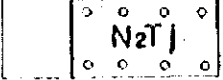
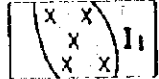
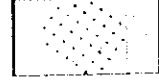
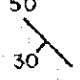
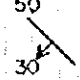

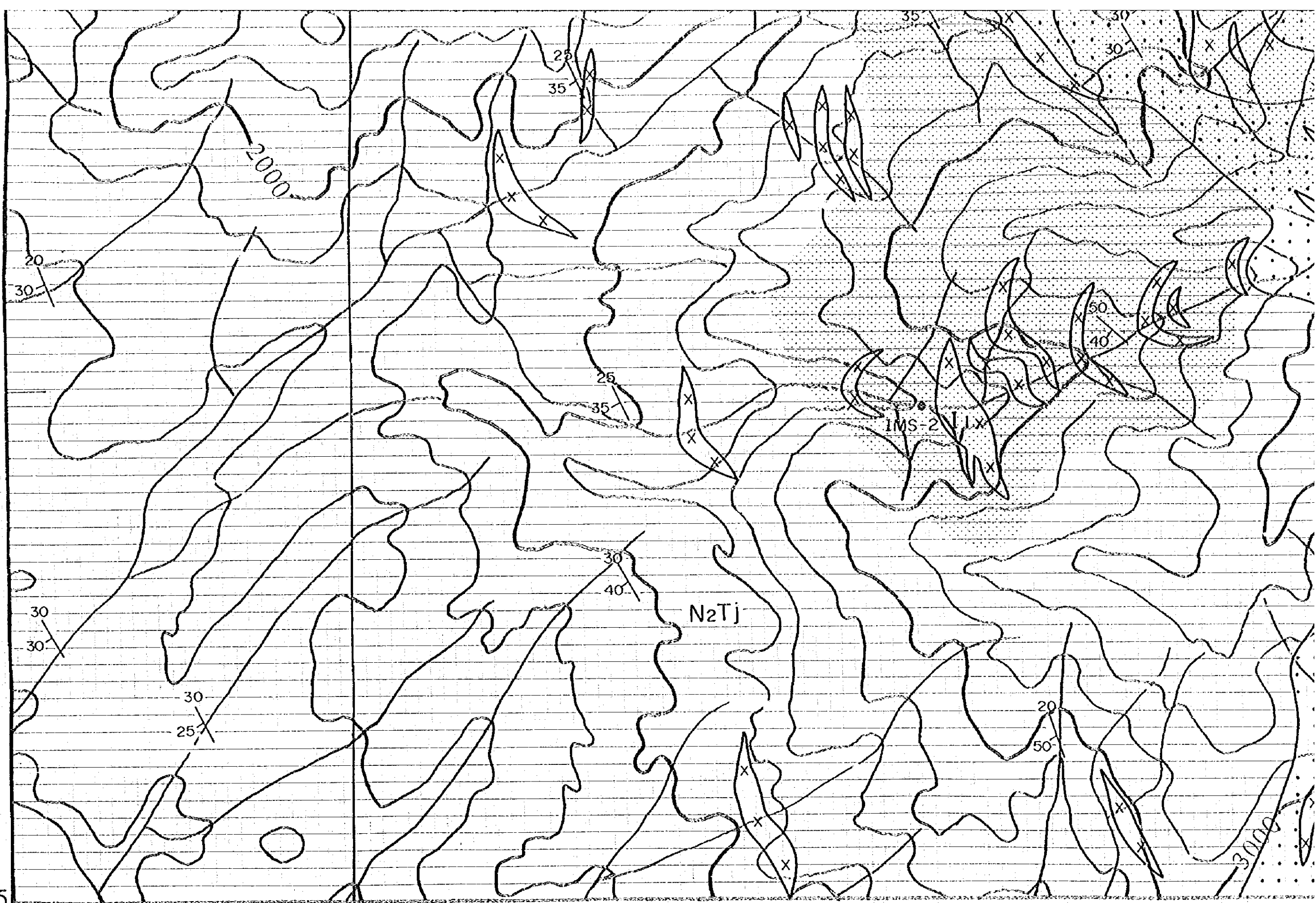


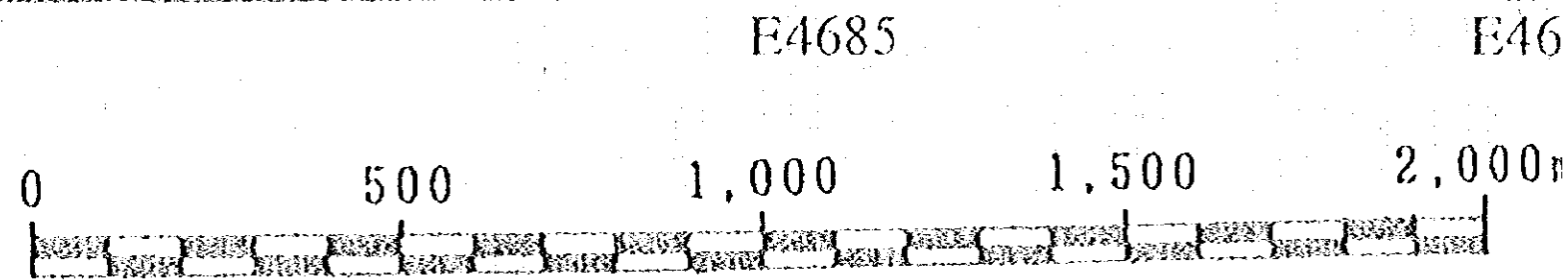
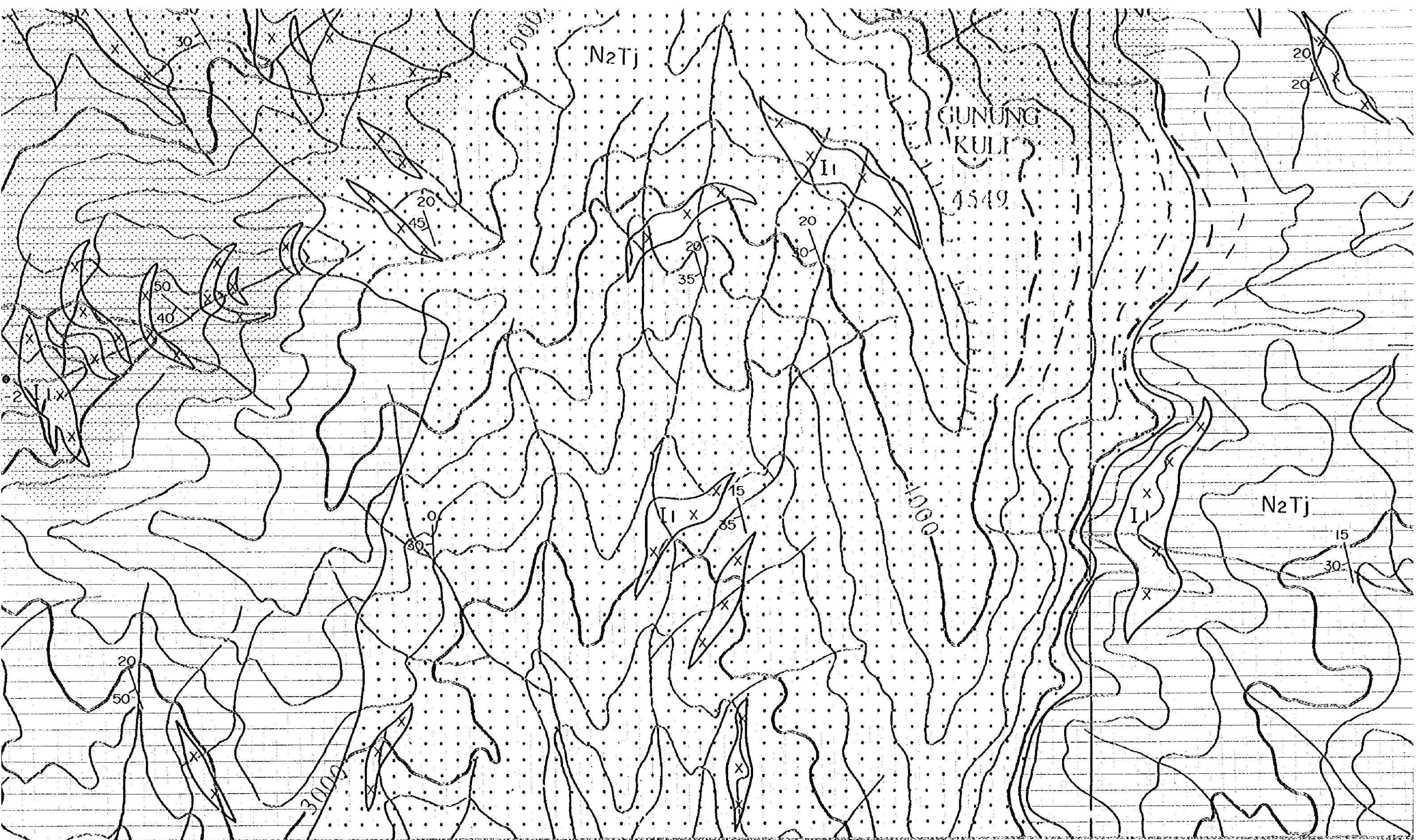
-  Lanjong Formation  
Conglomerate
-  Diorite Porphyry
-  Silicified and/or  
pyrite dissemination
-  50  
30  
Strike and dip of bedding
-  50  
30  
Strike and dip of vein
-  •IMS-1  
Location of mineral showing

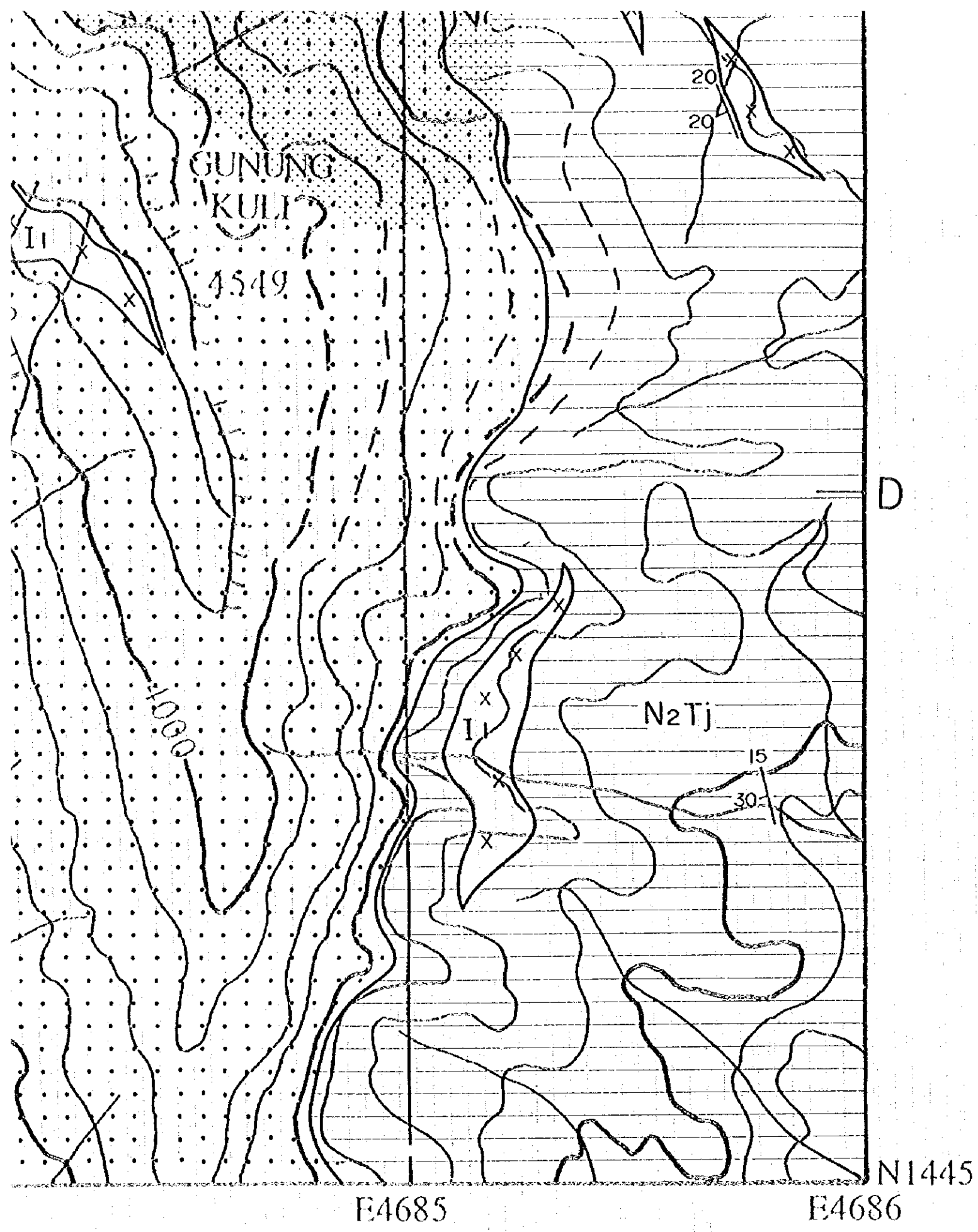
N1445  
E4679

E4680

C





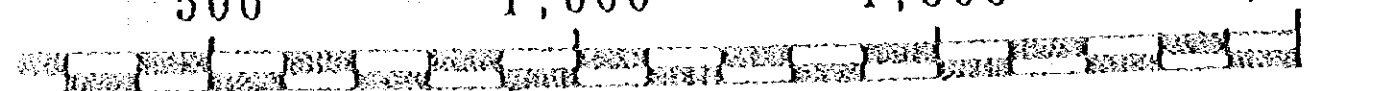


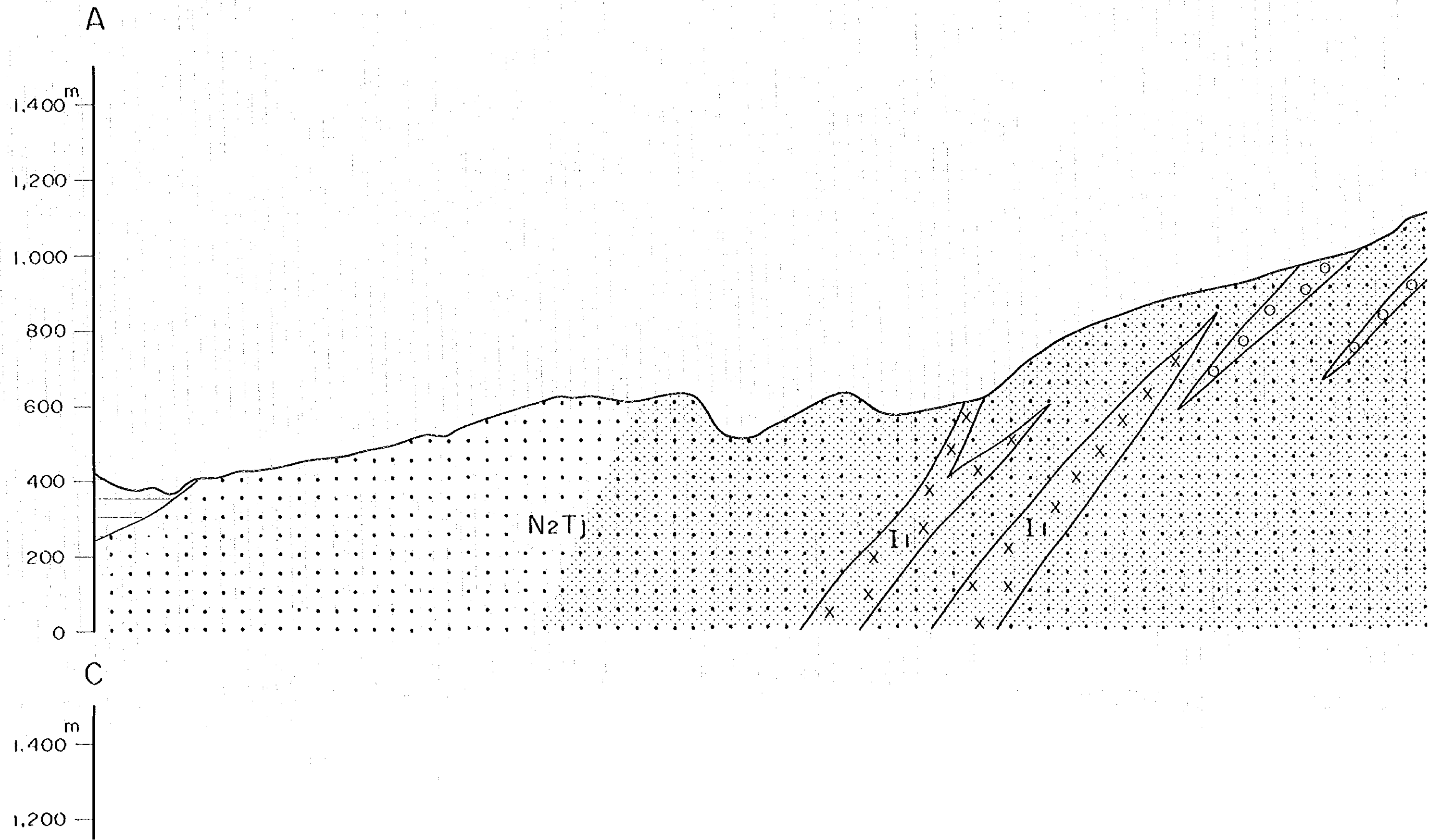
500

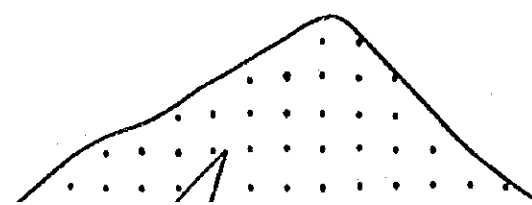
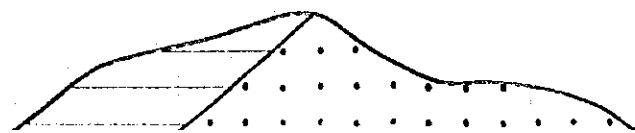
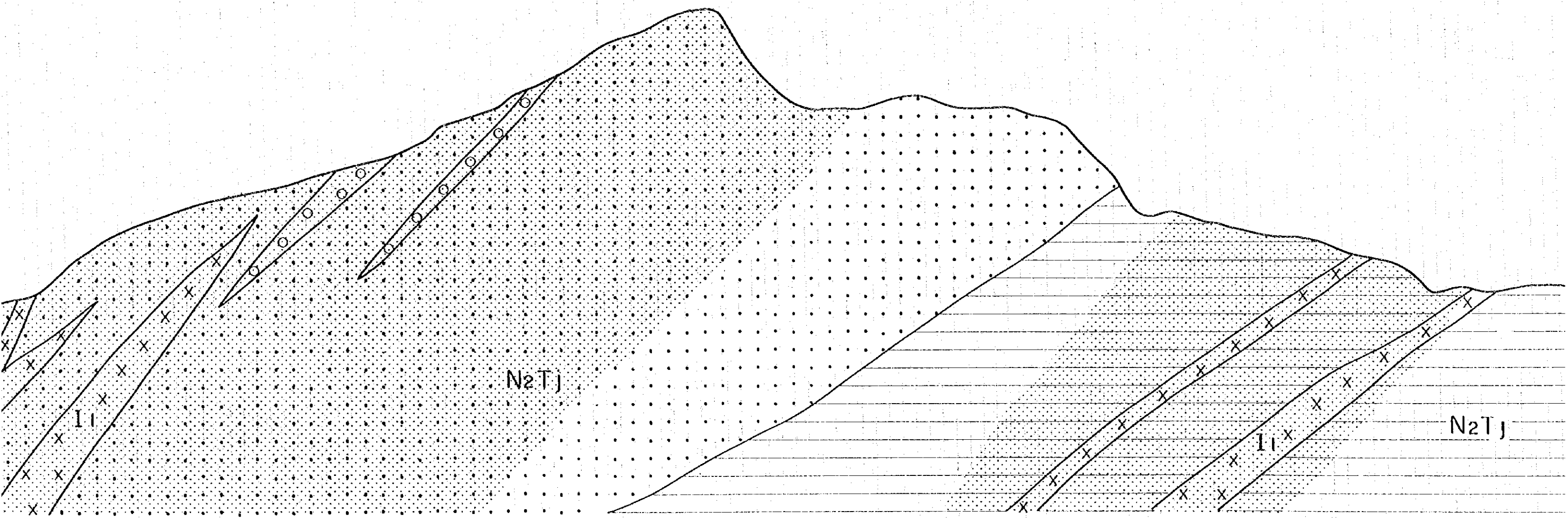
1,000

1,500

2,000m



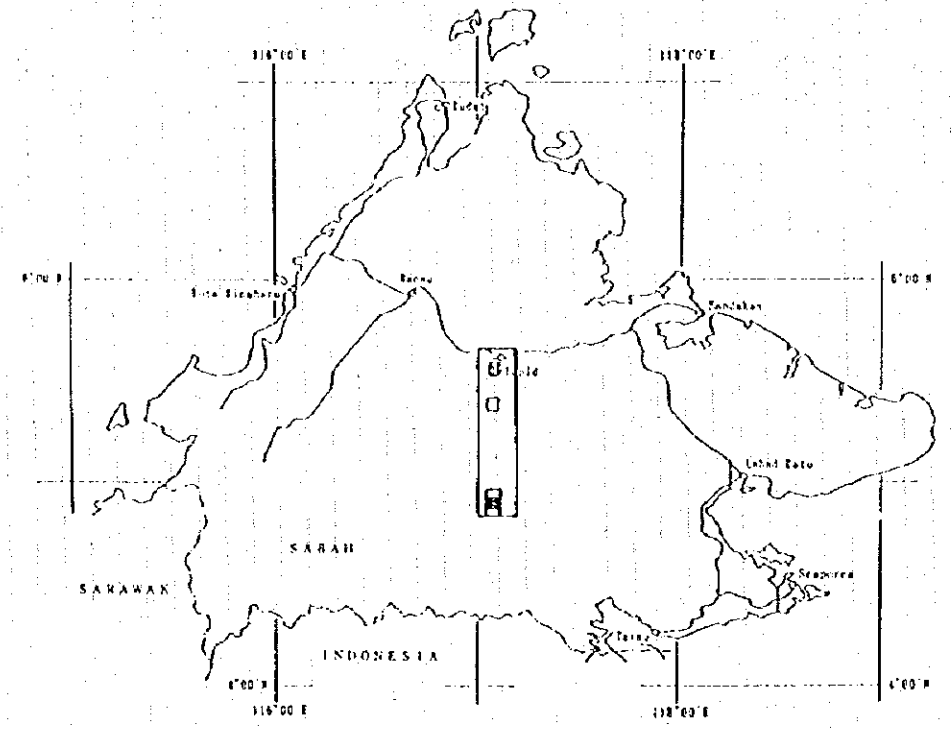




MINERAL EXPLORATION  
IN THE CENTRAL SABAH AREA  
MALAYSIA  
PHASE II

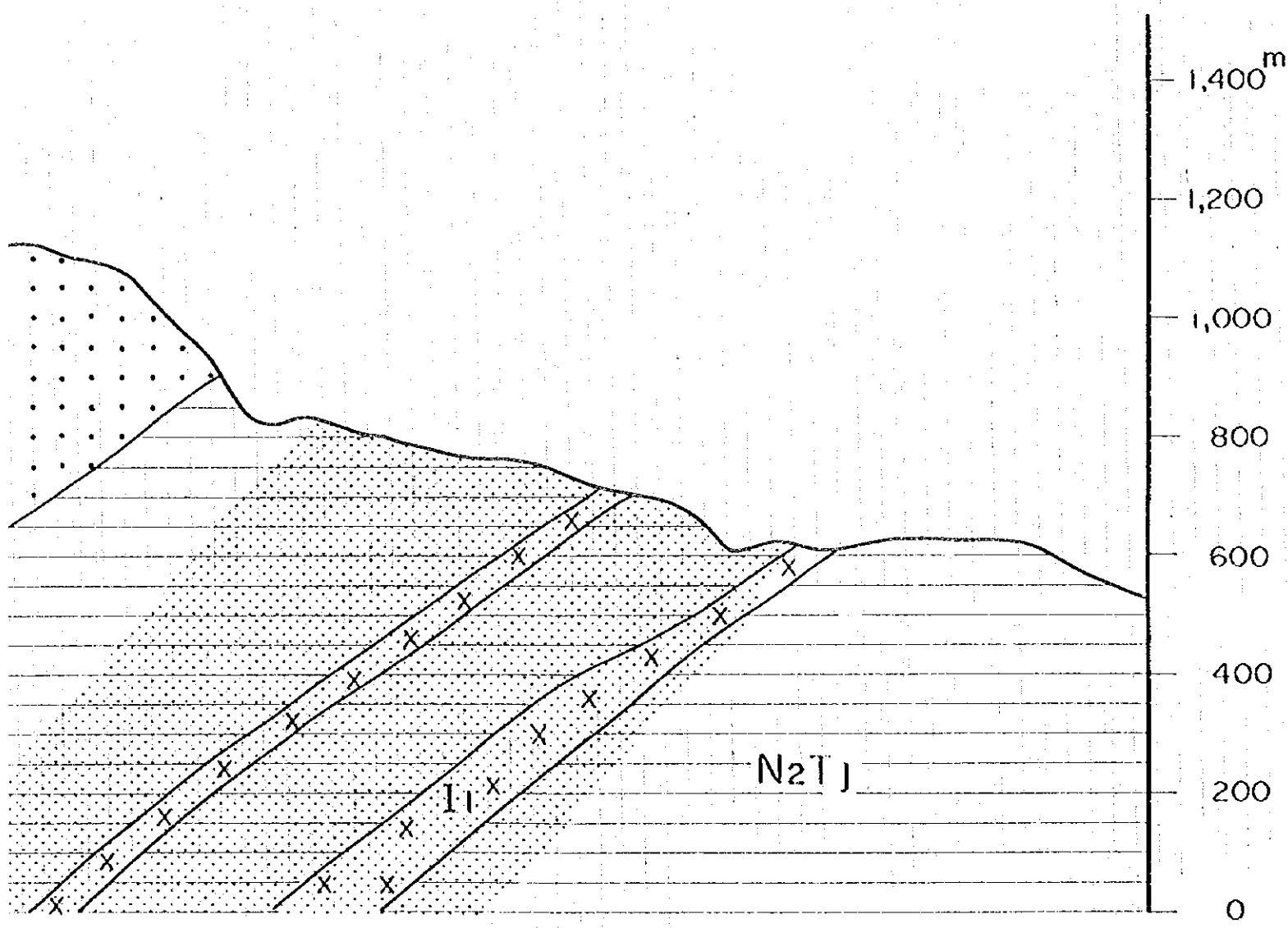
GEOLOGICAL MAP AND CROSS SECTIONS  
S. IMBAK SUB-AREA SOUTH

SCALE 1:10,000

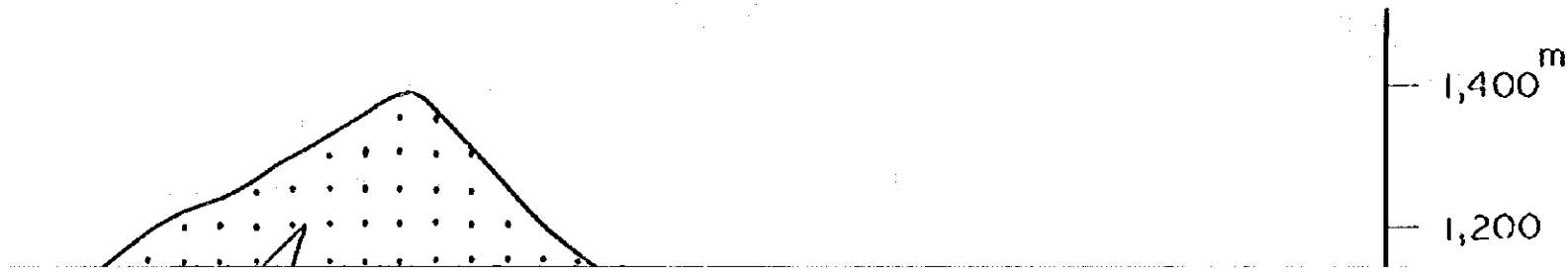


JAPAN INTERNATIONAL COOPERATION AGENCY  
METAL MINING AGENCY OF JAPAN  
FEBRUARY 1996

B

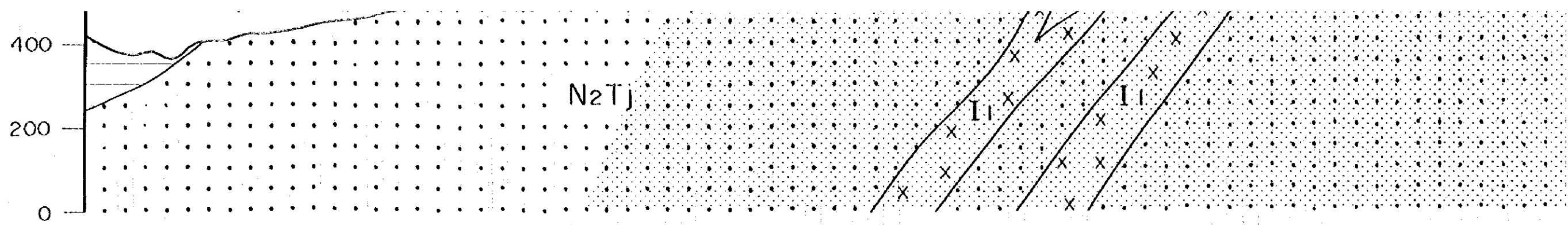


D

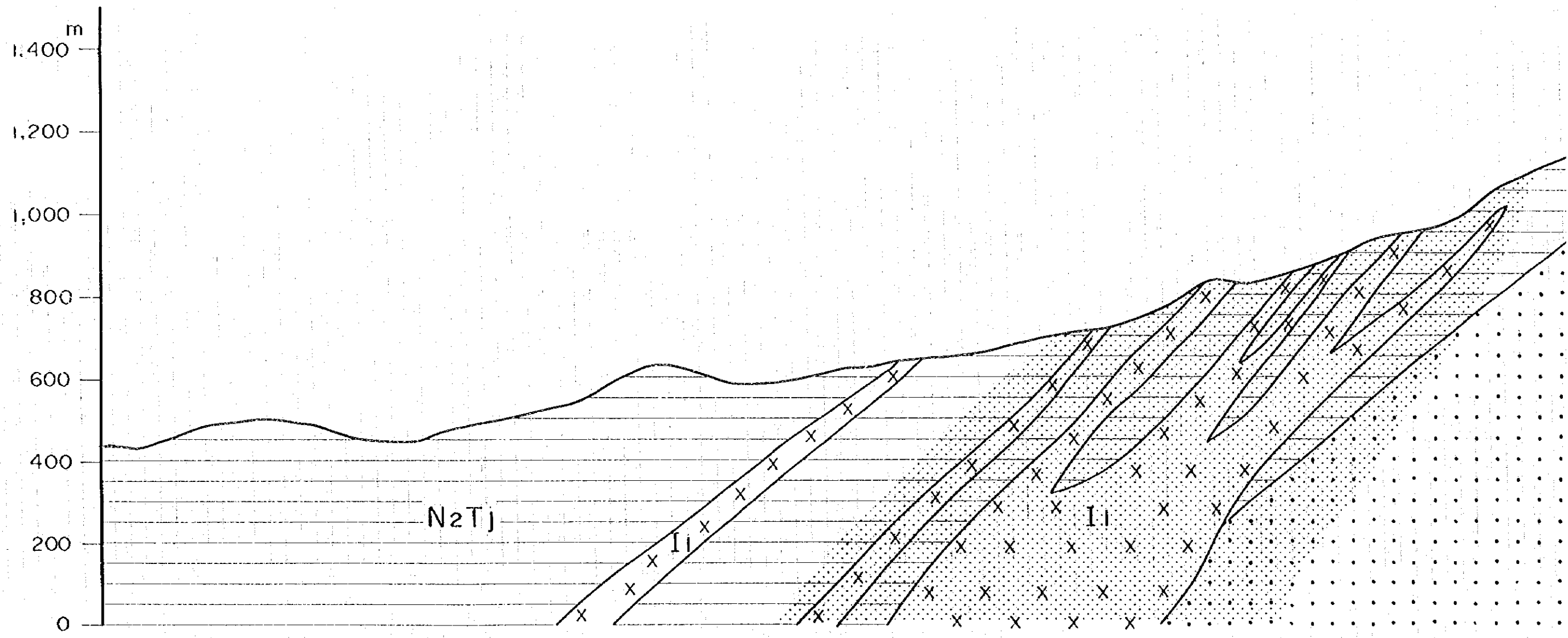


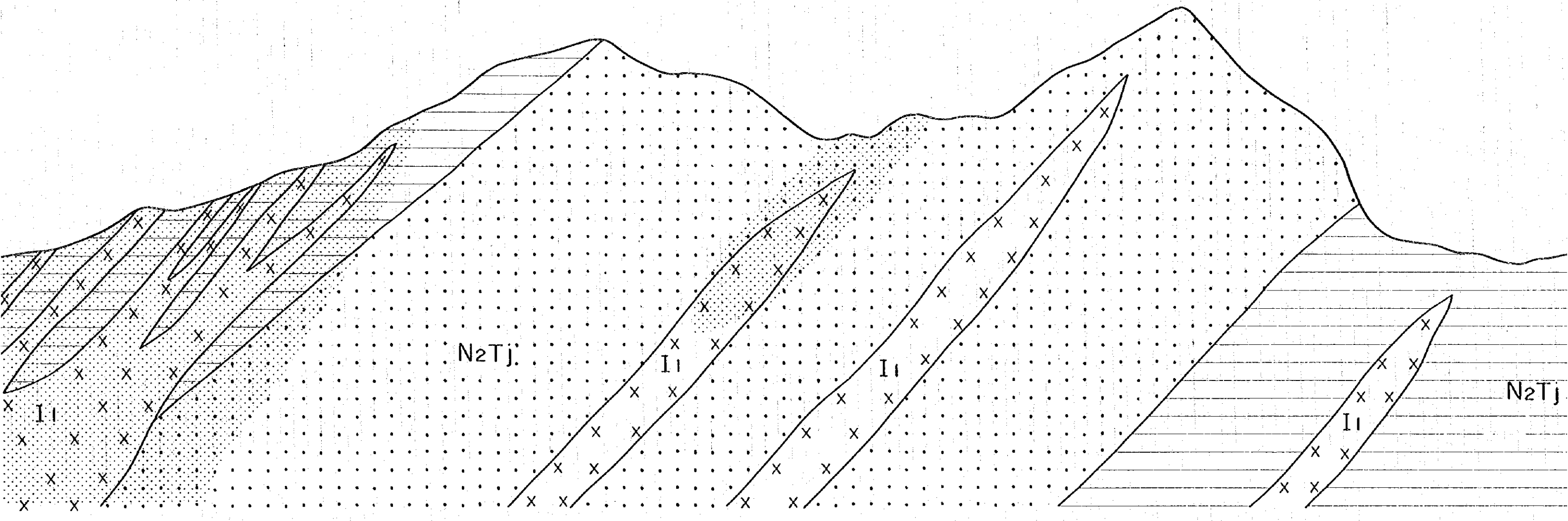
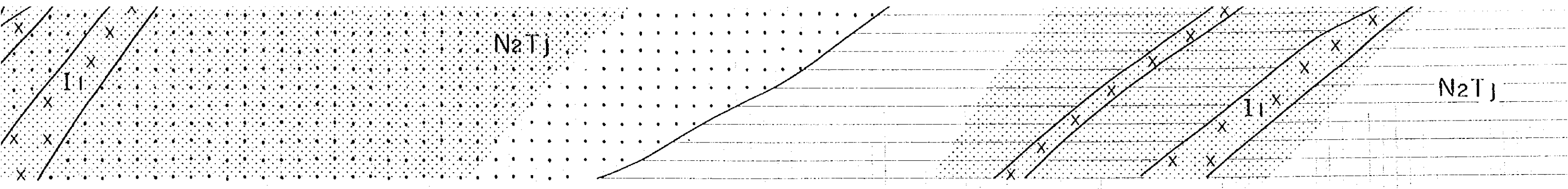
LEGEND

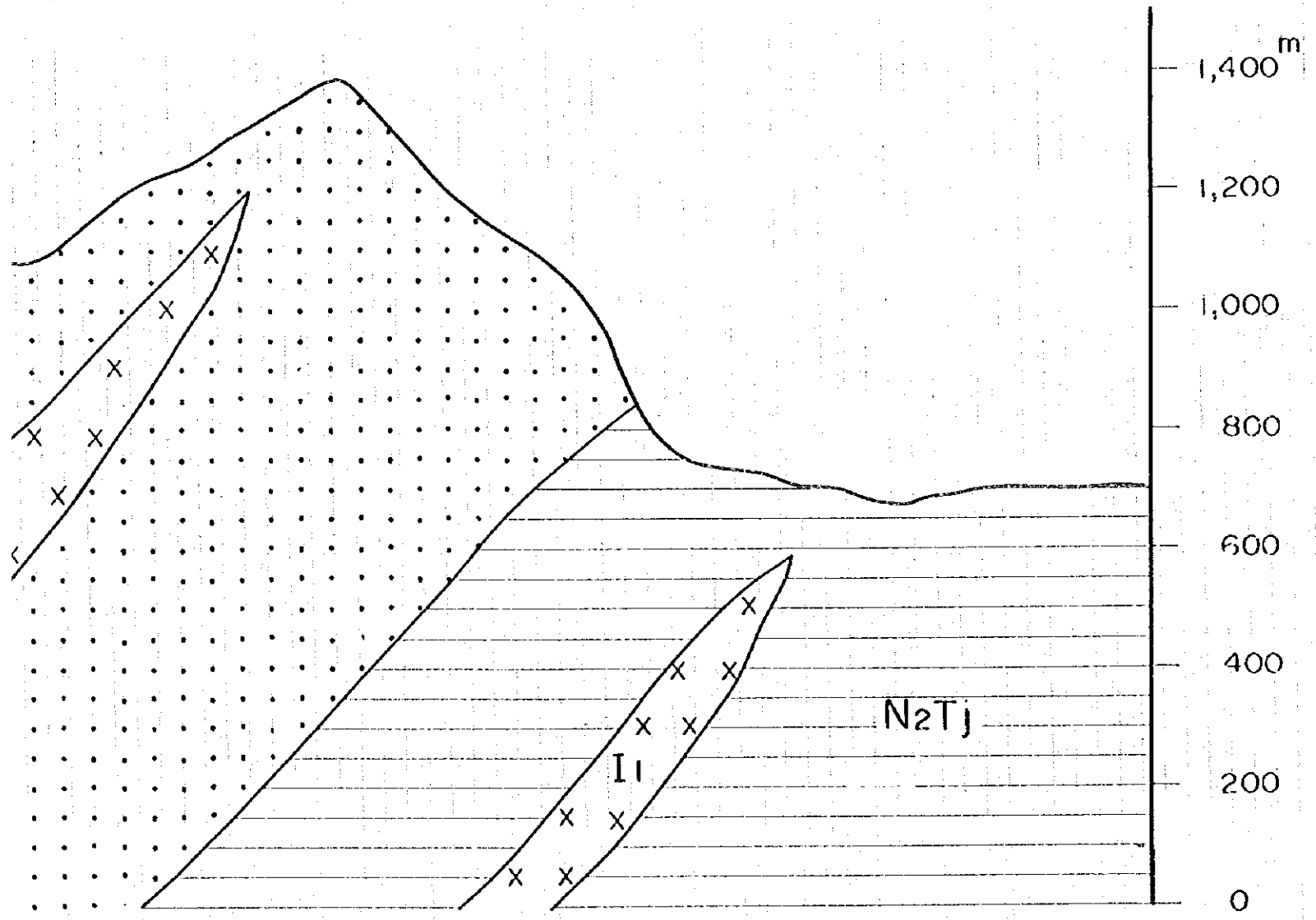
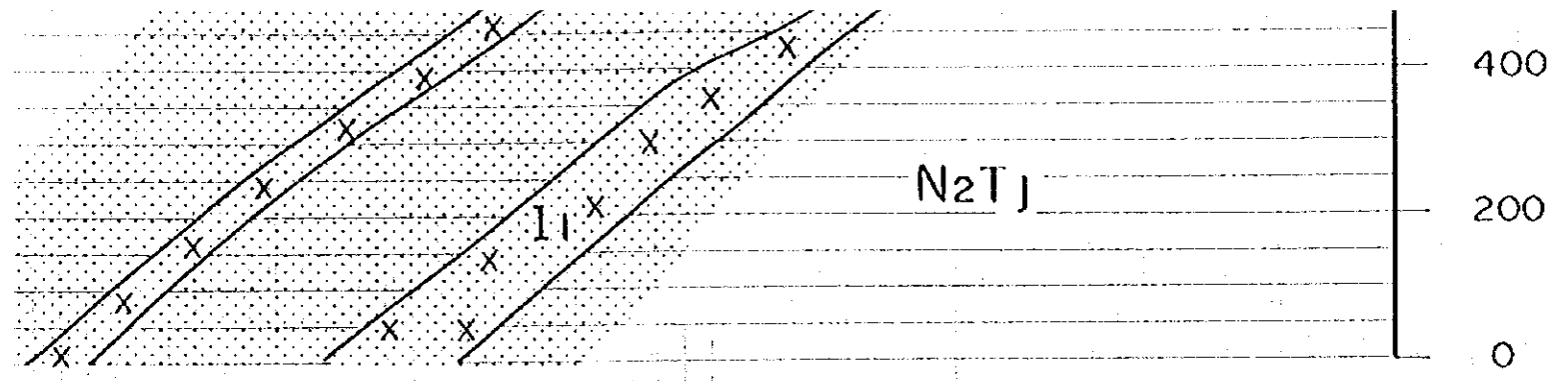




C







120°E      118°00'E      120°E  
 JAPAN INTERNATIONAL COOPERATION AGENCY  
 METAL MINING AGENCY OF JAPAN  
 FEBRUARY 1996

LEGEND

- |                                      |  |   |
|--------------------------------------|--|---|
| Early Miocene<br> <br>Middle Miocene |  | Tanjung Formation<br>Mudstone<br><br>Tanjung Formation<br>Sandstone<br><br>Tanjung Formation<br>Conglomerate<br><br>Diorite Porphyry<br><br>Silicified and/or<br>pyrite dissemination<br><br>Strike and dip of bedding<br><br>Strike and dip of vein<br><br>•IMS-1      Location of mineral showing |
|--------------------------------------|--|---|

JICA