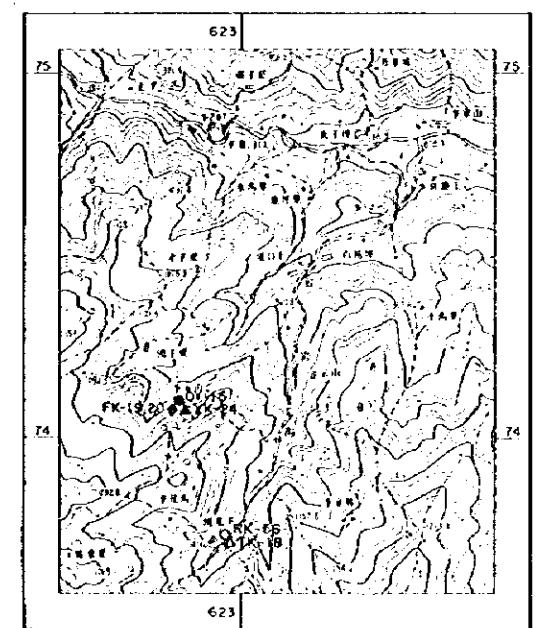
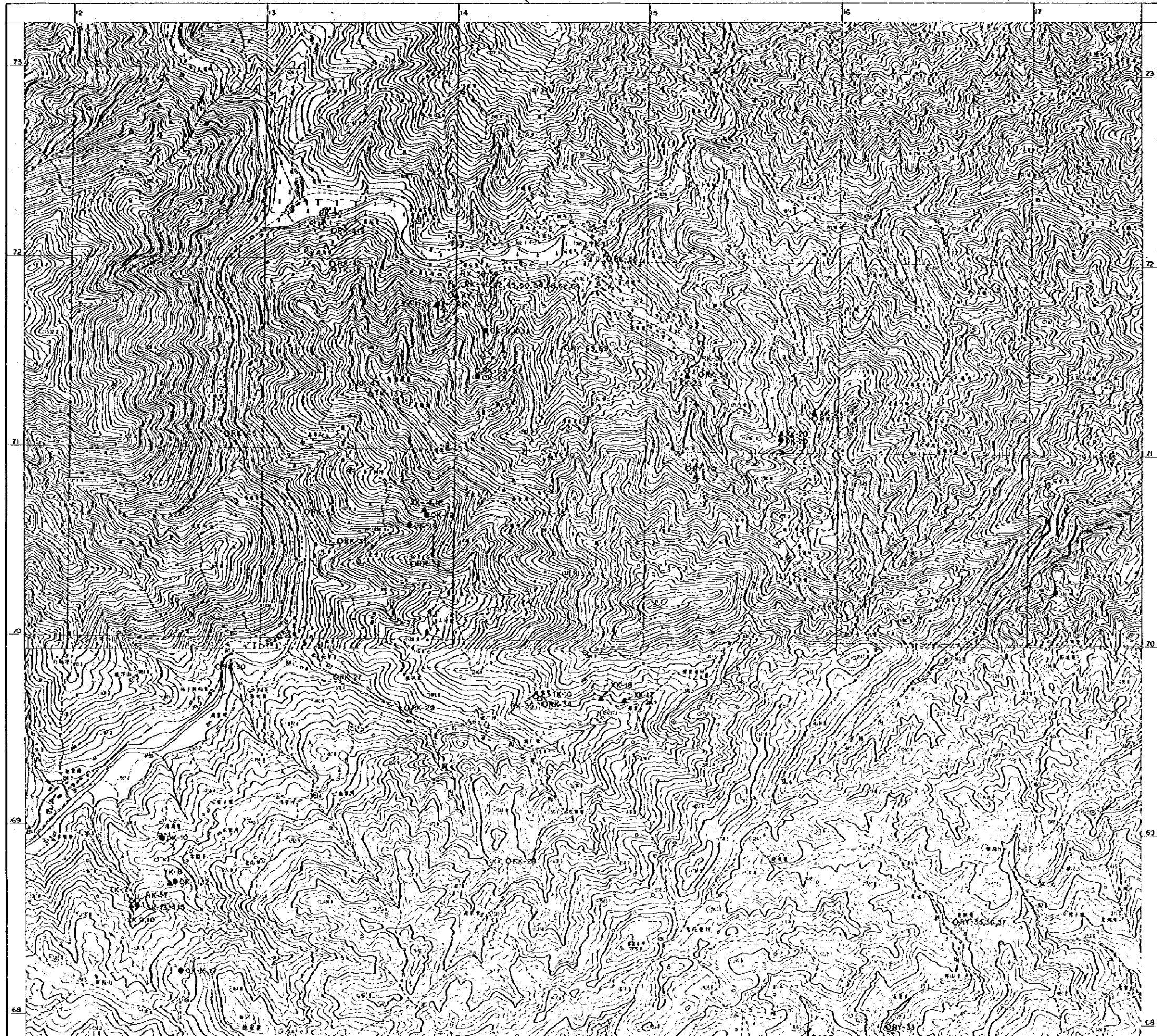
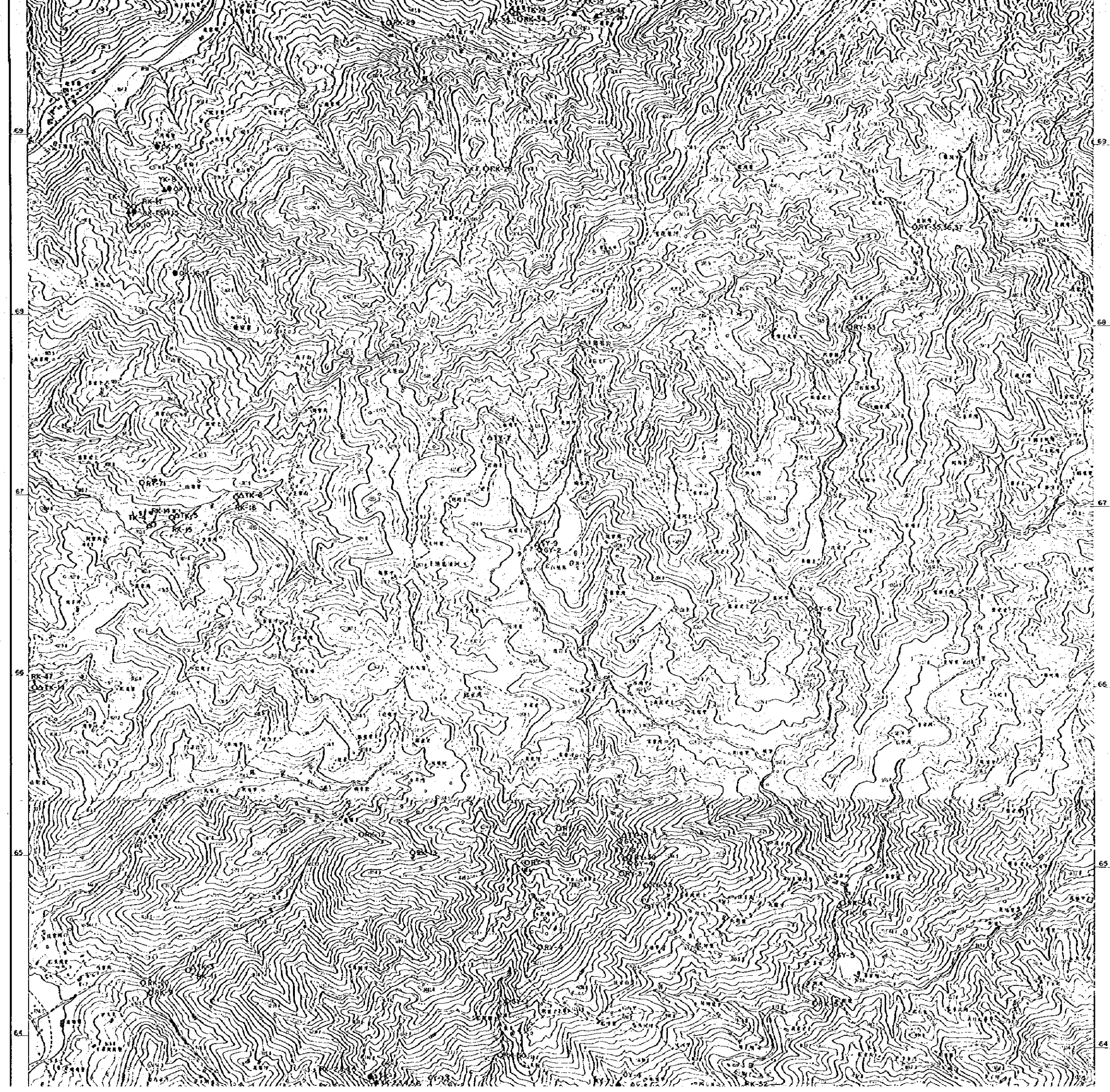


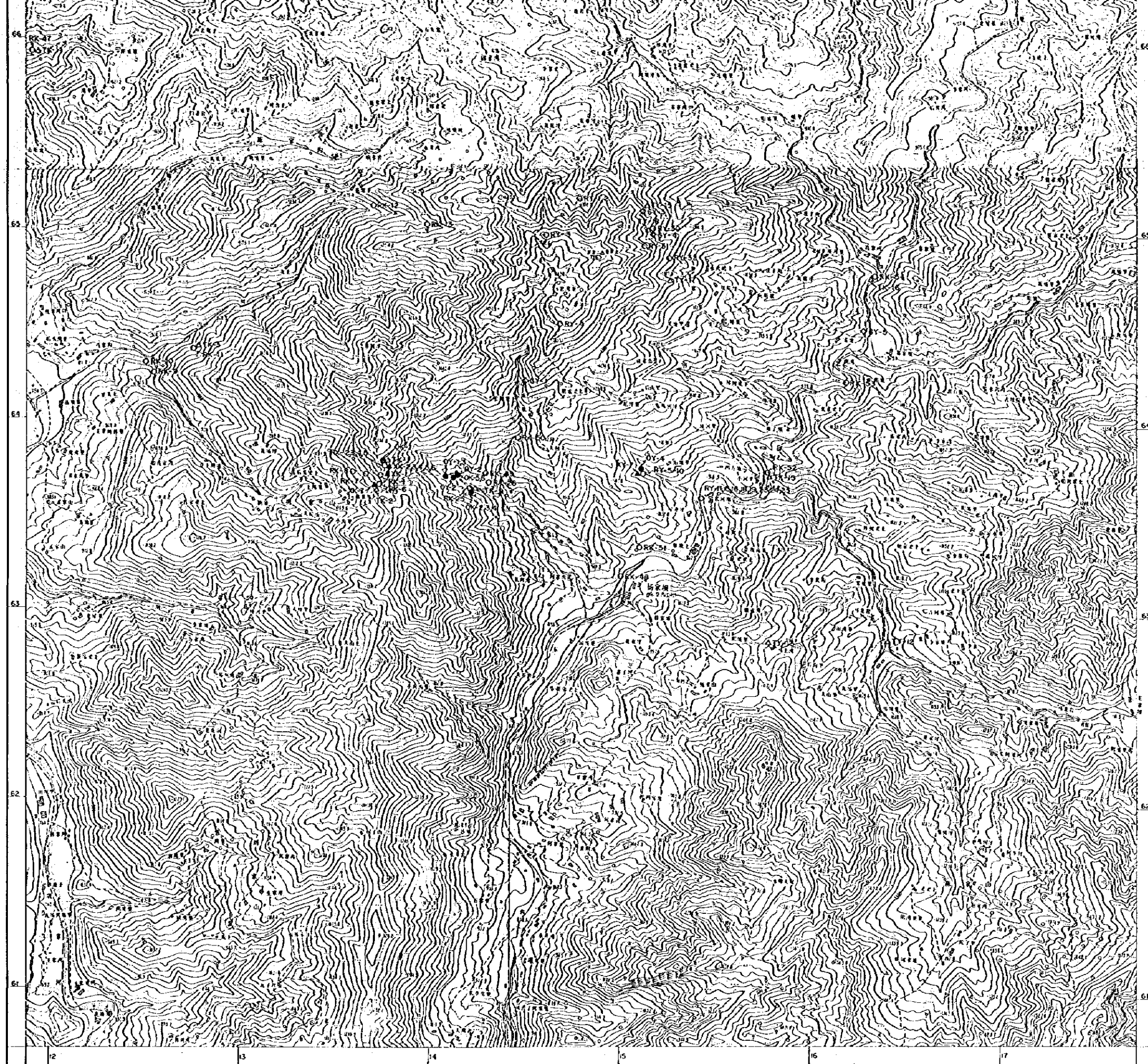
- 凡例
- 化学分析用岩石試料
 - 精製片用岩石試料
 - △ 薄片用岩石試料
 - ▲ X線回折用試料
 - 液体包有物試料用試料
 - ◇ 物性測定用岩石試料

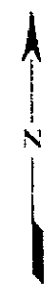
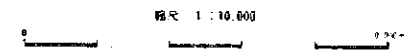
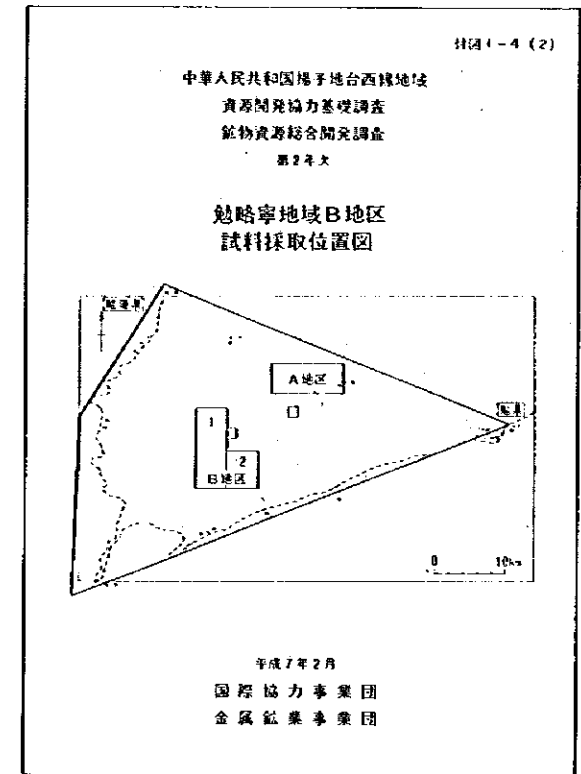
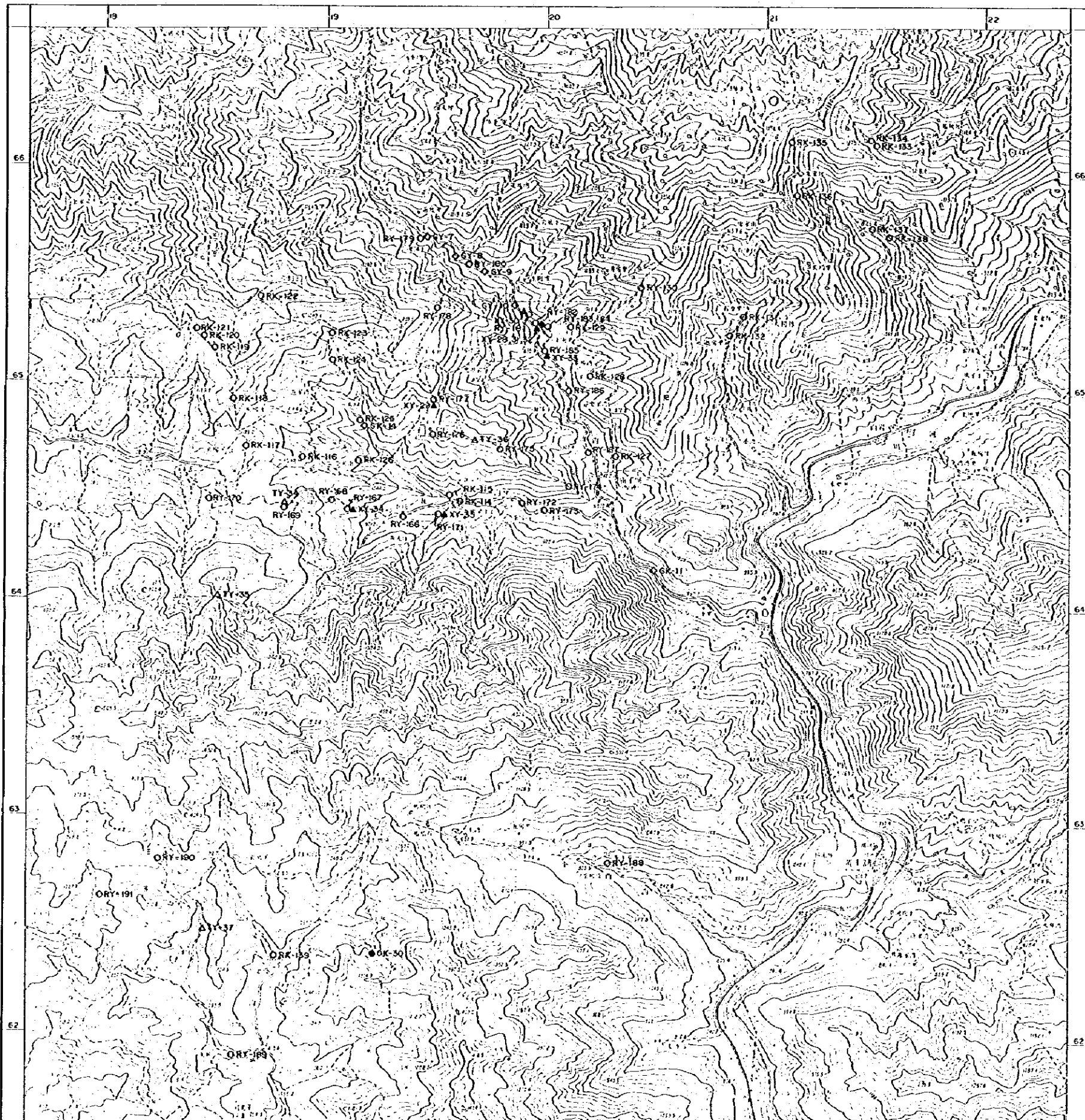


付图1-4(1) 魁峪率地域B地区试料採取位置图

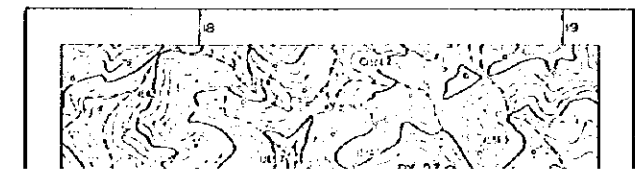


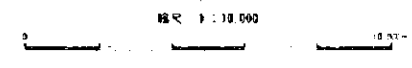
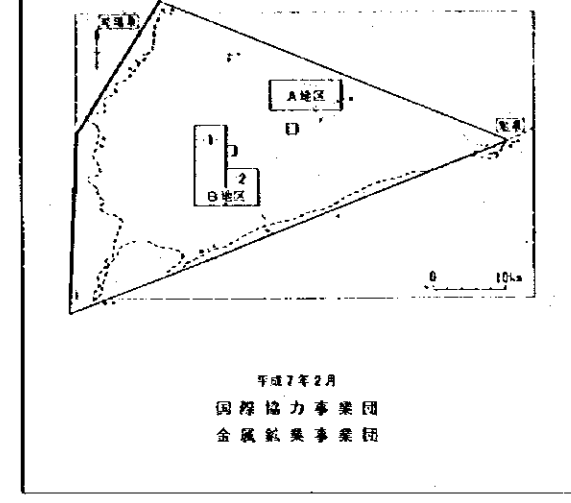
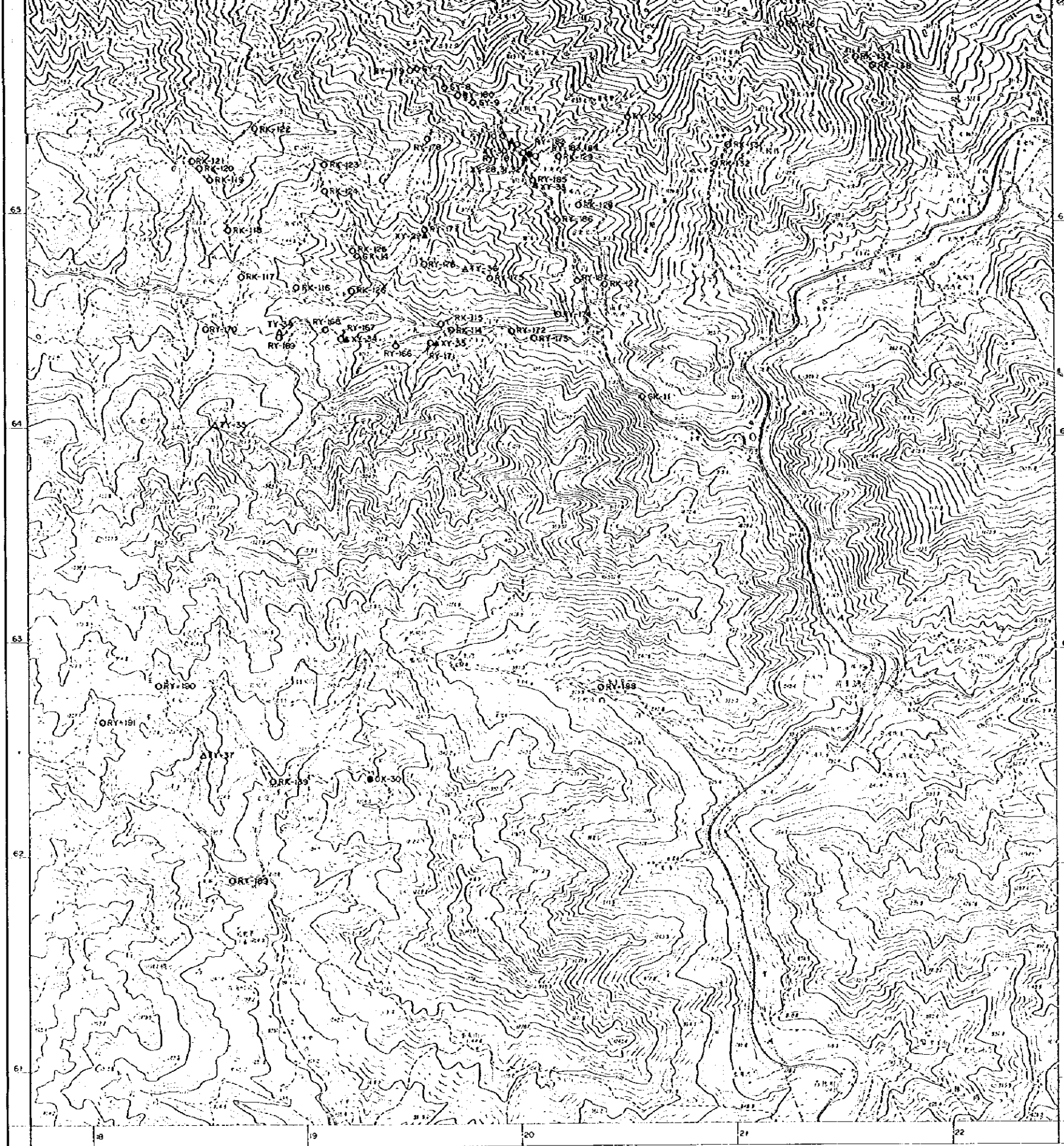






- 凡 例
- 化学分析用岩石试样
 - 研磨片用岩石试样
 - △ 薄片用岩石试样
 - ▲ X 線回折用试样
 - 液体包有物試驗用试样
 - ◇ 物性測定用岩石试样





- 凡例
- 化学分析用岩石試料
 - 顕微鏡用岩石試料
 - △ 薄片用岩石試料
 - ▲ X線回折用試料
 - 流体包有物試験用試料
 - ◇ 物性測定用岩石試料

