

Examples of Reports

Capacity of Power Generation

Company Sector	1976	1977	1978	1979	1980	1981	1982	1983	1984	1985	1986	1987	1988	1989	1990	1991	1992
All PC	1304.4	1361.4	1368.3	1366.5	1369.8	1391.1	1324.7	1384.4	1465.5	1605.3	1740.1	1807.4	2031.6	2622.1	2659.8	2998.5	3153.4
Thermal	514.0	569.0	575.0	567.0	567.0	567.0	562.6	552.5	638.5	776.5	911.0	962.0	954.0	944.0	944.0	898.0	898.0
Hydro	277.6	277.6	283.6	276.7	276.7	276.7	276.7	277.7	277.7	290.6	290.9	291.1	501.6	1176.1	1176.1	1662.7	1650.3
Diesel	451.3	453.3	448.2	461.3	464.6	457.8	391.4	418.2	413.3	402.2	402.2	418.3	425.0	325.0	376.7	324.8	397.1
Gas Turbine (O)	61.5	61.5	61.5	27.5	27.5	27.5	77.0	102.0	102.0	102.0	102.0	102.0	117.0	143.0	129.0	79.0	174.0
Gas Turbine (G)	0.0	0.0	0.0	34.0	34.0	34.0	17.0	34.0	34.0	34.0	34.0	34.0	34.0	34.0	34.0	34.0	34.0
PC1	461.3	524.3	559.6	581.7	585.9	600.7	555.7	580.3	666.7	790.5	925.3	975.7	985.2	1437.7	1437.7	1824.7	1821.8
Thermal (Coal)	281.0	336.0	342.0	334.0	334.0	329.6	329.6	319.5	405.5	543.5	678.0	729.0	721.0	711.0	711.0	693.0	693.0
Hydro	113.8	113.8	119.8	112.9	112.9	112.8	112.8	113.8	113.8	126.7	127.0	127.2	137.2	607.2	607.2	1080.0	1086.6
Diesel	66.5	74.5	97.8	100.8	105.0	91.3	46.3	38.0	38.4	11.3	11.3	10.5	18.0	10.5	10.5	17.7	8.2
Gas Turbine (O)	0.0	0.0	0.0	0.0	0.0	0.0	50.0	75.0	75.0	75.0	75.0	75.0	75.0	75.0	75.0	0.0	0.0
Gas Turbine (G)	0.0	0.0	0.0	34.0	34.0	34.0	17.0	34.0	34.0	34.0	34.0	34.0	34.0	34.0	34.0	34.0	34.0
PC2	771.9	735.9	709.0	684.6	684.6	666.6	666.6	666.6	666.6	666.6	666.6	666.6	881.3	980.1	1031.8	1034.7	1164.4
Thermal (Oil)	233.0	233.0	233.0	233.0	233.0	233.0	233.0	233.0	233.0	233.0	233.0	233.0	233.0	233.0	233.0	205.0	205.0
Hydro	163.0	163.0	163.0	163.0	163.0	163.1	163.1	163.1	163.1	163.1	163.1	163.1	363.7	564.2	564.2	563.7	563.7
Diesel	314.4	278.4	251.5	261.1	261.1	243.5	243.5	243.5	243.5	243.5	243.5	243.5	242.6	178.9	180.6	187.0	221.7
Gas Turbine (O)	61.5	61.5	61.5	27.5	27.5	27.0	27.0	27.0	27.0	27.0	27.0	27.0	42.0	54.0	54.0	79.0	174.0
PC3	71.2	101.2	99.7	100.2	99.3	123.8	102.4	137.5	132.2	148.2	148.2	165.1	165.1	204.3	190.3	139.1	167.2
Hydro	0.8	0.8	0.8	0.8	0.8	0.8	0.8	0.8	0.8	0.8	0.8	0.8	0.7	4.7	4.7	4.7	19.0
Diesel	70.4	100.4	98.9	99.4	98.5	123.0	101.6	136.7	131.4	147.4	147.4	164.3	164.4	185.6	185.6	120.1	167.2
Gas Turbine (O)	0.0	0.0	0.0	0.0	0.0	0.0	0.0	0.0	0.0	0.0	0.0	0.0	0.0	14.0	0.0	0.0	0.0

Figure 1.1.2-1 Report : Capacity

Transformer

Company Type	1976	1977	1978	1979	1980	1981	1982	1983	1984	1985	1986	1987	1988	1989	1990	1991	1992
All PC																	
Undefined												25.0	25.0	25.0	123.0	148.0	
Tram 220 kV	196.0	196.0	196.0	196.0	196.0	196.0	196.0	196.0	196.0	446.0	446.0	446.0	1078.0	1203.0	1732.0	2922.0	3062.0
Tram 110-66 kV	1378.4	1441.4	1396.9	1427.9	1482.8	1083.3	1241.3	1158.3	1268.8	1443.3	1582.3	1594.5	2224.2	2120.3	2562.3	2922.8	2979.8
Tram 35 kV	780.0	847.7	829.8	895.2	796.9	840.8	985.9	1075.1	650.3	769.3	1132.2	1366.5	2101.2	2409.7	2199.2	1616.9	1380.8
Tram 15-10-6 kV	1421.4	1558.1	1764.3	1793.3	1446.1	1614.1	1566.8	1916.4	2408.9	2531.4	2027.2	2482.3	3121.0	3384.4	3947.6	4375.8	1931.7
PC1																	
220/110/10 kV										250.0	250.0	250.0	500.0	500.0	750.0	2065.0	2065.0
110/35/10-6 kV	872.0	912.0	887.0	918.0	943.0	565.0	721.0	636.0	734.0	722.0	819.0	951.0	1396.0	1093.0	1442.5	1586.3	1643.3
35/10-6 kV	531.7	488.9	500.6	528.6	419.1	437.3	544.1	560.1	562.8	768.3	675.0	910.6	1382.0	1498.1	1479.5	887.8	821.3
35/0.4 kV	239.6	350.2	319.5	328.9	340.1	334.9	373.2	431.4			456.2	429.6	540.2	564.0	649.2	711.1	559.5
10/0.4 kV	248.0	237.8	363.5	313.6	297.2	741.9	877.7	972.9	1405.7	1568.4	527.2	562.6	763.3	729.0	950.4	1121.6	887.8
6/0.4 kV	363.2	365.0	417.3	461.2	446.1						715.4	706.8	829.8	942.0	1088.4	1089.8	1043.9
PC2																	
230/110-66 kV	196.0	196.0	196.0	196.0	196.0	196.0	196.0	196.0	196.0	196.0	196.0	196.0	578.0	703.0	919.0	794.0	934.0
110/15-6.6 kV	506.4	507.9	488.4	488.4	518.3	518.3	520.3	522.3	534.8	534.8	576.8	104.0	314.0	374.0	490.5	655.5	655.5
66/15-6.6 kV												524.3	499.0	617.0	611.0	662.7	662.7
31.5/6.6 kV	8.7	8.7	9.7	9.7	9.7	1.0	1.0	1.0	1.0	1.0	1.0	1.0	1.0	1.0	1.0	1.0	18.0
15/6.6 kV	810.2	836.9	862.1	890.6	556.1	171.0	171.0	171.0	271.0	271.0	648.7	951.2	1291.0	1476.5	1696.6	1837.1	
15.10/6/0.4 kV						581.9	382.7	603.0	556.1	556.1							
PC3																	
220/110 kV															63.0	63.0	63.0
110/35/10 kV												25.0	25.0	25.0	123.0	148.0	
66/15 kV		21.5	21.5	21.5	21.5					186.5	186.5	15.2	15.2	36.3	18.3	18.3	18.3
35/15 kV				28.0	28.0												
35/10-6 kV						67.6	67.6	82.6	86.5			25.3	178.0	346.6	69.5		
15/6 kV																	
6/4.16 kV		118.4	121.4	127.9	146.7	119.3	135.4	169.5	176.1	135.9	135.9	261.7	236.9	236.9	212.2	327.3	
15.10/6/0.4 kV																	

Figure 1.1.2-2 Report : Transformer

Transmission

Company Type	1976	1977	1978	1979	1980	1981	1982	1983	1984	1985	1986	1987	1988	1989	1990	1991	1992
APC																	
220 kV	257.0	257.0	257.0	257.0	257.0	257.0	257.0	487.0	647.0	647.0	582.0	582.0	1187.0	1241.0	1420.0	1712.8	
110-66 kV	1472.5	1594.3	1706.0	1728.1	1753.2	1911.1	1982.2	1955.7	1978.9	2166.1	2235.5	2356.0	2843.2	3245.2	3568.2	4478.3	
35 kV	3272.0	3243.3	3522.1	3983.4	3913.8	4246.8	4617.2	4273.8	4401.4	5008.8	5185.9	5446.4	6481.2	6568.3	6930.3	7726.9	
15,10,6 kV	6786.0	6705.8	7567.2	7730.0	8068.8	8818.4	10034.5	10971.7	11916.0	12745.0	13333.6	13564.8	14969.4	16225.0	17124.0	19743.8	
Low Voltage	7558.9	7968.9	8127.3	8436.4	8747.4	9436.0	9796.0	10028.0	10583.0	10983.0	11555.0	12403.0	13803.0	14864.0	15577.0	16203.0	
PC1																	
220 kV								230.0	390.0	390.0	325.0	325.0	675.0	729.0	838.0	1076.0	
110 kV	928.3	1014.1	1052.8	1074.9	1133.7	1219.3	1280.6	1240.0	1290.0	1477.2	1405.4	1502.9	1519.0	1779.0	1816.0	2419.0	
35 kV	3218.3	3165.8	3444.6	3905.9	3807.4	3969.0	4339.4	3996.0	3825.0	4432.4	4510.5	4707.1	5532.0	5532.0	5837.0	5837.0	
10 kV	2563.7	2360.6	2984.1	2886.1	2979.0	3108.7	3977.8	4600.8	4753.0	5269.0	5345.6	5427.5	5727.4	6067.0	6381.0	7082.8	
6 kV	1343.8	1220.2	1214.3	1399.1	1366.4	1388.0	1562.4	1574.7	1630.0	1780.0	1902.0	2141.0	2600.0	2691.0	2691.0	2790.0	
Low Voltage	4200.0	4400.0	4500.0	4800.0	5100.0	5400.0	5700.0	5900.0	6300.0	6700.0	7000.0	7200.0	8500.0	9000.0	9500.0	9500.0	
PC2																	
220,230 kV	257.0	257.0	257.0	257.0	257.0	257.0	257.0	257.0	257.0	257.0	257.0	257.0	257.0	512.0	512.0	566.8	
110 kV																	
66 kV	544.2	580.2	580.2	580.2	546.5	546.5	556.3	570.4	444.9	444.9	444.9	444.9	496.5	383.0	483.0	331.7	
35 kV													40.9				
31.5 kV	53.7	77.5	77.5	77.5	94.4	94.4	94.4	94.4	94.4	94.4	94.4	94.4	75.3	75.3	75.3	71.3	
15,10,6 kV	2233.4	2405.9	2579.5	2652.5	2817.0	3177.2	3349.8	3546.9	3669.0	3669.0	4073.0	4480.3	5027.0	5753.0	6342.0	8119.2	
Low Voltage	2732.0	2799.0	2799.0	2799.0	2799.0	2799.0	2799.0	2799.0	2799.0	2799.0	3005.0	3483.0	3483.0	3764.0	3577.0	4003.0	
PC3																	
220 kV								20.3	20.3	20.3	175.0	175.0	198.0	231.0	231.0	527.0	
110 kV								73.0	73.0	73.0	75.2	75.2	75.2	75.2	75.2	148.0	
66 kV								12.0	183.4	183.4	183.4	183.4	664.0	833.0	961.0	1018.0	
35 kV & 31.5 kV	463.4	443.7	498.1	530.1	640.2	645.2	645.2	750.0	1310.0	1310.0	1250.0	1063.0	1063.0	1118.0	1114.0	1167.0	
10,6 kV	181.7	275.4	291.2	262.2	266.2	499.3	499.3	499.3	554.0	717.0	763.0	453.0	552.0	596.0	596.0	584.8	
Low Voltage	626.9	769.9	828.3	837.4	848.4	1237.0	1297.0	1329.0	1484.0	1484.0	1550.0	1720.0	1820.0	2100.0	2500.0	2700.0	

Figure 1.1.2-3 Report : Transmission

Power Generation																	
Company Item	1976	1977	1978	1979	1980	1981	1982	1983	1984	1985	1986	1987	1988	1989	1990	1991	1992
All PC Total	2964.6	3353.6	3705.4	3775.6	3559.1	3726.3	3974.4	4071.8	4778.6	5064.7	5526.7	6049.7	6783.1	7791.9	8678.5	9151.6	9652.1
Thermal	1854.9	1955.2	2083.8	2022.3	1740.7	1844.4	1981.6	2242.4	2616.2	3017.7	3627.1	4155.2	4432.9	3462.0	2841.1	2424.7	1886.4
Hydro	831.0	1133.1	1330.8	1447.5	1488.2	1506.9	1559.6	1223.2	1599.0	1472.1	1401.9	1375.7	1785.5	3825.3	5368.7	6316.5	7228.1
Diesel	275.6	264.8	289.6	285.7	316.0	333.6	331.6	389.5	373.4	409.2	394.6	400.7	425.6	436.5	410.7	309.4	319.6
Gas Turbine (O)	3.1	0.5	1.2	20.1	14.2	25.8	65.4	96.7	76.6	92.5	36.7	51.9	75.1	40.7	52.4	65.8	212.5
Gas Turbine (G)						15.6	36.2	120.0	113.4	73.2	66.4	66.2	64.0	27.4	5.6	35.2	5.5
PCI Total	1605.5	1839.1	2085.5	2187.6	1869.8	1995.9	2115.0	2144.4	2646.7	2848.9	3238.6	3537.3	3872.1	4358.6	4868.8	5121.1	5414.6
Thermal (Coal)	1202.1	1430.7	1559.8	1596.8	1420.7	1434.9	1522.5	1525.6	2016.1	2302.1	2656.0	3064.8	3438.7	2722.3	2000.5	1365.5	851.4
Hydro	383.3	353.9	444.5	500.6	373.8	467.4	459.5	390.7	436.2	385.7	477.9	354.6	293.0	1589.5	2856.6	3709.9	4548.8
Diesel	20.1	54.5	80.4	70.3	61.5	52.4	32.8	19.6	6.2	2.6	7.7	10.1	11.3	8.9	6.1	10.5	8.9
Gas Turbine (O)	0.0	0.0	0.8	19.9	13.8	25.6	64.0	88.5	74.8	85.3	30.6	41.6	65.1	10.5			
Gas Turbine (G)						15.6	36.2	120.0	113.4	73.2	66.4	66.2	64.0	27.4	5.6	35.2	5.5
PC2 Total	1279.0	1418.1	1499.4	1451.0	1544.8	1575.5	1695.2	1732.9	1900.2	1966.4	2025.7	2233.9	2592.3	3068.7	3452.6	3793.1	4012.9
Thermal (Oil)	652.8	524.5	524.0	425.5	320.0	409.5	459.1	716.8	600.1	715.6	971.1	1090.4	994.2	739.7	840.6	1059.2	1035.0
Hydro	444.0	775.6	882.0	942.5	1110.3	1035.5	1096.1	828.8	1157.4	1081.3	916.9	1015.5	1489.4	2226.4	2484.0	2550.0	2618.6
Diesel	179.1	117.5	93.0	82.8	114.1	130.3	138.6	179.1	140.9	162.3	131.6	117.7	98.7	76.3	75.9	118.1	146.8
Gas Turbine (O)	3.1	0.5	0.4	0.2	0.4	0.2	1.4	8.2	1.8	7.2	6.1	10.3	10.0	26.3	52.1	65.8	212.5
PC3 Total	80.1	96.4	120.5	137.0	144.5	154.9	164.2	194.5	231.7	249.4	262.4	278.5	318.7	364.6	357.1	237.4	224.6
Hydro	3.7	3.6	4.3	4.4	4.1	4.0	4.0	3.7	5.4	5.1	7.1	5.6	3.1	9.4	28.1	56.6	60.7
Diesel	76.4	92.8	116.2	132.6	140.4	150.9	160.2	190.8	226.3	244.3	255.3	272.9	315.6	351.3	328.7	180.8	163.9
Gas Turbine (O)														3.9	0.3		
Others Total	97.6	149.3	111.7	95.0	76.9	124.1	150.0	201.8	177.5	154.3	159.0	163.4	171.8	156.6	167.0	195.0	
Thermal (Coal)	49.8	74.4	69.8	66.3	45.2	92.3	118.0	166.8	139.9	116.3	118.0	120.0	136.0	135.2	150.0	180.0	
Diesel	47.8	74.9	41.9	28.7	31.7	31.8	32.0	35.0	37.6	38.0	41.0	43.4	35.8	21.4	17.0	15.0	
PC+Others	3062.2	3502.9	3817.1	3870.6	3636.0	3850.4	4124.4	4273.6	4956.1	5219.0	5685.7	6213.1	6954.9	7948.5	8845.5	9346.6	9652.1

Figure I.1.2-4 Report : Generation

Sale to Sectors																	
Company Sector	1976	1977	1978	1979	1980	1981	1982	1983	1984	1985	1986	1987	1988	1989	1990	1991	1992
All PCs	2218.4	2498.5	2740.1	2726.1	2515.9	2799.1	2983.1	3104.1	3612.5	3866.5	4146.5	4599.9	5026.0	5663.4	6184.8	6573.7	6931.2
Industry	1117.7	1298.5	1481.0	1498.0	1377.4	1499.0	1659.4	1738.1	2027.4	2113.6	2197.0	2384.1	2589.7	2621.0	2845.0	3069.1	3196.9
Agriculture	218.1	251.8	290.6	282.0	233.5	311.2	256.1	242.8	307.0	308.5	332.2	387.2	441.0	462.3	586.8	808.6	975.0
Non-Industry	116.2	136.7	152.2	229.9	223.1	260.1	312.4	324.1	382.4	427.7	482.3	547.0	600.1	656.5	666.9	590.6	549.8
Transportation	27.7	21.1	24.8	42.9	34.4	34.4	37.2	30.6	38.5	35.9	40.6	38.2	38.4	41.4	51.1	53.8	56.1
House Hold	738.7	790.4	791.5	673.3	647.5	694.4	718.0	768.5	857.2	980.8	1094.4	1243.4	1356.8	1882.2	2035.0	2051.6	2153.4
PC1	1229.0	1360.0	1514.8	1531.3	1259.8	1503.8	1603.9	1655.2	1991.4	2148.2	2380.3	2632.9	2824.8	2998.5	3231.1	3541.1	3772.1
Industry	701.6	790.3	869.3	840.7	691.0	789.2	891.1	944.2	1117.1	1142.5	1244.4	1344.3	1464.9	1384.6	1468.0	1433.8	1465.5
Agriculture	215.2	242.5	275.8	253.0	193.5	260.5	210.6	192.7	252.1	243.7	262.9	308.3	343.6	354.7	466.9	674.0	827.1
Non-Industry	67.0	88.1	116.5	169.8	138.1	165.3	198.7	202.4	248.5	293.8	336.3	348.9	348.9	355.8	342.1	260.8	207.3
Transportation	27.7	20.9	23.3	33.3	24.3	24.5	26.0	16.0	20.8	18.5	22.8	21.0	20.9	24.0	29.2	27.0	24.8
House Hold	217.5	218.2	229.9	234.5	212.9	266.3	277.5	299.9	352.9	449.7	513.9	610.4	646.5	879.4	855.7	884.7	897.9
Sale to PC3	931.2	1063.9	1132.0	1086.9	1142.1	1173.1	1250.9	1297.6	1439.2	1522.4	1557.5	1749.2	1960.3	2387.1	2722.9	2965.5	3118.9
Industry	407.2	488.1	567.9	607.3	630.6	650.3	696.4	693.9	788.6	841.8	819.9	894.9	959.3	1054.8	1197.6	1448.1	1555.4
Agriculture	0.0	2.6	7.2	15.8	23.6	32.4	26.5	26.5	29.3	32.6	34.9	41.6	52.4	65.8	71.5	79.2	87.0
Non-Industry	48.2	48.6	29.0	47.5	71.3	81.4	98.5	100.6	110.3	110.0	118.0	169.6	220.4	266.9	288.3	286.1	292.0
Transportation	0.0	0.0	0.0	5.7	6.6	6.9	7.6	9.8	11.6	11.0	11.4	11.6	10.5	10.9	14.5	18.9	23.8
House Hold	456.4	498.5	498.8	381.7	379.3	370.7	380.8	399.5	424.3	448.9	492.6	539.9	607.0	868.6	1016.8	992.0	1035.6
Sale to PC3	19.4	26.1	29.1	28.9	30.7	31.4	41.1	67.3	75.1	78.1	80.7	91.6	110.7	120.1	134.2	141.2	145.1
PC3	77.6	100.7	122.4	136.8	144.7	153.6	169.4	218.6	257.0	274.0	289.4	309.4	351.6	397.9	434.2	469.1	534.8
Industry	8.9	20.1	43.8	50.0	55.8	59.5	71.9	100.0	121.7	129.3	132.7	144.9	165.5	181.6	179.4	187.2	196.0
Agriculture	2.9	6.7	7.6	13.2	16.4	18.3	19.0	23.6	25.6	32.2	34.4	37.3	45.0	41.8	48.4	55.4	60.9
Non-Industry	1.0	0.0	6.7	12.6	13.7	15.4	15.2	21.1	23.6	23.9	28.0	28.5	30.8	33.8	36.5	43.7	50.5
Transportation	0.0	0.2	1.5	3.9	3.5	3.0	3.6	4.8	6.1	6.4	6.4	5.6	7.0	6.5	7.4	7.9	7.5
House Hold	64.8	73.7	62.8	57.1	55.3	57.4	59.7	69.1	80.0	82.2	87.9	93.1	103.3	134.2	162.5	174.9	219.9

Figure 1.1.2-5 Report : Sale to Sectors

Sale to Sectors / Ratio

Company Sector	1976	1977	1978	1979	1980	1981	1982	1983	1984	1985	1986	1987	1988	1989	1990	1991	1992
Total	100.00	100.00	100.00	100.00	100.00	100.00	100.00	100.00	100.00	100.00	100.00	100.00	100.00	100.00	100.00	100.00	100.00
Industry	50.38	51.97	54.05	54.95	54.75	53.55	55.63	55.99	56.12	54.66	52.98	51.83	51.53	46.28	46.00	46.69	46.1
Agriculture	9.83	10.08	10.61	10.34	9.28	11.12	8.59	7.82	8.50	7.98	8.01	8.42	8.77	8.16	9.49	12.30	14.0
Non-Industry	5.24	5.47	5.55	8.43	8.87	9.29	10.47	10.44	10.59	11.06	11.63	11.89	11.94	11.59	10.78	8.98	7.9
Transportation	1.25	0.84	0.91	1.57	1.37	1.23	1.25	0.99	1.07	0.93	0.98	0.83	0.76	0.73	0.83	0.82	0.8
House Hold	33.30	31.63	28.89	24.70	25.74	24.81	24.07	24.76	23.73	25.37	26.39	27.03	27.00	33.23	32.90	31.21	31.0
PCI	100.00	100.00	100.00	100.00	100.00	100.00	100.00	100.00	100.00	100.00	100.00	100.00	100.00	100.00	100.00	100.00	100.00
Industry	57.09	58.11	57.39	54.90	54.85	52.48	55.56	57.04	56.10	53.18	52.28	51.06	46.18	45.43	45.43	40.49	38.85
Agriculture	17.51	17.83	18.21	16.52	15.36	17.32	13.13	11.64	12.66	11.34	11.04	11.71	11.83	14.45	14.45	19.03	21.93
Non-Industry	5.45	6.48	7.69	11.09	10.96	10.86	12.39	12.23	12.48	13.68	14.13	13.25	11.87	10.59	10.59	7.36	5.50
Transportation	2.25	1.54	1.54	2.17	1.93	1.63	1.62	0.97	1.04	0.86	0.96	0.80	0.80	0.90	0.90	0.76	0.66
House Hold	17.70	16.04	15.18	15.31	16.90	17.71	17.30	18.12	17.72	20.93	21.59	23.18	29.33	26.48	26.48	24.98	23.80
Sale to PC3													2.14	2.14	2.14	7.36	9.27
PC2	100.00	100.00	100.00	100.00	100.00	100.00	100.00	100.00	100.00	100.00	100.00	100.00	100.00	100.00	100.00	100.00	100.00
Industry	43.73	45.88	50.17	55.87	55.21	55.43	55.67	53.48	54.79	55.29	52.64	51.16	44.19	43.98	43.98	48.83	49.23
Agriculture	0.00	0.24	0.64	1.45	2.07	2.76	2.12	2.04	2.04	2.14	2.24	2.38	2.76	2.63	2.63	2.67	2.79
Non-Industry	5.18	4.57	2.56	4.37	6.24	6.94	7.87	7.75	7.66	7.23	7.58	9.70	11.18	10.59	10.59	9.65	9.36
Transportation	0.00	0.00	0.00	0.52	0.58	0.59	0.61	0.76	0.81	0.72	0.73	0.66	0.46	0.53	0.53	0.64	0.76
House Hold	49.01	46.86	44.06	35.12	33.21	31.60	30.44	30.79	29.48	29.49	31.63	30.87	36.39	37.34	37.34	33.45	33.20
Sale to PC3	2.08	2.45	2.57	2.66	2.69	2.68	3.29	5.19	5.22	5.13	5.18	5.24	5.03	4.93	4.93	4.76	4.65
PC3	100.00	100.00	100.00	100.00	100.00	100.00	100.00	100.00	100.00	100.00	100.00	100.00	100.00	100.00	100.00	100.00	100.00
Industry	11.47	19.96	35.78	36.55	38.56	38.74	42.44	45.75	47.35	47.19	45.85	46.83	45.64	41.32	41.32	39.91	36.65
Agriculture	3.74	6.65	6.21	9.65	11.33	11.91	11.22	10.80	9.96	11.75	11.89	12.06	10.51	11.15	11.15	11.81	11.39
Non-Industry	1.29	0.00	5.47	9.21	9.47	10.03	8.97	9.65	9.18	8.72	9.88	9.21	8.49	8.41	8.41	9.32	9.44
Transportation	0.00	0.20	1.23	2.85	2.42	1.95	2.13	2.20	2.37	2.34	2.21	1.81	1.63	1.70	1.70	1.68	1.40
House Hold	83.51	73.19	51.31	41.74	38.22	37.37	35.24	31.61	31.13	30.00	30.37	30.09	33.73	37.43	37.43	37.28	41.12

Figure 1.1.2-6 Report : Sale to Sectors / Ratio

		Sale to Provinces																
Company	Provinces	1976	1977	1978	1979	1980	1981	1982	1983	1984	1985	1986	1987	1988	1989	1990	1991	1992
PCI	Total	1219.4	1379.8	1448.8	1556.0	1305.6	1475.2	1558.7	1608.0	1938.5	2089.6	2374.8	2627.5	2856.8	3000.3	3038.3	3283.4	
	HÀ NỘI	416.3	468.7	476.5	476.7	410.5	465.4	490.5	517.7	604.7	683.2	736.7	821.4	865.3	886.3	949.0	963.9	
	HẢI PHÒNG	158.7	176.2	183.6	202.3	147.7	153.2	155.8	149.7	175.3	189.2	204.7	207.7	233.0	282.6	233.0	320.3	
	HÀ NAM-NINH	136.8	165.6	186.9	198.8	139.2	126.1	108.5	107.6	132.2	127.5	146.7	156.4	182.4	223.7	259.0	239.3	
	NINH BÌNH																	
	VINH PHU	93.5	114.0	130.3	126.7	102.6	101.1	106.0	95.9	118.2	134.7	151.9	163.6	174.2	167.1	133.4	185.5	
	QUANG BINH	100.0	118.6	134.5	143.4	135.5	179.2	200.4	185.7	179.9	174.0	181.2	193.3	207.9	198.0	126.0	183.3	
	BẮC THAI	120.1	139.5	143.8	146.4	119.4	112.1	124.2	115.4	132.5	149.0	158.6	181.7	193.5	197.6	216.9	262.1	
	HÀ BẮC	45.2	57.7	73.4	81.9	59.7	62.6	60.9	71.5	80.4	64.8	96.3	101.1	103.1	107.6	136.5	155.3	
	HẢI HƯNG	76.8	85.5	104.7	116.5	95.0	84.7	62.2	88.5	139.6	158.9	163.4	193.1	208.4	222.2	217.1	222.6	
	THANH HÓA	35.4	46.5	56.6	59.8	49.0	52.7	105.0	110.5	157.4	155.8	175.8	200.0	222.4	235.8	273.9	288.9	
	HÀ SƠN-NINH						67.8	80.7	100.0	136.0	163.2	201.1	219.1	246.8	238.4	215.8	160.9	
	HÒA BÌNH																	
	THAI BINH					41.9	50.8	41.3	32.2	43.9	45.0	46.8	56.1	59.6	72.8	74.6	79.6	
	HOANG LIÊN S						13.1	11.3	11.8	13.6	14.9	15.4	18.9	30.5	34.7	36.9	35.3	
	LAO CAI																	
	LANG SON	6.6	7.5	8.5	3.5	5.1	6.4	8.7	10.0	11.6	15.3	15.5	19.5	21.5	25.5	23.5	24.8	
	HÀ TUYẾN(TUE)							3.2	11.5	13.2	14.1	14.9	17.1	18.1	19.8	19.7	24.9	
	HÀ GIANG																	
	NGHỆ TINH												58.2	69.7	82.1	79.8	109.8	120.0
	HÀ TINH																	
CAO BANG												7.6	8.8	8.0	8.4	7.8	7.4	
SƠN LA																3.3	5.5	
LAI CHAU																2.1	3.8	
PC2	Total	950.5	1098.1	1159.8	1109.8	1175.8	1173.3	1250.7	1297.5	1439.2	1522.3	1567.5	1749.4	1960.4	2389.9	2722.0	2966.0	
	T. PHỐ CHI MINH	679.8	760.3	778.2	747.9	777.8	758.1	787.3	786.9	868.7	905.2	901.6	988.3	1076.7	1300.9	1421.7	1512.3	
	THUAN HAI	14.5	11.7	11.3	14.3	14.1	15.1	16.9	17.7	18.1	19.7	21.3	23.8	25.6	31.8	39.5	45.6	
	LAO ĐỘNG	11.1	11.2	16.0	11.1	17.6	19.4	20.3	21.7	27.5	29.0	30.9	36.4	40.0	43.7	44.1	47.5	
	SONG DE	8.7	21.0	22.3	18.8	19.8	20.7	23.5	23.0	26.1	26.6	27.2	32.5	34.7	44.9	48.5	58.0	
	TAY BINH	3.8	4.9	7.7	6.5	5.8	7.1	9.6	10.1	12.6	16.3	17.6	19.8	22.8	30.4	37.4	41.9	
	DONG BAI	126.6	146.7	165.1	163.4	160.1	160.2	176.2	176.4	195.7	206.5	233.9	253.7	279.8	297.8	369.4	383.5	
	LONG AN	7.5	7.4	9.7	10.3	10.4	11.6	12.1	14.7	18.0	19.2	20.2	25.7	30.7	45.4	54.1	61.8	
	DONG THAP	4.7	6.6	8.7	8.3	8.2	9.1	10.7	13.4	14.1	17.0	18.4	21.5	28.7	38.3	46.7	55.6	
	TIỀN GIANG	12.5	17.5	22.7	21.8	25.5	30.6	29.2	30.2	31.7	32.1	33.3	35.8	43.9	64.1	74.2	79.6	
	BEN TRE	2.2	3.3	5.2	4.3	4.7	7.4	9.2	10.2	10.1	14.7	14.4	17.7	21.3	24.9	28.6	35.3	
	CUU LONG	6.9	8.6	10.7	9.6	11.1	11.2	14.1	16.1	17.9	21.8	24.2	27.1	32.8	45.6	54.7	58.3	
	HAU GIANG	25.1	31.4	35.5	34.4	37.1	38.5	44.4	46.1	51.2	57.3	59.2	64.7	77.0	100.8	122.0	134.2	
	AN GIANG	13.8	17.4	19.7	17.9	19.3	19.4	18.9	20.2	21.7	23.5	23.1	29.2	35.2	49.7	58.3	66.7	
	XIEN GIANG	7.1	9.9	10.8	12.3	14.5	12.4	13.8	15.5	17.4	19.1	19.5	22.8	29.8	56.0	81.3	120.1	
	MINH HAI	6.8	6.1	7.1		7.4	8.7	10.5	14.4	13.0	13.5	10.9	12.1	12.5	19.3	28.9	42.2	
	VUNG TAU-CON					11.7	12.4	12.9	13.6	20.3	22.7	31.1	46.7	58.2	76.1	78.4	81.2	
	Ban cho AL Trung	19.4	26.1	29.1	28.9	30.7	31.4	41.1	67.3	75.1	78.1	80.7	91.6	110.7	120.2	134.2	141.2	
	PC3	Total	100.7	122.4	136.7	144.7	153.5	169.3	218.8	256.9	274.2	289.5	308.7	351.5	398.2	433.6	469.1	
		BINH TRI THIE		17.3	22.2	25.8	28.0	26.5	23.9	34.3	39.1	37.5	42.6	47.4	55.0	62.3		
		- Quang Binh															13.2	18.4
- Quang Tri																10.2	12.4	
- Thue Thien Hue																40.0	44.1	
QUANG NAM-D			35.7	41.5	48.9	48.4	54.8	60.7	67.0	79.4	85.8	87.4	87.5	101.6	114.4	123.9	137.0	
NGHIA BINH			13.7	16.6	17.6	20.0	22.1	22.8	27.6	34.1	41.2	42.9	46.1	48.8	62.2			
- Quang Ngai																24.8	26.3	
- Binh Dinh																45.9	47.3	
PHU KHANH			25.4	30.1	30.0	32.2	32.1	43.3	68.9	80.4	84.6	88.6	96.8	109.7	117.0			
- Phu Yen																13.0	16.0	
- Khanh Hoa																115.0	120.8	
GIA LAI-KONT			3.5	5.3	6.7	7.6	8.6	8.4	10.0	11.0	11.8	13.9	15.5	18.2	23.1	23.1	22.3	
DAK LAK		5.1	6.7	7.7	8.5	9.4	10.2	11.0	12.9	13.3	14.1	15.4	18.2	19.2	24.5	24.5		

Figure 1.1.2-7 Reprint : Sale to Provinces

Sale to Government and Private																			
Company Province	1986			1987			1988			1989			1990			1991			
	Total	Gov.	Priv.	Total	Gov.	Priv.	Total	Gov.	Priv.	Total	Gov.	Priv.	Total	Gov.	Priv.	Total	Priv.		
PCI	Total	2374.8	1146.5	1228.3	2627.5	1360.9	1266.6	2856.8	1504.9	1351.9	3000.3	1444.9	1555.4	3038.3	1417.3	1621.0	3283.4	1407.0	1876.4
	HA NOI	736.7	238.7	498.0	821.4	293.4	528.0	865.3	331.9	533.4	886.3	320.7	565.6	949.0	323.2	625.8	963.9	297.5	666.4
	HAI PHONG	204.7	79.8	124.9	207.7	81.7	126.0	233.0	94.0	139.0	282.6	90.8	191.8	233.0	72.6	160.4	320.3	117.9	202.4
	HA NAM-NINH	146.7	43.7	103.0	156.4	57.3	99.1	182.4	66.5	115.9	223.7	72.1	151.6	259.0	124.1	134.9	239.3	68.3	171.0
	VINH PHU	151.9	103.0	48.9	163.6	117.3	46.3	174.2	124.2	50.0	167.1	110.1	57.0	133.4	72.9	60.5	185.5	125.9	59.6
	QUANG BINH	181.2	139.7	41.5	193.3	155.0	38.3	207.9	167.4	40.5	198.0	154.9	43.1	126.0	81.5	44.5	183.3	115.6	67.7
	BAC THAI	158.6	130.6	28.0	181.7	153.0	28.7	193.5	163.7	29.8	197.6	165.1	32.5	216.9	190.3	26.6	262.1	207.0	55.1
	HA BAC	96.3	45.3	51.0	101.1	50.5	50.6	103.1	54.8	48.3	107.6	52.4	55.2	136.5	67.7	68.8	155.3	66.7	88.6
	HAI HUNG	163.4	80.5	82.9	193.1	105.9	87.2	208.4	110.7	97.7	222.2	108.0	114.2	217.1	110.1	107.0	222.6	91.3	131.3
	THANH HOA	175.8	116.3	59.5	200.0	143.1	56.9	222.4	156.8	65.6	235.8	164.7	71.1	273.9	190.1	83.8	288.9	189.3	99.6
	HA SON BINH	201.1	153.1	48.0	219.1	169.8	49.3	246.8	190.3	56.5	238.4	159.5	78.9	215.8	133.2	82.6	160.9	68.4	92.5
	THAI BINH	46.8	5.0	41.8	56.1	5.0	51.1	59.6	5.6	54.0	72.8	5.4	67.4	74.6	3.4	71.2	79.6	2.5	77.1
	HOANG LIEN S	15.4	1.9	13.5	18.9	5.2	13.7	30.5	14.8	15.7	34.7	17.7	17.0	36.9	17.5	19.4	35.3	17.1	18.2
	LANG SON	15.5	3.6	11.9	19.5	6.0	13.5	21.5	6.8	14.7	25.5	6.1	19.4	23.5	7.4	16.1	24.8	6.6	18.2
	HA TUYEN	14.9	2.7	12.2	17.1	5.5	11.6	18.1	4.8	13.3	19.8	5.8	14.0	19.7	6.0	13.7	24.9	10.3	14.6
	NGHE TINH	58.2	1.4	56.8	69.7	12.2	57.5	82.1	12.6	69.5	79.8	11.6	68.2	109.8	17.3	92.5	120.0	15.1	104.9
	CAO BANG	7.6	1.2	6.4			8.8			8.0			8.4			7.8	7.4	6.0	1.4
	SOR LA															3.3	5.5	1.5	4.0
	LAI CHAU															2.1			3.8
PC2	Total	1567.5	470.7	1096.8	1749.4	590.8	1158.6	1968.4	636.8	1323.6	2389.9	642.6	1747.3	2722.0	711.7	2010.3	2966.0	836.6	2129.4
	T.HO CHINH	901.6	273.5	628.1	988.3	329.7	658.6	1076.7	359.6	717.1	1300.9	356.8	944.1	1421.7	363.6	1058.1	1512.3	442.1	1070.2
	THUAN HAI	21.3	1.2	20.1	23.8	2.6	21.2	25.6	2.5	23.1	31.8	2.5	29.3	39.5	2.2	37.3	45.6	2.9	42.7
	LAM Dong	30.9	1.7	29.2	36.4	5.2	31.2	40.0	3.1	36.9	43.7	3.3	40.4	44.1	3.3	40.8	47.5	4.0	43.5
	SONG BE	37.2	7.5	29.7	32.5	11.3	21.2	34.7	10.4	24.3	44.9	11.2	33.7	48.5	9.8	38.7	58.0	12.9	45.1
	TAY NINH	17.6	1.0	16.6	19.8	1.0	18.8	22.8	1.0	21.8	30.4	1.6	28.8	37.4	1.3	36.1	41.9	1.1	40.8
	DONG NAI	233.9	168.1	65.8	253.7	192.5	61.2	279.8	203.9	75.9	297.8	196.5	101.3	369.4	250.7	118.7	383.5	264.1	119.4
	LONG AN	20.2	0.2	20.0	25.7	0.4	25.3	30.7	0.3	30.4	45.4	1.2	44.2	54.1	0.9	53.2	61.8	1.2	60.6
	DONG THAP	18.4	0.1	18.3	21.5	0.2	21.3	28.7	0.1	28.6			38.3	46.7	0.1	46.6	55.6	0.4	55.2
	TIEN GIANG	33.3	0.4	32.9	35.8	1.8	34.0	43.9	2.3	41.6	64.1	2.4	61.7	74.2	3.1	71.1	79.6	2.3	77.3
	DIEN TRE	14.4	0.1	14.3			17.7			21.3	24.9	0.1	24.8			28.6			35.3
	CUU LONG	24.2	0.5	23.7	27.1	1.4	25.7	32.8	2.5	30.3	45.6	0.9	44.7	54.7	1.6	53.1	58.3	1.5	56.8
	HAU GIANG	59.2	9.9	49.3	64.7	15.3	49.4	77.0	16.0	61.0	100.8	15.9	84.9	122.0	15.2	106.8	134.2	15.4	118.8
	AN GIANG	23.1	0.1	23.0	29.2	0.2	29.0	35.2	0.2	35.0	49.7	0.3	49.4	58.3	0.4	57.9	66.7	0.3	66.4
	KIEN GIANG	19.5	0.1	19.4	22.8	0.1	22.7			29.8	56.0	8.5	47.5	81.3	23.8	57.5	120.1	53.3	66.8
	MINH HAI			10.9			12.1			12.5			19.3		28.9				42.2
	VUNG TAU-CON	31.1	6.3	24.8	46.7	29.1	17.6	58.2	34.9	23.3	76.1	41.4	34.7	78.4	35.7	42.7	82.2	35.1	47.1
	Ben cho AI Trung			80.7			91.6			110.7			120.2		134.2				141.2
PC3	Total	289.5	63.9	225.6	308.7	83.0	225.7	351.5	88.8	262.7	398.2	84.2	314.0	433.8	97.5	336.3	468.2	116.4	351.8
	BINH TRI THIE	42.6	3.0	39.6	47.4	7.1	40.3	55.0	6.3	48.7	62.3	6.1	56.2	63.6	7.5	56.1	74.0	10.9	63.1
	QUANG NAM-D	87.4	19.4	68.0	87.5	22.3	65.2	101.6	23.6	78.0	114.4	22.9	91.5	123.9	19.8	104.1	137.0	23.5	113.5
	NGHIA BINH	42.9	2.9	40.0	46.1	5.5	40.6	48.8	5.7	43.1	62.2	5.7	56.5	70.7	9.9	60.8	73.6	13.4	60.2
	PHU KHANH	88.6	37.6	51.0	96.8	45.0	51.8	109.7	50.1	59.6	117.0	46.4	70.6	128.0	54.7	73.3	136.8	63.1	73.7
	GIA LAI-KONT	13.9	0.4	13.5	15.5	1.3	14.2	18.2	1.3	16.9	23.1	1.3	21.8	23.1	2.7	20.4	22.3	2.0	20.3
	DAR LAK	14.1	0.6	13.5	15.4	1.8	13.6	18.2	1.8	16.4	19.2	1.8	17.4	24.5	2.9	21.6	24.5	3.5	21.0

Figure 1.1.2-8 Report : Sale to Government and Private

		Fuel Consumption																
Company	Fuel	1976	1977	1978	1979	1980	1981	1982	1983	1984	1985	1986	1987	1988	1989	1990	1991	1992
All PC	Coal	837.5	984.3	1079.1	1105.9	1012.2	1001.6	1043.0	1096.9	1268.1	1277.7	1417.0	1610.0	1788.1	1408.0	1056.3	726.2	
	Diescl Oil	72.8	70.6	74.2	72.0	82.2	91.4	90.2	106.7	103.1	112.4	108.4	110.5	118.1	121.9	117.9	85.2	
	Fuel Oil	192.6	154.7	148.8	121.3	95.4	122.4	132.7	206.4	169.2	199.7	268.7	303.7	274.4	207.4	233.7	298.3	
	Distillate Oil (1.4	0.3	0.7	9.7	7.6	8.6	23.0	62.6	41.5	36.0	16.1	21.2	32.5	15.9	22.2	27.9	
	Gas (Turbine)						7.4	17.4	20.5	36.7	34.5	34.6	37.4	33.2	13.2	2.8	17.6	
	Fuel Oil (with	5.3	11.3	25.1	16.1	23.9	23.0	19.6	23.3	23.3	28.8	32.4	36.6	37.2	18.3	9.6	7.3	
PC1	Coal	837.5	984.3	1079.1	1105.9	1012.2	1001.6	1043.0	1096.9	1268.1	1277.7	1417.0	1610.0	1788.1	1408.0	1056.3	726.2	
	Diescl Oil	5.5	14.6	16.5	13.1	12.3	14.1	8.6	5.2	1.8	0.8	2.1	2.8	3.2	2.6	1.9	3.4	
	Distillate Oil (0.5	9.6	7.4	8.5	22.3	58.8	40.6	32.3	13.1	16.1	28.0	4.8			
	Gas (Turbine)						7.4	17.4	20.5	36.7	34.5	34.6	37.4	33.2	13.2	2.8	17.6	
		Fuel Oil (with	5.3	11.3	25.1	16.1	23.9	23.0	19.6	23.3	23.3	28.8	32.4	36.6	37.2	18.3	9.6	7.3
PC2	Diescl Oil	46.0	30.2	25.9	22.8	31.3	35.8	38.2	49.4	39.5	45.3	36.6	32.7	27.5	21.0	24.5	33.2	
	Fuel Oil	192.6	154.7	148.8	121.3	95.4	122.4	132.7	206.4	169.2	199.7	268.7	303.7	274.4	207.4	233.7	298.3	
	Distillate Oil (1.4	0.3	0.2	0.1	0.2	0.1	0.7	3.8	0.9	3.7	3.0	5.1	4.5	11.1	22.2	27.9	
		Diescl Oil	21.3	25.8	31.8	36.1	38.6	41.5	43.4	52.1	61.8	66.3	69.7	75.0	87.4	98.3	91.5	48.6

Figure I.1.2-9 Report : Fuel Consumption

Peak Load

Company	Month	1976	1977	1978	1979	1980	1981	1982	1983	1984	1985	1986	1987	1988	1989	1990	1991	1992	
PC1	1	225.8	292.7	259.7	367.7	366.4	309.4	391.5	326.0	391.8	514.4	482.0	598.0	593.0	775.0	936.0	902.0		
	2	225.6	299.6	287.7	371.5	309.0	336.1	338.8	358.1	394.0	460.8	575.0	550.0	591.0	785.0	871.0	1048.0		
	3	231.0	291.7	323.0	327.2	278.1	294.2	366.0	332.4	373.6	441.5	497.0	543.0	529.0	718.0	797.0	864.0		
	4	230.5	292.9	296.9	313.0	303.5	291.6	327.0	325.4	349.9	445.2	454.0	503.0	519.0	648.0	743.0	847.0		
	5	234.1	267.8	290.3	329.0	287.6	308.6	290.6	293.2	358.8	416.6	461.0	472.0	538.0	620.0	790.0	882.0		
	6	244.7	208.7	304.3	335.7	278.5	291.1	291.8	295.0	372.5	406.8	422.0	488.0	488.0	535.0	628.0	785.0	983.0	
	7	261.8	241.4	297.0	320.7	259.5	372.5	288.7	310.0	370.2	412.0	479.0	479.0	481.0	564.0	640.0	762.0	968.0	
	8	246.0	274.5	304.7	305.5	284.7	283.6	300.8	306.7	371.0	427.4	483.0	461.0	560.0	560.0	663.0	817.0	964.0	
	9	257.9	264.4	325.3	323.3	285.8	323.8	297.9	324.8	422.0	399.5	536.0	482.0	547.0	677.0	870.0	998.0		
	10	257.0	272.2	335.4	328.0	288.8	333.5	319.7	354.9	423.5	440.5	526.0	506.0	542.0	685.0	848.0	1013.0		
	11	264.8	254.3	350.9	323.7	294.9	365.8	348.0	397.8	437.4	448.3	523.0	523.0	524.0	581.0	801.0	839.0	1006.0	
	12	270.6	294.0	348.2	306.7	270.5	385.7	340.3	444.5	414.9	473.0	594.0	594.0	564.0	567.0	786.0	870.0	1005.0	
PC2	1	197.4	225.7	225.7	232.6	228.5	270.6	249.9	284.2	288.0	320.6	286.0	347.0	399.0	490.0	611.3	650.4		
	2	202.8	227.5	240.8	240.8	232.2	279.3	267.4	286.2	299.1	292.7	312.0	349.0	390.0	480.0	644.5	645.0		
	3	208.2	240.1	235.8	235.8	237.9	286.5	285.3	328.8	282.9	300.3	307.0	345.0	393.0	499.0	621.9	642.0		
	4	204.5	208.1	233.4	216.7	234.5	273.7	269.4	294.3	284.2	294.5	304.0	360.0	381.0	532.0	606.6	655.9		
	5	205.3	216.7	233.1	216.2	238.0	275.0	267.2	265.9	292.8	296.1	315.0	349.0	408.0	519.0	637.9	664.8		
	6	204.0	215.6	240.9	223.3	211.5	257.2	274.7	265.3	276.0	220.0	309.0	348.0	415.0	339.0	563.3	639.7		
	7	194.7	209.8	243.6	223.4	232.2	259.4	269.5	271.7	281.8	298.8	315.0	350.0	417.0	578.0	620.9	625.3		
	8	188.7	207.4	235.4	213.7	234.2	260.5	260.5	265.9	292.0	307.5	323.0	332.0	423.0	578.0	606.7	656.5		
	9	189.2	209.0	237.4	228.2	244.5	259.3	285.7	270.0	293.7	308.0	379.0	375.0	432.0	570.0	616.1	642.7		
	10	197.7	207.7	234.2	232.8	262.2	249.6	296.6	282.2	287.4	303.3	347.0	376.0	441.0	565.0	650.4	669.0		
	11	203.2	227.9	239.7	240.8	266.6	259.0	293.2	283.6	334.0	305.4	356.0	380.0	470.0	589.0	645.0	711.5		
	12	88.9	227.0	245.1	236.2	265.7	261.1	280.8	288.3	320.2	285.0	346.0	374.0	490.0	590.0	655.0	678.7		

Figure 1.1.2-10 Report : Peak Load

Own Use and Loss

Company Item	1976	1977	1978	1979	1980	1981	1982	1983	1984	1985	1986	1987	1988	1989	1990	1991	1992
Own Use																	
All PC	6.59	6.16	5.80	5.94	5.78	5.77	5.93	6.56	6.32	6.30	7.98	6.79	6.80	5.69	4.15	3.43	
PCI	8.18	8.08	7.66	8.00	8.78	8.48	8.58	9.28	9.13	8.94	9.33	9.41	9.32	8.12	5.80	4.19	
Thermal	8.01	8.03	7.56	7.97	11.26	11.51	11.73	12.93	12.03	10.93	11.30	10.79	10.40	12.00	12.60	12.80	
Hydro	0.29	0.32	0.25	0.24	0.29	0.20	0.23	0.28	0.27	0.31	0.24	0.33	0.40	0.40	0.30	0.30	
Diesel	4.48	4.24	3.54	3.05	3.12	3.24	3.08	2.46	3.40	4.66	4.58	3.42	3.80	3.70	3.70	3.80	
Gas Turbine				0.85	0.48	0.18	0.17	0.11	0.22	0.49	0.72	0.70	0.50	1.00	5.10	1.00	
PC2	4.86	3.69	3.48	3.14	2.40	2.66	2.97	3.60	2.94	3.23	3.42	3.35	3.03	2.65	2.50	2.58	
Thermal	8.16	8.76	8.86	9.34	9.49	8.53	8.37	6.96	7.29	7.26	6.05	5.83	6.50	6.80	6.60	6.59	
Hydro	0.86	0.41	0.40	0.38	0.34	0.35	0.35	0.35	0.32	0.33	0.34	0.33	0.47	0.40	0.40	0.44	
Diesel	2.68	2.55	2.18	2.54	2.32	2.55	2.50	2.73	2.12	1.74	1.92	1.99	1.90	1.70	2.50	2.52	
Gas Turbine	8.00	5.10	5.20	3.65	3.65	5.20	7.43	2.56	7.58	1.61	1.96	1.14	1.30	1.20	1.10	1.14	
PC3	2.52	1.99	2.47	2.58	3.10	2.47	2.34	2.25	2.19	2.28	2.18	2.50	2.60	2.40	2.80	2.55	
Loss																	
All PC	19.80	20.60	21.50	21.86	23.53	20.55	20.50	20.30	19.86	18.30	19.98	18.30	20.60	22.70	25.68	24.34	
PCI	15.47	16.65	17.91	16.87	17.68	18.35	18.10	18.22	17.74	17.42	19.03	17.98	18.63	25.10	29.40	27.67	
PC2	23.23	22.98	21.78	22.66	24.26	23.50	23.94	22.30	21.99	19.99	20.38	19.11	22.15	19.97	19.15	19.76	
PC3	19.10	15.99	15.89	15.98	15.45	15.65	15.71	15.01	14.85	15.00	14.22	14.15	18.12	16.40	21.00	25.74	

Figure 1.1.2-11 Report : Own Use and Loss

		Loss in Provinces																	
Company	Province	1980	1981	1982	1983	1984	1985	1986	1987	1988	1989	1990	1991	1992	1993	1994	1995	1996	
All PC	Average	23.53	20.55	20.50	20.30	19.86	18.30	19.98	18.30	20.60	22.70	25.68	24.34						
PC1	Average	17.68	18.35	18.10	18.22	17.74	17.42	19.03	17.98	18.63	25.10	29.40	27.67						
	HÀ NOI	12.25	15.00	18.00	15.36	18.41	15.94	16.75	16.64	16.25	27.02	27.48	26.60						
	HAI PHONG	14.30	19.35	17.95	14.60	13.09	14.20	14.87	14.61	15.20	24.25	44.65	40.69						
	HÀ-NAM-NI	14.30	19.30	17.90	14.60	11.99	11.87	12.47	13.09	13.40	17.99	29.14	32.27						
	VINH PHU		3.89	4.94	5.10	5.75	6.02	6.32	6.51	6.67	10.12	16.32	15.48						
	QUANG NIN	2.50	7.35	5.84	6.20	4.59	7.15	8.02	8.53	8.87	9.69	13.87	14.40						
	BAC THAI	5.28	4.16	7.70	7.99	7.13	6.96	7.69	7.88	13.41	14.66	13.70	16.06						
	HÀ BAC	8.40	4.70	8.10	7.48	7.17	7.30	7.18	7.11	7.03	13.29	17.24	16.54						
	HAI HUNG					7.42	12.10	13.51	15.64	13.90	17.29	47.05	33.47						
	THANH HOA	10.80	11.20	9.46	8.30	6.41	10.98	11.93	11.87	12.42	17.18	28.18	22.71						
	HÀ SON BINH					4.58	12.47	13.47	13.95	14.42	14.19	16.44	17.60						
	THAI BINH					16.63	16.42	16.12	15.74	15.42	15.39	15.74	19.83						
	HOANG LIE		4.18	4.00	10.65	13.74	10.54	10.66	9.30	11.52	16.37	29.17	24.74						
	LANG SON					9.41	11.63	11.92	12.61	13.17	14.04	31.40	35.30						
	HÀ TUYEN					5.39	7.49	6.09	9.02	12.00	15.58	28.57	22.72						
	NGHE TINH	9.60	9.10	8.80	8.70	11.55	6.71	10.14	10.35	10.00	17.39	17.96							
	-Nghe An													20.38					
	-Hà Tĩnh																		
	CAO BANG								13.71	12.62		12.16	16.37	28.50					
	SƠN LA													27.62					
LAI CHAU																	22.05		
PC2	Average	24.26	23.50	23.94	22.30	21.99	19.99	20.38	19.11	22.15	19.97	19.15	19.76						
	T.P.HỒ CHÍ	19.98	20.02	20.52	18.23	17.50	15.84	15.24	15.69	20.00	17.25	17.11	17.10						
	THUAN HAI	15.52	14.43	16.68	15.03	13.20	10.23	11.93	12.29	11.91	11.91	12.56	12.50						
	LAM DONG	16.46	18.39	19.18	18.76	14.68	21.21	19.23	14.77	15.22	15.66	18.81	18.80						
	SONG BE	14.59	14.18	18.33	15.50	15.94	13.09	13.14	14.25	13.05	16.12	19.78	19.70						
	TAY NINH	15.54	11.05	17.24	17.85	14.85	10.61	10.67	20.89	24.38	20.72	12.01	12.00						
	DONG NAI	10.75	13.65	13.21	11.40	10.00	10.94	10.12	10.12	8.03	9.48	10.32	10.30						
	LONG AN	13.51	13.09	13.96	11.19	10.40	9.22	10.66	9.66	12.03	13.52	15.15	15.10						
	DONG THIAP	16.29	20.67	20.96	19.07	21.56	18.74	17.45	18.22	14.54	15.87	15.41	15.40						
	TIEN GIANG	15.80	10.36	13.93	10.95	11.68	10.45	11.96	12.69	11.27	10.91	10.91	10.90						
	BEN TRE	26.63	21.99	28.42	25.58	24.37	19.39	21.02	19.82	20.35	19.18	19.67	13.90						
	CUU LONG	23.59	15.60	14.45	12.42	7.33	4.74	7.97	10.42	8.64	8.57	17.76	9.50						
	HÀU GIANG	24.08	23.12	15.35	24.14	26.66	14.01	19.05	16.60	15.23	14.74	13.96	12.70						
	PC2	AN GIANG	17.45	11.93	12.91	14.47	13.30	10.05	7.92	7.56	9.42	8.98	9.52	19.60					
		KIEN GIANG	15.48	11.65	14.49	16.29	13.09	10.94	11.44	8.89	11.08	12.50	12.79	7.70					
		MINH HAI	22.39	23.14	27.10	18.05	24.59	23.10	24.02	17.10	21.41	18.17	24.68	24.60					
		VUNG TAU	25.05	22.33	23.55	19.30	20.11	17.62	21.37	12.84	16.78	20.96	14.40	14.40					
	PC3	Average	15.45	15.65	15.71	15.01	14.85	15.00	14.22	14.15	18.12	16.40	21.00	25.74					
		BINH TRI T	15.30	14.70	17.50	15.78	16.77	17.60	17.30	19.60	19.30	21.20							
-Quang Binh												21.36	23.97						
-Quang Tri												38.91	29.63						
-Thua Thien												23.97	24.17						
QUANG NÀ		17.00	16.52	13.90	16.77	16.45	15.90	15.40	17.00	17.20	15.80	17.30	21.47						
NGHIA BINH		13.90	12.80	17.84	14.03	12.49	12.00	11.40	13.60	22.00	14.20								
-Quang Ngãi												14.30	14.15						
-Binh Dinh												15.80	19.30						
PHU KHANH		15.00	17.40	14.39	13.03	13.39	14.50	12.80	13.00	18.40	14.00								
-Phu Yen												19.03	18.97						
-Khanh Hoa												17.70	17.90						
GIA LAI-KO		12.00	12.90	13.71	11.73	13.92	14.70	13.90	14.60	13.80	16.30								
-Gia Lai												34.10	33.38						
-Kon Tum																			
DAK LAK		17.00	16.10	12.24	15.00	14.65	14.70	12.40	12.40	12.50	16.10	20.00	31.38						

Figure 1.1.2-12 Report : Loss in Provinces

Supply and Demand

Company Item	1976	1977	1978	1979	1980	1981	1982	1983	1984	1985	1986	1987	1988	1989	1990	1991	1992
All PC																	
Generation	2964.6	3353.6	3705.4	3775.6	3559.1	3726.3	3974.4	4071.8	4778.6	5064.7	5526.7	6049.7	6783.1	7791.9	8678.5	9151.6	9652.1
Thermal	1854.9	1955.2	2083.8	2022.3	1740.7	1844.4	1981.6	2242.4	2616.2	3017.7	3627.1	4155.2	4432.9	3462.0	2841.1	2424.7	1775.3
Hydro	831.0	1133.1	1330.8	1447.5	1488.2	1506.9	1559.6	1223.2	1599.0	1472.1	1401.9	1375.7	1785.5	3825.3	5368.7	6316.5	7881.1
Diesel	275.6	264.8	289.6	285.7	316.0	333.6	331.6	389.5	373.4	409.2	394.6	400.7	425.6	436.5	410.7	309.4	748.7
Gas Turbine	3.1	0.5	1.2	20.1	14.2	41.4	101.6	216.7	190.0	165.7	103.1	118.1	139.1	68.1	58.0	101.0	13.4
Own Use	195.5	206.7	214.9	224.1	205.8	215.0	235.6	270.8	302.0	323.9	377.2	414.7	447.7	444.0	378.7	318.6	
Loss	550.7	648.4	750.4	825.4	837.4	712.2	755.7	696.9	864.1	874.3	1003.0	1035.1	1309.4	1684.5	2115.0	2259.3	2453.2
Demand	2218.4	2498.5	2740.1	2726.1	2515.9	2799.1	2983.1	3104.1	3612.5	3866.5	4146.5	4599.9	5026.0	5663.4	6184.8	6573.7	6931.2
Industry	1117.7	1298.5	1481.0	1498.0	1377.4	1499.0	1659.4	1738.1	2027.4	2113.6	2197.0	2384.1	2589.7	2621.0	2845.0	3069.1	
Agriculture	218.1	251.8	290.6	282.0	233.5	311.2	256.1	242.8	307.0	308.5	332.2	387.2	441.0	462.3	586.8	808.6	
Non-Industry	116.2	136.7	152.2	229.9	223.1	260.1	312.4	324.1	382.4	427.7	482.3	547.0	600.1	656.5	666.9	590.6	
Transportatio	27.7	21.1	24.8	42.9	34.4	34.4	37.2	30.6	38.5	35.9	40.6	38.2	38.4	41.4	51.1	53.8	
House Hold	738.7	790.4	791.5	673.3	647.5	694.4	718.0	768.5	857.2	980.8	1094.4	1243.4	1356.8	1882.2	2035.0	2051.6	
PCI	1605.5	1839.1	2085.5	2187.6	1869.8	1995.9	2115.0	2144.4	2646.7	2848.9	3238.6	3537.3	3872.1	4358.6	4868.8	5121.1	5414.6
Thermal	1202.1	1430.7	1559.8	1596.8	1420.7	1434.9	1522.5	1525.6	2016.1	2302.1	2656.0	3064.8	3438.7	2722.3	2000.5	1365.5	636.3
Hydro	383.3	353.9	444.5	500.6	373.8	467.4	459.5	390.7	436.2	385.7	477.9	354.6	293.0	1589.5	2856.6	3709.9	5091.1
Diesel	20.1	54.5	80.4	70.3	61.5	52.4	32.8	19.6	6.2	2.6	7.7	10.1	11.3	8.9	6.1	10.5	9.7
Gas Turbine	0.0	0.0	0.8	19.9	13.8	41.2	100.2	208.5	188.2	158.5	97.0	107.8	129.1	37.9	5.6	35.2	13.4
Own Use	131.3	148.6	159.7	175.0	164.2	169.3	181.5	204.0	241.6	254.7	302.2	332.9	360.9	353.9	282.4	214.6	167.3
Loss	245.2	330.5	411.0	481.3	445.8	322.8	329.6	285.2	413.7	446.0	556.1	571.5	686.4	1006.2	1355.3	1365.4	1475.2
Demand	1229.0	1360.0	1514.8	1531.3	1259.8	1503.8	1603.9	1655.2	1991.4	2148.2	2380.3	2632.9	2824.8	2998.5	3231.1	3541.1	3772.1
Industry	701.6	790.3	869.3	840.7	691.0	789.2	891.1	944.2	1117.1	1142.5	1244.4	1344.3	1464.9	1384.6	1468.0	1433.8	1465.5
Agriculture	215.2	242.5	275.8	253.0	193.5	260.5	210.6	192.7	252.1	243.7	262.9	308.3	343.6	354.7	466.9	674.0	827.1
Non-Industry	67.0	88.1	116.5	169.8	138.1	163.3	198.7	202.4	248.5	293.8	336.3	348.9	348.9	355.8	342.1	260.8	207.3
Transportatio	27.7	20.9	23.3	33.3	24.3	24.5	26.0	16.0	20.8	18.5	22.8	21.0	20.9	24.0	29.2	27.0	24.8
House Hold	217.5	218.2	229.9	234.5	212.9	266.3	277.5	299.9	352.9	449.7	513.9	610.4	646.5	879.4	855.7	884.7	897.9
Sale to PC3															69.2	260.8	349.5

Figure 1.1.2-13a Report : Supply and Demand (a)

Supply and Demand

Company Item	1976	1977	1978	1979	1980	1981	1982	1983	1984	1985	1986	1987	1988	1989	1990	1991	1992
PC2																	
Generation	1279.0	1418.1	1499.4	1451.0	1544.8	1575.5	1695.2	1732.9	1900.2	1966.4	2025.7	2233.9	2592.3	3068.7	3452.6	3793.1	4012.9
Thermal	652.8	524.5	524.0	425.5	320.0	409.5	459.1	716.8	600.1	715.6	971.1	1090.4	994.2	739.7	840.6	1059.2	1139.0
Hydro	444.0	775.6	882.0	942.5	1110.3	1035.5	1096.1	828.8	1157.4	1081.3	916.9	1015.5	1489.4	2226.4	2484.0	2550.0	2790.0
Diesel	179.1	117.5	93.0	82.8	114.1	130.3	138.6	179.1	140.9	162.3	131.6	117.7	98.7	76.3	75.9	118.1	739.0
Gas Turbine	3.1	0.5	0.4	0.2	0.4	0.2	1.4	8.2	1.8	7.2	6.1	10.3	10.0	26.3	52.1	65.8	94.7
Own Use	62.2	56.2	52.2	45.6	37.1	41.9	50.3	62.4	55.3	63.5	69.3	74.8	78.5	81.3	86.3	97.9	94.7
Loss	285.6	298.0	315.2	318.5	365.6	360.5	394.0	372.9	405.7	380.5	398.9	409.9	553.5	600.3	643.4	729.7	799.3
Demand	931.2	1063.9	1132.0	1086.9	1142.1	1173.1	1250.9	1297.6	1439.2	1522.4	1557.5	1749.2	1960.3	2387.1	2722.9	2965.5	3118.9
Industry	407.2	488.1	567.9	607.3	630.6	650.3	696.4	693.9	788.6	841.8	819.9	894.9	959.3	1054.8	1197.6	1448.1	1535.4
Agriculture	0.0	2.6	7.2	15.8	23.6	32.4	26.5	26.5	29.3	32.6	34.9	41.6	52.4	65.8	71.5	79.2	87.0
Non-Industry	48.2	48.6	29.0	47.5	71.3	81.4	98.5	100.6	110.3	110.0	118.0	169.6	220.4	266.9	288.3	286.1	292.0
Transportatio	0.0	0.0	0.0	5.7	6.6	6.9	7.6	9.8	11.6	11.0	11.4	11.6	10.5	10.9	14.5	18.9	23.8
House Hold	456.4	498.5	498.8	381.7	379.3	370.7	380.8	399.5	424.3	448.9	492.6	539.9	607.0	868.6	1016.8	992.0	1035.6
Sale to PC3	19.4	26.1	29.1	28.9	30.7	31.4	41.1	67.3	75.1	78.1	80.7	91.6	110.7	120.1	134.2	141.2	145.1
PC3																	
Supply	99.5	122.5	149.6	165.9	175.2	186.3	205.3	261.8	306.8	327.5	343.1	370.1	429.4	484.7	560.5	639.4	719.2
Bought	19.4	26.1	29.1	28.9	30.7	31.4	41.1	67.3	75.1	78.1	80.7	91.6	110.7	120.1	203.4	402.0	494.6
Generation	80.1	96.4	120.5	137.0	144.5	154.9	164.2	194.5	231.7	249.4	262.4	278.5	318.7	364.6	357.1	237.4	224.6
Hydro	3.7	3.6	4.3	4.4	4.1	4.0	4.0	3.7	5.4	5.1	7.1	5.6	3.1	9.4	28.1	56.6	
Diesel	76.4	92.8	116.2	132.6	140.4	150.9	160.2	190.8	226.3	244.3	255.3	272.9	315.6	351.3	328.7	180.8	
Gas Turbine														3.9	0.3		
Own Use	2.0	1.9	3.0	3.5	4.5	3.8	3.8	4.4	5.1	5.7	5.7	7.0	8.3	8.8	10.0	6.1	5.7
Loss	19.9	19.9	24.2	25.6	26.0	28.9	32.1	38.8	44.7	47.8	48.0	53.7	69.5	78.0	116.3	164.2	178.7
Demand	77.6	100.7	122.4	136.8	144.7	153.6	169.4	218.6	257.0	274.0	289.4	309.4	351.6	397.9	434.2	469.1	534.8
Industry	8.9	20.1	43.8	50.0	55.8	59.5	71.9	100.0	121.7	129.3	132.7	144.9	165.5	181.6	179.4	187.2	196.0
Agriculture	2.9	6.7	7.6	13.2	16.4	18.3	19.0	23.6	25.6	32.2	34.4	37.3	45.0	41.8	48.4	55.4	60.9
Non-Industry	1.0	0.0	6.7	12.6	13.7	15.4	15.2	21.1	23.6	23.9	28.0	28.5	30.8	33.8	36.5	43.7	50.5
Transportatio	0.0	0.2	1.5	3.9	3.5	3.0	3.6	4.8	6.1	6.4	6.4	5.6	7.0	6.5	7.4	7.9	7.5
House Hold	64.8	73.7	62.8	57.1	55.3	57.4	59.7	69.1	80.0	82.2	87.9	93.1	103.3	134.2	162.5	174.9	219.9

Figure 1.1.2-13b Report : Supply and Demand (b)

Investment

Item	1976	1977	1978	1979	1980	1981	1982	1983	1984	1985	1986	1987	1988	1989	1990	1991	1992
Total																	
all	96,657	79,345	119,338	117,330	147,376	198,555	1661,539	2389,233	2945,226	4835,637	5079,909	17492,199	1322,501	402729.7	315772.5	562872.3	
building	26,767	32,849	43,988	37,781	38,293	63,828	716,147	1177,910	1332,901	2014,110	2848,153	12670,980	90683.8	272640.1	174332.4	259516.2	
equipment	47,102	19,369	22,834	20,410	59,792	38,476	377,183	409,439	301,096	273,476	434,536	1451,870	17302.2	60741.9	71911.0	92104.9	
without servic others															59690.0	102258.0	
Source																	
all	71,354	53,605	97,416	89,671	129,033	171,801	1486,256	2025,338	2464,163	4177,302	4295,944	16411,406	95386.0	262430.4	207963.3	298446.6	
building	15,347	15,247	29,969	19,984	24,690	45,130	577,416	870,241	1003,848	1534,413	2244,822	11949,482	63511.7	176181.6	99765.2	129055.7	
equipment	34,453	13,243	15,095	14,315	57,236	34,540	366,435	395,496	246,768	216,989	347,563	1319,151	10185.7	27586.3	52984.0	77470.0	
Network																	
all	25,303	25,740	21,922	27,609	18,343	26,754	175,280	363,778	481,063	658,335	783,965	1080,793	36864.1	140299.3	107809.2	162167.7	
building	11,420	17,602	14,019	17,797	13,605	18,698	138,686	307,669	329,053	479,697	603,331	721,498	25172.1	96458.5	74567.2	130460.5	
equipment	12,649	6,125	7,739	6,096	2,556	3,876	10,748	13,493	107,734	56,487	87,033	132,719	7116.5	33155.6	18927.0	14634.9	

Figure I.1.2-14 Report : Investment

Expenditure

Company Sector	1976	1977	1978	1979	1980	1981	1982	1983	1984	1985	1986	1987	1988	1989	1990	1991	1992
All PC																	
Total	100.00	100.00	100.00	100.00	100.00	80.55	227.19	262.32	298.76	1144	4195	13288	131430	421501	839884	657495	
Material	61.03	60.00	61.03	61.03	60.00	59.32	177.60	206.20	208.70	844	3239	8978	75444	174985	412389	789066	
Power Plant	0.79	2.93	0.79	0.79	2.93	1.91	11.31	15.93	22.87	3	3	3	146	1466	2278	3674	
Salary	5.40	3.77	5.40	5.40	3.77	1.33	3.50	4.19	6.04	45	262	1229	5615	22037	39839	53906	
Insurance	0.22	0.26	0.22	0.22	0.26	0.00	0.00	0.00	0.00	3	12	53	603	3422	6151	7343	
Amortization	28.58	27.65	28.58	28.58	27.65	7.57	22.78	16.93	36.49	153	460	1961	26926	178994	311637	558762	
Others	3.98	5.39	3.98	3.98	5.39	10.42	12.00	19.07	24.66	96	219	1031	22696	40597	67590	244744	
Total	100.0	100.0	100.00	100.00	100.00	50.96	122.64	141.05	166.29	607	2161	7113	80154	216283	368387	646894	
PC1																	
Material	61.2	65.6	67.78	65.28	63.56	37.40	95.50	113.90	108.60	414	1614	4852	49340	108968	155676	152592	
Power Plant	1.1	0.1	0.17	1.87	1.87	1.87	5.24	6.53	12.40	3	3	3	21	110	152	37	
Salary	6.6	5.4	5.16	5.39	5.64	0.96	2.34	2.36	4.00	19	165	829	2683	9856	20960	29769	
Insurance	0.3	0.3	0.21	0.27	0.28	0.28	0.28	0.28	0.28	1	6	32	159	1675	3320	3705	
Amortization	27.6	25.4	24.09	25.13	24.42	4.09	11.90	5.77	24.09	95	276	944	12983	73119	158829	354937	
Others	3.2	3.2	2.59	3.93	4.23	8.51	7.66	12.49	17.20	75	97	435	14879	22513	29565	105456	
Total	100.00	100.00	100.00	100.00	100.00	22.23	83.30	97.32	102.06	394	1527	4433	30734	148015	332801	781307	
PC2																	
Material	49.37	52.83	49.37	49.37	52.83	15.92	64.30	73.00	76.40	318	1242	2995	14863	36437	173554	504338	
Power Plant	5.06	5.06	5.06	5.06	5.06	1.60	5.12	8.26	8.90	18	64	253	1917	9823	15128	16423	
Salary	5.60	5.60	5.60	5.60	5.60	0.26	0.87	1.40	1.50	1	4	14	321	1437	2269	2461	
Insurance	0.13	0.24	0.13	0.13	0.24	0.24	0.24	0.24	0.24	1	4	4	4	4	4	4	
Amortization	41.22	34.15	41.22	41.22	34.15	3.06	9.81	9.90	10.10	46	151	753	10754	87815	117423	165974	
Others	3.68	7.72	3.68	3.68	7.72	1.39	3.20	4.76	5.16	11	66	403	2843	11189	22186	88872	
Total	100.00	100.00	100.00	100.00	100.00	7.36	21.25	23.95	30.41	143	507	1742	20542	57203	138696	229294	
PC3																	
Material	68.31	66.31	68.31	68.31	66.31	6.00	17.80	19.30	23.70	112	383	1131	11241	29580	83159	132136	
Power Plant	7.63	6.86	7.63	7.63	6.86	0.31	0.95	1.14	1.57	8	33	147	1015	2358	3751	7714	
Salary	4.93	4.54	4.93	4.93	4.54	0.11	0.29	0.43	0.54	1	2	7	123	310	562	1177	
Insurance	0.23	0.22	0.23	0.23	0.22	0.22	0.22	0.22	0.22	1	2	2	2	2	2	2	
Amortization	13.76	17.86	13.76	13.76	17.86	0.42	1.07	1.26	2.30	12	33	264	3189	18060	35385	37851	
Others	5.14	4.21	5.14	5.14	4.21	0.52	1.14	1.82	2.30	10	56	193	4974	6895	15839	50416	

Figure 1.1.2-15 Report : Expenditure

DB-ID	Company Code	Plant Type Code	1976	1977	1978	1979	1980	1981	1982	1983	1984	1985	1986	1987	1988	1989
1	1	1	281.00	336.00	342.00	334.00	334.00	329.60	329.60	319.50	405.50	543.50	678.00	729.00	721.00	711.00
2	3	1	113.80	113.80	119.80	112.90	112.90	112.80	112.80	113.80	113.80	126.70	127.00	127.20	137.20	607.20
3	4	1	66.50	74.50	97.80	100.80	105.00	91.30	46.30	36.00	38.40	11.30	11.30	10.50	18.00	10.50
4	5	1	0.00	0.00	0.00	0.00	0.00	50.00	50.00	75.00	75.00	75.00	75.00	75.00	75.00	75.00
5	6	1	0.00	0.00	0.00	34.00	34.00	17.00	17.00	34.00	34.00	34.00	34.00	34.00	34.00	34.00
6	2	2	233.00	233.00	233.00	233.00	233.00	233.00	233.00	233.00	233.00	233.00	233.00	233.00	233.00	233.00
7	2	3	163.00	163.00	163.00	163.00	163.00	163.10	163.10	163.10	163.10	163.10	163.10	163.10	163.10	163.10
8	2	4	314.40	278.40	251.50	261.10	261.10	243.50	243.50	243.50	243.50	243.50	243.50	243.50	242.60	128.90
9	2	5	61.50	61.50	61.50	27.50	27.50	27.00	27.00	27.00	27.00	27.00	27.00	27.00	42.00	54.00
10	3	3	0.80	0.80	0.80	0.80	0.80	0.80	0.80	0.80	0.80	0.80	0.80	0.80	0.70	4.70
11	3	4	70.40	100.40	98.90	99.40	98.50	123.00	101.60	136.70	131.40	147.40	147.40	164.30	164.40	185.60
12	3	5	0.00	0.00	0.00	0.00	0.00	0.00	0.00	0.00	0.00	0.00	0.00	0.00	0.00	14.00

1990	1991	1992	1993	1994	1995	1996	1997	1998	1999	2000	2001	2002	2003	2004	2005	2006	2007	2008
711.00	693.00	693.00																
607.20	1080.00	1086.60																
10.50	17.70	8.20																
75.00	0.00	0.00																
34.00	34.00	34.00																
233.00	205.00	205.00																
564.20	563.70	563.70																
180.60	187.00	221.70																
54.00	79.00	174.00																
4.70	19.00																	
185.60	120.10	167.20																
0.00	0.00																	

Figure 1.1.3-1 Data Table : Capacity

DB ID	Company Code	Transformer Code	1975	1977	1978	1979	1980	1981	1982	1983	1984	1985	1986	1987	1988	1989	1990
101	1	101															
102	1	102	872	912	887	918	943	565	721	636	734	722	819	951	1396	1093	1442.5
103	1	103	531.7	488.9	500.6	528.6	419.1	437.3	544.1	560.1	562.8	768.3	675	910.6	1382	1498.1	1479.5
104	1	104	239.6	350.2	319.5	328.9	340.1	334.9	373.2	431.4			456.2	429.6	540.2	564	649.2
105	1	105	248	237.8	363.5	313.6	297.2	741.9	877.7	972.9	1405.7	1568.4	527.2	562.6	763.3	729	950.4
106	1	106	363.2	365	417.3	461.2	446.1						715.4	706.8	629.8	942	1088.4
201	2	201	196	196	196	196	196	196	196	196	196	196	196	196	196	703	919
202	2	202	506.4	507.9	488.4	488.4	518.3	518.3	520.3	522.3	534.8	534.8	576.8	104	314	374	490.5
203	2	203												524.3	499	617	611
204	2	204	8.65	8.65	9.65	9.65	9.65	1	1	1	1	1	1	1	1	1	1
205	2	205	810.2	836.9	962.1	890.8	556.1	171	171	171	271	271	648.7	961.2	1291	1476.5	1696.6
206	2	206						581.9	382.7	603	556.1	556.1					
301	3	301															63
302	3	302															
303	3	303		21.5	21.5	21.5	21.5					186.5	186.5	15.2	15.2	36.3	18.3
304	3	304					28										
305	3	305						87.6	87.6	82.6	86.5			25.3	178	346.6	69.5
306	3	306															
307	3	307		118.4	121.4	127.9	146.7	119.3	135.4	169.5	176.1	135.9	135.9	261.7	236.9	236.9	212.2
308	3	308															

	1991	1992	1993	1994	1995	1996	1997	1998	1999	2000
2065										
1586.3		2065								
887.8		1643.3								
711.1		821.3								
1121.6		559.5								
1089.8		887.8								
794		1043.9								
655.5		934								
662.7		655.5								
662.7		662.7								
18										
1837.1										
63										
148										
18.3										
327.3										

Figure 1.1.3-2 Data Table : Transformer

DB-ID	Company Code	Code	1976	1977	1978	1979	1980	1981	1982	1983	1984	1986	1987	1988	1989	1990
0	0	0	0.0	0.0	0.0	0.0	0.0	0.0	0.0	0.0	0.0	0.0	0.0	0.0	0.0	0.0
102	1	2								230.0	390.0	390.0	325.0	675.0	729.0	838.0
104	1	4	928.3	1014.1	1052.8	1074.9	1139.7	1219.3	1280.6	1240.0	1290.0	1477.2	1405.4	1519.0	1779.0	1816.0
106	1	6	3218.3	3165.8	3444.6	3905.9	3807.4	3969.0	4339.4	3996.0	3825.0	4492.4	4510.5	5532.0	5532.0	5837.0
111	1	11	2563.7	2360.6	2984.1	2886.1	2979.0	3108.7	3977.8	4600.8	4753.0	5269.0	5345.6	5727.4	6067.0	6381.0
113	1	13	1343.8	1220.2	1214.3	1399.1	1366.4	1388.0	1562.4	1574.7	1630.0	1780.0	1902.0	2141.0	2600.0	2691.0
114	1	14	4200.0	4400.0	4500.0	4800.0	5100.0	5400.0	5700.0	5900.0	6300.0	6700.0	7000.0	8500.0	9000.0	9500.0
201	2	1	257.0	257.0	257.0	257.0	257.0	257.0	257.0	257.0	257.0	257.0	257.0	512.0	512.0	512.0
204	2	4						52.0	52.0	52.0	109.0	109.0	135.0	521.5	777.0	963.0
205	2	5	544.2	580.2	580.2	580.2	546.5	546.5	556.3	570.4	444.9	444.9	444.9	496.5	383.0	483.0
206	2	6												40.9		
208	2	8	53.7	77.5	77.5	77.5	94.4	94.4	94.4	94.4	94.4	94.4	94.4	75.3	75.3	75.3
209	2	9	2233.4	2405.9	2579.5	2652.5	2817.0	3177.2	3349.8	3546.9	3669.0	3669.0	4073.0	5027.0	5753.0	6342.0
214	2	14	2732.0	2793.0	2799.0	2799.0	2799.0	2799.0	2799.0	2799.0	2799.0	2799.0	3005.0	3483.0	3764.0	3577.0
302	3	2														70.0
304	3	4						20.3	20.3	20.3	59.8	59.8	175.0	231.0	231.0	231.0
305	3	5						73.0	73.0	73.0	75.2	75.2	75.2	75.2	75.2	75.2
307	3	7						183.4	183.4	183.4	482.0	482.0	581.0	833.0	961.0	1018.0
310	3	10	463.4	443.7	498.1	530.1	640.2	645.2	645.2	750.0	1310.0	1310.0	1250.0	1063.0	1118.0	1114.0
312	3	12	181.7	275.4	291.2	262.2	266.2	499.3	499.3	499.3	554.0	717.0	763.0	552.0	596.0	596.0
314	3	14	626.9	769.9	828.3	837.4	848.4	1237.0	1297.0	1329.0	1484.0	1484.0	1550.0	1820.0	2100.0	2500.0

Figure 1.1.3-3 Data Table : Transmission

DB-ID	Company Code	Plant Type Code	1976	1977	1978	1979	1980	1981	1982	1983	1984	1985	1986	1987	1988
1101	1	1	1202.1	1430.7	1559.8	1596.8	1420.7	1434.9	1522.5	1525.6	2016.1	2302.1	2656	3064.8	3438.7
1200	1	3	383.3	353.9	444.5	500.6	373.8	467.4	459.5	390.7	436.2	385.7	477.9	354.6	293
1300	1	4	20.1	54.5	80.4	70.3	61.5	52.4	32.8	19.6	6.2	2.6	7.7	10.1	11.3
1400	1	5	0	0	0.8	19.9	13.8	25.6	64	88.5	74.8	85.3	30.6	41.6	65.1
1500	1	6				15.6	36.2	120	113.4	73.2	66.4	66.2	66.4	66.2	64
2102	2	2	652.8	524.5	524	425.5	320	409.5	459.1	716.8	600.1	715.6	971.1	1090.4	994.2
2200	2	3	444	775.6	882	942.5	1110.3	1035.5	1096.1	828.8	1157.4	1081.3	916.9	1015.5	1489.4
2300	2	4	179.1	117.5	93	82.8	114.1	130.3	138.6	179.1	140.9	162.3	131.6	117.7	98.7
2400	2	5	3.1	0.5	0.4	0.2	0.4	0.2	1.4	8.2	1.8	7.2	6.1	10.3	10
3200	3	3	3.7	3.6	4.3	4.4	4.1	4	4	3.7	5.4	5.1	7.1	5.6	3.1
3300	3	4	76.4	92.8	116.2	132.6	140.4	150.9	160.2	190.8	226.3	244.3	255.3	272.9	315.6
3400	3	5													
4101	4	1	49.8	74.4	69.8	66.3	45.2	92.3	118	156.8	139.9	116.3	118	120	136
4300	4	4	47.8	74.9	41.9	28.7	31.7	31.8	32	35	37.6	38	41	43.4	35.8

1989	1990	1991	1992	1993	1994	1995	1996	1997	1998	1999	2000
2722.3	2000.5	1365.5	851.4	636.3							
1589.5	2856.6	3709.9	4548.8	5091.1							
8.9	6.1	10.5	8.9	9.7							
10.5											
27.4	5.6	35.2	5.5	13.4							
739.7	840.6	1059.2	1035	1139							
2226.4	2484	2550	2618.6	2790							
76.3	75.9	118.1	146.8	739							
26.3	52.1	65.8	212.5								
9.4	28.1	56.5	60.7								
351.3	328.7	180.8	163.9								
3.9	0.3										
135.2	150	180									
21.4	17	15									

Figure 1.1.3-4 Data Table : Generation

DB-ID	Company Code	Month	1976	1977	1978	1979	1980	1981	1982	1983	1984	1985	1986	1987	1988	1989	1990	1991	1992	1993	1994
101	1	1	225.8	292.7	259.7	367.7	366.4	309.4	391.5	326	391.8	514.4	482	598	593	775	936	902			
102	1	2	225.6	299.6	287.7	371.5	309	336.1	338.8	358.1	394	460.8	575	550	581	785	871	1048			
103	1	3	231	291.7	323	327.2	278.1	294.2	366	332.4	373.6	441.5	497	543	529	718	797	864			
104	1	4	230.5	292.9	296.9	313	303.5	291.6	327	325.4	349.9	445.2	454	503	519	648	743	847			
105	1	5	234.1	267.8	290.3	329	287.6	308.6	290.6	293.2	358.8	416.6	461	472	538	620	790	882			
106	1	6	244.7	208.7	304.3	336.7	278.5	291.1	291.8	295	372.5	406.8	422	488	535	628	785	983			
107	1	7	261.8	241.4	297	320.7	259.5	372.5	288.7	310	370.2	412	479	481	564	640	762	968			
108	1	8	246	274.5	304.7	305.5	284.7	283.6	300.8	306.7	371	427.4	483	461	560	663	817	964			
109	1	9	257.9	264.4	325.3	323.3	285.8	323.8	297.9	324.8	422	399.5	536	482	547	677	870	998			
110	1	10	257	272.2	335.4	328	288.8	333.5	319.7	354.9	423.5	440.5	526	506	542	685	848	1013			
111	1	11	264.8	254.3	350.9	323.7	294.9	365.8	348	397.8	437.4	448.3	523	524	581	801	839	1006			
112	1	12	270.6	294	348.2	306.7	270.5	385.7	340.3	444.5	414.9	473	594	564	567	786	870	1005			
201	2	1		197.4	225.7	232.6	228.5	270.6	249.9	284.2	288	320.6	286	347	399	490	611.3	650.4			
202	2	2		202.8	227.5	240.6	232.2	279.3	267.4	286.2	299.1	292.7	312	349	390	480	644.5	645			
203	2	3		208.2	240.1	235.8	237.9	286.5	285.3	328.8	282.9	300.3	307	345	393	499	621.9	642			
204	2	4	204.5	208.1	233.4	216.7	234.5	273.7	269.4	294.3	284.2	294.5	304	360	381	532	606.6	655.9			
205	2	5	205.3	216.7	233.1	216.2	238	275	267.2	265.9	292.8	296.1	315	349	408	519	637.9	664.8			
206	2	6	204	215.6	240.9	223.3	211.5	257.2	274.7	265.3	276	220	309	348	415	339	563.3	639.7			
207	2	7	194.7	209.8	243.6	223.4	232.2	259.4	269.5	271.7	281.8	298.8	315	350	417	578	620.9	625.3			
208	2	8	188.7	207.4	235.4	213.7	234.2	260.5	260.5	265.9	292	307.5	323	332	423	578	606.7	656.5			
209	2	9	189.2	209	237.4	226.2	244.5	259.3	285.7	270	293.7	308	379	375	432	570	616.1	642.7			
210	2	10	197.7	207.7	234.2	232.8	262.2	249.6	296.6	282.2	287.4	303.3	347	376	441	565	650.4	669			
211	2	11	203.2	227.9	239.7	240.8	266.6	259	293.2	283.6	334	305.4	356	380	470	589	645	711.5			
212	2	12	88.9	227	245.1	236.2	265.7	261.1	280.8	288.3	320.2	285	346	374	490	590	655	678.7			

Figure 1.1.3-5 Data Table : Peak

DB-ID	Company Code	1976	1977	1978	1979	1980	1981	1982	1983	1984	1986	1988	1987	1988	1989	1990	1991	1992
1	1	131.3	148.6	159.7	175	184.2	169.3	181.5	204	241.6	254.7	302.2	332.9	360.9	353.9	282.4	214.6	167.3
2	2	62.2	56.2	52.2	45.6	37.1	41.9	50.3	62.4	55.3	63.5	69.3	74.8	76.5	81.3	86.3	97.9	94.7
3	3	2	1.9	3	3.5	4.5	3.8	3.8	4.4	5.1	5.7	5.7	7	8.3	8.8	10	6.1	5.7

Figure 1.1.3-6 Data Table : Own Use

DB-ID	Company Code	Plant Type Code	1976	1977	1978	1979	1980	1981	1982	1983	1984	1985	1986	1987	1988	1989	1990	1991
000	0	0	6.59	6.16	5.8	5.94	5.78	5.77	5.93	6.56	6.32	6.3	7.98	6.79	6.8	5.69	4.15	3.43
100	1	0	8.18	8.08	7.66	8	8.78	8.48	8.58	9.28	9.13	8.94	9.33	9.41	9.32	8.12	5.8	4.19
101	1	1	8.01	8.03	7.56	7.97	11.26	11.51	11.73	12.93	12.03	10.93	11.3	10.79	10.4	12	12.6	12.8
102	1	3	0.289	0.319	0.251	0.244	0.285	0.2	0.225	0.28	0.274	0.308	0.242	0.327	0.4	0.4	0.3	0.3
103	1	4	4.48	4.24	3.54	3.05	3.12	3.24	3.08	2.46	3.4	4.66	4.58	3.42	3.8	3.7	3.7	3.8
104	1	5				0.85	0.48	0.18	0.167	0.11	0.222	0.49	0.718	0.7	0.5	1	5.1	1
200	2	0	4.86	3.69	3.48	3.14	2.4	2.66	2.97	3.6	2.94	3.23	3.42	3.35	3.03	2.65	2.5	2.58
201	2	1	8.16	8.76	8.86	9.34	9.49	8.53	8.37	6.96	7.29	7.26	6.05	5.83	6.5	6.8	6.6	6.59
202	2	3	0.86	0.41	0.4	0.38	0.34	0.35	0.35	0.35	0.32	0.33	0.34	0.33	0.47	0.4	0.4	0.44
203	2	4	2.68	2.55	2.18	2.54	2.32	2.55	2.5	2.73	2.12	1.74	1.92	1.99	1.9	1.7	2.5	2.52
204	2	5	8	5.1	5.2	3.65	5.2	7.43	2.34	2.56	7.58	1.61	1.96	1.14	1.3	1.2	1.1	1.14
300	3	0	2.52	1.99	2.47	2.58	3.1	2.47	2.34	2.25	2.19	2.28	2.18	2.5	2.6	2.4	2.8	2.55

Figure 1.1.3-7 Data Table : Own Use / Rate

DB-ID	Company Code	Sector Code	1976	1977	1978	1979	1980	1981	1982	1983	1984	1985	1986	1987	1988	1989	1990	1991	1992	1993	1994
1	1	1	701.6	790.3	869.3	840.7	691	789.2	891.1	944.2	1117.1	1142.5	1244.4	1344.3	1464.9	1394.6	1468	1433.8	1465.5		
2	1	2	215.2	242.5	275.8	253	193.5	260.5	210.6	192.7	252.1	243.7	262.9	308.3	343.6	354.7	466.9	674	827.1		
3	1	3	67	88.1	118.5	169.8	138.1	163.3	198.7	202.4	248.5	293.8	336.3	348.9	348.9	355.8	342.1	260.8	207.3		
4	1	4	27.7	20.9	23.3	33.3	24.3	24.5	26	16	20.8	18.5	22.8	21	20.9	24	29.2	27	24.8		
5	1	5	217.5	218.2	229.9	234.5	212.9	266.3	277.5	299.9	352.9	449.7	513.9	610.4	646.5	879.4	855.7	884.7	897.9		
6	1	6															69.2	260.8	349.5		
7	2	1	407.2	486.1	567.9	607.3	630.6	650.3	696.4	693.9	788.6	841.8	819.9	894.9	959.3	1054.8	1197.6	1448.1	1535.4		
8	2	2	0	2.6	7.2	15.8	23.6	32.4	26.5	26.5	29.3	32.6	34.9	41.6	52.4	65.8	71.5	79.2	87		
9	2	3	48.2	48.6	29	47.5	71.3	81.4	98.5	100.6	110.3	110	118	169.6	220.4	266.9	288.3	286.1	292		
10	2	4	0	0	0	0	5.7	6.6	6.9	7.6	9.8	11.6	11	11.4	10.5	10.9	14.5	18.9	23.8		
11	2	5	456.4	498.5	496.8	381.7	379.3	370.7	380.8	399.5	424.3	448.9	492.6	539.9	607	868.6	1016.8	992	1035.6		
12	2	6	19.4	26.1	29.1	28.9	30.7	31.4	41.1	67.3	75.1	78.1	80.7	91.6	110.7	120.1	134.2	141.2	145.1		
13	3	1	8.9	20.1	43.8	50	55.8	59.5	71.9	100	121.7	129.3	132.7	144.9	165.5	181.6	179.4	187.2	196		
14	3	2	2.9	6.7	7.6	13.2	16.4	18.3	19	23.6	25.6	32.2	34.4	37.3	45	41.8	48.4	55.4	60.9		
15	3	3	1	0	6.7	12.6	13.7	15.4	15.2	21.1	23.6	23.9	28	28.5	30.8	33.8	36.5	43.7	50.5		
16	3	4	0	0.2	1.5	3.9	3.5	3	3.6	4.8	6.1	6.4	6.4	5.6	7	6.5	7.4	7.9	7.5		
17	3	5	64.8	73.7	62.8	57.1	55.3	57.4	59.7	69.1	80	82.2	87.9	93.1	103.3	134.2	162.5	174.9	219.9		

Figure 1.1.3-8 Data Table : Sale to Sectors

DB-ID	Company Code	Code	Province	1976	1977	1978	1979	1980	1981	1982	1983	1984	1985	1986	1987	1988	1989	1990	1991
1000	710000	PC1 Total		1219.4	1379.8	1448.8	1556.0	1305.6	1475.2	1550.7	1608.0	1938.5	2099.8	2374.8	2627.5	2856.8	3000.3	3038.3	3283.4
1010	110100	HA HOI		446.3	468.7	426.5	476.7	410.5	465.4	400.5	517.7	604.7	683.2	736.7	821.4	865.3	886.3	949.0	963.9
1020	110200	HAI PHONG		158.7	176.2	183.6	202.3	147.7	153.2	155.8	149.7	175.3	189.2	204.7	207.7	233.0	282.6	233.0	320.3
1030	110300	HA NAM-NINH(NAM HA)		136.8	165.6	196.9	198.8	139.2	126.1	108.5	107.6	132.7	127.5	146.7	156.4	182.4	223.7	259.0	239.3
1031	110301	NINH BINH																	
1040	110400	VINH PHU		93.5	114.0	130.3	128.7	102.6	101.1	106.0	95.9	118.2	134.7	151.9	163.6	174.2	167.1	133.4	185.5
1050	110500	QUANG NINH		100.0	116.6	134.5	143.4	135.5	179.2	200.4	185.7	179.9	174.0	181.2	193.3	207.9	196.0	126.0	183.3
1060	110600	BAC THAI		120.1	139.5	143.8	146.4	119.4	112.1	124.2	115.4	132.5	149.0	158.6	181.7	193.5	197.6	216.9	262.1
1070	110700	HA BAC		45.2	57.7	73.4	61.9	59.7	62.8	60.9	71.5	80.4	84.8	96.3	101.1	103.1	107.6	136.5	155.3
1080	110800	HAI HUNG		76.8	85.5	104.7	118.5	95.0	84.7	62.2	88.5	139.6	158.9	183.4	193.1	208.4	222.2	217.1	222.6
1090	110900	THANH HOA		35.4	46.5	56.0	59.8	49.0	52.7	106.0	110.5	157.4	159.8	175.8	200.0	222.4	235.6	273.9	286.9
1100	111000	HA SON BINH(HA TAY)							67.8	00.7	100.0	138.0	153.2	201.1	219.1	246.8	238.4	215.8	160.9
1101	111001	HOA BINH																	
1110	111100	THAI BINH						41.9	50.8	41.3	32.2	43.9	45.0	46.8	56.1	59.6	72.8	74.6	79.6
1120	111200	HOANG LIEN SON(YENBAI)							13.1	11.3	11.8	13.6	14.9	15.4	18.9	30.5	34.7	36.9	35.3
1121	111201	LAO CAI																	
1130	111300	LANG SON		6.6	7.5	8.5	3.5	5.1	6.4	8.7	10.0	11.6	15.3	15.5	19.5	21.5	25.5	23.5	24.8
1140	111400	HA TUYEN(TUENQUANG)								3.2	11.5	13.2	14.1	14.9	17.1	18.1	19.8	19.7	24.9
1141	111401	HA GIANG																	
1150	111500	NGHE TINH(NGHE AN)												58.2	69.7	82.1	79.6	109.6	120.0
1151	111501	HA TINH																	
1160	111600	CAO BANG												7.6	8.0	8.0	8.4	7.8	7.4
1170	111700	SON LA																	
1180	111800	LAI CHAU																	
2000	620000	PC2 Total		950.5	1090.1	1159.8	1199.8	1175.8	1173.3	1250.7	1297.5	1439.2	1522.3	1567.5	1749.4	1960.4	2389.9	2722.0	2966.0
2010	220100	P.P HO CHI MINH		679.8	760.3	778.2	747.9	777.6	758.1	787.3	794.9	868.7	905.2	901.6	966.3	1076.7	1300.9	1421.7	1512.3
2020	220200	THUAN HAI		14.5	11.7	11.3	14.3	14.1	15.1	16.9	17.7	18.1	19.7	21.3	23.8	25.6	31.8	39.5	45.6
2030	220300	LAM Dong		11.1	11.2	15.0	11.1	17.6	18.4	20.3	21.7	27.5	29.0	30.9	36.4	40.0	43.7	44.1	47.5
2040	220400	SONG BE		8.7	21.0	22.3	19.8	19.8	20.7	23.5	23.0	26.1	26.6	27.2	32.5	34.7	44.9	48.5	58.0
2050	220500	TAI NINH		3.8	4.8	7.7	8.9	9.8	7.1	9.6	10.1	12.6	15.3	17.6	19.8	22.9	30.4	37.4	41.8
2060	220600	DONG HAI		126.6	146.7	165.1	163.4	160.1	160.2	178.2	178.4	195.7	206.5	233.9	253.7	279.8	297.8	369.4	383.5
2070	220700	LONG AN		7.5	7.4	9.7	10.3	10.4	11.8	12.1	14.7	18.0	19.2	20.2	25.7	30.7	45.4	54.1	61.6
2080	220800	DONG THAP		4.7	6.6	8.7	8.3	8.2	9.1	10.7	13.4	14.1	17.0	18.4	21.5	28.7	38.3	48.7	55.6
2090	220900	TIEN GIANG		12.5	17.5	22.7	21.8	25.5	30.6	29.2	30.2	31.7	32.1	33.3	35.8	43.9	64.1	74.2	79.6
2100	221000	BEN TRE		2.2	3.3	5.2	4.3	4.7	7.4	9.2	10.2	10.1	14.7	14.4	17.7	21.3	24.9	28.6	35.3
2110	221100	CUU LONG		5.9	8.6	10.7	9.6	11.1	11.2	14.1	18.1	17.9	21.8	24.2	27.1	32.8	45.0	54.7	58.3
2120	221200	HAI GIANG		25.1	31.4	35.5	34.4	37.1	38.5	44.4	46.1	51.2	57.3	59.2	64.7	77.0	100.8	122.0	134.2
2130	221300	AN GIANG		13.8	17.4	19.7	17.9	19.3	19.4	18.9	20.2	21.7	23.5	23.1	29.2	35.2	49.7	58.3	66.7
2140	221400	KIEN GIANG		7.1	9.9	10.8	12.3	14.5	12.4	13.8	15.5	17.4	19.1	19.5	22.8	29.8	58.0	81.3	120.1
2150	221500	MINH HAI		6.8	8.1	7.1		7.4	8.7	10.9	14.4	13.0	13.5	10.9	12.1	12.5	19.3	28.9	42.7
2160	221600	VUNG TAU-CON DAO						11.7	12.4	12.9	13.6	20.3	22.7	31.1	46.7	58.2	76.1	78.4	82.2
2170	221700	Ban cho M. Hung		19.4	26.1	29.1	28.9	30.7	31.4	41.1	67.3	75.1	78.1	80.7	91.6	110.7	120.2	134.2	141.2
3000	930000	PC3 Total		74.0	100.7	122.4	138.7	144.7	193.5	160.3	218.8	256.9	274.2	289.5	308.7	351.5	396.2	433.6	469.1
3010	330100	BINH TRI THIEN			12.3	22.2	25.8	28.0	28.5	23.9	34.3	39.1	37.5	42.6	47.4	55.0	62.3		
3011	330101	Quang Binh																13.2	18.4
3012	330102	Quang Tri																10.2	12.4
3013	330103	Thua Thien Hue																40.0	44.1
3020	330104	QUANG NAM-DA NANG			35.7	41.5	48.9	48.4	54.8	60.7	67.0	79.4	85.8	87.4	87.5	101.6	114.4	123.9	137.0
3030	330200	NGHIA BINH			13.7	16.6	17.8	20.0	22.1	22.8	27.6	34.1	41.2	42.9	48.1	48.8	62.2		
3031	330201	Quang Ngai																24.8	28.3
3032	330202	Binh Dinh																45.9	47.3
3040	330300	PHU KHANH			25.4	30.1	30.0	32.2	32.1	43.3	68.9	80.4	84.9	86.6	96.8	109.7	117.0		
3041	330301	Phu Yen																13.0	16.0
3042	330302	Khanh Hoa																115.0	120.6
3050	330400	GIA LAI-KON TUM			3.5	5.3	6.7	7.6	8.6	8.4	10.0	11.0	11.8	13.9	15.5	18.2	23.1	23.1	22.3
3060	330500	DAK LAK			5.1	6.7	7.7	8.3	9.4	10.2	11.0	12.9	13.3	14.1	15.4	18.2	19.2	24.5	24.5

Figure 1.1.3-9 Data Table : Sale to Provinces

DB-ID	Company Code	Code	Province	1986 T	1986 G	1986 P	1987 T	1987 G	1987 P	1988 T	1988 G	1988 P	1989 T	1989 G	1989 P	1990 T	1990 G	1990 P	1991 T	1991 G	1991 P	1992 T	1992 G	1992 P
1000	710000	PC1 Total		2374.8	1146.5	1228.3	2627.5	1360.9	1265.6	2856.8	1504.9	1351.9	3000.3	1444.9	1555.4	3036.3	1417.3	1621	3283.4	1407	1875.4			
1001	110100	HA NOI		736.7	238.7	498	821.4	283.4	528	865.3	331.9	533.4	866.3	320.7	565.6	949	323.2	625.8	963.9	297.5	668.4			
1002	110200	HAI PHONG		204.7	79.8	124.9	207.7	81.7	126	233	94	139	282.6	90.8	191.8	233	72.6	160.4	320.3	117.9	202.4			
1003	110300	HA NAM-NINH		146.7	43.7	103	158.4	57.3	99.1	182.4	68.5	115.9	223.7	72.1	151.6	239	124.1	134.9	239.3	68.3	171			
1004	110400	MINH PHU		151.9	103	48.9	163.6	117.3	46.3	174.2	124.2	50	167.1	110.1	57	133.4	72.9	60.5	185.5	125.9	59.6			
1005	110500	QUANG NINH		181.2	139.7	41.5	193.3	155	38.3	207.9	167.4	40.5	198	154.9	43.1	126	81.5	44.5	183.3	115.6	67.7			
1006	110600	BAC THAI		158.6	130.6	28	181.7	153	28.1	193.5	163.7	29.8	197.6	165.1	32.5	216.9	190.3	26.6	155.3	66.7	88.6			
1007	110700	HA BAC		96.3	45.3	51	101.1	50.5	50.6	103.1	54.8	48.3	107.6	52.4	55.2	136.5	67.7	68.8	155.3	66.7	88.6			
1008	110800	HAI HUNG		163.4	90.5	82.9	193.1	105.9	87.2	208.4	110.7	97.7	222.2	108	114.2	217.1	110.1	107	222.6	91.3	131.3			
1009	110900	THANH HOA		175.8	116.3	59.5	200	143.1	56.9	222.4	158.8	65.8	235.8	164.7	71.1	273.9	193.1	83.8	288.9	189.3	98.6			
1010	111000	HA SON BINH		201.1	153.1	48	219.1	169.8	46.3	246.8	190.3	56.5	238.4	159.5	78.9	215.8	133.2	82.5	160.9	68.4	92.5			
1011	111100	THAI BINH		46.8	5	41.8	56.1	5	51.1	59.8	5.8	54	72.8	5.4	57.4	74.6	3.4	71.2	79.6	2.5	77.1			
1012	111200	HOANG LIEN SON		15.4	1.9	13.5	18.9	5.2	13.7	30.5	14.8	15.7	34.7	17.7	17	36.9	17.5	19.4	35.3	17.1	18.2			
1013	111300	LANG SON		15.5	3.6	11.9	19.5	6	13.5	21.5	6.8	14.7	25.5	6.1	19.4	23.5	7.4	16.1	24.8	6.6	18.2			
1014	111400	HA TUYEN		14.9	2.7	12.2	17.1	5.5	11.6	18.1	4.8	13.3	19.8	5.8	14	19.7	6	13.7	24.9	10.3	14.6			
1015	111500	NGHE TINH		58.2	1.4	56.8	69.7	12.2	57.5	82.1	12.6	69.5	79.8	11.6	88.2	109.8	17.3	92.5	120	15.1	104.9			
1016	111600	CAO BANG		7.8	1.2	6.4	8.8	8.8	8.8	8		8	8.4	8.4	8.4	7.8	7.8	7.8	7.8	7.4	6	1.4		
1017	111700	SON LA														3.3	3.3	3.3	3.3	5.5	1.5			
1018	111800	LAI CHAU														2.1		2.1	3.8					
2000	820000	PC2 Total		1587.5	470.7	1095.8	1749.4	590.8	1158.6	1960.4	636.8	1323.6	2369.9	642.6	1747.3	2722	711.7	2010.3	2956	836.6	2129.4			
2001	220100	T.P. HO CHI MINH		901.6	273.5	628.1	989.3	329.7	658.6	1076.7	359.6	717.1	1300.9	358.8	944.1	1421.7	363.6	1058.1	1512.3	442.1	1070.2			
2002	220200	TRUAN HAI		21.3	1.2	20.1	23.8	2.6	21.2	25.6	2.5	23.1	31.8	2.9	29.3	2.2	37.3	45.6	2.9	42.7				
2003	220300	LAM DONG		30.9	1.7	29.2	36.4	5.2	31.2	40	3.1	36.9	43.7	3.3	40.4	44.1	3.3	40.8	47.5	4	43.5			
2004	220400	SONG BE		27.2	7.5	19.7	32.5	11.3	21.2	34.7	10.4	24.3	44.9	11.2	33.7	49.5	9.8	38.7	58	12.9	45.1			
2005	220500	TAY NINH		17.6	1	16.6	19.8	1	18.8	22.8	1	21.8	30.4	1.6	28.8	37.4	1.3	36.1	41.9	1.1	40.8			
2006	220600	DONG NAI		239.9	168.1	65.8	253.7	192.5	61.2	273.8	203.9	75.9	237.8	196.5	101.3	369.4	250.7	118.7	383.5	284.1	119.4			
2007	220700	LONG AN		20.2	0.2	20	25.7	0.4	25.3	30.7	0.3	30.4	45.4	1.2	44.2	54.1	0.9	53.2	61.8	1.2	60.6			
2008	220800	DONG THAP		18.4	0.1	18.3	21.5	0.2	21.3	28.7	0.1	28.6	38.3		38.3	46.7	0.1	46.6	55.6	0.4	55.2			
2009	220900	TIEN GIANG		33.3	0.4	32.9	35.8	1.8	34	43.9	2.3	41.6	64.1	2.4	61.7	74.2	3.1	71.1	79.6	2.3	77.3			
2010	221000	BEN TRE		14.4	0.1	14.3	17.7		17.7	21.3		21.3	24.9	0.1	24.8	28.6		28.6	35.3		35.3			
2011	221100	CUU LONG		24.2	0.5	23.7	27.1	1.4	25.7	32.8	2.5	30.3	45.6	0.9	44.7	54.7	1.6	53.1	56.3	1.5	56.6			
2012	221200	HAI GIANG		59.2	9.9	49.3	64.7	15.3	49.4	77	16	61	100.8	15.9	84.9	122	15.2	106.8	134.2	15.4	118.8			
2013	221300	AN GIANG		23.1	0.1	23	29.2	0.2	29	36.2	0.2	35	49.7	0.3	49.4	58.3	0.4	57.9	66.7	0.3	66.4			
2014	221400	KIEN GIANG		19.5	0.1	19.4	22.8	0.1	22.7	29.8		29.8	36	8.5	47.5	61.3	23.8	57.5	120.1	53.3	66.8			
2015	221500	MINH HAI		10.9		10.9	12.1		12.1	12.5		12.5	19.3		19.3	28.9		28.9	42.2		42.2			
2016	221600	VUNG TAU-CON DAO		31.1	6.3	24.8	46.7	29.1	17.6	58.2	34.9	23.3	76.1	41.4	34.7	78.4	35.7	42.7	82.2	35.1	47.1			
2018	221700	Ban cho M. Truong		80.7		80.7	91.6		91.6	110.7		110.7	120.2		120.2	134.2		134.2	141.2		141.2			
3000	910000	PC3 Total		289.5	63.9	225.6	308.7	83	225.7	351.5	88.8	282.7	398.2	84.2	314	433.8	97.5	336.3	488.2	116.4	351.8			
3001	310100	BINH TRI THIEN		42.6	3	39.6	47.4	7.1	40.3	55	6.3	48.7	62.3	6.1	56.2	63.6	7.5	56.1	74	10.9	63.1			
3002	310200	QUANG NAM-DA NANG		87.4	19.4	68	87.5	22.3	65.2	101.6	23.6	78	114.4	22.9	91.5	123.9	19.9	104.1	137	23.5	113.5			
3003	310300	NGHIA BINH		42.9	2.9	40	46.1	5.5	40.6	48.8	5.7	43.1	62.2	5.7	56.5	70.7	9.9	60.8	73.6	13.4	60.2			
3004	310400	PHU KHANH		88.6	37.6	51	96.8	45	51.8	109.7	50.1	59.6	117	46.4	70.6	128	54.7	73.3	136.8	63.1	73.7			
DB-ID	Company Code	Code	Province	1986 T	1986 G	1986 P	1987 T	1987 G	1987 P	1988 T	1988 G	1988 P	1989 T	1989 G	1989 P	1990 T	1990 G	1990 P	1991 T	1991 G	1991 P	1992 T	1992 G	1992 P
3005	310500	GIA LAH-KON TUM		13.9	0.4	13.5	15.5	1.3	14.2	18.2	1.3	16.9	23.1	1.3	21.8	23.1	2.7	20.4	22.3	2	20.3			
3006	310600	DAK LAK		14.1	0.6	13.5	15.4	1.8	13.8	18.2	1.8	16.4	19.2	1.8	17.4	24.5	2.9	21.6	24.5	3.5	21			

Figure 1.1.3-10 Data Table : Sale to Government and Private

DB-ID	Company Code	Code	1976	1977	1978	1979	1980	1981	1982	1983	1984	1985	1986	1987	1988	1989	1990	1991
101	1	1	837.5	984.3	1079.1	1105.9	1012.2	1001.6	1043	1096.9	1268.1	1277.7	1417	1610	1788.1	1408	1056.3	726.2
102	1	2	5.5	14.6	16.5	13.1	12.3	14.1	8.6	5.2	1.8	0.8	2.1	2.8	3.2	2.6	1.9	3.4
104	1	4			0.5	9.6	7.4	8.5	22.3	58.8	40.6	32.3	13.1	16.1	28	4.8		
105	1	5					7.4	7.4	17.4	20.5	36.7	34.5	34.6	37.4	33.2	13.2	2.8	17.6
106	1	6	5.3	11.3	25.1	16.1	23.9	23	19.6	23.3	23.3	28.8	32.4	36.6	37.2	18.3	9.6	7.3
202	2	2	46	30.2	25.9	22.8	31.3	35.8	38.2	49.4	39.5	45.3	36.6	32.7	27.5	21	24.5	33.2
203	2	3	192.6	154.7	148.8	121.3	95.4	122.4	132.7	206.4	169.2	193.7	268.7	303.7	274.4	207.4	233.7	298.3
204	2	4	1.4	0.3	0.2	0.1	0.2	0.1	0.7	3.8	0.9	3.7	3	5.1	4.5	11.1	22.2	27.9
302	3	2	21.3	25.8	31.8	36.1	38.6	41.5	43.4	52.1	61.8	66.3	69.7	75	87.4	98.3	91.5	48.6

Figure 1.1.3-11 Data Table : Fuel Consumption

DB-ID	Company Code	Code	Province	1976	1977	1978	1979	1980	1981	1982	1983	1984	1985	1986	1987	1988	1989	1990	1991	1992	1993
000	00000	Average		19.0	20.8	21.8	21.89	23.53	20.55	20.5	20.3	19.80	19.3	19.96	18.3	20.6	22.7	25.68	24.34		
100	10000	Average		15.47	16.65	17.91	18.07	17.58	18.35	18.1	18.22	17.74	17.42	19.03	17.98	18.63	25.11	29.4	27.67		
1010	11010	HA NOI		0	0	0	0	12.26	15	18	15.36	18.41	15.94	16.75	16.64	16.25	27.02	27.46	26.6		
1020	11020	HAI PHONG		0	0	0	0	14.3	19.35	17.95	14.8	13.09	14.2	14.87	14.61	15.2	24.25	44.65	40.69		
1030	11030	HA-NAM-NINH		0	0	0	0	3.89	4.94	5.1	5.75	6.02	6.32	6.51	6.67	10.12	16.32	15.46			
1040	11040	VINH PHU		0	0	0	0	2.5	7.35	5.84	6.2	4.59	7.15	6.02	6.53	6.87	9.69	13.87	14.4		
1050	11050	QUANG NINH		0	0	0	0	5.28	4.16	7.7	7.99	7.13	6.96	7.69	7.86	13.41	14.66	13.7	16.06		
1060	11060	BAC THAI		0	0	0	0	8.4	4.7	8.1	7.46	7.17	7.3	7.18	7.11	7.03	13.29	17.24	16.54		
1070	11070	HA BAC		0	0	0	0	0	0	0	0	0	0	0	0	0	0	0	0		
1080	11080	HAI HUNG		0	0	0	0	0	0	0	0	0	0	0	0	0	0	0	0		
1090	11090	THANH HOA		0	0	0	0	10.8	11.2	9.46	8.3	8.41	10.96	11.93	11.07	12.42	17.10	28.16	22.71		
1100	11100	HA SON BINH		0	0	0	0	0	0	0	0	0	0	0	0	0	0	0	0		
1110	11110	THAI BINH		0	0	0	0	0	0	0	0	0	0	0	0	0	0	0	0		
1120	11120	HOANG LIEN SON		0	0	0	0	0	4.18	4	10.65	13.74	10.54	10.86	9.3	11.52	16.37	29.17	24.74		
1130	11130	LANG SON		0	0	0	0	0	0	0	0	0	0	0	0	0	0	0	0		
1140	11140	HA TUYEN		0	0	0	0	0	0	0	0	0	0	0	0	0	0	0	0		
1150	11150	NGHE TINH		0	0	0	0	9.6	8.1	8.8	8.7	11.55	6.71	10.14	10.39	10	17.39	17.96			
1151	11151	Nghe An		0	0	0	0	0	0	0	0	0	0	0	0	0	0	0	0		20.38
1152	11152	Ha Tinh		0	0	0	0	0	0	0	0	0	0	0	0	0	0	0	0		20.5
1160	11160	CAO BANG		0	0	0	0	0	0	0	0	0	0	0	13.71	12.62	12.16	16.37			27.62
1170	11170	SON LA		0	0	0	0	0	0	0	0	0	0	0	0	0	0	0	0		22.03
1180	11180	LAI CHAU		0	0	0	0	0	0	0	0	0	0	0	0	0	0	0	0		19.76
200	20000	Average		23.23	22.98	21.78	22.66	24.26	23.5	23.94	22.3	21.99	19.99	20.38	19.11	22.15	19.97	19.15	19.76		
2001	22010	T.P.HO CHI MINH		0	0	0	0	19.96	20.02	20.52	18.23	17.5	15.84	15.24	15.69	20	17.25	17.11	17.1		
2002	22020	THUAN HAI		0	0	0	0	15.52	14.43	16.68	15.03	13.2	10.23	11.03	12.29	11.91	11.91	12.58	12.5		
2003	22030	LAM DONG		0	0	0	0	16.46	18.39	19.18	18.76	14.88	21.21	19.23	14.77	15.22	15.68	16.81	18.8		
2004	22040	SONG BE		0	0	0	0	14.59	14.18	16.33	15.5	15.94	13.09	13.14	14.25	13.05	16.12	19.78	19.7		
2005	22050	TAY NINH		0	0	0	0	15.54	11.05	17.24	17.85	14.85	10.61	10.67	20.69	24.38	20.72	12.01	12		
2006	22060	DOANG NAI		0	0	0	0	10.75	13.65	13.21	11.4	10	10.94	10.12	10.12	8.03	9.46	10.32	10.3		
2007	22070	LONG AN		0	0	0	0	13.51	13.09	13.96	11.19	10.4	9.22	10.66	9.66	12.03	13.52	15.15	15.1		
2008	22080	DOANG THAP		0	0	0	0	18.29	20.67	20.96	19.07	21.56	18.74	17.45	18.22	14.54	15.87	15.41	15.4		
2009	22090	TIEN GIANG		0	0	0	0	15.8	10.38	13.93	10.99	11.68	10.45	11.96	12.69	11.27	10.91	10.91	10.9		
2010	22100	BEN TRE		0	0	0	0	26.83	21.99	28.42	25.58	24.37	19.39	21.02	19.82	20.35	19.19	19.67	13.9		
2011	22110	CHU LONG		0	0	0	0	23.59	15.6	14.45	12.42	7.33	4.74	7.07	10.42	6.64	8.57	17.76	9.5		
2012	22120	HAU GIANG		0	0	0	0	24.06	23.12	15.35	24.14	26.66	14.01	19.05	16.8	15.23	14.74	13.96	12.7		
2013	22130	AN GIANG		0	0	0	0	17.45	11.93	12.91	14.47	13.3	10.05	7.92	7.56	9.42	8.96	9.52	19.6		
2014	22140	KIEN GIANG		0	0	0	0	15.48	11.65	14.49	16.29	13.09	10.94	11.44	6.89	11.06	12.5	12.79	7.7		
2015	22150	MINH HAI		0	0	0	0	22.39	23.14	27.1	18.05	24.59	23.1	24.02	17.1	21.41	18.17	24.68	24.6		
2016	22160	VUNG TAU		0	0	0	0	25.05	22.33	23.55	19.3	20.11	17.62	21.37	12.84	16.78	20.96	14.4	14.4		
300	30000	Average		19.1	15.99	15.96	15.45	15.65	15.71	15.01	14.85	15	14.22	14.15	18.12	16.4	21	25.74			
3010	33010	BINH TRI THIEN		0	0	0	0	15.3	14.7	17.5	15.78	16.77	17.6	17.3	19.6	19.3	21.2				
3011	33011	Quang Binh		0	0	0	0	0	0	0	0	0	0	0	0	0	0	0	0		
3012	33012	Quang Tri		0	0	0	0	0	0	0	0	0	0	0	0	0	0	0	0		38.92
3013	33013	Thua Thien Hue		0	0	0	0	0	0	0	0	0	0	0	0	0	0	0	0		23.97
3020	33020	QUANG NAM-DA NANG		0	0	0	0	17	18.62	13.9	16.77	16.45	15.9	15.4	17	17.2	15.8	17.3	21.47		
3030	33030	NGHIA BINH		0	0	0	0	13.9	12.8	17.84	14.03	12.49	12	11.4	13.6	22	14.2				
3031	33031	Quang Ngai		0	0	0	0	0	0	0	0	0	0	0	0	0	0	0	0		14.3
3032	33032	Binh Dinh		0	0	0	0	0	0	0	0	0	0	0	0	0	0	0	0		14.15
3040	33040	PHU KHANH		0	0	0	0	0	0	0	0	0	0	0	0	0	0	0	0		15.8
3041	33041	Phu Yen		0	0	0	0	15	17.4	14.39	13.03	13.39	14.5	12.6	13	18.4	14				19.03
3042	33042	Khanh Hoa		0	0	0	0	0	0	0	0	0	0	0	0	0	0	0	0		18.97
3050	33050	GIA LAI-KON TUM		0	0	0	0	12	12.9	13.71	11.73	13.92	14.7	13.9	14.6	13.6	16.3				17.7
3051	33051	Gia Lai		0	0	0	0	0	0	0	0	0	0	0	0	0	0	0	0		34.1
3052	33052	Kon Tum		0	0	0	0	0	0	0	0	0	0	0	0	0	0	0	0		33.38
3060	33060	DAK LAK		0	0	0	0	17	16.1	12.24	15	14.65	14.7	12.4	12.4	12.5	16.1	20	31.38		

Figure 1.1.3-12 Data Table : Loss

DB-ID	SN Code	Code	1976	1977	1978	1979	1980	1981	1982	1983	1984	1985	1986	1987	1988
000	0	0	96.657	79.345	119.338	117.33	147.376	198.555	1661.539	2389.233	2945.228	4835.637	5079.909	17492.199	132250.1
001	0	1	26.767	32.849	43.988	37.781	38.293	63.828	716.147	1177.91	1332.901	2014.11	2848.153	12670.98	90683.8
002	0	2	47.102	19.369	22.834	20.41	59.792	38.476	377.183	409.439	301.096	273.476	434.536	1451.87	17302.2
003	0	3													
004	0	4													
100	1	0	71.354	53.605	97.416	89.671	129.033	171.801	1486.256	2025.338	2464.163	4177.302	4295.944	16411.406	95386
101	1	1	15.347	15.247	29.969	19.984	24.69	45.13	577.416	870.241	1003.848	1534.413	2244.822	11949.482	65511.7
102	1	2	34.453	13.243	15.095	14.315	57.236	34.54	366.435	395.496	246.768	216.989	347.563	1319.151	10165.7
200	2	0	25.303	25.74	21.922	27.609	18.343	26.754	175.28	363.778	481.063	658.335	783.965	1080.793	36864.1
201	2	1	11.42	17.602	14.019	17.797	13.605	18.698	198.686	307.669	329.053	479.697	603.331	721.498	25172.1
202	2	2	12.649	6.125	7.739	6.096	2.556	3.876	10.748	13.493	107.734	56.487	87.033	132.719	7116.5

1989	1990	1991	1992	1993	1994	1995	1996	1997	1998	1999	2000
402729.7	315772.5	562872.3									
272640.1	174332.4	259516.2									
60741.9	71911	92104.9									
	59690	102258									
262430.4	207963.3	298446.6									
176181.6	99765.2	129055.7									
27586.3	52984	77470									
140299.3	107809.2	162167.7									
96458.5	74567.2	130460.5									
33155.6	18927	14634.9									

Figure 1.1.3-13 Data Table : Investment

DB-ID	Company Code	Code	1976	1977	1978	1979	1980	1981	1982	1983	1984	1985	1986	1987	1988	1989	1990	1991
000		0				100	100	80.55	227.19	262.32	298.76	11.44	4195	13288	131430	421501	839884	1657495
001		0				61.03	60	59.32	177.6	206.2	208.7	844	3239	8978	75444	174985	412389	789066
002		0				0.79	2.93	1.91	11.31	15.93	22.87	3	3	36	146	1466	2278	3674
003		0				5.4	3.77	1.33	3.5	4.19	6.04	45	262	1229	5615	22037	39839	53906
004		0				0.22	0.26	0	0	0	0	3	12	53	603	3422	6151	7343
005		0				28.58	27.65	7.57	22.78	16.93	36.49	153	460	1961	26926	178994	311637	558762
006		0				3.96	5.39	10.42	12	19.07	24.66	96	219	1031	22696	40597	67590	244744
100		0				100	100	50.96	122.64	141.05	166.29	607	2161	7113	80154	216283	368387	646894
101		1				61.2	65.6	67.78	65.28	63.56	37.4	414	1614	4852	49340	108968	155676	152592
102		1				1.1	0.1	0.17	5.24	6.53	12.4	3	3	21	110	152	37	435
103		1				6.6	5.4	5.16	2.34	2.36	4	19	165	829	2683	9856	20960	29769
104		1				0.3	0.3	0.21	0.27	0.28		1	6	32	159	1675	3320	3705
105		1				27.6	25.4	24.09	25.13	24.42	4.09	95	276	944	12983	73119	158829	354937
106		1				3.2	3.2	2.59	3.93	4.23	8.51	75	97	435	14879	22513	29565	105456
200		0				100	100	22.23	83.3	97.32	102.06	394	1527	4433	30734	148015	332801	781307
201		1				49.37	52.83	15.92	64.3	73	76.4	318	1242	2995	14863	36437	173554	504338
202		2				5.6	5.06	1.6	5.12	8.26	8.9	18	64	15	36	1314	2241	3239
203		2						0.26	0.87	1.4	1.5	1	4	253	1917	9823	15128	16423
204		2				0.13	0.24					1	4	14	321	1437	2269	2461
205		2				41.22	34.15	3.06	9.81	9.9	10.1	46	151	753	10754	87815	117423	165974
206		2				3.68	7.72	1.39	3.2	4.76	5.16	11	66	403	2843	11189	22186	88672
300		0				100	100	7.36	21.25	23.95	30.41	143	507	1742	20542	57203	138696	229294
301		3				68.31	66.31	6	17.8	19.3	23.7	112	383	1131	11241	29580	83159	132136
302		3				7.63	6.86	0.31	0.95	1.14	1.57	8	33	147	1015	2358	3751	7714
303		3				4.93	4.54	0.11	0.29	0.43	0.54	1	1	2	7	123	310	562
304		3				0.23	0.22					1	1	2	7	123	310	562
305		3				13.76	17.86	0.42	1.07	1.26	2.3	12	33	264	3189	18060	35385	37851
306		3				5.14	4.21	0.52	1.14	1.82	2.3	10	56	193	4974	6895	15839	50416

Figure 1.1.3-14 Data Table : Expenditure

DB-ID	Company Code	Company Name	Company Name in Vietnamese
1	0	All PC	Toan Nganh Dien
2	1	PC1	Cong Ty Dien Luc I
3	2	PC2	Cong Ty Dien Luc II
4	3	PC3	Cong Ty Dien Luc III
5	4	Others	Outside

Figure 1.1.5-1 Code Table : Company Code

DB-ID	Code	Name	Name In Vietnamese	Code 2	Name 2	Code 3	Name 3
0	0	Total		0	Total	0	Total
1	1	Thermal (Coal)	Nhiet Dien (than)	1	Thermal	1	Thermal
2	2	Thermal (Oil)	Nhiet Dien (Do)	1	Thermal	1	Thermal
3	3	Hydro	Thuy Dien	3	Hydro	3	Hydro
4	4	Diesel	Diedel	4	Diesel	4	Diesel
5	5	Gas Turbine (Oil)	Tuabin Khi (Do)	5	Gas Turbine (Oil)	5	Gas Turbine
6	6	Gas Turbine (Gas)	Tuabin Khi (Gaz)	6	Gas Turbine (Gas)	5	Gas Turbine

Figure 1.1.5-2 Code Table : Plant Type Code

DB-ID	Code	Name	Name In Vietnamese
0	0	Total	
1	1	Thermal	Nhiet Dien
3	3	Hydro	Thuy Dien
4	4	Diesel	Diedel
5	5	Gas Turbine (Oil)	Tuabin Khi (Do)
6	6	Gas Turbine (Gas)	Tuabin Khi (Gaz)

Figure 1.1.5-3 Code Table : Plant Type Code 2

DB-ID	Code	Name	Name In Vietnamese
0	0	Total	
1	1	Thermal	Nhiet Dien
3	3	Hydro	Thuy Dien
4	4	Diesel	Diedel
5	5	Gas Turbine	Tuabin Khi

Figure 1.1.5-4 Code Table : Plant Type Code 3

DB ID	Code	Name	Super Code
101	101	220/110/10 kV	1
102	102	110/35/10-6 kV	2
103	103	35/10-6 kV	3
104	104	35/0.4 kV	3
105	105	10/0.4 kV	4
106	106	6/0.4 kV	4
201	201	230/110-66 kV	1
202	202	110/15-6,6 kV	2
203	203	66/15-6,6 kV	2
204	204	31.5/6,6 kV	3
205	205	15/6,6 kV	4
206	206	15,10,6/0.4 kV	4
301	301	220/110 kV	1
302	302	110/35/10 kV	0
303	303	66/15 kV	2
304	304	35/15 kV	3
305	305	35/10-6 kV	3
306	306	15/6 kV	4
307	307	6/4,16 kV	4
308	308	15,10,6/0.4 kV	0

Figure 1.1.5-5 Code Table : Transformer Code

DB-ID	Code	Name
0	0	Undefined
1	1	Tram 220 kV
2	2	Tram 110-66 kV
3	3	Tram 35 kV
4	4	Tram 15-10-6 kV

Figure 1.1.5-6 Code Table : Transformer Code 2

DB ID	Code	Name	Total Code
1	1	220,230 kV	2
2	2	220 kV	2
3	3	110-66 kV	3
4	4	110 kV	3
5	5	66 kV	3
6	6	35 kV	6
7	7	35 kV & 31.5 kV	6
8	8	31,5 kV	6
9	9	15,10,6 kV	9
10	10	15 kV	9
11	11	10 kV	9
12	12	10,6 kV	9
13	13	6 kV	9
14	14	Low Voltage	14

Figure 1.1.5-7 Code Table : Transmission Code

DB-ID	Sector Code	Sector Name	Sector Name in Vietnamese
1	1	Industry	Cong Nghiep
2	2	Agriculture	Nong Nghiep
3	3	Non-Industry	Dong Luc P.C.N
4	4	Transportation	Giao Thong Van Tai
5	5	House Hold	Anh Sang Sinh Hoat
6	6	Sale to PC3	Ban cho Mien Trung

Figure 1.1.5-8 Code Table : Sector Code

DB-ID	Code	Name	Name in Vietnamese	Unit
1	1	Coal	-Than tieu chuan	1000tan
2	2	Diesel Oil	-Dau diesel(DO)	-nt-
3	3	Fuel Oil	-Dau nhiet dien(FO)	-nt-
4	4	Distillate Oil (Turbin	-Dau tuabin khi(DO)	-nt-
5	5	Gas (Turbine)	-Khi tuabin khi	1000m3
6	6	Fuel Oil (with Coal)	Dau phun to(FO)	-nt-

Figure 1.1.5-9 Code Table : Fuel Code

DB-ID	Code	Name	Name in Vietnamese
0	0	all	
1	1	building	-Xay lap
2	2	equipment	-Thiet bi
3	3	without service part	(Khong ke nganh phuc vu)
4	4	others	Trong do :

Figure 1.1.5-10 Code Table : Investment Code

DB-ID	Code	Name	Name in Vietnamese
000	0	Total	TOAN NGANH DIEN
100	1	Source	NGUON
200	2	Network	LUOI

Figure 1.1.5-11 Code Table : Investment Code 2

DB-ID	Code	Name	Name in Vietnamese
0	0	Total	TOAN NGANH
1	1	Material	-Nguyen nhien vat lieu
2	2	Power Plant	-Dong luc
3	3	Salary	-Tien luong
4	4	Insurance	-Bao hiem xa hoi
5	5	Amortization	-Khau hao tai san co dinh
6	6	Others	-Chi phi khac

Figure 1.1.5-12 Code Table : Expenditure Code

Energy Balance Table	Indonesia												Unit: 000Tce
	1980	1981	1982	1983	1984	1985	1986	1987	1988	1989	1990	1991	
Coal and coal products	187	215	296	299	667	1230	1574	1862	2837	5419	6449	8435	
Indigenous production	25	21	20	16	18	29	801	1004	858	695	492	439	
Imports	-69	-97	-130	-261	-542	-665	-579	-549	-638	-1566	-2989	-4678	
Exports	25	46	17	126	74	0	0	0	-354	-1146	0	-108	
Stock change	167	186	203	180	216	594	1796	2317	2704	3402	3952	4088	
Total primary energy supply	0	0	-9	0	0	-221	-180	-206	-186	0	0	0	
Statistical difference	0	0	0	0	0	-100	-1387	-1876	-2029	-2442	-2812	-3200	
Public service electricity	1	1	2	2	2	2	2	2	2	2	2	2	
Coal transformation	-38	-34	-28	-22	-13	-49	-31	-31	0	0	0	0	
Own use by energy sectors	130	154	167	161	205	225	199	206	491	962	1142	891	
Total final consumption	116	143	158	154	198	195	199	206	491	895	1142	891	
Total industry sector	23	20	20	17	19	21	21	21	23	29	33	27	
Iron & steel	42	46	50	44	0	0	0	0	0	0	0	0	
Chemical incl petrochemical	29	62	78	81	175	148	160	166	467	865	1110	864	
Non-metallic minerals													

International Energy Agency

Figure 2.6-1a Report of Energy Balance Table(a)

Energy Balance Table	Indonesia													Unit: 000Tce
	1980	1981	1982	1983	1984	1985	1986	1987	1988	1989	1990	1991	1992	
Coal and coal products	23	15	10	12	4	26	18	18	0	0	0	0	0	
Mining and quarrying														
Non-specified industry	0	0	0	0	0	0	0	0	0	0	0	0	0	
Total transport sector	14	11	9	6	2	20	0	0	0	0	0	0	0	
Rail	14	11	9	6	2	20	0	0	0	0	0	0	0	
Total other sectors	0	0	0	0	4	10	0	0	0	0	68	0	0	
Non-specified other	0	0	0	0	4	10	0	0	0	0	68	0	0	
Electricity output (GWh)	0	0	0	0	0	373	5163	6980	7552	9324	10635	12008	12008	
of which : public (GWh)	0	0	0	0	0	373	5163	6980	7552	9324	10635	12008	12008	
Crude oil, NGL and feedstocks	80045	81224	66693	67050	75561	67266	72563	71748	68983	73511	76360	82945	82945	
Indigenous production														
Imports	0	0	1214	3459	396	594	3861	4181	4320	3889	6327	6158	6158	
Exports	-60922	-63287	-54884	-58481	-53868	-42914	-45640	-40413	-38301	-40332	-39915	-45757	-45757	
Stock change	-459	-860	1083	745	274	-1055	2708	-2135	7	-454	-2391	-1444	-1444	
Total primary energy supply	18663	17077	14107	12773	22363	23891	33491	33380	35008	36615	40381	41901	41901	
Oil refineries	-18408	-16873	-13917	-12619	-22199	-23724	-33327	-33217	-35008	-36615	-40381	-41901	-41901	

International Energy Agency

Figure 2.6-1b Report of Energy Balance Table(b)

Energy Balance Table	Indonesia												Unit: 000Toe
	1980	1981	1982	1983	1984	1985	1986	1987	1988	1989	1990	1991	
Crude oil, NGL and feedstocks	-255	-204	-190	-154	-164	-167	-164	-163	0	0	0	0	0
Own use by energy sectors													
Petroleum products	10815	14158	15356	16973	9944	6102	3909	1679	2040	2552	3329	3488	3488
Imports													
Exports	-7944	-7464	-5355	-6260	-9919	-7194	-7898	-9244	-9961	-10252	-10456	-10362	-10362
International marine bunkers	-247	-228	-215	-147	-259	-212	-158	-169	-232	-243	-346	-437	-437
Stock change	-240	-667	-343	-520	573	899	-72	228	304	269	-33	118	118
Total primary energy supply	2383	5799	9443	10047	339	-405	-4220	-7506	-7848	-7675	-7506	-7193	-7193
Public service electricity	-2193	-2302	-2672	-2608	-2887	-3027	-2401	-3125	-3022	-2909	-3998	-4667	-4667
Autoproducers of electricity	-261	-435	-362	-363	-328	-301	-355	-212	-194	-237	-243	-279	-279
Manufactured gases	-39	-37	-48	-53	0	0	0	0	0	-6	0	0	0
Oil refineries	17606	15808	12807	11753	20891	22353	25620	30210	32256	34112	36806	39302	39302
Own use by energy sectors	0	0	0	0	-10	-9	0	0	0	0	0	0	0
Total final consumption	17495	18833	19167	18775	18005	18611	18645	19367	21192	23284	25058	27162	27162
Total industry sector	5726	6140	6156	6233	5627	6064	5527	5477	6005	4975	5155	6099	6099
Iron & steel	132	137	138	145	104	104	104	104	104	254	448	732	732

International Energy Agency

Figure 2.6-1c Report of Energy Balance Table(c)

Energy Balance Table	Indonesia													Unit: 000Toe
	1980	1981	1982	1983	1984	1985	1986	1987	1988	1989	1990	1991	1992	
<i>Petroleum products</i>														
Chemical incl petrochemical	434	445	456	523	518	877	883	894	894	1128	954	1397		
Non-metallic minerals	0	0	0	0	0	0	0	0	0	601	688	922		
Machinery	0	0	0	0	0	0	0	0	0	61	54	52		
Mining and quarrying	0	0	0	0	0	0	0	0	0	831	930	719		
Food beverages & tobacco	0	0	0	0	0	0	0	0	0	500	518	528		
Construction	0	0	0	0	0	0	0	0	0	255	268	286		
Textiles & leather	0	0	0	0	0	0	0	0	0	802	891	1045		
Non-specified industry	5160	5557	5562	5565	5006	5084	4541	4480	5008	542	404	419		
Total transport sector	6188	6770	7138	6901	7034	7224	7666	8434	9142	9946	11108	11838		
Air transport	599	562	536	515	528	530	520	687	754	828	969	944		
Road	5409	6022	6414	6194	6321	6508	6969	7560	8204	8462	9386	10059		
Internal waterways	180	185	188	192	185	185	177	188	184	656	753	835		
Total other sectors	5327	5707	5632	5440	5250	5113	5206	5206	5437	7508	7966	8311		
Agriculture	0	0	0	0	0	0	0	0	0	981	992	967		

International Energy Agency

Figure 2.6-1d Report of Energy Balance Table(d)

	Indonesia												
	1980	1981	1982	1983	1984	1985	1986	1987	1988	1989	1990	1991	1992
	Unit: 000Tce												
Petroleum products	0	0	0	0	0	0	0	0	0	0	265	319	362
Commercial & public services													
Residential	5327	5707	5632	5440	5250	5113	5206	5206	5437	6262	6655	6982	6982
Non-energy use	254	216	241	202	94	210	245	250	608	855	829	915	915
Electricity output (GWh)	7075	8509	10450	11367	12442	13308	8927	9832	11388	11804	16464	18724	18724
of which : public (GWh)	6157	6977	9175	10086	11287	12247	7674	9085	10705	10968	15608	17824	17824
of which : autoproducers (GWh)	918	1532	1275	1281	1155	1061	1253	747	683	836	856	900	900
Natural gas													
Indigenous production	13491	14264	14445	16067	22724	24182	25153	26507	31017	32818	36291	38526	38526
Exports	-9792	-10177	-10608	-11311	-16737	-17659	-17748	-19127	-22613	-21875	-24317	-26516	-26516
Total primary energy supply	3699	4087	3837	4757	5987	6523	7405	7381	8404	10943	11974	12010	12010
Statistical difference	0	0	0	0	0	0	0	0	-503	0	0	0	0
Public service electricity	0	0	0	0	0	-1	-60	-123	-175	-248	-273	-275	-275
Manufactured gases	0	0	0	0	0	0	0	-40	-36	-207	-297	-441	-441
Oil refineries	-243	-252	-189	-170	-119	-70	-158	-291	-104	-694	-774	-723	-723
Own use by energy sectors	-1388	-1287	-1096	-1550	-1834	-1782	-1971	-1799	-2104	-2145	-2302	-2086	-2086

International Energy Agency

Figure 2.6-1e Report of Energy Balance Table(e)

Energy Balance Table	Indonesia													
	1980	1981	1982	1983	1984	1985	1986	1987	1988	1989	1990	1991	1992	
	Unit: 000Toe													
Natural gas														
Distribution losses	0	0	0	0	0	0	0	0	0	0	-2720	-3073	-3009	
Total final consumption	2069	2548	2552	3056	4034	4670	5216	5129	5483	4929	5257	5477	5477	
Total industry sector	2069	2523	2542	3039	4015	4639	5186	5090	5447	4925	5252	5472	5472	
Iron & steel	900	1314	1282	1467	1483	1582	1936	1979	1829	1304	1319	1255	1255	
Chemical incl petrochemical	1169	1198	1217	1419	2495	3021	3214	3058	3368	3621	3933	4217	4217	
Non-metallic minerals	0	0	0	0	0	0	0	53	53	0	0	0	0	
Non-specified industry	0	11	43	153	37	37	36	0	197	0	0	0	0	
Total other sectors	0	24	11	17	19	31	30	40	36	4	4	4	4	
Residential	0	24	11	17	19	31	30	40	36	4	4	4	4	
Electricity output (GWh)	0	0	0	0	0	4	198	318	444	804	969	1348	1348	
of which : public (GWh)	0	0	0	0	0	4	198	318	444	804	969	1348	1348	
Hydro energy														
Indigenous production	116	140	113	156	182	257	424	383	449	570	488	471	471	
Total primary energy supply	116	140	113	156	182	257	424	383	449	570	488	471	471	
Public service electricity	-116	-140	-113	-156	-182	-257	-424	-383	-449	-570	-488	-471	-471	

International Energy Agency

Figure 2.6-1f Report of Energy Balance Table(f)

	Indonesia													
	1980	1981	1982	1983	1984	1985	1986	1987	1988	1989	1990	1991	1992	
	Unit: 000Tce													
Hydro energy														
Electricity output (GWh)	1345	1629	1318	1816	2118	2990	4935	4457	5227	6630	5675	5474	5474	
of which : public (GWh)	1345	1629	1318	1816	2118	2990	4935	4457	5227	6630	5675	5474	5474	
Geothermal														
Indigenous production	0	0	67	180	187	193	199	618	870	866	968	941	941	
Total primary energy supply	0	0	67	180	187	193	199	618	870	866	968	941	941	
Public service electricity	0	0	-67	-180	-187	-193	-199	-618	-870	-866	-968	-941	-941	
Electricity output (GWh)	0	0	78	209	217	224	232	719	1012	1007	1125	1094	1094	
of which : public (GWh)	0	0	78	209	217	224	232	719	1012	1007	1125	1094	1094	
Electricity														
Public service electricity	645	740	909	1042	1172	1362	1565	1854	2145	2471	2925	3246	3246	
Autoproducers of electricity	79	132	110	110	99	91	108	64	59	72	74	77	77	
Own use by energy sectors	-30	-34	-44	-43	-60	-73	-73	-90	-109	-125	-144	-160	-160	
Distribution losses	-138	-163	-195	-233	-262	-287	-330	-359	-372	-402	-469	-570	-570	
Total final consumption	557	675	780	876	950	1093	1269	1469	1722	2015	2386	2594	2594	
Total industry sector	147	193	260	296	345	419	532	637	782	982	1218	1361	1361	
Non-specified industry	147	193	260	296	345	419	532	637	782	982	1218	1361	1361	

International Energy Agency

Figure 2.6-1g Report of Energy Balance Table(g)

Energy Balance Table	Indonesia													
	1980	1981	1982	1983	1984	1985	1986	1987	1988	1989	1990	1991	1992	
Electricity														
Total other sectors	409	482	521	580	605	674	738	832	941	1034	1168	1234		
Commercial & public services	95	107	97	103	108	118	132	150	173	196	228	239		
Residential	249	295	338	369	393	432	486	549	626	683	774	878		
Non-specified other	65	80	85	108	104	123	120	132	142	154	165	117		
Total	93838	95843	81615	83752	99321	93128	99913	101119	104156	113184	120555	131317		
Indigenous production	10839	14180	16590	20448	10358	6725	8571	6864	7219	7136	10148	10085		
Imports	-78727	-81024	-70977	-76312	-81066	-68433	-71865	-69332	-71512	-74025	-77677	-87312		
Exports	-247	-228	-215	-147	-259	-212	-158	-169	-232	-243	-346	-437		
International marine bunkers	-675	-1481	757	351	921	-156	2636	-1907	-42	-1330	-2423	-1434		
Stock change	25028	27289	27770	28092	29274	31053	39096	36574	39588	44721	50257	52218		
Total primary energy supply	0	0	-9	0	0	-221	-180	-206	-688	0	0	0		
Statistical difference	-1663	-1702	-1944	-1902	-2084	-2216	-2907	-4271	-4402	-4564	-5614	-6307		
Public service electricity	-182	-303	-253	-253	-229	-210	-247	-148	-135	-165	-170	-202		
Autoproducers of electricity	-39	-37	-48	-53	0	0	0	-40	-36	-213	-297	-441		
Manufactured gases														

International Energy Agency

Figure 2.6-1h Report of Energy Balance Table(h)

Energy Balance Table	Indonesia													Unit: 000Toe
	1980	1981	1982	1983	1984	1985	1986	1987	1988	1989	1990	1991	1992	
Total	-1045	-1318	-1299	-1036	-1427	-1441	-7865	-3298	-2857	-3198	-4349	-3322		
Oil refineries	1	1	2	2	2	2	2	2	2	2	2	2	2	
Coal transformation	-1711	-1558	-1358	-1749	-2080	-2081	-2240	-2083	-2213	-2270	-2446	-2245		
Own use by energy sectors	-138	-163	-195	-233	-262	-287	-330	-359	-372	-3122	-3542	-3579		
Distribution losses	20251	22209	22667	22868	23194	24598	25329	26170	28888	31191	33843	36124		
Total final consumption	8059	8999	9115	9722	10185	11318	11444	11409	12724	11777	12768	13822		
Total industry sector	1054	1471	1440	1629	1605	1707	2060	2104	1956	1588	0	0		
Iron & steel	1645	1690	1724	1987	3012	3897	4097	3952	4262	4750	0	0		
Chemical incl petrochemical	29	62	78	81	175	148	160	219	520	1466	0	0		
Non-metallic minerals	0	0	0	0	0	0	0	0	0	61	0	0		
Machinery	23	15	10	12	4	26	18	18	0	831	0	0		
Mining and quarrying	0	0	0	0	0	0	0	0	0	500	0	0		
Food beverages & tobacco	0	0	0	0	0	0	0	0	0	255	0	0		
Construction	0	0	0	0	0	0	0	0	0	802	0	0		
Textiles & leather														

International Energy Agency

Figure 2.6-1i Report of Energy Balance Table(i)

Energy Balance Table	Indonesia													Unit: 000Toe
	1980	1981	1982	1983	1984	1985	1986	1987	1988	1989	1990	1991	1992	
Total	5308	5761	5864	6014	5389	5540	5109	5116	5987	1524	0	0	0	
Non-specified industry	6202	6781	7148	6907	7037	7243	7666	8434	9142	9946	11108	11838	11838	
Total transport sector	599	562	536	515	528	530	520	687	754	828	969	944	944	
Air transport	5409	6022	6414	6194	6321	6508	6969	7560	8204	8462	9386	10059	10059	
Road	14	11	9	6	2	20	0	0	0	0	0	0	0	
Rail	180	185	188	192	185	185	177	188	184	656	753	835	835	
Internal waterways	5736	6213	6163	6037	5878	5827	5974	6077	6414	8613	9138	9549	9549	
Total other sectors	0	0	0	0	0	0	0	0	0	981	992	967	967	
Agriculture	95	107	97	103	108	118	132	150	173	460	547	601	601	
Commercial & public services	5576	6026	5981	5826	5662	5576	5722	5795	6099	6949	7434	7864	7864	
Residential	65	80	85	108	108	133	120	132	142	222	165	117	117	
Non-specified other	254	216	241	202	94	210	245	250	608	855	829	915	915	
Non-energy use	8420	10138	11846	13392	14777	16899	19455	22306	25623	29569	34868	38648	38648	
Electricity output (GWh)	7502	8606	10571	12111	13622	15838	18202	21559	24940	28733	34012	37748	37748	
of which : public (GWh)														

International Energy Agency

Figure 2.6-1j Report of Energy Balance Table(j)

Energy Balance Table	Indonesia												Unit: 000Toe				
	1980	1981	1982	1983	1984	1985	1986	1987	1988	1989	1990	1991	1992				
Total of which : autoproducers (GWh)	918	1532	1275	1281	1155	1061	1253	747	683	836	856	900					
Traditional fuels	27676	28222	29110	29498	30213	30756	31542	32411	33018	33606	34326	34891					
Indigenous production																	
Exports	-30	-28	-28	-23	0	0	0	0	0	0	0	0	0	0	0	0	0
Total primary energy supply	27646	28194	29082	29475	30213	30756	31542	32411	33018	33606	34326	34891					

International Energy Agency

Figure 2.6-1k Report of Energy Balance Table(k)

Vietnam energy balance table

Unit: TOE

Product	1980	1981	1982	1983	1984	1985	1986	1987	1988	1989	1990	1991	1992	1993
Coal														
PRODUCTION OF PRIMARY ENERGY	0	2589	2878	2705	2712	2797	3061	3166	3026	2565	2562	2599	2745	2505
-Losses production & flared	0	0	0	0	0	0	0	0	0	0	0	0	0	0
-Net production	0	2589	2878	2705	2712	2797	3061	3166	3026	2565	2562	2599	2745	2505
IMPORT	0	3	0	0	0	0	0	0	0	0	0	0	0	3
EXPORT	0	-467	-337	-201	-235	-302	-310	-100	-157	-263	-372	-472	-784	-320
PRIMARY ENERGY REQUIREMENT	0	2125	2542	2504	2478	2495	2750	3066	2868	2303	2190	2127	1961	2188
OIL REFINING	0	0	0	0	0	0	0	0	0	0	0	0	0	0
POWER GENERATION	0	0	0	0	0	0	0	0	0	0	0	0	0	0
-Input	0	-692	-720	-795	-888	-891	-991	-1126	-1429	-984	-775	-481	-349	-616
-Output	0	124	131	132	174	198	229	264	296	235	172	118	73	122
TRANSM. & DISTRIB. LOSSES	0	0	0	0	0	0	0	0	0	0	0	0	0	0
ENERGY SECTOR OWN USE	0	0	0	0	0	0	0	0	0	0	0	0	0	0
NET SUPPLY	0	1433	1822	1709	1590	1604	1760	1940	1440	1319	1415	1646	1612	1572
NET DOMESTIC CONSUMPTION	0	1433	1822	1709	1590	1604	1760	1940	1440	1319	1415	1646	1612	1572
-Industry	0	1192	1454	1320	1244	1288	1425	1573	1159	1080	1177	1422	1395	1268
-Agriculture	0	10	15	15	13	13	13	13	13	13	13	13	12	9

Source: Institute of Energy, The Socialist of Vietnam

Figure 2.6-2a Report of Energy Balance Table of Vietnam(a)

Vietnam energy balance table

Unit: TOE

product	1980	1981	1982	1983	1984	1985	1986	1987	1988	1989	1990	1991	1992	1993
Coal	0	44	92	98	71	52	44	59	40	16	14	15	10	56
-Transport	0	188	261	276	262	251	277	296	228	210	211	196	195	239
-Household/service	0	0	0	0	0	0	42	285	698	1517	2749	3258	3258	0
Crude oil	0	0	0	0	0	0	0	0	0	0	0	0	0	0
PRODUCTION OF PRIMARY ENERGY	0	0	0	0	0	0	0	0	0	0	0	0	0	0
-Losses production & flared	0	0	0	0	0	0	0	0	0	0	0	0	0	0
-Net production	0	0	0	0	0	0	-42	285	698	1517	2749	3258	3258	0
IMPORT	0	0	0	0	0	0	0	0	0	0	0	0	0	0
EXPORT	0	0	0	0	0	0	0	-285	-658	-1476	-2708	-3217	-3217	0
PRIMARY ENERGY REQUIREMENT	0	0	0	0	0	0	0	0	41	41	41	41	41	0
OIL REFINING	0	0	0	0	0	0	0	0	-41	-41	-41	-41	-41	0
POWER GENERATION	0	0	0	0	0	0	0	0	0	0	0	0	0	0
-Input	0	0	0	0	0	0	0	0	0	0	0	0	0	0
-Output	0	0	0	0	0	0	0	0	0	0	0	0	0	0
TRANSM. & DISTRIB. LOSSES	0	0	0	0	0	0	0	0	0	0	0	0	0	0
ENERGY SECTOR OWN USE	0	0	0	0	0	0	0	0	0	0	0	0	0	0
NET SUPPLY	0	0	0	0	0	0	0	0	0	0	0	0	0	0
NET DOMESTIC CONSUMPTION	0	0	0	0	0	0	0	0	0	0	0	0	0	0

Source: Institute of Energy, The Socialist of Vietnam

Figure 2.6-2b Report of Energy Balance Table of Vietnam(b)

Vietnam energy balance table

Unit: TOE

product	1980	1981	1982	1983	1984	1985	1986	1987	1988	1989	1990	1991	1992	1993
Crude oil	0	0	0	0	0	0	0	0	0	0	0	0	0	0
-Industry	0	0	0	0	0	0	0	0	0	0	0	0	0	0
-Agriculture	0	0	0	0	0	0	0	0	0	0	0	0	0	0
-Transport	0	0	0	0	0	0	0	0	0	0	0	0	0	0
-Household/service	0	0	0	0	0	0	0	0	0	0	0	0	0	0
Gasoline	0	0	0	0	0	0	0	0	0	0	0	0	0	0
PRODUCTION OF PRIMARY ENERGY	0	0	0	0	0	0	0	0	0	0	0	0	0	0
-Losses production & flared	0	0	0	0	0	0	0	0	0	0	0	0	0	0
-Net production	0	0	0	0	0	0	0	0	0	0	0	0	0	0
IMPORT	0	293	324	354	350	353	367	371	454	378	307	443	759	390
EXPORT	0	0	0	0	0	0	0	0	0	0	0	0	0	0
PRIMARY ENERGY REQUIREMENT	0	293	324	354	350	353	367	371	454	378	307	443	759	390
OIL REFINING	0	0	0	0	0	0	0	0	7	7	7	7	7	0
POWER GENERATION	0	0	0	0	0	0	0	0	0	0	0	0	0	0
-Input	0	0	0	0	0	0	0	0	0	0	0	0	0	0
-Output	0	0	0	0	0	0	0	0	0	0	0	0	0	0
TRANSM. & DISTRIB. LOSSES	0	0	0	0	0	0	0	0	0	0	0	0	0	0
ENERGY SECTOR OWN USE	0	0	0	0	0	0	0	0	0	0	0	0	0	0

Source: Institute of Energy, The Socialist of Vietnam

Figure 2.6-2c Report of Energy Balance Table of Vietnam(c)

Vietnam energy balance table

Unit: TOE

Product	1980	1981	1982	1983	1984	1985	1986	1987	1988	1989	1990	1991	1992	1993
Gasoline	0	293	324	354	350	353	367	371	461	384	314	450	766	390
NET SUPPLY	0	293	324	354	350	353	367	371	461	384	314	450	766	390
NET DOMESTIC CONSUMPTION	0	20	21	37	35	39	32	33	34	22	24	14	23	27
-Industry	0	14	13	14	16	14	15	23	23	9	11	34	54	14
-Agriculture	0	169	200	190	195	219	239	232	301	264	209	354	613	200
-Transport	0	91	90	113	104	80	80	83	103	90	70	48	77	149
-Household/service	0	0	0	0	0	0	0	0	0	0	0	0	0	0
Jet fuel	0	0	0	0	0	0	0	0	0	0	0	0	0	0
PRODUCTION OF PRIMARY ENERGY	0	0	0	0	0	0	0	0	0	0	0	0	0	0
-Losses production & flared	0	0	0	0	0	0	0	0	0	0	0	0	0	0
-Net production	0	102	89	104	90	83	89	128	139	116	96	67	105	100
IMPORT	0	0	0	0	0	0	0	0	0	0	0	0	0	0
EXPORT	0	0	0	0	0	0	0	0	0	0	0	0	0	0
PRIMARY ENERGY REQUIREMENT	0	102	89	104	90	83	89	128	139	116	96	67	105	100
OIL REFINING	0	0	0	0	0	0	0	0	2	2	2	2	2	0
POWER GENERATION	0	0	0	0	0	0	0	0	0	0	0	0	0	0
-Input	0	0	0	0	0	0	0	0	0	0	0	0	0	0
-Output	0	0	0	0	0	0	0	0	0	0	0	0	0	0

Source: Institute of Energy, The Socialist of Vietnam

Figure 2.6-2d Report of Energy Balance Table of Vietnam(d)

Vietnam energy balance table

Unit: TOE

product	1980	1981	1982	1983	1984	1985	1986	1987	1988	1989	1990	1991	1992	1993
Jet fuel	0	0	0	0	0	0	0	0	0	0	0	0	0	0
TRANSM. & DISTRIB. LOSSES	0	0	0	0	0	0	0	0	0	0	0	0	0	0
ENERGY SECTOR OWN USE	0	102	89	104	90	83	89	128	141	118	98	69	107	100
NET SUPPLY	0	102	89	104	90	83	89	128	141	118	98	69	107	100
NET DOMESTIC CONSUMPTION	0	102	89	104	90	83	89	128	141	118	98	69	107	100
-Industry	0	0	0	0	0	0	0	0	0	0	0	0	0	0
-Agriculture	0	0	0	0	0	0	0	0	0	0	0	0	0	0
-Transport	0	102	89	104	90	83	89	128	141	118	98	69	107	100
-Household/service	0	0	0	0	0	0	0	0	0	0	0	0	0	0
Kerosine	0	0	0	0	0	0	0	0	0	0	0	0	0	0
PRODUCTION OF PRIMARY ENERGY	0	0	0	0	0	0	0	0	0	0	0	0	0	0
-Losses production & flared	0	0	0	0	0	0	0	0	0	0	0	0	0	0
-Net production	0	0	0	0	0	0	0	0	0	0	0	0	0	0
IMPORT	0	0	0	0	0	0	0	0	0	0	0	0	0	0
EXPORT	0	0	0	0	0	0	0	0	0	0	0	0	0	0
PRIMARY ENERGY REQUIREMENT	0	0	0	0	0	0	0	0	0	0	0	0	0	0
OIL REFINING	0	0	0	0	0	0	0	0	0	0	0	0	0	0
POWER GENERATION	0	0	0	0	0	0	0	0	0	0	0	0	0	0

Source: Institute of Energy, The Socialist of Vietnam

Figure 2.6-2e Report of Energy Balance Table of Vietnam(e)

Vietnam energy balance table

Unit: TOE

product	1980	1981	1982	1983	1984	1985	1986	1987	1988	1989	1990	1991	1992	1993
Kerosine	0	0	0	0	0	0	0	0	0	0	0	0	0	0
-Input	0	0	0	0	0	0	0	0	0	0	0	0	0	0
-Output	0	0	0	0	0	0	0	0	0	0	0	0	0	0
TRANSM. & DISTRIB. LOSSES	0	0	0	0	0	0	0	0	0	0	0	0	0	0
ENERGY SECTOR OWN USE	0	0	0	0	0	0	0	0	0	0	0	0	0	0
NET SUPPLY	0	0	0	0	0	0	0	0	0	0	0	0	0	0
NET DOMESTIC CONSUMPTION	0	0	0	0	0	0	0	0	0	0	0	0	0	0
-Industry	0	0	0	0	0	0	0	0	0	0	0	0	0	0
-Agriculture	0	0	0	0	0	0	0	0	0	0	0	0	0	0
-Transport	0	0	0	0	0	0	0	0	0	0	0	0	0	0
-Household/service	0	0	0	0	0	0	0	0	0	0	0	0	0	0
DO	0	0	0	0	0	0	0	0	0	0	0	0	0	0
PRODUCTION OF PRIMARY ENERGY	0	0	0	0	0	0	0	0	0	0	0	0	0	0
-Losses production & flared	0	0	0	0	0	0	0	0	0	0	0	0	0	0
-Net production	0	0	0	0	0	0	0	0	0	0	0	0	0	0
IMPORT	0	745	748	843	862	871	853	940	982	820	898	853	1567	809
EXPORT	0	0	0	0	0	0	0	0	0	0	0	0	0	0
PRIMARY ENERGY REQUIREMENT	0	745	748	843	862	871	853	940	982	820	898	853	1567	809

Source: Institute of Energy, The Socialist of Vietnam

Figure 2.6-2f Report of Energy Balance Table of Vietnam(f)

Vietnam energy balance table

Unit: TOE

product	1980	1981	1982	1983	1984	1985	1986	1987	1988	1989	1990	1991	1992	1993
DO	0	0	0	0	0	0	0	0	18	18	18	18	18	0
OIL REFINING	0	0	0	0	0	0	0	0	0	0	0	0	0	0
POWER GENERATION	0	0	0	0	0	0	0	0	0	0	0	0	0	0
-Input	0	-98	-110	-143	-132	-156	-123	-136	-153	-135	-142	-116	-168	-93
-Output	0	31	34	42	39	43	37	39	43	41	40	32	46	28
TRANSM. & DISTRIB. LOSSES	0	0	0	0	0	0	0	0	0	0	0	0	0	0
ENERGY SECTOR OWN USE	0	0	0	0	0	0	0	0	0	0	0	0	0	0
NET SUPPLY	0	648	639	700	729	715	729	804	848	703	774	755	1418	716
NET DOMESTIC CONSUMPTION	0	648	639	700	729	715	729	804	848	703	774	755	1418	716
-Industry	0	78	95	150	166	146	136	151	159	113	127	49	94	107
-Agriculture	0	43	36	34	37	44	35	56	51	19	28	29	47	38
-Transport	0	429	428	439	445	450	483	517	558	488	534	605	1134	486
-Household/service	0	98	80	77	82	76	75	80	80	84	84	72	142	85
FO	0	0	0	0	0	0	0	0	0	0	0	0	0	0
PRODUCTION OF PRIMARY ENERGY	0	0	0	0	0	0	0	0	0	0	0	0	0	0
-Losses production & flared	0	0	0	0	0	0	0	0	0	0	0	0	0	0
-Net production	0	0	0	0	0	0	0	0	0	0	0	0	0	0
IMPORT	0	293	334	445	445	477	524	571	565	458	499	593	814	346

Source: Institute of Energy, The Socialist of Vietnam

Figure 2.6-2g Report of Energy Balance Table of Vietnam(g)

Vietnam energy balance table

Unit: TOE

product	1980	1981	1982	1983	1984	1985	1986	1987	1988	1989	1990	1991	1992	1993
FO EXPORT	0	0	0	0	0	0	0	0	0	0	0	0	0	0
PRIMARY ENERGY REQUIREMENT	0	293	334	445	445	477	524	571	565	458	499	593	814	346
OIL REFINING	0	0	0	0	0	0	0	0	10	10	10	10	10	0
POWER GENERATION	0	0	0	0	0	0	0	0	0	0	0	0	0	0
-Input	0	-121	-131	-205	-168	-203	-266	-301	-309	-210	-238	-297	-296	-95
-Output	0	35	40	62	52	62	84	94	86	64	72	91	89	28
TRANSM. & DISTRIB. LOSSES	0	0	0	0	0	0	0	0	0	0	0	0	0	0
ENERGY SECTOR OWN USE	0	0	0	0	0	0	0	0	0	0	0	0	0	0
NET SUPPLY	0	172	203	241	277	275	258	270	266	259	272	307	528	251
NET DOMESTIC CONSUMPTION	0	172	203	241	277	275	258	270	266	259	272	307	528	251
-Industry	0	155	183	212	256	246	228	203	196	196	219	216	370	224
-Agriculture	0	1	0	0	0	0	0	36	37	24	22	86	50	2
-Transport	0	13	18	28	18	27	28	28	30	35	27	2	10	24
-Household/service	0	2	2	1	2	2	2	4	4	3	3	3	99	2
LPG PRODUCTION OF PRIMARY ENERGY	0	0	0	0	0	0	0	0	0	0	0	0	0	0
-Losses production & flared	0	0	0	0	0	0	0	0	0	0	0	0	0	0

Source: Institute of Energy, The Socialist of Vietnam

Figure 2.6-2h Report of Energy Balance Table of Vietnam(h)

Vietnam energy balance table

Unit: TOE

product	1980	1981	1982	1983	1984	1985	1985	1985	1987	1988	1989	1990	1991	1992	1993
LPG	0	0	0	0	0	0	0	0	0	0	0	0	0	0	0
-Net production	0	0	0	0	0	0	0	0	0	0	0	0	0	0	0
IMPORT	0	0	0	0	0	0	0	0	0	0	0	0	0	0	0
EXPORT	0	0	0	0	0	0	0	0	0	0	0	0	0	0	0
PRIMARY ENERGY REQUIREMENT	0	0	0	0	0	0	0	0	0	0	0	0	0	0	0
OIL REFINING	0	0	0	0	0	0	0	0	0	0	0	0	0	0	0
POWER GENERATION	0	0	0	0	0	0	0	0	0	0	0	0	0	0	0
-Input	0	0	0	0	0	0	0	0	0	0	0	0	0	0	0
-Output	0	0	0	0	0	0	0	0	0	0	0	0	0	0	0
TRANSM. & DISTRIB. LOSSES	0	0	0	0	0	0	0	0	0	0	0	0	0	0	0
ENERGY SECTOR OWN USE	0	0	0	0	0	0	0	0	0	0	0	0	0	0	0
NET SUPPLY	0	0	0	0	0	0	0	0	0	0	0	0	0	0	0
NET DOMESTIC CONSUMPTION	0	0	0	0	0	0	0	0	0	0	0	0	0	0	0
-Industry	0	0	0	0	0	0	0	0	0	0	0	0	0	0	0
-Agriculture	0	0	0	0	0	0	0	0	0	0	0	0	0	0	0
-Transport	0	0	0	0	0	0	0	0	0	0	0	0	0	0	0
-Household/service	0	0	0	0	0	0	0	0	0	0	0	0	0	0	0

Source: Institute of Energy, The Socialist of Vietnam

Figure 2.6-2i Report of Energy Balance Table of Vietnam(i)

Vietnam energy balance table

Unit: TOE

product	1980	1981	1982	1983	1984	1985	1986	1987	1988	1989	1990	1991	1992	1993
Sub total	0	0	0	0	0	0	0	0	0	0	0	0	0	0
PRODUCTION OF PRIMARY ENERGY	0	0	0	0	0	0	0	0	0	0	0	0	0	0
-Losses production & flared	0	0	0	0	0	0	0	0	0	0	0	0	0	0
-Net production	0	0	0	0	0	0	0	0	0	0	0	0	0	0
IMPORT	0	1593	1655	1912	1911	1944	1989	2201	2328	2046	2018	2136	3349	1806
EXPORT	0	0	0	0	0	0	0	0	0	0	0	0	-3217	0
PRIMARY ENERGY REQUIREMENT	0	1593	1655	1912	1911	1944	1989	2201	2369	2087	2059	2176	3389	1806
OIL REFINING	0	0	0	0	0	0	0	0	-1	-1	-1	-1	-1	0
POWER GENERATION	0	0	0	0	0	0	0	0	0	0	0	0	0	0
-Input	0	-218	-241	-348	-300	-359	-389	-437	-462	-345	-380	-413	-464	-187
-Output	0	66	74	104	91	105	121	133	129	105	112	124	135	56
TRANSM. & DISTRIB. LOSSES	0	0	0	0	0	0	0	0	0	0	0	0	0	0
ENERGY SECTOR OWN USE	0	0	0	0	0	0	0	0	0	0	0	0	0	0
NET SUPPLY	0	1375	1414	1564	1611	1585	1601	1764	1906	1742	1679	1763	2925	1619
NET DOMESTIC CONSUMPTION	0	1375	1414	1564	1611	1585	1601	1764	1906	1741	1679	1763	2925	1619
-Industry	0	253	299	399	457	431	396	387	388	331	371	278	487	357
-Agriculture	0	58	49	48	53	58	51	115	111	51	61	150	150	54

Source: Institute of Energy, The Socialist of Vietnam

Figure 2.6-2j Report of Energy Balance Table of Vietnam(j)

Vietnam energy balance table

Unit: TOE

product	1980	1981	1982	1983	1984	1985	1986	1987	1988	1989	1990	1991	1992	1993
Sub total	0	713	734	761	749	779	839	905	1030	905	868	1030	1863	810
-Transport	0	351	332	356	353	318	314	357	377	454	378	304	424	397
-Household/service	0	0	17	0	50	32	32	32	31	17	3	17	3	0
Natural Gas	0	0	0	0	0	0	0	0	0	0	0	0	0	0
PRODUCTION OF PRIMARY ENERGY	0	0	0	0	0	0	0	0	0	0	0	0	0	0
-Losses production & flared	0	0	0	0	0	0	0	0	0	0	0	0	0	0
-Net production	0	0	17	0	50	32	32	32	31	17	3	17	3	0
IMPORT	0	0	0	0	0	0	0	0	0	0	0	0	0	0
EXPORT	0	0	0	0	0	0	0	0	0	0	0	0	0	0
PRIMARY ENERGY REQUIREMENT	0	0	17	0	50	32	32	32	31	17	3	17	3	0
OIL REFINING	0	0	0	0	0	0	0	0	0	0	0	0	0	0
POWER GENERATION	0	0	0	0	0	0	0	0	0	0	0	0	0	0
-Input	0	0	-17	0	-50	-32	-32	-32	-31	-17	-3	-17	-3	0
-Output	0	0	3	0	10	6	6	6	6	2	0	3	0	0
TRANSM. & DISTRIB. LOSSES	0	0	0	0	0	0	0	0	0	0	0	0	0	0
ENERGY SECTOR OWN USE	0	0	0	0	0	0	0	0	0	0	0	0	0	0
NET SUPPLY	0	0	0	0	0	0	0	0	0	0	0	0	0	0
NET DOMESTIC CONSUMPTION	0	0	0	0	0	0	0	0	0	0	0	0	0	0

Source: Institute of Energy, The Socialist of Vietnam

Figure 2.6-2k Report of Energy Balance Table of Vietnam(k)

Unit: TOE

Vietnam energy balance table

product	1980	1981	1982	1983	1984	1985	1986	1987	1988	1989	1990	1991	1992	1993
Natural Gas	0	0	0	0	0	0	0	0	0	0	0	0	0	0
-Industry	0	0	0	0	0	0	0	0	0	0	0	0	0	0
-Agriculture	0	0	0	0	0	0	0	0	0	0	0	0	0	0
-Transport	0	0	0	0	0	0	0	0	0	0	0	0	0	0
-Household/service	0	0	0	0	0	0	0	0	0	0	0	0	0	0
Associal Gas	0	0	0	0	0	0	0	0	0	0	0	0	0	0
PRODUCTION OF PRIMARY ENERGY	0	0	0	0	0	0	0	0	0	0	0	0	0	0
-Losses production & flared	0	0	0	0	0	0	0	0	0	0	0	0	0	0
-Net production	0	0	0	0	0	0	0	0	0	0	0	0	0	0
IMPORT	0	0	0	0	0	0	0	0	0	0	0	0	0	0
EXPORT	0	0	0	0	0	0	0	0	0	0	0	0	0	0
PRIMARY ENERGY REQUIREMENT	0	0	0	0	0	0	0	0	0	0	0	0	0	0
OIL REFINING	0	0	0	0	0	0	0	0	0	0	0	0	0	0
POWER GENERATION	0	0	0	0	0	0	0	0	0	0	0	0	0	0
-Input	0	0	0	0	0	0	0	0	0	0	0	0	0	0
-Output	0	0	0	0	0	0	0	0	0	0	0	0	0	0
TRANSM. & DISTRIB. LOSSES	0	0	0	0	0	0	0	0	0	0	0	0	0	0
ENERGY SECTOR OWN USE	0	0	0	0	0	0	0	0	0	0	0	0	0	0

Source: Institute of Energy, The Socialist of Vietnam

Figure 2.6-21 Report of Energy Balance Table of Vietnam(1)

Vietnam energy balance table

Unit: TOE

product	1980	1981	1982	1983	1984	1985	1986	1987	1988	1989	1990	1991	1992	1993
Associated Gas NET SUPPLY	0	0	0	0	0	0	0	0	0	0	0	0	0	0
NET DOMESTIC CONSUMPTION	0	0	0	0	0	0	0	0	0	0	0	0	0	0
-Industry	0	0	0	0	0	0	0	0	0	0	0	0	0	0
-Agriculture	0	0	0	0	0	0	0	0	0	0	0	0	0	0
-Transport	0	0	0	0	0	0	0	0	0	0	0	0	0	0
-Household/service	0	0	0	0	0	0	0	0	0	0	0	0	0	0
Hydro PRODUCTION OF PRIMARY ENERGY	0	624	631	515	622	525	480	470	686	1297	1877	2030	2317	577
-Losses production & flared	0	0	0	0	0	0	0	0	0	0	0	0	0	0
-Net production	0	624	631	515	622	525	480	470	686	1297	1877	2030	2317	577
IMPORT	0	0	0	0	0	0	0	0	0	0	0	0	0	0
EXPORT	0	0	0	0	0	0	0	0	0	0	0	0	0	0
PRIMARY ENERGY REQUIREMENT	0	624	631	515	622	525	480	470	686	1297	1877	2030	2317	577
OIL REFINING	0	0	0	0	0	0	0	0	0	0	0	0	0	0
POWER GENERATION	0	0	0	0	0	0	0	0	0	0	0	0	0	0
-Input	0	-624	-631	-515	-622	-525	-480	-470	-686	-1297	-1877	-2030	-2317	-577
-Output	0	130	134	105	138	127	121	119	154	330	463	544	623	128

Source: Institute of Energy, The Socialist of Vietnam

Figure 2.6-2m Report of Energy Balance Table of Vietnam(m)

Vietnam energy balance table

Unit: TOE

product	1980	1981	1982	1983	1984	1985	1986	1987	1988	1989	1990	1991	1992	1993
Hydro	0	0	0	0	0	0	0	0	0	0	0	0	0	0
TRANSM. & DISTRIB. LOSSES	0	0	0	0	0	0	0	0	0	0	0	0	0	0
ENERGY SECTOR OWN USE	0	0	0	0	0	0	0	0	0	0	0	0	0	0
NET SUPPLY	0	0	0	0	0	0	0	0	0	0	0	0	0	0
NET DOMESTIC CONSUMPTION	0	0	0	0	0	0	0	0	0	0	0	0	0	0
-Industry	0	0	0	0	0	0	0	0	0	0	0	0	0	0
-Agriculture	0	0	0	0	0	0	0	0	0	0	0	0	0	0
-Transport	0	0	0	0	0	0	0	0	0	0	0	0	0	0
-Household/service	0	0	0	0	0	0	0	0	0	0	0	0	0	0
Elect	0	0	0	0	0	0	0	0	0	0	0	0	0	0
PRODUCTION OF PRIMARY ENERGY	0	0	0	0	0	0	0	0	0	0	0	0	0	0
-Losses production & flared	0	0	0	0	0	0	0	0	0	0	0	0	0	0
-Net production	0	0	0	0	0	0	0	0	0	0	0	0	0	0
IMPORT	0	0	0	0	0	0	0	0	0	0	0	0	0	0
EXPORT	0	0	0	0	0	0	0	0	0	0	0	0	0	0
PRIMARY ENERGY REQUIREMENT	0	0	0	0	0	0	0	0	0	0	0	0	0	0
OIL REFINING	0	0	0	0	0	0	0	0	0	0	0	0	0	0
POWER GENERATION	0	0	0	0	0	0	0	0	0	0	0	0	0	0

Source: Institute of Energy, The Socialist of Vietnam

Figure 2.6-2n Report of Energy Balance Table of Vietnam(n)

Vietnam energy balance table

Unit: TOE

Product	1980	1981	1982	1983	1984	1985	1986	1987	1988	1989	1990	1991	1992	1993
Elect	0	0	0	0	0	0	0	0	0	0	0	0	0	0
-Input	0	321	343	351	412	437	476	521	585	672	748	789	832	307
-Output	0	-61	-66	-65	-67	-76	-85	-71	-104	-147	-179	-194	-206	-60
TRANSM. & DISTRIB. LOSSES	0	-19	-20	-23	-26	-28	-33	-36	-39	-38	-33	-27	-29	-18
ENERGY SECTOR OWN USE	0	241	256	263	318	332	359	414	442	487	536	567	597	229
NET SUPPLY	0	241	256	263	318	332	359	414	442	487	536	567	597	229
NET DOMESTIC CONSUMPTION	0	122	135	143	185	187	193	224	231	223	238	253	276	115
-Industry	0	27	21	16	26	26	28	33	38	40	53	70	84	25
-Agriculture	0	0	0	0	0	1	1	1	2	2	2	2	2	0
-Transport	0	92	100	104	106	118	136	156	171	223	243	242	233	89
-Household/service	0	3222	3526	3277	3384	3354	3615	3954	4441	5396	7694	8407	8825	3082
Total	0	0	0	0	0	0	0	0	0	0	-503	-503	-503	0
PRODUCTION OF PRIMARY ENERGY	0	3222	3526	3277	3384	3354	3615	3954	4441	5396	7694	8407	8825	3082
-Losses production & flared	0	3222	3526	3277	3384	3354	3531	3954	4441	5396	7191	7904	8323	3082
-Net production	0	1597	1656	1912	1911	1944	1989	2201	2328	2046	2018	2136	3349	1809
IMPORT	0	-467	-337	-201	-235	-302	-310	-385	-815	-1739	-3080	-3689	-4001	-320
EXPORT	0	4352	4845	4988	5061	4996	5252	5769	5954	5704	6129	6350	7670	4571
PRIMARY ENERGY REQUIREMENT	0	4352	4845	4988	5061	4996	5252	5769	5954	5704	6129	6350	7670	4571

Source: Institute of Energy, The Socialist of Vietnam

Figure 2.6-2o Report of Energy Balance Table of Vietnam(o)

Vietnam energy balance table

Unit: TOE

Product	1980	1981	1982	1983	1984	1985	1986	1987	1988	1989	1990	1991	1992	1993
Total	0	0	0	0	0	0	0	0	-1	-1	-1	-1	-1	0
OIL REFINING	0	0	0	0	0	0	0	0	0	0	0	0	0	0
POWER GENERATION	0	-1544	-1609	-1715	-1859	-1807	-1892	-2066	-2608	-2643	-3035	-2941	-3133	-1380
-Input	0	321	343	351	412	437	476	521	585	672	748	789	832	307
-Output	0	-61	-66	-65	-67	-76	-85	-71	-104	-147	-179	-194	-206	-60
TRANSM. & DISTRIB. LOSSES	0	-19	-20	-23	-26	-28	-33	-36	-39	-38	-33	-27	-29	-18
ENERGY SECTOR OWN USE	0	3049	3492	3536	3519	3522	3719	4118	3788	3547	3629	3976	5134	3420
NET SUPPLY	0	3049	3492	3536	3520	3522	3719	4118	3788	3547	3629	3976	5134	3420
NET DOMESTIC CONSUMPTION	0	1567	1888	1862	1886	1906	2014	2184	1778	1633	1786	1954	2157	1741
-Industry	0	95	85	79	92	97	93	160	162	104	127	232	246	88
-Agriculture	0	757	826	859	820	831	884	965	1072	923	884	1047	1878	867
-Transport	0	631	693	737	721	687	727	809	776	886	832	743	852	724
-Household/service														

Source: Institute of Energy, The Socialist of Vietnam

Figure 2.6-2p Report of Energy Balance Table of Vietnam(p)

Report of Economy Data

China

	1980	1981	1982	1983	1984	1985	1986	1987	1988	1989	1990	1991
Population	981234944	993861120	1.009E+09	1.023E+09	1.037E+09	1.051E+09	1.067E+09	1.084E+09	1.102E+09	1.119E+09	1.134E+09	0
GNP per capita (US\$, curr. pr.)	300	320	320	320	330	320	320	300	330	330	350	370
GDP (billion 1987 US dollars)	1.578E+11	1.649E+11	1.792E+11	1.973E+11	2.258E+11	2.535E+11	2.745E+11	3.044E+11	3.34E+11	3.454E+11	3.609E+11	0
Gross National Product (local, curr. pr.)	4.470E+11	4.773E+11	5.193E+11	5.809E+11	6.962E+11	8.568E+11	9.696E+11	1.130E+12	1.398E+12	1.579E+12	1.74E+12	0
Gross Domestic Product (local, curr. pr.)	4.467E+11	4.770E+11	5.189E+11	5.798E+11	6.938E+11	8.559E+11	9.699E+11	1.133E+12	1.401E+12	1.586E+12	1.745E+12	0
Gross National Product (local, const. pr.)	5.877E+11	6.141E+11	6.675E+11	7.363E+11	8.434E+11	9.445E+11	1.021E+12	1.130E+12	1.241E+12	1.28E+12	1.339E+12	0
GDP at market prices (local, const. pr.)	5.873E+11	6.137E+11	6.670E+11	7.345E+11	8.406E+11	9.436E+11	1.022E+12	1.133E+12	1.243E+12	1.286E+12	1.343E+12	0
GDP at factor cost (local, const. pr.)	0	0	0	0	0	0	0	0	0	0	0	0
GDP Deflator (1987=100, Index)	76.065521	77.724197	77.798508	78.936798	82.543701	90.710800	94.930573	100	112.69695	123.34656	129.95024	0
Conversion Factor (Ann. av., local per US\$)	1.4980001	1.7049999	1.8924999	1.9757004	2.3199997	2.9366995	3.4527998	3.7221003	3.7220001	3.7639999	4.7831993	0

Figure 2.6-3a Report of Economy Data(a)

Report of Economy Data

France

	1980	1981	1982	1983	1984	1985	1986	1987	1988	1989	1990	1991
Population	53880000	54182000	54480000	54728000	54947008	55170000	55394000	55630000	55884000	56160000	56440000	0
GNP per capita (US\$, curr. pr.)	11850	12420	11890	10630	9950	9750	10780	12970	16240	17910	19520	0
GDP (billion 1987 US dollars)	7.872E+11	7.964E+11	8.153E+11	8.213E+11	8.334E+11	8.485E+11	8.69E+11	8.879E+11	9.222E+11	9.552E+11	9.799E+11	0
Gross National Product (local, curr. pr.)	2.821E+12	3.175E+12	3.628E+12	3.995E+12	4.338E+12	4.674E+12	5.053E+12	5.324E+12	5.712E+12	6.126E+12	6.467E+12	0
Gross Domestic Product (local, curr. pr.)	2.808E+12	3.165E+12	3.626E+12	4.006E+12	4.362E+12	4.700E+12	5.069E+12	5.337E+12	5.723E+12	6.136E+12	6.484E+12	0
Gross National Product (local, const. pr.)	4.753E+12	4.803E+12	4.903E+12	4.923E+12	4.983E+12	5.073E+12	5.206E+12	5.324E+12	5.531E+12	5.732E+12	5.875E+12	0
GDP at market prices (local, const. pr.)	4.732E+12	4.787E+12	4.901E+12	4.937E+12	5.01E+12	5.100E+12	5.223E+12	5.337E+12	5.542E+12	5.742E+12	5.890E+12	0
GDP at factor cost (local, const. pr.)	4.142E+12	4.215E+12	4.297E+12	4.331E+12	4.391E+12	4.463E+12	4.578E+12	4.669E+12	4.825E+12	5.005E+12	5.141E+12	0
GDP Deflator (1987=100, Index)	59.348251	66.11319	73.992081	81.154541	87.072647	92.152675	97.051666	100	103.27249	106.86899	110.08549	0
Conversion Factor (Ann. av., local per US\$)	4.2255697	5.4346104	6.5720997	7.6212902	8.7391005	8.98522	6.9260902	6.0107098	5.9569397	6.3801403	5.4452696	0

Figure 2.6-3b Report of Economy Data(b)

Report of Economy Data

Indonesia

	1980	1981	1982	1983	1984	1985	1986	1987	1988	1989	1990	1991
Population	148303008	151305008	154245008	157157008	160075008	163036008	166015008	168990000	171994000	175063008	1782332000	0
GNP per capita (US\$, curr. pr.)	470	550	610	610	590	550	530	500	490	510	570	0
GDP (billion 1987 US dollars)	5.359E+10	5.757E+10	5.737E+10	6.242E+10	6.666E+10	6.843E+10	7.24E+10	7.593E+10	8.034E+10	8.634E+10	9.256E+10	0
Gross National Product (local,curr. pr.)	4.690E+13	5.63E+13	5.961E+13	7.430E+13	8.572E+13	9.306E+13	9.856E+13	1.188E+14	1.352E+14	1.594E+14	1.884E+14	0
Gross Domestic Product (local,curr. pr.)	4.891E+13	5.842E+13	6.265E+13	7.762E+13	8.988E+13	9.7E+13	1.027E+14	1.248E+14	1.421E+14	1.675E+14	1.977E+14	0
Gross National Product (local,const. pr.)	7.930E+13	8.589E+13	8.674E+13	9.435E+13	1.012E+14	1.048E+14	1.121E+14	1.188E+14	1.272E+14	1.371E+14	1.471E+14	0
GDP at market prices (local,const. pr.)	8.809E+13	9.463E+13	9.430E+13	1.026E+14	1.096E+14	1.125E+14	1.190E+14	1.248E+14	1.321E+14	1.419E+14	1.522E+14	0
GDP at factor cost (local,const. pr.)	0	0	0	0	0	0	0	0	0	0	0	0
GDP Deflator (1987=100,Index)	55.525116	61.735062	66.432648	75.649841	82.029724	86.235515	86.285629	100	107.60544	118.01231	129.94524	0
Conversion Factor (Ann. av., local per US\$)	626.98999	631.76001	661.41992	909.26001	1025.8999	1110.6001	1282.6001	1643.8000	1685.7	1770.0601	1842.8101	0

Figure 2.6-3c Report of Economy Data(c)

Report of Economy Data

Japan

	1980	1981	1982	1983	1984	1985	1986	1987	1988	1989	1990	1991
Population	116782000	117648000	118449008	119259008	120018000	120754000	121492000	1222091008	122613008	123116000	123537008	0
GNP per capita (US\$, curr. pr.)	9830	10350	10310	10340	10570	11350	13010	16020	21400	24240	25890	0
GDP (billion 1987 US dollars)	1.877E+12	1.944E+12	2.006E+12	2.059E+12	2.147E+12	2.254E+12	2.314E+12	2.409E+12	2.559E+12	2.677E+12	2.828E+12	0
Gross National Product (local,curr. pr.)	2.401E+14	2.574E+14	2.707E+14	2.821E+14	3.010E+14	3.216E+14	3.358E+14	3.505E+14	3.737E+14	3.987E+14	4.292E+14	0
Gross Domestic Product (local,curr. pr.)	2.402E+14	2.58E+14	2.706E+14	2.818E+14	3.005E+14	3.204E+14	3.346E+14	3.484E+14	3.714E+14	3.958E+14	4.261E+14	0
Gross National Product (local,const. pr.)	2.714E+14	2.806E+14	2.902E+14	2.982E+14	3.111E+14	3.272E+14	3.359E+14	3.505E+14	3.724E+14	3.9E+14	4.119E+14	0
GDP at market prices (local,const. pr.)	2.715E+14	2.812E+14	2.901E+14	2.979E+14	3.106E+14	3.261E+14	3.347E+14	3.484E+14	3.701E+14	3.872E+14	4.09E+14	0
GDP at factor cost (local,const. pr.)	2.559E+14	2.644E+14	2.728E+14	2.806E+14	2.911E+14	3.048E+14	3.132E+14	3.235E+14	3.426E+14	3.587E+14	3.787E+14	0
GDP Deflator (1987=100, Index)	88.461578	91.722031	93.267792	94.595428	96.774719	98.267883	99.969208	100	100.35983	102.23984	104.1915	0
Conversion Factor (Ann. av., local per US\$)	226.741	220.536	249.077	237.51199	237.52200	238.536	168.52000	144.63699	128.15199	137.96400	144.79201	0

Figure 2.6-3d Report of Economy Data(d)

Report of Economy Data

Korea, Rep. of

	1980	1981	1982	1983	1984	1985	1986	1987	1988	1989	1990	1991
Population	38124000	38723008	39226000	39910000	40406000	40806000	41184000	41575008	41975008	42380000	42793008	0
GNP per capita (US\$, curr. pr.)	1620	1830	1930	2110	2240	2320	2570	2950	3600	4400	5400	0
GDP (billion 1987 US dollars)	0	0	0	0	0	0	0	0	0	0	0	0
Gross National Product (local, curr. pr.)	3.675E+13	4.553E+13	5.218E+13	6.172E+13	7.008E+13	7.809E+13	9.054E+13	1.056E+14	1.236E+14	1.411E+14	1.677E+14	0
Gross Domestic Product (local, curr. pr.)	3.804E+13	4.748E+13	5.444E+13	6.383E+13	7.264E+13	8.085E+13	9.337E+13	1.080E+14	1.253E+14	1.423E+14	1.673E+14	0
Gross National Product (local, const. pr.)	5.55E+13	5.885E+13	6.31E+13	7.127E+13	7.775E+13	8.315E+13	9.382E+13	1.056E+14	1.185E+14	1.27E+14	1.402E+14	0
GDP at market prices (local, const. pr.)	5.739E+13	6.134E+13	6.585E+13	7.379E+13	8.060E+13	8.618E+13	9.678E+13	1.080E+14	1.202E+14	1.279E+14	1.399E+14	0
GDP at factor cost (local, const. pr.)	5.055E+13	5.404E+13	5.786E+13	6.438E+13	7.092E+13	7.618E+13	8.553E+13	9.549E+13	1.062E+14	1.136E+14	1.242E+14	0
GDP Deflator (1987=100, index)	66.282227	77.412048	82.673065	86.505951	90.126587	93.814453	96.479996	100	104.25276	111.19319	119.63705	0
Conversion Factor (Ann. av., local per US\$)	607.43188	681.02808	731.08398	775.74805	805.97607	870.02002	881.45410	822.56689	731.46802	671.45605	707.76392	0

Figure 2.6-3e Report of Economy Data(e)

Report of Economy Data

Malaysia

	1980	1981	1982	1983	1984	1985	1986	1987	1988	1989	1990	1991
Population	13764000	14130000	14510000	14887000	15272000	15682000	16109000	16528000	16942000	17353000	17861000	0
GNP per capita (US\$, curr. pr.)	1690	1880	1900	1900	2040	1970	1840	1830	1930	2120	2320	0
GDP (billion 1987 US dollars)	2.116E+10	2.261E+10	2.395E+10	2.549E+10	2.75E+10	2.717E+10	2.750E+10	2.9E+10	3.163E+10	3.441E+10	3.785E+10	0
Gross National Product (local,curr. pr.)	5.139E+10	5.560E+10	5.969E+10	6.553E+10	7.418E+10	7.196E+10	7.468E+10	7.468E+10	8.578E+10	9.56E+10	1.097E+11	0
Gross Domestic Product (local,curr. pr.)	5.331E+10	5.761E+10	6.258E+10	6.994E+10	7.955E+10	7.747E+10	7.962E+10	7.962E+10	9.086E+10	1.015E+11	1.146E+11	0
Gross National Product (local,const. pr.)	5.139E+10	5.521E+10	5.773E+10	6.001E+10	6.409E+10	6.322E+10	6.488E+10	6.851E+10	7.514E+10	8.168E+10	9.126E+10	0
GDP at market prices (local,const. pr.)	5.331E+10	5.696E+10	6.035E+10	6.422E+10	6.928E+10	6.845E+10	6.93E+10	7.306E+10	7.968E+10	8.67E+10	9.537E+10	0
GDP at factor cost (local,const. pr.)	4.417E+10	4.819E+10	5.158E+10	5.378E+10	5.761E+10	5.719E+10	6.012E+10	6.378E+10	6.916E+10	7.558E+10	8.201E+10	0
GDP Deflator (1987=100,Index)	100	101.1465	103.68509	108.91623	114.82080	113.17888	103.31369	108.99135	114.02876	117.02931	120.18608	0
Conversion Factor (Ann. av., local per US\$)	2.1768999	2.3041000	2.3333996	2.3212996	2.3436003	2.4829998	2.5195999	2.6188002	2.7088003	2.7048998	2.7048998	0

Figure 2.6-3f Report of Economy Data(f)

Report of Economy Data

Philipp

	1980	1981	1982	1983	1984	1985	1986	1987	1988	1989	1990	1991
Population	48323008	49540000	50800000	52055008	53351008	54700000	56004000	57356000	58721008	60097008	61480000	0
GNP per capita (US\$, curr. pr.)	650	720	760	710	610	540	550	570	620	680	730	0
GDP (billion 1987 US dollars)	3.28E+10	3.391E+10	3.513E+10	3.577E+10	3.314E+10	3.073E+10	3.331E+10	3.331E+10	3.541E+10	3.751E+10	3.832E+10	0
Gross National Product (local, curr. pr.)	2.433E+11	2.805E+11	3.135E+11	3.633E+11	5.085E+11	5.561E+11	5.963E+11	6.731E+11	7.957E+11	9.112E+11	1.069E+12	0
Gross Domestic Product (local, curr. pr.)	2.437E+11	2.816E+11	3.172E+11	3.691E+11	5.245E+11	5.719E+11	6.089E+11	6.851E+11	8.030E+11	9.226E+11	1.066E+12	0
Gross National Product (local, const. pr.)	6.737E+11	6.953E+11	7.148E+11	7.245E+11	6.615E+11	6.149E+11	6.404E+11	6.731E+11	7.216E+11	7.621E+11	7.899E+11	0
GDP at market prices (local, const. pr.)	6.746E+11	6.975E+11	7.226E+11	7.356E+11	6.817E+11	6.321E+11	6.538E+11	6.851E+11	7.283E+11	7.715E+11	7.881E+11	0
GDP at factor cost (local, const. pr.)	6.033E+11	6.333E+11	6.573E+11	6.664E+11	6.246E+11	5.776E+11	5.976E+11	6.148E+11	6.702E+11	7.059E+11	7.205E+11	0
GDP Deflator (1987=100, Index)	36.134964	40.371597	43.893921	50.172104	76.935455	90.470428	93.136292	100	110.25308	119.57538	135.3006	0
Conversion Factor (Ann. av., local per US\$)	7.5114002	7.8997002	8.54	11.1113	16.699005	18.606995	20.386002	20.567993	21.095001	21.737	24.311005	0

Figure 2.6-3g Report of Economy Data(g)

Report of Economy Data

Singapore

	1980	1981	1982	1983	1984	1985	1986	1987	1988	1989	1990	1991
Population	2414000	2481000	2546000	2610000	2671000	2731000	2789000	2845000	2900000	2952000	3003000	0
GNP per capita (US\$, curr. pr.)	4550	5360	5990	6650	7330	7120	6850	7260	8190	9420	11160	0
GDP (billion 1987 US dollars)	1.348E+10	1.477E+10	1.578E+10	1.707E+10	1.85E+10	1.816E+10	1.848E+10	2.023E+10	2.25E+10	2.457E+10	2.66E+10	0
Gross National Product (local, curr. pr.)	2.419E+10	2.819E+10	3.178E+10	3.656E+10	4.082E+10	4.033E+10	4.319E+10	4.319E+10	4.994E+10	5.634E+10	6.391E+10	0
Gross Domestic Product (local, curr. pr.)	2.509E+10	2.934E+10	3.267E+10	3.673E+10	4.005E+10	3.892E+10	4.261E+10	4.261E+10	4.969E+10	5.624E+10	6.271E+10	0
Gross National Product (local, const. pr.)	2.737E+10	2.987E+10	3.229E+10	3.578E+10	3.972E+10	3.965E+10	3.989E+10	4.319E+10	4.76E+10	5.182E+10	5.71E+10	0
GDP at market prices (local, const. pr.)	2.839E+10	3.111E+10	3.324E+10	3.596E+10	3.896E+10	3.824E+10	3.892E+10	4.261E+10	4.738E+10	5.174E+10	5.602E+10	0
GDP at factor cost (local, const. pr.)	2.591E+10	2.847E+10	3.031E+10	3.270E+10	3.543E+10	3.5E+10	3.629E+10	3.974E+10	4.416E+10	4.768E+10	5.146E+10	0
GDP Deflator (1987=100, index)	88.389450	94.321442	98.276474	102.16075	102.80049	101.78491	99.312744	100	104.88963	108.69275	111.94588	0
Conversion Factor (Ann. av., local per US\$)	2.1412001	2.1127005	2.1400003	2.1131001	2.1330996	2.2002001	2.1773996	2.1059999	2.0123997	1.9503002	1.8125	0

Figure 2.6-3h Report of Economy Data(h)

Report of Economy Data

	<i>Thailand</i>											
	1980	1981	1982	1983	1984	1985	1986	1987	1988	1989	1990	1991
Population	46700000	47727008	48740000	49739008	50720000	51683008	52654000	53605008	54536000	55448000	55801008	0
GNP per capita (US\$, curr. pr.)	670	750	780	810	840	800	800	860	1030	1220	1420	0
GDP (billion 1987 US dollars)	3.223E+10	3.425E+10	3.563E+10	3.818E+10	4.092E+10	4.23E+10	4.444E+10	4.872E+10	5.525E+10	6.201E+10	6.839E+10	0
Gross National Product (local, curr. pr.)	6.531E+11	7.482E+11	8.071E+11	9.034E+11	9.62E+11	9.968E+11	1.073E+12	1.231E+12	1.482E+12	1.753E+12	2.030E+12	0
Gross Domestic Product (local, curr. pr.)	6.585E+11	7.602E+11	8.2E+11	9.101E+11	9.734E+11	1.014E+12	1.095E+12	1.253E+12	1.507E+12	1.776E+12	2.051E+12	0
Gross National Product (local, const. pr.)	8.236E+11	8.663E+11	9.009E+11	9.783E+11	1.043E+12	1.070E+12	1.120E+12	1.231E+12	1.398E+12	1.575E+12	1.743E+12	0
GDP at market prices (local, const. pr.)	8.291E+11	8.811E+11	9.166E+11	9.822E+11	1.053E+12	1.088E+12	1.143E+12	1.253E+12	1.421E+12	1.595E+12	1.759E+12	0
GDP at factor cost (local, const. pr.)	7.408E+11	7.909E+11	8.273E+11	8.782E+11	9.375E+11	9.754E+11	1.019E+12	1.103E+12	1.259E+12	1.431E+12	1.576E+12	0
GDP Deflator (1987=100, index)	79.42215	86.282440	89.464828	92.663605	92.466827	93.232178	95.829269	100	106.03651	111.33353	116.59248	0
Conversion Factor (Ann. av., local per US\$)	20.475998	21.820007	23	23	23.639008	27.158997	26.298996	25.723007	25.293701	25.701996	25.585007	0

Figure 2.6-3i Report of Economy Data(i)

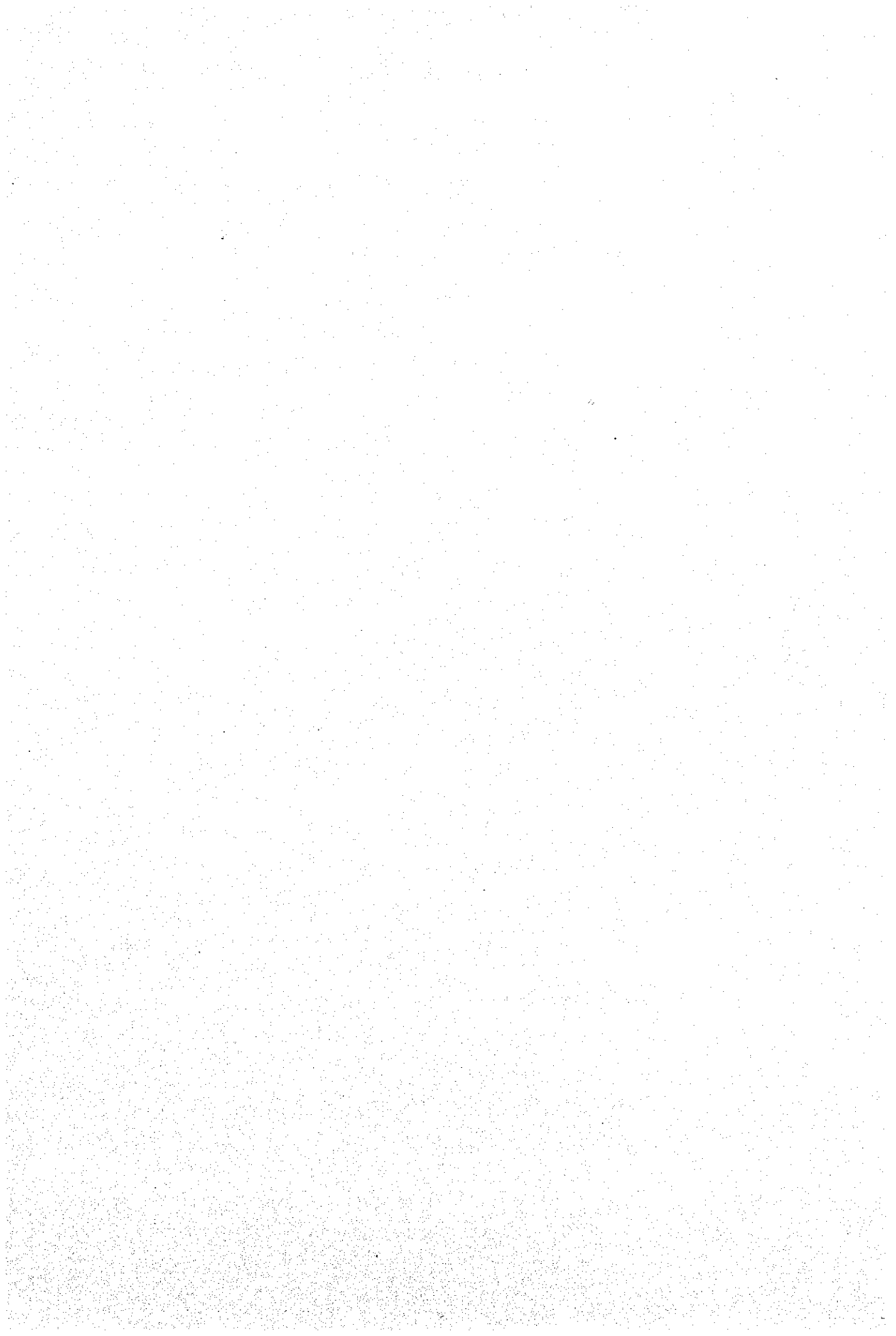
Report of Economy Data

United States

	1980	1981	1982	1983	1984	1985	1986	1987	1988	1989	1990	1991
Population	227757008	230138000	232520000	234799008	237001008	239279008	241625008	243942000	246307008	248762000	249975008	0
GNP per capita (US\$, curr. pr.)	11990	13310	13650	14520	15930	16790	17520	18450	19700	20850	21790	0
GDP (billion 1987 US dollars)	3.629E+12	3.713E+12	3.615E+12	3.749E+12	4.016E+12	4.167E+12	4.301E+12	4.453E+12	4.655E+12	4.785E+12	4.829E+12	0
Gross National Product (local,curr. pr.)	2.736E+12	3.062E+12	3.173E+12	3.403E+12	3.77E+12	4.008E+12	4.216E+12	4.488E+12	4.85E+12	5.176E+12	5.441E+12	0
Gross Domestic Product (local,curr. pr.)	2.686E+12	3.007E+12	3.119E+12	3.349E+12	3.718E+12	3.962E+12	4.176E+12	4.453E+12	4.809E+12	5.132E+12	5.392E+12	0
Gross National Product (local,const. pr.)	3.696E+12	3.780E+12	3.678E+12	3.81E+12	4.072E+12	4.216E+12	4.343E+12	4.488E+12	4.694E+12	4.826E+12	4.872E+12	0
GDP at market prices (local,const. pr.)	3.629E+12	3.713E+12	3.615E+12	3.749E+12	4.016E+12	4.167E+12	4.301E+12	4.453E+12	4.655E+12	4.785E+12	4.829E+12	0
GDP at factor cost (local,const. pr.)	3.357E+12	3.419E+12	3.333E+12	3.457E+12	3.7E+12	3.839E+12	3.968E+12	4.116E+12	4.309E+12	4.425E+12	4.46E+12	0
GDP Deflator (1987=100,Index)	74.014786	80.986008	86.265732	89.331528	92.583755	95.084244	97.091095	100	103.31183	107.26228	111.66844	0
Conversion Factor (Amt. av., local per US\$)	1	1	1	1	1	1	1	1	1	1	1	0

Figure 2.6-3j Report of Economy Data(j)





JICA