

JAPAN INTERNATIONAL COOPERATION AGENCY (JICA)
STATE SECRETARIAT OF PLANNING AND GENERAL COORDINATION,
PARANÁ STATE, THE FEDERATIVE REPUBLIC OF BRAZIL

THE MASTER PLAN STUDY ON
THE UTILIZATION OF WATER RESOURCES IN PARANÁ STATE
IN
THE FEDERATIVE REPUBLIC OF BRAZIL

FINAL REPORT

SECTORAL REPORT VOLUME A
SOCIO-ECONOMY

JICA LIBRARY



Q 1125391 (1)

December, 1995

Yachiyo Engineering Co., Ltd.
Tokyo, Japan

and

Nippon Koei Co., Ltd.
Tokyo, Japan

S S S

J R

95-132

JAPAN INTERNATIONAL COOPERATION AGENCY (JICA)
STATE SECRETARIAT OF PLANNING AND GENERAL COORDINATION,
PARANÁ STATE, THE FEDERATIVE REPUBLIC OF BRAZIL

THE MASTER PLAN STUDY ON
THE UTILIZATION OF WATER RESOURCES IN PARANÁ STATE
IN
THE FEDERATIVE REPUBLIC OF BRAZIL

FINAL REPORT

SECTORAL REPORT VOLUME A
SOCIO-ECONOMY

December, 1995

Yachiyo Engineering Co., Ltd.
Tokyo, Japan

and

Nippon Koei Co., Ltd.
Tokyo, Japan



1125391 (1)

**Cost Estimate is Based
on The Price Level of August, 1994,
According to The Following Exchange Rate.**

**US\$ 1.00 = ¥ 98.87
(as of August, 1994)**

COMPOSITION OF FINAL REPORT

1. EXECUTIVE SUMMARY
2. MAIN REPORT
 - I. Strategy for Paraná State
 - II. Master Plan for Iguaçu River Basin
 - III. Master Plan for Tibagi River Basin
3. SECTORAL REPORT
 - A. Socio-economy
 - B. Meteorology, Hydrology and Surface Water Resources
 - C. Hydrogeology and Groundwater Resources
 - D. Domestic and Industrial Water
 - E. Agriculture
 - F. Hydroelectric Power Generation
 - G. Water Utilization Plan
 - H. Flood Control
 - I. Water Quality and Sewerage
 - J. Soil Erosion and Forest
 - K. Ecology
 - L. Water Environment Management
 - M. Institution
 - N. Cost Estimate, and Economic and Financial Assessment
4. DATA BOOK

**THE MASTER PLAN STUDY ON
THE UTILIZATION OF WATER RESOURCES IN PARANÁ STATE
IN THE FEDERATIVE REPUBLIC OF BRAZIL**

Sector Report Vol. A

Socio-Economy

TABLE OF CONTENTS

SUMMARY

CHAPTER 1 STRATEGY FOR PARANÁ STATE	1-1
1.1 Present Socio-Economic Structure.....	1-1
1.1.1 Geographical and Demographic Feature	1-1
1.1.2 Administrative Units.....	1-1
1.1.3 Population	1-13
1.1.4 GDP - PARANÁ (Gross Domestic Product)	1-19
1.1.5 Gross Regional Domestic Production (GRDP) per MRH.....	1-19
1.1.6 Present Socio-Economic Framework.....	1-20
1.1.7 Profile of the Economic Sector and Social Sector and Infrastructure .	1-22
1.1.8 Public Finance.....	1-35
1.2 Future Socio-Economic Structure	1-44
1.2.1 Population Projection	1-44
1.2.2 Gross Domestic Product (GDP) Projection	1-57
1.2.3 Gross Regional Domestic Product (GRDP) Projection per MRH.....	1-57
1.2.4 GRDP Projection by Sector per MRH.....	1-58
1.2.5 Gross Domestic Product per Capita of Paraná State (GDP per Capita of Paraná State) and Gross Regional Domestic Product per Capita per MRH (GRDP per Capita per MRH)	1-58
1.2.6 Future Socio-Economic Framework.....	1-58
1.3 Alternative Regional Development Plan and Alternative Socio-Economic Framework.....	1-59
1.3.1 Future Socio-Economic Framework in Curitiba Metropolitan Area ...	1-59
1.3.2 Alternative Regional Development Plan.....	1-60
1.3.3 Alternative Socio-Economic Framework	1-60
 CHAPTER 2 MASTER PLAN FOR IGUAÇU RIVER BASIN.....	 2-1
2.1 Regional Unit and Zoning of the Study.....	2-1
2.2 Present Socio-Economic Structure.....	2-1
2.2.1 Population per Municipality.....	2-1
2.2.2 Gross Regional Domestic Product (GRDP) per Municipality.....	2-1
2.2.3 GRDP by Secondary Sector per Municipality	2-2
2.2.4 Present Socio-Economic Framework.....	2-2

2.3	Future Socio-Economic Structure.....	2-14
2.3.1	Population Projection per Municipality.....	2-14
2.3.2	Gross Regional Domestic Product (GRDP) Projection per Municipality 2-14	
2.3.3	GRDP of Secondary Sector Projection per Municipality.....	2-14
2.3.4	Future Socio-Economic Framework.....	2-15
2.4	Alternative Socio-Economic Framework(Alternative Case).....	2-15

CHAPTER 3 MASTER PLAN FOR TIBAGI RIVER BASIN 3-1

3.1	Regional Unit and Zoning of the Study.....	3-1
3.2	Present Socio-Economic Structure.....	3-1
3.2.1	Population per Municipality.....	3-1
3.2.2	Gross Regional Domestic Product (GRDP) per Municipality.....	3-1
3.2.3	GRDP by Secondary Sector per Municipality.....	3-1
3.2.4	Present Socio-Economic Framework.....	3-2
3.3	Future Socio-Economic Structure.....	3-10
3.3.1	Population Projection per Municipality.....	3-10
3.3.2	Gross Regional Domestic Product (GRDP) Projection per Municipality.....	3-10
3.3.3	GRDP by Secondary Sector Projection per Municipality.....	3-10
3.3.4	Future Socio-Economic Framework.....	3-10
3.4	Alternative Socio-Economic Framework (Alternative Case).....	3-11

List of Tables

Table - 1.1	Geographic, Demographic and Socio-Economic Characteristics of Paraná State	1-2
Table - 1.2	Organs of the Direct Administration in the State of Paraná - 1995	1-4
Table - 1.3	Organs of the Indirect Administration and their Related Institution - 1995	1-5
Table - 1.4	List of Municipalities in the Paraná State with Population, Area and Density of the Population	1-7
Table - 1.5	Population of Brazil, South Region and Paraná State	1-13
Table - 1.6	Annual Average Growth Rate of Population (%/year)	1-14
Table - 1.7	List of Municipalities Created from the year of 1980 to 1993	1-15
Table - 1.8	Population of Paraná State per MRH - 1970, 1980 and 1991	1-18
Table - 1.9	GDP - Brazil and Paraná, GDP per Capita - Brazil and Paraná/ 1980 - 1991	1-19
Table - 1.10	GDP - Paraná by Sector / 1980 - 1991	1-19
Table - 1.11	Classification of MRH in terms of Urban Population and GRDP per MRH in 1980 and 1991	1-20
Table - 1.12	GRDP of Paraná State per MRH - 1980 to 1991	1-21
Table - 1.13	Imports and Exports of Paraná State - 1990, 1991 and 1992	1-24
Table - 1.14	PARANÁ - Number of Industrial Establishments, According to the MRH and Classified by Type of Activity - 1994	1-25
Table - 1.15	PARANÁ - Number of Commercial Establishments, According to the MRH and Classified by Sub-group of Activity - 1994	1-26
Table - 1.16	PARANÁ - Number of Commercial Establishments, According to the MRH and Classified by Sub-group of Activity - 1994	1-27
Table - 1.17	PARANÁ - Number of Establishments of Services per MRH, According to the Classification of Type of Activity in the Paraná State/1994	1-28
Table - 1.18	Code of the Type of Activity (Industry, Commerce and Service)	1-29
Table - 1.19	GRDP by Sector per Region (MRH)/Primary Sector (Agriculture, Livestock and Extraction Activities) - 1980 to 1989	1-30
Table - 1.20	GRDP by Sector per Region (MRH) / Secondary Sector (Industry) 1980 to 1989	1-31
Table - 1.21	GRDP by Sector per Region (MRH) / Tertiary Sector (Commerce and Services) - 1980 to 1989	1-32
Table - 1.22	Medical Facilities of the State of Paraná per MRH / 1992	1-33
Table - 1.23	Educational Institution of the State of Paraná per MRH / 1993	1-34

Table - 1.24	Participation of the Organs of the Direct Administration and to the Indirect Administration in the State's Overall Revenues and Expenditure, in percentage, from 1988 to 1993	1-35
Table - 1.25	Relation between Total Revenue of the Organs of Direct Administration and GDP - Paraná, from 1988 to 1993	1-36
Table - 1.26	Relation between Expenditure with Personnel (including transfers to persons) and Total Expenditure of the Organs of the Direct Administration, from 1988 to 1993	1-36
Table - 1.27	Relation between Investments and Total Expenditure of the Organs of the Direct Administration, from 1988 to 1993	1-37
Table - 1.28	Relation between Financial Expenditure and Total Expenditure of the Organs of the Direct Administration, from 1988 to 1993	1-37
Table - 1.29	Demonstrative Chart of Overall Revenues and Expenditure According to the Economic Categories, in the State of Paraná, from 1988 to 1993	1-38
Table - 1.30	Comparative Table between Revenues and Expenditure of the Organs of the Direct and Indirect Administration, in the State of Paraná, from 1988 to 1993	1-40
Table - 1.31	Evolution of the Revenues of the Organs of the Direct Administration in the State of Paraná - 1988 to 1993	1-41
Table - 1.32	Expenditure of the Organs of the Direct Administration, at Current Prices, in Paraná - 1988 to 1993	1-42
Table - 1.33	Specification of the Expenditure of the Organs of the State of Paraná, According to their Function - 1989 to 1993	1-43
Table - 1.34	Projected Population in Paraná State per River Basins in the years 2000, 2005 and 2015	1-45
Table - 1.35	Projected Population in Paraná State per MRH - 1993, 2005 and 2015	1-45
Table - 1.36	Average Annual Growth Rate of Population by MRH during the period 1970-1980, 1980-1991, 1991-2005 and 2005-2015	1-46
Table - 1.37	Estimated GDP - Paraná by Sector - 1993, 2005 and 2015	1-57
Table - 1.38	Socio-Economic Framework of Paraná State in 2005	1-59
Table - 1.39	Socio-Economic Framework of Paraná State in 2015	1-59
Table - 1.40	Restriction and Distribution of Urban Population, GRDP (Secondary and Tertiary Sector) and GRDP of Secondary Sector, in 2005 and 2015	1-61
Table - 1.41	Socio-Economic Framework of Paraná State in 2005/ Alternative Case	1-61
Table - 1.42	Socio-Economic Framework of Paraná State in 2015/ Alternative Case	1-61

Table - 1.43	Projected Population in Paraná State per MRH - 2005 and 2015/ Alternative Case	1-62
Table - 1.44	Estimated GRDP per MRH and GRDP per Capita per MRH in 1993, 2005 and 2015	1-64
Table - 1.45	Estimated GRDP per MRH /Primary Sector and Secondary Sector/ in 1993, 2005 and 2015	1-65
Table - 1.46	Alternative Scenario for Annual Growth Rate of Production by ELETROBRÁS/COPEL (Reference).....	1-66
Table - 2.1	Classification of Municipalities Related to Urban Population and GRDP per Municipality in 1980 and 1991/Iguaçu River Basin.....	2-3
Table - 2.2	Population per Municipality in 1970, 1980 and 1991/Iguaçu River Basin.....	2-5
Table - 2.3	GRDP per Municipality in 1981, 1983, 1985, 1987, 1989 and 1991/ Iguaçu River Basin	2-8
Table - 2.4	GRDP by Secondary Sector per Municipality in 1981, 1983, 1985, 1987, 1989 and 1991/Iguaçu River Basin.....	2-11
Table - 2.5	Restriction and Distribution of Urban Population, GRDP (Secondary Sector and Tertiary Sector) and GRDP by Secondary Sector in 2005 and 2015	2-15
Table - 2.6	Participation of Urban Population, GRDP (Secondary Sector and Tertiary Sector) and GRDP by Secondary Sector of Three Municipalities in 2005 and 2015 by Alternative Case.....	2-15
Table - 2.7	Classification of Municipalities Related to Urban Population and GRDP per Municipality in 1993, 2005 and 2015/ Iguaçu River Basin.....	2-16
Table - 2.8	Projected Population per Municipality in 1993, 2005 and 2015 and Area per Municipality/Iguaçu River Basin.....	2-17
Table - 2.9	Estimated GRDP per Municipality in 1993, 2005 and 2015 - Excluding Contribution of Hydroelectric Power Stations/ Iguaçu River Basin	2-21
Table - 2.10	Estimated GRDP by Secondary Sector per Municipality in 1993, 2005 and 2015 - Excluding Contribution of Hydroelectric Power Station/Iguaçu River Basin	2-23
Table - 3.1	Classification of Municipalities Related to Urban Population and GRDP per Municipality in 1980/Tibagi River Basin.....	3-2
Table - 3.2	Classification of Municipalities Related to Urban Population and GRDP per Municipality in 1991/Tibagi River Basin.....	3-2
Table - 3.3	Population per Municipality in 1970, 1980 and 1991/Tibagi River Basin.....	3-4
Table - 3.4	GRDP per Municipality in 1981, 1983, 1985, 1987, 1989 and 1991/ Tibagi River Basin	3-6

Table - 3.5	GRDP by Secondary Sector per Municipality in 1981, 1983, 1985, 1987, 1989 and 1991/Tibagi River Basin.....	3-8
Table - 3.6	Restriction and Distribution of Urban Population, GRDP (Secondary and Tertiary Sector) and GRDP of Secondary Sector, in 2005 and 2015	3-11
Table - 3.7	Participation of Urban Population, GRDP (Secondary Sector and Tertiary Sector) and GRDP by Secondary Sector of Six Municipalities in 2005 and 2015 by Alternative Case.....	3-11
Table - 3.8	Classification of Municipalities Related to Urban Population and GRDP per Municipality in 1993/ Tibagi River Basin.....	3-12
Table - 3.9	Classification of Municipalities Related to Urban Population and GRDP per Municipality in 2005/Tibagi River Basin.....	3-12
Table - 3.10	Classification of Municipalities Related to Urban Population and GRDP per Municipality in 2015/Tibagi River Basin.....	3-12
Table - 3.11	Projected Population per Municipality in 1993, 2005 and 2015 and Area per Municipality/Tibagi River Basin	3-13
Table - 3.12	Estimated GRDP per Municipality in 1993, 2005 and 2015 - Excluding Contribution of Hydroelectric Power Stations/ Tibagi River Basin	3-15
Table - 3.13	Estimated GRDP by Secondary Sector per Municipality in 1993, 2005 and 2015 - Excluding Contribution of Hydroelectric Power Stations/Tibagi River Basin.....	3-16

List of Figures

Figure - 1.1	Geographic and Demographic Features of the State of Paraná.....	1-3
Figure - 1.2	Division of Region - River Basin, MRH (Homogeneous Micro Region) and Municipality.....	1-17
Figure - 1.3	Projected Urban, Rural and Total Population in the Paraná State	1-47
Figure - 1.4	Projected Urban Population per MRH.....	1-48
Figure - 1.5	Projected Rural Population per MRH.....	1-51
Figure - 1.6	Projected Total Population per MRH.....	1-54
Figure - 1.7	Projected Urban Population for MRH 268, MRH 273, MRH 281, MRH 282 and MRH 288 by Alternative Case.....	1-63
Figure - 1.8	Conceptual Diagram of Future Socio-Economic Framework.....	1-66
Figure - 2.1	Zoning of the Study/Iguaçu River Basin.....	2-4
Figure - 3.1	Zoning of the Study/Tibagi River Basin.....	3-3

List of Abbreviations

1. SEAB State Secretariat for Agriculture and Supplying
Secretaria de Estado da Agricultura e do Abastecimento
2. SEAD State Secretariat for Administration
Secretaria de Estado da Administração
3. SEED State Secretariat for Education
Secretaria de Estado da Educação
4. SEFA State Secretariat for Treasury
Secretaria de Estado da Fazenda
5. SEIC State Secretariat for Industry, Commerce and Economic Development
Secretaria de Estado da Indústria, Comércio e do Desenvolvimento Econômico
6. SEPL State Secretariat for Planning and General Coordination
Secretaria de Estado do Planejamento e Coordenação Geral
7. SESA State Secretariat for Health
Secretaria de Estado da Saúde
8. IPARDES Economic and Social Development Institution of the State of Paraná
Instituto Paranaense de Desenvolvimento Econômico Social
9. FUNDEPAR Institute for Education Development of Paraná
Instituto de Desenvolvimento Educacional do Paraná
10. IBGE Foundation of Brazilian Institute of Geography and Statistics
Fundação Instituto Brasileiro de Geografia e Estatística
11. COPEL Paraná Energy Company
Companhia Paranaense de Energia
12. FERROESTE West Paraná Railway Co., Ltd.
Estrada de Ferro Oeste do Paraná S/A
13. TELEPAR Telecommunication Company of Paraná
Telecomunicações do Paraná S/A
14. CEXPAR Center of Exterior Commerce of Paraná
Centro de Comércio Exterior do Paraná
15. FIEP Federation of Industries of the State of Paraná
Federação das Indústrias do Estado do Paraná
16. MRH Homogeneous Micro Regions
Microrregiões Homogêneas:
17. GDP Gross Domestic Products
18. GRDP Gross Resional Domestic Products
19. JICA Japan International Cooperation Agency
Agência de Cooperação Internacional do Japão

- 20. DERAL Economy Department
Departamento de Economia
- 21. CEPA State Commission for Agricultural Planning
Comissão Estadual de Planejamento Agrícola
- 22. SETR State Secretariat of Transport
Secretaria de Estado dos Transportes
- 23. DAC Civil Aviation Department
Departamento de Aviação Civil
- 24. FOB Free on Board

SUMMARY

(1) Introduction

The Master Plan Study on the Utilization of Water Resources in Paraná State in the Federative Republic of Brazil (Hereinafter referred to as the "Study") has been formulated through the environmental Joint-Programming (JP) carried out between the Government of Japan and the Government of the Federative Republic of Brazil to find and establish a project that is necessary and worthwhile.

The purposes of the Study are 1) to formulate a Master Plan for Water Environment composed of a water use plan for various water sectors, such as domestic water, industrial water, agricultural water, hydroelectric power generation, etc., and an improvement or conservation plan for environmental issues such as flood control, water quality, soil erosion, ecology, etc., for the entire area of the State of Paraná for the target year of 2015 and 2) to promote transference of technology to the Brazilian counterparts during the Study.

The Study is divided into three phases, as follows:

- Phase - I: To determine the methodology to formulate the Master Plan.
- Phase - II: To formulate a Water Environment Strategy for the whole area of the State of Paraná, and to select a pilot river basin(s) for Phase III.
- Phase III: To formulate the Master Plan for Water Environment for the selected pilot river basin(s).

According to the purposes of the Study and the division into Phases, the Socio-Economic Study (hereinafter referred to as "This Sector") is also composed of three Sections, as follows:

1. Strategy for Paraná State.
2. Master Plan for Iguazu River Basin.
3. Master Plan for Tibagi River Basin.

This Sector aims at presenting two aspects for the other planning Sectors: 1) present socio-economic structure in the sectors concerned with Water Environment, in each Section, and 2) future socio-economic framework in the same sectors and also in the three Sections mentioned above.

These two aspects are not only essential for the planning of other sectors but also fundamental for the estimation of water demand for domestic water, industrial water and agricultural water. In this context, Section 1 describes the present and future socio-economic framework of the State of Paraná, using the Homogenous Micro Regions (MRH) as regional units in relation to population projection and GRDP projection per MRH.

Section 2 describes the present and future socio-economic framework for the Iguazu river basin using the Municipality as a regional unit in relation to population projection and GRDP projection per Municipality.

Section 3 describes present and future socio-economic framework for the Tibagi river basin using the same methodology of Section 2.

In addition, JICA Team presents a proposal of an alternative regional development plan, as a strategy, with a concept of decentralization of socio-economic activities in order to solve the problems or to avoid the foreseeable problems in the Metropolitan Area of Curitiba, such as the conflict between water demand and water supply, problems concerning water quality, solid waste and other environmental issues that will be enlarged to the extent of threatening human life, in all sections.

The other factors concerned with socio-economic framework, such as a profile of the Economic Sector (Primary, Secondary and Tertiary), Social Sector (educational facilities and medical facilities) and Infrastructure, were described in order to illustrate the characteristics of the regions.

And regarding the Public Finance, the State's General Balance Sheet and the data from the organs of the direct administration have been analyzed and described.

(2) Strategy for the State of Paraná

1) Present Socio-Economic Structure

Regional Unit

Paraná State, which was composed of 371 municipalities in 1993, is divided into 24 Homogenous Micro-Regions (Microregiões Homogêneas: MRH - refer to Figure - 1.2). In the socio-economic study, these MRH are used as regional units.

Population of Paraná State

According to the census of 1970, 1980 and 1991, the total population of the State of Paraná was about 6.93 million, 7.63 million and 8.45 million, respectively. The annual growth rate of 0.95% during the period of 1970 to 1991 was very low, if compared to the growth rate of Brazil as a whole (2.12%) and of the South Region of Brazil (1.35%). However, the concentration of population in urban areas is very high. The percentage of urban population increased very much, from 36% in 1970 to 73% in 1991. The average annual growth during the period indicates 4.4% in urban areas and -3.2% in rural areas.

Population per Region (MRH)

The population per region (urban or rural) and per MRH in 1991 is shown in Table - 1.8. The five big regions: MRH 268 - Curitiba, MRH 273 - Ponta Grossa, MRH 281 - N. N. Londrina, MRH 282 - N. N. Maringá and MRH 288 - Extr. Oeste Paranaense (Cascavel), occupied approximately 65% of the total urban population in 1991 and, above all, MRH 268-Curitiba shared about 30%.

Gross Domestic Production (GDP) of Paraná State

The GDP-PARANÁ in 1991 was approximately US\$25,225 million, what is 6% of the GDP-BRAZIL. The share of GDP-PARANÁ in 1991 by primary, secondary and tertiary

sectors, was approximately of 15%, 31% and 54% respectively. The annual growth rate of the GDP-PARANÁ during the period of 1980 to 1991 was 4.66%, which was lower than that of the GDP-BRAZIL, of 5.76%. The annual growth rate during the same period of the primary, secondary and tertiary sectors was of 2.22%, 5.50% and 5.00% respectively.

The GDP per Capita-Paraná in 1991 was approximately of US\$2,990.00, which was more than that of Brazil, of US\$2,890.00. The annual growth rates during the period of 1980 to 1991 were of 3.7% and 3.8% respectively.

GRDP per MRH

The Gross Regional Domestic Product (GRDP) of the 24 MRHs is presented in Table - 1.12. The GRDP of the five big regions mentioned in the section of population have increased by larger rates than those of the increase of the urban population. It means that the gap of economic activity, namely "wealth", between the five big MRHs and the other MRHs has widened in the last 10 years. Among these five MRHs, the MRH 268 - Curitiba, has shown a remarkable economic development.

2) Future Socio-Economic Framework

Population Projection per River Basin

The population projection of Paraná State for the target years 2005 and 2015 was provided by IPARDES as a preliminary population projection by river basin, with separate figures for urban and rural population, as shown below. According to this projection, three big river basins, Iguaçu river basin, Tibagi river basin and Ivaí river basin, will occupy approximately 40%, 15% and 12% of the total population in 2015, respectively, as shown in Table - 1.34.

Year		① 1993		② 2005		③ 2015		③ ÷ ①
Urban Population		6,430	(75)	8,350	(84)	9,970	(90)	155
Rural Population		2,150	(25)	1,560	(16)	1,160	(10)	54
Total Population		8,570	(100)	9,910	(100)	11,130	(100)	129
Average Annual Growth Rate	Urban	2.6		1.8				
	Rural	-3.2		-2.9				
	Total	1.2		1.2				

Unit: 1,000 people and percentage

Population Projection per Region (MRH)

The population projection for the years 2005 and 2015 per MRH was made by JICA Study Team based on the Census of 1970, 1980 and 1991, and on the Preliminary Projection by IPARDES for 1995 and 2000, as shown in Table - 1.35. The urban population in MRH 268 - Curitiba will reach 3,113,000 in 2015 from 1,950,000 in 1993 through an increase of approximately 1,163,000.

GDP Projection

The projection of GDP-Paraná and GDP by sector, at the target years, were estimated by the past trend from the year of 1980 to 1991, with assumed growth rate of 5.00% per year for

GDP-PARANÁ, and 2.00%/year, 5.35%/year and 5.25%/year for the primary sector, secondary sector and tertiary sector respectively, as shown below.

Year	Primary Sector		Secondary Sector		Tertiary Sector		GDP - Paraná	
	Million US\$	%	Million US\$	%	Million US\$	%	Million US\$	%
1993	3,149	11.32	9,295	33.42	15,367	55.26	27,811	100.00
2005	3,831	7.67	17,446	34.93	28,668	57.40	49,945	100.00
2015	4,874	5.99	29,110	35.78	47,370	58.23	81,354	100.00

Source: Fundo de Participação dos Municípios-Índices Provisórios/95 (Municipalities' Participation Fund- Preliminary Indexes/95)-SEFA

GRDP Projection per MRH

The GRDP per MRH at the target years was estimated based on the past trend of GRDP per MRH, excluding contribution of Hydroelectric Power Stations, as shown in Table - 1.44. The GRDP of MRH 268 - Curitiba will increase approximately 225% and will share 44% of the Total GRDP of the MRH in 2015. The GRDP of the other four big MRH will also increase about 185% and will account for 32% of the Total GRDP of the MRH in 2015.

Future Socio-Economic Framework (Base Case)

The future socio-economic structure can be estimated by classifying the MRH into four categories, as shown below:

- 1st - MRH 268 - Curitiba
- 2nd - MRH 273 - C. de Ponta Grossa, MRH 281 - N. N. Londrina, MRH 282 - N. N. Maringá, MRH 288 - Extr. Oeste Paranaense (Cascavel)
- 3rd - MRH 279, MRH 284, MRH 285, MRH 286, MRH 289, MRH 290
- 4th - MRH 269 - MRH 272, MRH 274 - MRH 278, MRH 280, MRH 283, MRH 287, MRH 291

The future socio-economic framework in 2015 for the four categories can be drawn as shown below.

Classification	No. and Name of MRH	Urban Population		GRDP		GRDP per Capita Current US\$
		Population	%	Current million US\$	%	
1st	MRH 268 Curitiba	3,112,700	31.20	34,330.00	44.30	10,700.00
2nd	MRH 273 C. de Ponta Grossa	519,800	5.20	4,630.00	6.00	8,200.00
	MRH 281/N.N. Londrina	1,103,700	11.10	5,990.00	7.70	5,300.00
	MRH 282/N.N. Maringá	664,200	6.70	4,920.00	6.30	7,310.00
	MRH 288/Extr. Oeste Paranaense	1,320,500	13.30	9,050.00	11.70	6,370.00
	Subtotal/Average	3,608,200	36.30	24,590.00	31.70	6,490.00
3rd	MRH 279/284/285/286/289/290	1,964,200	19.70	11,110.00	14.30	4,740.00
4th	MRH 269/270/271/272/274/275/276/277/278/280/283/287/291	1,284,200	12.80	7,490.00	9.70	4,190.00
TOTAL of MRH / Average		9,969,300	100.00	77,520.00	100.00	6,960.00

Remark : Total population per 2nd, 3rd and 4th Categories was 3,787,700, 2,346,100 and 1,787,200, respectively
: GRDP and GRDP per Capita per MRH are not including contribution of Hydroelectric Power Stations

Alternative Case

Due to the population concentration in the Metropolitan Area of Curitiba (MRH 268), the balance between water demand and water supply will be very tight. In addition to that, problems concerning water quality, solid waste and other environmental issues will be enlarged to the extent to threaten the human life. Furthermore, the Area will require a great amount of additional social infrastructure on which more than one million people live. To solve the problems mentioned above, the JICA Study Team proposes an alternative regional development plan as strategy. The plan is to restrict the number of emigrants to the metropolitan area and to distribute them to local urban centers, classified above as 2nd category, namely MRH 281 - N. N. Londrina, MRH 282 - N. N. Maringá, MRH 273 - C. de Ponta Grossa and MRH 288 - Extr. Oeste Paranaense (Cascavel).

In the base case, the increase of the urban population in the MRH 268 - Curitiba was estimated in 1,162,900, with an annual average growth rate of 2.05% from the year of 1993 to the year of 2015. Based on several case studies, 40% of population increase, or approximately 15.00% of total urban population, namely 465,000 emigrants, should be distributed to the four MRH belonging to the 2nd category, according to the proportion of each urban population estimated in 2015. Consequently, 15.00% of the amount of the GRDP by second and tertiary sector in the MRH 268, equivalent to US\$5.10 billion, is distributed to the MRH of the 2nd category in the same manner mentioned above.

The alternative socio-economic framework in 2015 can be estimated as shown below:

Classification	No. and Name of MRH	Urban Population		GRDP 2nd and 3rd Sectors		GRDP 2nd Sector	
		Population	%	Current million US\$	%	Current million US\$	%
1st	MRH 268/Curitiba	2,647,700	26.60	29,230.00	37.70	10,940.00	43.30
2nd	MRH 273/C. de Ponta Grossa	585,800	5.90	5,360.00	6.90	2,030.00	8.00
	MRH 281/N.N. Londrina	1,245,900	12.50	7,550.00	9.70	2,640.00	10.50
	MRH 282/N.N. Maringá	749,800	7.50	5,860.00	7.60	2,410.00	9.50
	MRH 288/Extr. Oeste Paranaense	1,490,700	15.00	10,920.00	14.10	1,540.00	6.10
	Subtotal/Average	4,073,200	40.90	29,690.00	38.30	8,620.00	34.10
3rd	MRH 279/284/285/286/289/290	1,964,300	19.70	11,110.00	14.30	3,370.00	13.30
4th	MRH 269/270/271/272/274/275/276/ 277/278/280/283/287/291	1,284,300	12.80	7,490.00	9.70	2,340.00	9.30
TOTAL of MRH / Average		9,969,300	100.00	77,520.00	100.00	25,270.00	100.00

Remark : Total population per 2nd, 3rd and 4th Categories was 3,787,700, 2,346,100 and 1,787,200, respectively
: GRDP and GRDP per Capita per MRH are not including contribution of Hydroelectric Power Stations

(3) Master Plan for Iguaçu River Basin

1) Regional Unit and Zoning of the Study

According to the regional unit of the collected data concerning the socio-economic area, it was decided to use the municipalities as a regional unit and based on the criteria for inclusion (or exclusion) of municipalities that straddle other river basin, it was decided that the zoning of the Study would be composed of 101 municipalities, as shown in Figure - 2.1.

2) Present Socio-Economic Structure

Population

The population of the 101 municipalities mentioned above summed approximately 3,709,900 people, sharing about 44% of total population of Paraná State in 1991.

GRDP

The GRDP of the 101 municipalities was of about 14,254 current million US\$ and the share of GRDP-Paraná State was of approximately 56.50% in 1991.

3) Future Socio-Economic Structure

Population Projection

Population Projection of the 101 municipalities for the target years was carried out as described in Section - 2.3.1; the projected population in 1993, 2005 and 2015 was of 3,796,100, 4,698,200 and 5,445,300, respectively. And the share for total population of Paraná State, in 1993, 2005 and 2015, was 44.30%, 47.40% and 48.90%, respectively.

GRDP Projection

Estimated GRDP of these 101 municipalities for the target years 1993, 2005 and 2015, excluding contribution of hydroelectric power stations, was approximately of 15,180 current million US\$, 29,083 current million US\$ and 49,499 current million US\$, respectively, and the estimated share of GAP-Paraná, excluding the contribution mentioned above, was of 57.10%, 61.10% and 63.90%, respectively.

Future Socio-Economic Framework (Base Case)

The future socio-economic framework of this river basin in 2015, composed of 101 municipalities, can be estimated by dividing these municipalities into four categories, as shown below:

Classification	No. and Name of MRH	No. and Name of Municipality	2015		GRDP		
			Urban Population		Million US\$	%	
			Population	%			
1st Class	MRH 268/Curitiba	9 Curitiba	1,717,150	35.03	24,458.37	49.41	
2nd Class	MRH 268/Curitiba	1 Almirante Tamandaré	169,730	3.46	228.89	0.46	
		2 Araucária	138,700	2.83	2,875.49	5.81	
		7 Colombo	283,000	5.77	650.79	1.31	
		10 Fazenda Rio Grande	119,160	2.43	94.39	0.19	
		13 Pinhaia	125,690	2.56	683.10	1.38	
		17 São José dos Pinhais	284,590	5.81	2,701.15	5.46	
		274 Cascavel	303,280	6.19	2,344.27	4.53	
		282 Foz do Iguaçu	479,380	9.78	4,195.54	8.48	
		MRH 268/Extremo Oeste Paranaense	327 Francisco Beltrão	100,490	2.05	561.93	1.14
		MRH 289/Sudoeste Paranaense	352 Guarapuava	179,920	3.67	1,644.84	3.32
MRH 290/Campos de Guarapuava	Sub-Total	2,183,940	44.56	15,880.34	32.08		
3rd Class	MRH 268/Curitiba	5 Campina Grande do Sul	61,440	1.25	150.19	0.30	
		6 Campo Largo	85,590	1.75	963.60	1.95	
		14 Piraquara	29,650	0.60	170.78	0.35	
		15 Quatro Barras	25,810	0.53	167.63	0.34	
		MRH 272/C. da Lapa	33 Lapa	28,970	0.59	209.12	0.42
		36 Rio Negro	27,140	0.55	672.59	1.36	
		MRH 275/São Mateus do Sul	48 São Mateus do Sul	25,010	0.51	242.51	0.49
		MRH 288/Ext. Oeste Paranaense	294 Medianeira	41,230	0.84	193.77	0.39
		MRH 289/Sudoeste Paranaense	324 Dois Vizinhos	45,560	0.93	345.24	0.70
		MRH 290/Campos de Guarapuava	333 Pato Branco	67,550	1.38	371.85	0.75
		MRH 291/Médio Iguaçu	351 Cartagato	39,360	0.80	44.96	0.09
			367 Palmas	45,210	0.92	201.66	0.41
			371 União da Vitória	41,460	0.85	443	0.89
	Sub-Total	561,980	11.51	4,176.90	8.44		
4th Class	Other 77 Municipalities	Sub-Total	436,560	8.91	4,931.01	10.07	
TOTAL OF THE MUNICIPALITIES OF THE BASIN			4,901,630	100.00	49,498.62	100.00	

Remark GRDP per Municipality not including contribution of Hydroelectric Power Stations

4) Alternative Socio-Economic Framework

According to the concept of the alternative development plan described in Section - 1, the participation of three municipalities which belong to MRH 288/Extr. Oeste Paranaense, in 2005 and 2015, is shown below:

YEAR	2005				2015			
	%	Urban Population	GRDP (2nd and 3rd Sectors) million US\$	GRDP of 2nd Sector million US\$	%	Urban Population	GRDP (2nd and 3rd Sectors) million US\$	GRDP of 2nd Sector million US\$
MRH 288 Extr. Oeste Paranaense	100.00	(90,300)	(700.00)	(265.00)	100.00	(170,200)	(1,870.00)	(695.00)
274 Cascavel	35.00	31,600	250.00	95.00	35.00	59,600	655.00	240.00
282 Foz do Iguaçu	50.00	45,300	350.00	135.00	50.00	85,100	935.00	350.00
312 Toledo * (1)	15.00	13,500	100.00	35.00	15.00	25,500	280.00	105.00

Remark: Toledo is located in other basin

(4) Master Plan for Tibagi River Basin

1) Regional Unit and Zoning of the Study

As mentioned in Section (3), the Zoning of the Study was decided to be composed by 43 municipalities, as shown in Figure - 3.1.

2) Present Socio-Economic Structure

Population

The 43 municipalities that compose this Zoning of the Study had a population of approximately 1,525,000 people and shared about 18.00% of the total population of Paraná State in 1991.

GRDP

The GRDP of these 43 municipalities, in 1991, was of about US\$ 4,157 million and shared approximately 16.50% of the GDP-Paraná State.

3) Future Socio-Economic Structure

Population Projection

Population projection of these 43 municipalities for the target years was carried out as described in Section - 3.3.1, being the estimated population in 1993, 2005 and 2015 of 1,550,800, 1,805,200 and 2,034,400, respectively. The estimated share of total population of Paraná State was of 18.10%, 18.20% and 18.30%, respectively.

GRDP Projection

Estimated GRDP of these 43 municipalities in 1993, 2005 and 2015, excluding contribution of hydroelectric power stations, was of approximately US\$ 4,324 million, US\$ 7,378 million and US\$ 11,618 million, respectively. Their estimated share of the GDP-Paraná State, excluding the contribution mentioned above, was of about 16.30%, 15.50% and 15.00%, respectively.

Future Socio-Economic Framework (Base Case)

The future socio-economic framework of this river basin in 2015, composed of the 43 municipalities, can be estimated by dividing these municipalities into four categories, as shown below:

Classification	No. and Name of MRH	No. and Name of Municipality	Urban Population		GRDP per Municipality	
			Population	%	Million US\$	%
1st Class	281/N. N. Londrina	124 Londrina	579,760	31.08	2,952.12	25.41
2nd Class	273/C. Ponta Grossa	39 Ponta Grossa	306,720	16.44	2,230.33	19.20
		40 Telêmaco Borba	99,820	5.35	881.22	7.58
		113 Cambé	118,770	6.37	718.50	6.18
		183 Apucarana	129,880	6.96	580.41	5.00
		Subtotal	655,190	35.13	4,410.46	37.96
3rd class	273/C. Ponta Grossa 276/Col. Irati 279/N. V. Jacarezinho 281/N. N. Londrina	37 Castro	71,080	3.81	1,196.61	10.30
		50 Irati	47,140	2.53	289.31	2.49
		85 Cornélio Procopio	54,290	2.91	292.88	2.52
		109 Arapongas	78,620	4.22	576.08	4.96
		119 Ibiçara	57,060	3.06	110.43	0.95
		132 Rolândia	48,550	2.60	542.60	4.67
		Subtotal	356,740	19.13	3,007.91	25.89
4th Class	Other 32 Municipalities	Subtotal	273,540	14.67	1,247.47	10.74
TOTAL OF MUNICIPALITIES OF BASIN			1,865,230	100.00	11,617.96	100.00

Remark: GRDP per Municipality is not including contribution of Hydroelectric Power Stations

4) Alternative Socio-Economic Framework (Alternative Case)

According to the concept of the alternative development plan, described in Section - 1, the participation of six municipalities, in the MRH to which they belong, in 2005 and 2015 is shown below:

YEAR	2005				2015			
	%	Urban Population	GRDP (2nd and 3rd Sectors) million US\$	GRDP of 2nd Sector million US\$	%	Urban Population	GRDP (2nd and 3rd Sectors) million US\$	GRDP of 2nd Sector million US\$
MRH 273/C. Ponta Grossa	100.00	(37,200)	(285.00)	(110.00)	100.00	(67,000)	(735.00)	(275.00)
39 Ponta Grossa	65.00	24,300	185.00	70.00	65.00	43,600	480.00	180.00
40 Telêmaco Borba	25.00	7,400	55.00	25.00	20.00	13,400	150.00	55.00
37 Castro	15.00	5,600	45.00	15.00	15.00	10,000	105.00	40.00
MRH 281/N. N. Londrina	100.00	(79,200)	(610.00)	(235.00)	100.00	(142,200)	(1,560.00)	(580.00)
124 Londrina	75.00	59,400	460.00	175.00	75.00	106,700	1,170.00	435.00
113 Cambé	15.00	11,900	90.00	35.00	15.00	21,300	235.00	90.00
109 Arapongas	10.00	7,900	60.00	25.00	10.00	14,200	155.00	55.00

CHAPTER 1 STRATEGY FOR PARANÁ STATE

1.1 Present Socio-Economic Structure

1.1.1 Geographical and Demographic Features

The Federative Republic of Brazil consists of 26 states and one Federal District, Brazil is divided into 5 Regions, North, Northeast, Middle West, Southeast and South Regions, as shown in Figure - 1.1. The State of Paraná is located in the South Region of Brazil. The climate in Paraná is defined by the Tropic of Capricorn, which crosses the State's territory, and by the characteristics of the State's relief- 53% of the State's area is above 600 m of altitude, which determines a transition climate between two types, a tropical zone (north and littoral of the State) and subtropical zone (center and south of the State). The territory of Paraná State lies between latitude 22°30' north and 26°43' south, and between longitude 54°37' west 48°05' east.

According to IBGE's information, Paraná State has the following boundaries: to the north with São Paulo State (940 km); to the south with Santa Catarina State (754 km) and the Republic of Argentina (293 km); to the east with the Atlantic Ocean (98 km); and to the west with Mato Grosso do Soul State (219 km) and Paraguay (208 km). The longest distance from east to west is 647 km. The longest distance from north to south is 486 km. The total area of the State is approximately 199,000 km², which represents 2.34% of the total area of Brazil. Of the total area of the State of Paraná 83.4% can be used for economic purposes such as agriculture, livestock and silviculture.

According to IBGE's data, from 1991 census, the population of Paraná State is 8,448,713 inhabitants, which is ranked as 6th in Brazil with 5.74% of the total, and 6,197,953 inhabitants live in urban areas, and 2,250,760 inhabitants in the rural area. The population density (inhabitants per square kilometer) is 42.36 inhabit/km², 13th in the Brazilian rank, as shown in Table-1.1, with the main socio-economic indicators.

1.1.2 Administrative Units

(1) Central Government

Presently, according to the Constitution of the Federative Republic of Brazil and the Constitution of the State of Paraná, the State's central government is divided into two types of organs: the organs of the direct administration and those of the indirect administration, as shown in Table-1.2, Table-1.3 (1), Table-1.3 (2) and Table-1.3 (3).

(2) Local Government

The State of Paraná is composed of 371 municipalities, in 1993. Each municipality has the City Hall and the City Council, with a certain degree of autonomy and competence to act within the limits of each municipality. These municipalities are shown in Table-1.4 (1) to Table-1.4 (6), with their name, projected population in 1993, area of each municipality, population density, and mapped on Figure-1.2 with a number for each of the municipalities in the Tables. Each municipality is divided into urban and rural areas in accordance with urban perimeter determined by the municipality.

Table - 1.1. Geographic, Demographic and Socio-Economic Characteristics of Paraná State

	Brazil	Paraná State	Position of the Paraná State	South Region (*1) Region (*1)	Northeast Region (*2) Region (*2)	Southeast Region (*3) Region (*3)
1. Geographic						
a. Area (km ²) (*1)	8,511,996.3	199,324.0	15th Rank	575,316.2	566,001.1	924,266.3
Distribution (%)	100.00	2.34		6.76	18.4	10.86
2. Demographic (*4)						
a. Population/1991	146,917,459	8,443,299	6th Rank	22,117,026	42,470,225	62,660,700
Distribution (%)	100.00	5.74		15.05	28.91	42.65
b. Density/1991(persons/Km ²)	17.26	42.56	13th Rank	38.44	27.30	67.80
3. Economic						
a. GDP/1991 (million US\$)	423,239 (*5)	25,225 (*5)	5th Rank	70,850	67,126	237,776
Share (%)	100.00	5.87		16.74 (*6)	15.86 (*6)	56.18 (*6)
b. GDP per Capita/1991(US\$)	2,890.00	2,990.00	6th Rank	130.00	1,580.00	3,780.00
4. Social						
a. Infant mortality (person/1,000)/1990	51.60 (*7)	33.29 (*8)	Better than average rate in Brazil, but worse than average rate in South Region	6.70 (*8)	88.20 (*7)	37.00 (*7)
b. Illiteracy rate/1990 (more than 15 years old)	17.60 (*8)	14.17 (*9)		1.10 (*8)	35.10 (*8)	10.60 (*8)

Remarks: (*1) South Region: Composed by three States (Paraná, Santa Catarina and Rio Grande do Sul)/Shown in Figure-1.1.

(*2) Northeast Region: Composed by nine States (Bahia, Sergipe, Alagoas, Pernambuco, Maranhão, Piauí, Paraíba, Ceará, Rio Grande do Norte)/Shown in Figure-1.1

- considered as developing region in Brazil

(*3) Southeast Region: Composed by four States (São Paulo, Rio de Janeiro, Minas Gerais and Espírito Santo)/Shown in Figure-1.1, considered as developed region in Brazil.

Source: (*4) (*7): * (8): IBGE/Anuário Estatístico do Brasil - 1993 (IBGE/ Statistical Annual of Brazil - 1993).

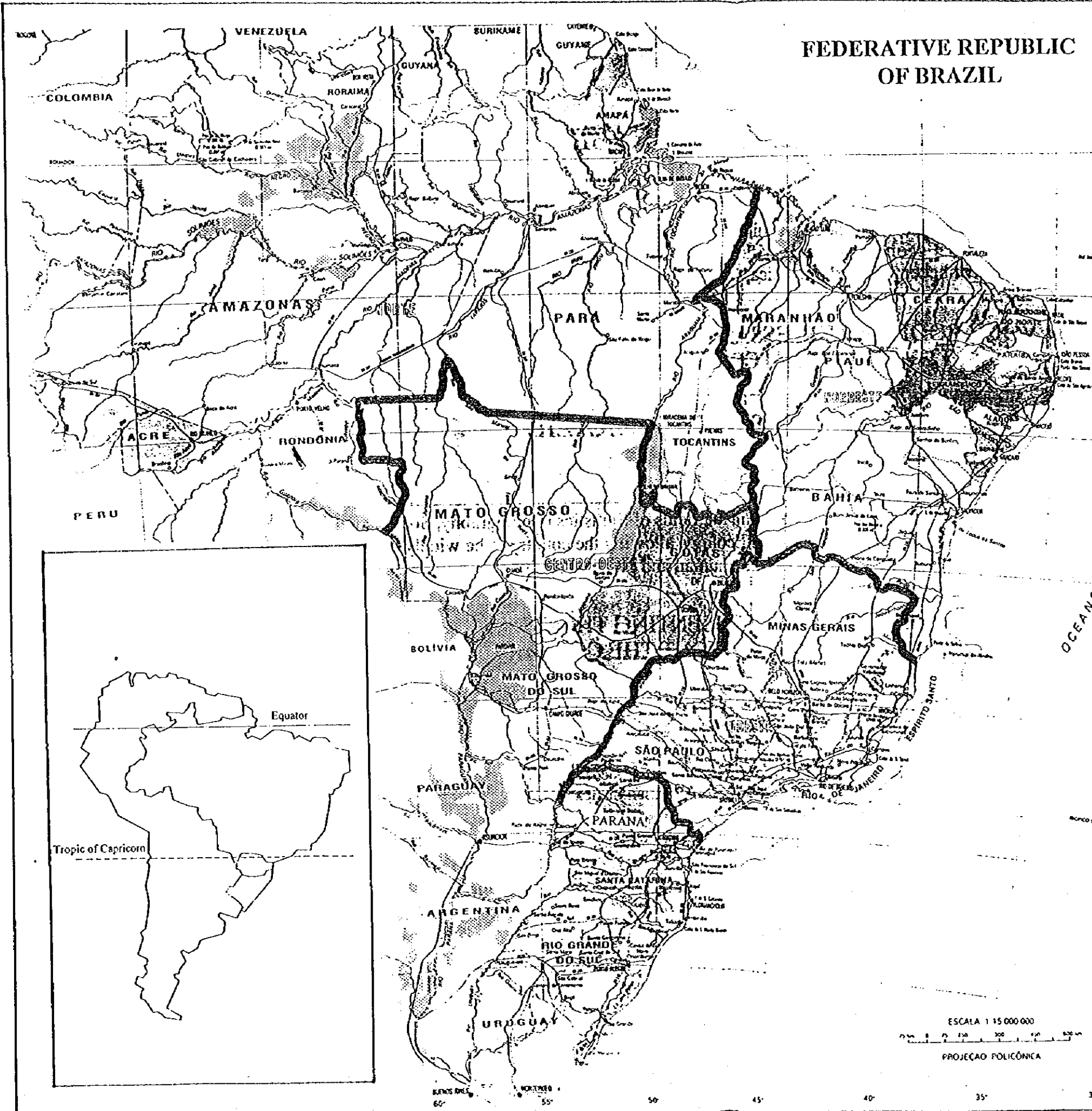
(*5): IPARDES/Paraná Desempenho Macroeconômico - Maio 1994 (Macroeconomic Performance of Paraná - May-1994).

(*6) Conjuntura Econômica Dezembro de 1993 (Economic Conjunction - DEC-1993)

(*8): ISEP/CEPI/SETOR DE MORTALIDADE (Mortality Sector)

(*9): FUNDEPAR/Boletim Informativo - Dados e Informações Educacionais Estimado em 15.30 em 1988 (Fundepar/Informative Report - Educational Data and Information - Estimated 15.30% in 1988)

FEDERATIVE REPUBLIC OF BRAZIL



REGIONS, STATES OF THE FEDERATION, AREA AND POPULATION						
	STATE	AREA (km ²)	POPULATION			
			URBAN	RURAL	TOTAL	
N O R T H	RONDONIA	238,378.7	658,172	472,702	1,130,874	
	ACRE	153,697.5	258,035	159,130	417,165	
	AMAZONAS	1,567,958.7	1,501,807	601,094	2,102,901	
	RORAIMA	225,017.0	139,466	76,484	215,950	
	AMAPA	142,358.5	233,515	55,175	288,690	
	PARA	1,246,833.1	2,609,777	2,571,793	5,181,570	
	TOCANTINS	277,321.9	530,795	389,321	920,116	
	Subtotal	3,851,565.4	5,931,567	4,325,699	10,257,266	
N O R T H E A S T	MARANHAO	329,555.8	1,972,008	2,957,021	4,929,029	
	PIAU	251,273.3	1,366,218	1,214,997	2,581,215	
	CEARA	145,693.9	4,158,059	2,204,561	6,362,620	
	RIO GRANDE DO NORTE	53,166.3	1,668,165	745,956	2,414,121	
	PARAIBA	53,958.2	2,051,576	1,149,101	3,200,677	
	PERNAMBUCO	101,023.4	5,046,535	2,076,013	7,122,548	
	ALAGOAS	29,106.9	1,481,125	1,031,866	2,512,991	
	SERGIPE	21,866.6	1,001,940	489,927	1,491,867	
	BAHIA	566,978.5	7,007,729	4,847,428	11,855,157	
		Subtotal	1,552,622.9	25,753,355	16,716,870	42,470,225
S O U T H E A S T	MINAS GERAIS	586,624.3	11,776,538	3,955,423	15,731,961	
	ESPIRITO SANTO	45,733.0	1,922,828	675,677	2,598,505	
	RIO DE JANEIRO	43,653.3	12,177,144	606,617	12,783,761	
	SAO PAULO	248,255.7	29,272,927	2,273,546	31,546,473	
		Subtotal	924,266.3	55,149,437	7,511,263	62,660,700
	S O U T H W E S T	PARANA	199,323.9	6,192,976	2,250,323	8,443,299
		SANTA CATARINA	95,318.3	3,205,600	1,332,648	4,538,248
RIO GRANDE DO SUL		280,674.0	6,994,134	2,141,345	9,135,479	
		Subtotal	575,316.2	16,392,710	5,724,316	22,117,026
M I D W E S T	MATO GROSSO DO SUL	357,471.9	1,413,095	365,646	1,778,741	
	MATO GROSSO	901,420.7	1,481,073	541,451	2,022,524	
	GOIAS	340,165.9	3,241,119	771,443	4,012,562	
	DISTRITO FEDERAL	5,794.2	1,513,470	84,945	1,598,415	
		Subtotal	1,604,852.7	7,648,757	1,763,485	9,412,242
	TOTAL	8,508,623.5	110,875,826	36,041,633	146,917,459	

(Source) IBGE-CDDI (Center of Data Documentation and Dissemination), Preliminary Synopsis of 1991 Demographic Census

Figure - 1.1 Geographic and Demographic Features of the State of Paraná

Table-1.2 Organs of the Direct Administration in the State of Paraná - 1995

English name	Portuguese name	Abbreviation
1. Governor's Bureau	Governadoria	GOV
2. Vice Governor	Vice Governador	VICE
3. Government Special Assistant	Assessor Especial de Governo	AEG
4. Civil Bureau	Casa Civil	CC
5. Military Bureau	Casa Militar	CM
6. State's General Procuratorship	Procuradoria Geral do Estado	PGE
7. State Secretariat for Planning and General Coordination	Secretaria de Estado do Planejamento e Coordenação Geral	SEPL
8. State Secretariat for Social Communication	Secretaria de Estado da Comunicação	SECS
9. Special Secretary for Housing Policy	Secretário Especial da Política Habitacional	SEPH
10. State Secretariat for Administration	Secretaria de Estado da Administração	SEAD
11. State Secretariat for Treasury	Secretaria de Estado da Fazenda	SEFA
12. State Secretariat for Agriculture and Supplying	Secretaria de Estado da Agricultura e do Abastecimento	SEAB
13. State Secretariat for Culture	Secretaria de Estado da Cultura	SEEC
14. State Secretariat for Urban Development	Secretaria de Estado do Desenvolvimento Urbano	SEDU
15. State Secretariat for Education	Secretaria de Estado da Educação	SEED
16. State Secretariat for Science, Technology and Superior Education	Secretaria de Estado da Ciência, Tecnologia e Ensino Superior	SECT
17. State Secretariat for Health	Secretaria de Estado da Saúde	SESA
18. State Secretariat for Public Security	Secretaria de Estado da Segurança Pública	SESP
19. State Secretariat for Transport	Secretaria de Estado dos Transportes	SETR
20. State Secretariat for Justice and Citizenship	Secretaria de Estado da Justiça e da Cidadania	SEJU
21. State Secretariat for Environment	Secretaria de Estado do Meio Ambiente	SEMA
22. State Secretariat of Government	Secretaria de Estado do Governo	SEEG
23. State Secretariat for Industry, Commerce and Economic Development	Secretaria de Estado da Indústria, Comércio e do Desenvolvimento Econômico	SEID
24. State Secretariat for Child and Family	Secretaria de Estado da Criança e da Família	SECR
25. State Secretariat for Employment and Labor Relations	Secretaria de Estado do Emprego e Relações do Trabalho	SERT
26. State Secretariat for Sports and Tourism	Secretaria de Estado do Esporte e Turismo	SEET
27. State Secretariat for Public Works	Secretaria de Estado de Obras Públicas	SEOP
28. Secretariat for Governor's Chief of Cabinet	Secretaria da Chefia de Gabinete do Governador	SCGG
29. Special Secretary	Secretário Especial	SEDE
30. Special Secretary (Ombudsman)	Secretário Especial (Ouvidor Geral)	SEOG

Source: SEAD/SEPL

Table-1.3 (1) Organs of the Indirect Administration and their Related Institution - 1995

English Name	Portuguese name and abbrev.	Related Institution
Organs of Special Regime		
1. Paraná's Public Library	Biblioteca Pública do Paraná- BPP	SEEC
2. Paraná State Highschool	Colégio Estadual do Paraná -CEPR	SEED
3. Coordination of State's Income	Coordenação da Receita do Estado- CRE	SEFA
4. State Department for Material (Assets) Administration	Departamento Estadual de Administração de Material-DEAM	SEAD
5. State Department of Public File	Departamento Estadual de Arquivo Público -DEAP	SEAD
6. State Department of Official Transport	Departamento Estadual de Transporte Oficial-DETO	SEAD
7. Service of Paraná State Lottery	Serviço da Loteria do Estado do Paraná- SERLOPAR	SEFA
Autarchies (Government-subsidized non-profit organizations)		
1. Administration of the Port of Paranaguá and Antonina	Administração do Porto de Paranaguá e Antonina-APPA	SETR
2. Roadway Department	Departamento de Estradas de Rodagem- DER	SETR
3. Department of State's Official Press	Departamento de Imprensa Oficial do Estado-DIOE	SEJU
4. Department of Transit of Paraná	Departamento de Trânsito do Paraná- DETRAN	SESP
5. State Department of Works, Construction and Maintenance	Departamento Estadual de Construção, Obras e Manutenção-DECOM	SEOP
6. Coordination of the Metropolitan Region of Curitiba	Coordenação da Região Metropolitana de Curitiba-COMEC	SEPL
7. Environmental Institute of Paraná	Instituto Ambiental do Paraná-IAP	SEMA
8. Institute of Weights and Measures of Paraná State	Instituto de Pesos e Medidas do Estado do Paraná-IPEM	SEJU
9. Institute of Welfare and Assistance of Public Officers of Paraná State	Instituto de Previdência e Assistência Aos Servidores do Estado do Paraná-IPE	SEAD
10. Commercial Board of Paraná	Junta Comercial do Paraná- JCP	SEJU
11. Paraná Sport	Paraná Esporte	SEET
12. Paraná Tourism	Paraná Turismo	SEET
13. Superintendence for Erosion Control and Environmental Sanitation	Superintendência do Controle da Erosão e Saneamento Ambiental do Paraná- SUCEAM	SEMA
14. Guaíra Theater Cultural Center	Centro Cultural Teatro Guaíra-CCGT	SEEC
15. Foundation of Social Action of Paraná	Fundação de Ação Social do Paraná- FASPAR	SECR
16. Agronomic Institute of Paraná	Instituto Agrônomico do Paraná-IAPAR	SEAB
17. Institute for Assistance to the Municipalities of the State of Paraná	Instituto de Assistência aos Municípios do Paraná- FAMEPAR	SEDU
18. Institute for Educational Development of Paraná	Instituto de Desenvolvimento Educacional do Paraná-FUNDEPAR	SEED
19. Health Institute of Paraná	Instituto de Saúde do Paraná- ISEPr	SESA
20. Institute of Social and Economic Development of Paraná	Instituto Paranaense de Desenvolvimento Econômico e Social-IPARDES	SEPL
21. Educative Radio and Television of Paraná	Rádio e Televisão Educativa do Paraná- TVE	SEEC
22. Music and Arts School of Paraná	Escola de Música e Belas Artes do Paraná	SECT
23. Arts College of Paraná	Faculdade de Artes do Paraná	SECT
24. Science and Arts College of Campo Mourão	Faculdade de Ciências e Letras de Campo Mourão	SECT
25. Physical Education College of Jacarezinho	Faculdade de Educação Física de Jacarezinho	SECT
26. State College of Economic Science of Apucarana	Faculdade Estadual de Ciências Econômicas de Apucarana	SECT
27. State College of Law of the Norte Pioneiro	Faculdade Estadual de Direito do Norte Pioneiro	SECT
28. State College of Education, Science and Arts of Paranavaí	Faculdade Estadual de Educação, Ciências e Letras de Paranavaí	SECT

Source: SEAD/SEPL

(To be continued)

Table-1.3 (2) Organs of the Indirect Administration and their Related Institution - 1995

(Continuation)

English name	Portuguese name and abbrev.	Related Institution
29. State College of Philosophy, Science and Arts of Cornélio Procopio	Faculdade Estadual de Filosofia, Ciências e Letras de Cornélio Procopio	SECT
30. State College of Philosophy, Science and Arts of Jacarezinho	Faculdade Estadual de Filosofia, Ciências e Letras de Jacarezinho	SECT
31. State College of Philosophy, Science and Arts of Paranaguá	Faculdade Estadual de Filosofia, Ciências e Letras de Paranaguá	SECT
32. State University of Londrina	Universidade Estadual de Londrina-UEL	SECT
33. State University of Maringá	Universidade Estadual de Maringá-UEM	SECT
34. State University of Ponta Grossa	Universidade Estadual de Ponta Grossa-UEPG	SECT
35. State University of Centro Oeste (Middle West)	Universidade Estadual do Centro Oeste - UNICENTRO	SECT
36. State University of the West of Paraná	Universidade Estadual do Oeste do Paraná-UNIOESTE	SECT
37. State University of the Vale do Iguaçu (Iguaçu Valley)	Universidade Estadual do Vale do Iguaçu-UNIVALE	SECT
Public Companies (enterprises)		
1. Technical Assistance and Rural Extension Company of Paraná	Empresa Paranaense de Assistência Técnica e Extensão Rural-EMATER-PR	SEAB
2. Paraná Company for Classification of Products	Empresa Paranaense de Classificação de Produtos-CLASPAR	SEAB
3. Institute of Technology of Paraná	Instituto de Tecnologia do Paraná-TECPAR	SEID
Mixed Economy Societies (institutions)		
1. Paraná Development Bank (in process of extinction/liquidation/closing)	Banco de Desenvolvimento do Paraná-BADEP (em processo de liquidação)	SEFA
2. Bank of the State of Paraná	Banco do Estado do Paraná-BANESTADO	SEFA
3. BANESTADO Leasing SA	BANESTADO Leasing S/A- Arrendamento Mercantil	SEFA
4. BANESTADO SA- Exchange, Titles and Share Broker	BANESTADO S/A-Corretora de Câmbio, Títulos e Valores Mobiliários	SEFA
5. BANESTADO SA-Insurance Company	BANESTADO SA-Corretora de Seguros	SEFA
6. BANESTADO SA- Housing/Real State Credit	BANESTADO S/A-Crédito Imobiliário	SEFA
7. BANESTADO S/A- Computing	BANESTADO S/A- Informática	SEFA
8. BANESTADO S/A- Reforestation	BANESTADO S/A- Reflorestadora	SEFA
9. Supplying Centrals of Paraná	Centrais de Abastecimento do Paraná-CEASA	SEAB
10. Convention Center of Curitiba SA	Centro de Convenções de Curitiba S/A	GOV
11. Agriculture and Livestock Development Company of Paraná	Companhia de Desenvolvimento Agropecuário do Paraná	SEAB
12. Housing Company of Paraná	Companhia de Habitação do Paraná-COHAPAR	GOV/SEPH
13. Computing Company of Paraná	Companhia de Informática do Paraná-CELEPAR	SEPL
14. Sanitation Company of Paraná	Companhia de Saneamento do Paraná-SANEPAR	GOV
15. Energy Company of Paraná	Companhia Paranaense de Energia-COPEL	GOV
16. West of Paraná Railway SA	Estrada de ferro Oeste do Paraná S/A FERROESTE	SETR
17. Minerals of Paraná SA	Minerais do Paraná S/A- Mineropar	SEID

Source: SEAD/SEPL

Table - 1.4 (1) List of Municipalities in the Paraná State with Population, Area and Density of the Population

No./Name of MRH	Name of Municipality	No.	Population - 1993			Area Km ²	Density Popul.
			Urban	Rural	Total		
MRH 268	TOTAL MRH		1,949,779	126,226	2,076,005	8,500.9	244.21
Curitiba	Alm. Tamandaré	1	65,600	7,045	72,645	523.1	138.87
	Araucária	2	59,259	7,680	66,939	460.9	145.23
	Balsa Nova	3	2,627	5,266	7,893	360.3	21.91
	Bocaiúva do Sul	4	2,545	4,996	7,541	831.7	9.07
	Campina G. do Sul	5	15,192	6,750	21,942	600.8	36.52
	Campo Largo	6	55,837	18,791	74,628	1,191.9	62.61
	Colombo	7	120,802	7,404	128,206	198.7	645.22
	Contenda	8	4,925	4,118	9,043	206.2	43.86
	Curitiba	9	1,337,892	---	1,337,892	432.4	3,093.98
	Fazenda Rio Grande	10	26,498	3,401	29,899	173.2	172.61
	Itaperuçu	11	5,017	5,936	10,953	315.0	34.77
	Mandirituba	12	5,405	9,452	14,857	393.9	37.71
	Pinhais	13	75,045	3,843	78,888	60.8	1,297.59
	Piraquara	14	20,482	12,847	33,329	224.9	148.23
	Quatro Barras	15	9,149	1,825	10,974	169.5	64.76
	Rio Branco do Sul	16	20,104	8,191	28,295	835.3	33.87
	São José dos Pinhais	17	122,604	16,652	139,256	899.1	154.88
	Tunas do Paraná	18	796	2,029	2,825	623.3	4.53
MRH 269	TOTAL MRH		145,826	33,639	179,465	5,594.5	32.08
Litoral Paranaense	Antonina	19	13,859	2,980	16,839	845.9	19.91
	Guaraqueçaba	20	1,783	5,963	7,746	1,916.0	4.04
	Guaratuba	21	15,014	3,973	18,987	1,289.6	14.72
	Matinhos	22	12,146	415	12,561	214.9	58.44
	Morretes	23	6,138	6,808	12,946	662.8	19.53
	Paranaguá	24	96,886	13,500	110,386	665.4	165.89
MRH 270	TOTAL MRH		5,478	24,430	29,908	2,667.3	11.21
Alto Ribeira	Adrianópolis	25	1,683	6,991	8,674	1,423.0	6.10
	Cerro Azul	26	3,387	12,812	16,199	465.3	34.82
	Doutor Ulysses	27	408	4,627	5,035	779.0	6.46
MRH 271	TOTAL MRH		6,350	33,468	39,818	1,567.3	25.41
Alto Rio Negro	Agudos do Sul	28	752	5,451	6,203	144.3	43.00
	Piñ	29	1,810	6,464	8,274	284.5	29.08
	Quitandinha	30	2,508	12,239	14,747	452.2	32.61
	Tijucas do Sul	31	1,280	9,314	10,594	686.3	15.44
MRH 272	TOTAL MRH		60,616	46,044	106,660	4,766.0	22.38
Campos de Lapa	Campo do Tenente	32	2,243	3,276	5,519	303.0	18.21
	Lapa	33	20,074	20,809	40,883	2,193.4	18.64
	Palmeira	34	15,221	14,533	29,754	1,449.6	20.53
	Porto Amazonas	35	2,435	1,223	3,658	190.6	19.19
	Rio Negro	36	20,643	6,203	26,846	629.3	42.66
MRH 273	TOTAL MRH		349,228	65,327	414,555	11,728.0	35.35
Campos de Ponta Grossa	Castro	37	41,065	24,987	66,052	3,168.9	20.84
	Piraí do Sul	38	12,568	6,964	19,532	1,437.4	13.59
	Ponta Grossa	39	226,775	12,133	238,908	2,100.3	113.75
	Telêmaco Borba	40	57,538	9,397	66,935	1,689.2	39.63
	Tibagi	41	7,631	8,995	16,626	2,585.8	6.43
	Ventania	42	3,651	2,851	6,502	746.6	8.71
MRH 274	TOTAL MRH		43,660	20,975	64,635	4,458.5	14.50
Campos de Jaguariá	Arapoti	43	12,894	8,786	21,680	1,352.3	16.03
	Jaguariá	44	21,644	5,803	27,447	1,748.4	15.70
	Senges	45	9,122	6,386	15,508	1,357.8	11.42
MRH 275	TOTAL MRH		20,122	34,552	54,674	2,517.8	21.71
São Mateus do Sul	Antônio Olinto	46	675	7,268	7,943	465.2	17.08
	São João do Triunfo	47	2,958	9,679	12,637	718.1	17.60
	São Mateus do Sul	48	16,489	17,605	34,094	1,334.5	25.55
MRH 276	TOTAL MRH		71,821	103,597	175,418	7,394.7	23.72
Col. Itati	Imbituva	49	8,119	18,063	26,182	976.2	26.82
	Itati	50	32,420	16,180	48,600	868.9	55.94
	Mallet	51	5,948	6,146	12,094	700.8	17.26
	Prudentópolis	52	11,724	36,691	48,415	2,461.6	19.67
	Rebouças	53	5,579	7,636	13,215	456.7	28.93
	Rio Azul	54	3,260	9,426	12,686	613.1	20.69
	Teixeira Soares	55	4,771	9,455	14,226	1,317.4	10.80
MRH 277	TOTAL MRH		23,934	72,182	96,116	7,168.6	13.41
Alto Ivaí	Cândido de Abreu	56	4,247	17,653	21,900	1,533.1	14.28
	Ipiranga	57	3,345	9,532	12,877	984.7	13.08
	Ivaí	58	3,145	8,325	11,470	537.8	21.33
	Ortigueira	59	5,444	19,339	24,783	2,394.8	10.35
	Reserva	60	7,753	17,333	25,086	1,718.1	14.60

Source: IPARDES

Remark: Population is a preliminary projection by IPARDES

(To be continued)

Table - 1.4 (2) List of Municipalities in the Paraná State with Population, Area and Density of the Population (Continuation)

No./Name of MRH	Name of Municipality	No.	Population - 1993			Area Km ²	Density Popul.
			Urban	Rural	Total		
MRH 278	TOTAL MRH		96,440	71,394	167,834	6,174.9	27.18
N. V. Wenceslau Braz	Carlópolis	61	6,592	5,522	12,114	408.6	29.65
	Conselheiro Mairinck	62	2,326	1,159	3,485	193.1	18.05
	Curiuva	63	4,380	6,274	10,654	571.4	18.65
	Figueira	64	8,126	2,054	10,180	115.0	88.52
	Guapirama	65	2,625	1,332	3,957	152.5	25.96
	Ibaiti	66	15,510	10,123	25,633	903.5	28.37
	Jaboti	67	1,917	2,346	4,263	124.5	34.23
	Japira	68	1,916	2,816	4,732	226.8	20.87
	Joaquim Távora	69	6,344	3,363	9,707	305.1	31.81
	Pinhalão	70	2,770	2,784	5,554	280.3	19.81
	Quitigua	71	4,636	1,154	5,790	121.1	47.81
	Salto do Itararé	72	3,213	3,000	6,213	206.9	30.03
	Santana do Itararé	73	3,076	2,750	5,826	269.9	21.58
	São José da Boa Vista	74	3,474	4,897	8,371	437.7	19.12
	Sapopema	75	3,119	3,928	7,047	659.7	10.68
	Siqueira Campos	76	9,031	4,907	13,938	283.0	49.26
	Tomazina	77	3,951	7,463	11,414	566.3	20.15
	Wenceslau Braz	78	13,434	5,522	18,956	349.5	54.24
MRH 279	TOTAL MRH		220,756	86,480	307,236	7,256.4	42.34
N. V. Jacarezinho	Abaliá	79	5,428	4,954	10,382	232.7	44.65
	Andirá	80	17,420	2,295	19,715	274.1	71.93
	Bandeirantes	81	24,950	9,323	34,273	467.5	73.31
	Barra do Jacaré	82	1,415	1,622	3,037	128.8	23.58
	Cambará	83	16,773	4,449	21,222	362.3	58.57
	Congonhinhas	84	4,211	3,505	7,716	610.7	12.63
	Cornélio Procopio	85	40,907	6,132	47,039	613.3	76.70
	Itambaracá	86	6,532	3,473	10,005	197.3	50.71
	Jacarezinho	87	30,719	10,201	40,920	587.7	69.63
	Jundiá do Sul	88	2,205	1,822	4,027	264.5	15.22
	Leópolis	89	2,361	2,365	4,726	351.5	13.44
	Nova América da Colina	90	1,880	2,173	4,053	114.7	35.32
	Nova Fátima	91	6,099	2,265	8,364	214.6	38.98
	Ribeirão Claro	92	6,197	4,997	11,194	583.3	19.19
	Ribeirão do Pinhal	93	8,861	4,793	13,654	461.1	29.61
	Santa Amélia	94	2,339	2,284	4,623	110.4	41.88
	Santa Mariana	95	8,416	6,059	14,475	400.8	36.11
	Santo Antônio da Platina	96	27,892	10,883	38,775	711.7	54.48
Santo Antônio do Paraiso	97	1,210	1,168	2,378	140.8	16.89	
Sertaneja	98	4,941	1,707	6,648	428.4	15.52	
MRH 280	TOTAL MRH		49,386	28,412	77,798	2,234.4	34.82
Algodocira de Assaí	Assaí	99	13,249	6,819	20,068	447.4	44.85
	Jataizinho	100	8,565	1,918	10,483	201.8	51.94
	Nova Santa Bárbara	101	2,115	1,552	3,667	72.6	50.49
	Rancho Alegre	102	3,365	1,105	4,470	164.3	27.21
	Santa Cecília do Pavão	103	2,639	2,141	4,780	100.3	47.65
	São Jerônimo da Serra	104	5,234	7,795	13,029	819.1	15.91
	São Sebastião da Amoreira	105	4,859	3,316	8,175	229.7	35.58
	Ural	106	9,360	3,766	13,126	199.1	65.92
MRH 281	TOTAL MRH		738,500	94,994	833,494	10,229.9	81.48
N. N. Londrina	Alvorada do Sul	107	5,933	3,370	9,303	427.5	21.81
	Ângulo	108	1,684	754	2,438	103.9	23.47
	Arapongas	109	61,063	4,275	65,338	379.1	172.35
	Astorga	110	19,000	3,610	22,610	446.6	50.62
	Bela Vista do Paraíso	111	13,116	1,840	14,956	214.3	69.78
	Cafeara	112	1,640	685	2,325	203.2	11.44
	Cambé	113	70,214	6,743	76,957	481.4	159.85
	Centenário do Sul	114	10,195	3,841	14,036	400.7	35.03
	Colorado	115	16,501	3,004	19,505	412.2	47.32
	Florestópolis	116	8,835	3,191	12,026	229.0	52.53
	Flórida	117	1,745	394	2,139	82.4	25.97
	Guaraci	118	4,094	1,374	5,468	215.0	25.44
	Ibiporã	119	32,425	4,079	36,504	302.4	120.72
	Iguaraçu	120	2,736	668	3,404	158.3	21.50
	Itaguajé	121	3,481	1,480	4,961	215.3	23.04
	Jaguapitã	122	7,789	2,772	10,561	463.2	22.80
Lobato	123	3,035	853	3,888	234.1	16.61	
Londrina	124	380,979	21,995	402,974	2,068.6	194.80	
Lupionópolis	125	3,683	674	4,357	107.0	40.74	

Source: IPARDES

Remark: Population is a preliminary projection by IPARDES.

(To be continued)

Table - 1.4 (3) List of Municipalities in the Paraná State with Population, Area and Density of the Population

(Continuation)

No./Name of MRH	Name of Municipality	No.	Population - 1993			Area Km ²	Density Popul.
			Urban	Rural	Total		
MRH 281 (cont.) N. N. Londrina	Miraselva	126	3,223	2,064	5,287	289.6	18.26
	Munhoz de Melo	127	2,023	1,446	3,469	139.2	24.91
	Nossa Senhora das Graças	128	2,278	1,117	3,395	168.8	20.11
	Pitangueiras	129	1,222	1,018	2,240	123.7	18.10
	Porcatu	130	11,566	4,781	16,347	101.1	51.21
	Primeiro de Maio	131	9,922	1,853	11,775	416.1	28.30
	Rolândia	132	34,929	6,774	41,703	467.3	89.24
	Sabáudia	133	3,159	2,207	5,366	185.3	28.96
	Santa Fé	134	6,648	2,018	8,666	282.1	30.72
	Santa Inês	135	1,004	931	1,935	133.7	14.47
	Santo Inácio	136	4,170	1,338	5,508	259.8	21.20
	Sertãoópolis	137	10,188	3,842	14,030	318.7	44.03
	MRH 282	TOTAL MRH		404,731	35,651	440,382	3,627.4
N. Novo de Maringá	Atalaia	138	2,942	1,133	4,075	134.0	30.41
	Doutor Camargo	139	4,462	1,344	5,806	117.3	49.50
	Floraí	140	4,150	1,098	5,248	207.2	25.33
	Floresta	141	3,670	942	4,612	158.1	29.17
	Itambé	142	4,893	1,257	6,150	240.9	25.53
	Ivatuba	143	1,809	676	2,485	93.6	26.55
	Mandaguacu	144	11,676	3,203	14,879	292.1	50.94
	Mandaguari	145	22,031	6,391	28,422	337.5	84.22
	Marialva	146	16,755	6,027	22,782	475.6	47.90
	Maringá	147	244,347	5,955	250,302	486.5	514.47
	Ourizona	148	2,686	987	3,673	174.9	21.00
	Paçandu	149	23,749	1,020	24,769	171.6	144.34
	São Carlos do Ivaí	150	3,527	1,432	4,959	246.8	20.09
	São Jorge do Ivaí	151	4,341	1,464	5,805	318.1	18.25
	Sarandi	152	52,105	1,708	53,813	113.4	474.75
Uniflor	153	1,588	1,014	2,602	59.8	43.52	
MRH 283	TOTAL MRH		205,603	65,124	270,727	10,340.5	26.18
N. Noviss. de Paranaval	Alto Paraná	154	8,451	3,356	11,807	431.5	27.37
	Amaporã	155	3,301	788	4,089	409.7	9.98
	Cruzeiro do Sul	156	2,893	2,075	4,968	216.0	23.00
	Diamante do Norte	157	4,729	2,804	7,533	209.5	35.96
	Guairacá	158	3,132	2,202	5,334	495.0	10.77
	Inajá	159	2,065	549	2,614	195.9	13.34
	Itaúna do Sul	160	3,277	1,396	4,673	136.1	34.34
	Jardim Olinda	161	1,095	342	1,437	136.2	10.55
	Loanda	162	14,347	3,068	17,415	741.7	23.48
	Marilena	163	3,618	3,015	6,633	237.6	27.92
	Mirador	164	1,519	886	2,405	249.0	9.66
	Nova Aliança do Ivaí	165	794	426	1,220	81.7	14.94
	Nova Esperança	166	17,936	5,963	23,899	389.3	61.39
	Nova Londrina	167	11,141	1,684	12,825	275.3	46.58
	Paraiso do Norte	168	7,434	1,540	8,974	190.3	47.15
	Paranacity	169	5,244	3,274	8,518	406.8	20.94
	Paranapoema	170	2,110	421	2,531	117.2	21.60
	Paranaval	171	64,994	6,204	71,198	1,190.6	59.80
	Planaltina do Paraná	172	2,279	1,351	3,630	385.7	9.41
	Porto Rico	173	1,528	1,484	3,012	185.3	16.26
	Pres. Castelo Branco	174	2,317	1,258	3,575	158.9	22.50
	Querência do Norte	175	6,900	3,558	10,458	834.0	12.54
	Sta. Cruz do Monte Castelo	176	6,415	3,774	10,189	442.4	23.03
	Santa Isabel do Ivaí	177	5,874	3,026	8,900	355.7	25.02
	Santa Mônica	178	728	2,194	2,922	257.5	11.35
	Santo Antônio do Caiuá	179	1,845	1,091	2,936	221.6	13.25
	São João do Caiuá	180	4,884	974	5,858	313.2	18.70
São Pedro do Paraná	181	1,356	1,683	3,039	211.2	14.39	
Tamboara	182	2,876	1,581	4,457	180.9	24.64	
Terra Rica	183	10,521	3,157	13,678	684.8	19.97	
MRH 284	TOTAL MRH		214,652	104,770	318,822	7,401.7	43.07
N. N. Apucarana	Apucarana	184	88,221	8,449	96,670	544.4	177.58
	Bom Sucesso	185	4,727	2,215	6,942	321.9	21.57
	Borrazópolis	186	5,436	5,478	10,914	334.2	32.66
	Califórnia	187	4,646	2,570	7,216	146.0	49.43
	Cambira	188	3,104	3,103	6,207	106.9	58.08
	Faxinal	189	11,274	2,965	14,239	995.3	19.33
	Godoy Moreira	190	1,237	3,461	4,698	124.2	37.82
	Grandes Rios	191	4,440	7,104	11,544	611.8	18.87

Source: IPARDES

Remark: Population is a preliminary projection by IPARDES

(To be continued)

Table - 1.4 (4) List of Municipalities in the Paraná State with Population, Area and Density of the Population (Continuation)

No./Name of MRH	Name of Municipality	No.	Population - 1993			Area Km ²	Density Popul.
			Urban	Rural	Total		
MRH 284 (cont.) N. N. Apucarana	Ivaiporã	192	27,786	15,640	43,426	891.1	48.73
	Jandaia do Sul	193	15,550	3,011	18,561	185.1	100.29
	Jardim Alegre	194	6,610	6,348	12,958	443.6	29.21
	Kalore	195	2,862	3,455	6,317	254.2	24.85
	Lidianópolis	196	1,927	4,476	6,403	154.1	41.56
	Lunardelli	197	2,957	4,182	7,139	196.8	36.28
	Marilândia do Sul	198	4,912	4,261	9,173	377.9	24.28
	Marumbi	199	3,079	1,721	4,800	215.0	22.33
	Mauá da Serra	200	3,098	1,404	4,502	107.5	41.89
	Novo Itacolomi	201	878	2,430	3,308	204.1	16.21
	Rio Bom	202	1,715	2,340	4,055	170.4	23.80
	Rosário do Ivaí	203	2,439	6,662	9,101	445.0	20.45
	São João do Ivaí	204	9,987	6,341	16,328	323.8	50.43
São Pedro do Ivaí	205	7,167	2,154	9,321	248.9	37.45	
MRH 285	TOTAL MRH		260,680	137,751	398,431	14,301.1	27.86
N. Noviss. Umuarama	Alto Piquiri	206	9,031	3,100	12,131	442.6	27.41
	Altônia	207	12,176	11,573	23,749	573.9	41.38
	Brasilândia do Sul	208	2,476	1,897	4,373	300.5	14.55
	Cafezal do Sul	209	2,205	3,188	5,393	432.1	12.48
	Cianorte	210	38,837	11,075	49,912	802.5	62.20
	Cidade Gaúcha	211	6,866	1,738	8,604	426.1	20.19
	Cruzeiro do Oeste	212	16,647	6,281	22,928	782.6	29.30
	Douradina	213	3,198	2,845	6,043	300.5	20.11
	Francisco Alves	214	4,131	4,373	8,504	314.5	27.04
	Guaporema	215	1,131	1,099	2,230	222.7	10.01
	Icaralma	216	6,716	4,693	11,409	671.8	16.98
	Indianópolis	217	1,963	2,213	4,176	128.6	32.47
	Iporã	218	13,214	6,111	19,325	606.1	31.88
	Ivaté	219	2,203	4,559	6,762	407.3	16.60
	Japurá	220	4,363	3,492	7,855	152.6	51.48
	Jussara	221	5,054	1,148	6,202	192.3	32.26
	Maria Helena	222	2,832	5,056	7,888	610.9	12.91
	Nova Olímpia	223	3,965	1,222	5,187	141.5	36.67
	Pérola	224	7,448	6,820	14,268	380.8	37.47
	Rondon	225	4,357	3,853	8,210	513.2	16.00
	São Jorge do Patrocínio	226	2,729	6,194	8,923	361.9	24.66
	São Manoel do Paraná	227	896	1,373	2,269	93.7	24.22
	São Tomé	228	2,628	2,267	4,895	252.9	19.35
Tapejara	229	8,503	3,573	12,076	632.4	19.09	
Tapira	230	3,168	4,787	7,955	432.3	18.40	
Terra Boa	231	9,189	4,779	13,968	317.6	43.99	
Tunçiras do Oeste	232	4,944	6,424	11,368	736.8	15.43	
Umuarama	233	75,257	14,053	89,310	1,635.1	54.62	
Vila Alta	234	2,100	2,082	4,182	1,075.3	3.89	
Xambê	235	2,453	5,883	8,336	360.0	23.16	
MRH 286	TOTAL MRH		216,637	113,452	330,089	10,463.8	31.55
Campo Mourão	Araruna	236	5,946	6,113	12,059	492.2	24.50
	Barbosa Ferraz	237	10,882	6,539	17,421	529.3	32.91
	Boa Esperança	238	2,705	4,034	6,739	299.7	22.48
	Campina da Lagoa	239	12,844	7,217	20,061	817.9	24.53
	Campo Mourão	240	74,340	6,980	81,320	773.2	105.17
	Corumbataí do Sul	241	1,783	4,545	6,328	172.0	36.80
	Engenheiro Beltrão	242	8,751	5,836	14,587	467.1	31.23
	Farol	243	1,914	2,445	4,359	299.7	14.54
	Fênix	244	4,030	1,748	5,778	224.4	25.75
	Goio-Erê	245	28,758	11,918	40,676	1,073.8	37.88
	Iretama	246	6,852	8,361	15,213	567.8	26.79
	Janiópolis	247	4,333	5,851	10,184	334.9	30.41
	Juranda	248	3,771	4,991	8,762	357.6	24.50
	Luiziana	249	3,449	5,301	8,750	901.9	9.70
	Mamboré	250	8,583	7,485	16,068	798.3	20.13
	Mariluz	251	8,237	2,417	10,654	391.5	27.21
	Moreira Sales	252	10,568	6,225	16,793	377.4	44.50
	Nova Cantu	253	4,288	6,899	11,187	555.9	20.12
	Peabiru	254	9,215	4,543	13,758	476.4	28.88
Quinta do Sol	255	3,399	1,954	5,353	323.9	16.53	
Rancho A. do Oeste	256	1,989	2,050	4,039	229.0	17.64	

Source: IPARDES

Remark: Population is a preliminary projection by IPARDES.

(To be continued)

Table - 1.4 (5) List of Municipalities in the Paraná State with Population, Area and Density of the Population (Continuation)

No./Name of MRH	Name of Municipality	No.	Population - 1993			Area Km ²	Density Popul.
			Urban	Rural	Total		
MRH 286 (cont.)	Roncador	257	6,454	11,165	17,619	786.8	22.39
MRH 287	Campo Mourão	258	18,810	7,891	26,701	655.8	40.71
	TOTAL MRH		33,770	91,821	125,591	5,350.2	23.47
Pitanga	Altamira do Paraná	259	1,875	5,173	7,048	375.0	18.79
	Laranjal	260	870	5,796	6,666	553.6	12.04
	Manoel Ribas	261	4,916	6,675	11,591	526.2	22.03
	Mato Rico	262	388	5,631	6,019	399.0	15.09
	Nova Tebas	263	2,564	14,833	17,397	525.8	33.08
	Palmital	264	4,899	12,997	17,896	875.7	20.44
	Pitanga	265	16,860	28,831	45,691	2,107.5	21.68
	Santa Maria D'Oeste	266	1,398	11,885	13,283	916.0	14.50
MRH 288	TOTAL MRH		765,866	264,671	1,030,537	20,485.5	50.30
Ext. Oeste Paranaense	Anahy	267	1,499	1,891	3,390	100.8	33.62
	Assis Chateaubriand	268	28,981	9,677	38,658	1,010.3	38.26
	Boa Vista Aparecida	269	3,140	7,020	10,160	247.0	41.13
	Braganey	270	3,110	4,650	7,760	333.7	23.26
	Cafelândia	271	5,977	2,708	8,685	271.9	31.94
	Campo Bonito	272	1,544	3,388	4,932	428.2	11.52
	Capitão Leônidas Marques	273	5,799	5,996	11,795	272.6	43.27
	Cascavel	274	185,746	14,184	199,930	2,016.3	99.16
	Catanduvas	275	5,050	5,693	10,743	553.3	19.42
	Céu Azul	276	5,720	3,637	9,357	1,153.2	8.11
	Corbélia	277	11,316	4,498	15,814	418.6	37.78
	Diamante D'Oeste	278	3,146	5,753	8,899	242.8	36.65
	Diamante do Sul	279	841	3,618	4,459	365.0	12.22
	Entre Rios do Oeste	280	996	1,842	2,838	120.7	23.51
	Formosa do Oeste	281	5,021	6,039	11,060	283.6	39.00
	Foz do Iguaçu	282	204,365	2,613	206,978	422.0	490.47
	Guaíra	283	22,693	6,785	29,478	536.7	54.93
	Guaraniaçu	284	7,965	12,965	20,930	1,625.3	12.88
	Ibema	285	4,382	2,274	6,656	138.5	48.04
	Iguatu	286	1,111	1,778	2,889	107.8	26.79
	Iracema do Oeste	287	2,255	1,150	3,405	81.8	41.63
	Itaipulândia	288	919	3,046	3,965	332.2	11.94
	Jesuítas	289	5,596	6,674	12,270	228.9	53.60
	Lindoeste	290	847	5,472	6,319	440.1	14.36
	Marechal Cândido Rondon	291	21,717	11,914	33,631	922.0	36.48
	Maripá	292	2,197	4,138	6,335	284.6	22.26
	Mateiândia	293	8,529	4,551	13,080	598.5	21.86
	Medianeira	294	30,268	8,392	38,660	791.6	48.84
	Mercedes	295	732	3,346	4,078	197.7	20.61
	Missal	296	3,955	6,159	10,114	358.2	28.24
	Nova Aurora	297	8,565	6,465	15,030	516.1	29.12
	Nova Santa Rosa	298	3,380	3,676	7,056	198.5	35.55
	Ouro Verde do Oeste	299	3,397	2,674	6,071	290.5	20.90
	Palotina	300	18,401	6,123	24,524	591.5	41.46
	Pato Branco	301	1,386	2,046	3,432	131.9	26.02
	Quatro Pontes	302	1,136	2,417	3,553	113.8	31.23
	Ramilândia	303	1,960	1,605	3,565	245.7	14.51
	Santa Helena	304	6,486	11,448	17,934	631.1	28.42
	Santa Lúcia	305	1,874	2,725	4,599	147.8	31.12
	Santa Tereza do Oeste	306	3,370	2,571	5,941	337.6	17.60
	Santa Terezinha Itaipu	307	12,189	2,329	14,518	248.1	58.51
	São José Palmeiras	308	2,403	2,780	5,183	188.0	27.57
	São Miguel do Iguaçu	309	10,321	9,401	19,722	894.1	22.06
	São Pedro do Iguaçu	310	2,527	6,044	8,571	348.8	24.58
	Terra Roxa	311	11,664	7,194	18,858	829.3	22.74
	Toledo	312	75,539	15,008	90,547	1,140.8	79.37
	Três Barras do Paraná	313	4,040	10,060	14,100	507.4	27.79
	Tupãssi	314	5,368	3,154	8,522	301.1	28.31
	Vera Cruz do Oeste	315	6,443	5,100	11,543	332.6	34.70
MRH 289	TOTAL MRH		235,122	238,203	473,325	11,353.0	41.69
Sudoeste Paranaense	Ampére	316	6,043	6,760	12,803	272.2	47.04
	Barracão	317	4,815	9,140	13,955	365.1	38.22
	Boa Esperança Iguaçu	318	541	3,129	3,670	148.6	24.70
	Bom Sucesso do Sul	319	1,036	2,799	3,835	194.7	19.70
	Capanema	320	7,798	10,662	18,460	415.0	44.48
	Chopininho	321	8,437	11,159	19,596	899.1	21.79

Source: IPARDES

Remark: Population is a preliminary projection by IPARDES.

(To be continued)

Table - 1.4 (6) List of Municipalities in the Paraná State with Population, Area and Density of the Population

(Continuation)

No./Name of MRH	Name of Municipality	No.	Population - 1993			Area Km ²	Density Popul.
			Urban	Rural	Total		
MRH 289 (cont.) Sudoeste Paranaense	Coronel Vivida	322	12,518	12,285	24,803	701.0	35.38
	Cruzeiro do Iguaçu	323	2,045	3,136	5,181	161.1	32.17
	Dois Vizinhos	324	21,463	10,350	31,813	423.6	75.10
	Enéas Marques	325	1,423	5,822	7,245	214.1	33.83
	Flor da Serra do Sul	326	304	4,884	5,188	256.6	20.22
	Francisco Beltrão	327	48,417	15,017	63,434	706.8	89.73
	Itapejara do Oeste	328	3,962	4,903	8,865	288.9	30.69
	Mariópolis	329	2,896	3,368	6,264	238.7	26.24
	Marmeleiro	330	6,197	9,225	15,422	342.1	45.08
	Nova Esperança do Sudoeste	331	713	4,730	5,443	198.8	27.38
	Nova Prata do Iguaçu	332	4,147	6,790	10,937	288.0	37.98
	Pato Branco	333	43,856	9,210	53,066	578.1	91.80
	Pérola do Oeste	334	3,219	8,454	11,673	314.2	37.15
	Pinhal de São Bento	335	544	2,193	2,737	97.0	28.20
	Pfaffalto	336	4,064	10,336	14,400	346.8	41.52
	Pranchita	337	2,729	5,579	8,308	267.5	31.06
	Realeza	338	9,173	7,231	16,404	352.6	46.52
	Renascença	339	2,120	5,348	7,468	434.1	17.20
	Salgado Filho	340	1,804	9,278	11,082	351.0	31.58
	Salto do Lontra	341	4,798	8,601	13,399	379.1	35.34
	Santa Izabel do Oeste	342	4,573	7,388	11,961	318.4	37.56
	Santo Antônio do Sudoeste	343	8,554	8,431	16,985	314.4	54.02
	São João	344	4,899	8,343	13,242	391.5	33.83
	São Jorge do Oeste	345	3,746	6,097	9,843	382.4	25.74
	Saudade do Iguaçu	346	1,943	2,656	4,599	146.1	31.48
	Sulina	347	931	3,964	4,895	170.3	28.74
	Verê	348	2,769	7,186	9,955	361.1	27.57
Vitorino	349	2,645	3,749	6,394	306.2	20.88	
MRH 290	TOTAL MRH		179,566	157,625	337,191	12,484.3	27.01
Campos de Guarapuava	Candói	350	1,811	17,459	19,270	1,870.0	10.30
	Cantagalo	351	6,792	20,200	26,992	1,793.2	15.05
	Guarapuava	352	117,385	27,041	144,426	3,503.8	41.22
	Inácio Martins	353	2,527	11,858	14,385	898.4	16.01
	Laranjeiras do Sul	354	19,954	11,473	31,427	967.5	32.48
	Nova Laranjeiras	355	316	12,035	12,351	1,056.3	11.69
	Pinhão	356	10,068	24,076	34,144	2,790.8	12.23
	Quedas do Iguaçu	357	16,343	14,885	31,228	1,199.0	26.04
	Rio Bonito do Iguaçu	358	694	4,502	5,196	881.3	5.90
	Turvo	359	3,065	11,249	14,314	936.3	15.29
	Virmond	360	611	2,847	3,458	251.0	13.78
MRH 291	TOTAL MRH		105,048	75,963	181,011	11,114.8	16.29
Médio Iguaçu	Bituruna	361	5,881	7,170	13,051	1,238.1	10.54
	Clevelândia	362	13,277	4,718	17,995	717.7	25.07
	Cruz Machado	363	2,540	14,275	16,815	1,549.7	10.85
	General Carneiro	364	6,670	5,123	11,793	1,083.4	10.88
	Honório Serpa	365	803	7,075	7,878	654.0	12.05
	Mangueirinha	366	4,783	13,912	18,695	931.3	20.07
	Palmas	367	25,957	9,860	35,817	3,245.2	11.04
	Paula Freitas	368	1,639	3,091	4,730	431.9	10.95
	Paulo Frontin	369	1,648	5,060	6,708	351.8	19.07
	Porto Vitória	370	1,871	1,916	3,787	190.6	19.87
	União da Vitória	371	39,979	3,763	43,742	721.2	60.65

Source: IPARDES

Remark: Population is a preliminary projection by IPARDES.

No. : Number of each Municipality mapped on Figure 1.2

For administrative and operational purposes, defined by the State's Central Government and by the Legislative Assembly, many municipalities were divided into new municipalities. In 1983, twenty new municipalities were installed; in 1986, one new municipality was installed; in 1989, seven new municipalities became a part of Paraná State; in 1990, five new municipalities were installed; and in 1993, forty eight new municipalities were installed. All these new municipalities are shown in Table-1.7 (1) and Table-1.7 (2) with their municipality of origin.

For planning and strategic purposes, the State is divided into 24 Homogeneous Micro-Regions (Microrregiões Homogêneas-MRH, refer to Figure - 1.2), composed of municipalities located in the same area, and with similar characteristics regarding production, transportation, potential for industrial and/or agricultural development, and others. In the socio-economic study of "Strategy for Paraná State", these 24 Homogeneous Micro-Regions are used as regional units.

1.1.3 Population

(1) Total Population of Paraná State

According to the census of 1970, 1980 and 1991, the total population of Paraná State was 6,929,868; 7,629,392 and 8,448,713, respectively. The annual growth rate of 0.95% in Paraná State, during the period from 1970 to 1991 was very low, compared to the growth rate of the whole Brazil (2.12%) and of the South Region of Brazil (1.35%).

Paraná's remarkable characteristic is not only the low populational growth rate, but also concentration of population in urban areas, in other words, migration of rural population to urban centers. In terms of percentage, the average annual population growth indicates 4.41% in urban areas and -3.17% in rural areas. The comparison among Brazil, South Region and Paraná State, regarding population and annual growth rate, is shown in Table-1.5 and Table-1.6.

Table - 1.5 Population of Brazil, South Region and Paraná State.

Year	Zone	Paraná State		South Region		Brazil	
			*(1) %		*(1) %		*(1) %
1970	Urban	2,504,378	36.14	7,434,196	44.56	52,904,744	55.98
	Rural	4,425,490	63.86	9,249,355	55.44	41,603,839	44.02
	Total	6,929,868	100.00	16,683,551	100.00	94,508,583	100.00
1980	Urban	4,472,561	58.62	12,153,971	62.71	82,013,375	67.70
	Rural	3,156,831	41.38	7,226,155	37.29	39,137,198	32.30
	Total	7,629,392	100.00	19,380,126	100.00	121,150,573	100.00
1991	Urban	6,197,953	73.36	16,392,710	74.12	110,875,826	75.47
	Rural	2,250,760	26.64	5,724,316	25.88	36,041,633	24.53
	Total	8,448,713	100.00	22,117,026	100.00	146,917,459	100.00

Source: IBGE and IPARDES

Remark: *(1) Population of Paraná State in 1991 is final result of the Census of 1991, but the population of South Region and Brazil is a preliminary result.

*(2) Percentage of distribution for urban area and rural area.

Table - 1.6 Annual Average Growth Rate of Population (% / year)

Period		Paraná State %	South Region %	Brazil %
1970 - 1980	Urban	5.97	5.04	4.48
	Rural	(-3.22)	(-2.44)	(-0.61)
	Total	0.97	1.50	2.51
1980 - 1991	Urban	3.00	2.76	2.78
	Rural	(-3.15)	(-2.10)	(-0.75)
	Total	0.93	1.21	1.77
1970 - 1991	Urban	4.41	3.84	3.58
	Rural	(-3.17)	(-2.26)	(-0.68)
	Total	0.95	1.35	2.12

Source: IBGE and IPARDES

(2) Characteristics of Regional Population

Based on the census of 1970, 1980 and 1991 the population and its distribution in urban and rural areas per MRH are shown in Table - 1.8. Two remarkable points regarding the movement of the population are observed, as summarized below:

- 1) Urban population has increased in all MRH, even though total population has decreased in some MRH, for example MRH 284 - N. N. Apucarana and MRH 285 - N. N. Umuarama.
- 2) Five regions with high population density, such as the MRH 268 - Curitiba, the MRH 273 - C. de Ponta Grossa, the MRH 281 - N. N. Londrina, the MRH 282 - N. N. Maringá and the MRH 288 - Ext. Oeste Paranaense (Cascavel), occupied approximately 58% of the total urban population in 1970, and their share had increased to 65% in 1991.

From these facts, it can be considered that the migration process in the Paraná State has two directions, as follows:

- a) towards big urban centers, such as Curitiba Metropolitan Area, and local urban centers, for example, Londrina, Maringá, etc.
- b) towards small urban centers located adjacent to rural areas.

Table - 1.7 (1) List of Municipalities Created from the year of 1980 to 1993

Municipalities Created in 1983

No.	Municipality Created	Municipality of Origin
1	Altamira do Paraná	Palmital
2	Boa Vista da Aparecida	Leônidas Marques
3	Braganey	Corbélia
4	Cafelândia	Cascavel
5	Cantagalo	Guarapuava
6	Douradina	Maria Helena
7	Figueira	Curiúva
8	Jesuítas	Formosa do Oeste
9	Juranda	Mamborê
10	Lunardelli	São João do Ivaí
11	Missal	Medianeira
12	Nova Prata do Iguaçu	Santo Antônio do Sudoeste
13	Pranchita	Salto do Lontra
14	Santa Terezinha do Itaipu	Foz do Iguaçu
15	São Jorge do Patrocínio	Altônia
16	Sarandi	Marialva
17	Três Barras do Paraná	Catanduvás
18	Tupãssi	Assis Chateaubriand
19	Turvo	Guarapuava
20	Vera Cruz do Oeste	Céu Azul

Municipality Created in 1986

No.	Municipality Created	Municipality of Origin
1	São José das Palmeiras	Santa Helena

Municipalities Created in 1989

No.	Municipality Created	Municipality of Origin
1	Campo Bonito	Guaraniaçu
2	Corumbataí do Sul	Barbosa Ferraz
3	Diamante do Oeste	Matelândia
4	Luiziana	Campo Mourão
5	Nova Tebas	Pitanga
6	Rosário do Ivaí	Grandes Rios
7	Sulina	Chopinzinho

Municipalities Created in 1990

No.	Municipality Created	Municipality of Origin
1	Godoy Moreira	São João do Ivaí
2	Ibema	Catanduvás
3	Lindoeste	Cascavel
4	Santa Tereza do Oeste	Cascavel / Toledo
5	Ouro Verde do Oeste	Toledo

Source: IPARDES

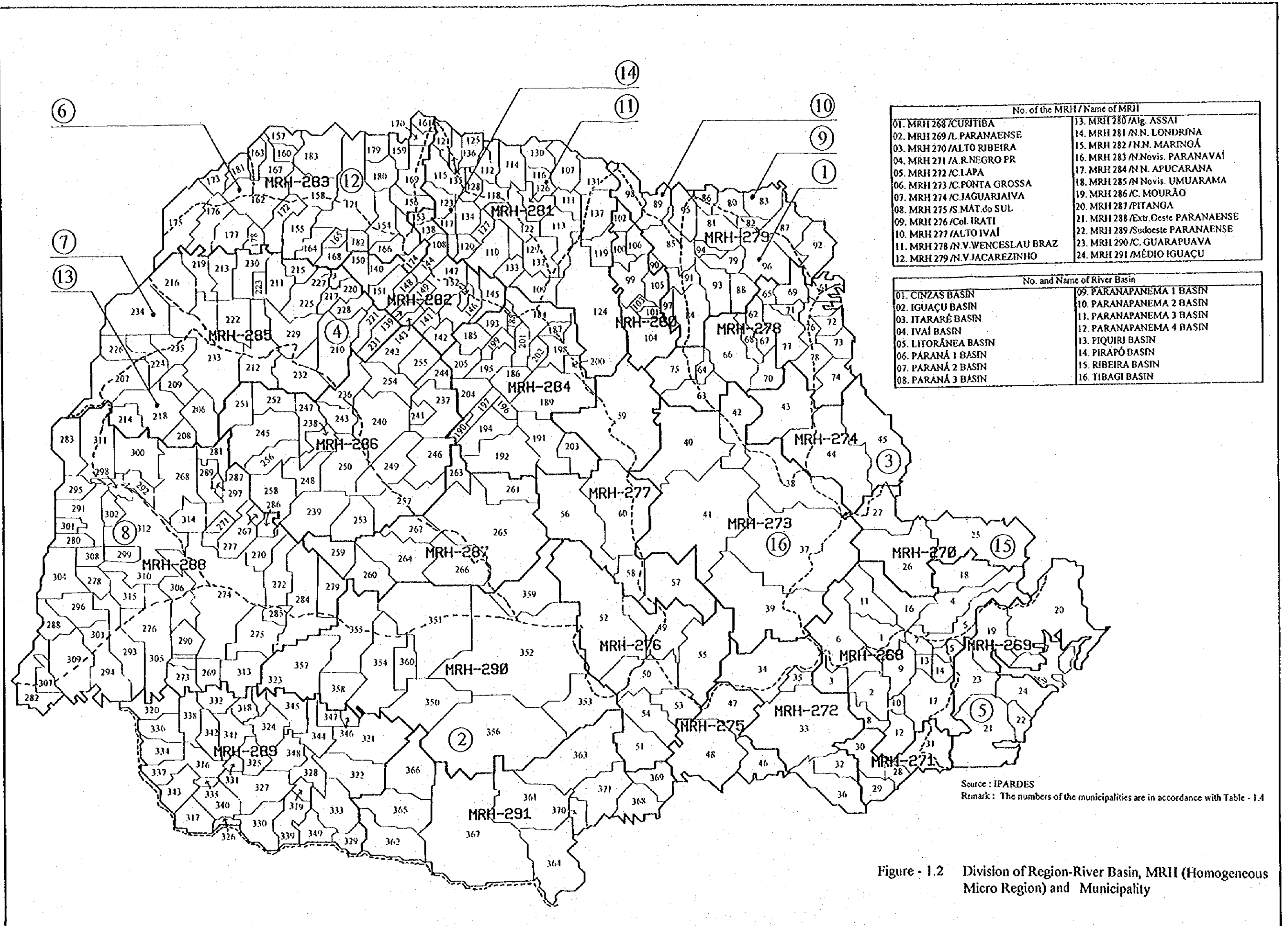
Table - 1.7 (2) List of Municipalities Created from the year of 1980 to 1993

Municipalities Created in 1993

No.	Municipality Created	Municipality of Origin
1	Anahy	Corbélia
2	Iguatu	Corbélia
3	Ângulo	Iguaraçu
4	Boa Esperança do Iguaçu	Dois Vizinhos
5	Cruzeiro do Iguaçu	Dois Vizinhos
6	Bom Sucesso do Sul	Pato Branco
7	Brasilândia do Sul	Alto Piquiri
8	Cafezal do Sul	Iporã
9	Candói	Guarapuava
10	Diamante do Sul	Guaraniaçu
11	Doutor Ulysses	Cerro Azul
12	Farol	Campo Mourão
13	Fazenda Rio Grande	Mandirituba
14	Flor da Serra do Sul	Barracão / Salgado Filho / Marmeleiro
15	Honório Serpa	Mangueirinha
16	Iracema do Oeste	Formosa do Oeste
17	Itaipulândia	São Miguel do Iguaçu
18	Itaperuçu	Rio Branco do Sul
19	Vila Alta	Umuarama
20	Ivaté	Umuarama
21	Laranjal	Palmital
22	Lidianópolis	Jardim Alegre
23	Maripá	Palotina
24	Mato Rico	Pitanga
25	Santa Maria do Oeste	Pitanga
26	Mauá da Serra	Marilândia do Sul
27	Nova Esperança do Sudoeste	Enéas Marques / Salto do Lontra
28	Nova Laranjeiras	Laranjeiras do Sul
29	Rio Bonito do Iguaçu	Laranjeiras do Sul
30	Virmond	Laranjeiras do Sul
31	Nova Santa Bárbara	Santa Cecília do Pavão
32	Novo Itacolomi	Cambira
33	Pinhal de São Bento	Santo Antônio do Sudoeste
34	Pinhais	Piraquara
35	Pitangueiras	Rolândia
36	Quatro Pontes	Marechal Cândido Rondon
37	Pato Bragado	Marechal Cândido Rondon
38	Mercedes	Marechal Cândido Rondon
39	Entre Rios do Oeste	Marechal Cândido Rondon
40	Ramilândia	Matelândia
41	Rancho Alegre D' Oeste	Goioerê
42	Santa Lúcia	Capitão Leônidas Marques
43	Santa Mônica	Santa Izabel Do Ivaí
44	São Manoel do Paraná	Indianópolis
45	São Pedro do Iguaçu	Toledo
46	Saudade do Iguaçu *	Chopininho
47	Tunas do Paraná	Bocaiúva do Sul
48	Ventania	Tibagi

Source: IPARDES

Remark: * Municipality created from the rural part of the Municipality of origin



Source : IPARDES
 Remark : The numbers of the municipalities are in accordance with Table - 1.4

Figure - 1.2 Division of Region-River Basin, MRH (Homogeneous Micro Region) and Municipality

Table - 1.8 Population of Paraná State per MRH - 1970, 1980 and 1991

No of the MRH/Name of Region	1970			1980			1991		
	Urban	Rural	Total	Urban	Rural	Total	Urban	Rural	Total
	01. MRH 268/CURITIBA	656,469	164,764	821,233	1,325,275	115,351	1,440,626	1,877,232	123,573
02. MRH 269/L. PARANAENSE	77,865	34,445	112,310	104,768	32,251	137,019	141,528	33,437	174,965
03. MRH 270/ALTO RIBEIRA	2,470	27,433	29,903	3,257	27,842	31,099	5,188	24,820	30,008
04. MRH 271/A. RIO NEGRO	2,529	26,959	29,488	3,327	28,246	31,573	5,958	32,505	38,463
05. MRH 272/C. LAPA	34,492	43,417	77,909	44,843	42,862	87,705	58,986	45,345	104,331
06. MRH 273/C. PONTA GROSSA	159,410	77,703	237,113	249,833	78,883	328,716	338,225	66,953	405,178
07. MRH 274/C. JAGUARUAIVA	11,128	29,376	40,504	17,438	28,538	45,976	38,898	21,849	60,747
08. MRH 275/S. MAT. do SUL	7,492	33,616	41,108	13,682	30,894	44,576	19,575	33,816	53,391
09. MRH 276/Col. IRAI	36,598	98,159	134,757	49,976	98,491	148,467	69,230	102,442	171,672
10. MRH 277/ALTO IVAI	7,733	84,050	91,783	14,839	97,959	112,798	22,734	75,505	98,239
11. MRH 278/N. V. WENCESLAU BRAZ	45,784	154,817	200,601	65,574	119,824	185,398	92,920	76,431	169,351
12. MRH 279/N. V. JACAREZINHO	134,767	254,191	388,958	169,589	132,989	302,578	216,130	91,437	307,567
13. MRH 280/Alg. ASSAI	28,255	88,143	116,398	35,990	47,713	83,703	47,969	30,452	78,421
14. MRH 281/N. N. LONDRINA	333,024	351,924	684,948	527,638	177,793	705,431	713,505	103,335	816,840
15. MRH 282/N. N. MARINGA	150,387	169,638	320,025	247,364	66,854	314,218	383,102	39,022	422,124
16. MRH 283/N. N. PARANAVAI	123,738	212,722	336,460	168,084	119,391	287,475	202,906	70,780	273,686
17. MRH 284/N. N. APUCARANA	110,531	351,354	461,885	169,930	211,157	381,087	210,412	115,301	325,713
18. MRH 285/N. N. Umuarama	141,465	509,057	650,522	207,169	278,650	485,819	256,354	151,515	407,869
19. MRH 286/C. MOURAO	100,752	431,391	532,143	169,558	234,344	403,902	233,673	143,145	376,818
20. MRH 287/PITANGA	8,053	97,933	105,986	16,249	118,480	134,729	30,996	94,815	125,811
21. MRH 288/Ext. Oeste PARANAENSE	149,516	602,916	752,432	484,504	476,203	960,709	728,448	288,033	1,016,481
22. MRH 289/Sudeste PARANAENSE	80,157	366,203	446,360	166,906	354,343	521,249	225,666	252,460	478,126
23. MRH 290/C. GUARAPUAVA	54,427	135,403	189,830	138,931	157,905	296,836	176,072	157,602	333,674
24. MRH 291/ MEDIO IGUAÇU	47,336	79,876	127,212	77,837	79,866	157,703	102,446	76,187	178,633
TOTAL OF PARANA STATE	2,504,378	4,423,490	6,927,868	4,472,561	3,156,831	7,629,392	6,197,953	2,250,760	8,448,713

Source: Census 1970, 1980 and 1991 / IBGE and IPARDES

1.1.4 GDP-PARANÁ (Gross Domestic Product)

According to information provided by the IPARDES, the GDP-PARANÁ has increased in proportion to the GDP-BRAZIL in the recent ten years, and accounts of 5.96% of the GDP-BRAZIL in 1991. The GDP per Capita has increased 3.7%/year and reached to almost US\$ 3,000 in 1991 (refer to Table - 1.9).

Table - 1.9 GDP - Brazil and Paraná, GDP per Capita - Brazil and Paraná / 1980 - 1991

Year	GDP (Million US\$)				GDP per Capita (US\$)			
	Brazil	%*(1)	Paraná	%*(1)	Brazil	%*(1)	Paraná	%*(1)
1980	228,519		15,288		1,926.43		2,003.93	
1981	239,399	4.76	16,125	5.47	1,979.85	2.77	2,094.16	4.50
1982	255,937	6.92	15,921	(-1.26)	2,076.73	4.89	2,048.77	(-2.19)
1983	256,504	0.21	16,793	5.48	2,041.58	(-1.69)	2,141.14	4.51
1984	280,167	9.23	18,573	10.60	2,187.61	7.15	2,346.23	9.58
1985	310,876	10.96	20,238	8.96	2,381.33	8.87	2,533.23	7.97
1986	342,748	10.25	20,334	0.47	2,575.66	8.16	2,521.89	(-0.45)
1987	366,343	6.88	23,442	15.28	2,700.73	4.86	2,880.31	14.24
1988	378,090	3.21	25,353	8.15	2,734.43	1.25	3,087.31	7.16
1989	405,744	7.31	25,619	1.05	2,878.77	5.28	3,091.10	0.12
1990	403,415	(-0.57)	24,286	(-5.20)	2,807.92	(-2.46)	2,903.29	(-6.08)
1991	423,239	4.91	25,225	3.87	2,890.01	2.92	2,988.04	2.92
Average Annual Growth Rate 1980-1991		5.76		4.66		3.76		3.70

Source: Desempenho Macroeconômico do Paraná - maio/94 (Paraná Macroeconomical Performance May/94) IPARDES

Remark: *(1) Percentage of Annual Growth Rate

The estimated share of GDP-PARANÁ by primary, secondary or tertiary sector, approximately 15%, 31% and 54%, respectively, in 1991, indicates that the economic structure of Paraná has reached those of industrialized countries. The information regarding the GDP and GDP by the three sectors is shown in Table - 1.10. The annual growth rate during the period of 1980 to 1991 of primary, secondary and tertiary sector was of 2.22%, 5.50% and 5.00%, respectively, while the annual growth in GDP-PARANÁ was of 4.66%.

Table - 1.10 GDP - Paraná by Sector / 1980 - 1991

Unit: Million US\$

Year	Primary Sector		Secondary Sector		Tertiary Sector		GDP - Paraná	
	Million US\$	%	Million US\$	%	Million US\$	%	Million US\$	%
1980	2,970.4	19.43	4,404.5	28.81	7,913.1	51.76	15,288.0	100.00
1981	3,302.4	20.48	4,831.1	29.96	7,991.5	49.56	16,125.0	100.00
1982	2,712.9	17.05	4,518.4	28.39	8,684.4	54.56	15,921.0	100.00
1983	2,994.2	17.83	4,854.9	28.91	8,943.9	53.26	16,793.0	100.00
1984	3,679.3	19.81	4,992.4	26.88	9,901.3	53.31	18,573.0	100.00
1985	4,205.5	20.78	5,138.4	25.39	10,894.1	53.83	20,238.0	100.00
1986	3,676.4	18.08	5,130.3	25.23	11,527.3	56.69	20,334.0	100.00
1987	3,938.2	16.80	5,811.3	24.79	13,692.5	58.41	23,442.0	100.00
1988	3,615.3	14.26	6,860.6	27.06	14,877.1	58.68	25,353.0	100.00
1989	3,579.0	13.97	6,740.3	26.31	15,299.7	59.72	25,619.0	100.00
1990	3,408.0	14.03	7,316.0	30.12	13,562.0	55.85	24,286.0	100.00
1991	3,784.0	15.00	7,936.0	31.34	13,535.0	53.66	25,225.0	100.00

Source: Desempenho Macroeconômico do Paraná - Maio/94 (Paraná Macroeconomical Performance May/94) IPARDES

Análise Conjuntural - UI3, N.4, P.6, Abril 1991 (Conjecture Analysis - April 1991) / IPARDES, Fundo de Participação dos Municípios - Índices Provisórios/95 (Municipalities' Participation Fund - Preliminary Indexes/95)

Remark: The share by Sector in 1990 and 1991 was estimated by JICA Team

1.1.5 Gross Regional Domestic Production (GRDP) per MRH

The recent situation of the estimated GRDP of the 24 MRH, from 1980 to 1991, is presented in Table-1.12.

It can be observed that the GRDP of the five big regions (MRH 268/Curitiba, MRH 273/Campos de Ponta Grossa, MRH 281/N.N. Londrina, MRH 282/N.N. Maringá and MRH 288/Extr. Oeste Paranaense) has increased in larger rates than the increase of the urban population. Urban population increased 43% and GRDP increased 84% during the period mentioned above. While the GRDP of the six medium MRH shown in Table-1.11 and the other 13 small MRH has increased in a slightly lower rate than the one of urban population, each urban population increased 29% and 36% and each GRDP increased 29% and 30%, respectively, during the same years. This means that the gap of economic activity, namely "wealth", between the five big MRH and the six medium MRH, and between the six medium MRH and the other 13 small MRH, has widened in the last 10 years.

1.1.6 Present Socio-Economic Framework

The present socio-economic framework can be estimated by classifying the MRH in four categories, as shown in Table-1.11, and it can be observed that MRH 268/Curitiba occupied the share of about 30% and 37%, and the five big MRH mentioned above had the share of 65% and 73% in terms of population and GRDP of Paraná State in 1991, respectively. However, it should be noted that the GRDP of some of the MRH in 1991 was estimated including the contribution to the Value Added of Hydroelectric Power Stations. Four MRH were considerably influenced by this contribution: MRH 288, MRH 289, MRH 290 and MRH 291.

Table - 1.11 Classification of MRH in terms of Urban Population and GRDP per MRH in 1980 and 1991

Category	No./Name of MRH	Urban Population				Gross Regional Domestic Product-GRDP			
		1980		1991		1980		1991	
		Population	%	Population	%	GRDP million US\$	%	GRDP million US\$	%
1st	1 MRH 268/Curitiba	1,325,275	29.63	1,877,232	30.29	5,047.2	33.01	9,263.3	36.72
	6 MRH 273/C. Ponta Grossa	249,833	5.59	338,225	5.46	968.5	6.34	1,538.2	6.10
	14 MRH 281/N. N. Londrina	527,638	11.80	713,505	11.51	1,578.2	10.32	2,182.4	8.65
	15 MRH 282/N. N. Maringá	247,364	5.53	383,102	6.18	667.3	4.37	1,210.1	4.80
	21 MRH 288/Extr. Oeste Paranaense	484,504	10.83	728,448	11.75	1,703.8	11.14	4,153.6	16.46
	Sub-Total	1,509,339	33.75	2,163,280	34.90	4,917.8	32.17	9,084.3	36.01
2nd	12 MRH 279/N. V. Jacarezinho	169,589	3.79	216,130	3.49	578.4	3.78	677.3	2.69
	17 MRH 284/N. N. Apucarana	169,930	3.80	210,412	3.39	412.3	2.70	511.2	2.03
	18 MRH 285/N. Novis. Umuarama	207,169	4.63	256,354	4.14	563.6	3.69	570.1	2.26
	19 MRH 286/Campo Mourão	169,558	3.79	233,673	3.77	696.7	4.56	841.4	3.34
	22 MRH 289/Sudoeste Paranaense	166,906	3.73	225,666	3.64	562.2	3.68	794.9	3.15
	23 MRH 290/ C. de Guaraçuva	138,931	3.11	176,072	2.84	460.5	3.01	824.4	3.27
3rd	Sub-Total	1,022,083	22.65	1,318,307	21.27	3,273.7	21.42	4,219.3	16.73
4th	Other 13 MRH	615,864	13.77	839,134	13.54	2,049.3	13.40	2,658.1	10.54
	Total Paraná State	4,472,561	100.00	6,197,953	100.00	15,288.0	100.00	25,225.0	100.00

Source: Census 1980 and 1991/IBGE and IPARDES - Population, Estatística Econômico-Financeira (Finance Economic Statistics) 78/85, 86/87, 88/89/SEFA - GRDP, and Análise Conjuntural (Conjecture Analysis) UI3, N. 4, P6, Abril 1991/IPARDES-GRDP, Fundo de Participação dos Municípios - Índices Provisórios - 95 (Municipalities' Participation Fund - Preliminary Indexes - 95)/SEFA

Remark: Percentage of GRDP in 1991 was estimated by IPARDES and value of GRDP was estimated by JICA Team
GRDP in 1991 includes estimated contribution to the Value Added of Hydroelectric Power Stations

Table - 1.12 GRDP of Paraná State per MRH - 1980 to 1991

(unit: US\$ million)

No. and NAME of MRH	YEAR										
	1980	1981	1982	1983	1984	1985	1986	1987	1988	1989	1991
01. MRH 268/CURITIBA	5,047.2	5,437.5	5,500.8	5,936.6	6,077.9	5,789.1	6,517.8	8,317.4	8,873.0	9,379.3	9,263.1
02. MRH 269/L. PARANAENSE	544.9	379.9	605.6	386.3	431.9	539.3	377.2	493.9	413.8	385.1	562.9
03. MRH 270/ALTO RIBEIRA	27.9	22.2	12.2	16.9	18.2	29.7	21.5	21.0	35.1	35.5	31.7
04. MRH 271/A. RIO NEGRO	17.4	17.5	17.5	15.9	14.9	21.7	33.9	21.0	17.9	23.0	33.0
05. MRH 272/ C. da LAPA	112.0	164.3	188.1	151.2	162.3	187.4	312.4	214.5	256.4	271.5	273.4
06. MRH 273/C. de PONTA GROSSA	968.5	1,040.7	926.3	1,177.8	1,121.9	1,208.8	1,258.2	1,516.2	1,799.5	1,719.3	1,538.2
07. MRH 274/C. de JAGUARUAIVA	58.6	60.3	53.4	55.1	58.1	143.7	144.0	227.7	240.8	243.2	196.8
08. MRH 275/S. MATEUS do SUL	36.6	36.3	49.2	28.4	37.5	51.2	60.7	51.4	39.7	55.3	67.1
09. MRH 276/Col. de IRATI	140.1	126.7	114.7	111.7	114.9	160.9	189.9	173.2	185.5	191.7	199.9
10. MRH 277/ALTO IVAI	41.6	36.2	33.7	29.7	37.7	53.7	47.8	39.5	36.9	46.9	43.6
11. MRH 278/N. V. DE WENCESLAU B.	135.7	132.7	126.4	103.7	115.5	143.4	153.5	142.0	126.9	141.9	139.3
12. MRH 279/N. V. JACAREZINHO	578.4	595.5	600.7	603.3	807.4	884.7	771.5	800.3	943.8	795.6	677.3
13. MRH 280/ALG. de ASSAI	171.2	158.1	178.6	160.9	221.5	219.4	217.8	202.9	263.0	208.0	140.3
14. MRH 281/N. N. LONDRINA	1,578.2	1,551.5	1,716.5	1,781.3	2,132.2	2,594.0	2,172.9	2,359.9	2,776.8	2,252.6	2,182.4
15. MRH 282/N. N. MARINGA	667.3	737.2	804.7	921.5	964.8	1,106.6	1,056.0	1,377.0	1,720.4	1,649.7	1,210.4
16. MRH 283/N. Noviss. PARANAVAI	362.5	405.5	303.1	372.9	433.3	543.5	481.1	508.0	425.9	462.2	409.0
17. MRH 284/N. N. APUCARANA	412.3	464.4	431.8	425.6	607.2	692.7	667.4	597.9	743.4	632.2	511.2
18. MRH 285/N. Noviss. UMUARAMA	563.6	715.3	493.0	607.1	658.7	963.5	871.0	892.6	605.8	652.3	570.1
19. MRH 286/C. MOURAO	696.7	743.4	682.3	690.1	865.8	927.3	872.7	916.3	1,070.6	817.7	841.4
20. MRH 287/PITANGA	61.8	58.9	53.3	59.1	75.3	78.3	87.1	70.4	86.0	83.6	112.3
21. MRH 288/ENL OESTE PARANAENSE	1,703.8	1,873.9	1,781.5	1,940.9	2,164.7	2,354.5	2,196.9	2,654.2	2,761.3	3,329.9	4,153.6
22. MRH 289/SUDOESTE PARANAENSE	562.2	656.5	593.2	593.9	734.4	785.5	851.9	792.9	848.8	866.1	794.9
23. MRH 290/C. de GUARAPUAVA	460.5	423.1	397.6	396.1	466.7	470.5	596.0	671.1	757.3	909.5	824.4
24. MRH 291/MEDIO IGUAÇU	338.9	287.5	256.7	227.1	250.2	288.9	374.6	380.6	372.4	473.0	448.7
TOTAL PARANA STATE	15,288.00	16,125.00	15,921.00	16,793.00	18,573.00	20,238.00	20,334.00	23,442.00	25,352.00	25,619.00	25,225.00

Source: Análise Conjuntural - UI3, N.4, P.6, Abril 1991 (Conjecture Analysis - April 1991) / IPARDES, Estatística Econômico-Financeira (Economic-Financial Statistics) 74/85, 86/87, 88,89/SEFA, Fundo de Participação dos Municípios - Índices Provisórios - 95 (Municipalities' Participation Funds-Preliminary Indexes-95)/SEFA

Remark: In the figures of some MRH, as for example MRH 288/Ext. Oeste Paranaense, was included the contribution of Hydroelectric Power Stations in 1989 and 1991

1.1.7 Profile of the Economic Sector and Social Sector

(1) Economic Sector

1) Primary Sector (Agriculture, Livestock and Extracting Activities)

According to the Cropping Calendar in Paraná (DERAL, SEAB and CEPA-1990), the participation of Paraná's agriculture in Brazilian agriculture is very high. For example, Paraná is the first Brazilian producer of Cotton, Beans, Maize and Wheat. In terms of GDP, the share of Paraná's GDP in this Brazilian sector was approximately 19.5%, in 1980, and 14.0%, in 1989, respectively, and it is expected to be about 5.6% in the year 2015.

The current GRDP of this sector per MRH is shown in Table-1.19. From this Table, it can be observed that the West and Northwest Regions (MRH 281 to MRH 286; MRH 288 and MRH 289), which occupy around 45% of the area of Paraná State, have approximately 70% of the share in the GDP of this sector in 1989.

2) Secondary Sector (Industry)

According to the information from the Federation of the Industries of Paraná State-FIEP (Federação das Indústrias do Estado do Paraná), there were 20,650 factories in operation in the year of 1990. And the remarkable points are as follows:

- The largest number of factories (approximately 90% of total number of factories) had only about 4% of the share in the Total Sales Value of Paraná State.
- Very few factories (around 0.7% of the total number of factories) occupied about 65% of the share in the Total Sales Value of Paraná State.

In the year of 1994, the number of factories increased to 26,560. The number of industrial establishments (factories) per MRH, classified by type of industrial activity, and current GRDP per MRH by this sector, are shown in Table-1.14 and table-1.20.

From these Tables, it can be noted that only 5 MRH (MRH 268-Curitiba, MRH 273-C. de Ponta Grossa, MRH 281-N. N. Londrina, N. N. MRH 282-Maringá, and MRH 288-Extr. Oeste Paranaense) occupied approximately 80% of the share in GDP by this sector, and about 65% share in terms of number of establishments in the State of Paraná.

3) Tertiary Sector (Commerce and Services)

From a viewpoint of current economic development, this sector has recently made great progress compared to the other two economic sectors mentioned above.

This sector had approximately 52% share in GDP-Paraná in 1980, and increased its share to about 60% in GDP-Paraná in 1989, as shown in Table-1.10. And in terms of regional concentration, the establishments located in 5 MRH (MRH 268-Curitiba, MRH 273-C. de Ponta Grossa, MRH 281-N. N. Londrina, MRH 282-N. N. Maringá, and MRH 288-Extr. Oeste Paranaense), regarding Wholesaler, Retailer and Services, had 66%, 64% and 61% share of the number of establishments in Paraná State, respectively, in the year of 1994, as shown in Table - 1.15, Table - 1.16 and Table - 1.17.

Concerning GRDP of this sector, the 5 MRH mentioned above occupied 73% share in GDP-Paraná on the Tertiary Sector in 1989, as shown in Table - 1.21.

(2) Social Sector

1) Medical Facilities

As one can see from Table-1.22, in the year of 1992, the State of Paraná had 586 Hospitals with 34,467 beds to serve a population of 8,574,042 inhabitants. These figures show that in 1992 there was an average of 40.2 hospital beds for each group of 10,000 inhabitants.

2) Educational Facilities

From Table-1.23, one can note that in Paraná State, in the year of 1993, there was a total of 1,723,205 students enrolled in the 11,468 Primary School establishments, this figure gives an average of 201 students enrolled in Primary School for each group of 1,000 students.

(3) Infrastructure

Road Transport

According to IPARDES and DER, in Paraná State the road network has over 15,000 km of paved roads and more than 245,000 km of non-paved roads. The management of these roads is divided among the Federal, State and Municipal Governments. Under the responsibility of Federal Government there are 3,085 Km of paved roads and 174 km of non-paved roads. Under the State's administration there are 9,806 km of paved roads and 2,172 km of non-paved roads. Finally, under the administration of the municipalities there are 2,418 km of paved roads and 243,634 km of non-paved roads.

Railway Network

According to SETR and IPARDES, the railway network in the State of Paraná has over 2,248 Km, it is administered by a Federal institution named Federal Railway Network SA (Rede Ferroviária Federal S/A- RFFSA). The railway network in Paraná connects the main producing region of the north and middle west of the State to the Capital, Curitiba, to the Port of Paranaguá and Antonina, and to other Brazilian States, like São Paulo and Santa Catarina.

Another important railway is under construction in Paraná State, the FERROESTE (Paraná West Railway), it is formed by public and private capital and it will connect the west of the State (Guaira and Cascavel) to the Port of Paranaguá, using already existing railway facilities from the municipality of Guarapuava until the Port of Paranaguá, increasing the railway network in more than 424 km.

Airway Transport

According to IPARDES information, in the State of Paraná there are airports in all the State's regions. There are 38 paved airports with all the required administrative and operational infrastructure, among them it shall be mentioned the International Airport of Foz do Iguaçu and the Affonso Pena Airport, which will be named international airport within this year of 1995, in the Metropolitan Region of Curitiba. In addition to these 38 paved airports, there are over 40 small airports all registered at Civil Aviation Department (Departamento de Aviação Civil -DAC).

Sea Port

The State of Paraná is in charge of the administration of the Ports of Paranaguá and Antonina through an concession granted by Federal Government. The Port of Antonina regardless being part of the complex is hardly used, and, therefore, has no economic importance. On the other hand, the Port of Paranaguá, according to IPARDES data, is the 4th ranked Brazilian port in terms of movement of exported and imported cargo, reaching an yearly average of 14,5 million tons from 1989 and on.

The access channel to the Port of Paranaguá has 15 miles of length with 150/200 meters of width and 12 meters depth. Its commercial pier has 2,456 meters length and 13 ships can be loaded or unloaded at the same time. There are other 160 meters under construction and a terminal for containers only. Also the Port has two terminals for liquid type cargo (gas, fuel, vegetable oil and chemical products).

Telecommunications

According to IPARDES and TELEPAR data, the State of Paraná has a modern telecommunication network formed by a high capacity transmission ring which connects the State's main cities. The small towns converge to the regional centers and from them to the National Telecommunications Network, so every village with over 200 inhabitants has telecommunication service in Paraná State.

According to IPARDES data, in 1992 there were in Paraná State 1,067,445 operating telephones, in addition to 13,068 public telephones and 2,405 telephone service facilities.

Imports and Exports

According to IPARDES data, the values, in US\$ dollars FOB, of the imports and exports of Paraná State from 1990 to 1992 are shown below:

Table-1.13 Imports and Exports of Paraná State, from 1990, 1991 and 1992.

(Unit: US\$ 1,000.00 FOB)

	1990	1991	1992
Imports	626,179.00	739,492.00	644,781.00
Exports	1,868,168.00	1,870,230.00	2,110,055.00

Source: IPARDES

Remark: Figure of imports in 1992 was only from January to November of 1992

Table - 1.14 PARANÁ - Number of Industrial Establishments, According to the MRH and Classified by Type of Activity - 1994

Homogeneous Micro-Regions	NUMBER OF INDUSTRIAL ESTABLISHMENTS CLASSIFIED BY TYPE OF ACTIVITY																				TOTAL				
	0	10	11	12	13	14	15	16	17	18	19	20	21	22	23	24	25	26	27	28	29	30	33	P/MRH	P/AMR
01.MRH 268/CURITIBA	259	990	862	398	284	158	564	816	94	32	70	234	52	135	209	112	1264	911	46	2	438	347	958	9235	34.77
02.MRH 269/L. PARANAENSE	20	29	37	6	-	3	19	18	4	-	-	20	-	2	-	1	12	126	6	-	19	7	24	353	1.33
03.MRH 270/ALTO RIBEIRA	16	3	1	1	1	-	14	1	-	-	-	-	-	-	-	-	1	4	-	-	-	-	-	42	0.16
04.MRH 271/A.R.NEGRO PR	15	8	5	-	-	1	26	9	2	-	1	1	-	4	1	1	2	12	-	-	3	-	1	92	0.35
05.MRH 272/C. LAPA	24	28	29	8	2	2	63	39	5	1	11	2	-	4	2	6	21	31	-	2	6	3	12	301	1.13
06.MRH 273/C. PONTA GROSSA	68	75	88	33	12	17	171	58	12	3	-	21	2	4	5	17	86	124	10	-	24	18	44	892	3.36
07.MRH 274/C. JAGUARIATVA	16	13	8	-	-	-	59	2	6	-	-	-	-	-	-	1	6	14	-	-	1	-	6	132	0.5
08.MRH 275/S. MAT. do SUL	8	18	5	3	-	1	33	3	-	-	1	2	-	2	-	-	5	38	1	-	3	1	2	126	0.47
09.MRH 276/Col. TRATI	4	105	34	7	3	3	146	35	5	2	8	7	-	2	-	13	67	99	1	2	7	2	4	556	2.09
10.MRH 277/ALTO IVAJ	2	30	6	-	-	-	22	7	1	-	1	-	-	1	-	1	1	24	-	-	3	-	2	101	0.38
11.MRH 278/N.V.WENCESL.BRAZ	34	68	24	5	1	3	25	15	1	-	4	1	-	7	2	1	25	112	12	-	9	4	5	358	1.35
12.MRH 279/N.V. JACAREZINHO	44	72	64	10	4	6	27	39	1	4	2	10	1	10	8	18	62	223	11	-	20	10	25	671	2.53
13.MRH 280/Alc. ASSAI	7	37	9	5	-	1	7	8	-	-	-	2	-	2	-	17	15	49	4	-	4	4	1	172	0.65
14.MRH 281/N.N. LONDRINA	33	158	200	91	69	73	121	308	30	6	41	66	4	48	53	70	651	595	28	1	91	115	177	3029	11.4
15.MRH 282/N.N. MARINGA	7	99	145	39	19	38	35	146	6	13	12	28	10	32	15	30	340	312	14	-	46	52	153	1591	5.99
16.MRH 283/N.N. Novis. PARANAVAI	25	93	62	10	4	23	47	72	3	2	8	8	-	9	4	10	123	216	3	-	18	17	9	766	2.88
17.MRH 284/N.N. APUCARANA	4	52	65	13	7	18	59	70	6	4	11	15	3	10	14	12	210	243	6	-	17	25	13	877	3.3
18.MRH 285/N.N. Novis. UMUARAMA	25	77	53	17	9	25	81	102	2	4	11	18	1	9	7	18	330	309	7	-	33	14	20	1172	4.41
19.MRH 286/C. MOURAO	8	60	52	6	5	11	58	59	6	1	4	8	-	10	3	33	142	178	1	1	25	7	24	702	2.64
20.MRH 287/PTIANGA	1	7	5	-	-	-	34	10	7	-	1	2	-	-	-	-	7	60	1	-	4	1	1	141	0.53
21.MRH 288/Ext.Oest.Paranaense	29	236	322	62	27	50	229	314	15	11	7	31	7	39	15	46	411	387	12	-	88	44	98	2480	9.34
22.MRH 289/Sudoest.Paranaense	24	110	144	30	17	20	210	159	4	10	8	13	1	10	4	27	224	222	5	1	30	13	32	1318	4.96
23.MRH 290/C. GUARAPUAVA	5	33	53	13	1	8	256	46	26	2	4	3	2	5	1	6	50	121	4	-	18	13	21	691	2.6
24.MRH 291/MEDIO IGUAÇU	8	30	37	7	3	6	337	74	21	2	1	1	2	7	3	6	38	131	-	3	15	18	15	765	2.88
TOTAL of the State - Quantity	686	2431	2310	764	468	467	2643	2410	257	97	206	493	85	352	346	446	4093	4541	172	12	922	715	1647	26563	
Participation per Type	2.58	9.15	8.7	2.88	1.76	1.76	9.95	9.07	0.97	0.37	0.78	1.86	0.32	1.33	1.3	1.68	15.41	17.1	0.65	0.05	3.47	2.69	6.2		100

Source: Sistema de Informações sobre a Indústria e Comércio 10/02/94 (Information System of the Industry and Commerce Feb 10, 94) SICSEIC

Remark: Percentage is participation in the Total

Table - 1.15 PARANÁ - Number of Commercial Establishments, According to the MRH and Classified by Sub-group of Activity - 1994
WHOLESALE

	NUMBER OF ESTABLISHMENTS CLASSIFIED BY SUB-GROUP OF ACTIVITY																				TOTAL		
	430	431	432	433	434	435	436	437	438	439	440	441	442	443	444	449	P/MRH	P/MRH	%				
Homogeneous Micro-Regions	430	431	432	433	434	435	436	437	438	439	440	441	442	443	444	449 <td>P/MRH</td> <td>P/MRH</td> <td>%</td>	P/MRH	P/MRH	%				
01.MRH 268/CURITIBA	38	1091	188	169	70	402	131	189	103	100	135	213	135	20	28	55	3067	30.64					
02.MRH 269/L. PARANAENSE	24	178	6	12	3	16	9	-	16	3	45	4	5	1	2	2	326	3.26					
03.MRH 270/ALTO RIBEIRA	3	3	-	-	-	-	1	-	-	-	1	-	1	-	-	-	9	0.09					
04.MRH 271/A. R. NEGRO PR	2	31	1	-	1	-	-	-	-	-	1	-	-	-	2	-	38	0.38					
05.MRH 272/C. LAPA	5	78	4	5	-	2	-	-	1	-	7	-	2	-	4	-	106	1.06					
06.MRH 273/C.PONTA GROSSA	28	144	18	12	3	41	6	15	13	7	8	5	9	3	8	-	320	3.20					
07.MRH 274/C. JAGUARAIVA	4	12	-	1	1	1	1	2	3	1	1	-	-	-	2	-	29	0.29					
08.MRH 275/S. MAT do SUL	3	27	-	-	-	-	-	-	2	-	1	-	-	-	-	-	33	0.33					
09.MRH 276/Col. IRAI	8	139	-	2	-	6	2	4	2	1	6	-	1	2	4	3	180	1.80					
10.MRH 277/ALTO IVAI	1	27	-	1	-	-	-	1	-	-	-	-	-	-	-	-	30	0.30					
11.MRH 278/N. V. WENCESL. BRAZ	7	203	8	2	3	1	1	2	1	-	3	-	2	3	2	3	241	2.41					
12.MRH 279/N. V. JACAREZINHO	20	182	3	7	1	8	4	7	10	-	7	-	2	5	5	6	267	2.67					
13.MRH 280/AE. ASSAI	2	32	-	3	-	3	-	4	1	-	1	-	-	-	3	-	49	0.49					
14.MRH 281/N. N. LONDRINA	54	466	71	108	20	109	71	46	42	42	23	2	51	23	32	14	1174	11.73					
15.MRH 282/N. N. MARINGA	22	235	28	127	9	41	35	23	36	11	32	7	16	11	8	8	649	6.48					
16.MRH 283/N. Novis. PARANAVAL	11	80	4	3	1	9	3	-	7	-	2	1	6	-	7	-	134	1.34					
17.MRH 284/N. N. APUCARANA	27	254	16	36	2	14	10	5	8	3	1	-	12	7	4	1	400	4.00					
18.MRH 285/N. Novis. UMUARAMA	22	297	12	101	4	13	9	10	18	3	9	2	11	2	10	2	525	5.24					
19.MRH 286/C. MOURAO	24	118	7	6	1	6	-	2	8	2	2	-	6	2	7	5	196	1.96					
20.MRH 287/PITANGA	2	32	3	-	-	1	-	-	2	-	-	-	-	-	-	-	40	0.40					
21.MRH 288/Ext. Oeste. Paranaense	65	489	34	104	20	106	37	57	48	17	226	167	22	12	29	8	1441	14.39					
22.MRH 289/Sudoest. Paranaense	30	269	20	21	11	22	7	10	7	3	24	3	7	-	5	1	440	4.40					
23.MRH 290/C. GUARAPUAVA	13	103	5	4	1	15	4	1	22	-	11	-	4	2	2	2	189	1.89					
24.MRH 291/MEDIO IGUAÇU	7	70	-	6	1	16	1	8	5	3	4	-	2	-	4	1	128	1.28					
TOTAL of the State - Quantity	422	4560	428	728	152	832	332	386	355	196	550	404	294	93	168	111	10011						
Participation by Sub-Group %	4.21	45.54	4.27	7.27	1.51	8.31	3.31	3.85	3.54	1.95	5.49	4.03	2.93	0.92	1.67	1.1	100.00						

Source: Sistema de Informação da Indústria e Comércio 10/02/94 (Information System of the Industry and Commerce Feb 10, 94) - SIC/SEIC

Table - 1.16 PARANÁ - Number of Commercial Establishments, According to the MRH and Classified by Sub-group of Activity - 1994
RETAILING

	NUMBER OF ESTABLISHMENTS CLASSIFIED BY SUB-GROUP OF ACTIVITY																				TOTAL		%
	411	412	413	414	415	416	417	418	419	420	421	422	423	424	429	P/MRH	P/MRH						
Homogeneous Micro-Regions	411	412	413	414	415	416	417	418	419	420	421	422	423	424	429	P/MRH	P/MRH						
01.MRH 268/CURITIBA	8662	1499	6205	1482	3161	2595	1577	548	1668	983	646	2353	187	128	189	31833	31.73						
02.MRH 269/L. PARANAENSE	879	91	540	51	216	127	32	62	64	104	36	142	16	5	5	2370	2.36						
03.MRH 270/ALTO RIBERA	152	7	23	3	12	11	1	3	1	21	4	1	1	-	-	240	0.24						
04.MRH 271/A.R.NEGRO PR	161	13	31	9	14	8	-	10	2	49	3	6	1	5	-	312	0.31						
05.MRH 272/C. LAPA	479	55	218	32	54	69	19	29	24	57	14	56	7	28	3	1144	1.14						
06.MRH 273/C.PONTA GROSSA	1461	193	947	163	380	435	103	134	98	159	41	257	42	53	6	4472	4.46						
07.MRH 274/C. JAGUARAIVA	230	28	139	26	55	39	9	22	17	26	4	22	5	6	1	629	0.63						
08.MRH 275/S.MAT 60 SUL	188	24	79	14	32	31	8	12	7	51	14	27	2	6	-	495	0.49						
09.MRH 276/Col. IRATI	574	56	300	42	58	101	26	47	22	142	23	70	4	29	2	1496	1.49						
10.MRH 277/ALTO IVAI	288	25	101	13	31	32	3	24	9	43	3	13	-	20	-	605	0.60						
11.MRH 278/N.V.WENCESL. BRAZ	583	96	391	59	90	91	9	57	23	129	2	47	2	28	7	1614	1.61						
12.MRH 279/N.V.JACAREZINHO	960	188	762	123	240	300	46	113	55	138	21	150	8	46	19	3169	3.16						
13.MRH 280/Alg. ASSAI	260	39	140	17	57	47	7	29	11	25	5	14	2	19	1	673	0.67						
14.MRH 281/N.N. LONDRINA	3016	531	1881	479	954	931	317	275	175	293	44	570	71	79	46	9662	9.63						
15.MRH 282/N.N. MARINGÁ	1452	335	1027	269	536	559	183	132	84	220	36	314	33	42	26	5248	5.23						
16.MRH 283/N.Novis. PARANAÍVAI	900	177	681	114	217	274	41	110	41	122	35	133	19	38	7	2909	2.90						
17.MRH 284/N.N. PUCARANA	1122	205	694	141	211	300	65	107	55	129	17	135	26	39	19	3265	3.25						
18.MRH 285/N.Novis. UMUARAMA	1483	271	1122	184	386	405	67	142	61	149	20	234	34	44	12	4614	4.60						
19.MRH 286/C. MOURAO	1215	207	770	148	223	329	65	126	44	151	18	175	16	33	16	3536	3.52						
20.MRH 287/PITANGA	256	45	136	31	37	40	9	24	7	106	5	26	5	14	-	741	0.74						
21.MRH 288/Ext.Oest. Paranacense	2710	725	2895	651	1033	1400	391	403	272	860	189	707	60	187	47	12530	12.49						
22.MRH 289/Sudoest. Paranacense	940	354	1010	227	319	523	180	165	77	320	31	282	24	43	7	4502	4.49						
23.MRH 290/C. GUARAPUAVA	831	121	499	74	166	229	79	86	64	238	35	117	20	48	10	2617	2.61						
24.MRH 291/MEDIO IGUAÇU	479	60	344	50	102	161	54	56	41	158	17	87	14	23	13	1659	1.65						
TOTAL of the State - Quantity	29281	5345	20935	4402	8584	9037	3291	2716	2922	4673	1263	5938	599	963	436	100335							
Participation per Type %	29.16	5.32	20.85	4.38	8.55	9	3.27	2.7	2.91	4.65	1.25	5.91	0.59	0.95	0.43		100.00						

Source: Sistema de Informação da Indústria e Comércio 10/02/94 (Information System of the Industry and Commerce Feb 10, 94) - SIC/SEIC

Table 1.17 PARANÁ - Number of Establishments of Services per MRH, According to the Classification of Type of Activity in Paraná State / 1994
SERVICES

Homogeneous Micro-Regions	NUMBER OF ESTABLISHMENTS CLASSIFIED BY TYPE OF ACTIVITY																				TOTAL %	
	45	46	47	48	51	52	53	54	55	56	57	58	59	60	61	62	63	64	66	P/MRH	P/MRH	
01.MRH 268/CURITIBA	3	13	1207	36	5544	202	16	27	237	28	-	-	-	-	12	10	3	-	-	7338	28.31	
02.MRH 269/L. PARANAENSE	-	-	82	1	1081	22	2	12	87	-	-	-	-	-	-	-	-	-	-	1287	4.96	
03.MRH 270/ALTO RIBEIRA	-	-	3	-	38	-	-	-	-	-	-	-	-	-	-	-	-	-	-	41	0.15	
04.MRH 271/A.R.NEGRO PR	-	-	9	-	62	3	1	-	-	-	-	-	-	-	-	-	-	-	-	75	0.28	
05.MRH 272/C. LAPA	-	-	66	-	229	9	1	3	6	-	-	-	-	-	-	-	-	-	-	313	1.2	
06.MRH 273/C.PONTA GROSSA	-	-	277	4	956	44	1	9	21	1	-	-	-	-	2	-	-	-	-	1315	5.07	
07.MRH 274/C. JAGUARAJVA	-	-	41	-	166	4	-	-	2	-	-	-	-	-	-	-	-	-	-	213	0.82	
08.MRH 275/S.MAT do SUL	-	-	1	-	118	5	-	2	1	-	-	-	-	-	-	1	-	-	-	128	0.49	
09.MRH 276/Col. IRATI	-	-	39	1	271	21	1	5	2	-	-	-	-	-	-	2	-	-	-	342	1.31	
10.MRH 277/ALTO IVAI	-	-	11	-	126	5	-	1	-	-	-	-	-	-	1	-	-	-	-	144	0.55	
11.MRH 278/N.V.WENCESL. BRAZ	-	-	18	-	462	14	3	1	6	-	-	-	-	-	-	-	-	-	-	504	1.94	
12.MRH 279/N.V.JACAREZINHO	-	-	82	-	838	39	11	3	15	-	-	-	-	-	-	1	-	-	-	989	3.81	
13.MRH 280/Aig. ASSAI	-	-	4	-	205	10	1	-	3	-	-	-	-	-	-	-	-	-	-	223	0.86	
14.MRH 281/N.N. LONDRINA	-	-	297	7	2248	38	3	4	59	2	-	-	-	-	-	3	-	-	-	2661	10.26	
15.MRH 282/N.N. MARINGA	-	-	132	5	929	62	6	4	31	5	-	-	-	-	2	-	-	-	-	1176	4.53	
16.MRH 283/N.Novis.PARANAVAI	-	-	40	-	594	22	1	1	15	-	-	-	-	-	-	-	-	-	-	673	2.59	
17.MRH 284/N.N.LAPUCARANA	-	-	81	-	683	26	-	2	18	-	-	-	-	-	-	1	-	-	-	811	3.12	
18.MRH 285/N.Novis.UMUARAMA	-	-	79	2	790	30	6	1	16	-	-	-	-	-	-	6	1	-	-	931	3.59	
19.MRH 286/C. MOURAO	-	-	55	-	778	31	1	4	13	-	-	-	-	-	-	-	-	-	-	882	3.4	
20.MRH 287/PITANGA	-	-	12	-	170	1	-	1	1	-	-	-	-	-	-	-	-	-	-	185	0.71	
21.MRH 288/Ext.Oest. Paranaense	-	3	572	3	2445	135	2	32	53	1	-	-	-	-	2	21	-	-	-	3269	12.61	
22.MRH 289/Sudoest. Paranaense	-	-	299	1	911	39	1	3	39	-	-	-	-	-	2	4	-	-	-	1299	5.01	
23.MRH 290/C. GUARAPUAVA	-	-	74	1	471	29	-	-	17	-	-	-	-	-	2	-	-	-	-	594	2.29	
24.MRH 291/MEDIO IGUAÇU	-	-	82	1	398	26	3	2	3	-	-	-	-	-	1	3	-	-	-	519	2	
TOTAL of the State - Quantity	3	16	3562	62	20513	817	60	117	645	37	-	-	-	-	24	52	4	-	-	25912		
Participation by Sub-Group %	0.01	0.06	13.74	0.23	79.16	3.15	0.23	0.45	2.48	0.14	0	0	0	0	0.09	0.2	0.01	0	0		100	

Source: Information System of the Industry and Commerce - SIC/SEIC - 10/02/94

Table - 1.18 Code of the Type of Activity (Industry, Commerce and Service)

Code of the Types of Table 1.14			
00 - Extraction of Minerals	15 - Wood	21 - Pharmaceutical and Veterinary Products	27 - Beverage
10 - Production of Non Metallic Minerals	16 - Furniture	22 - Perfumery, Soaps and Candles	28 - Tobacco
11 - Metallurgy	17 - Paper and Cardboard	23 - Production of Plastic Materials	29 - Editorial and Graphical Art
12 - Mechanics	18 - Rubber	24 - Textile	30 - Diverse
13 - Electrical and Communication Material	19 - Leather, Skins and Similar Products	25 - Clothing, Footwear and Fabric	31 - Civil Construction
14 - Transportation Material	20 - Chemicals	26 - Food Products	

Code of the Types of Table 1.15			
411 - Food Products	415 - Hardware, Metal Products, Construc. Material, Sanitary Articles	418 - Fuels and Lubricants	422 - Diverse Articles
412 - Pharmaceutical Products	416 - New and Used Vehicles	419 - Paper, Printed Matter & Paper Articles for Book Stores, Stationers & Offices	423 - Used Articles
413 - Fabric and Fabric Products	417 - Industrial, Commercial and Technical Machines, Devices and Equipment	420 - Goods in general & Food Products	424 - Products for Agriculture and Animal Breeding
414 - Electric and Non-Electric Machines and Devices for Domestic Use		421 - Goods in general - no Food Products	429 - Administrative and Auxiliary Activities

Code of the Types of Table 1.16			
430 - Extractive, Agricul.&Animal Breeding Products - no Food Products	434 - Electric and Non-Electric Machines and Devices for Domestic Use	437 - Agricultural, Ind. & Comm. Machines, Devices and Equipment	441 - Goods in general - no Food Products
431 - Food Products	435 - Hardware, Metal Products, Construc. Material, Sanitary Articles	438 - Fuels and Lubricants	442 - Diverse Articles
432 - Chemical and Pharmaceutical Produc.	436 - New and Used Vehicles	439 - Paper Cellulose Printed Matter & Articl. for Stationers and Offices	443 - Used Articles
433 - Fabric, Fabric Produc. & Textile Lines		440 - Goods in General & Food Products	444 - Articles for Agric. & Animal Breeding
			449 - Administrative & Auxiliary Activities

Code of the Types of Table 1.17			
45 - Financial Institutions	52 - Repair, Maintenance and Confection	57 - Reserved Type	62 - Surgeons, Dentist and Veterinary
46 - Insurance and Capitalization	53 - Personnel and Hygiene	58 - Reserved Type	63 - Education
47 - Transportation	54 - Broadcasting, Television and Diverse	59 - Reserved Type	64 - Reserved Type
48 - Communications	55 - Diverse Auxiliary Services	60 - Reserved Type	66 - Professions and Artisans
51 - Lodging and Meals	56 - Purchase, Sale and Real State Assers	61 - Communitary and Social	

Source: Information System of the Industry and Commerce - SIC/SEIC - 10/02/94

Table - 1.19 GRDP by Sector per Region (MRH) / Primary Sector (Agriculture, Livestock and Extraction Activities) - 1980 to 1989

Unit: million US\$ c

YEAR	1980		1981		1982		1983		1984		1985		1986		1987		1988		1989	
	US\$	%	US\$	%	US\$	%	US\$	%	US\$	%	US\$	%	US\$	%	US\$	%	US\$	%	US\$	%
1. MRH 269/CURITIBA	48.2	1.62	44.6	1.35	37.8	1.39	37.5	1.25	35.2	0.96	62.3	1.48	71.0	1.93	43.9	1.11	55.1	1.52	55.5	1.55
2. MRH 269/L. PARANAENSE	6.0	0.20	6.7	0.20	10.6	0.39	7.6	0.25	3.0	0.08	8.0	0.19	7.9	0.22	7.7	0.20	5.2	0.14	7.0	0.19
3. MRH 270/ALTO RUBERA	1.8	0.06	2.0	0.06	0.9	0.03	1.0	0.03	1.4	0.04	4.4	0.10	1.7	0.05	1.7	0.04	2.1	0.06	5.7	0.16
4. MRH 271/A. RIO NEGRO	7.5	0.25	8.1	0.25	6.9	0.25	6.9	0.23	6.7	0.18	10.2	0.24	13.8	0.37	6.6	0.17	5.8	0.16	8.0	0.22
5. MRH 272/C. da LAPA	29.2	0.98	36.4	1.10	26.1	0.96	30.4	1.02	34.6	0.94	43.6	1.04	66.0	1.80	48.6	1.23	47.3	1.31	49.7	1.39
6. MRH 273/C. de PONTA GROSSA	120.1	4.04	122.4	3.71	105.0	3.87	131.9	4.40	118.6	3.22	136.7	3.25	150.2	4.09	199.3	5.06	201.1	5.56	192.5	5.38
7. MRH 274/C. de JAGUARUNA	26.4	0.89	26.8	0.81	23.9	0.88	19.0	0.63	19.7	0.53	31.6	0.75	25.3	0.69	35.2	0.89	30.7	0.85	70.0	1.96
8. MRH 275/S. MATEUS do SUL	13.9	0.47	13.9	0.42	18.7	0.69	12.2	0.41	13.4	0.36	19.6	0.47	21.3	0.58	14.1	0.36	13.1	0.36	19.7	0.55
9. MRH 276/Col. de BRATI	44.8	1.51	39.3	1.19	29.9	1.10	28.6	0.96	32.9	0.89	54.3	1.29	55.0	1.50	44.4	1.13	46.5	1.29	68.7	1.92
10. MRH 277/ALTO IVAI	22.4	0.75	19.7	0.60	15.9	0.59	15.3	0.51	19.7	0.54	29.4	0.70	22.0	0.60	19.6	0.50	17.5	0.48	24.1	0.67
11. MRH 278/N. V. DE WENCESLAU B.	66.7	2.25	70.9	2.15	54.5	2.01	52.4	1.75	57.8	1.57	69.4	1.65	66.9	1.82	72.3	1.84	54.3	1.50	57.7	1.61
12. MRH 279/N. V. JACAREZINHO	182.8	6.15	194.1	5.88	185.9	6.85	196.4	6.56	258.6	7.03	283.9	6.75	236.8	6.44	237.7	6.04	255.1	7.06	238.6	6.67
13. MRH 280/ALG. de ASSAI	65.4	2.20	64.5	1.95	67.2	2.48	56.8	1.90	97.3	2.65	91.1	2.17	93.3	2.54	72.0	1.83	82.8	2.29	95.0	2.65
14. MRH 281/N. LONDRENA	293.7	9.89	305.7	9.26	345.1	12.72	340.8	11.38	443.9	12.06	496.8	11.81	397.7	10.82	398.0	10.11	387.9	10.73	411.3	11.49
15. MRH 282/N. MARINGA	126.4	4.25	136.4	4.13	116.5	4.29	170.1	5.68	204.2	5.55	215.3	5.12	171.8	4.67	238.5	6.06	264.0	7.30	253.4	7.08
16. MRH 283/N. Novaes PARANAVALI	174.7	5.88	188.4	5.71	115.8	4.27	153.9	5.14	189.8	5.16	211.7	5.03	179.0	4.87	175.1	4.45	131.3	3.63	189.0	5.28
17. MRH 284/N. APUCARANA	145.1	4.88	173.7	5.26	132.1	4.87	129.5	4.32	205.2	5.58	211.3	5.02	194.9	5.30	177.0	4.50	169.0	4.68	157.9	4.41
18. MRH 285/N. Novaes UMUARAMA	244.3	8.22	322.7	9.77	181.6	6.69	244.5	8.16	283.4	7.70	415.2	9.87	305.0	8.30	343.5	8.72	167.1	4.62	213.5	5.97
19. MRH 286/C. MOURAO	277.5	9.34	338.6	10.25	270.2	9.96	275.8	9.21	366.2	9.95	419.5	9.97	325.9	8.87	368.8	9.37	390.6	10.80	284.6	7.95
20. MRH 287/PITANGA	32.2	1.08	31.5	0.95	25.6	0.94	28.5	0.95	37.7	1.03	41.2	0.98	40.5	1.10	35.3	0.90	36.8	1.02	37.5	1.05
21. MRH 288/Ext. O. PARANAENSE	625.3	21.05	715.7	21.67	586.0	21.60	669.9	22.37	805.8	21.90	874.3	20.79	710.7	19.33	913.2	23.19	787.9	21.79	701.2	19.59
22. MRH 289/SUD. PARANAENSE	220.4	7.42	265.4	8.04	220.7	8.13	243.3	8.13	276.2	7.51	287.5	6.84	288.4	7.84	258.1	6.55	246.6	6.82	228.6	6.39
23. MRH 290/C. de GUARAPUAVA	123.6	4.16	111.0	3.36	96.4	3.55	100.2	3.35	118.6	3.22	134.1	3.19	153.8	4.18	153.0	3.89	153.8	4.25	145.5	4.07
24. MRH 291/MEDIO IGUAÇU	72.0	2.42	63.9	1.93	39.9	1.47	41.7	1.39	49.7	1.35	54.0	1.28	77.4	2.11	74.6	1.89	63.7	1.76	64.1	1.79
TOTAL PARANA STATE	2,970.4	100.00	3,302.4	100.00	2,712.9	100.00	2,994.2	100.00	3,679.3	100.00	4,205.5	100.00	3,676.4	100.00	3,938.2	100.00	3,615.3	100.00	3,579.0	100.00

Source: Estatística Econômico-Financeira 74/75 (Finance-Economical Statistics 74/75) - SEFA
Análise Conjuntural V3 N4 P6 Abril 1991 (Conjuncture Analysis - April 1991) - IPARDES

Table - 1.20 GRDP by Sector per Region (MRH) / Secondary Sector (Industry) - 1980 to 1989

Unit: million US\$

YEAR	1980		1981		1982		1983		1984		1985		1986		1987		1988		1989		
	US\$	%	US\$	%	US\$	%	US\$	%	US\$	%	US\$	%	US\$	%	US\$	%	US\$	%	US\$	%	
No. and NAME of MRH																					
1. MRH 268/CURITIBA	2.471,5	56,11	2.806,2	58,09	2.453,1	54,29	2.603,6	53,63	2.790,0	55,88	2.469,0	48,05	2.666,3	51,97	3.087,9	53,14	3.456,5	50,38	3.351,8	49,73	
2. MRH 269/L. PARANAENSE	125,5	2,85	106,5	2,21	210,9	4,67	79,8	1,64	55,3	1,11	92,0	1,79	63,8	1,24	134,6	2,32	65,6	0,96	40,0	0,59	
3. MRH 270/ALTO RIBEIRA	15,5	0,35	11,9	0,25	6,3	0,14	9,1	0,19	9,2	0,18	13,1	0,26	10,2	0,20	9,2	0,16	16,4	0,24	13,4	0,20	
4. MRH 271/A. RIO NEGRO	2,5	0,06	2,1	0,04	2,4	0,05	2,1	0,04	1,8	0,04	2,1	0,04	3,7	0,07	3,9	0,07	2,9	0,04	3,4	0,05	
5. MRH 272/C. CAI LATA	33,2	0,75	60,1	1,24	79,2	1,75	55,2	1,14	55,7	1,12	60,5	1,18	104,5	2,04	57,6	0,99	84,1	1,23	80,9	1,20	
6. MRH 273/C. de PONTA GROSSA	375,3	8,52	428,9	8,88	347,8	7,70	479,1	9,87	431,9	8,65	460,2	8,96	430,8	8,40	433,2	7,45	602,7	8,79	577,6	8,57	
7. MRH 274/C. de JACUARIAVA	8,6	0,19	7,3	0,15	5,3	0,12	11,4	0,23	11,8	0,24	52,2	1,02	55,1	1,07	84,1	1,45	98,4	1,43	70,1	1,04	
8. MRH 275/S. MATEUS do SUL	6,7	0,15	6,1	0,13	7,5	0,17	2,1	0,04	6,5	0,13	8,4	0,16	8,4	0,16	9,5	0,19	9,4	0,16	3,9	0,06	
9. MRH 276/C. de IRATI	29,0	0,66	24,7	0,51	24,4	0,54	23,8	0,49	20,2	0,40	26,9	0,52	32,5	0,63	32,6	0,56	34,9	0,51	39,2	0,58	
10. MRH 277/ALTO IVAI	2,2	0,05	1,6	0,03	1,8	0,04	1,5	0,03	1,6	0,03	1,9	0,04	2,4	0,05	1,7	0,03	1,8	0,03	2,5	0,04	
11. MRH 278/N. V. DE WENCESLAU B.	6,2	0,14	3,9	0,08	10,8	0,24	3,4	0,07	4,8	0,10	10,6	0,21	8,0	0,16	5,9	0,10	7,8	0,11	11,5	0,17	
12. MRH 279/N. V. JACAREZINHO	117,5	2,67	110,5	2,29	110,6	2,45	116,3	2,39	132,2	3,05	147,1	2,86	116,6	2,27	137,8	2,37	188,5	2,75	145,8	2,16	
13. MRH 280/ALG. de ASSAI	37,4	0,85	32,9	0,68	35,2	0,78	38,4	0,79	32,6	0,65	38,8	0,76	26,5	0,52	39,3	0,68	37,6	0,55	24,2	0,36	
14. MRH 281/N. N. LONDRINA	401,1	9,11	396,0	8,20	417,6	9,24	469,8	9,68	467,9	9,37	594,0	11,56	461,4	8,99	516,2	8,88	673,4	9,82	480,0	7,12	
15. MRH 282/N. N. MARINGA	140,7	3,19	185,8	3,85	185,7	4,11	248,1	5,11	182,5	3,66	237,3	4,62	212,2	4,14	292,1	5,03	429,0	6,25	380,7	5,65	
16. MRH 283/N. N. PARANAVAI	24,1	0,55	39,1	0,81	30,2	0,67	47,8	0,98	46,8	0,94	79,7	1,55	57,1	1,11	69,7	1,20	73,0	1,06	46,7	0,69	
17. MRH 284/N. N. APUCARANA	61,9	1,41	72,1	1,49	66,4	1,47	73,6	1,52	93,8	1,88	116,0	2,26	132,5	2,58	111,8	1,92	181,9	2,65	133,7	1,98	
18. MRH 285/N. N. UNGUARAMA	46,3	1,05	69,9	1,45	50,6	1,12	65,5	1,35	57,8	1,16	103,0	2,01	112,9	2,20	96,6	1,66	81,4	1,19	73,8	1,09	
19. MRH 286/C. MOURAO	79,9	1,81	65,1	1,35	67,1	1,48	82,6	1,70	83,7	1,68	85,7	1,67	94,4	1,84	99,3	1,71	128,2	1,87	107,6	1,60	
20. MRH 287/PTFANGA	3,2	0,07	1,7	0,03	2,2	0,05	2,5	0,05	2,4	0,05	1,9	0,04	2,6	0,05	3,0	0,05	5,3	0,08	4,4	0,07	
21. MRH 288/Ext. O. PARANAENSE *	132,8	3,01	162,9	3,37	163,6	3,62	213,2	4,39	198,0	3,97	230,2	4,48	198,1	3,86	259,3	4,46	308,9	4,50	606,9	9,00	
22. MRH 289/SUD. PARANAENSE	48,7	1,11	58,4	1,21	56,6	1,25	55,3	1,14	95,0	1,90	105,6	2,06	106,8	2,08	109,6	1,89	132,7	1,93	139,2	2,07	
23. MRH 290/C. de GUARAPIVA *	118,6	2,69	83,6	1,73	93,2	2,06	93,9	1,93	111,5	2,23	106,2	2,07	111,4	2,17	115,2	1,98	137,1	2,00	259,1	3,84	
24. MRH 291/ MEDIO IGUAU	116,1	2,64	94,7	1,96	90,0	1,99	76,9	1,58	79,4	1,59	96,0	1,87	111,0	2,16	101,3	1,74	107,9	1,57	143,0	2,12	
TOTAL PARANA STATE	4.404,5	100,00	4.831,1	100,00	4.518,4	100,00	4.854,9	100,00	4.992,4	100,00	5.138,4	100,00	5.130,3	100,00	5.811,3	100,00	6.560,6	100,00	6.740,3	100,00	

Source: Estatística Econômico-Financeira 74/75 (Finance Economic Statistics 74/75) - SEFA

Análise Conjuntural V3 N4 P6 - Abril 1991 (Conjuncture Analysis - April 1991) - IPARDES

Remark: * - The contribution from Hydropower Stations was included in the GRDP of these MRHs.

Table - 1.21 GRDP by Sector per Region (MRH) / Tertiary Sector (Commerce and Services) - 1980 to 1989

Unit: million US\$

YEAR	1980		1981		1982		1983		1984		1985		1986		1987		1988		1989	
	US\$	%	US\$	%	US\$	%	US\$	%	US\$	%	US\$	%	US\$	%	US\$	%	US\$	%	US\$	%
No. and NAME of MRH	US\$	%	US\$	%	US\$	%	US\$	%	US\$	%	US\$	%	US\$	%	US\$	%	US\$	%	US\$	%
1. MRH 258/CURITIBA	2,246.5	28.39	2,154.6	26.96	3,102.3	35.72	3,330.6	37.24	2,822.4	28.51	3,208.5	29.45	3,878.6	33.65	5,006.4	36.56	4,715.7	31.70	5,477.3	35.80
2. MRH 259/L. PARANAENSE	701.8	8.87	427.5	5.35	504.7	5.81	484.5	5.42	693.3	7.00	762.5	7.00	527.3	4.57	469.1	3.43	563.6	3.79	547.7	3.58
3. MRH 270/ALTO RIBEIRA	1.7	0.02	1.9	0.02	1.6	0.02	1.4	0.02	1.6	0.02	2.4	0.02	2.6	0.02	2.6	0.02	3.4	0.02	5.3	0.03
4. MRH 271/A. RIO NEGRO	4.1	0.05	5.1	0.06	5.1	0.06	4.3	0.05	4.3	0.04	5.6	0.05	10.3	0.09	7.9	0.06	8.5	0.06	11.4	0.07
5. MRH 272/C. da LAPA	31.3	0.40	38.5	0.48	41.5	0.48	34.2	0.38	37.2	0.38	42.6	0.39	55.1	0.48	70.4	0.51	66.3	0.45	101.9	0.67
6. MRH 273/C. de PONTA GROSSA	402.8	5.09	415.1	5.19	410.3	4.72	417.5	4.67	465.1	4.70	479.3	4.40	579.4	5.03	832.8	6.08	786.1	5.28	705.4	4.61
7. MRH 274/C. de JACUARANA	9.7	0.12	21.0	0.26	12.4	0.14	17.1	0.19	19.0	0.19	18.3	0.17	18.8	0.16	36.0	0.26	29.6	0.20	39.8	0.26
8. MRH 275/S. MATIUS de SUL	10.0	0.13	14.0	0.18	14.1	0.16	13.4	0.15	14.0	0.14	15.9	0.15	19.7	0.17	26.2	0.19	25.8	0.17	38.1	0.25
9. MRH 276/C. de TRAIT	53.6	0.68	65.0	0.81	55.0	0.63	60.9	0.68	67.2	0.68	70.2	0.64	91.5	0.79	94.6	0.69	108.8	0.73	117.9	0.77
10. MRH 277/ALTO IVAI	8.3	0.10	10.5	0.13	10.1	0.12	9.3	0.10	12.2	0.12	13.0	0.12	15.8	0.14	14.8	0.11	17.6	0.12	20.8	0.14
11. MRH 278/N. V. DE WENCESLAU B.	49.8	0.63	48.8	0.61	36.4	0.42	40.7	0.45	45.3	0.46	43.7	0.40	61.5	0.53	48.9	0.36	70.7	0.47	84.4	0.55
12. MRH 279/N. Y. JACAREZINHO	236.8	2.99	294.9	3.69	247.5	2.85	246.6	2.76	352.5	3.56	433.6	3.98	380.6	3.30	388.0	2.83	462.3	3.11	393.7	2.57
13. MRH 280/ALG. de ASSAI	25.6	0.32	27.8	0.35	28.2	0.33	29.7	0.33	47.3	0.48	36.0	0.33	40.1	0.35	46.3	0.34	55.8	0.37	74.6	0.49
14. MRH 281/N. N. LONDREINA	1,032.9	13.05	1,024.3	12.82	985.1	11.24	1,023.6	11.44	1,434.7	14.49	1,746.1	16.03	1,518.4	13.17	1,638.2	11.96	1,938.4	13.03	1,499.9	9.80
15. MRH 282/N. N. MARINGA	524.3	6.63	520.9	6.52	637.8	7.34	531.7	5.94	740.0	7.47	789.5	7.25	852.9	7.40	972.0	7.10	1,091.4	7.34	1,110.1	7.26
16. MRH 283/N. N. PARANAVAI	119.4	1.51	147.2	1.84	134.2	1.54	133.6	1.49	153.2	1.55	188.2	1.73	185.4	1.61	241.4	1.76	207.8	1.40	241.4	1.58
17. MRH 284/N. N. APUCARANA	193.1	2.44	207.8	2.60	223.6	2.57	227.0	2.54	303.5	3.06	370.2	3.40	252.0	2.19	257.8	1.88	330.8	2.22	325.4	2.13
18. MRH 285/N. N. UNICARANA	243.3	3.07	285.5	3.57	235.2	2.71	274.6	3.07	295.2	2.98	342.0	3.14	367.4	3.19	415.5	3.03	432.9	2.91	437.5	2.86
19. MRH 286/C. MOURAO	304.5	3.85	310.9	3.89	274.4	3.16	292.5	3.27	380.4	3.84	314.1	2.88	364.5	3.16	377.2	2.76	555.5	3.73	457.3	2.99
20. MRH 287/PTTANGA	15.5	0.20	21.7	0.27	16.6	0.19	25.3	0.28	32.8	0.33	27.1	0.25	33.3	0.29	25.9	0.19	47.5	0.32	49.9	0.33
21. MRH 288/E. O. PARANAENSE	1,118.4	14.13	1,201.6	15.04	1,133.4	13.05	1,189.8	13.30	1,326.6	13.40	1,339.6	12.30	1,426.7	12.38	1,670.2	12.20	2,127.5	14.30	2,351.2	15.37
22. MRH 289/SUD. PARANAENSE	308.2	3.90	372.7	4.66	289.4	3.33	283.9	3.17	345.4	3.49	361.6	3.32	405.6	3.52	419.7	3.07	503.1	3.38	567.5	3.71
23. MRH 290/C. de GUARAPUAVA	175.8	2.22	273.9	3.43	186.4	2.15	189.8	2.12	217.1	2.19	187.0	1.72	317.9	2.76	467.0	3.41	565.4	3.80	430.4	2.81
24. MRH 291/I. MEDIO IGUAU	95.4	1.21	100.3	1.26	99.1	1.14	82.1	0.92	90.9	0.92	96.9	0.89	122.0	1.06	163.6	1.19	162.7	1.09	210.9	1.38
TOTAL PARANA STATE	7,913.1	100.00	7,991.5	100.00	8,684.4	100.00	8,943.9	100.00	9,901.3	100.00	10,894.1	100.00	11,527.3	100.00	13,692.5	100.00	14,877.1	100.00	15,299.7	100.00

Source: Estatística Econômico-Financeira 74/75 (Finance Economic Statistics 74/75) - SEFA

Análise Conjuntural V3 N4 P6 - Abril 1991 (Conjuncture Analysis - April 1991) - IPARDES

Table - 1.22 Medical Facilities of the State of Paraná per MPRH - 1992

No. and Name of the MPRH	Total of Hospitals	Total of Beds	Ambulatories Units *(1)	Total Population of the MPRH/1993	Number of beds per 10,000 inhabitants
1. MPRH 268/CURITIBA	72	9,720	620	2,076,005	46.8
2. MPRH 269/L. PARANAENSE	10	422	94	179,465	23.5
3. MPRH 270/ALTO RIBEIRA	1	25	19	29,908	8.4
4. MPRH 271/A.R. NEGRO PR.	3	57	23	39,818	14.3
5. MPRH 272/C. LAPA	10	512	41	106,660	48.0
6. MPRH 273/C. PONTA GROSSA	18	1,903	123	414,555	45.9
7. MPRH 274/C. JAGUARIAIVA	4	198	33	64,635	30.6
8. MPRH 275/S. MATEUS DO SUL	2	66	42	54,674	12.1
9. MPRH 276/Col. IRAÍ	9	537	94	175,418	30.6
10. MPRH 277/ALTO IVAÍ	9	187	63	96,116	19.5
11. MPRH 278/N. V. WENCESLAU BRAZ	19	605	90	167,834	36.0
12. MPRH 279/N. V. JACAREZINHO	30	1,297	109	307,236	42.2
13. MPRH 280/Alb. ASSAÍ	9	218	33	77,798	28.0
14. MPRH 281/N. N. LONDRINA	51	3,210	151	833,494	38.5
15. MPRH 282/N. N. MARINGÁ	32	1,702	76	440,382	38.6
16. MPRH 283/N. Nova. PARANAVAI	41	1,074	95	270,727	39.7
17. MPRH 284/N. N. APUCARANA	33	1,545	124	318,822	48.5
18. MPRH 285/N. Nova. UMUARAMA	53	2,025	158	398,431	50.8
19. MPRH 286/C. MOURÃO	35	975	131	374,409	26.0
20. MPRH 287/PITANGA	6	331	36	125,591	26.4
21. MPRH 288/Ext. Oeste PARANAENSE	63	3,560	257	1,030,537	34.5
22. MPRH 289/Sudoeste PARANAENSE	45	2,304	298	473,325	48.7
23. MPRH 290/C. GUARAPUAVA	17	1,474	159	337,191	43.7
24. MPRH 291/MÉDIO IGUAÇU	14	520	152	181,011	28.7
TOTAL OF THE STATE	586	34,467	3,021	8,374,042	40.2

Source: Instituto de Saúde do Paraná - 24a. Regional de Saúde (Health Institute of Paraná - 24th Regional) - RS, GTI, AAG/GPC/ISEP/SESA, 03/93

Remark: *(1) - Ambulatories managed by governmental institutions (Municipality, State and Union), by private institutions hired by SUS (Single Health System) and other private institutions/entities.

Table - 1.23 Educational Institutions of the State of Paraná per MRH / 1993

No. and Name of the MRH	Number of Schools			Number of Students Enrolled					
	Preschool	Primary School	High School	University & College	Preschool	Primary School	High School	University & College	Students/ 1,000 inh.
1. MRH 268/CURITIBA	575	1,060	128	22	38,834	403,174	65,984	44,080	194
2. MRH 269/L. PARANAENSE	72	212	13	1	2,888	39,019	4,918	1,900	217
3. MRH 270/ALTO RIBEIRA	4	114	1	-	74	5,973	396	-	200
4. MRH 271/A.R. NEGRO PR.	15	120	4	-	373	7,423	432	-	186
5. MRH 272/C. LAPA	61	158	13	-	2,299	19,882	2,947	-	186
6. MRH 273/C. PONTA GROSSA	170	390	36	2	8,267	81,950	13,144	7,120	198
7. MRH 274/C. JAGUARUNA	24	113	5	-	1,148	13,925	1,467	-	215
8. MRH 275/S. MATEUS do SUL	18	147	3	-	568	9,958	897	-	182
9. MRH 276/Col. IRATI	96	434	12	1	2,255	30,996	3,373	1,520	177
10. MRH 277/ALTO IVAÍ	15	354	7	-	515	19,207	1,153	-	201
11. MRH 278/N. V. WENCESLAU BRAZ	60	435	18	-	2,564	37,451	5,387	-	223
12. MRH 279/N. V. JACAREZINHO	118	476	38	5	6,015	62,007	12,293	6,600	202
13. MRH 280/Alg. ASSAÍ	43	138	9	-	1,422	16,734	2,500	-	215
14. MRH 281/N. N. LONDRINA	307	615	59	10	19,278	166,038	28,717	13,220	199
15. MRH 282/N. N. MARINGÁ	178	188	39	3	14,773	83,757	14,703	6,900	190
16. MRH 283/N. Novis. PARANAVAI	91	245	35	1	5,495	60,815	9,780	3,640	225
17. MRH 284/N. N. APUCARANA	38	98	10	1	1,790	18,718	3,283	3,200	59
18. MRH 285/N. Novis. UMUARAMA	236	1,153	83	4	9,949	150,719	25,037	9,660	378
19. MRH 286/C. MOURÃO	132	587	35	1	7,005	82,077	12,006	4,080	219
20. MRH 287/UITANGA	26	377	7	-	968	25,422	1,877	-	202
21. MRH 288/Ext. Oeste PARANAENSE	341	1,324	122	8	18,339	181,405	33,813	8,542	176
22. MRH 289/Sudoeste PARANAENSE	167	1,431	40	2	6,528	107,997	13,287	2,080	228
23. MRH 290/C. GUARAPUAVA	104	833	19	1	4,283	65,686	6,128	2,120	195
24. MRH 291/MÉDIO IGUAÇU	73	466	15	4	2,667	32,772	4,545	8,384	181
TOTAL OF THE STATE	2,964	11,468	751	66	158,297	1,723,205	268,067	123,046	201

Source: Sistema de Informações Educacionais (Educational Information System) - SIE/SEED - PR FUNDEPAR - 1992

Remark: (1) Data concerning Preschool/Primary School/High School refers only to Public Schools.

(2) Number of students per 1,000 inhabitants

1.1.8 Public Finance

(1) Paraná State Overall Revenues and Expenditure

This item shows a general view of the Public Finance in the State of Paraná, from the year of 1988 to 1993. It is important to remark that the State Government is divided into two types of organs or institutions, the organs of the Direct Administration and the organs of the Indirect Administration, as shown in Table-1.2 and Table-1.3 (1) and 1.3 (2)

Following that classification, and according to data from IPARDES and SEFA, some tables were elaborated aiming at showing the participation of each one of these organs in the State's revenues and expenditure.

The main source of information to prepare these tables was the State's Balance Sheet, issued by SEFA and presented to the State's Legislative Assembly at the end of each fiscal period.

Balance in the State budget is summarized in Table-1.29 (1) and 1.29 (2). The total revenues and total expenditure of the organs of the Direct Administration are shown in Table-1.31. Comparing both Table - 1.29 and Table - 1.31, the figures regarding total revenues and expenditure of the organs of the Indirect Administration were obtained as presented in Table-1.30.

Table-1.24 shows the participation of the organs of Direct Administration and those organs of the Indirect Administration in the overall revenues and expenditure of Paraná State. The shares of revenue and expenditure of the organs of Direct Administration in those of the State are predominant, as shown in the Table.

The organs of the Direct Administration and the organs of the Indirect Administration had the following participation in the State's overall Revenues and Expenditure.

Table-1.24 Participation of the Organs of the Direct Administration and to the Indirect Administration in the State's Overall Revenues and Expenditure, in percentage, from 1988 to 1993.

	1988 %	1989 %	1990 %	1991 %	1992 %	1993 %
Revenue						
Direct Administration	80.32	75.68	84.40	88.43	86.98	86.33
Indirect Administration	19.68	24.32	15.60	11.57	13.02	13.67
TOTAL	100	100	100	100	100	100
Expenditure						
Direct Administration	87.64	84.39	83.85	90.58	90.45	90.51
Indirect Administration	12.36	15.61	16.15	9.42	9.55	9.49
TOTAL	100	100	100	100	100	100

Source: State's Balance Sheet (Balanco Geral do Estado) SEFA

Remark: this Table does not include the Mixed Economy Companies/Shown in Table-1.3 (2)

In Table-1.29 it is shown a demonstrative chart of the Overall Revenues and Expenditures of the organs of Direct and Indirect Administration of Paraná State in the period from 1988 to 1993. It is important to mention that this Table does not include the State's Mixed Economy Companies, such as COPEL, BANESTADO and SANEPAR.

The comparison between the revenues and expenditure of both Direct and Indirect Administration organs is shown in Table-1.30. From this Table it is observed that in the years of 1988 and 1989 the State had a budgetary deficit of 12.24% and 21, 65% of the State's Total Revenues, respectively. In the following years, after the promulgation of the new Federal Constitution, in 1988, there is a surplus on the State's Balance. In 1990, it was 3.25% of total revenues; it decreased to 2.36% in 1991, the surplus reached 6.43% of total revenues in 1992, and finally in 1993 it raised up to 13.23% of the State's total revenues.

(2) Revenues and Expenditure of the Organs of the Direct Administration

The Revenue and Expenditure considered for the Tables below are those from the organs of the Direct Administration of the Government of the State of Paraná. According to information from IPARDES the organs of Direct Administration represent the most significant amount of the State's total Revenue and Expenditure.

In Table-1.25 it is shown the relation between the Total Revenue of the Organs of the Direct Administration and the GDP-Paraná, from 1988 to 1993.

Table-1.25 Relation between Total Revenue of the Organs of Direct Administration and GDP-Paraná*, from 1988 to 1993.

	1988	1989	1990	1991	1992	1993
Revenue	1,625,478.00	1,532,513.00	1,859,234.00	1,636,749.00	1,609,306.00	1,744,090.00
GDP	25,352,400.0	25,619,100.0	24,286,000.0	25,225,000.0	26,486,000.0	27,811,000.0
	0	0	0	0	0	0
%	6.41	5.98	7.66	6.49	6.08	6.27

Source: Balanço Geral do Estado (State's Balance Sheet) - SEFA/IPARDES

* GDP-Paraná in 1992 and 1993 was projected by JICA Study Team

From the Table-1.25 above, it can be seen that the revenues of Paraná State have been changing from 6 to 8 per cent of the State's GDP. The lowest value of this relation happened in 1989, which coincides with a negative growth of the State's GDP, (-2.6%). The biggest value is that in 1990, it occurred due to changes in the Brazilian economy determined by the Federal Government, such as abruptly reduced inflation and, therefore, they helped to increase the tax revenue in real terms.

In Table-1.26 it is shown the relation between the Expenditure with Personnel of the organs of Direct Administration and the Total Expenditure of these organs. The Expenditure with Personnel includes also Transfers to Persons, which means services rendered by persons who are not public officers but are hired specifically for that task.

Table-1.26 Relation between Expenditure with Personnel (including transfers to persons) and Total Expenditure of the Organs of the Direct Administration, from 1988 to 1993.

(Unit: US\$ thousand)

	1988	1989	1990	1991	1992	1993
Personnel	710,367.00	761,974.00	763,393.00	758,211.00	776,079.00	783,259.00
Expenditure	1,990,868.00	2,078,998.00	1,787,061.00	1,636,947.00	1,565,806.00	1,586,541.00
%	35.68	36.65	42.72	46.32	49.56	49.37

Source: Balanço Geral do Estado (State's Balance Sheet)-SEFA/IPARDES

Table-1.26 above shows that the percentage between expenses with personnel in relation to the total expenses of the organs of the direct administration has a continuous growth since 1988.

The relation between Investments and Total Expenditure of the organs of the Direct Administration and the relation between Financial Expenditure (which includes charges of the Internal and External Debt plus Amortization of Internal and External Debt), and Total Expenditure are shown in Tables-1.27 and Table-1.28, respectively.

Table-1.27 Relation between Investments and Total Expenditure of the Organs of the Direct Administration, from 1988 to 1993.

(unit: US\$ thousand)

	1988	1989	1990	1991	1992	1993
Investment	28,697.00	27,188.00	38,800.00	128,793.00	117,151.00	92,468.00
Expenditure	1,990,868.00	2,078,998.00	1,787,061.00	1,636,947.00	1,565,806.00	1,586,541.00
%	1.44	1.31	2.17	7.88	7.48	5.83

Source: Balanço Geral do Estado (State's Balance Sheet)-SEFA/IPARDES

Table-1.27 above, shows that after the year of 1989, when the Tax changes was defined by the Federal Constitution, the State of Paraná slightly recovered its capacity to invest, which can be confirmed during the following years, when the State's investments reached approximately 5% to 7% of the Total Expenditure of the organs of the Direct Administration.

Table-1.28 Relation between Financial Expenditure* and Total Expenditure of the Organs of the Direct Administration, from 1988 to 1993.

(unit: US\$ thousand)

	1988	1989	1990	1991	1992	1993
Financial Expenditure	175,542.00	150,586.00	278,625.00	114,990.00	107,383.00	99,126.00
Expenditure	1,990,868.00	2,078,998.00	1,787,061.00	1,636,947.00	1,565,806.00	1,586,541.00
%	8.82	7.24	15.59	7.02	6.86	6.25

Source: Balanço Geral do Estado (State's Balance Sheet)-SEFA/IPARDES

* Financial Expenditure is formed by Charges of the External and Internal Debt plus Amortization of the External and Internal Debt

From Table-1.28 above, it can be noted that the relation between Financial Expenditure and Total Expenditure of the organs of the Direct Administration experienced an abrupt growth from 1989 to 1990, from 7.24% to 15.59%, and then this type of Expenditure has decreased to 6.25% of the Total Expenditure by 1993.

Table-1.29 (1) Demonstrative Chart of Overall Revenues and Expenditure According to the Economic Categories, in the State of Paraná, from 1988 to 1993.
(Unit: :US\$ 1,000.00)

REVENUES AND EXPENDITURE	1988		1989		1990	
	REVENUE	EXPEND.	REVENUE	EXPEND.	REVENUE	EXPEND.
Current Revenues						
Tax Revenues	1,059,150		1,190,286		1,276,447	
Revenues from Contributions	40,567		36,967		48,108	
Patrimonial Revenue	244,766		260,803		192,750	
Agriculture and Livestock Revenue	1,425		1,431		1,177	
Industrial Revenue	19,393		9,062		8,544	
Services Revenue	66,909		55,255		44,753	
Current Transfer	63,589		118,152		253,505	
Other Current Revenues	48,510	1,544,309	43,972	1,715,928	47,597	1,872,881
Current Expenditure						
Costing Expenditure	(995,522)		(1,101,769)		(1,038,154)	
Current Transfer	(529,399)	(1,524,921)	(752,738)	(1,854,507)	(654,044)	(1,692,198)
Current Budgetary Deficit or Surplus		19,388		(138,579)		180,683
Capital Revenues						
Operations of Credit	226,137		80,538		140,117	
Sale of Assets	433		521		212	
Amortization of Loans	24,388		2,590		2,995	
Transference of Capital	227,410		224,971		185,885	
Other Capital Revenues	1,094	479,462	441	309,061	735	329,944
Capital Expenditure						
Investments	(560,648)		(433,564)		(525,726)	
Financial Investments	(21,622)		(18,426)		(25,017)	
Transference of Capital	(164,374)	(746,644)	(156,909)	(608,899)	(88,199)	(438,942)
Budgetary Deficit or Surplus		(247,794)		(438,417)		71,685
SUMMARY						
Current Revenues and Expenditure	1,544,309	1,524,921	1,715,928	1,854,507	1,872,881	1,692,198
Capital Revenues and Expenditure	479,462	746,644	309,061	608,899	329,944	438,942
SUB-TOTAL	2,023,771	2,271,565	2,024,989	2,463,406	2,202,825	2,131,140
Budgetary Deficit or Surplus in the Period	247,794		438,417			71,685
TOTAL	2,271,565	2,271,565	2,463,406	2,463,406	2,202,825	2,202,825

Source: State's Balance Sheet (Balanco Geral do Estado)/SEFA

Remark: This Table does not include the Mixed Economy Companies of Paraná State/Shown in Table-1.3 (2)

to be continued

Table-1.29 (2) Demonstrative Chart of Overall Revenues and Expenditure According to the Economic Categories, in the State of Paraná, from 1988 to 1993.

REVENUES AND EXPENDITURE	1991		1992		1993	
	REVENUE 1991	EXPEND. 1991	REVENUE 1992	EXPEND. 1992	REVENUE 1993	EXPEND. 1993
Current Revenues						
Tax Revenues	1,135,523		1,085,768		987,483	
Revenues from Contributions	49,306		50,463		61,250	
Patrimonial Revenue	235,181		310,251		413,451	
Agriculture and Livestock Revenue	919		1,069		967	
Industrial Revenue	11,972		10,580		3,192	
Services Revenue	39,342		43,120		65,914	
Current Transfer	230,338		229,724		242,759	
Other Current Revenues	57,321	1,759,902	65,305	1,796,280	48,292	1,823,308
Current Expenditure						
Costing Expenditure	(899,591)		(964,604)		(977,524)	
Current Transfer	(559,100)	(1,458,691)	(448,136)	(1,412,740)	(419,416)	(1,396,940)
Current Budgetary Deficit or Surplus		301,211		383,540		426,368
Capital Revenues						
Operations of Credit	29,268		40,733		43,487	
Sale of Assets	275		198		135,787	
Amortization of Loans	3,038		4,925		8,816	
Transference of Capital	58,062		7,875		8,756	
Other Capital Revenues	278	90,921	120	53,851	1	196,847
Capital Expenditure						
Investments	(272,500)		(212,552)		(217,579)	
Financial Investments	(14,869)		(56,944)		(61,413)	
Transference of Capital	(61,086)	(348,455)	(48,930)	(318,426)	(76,894)	(355,886)
Budgetary Deficit or Surplus		43,677		118,965		267,329
SUMMARY	REVENUE 1991	EXPEND. 1991	REVENUE 1992	EXPEND. 1992	REVENUE 1993	EXPEND. 1993
Current Revenues and Expenditure	1,759,902	1,458,691	1,796,280	1,412,740	1,823,308	1,396,940
Capital Revenues and Expenditure	90,921	348,455	53,851	318,426	196,847	355,886
SUB-TOTAL	1,850,823	1,807,146	1,850,131	1,731,166	2,020,155	1,752,826
Budgetary Deficit or Surplus in the Period		43,677		118,965		267,329
TOTAL	1,850,823	1,850,823	1,850,131	1,850,131	2,020,155	2,020,155

Source: State's Balance Sheet (Balanco Geral do Estado)/SEFA

Remark: This Table does not include the Mixed Economy Companies of Paraná State/Shown in Table-1.3 (2)

Table-1.30 Comparative Table between Revenues and Expenditure of the Organs of the Direct and Indirect Administration, in the State of Paraná, from 1988 to 1993.

(Unit: US\$ 1,000.00)

	1988	1989	1990	1991	1992	1993
REVENUE						
1. Direct Administration						
Current Revenue	1,230,293	1,372,235	1,682,522	1,575,607	1,564,253	1,556,162
Capital Revenue	395,185	160,278	176,712	61,141	45,053	187,927
Subtotal	1,625,478	1,532,513	1,859,234	1,636,748	1,609,306	1,744,089
2. Indirect Administration						
Current Revenue	314,016	343,693	190,359	184,295	232,027	267,146
Capital Revenue	84,277	148,783	153,232	29,780	8,798	8,920
Subtotal	398,293	492,476	343,591	214,075	240,825	276,066
TOTAL REVENUE	2,023,771	2,024,989	2,202,825	1,850,823	1,850,131	2,020,155
EXPENDITURE						
1. Direct Administration						
Current Expenditure	1,375,045	1,695,158	1,536,328	1,317,245	1,279,214	1,277,537
Capital Expenditure	615,822	383,841	250,733	319,701	286,592	309,004
Subtotal	1,990,867	2,078,999	1,787,061	1,636,946	1,565,806	1,586,541
2. Indirect Administration						
Current Expenditure	149,876	159,349	155,870	141,446	133,526	119,403
Capital Expenditure	130,822	225,058	188,209	28,754	31,834	46,882
Subtotal	280,698	384,407	344,079	170,200	165,360	166,285
TOTAL EXPENDITURE	2,271,565	2,463,406	2,131,140	1,807,146	1,731,166	1,752,826
Deficit or Surplus in the Fiscal year	(247,794)	(438,417)	71,685	43,677	118,965	267,329

Source: State's Balance Sheet (Balanco Geral do Estado)/SEFA

Remark: This Table does not include the Mixed Economy Companies of Paraná State/Shown in Table-1.3 (2)

Table-1.31 Evolution of the Revenues of the Organs of the Direct Administration in the State of Paraná - 1988 to 1993

(Unit: \$ 000.00 US\$ of 1992)*

REVENUES	1988	1989	1990	1991	1992	1993
I - Current Revenues	1,230,293	1,372,235	1,682,522	1,575,607	1,564,253	1,556,162
1 Tax Revenues	1,059,150	1,190,285	1,276,447	1,135,522	1,085,768	987,483
1.1 Taxes	1,044,831	1,183,374	1,268,249	1,123,411	1,074,576	984,725
1.1.1 On Patrimony and Income	24,343	31,115	42,115	31,562	51,604	60,935
1.1.1.1 On Income and Profits	0,000	16,702	22,955	14,951	17,594	5,789
1.1.1.2 Vehicle proprietorship	0,000	7,655	13,609	11,604	29,608	50,350
1.1.1.3 Assets Transmission	16,316	6,758	5,551	5,008	4,401	4,795
1.1.2 On Production and Circulation	1,020,488	1,152,260	1,226,134	1,091,849	1,022,972	923,789
1.1.2.1 Circulation of Goods / Transportation / Commerce	1,020,488	1,152,260	1,226,134	1,091,948	1,022,972	923,789
1.2 Duties (fees)	14,319	6,911	8,198	12,111	11,192	2,757
1.2.1 On Police Power	11,939	6,703	8,007	11,840	10,962	2,134
1.2.2 Rendering of Services	2,379	209	191	271	231	623
2 Patrimonial Revenue	94,461	63,436	143,711	190,813	207,304	249,366
3 Agriculture and Livestock Revenue	47	2	0,000	36	3	9
4 Industrial Revenue	162	10	0,000	65	26	39
5 Services Revenue	292	176	154	398	462	505
6 Current Transfer	44,076	104,087	246,334	226,333	223,581	234,956
6.1 Intragovernmental Transfer	0,000	0,000	257	0,000	0,000	0,000
6.2 Intergovernmental Transfer	44,076	104,087	246,077	226,333	219,428	224,846
6.2.1 Transference from the Union	43,976	104,087	246,077	226,333	219,428	224,846
6.2.1.1 FPE (State's Participation Fund)	17,139	62,281	138,203	225,216	219,428	224,846
6.2.1.1.1 Participation (share) on the Union's Revenue	17,139	62,281	138,203	225,216	219,428	224,846
6.2.1.1.2 IRRF	26,619	40,652	55,750	117,208	117,176	130,062
6.2.1.1.3 IPI (Tax on Industrialized Products)	0,000	0,000	52,013	49,692	26,069	26,662
6.2.1.1.4 IOF.../Gold commercializations	0,000	0,000	0,000	58,308	46,842	43,397
6.2.1.1.5 Salary-Education	0,000	0,000	0,000	0,000	0,000	0,000
6.2.1.2 Other Transference from the Union	218	0,000	0,000	0,000	29,339	24,724
6.3 Agreements with Federal Organs	100	1,155	0,000	0,000	0,000	0,000
7 Other Current Revenues	0,000	0,000	88	1,117	4,127	10,129
II - Capital Revenues	32,105	14,237	15,876	22,440	47,109	31,708
1 Operations of Credit	395,185	160,278	176,712	61,141	45,053	187,927
2 Sale of Assets	222,661	80,505	140,117	29,268	39,697	43,484
3 Amortization of Loans	23,932	2,413	2,794	0,000	79	135,730
4 Transference of Capital	148,522	77,318	33,772	2,681	4,638	8,411
4.1 Transference from the Union	148,522	77,318	33,772	29,193	638	0,000
4.1.1 Salary-Education	21,611	19,659	33,709	29,193	0,000	0,000
4.1.2 Other Transference from the Union	126,911	57,660	63	0,000	638	0,000
5 Other Capital Revenues	69	42	30	0,000	0,000	0,000
TOTAL REVENUE	1,625,478	1,832,513	1,869,234	1,636,749	1,609,306	1,744,090

Source: State's Balance Sheet
 Remark: * Average Dollar of 1992 applied on the values in Cr\$ of 1992, corrected by IGP-D/FGV

Table-1.32 Expenditure of the Organs of the Direct Administration, at Current Prices, in Paraná - 1988-1993

	(Unit: 1.000.00 US\$)					
EXPENDITURE	1988	1989	1990	1991	1992	1993
1. Current Expenses	1,375,045	1,695,158	1,536,328	1,317,245	1,279,214	1,277,537
1.1 Costing Expenses	541,540	583,643	575,867	554,693	596,595	589,290
Personnel	460,002	499,782	498,286	494,610	511,822	494,098
Consumption Material	8,331	8,588	8,955	9,174	10,437	8,239
Third Party Services and Charges	72,814	74,499	67,000	50,277	72,441	86,139
Other Costing Expenses	393	774	1,626	633	1,895	814
1.2 Current Transfer	833,505	1,111,515	960,460	762,552	682,619	688,246
Intragovernmental Transfer	393,232	427,100	421,753	355,620	317,432	313,181
Intergovernmental Transfer	44,186	55,474	56,594	49,147	17,360	9,256
Transfer to Persons	250,365	262,192	263,107	263,601	264,257	289,161
Charges of the Internal Debt	76,436	317,499	169,065	45,374	35,789	31,784
Charges of the External Debt	58,439	37,119	27,668	26,558	27,234	25,122
Other Current Transfer	10,847	12,131	20,275	22,253	20,546	19,742
2. Capital Expenses	615,822	343,841	250,733	319,701	286,592	309,004
2.1 Investments	28,697	27,188	38,800	128,793	117,151	92,468
Works and Facilities	4,580	1,627	279	1,752	962	482
Equipment and Permanent Material	897	2,935	1,277	4,639	7,162	8,754
Investments in Special Status of Execution	11,013	8,566	14,320	60,159	46,285	59,506
*****	12,208	14,060	22,924	53,284	61,440	21,587
Other Investments	0,000	0,000	0,000	8,959	1,301	2,140
2.2 Financial Investments/Inversions	18,871	16,057	18,717	13,294	14,369	60,675
Real State Acquisition / Payment for Land						
Expropriation	667	207	220	746	325	0,000
*****	6,119	15,849	18,497	13,177	14,044	58,163
Other Financial Investments	12,085	0,000	0,000	0,000	0,000	2,512
2.3 Transference of Capital	568,254	340,596	193,216	176,985	155,073	155,861
Intragovernmental Transference	439,230	188,929	109,773	133,560	109,438	113,082
Intergovernmental Transference	2,389	1,081	1,526	379	32	298
Amortization of the Internal Debt	40,581	83,826	34,573	17,495	17,637	18,934
Amortization of the External Debt	86	66,760	47,319	25,563	26,723	23,286
Other Transference of Capital	85,968	0,000	25	188	1,242	261
TOTAL EXPENSE	1,990,868	2,078,998	1,787,061	1,636,947	1,565,806	1,586,541

Source: Balanço Geral do Estado (State's Balance Sheet) - SEFA

Table - 1.33 Specification of the Expenditure of the Organs of the State of Paraná, According to their Function - 1988 to 1993

FUNCTION	1988		1989		1990		1991		1992		1993	
	US\$	%	US\$	%	US\$	%	US\$	%	US\$	%	US\$	%
1. Legislative	34,277	1.72	41,654	2.00	47,724	2.00	48,004	2.93	42,258	2.70	39,492	2.49
2. Judicial	87,112	4.38	126,195	6.07	149,518	6.07	151,543	9.26	128,184	8.19	123,262	7.77
3. Planning and Administration	380,573	19.12	636,194	30.60	386,134	30.60	253,190	15.47	184,896	11.81	235,404	14.84
4. Agriculture	66,487	3.34	92,350	4.44	66,418	4.44	75,220	4.60	71,094	4.54	68,027	4.29
5. Communications	718	0.04	509	0.02	1,033	0.02	356	0.02	0,000	0.00	0,000	0.00
6. National Defense and Public Security	118,907	5.97	120,907	5.82	130,153	5.82	129,650	7.92	125,235	8.00	102,328	6.45
7. Regional Development	65,467	3.29	13,443	0.65	16,850	0.65	35,220	2.15	78,242	5.00	5,627	0.35
8. Education and Culture	488,801	24.55	500,963	24.10	460,280	24.10	441,391	26.96	423,740	27.06	409,678	25.82
9. Energy and Mineral Resources	14,668	0.74	4,565	0.22	22,223	0.22	30,656	1.87	21,346	1.36	2,427	0.15
10. Habitation and Urbanism	5,698	0.29	3,578	0.17	2,680	0.17	15,739	0.96	39,207	2.50	19,939	1.26
11. Industry, Commerce and Services	25,680	1.29	5,752	0.28	8,411	0.28	23,752	1.45	44,708	2.86	5,788	0.36
12. External Relations	0,000	0.00	0,000	0.00	0,000	0.00	0,000	0.00	0,000	0.00	0,000	0.00
13. Health and Sanitation	59,406	2.98	89,389	4.30	76,832	4.30	65,924	4.03	79,207	5.06	76,125	4.80
14. Labor	2,186	0.11	5,294	0.25	5,870	0.25	3,753	0.23	2,202	0.14	3,021	0.19
15. Social Welfare	234,099	11.76	245,879	11.83	249,928	11.83	230,610	14.09	244,571	15.62	286,431	18.05
16. Transportation	406,609	20.43	192,353	9.25	163,006	9.25	131,939	8.06	80,917	5.17	158,335	9.98
TOTAL	1,990,688	100.00	2,079,025	100.00	1,787,060	100.00	1,636,947	100.00	1,565,807	100.00	1,586,540	100.00

Source: State's Balance Sheet

Remark: Average dollar of 1992 applied on the values in Cr\$ of 1992, updated by the IGP-DI/FGV