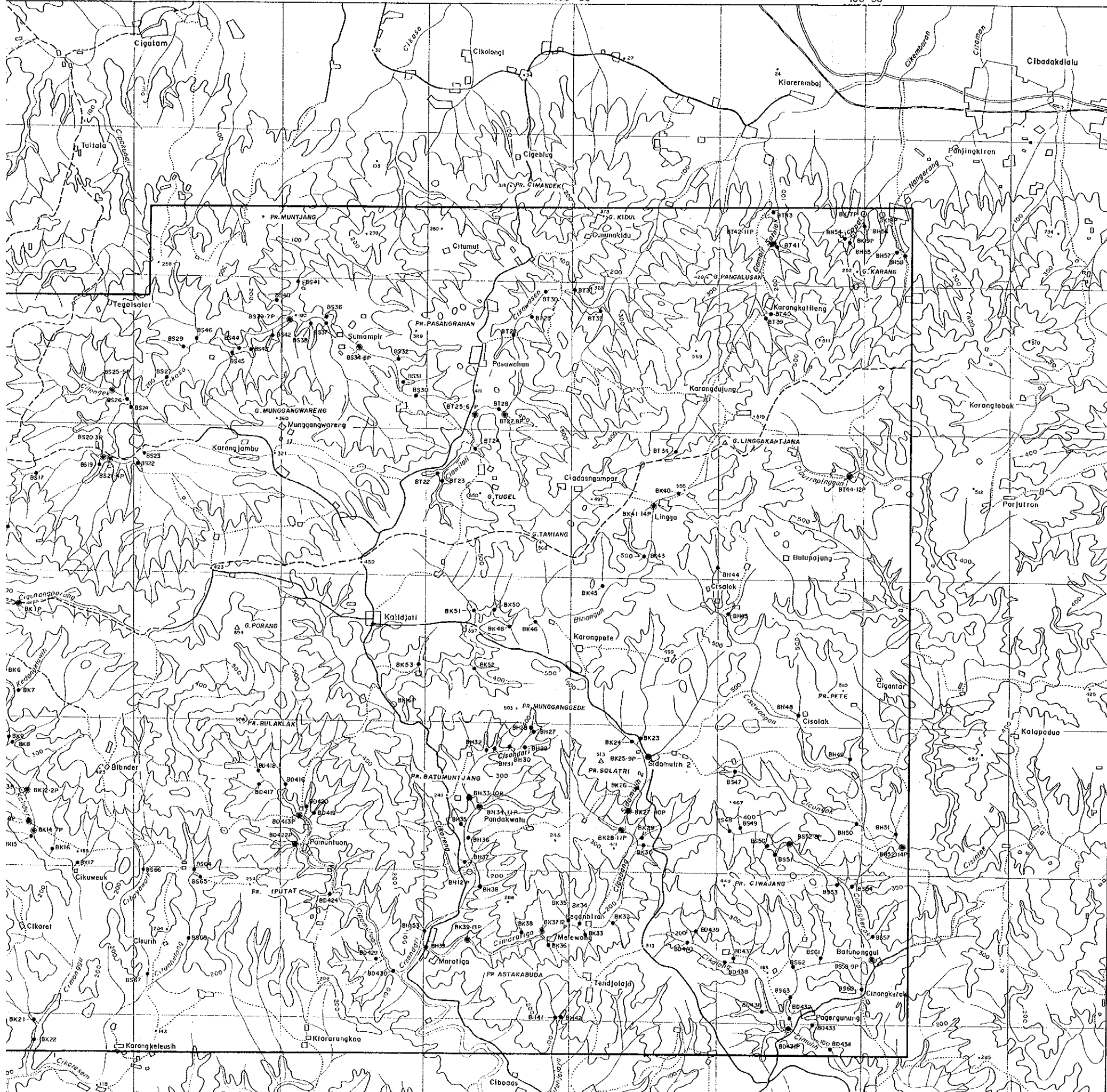


- Location of stream sediment samples
 (Sample No. : AD200)
 ● Same Location of Pan Concentrate Sample
 and Stream Sediment Sample
 (A0300P : Same Sample Number)

108° 34'

108° 36'

108° 38'



7°32'

7°34'

7°36'

PL. 10

REPORT ON THE COOPERATIVE MINERAL EXPLORATION
IN THE TASIKMALAYA AREA, THE REPUBLIC OF INDONESIA
PHASE I

ANOMALIES OF PANNING SURVEY IN THE SIDAMULIH AREA

FEBRUARY 1995

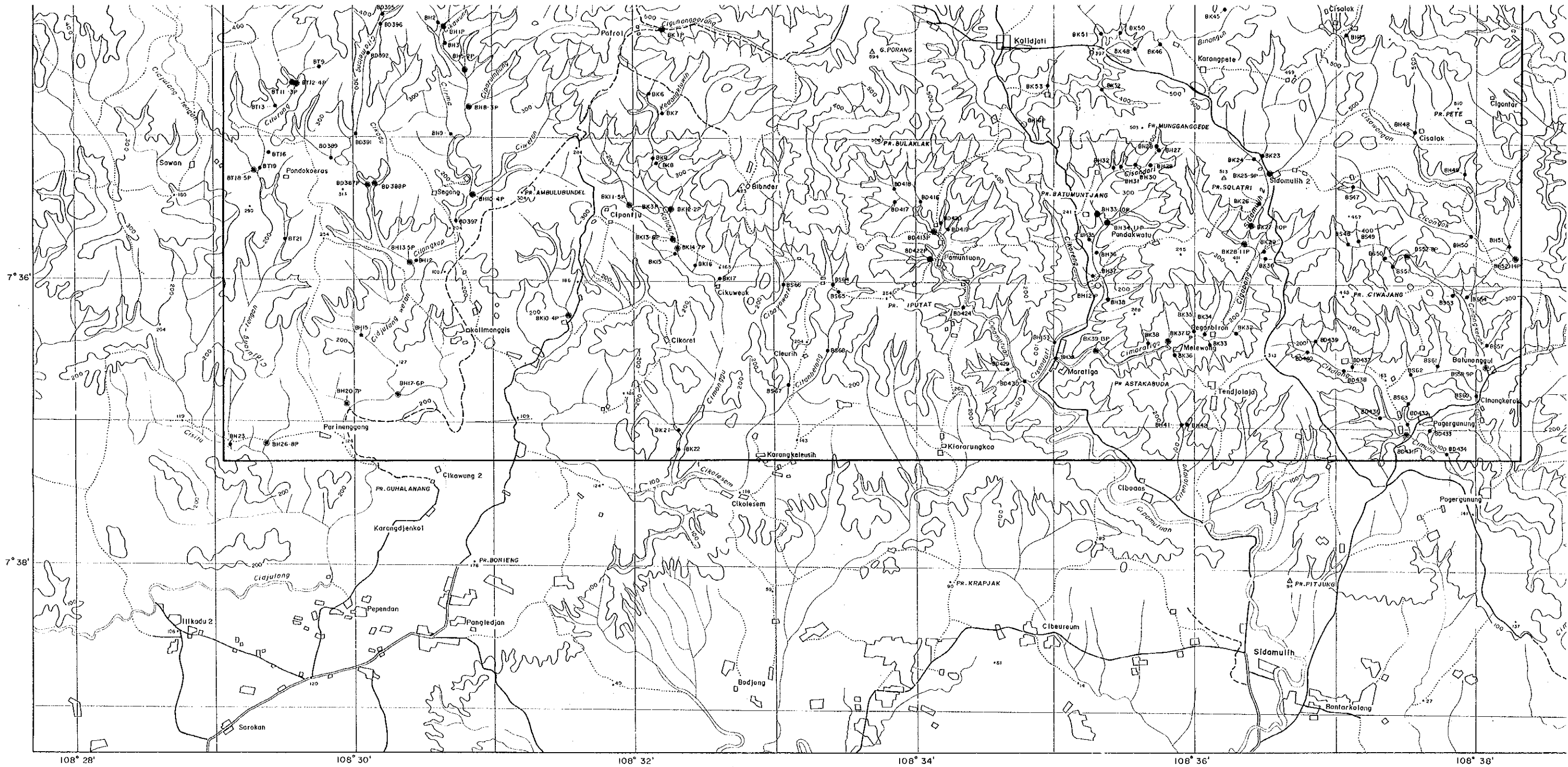
JAPAN INTERNATIONAL COOPERATION AGENCY
METAL MINING AGENCY OF JAPAN

1: 25,000

LEGEND

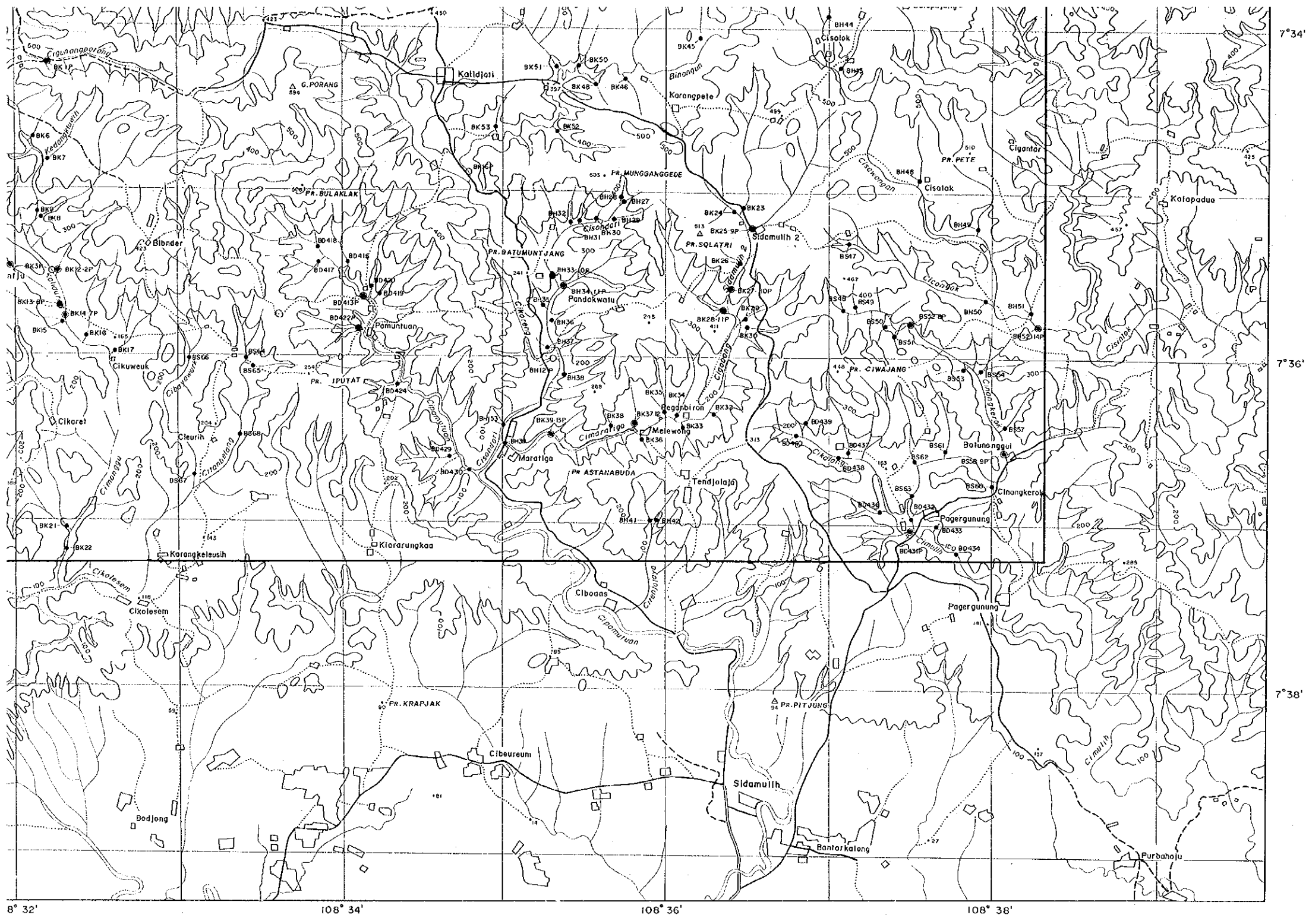
- Au Count by Panning Sample
- , ○ Panning & Stream Sediment Sample (No Gold)
- Stream Sediment Sample Only

Au 2L : Au Count of Observation by Loupe
Au 3M : Au Count by Binocular - Microscope



LEGEND

- Au Count by Panning Sample
 - , ○ Panning & Stream Sediment Sample (No Gold)
 - Stream Sediment Sample Only
- Au 2L : Au Count of Observation by Loupe
Au 3M : Au Count by Binocular - Microscope



8° 32' 108° 34' 108° 36' 108° 38'

7° 34' 7° 36' 7° 38'



Pl. 11

REPORT ON THE COOPERATIVE MINERAL EXPLORATION
IN THE TASIKMALAYA AREA, THE REPUBLIC OF INDONESIA
PHASE I

GEOLOGIC MAP AND GEOLOGIC PROFILE OF THE CISASA AREA

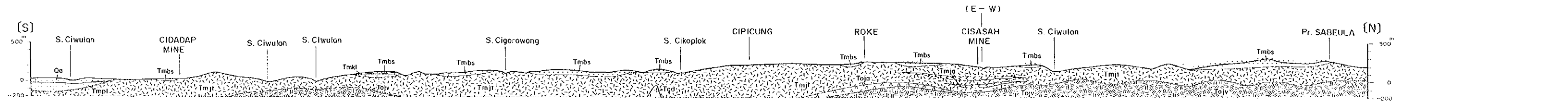
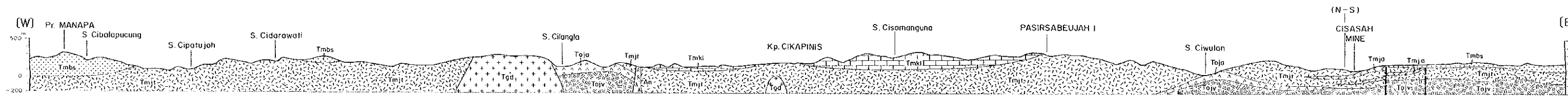
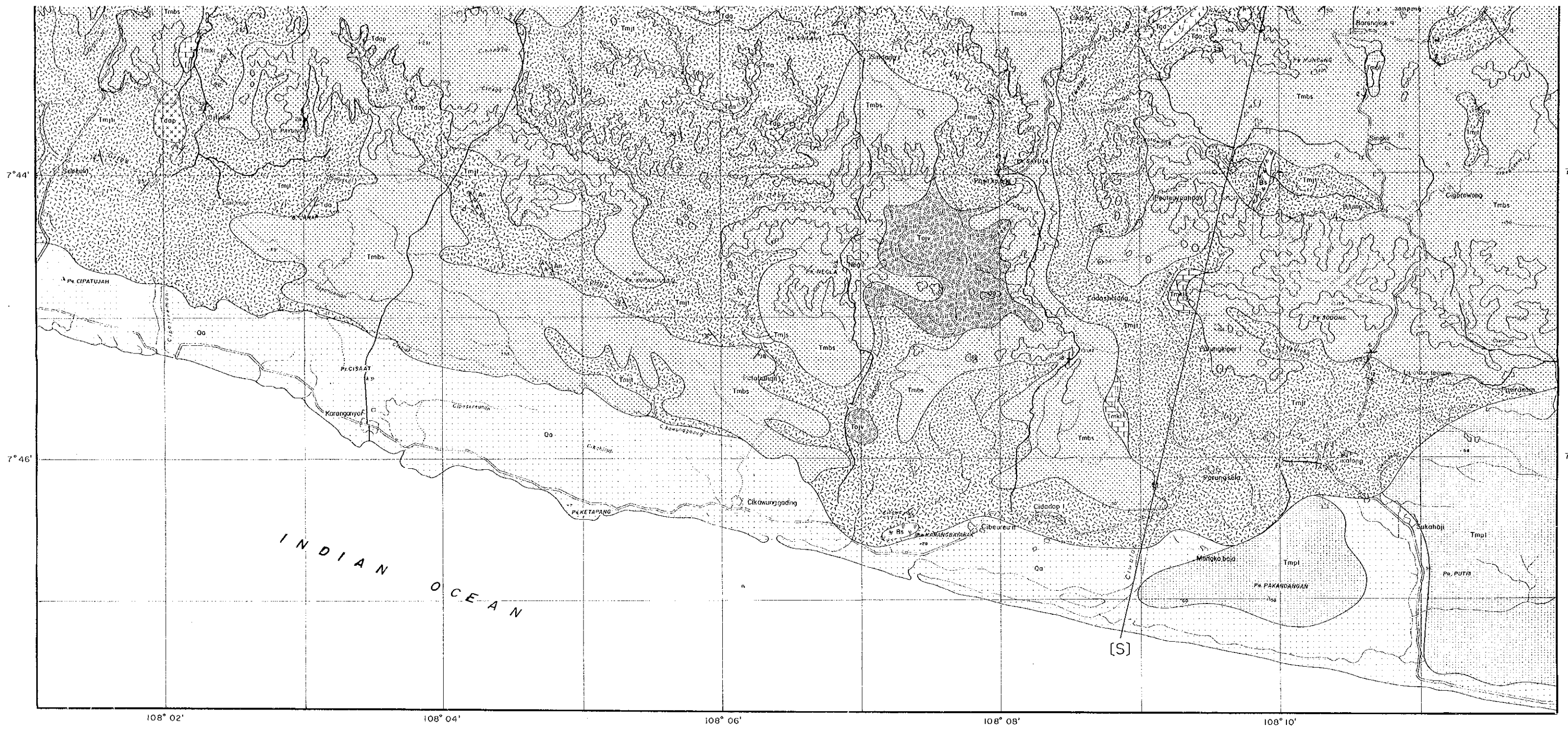
FEBRUARY, 1995

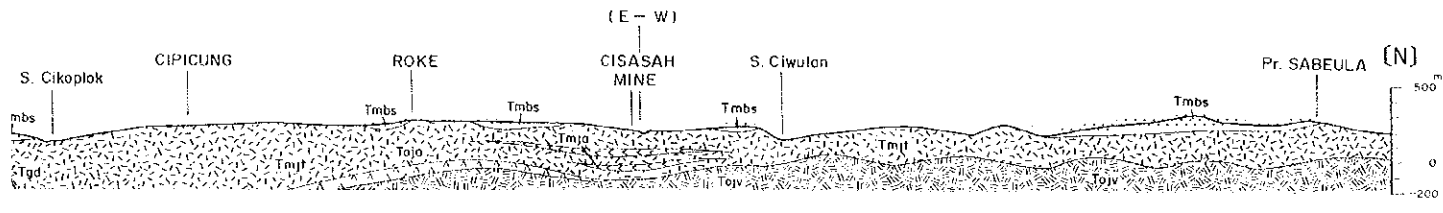
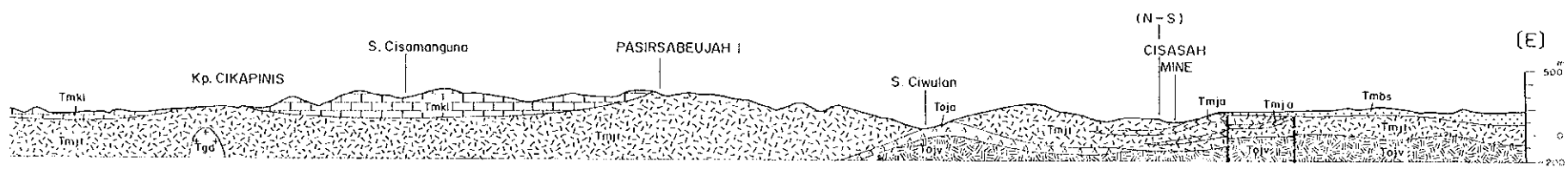
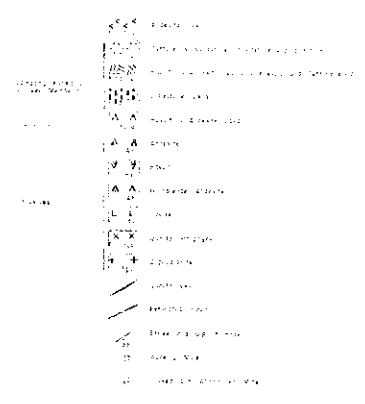
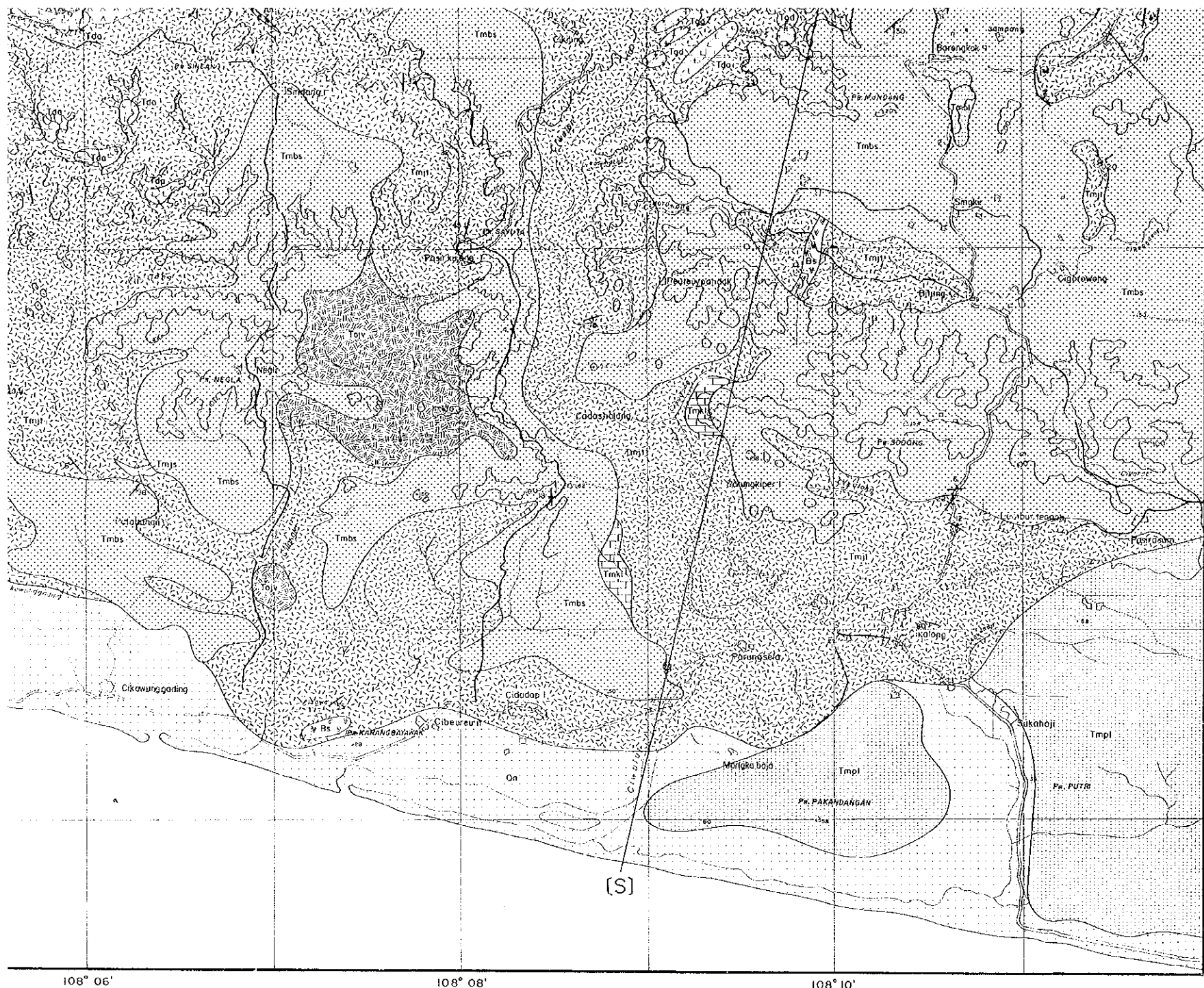
JAPAN INTERNATIONAL COOPERATION AGENCY
METAL MINING AGENCY OF JAPAN

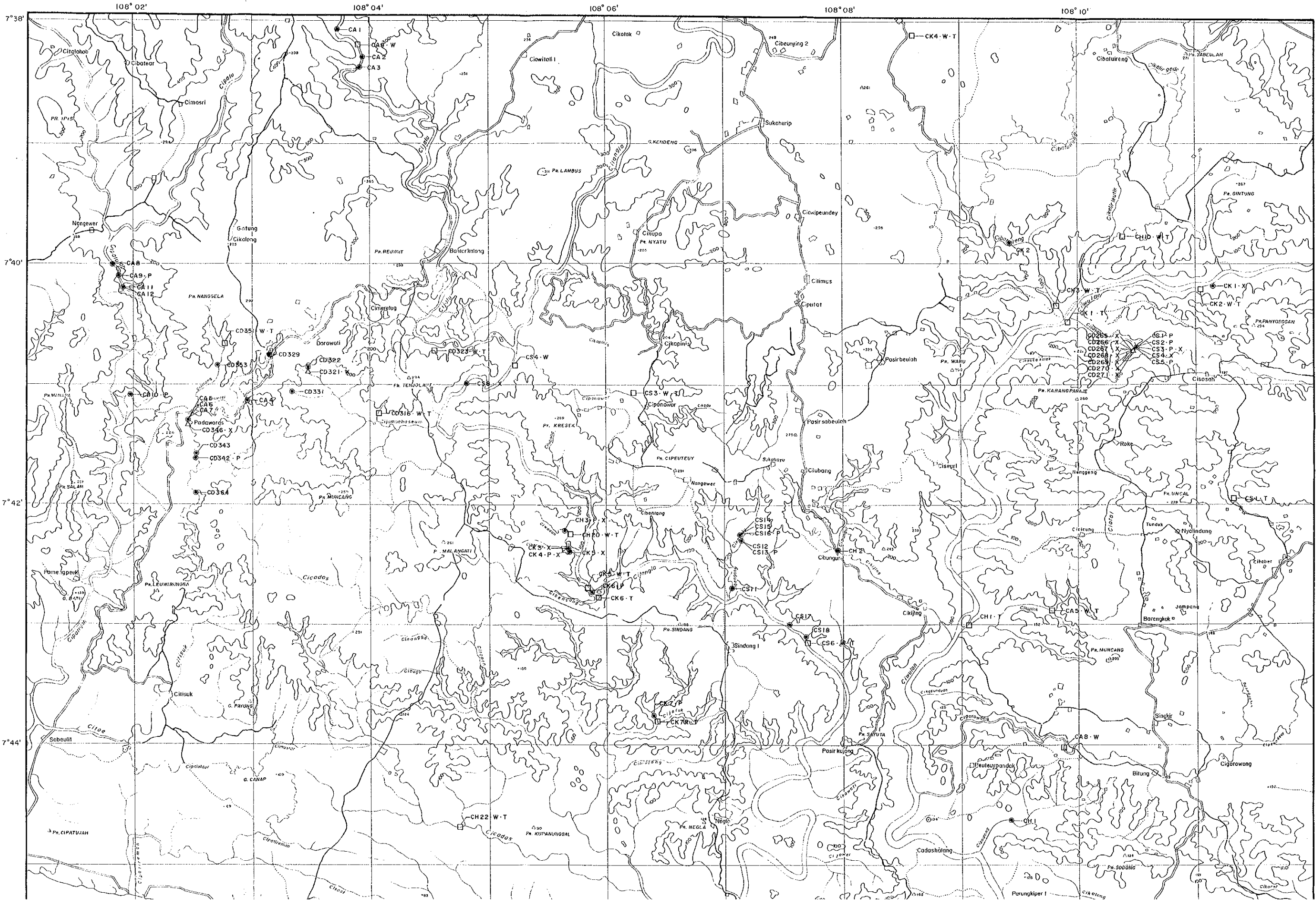
1:25,000

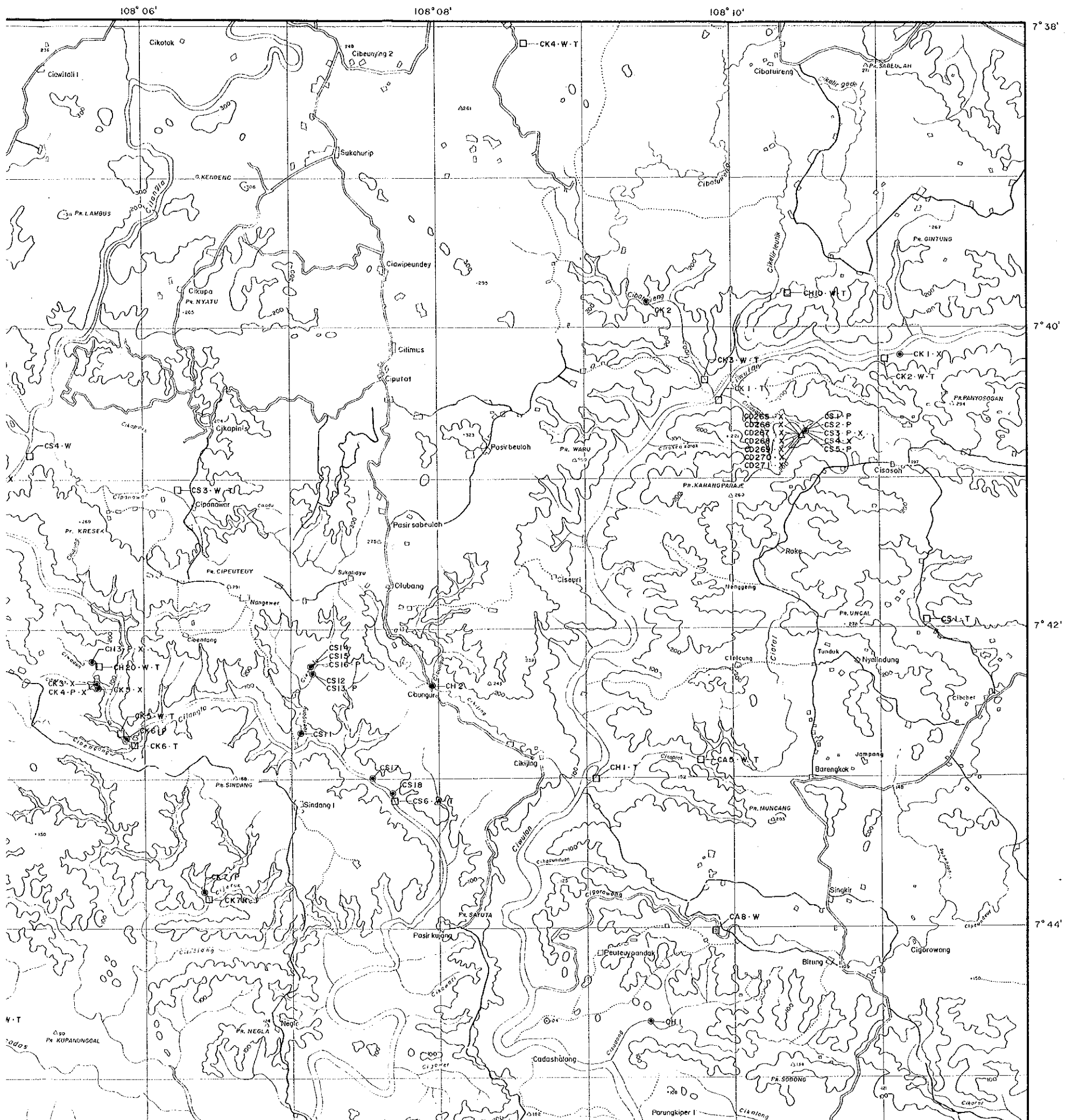
LEGEND

TOPOGRAPHY	Contour Lines	5, 10, 20, 30, 40, 50, 60, 70, 80, 90, 100, 150, 200, 250, 300, 350, 400, 450, 500, 550, 600, 650, 700, 750, 800, 850, 900, 950, 1000, 1100, 1200, 1300, 1400, 1500, 1600, 1700, 1800, 1900, 2000, 2100, 2200, 2300, 2400, 2500, 2600, 2700, 2800, 2900, 3000, 3100, 3200, 3300, 3400, 3500, 3600, 3700, 3800, 3900, 4000, 4100, 4200, 4300, 4400, 4500, 4600, 4700, 4800, 4900, 5000, 5100, 5200, 5300, 5400, 5500, 5600, 5700, 5800, 5900, 6000, 6100, 6200, 6300, 6400, 6500, 6600, 6700, 6800, 6900, 7000, 7100, 7200, 7300, 7400, 7500, 7600, 7700, 7800, 7900, 8000, 8100, 8200, 8300, 8400, 8500, 8600, 8700, 8800, 8900, 9000, 9100, 9200, 9300, 9400, 9500, 9600, 9700, 9800, 9900, 10000	Spot Elevation
TOPOGRAPHY	Water	Stream	Canal
TOPOGRAPHY	Highway	Road	Trail
TOPOGRAPHY	Power Line	Telegraph Line	Telephone Line
TOPOGRAPHY	Boundary	Survey Line	Control Point
TOPOGRAPHY	Well	Spring	Water Tower
TOPOGRAPHY	Structure	Building	Monument
TOPOGRAPHY	Vegetation	Forest	Plantation
TOPOGRAPHY	Soil	Soil Profile	Soil Sample
TOPOGRAPHY	Rock	Rock Outcrop	Rock Sample
TOPOGRAPHY	Mineral	Mineral Deposit	Mineral Sample
TOPOGRAPHY	Geological	Geological Unit	Geological Profile
TOPOGRAPHY	Geological	Geological Feature	Geological Structure
TOPOGRAPHY	Geological	Geological Boundary	Geological Contact
TOPOGRAPHY	Geological	Geological Symbol	Geological Code
TOPOGRAPHY	Geological	Geological Unit	Geological Profile
TOPOGRAPHY	Geological	Geological Feature	Geological Structure
TOPOGRAPHY	Geological	Geological Boundary	Geological Contact
TOPOGRAPHY	Geological	Geological Symbol	Geological Code







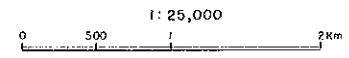


PL. 12

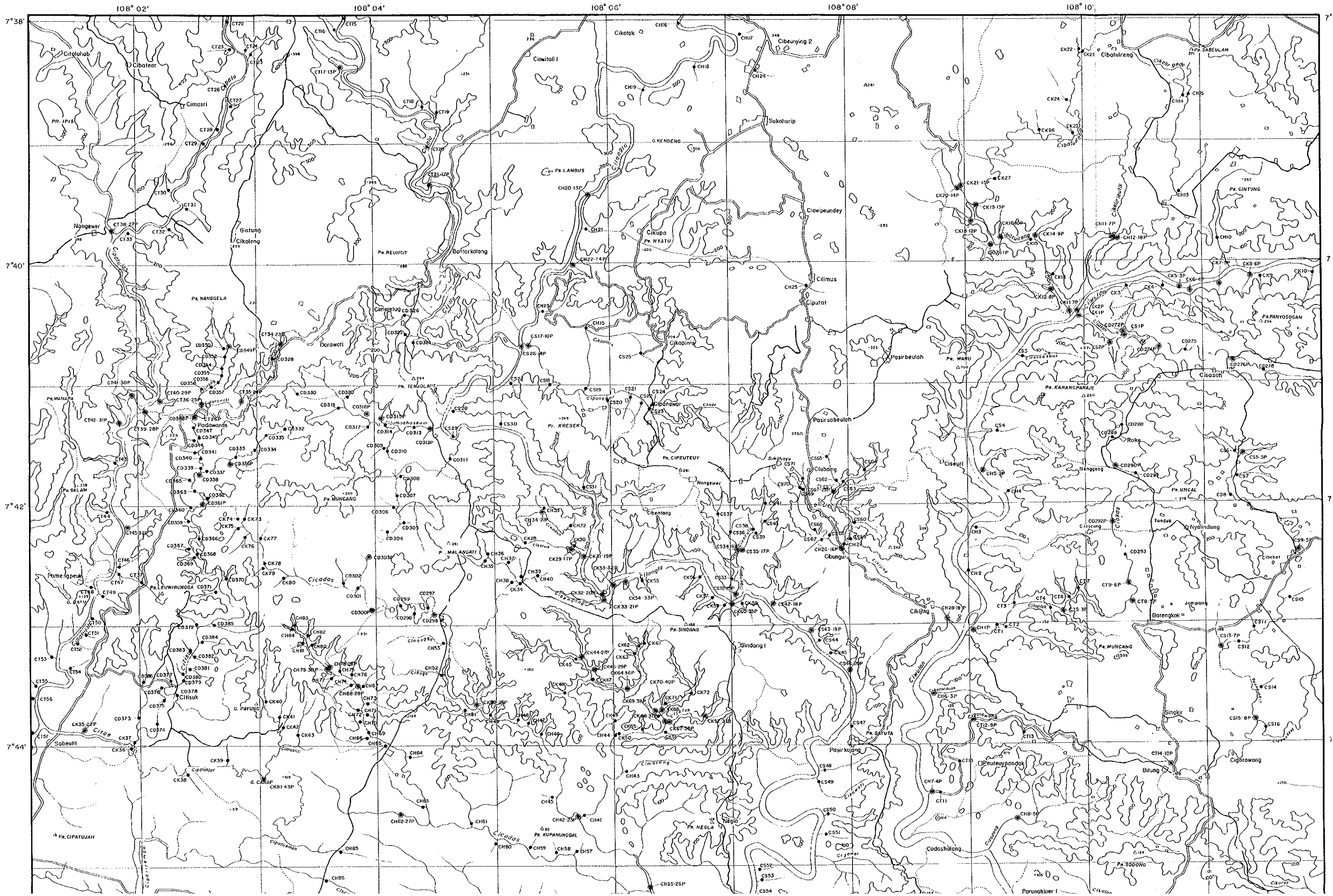
REPORT ON THE COOPERATIVE MINERAL EXPLORATION
IN THE TASIKMALAYA AREA, THE REPUBLIC OF INDONESIA
PHASE I

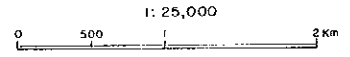
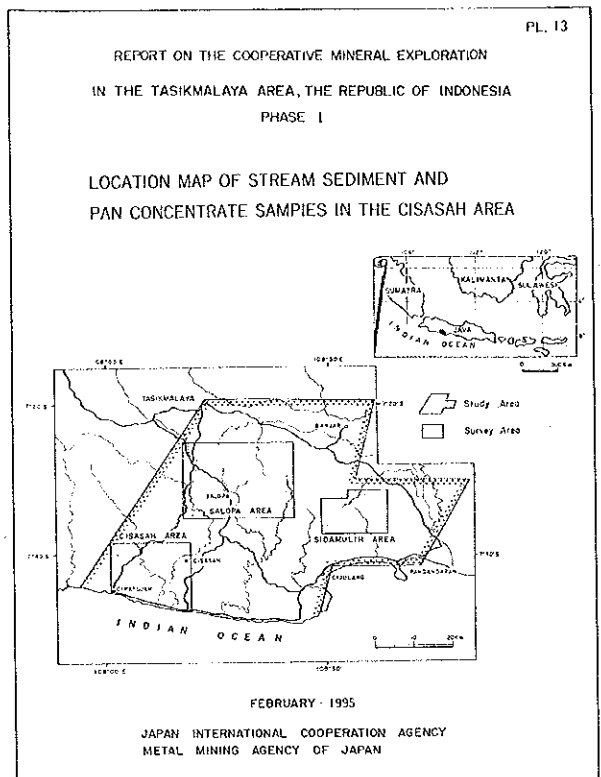
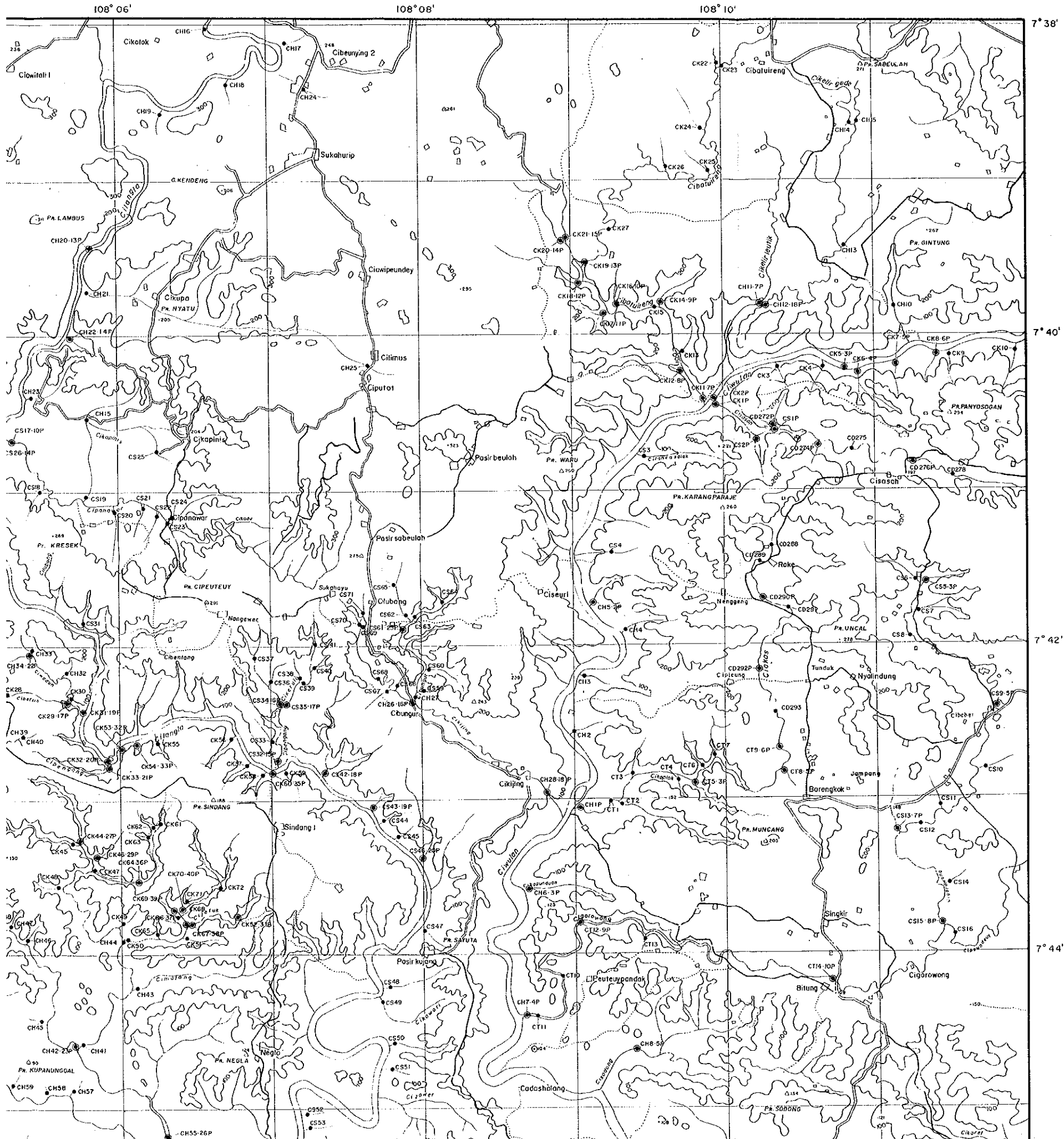
LOCATION MAP OF ORE AND ROCK SAMPLES IN THE CISARAH AREA

FEBRUARY, 1955
JAPAN INTERNATIONAL COOPERATION AGENCY
METAL MINING AGENCY OF JAPAN



- LEGEND**
- Abbreviation of Laboratory Works
- AD123 Sample Number
 - Location of Ore Assay
 - ,P Polished Section
 - Δ,X X-Ray Diffraction Analysis
 - Location of Rock Samples
 - w Whole Rocks Assay
 - T Thin Section

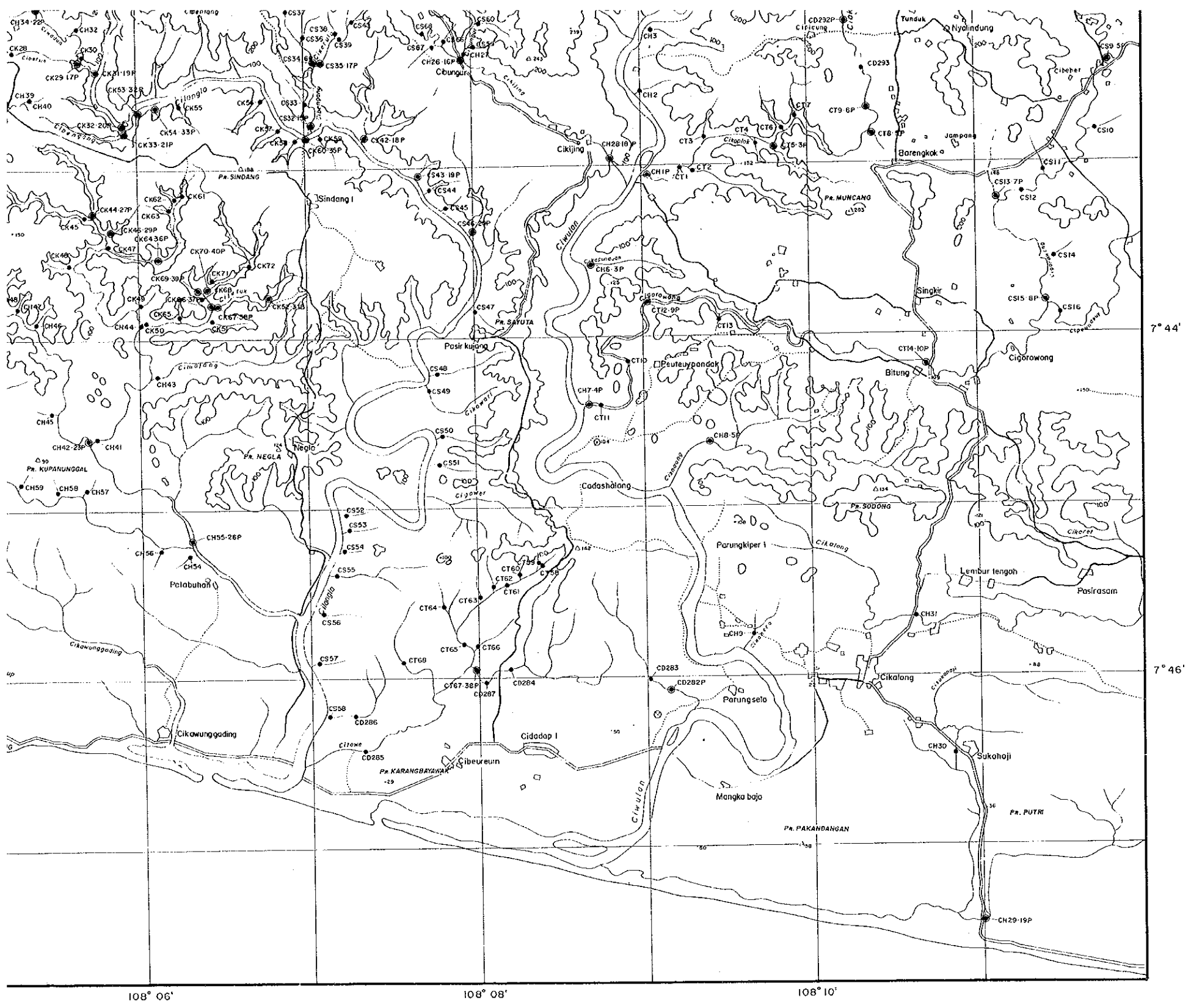




- LEGEND**
- Location of Pan Concentrate Samples
(Sample No. : AD100P)
 - Location of Stream Sediment Samples
(Sample No. : AD200)
 - ⊙ Same Location of Pan Concentrate Sample
and Stream Sediment Sample
(AD300P : Same Sample Number)

(Sample No. : AD 200)

● Same Location of Pan Concentrate Sample
 and Stream Sediment Sample
 (AD300P : Same Sample Number)



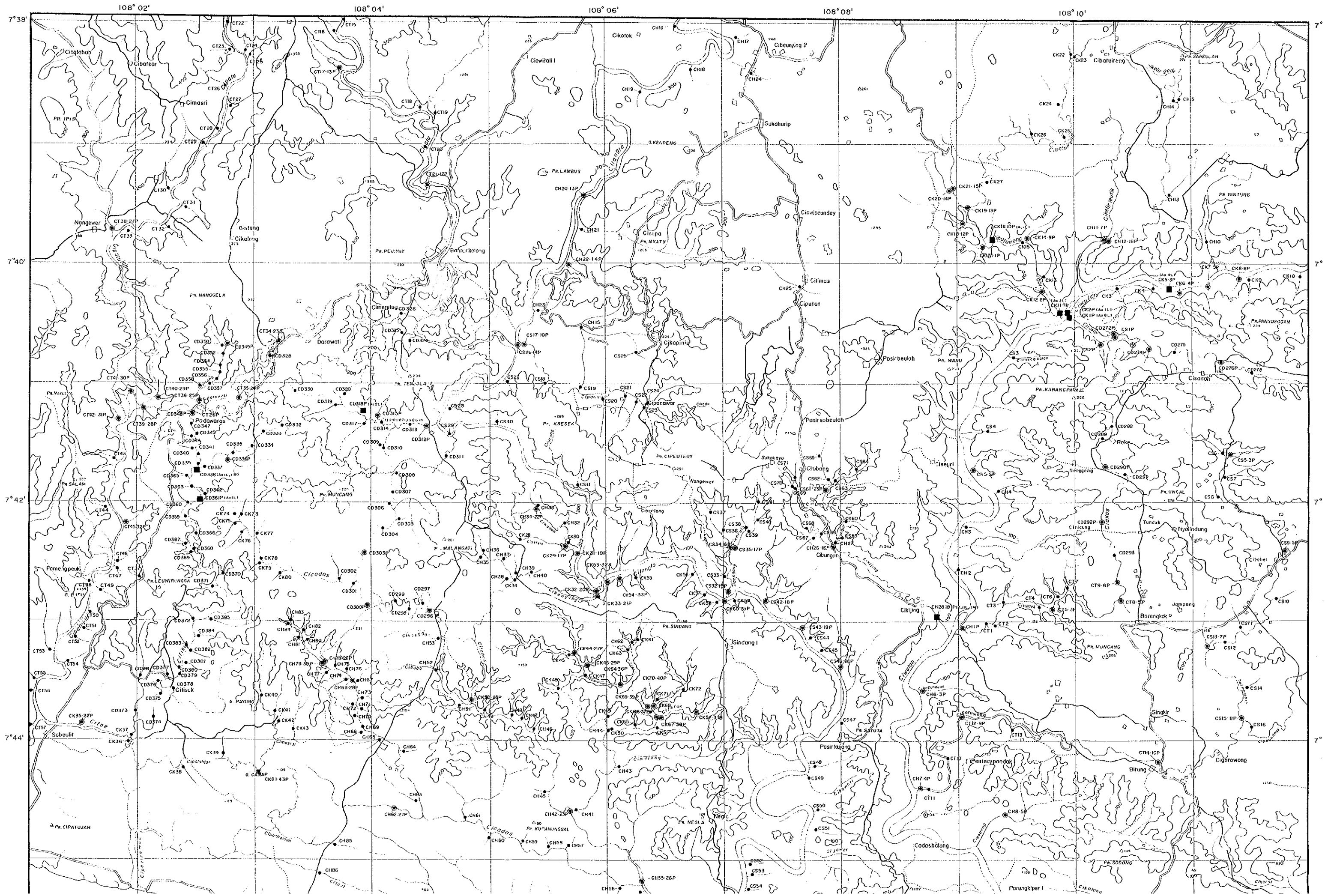
108° 06'

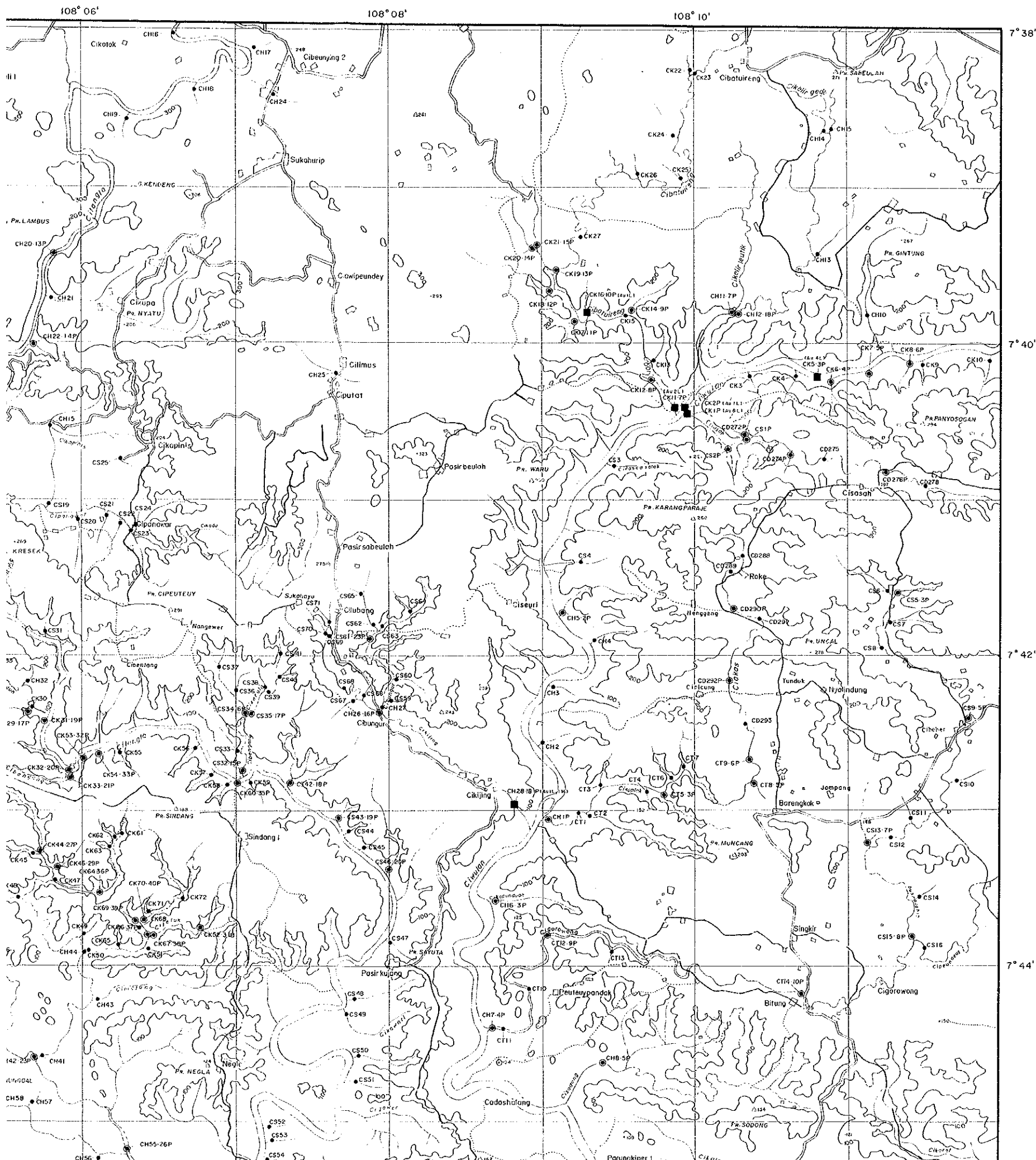
108° 08'

108° 10'

7° 44'

7° 46'





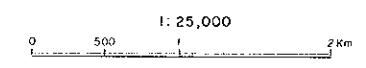
PL. 14

REPORT ON THE COOPERATIVE MINERAL EXPLORATION
IN THE TASIKMALAYA AREA, THE REPUBLIC OF INDONESIA
PHASE I

ANOMALIES OF PANNING SURVEY IN THE CISASA AREA

FEBRUARY - 1995

JAPAN INTERNATIONAL COOPERATION AGENCY
METAL MINING AGENCY OF JAPAN



LEGEND

- Au Count by Panning Sample
 - , ○ Panning & Stream Sediment Sample (No Gold)
 - Stream Sediment Sample Only
- Au 2L : Au Count of Observation by Loupe
Au 3M : Au Count by Binocular - Microscope