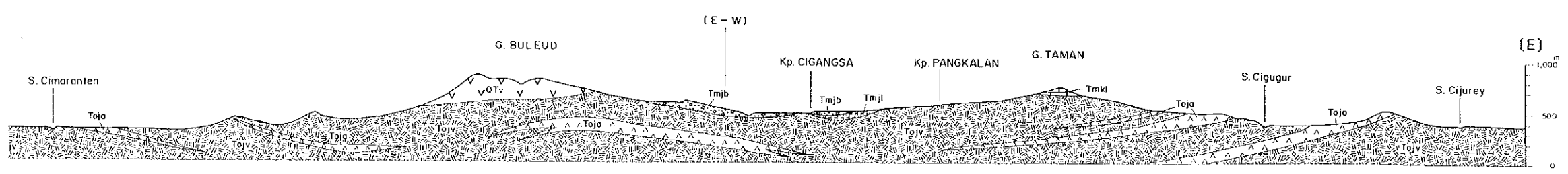
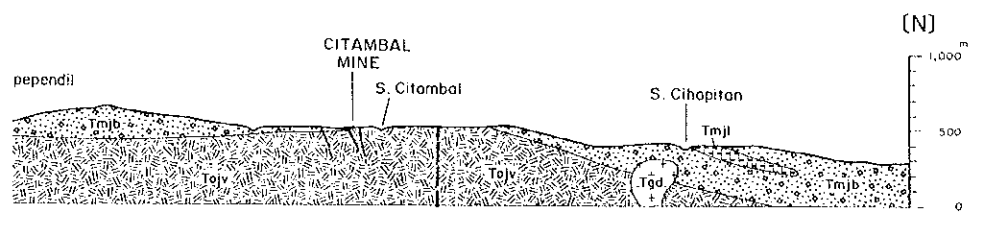


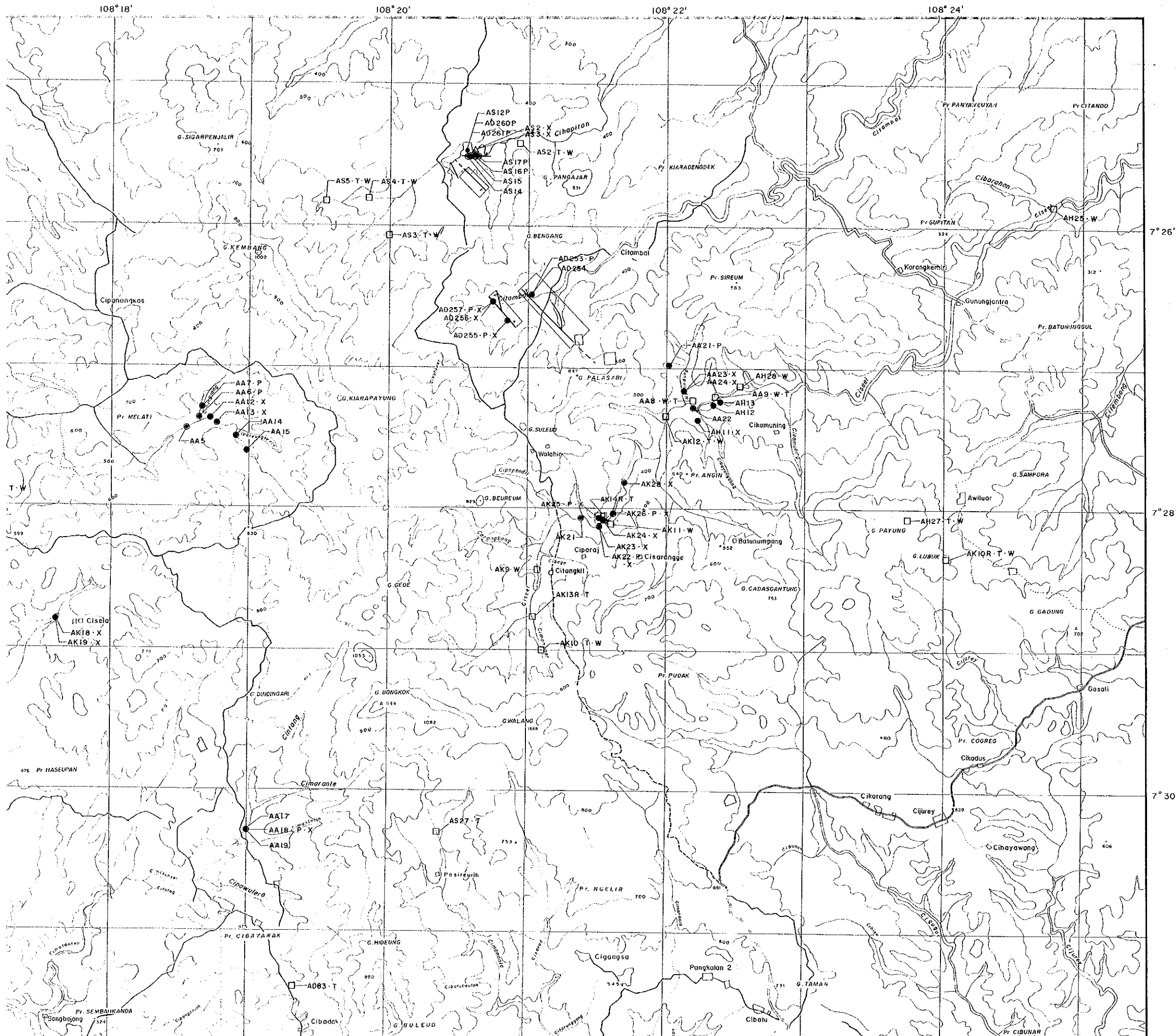
(S)



(E)



(N)



PL. 3

REPORT ON THE COOPERATIVE MINERAL EXPLORATION
IN THE TASIKMALAYA AREA, THE REPUBLIC OF INDONESIA
PHASE I

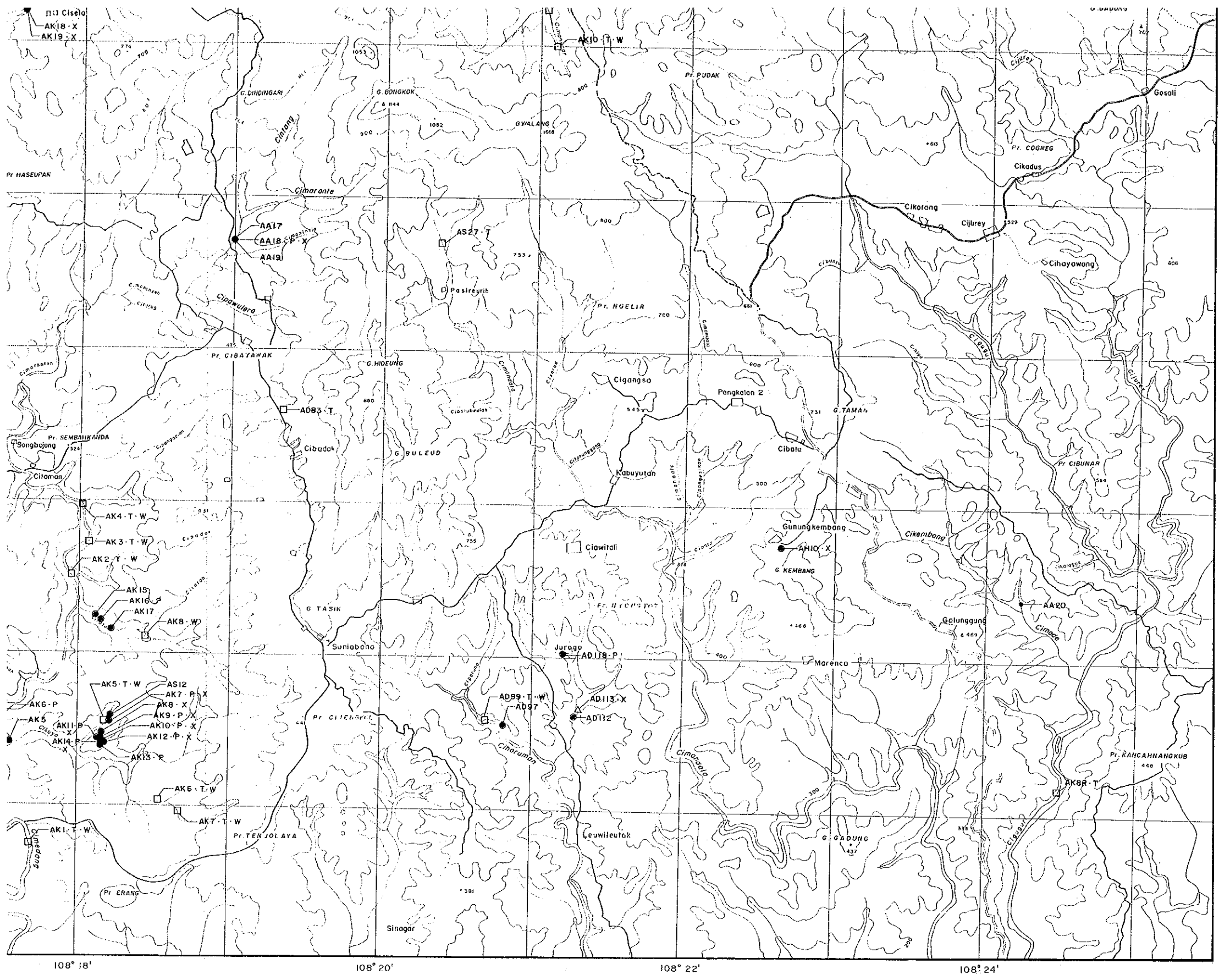
LOCATION MAP OF ORE AND ROCK SAMPLES IN THE SALOPA AREA

FEBRUARY 1955
JAPAN INTERNATIONAL COOPERATION AGENCY
METAL MINING AGENCY OF JAPAN

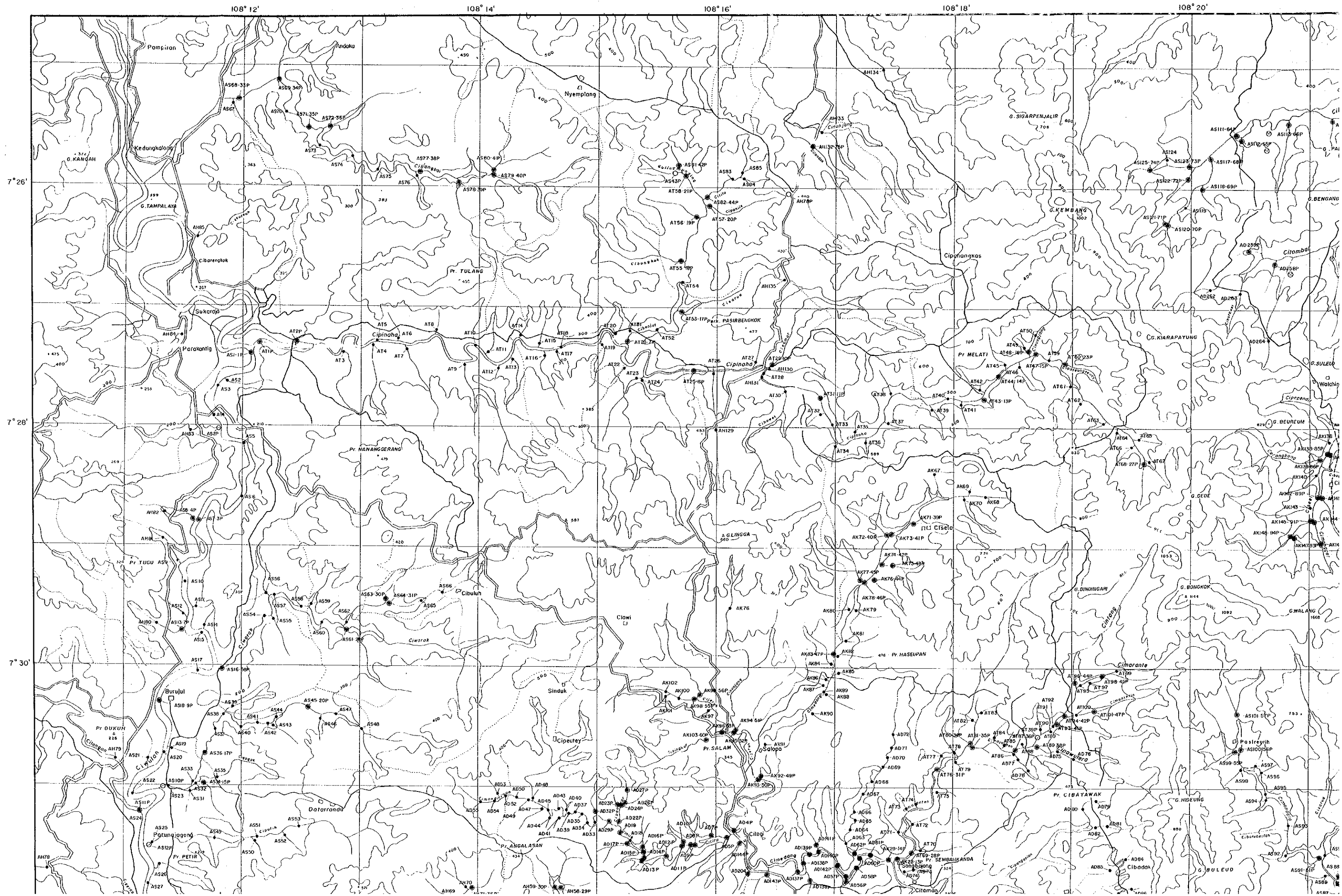
I: 25,000

0 500 1 2 Km

- LEGEND**
- Abbreviation of Laboratory Works
- AD23 Sample Number
 - Location of Ore Assay
 - P Polished Section
 - Δ, X X-Ray Diffraction Analysis
 - Location of Rock Samples
 - W Whole Rocks Assay
 - T Thin Section

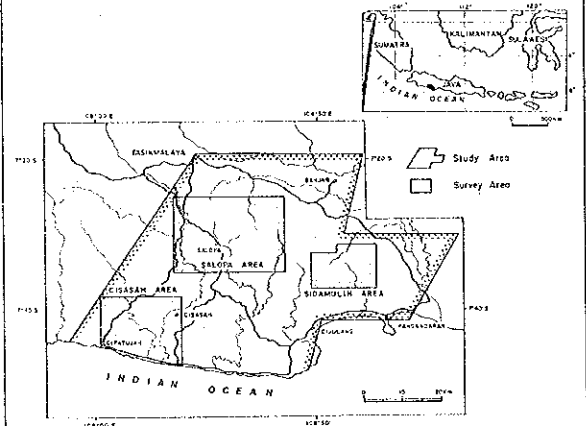


- △, X X-Ray Diffraction Analysis
- Location of Rock Samples
- W Whole Rocks Assay
- T Thin Section

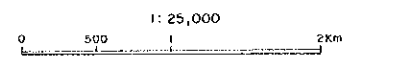


REPORT ON THE COOPERATIVE MINERAL EXPLORATION
IN THE TASIKMALAYA AREA, THE REPUBLIC OF INDONESIA
PHASE I

LOCATION MAP OF STREAM SEDIMENT AND
PAN CONCENTRATE SAMPLES IN THE SALOPA AREA

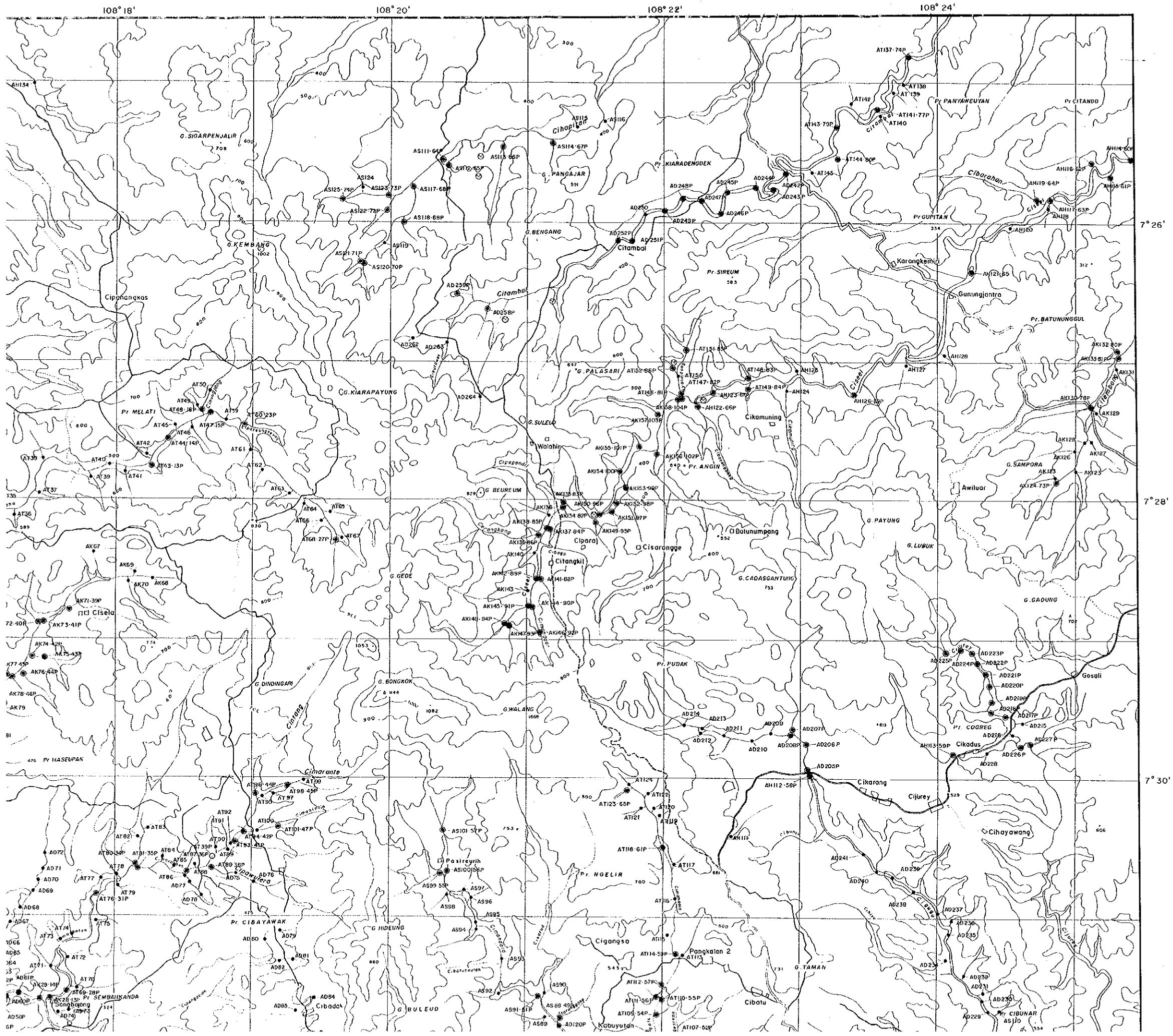


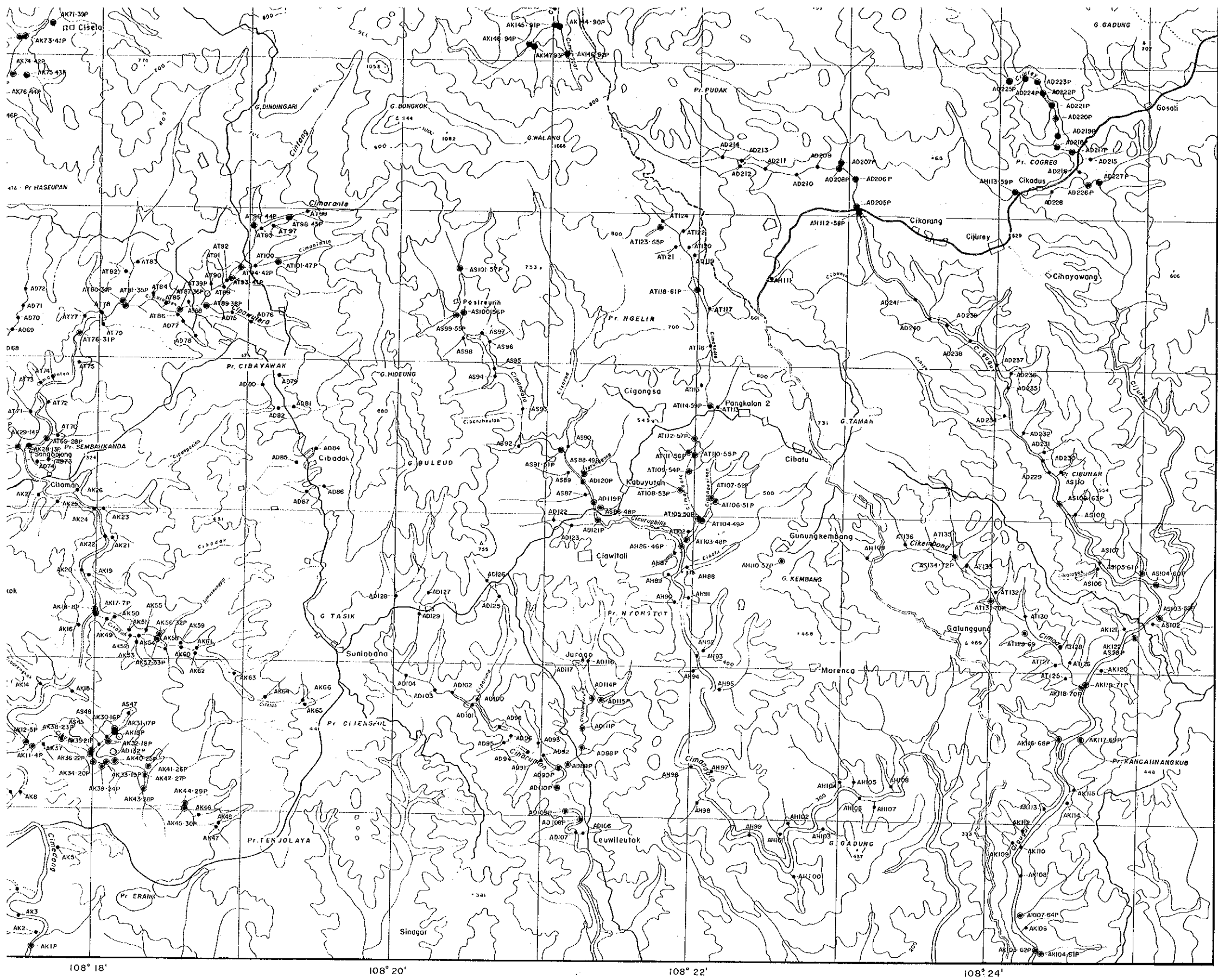
FEBRUARY 1995
JAPAN INTERNATIONAL COOPERATION AGENCY
METAL MINING AGENCY OF JAPAN



LEGEND

- Location of Pan Concentrate Samples (Sample No. : AD100P)
- Location of Stream Sediment Samples (Sample No. : AD200)
- ⊙ Some Location of Pan Concentrate Sample and Stream Sediment Sample (AD300P : Some Sample Number)





- Location of Stream Sediment Samples (Sample No. : AD200)
- Same Location of Pan Concentrate Sample and Stream Sediment Sample (AD300P : Same Sample Number)

108° 18' 108° 20' 108° 22' 108° 24'

7° 30' 7° 32' 7° 34'