

108° 12'

108° 14'

108° 16'

108° 18'

108° 20'

7° 26'

7° 28'

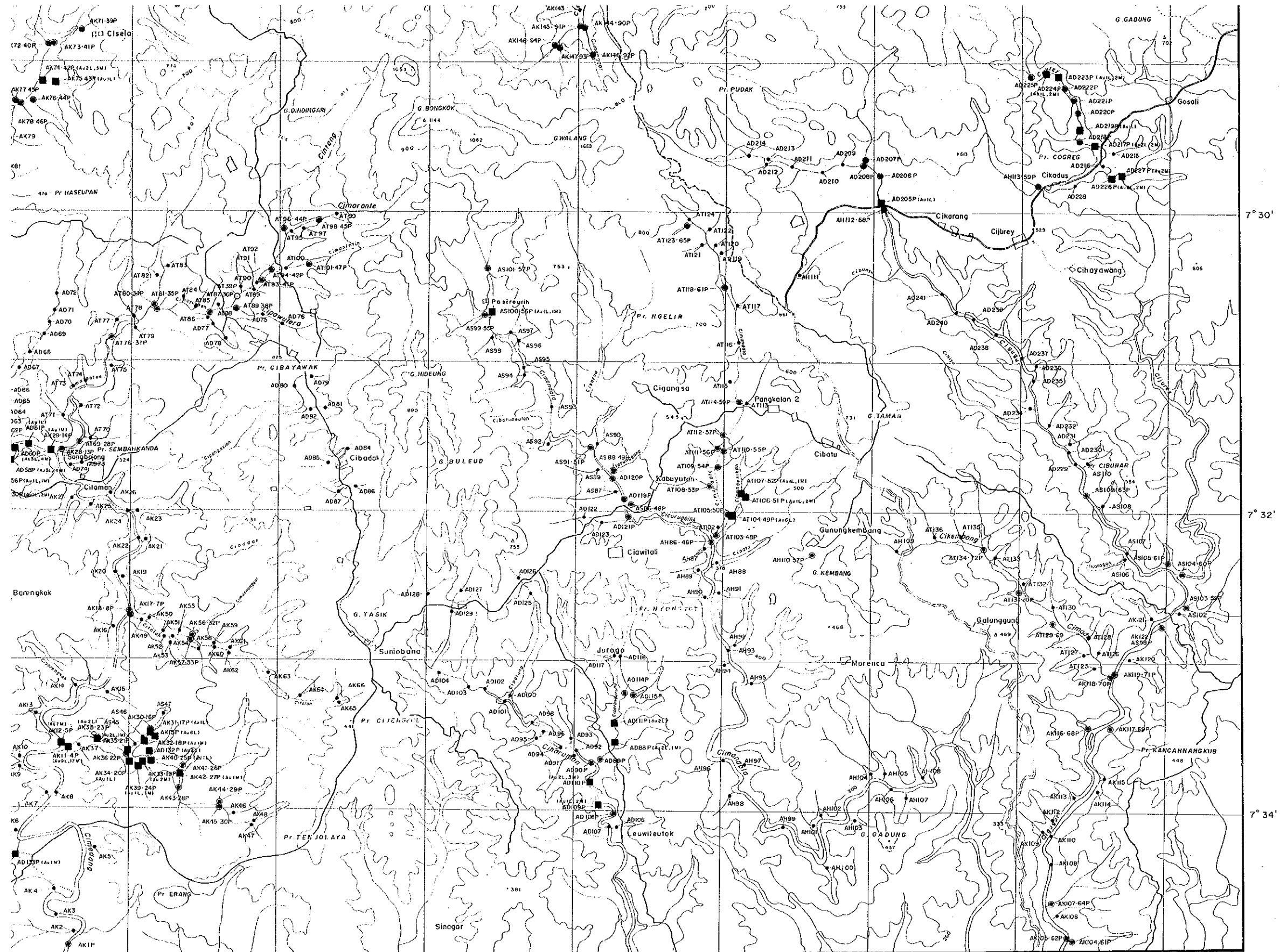
7° 30'







Au 2L : Au Count of Observation by Loupe  
Au 3M : Au Count by Binocular - Microscope



108° 18'

108° 20'

108° 22'

108° 24'

7° 30'

7° 32'

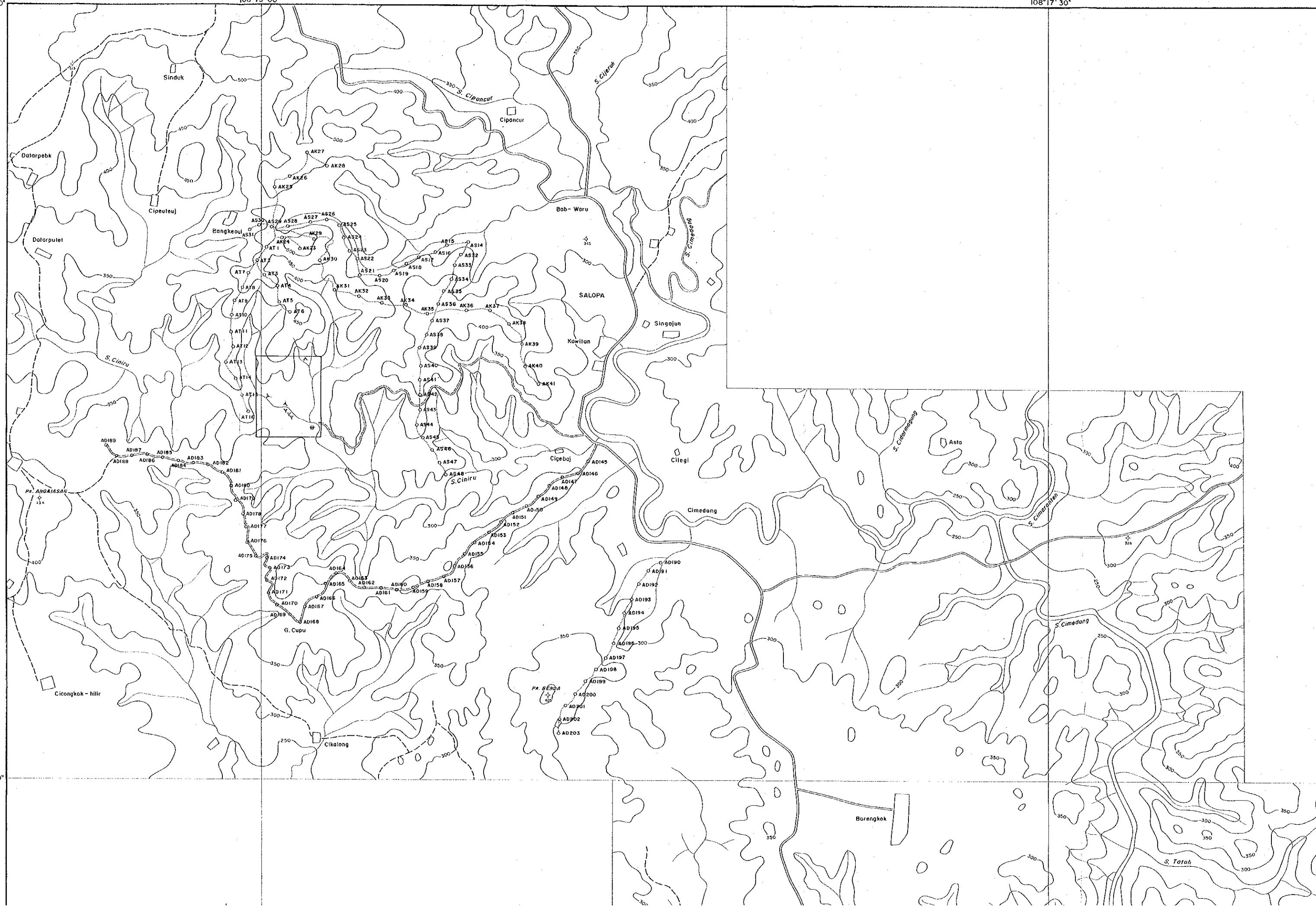
7° 34'

30' 00"

108° 15' 00"

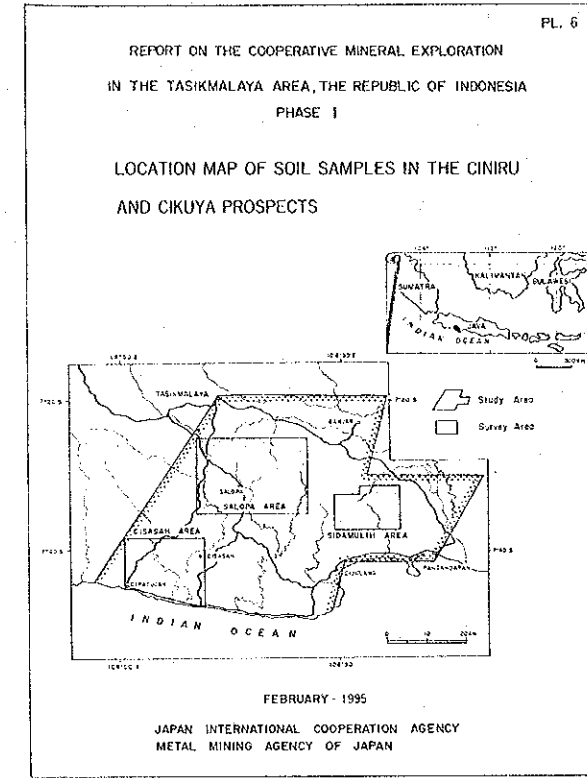
108° 17' 30"

32' 30"



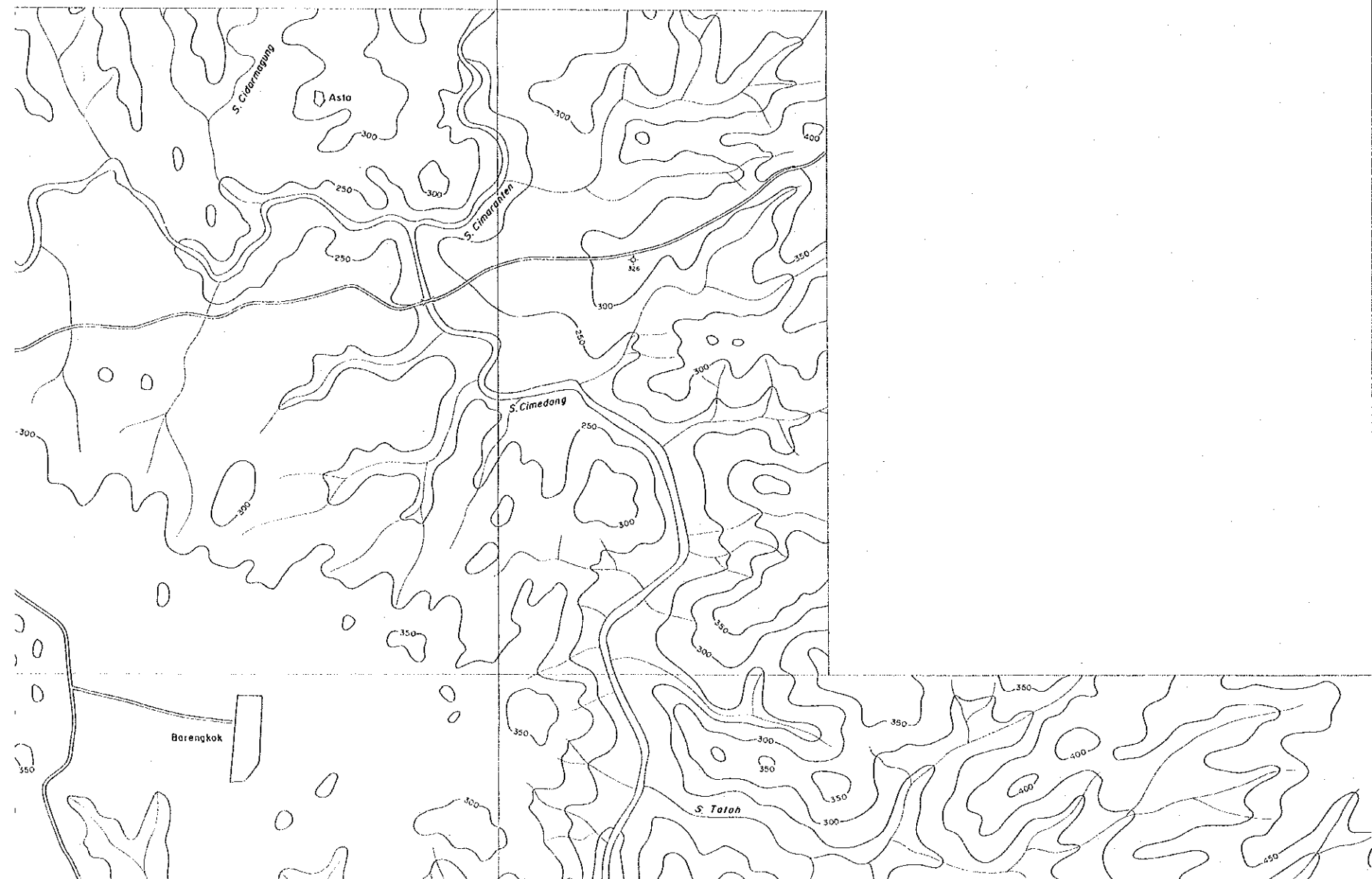
108° 17' 30"

7° 30' 00"

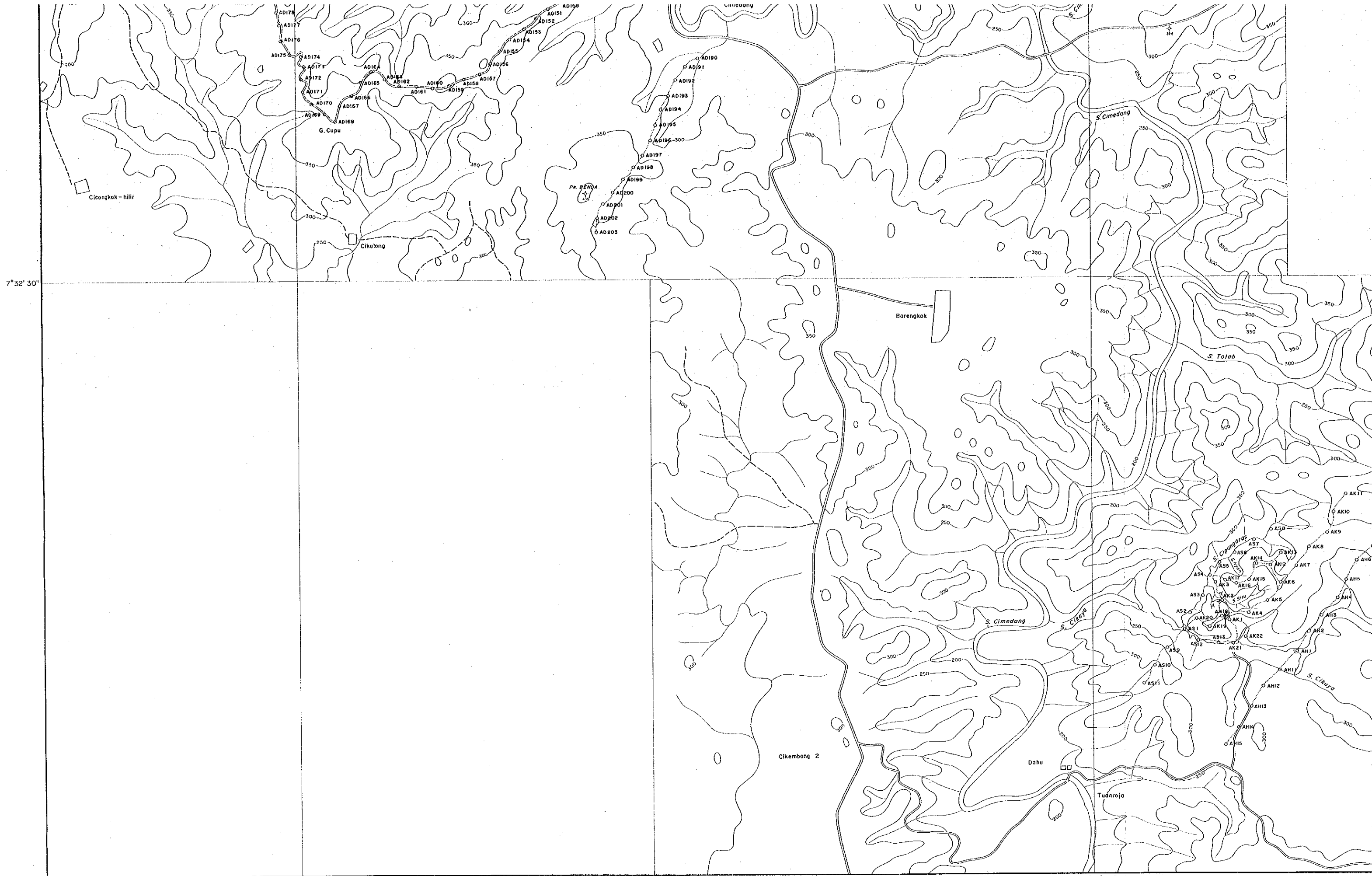


LEGEND

O-- AB100 Sample Number



7° 32' 30"



7° 32' 30"

108° 15' 00"

108° 17' 30"



7°32' 30"

106°17' 30"

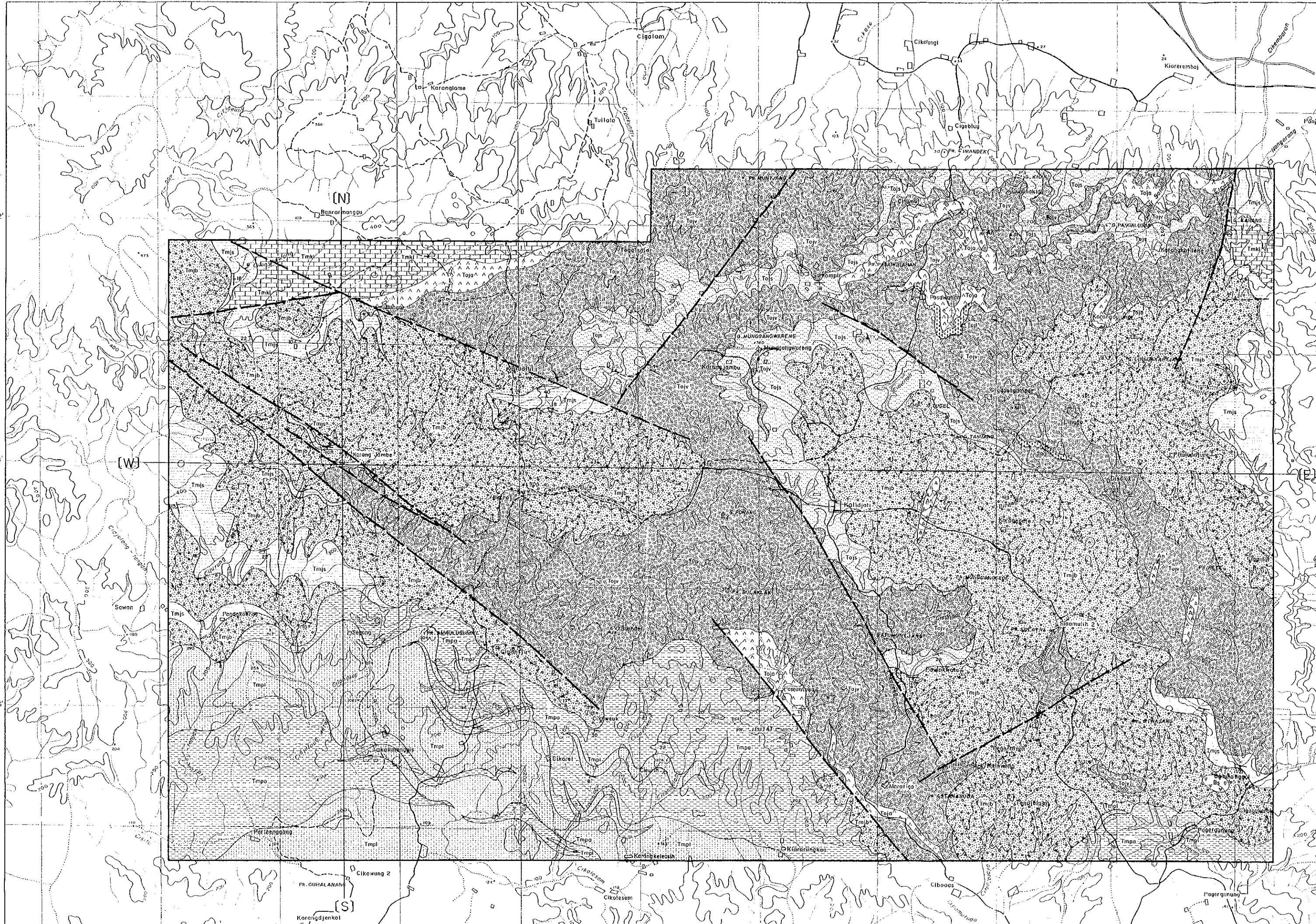


108° 28' 108° 30' 108° 32' 108° 34' 108° 36' 108° 38'

7° 32'

7° 34'

7° 36'

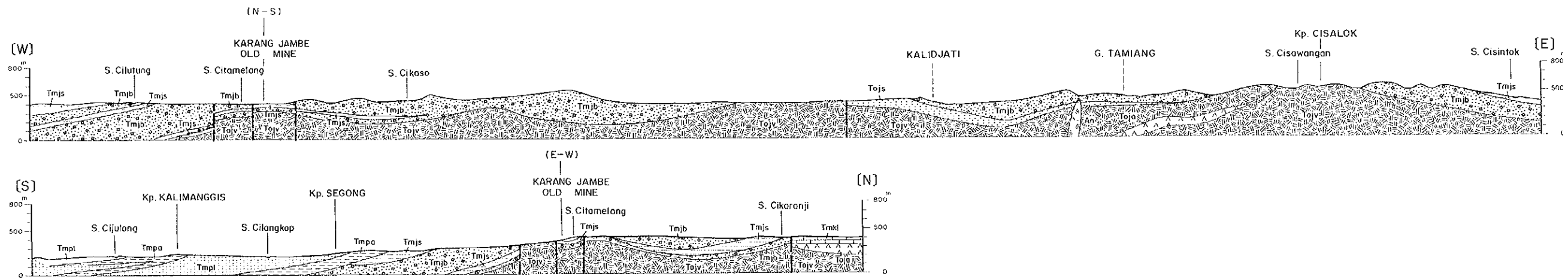
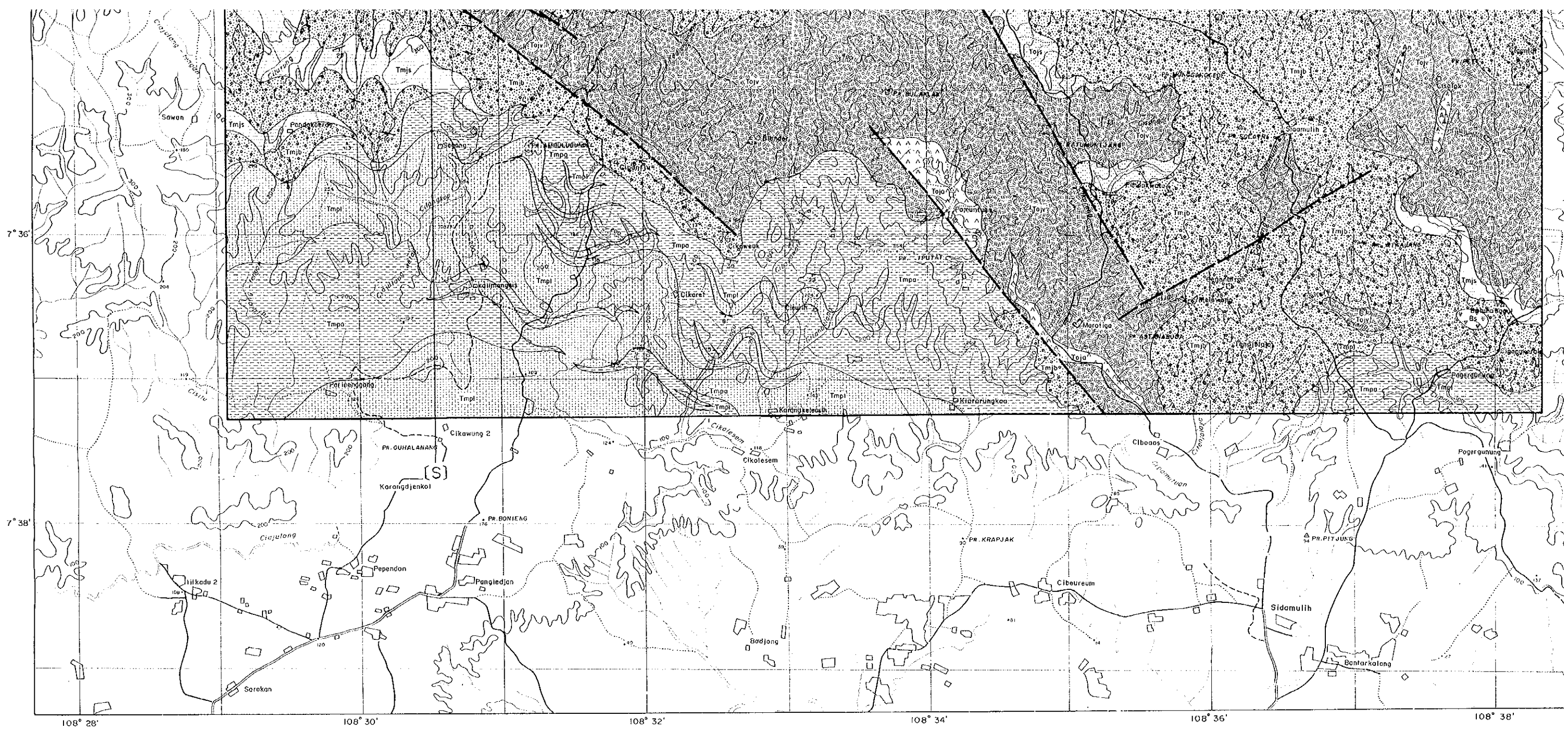


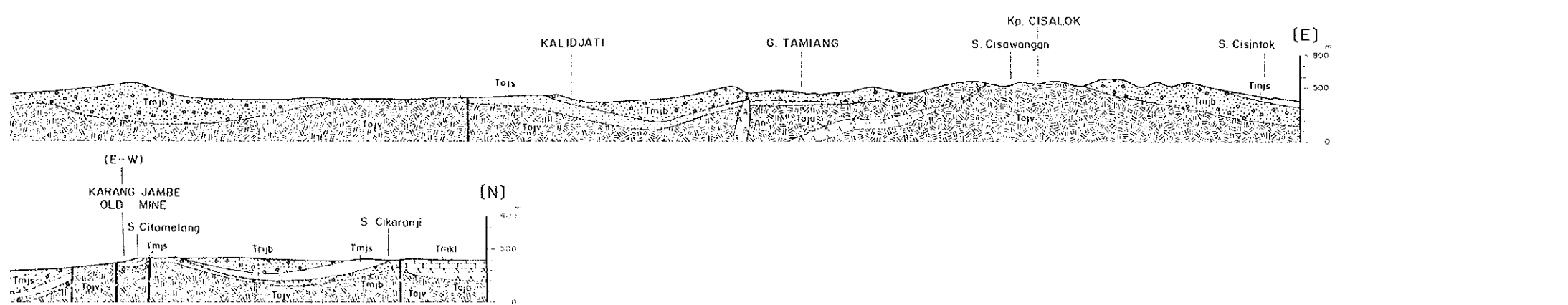
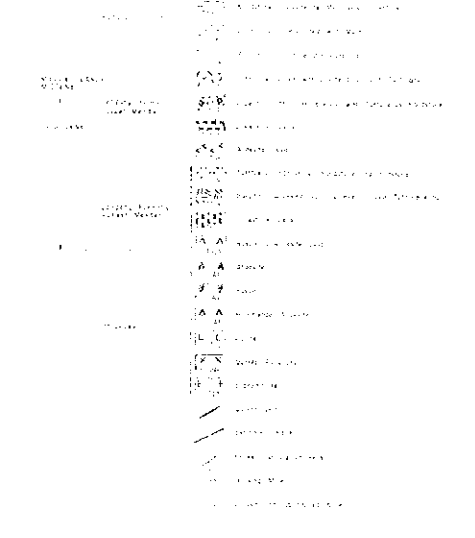
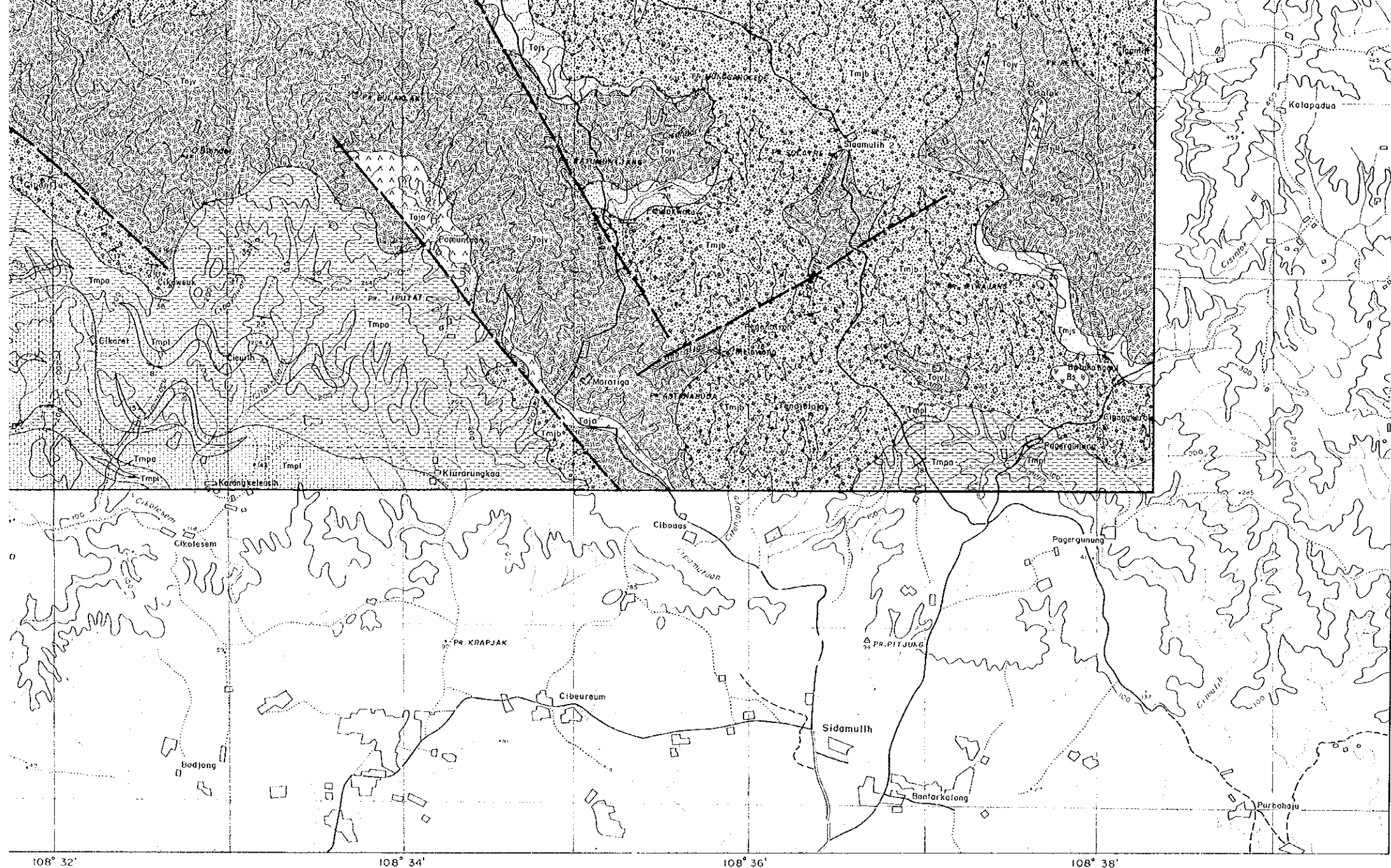
(N)

(W)

(S)



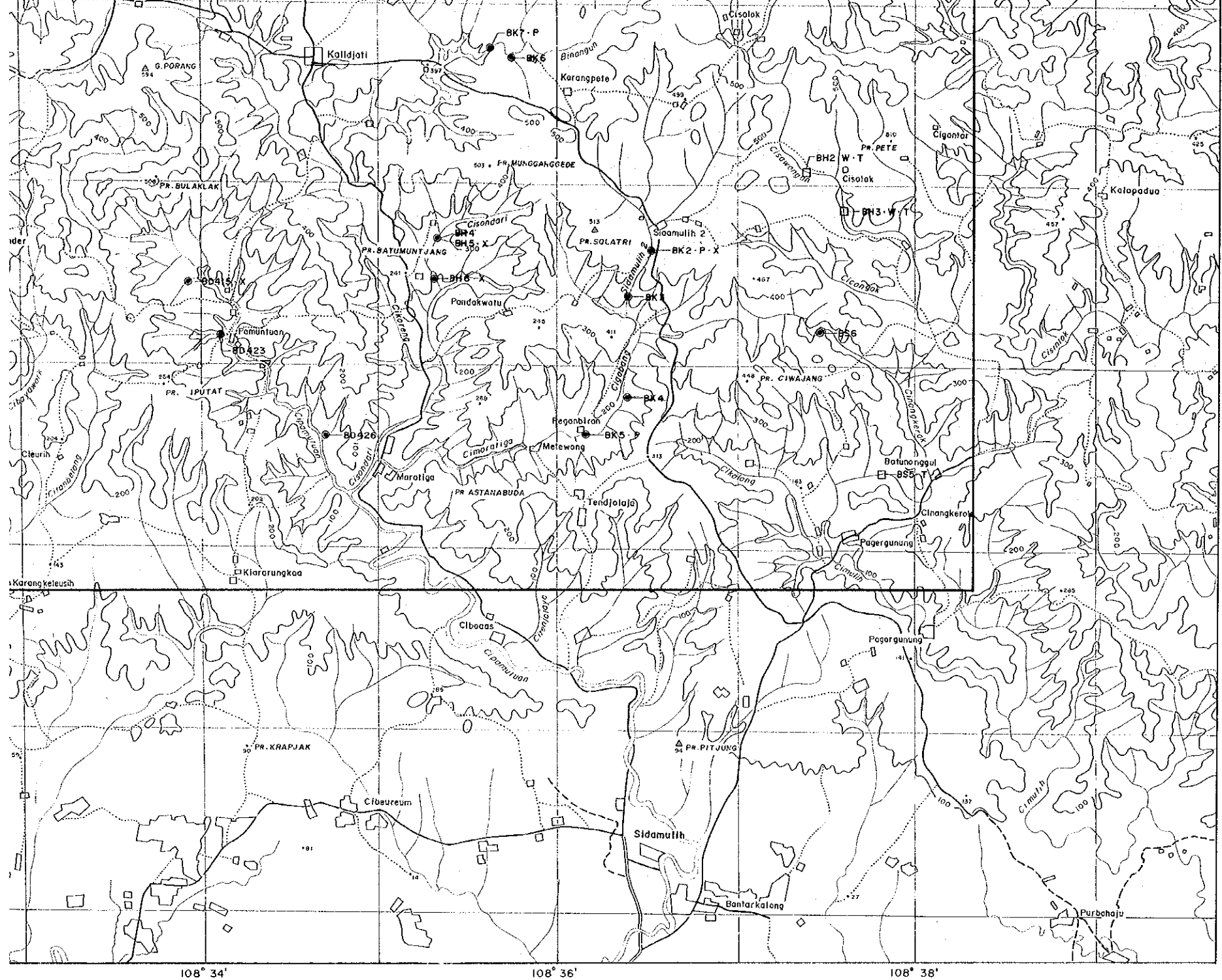












- AD123 Sample Number
- Location of Ore Assay
- , P Polished Section
- △, X X-Ray Diffraction Analysis
- Location of Rock Samples
- w Whole Rocks Assay
- ⋮ Thin Section

7°34'

7°36'

7°38'

108° 34'      108° 36'      108° 38'





