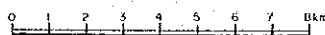


Scale 1:100,000



CISASAH AREA

INDIAN OCEAN

**BANTARKALONG**

[N] Au 0.0570pm Ag 1.200pm Cu 3.300pm Pb 1.000pm Zn 1.400pm Mn 0.150pm	[P] Au 0.0570pm Ag 1.200pm Cu 3.300pm Pb 1.000pm Zn 1.400pm Mn 0.150pm
---	---

**CIPATUJUH**

[N] Au 0.0300pm Ag 1.500pm Cu 1.700pm Pb 0.800pm Zn 0.900pm Mn 0.150pm
---

**CIKALONG**

[N] Au 0.1000pm Ag 1.800pm Cu 2.200pm Pb 0.800pm Zn 1.200pm Mn 0.150pm
---

**CIBEBER**

[N] Au 0.0500pm Ag 1.500pm Cu 1.800pm Pb 0.800pm Zn 1.000pm Mn 0.150pm
---

**SINGKIR**

[N] Au 0.0500pm Ag 1.500pm Cu 1.800pm Pb 0.800pm Zn 1.000pm Mn 0.150pm
---

**CIBUNIASIH**

[N] Au 0.0500pm Ag 1.500pm Cu 1.800pm Pb 0.800pm Zn 1.000pm Mn 0.150pm
---

**CIKALONG**

[N] Au 0.0500pm Ag 1.500pm Cu 1.800pm Pb 0.800pm Zn 1.000pm Mn 0.150pm
---

[N] Au 0.2000pm Ag 3.500pm Cu 10.000pm Pb 3.000pm Zn 4.000pm Mn 0.300pm
--

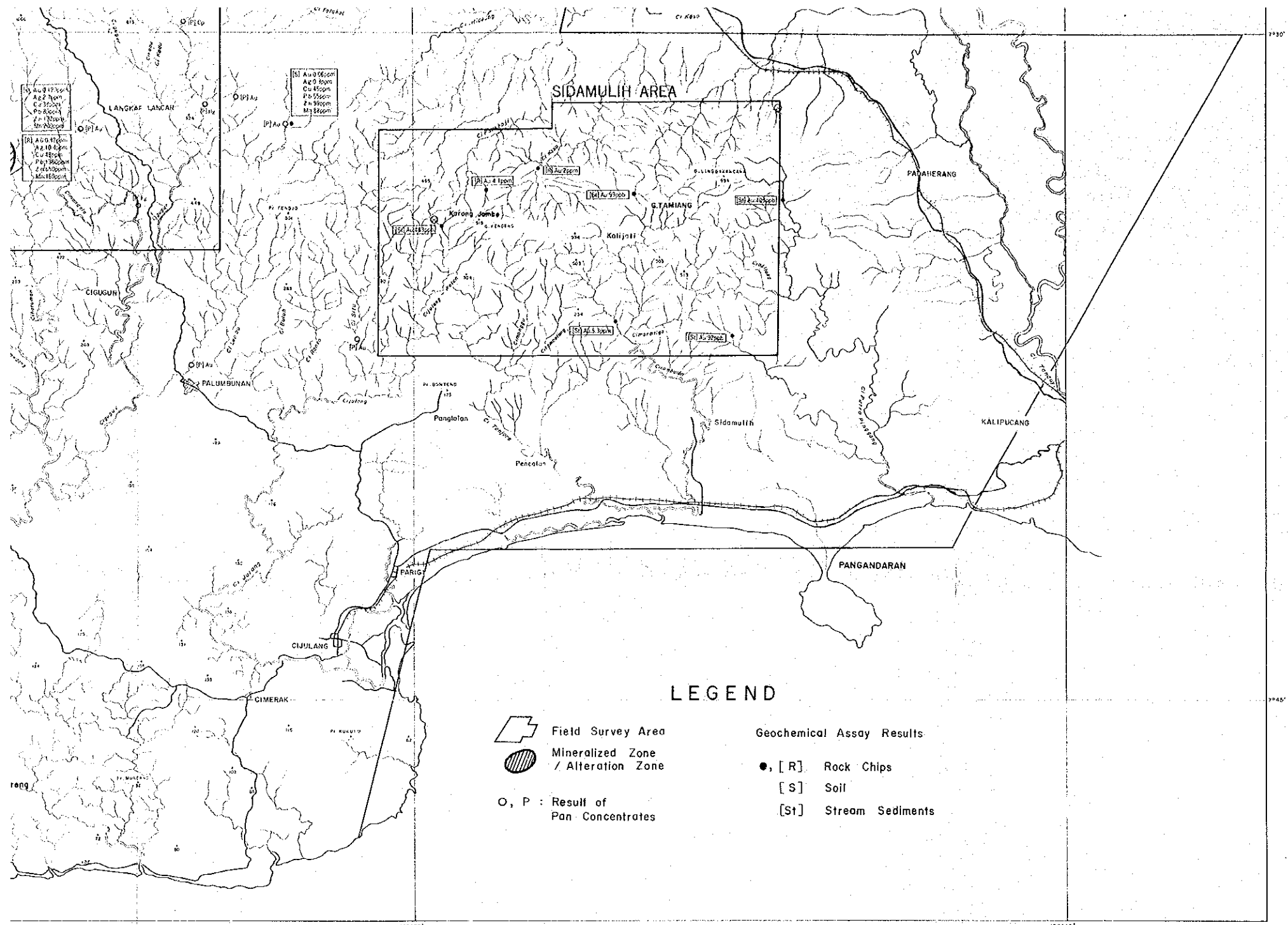
[N] Au 0.2500pm Ag 4.000pm Cu 11.000pm Pb 3.500pm Zn 4.500pm Mn 0.350pm
--

[N] Au 0.3000pm Ag 4.500pm Cu 12.000pm Pb 4.000pm Zn 5.000pm Mn 0.400pm
--

[N] Au 0.3500pm Ag 5.000pm Cu 13.000pm Pb 4.500pm Zn 5.500pm Mn 0.450pm
--

[N] Au 0.4000pm Ag 5.500pm Cu 14.000pm Pb 5.000pm Zn 6.000pm Mn 0.500pm
--

Korona, Jember



**LEGEND**

Field Survey Area

Mineralized Zone / Alteration Zone

O, P : Result of Pan Concentrates

Geochemical Assay Results

•, [R] Rock Chips

[S] Soil

[St] Stream Sediments

[St] Au 0.05ppm  
Ag 0.5ppm  
Cu 45ppm  
Pb 15ppm  
Zn 95ppm  
Mn 25ppm

[St] Au 0.15ppm  
Ag 1.0ppm  
Cu 45ppm  
Pb 15ppm  
Zn 95ppm  
Mn 25ppm

[St] Au 0.30ppm  
Ag 2.0ppm  
Cu 45ppm  
Pb 15ppm  
Zn 95ppm  
Mn 25ppm

[St] Au 0.45ppm  
Ag 3.0ppm  
Cu 45ppm  
Pb 15ppm  
Zn 95ppm  
Mn 25ppm

108° 30'

108° 00'

9° 30'

9° 45'

108° 12'

108° 14'

108° 16'

108° 18'

108° 20'

(N)

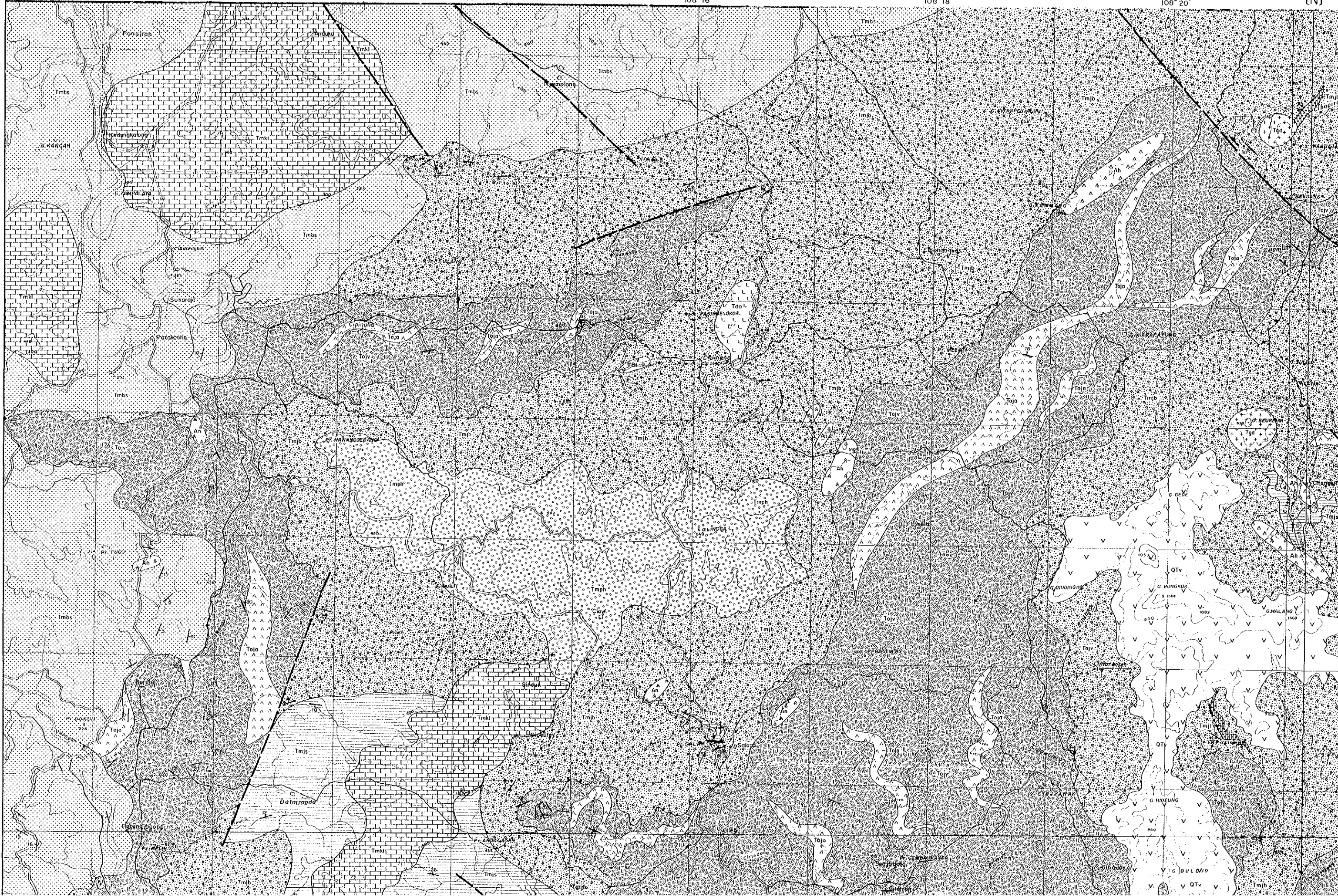
7° 26'

7° 28'

7° 30'

(W)

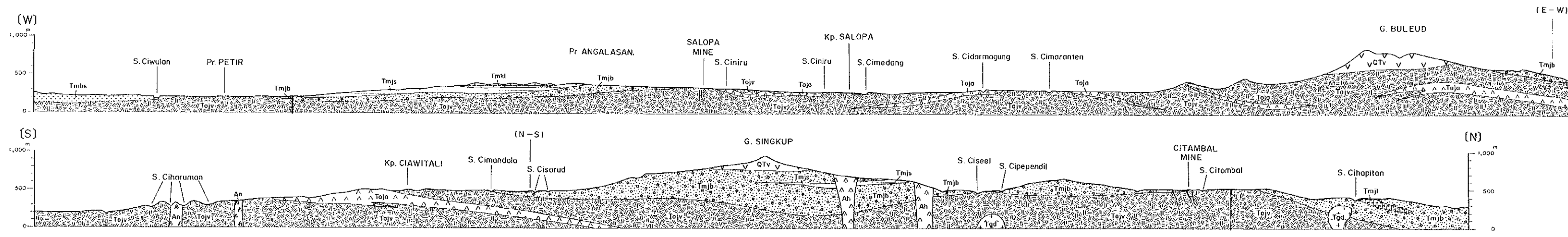
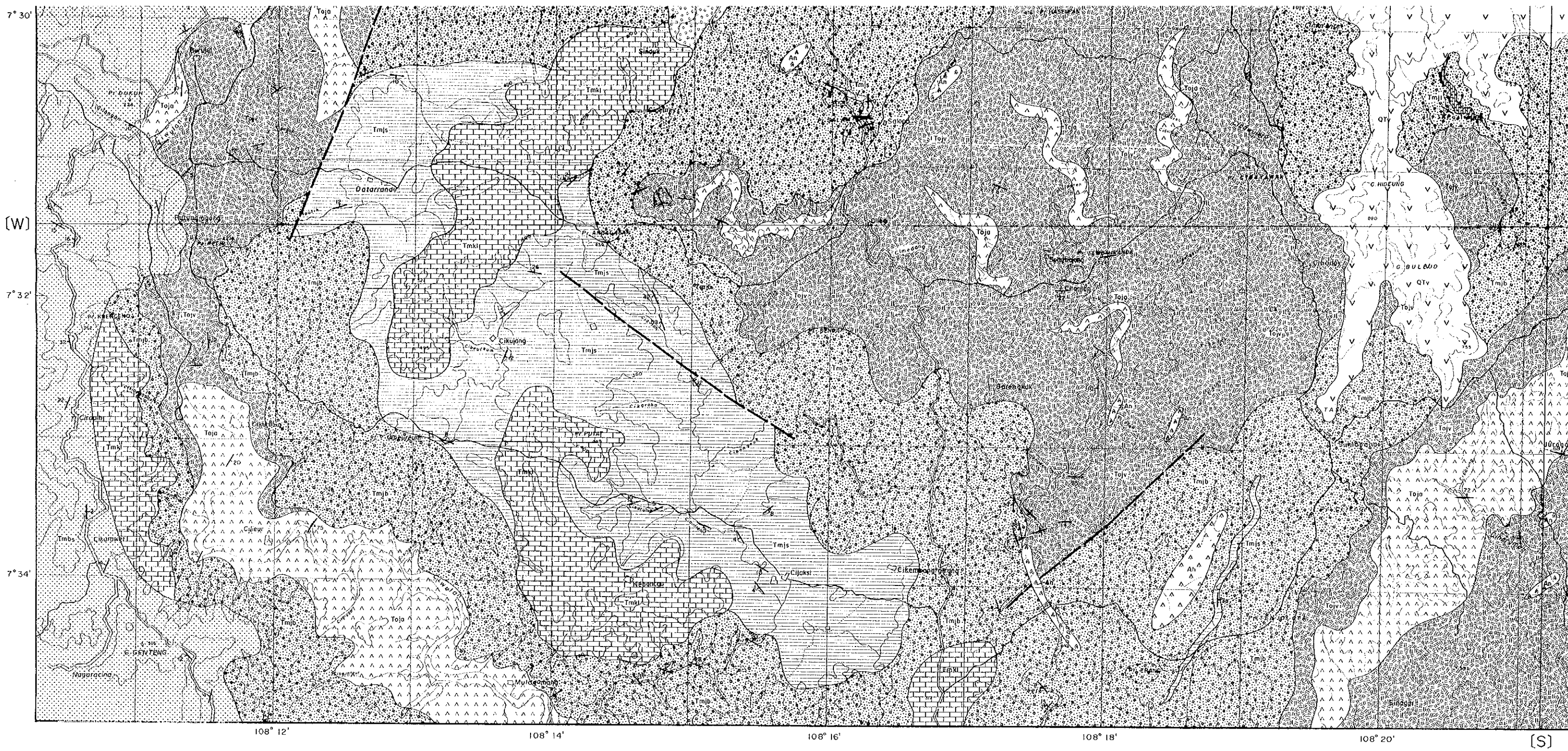
7° 32'







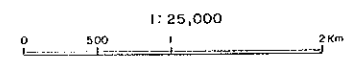
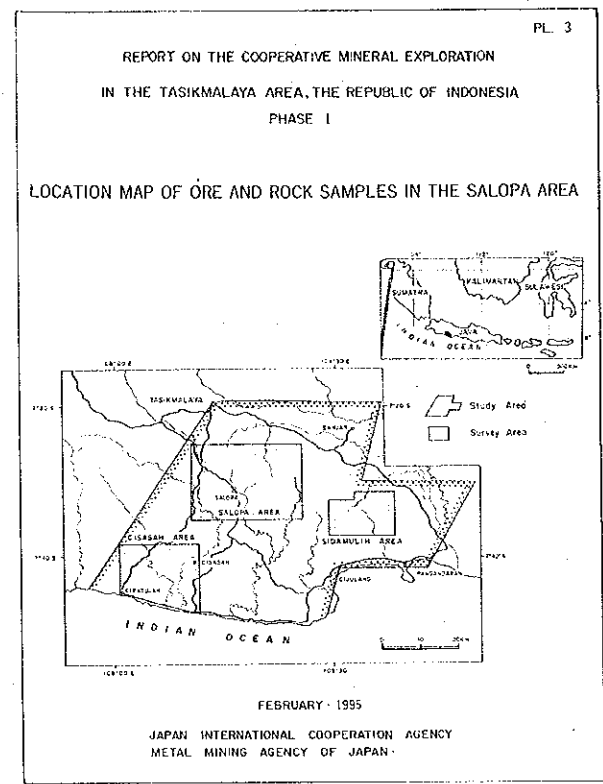
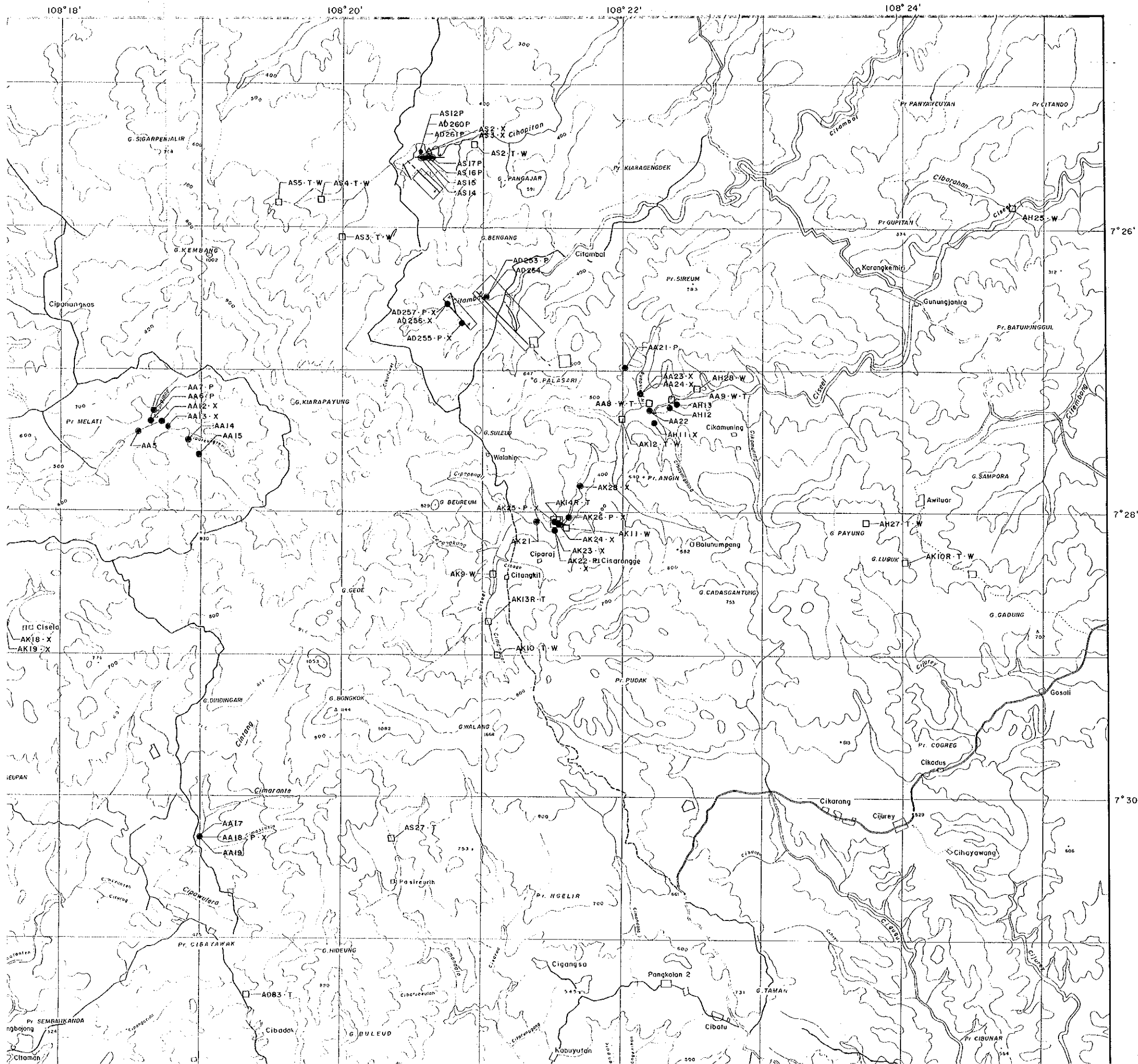












**LEGEND**

- Abbreviation of Laboratory Works
- AD23 Sample Number
  - ⊙ Location of Ore Assay
  - P Polished Section
  - △ X X-Ray Diffraction Analysis
  - Location of Rock Samples
  - W Whole Rocks Assay
  - T Thin Section

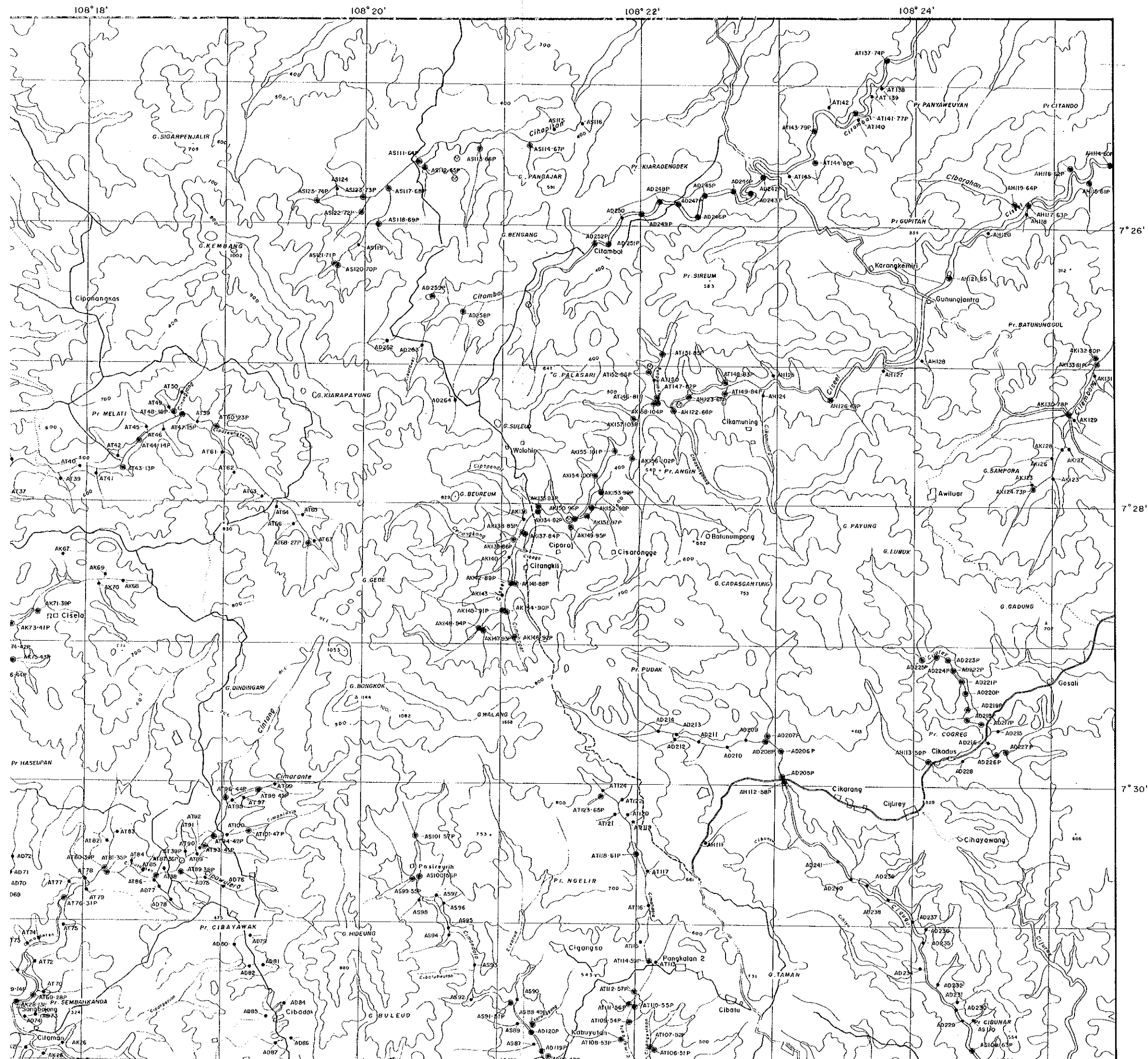










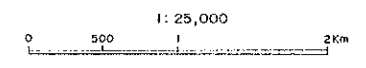


PL. 4

REPORT ON THE COOPERATIVE MINERAL EXPLORATION  
IN THE TASIKMALAYA AREA, THE REPUBLIC OF INDONESIA  
PHASE I

LOCATION MAP OF STREAM SEDIMENT AND  
PAN CONCENTRATE SAMPLES IN THE SALOPA AREA

FEBRUARY, 1955  
JAPAN INTERNATIONAL COOPERATION AGENCY  
METAL MINING AGENCY OF JAPAN

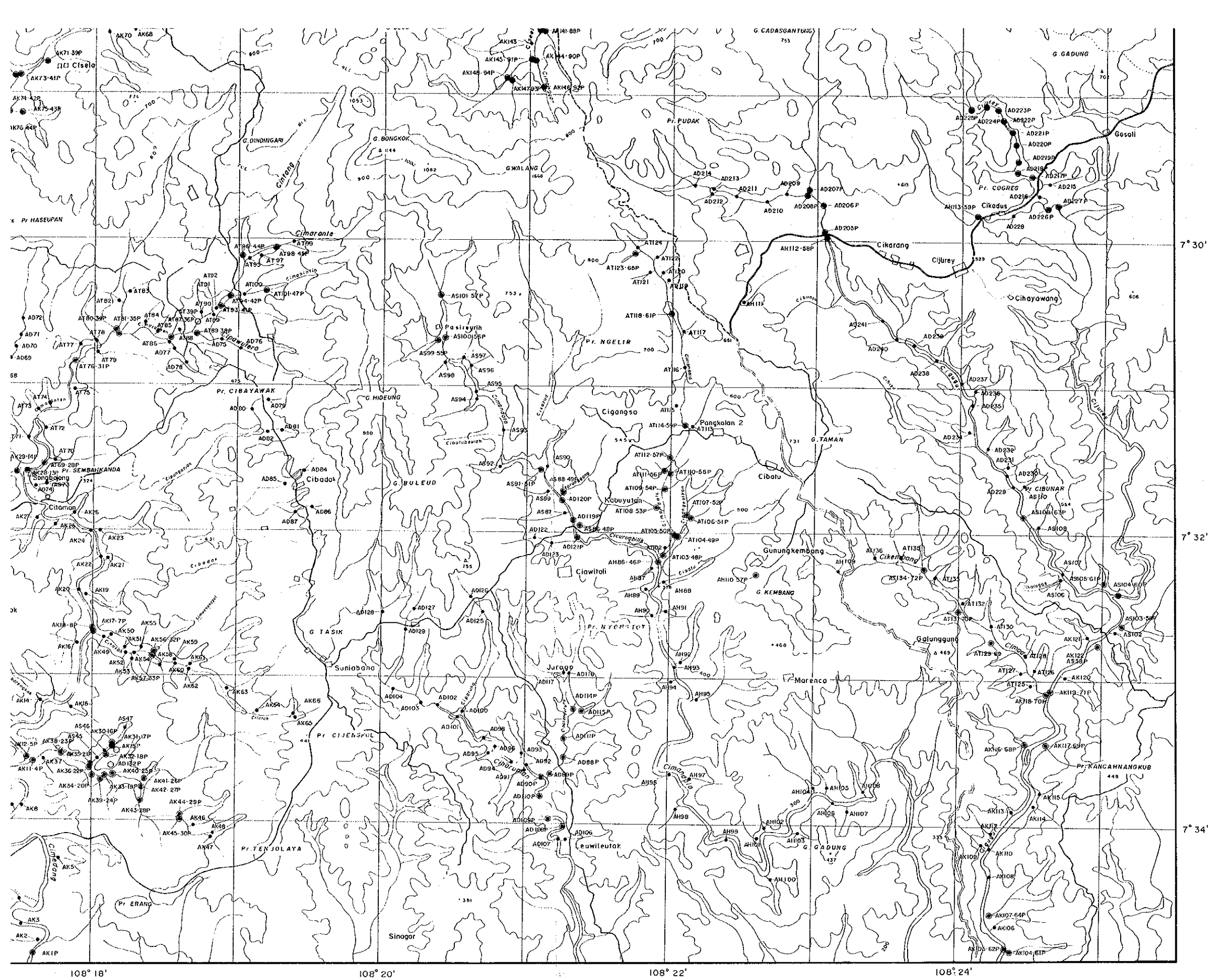


- LEGEND**
- Location of Pan Concentrate Samples  
(Sample No. : AD100P)
  - Location of Stream Sediment Samples  
(Sample No. : AD200)
  - ⊙ Same Location of Pan Concentrate Sample  
and Stream Sediment Sample  
(AD300P : Same Sample Number)





- (Sample No. : AD100P)
- Location of Stream Sediment Samples (Sample No. : AD200)
- ⊙ Same Location of Pan Concentrate Sample and Stream Sediment Sample (AD300P : Same Sample Number)



108° 18'                      108° 20'                      108° 22'                      108° 24'

7° 30'                      7° 32'                      7° 34'