



LANDSAT TM P135R02B  
MONGOLIA

0 50km

Appendix 26: Analyzed Satellite Image



50km



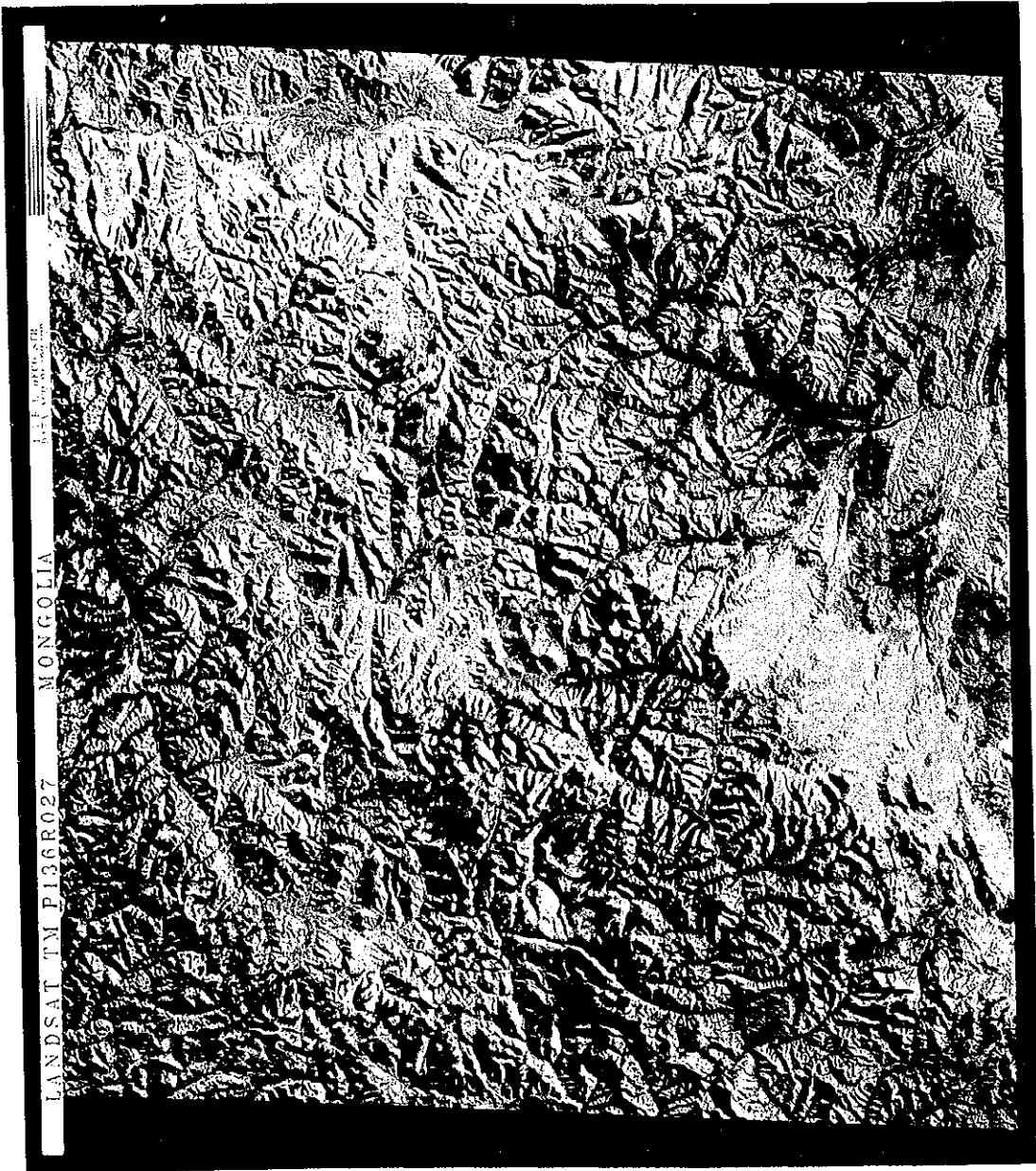
Appendix 27: Analyzed Satellite Image



LANDSAT TM P135R030 MONGOLIA

0 50km

Appendix 28: Analyzed Satellite Image



LANDSAT TM P136R027

MONGOLIA

0 50km

Appendix 29: Analyzed Satellite Image



LANDSAT TM P13GR028

MONGOLIA

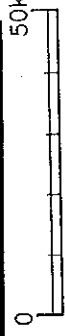
0 50km

Appendix 30: Analyzed Satellite Image



LANDSAT TM P13GR029 MONGOLIA

50km



Appendix 31: Analyzed Satellite Image



LANDSAT TM P136R030 MONGOLIA

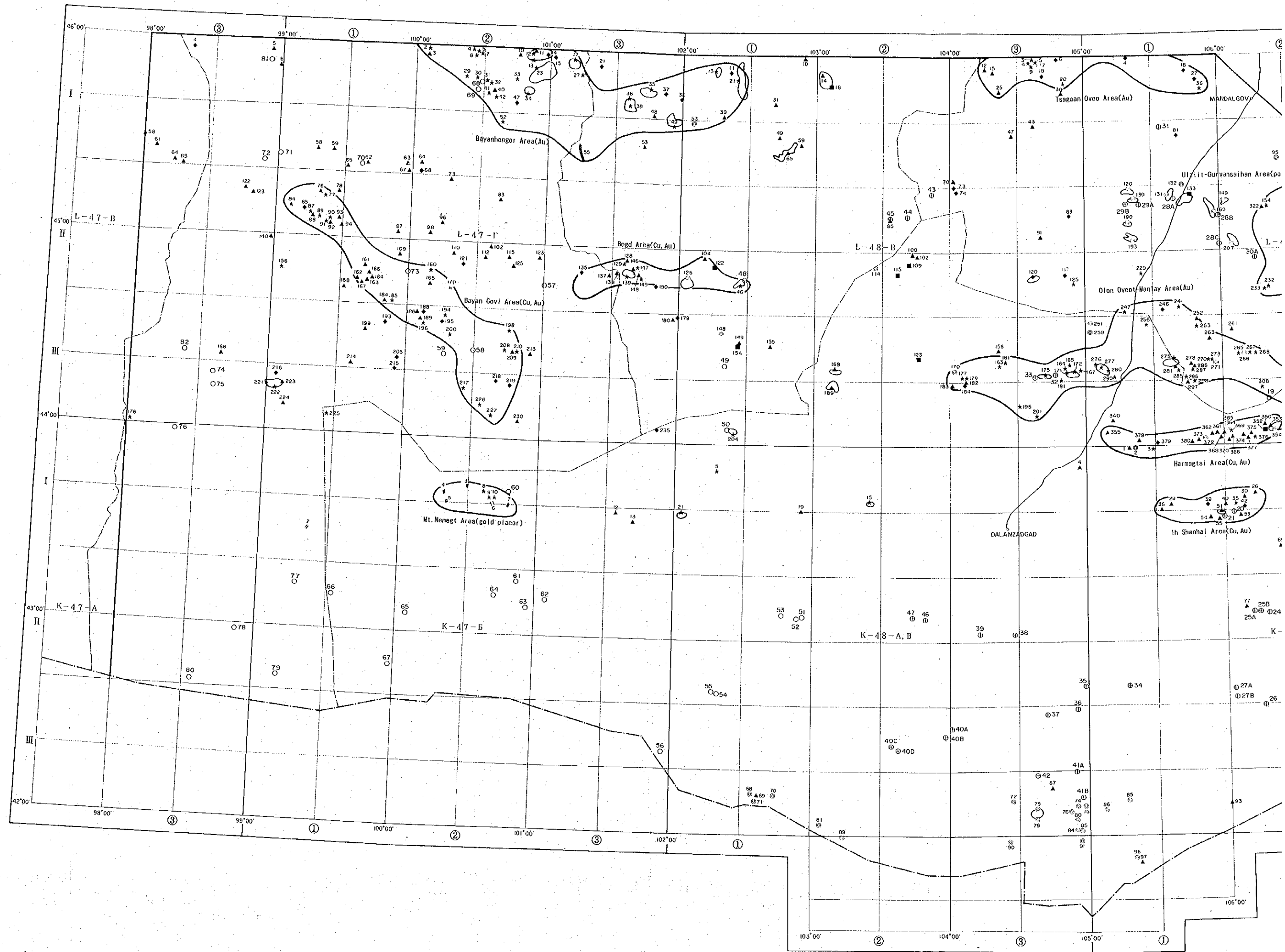
50km

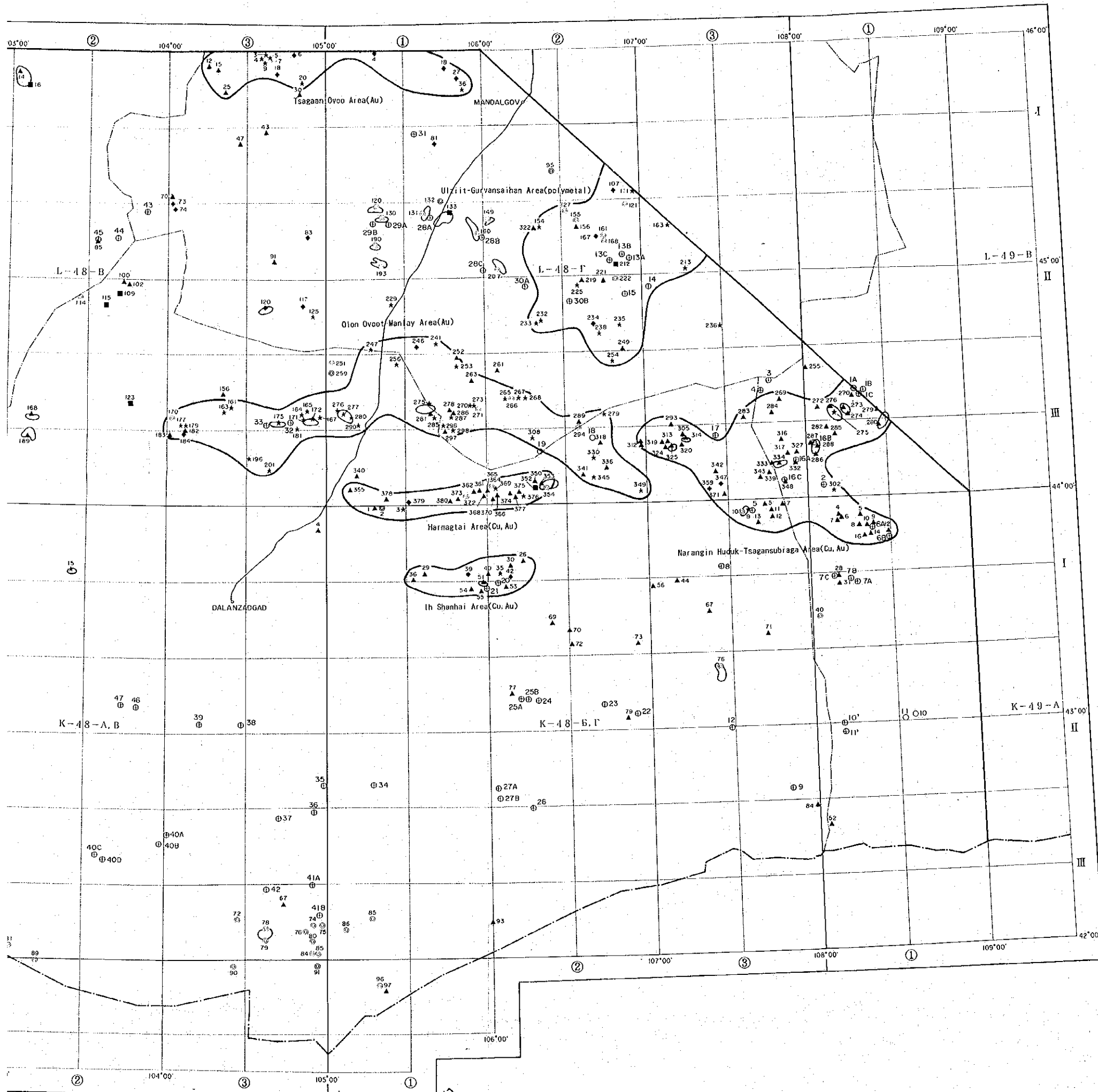
Appendix 32: Analyzed Satellite Image



Appendix 33: Analyzed Satellite Image







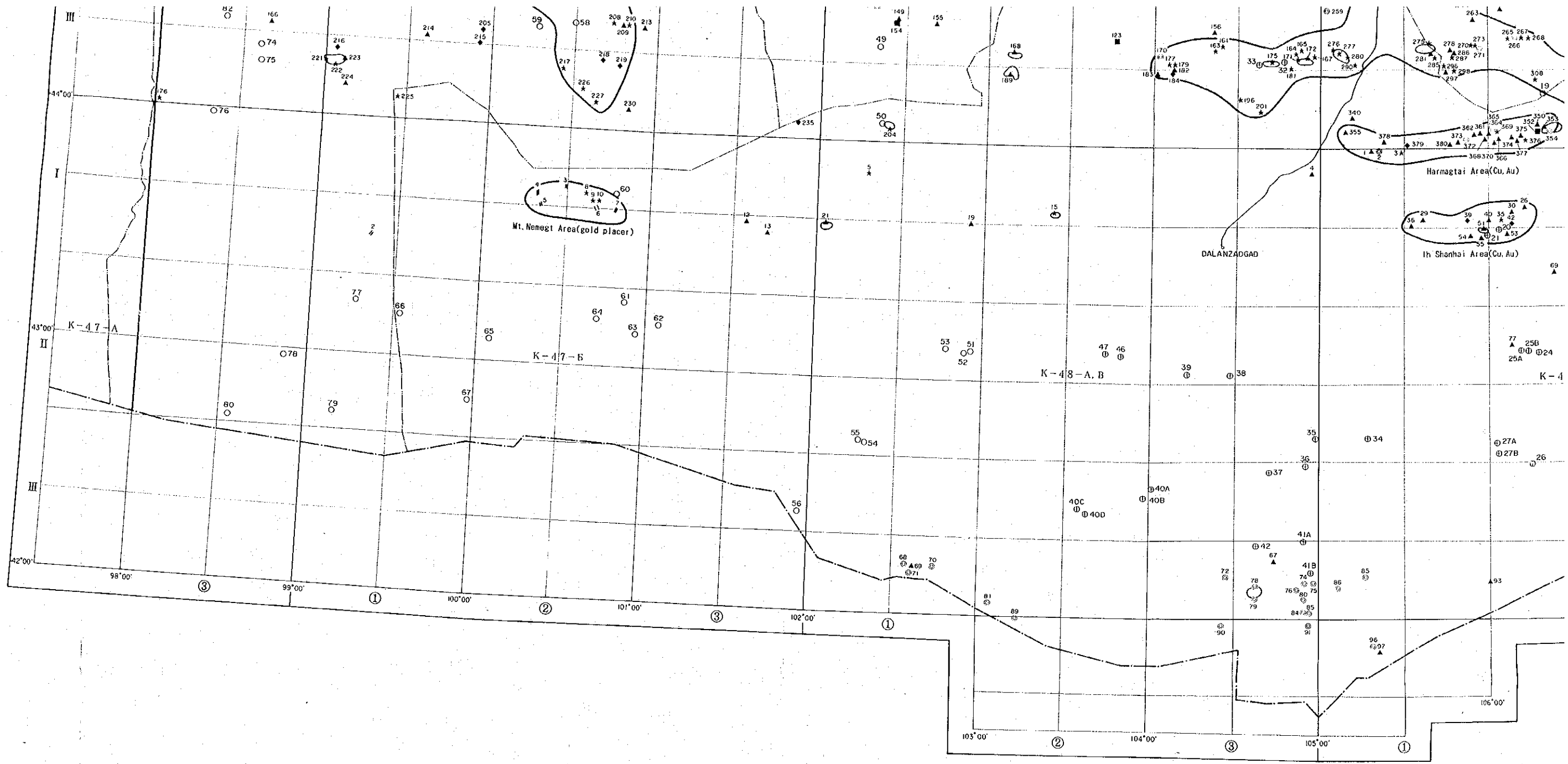
PL. I - 1

REPORT ON THE MINERAL EXPLORATION  
IN THE ALTANTAL AREA,  
MONGOLIA

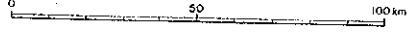
Compiled Map of Results of Existing Data Analysis,  
Satellite Image Interpretation and Ground Truth Survey.

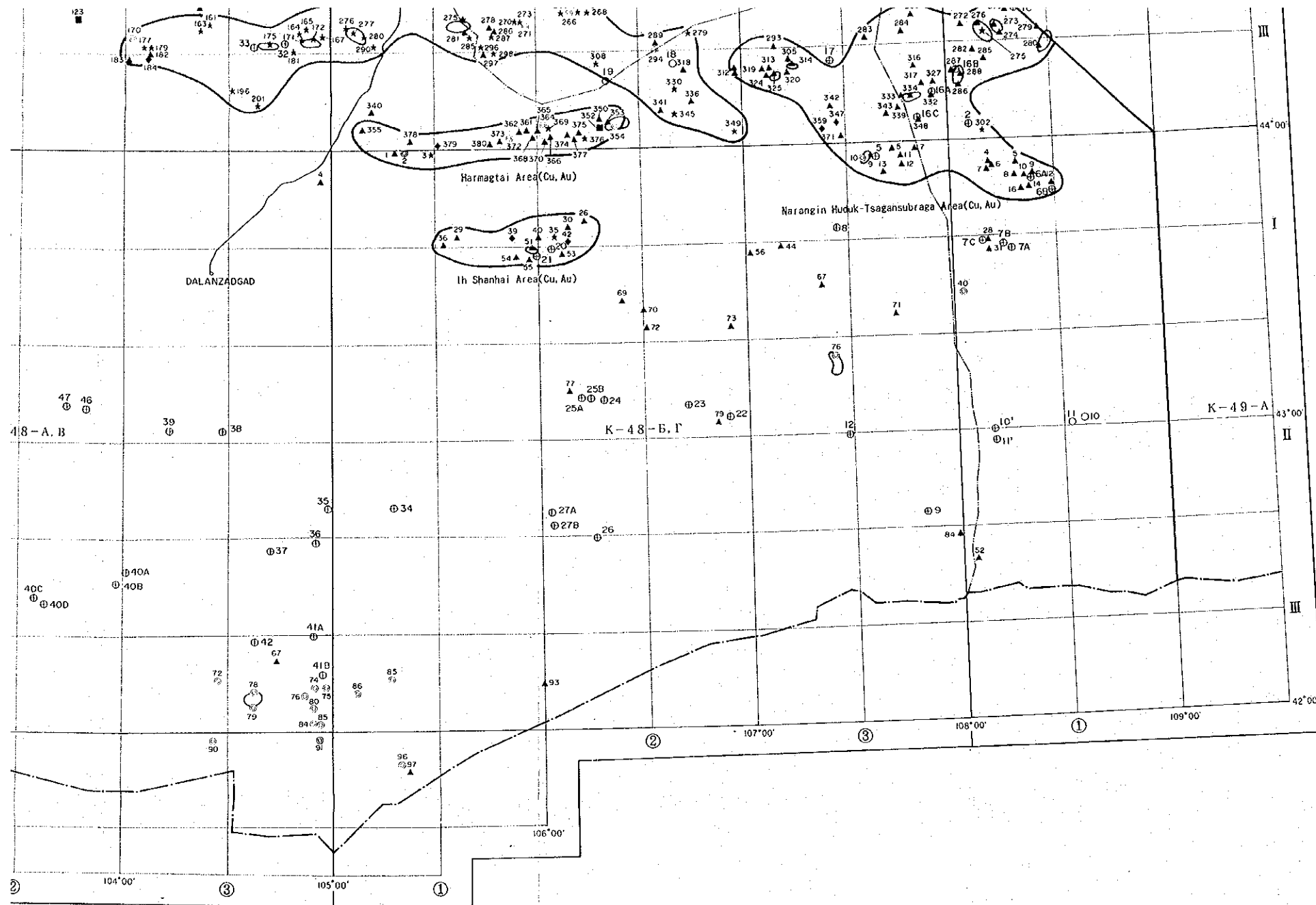
FEBRUARY 1995  
JAPAN INTERNATIONAL COOPERATION AGENCY  
METAL MINING AGENCY OF JAPAN

- LEGEND
- Point and number of ore showing
  - ★ <sup>123</sup> Au, // Placer gold deposit
  - ◆ <sup>123</sup> Ag
  - ▲ <sup>123</sup> Cu
  - ⊙ <sup>123</sup> Pb
  - <sup>123</sup> Zn
  - Altered area selected by satellite image.
  - ⊕ Surveyed altered area
  - Geochemical anomaly zone
  - Boundary of province
  - Boundary of border
  - Survey area
  - ⊕ Promising area of gold deposit and showing selected from existing data.



SCALE 1:1,000,000



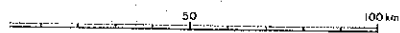


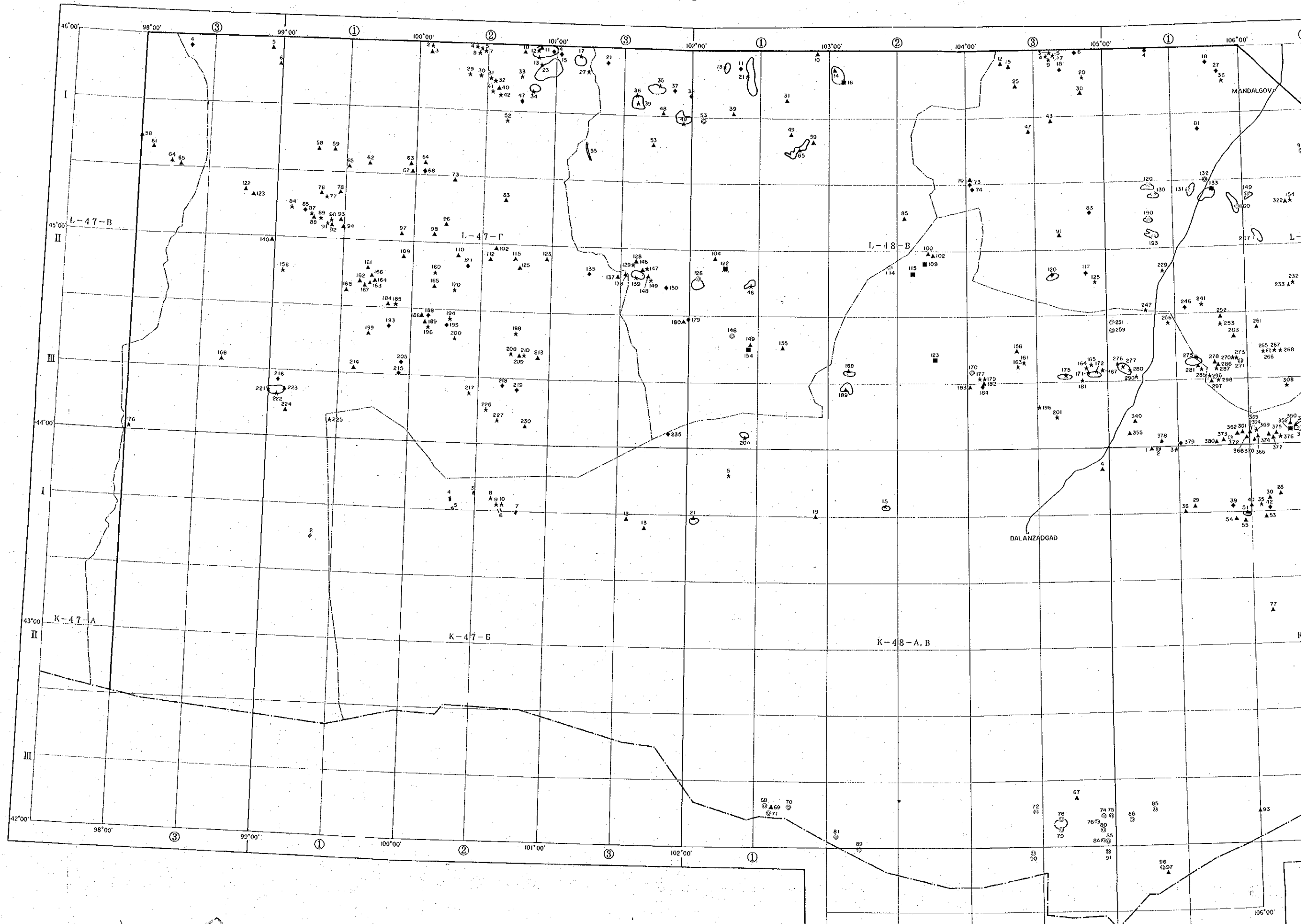
L E G E N D

Point and number of are showing

- ★ <sup>123</sup> A u, // Placer gold deposit
- ◆ <sup>123</sup> A g
- ▲ <sup>123</sup> C u
- ⊙ <sup>123</sup> P b
- <sup>123</sup> Z n
- Altered area selected by satellite image.
- ⊙ Surveyed altered area
- Geochemical anomaly zone
- Boundary of province
- Boundary of border
- ▭ Survey area
- ☁ Promising area of gold deposit and showing selected from existing data.

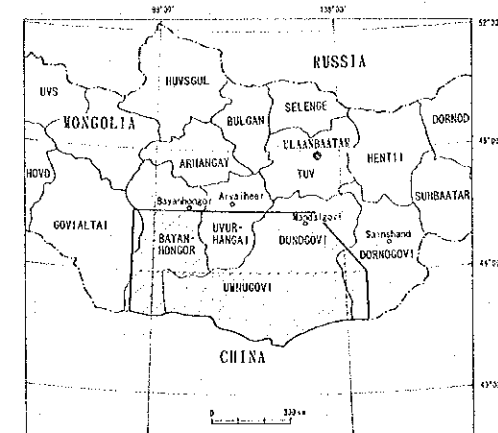
SCALE 1: 1,000,000



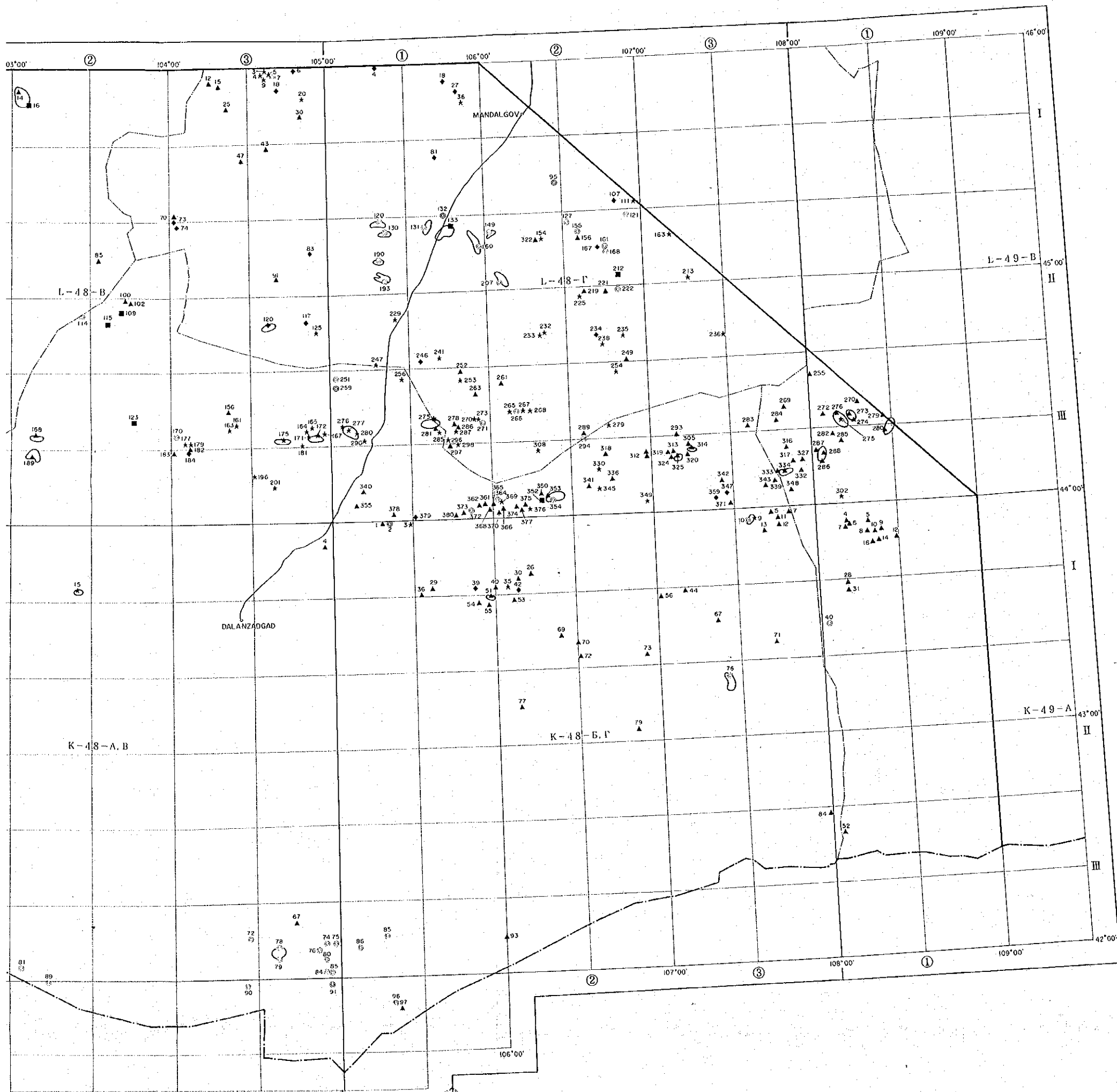


REPORT ON THE MINERAL EXPLORATION  
IN THE ALTANTAL AREA,  
MONGOLIA

DISTRIBUTION MAP OF ORE DEPOSITS  
AND SHOWINGS IN THE SURVEY AREA

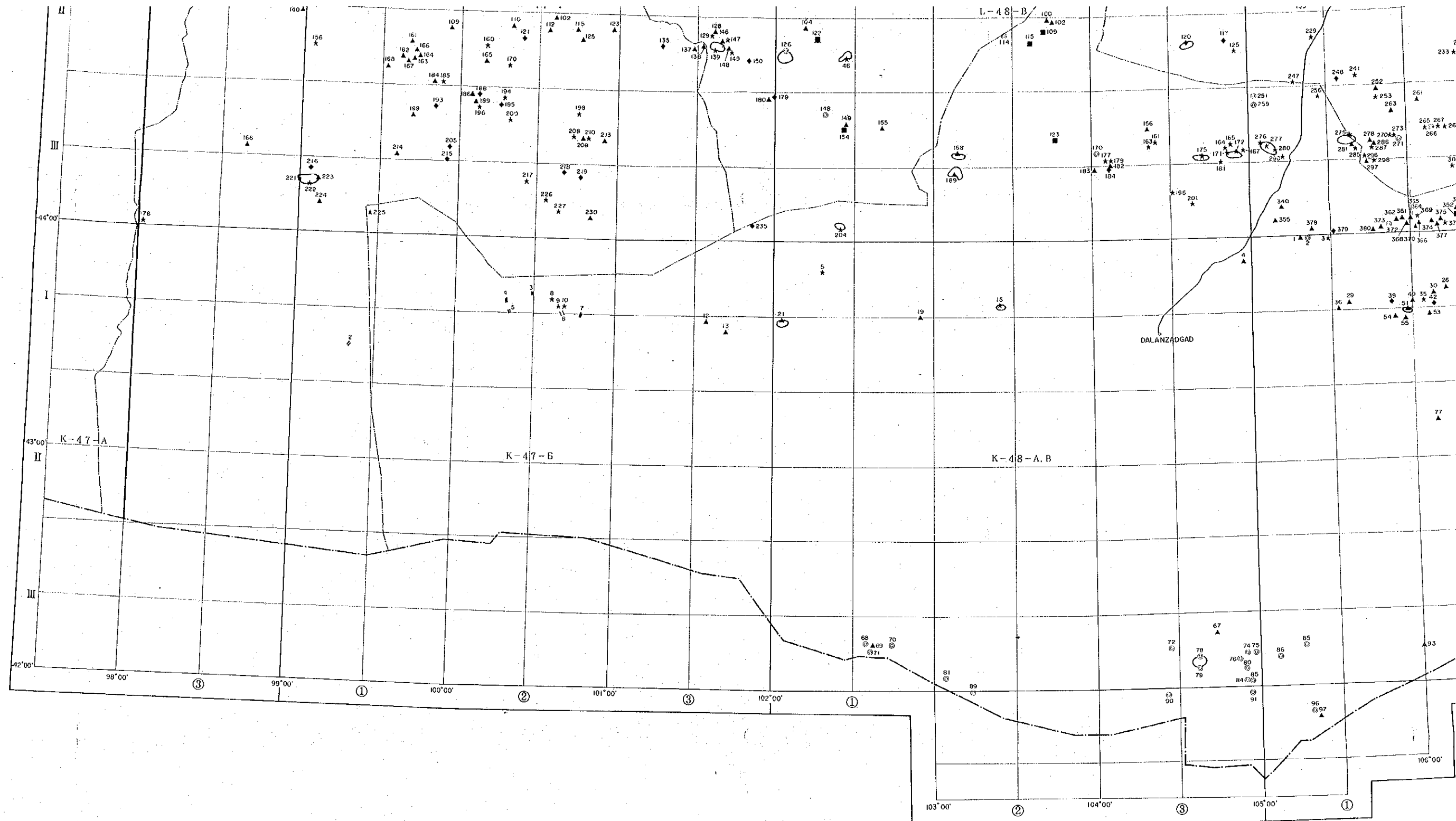


FEBRUARY 1965  
JAPAN INTERNATIONAL COOPERATION AGENCY  
METAL MINING AGENCY OF JAPAN

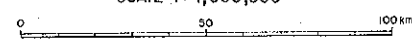


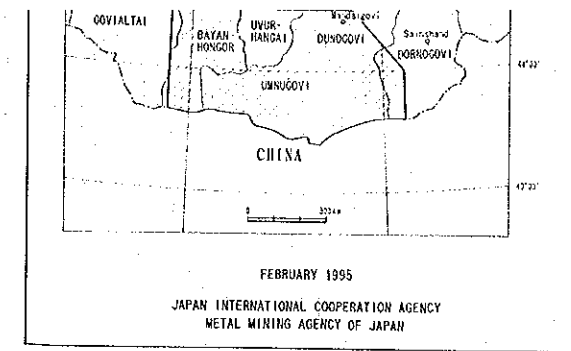
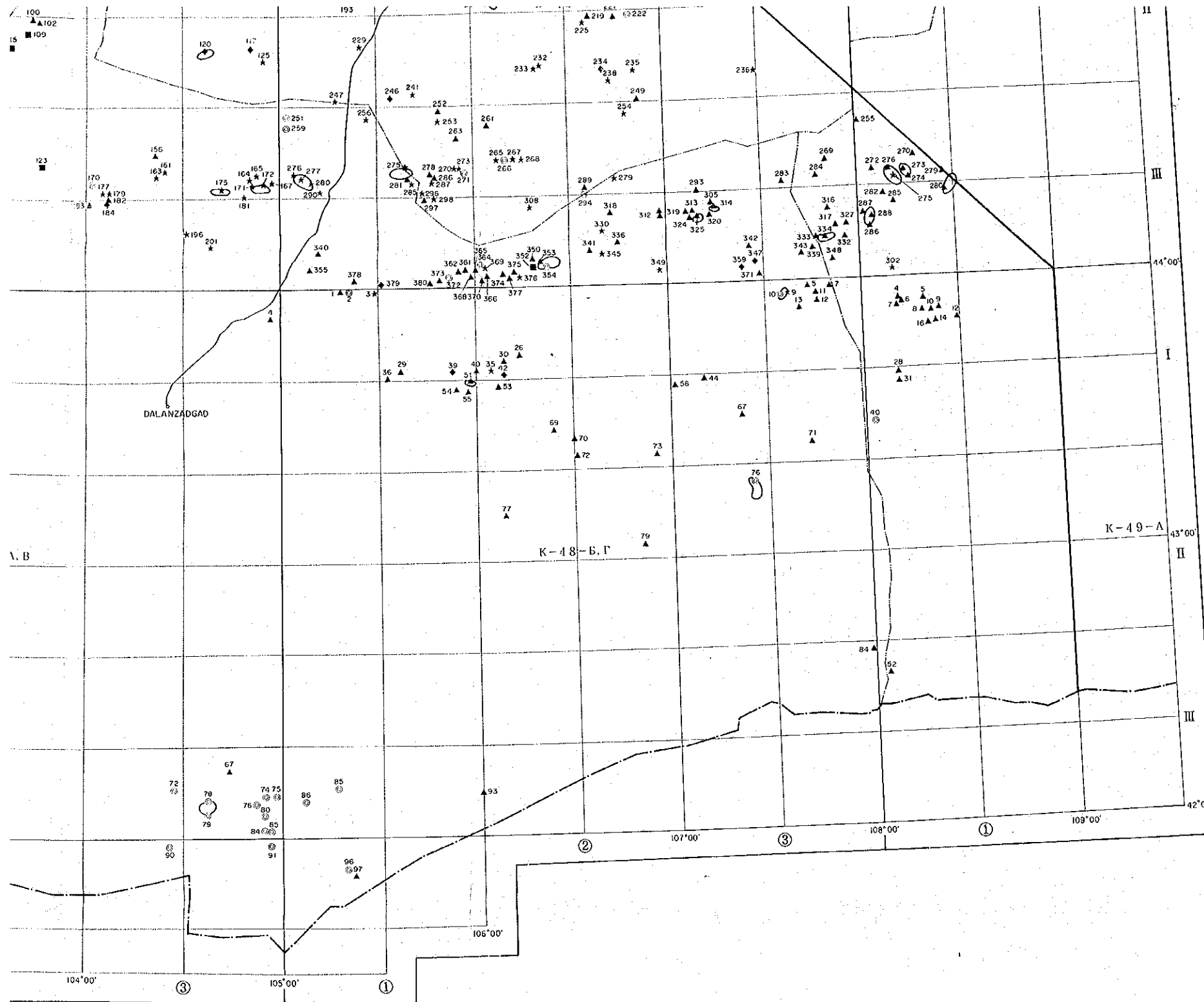
LEGEND

- Point and number of ore showing
- ★ Au, // Placer gold deposit
- ◆ Ag
- ▲ Cu
- ⊙ Pb
- Zn
- Geochemical anomaly zone
- Boundary of province
- Boundary of border
- Survey area



SCALE 1:1,000,000





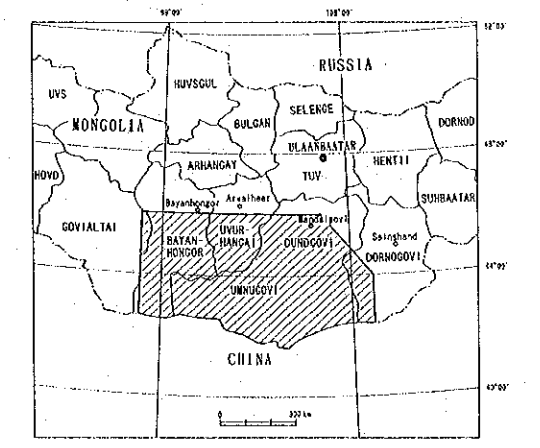
- L E G E N D
- Point and number of ore showing
- ★<sup>123</sup> A u. // Placer gold deposit
  - ◆<sup>123</sup> A g
  - ▲<sup>123</sup> C u
  - ⊙<sup>123</sup> P b
  - <sup>123</sup> Z n
  - Geochemical anomaly zone
  - Boundary of province
  - Boundary of border
  - Survey area

SCALE 1:1,000,000



REPORT ON THE MINERAL EXPLORATION  
IN THE ALTANTAL AREA,  
MONGOLIA.

COMPILED MAP OF GEOLOGY AND  
ORE DEPOSITS AND SHOWINGS  
IN THE SURVEY AREA



FEBRUARY 1985

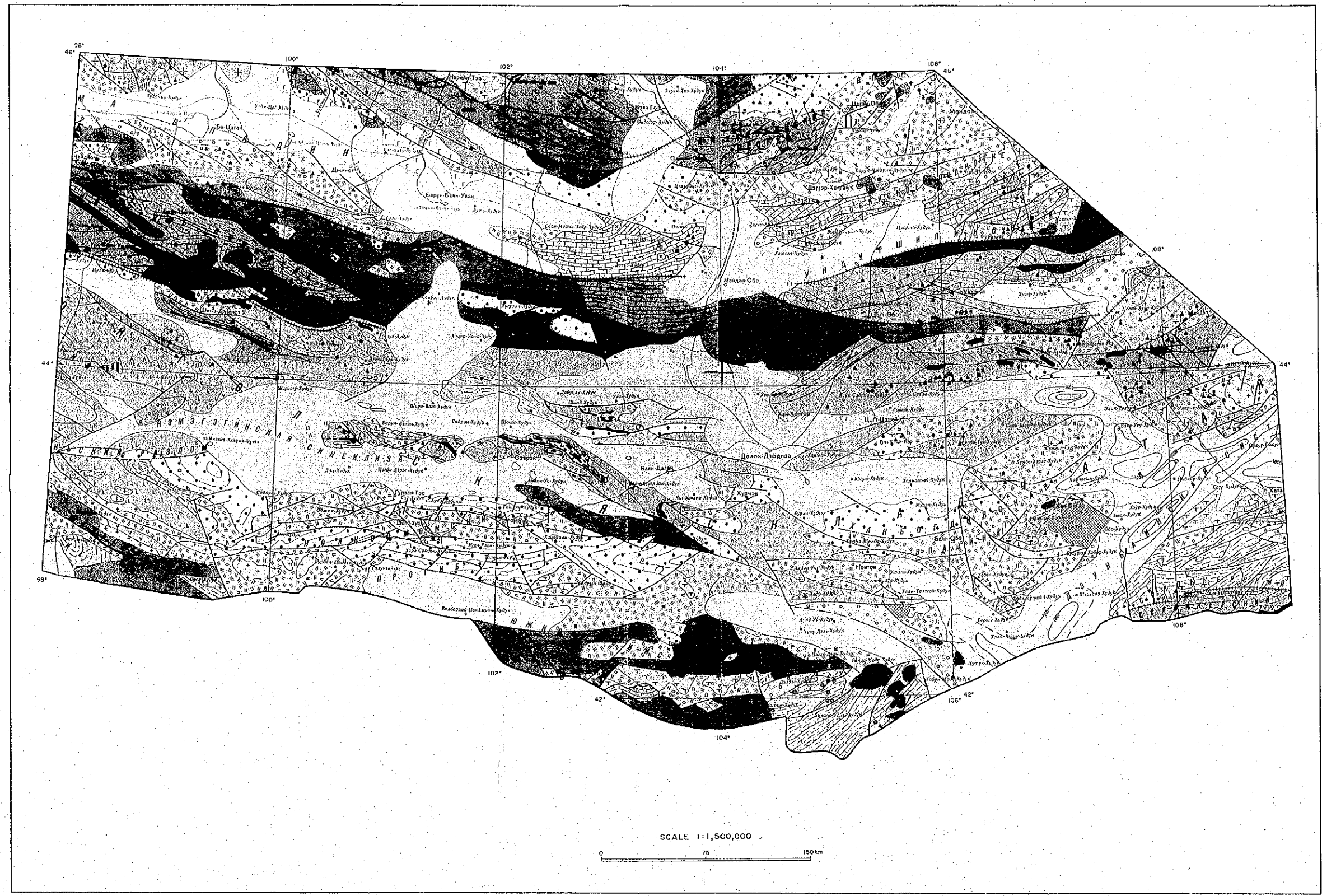
JAPAN INTERNATIONAL COOPERATION AGENCY  
METAL MINING AGENCY OF JAPAN

LEGEND

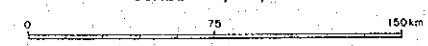
Point and number of ore showing

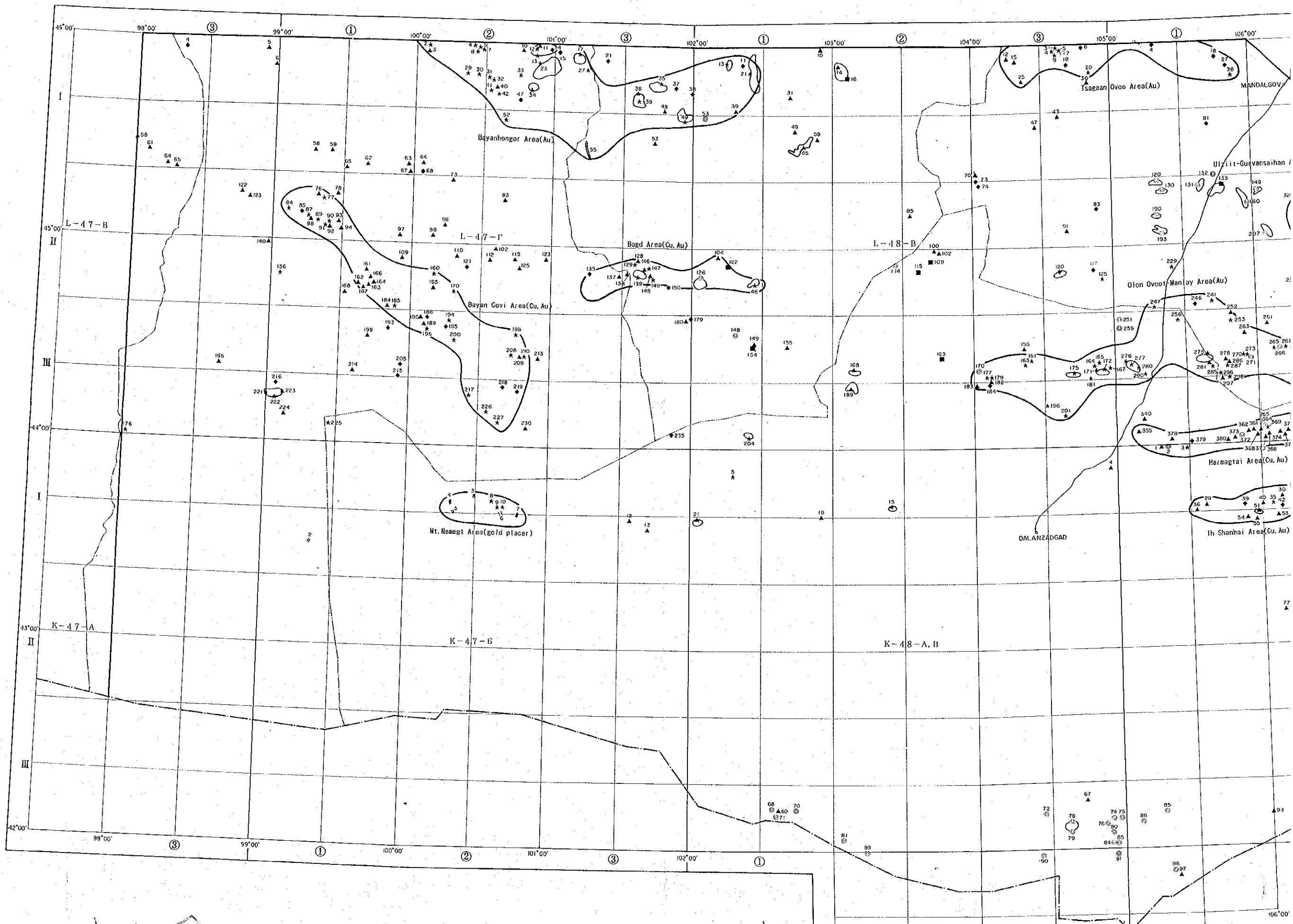
- ★ 123 Au
- ◆ 123 Ag
- ▲ 123 Cu
- ⊙ 123 Pb
- 123 Zn

For legend of geology, see Fig. II-1-1 in the report.



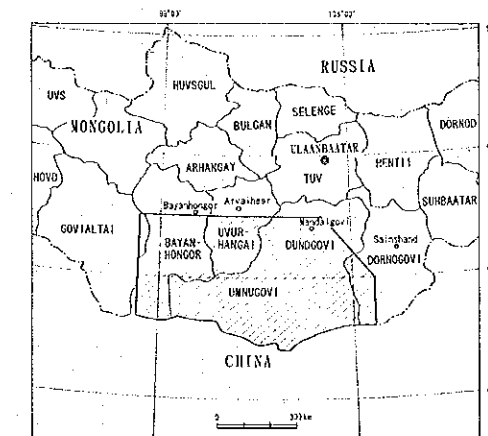
SCALE 1:1,500,000





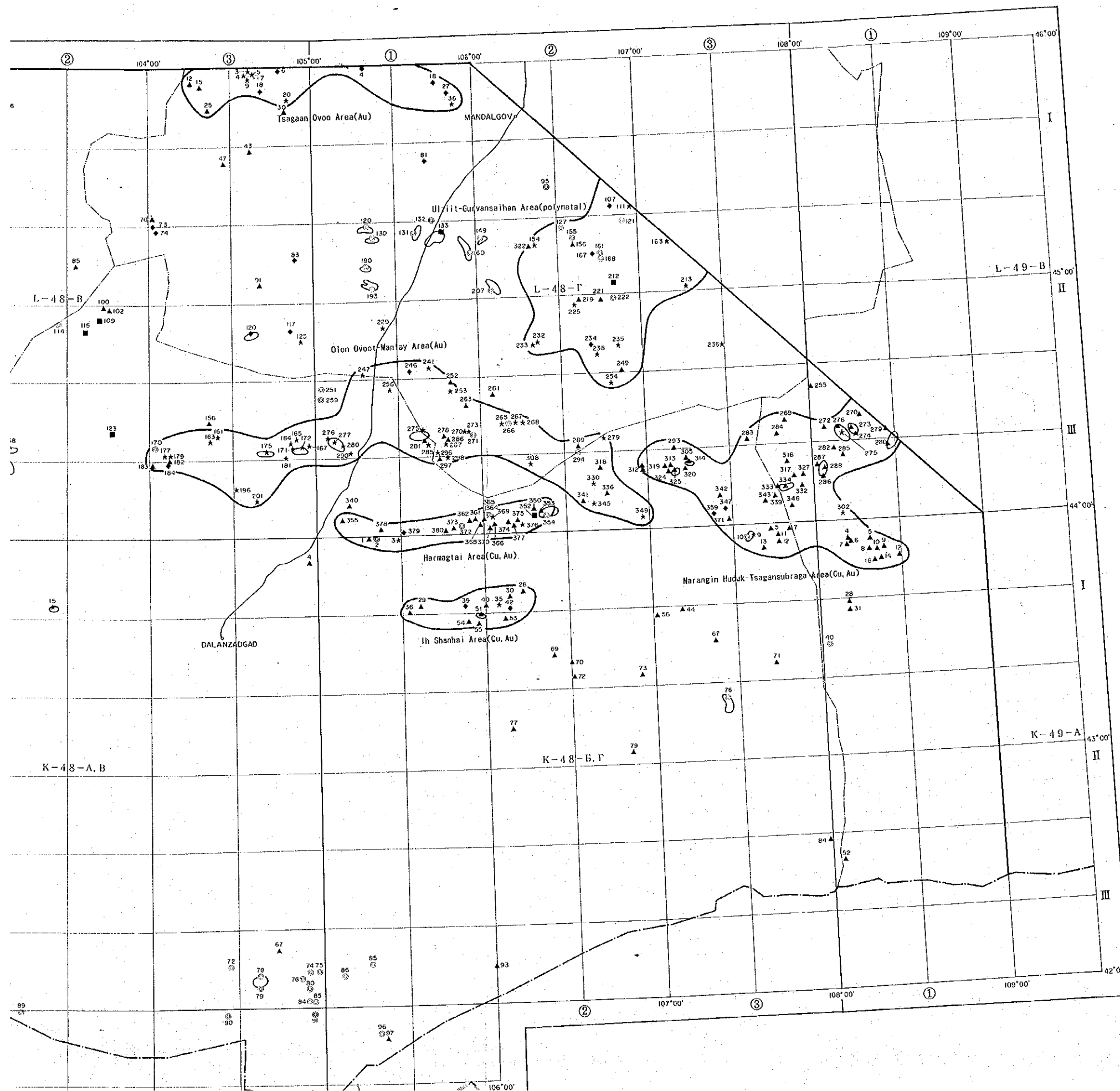
REPORT ON THE MINERAL EXPLORATION  
IN THE ALTANTAL AREA,  
MONGOLIA

LOCALITY MAP OF PROMISING AREA OF  
GOLD DEPOSIT AND SHOWING SELECTED  
FROM EXISTING DATA IN THE SURVEY AREA



FEBRUARY 1955

JAPAN INTERNATIONAL COOPERATION AGENCY  
METAL MINING AGENCY OF JAPAN



LEGEND

Point and number of ore showing

★ 123 Au. // Placer gold deposit

◆ 123 Ag

▲ 123 Cu

⊙ 123 Pb

■ 123 Zn

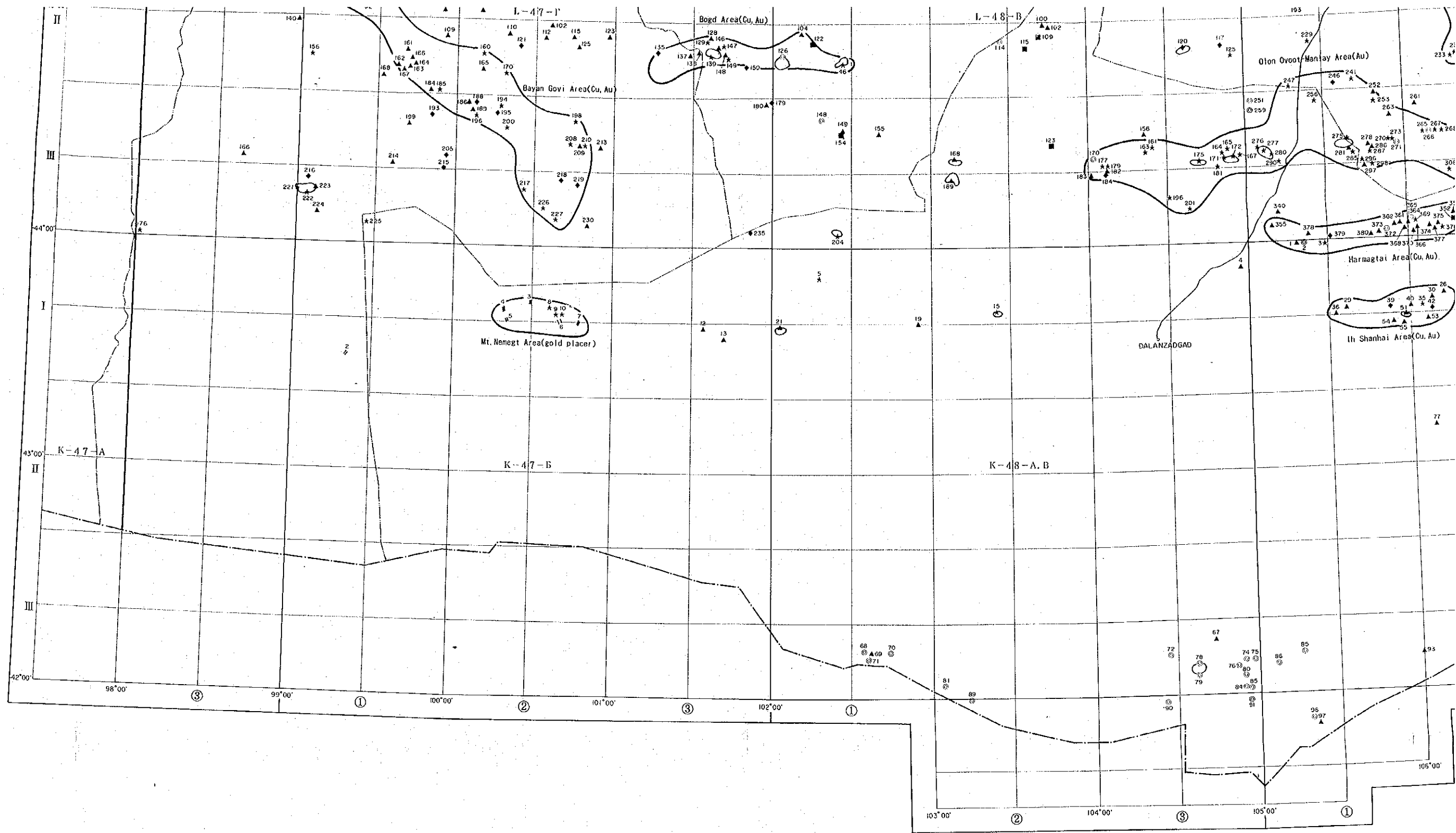
○ Geochemical anomaly zone

--- Boundary of province

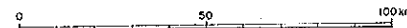
- - - Boundary of border

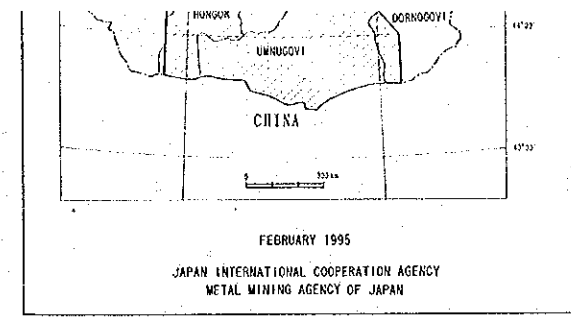
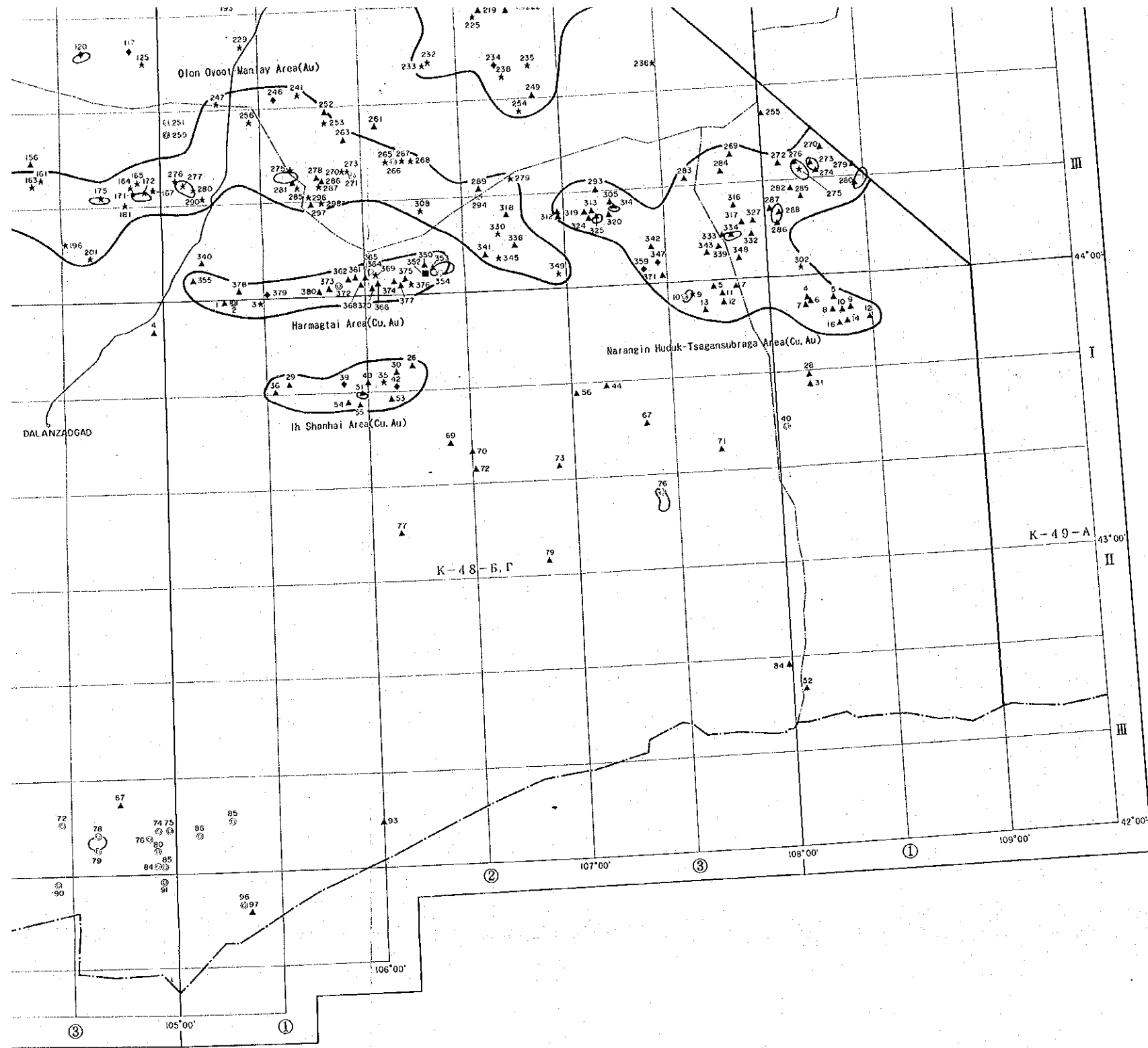
□ Survey area

○ Promising area of gold deposit and showing selected from existing data.



SCALE 1 : 1,000,000

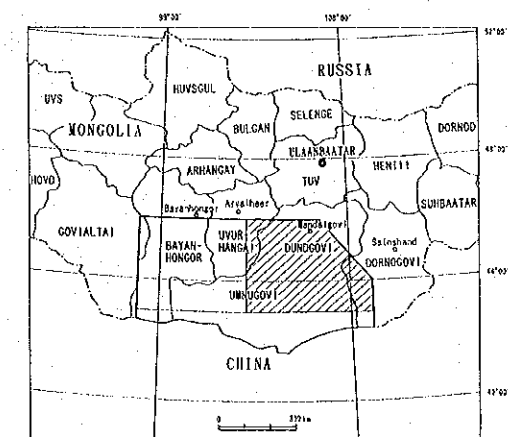




- L E G E N D
- Point and number of ore showing
  - ★<sup>123</sup> Au. // Placer gold deposit
  - ◆<sup>123</sup> Ag
  - ▲<sup>123</sup> Cu
  - ⊙<sup>123</sup> Pb
  - <sup>123</sup> Zn
  - Geochemical anomaly zone
  - Boundary of province
  - - - Boundary of border
  - Survey area
  - ⊂ Promising area of gold deposit and showing selected from existing data.

1000  
100 km

REPORT ON THE MINERAL EXPLORATION  
IN THE ALTANTAL AREA,  
MONGOLIA  
GEOLOGICAL MAP AROUND PROMISING AREAS  
OF GOLD DEPOSIT AND SHOWING  
IN THE EASTERN SURVEY AREA

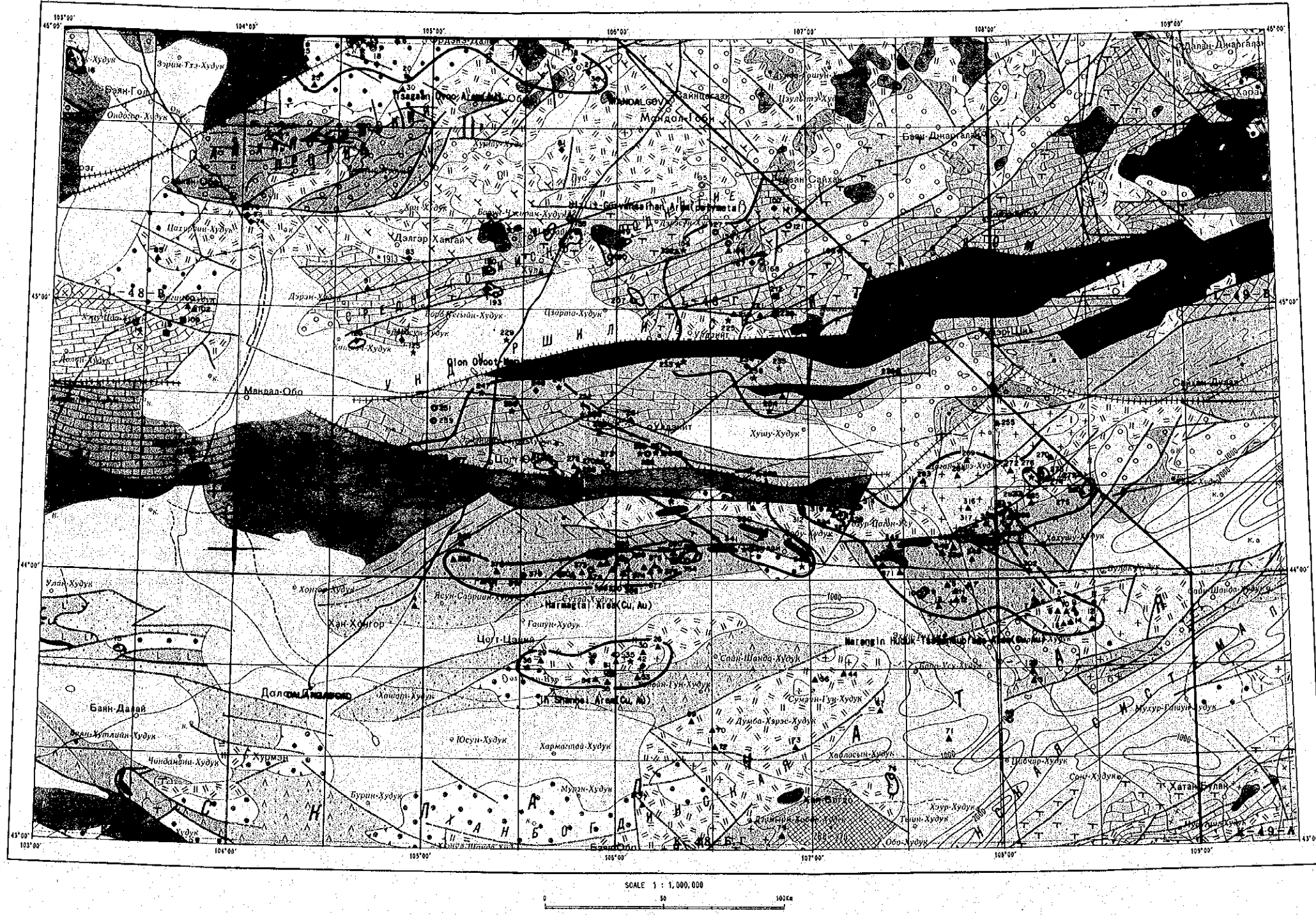


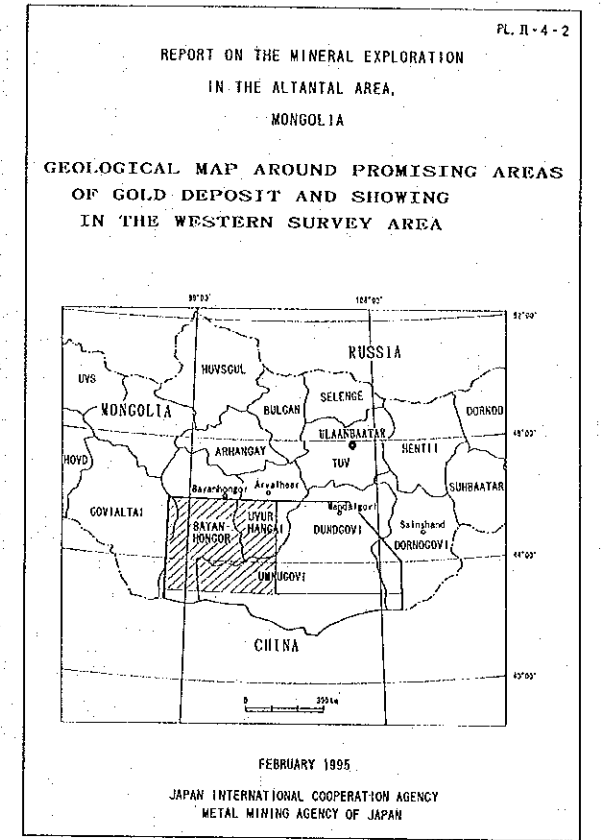
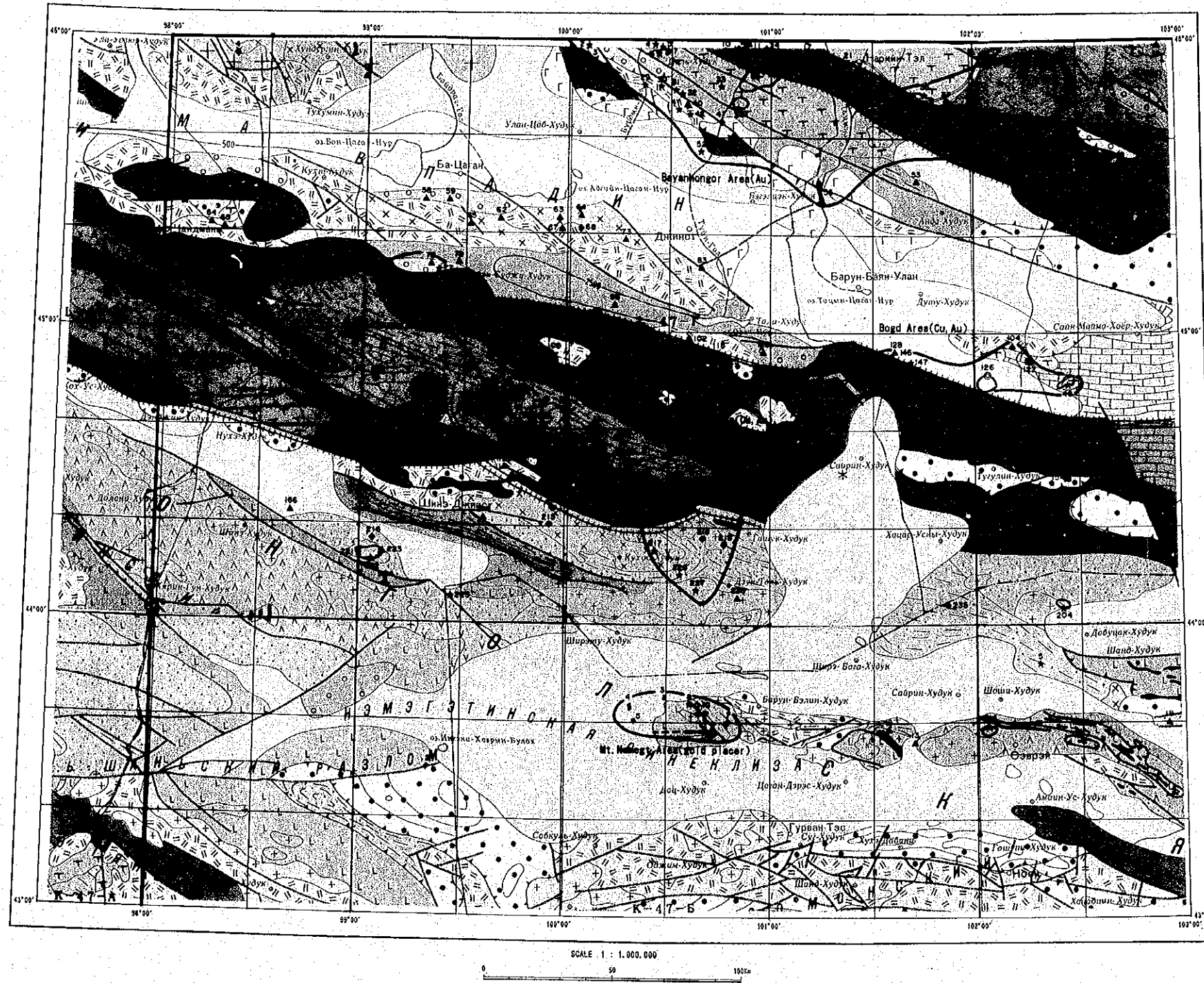
FEBRUARY 1955  
JAPAN INTERNATIONAL COOPERATION AGENCY  
METAL MINING AGENCY OF JAPAN

LEGEND

- Point and number of ore showing
- ★ 123 Au
- ◆ 123 Ag
- ▲ 123 Cu
- ⊙ 123 Pb
- 123 Zn
- Promising area of gold deposit and showing selected from existing data.

For legend of geology, see Fig. II-1-1 in the report.





- LEGEND
- Point and number of ore showing
- ★ 123 Au
  - ◆ 123 Ag
  - ▲ 123 Cu
  - 123 Pb
  - 123 Zn
- Promising area of gold deposit and showing selected from existing data.

For legend of geology, see Fig. II-1-1 in the report.

JICA