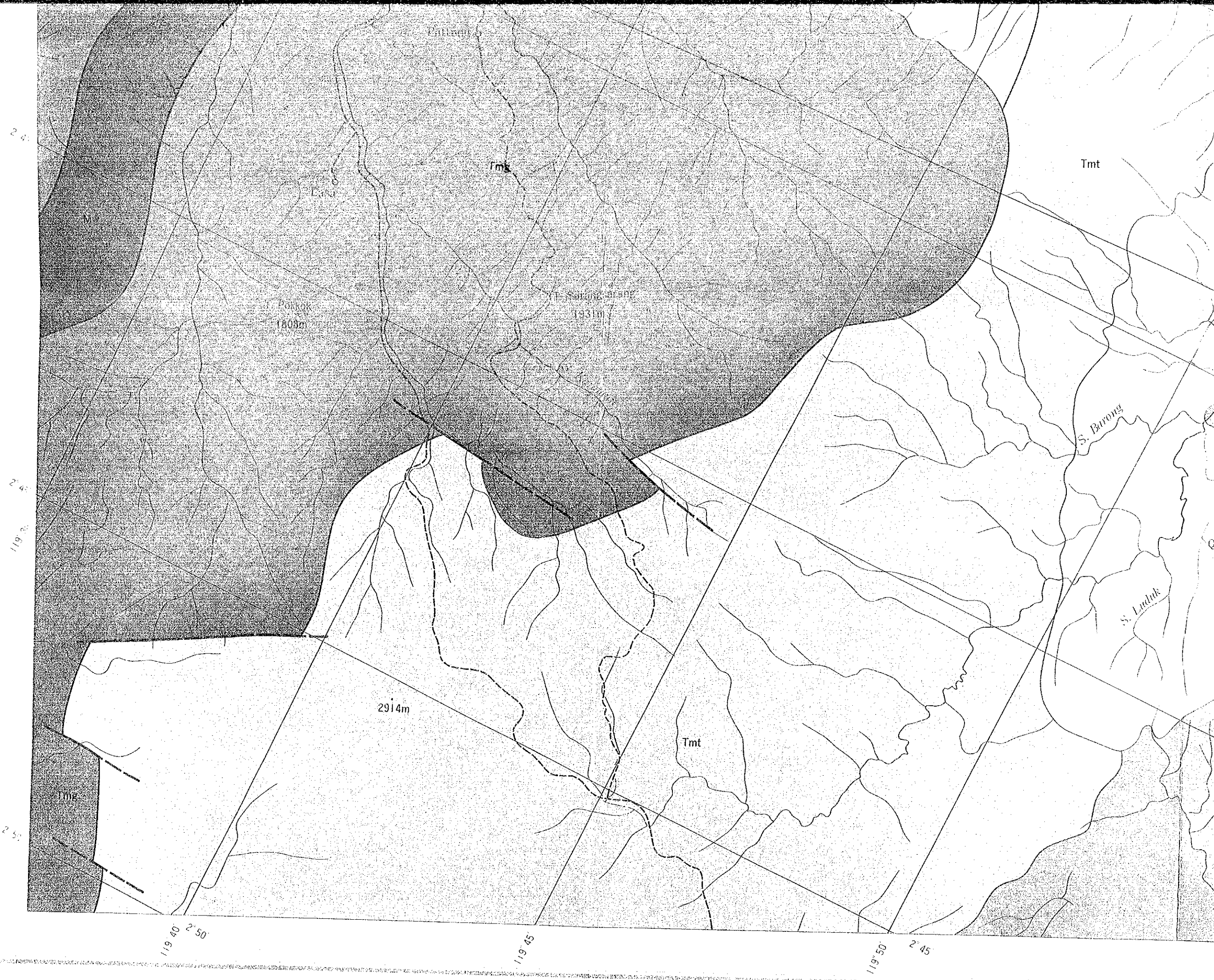


- LEGEND**
- Dacite (Qt)
  - Andesite (Klv)
  - Shale (Kls)
  - Quartz Vein
  - Quartz Stockwork



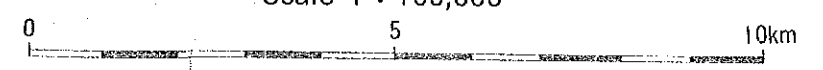






Pleistocene	Barupu Tuffs
Miocene	Talaya Volcanic Rocks
	Sekala Formation
	Beropa Tuffs
Oligocene to Miocene	Lamasi Volcanic Rocks
Eocene	Toraja Formation
Cretaceous	Latimojong Formation
Triassic to Jurassic	Batuan Malihan Metamorphic Rocks
Intrusives	

Scale 1 : 100,000



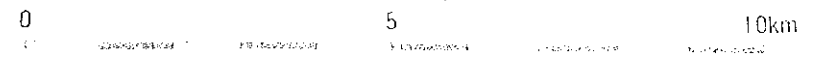
Geologic Profile along Line A-A'





Pleistocene	Barupa Tuffs
	Talaya Volcanic Rocks
Miocene	Sekau Formation
	Beropa Tuffs
Oligocene to Miocene	Lamas Volcanic Rocks
Eocene	Teraja Formation
Cretaceous	Latimojong Formation
Triassic to Jurassic	Batuan Malihan Metamorphic Rocks
Intrusives	

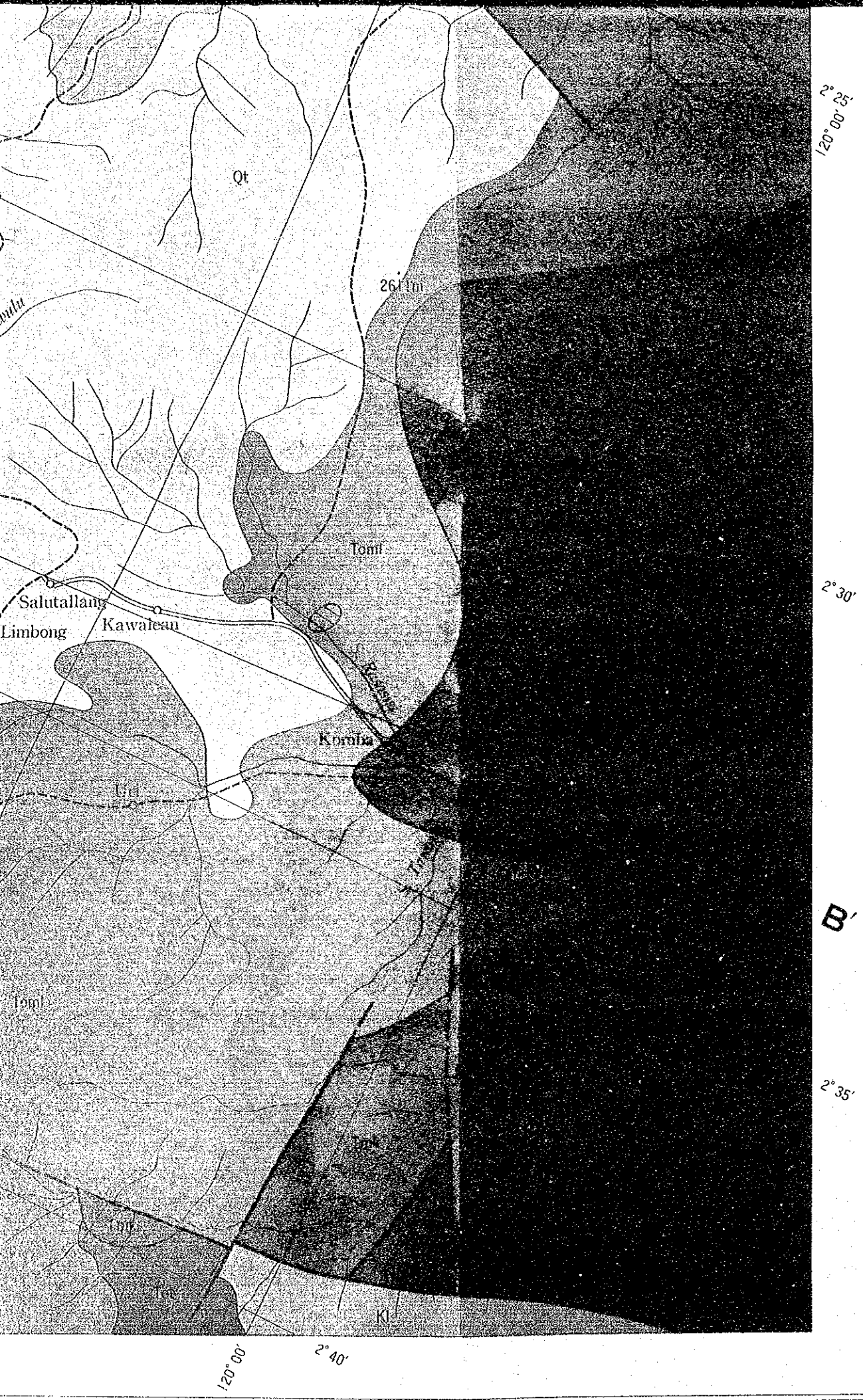
Scale 1 : 100,000



Geologic Profile along Line A - A'

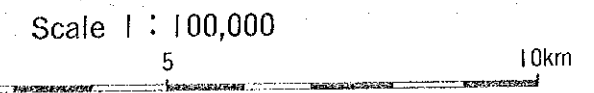


Scale 1:100,000



### LEGEND

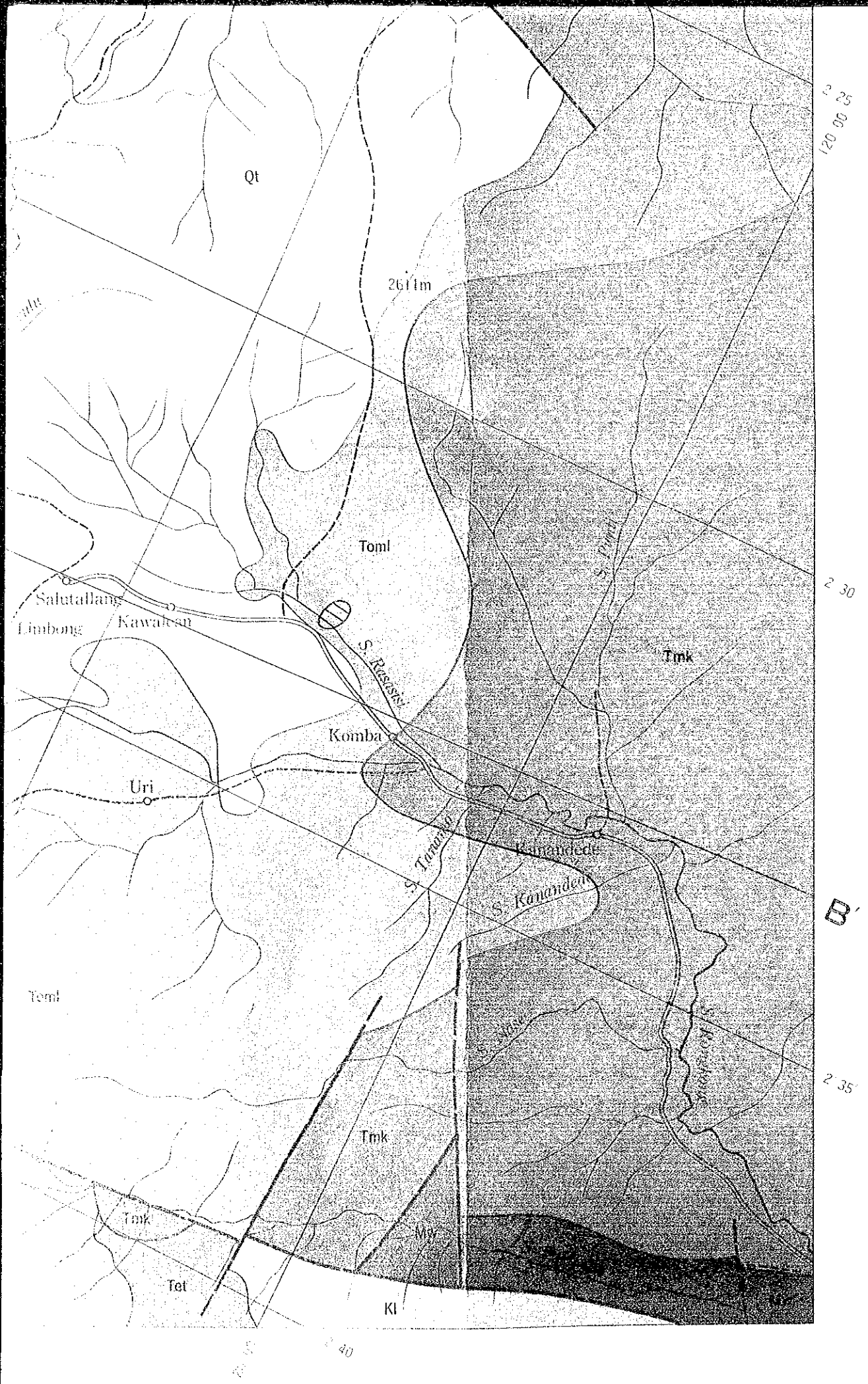
Pleistocene	Barupu Tuffs		Biotite Dacite and Dacitic Crystal Tuff
Miocene	Talaya Volcanic Rocks		Andesitic to Basaltic Volcanic Breccia and Lava, Locally with Basic Tuff
	Sekala Formation		Black Shale with Intercalation of Basic Tuff, Sandstone and Conglomerate
			Massive Limestone
	Beropa Tuffs		Alternation of Basalt, Andesite, Tuff, Siltstone and Sandstone
Oligocene to Miocene	Lamasi Volcanic Rocks		Autobrecciated Dacite, Andesite, Fine Tuff, Lapilli Tuff, Porphyritic Dacite and Quartz Porphyry
Eocene	Toraja Formation		Shale, Limestone and Sandstone
Cretaceous	Latimojong Formation		Black Shale/Slate/Siltstone and Altered Andesite/Basalt/Dolerite, Locally with Quartz Sandstone and Limestone
Triassic to Jurassic	Batuan Malihan Metamorphic Rocks		Biotite Gneiss and Mica Schist
Intrusives			Mamasa Granite : Quartz Monzonite, Porphyritic Quartz Diorite, Granodiorite and Diorite
			Kambuno Granite : Quartz Monzonite, Granodiorite, Diorite and Aplite
			Porphyritic Andesite and Quartz Porphyry
			Andesitic Volcanic Neck, Dolerite
			Fault
			Strike and Dip of Beds
			Gold Anomalies of Stream Sediment Geochemistry, Au ≥ 21.5ppb (Phase I)
			Drill Hole Location in the Batuisi Prospect



Members of the Survey Team

Phase I [Metal Mining Agency of Japan]  
Kenzo MASUTA Coordinator and Geologist





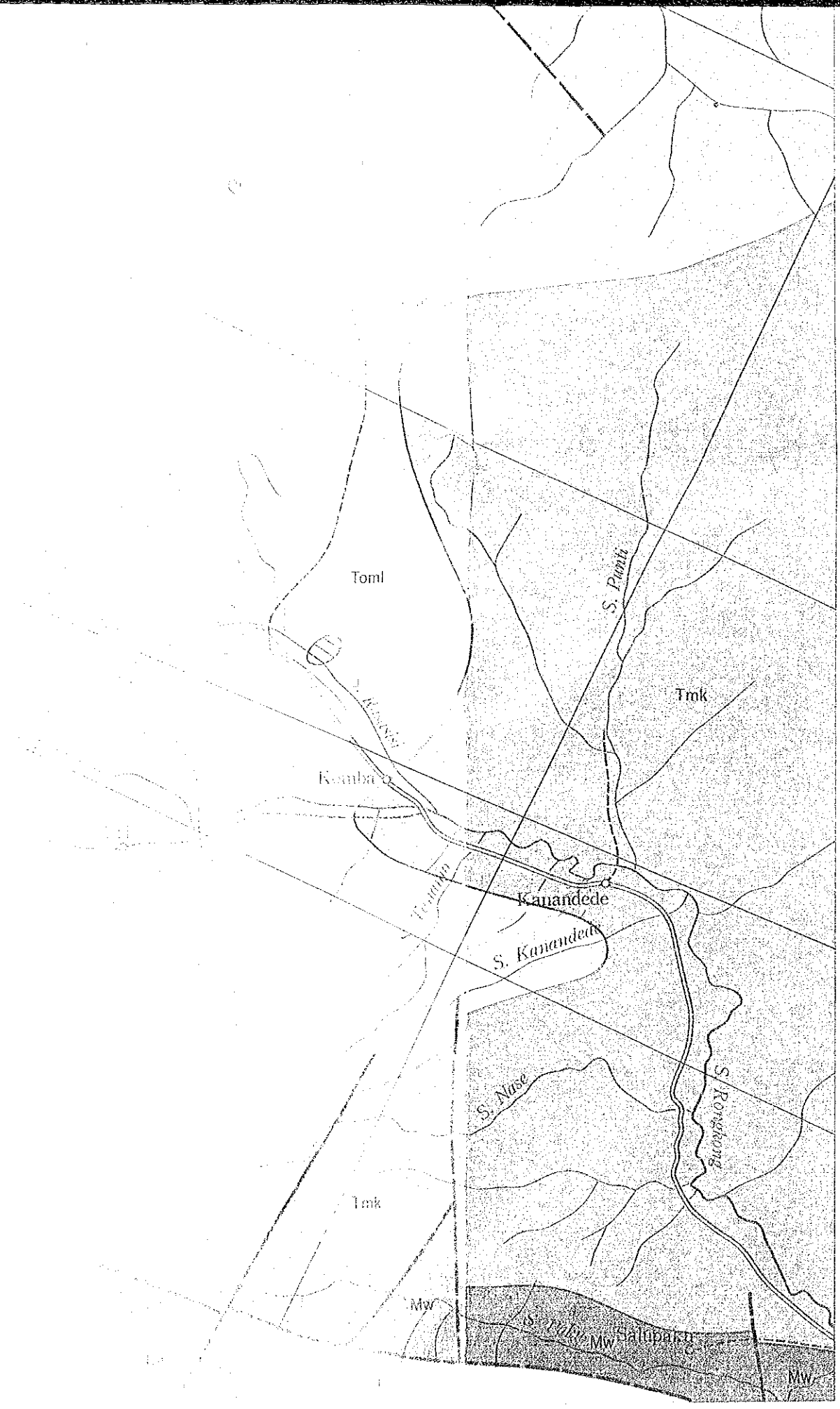
Scale 1 : 100,000  
 0 5 10km

### LEGEND

Pleistocene	Barupu Tuffs	Qt	Biotite Dacite and Dacitic Crystal Tuff
	Talaya Volcanic Rocks	Tmt	Andesitic to Basaltic Volcanic Breccia and Lava, Locally with Basic Tuff
Miocene	Sekala Formation	Tmps	Black Shale with Intercalation of Basic Tuff, Sandstone and Conglomerate
	Beropa Tuffs	Tmb	Massive Limestone
	Lamasi Volcanic Rocks	Toml	Alternation of Basalt, Andesite, Tuff, Siltstone and Sandstone
Oligocene to Miocene			Autobrecciated Dacite, Andesite, Fine Tuff, Lapilli Tuff, Porphyritic Dacite and Quartz Porphyry
Eocene	Toraja Formation	Tet	Shale, Limestone and Sandstone
Cretaceous	Latimojong Formation	Kl	Black Shale / Slate / Siltstone and Altered Andesite / Basalt / Dolerite, Locally with Quartz Sandstone and Limestone
Triassic to Jurassic	Baluan Malihan Metamorphic Rocks	Mw	Biotite Gneiss and Mica Schist
Intrusives	Mamasa Granite	Tmg	Quartz Monzonite, Porphyritic Quartz Diorite, Granodiorite and Diorite
	Kambuno Granite	Tmk	Quartz Monzonite, Granodiorite, Diorite and Aplite
	Porphyritic Andesite and Quartz Porphyry	Tv	
	Andesitic Volcanic Neck, Dolerite	Kv	
	Fault		
	Strike and Dip of Beds		
	Gold Anomalies of Stream Sediment Geochemistry, Au ≥ 21.5ppb (Phase I)		
	Drill Hole Location in the Batuisi Prospect		

Members of the Survey Team

Phase I [Metal Mining Agency of Japan]



Scale 1 : 100,000

LEGEND

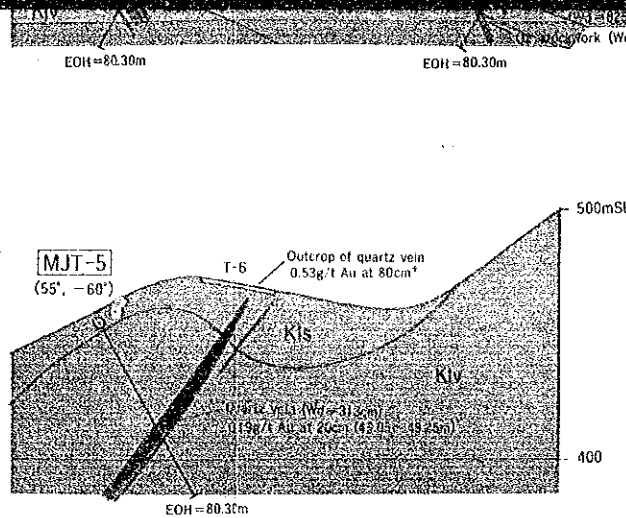


1. ...  
 2. ...  
 3. ...  
 4. ...  
 5. ...  
 6. ...

Members of the Survey Team

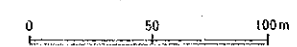


BD3-20	9.50	10.50	1.00	0.40	2	0.054	0.026	0.024	6.04	Qz stockwork
BD3-21	10.50	11.50	1.00	0.44	2	0.017	0.004	0.019	4.63	Qz stockwork
BD3-22	11.50	12.00	0.50	0.50	2	0.010	0.001	0.015	5.23	Qz stockwork
BD3-23	12.00	12.50	0.50	0.22	2	0.007	0.001	0.013	4.05	Qz stockwork
BD3-3	12.50	13.55	1.05	0.25	2	0.012	0.001	0.012	4.34	Qz stockwork
BD3-4	13.55	14.10	0.55	0.12	2	0.014	0.001	0.012	4.37	Qz stockwork
BD3-23	14.70	14.90	0.20	0.16	2	0.007	0.001	0.019	5.83	Qz stockwork
BD3-24	14.90	15.35	0.45	0.12	2	0.008	0.001	0.017	6.18	Qz stockwork
BD3-25	15.80	16.70	0.90	0.22	2	0.007	0.001	0.011	5.45	Qz stockwork
MJT-4										
BD4-28	6.00	7.00	1.00	0.06	2	0.008	0.003	0.016	5.78	Qz stockwork
BD4-26	7.00	7.90	0.90	0.53	2	0.008	0.004	0.011	5.34	Qz stockwork
BD4-2	9.85	10.85	1.00	0.19	2	0.007	0.001	0.034	4.66	Qz stockwork
BD4-3	10.85	11.85	1.00	0.06	2	0.007	0.001	0.051	4.71	Qz stockwork
BD4-4	11.85	12.85	1.00	0.37	2	0.007	0.001	0.062	4.72	Qz stockwork
BD4-5	12.85	13.15	0.30	0.12	2	0.008	0.001	0.092	5.87	Qz stockwork
BD4-29	13.15	13.30	0.15	0.06	2	0.008	0.001	0.061	4.65	Qz stockwork
BD4-7	13.90	14.25	0.35	0.37	2	0.003	0.001	0.008	1.34	Qz vein
MJT-5										
BD5-3	47.20	47.60	0.40	0.06	2	0.507	0.001	0.021	3.47	Qz vein
BD5-5	49.05	49.25	0.20	0.19	2	0.932	0.001	0.038	3.36	Qz vein

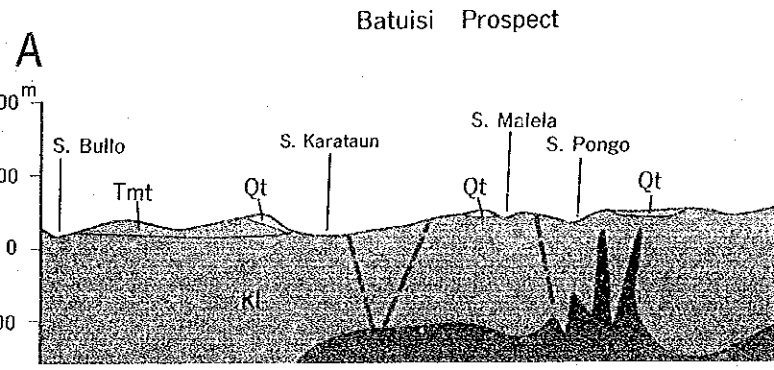
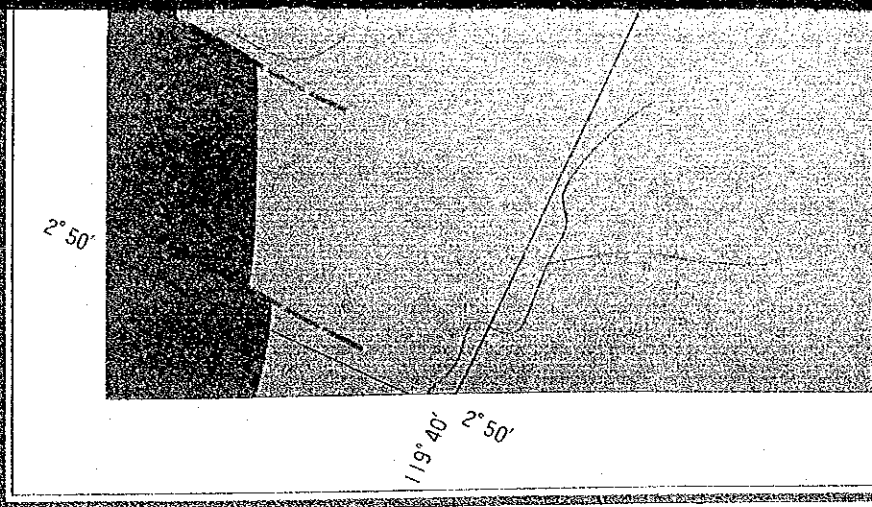
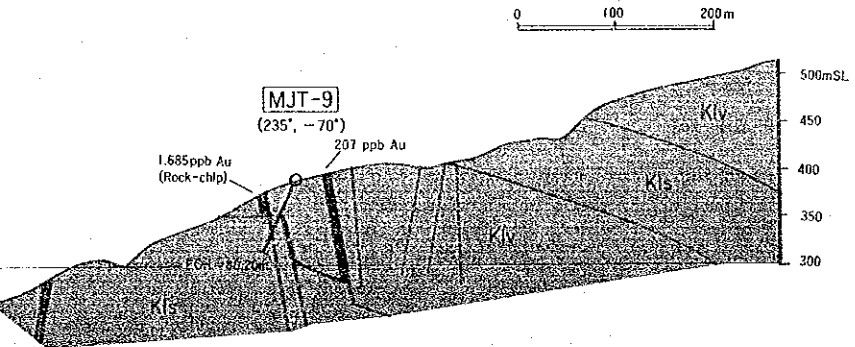
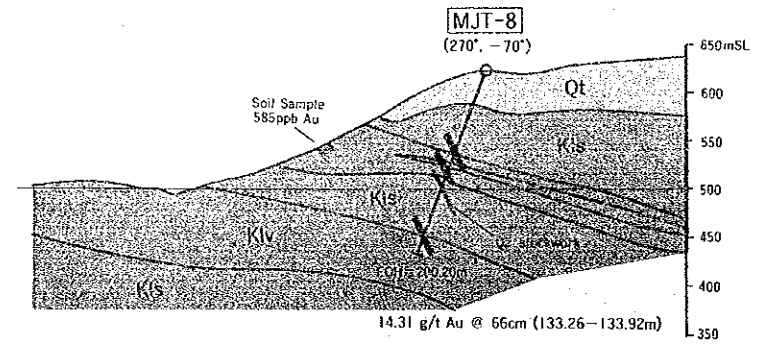
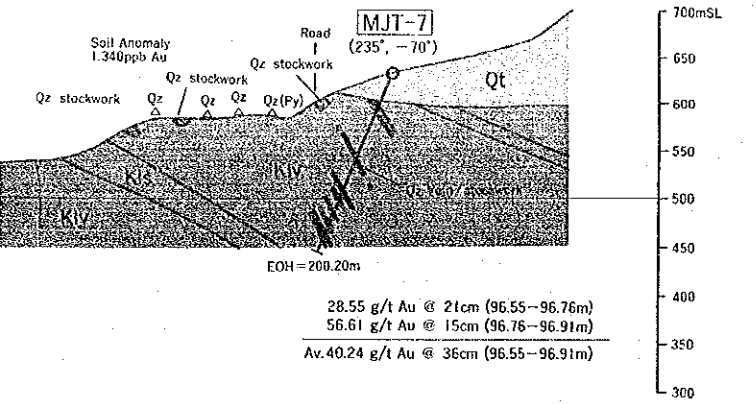
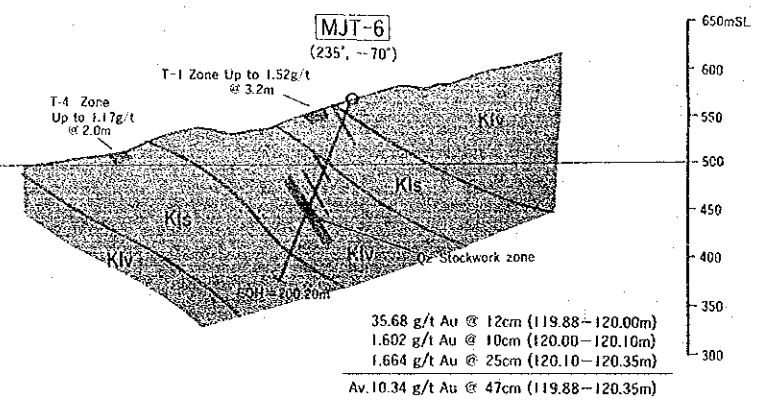


**LEGEND**

- Dacite (Qt)
- ▨ Andesite (Klv)
- ▩ Shale (Kls)
- ⚡ Quartz Vein
- ⚡ Quartz Stockwork



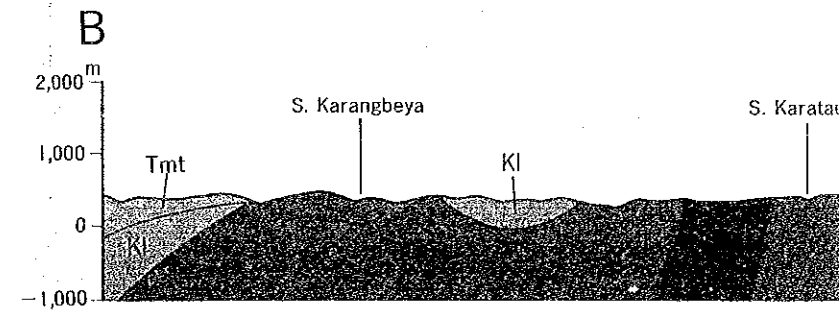
Geologic Profile of Drill Hole (Phase III)



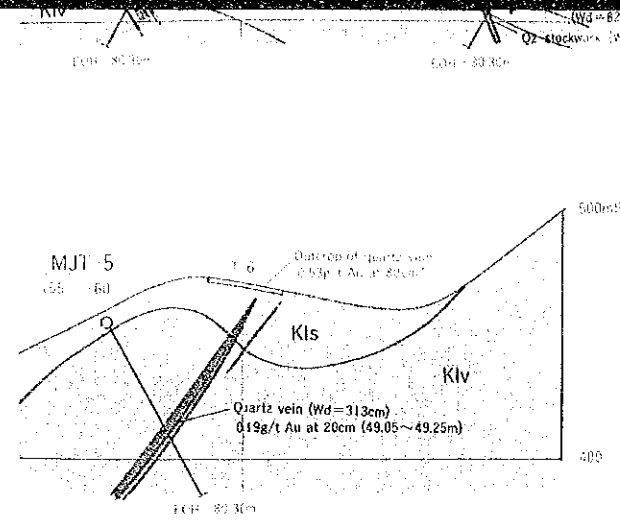
Phase III

Sample No.	Depth (m)		Width (m)	Au (g/t)	Ag (g/l)	Cu (%)	Pb (%)	Zn (%)	Fe (%)	Description
	From	To								
MJT-6										
BD6-1	15.60	16.60	1.00	0.06	0.008	0.003	0.016	4.71		Qz stockwork
BD6-2	16.60	17.60	1.00	0.08	0.011	0.023	0.018	6.60		Qz stockwork
BD6-3	17.60	18.60	1.00	0.11	0.009	0.013	0.019	5.76		Qz stockwork
BD6-4	18.60	19.60	1.00	0.14	0.008	0.006	0.016	6.26		Qz stockwork
BD6-5	19.60	20.50	0.90	0.11	0.008	0.003	0.022	4.92		Qz stockwork
BD6-6	27.62	28.05	0.47	0.06	0.003	0.025	0.017	1.44		Qz vein
BD6-9	109.39	109.44	0.05	0.03	0.186	0.001	0.072	7.00		Qz veinlet
BD6-10	109.55	109.76	0.21	0.02	0.100	0.001	0.497	1.50		Qz vein
BD6-31	119.75	119.88	0.13	0.06	0.003	0.001	0.005	4.09		Qz stockwork
BD6-32	119.88	120.00	0.12	35.68	0.004	0.001	0.009	3.19		Qz stockwork
BD6-33	120.00	120.10	0.10	1.60	0.006	0.001	0.012	3.40		Qz stockwork
BD6-34	120.10	120.35	0.25	1.66	0.015	0.001	0.015	6.23		Qz stockwork
BD6-13	120.35	120.75	0.40	0.11	0.127	0.001	0.015	4.39		Qz stockwork
BD6-29	120.75	121.25	0.50	0.03	0.038	0.001	0.058	2.52		Qz stockwork
MJT-7										
BD7-15	91.30	92.30	1.00	0.05	0.001	0.002	0.006	6.12		Qz stockwork
BD7-17	92.30	93.30	1.00	0.11	0.009	0.001	0.008	6.64		Qz stockwork
BD7-18	93.30	94.40	1.10	0.08	0.002	0.001	0.007	6.88		Qz stockwork
BD7-38	94.70	96.00	1.30	0.05	0.011	0.001	0.008	7.28		Clayey zone
BD7-19	96.00	96.05	0.05	0.02	0.004	0.001	0.006	6.56		Qz veinlet
BD7-20	96.05	96.55	0.50	0.06	0.002	0.001	0.005	5.19		Qz stockwork
BD7-21	96.55	96.76	0.21	28.55	0.002	0.001	0.004	3.49		Qz vein
BD7-22	96.76	96.91	0.15	56.61	0.004	0.001	0.007	3.39		Qz stockwork

Sample No.	Depth (m)		Width (m)	Au (g/t)	Ag (g/l)	Cu (%)	Pb (%)	Zn (%)	Fe (%)	Description
	From	To								
MJT-7										
BD7-26	158.10	158.35	0.25	0.03	2	0.019	0.001	0.018	4.36	Qz stockwork
BD7-40	160.75	160.80	0.05	0.25	6	5.090	0.001	0.162	26.00	Qz stockwork
BD7-27	161.40	161.80	0.40	0.02	2	0.598	0.001	0.033	5.63	Qz stockwork
BD7-31	172.20	172.30	0.10	0.02	4	1.090	0.001	0.023	6.70	Qz stockwork
BD7-32	172.70	172.80	0.10	0.02	2	0.021	0.001	0.008	6.14	Qz stockwork
BD7-33	173.55	174.30	0.75	0.02	2	0.357	0.001	0.042	8.27	Qz stockwork
BD7-34	174.30	175.00	0.70	0.02	2	0.096	0.001	0.033	5.92	Qz stockwork
BD7-35	176.95	177.45	0.50	0.02	2	0.118	0.001	0.678	5.12	Qz stockwork
MJT-8										
BD8-5	108.70	109.30	0.60	0.19	18	4.870	0.004	0.198	10.35	Qz stockwork
BD8-6	109.30	110.30	1.00	0.02	2	0.437	0.001	0.021	3.79	Qz stockwork
BD8-7	110.30	111.05	0.75	0.06	2	0.009	0.001	0.069	2.84	Qz stockwork
BD8-8	111.27	111.90	0.63	0.02	2	0.122	0.001	0.009	1.86	Qz stockwork
BD8-9	112.05	112.30	0.25	0.02	4	0.858	0.001	0.043	5.17	Qz stockwork
BD8-10	112.30	112.85	0.55	0.02	2	0.544	0.001	0.022	3.36	Qz stockwork
BD8-20	130.70	130.77	0.07	0.42	2	0.016	0.016	0.047	7.14	Qz veinlet
BD8-21	133.26	133.92	0.66	14.31	2	0.037	0.002	0.019	4.94	Qz stockwork



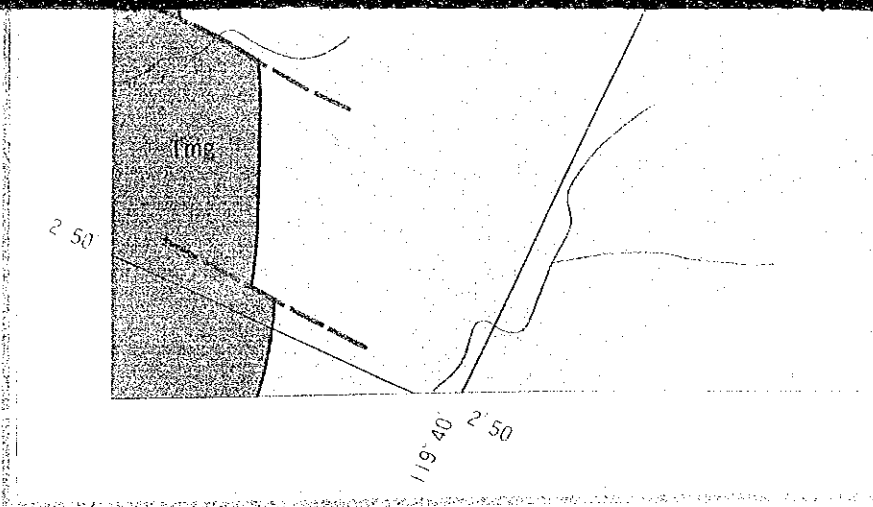
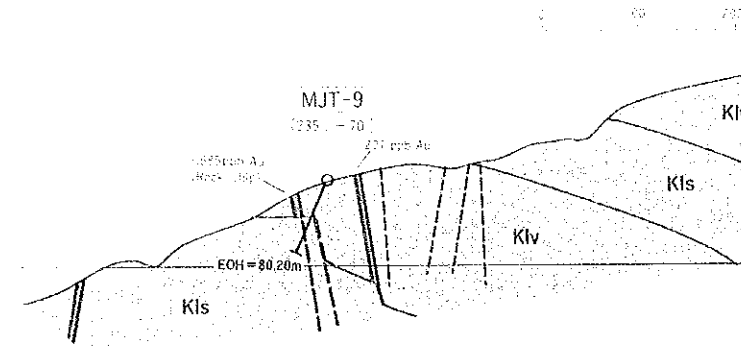
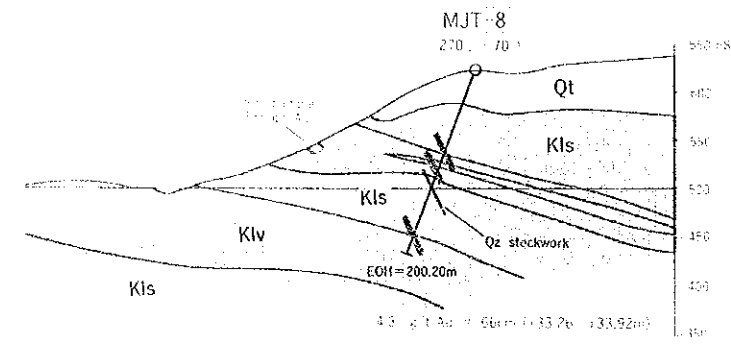
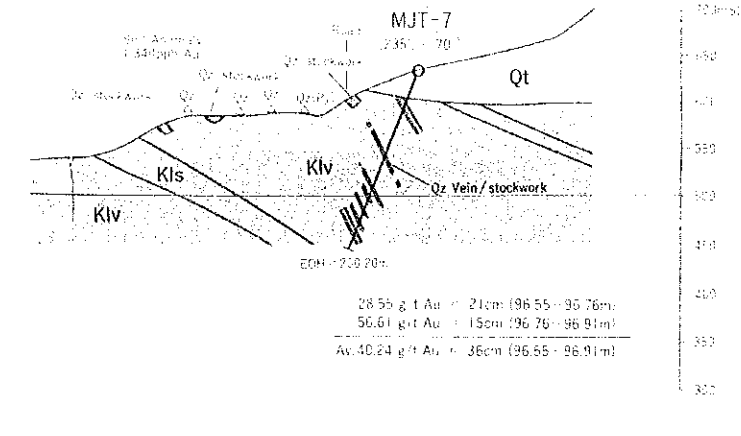
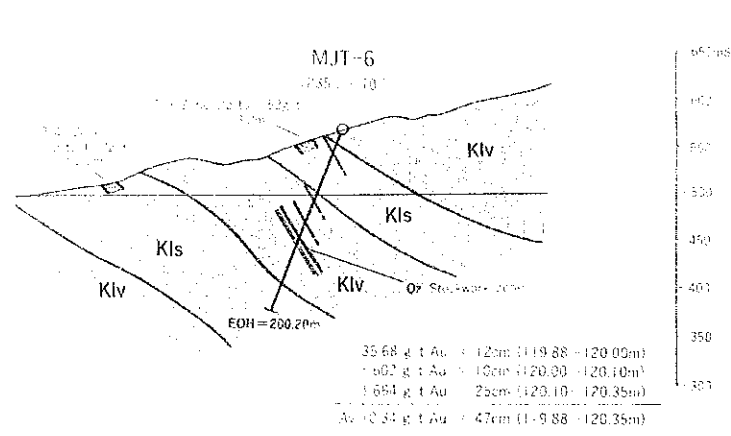
B013-1	10.50	12.50	1.00	0.44	2	0.017	0.004	0.019	4.63	Qz stockwork
B013-2	11.50	12.00	0.50	0.50	2	0.010	0.000	0.015	5.23	Qz stockwork
B013-23	12.00	12.50	0.50	0.72	2	0.007	0.001	0.013	4.06	Qz stockwork
B013-3	12.50	13.55	1.05	0.75	2	0.012	0.001	0.012	4.34	Qz stockwork
B013-4	13.15	14.10	0.95	0.12	2	0.014	0.001	0.012	4.37	Qz stockwork
B013-25	14.70	14.90	0.20	0.16	2	0.007	0.001	0.015	5.83	Qz stockwork
B013-24	4.50	15.35	0.45	0.12	2	0.008	0.001	0.017	6.18	Qz stockwork
B013-25	5.80	16.70	0.90	0.22	2	0.007	0.001	0.011	5.45	Qz stockwork
MJT-4										
B014-28	6.50	7.00	0.50	0.66	2	0.008	0.003	0.016	5.78	Qz stockwork
B014-29	7.50	7.90	0.40	0.53	2	0.006	0.004	0.011	5.34	Qz stockwork
B014-1	8.85	10.85	2.00	0.19	2	0.007	0.001	0.014	4.66	Qz stockwork
B014-4	10.85	11.85	1.00	0.06	2	0.007	0.001	0.015	4.71	Qz stockwork
B014-4	11.25	12.85	1.60	0.31	2	0.007	0.001	0.012	4.72	Qz stockwork
B014-5	11.80	13.75	1.95	0.12	2	0.008	0.001	0.012	5.87	Qz stockwork
B014-29	2.10	3.30	1.20	0.06	2	0.008	0.000	0.011	4.85	Qz stockwork
B014-3	3.50	4.25	0.75	0.11	2	0.003	0.000	0.008	1.34	Qz vein
B014-3	1.10	2.00	0.90	0.11	2	0.007	0.000	0.012	3.47	Qz vein
B014-3	2.10	2.85	0.75	0.11	2	0.007	0.000	0.012	3.36	Qz vein



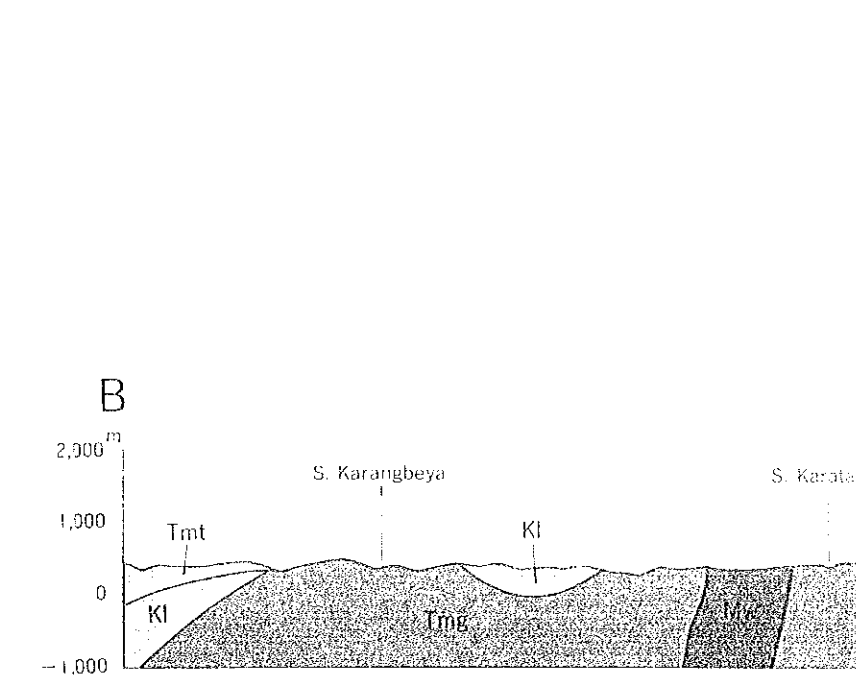
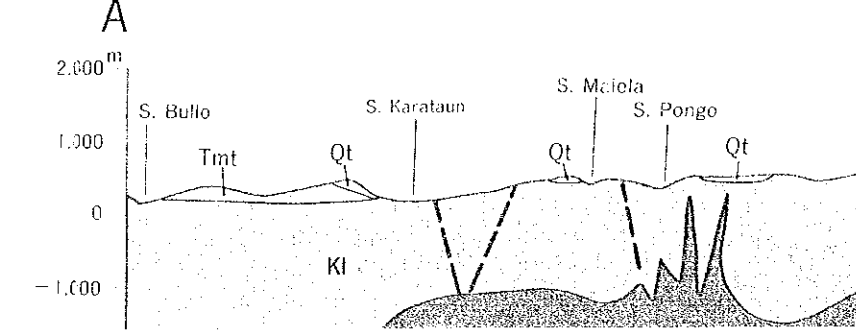
**LEGEND**

- Dacite (Qd)
- Andesite (Klv)
- Shale (Kls)
- Quartz Vein
- Quartz Stockwork

Geologic Profile of Drill Hole (Phase III)



Batuisi Prospect



Sample No.	Depth (m)	Width (cm)	Au (g/t)	Ag (g/t)	Cu (%)	Pb (%)	Zn (%)	Fe (%)	Description
MJT-4									
B014-28	6.50	7.00	0.66	0.008	0.003	0.016	4.71	Qz stockwork	
B014-29	7.50	7.90	0.53	0.006	0.004	0.011	5.34	Qz stockwork	
B014-1	8.85	10.85	0.19	0.007	0.001	0.014	4.66	Qz stockwork	
B014-4	10.85	11.85	0.06	0.007	0.001	0.015	4.71	Qz stockwork	
B014-4	11.25	12.85	0.31	0.007	0.001	0.012	4.72	Qz stockwork	
B014-5	11.80	13.75	0.12	0.008	0.001	0.012	5.87	Qz stockwork	
B014-29	2.10	3.30	0.06	0.008	0.000	0.011	4.85	Qz stockwork	
B014-3	3.50	4.25	0.11	0.003	0.000	0.008	1.34	Qz vein	
B014-3	1.10	2.00	0.11	0.007	0.000	0.012	3.47	Qz vein	
B014-3	2.10	2.85	0.11	0.007	0.000	0.012	3.36	Qz vein	

Sample No.	Depth (m)	Width (cm)	Au (g/t)	Ag (g/t)	Cu (%)	Pb (%)	Zn (%)	Fe (%)	Description
MJT-7									
B07-26	158.10	158.35	0.25	0.03	2	0.019	0.001	0.018	4.36 Qz stockwork
B07-40	160.75	160.80	0.05	0.25	6	5.091	0.001	0.02	26.00 Qz stockwork
B07-27	161.40	161.89	0.40	0.02	2	0.598	0.001	0.033	5.63 Qz stockwork
B07-31	172.20	172.30	0.10	0.02	4	1.093	0.001	0.023	6.70 Qz stockwork
B07-32	172.70	172.80	0.10	0.02	2	0.021	0.001	0.038	6.14 Qz stockwork
B07-33	173.55	174.30	0.75	0.02	2	0.557	0.001	0.042	8.27 Qz stockwork
B07-34	174.30	175.00	0.70	0.02	2	0.096	0.001	0.033	5.92 Qz stockwork
B07-35	176.95	177.45	0.50	0.02	2	0.118	0.001	0.078	5.17 Qz stockwork
MJT-8									
B08-5	108.70	109.30	0.60	0.191	18	4.870	0.004	0.098	10.35 Qz stockwork
B08-6	109.30	110.30	1.00	0.02	2	0.437	0.001	0.021	3.79 Qz stockwork
B08-7	110.30	111.05	0.75	0.06	2	0.009	0.001	0.069	2.84 Qz stockwork
B08-8	111.27	111.90	0.63	0.02	2	0.122	0.001	0.059	1.86 Qz stockwork
B08-9	112.05	112.30	0.25	0.02	4	0.853	0.001	0.043	5.17 Qz stockwork
B08-10	112.30	112.85	0.55	0.02	2	0.544	0.001	0.022	3.36 Qz stockwork
B08-20	139.70	140.77	0.07	0.42	2	0.916	0.016	0.047	7.14 Qz veinlet
B08-21	133.26	133.92	0.65	0.31	2	0.937	0.002	0.019	4.94 Qz stockwork

