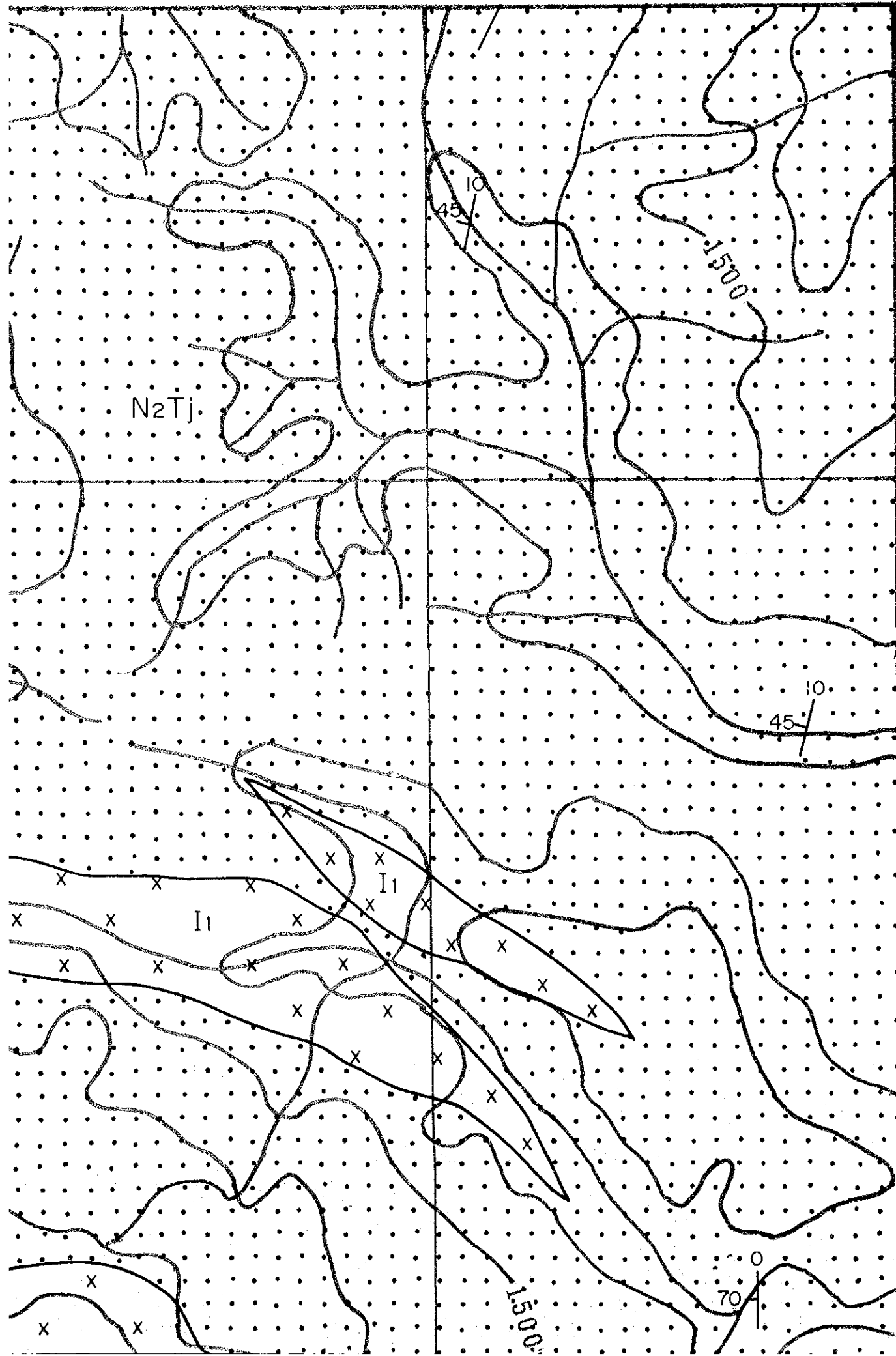


E4685 C

E4686

N1456



N1455



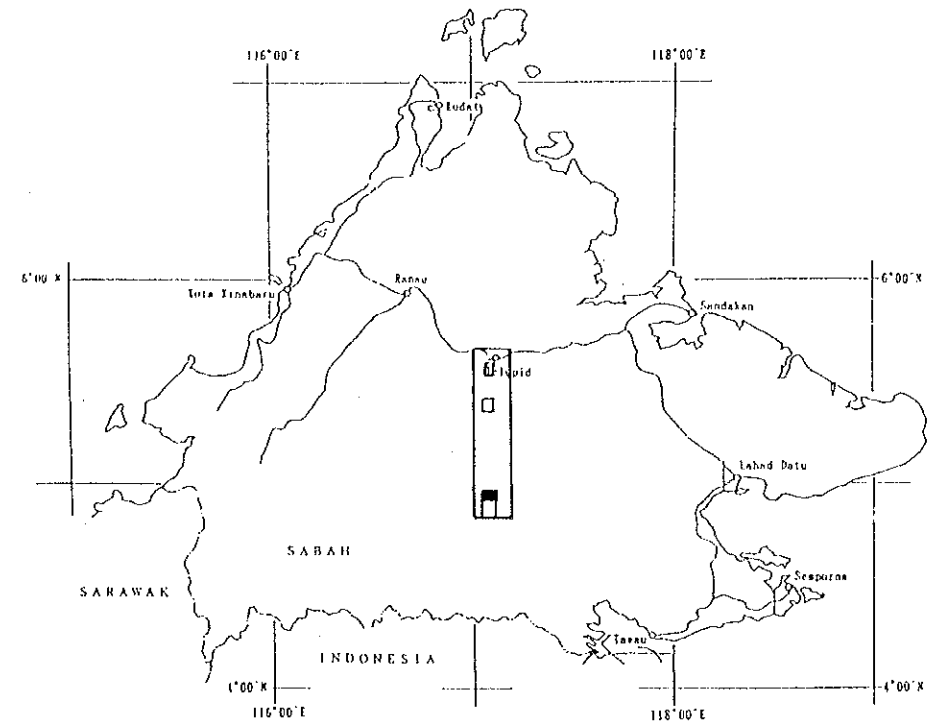
Plate II-3-1

MINERAL EXPLORATION
IN THE CENTRAL SABAH AREA
MALAYSIA

GEOLOGIC MAP AND CROSS SECTIONS

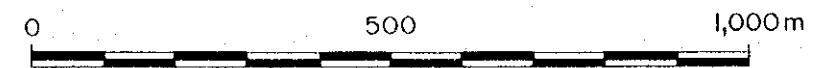
S. IMBAK SUB-AREA

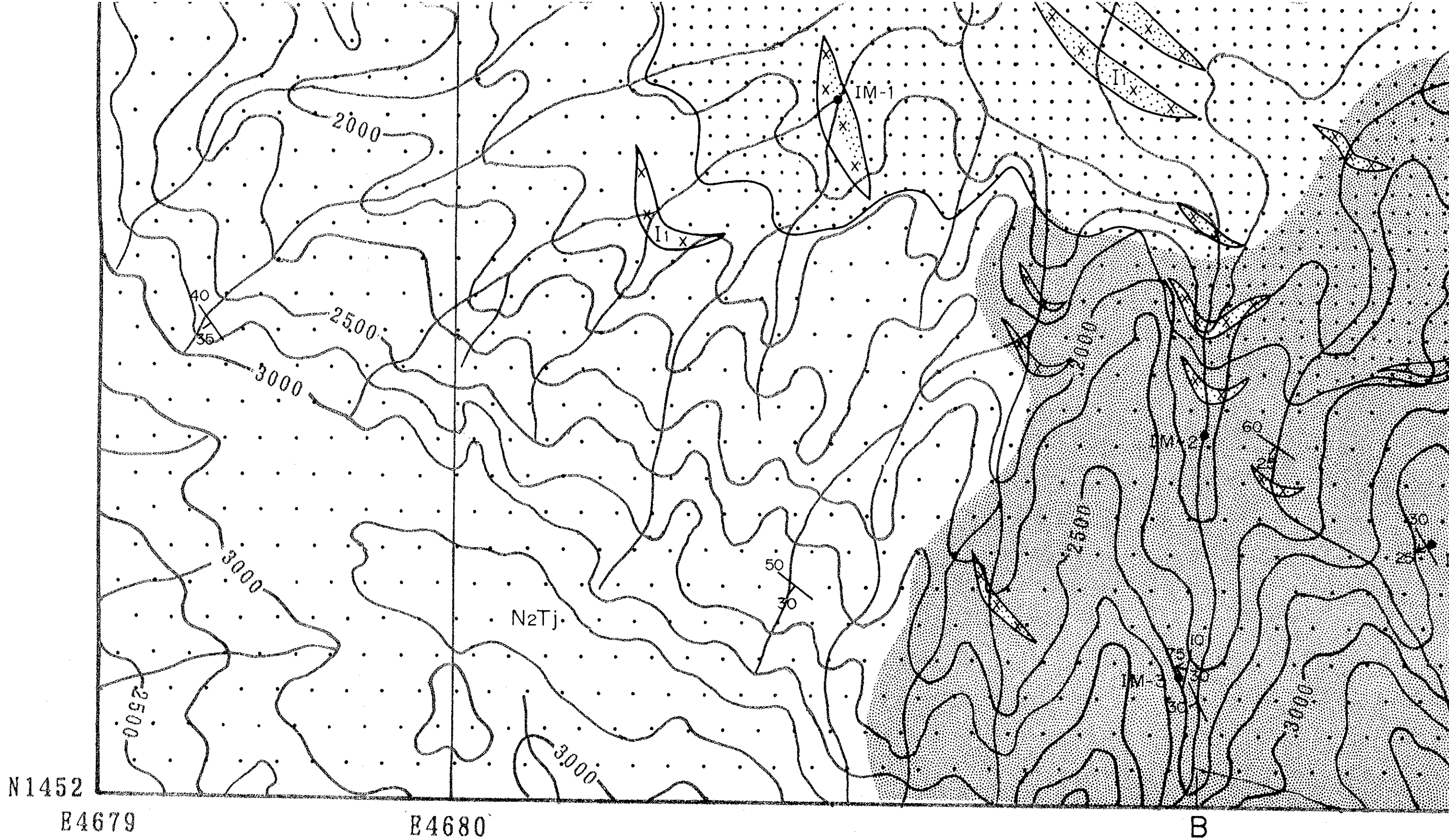
SCALE 1:10,000



JAPAN INTERNATIONAL COOPERATION AGENCY
METAL MINING AGENCY OF JAPAN

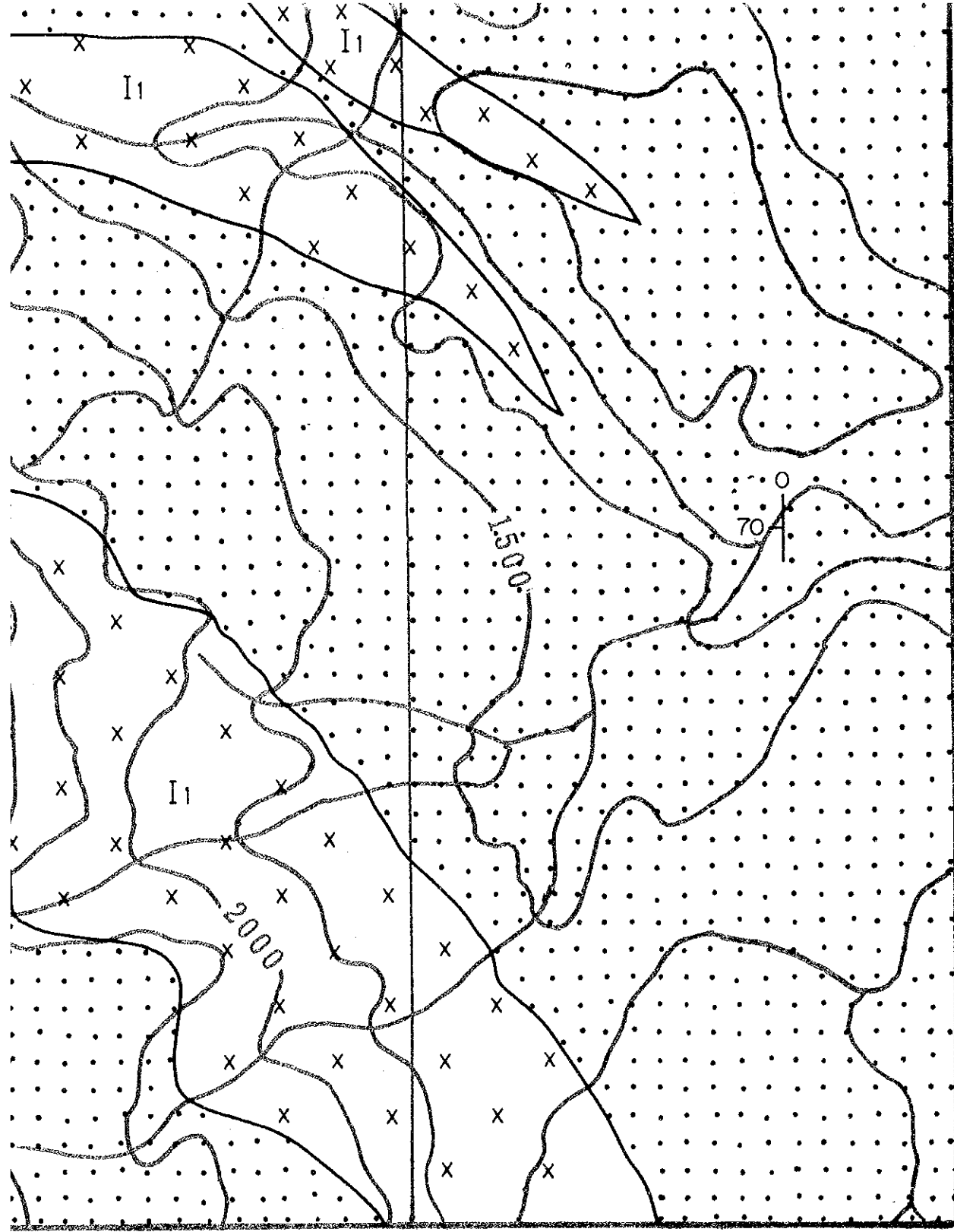
FEBRUARY 1995





B

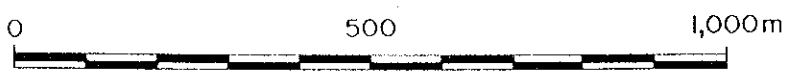
1,000^m







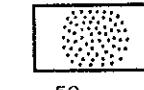
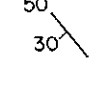


 INDONESIA

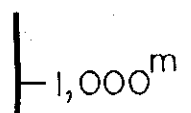
JAPAN INTERNATIONAL COOPERATION AGENCY
 METAL MINING AGENCY OF JAPAN
 FEBRUARY 1995



LEGEND

- | | | |
|----------------------------------|---|---|
| Early Miocene-
Middle Miocene |  | Tanjung Formation
Sandstone dominant |
| |  | Tanjung Formation
Mudstone dominant |
| |  | Diorite Porphyry |
| |  | Diorite Porphyry (argillized) |
| |  | Silicified and/or pyrite dissemination |
| |  | Strike and dip of bedding plane |
| | • | Location of mineral showing |

A

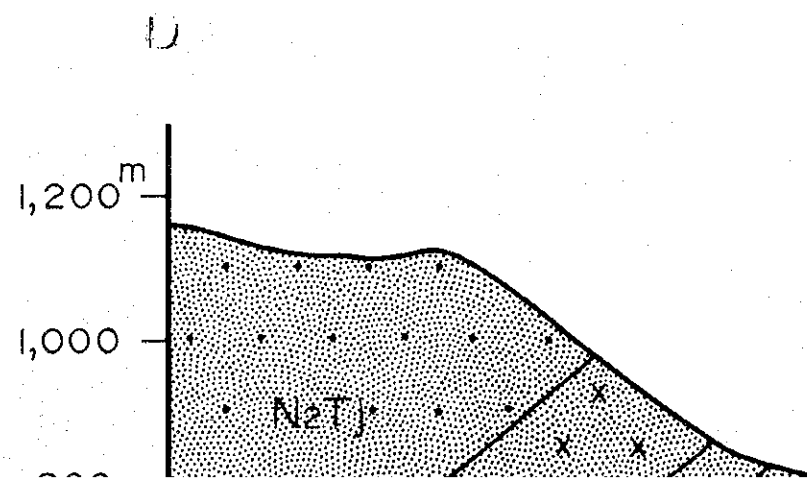
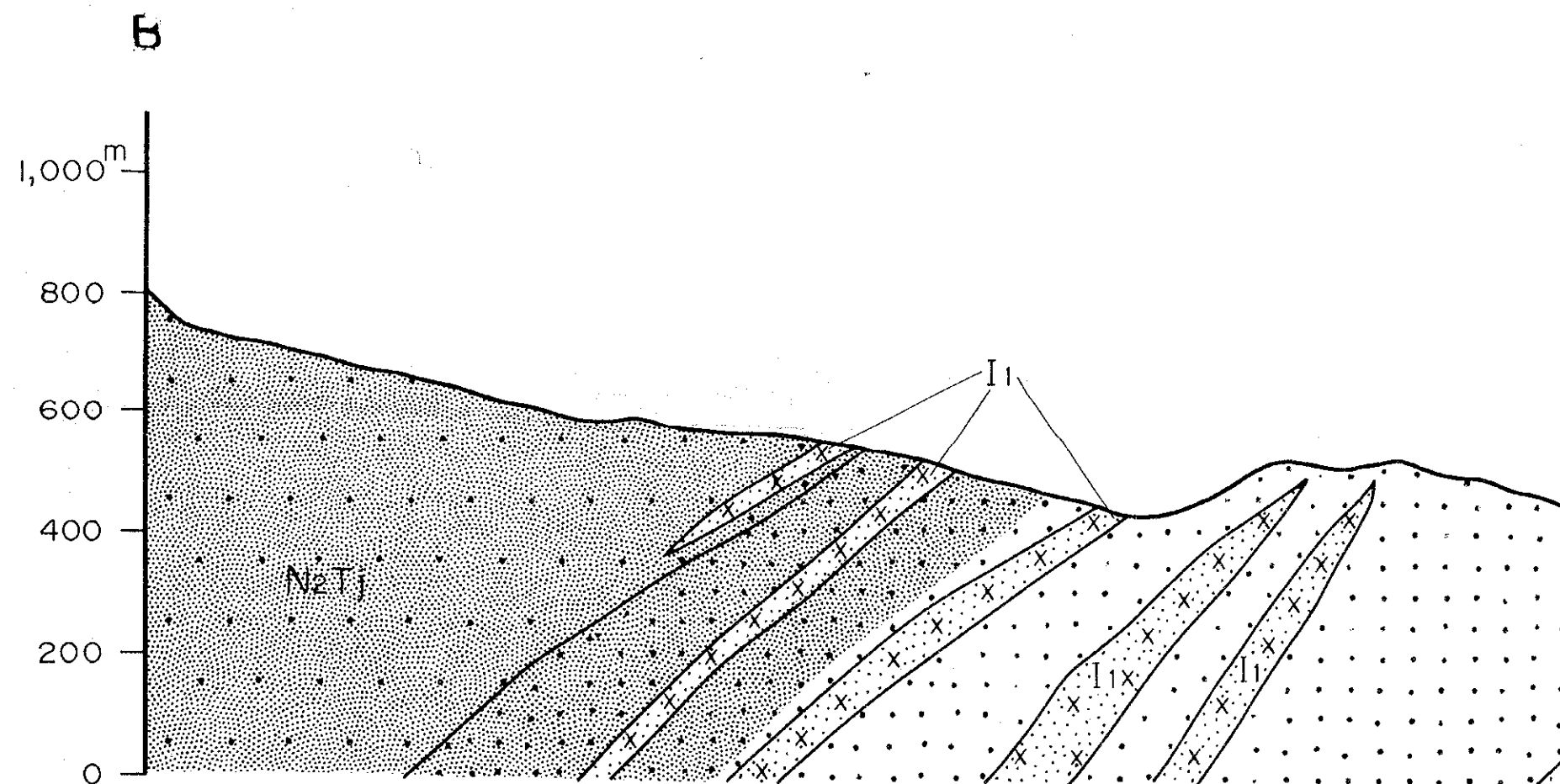


N1452

E4679

E4680

B

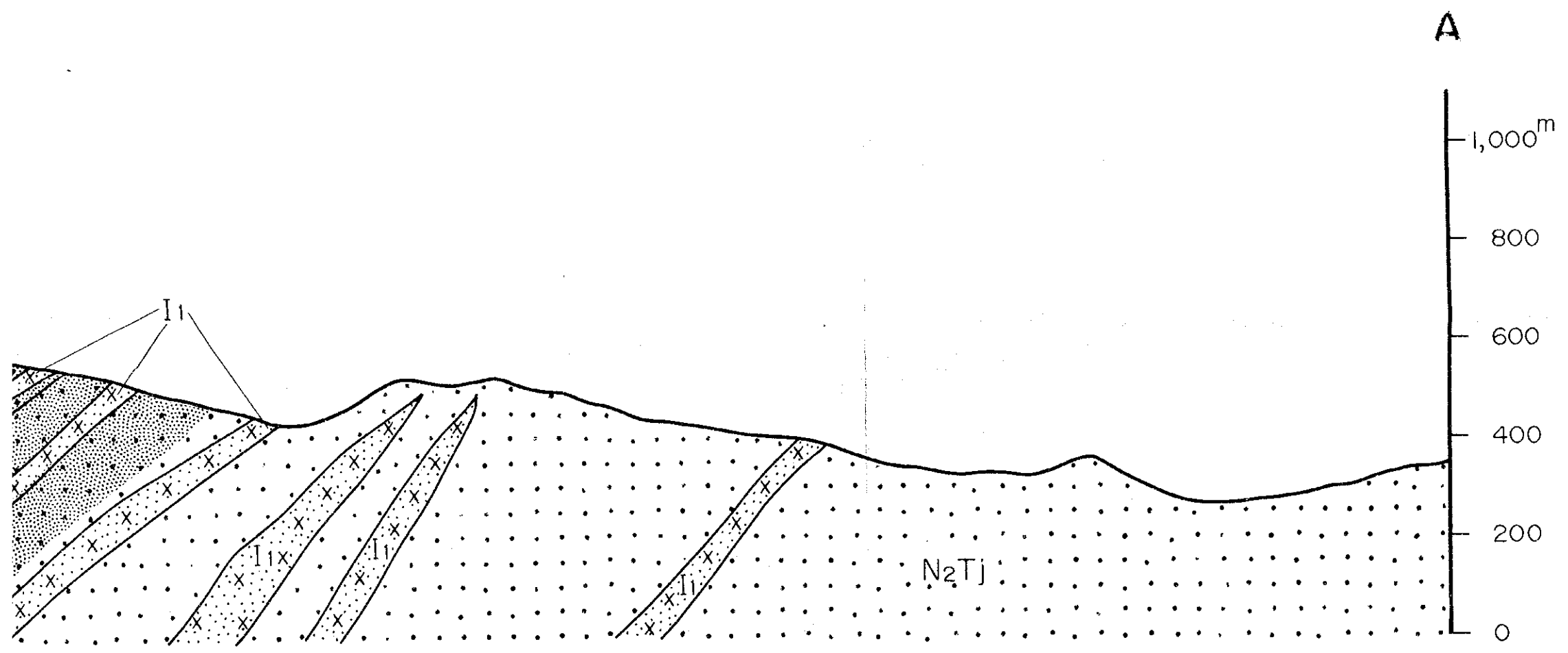




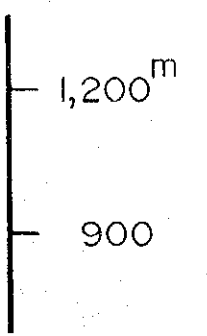
B

D

B4685



C


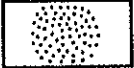
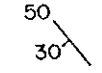





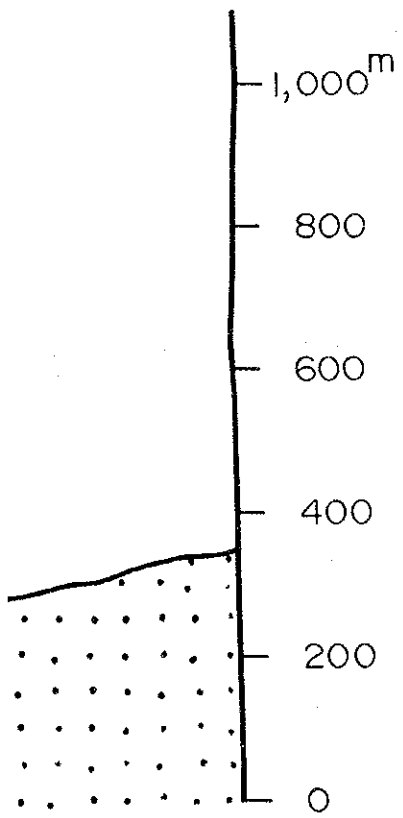
E4685

E4686

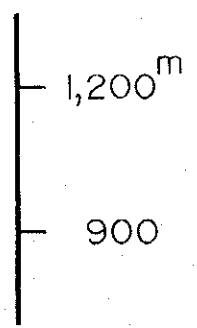
N1452

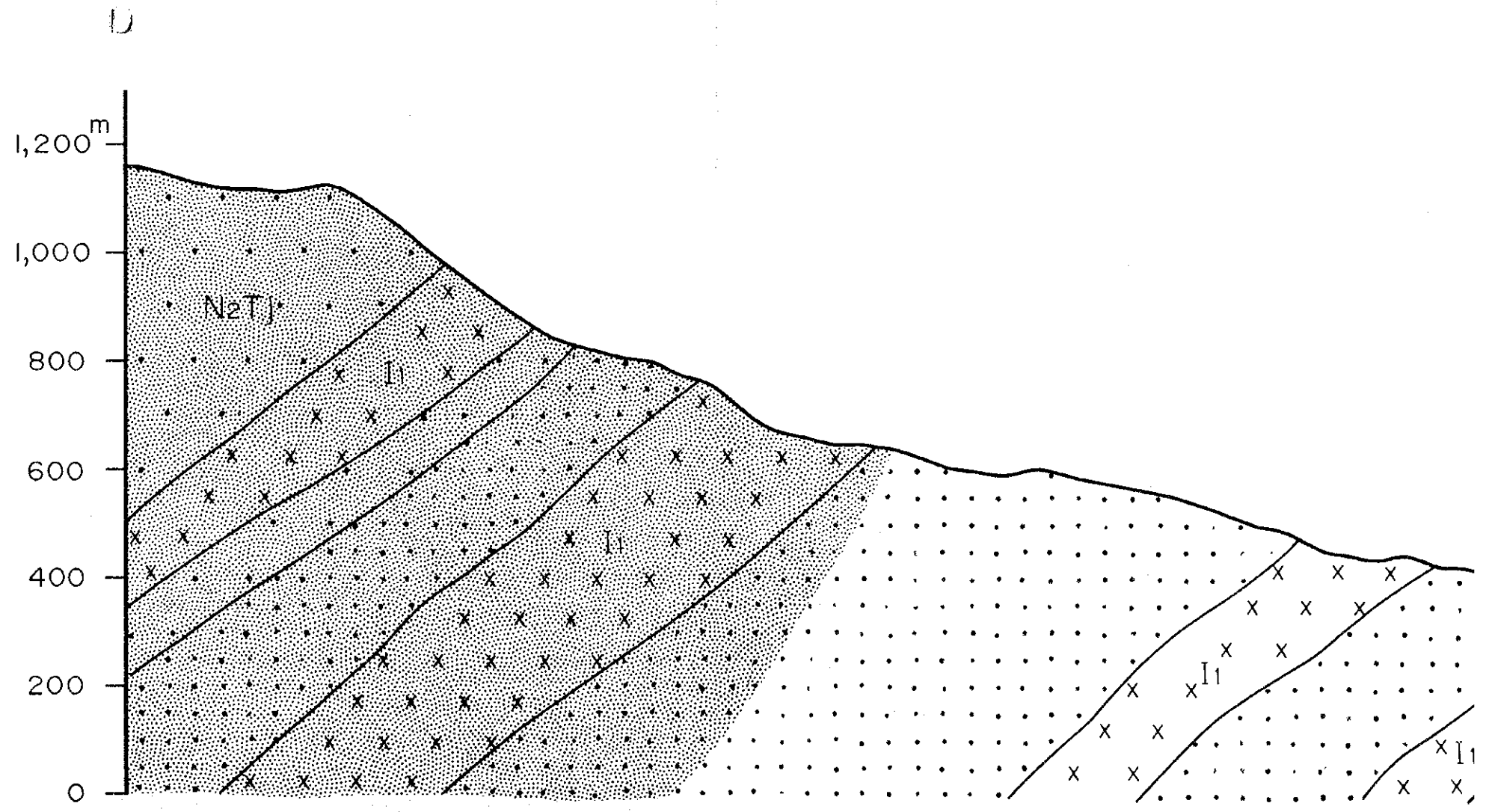
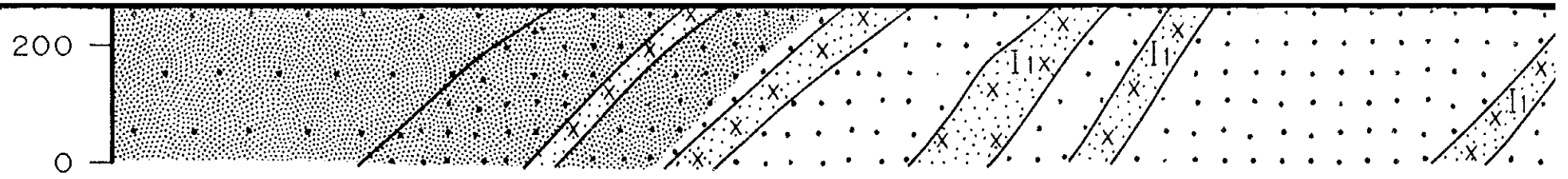
-  Diorite Porphyry (argillized)
-  Silicified and/or pyrite dissemination
-  Strike and dip of bedding plane
-  Location of mineral showing

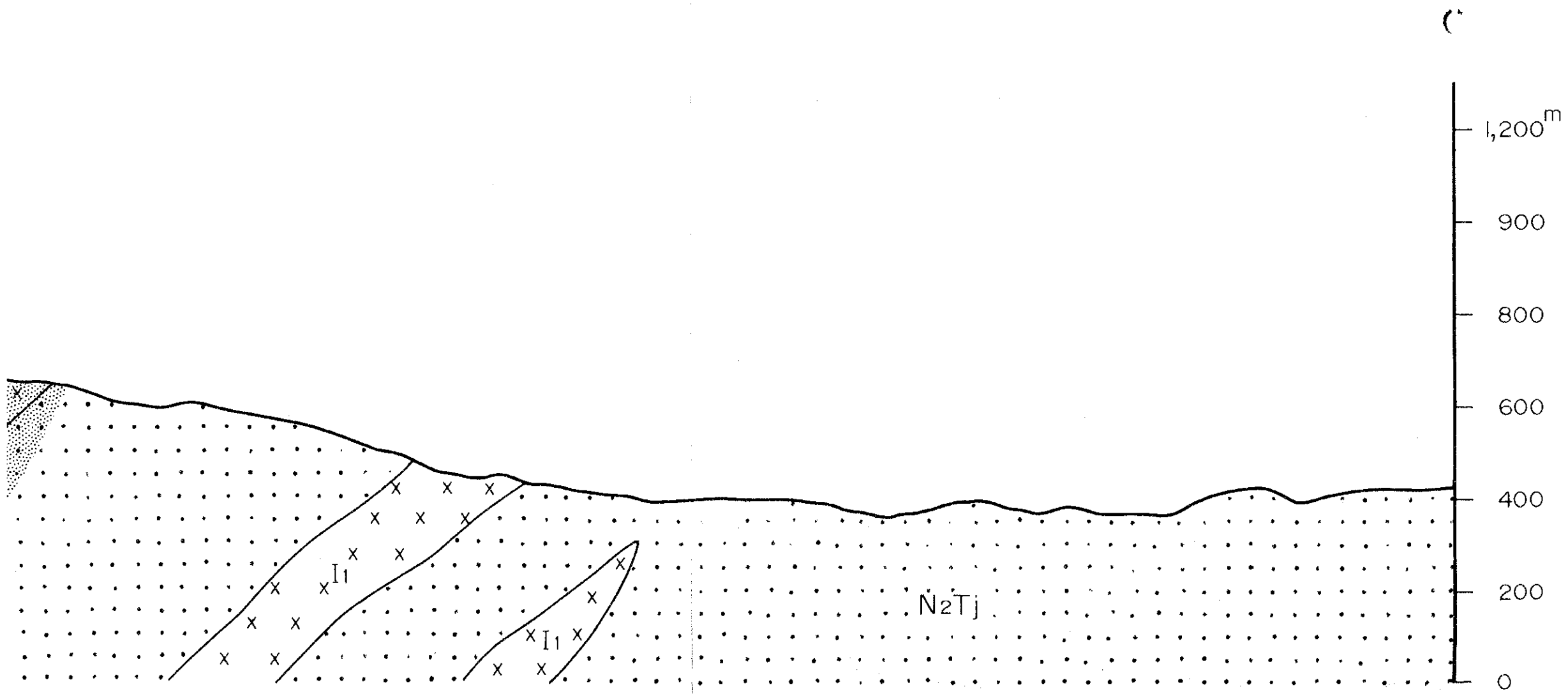
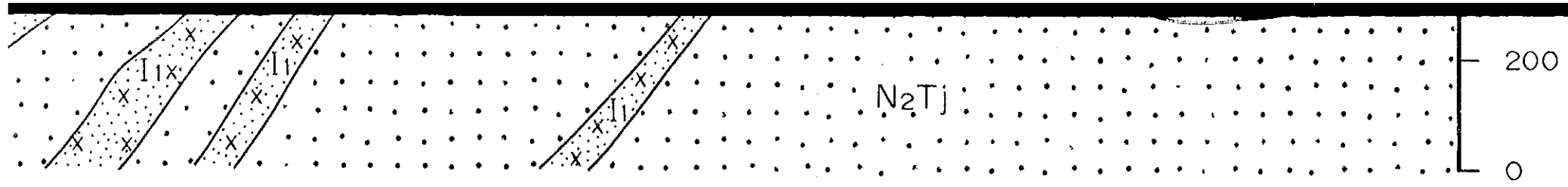
A

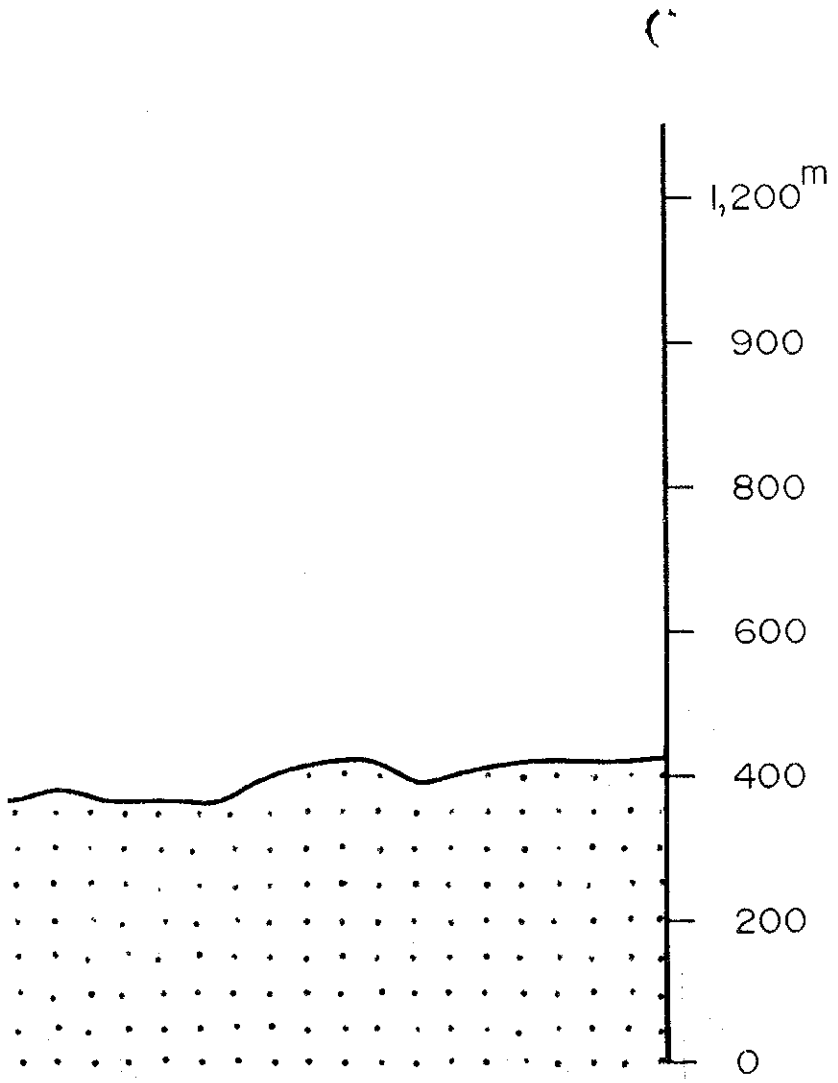
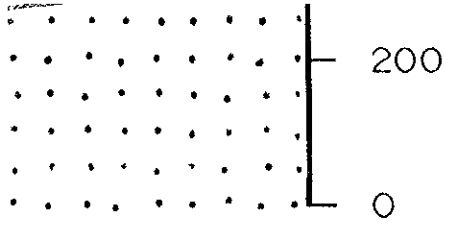


C









JICA