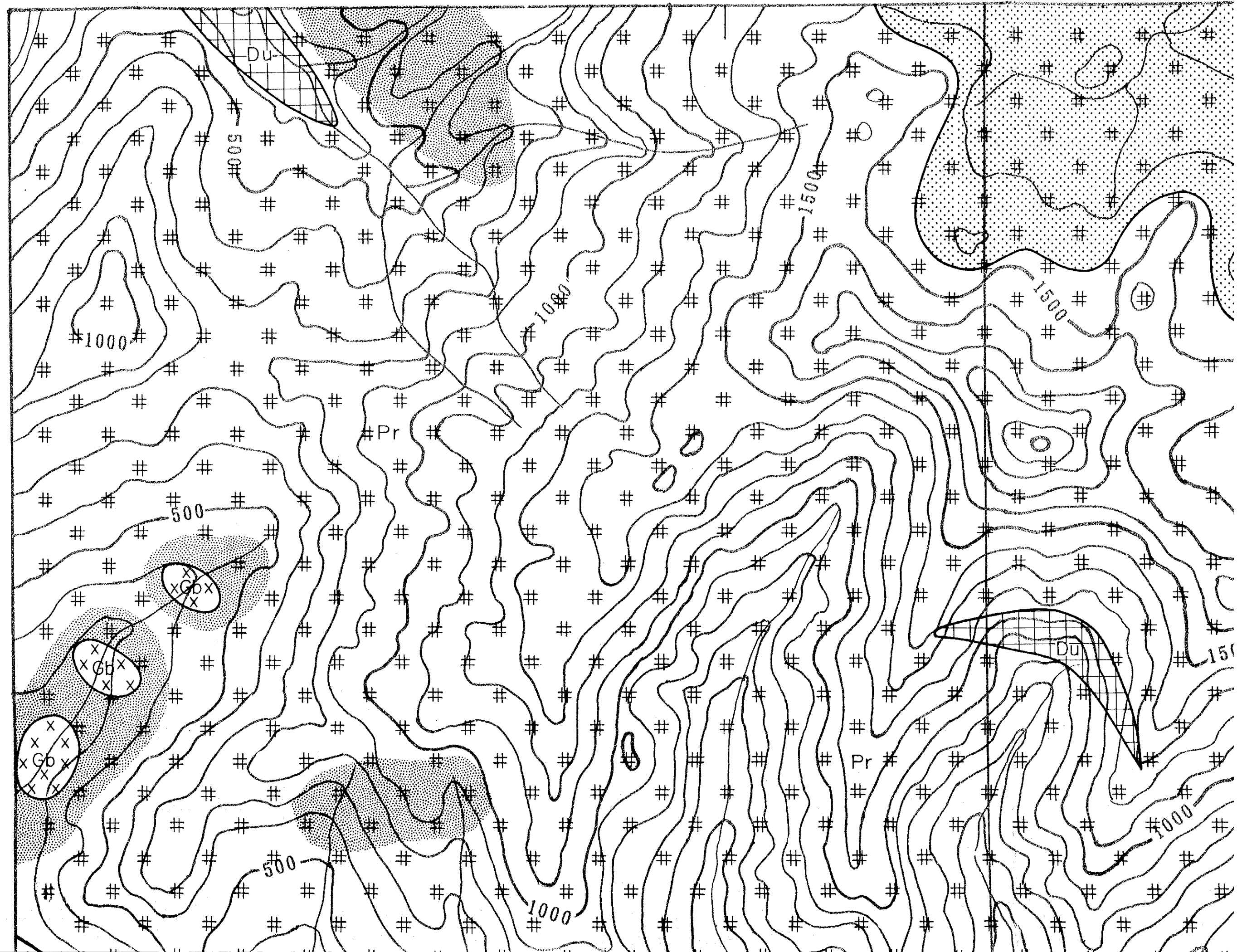


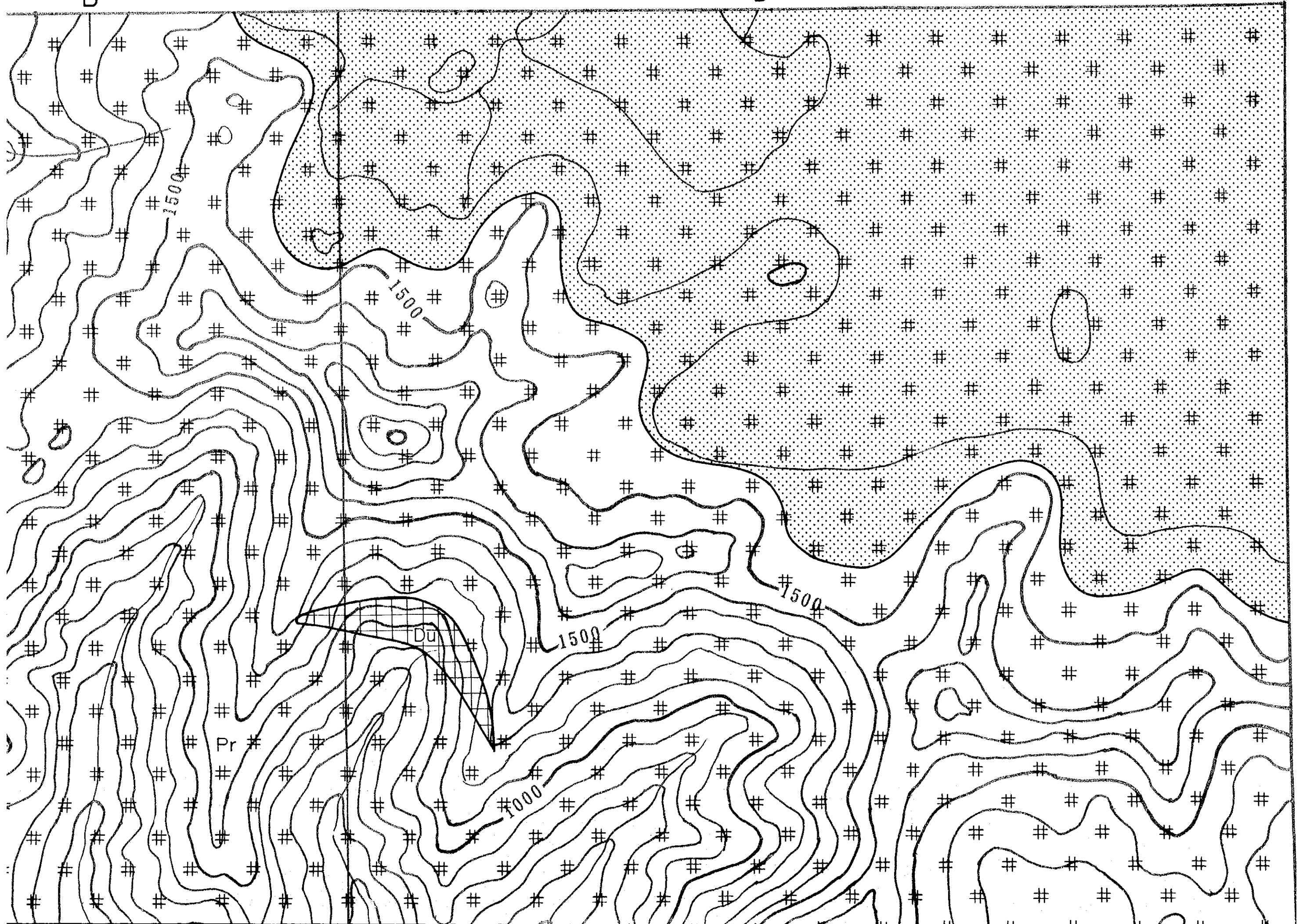
N1505

B



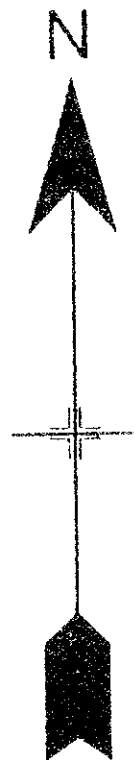
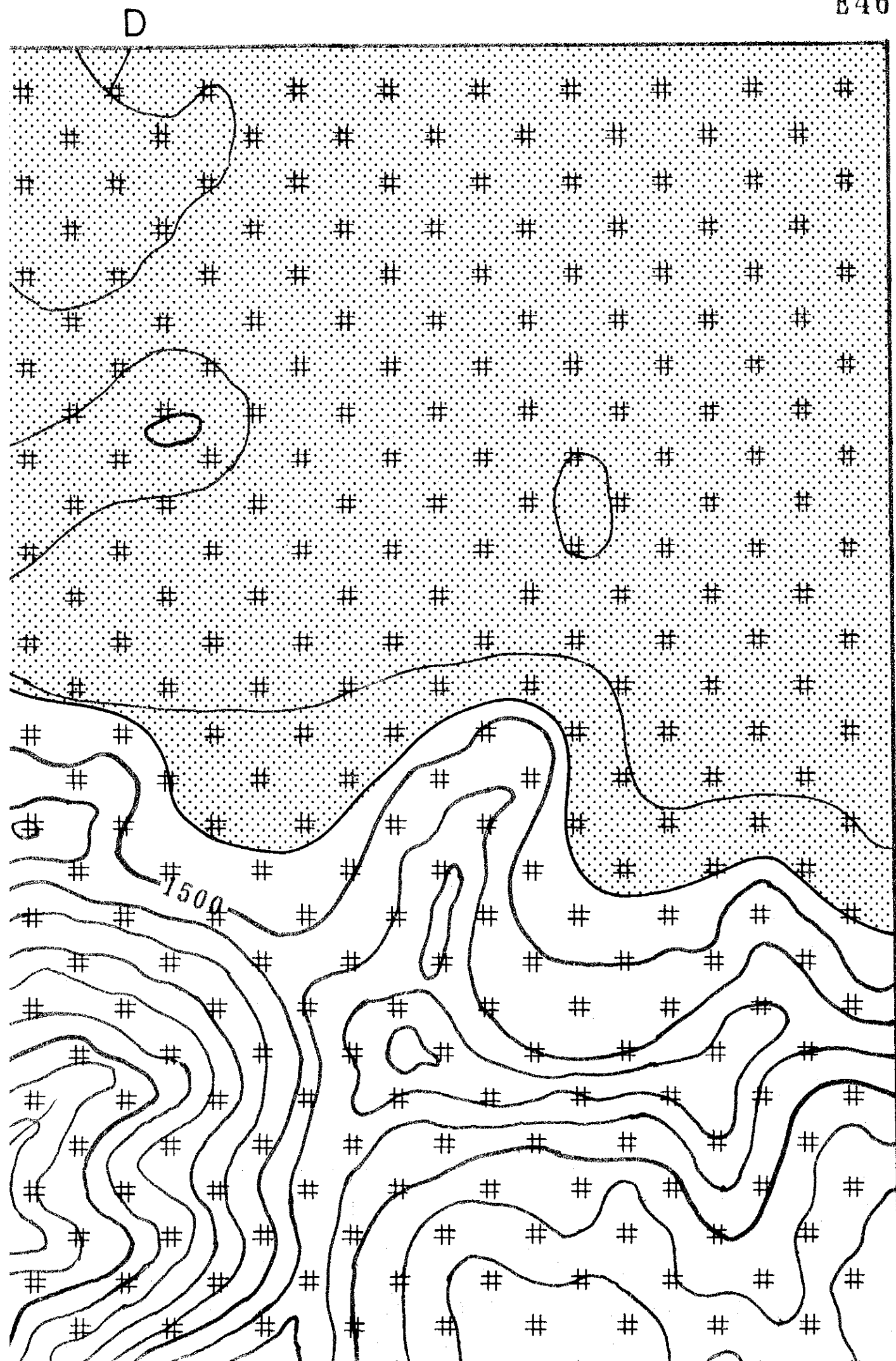
B

D



E4688

N1505



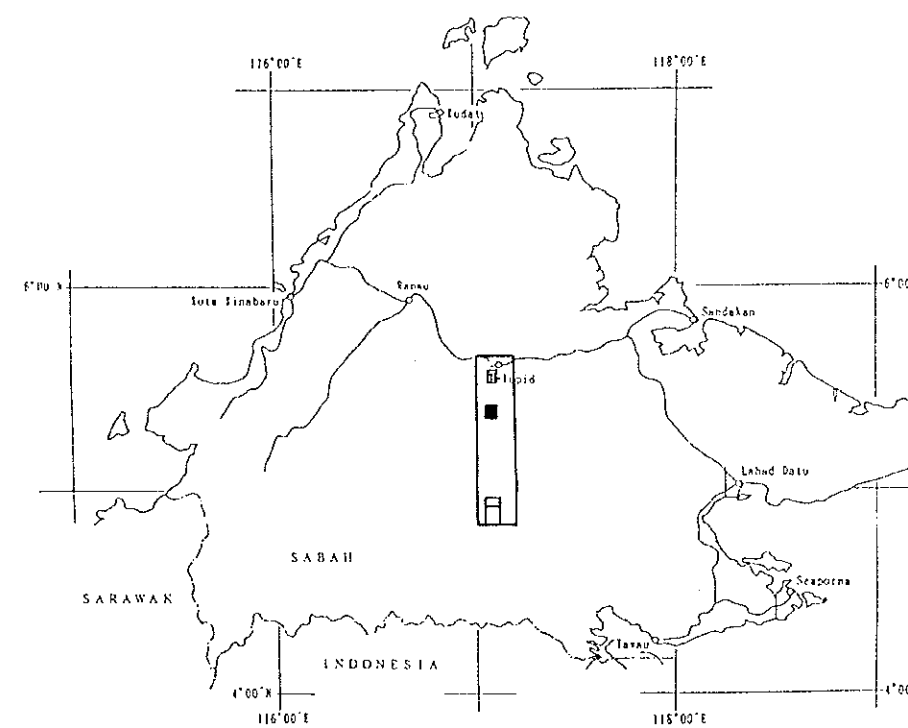
MINERAL EXPLORATION
IN THE CENTRAL SABAH AREA
MALAYSIA
PHASE I

Plate II-2-1

GEOLOGIC MAP AND CROSS SECTIONS

PINANDUAN SUB-AREA

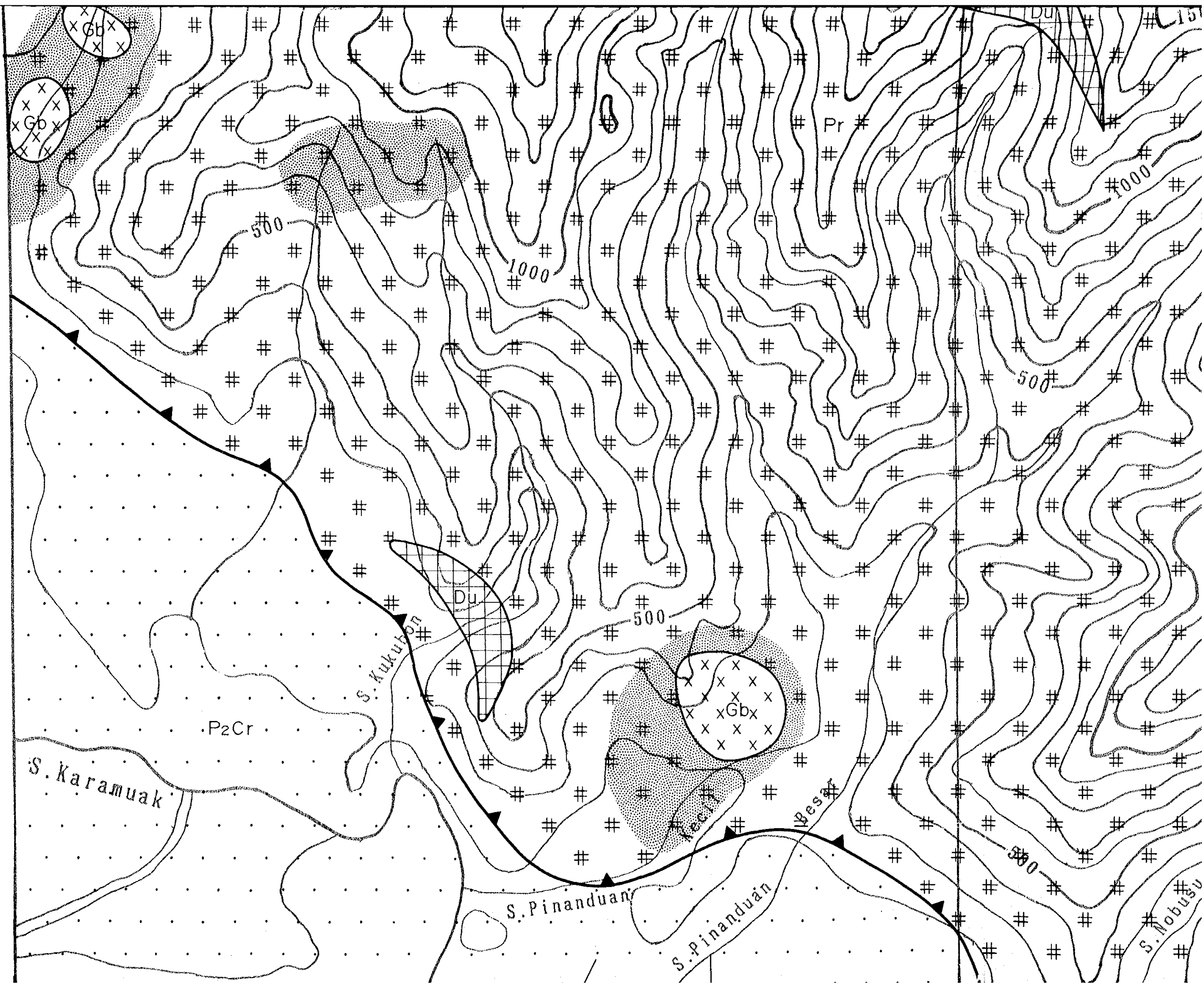
SCALE 1:10,000

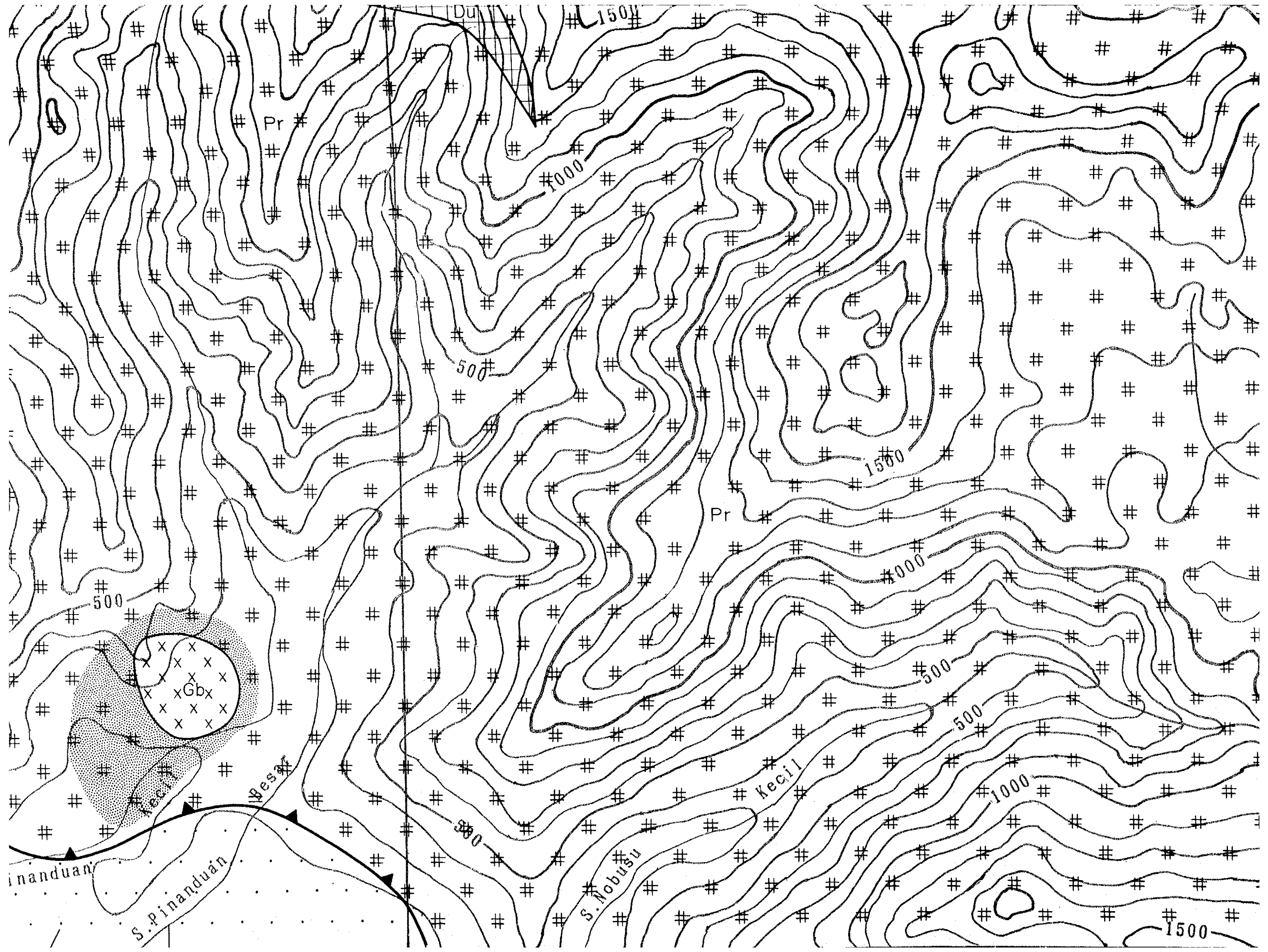


JAPAN INTERNATIONAL COOPERATION AGENCY
METAL MINING AGENCY OF JAPAN

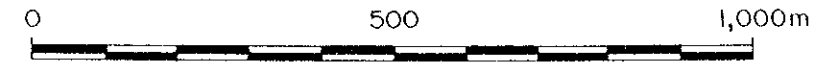
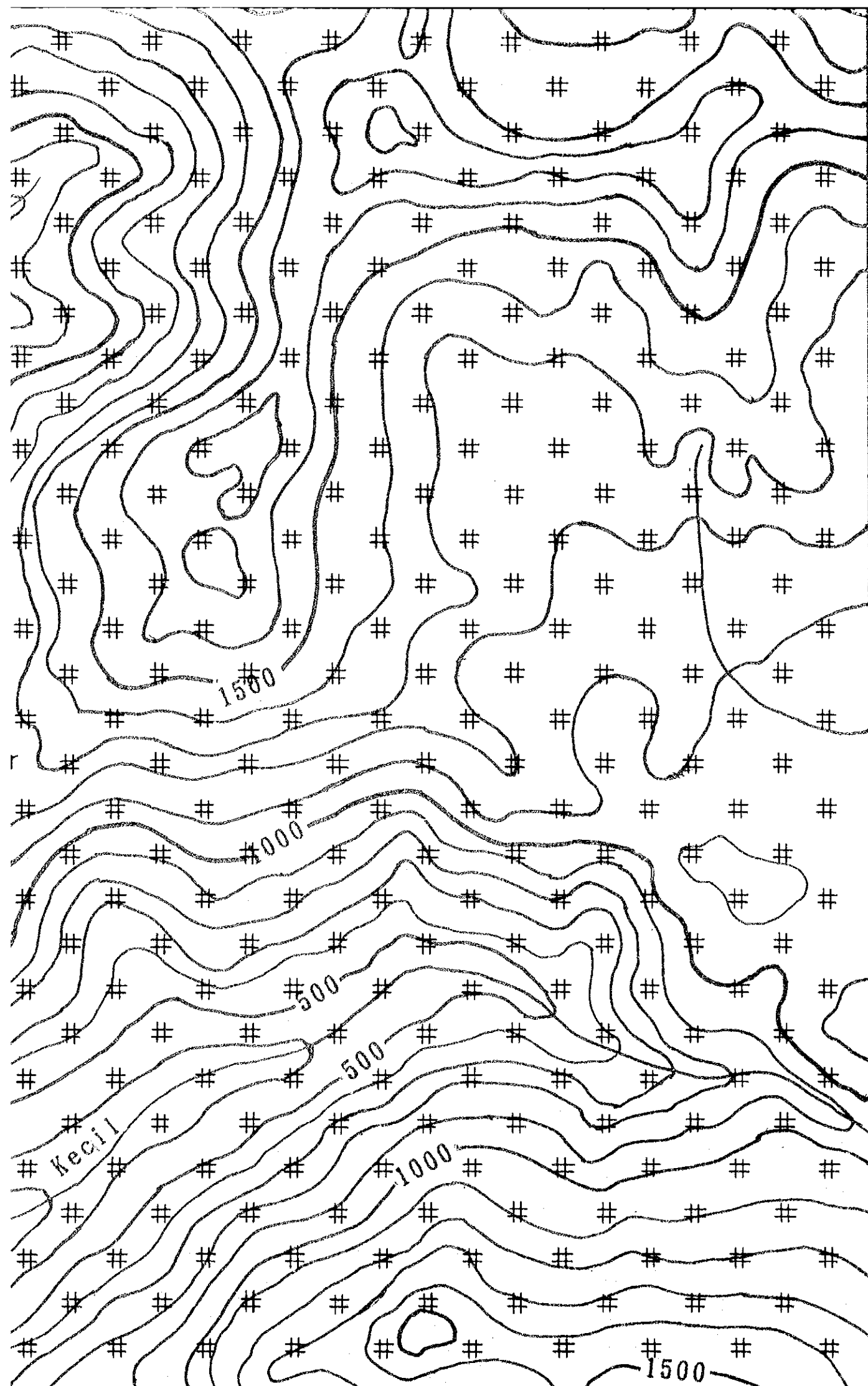
FEBRUARY 1995





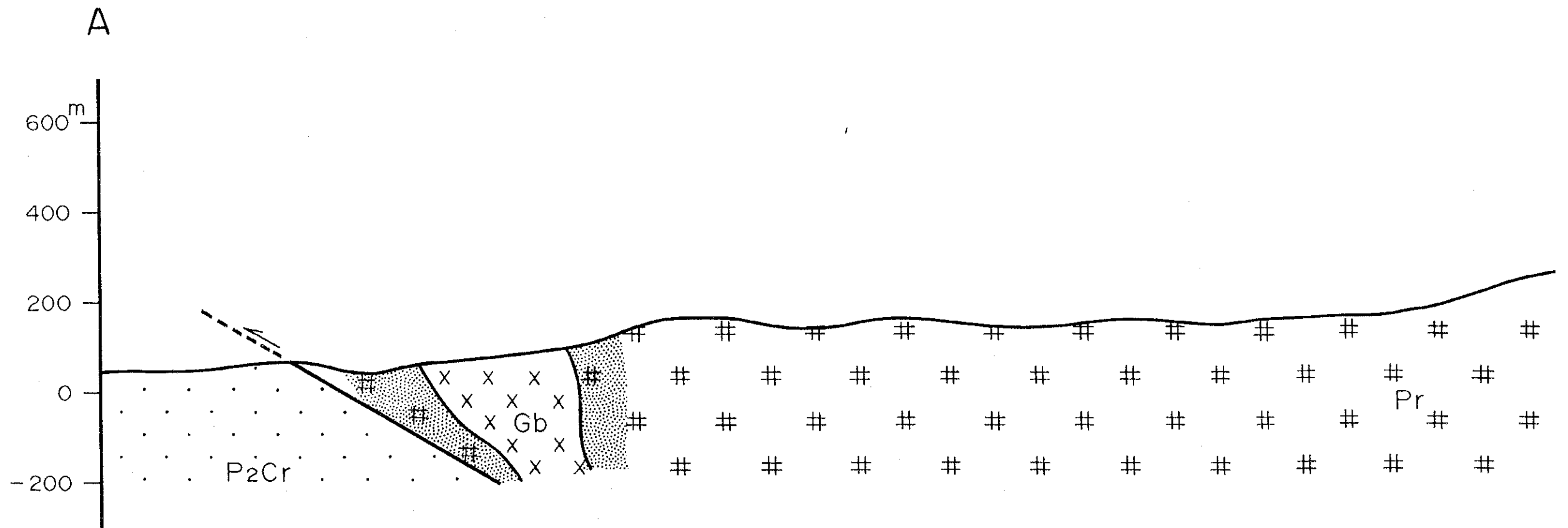
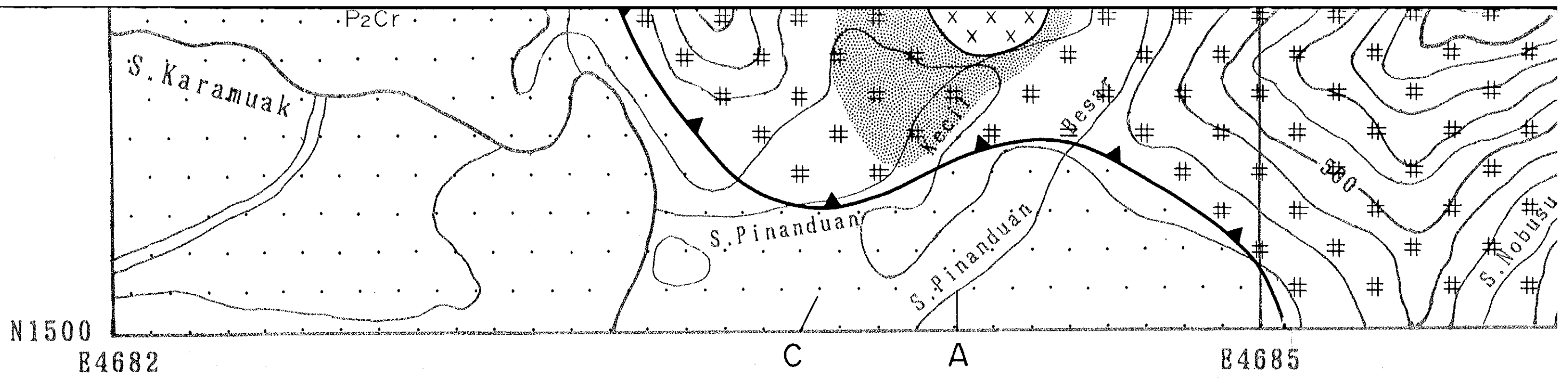


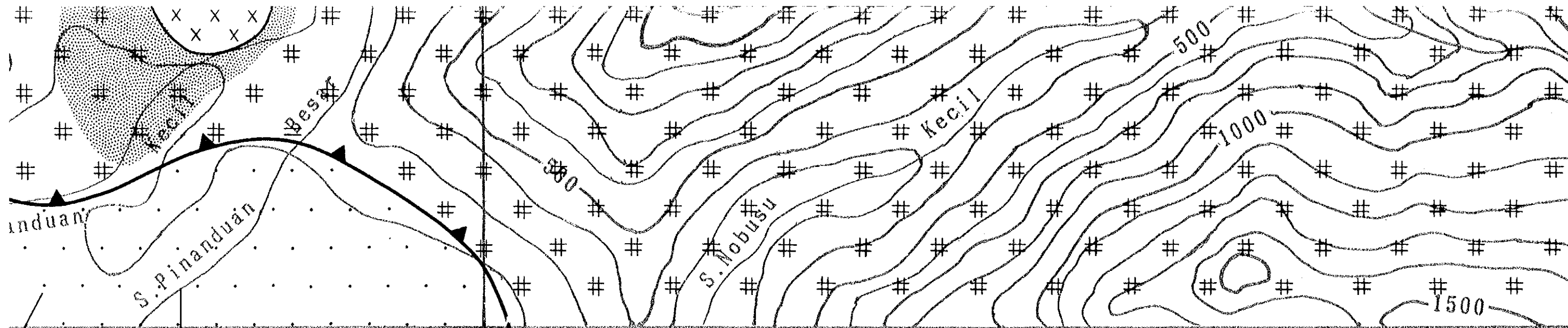
FEBRUARY 1995



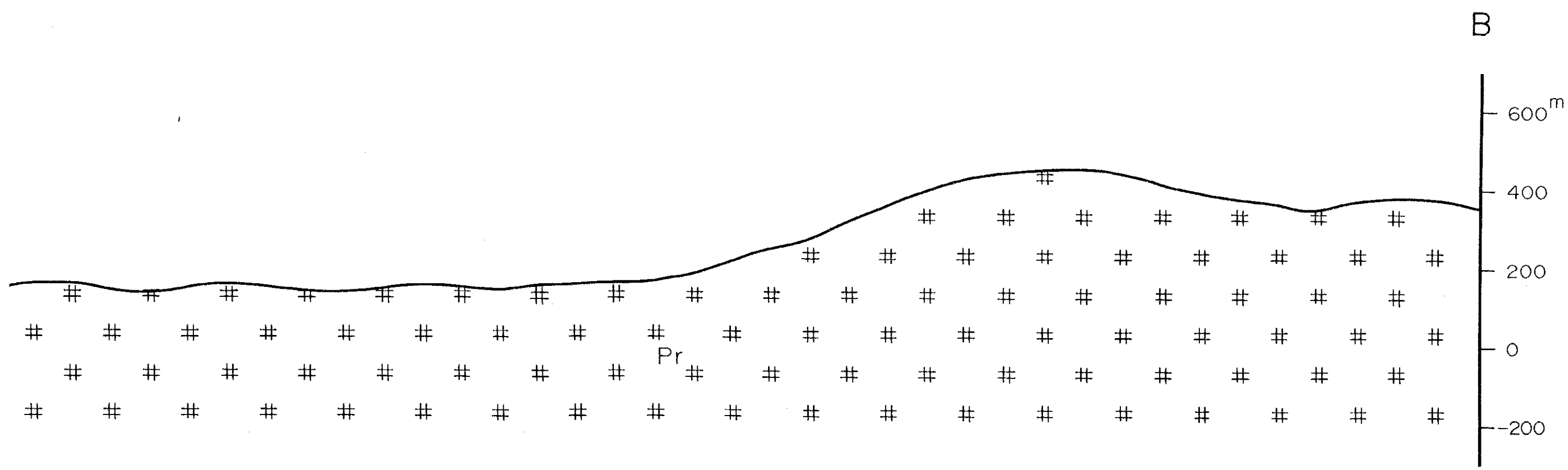
LEGEND

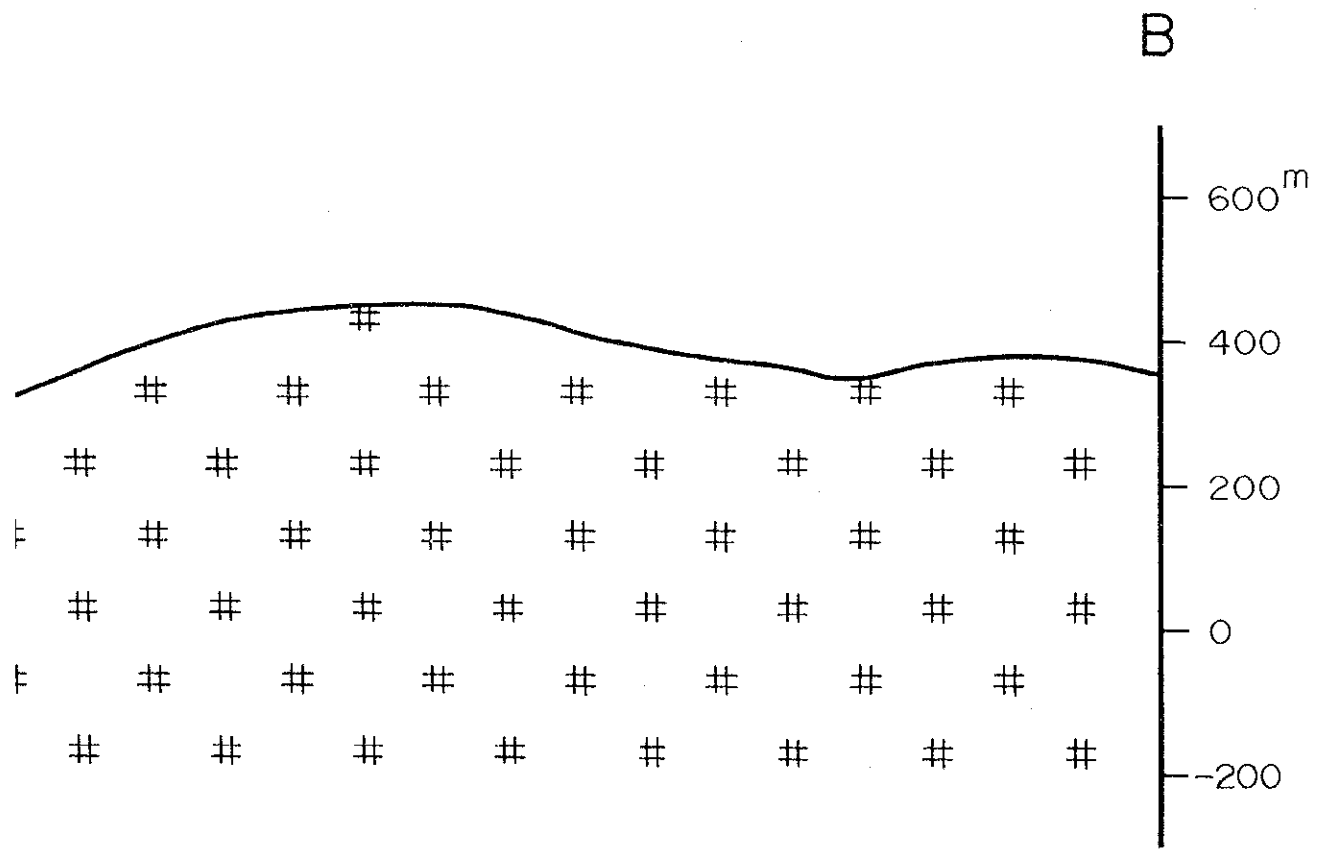
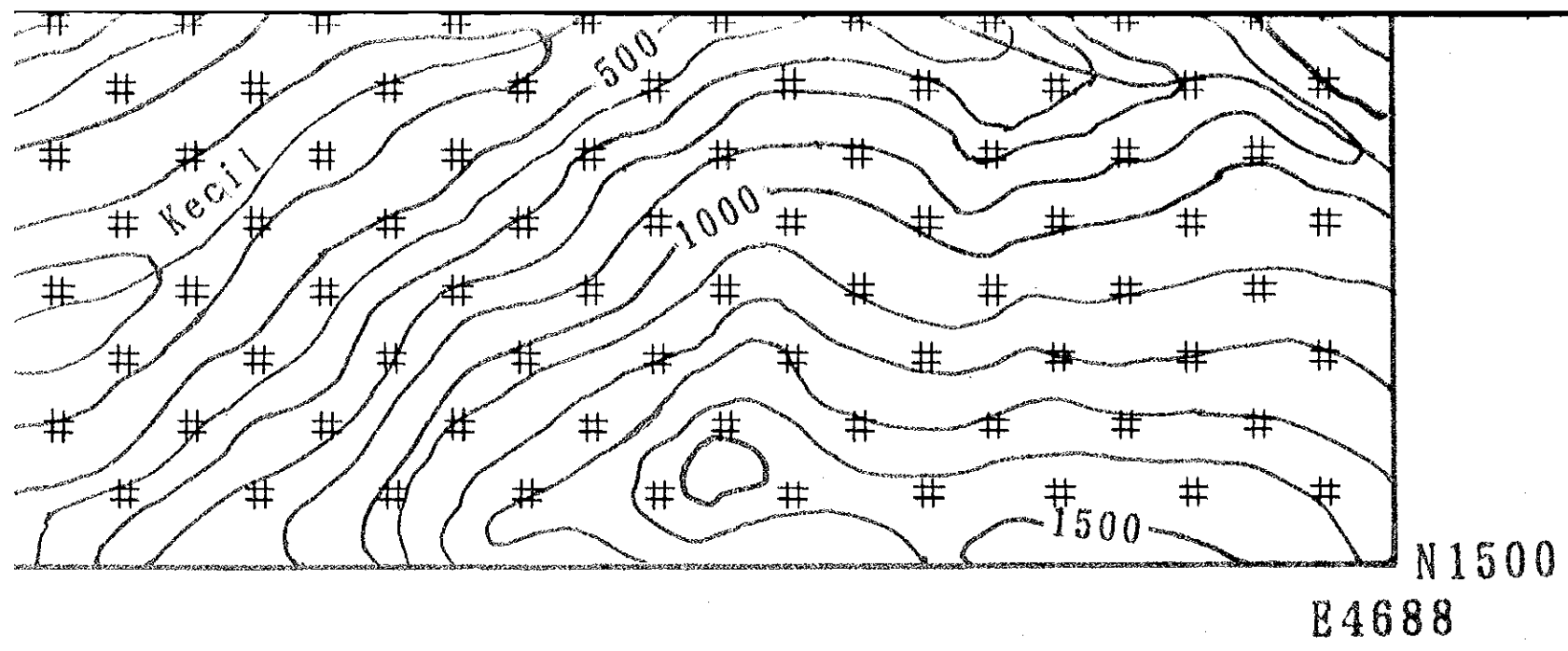
- | | | |
|-----------------------|--|---|
| Eocene -
Oligocene | | Crocker Formation
sandstone and mudstone |
| | | Gabbro |
| | | Peridotite
(mainly harzburgite) |
| | | Dunite |
| | | Laterite |
| | | Altered and/or pyrite dissemination |
| | | Thrust fault |

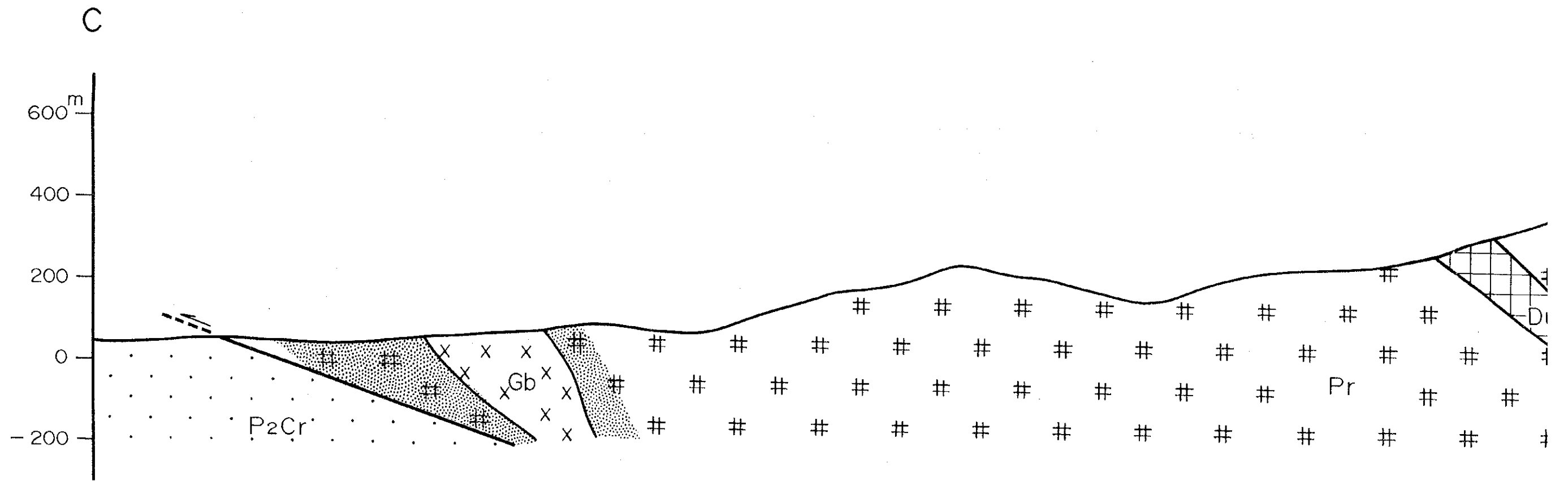
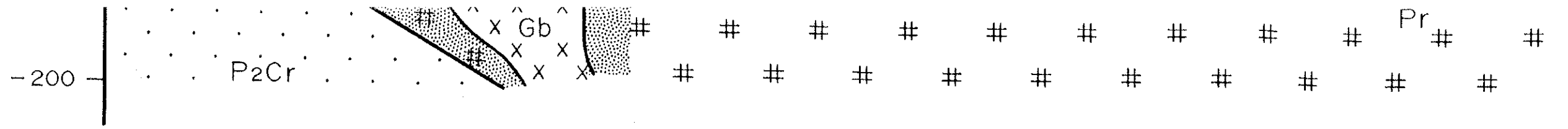


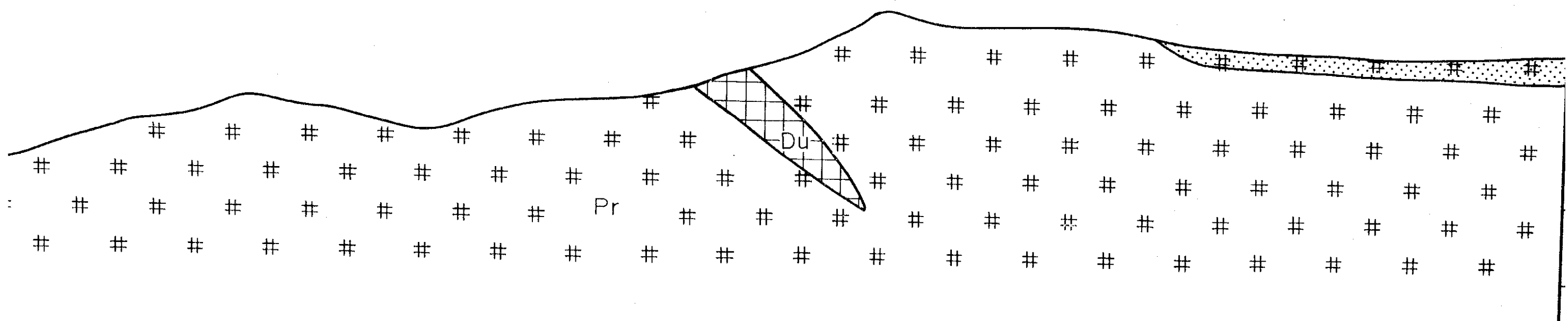
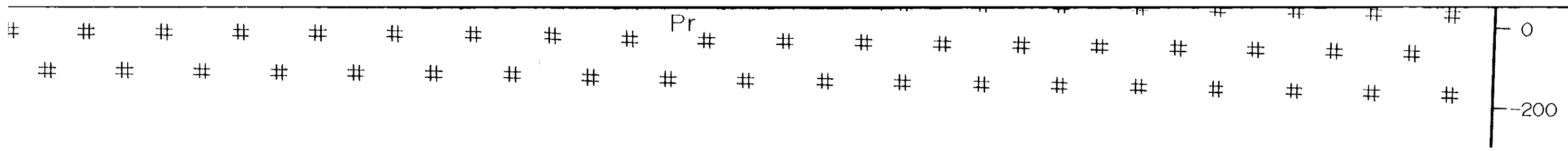


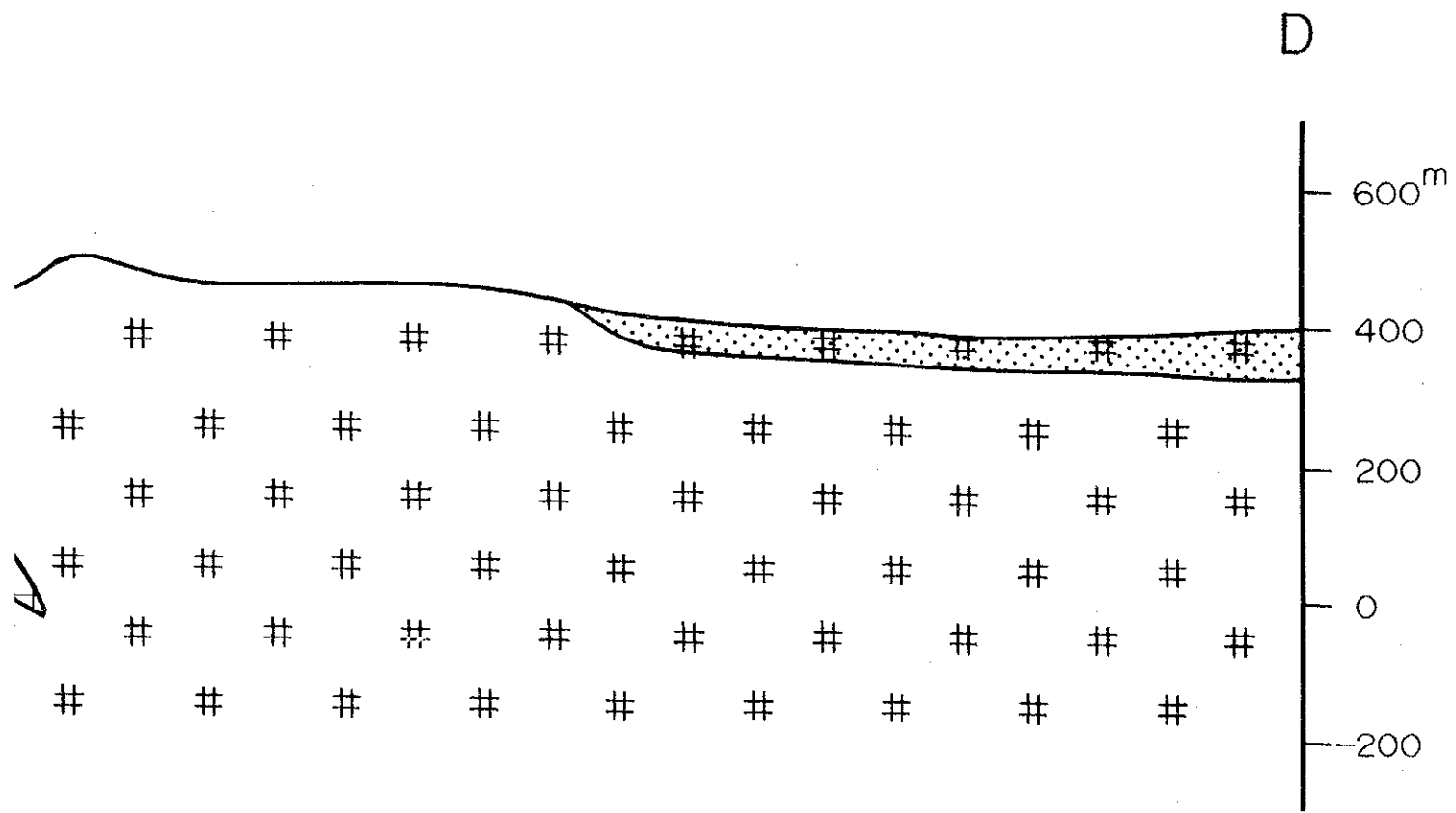
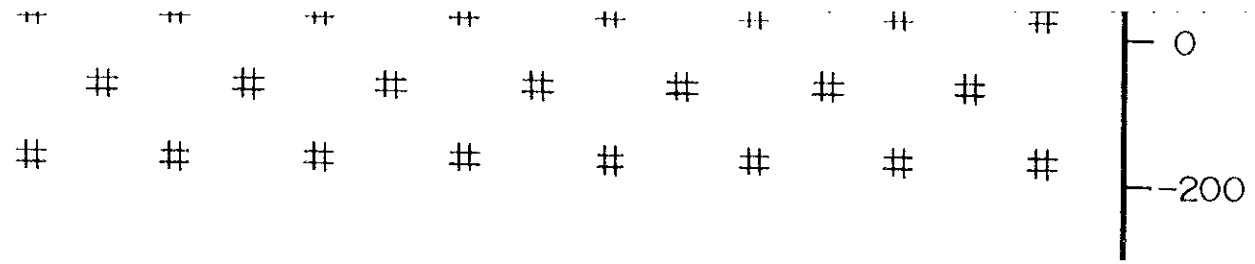
C A E4685











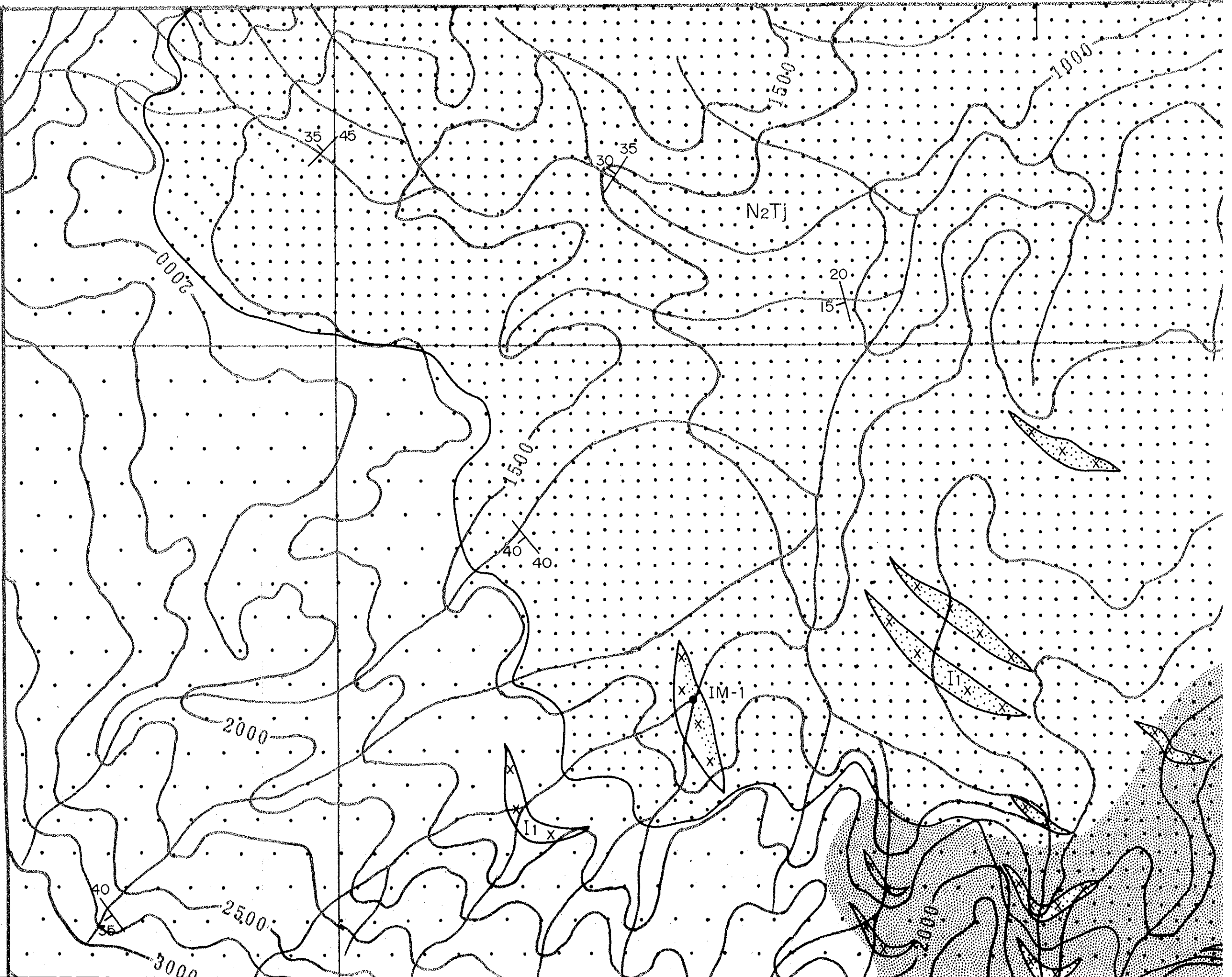
E4679

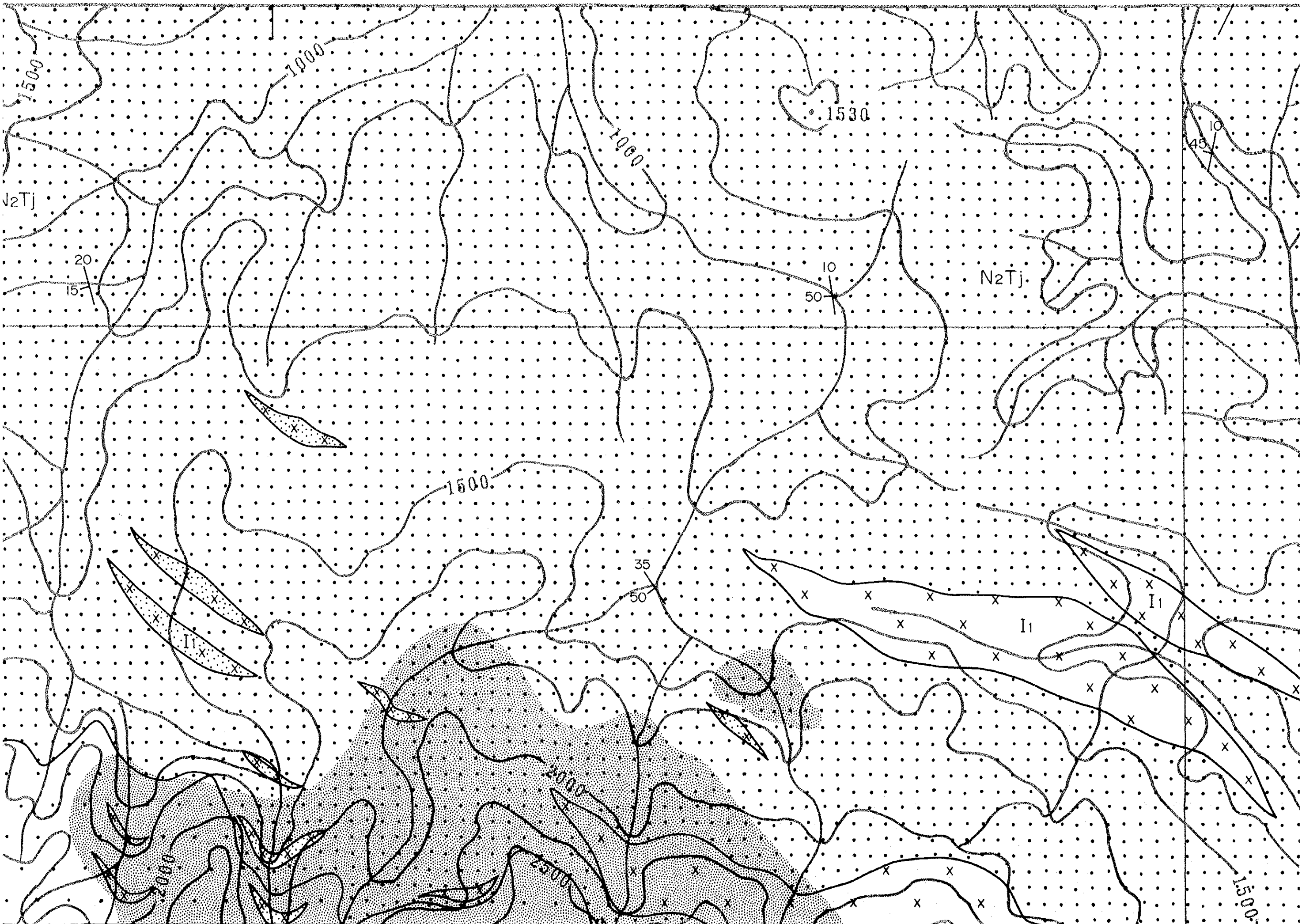
E4680

N1456

A

N1455





E4685

E4686

C

N1456

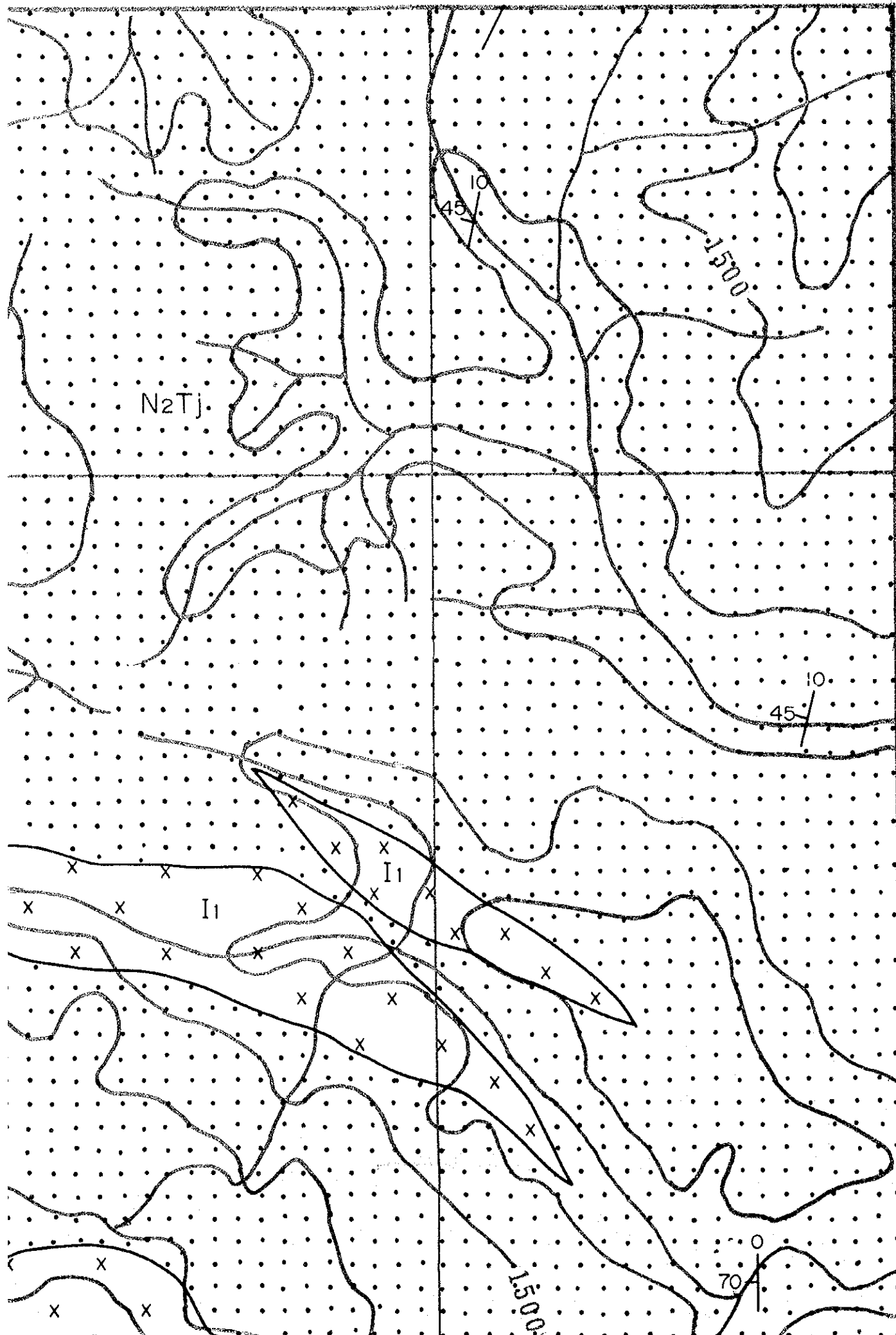


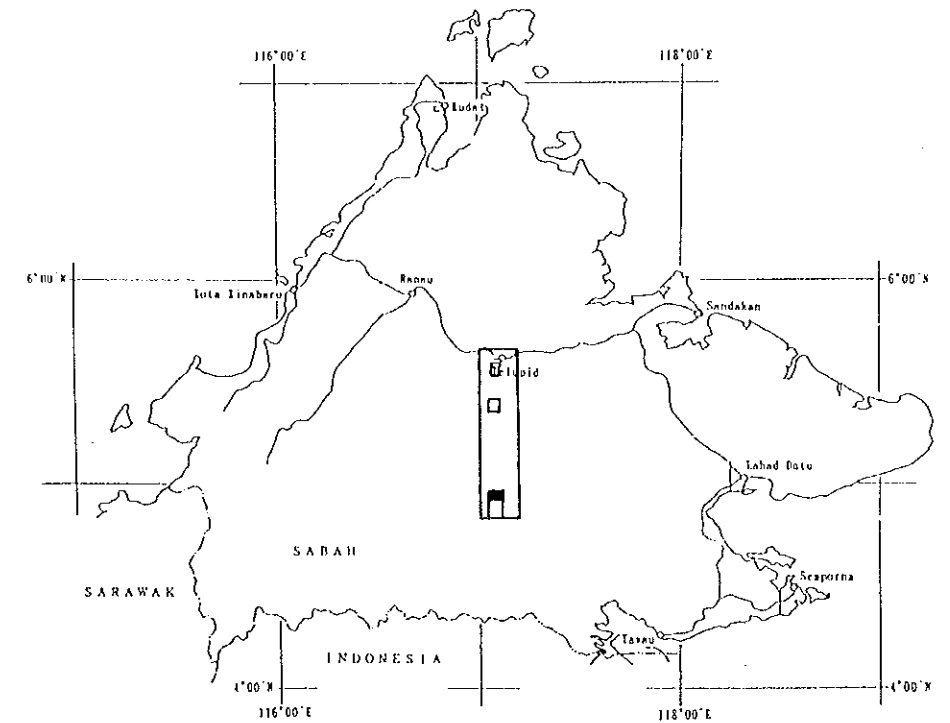
Plate II-3-1

MINERAL EXPLORATION
IN THE CENTRAL SABAH AREA
MALAYSIA

GEOLOGIC MAP AND CROSS SECTIONS

S. IMBAK SUB-AREA

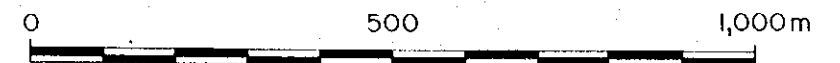
SCALE 1:10,000

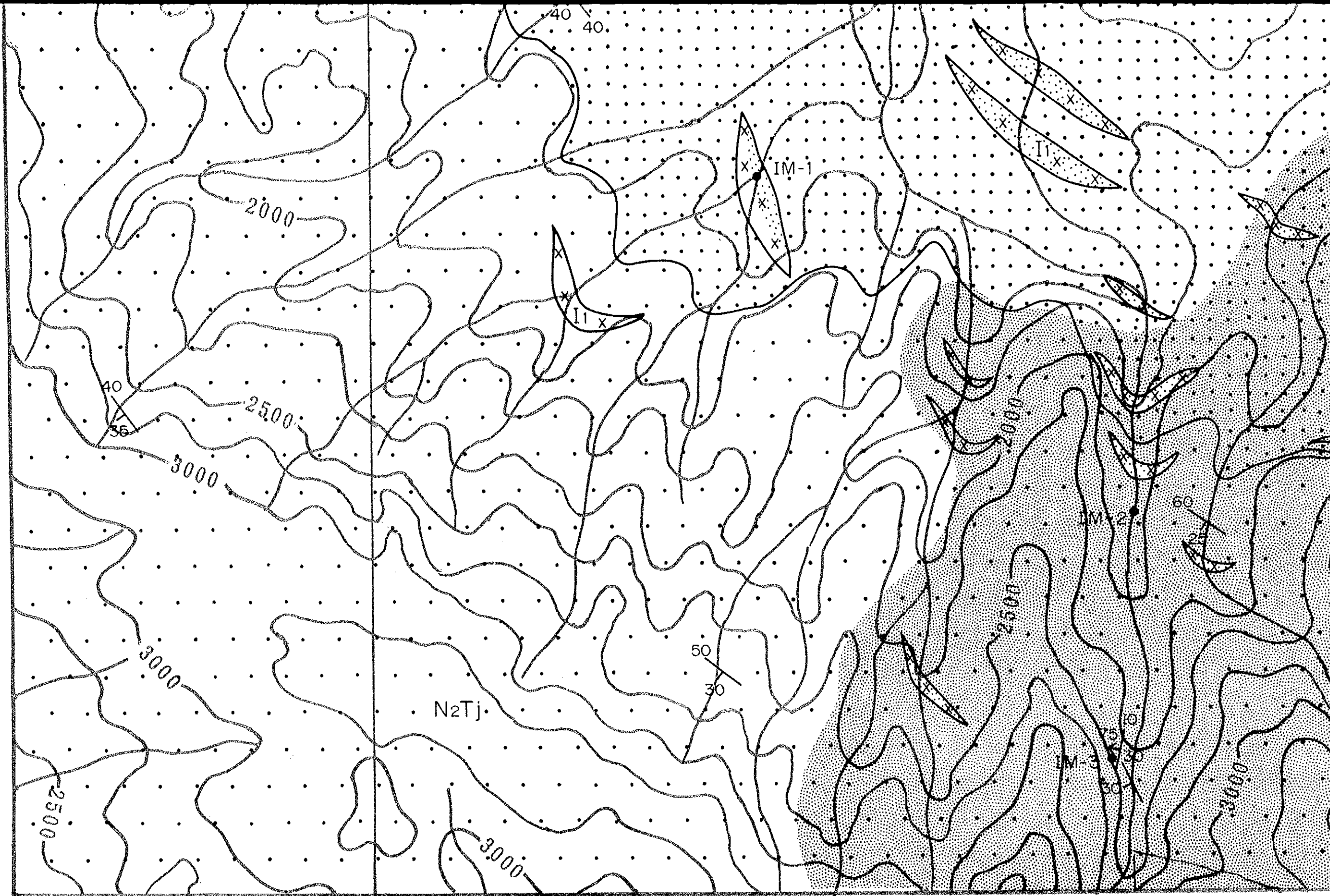


JAPAN INTERNATIONAL COOPERATION AGENCY

METAL MINING AGENCY OF JAPAN

FEBRUARY 1995



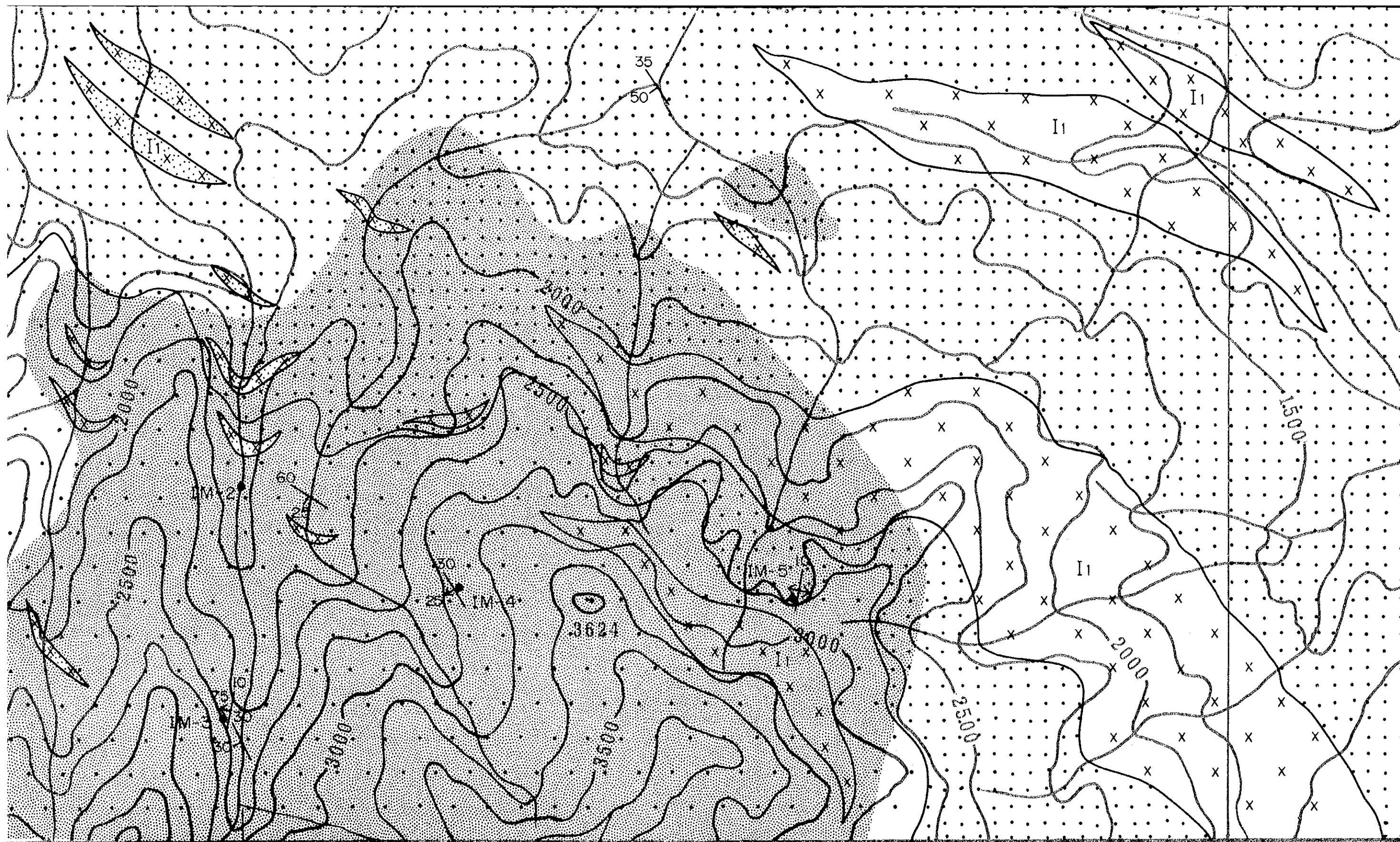


N1452

E4679

E4680

B

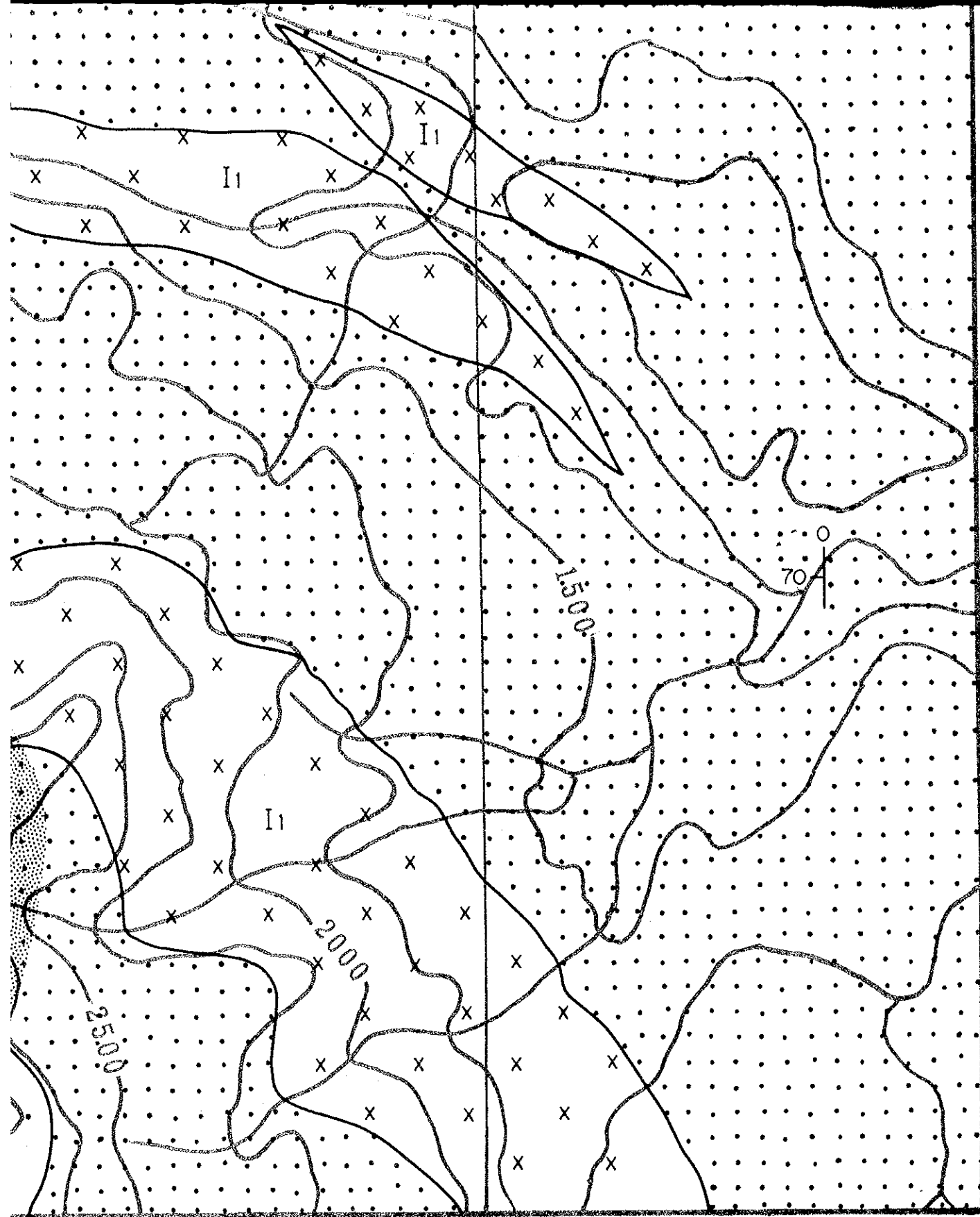


B

D

B4685

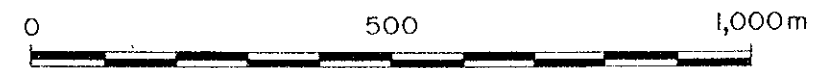
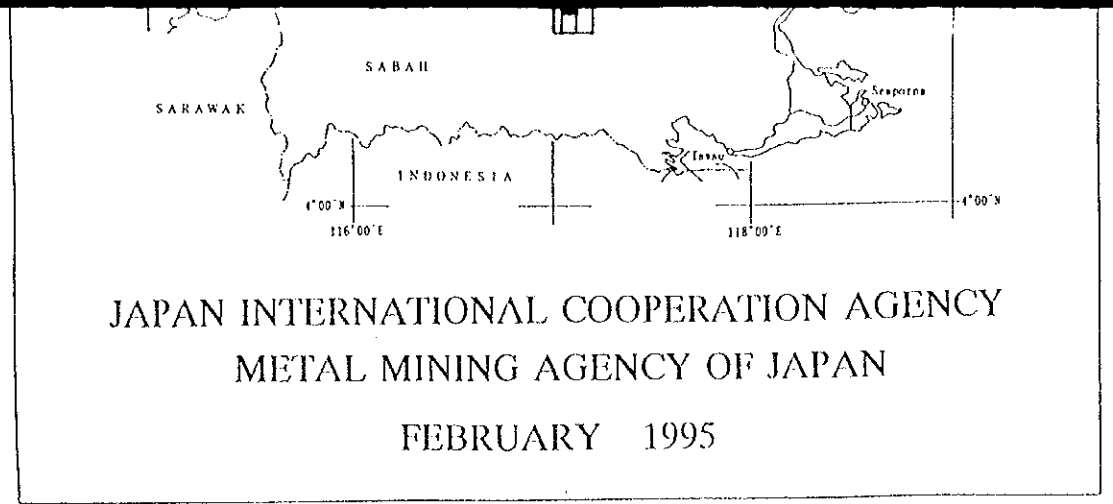
A



E4685

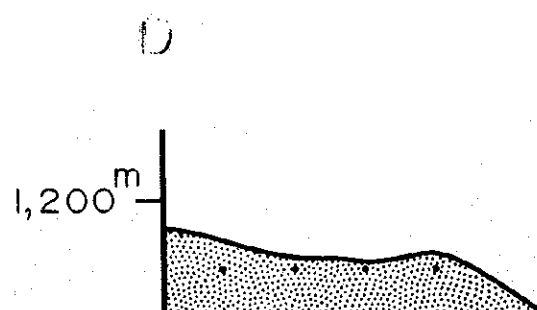
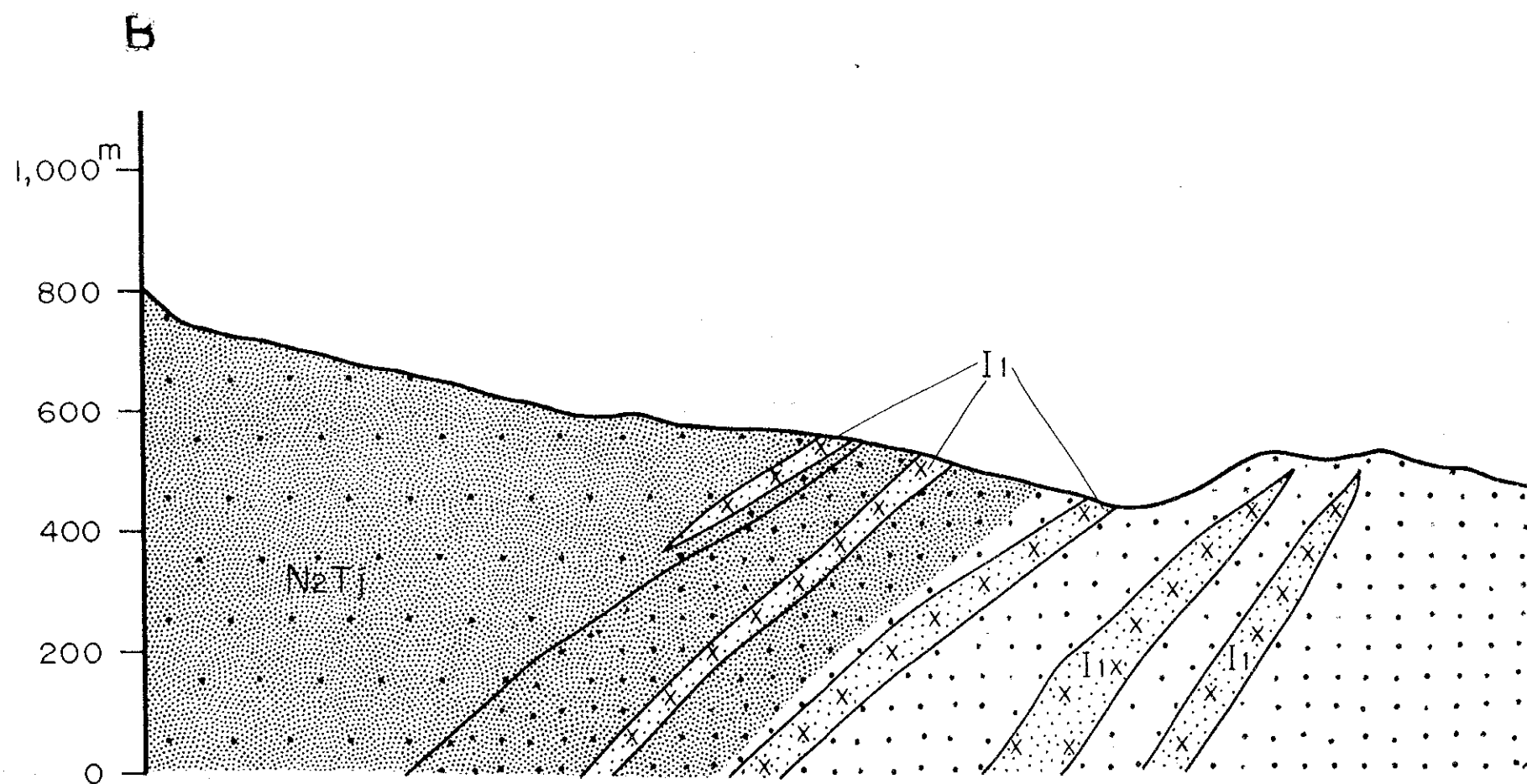
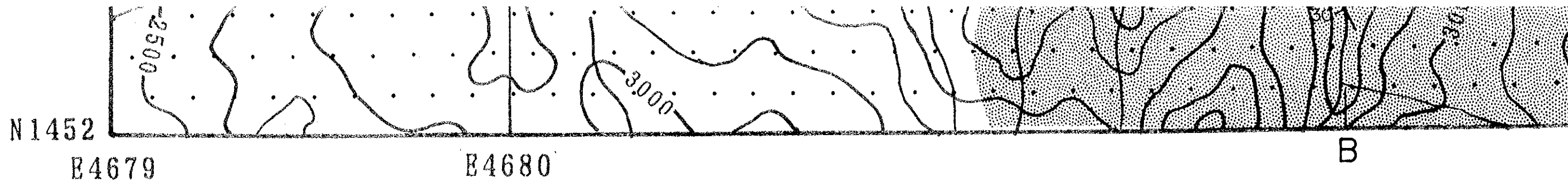
E4686

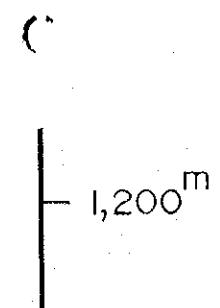
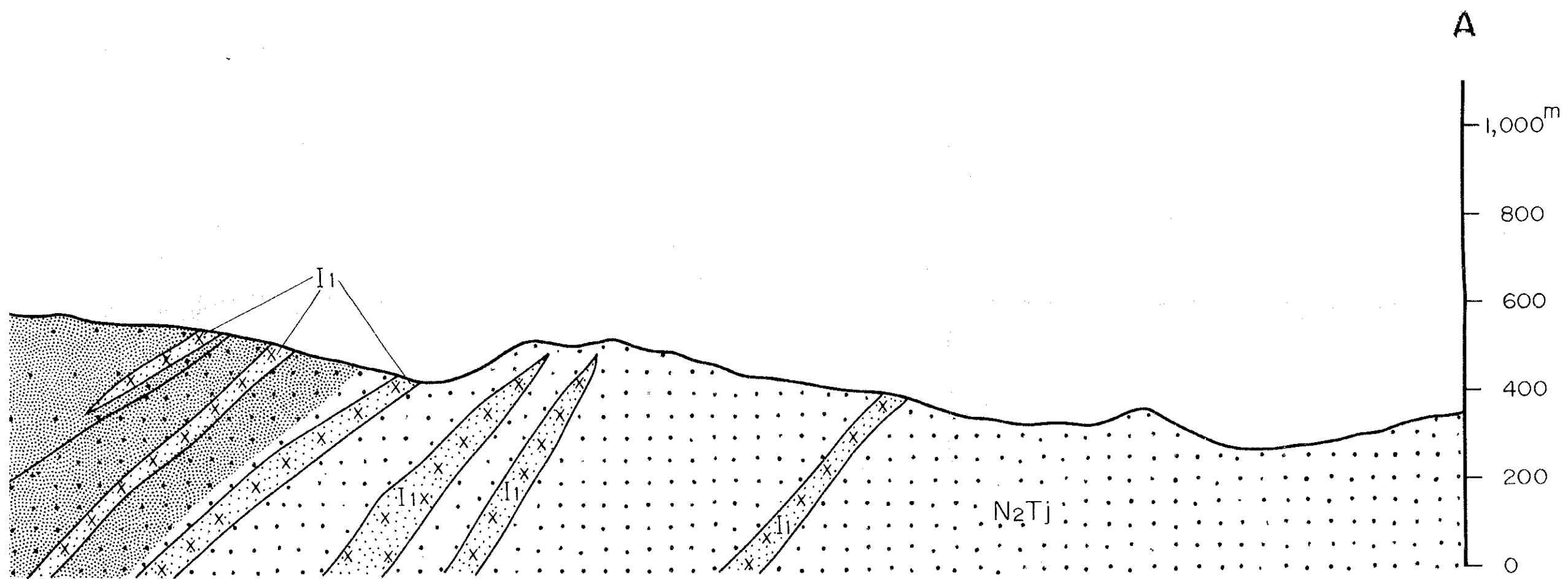
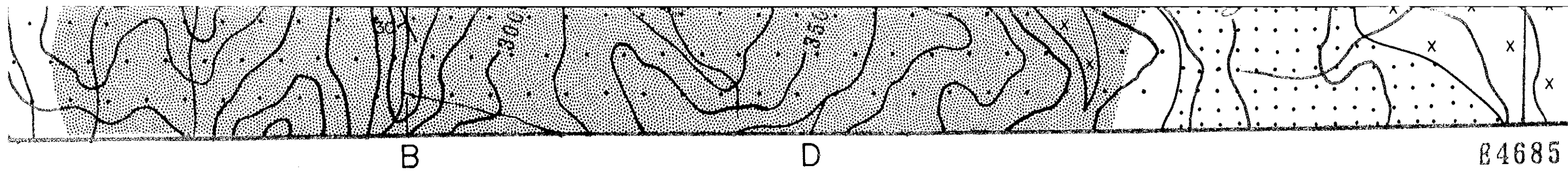
N1452

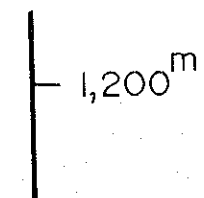
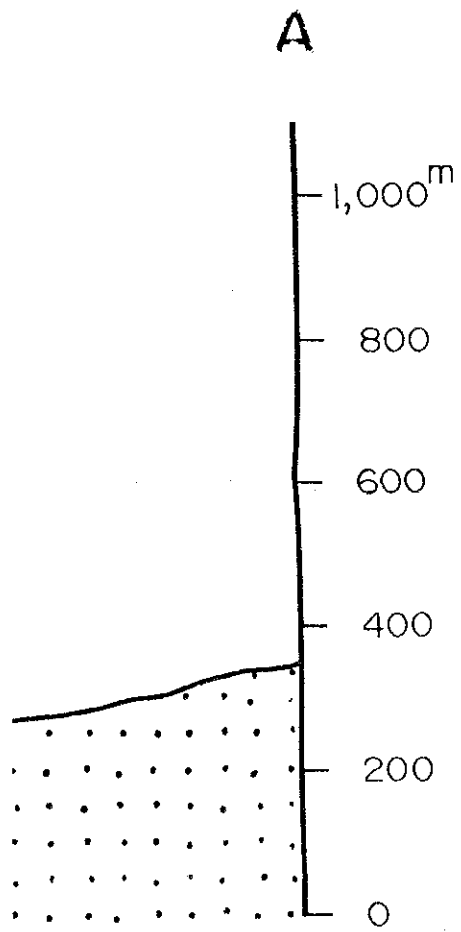
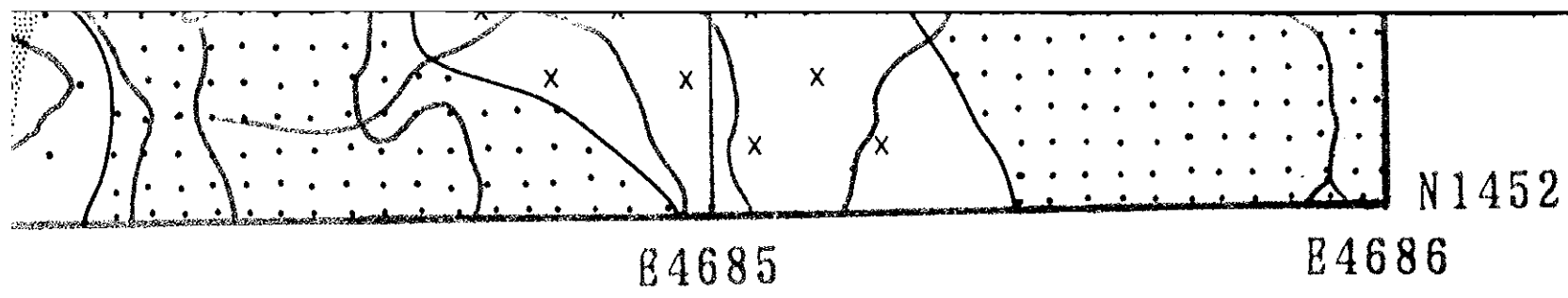


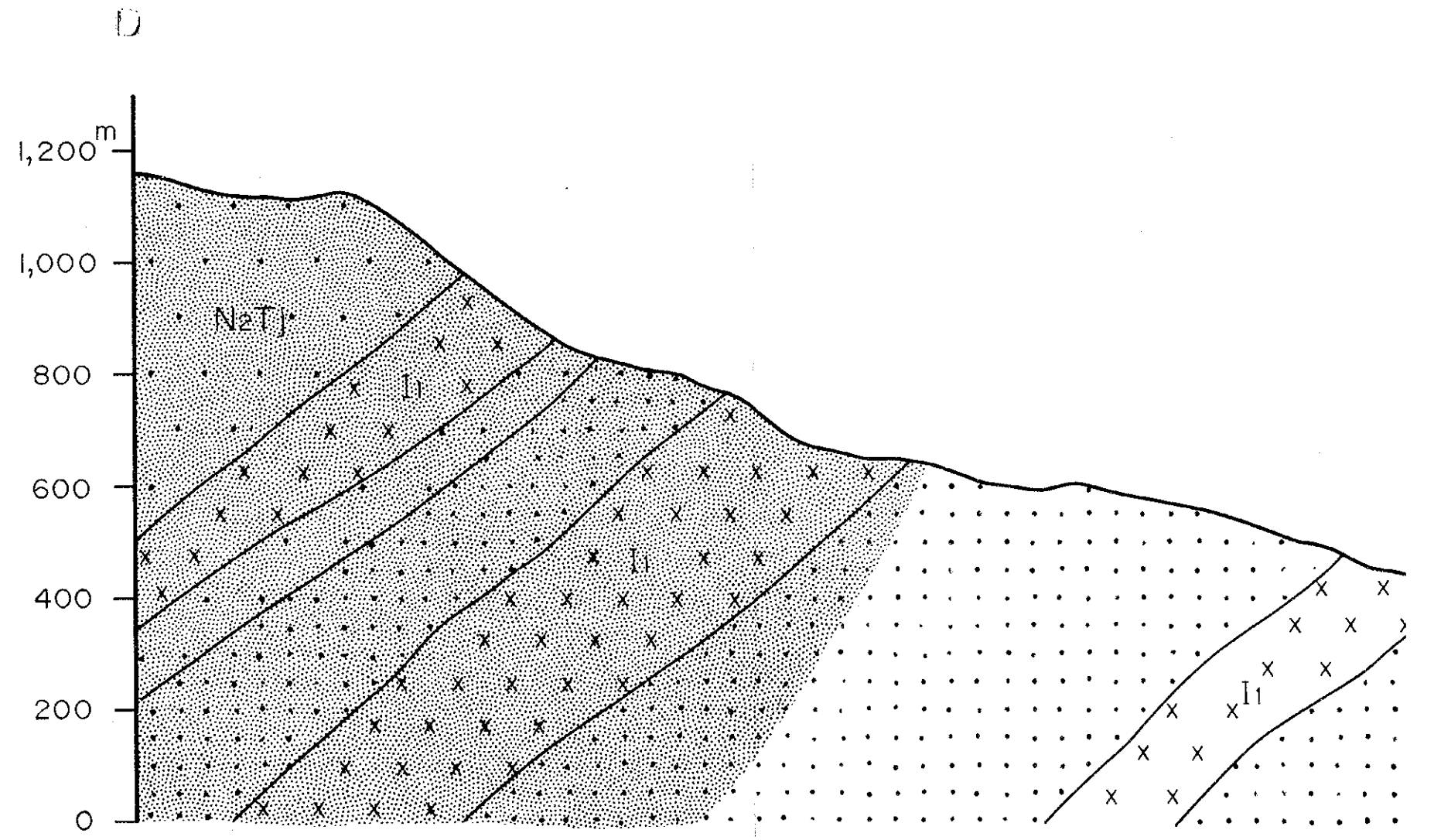
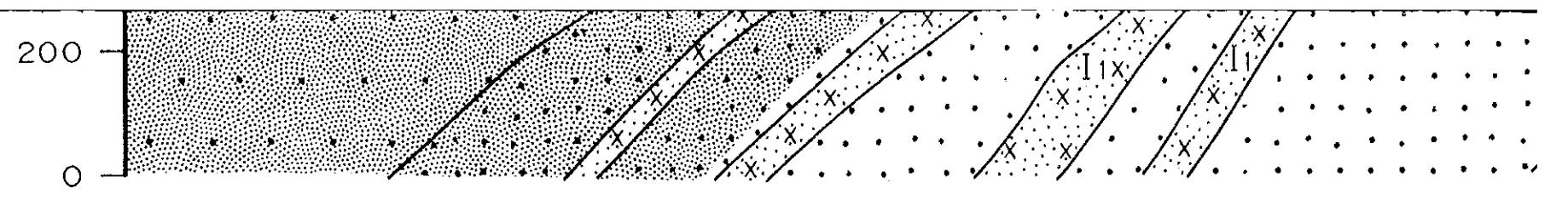
LEGEND

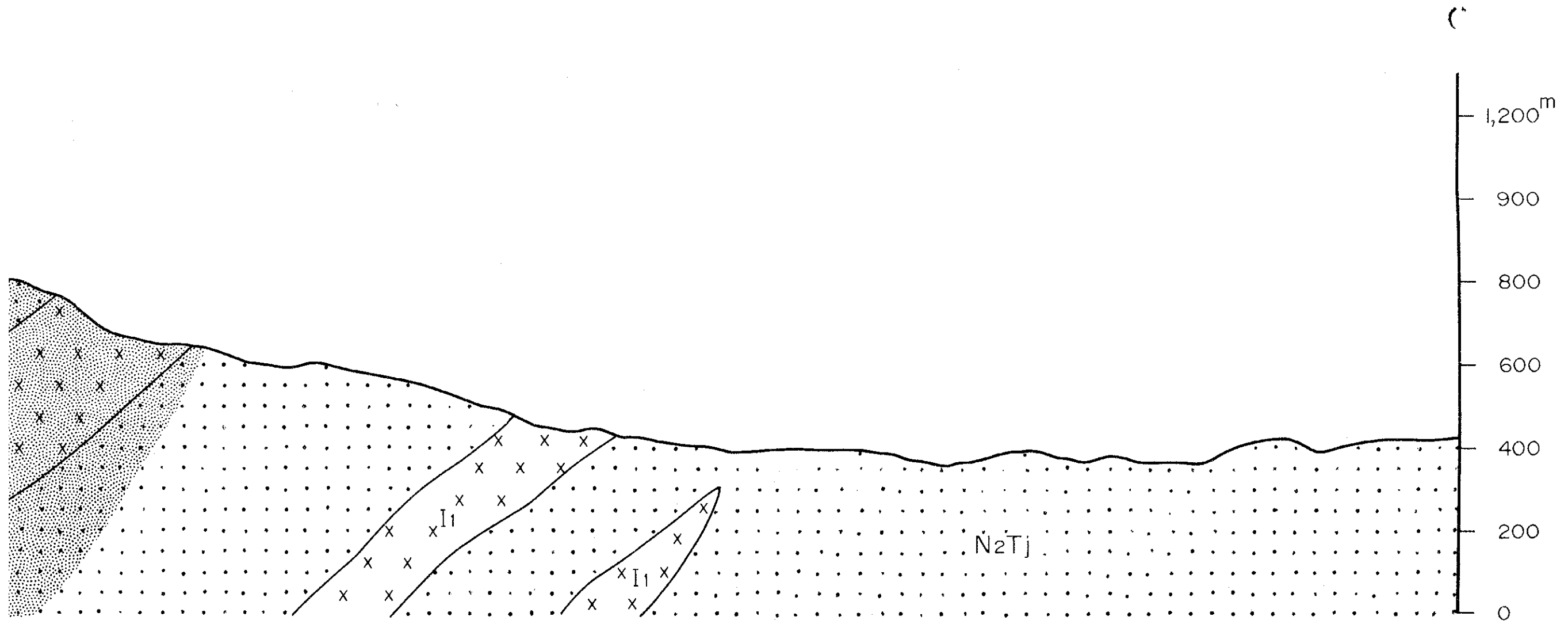
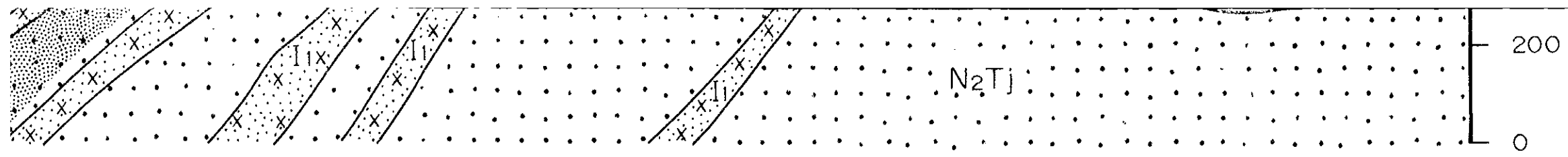
- | | | |
|----------------------------------|--|---|
| Early Miocene-
Middle Miocene | | Tanjong Formation
Sandstone dominant |
| | | Tanjong Formation
Mudstone dominant |
| | | Diorite Porphyry |
| | | Diorite Porphyry (argillized) |
| | | Silicified and/or pyrite dissemination |
- Strike and dip of bedding plane
 Location of mineral showing

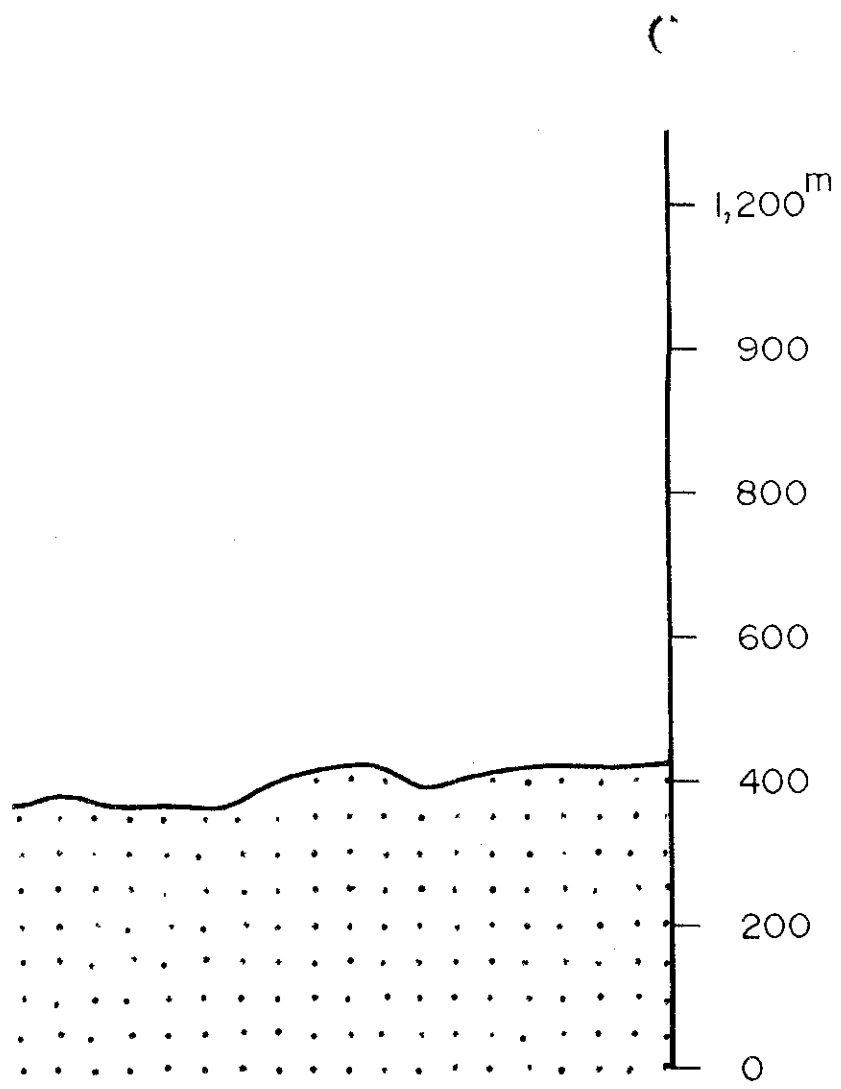
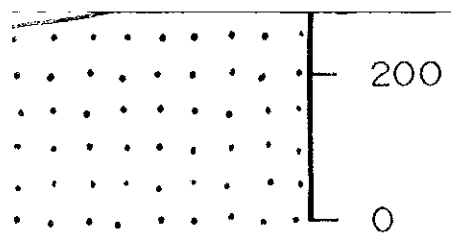












JICA