

APPENDICES

Appendix 1	List of Water Development Points.....	O-App-1
Appendix 2	Location of Water Development Points.....	O-App-7

Appendix 1 List of Water Resources Development Points (1/6)

Map Reference	NO.	River	X(10 ³ m) (Lon)	Y (Lat)	Priority	1/50,000 or 1/100,000	Remarks
SC-34-4 Lon28° 30' ~30° 30' Lat.8° -9°							None
SC-35-8 Lon28° 30' ~30° 00' Lat.9° -10° KAWAMBA	1	Kalung-wishi	758	8950	B	0929 A4	Irrigation
	2	Kalung-wishi	812	8919	C	0929 D4	Irrigation
SC-35-12 Lon28° 30' ~30° 00' Lat.10° -11° LUWINGU	1	Lungo	698	8815	C	1028 D2	Musonda PS
	2	Lufubu	729	8813	AA	1029 C1	
	3	Lupoposhi	772	8835	C	1029 C2	
	4	Lufubu	816	8850	C	1029 B4	
	5	Lufubu	820	8841	B	1029 B4	
SC-35-13 Lon24° 00' ~25° 30' Lat.11° -12° MWINILUNGA	1	Westlunga	221	8701	AA	1124 C2	
	2	Westlunga	221	8703	C	1124 C2	
	3	Mudyanyama	219	8701	B	1124 C2	
SC-35-14 Lon25° 30' ~27° 00' Lat.11° -12° TENKE							None
SC-35-15 Lon27° 00' ~28° 30' Lat.11° -12° LUBUMBASHI							None
SC-35-16 Lon28° 30' ~30° 00' Lat.11° -12° MANSA	1	Mansa	680	8762	B	1128 B1	
	2	Mansa	689	8759	C	1128 B1	
	3	Mansa (chibalashi)	712	8768	B	1128 B2	
	4	Lurangwa	704	8748	A	1128 B4	
SC-36-1 Lon30° 00' ~31° 30' Lat.8° -9° MABALA	1	Lufubu	194	9022	C	0830 C3	
	2	Lufubu	214	9030	C	0830 C4	
	3	Lonzua	298	9013	B	0831 C3	
	4	Lonzua	298	9011	A	0831 C3	
SC-36-2 Lon31° 30' ~33° 00' Lat.8° -9° KAWIMBE							None
SC-36-5 Lon30° 00' ~31° 30' Lat.9° -10° MPOROKOSO	1	Chambeshi	335	8949	B	0931 C2	
	2	Chambeshi	330	8957	B	0931 A4	

Appendix I. List of Water Resources Development Points (2/6)

Map Reference	NO.	River	X(10 ³ m) (Lon)	Y (Lat)	Priority	1/50,000 or 1/100,000	Remarks
SC-36-6 Lon31° 30' ~33° 00' Lat9° -10' TUNDUMA							None
SC-36-7 Lon33° 00' ~34° 00' Lat9° -10' KARONGA							None
SC-36-9 Lon30° 00' ~31° 30' Lat10° -11' KASAMA	1	Luban-senshi	192	8872	B	1030 A1	
	2	Lukupa	278	8879	AA	1030 B2	
SC-36-10 Lon31° 30' ~33° 00' Lat10° -11' CHINSALI	1	Lubu	423	8838	C	1032 C2	
	2	Mwambwa	420	8801	B	1032 C4	
SC-36-11 Lon33° 00' ~34° 00' Lat10° -11' NYKA	1	Ntonga	521	8885	B	1033 A1	
	2	Muyelea	520	8872	C	1033 A1	
	3	Monga	519	8860	B	1033 A3	
	4	Luwumbu (chire)	5334	8812	B	1033 C2 1033 C3	
	5	Mutanga	558	8829	A	1033 D1	Near Muyombe
SC-36-13 Lon30° 00' ~31° 30' Lat11° -12' MAPIKA							None
SC-36-14 Lon31° 30' ~33° 00' Lat11° -12' SHIWANGANDO	1	Lurwanya	359	8743	C	1031 B3	
	2	Lurwanya	362	8735	A	1031 B3	
	3	Mitowa	354	8710	B	1031 D1	
	4	Mitowa	368	8695	C	1131 D4	
	5	Munenshi	355	8676	C	1131 D3	
	6	Mwaleshi	394	8710	C	1132 C1	
	7	Lufila	417	8733	C	1132 A3	
SC-36-15 Lon33° 00' ~34° 00' Lat11° -12' MZUZU	1	Kapemba	521	8760	AA	1133 A1	
	2	Bazima	519	8752	B	1133 A3	
	3	Lupamadzi	516	8744	B	1133 A3	
SD-34-8 Lon22° 30' ~24° 00' Lat13° -14' ZAMBEZI	1	Zambezi	727	8503	A	1323 C1	Intake & Pump

Appendix 1 List of Water Resources Development Points (3/6)

Map Reference	NO.	River	X(10 ³ m) (Lon)	Y (Lat)	Priority	1/50,000 or 1/100,000	Remarks
SD-34-12 Lon22° 30' ~24° 30' Lat.14° -15° LIBONDA	1	Zambezi	740	8410	A	1423 A4	Intake & Pump
SD-35-16 Lon22° 30' ~24° 00' Lat.15° -16° LEAUI	1	Zambezi	728	8312	AA	1523 A3	Intare & Pump
SD-35-1 Lon24° 00' ~25° 30' Lat.12° -13° NTAMBU							None
SD-35-2 Lon25° 30' ~27° 00' Lat.12° -13° SOLWEZI	1	Mutanda	417	8632	B	1226 A3	Irigation Topo Good
	2	Soiwezi	434	8655	AA	1226 A2	
	3	Kifubwa	440	8655	B	1326 A2	
SD-35-3 Lon27° 00' ~28° 30' Lat.12° -13° KITWE	1	Lufwanyama	564	8583	B	1277 D3	
	2	Kafue	592	8623	B	1227 B4	
	3	Kafue	621	8614	C		
	4	Kafue	626	8606	AA	1228 C1	
	5	Muliashi	604	8631	A	1227 B4	
	6	Mutundu	636	8598	AA	1228 C2	
	7	Mutupa	641	8591	A	1228 C2	
SD-35-4 Lon28° 30' ~30° 00' Lat.12° -13° NDOLA							None
SD-35-5 Lon24° 00' ~25° 30' Lat.13° -14° KABOMPO	1	Kabompo	198	8496	A	1324 C1	Intare & Pump
	2	Luli	188	8492	AA	1324 C1	
SD-35-6 Lon25° 30' ~27° 00' Lat.13° -14° KASEMPA	1	Lufupa	375	8510	AA	1325 B4	
	2	Lufupa	375	8519	C	1325 B4	
SD-35-7 Lon27° 00' ~28° 30' Lat.13° -14° LUANSHYA	1	Lufuwa-nyama	571	8559	C	1327 B1	Top is god
	2	Kafue	621	8528	C	1328 A3	
	3	Kafue	625	8536	B	1328 A1	
	4	Kafue	626	8545	B	1328 A1	
	5	Kafukafuto	651	8525	B	1328 A4	
	6	Kafubu	661	8538	A	1328 A2	
	7	Baluba	647	8560	AA	1328A2	

Appendix 1 List of Water Resources Development Points (4/6)

Map Reference	NO.	River	X(10 ³ m) (Lon)	Y (Lat)	Priority	1/50,000 or 1/100,000	Remarks
SD-35-8 Lon28° 30' ~27° 00' Lat13° -14° MKUSHI	1	Kafubu	664	8540	B	1328 B1	Downstream of existing Kafubu Dam
	2	Kafubu	669	8542	B	1328 B1	
	3	Mubalashi	699	8491	A	1328 D2	
	4	Kashitu	702	8480	C	1328 D2	
	5	Kashitu	710	8476	C	1328 D4	
	6	Kashitu	716	8477	C	1328 D4	
	7	Lunsenfa	723	8470	B	1329 C3	
	8	Lunsenfa	746	8490	AA	1329 C2	
	9	Kafulafuta	668	8522	B	1328 B3	
	10	Kafulafuta	673	8523	C	1328 B3	
	11	Kafulafuta	682	8530	A	1328 B3	
SD-35-9 Lon24° 00' ~25° 30' Lat14° -15° KAOMA							None
SD-35-10 Lon25° 30' ~27° 00' Lat14° -15° BUSAMGA SWAMP	1	Kafue	413	8363	C	1426 C3	
SD-35-11 Lon27° 00' ~28° 30' Lat14° -15° KABWE	1	Mwomboshi	659	8361	AA	1428 C4	Existing Dam
	2	Muyama	653	8377	B	1428 C2	
SD-35-12 Lon28° 30' ~29° 00' Lat14° -15° MULUNGUSHI	1	Meteteshi	671	8420	C	1428 B3	
	2	Meteteshi	674	8425	A	1428 B1	
SD-35-13 Lon24° 00' ~25° 30' Lat15° -16° LUAMPA							None
SD-35-14 Lon25° 30' ~27° 00' Lat15° -16° NAMWALA	1	Kafue	424	8252	C	1526 C4	Intake & Pump
	2	Kafue	439	8258	B	1526 C2 1526 C4	Intake & Pump
	3	Kafue	472	8267	C	1526 D1	Intake & Pump
SD-35-15 Lon27° 00' ~28° 30' Lat15° -16° LUSAKA	1	Kopyanga (chibenga)	556	8326	AA	1527 B1	
	2	Kabile	566	8333	A	1527 B1	
	3	Kaieya	582	8238	C	1527 D1	
	4	Kabaya	634	8254	C	1528 C3 1528 C4	
	5	Muchito	635	8258	B	1528 C4	
	6	Muchito	633	8263	AA	1528 C1	

Appendix I List of Water Resources Development Points (5/6)

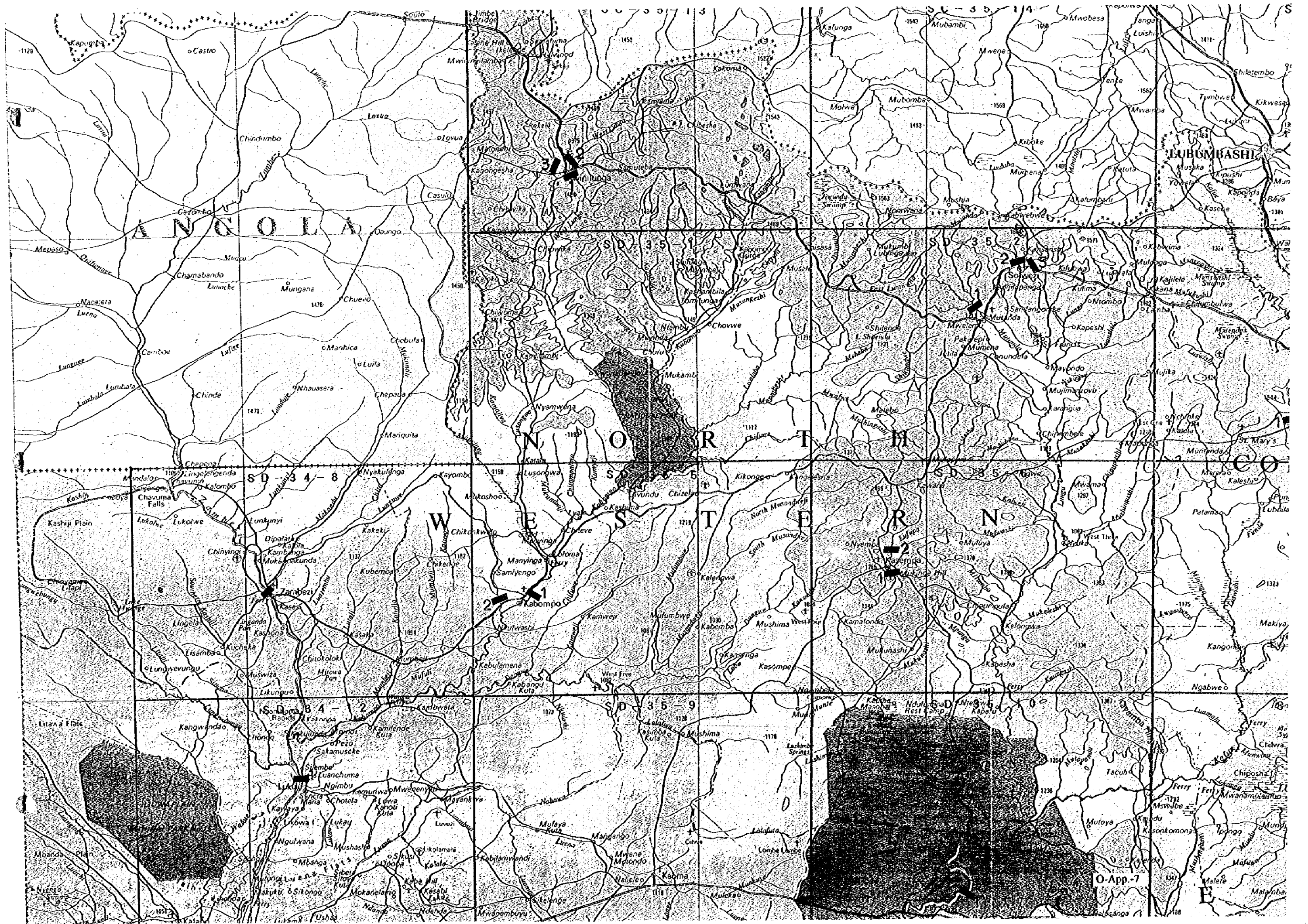
Map Reference	NO.	River	X(10 ³ m) (Lon)	Y (Lat)	Priority	1/50,000 or 1/100,000	Remarks
	7	Dem	624	8278	B	1528 C1	
	8	Chongwe	659	8315	A	1528 A2	
	9	Chongwe	654	8322	A	1528 A2	
SD-35-16 Lon28° 30' ~30° 00' Lat.15° -16° RUFUNASA	1	Kanakantapa	672	8321	AA	1528 B1	
	2	Chongwe	682	8306	AA	1528 B3	
	3	Mwapula	712	8320	AA	1528 B2	
	4	Mwapula	720	8319	B	1529 A1	
SD-36-1 Lon30° 00' ~31° 30' Lat.12° -13° CHILONGA	1	Musola	208	8590	A	1230 C2	
	2	Mulenbo	230	8605	B	1230 D1	
	3	Lukulu	270	8606	B	1230 D2	
	4	Lukulu	276	8640	C	1230 B4	
SD-36-2 Lon31° 30' ~33° 00' Lat.12° -13° MWANYA							None
SD-36-3 Lon33° 00' ~34° 00' Lat.12° -13° NKHOTAKOTA	1	Lundazi	505	8665	AA	1233 A1	
	2	Lundazi	510	8659	C	1233 A1	
	3	Lundazi	515	8648	B	1233 A1	
SD-36-5 Lon30° 00' ~31° 30' Lat.13° -14° SERENJE	1	Lukusashi	202	8514	AA	1330 A3	Kundalila Fall
	2	Chipendezi	220	8513	B	1330 A4	
	3	Chipendezi	218	8530	A	1330 A4	
	4	Kaombe	251	8545	C	1330 B1	
	5	Lusiwasi	287	8540	C	1331 A1	
SD-36-6 Lon31° 30' ~33° 00' Lat.13° -14° CHIPATA	1	Lutembwe	432	8501	AA	1332 C2	Topo Good, Far
	2	Lutembwe	440	8489	B	1332 C2	
	3	Lutembwe	457	8487	A	1332 D1	
SD-36-9 Lon31° 30' ~33° 00' Lat.13° -14° PETAUKE	1	Lukusashi	209	8434	B	1430 A2	
	2	Lunsemfwa	188	8371	B	1430 C1	
	3	Luangwa]	201	8351	B	1430 C3	
	4	Luangwa	224	8397	B	1430 A4	
	5	Nyimbe	261	8392	A	1430 D2	
	6	Muvye	284	8419	B	1430 B4	
	7	Muvye	302	8416	A	1431 A3	
	8	Muvye	314	8413	C	1431 A4	
SD-36-10 Lon31° 30' ~33° 00' Lat.13° -14° KATEIE	1	Katete	399	8449	AA	1432 A1	
SD-36-13 Lon31° 30' ~33° 00' Lat.13° -14° LUANGWA							None

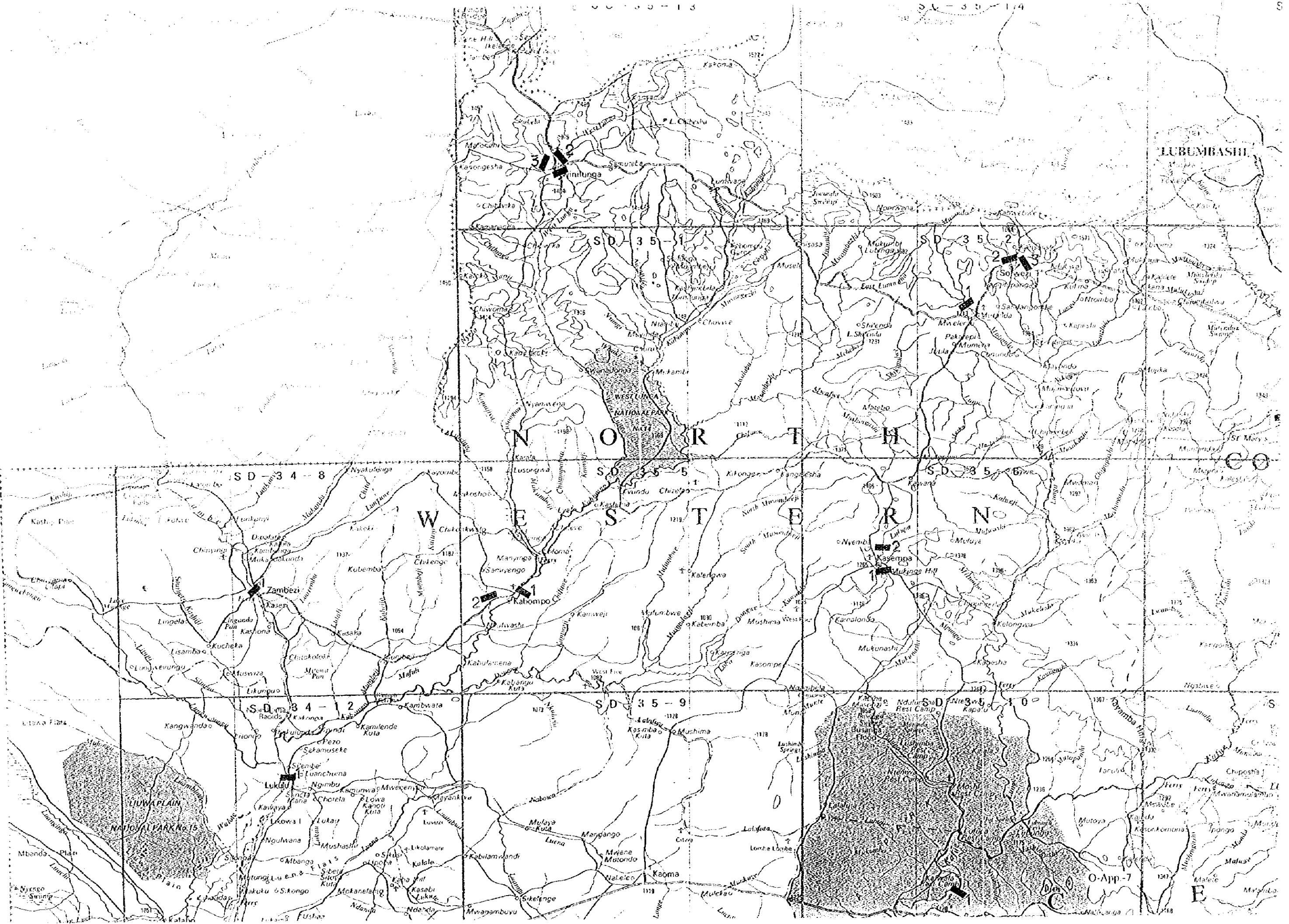
Appendix 1 List of Water Resources Development Points (6/6)

Map	NO.	River	X(10 ³ m)	Y	Priority	1/50,000 or	Remarks
SD-34-4 Lon22° 30' ~24° 00' Lat.16° -17' SENANGA	1	Zambezi	745	8219	B	1623 A2	Intake & Pump Nagonye Rapid
	2	Zambezi	743	8158	C	1623 D2	
SD-34-8 Lon22° 30' ~24° 00' Lat.17° -18' LUIANA							None
SD-35-1 Lon24° 00' ~25° 30' Lat.16° -17' MOLOBEZI							None
SD-35-2 Lon25° 30' ~27° 00' Lat.16° -17' CHOMA	1	Kalomo	443	8125	B	1626 C4	
SD-35-2 Lon25° 30' ~27° 00' Lat.16° -17' MONZE	1	Bwengwa	513	8125	A	1626 C4	
	2	Bwengwa	509	8165	C	1627 C2	
	3	Bwengwa	518	8171	C	1627 C2	
	4	Magoye	559	8195	C	1627 B3	
	5	Magoye	566	8217	A	1627 B1	
	6	Lusitu	622	8227	A	1628 A1	
	7	Lusitu	629	8224	B	1628 A1	
SD-35-4 Lon28° 30' ~30° 00' Lat.16° -17' KARIBA							None
SD-35-5 Lon24° 00' ~25° 30' Lat.17° -18' SESHEKI	1	Zambezi	190	8096	C		Intake & Pump Monta rapid
SD-35-6 Lon25° 30' ~27° 00' Lat.17° -18' LIVINGSTONE	1	Zambezi	377	8022	AA	1725 D4	
	2	Maranba	382	8029	B	1725 D4	
	3	Nansazu	387	8029	B	1725 D4	
	4	Sinde	372	8045	B	1725 D2	
	5	Ngweze	381	8073	C	1725 B4	
	6	Kalomo	442	8097	A	1726 A2	
SD-35-7 Lon27° 00' ~28° 30' Lat.17° -18' SIANONGWE							None
			AA	23	No. of Dam Sites 21		
			A	26			
			B	47			
			C	40	Tota 136		

Appendix 2 Location of Water Development Points

U-Am-613





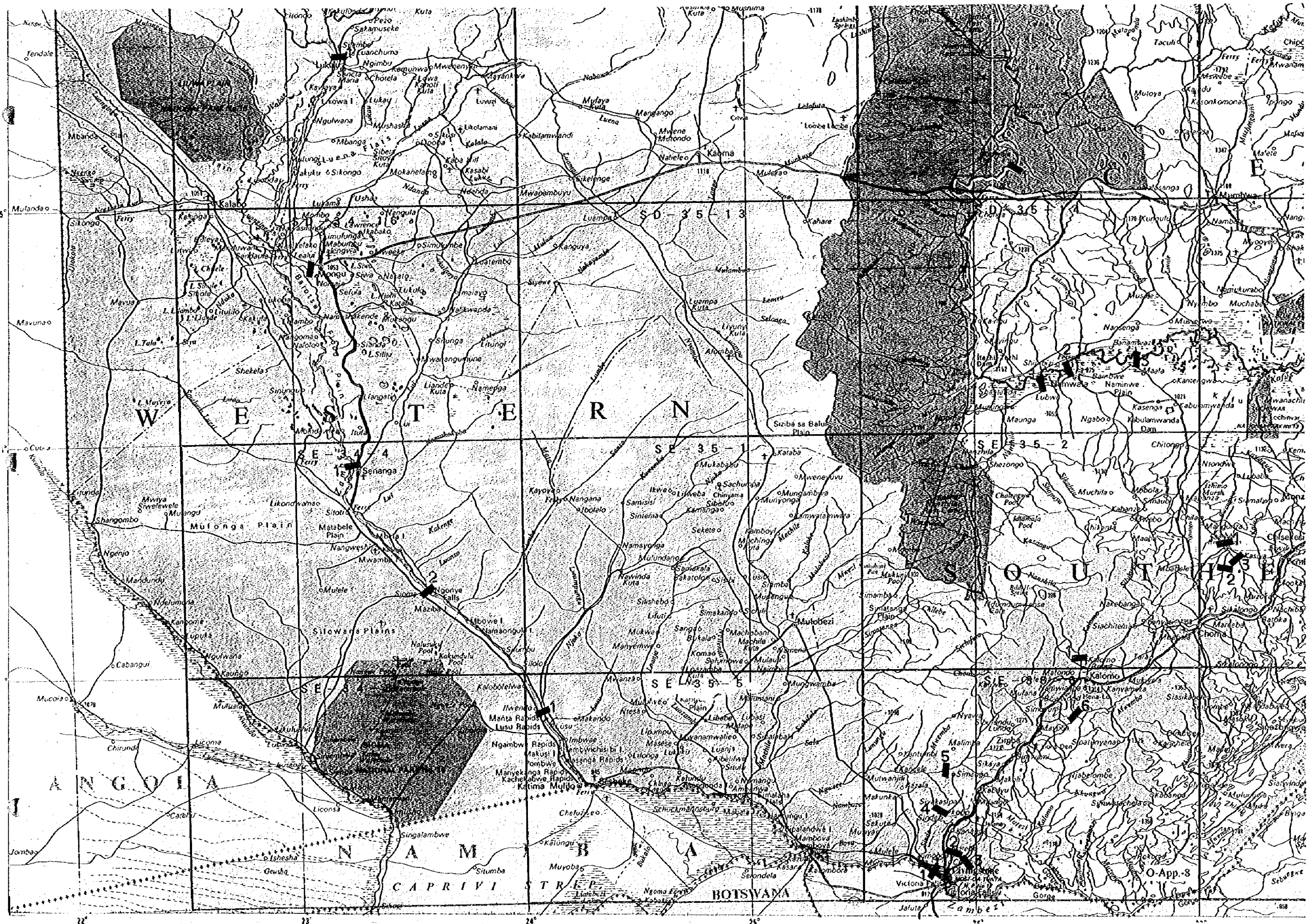
LUBUMBASHI

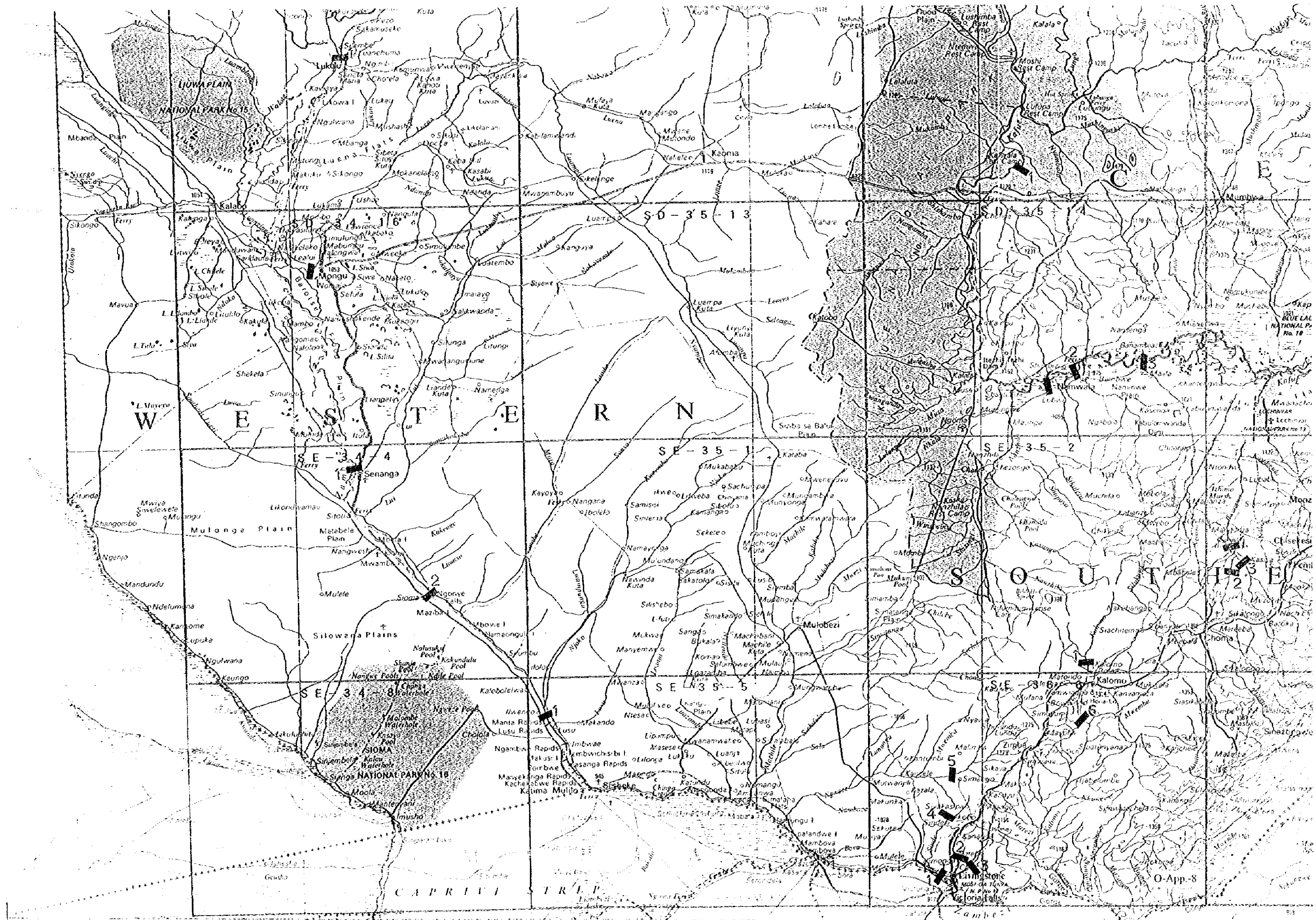
N O R T H R H O D E S I A

W E S T E R N N O R T H R H O D E S I A

LUWAPA PLAIN NATIONAL PARK No. 15

O-App-7





LIWANA NATIONAL PARK No. 15

SD-35-13

SD-35-4

SE-34-4

SE-35-1

SE-35-2

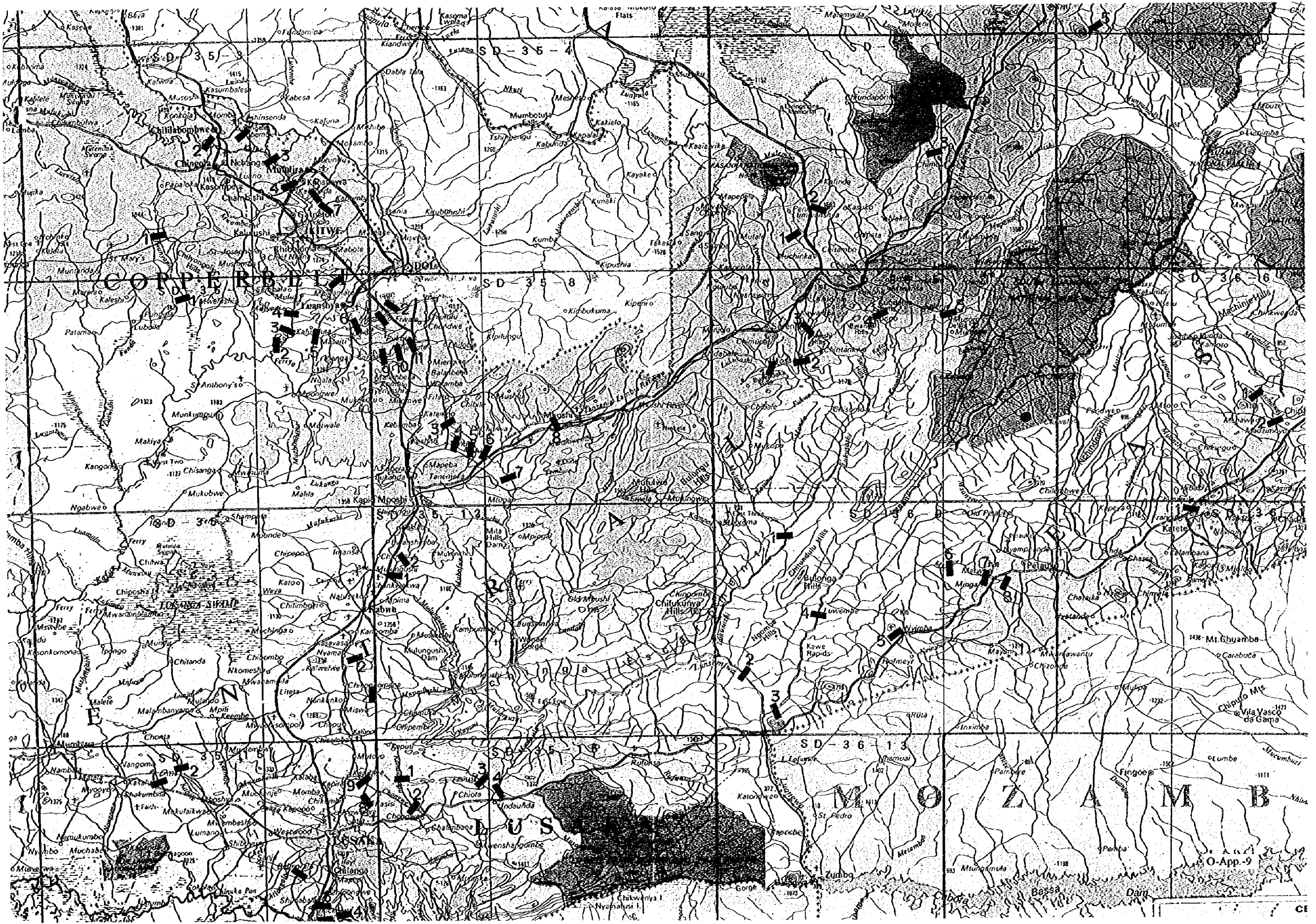
SE-34-8

SE-35-5

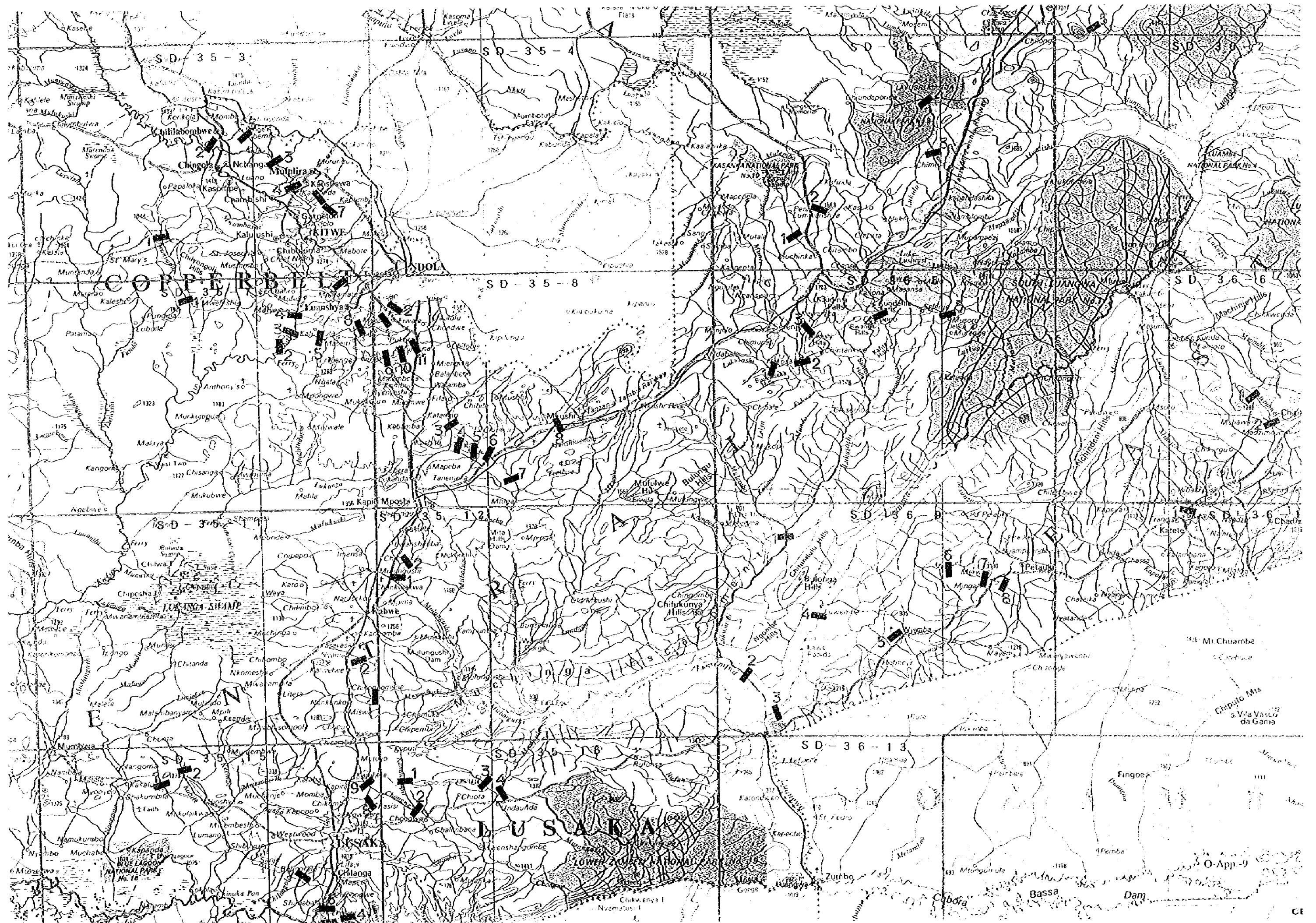
SE-35-6

CAPRIVI TRIP

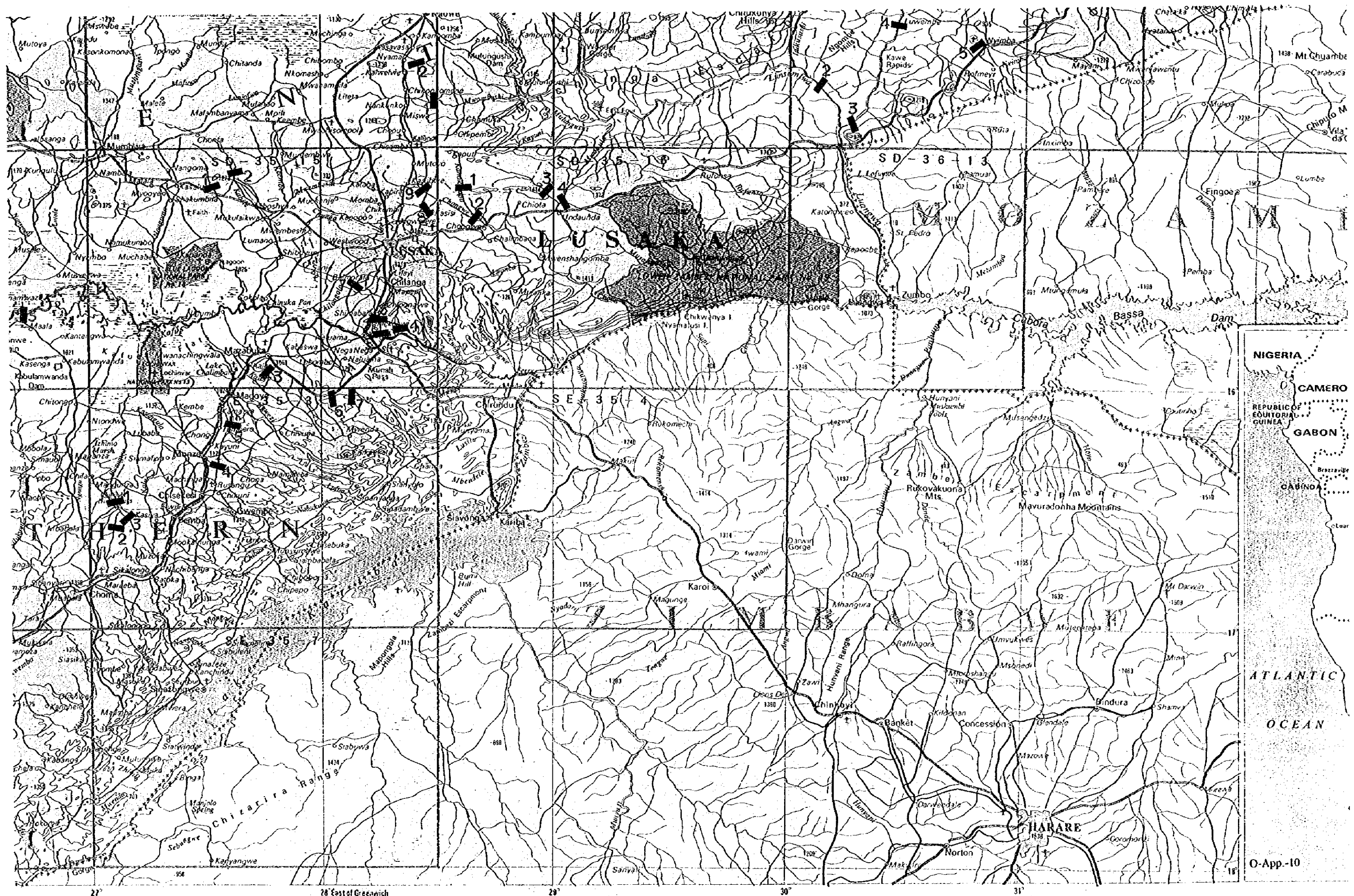
O-App-8



O-App-9



O-App-9



NIGERIA
CAMERO
REPUBLIC OF EQUATORIAL GUINEA
GABON
CABINDA
ATLANTIC OCEAN
 O-App-10

