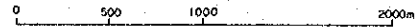


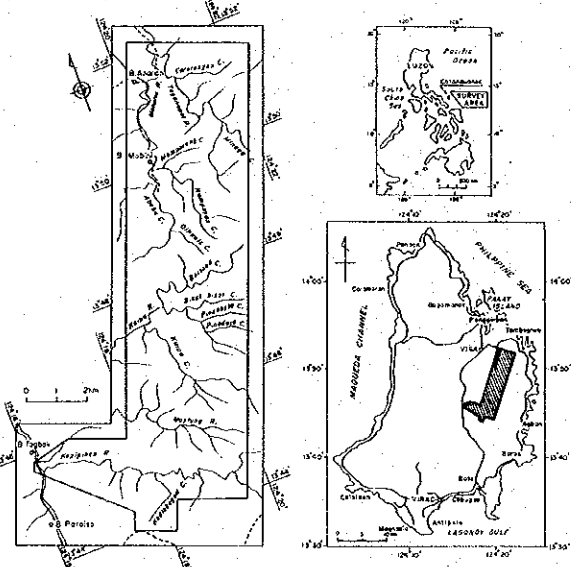
MINERAL EXPLORATION PL-6
 IN THE CATANDUANES AREA,
 THE REPUBLIC OF THE PHILIPPINES
 PHASE II
 GEOCHEMICAL ANOMALY OF STREAM SEDIMENTS

As

Scale 1:20,000



LOCATION INDEX



JAPAN INTERNATIONAL COOPERATION AGENCY
 METAL MINING AGENCY OF JAPAN
 January 1995

LEGEND

As (ppm)

○ : < 7.23

● : < 12.48

● : < 21.55

● : > 21.55



Diorite



Andesite porphyry



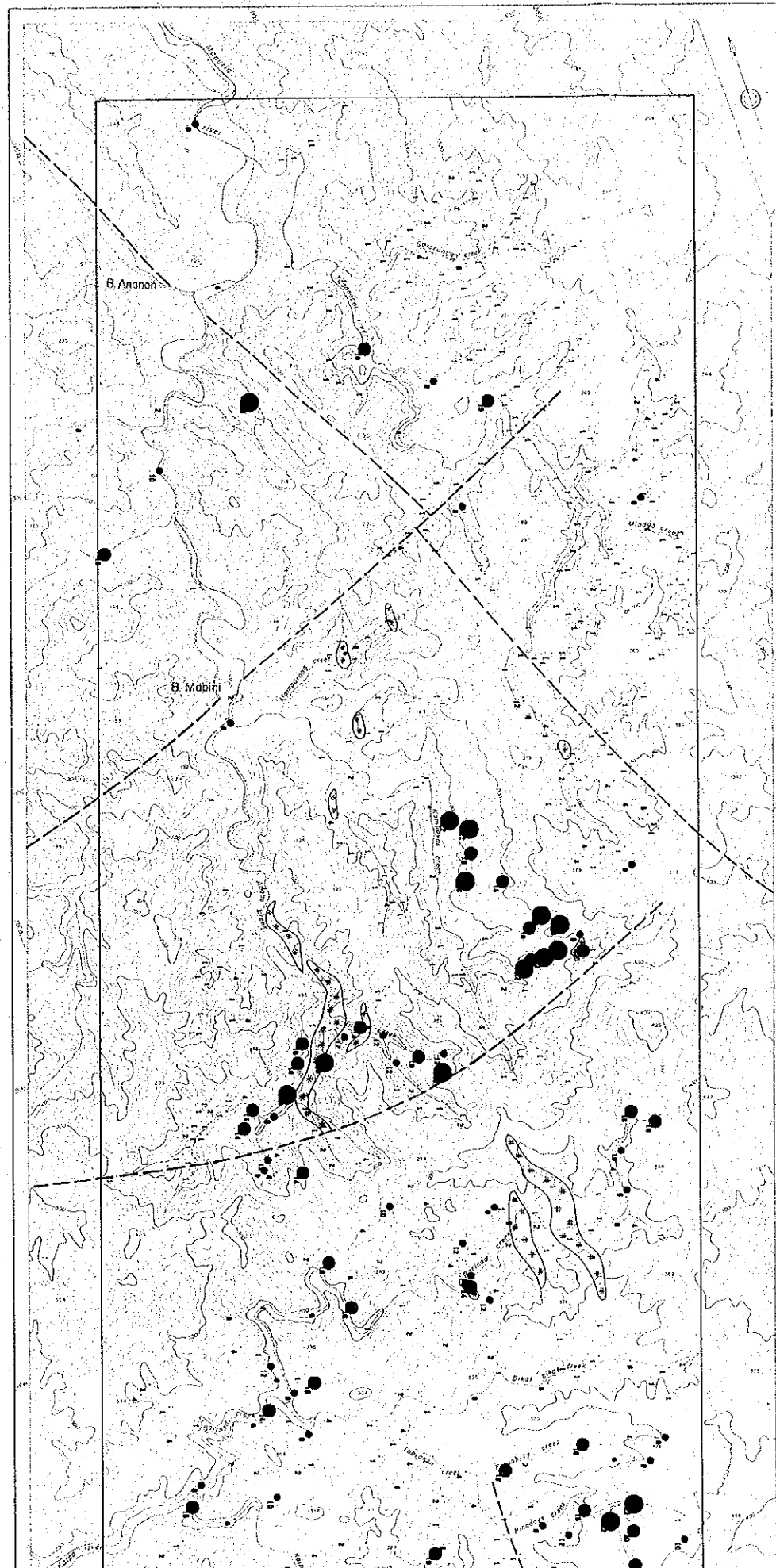
Dolerite



Gabbro

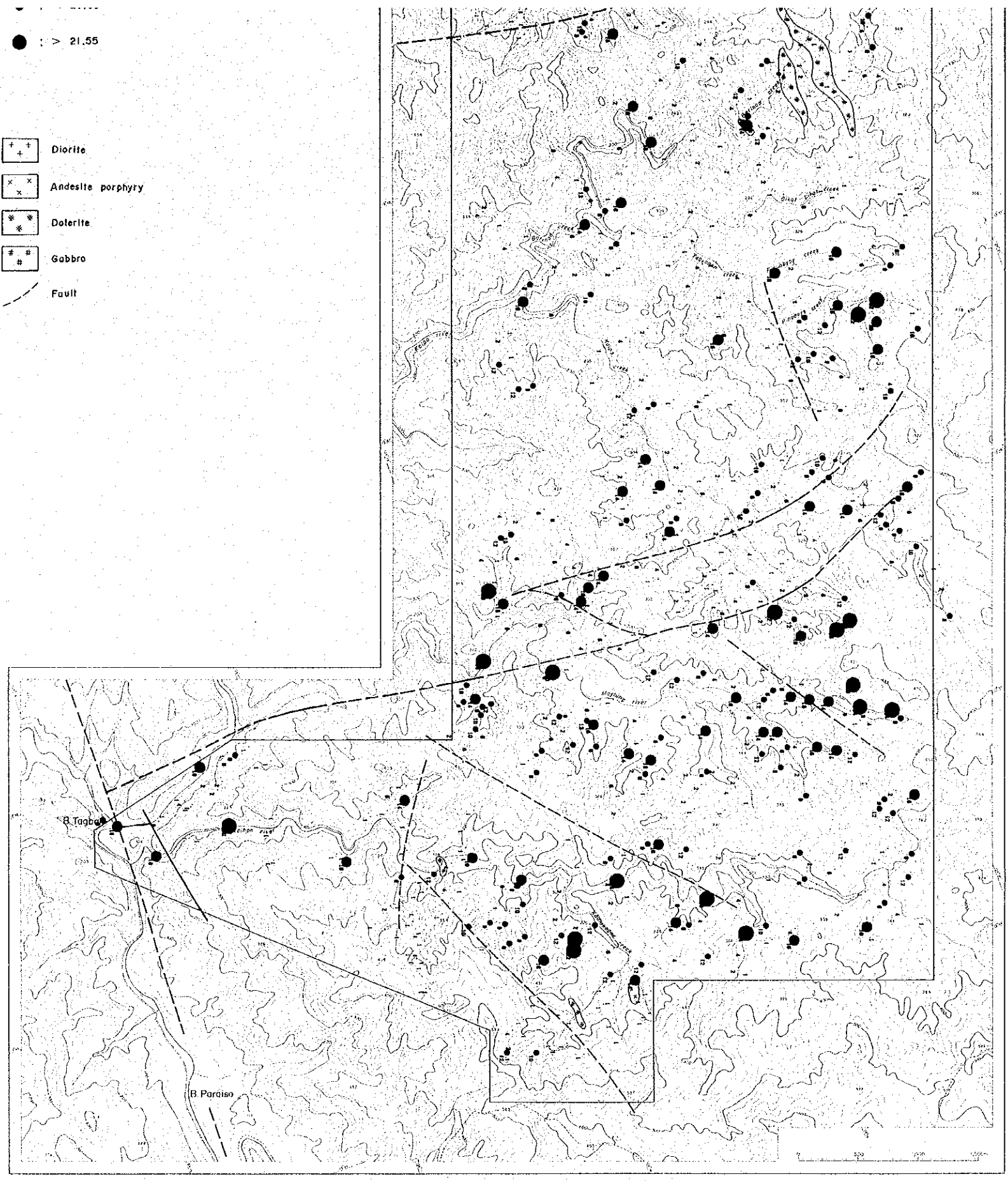


Fault



● > 21.55

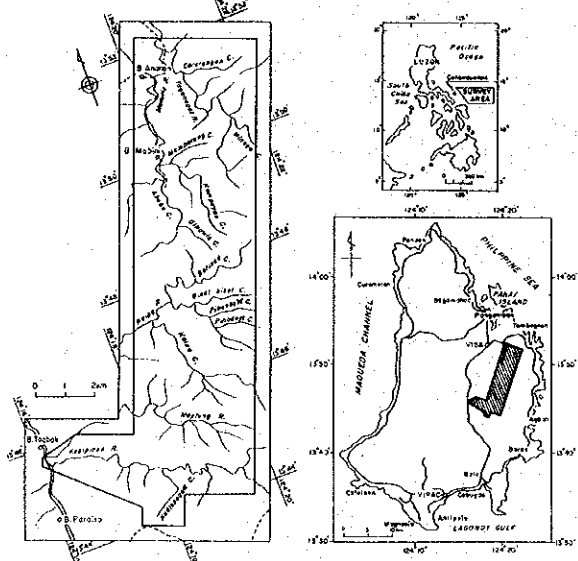
- ⊕ ⊕ Diorite
- ⊗ ⊗ Andesite porphyry
- ⊛ ⊛ Dolerite
- ⊞ ⊞ Gabbro
- Fault



MINERAL EXPLORATION PL-7
 IN THE CATANDUANES AREA,
 THE REPUBLIC OF THE PHILIPPINES
 PHASE II
 GEOCHEMICAL ANOMALY OF STREAM SEDIMENTS

Cu
 Scale 1:20,000
 0 500 1000 2000m

LOCATION INDEX

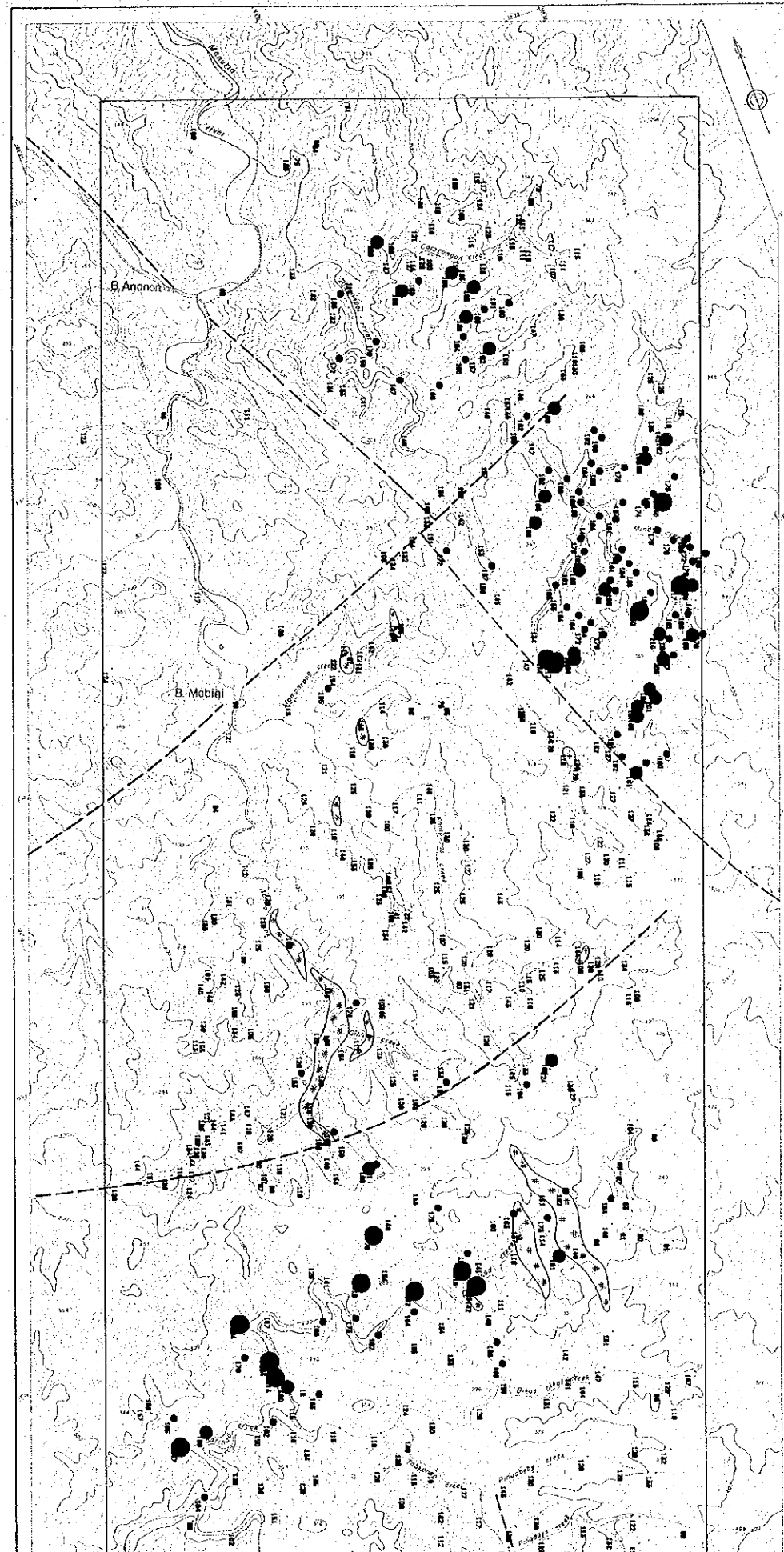


JAPAN INTERNATIONAL COOPERATION AGENCY
 METAL MINING AGENCY OF JAPAN
 January 1995

LEGEND

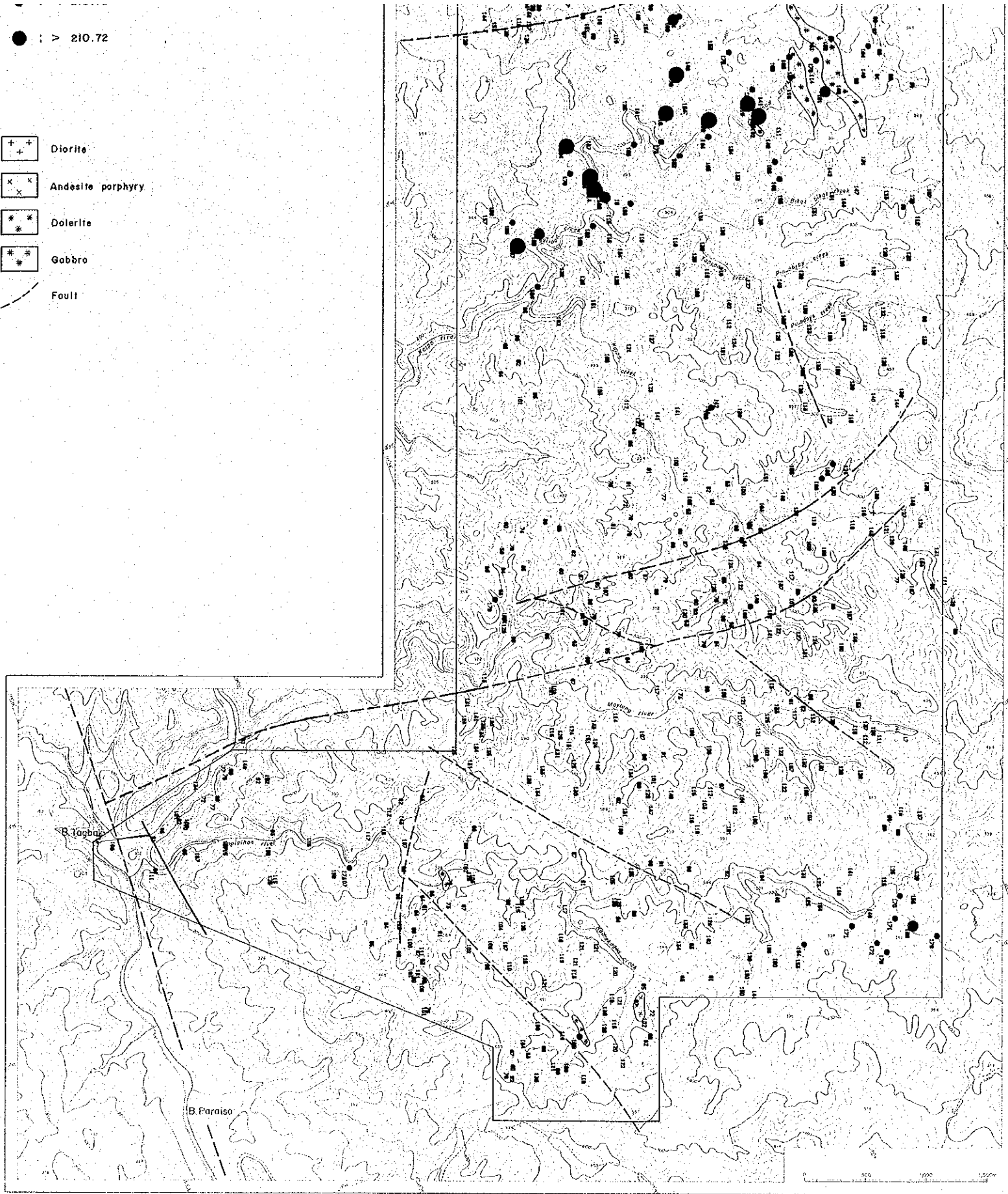
- Cu (ppm)
- : < 161.44
 - : < 184.44
 - : < 210.72
 - : > 210.72

- ++ Diorite
- xx Andesite porphyry
- ◆ Dolerite
- ◆ Gabbro
- - - Fault



● : > 210.72

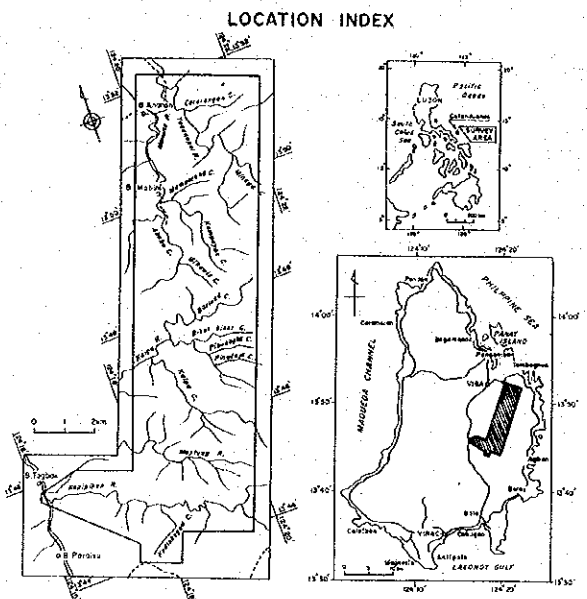
- ⊕ ⊕ Diorite
- ⊗ ⊗ Andesite porphyry
- * * Dolerite
- # # Gabbro
- - - Fouti



MINERAL EXPLORATION
 IN THE CATANDUANES AREA,
 THE REPUBLIC OF THE PHILIPPINES
 PHASE II
 GEOCHEMICAL ANOMALY OF STREAM SEDIMENTS

PL-8

Fe
 Scale 1:20,000
 0 500 1000 2000m

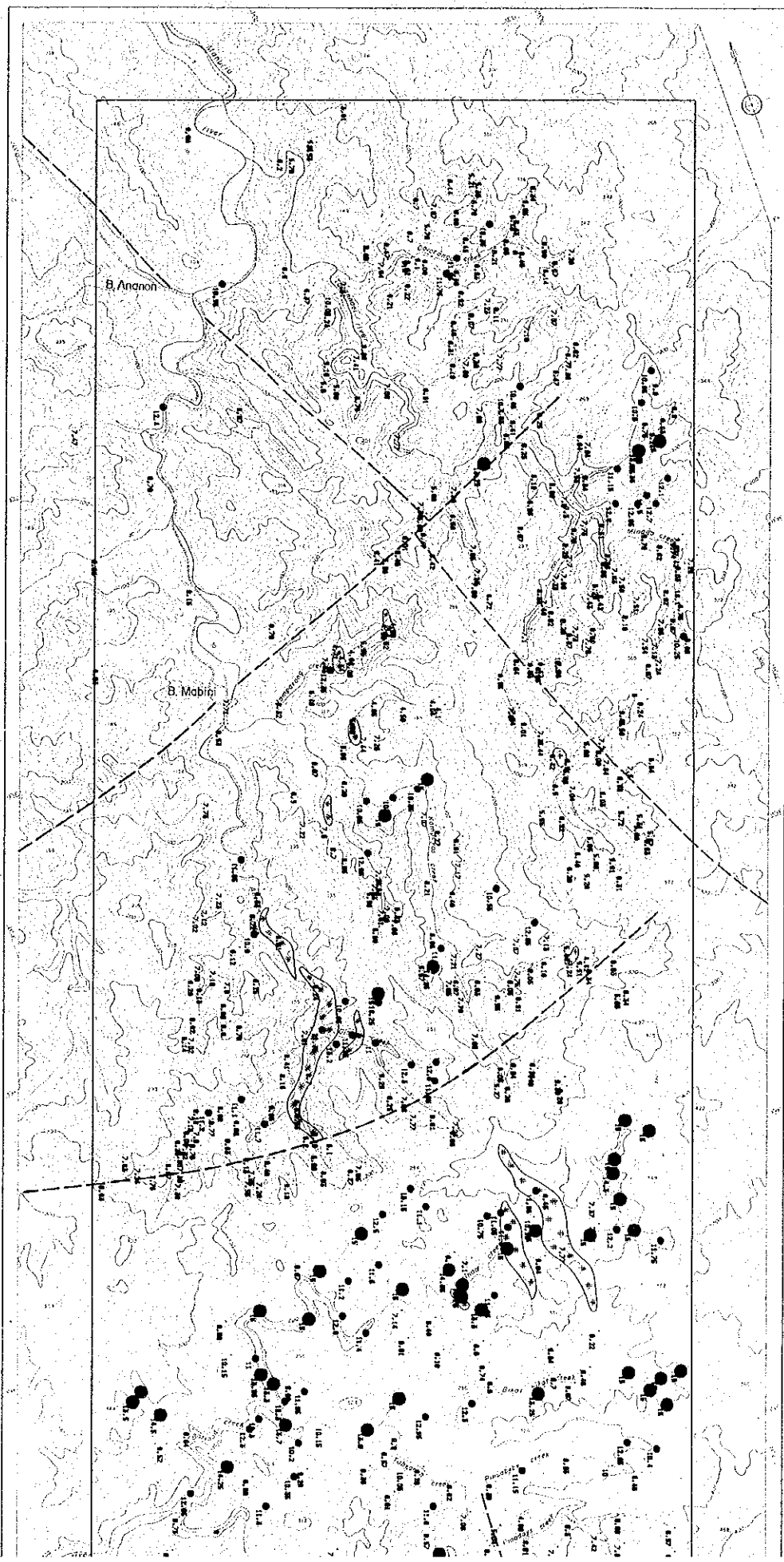


JAPAN INTERNATIONAL COOPERATION AGENCY
 METAL MINING AGENCY OF JAPAN
 January 1995

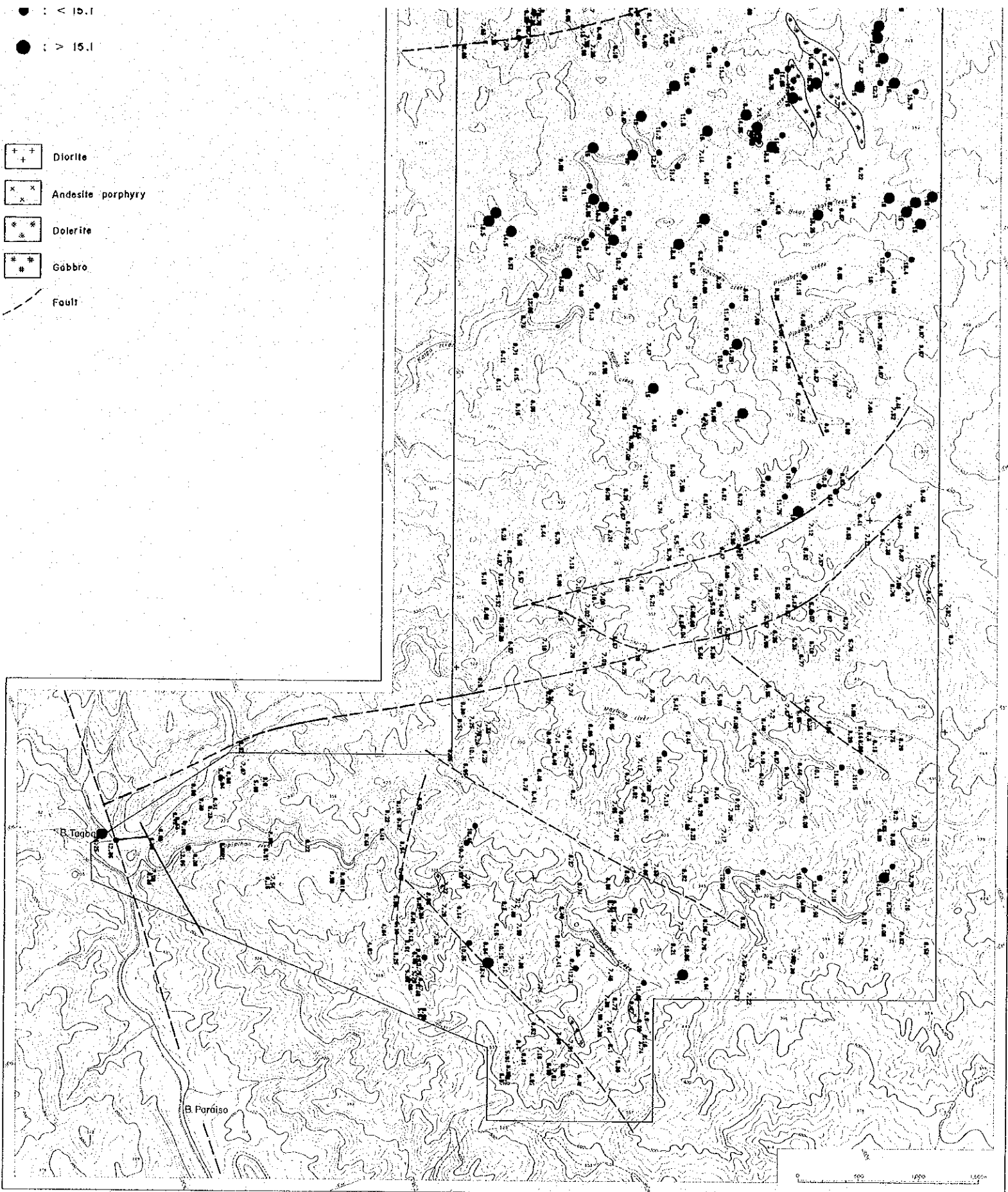
LEGEND

- Fe (%)
- : < 10.18
 - : < 13.24
 - : < 15.1
 - : > 15.1

- ++ Diorite
- xx Andesite porphyry
- * Dolerite
- # Gabbro
- - - Fault



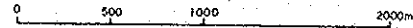
- : < 15.1
- : > 15.1
- + + Diorite
- x x Andesite porphyry
- * * Dolerite
- # # Gabbro
- - - Fault



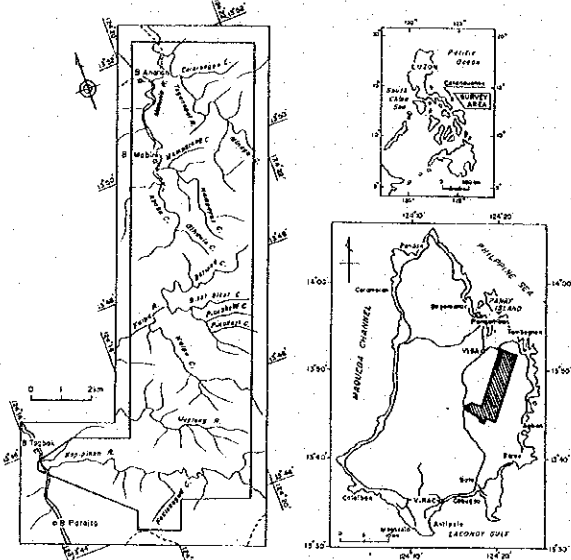
MINERAL EXPLORATION PL-9
 IN THE CATANDUANES AREA,
 THE REPUBLIC OF THE PHILIPPINES
 PHASE II
 GEOCHEMICAL ANOMALY OF STREAM SEDIMENTS

Hg

Scale 1:20,000



LOCATION INDEX

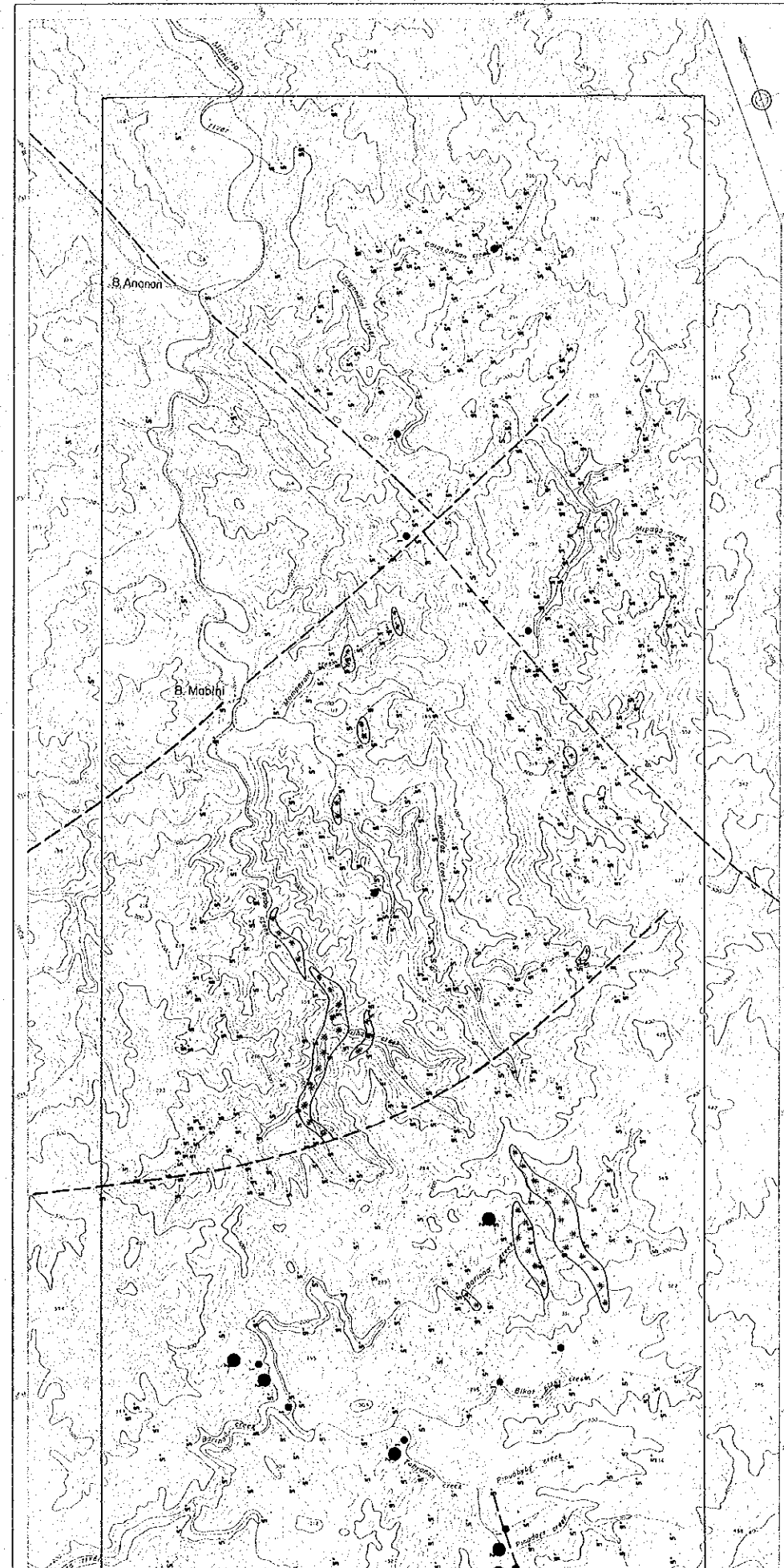


JAPAN INTERNATIONAL COOPERATION AGENCY
 METAL MINING AGENCY OF JAPAN
 January 1995

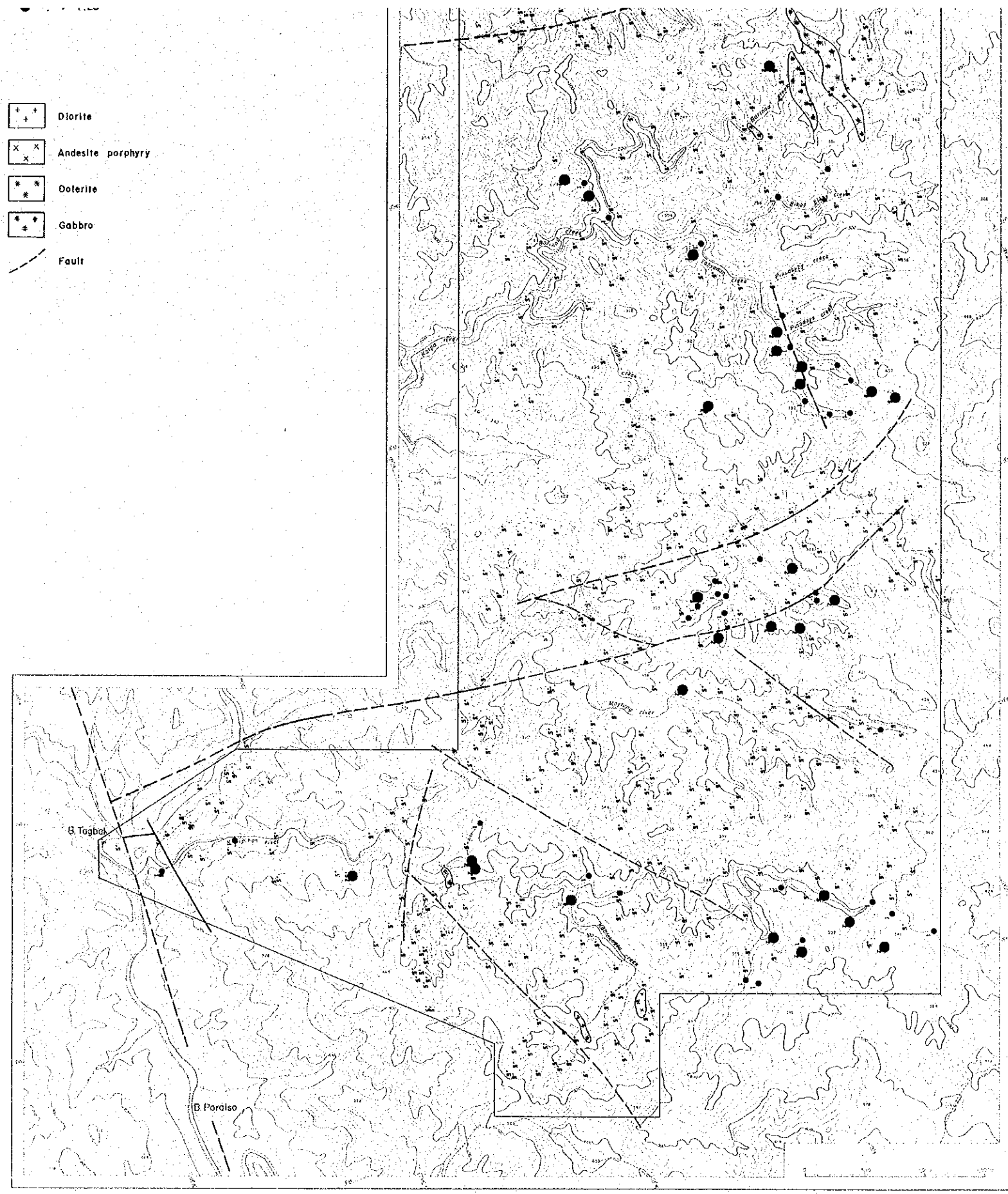
LEGEND

Hg (ppm)

- : < .72
- : < 1.28
- : > 1.28
- + + : Diorite
- x x : Andesite porphyry
- * * : Dolerite
- * * : Gabbro
- - - : Fault

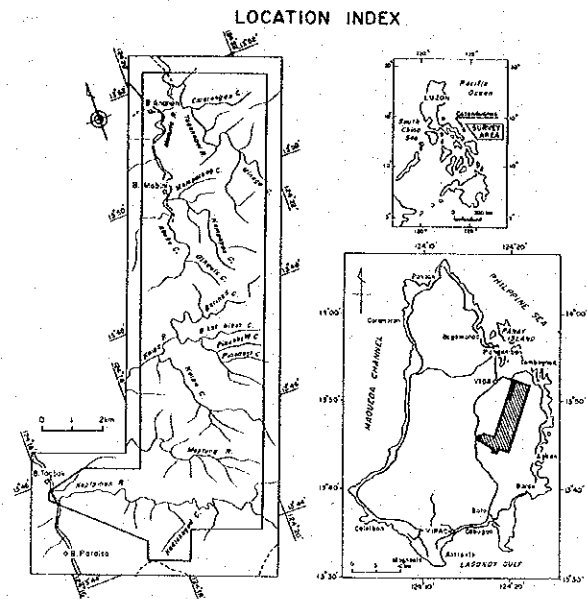


- + + Diorite
- x x Andesite porphyry
- * * Dolerite
- * * Gabbro
- Fault



MINERAL EXPLORATION PL-10
 IN THE CATANDUANES AREA,
 THE REPUBLIC OF THE PHILIPPINES
 PHASE II
 GEOCHEMICAL ANOMALY OF STREAM SEDIMENTS

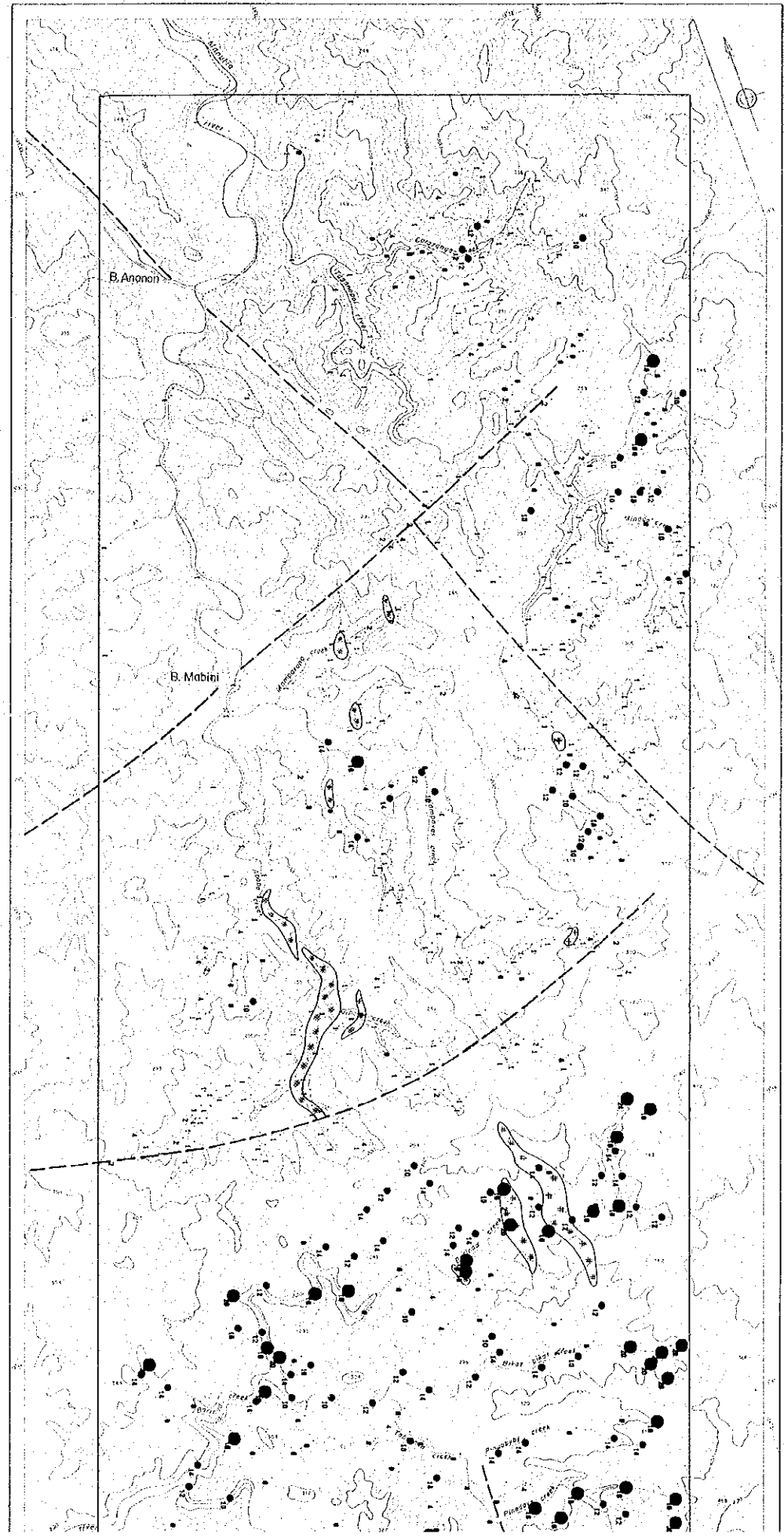
Pb
 Scale 1:20,000
 0 500 1000 2000m



JAPAN INTERNATIONAL COOPERATION AGENCY
 METAL MINING AGENCY OF JAPAN
 January 1995

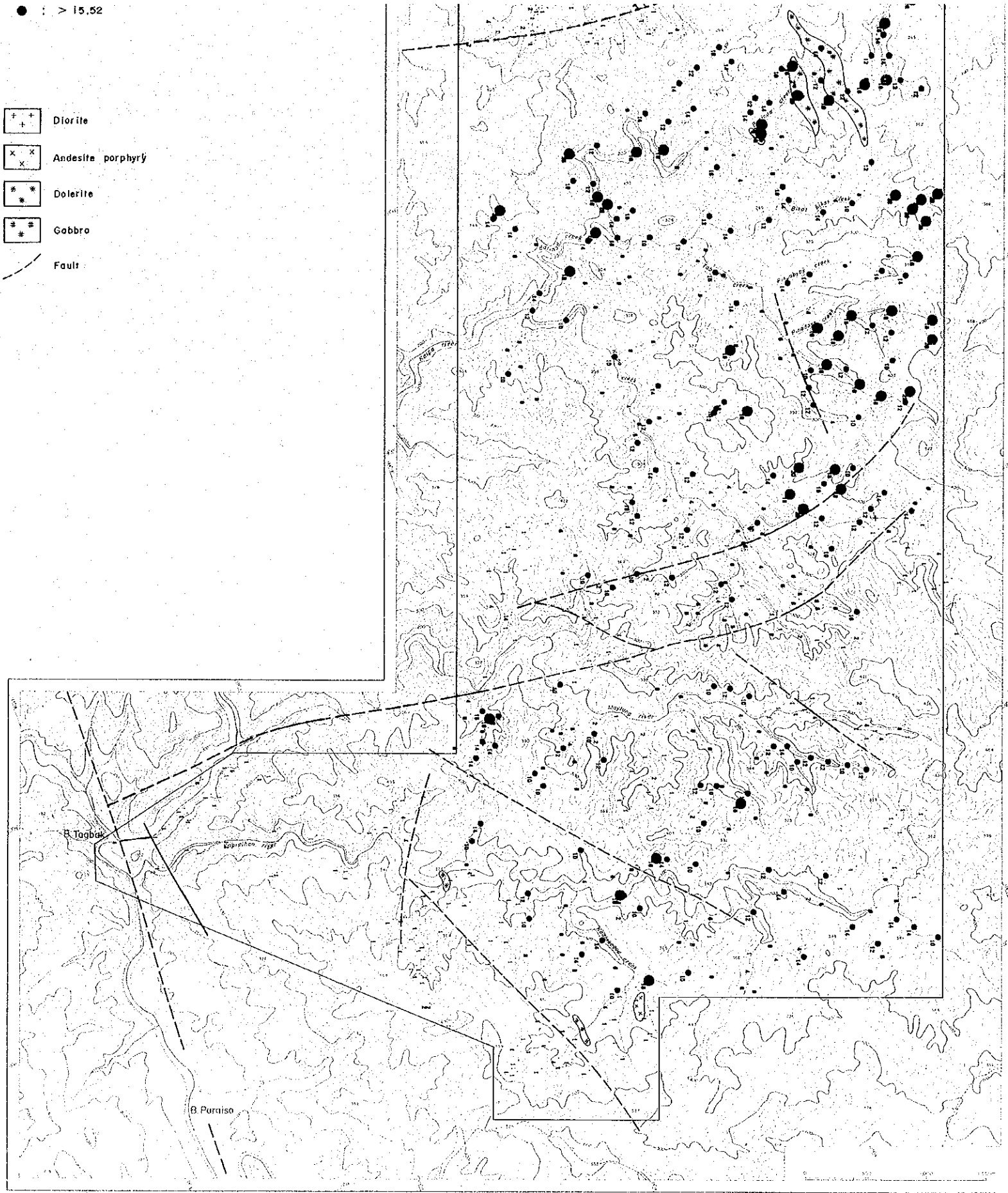
LEGEND

- Pb (ppm)
- : < 8.96
 - : < 15.52
 - : > 15.52
- ⊕ ⊕ Diorite
 - ⊗ ⊗ Andesite porphyry
 - ⊛ ⊛ Dolerite
 - ⊞ ⊞ Gabbro
 - Fault

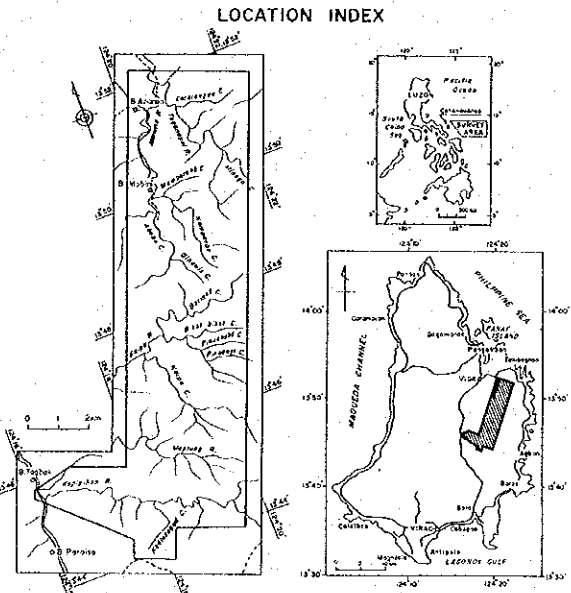
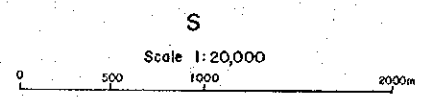


● : > 15.52

- ⊕ ⊕ Diorite
- ⊗ ⊗ Andesite porphyry
- ⊛ ⊛ Dolerite
- ⊞ ⊞ Gabbro
- Fault



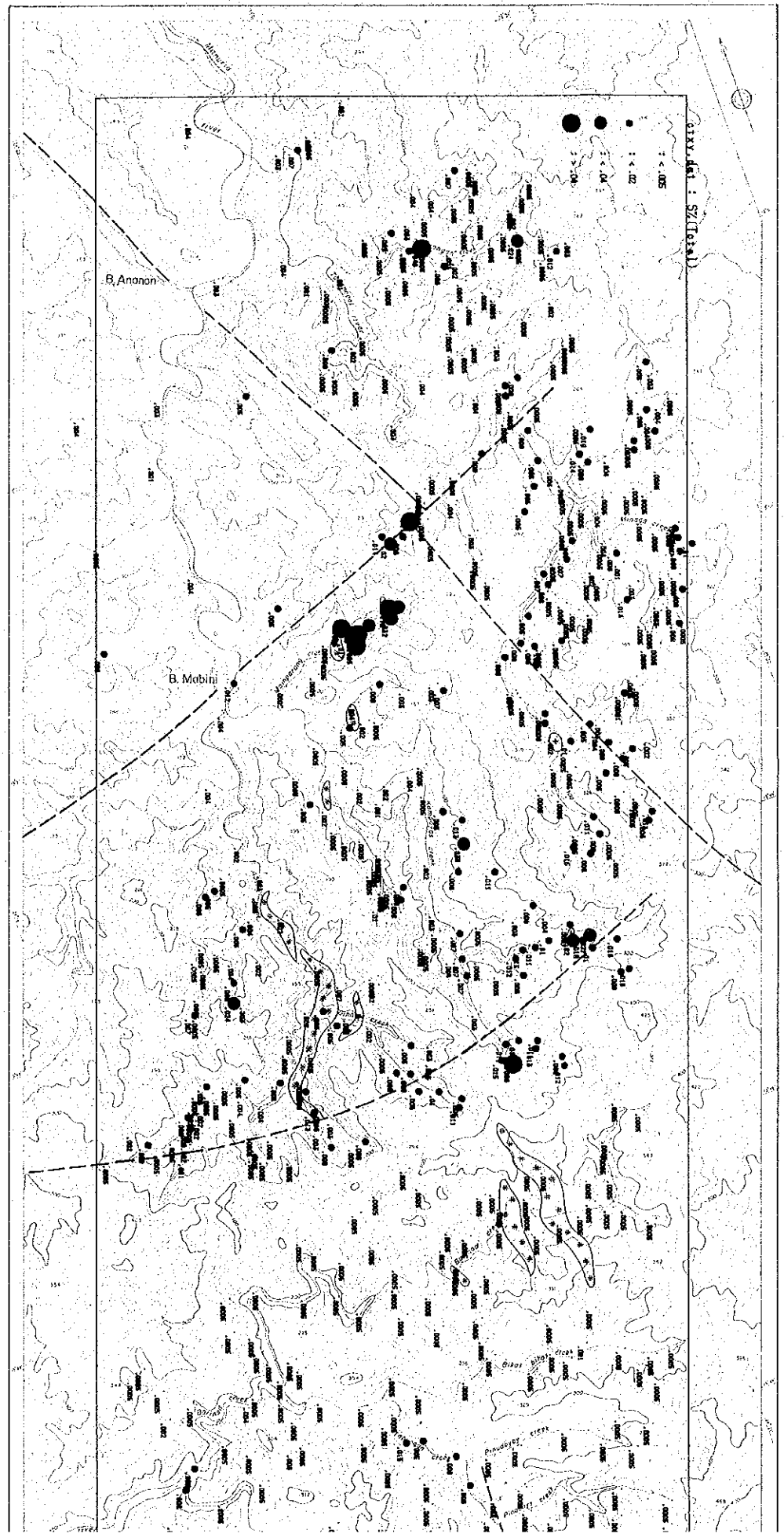
MINERAL EXPLORATION PL-11
 IN THE CATANDUANES AREA,
 THE REPUBLIC OF THE PHILIPPINES
 PHASE II
 GEOCHEMICAL ANOMALY OF STREAM SEDIMENTS



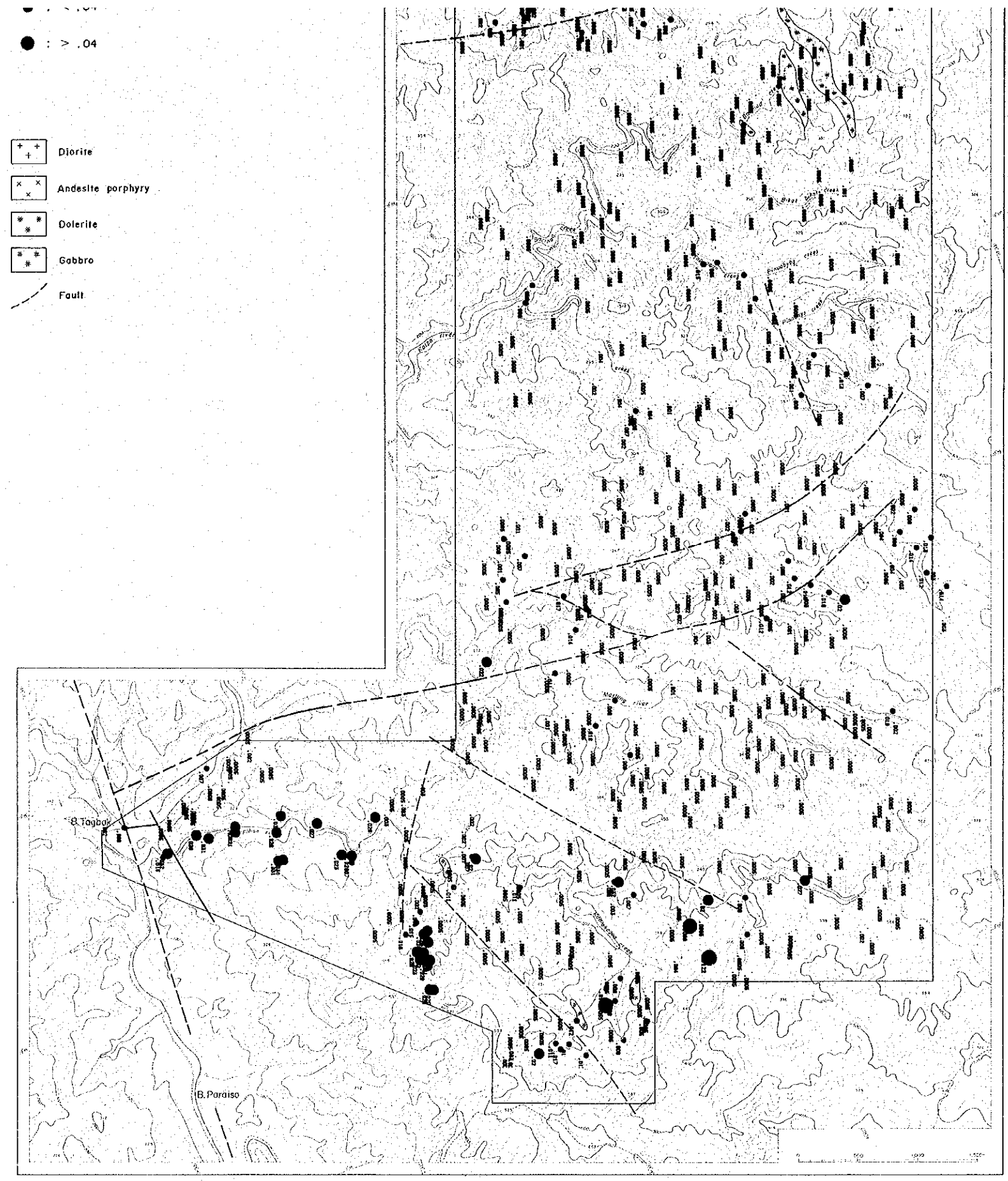
JAPAN INTERNATIONAL COOPERATION AGENCY
 METAL MINING AGENCY OF JAPAN
 January 1995

LEGEND

- S% (Total)
- : < .005
 - : < .02
 - : < .04
 - : > .04
-
- ⊕ ⊕ Diorite
 - ⊗ ⊗ Andesite porphyry
 - ⊗ ⊗ Dolerite
 - ⊕ ⊕ Gabbro
 - - - Fault



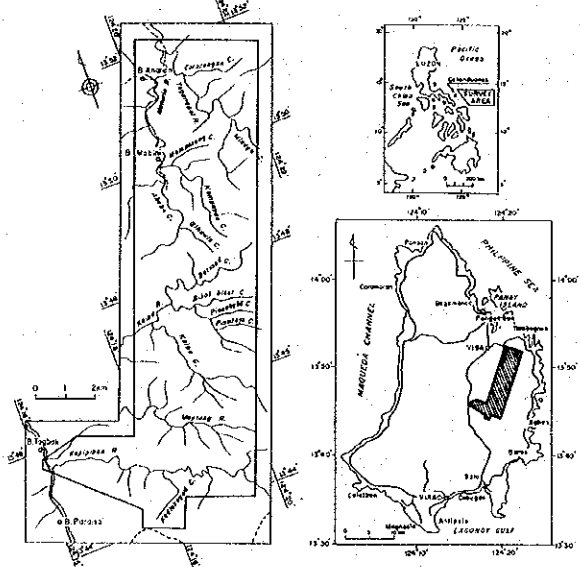
- : > .04
- ⊕ ⊕ Diorite
- ⊗ ⊗ Andesite porphyry
- ⊛ ⊛ Dolerite
- ⊞ ⊞ Gabbro
- Fault



MINERAL EXPLORATION PL-12
 IN THE CATANDUANES AREA,
 THE REPUBLIC OF THE PHILIPPINES
 PHASE II
 GEOCHEMICAL ANOMALY OF STREAM SEDIMENTS

Sb
 Scale 1:20,000
 0 500 1000 2000m

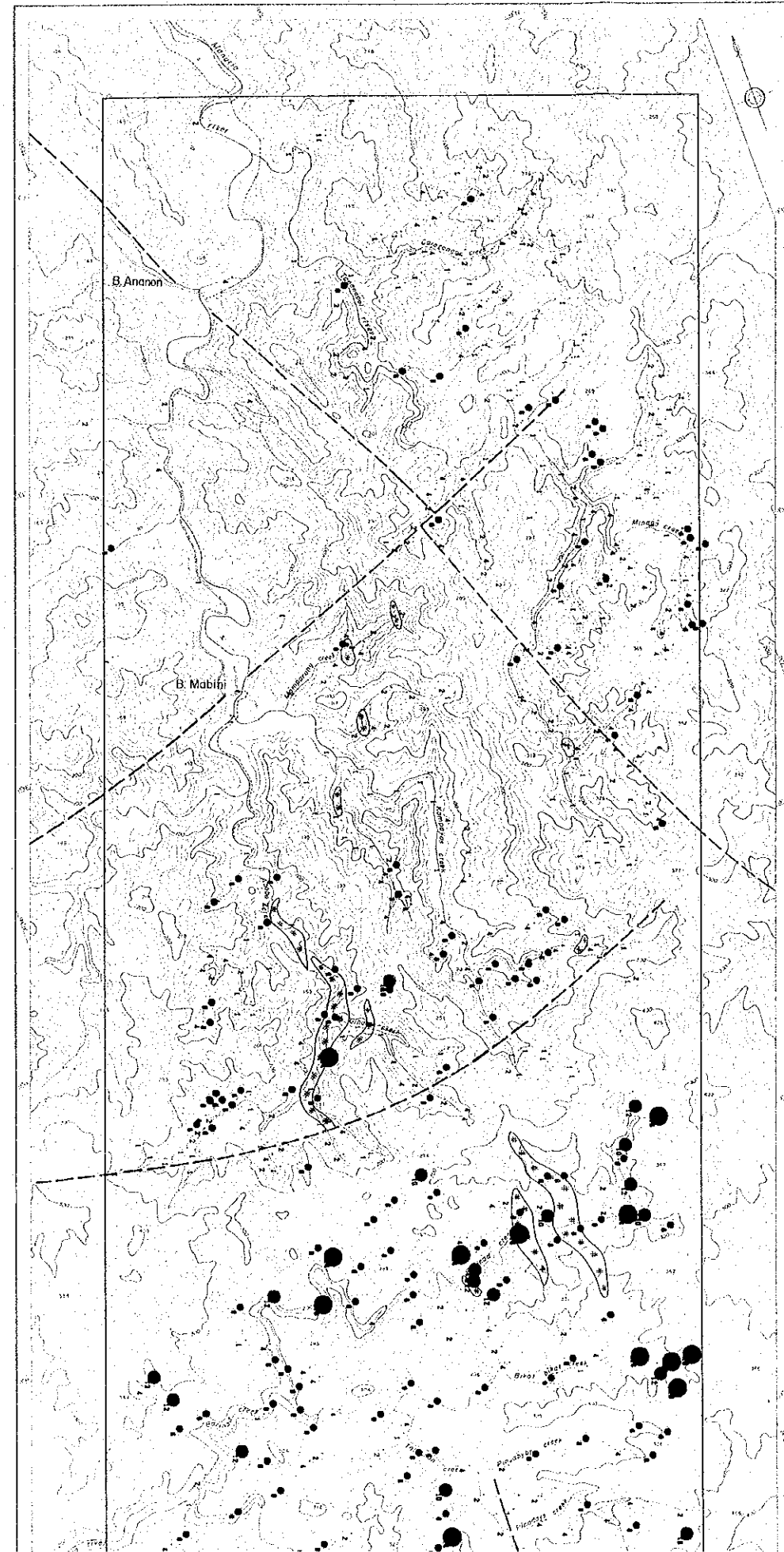
LOCATION INDEX

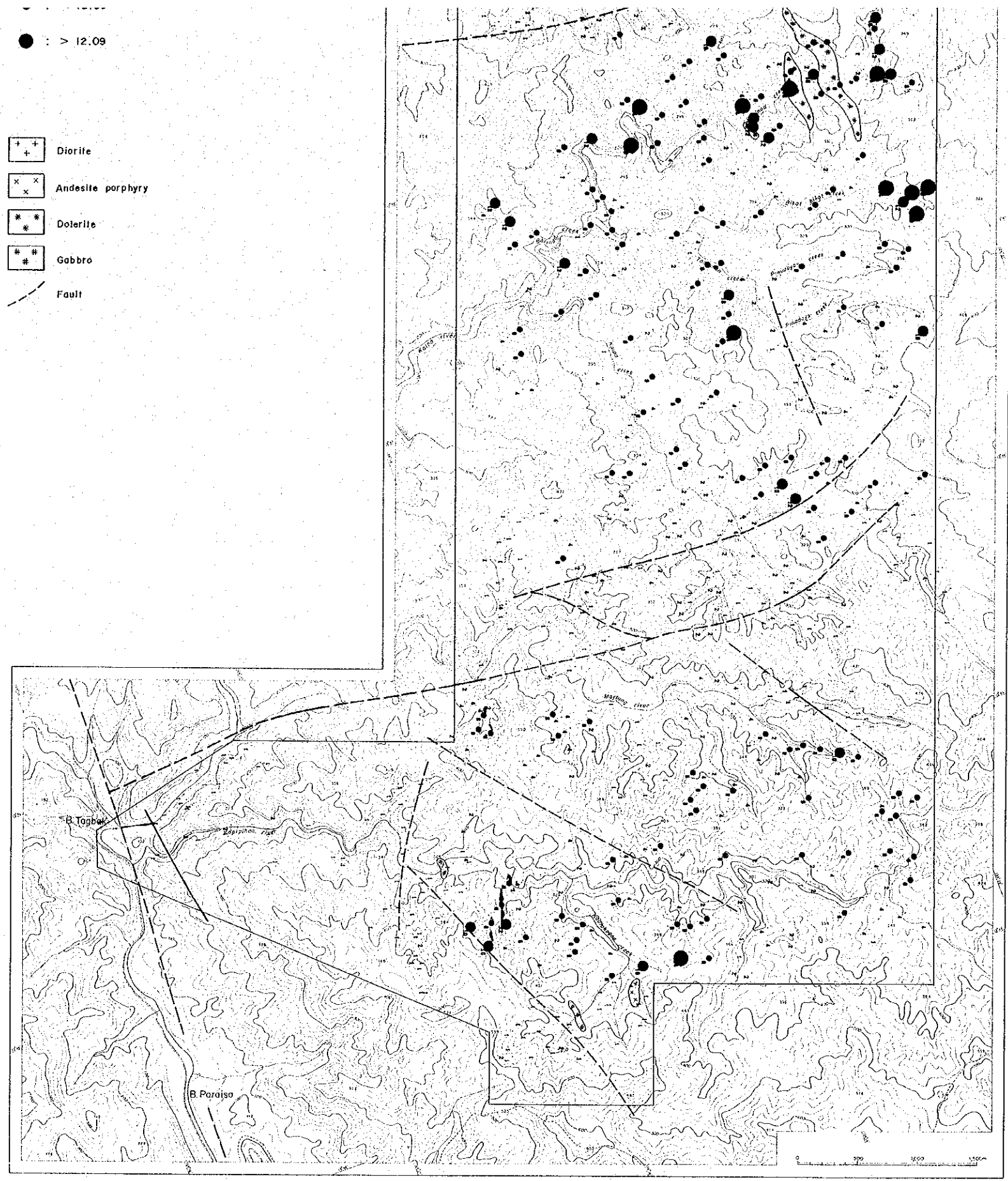


JAPAN INTERNATIONAL COOPERATION AGENCY
 METAL MINING AGENCY OF JAPAN
 January 1995

LEGEND

- Sb (ppm)
- : < 5.36
 - : < 8.05
 - : < 12.09
 - : > 12.09
- ⊕ Diorite
 - ⊗ Andesite porphyry
 - ⊛ Dolerite
 - ⊞ Gabbro
 - Fault

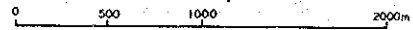




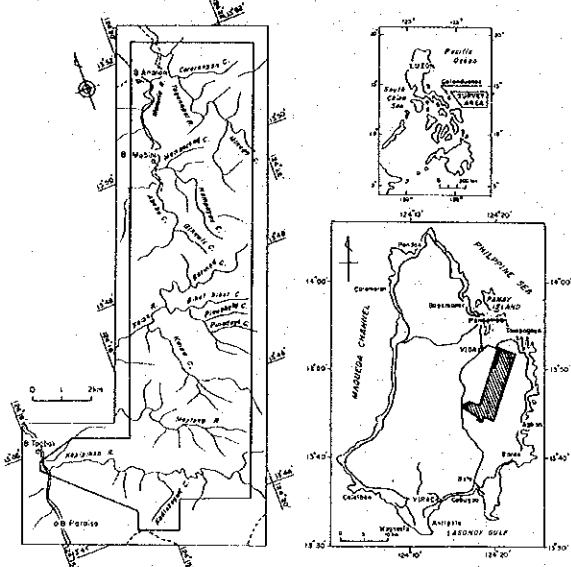
MINERAL EXPLORATION PL-13
 IN THE CATANDUANES AREA,
 THE REPUBLIC OF THE PHILIPPINES
 PHASE II
 GEOCHEMICAL ANOMALY OF STREAM SEDIMENTS

Zn

Scale 1:20,000



LOCATION INDEX



JAPAN INTERNATIONAL COOPERATION AGENCY
 METAL MINING AGENCY OF JAPAN
 January 1995

LEGEND

Zn (ppm)

○ : < 120.59

● : < 167.19

● : < 186.42

● : > 186.42

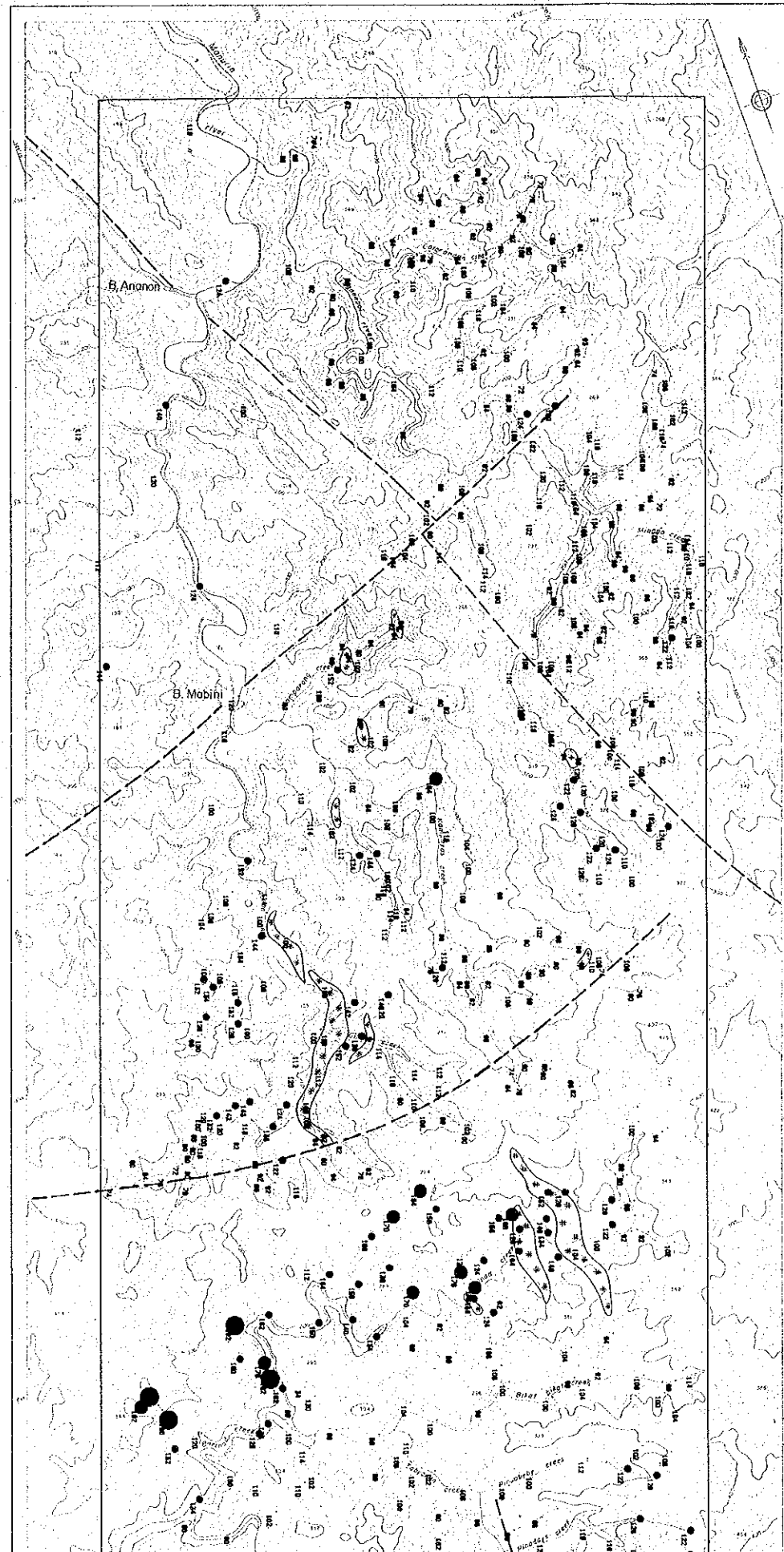
++ Diorite

×× Andesite porphyry

Dolerite

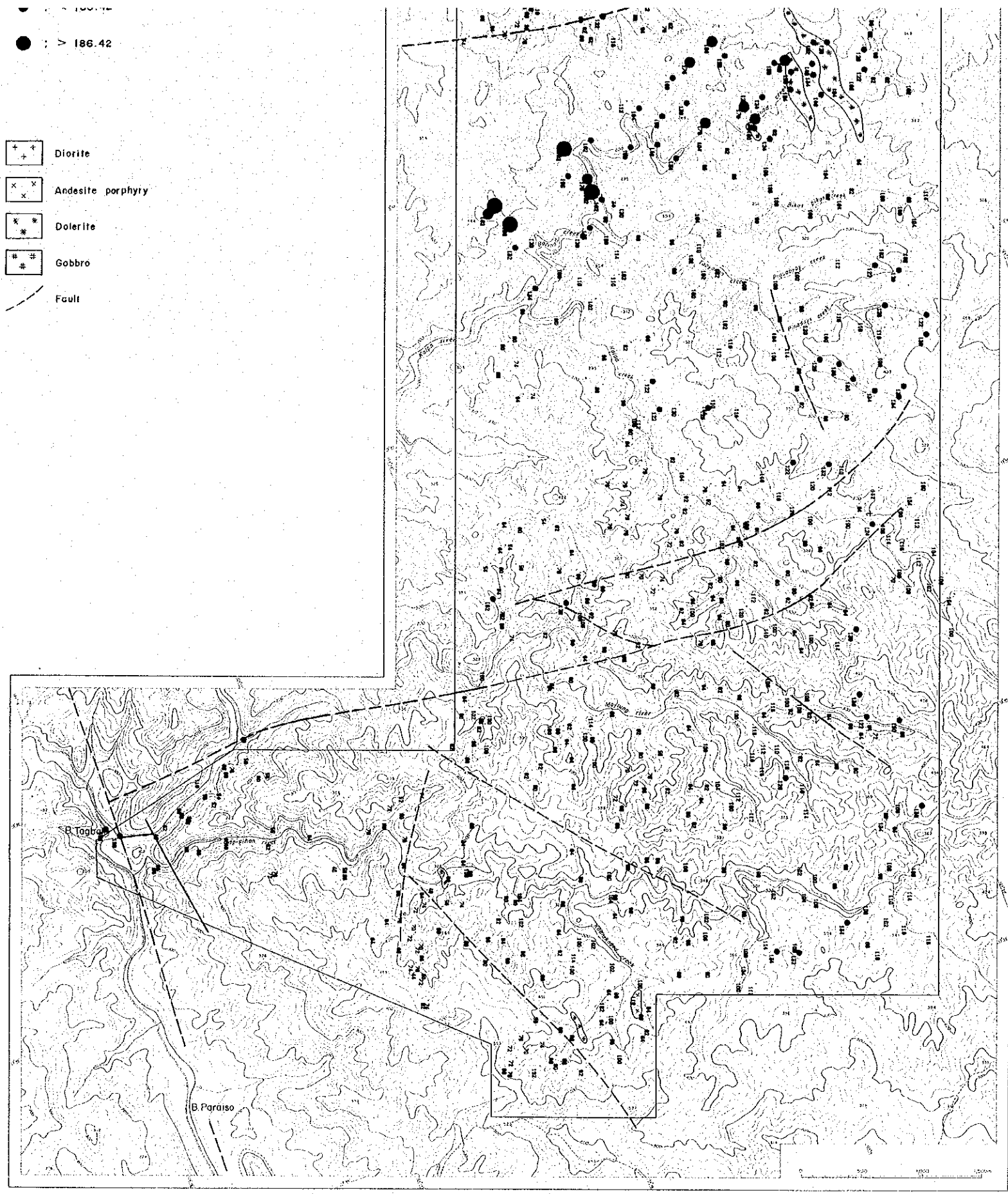
Gabbro

— Fault



● : > 186.42

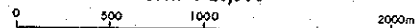
- ⊕ ⊕ Diorite
- ⊗ ⊗ Andesite porphyry
- ⊗ ⊗ Dolerite
- ⊕ ⊕ Gobbro
- Fault



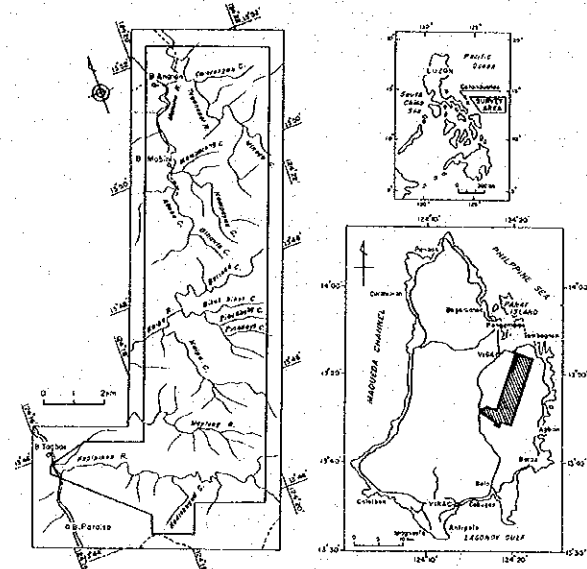
MINERAL EXPLORATION
 IN THE CATANDUANES AREA,
 THE REPUBLIC OF THE PHILIPPINES
 PHASE II
 GEOCHEMICAL ANOMALY ZONES
 IN SURVEY AREA

PL-14

Scale 1:20,000



LOCATION INDEX



JAPAN INTERNATIONAL COOPERATION AGENCY
 METAL MINING AGENCY OF JAPAN
 January 1995

LEGEND

Promising area

GEOCHEMICAL ANOMALY ZONE

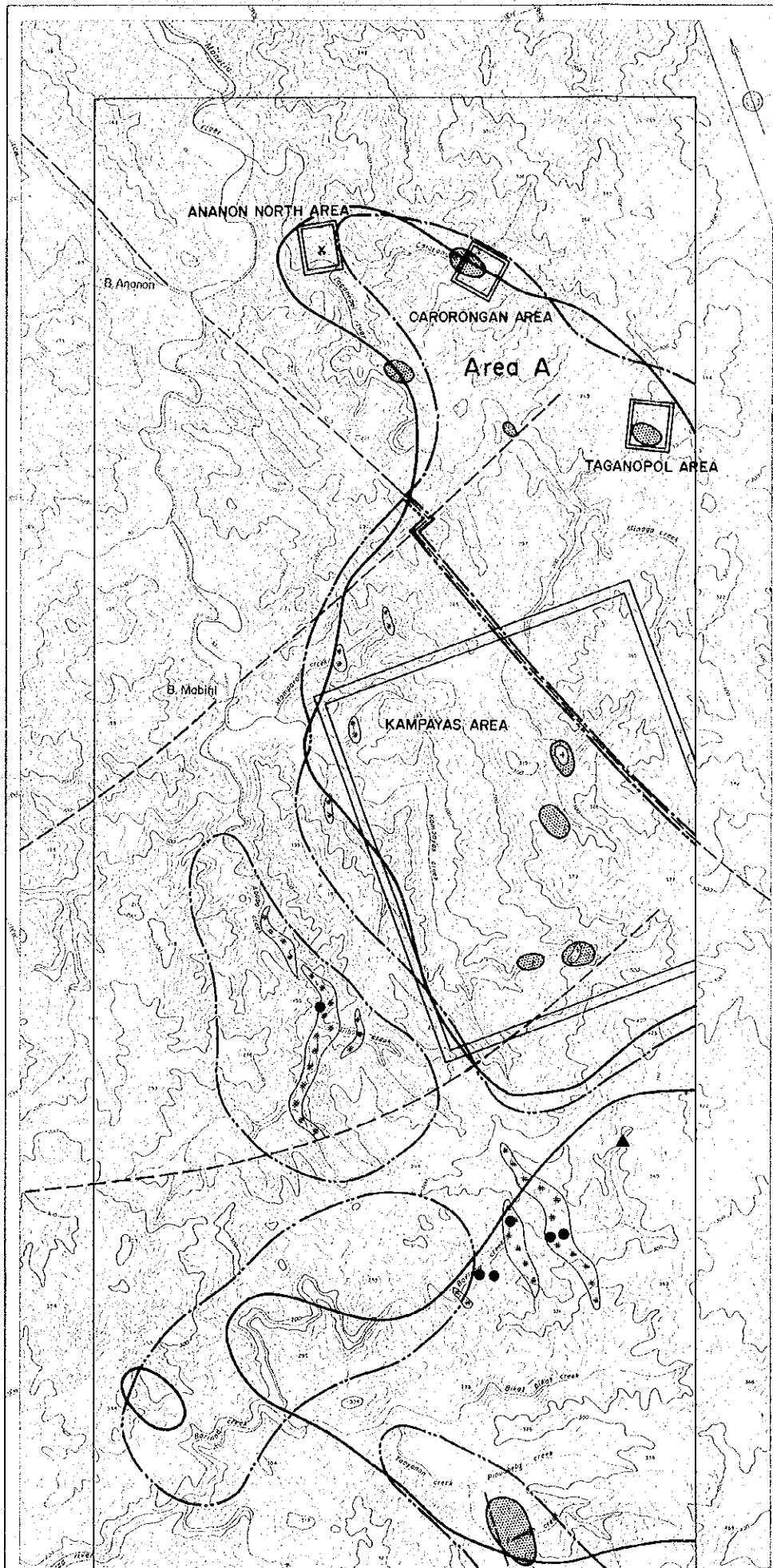
- Au anomaly zone
- Z-01 high score zone in Area A
Fe, Au, Pb, Cu, (Zn)
- Z-02 high score zone in Area B
Au, S, (Cu), (Ag)

GEOLOGY

- Diorite } Batolay Intrusives
- Andesite porphyry }
- Gabbro } Cretaceous Intrusives
- Dolerite }

ALTERATION and MINERALIZATION

- Silicified zone
- Argillized zone
- Native copper



GEOLOGY

- | | | |
|--|-------------------|-------------------------|
| | Diorite | } Batalay Intrusives |
| | Andesite porphyry | |
| | Gabbro | } Cretaceous Intrusives |
| | Dolerite | |

ALTERATION and MINERALIZATION

- Silicified zone
- Argillized zone
- Native copper
- Mining (placer gold)
- Old mining (placer gold)
- Fault

