


REPORT
ON
THE COOPERATIVE MINERAL EXPLORATION
IN
THE CATANDUANES AREA,
THE REPUBLIC OF THE PHILIPPINES

PHASE II

MARCH 1995

JICA LIBRARY

J 1124849 [9]

JAPAN INTERNATIONAL COOPERATION AGENCY
METAL MINING AGENCY OF JAPAN

M P N
J R
95-043

 REPORT ON THE COOPERATIVE MINERAL
EXPLORATION IN THE CATANDUANES AREA,
THE REPUBLIC OF THE PHILIPPINES

PHASE II

MARCH, 1995

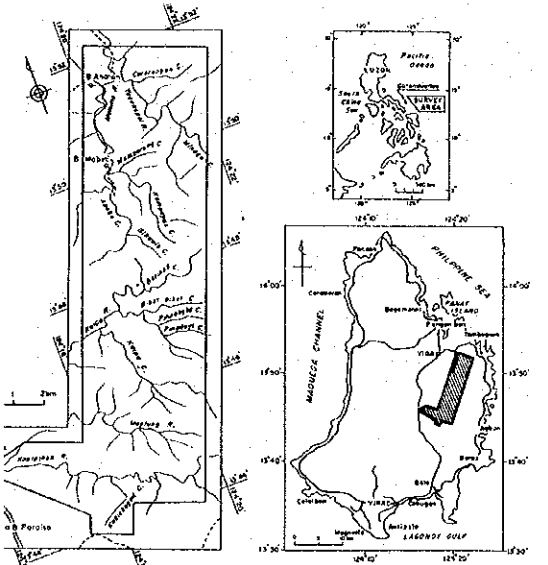
M
M
A
C

118
66.1
MPN

MINERAL EXPLORATION PL-1
 IN THE CATANDUANES AREA,
 THE REPUBLIC OF THE PHILIPPINES
 PHASE II
 LOCALITY MAP OF STREAM SEDIMENTS,
 SOIL AND ROCK SAMPLES

Scale 1:10,000
 0 100 200 300 400 500 1000m

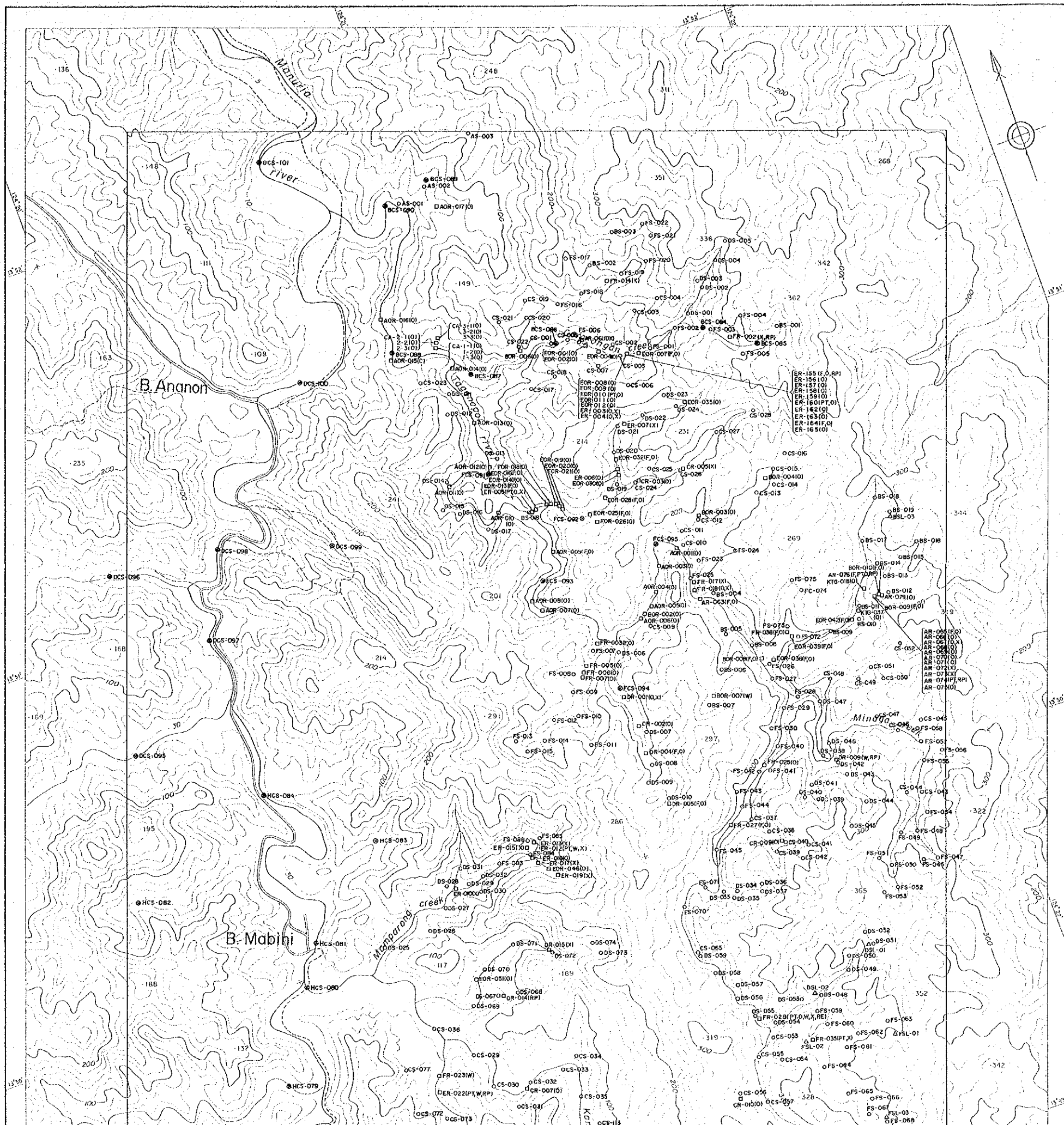
LOCATION INDEX



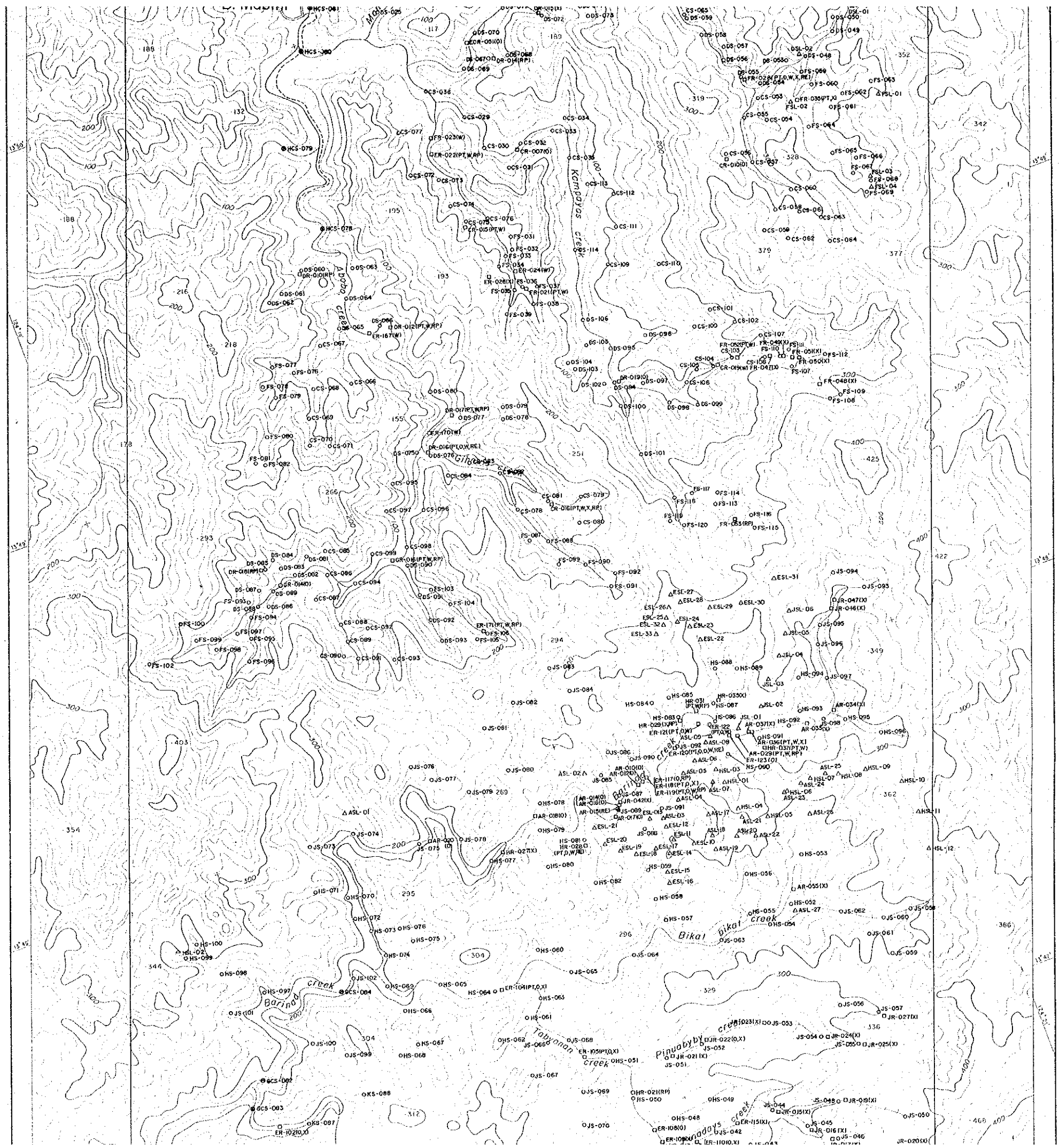
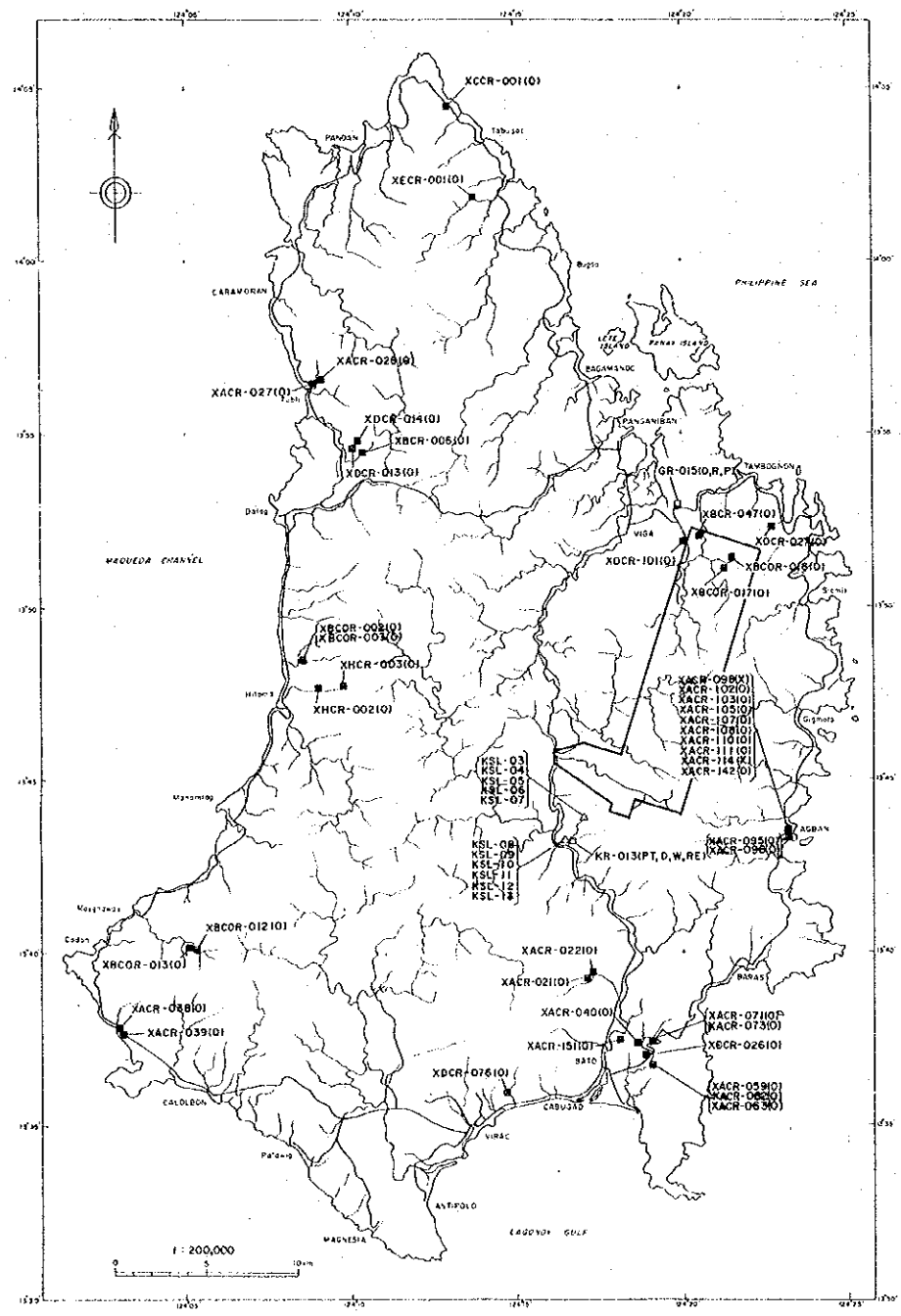
JAPAN INTERNATIONAL COOPERATION AGENCY
 METAL MINING AGENCY OF JAPAN
 January 1995

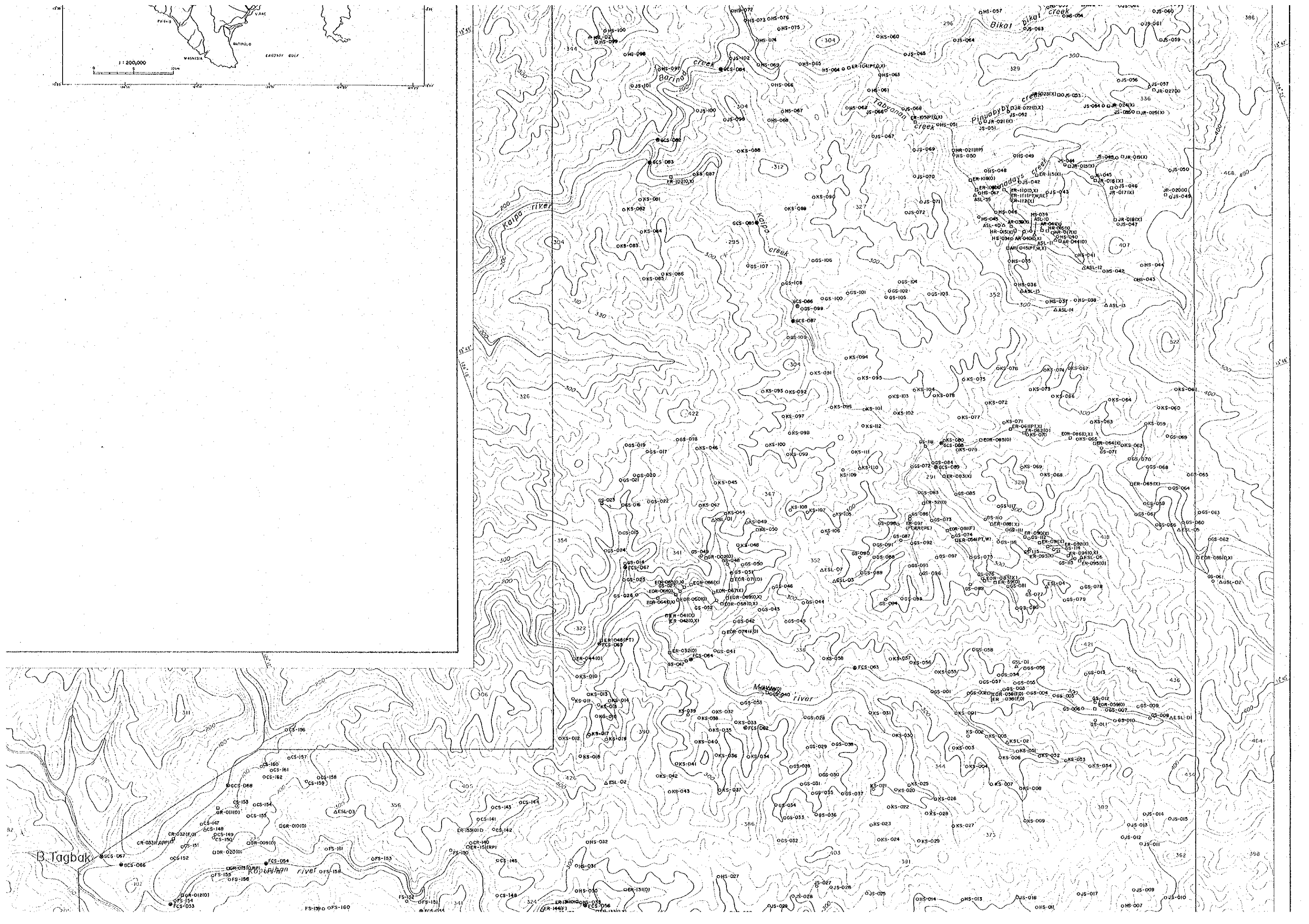
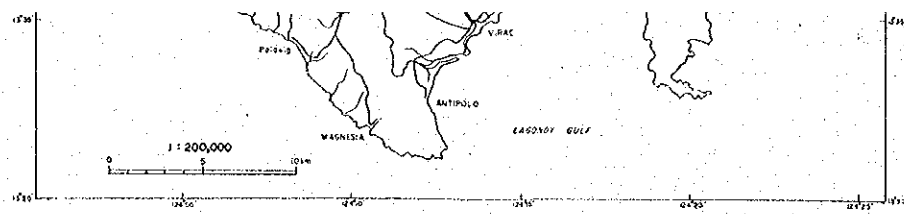
LEGEND

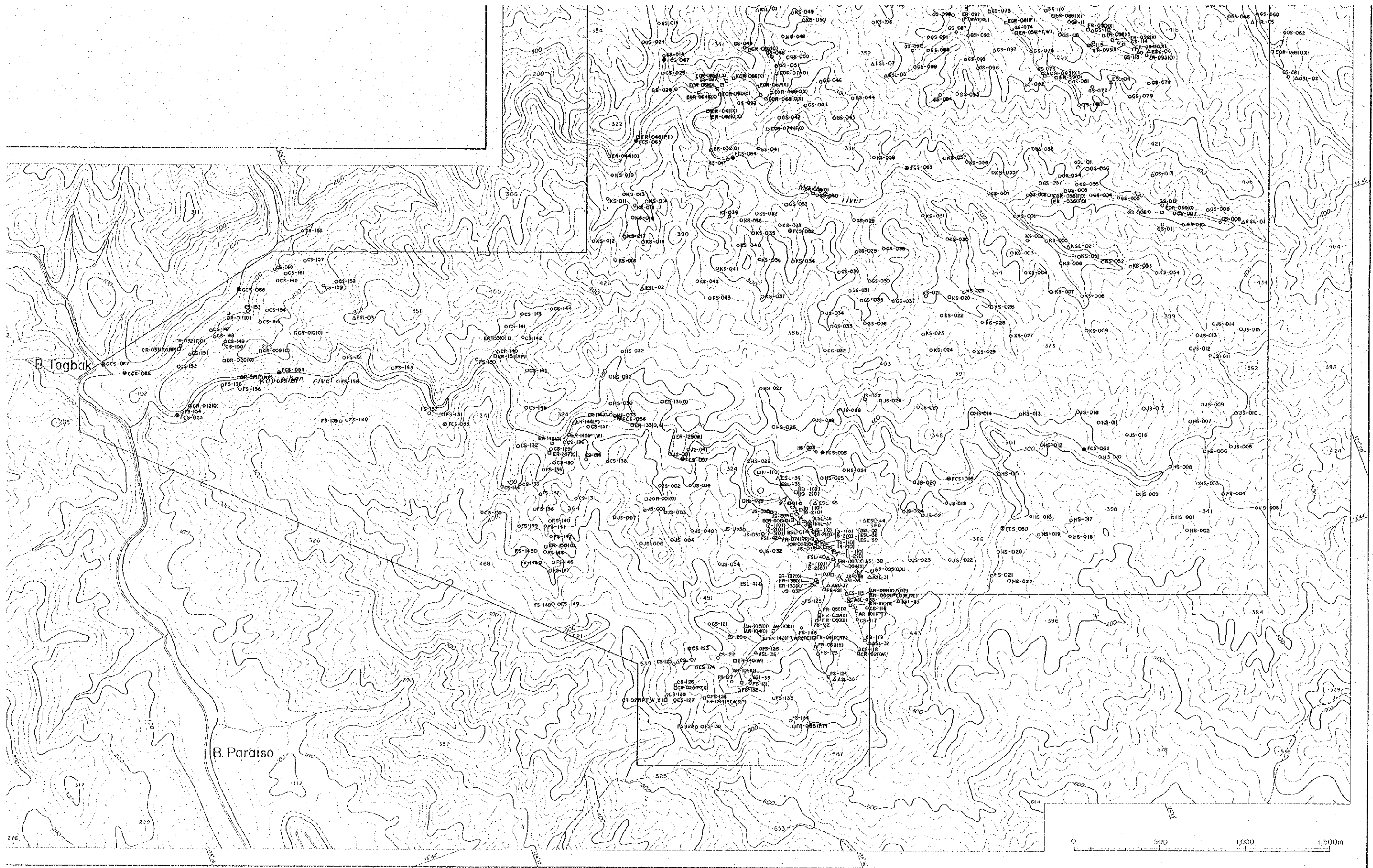
- Stream Sediment (PHASE I) ⊗ DCS-082
 - Stream Sediment ○ JS-001
 - Soil Sample △ KSL-01
 - Ore Sample (PHASE I) ⊠ XACR-021
 - Rock Sample □ ER-003 (F, PT, O, D, W, X, RP, RE)
-
- Fluid Inclusion ————
 - Polished Thin Section ————
 - Ore Analysis ————
 - K-Ar Dating ————
 - Whole Rock Analysis ————
 - X-ray Diffraction ————
 - Resistivity and Polarization ————
 - Rare Earth Element ————



- K-Ar Dating
- Whole Rock Analysis
- X-ray Diffraction
- Resistivity and Polarization
- Rare Earth Element





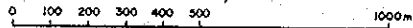


MINERAL EXPLORATION
IN THE CATANDUANES AREA,
THE REPUBLIC OF THE PHILIPPINES
PHASE II

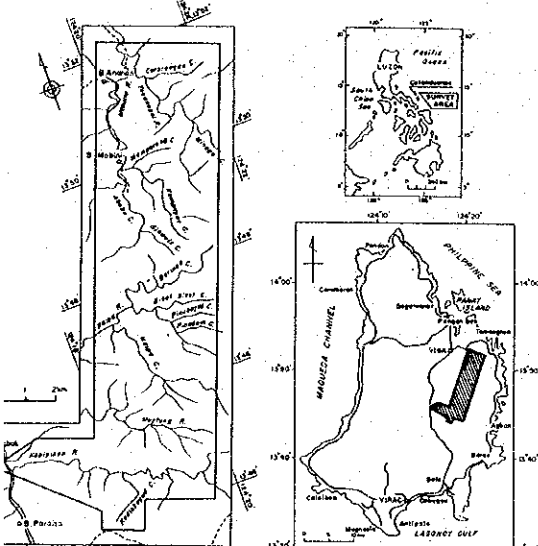
PL-2

GEOLOGIC MAP

Scale 1:10,000



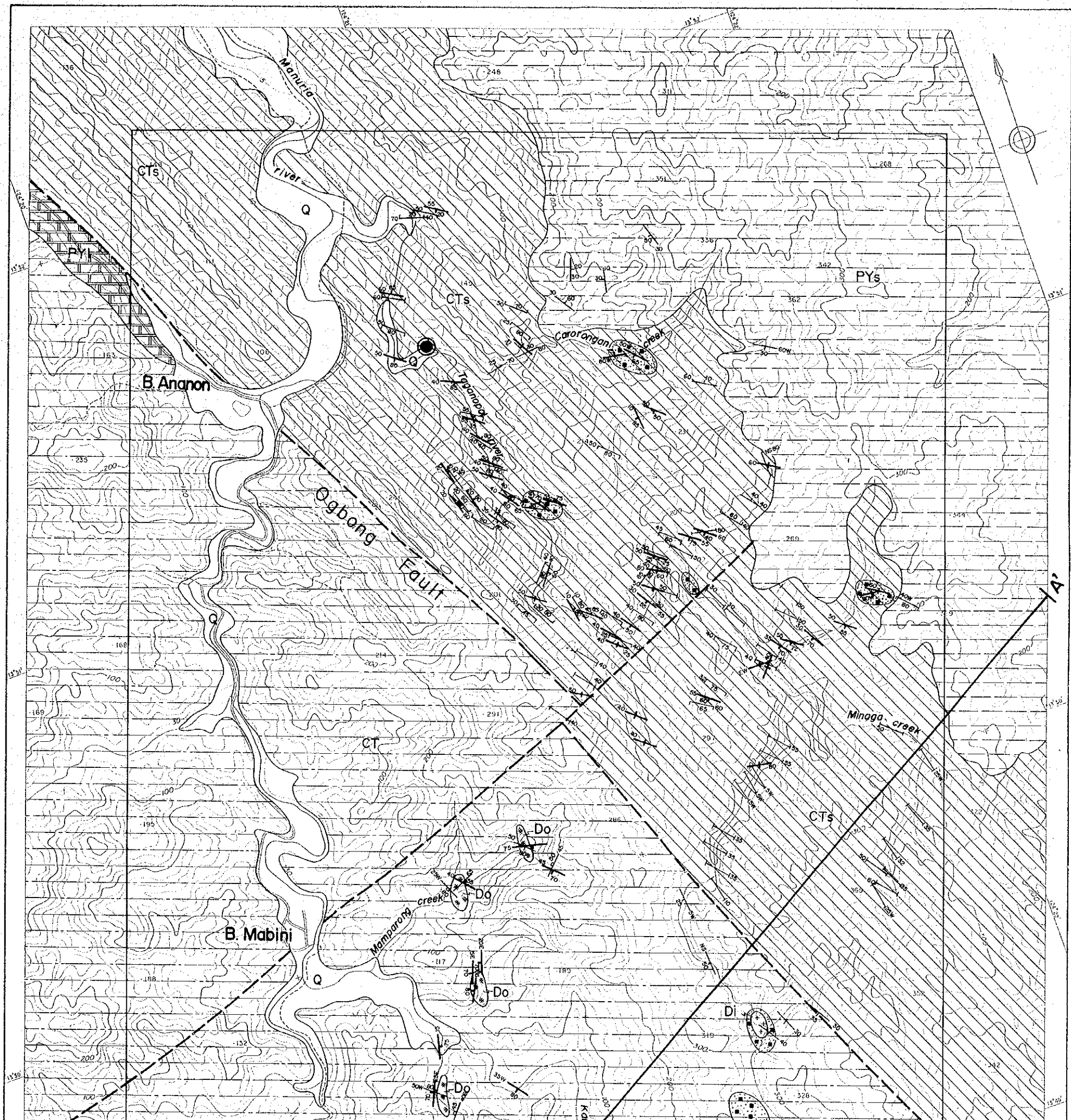
LOCATION INDEX



JAPAN INTERNATIONAL COOPERATION AGENCY
METAL MINING AGENCY OF JAPAN
January 1995

LEGEND

AGE	SYMBOLS	ROCKS	FORMATION
Quaternary			
Holocene	Q		Alluvium
Tertiary			
Early ~ Late Eocene	PYI	Limestone	Payo Formation
	PYS	Sandstone	
Cretaceous			
	CT	Sandstone	
	CTI	Lapilli Tuff	



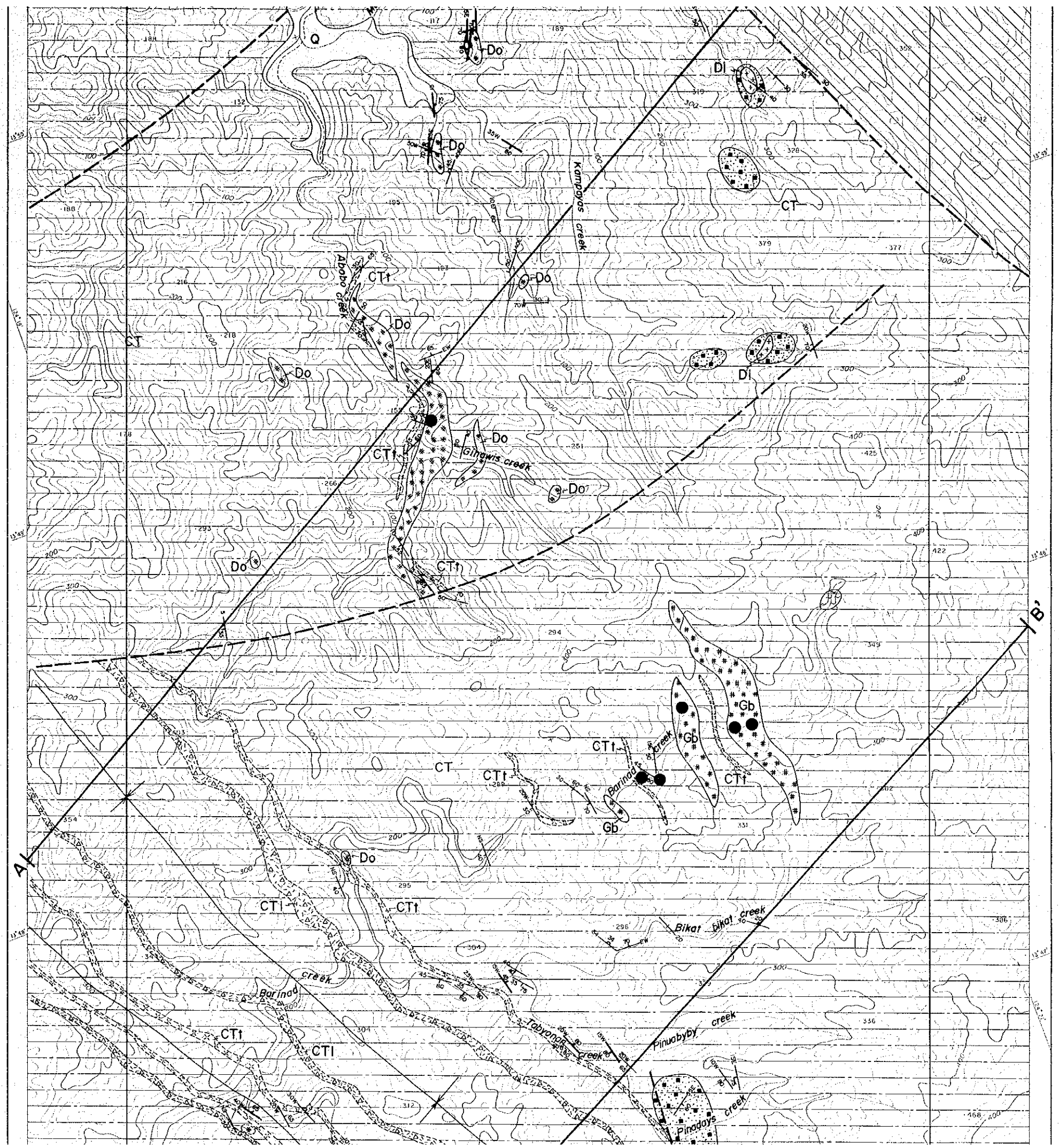
Early ~ Late Eocene		Limestone	} Payo Formation
		Sandstone	
Cretaceous		Sandstone	} Catanduanes Formation
		Lapilli Tuff	
		Tuff	
		Andesite Lava	
		Schist	
INTRUSIVE ROCKS			
Latest Eocene ~ Oligocene		Diorite	} Batajay Intrusives
		Andesite Porphyry	
		Gabbro	
Cretaceous		Dolerite	

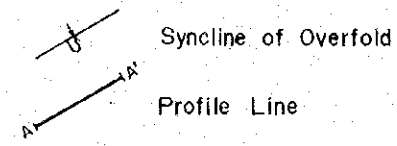
GEOLOGIC STRUCTURE

- Formation Boundary
- Lithology Boundary
- Fault or Center of Fracture Zone
- Strike and Dip of Bedding
- Strike and Dip of Joint
- Strike and Dip of Schistosity
- Vertical Schistosity
- Syncline
- Anticline
- Syncline of Overfold
- Profile Line

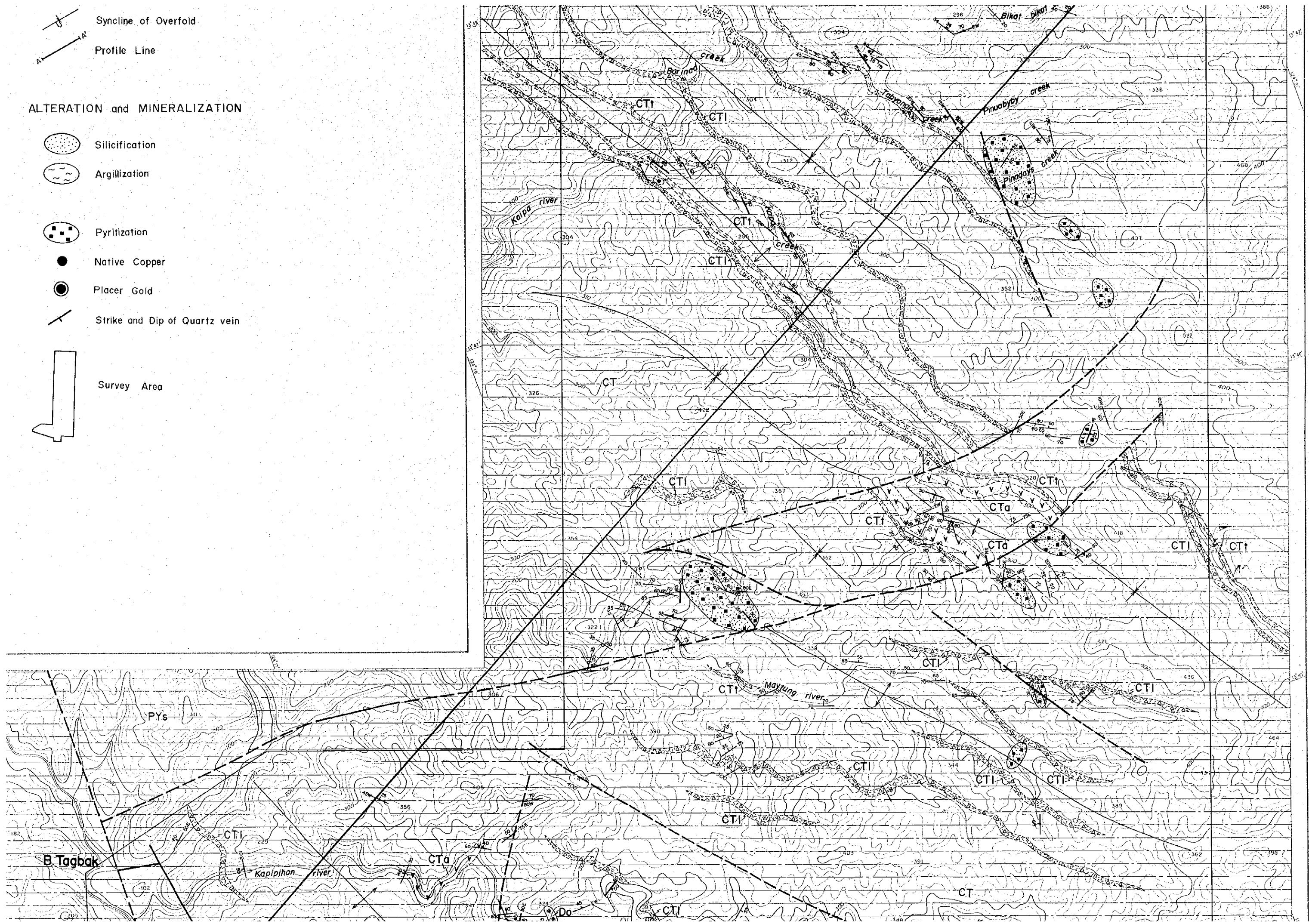
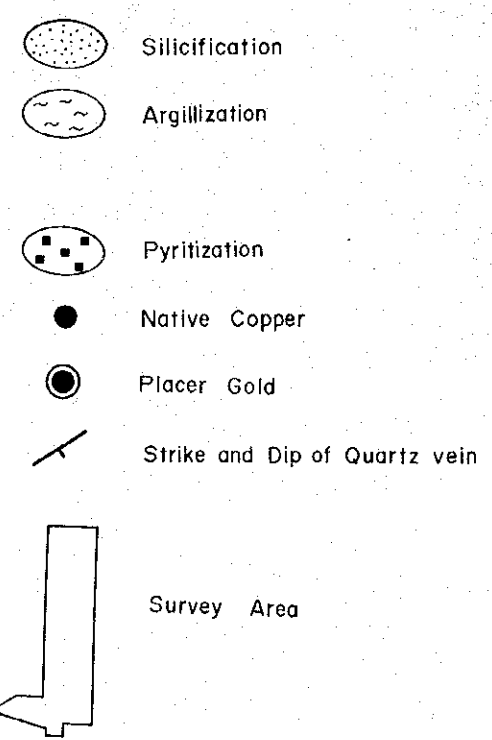
ALTERATION and MINERALIZATION

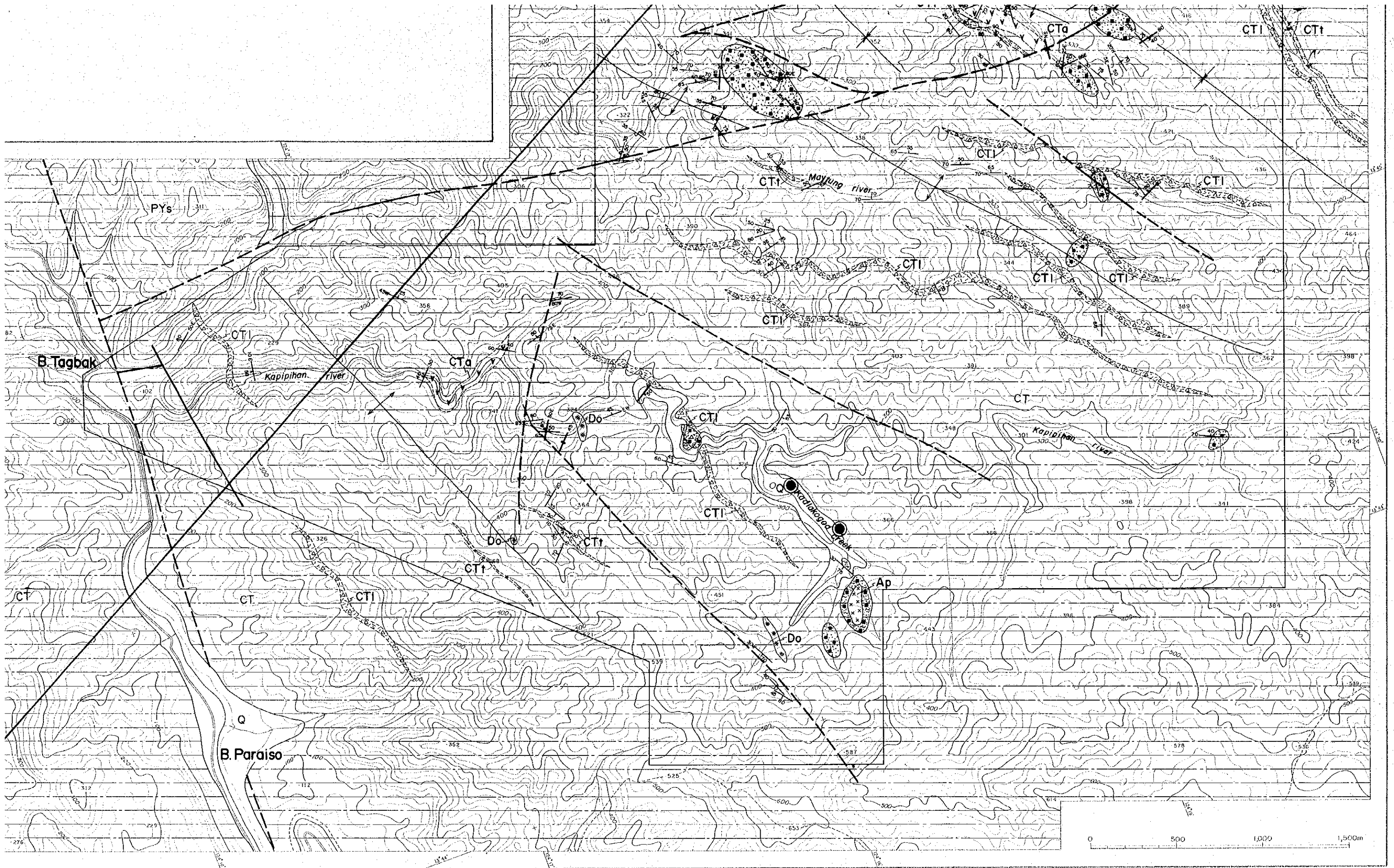
- Silicification
- Argillization

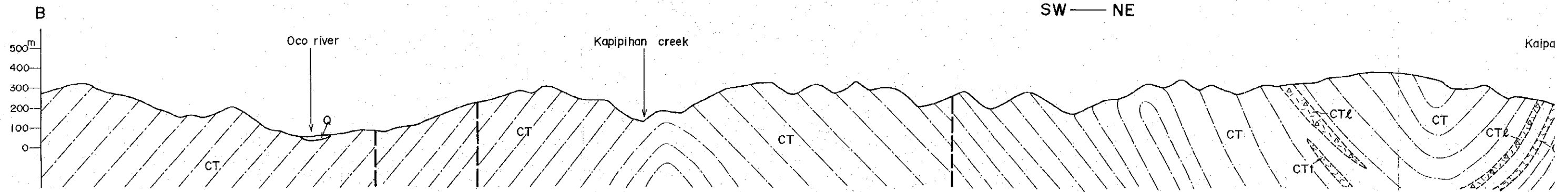
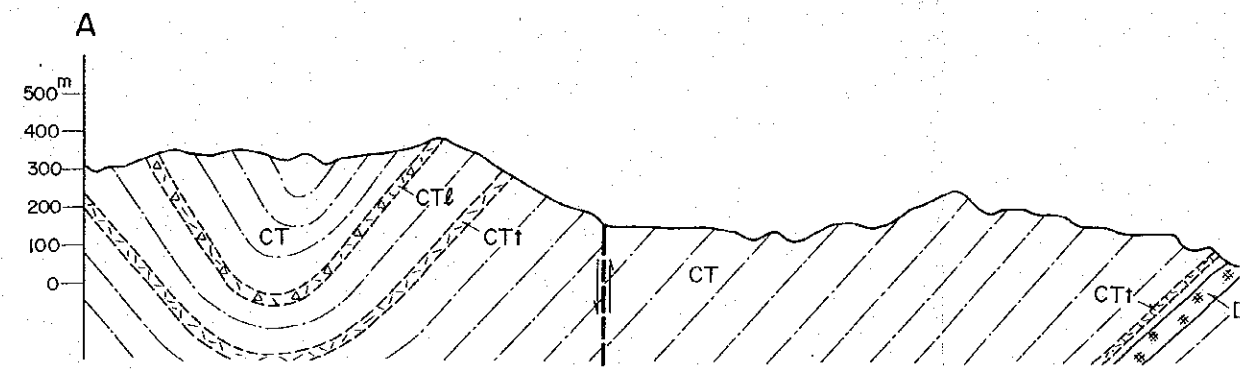


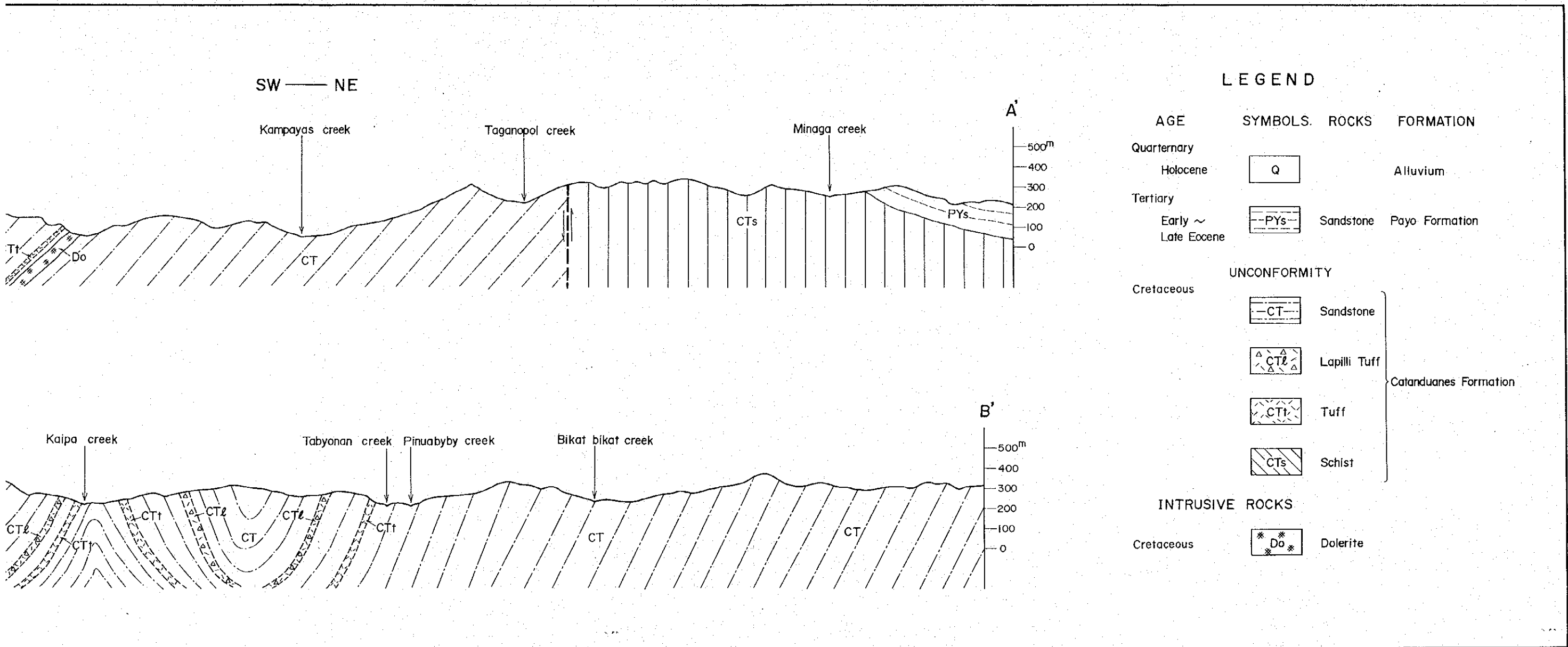


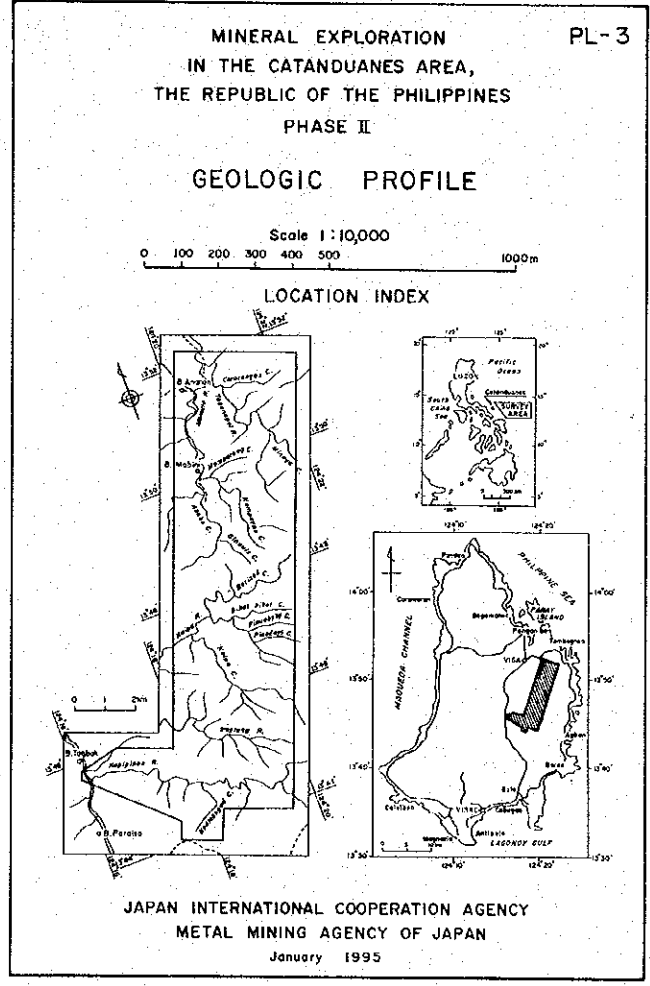
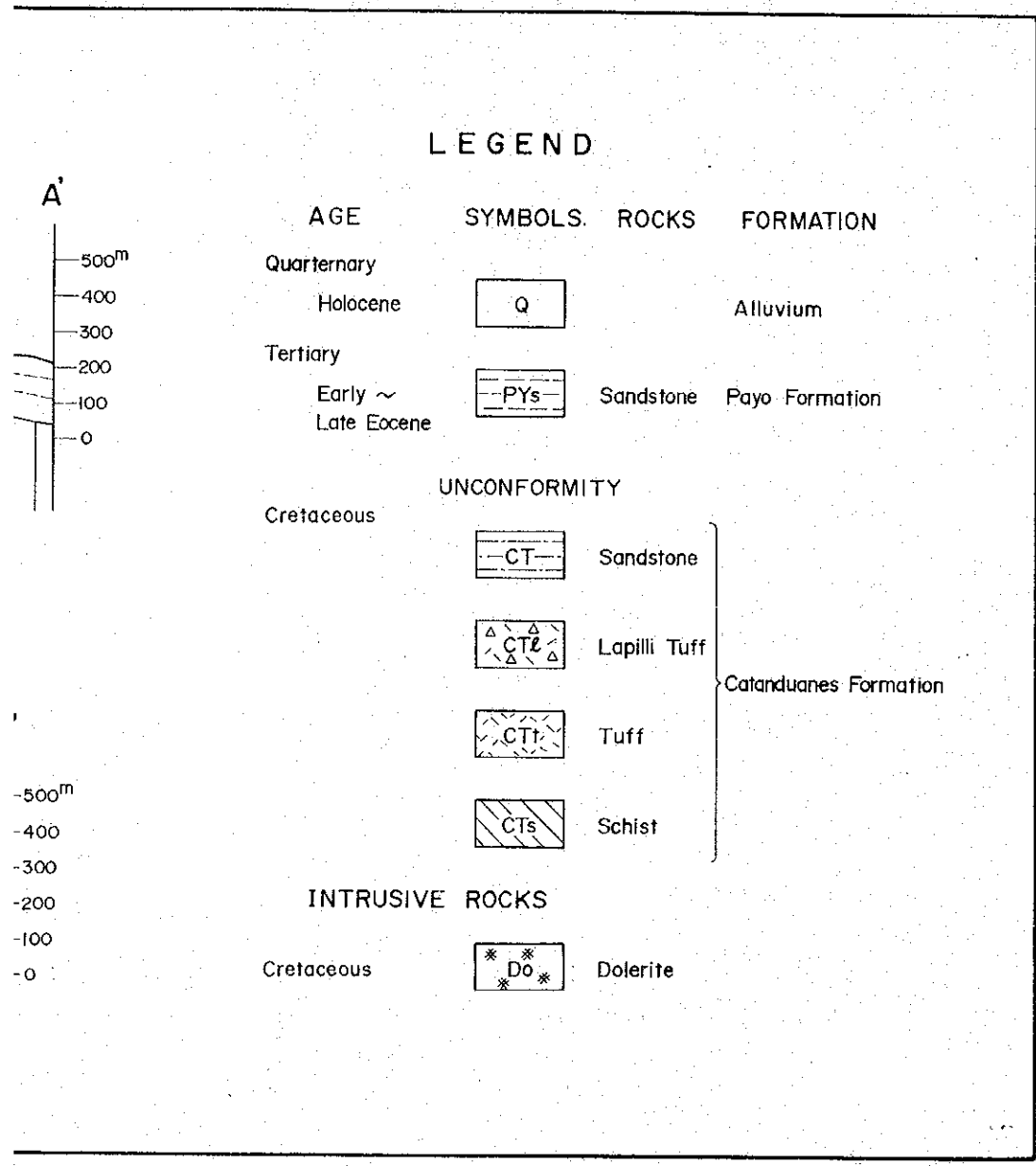
ALTERATION and MINERALIZATION



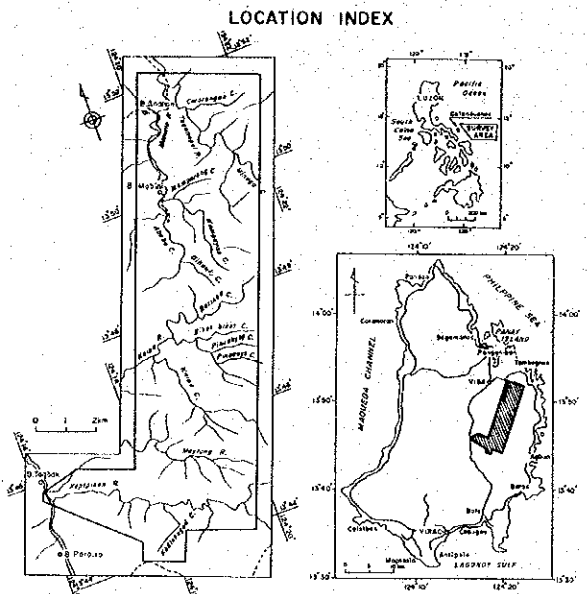
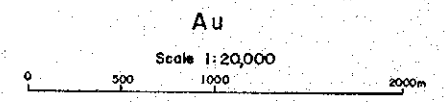








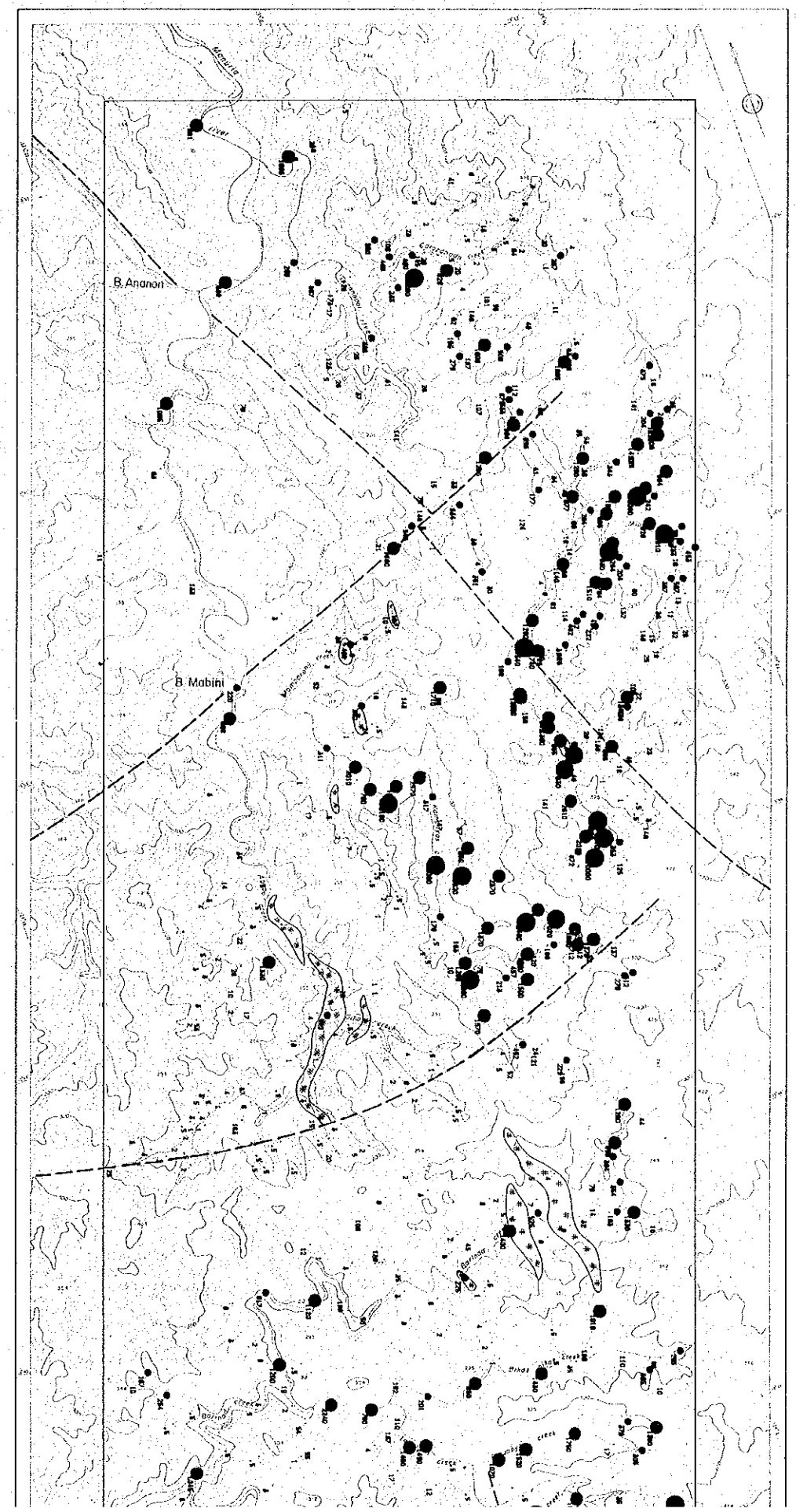
MINERAL EXPLORATION PL-4
 IN THE CATANDUANES AREA,
 THE REPUBLIC OF THE PHILIPPINES
 PHASE II
 GEOCHEMICAL ANOMALY OF STREAM SEDIMENTS



JAPAN INTERNATIONAL COOPERATION AGENCY
 METAL MINING AGENCY OF JAPAN
 January 1995

- LEGEND
- Au (ppb)
- : < 173.11
 - : < 677.12
 - : < 2648.62
 - : > 2648.62

- ++ Diorite
- xx Andesite porphyry
- * * Dolerite
- # # Gabbro
- - Fault



● : < 2648.62

● : > 2648.62

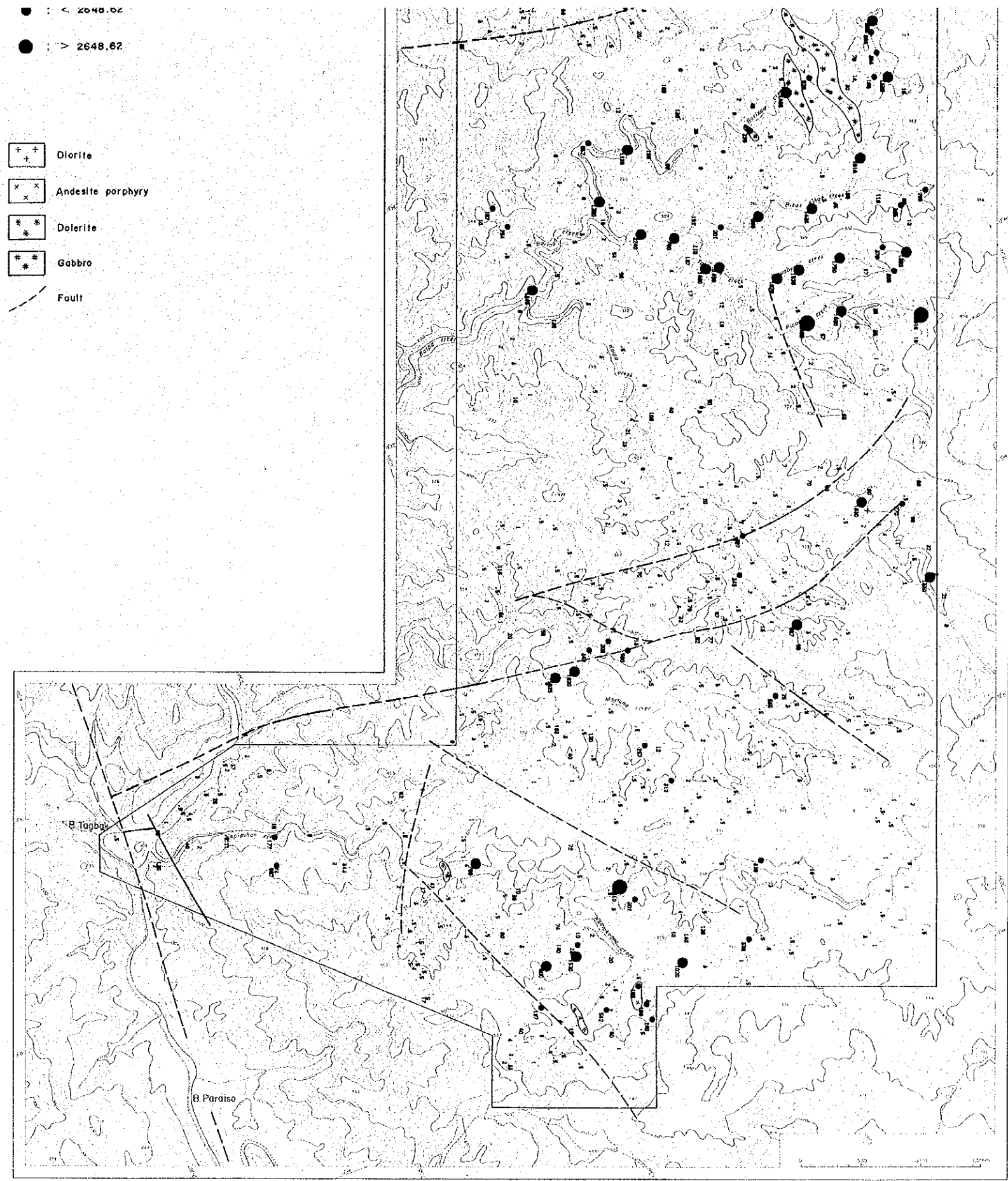
++ Diorite

x x Andesite porphyry

* * Dolerite

Gabbro

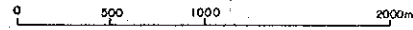
--- Fault



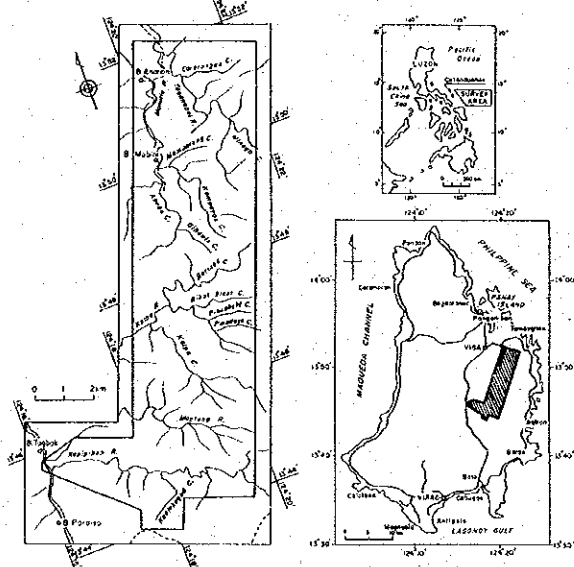
MINERAL EXPLORATION PL-5
 IN THE CATANDUANES AREA,
 THE REPUBLIC OF THE PHILIPPINES
 PHASE II
 GEOCHEMICAL ANOMALY OF STREAM SEDIMENTS

Ag

Scale 1:20,000



LOCATION INDEX



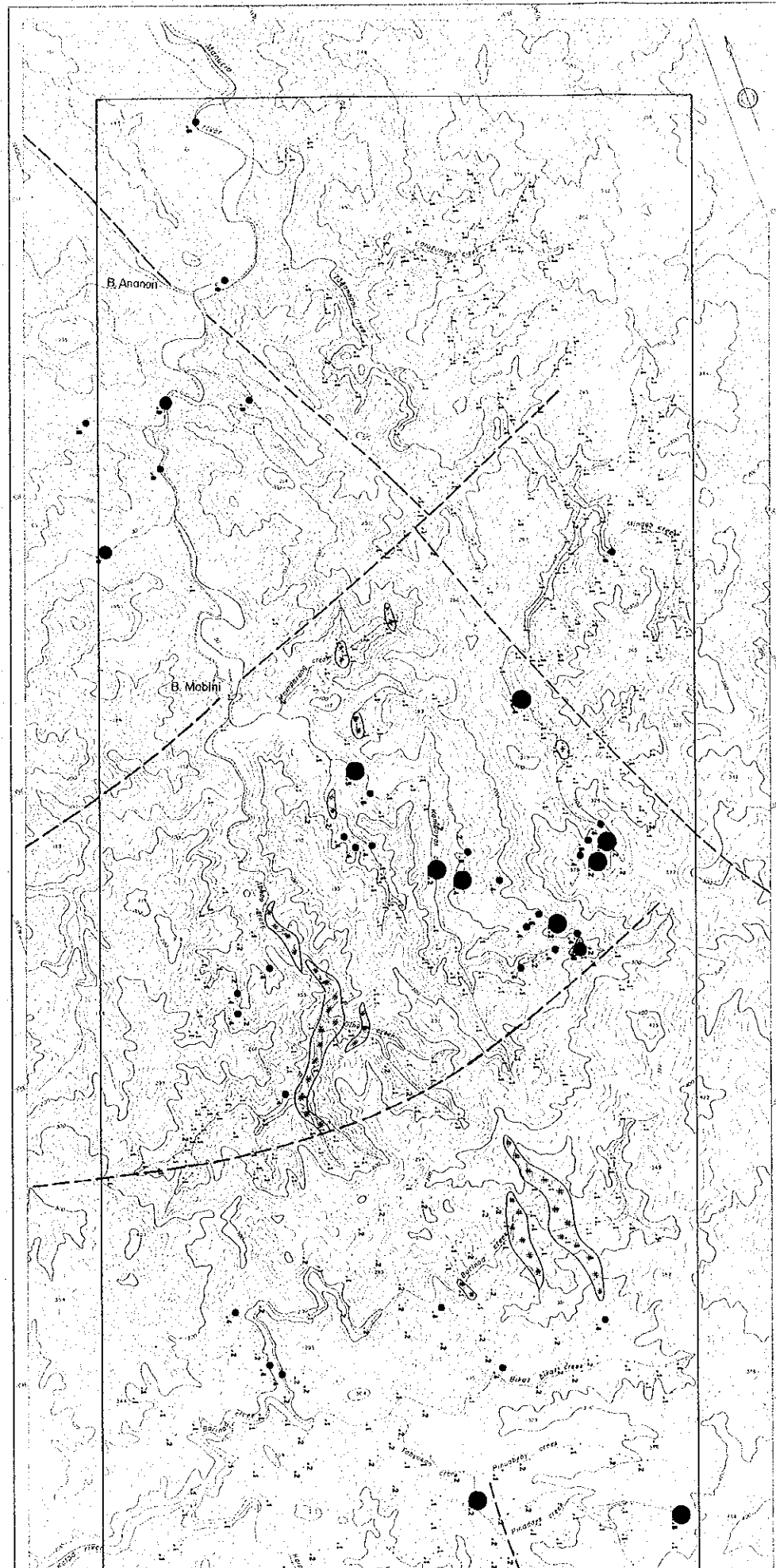
JAPAN INTERNATIONAL COOPERATION AGENCY
 METAL MINING AGENCY OF JAPAN
 January 1995

LEGEND

Ag (ppm)

- : < .24
- : < .74
- : < .98
- : > .98

- ++ Diorite
- xx Andesite porphyry
- * Dolerite
- # Gabbro
- - - Fault



● : V . 98

- + + Diorite
- x x Andesite porphyry
- * * Dolerite
- # # Gabbro
- Fault

