

REPORT
ON
THE COOPERATIVE MINERAL EXPLORATION
IN
THE CHIANG KHONG, DOI CHONG, RATCHABURI AREA,
THE KINGDOM OF THAILAND

PHASE I

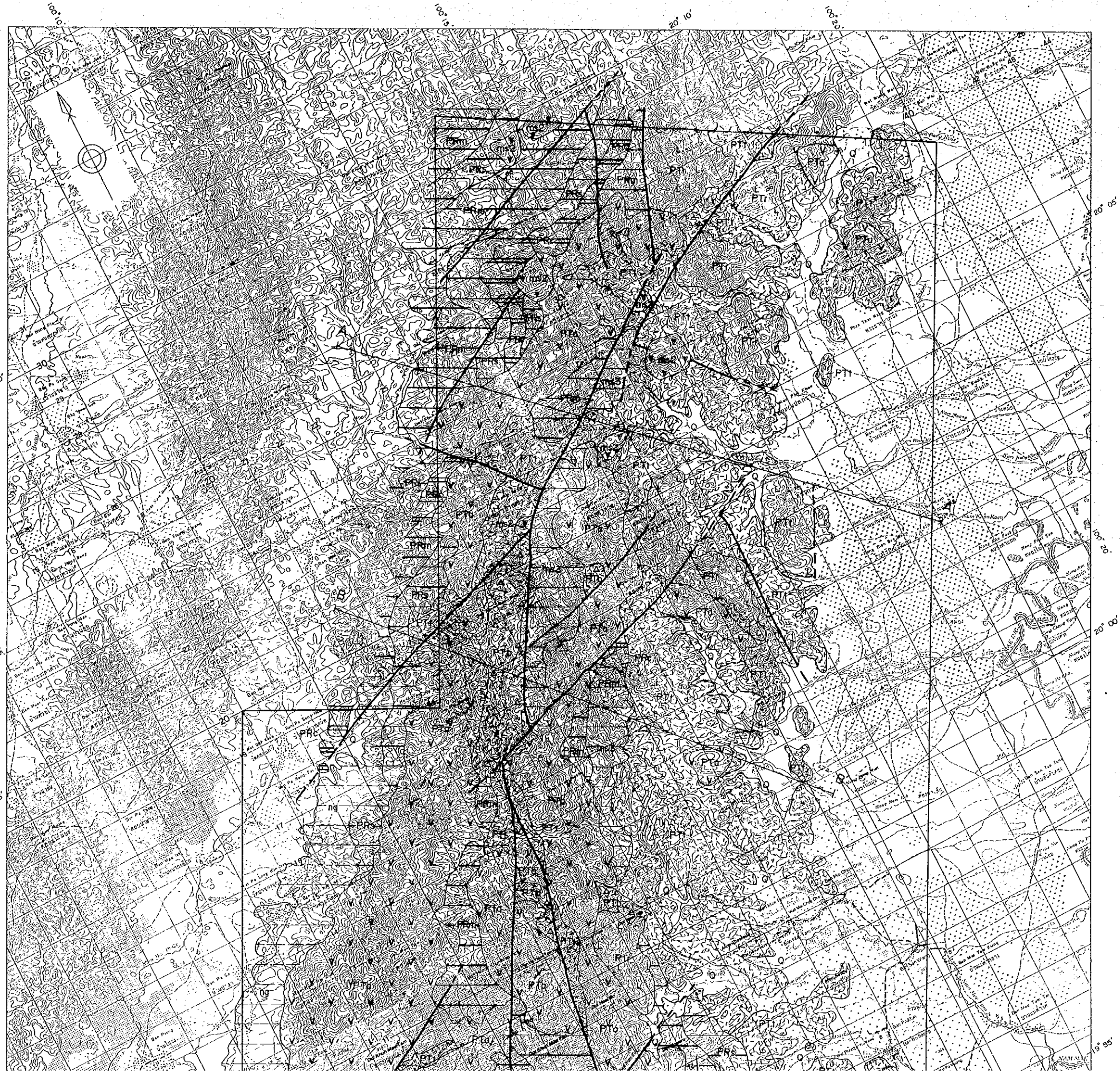
MARCH 1995

JICA LIBRARY

J 1124848(1)

JAPAN INTERNATIONAL COOPERATION AGENCY
METAL MINING AGENCY OF JAPAN

M P N
J R
95-057



PL-1

MINERAL EXPLORATION
OF
THE CHIANG KHONG, DOI CHONG, RATCHABURI AREA, THAILAND

PHASE I
GEOLOGIC MAP AND PROFILE
IN CHIANG KHONG AREA

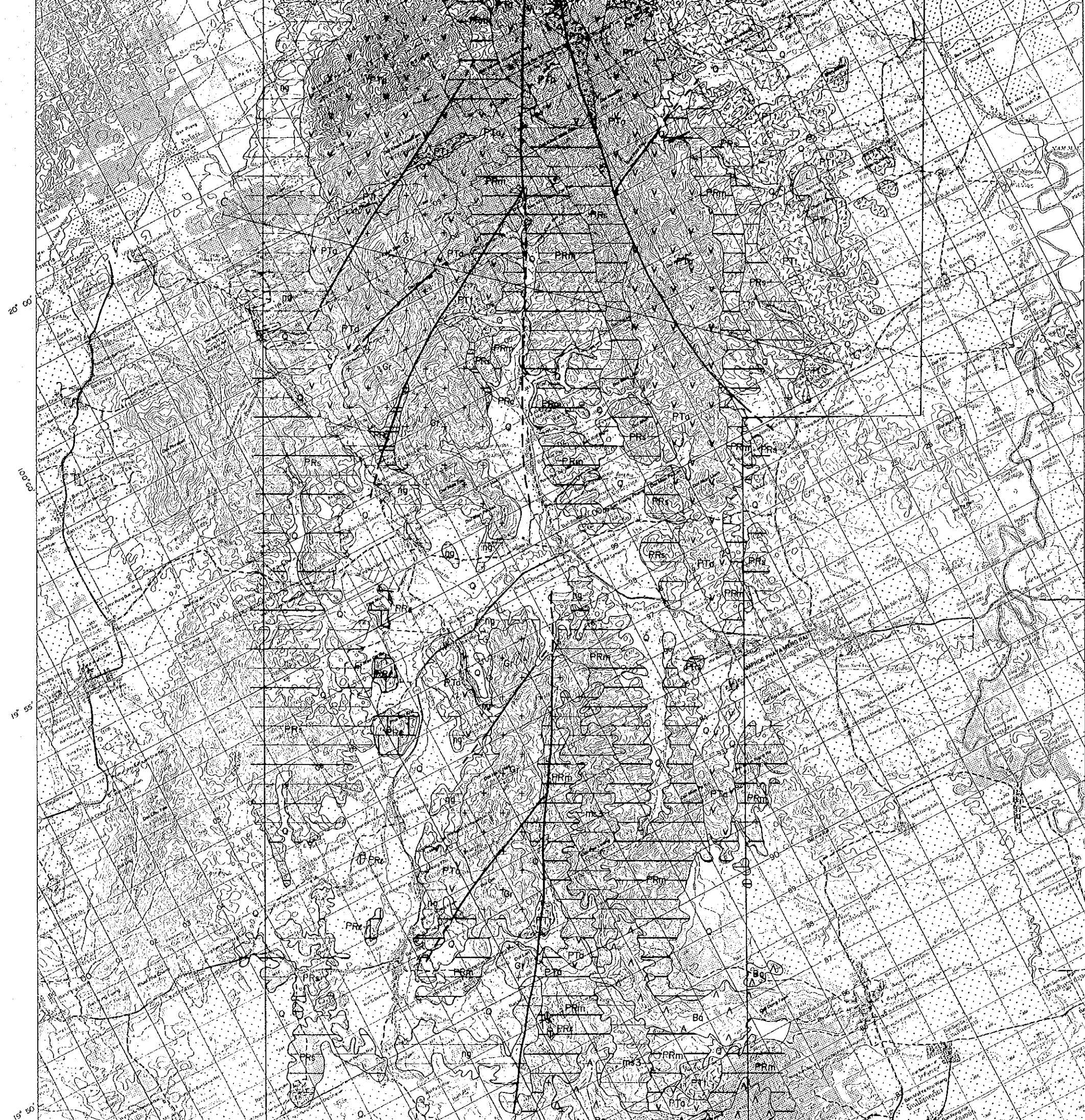
Scale 1:50,000

LOCATION INDEX

JAPAN INTERNATIONAL COOPERATION AGENCY
METAL MINING AGENCY OF JAPAN
Feb. 1995

LEGEND

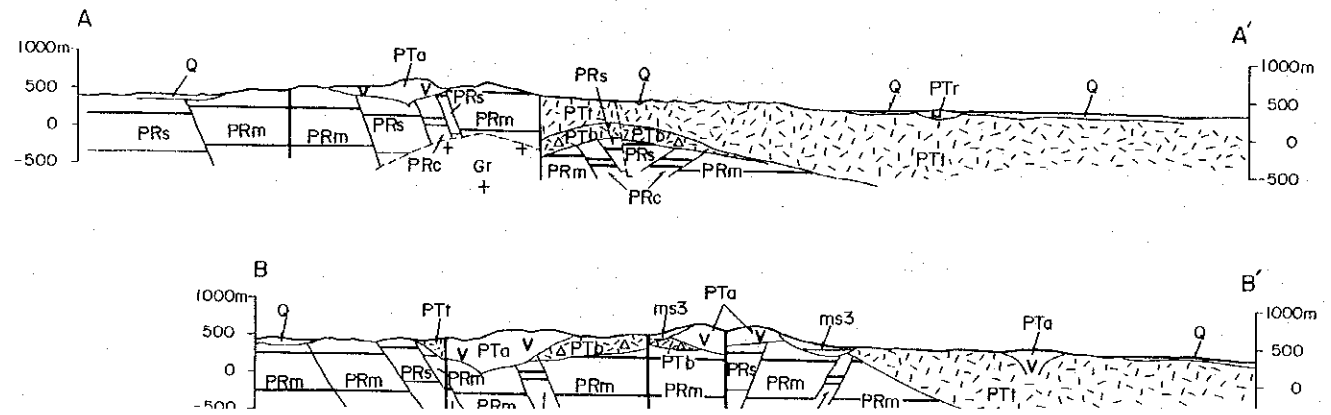
Sedimentary rocks		
AGE	SYMBOLS	Facies
Quaternary	Q	gravel, sand, clay
Tertiary	ng	siltstone
Jurassic	ms3	silt, conglomerate
Permo-Triassic	PTi	rhyolitic tuff, andesitic tuff
	PTb	andesitic tuff breccia
	PRl	limestone
	PRc	conglomerate



Jurassic	ms3	silt, conglomerate
Permo-Triassic	PTt	rhyolitic tuff, andesitic tuff
	PTb	andesitic tuff breccia
Permian	PRt	limestone
	PRc	conglomerate
	PRs	sandstone
	PRm	slate, phyllite
Igneous rocks		
AGE	SYMBOLS	Facies
Quaternary-Tertiary	Ba	olivine basalt
Jurassic	ms2	andesite, tuff
Triassic	Gr	hornblende-biotite granite
Permo-Triassic	PTa	andesite
	PTr	rhyolite

SYMBOLS

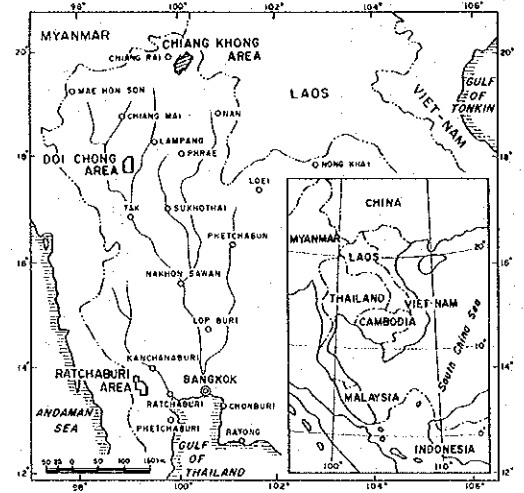
	Fault
	Strike and dip of bedding
	Profile line



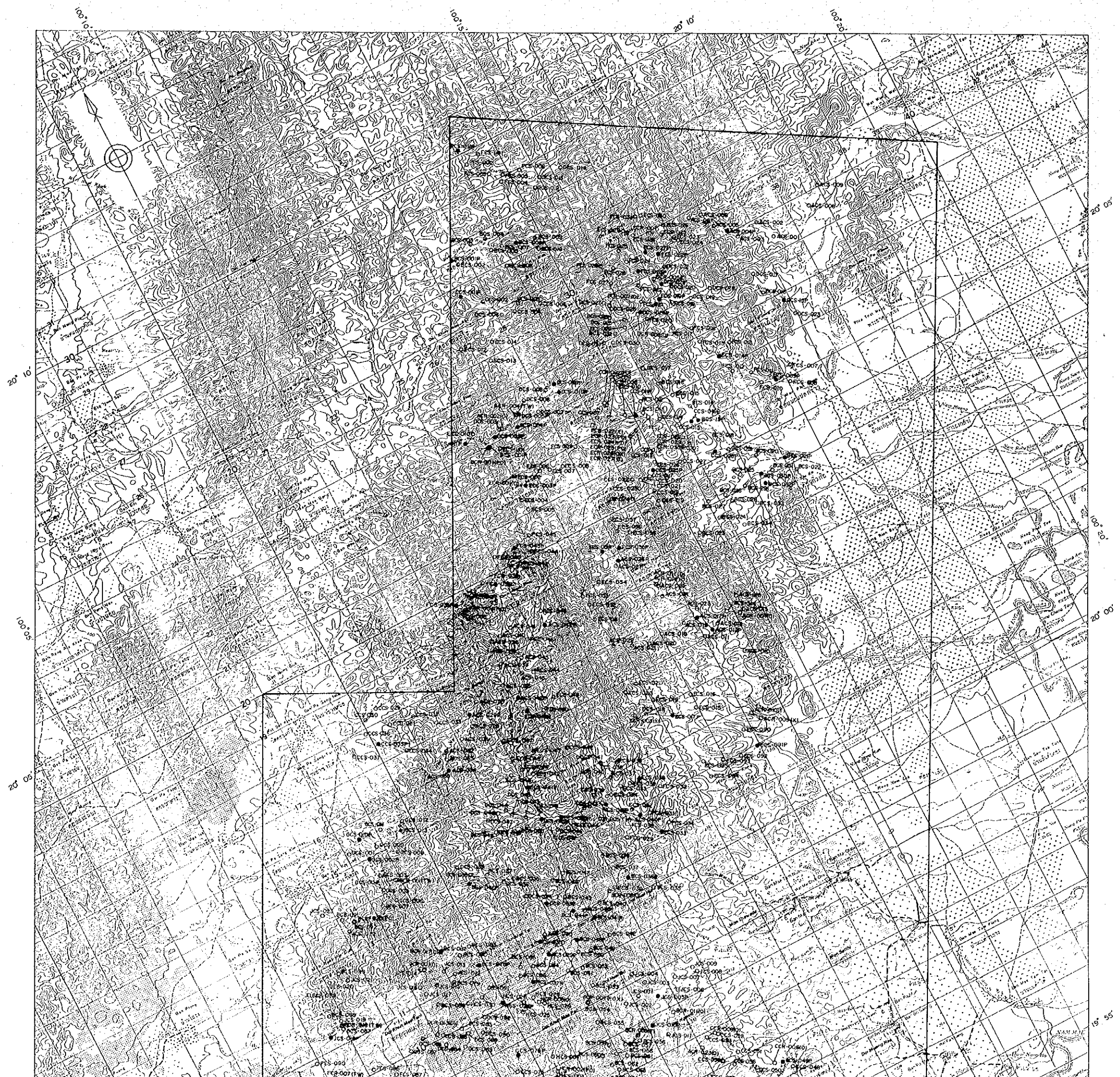
MINERAL EXPLORATION
OF
THE CHIANG KHONG, DOI CHONG, RATCHABURI AREA, THAILAND
PHASE I
SAMPLE LOCATION MAP IN CHIANG KHONG AREA

Scale 1:50,000
0 1 2 3 4 5km

LOCATION INDEX

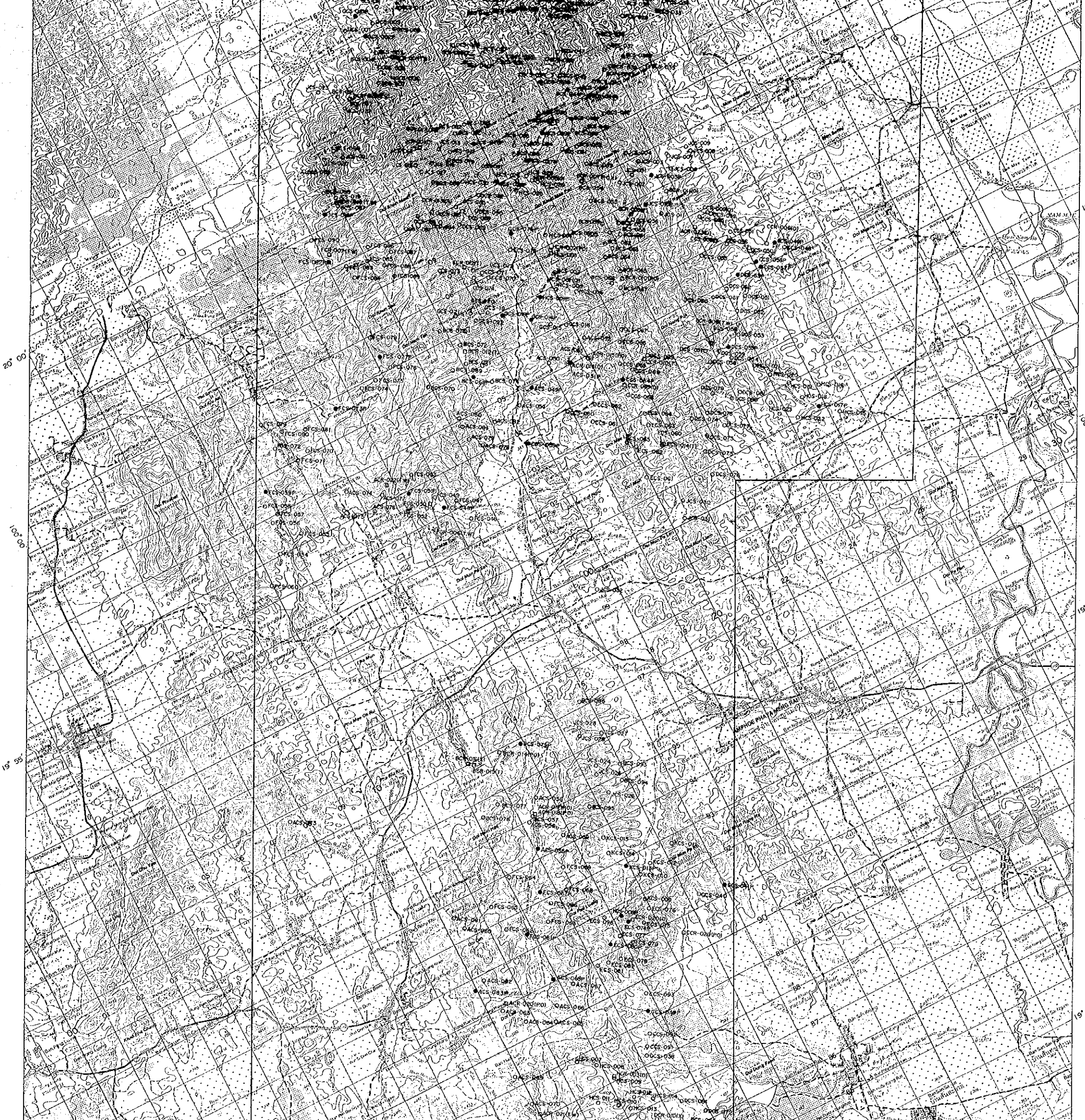


JAPAN INTERNATIONAL COOPERATION AGENCY
METAL MINING AGENCY OF JAPAN
Feb. 1995



LEGEND

- Stream Sediment ○ ACS-001
- Stream Sediment And Panning ● ACS-004P
- Rock Sample □ ACR-002 (P, T, O, W, X)
- Polished Thin Section



LEGEND

- Stream Sediment ○ ACS-001
 - Stream Sediment And Panning ● ACS-004P
 - Rock Sample □ ACR-002 (P, T, O, W, X)
-
- Polished Thin Section _____
 - Thin Section _____
 - Ore Analysis _____
 - Whole Rock Analysis _____
 - X-ray Diffraction _____

