

LEGEND

- : < 4.345228
- : < 6.565448
- ◐ : < 9.914081
- ◑ : < 14.02515
- : > 14.02515

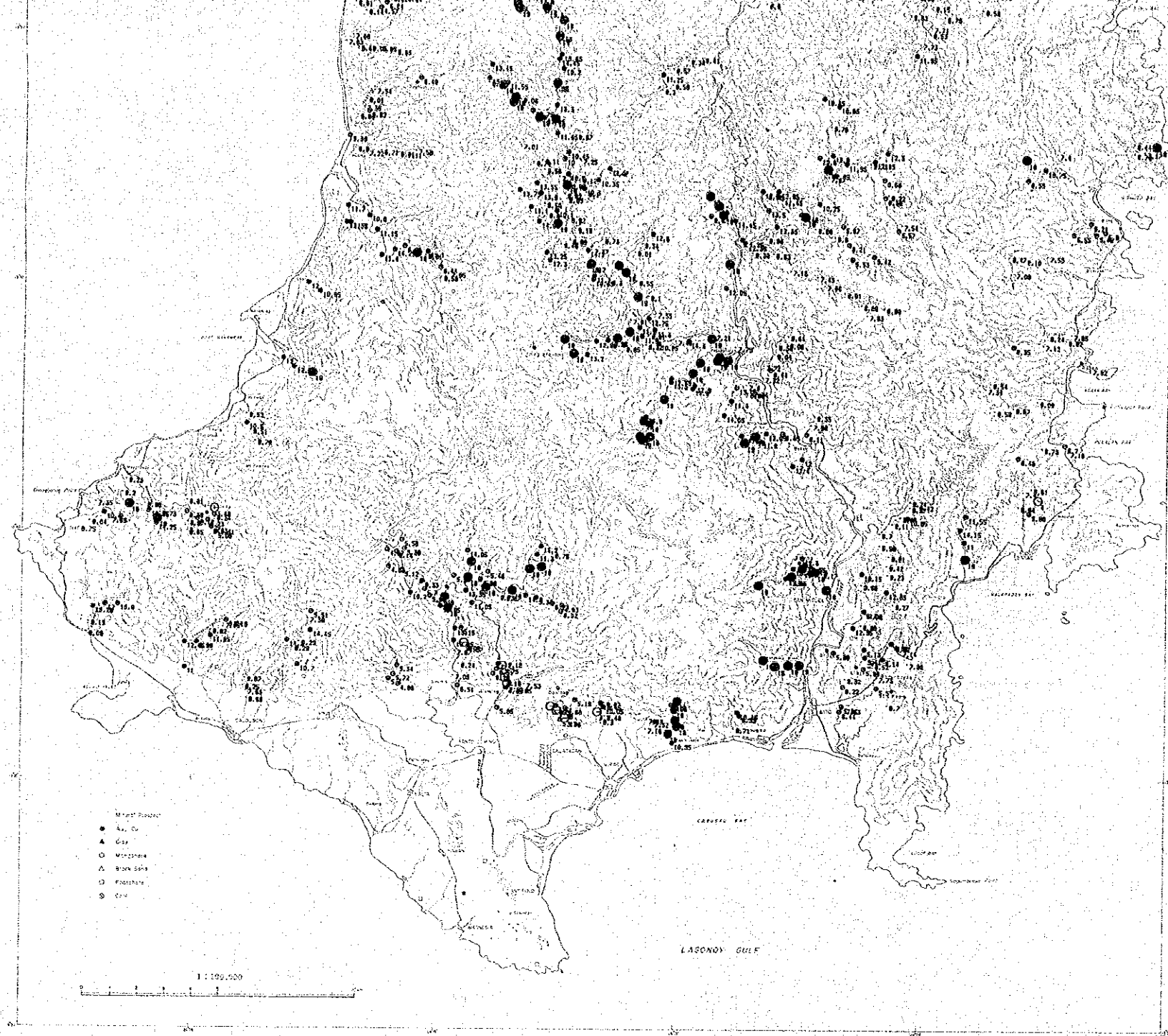
PL-8

MINERAL EXPLORATION
IN THE CATANDUANES AREA,
THE REPUBLIC OF THE PHILIPPINES
PHASE I
GEOCHEMICAL ANOMALY
OF STREAM SEDIMENTS
Fe

Scale 1:100,000
0 1 2 3 4 5 10km

LOCATION INDEX

JAPAN INTERNATIONAL COOPERATION AGENCY
METAL MINING AGENCY OF JAPAN
Feb. 1994

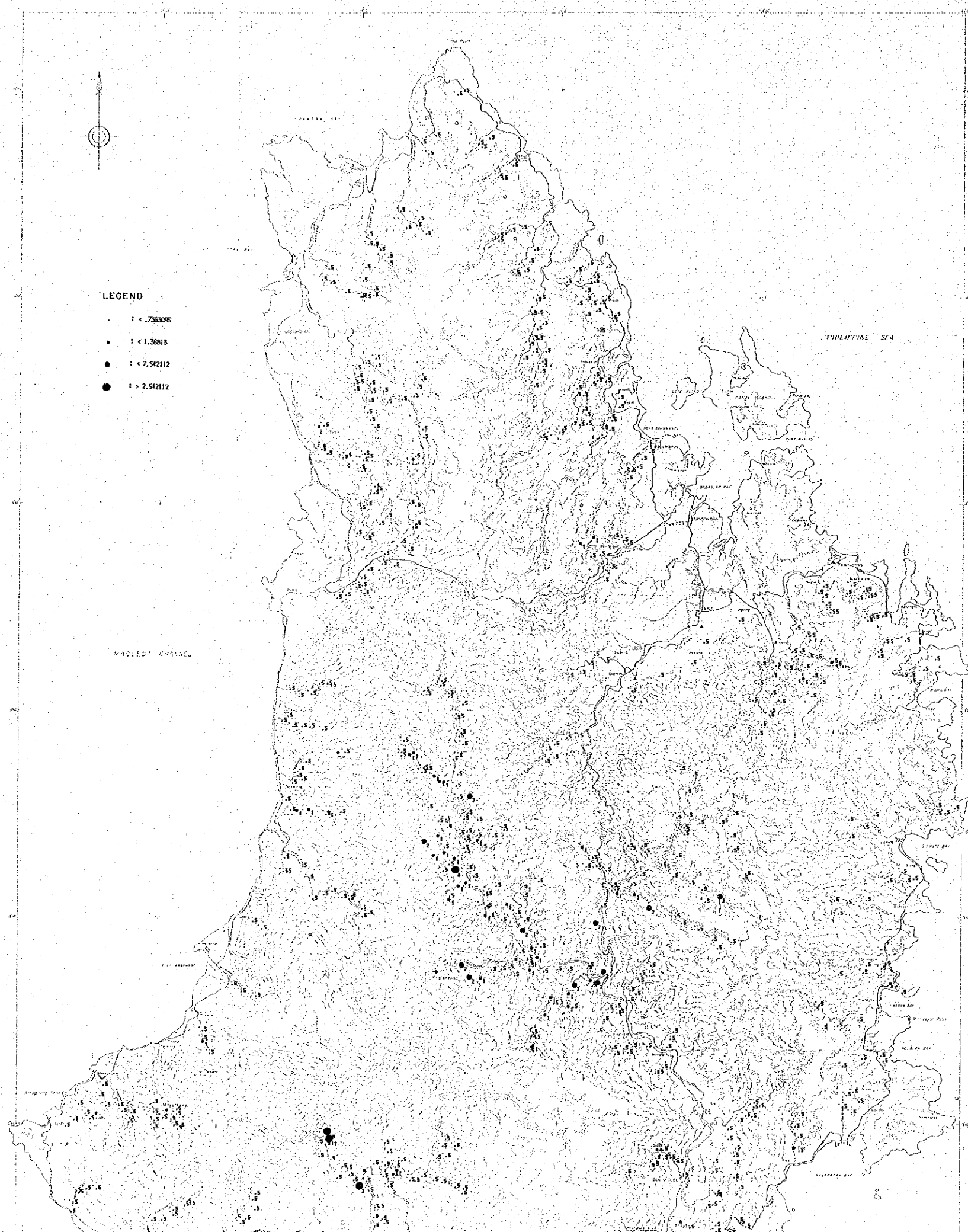


- Mud' Pond
- A. Co
 - ▲ G. S.
 - ◊ Mudstone
 - ▲ Bank salt
 - ◻ Footstone
 - Co

1:100,000

LACONNO GULF

CARACAS BAY



LEGEND

- : <math>1 < .736325</math>
- : <math>1 < 1.36813</math>
- : <math>1 < 2.542112</math>
- : $1 > 2.542112$

PL-9

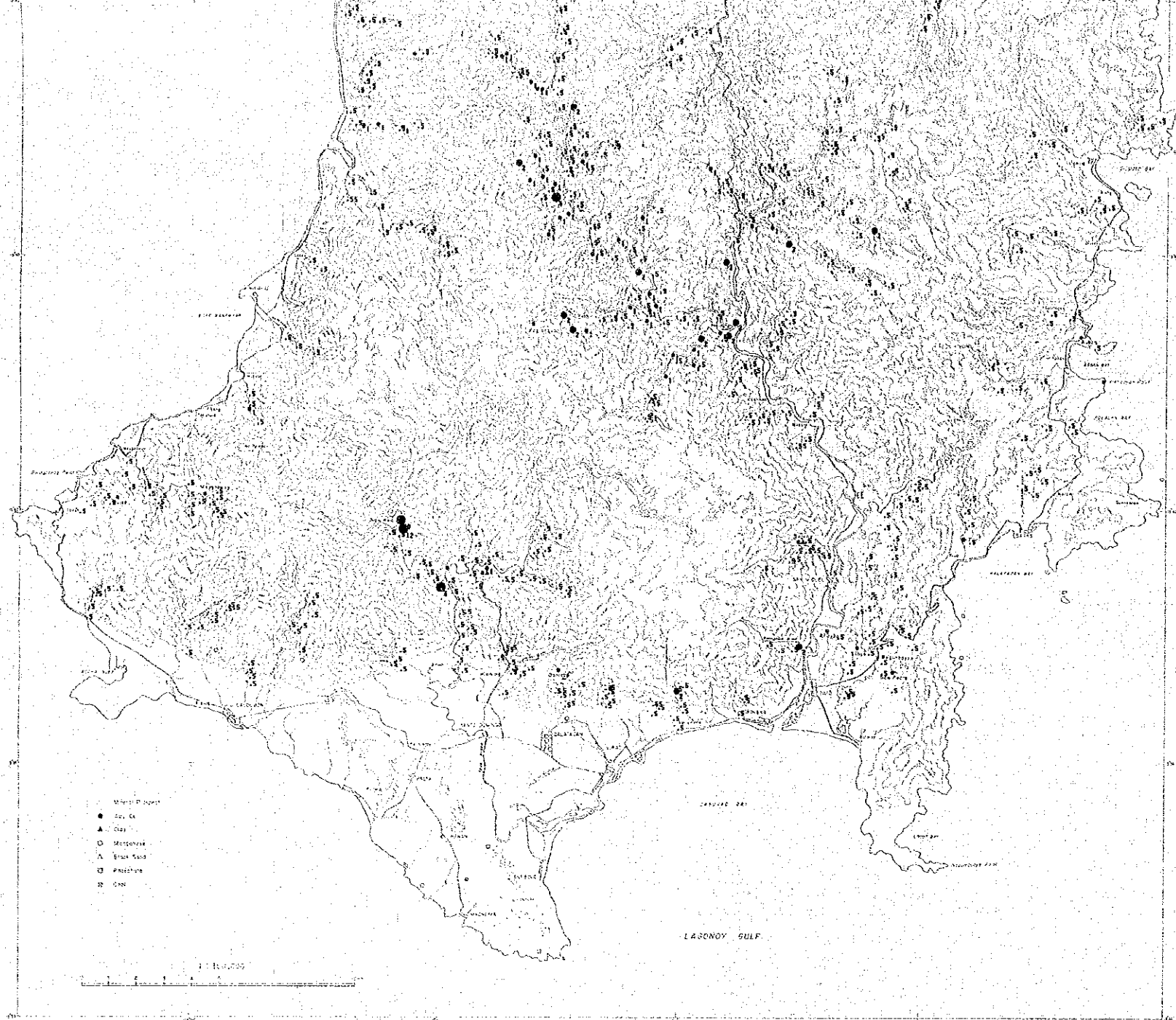
MINERAL EXPLORATION
IN THE CATANDUANES AREA,
THE REPUBLIC OF THE PHILIPPINES
PHASE I
GEOCHEMICAL ANOMALY
OF STREAM SEDIMENTS
Hg

Scale 1:100,000

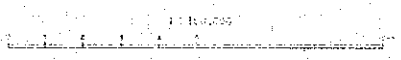
0 1 2 3 4 5 10km

LOCATION INDEX

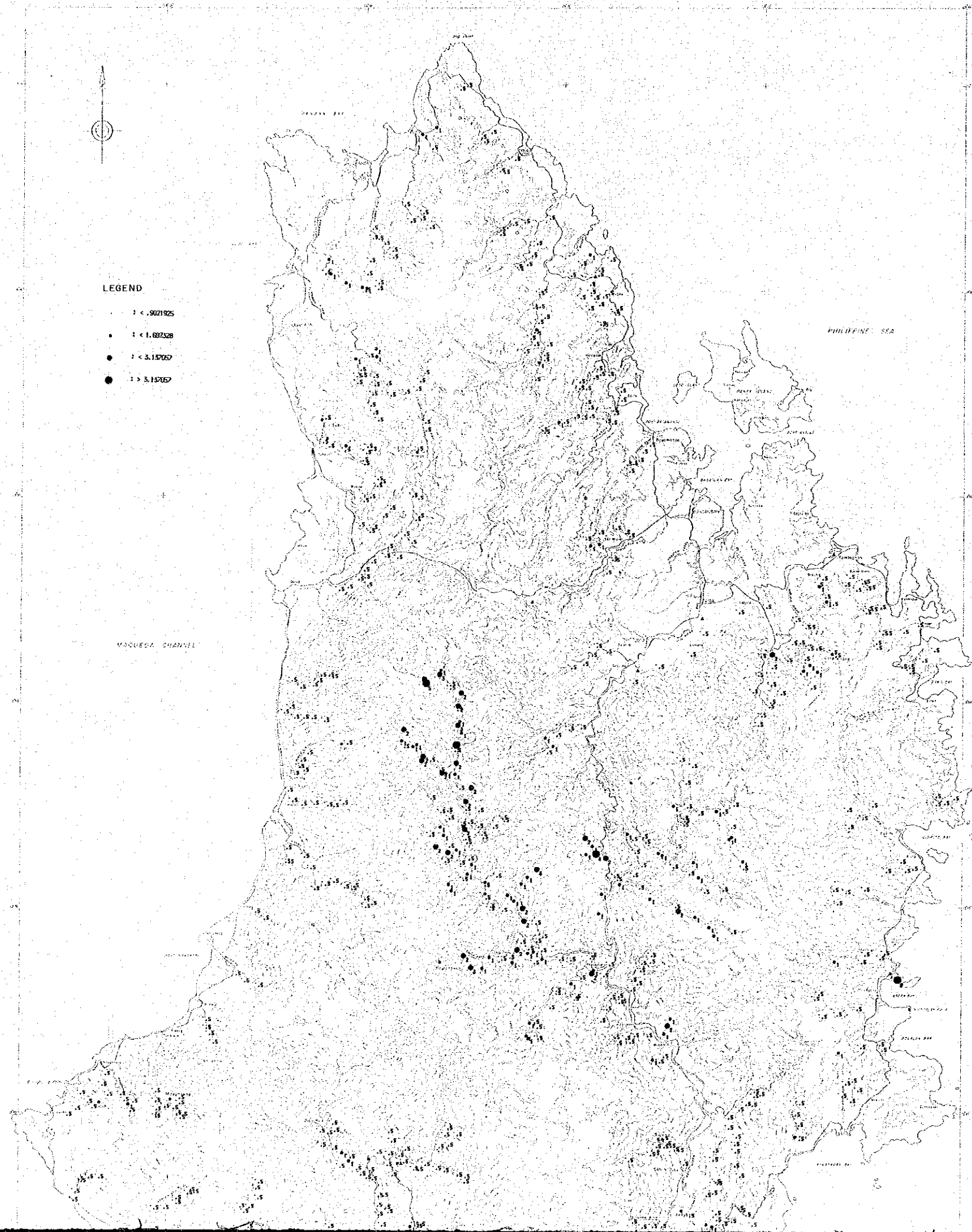
JAPAN INTERNATIONAL COOPERATION AGENCY
METAL MINING AGENCY OF JAPAN
Feb. 1994



- Mineral Property
- City
- ▲ Clay
- Manganese
- △ Iron Sand
- Pasture
- Cane



LAGOON GULF

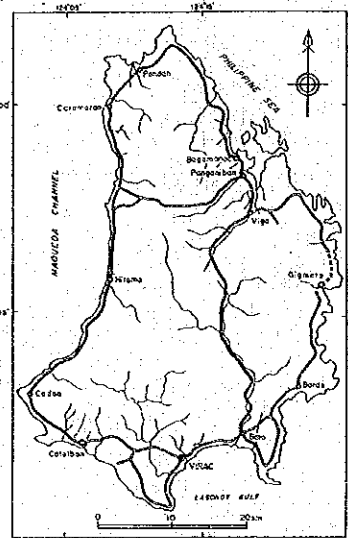
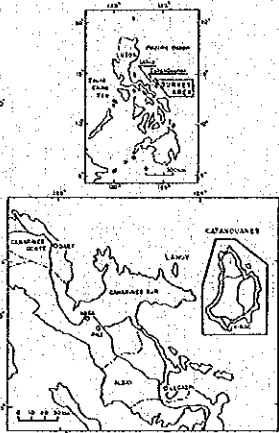


- LEGEND**
- 1 < .9021925
 - 1 < 1.692328
 - 1 < 3.157657
 - 1 > 3.157657

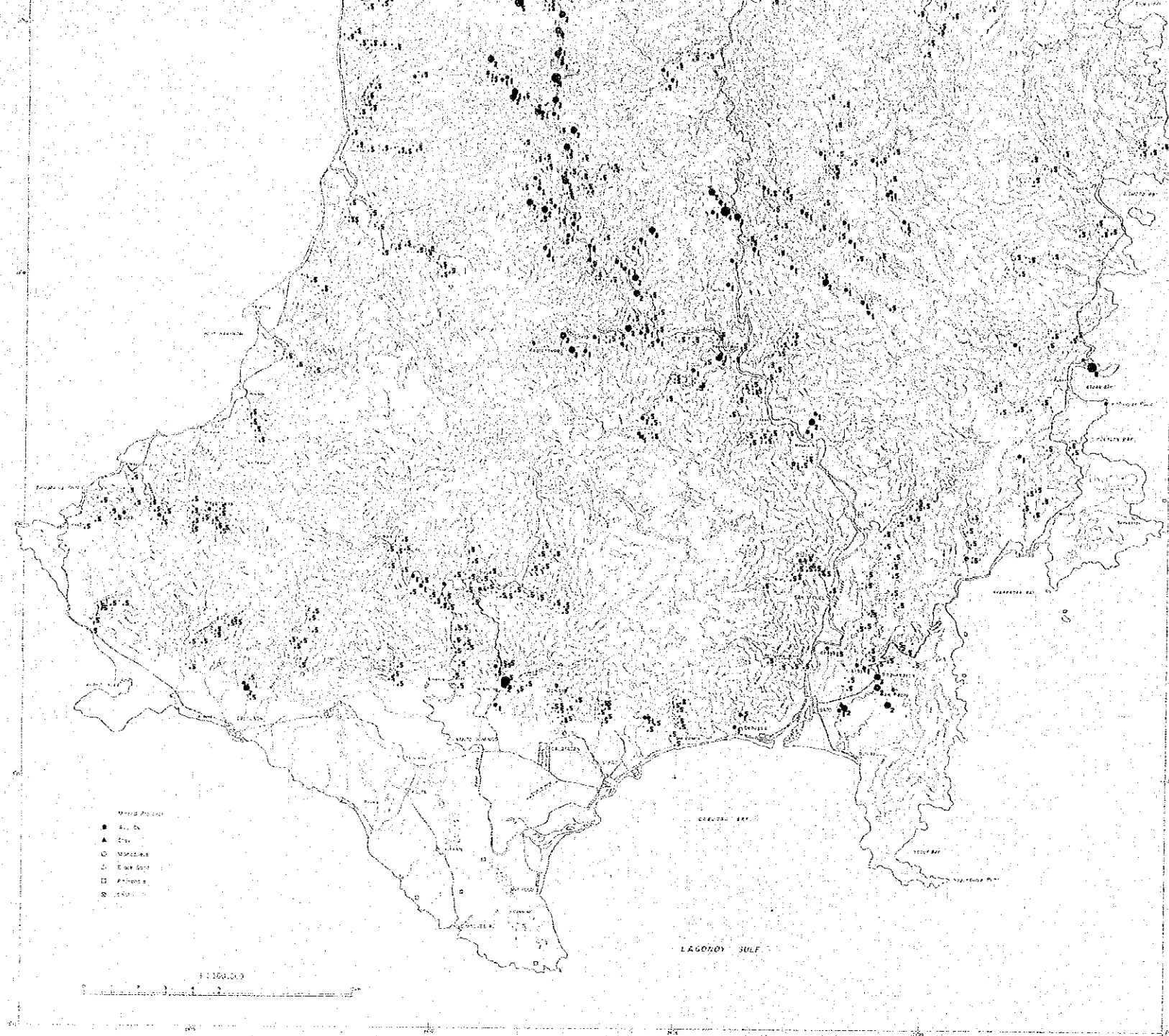
MINERAL EXPLORATION PL-10
 IN THE CATANDUANES AREA,
 THE REPUBLIC OF THE PHILIPPINES
 PHASE I
 GEOCHEMICAL ANOMALY
 OF STREAM SEDIMENTS
 Mo

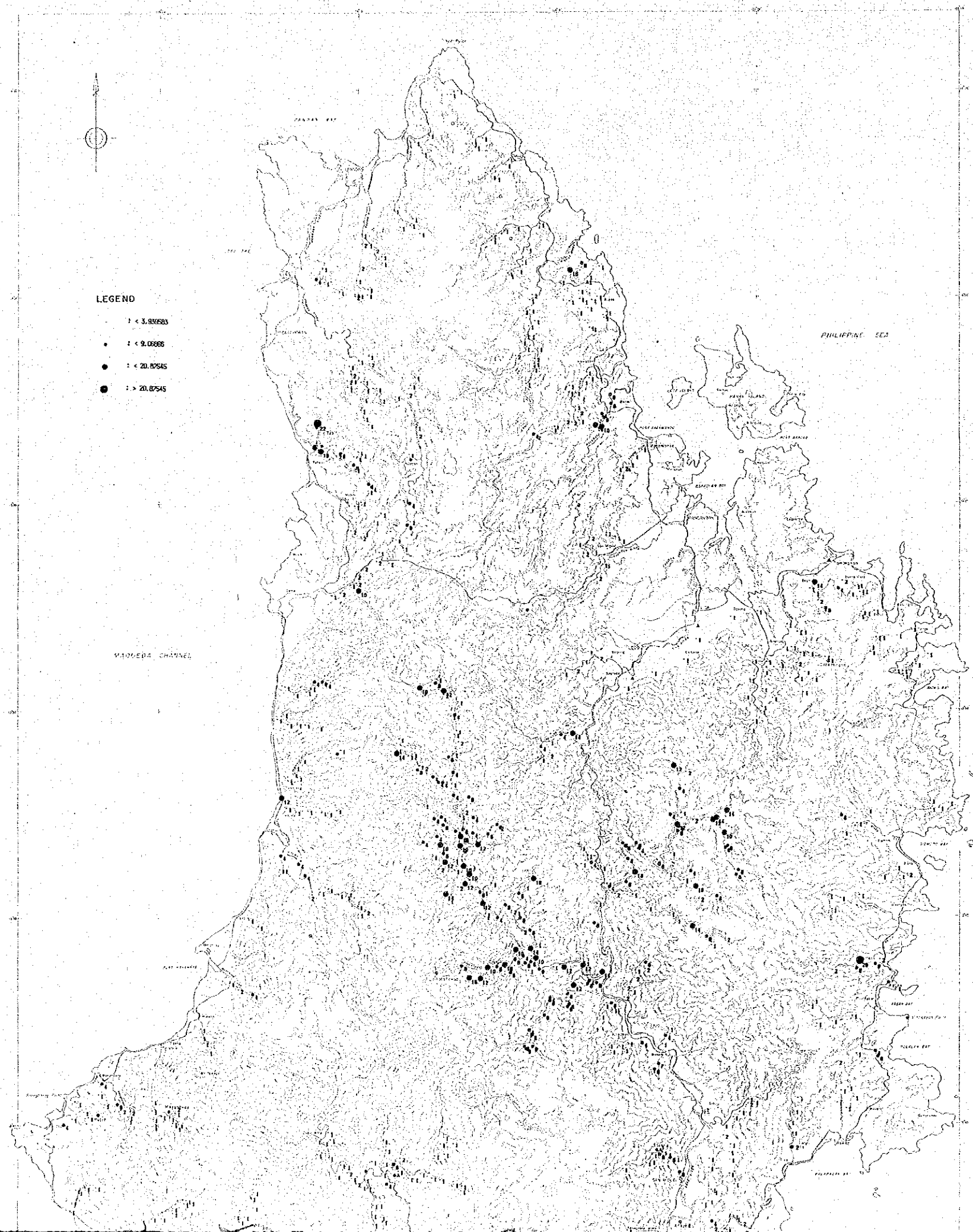
Scale 1:100,000
 0 1 2 3 4 5 10km

LOCATION INDEX

JAPAN INTERNATIONAL COOPERATION AGENCY
 METAL MINING AGENCY OF JAPAN
 Feb. 1994





LEGEND

- $Pb < 3.93683$
- $Pb < 9.06986$
- $Pb < 20.87545$
- $Pb > 20.87545$

PL-11

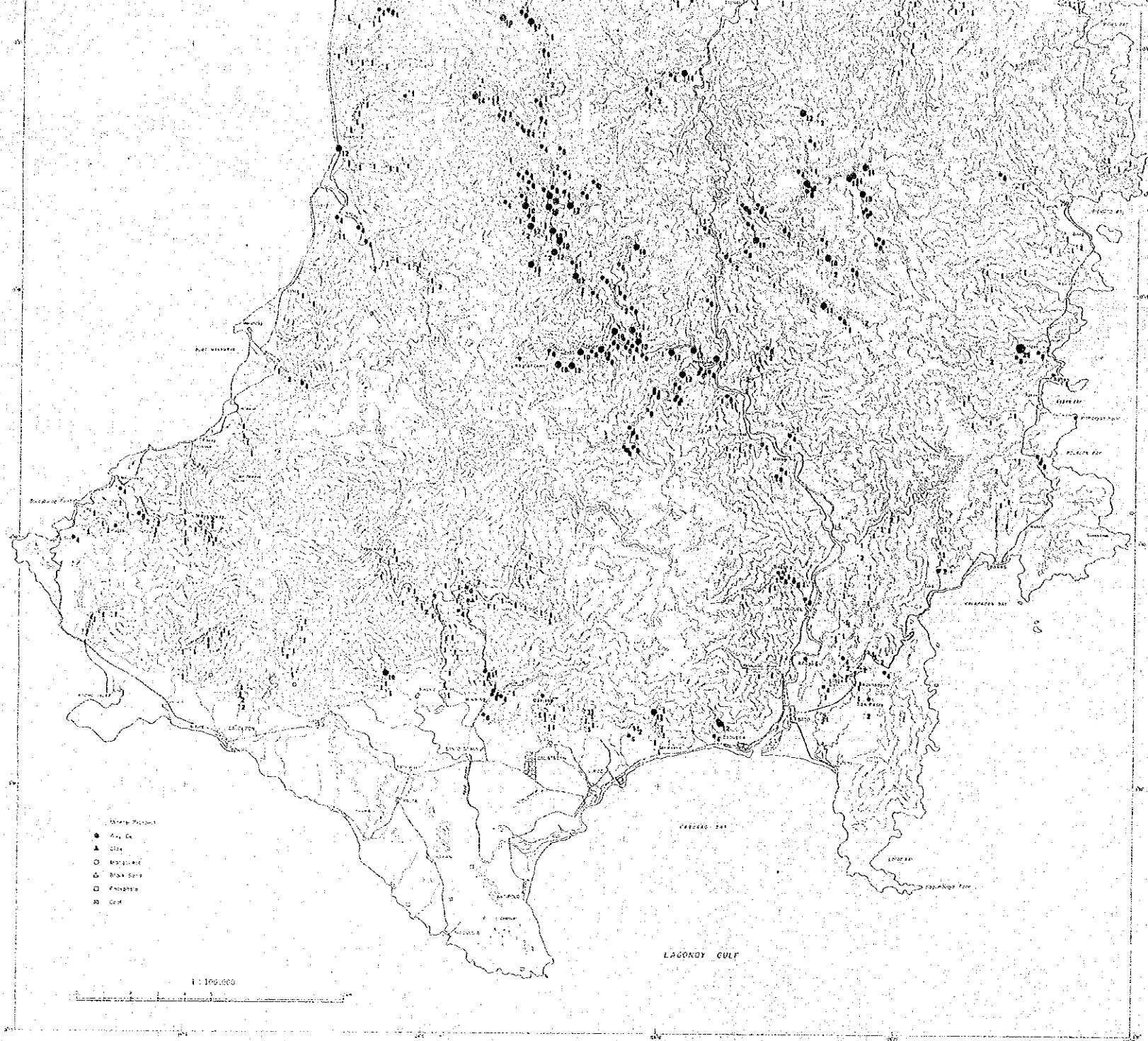
MINERAL EXPLORATION
IN THE CATANDUANES AREA,
THE REPUBLIC OF THE PHILIPPINES
PHASE I
GEOCHEMICAL ANOMALY
OF STREAM SEDIMENTS
Pb

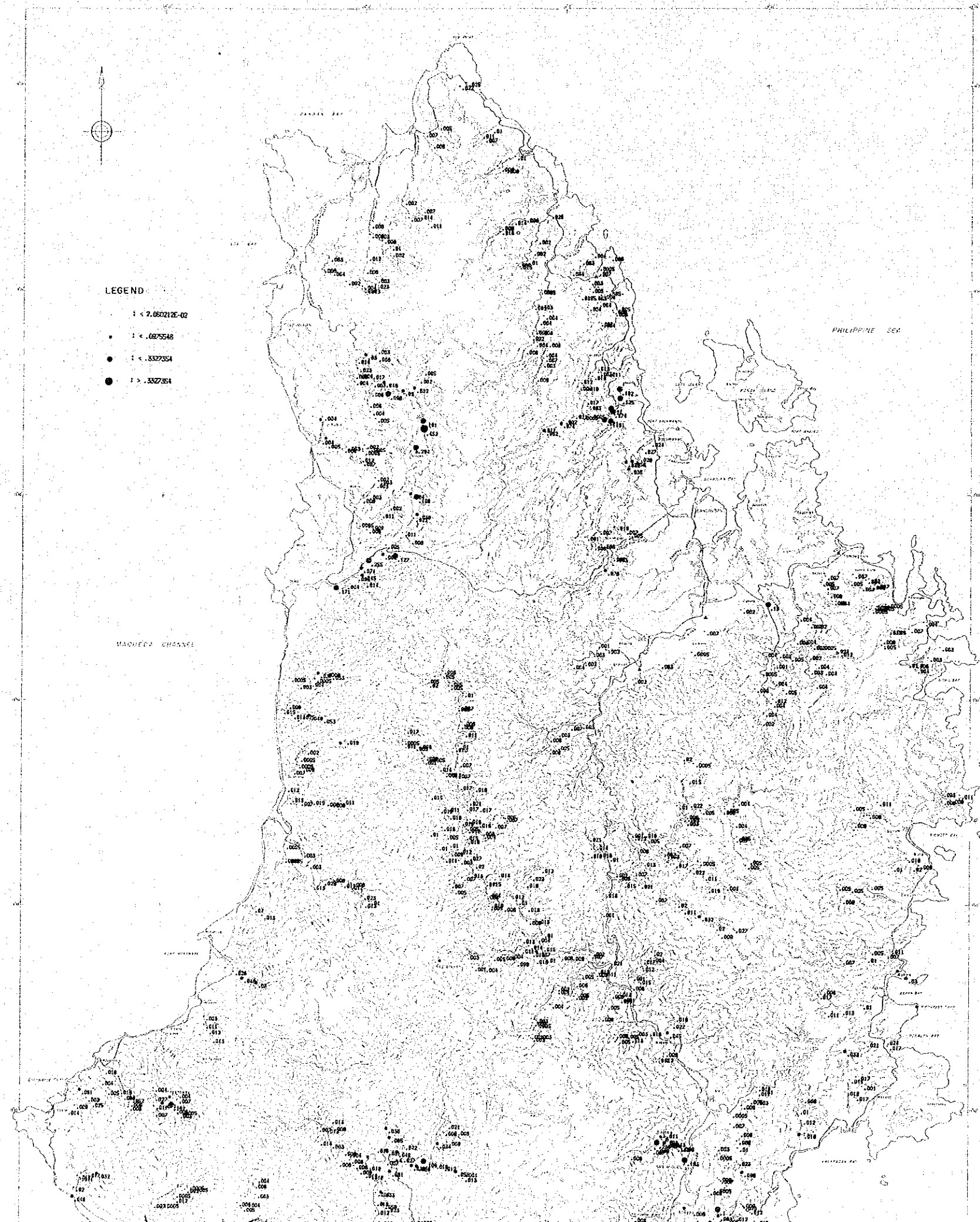
Scale 1:100,000

0 1 2 3 4 5 10km

LOCATION INDEX

JAPAN INTERNATIONAL COOPERATION AGENCY
METAL MINING AGENCY OF JAPAN
Feb. 1994





LEGEND

- $1 < 7.65021E-02$
- $1 < .0675548$
- $1 < .8327354$
- $1 > .8327354$

MINERAL EXPLORATION PL-12

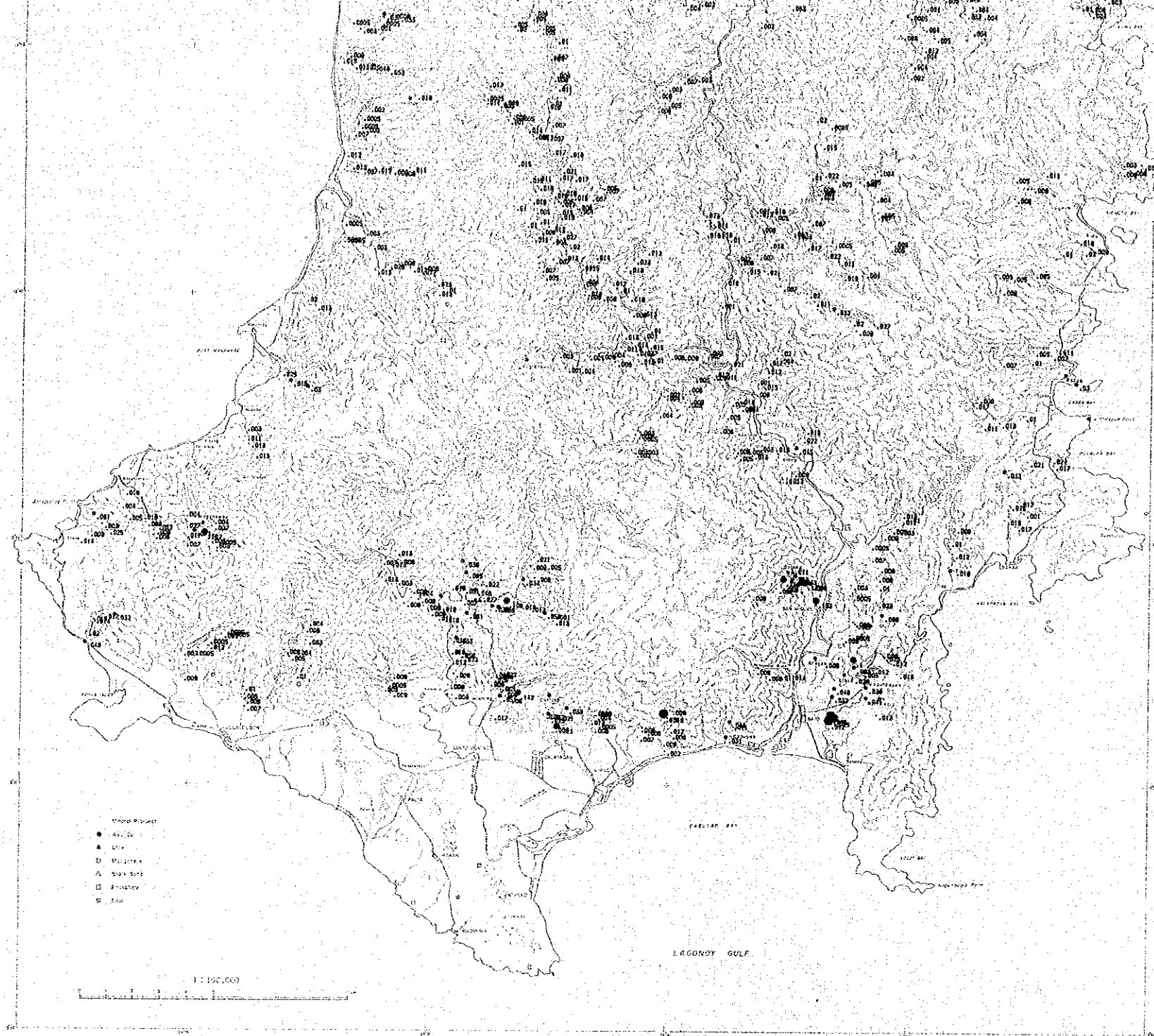
IN THE CATANDUANES AREA,
THE REPUBLIC OF THE PHILIPPINES
PHASE I
GEOCHEMICAL ANOMALY
OF STREAM SEDIMENTS
S

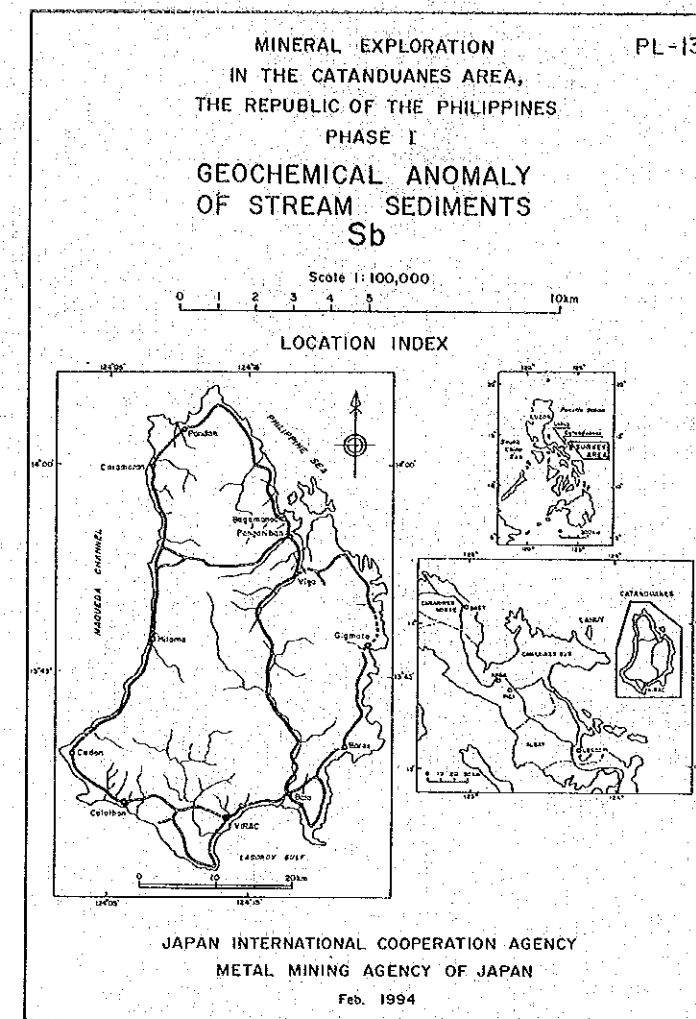
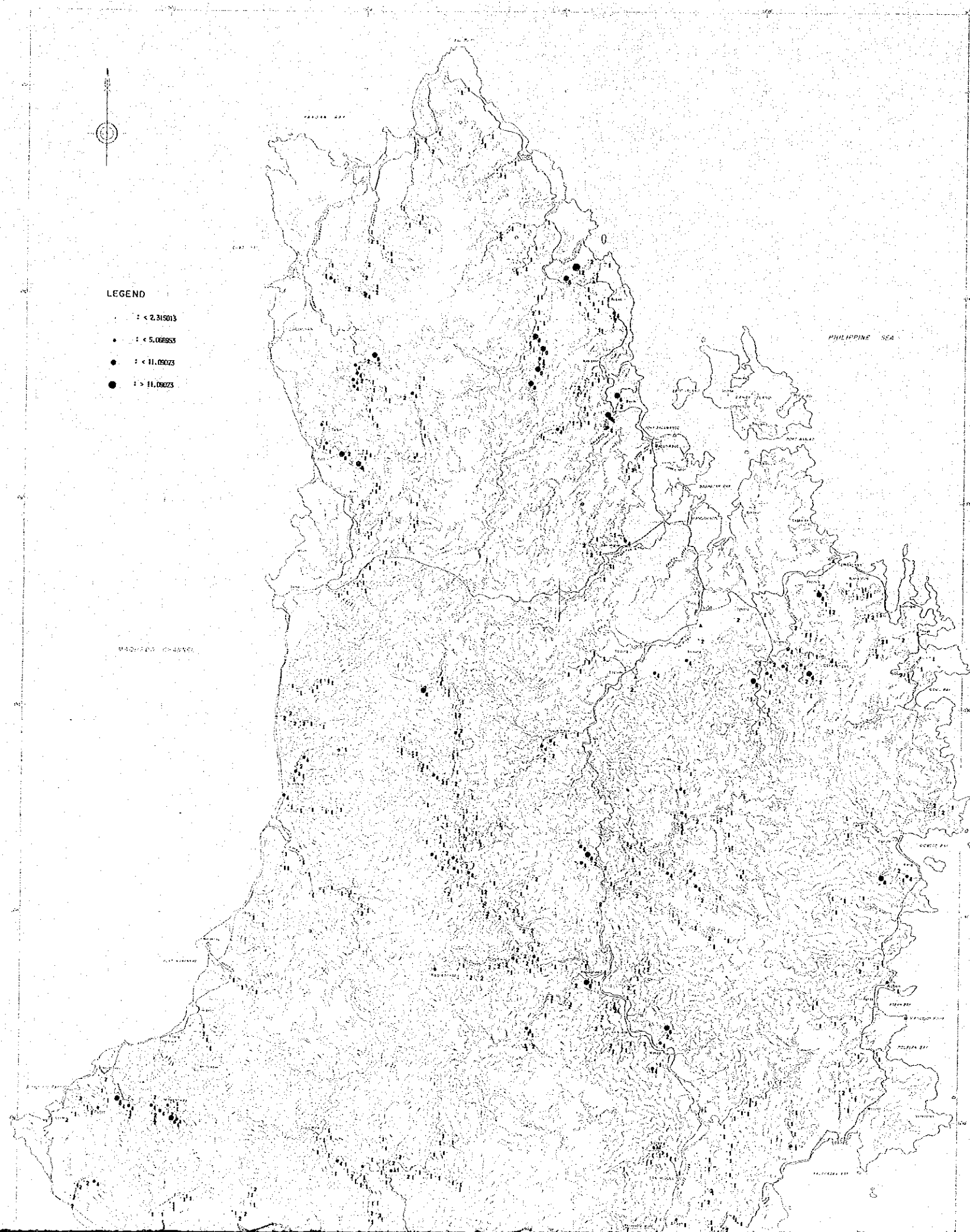
Scale 1:100,000

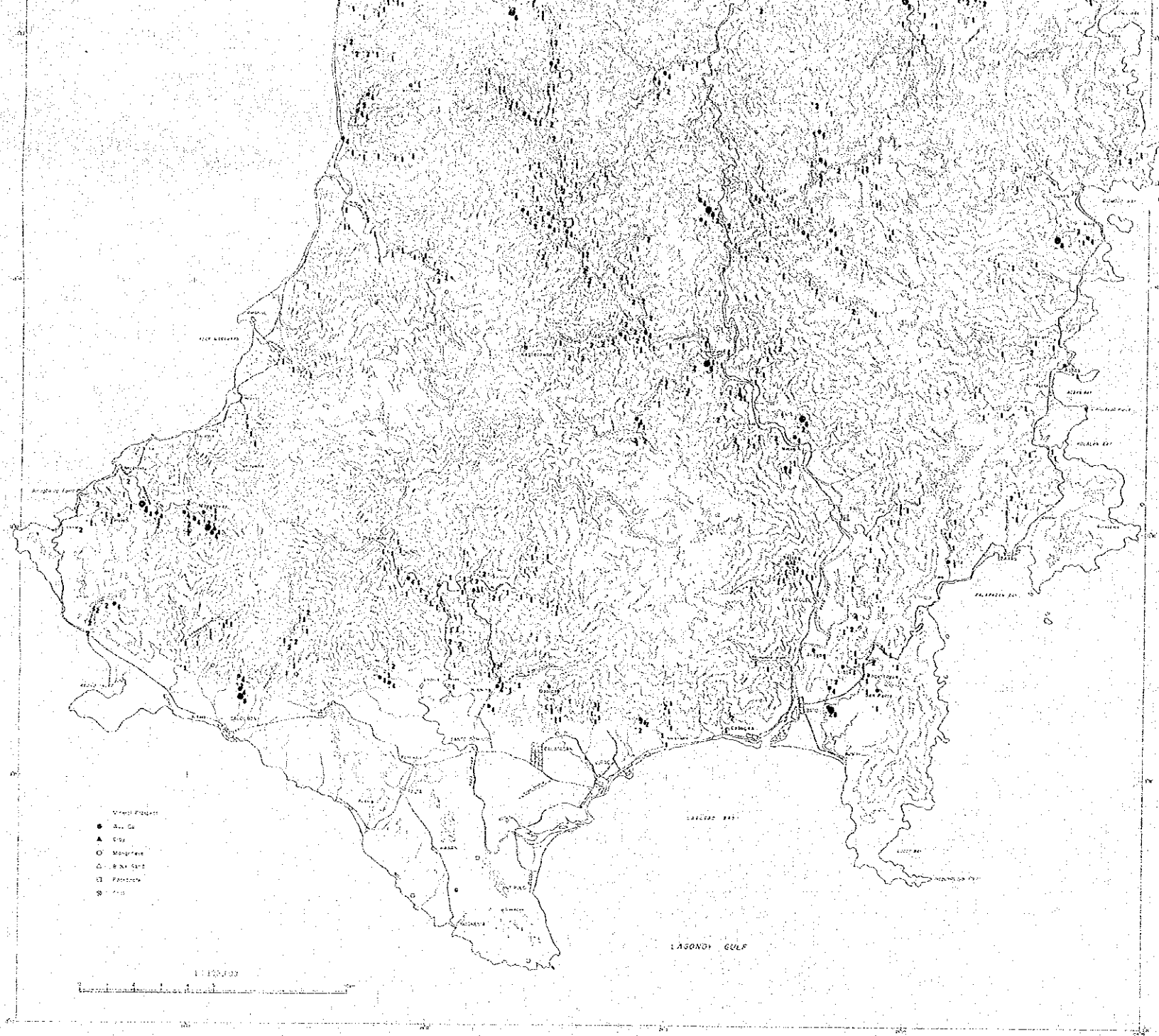
0 1 2 3 4 5 10km

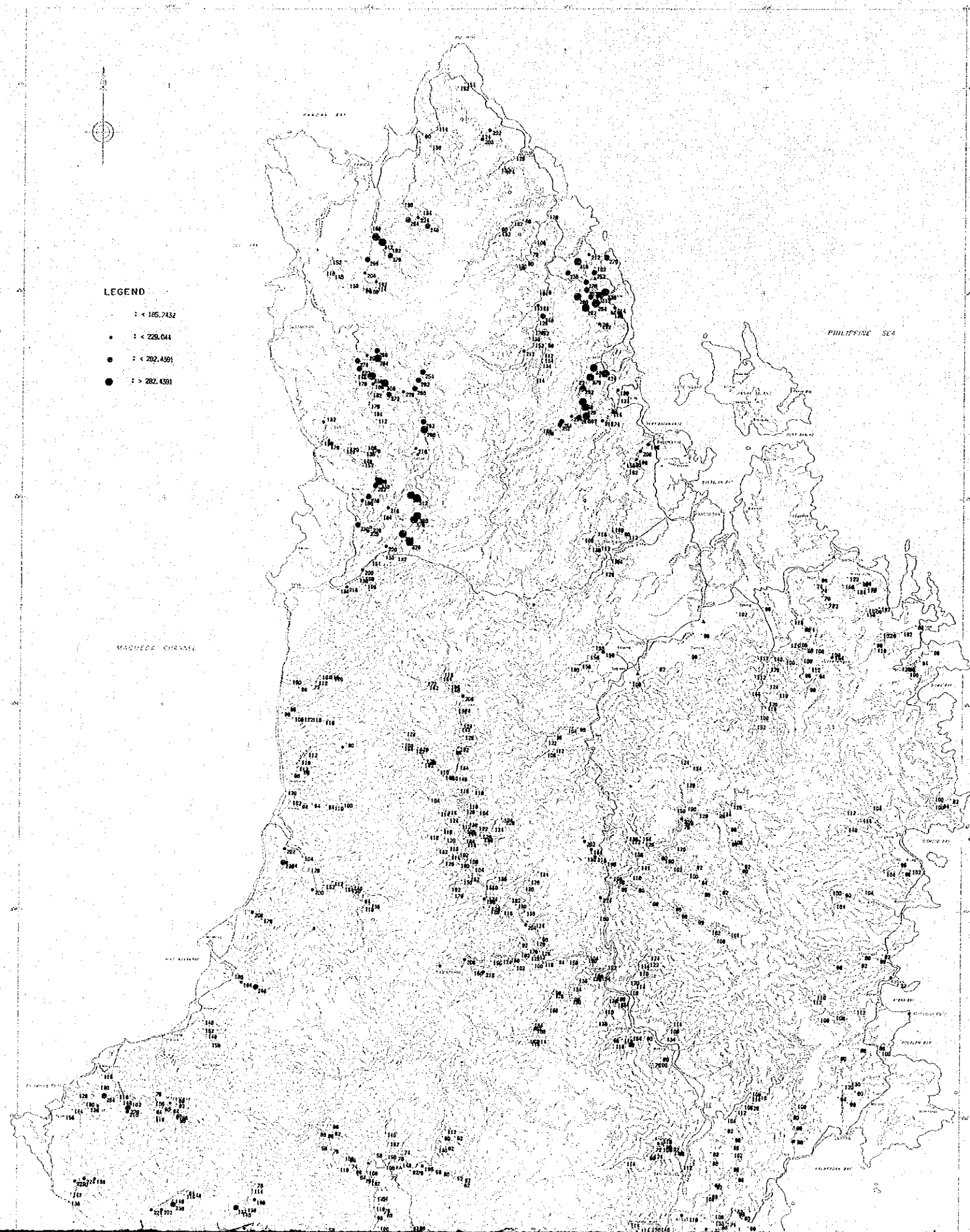
LOCATION INDEX

JAPAN INTERNATIONAL COOPERATION AGENCY
METAL MINING AGENCY OF JAPAN
Feb. 1994









LEGEND

- : < 185.7432
- : < 229.044
- : < 282.4391
- : > 282.4391

PL-14

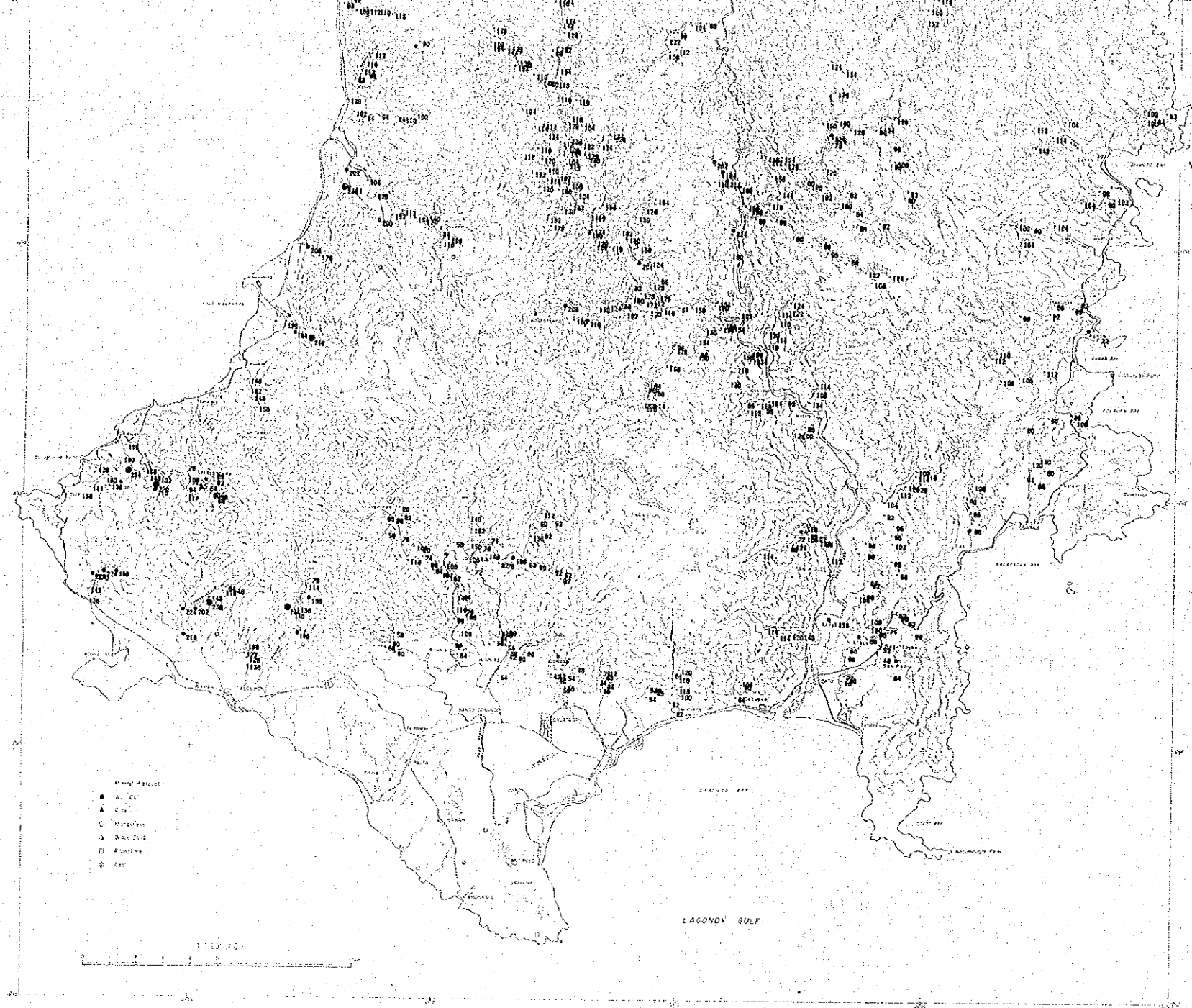
MINERAL EXPLORATION
IN THE CATANDUANES AREA,
THE REPUBLIC OF THE PHILIPPINES
PHASE I
GEOCHEMICAL ANOMALY
OF STREAM SEDIMENTS
Z

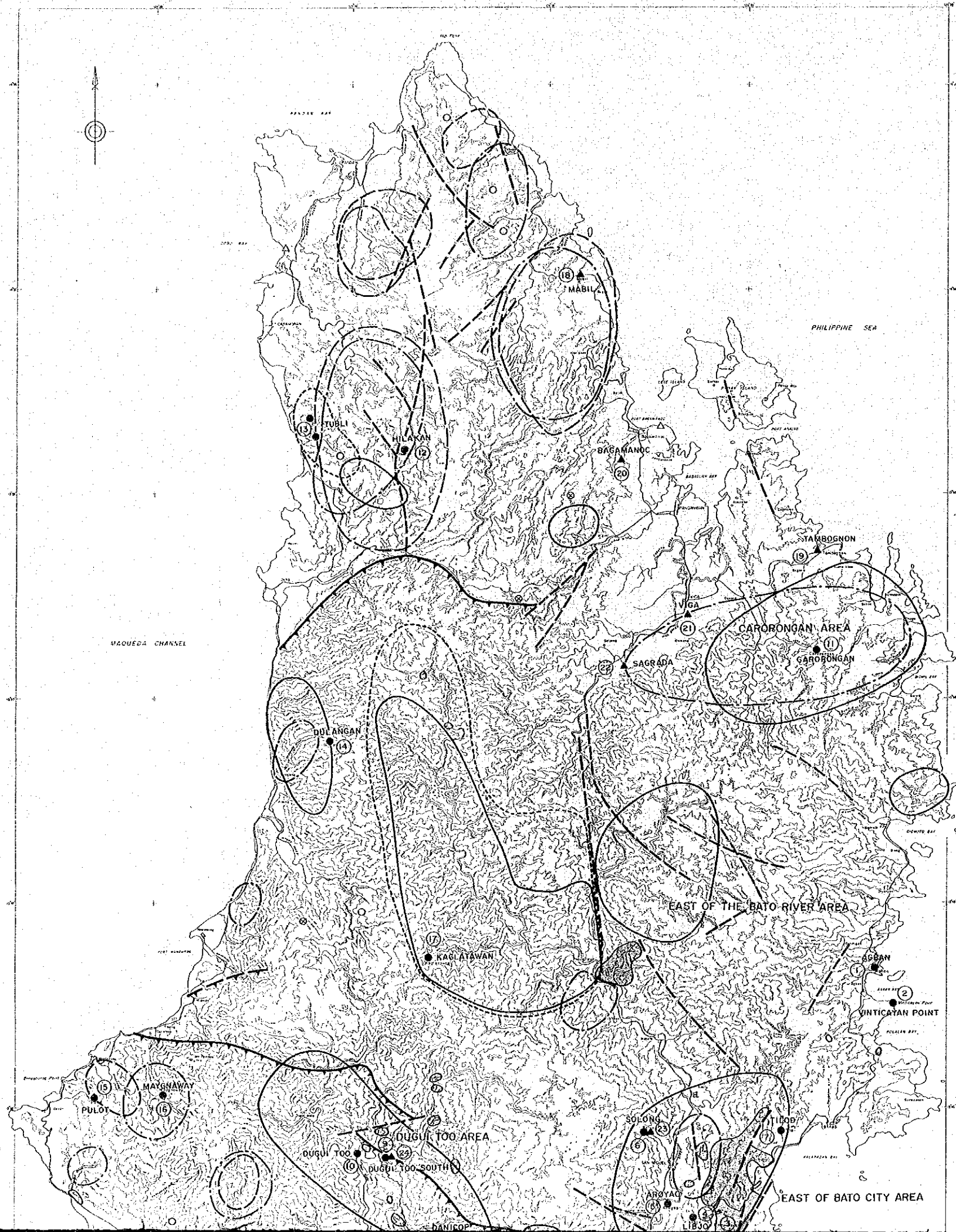
Scale 1:100,000

0 1 2 3 4 5 10km

LOCATION INDEX

JAPAN INTERNATIONAL COOPERATION AGENCY
METAL MINING AGENCY OF JAPAN
Feb. 1994





PL-15

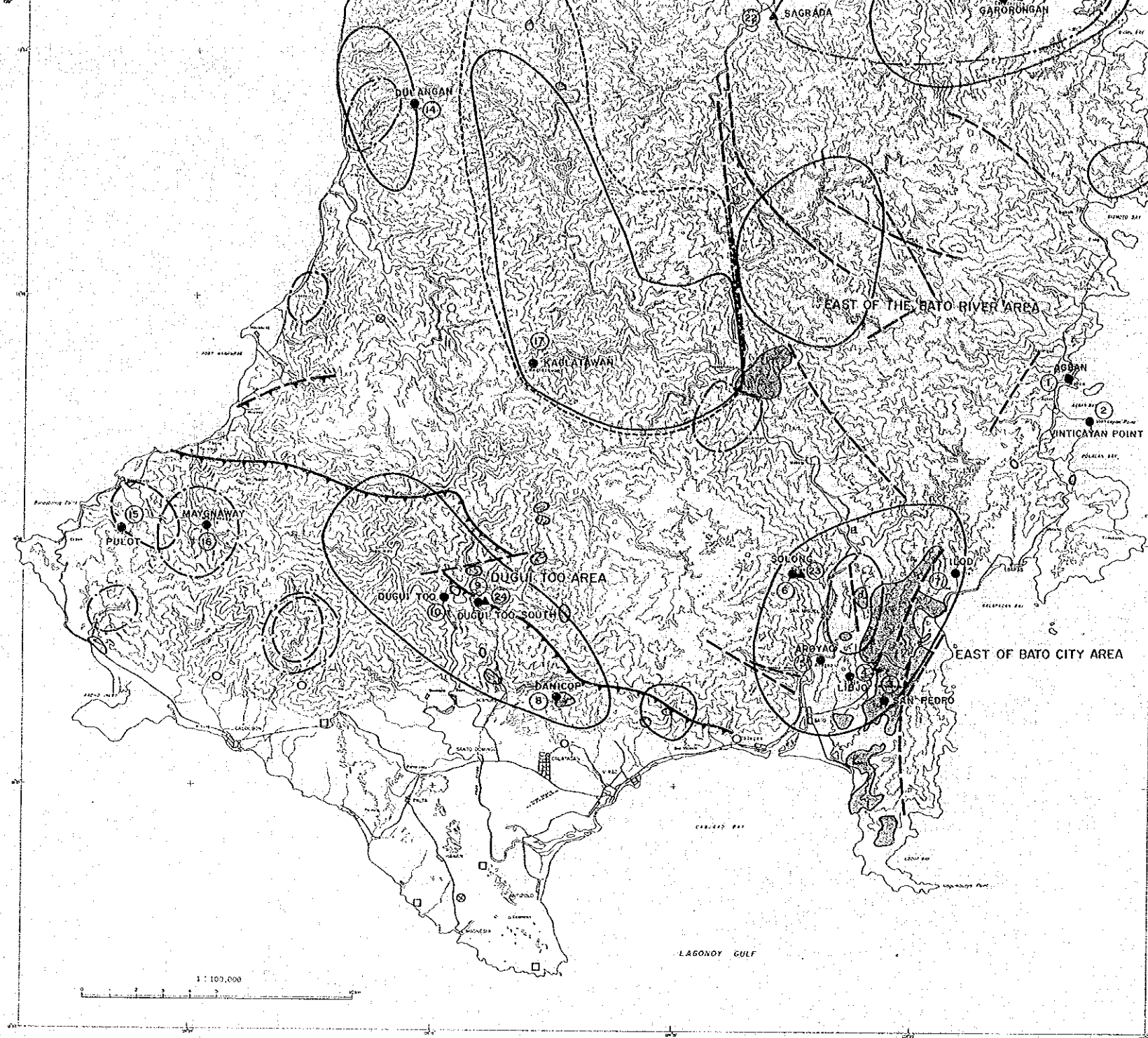
MINERAL EXPLORATION
IN THE CATANDUANES AREA,
THE REPUBLIC OF THE PHILIPPINES
PHASE I
**GEOCHEMICAL ANOMALY ZONES
IN CATANDUANES ISLAND**

Scale 1:100,000
0 1 2 3 4 5 10km





LOCATION INDEX

JAPAN INTERNATIONAL COOPERATION AGENCY
METAL MINING AGENCY OF JAPAN
Feb. 1994

- LEGEND**
- PRINCIPAL COMPONENT ANALYSIS (PCA)**
- High Score Anomaly
- Z-01 (Pb, Mo, Cu)
 - Z-02 (Zn, Fe)
 - Z-03 (Ag, As, Sb)
 - Z-05 (Au, Hg)
- MINERAL PROSPECTS**
- Au, Cu } This Survey
 - ▲ Clay } This Survey
 - Manganese } Miranda and Vargas (1967)
 - △ Black Sand } Miranda and Vargas (1967)
 - Phosphate } Miranda and Vargas (1967)
 - ⊗ Coal } Miranda and Vargas (1967)
 - ⑩ No. of Mineral Prospect (Table 4)
- GEOLOGY**
- Batalay Intrusives
 - Thrust Fault
 - Fault





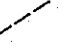
PRINCIPAL COMPONENT ANALYSIS (PCA)

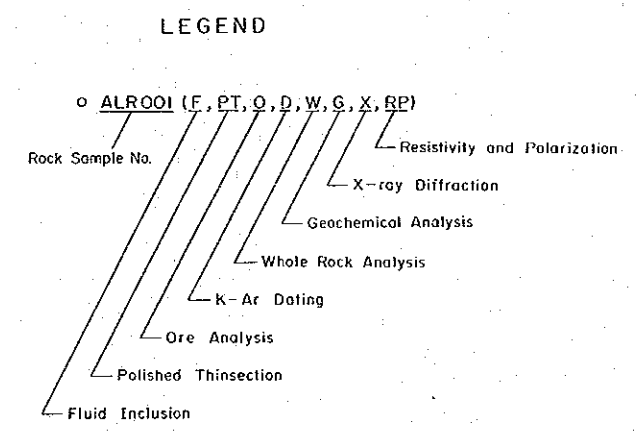
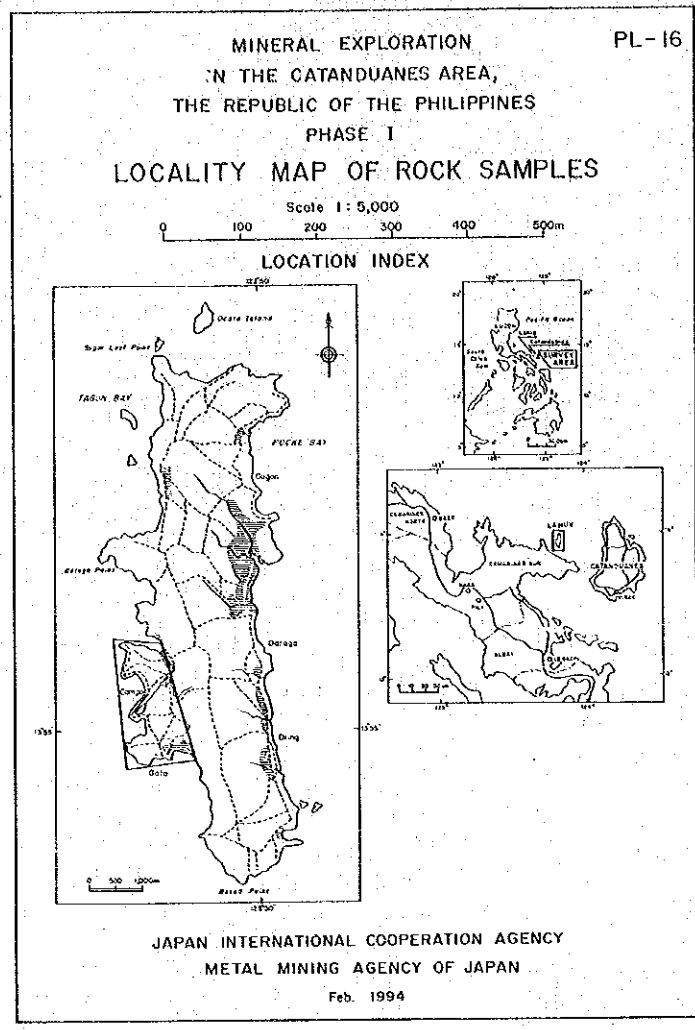
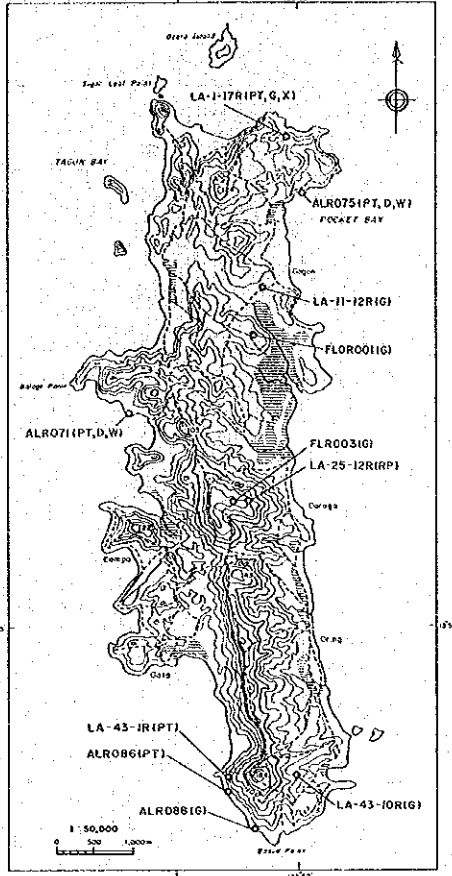
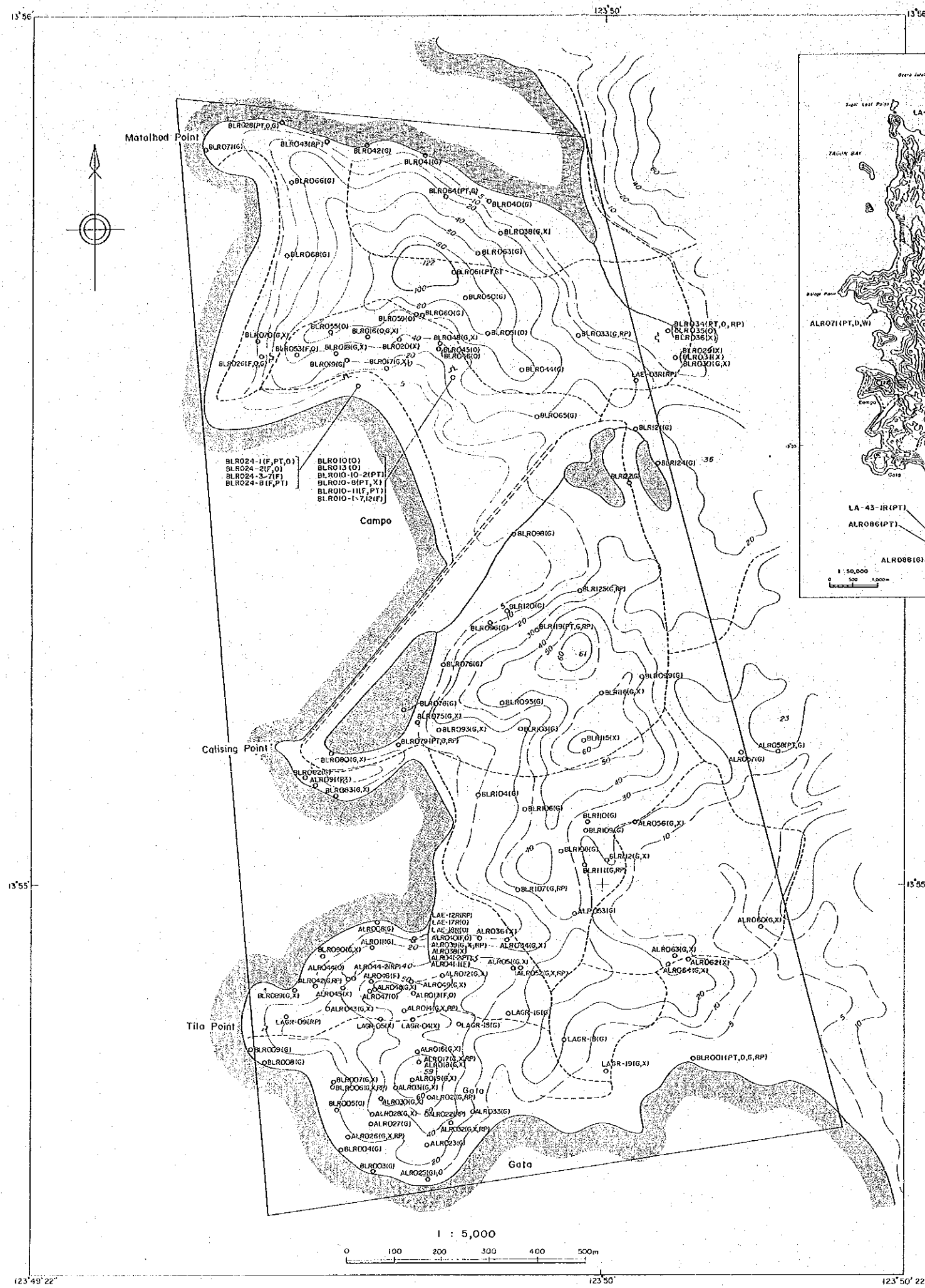
- High Score Anomaly
- Z-01 (Pb, Mo, Cu) 
 - Z-02 (Zn, Fe) 
 - Z-03 (Ag, As, Sb) 
 - Z-05 (Au, Hg) 

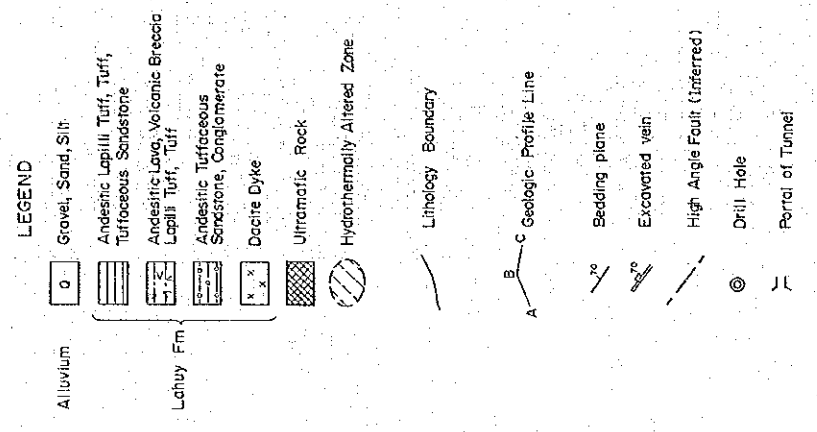
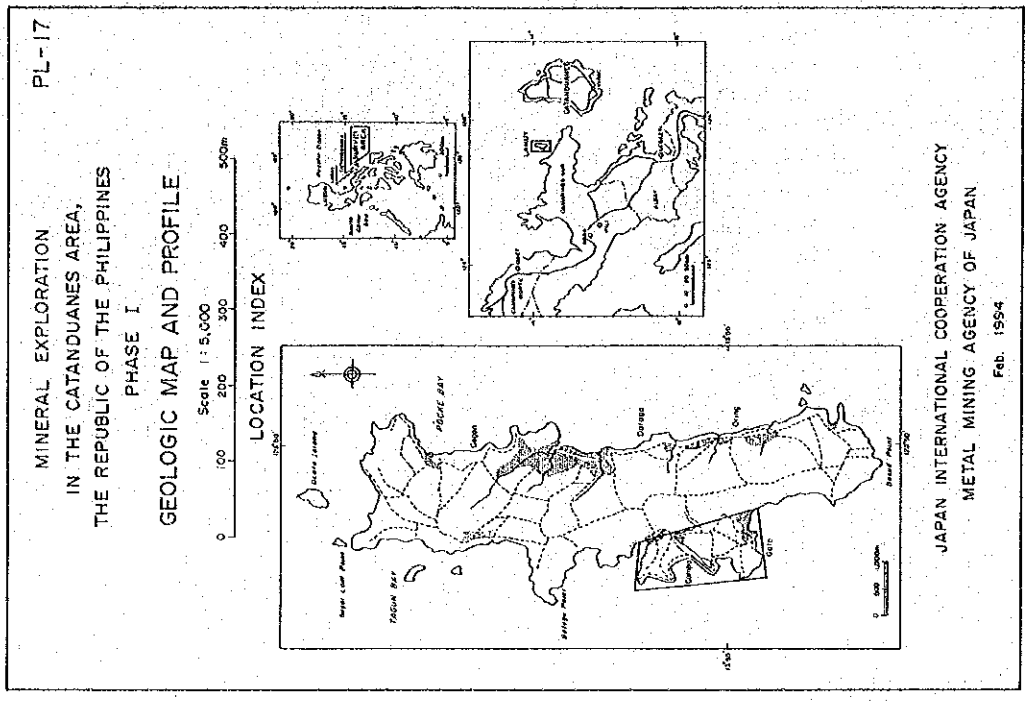
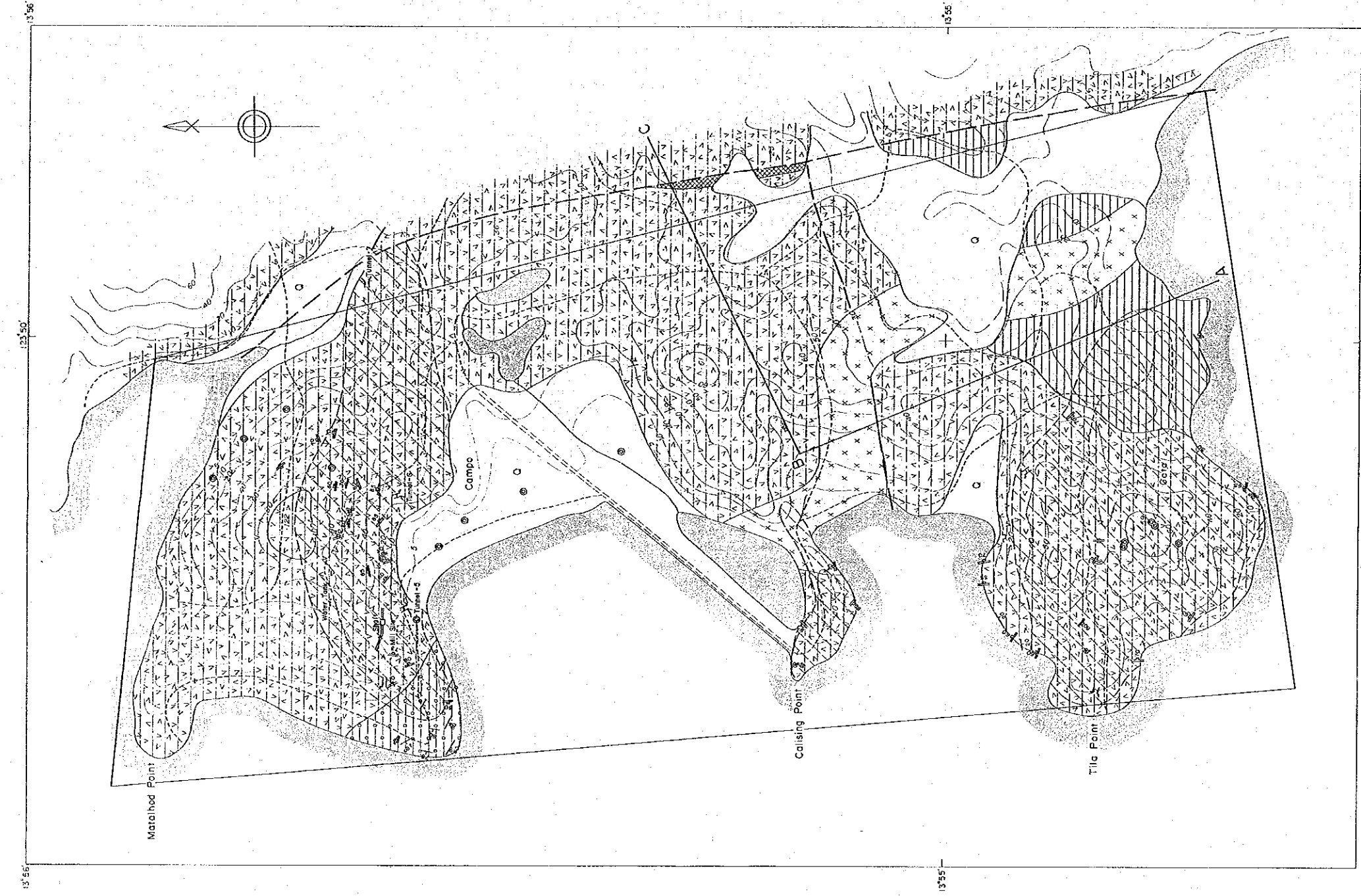
MINERAL PROSPECTS

- Au, Cu } This Survey
- ▲ Clay } This Survey
- Manganese } Miranda and Vargas (1967)
- △ Black Sand } Miranda and Vargas (1967)
- Phosphate } Miranda and Vargas (1967)
- ⊗ Coal } Miranda and Vargas (1967)
- ⑩ No. of Mineral Prospect (Table 4)

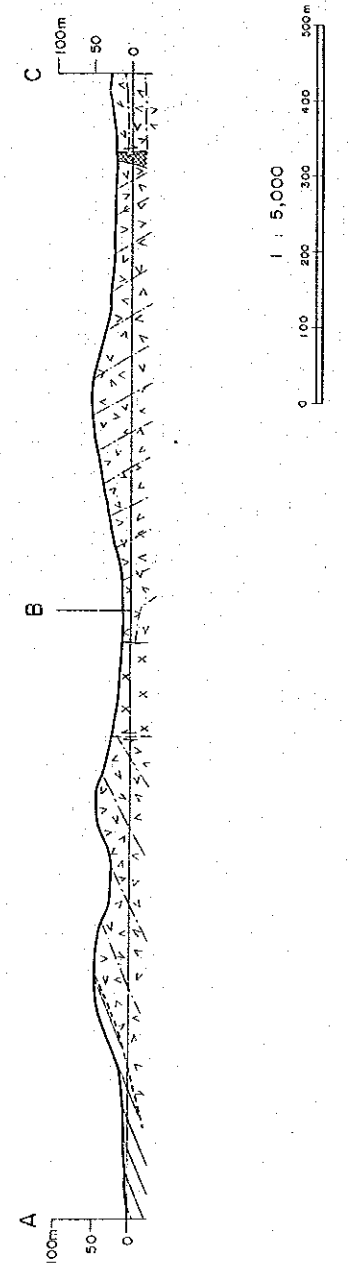
GEOLOGY

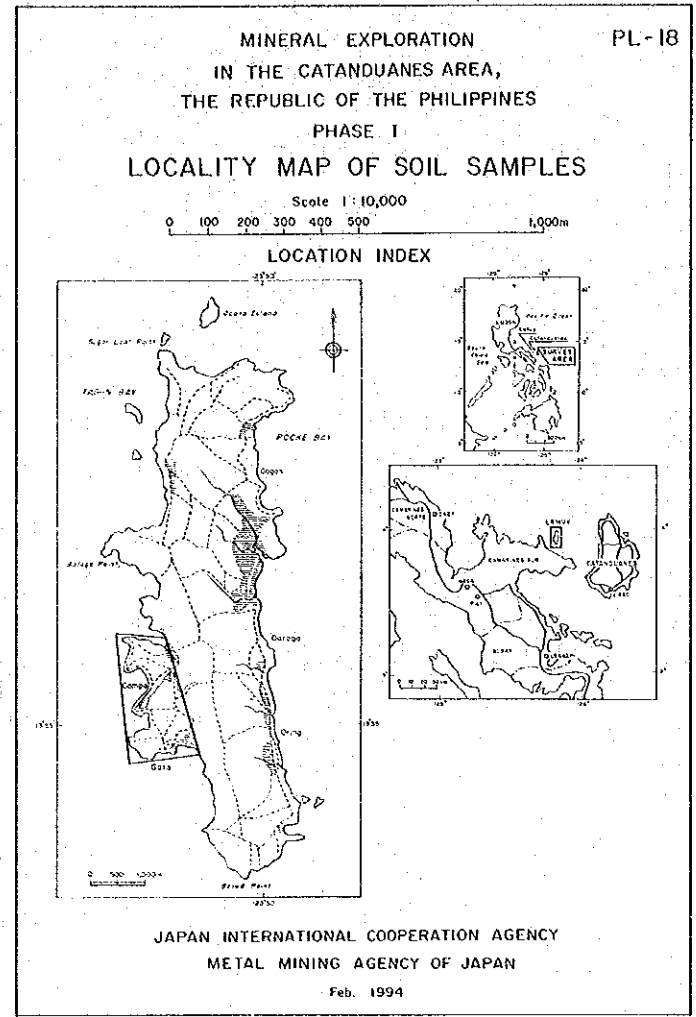
-  Batolay Intrusives
-  Thrust Fault
-  Fault

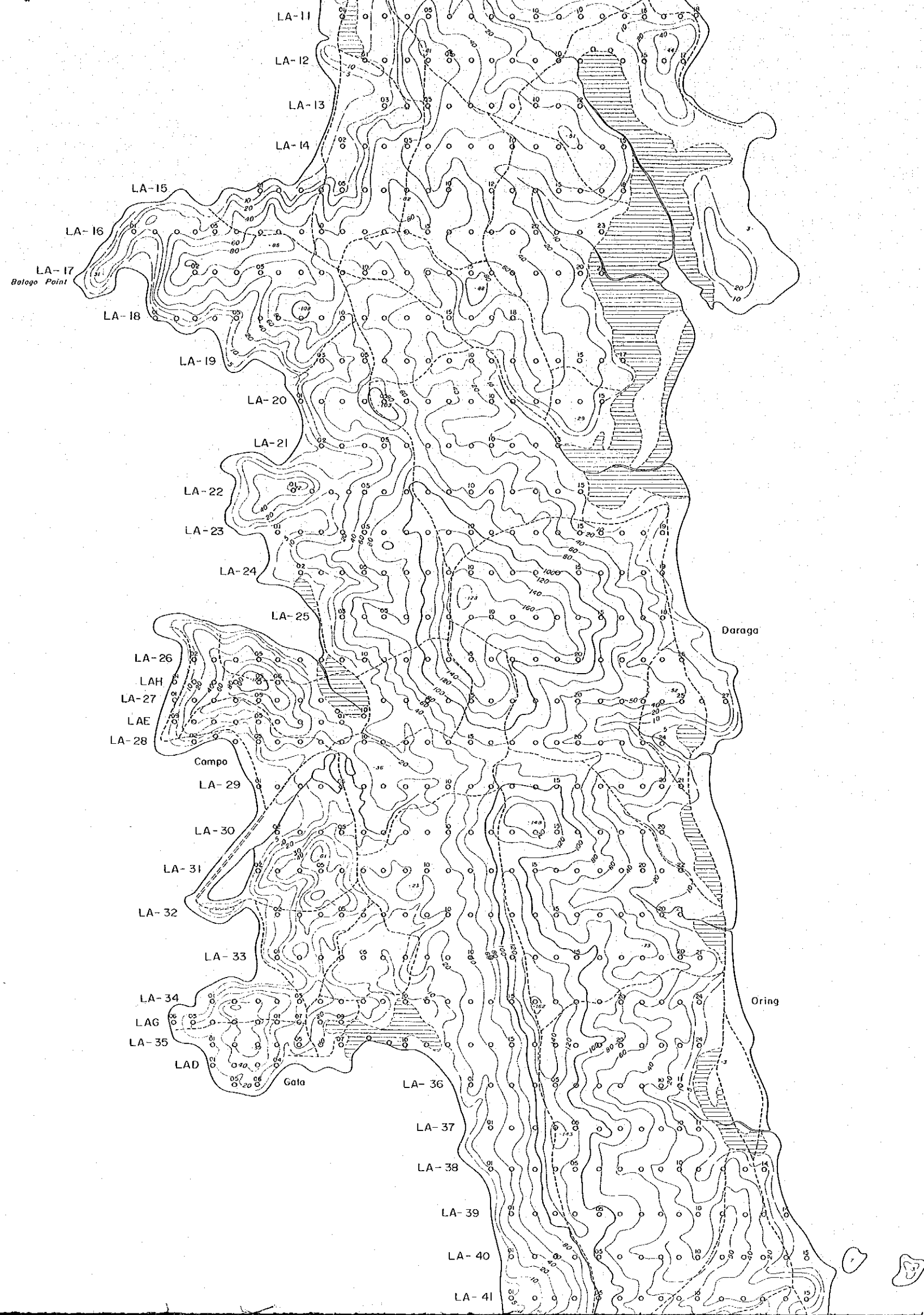




A - B - C

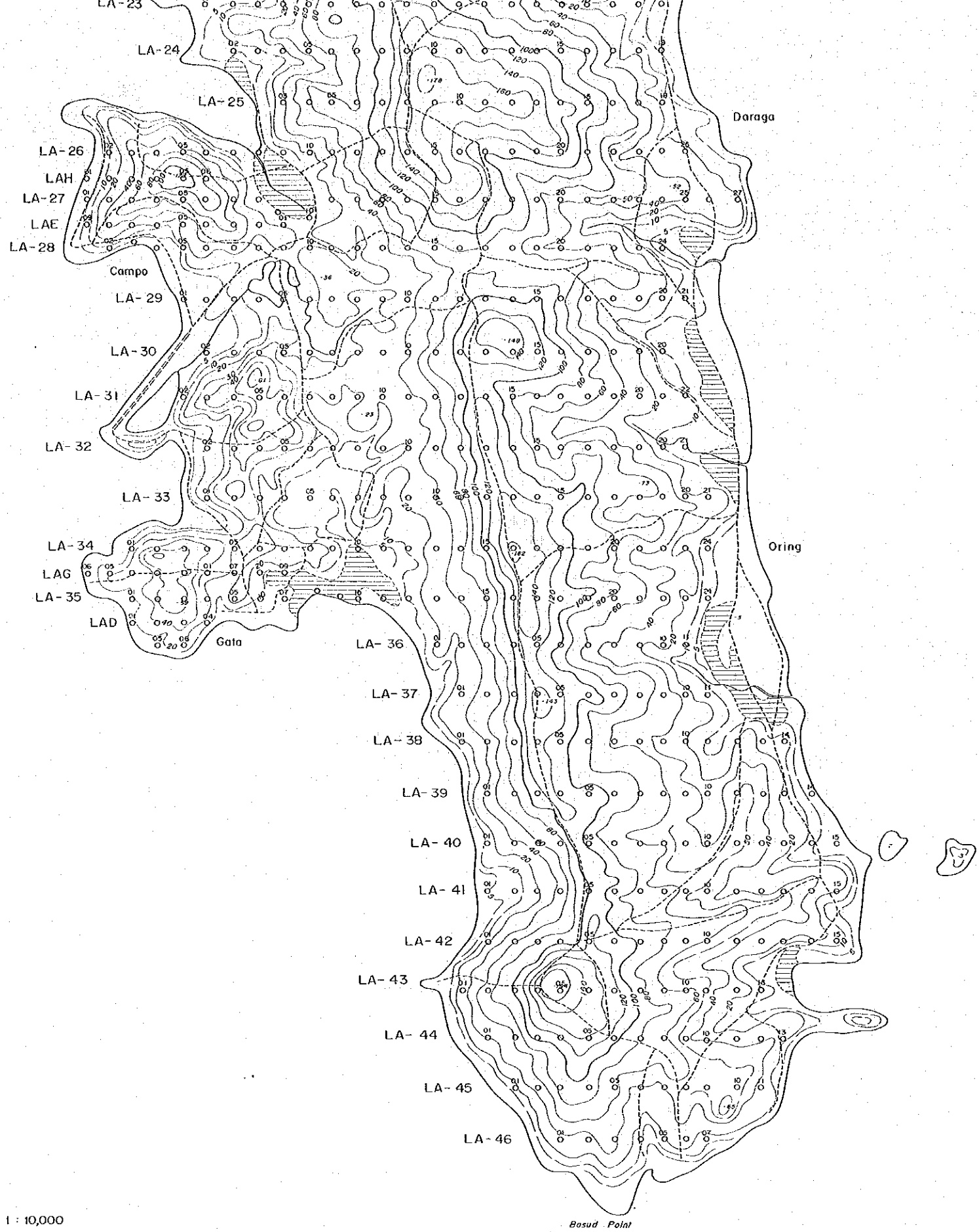






13°55'

13°55'



LA-23

LA-24

LA-25

LA-26

LAH

LA-27

LAE

LA-28

Campo

LA-29

LA-30

LA-31

LA-32

LA-33

LA-34

LAG

LA-35

LAD

Gato

LA-36

LA-37

LA-38

LA-39

LA-40

LA-41

LA-42

LA-43

LA-44

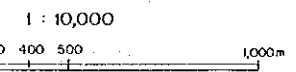
LA-45

LA-46

Daraga

Oring

Basud Point



13°55'

13°55'

123°50'

