

REPORT  
ON  
THE COOPERATIVE MINERAL EXPLORATION  
IN  
THE CATANDUANES AREA,  
THE REPUBLIC OF THE PHILIPPINES

PHASE I

MARCH 1994



JAPAN INTERNATIONAL COOPERATION AGENCY  
METAL MINING AGENCY OF JAPAN



REPORT ON THE COOPERATIVE MINERAL  
EXPLORATION IN THE CATANDUANES AREA,  
THE REPUBLIC OF THE PHILIPPINES

PHASE I

MARCH 1994

J I  
M M

118  
66.1  
MPN



- ▲ Clay
- Manganese
- △ Black Sand
- Phosphate
- ⊗ Coal



MAQUEDA CHANNEL

PORT MANAMRAG

AGBAN BAY

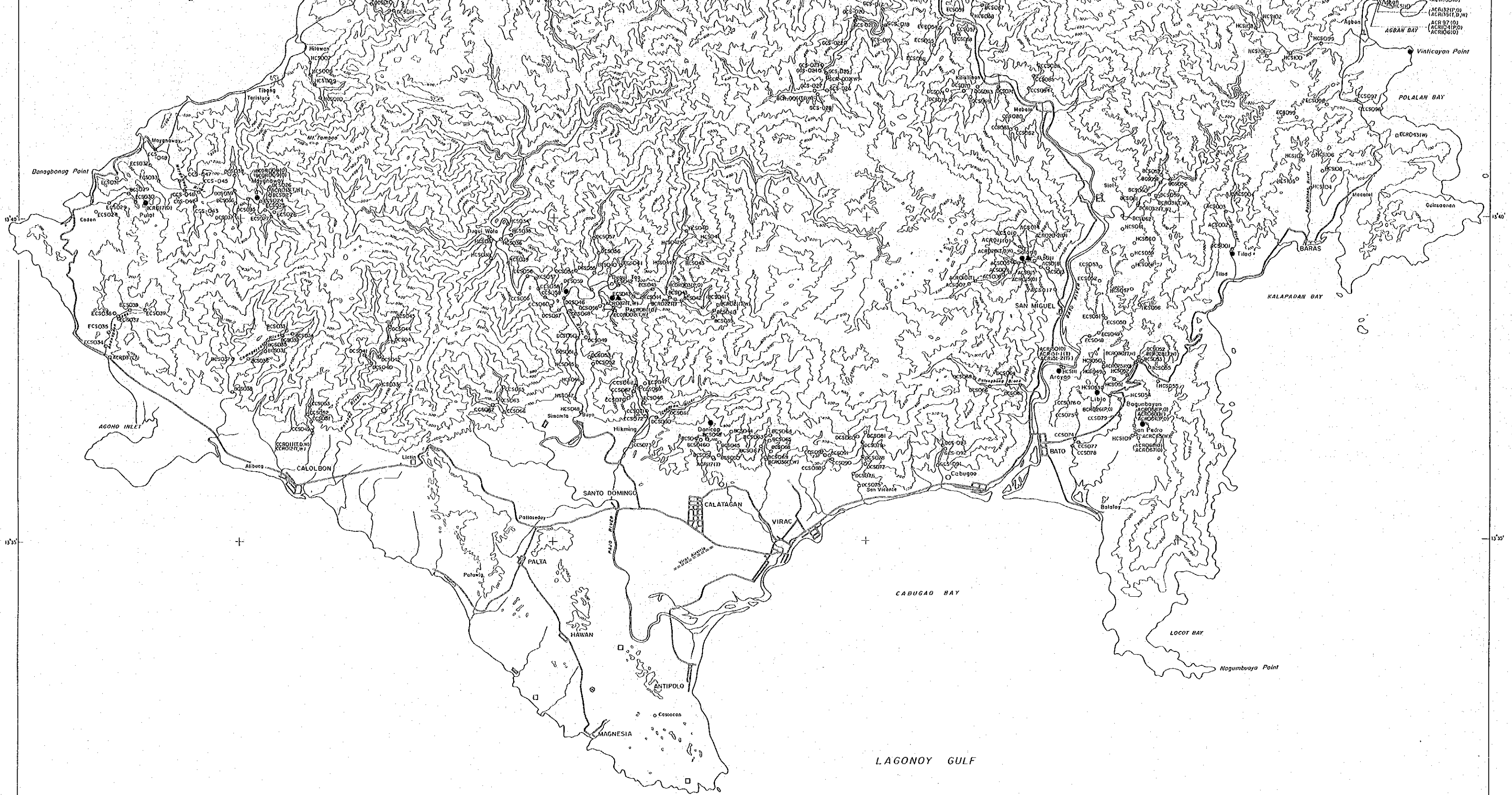
POLALAN BAY

AGBAN BAY

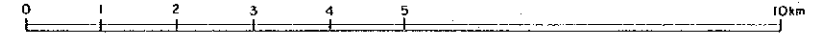
Vinticayon Point

Polalan Bay

Agban Bay

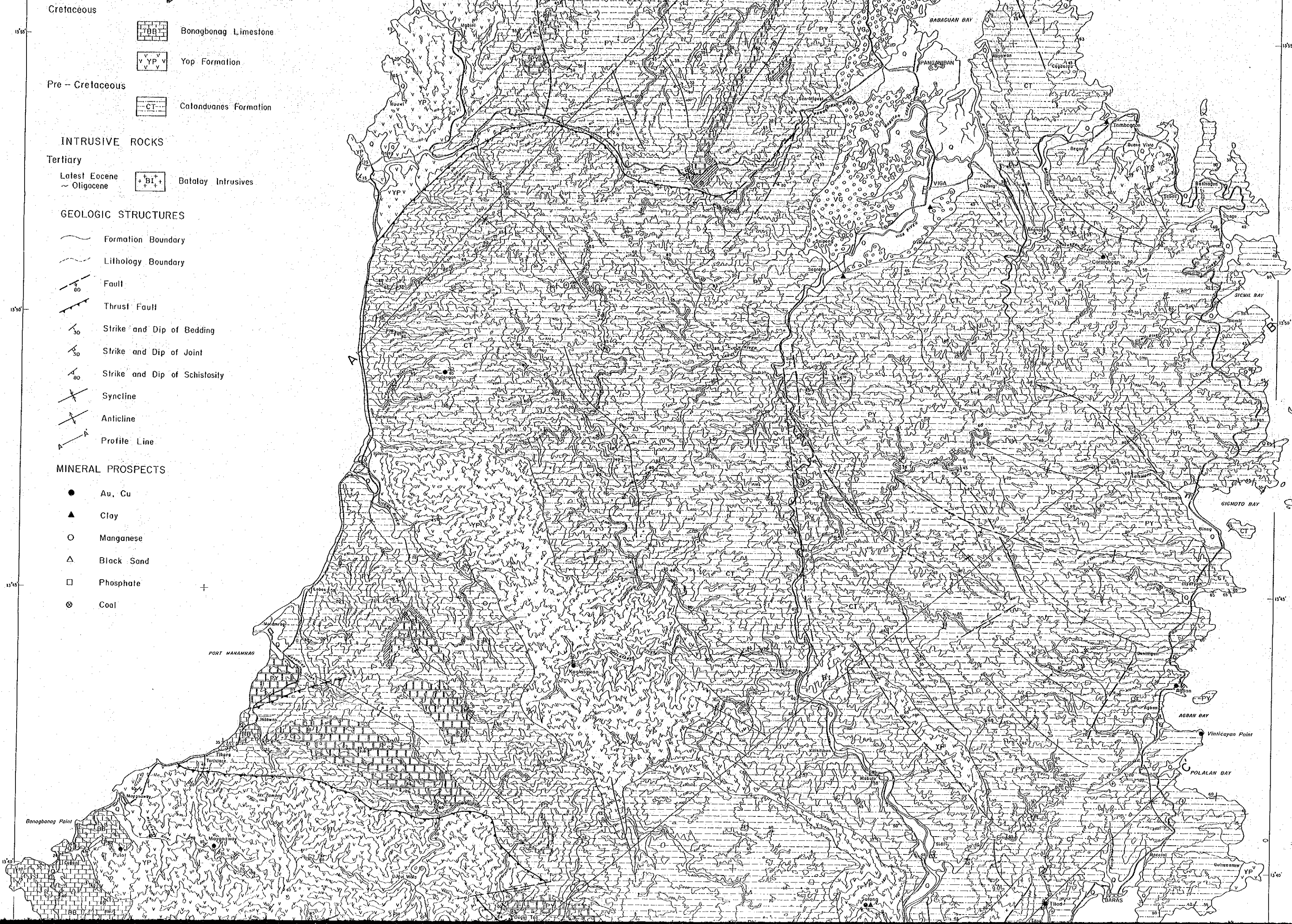


1 : 50,000



13°30' 124°05' 124°10' 124°15' 124°20' 13°35'





Cretaceous

- TBB Bonagbonag Limestone
- Y P Yop Formation

Pre - Cretaceous

- CT Catanduanes Formation

**INTRUSIVE ROCKS**

Tertiary

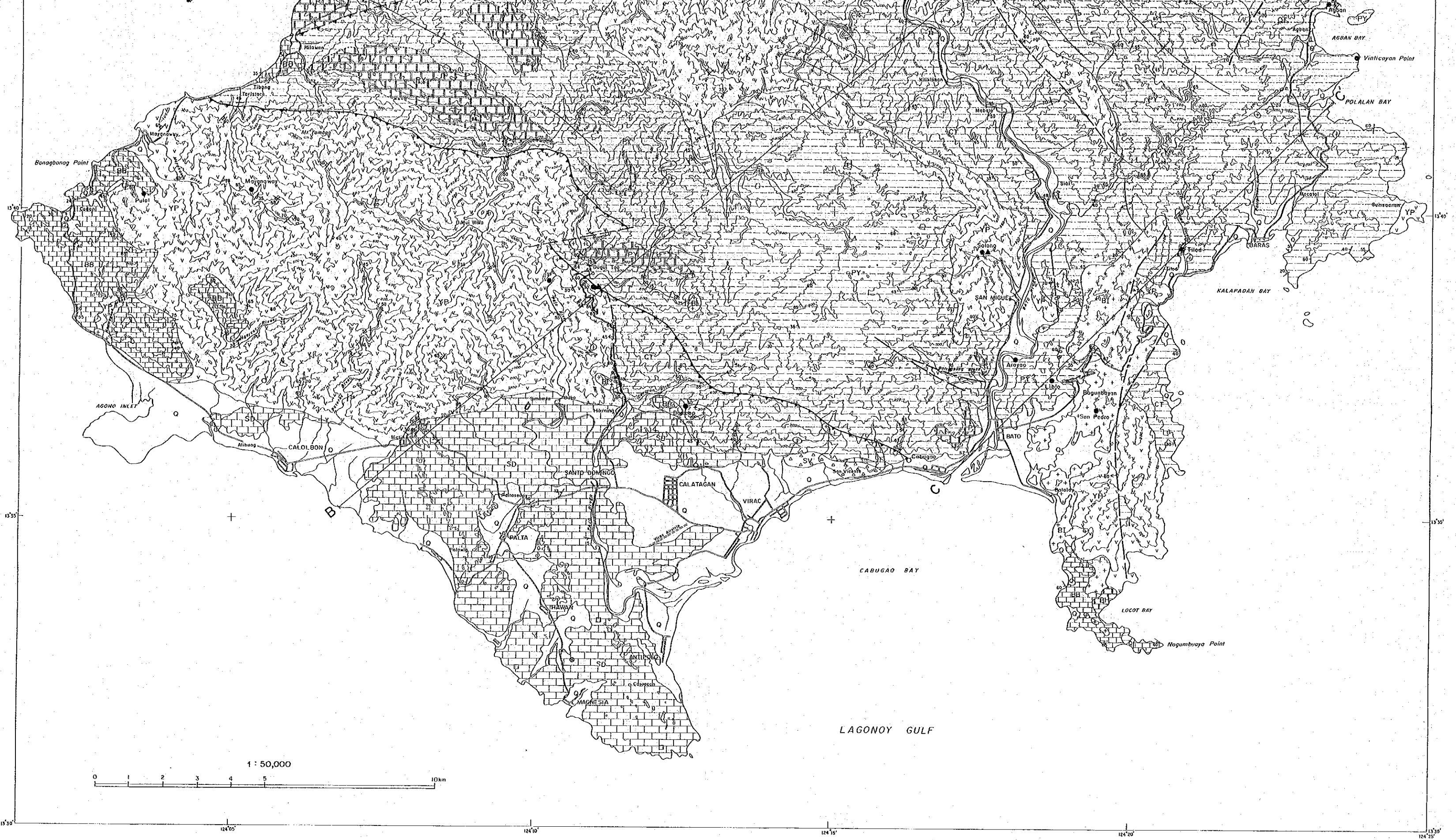
- Latest Eocene ~ Oligocene BI Batalay Intrusives

**GEOLOGIC STRUCTURES**

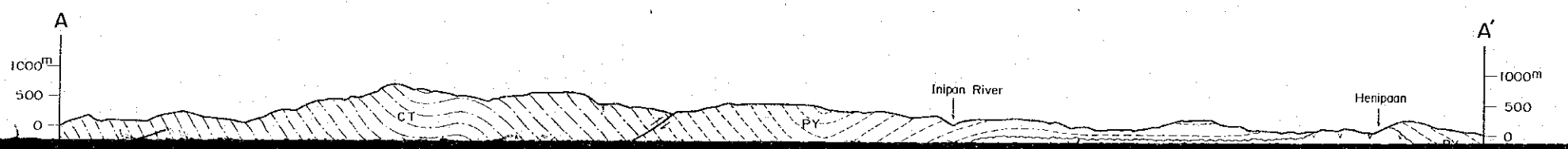
- Formation Boundary
- Lithology Boundary
- Fault
- Thrust Fault
- Strike and Dip of Bedding
- Strike and Dip of Joint
- Strike and Dip of Schistosity
- Syncline
- Anticline
- Profile Line

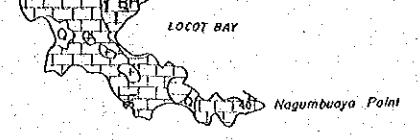
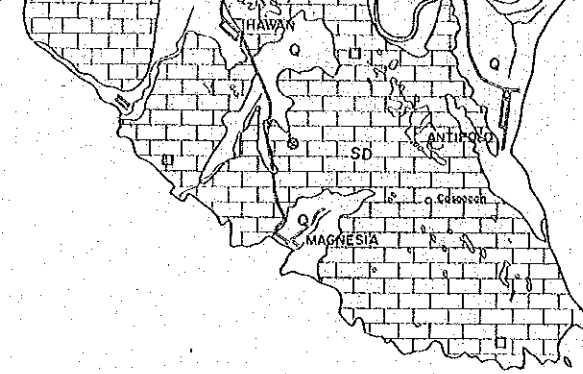
**MINERAL PROSPECTS**

- Au, Cu
- ▲ Clay
- Manganese
- △ Black Sand
- Phosphate
- ⊗ Coal



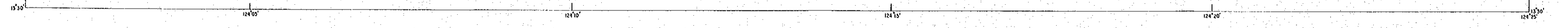
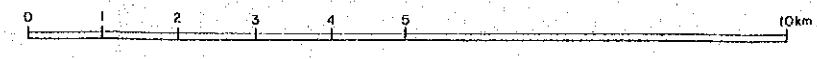
A — A'



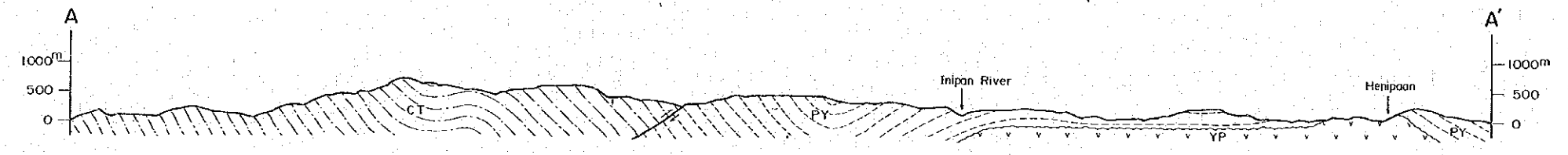


LAGONUY GULF

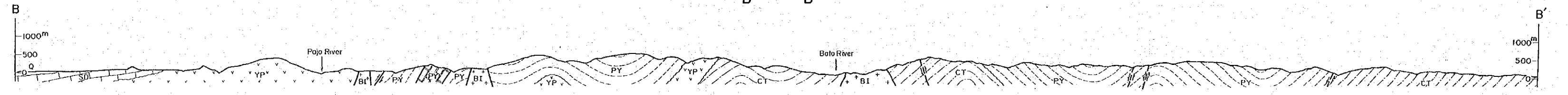
1 : 50,000



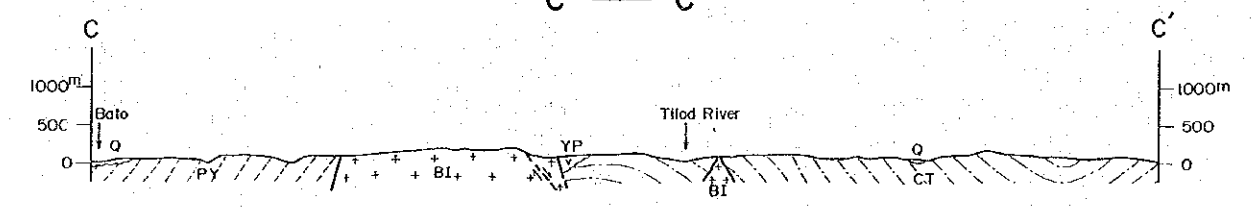
A — A'



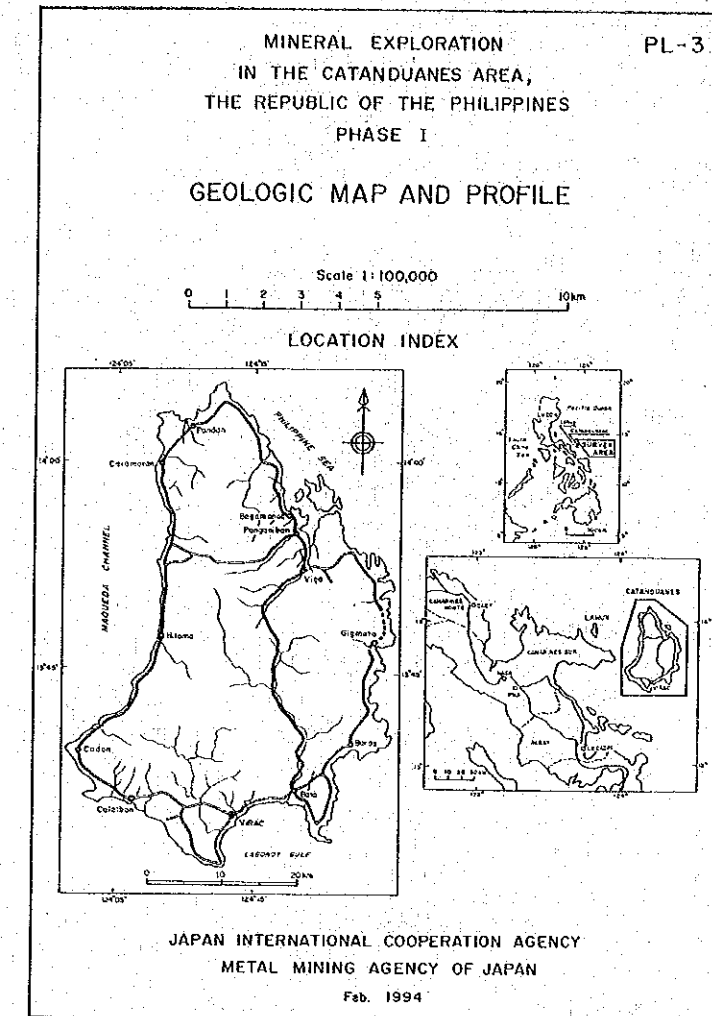
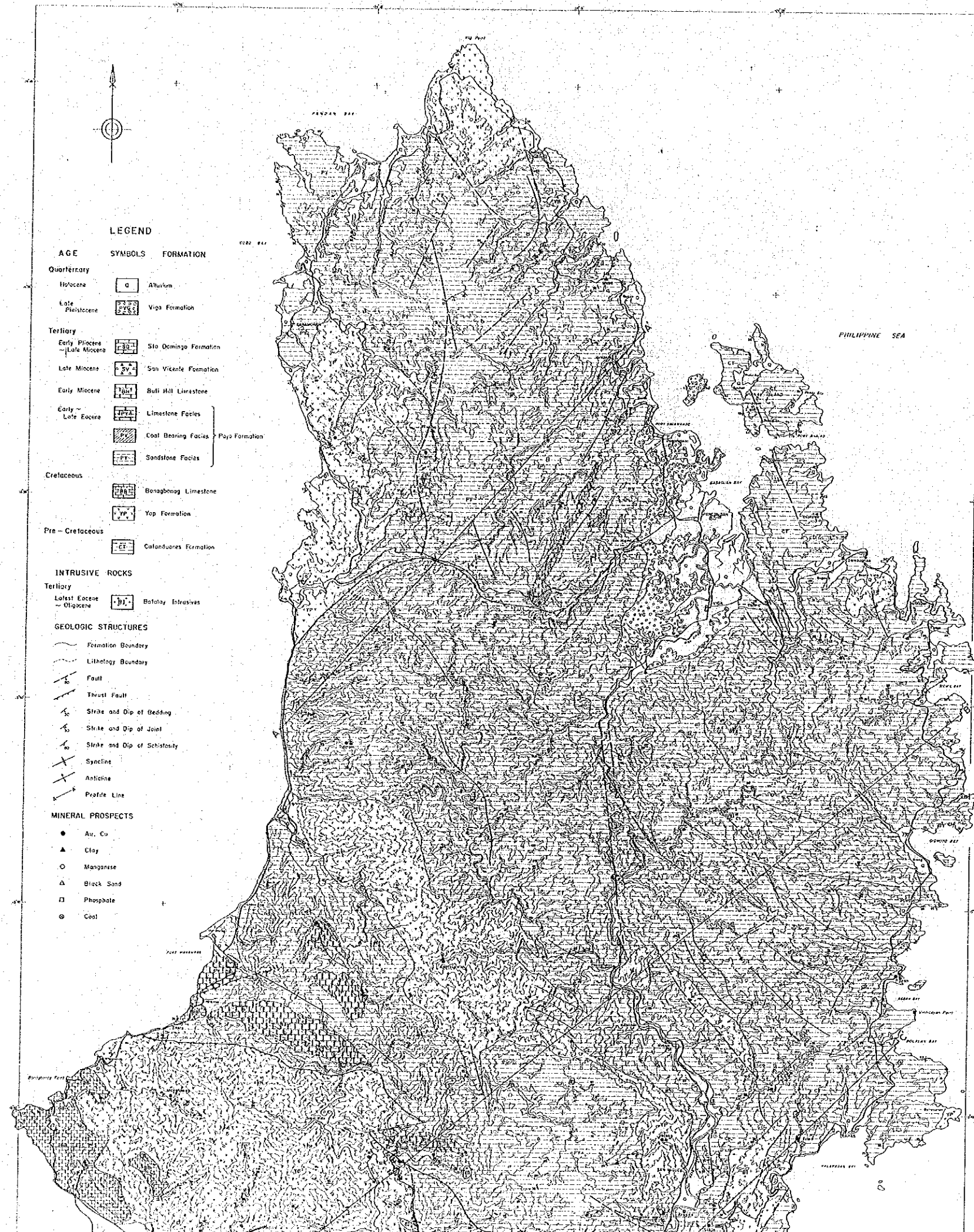
B — B'

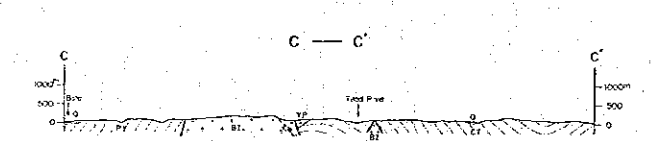
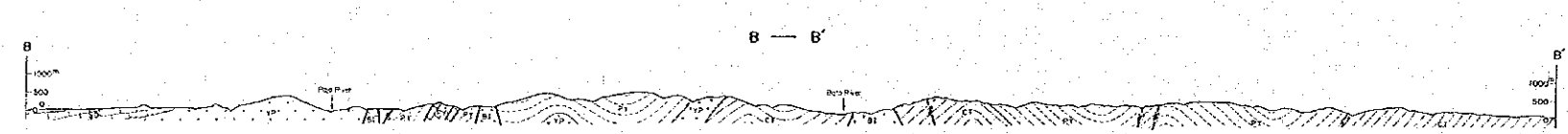
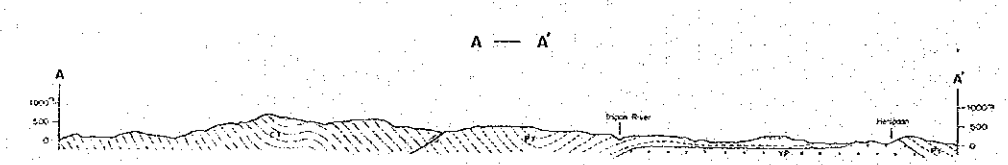
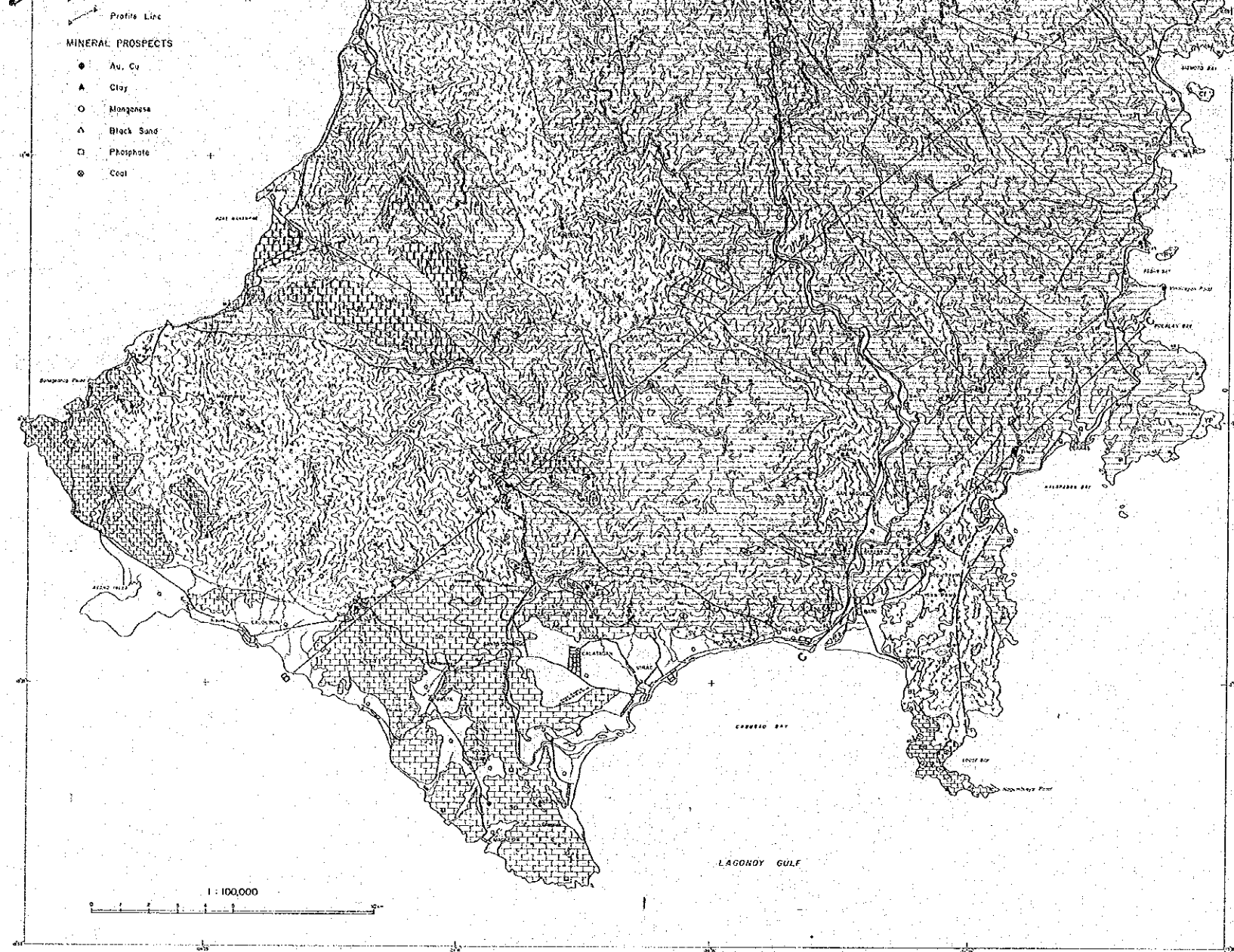


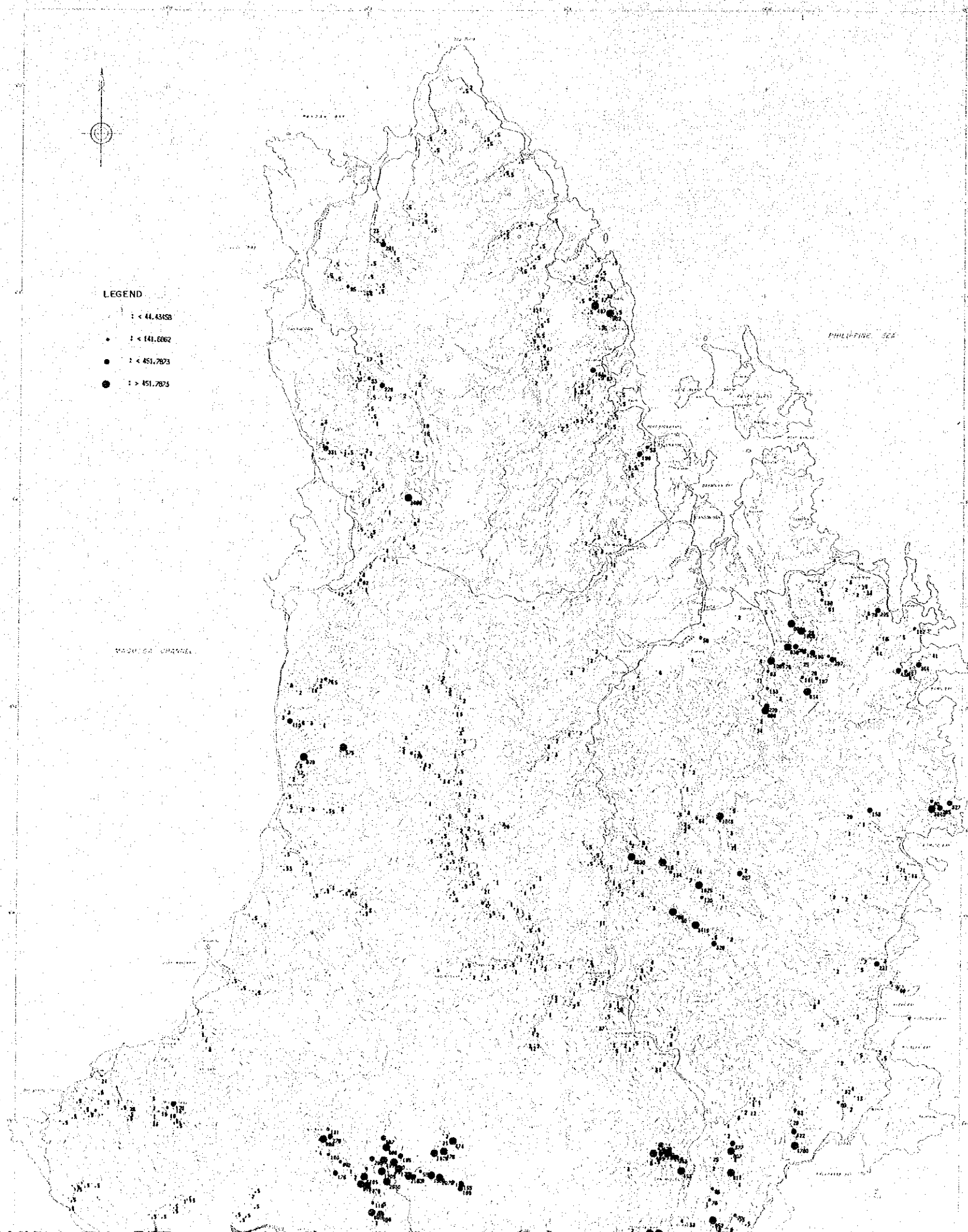
C — C'











**LEGEND**

- : < 44.4353
- : < 141.6862
- : < 451.7873
- : > 451.7873

PL-4

**MINERAL EXPLORATION**  
**IN THE CATANDUANES AREA,**  
**THE REPUBLIC OF THE PHILIPPINES**  
**PHASE I**  
**GEOCHEMICAL ANOMALY**  
**OF STREAM SEDIMENTS**  
**Au**

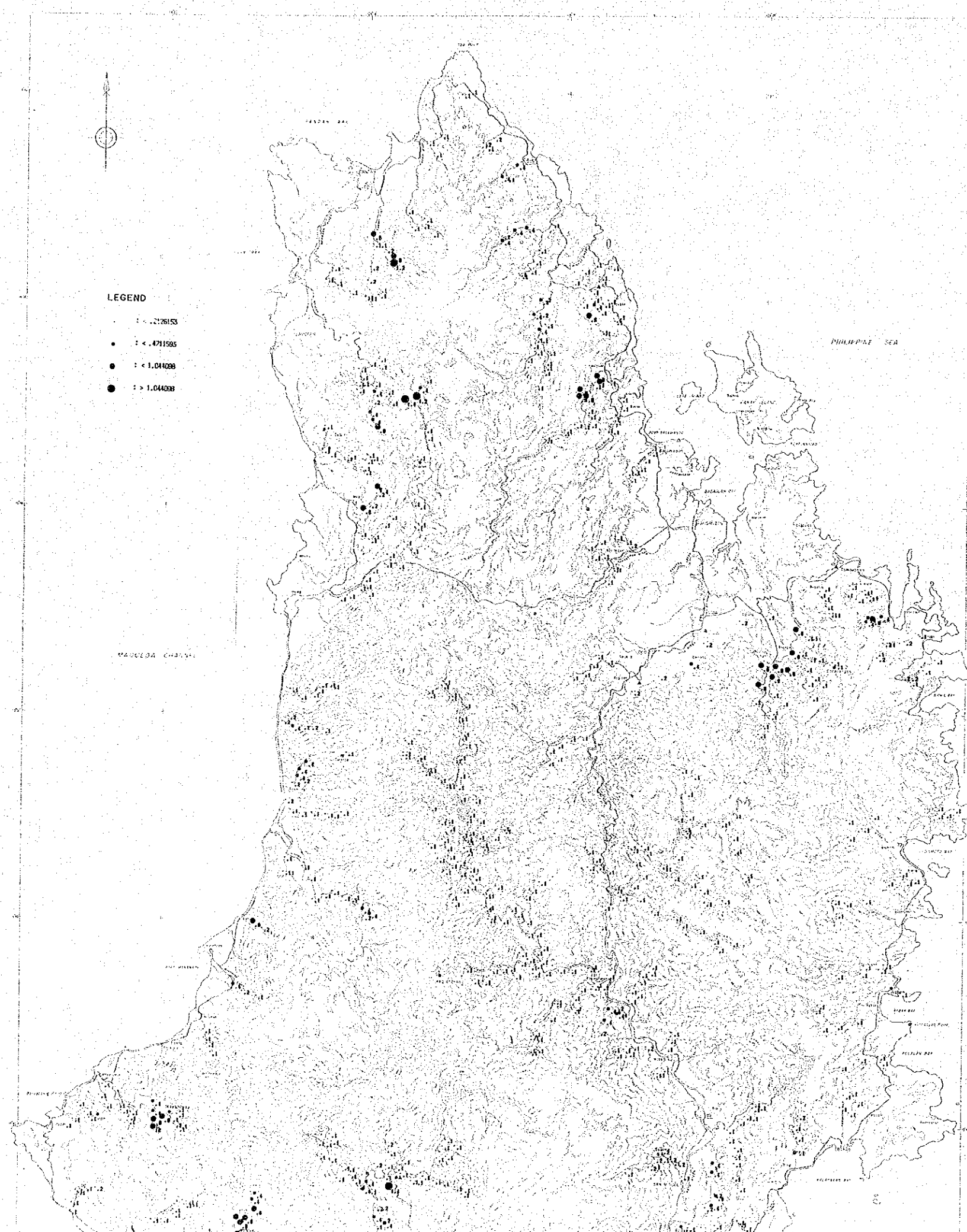
Scale 1:100,000

0 1 2 3 4 5 10km

**LOCATION INDEX**

**JAPAN INTERNATIONAL COOPERATION AGENCY**  
**METAL MINING AGENCY OF JAPAN**  
 Feb. 1994





LEGEND

- 1 < 2.26153
- 2 < 4.711505
- 3 < 1.041008
- 4 > 1.041008

PL-5

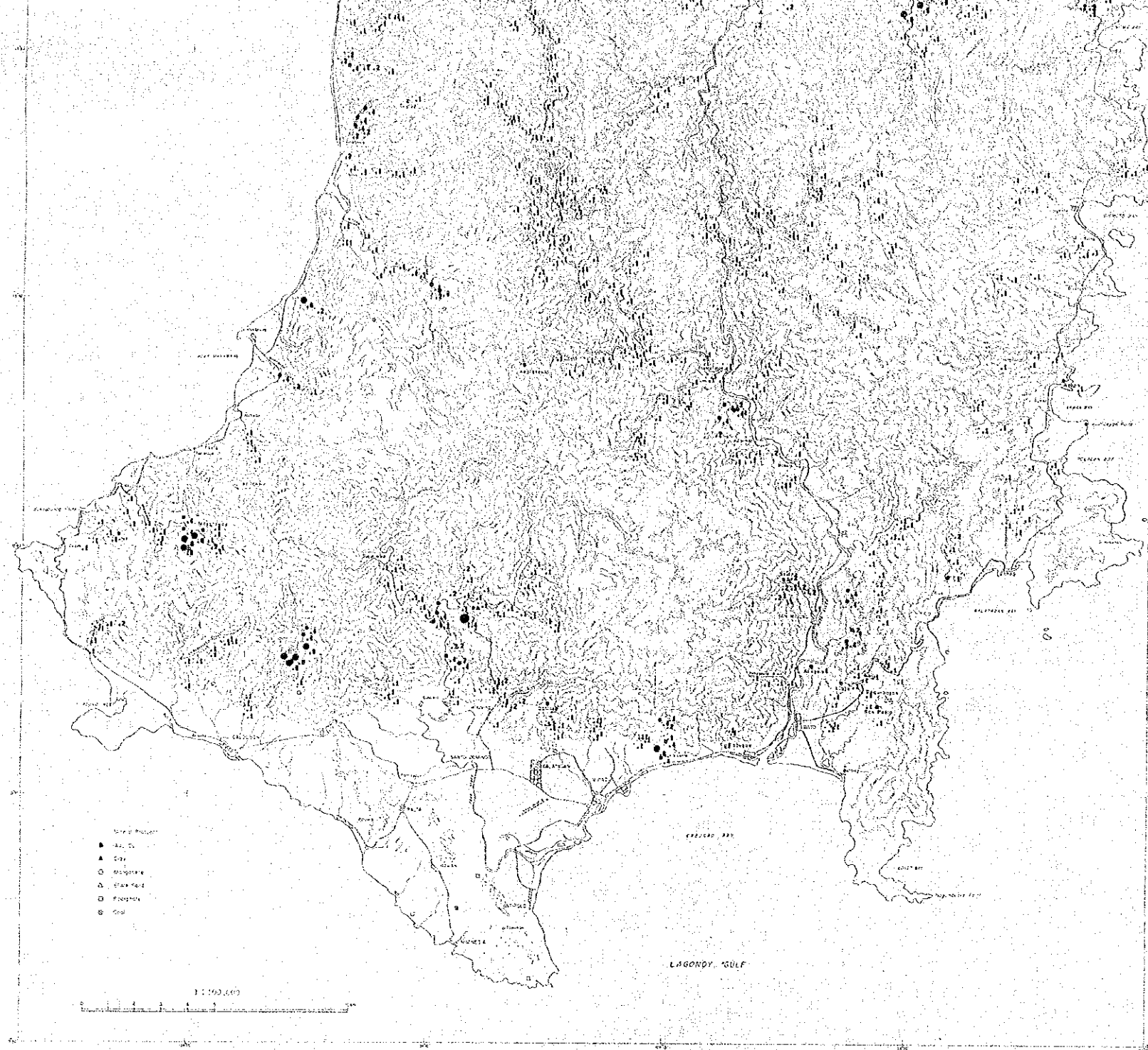
MINERAL EXPLORATION  
IN THE CATANDUANES AREA,  
THE REPUBLIC OF THE PHILIPPINES  
PHASE I  
GEOCHEMICAL ANOMALY  
OF STREAM SEDIMENTS  
Ag

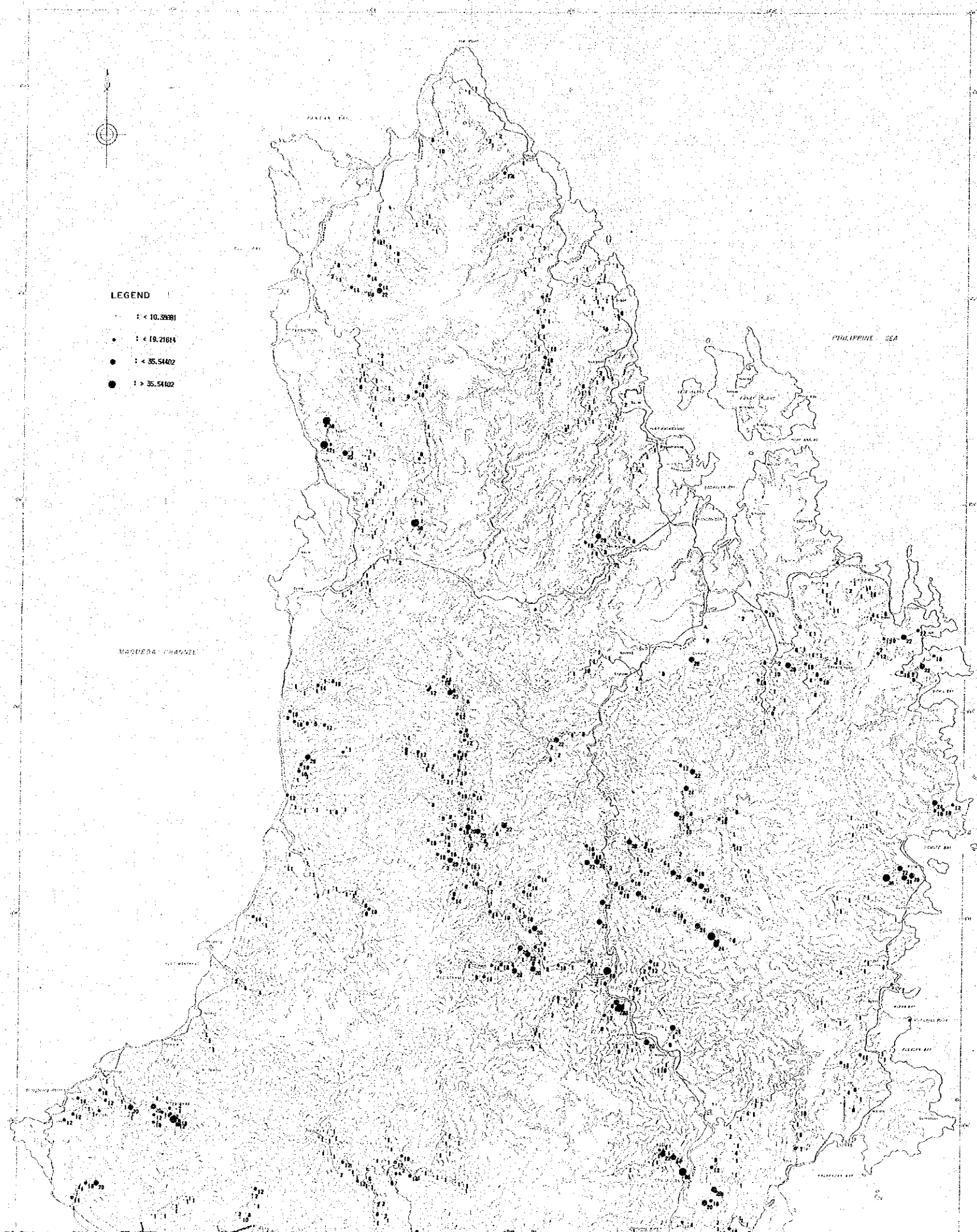
Scale 1:100,000

0 1 2 3 4 5 10km

LOCATION INDEX

JAPAN INTERNATIONAL COOPERATION AGENCY  
METAL MINING AGENCY OF JAPAN  
Feb. 1994





**LEGEND**

- : < 10.29281
- : < 19.21814
- : < 35.54402
- : > 35.54402

PL-6

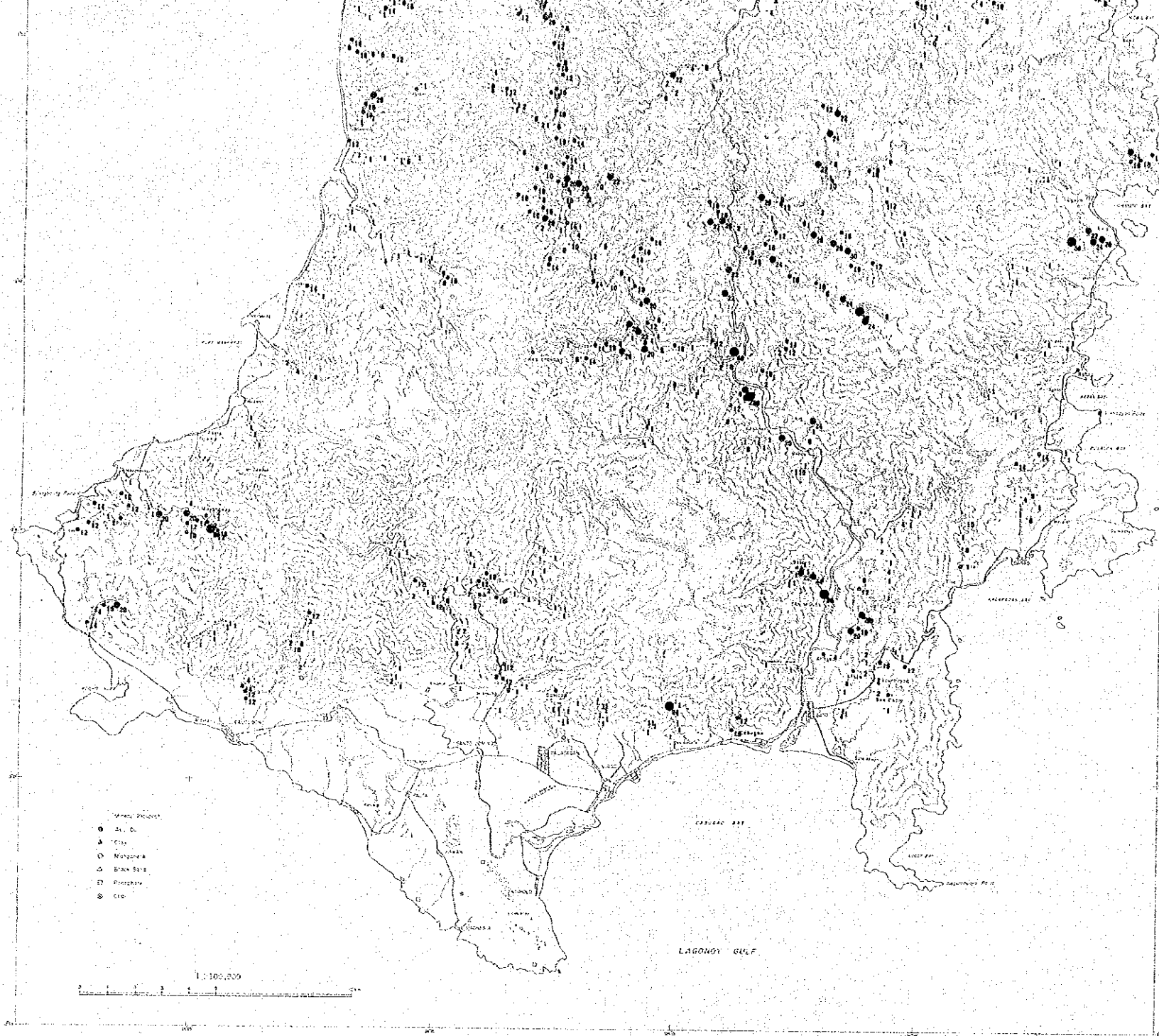
**MINERAL EXPLORATION**  
**IN THE CATANDUANES AREA,**  
**THE REPUBLIC OF THE PHILIPPINES**  
**PHASE I**  
**GEOCHEMICAL ANOMALY**  
**OF STREAM SEDIMENTS**  
**As**

Scale 1:100,000

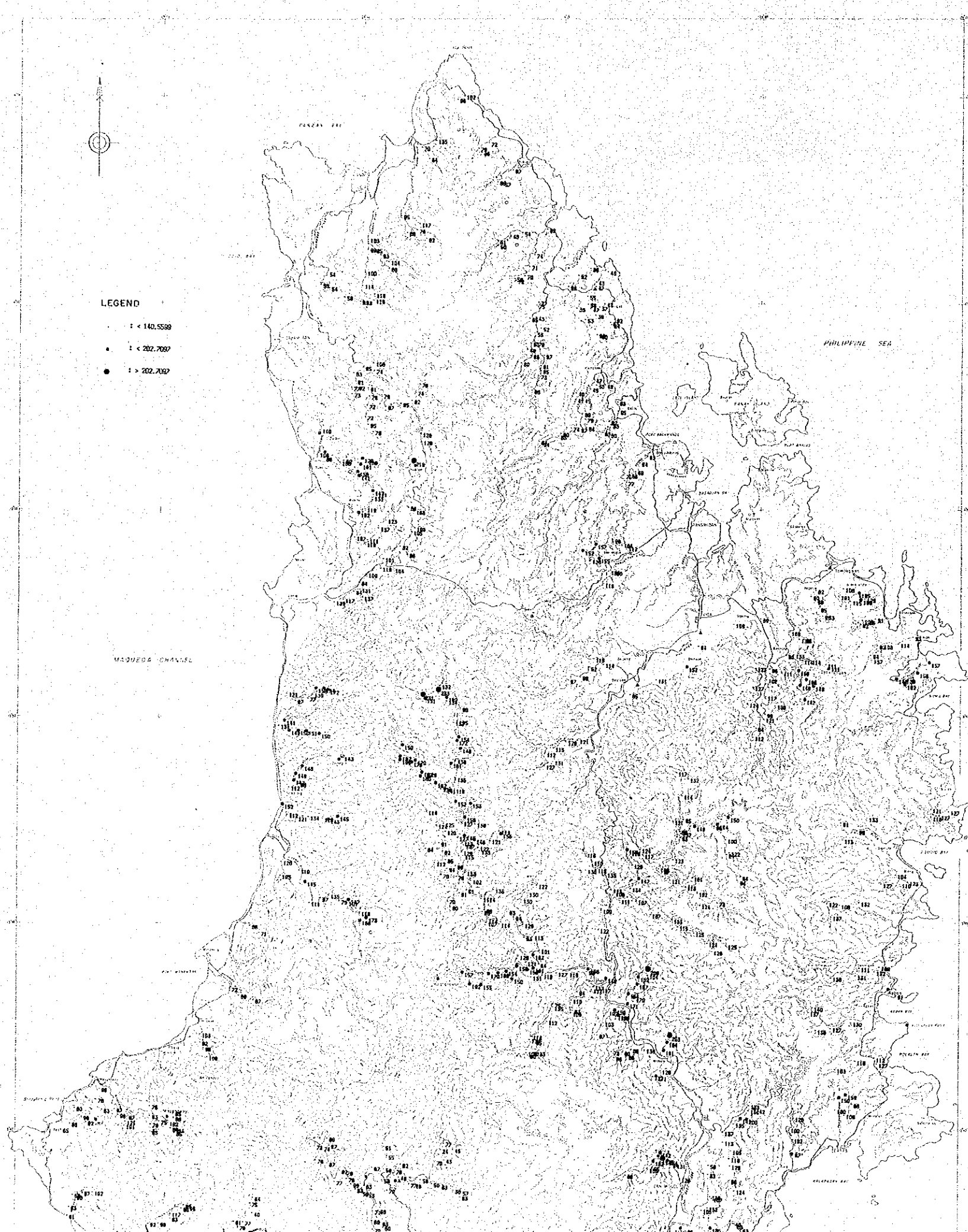
0 1 2 3 4 5 10km

LOCATION INDEX

JAPAN INTERNATIONAL COOPERATION AGENCY  
 METAL MINING AGENCY OF JAPAN  
 Feb. 1994







**LEGEND**

- $1 < 140.5590$
- $1 < 202.7097$
- $1 > 202.7097$

PL-7

MINERAL EXPLORATION  
IN THE CATANDUANES AREA,  
THE REPUBLIC OF THE PHILIPPINES  
PHASE I  
GEOCHEMICAL ANOMALY  
OF STREAM SEDIMENTS  
Cu

Scale 1:100,000  
0 1 2 3 4 5 10km

LOCATION INDEX

JAPAN INTERNATIONAL COOPERATION AGENCY  
METAL MINING AGENCY OF JAPAN  
Feb. 1994

