

JAPAN INTERNATIONAL COOPERATION AGENCY (JICA)

MINISTRY OF PUBLIC WORKS
REPUBLIC OF INDONESIA

**The Study on the Solid Waste Management
Improvement for
Surabaya City
in
The Republic of Indonesia**

FINAL REPORT

Volume 6

DRAWINGS

May 1993

Pacific Consultants International
EX Corporation

SSS

JR

93-064

JAPAN INTERNATIONAL COOPERATION AGENCY (JICA)

MINISTRY OF PUBLIC WORKS
REPUBLIC OF INDONESIA

**The Study on the Solid Waste Management
Improvement for
Surabaya City**

in

The Republic of Indonesia

FINAL REPORT

Volume 6

DRAWINGS

May 1993

JICA LIBRARY



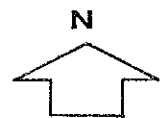
J1124822 (6)

**Pacific Consultants International
EX Corporation**

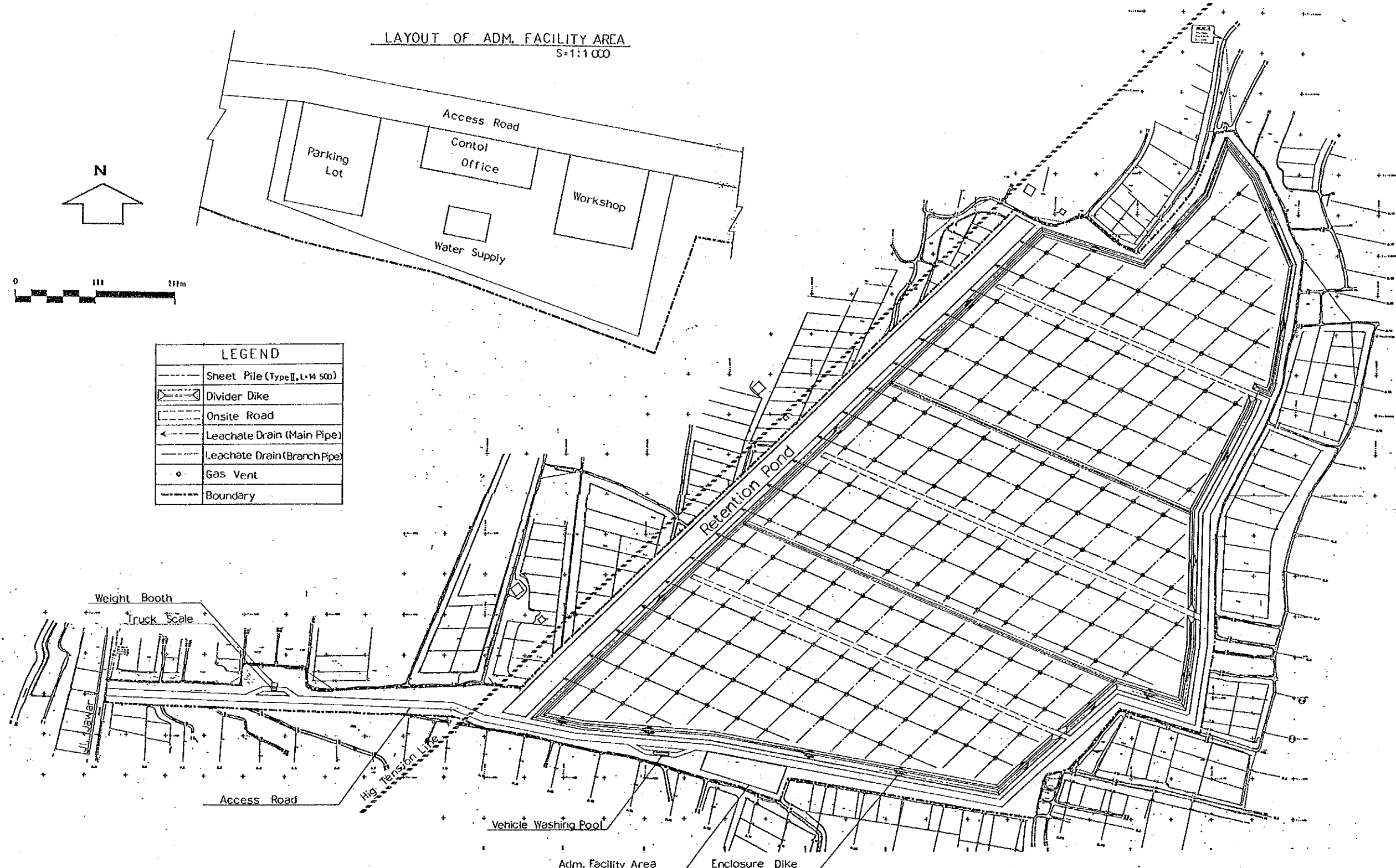
Table of Contents

L - 1	PLAN
L - 2	STANDARD VERTIFCAL SECTION AND CROSS SECTION
L - 3	LEACHATE COLLECTION FACILITY AND GAS VENT
L - 4	RAINWATER DRAINAGE
L - 5	ACCESS ROAD AND ONSITE ROAD
L - 6	RECIRCULATION SYSTEM
L - 7	CONTROL OFFICE AND WORKSHOP
L - 8	PLAN OF COMPLETED LANDFILL

LAYOUT OF ADM. FACILITY AREA
S=1:1 000

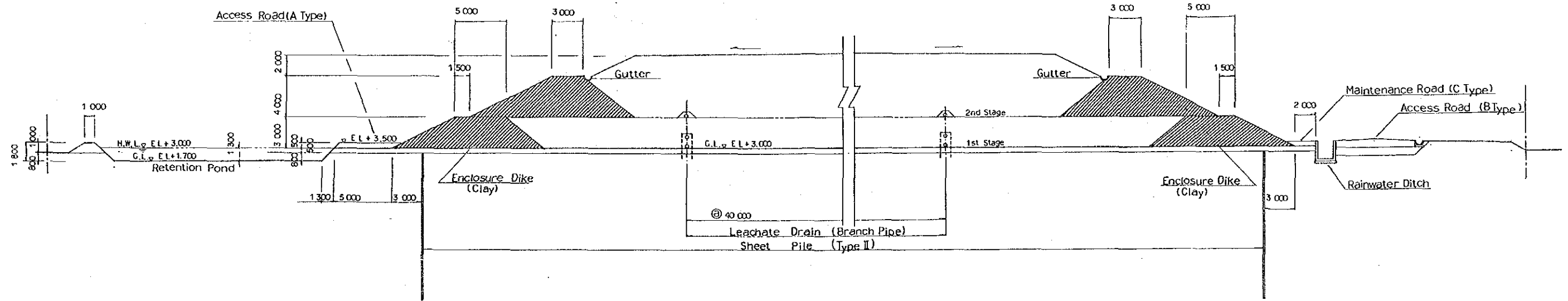


LEGEND	
	Sheet Pile (Type II, L x M 500)
	Divider Dike
	Onsite Road
	Leachate Drain (Main Pipe)
	Leachate Drain (Branch Pipe)
	Gas Vent
	Boundary

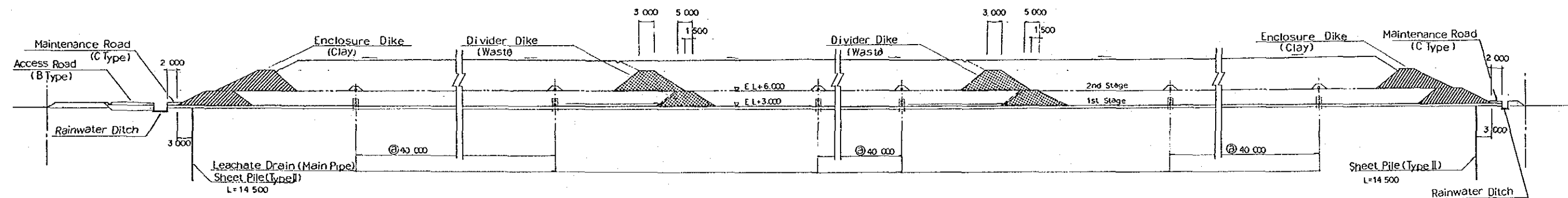


The Directorate of Environmental Sanitation, The Directorate General of Human Settlements, The Ministry of Public Works					
The Study on the Solid Waste Management Improvement for Surabaya City in The Republic of Indonesia					
PLAN					
DATE	FEB. 1993	SCALE	1:5000	DWG. NO.	L-1
JAPAN INTERNATIONAL COOPERATION AGENCY (JICA)					

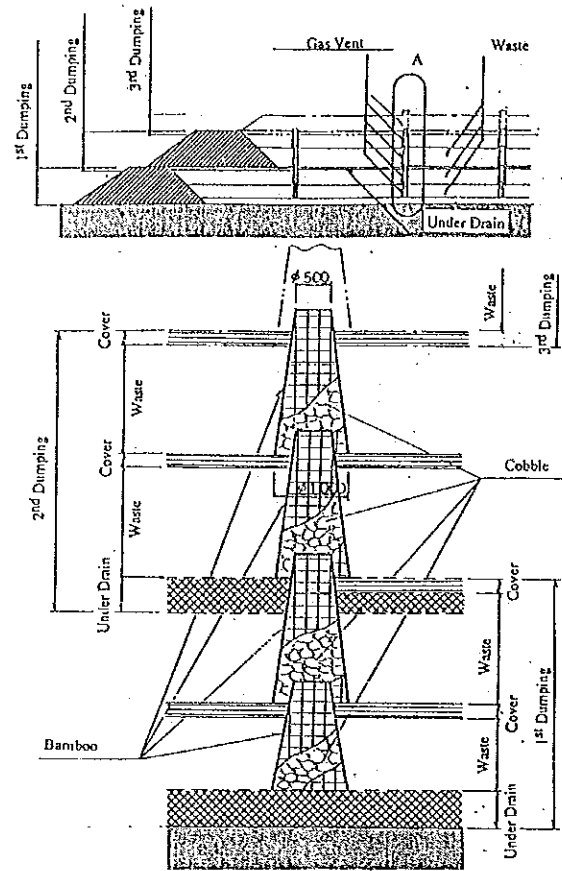
STANDARD VERTICAL SECTION
S=1:400



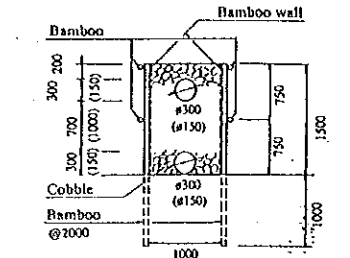
STANDARD CROSS SECTION
S=1:800



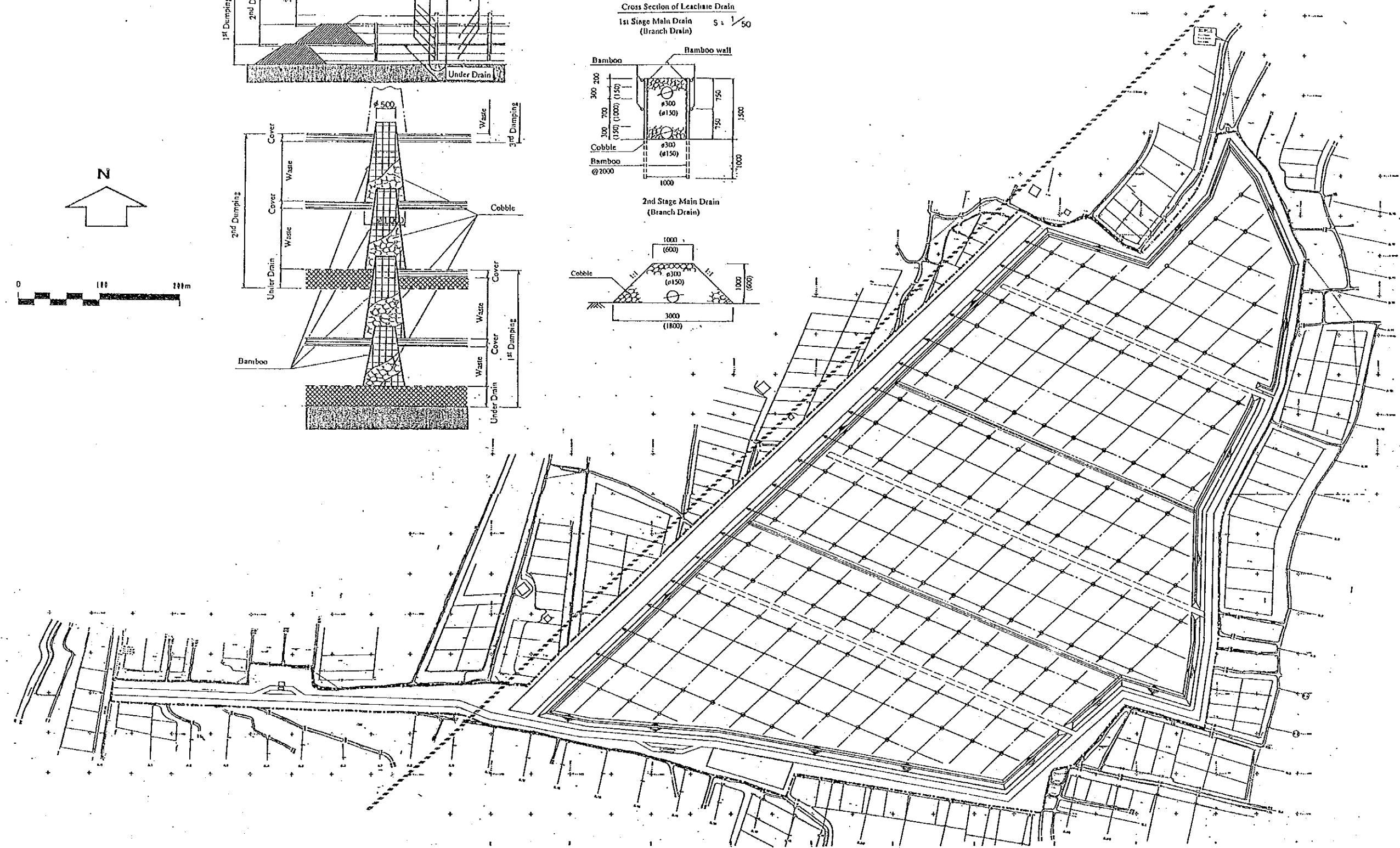
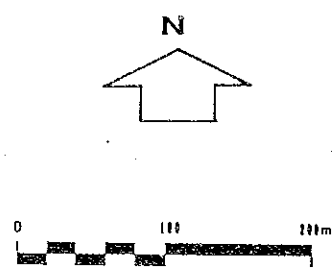
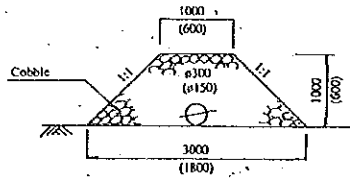
The Directorate of Environmental Sanitation, The Directorate General of Human Settlements, The Ministry of Public Works			
The Study on the Solid Waste Management Improvement for Surabaya City in The Republic of Indonesia			
STANDARD VERTICAL SECTION AND STANDARD CROSS SECTION			
DATE	FEB. 1993	SCALE	DWG. NO. L-2
JAPAN INTERNATIONAL COOPERATION AGENCY (JICA)			



Cross Section of Leachate Drain
1st Stage Main Drain (Branch Drain) S = 1/50



2nd Stage Main Drain (Branch Drain)



LEGEND	
	Sheet Pile (Type B, L=14 500)
	Divider Dike
	Onsite Road
	Leachate Drain (Main Pipe)
	Leachate Drain (Branch Pipe)
	Gas Vent
	Boundary

The Directorate of Environmental Sanitation,
The Directorate General of Human Settlements,
The Ministry of Public Works
The Study on the Solid Waste Management
Improvement for Surabaya City
In The Republic of Indonesia

**LEACHATE COLLECTION FACILITY
AND
GAS VENT**

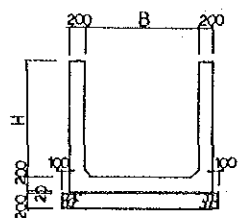
DATE FEB. 1993 SCALE DWG. NO. L-3
JAPAN INTERNATIONAL COOPERATION AGENCY (JICA)

DIMENSION TABLE OF
RAINWATER DITCH

(Unit: mm)

block	B	H
a	900	1 350
b	1 600	1 800
c	2 700	2 000
d	2 300	1 500
e	4 000	1 150

RAINWATER DITCH

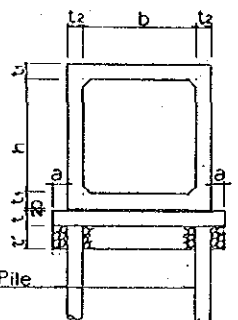


DIMENSION TABLE OF
Box CULVERT

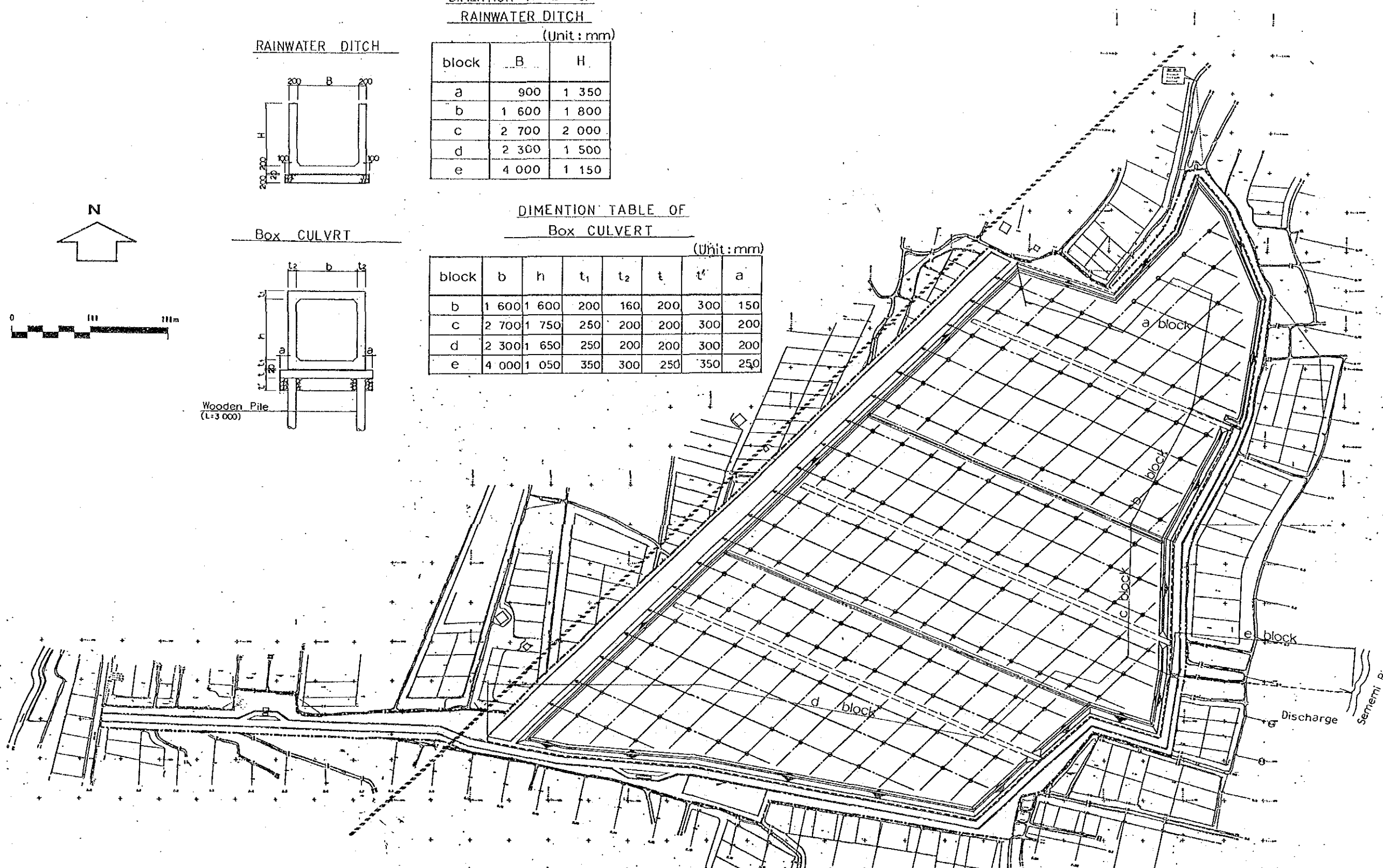
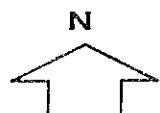
(Unit: mm)

block	b	h	t ₁	t ₂	t	t'	a
b	1 600	1 600	200	160	200	300	150
c	2 700	1 750	250	200	200	300	200
d	2 300	1 650	250	200	200	300	200
e	4 000	1 050	350	300	250	350	250

Box CULVRT



Wooden Pile
(L=3 000)



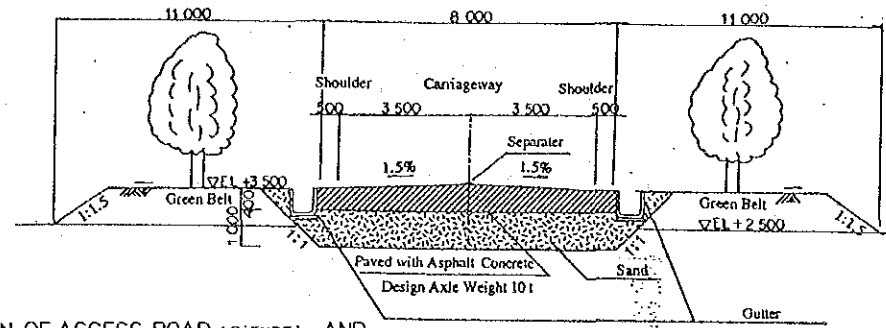
LEGEND	
Mark	Remark
---	Rainwater
---	Gutter
▣	Box Culvert

The Directorate of Environmental Sanitation,
The Directorate General of Human Settlements,
The Ministry of Public Works
The Study on the Solid Waste Management
Improvement for Surabaya City
in The Republic of Indonesia

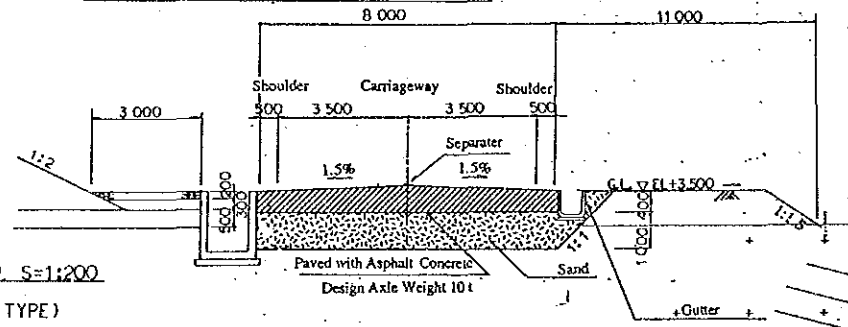
RAINWATER DRAINAGE

DATE FEB. 1993 SCALE DRG. NO. L-4
JAPAN INTERNATIONAL COOPERATION AGENCY (JICA)

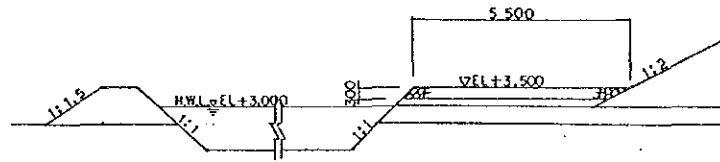
SECTION OF ACCESS ROAD (A TYPE) S=1:200



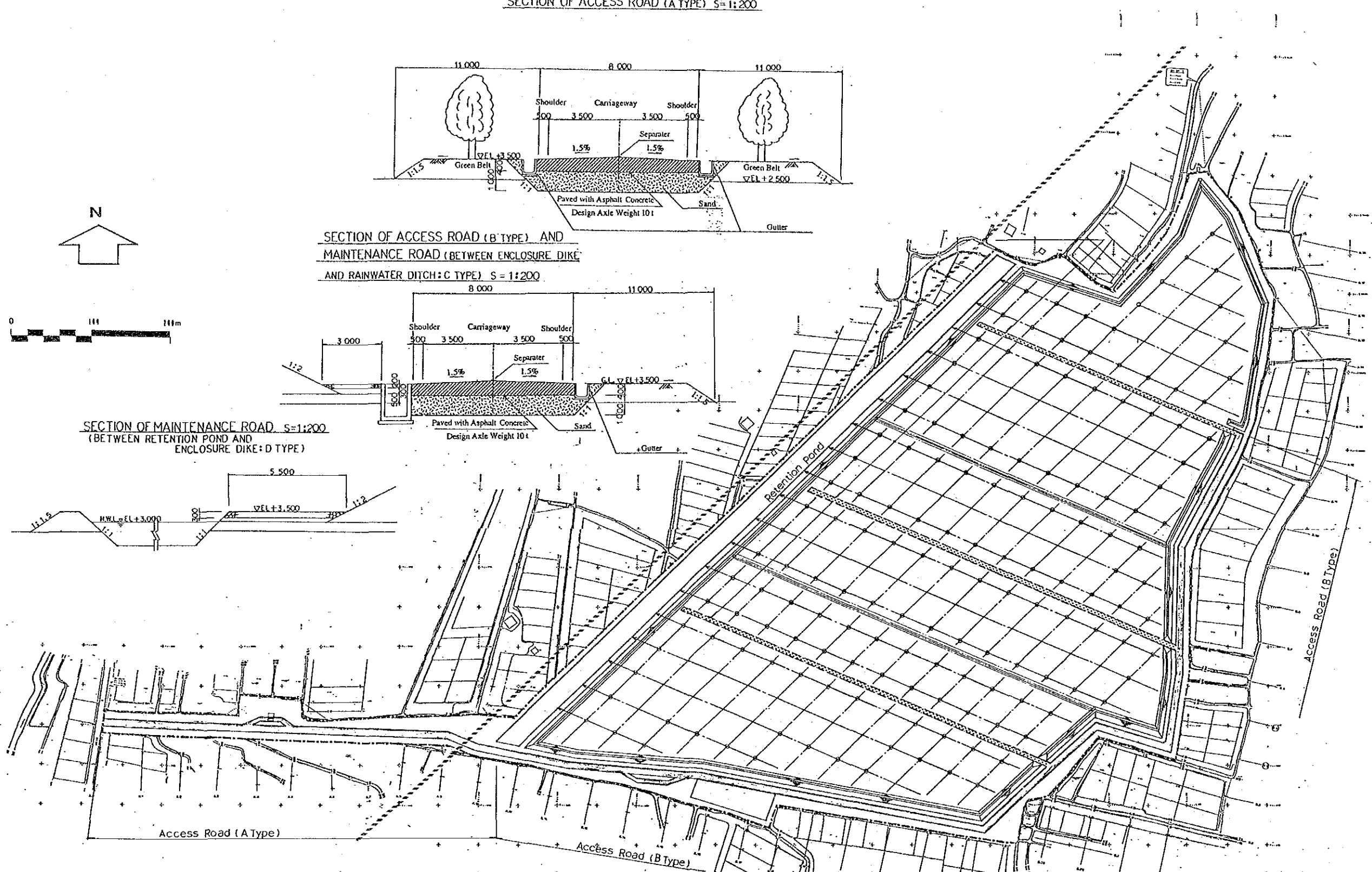
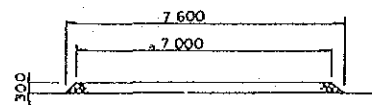
SECTION OF ACCESS ROAD (B TYPE) AND MAINTENANCE ROAD (BETWEEN ENCLOSURE DIKE AND RAINWATER DITCH: C TYPE) S = 1:200



SECTION OF MAINTENANCE ROAD (BETWEEN RETENTION POND AND ENCLOSURE DIKE: D TYPE) S=1:200



SECTION OF ONSITE ROAD S=1:200

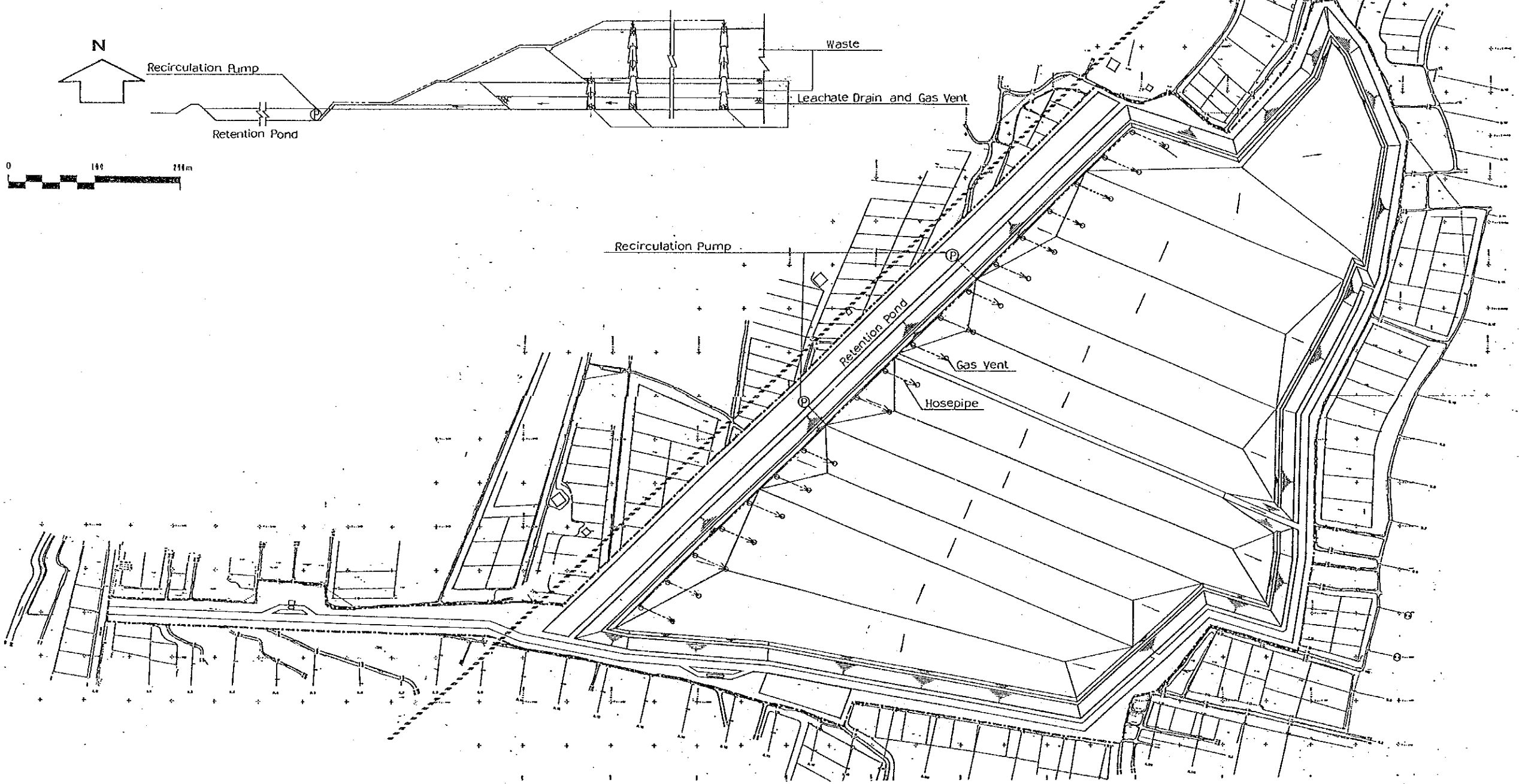


The Directorate of Environmental Sanitation,
The Directorate General of Human Settlements,
The Ministry of Public Works
The Study on the Solid Waste Management
Improvement for Surabaya City
in The Republic of Indonesia

ACCESS ROAD
AND
ONSITE ROAD etc.

DATE	FEB. 1993	SCALE		DWG. NO.	L-5
JAPAN INTERNATIONAL COOPERATION AGENCY (JICA)					

SECTION OF RECIRCULATION SYSTEM S=1:500

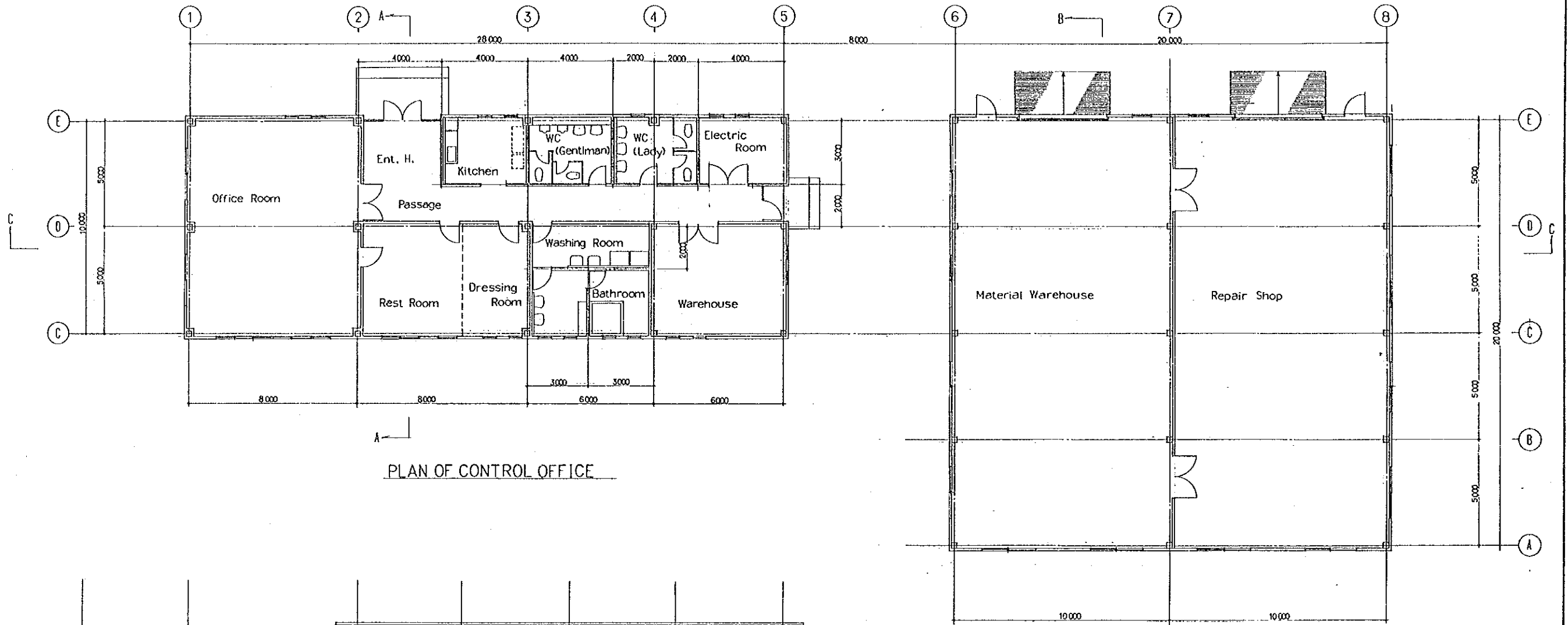
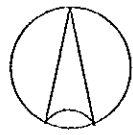


The Directorate of Environmental Sanitation,
 The Directorate General of Human Settlements,
 The Ministry of Public Works

The Study on the Solid Waste Management
 Improvement for Surabaya City
 in The Republic of Indonesia

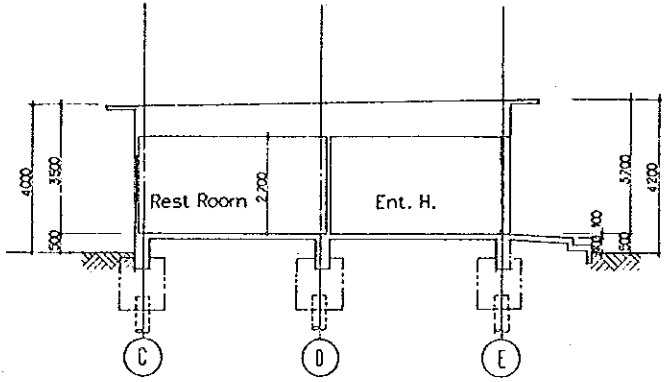
RECIRCULATION SYSTEM

DATE	FEB. 1993	SCALE	DWG. NO.	L-6
JAPAN INTERNATIONAL COOPERATION AGENCY (JICA)				

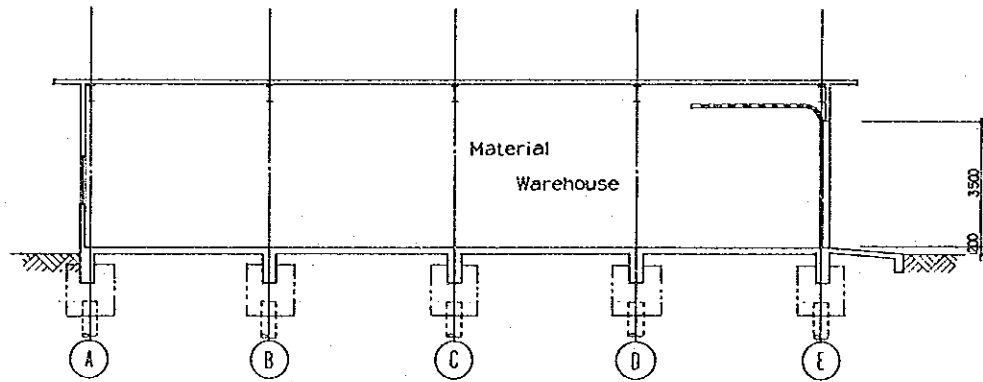


PLAN OF CONTROL OFFICE

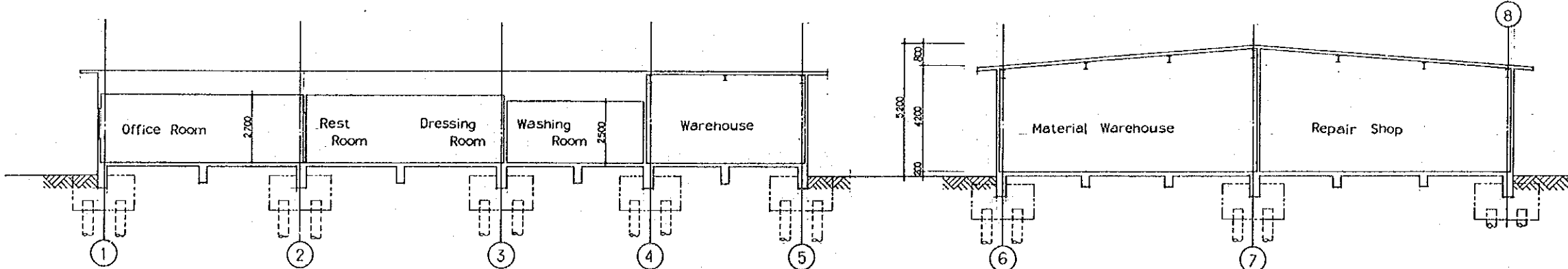
PLAN OF REPAIR HOUSE



A-A SECTION



B-B SECTION

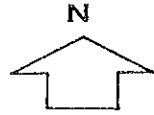


C-C SECTION

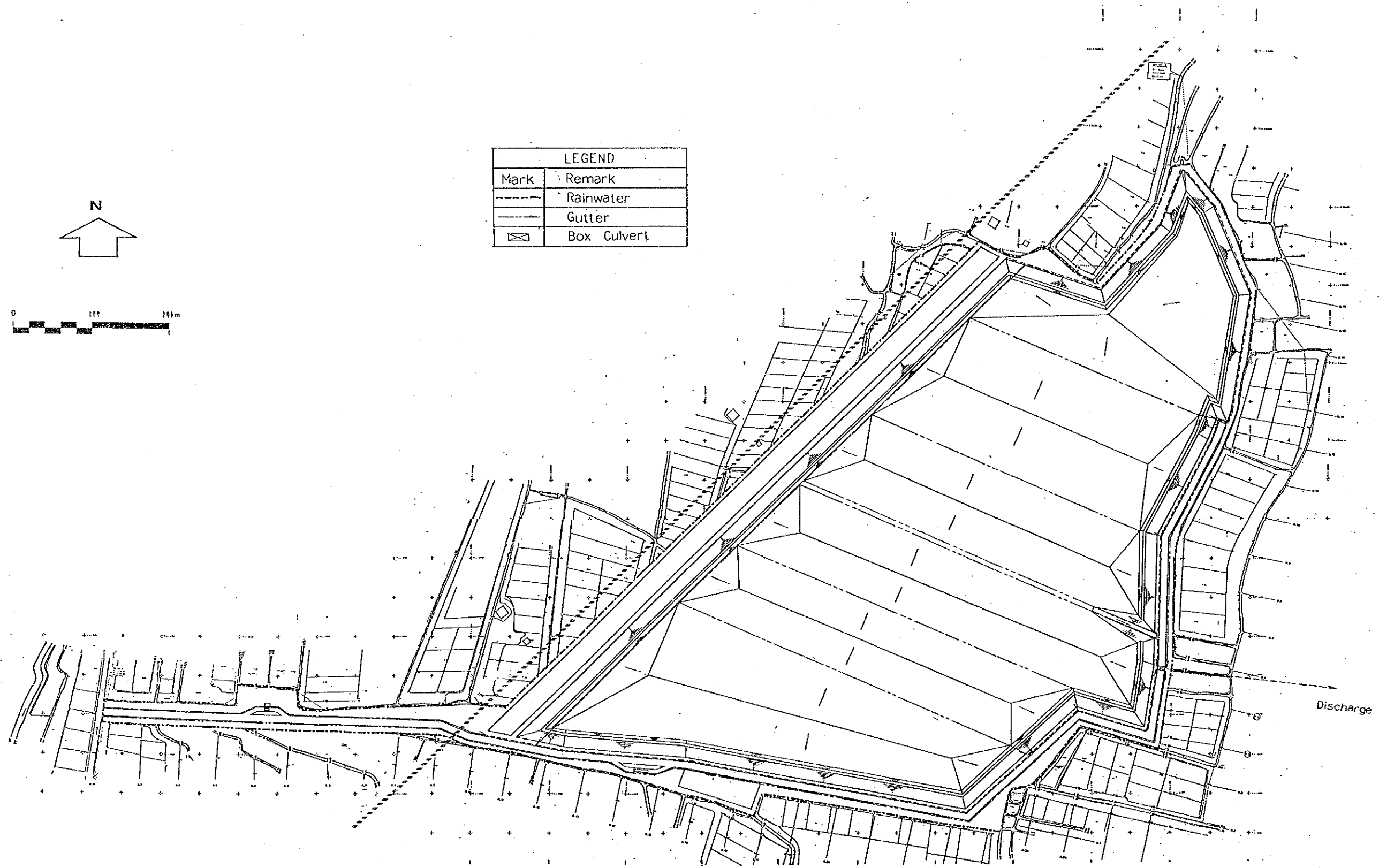
The Directorate of Environmental Sanitation,
 The Directorate General of Human Settlements,
 The Ministry of Public Works
 The Study on the Solid Waste Management
 Improvement for Surabaya City
 in The Republic of Indonesia

CONTROL OFFICE AND WORK SHOP

DATE | FEB. 1993 | SCALE | 1:200 | DWG. NO. | L-7
 JAPAN INTERNATIONAL COOPERATION AGENCY (JICA)



LEGEND	
Mark	Remark
	Rainwater
	Gutter
	Box Culvert



The Directorate of Environmental Sanitation,
The Directorate General of Human Settlements,
The Ministry of Public Works
The Study on the Solid Waste Management
Improvement for Surabaya City
In The Republic of Indonesia

PLAN OF COMPLETED LANDFILL

DATE | FEB. 1993 | SCALE | 1:6000 | DWG. NO. | L-8
JAPAN INTERNATIONAL COOPERATION AGENCY (JICA)

JICA