

APPENDIX IV

IRRIGATION AND DRAINAGE ANALYSIS

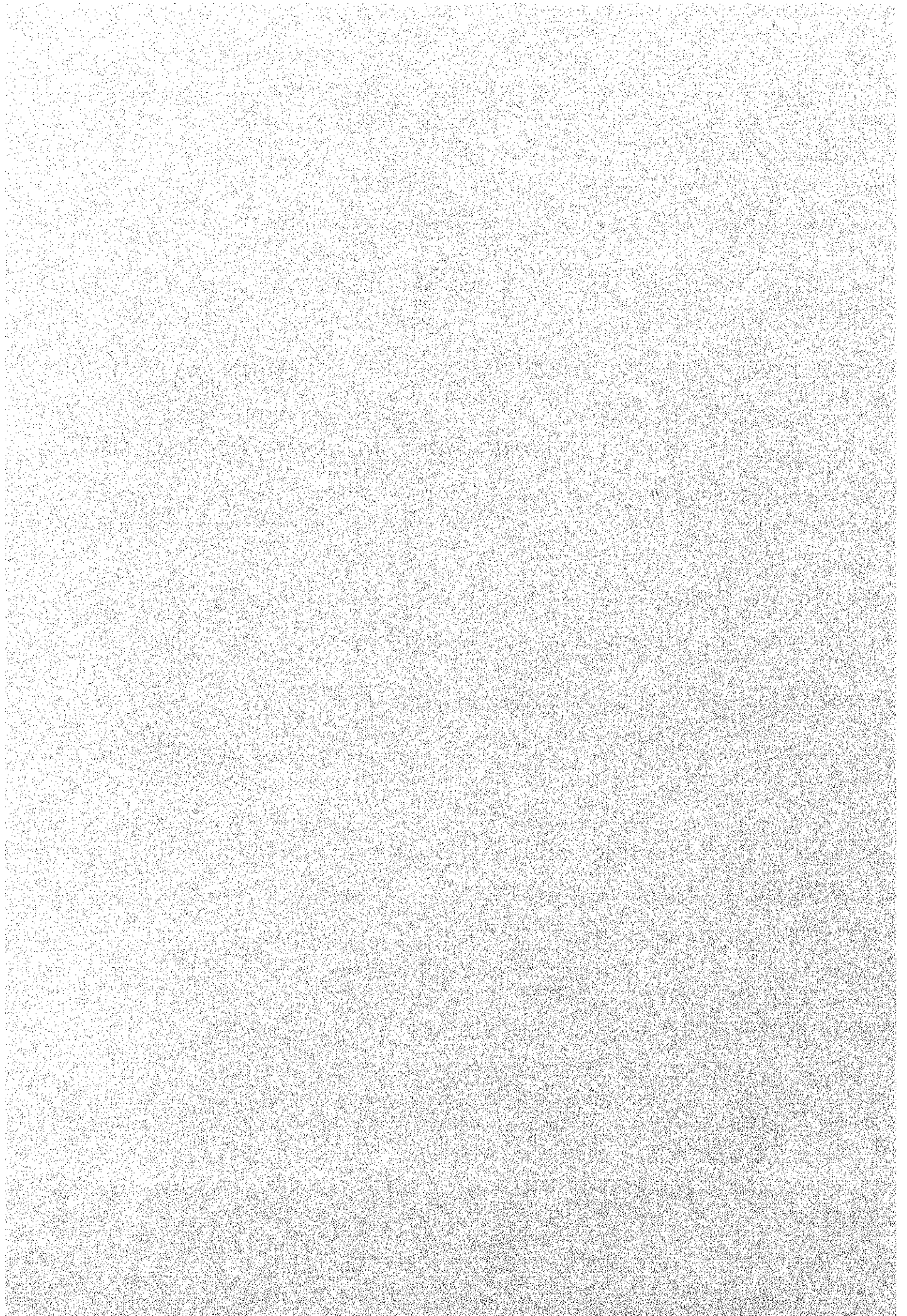


Table 1.1 EXISTING IRRIGATION FACILITIES OF THE SHORTLISTED PROJECTS

COD	NO	NAME OF PROJECT	Type of Project	Existing Irr. Facility	Irr. area (ha)	Water Resources		Existing Dam	Dam Type	Dam Height (m)	Effective Storage(m3)		Dead Storage(m3)		Off-taking System
						SRC	WAT				DAM_EFF	DAM_DEAD	DAM_METH		
FR	1	SIMPANG GETI	B	YES	40	R	R	YES	EARTH FILL	-	48,000	12,000	-	-	P
FR	2	PANGGAS-SMALL DAM PROJECT	A	YES	114	R	R	YES	EARTH FILL	7	250,000	30,000	-	-	R
FR	4	TASEK MELATI	B	YES	232	R	R	YES	-	-	70,000	12,500	-	-	R
FR	5	PAYA KELUBI MANGO PROJECT	B	YES	10	RW	RW	YES	-	-	8,000	1,000	-	-	P
FR	6	HUTAN LEMBAH MANGO PROJECT	B	NO	-	RW	RW	NO	EARTH FILL	9	135,700	NA	-	-	R
KH	3	AMPANGAN PDG SAGA	B	YES	486	R	R	YES	-	-	-	-	-	-	R
KH	4	KAWASAN PADI KEDAWANG	B	YES	-	-	-	-	-	-	-	-	-	-	-
KH	6	P LIBALI BERKELOMPOK	A	NO	-	-	-	-	-	-	NA	NA	-	-	-
KH	13	-	A	NO	-	-	-	-	-	-	7,000	1000	-	-	P
KH	14	SKIM JANING	A	YES	137	R	R	YES	-	-	-	-	-	-	-
KH	15	LUBUK MERBAU	A	NO	-	-	-	-	HEADWORKS	3	240,000	120,000	-	-	R
KH	16	SEKIM TANDOP BESAR	A	YES	50	R	R	-	HEADWORKS	2	2,500	500	-	-	R
KH	19	KURONG HITAM IRRIGATION SCHEME	A	YES	100	R	R	-	HEADWORKS	5	2,500	500	-	-	R
KH	31	KUBUR PANJANG	A	YES	111	R	R	YES	HEADWORKS	-	500	100	-	-	P
KH	32	KG KAYU TIGA	A	NO	-	-	-	-	-	-	6,000	2,000	-	-	P
KH	35	BK PERAK	A	YES	48	R	R	NO	-	-	NA	NA	-	-	R
KH	40	SG AIR JERNIH	A	NO	-	-	-	-	HEADWORKS	3	2,000	200	-	-	WER
KH	41	SG BARU	A	YES	120	R	R	YES	-	-	NA	NA	-	-	-
KH	43	BENDANG DALAM	E	NO	-	-	-	-	-	-	NA	NA	-	-	-
KH	48	KG BETONG - P DURIAN KELOMPOK	E	NO	-	-	-	-	-	-	NA	NA	-	-	P
KH	49	KG KUBANG YOI	A	NO	-	-	-	-	-	-	NA	NA	-	-	P
KH	50	KG SELAMAT	A	YES	4	R	R	NO	-	-	NA	NA	-	-	-
FP	1	LUAR BAN PINANG TUNGGAL	C	NO	10	R	R	NO	-	-	NA	NA	-	-	P
FP	3	TOK BEDU IRRIGATION AREA	C	YES	68	R	R	NO	HEADWORKS	2	40,600	0	-	-	FI/P
FP	5	PINANG TUNGGAL IRRIGATION AREA (PIA)	A	YES	558	R	R	YES	HEADWORKS	2	40,600	0	-	-	P
FP	6	SG JARAK IRRIGATION AREA	A	YES	475	R	R	YES	HEADWORKS	2	4,500	500	-	-	R
FP	9	SG BULUNG	D	YES	525	R	R	NO	HEADWORKS	2	12,800	72,000	-	-	R
FP	11	SG KULIM IRRIGATION SCHEME	D	YES	3,665	R	R	YES	HEADWORKS	2	NA	NA	-	-	P
FP	12	SKIM PENGAIRAN SG KULIM	B	YES	-	R	R	NO	-	-	NA	NA	-	-	R
FP	13	SKM PENGAIRAN TASEK SELATAN	D	YES	192	R	R	YES	HEADWORKS	2	NA	NA	-	-	-
PK	1	KG TASEK	A	NO	-	-	-	NO	-	-	-	-	-	-	-
PK	2	PUSAT PERTANAH TINGGI BK BARING	A	NO	-	-	-	NO	-	-	-	-	-	-	-
PK	3	INDUSTRI BUAH-BUAHAN	A	NO	-	-	-	NO	-	-	-	-	-	-	W
PK	4	BENDANG TEMELONG	A	YES	150	R	R	YES	-	-	-	-	-	-	W
PK	5	P KELOMPOK BUAH-BUAHAN	A	YES	30	RRW	RRW	YES	-	-	-	-	-	-	W
PK	6	P KELOMPOK BUAH-BUAHAN SAYURAN	A	YES	75	R	R	YES	-	-	-	-	-	-	W
PK	7	SENOUK CHANGKAT NING	A	YES	113	RRW	RRW	YES	-	-	-	-	-	-	W
PK	8	P KELOMPOK BUAH-BUAHAN AIR PUTIH	B	NO	-	RW	RW	NO	-	-	-	-	-	-	R
PK	9	BENDANG JENALIK	A	YES	60	R	R	NO	-	-	-	-	-	-	-
PK	10	BENDANG KG LANEH	A	NO	-	-	-	YES	-	-	-	-	-	-	-

COD	NO	NAME OF PROJECT	Type of Project	Existing Irr. Facility ID_FAC	Irr. area (ha) IRR_AREA	Water Resources SRC_WAT	Existing Dam EXIST_STR	Dam Type DAM_TYPE	Dam Height (m) DAM_HGT	Effective Storage(m3) DAM_EFF	Dead Storage(m3) DAM_DEAD	Off-taking System
PK	13	RANC TALAIR PDG RENGAS	A	YES	115	R	YES	-	-	-	-	W
PK	15	DENDANG A	A	YES	59	R	NO	-	-	-	-	W
PK	16	DENDANG B	A	YES	160	R	NO	-	-	-	-	W
PK	17	BRUAS & TAMBAHAN	A	YES	278	R	NO	-	-	-	-	W
PK	20	SG BANGUNG PDG MATI	B	YES	143	RRW	NO	-	-	-	-	W
PK	21	SG MANIK RRG SCHEME	B	YES	6,600	R	YES	-	-	-	-	W
SG	3	SG JANG	A	NO	-	-	-	-	-	-	-	-
SG	4	BK TAMU	A	NO	-	-	-	-	-	-	-	-
SG	5	KG KALONG TENGAH	D	YES	N.A.	N.A.	N.A.	-	-	-	-	-
SG	8	KUANG	B	NO	-	R	NO	-	-	-	-	WER
SG	9	REKREASI SG CHONGKAK	A	N.A.	-	-	-	-	-	-	-	-
SG	10	KG KANTAN	A	NO	-	RW	-	-	-	-	-	-
SG	11	KG PASIR	A	NO	-	GW	NO	-	-	-	-	-
SG	13	JLN ENAM KAKI 1	A	YES	58	RRW	NO	N.A.	-	-	-	WER
SG	14	SAPAN BT MINANGKABAU	A	YES	-	RRW	YES	M.C.ROLLER	-	-	-	F
SG	15	SG JAI BK KEPONG	A	YES	60	R	NO	N.A.	-	-	-	-
NS	1	STESAN MARDI JELEBU	A	YES	220	RW	YES	POND	6	12,000	9,000	RJ
NS	2	BUAH-BUAHAN LANJUT MANIS	A	YES	12.9	RW	YES	EARTH FILL	7.9	2,501	1,711	RJ
NS	3	SRI MENANTI	B	YES	142	RRW	NO	-	-	-	-	W
NS	5	REBAU	A	NO	-	-	NO	-	-	-	-	-
NS	6	KELOMPOK KG CHENGAU LULU	A	YES	33.6	R	YES	-	-	-	-	-
NS	7	KG BK TEMBOK & SG RAYA	B	YES	260	RRW	YES	EARTH FILL	2.4	200,000	140,000	W
NS	8	P TERNAKAN UDANG GALAH	A	YES	2.14	R	YES	CONC.	-	-	-	W
MA	2	LULU SG BULOH	A	-	-	-	-	-	-	-	-	-
MA	11	SG UDANG	D	NO	10	R	NO	-	-	-	-	-
MA	14	KANDANG	B	YES	7	RW	YES	-	-	-	-	PUMPING
MA	15	SOLOK BK META	B	YES	7	RW	YES	-	-	-	-	-
MA	16	FELORA BK SEDANAN	A	YES	97	R	YES	EARTH FILL	7	146,200	120,400	-
JR	3	SAWAH KEBUN BARU	B	YES	178	R	YES	-	-	-	-	-
JR	8	LDG KELOMPOK KG SRI TIMOR	B	NO	70	RRW	NO	-	-	-	-	-
JR	9	LDG KELOMPOK BT SAMBULAN, YONG PENG	B	YES	20	RW	YES	-	-	-	-	-
JR	10	LDG KELOMPOK KANGKAR MERLIMAU	B	NO	5	GW	NO	-	-	-	-	-
JR	12	TUNJOK LAUT	D	NO	60	R	NO	-	-	-	-	-
JR	14	SG CHEMARAN	D	YES	10	R	YES	-	-	-	-	-
KN	1	JUBAKAR PANTAI	B	NO	-	-	-	-	-	-	-	-
KN	4	KG BELIAN	B	NO	-	-	-	-	-	-	-	-
KN	5	LUBOK SELEHONG	B	NO	-	-	-	-	-	-	-	-
KN	8	BENDANG JELITONG, KOK LANAS	B	YES	75	RRW	YES	CONCRETE	3	1,593	1,062	F
KN	9	BENDANG BT TINGGI, BK CHINA	B	YES	30	RRW	YES	CONCRETE	3	175	47	F
KN	10	BENDANG SOKOR, BK CHINA	B	YES	50	RRW	YES	CONCRETE	3	346	230	F
KN	11	KUBANG TEBAKANG	C	YES	100	R	YES	-	-	-	-	-

COD NO	NAME OF PROJECT	Type of Project	Existing Irr.Facility ID_FAC	Irr.area (ha)	Water Resources		Existing Dam	Dam Type	Dam Height (m)	Effective Storage(m3)		Dead Storage(m3)	Off-taking System
					SRW	WAT				DAM_HGT	DAM_EFF		
KN	13	TASIK PUTERA	YES	20	R	NO	NO	-	-	-	-	-	-
KN	16	BENDANG PERGI	YES	32	RGW	NO	NO	-	-	-	-	-	P
KN	24		YES	465	R	YES	AMCO	-	2	1,152	-	-	R
KN	26		YES	147	R	YES	-	-	-	-	-	-	-
KN	27		YES	84	R	YES	-	-	-	-	-	-	-
KN	35	RANC TALAIR LEPAN AGOR	YES	36	R	YES	-	-	-	-	-	-	-
TR	1	TELABAK IRRIGATION SCHEME	YES	100	R	YES	EARTH	-	3	1,778,400	39,900	-	R
TR	3	SKIM TANAMAN PADI MARAS	YES	1,955	RFW	YES	NA	-	NA	NA	NA	-	NA
TR	4	P KELOMPOK SAYURAN	YES	4	POND	NA	-	-	-	-	-	-	-
TR	7	SALIRAN TOK JIRING	NO	-	-	-	-	-	-	-	-	-	R
TR	12	P KELOMPOK SAYURAN	YES	20	GW	NA	-	-	-	-	-	-	-
TR	14	P KELOMPOK SAYURAN	YES	5	POND	NO	-	-	-	-	-	-	-
TR	20	SKIM TANAM PADI DURIAN HAJI	NO	50	RFW	NO	-	-	-	-	-	-	R
TR	24	P KELOMPOK SAYURAN	YES	4	POND	NO	-	-	-	-	-	-	-
TR	28	P KELOMPOK SAYURAN	NO	NA	NA	NA	-	-	-	-	-	-	R
TR	34	LEMBAH MARANG II	NO	-	-	-	-	-	-	-	-	-	-
TR	38	P KELOMPOK SAYURAN	NO	-	-	-	-	-	-	-	-	-	-
TR	42	P KELOMPOK SAYURAN	YES	NA	NA	NA	-	-	-	-	-	-	-
TR	44	P KELOMPOK SAYURAN	YES	2	R	-	-	-	-	-	-	-	-
TR	45	P KELOMPOK SAYURAN	YES	5	R	NO	-	-	-	-	-	-	-
TR	50	KOLAM ABANG	-	-	-	-	-	-	-	-	-	-	-
PH	9	PAYA PAGAR SASAK	-	-	R	YES	BRUSHWOOD	-	3	-	-	-	R
PH	11	P.WAU,BETONG & GEMAYAIL	YES	59	R	YES	EARTH DAM	-	2	59,000	30,000	-	INNUNDATION
PH	12	PAYA JELUTUNG	YES	-	RW	YES	TYPE A	-	3	-	-	-	INNUNDATION
PH	13	PAYA NYAK BESAR	YES	-	R/RW	YES	TYPE A	-	-	-	-	-	INNUNDATION
PH	14	PAYA TING & BESAR KERTAUA	YES	70	RW	YES	TYPE A	-	3	1.4M	175,000	-	INNUNDATION
PH	16	PAYA NYAK KECIL	YES	54	RW	YES	TYPE A	-	3	0.9M	0.1M	-	INNUNDATION
PH	17	PAYA PDG TENGGALA	YES	-	RW	YES	TYPE A	-	2	0.85M	-	-	INNUNDATION
PH	19	PAYA SG LING	-	210	-	YES	EARTH DAM	-	3	525,000	105,000	-	INNUNDATION
PH	20	PAYA LANTING	-	187	-	-	EARTH DAM	-	2	374,000	93,500	-	-
PH	23	PAYA PESAGI	-	93	-	-	EARTH DAM	-	2	232,500	111,600	-	-
PH	24	PAYA KROT	-	83	-	-	EARTH DAM	-	2	207,500	41,500	-	-
PH	25	PAYA LDG	-	159	-	-	EARTH DAM	-	2	318,000	79,500	-	INNUNDATION

COD NO	NAME OF PROJECT	Type of Project	Existing Int. Facility ID_FAC	Intr. area (ha)	Flood Occurrence	Flood Season F&IN_YR	Flood Season F&IN_SEA	Inundation Period (day)	Flood Reason F&IN_PD	Flood Reason F&IN_REA	Watershortage Occurrence	Watershortage Area (ha)	Watershortage Season WTR_SIZE	Watershortage Reason of WTR_RSN	Crops	Damaged Area (ha)
PK 13	RANC TALAIR PDG BENGAS	A	YES	115	90/93(20)	OCT		1	CHOKING		90.91.92.93	15.15.15.15	FEB	FREQUENT DISCHARGE INT	MASHUR	15
PK 15	DENDANG A	A	YES	59	50/93(3)	DEC/JAN		1	CHOKING		90.91.92.93	30.30.30.30	FEB	FREQUENT DISCHARGE INT	MASHUR	30
PK 16	DENDANG B	A	YES	160							90.91.92.93	71.71.71.71	FEB	FREQUENT DISCHARGE INT	MASHUR	71
PK 17	BRIJAS & TAMBAHAN	A	YES	278				3	CHOKING		90.91.92.93	50.50.50.50	WHOLE YR	POOR IRR FACILITIES	PADY	50
PK 20	SG BATANG PDG MATI	B	YES	143	93(10)	DEC					90.91.92.93	53.65.65.65	N.A.	CONTROL BY T.N.B	PADY	653
PK 21	SG MANIK IRRIG SCHEME	B	YES	6,600												
SG 3	SG JANG	A	NO													
SG 4	BK TAMU	A	NO													
SG 5	KG KALONG TENGAH	D	YES	N.A.												
SG 8	KUANG	B	NO													
SG 9	REKREASI SG CHONGKAK	A	N.A.													
SG 10	KG KANTAN	A	NO													
SG 11	KG PASIR	A	NO													
SG 13	JLN ENAM KAKI 1	A	YES	58	20	JAN		2	ORC							50
SG 14	SAPAN BT MINANGKABAU	A	YES		150	JAN		2	ORC		N.A.					
SG 15	SG JAI BK KEPONG	A	YES	60	25	JAN		2	N.A.							
NS 1	STESEN MARU JELUBU	A	YES	12.9												
NS 2	BUAH-BUAHAN LANJUT MANIS	A	YES	142.90(2), 91(3), 93(2)	OCT-NOV			0.5	ORC		90.91.92.93	35.35.35.35	MAY-JUL	TAUGHT & FOREST CLEAR	PADY	12.14
NS 3	SRI MENAWI	B	YES													70
NS 5	REBAU	A	NO													
NS 6	KELOMPOK KG CHENGKAU LULU	A	YES	33.6	1993(2)	NOV			ORC							
NS 7	KG BK TEMBOK & SG RAYA	B	YES	260	1991(100)	DEC		1-2			1991		MAR-APR	DROUGHT	PADY	180
NS 8	P TERNAKAN UDANG GALAH	A	YES	2.14							92.93	12.12	JUN-JUL	INSUFFICIENT CATCHMENT	PADY	12
MA 2	LULU SG BULOH	A	NO													
MA 11	SG UDANG	D	NO	10	NO	JUL		3	CHOKING							7
MA 14	KANDANG	B	YES	7												7
MA 15	SOLOK BK META	B	YES	7												
MA 16	FELCRA BK SEDANAN	A	YES	97												
JR 3	SAWAH KEBUN BARU	B	YES	178												
JR 8	LDG KELOMPOK KG SRI TIMOR	B	NO	70	NIL	NIL										
JR 9	LDG KELOMPOK BT SAMBULAN, YONG PENG	B	YES	20	20	OCT-JAN		15			1990-93	114	FEB-APR	NO RAINFALL	ALL	40
JR 10	LDG KELOMPOK KANGKAR MERLIMAU	B	NO	5	NO	NO										
JR 12	TUNJOK LAUT	D	NO	60	N.A.	N.A.										
JR 14	SG CHEMARAN	D	YES	10												
KN 1	JUBAKAR PANTAI	B	NO													
KN 4	KG BELIAN	B	NO		1993(40)	NOV-DEC		8								
KN 5	LUKOK SELEHONG	B	NO		1990-93(N.A)	DEC		7								
KN 8	BENDANG JELUTONG, KOK LANAS	B	YES	75	1990-93(75)	NOV-DEC		3	HLR		1990-93	75	MAY-JUL	COMPETING	PADY	75
KN 9	BENDANG BT TINGGI, BK CHINA	B	YES	30	1990-93(30)	NOV-DEC		3	HLR		1990-93	15.10.10.5	MAY-JUL	COMPETING	PADY	5
KN 10	BENDANG SOKOR, BK CHINA	B	YES	50	1990-93(50)	NOV-DEC		3	HLR		1990-93	50	MAY-JUL	DRAUGHT	PADY	12
KN 11	KUBANG TEBAKANG	C	YES	100	1990-93(23)	NA		NA	NA		1990-93	12	MAR-JUL	DRAUGHT	PADY	12

COD NO	NAME OF PROJECT	Type of Project		Existing Irr. facility	Irr. area (ha)	Adjacent projects		Type of project	Relation to the Project	Aerial over lapping	Overlap Area (ha)	Current stage of project	O & M cost(RM)	Work System
		ID	FAC			OFFRO AREA	OFFRO NAME							
PK 13	RANG TALAIR PDG RENGAS	A	YES	115										
PK 15	DENDANG A	A	YES	59	DENDANG B & BRUAS			FR	SHARING WAT	NO		O&M	47,300	FA
PK 16	DENDANG B	A	YES	160	DENDANG A & BRUAS			FR	SHARING WAT	NO		O&M	37,700	FA
PK 17	BRUAS & TAMBAHAN	A	YES	278	DENDANG A & B			FR	SHARING WAT	NO		O&M	54,500	FA
PK 20	SG BAYANG PDG MATI	B	YES	143	IADP KRIAN,SG.MANIK			FR	SHARING WAT	YES	73	O&M	16,900	S,FA
PK 21	SG MANIK,IRRIG SCHEME	B	YES	6,800	TENAGA NATIONAL BHD.			HYDRO POWER	SHARING WAT	NO		O&M	2,344,500	S,FA
SG 3	SG JANG	A	NO											
SG 4	BK TAMU	A	NO											
SG 5	KG KALONG TENGAH	D	YES	N.A.										
SG 8	KUANG	B	NO									FS		
SG 9	REKREASI SG CHONGKAK	A	N.A.											
SG 10	KG KANTAN	A	NO											
SG 11	KG PASIR	A	NO											
SG 13	JLN ENAM KAKI 1	A	YES	58	SG JAWBK KEPONG								26,000	FA
SG 14	SAPAN BT MINANGKABAU	A	YES										40,000	FA
SG 15	SG JAI BK KEPONG	A	YES	60									29,400	FA
NS 1	STESAN MARDI JELEBU	A	YES	220									4,560	S
NS 2	BUAH-BUAHAN LANJUT MANIS	A	YES	12.9	AQUACULTURE			FEED LOT	SHARING WAT	NO	2	O&M	4,000	S
NS 3	SRI MENVANTI	B	YES	142	POND					NO			36,544	S,FA
NS 5	REMAU	A	NO		REMAU WATER SUPPLY					NO		O&M	3,000	FC
NS 6	KELOMPOK KG CHENGAU ULU	A	YES	33.6						NO				
NS 7	KG BK TEMBOK & SG RAYA	B	YES	260						NO		O&M	200,000	FA
NS 8	P TERNAKAN UDANG GALAH	A	YES	2.14	AQUACULTURE					NO		CS	3,000	FC
MA 2	ULU SG BULOH	A												
MA 11	SG UDANG	D	NO	10	IFRIGATON					NO		NO		NO
MA 14	KANDANG	B	YES	7						NO		O&M	600	FORCE AC
MA 15	SOLOK BK MIETA	B	YES	7						NO		O&M	600	FORCE AC
MA 16	FELORA BK SEDANAN	A	YES	97						NO				FORCE AC
JR 3	SAWAH KEBUN BARU	B	YES	178	FELDA KALANG TIMUR					NO		FS	1,000	FORCE
JR 8	LDG KELOMPOK KG SRI TIMOR	B	NO	70								NO	NIL	NIL
JR 9	LDG KELOMPOK BT SAMBULAN, YONG PENG	B	YES	20										
JR 10	LDG KELOMPOK KANGKAR MEPLIMAU	B	NO	5									NO	NO
JR 12	TUNJOK LAUT	D	NO	60								DD	N.A	N.A
JR 14	SG CHEMPARAN	D	YES	10								O&M	1,000	FORCE
KN 1	JUBAKAR PANTAI	B	NO											
KN 4	KG BELAN	B	NO											
KN 5	LUBOK SELEHONG	B	NO											
KN 8	BENDANG JELUTONG, KOK LAYAS	B	YES	75	BDG SOKOR 8			FR	SHARING WAT	NO		CS,O&M	10000	S
KN 9	BENDANG BT TINGGI, BK CHINA	B	YES	30	BDG KUALI-8			FR	SHARING WAT	NO		CS,O&M	10000	S
KN 10	BENDANG SOKOR, BK CHINA	B	YES	50	BDG JELUTONG			FR	SHARING WAT	NO		CS,O&M	10000	S

Table 2.1 GENERAL FEATURE OF PROPOSED MINI-DAM AND RESERVOIR (TYPE - A)

COD NO	NAME OF PROJECT	Rehabilitation of irr. facility	Catchment Area (km2)	Designed Dam HGT	Submerged Land (ha)	Total stor. Cap. (m3)	Earth vol. of Dam (m3)	Land acq. (ha)	Dir. Const. cost (RM)	Irr. area (ha)	Expecting cropping pattern	Water shortage Constraint	Remarks
KH 6	P LIBALI BERKELOMPOK	NO	1.35	6	RUBBER FOREST (9)	480,000	1,700,000	9	1,700,000	64	POMELO		
KH 13	KG POG GELANGGANG	NO	13	3	RUBBER (1)	20,000		2		190	DOUBLE PADDY		
KH 14	SKIM JANING	YES	30	4	PADDY (1)	26,000		4		147	DOUBLE PADDY		
KH 15	LUBUK MERBAU	NO	3	4	SWAMP PADDY (1)	26,000		3		120	DOUBLE PADDY		
KH 32	KG KAYU TIGA	NO	4	3	PADDY (1)	20,000		8		71	DOUBLE PADDY	Yes	
KH 35	BK PEPAK	YES	6	5	BUSHES (5)	170,000		5		48	MIXED		
KH 40	SG AIR JERNIH	NO	10	4	PADDY (1)	20,000		2		120	DOUBLE PADDY		
KH 49	KG KUBANG YOI	NO	NA	3	BUSHES (1.5)	44,000		2		31	VEGETABLE	Yes	
KH 50	KG SELAMAT	YES	NA	3	PADDY (0.3)	15,000		1		14	VEGETABLE	Yes	
FP 5	PINANG TUNGGAL IRRIGATION AREA (PIA)	YES	-	-	-	-	-	-	-	-	-	-	Data-no available
FP 6	SG JARAK IRRIGATION AREA	YES	-	-	-	-	-	-	-	-	-	-	Data-no available
PK 1	KG TASEK	NO	9.4	1	SHOLDER 0.5	5,000				50	PADDY		
PK 2	PUSAT PERTANAH TINGGI BK BERING	NO	15	2		20,000							
PK 3	INDUSTRI BUAH-BUAHAN	NO	10	1.5	STATE LAND 0.02	150		3	350,000	57	DURIAN ALL YR	Yes	
PK 4	BENDANG TEMELONG	YES	0.6	3.5	SHOLDER 2	50,000		0	200,000	100	PADDY D/C		
PK 5	P KELOMPOK BUAH-BUAHAN	NO	4	1		1,000		0	200,000	30	FRUITS		
PK 6	P KELOMPOK BUAH-BUAHAN SATURAN	NO	3	1	SHOLDER 0.15	700		1	200,000	35	FRUITS		
PK 7	SENDUK CHANGKAT NING	NO	N.A.	1.5	RIVER COURSE 0.2	0	1,800			34	DURIAN		
PK 9	BENDANG JENALIK	NO	NO	1	SHOLDER 0.1					70	PADDY D/C		
PK 10	BENDANG KG LANEH	NO	3.07	1	SHOLDER					35	PADDY D/C		
PK 13	RANC TALAIR PDG RENGAS	YES	N.A.	N.A.	RIVER COURSE					100	FRUITS	Yes	
PK 15	DENDANG A	YES	16	2	SHOLDER							Yes	
PK 16	DENDANG B	YES	16	2	SHOLDER							Yes	
PK 17	BRUAS & TAMBAHAN	YES	16	2	SHOLDER							Yes	
SG 3	SG JANG	NO	N.A.	-	-	-	-	-		200	N.A.		Data-no available
SG 4	BK TAMU	NO	N.A.	-	-	-	-	-		400	N.A.		Data-no available
SG 9	REKREASI SG CHONGKAK	N.A.	75	8	FOREST					25	N.A.		Data-no available
SG 10	KG KANTAN	NO	N.A.	-	-	-	-	-			N.A.		Data-no available
SG 11	KG PASIR	NO	N.A.	-	-	-	-	-			N.A.		Data-no available
SG 13	JLN ENAM KAKI 1	YES	88	6				2	150,000		N.A.		
SG 14	SAPAN BT MINANGKABAU	YES	58.67	8		1,000	384,000	1	500,000	500	N.A.	Yes	
SG 15	SG JAI BK KEPONG	YES	69.99	6				2	80,000		N.A.		
NS 1	STESENIMARDI JELEBU	NO	-	-	-	-	-	NO		8	orchard	Yes	Data-no available
NS 2	BUAH-BUAHAN LANJUT MANIS	YES	-	-	-	-	-	-		-	-	Yes	Data-no available
NS 5	REMBAU	NO	-	12.8	10 FOREST RESERVE	100,000							
NS 6	KELOMPOK KG CHENGKAU LULU	YES	-	8.1	EX-PADDY LAND(S)								
MA 2	ULU SG BULOH	NO	N-4V	1.5	FOREST RESERVE 10	100,000							Data-no available
MA 16	FELCRA BK SEDANAN	YES	-	-	-	-	-	-					
KN 27	PANGANGAN PENGAIRAN GUAL IPOH	YES	1	2	STATE LAND (1)	600		1		DOUBLE	VEGETABLE	Yes	
KN 35	PANG TALAIR LEPAN AGOR	YES	17	8	RUBBER (20)	500,000		25		32	VEGETABLE	Yes	

COD NO	NAME OF PROJECT	Rehabilitation of irr. facility	Catchment Area (km ²)	Designed Dam height DDM_HGT	Submerged Land (ha) DDM_AREA	Total stor. Cap. (m3) EST_STR	Earth vol. of Dam (m3) EST_EARTH	Land acquis.(ha) ACQ_AREA	Dir. Const. cost (RM) STRT_COST	Irr.area (ha) IR_AREA_1	Expecting cropping pattern EXP_PATTN_1	Water/shortage Constraint	Remarks
TR	1 TELABAK IRRIGATION SCHEME	YES	-	-	-	-	-	-	-	-	-	-	Data-no available
TR	7 SALURAN TOKJIRING	NO	-	-	-	-	-	-	-	-	-	-	Data-no available
TR	20 SKIM TANAM PAU DURIAN HAJI	NO	-	-	-	-	-	-	-	-	-	-	Data-no available
TR	34 LEMBAH MARANG II	NO	-	-	-	-	-	-	-	-	-	-	Data-no available
TR	44 P KELLOWOK SATURAN	YES	-	-	-	-	-	-	-	-	-	-	Data-no available
PH	9 PAYA PAGAR SASAK	-	-	-	-	-	-	-	-	-	-	-	Data-no available
PH	11 P WAUBETONG & GEMAYAI	YES	N.A.	N.A.	N.A.	N.A.	N.A.	N.A.	N.A.	N.A.	N.A.	N.A.	Data-no available
PH	12 PAYA JELUTUNG	YES	2.08	3	FISHERS	1,000,000	-	N.A.	N.A.	-	-	Yes	Data-no available
PH	13 PAYA NYAK BESAR	YES	10.4	3	-	-	-	-	-	-	-	Yes	Data-no available
PH	14 PAYA TING & BESAR KERTAU	YES	4.55	-	-	-	-	-	-	-	-	Yes	Data-no available
PH	16 PAYA NYAK NECIL	YES	6.24	-	-	-	-	-	-	-	-	Yes	Data-no available
PH	17 PAYA PDG TENGGALA	YES	6.5	-	-	-	-	-	-	-	-	Yes	Data-no available
PH	19 PAYA SG LING	-	N.A.	N.A.	N.A.	N.A.	N.A.	N.A.	N.A.	N.A.	N.A.	-	Data-no available
PH	20 PAYA LANTING	-	N.A.	N.A.	N.A.	N.A.	N.A.	N.A.	N.A.	N.A.	N.A.	-	Data-no available
PH	24 PAYA KROT	-	N.A.	N.A.	N.A.	N.A.	N.A.	N.A.	N.A.	N.A.	N.A.	-	Data-no available
PH	25 PAYA LDG	-	N.A.	N.A.	N.A.	N.A.	N.A.	N.A.	N.A.	N.A.	N.A.	-	Data-no available

Table 2.2 GENERAL FEATURE OF HEIGHTENING OF EXISTING MINI-DAM AND BAND (TYPE-A)

COD NO	NAME OF PROJECT	Rehabilitation of exist. fac.	Irr. area (ha)	Catchment area (km2)	Exist. dam Height(m)	Heightening of dam (m)	Earth vol. of dam (m3)	Total Storage Capacity (m3)		Land acquisition (ha)	Dir. const. cost (RM)	Increase of irr. area (ha)	Expecting cropping pattern	Watershortage constraints	Remark	
								XEST_STR	XEXP_TSTR							XDM_EARAD
FR	2 PANGGAS-SMALL DAM PROJECT	YES	144	15	7	0	280,000	280,000	0	0	0	0	6 DOUBLE & MIXED	Yes		
KH	18 SEWIT TANDOP BESAR	YES	150	20	3	2	360,000	600,000	4,000	1	1	1	35 DOUBLE PADDY			
KH	18 KUBONG HITAM IRRIGATION SCHEME	YES	100	31	2	2	3,000	20,000	400	1	1	1	50 DOUBLE PADDY			
KH	31 KUBUR PALUANG	YES	111	70	6	1	NA	NA	NA	3	3	3	0 DOUBLE PADDY			
KH	41 SG BARU	YES	120	10	3	1	2,200	12,000	1,000	2	2	2	0 DOUBLE PADDY	Yes		
FP	5 PINANG TUNGGAL IRRIGATION AREA (PIA)	YES	568	-	-	-	-	-	-	-	-	-	-		Data-no available	
FP	6 SG JARAK IRRIGATION AREA	YES	475	-	-	-	-	-	-	-	-	-	-		Data-no available	
SG	1 TELUK BEHILIN														Data-no available	
SG	3 SG JANG	NO													Data-no available	
SG	4 BK TAMU	NO													Data-no available	
SG	10 KG KANTAN	NO													Data-no available	
SG	11 KG PASIR	NO													Data-no available	
NS	8 P TERNAKAN UDANG GALAH	YES	2	3	3	1	2,023	4,047	NA	NA	NA	NA	PADDY DIC	Yes		
TR	1 TELABAK IRRIGATION SCHEME	YES														Data-no available
TR	7 SALIRAN TOK JIRING	NO														Data-no available
TR	20 SKIM TANAM PAU DURIAN HAJI	NO														Data-no available
TR	34 LEMBANG MARANG II	NO														Data-no available
PH	9 PAYA PAGAR SASAK															Data-no available
PH	11 P WAJU BERTONG & GENAYAI	YES	59	N.A.	N.A.	N.A.	N.A.	N.A.	N.A.	N.A.	N.A.	N.A.	N.A.	Yes	Data-no available	
PH	14 PAYA TING & BESAR KERTAU	YES	70	-	-	-	-	-	-	-	-	-	-	Yes	Data-no available	
PH	18 PAYA NYAK KECIL	YES	54	-	-	-	-	-	-	-	-	-	-	Yes	Data-no available	
PH	17 PAYA PADG TENGGALA															Data-no available
PH	19 PAYA SG LING		210	N.A.	N.A.	N.A.	N.A.	N.A.	N.A.	N.A.	N.A.	N.A.	N.A.	N.A.	N.A.	Data-no available
PH	23 PAYA PESAGI		83	N.A.	N.A.	N.A.	N.A.	N.A.	N.A.	N.A.	N.A.	N.A.	N.A.	N.A.	N.A.	Data-no available
PH	24 PAYA KROT		83	N.A.	N.A.	N.A.	N.A.	N.A.	N.A.	N.A.	N.A.	N.A.	N.A.	N.A.	N.A.	Data-no available
PH	25 PAYA LGS		159	N.A.	N.A.	N.A.	N.A.	N.A.	N.A.	N.A.	N.A.	N.A.	N.A.	N.A.	N.A.	Data-no available

Table 2.3 GENERAL FEATURE OF POND (TYPE-B)

COD NO	NAME OF PROJECT	Rehab. of exist. fac. area (km ²)	Catchment EST_CATCH_1	Soil type	Exist. Stor. Cap. (m ³)	Irr.area (ha)	Excav. depth (m)	Total stor. Cap. (m ³)	Excavated material (m ³)	Water supply System	Land Acqui. (ha)	Dir.const. Cost (RM)	Land acqui. Cost (RM)	Increase of irr.area (ha)
RR	1 SMPANG GETI	YES		3 SANDY CLAYEY SILT	60,000	40	0.0	0.0	-	P	2	-	130,000	-
RR	4 TASER MELATI	YES		3 LOAM, SANDY CLAY	82,500	232	0.0	-	0	GR	0	450,000	0	-
FR	5 PATA KELUBI MANGO PROJECT	YES		0 CLAYEY LOAM	9,000	10	4.5	9,000	0	P	0	-	20,000	-
FR	6 HUTAN LEMBAH MANGO PROJECT	NO		0 SANDLY SILTY CLAY	1,500	-	4.5	65,000	65,000	P	3	-	160,000	-
KH	3 AMPANGAN PDG SAGA	YES		12 NA	135,700	486	NA	1,200,000	1,064,300	NA	4	-	1,100,000	-
KH	4 KAWASAN PADI KEDAWANG	YES		10 SANDY CLAY	-	-	1.5	250,000	300,000	GR	26	-	8,400,000	200
PK	12 SKIM PENGAIRAN SG KULIM	YES		5 C	8,699	-	2.0	10,000	1,301	GP	0	-	0	-
PK	6 IP KELOMPOK BUAH-BUAHAN AIR PUTH	NO		-	-	-	-	500,000	-	GRAVITY	-	-	-	-
PK	20 SG BATANG PDG MATI	YES		12 C	-	143	-	-	-	GRAVITY	-	-	-	150
PK	21 SG MANIK PIRIG SCHEME	YES	690	690 S	95,000	6,600	3.5	400,000	520,000	GRAVITY	-	-	-	-
SS	8 KUANG	NO		-	-	-	-	-	-	-	-	-	-	-
NS	3 SRI MENANTI	YES		-	-	142	-	-	-	-	-	-	-	-
NS	7 KG BK TENBOK & SG RAYA	YES		-	-	260	-	-	-	-	-	-	-	-
MA	14 KANDANG	YES		CLAY	934	7	2.4	934	935	PUMPING UP	-	-	-	-
MA	15 SOLOK BK META	YES		CLAY	764	7	-	764	765	PUMPING UP	-	-	-	-
JR	3 SAWAH KEBUN BARU	YES		-	-	178	-	-	-	-	-	-	-	-
JR	8 LDG KELOMPOK KG SRI TIMOR	NO		SANDY	NIL	70	3.0	9,000	9,000	PUMPNG	-	700,000	NIL	120
JR	9 LDG KELOMPOK BT SAMBULAN, YONG PENG	YES		LOCAL ALLUVIUM	10,800	20	3.0	18,900	8,100	PUMPNG	NO	700,000	NIL	74
JR	10 LDG KELOMPOK KANGKAR MERLIMAU	YES		2 CLAY	NIL	5	3.0	9,000	9,000	PUMPNG	-	-	-	90
KN	1 JUBAKAR PANTAI	NO		4 CLAY & LOAM	NA	-	NA	NA	NA	P	-	-	-	-
KN	4 KG BELJAN	NO		12 CLAY & LOAM	324	-	4.0	648	648	P	-	-	-	40
KN	5 LUBOK SELEHONG	NO		12 CLAY & LOAM	NA	-	NA	NA	NA	P	-	-	-	40
KN	8 BENDANG JELUTONG, KOK LAMAS	YES		-	-	75	-	-	-	-	-	-	-	-
KN	9 BENDANG BT TINGGI, BK CHINA	YES		-	-	30	-	-	-	-	-	-	-	-
TR	4 P KELOMPOK SAYURAN	YES		-	-	50	-	-	-	-	-	-	-	-
TR	10 BENDANG SOKOR, BK CHINA	YES		-	-	4	-	-	-	-	-	-	-	-
TR	12 P KELOMPOK SAYURAN	YES		-	-	20	-	-	-	-	-	-	-	-
TR	14 P KELOMPOK SAYURAN	YES		-	-	5	-	-	-	-	-	-	-	-
TR	24 P KELOMPOK SAYURAN	YES		-	-	4	-	-	-	-	-	-	-	-
TR	28 P KELOMPOK SAYURAN	NO		-	-	-	-	-	-	-	-	-	-	-
TR	38 P KELOMPOK SAYURAN	NO		-	-	-	-	-	-	-	-	-	-	-
TR	42 P KELOMPOK SAYURAN	YES		-	-	-	-	-	-	-	-	-	-	-
TR	45 P KELOMPOK SAYURAN	YES		-	-	5	-	-	-	-	-	-	-	-
PH	20 PAYA LANTING	N.A.		N.A.	N.A.	187	N.A.	N.A.	N.A.	N.A.	N.A.	N.A.	N.A.	N.A.

Table 2.4 GENERAL FEATURE OF ABOLISHED RIVER COURSE (TYPE-C)

COD NO	NAME OF PROJECT	Rehab. of exist. fac. area (km ²)	Catchment EST_CATCH_1	Soil type	Exist. Stor. Cap. (m ³)	Irr.area (ha)	Excav. depth (m)	Total stor. Cap. (m ³)	Excavated material (m ³)	Water supply System	Land Acqui. (ha)	Dir.const. Cost (RM)	Land acqui. Cost (RM)	Increase of irr.area (ha)
FP	1 LUAR BANI PINANG TUNGGAL	NO	4,145	NA	NA	10	NA	NA	NA	P	0	-	0	-
FP	3 TOK BEDU IRRIGATION AREA	NO	19	C	6,000	68	0.0	0	0	P	0	-	0	-
KN	11 KUBANG TEBAKANG	YES	9	SANDY CLAY	30,200	100	4.0	90,000	-	P	30	-	1,500,000	NA
KN	26 FANCANGAN PENGAIRAN TERASIL	YES	18	CLAY	900	147	5.0	2,250	800	G	2	-	50,000	50

Table 2.3 GENERAL FEATURE OF POND (TYPE-E)

COD NO	Expediting cropping pattern	Irr.water req. (/sec/ha)	Brackish water intru.	Water shortage Constraint	Remark
FR 1	PADDY,TOBACCO	-	NO	Yes	
FR 4	PADDY,TOBACCO	-	NO	Yes	
FR 5	MANGO	0.32	NO	Yes	
FR 6	MANGO	0.32	NO	Yes	
WH 3	SINGLE PADDY	-	NO	Yes	
KH 4	SINGLE PADDY	-	NO	-	
FR 12	-	-	NO	-	
PK 8	-	-	-	-	Data- no available
PK 20	PADDY D/L	2.00	-	Yes	
PK 21	-	-	-	Yes	
SG 8	-	-	NO	-	
NS 3	-	-	-	Yes	
NS 7	-	-	-	Yes	
MA 14	-	-	-	Yes	
MA 15	-	-	-	Yes	
JR 3	-	-	-	Yes	
JR 6	ALL YEAR	0.06	N.A	-	Data- no available
JR 9	ALL YEAR	0.06	NO	Yes	
JR 10	ALL YEAR	0.06	-	-	
KN 1	-	-	NA	-	
KN 4	PADDY	3.50	NA	-	
KN 5	PADDY	3.50	-	-	
KN 8	-	-	-	Yes	Data- no available
KN 9	-	-	-	Yes	Data- no available
KN 10	-	-	-	Yes	Data- no available
TR 4	-	-	-	-	Data- no available
TR 12	-	-	-	-	Data- no available
TR 14	-	-	-	-	Data- no available
TR 24	-	-	-	-	Data- no available
TR 28	-	-	-	-	Data- no available
TR 38	-	-	-	-	Data- no available
TR 42	-	-	-	-	Data- no available
TR 45	-	-	-	-	Data- no available
PH 20	N.A.	N.A.	N.A.	-	Data- no available

Table 2.4 GENERAL FEATURE OF ABOLISHED RIVER COURSE (TYPE-C)

COD NO	Expediting cropping pattern	Irr.water req. (/sec/ha)	Brackish water intru.	Water shortage Constraint	Remark
FR 1	DOUBLE PADDY	-	NO	-	Data- no available
FR 3	DOUBLE PADDY	-	NO	-	-
KN 11	S	-	-	Yes	
KN 26	DOUBLE CROP	-	N	Yes	

Table 2.5 GENERAL FEATURE OF HEIGHTENING OF EXISTING WEIR (TYPE-D)

COD NO	NAME OF PROJECT	Rehab. of exist. fac.	Exist. weir height (m)	Irr. area (ha)	Heightening of weir (m)	Total stor.		Submerged area (ha)	Land acqui. area (ha)	Dir. construction Cost (RM)	Increase of Irr. area (ha)	Expecting Cropping pattern	Design dis. (l/sec/ha)	Watershortage Constraint	Remark
						Cap. (mg)	Exp. TSTR								
			XWE_HGT		XWE_HGTG	EXP	XDM_AREA_3	ACQ_AREA_3	IFL_AREA_3	CSTRT_COST_3	IFL_AREA_3	EXP_PALTN_3	ACAN_DISC_3		
FP 9	SG BURUNG	YES	1.50	525	0.60	6,000	SWAMP(1)	1	1			DOUBLE PADDY		Yes	
FP 11	SG KULIM IRRIGATION SCHEME	YES	1.80	3,865	1.00	60,000	SWAMP(6)	6	6	1,500,000		DOUBLE CROPPING	6.38	Yes	
FP 13	SKIM PENGAIRAN TASEK SELATAN	YES	1.70	192	0.30	NA	RUBBER,OIL PALM(S)	5				FRUIT TREE			
SG 5	KG KALONG TENGAH	YES													Data-no available
MA 11	SG UDANG	NO		10											Data-no available
JR 12	TUNJOK LAUT	NO		60											Data-no available
JR 14	SG CHEMARAN	YES		10											Data-no available
KN 16	BENDANG PERMATANG SUNGKAI	YES	1.35	32	0.60	10,000	PADDY(32)	2	2	50,000		NA	0.50	Yes	
KN 24	RANCANGAN TALIAIR HILIR SAT 1	YES		4851										Yes	Data-no available

Table 3.1 SELECTED PROJECT (TYPE - A: MINI-DAM & RESERVOIR)

COD NO	NAME OF PROJECT	Rehabilitation of irr. facility	Watershortage Constraint	Irr. area (ha)	Catchment Area (km2)	Designed Dam height (m)	Submerged Land (ha)	Total stor. Cap. (m3)	Expecting cropping pattern	Land acquis.(ha)	Dir. Const. cost (RM)	Remarks
KH 6	P. LIBAU BERKELOMPOK	NO		64	1.35	8	RUBBER FOREST (8)	480,000	POMELO	9	1,700,000	
KH 13	KG PDG GELANGGANG	NO		180	13	3	RUBBER (1)	20,000	DOUBLE PADDY	2		
KH 14	SKIM JAWING	YES		147	30	4	PADDY (1)	26,000	DOUBLE PADDY	4		
KH 15	LUBUK MERBAU	NO		120	3	4	SWAMP PADDY (1)	26,000	DOUBLE PADDY	3		
KH 32	KG KAYU TIGA	NO		71	4	3	PADDY (1)	20,000	DOUBLE PADDY	8		
KH 35	BK PERAK	YES	Yes	48	6	5	BUSHES (5)	170,000	WOOD ORCHARD	5		
KH 40	SG AIR JERNIH	NO		120	10	4	PADDY (1)	20,000	DOUBLE PADDY	2		
KH 49	KG KUBANG YOI	NO		31 NA		3	BUSHES (1.5)	44,000	VEGETABLE	2		
KH 50	KG SELAMAT	YES	Yes	14 NA		3	PADDY (0.3)	15,000	VEGETABLE	1		
PP 5	PINANG TUNGGAL IRRIGATION AREA (PIA)	YES										Data-no available
PP 6	SG JARAK IRRIGATION AREA	YES										Data-no available
PK 1	KG TASEK	NO		50	9.4	1	SHOLDER 0.5	5,000	PADDY			
PK 2	PUSAT PERTANAHAN TINGGI BK BARING	NO		15	15	2		20,000				
PK 3	INDUSTRI BUAH-BUAHAN	NO		57	10	1.5	STATE LAND 0.02	150	DURIAN ALL YR			
PK 4	BENDANG TEMELONG	YES	Yes	100	0.6	3.5	SHOLDER 2	50,000	PADDY DIC	3	350,000	
PK 5	P. KELOMPOK BUAH-BUAHAN	NO		30	4	1		1,000	FRUITS	0	200,000	
PK 6	P. KELOMPOK BUAH-BUAHAN SATURAN	NO		35	3	1	SHOLDER 0.15	700	FRUITS	1	200,000	
PK 7	SENJUK CHANGKAT NING	NO		34	N.A.	1.5	RIVER COURSE 0.2	0	DURIAN		200,000	
PK 9	BENDANG JENALIK	NO		70	5	1	SHOLDER 0.1		PADDY DIC			
PK 10	BENDANG KG LANEH	NO		35	3.07	1	SHOLDER		PADDY DIC			
PK 13	RANC TALAIR PDG BENGAS	YES		100	N.A.	N.A.	RIVER COURSE		FRUITS		N.A.	
PK 15	DENDANG A	YES	Yes		16	2	SHOLDER					
PK 16	DENDANG B	YES	Yes		16	2	SHOLDER					
PK 17	BRIUAS & TAMBAHAN	YES	Yes		16	2	SHOLDER					
SG 3	SG JANG	NO		200	N.A.				N.A.		N.A.	Data-no available
SG 4	BK TAMU	NO		400	N.A.				N.A.			Data-no available
SG 9	PEREAS SG CHONGKAK	N.A.			75	8	FOREST		N.A.			
SG 10	KG KANTAN	NO		25	N.A.				N.A.			Data-no available
SG 11	KG PASIR	NO			N.A.				N.A.			Data-no available
SG 13	JLN ENAM KAKI 1	YES			88	8			N.A.	2	150,000	
SG 14	SAPAN BT MIRANGKABAU	YES	Yes	500	58.67	8		1,000	N.A.	1	500,000	
SG 15	SG JAI BK KEPONG	YES			69.99	6			N.A.	2	80,000	
NS 1	STESER MARDI JELEBU	NO							orchard	NO		Data-no available
NS 2	BUAH-BUAHAN LANJUT MANIS	YES	Yes									Data-no available
NS 5	REMBAU	NO			12.8		10 FOREST RESE					
NS 6	KELOMPOK KG CHENGKAU ULU	YES			8.1		EX-PADDY LAND (5)					
MA 2	ULU SG BULOH	NO			N-4V	1.5	FOREST RESERVE (10)	100,000		FOREST RESERVE		Data-no available
MA 1	PELORA BK SEDANAN	YES										
KN 27	PANCANGAN PENGALIRAN GUAL IPOH	YES	Yes	DOUBLE	1	2	STATE LAND (1)	600		1		
KN 3	RANC TALAIR LEPAN AGOR	YES	Yes	32	17	8	RUBBER (20)	500,000	VEGETABLE	25		

COD NO	NAME OF PROJECT	Rehabilitation of irr. facility		Water shortage Constraint		Irr. area (ha)		Catchment Area (km2)		Designed Dam height		Submerged Land (ha)		Total stor. Cap. (m3)		Expecting cropping pattern		Land Dir. Const. cost (RM)		Remarks
		YES	NO	IR_AREA_1	EST_CATCH_1	IR_AREA_1	EST_CATCH_1	DDM_HGT	DDM_HGT	DDM_AREA	EST_STR	EXP_PATRN_1	EXP_PATRN_1	ACQ_AREA	STRT_COST_1					
TR 1	TELABAK IRRIGATION SCHEME	YES																		Data-no available
TR 7	SALIRAN TOK JIRING	NO																		Data-no available
TR 20	SKIM TANAH PADI DURIAN HAJI	NO																		Data-no available
TR 34	LEMBAH MARANG II	NO																		Data-no available
TR 44	P. KELOMPOK SAYURAN	YES																		Data-no available
PH 9	PAYA PAGAR SASAK	-																		Data-no available
PH 11	P. WAUBETONG & GEMAYAI	YES		N.A.	N.A.	N.A.	N.A.	2.08	N.A.	N.A.	N.A.	N.A.	N.A.	N.A.	1,000,000	N.A.	N.A.	N.A.	N.A.	Data-no available
PH 12	PAYA JELUTUNG	YES	Yes					10.4	3	3	FSHERES									Data-no available
PH 13	PAYA NYAK BESAR	YES	Yes					4.55												Data-no available
PH 14	PAYA TING & BESAR KERTAU	YES	Yes					6.24												Data-no available
PH 16	PAYA NYAK KECIL	YES	Yes					6.5												Data-no available
PH 17	PAYA POG TENGGALA	YES	Yes																	Data-no available
PH 19	PAYA SG LING	-		N.A.	N.A.	N.A.	N.A.													Data-no available
PH 20	PAYA LANTING	-		N.A.	N.A.	N.A.	N.A.													Data-no available
PH 24	PAYA KROT	-		N.A.	N.A.	N.A.	N.A.													Data-no available
PH 25	PAYA LDG	-		N.A.	N.A.	N.A.	N.A.													Data-no available

Table 3.2 SELECTED PROJECTS (TYPE-A: HEIGHTENING OF EXISTING MINI-DAM AND BAND)

COD NO	NAME OF PROJECT	Rehabilitation of exist. fac. constraints	Watershortage area (ha)	Exist. Irr. area (ha)	Increase of Irr. area (ha)	Exist. dam Height(m)	XDM_HGT	XDM_HGTG	Heightening of dam (m)	Total Storage Capacity (m3)	XEXP_TSTR	Additional earth vol.(m3)	Land acqui.(ha)	Dir. const. cost.(RM)	Exp. const. cost.(RM)	Exp. const. cost.(RM)	Exp. const. cost.(RM)	Exp. const. cost.(RM)	Design dis. (ksc)	Remark
RR	2 PANGAS-SMALL DAM PROJECT	YES	114	6	3	0	280,000	0	0	0	0	0	0	0	0	0	0	0	DOUBLE & MKED	
IGH	16 SEKIM TANJOP BESAR	YES	50	35	3	2	600,000	4,000	1	0	0	0	0	0	0	0	0	0	DOUBLE PADDY	
KH	19 KURONG HITAM IRRIGATION SCHEME	YES	100	60	2	2	20,000	400	1	0	0	0	0	0	0	0	0	0	DOUBLE PADDY	
KH	31 KUBUR PANJANG	YES	111	0	6	1	NA	NA	3	0	0	0	0	0	0	0	0	0	DOUBLE PADDY	
KH	41 SEBARU	YES	120	0	3	1	12,000	1,000	2	0	0	0	0	0	0	0	0	0	DOUBLE PADDY	
PP	5 PINANG TUNGGAL IRRIGATION AREA (PIA)	YES	558	-	-	-	-	-	-	-	-	-	-	-	-	-	-	-	-	Data-no available
PP	6 SG JARAK IRRIGATION AREA	YES	475	-	-	-	-	-	-	-	-	-	-	-	-	-	-	-	-	Data-no available
SG	1 TEBUK BERNJUN	NO	-	-	-	-	-	-	-	-	-	-	-	-	-	-	-	-	-	Data-no available
SG	3 SG JANG	NO	-	-	-	-	-	-	-	-	-	-	-	-	-	-	-	-	-	Data-no available
SG	4 BK TAMU	NO	-	-	-	-	-	-	-	-	-	-	-	-	-	-	-	-	-	Data-no available
SG	10 KG KANTAN	NO	-	-	-	-	-	-	-	-	-	-	-	-	-	-	-	-	-	Data-no available
SG	11 KG PASIR	NO	-	-	-	-	-	-	-	-	-	-	-	-	-	-	-	-	-	Data-no available
NS	8 P TERMAKAN UDANG GALAH	YES	2	-	3	1	4,047	NA	1	0	0	0	0	0	0	0	0	0	PADDY DIC	
TR	1 TELABEK IRRIGATION SCHEME	YES	100	-	-	-	-	-	-	-	-	-	-	-	-	-	-	-	-	Data-no available
TR	7 SALURAN TOK JIRING	NO	-	-	-	-	-	-	-	-	-	-	-	-	-	-	-	-	-	Data-no available
TR	20 SKIM TANAM PAU DURIAN HAJI	NO	50	-	-	-	-	-	-	-	-	-	-	-	-	-	-	-	-	Data-no available
TR	34 LEMBAH MARANG II	NO	-	-	-	-	-	-	-	-	-	-	-	-	-	-	-	-	-	Data-no available
PH	9 PAYA PAGAR SASAK	-	-	-	-	-	-	-	-	-	-	-	-	-	-	-	-	-	-	Data-no available
PH	11 P WAJUBETONG & GEMAYAH	YES	59	N.A.	N.A.	N.A.	N.A.	N.A.	N.A.	N.A.	N.A.	N.A.	N.A.	N.A.	N.A.	N.A.	N.A.	N.A.	N.A.	Data-no available
PH	14 PAYA TING & BESAR KERTAU	YES	70	-	-	-	-	-	-	-	-	-	-	-	-	-	-	-	-	Data-no available
PH	16 PAYA NYAK KECIL	YES	54	-	-	-	-	-	-	-	-	-	-	-	-	-	-	-	-	Data-no available
PH	17 PAYA POG TENGGA	YES	-	-	-	-	-	-	-	-	-	-	-	-	-	-	-	-	-	Data-no available
PH	18 PAYA SGLING	-	210	N.A.	N.A.	N.A.	N.A.	N.A.	N.A.	N.A.	N.A.	N.A.	N.A.	N.A.	N.A.	N.A.	N.A.	N.A.	N.A.	Data-no available
PH	23 PAYA PESAGI	-	93	N.A.	N.A.	N.A.	N.A.	N.A.	N.A.	N.A.	N.A.	N.A.	N.A.	N.A.	N.A.	N.A.	N.A.	N.A.	N.A.	Data-no available
PH	24 PAYA KROT	-	83	N.A.	N.A.	N.A.	N.A.	N.A.	N.A.	N.A.	N.A.	N.A.	N.A.	N.A.	N.A.	N.A.	N.A.	N.A.	N.A.	Data-no available
PH	25 PAYA LDG	-	159	N.A.	N.A.	N.A.	N.A.	N.A.	N.A.	N.A.	N.A.	N.A.	N.A.	N.A.	N.A.	N.A.	N.A.	N.A.	N.A.	Data-no available

Table 3.3 SELECTED PROJECT (TYPE - B : POND)

COD NO	NAME OF PROJECT	Rehab. of exist. fac.	Watershortage Constraint	Exist. Irr. area (ha)	Increase of irr. area (ha)	IR_AREA_5	LEST_STR	DR_DPH	Excav. depth (m)	Total stor. Cap. (m3)	DR_ISTR	Excavated material (m3)	Land Acqui. (ha)	Dir.const. Cost (RM)	Dir.const. ACC_AREA_STRT_COST	Expecting cropping pattern	EXP_PATTIN_5	Brackish water intru. BRAC_WAT	Remark
FR 1	SIMPANG GETI	YES	Yes	40	60,000	0.0	-	-	-	-	-	-	2	-	-	PADDY, TOBACCO	NO	NO	
FR 4	TASEK MELATI	YES	Yes	232	82,500	0.0	-	-	-	-	-	-	0	450,000	-	PADDY, TOBACCO	NO	NO	
FR 5	PAYA KELUAI MANGO PROJECT	YES	Yes	10	9,000	4.5	-	-	9,000	-	-	-	0	-	-	MANGO	NO	NO	
FR 6	HUTAN LEMBAH MANGO PROJECT	NO	-	-	1,500	4.5	-	-	65,000	-	-	-	3	-	-	MANGO	NO	NO	
FR 3	JAMPANGAN PDG SAGA	YES	Yes	486	135,700	NA	-	-	1,064,300	-	-	-	4	-	-	SINGLE PADDY	NO	NO	
KH 4	KAWASAN PADI KEDAWANG	YES	Yes	-	200	1.5	-	-	900,000	-	-	-	26	-	-	SINGLE PADDY	NO	NO	
KH 12	SKM PENGALIRAN SG KULIM	YES	Yes	-	8,699	2.0	-	-	10,000	-	-	-	0	-	-	-	-	-	Data- no available
PK 6	P KELOMPOK BUAH-BUAHAN AIR PUTIH	NO	-	-	-	-	-	-	500,000	-	-	-	-	-	-	PADDY D/L	-	-	
PK 20	SG BATAANG PDG MATI	YES	Yes	143	95,000	3.5	-	-	400,000	-	-	-	-	-	-	-	-	-	
PK 21	SG MANIK IRRIG SCHEME	YES	Yes	6,600	-	-	-	-	-	-	-	-	-	-	-	-	-	-	
SG 8	KUJANG	NO	-	-	-	-	-	-	-	-	-	-	-	-	-	-	-	-	
NS 3	SRI MERVANTI	YES	Yes	142	-	-	-	-	-	-	-	-	-	-	-	-	-	-	
NS 7	KG BK TEMBOK & SG RAYA	YES	Yes	280	934	2.4	-	-	934	-	-	-	935	-	-	-	-	-	Data- no available
MA 14	KANDANG	YES	Yes	7	764	-	-	-	764	-	-	-	-	-	-	-	-	-	
MA 15	SOLOK BK META	YES	Yes	7	-	-	-	-	-	-	-	-	-	-	-	-	-	-	
JR 3	SAWAH KEBUN BARU	YES	Yes	178	-	-	-	-	-	-	-	-	-	-	-	-	-	-	
JR 8	LDG KELOMPOK KG SRI TIMOR	NO	-	70	120 NIL	3.0	-	-	9,000	-	-	-	9,000	700,000	-	ALL YEAR	NO	NO	
JR 9	LDG KELOMPOK BT SAMBULAN, YONG PENG	YES	Yes	20	10,800	3.0	-	-	18,900	-	-	-	8,100	700,000	-	ALL YEAR	NO	NO	
JR 10	LDG KELOMPOK KANGKAR MERLIMAU	YES	Yes	5	50 NIL	3.0	-	-	9,000	-	-	-	9,000	-	-	ALL YEAR	NO	NO	
KN 1	JUBAKAR PANTAI	NO	-	-	NA	NA	-	-	NA	-	-	-	NA	-	-	PADDY	NO	NO	
KN 4	KG BELJAN	NO	-	-	40	324	-	-	648	-	-	-	648	-	-	PADDY	NO	NO	
KN 5	LUJOK SELEHONG	NO	-	-	40	NA	-	-	NA	-	-	-	NA	-	-	-	-	-	Data- no available
KN 8	BENDANG JELUTONG, KOK LANAS	YES	Yes	75	-	-	-	-	-	-	-	-	-	-	-	-	-	-	Data- no available
KN 9	BENDANG BT TINGGI, BK CHINA	YES	Yes	30	-	-	-	-	-	-	-	-	-	-	-	-	-	-	Data- no available
KN 10	BENDANG SOKOR, BK CHINA	YES	Yes	50	-	-	-	-	-	-	-	-	-	-	-	-	-	-	Data- no available
TR 4	P KELOMPOK SAYURAN	YES	Yes	4	-	-	-	-	-	-	-	-	-	-	-	-	-	-	Data- no available
TR 12	P KELOMPOK SAYURAN	YES	Yes	20	-	-	-	-	-	-	-	-	-	-	-	-	-	-	Data- no available
TR 14	P KELOMPOK SAYURAN	YES	Yes	5	-	-	-	-	-	-	-	-	-	-	-	-	-	-	Data- no available
TR 24	P KELOMPOK SAYURAN	YES	Yes	4	-	-	-	-	-	-	-	-	-	-	-	-	-	-	Data- no available
TR 28	P KELOMPOK SAYURAN	NO	-	-	-	-	-	-	-	-	-	-	-	-	-	-	-	-	Data- no available
TR 38	P KELOMPOK SAYURAN	YES	Yes	-	-	-	-	-	-	-	-	-	-	-	-	-	-	-	Data- no available
TR 42	P KELOMPOK SAYURAN	YES	Yes	5	-	-	-	-	-	-	-	-	-	-	-	-	-	-	Data- no available
PH 2.0	PAYA LANTING	N/A	-	187	N/A	N/A	-	-	N/A	-	-	-	N/A	N/A	-	N/A	-	-	Data- no available

Table 3.4 SELECTED PROJECT (TYPE - C : ABOLISHED RIVER COURSE)

COD NO	NAME OF PROJECT	Rehab. of exist. fac.	Watershortage Constraint	Exist. Irr. area (ha)	Increase of irr. area (ha)	IR_AREA_5	LEST_STR	DR_DPH	Excav. depth (m)	Total stor. Cap. (m3)	DR_ISTR	Excavated material (m3)	Land Acqui. (ha)	Dir.const. Cost (RM)	Dir.const. ACC_AREA_STRT_COST	Expecting cropping pattern	EXP_PATTIN_5	Brackish water intru. BRAC_WAT	Remark	
																				DR_DPH
PP 1	LUAR BAN PINANG TUNGGAL	NO	-	-	-	-	-	-	-	-	-	-	-	-	-	-	-	-	-	
PP 3	TGK BEDU IRRIGATION AREA	NO	-	-	6,000	-	-	-	6,000	-	-	-	-	-	-	-	-	-	-	Data- no available
KN 11	KUBANG TEBAKANG	YES	Yes	NA	30,200	4.0	-	-	90,000	-	-	-	30	-	-	-	-	-	-	Data- no available
KN 26	RANCANGAN PENGALIRAN TERASIL	YES	Yes	50	900	5.0	-	-	2,250	-	-	-	800	-	-	DOUBLE CROP	-	-	-	

Table 3.5 SELECTED PROJECT (TYPE-D: HEIGHTENING OF EXISTING WEIR)

COD NO	NAME OF PROJECT	Rehab. of Watershortage exist. fac.		Exist. irr. area (ha)	Increase of irr. area (ha)		Exist. weir heightening of weir (m)		Total stor. Cap.(m3)	Submerged area (ha)	Land acqu. area (ha)	Dr. construction Cost (RM)	Expecting Cropping pattern	Remark
		Constraint	YES		JR, AREA_3	XWE_HGT	XWE_HGT	EXP_HSTR						
FP	9 SGBURLANG	YES	Yes	525	-	-	1.50	0.60	6,000	SWAMP(1)	1	-	DOUBLE PADDY	
FP	11 SG KUALI BIRGATON SCHEME	YES	Yes	3,665	-	-	1.60	1.00	60,000	SWAMP(6)	6	1,500,000	DOUBLE CROPPING	
FP	13 SKM PENGARAPAN TASEK SELATAN	YES	Yes	192	-	-	1.70	0.30	NA	RUBBER, OIL PALMS	5	-	FRUITIFE	
SG	5 KG KALONG TENGAH	YES	Yes	-	-	-	-	-	-	-	-	-	-	Data-no available
MA	11 SG UDANG	NO	No	10	-	-	-	-	-	-	-	-	-	Data-no available
JR	12 TUNOK LAUT	NO	No	60	-	-	-	-	-	-	-	-	-	Data-no available
JR	14 SG CHEMARAN	YES	Yes	10	-	-	-	-	-	-	-	-	-	Data-no available
KN	16 BENDANG PERMATANG SUNGKAI	YES	Yes	32	32	-	1.35	0.60	10,000	PADDY(32)	2	50,000	NA	Data-no available
KN	24 RANCANGAN TALIAIR HILIR SAT 1	YES	Yes	455	-	-	-	-	-	-	-	-	-	Data-no available

Table 3.6 SELECTED PROJECTS (TYPE - E: DISUSED TIN MINE POND)

COD NO	NAME OF PROJECT	Rehab. of exist. fac.	Water shortage Constraint	Nos of stream	Catchment Area (km ²)	Total stor. Cap. (m ³)	EST_PSTR	WAT_SYS_5	ACQ_AREA	Land acqui. (ha)	Exp. of water use	Irr. area (ha)	Cropping pattern	Design dis. (l/sec/ha)	Irr. water req. (l/sec/ha)	Remark
KH 43	BENDANG DALAM	NO		1	0.5	300,000		G		3	IR	42	DOUBLE PADDY			
KH 48	KG BETONG - P. DURIAN KELOMPOK	NO		1	1.5	NA		P			IR	14	DURIAN			Data-no available
KN 13	TASK PUTERA	YES	Yes									20	SINGLE PADDY			Data-no available
TR 3	SKIM TANAMAN PADI MARAS	YES		4	1.54	140,000		G								Data-no available
TR 5	KOLAK ABANG			1	0.2	250,000										Data-no available

APPENDIX V

GEOLOGICAL ANALYSIS

Table A.5.1 Results of Questionnaire Survey on Geology (1/4)

CODE	NAME OF PROJECT	DISTRICT	MUKIM	KAMPUNG	G_MAP	G_PSCALE	G_MSCALE
PERLIS							
PR 1	SIMPANG GETI	-	ORAN	ORAN	N	-	-
PR 2	PANGGAS-SMALL DAM PROJECT	-	CHIUPING	PANGGAS	1/50000	-	-
PR 4	TASEK MELATI	-	PAYA	PDG LATI	1/50000	-	-
PR 5	PAYA KELUBI MANGO PROJECT	-	BESERI	PAYA KELUBI	1/50000	-	-
PR 6	HUTAN LEMBAH MANGO PROJECT	-	MATA AYER	HUTAN LEMBAH	1/50000	-	-
PR 7	TASEK MELATI II	-	PAYA	PDG LATI	-	-	-
KEDAH							
KH 1	DURIAN PERAGIN	LANGKAWI	AIR HANGAT	DURIAN PERAGIN	-	-	-
KH 2	AIR HANGAT	LANGKAWI	AIR HANGAT	KUMBANG BADAQ	-	-	-
KH 3	AMPANGAN PDG SAGA	LANGKAWI	ULU MELAKA	PDG SAGA	1/50000	-	-
KH 4	KAWASAN PADI KEDAWANG	LANGKAWI	KEDAWANG	KEDAWANG	1/50000	-	-
KH 5	KEDAWANG	LANGKAWI	KEDAWANG	BK LEMBU	-	-	-
KH 6	P. LIBALI BERKELOMPOK	KUBANG PASU	KIPLU	GUAR BT HITAM	1/63360, 50000	-	-
KH 13	KG PDG GELANGGANG	PDG TERAP	PDG TERAP KANAN	PDG GELANGGANG	1/63360	-	-
KH 14	SKIM JANING	PDG TERAP	BELIMBING KIRI	BENDANG RAJA	1/63360	-	-
KH 15	LUBUK MERBAU	PDG TERAP	PEDU	KG LUBUK MERBA	1/63360	-	-
KH 16	SEKIM TANDOP BESAR	PDG TERAP	TEKAI KANAN	TANDOP BESAR	1/63360	-	-
KH 19	KURONG HITAM IRRIGATION SCHEME	PDG TERAP	KURONG HITAM	KERAP	1/63360	-	-
KH 31	KUBUR PANJANG	PENDANG	RAMBAI	KUBOR PANJANG	-	-	-
KH 32	KG KAYU TIGA	PENDANG	PDG KERBAU	ASAM PAGI	1/63360	-	-
KH 34	KG SAWA KECIK	PENDANG	PDG PUSING	SAWA KECIK	-	-	-
KH 35	BK PERAK	PENDANG	PDG PELIANG	BK PERAK	1/63360	-	-
KH 40	SG AIR JERNIH	KUALA MUDA	MERBOK	KG PASIR	1/63360	-	-
KH 41	SG BARU	KUALA MUDA	BUJANG	SG BARU	1/63360, 50000	-	-
KH 43	BENDANG DALAM	KUALA MUDA	MERBOK	BENDANG DALAM	1/63360	-	-
KH 48	KG BETONG - P DURIAN KELOMPOK	SIK	NA	KG BETONG	1/63360	-	-
KH 49	KG KUBANG YOI	SIK	NA	KG KUBANG YOI	1/63360, 50000	-	-
KH 50	KG SELAMAT - P SAYUR + BUAHAN	SIK	NA	KG SELAMAT	1/63360, 50000	-	-
PULAU PINANG							
PP 1	LUAR BAN PINANG TUNGGAL	S PERAI UTARA	3	PANTAI KAMLOON	1/63360	-	1/25000*
PP 2		S PERAI UTARA	3	LAHAR TIANG	-	-	1/25000*
PP 3	TOK BEDU IRRIGATION AREA	S PERAI UTARA	6	TOK BEDU	1/63360	-	1/25000*
PP 4	KG TOK BEDU, AIR MELINTAS, PMTG BERAN	S PERAI UTARA	6				
PP 5	PINANG TUNGGAL IRRIGATION AREA (PIA)	S PERAI UTARA	6, 12	POKOK JENEREH	1/63360	-	1/25000*
PP 6	SG JARAK IRRIGATION AREA	S PERAI UTARA	12	BELUKAR	1/63360	-	1/25000*
PP 7	BK TOH ALLANG	S PERAI UTARA	13	BK TOH ALLANG	-	-	-
PP 8	SG BURUNG	BARAT DAYA	H	SG BURUNG	-	-	-
PP 9	SG BURUNG	BARAT DAYA	M, E & H	KG SG BURUNG	1/63360, 50000	-	-
PP 10	MAK SULONG	S PERAI TENGAH	20	MAK SULONG	-	-	-
PP 11	SG KULIM IRRIGATION SCHEME	S PERAI TENGAH	20	MENGGUANG MAK	1/63360	N	1/25000 GIS
PP 12	SKIM PENGAIRAN SG KULIM	S PERAI TENGAH	21	BK JELUTONG	1/63360	-	-
PP 13	SKIM PENGAIRAN TASEK SELATAN	S PERAI SELATAN	1	TASEK JUNJONG	1/63360	N	1/25000 GIS
PERAK							
PK 1	KG TASEK	HULU PERAK	BELUKAR SEMANG	TASEK	1/63360	-	-
PK 2	PUSAT PERT TANAH TINGGI BK BARING	HULU PERAK	TEMENGOR	PUNCAK DARING	1/63360	-	-
PK 3	INDUSTRI BUAH-BUAHAN	SELAMA	JOK	KG MESHD, JOK	N	-	-
PK 4	BENDANG TEMELONG	HULU PERAK	LENGGONG	TELUK BATU	N	-	-
PK 5	P KELOMPOK BUAH-BUAHAN	LARUT MATANG	BATU KURAU	CANGKAT LOBAK	N	-	-
PK 6	P KELOMPOK BUAH-BUAHAN/SAYURAN	LARUT MATANG	BATU KURAU	TELUK BATU, ANAN	N	-	-
PK 7	SENOUK CHANGKAT NING	LARUT MATANG	MATANG	SENOUK, BATU LAIN	N	-	-
PK 8	P KELOMPOK BUAH-BUAHAN AIR PUTIH	LARUT MATANG	TAIPING	KG PAK DOLLAH	N	-	-
PK 9	BENDANG JENALIK	KUALA KANGSAR	CHIEGAR GALAH	JENALIK	N	-	-
PK 10	BENDANG KG LANEH	KUALA KANGSAR	LUBUK MERBAU	KG LANEH	1/63360	-	-
PK 11	RANC TALIAIR BENDANG SENGGANG	KUALA KANGSAR	SENGGANG	KG SENGGANG	1/63360	-	-
PK 12	RANC TALIAIR BENDANG LEMPOR	KUALA KANGSAR	SENGGANG	LEMPOR	1/63360	-	-
PK 13	RANC TALIAIR PDG RENGAS	KUALA KANGSAR	KG BUAIA	PDG RENGAS	N	-	-
PK 15	DENDANG A	MANJUNG	BRUAS	KG DENDANG	N	-	-
PK 16	DENDANG B	MANJUNG	BRUAS	KG KOTA	N	-	-
PK 17	BRUAS & TAMBAHAN	MANJUNG	BRUAS	KG PULAU MERAN	N	-	-
PK 19	KG LALAT BATU 7	HILIR PERAK	DURIAN'S BATANG	KG LALAT BATU 7	N	-	-
PK 20	SG BATANG PDG MATI	HILIR PERAK	SG MANIK	SG TUKANG SIDIN	1/63360	-	-
PK 21	SG MANIK, IRRIG SCHEME	HILIR PERAK	SG MANIK - LABU KUBONG		1/63360	-	1/6336
SELANGOR							
SG 1	TEBUK BERIHUN	SABAK BERNAM	SABAK	TEBUK BERIHUN	-	-	-
SG 3	SG JANG	HULU SELANGOR	KERLING	SG JANG	-	-	-
SG 4	BK TAMU	HULU SELANGOR	BATANG KALI	BK TAMU	-	-	-
SG 5	KG KALONG TENGAH	HULU SELANGOR	HULU YAM	KG KALONG TENGAH	-	-	-
SG 6	P SAYURAN SG YU	KUALA SELANGOR	PMTG	SG YU	-	-	-
SG 8	KUANG	GOMBAK	RAWANG	KUANG	1/63360	-	-
SG 9	REKREASI SG CHONGKAK	HULU LANGAT	HULU LANGAT	KG PDG	1/63360	-	-
SG 10	KG KANTAN	HULU LANGAT	HULU LANGAT	KG KANTAN	1/63360	-	-
SG 11	KG PASIR	HULU LANGAT	SEMENYIH	KG PASIR	-	-	-
SG 12	MINANG KABAU	HULU LANGAT	BARAMANG	MINANG KABAU	-	-	-
SG 13	JLN ENAM KAKI 1	HULU LANGAT	BERANANG	JLN 6 KAKI	-	-	-
SG 14	SAPAN BT MINANGKABAU	HULU LANGAT	BERANANG	SESAPAN BT MINA	1/63360	-	-
SG 15	SG JAI BK KEPONG	HULU LANGAT	BERANANG	SG JAI	1/63360	-	-
SG 16	MARDI RESEARCH STATION	KELANG	JLN KEBUN	BT 6, JLN KEBUN	-	-	-
SG 18	TAMAN PERT MALAYSIA	PETALING	BK RAJAH		-	-	-
SG 24	P KELOMPOK SAYURAN KG ENDANG	KUALA LANGAT	MORIB	KANCHONG TENGAH	-	-	-
SG 25	P KELOMPOK KANTAN KG KUNDANG	KUALA LANGAT	BATU	KUNDANG	-	-	-

Table A.5.1 Results of Questionnaire Survey on Geology (3/4)

CODE	NAME OF PROJECT	DISTRICT	MUKIM	KAMPUNG	G_MAP	G_PSCALE	G_MSCALE
NEGERI SEMBILAN							
NS 1	STESEN MARDI JELEBU	JELEBU	LAKAI				
NS 2	BUAH-BUAHAN LANJUT MANIS	KUALA PILAH	AMPANG TINGGI	TALANG			
NS 3	SRI MENANTI	KUALA PILAH	SRI MENANTI	KG TENGAH	1/63360		
NS 4	PEMBANGUNAN SAWAH KG. LONDAH	GEMAS	GEMAS	LONDAH	1/63360		
NS 5	REMBAU	REMBAU	SIRI		1/63360		
NS 6	KELOMPOK KG CHENGKAU ULU	REMBAU	CHIENKAU	CHENGKAU ULU			
NS 7	KG BK TEMBOK & SG RAYA	PORT DICKSON	PASIR PANJANG	BK TEMBOK	1/63360		
NS 8	P TERNAKAN UDANG GALAH	KUALA PILAH	SRI MENANTI	JUMBANG			
MELAKA							
MA 1	TEBONG	ALOR GAJAH	TEBONG	BT 22, TEBONG			
MA 2	ULU SG BULOI	ALOR GAJAH	SG BULOI	ULU SG BULOI			1/3168
MA 3	SOLOK BT ALANG	ALOR GAJAH	SG SIPUT	SG SIPUT			
MA 4	FELCRA RAMUAN CINA	ALOR GAJAH	SG JERNIH	FELCRA RAMUAN CINA			
MA 5	MERIAM PATAH	ALOR GAJAH	KUALA LINGGI	MERIAM PATAH			
MA 6	SOLOK PUNGGAI	ALOR GAJAH	AIR PAALOAS	SOLOK PUNGGAI			
MA 9	PDG KELADI	ALOR GAJAH	DURIAN TUNGGAL	PDG KELADI			
MA 11	SG UDANG	MELAKA TENGAH	SG UDANG	SG UDANG			1/63360
MA 12	FELDA BK KATIL	MELAKA TENGAH	BK KATIL	FELDA TUN RAZAK			
MA 14	KANDANG	MELAKA TENGAH	KANDANG	KANDANG	1/63360		1/3168
MA 15	SOLOK BK META	MELAKA TENGAH	ALAI/KANDANG	SLK BK META	1/63360		1/3168
MA 16	FELCRA BK SEDANAN	JASIN	SELANDAR	BK SEDANAN			1/25000
MA 17	CINCIN LAKE	JASIN	CINCIN	CINCIN			
MA 18	KG PULAU/SERKAM	JASIN	TEDONG	PULAI			
JOHOR							
JR 3	SAWAH KEBUN BARU	MUAR	TANGKAK	SAGIL	1/63360		
JR 8	LDG KELOMPOK KG SRI TIMOR	KLUANG	KLUANG	SRI TIMOR	1/63360		
JR 9	LDG KELOMPOK BT SAMBULAN, YONG PENG	BATU PAHAT	CHIAH BARU	SRI SEPAKAT	1/63360		
JR 10	LDG KELOMPOK KANGKAR MERLIMAU	BATU PAHAT	SRI MEDAN	KANGKAR MERLIM			1/25000
JR 12	TUNJOK LAUT	KOTA TINGGI	ULU SG SEDILI BESA		1/63360		
JR 14	SG CHEMARAN	KOTA TINGGI	TANJONG SURAT		1/63360		
KELANTAN							
KN 1	JUBAKAR PANTAI	TUMPAT	TUMPAT	JUBAKAR PANTAI	1/63360		
KN 4	KG BELIAN	TUMPAT	SELEHONG NORTH	KG BELIAN	1/63360		
KN 5	LUBOK SELEHONG	TUMPAT	SELEHONG	KOK PASIR	1/63360		
KN 8	BENDANG JELUTONG, KOK LANAS	KOTA BHARU	KOK LANAS	JELUTONG	1/63360		1/25000
KN 9	BENDANG BT TINGGI, BK CHINA	KOTA BHARU	KOK LANAS	BT TINGGI	1/63360		1/25000
KN 10	BENDANG SOKOR, BK CHINA	KOTA BHARU	KOK LANAS	SOKOR	1/63360		1/25000
KN 11	KUBANG TEBAKANG	PASIR MAS	KUBANG GADUNG	KUBANG TEBAKANG			
KN 12	BENDANG TASEK BERANGAN	PASIR MAS	ALOR PASIR	TASEK BERANGAN			
KN 13	TASIK PUTERA	PASIR MAS	PASIR MAS	KUBANG PANJANG	1/63360		
KN 16	BENDANG PERIGI	PASIR MAS	KUALA LEMAL	KG PULAI	1/63360		
KN 24					N		
KN 26					1/63360		
KN 27					1/63360		
KN 35	RANC TALIAIR LEPAN AGOR	KUALA KRAI	BT MENGKEBANG	BUNUT PAYONG	1/63360		
TERENGGANU							
TR 1	TELABAK IRRIGATION SCHEME	BESUT	PASIR AKAR	DURIAN TELOR	1/63360		1/25000
TR 3	SKIM TANAMAN PADI MARAS	KUALA TRG	BT RAKIT	DARAT BT RAKIT	1/63360		1/25000
TR 4	P KELOMPOK SAYURAN	KUALA TRG	BT RAKIT	MENGABANG LEKON			N
TR 7	SALIRAN TOK JIRING	KUALA TRG	KUALA NERUS	TOK JIRING	1/63360		
TR 12	P KELOMPOK SAYURAN	KUALA TRG	SERADA	BENGGOL KATONG			N
TR 14	P KELOMPOK SAYURAN	KUALA TRG	PENGADANG BULOI	SURAU HJ DAUD			N
TR 20	SKIM TANAM PADI DURIAN HAJI	MARANG	ALOR LIMBAT	ALOR LIMBAT	1/63360		1/25000
TR 24	P KELOMPOK SAYURAN	MARANG	ALOR LIMBAT	BELUKAR GOREK			N
TR 28	P KELOMPOK SAYURAN	MARANG	BK PAYUNG	LUBUK BATU			N
TR 34	LEMBAH MARANG II	MARANG	JERONG	JERONG SURAU	1/63360		
TR 38	P KELOMPOK SAYURAN	MARANG	MERCANG	MERCANG			N
TR 42	P KELOMPOK SAYURAN	HULU TRG	HULU TELEMONG	TERIS			1/25000
TR 44	P KELOMPOK SAYURAN	HULU TRG	JENAGOR	PASIR NERING			1/25000
TR 45	P KELOMPOK SAYURAN	HULU TRG	KUALA BERANG	KUALA KEJIR			1/25000
TR 50	KOLAM ABANG	DUNGUN	ABANG	RANTAU ABANG	1/63360		1/25000
PAHANG							
PH 9	PAYA PAGAR SASAK	LIPIS	KEOHAN	PETOLA	1/63360		
PH 11	P.WAU,BETONG & GEMAYAI	MARAN	LUIT	KUALA WAU			
PH 12	PAYA JELUTUNG	MARAN	KERTAUI	SEKARA			
PH 13	PAYA NYAK BESAR	MARAN	KERTAUI	NYAK	1/63360		
PH 14	PAYA TING & BESAR KERTAUI	MARAN	KERTAUI	KG PAYA TING			
PH 16	PAYA NYAK KECIL	MARAN	KERTAUI	NYAK	1/63360		
PH 17	PAYA PDG TENGGALA	MARAN	BK SEGUMPAL	BK LADA			
PH 19	PAYA SG LING	MARAN	CHENOR	SG LING	1/63360		
PH 20	PAYA LANTING	MARAN	CHENOR	LANTING	1/63360		
PH 23	PAYA PESAGI	MARAN	CHENOR	KG PESAGI	1/63360		
PH 24	PAYA KROT	MARAN	CHENOR	JENGAKA	1/63360		
PH 25	PAYA LDG	MARAN	CHENOR	PAYA LDG	1/63360		

NOTE G_MAP: Existing topo-map N: nothing, 1: 1 inch 1 mile, 5: 1/50,000
 G_PSCALE: Scale of aerial photographs
 G_MSCALE: Scale of other maps

Table A.5.1 Results of Questionnaire Survey on Geology (4/4)

CODE	G_COND	G_DATA	G_DAMG	G_PDAMG	G_SDAMGW	G_SDAMGH	G_MDAMAG	*REMARK
NEGERI SEMBILAN								
NS 1								
NS 2								
NS 3		N						
NS 4	S,C	N	SF	SE(2:1)				
NS 5								
NS 6								
NS 7	C,P	N	N				N	
NS 8								
MELAKA								
MA 1								
MA 2	C	N	N				N	
MA 3								
MA 4								
MA 5								
MA 6								
MA 9								
MA 11	C	N	N				N	
MA 12								
MA 14	C	N	N				N	
MA 15	C	N	N				N	
MA 16	C	N	N				N	
MA 17								
MA 18								
JOHOR								
JR 3	G,S,SL,C,P	N	N				N	
JR 8	G,S,SL,C	N	N				N	
JR 9	S,SL,C,P	N	N				N	
JR 10	R,SL,C	N	N				N	
JR 12	R,S,SL	N	N				N	
JR 14	U	N	N				N	
KELANTAN								
KN 1	S,SL,C,P	N	N					
KN 4	G,S,SL,C	N	N					
KN 5	G,S,SL,C	N	N					
KN 8	R,S,SL	N	SF	CS(0.5:1)	15m	3m	N	
KN 9	R,S,SL	N	SF	CS(0.5:1)	5m	2.5m	N	
KN 10	R,S,SL	N	N					
KN 11	G,S,SL,C	N						
KN 12	G,S,SL,C	N						
KN 13	G,S,SL,C	N	N					
KN 16	G,S,SL,C	N	N					
KN 24	G,S,SL,C	N	O*		7m	5m	N	Riv.Bank Washaway by Flood
KN 26	R,S,SL	N	SF	CS	20m	3m	O*	Slope Stabilization
KN 27	R,S,SL	GSR	SF	CS	10m	2m	O*	Earth Filing & Compaction
KN 35	R,S,SL	N	N					
TERENGGANU								
TR 1	R,S,SL	N	N					
TR 3	G,SL,C,P	N	N	NS(1:1)				
TR 4	G,SL,C,P	N	N	N	N	N	N	
TR 7	R,S,O(CARB)	N	N	NS(1:1)				
TR 12	G,S,SL,C	N	N	N	N	N	N	
TR 14	G,S,SL,C	N	N	N	N	N	N	
TR 20	G,S,SL,C	N	N	NS(1:1)				
TR 24	G,S,SL,C	N	N	N	N	N	N	
TR 28	R,S,SL	N	N	N	N	N	N	
TR 34	R,S,SL	N	N	NS(1:1)				
TR 38	R,S,SL	N	N	N	N	N	N	
TR 42	R,S,SL,C							
TR 44	R,S,SL							
TR 45	R,S,SL							
TR 50	G,S,SL,C,P	N	N					
PAHANG								
PH 9	R,S,SL,C	N	N				N	
PH 11	R,S,C							
PH 12	R,S,SL,C	N	N				N	
PH 13	R,S,SL,C	N	N				N	
PH 14	R,S,SL,C	N	N				N	
PH 16	R,S,SL,C	N	N				N	
PH 17	R,S,SL,C	N	N				N	
PH 19	R,S,C	N	N				N	
PH 20	R,S,SL,C	N	N				N	
PH 23	R,S,SL,C	N	N				N	
PH 24	R,S,SL,C	N	N				N	
PH 25	R,S,SL,C	N	N				N	

NOTE: G_COND: Geological condition in the project area
 Unknown, Rocks, Gravel, Sand, Silt, Clay, Peat, Others (to be specified)
 G_DATA: Existing geological data in the vicinity
 Nothing, R (geological survey report), M (geological map or profile)
 L (drilling log), P (geophysical data), Others
 G_DAMG: Damage in the vicinity
 Nothing, Subsidence, Landslide, Slope failure or erosion, Others (to be specified)
 G_PDAMG: Foundation of facilities, Natural slope, Cut slope, E (slope of embankment), Others (to be specified)
 G_SDAMGW: Scale of the damage (width in meter)
 G_ADAMGH: Scale of the damage (height in meter)
 G_MDAMAG: Countermeasures against the damage
 Nothing, Others (to be specified)

APPENDIX VI

AGRICULTURE AND AGRO-ECONOMIC ANALYSIS

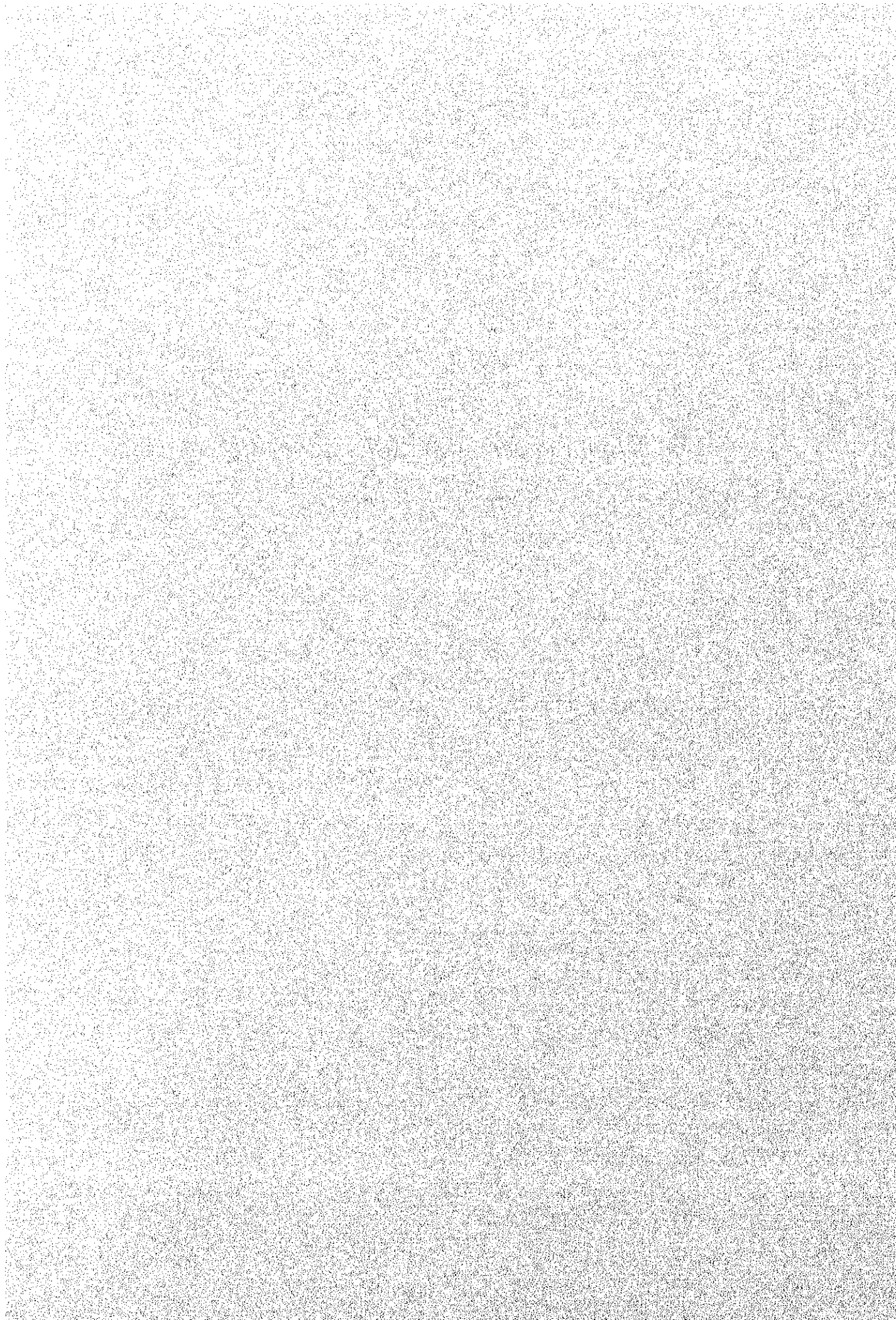


TABLE A.6.1 MAIN PRODUCTION AREA OF VEGETABLES

State	Area Name	Area	Total Area
PERLIS	1. Kok Klang	25	50
	2. Kg. Penghulu, Jaafar, Beseri	17	
	3. Kg. Batu Bertangkup, Mata Air	8	
KEDAH	1. Kuala Muda	86	116
	2. Sik	9	
	3. Pendang	8	
	4. Lankawi	13	
PULAU PINANG	1. Sebarang Perai Utara	210	587
	2. Sebarang Perai Tengah	257	
	3. Barat Daya	72	
	4. Sebra Perai Selatan	48	
PERAK	1. Kinta	645	2331
	2. Kuala Kangsar	39	
	3. Perak Tengah	39	
	4. Hilir Perak	275	
	5. Hulu Perak	57	
	6. Batang Pedang	1,082	
	7. Manjung	146	
	8. Larut Matang dan Selama	39	
	9. Krian	9	
SELANGOR	1. Sabak	40	790
	2. Kuala Selangor	170	
	3. Kuala Langat	280	
	4. Sepang	120	
	5. Hulu Langat	10	
	6. Hulu Selangor	100	
	7. Gombak	10	
	8. Petaling	60	
NEGERI SEMBILAN	1. Kuala Pilah	20	93
	2. Rembau	33	
	3. Seremban	40	
MELAKA	1. Melaka Tengah	60	90
	2. Masjid Tanah	15	
	3. Alor Gajah	15	
JOHOR	1. Batu Pahat	156	870
	2. Johor Bahru	507	
	3. Keluang	47	
	4. Kota Tinggi	100	
	5. Muar	35	
	6. Pontian	25	
TERENGGANU	1. Kuala Terengganu	89	510
	2. Marang	91	
	3. Hulu Terengganu	34	
	4. Setiu	35	
	5. Besut	55	
	6. Dungun	33	
	7. Kemaman	174	
KELANTAN	1. Bachok	300	790
	2. Tumpat	200	
	3. Kota Bharu	170	
	4. Pasir Mas	80	
	5. Pasir Puteh	40	
PAHANG	1. Cameron Highlands	1269	1644
	2. Bentong	66	
	3. Rompin	103	
	4. Raub	12	
	5. Lipis	23	
	6. Kuantan	105	
	7. Maran	37	
	8. Temerloh	29	

TABLE A.6.2 SITE EVALUATION BY AGRICULTURAL ASPECT ON 96 POTENTIAL SITES (3/3)

COI NO	NAME OF PROJECT	1	2	3	4	5	6	7	13	17	18.c1	18.c2	18.c3	24	26	SCORE	RANKING	
		NO_FARMH	ACR_PL	ACR_UPL	ACR_FTC	ACR_FARM	SOIL_TEX	POVERTY	PER_SUCC	EX_GF	CROPI	CROF2	CROF3	PROPAQR	PROPINC			
							CLAY,SAND		20	NO	TOBACCO			40	INDIVIDUAL	3	C	
							CLAY,SAND		40	NO	TOBACCO			60	INDIVIDUAL	3	C	
															GROUP FARMING	1	D	
							CLAY			NO	TOBACCO				INDIVIDUAL	0	E	
							CLAY,SAND		20	YES	TOBACCO				INDIVIDUAL	2	C	
							CLAY,SAND		40	YES	TOBACCO				GROUP FARMING	3	C	
							CLAY		80	NO					GROUP FARMING	2	C	
							CLAY		50	NO					GROUP FARMING	2	C	
							LOAM		100	NO					GROUP FARMING	2	C	
									45	NO	RUBBER				45	GROUP FARMING	3	C
TR 1	TELABAK IRRIGATION SCHEME	58	100	16	12	10	C	50	40	NO	WATER WELON				58	GROUP	3	C
TR 3	SKIM TANAMAN PADI MARAS	400	200	150	50	20	C	400	40	YES					400	GROUP	2	C
TR 4	P KELOMPOK SAYURAN	20		8			S	3	60	YES	VEGETABLE				15	GROUP	4	B
TR 7	SALIRAN TOK JERING	200	600	100	150	50	C	100	40	YES					200		2	C
TR 12	P KELOMPOK SAYURAN	40		20			C	5	60	YES					40	GROUP	4	B
TR 14	P KELOMPOK SAYURAN	12					C	5	60	YES					30	GROUP	4	B
TR 20	SKIM TANAM PADI DURIAN HAJI	30	40	76	10	10	C	30	40	YES					30	GROUP	3	C
TR 24	P KELOMPOK SAYURAN	10		4.8			C	60	60	YES					30	GROUP	4	B
TR 28	P KELOMPOK SAYURAN	13		6			C			YES					13	GROUP	3	C
TR 34	LEMAH MARANG II	60	200	250	100	50	C	60	40	NO					60	INDIVIDUAL	2	C
TR 38	P KELOMPOK SAYURAN	14		7.5			SAND	8	38	YES					20	GROUP	2	C
TR 42	P KELOMPOK SAYURAN	40	16	16			C	38	60	YES	CHILLONG/BEA MACE				40	GROUP	5	A
TR 44	P KELOMPOK SAYURAN	22	40	2.4			C	22	40	YES	CHILI				50	GROUP	4	B
TR 45	P KELOMPOK SAYURAN	5	4.4	4.4			L	5	20	YES	CHILI				50	GROUP	3	C
TR 50	KOLAM ABANG									YES	VEGETABLE						0	E
PH 9	PAYA PAGAR SASAK	40	43.7					10	60	NO							1	D
PH 11	P'WAU BETONG & GEMAYAU	67	59							NO							0	E
PH 12	PAYA BELUTUNG	80	65				C			NO					GROUP	1	D	
PH 13	PAYA NYAK BESAR	45	212				C		NONE	NO					45		1	D
PH 14	PAYA TING & BESAR KERTAU	30	70				C		NONE	NO					30	MINI	1	D
PH 16	PAYA NYAK KECIL	20	54				C		NONE	NO					20	GROUP	1	D
PH 17	PAYA PDG TENGGALA	60	57				C		NONE	NO						0	E	
PH 19	PAYA SG LING	75	180				C		NONE	NO					75	GROUP	2	C
PH 20	PAYA LANTING	50	137				C		NONE	NO						0	E	
PH 23	PAYA PESAGI	30	73				C		NONE	NO						0	E	
PH 24	PAYA KROT	35	63				C		NONE	NO						1	D	
PH 25	PAYA LIDG	36	99				C		NONE	NO						1	D	

NOTE: The numbers and items mentioned in the first r. The numbers mentioned in the row 1 correspond to the Questionnaire II shown in Annex II. E Agriculture and Agro-economy

TR. 44

Name of the Project
 1. District in-charge (DID)
 2. District in-charge (DOA)
 3. Agr. Extension Worker
 4. Farmers' Representative

AGRIC DEVELOPMENT OF GAMBANG AREA
 PASIR NERING, HULU TERENGGANU.
 Name Signature
 MUND HASHIM Yusop
 ZIKRI MAMAT
 SHAK BIN SU

Project Proposal by the Farmers

(This proposal should be filled up by the farmers' leaders ; The Agr. Extension Worker shall also fill-up this form, but the farmers opinion should be asked)

1. Number of farmers to be included in the proposal
 (Present number of farmers)

79
 16

2. Proposed cropping area
 (Present cropping area)

42 HA
 5 HA

3. Proposed irrigation method

a. Water canal from small dam
 b. Pumping from pond
 c. Overhead tank at field

4. Proposed irrigation facilities

a. Pipe Irrigation
 b. Drip Irrigation
 c. Sprinkler Irrigation
 d. Rain shelter facilities

5. Proposed crop in the development plan

A. Main crop
 a. Paddy
 b. Pulses
 c. Corn
 d. Cassava
 e. Yam
 f. Sugarcane
 g. Sweet potatoes

B. Vegetables
 a. Chili
 b. Tomato
 c. Cabbage
 d. Cucumber
 e. Brinjal
 f. Okara
 g. _____

C. Fruits
 a. Water melon
 b. Pine Apple
 c. Banana
 d. Papaya
 e. Star fruits
 f. Mango
 g. Durian
 h. Oranges
 i. Bokong

D. Fish Farming

(Name of Fish) _____

6. Proposed income for the full time farm family/month
 (Present income for the full time farm family / month)

RM 1000 / month
 RM - / month

7. Proposed income for the part time farm family/month
 (Present income for the part time farm family/month)

RM 500 / month
 RM 200 / month

8. The farmers leaders who participated in this project proposal

Name	Address	Signature
1) ELIYONIS BIN MOHAMMAD	50, KG BANGU PASIR NERING	[Signature]
2) CAZALI BIN ABU BAKAR	95, KG BANGU PASIR NERING	[Signature]
3) MAT ZIN BIN HITAM	28 A, KG BANGU PASIR NERING	[Signature]

PAHAN 20

2/22

Name of the Project

PAVA LAUTIN

Name

Signature

1. District in-charge (DID) Johore Bahru
2. District in-charge (DDA) Mohd. Kasim
3. Areal Ag. Extension Worker Mohd. Yusoff
4. Farmers' Representative Hassan B. H. Bakar

Project Proposal by the Farmers

(This proposal should be filled up by the farmers' leaders ; The Agr. Extension Worker shall also fill-up this form, but the farmers opinion should be asked)

1. Number of farmers to be included in the proposal
 (Present number of farmers) 150
100

2. Proposed cropping area
 (Present cropping area) 127

3. Proposed irrigation method

- a. Water canal from small dam
- b. Pumping from pond
- c. Overhead tank at field

4. Proposed irrigation facilities

- a. Pipe Irrigation
- b. Drip Irrigation
- c. Sprinkler Irrigation
- d. Rain shelter facilities

5. Proposed crop in the development plan

- | | | |
|---|--|--|
| <p>A. Main crop</p> <ul style="list-style-type: none"> <input checked="" type="checkbox"/> a. Paddy <input type="checkbox"/> b. Pulses <input checked="" type="checkbox"/> c. Corn <input type="checkbox"/> d. Cassava <input type="checkbox"/> e. Yam <input type="checkbox"/> f. <input type="text"/> | <p>B. Vegetables</p> <ul style="list-style-type: none"> <input checked="" type="checkbox"/> a. Chili <input type="checkbox"/> b. Tomato <input type="checkbox"/> c. Cabbage <input checked="" type="checkbox"/> d. Cucumber <input type="checkbox"/> e. Brinjal <input checked="" type="checkbox"/> f. Okara <input type="checkbox"/> g. <input type="text"/> | <p>C. Fruits</p> <ul style="list-style-type: none"> <input type="checkbox"/> a. Water melon <input type="checkbox"/> b. Pine Apple <input type="checkbox"/> c. Banana <input type="checkbox"/> d. Papaya <input type="checkbox"/> e. Star fruits <input type="checkbox"/> f. Mango <input type="checkbox"/> g. Durian <input type="checkbox"/> h. <input type="text"/> |
|---|--|--|

D. Fish Farming (Name of Fish) Jenis Koi & Ikan

6. Proposed income for the full time farm family/month RM 500.00 / month
 (Present income for the full time farm family / month) RM 500.00 / month

7. Proposed income for the part time farm family/month RM 500.00 / month
 (Present income for the part time farm family/month) RM 200.00 / month

8. The farmers leaders who participated in this project proposal

- 1) En HASSAN B. H. ABU BAKAR
- 2) WAN MUSTAPPA B. WAN TARIK
- 3) En MOHAMMAD B. H. ISMAIL

ANNEX 2.2 PROJECT PROPOSAL BY THE FARMERS

KN 16

3/27

Name of the Project

BENDANG PERMATANG SUNGILAI

Name

Signature

1. District in-charge (DD) _____
2. District in-charge (DDA) AZMI BIN MUKHAMMAR
3. Areal Ag. Extension Worker SHAFAWI ABILATIF
4. Farmers' Representative MAWI ISMAIL

Project Proposal by the Farmers

(This proposal should be filled up by the farmers' leaders; The Agr. Extension Worker shall also fill-up this form, but the farmers opinion should be asked)

1. Number of farmers to be included in the proposal
(Present number of farmers)

55
14

2. Proposed cropping area
(Present cropping area)

32
10

3. Proposed irrigation method

- a. Water canal from small dam
- b. Pumping from pond
- c. Overhead tank at field

4. Proposed irrigation facilities

- a. Pipe Irrigation
- b. Drip Irrigation
- c. Sprinkler Irrigation
- d. Rain shelter facilities

5. Proposed crop in the development plan

- | | | |
|---|---|--|
| <p>A. Main crop</p> <ul style="list-style-type: none"> <input checked="" type="checkbox"/> a. Paddy <input type="checkbox"/> b. Pulses <input type="checkbox"/> c. Corn <input type="checkbox"/> d. Cassava <input type="checkbox"/> e. Yam <input type="checkbox"/> f. _____ | <p>B. Vegetables</p> <ul style="list-style-type: none"> <input checked="" type="checkbox"/> a. Chili <input type="checkbox"/> b. Tomato <input type="checkbox"/> c. Cabbage <input type="checkbox"/> d. Cucumber <input type="checkbox"/> e. Brinjol <input type="checkbox"/> f. Okara <input type="checkbox"/> g. _____ | <p>C. Fruits</p> <ul style="list-style-type: none"> <input checked="" type="checkbox"/> a. Water melon <input type="checkbox"/> b. Pine Apple <input type="checkbox"/> c. Banana <input type="checkbox"/> d. Papaya <input type="checkbox"/> e. Star fruits <input type="checkbox"/> f. Mango <input type="checkbox"/> g. Durian <input type="checkbox"/> h. _____ |
|---|---|--|

D. Fish Farming (Name of Fish) _____

6. Proposed income for the full time farm family/month
(Present income for the full time farm family / month)

FM 600.00 / month
FM 300.00 / month

7. Proposed income for the part time farm family/month
(Present income for the part time farm family/month)

FM 400.00 / month
FM 250.00 / month

8. The farmers leaders who participated in the project proposal

Name	Address	Signature
1. Mawis Ismail	Kp. Permatang Sungkai	[Signature]
2. [Name]	Kp. Permatang Sungkai	[Signature]
3. [Name]	Kp. Permatang Sungkai	[Signature]

ANNEX 2 PROJECT PROPOSAL BY THE FARMERS

P.P. 3

Name of the Project

SEKIM TOK BBDU (PPB) (SPU)

Name

Signature

- | | | |
|-------------------------------|-------------------------------------|------------------------------------|
| 1. District in-charge (DID) | <u>Schranwallah Hj. Mohd Zahidi</u> | <u>[Signature]</u> |
| 2. District in-charge (DOA) | <u>Hj. Jamel Abu Hamid</u> | <u>[Signature]</u> |
| 3. Areal Ag. Extension Worker | <u>Abd Rahman bin Md Zin</u> | <u>[Signature]</u> |
| 4. Farmers' Representative | <u>Halm bin H. Nohab</u> | <u>[Signature] (Pkg. Berangan)</u> |

Project Proposal by the Farmers

(This proposal should be filled up by the farmers' leaders ; The Agr. Extension Worker shall also fill-up this form, but the farmers opinion should be asked)

- Number of farmers to be included in the proposal
(Present number of farmers)

53
98
- Proposed cropping area
(Present cropping area)

60.2 ha
76 ha
- Proposed irrigation method

<input type="checkbox"/>	a. Water canal from small dam
<input checked="" type="checkbox"/>	b. Pumping from pond
<input checked="" type="checkbox"/>	c. Overhead tank at field
- Proposed irrigation facilities

<input type="checkbox"/>	a. Non Irrigated
<input type="checkbox"/>	b. Drip Irrigation
<input type="checkbox"/>	c. Sprinkler Irrigation
<input type="checkbox"/>	d. Rain shelter facilities
- Proposed crop in the development plan

A. Main crop	<input checked="" type="checkbox"/> a. Paddy	B. Vegetables	<input type="checkbox"/> a. Chili	C. Fruits	<input type="checkbox"/> a. Water melon
	<input type="checkbox"/> b. Pulses		<input type="checkbox"/> b. Tomato		<input type="checkbox"/> b. Pine Apple
	<input checked="" type="checkbox"/> c. Corn		<input type="checkbox"/> c. Cabbage		<input type="checkbox"/> c. Banana
	<input type="checkbox"/> d. Cabbage		<input type="checkbox"/> d. Cucumber		<input type="checkbox"/> d. Papaya
	<input type="checkbox"/> e. Yam		<input type="checkbox"/> e. Brinjal		<input type="checkbox"/> e. Star fruits
	<input type="checkbox"/> f. []		<input type="checkbox"/> f. Okara		<input type="checkbox"/> f. Mango
			<input type="checkbox"/> g. []		<input type="checkbox"/> g. Durian
					<input type="checkbox"/> h. []
- Fish Farming

(Name of Fish) []
- Proposed Income for the full time farm family/month
(Present Income for the full time farm family / month)

RM 200.00 / month /acre
RM 150.00 / month) /acre
- Proposed income for the part time farm family/month
(Present Income for the part time farm family/month)

RM 250 - 200 / month /acre
RM 100 / month) /acre
- The farmers leaders who participated in this project proposal

Name

Address

Signature

- | | | |
|------------------------------------|-------------------------|--------------------|
| 1. <u>Nahda Radzy E. G. Husein</u> | <u>8338 PG Berangan</u> | <u>[Signature]</u> |
| 2. [] | [] | [] |
| 3. [] | [] | [] |

PEKAN (2)

Air Melintang
Besar

PP 3

Name of the Project

SEKIM TOK BESUK (PP3) SPU

Name

Signature

1. District in-charge (DID)
2. District in-charge (DOA)
3. Areal Ag. Extension Worker
4. Farmers' Representative

Sabramallisi b. Hj. Mohd. Jaidi

Ah. Somel Abd. Hamid

Abd. Rahman b. Md. Lan

KUSA b. Mohamed

(AIR MELINTANG
BESAR)

Project Proposed by the Farmers

(This proposal should be filled up by the farmers' leaders, The Agr. Extension Worker shall also fill-up this form, but the farmers opinion should be asked)

1. Number of farmers to be included in the proposal
(Present number of farmers)

22
80

2. Proposed cropping area
(Present cropping area)

44.0 ha
60.0 ha

3. Proposed irrigation method

- a. Water canal from small dam
- b. Pumping from pond
- c. Overhead tank at field

4. Proposed irrigation facilities

- a. Pipe Irrigation
- b. Drip Irrigation
- c. Sprinkler Irrigation
- d. Rain shelter facilities

5. Proposed crop in the development plan

- | | | | | | |
|--------------|--|---------------|--|-----------|--|
| A. Main crop | <input checked="" type="checkbox"/> a. Paddy | B. Vegetables | <input type="checkbox"/> a. Chili | C. Fruits | <input type="checkbox"/> a. Water melon |
| | <input type="checkbox"/> b. Pulses | | <input type="checkbox"/> b. Tomato | | <input type="checkbox"/> b. Pine Apple |
| | <input checked="" type="checkbox"/> c. Corn | | <input type="checkbox"/> c. Cabbage | | <input type="checkbox"/> c. Banana |
| | <input type="checkbox"/> d. Cabbage | | <input type="checkbox"/> d. Cucumber | | <input type="checkbox"/> d. Papaya |
| | <input type="checkbox"/> e. Yam | | <input type="checkbox"/> e. Brinjal | | <input type="checkbox"/> e. Star fruits |
| | <input type="checkbox"/> f. <input type="text"/> | | <input type="checkbox"/> f. Okara | | <input type="checkbox"/> f. Mango |
| | | | <input type="checkbox"/> g. <input type="text"/> | | <input type="checkbox"/> g. Durian |
| | | | | | <input type="checkbox"/> h. <input type="text"/> |

D. Fish Farming

(Name of Fish)

6. Proposed income for the full time farm family/month
(Present income for the full time farm family / month)

RM / month / acre
RM / month / acre

7. Proposed income for the part time farm family/month
(Present income for the part time farm family/month)

RM / month / acre
RM / month / acre

8. The farmers leaders who participate in this project are:

No.	Name	Address	Signature
1)			
2)			
3)			

(3) Air Melintas
Ulu

PP3

SEKIM TOK BEDU (PP3) (SPU)

Name

Signature

District in-charge (DID)

Sabramellin H. Nishid Zehidi

District in-charge (DOA)

Hj. Jamel Abd. Hamid

Areal Ag. Extension Worker

Abd. Rahman Md. Zan

4. Farmers' Representative

Haji Mutsab b. Arif

(Air Melintas kecil)

Project Proposal by the Farmers

(This proposal should be filled up by the farmers' leaders ; The Agr. Extension Worker shall also fill-up this form, but the farmers opinion should be asked)

1. Number of farmers to be included in the proposal
(Present number of farmers)

34 /
50 /

2. Proposed cropping area
(Present cropping area)

48.0 ha
55.0 ha

3. Proposed irrigation method

a. Water canal from small dam
 b. Pumping from pond
 c. Overhead tank at field

4. Proposed irrigation facilities

a. Pipe Irrigation
 b. Drip Irrigation
 c. Sprinkler Irrigation
 d. Rain shelter facilities

5. Proposed crop in the development plan

A. Main crop	<input checked="" type="checkbox"/> a. Paddy	B. Vegetables	<input type="checkbox"/> a. Chili	C. Fruits	<input type="checkbox"/> a. Water melon
	<input checked="" type="checkbox"/> b. Pulses		<input type="checkbox"/> b. Tomato		<input type="checkbox"/> b. Pine Apple
	<input type="checkbox"/> c. Corn		<input type="checkbox"/> c. Cabbage		<input type="checkbox"/> c. Bananas
	<input type="checkbox"/> d. Cabbage		<input type="checkbox"/> d. Cucumber		<input type="checkbox"/> d. Pineapple
	<input type="checkbox"/> e. Yam		<input type="checkbox"/> e. Brinjal		<input type="checkbox"/> e. Star fruits
	<input type="checkbox"/> f. <input type="text"/>		<input type="checkbox"/> f. Okara		<input type="checkbox"/> f. Mango
			<input type="checkbox"/> g. <input type="text"/>		<input type="checkbox"/> g. Durian
					<input type="checkbox"/> h. <input type="text"/>

D. Fish Farming (Name of Fish)

6. Proposed income for the full time farm family/month RM 500.00 / month
(Present income for the full time farm family / month) RM 150.00 / month

7. Proposed income for the part time farm family/month RM 250-300.00 / month
(Present income for the part time farm family/month) RM 100.00 / month

8. The farmers leaders who participated in this project proposal

Name: _____ Address: _____ Signature: _____
1) _____
2) _____
3) _____

(4)

PPB

Name of the Project

SPEKIM TOK BEGUT (PPB) (SPU)

	Name	Signature
1. District in-charge (IID)	<u>Sabranudin H. Mohd Zaki</u>	<i>[Signature]</i>
2. District in-charge (DOA)	<u>M. Zamel Abd. Hamid</u>	<i>[Signature]</i>
3. Areal Ag. Extension Worker	<u>Abd Rahman Md Zain</u>	<i>[Signature]</i>
4. Farmers' Representative	<u>LONG B BONG</u>	<i>[Signature]</i>

(kelompok Kg. Tok Begut)

Project Proposed by the Farmers

(This proposal should be filled up by the farmers' leaders ; The Agr. Extension Worker shall also fill-up this form, but the farmers opinion should be asked)

1. Number of farmers to be included in the proposal
(Present number of farmers)

46
82

2. Proposed cropping area
(Present cropping area)

40.9 ha
63.0 ha

3. Proposed irrigation method

a. Water canal from small dam
 b. Pumping from pond
 c. Overhead tank at field

4. Proposed irrigation facilities

a. Rain shelter
 b. Drip Irrigation
 c. Sprinkler Irrigation
 d. Rain shelter facilities

5. Proposed crop in the development plan

A. Main crop	<input checked="" type="checkbox"/> a. Paddy	B. Vegetables	<input type="checkbox"/> a. Chili	C. Fruits	<input type="checkbox"/> a. Water melon
	<input type="checkbox"/> b. Pulses		<input type="checkbox"/> b. Tomato		<input type="checkbox"/> b. Pine Apple
	<input checked="" type="checkbox"/> c. Corn		<input type="checkbox"/> c. Cabbage		<input type="checkbox"/> c. Banana
	<input type="checkbox"/> d. Cassava		<input type="checkbox"/> d. Cucumber		<input type="checkbox"/> d. Durian
	<input type="checkbox"/> e. Yam		<input type="checkbox"/> e. Brinjal		<input type="checkbox"/> e. Star fruits
	<input type="checkbox"/> f. <input type="text"/>		<input type="checkbox"/> f. Okara		<input type="checkbox"/> f. Mango
			<input type="checkbox"/> g. <input type="text"/>		<input type="checkbox"/> g. Durian
					<input type="checkbox"/> h. <input type="text"/>

(Name of Fish)

D. Fish Farming

6. Proposed income for the full time farm family/month
(Present income for the full time farm family / month)

RM / month / acre
RM / month / acre

7. Proposed income for the part time farm family/month
(Present income for the part time farm family/month)

RM / month / acre
RM / month / acre

8. The farmers leaders who participate in this project proposal

Name	Address	Signature
1)		
2)		
3)		