

JAPAN INTERNATIONAL COOPERATION AGENCY (JICA)
DEPARTMENT OF PUBLIC WORKS AND HIGHWAYS
REPUBLIC OF THE PHILIPPINES

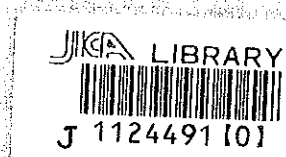
METRO MANILA URBAN EXPRESSWAY SYSTEM STUDY

FINAL REPORT

VOLUME V

DRAWINGS

OCTOBER 1993



KATAHIRA & ENGINEERS INTERNATIONAL

METRO MANILA URBAN EXPRESSWAY SYSTEM STUDY FINAL REPORT VOLUME V DRAWINGS

L118
737
SSF

S	S	F
J		R
93-098		

METRO MANILA URBAN EXPRESSWAY SYSTEM STUDY

FINAL REPORT

VOLUME V

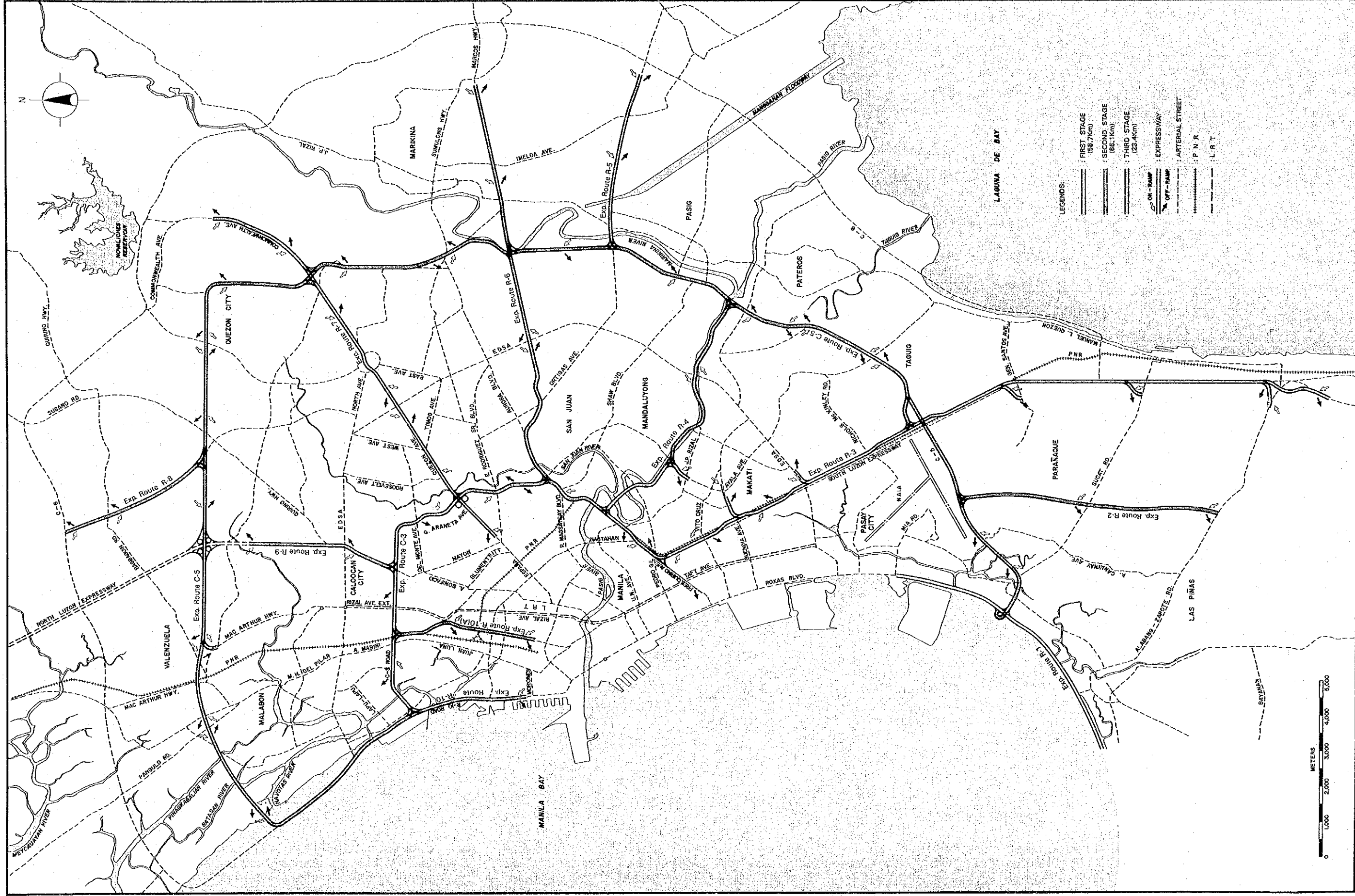
DRAWINGS

OCTOBER 1993

KATAHIRA & ENGINEERS INTERNATIONAL



1124491 [0]



METRO MANILA URBAN EXPRESSWAY SYSTEM (MMUES)

INDEX OF DRAWINGS

• METRO MANILA URBAN EXPRESSWAY SYSTEM (MMUES)

• INDEX

<p>1. EXPRESSWAY ROUTE C-3</p> <p>1.1 TYPICAL CROSS SECTION -----1-1 to 1-2</p> <p>1.2 PLAN AND PROFILE -----1-3 to 1-13</p> <p>2. EXPRESSWAY ROUTE R-3</p> <p>2.1 TYPICAL CROSS SECTION -----2-1 to 2-3</p> <p>2.2 PLAN AND PROFILE ----- 2-4 to 2-16</p> <p>2.3 ACCESS RAMP</p> <p>2.3.1 BUENDIA ACCESS RAMP -----2-17 to 2-19</p> <p>2.3.2 BICUTAN ACCESS RAMP -----2-20 to 2-21</p> <p>2.3.3 SUCAT ACCESS RAMP -----2-22 to 2-23</p> <p>2.3.4 ALABANG ACCESS RAMP -----2-24 to 2-26</p> <p>3. EXPRESSWAY ROUTE R-4</p> <p>3.1 TYPICAL CROSS SECTION -----3-1</p> <p>3.2 PLAN AND PROFILE -----3-2 to 3-3</p> <p>3.3 ACCESS RAMP</p> <p>3.3.1 EXP. R-4/MAKATI ACCESS RAMP I/C -- 3-4 to 3-6</p> <p>3.3.2 MAKATI ACCESS RAMP ----- 3-7</p> <p>4. EXPRESSWAY ROUTE R-7</p> <p>4.1 TYPICAL CROSS SECTION ----- 4-1 to 4-2</p> <p>4.2 PLAN AND PROFILE ----- 4-3 to 4-10</p> <p>4.3 QUEZON MEMORIAL CIRCLE ----- 4-11</p> <p>5. EXPRESSWAY ROUTE R-9</p> <p>5.1 TYPICAL CROSS SECTION ----- 5-1</p> <p>5.2 PLAN AND PROFILE ----- 5-2 to 5-4</p>	<p>6. EXPRESSWAY ROUTE R-10</p> <p>6.1 TYPICAL CROSS SECTION ----- 6-1</p> <p>6.2 PLAN AND PROFILE ----- 6-2 to 6-4</p> <p>7. INTERCHANGE</p> <p>7.1 EXP. C-3/EXP. R-3 INTERCHANGE ----- 7-1 to 7-3</p> <p>7.2 EXP. C-3/EXP. R-4 INTERCHANGE ----- 7-4 to 7-5</p> <p>7.3 EXP. C-3/EXP. R-6 INTERCHANGE ----- 7-6 to 7-7</p> <p>7.4 EXP. C-3/EXP. R-7 INTERCHANGE ----- 7-8 to 7-10</p> <p>7.5 EXP. C-3/EXP. R-9 INTERCHANGE ----- 7-11 to 7-12</p> <p>7.6 EXP. C-3/EXP. R-10(A) INTERCHANGE ----- 7-13 to 7-14</p> <p>7.7 EXP. C-3/EXP. R-10 INTERCHANGE ----- 7-15 to 7-16</p> <p>7.8 EXP. R-3/C-4 INTERCHANGE ----- 7-17 to 7-19</p> <p>7.9 EXP. R-3/EXP. C-5 INTERCHANGE ----- 7-20 to 7-22</p> <p>7.10 EXP. R-7/EXP. C-5 INTERCHANGE ----- 7-23 to 7-25</p> <p>8. VIADUCT AND BRIDGE</p> <p>8.1 STANDARD VIADUCT ----- 8-1 to 8-2</p> <p>8.2 PASIG RIVER BRIDGE ----- 8-3 to 8-5</p> <p>8.3 ERECTION METHOD ----- 8-6 to 8-7</p> <p>9. MISCELLANEOUS</p> <p>9.1 TOLL PLAZA AND TOLL BOOTH ----- 9-1</p> <p>9.2 DETAILS OF CENTER RAMP TERMINAL AT AT-GRADE ROAD ----- 9-2</p> <p>9.3 TYPICAL PAVEMENT MARKINGS DETAILS --- 9-3</p> <p>9.4 LAYOUT OF TRAFFIC CONTROL FACILITIES -- 9-4</p> <p>9.5 STANDARD CONCRETE RAILING, AND NOISE BARRIER DETAILS ----- 9-5</p> <p>9.6 STANDARD LIGHTNING ----- 9-6</p>
---	---



KATAHIRA & ENGINEERS
INTERNATIONAL



JAPAN INTERNATIONAL
COOPERATION AGENCY

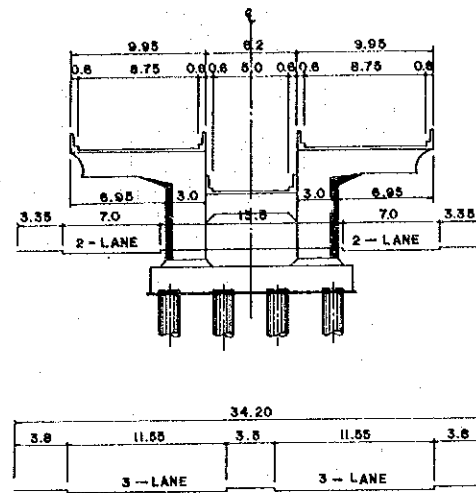
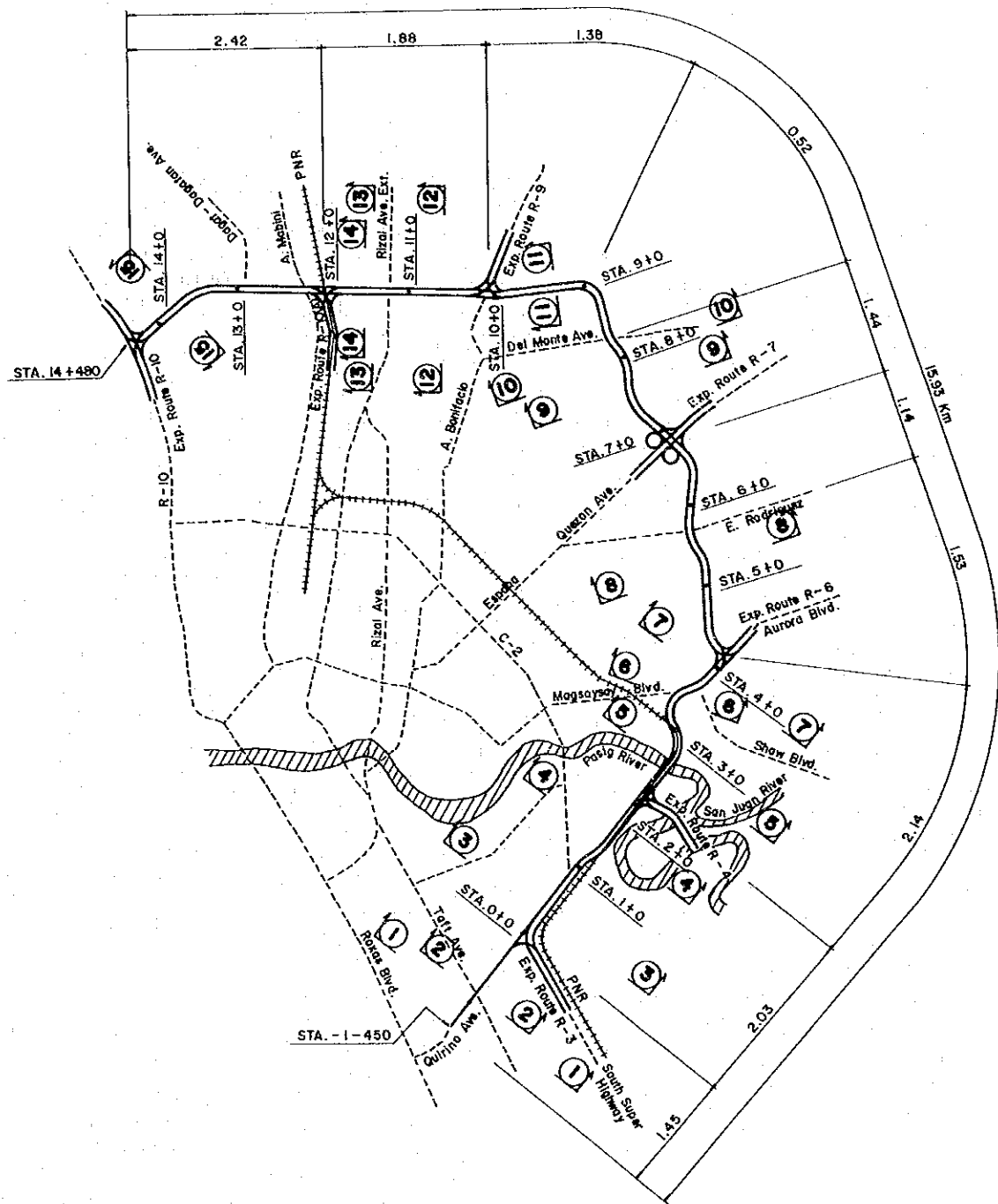


DEPARTMENT OF PUBLIC
WORKS AND HIGHWAYS
Republic of the Philippines

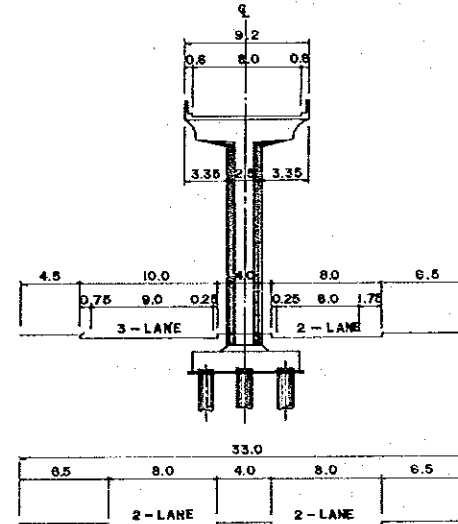
FEASIBILITY STUDY ON METRO MANILA
URBAN EXPRESSWAY SYSTEM

INDEX OF DRAWINGS

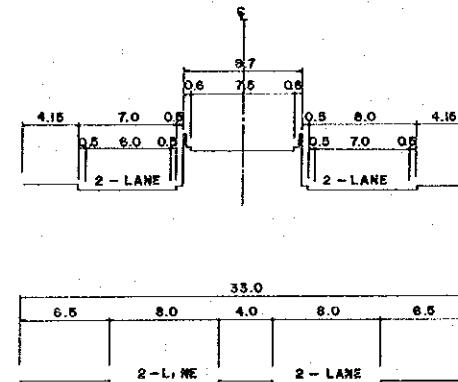
VICINITY MAP
SCALE 1 : 40,000



3 - 3 SECTION

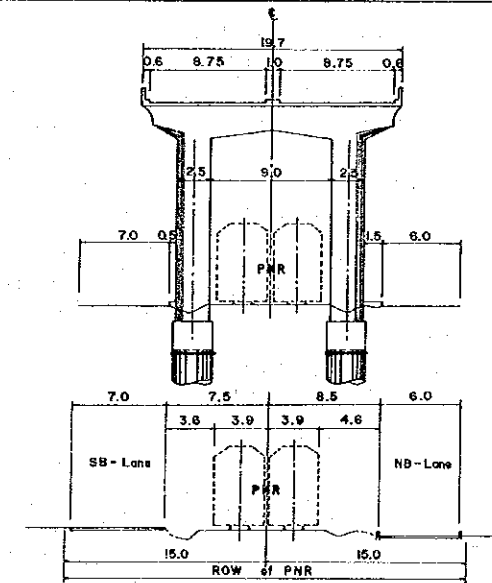
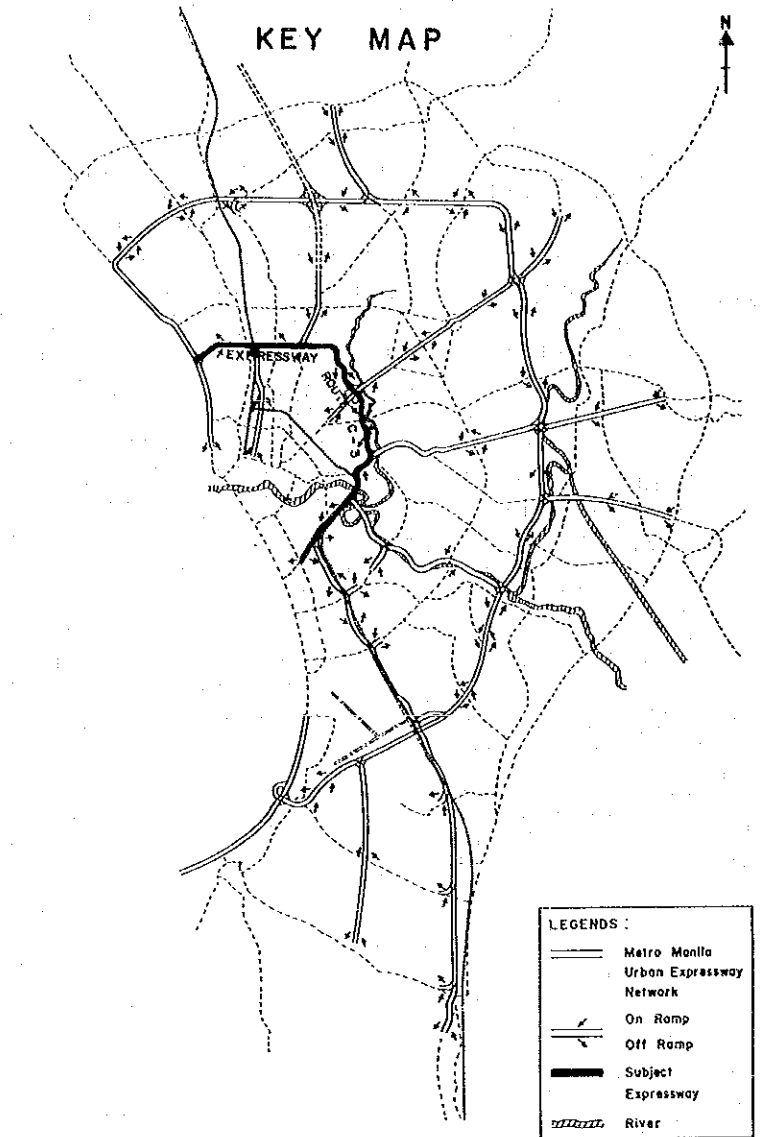


2 - 2 SECTION

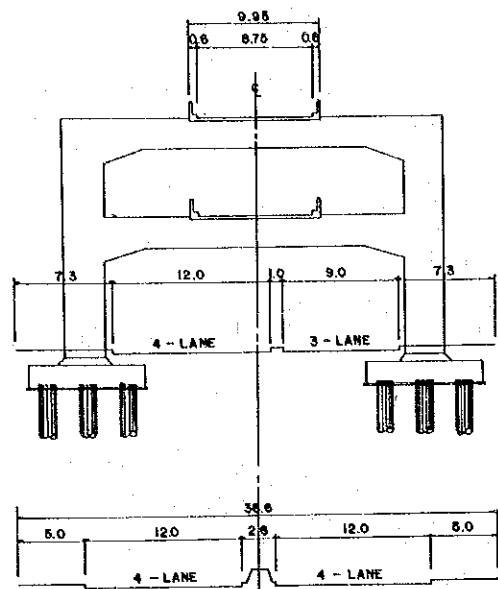


1 - 1 SECTION

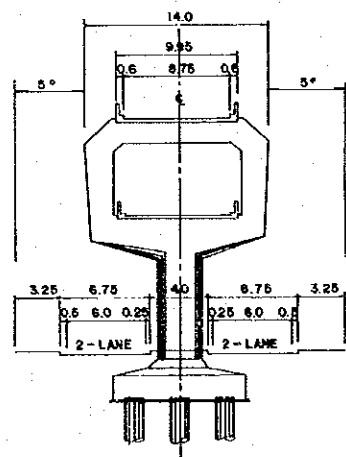
KEY MAP



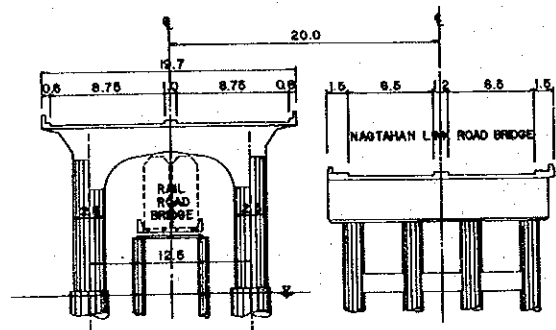
4 - 4 SECTION



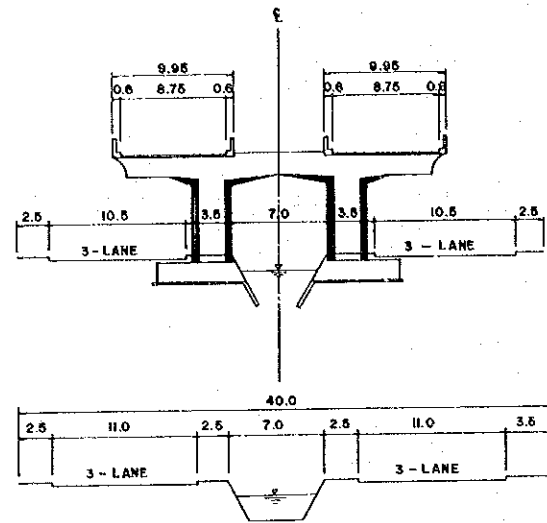
⑦ - ⑦ SECTION



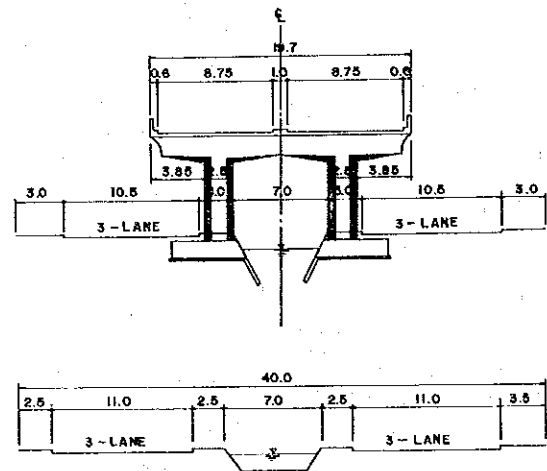
⑥ - ⑥ SECTION



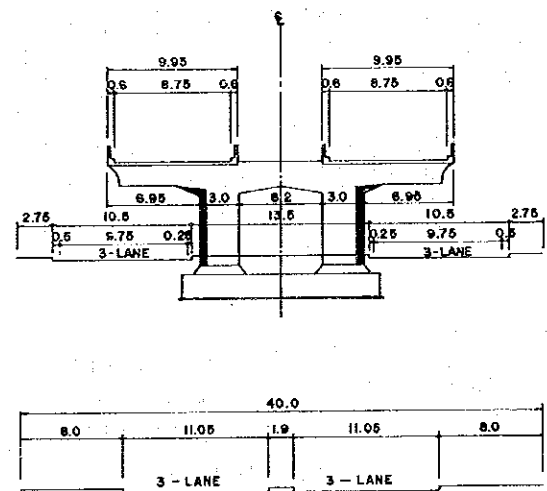
⑤ - ⑤ SECTION



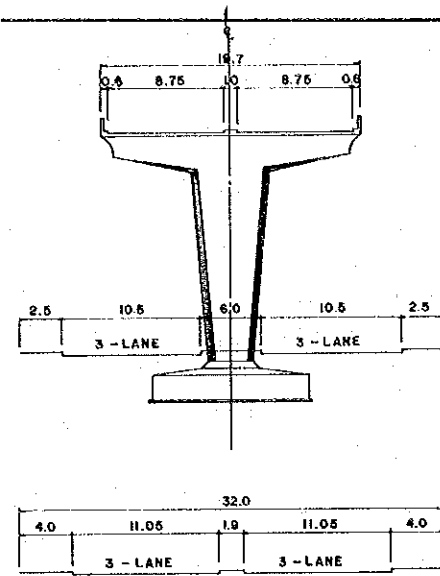
⑩ - ⑩ SECTION



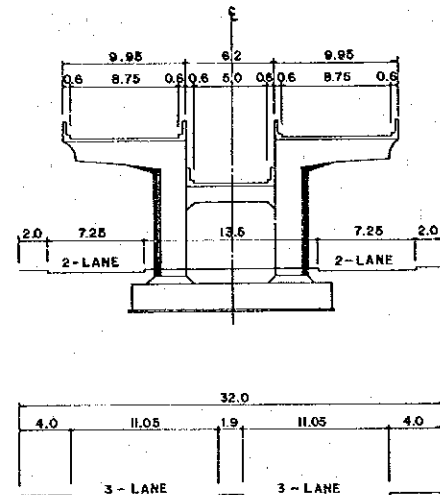
⑨ - ⑨ SECTION



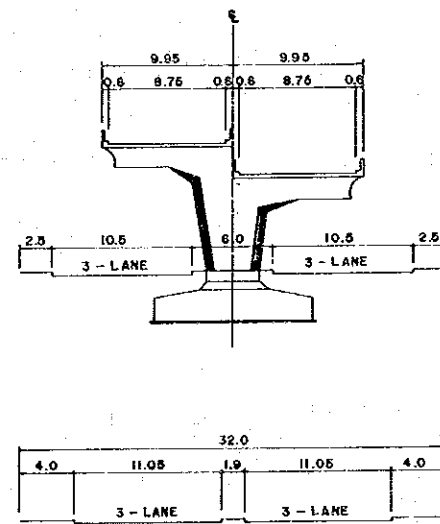
⑧ - ⑧ SECTION



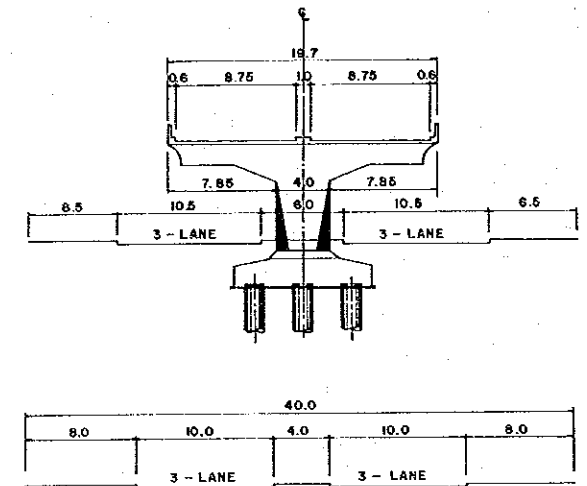
⑬ - ⑬ SECTION



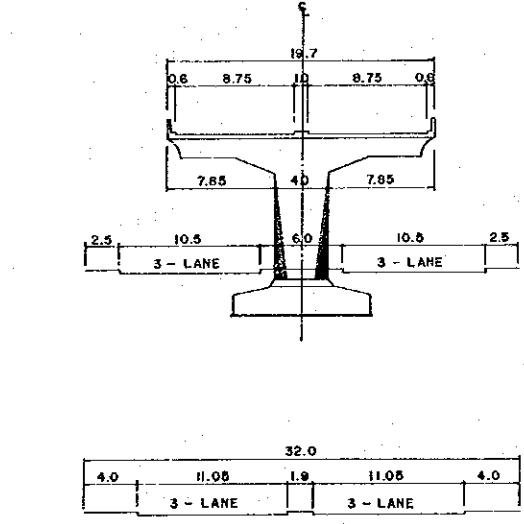
⑫ - ⑫ SECTION



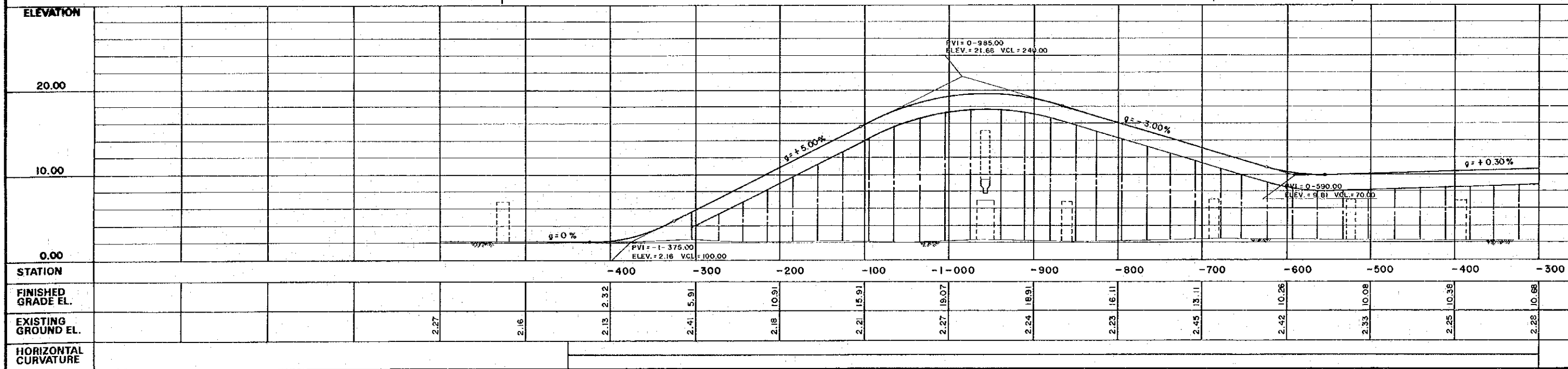
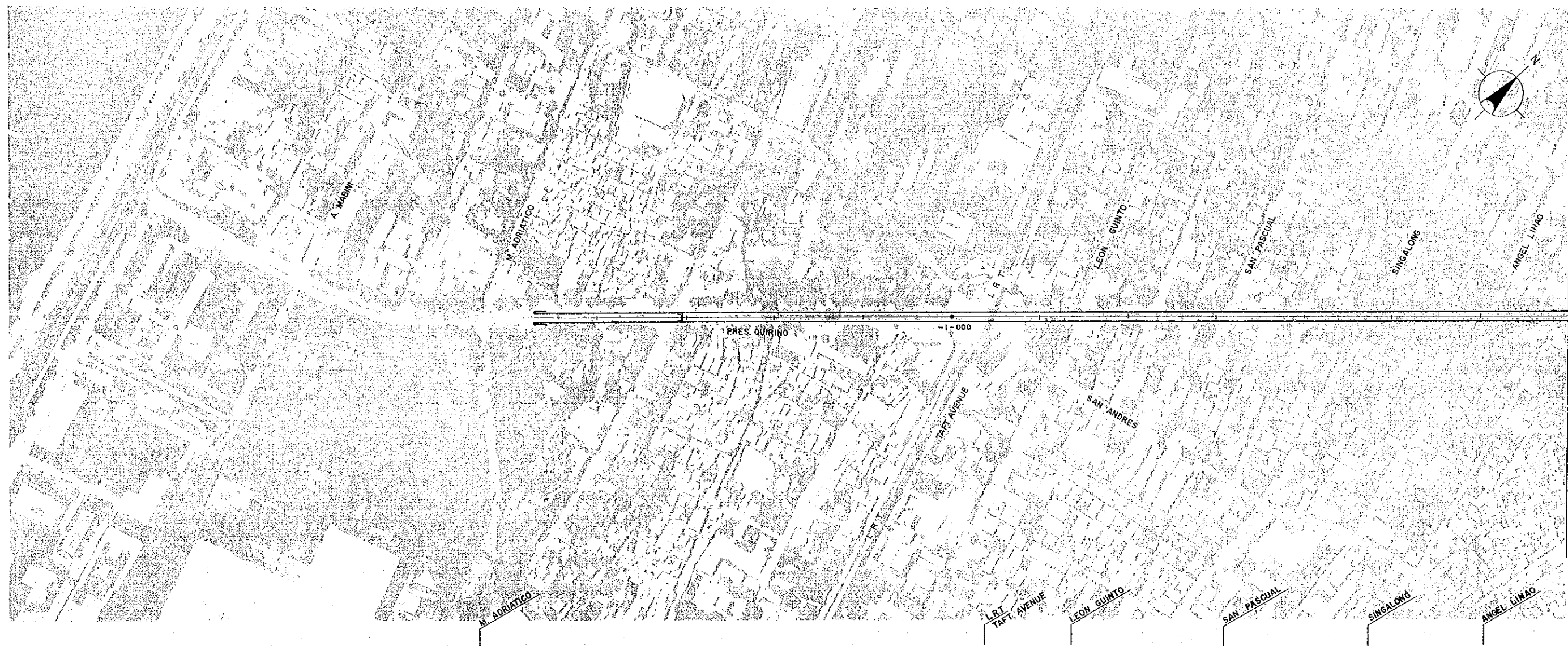
⑪ - ⑪ SECTION



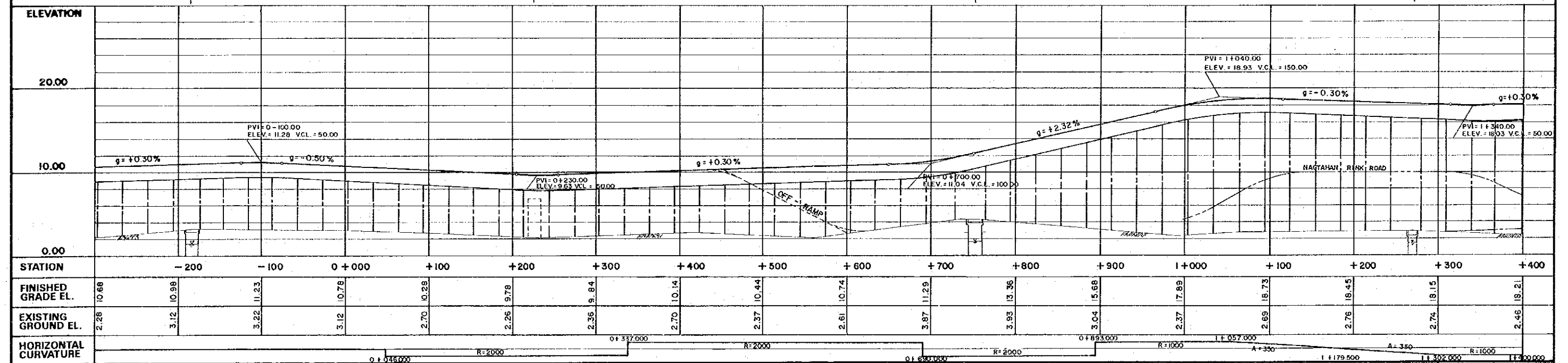
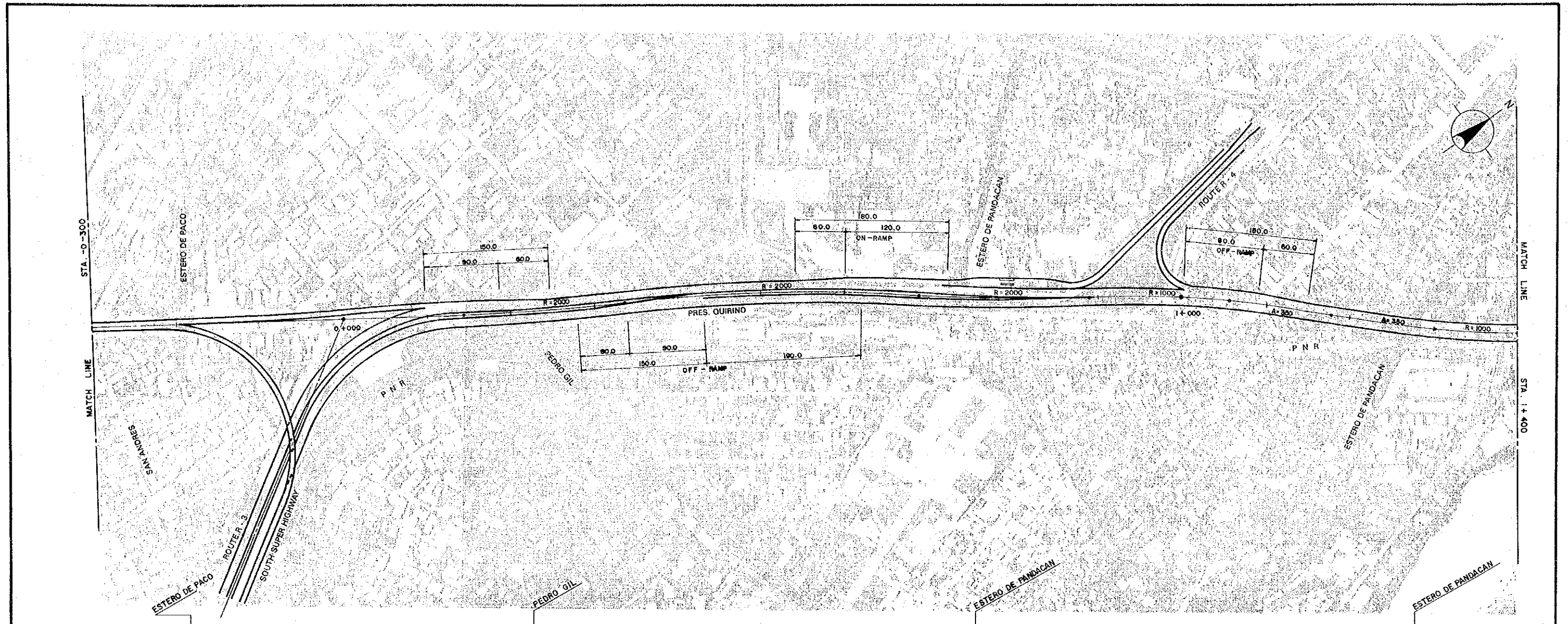
⑮ - ⑮ SECTION



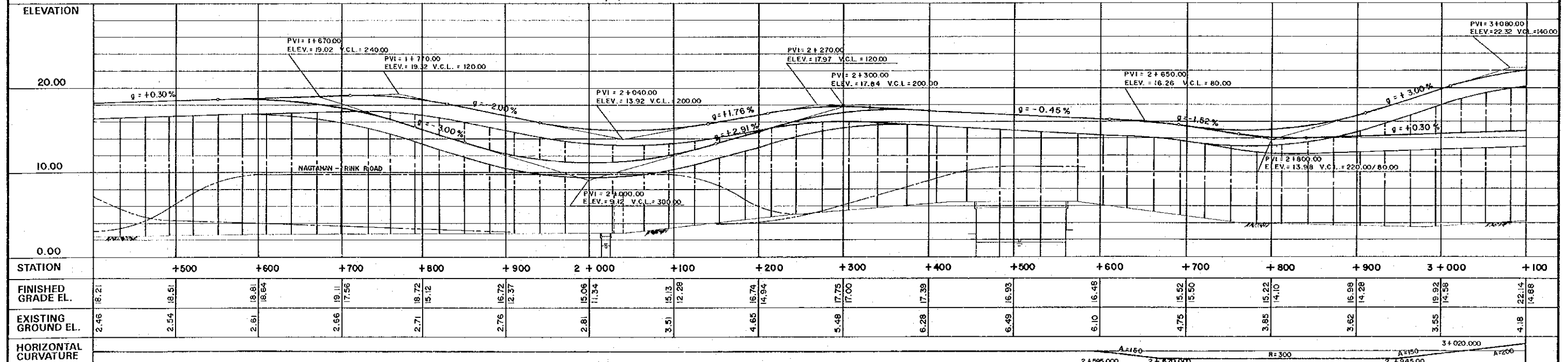
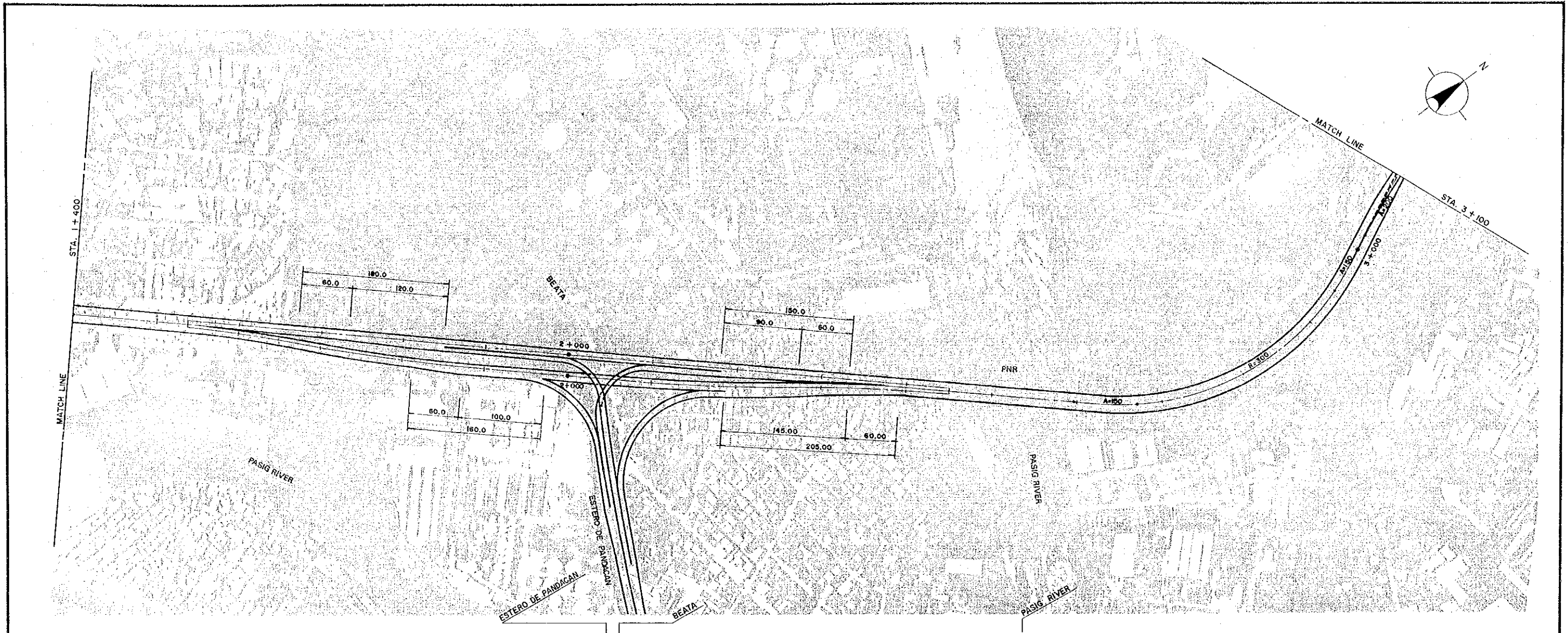
⑭ - ⑭ SECTION



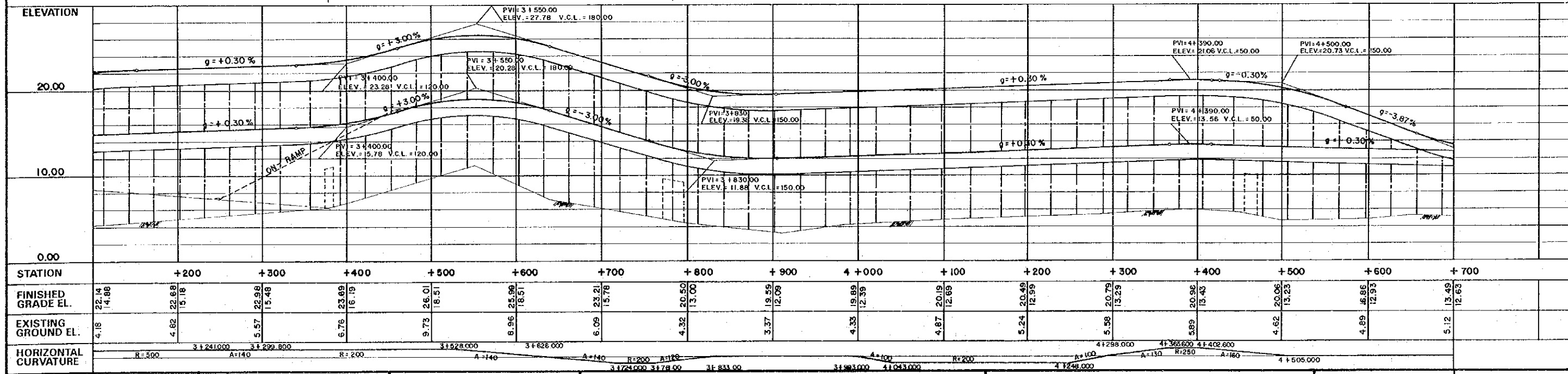
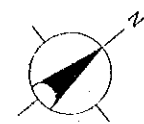
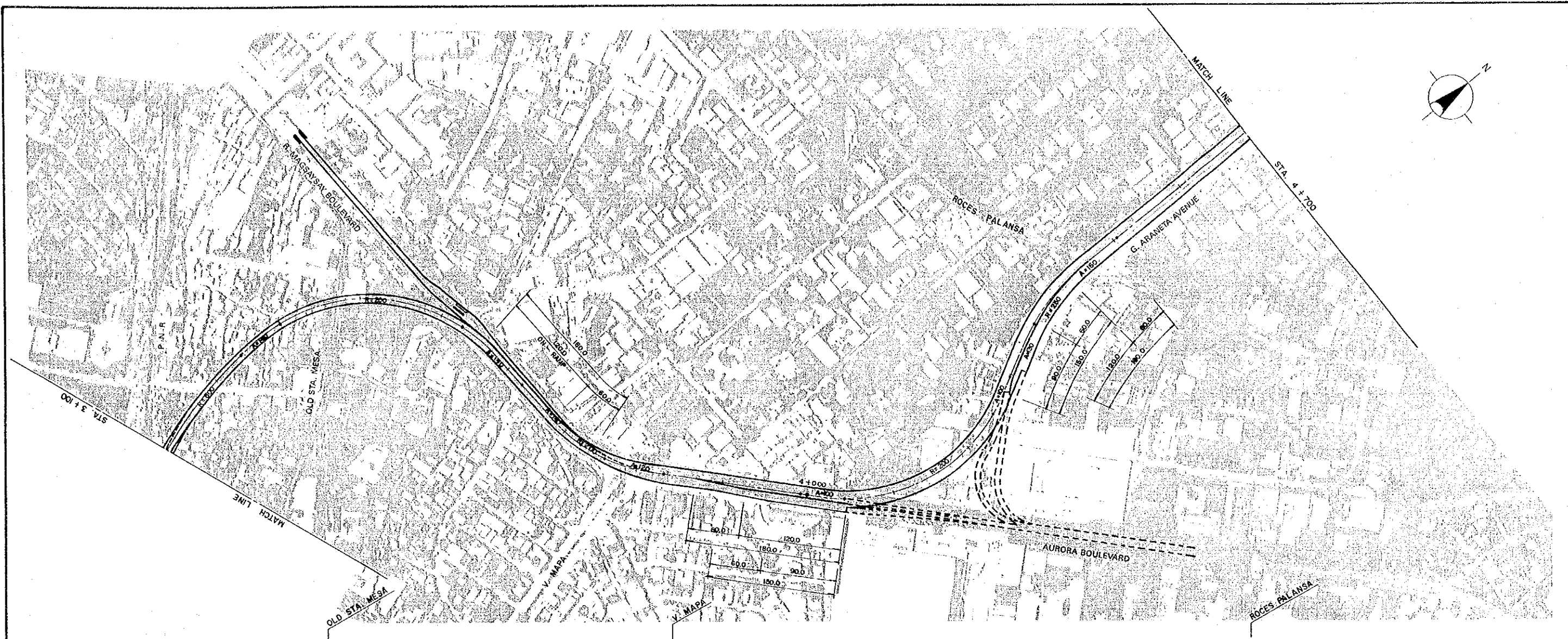
 KATAHIRA & ENGINEERS INTERNATIONAL	 JAPAN INTERNATIONAL COOPERATION AGENCY	 DEPARTMENT OF PUBLIC WORKS AND HIGHWAYS Republic of the Philippines	FEASIBILITY STUDY ON METRO MANILA URBAN EXPRESSWAY SYSTEM	PLAN AND PROFILE ROUTE NAME STA. -1-450 - STA. -0-300 C - 3	SCALE	DWG. No.
					HORIZONTAL : 1 : 2,500 VERTICAL : 1 : 250	1 - 3



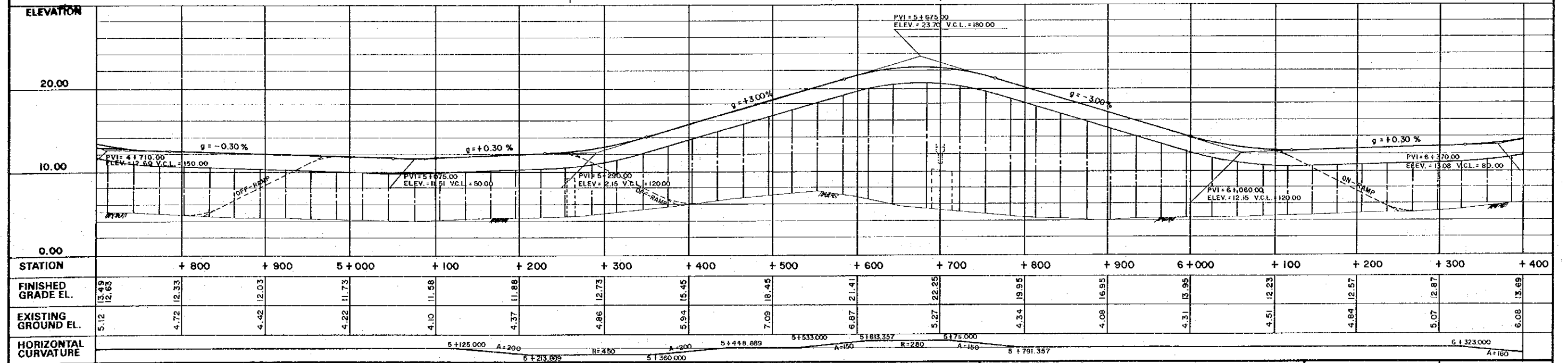
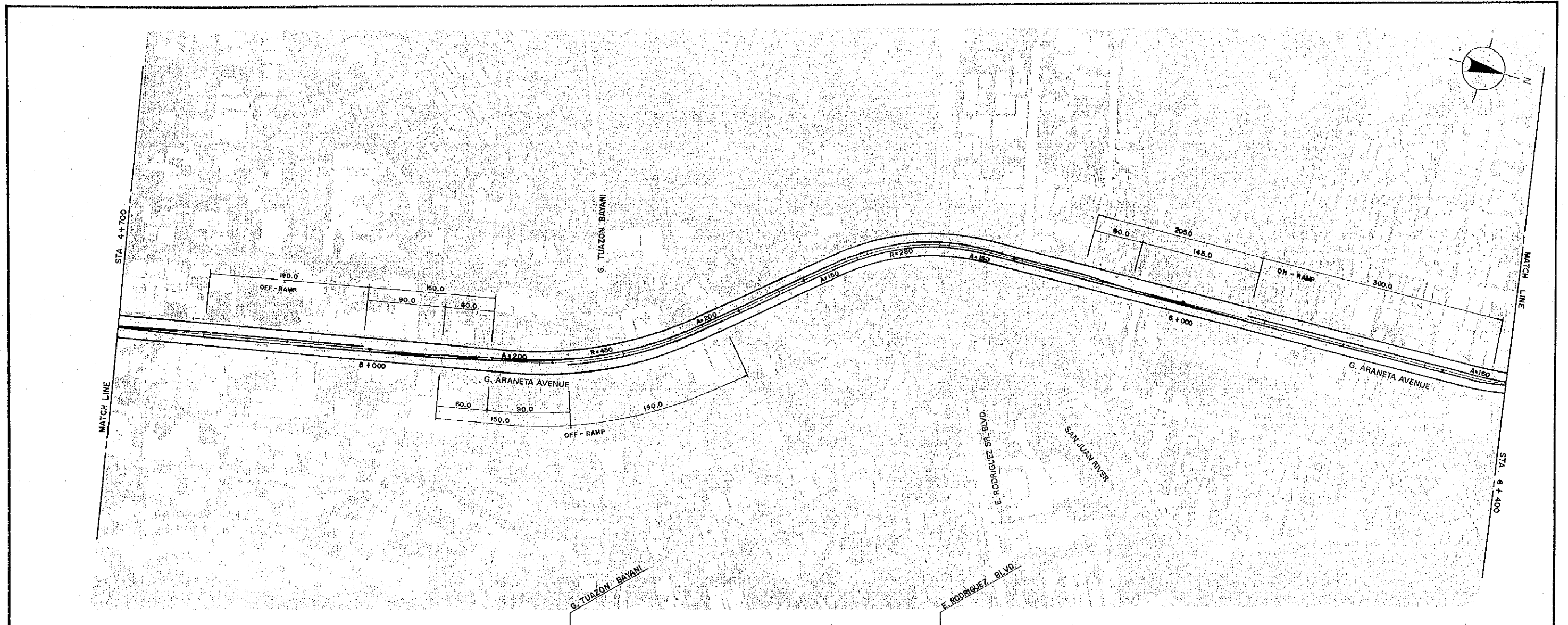
 KATAHIRA & ENGINEERS INTERNATIONAL	 JAPAN INTERNATIONAL COOPERATION AGENCY	 DEPARTMENT OF PUBLIC WORKS AND HIGHWAYS Republic of the Philippines	FEASIBILITY STUDY ON METRO MANILA URBAN EXPRESSWAY SYSTEM	PLAN AND PROFILE	SCALE	DWG. No.
				ROUTE NAME C-3	STA. -0-300 - STA. 1+400	HORIZONTAL : 1 : 2,500 VERTICAL : 1 : 250



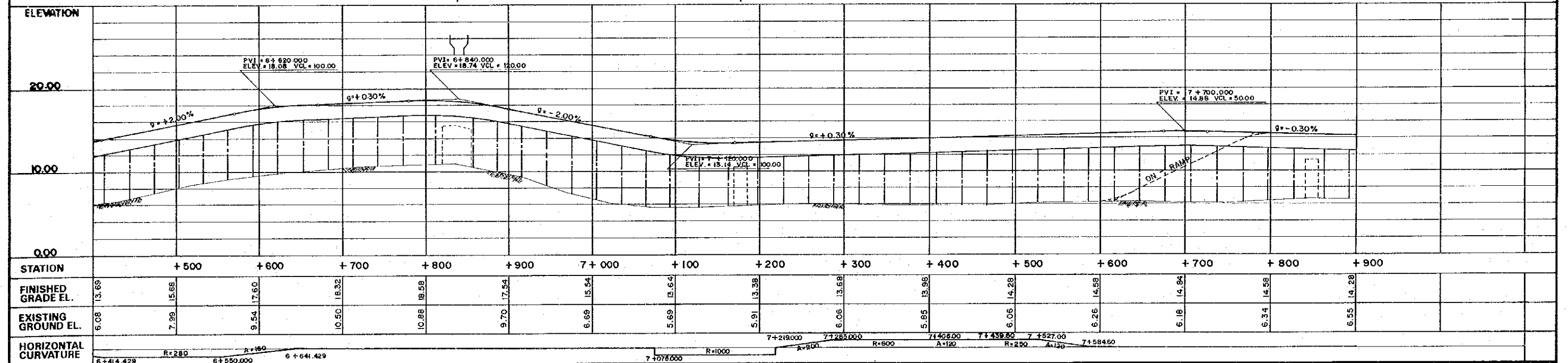
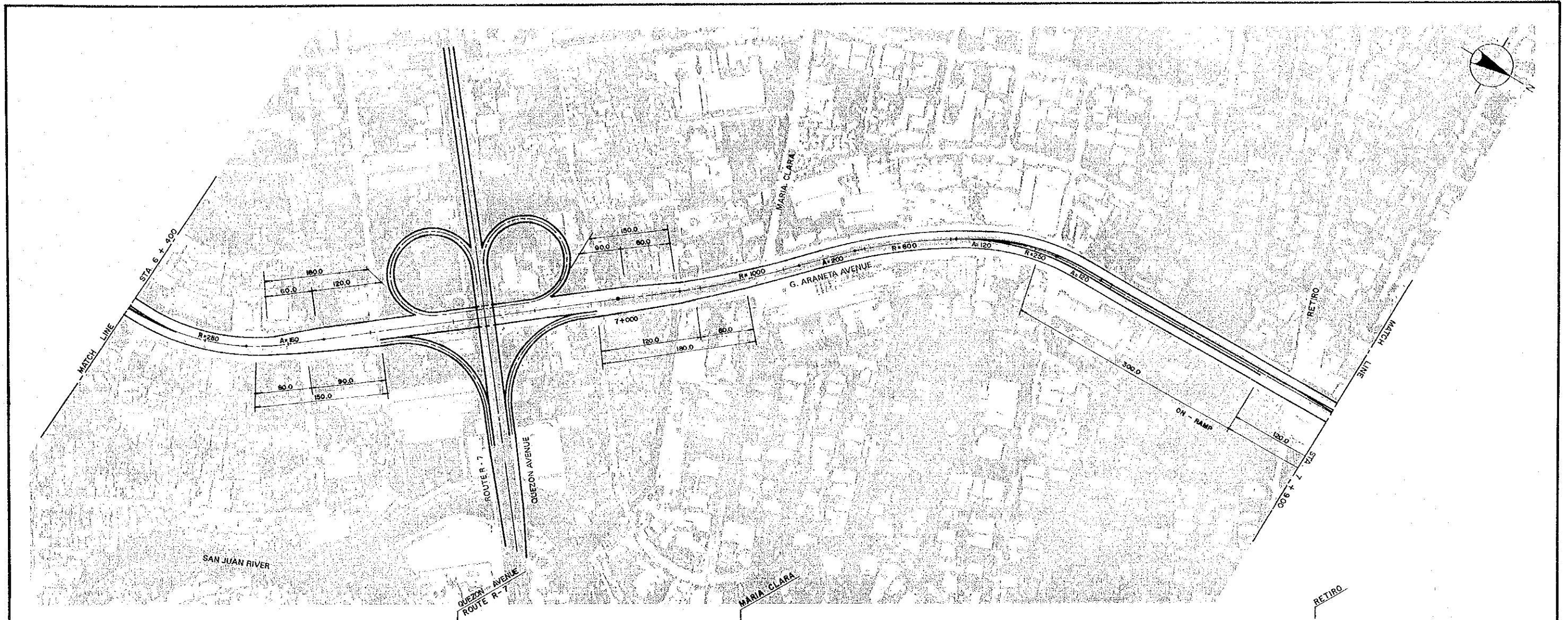
 KATAHIRA & ENGINEERS INTERNATIONAL	 JAPAN INTERNATIONAL COOPERATION AGENCY	 DEPARTMENT OF PUBLIC WORKS AND HIGHWAYS Republic of the Philippines	FEASIBILITY STUDY ON METRO MANILA URBAN EXPRESSWAY SYSTEM	PLAN AND PROFILE ROUTE NAME STA. 1 + 400 - STA. 3 + 100 C - 3	SCALE	DWG. No.
					HORIZONTAL : 1 : 2,500 VERTICAL : 1 : 250	1 - 5



KATAHIRA & ENGINEERS INTERNATIONAL	JAPAN INTERNATIONAL COOPERATION AGENCY	DEPARTMENT OF PUBLIC WORKS AND HIGHWAYS Republic of the Philippines	FEASIBILITY STUDY ON METRO MANILA URBAN EXPRESSWAY SYSTEM	PLAN AND PROFILE ROUTE NAME STA. 3 + 100 - STA. 4 + 700 C - 3	SCALE	DWG. No. 1 - 6
					HORIZONTAL : 1 : 2,500 VERTICAL : 1 : 250	



 KATAHIRA & ENGINEERS INTERNATIONAL	 JAPAN INTERNATIONAL COOPERATION AGENCY	 DEPARTMENT OF PUBLIC WORKS AND HIGHWAYS Republic of the Philippines	FEASIBILITY STUDY ON METRO MANILA URBAN EXPRESSWAY SYSTEM	PLAN AND PROFILE ROUTE NAME STA. 4 + 700 - STA. 6 + 400 C - 3	SCALE	DWG. No.
					HORIZONTAL : 1 : 2,500 VERTICAL : 1 : 250	1-7



ELEVATION																
20.00																
10.00																
0.00																
STATION	+ 500	+ 600	+ 700	+ 800	+ 900	7 + 000	+ 100	+ 200	+ 300	+ 400	+ 500	+ 600	+ 700	+ 800	+ 900	
FINISHED GRADE EL.	13.69	15.68	17.60	18.32	18.58	17.54	15.54	13.64	13.38	13.68	13.96	14.28	14.58	14.84	14.58	14.28
EXISTING GROUND EL.	6.08	7.99	9.54	10.50	10.88	9.70	6.89	5.69	5.91	6.06	5.85	6.06	6.26	6.18	6.34	6.55
HORIZONTAL CURVATURE	6+414.429 R=280 A=150 6+550.000 6+641.429 7+078.000 R=1000 A=200 7+219.000 7+285.000 R=600 7+408.000 A=120 7+459.000 R=250 A=150 7+584.500															

KEI
KATAHIRA & ENGINEERS
INTERNATIONAL

JICA
JAPAN INTERNATIONAL
COOPERATION AGENCY

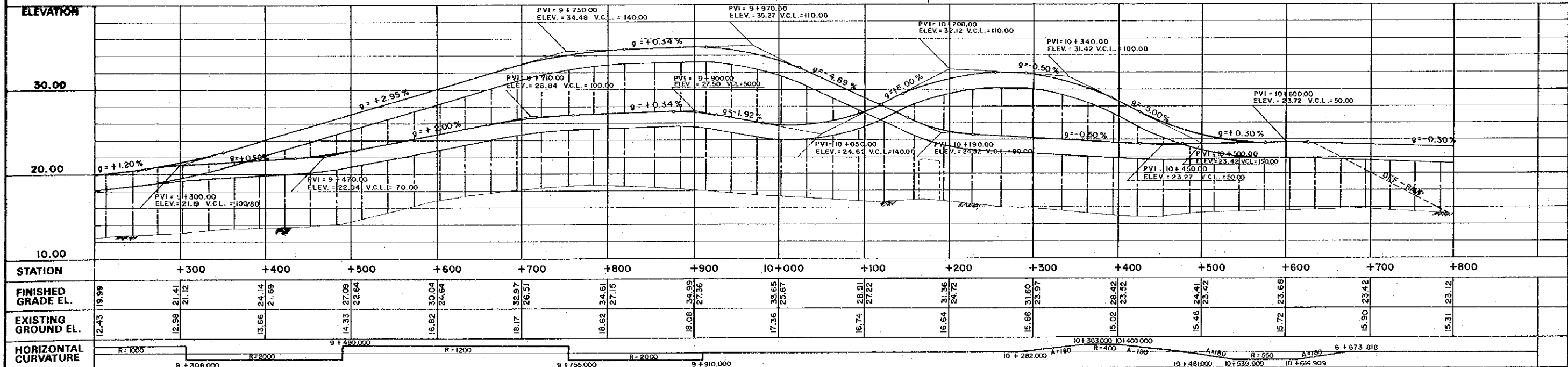
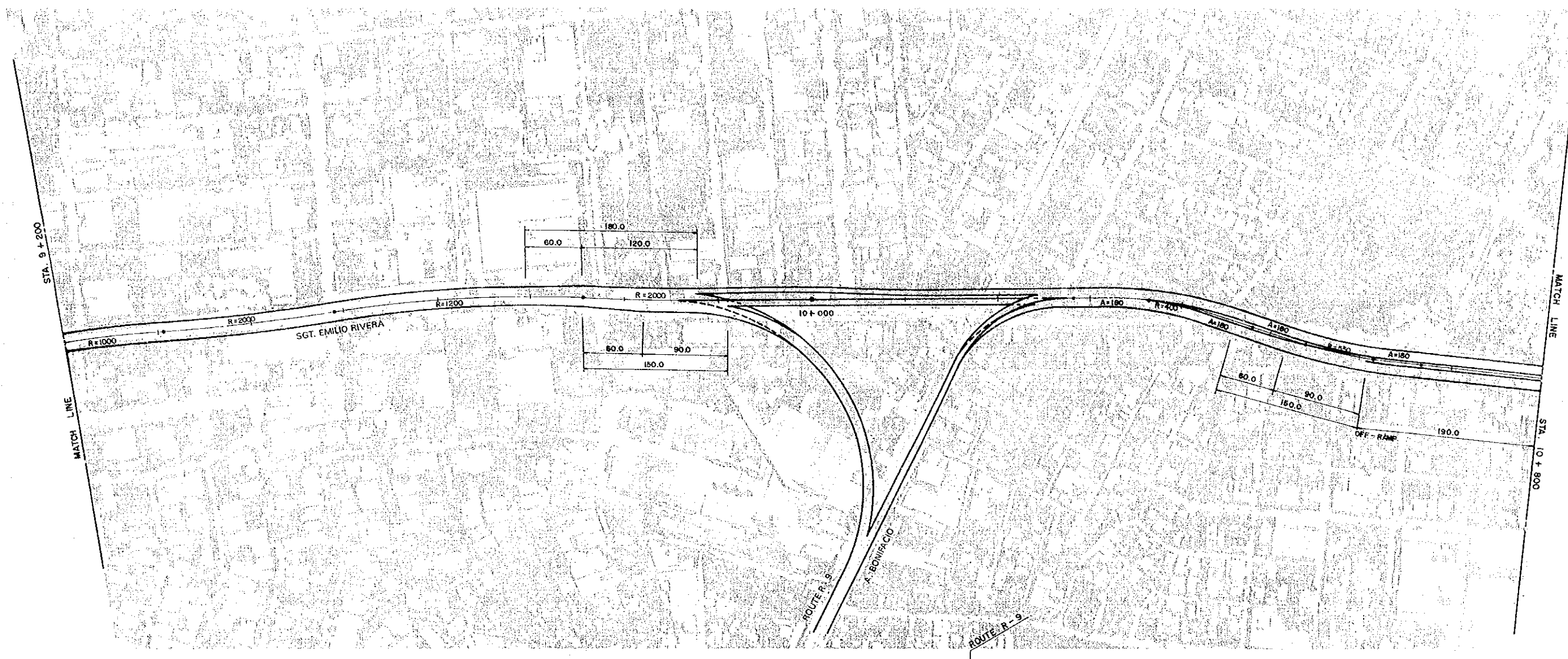
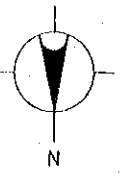
DEPARTMENT OF PUBLIC
WORKS AND HIGHWAYS
Republic of the Philippines

**FEASIBILITY STUDY ON METRO MANILA
URBAN EXPRESSWAY SYSTEM**

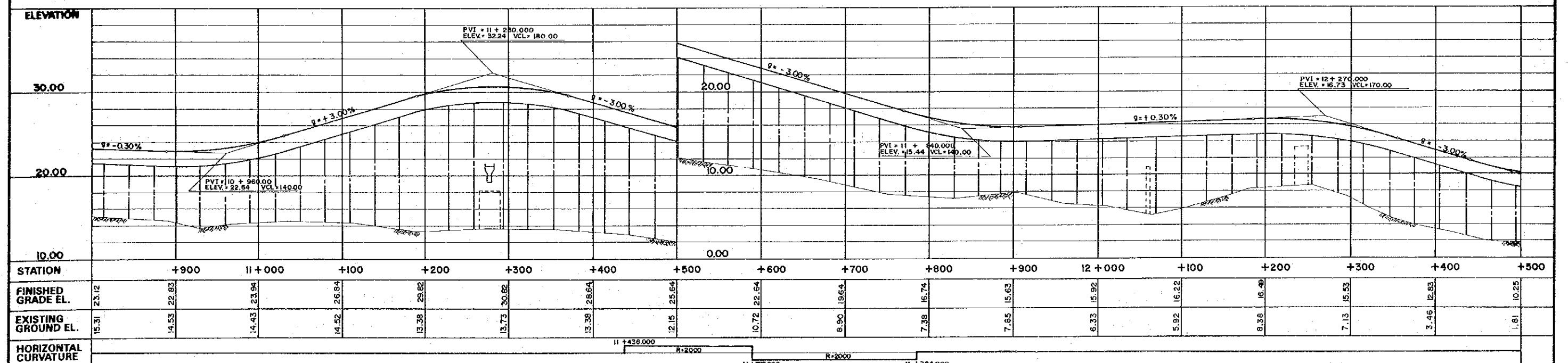
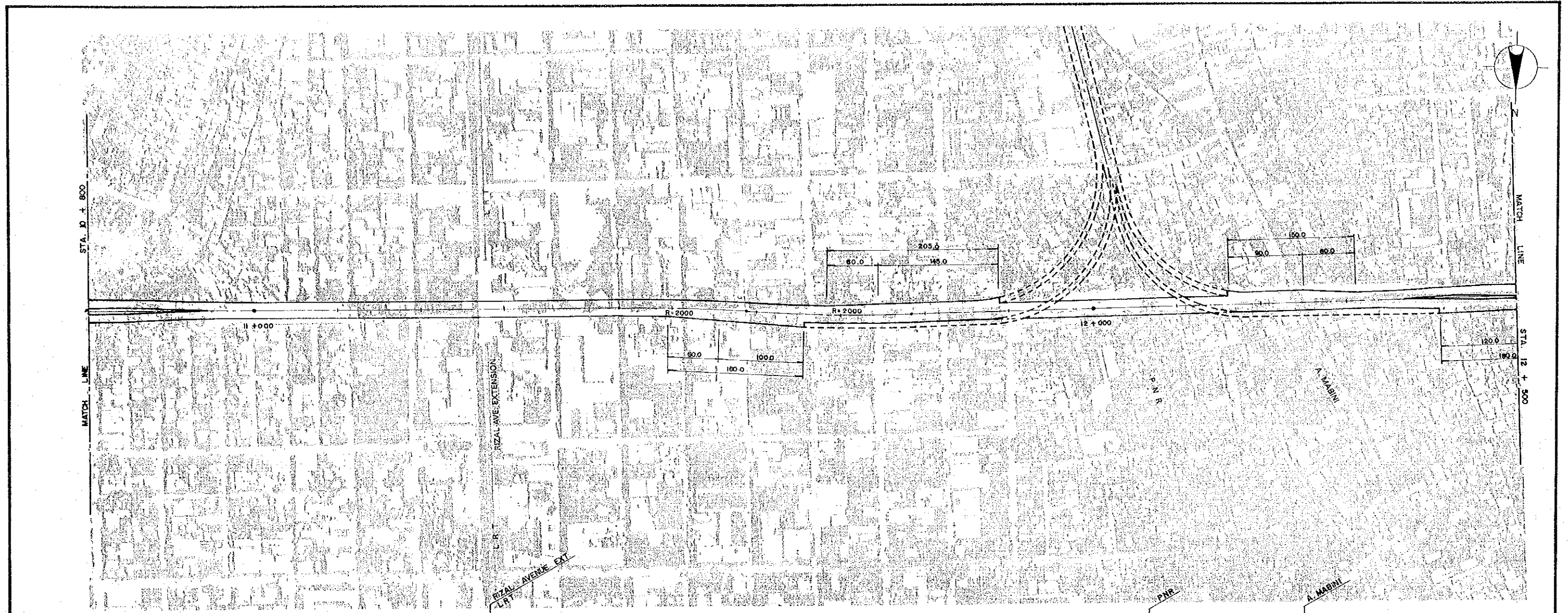
PLAN AND PROFILE
ROUTE NAME STA. 6 + 400 - STA. 7 + 900
C - 3

SCALE
HORIZONTAL : 1 : 2,500
VERTICAL : 1 : 250

DWG. No.
1 - 8



 KATAHIRA & ENGINEERS INTERNATIONAL	 JAPAN INTERNATIONAL COOPERATION AGENCY	 DEPARTMENT OF PUBLIC WORKS AND HIGHWAYS Republic of the Philippines	FEASIBILITY STUDY ON METRO MANILA URBAN EXPRESSWAY SYSTEM	PLAN AND PROFILE	SCALE	DWG. No.
				ROUTE NAME STA. 9 + 200 -- STA. 10 + 800 C - 3	HORIZONTAL : 1 : 2,500 VERTICAL : 1 : 250	1 - 10



ELEVATION																																				
30.00																																				
20.00																																				
10.00																																				
STATION		+900		11+000		+100		+200		+300		+400		+500		+600		+700		+800		+900		12+000		+100		+200		+300		+400		+500		
FINISHED GRADE EL.		23.12		22.83		23.94		26.84		29.82		30.82		28.64		25.64		22.64		19.64		16.74		15.63		15.92		16.22		16.49		15.53		12.83		10.25
EXISTING GROUND EL.		15.31		14.53		14.43		14.52		13.38		13.73		13.38		12.15		10.72		8.90		7.35		7.85		6.33		5.92		8.36		7.13		3.45		1.81
HORIZONTAL CURVATURE																																				

KEI
KATAHIRA & ENGINEERS
INTERNATIONAL

JICA
JAPAN INTERNATIONAL
COOPERATION AGENCY

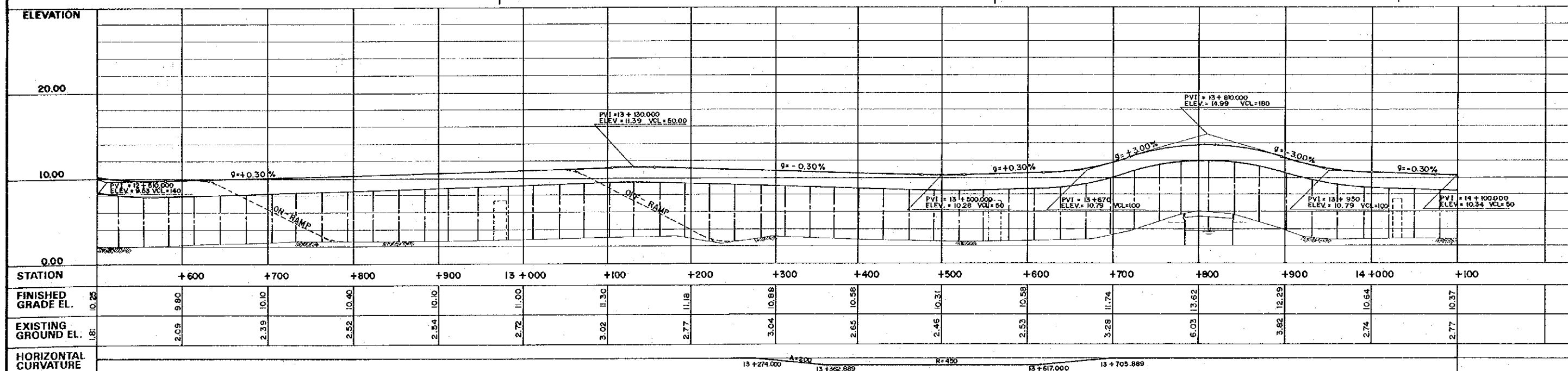
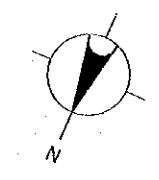
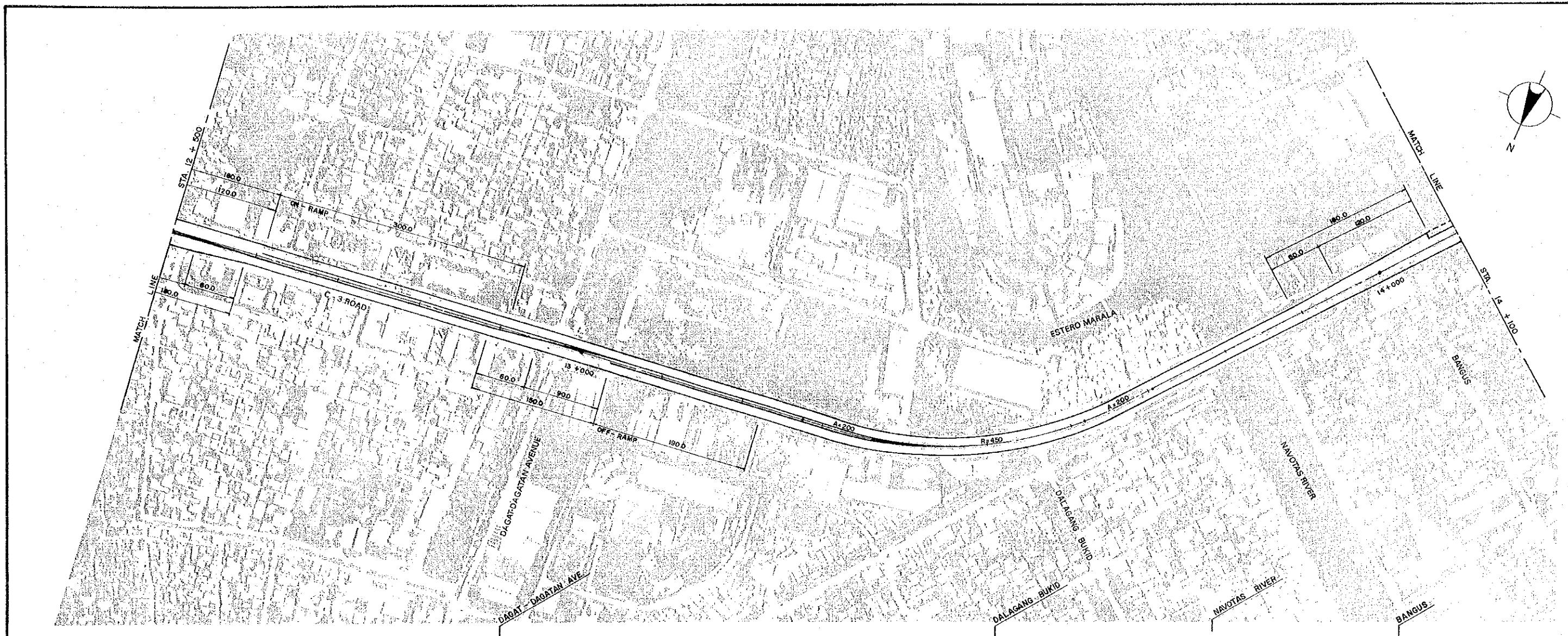
DEPARTMENT OF PUBLIC
WORKS AND HIGHWAYS
Republic of the Philippines

**FEASIBILITY STUDY ON METRO MANILA
URBAN EXPRESSWAY SYSTEM**

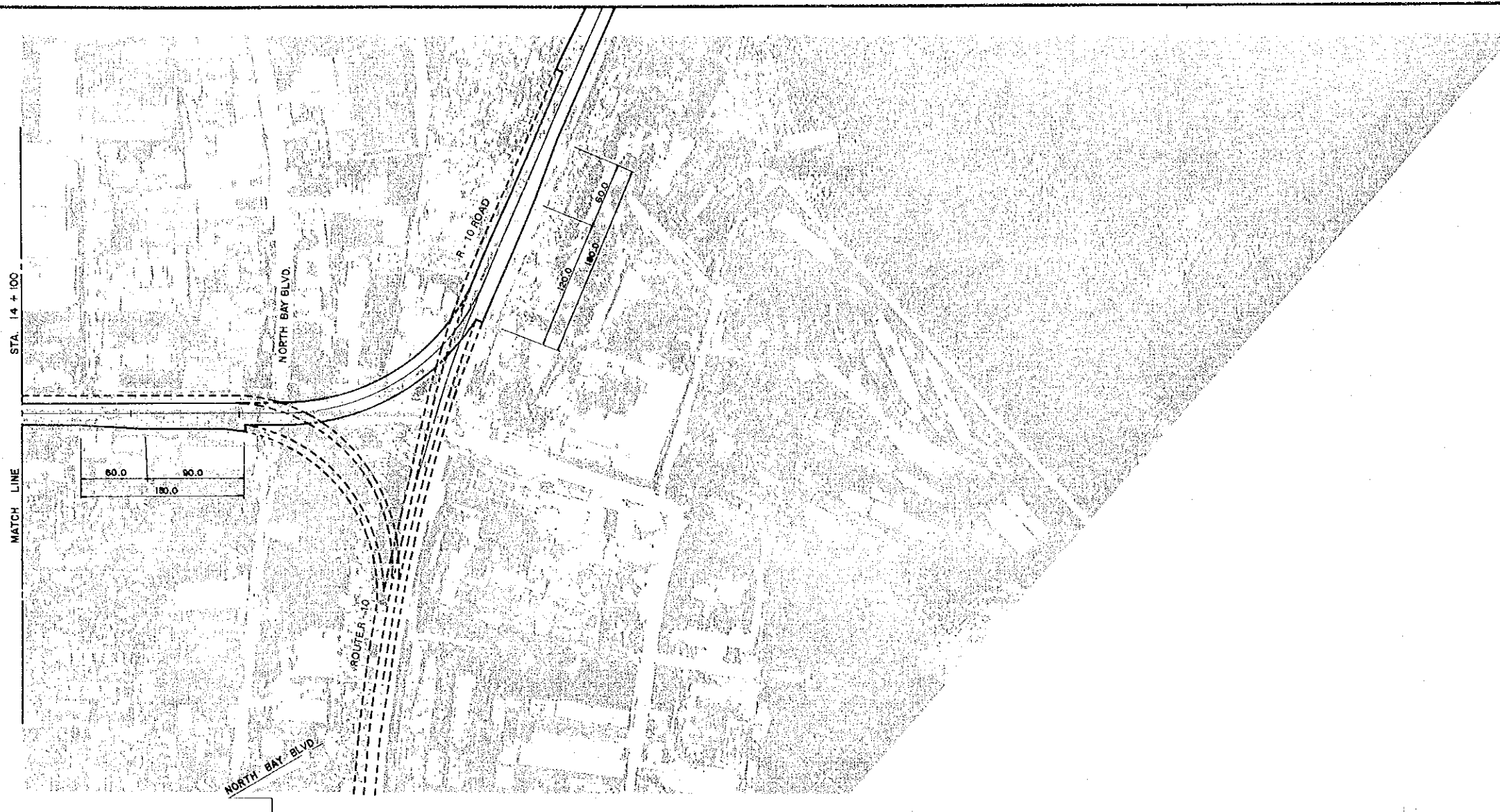
PLAN AND PROFILE
ROUTE NAME STA. 10+800 - STA. 12+500
C - 3

SCALE
HORIZONTAL : 1 : 2,500
VERTICAL : 1 : 250

DWG. No.
1-11



 KATAHIRA & ENGINEERS INTERNATIONAL	 JAPAN INTERNATIONAL COOPERATION AGENCY	 DEPARTMENT OF PUBLIC WORKS AND HIGHWAYS Republic of the Philippines	FEASIBILITY STUDY ON METRO MANILA URBAN EXPRESSWAY SYSTEM	PLAN AND PROFILE ROUTE NAME STA. 12 + 500 - STA. 14 + 100 C - 3	SCALE HORIZONTAL : 1 : 2,500 VERTICAL : 1 : 250	DWG. No. 1 - 12
---	---	---	--	--	--	---------------------------



ELEVATION													
20.00													
10.00													
0.00													
STATION	+200	+300	+400	+500	+600								
FINISHED GRADE EL.	10.37	10.64	10.94										
EXISTING GROUND EL.	2.77	2.63	2.55	2.73									
HORIZONTAL CURVATURE													



KATAHIRA & ENGINEERS
INTERNATIONAL



JAPAN INTERNATIONAL
COOPERATION AGENCY



DEPARTMENT OF PUBLIC
WORKS AND HIGHWAYS
Republic of the Philippines

FEASIBILITY STUDY ON METRO MANILA
URBAN EXPRESSWAY SYSTEM

PLAN AND PROFILE

ROUTE NAME STA. 14 + 100 - STA. 14 + 480
C - 3

SCALE

HORIZONTAL : 1 : 2,500
VERTICAL : 1 : 250

DWG. No.

1 - 13