

- | | | | |
|-------|------------------|------|------------------|
| (Ca) | Ca anomalia alta | (Mg) | Mg anomalia baja |
| -(Ca) | Ca anomalia baja | | |

Fig.II-3-13 MAPA DE RESULTADOS DE GEOQUIMICA DEL AREA CAMPO SECO(Ca,Mg)

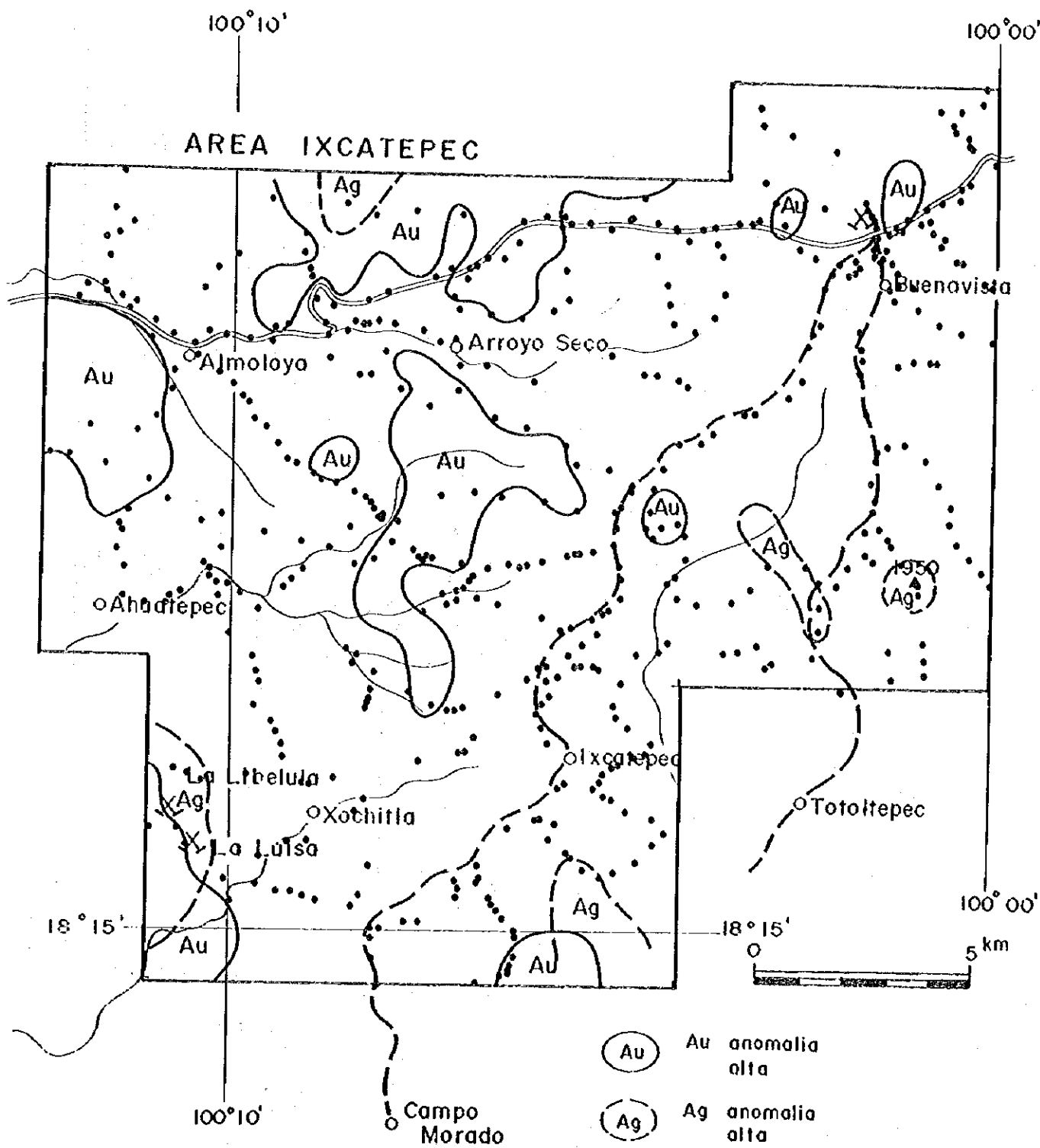


Fig.II-3-14. MAPA DE RESULTADOS DE GEOQUIMICA DEL AREA IXCATEPEC (Au,Ag)

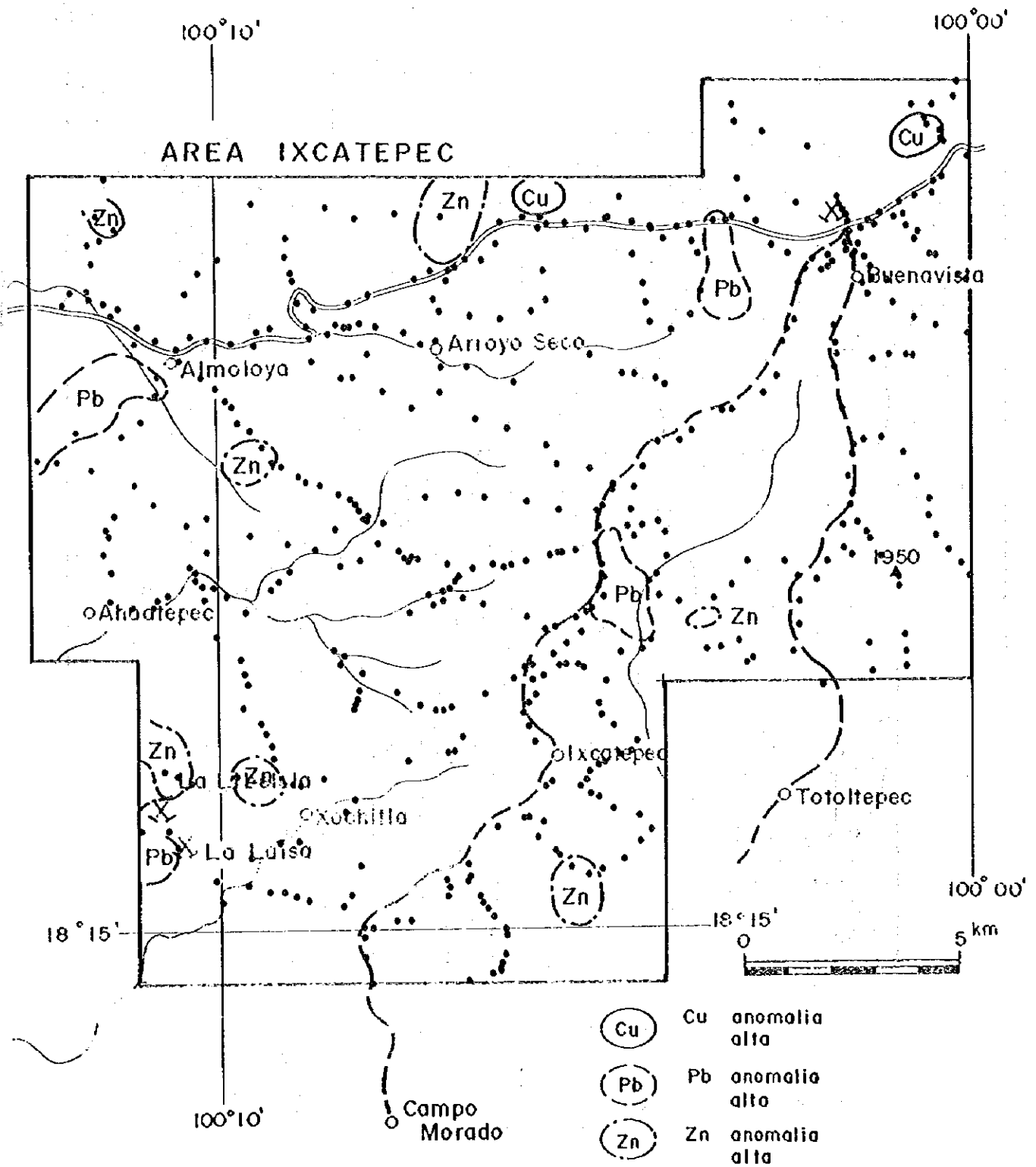


Fig.II-3-15 MAPA DE RESULTADOS DE GEOQUIMICA DEL AREA IXCATEPEC (Cu,Pb,Zn)

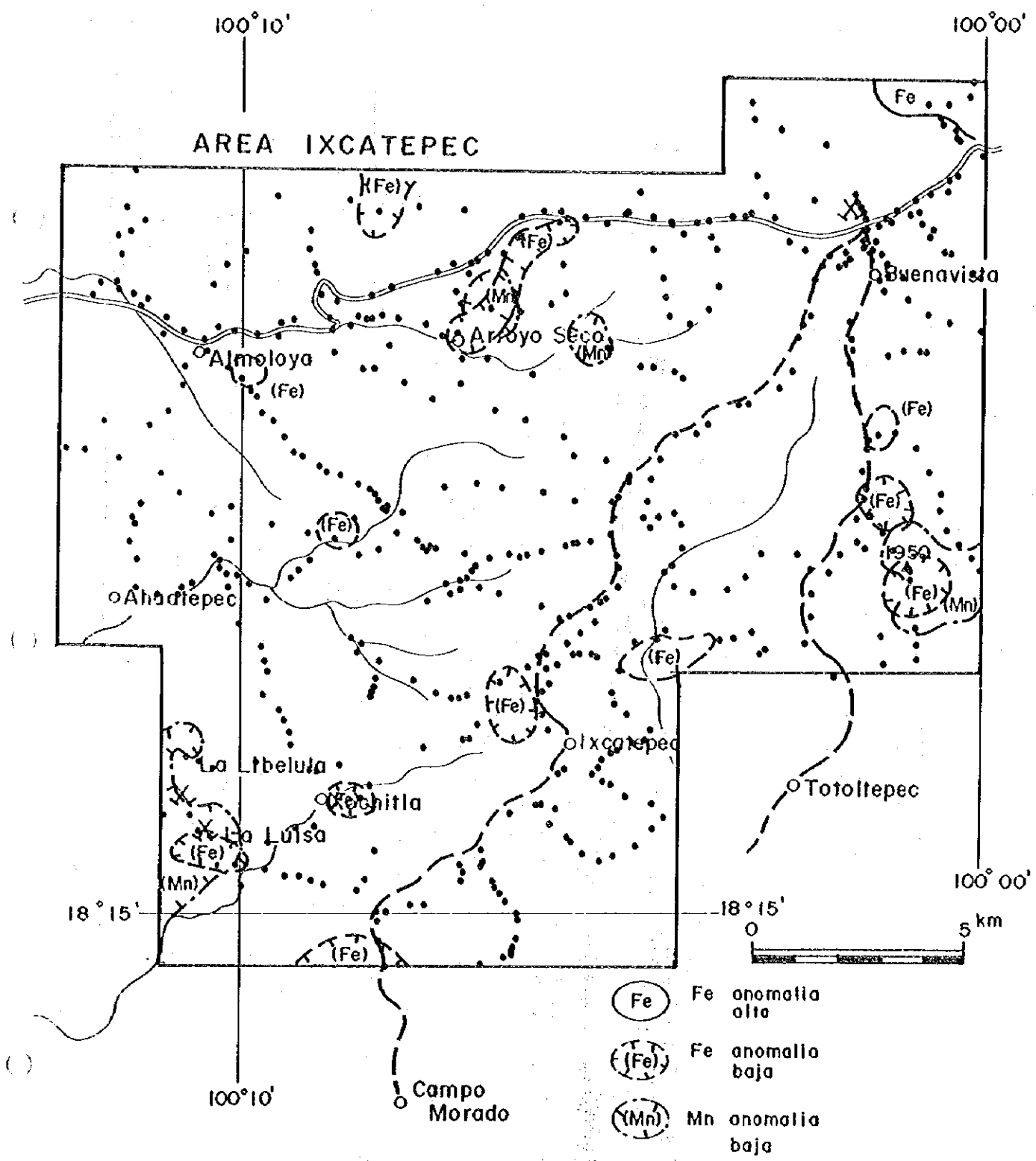


Fig.II-3-16 MAPA DE RESULTADOS DE GEOQUIMICA DEL AREA IXCATEPEC (Fe,Mn)

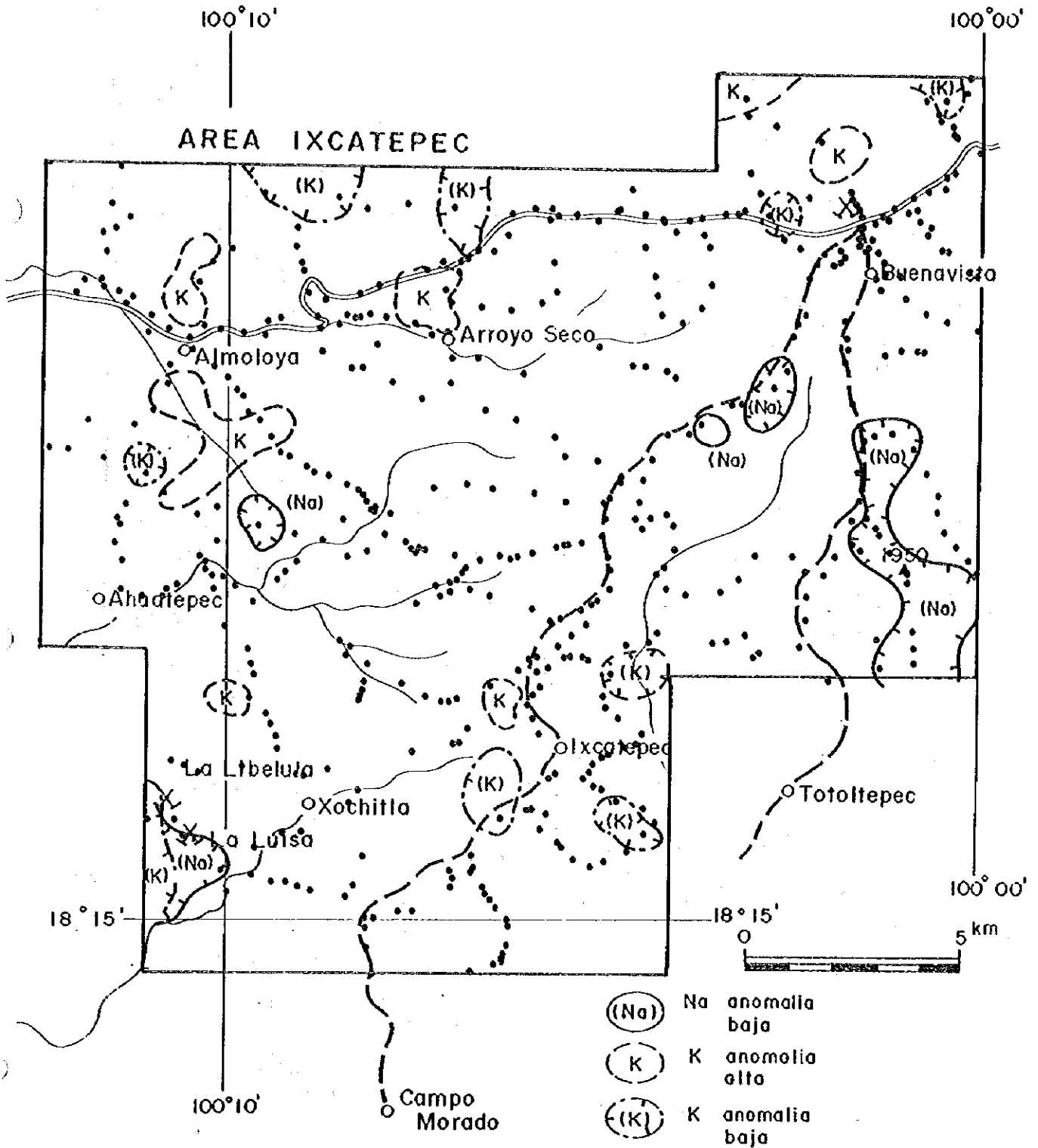


Fig.II-3-18 MAPA DE RESULTADOS DE GEOQUIMICA DEL AREA IXCATEPEC (Na,K)

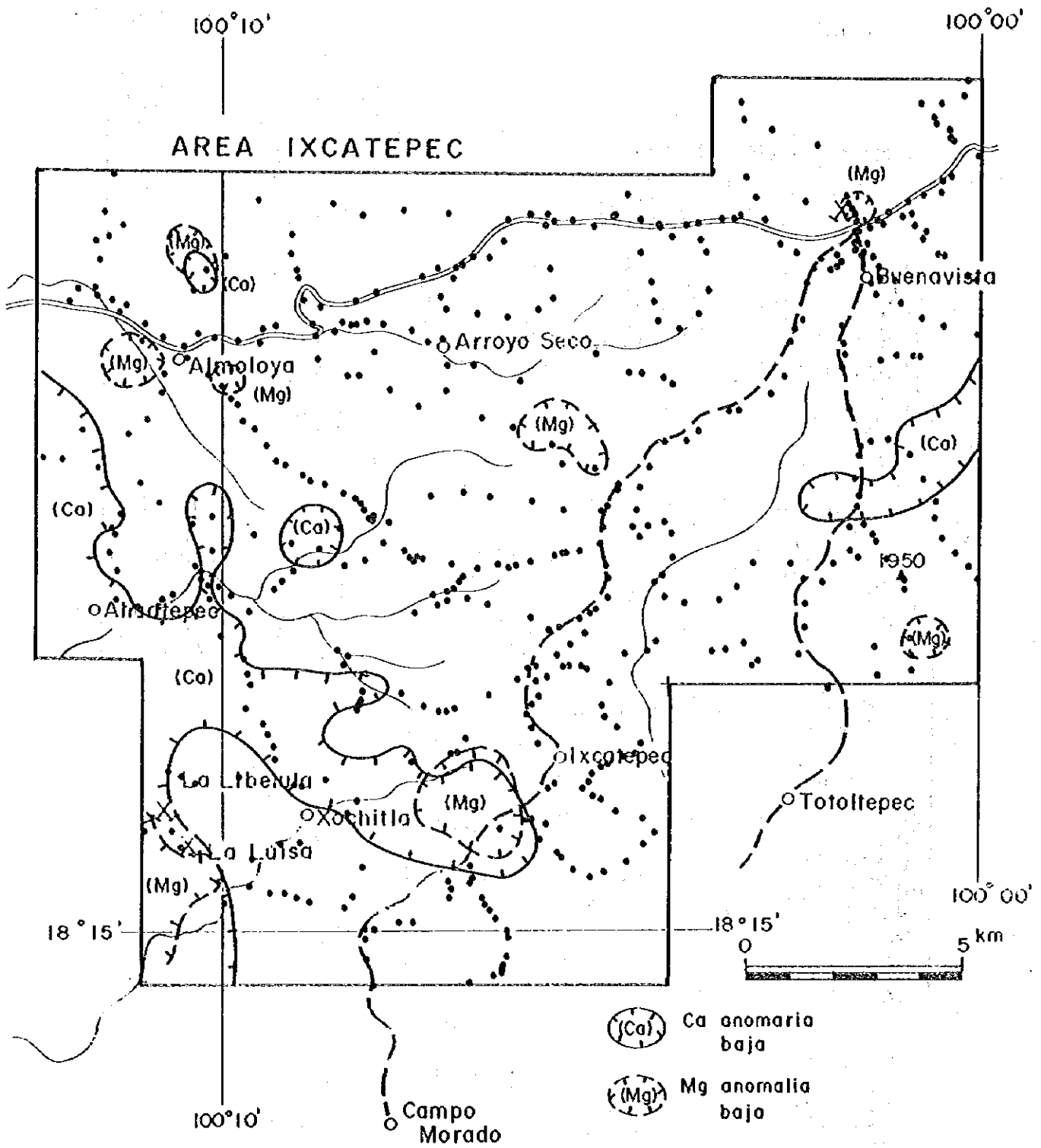


Fig.II-3-19 MAPA DE RESULTADOS DE GEOQUIMICA DEL AREA IXCATEPEC (Ca,Mg)

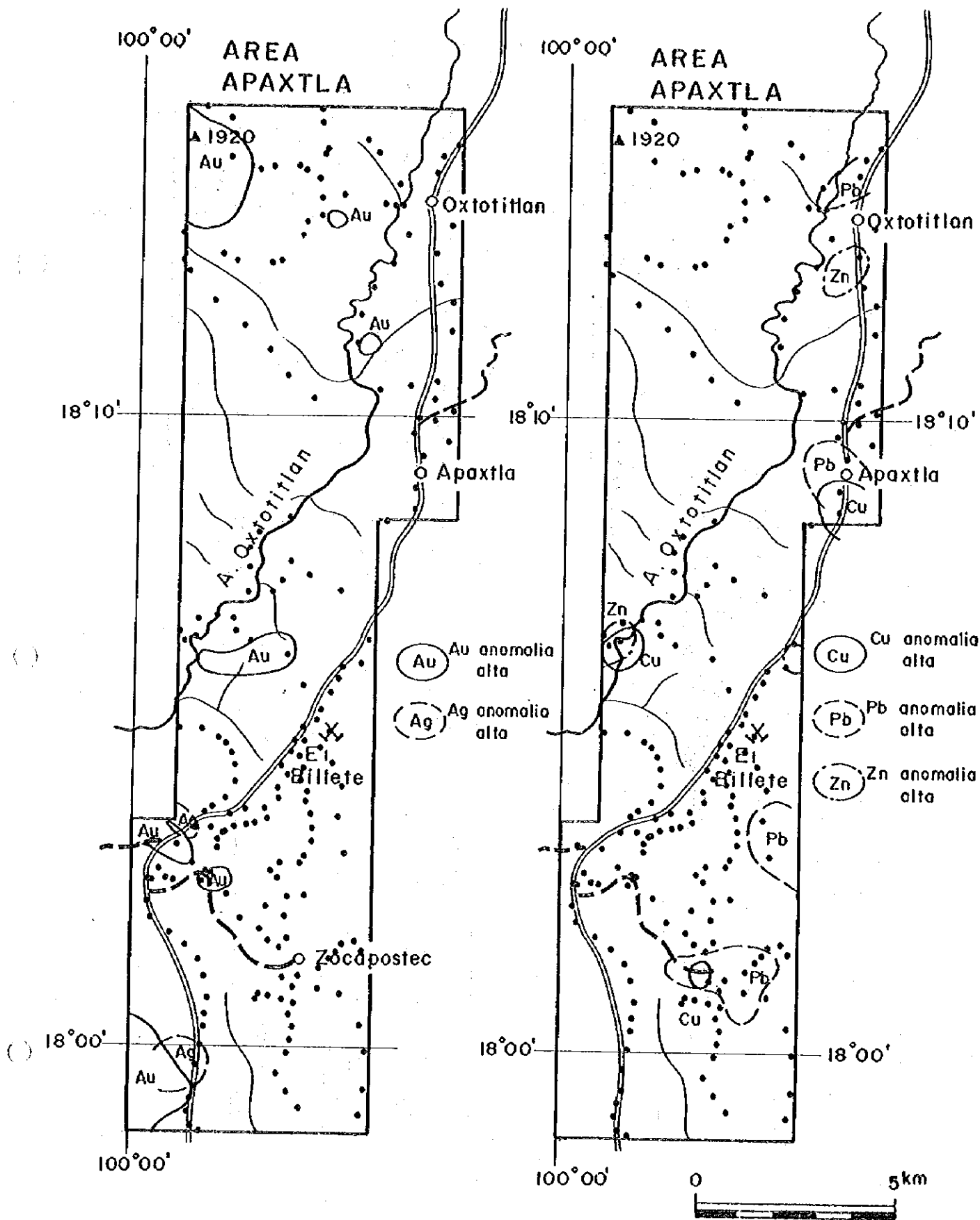


Fig.II-3-20 MAPA DE RESULTADOS DE GEOQUIMICA DEL AREA APAXTLA (Au,Ag,Cu,Pb,Zn)

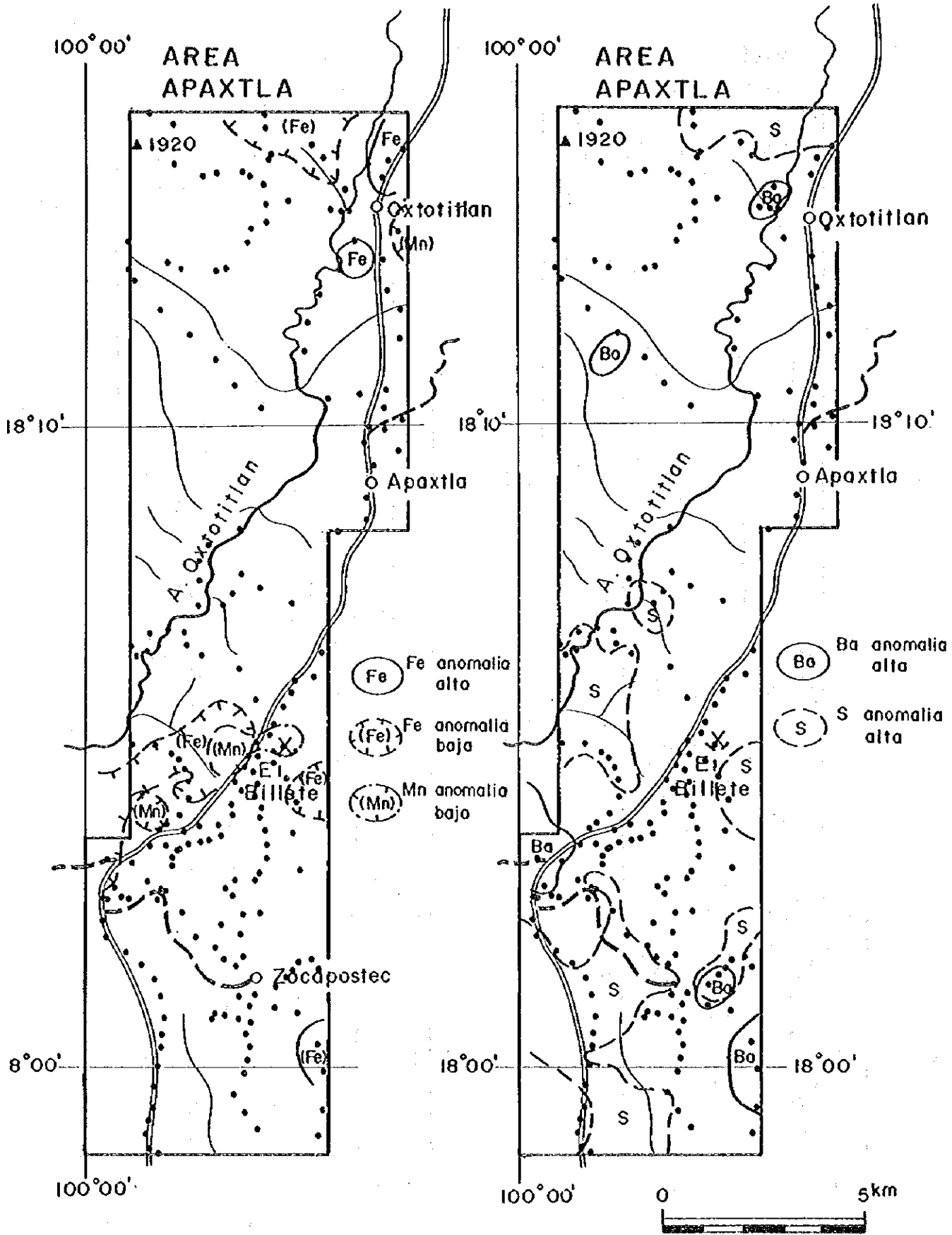


Fig.II-3-21 MAPA DE RESULTADOS DE GEOQUIMICA DEL AREA APAXTLA (Fe,Mn,Ba,S)

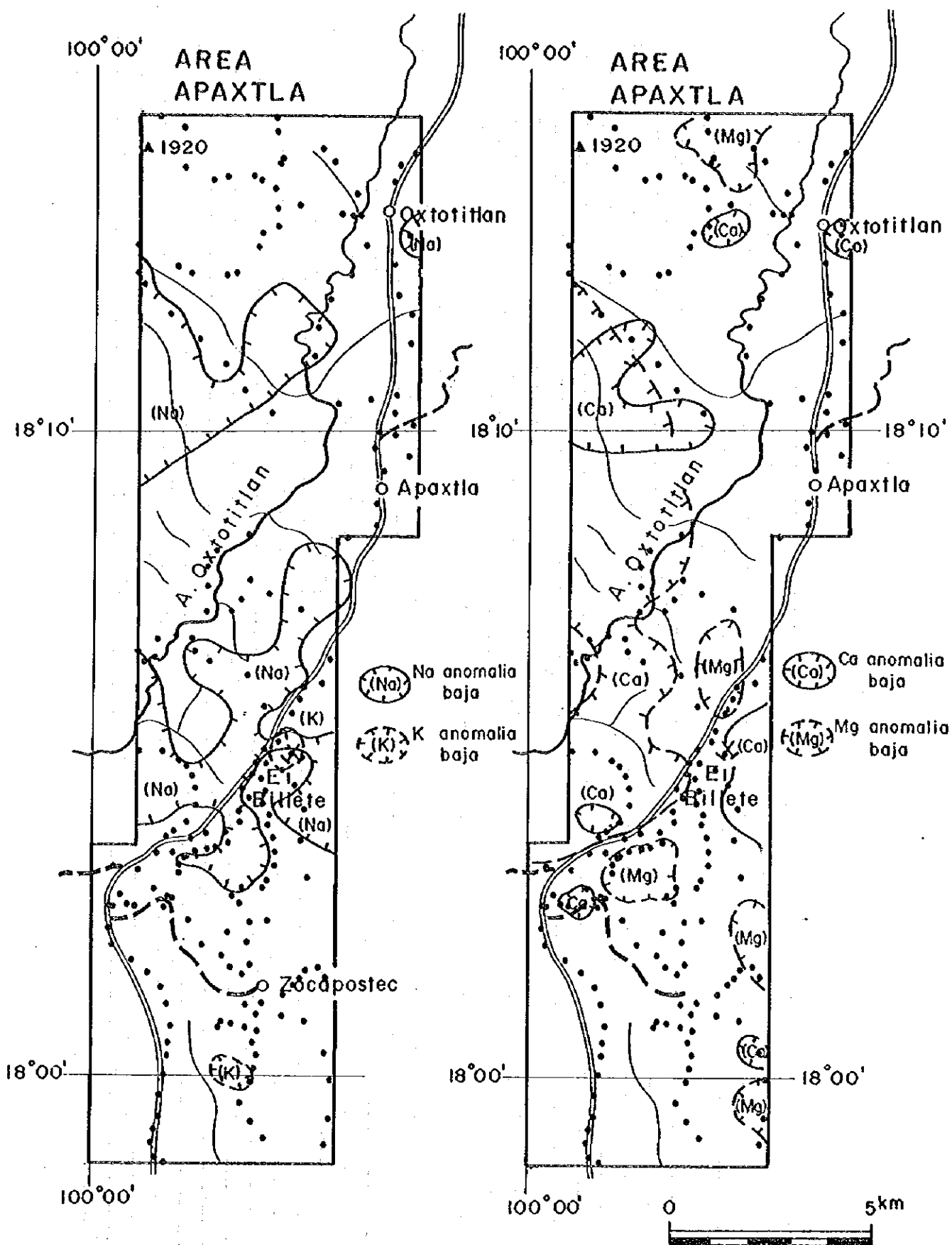


Fig.II-3-22 MAPA DE RESULTADOS DE GEOQUIMICA DEL AREA APAXTLA (Na,K,Ca,Mg)

Tab.II-3-4 LISTA DE COEFICIENTE

AREA CAMPO SECO													
	Au	Ag	Cu	Pb	Zn	Fe	Mn	Ba	S	Na	K	Ca	Mg
Au	1.000	0.268	0.126	0.234	-0.057	0.107	-0.098	0.017	0.152	-0.184	-0.012	0.054	-0.063
Ag	0.268	1.000	0.287	0.313	0.095	0.117	-0.075	0.054	0.071	-0.210	0.033	-0.041	-0.126
Cu	0.126	0.287	1.000	0.323	0.456	0.548	0.345	-0.065	0.155	-0.064	-0.079	0.110	0.054
Pb	0.234	0.313	0.323	1.000	0.128	0.248	0.059	0.126	0.104	-0.129	0.083	0.100	-0.025
Zn	-0.057	0.095	0.456	0.128	1.000	0.481	0.547	-0.040	0.183	0.202	0.043	0.217	0.246
Fe	0.107	0.117	0.548	0.248	0.481	1.000	0.414	0.076	0.108	0.179	0.142	0.162	0.384
Mn	-0.098	-0.075	0.345	0.059	0.547	0.414	1.000	-0.034	0.424	0.346	-0.038	0.597	0.433
Ba	0.017	0.054	-0.065	-0.126	-0.040	0.076	-0.034	1.000	-0.074	0.239	0.544	-0.088	0.157
S	0.152	0.071	0.165	0.104	0.183	0.108	0.424	-0.074	1.000	0.027	-0.039	-0.376	0.084
Na	-0.184	-0.210	-0.064	-0.129	0.202	0.179	0.346	0.239	0.027	1.000	0.430	0.140	0.584
K	-0.012	0.033	-0.079	0.083	0.043	0.142	-0.038	0.544	-0.039	0.430	1.000	-0.136	0.308
Ca	0.054	-0.041	0.110	0.100	0.217	0.162	0.597	-0.088	0.376	0.140	-0.136	1.000	0.131
Mg	-0.063	-0.126	0.054	-0.025	0.246	0.384	0.433	0.157	0.084	0.584	0.308	0.131	1.000

AREA IXCATEPEC + AREA APAXTLA													
	Au	Ag	Cu	Pb	Zn	Fe	Mn	Ba	S	Na	K	Ca	Mg
Au	1.000	0.129	0.074	0.009	0.026	0.108	-0.030	0.081	-0.059	0.019	0.077	-0.113	0.039
Ag	0.129	1.000	0.098	0.123	0.148	-0.020	-0.091	0.050	0.023	-0.070	0.047	-0.006	-0.088
Cu	0.074	0.098	1.000	0.222	0.509	0.567	0.130	0.280	-0.118	0.210	0.242	-0.067	0.413
Pb	0.009	0.123	0.222	1.000	0.187	0.301	-0.264	0.122	0.005	0.286	0.115	0.099	0.301
Zn	0.026	0.148	0.509	0.187	1.000	0.517	0.125	0.422	-0.234	0.337	0.384	-0.182	0.439
Fe	0.108	-0.020	0.567	0.301	0.517	1.000	0.119	0.486	-0.414	0.463	0.460	-0.313	0.630
Mn	-0.030	-0.091	0.130	0.264	0.125	0.119	1.000	-0.256	0.446	0.219	-0.262	0.665	0.124
Ba	0.081	0.050	0.280	0.122	0.422	0.486	-0.256	1.000	-0.547	0.348	0.844	-0.549	0.406
S	-0.059	0.023	-0.118	0.005	-0.234	-0.414	0.446	-0.547	1.000	-0.186	-0.564	0.800	-0.278
Na	0.019	-0.070	0.210	0.286	0.337	0.463	0.219	0.348	-0.186	1.000	0.305	-0.081	0.593
K	0.077	0.047	0.242	0.115	0.384	0.460	-0.262	0.844	-0.564	0.305	1.000	-0.567	0.313
Ca	-0.113	-0.006	-0.067	0.099	-0.182	-0.313	0.665	-0.549	0.800	-0.081	-0.567	1.000	-0.218
Mg	0.039	-0.088	0.413	0.301	0.439	0.630	0.124	0.406	-0.278	0.593	0.313	-0.218	1.000

FOTOGRAFIAS DE OBSERVACION MICROSCOPIA

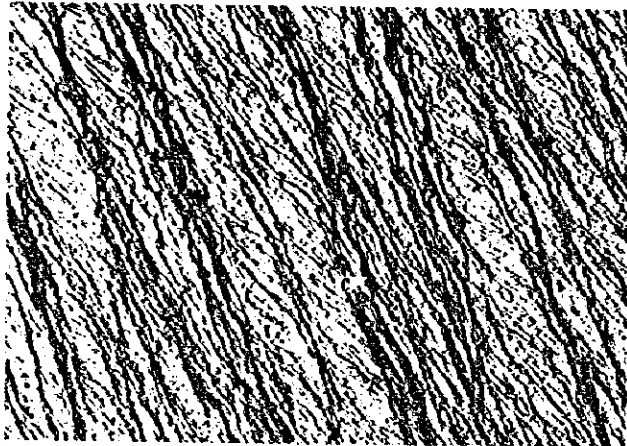
Leyenda

Qz : cuarzo	C : carbon
Pl : plagioclasa	Mt : magnetita
Si : cuarzo con silicificacion	Hb : hornblenda
Se : sericita	Pm : pumita
Ag : augita	Gs : vidrioso
Sl : pizarra	Ap : apatita
Ch : clorita	Py : pirita
Po : pirrotita	Cp : calcopirita
Gn : galena	Es : esfalerita
Dg : digenita	FPy : pirita frambuesa

30

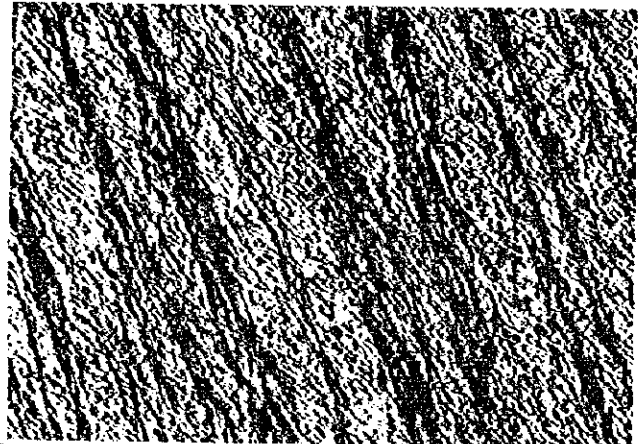
30

00

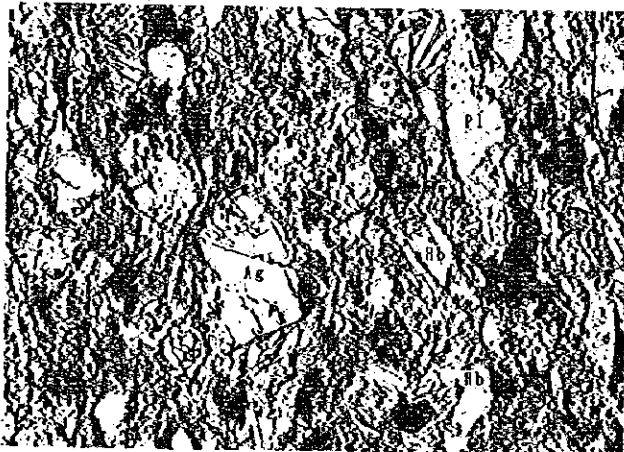


Muestra: A-01 Pizarra
Localidad: El Brasil

Nicoles paralelos



Nicoles cruzados



Muestra: D-175 Toba andesítica (Ka)
Localidad: Olmates Grandes

Nicoles paralelos



Nicoles cruzados



Muestra: G-52 Arenisca (Ts)
Localidad: Oxtotitlan

Nicoles paralelos

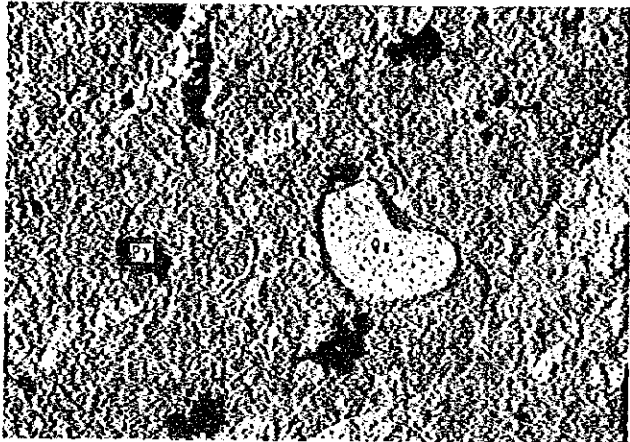


Nicoles cruzados

0

0

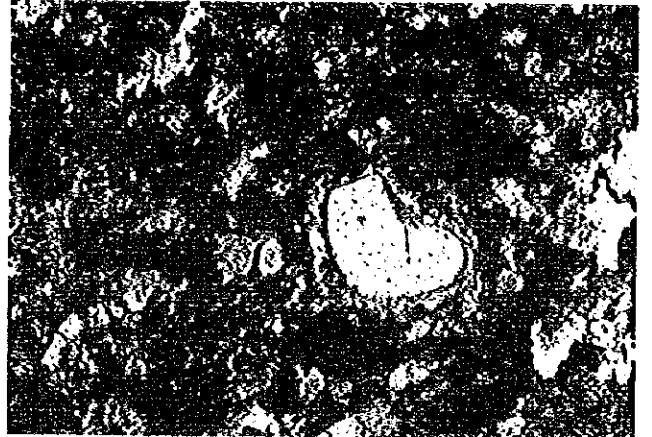
0



0 0,1mm

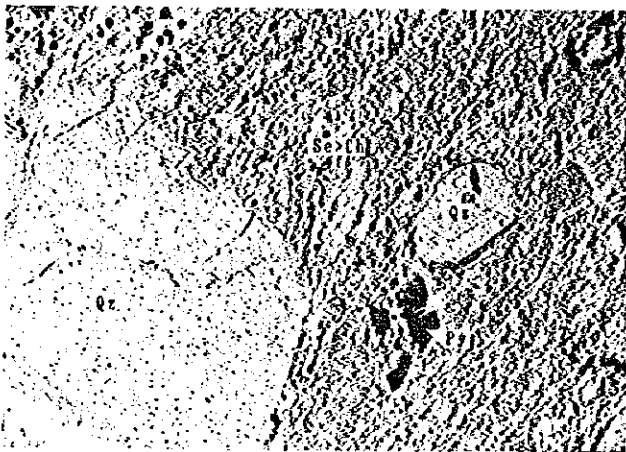
Muestra: E-22 Riolita silicificacola (Kr)
Localidad: Norte de Campo Seco

Nicoles paralelos



0 0,1mm

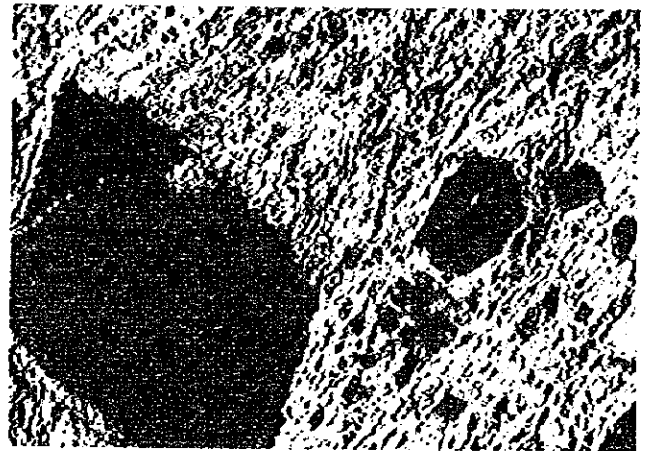
Nicoles cruzados



0 0,1mm

Muestra: E-35 Toba riolitica (Kt)
Localidad: Tehuehuella

Nicoles paralelos



0 0,1mm

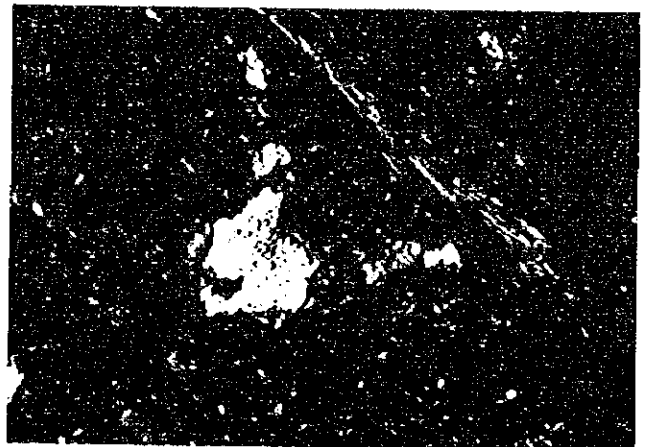
Nicoles cruzados



0 0,2mm

Muestra: E-75 Toba riolitica (Kt)
Localidad: Campo Seco

Nicoles paralelos



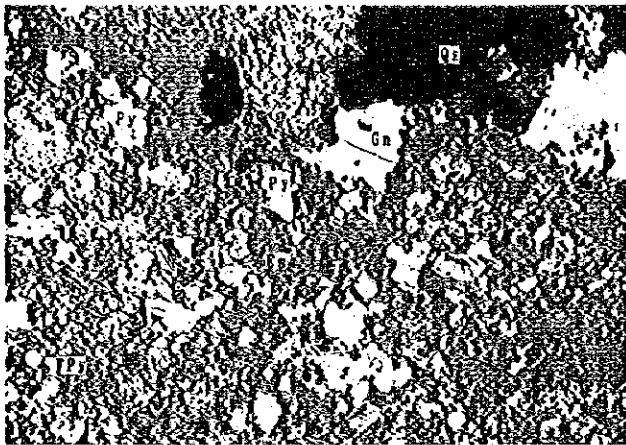
0 0,2mm

Nicoles cruzados

0

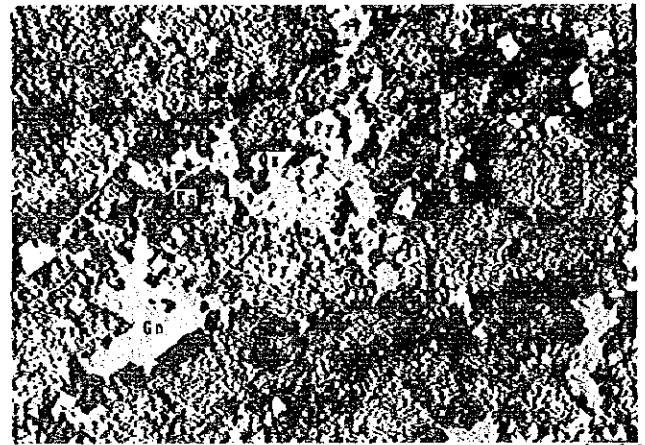
0

0



Muestra: H-01 Sulfuro Masivo
Localidad: Tehuehuella

Nicoles paralelos



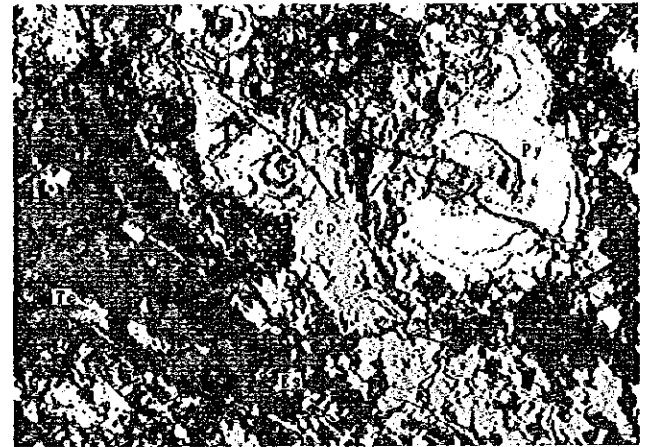
Muestra: H-01 Sulfuro Masivo
Localidad: Tehuehuella

Nicoles paralelos



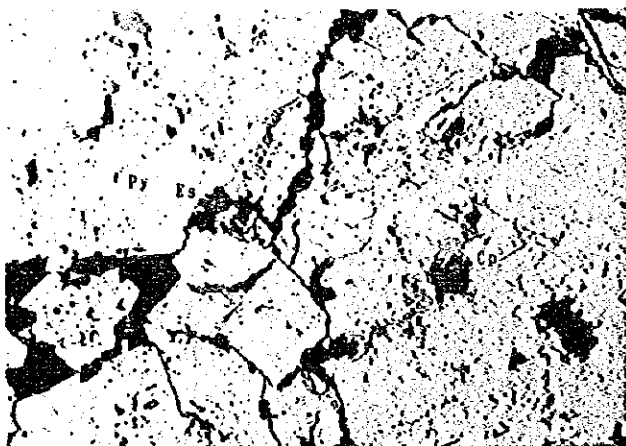
Muestra: E-77 Sulfuro Masivo
Localidad: Campo Seco

Nicoles paralelos



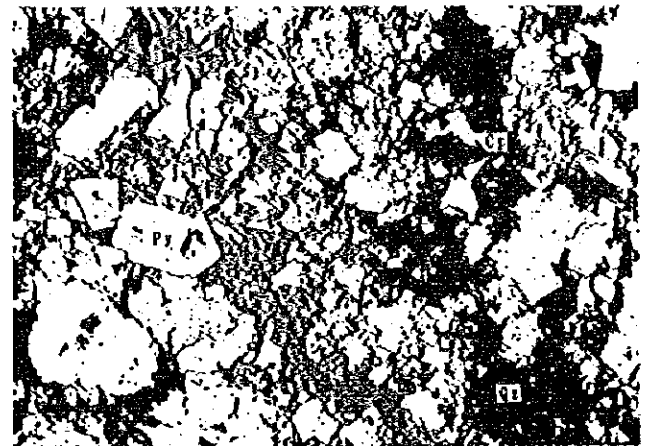
Muestra: E-78 Sulfuro Masivo
Localidad: Campo Seco

Nicoles paralelos



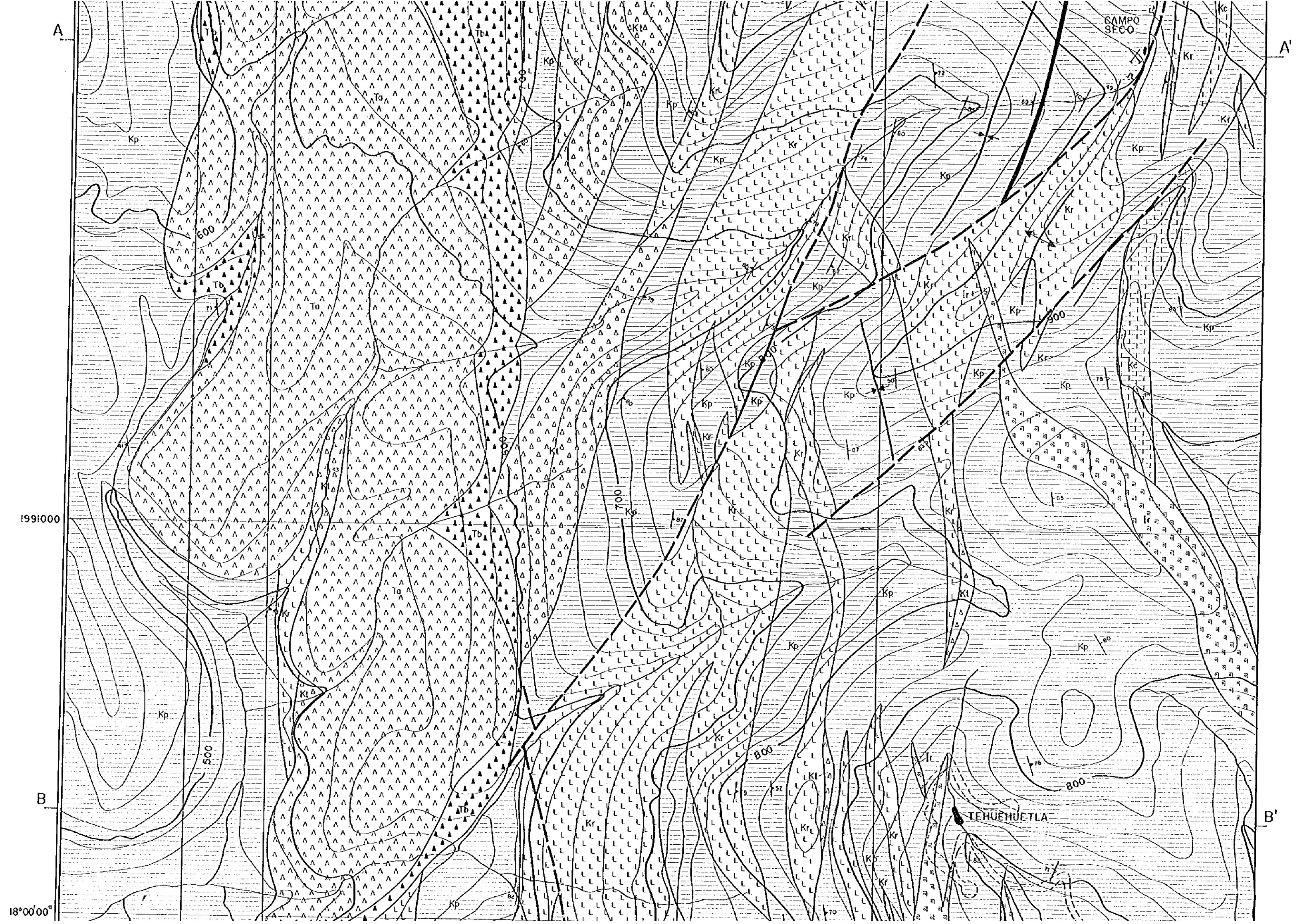
Muestra: C-46C Sulfuro Masivo
Localidad: La Libelula

Nicoles paralelos



Muestra: A0-50 Sulfuro Masivo
Localidad: La Libelula

Nicoles paralelos



1991000

B

18°00'00"

1990000

17°59'40"

100°03'07"

100°03'00"

389000

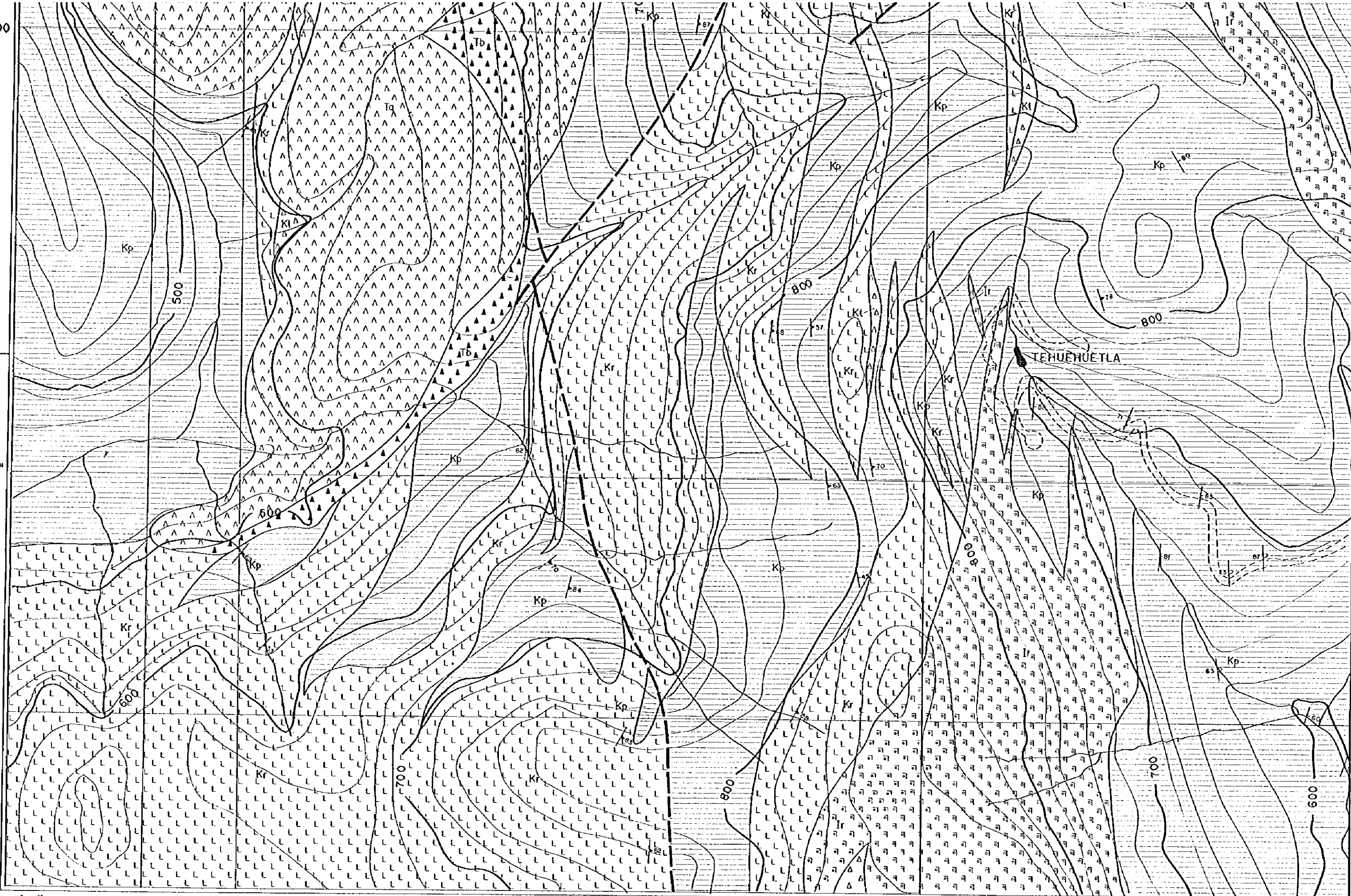
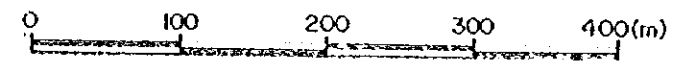
390000

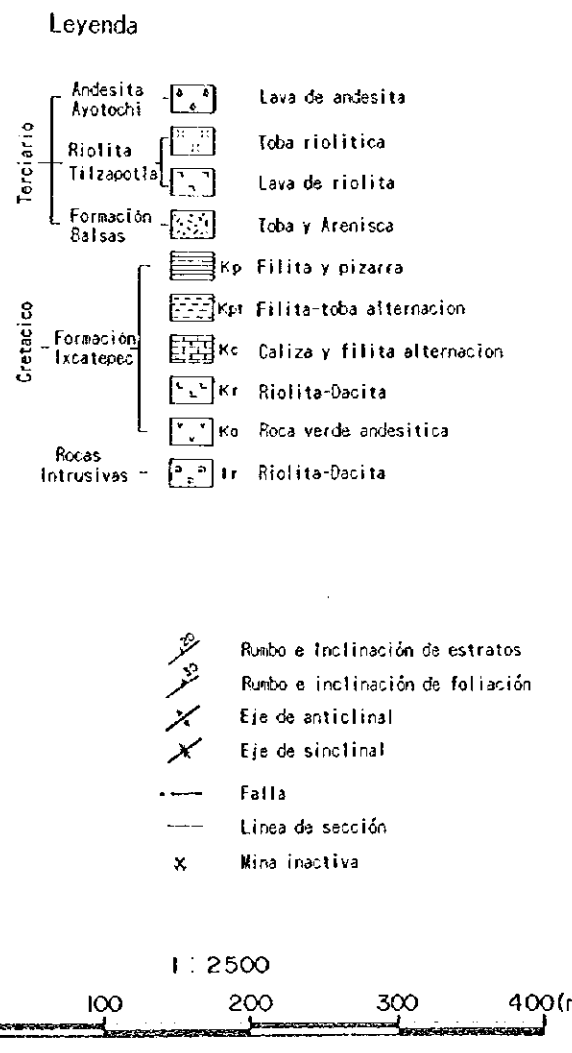
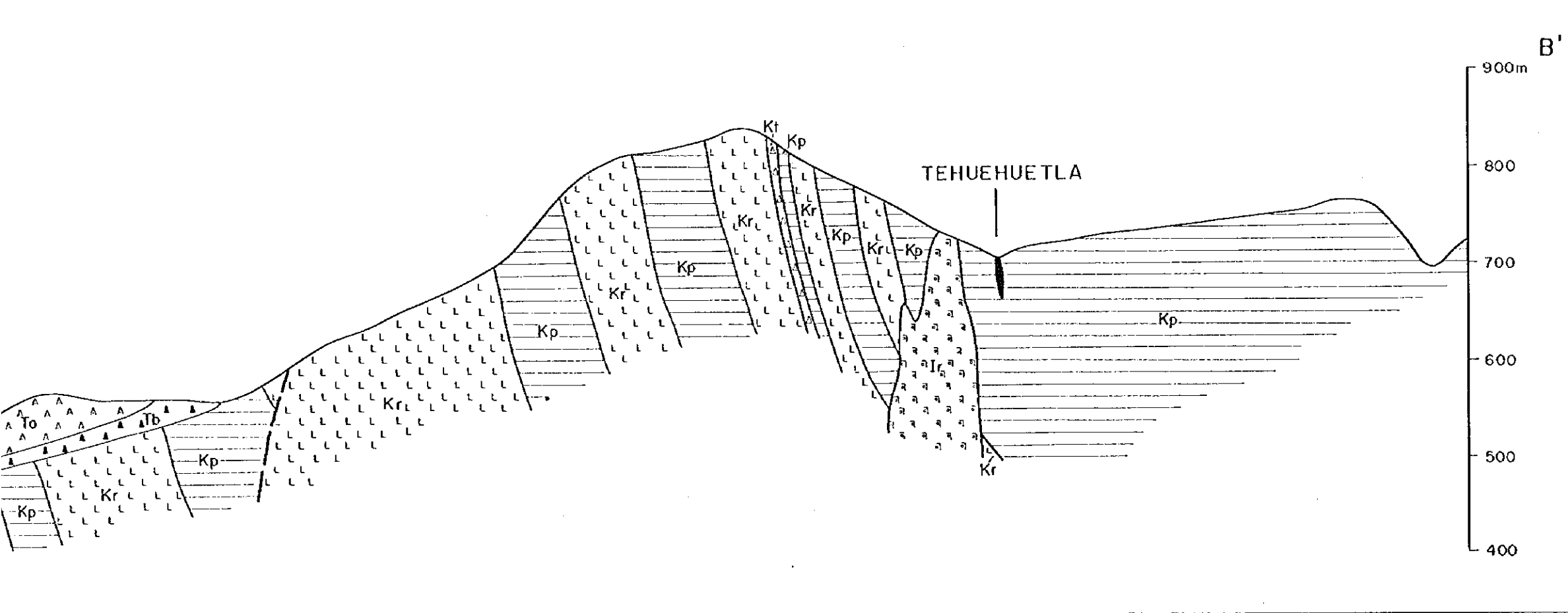
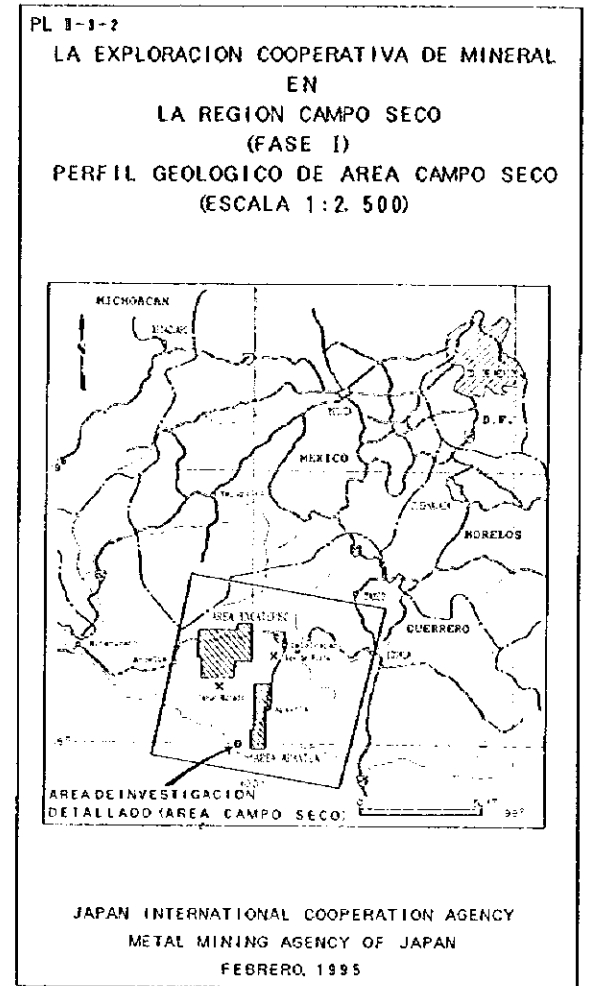
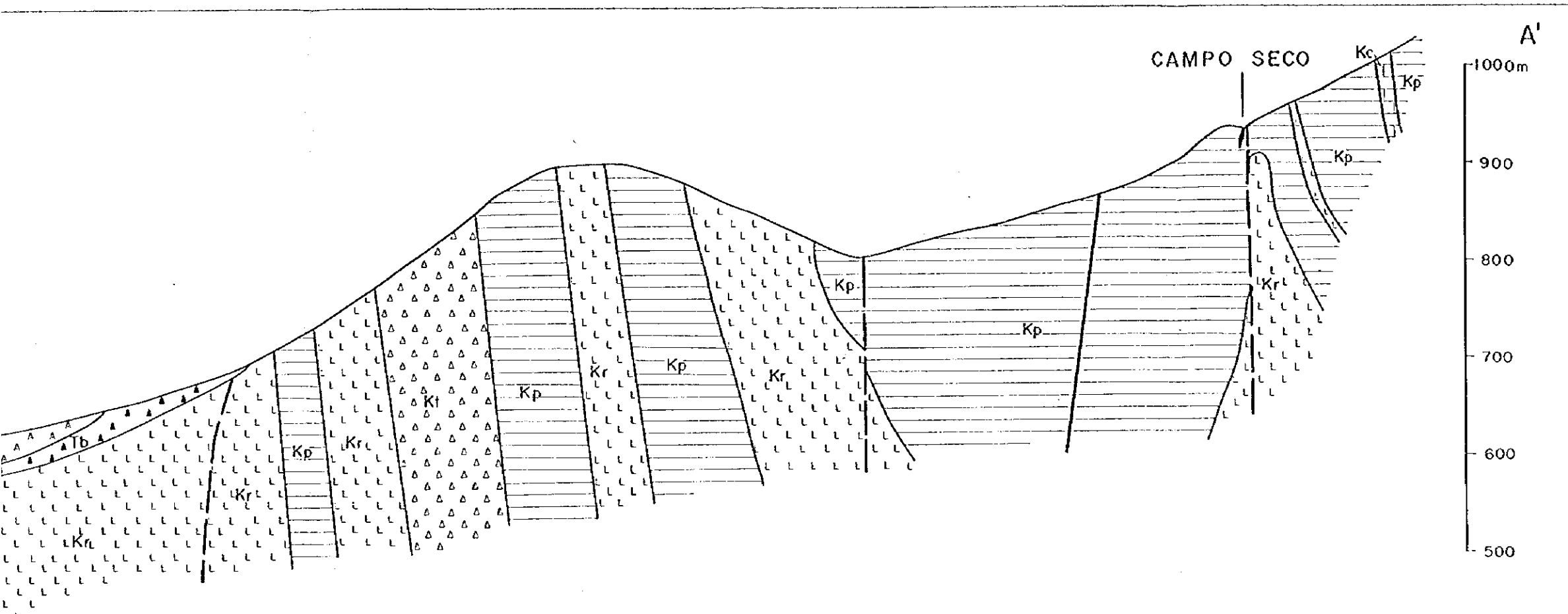
100°02'00"

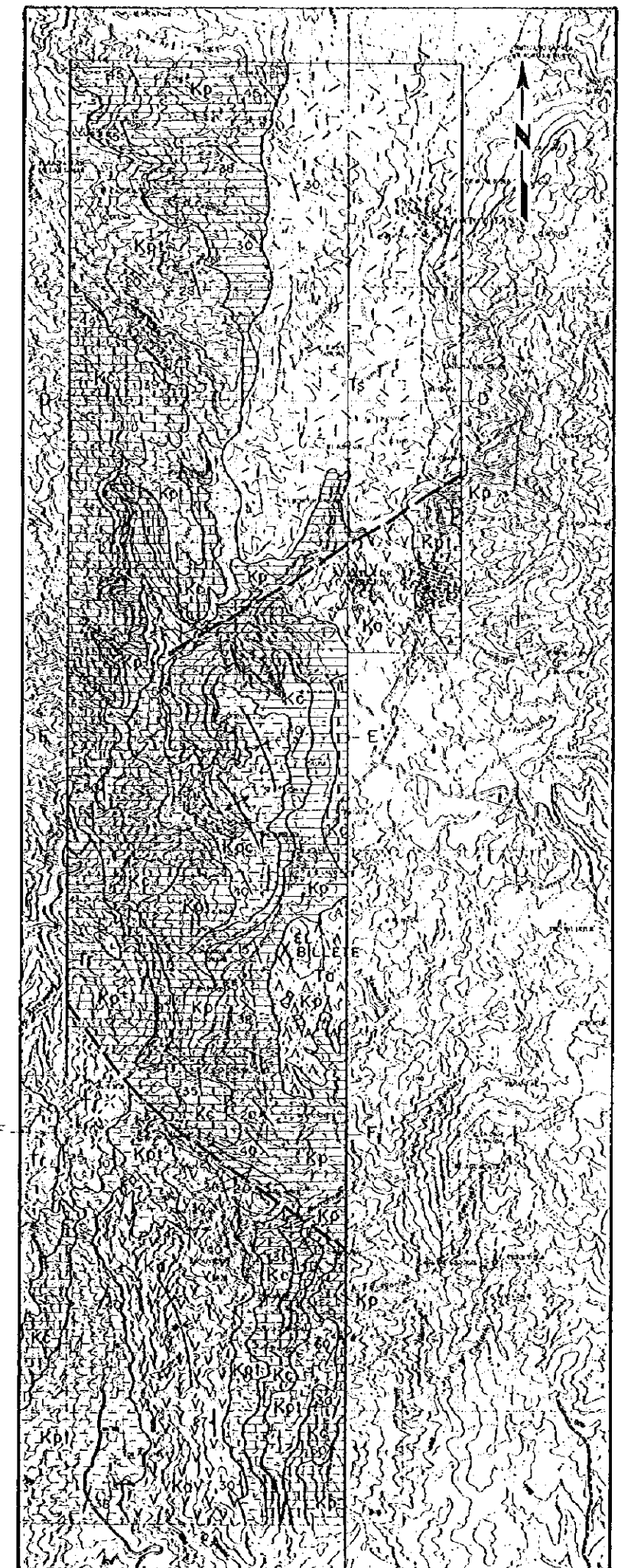
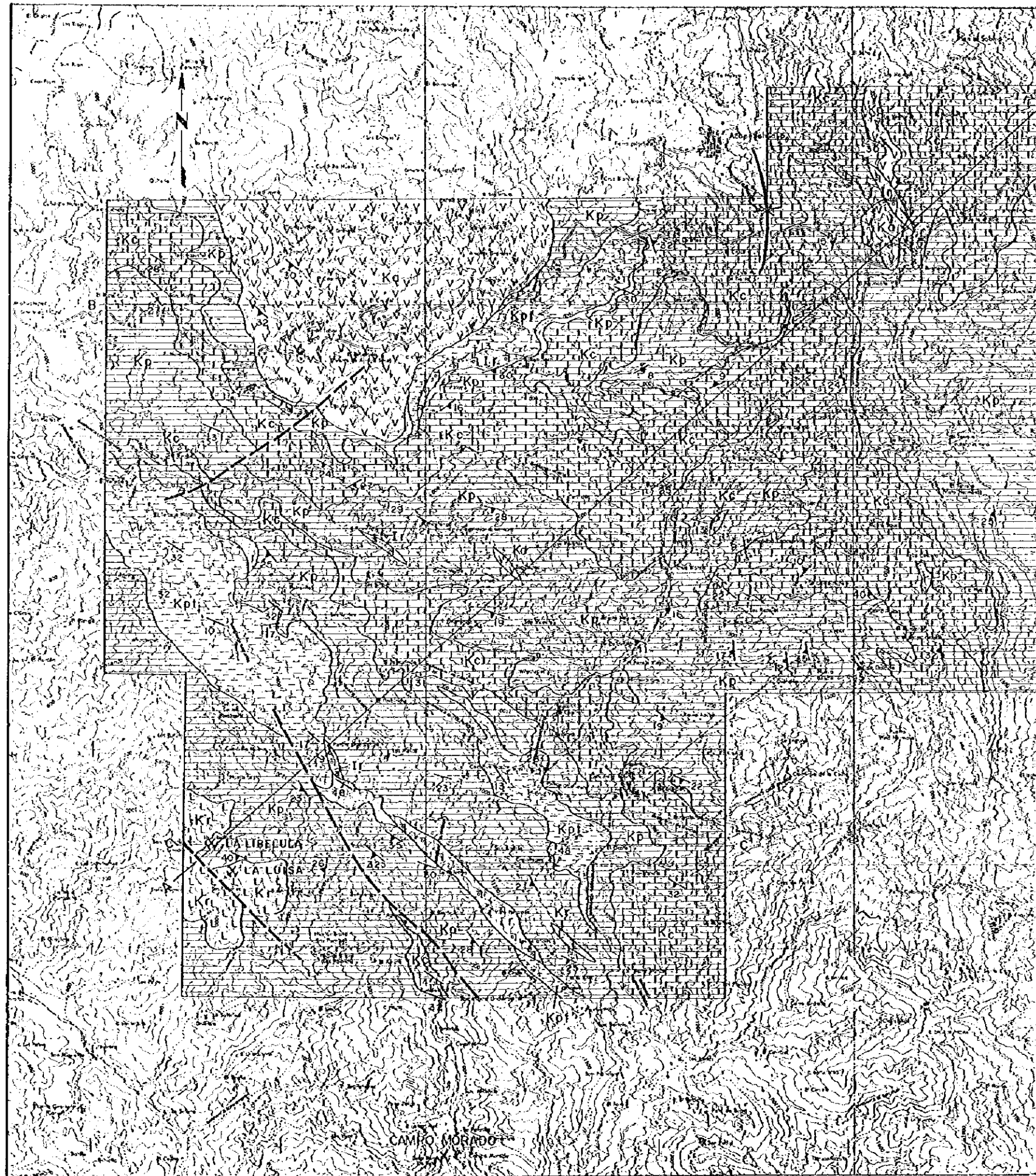
TEHUHUETLA

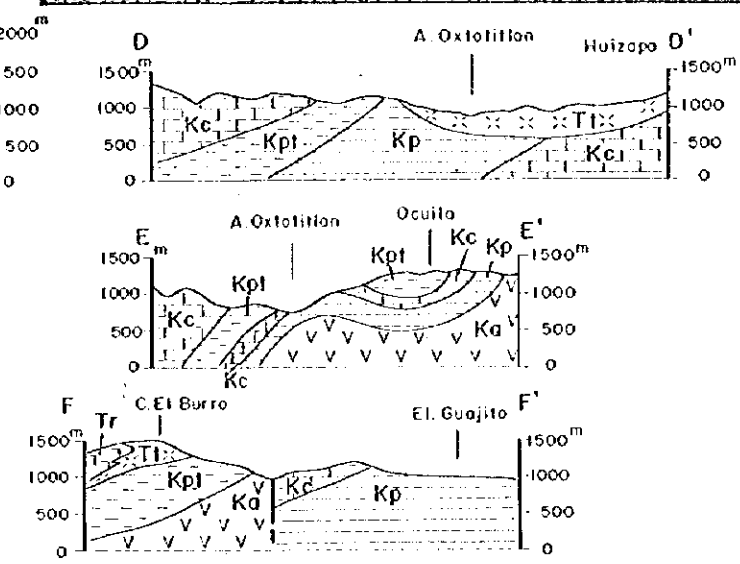
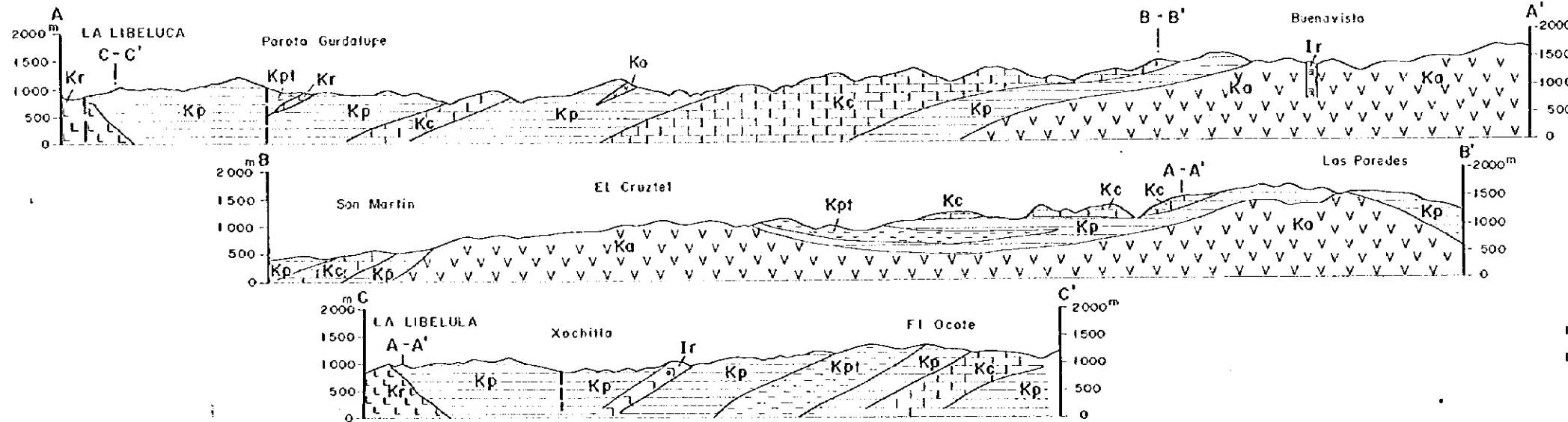
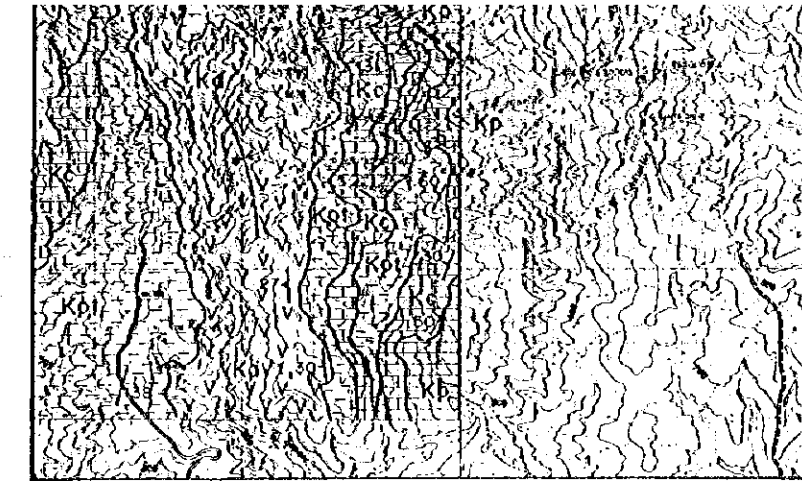
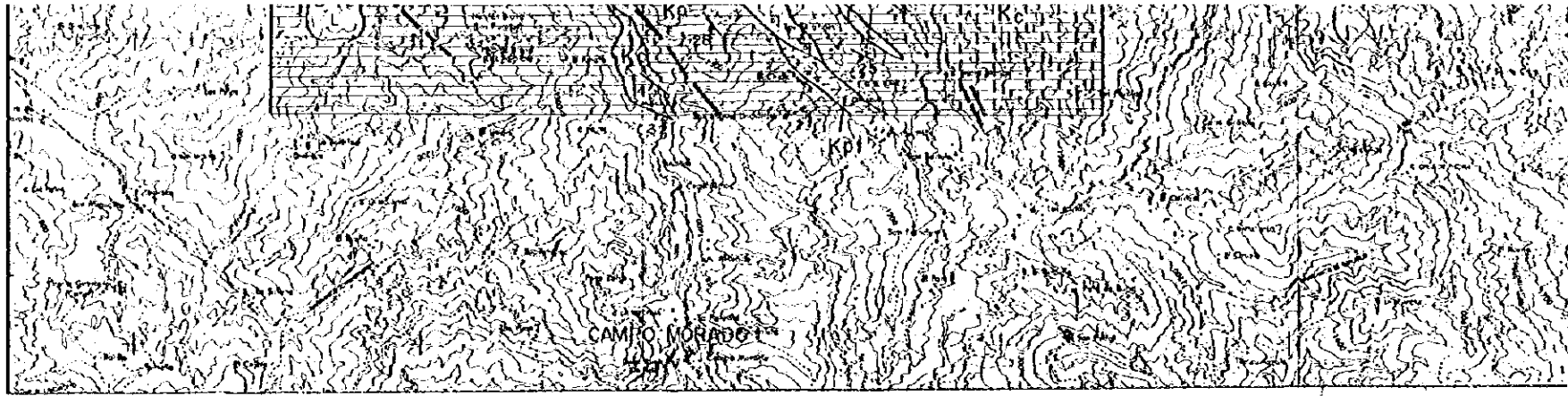
B'

1 : 2500









Leyenda

Terciario	Andesita Ayotodhi		Lava de andesita
	Riolita Tlilzapotla		Toba riolitica
	Formación Balsas		Lava de riolita
			Toba y Arenisca
Cretácico			Filita y pizarra
			Filita-toba alternación
	Formación Ixcatepec		Caliza y filita alternación
			Riolita-Dacita
Rocas Intrusivas			Roca verde andesítica
			Riolita-Dacita

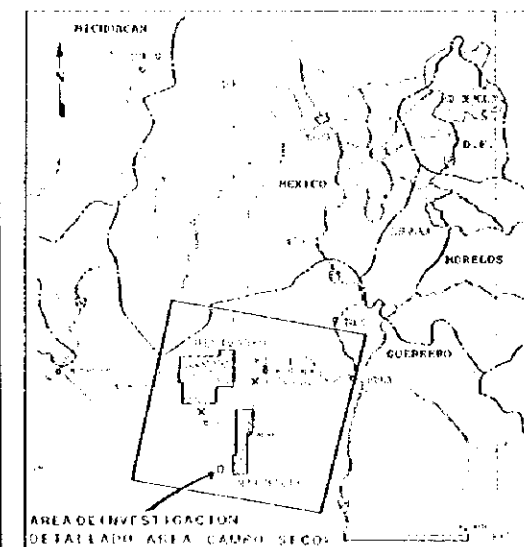
- Dicho e inclinación de estratos
- Dicho e inclinación de foliación
- Eje de anticlinal
- Eje de sinclinal
- Falla
- Línea de sección
- Mina inactiva

ESCALA 1:50,000



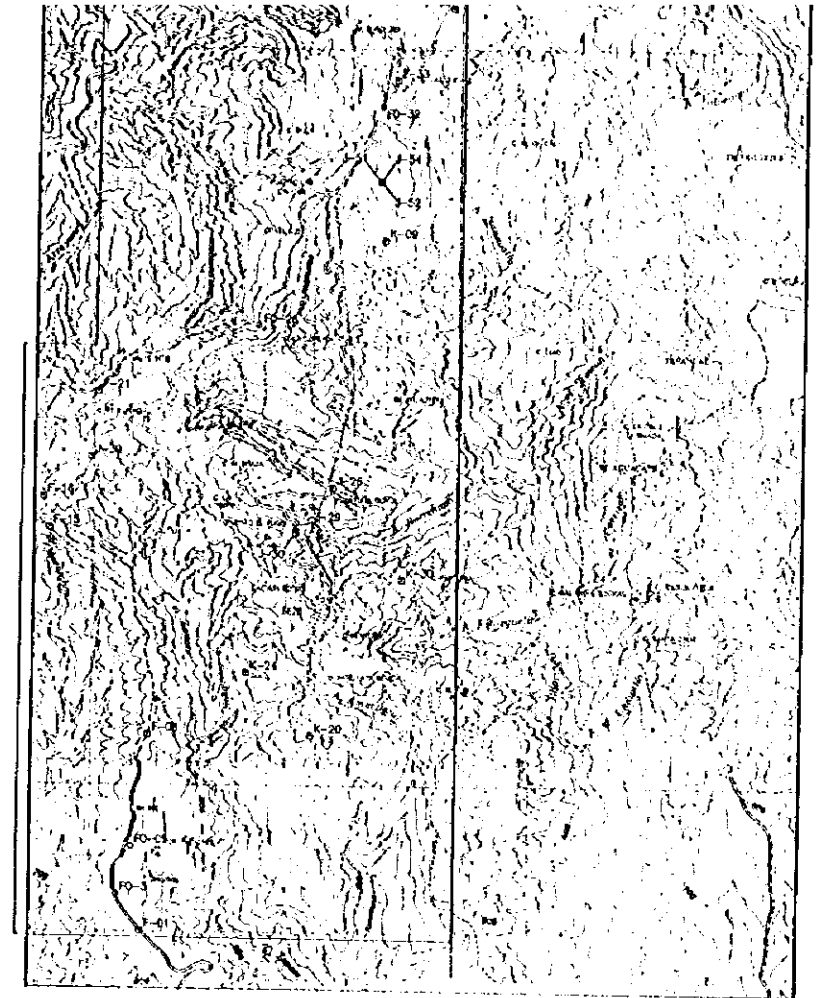
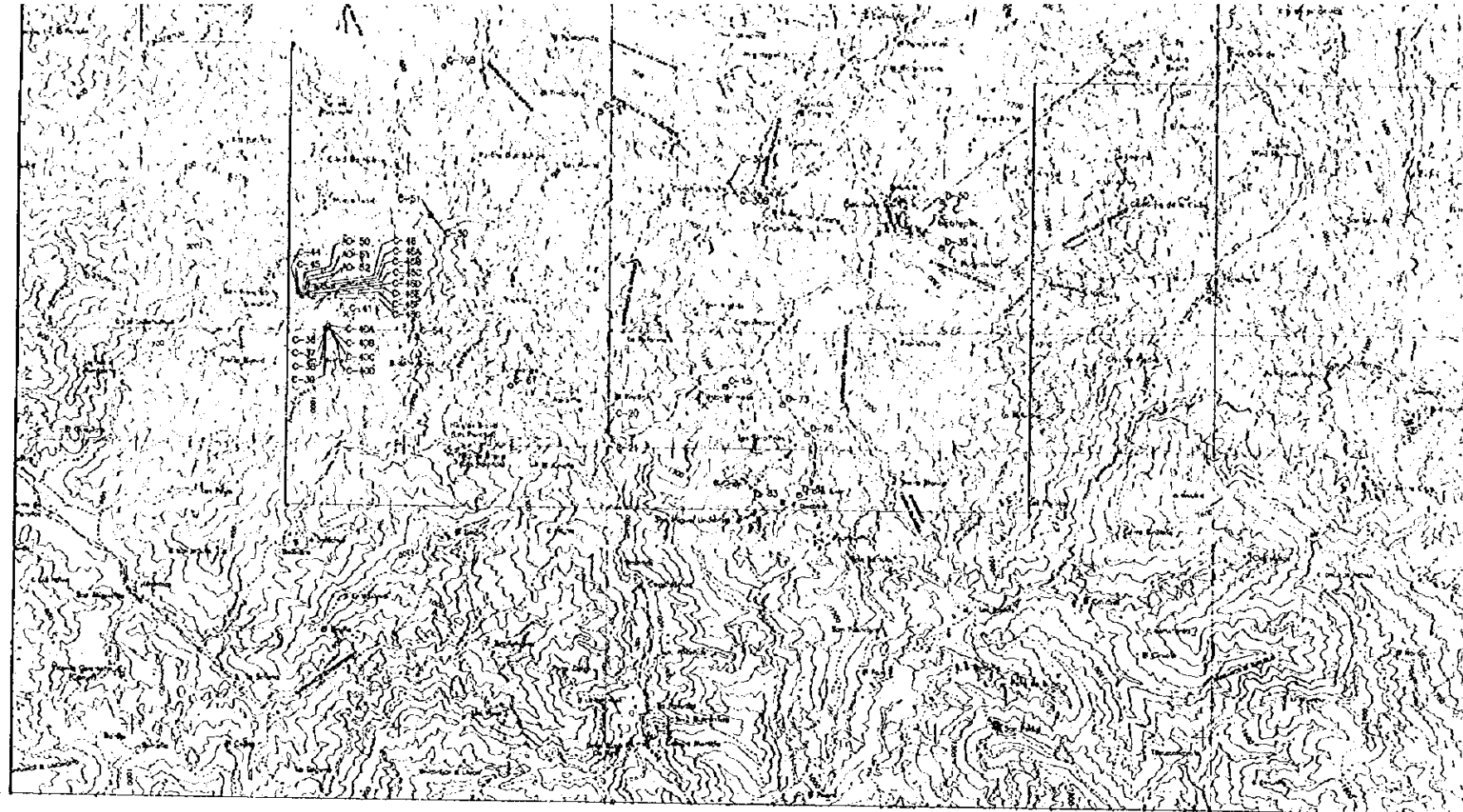
PL 8-3-3

LA EXPLORACION COOPERATIVA DE MINERAL
EN
LA REGION CAMPO SECO
(FASE I)
MAPA GEOLOGICO Y PERFIL GEOLOGICO
DE AREA IXCATEPEC Y AREA APAXTLA
(ESCALA 1:50,000)



AREA DE INVESTIGACION
DETALLADA AREA CAMPO SECO

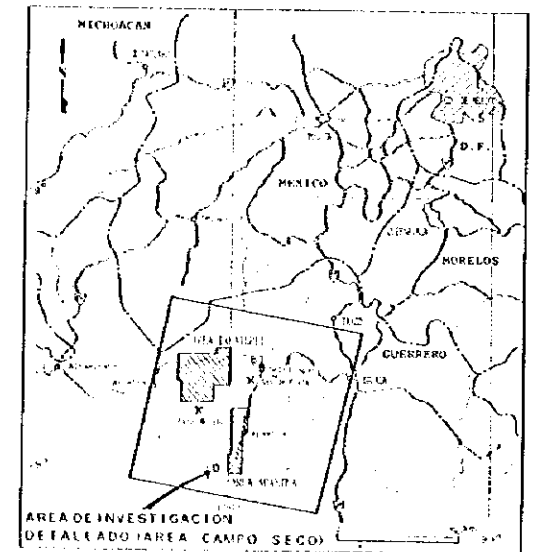
JAPAN INTERNATIONAL COOPERATION AGENCY
METAL MINING AGENCY OF JAPAN
FEBRERO, 1995



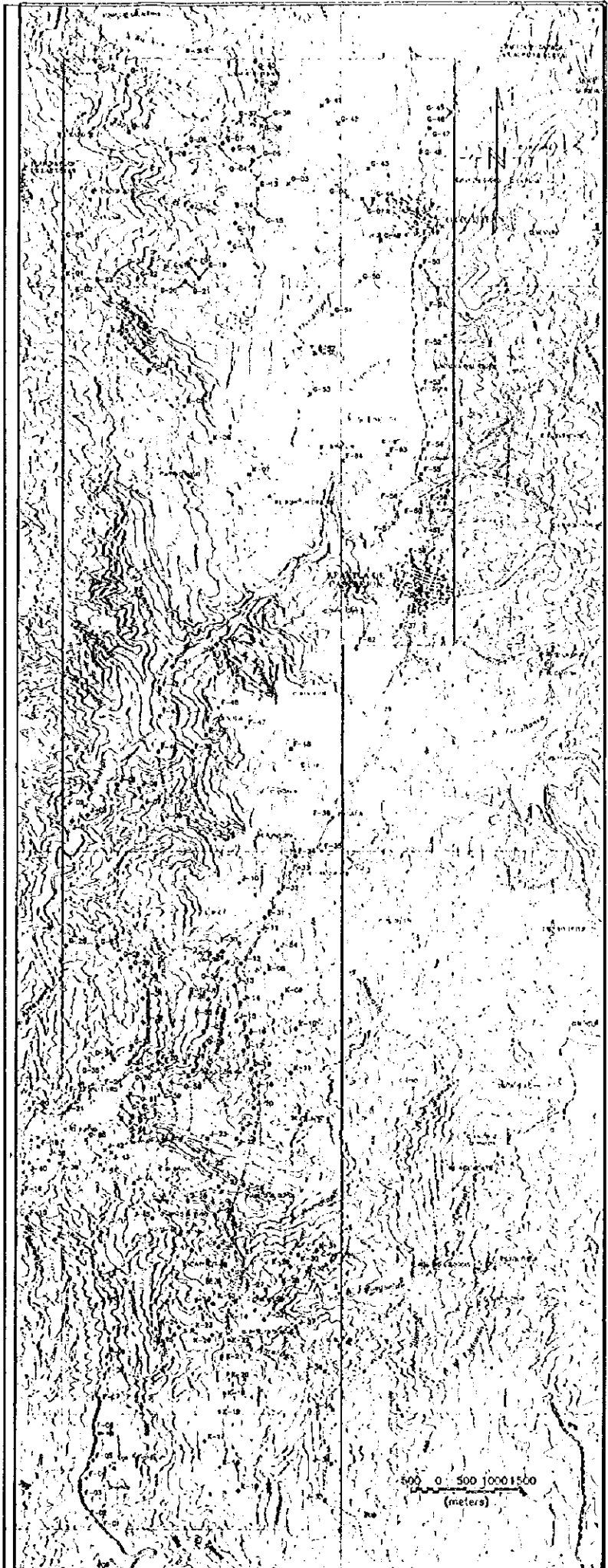
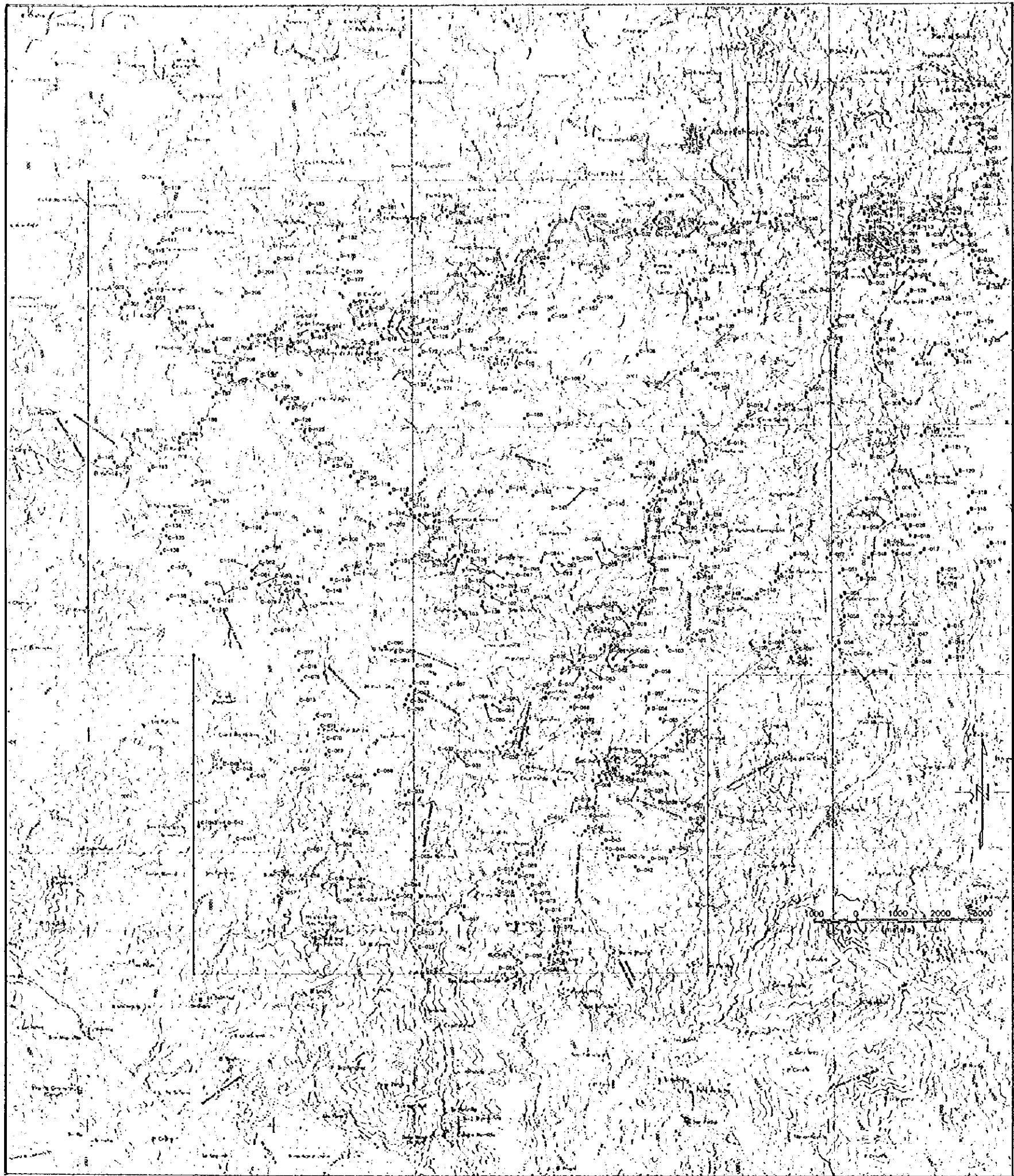
Leyenda

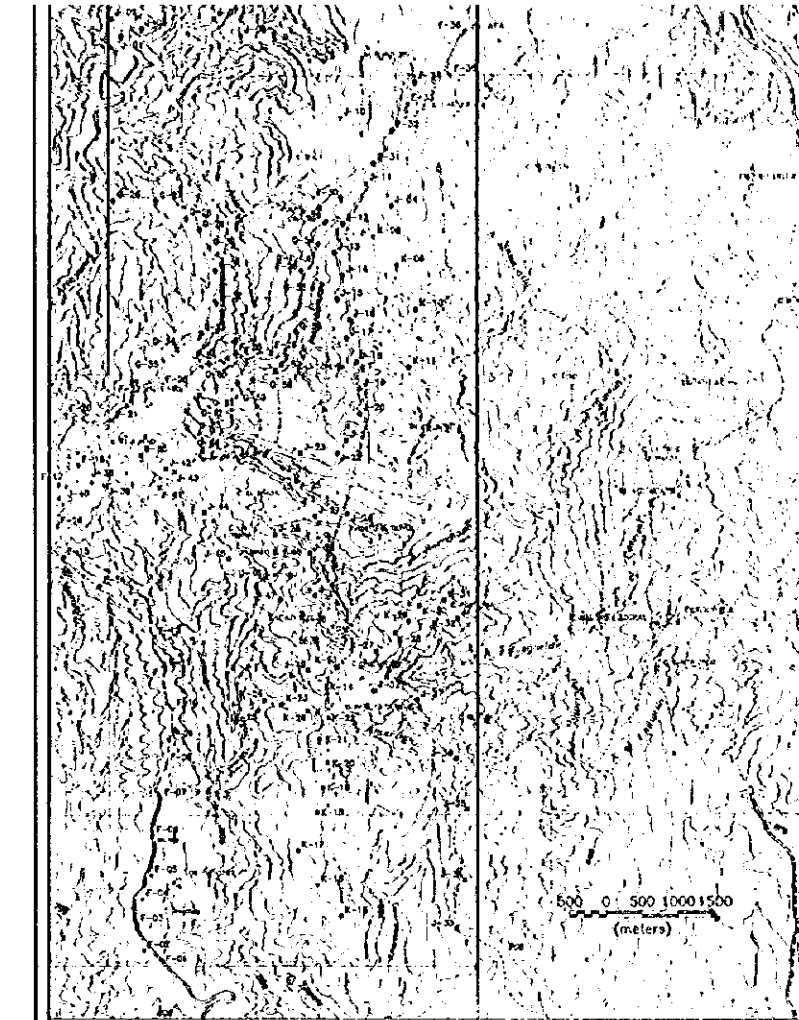
- : SECCION DELGADA
- △: SECCION PULIDA
- X: PAYOS—X
- : ANALISIS QUIMICO(MENA)

PL II-3-4
 LA EXPLORACION COOPERATIVA DE MINERAL
 EN
 LA REGION CAMPO SECO
 (FASE I)
 MAPA DE UBICACION DE LAS MUESTRAS
 DE AREA IXCATEPEC Y AREA APAXTLA
 (POCA Y MENA)

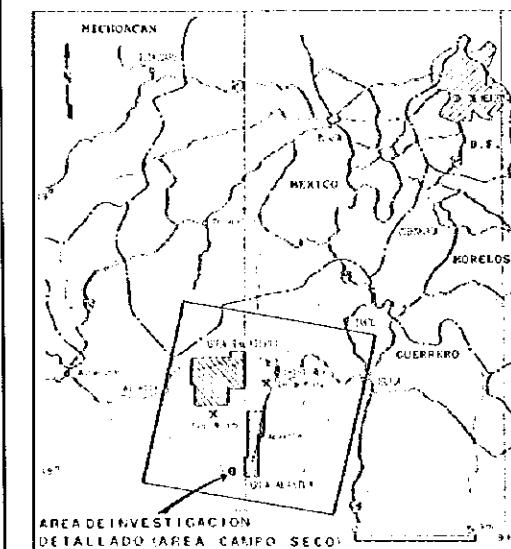


JAPAN INTERNATIONAL COOPERATION AGENCY
 METAL MINING AGENCY OF JAPAN
 FEBRERO, 1995





PL 1-3-5
 LA EXPLORACION COOPERATIVA DE MINERAL
 EN
 LA REGION CAMPO SECO
 (FASE I)
 MAPA DE UBICACION DE LAS MUESTRAS
 DE AREA IXCATEPEC Y AREA APAXTLA
 (GEOQUIMICA)
 (ESCALA 1:50,000)



JAPAN INTERNATIONAL COOPERATION AGENCY
 METAL MINING AGENCY OF JAPAN
 FEBRERO, 1955

