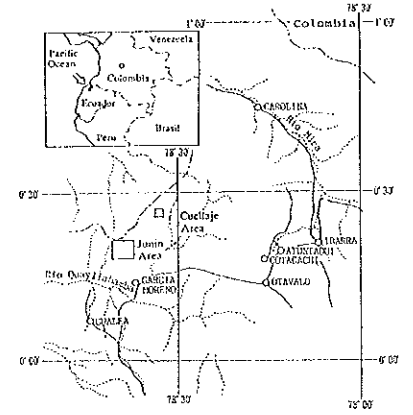
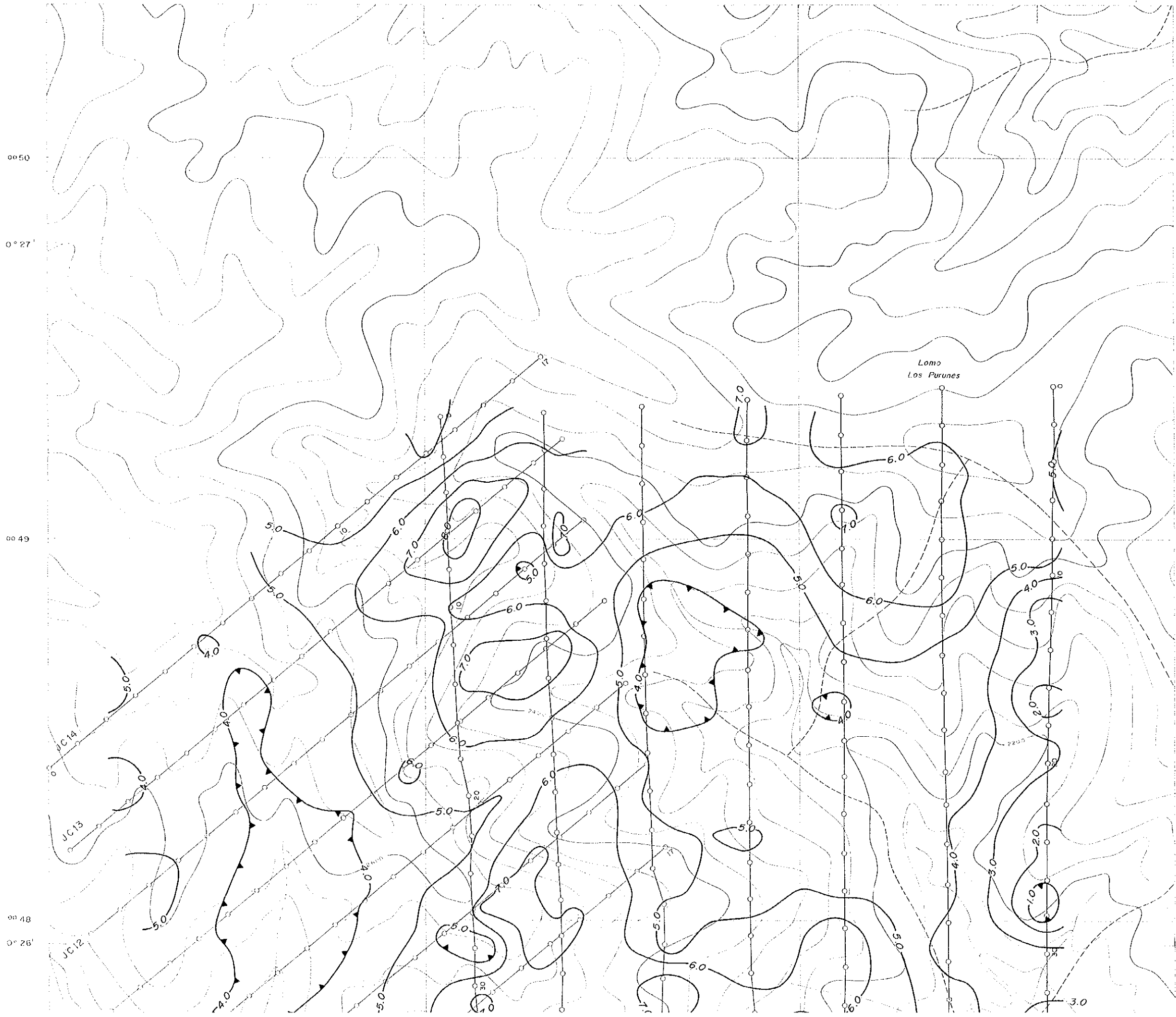


MINERAL EXPLORATION
IN THE JUNIN AND CUELLAJE AREA
REPUBLIC OF ECUADOR
PHASE I

PLAN MAP OF
PERCENT FREQUENCY EFFECT (n=1)
(1 : 5,000)



JAPAN INTERNATIONAL COOPERATION AGENCY
METAL MINING AGENCY OF JAPAN
FEBRUARY 1985




LEGEND

3.0 Percent Frequency Effect
(Unit: %)

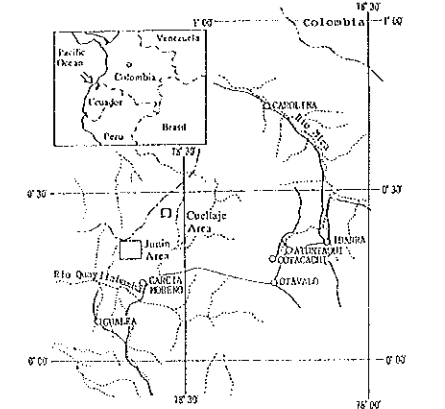


LEGEND

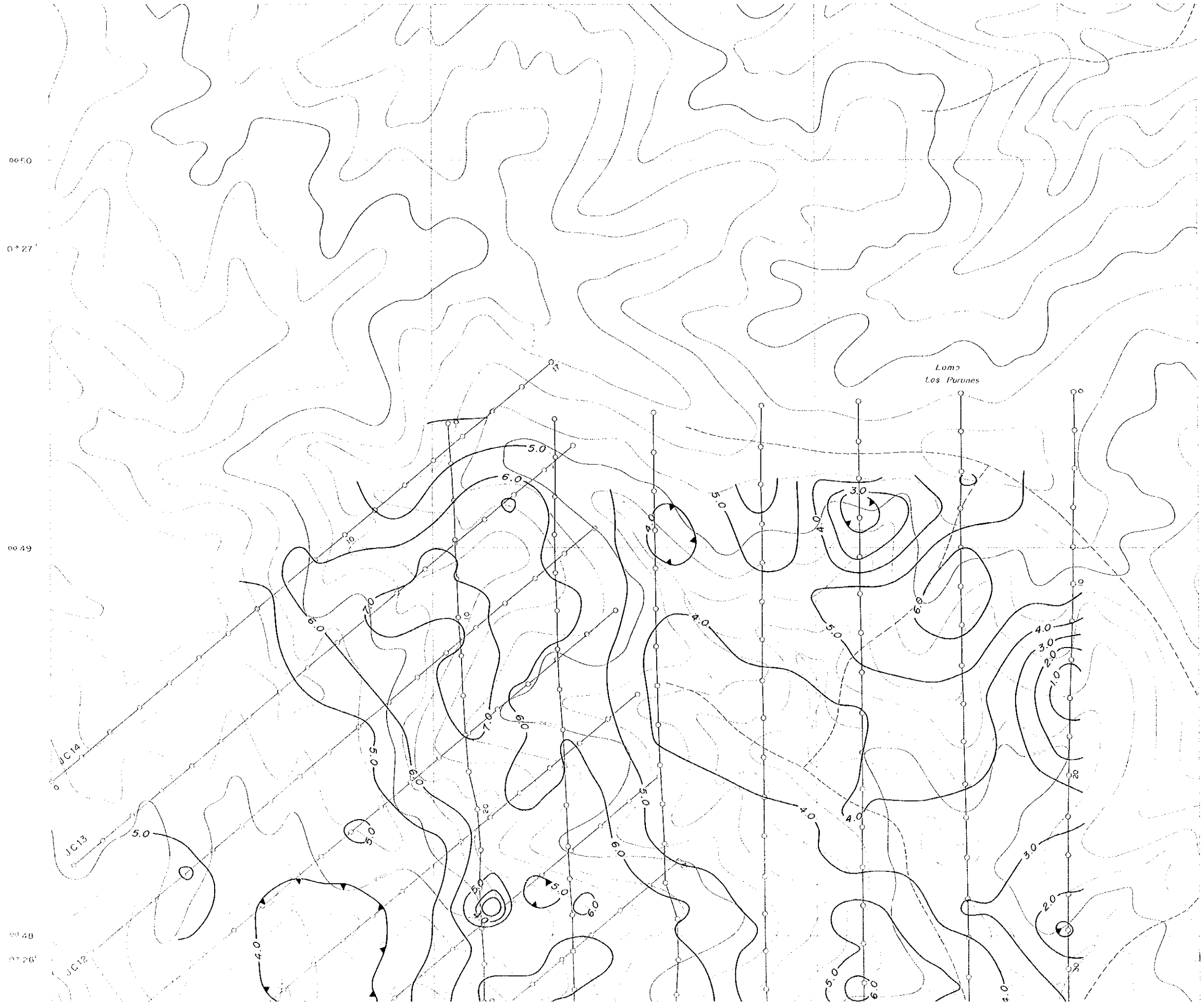

 Percent Frequency Effect
 (Unit: %)

MINERAL EXPLORATION
IN THE JUNIN AND CUELLAJE AREA
REPUBLIC OF ECUADOR
PHASE I

PLAN MAP OF
PERCENT FREQUENCY EFFECT (n=3)
(1 : 5.000)




JAPAN INTERNATIONAL COOPERATION AGENCY
METAL MINING AGENCY OF JAPAN
FEBRUARY 1955



LEGEND

Percent Frequency Effect
(Unit: %)

LEGEND

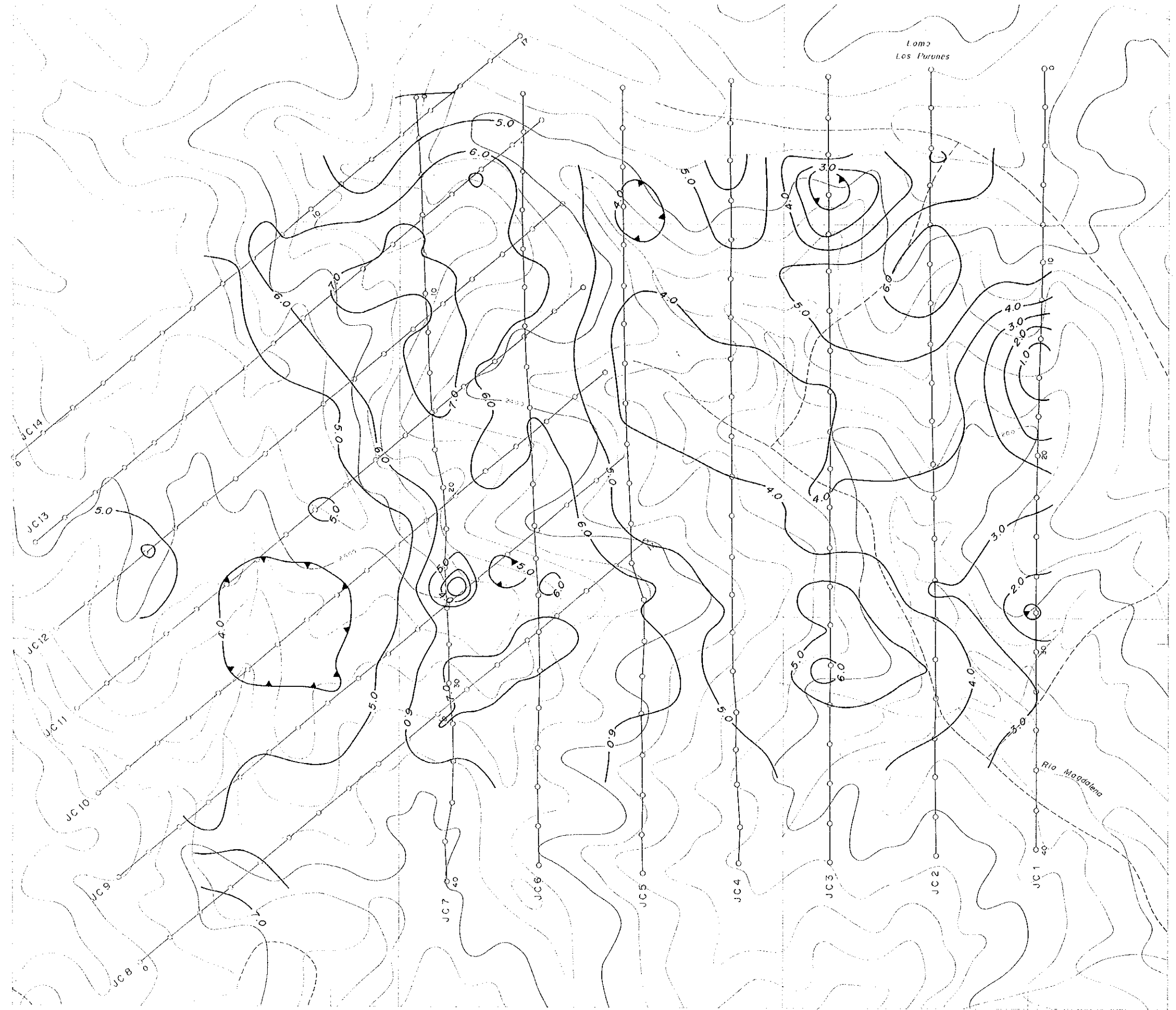
3.0 Percent Frequency Effect
(Unit: %) 

19

48

26'

47



770

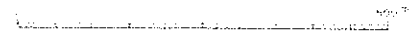
78°34'

771

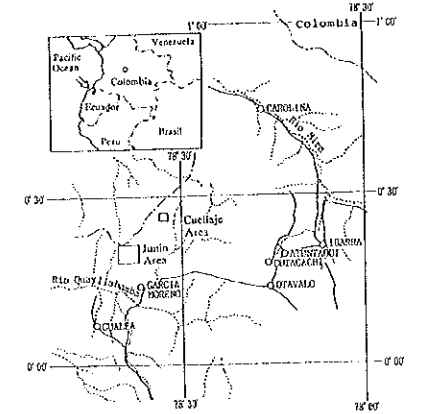
772

78°33'

773

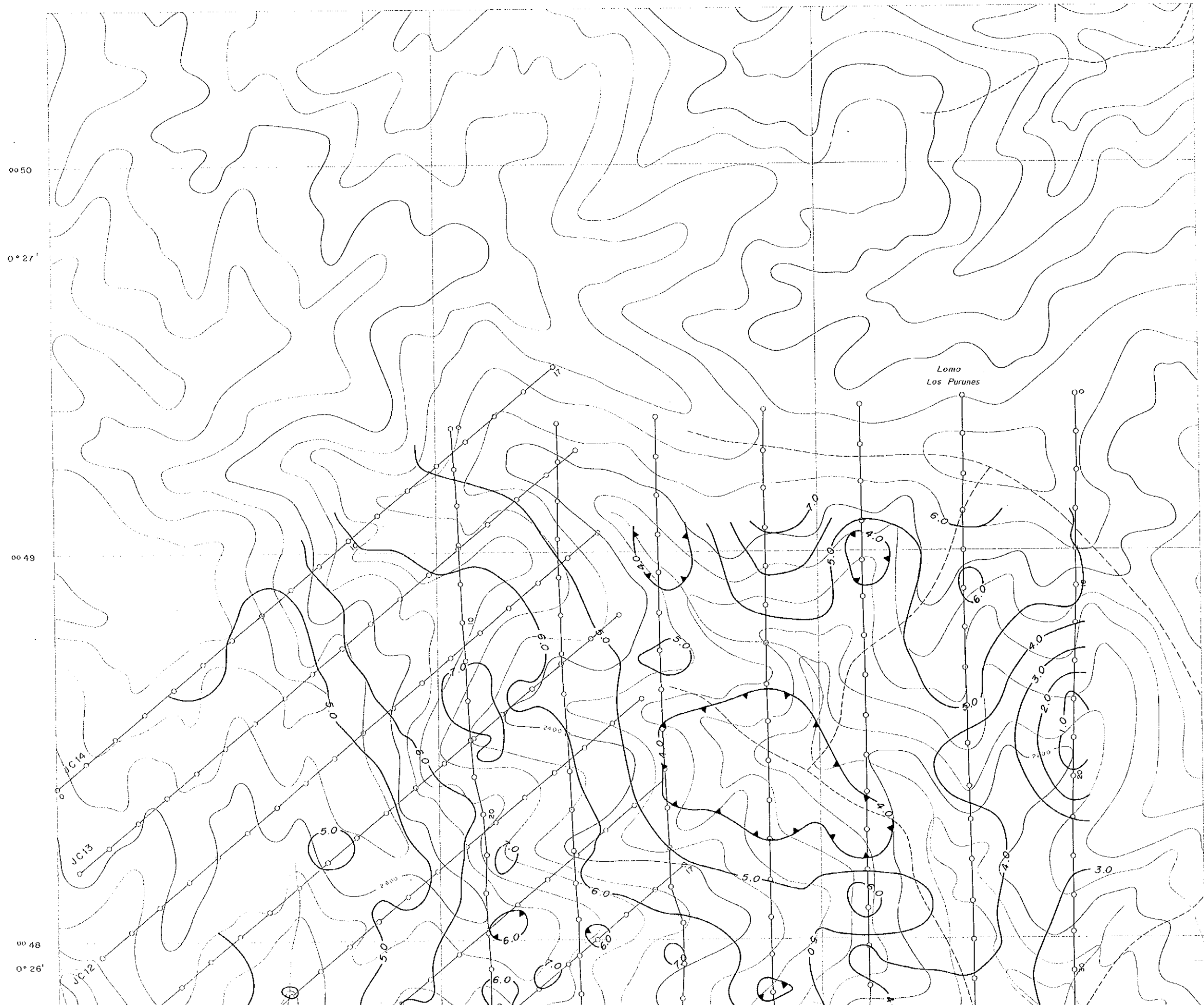
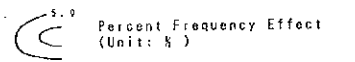


MINERAL EXPLORATION
IN THE JUNIN AND CUELLAJE AREA
REPUBLIC OF ECUADOR
PHASE I
PLAN MAP OF
PERCENT FREQUENCY EFFECT (n=5)
(1 : 5,000)



JAPAN INTERNATIONAL COOPERATION AGENCY
METAL MINING AGENCY OF JAPAN
FEBRUARY 1995

LEGEND



LEGEND

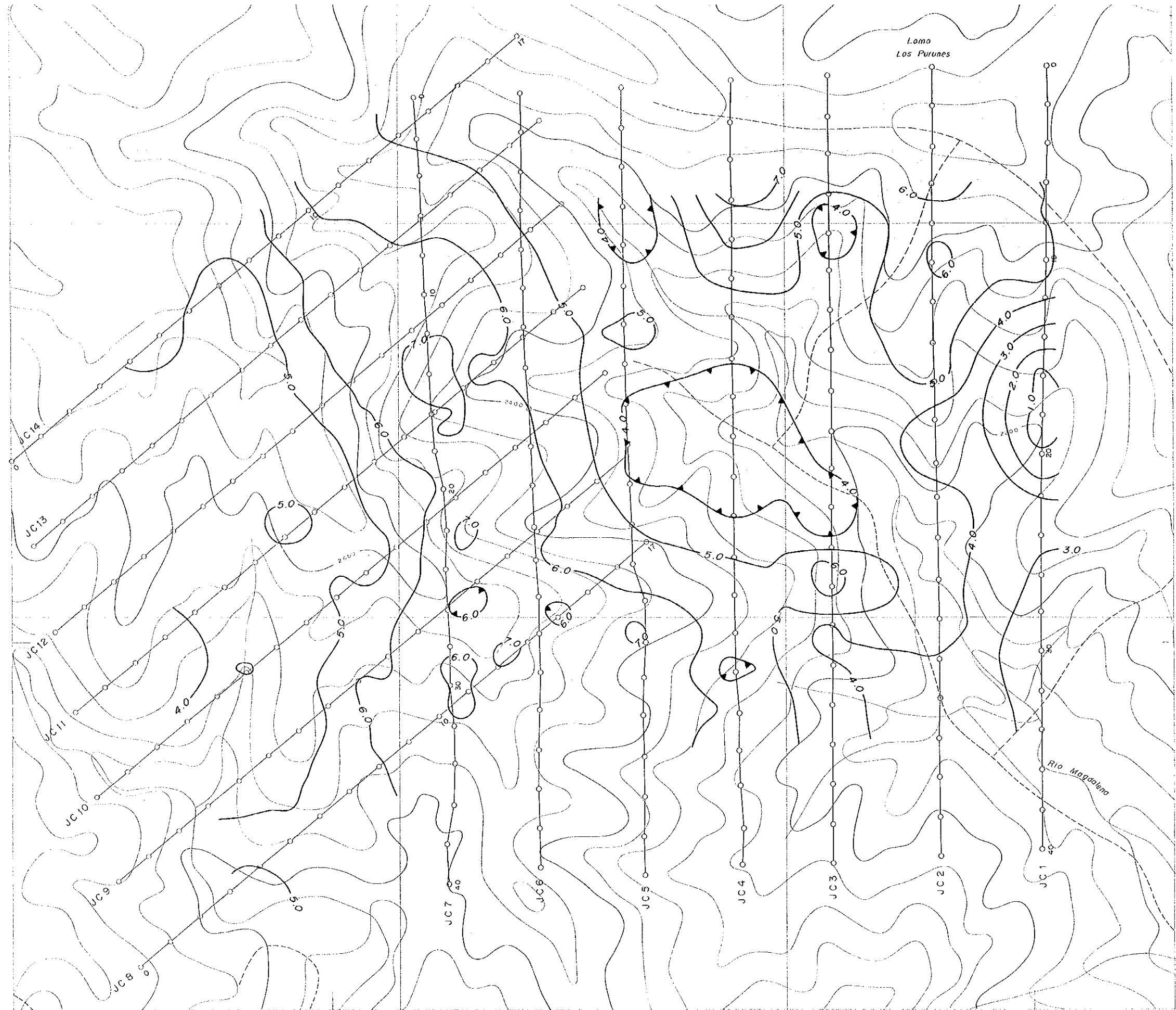
5.0
Percent Frequency Effect
(Unit: %)

00 49

00 48

0° 26'

00 47



770

78°34'

771

772

78°33'

773

0 500m

