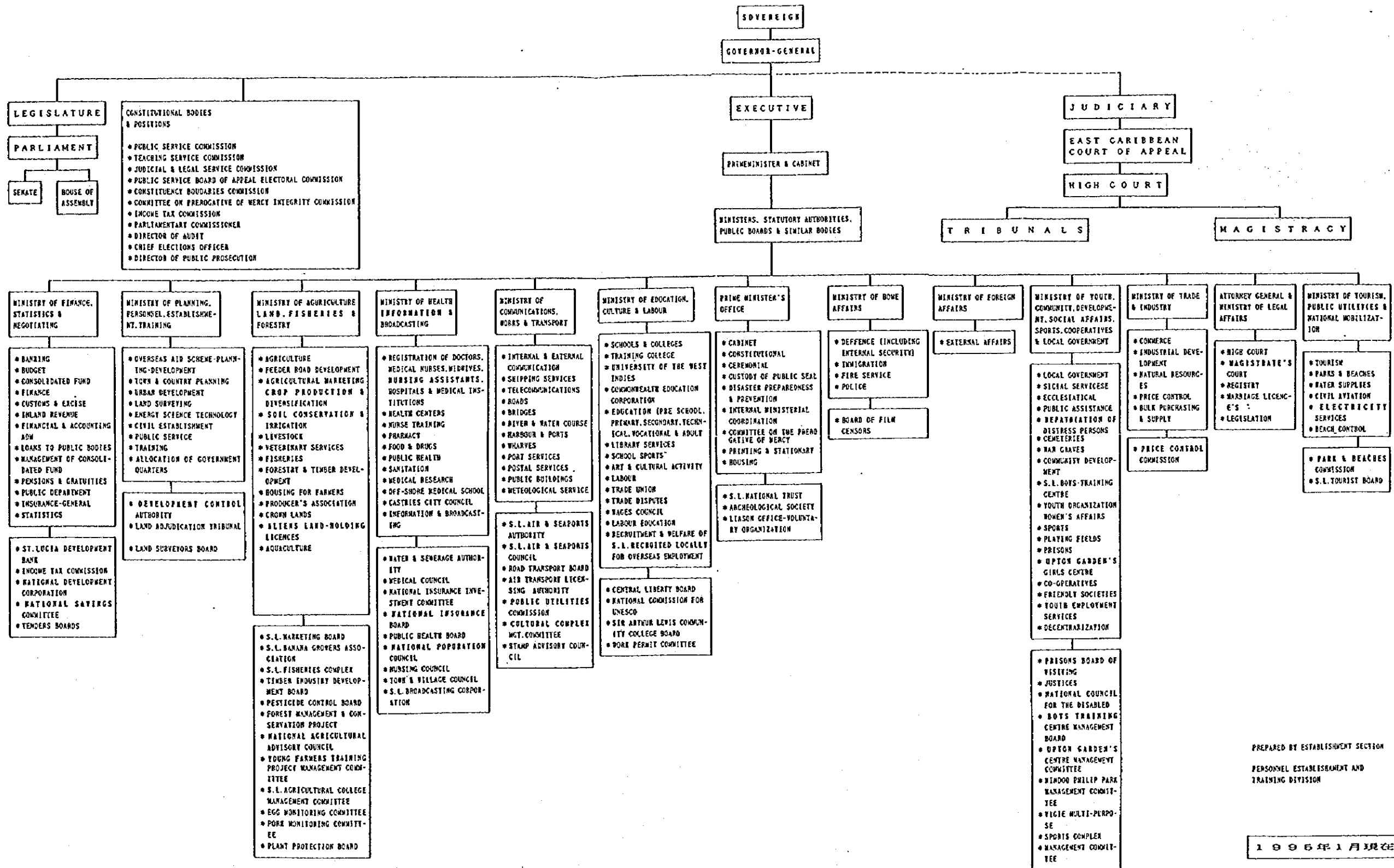


## 2. 政府関係組織図





\*\*\*\*\*  
 \* Organization of the Government of St. Lucia \*  
 \*\*\*\*\*



PREPARED BY ESTABLISHMENT SECTION  
 PERSONNEL ESTABLISHMENT AND  
 TRAINING DIVISION

1996年1月現在

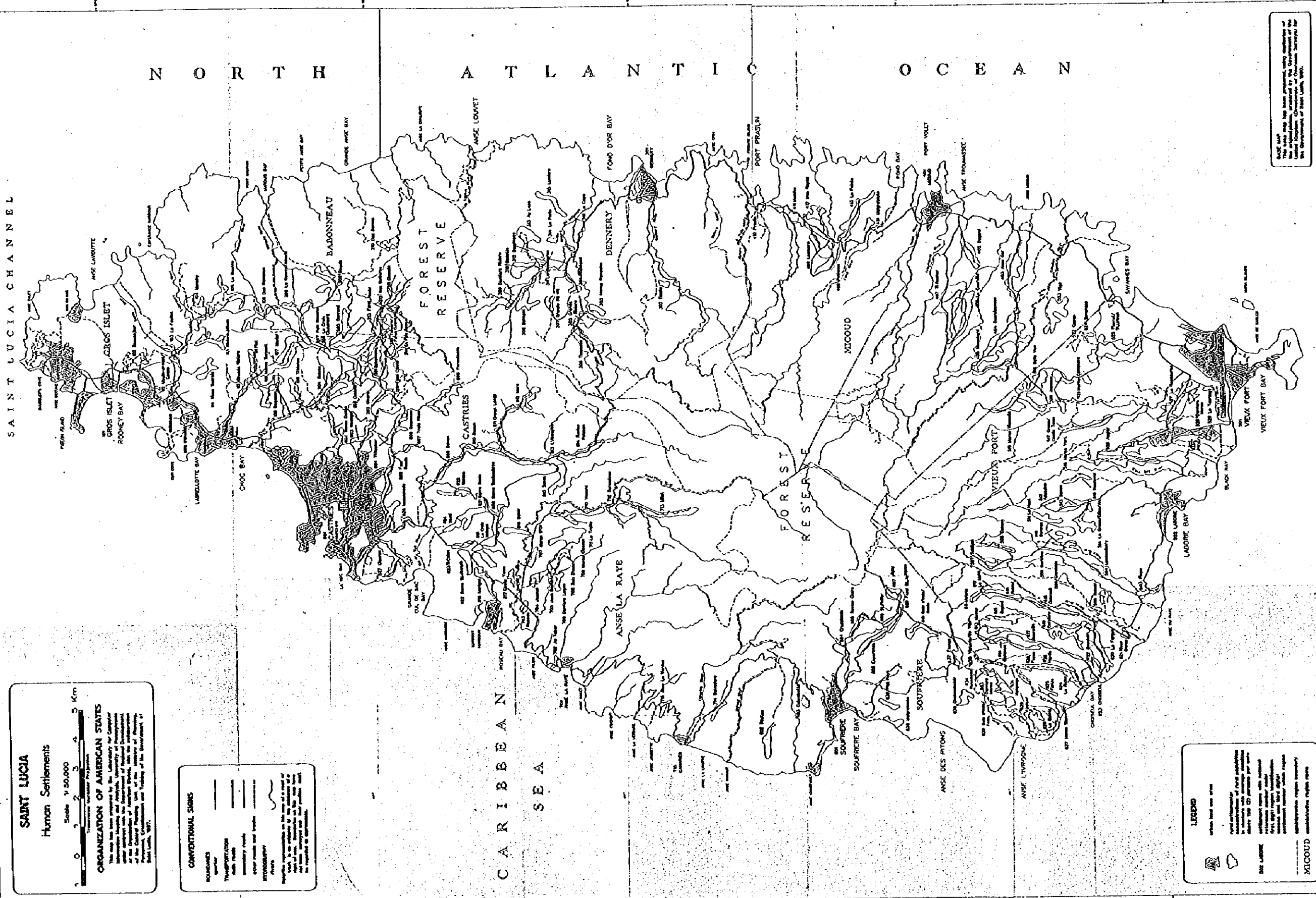


### 3. 統計・地図等









N O R T H A T L A N T I C O C E A N

S A I N T L U C I A C H A N N E L

C A R I B B E A N S E A

**SAINT LUCIA**  
Human Settlements

Scale 1:50,000

0 1 2 3 4 5 Km

**ORGANIZATION OF AMERICAN STATES**  
This map has been prepared by the Laboratory for Computer Information Studies and Research, University of Pennsylvania, under contract with the Department of National Development of the Organization of American States. The Laboratory is a part of the Organization of American States, Washington, D.C., and is a member of the Organization of American States, Washington, D.C., and is a member of the Organization of American States, Washington, D.C.

**CONVENTIONAL SIGNS**

BOUNDARIES  
 International  
 National  
 Municipal  
 Parish  
 Township

TOPOGRAPHY  
 Contour lines  
 Spot heights  
 Peaks  
 Depressions

HYDROGRAPHY  
 Rivers  
 Streams  
 Canals  
 Lagoons  
 Swamps  
 Marshes  
 Ponds  
 Lakes  
 Reservoirs  
 Dams  
 Weirs  
 Bridges  
 Ferries  
 Tunnels  
 Pipelines  
 Power lines  
 Telephone lines  
 Railroads  
 Highways  
 Roads  
 Tracks  
 Airports  
 Harbors  
 Wharves  
 Piers  
 Breakwaters  
 Docks  
 Anchorage  
 Lightships  
 Beacons  
 Buoys  
 Navigational aids

**LEGEND**

Shaded areas represent population density.

Specific symbols indicate locations like Gros Islet and the Forest Reserve.

ANSE LA RAYE  
 MICOUUD

NOTE: This map was prepared by the Laboratory for Computer Information Studies and Research, University of Pennsylvania, under contract with the Department of National Development of the Organization of American States, Washington, D.C., and is a member of the Organization of American States, Washington, D.C.

人口分布图







# SAINT LUCIA

## Land Distribution and Tenure

Scale 1:50,000  
 Prepared by the  
 Organization of American States  
 under the auspices of the Inter-American Commission on  
 Human Rights, in cooperation with the Government of  
 Saint Lucia, 1964.

### CONVENTIONAL SIGNS

- 1. Capital
- 2. Town
- 3. Village
- 4. Hamlet
- 5. Islet
- 6. Lighthouse
- 7. Monument
- 8. Boundary of the State
- 9. Boundary of the Parish
- 10. Boundary of the Estate
- 11. Boundary of the Lot
- 12. Boundary of the Parcel
- 13. Boundary of the Block
- 14. Boundary of the Section
- 15. Boundary of the Township
- 16. Boundary of the County
- 17. Boundary of the State
- 18. Boundary of the Parish
- 19. Boundary of the Estate
- 20. Boundary of the Lot
- 21. Boundary of the Parcel
- 22. Boundary of the Block
- 23. Boundary of the Section
- 24. Boundary of the Township
- 25. Boundary of the County



- ### LEGEND
- |    |                    |   |
|----|--------------------|---|
| 1  | UNDEVELOPED        | Land reserved for the future use of the State or for other public purposes. |
| 2  | STATE'S POSSESSION | Land reserved for the future use of the State or for other public purposes. |
| 3  | STATE'S POSSESSION | Land reserved for the future use of the State or for other public purposes. |
| 4  | STATE'S POSSESSION | Land reserved for the future use of the State or for other public purposes. |
| 5  | STATE'S POSSESSION | Land reserved for the future use of the State or for other public purposes. |
| 6  | STATE'S POSSESSION | Land reserved for the future use of the State or for other public purposes. |
| 7  | STATE'S POSSESSION | Land reserved for the future use of the State or for other public purposes. |
| 8  | STATE'S POSSESSION | Land reserved for the future use of the State or for other public purposes. |
| 9  | STATE'S POSSESSION | Land reserved for the future use of the State or for other public purposes. |
| 10 | STATE'S POSSESSION | Land reserved for the future use of the State or for other public purposes. |
| 11 | STATE'S POSSESSION | Land reserved for the future use of the State or for other public purposes. |
| 12 | STATE'S POSSESSION | Land reserved for the future use of the State or for other public purposes. |
| 13 | STATE'S POSSESSION | Land reserved for the future use of the State or for other public purposes. |
| 14 | STATE'S POSSESSION | Land reserved for the future use of the State or for other public purposes. |
| 15 | STATE'S POSSESSION | Land reserved for the future use of the State or for other public purposes. |
| 16 | STATE'S POSSESSION | Land reserved for the future use of the State or for other public purposes. |
| 17 | STATE'S POSSESSION | Land reserved for the future use of the State or for other public purposes. |
| 18 | STATE'S POSSESSION | Land reserved for the future use of the State or for other public purposes. |
| 19 | STATE'S POSSESSION | Land reserved for the future use of the State or for other public purposes. |
| 20 | STATE'S POSSESSION | Land reserved for the future use of the State or for other public purposes. |
| 21 | STATE'S POSSESSION | Land reserved for the future use of the State or for other public purposes. |
| 22 | STATE'S POSSESSION | Land reserved for the future use of the State or for other public purposes. |
| 23 | STATE'S POSSESSION | Land reserved for the future use of the State or for other public purposes. |
| 24 | STATE'S POSSESSION | Land reserved for the future use of the State or for other public purposes. |
| 25 | STATE'S POSSESSION | Land reserved for the future use of the State or for other public purposes. |

土地区画及び保護地区

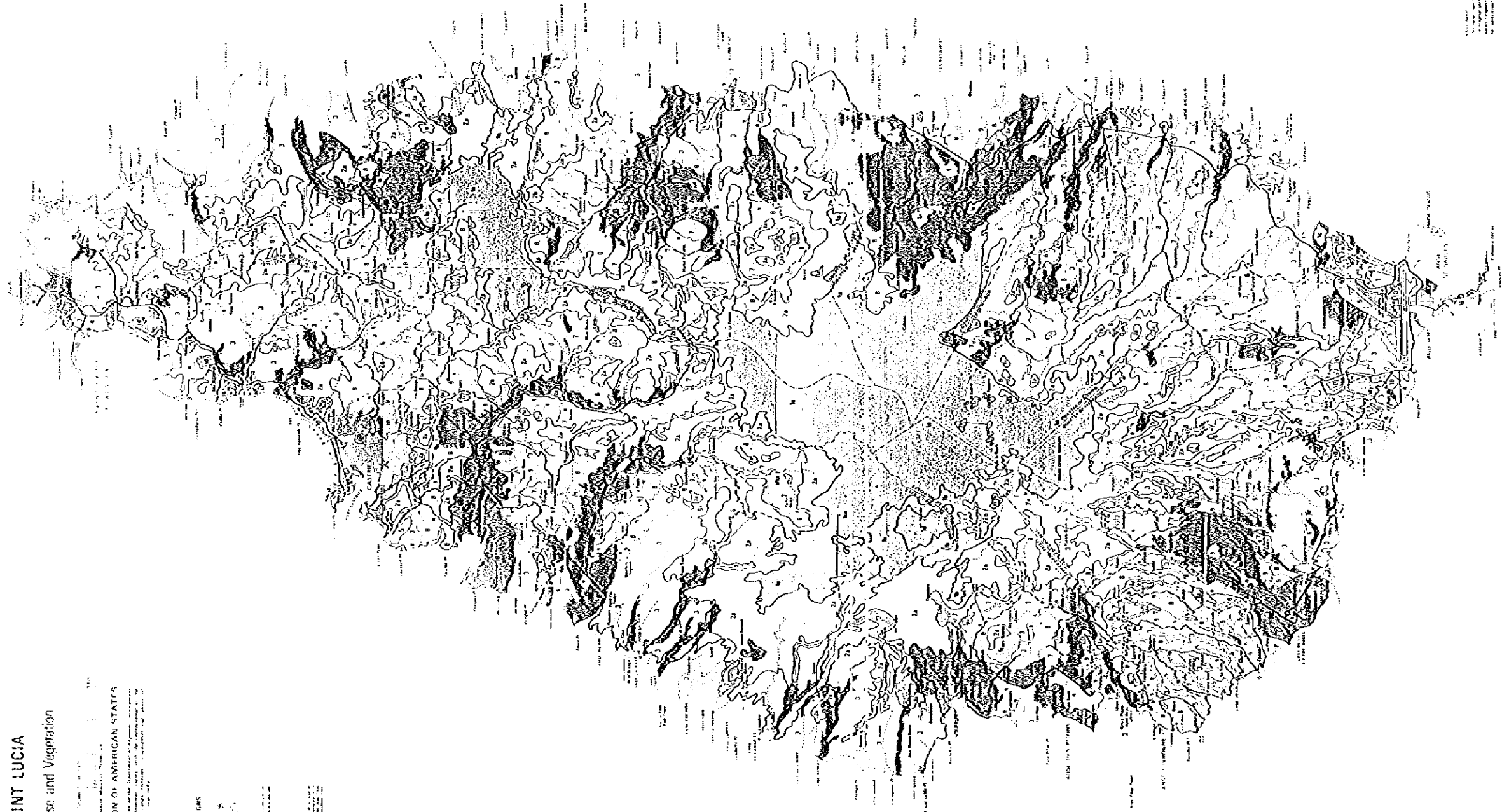


**SAINT LUCIA**  
Land Use and Vegetation

ORGANIZATION OF AMERICAN STATES  
 UNITED STATES DEPARTMENT OF AGRICULTURE  
 BUREAU OF PLANT INDUSTRY  
 WASHINGTON, D. C.

**CONVENTIONAL SIGNS**

- 1. CAPITAL
- 2. PORT
- 3. RAILROAD
- 4. ROAD
- 5. RIVER
- 6. STREAM
- 7. COASTLINE
- 8. BOUNDARY
- 9. TOWN
- 10. VILLAGE
- 11. HAMLET
- 12. COUNTRY HOUSE
- 13. CHURCH
- 14. SCHOOL
- 15. MILITARY CAMP
- 16. AIRFIELD
- 17. AIRPORT
- 18. AIRFIELD
- 19. AIRPORT
- 20. AIRPORT



**EXPLANATION**

1. **PLANTATION**  
 Land used for the cultivation of sugar cane, coffee, and other crops. This area is shown with a cross-hatch pattern.

2. **PLANTATION**  
 Land used for the cultivation of sugar cane, coffee, and other crops. This area is shown with a diagonal line pattern.

3. **PLANTATION**  
 Land used for the cultivation of sugar cane, coffee, and other crops. This area is shown with a dotted pattern.

4. **PLANTATION**  
 Land used for the cultivation of sugar cane, coffee, and other crops. This area is shown with a horizontal line pattern.

5. **PLANTATION**  
 Land used for the cultivation of sugar cane, coffee, and other crops. This area is shown with a vertical line pattern.

6. **PLANTATION**  
 Land used for the cultivation of sugar cane, coffee, and other crops. This area is shown with a wavy line pattern.

7. **PLANTATION**  
 Land used for the cultivation of sugar cane, coffee, and other crops. This area is shown with a stippled pattern.

8. **PLANTATION**  
 Land used for the cultivation of sugar cane, coffee, and other crops. This area is shown with a solid black pattern.

9. **PLANTATION**  
 Land used for the cultivation of sugar cane, coffee, and other crops. This area is shown with a diagonal line pattern.

10. **PLANTATION**  
 Land used for the cultivation of sugar cane, coffee, and other crops. This area is shown with a dotted pattern.

11. **PLANTATION**  
 Land used for the cultivation of sugar cane, coffee, and other crops. This area is shown with a horizontal line pattern.

12. **PLANTATION**  
 Land used for the cultivation of sugar cane, coffee, and other crops. This area is shown with a vertical line pattern.

13. **PLANTATION**  
 Land used for the cultivation of sugar cane, coffee, and other crops. This area is shown with a wavy line pattern.

14. **PLANTATION**  
 Land used for the cultivation of sugar cane, coffee, and other crops. This area is shown with a stippled pattern.

15. **PLANTATION**  
 Land used for the cultivation of sugar cane, coffee, and other crops. This area is shown with a solid black pattern.

16. **PLANTATION**  
 Land used for the cultivation of sugar cane, coffee, and other crops. This area is shown with a diagonal line pattern.

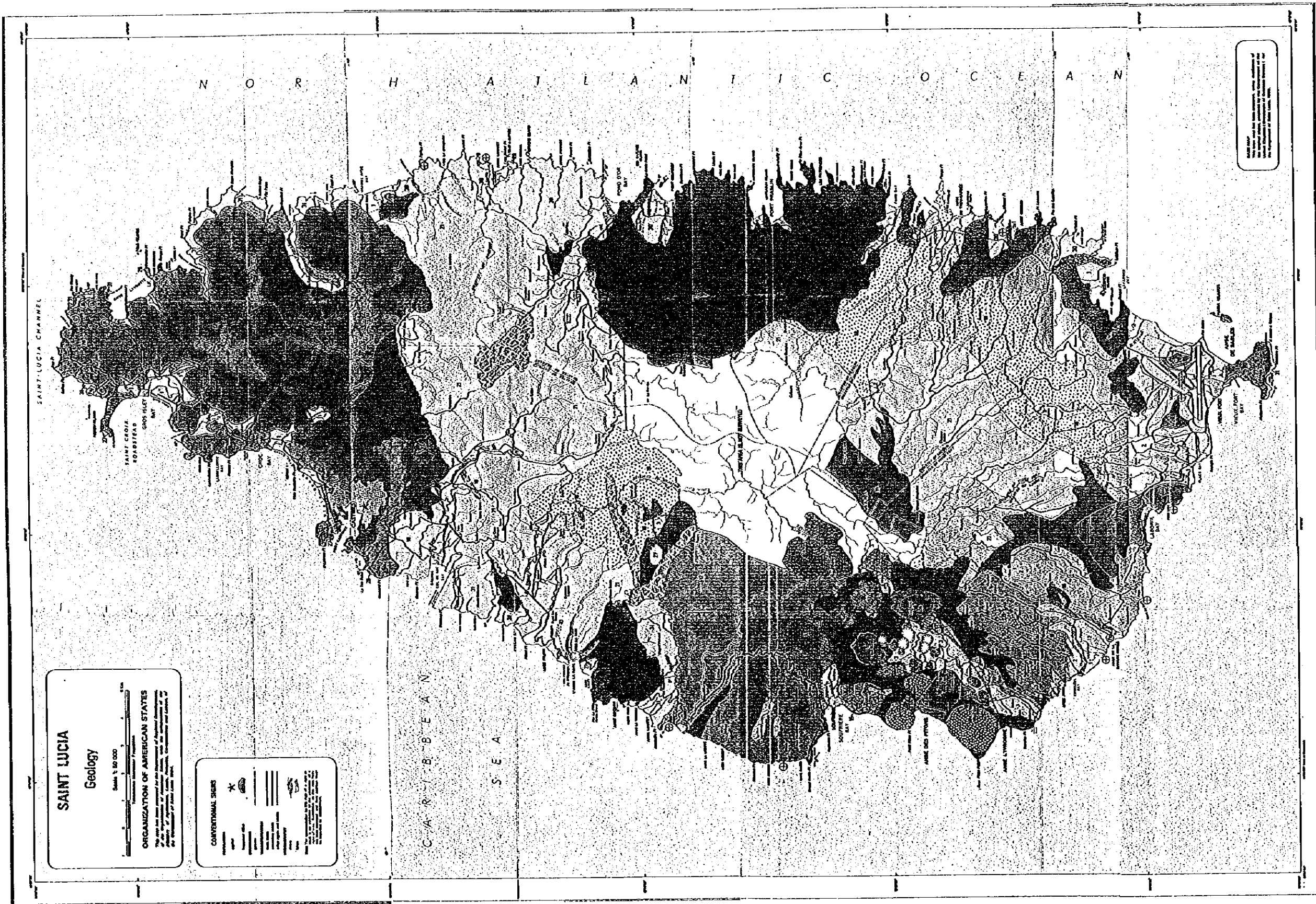
17. **PLANTATION**  
 Land used for the cultivation of sugar cane, coffee, and other crops. This area is shown with a dotted pattern.

18. **PLANTATION**  
 Land used for the cultivation of sugar cane, coffee, and other crops. This area is shown with a horizontal line pattern.

19. **PLANTATION**  
 Land used for the cultivation of sugar cane, coffee, and other crops. This area is shown with a vertical line pattern.

20. **PLANTATION**  
 Land used for the cultivation of sugar cane, coffee, and other crops. This area is shown with a wavy line pattern.

土地開發狀況及び植物分布図



地質分類図

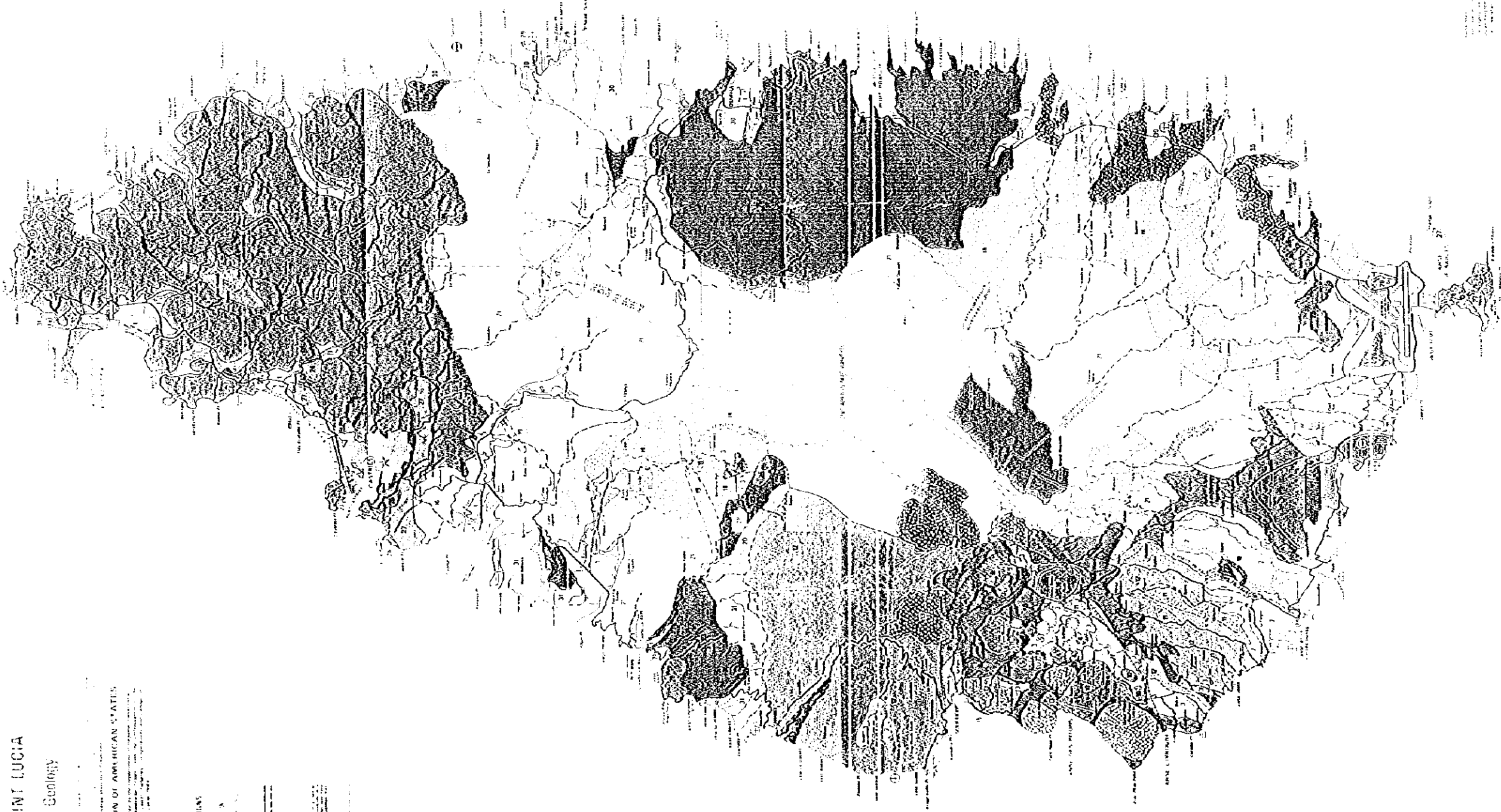


SAINT LUCIA

Geology

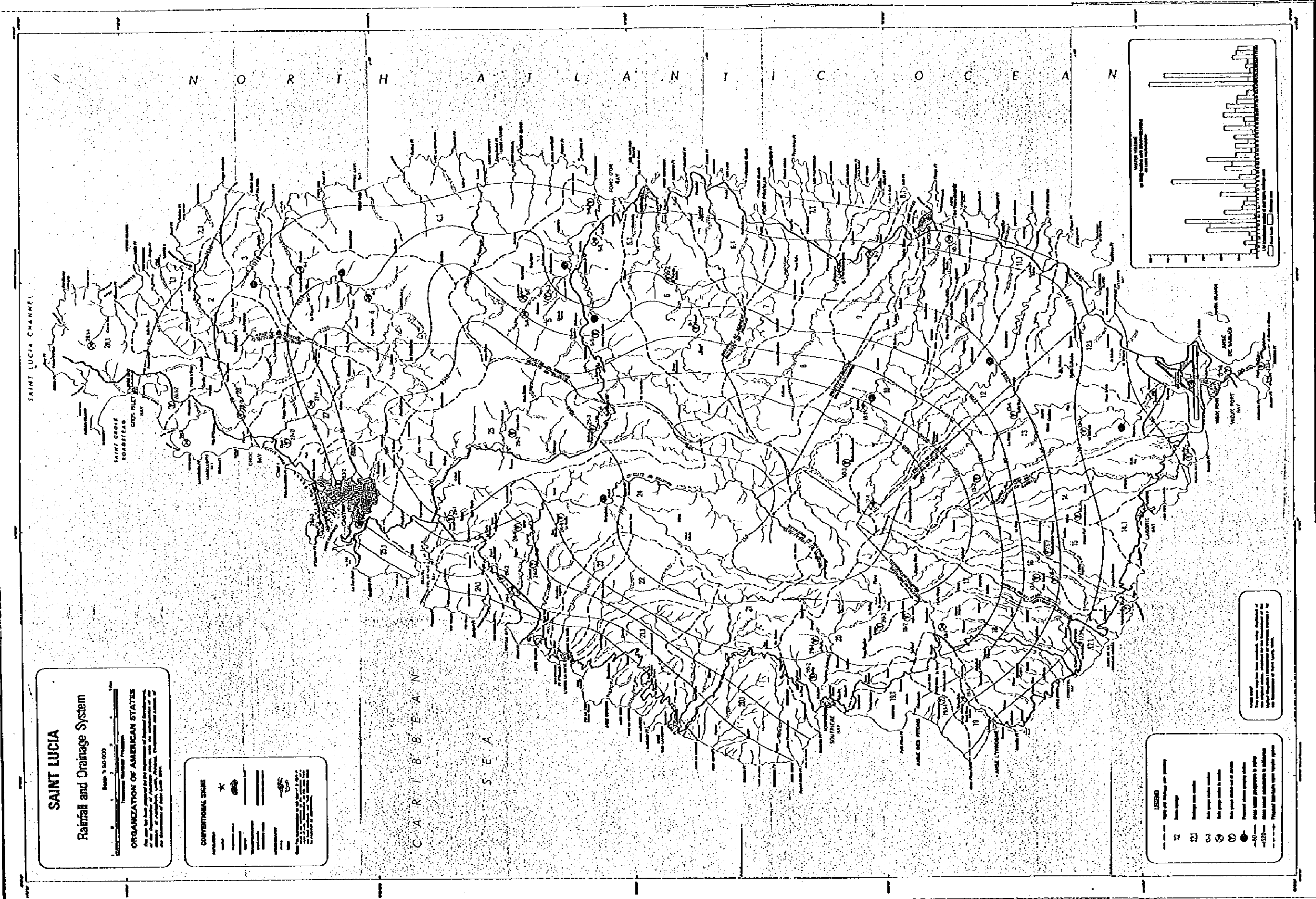
ORGANIZATION OF AMERICAN STATES

CONVERSION TABLES



LEGEND	
	NATIONAL BOUNDARY
	INTERNATIONAL BOUNDARY
	COUNTY BOUNDARY
	MAJOR ROAD
	MINOR ROAD
	RAILWAY
	RIVER
	STREAM
	LAKE
	POND
	SWAMP
	FOREST
	CULTIVATED LAND
	PASTURE
	URBAN AREA
	RESIDENTIAL AREA
	INDUSTRIAL AREA
	AIRPORT
	LIGHTHOUSE
	BEACON
	MONUMENT
	WELL
	SPRING
	CAVE
	CLIFF
	BEACH
	DUNE
	SANDBAR
	SHOAL
	REEF
	ISLAND
	ATOLL
	LAGOON
	BAY
	HARBOR
	STRAIT
	TRENCH
	RIDGE
	VALLEY
	PLATEAU
	HILL
	MOUNTAIN
	PEAK
	SUMMIT
	SUMMIT ELEVATION
	CONTOUR INTERVAL
	CONTOUR LINE
	SPOT ELEVATION
	ELEVATION
	ELEVATION RANGE
	ELEVATION SCALE
	ELEVATION LEGEND

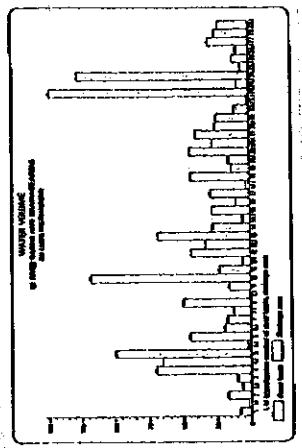
地質分類区



**SAINT LUCIA**  
**Rainfall and Drainage System**  
 Scale 1:50,000  
**ORGANIZATION OF AMERICAN STATES**  
 Technical Cooperation Program  
 This map has been prepared by the Department of Technical Cooperation, Organization of American States, under the leadership of the United States Agency for International Development, Washington, D.C., and the Department of Public Works, Saint Lucia.

**CONVENTIONAL SIGNS**  
 \* Capital  
 — Main Road  
 — Secondary Road  
 — Railway  
 — Telephone Line  
 — Power Line  
 — Boundary  
 — Contour Line  
 — Spot Height  
 — Elevation  
 — Depression  
 — Water Level  
 — Tidal Level  
 — Mean Sea Level  
 — Mean High Water  
 — Mean Low Water  
 — Low Water  
 — High Water  
 — Spring Tide  
 — Neap Tide  
 — Storm Surge  
 — Tsunami  
 — Earthquake  
 — Volcano  
 — Hot Spring  
 — Geysir  
 — Geyser  
 — Geothermal Field  
 — Geothermal Area  
 — Geothermal Zone  
 — Geothermal Field  
 — Geothermal Area  
 — Geothermal Zone

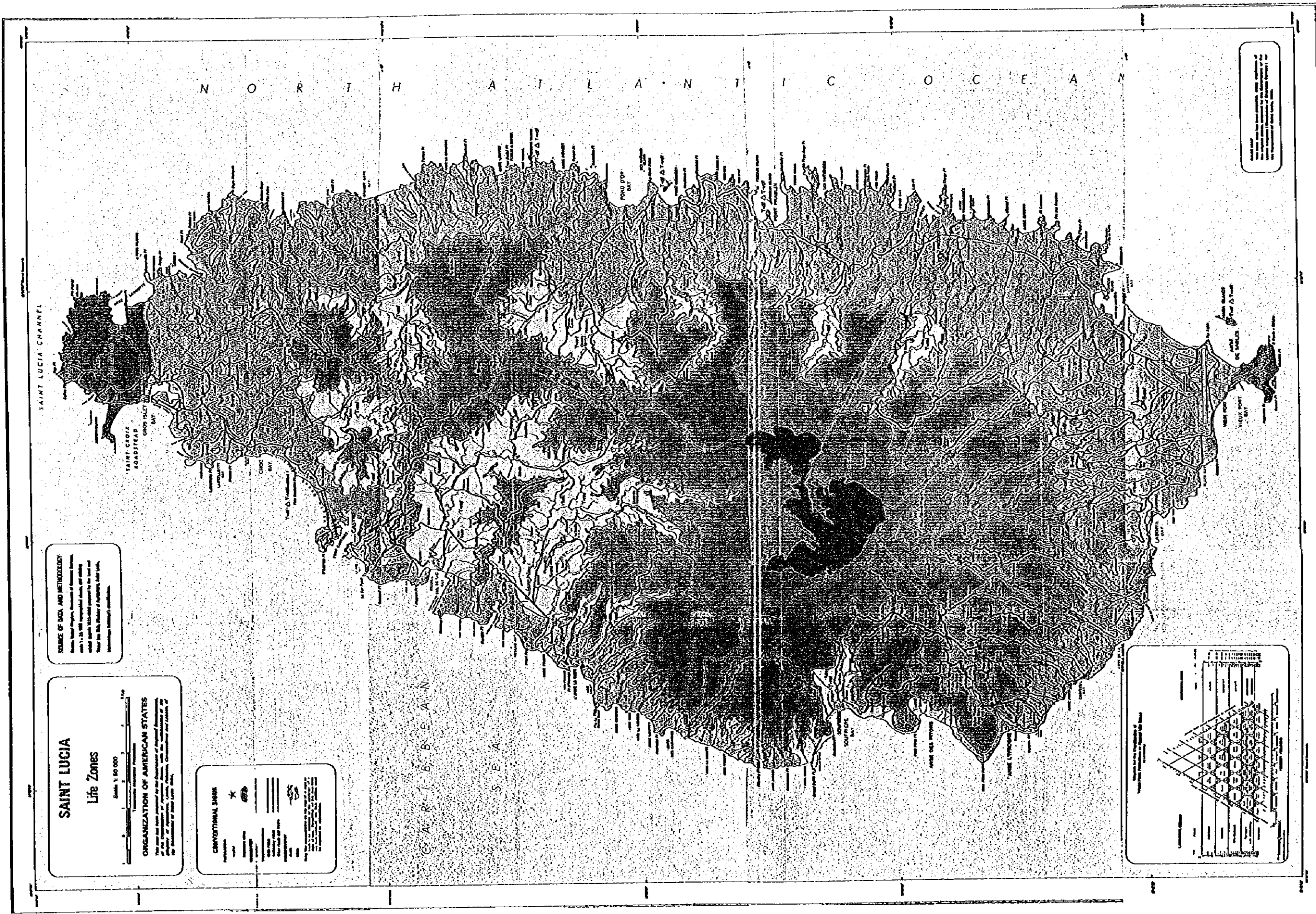
**LEGEND**  
 12 Rainfall Station  
 13 Rainfall Station  
 14 Rainfall Station  
 15 Rainfall Station  
 16 Rainfall Station  
 17 Rainfall Station  
 18 Rainfall Station  
 19 Rainfall Station  
 20 Rainfall Station  
 21 Rainfall Station  
 22 Rainfall Station  
 23 Rainfall Station  
 24 Rainfall Station  
 25 Rainfall Station  
 26 Rainfall Station  
 27 Rainfall Station  
 28 Rainfall Station  
 29 Rainfall Station  
 30 Rainfall Station  
 31 Rainfall Station  
 32 Rainfall Station  
 33 Rainfall Station  
 34 Rainfall Station  
 35 Rainfall Station  
 36 Rainfall Station  
 37 Rainfall Station  
 38 Rainfall Station  
 39 Rainfall Station  
 40 Rainfall Station  
 41 Rainfall Station  
 42 Rainfall Station  
 43 Rainfall Station  
 44 Rainfall Station  
 45 Rainfall Station  
 46 Rainfall Station  
 47 Rainfall Station  
 48 Rainfall Station  
 49 Rainfall Station  
 50 Rainfall Station  
 51 Rainfall Station  
 52 Rainfall Station  
 53 Rainfall Station  
 54 Rainfall Station  
 55 Rainfall Station  
 56 Rainfall Station  
 57 Rainfall Station  
 58 Rainfall Station  
 59 Rainfall Station  
 60 Rainfall Station  
 61 Rainfall Station  
 62 Rainfall Station  
 63 Rainfall Station  
 64 Rainfall Station  
 65 Rainfall Station  
 66 Rainfall Station  
 67 Rainfall Station  
 68 Rainfall Station  
 69 Rainfall Station  
 70 Rainfall Station  
 71 Rainfall Station  
 72 Rainfall Station  
 73 Rainfall Station  
 74 Rainfall Station  
 75 Rainfall Station  
 76 Rainfall Station  
 77 Rainfall Station  
 78 Rainfall Station  
 79 Rainfall Station  
 80 Rainfall Station  
 81 Rainfall Station  
 82 Rainfall Station  
 83 Rainfall Station  
 84 Rainfall Station  
 85 Rainfall Station  
 86 Rainfall Station  
 87 Rainfall Station  
 88 Rainfall Station  
 89 Rainfall Station  
 90 Rainfall Station  
 91 Rainfall Station  
 92 Rainfall Station  
 93 Rainfall Station  
 94 Rainfall Station  
 95 Rainfall Station  
 96 Rainfall Station  
 97 Rainfall Station  
 98 Rainfall Station  
 99 Rainfall Station  
 100 Rainfall Station



**RIVER BASINS, DRAINAGE AREAS AND RAIN GAUGE STATION NETWORK**

Basin No.	Basin Name	Area (sq. miles)	Number of Stations	Station No.	Station Name	Station Type	Source of Data
1	Grand Riviere	100.0	12	12	Grand Riviere	12	USDA
2	Riviere de la Plaine	100.0	13	13	Riviere de la Plaine	13	USDA
3	Riviere du Large	100.0	14	14	Riviere du Large	14	USDA
4	Riviere de la Riviere	100.0	15	15	Riviere de la Riviere	15	USDA
5	Riviere de la Riviere	100.0	16	16	Riviere de la Riviere	16	USDA
6	Riviere de la Riviere	100.0	17	17	Riviere de la Riviere	17	USDA
7	Riviere de la Riviere	100.0	18	18	Riviere de la Riviere	18	USDA
8	Riviere de la Riviere	100.0	19	19	Riviere de la Riviere	19	USDA
9	Riviere de la Riviere	100.0	20	20	Riviere de la Riviere	20	USDA
10	Riviere de la Riviere	100.0	21	21	Riviere de la Riviere	21	USDA
11	Riviere de la Riviere	100.0	22	22	Riviere de la Riviere	22	USDA
12	Riviere de la Riviere	100.0	23	23	Riviere de la Riviere	23	USDA
13	Riviere de la Riviere	100.0	24	24	Riviere de la Riviere	24	USDA
14	Riviere de la Riviere	100.0	25	25	Riviere de la Riviere	25	USDA
15	Riviere de la Riviere	100.0	26	26	Riviere de la Riviere	26	USDA
16	Riviere de la Riviere	100.0	27	27	Riviere de la Riviere	27	USDA
17	Riviere de la Riviere	100.0	28	28	Riviere de la Riviere	28	USDA
18	Riviere de la Riviere	100.0	29	29	Riviere de la Riviere	29	USDA
19	Riviere de la Riviere	100.0	30	30	Riviere de la Riviere	30	USDA
20	Riviere de la Riviere	100.0	31	31	Riviere de la Riviere	31	USDA
21	Riviere de la Riviere	100.0	32	32	Riviere de la Riviere	32	USDA
22	Riviere de la Riviere	100.0	33	33	Riviere de la Riviere	33	USDA
23	Riviere de la Riviere	100.0	34	34	Riviere de la Riviere	34	USDA
24	Riviere de la Riviere	100.0	35	35	Riviere de la Riviere	35	USDA
25	Riviere de la Riviere	100.0	36	36	Riviere de la Riviere	36	USDA
26	Riviere de la Riviere	100.0	37	37	Riviere de la Riviere	37	USDA
27	Riviere de la Riviere	100.0	38	38	Riviere de la Riviere	38	USDA
28	Riviere de la Riviere	100.0	39	39	Riviere de la Riviere	39	USDA
29	Riviere de la Riviere	100.0	40	40	Riviere de la Riviere	40	USDA
30	Riviere de la Riviere	100.0	41	41	Riviere de la Riviere	41	USDA
31	Riviere de la Riviere	100.0	42	42	Riviere de la Riviere	42	USDA
32	Riviere de la Riviere	100.0	43	43	Riviere de la Riviere	43	USDA
33	Riviere de la Riviere	100.0	44	44	Riviere de la Riviere	44	USDA
34	Riviere de la Riviere	100.0	45	45	Riviere de la Riviere	45	USDA
35	Riviere de la Riviere	100.0	46	46	Riviere de la Riviere	46	USDA
36	Riviere de la Riviere	100.0	47	47	Riviere de la Riviere	47	USDA
37	Riviere de la Riviere	100.0	48	48	Riviere de la Riviere	48	USDA
38	Riviere de la Riviere	100.0	49	49	Riviere de la Riviere	49	USDA
39	Riviere de la Riviere	100.0	50	50	Riviere de la Riviere	50	USDA
40	Riviere de la Riviere	100.0	51	51	Riviere de la Riviere	51	USDA
41	Riviere de la Riviere	100.0	52	52	Riviere de la Riviere	52	USDA
42	Riviere de la Riviere	100.0	53	53	Riviere de la Riviere	53	USDA
43	Riviere de la Riviere	100.0	54	54	Riviere de la Riviere	54	USDA
44	Riviere de la Riviere	100.0	55	55	Riviere de la Riviere	55	USDA
45	Riviere de la Riviere	100.0	56	56	Riviere de la Riviere	56	USDA
46	Riviere de la Riviere	100.0	57	57	Riviere de la Riviere	57	USDA
47	Riviere de la Riviere	100.0	58	58	Riviere de la Riviere	58	USDA
48	Riviere de la Riviere	100.0	59	59	Riviere de la Riviere	59	USDA
49	Riviere de la Riviere	100.0	60	60	Riviere de la Riviere	60	USDA
50	Riviere de la Riviere	100.0	61	61	Riviere de la Riviere	61	USDA
51	Riviere de la Riviere	100.0	62	62	Riviere de la Riviere	62	USDA
52	Riviere de la Riviere	100.0	63	63	Riviere de la Riviere	63	USDA
53	Riviere de la Riviere	100.0	64	64	Riviere de la Riviere	64	USDA
54	Riviere de la Riviere	100.0	65	65	Riviere de la Riviere	65	USDA
55	Riviere de la Riviere	100.0	66	66	Riviere de la Riviere	66	USDA
56	Riviere de la Riviere	100.0	67	67	Riviere de la Riviere	67	USDA
57	Riviere de la Riviere	100.0	68	68	Riviere de la Riviere	68	USDA
58	Riviere de la Riviere	100.0	69	69	Riviere de la Riviere	69	USDA
59	Riviere de la Riviere	100.0	70	70	Riviere de la Riviere	70	USDA
60	Riviere de la Riviere	100.0	71	71	Riviere de la Riviere	71	USDA
61	Riviere de la Riviere	100.0	72	72	Riviere de la Riviere	72	USDA
62	Riviere de la Riviere	100.0	73	73	Riviere de la Riviere	73	USDA
63	Riviere de la Riviere	100.0	74	74	Riviere de la Riviere	74	USDA
64	Riviere de la Riviere	100.0	75	75	Riviere de la Riviere	75	USDA
65	Riviere de la Riviere	100.0	76	76	Riviere de la Riviere	76	USDA
66	Riviere de la Riviere	100.0	77	77	Riviere de la Riviere	77	USDA
67	Riviere de la Riviere	100.0	78	78	Riviere de la Riviere	78	USDA
68	Riviere de la Riviere	100.0	79	79	Riviere de la Riviere	79	USDA
69	Riviere de la Riviere	100.0	80	80	Riviere de la Riviere	80	USDA
70	Riviere de la Riviere	100.0	81	81	Riviere de la Riviere	81	USDA
71	Riviere de la Riviere	100.0	82	82	Riviere de la Riviere	82	USDA
72	Riviere de la Riviere	100.0	83	83	Riviere de la Riviere	83	USDA
73	Riviere de la Riviere	100.0	84	84	Riviere de la Riviere	84	USDA
74	Riviere de la Riviere	100.0	85	85	Riviere de la Riviere	85	USDA
75	Riviere de la Riviere	100.0	86	86	Riviere de la Riviere	86	USDA
76	Riviere de la Riviere	100.0	87	87	Riviere de la Riviere	87	USDA
77	Riviere de la Riviere	100.0	88	88	Riviere de la Riviere	88	USDA
78	Riviere de la Riviere	100.0	89	89	Riviere de la Riviere	89	USDA
79	Riviere de la Riviere	100.0	90	90	Riviere de la Riviere	90	USDA
80	Riviere de la Riviere	100.0	91	91	Riviere de la Riviere	91	USDA
81	Riviere de la Riviere	100.0	92	92	Riviere de la Riviere	92	USDA
82	Riviere de la Riviere	100.0	93	93	Riviere de la Riviere	93	USDA
83	Riviere de la Riviere	100.0	94	94	Riviere de la Riviere	94	USDA
84	Riviere de la Riviere	100.0	95	95	Riviere de la Riviere	95	USDA
85	Riviere de la Riviere	100.0	96	96	Riviere de la Riviere	96	USDA
86	Riviere de la Riviere	100.0	97	97	Riviere de la Riviere	97	USDA
87	Riviere de la Riviere	100.0	98	98	Riviere de la Riviere	98	USDA
88	Riviere de la Riviere	100.0	99	99	Riviere de la Riviere	99	USDA
89	Riviere de la Riviere	100.0	100	100	Riviere de la Riviere	100	USDA

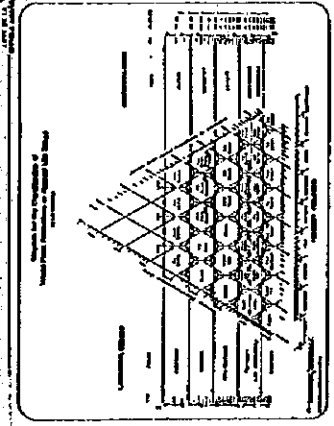
降雨量及び下水処理施設表示図



**SOURCE OF DATA AND METHODOLOGY**  
 Based on field studies, measurements of biomass, and other data collected during the 1960s and 1970s. The map was prepared by the U.S. Fish and Wildlife Service, Washington, D.C.

**SAINT LUCIA**  
**Life Zones**  
 Scale 1:50,000  
**ORGANIZATION OF AMERICAN STATES**  
 Prepared for the Organization of American States by the U.S. Fish and Wildlife Service, Washington, D.C.

**CONVENTIONAL SIGNS**  
 \*  
 (Symbol for a specific feature)



**LEGEND**

Life Zone	Symbol	Description
1	(Symbol)	Subtropical forest
2	(Symbol)	Subtropical forest
3	(Symbol)	Subtropical forest
4	(Symbol)	Subtropical forest
5	(Symbol)	Subtropical forest
6	(Symbol)	Subtropical forest
7	(Symbol)	Subtropical forest
8	(Symbol)	Subtropical forest
9	(Symbol)	Subtropical forest
10	(Symbol)	Subtropical forest
11	(Symbol)	Subtropical forest
12	(Symbol)	Subtropical forest
13	(Symbol)	Subtropical forest
14	(Symbol)	Subtropical forest
15	(Symbol)	Subtropical forest
16	(Symbol)	Subtropical forest
17	(Symbol)	Subtropical forest
18	(Symbol)	Subtropical forest
19	(Symbol)	Subtropical forest
20	(Symbol)	Subtropical forest
21	(Symbol)	Subtropical forest
22	(Symbol)	Subtropical forest
23	(Symbol)	Subtropical forest
24	(Symbol)	Subtropical forest
25	(Symbol)	Subtropical forest
26	(Symbol)	Subtropical forest
27	(Symbol)	Subtropical forest
28	(Symbol)	Subtropical forest
29	(Symbol)	Subtropical forest
30	(Symbol)	Subtropical forest
31	(Symbol)	Subtropical forest
32	(Symbol)	Subtropical forest
33	(Symbol)	Subtropical forest
34	(Symbol)	Subtropical forest
35	(Symbol)	Subtropical forest
36	(Symbol)	Subtropical forest
37	(Symbol)	Subtropical forest
38	(Symbol)	Subtropical forest
39	(Symbol)	Subtropical forest
40	(Symbol)	Subtropical forest
41	(Symbol)	Subtropical forest
42	(Symbol)	Subtropical forest
43	(Symbol)	Subtropical forest
44	(Symbol)	Subtropical forest
45	(Symbol)	Subtropical forest
46	(Symbol)	Subtropical forest
47	(Symbol)	Subtropical forest
48	(Symbol)	Subtropical forest
49	(Symbol)	Subtropical forest
50	(Symbol)	Subtropical forest

生物分布图





## 4. 収集資料リスト









\*\*\*\*\*

**\* 取 集 資 料 リ ス ト \***

\*\*\*\*\*

1. セントルシア案内一般資料

- (1) Saint Lucia, Helen of the West Indies
- (2) A Visitor's Guide to St. Lucia Patois
- (3) Liat Islander, 33 Sept. 1994
- (4) Liat, The Caribbean Airline Time Table, 31 Oct. 94 to 01 April, 95
- (5) VIDEO, "The New Images of St. Lucia, the Helen of The West Indies"
- (6) St. Lucia General Information (1993)
- (7) 1994 Road Map St. Lucia
- (8) セント・ルシア概要 (在トリニダッド・トバゴ日本大使館発行)

2. 年報等政府刊行物

- (1) Staff Orders for The Public Service of Saint Lucia
- (2) Saint Lucia Gazette, Vol. 164. 7th Jan., 1995
- (3) Saint Lucia Yearbook, 1994
- (4) Organization of The Government of St. Lucia
- (5) Organization of The Government of St. Lucia
- (6) The Map of "Land Distribution and Tenure", Scale 1: 50,000
- (7) The Map of "Land Capability", Scale 1: 50,000
- (8) The Map of "Life Zones", Scale 1: 50,000
- (9) The Map of "Rainfall and Drainage System", Scale 1: 50,000
- (10) The Map of "Land Use and Vegetation", Scale 1: 50,000
- (11) The Map of "Geology", Scale 1: 50,000
- (12) The Map of "Human Settlements", Scale 1: 50,000
- (13) The Map of "Saint Lucia", Scale 1: 120,000 (2部)
- (14) Budget Address by The Right Honourable Mr. John G.M. Compton, April 19, 1994
- (15) Caricom Trade Annual 1991

- (16) Labour Force Report as at November 1992
- (17) Vital Statistics Report -1992-
- (18) Annual Statistical Digest 1991
- (19) Estimates of Saint Lucia 1994/95
- (20) Economic and Social Review 1992
- (21) Statistical Digest 1992-1993
- (22) Allocation of Portfolios to Ministers
- (23) St.Lucia Medium Term Economic Strategy Paper 1993-1996
- (24) Estimated Fish Landing for Saint Lucia 1993

### 3. 医療関係

- (1) Present Structure for The Nursing Staff at Victoria Hospital
- (2) Pamphlet "Keep Your Child Safe"
- (3) Pamphlet "Pregnancy and AIDS"
- (4) Pamphlet "Life or Death"
- (5) Pamphlet "Taking Care of Ourselves and Our Families"

### 4. 教育関係

- (1) Total Primary School Enrolment and Staffing by School and District
- (2) Private Secondary School/Institutions, Enrolment and Staffing, 1992/1993
- (3) Students Monthly Attendance Rate
- (4) Sir Arthur Lewis Community College, Prospectus 1994-1995

### 5. その他

- (1) Pamphlet "Toyota 4-Runner", "Toyota Hiage", "Honda Accord", "Honda Civic", "Toyota Land Cruiser", "Toyota Corolla"
- (2) Peace Corps St.Lucia
- (3) Briefing Paper - Peace Corps/Eastern Caribbean November, 1992
- (4) Tropical Island Real Estate







JICA

