

National Accounts estimates (1992-1995) (March 1995 estimates)

Introduction

This first issue of National Accounts estimates presents revised figures for the years 1992 and 1993, preliminary estimates for 1994 and a forecast for the current year, 1995.

2. Summary

Preliminary estimates of the Gross Domestic Product (GDP) for the year 1994, based on employment, trade and production data now available, show that the economy last year maintained a growth rate of 5% in spite of the negative impact of cyclone Hollanda on the agricultural sector.

A forecast of the likely performance in the key sectors of the economy in particular Sugar, EPZ and Tourism for the current year points to an overall growth of 5.9% in 1995. This higher rate is based on the assumption of a recovery in the sugar sector with production reaching around 600,000 tonnes against a low yield of 500,000 tonnes in 1994.

3. National Accounts Estimates, 1994

3.1 Output

GDP at current factor cost increased by 12.8% in nominal terms from Rs 46,452 million in 1993 to Rs 52,394 million in 1994. As indirect taxes net of subsidies totalled Rs 9,150 million, GDP at market prices reached Rs 61,544 million. The real growth rate, which measures the change in the volume of production, worked out to 5% in 1994, the same rate as in the previous year.

Gross National Product (GNP)^I at market prices which takes account of movements of factor incomes between Mauritius and the rest of the world amounted to Rs 61,144 million. This shows a net outflow of Rs 400 million to the rest of the world compared to a net inflow of Rs 63 million in 1993. GNP per capita reached Rs 56,794 in 1994, representing a nominal increase of about 10 % over 1993.

3.2 Sectoral growth

All sectors, with the exception of Agriculture, registered positive growth rates ranging between 4% and 8%.

Net output in the Agricultural sector, severely affected by cyclone Hollanda, declined by 6.8%. This decrease was due to the combined effect of a low sugar crop of 500,000 tonnes and a 2% drop in the production of other agricultural food crops.

EPZ trade data now available show that in 1994, EPZ exports increased by 4.6% from Rs 15,821 million to Rs 16,545 million. It is worth pointing out that in 1993, EPZ exports were 20% higher than in 1992. The growth rate in the EPZ sector is estimated at 4% in 1994 compared to 6% in 1993.

On the other hand, production of the Non-EPZ manufacturing sector grew by 9.3 % as a result of expansion of existing industries and the setting up of new enterprises.

Activities in the "Restaurants & Hotels" sector which are highly dependent on tourist arrivals, are estimated to have grown by 8%; 400,500 tourists visited the country in 1994 against 374,630 in 1993.

The "Wholesale & Retail trade" sector maintained a growth of 6% , in line with the higher level of consumption.

Major developments were observed in the "Transport, Storage and Communication" sector where a 7.5% growth was registered following expansions in the telecommunication and air transport services.

Activities in the "Banking, Insurance and Business services" sector remained buoyant at 8%.

The remaining two sectors, namely "Construction" and "Other Services" sectors maintained growth rates of 7% and 8% respectively.

3.3 Consumption and Savings

Total final consumption expenditure progressed by 14% in nominal terms from Rs 41,593 million in 1993 to Rs 47,431 million in 1994 and represented 77.1% of GDP at market prices. In real terms, aggregate consumption increased by 5.4% over 1993.

The bulk of this amount (83.3%) comprised consumption by households which totalled Rs 39,496 million, the remainder (Rs 7,935 million) being Government consumption.

Consequently, Gross Domestic Savings, the difference between GDP at market prices and consumption expenditure, yielded Rs 14,113 million in 1994, a 6.2% increase over 1993 (Rs 13,283 million). The Savings Rate which is the ratio of Domestic Savings to GDP at market prices declined further from 24.2% in 1993 to 22.9% in 1994.

3.4 Cost component

The share of compensation of employees in the GDP has shown a slight and steady improvement from 48% in 1992 to 48.8% in 1994. The total wage bill amounted to Rs 25,550 million of which government's share was Rs 6,400 million. Wages, salaries and other allowances paid by Government increased by about 20% both in 1993 and 1994 following the implementation of the PRB report.

3.5 Investment

Investment, defined as Gross Domestic Fixed Capital Formation , picked up significantly in nominal terms by 21.6% to reach Rs 19,260 million in 1994 from Rs 15,835 million in 1993. After elimination of price effects estimated at 8%, investment grew by 12.4 % in real terms. The investment figure of 1994 comprised the purchase of an aircraft worth around Rs 2,000 million . Excluding the aircraft, investment in volume terms increased by 3.3% against 4.9% in 1993.

Investment level , i.e. the ratio of GDFCF to GDP at market prices, in 1994 consequently attained 31.3% compared to 28.4% and 28.9 % in 1992 and 1993 respectively.

Expenditure on construction, valued at Rs 10,120 million at current prices, increased by 6% in real terms. Compared to 1993, it is observed that in volume terms the construction of residential buildings stagnated, whereas increases of 12% and 11% were recorded in construction of non-residential buildings and other construction works respectively.

Investment in capital goods (transport equipment and machinery), amounted to Rs 9,140 million compared to Rs 6,945 million in 1993. Capital expenditure on transport materials rose substantially with the purchase of a new aircraft, taxis and contract vehicles. For the component, "machinery & equipment", the increase was largely attributable to disbursements for a turbine and telecommunication equipment.

Details on investment by industrial use show higher investment in all sectors with the exception of the EPZ sector.

The share of public sector in GDFCF, which totalled Rs 7,385 million, shot up from 27.4 % in 1993 to 38.3 % in 1994, as a result of the purchase of an aircraft. The remaining 62% or Rs 11,875 million was contributed by the private sector.

4. National Accounts Estimates, 1995 (First forecast)

4.1 Output

Information received from various sources on the likely size of the 1995 sugar crop shows that sugar production may lie between 570,000 and 625,000 tonnes. Sugar production is assumed at 600,000 tonnes for this forecasting exercise.

There are indications of a slight decline in the growth rates of the EPZ, Tourism and Construction sectors.

On the basis of the above factors and on past trends, the overall growth rate of the economy is forecast at 5.9% in 1995.

The following assumptions on the key sectors of the economy have been used for the forecast:

<u>Sector</u>	<u>Assumption</u>	<u>Growth Rate</u>
a) Sugar	Production of around 600,000 tonnes	+ 18%
b) EPZ	Exports of around Rs 17,500 million	+ 3%
c) Construction		+ 4%
d) Tourism	425,000 tourists and expected tourist earnings to reach Rs 6,700 million	+ 6%

4.2 Consumption and Savings

Final consumption expenditure may rise by about 11% to reach Rs 52,810 million. However, in real terms, the growth of aggregate consumption will decline from 5.4% in 1994 to 5% in 1995.

Gross Domestic Savings will therefore amount to Rs 14,890 million and the Savings Rate will show a further decline from 22.9% in 1994 to 22% in 1995.

4.3 Investment

The GDFCF is forecast to reach Rs 18,300 million compared to Rs 19,260 million showing a decline of 5% in nominal terms. However, if the purchase of the aircraft in 1994 is excluded, GDFCF shows an increase of 6% in nominal terms and 2.7% in real terms.

Consequently, investment level will fall to 27% from 31.3% in 1994. The share of public sector in GDFCF will be 30% and amount to Rs 5,510 million.

Central Statistical Office,
Ministry of Economic Planning and Development
PORT LOUIS

April , 1995

Technical Notes

1. Gross Domestic Product(GDP)

GDP is the aggregate money value of all goods & services produced within the country out of economic activity during a specified period usually a year.

(ii) GDP at market prices is obtained by adding net indirect taxes (indirect taxes - subsidies) to GDP at factor cost.

(iii) Gross National Product(GNP) consists of GDP and net factor income(factor income received less factor income paid) from the rest of the world.

2. Gross Domestic Fixed Capital Formation(GDFCF)

GDFCF is the net additions to the physical assets of the country. These consist mainly of buildings, plants, machinery and transport equipment and are valued at market prices.

3. Private final consumption expenditure.

Private final consumption expenditure consists of net expenditure on goods & services consumed by households and private non profit institutions serving households.

4. Government final consumption expenditure.

Government final consumption expenditure is the value of goods & services produced by Government for its own use on current account.

5. Gross Domestic Savings

Gross Domestic Savings is obtained after subtracting total consumption expenditure from GDP at market prices.

6. Savings rate

Savings rate is the percentage of Gross Domestic Savings to GDP at market prices.

7. Estimates at constant prices

In order to assess the real change, i.e change in volume between two time periods, National Accounts aggregates such as GDP, GDFCF are revalued so as to eliminate the effects of price changes during the time interval. The aggregates at constant prices are obtained by deflating the current values by appropriate price indices (deflators).

Fig 1 - GDP at current factor cost and GDP growth rate

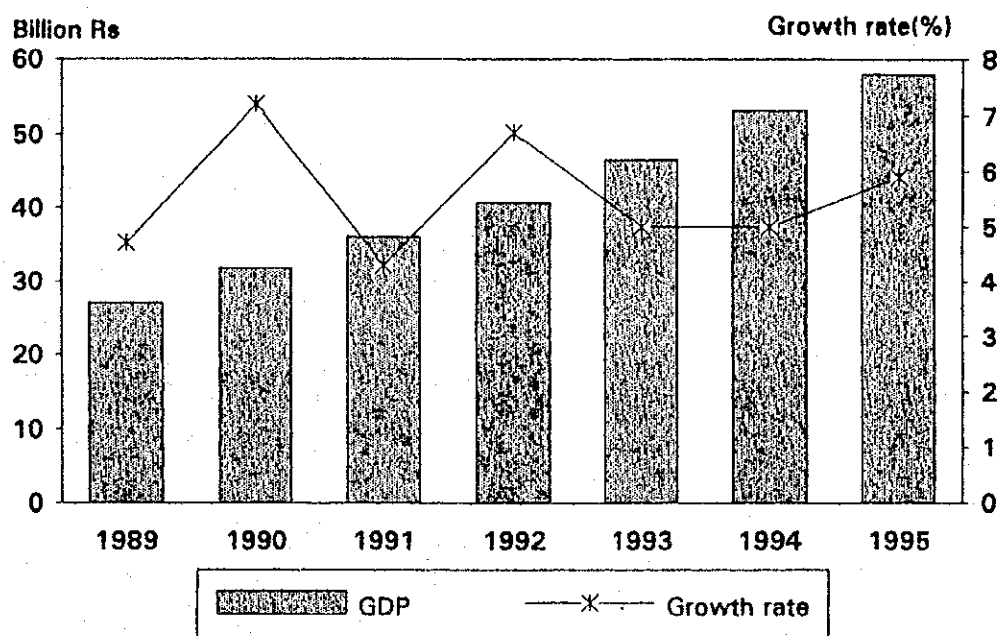


Fig II - Sectoral composition of GDP, 1994

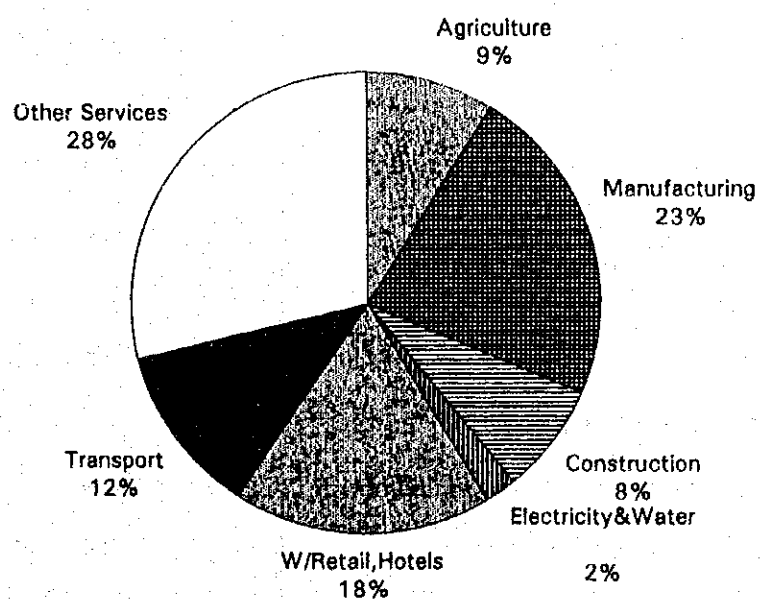


Table 1 - Main National Accounts aggregates, 1992-1995

	Unit	1992	1/ 1993	2/ 1994	3/ 1995
1. Gross Domestic Product (GDP)					
at factor cost	Rs M	40,686	46,452	52,394	58,000
at market prices	Rs M	47,926	54,877	61,544	67,700
Net factor income from the rest of the world	Rs M	+171	+63	-400	-425
Gross National Product (GNP)					
at factor cost	Rs M	40,857	46,515	51,994	57,575
at market prices	Rs M	48,097	54,940	61,144	67,275
2. Per capita GNP					
at factor cost	Rs	38,913	43,766	48,295	52,427
at market prices	Rs	45,808	51,693	56,794	61,259
3. Compensation of employees	Rs M	19,542	22,410	25,550	28,300
4. Final consumption expenditure	Rs M	35,836	41,593	47,431	52,810
private (households)	Rs M	(30,336)	(34,973)	(39,496)	(44,095)
government	Rs M	(5,500)	(6,620)	(7,935)	(8,715)
5. Gross Domestic Fixed Capital Formation (GDFCF)	Rs M	13,630	15,835	19,260	18,300
private sector	Rs M	(8,980)	(11,500)	(11,875)	(12,790)
public sector	Rs M	(4,650)	(4,335)	(7,385)	(5,510)
6. Gross domestic savings	Rs M	12,090	13,283	14,113	14,890
7. Net exports of goods & non-factor services	Rs M	-1,627	-3,505	-5,490	-3,840
Exports of goods & non-factor services	Rs M	29,759	33,515	36,260	39,160
Imports of goods & non-factor services	Rs M	31,386	37,020	41,750	43,000

1/ revised estimates

2 / preliminary estimates

3/ first forecast

Table 2 - Growth rates and ratios, 1992-1995

	1992	1993 ^{1/}	1994 ^{2/}	1995 ^{3/}
	(%)	(%)	(%)	(%)
1. Annual real growth rate of :				
Gross Domestic Product (GDP) at factor cost	+6.7	+5.0	+5.0	+5.9
Final consumption expenditure	+4.9	+5.3	+5.4	+5.0
<i>Private</i>	+5.0	+5.2	+5.3	+4.9
<i>Government</i>	+4.8	+5.9	+6.2	+6.0
Gross Domestic Fixed Capital Formation (GDFCF)	+5.3	+4.7	+12.4	- 7.7
GDFCF (excluding aircraft and marine vessel)	+3.5	+4.9	+3.3	+2.7
2. Ratios				
Compensation of employees as a % of GDP at factor cost	48.0	48.2	48.8	48.8
Final consumption expenditure as a % of GDP at market prices	74.8	75.8	77.1	78.0
<i>Private</i>	63.3	63.7	64.2	65.1
<i>Government</i>	11.5	12.1	12.9	12.9
GDFCF as a % of GDP at market prices	28.4	28.9	31.3	27.0
Public sector's investment as a % of GDFCF	34.1	27.4	38.3	30.1
Gross domestic savings as a % of GDP at market prices	25.2	24.2	22.9	22.0

1/ revised estimates

2/ preliminary estimates

3/ first forecast

Table 3 - Gross Domestic Product by industry group at current factor cost , 1992-1995
(Rs million)

	1992	1993 ^{1/}	1994 ^{2/}	1995 ^{3/}
Agriculture, hunting, forestry and fishing	4,464	4,519	4,750	5,460
Sugar	(2,906)	(2,729)	(2,850)	(3,465)
Other	(1,558)	(1,790)	(1,900)	(1,995)
Mining and quarrying	54	65	76	85
Manufacturing	9,361	10,676	11,738	12,830
Sugar	(821)	(775)	(815)	(990)
E.P.Z	(5,000)	(5,745)	(6,154)	(6,530)
Other	(3,540)	(4,156)	(4,769)	(5,310)
Electricity , gas and water	950	1,205	1,251	1,375
Construction	3,005	3,485	3,990	4,315
Wholesale & retail trade , restaurants and hotels	6,900	8,115	9,240	10,365
Wholesale and retail trade	(5,500)	(6,415)	(7,275)	(8,175)
Restaurants and hotels	(1,400)	(1,700)	(1,965)	(2,190)
Transport , storage and communication	4,810	5,430	6,321	7,000
Financing, insurance, real estate and business services	4,972	5,557	6,186	6,810
Ownership of dwellings	(2,500)	(2,756)	(3,010)	(3,240)
Other	(2,472)	(2,801)	(3,176)	(3,570)
Producers of government services	4,005	4,875	5,925	6,470
Other services	2,165	2,525	2,917	3,290
Gross Domestic Product at factor cost	40,686	46,452	52,394	58,000
Indirect taxes (net of subsidies)	7,240	8,425	9,150	9,700
Gross Domestic Product at market prices	47,926	54,877	61,544	67,700

1/ revised estimates

2/ preliminary estimates

3/ first forecast

Table 4 - Gross Domestic Product by Industry group at constant 1992 prices, 1992-1995

	(Rs million)			
	1992	1993 ^{1/}	1994 ^{2/}	1995 ^{3/}
Agriculture, hunting, forestry and fishing	4,464	4,143	3,863	4,263
Sugar	(2,906)	(2,470)	(2,223)	(2,623)
Other	(1,558)	(1,673)	(1,640)	(1,640)
Mining and quarrying	54	59	64	69
Manufacturing	9,361	9,850	10,349	10,881
Sugar	(821)	(706)	(635)	(750)
E.P.Z	(5,000)	(5,300)	(5,512)	(5,677)
Other	(3,540)	(3,844)	(4,202)	(4,454)
Electricity, gas and water	950	1,051	1,111	1,163
Construction	3,005	3,185	3,408	3,545
Wholesale & retail trade, restaurants and hotels	6,900	7,439	7,916	8,329
Wholesale and retail trade	(5,500)	(5,885)	(6,238)	(6,550)
Restaurants and hotels	(1,400)	(1,554)	(1,678)	(1,779)
Transport, storage and communication	4,810	5,147	5,533	5,892
Financing, insurance, real estate and business services	4,972	5,266	5,585	5,910
Ownership of dwellings	(2,500)	(2,600)	(2,704)	(2,799)
Other	(2,472)	(2,666)	(2,881)	(3,111)
Producers of government services	4,005	4,205	4,458	4,680
Other services	2,165	2,360	2,549	2,740
Gross Domestic Product at factor cost	40,686	42,705	44,836	47,472
Indirect taxes (net of subsidies)	7,240	7,880	8,116	8,360
Gross Domestic Product at market prices	47,926	50,585	52,952	55,832

1/ revised estimates

2/ preliminary estimates

3/ first forecast

Table 5 - Gross domestic product - sectoral growth rates (% change over previous year)

	1992	1993 ^{1/}	1994 ^{2/}	1995 ^{3/}
Agriculture, hunting, forestry and fishing	+6.5	-7.2	-6.8	+10.4
Sugar	(+7.1)	(-15.0)	(-10.0)	(+18.0)
Other	(+5.4)	(+7.4)	(-2.0)	(+0.0)
Mining and quarrying	+10.0	+10.0	+8.0	+8.0
Manufacturing	+6.6	+5.2	+5.1	+5.1
Sugar	(+8.1)	(-14.0)	(-10.0)	(+18.0)
E.P.Z	(+6.0)	(+6.0)	(+4.0)	(+3.0)
Other	(+7.0)	(+8.6)	(+9.3)	(+6.0)
Electricity, gas and water	+5.0	+10.6	+5.7	+4.7
Construction	+10.0	+6.0	+7.0	+4.0
Wholesale & retail trade, restaurants and hotels	+6.8	+7.8	+6.4	+5.2
Wholesale and retail trade	(+6.0)	(+7.0)	(+6.0)	(+5.0)
Restaurants and hotels	(+10.0)	(+11.0)	(+8.0)	(+6.0)
Transport, storage and communication	+8.0	+7.0	+7.5	+6.5
Financing, insurance, real estate and business services	+5.5	+5.9	+6.0	+5.8
Ownership of dwellings	(+4.0)	(+4.0)	(+4.0)	(+3.5)
Other	(+7.1)	(+7.9)	(+8.0)	(+8.0)
Producers of government services	+4.0	+5.0	+6.0	+5.0
Other services	+9.0	+9.0	+8.0	+7.5
Gross Domestic Product at factor cost	+6.7	+5.0	+5.0	+5.9

1/ revised estimates

2/ preliminary estimates

3/ first forecast

Table 6 - Gross domestic product by industry group - sectoral volume indices, 1992 - 1995

	1992	1/ 1993	2/ 1994	3/ 1995
	(Base year = 1992)			
Agriculture, hunting, forestry and fishing	100.0	92.8	86.5	95.5
Sugar	(100.0)	(85.0)	(76.5)	(90.3)
Other	(100.0)	(107.4)	(105.3)	(105.3)
Mining and quarrying	100.0	110.0	118.8	128.3
Manufacturing	100.0	105.2	110.6	116.2
Sugar	(100.0)	(86.0)	(77.4)	(91.3)
E.P.Z	(100.0)	(106.0)	(110.2)	(113.5)
Other	(100.0)	(108.6)	(118.7)	(125.8)
Electricity, gas and water	100.0	110.6	116.9	122.4
Construction	100.0	106.0	113.4	118.0
Wholesale & retail trade, restaurants and hotels	100.0	107.8	114.7	120.7
Wholesale and retail trade	(100.0)	(107.0)	(113.4)	(119.1)
Restaurants and hotels	(100.0)	(111.0)	(119.9)	(127.1)
Transport, storage and communication	100.0	107.0	115.0	122.5
Financing, insurance, real estate and business services	100.0	105.9	112.3	118.9
Ownership of dwellings	(100.0)	(104.0)	(108.2)	(111.9)
Other	(100.0)	(107.9)	(116.5)	(125.9)
Producers of government services	100.0	105.0	111.3	116.9
Other services	100.0	109.0	117.7	126.5
Gross Domestic Product at factor cost	100.0	105.0	110.2	116.7
Annual growth rates of the gross domestic product (%)	+ 6.7	+ 5.0	+ 5.0	+ 5.9

1/ revised estimates

2/ preliminary estimates

3/ first forecast

Table 7 - Gross domestic product by industry group - sectoral deflators, 1992- 1995

	1992	1993 ^{1/}	1994 ^{2/}	1995 ^{3/}
	(Base year = 1992)			
Agriculture, hunting, forestry and fishing	100.0	109.1	123.0	128.1
Sugar	(100.0)	(110.5)	(128.2)	(132.1)
Other	(100.0)	(107.0)	(115.9)	(121.7)
Mining and quarrying	100.0	110.0	117.7	122.0
Manufacturing	100.0	108.4	113.4	117.9
Sugar	(100.0)	(109.8)	(128.2)	(132.1)
E.P.Z	(100.0)	(108.4)	(111.7)	(115.0)
Other	(100.0)	(108.1)	(113.5)	(119.2)
Electricity , gas and water	100.0	114.7	112.6	118.3
Construction	100.0	109.4	117.1	121.7
Wholesale & retail trade , restaurants and hotels	100.0	109.1	116.7	124.4
Wholesale and retail trade	(100.0)	(109.0)	(116.6)	(124.8)
Restaurants and hotels	(100.0)	(109.4)	(117.1)	(123.1)
Transport , storage and communication	100.0	105.5	114.2	118.8
Financing, insurance, real estate and business services	100.0	105.6	110.8	115.2
Ownership of dwellings	(100.0)	(106.0)	(111.3)	(115.8)
Other	(100.0)	(105.0)	(110.3)	(114.8)
Producers of government services	100.0	115.9	132.9	138.2
Other services	100.0	107.0	114.5	120.1
Gross Domestic Product at factor cost	100.0	108.8	116.9	122.2
Indirect taxes (net of subsidies)	100.0	106.9	112.7	116.0
Gross Domestic Product at market prices	100.0	108.5	116.2	121.3

1/ revised estimates

2/ preliminary estimates

3/ first forecast

Table 8 - Expenditure on Gross Domestic Product at current prices, 1992-1995

	(Rs million)			
	1992	1993 ^{1/}	1994 ^{2/}	1995 ^{3/}
Final consumption expenditure on goods and services	35,836	41,593	47,431	52,810
Private	(30,336)	(34,973)	(39,496)	(44,095)
General government	(5,500)	(6,620)	(7,935)	(8,715)
Gross domestic fixed capital formation	13,630	15,835	19,260	18,300
Private sector	(8,980)	(11,500)	(11,875)	(12,790)
Public sector	(4,650)	(4,335)	(7,385)	(5,510)
Increase in stocks*	87	954	343	430
Exports of goods & non-factor services	29,759	33,515	36,260	39,160
Goods (f.o.b)	(20,272)	(22,992)	(24,080)	(25,660)
Non-factor services	(9,487)	(10,523)	(12,180)	(13,500)
Less Imports of goods & non-factor services	31,386	37,020	41,750	43,000
Goods (f.o.b)	(22,931)	(27,507)	(31,350)	(32,000)
Non-factor services	(8,455)	(9,513)	(10,400)	(11,000)
Gross Domestic Product at market prices	47,926	54,877	61,544	67,700

Table 9-Expenditure on Gross Domestic Product at constant 1992 prices, 1992-1995

	(Rs million)			
	1992	1993 ^{1/}	1994 ^{2/}	1995 ^{3/}
		(Base year = 1992)		
Final consumption expenditure on goods and services	35,836	37,732	39,774	41,779
Private	(30,336)	(31,907)	(33,688)	(35,222)
General government	(5,500)	(5,825)	(6,186)	(6,557)
Gross Domestic Fixed Capital Formation	13,630	14,265	16,040	14,810
Private sector	(8,980)	(10,360)	(9,890)	(10,350)
Public sector	(4,650)	(3,905)	(6,150)	(4,460)
Increase in stocks*	87	115	26	495
Exports of goods & non-factor services	29,759	32,145	32,685	33,815
Less Imports of goods & non-factor services	31,386	33,672	35,573	35,067
Gross Domestic Product at market prices	47,926	50,585	52,952	55,832

1/ revised estimates

2/ preliminary estimates

3/ first forecast

* includes all statistical discrepancies

Table 10-Cost components of the Gross Domestic Product at current prices, 1992-1995

(Rs million)				
	1992	1993 ^{1/}	1994 ^{2/}	1995 ^{3/}
Compensation of employees	19,542	22,410	25,550	28,300
of which paid by government*	(4,418)	(5,323)	(6,400)	(7,000)
Gross operating surplus	21,144	24,042	26,844	29,700
of which government industries	(88)	(104)	(100)	(100)
Consumption of fixed capital
Gross domestic product at factor cost	40,686	46,452	52,394	58,000
Net indirect taxes	7,240	8,425	9,150	9,700
Indirect taxes	(7,718)	(8,740)	(9,350)	(9,900)
less subsidies	(478)	(315)	(200)	(200)
Gross domestic product at market prices	47,926	54,877	61,544	67,700

1/ revised estimates

2/ preliminary estimates

3/ first forecast

* Includes producers of government services, government industries and departmental enterprises

**Table 11 - Gross Domestic Fixed Capital Formation at current prices
by type and use, 1992-1995**

	(Rs million)			
	1992	1993 ^{1/}	1994 ^{2/}	1995 ^{3/}
I - By type of capital goods				
A. Building & construction work	<u>7,745</u>	<u>8,890</u>	<u>10,120</u>	<u>10,700</u>
Residential building	3,750	4,435	4,750	4,900
Non-residential building	2,370	2,700	3,270	3,500
Other construction work	1,625	1,755	2,100	2,300
B. Machinery and equipment	<u>5,885</u>	<u>6,945</u>	<u>9,140</u>	<u>7,600</u>
Passenger car	575	640	890	900
Other transport equipment	1,200	1,205	2,700	1,050
Other machinery and equipment	4,110	5,100	5,550	5,650
Gross Domestic Fixed Capital Formation	13,630	15,835	19,260	18,300
II - By Industrial use				
Agriculture, hunting, forestry and fishing	585	595	620	715
Mining and quarrying	-	-	-	-
Manufacturing	1,900	2,640	2,610	2,680
of which : EPZ	(560)	(900)	(820)	(850)
Electricity, gas and water	1,210	550	895	985
Construction	295	415	475	465
Wholesale & retail trade, restaurants and hotels	1,585	1,765	2,265	2,605
Transport, storage and communication	2,260	2,905	4,625	3,085
Financing, insurance, real estate and business services	4,335	5,320	6,055	5,715
of which : Ownership of dwellings	(3,750)	(4,435)	(4,750)	(4,900)
Producers of government services	1,070	1,185	1,200	1,245
Other services	390	460	515	805

1/ final estimates

2/ preliminary estimates

3/ first forecast

Table 12 - Gross Domestic Fixed Capital Formation at constant 1992 prices by type and use, 1992-1995

	(Rs million)			
	1992	1993 ^{1/}	1994 ^{2/}	1995 ^{3/}
<u>I - By type of capital goods</u>				
A. Building & construction work	<u>7,745</u>	<u>8,150</u>	<u>8,625</u>	<u>8,825</u>
Residential building	3,750	4,070	4,075	4,080
Non-residential building	2,370	2,455	2,750	2,830
Other construction work	1,625	1,625	1,800	1,915
B. Machinery and other equipment	<u>5,885</u>	<u>6,115</u>	<u>7,415</u>	<u>5,985</u>
Passenger car	575	570	720	710
Other transport equipment	1,200	1,075	2,190	825
Other machinery and equipment	4,110	4,470	4,505	4,450
Gross Domestic Fixed Capital Formation	13,630	14,265	16,040	14,810
<u>II - By industrial use</u>				
Agriculture, hunting, forestry and fishing	585	535	510	570
Mining and quarrying	-	-	-	-
Manufacturing	1,900	2,325	2,125	2,120
of which : EPZ	(560)	(805)	(680)	(680)
Electricity, gas and water	1,210	500	755	805
Construction	295	365	385	370
Wholesale & retail trade, restaurants and hotels	1,585	1,585	1,875	2,090
Transport, storage and communication	2,260	2,615	3,815	2,480
Financing, insurance, real estate and business services	4,335	4,865	5,155	4,735
of which : Ownership of dwellings	(3,750)	(4,070)	(4,075)	(4,080)
Producers of government services	1,070	1,065	995	1,000
Other services	390	410	425	640

1/ final estimates

2/ preliminary estimates

3/ first forecast

Table 13 - Gross Domestic Fixed Capital Formation - Volume Indices, 1992 -1995

	1992	1993 ^{1/}	1994 ^{2/}	1995 ^{3/}
	(Base year = 1992)			
I - By type of capital goods				
A. Building & construction work	<u>100.0</u>	<u>105.2</u>	<u>111.4</u>	<u>113.9</u>
Residential building	100.0	108.5	108.7	108.8
Non-residential building	100.0	103.6	116.0	119.4
Other construction work	100.0	100.0	110.8	117.8
B. Machinery and equipment	<u>100.0</u>	<u>103.9</u>	<u>126.0</u>	<u>101.7</u>
Passenger car	100.0	99.1	125.2	123.5
Other transport equipment	100.0	89.6	182.5	68.8
Other machinery and equipment	100.0	108.8	109.6	108.3
Gross Domestic Fixed Capital Formation	100.0	104.7	117.7	108.7
Annual real growth rate of GDFCF (%)	+ 5.3	+4.7	+ 12.4	- 7.7
Growth rate excluding aircraft and marine vessel (%)	+ 3.5	+4.9	+ 3.3	+ 2.7

Table 14 - Gross Domestic Fixed Capital Formation - deflators, 1992-1995

	1992	1993 ^{1/}	1994 ^{2/}	1995 ^{3/}
	(Base year = 1992)			
I - By type of capital goods				
A. Building & construction work	<u>100.0</u>	<u>109.1</u>	<u>117.3</u>	<u>121.2</u>
Residential building	100.0	109.0	116.6	120.1
Non-residential building	100.0	110.0	118.9	123.7
Other construction work	100.0	108.0	116.7	120.1
B. Machinery and equipment	<u>100.0</u>	<u>113.6</u>	<u>123.3</u>	<u>127.0</u>
Passenger car	100.0	112.3	123.6	126.8
Other transport equipment	100.0	112.1	123.3	127.3
Other machinery and equipment	100.0	114.1	123.2	127.0
Gross Domestic Fixed Capital Formation	100.0	111.0	120.1	123.6

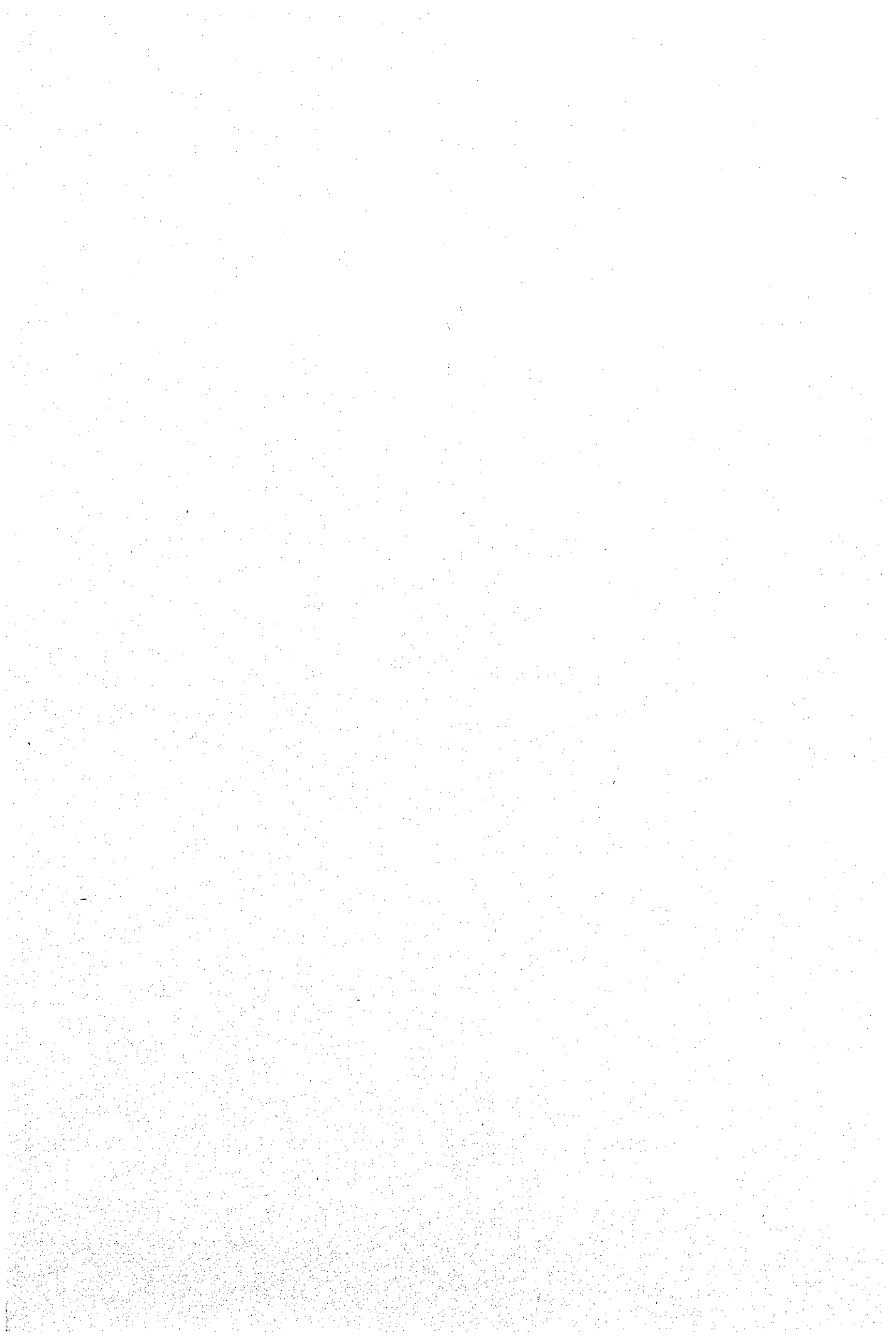
1/ final estimates

2/ preliminary estimates

3/ first forecast

Table 4 - Inflation rate (%) , 1975 - 1994

<u>Calendar year</u>	<u>Inflation rate</u>	<u>Financial year</u>	<u>Inflation rate</u>
1975	14.7	1974 - 75	20.6
1976	13.4	1975 - 76	14.7
1977	9.2	1976 - 77	9.6
1978	8.5	1977 - 78	10.1
1979	14.5	1978 - 79	8.0
1980	42.0	1979 - 80	33.0
1981	14.5	1980 - 81	26.5
1982	11.4	1981 - 82	13.4
1983	5.6	1982 - 83	7.5
1984	7.3	1983 - 84	5.6
1985	6.7	1984 - 85	8.3
1986	1.8	1985 - 86	4.3
1987	0.6	1986 - 87	0.7
1988	9.2	1987 - 88	1.5
1989	12.6	1988 - 89	16.0
1990	13.5	1989 - 90	10.7
1991	7.0	1990 - 91	12.8
1992	4.6	1991 - 92	2.9
1993	10.5	1992 - 93	8.9
1994	7.3	1993 - 94	9.4



Selected social and economic indicators, Island of Mauritius, 1976 - 1994

	1976	1977	1978	1979	1980	1981	1982	1983	1984	1985	1986	1987	1988	1989	1990	1991	1992	1993	1994
Population (Mid - year)	679,193	893,069	907,779	922,807	937,886	950,785	960,994	968,609	978,658	986,520	994,319	1,001,607	1,009,332	1,017,307	1,024,571	1,035,607	1,049,967	1,062,810	1,077,946
Annual population growth (%)	1.3	1.6	1.6	1.7	1.6	1.4	1.1	0.8	1.0	0.8	0.8	0.7	0.8	0.8	0.7	1.1	1.4	1.2	1.4
Life expectancy at birth - Male (yrs)								64.4								65.6			
- Female (yrs)								71.7								73.4			
Crude birth rate (births per 1000 population)	25.3	25.5	26.7	27.2	26.6	24.9	22.1	20.6	19.6	18.8	18.3	19.1	19.9	20.6	21.3	20.7	21.1	20.4	19.5
Crude death rate (deaths per 1000 population)	7.8	7.8	7.1	7.2	7.1	6.7	6.6	6.5	6.6	6.8	6.7	6.6	6.6	6.8	6.7	6.6	6.5	6.8	6.7
Infantile mortality rate (infant deaths per 1000 popula	40.4	45.0	33.9	32.9	32.3	33.6	29.4	25.6	23.1	23.8	26.3	24.2	22.0	21.6	19.9	18.1	18.6	19.6	18
Employment (large establishments only)*	176,739	194,032	195,168	199,629	196,597	193,454	193,372	189,256	190,626	203,615	223,176	244,986	264,004	268,487	277,405	280,321	282,592	276,775	279,318
Tourist arrivals (Number)	92,561	102,510	108,322	128,360	115,080	121,620	118,360	123,820	139,670	148,860	165,310	207,570	239,300	262,790	291,550	300,670	335,400	374,630	400,526
Tourist earnings (Rs Mn)	184	210	230	260	361	421	450	503	630	845	1,190	1,786	2,381	2,796	3,500	3,940	4,655	5,300	4,925
GNP at market prices (Rs Mn)	4,743	5,425	6,210	7,534	8,519	9,801	11,227	12,278	13,734	15,918	18,971	23,043	27,210	31,962	37,696	42,724	48,097	54,940	61,144
GNP per capita at market prices (Rs)	5,395	6,075	6,841	8,164	8,198	10,308	11,683	12,676	14,055	16,157	19,088	22,956	26,766	31,418	36,792	41,247	45,803	51,693	56,794
Real annual growth rate of GDP at factor cost (%)	16.2	7.0	4.0	3.6	-10.1	6.4	5.8	0.4	4.7	6.8	8.9	8.4	6.1	4.7	7.2	4.3	6.7	5.0	5.0
Rate of inflation	13.4	9.2	8.5	14.5	42.0	14.5	11.4	5.6	7.3	6.7	1.8	0.6	9.2	12.6	13.5	7.0	4.6	10.5	7.3
Total imports (c.i.f : Rs Mn)	2,406	2,951	3,076	3,634	4,721	4,977	5,048	5,175	6,494	8,119	9,199	13,042	17,460	20,217	23,943	24,383	25,280	30,319	34,473
Total exports (f.o.b: Rs Mn)	1,770	2,041	1,987	2,433	3,341	2,999	3,939	4,311	5,179	6,644	9,063	11,497	13,465	15,049	17,598	18,700	20,244	22,932	24,097
of which Sugar	1,322	1,428	1,305	1,590	2,168	1,625	2,462	2,679	2,523	2,867	3,553	4,328	4,550	4,946	5,212	5,298	5,841	5,770	5,742
of which EPZ	309	433	484	620	894	1,087	1,235	1,307	2,151	3,272	4,986	6,567	8,176	9,057	11,474	12,136	13,031	15,221	16,546
Production of sugar (000 M Tons)	690	666	665	688	475	575	688	605	576	646	707	691	634	668	624	611	643	565	500

* Figures refer to employment as at March and exclude foreign workers

GROSS DOMESTIC PRODUCT BY INDUSTRY GROUP AT CURRENT PRICES (RS MN), 1976 - 1995

INDUSTRY GROUP	1976	1977	1978	1979	1980	1981	1982	1983	1984	1985	1986	1987	1988	1989	1990	1991	1992	1993	1994	1995
AGRICULTURE, HUNTING, FORESTRY, AND FISHING	938	939	977	1224	914	1257	1530	1465	1736	2123	2510	2884	3067	3370	3895	4093	4464	4519	4750	5460
SUGAR	741	701	729	953	598	899	1140	1010	1166	1538	1905	2124	2177	2355	2675	2658	2906	2729	2850	3465
OTHER	197	238	248	271	316	358	390	455	570	585	605	760	890	1015	1220	1435	1558	1790	1900	1995
MINING AND QUARRYING	7	9	11	12	15	16	17	18	19	20	22	25	27	30	37	45	54	65	76	85
MANUFACTURING	631	699	801	972	1127	1377	1560	1678	2183	2864	3830	4841	5627	6365	7461	8274	9361	10676	11738	12830
SUGAR	228	208	218	276	178	251	313	265	326	438	605	676	597	652	720	727	721	775	815	990
EPZ	108	130	156	223	321	421	449	548	865	1333	1900	2585	3125	3450	3975	4400	5000	5745	6154	6530
OTHER	295	360	427	473	628	705	798	865	992	1093	1325	1580	1905	2263	2766	3147	3540	4156	4769	5310
ELECTRICITY, GAS AND WATER	70	99	118	161	209	188	260	245	296	397	462	490	517	577	507	775	950	1205	1251	1375
CONSTRUCTION	333	406	506	552	561	588	625	655	690	775	880	1045	1370	1735	2220	2590	3005	3485	3990	4315
WHOLESALE & RETAIL, RESTAURANTS & HOTELS	472	575	630	779	1050	1219	1290	1455	1640	1834	2300	2962	3785	4540	5455	6100	6900	8115	9240	10155
WHOLESALE & RETAIL	398	484	520	631	877	1004	1050	1180	1340	1494	1885	2427	3125	3725	4400	4920	5500	6415	7275	8075
RESTAURANTS & HOTELS	74	91	110	148	173	215	240	275	300	340	415	535	660	815	1055	1180	1400	1700	1965	2080
TRANSPORT, STORAGE & COMMUNICATION	356	447	563	653	837	997	1112	1230	1372	1510	1775	2075	2425	2949	3490	4200	4800	5430	6321	6900
FINANCING, INSURANCE, REAL ESTATE & BUSINESS SERVICES	664	746	893	1045	1309	1517	1755	1890	2050	2190	2335	2482	2723	3261	3900	4223	4872	5557	6186	6810
OWNERSHIP OF DWELLINGS	427	515	635	759	938	1085	1270	1360	1460	1535	1580	1610	1715	1900	2110	2290	2500	2756	3010	3240
OTHER	237	231	258	286	371	432	485	530	590	655	755	872	1008	1361	1790	1933	2372	2801	3176	3570
PRODUCERS OF GOVERNMENT SERVICES	497	615	705	793	952	1104	1275	1327	1379	1447	1560	2035	2680	2987	3262	3640	4005	4875	5925	6700
OTHER SERVICES	197	241	290	349	415	502	596	650	685	720	776	856	960	1260	1563	1877	2165	2525	2917	3290
GROSS DOMESTIC PRODUCT (F.C)	4165	4776	5494	6540	7389	8765	10020	10613	12050	13880	16450	19695	23181	27074	31790	35817	40686	46452	52394	60000
NET INDIRECT TAXES	539	666	764	1100	1308	1444	1705	2150	2310	2738	3250	3881	4622	5191	6245	6818	7240	8425	9150	9700
GROSS DOMESTIC PRODUCT (M.P)	4704	5442	6258	7640	8697	10209	11725	12763	14360	16618	19700	23576	27803	32265	38035	42635	47926	54877	61544	69700

NATIONAL ACCOUNTS - MAIN AGGREGATES, 1976-1995

MAIN AGGREGATES	UNIT	1976	1977	1978	1979	1980	1981	1982	1983	1984	1985	1986	1987	1988	1989	1990	1991	1992	1993	1994	1995
GROSS DOMESTIC PRODUCT (GDP)																					
AT FACTOR COST	RS MN	4165	4776	5494	6540	7389	8765	10020	10613	12050	13880	16450	19695	23181	27074	31790	35817	40686	46452	52394	58000
GDP AT MARKET PRICES	RS MN	4704	5442	6258	7640	8697	10209	11725	12763	14360	16618	19700	23576	27603	32265	36035	42635	47926	54677	61544	67700
NET FACTOR INCOME FROM THE REST OF THE WORLD	RS MN	39	-17	-48	-106	-178	-408	-498	-485	-626	-700	-729	-533	-593	-303	-339	89	171	63	-400	-425
GNP AT FACTOR COST	RS MN	4204	4759	5446	6434	7211	8357	9522	10128	11424	13180	15721	19162	22588	26771	31451	35906	40857	46515	51994	57575
GNP AT MARKET PRICES	RS MN	4743	5425	6210	7534	8519	9801	11227	12278	13734	15918	18971	23043	27210	31962	37696	42724	48097	54940	61144	67275
PER CAPITA GNP AT FACTOR COST	RS	4782	5140	5999	6972	7689	8790	9908	10456	11691	13378	15818	19090	22219	26316	30697	34665	38913	43766	48295	52427
PER CAPITA GNP AT MARKET PRICES	RS	5395	6075	6841	8164	8198	10308	11683	12676	14055	16157	19088	22956	26766	31418	36792	41247	45808	51693	56794	61259
COMPENSATION OF EMPLOYEES	RS MN	2205	2705	3046	3470	3953	4482	4975	5400	5915	6570	7365	8895	10915	12815	14890	17228	19542	22410	25550	28300
OF WHICH GOVERNMENT	RS MN	592	719	827	927	1103	1314	1494	1547	1604	1680	1812	2370	3050	3364	3648	4056	4418	5323	6400	7000
GROSS OPERATING SURPLUS	RS MN	1960	2071	2448	3070	3436	4283	5045	5213	6135	7310	9085	10800	12266	14259	16900	18589	21144	24042	26844	29700
GOVERNMENT INDUSTRIES	RS MN	4	4	7	17	21	23	43	61	67	92	98	103	79	41	65	45	88	104	100	100
FINAL CONSUMPTION EXPENDITURE	RS MN	3579	4391	5107	6153	7786	8699	9925	10580	11676	13033	14076	17117	20724	24786	29296	32505	35836	41593	47431	52810
PRIVATE	RS MN	2943	3593	4174	5144	6562	7277	8301	8874	9841	11118	12000	14395	17215	20850	24840	27500	30336	34973	39496	44095
GOVERNMENT	RS MN	636	798	933	1009	1224	1422	1624	1706	1835	1915	2076	2722	3509	3936	4456	5005	5500	6620	7935	8715
GROSS DOMESTIC FIXED CAPITAL FORMATION	RS MN	1287	1510	1770	1965	2028	2240	2100	2300	2595	3100	3890	5090	7990	8565	11865	12385	13630	15835	18260	18300
PRIVATE SECTOR	RS MN	882	1035	1130	1355	1298	1375	1345	1485	1770	2100	2515	3375	4610	6280	7500	8870	8980	11500	13375	12790
PUBLIC SECTOR	RS MN	405	475	640	610	730	865	755	815	825	1000	1375	1715	3380	2285	4365	3515	4650	4335	4885	5510
GROSS DOMESTIC SAVINGS	RS MN	1125	1051	1151	1487	911	1510	1800	2183	2684	3585	5624	6459	7079	7479	8739	10130	12090	13283	14113	14890
NET EXPORTS OF GOODS & N-FACTOR SERVICES	RS MN	-324	-579	-772	-898	-892	-1068	-330	-46	-481	-315	1312	498	-1423	-2438	-2839	-1674	-1627	-3505	490	-3840
EXPORTS OF GOODS & N-FACTOR SERVICES	RS MN	2388	2856	2705	3260	4450	4566	5529	5953	6983	8835	11919	15639	18565	21363	25619	27861	29759	33515	3260	39160
IMPORTS OF GOODS & N-FACTOR SERVICES	RS MN	2712	3235	3477	4158	5342	5634	5859	5999	7470	9210	10607	15141	19988	23801	28458	29535	31386	37020	3750	43000
NET INDIRECT TAXES	RS MN	539	666	764	1100	1308	1444	1705	2150	2310	2738	3250	3881	4622	5191	6245	6818	7240	8425	8150	9700
INDIRECT TAXES PAID	RS MN	581	734	825	1136	1326	1455	1717	2180	2355	2784	3348	4071	4889	5535	6634	7221	7718	8740	8350	9900
SUBSIDIES RECEIVED	RS MN	42	68	61	36	18	11	12	30	45	46	98	190	267	344	389	403	478	315	200	200

5. 収集資料リスト (JICA図書館保有)

モーリシャス

(1) Republic of Mauritius National Development Plan 1992-1994

(1993.1 経済企画開発省)

(2) Mauritius Energy Sector Review (1994.12 UNDP/World Bank)

JICA