

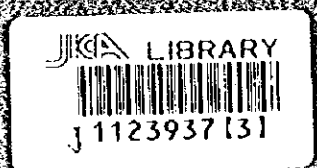
JAPAN INTERNATIONAL COOPERATION AGENCY (JICA)

FEDERAL MINISTRY OF WATER RESOURCES  
AND RURAL DEVELOPMENT  
FEDERAL REPUBLIC OF NIGERIA

THE STUDY ON THE NATIONAL WATER  
RESOURCES MASTER PLAN (NWRMP)

WATER RESOURCES INVENTORY SURVEY

VOLUME THREE



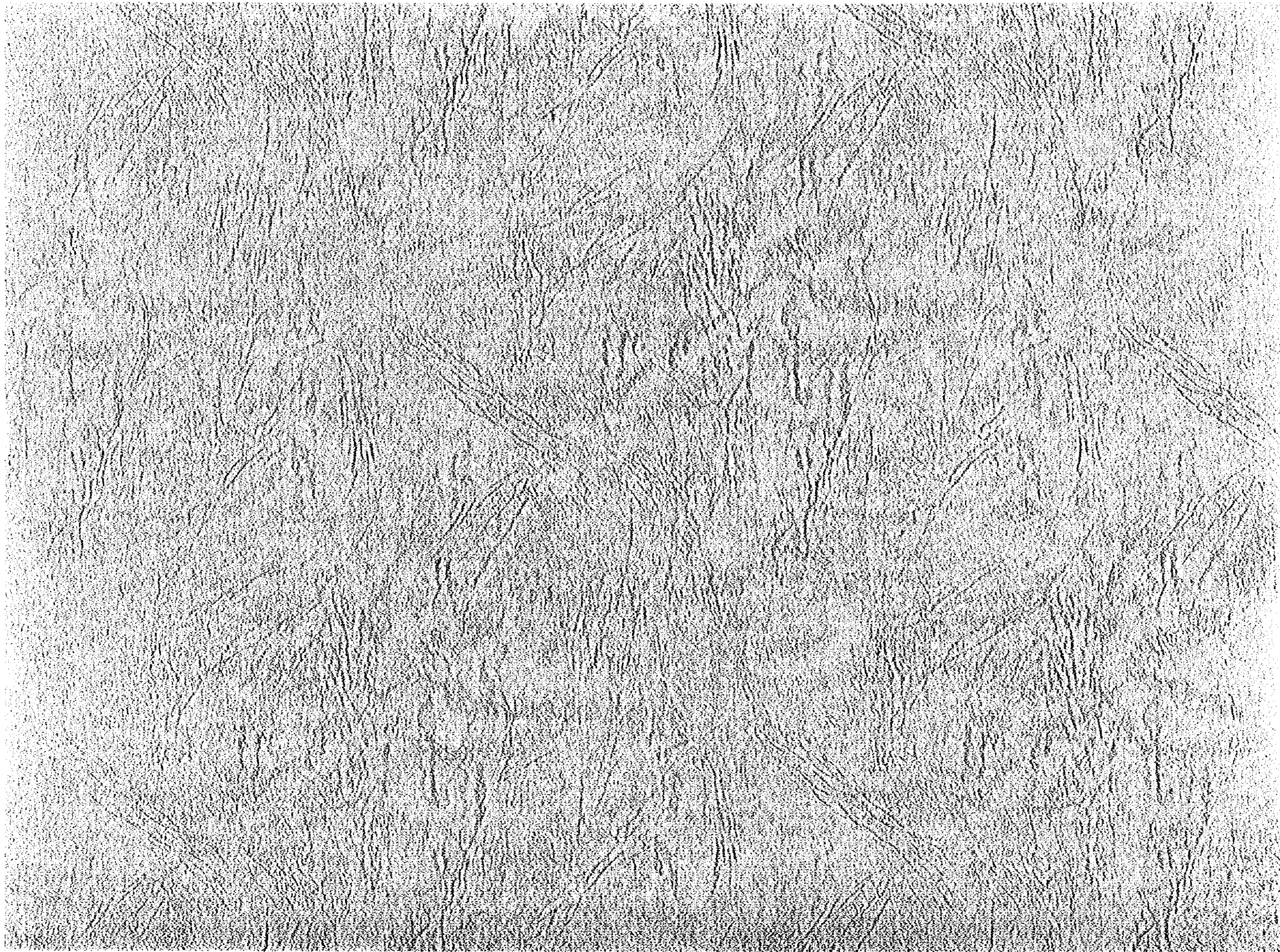
MARCH 1993

SANKYO CONSULTANTS INC.  
SUMIKO CONSTRUCTION CO. LTD.

1153  
1181

4  
3  
S  
Y





**JAPAN INTERNATIONAL COOPERATION AGENCY (JICA)**

**FEDERAL MINISTRY OF WATER RESOURCES  
AND RURAL DEVELOPMENT  
FEDERAL REPUBLIC OF NIGERIA**

# **THE STUDY ON THE NATIONAL WATER RESOURCES MASTER PLAN (NWRMP)**

**WATER RESOURCES INVENTORY SURVEY**

**VOLUME THREE**

**MARCH 1995**

**SANYU CONSULTANTS INC.,  
SUMIKO CONSULTANTS CO., LTD.**

## COMPOSITION OF THE REPORT

The Draft Final Report on the Study on the National Water Resources Master Plan (NWRMP) for the Federal Ministry of Water Resources and Rural Development in the Federal Republic of Nigeria comprises the following volumes:

- Volume One : SUMMARY AND MAIN TEXT
- Volume Two : SECTOR REPORT

This contains 12 Chapters, each of which has been presented in an independent manner for the sub-sector designated compiling all the requirements concerned, while major findings and recommendation of each sub-sector along with inter-sub-sectoral relations and basin-wide considerations are summarized in Volume 1:

CHAPTER 1. NWRIS and SIA	Part One
CHAPTER 2. Socio-Economy and Land Use	
CHAPTER 3. Water Resources and Management	
CHAPTER 4. Water Source Works	
CHAPTER 5. Irrigation and Drainage	
CHAPTER 6. Water Supply and Sanitation	
CHAPTER 7. Gully Erosion and Flood Control	Part Two
CHAPTER 8. Hydropower Generation	
CHAPTER 9. Inland Navigation	
CHAPTER 10. Inland Fisheries	
CHAPTER 11. Environmental Management	
CHAPTER 12. Institution and Legislation	

- Volume Three : WATER RESOURCES INVENTORY SURVEY
- Volume Four : WATER RESOURCES DATABASE MAPS
- Volume Five : SATELLITE IMAGE ANALYSIS

**This is Volume Three: WATER RESOURCES INVENTORY SURVEY**

It may be noted that all the findings and recommendation contained in this Report are those made by the Study Team with the members of Sanyu Consultants Inc. and Sumiko Consultants Co., Ltd. and do not imply any authorization by the Japan International Cooperation Agency or the Government of Japan.



## CONTENTS OF WATER RESOURCES INVENTORY SURVEY

Table 1	Land Resources (1/6 to 6/6)	1
Table 2	Acreage and Population of LGA in 1991 (1/15 to 15/15)	7
Table 3	Selected 89 Rainfall Stations and Mean Monthly Rainfall (1/3 to 3/3)	22
Table 4	Yearly Rainfall at Selected 89 Stations (1/3 to 3/3)	25
Table 5	List of Selected 90 River Gaging Stations (1/3 to 3/3)	28
Table 6	Monthly Runoff at Selected River Gaging Stations	31
Table 7	Yearly Evaporation at Selected Stations	105
Table 8	Mean Monthly Evaporation	106
Table 9	Borehole Condition on State and LGA Basis (1/13 to 13/13)	107
Table 10	Well Site Distribution Density by LGA (1/8 to 8/8)	120
Table 11	Existing Large Dams (1/4 to 4/4)	128
Table 12	Existing Small Dams (1/6 to 6/6)	132
Table 13	Large and Medium Dams Identified by Inventory Survey (1/3 to 3/3)	138
Table 14	Small Dams Identified by Inventory Survey (1/3 to 3/3)	141
Table 15	Proposed Large and Medium Dams for Irrigation and Water Supply Toward 2020 (1/6 to 6/6)	144
Table 16	Existing Large Scale Irrigation Projects (1/2 to 2/2)	150
Table 17	Existing Medium and Small Scale Irrigation Projects (1/3 to 3/3)	152
Table 18	Existing Urban Water Supply (1/15 to 15/15)	155
Table 19	Existing Rural Water Supply (1/15 to 15/15)	170
Table 20	Projected Urban Water Demand (1/15 to 15/15)	185
Table 21	Projected Rural Water Demand (1/15 to 15/15)	200
Table 22	Urban Water Supply Planning Balance (1/15 to 15/15)	215
Table 23	Rural Water Supply Planning Balance (1/15 to 15/15)	230
Table 24	Water Resources Manpower in 1993 (1/2 to 2/2)	245
Table 25	Water Resources Manpower in 1993 by Eight Hydrological Areas	251
Table 26	Manpower Projection by States & Agencies (1/4 to 4/4)	252



TABLE 1 LAND RESOURCES (1/6)

A. GEOLOGY BY HYDROLOGICAL AREA

(Unit: sq.km)

Category	Hydrological Area								
	I	II	III	IV	V	VI	VII	VIII	Total
Qa	7,015	4,860	51,940	15,225	3,980	8,800	5,485	13,060	110,365
Qs	0	0	0	0	11,410	445	0	0	11,855
Qm	0	0	0	0	7,145	3,855	1,700	0	12,700
Qbr	0	0	0	0	425	800	0	0	1,225
Qsd	0	0	0	0	3,535	3,165	145	0	6,845
Qp	0	0	0	0	2,760	11,765	10,910	0	25,455
Qc	0	0	920	0	0	0	0	105,530	106,450
T-Qr	0	580	8,070	1,215	0	0	310	45	10,220
Ti	0	0	0	0	0	1,075	0	0	1,075
Tl	0	0	0	0	2,815	2,215	2,160	0	7,190
Tb	0	0	0	0	1,935	605	1,165	0	3,705
Tg	20,160	0	0	0	0	0	0	0	20,160
Te	0	0	0	0	0	1,215	0	0	1,215
Tn	0	0	0	0	3,885	1,535	885	0	6,305
Tkk	0	0	17,210	0	0	0	0	10,020	27,230
Ts	5,810	0	0	0	0	0	0	0	5,810
Kb	0	0	0	0	0	3,675	0	0	3,675
Kuc	0	0	0	965	8,840	910	2,480	0	13,195
Klc	0	0	0	735	240	0	1,090	0	2,065
Kro	0	0	0	6,140	1,420	580	4,900	0	13,040
Ki	0	0	0	0	0	0	120	0	120
Kwn	0	0	610	14,370	0	0	3,605	0	18,585
Kea	0	0	3,755	9,645	0	0	10,435	0	23,835
Kar	0	0	0	1,530	0	0	8,465	0	9,995
Kg	0	0	3,250	0	0	0	0	125	3,375
Kp	0	0	17,915	0	0	0	0	0	17,915
Ky	370	0	0	0	0	0	0	0	370
Kbo	0	0	1,605	0	0	0	0	0	1,605
Kby	0	0	19,810	680	0	0	0	980	21,470
Kr	9,160	0	0	0	0	0	0	0	9,160
Kn	435	31,295	0	1,315	120	0	0	0	33,165
Kl	7,360	0	0	0	0	0	0	0	7,360
Km	14,450	0	0	0	0	0	0	3,420	17,870
Jyg	0	1,435	1,095	1,850	0	0	0	2,510	6,890
Jyr	0	455	0	0	0	0	0	1,335	1,790
Peg	9,590	22,475	12,200	1,995	440	9,095	2,920	30,415	89,130
Pcs	0	0	0	0	0	2,370	0	0	2,370
Pcq	485	1,805	0	0	0	1,320	0	0	3,610
Pcm	22,805	13,780	20	1,380	690	9,295	0	1,275	49,245
Pcb	33,960	81,415	20,500	15,955	4,240	37,780	3,025	19,285	216,160
Total	131,600	158,100	158,900	73,000	53,900	100,500	59,600	188,000	923,800

Data Source: Satellite Image Analysis by JICA

B. MORPHOLOGY BY HYDROLOGICAL AREA

(Unit: sq.km)

Category	Hydrological Area								
	I	II	III	IV	V	VI	VII	VIII	Total
CP	0	0	0	0	420	6335	0	0	6,755
D	0	0	65	0	0	0	0	45,350	45,415
D/LB	0	0	0	0	0	0	0	15,515	15,515
FP	7,000	4,710	5,415	2,505	15,000	3,615	0	12,960	51,205
H	38,605	92,680	11,080	11,405	3,685	59,365	455	13,465	230,740
H/P	0	0	1,390	515	1,405	0	12195	0	15,505
H/UP	0	0	12,070	0	0	0	0	855	12,925
L	0	150	0	0	0	0	0	0	150
LB/D	0	0	0	0	0	0	0	23,335	23,335
H	90	1,760	25,895	3,960	25	250	1,805	3,110	36,895
H/H	0	0	0	0	0	0	2,670	0	2,670
MS	0	0	0	0	7,160	3,970	1,700	0	12,830
ND	0	0	0	0	3,540	3,140	260	0	6,940
P	53,440	55,590	66,195	48,280	19,520	23,825	38,480	33,910	339,240
P/D	50	0	1,175	0	0	0	0	28,775	30,000
P/H	0	0	31,625	3,490	0	0	0	5,015	40,130
S	0	0	0	0	0	0	0	4975	4,975
UP	32,415	3,210	3,990	2,845	3,145	0	2,235	735	48,575
Total	131,600	158,100	158,900	73,000	53,900	100,500	59,600	188,000	923,800

Data Source: Satellite Image Analysis by JICA

C. LAND USE (LAND COVER) BY HYDROLOGICAL AREA

	Forest Land				(%)	Grassland	(%)	Agricul. Land	(%)	Other Land				Total	(%)	Total
	Mangrove	T. R. F.	Woodland	Total						Wetland	Bareland	Water A.	Urban L.			
HA-I	0	0	2,755	2,755	2	46,615	35	69,520	53	970	10,330	1,400	10	12,710	10	131,600
HA-II	0	3,105	24,275	27,380	17	59,745	38	67,020	42	815	2,065	1,040	35	3,955	3	158,100
HA-III	0	0	13,365	13,365	8	75,850	48	46,270	29	1,165	21,615	630	0	23,410	15	158,900
HA-IV	0	1,415	13,285	14,700	20	13,945	19	39,290	54	1,460	3,230	370	5	5,065	7	73,000
HA-V	5,430	8,255	1,075	14,760	27	3,775	7	14,265	27	11,180	7,955	1,745	220	21,100	39	53,900
HA-VI	3,630	34,540	6,080	44,250	44	4,675	5	41,015	41	6,730	900	1,850	1,060	10,560	10	100,500
HA-VII	1,340	11,100	1,265	13,705	23	835	1	38,650	65	765	5,405	420	20	6,610	11	59,800
HA-VIII	0	0	5,920	5,920	3	75,640	40	76,300	41	1,960	27,700	340	140	30,140	16	188,000
Total	10,400	58,415	68,020	136,835	15	281,000	30	392,335	42	25,045	79,200	7,795	1,510	113,550	12	923,800

Note: T.R.F.: Tropical Rain Forest

TABLE 1 LAND RESOURCES (2/6)

D. DETAILED LAND COVER (LAND USE) BY SHA AND SSHA

(1) HA-1

(Unit: sq.km)

SHA	SSHA	Forest Land				Grassland	Agricul. Land				Other Land				Total		
		Mangrove	T. R. F.	Woodland	Total (%)						Wetland	Bareland	Water A.	Urban L.		Total (%)	
1-1		-	-	5	5	0	2,220	55	1,775	44	5	-	15	10	30	1	4,030
1-2	1-2-1	-	-	-	-	-	1,110	34	2,125	64	20	5	40	-	65	2	3,300
	1-2-2	-	-	85	85	2	2,530	49	2,105	41	135	335	-	-	470	9	5,190
	Total	-	-	85	85	1	3,640	43	4,230	50	155	340	40	-	535	6	8,490
1-3		-	-	50	50	1	2,300	27	5,995	69	10	275	-	-	285	3	8,660
1-4	1-4-1	-	-	35	35	1	410	11	3,155	86	5	40	5	-	50	1	3,650
	1-4-2	-	-	380	380	4	2,395	28	4,555	53	175	1,025	40	-	1,240	14	8,570
	Total	-	-	415	415	3	2,805	23	7,710	63	180	1,065	45	-	1,290	11	12,220
1-5	1-5-1	-	-	45	45	2	405	16	1,450	58	25	595	-	-	620	25	2,520
	1-5-2	-	-	55	55	1	2,075	31	2,450	36	60	2,005	55	-	2,140	32	6,720
	Total	-	-	100	100	1	2,480	27	3,900	42	105	2,600	55	-	2,760	30	9,240
1-6	1-6-1	-	-	155	155	2	2,330	37	3,420	54	35	330	10	-	375	6	6,280
	1-6-2	-	-	10	10	1	245	26	650	70	-	25	-	-	25	3	930
	1-6-3	-	-	5	5	0	555	38	910	61	-	10	-	-	10	1	1,480
	Total	-	-	170	170	2	3,130	36	4,980	57	35	365	10	-	410	5	8,690
1-7	1-7-1	-	-	10	10	0	720	30	1,665	68	-	45	-	-	45	2	2,440
	1-7-2	-	-	15	15	0	1,860	46	2,185	54	-	10	-	-	20	0	4,080
	1-7-3	-	-	5	5	0	825	42	1,110	57	10	-	-	-	20	1	1,960
	Total	-	-	30	30	0	3,405	40	4,960	58	10	55	20	-	85	1	8,480
1-8	1-8-1	-	-	-	-	-	445	16	2,250	83	-	15	-	-	15	1	2,710
	1-8-2	-	-	160	160	1	3,125	26	8,445	71	20	160	-	-	180	2	11,910
	1-8-3	-	-	30	30	2	1,055	56	770	41	-	35	10	-	45	2	1,900
	1-8-4	-	-	-	-	-	250	41	360	59	-	-	-	-	-	-	610
	Total	-	-	190	190	1	4,875	28	11,825	69	20	210	10	-	240	1	17,130
1-9	1-9-1	-	-	30	30	0	4,675	45	4,710	45	-	965	-	-	965	9	10,380
	1-9-2	-	-	-	-	-	380	38	620	62	-	-	-	-	-	-	1,000
	Total	-	-	30	30	0	5,055	44	5,330	47	-	965	-	-	965	8	11,380
1-10	1-10-1	-	-	15	15	1	755	35	1,295	59	60	10	45	-	115	5	2,180
	1-10-2	-	-	10	10	0	905	26	1,945	56	-	640	-	-	640	18	3,500
	1-10-3	-	-	15	15	2	95	15	335	53	90	80	15	-	185	29	630
	1-10-4	-	-	10	10	1	570	31	670	37	20	540	10	-	570	31	1,820
	Total	-	-	50	50	1	2,325	29	4,245	52	170	1,270	70	-	1,510	19	8,130
1-11	1-11-1	-	-	5	5	0	4,105	43	2,770	29	15	2,730	5	-	2,750	29	9,630
	1-11-2	-	-	5	5	1	60	8	630	81	5	45	35	-	85	11	780
	1-11-3	-	-	10	10	1	180	13	870	64	40	-	270	-	310	23	1,370
	Total	-	-	20	20	0	4,345	37	4,270	36	60	2,775	310	-	3,145	27	11,780
1-12		-	-	25	25	0	4,765	54	3,650	41	55	345	40	-	440	5	8,880
1-13	1-13-1	-	-	75	75	5	870	59	515	35	15	5	-	-	20	1	1,480
	1-13-2	-	-	610	610	18	1,940	58	690	21	50	60	-	-	110	3	3,350
	1-13-3	-	-	140	140	8	875	47	810	44	25	-	10	-	35	2	1,860
	1-13-4	-	-	40	40	5	120	15	575	74	45	-	-	-	45	6	780
	1-13-5	-	-	670	670	26	80	3	1,345	53	20	-	415	-	435	17	2,530
	Total	-	-	1,535	1,535	15	3,885	39	3,935	39	155	65	425	-	645	6	10,000
1-14		-	-	50	50	1	1,355	30	2,715	60	10	-	360	-	370	8	4,490
Total		-	-	2,755	2,755	2	46,615	35	69,520	53	970	10,330	1,400	10	12,710	10	131,600

Note: T.R.F.: Tropical Rain Forest

(2) HA-2

(Unit: sq.km)

SHA	SSHA	Forest Land				Grassland	Agricul. Land	Other Land				Total					
		Mangrove	T. R. F.	Woodland	Total (%)								Wetland	Bareland	Water A.	Urban L.	Total (%)
2-1	2-1-1	-	-	160	160	2	3,015	35	5,365	63	-	-	20	-	20	0	8,560
	2-1-2	-	-	110	110	8	890	65	315	23	-	-	55	-	55	4	1,370
	Total	-	-	270	270	3	3,905	39	5,680	57	-	-	75	-	75	1	9,930
2-2		-	-	2,225	2,225	22	5,275	52	2,695	26	-	-	15	-	15	0	10,210
2-3	2-3-1	-	-	60	60	1	2,070	49	2,085	49	-	40	5	-	45	1	4,260
	2-3-2	-	-	85	85	2	3,420	89	290	8	-	-	35	-	35	1	3,830
	2-3-3	-	-	-	-	-	425	48	365	41	-	-	90	-	90	10	880
	Total	-	-	145	145	2	5,915	66	2,740	31	-	40	130	-	170	2	8,970
2-4		-	-	60	370	6	2,480	35	4,130	58	-	-	85	25	110	2	7,150
2-5	2-5-1	-	-	215	215	7	1,270	41	1,590	51	40	-	15	-	55	2	3,130
	2-5-2	-	-	130	130	5	1,835	73	455	20	35	-	5	-	40	2	2,500
	2-5-3	-	-	730	730	10	3,515	68	880	17	10	20	5	-	35	1	5,170
	Total	-	-	1,075	1,075	10	6,620	61	2,965	27	85	20	25	-	130	1	10,800
2-6		-	-	5	435	4	8,570	48	7,125	40	5	1,660	-	-	1,665	9	17,800
2-7	2-7-1	-	-	40	40	1	2,460	91	210	8	-	-	-	-	-	-	2,710
	2-7-2	-	-	20	20	1	1,150	60	630	33	35	-	75	-	110	6	1,910
	2-7-3	-	-	35	35	1	2,175	70	795	26	80	-	25	-	105	3	3,110
	Total	-	-	95	95	1	5,785	75	1,635	21	115	-	100	-	215	3	7,730
2-8	2-8-1	-	-	1,695	1,695	33	3,550	44	1,765	22	15	10	15	10	50	1	8,060
	2-8-2	-	-	5	5	0	1,005	80	190	15	35	-	15	-	50	4	1,250
	2-8-3	-	-	195	1,035	53	710	30	225	10	100	50	25	-	175	7	2,340
	Total	-	-	1,900	2,295	34	5,535	45	2,265	18	175	60	70	10	315	3	12,310
2-9	2-9-1	-	-	210	210	4	1,380	23	4,375	73	5	-	-	-	5	0	5,970
	2-9-2	-	-	620	620	41	310	21	490	33	-	25	55	-	80	5	1,500
	Total	-	-	830	830	11	1,690	23	4,865	65	5	25	55	-	85	1	7,470
2-10	2-10-1	-	-	810	810	25	1,080	33	1,380	42	-	-	-	-	-	-	3,270
	2-10-2	-	-	35	35	2	880	42	1,145	55	-	5	15	-	20	1	2,060
	Total	-	-	845	845	16	1,960	37	2,525	47	-	5	15	-	20	0	5,330
2-11	2-11-1	-	-	500	500	6	1,815	22	5,995	72	-	40	10	-	50	1	8,360
	2-11-2	-	-	860	860	26	1,545	47	865	26	-	-	-	-	-	-	3,270
	Total	-	-	1,360	1,360	12	3,360	29	6,860	59	-	40	10	-	50	0	11,630
2-12	2-12-1	-	-	2,290	2,290	36	2,790	44	1,215	19	-	5	-	-	5	0	6,300
	2-12-2	-	-	495	495	16	225	7	2,385	76	-	-	15	-	15	0	3,120
	Total	-	-	2,7													

TABLE 1 LAND RESOURCES (3/6)

(3) HA-3

(Unit: sq.ka)

SHA	SSHA	Forest Land				Grassland	Agricul. Land			Other Land				Total			
		Mangrove	T. R. F.	Woodland	Total (%)		(%)	(%)	Wetland	Bareland	Water A.	Urban L.	Total (%)				
3-1	3-1-1	-	-	20	20	1	1,370	70	565	29	-	15	-	-	15	1	1,970
	3-1-2	-	-	85	85	2	2,900	51	2,530	45	-	140	5	-	145	3	5,660
	3-1-3	-	-	-	-	-	1,025	56	580	32	5	180	30	-	215	12	1,820
	Total	-	-	105	105	1	5,295	56	3,675	39	5	335	35	-	375	4	9,450
3-2	3-2-1	-	-	40	40	1	1,670	61	555	20	-	460	15	-	475	17	2,740
	3-2-2	-	-	320	320	5	3,165	52	1,585	26	20	965	5	-	990	16	6,060
	3-2-3	-	-	605	605	30	1,045	53	105	5	-	235	-	-	235	12	1,990
	Total	-	-	965	965	9	5,880	54	2,245	21	20	1,660	20	-	1,700	16	10,790
3-3	3-3-1	-	-	-	-	-	2,055	59	960	27	-	495	-	-	495	14	3,550
	3-3-2	-	-	10	10	0	3,140	41	3,650	48	-	780	-	-	780	10	7,580
	3-3-3	-	-	-	-	-	2,145	73	280	10	-	515	-	-	515	18	2,990
	3-3-4	-	-	-	-	-	1,250	60	625	30	15	145	35	-	195	9	2,070
	Total	-	-	10	10	0	8,630	53	5,515	34	15	1,935	35	-	1,985	12	16,140
3-4	3-4-1	-	-	400	400	4	4,140	40	5,295	51	-	550	5	-	555	5	10,390
	3-4-2	-	-	65	65	0	12,655	60	4,670	22	20	3,565	185	-	3,770	18	21,160
	Total	-	-	465	465	1	16,795	53	9,965	32	20	4,115	190	-	4,325	14	31,550
3-5	-	-	-	-	-	3,840	63	815	13	15	1,360	80	-	1,455	24	6,110	
3-6	-	-	35	35	1	2,220	52	860	20	90	975	50	-	1,115	26	4,230	
3-7	-	-	245	245	3	4,240	56	1,910	25	55	1,065	45	-	1,165	15	7,560	
3-8	-	-	40	40	0	9,325	57	5,730	35	130	1,120	5	-	1,255	8	16,350	
3-9	-	-	1,385	1,385	24	2,020	35	875	15	195	1,250	25	-	1,470	26	5,750	
3-10	3-10-1	-	-	-	-	-	1,255	30	2,340	56	35	520	40	-	595	14	4,190
	3-10-2	-	-	20	20	0	835	13	4,505	68	90	1,145	25	-	1,260	19	6,620
	Total	-	-	20	20	0	2,090	19	6,845	63	125	1,665	65	-	1,855	17	10,810
3-11	3-11-1	-	-	3,540	3,540	57	1,390	22	275	4	10	965	-	-	975	16	6,180
	3-11-2	-	-	65	65	3	1,035	43	745	31	90	435	40	-	565	23	2,410
	3-11-3	-	-	-	-	-	90	6	895	63	255	110	30	-	435	31	1,420
	Total	-	-	3,605	3,605	36	2,515	25	1,915	19	395	1,510	70	-	1,975	20	10,010
3-12	-	-	870	870	16	2,845	53	1,380	26	-	255	-	-	255	5	5,350	
3-13	-	-	3,085	3,085	24	6,970	55	750	6	-	1,920	5	-	1,925	15	12,730	
3-14	-	-	2,535	2,535	21	3,185	26	3,795	31	100	2,450	5	-	2,555	21	12,070	
Total	-	-	13,365	13,365	8	75,850	48	46,275	29	1,165	21,615	630	-	23,410	15	158,900	

Note: T.R.F.: Tropical Rain Forest

(4) HA-4

(Unit: sq.ka)

SHA	SSHA	Forest Land				Grassland	Agricul. Land			Other Land				Total			
		Mangrove	T. R. F.	Woodland	Total (%)		(%)	(%)	Wetland	Bareland	Water A.	Urban L.	Total (%)				
4-1	4-1-1	-	-	290	290	6	785	15	2,420	47	385	1,305	15	-	1,705	33	5,200
	4-1-2	-	-	-	-	-	30	4	670	84	90	5	5	-	100	13	800
	Total	-	-	290	290	5	815	14	3,090	52	475	1,310	20	-	1,805	30	6,000
4-2	4-2-1	-	-	-	-	-	100	4	2,210	88	135	40	20	5	200	8	2,510
	4-2-2	-	-	-	-	-	120	9	1,155	88	5	20	10	-	35	3	1,320
	4-2-3	-	-	-	-	-	175	25	460	66	40	15	10	-	65	9	700
	Total	-	-	-	-	-	395	9	3,835	85	180	75	40	5	300	7	4,530
4-3	-	-	3,940	3,940	34	2,865	25	4,465	39	50	205	25	-	280	2	11,550	
4-4	4-4-1	-	-	125	125	12	220	20	705	65	10	15	5	-	30	3	1,080
	4-4-2	-	-	165	165	15	360	32	500	45	25	40	20	-	85	8	1,110
	4-4-3	-	-	255	255	12	470	22	1,360	62	5	75	15	-	95	4	2,180
	4-4-4	-	-	235	235	15	605	40	585	38	25	60	10	-	95	6	1,520
	4-4-5	-	-	85	85	13	215	34	255	40	25	45	5	-	75	12	630
	Total	-	-	865	865	13	1,870	29	3,605	52	90	235	55	-	380	6	6,520
4-5	4-5-1	-	5	1,735	1,740	41	320	7	1,665	44	20	320	5	-	345	8	4,270
	4-5-2	-	185	350	535	9	485	8	4,895	80	10	185	10	-	205	3	6,120
	4-5-3	-	-	45	45	2	225	9	2,085	86	5	35	35	-	75	3	2,430
	Total	-	190	2,130	2,320	18	1,030	8	8,845	69	35	540	50	-	625	5	12,820
4-6	4-6-1	-	-	5	5	0	20	1	1,350	91	-	95	10	-	135	7	1,480
	4-6-2	-	5	25	30	5	55	9	455	72	-	80	10	-	90	14	630
	4-6-3	-	5	5	10	1	165	9	1,420	82	10	130	5	-	145	8	1,740
	4-6-4	-	-	-	-	-	95	7	620	78	5	115	5	-	125	16	800
	4-6-5	-	-	-	-	-	20	2	765	88	10	70	5	-	85	10	870
	4-6-6	-	15	-	15	2	10	1	895	92	-	45	5	-	50	5	970
Total	-	25	35	60	1	325	5	5,505	85	25	535	40	-	600	9	6,490	
4-7	4-7-1	-	-	3,015	3,015	71	1,070	25	165	4	-	-	-	-	-	-	4,250
	4-7-2	-	-	605	605	14	1,280	29	2,550	57	20	10	15	-	45	1	4,480
	Total	-	-	3,620	3,620	41	2,350	27	2,715	31	20	10	15	-	45	1	8,730
4-8	4-8-1	-	50	125	175	32	35	6	295	55	10	15	10	-	35	6	540
	4-8-2	-	255	465	720	41	450	26	375	22	135	30	30	-	195	11	1,740
	4-8-3	-	100	1,400	1,500	16	3,065	33	4,340	47	145	55	45	-	245	3	9,150
	Total	-	405	1,990	2,395	21	3,550	31	5,010	44	290	100	85	-	475	4	11,430
4-9	4-9-1	-	15	-	15	2	35	4	830	84	70	20	20	-	110	11	950
	4-9-2	-	175	40	215	14	100	6	1,160	75	40	25	10	-	75	5	1,550
	4-9-3	-	555	255	810	47	430	25	335	19	90	55	-	-	145	8	1,720
	4-9-4	-	50	120	170	25	180	27	95	14	95	120	10	-	225	34	670
	Total	-	795	415	1,210	25	745	15	2,420	49	295	220	40	-	555	11	4,930
Total	-	1,415	13,285	14,700	20	13,945	19	39,290	54	1,460	3,230	370	5	5,065	7	73,000	

Note: T.R.F.: Tropical Rain Forest



TABLE 1 LAND RESOURCES (4/6)

(5) HA-5

(Unit: sq.km)

SHA	SSHA	Forest Land					Grassland (%)	Agricul. Land (%)		Other Land					Total		
		Mangrove	T. R. F.	Woodland	Total	(%)		Wetland	Bareland	Water A.	Urban L.	Total	(%)				
5-1	5-1-1	-	120	160	280	22	735	57	45	3	-	230	10	-	240	18	1,300
	5-1-2	-	20	105	125	7	900	50	485	27	-	285	15	-	300	17	1,810
	5-1-3	-	455	155	610	22	570	20	985	35	90	530	35	-	655	23	2,820
	5-1-4	-	1,745	135	1,880	65	240	8	480	17	40	230	10	-	280	10	2,880
	Total	-	2,340	555	2,895	33	2,445	28	1,995	23	130	1,275	70	-	1,475	17	8,810
5-2		-	3,065	500	3,565	31	1,330	12	3,670	32	210	2,610	105	-	2,925	25	11,490
5-3	5-3-1	-	475	15	490	21	-	-	1,230	51	150	430	30	60	670	28	2,390
	5-3-2	-	520	-	520	13	-	-	1,895	48	1,040	400	65	30	1,535	39	3,950
	Total	-	995	15	1,010	16	-	-	3,125	49	1,190	830	95	90	2,205	35	6,340
5-4	5-4-1	-	630	5	635	15	-	-	1,535	36	-	2,040	5	55	2,100	49	4,270
	5-4-2	-	725	-	725	17	-	-	1,680	39	725	1,020	50	60	1,655	44	4,250
	Total	-	1,355	5	1,360	16	-	-	3,215	38	725	3,060	55	115	3,955	46	8,530
5-5		5,430	500	-	5,930	32	-	-	2,260	12	8,925	180	1,420	15	10,540	56	18,730
Total		5,430	8,255	1,075	14,760	27	3,775	7	14,265	26	11,180	7,955	1,745	220	21,100	39	53,900

Note: T.R.F.: Tropical Rain Forest

(6) HA-6

(Unit: sq.km)

SHA	SSHA	Forest Land					Grassland (%)	Agricul. Land (%)		Other Land					Total		
		Mangrove	T. R. F.	Woodland	Total	(%)		Wetland	Bareland	Water A.	Urban L.	Total	(%)				
6-1		-	-	2,395	2,395	50	1,380	29	1,025	21	-	-	-	-	-	-	4,800
6-2	6-2-1	-	35	1,535	1,570	18	725	8	6,445	74	-	-	-	-	-	-	8,740
	6-2-2	-	35	2,045	2,080	27	1,700	22	3,940	51	-	-	-	-	-	-	7,720
	6-2-3	-	1,135	-	1,135	31	15	0	2,500	68	5	-	25	-	30	1	3,680
	6-2-4	-	1,285	-	1,285	67	-	-	610	32	-	-	-	25	25	1	1,920
	Total	-	2,490	3,500	6,070	28	2,440	11	13,495	61	5	-	25	25	55	0	22,060
6-3	6-3-1	-	1,705	-	1,705	43	-	-	1,935	49	280	-	5	15	300	8	3,940
	6-3-2	-	760	-	760	44	-	-	590	34	90	-	-	290	380	22	1,730
	Total	-	2,465	-	2,465	43	-	-	2,525	45	370	-	5	305	680	12	5,670
6-4		-	2,930	-	2,930	52	-	-	2,675	47	5	-	10	20	35	1	5,640
6-5	6-5-1	-	3,750	100	3,850	50	340	4	3,255	42	-	255	20	40	315	4	7,760
	6-5-2	-	1,265	-	1,265	53	-	-	840	35	240	10	5	10	265	11	2,370
	Total	-	5,015	100	5,115	50	340	3	4,095	40	240	265	25	50	580	6	10,130
6-6	6-6-1	-	5,465	-	5,465	80	-	-	1,080	16	295	10	-	10	315	5	6,860
	6-6-2	-	1,305	-	1,305	32	-	-	2,230	55	500	-	-	5	505	13	4,040
	Total	-	6,770	-	6,770	62	-	-	3,310	30	795	10	-	15	820	8	10,900
6-7		-	4,425	-	4,425	77	-	-	1,170	20	20	120	-	15	155	3	5,750
6-8		-	8,205	5	8,210	60	505	4	4,625	34	240	110	5	35	390	3	13,730
6-9	6-9-1	-	220	-	220	15	-	-	195	13	240	-	645	150	1,035	71	1,450
	6-9-2	-	100	-	100	7	-	-	200	13	825	-	300	5	1,210	80	1,510
	6-9-3	3,625	500	-	4,125	48	-	-	865	10	2,765	15	740	50	3,570	42	8,560
	Total	3,625	820	-	4,445	39	-	-	1,260	11	3,830	15	1,765	205	5,815	50	11,520
6-10		5	1,420	-	1,425	14	10	0	6,835	66	1,225	380	15	410	2,030	20	10,300
Total		3,630	34,540	6,080	44,250	44	4,675	5	41,015	41	6,730	900	1,850	1,080	10,560	11	100,500

Note: T.R.F.: Tropical Rain Forest

TABLE 1 LAND RESOURCES (5/6)

(7) HA-7

(Unit: sq.ka)

SHA	SSHA	Forest Land				Grassland	Agricul. Land	Other Land				Total					
		Mangrove	T. R. F.	Woodland	Total (%)			Wetland	Bareland	Water A.	Urban L.		Total (%)				
7-1		-	200	230	510	7	540	7	5,165	69	-	1,275	-	-	1,275	17	7,490
7-2	7-2-1	-	20	55	75	1	260	5	4,700	87	-	340	-	5	345	6	5,380
	7-2-2	-	530	110	640	20	20	1	2,405	73	-	215	-	-	215	7	3,280
	Total	-	550	165	715	8	280	3	7,105	82	-	555	-	5	560	6	8,660
7-3	7-3-1	-	30	-	30	1	-	-	605	30	-	1,370	5	-	1,375	68	2,010
	7-3-2	-	495	40	535	11	15	0	2,980	61	-	1,345	-	5	1,350	28	4,880
	7-3-3	-	520	-	520	20	-	-	1,735	67	-	345	-	-	345	13	2,600
	Total	-	1,045	40	1,085	11	15	0	5,320	56	-	3,060	5	5	3,070	32	9,490
7-4	7-4-1	-	2,990	365	3,355	96	-	-	110	3	-	-	15	-	15	0	3,480
	7-4-2	-	2,055	445	2,500	76	-	-	750	23	-	15	25	-	40	1	3,290
	7-4-3	-	285	-	285	17	-	-	1,125	66	-	265	25	-	290	17	1,700
	Total	-	5,330	810	6,140	72	-	-	1,985	23	-	280	65	-	345	4	8,470
7-5	7-5-1	-	170	-	170	7	-	-	2,285	91	20	45	-	-	65	3	2,520
	7-5-2	-	295	-	295	10	-	-	2,450	85	70	55	-	-	125	4	2,870
	7-5-3	175	40	-	215	7	-	-	2,700	88	115	30	15	5	165	5	3,080
	7-5-4	200	45	-	245	7	-	-	3,275	91	70	-	10	-	80	2	3,600
	7-5-5	260	-	-	260	20	-	-	955	73	60	-	25	-	85	7	1,300
	Total	635	550	-	1,185	9	-	-	11,665	87	335	130	50	5	520	4	13,370
7-6		-	960	-	960	17	-	-	4,370	78	90	100	70	-	260	5	5,590
7-7	7-7-1	75	535	-	610	32	-	-	1,000	52	205	5	105	5	320	17	1,930
	7-7-2	140	480	15	635	35	-	-	1,050	58	115	-	20	-	135	7	1,820
	7-7-3	490	475	-	965	54	-	-	710	39	20	-	105	-	125	7	1,800
	7-7-4	-	895	5	900	76	-	-	280	24	-	-	-	-	-	-	1,180
	Total	705	2,385	20	3,110	46	-	-	3,040	45	340	5	230	5	580	9	6,730
Total		1,340	11,100	1,265	13,705	23			38,650	65	765	5,405	420	20	6,610	11	59,800

Note: T.R.F.: Tropical Rain Forest

(8) HA-8

(Unit: sq.ka)

SHA	SSHA	Forest Land				Grassland	Agricul. Land	Other Land				Total				
		Mangrove	T. R. F.	Woodland	Total (%)			Wetland	Bareland	Water A.	Urban L.		Total (%)			
8-1	8-1-1	-	-	-	-	725	20	2,775	75	10	145	5	20	180	5	3,680
	8-1-2	-	-	5	5	860	20	2,960	67	5	560	-	-	565	13	4,390
	Total	-	-	5	5	1,585	20	5,735	71	15	705	5	20	745	9	8,070
8-2	8-2-1	-	-	60	60	960	31	1,875	60	55	165	25	-	245	8	3,140
	8-2-2	-	-	-	-	730	46	795	51	-	40	5	-	45	3	1,570
	8-2-3	-	-	-	-	1,580	68	295	13	-	445	-	-	445	19	2,320
	8-2-4	-	-	-	-	1,575	52	820	27	5	610	10	30	655	21	3,050
	Total	-	-	60	60	4,845	48	3,785	38	60	1,260	40	30	1,390	14	10,080
8-3	8-3-1	-	-	-	-	45	2	2,655	98	-	-	-	-	-	-	2,700
	8-3-2	-	-	-	-	50	2	2,405	97	-	10	5	-	15	1	2,470
	8-3-3	-	-	35	35	280	19	1,145	77	5	-	15	-	20	1	1,480
	Total	-	-	35	35	375	6	6,205	93	5	10	20	-	35	1	6,650
8-4	8-4-1	-	-	1,145	1,145	18	3,020	47	25	60	180	-	-	265	4	6,490
	8-4-2	-	-	10	10	1	160	14	-	-	10	-	-	10	1	1,170
	Total	-	-	1,155	1,155	15	3,180	42	25	60	190	-	-	275	4	7,660
8-5	8-5-1	-	-	2,815	2,815	41	3,090	45	-	125	-	-	-	125	2	6,880
	8-5-2	-	-	615	615	9	1,460	21	-	105	5	-	-	110	2	6,900
	Total	-	-	3,430	3,430	25	4,550	33	-	230	5	-	-	235	2	13,780
8-6		-	-	515	515	8	2,950	46	-	35	-	-	-	35	1	6,430
8-7	8-7-1	-	-	35	35	1	815	30	-	-	10	65	-	75	3	2,720
	8-7-2	-	-	20	20	0	2,820	43	-	35	-	-	-	35	1	6,620
	8-7-3	-	-	185	185	3	3,915	62	150	570	10	-	-	730	12	6,340
	Total	-	-	240	240	2	7,550	48	150	605	20	65	-	840	5	15,680
8-8	8-8-1	-	-	-	-	2,150	32	795	12	-	3,635	-	-	3,635	57	6,780
	8-8-2	-	-	45	45	1	1,825	30	120	3,605	10	-	-	3,735	62	6,040
	Total	-	-	45	45	0	3,975	31	120	7,440	10	-	-	7,570	59	12,820
8-9	8-9-1	-	-	230	230	5	1,580	31	10	890	10	-	-	910	18	5,030
	8-9-2	-	-	65	65	1	2,060	42	-	2,145	-	-	-	2,145	44	4,880
	Total	-	-	295	295	3	3,640	37	10	3,035	10	-	-	3,055	31	9,910
8-10	8-10-1	-	-	5	5	0	1,035	84	-	-	-	-	-	-	-	1,230
	8-10-2	-	-	70	70	0	12,255	45	-	3,345	-	5	-	3,350	12	27,380
	Total	-	-	75	75	0	13,290	46	-	3,345	-	5	-	3,350	12	28,610
8-11		-	-	-	-	2,820	60	520	11	5	1,365	-	-	1,370	29	4,710
8-12	8-12-1	-	-	-	-	6,355	47	3,040	22	15	4,250	-	-	4,265	31	13,660
	8-12-2	-	-	20	20	0	1,315	23	1,505	1,050	5	-	-	2,560	46	5,610
	Total	-	-	20	20	0	7,670	40	1,520	5,300	5	-	-	6,825	35	19,270
8-13	8-13-1	-	-	-	-	3,780	77	820	17	-	340	-	-	340	7	4,940
	8-13-2	-	-	-	-	2,205	35	3,550	58	10	275	30	-	315	5	6,070
	8-13-3	-	-	-	-	1,365	23	2,895	50	-	1,540	-	20	1,560	27	5,820
	8-13-4	-	-	-	-	4,135	62	1,075	16	-	1,450	-	-	1,450	22	6,660
	Total	-	-	-	-	11,485	49	8,340	36	10	3,605	30	20	3,665	16	23,490
8-14	8-14-1	-	-	5	5	0	480	29	-	100	-	-	-	100	6	1,680
	8-14-2	-	-	20	20	0	2,760	35	15	155	5	-	-	175	2	7,850
	Total	-	-	25	25	0	3,240	34	15	255	5	-	-	275	3	9,530
8-15		-	-	20	20	0	4,485	40	25	450	-	-	-	475	4	11,310
Total		-	-	5,920	5,920	3	75,640	40	1,960	27,700	340	140	30,140	16	188,000	

Note: T.R.F.: Tropical Rain Forest

TABLE 1 LAND RESOURCES (6/6)

E. LAND USE (LAND COVER) BY ADMINISTRATIVE DIVISION

Name of State	Forest Land					Grassland		Agricul. Land		Other Land					Total	
	Mangrove	T. R. F.	Woodland	Total	(%)		(%)		(%)	Wetland	Bareland	Water A.	Urban L.	Total		(%)
<b>Northern Zone</b>																
<b>Western Blk.</b>																
Sokoto	0	0	1,100	1,100	2	24,255	36	36,000	53	405	6,215	115	0	6,735	10	68,090
Ketbi	0	0	635	635	2	15,370	41	18,145	49	410	1,905	785	0	3,100	8	37,250
Katsina	0	0	30	30	0	5,880	25	17,245	72	120	580	65	30	795	3	23,950
Sub-total	0	0	1,765	1,765	1	45,505	35	71,390	55	935	8,700	965	30	10,630	8	129,290
<b>Eastern Blk.</b>																
Kano	0	0	495	495	2	6,540	30	14,095	65	70	120	265	95	550	3	21,680
Jigawa	0	0	440	440	2	12,340	51	8,490	35	195	2,725	20	0	2,940	12	24,210
Yobe	0	0	245	245	1	20,355	45	9,660	21	110	14,855	15	0	14,980	33	45,240
Borno	0	0	125	125	0	35,175	45	26,985	35	1,575	12,130	40	20	13,765	18	76,050
Bauchi	0	0	4,995	4,995	8	32,845	50	23,740	36	90	4,430	205	5	4,730	7	66,310
Sub-total	0	0	6,300	6,300	3	107,255	46	82,970	36	2,040	34,260	545	120	36,965	16	233,490
Total	0	0	8,065	8,065	2	152,760	42	154,360	43	2,975	42,960	1,510	150	47,595	13	362,700
<b>Central Zone</b>																
<b>Western Blk.</b>																
Niger	0	30	5,580	5,610	8	25,930	36	36,070	50	395	3,175	1,160	0	4,730	7	72,340
Kwara	0	480	3,480	3,960	11	18,760	54	11,660	34	130	20	145	25	320	1	34,700
Kaduna	0	0	14,465	14,465	33	12,810	29	15,975	36	5	1,065	50	0	1,140	3	44,390
Kogi	0	5,270	3,795	9,065	31	7,685	27	8,460	29	800	2,555	240	5	3,600	12	28,810
Abuja FCT	0	25	1,535	1,560	22	1,140	16	4,250	61	0	0	10	0	10	0	6,960
Sub-total	0	5,805	28,855	34,660	19	66,325	35	76,415	41	1,330	6,835	1,605	30	9,800	5	187,200
<b>Eastern Blk.</b>																
Adoawa	0	0	3,195	3,195	8	18,925	50	11,885	31	130	3,885	200	0	4,215	11	38,220
Taraba	0	5	10,950	10,955	19	19,725	35	15,425	27	1,330	9,155	265	5	10,755	19	56,860
Plateau	0	410	8,425	8,835	16	14,940	28	25,920	48	610	3,425	140	0	4,175	8	53,870
Benue	0	250	1,450	1,700	5	3,100	10	25,335	78	185	1,930	155	5	2,275	7	32,410
Sub-total	0	665	24,020	24,685	14	56,690	31	78,565	43	2,255	18,395	760	10	21,420	12	181,360
Total	0	6,470	52,875	59,345	16	123,015	33	154,980	42	3,585	25,230	2,365	40	31,220	8	368,560
<b>Southern Zone</b>																
<b>Western Blk.</b>																
Oyo	0	2,140	5,565	7,705	28	3,790	14	15,605	57	5	0	0	35	40	0	27,140
Ogun	0	7,665	45	7,710	45	65	0	7,985	47	1,135	0	135	0	1,270	7	17,030
Osun	0	7,110	10	7,120	76	50	1	1,920	20	0	230	20	50	300	3	9,390
Lagos	0	690	0	690	18	0	0	920	25	740	0	900	480	2,120	57	3,730
Ondo	65	12,130	0	12,195	59	260	1	6,365	31	1,535	270	135	50	1,990	10	20,810
Edo	170	7,760	215	8,145	41	950	5	8,430	43	1,080	735	90	270	2,175	11	19,700
Delta	3,460	1,300	0	4,760	28	0	0	5,400	31	4,940	1,090	795	295	7,120	41	17,280
Sub-total	3,695	38,795	5,835	48,325	42	5,115	4	46,625	41	9,435	2,325	2,075	1,180	15,015	13	115,080
<b>Eastern Blk.</b>																
Anambra	0	620	30	650	14	50	1	1,150	25	135	2,580	30	95	2,840	61	4,690
Iao	0	855	0	855	16	0	0	4,070	75	190	305	0	10	505	9	5,430
Rivers	5,390	505	0	5,895	30	0	0	3,965	20	8,130	180	1,410	20	9,740	50	19,600
Enugu	0	1,210	55	1,265	10	70	1	6,385	51	0	4,785	0	5	4,790	38	12,510
Abia	0	790	0	790	12	0	0	5,160	81	25	400	0	5	430	7	6,380
Akwa Ibom	650	75	0	725	11	0	0	5,730	85	225	5	95	0	325	5	6,780
Cross River	665	9,095	1,160	10,920	50	70	0	9,910	45	345	430	310	5	1,090	5	21,990
Sub-total	6,705	13,150	1,245	21,100	27	190	0	36,370	47	9,050	8,685	1,845	140	19,720	25	77,380
Total	10,400	51,945	7,080	69,425	36	5,305	3	82,995	43	18,485	11,010	3,920	1,320	34,735	18	192,460
Grand Total	10,400	58,415	68,020	136,835	15	281,080	30	392,335	42	25,045	79,200	7,795	1,510	113,550	12	923,800

Note: T.R.F.: Tropical Rain Forest

Data Source: Satellite Image Analysis by JICA



TABLE 2 ACREAGE AND POPULATION OF LGA IN 1991 (1/15)

Name of State: SOKOTO

Local Government Area			Acreage	Population	P. Density
Code	Name	Name of Center	(sq.km)	(1,000)	(/sq.km)
1501	Anka	Anka	9,108	272	29.9
1502	Bodinga	Bodinga	350	113	322.9
1503	Bungudu	Bungudu	2,519	194	77.0
1504	Dange Shunt	Dange	2,504	148	59.1
1505	Gada	Gada	1,980	153	77.3
1506	Goronyo	Goronyo	1,310	105	80.2
1507	Gunmi	Gunmi	5,241	333	36.8
1508	Bukkuyum	Bukkuyum	3,810		
1509	Gusau	Gusau	3,484	260	74.6
1510	Gwadabawa	Gwadabawa	1,118	140	125.2
1511	Illelan-Tofa	Illelan-Tofa	1,458	132	90.5
1512	Isa	Isa	2,940	183	62.2
1513	Kaura Namoda	Kaura Namoda	2,244	262	116.8
1514	Kware	Kware	779	112	143.8
1515	Maradun	Maradun	2,495	131	52.5
1516	Rabah	Rabah	2,385	88	36.9
1517	Sabon Birni	Sabon Birni	2,516	139	55.2
1518	Silawe	Silawe	703	60	85.3
1519	Sokoto	Sokoto	73	270	3,698.6
1520	Talata Mafara	Talata Mafara	1,227	140	114.1
1521	Tambuwal	Tambuwal	2,890	144	49.8
1522	Tangaza	Gidan-Madi	6,645	126	19.0
1523	Tsafe	Tsafe	1,230	164	133.3
1524	Wamakko	Wamakko	645	128	198.4
1525	Wurno	Wurno	749	96	128.2
1526	Yabo	Yabo	1,795	156	86.9
1527	Zurmi	Zurmi	2,651	173	65.3
1528	Binji	Binji	670	51	76.1
1529	Bakura	Bakura	2,571	120	46.7
Total			68,090	4,393	64.5

Name of State: KEBBI

Local Government Area			Acreage	Population	P. Density
Code	Name	Name of Center	(sq.km)	(1,000)	(/sq.km)
1601	Arewa/Dandi	Kangiwa	4,927	132	26.8
1602	Argungu	Argungu	2,133	208	97.5
1603	Bagudo	Bagudo	5,717	154	26.9
1604	Birnin-Kebbi	Birnin-Kebbi	1,084	151	139.3
1605	Bunza	Bunza	1,578	121	76.7
1606	Jega	Jega	889	154	173.2
1607	Maiyama	Maiyama	1,344	110	81.8
1608	Sakaba	Sakaba	1,580	202	38.8
1609	Wasagu	Ribah	3,629		
1610	Suru	Oakingari	1,437	114	79.3
1611	Yauri	Yauri	3,305	155	46.9
1612	Zuru	Zuru	2,533	172	67.9
1613	Dandi	Kamba	2,346	99	42.2
1614	Ngasaki	Wara	2,845	73	25.7
1615	Gwandu	Gwandu	492	107	217.5
1616	Koko/Besse	Besse	1,411	107	75.8
Total			37,250	2,059	55.3

TABLE 2 ACREAGE AND POPULATION OF LGA IN 1991 (2/15)

Name of State: KATSINA

Local Government Area			Acreage	Population	P. Density
Code	Name	Name of Center	(sq.km)	(1,000)	(/sq.km)
2301	Bakori	Bakori	489	253	210.7
2302	Danja	Danja	712		
2303	Batsari	Batsari	821	145	176.6
2304	Bindawa	Bindawa	521	115	220.7
2305	Daura	Daura	634	340	272.0
2306	Maiaduwa	Maiaduwa	616		
2307	Dutsin-Ma	Dutsin-Ma	599	195	127.5
2308	Kurfi	Kurfi	931		
2309	Faskari	Faskari	2,363	193	81.7
2310	Funta	Funta	982	261	265.8
2311	Ingawa	Ingawa	805	110	136.6
2312	Jibia	Jibia	960	128	133.3
2313	Kaita	Kaita	794	100	125.9
2314	Kankara	Kankara	1,586	166	104.7
2315	Kankia	Kankia	1,216	174	143.1
2316	Katsina	Katsina	107	306	809.5
2317	Batagarawa	Batagarawa	271		
2318	Malunfashi	Malunfashi	916	313	165.2
2319	Kafur	Kafur	979		
2320	Mani	Mani	725	120	165.5
2321	Mashi	Mashi	1,263	188	148.9
2322	Musawa	Musawa	524	161	151.0
2323	Natazu	Natazu	542		
2324	Rimi	Rimi	795	193	242.8
2325	Safana	Safana	2,322	204	87.9
2326	Zango	Zango	1,477	214	144.9
Total			23,950	3,879	162.0

Name of State: KANO

Local Government Area			Acreage	Population	P. Density
Code	Name	Name of Center	(sq.km)	(1,000)	(/sq.km)
2701	Albasu	Albasu	490	112	228.6
2702	Bagwai	Bagwai	430	101	234.9
2703	Bebeji	Bebeji	732	265	156.9
2704	Kiru	Kiru	957		
2705	Bichi	Bichi	586	172	293.5
2706	Bunkure	Bunkure	444	119	268.0
2707	Dala	Gwammaja	45	496	11,022.2
2708	Dambatta	Dambatta	1,439	205	142.5
2709	Dawakin-Kude	Dawakin-Kude	796	238	299.0
2710	Warawa	Warawa			
2711	Dawakin-Tofa	Dawakin-Tofa	508	148	291.3
2712	Gabasawa	Zakirai	767	147	191.7
2713	Gaya	Gaya	1,451	227	156.4
2714	Gezawa	Gezawa	349	149	426.9
2715	Gwarzo	Gwarzo	430	121	281.4
2716	Kabo	Kabo	369	86	233.1
2717	Kano	Kano	115	404	3,513.0
2718	Karaye	Karaye	1,348	231	171.4
2719	Kumbotso	Kumbotso	171	168	982.5
2720	Kura	Kura	420	228	338.3
2721	Madobi	Madobi	254		
2722	Minjibir	Minjibir	436	130	298.2
2723	Nassarawa	Waje	48	464	9,666.7
2724	Rano	Rano	975	154	157.9
2725	Rimin-Gado	Rimin-Gado	438	121	276.3
2726	Tofa	Tofa			
2727	Shanono	Shanono	747	83	111.1
2728	Sumalia	Sumalia	1,093	160	146.4
2729	Takai	Takai	955	134	140.3
2730	Tsanyawa	Tsanyawa	1,198	155	129.4
2731	Tudun-Wada	Tudun-Wada	1,181	224	83.1
2732	Doguwa	Riruwai	1,515		
2733	Ungogo	Ungogo	151	166	1,099.3
2734	Nudil	Nudil	842	230	273.2
Total			21,680	5,638	260.0

TABLE 2 ACREAGE AND POPULATION OF LG A IN 1991 (3/15)

Acreege and Population of L.G.A. in 1991

Name of State: JIGAWA

Local Government Area			Acreege	Population	P. Density
Code	Name	Name of Center	(sq.km)	(1,000)	(/sq.km)
2801	Babura	Babura	1,055	135	128.0
2802	Birniwa	Birniwa	1,905	114	59.8
2803	Birnin-Kudu	Birnin-Kudu	2,107	293	139.1
2804	Dutse	Dutse	1,086	148	136.3
2805	Garki	Garki	1,312	103	78.5
2806	Gumel	Gumel	927	121	76.1
2807	Suletankar-Kar	Suletankar-Kar	662		
2808	Gwaram	Gwaram	1,862	196	105.3
2809	Hadeja	Hadeja	625	184	294.4
2810	Jahun	Jahun	1,633	250	153.1
2811	Kafin-Hausa	Kafin-Hausa	1,433	150	104.7
2812	Kazaure	Kazaure	714	122	170.9
2813	Kirikasama	Kirikasama	1,669	178	106.7
2814	Kiyawa	Kiyawa	970	108	111.3
2815	Maigatari	Maigatari	1,038	179	100.6
2816	Suletankar-Kar	Suletankar-Kar	741		
2817	Malam-Maduri	Malam-Maduri	809	193	111.8
2818	Kaugama	Kaugama	918		
2819	Ringim	Ringim	1,848	248	134.2
2820	Taura	Taura			
2821	Roni	Roni	850	110	129.4
2822	Gwiwa	Gwiwa			
Total			24,210	2,832	117.0

Name of State: YOBE

Local Government Area			Acreege	Population	P. Density
Code	Name	Name of Center	(sq.km)	(1,000)	(/sq.km)
2901	Bade	Bade	2,017	185	39.7
2902	Jakusko	Jakusko	2,645		
2903	Damaturu	Damaturu	6,945	162	15.1
2904	Borsari	Dapchi	3,800		
2905	Fika	Fika	2,184	130	59.5
2906	Fune	Damagum	5,041	136	27.0
2907	Geidam	Geidam	4,421	85	19.2
2908	Gujiba	Biniyadi	5,373	144	26.8
2909	Mchina	Mchina	3,915	107	27.3
2910	Nangere	Potiskum	1,618	251	155.1
2911	Nguru	Nguru	3,576	137	38.3
2912	Yunusari	kananga	3,705	74	20.0
Total			45,240	1,411	31.2













TABLE 2 ACREAGE AND POPULATION OF L.G.A IN 1991 (8/15)

Name of State: PLATEAU

Local Government Area			Acreage	Population	P. Density
Code	Name	Name of Center	(sq.km)	(1,000)	(/sq.km)
2101	Akwanga	Akwanga	2,212	183	53.0
2102	Nasarawo-Egon	Nasarawo-Egon	1,238		
2103	Awe	Awe	3,612	134	37.1
2104	Barikin-Ladi	Barikin-Ladi	1,947	153	78.6
2105	Bassa	Bassa	1,695	113	66.7
2106	Lantang South	Mabudi	1,443	48	33.3
2107	Jos North	Jos	1,577	623	395.1
2108	Jos South				
2109	Kanam	Dengi	2,920	117	40.1
2110	Keffi	Keffi	2,012	243	49.6
2111	karu	karu	2,883		
2112	Lafia	Lafia	2,169	341	92.6
2113	Obi	Obi	1,515		
2114	Lantang North	Lantang	1,067	101	94.7
2115	Mangu	Mangu	1,789	273	78.9
2116	Bokkos	Bokkos	1,673		
2117	Nassarawa	Nassarawa	5,696	225	26.1
2118	Toto	Toto	2,920		
2119	Pankshin	Pankshin	2,508	169	67.4
2120	Quan-Pan	Paap	2,426	142	58.5
2121	Shendam	Shendam	3,181	217	68.2
2122	Wase	Wase	4,783	104	21.7
2123	Doma	Doma	2,604	99	38.0
Total			53,870	3,285	61.0

Name of State: BENUE

Local Government Area			Acreage	Population	P. Density
Code	Name	Name of Center	(sq.km)	(1,000)	(/sq.km)
1901	Ado	Igumale	1,177	103	87.5
1902	Gboko	Gboko	2,395	298	124.4
1903	Guma	Gbajimba	2,584	116	44.9
1904	Gwer East	Aliade	2,515	115	45.7
1905	Katsina-Ala	Katsina-Ala	4,288	238	55.5
1906	Konshisha	Tse-Agberagba	1,918	143	74.6
1907	Kwande	Adikpo	3,031	191	63.0
1908	Makurdi	Makurdi	778	226	290.5
1909	Oju	Oju	1,857	177	95.3
1910	Okpokwu	Okpoga	786	87	110.7
1911	Oturkpo	Oturkpo	2,119	190	89.7
1912	Ushongo	Lessei	1,256	124	98.7
1913	Vandeikya	Vandeikya	999	164	164.2
1914	Ogbadibo	Otukpa	591	91	154.0
1915	Apa	Gbokpo	2,114	129	61.0
1916	Bukuru	Bukuru	1,350	131	97.0
1917	Gwer West	Naka	1,237	73	59.0
1918	Ukum	Zaki Biam	1,415	183	129.3
Total			32,410	2,779	85.7

TABLE 2: ACREAGE AND POPULATION OF LGA IN 1991 (9/15)

Name of State: OYO

Local Government Area			Acreege	Population	P. Density
Code	Name	Name of Center	(sq.km)	(1,000)	(/sq.km)
0301	Afijio	Jobele	677	70	103.4
0302	Akinyele	Moniya	487	140	287.5
0303	Egbeda	Egbeda	149	129	865.8
0304	Ibadan North-East	Agodi	74	147	1,986.5
0305	Ibapara	Eruwa	843	57	67.6
0306	Ido	Ido	850	56	65.9
0307	Ifedapo	Saki	6,650	231	34.7
0308	Ifelaju	Igbo-Ora	1,531	105	68.6
0309	Irepo	Kisi	2,035	132	64.9
0310	Iseyin	Iseyin	2,729	171	62.7
0311	Kajola	Oke-Iho	2,889	172	59.5
0312	Lagelu	Iyana-Offa	306	69	225.5
0313	Ogbomosho North	Sabo	172	166	582.5
0314	Ogbomosho South	Arowomole	113		
0315	Ogo-Oluwa	Ajawa	405	36	88.9
0316	Oluyole	Idi-Ayunre	281	91	323.8
0317	Ona-Ara	Akanran	460	122	265.2
0318	Orelope	Igboho	827	83	100.4
0319	Orire	Ikoyi	2,021	93	46.0
0320	Oyo	Oyo	2,456	275	112.0
0321	Surulere	Iresadu	788	68	86.3
0322	Ibadan North-West	Dugbe/Onireke	46	273	5,934.8
0323	Ibadan South-East	Mapo	93	228	2,451.6
0324	Ibadan South-West	Oluyole	107	274	2,560.7
0325	Ibadan Central	Bodija	151	301	1,993.4
Total			27,140	3,489	128.6

Name of State: OGUN

Local Government Area			Acreege	Population	P. Density
Code	Name	Name of Center	(sq.km)	(1,000)	(/sq.km)
0201	Abeokuta North	Akomoje	549	375	426.6
0202	Abeokuta South	Ake Abeokuta	330		
0203	Ado-Odo/Ota	Ota	801	240	299.6
0204	Egbado North	Aiyetoro	4,030	235	58.3
0205	Egbado South	Ilaro	1,180	272	230.5
0206	Ifo	Ifo	1,076	213	198.0
0207	Ijebu East	Ogbere	2,117	62	29.3
0208	Ijebu North	Ijebu Igbo	964	142	147.3
0209	Ijebu-Ode	Ijebu-Ode	186	245	302.5
0210	Odogbolu	Odogbolu	624		
0211	Obafemi/Owode	Owode	1,411	135	95.7
0212	Odeda	Odeda	1,642	88	53.6
0213	Ogun Waterside	Abigi	1,098	66	60.1
0214	Ikenne	Ikenne	441	266	260.3
0215	Shagamu	Shagamu	581		
Total			17,030	2,339	137.3





TABLE 2 ACREAGE AND POPULATION OF LGA IN 1991 (11/15)

Name of State: ONDO

Local Government Area			Acreage	Population	P. Density
Code	Name	Name of Center	(sq.km)	(1,000)	(/sq.km)
0501	Ado	Ado	401	149	371.6
0502	Akoko North-East	Ikare	409	104	254.3
0503	Akoko South	Oka	773	186	240.6
0504	Akure	Akure	1,042	317	304.2
0505	Ekiti East	Omuo	701	137	195.4
0506	Ekiti South-East	Ilawe	294	134	455.8
0507	Ekiti West	Aramoko	474	247	521.1
0508	Idanre	Owena	1,872	82	43.8
0509	Ido/Osi	Ido	269	108	401.5
0510	Odigbo	Ore	1,875	151	80.5
0511	Ijero	Ijero	378	93	246.0
0512	Okitipupa	Okitipupa	811	169	208.4
0513	Ikere	Ikere	218	59	270.6
0514	Ikole	Ikole	1,029	143	139.0
0515	Ilaje	Igbokoda	2,112	275	130.2
0516	Irepodun/Ifelodun	Igede	399	124	310.8
0517	Emure/Ise/Orun	Ise	648	132	203.7
0518	Noba	Otun	295	166	562.7
0519	Ondo	Ondo	1,255	247	196.8
0520	Ose	Ifon	865	92	106.4
0521	Owo	Owo	1,704	155	91.0
0522	Oye	Oye	484	136	281.0
0523	Ile-Oluji-Okeigbo	Ile-Oluji	750	123	164.0
0524	Ifedore	Igbara-Oke	313	102	325.9
0525	Irele	Irele	866	105	121.2
0526	Akoko North-West	Oke	573	148	258.3
Total			20,810	3,884	186.6

Name of State: EDO

Local Government Area			Acreage	Population	P. Density
Code	Name	Name of Center	(sq.km)	(1,000)	(/sq.km)
0601	Esan South East	Ubiaja	1,494	89	59.6
0602	Akoko-Edo	Igarri	1,414	124	87.7
0603	Etsako West	Auchi	1,479	131	88.6
0604	Esan West	Ekpoma	644	92	142.9
0605	Oredo	Benin City	1,184	781	659.6
0606	Orhionmwon	Abudu	2,166	227	53.8
0607	Uhunmwonde	Ehor	2,051		
0608	Ovia South West	Iguobazuwa	3,379	81	24.0
0609	Owan East	Afuze	1,229	151	78.6
0610	Owan West	Sabongida Ora	691		
0611	Esan Central	Irrua	425	129	303.5
0612	Esan North East	Uromi	348	88	252.9
0613	Etsako East	Agenebode	1,319	144	109.2
0614	Ovia North East	Okada	1,877	122	65.0
Total			19,700	2,159	109.6









