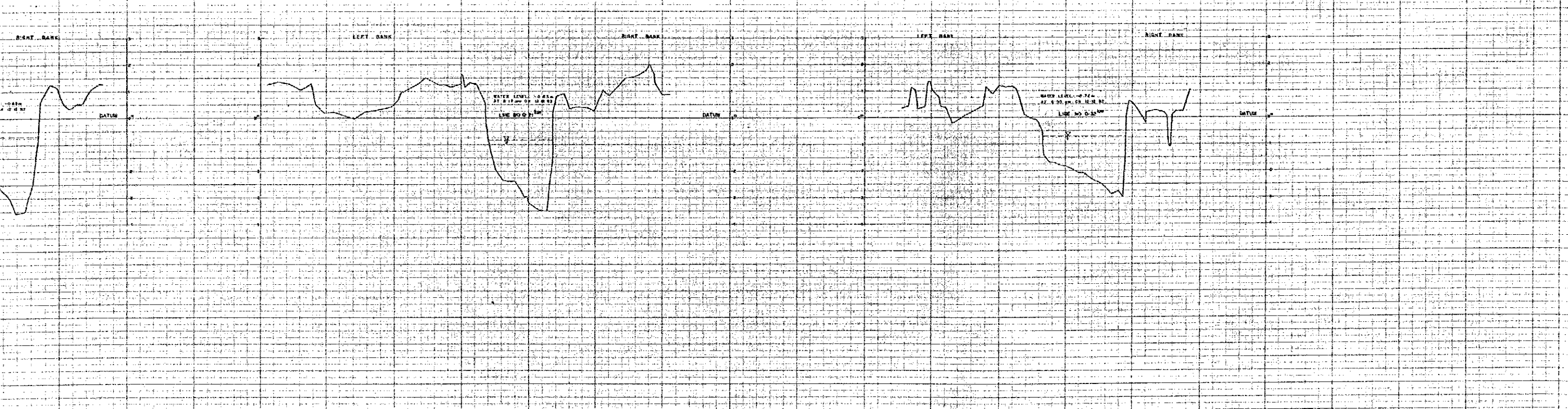
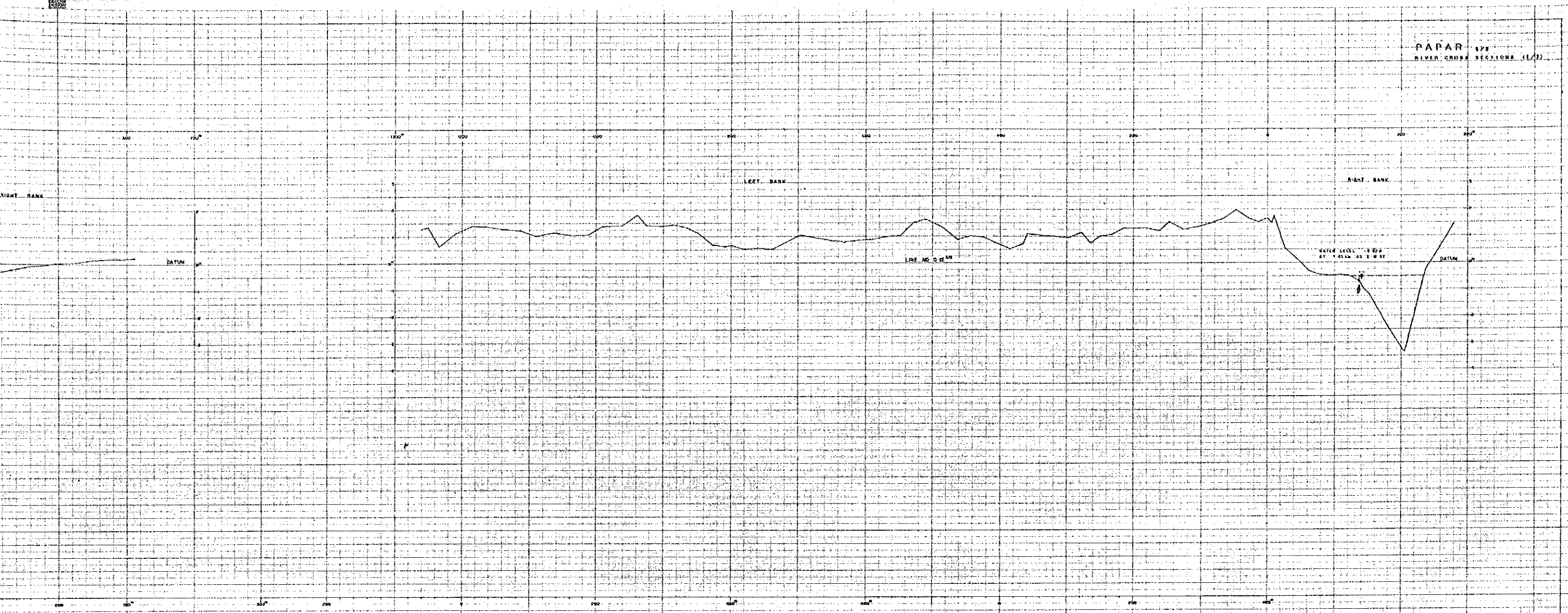
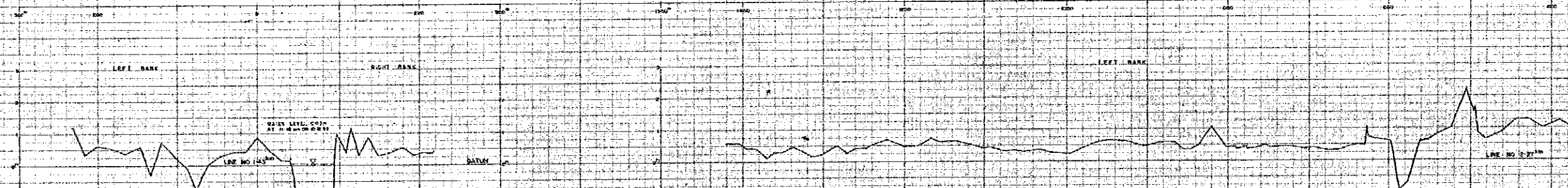
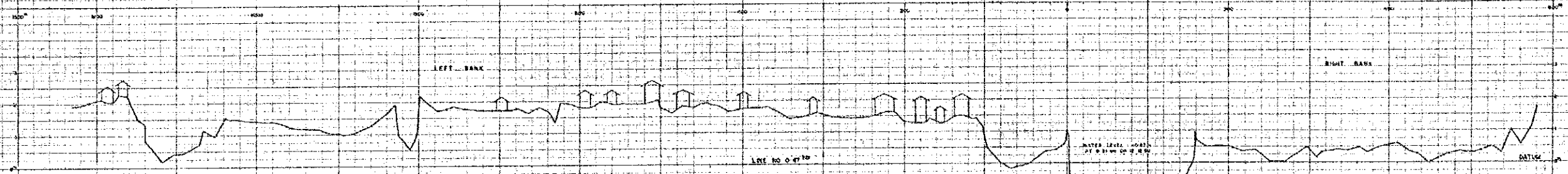


RIVER CROSS SECTIONS OF SUNGAI PAPAR
 LINE NO 0-00 km — LINE NO 0-32 km

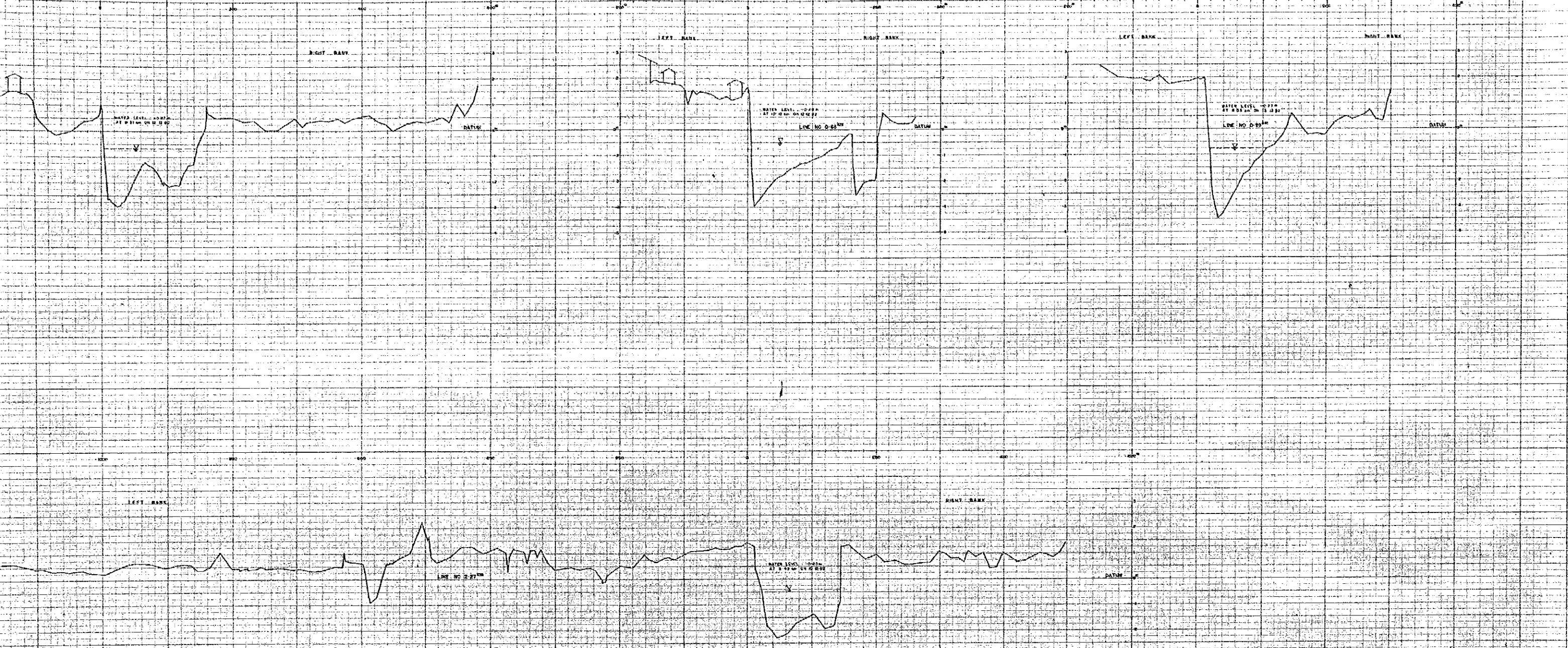


RIVER CROSS SECTIONS OF SUNGAI PAPAR
 LINE NO 0-06 km — LINE NO 0-32 km

NOTE:
 HEIGHT DATUM ALL LEVELS ARE BASED ON BM 102 (2000) FROM MALAYA 1958
 DATE OF SURVEY: NOVEMBER 1958
 DRAWN BY: LAD AND DEPUTY LAD



RIVER CROSS SECTIONS OF SUNGAI PAPAR
 LINE NO 0-47 km — LINE NO 1-27 km



RIVER CROSS SECTIONS OF SUNGAI PAPAR
LINE NO 0.47km — LINE NO 2.27km

NOTE:
HEIGHT IN CM. ALL LEVELS ARE BASED ON DATUM 100 CM ABOVE RIVER BED.
DATE OF SURVEY: NOVEMBER 1971
SURVEYING: ENGINEER SUPPLY CORPS.

DATUM: 00 m

LINE NO.	SECTIONAL DISTANCE (M)	CUMULATIVE DISTANCE (M)	THE USE OF BED LEVEL (m)	LEVEL OF BANK LEFT BANK	LEVEL OF BANK RIGHT BANK
----------	------------------------	-------------------------	--------------------------	-------------------------	--------------------------

6.00	0	0	2.93	0.34	0.28
0.12	20	20	3.85	1.77	1.47
0.17	50	70	3.88	1.59	0.72
0.21	40	110	3.51	0.57	0.15
0.32	10	120	2.99	0.7	0.05
0.47	150	170	2.93	0.78	0.18
0.66	210	180	2.98	1.65	0.66
0.99	310	190	3.48	2.50	0.51
1.43	440	1430	5.89	0.17	0.99
2.21	840	2270	4.29	1.30	1.27

RIVER PROFILE OF SUNGAI PAPAR

NOTE:
HEIGHT DATUM ALL LEVELS ARE BASED ON BM NO. 202002 (2.025 m ABOVE LSD).
DATE OF SURVEY: NOVEMBER 1992.
(DATUM LEVEL = LARI AND SURVEY DATUM = LSD)

JICA