

資料 3 鉍石研磨片檢鏡結果

A p c. 3

RESULTAT D'ETUDE MICROSCOPIQUE
DES SECTIONS POLIES

SUMMARY OF MICROSCOPIC OBSERVATION OF ORES IN POLISHED SECTION

Sample Number	Sample Location	Ore Type	Au	Py	Cp	Asp	Po	Lm	Remarks
D-4	Kekoro	Smoky vein quartz	-	-	-	△	-	-	Asp veinlets, width ≤ 2mm, grain $\phi \leq 0.3$ mm
KB-i5	Kekoro	Silicified rhyolite	-	△	-	-	-	-	Disseminated Py, $\phi \leq 0.1$ mm
P04-5	Silobougou	Smoky vein quartz	-	-	-	-	-	×	Lm occurs in hair cracks. $\phi \leq 0.2$ mm
S0-1	Silobougou	Altered diabase ?	-	-	×	-	△	-	Disseminated Po, $\phi \leq 0.5$ mm; Po accompanies Cp ($\phi \leq 0.1$ mm) & pentlandite? ($\phi \leq 0.2$ mm).
S0-7	Silobougou	Smoky vein quartz	-	-	-	-	-	-	No ore mineral is observed.
V09a-1	Silobougou	Milky vein quartz	-	-	-	△	-	-	Asp veinlets, width ≤ 1.5mm, $\phi \leq 0.7$ mm
V09a-2	Silobougou	Milky vein quartz	-	-	-	△	-	-	Asp veinlets, width ≤ 1mm, $\phi \leq 0.5$ mm
V-10	Silobougou	Smoky vein quartz	-	-	-	-	-	×	Lm occurs in hair cracks. $\phi \leq 0.2$ mm; Lm shows colloform texture.
Kalana-1	Kalana mine	Altered diorite	-	-	×	-	△	-	Disseminated Po, $\phi \leq 1.2$ mm; Po accompanies Cp ($\phi \leq 0.3$ mm).
Kalana-2	Kalana mine	Au ore vein quartz	×	×	△	-	-	-	Cp $\phi \leq 0.8$ mm; Cp accompanies sphalerite ($\phi \leq 0.5$ mm), Py ($\phi \leq 0.6$ mm) & Au ($\phi \leq 0.12$ mm).

Abbreviations Au : native gold Asp : arsenopyrite
 Py : pyrite Po : pyrrhotite
 Cp : chalcopyrite Lm : limonite

⊙ : abundant ○ : common △ : little × : rare - : none

鉍石研磨片顯微鏡写真

鉍物略号

Py : pyrite

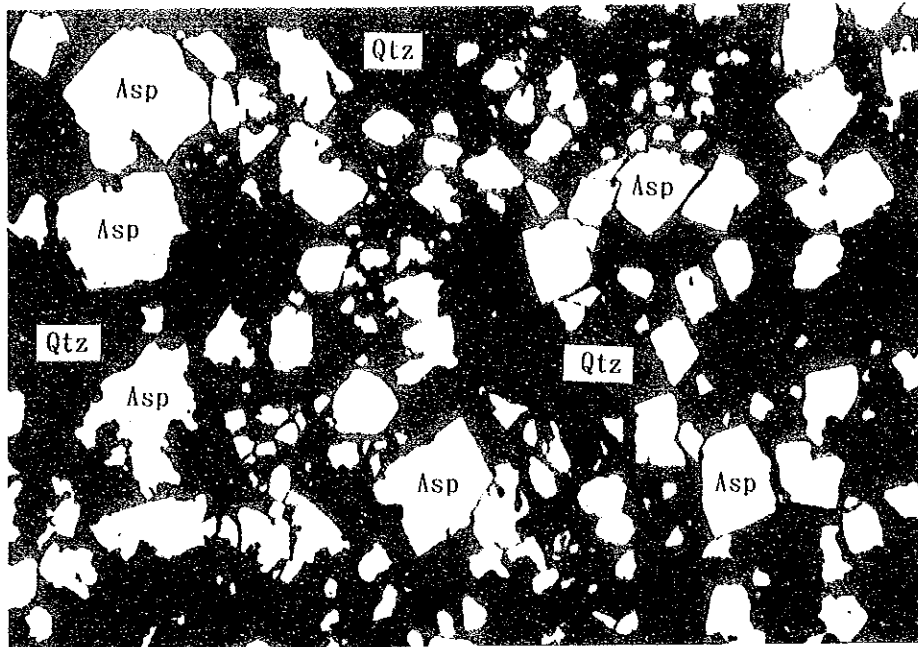
Cp : chalcopyrite

Po : pyrrhotite

Asp : arsenopyrite

Pnt : pentlandite

Qtz : quartz

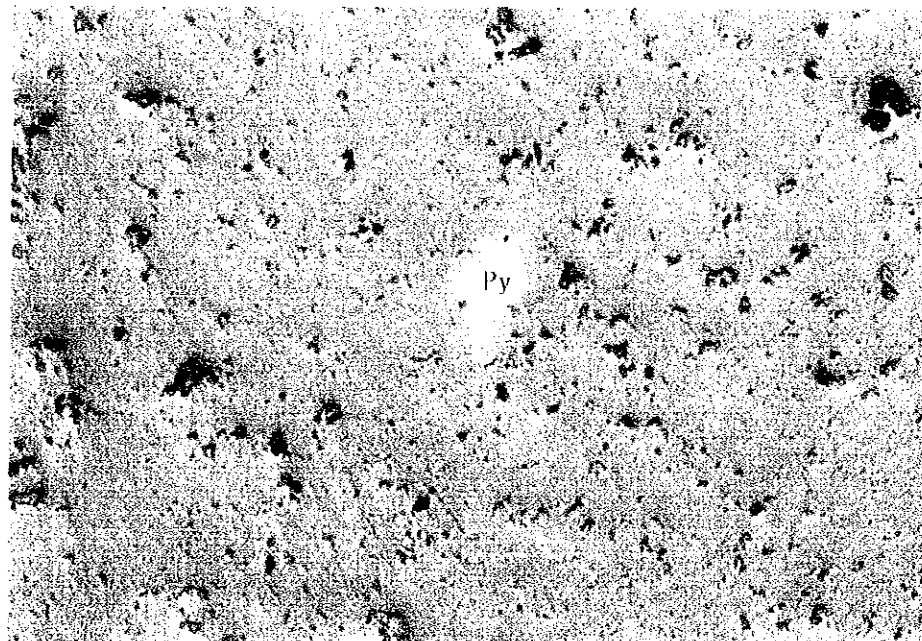


0.1mm

Sample No : D-4

Location : Kekoro area

Ore Name : Asp-Qtz vein



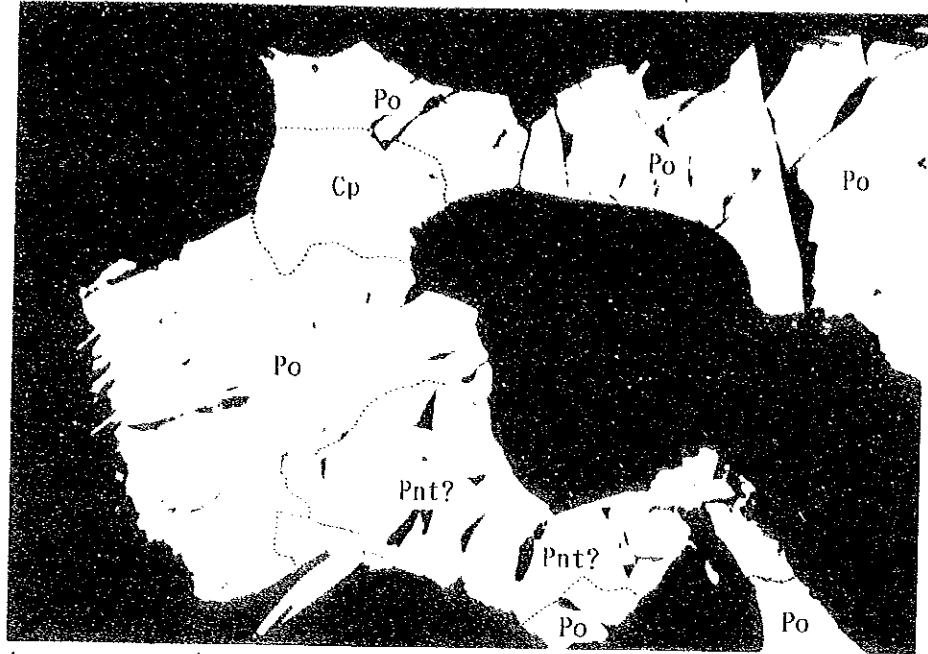
0.1mm

Sample No : KB-15

Location : Kekoro area

Ore Name : Silicified rhyolite

Photomicrographs (polished section)

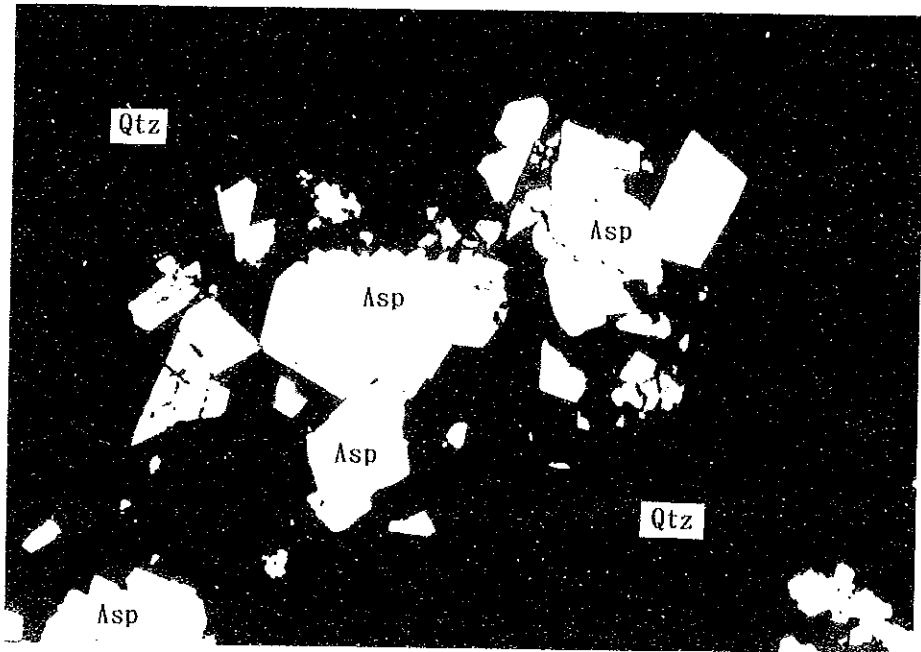


0.1mm

Sample No : S0-1

Location : Silobougou area

Ore Name : Altered diabase



0.1mm

Sample No : V09a-1

Location : Silobougou area

Ore Name : Asp-Qtz vein

Photomicrographs (polished section)

資料 4 化学分析結果一覽表 (土壤)

А р с. 4

RESULTAT D'ANALYSE CHIMIQUE DES SOLS

Ser. No.	Sample No.	Au ppb	Ag ppm	Cu ppm	Pb ppm	Zn ppm	As ppm	Sb ppm
1841	1W-284	5	2	7	9	2	6	2
1842	1W-285	5	2	7	9	2	6	2
1843	1W-286	5	2	7	9	2	6	2
1844	1W-287	5	2	7	9	2	6	2
1845	1W-288	5	2	7	9	2	6	2
1846	1W-289	5	2	7	9	2	6	2
1847	1W-290	5	2	7	9	2	6	2
1848	1X-074	5	2	7	9	2	6	2
1849	1X-075	5	2	7	9	2	6	2
1850	1X-076	5	2	7	9	2	6	2
1851	1X-077	5	2	7	9	2	6	2
1852	1X-078	5	2	7	9	2	6	2
1853	1X-080	5	2	7	9	2	6	2
1854	1X-081	5	2	7	9	2	6	2
1855	1X-082	5	2	7	9	2	6	2
1856	1X-083	5	2	7	9	2	6	2
1857	1X-084	5	2	7	9	2	6	2
1858	1X-085	5	2	7	9	2	6	2
1859	1X-086	5	2	7	9	2	6	2
1860	1X-087	5	2	7	9	2	6	2
1861	1X-088	5	2	7	9	2	6	2
1862	1X-089	5	2	7	9	2	6	2
1863	1X-090	5	2	7	9	2	6	2
1864	1X-091	5	2	7	9	2	6	2
1865	1X-092	5	2	7	9	2	6	2
1866	1X-093	5	2	7	9	2	6	2
1867	1X-094	5	2	7	9	2	6	2
1868	1X-095	5	2	7	9	2	6	2
1869	1X-096	5	2	7	9	2	6	2
1870	1X-097	5	2	7	9	2	6	2
1871	1X-098	5	2	7	9	2	6	2
1872	1X-099	5	2	7	9	2	6	2
1873	1X-100	5	2	7	9	2	6	2
1874	1X-101	5	2	7	9	2	6	2
1875	1X-102	5	2	7	9	2	6	2
1876	1X-103	5	2	7	9	2	6	2
1877	1X-104	5	2	7	9	2	6	2
1878	1X-105	5	2	7	9	2	6	2
1879	1X-106	5	2	7	9	2	6	2
1880	1X-107	5	2	7	9	2	6	2
1881	1X-108	5	2	7	9	2	6	2
1882	1X-109	5	2	7	9	2	6	2
1883	1X-110	5	2	7	9	2	6	2
1884	1X-111	5	2	7	9	2	6	2
1885	1X-112	5	2	7	9	2	6	2
1886	1X-113	5	2	7	9	2	6	2
1887	1X-114	5	2	7	9	2	6	2
1888	1X-115	5	2	7	9	2	6	2
1889	1X-116	5	2	7	9	2	6	2
1890	1X-117	5	2	7	9	2	6	2
1891	1X-118	5	2	7	9	2	6	2
1892	1X-119	5	2	7	9	2	6	2
1893	1X-120	5	2	7	9	2	6	2
1894	1X-121	5	2	7	9	2	6	2
1895	1X-122	5	2	7	9	2	6	2
1896	1X-123	5	2	7	9	2	6	2
1897	1X-124	5	2	7	9	2	6	2
1898	1X-125	5	2	7	9	2	6	2
1899	1X-126	5	2	7	9	2	6	2
1900	1X-127	5	2	7	9	2	6	2
1901	1X-128	5	2	7	9	2	6	2
1902	1X-129	5	2	7	9	2	6	2
1903	1X-130	5	2	7	9	2	6	2
1904	1X-131	5	2	7	9	2	6	2
1905	1X-132	5	2	7	9	2	6	2
1906	1X-133	5	2	7	9	2	6	2
1907	1X-134	5	2	7	9	2	6	2
1908	1X-135	5	2	7	9	2	6	2
1909	1X-136	5	2	7	9	2	6	2
1910	1X-137	5	2	7	9	2	6	2
1911	1X-138	5	2	7	9	2	6	2
1912	1X-139	5	2	7	9	2	6	2
1913	1X-140	5	2	7	9	2	6	2
1914	1X-141	5	2	7	9	2	6	2
1915	1X-142	5	2	7	9	2	6	2
1916	1X-143	5	2	7	9	2	6	2
1917	1X-144	5	2	7	9	2	6	2
1918	1X-145	5	2	7	9	2	6	2
1919	1X-146	5	2	7	9	2	6	2
1920	1X-147	5	2	7	9	2	6	2
1921	1X-148	5	2	7	9	2	6	2
1922	1X-149	5	2	7	9	2	6	2
1923	1X-150	5	2	7	9	2	6	2
1924	1X-151	5	2	7	9	2	6	2
1925	1X-152	5	2	7	9	2	6	2
1926	1X-153	5	2	7	9	2	6	2
1927	1X-154	5	2	7	9	2	6	2
1928	1X-155	5	2	7	9	2	6	2
1929	1X-156	5	2	7	9	2	6	2
1930	1X-157	5	2	7	9	2	6	2
1931	1X-158	5	2	7	9	2	6	2
1932	1X-159	5	2	7	9	2	6	2
1933	1X-160	5	2	7	9	2	6	2
1934	1X-161	5	2	7	9	2	6	2
1935	1X-162	5	2	7	9	2	6	2
1936	1X-163	5	2	7	9	2	6	2
1937	1X-164	5	2	7	9	2	6	2
1938	1X-165	5	2	7	9	2	6	2
1939	1X-166	5	2	7	9	2	6	2
1940	1X-167	5	2	7	9	2	6	2
1941	1X-168	5	2	7	9	2	6	2
1942	1X-169	5	2	7	9	2	6	2
1943	1X-170	5	2	7	9	2	6	2
1944	1X-171	5	2	7	9	2	6	2
1945	1X-172	5	2	7	9	2	6	2
1946	1X-173	5	2	7	9	2	6	2
1947	1X-174	5	2	7	9	2	6	2
1948	1X-175	5	2	7	9	2	6	2
1949	1X-176	5	2	7	9	2	6	2
1950	1X-177	5	2	7	9	2	6	2
1951	1X-178	5	2	7	9	2	6	2
1952	1X-179	5	2	7	9	2	6	2
1953	1X-180	5	2	7	9	2	6	2
1954	1X-181	5	2	7	9	2	6	2
1955	1X-182	5	2	7	9	2	6	2
1956	1X-183	5	2	7	9	2	6	2
1957	1X-184	5	2	7	9	2	6	2
1958	1X-185	5	2	7	9	2	6	2
1959	1X-186	5	2	7	9	2	6	2
1960	1X-187	5	2	7	9	2	6	2
1961	1X-188	5	2	7	9	2	6	2
1962	1X-189	5	2	7	9	2	6	2
1963	1X-190	5	2	7	9	2	6	2
1964	1X-191	5	2	7	9	2	6	2
1965	1X-192	5	2	7	9	2	6	2
1966	1X-193	5	2	7	9	2	6	2
1967	1X-194	5	2	7	9	2	6	2
1968	1X-195	5	2	7	9	2	6	2
1969	1X-196	5	2	7	9	2	6	2
1970	1X-197	5	2	7	9	2	6	2
1971	1X-198	5	2	7	9	2	6	2
1972	1X-199	5	2	7	9	2	6	2
1973	1X-200	5	2	7	9	2	6	2
1974	1X-201	5	2	7	9	2	6	2
1975	1X-202	5	2	7	9	2	6	2
1976	1X-203	5	2	7	9	2	6	2
1977	1X-204	5	2	7	9	2	6	2
1978	1X-205	5	2	7	9	2	6	2
1979	1X-206	5	2	7	9	2	6	2
1980	1X-207	5	2	7	9	2	6	2
1981	1X-208	5	2	7	9	2	6	2
1982	1X-209	5	2	7	9	2	6	2
1983	1X-210	5	2	7	9	2	6	2
1984	1X-211	5	2	7	9	2	6	2
1985	1X-212	5	2	7	9	2	6	2
1986	1X-213	5	2	7	9	2	6	2
1987	1X-214	5	2	7	9	2	6	2
1988	1X-215	5	2	7	9	2	6	2
1989	1X-216	5	2	7	9	2	6	2
1990	1X-217	5	2	7	9	2	6	2
1991	1X-218	5	2	7	9	2	6	2
1992	1X-219	5	2	7	9	2	6	2
1993	1X-220	5	2	7	9	2	6	2
1994	1X-221	5	2	7	9	2	6	2
1995	1X-222	5	2	7	9	2	6	2
1996	1X-223	5	2	7	9	2	6	2
1997	1X-224	5	2	7	9	2	6	2
1998	1X-225	5	2	7	9	2	6	2
1999	1X-226	5	2	7	9	2	6	2
2000	1X-227	5	2	7	9	2	6	2

Ser. No.	Sample No.	Au ppb	Ag ppm	Cu ppm	Pb ppm	Zn ppm	As ppm	Sb ppm
1761	1V-266	5	2	7	9	2	6	2
1762	1V-267	5	2	7	9	2	6	2
1763	1V-268	5	2	7	9	2	6	2
1764	1V-269	5	2	7	9	2	6	2
1765	1V-270	5	2	7	9	2	6	2
1766	1V-271	5	2	7	9	2	6	2
1767	1V-272	5	2	7	9	2	6	2
1768	1V-273	5	2	7	9	2	6	2
1769	1V-274	5	2	7	9	2	6	2
1770	1V-275	5	2	7	9	2	6	2
1771	1V-276	5	2	7	9	2	6	2
1772	1V-277	5	2	7	9	2	6	2
1773	1V-278	5	2	7	9	2	6	2
1774	1V-279	5	2	7	9	2	6	2
1775	1V-280	5	2	7	9	2	6	2
1776	1V-281	5	2	7	9	2	6	2
1777	1V-282	5	2	7	9	2	6	2
1778	1V-283	5	2	7	9	2	6	2
1779	1V-284	5	2	7	9	2	6	2
1780	1V-285	5	2	7	9	2	6	2
1781	1V-286	5	2	7	9	2	6	2

Sr. No.	Sample No.	Au ppb	Ag ppm	Cu ppm	Pb ppm	Zn ppm	As ppm	Sb ppm
3441	101	1.0	0.0	0.0	0.0	0.0	0.0	0.0
3442	102	1.0	0.0	0.0	0.0	0.0	0.0	0.0
3443	103	1.0	0.0	0.0	0.0	0.0	0.0	0.0
3444	104	1.0	0.0	0.0	0.0	0.0	0.0	0.0
3445	105	1.0	0.0	0.0	0.0	0.0	0.0	0.0
3446	106	1.0	0.0	0.0	0.0	0.0	0.0	0.0
3447	107	1.0	0.0	0.0	0.0	0.0	0.0	0.0
3448	108	1.0	0.0	0.0	0.0	0.0	0.0	0.0
3449	109	1.0	0.0	0.0	0.0	0.0	0.0	0.0
3450	110	1.0	0.0	0.0	0.0	0.0	0.0	0.0
3451	111	1.0	0.0	0.0	0.0	0.0	0.0	0.0
3452	112	1.0	0.0	0.0	0.0	0.0	0.0	0.0
3453	113	1.0	0.0	0.0	0.0	0.0	0.0	0.0
3454	114	1.0	0.0	0.0	0.0	0.0	0.0	0.0
3455	115	1.0	0.0	0.0	0.0	0.0	0.0	0.0
3456	116	1.0	0.0	0.0	0.0	0.0	0.0	0.0
3457	117	1.0	0.0	0.0	0.0	0.0	0.0	0.0
3458	118	1.0	0.0	0.0	0.0	0.0	0.0	0.0
3459	119	1.0	0.0	0.0	0.0	0.0	0.0	0.0
3460	120	1.0	0.0	0.0	0.0	0.0	0.0	0.0

Sr. No.	Sample No.	Au ppb	Ag ppm	Cu ppm	Pb ppm	Zn ppm	As ppm	Sb ppm
3461	121	1.0	0.0	0.0	0.0	0.0	0.0	0.0
3462	122	1.0	0.0	0.0	0.0	0.0	0.0	0.0
3463	123	1.0	0.0	0.0	0.0	0.0	0.0	0.0
3464	124	1.0	0.0	0.0	0.0	0.0	0.0	0.0
3465	125	1.0	0.0	0.0	0.0	0.0	0.0	0.0
3466	126	1.0	0.0	0.0	0.0	0.0	0.0	0.0
3467	127	1.0	0.0	0.0	0.0	0.0	0.0	0.0
3468	128	1.0	0.0	0.0	0.0	0.0	0.0	0.0
3469	129	1.0	0.0	0.0	0.0	0.0	0.0	0.0
3470	130	1.0	0.0	0.0	0.0	0.0	0.0	0.0
3471	131	1.0	0.0	0.0	0.0	0.0	0.0	0.0
3472	132	1.0	0.0	0.0	0.0	0.0	0.0	0.0
3473	133	1.0	0.0	0.0	0.0	0.0	0.0	0.0
3474	134	1.0	0.0	0.0	0.0	0.0	0.0	0.0
3475	135	1.0	0.0	0.0	0.0	0.0	0.0	0.0
3476	136	1.0	0.0	0.0	0.0	0.0	0.0	0.0
3477	137	1.0	0.0	0.0	0.0	0.0	0.0	0.0
3478	138	1.0	0.0	0.0	0.0	0.0	0.0	0.0
3479	139	1.0	0.0	0.0	0.0	0.0	0.0	0.0
3480	140	1.0	0.0	0.0	0.0	0.0	0.0	0.0

Sr. No.	Sample No.	Au ppb	Ag ppm	Cu ppm	Pb ppm	Zn ppm	As ppm	Sb ppm
3481	141	1.0	0.0	0.0	0.0	0.0	0.0	0.0
3482	142	1.0	0.0	0.0	0.0	0.0	0.0	0.0
3483	143	1.0	0.0	0.0	0.0	0.0	0.0	0.0
3484	144	1.0	0.0	0.0	0.0	0.0	0.0	0.0
3485	145	1.0	0.0	0.0	0.0	0.0	0.0	0.0
3486	146	1.0	0.0	0.0	0.0	0.0	0.0	0.0
3487	147	1.0	0.0	0.0	0.0	0.0	0.0	0.0
3488	148	1.0	0.0	0.0	0.0	0.0	0.0	0.0
3489	149	1.0	0.0	0.0	0.0	0.0	0.0	0.0
3490	150	1.0	0.0	0.0	0.0	0.0	0.0	0.0
3491	151	1.0	0.0	0.0	0.0	0.0	0.0	0.0
3492	152	1.0	0.0	0.0	0.0	0.0	0.0	0.0
3493	153	1.0	0.0	0.0	0.0	0.0	0.0	0.0
3494	154	1.0	0.0	0.0	0.0	0.0	0.0	0.0
3495	155	1.0	0.0	0.0	0.0	0.0	0.0	0.0
3496	156	1.0	0.0	0.0	0.0	0.0	0.0	0.0
3497	157	1.0	0.0	0.0	0.0	0.0	0.0	0.0
3498	158	1.0	0.0	0.0	0.0	0.0	0.0	0.0
3499	159	1.0	0.0	0.0	0.0	0.0	0.0	0.0
3500	160	1.0	0.0	0.0	0.0	0.0	0.0	0.0

Sr. No.	Sample No.	Au ppb	Ag ppm	Cu ppm	Pb ppm	Zn ppm	As ppm	Sb ppm
3501	161	1.0	0.0	0.0	0.0	0.0	0.0	0.0
3502	162	1.0	0.0	0.0	0.0	0.0	0.0	0.0
3503	163	1.0	0.0	0.0	0.0	0.0	0.0	0.0
3504	164	1.0	0.0	0.0	0.0	0.0	0.0	0.0
3505	165	1.0	0.0	0.0	0.0	0.0	0.0	0.0
3506	166	1.0	0.0	0.0	0.0	0.0	0.0	0.0
3507	167	1.0	0.0	0.0	0.0	0.0	0.0	0.0
3508	168	1.0	0.0	0.0	0.0	0.0	0.0	0.0
3509	169	1.0	0.0	0.0	0.0	0.0	0.0	0.0
3510	170	1.0	0.0	0.0	0.0	0.0	0.0	0.0
3511	171	1.0	0.0	0.0	0.0	0.0	0.0	0.0
3512	172	1.0	0.0	0.0	0.0	0.0	0.0	0.0
3513	173	1.0	0.0	0.0	0.0	0.0	0.0	0.0
3514	174	1.0	0.0	0.0	0.0	0.0	0.0	0.0
3515	175	1.0	0.0	0.0	0.0	0.0	0.0	0.0
3516	176	1.0	0.0	0.0	0.0	0.0	0.0	0.0
3517	177	1.0	0.0	0.0	0.0	0.0	0.0	0.0
3518	178	1.0	0.0	0.0	0.0	0.0	0.0	0.0
3519	179	1.0	0.0	0.0	0.0	0.0	0.0	0.0
3520	180	1.0	0.0	0.0	0.0	0.0	0.0	0.0

Sr. No.	Sample No.	Au ppb	Ag ppm	Cu ppm	Pb ppm	Zn ppm	As ppm	Sb ppm
1	1000	10	10	10	10	10	10	10
2	1001	10	10	10	10	10	10	10
3	1002	10	10	10	10	10	10	10
4	1003	10	10	10	10	10	10	10
5	1004	10	10	10	10	10	10	10
6	1005	10	10	10	10	10	10	10
7	1006	10	10	10	10	10	10	10
8	1007	10	10	10	10	10	10	10
9	1008	10	10	10	10	10	10	10
10	1009	10	10	10	10	10	10	10
11	1010	10	10	10	10	10	10	10
12	1011	10	10	10	10	10	10	10
13	1012	10	10	10	10	10	10	10
14	1013	10	10	10	10	10	10	10
15	1014	10	10	10	10	10	10	10
16	1015	10	10	10	10	10	10	10
17	1016	10	10	10	10	10	10	10
18	1017	10	10	10	10	10	10	10
19	1018	10	10	10	10	10	10	10
20	1019	10	10	10	10	10	10	10
21	1020	10	10	10	10	10	10	10
22	1021	10	10	10	10	10	10	10
23	1022	10	10	10	10	10	10	10
24	1023	10	10	10	10	10	10	10
25	1024	10	10	10	10	10	10	10
26	1025	10	10	10	10	10	10	10
27	1026	10	10	10	10	10	10	10
28	1027	10	10	10	10	10	10	10
29	1028	10	10	10	10	10	10	10
30	1029	10	10	10	10	10	10	10
31	1030	10	10	10	10	10	10	10
32	1031	10	10	10	10	10	10	10
33	1032	10	10	10	10	10	10	10
34	1033	10	10	10	10	10	10	10
35	1034	10	10	10	10	10	10	10
36	1035	10	10	10	10	10	10	10
37	1036	10	10	10	10	10	10	10
38	1037	10	10	10	10	10	10	10
39	1038	10	10	10	10	10	10	10
40	1039	10	10	10	10	10	10	10
41	1040	10	10	10	10	10	10	10
42	1041	10	10	10	10	10	10	10
43	1042	10	10	10	10	10	10	10
44	1043	10	10	10	10	10	10	10
45	1044	10	10	10	10	10	10	10
46	1045	10	10	10	10	10	10	10
47	1046	10	10	10	10	10	10	10
48	1047	10	10	10	10	10	10	10
49	1048	10	10	10	10	10	10	10
50	1049	10	10	10	10	10	10	10
51	1050	10	10	10	10	10	10	10
52	1051	10	10	10	10	10	10	10
53	1052	10	10	10	10	10	10	10
54	1053	10	10	10	10	10	10	10
55	1054	10	10	10	10	10	10	10
56	1055	10	10	10	10	10	10	10
57	1056	10	10	10	10	10	10	10
58	1057	10	10	10	10	10	10	10
59	1058	10	10	10	10	10	10	10
60	1059	10	10	10	10	10	10	10
61	1060	10	10	10	10	10	10	10
62	1061	10	10	10	10	10	10	10
63	1062	10	10	10	10	10	10	10
64	1063	10	10	10	10	10	10	10
65	1064	10	10	10	10	10	10	10
66	1065	10	10	10	10	10	10	10
67	1066	10	10	10	10	10	10	10
68	1067	10	10	10	10	10	10	10
69	1068	10	10	10	10	10	10	10
70	1069	10	10	10	10	10	10	10
71	1070	10	10	10	10	10	10	10
72	1071	10	10	10	10	10	10	10
73	1072	10	10	10	10	10	10	10
74	1073	10	10	10	10	10	10	10
75	1074	10	10	10	10	10	10	10
76	1075	10	10	10	10	10	10	10
77	1076	10	10	10	10	10	10	10
78	1077	10	10	10	10	10	10	10
79	1078	10	10	10	10	10	10	10
80	1079	10	10	10	10	10	10	10
81	1080	10	10	10	10	10	10	10
82	1081	10	10	10	10	10	10	10
83	1082	10	10	10	10	10	10	10
84	1083	10	10	10	10	10	10	10
85	1084	10	10	10	10	10	10	10
86	1085	10	10	10	10	10	10	10
87	1086	10	10	10	10	10	10	10
88	1087	10	10	10	10	10	10	10
89	1088	10	10	10	10	10	10	10
90	1089	10	10	10	10	10	10	10
91	1090	10	10	10	10	10	10	10
92	1091	10	10	10	10	10	10	10
93	1092	10	10	10	10	10	10	10
94	1093	10	10	10	10	10	10	10
95	1094	10	10	10	10	10	10	10
96	1095	10	10	10	10	10	10	10
97	1096	10	10	10	10	10	10	10
98	1097	10	10	10	10	10	10	10
99	1098	10	10	10	10	10	10	10
100	1099	10	10	10	10	10	10	10
101	1100	10	10	10	10	10	10	10
102	1101	10	10	10	10	10	10	10
103	1102	10	10	10	10	10	10	10
104	1103	10	10	10	10	10	10	10
105	1104	10	10	10	10	10	10	10
106	1105	10	10	10	10	10	10	10
107	1106	10	10	10	10	10	10	10
108	1107	10	10	10	10	10	10	10
109	1108	10	10	10	10	10	10	10
110	1109	10	10	10	10	10	10	10
111	1110	10	10	10	10	10	10	10
112	1111	10	10	10	10	10	10	10
113	1112	10	10	10	10	10	10	10
114	1113	10	10	10	10	10	10	10
115	1114	10	10	10	10	10	10	10
116	1115	10	10	10	10	10	10	10
117	1116	10	10	10	10	10	10	10
118	1117	10	10	10	10	10	10	10
119	1118	10	10	10	10	10	10	10
120	1119	10	10	10	10	10	10	10
121	1120	10	10	10	10	10	10	10
122	1121	10	10	10	10	10	10	10
123	1122	10	10	10	10	10	10	10
124	1123	10	10	10	10	10	10	10
125	1124	10	10	10	10	10	10	10
126	1125	10	10	10	10	10	10	10
127	1126	10	10	10	10	10	10	10
128	1127	10	10	10	10	10	10	10
129	1128	10	10	10	10	10	10	10
130	1129	10	10	10	10	10	10	10
131	1130	10	10	10	10	10	10	10
132	1131	10	10	10	10	10	10	10
133	1132	10	10	10	10	10	10	10
134	1133	10	10	10	10	10	10	10
135	1134	10	10	10	10	10	10	10
136	1135	10	10	10	10	10	10	10
137	1136	10	10	10	10	10	10	10
138	1137	10	10	10	10	10	10	10
139	1138	10	10	10	10	10	10	10
140	1139	10	10	10	10	10	10	10
141	1140	10	10	10	10	10	10	10
142	1141	10	10	10	10	10	10	10
143	1142	10	10	10	10	10	10	10
144	1143	10	10	10	10	10	10	10
145	1144	10	10	10	10	10	10	10
146	1145	10	10	10	10	10	10	10
147	1146	10	10	10	10	10	10	10
148	1147	10	10	10	10	10	10	10
149	1148	10	10	10	10	10	10	10
150	1149	10	10	10	10	10	10	10
151	1150	10	10	10	10	10	10	10
152	1151	10	10	10	10	10	10	10
153	1152	10	10	10	10	10	10	10
154	1153	10	10	10	10	10	10	10
155	1154	10	10	10	10	10	10	10
156	1155	10	10	10	10	10	10	10
157	1156	10	10	10	10	10	10	10
158	1157	10	10	10	10	10	10	10
159	1158	10	10	10	10	10	10	10
160	1159	10	10	10	10	10	10	10
161	1160	10	10	10	10	10	10	10
162	1161	10	10	10	10	10	10	10
163	1162	10	10	10	10	10	10	10
164	1163	10	10	10	10	10	10	10
165	1164	10	10	10	10	10	10	10
166	1165	10	10	10	10	10	10	10
167	1166	10	10	10	10	10	10	10
168	1167	10	10	10	10	10	10	10
169	1168	10	10	10	10	10	10	10
170	1169	10	10	10	10	10	10	10
171	1170	10	10	10	10	10	10	10
172	1171	10	10	10	10	10	10	10
173	1172	10	10	10	10	10	10	10
174	1173	10	10	10	10	10	10	10
175								

Ser. No.	Sample No.	Au	Ag	Cu	Pb	Zn	As	Sb
1	101	100	100	100	100	100	100	100
2	102	100	100	100	100	100	100	100
3	103	100	100	100	100	100	100	100
4	104	100	100	100	100	100	100	100
5	105	100	100	100	100	100	100	100
6	106	100	100	100	100	100	100	100
7	107	100	100	100	100	100	100	100
8	108	100	100	100	100	100	100	100
9	109	100	100	100	100	100	100	100
10	110	100	100	100	100	100	100	100
11	111	100	100	100	100	100	100	100
12	112	100	100	100	100	100	100	100
13	113	100	100	100	100	100	100	100
14	114	100	100	100	100	100	100	100
15	115	100	100	100	100	100	100	100
16	116	100	100	100	100	100	100	100
17	117	100	100	100	100	100	100	100
18	118	100	100	100	100	100	100	100
19	119	100	100	100	100	100	100	100
20	120	100	100	100	100	100	100	100

Ser. No.	Sample No.	Au	Ag	Cu	Pb	Zn	As	Sb
21	121	100	100	100	100	100	100	100
22	122	100	100	100	100	100	100	100
23	123	100	100	100	100	100	100	100
24	124	100	100	100	100	100	100	100
25	125	100	100	100	100	100	100	100
26	126	100	100	100	100	100	100	100
27	127	100	100	100	100	100	100	100
28	128	100	100	100	100	100	100	100
29	129	100	100	100	100	100	100	100
30	130	100	100	100	100	100	100	100
31	131	100	100	100	100	100	100	100
32	132	100	100	100	100	100	100	100
33	133	100	100	100	100	100	100	100
34	134	100	100	100	100	100	100	100
35	135	100	100	100	100	100	100	100
36	136	100	100	100	100	100	100	100
37	137	100	100	100	100	100	100	100
38	138	100	100	100	100	100	100	100
39	139	100	100	100	100	100	100	100
40	140	100	100	100	100	100	100	100

Ser. No.	Sample No.	Au	Ag	Cu	Pb	Zn	As	Sb
41	141	100	100	100	100	100	100	100
42	142	100	100	100	100	100	100	100
43	143	100	100	100	100	100	100	100
44	144	100	100	100	100	100	100	100
45	145	100	100	100	100	100	100	100
46	146	100	100	100	100	100	100	100
47	147	100	100	100	100	100	100	100
48	148	100	100	100	100	100	100	100
49	149	100	100	100	100	100	100	100
50	150	100	100	100	100	100	100	100
51	151	100	100	100	100	100	100	100
52	152	100	100	100	100	100	100	100
53	153	100	100	100	100	100	100	100
54	154	100	100	100	100	100	100	100
55	155	100	100	100	100	100	100	100
56	156	100	100	100	100	100	100	100
57	157	100	100	100	100	100	100	100
58	158	100	100	100	100	100	100	100
59	159	100	100	100	100	100	100	100
60	160	100	100	100	100	100	100	100

Ser. No.	Sample No.	Au	Ag	Cu	Pb	Zn	As	Sb
61	161	100	100	100	100	100	100	100
62	162	100	100	100	100	100	100	100
63	163	100	100	100	100	100	100	100
64	164	100	100	100	100	100	100	100
65	165	100	100	100	100	100	100	100
66	166	100	100	100	100	100	100	100
67	167	100	100	100	100	100	100	100
68	168	100	100	100	100	100	100	100
69	169	100	100	100	100	100	100	100
70	170	100	100	100	100	100	100	100
71	171	100	100	100	100	100	100	100
72	172	100	100	100	100	100	100	100
73	173	100	100	100	100	100	100	100
74	174	100	100	100	100	100	100	100
75	175	100	100	100	100	100	100	100
76	176	100	100	100	100	100	100	100
77	177	100	100	100	100	100	100	100
78	178	100	100	100	100	100	100	100
79	179	100	100	100	100	100	100	100
80	180	100	100	100	100	100	100	100

Ser. No.	Sample No.	Au Ppb	Ag Ppm	Cu Ppm	Pb Ppm	Zn Ppm	As Ppm	Sb Ppm
7281	5B-069	5	11	15	15	12	2	2
7282	5B-070	5	15	15	15	14	2	2
7283	5B-071	5	9	16	16	14	2	2
7284	5B-072	5	14	16	16	12	2	2
7285	5B-073	5	6	11	11	9	2	2
7286	5B-074	5	7	9	8	7	2	2
7287	5B-075	5	7	9	8	7	2	2
7288	5B-076	5	6	11	11	10	2	2
7289	5B-077	5	6	11	11	10	2	2
7290	5B-078	5	6	11	11	10	2	2
7291	5B-079	5	6	11	11	10	2	2
7292	5B-080	5	6	11	11	10	2	2
7293	5B-081	5	6	11	11	10	2	2
7294	5B-082	5	6	11	11	10	2	2
7295	5B-083	5	6	11	11	10	2	2
7296	5B-084	5	6	11	11	10	2	2
7297	5B-085	5	6	11	11	10	2	2
7298	5B-086	5	6	11	11	10	2	2
7299	5B-087	5	6	11	11	10	2	2
7300	5B-088	5	6	11	11	10	2	2
7301	5B-089	5	6	11	11	10	2	2
7302	5B-090	5	6	11	11	10	2	2
7303	5B-091	5	6	11	11	10	2	2
7304	5B-092	5	6	11	11	10	2	2
7305	5B-093	5	6	11	11	10	2	2
7306	5B-094	5	6	11	11	10	2	2
7307	5B-095	5	6	11	11	10	2	2
7308	5B-096	5	6	11	11	10	2	2
7309	5B-097	5	6	11	11	10	2	2
7310	5B-098	5	6	11	11	10	2	2
7311	5B-099	5	6	11	11	10	2	2
7312	5B-100	5	6	11	11	10	2	2
7313	5B-101	5	6	11	11	10	2	2
7314	5B-102	5	6	11	11	10	2	2
7315	5B-103	5	6	11	11	10	2	2
7316	5B-104	5	6	11	11	10	2	2
7317	5B-105	5	6	11	11	10	2	2
7318	5B-106	5	6	11	11	10	2	2
7319	5B-107	5	6	11	11	10	2	2
7320	5B-108	5	6	11	11	10	2	2
7321	5B-109	5	6	11	11	10	2	2
7322	5B-110	5	6	11	11	10	2	2
7323	5B-111	5	6	11	11	10	2	2
7324	5B-112	5	6	11	11	10	2	2
7325	5B-113	5	6	11	11	10	2	2
7326	5B-114	5	6	11	11	10	2	2
7327	5B-115	5	6	11	11	10	2	2
7328	5B-116	5	6	11	11	10	2	2
7329	5B-117	5	6	11	11	10	2	2
7330	5B-118	5	6	11	11	10	2	2
7331	5B-119	5	6	11	11	10	2	2
7332	5B-120	5	6	11	11	10	2	2

Ser. No.	Sample No.	Au Ppb	Ag Ppm	Cu Ppm	Pb Ppm	Zn Ppm	As Ppm	Sb Ppm
7201	5A-055	5	12	8	8	8	2	2
7202	5A-056	5	12	11	14	10	2	2
7203	5A-057	5	12	13	14	11	2	2
7204	5A-058	5	12	13	14	11	2	2
7205	5A-059	5	12	13	14	11	2	2
7206	5A-060	5	12	13	14	11	2	2
7207	5A-061	5	12	13	14	11	2	2
7208	5A-062	5	12	13	14	11	2	2
7209	5A-063	5	12	13	14	11	2	2
7210	5A-064	5	12	13	14	11	2	2
7211	5A-065	5	12	13	14	11	2	2
7212	5A-066	5	12	13	14	11	2	2
7213	5A-067	5	12	13	14	11	2	2
7214	5A-068	5	12	13	14	11	2	2
7215	5A-069	5	12	13	14	11	2	2
7216	5A-070	5	12	13	14	11	2	2
7217	5A-071	5	12	13	14	11	2	2
7218	5A-072	5	12	13	14	11	2	2
7219	5A-073	5	12	13	14	11	2	2
7220	5A-074	5	12	13	14	11	2	2
7221	5A-075	5	12	13	14	11	2	2
7222	5A-076	5	12	13	14	11	2	2
7223	5A-077	5	12	13	14	11	2	2
7224	5A-078	5	12	13	14	11	2	2
7225	5A-079	5	12	13	14	11	2	2
7226	5A-080	5	12	13	14	11	2	2
7227	5A-081	5	12	13	14	11	2	2
7228	5A-082	5	12	13	14	11	2	2
7229	5A-083	5	12	13	14	11	2	2
7230	5A-084	5	12	13	14	11	2	2
7231	5A-085	5	12	13	14	11	2	2
7232	5A-086	5	12	13	14	11	2	2
7233	5A-087	5	12	13	14	11	2	2
7234	5A-088	5	12	13	14	11	2	2
7235	5A-089	5	12	13	14	11	2	2
7236	5A-090	5	12	13	14	11	2	2
7237	5A-091	5	12	13	14	11	2	2
7238	5A-092	5	12	13	14	11	2	2
7239	5A-093	5	12	13	14	11	2	2
7240	5A-094	5	12	13	14	11	2	2
7241	5A-095	5	12	13	14	11	2	2
7242	5A-096	5	12	13	14	11	2	2
7243	5A-097	5	12	13	14	11	2	2
7244	5A-098	5	12	13	14	11	2	2
7245	5A-099	5	12	13	14	11	2	2
7246	5A-100	5	12	13	14	11	2	2
7247	5A-101	5	12	13	14	11	2	2
7248	5A-102	5	12	13	14	11	2	2
7249	5A-103	5	12	13	14	11	2	2
7250	5A-104	5	12	13	14	11	2	2
7251	5A-105	5	12	13	14	11	2	2
7252	5A-106	5	12	13	14	11	2	2
7253	5A-107	5	12	13	14	11	2	2
7254	5A-108	5	12	13	14	11	2	2
7255	5A-109	5	12	13	14	11	2	2
7256	5A-110	5	12	13	14	11	2	2
7257	5A-111	5	12	13	14	11	2	2
7258	5A-112	5	12	13	14	11	2	2
7259	5A-113	5	12	13	14	11	2	2
7260	5A-114	5	12	13	14	11	2	2
7261	5A-115	5	12	13	14	11	2	2
7262	5A-116	5	12	13	14	11	2	2
7263	5A-117	5	12	13	14	11	2	2
7264	5A-118	5	12	13	14	11	2	2
7265	5A-119	5	12	13	14	11	2	2
7266	5A-120	5	12	13	14	11	2	2

Ser. No.	Sample No.	Au Ppb	Ag Ppm	Cu Ppm	Pb Ppm	Zn Ppm	As Ppm	Sb Ppm
7121	4X-058	5	12	16	14	14	2	2
7122	4X-059	5	12	15	14	13	2	2
7123	4X-060	5	12	15	14	13	2	2
7124	4X-061	5	12	15	14	13	2	2
7125	4X-062	5	12	15	14	13	2	2
7126	4X-063	5	12	15	14	13	2	2
7127	4X-064	5	12	15	14	13	2	2
7128	4X-065	5	12	15	14	13	2	2
7129	4X-066	5	12	15	14	13	2	2
7130	4X-067	5	12	15	14	13	2	2
7131	4X-068	5	12	15	14	13	2	2
7132	4X-069	5	12	15	14	13	2	2
7133	4X-070	5	12	15	14	13	2	2
7134	4X-071	5	12	15	14	13	2	2
7135	4X-072	5	12	15	14	13	2	2
7136	4X-073	5	12	15	14	13	2	2
7137	4X-074	5	12	15	14	13	2	2
7138	4X-075	5	12	15	14	13	2	2
7139	4X-076	5	12	15	14	13	2	2
7140	4X-077	5	12	15	14	13	2	2
7141	4X-078	5	12	15	14	13	2	2
7142	4X-079	5	12	15	14	13	2	2
7143	4X-080	5	12	15	14	13	2	2
7144	4X-081	5	12	15	14	13	2	2
7145	4X-082	5	12	15	14	13	2	2
7146	4X-083	5	12	15	14	13	2	2
7147	4X-084	5	12	15	14	13	2	2
7148	4X-085	5	12	15	14	13	2	2
7149	4X-086	5	12	15	14	13	2	2
7150	4X-087	5	12	15	14	13	2	2
7151	4X-088	5	12	15	14	13	2	2
7152	4X-089	5	12	15	14	13	2	2
7153	4X-090	5	12	15	14	13	2	2
7154	4X-091	5	12	15	14	13	2	2
7155	4X-092	5	12	15	14	13	2	2
7156	4X-093	5	12	15	14	13	2	2
7157	4X-094	5	12	15	14	13	2	2
7158	4X-095	5	12	15	14	13	2	2
7159	4X-096	5	12	15	14	13	2	2
7160	4X-097	5	12	15	14	13	2	2
7161	4X-098	5	12	15	14	13	2	2
7162	4X-099	5	12	15	14	13	2	2
7163	4X-100	5	12	15	14	13	2	2
7164	4X-101	5	12	15	14	13	2	2
7165	4X-102	5	12	15	14	13	2	2
7166	4X-103	5	12	15	14	13	2	2
7167	4X-104	5	12	15	14	13	2	2
7168	4X-105	5	12	15	14	13	2	2
7169	4X-106	5	12	15	14	13	2	2
7170	4X-107	5	12	15	14	13	2	2
7171	4X-108	5	12	15	14	13	2	2
7172	4X-109	5						

Sb ppm	As ppm	Zn ppm	Pb ppm	Cu ppm	Ag ppm	Au ppb	Sample No.	Ser. No.
0	0	0	0	0	0	0	07	76600
0	0	0	0	0	0	0	08	76601
0	0	0	0	0	0	0	09	76602
0	0	0	0	0	0	0	10	76603
0	0	0	0	0	0	0	11	76604
0	0	0	0	0	0	0	12	76605
0	0	0	0	0	0	0	13	76606
0	0	0	0	0	0	0	14	76607
0	0	0	0	0	0	0	15	76608
0	0	0	0	0	0	0	16	76609
0	0	0	0	0	0	0	17	76610
0	0	0	0	0	0	0	18	76611
0	0	0	0	0	0	0	19	76612
0	0	0	0	0	0	0	20	76613
0	0	0	0	0	0	0	21	76614
0	0	0	0	0	0	0	22	76615
0	0	0	0	0	0	0	23	76616
0	0	0	0	0	0	0	24	76617
0	0	0	0	0	0	0	25	76618
0	0	0	0	0	0	0	26	76619
0	0	0	0	0	0	0	27	76620
0	0	0	0	0	0	0	28	76621
0	0	0	0	0	0	0	29	76622
0	0	0	0	0	0	0	30	76623
0	0	0	0	0	0	0	31	76624
0	0	0	0	0	0	0	32	76625
0	0	0	0	0	0	0	33	76626
0	0	0	0	0	0	0	34	76627
0	0	0	0	0	0	0	35	76628
0	0	0	0	0	0	0	36	76629
0	0	0	0	0	0	0	37	76630
0	0	0	0	0	0	0	38	76631
0	0	0	0	0	0	0	39	76632
0	0	0	0	0	0	0	40	76633
0	0	0	0	0	0	0	41	76634
0	0	0	0	0	0	0	42	76635
0	0	0	0	0	0	0	43	76636
0	0	0	0	0	0	0	44	76637
0	0	0	0	0	0	0	45	76638
0	0	0	0	0	0	0	46	76639
0	0	0	0	0	0	0	47	76640
0	0	0	0	0	0	0	48	76641
0	0	0	0	0	0	0	49	76642
0	0	0	0	0	0	0	50	76643
0	0	0	0	0	0	0	51	76644
0	0	0	0	0	0	0	52	76645
0	0	0	0	0	0	0	53	76646
0	0	0	0	0	0	0	54	76647
0	0	0	0	0	0	0	55	76648
0	0	0	0	0	0	0	56	76649
0	0	0	0	0	0	0	57	76650
0	0	0	0	0	0	0	58	76651
0	0	0	0	0	0	0	59	76652
0	0	0	0	0	0	0	60	76653
0	0	0	0	0	0	0	61	76654
0	0	0	0	0	0	0	62	76655
0	0	0	0	0	0	0	63	76656
0	0	0	0	0	0	0	64	76657
0	0	0	0	0	0	0	65	76658
0	0	0	0	0	0	0	66	76659
0	0	0	0	0	0	0	67	76660
0	0	0	0	0	0	0	68	76661
0	0	0	0	0	0	0	69	76662
0	0	0	0	0	0	0	70	76663
0	0	0	0	0	0	0	71	76664
0	0	0	0	0	0	0	72	76665
0	0	0	0	0	0	0	73	76666
0	0	0	0	0	0	0	74	76667
0	0	0	0	0	0	0	75	76668
0	0	0	0	0	0	0	76	76669
0	0	0	0	0	0	0	77	76670
0	0	0	0	0	0	0	78	76671
0	0	0	0	0	0	0	79	76672
0	0	0	0	0	0	0	80	76673
0	0	0	0	0	0	0	81	76674
0	0	0	0	0	0	0	82	76675
0	0	0	0	0	0	0	83	76676
0	0	0	0	0	0	0	84	76677
0	0	0	0	0	0	0	85	76678
0	0	0	0	0	0	0	86	76679
0	0	0	0	0	0	0	87	76680
0	0	0	0	0	0	0	88	76681
0	0	0	0	0	0	0	89	76682
0	0	0	0	0	0	0	90	76683
0	0	0	0	0	0	0	91	76684
0	0	0	0	0	0	0	92	76685
0	0	0	0	0	0	0	93	76686
0	0	0	0	0	0	0	94	76687
0	0	0	0	0	0	0	95	76688
0	0	0	0	0	0	0	96	76689
0	0	0	0	0	0	0	97	76690
0	0	0	0	0	0	0	98	76691
0	0	0	0	0	0	0	99	76692
0	0	0	0	0	0	0	100	76693

Sb ppm	As ppm	Zn ppm	Pb ppm	Cu ppm	Ag ppm	Au ppb	Sample No.	Ser. No.
0	0	0	0	0	0	0	101	76694
0	0	0	0	0	0	0	102	76695
0	0	0	0	0	0	0	103	76696
0	0	0	0	0	0	0	104	76697
0	0	0	0	0	0	0	105	76698
0	0	0	0	0	0	0	106	76699
0	0	0	0	0	0	0	107	76700
0	0	0	0	0	0	0	108	76701
0	0	0	0	0	0	0	109	76702
0	0	0	0	0	0	0	110	76703
0	0	0	0	0	0	0	111	76704
0	0	0	0	0	0	0	112	76705
0	0	0	0	0	0	0	113	76706
0	0	0	0	0	0	0	114	76707
0	0	0	0	0	0	0	115	76708
0	0	0	0	0	0	0	116	76709
0	0	0	0	0	0	0	117	76710
0	0	0	0	0	0	0	118	76711
0	0	0	0	0	0	0	119	76712
0	0	0	0	0	0	0	120	76713
0	0	0	0	0	0	0	121	76714
0	0	0	0	0	0	0	122	76715
0	0	0	0	0	0	0	123	76716
0	0	0	0	0	0	0	124	76717
0	0	0	0	0	0	0	125	76718
0	0	0	0	0	0	0	126	76719
0	0	0	0	0	0	0	127	76720
0	0	0	0	0	0	0	128	76721
0	0	0	0	0	0	0	129	76722
0	0	0	0	0	0	0	130	76723
0	0	0	0	0	0	0	131	76724
0	0	0	0	0	0	0	132	76725
0	0	0	0	0	0	0	133	76726
0	0	0	0	0	0	0	134	76727
0	0	0	0	0	0	0	135	76728
0	0	0	0	0	0	0	136	76729
0	0	0	0	0	0	0	137	76730
0	0	0	0	0	0	0	138	76731
0	0	0	0	0	0	0	139	76732
0	0	0	0	0	0	0	140	76733
0	0	0	0	0	0	0	141	76734
0	0	0	0	0	0	0	142	76735
0	0	0	0	0	0	0	143	76736
0	0	0	0	0	0	0	144	76737
0	0	0	0	0	0	0	145	76738
0	0	0	0	0	0	0	146	76739
0	0	0	0	0	0	0	147	76740
0	0	0	0	0	0	0	148	76741
0	0	0	0	0	0	0	149	76742
0	0	0	0	0	0	0	150	76743
0	0	0	0	0	0	0	151	76744
0	0	0	0	0	0	0	152	76745
0	0	0	0	0	0	0	153	76746
0	0	0	0	0	0	0	154	76747
0	0	0	0	0	0	0	155	76748
0	0	0	0	0	0	0	156	76749
0	0	0	0	0	0	0	157	76750
0	0	0	0	0	0	0	158	76751
0	0	0	0	0	0	0	159	76752
0	0	0	0	0	0	0	160	76753
0	0	0	0	0	0	0	161	76754
0	0	0	0	0	0	0	162	76755
0	0	0	0	0	0	0	163	76756
0	0	0	0	0	0	0	164	76757
0	0	0	0	0	0	0	165	76758
0	0	0	0	0	0	0	166	76759
0	0	0	0	0	0	0	167	76760
0	0	0	0	0	0	0	168	76761
0	0	0	0	0	0	0	169	76762
0	0	0	0	0	0	0	170	76763
0	0	0	0	0	0	0	171	76764
0	0	0	0	0	0	0	172	76765
0	0	0	0	0	0	0	173	76766
0	0	0	0	0	0	0	174	76767
0	0	0	0	0	0	0	175	76768
0	0	0	0	0	0	0	176	76769
0	0	0	0	0	0	0	177	76770
0	0	0	0	0	0	0	178	76771
0	0	0	0	0	0	0	179	76772
0	0	0	0	0	0	0	180	76773
0	0	0	0	0	0	0	181	76774
0	0	0	0	0	0	0	182	76775
0	0	0	0	0	0	0	183	76776
0	0	0	0	0	0	0	184	76777
0	0	0	0	0	0	0	185	76778
0	0	0	0	0	0	0	186	76779
0	0	0	0	0	0	0	187	76780
0	0	0	0	0	0	0	188	76781
0	0	0	0	0	0	0	189	76782
0	0	0	0	0	0	0	190	76783
0	0	0	0	0	0	0	191	76784
0	0	0	0	0	0	0	192	76785
0	0	0	0	0	0	0	193	76786
0	0	0	0	0	0	0	194	76787

Sample No.	Au ppb	Ag ppm	Cu ppm	Pb ppm	Zn ppm	As ppm	Sb ppm
8001	5	2	15	32	17	20	3
8002	5	2	15	18	15	19	2
8003	5	2	14	18	14	19	2
8004	5	2	14	18	14	19	2
8005	5	2	14	18	14	19	2
8006	5	2	14	18	14	19	2
8007	5	2	14	18	14	19	2
8008	5	2	14	18	14	19	2
8009	5	2	14	18	14	19	2
8010	5	2	14	18	14	19	2
8011	5	2	14	18	14	19	2
8012	5	2	14	18	14	19	2
8013	5	2	14	18	14	19	2
8014	5	2	14	18	14	19	2
8015	5	2	14	18	14	19	2
8016	5	2	14	18	14	19	2
8017	5	2	14	18	14	19	2
8018	5	2	14	18	14	19	2
8019	5	2	14	18	14	19	2
8020	5	2	14	18	14	19	2
8021	5	2	14	18	14	19	2
8022	5	2	14	18	14	19	2
8023	5	2	14	18	14	19	2
8024	5	2	14	18	14	19	2
8025	5	2	14	18	14	19	2
8026	5	2	14	18	14	19	2
8027	5	2	14	18	14	19	2
8028	5	2	14	18	14	19	2
8029	5	2	14	18	14	19	2
8030	5	2	14	18	14	19	2
8031	5	2	14	18	14	19	2
8032	5	2	14	18	14	19	2
8033	5	2	14	18	14	19	2
8034	5	2	14	18	14	19	2
8035	5	2	14	18	14	19	2
8036	5	2	14	18	14	19	2
8037	5	2	14	18	14	19	2
8038	5	2	14	18	14	19	2
8039	5	2	14	18	14	19	2
8040	5	2	14	18	14	19	2
8041	5	2	14	18	14	19	2
8042	5	2	14	18	14	19	2
8043	5	2	14	18	14	19	2
8044	5	2	14	18	14	19	2
8045	5	2	14	18	14	19	2
8046	5	2	14	18	14	19	2
8047	5	2	14	18	14	19	2

資料 5 化学分析結果一覽表 (鉍石)

А р с . 5

RESULTAT D'ANALYSE CHIMIQUE
DES ROCHES MINERAIS

RESULTS OF THE CHEMICAL ANALYSIS OF ORE SAMPLES

Sample No.	Area	Au(ppb)	Ag(ppm)	Ore type
D-4	Kekoro	171	<2	arsenopyrite-bearing smoky quartz
D-9	Kekoro	12	<2	smoky quartz
D-10	"	<5	<2	altered diorite porphyry
KB-15	"	70	<2	silicified rhyolite
KB-20	"	<5	<2	smoky quartz
N04	Silobougou	<5	<2	smoky quartz
P04-1	"	7	<2	saprolite
P04-2	"	5	<2	ditto
P04-3	"	<5	<2	ditto
P04-4	"	9	<2	panned carapace
P04-5	"	<5	<2	smoky quartz
P04-6	"	<5	<2	limonitized quartz
P05-1	"	48	<2	pit bottom carapace
Q06	"	228	<2	smoky quartz
R05-1	"	970	<2	panned carapace
R06-1	"	6	<2	ditto
R06-2	"	7	<2	saprolite
R06-3	"	9	<2	ditto
R06-4	"	1150	<2	pit bottom carapace
R06-5	"	<5	<2	smoky quartz
S06-2	"	<5	<2	milky white quartz
S06-3	"	<5	<2	limonitized brecciated quartz
S07	"	<5	<2	black quartz
U08-2	"	<5	<2	smoky quartz
U09-1	"	10	<2	panned carapace
U09-2	"	131	<2	saprolite
U09-3	"	<5	<2	panned carapace
U09-4	"	<5	<2	ditto
U09-5	"	5	<2	saprolite
V09-a	"	21	<2	arsenopyrite-bearing milky white quartz

資料 6 X線回折法試験結果一覽表

Ap.c. 6

RESULTAT DE DIFFRACTION DES RAYONS X

Paragénèse des minéraux par méthode de diffraction des Rayon X

code	division géologique	paragénèse des minéraux
secteur	description d'échantillon	abondant
KB-11	intrusion delta-2	commun
kékoro	porphyrie dioritique	biotite
		albite
		séricite-Montmorillonite lamelle méele
D-10	intrusion delta-2	K-feldspath
kékoro	porphyrie dioritique	biotite
		chlorite
		séricite-Montmorillonite lamelle méele
KB-06	intrusion R	plagioclase
kékoro	dacite altérée	biotite
		séricite-Montmorillonite lamelle méele
KB-15	intrusion R	K-feldsper
kékoro	rhyolite altérée	biotite
		muscovite
		séricite-Montmorillonite lamelle méele
Kalana-1	intrusion delta-2?	albite
Kalana	tonalite altérée	muscovite
		chlorite
V09	filon de quartz	arsénoopyrite
sélingué	quartz blanc	
P04	filon de quartz	muscovite
sélingué	quartz gris	
V10	filon de quartz	kaolin
sélingué	quartz fumé	
S07	filon de quartz	séricite-Montmorillonite lamelle méele
sélingué	quartz fumé	noséane?
R06	filon de quartz	noséane?
sélingué	quartz à tourmalline	dravite