

④ **ブルサ・パイロットエリア活動概要**  
**(ブルサ県保健部作成)**

THE UNIVERSITY OF CHICAGO  
PHILOSOPHY DEPARTMENT

**REPUBLIC of TÜRKİYE**  
**MINISTRY of HEALTH**  
**HEALTH DIRECTORATE of BURSA**

**“JICA BURSA PROJECT”**

## **JICA BURSA PROJECT**

The first capital of the Ottoman Empire, Bursa's history extends back to very ancient times. Until the conquering of Edirne was preserved as the site of principality's center. The first Ottoman coins were minted in Bursa. During the Ottoman period, after Istanbul, Bursa was most important cultural and scientific center.

Bursa, our city is located in the Marmara Region, the northwest part of Türkiye, on the front range of Mount Olympus (Uludağ) - where has a rich vegetation with chestnut, oak, beech, black pine and red pine forests and is an area where various wild animals are protected -

It's the fifth biggest city in Türkiye, which has a population of approximately 2,000,000 including the towns. It has a surface area of 10609 square kilometers and 43% of it is used for producing almost every kind of agricultural products. It's also an industrial city of which 10% of all Turkish Products are - especially textile, automotive, steel industry - are produced. The city helps to Turkish Economy as it has 5.7% employment rate (this makes it the fourth highest in Türkiye). Besides agricultural and industrial sectors the city plays an important role in Türkiye's tourism. Bursa is a city of thermal springs and curative waters. Besides it in the city the hotels provide curative services to the guests with sulphur and iron bath. You can ski at the top of the Mount Olympus (Uludağ). It's possible to see many historical monuments (Mosques, tombs, etc.). Besides all of these it has a suitable seashore strip on the Marmara Sea for swimming and relaxation. Because of all these natural and historical beauties, in Türkiye it's called "Green Bursa"

Now, we would like to let you know about health care services and units in Bursa province. Bursa consists of 17 towns and have 12 State Hospitals, 1 Maternity Hospital, 1 Pediatric Hospital, 1 Dental Hospital, 1 Academic Specialization Hospital, 115 Health Centers, 9 Mother - Child Health and Family Planning Centers, 10 Tuberculosis Dispensaries, 629 Health Houses. These are working under the rule of Health Directorate. All these institutes have: 224 Specialist, 56 Research Assistant, 457 Physician, 40 Dentist, 25 Pharmacist, 784 Nurse, 895 Midwife, 498 Health Technician. Except all of these, Bursa has 1 Military Hospital, 2 Social Security Hospitals, 4 Private Hospitals and 1 University Hospital.

Also, Health Directorate, includes many sections in its structure in addition to others written above, such as "Public Health Province Laboratory", "Civil Defence Section", "Vocational Health Schools", "Dir. of Regional Reorganization". Also in the Health Directorate we have 11 branches: These are Curative Services Br., Food-Environmental control Br., Public Health Br., Pharmaceutical Affairs Br., Contagious Diseases Br., Health Statistics Br., MCH-FP Br., Health Education Br., Mental Health Br., Personnel Affairs Br., Administration-Finance Br. Functions of some

of sections are as follows :

**1- The Health Centers' services are as follows:**

- \* Protective Health Services,
- \* Vaccination,
- \* Environmental Health,
- \* Health Education Services,
- \* Family Planning,
- \* Clinical Services,
- \* Laboratory,
- \* Treatment.

**2- MCH-FP Centers' services are as follows:**

- \* Pregnancy and women afterbirth control,
- \* Childs' developmental control (0-6 year),
- \* Gynecologic control, examine and controls of women (15-49 yr.)
- \* Tetanus immunization and nutrition training for pregnant,
- \* To provide and adminstrate appropriate and effective family planning method for families,
- \* Vaccination,
- \* Treatment of children with diarrhoea,
- \* Education,
- \* Laboratory (Hb, pregnancy test, urine analysis, .... etc.)

**3- Zübeyde Hanım Maternity Home services are as follows:**

- \* Antenatal control,
- \* Family planning,
- \* Delivery,
- \* Gynecologic examinations and treatments,
- \* Curettage.

**4- Health Houses' services are as follows:**

- \* Pregnancy control,
- \* Childs' developmental control (0-6 yr)
- \* Vaccination,
- \* Injections and dressing wounds according the doctors' orders.

Besides the protective and curative health services, the most important service given by this units is EDUCATION. Our Directorate has an Educational branch which is responsible for this service. This department has a meeting room with the capacity of holding 60 people. It has also 1 TV, 1 VTR, 1 Slide machine, 2 screen, 1 Overhead projector and educational video programs, slides, booklets that had been sent from the Ministry of Health. At the end of 1992, foundation of Health and Social Helps, bought an 18 seater minibus to be used in educational works. Our Educational Branch make education plans periods of 6 months

According to this plan they visit each health center. There, we make two kinds of educational programs, one of them is to the health personnel of the center on duty and the other one is to the people belong to that center. In education to the health personnel, besides the subjects about health, we also give educations about statistics, archives, filling standart forms correctly and orderly by the designated educators. Besides this, on special health days and weeks, we prepare educational meetings and also write up leaflets regarding those and print and again at the end we distribute them. In peripheric towns, there are educational centers of their own and they prepare courses about different kinds of abilities (like as carpet weaving, baby care, tailor course etc.). We can also give education to the attendants of these courses. Sometimes in rented meeting halls we can give information to teachers, religious men and mukthers, who can easily effect the target people.

As we mentioned before lots of people come to our city from the every region of our country with the hope to get job easily. Furthermore, our consanguineases who are the returnees from Bulgaria mostly prefer housing in Bursa.....

Therefore, Bursa city is chosen as a pilot area for this project. Ankara Communication Center, which's founded by MCHFP General Directorate in cooperation with JICA, produce educational materials for all Turkey. But Bursa Education and Communication Center will produce more favourable and more explicit educational programs for target groups, not for all of Turkey but for Marmara region, according to the pre and post productional surveys which care the differences in community. And also we are going to make field observations and researchs to evaluate the clearness of the Ankara productions for community.

If we glance at the history of JICA Bursa Project, the studies on choosing a pilot area except Ankara, started in 1992, therefore:

- \* Between 19-May 1992-23 May 1992 the first Japanese commission visited Bursa City.

- \* We received the official acknowledgement report in 04-June 1992. (Bursa was chosen as a pilot city of this project)

- \* Then Bursa Health Directorate looked for an appropriate place to build Education-Communication Center. After the application for adjustment and repairment of D and E and dinning-hall buildings to use as studio, dormitory and conferance-hall in accord to the project which are in the garden of Academic Specialization Hospital,

- \* In 10-November 1992 1.120.000.000 T.L. subsidy was sent by Health Ministry and repairments were finished in early 1993

- \* After that E. building was approved as MCHFP no 4 and was opened in 17.3.1993 with an amount of 200.000.000 T.L. subsidy for repairment and adjustment.

\* The official acknowledgement of main building was sent by Health Ministry in 10 March 1993.

\* And its subsidy , which was 13.440 .000 .000 T.L., was sent by Health Ministry in 24 May.1993

\* And in 23 July .1993 Bursa Health Directorate put it out to tender. In a briefing detailed information and instructions about Bursa city and Bursa Project was given with a dia-show for Japanese Commission, who visited bursa in 27-29 June 1993 .

\* In 19-20 September 1993 another Japanese commission visited Bursa for research.

\* In 23. September 1993 , as JICA's second phase, Bursa Project was officially approved and signed by both Turkish and Japanese side.

\* In 28. September. 1993 first Arabayatağı Health Center and then Güllük Health Center was destined for JICA project temporarily until finishing the construction of Bursa Education Communication center building.

\* First equipments was sent in October 1993 . And S-VHS editing system was set up in Güllük Health Center temporarily .

The educations and activities of JICA Bursa Project are shortly as follows:

\* "Communication technics in Health Education" Seminar in 30 June 1992-2. July 1992, in Bolu, 1 participant from Bursa JICA project attended.

\* 10 participants attended from Bursa for " Educational Technics , to prepare educational materials." course in 1-12 February 1992, in Ankara.

\* Since February 1993 some I.E.C surveys was done in rural areas and in gecekondu places in Bursa.

\* Common studies was made in Ankara about the Bursa's new studio building (2-5. February. 1993).

\* Video program feed back studies were done (4-15 March 1993).

\* Video program planning and shooting about " F.P. methods" 7 June 2 July 1993

\* Shooting of a video program about " Child development", September 1993.

\* 10 participants from Bursa project attended to soundslide production course in 4 October - 15 October 1993 They produced 5 sound slide program:

- Presentation of Health Directorate studies,
- Presentation of Dental Hospital,
- Presentation of Z.İ. Maternity Hospital,
- Presentation of MCH-FP Center No 2,
- Presentation of Hürriyet Health Center.

\* S-VHS editing system was set up in Gulluk Health Center, October.1993.

\* 1 participant from Bursa for "Educational Material Production Course , learning to use and editing Betacam", 25-29, October 1993.

\* 5 Participants from Bursa Project for "Animation Technics Course" in Bursa, 31 January-16 February 1994. Five animations were produced :

- Give up smoking,
- Free insurance,
- We are happy,
- I love my mummy,
- I'm hungry mummy.

\* Dr Fatih Aydin left for training in Japan "3AVT and Multimedia Planing and Management" 17 February 1994-24 June 1994.

\*Apple Macintosh computers were bought for DTP (desk-top publishing), April 1994

\*A course was organized to learn how to use them in May 1994.

\*Page-setting of "Bursa'da Sağlık" which is the magazine of Bursa Health Directorate was designed in the computers in Bursa JICA Education-Communication Center.

\*Five AIWA TV+VTR and five FM2 Nikon cameras arrived, in July 1994.

\* Some IEC researchs were done together with Ms. Umabe from March 1994 and still going on .

\* Inservice training about T.P.designs, video program production , script-writing in August 1994.

\* Annual tentative work plan was prepared in August 1994.

\* Schedule of training in Japan prepared in August 1994.

\* Studies on setting up an FM Radio-Station which is thinking to broadcast about health related subjects, started. It's going to support the training of community within Bursa also about MCH-FP besides JICA activities.

\* In september "Dark-Room" was designed

\* A Video drama programe produced which last 7'30" about "The effective using of TP and OHP", September 1994.

\* In October we started the preparations of shooting of the same program (TP and OHP) but which is instructional one.

\* 25 September 1994 our Health Director Dr. Erol Afşin will go to Japan for training

On this time our project has 2 Doctors, 8 Educator (1 li - sons nurse, 3 midwife, 3 health technician, 1 officer), 2 officer, 1 driver.



Also we have 3 Japanese experts and 1 Japanese coordinator.

If we make a look at this center : Behind the Academic Specialisation Hospital a big place assigned to the JICA center with the allowance of Ministry of Health. This place is considered as a conference hall (for 300 persons) at south , MCH-FP Center no 4 at north and beside this a guesthouse (for JICA trainees) , lastly between all of these buildings stays our new studio. (with 600 m2 area and it will consist of third floor and a basement) . It will be finish by the beginning of early 1995.

We give more importance to this establishing center. Because the biggest problem we have is, we couldn't reach the target population to give necessary education. This audio-visual education provide the best communication with people. With the regional oriented educational programs that would prepared in our center we can reach the target population. You know with the developing industrial sector, every year we have more immigrants from each part of Türkiye. Because of this, you can find the people from different parts with different cultures in this city, cause it has a cosmopolite population structure. So even in the center different districts, need different educational programs. (A given message should be clear and understandable for everyone in our target population) Also we decide to produce the correct educational programs and carry them to people orderly. Because in spite of immigrations to our city, immigrants who came from the same region were going to live in the same districts. So, if we consider these regional differences in their places correctly, we can produce the best educational programs for Türkiye.

According to the RD which was signed in 23 September 1993 , studies of Phase 2 in Bursa Pilot City are as follows:

1.) For improving I.E.C. activities and for strengthening the MCH-FP services in Türkiye ;

a) Field Works: To find out the needs and conditions of MCH-FP services by the surveys. (I.E.C surveys.)

b) Cooperation with health institutes to do surveys

c) To analyse the results of the surveys and to build up system for feedback.

2.) Supporting of MCH-FP strategies.

a) Strengthening of services of Health Centers, Health Houses, MCH-FP centers by producing educational programs and materials.

b) To provide medical and educational equipments for the institutes above

3.) In service training of health personel;

a) To organize work-shops and renewing the knowledges and communication technics.

b) To provide materials for I.E.C.

c) To enhance the efficiency of trainings and work-shops by developing new audio-visual materials.

4.) Japanese technical aid and cooperation,

JICA is going to support all activities written above

5.) Japanese experts work in the fields of;

a) I.E.C

b) Developing educational programs

c) Developing and planning educational materials

d) Production of audio-visual educational materials

e) MCH-FP.

f) Maintenance and reparation of audio-visual educa-

tional materials

6.) Equipment and material support;

a) Productional systems or sets for educational programs of work-shops and I.E.C.

b) Audio-Visual equipments and facilities for health institutes.

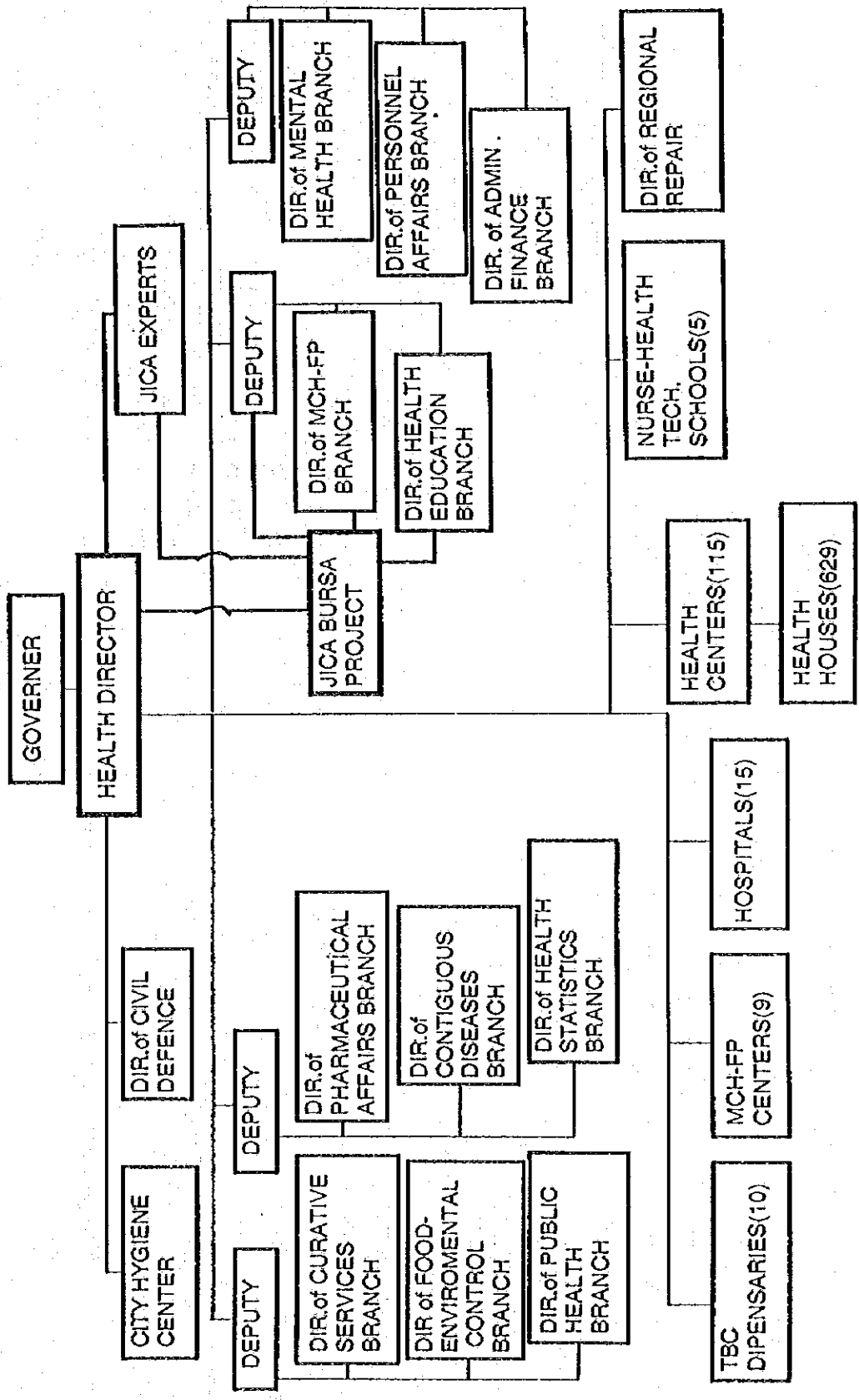
c) Other equipments and materials which are necessary.

New graduated personnel with only theoretical knowledge, they won't be satisfied, if they can't have the practical and concrete knowledge. Giving materials and teaching educational technics, we can increase their own motivation and then they will be satisfied. There is enough personnel who are working under the rule of our Health Directorate and all of them are eager to educate the people. If at the beginning we are going to make educational programs for personnel on duty, we will take the first and the right step to reach our targets.

In the frame of this project within video and slide programs, DTP, Printed materials, OHP-TP and radio programmes, which are all supported by IEC surveys and researches, Bursa JICA center aimed to reach the people in right and best way. Thus, at first beginning with analysis of target group, and by searching activities and by surveys we're going to find out what we need to do and which kind of materials we must produce.

We, as Health Directorate of Bursa, believe that we try to do our best for this project to continue successfully.

Republic of Türkiye  
Bursa Health Directorate Organization Chart



PLAN of JICA BURSA PROJECT

**CONFERENCE HALL  
(300persons)**

**STUDIO, AND OTHER  
MULTI-MEDIA  
PRODUCTION CENTER**

**JICA QUESTHOUSE  
(for trainers)**

**MCH-FP CENTER No 4**

ANNUAL WORKING PLAN OF JICA BURSA PROJECT

94 | 8 | 9 | 10 | 11 | 12 | 1 | 2 | 3 | 4 | 5 | 6 | 7 | 8

Video program production

Training for basics of photography and slide production

Training in Japan

Multi-Slide program production

Video program production

AVT course (a) in Japan

exhibition

DTP

MCH-FP survey with Umabe

Equipment list for the new year

Preparation of opening ceremony

Set up the new equipments

OPENING CEREMONY

96

9 | 10 | 11 | 12 | 1 | 2 | 3 | 4 | 5 | 6

Video production course in Japan

AVT course (b) in Japan

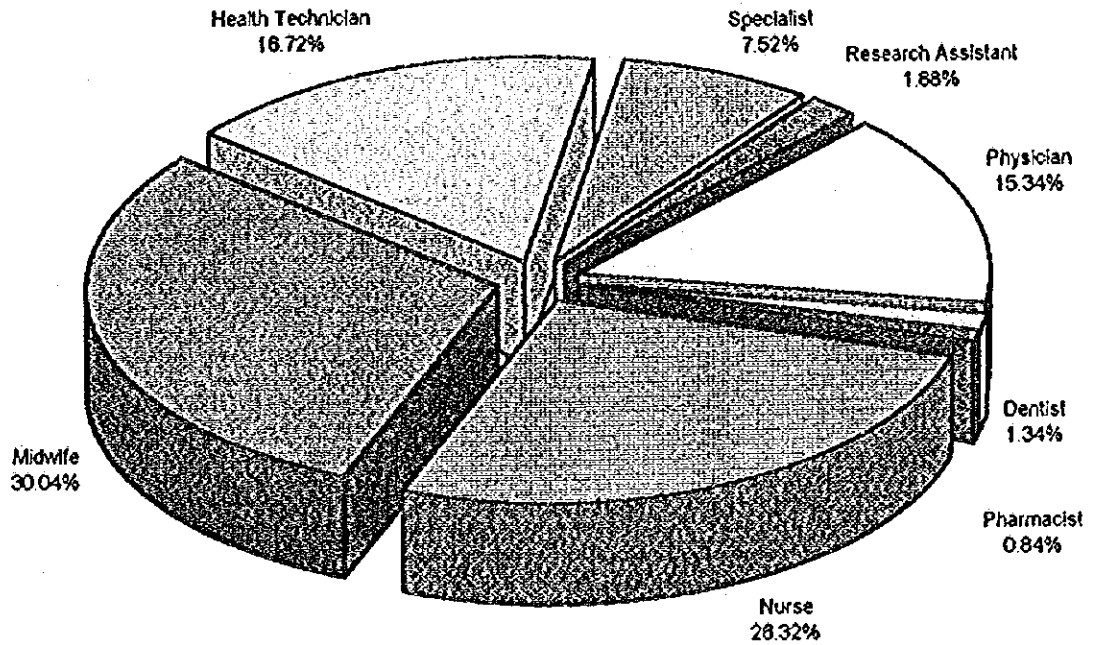
Video

Slide Productions

DTP



## HEALTH DIRECTORATE of BURSA



### Personnel Record

Specialist	:224
Research Ass.	: 56
Physician	:457
Dentist	: 40
Pharmacist	: 25
Nurse	:784
Midwife	:895
Health Techn.	:498

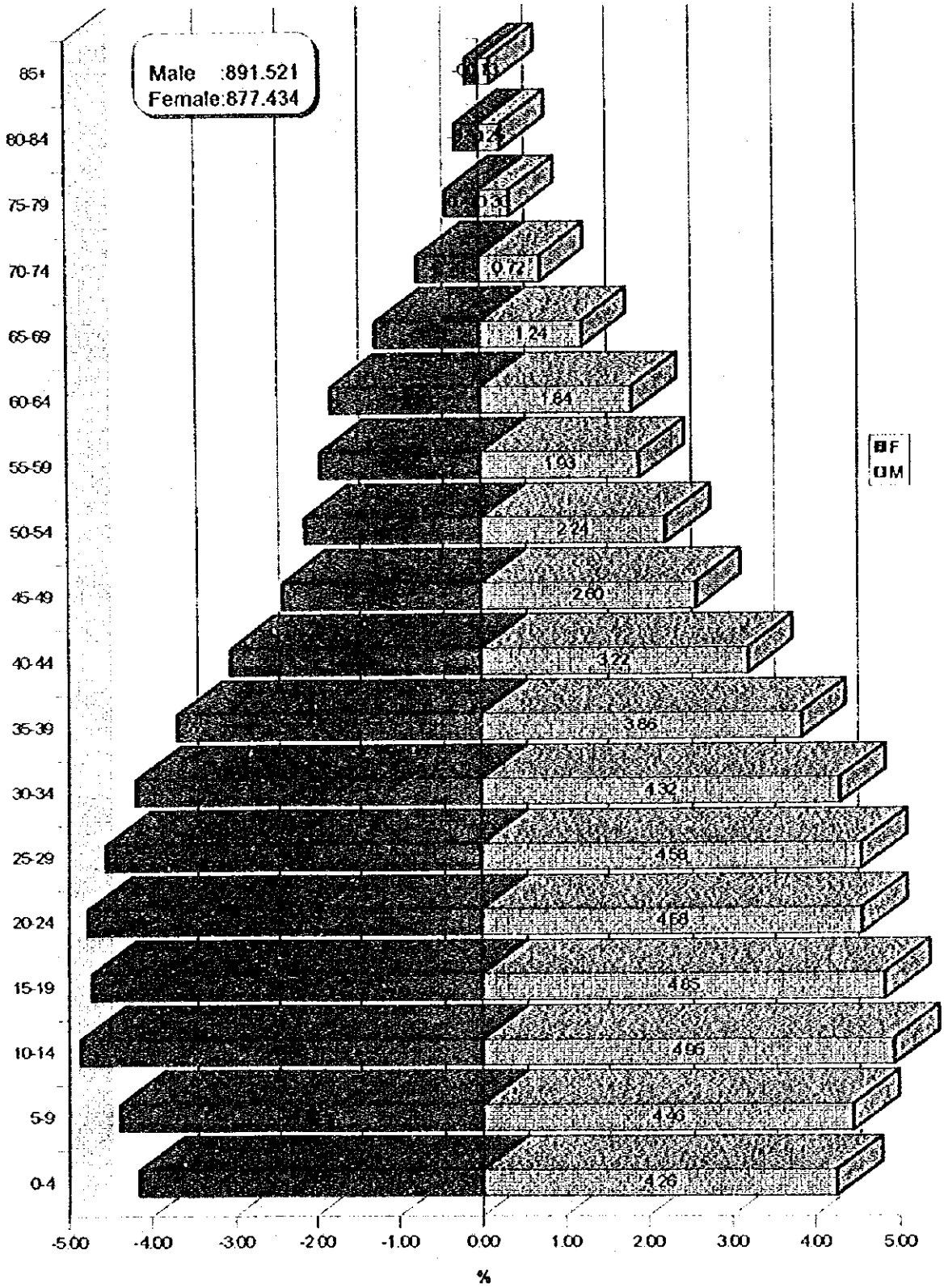
**Under the rule of Health Directorate:**

- 12 State Hospitals**
- 1 Maternity Hospital**
- 1 Pediatric Hospital**
- 1 Academic Specialization Hospital**
- 115 Health Centers**
- 9 MCH-FP Centers**
- 10 Tuberculosis Dipensaries**
- 629 Health Houses**



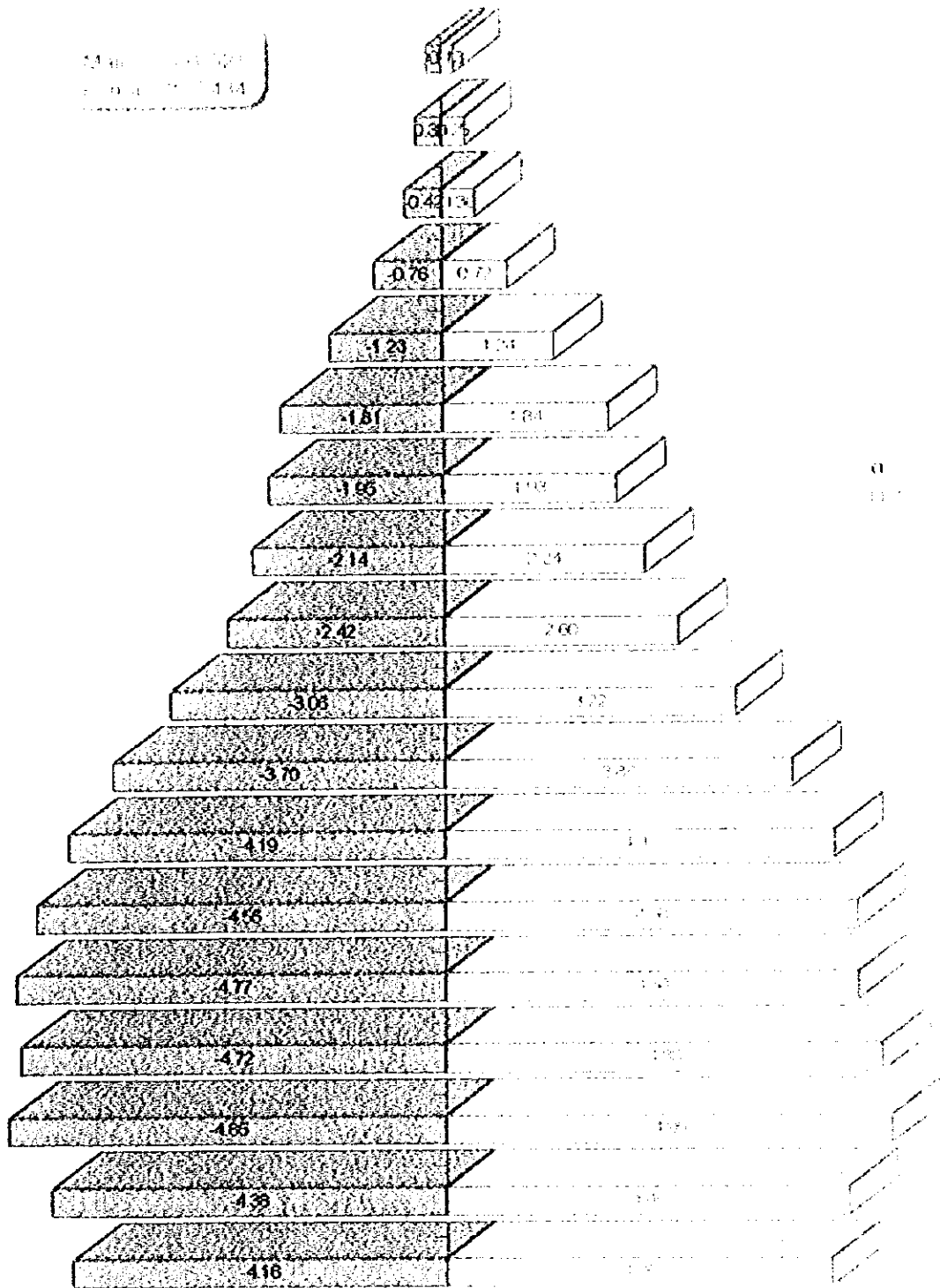


**POPULATION PYRAMID of BURSA 1994**  
 Population: 1.768.955



POPULATION PYRAMID - GERMANY, 2013  
 Population pyramid

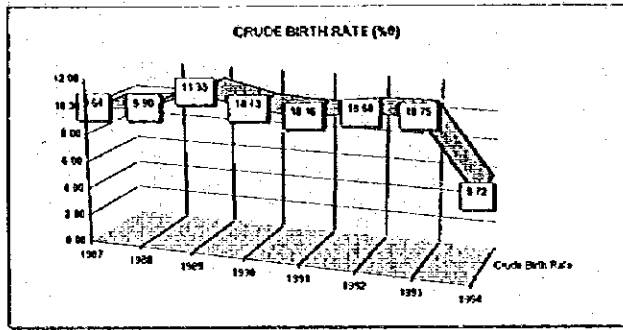
Male 1,000,000  
 Female 1,000,000



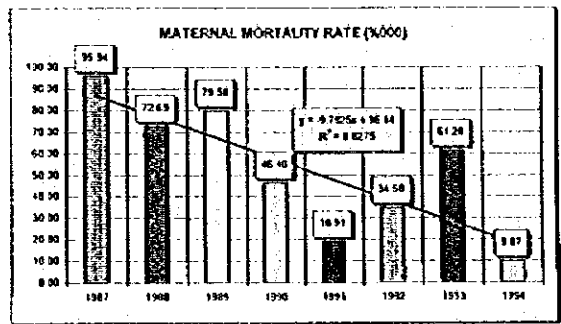


VITAL STATISTICS RECORD of BURSA

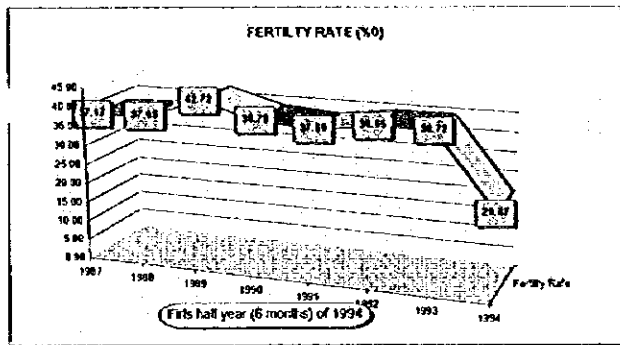
	1987	1988	1989	1990	1991	1992	1993	1994
Crude Birth Rate	9.64	9.90	11.33	10.43	10.16	10.68	10.75	8.72



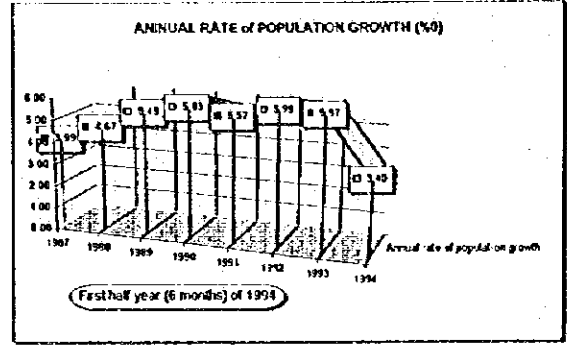
	1987	1988	1989	1990	1991	1992	1993	1994
Maternal Mortality	95.94	72.69	79.58	48.43	18.91	34.68	61.28	9.87



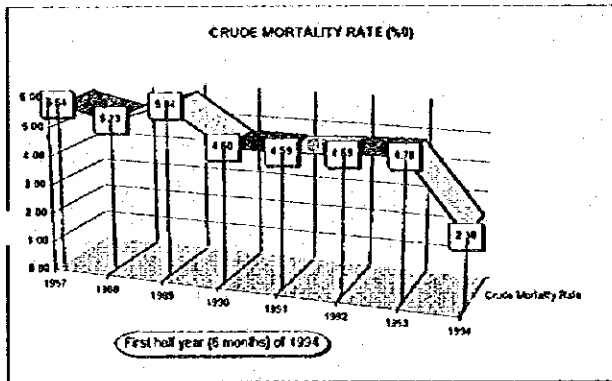
	1987	1988	1989	1990	1991	1992	1993	1994
Fertility Rate	37.17	37.69	42.72	39.79	37.69	39.65	39.72	29.87



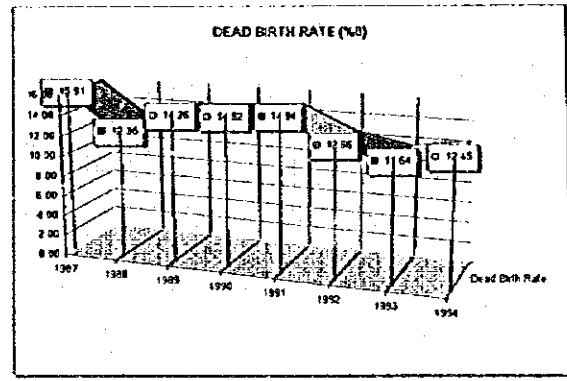
	1987	1988	1989	1990	1991	1992	1993	1994
Annual Rate of Population Growth	3.99	4.87	5.43	5.83	5.57	5.99	5.97	3.40



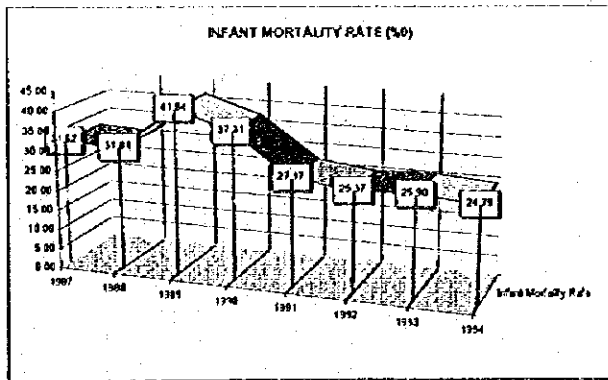
	1987	1988	1989	1990	1991	1992	1993	1994
Crude Mortality Rate	5.54	5.23	5.84	4.60	4.59	4.69	4.78	2.33



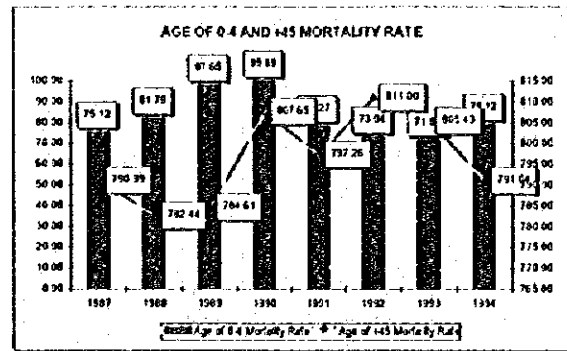
	1987	1988	1989	1990	1991	1992	1993	1994
Dead Birth	15.91	12.35	14.26	14.52	14.94	12.66	11.64	12.45



	1987	1988	1989	1990	1991	1992	1993	1994
Infant Mortality Rate	31.82	31.01	41.84	37.31	27.17	25.37	25.90	24.79

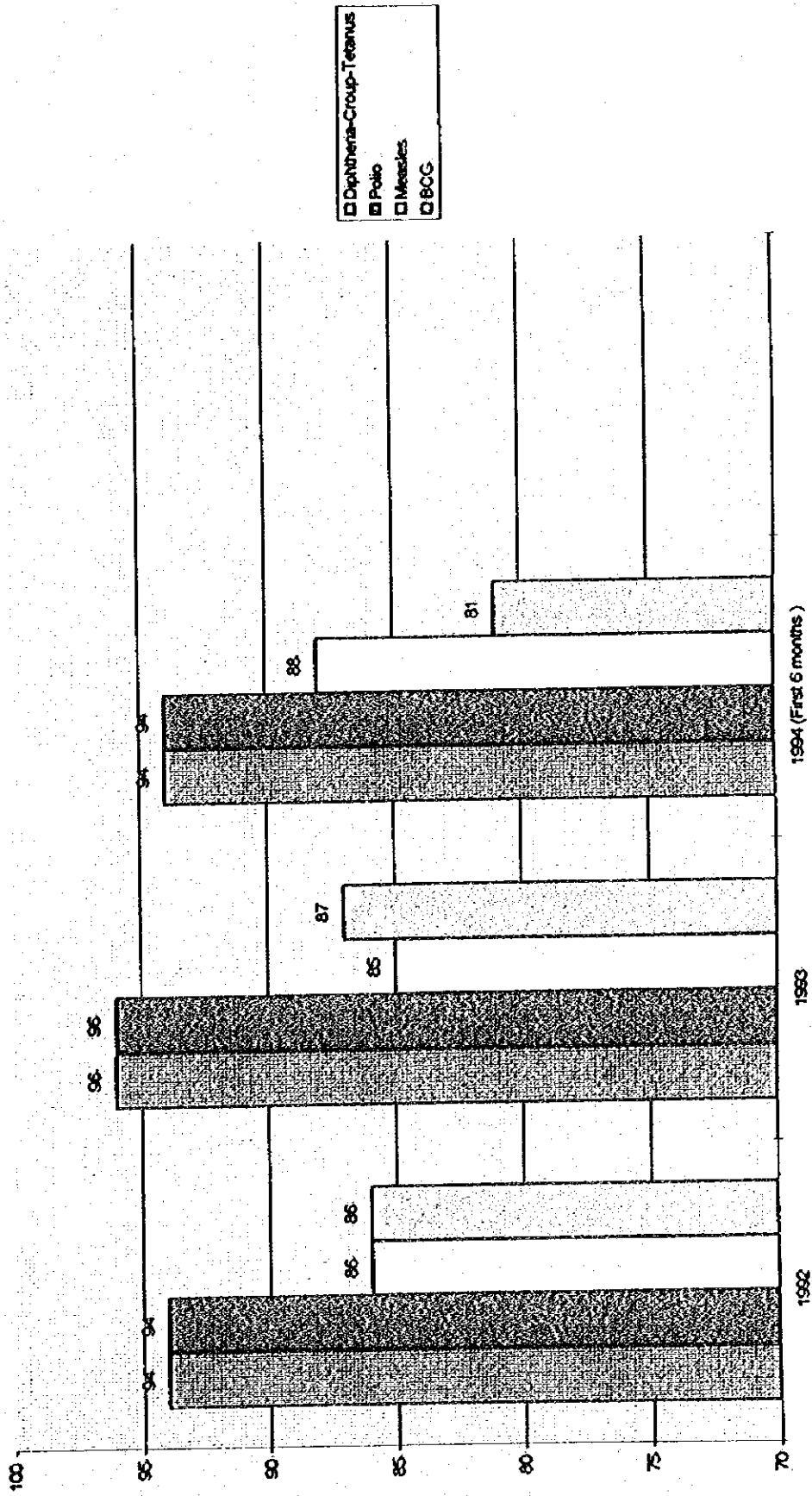


	1987	1988	1989	1990	1991	1992	1993	1994
Age of 0-4 Mortality Rate	75.12	81.79	97.65	99.69	78.27	73.04	71.53	79.12
Age of +4 Mortality Rate	790.99	782.44	784.61	807.65	797.26	811.00	805.43	791.04



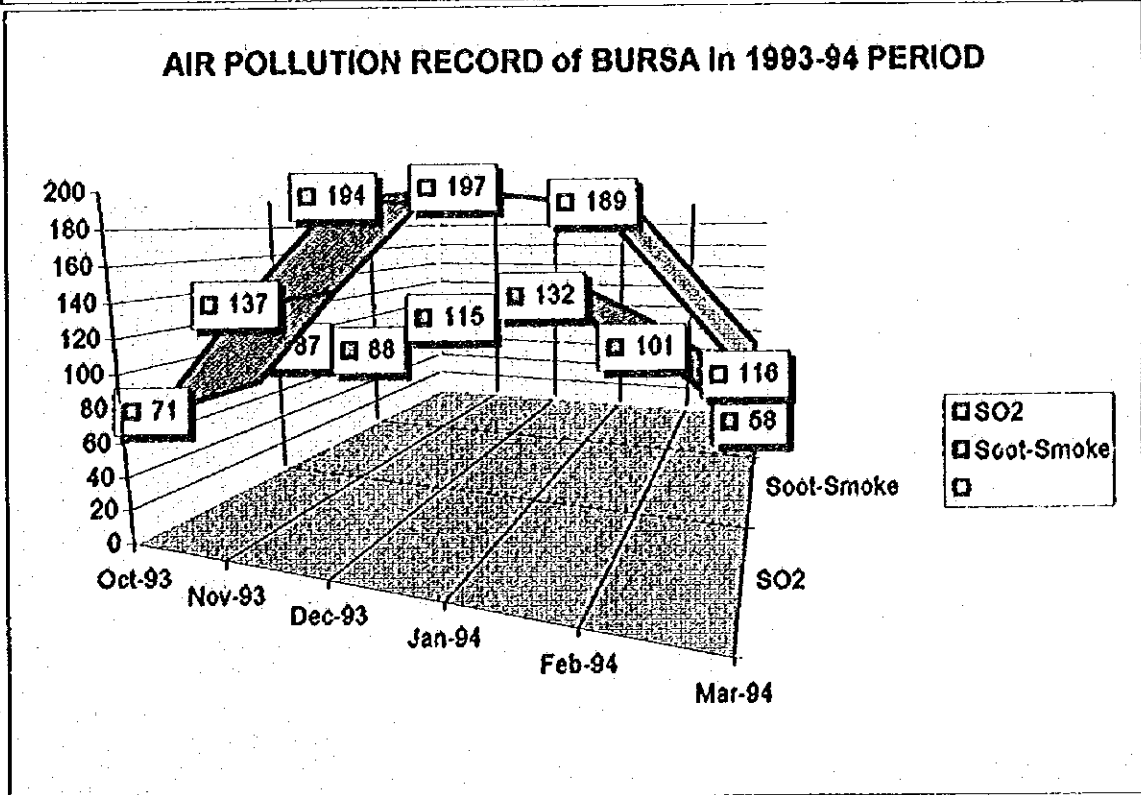
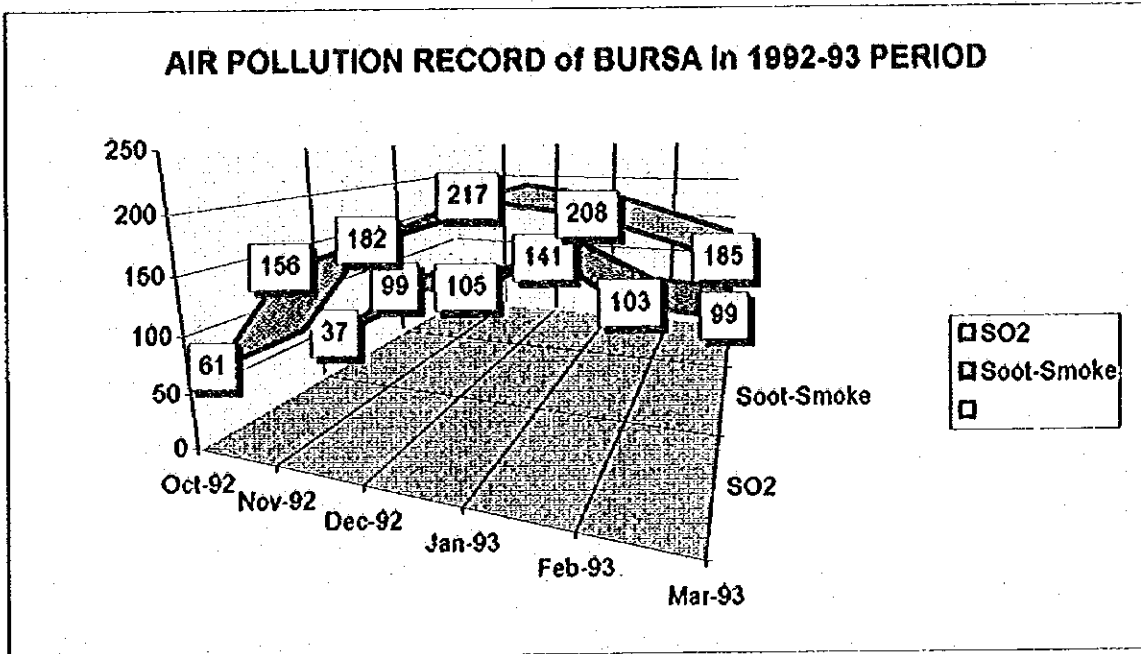


# VACCINATION RECORD





## AIR POLLUTION RECORD of BURSA







**MOTHER & CHILD HEALTH ACTIVITIES in MCH-FP CENTERS (1993)**

Institute	Examined Women		Examined Children		Dental & Oral Health					
	Pregnant	Puerpe. Others	0-11 mo	12-59 mo	Up to 5 year	TOTAL	Examined	Treatm.	Sent	
MCH-FP No 1	1593	122	0	3075	2159	197	5431	0	0	0
MCH-FP No 2	809	6	1419	3828	2060	166	6054	0	0	0
MCH-FP No 3	1059	331	0	3666	2689	159	6514	0	0	0
İznik MCH-FP	399	62	5927	1838	2081	3101	7020	887	256	173
İnegöl MCH-FP	720	145	1955	0	0	0	0	0	0	0
Karacabey MCH-FP	206	205	43	876	344	40	1260	0	0	0
Orhangazi MCH-FP	321	66	4055	1046	1054	0	2100	0	0	0
Yenişehir MCH-FP	71	20	0	742	515	162	1419	0	0	0
<b>TOTAL</b>	<b>5178</b>	<b>957</b>	<b>13399</b>	<b>15071</b>	<b>10902</b>	<b>3825</b>	<b>29798</b>	<b>887</b>	<b>256</b>	<b>173</b>



**MOTHER & CHILD HEALTH ACTIVITIES in MCH-FP CENTERS**  
**(1994-FIRST 6 MONTHS)**

Institute	Examined Women		Examined Children		Dental & Oral Health	
	Pregnant	Puerpe. Others	0-11 mo.	12-59 mo	Up to 5y.	TOTAL
MCH-FP No 1	2258	234	2869	1625	185	4679
MCH-FP No 2	337	369	2172	981	78	3231
MCH-FP No 3	641	170	1621	1340	33	2994
Iznik MCH-FP	246	56	64	890	1077	2031
Inegöl MCH-FP	434	80	290	232	27	549
Karacabey MCH-FP	262	9	324	109	16	449
Orhangazi MCH-FP	207	1476	501	391	68	960
Yenişehir MCH-FP	226	37	374	210	166	750
<b>TOTAL</b>	<b>4611</b>	<b>636</b>	<b>8215</b>	<b>5778</b>	<b>1650</b>	<b>15643</b>
						<b>253</b>
						<b>51</b>
						<b>40</b>



**CONTRACEPTIVE MATERIALS CONSUMPTION IN MCH-FP CENTERS (1993)**

Institute	IUD	Pills	Number of People	Condom	Number of People	Examined People
MCH-FP No 1	909	329	142	15617	702	4629
MCH-FP No 2	106	58	50	9090	409	1380
MCH-FP No 3	32	213	148	6442	353	825
Iznik MCH-FP	35	1100	380	4262	217	656
Inegol MCH-FP	415	1961	552	4728	374	1582
Karacabey MCH-FP	431	573	209	6735	257	1043
Orhangazi MCH-FP	0	840	198	6674	261	468
Yenisehir MCH-FP	179	1293	194	437	46	878
TOTAL	2107	6427	1874	53985	2619	11461

**MONTHLY RECORDS OF CONTRACEPTIVE MATERIALS CONSUMPTION (1993)**

Months	IUD	Pills	Number of People	Condom	Number of People	Examined People
January	131	350	120	4467	196	892
February	140	532	165	7017	287	1004
March	84	705	161	5280	312	765
April	220	773	155	5094	224	1216
May	219	464	182	5063	249	1190
June	196	398	120	5219	253	1011
July	152	602	164	5368	345	1140
August	201	552	182	6844	280	1014
September	232	553	184	2816	211	928
October	134	521	165	3501	167	925
November	150	315	168	1128	91	687
December	192	412	110	1886	81	689



**CONTRACEPTIVE MATERIALS CONSUMPTION IN MCH-FP CENTERS (1994 first 6 months)**

Institute	IUD	Pills	Number of People	Condom	Number of People
MCH-FP No 1	317	598	202	6206	3226
MCH-FP No 2	62	46	8	3160	224
MCH-FP No 3	24	260	99	2620	126
Iznik MCH-FP	20	679	253	1545	78
Inegöl MCH-FP	252	865	257	3416	249
Karacabey MCH-FP	230	162	155	2305	168
Orhangazi MCH-FP	0	121	72	1202	92
Yenişehir MCH-FP	61	1000	316	3652	281
Total	966	3731	1362	24006	1494





**CONTROL OF DISEASES, FOLLOW UP OF GROWTH & DEVELOPMENT  
& LOWER RESPIRATORY TRACT INFECTION PROGRAMS IN MCH-FP CENTERS (1993)**

Institute	Number of child. with AGE 0-59 months	Number of consumed ORS package	Formule baby food	Number of child. with LRTI 0-59 months	Penicillin 0-59 months	Cotrimaxosol 0-59 months
MCH-FP No 1	104	131	0	149	0	0
MCH-FP No 2	20	20	0	0	0	0
MCH-FP No 3	175	0	0	109	0	0
İzmit MCH-FP	161	202	0	36	0	0
İnegöl MCH-FP	76	0	0	0	0	0
Karacabey MCH-FP	42	0	0	0	0	0
Orhangazi MCH-FP	52	0	0	0	0	0
Yenişehir MCH-FP	69	0	0	0	0	0
<b>TOTAL</b>	<b>699</b>	<b>353</b>	<b>0</b>	<b>294</b>	<b>0</b>	<b>0</b>



**CONTROL OF DISEASES, FOLLOW UP OF GROWTH & DEVELOPMENT & LOWER  
RESPIRATORY TRACT INFECTION PROGRAMS in MCH-FP CENTERS(1994 first 6 months)**

Institute	Number of child. with AGE 0-59 months		Number of consumed		Formule baby food		Number of child. with LRTI 0-59 months		Penicillin 0-59 months		Cotrimaxasol 0-59 months	
	months	months	ORS	package	baby food	months	months	months	months	months	months	months
MCH-FP No 1	87	78	0	0	0	314	0	0	0	0	0	0
MCH-FP No 2	13	46	0	0	0	0	0	0	0	0	0	0
MCH-FP No 3	64	18	0	0	0	74	0	0	0	0	0	0
İzmit MCH-FP	72	93	0	0	0	0	0	0	0	0	0	0
İnegöl MCH-FP	76	0	0	0	0	0	0	0	0	0	0	0
Karacabey MCH-FP	6	15	0	0	0	0	0	0	0	0	0	0
Orhangazi MCH-FP	27	16	0	0	0	0	0	0	0	0	0	0
Yenişehir MCH-FP	79	0	0	0	0	91	0	0	0	0	0	0
<b>TOTAL</b>	<b>424</b>	<b>266</b>	<b>0</b>	<b>0</b>	<b>0</b>	<b>479</b>	<b>0</b>	<b>0</b>	<b>0</b>	<b>0</b>	<b>0</b>	<b>0</b>



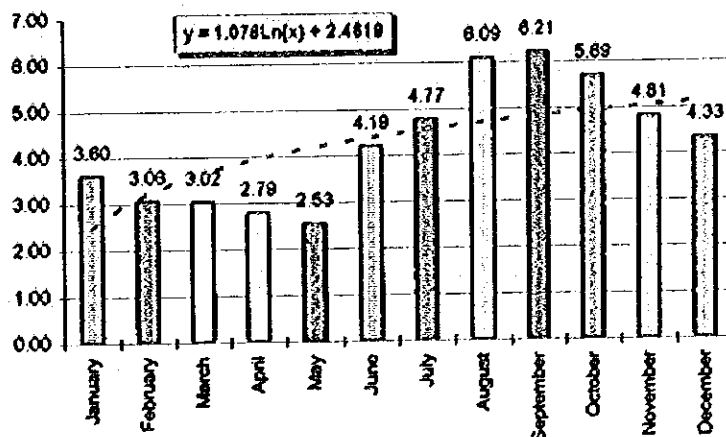
**CONTROL OF DISEASES FOLLOW UP OF GROWTH & DEVELOPMENT  
& LOWER RESPIRATORY TRACT INFECTION PROGRAMS IN BURSA (1993)**

Months	Number of child. with AGE 0-59 Months	Number of consumed ORS package	Deaths from AGE	Consumed formule baby food	Number of child. with LRTI 0-59 months	Penicillin+ cotrimoxas of 0-59 months	Deaths from LRTI 0-59 months
January	876	289	0	7-17	610	0	3
February	743	201	1	0	481	0	2
March	735	187	1	0	622	0	6
April	677	195	0	0	548	0	1
May	616	229	0	0	305	0	3
June	1019	150	0	0	348	0	2
July	1180	327	1	0	158	0	1
August	1479	469	0	0	230	0	2
September	1508	541	3	0	136	0	3
October	1383	388	3	0	183	0	0
November	1168	251	1	0	249	0	4
December	1053	278	1	0	492	0	4
Total	12416	3483	11	7-17	4158	0	30

Number of child 0-59 mo = 24601

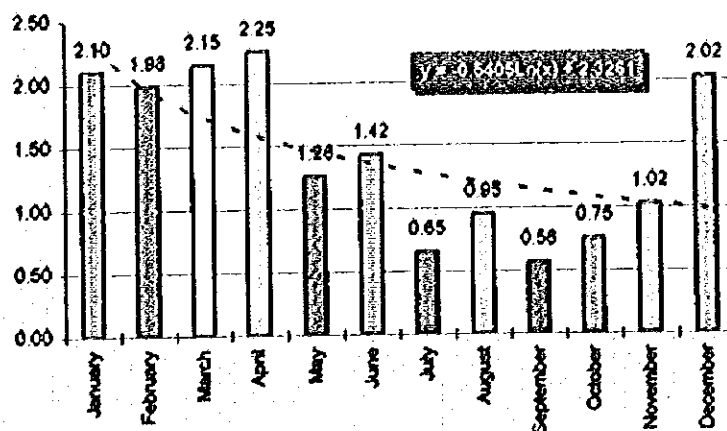
%Months	Number of child. with AGE 0-59 months
January	3.60
February	3.06
March	3.02
April	2.79
May	2.53
June	4.19
July	4.77
August	6.09
September	6.21
October	5.69
November	4.81
December	4.33
Total	51.09

Insidans of LRTI diseases in BURSA (1993)



Insidans of diarrhoeal diseases in BURSA (1993)

%Months	Number of child with LRTI 0-59 months
January	2.10
February	1.98
March	2.15
April	2.25
May	1.28
June	1.42
July	0.65
August	0.95
September	0.58
October	0.75
November	1.02
December	2.02
Total	17.11





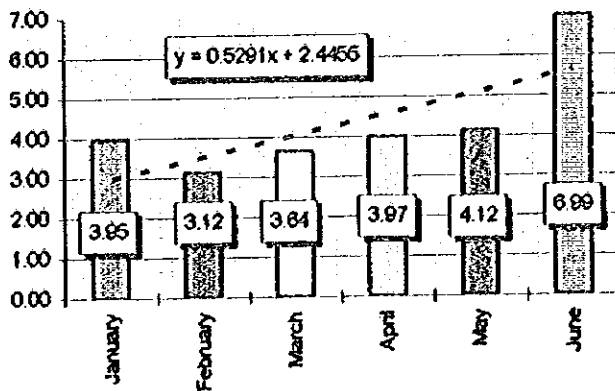
**CONTROL of DISEASES FOLLOW UP of GROWTH & DEVELOPMENT  
& LOWER RESPIRATORY TRACT INFECTION PROGRAMS in BURSA (1994 first 6 months)**

Months	Number of child with AGE 0-59 Months	Number of consumed ORS package	Deaths from AGE	Consumed formule baby food	Number of child with LRTI 0-59 months	Penicillin+c otrimaxosol 0-59 months	Deaths from LRTI 0-59 months
January	1064	156	0	0	976	2	0
February	841	209	1	0	699	0	2
March	981	469	4	0	495	0	1
April	1070	681	2	0	382	0	0
May	1110	588	0	0	442	0	2
June	1883	1026	1	0	400	0	0
<b>Total</b>	<b>6949</b>	<b>3127</b>	<b>8</b>	<b>0</b>	<b>3394</b>	<b>2</b>	<b>6</b>

**Number of child 0-59 mo 26950**

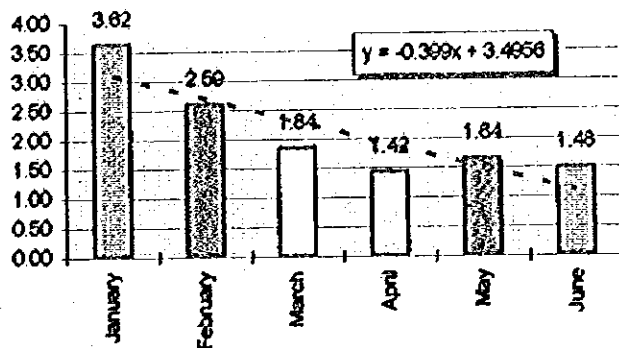
%Months	Number of child with AGE 0-59 months
January	3.95
February	3.12
March	3.64
April	3.97
May	4.12
June	6.99
<b>Total</b>	<b>25.78</b>

**INSIDANS of DIARRHOEAL DISEASES in BURSA (1994, first 6 months)**



%Months	Number of child with LRTI 0-59 months
January	3.62
February	2.69
March	1.84
April	1.42
May	1.64
June	1.48
<b>Total</b>	<b>12.69</b>

**INSIDANS of LRTI DISEASES in BURSA (1994, first 6 months)**







**LABORATORY and VACCINATION RECORD**  
**of MCH-FP CENTERS in 1993**

	Laboratory			Vaccination							
	Urine	Blood	Excrem.	Pregna.	DCT	Polio	Measles	BCG	DT	Preg I	Preg II
Institute	1862	2338	0	1186	555	469	559	299	12	355	241
MCH-FP no 1	398	1454	0	466	469	469	456	375	0	279	187
MCH-FP no 2	0	0	0	0	377	385	382	357	23	177	66
MCH-FP no 3	0	815	0	532	0	0	0	0	0	0	0
Iznik MCH-FP	0	0	0	0	0	0	0	0	0	0	0
Inegöl MCH-FP	4	68	0	283	90	90	105	0	0	228	116
Karacabey MCH-FP	0	0	0	0	159	146	148	0	0	49	53
Orhangazi MCH-FP	0	0	0	0	0	0	0	0	0	149	113
Yenişehir MCH-FP	0	0	0	0	0	0	0	0	0	0	0
<b>TOTAL</b>	<b>2262</b>	<b>4676</b>	<b>0</b>	<b>2467</b>	<b>1650</b>	<b>1559</b>	<b>1650</b>	<b>1061</b>	<b>65</b>	<b>1287</b>	<b>781</b>

Note: For Iznik, Inegöl & Yenişehir MCH-FP's, their vaccinations made together with health centers.



**LABORATORY and VACCINATION RECORD of MCH-FP CENTERS in 1994  
(First 6 MONTHS)**

Institute	Laboratory				Vaccination							
	Urine	Blood	Excrem.	Pregna.	DCT	Polio	Measles	BCG	DT	Preg.I	Preg.II	
MCH-FP No 1	620	1069	0	760	549	550	432	0	0	440	308	
MCH-FP No 2	176	957	0	254	296	298	258	212	0	117	63	
MCH-FP No 3	0	0	0	0	230	232	231	114	0	128	81	
Iznik MCH-FP	0	161	0	243	0	0	0	0	0	0	0	
Inegöl MCH-FP	0	0	0	0	0	0	0	0	0	7	7	
Karacabey MCH-FP	0	58	0	157	58	58	43	0	0	56	33	
Orhangazi MCH-FP	0	0	0	0	75	75	112	0	0	20	15	
Yenişehir MCH-FP	0	0	0	0	0	0	0	0	0	39	21	
<b>Total</b>	<b>796</b>	<b>2245</b>	<b>0</b>	<b>1414</b>	<b>1210</b>	<b>1216</b>	<b>1076</b>	<b>626</b>	<b>0</b>	<b>807</b>	<b>598</b>	

Note: For Iznik, Yenişehir & Inegöl MCH-FP's, their vaccinations made together with health centers.



**HEALTH TRAINING RECORDS of BURSA (1993)**

SUBJECT	1	2	3	4	5	6	7	8	9	10 TOTAL
Number of participants										
FEMALE	67057	110498	75448	136720	127484	25560	22079	27553	88823	22277
MALE	59233	51189	26968	48858	76207	22939	14667	16538	74899	15353
Meeting	10413	15645	10230	16801	16339	4180	3485	3743	3603	3635
										88134

**DISTRIBUTION of FREE TRAINING MATERIALS (1993)**

BOOK	BROCHURE	POSTERS
Number of devoted		
50	1485	4060

**HEALTH TRAINING RECORDS of BURSA (1994 first 6 MONTHS)**

SUBJECT	1	2	3	4	5	6	7	8	9	10 TOTAL
Number of participants										
FEMALE	29950	55963	32149	50924	51712	17761	5141	4872	100438	29531
MALE	29238	23883	16610	17781	27867	21977	6585	4555	101820	126524
Meeting	4471	5485	4063	6135	5977	2506	829	938	2532	1617
										34553

**DISTRIBUTION of FREE TRAINING MATERIALS (1994 first 6 months)**

BOOK	BROCHURE	POSTERS
Number of devoted		
658	1650	4579

Subject codes: 1-Hygiene & Environment

2-Feeding

3-Child Health & Diseases of children

4-Mother Health & Family Planning

5-Infectious Diseases , protection , vaccins & serums

6-Social Diseases (tuberculosis,malaria,AIDS etc.)

7-Smoking,alcohol,narcotics,drugs

8-First aid & protection from accidents.

9-Specific days & weeks (like as April 7th World Health Day)

10-Other health subjects.











JICA

JICA  
LIB