

Table 5.3 Framework of Project Selection in Rural and Agricultural Sector (by Sub-Sector)

Sector / Sub-sector	Key Themes	On-going Major Development Programs/Projects	Proposed Main Programs/Projects
1. Crop Production	<ul style="list-style-type: none"> <li>- Increase in yield and cropping intensity</li> <li>- Construction of new irrigation systems</li> <li>- Rehabilitation of infrastructure damaged by Mt. Pinatubo eruption</li> <li>- Grains production enhancement, especially in grains (rice and corn) key production areas</li> <li>- Development of communal irrigation systems, especially in upland and rainfed areas</li> <li>- Diversification of crops, especially high-value &amp; commercial crops</li> <li>- Development of sustainable upland &amp; hilly farming</li> <li>- Integrated farming, bio-intensive gardening, inter-cropping &amp; multi-story farming</li> <li>- Postharvest and processing development</li> <li>- Widen spread of agriculture insurance coverage</li> </ul>	<ul style="list-style-type: none"> <li>- Grains Production Enhancement Program (GPEP-DA)</li> <li>- Key Commercial Crops Development Program (KCCDP-DA)</li> <li>- Small Water Impounding Projects (SWIPs)</li> <li>- Small Reservoir Irrigation Projects (SRIPs)</li> <li>- Small Scale Irrigation Development Projects (SSIDP)</li> </ul>	<ul style="list-style-type: none"> <li>(Rehabilitation of the Existing Irrigation Systems)</li> <li>- Angat Afterbay Regulator Dam Rehabilitation*</li> <li>- Mananupe River Lake Irrigation</li> <li>- Porac-Gumain River Irrig. System Restoration</li> <li>(Construction of New Irrigation Systems)</li> <li>- Baimbingo Reservoir Multipurpose Development*</li> <li>- Pampanga Delta Development Project - Irrig. Comp.</li> <li>- Upper Tabuaning River Irrigation</li> <li>- North Lawis (Palongahon) Irrigation</li> <li>- Communal Irrigation Development</li> <li>- Tarlac Satellite Irrigation</li> <li>(Others)</li> <li>- SWIMs &amp; SRIPs</li> <li>- Integrated Upland Farming System Development*</li> <li>- Pilot Pump Irrigation</li> <li>- Postharvest Operations Nucleus Development</li> <li>- Tropical Plants Multiplication and Distribution</li> <li>- Citrus Inter-cropping Pilot Development</li> <li>- Integrated Organic Farming Promotion</li> <li>- Seri-Culture Promotion</li> </ul>
2. Livestock	<ul style="list-style-type: none"> <li>- Development of breeding facilities</li> <li>- Increase of livestock production thru improved breeding (artificial insemination)</li> <li>- Enhancement of backyard animal production</li> <li>- Improvement of fodder production and feeding system</li> <li>- Intensification of animal disease prevention and control</li> <li>- Improvement of abattoirs</li> <li>- Development of processing and marketing system</li> <li>- Credit facilities for necessary investments</li> </ul>	<ul style="list-style-type: none"> <li>- Livestock Dispersal Program (LDP / BAI)</li> <li>- Multi-Livestock Dispersal Loan Program (MLDLP / BAI)</li> <li>- Multi-Livestock Development Loan Program for the Farmers' cooperatives/Associations in Mt. Pinatubo affected Areas (BAI)</li> <li>- National Artificial Insemination Program (BAI)</li> </ul>	<ul style="list-style-type: none"> <li>- Crop - Livestock Integrated Farming</li> <li>- Backyard Animal Production Enhancement Program*</li> <li>- Carabao-Based Dairy Development*</li> </ul>
3. Fishery	<ul style="list-style-type: none"> <li>- Intensification of research, extension and training (RET) programs</li> <li>- Improvement of RET facilities and equipment</li> <li>- Establishment of vulgarization network</li> </ul>	<ul style="list-style-type: none"> <li>- Fisheries Sector Program (FSP / BFAR)</li> </ul>	<ul style="list-style-type: none"> <li>- Provincial Tilapia Hatchery*</li> <li>- Fishery Common Service Facilities Establishment*</li> <li>- Grouped Cage Culture</li> <li>- Luzon Sea Coastal Resources Management</li> </ul>

Table 5.3 Framework of Project Selection in Rural and Agricultural Sector (by Sub-Sector)

Sector / Sub-sector	Key Themes	On-going Major Development Programs/Projects	Proposed Main Programs/Projects
4. Forestry	<ul style="list-style-type: none"> <li>- Enlargement of fishing capabilities</li> <li>- Improvement of fishery port complex and processing facilities (e.g. ice plant, cold storage, etc.)</li> <li>- poor fisherfolks</li> <li>- Installation of artificial reef and fish aggregating device</li> <li>- Strengthening of fishery law enforcement</li> <li>- Increase in production of good quality seedlings</li> <li>- Reforestation in the denuded areas to sustain the watersheds, especially in the areas affected by Mt. Pinatubo eruption</li> <li>- Strengthening of social agro-forestry extension</li> <li>- Establishment of demonstration forest and model community forest to accelerate tree planting</li> <li>- Improvement of access to pre-production, post-harvest and marketing</li> <li>- Promotion of greening campaign</li> <li>- Strict enforcement of log ban policy</li> </ul>	<ul style="list-style-type: none"> <li>- Integrated Social Forestry (ISF) Program (DENR-FMB)</li> <li>- Greening Campaign (or Programs)</li> </ul>	<ul style="list-style-type: none"> <li>- Holistic Catchment Management Program* (Critical river basins in each province of Central Luzon)</li> <li>- Rattan &amp; Bamboo Plantations Dev. and Management</li> </ul>
5. Agro-industry/ Livelihood	<ul style="list-style-type: none"> <li>- Promotion of provincial and countryside agro-industry development</li> <li>- Employment opportunities &amp; income generation</li> <li>- Production of high-value and exportable crops</li> </ul>	<ul style="list-style-type: none"> <li>- Regional &amp; Provincial Industrial Centers (RICs &amp; PICs)</li> <li>- People's Industrial Enterprises (PIEs)</li> <li>- Agro-Industrial Development Areas (AIDAs)</li> <li>- Countryside Agro-industrial Development Strategy (CAIDS)</li> <li>- Agro-Industrial Technology Transfer Program</li> </ul>	<ul style="list-style-type: none"> <li>- Hermosa Agro-Industrial Estate</li> <li>- Countryside Agro-Industrial Centers (CAICs) Dev. *</li> <li>- Micro and Small Enterprises Livelihood Systems Dev.</li> <li>- People's Postharvest and Trading Facilities</li> <li>- Local Resource and Agri-Based Rural Industries Est.</li> <li>- Regional Herbal Processing Plant</li> </ul>
6. Institutional & Capacity Building	<ul style="list-style-type: none"> <li>- Strengthening of cooperatives and livelihood organizations (POs &amp; FAs)</li> <li>- Consolidation of local government units</li> <li>- Establishment of urban information &amp; management system</li> <li>- Strengthening of marketing (prices) information system</li> <li>- Development of technical skills and labor force</li> <li>- Provision of research and extension funds</li> </ul>	<ul style="list-style-type: none"> <li>- Various intensifying/supporting programs and activities</li> </ul>	<ul style="list-style-type: none"> <li>- Regional Agricultural Training and Extension Center</li> <li>- Regional Cooperatives Dev. and Training Institute*</li> <li>- Resource Center for People's Participation in Local Governance and Development</li> <li>- Computerization of LGU Data Base</li> <li>- Land Resources Information System Development</li> <li>- Popular Leadership and Entrepreneurship Training</li> </ul>

Table 5.3 Framework of Project Selection in Rural and Agricultural Sector (by Sub-Sector)

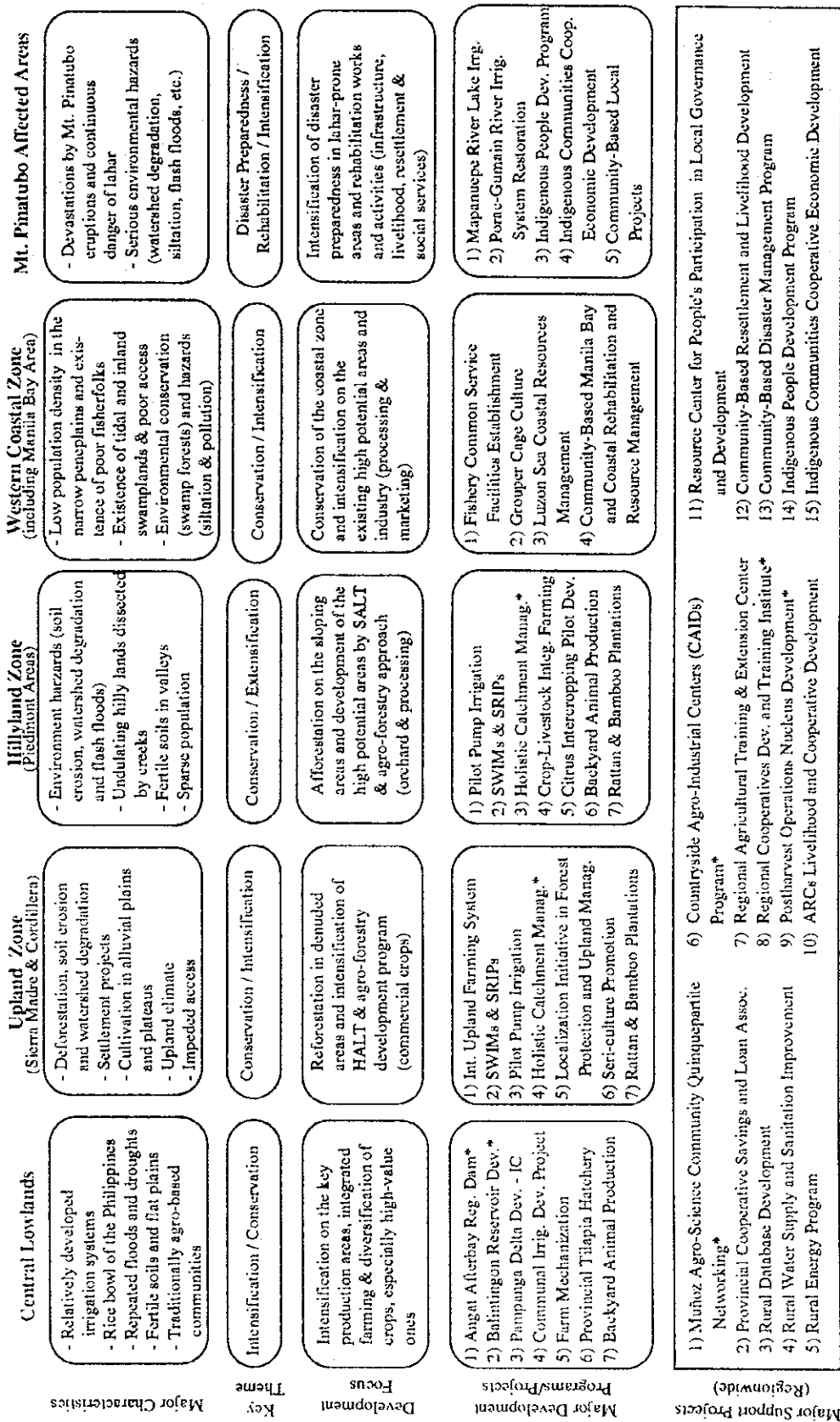
Sector / Sub-sector	Key Themes	On-going Major Development Programs/Projects	Proposed Main Programs/Projects
7. Finance / Crop Insurance	<ul style="list-style-type: none"> <li>- Wider availability of soft loans &amp; credits</li> <li>- Financial assistance (loan &amp; credit) to the cooperatives and livelihood groups</li> <li>- More flexible and wider spread of insurance system</li> </ul>	<ul style="list-style-type: none"> <li>- Countryside Development Fund</li> <li>- Local Government Infrastructure Fund (USAD)</li> <li>- Comprehensive Agricultural Loan Fund (CALF)</li> </ul>	<ul style="list-style-type: none"> <li>- Provincial Cooperative Savings and Loan Association*</li> </ul>
8. Integrated Area, Inter-Sector and Rural Development	<ul style="list-style-type: none"> <li>- Promotion of Agrarian Reform Community (ARC) development program</li> <li>- Prompt implementation of settlement projects</li> <li>- Promotion of CARP (Land Transfer Improvement)</li> </ul>	<ul style="list-style-type: none"> <li>- ARC Development Program (DAR)</li> <li>- Comprehensive Agrarian Reform Program (CARP / DAR)</li> <li>- Agrarian Reform Infrastructure Support Project (ARISP / DAR)</li> </ul>	<ul style="list-style-type: none"> <li>- Muñoz Agro-Science Community-Quinquenpartite Networking*</li> <li>- Rural Database Development</li> <li>- Rural Roads Development and Management</li> <li>- Rural Energy Program</li> <li>- Rural Water Supply and Sanitation Improvement</li> <li>- Agrarian Reform Communities Livelihood and Cooperative Development*</li> <li>- Community-Based Resettlement and Livelihood Dev.*</li> </ul>

Source : Study Team

Note : \* Priority projects recommended by JICA Expert in charge of Rural And Agricultural Sector.

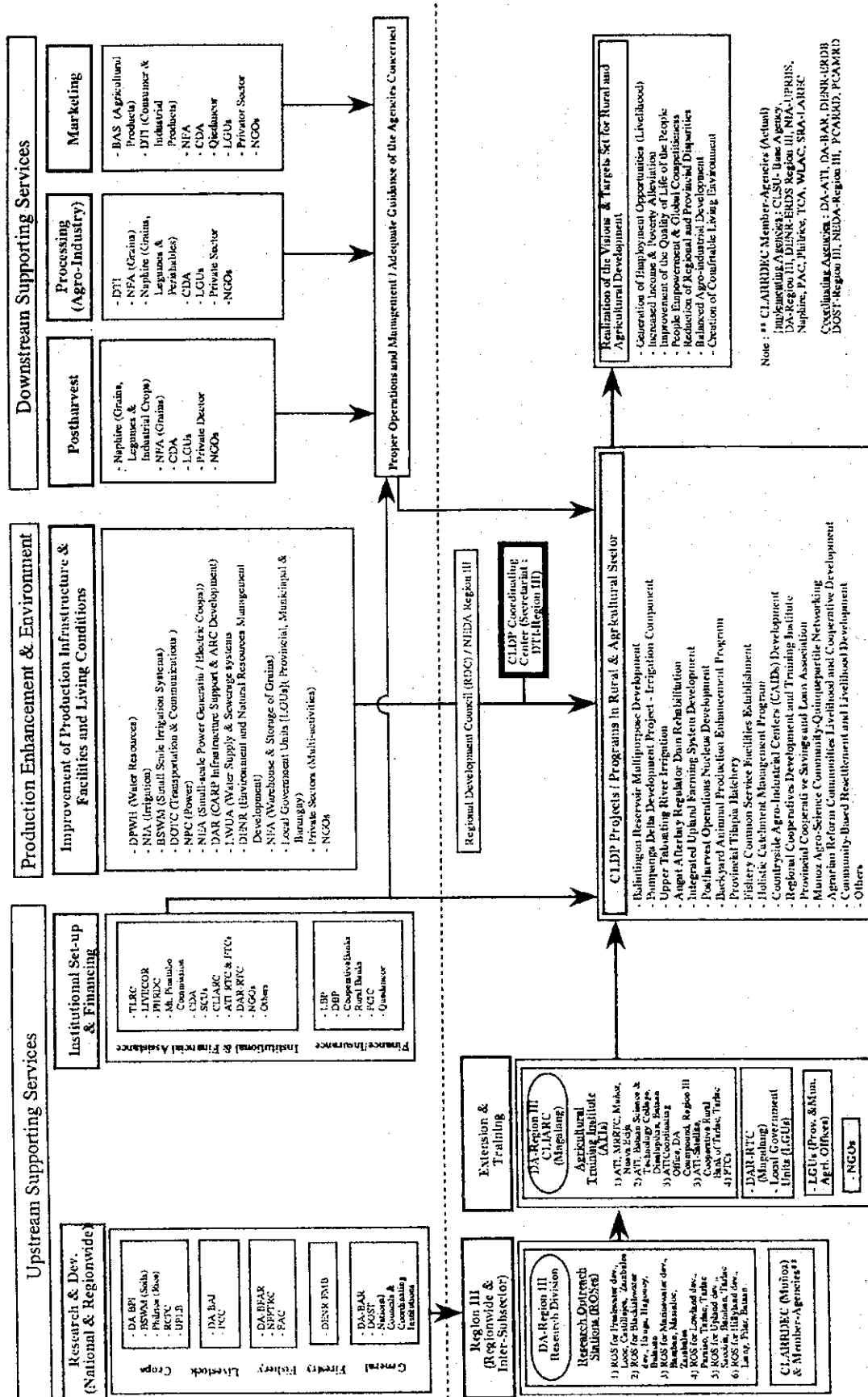
CHAPTER 5  
**FIGURES**

Figure 5.1 Conceptual Development Framework for Rural And Agricultural Sector by Topographical Zone



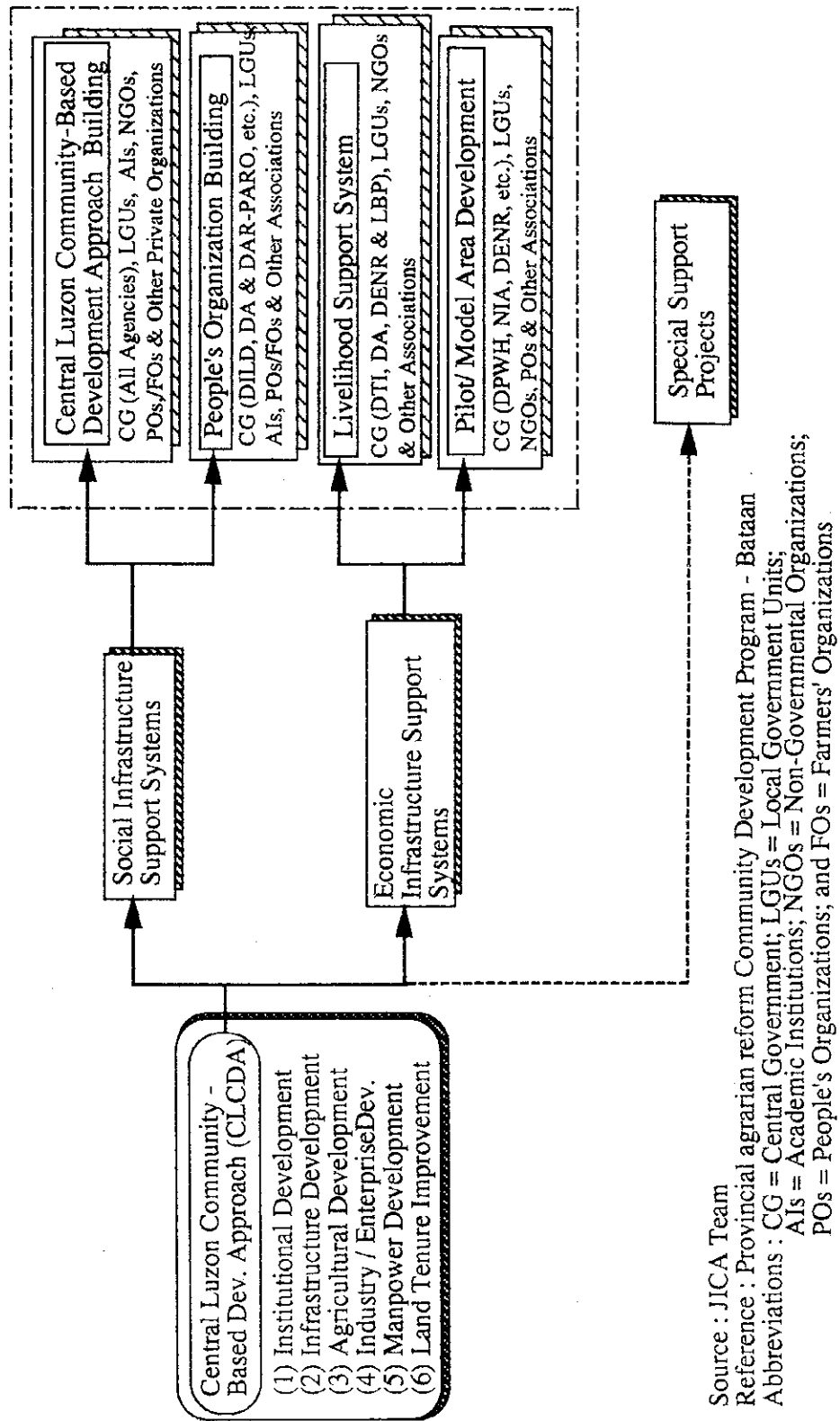
Note : \* high priority projects in Rural and Agricultural Sector

Figure 5.2 Proposed Institutional Set-up for Rural and Agricultural Development



Source : JICA Team

Figure 5.3 Operational Framework of the Proposed Projects in Rural and Agricultural Sector



## **REFERENCE**



## Reference : List of Programs & Plans and Accomplishment Reports Related to Rural and Agricultural Sector

### I. National Plans/Programs

#### 1.1 General

- 1) Medium-Term Philippine Development Plan, 1993-1998 ("Philippines 2000")
- 2) The National Accounts of the Philippines, 1st Quarter 1991- 1st Quarter 1993, NSCB, May 1993
- 3) Medium-Term Public Investment Program, 1993-1998 (Draft - February 1993)

#### 1.2 Agriculture Sector

- 1) The Mid-Term Agricultural Development Plan, 1993-1998, DA, November 1993
- 2) Philippine Agricultural Development Plan, 1992-1995, DA, January 1992
- 3) Grains Production Enhancement Program (GPEP), DA, May 1993 (Program Document & Implementing Guidelines)
- 4) Key Commercial Crops Development Program (KCCDP) 1993-1998, DA, Sept. 1993
- 5) Cooperate Plan, 1993-2002, NIA
- 6) Land and Water Resources Conservation and Management Plan, 1992-1995, DA
- 7) DA Update 1992, Department of Agriculture (DA), 1993
- 8) Annual report 1992, Naphire
- 9) Post-Harvest Industry Development Plan, 1993-1997, Naphire
- 10) Annual Report 1992, Bureau of Plant Industry (BPI)
- 11) Rice Development Plan, 1992-1995, DA, January 1992
- 12) Fruit and Vegetable Development Plan, 1992-1995, DA, January 1992
- 13) Fisheries Management and Conservation Plan, 1992-1995, DA, January 1992
- 14) Corn, Swine, and Poultry Development Plan, 1992-1995, DA, January 1992
- 15) Cattle, Carabao, and Dairy Development Plan, 1992-1995, DA, January 1992
- 16) Sugar Development Plan, 1992-1995, DA, January 1992
- 17) Coconut Development Plan, 1992-1995, DA, January 1992
- 18) Fiber Development Plan, 1992-1995, DA, January 1992
- 19) Cut flower Development Plan, 1992-1995, DA, January 1992
- 20) Cotton Development Plan, 1992-1995, DA, January 1992
- 21) Rural Finance Development Plan, 1992-1995, DA, January 1992
- 22) Land and Water Resources Conservation and Management Plan, 1992-1995, DA, January 1992
- 23) Agricultural Research, Extension, and training Development Plan, 1992-1995, DA, January 1992
- 24) Fertilizer, Seed, and Agricultural Mechanization Development Plans, 1992-1995, DA, January 1992
- 25) Agricultural Marketing and Investment Assistance Plan, 1992-1995, DA, January 1992
- 26) Nutrition Development Plan for the Agriculture Sector, 1992-1995, DA, January 1992

#### 1.3 Agrarian Reform

- 1) The CARP 2000 : Medium-Term Development Plan, 1993-1998
- 2) 1992 Accomplishment Report, Department of Agrarian Reform

#### 1.4 Fishery Sector

- 1) Medium-Term Fisheries Management and Development Program , 1993-1998
- 2) Fisheries Sector Program, 1990-1994, DA
- 3) Fisheries Management and Conservation Plan, 1992-1995, DA
- 4) Aquaculture Sector Strategic Profile, BFAR
- 5) Six-Year Research and Development Plan of the Freshwater Aquaculture Center, 1983-1998

#### 1.5 Livestock Sector

- 1) The Medium-Term Livestock Development Program (Draft), 1993-1998
- 2) Multi Livestock Dispersal Loan Program (MLDLP)

#### 1.6 Forestry Sector

- 1) Master Plan for Forestry Development, DENR, June 30, 1990
- 2) 1991 & 1992 (Extract) Philippine Forestry Statistics, DENR-FMB

### 1.7 Cooperative Development

- 1) Philippine Medium-Term Cooperative Development Plan, 1993-1998, CDA, January, 1992
- 2) 1992 Annual Report, Cooperative Development Authority

### 1.8 Others

- 1) Agricultural Foreign Trade Development, 1992 Annual Report, Bureau of Agricultural Statistics

## 2. Regional Plans/Programs

### 2.1 General

- 1) Medium-Term Regional Development Plan for Central Luzon (MTRDP), 1993-1998
- 2) Regional Development Plan, DPWH, 1993-1998, Regional Office No.3
- 3) Master Plan for the Areas of Central Luzon Affected by the Eruption of Mt. Pinatubo, July 1994

### 2.2 Agriculture Sector

- 1) Central Luzon Agricultural Development Framework, 1992-1995, DA, January 1992
- 2) Medium-Term Regional Development Plan (Key Production Areas), CY 1993-1998, DA
- 3) Integrated Regional Programs, Annual Accomplishment Report, CY - 1992, DA Region III, San Fernando

### 2.3 Livestock Sector

- 1) Multi Livestock Development Loan Program for the Farmers' Cooperatives / Associations in Mt. Pinatubo Affected Areas

### 2.4 Forestry Sector

- 1) Regional Master Plan for Forestry Development, DENR Region III, San Fernando, Pampanga
- 2) Medium-Term Environment and Natural Resources Sector Development Plan, 1993-1998, Region III

### 2.5 Cooperative Development

- 1) Regional Cooperative Development Plan, 1993-1998, Cooperative Development Authority (CDA)

## 3. Provincial Plans/Programs

### 3.1 General

- 1) Provincial Development Reports, CYs 1986-1992, Bataan, Bulacan, Nueva Ecija, Pampanga, Tarlac and Zambales, Region III, June 1992

### 3.2 Bataan

- 1) Itaguyod Ang Bataan - Sustainable Management for Sustainable Development Project, 1993-2000
- 2) Medium-Term Development Framework Plan of Bataan, 1994-1998, Province of Bataan
- 3) Agricultural Development Plan, 1993-1998, Office of The Provincial Agriculturist
- 4) Provincial Agrarian Reform Development Plan, 1993-1998, Province of Bataan
- 5) Provincial Multi-Sectoral Development Plan, 1995, Province of Bataan

### 3.3 Bulacan

- 1) Five-Point Development Program, 1992-1995, Province of Bulacan, June 1992
- 2) The Medium-Term Agricultural Development Plan for Bulacan, 1994-2000, Provincial Planning and Development Office, Province of Bulacan
- 3) Statistical Profile 1991, Province of Bulacan, Provincial Planning and Development Office, 1992
- 4) Provincial Agrarian Reform Community Development Plan, 1993-1998, Provincial Agrarian Reform Office

### 3.4 Nueva Ecija

- 1) Nueva Ecija 2000
- 2) Five (5) Years Development for Livestock in the Province of Nueva Ecija, 1993-1997
- 3) Nueva Ecija Provincial Agrarian Reform Development Plan, 1993-1998

### 3.5 Pampanga

- 1) Annual Accomplishment Report of the Office of the Provincial Agriculturist for the Year 1992
- 2) Provincial Agrarian Reform Development Plan, 1993-1998, Province of Pampanga
- 3) Annual Development and Investment Plan, CY 1993, Province of Pampanga
- 4) Socio-Economic Profile, 1994 Edition, PPDO
- 5) Annual Development Plan and Investment Program, CY 1995, Province of Pampanga

### 3.6 Tarlac

- 1) Medium-Term Development Plan, 1994-1998, Province of Tarlac
- 2) Master Plan on Mount Pinatubo Development Programs, Tarlac Provincial Pinatubo Development Council

### 3.7 Zambales

- 1) Medium Term Development Plan, 1994-1998, Province of Zambales
- 2) Provincial Agrarian Reform Development Plan, 1993-1998, Province of Zambales
- 3) Zambales Provincial CARP Profile, Provincial Agrarian Reform Office
- 4) Zambales (Profile) - "The Supersweet Mango Basket and More .....", 1992, Province of Zambales

JICA