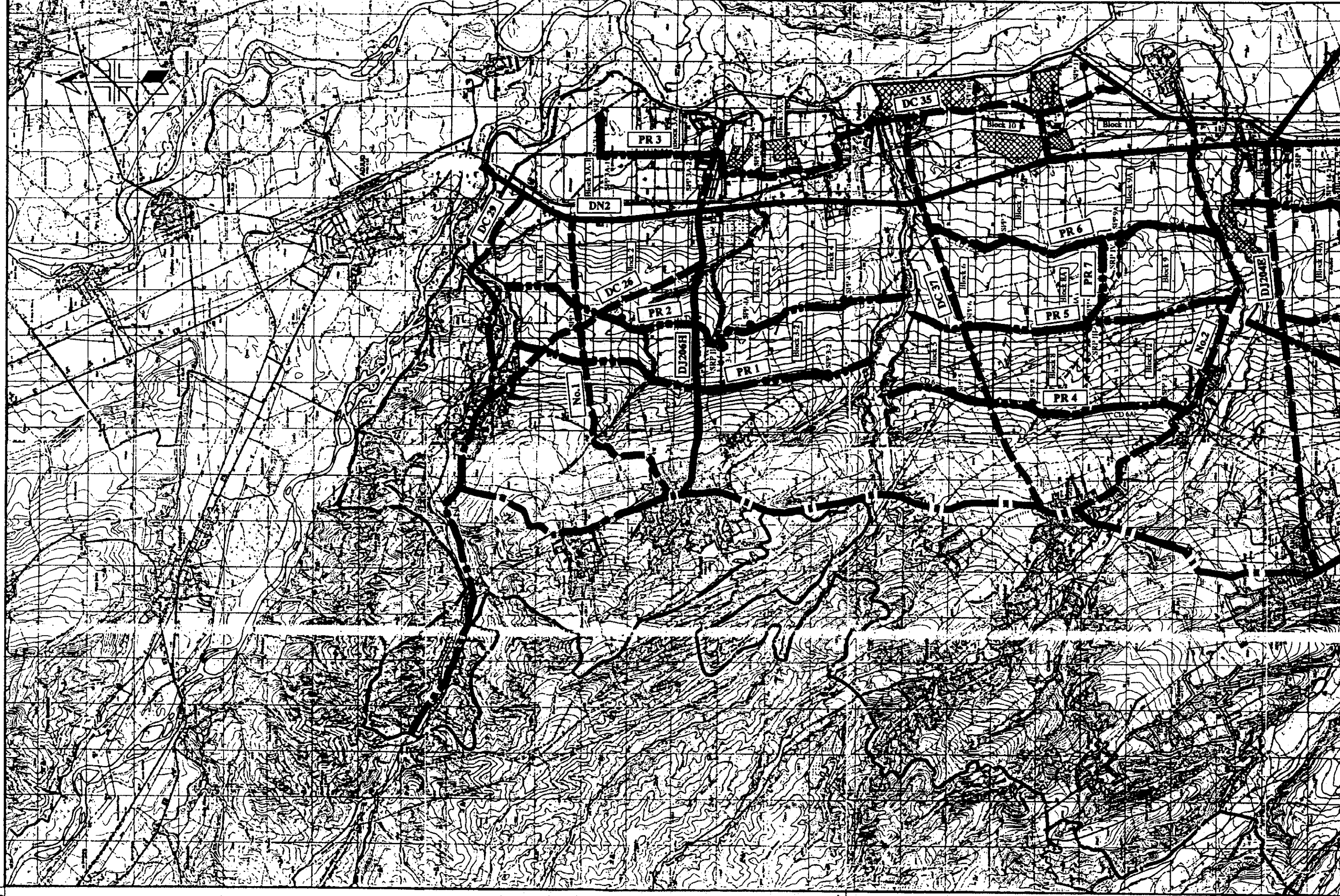


27 15

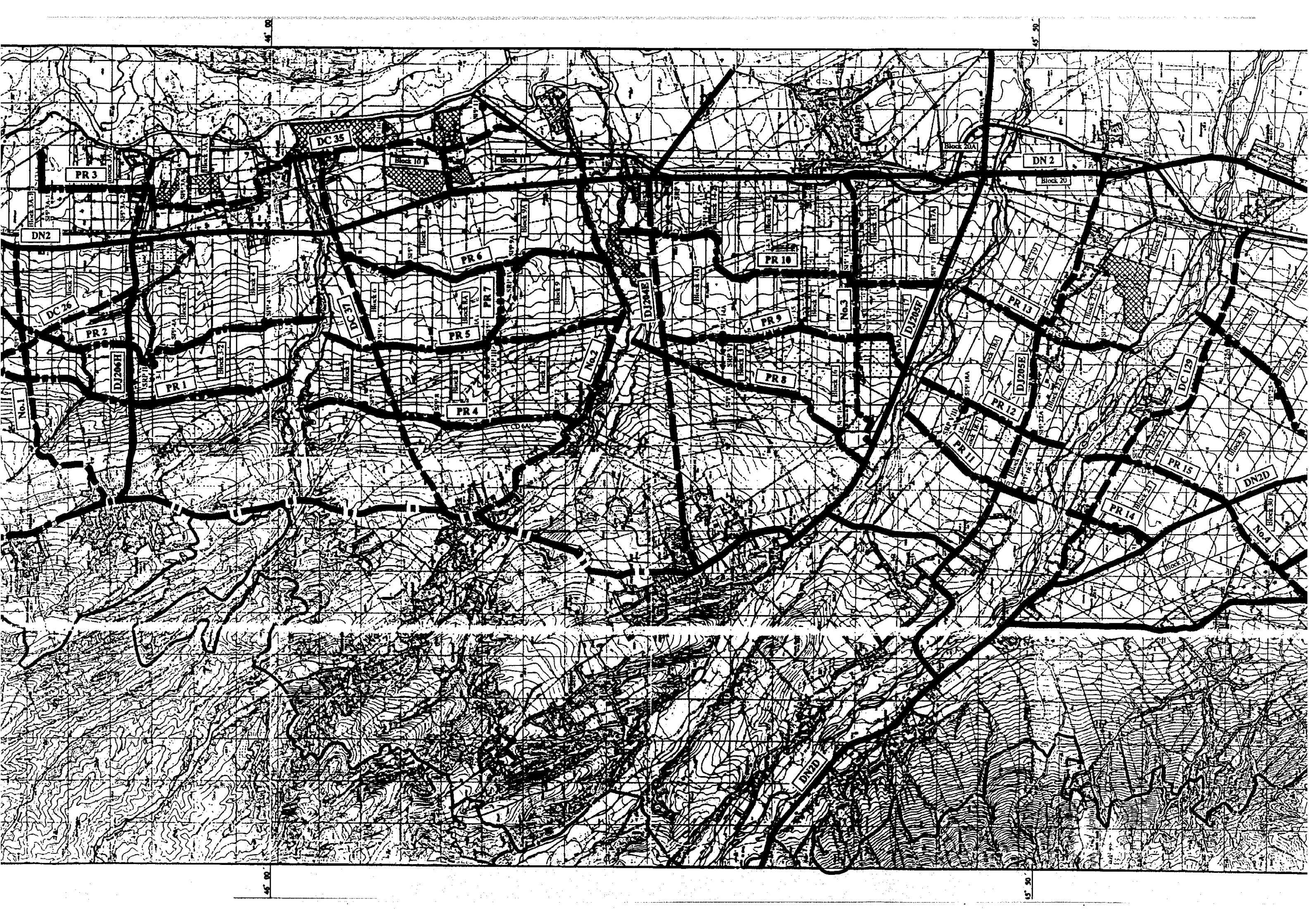
46 00



27 00

46 10

46 00



45° 00'

45° 30'

45° 00'

45° 30'

PR 3

DC 35

DN 2

DN 2

PR 6

PR 10

DC 26

PR 2

PR 5

PR 9

PR 13

D 2005H

PR 1

PR 4

PR 8

PR 12

No. 2

No. 3

PR 11

PR 15

PR 14

DN 2D

DN 2D

No. 4

Block 20

Block 21

Block 22

Block 23

Block 24

Block 25

Block 26

Block 27

Block 28

Block 29

Block 30

Block 31

Block 32

Block 33

Block 34

Block 35

Block 36

Block 37

Block 38

Block 39

Block 40

Block 41

Block 42

Block 43

Block 44

Block 45

Block 46

Block 47

Block 48

Block 49

Block 50

Block 51

Block 52

Block 53

Block 54

Block 55

Block 56

Block 57

Block 58

Block 59

Block 60

Block 61

Block 62

Block 63

Block 64

Block 65

Block 66

Block 67

Block 68

Block 69

Block 70

Block 71

Block 72

Block 73

Block 74

Block 75

Block 76

Block 77

Block 78

Block 79

Block 80

Block 81

Block 82

Block 83

Block 84

Block 85

Block 86

Block 87

Block 88

Block 89

Block 90

Block 91

Block 92

Block 93

Block 94

Block 95

Block 96

Block 97

Block 98

Block 99

Block 100

Block 101

Block 102

Block 103

Block 104

Block 105

Block 106

Block 107

Block 108

Block 109

Block 110

Block 111

Block 112

Block 113

Block 114

Block 115

Block 116

Block 117

Block 118

Block 119

Block 120

Block 121

Block 122

Block 123

Block 124

Block 125

Block 126

Block 127

Block 128

Block 129

Block 130

Block 131

Block 132

Block 133

Block 134

Block 135

Block 136

Block 137

Block 138

Block 139

Block 140

Block 141

Block 142

Block 143

Block 144

Block 145

Block 146

Block 147

Block 148

Block 149

Block 150

Block 151

Block 152

Block 153

Block 154

Block 155

Block 156

Block 157

Block 158

Block 159

Block 160

Block 161

Block 162

Block 163

Block 164

Block 165

Block 166

Block 167

Block 168

Block 169

Block 170

Block 171

Block 172

Block 173

Block 174

Block 175

Block 176

Block 177

Block 178

Block 179

Block 180

Block 181

Block 182

Block 183

Block 184

Block 185

Block 186

Block 187

Block 188

Block 189

Block 190

Block 191

Block 192

Block 193

Block 194

Block 195

Block 196

Block 197

Block 198

Block 199

Block 200

Block 201

Block 202

Block 203

Block 204

Block 205

Block 206

Block 207

Block 208

Block 209

Block 210

Block 211

Block 212

Block 213

Block 214

Block 215

Block 216

Block 217

Block 218

Block 219

Block 220

Block 221

Block 222

Block 223

Block 224

Block 225

Block 226

Block 227

Block 228

Block 229

Block 230

Block 231

Block 232

Block 233

Block 234

Block 235

Block 236

Block 237

Block 238

Block 239

Block 240

Block 241

Block 242

Block 243

Block 244

Block 245

Block 246

Block 247

Block 248

Block 249

Block 250

Block 251

Block 252

Block 253

Block 254

Block 255

Block 256

Block 257

Block 258

Block 259

Block 260

Block 261

Block 262

Block 263

Block 264

Block 265

Block 266

Block 267

Block 268

Block 269

Block 270

Block 271

Block 272

Block 273

Block 274

Block 275

Block 276

Block 277

Block 278

Block 279

Block 280

Block 281

Block 282

Block 283

Block 284

Block 285

Block 286

Block 287

Block 288

Block 289

Block 290

Block 291

Block 292

Block 293

Block 294

Block 295

Block 296

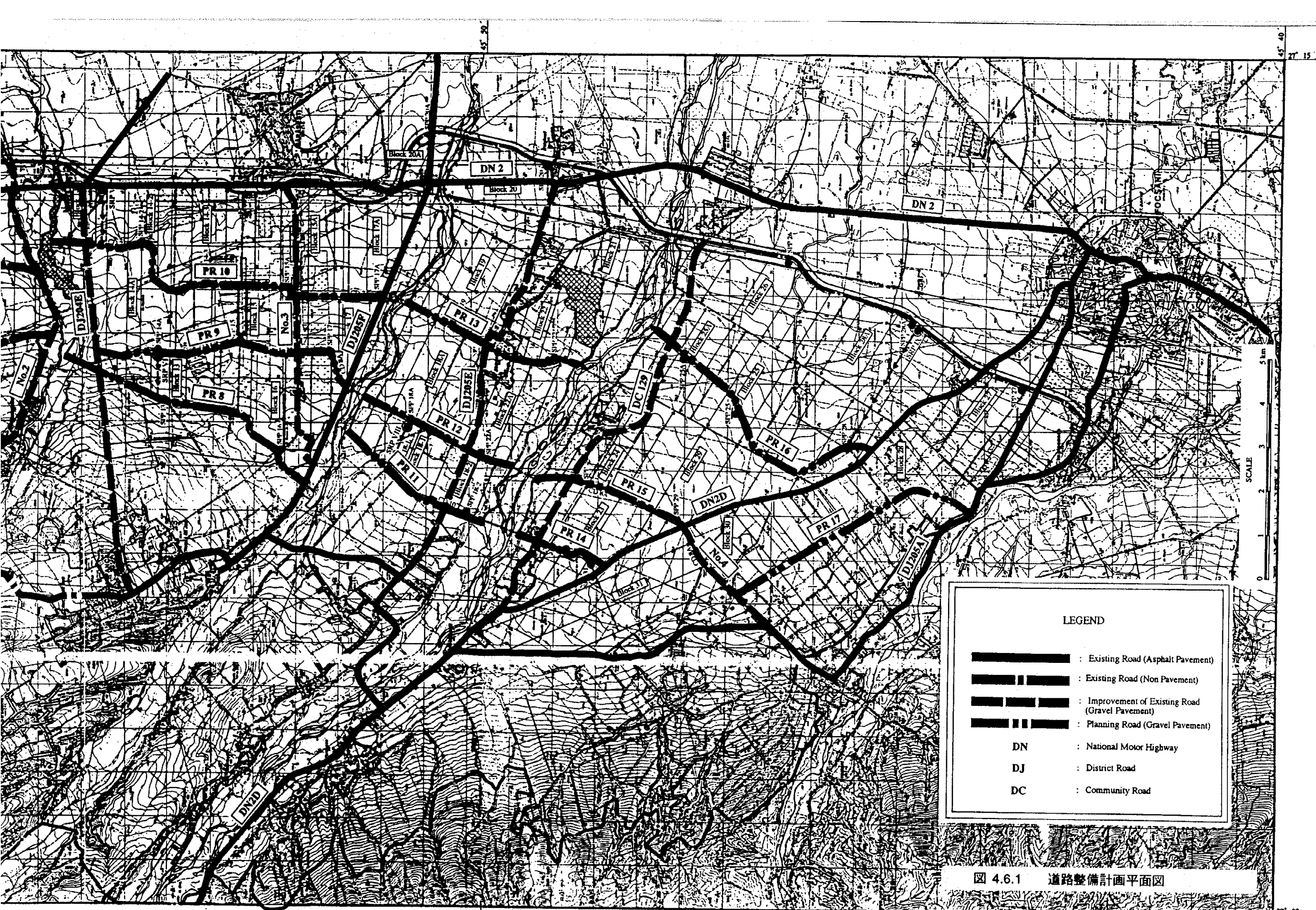
Block 297

Block 298

Block 299

Block 300





LEGEND





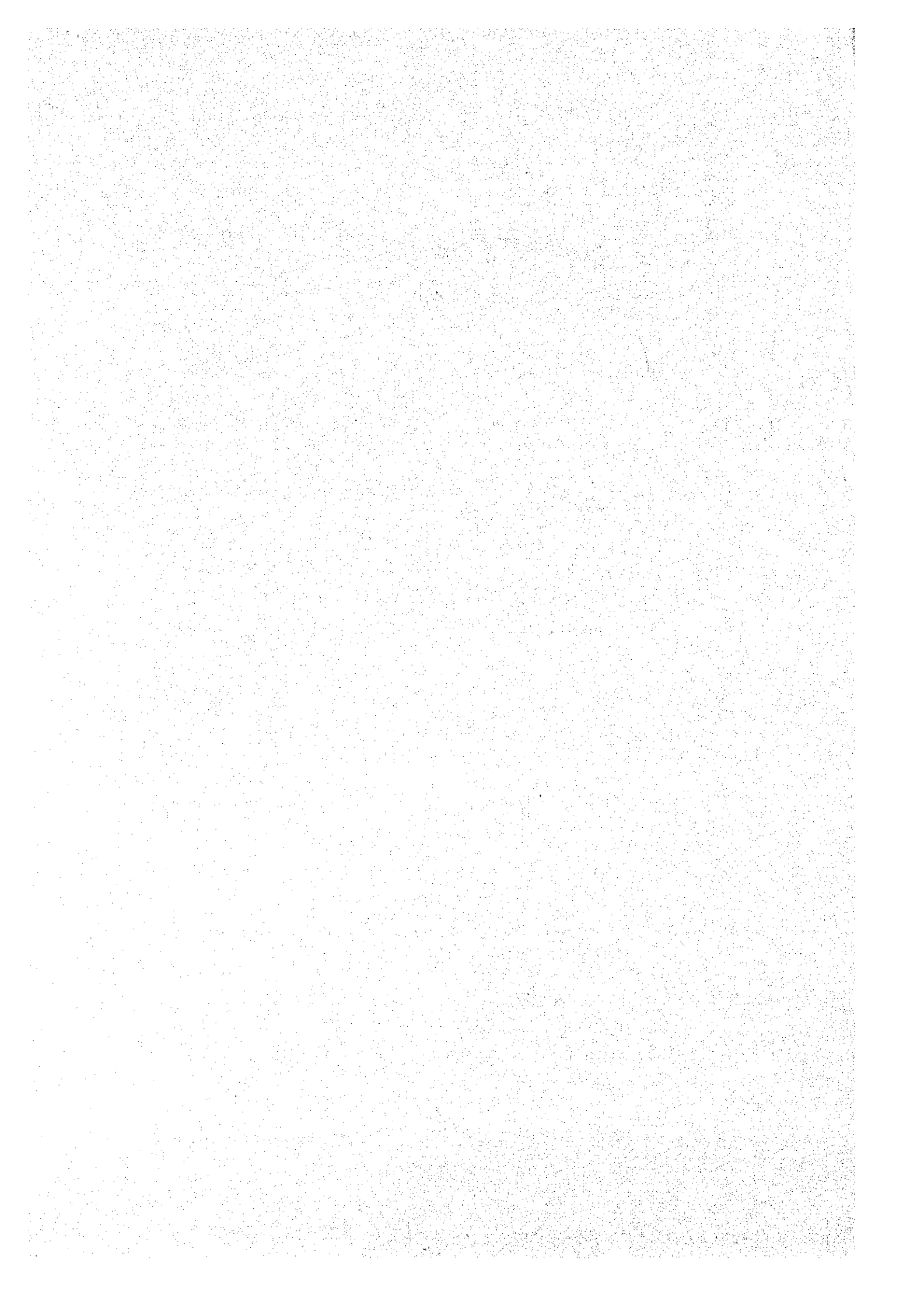
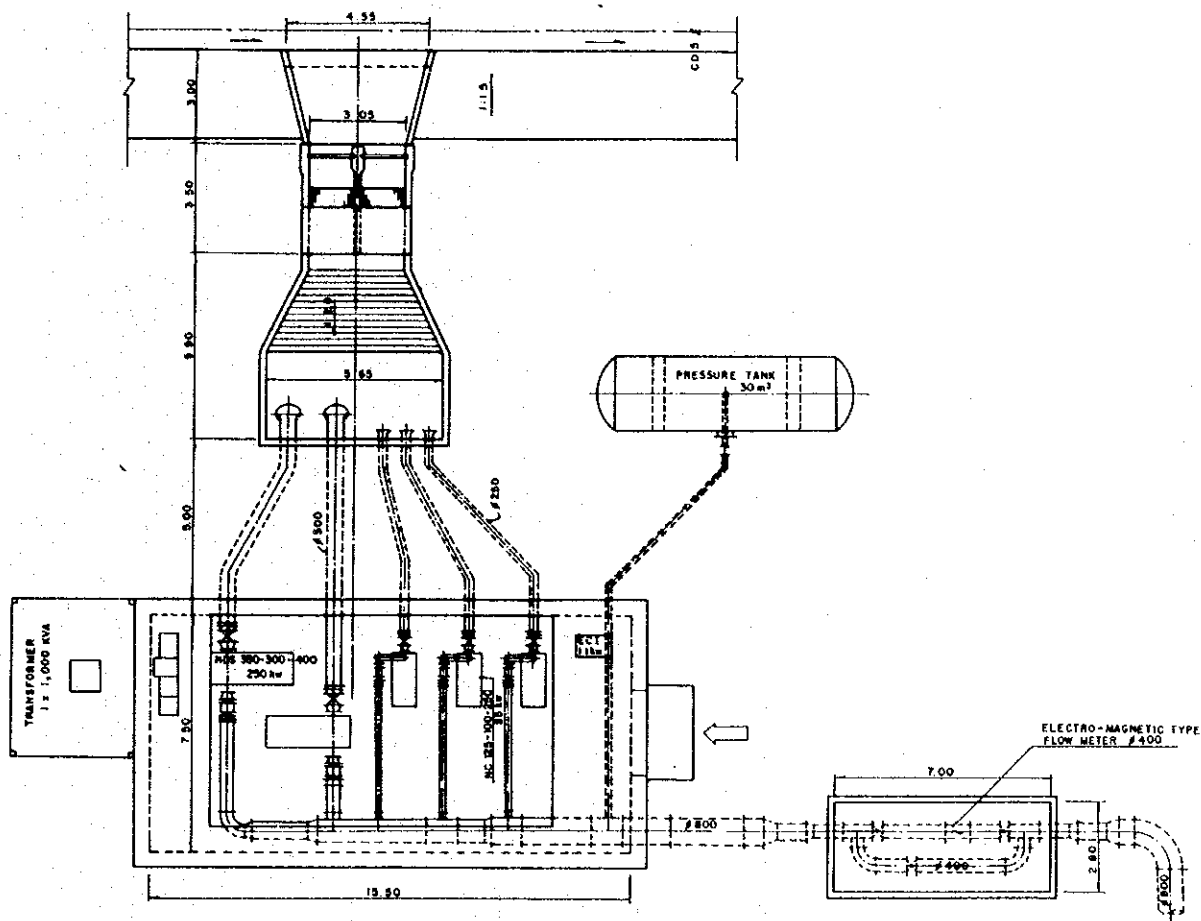
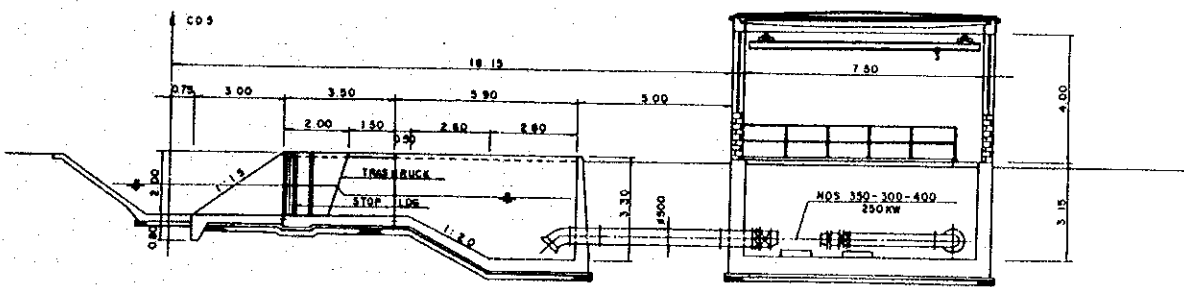
	: Existing Road (Asphalt Pavement)
	: Existing Road (Non Pavement)
	: Improvement of Existing Road (Gravel Pavement)
	: Planning Road (Gravel Pavement)
DN	: National Motor Highway
DJ	: District Road
DC	: Community Road

図 4.6.1 道路整備計画平面図





Profile



Cross Section

図 4.7.1 揚水機場 (SRP) 標準図

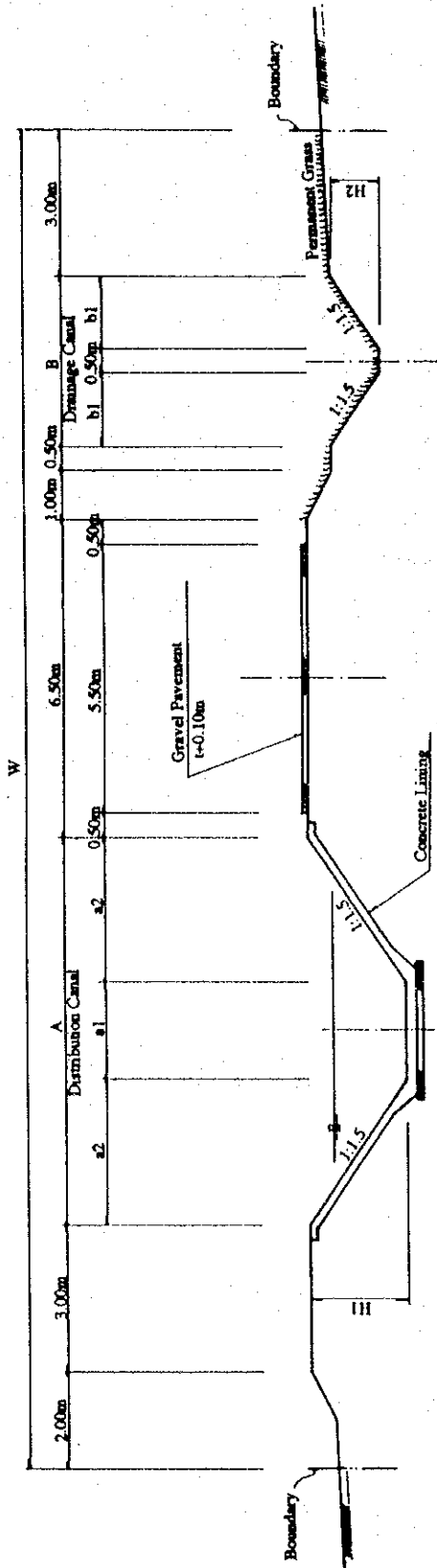
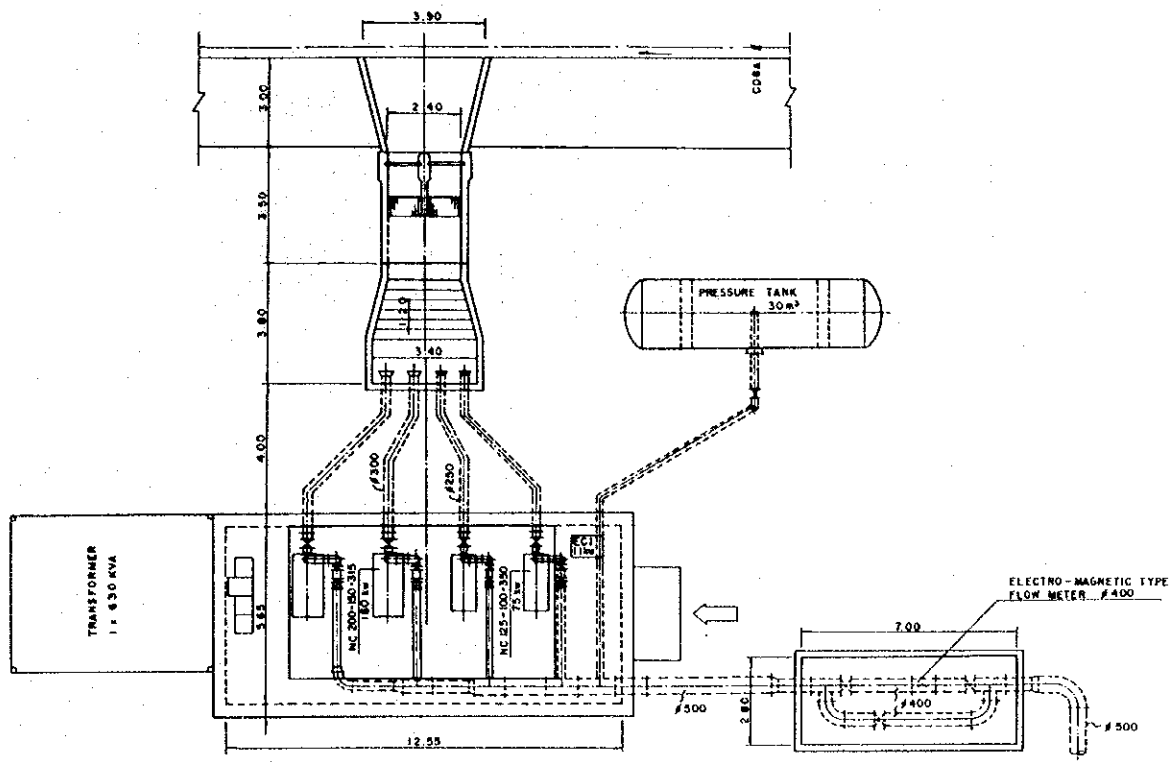
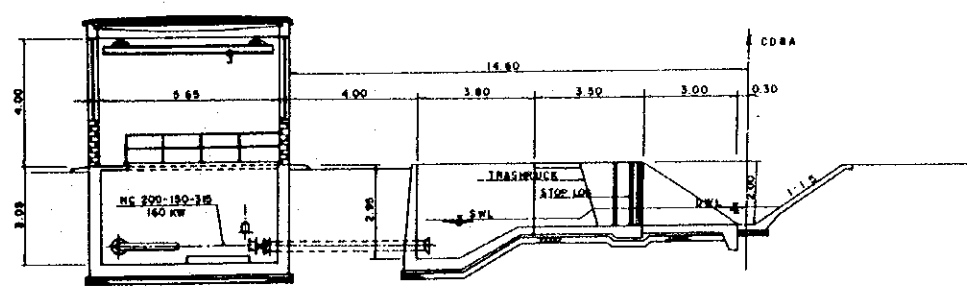


图 4.7.2 配水路 (CD) 标准横断面图

Name of Canal Canal No.	Canal Length		Canal Dimension			Bottom		Name of Canal Canal No.	Race No.	Canal Length		Canal Dimension			
	Race (m)	Total (m)	Hm (m)	A (m)	a1 (m)	a2 (m)	Slope (%)			Race (m)	Total (m)	Hm (m)	A (m)	a1 (m)	a2 (m)
CD 1	I	1,150	5,100	1,685	1,000	2,528	0.020	CD 7	I	5,745	12,645	2,675	10,025	2,000	4,013
	II	1,655		1,620	1,000	2,430	0.020		II	3,000		2,330	7,990	1,000	3,495
	III	2,295		1,330	1,000	1,995	0.020		III	705		2,305	7,915	1,000	3,458
CD 2	I	3,300		1,730	1,500	2,595	0.015	CD 8	I	3,195		1,620	5,860	1,000	2,430
	II	2,500	7,105	1,720	1,500	2,580	0.015		II	3,010	3,010	2,295	8,385	1,500	3,443
	III	1,305		1,910	1,000	2,865	0.010		III	3,900		2,295	8,385	1,500	3,443
CD 3	I	2,260	2,260	1,430	1,000	2,145	0.020	CD 8A	I	4,650	12,550	2,580	9,240	1,500	3,870
	II	2,465		2,290	1,500	3,435	0.010		II	1,500		1,550	6,150	1,500	2,325
	III	4,785	7,950	2,300	1,000	3,450	0.012		III	2,500		1,850	7,050	1,500	2,775
CD 4	I	700		1,860	1,000	2,790	0.015	CD 9	I	3,450	3,450	2,090	7,270	1,000	3,135
	II	1,500	4,070	1,905	1,500	2,858	0.015		II	2,285		2,160	7,480	1,000	3,240
	III	2,570		1,645	1,000	2,468	0.015		III	2,510	5,595	1,485	5,455	1,000	2,228
CD 5	I	1,060	4,535	1,975	1,500	2,963	0.020	CD 10	I	800		1,880	6,640	1,000	2,820
	II	3,475		2,150	1,000	3,225	0.015		II	2,500		1,635	5,905	1,000	2,453
	III	1,920	1,920	1,690	1,000	2,535	0.020		III	1,500	6,180	1,935	6,805	1,000	2,903
CD 6A	I	1,920						III	2,180		1,655	5,965	1,000	2,483	



Profile



Cross Section

図 4.7.3 加圧機場 (SPP) 標準図

Table of Flow Capacity

Bottom Slope  $i=1/1,000$

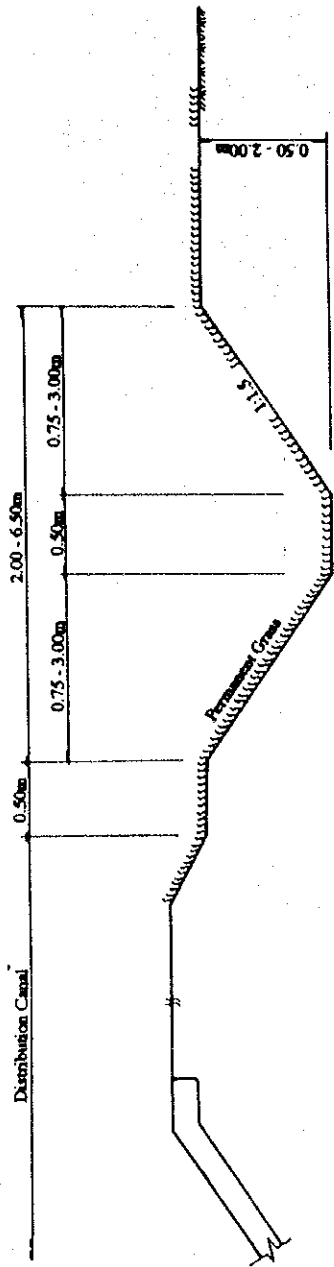
H (m)	Q (m <sup>3</sup> /s)	V (m/s)	A (m <sup>2</sup> )
0.50	0.24	0.38	0.63
0.75	0.38	0.47	1.22
1.00	1.12	0.56	2.00
1.25	1.89	0.64	2.97
1.50	2.93	0.71	4.13
1.75	4.27	0.78	5.47
2.00	5.93	0.85	7.00

Bottom Slope  $i=1/1,500$

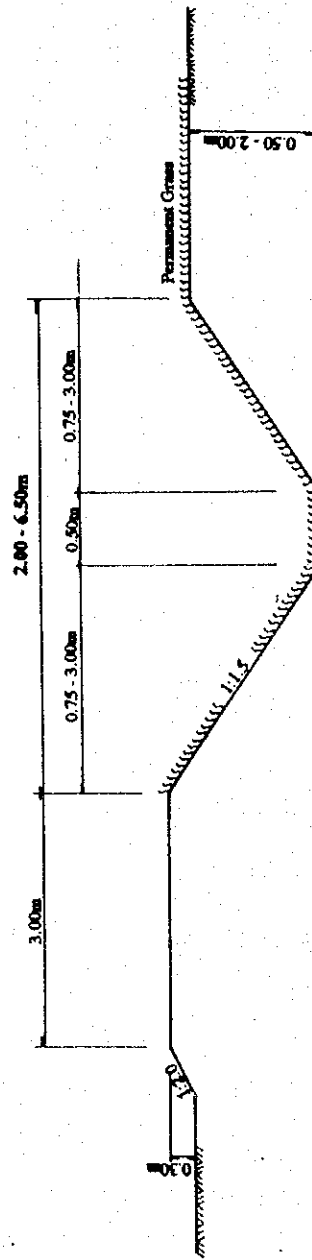
H (m)	Q (m <sup>3</sup> /s)	V (m/s)	A (m <sup>2</sup> )
0.50	0.19	0.31	0.63
0.75	0.47	0.39	1.22
1.00	0.91	0.46	2.00
1.25	1.55	0.52	2.97
1.50	2.39	0.58	4.13
1.75	3.49	0.64	5.47
2.00	4.84	0.69	7.00

Bottom Slope  $i=1/2,000$

H (m)	Q (m <sup>3</sup> /s)	V (m/s)	A (m <sup>2</sup> )
0.50	0.17	0.27	0.63
0.75	0.41	0.34	1.22
1.00	0.79	0.40	2.00
1.25	1.34	0.45	2.97
1.50	2.07	0.50	4.13
1.75	3.02	0.55	5.47
2.00	4.19	0.60	7.00



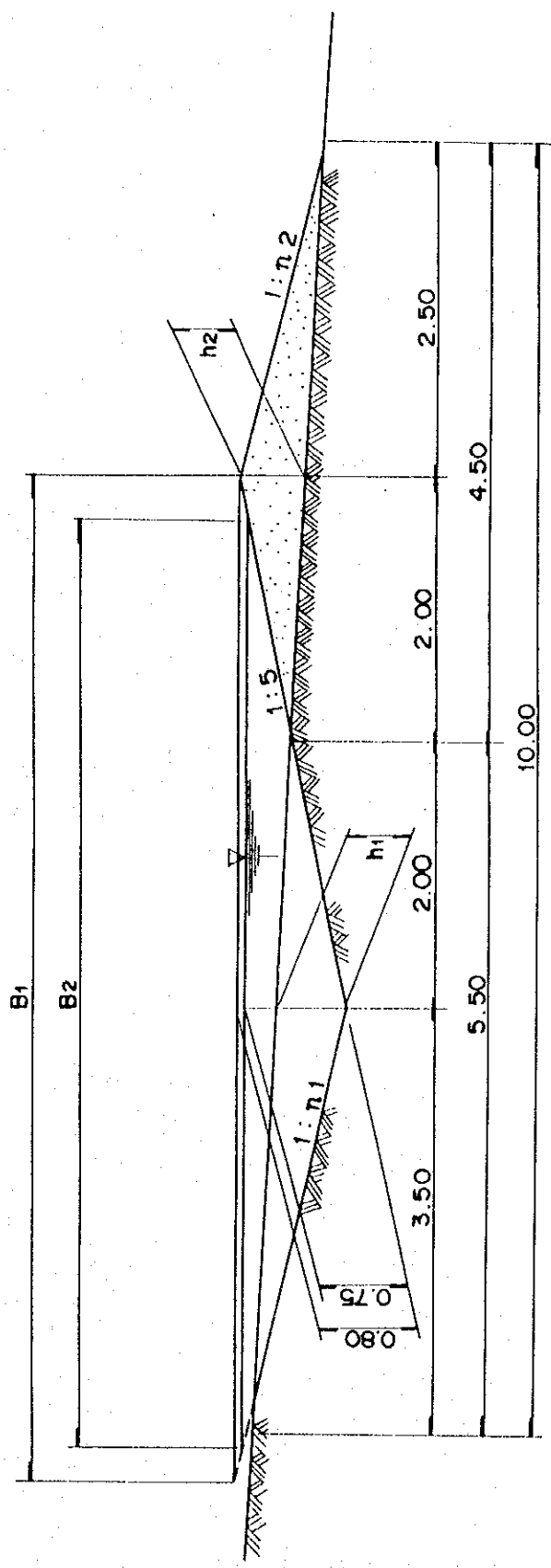
Type-I



Type-II

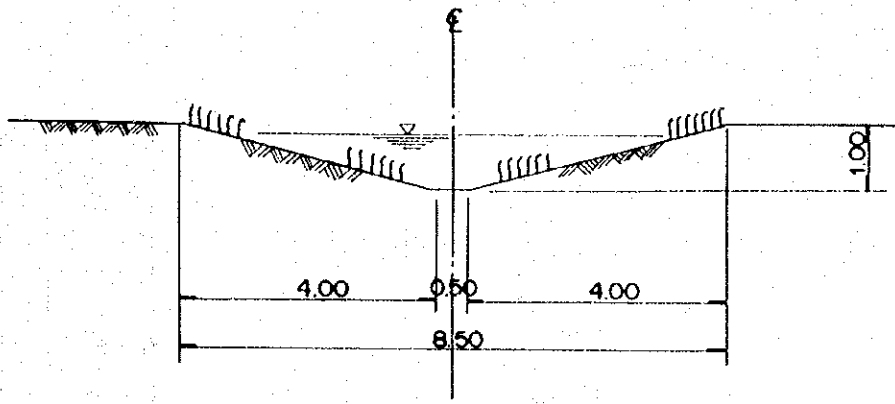
图 4.7.4 排水路標準断面图



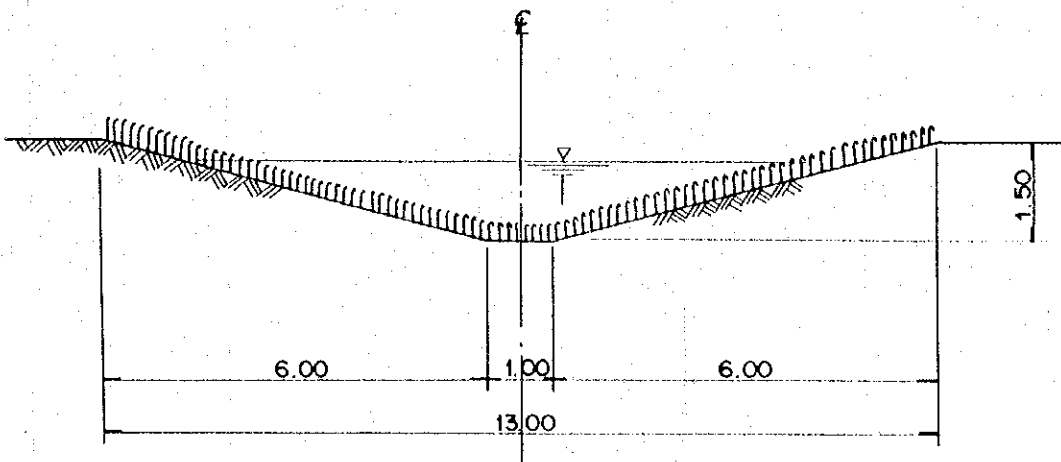


Slope declination	h1 (m)	h2 (m)	d (m)	B1 (m)	B2 (m)	n1	n2	Cut volume (m <sup>3</sup> /m)	Fill volume (m <sup>3</sup> /m)	Terrace storage (m <sup>3</sup> /m)
2%	0.440	0.440	0.750	8.800	8.250	6.000	5.102	1.100	0.990	3.094
3%	0.460	0.460	0.750	8.364	7.841	5.455	4.673	1.150	1.035	2.940
5%	0.500	0.500	0.750	7.692	7.211	4.615	4.000	1.250	1.125	2.704

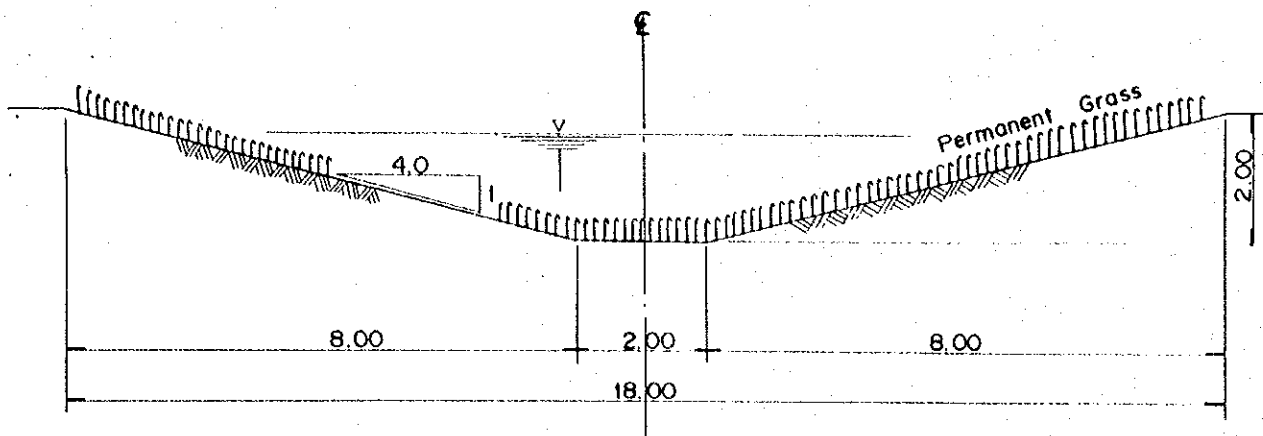
図 4.7.5 レベルテラス標準断面図



Type C



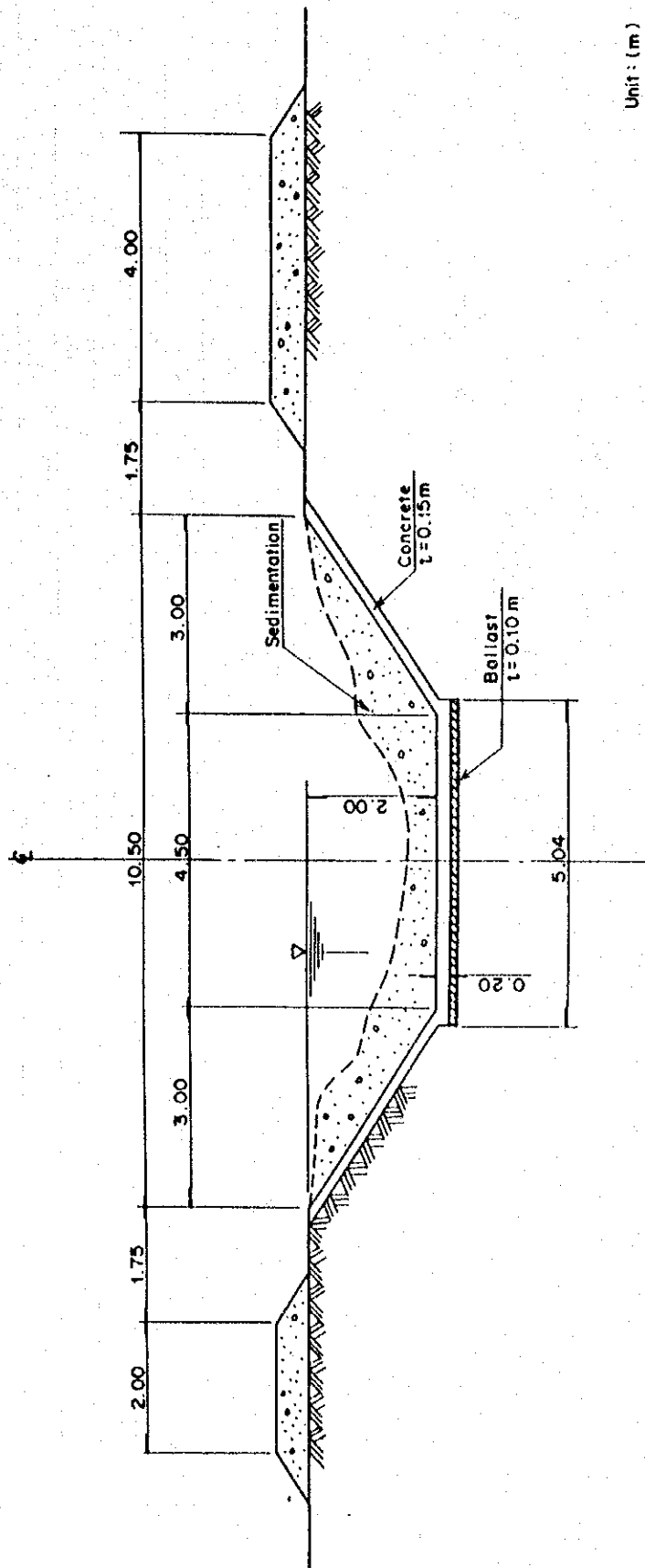
Type B



Type A

图 4.7.6 草生水路標準断面图





Unit : (m)

图 4.7.8 Soimului 水路標準断面图



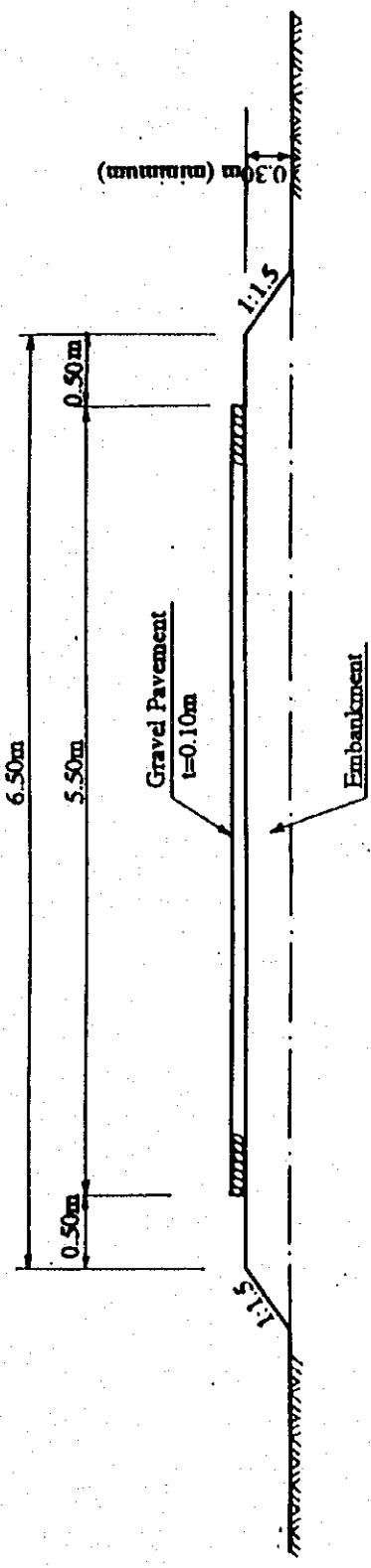
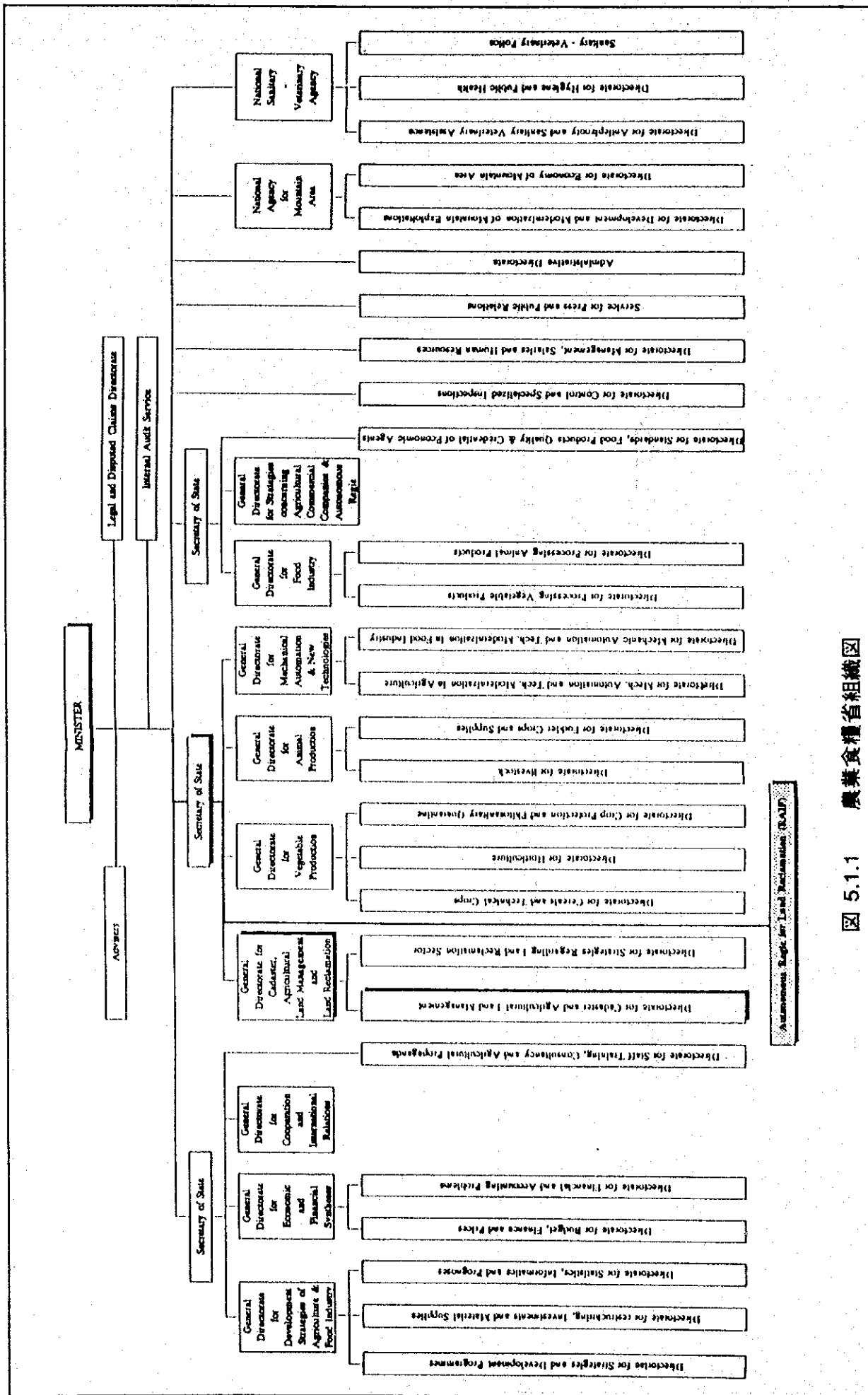


圖 4.7.9 維持管理用道路標準断面図



Autonomous Legal and Reclamation (RALP)

圖 5.1.1 農業食糧省組織圖

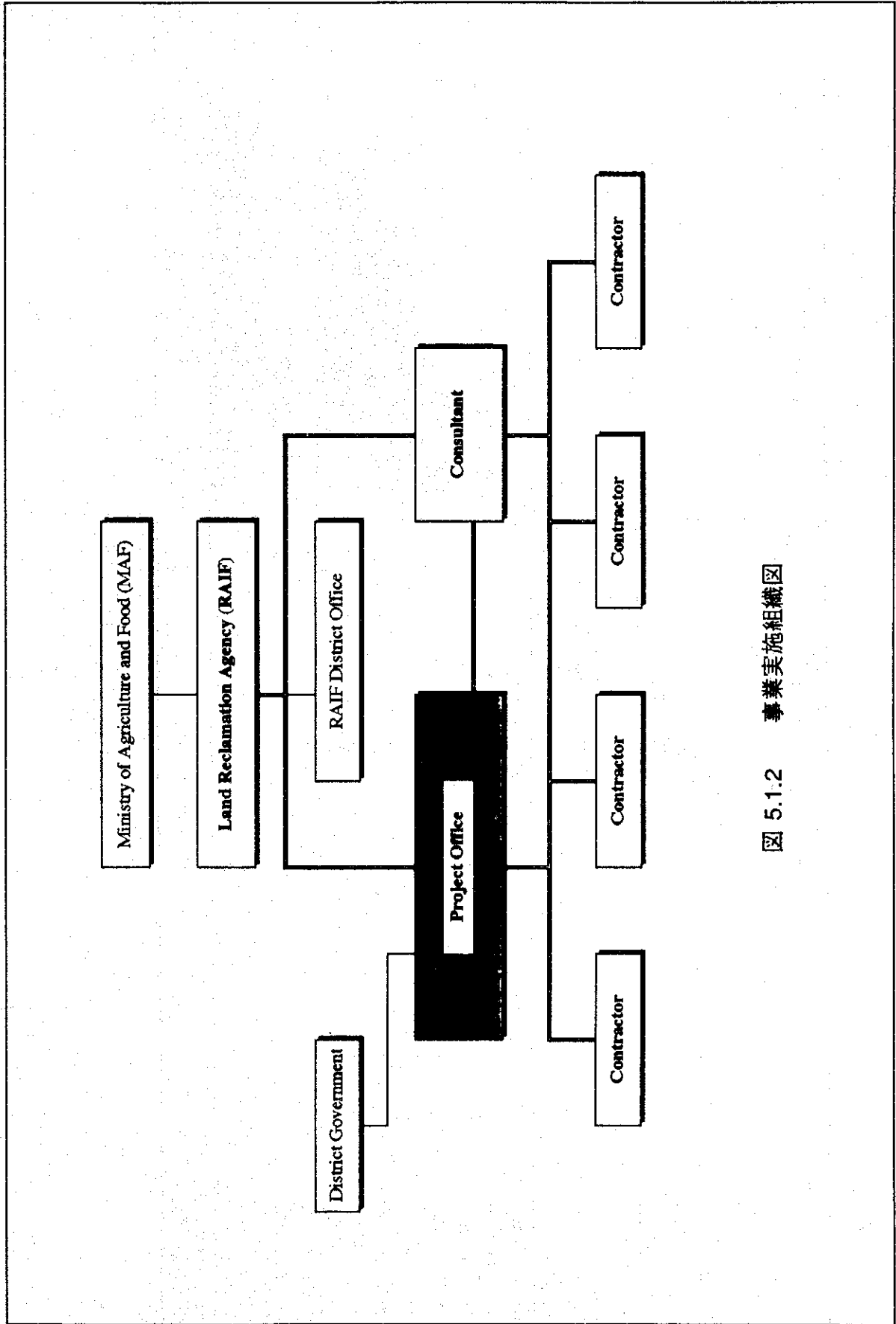


図 5.1.2 事業実施組織図





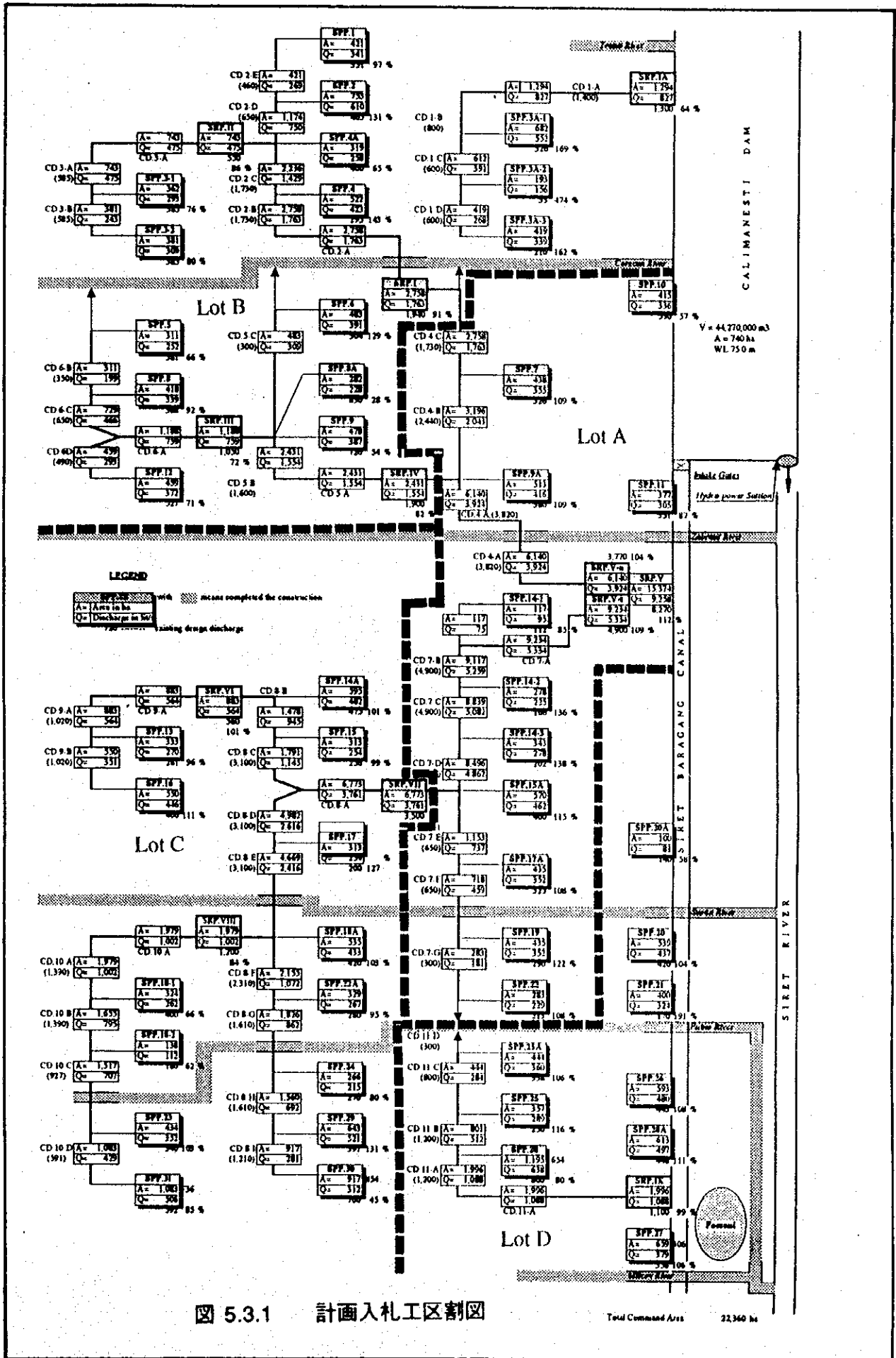


图 5.3.1 計画入札工区割図

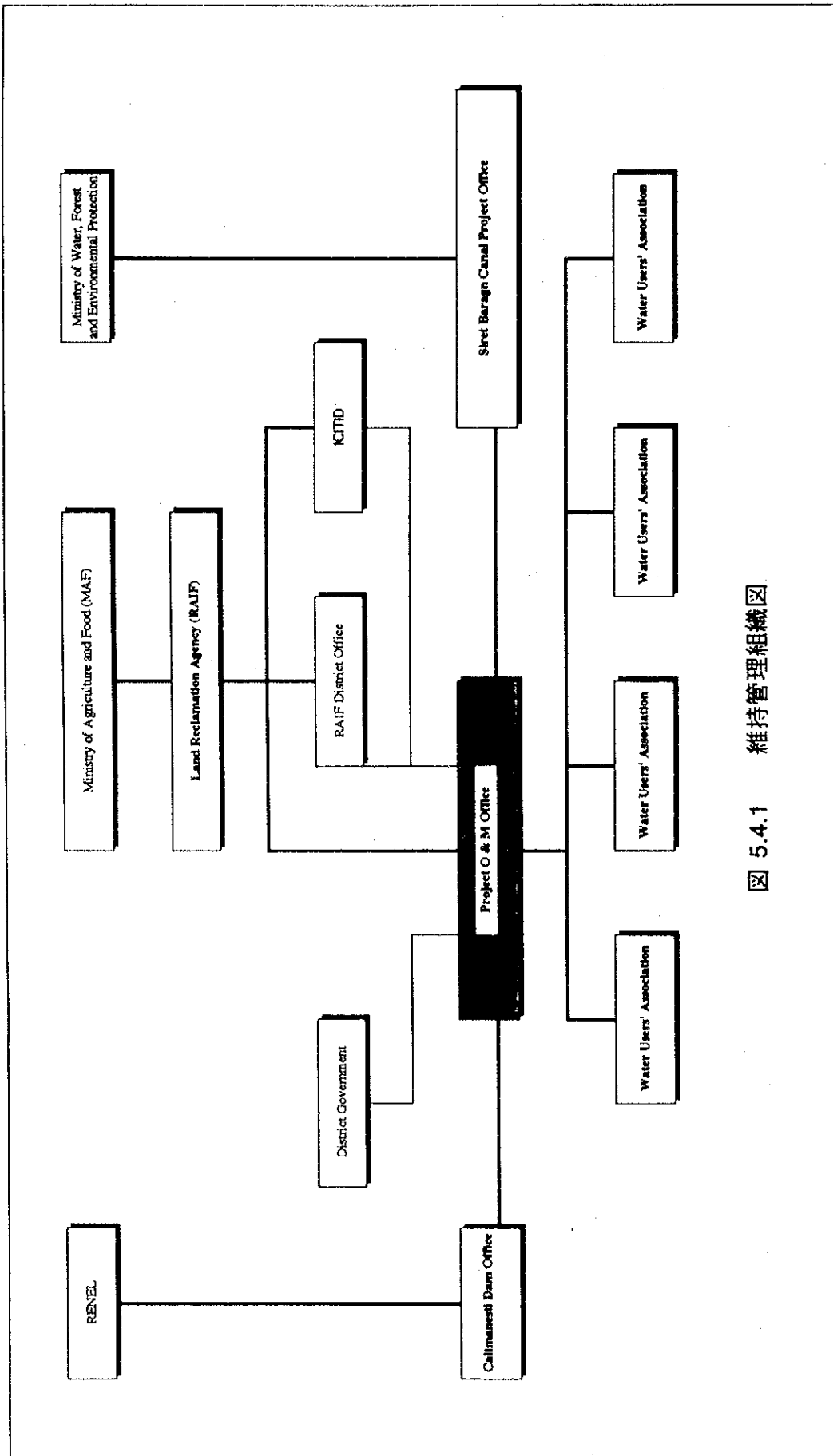
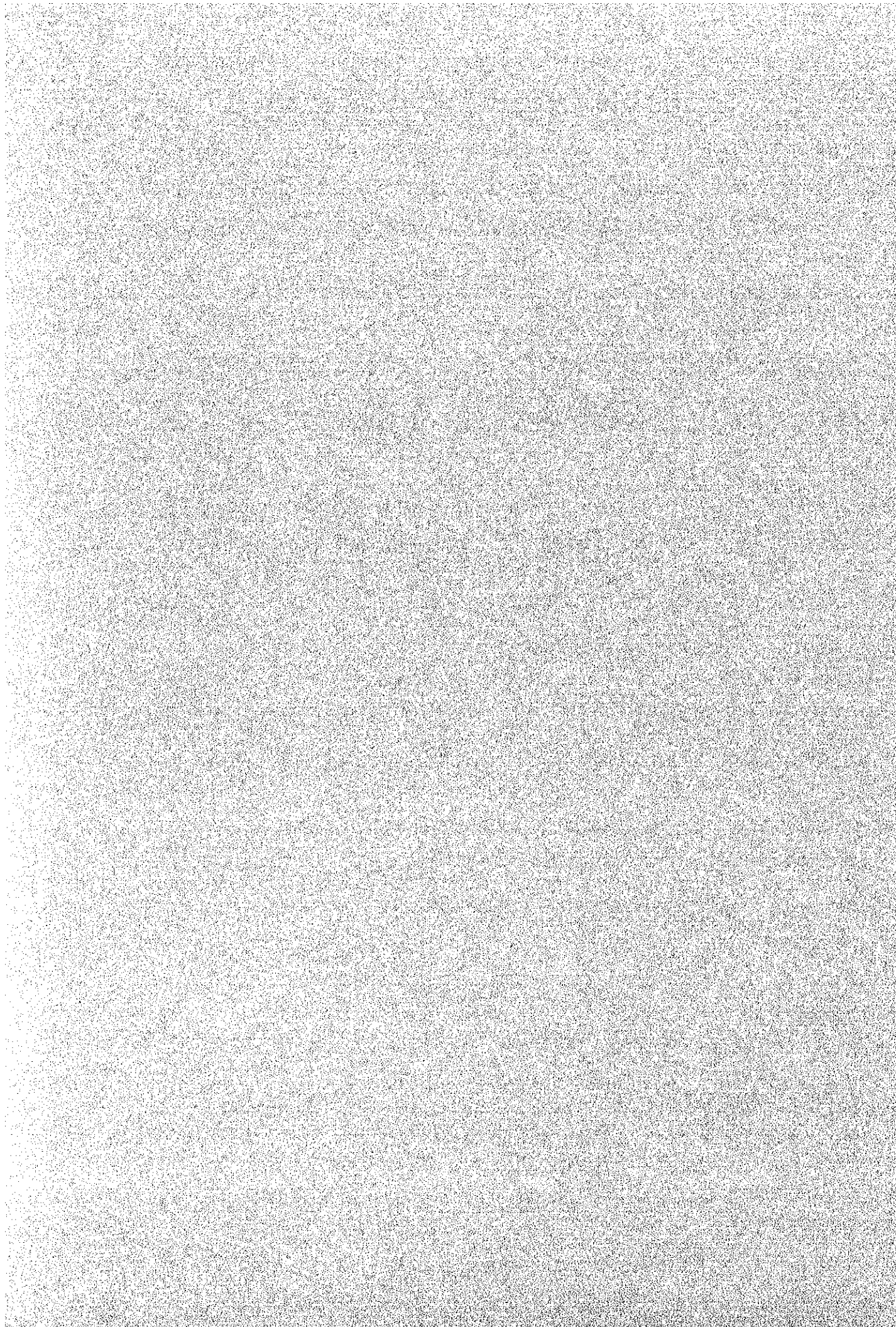


圖 5.4.1 維持管理組織圖

## 添付資料 - 1 SCOPE OF WORK





SCOPE OF WORK  
FOR  
THE FEASIBILITY STUDY  
ON  
THE IRRIGATION PROJECT  
IN  
RUGINESTI-PUFESTI-PANCIU DISTRICT VRANCEA

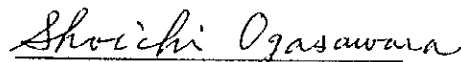
AGREED UPON BETWEEN  
MINISTRY OF AGRICULTURE AND FOOD OF ROMANIA  
AND  
JAPAN INTERNATIONAL COOPERATION AGENCY

Bucuresti, 15, December, 1993



---

MR. VASILE BERBECI  
SECRETARY OF STATE  
MINISTRY OF AGRICULTURE  
AND FOOD  
DEPT. OF LAND RECLAMATION



---

MR. SHOICHI OGASAWARA  
LEADER  
PREPARATORY STUDY TEAM  
JAPAN INTERNATIONAL  
COOPERATION AGENCY

## I. Introduction

In response to the request of the Government of Romania, the Government of Japan has decided to conduct the Feasibility Study on The Irrigation Project in Ruginesti-Pufesti-Panciu District Vrancea (hereinafter referred to as "the Study"), in accordance with the relevant laws and regulations in force in Japan.

Accordingly, Japan International Cooperation Agency (hereinafter referred to as "JICA"), the official agency responsible for the implementation of technical cooperation programs of the Government of Japan, will undertake the Study in close cooperation with the authorities concerned of the Government of Romania.

The present document sets forth the scope of work with regard to the Study.

## II. Objectives of the Study

The objectives of the Study are:

1. to conduct a Feasibility Study on the Irrigation Project in Ruginesti-Pufesti-Panciu District Vrancea.
2. to carry out technology transfer to the counterpart personnel of the Government of Romania in the course of the Study.

## III. Study Area

The total study area covers about 47,000 ha (agricultural area about 38,000 ha) located in the boundary of Ruginesti-Pufesti-Panciu project in the District Vrancea.

## IV. Scope of the Study

In order to achieve the above objectives, the Study will consist of two(2) phases and the following items.

### 1. Phase I

- 1.1. Collection and review of existing data and information and field survey on the following items:

- (1) natural condition (topography, meteorology, hydrology, soil, water quality, water resources, etc;)
- (2) social condition (population, regional socio-economy, social infrastructure, regional development plan etc);

- (3) agriculture (land use, land tenure, land conservation, cultivation technique, cropping pattern, production, agricultural machinery, etc);
  - (4) agro economy (farmers economy, agricultural credit, processing, marketing system, etc);
  - (5) agricultural infrastructures (irrigation and drainage system, farm road and rural water supply, etc);
  - (6) agricultural supporting system (farmers' organizations, supporting organizations, extension service organizations, etc); and
  - (7) environmental condition (natural condition, social condition, etc).
- 1.2. Review of the existing development plans and projects in the Study Area.
  - 1.3. Identification and evaluation of the development potentials of irrigation and land conservation and constraints based on the results of the above survey.
2. Phase II
- 2.1. Field survey for collection of supplementary data and information of the Study areas.
  - 2.2. Formulation of the Irrigation and agricultural development plan of the Study areas by considering the following components:
    - (1) Irrigation and Drainage;
    - (2) Land conservation;
    - (3) Cropping pattern;
    - (4) Land use;
    - (5) Rural infrastructure;
    - (6) Marketing system; and
    - (7) Farmers' organization and supporting service.
  - 2.3. Preparation of environmental conservation plan.
  - 2.4. Preparation of a preliminary design of the main facilities.
  - 2.5. Preparation of an operation and maintenance plan of the facilities.

- 2.6. Preparation of the project implementation plan.
- 2.7. Estimation of the project costs and benefits.
- 2.8. Evaluation of the project.
- 2.9. Recommendation.

#### V. Study Schedule

The Study will be carried out in accordance with the tentative schedule attached in Annex.

#### VI. Report

JICA shall prepare and submit the following reports in English to Romania.

1. Inception Report  
Ten (10) copies at the commencement of the Phase I field work.
2. Progress Report (1)  
Ten (10) copies at the end of the Phase I field work.
3. Interim Report  
Ten (10) copies at the commencement of the Phase II field work.
4. Progress Report (2)  
Ten (10) copies at the end of the Phase II field work.
5. Draft Final Report  
Ten (10) copies at the end of the Phase II home office work. The Romania side will provide its comments on the Draft Final Report to JICA within one (1) month after receiving the Draft Final Report.
6. Final Report  
Thirty (30) copies within two (2) months after the receipt of comments on the Draft Final Report.

VII. Undertakings of the Government of Romania.

1. To facilitate the smooth conduct of the Study, the Government of Romania shall take necessary measures:
  - (1) to secure the safety of the Japanese study team;
  - (2) to permit the members of the Japanese study team to enter, leave and sojourn in Romania for the duration of their assignment therein, and exempt them from visa fees;
  - (3) to exempt the members of the Japanese study team from taxes, duties, fees and any other charges on equipment, machinery and other materials to be brought into and out of Romania for the conduct of the Study;
  - (4) to exempt the members of the Japanese study team from income tax and charges of any kind imposed on or in connection with any emoluments or allowances paid to the members of the Japanese study team for their services in connection with the implementation of the Study, if necessary;
  - (5) to provide necessary facilities to the Japanese study team for the remittance as well as the utilization of the funds introduced into Romania from Japan in connection with the implementation of the Study, if necessary;
  - (6) to secure permission for entry into private properties or restricted areas for the implementation of the Study;
  - (7) to secure permission for the Japanese study team to take all data and documents (including photographs and maps) related to the Study out of Romania to Japan by the Japanese study team; and
  - (8) to provide medical services as needed. Its expenses will be chargeable on the members of the Japanese study team.
2. The Government of Romania shall bear claims, if any arises, against the members of the Japanese study team resulting from, occurring in the course of, or otherwise connected with, the discharge of their duties in the implementation of the Study, except when such claims arise from gross negligence or willful misconduct on the part of the members of the Japanese study team.

3. Ministry of Agriculture and Food shall act as a counterpart agency to the Japanese study team and also as coordinating body in relation with other Romanian organizations concerned for the smooth implementation of the Study.
4. Ministry of Agriculture and Food shall act as the implementing agency. It shall undertake, at its own expense, to provide the Japanese study team with the following, in cooperation with other organizations concerned;
  - (1) available data and information related to the Study;
  - (2) additional survey related to the study, if necessary;
  - (3) counterpart personnel;
  - (4) suitable office space with necessary equipment and furniture;
  - (5) credentials or identification cards.

#### VIII. Undertakings of JICA

For the implementation of the Study, JICA shall take the following measures:

- (1) to dispatch, at its own expense, the study team to the Romania,
- (2) to pursue technology transfer to the counterpart personnel of the Government of Romania in the course of the Study.

#### IX. Consultation

JICA and the Government of Romania shall consult with each other in respect of any matter that may arise from or in connection with the Study.

TENTATIVE SCHEDULE

Month	1	2	3	4	5	6	7	8	9	10	11	12	13	14	15	16	17	18
Item																		
WORK IN ROMANIA		■				■					■		○					
WORK IN JAPAN	□			□						□				□				
REPORTS		△		△		△		△			△				△			
		IC/R		PR (I)		IT/R		PR (II)			DF/R				F/R			

Remarks IC/R : Inception Report PR (II) : Progress Report II  
 PR (I) : Progress Report I DF/R : Draft Final Report  
 IT/R : Interim Report F/R : Final Report  
 ○ : Comments on DF/R by Romania side

■ : Field Work

□ : Home Office Work



MINUTES OF MEETING  
FOR  
SCOPE OF WORK  
FOR  
THE FEASIBILITY STUDY  
ON  
THE IRRIGATION PROJECT  
IN  
RUGINESTI-PUFESTI-PANCIU DISTRICT VRANCEA

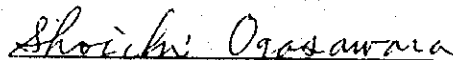
AGREED UPON BETWEEN  
MINISTRY OF AGRICULTURE AND FOOD OF ROMANIA  
AND  
JAPAN INTERNATIONAL COOPERATION AGENCY

Bucuresti, 15, December, 1993



---

MR. VASILE BERBECI  
SECRETARY OF STATE  
MINISTRY OF AGRICULTURE  
AND FOOD  
DEPT. OF LAND RECLAMATION



---

MR. SHOICHI OGASAWARA  
LEADER  
PREPARATORY STUDY TEAM  
JAPAN INTERNATIONAL  
COOPERATION AGENCY

In response to the request of the Government of the Romania, the Government of Japan decided to dispatch through Japan International Cooperation Agency (hereinafter referred to as "JICA"), which is responsible for the implementation of technical cooperation programmes of the Government of Japan, the preparatory study team (hereinafter referred to as "the Team"), headed by Mr. Shoichi OGASAWARA to the Romania from December 8th to 16th, 1993 so as to discuss and exchange views on the study with Ministry of Agriculture and Food and officials concerned of the Government of Romania for the implementation of the study.

Ministry of Agriculture and Food and the Team mutually agreed to the Scope of Work on the Feasibility Study on the Irrigation Project of Ruginesti-Pufesti-Panciu District Vrancea (hereinafter referred to as "the Study"). The list of participants of the meeting is attached in ANNEX.

The following minutes were prepared to confirm the main issues discussed and matters agreed upon by both sides in connection.

1. The Team requested the Romanian side to assign the qualified and necessary number of counterpart experts for the study at its own expenses and the Romanian side accepted its request.
2. The Team suggested that the Steering Committee for the Project should be organized by the concerned Ministries and Agencies. The Romanian side agreed to the idea and promised to organize the Committee.
3. The Romanian side and the Team confirmed that topographic map at the scale of 1/5,000 for the study should be prepared before commencement of the study by the Romanian side.
4. The Romanian side shall provide the Japanese study team with suitable office space with necessary equipment and furniture in Bucuresti and the study site.
5. The Romanian side shall carry out the Environmental Impact Assessment according to the Romanian laws and regulations. The Japanese study team shall provide Romanian side with basic data and information on environmental issues in the course of the study.
6. The Romanian side requested that the Romanian counterpart personnel take advantage of training in Japan related to the Study to promote an effective technology transfer. The Team promised to convey this request to the Government of Japan.

7. The Romanian side requested that the appropriate number of vehicles for the study should be arranged by JICA. The Team promised to convey the request to the Government of Japan.
8. The Romanian side requested that the equipment and machinery which would be used for smooth implementation of the Study to be transferred to the Romanian side at the end of the study. The Team promised to convey the request to the Government of Japan.
9. The Romanian side requested that the automatic control system of pumping station should be taken into consideration particularly in the course of the study. The Team promised to convey the request to the Government of Japan.
10. The Romanian side requested that reduction of the Tentative Schedule should be taken into consideration by the Japanese side. The Team promised to convey the request to the Government of Japan.

List of Participants of the Meeting

\* Romanian side

Ministry of Agriculture and Food

Dept. of Land Reclamation

Mr. VASILE BERBECI

Dr. LIVIU BUHOCIU

Mr. PETRE MOROIANU

Mr. LIVIU CREANGA

Secretary of State

Counselor of Minister

Senior Adviser

Senior Adviser

ISPIF<sub>SA</sub>

Mr. VIRGIL NEACSU

Mr. MIHAI GROSU

Dr. NICOLAE C POPESCU

Mr. COMAN CORNELIU

Mr. SIMIONESCU IANCU

General Director

Deputy Director

Chief of Dept. of Soil Erosion

Counselor

Project Manager

\* Japanese side

Preparatory Study Team

Mr. SHOICHI OGASAWARA

Mr. AKIHIKO KUBOTA

Mr. KAZUHIKO NIKI

Mr. TOSHIRO YAMASHITA

Mr. EIJI TAKEMORI

Leader

Member

Member

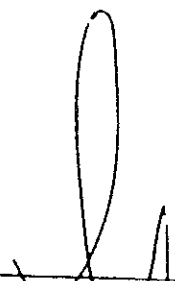
Member

Member

**添付資料 - 2 レポート協議議事録**

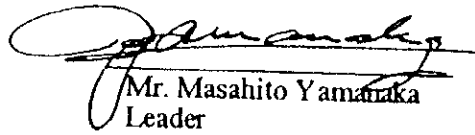
MINUTES OF MEETING  
ON  
INCEPTION REPORT  
FOR  
THE FEASIBILITY STUDY  
ON  
THE IRRIGATION PROJECT  
IN  
RUGINESTI-PUFESTI-PANCIU DISTRICT VRANCEA  
BETWEEN  
JAPAN INTERNATIONAL COOPERATION AGENCY (JICA)  
AND  
MINISTRY OF AGRICULTURE AND FOOD (MAF)

Bucharest, June 8, 1994




---

Mr. Vasile Berbeci  
Secretary of State  
Dept. of Land Reclamation  
MAF



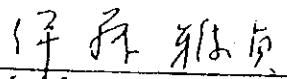
---

Mr. Masahito Yamataka  
Leader  
Study Team  
JICA



---

Mr. Petre Moroianu, Mr. Liviu Creanga  
Senior Advisers  
Dept. of Land Reclamation  
MAF



---

Mr. Masasada Ito  
Leader  
Advisory Team  
JICA

In accordance with the Scope of Work for the Feasibility Study on the Irrigation Project in Ruginesti-Pufesti-Panciu District Vrancea (hereinafter referred to as "the Project"), the Government of Japan dispatched through Japan International Cooperation Agency (JICA) the Study Team headed by Mr. Masahito Yamanaka and the Advisory Team headed by Mr. Masasada Ito for the implementation of the Study to Romania. At the commencement of the Study, the Study Team submitted officially ten (10) copies of the Inception Report and explained basic concepts, methodology and schedule of the Study at the presence of Romanian organization represented by Department of Land Reclamation, Ministry of Agriculture and Food on June 6, 1994 at the office of Dept. of Land Reclamation. As a result of explanation and exchange of opinions on the Inception Report, the following points were agreed upon by the Romanian side and Japanese side:

1. The Romanian side agreed upon the contents of the Inception Report that was prepared in due compliance with the conditions set forth in the Scope of Work for the Study.
2. The Romanian side agreed upon that the Study Team would proceed to the next stage of the Study in accordance with the methodology and schedule mentioned in the Inception Report.
3. The Romanian side agreed upon that the Steering Committee the members of which are attached herewith should be held at the important stages of the Study like at the explanation times of Interim Report and Draft Final Report.
4. Both sides agreed to collaborate each other for the efficient implementation of the Study so that the objectives of the Study be attained as described in the Scope of Work.

(17) J. Ito  
M. Yamanaka



LIST OF THE MEMBERS OF THE  
STEERING COMMITTEE

MIHAI MOISE	Director	Land Reclamation Department
LIVIU CREANGA	Senior Adviser	Land Reclamation Department
PETRE MOROIANU	Senior Adviser	Land Reclamation Department
CRISTIAN NITA	Gubernamental Expert	Department of European Integration
GHEORGHE BRATIANU	Project Manager for Siret Canal	Ministry of Water, Forestry and Environment - AQUA Project
NICOLAIE PAPUC	Deputy Director	General Directorate for Agriculture and Food of Vrancea District
VIRGIL NEACSU	Director General	Land Reclamation Design Institute
MIHAI GROSU	Deputy Director	Land Reclamation Design Institute
BALUTA SGARCITU	Director	Company for the Operation of the Land Reclamation Projects - District Vrancea

(17)

*J. [Signature]*

## PARTICIPANTS OF THE MEETING

### \* Romanian side

#### Ministry of Agriculture and Food Land Reclamation Department

Mr. Vasile Berbeci  
Mr. Romica Condruz  
Mr. Mihail Moisa  
Mr. Petre Moroianu  
Mr. Liviu Creanga  
Mr. George Ursacescu

Secretary of State  
Executive General Manager  
Director, Investment & Environment  
Senior Adviser  
Senior Adviser  
Chief of Appraisal

#### ISPIF-SA

Mr. Virgil Neacsu  
Mr. Mihai Grosu  
Mr. Iancu Simionescu  
Mr. Cornel Coman  
Mr. Gabriel Ionita  
Mr. Mihai Balta  
Mr. Geoge Curtasu  
Mr. Sorin Istratoiu  
Mr. Nicolae Dinescu  
Ms. Maria Enache

General Director  
Technical Director  
Project Manager  
Counselor  
Deputy Senior Head  
Soil  
Mechanical Eng.  
Hydro-structure Eng.  
Environmental Specialist  
Agronomy

#### ICITID

Mr. Valeriu Mardare

Director Scientific

#### SCELIF-SA, Vrancea

Mr. Sgarcitu Baluta

Director

#### SC ZBOINA-SA, Vrancea

Mr. Ion Cuculas C.

Director General

### \* Japanese side

#### JICA Study Team

Mr. Masahito Yamanaka  
Mr. Keiji Matsumoto  
Dr. Michio Nozaki  
Mr. Shin Onoda

Team Leader  
Irrigation & Drainage Eng.  
Agronomist  
Facility Planning, Civil

#### JICA Advisory Team

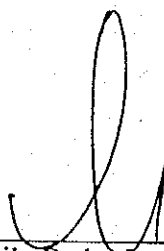
Mr. Masasada Ito  
Mr. Toshiro Yamashita

Leader  
JICA Tokyo

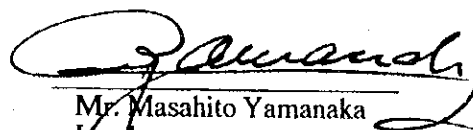
(57)

MINUTES OF MEETING  
ON  
PROGRESS REPORT ( I )  
FOR  
THE FEASIBILITY STUDY  
ON  
THE IRRIGATION PROJECT  
IN  
RUGINESTI-PUFESTI-PANCIU DISTRICT VRANCEA  
BETWEEN  
JAPAN INTERNATIONAL COOPERATION AGENCY (JICA)  
AND  
MINISTRY OF AGRICULTURE AND FOOD (MAF)


Bucharest, August 9, 1994



Mr. Vasile Berbeci  
Secretary of State  
Land Reclamation Department  
MAF



Mr. Masahito Yamanaka  
Leader  
Study Team  
JICA



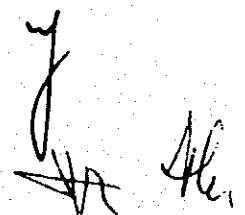
Mr. Petre Moroianu, Mr. Liviu Creanga  
Senior Advisers  
Land Reclamation Department  
MAF

In accordance with the Scope of Work for the Feasibility Study on the Irrigation Project in Ruginesti-Pufesti-Panciu District Vrancea (hereinafter referred to as "the Study") signed by the Governments of Romania and Japan, the Government of Japan dispatched through Japan International Cooperation Agency (JICA) the Study Team headed by Mr. Masahito Yamanaka for the implementation of the Study to Romania.

At the end of the field survey of the Phase I study of the Study, the Study Team officially submitted ten (10) copies of the Progress Report (I) and explained its contents with an emphasis laid on the results of data collection and their review, present conditions of the Study Area, the basic concepts for planning the Project, etc. at the presence of Romanian organization represented by the Land Reclamation Department, the Ministry of Agriculture and Food on August 9, 1994 at the office of the Land Reclamation Department.

As a result of explanation and exchange of opinions on the Report, the following points were agreed upon by the Romanian side and Japanese side:

1. The Romanian side confirmed that the contents of the Progress Report (I) was prepared in due compliance with the conditions and methodology set forth in the Inception Report.
2. The basic concepts for planning the Project presented in the Report have good correlation with the result of the diagnosis and analysis of the prevailing potentials and constraints in the Study Area. The detailed review on the Report will be made by the Romanian side and the comments will be sent to the Study Team by August 22, 1994, if any.
3. The Romanian side agreed upon that the Study Team would proceed to the next stage of the Study in accordance with the methodology and schedule mentioned in the Inception Report .



## PARTICIPANTS OF THE MEETING

### \* Romanian side

#### Ministry of Agriculture and Food Land Reclamation Department

Mr. Vasile Berbeci  
Mr. Romica Condruz  
Mr. Mihail Moisa  
Mr. Petre Moroianu  
Mr. Liviu Creanga  
Mr. Liviu Buhociu  
Mr. George Ursacescu  
Mr. Emilian Zarcu

Secretary of State  
Executive General Manager  
Director, Investment & Environment  
Senior Adviser  
Senior Adviser  
Senior Adviser  
Chief of Appraisal  
Inspector

#### ISPIF-SA

Mr. Virgil Neacsu  
Mr. Iancu Simionescu  
Mr. Gabriel Ionita  
Mr. Stefan Titorian  
Mr. Nicolae Popescu  
Mr. Nicolae Dinescu  
Ms. Daniela Giuglan

General Director  
Project Manager (Counterpart)  
Head of Technical Division (Counterpart)  
Counselor  
Soil Conservation Specialist (Counterpart)  
Environmental Specialist (Counterpart)  
Translator

#### ICITID

Mr. Ion Nicolaescu

Professor of Agriculture University

#### SCELIF-SA, Vrancea

Mr. Sgarcitu Baluta

General Manager

### \* Japanese side

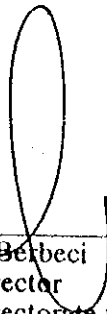
#### JICA Study Team

Mr. Masahito Yamanaka  
Mr. Keiji Matsumoto  
Mr. Michio Nozaki  
Mr. Shinichiro Matsumoto  
Mr. Michel Gavasa  
Mr. Sakae Tamuara  
Mr. Hiroshi Ikeda  
Mr. Haruo Homma  
Mr. Shin Onoda  
Mr. Christian Rouviere

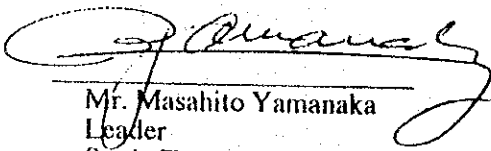
Team Leader  
Irrigation & Drainage Eng.  
Agronomist  
Soil Conservation  
Agro-soil  
Marketing / Food Processing  
Rural Community  
Facility Planning, Mechanic  
Facility Planning, Civil  
Environment

MINUTES OF MEETING  
ON  
INTERIM REPORT  
FOR  
THE FEASIBILITY STUDY  
ON  
THE IRRIGATION PROJECT  
IN  
RUGINESTI-PUFESTI-PANCIU DISTRICT VRANCEA  
BETWEEN  
JAPAN INTERNATIONAL COOPERATION AGENCY (JICA)  
AND  
MINISTRY OF AGRICULTURE AND FOOD (MAF)

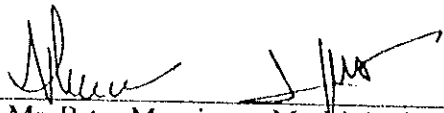
Bucharest, October 26, 1994



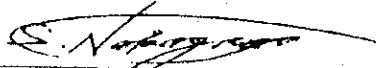
Mr. Vasile Berbeci  
General Director  
General Directorate for Cadaster,  
Agricultural Land Management  
and Land Reclamation  
MAF



Mr. Masahito Yamanaka  
Leader  
Study Team  
JICA



Mr. Petre Moroianu, Mr. Liviu Creanga  
Senior Advisers



Dr. Shoichiro Nakagawa  
Chairman  
Advisory Committee  
JICA

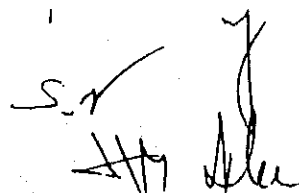
In accordance with the Scope of Work for the Feasibility Study on the Irrigation Project in Ruginesti-Pufesti-Panciu District Vrancea (hereinafter referred to as "the Study") signed by the Governments of Romania and Japan, the Government of Japan dispatched through Japan International Cooperation Agency (JICA) the Study Team represented by Pacific Consultants International headed by Mr. Masahito Yamataka for the implementation of the Study to Romania.

At the beginning of the field survey in Phase II of the Study, the Study Team officially submitted ten (10) copies of the Interim Report and explained its contents with an emphasis laid on the basic concepts for the irrigation/agricultural development plan and work items and schedule of the field survey in Phase II of the Study at the presence of Romanian organization represented by the General Directorate for Cadaster, Agricultural Land Management and Land Reclamation (formerly represented by Land Reclamation Department), the Ministry of Agriculture and Food, on October 24, 1994 at the office of the above General Directorate.

As a result of explanation and exchange of opinions on the Report, the following points were agreed upon by the Romanian side and Japanese side:

1. The Romanian side confirmed that the contents of the Interim Report were prepared in due compliance with the conditions and methodology set forth in the Progress Report ( I ) of the Study.
2. The basic concepts for the irrigation/agricultural development plan presented in the Report have generally good correlation with the result of the diagnosis and analysis of the prevailing potentials and constraints in the Study Area. The detailed review on the Report will be made by the Romanian side and the comments will be given to the Study Team through the joint work between the Study Team and the Romanian counterparts, if any.
3. The Romanian side agreed upon that the Study Team would proceed to the next stage of the Study in accordance with the methodology and schedule mentioned in the Report.

Furthermore, when the restructuring of MAF is finalized, the new organization (Autonomous Regie for Land Reclamation) which will continue the cooperation with JICA in this Project will be officially nominated. In this connection, MAF confirmed that there would be no problems nor confusion in the implementation of the Scope of Work for the Study signed by the Governments of Romania and Japan.





## PARTICIPANTS OF THE MEETING

### **\* Romanian side**

Ministry of Agriculture and Food

General Directorate for Cadaster, Agricultural Land Management and Land Reclamation

Mr. Vasile Berbeci

General Director

Mr. Romica Condruz

Director

Mr. Mihail Moisa

Director

Mr. Petre Moroianu

Senior Adviser

Mr. Liviu Creanga

Senior Adviser

Mr. Emilian Zarcu

Senior Engineer

ISPIF-SA

Mr. Iancu Simionescu

Project Manager (Counterpart)

Mr. Stefan Titorian

Counselor

Mr. Corneliu Coman

Counselor

Ms. Doinita Dinita

Translator

ICITID

Dr. Ion Nicolaescu

Professor of Land Reclamation & Environmental  
Engineering Faculty, Bucharest University

### **\* Japanese side**

JICA Advisory Committee

Dr. Shoichiro Nakagawa

Chairman

Dr. Makoto Inaba

Member

JICA Study Team

Mr. Masahito Yamanaka

Team Leader

Mr. Keiji Matsumoto

Irrigation & Drainage Eng.

Dr. Michio Nozaki

Agronomist

Mr. Shinichiro Matsumoto

Soil Conservation Eng.

Mr. Sakae Tamuara

Marketing / Food Processing

Mr. Haruo Homma

Facility Planning, Mechanic

Mr. Shin Onoda

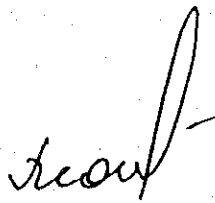
Facility Planning, Civil

Mr. Yutaka Nozaki

Project Evaluation

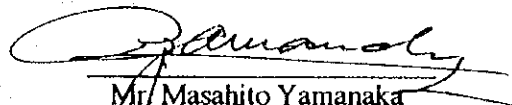
MINUTES OF MEETING  
ON  
PROGRESS REPORT ( II )  
FOR  
THE FEASIBILITY STUDY  
ON  
THE IRRIGATION PROJECT  
IN  
RUGINESTI-PUFESTI-PANCIU DISTRICT VRANCEA  
BETWEEN  
JAPAN INTERNATIONAL COOPERATION AGENCY (JICA)  
AND  
MINISTRY OF AGRICULTURE AND FOOD (MAF)

Bucharest, December 13, 1994



---

Mr. Voicu Todor  
Director General  
Regia Autonoma  
a Imbunatatirilor Funciare  
MAF



---

Mr. Masahito Yamanaka  
Leader  
Study Team  
JICA



---

Mr. Mihail Moisa  
Division Chief  
Regia Autonoma  
a Imbunatatirilor Funciare  
MAF

In accordance with the Scope of Work for the Feasibility Study on the Irrigation Project in Ruginesti-Pufesti-Panciu District Vrancea (hereinafter referred to as "the Study") signed by the Governments of Romania (represented by MAF) and Japan (represented by JICA), JICA dispatched the Study Team represented by Pacific Consultants International, led by Mr. Masahito Yamanaka, for the implementation of the Study to Romania.

At the end of the field survey in Phase II of the Study, the Study Team officially submitted ten (10) copies of the Progress Report (II) and explained its contents with an emphasis laid on the proposed plans for respective fields which have been tentatively formulated at the presence of Romanian organization represented by Regia Autonoma a Imbunatatirilor Funciare (RAIF, former LRD), the Ministry of Agriculture and Food, on December 12, 1994 at the office of RAIF.


As a result of explanation and exchange of opinions on the Report, the following points were agreed upon by the Romanian side and Japanese side:

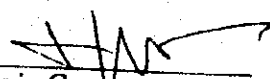
1. The Romanian side confirmed that the contents of the Progress Report (II) were prepared in due compliance with the conditions and methodology set forth in the Interim Report.
2. The irrigation/agricultural development plans presented in the Report have been prepared based on the discussions between the Study Team and the Romanian counterparts held on November 25, 1994 and have generally good correlation with the result of the diagnosis and analysis of the prevailing potentials and constraints in the Study Area. The detailed review on the Report will be made by the Romanian side and the comments will be sent to the Study Team through the Headquarters of JICA, Tokyo, by December 26, 1994, if any.
3. The Romanian side agreed upon that the Study Team would proceed to the next stage of the Study in accordance with the methodology and schedule mentioned in the Report.

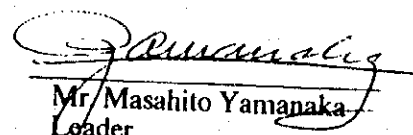


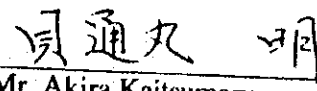
MINUTES OF MEETING  
ON  
DRAFT FINAL REPORT  
FOR  
THE FEASIBILITY STUDY  
ON  
THE IRRIGATION PROJECT  
IN  
RUGINESTI-PUFESTI-PANCIU DISTRICT VRANCEA  
BETWEEN  
JAPAN INTERNATIONAL COOPERATION AGENCY (JICA)  
AND  
MINISTRY OF AGRICULTURE AND FOOD (MAF)

Bucharest, March 14, 1995

  
Mr. Voicu Todor  
General Manager  
Regia Autonoma  
a Imbunatatirilor Funciare  
MAF

  
Mr. Liviu Creanga  
Senior Adviser  
Regia Autonoma  
a Imbunatatirilor Funciare  
MAF

  
Mr. Masahito Yamanaka  
Leader  
Study Team  
JICA

  
Mr. Akira Kaitsumaru  
Leader  
Advisory Committee  
JICA

In accordance with the Scope of Work for the Feasibility Study on the Irrigation Project in Ruginesti-Pufesti-Panciu District Vrancea (hereinafter referred to as "the Study") signed by the Governments of Romania (represented by MAF) and Japan (represented by JICA), JICA dispatched the Study Team represented by Pacific Consultants International, led by Mr. Masahito Yamanaka, for the implementation of the Study to Romania.

As a result of the Study, the Study Team officially submitted ten (10) copies of the Draft Final Report on the Study (hereinafter referred to as "the Report") and explained its contents with an emphasis laid on the economic and financial feasibility of the Project at the presence of Romanian organization represented by the Regia Autonoma a Imbunatatirilor Funciare (RAIF), the Ministry of Agriculture and Food (MAF), on March 13, 1995 at the office of RAIF.

As a result of explanation and exchange of opinions on the Report, the following points were agreed upon by the Romanian side and Japanese side:

1. The Romanian side confirmed that the contents of the Report were prepared in due compliance with the conditions and methodology set forth in the Progress Report ( II ).
2. The Project proposed in the Report has generally good correlation with the result of the diagnosis and analysis of the prevailing potentials and constraints in the Study Area. The detailed review on the Report will be made by the Romanian side and the comments will be sent to the Study Team by April 13, 1995 through the Headquarters of JICA, Tokyo, if any.
3. The Study Team will modify and/or correct the Report based on the above comments, if necessary and send the Final Report to RAIF through the Headquarters of JICA, Tokyo within two months after receiving the said comments from the Romanian side.
4. The Romanian side has no objection for the Final Report being open to the public immediately after the Final Report is received by RAIF.
5. The Romanian side requested the Japanese side to donate to RAIF the vehicles, equipment and machinery, which had been used by JICA Study Team during the course of their Study, for carrying out further study of the Project. The Japanese side promised to convey the said request of the Romanian side to the Government of Japan.
6. The Romanian side expressed their strong wish to ask for the financial assistance from the Government of Japan to the implementation of the Project in the earliest time possible. The Japanese side suggested that the Romanian side should submit the official request to the Government of Japan for the financial assistance to the Project as soon as possible and promised to convey the said request of the Romanian side to the Government of Japan.