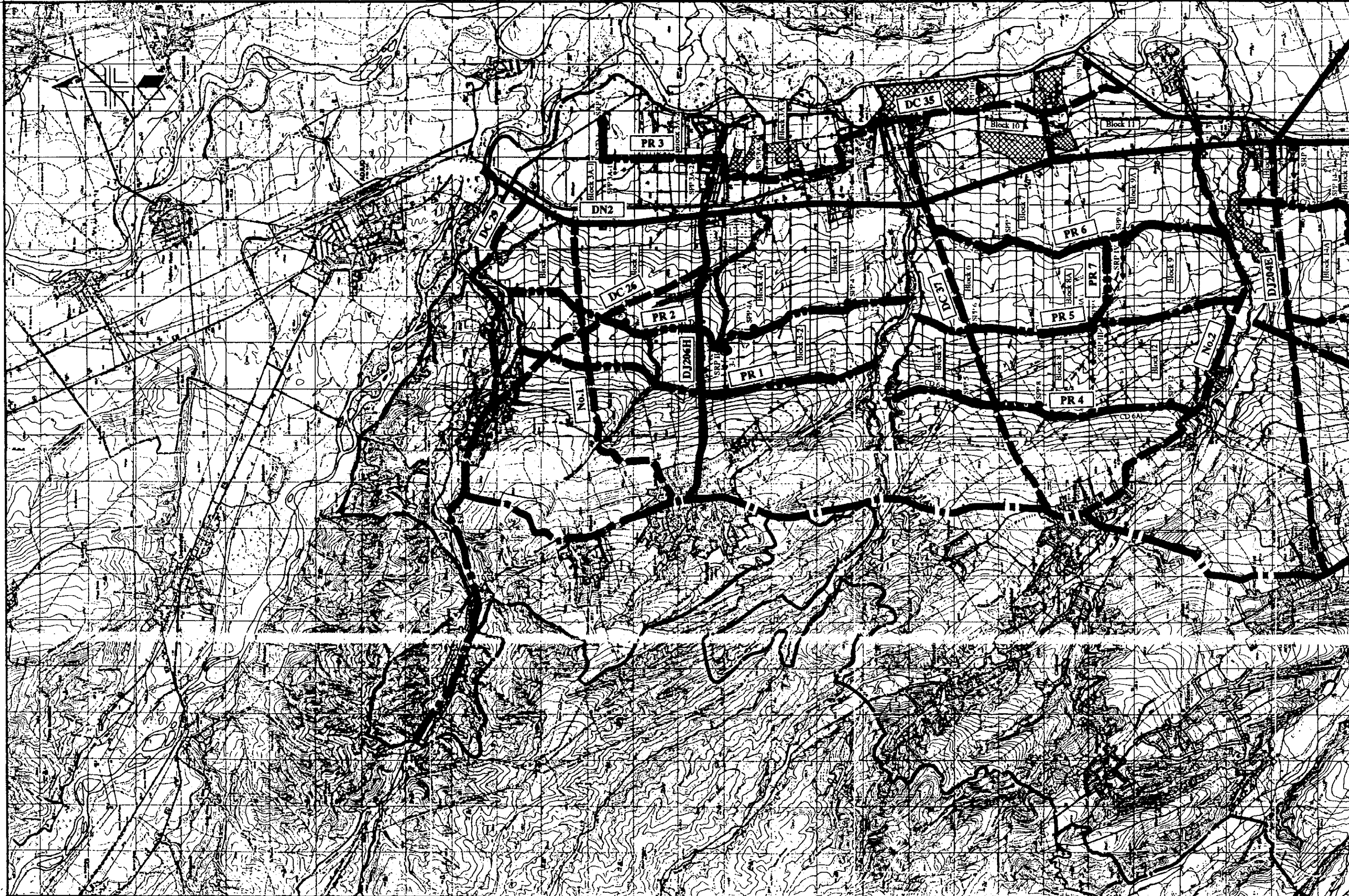


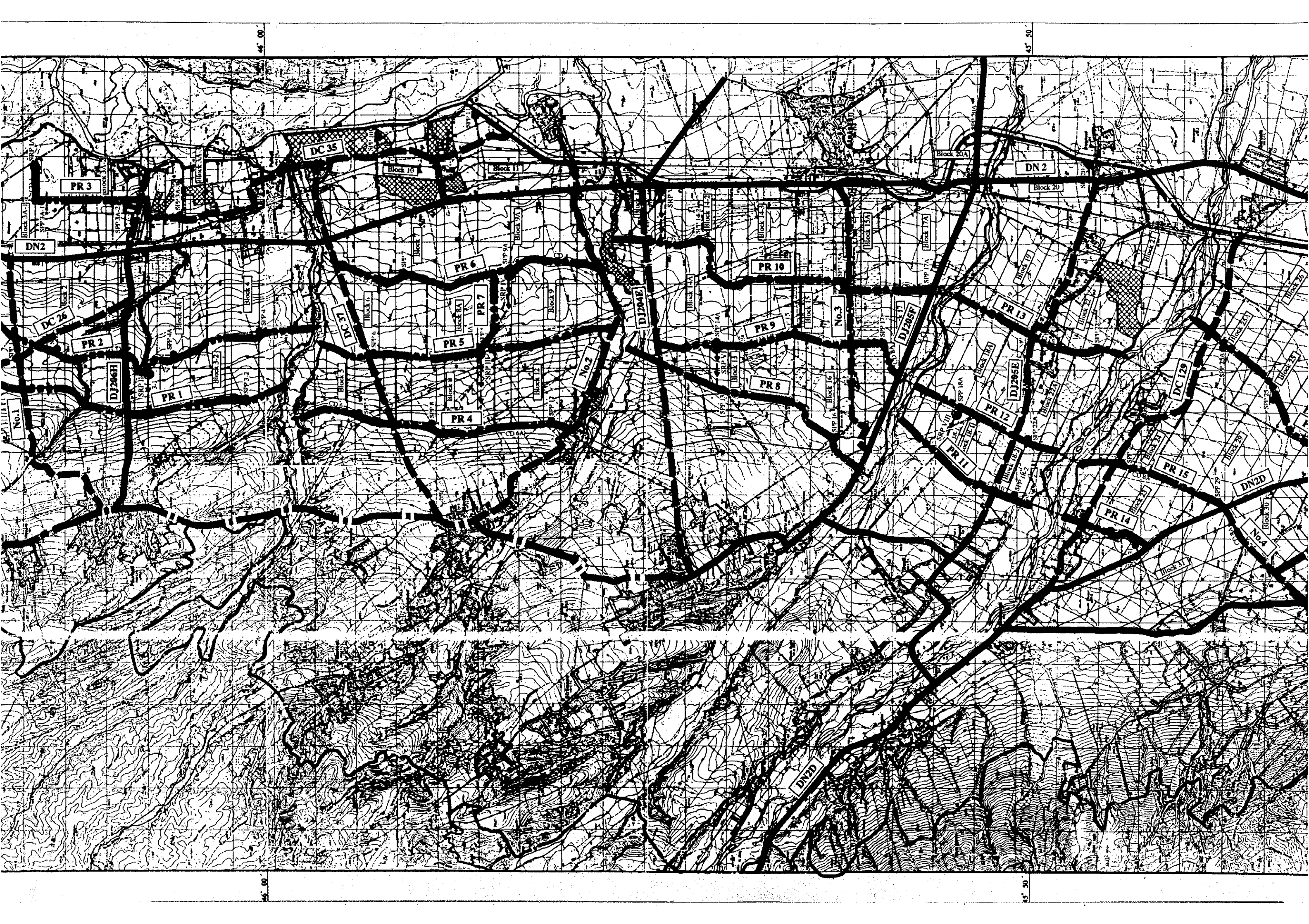
27 15 46 10

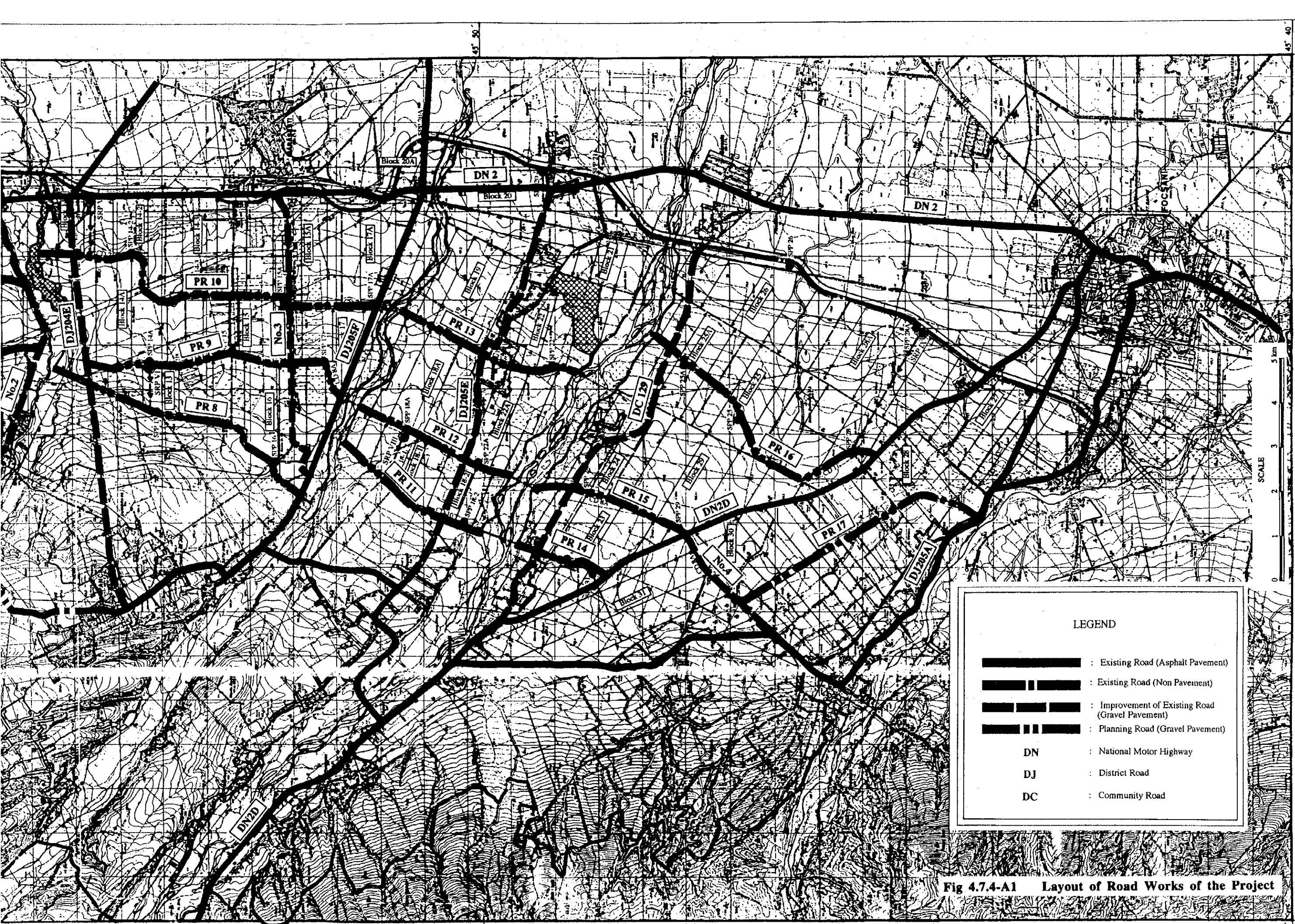
46 00







27 00 46 10

46 00

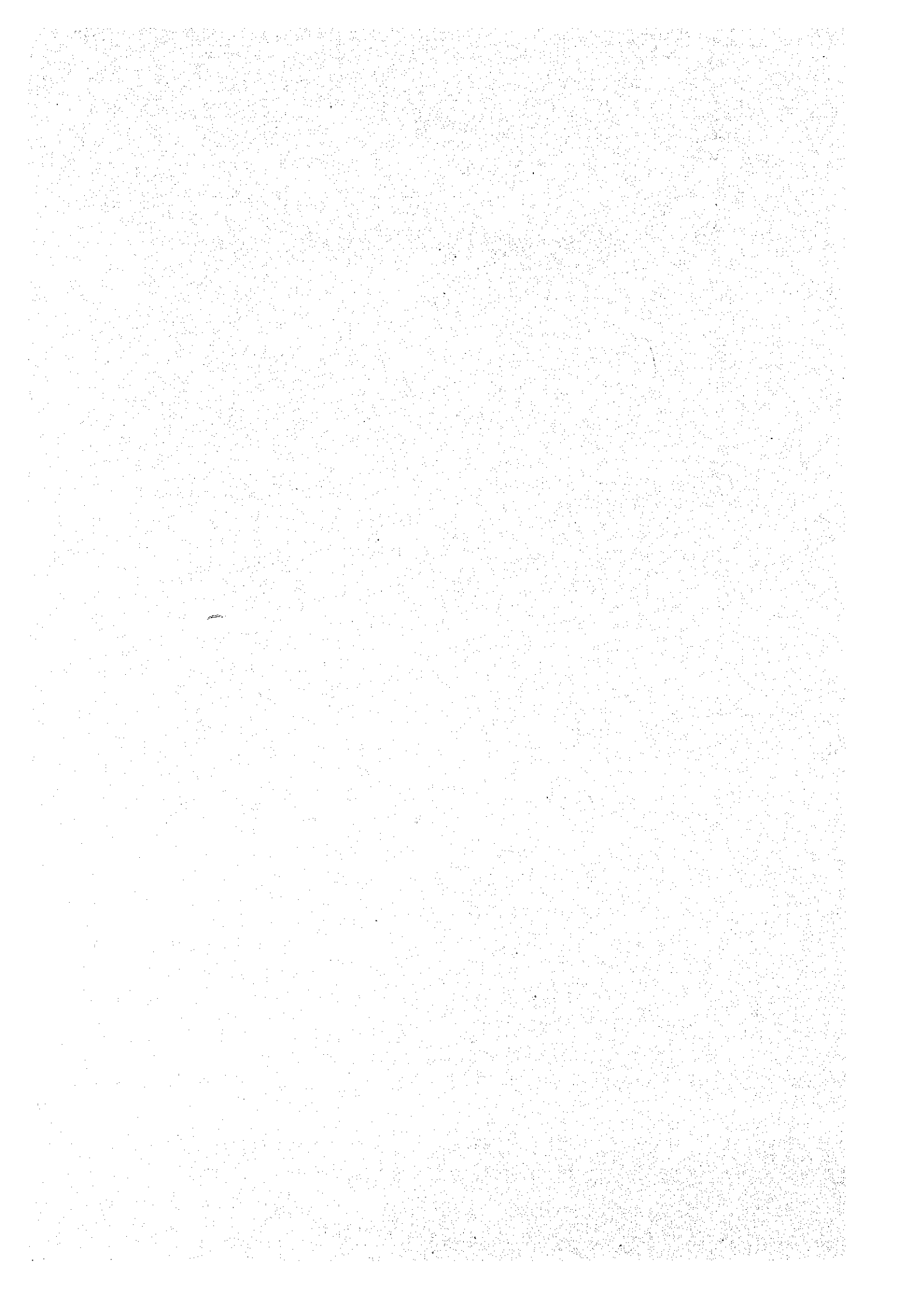




**LEGEND**

	: Existing Road (Asphalt Pavement)
	: Existing Road (Non Pavement)
	: Improvement of Existing Road (Gravel Pavement)
	: Planning Road (Gravel Pavement)
<b>DN</b>	: National Motor Highway
<b>DJ</b>	: District Road
<b>DC</b>	: Community Road

**Fig 4.7.4-A1 Layout of Road Works of the Project**



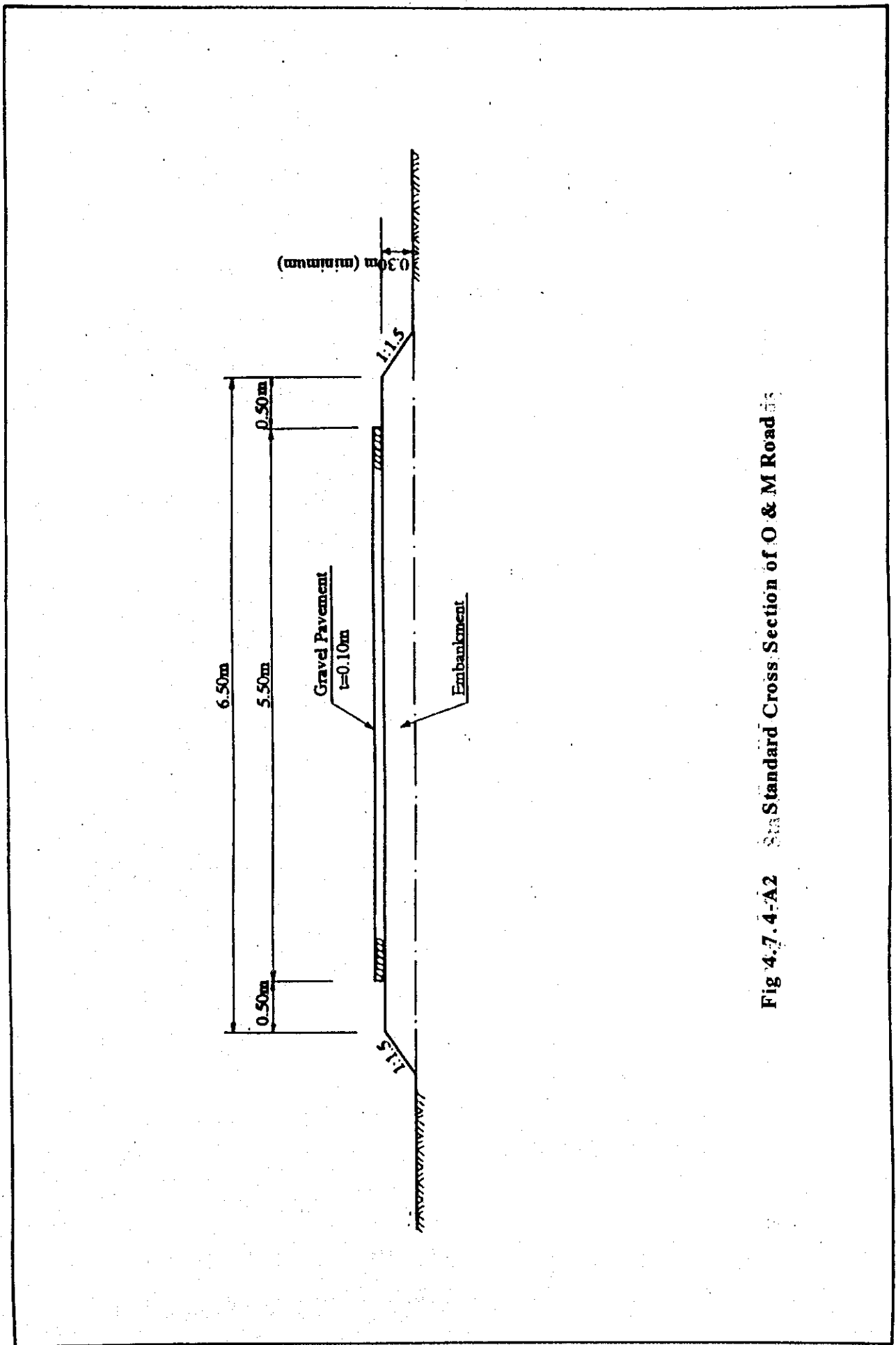


Fig 4.7.4-A2 Standard Cross Section of O & M Road

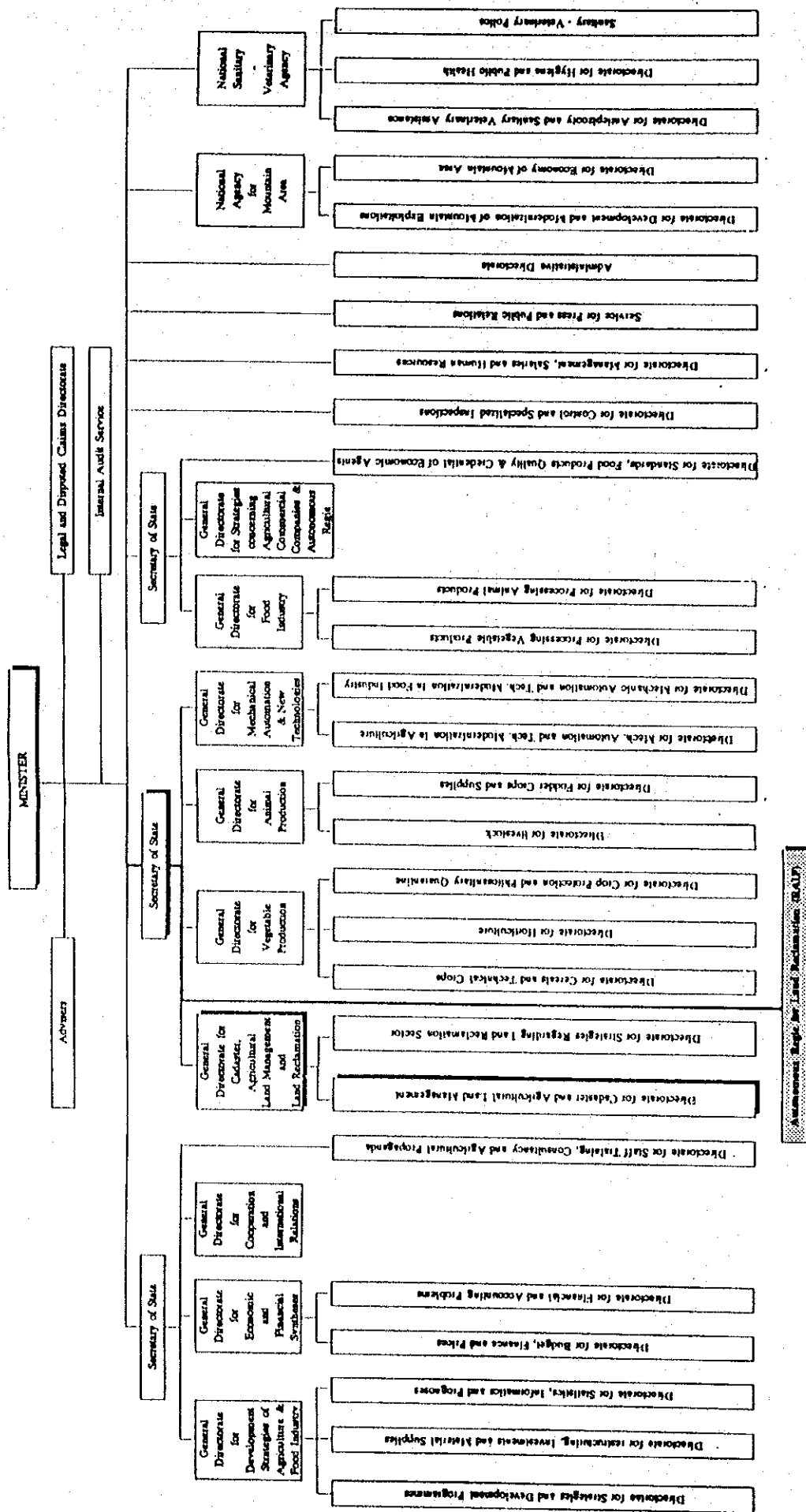


Fig. 5.1.2-A1 Organization Chart of Ministry of Agriculture and Food

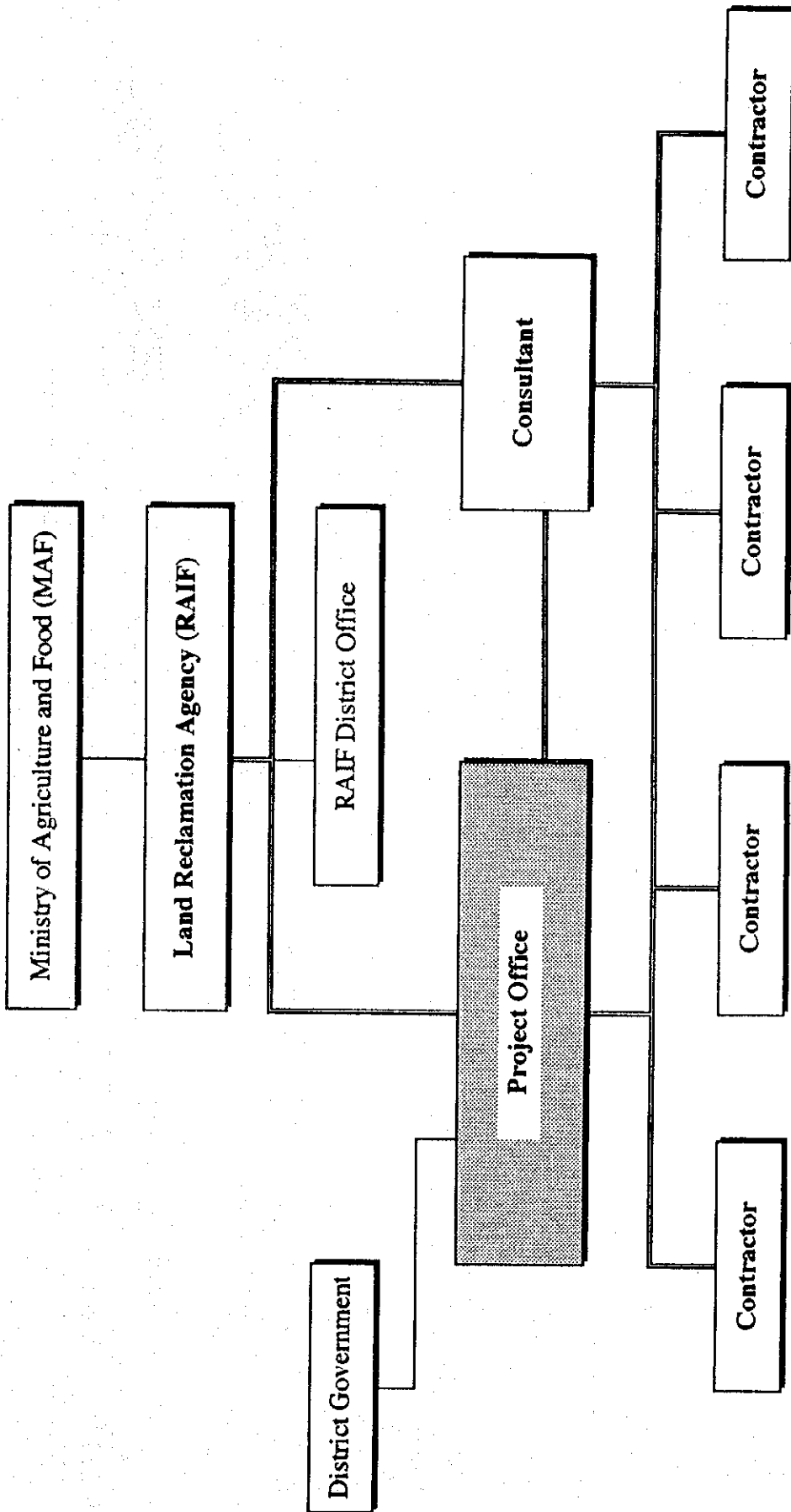


Fig 5.1.2-A2 Organization Chart for the Project Implementation







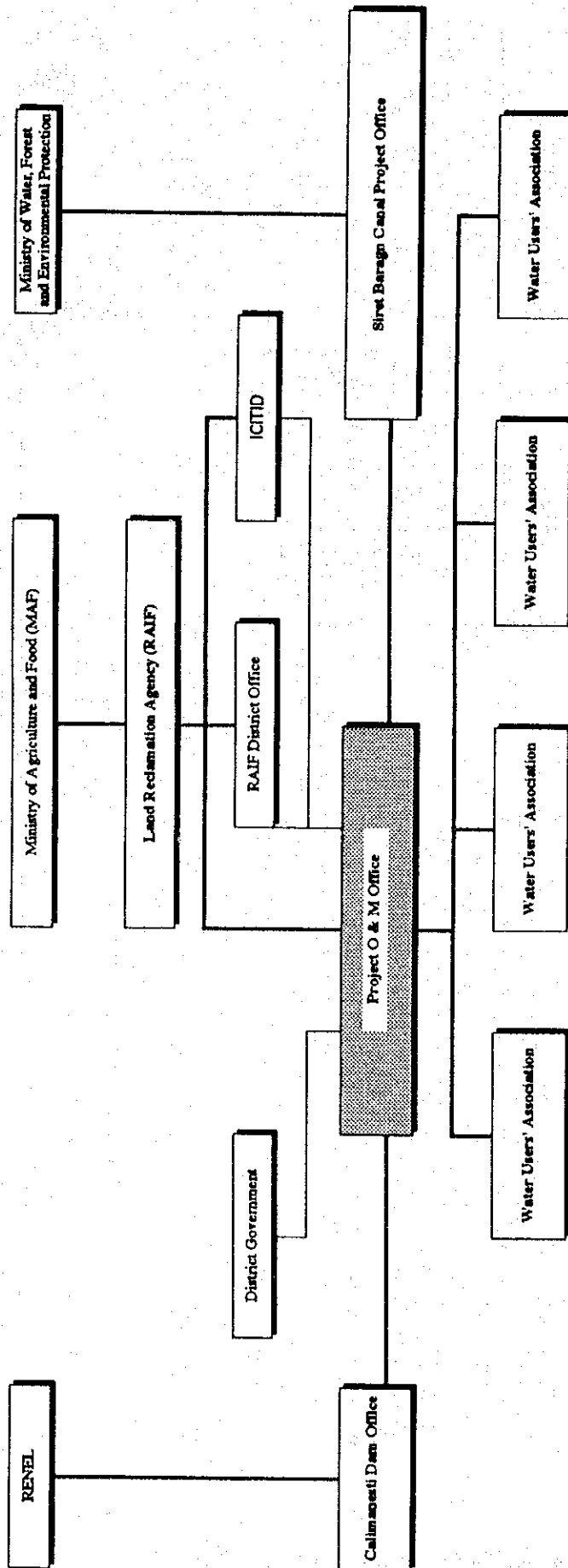
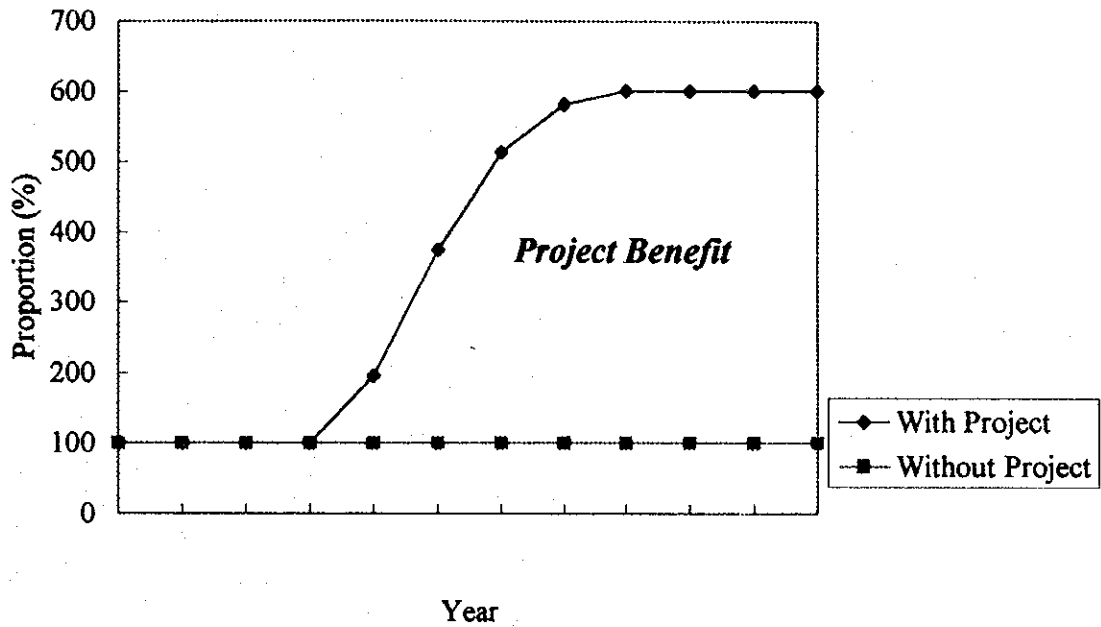
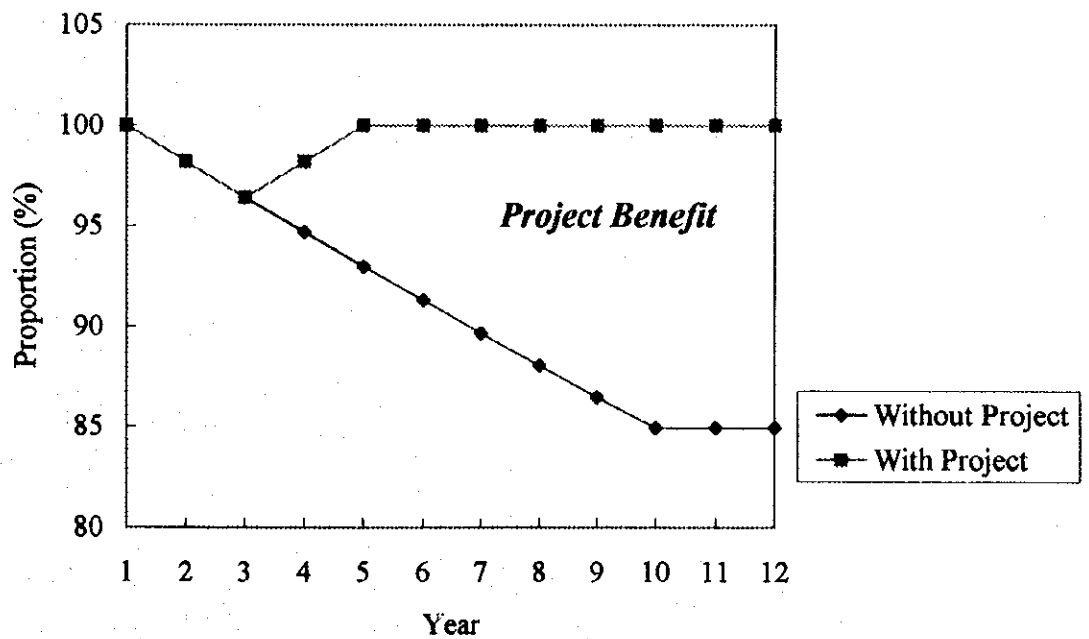


Fig. 5.4.1-A1 Organization Chart for the Operation and Maintenance

**Fig 6.2.2-A1 Concept Figure of Increased Project Benefit  
(Irrigation Project)**



**Fig 6.2.3-A1 Concept Figure of Decreased Project Benefit  
(Soil Conservation Project)**



JWA