

Appendix 3 現地調査工事資料

Appendix 3

Data of Field Investigation Works

- 3.1 Data of Topographic Survey
- 3.2 Data of Seismic Prospecting Survey
- 3.3 Data of Core Drilling Work
- 3.4 Data of Survey on Environmental Impact and Compensation
- 3.5 Data of Geology

3.1 Data of Topographic Survey

Description of GPS Stations

Station No. 001 ~ 037

Abstract

Abstract: This paper presents a study on the impact of digital marketing strategies on consumer behavior. The research focuses on the effectiveness of various digital marketing channels, including social media, email marketing, and search engine optimization (SEO), in influencing consumer purchasing decisions. The study involves a series of experiments and data analysis to determine the most effective strategies for different target audiences.

The research is divided into three main sections: a literature review, a methodology section, and a results and discussion section. The literature review explores existing research on digital marketing and consumer behavior. The methodology section details the experimental design, including the selection of participants, the development of marketing campaigns, and the data collection process. The results and discussion section presents the findings of the study, highlighting the key factors that influence consumer behavior in the digital age.

The findings of the study indicate that digital marketing strategies have a significant impact on consumer behavior. Social media marketing was found to be particularly effective in reaching and engaging target audiences, while email marketing and SEO were also shown to be important components of a successful digital marketing strategy. The study also identified several factors that influence consumer behavior, such as the quality of the marketing content and the timing of the campaigns.

Based on the findings, the study provides several recommendations for businesses looking to improve their digital marketing efforts. These include the importance of creating high-quality, engaging content, the need for a consistent and integrated marketing strategy, and the importance of monitoring and analyzing the results of the campaigns. The study also highlights the need for businesses to stay up-to-date with the latest trends and technologies in digital marketing.

The study concludes by emphasizing the significance of digital marketing in the modern business landscape. As technology continues to advance, digital marketing will play an increasingly important role in shaping consumer behavior and driving business growth. The findings of this study provide valuable insights for businesses and marketers looking to optimize their digital marketing strategies.

Keywords: Digital marketing, consumer behavior, social media, email marketing, SEO, purchasing decisions, target audiences, marketing campaigns, data analysis, experimental design, literature review, methodology, results, discussion, recommendations, business growth, technology, trends.

DESCRIPTION OF GPS STATION

STATION NO:	GPS 001	DISTRICT:	M. KALUM
TYPE:	*	PROVIENCE:	XEKONG

METHOD OF APPROACH:

The station was established on the bank of the Xe Kong river . Approached to the site for monumentation , signalisation and observation by helicopter.

GPS 1

LATITUDE	15 ° 59 ' 37.1785 "	N(m)	1,769,077.933
LONGITUDE	106 ° 57 ' 25.1890 "	E(m)	709,394.843
		H(m)	

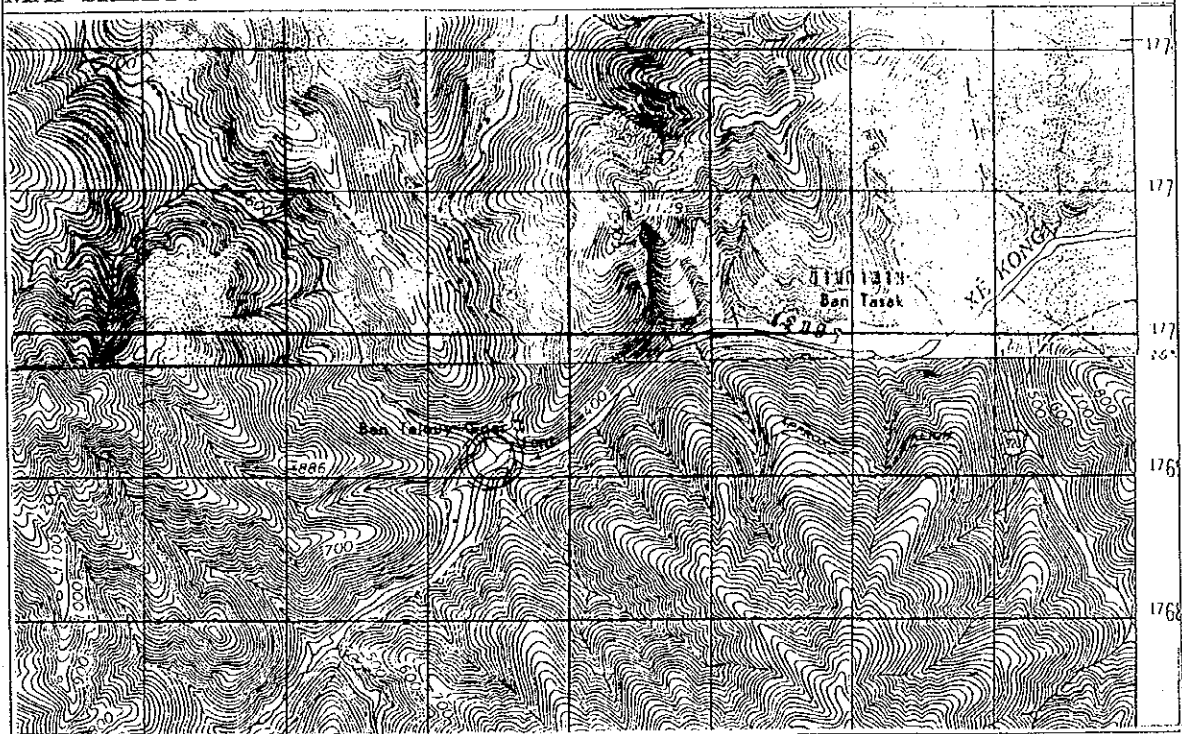
Note:

The Latitude, Longitude, North, and East of this survey results was computed out based on existing point name No.8924 of Mekon Committee, and the elevation on Bench Mark of National Geographic Department (NGD).

LOCATION IN 1: 50,000 MAP:

MAP SHEET NO: 6340 I

NAME: B. CHAKEUY TAI



DESCRIPTION OF GPS STATION			
STATION NO:	GPS 002	DISTRICT:	M. KALUM
TYPE:		PROVIENCE:	XEKONG
METHOD OF APPROACH:			
<p>The station was established on the rice field . Approached to the site for monumentation , signalisation and observation by helicopter.</p>			
GPS 2			
LATITUDE	15 ° 53 '	1.3298 " N(m)	1,756,938.635
LONGITUDE	106 ° 59 '	7.2890 " E(m)	712,546.287
		H(m)	

MAP SHEET NO: 6340 I

[illegible]

DESCRIPTION OF GPS STATION

STATION NO:	GPS 003	DISTRICT:	M. KALUM
TYPE:		PROVINCENCE:	XEKONG

METHOD OF APPROACH:

The station was established on the bank of Xe Kong river near Ban Long Kong .
 Approached to the site for monumentation , signalisation and observation by
 helicopter.

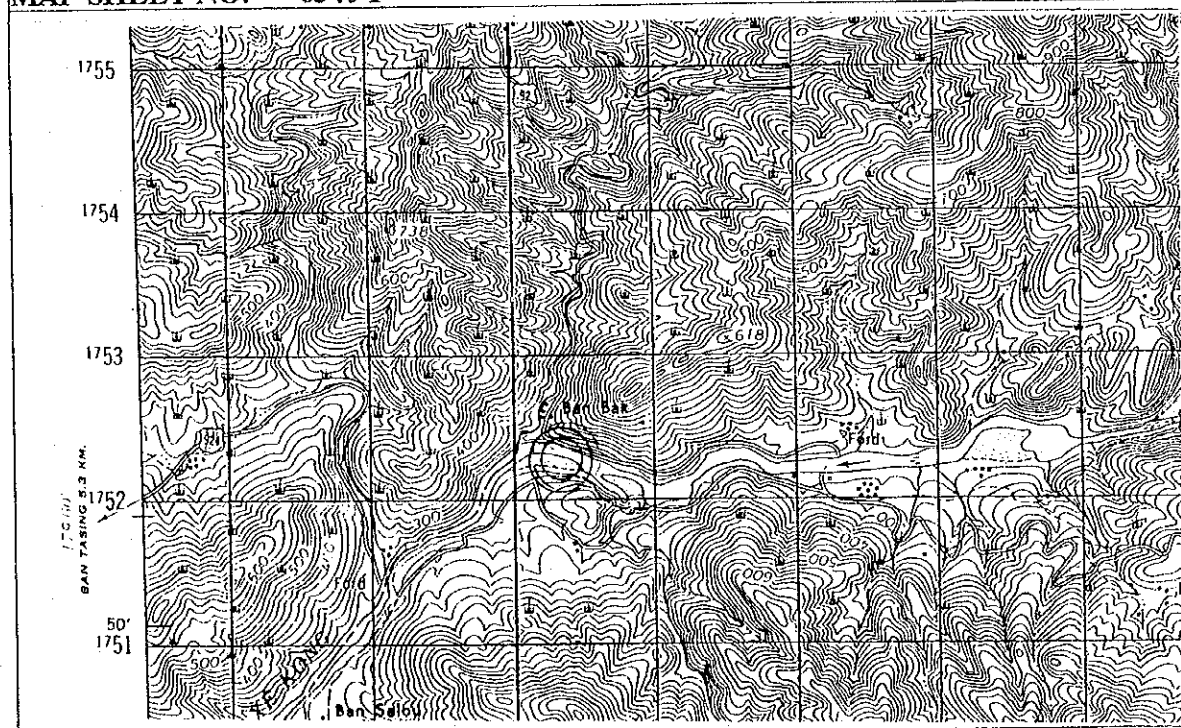
GPS 3

LATITUDE	15 ° 50 ' 36.7371 "	N(m)	1.752,306.025
LONGITUDE	106 ° 47 ' 25.2450 "	E(m)	691,700.720
		H(m)	204.187

LOCATION IN 1: 50,000 MAP:

MAP SHEET NO: 6340 I

NAME: B. CHAKEUY TAI



DESCRIPTION OF GPS STATION

STATION NO:	GPS 004	DISTRICT:	M. KALUM
TYPE:		PROVIENCE:	XEKONG

METHOD OF APPROACH:

The station was established near the bank of Xe Kong river near Ban Don .
 Approached to the site for monumentation , signalisation and observation by helicopter.

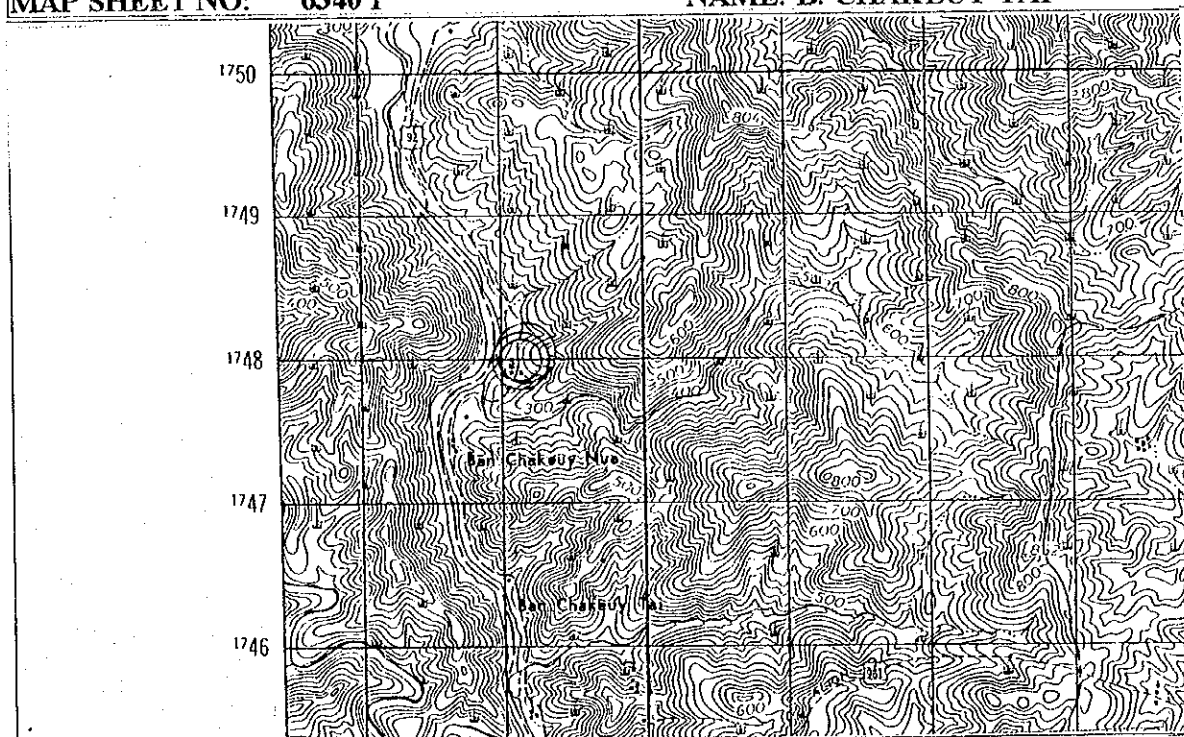
GPS 4

LATITUDE	15 ° 48 ' 1.5269 "	N(m)	1,747,509.234
LONGITUDE	106 ° 45 ' 40.7379 "	E(m)	688,631.563
		H(m)	221.060

LOCATION IN 1: 50,000 MAP:

MAP SHEET NO: 6340 I

NAME: B. CHAKEUY TAI



DESCRIPTION OF GPS STATION

STATION NO:	GPS 005	DISTRICT:	M. KALUM
TYPE:		PROVINCENCE:	XEKONG

METHOD OF APPROACH:

The station was established in the rice field near Ban Tanglao . Approached to the site for monumentation , signalisation and observation by helicopter.

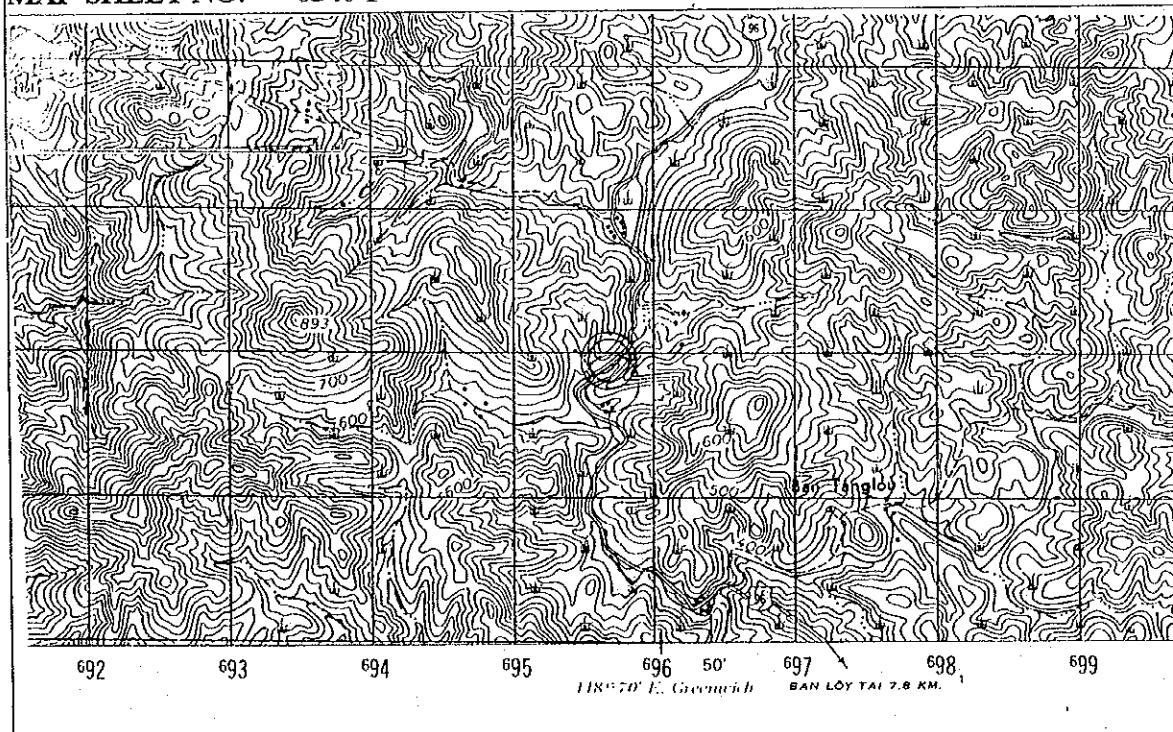
GPS 5

LATITUDE	15 ° 47 ' 6.5204 "	N(m)	1,745,882.871
LONGITUDE	106 ° 49 ' 53.9265 "	E(m)	696,180.538
		H(m)	447.847

LOCATION IN 1: 50,000 MAP:

MAP SHEET NO: 6340 I

NAME: B. CHAKEUY TAI



DESCRIPTION OF GPS STATION

STATION NO:	GPS 006	DISTRICT:	M. KALUM
TYPE:		PROVINCENCE:	XEKONG

METHOD OF APPROACH:

The station was established in the rice field near Ban Taxing . Approached to the site for monumentation , signalisation and observation by helicopter.

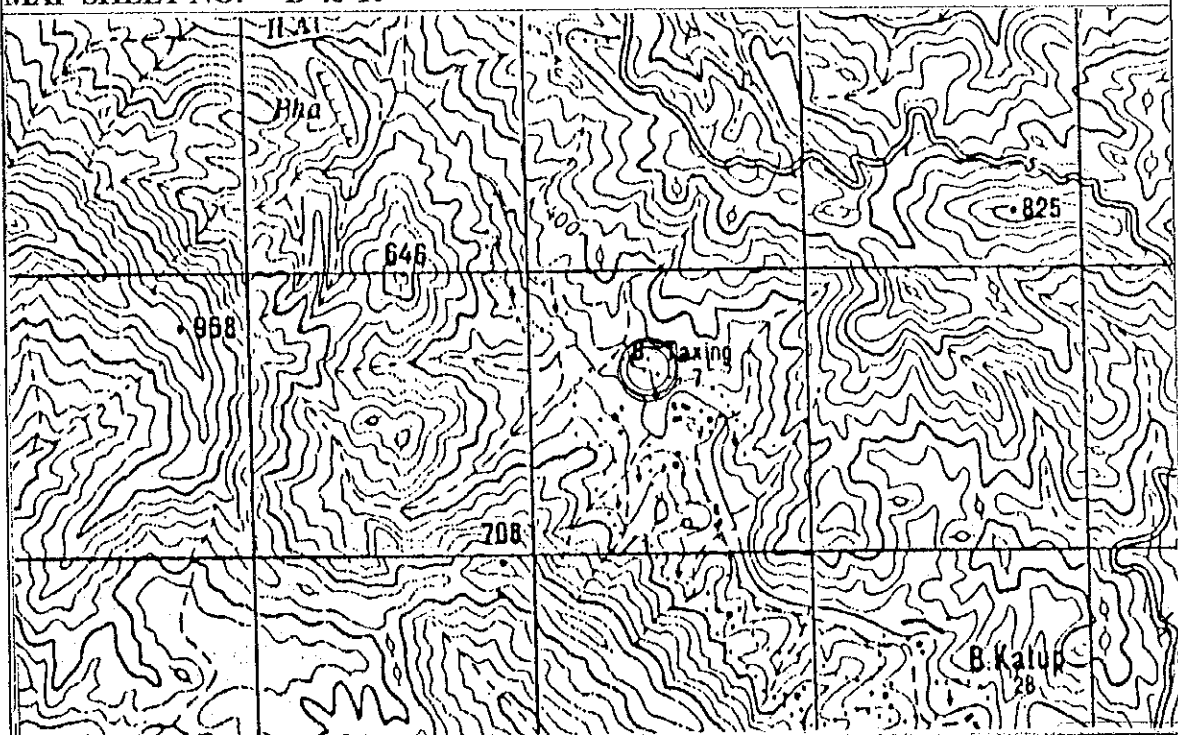
GPS 6

LATITUDE	15 ° 45 ' 16.2649 "	N(m)	1,742,368.243
LONGITUDE	106 ° 41 ' 27.8648 "	E(m)	681,147.623
		H(m)	268.041

LOCATION IN 1: 100,000 MAP:

MAP SHEET NO: D 48-10

NAME: M. KALUM



DESCRIPTION OF GPS STATION

STATION NO:	GPS 007	DISTRICT:	M. SALAVAN
TYPE:		PROVIENCE:	SALAVAN

METHOD OF APPROACH:

The station was established in the grass land along disused Hochiminh trail near Ban Bouang . Approached to the site for monumentation , signalisation and observation by helicopter.

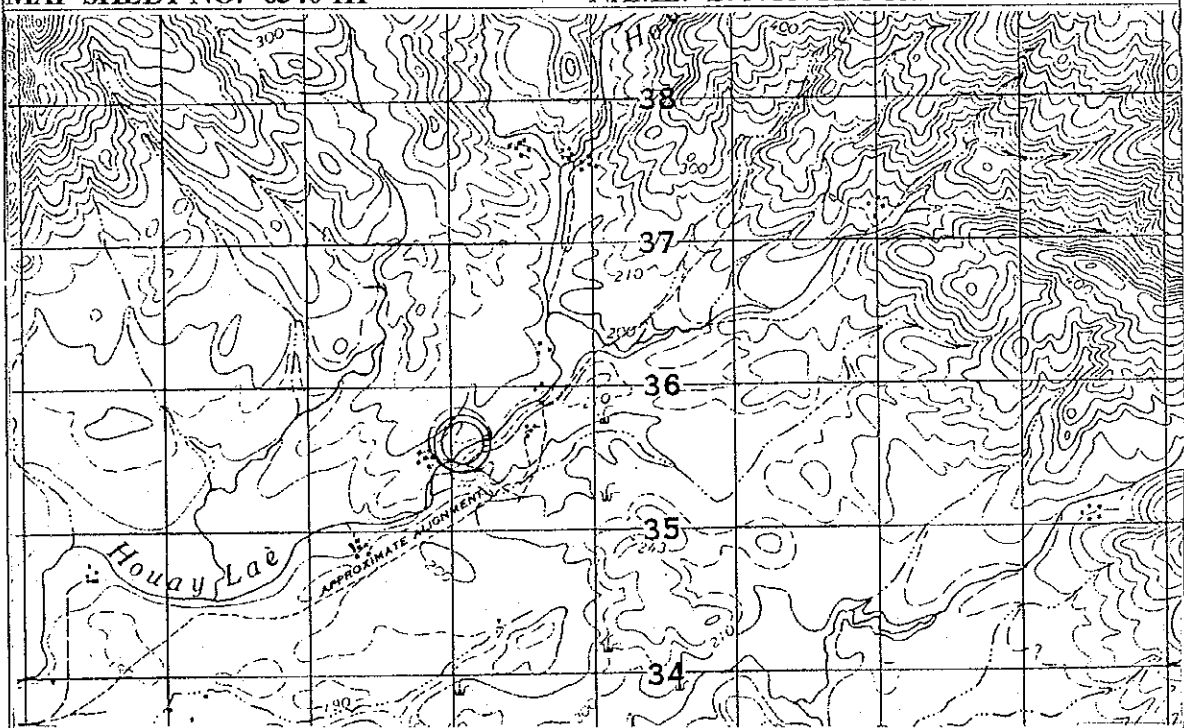
GPS 7

LATITUDE	15 ° 42 ' 0.1798 " N(m)	1,736,285.435
LONGITUDE	106 ° 37 ' 26.5370 " E(m)	674,011.418
	H(m)	236.203

LOCATION IN 1: 50,000 MAP:

MAP SHEET NO: 6340 III

NAME: B. NONGBOUA



DESCRIPTION OF GPS STATION

STATION NO:	GPS 008	DISTRICT:	M. KALUM
TYPE:		PROVIENCE:	XEKONG

METHOD OF APPROACH:

The station was established in the barren land near Ban Bouay Say . Approached to the site for monumentation , signalisation and observation by helicopter.

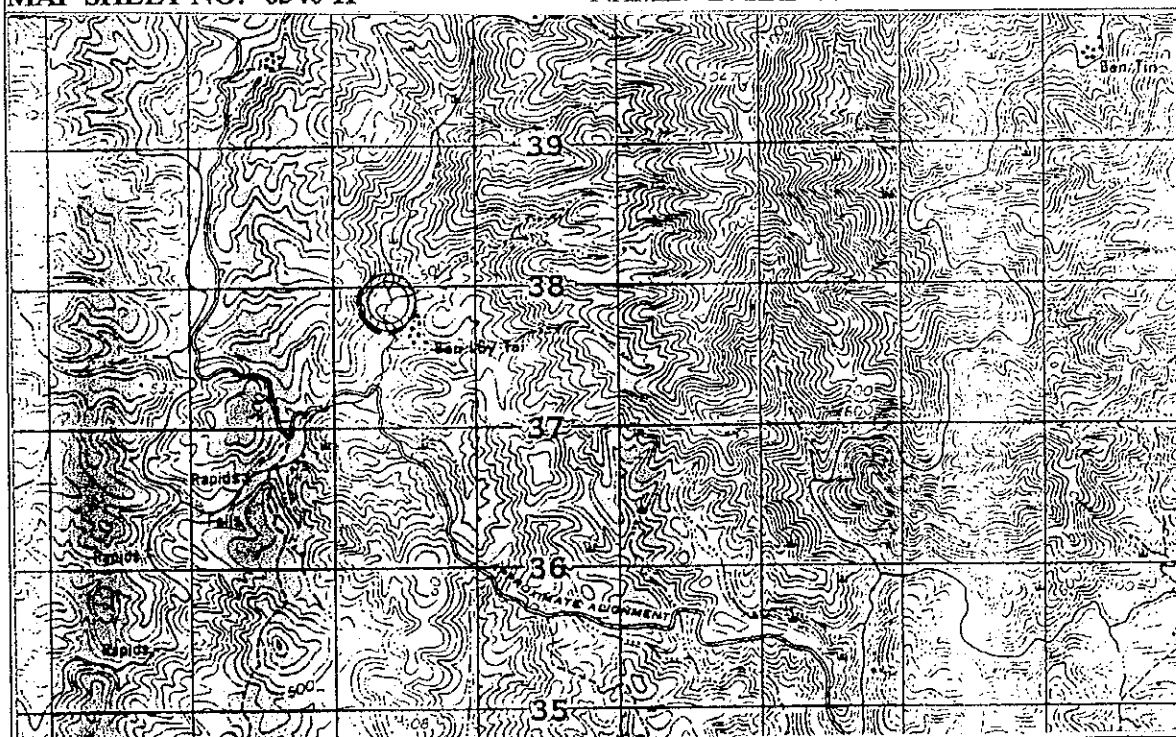
GPS 8

LATITUDE	15 ° 42 ' 49.2773 "	N(m)	1,738,000.509
LONGITUDE	106 ° 51 ' 27.7645 "	E(m)	699,042.820
		H(m)	407.091

LOCATION IN 1: 50,000 MAP:

MAP SHEET NO: 6340 II

NAME: B. HANONG



DESCRIPTION OF GPS STATION

STATION NO:	GPS 009	DISTRICT:	M. KALUM
TYPE:		PROVIENCE:	XEKONG

METHOD OF APPROACH:

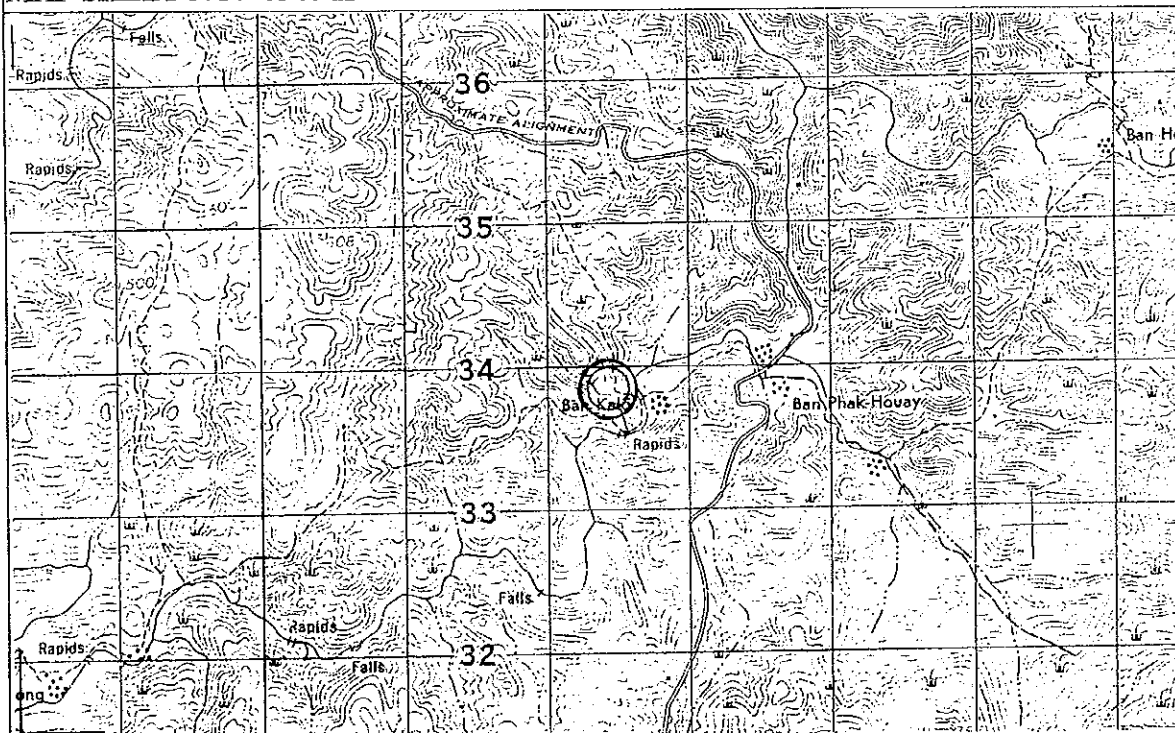
The station was established in the barren land near Ban Kalo . Approached to the site for monumentation , signalisation and observation by helicopter.

GPS 9					
LATITUDE	15 °	40 ' 33.1486 "	N(m)	1,733,845.836	
LONGITUDE	106 °	53 ' 19.7546 "	E(m)	702,414.253	
			H(m)	465.433	

LOCATION IN 1: 50,000 MAP:

MAP SHEET NO: 6340 II NAME: B. HANONG

NAME: B. HANONG



DESCRIPTION OF GPS STATION

STATION NO:	GPS 010	DISTRICT:	M. SALAVAN
TYPE:		PROVIENCE:	SALAVAN

METHOD OF APPROACH:

The station was established near the disused Hochiminh trail . Approached to the site for monumentation , signalisation and observation by helicopter.

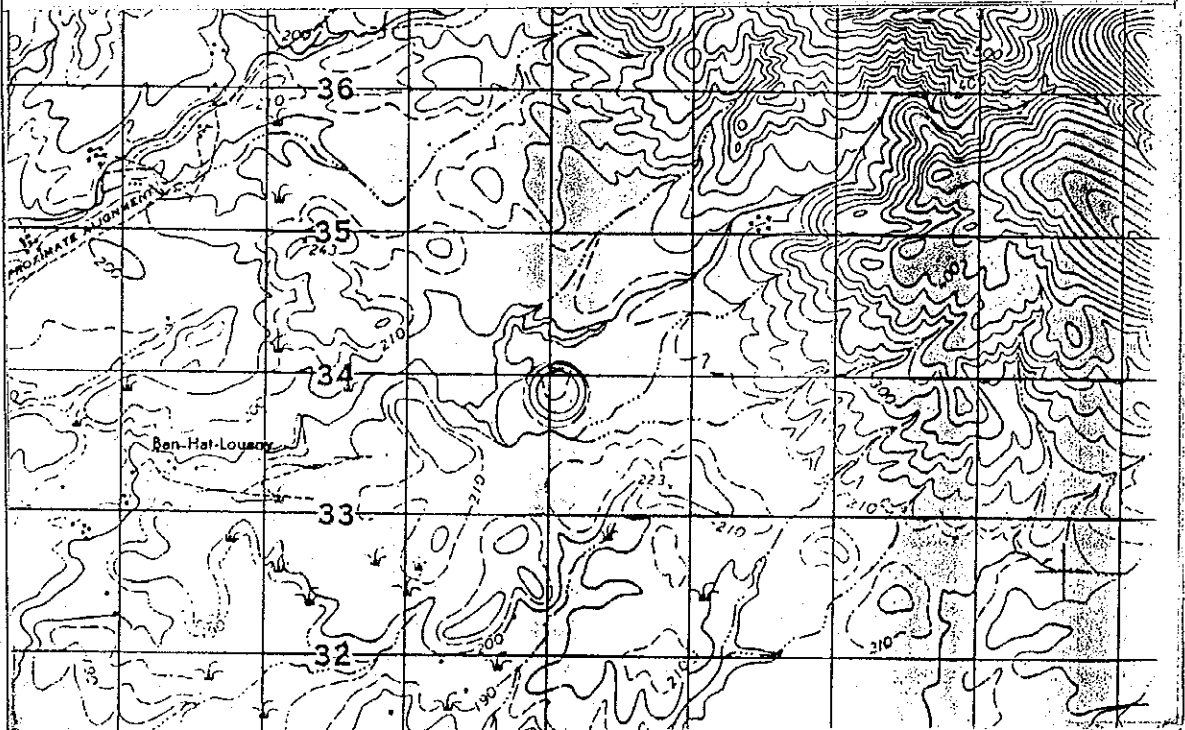
GPS 10

LATITUDE	15 °	40 ' 22.5069 "	N(m)	1, 733, 303. 942
LONGITUDE	106 °	38 ' 54.9957 "	E(m)	676, 668. 208
			H(m)	232. 906

LOCATION IN 1: 50,000 MAP:

MAP SHEET NO: 6340 III

NAME: B. NONGBOUA



DESCRIPTION OF GPS STATION

STATION NO:	GPS 011	DISTRICT:	M.LAMAM
TYPE:		PROVIENCE:	XEKONG

METHOD OF APPROACH:

The station was established along the disused Hochiminh trail near Ban Na Num. Approached to the site for monumentation, signalisation and observation by helicopter.

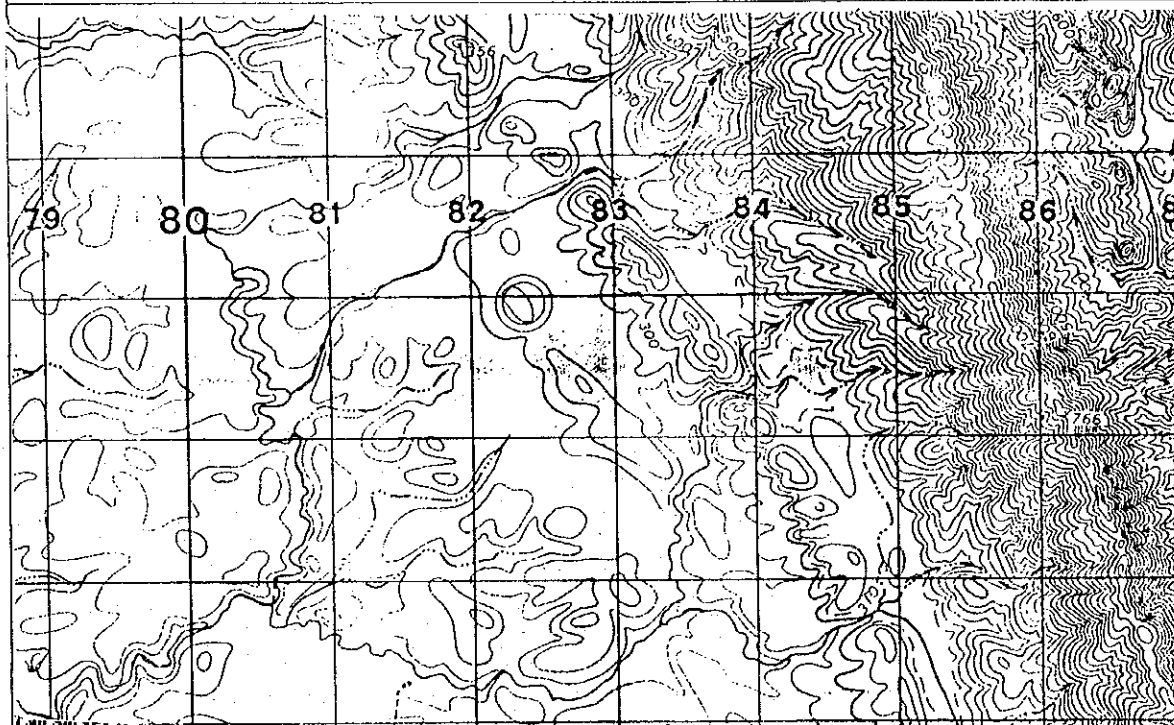
GPS 11

LATITUDE	15 ° 37 ' 5.4640 "	N(m)	1,727,289.270
LONGITUDE	106 ° 41 ' 50.7499 "	E(m)	681,949.614
		H(m)	252.345

LOCATION IN 1: 50,000 MAP:

MAP SHEET NO: 6340 III

NAME: B. NONGBOUA



DESCRIPTION OF GPS STATION

STATION NO:	GPS 012	DISTRICT:	M.KALUM
TYPE:		PROVIENCE:	XEKONG

METHOD OF APPROACH:

The station was established near the bank of Nam Emun. Approached to the site for monumentation, signalisation and observation by helicopter.

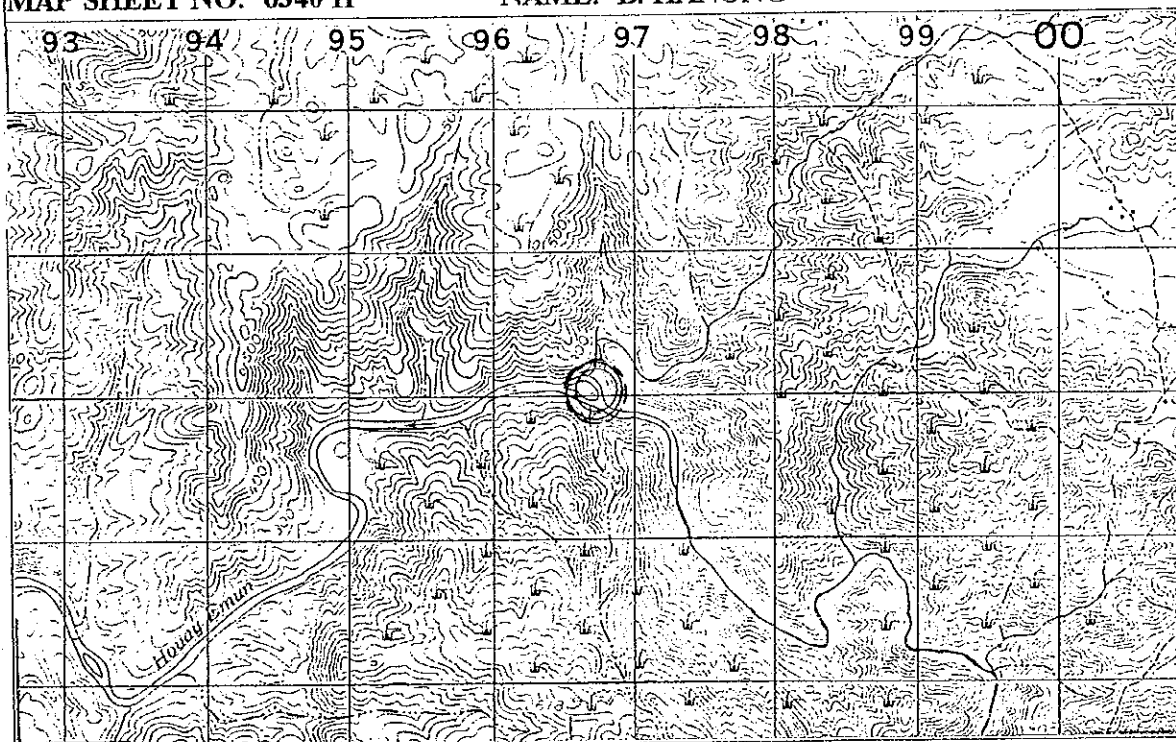
GPS 12

LATITUDE	15 ° 36 ' 18.1127 "	N(m)	1,725,956.035
LONGITUDE	106 ° 50 ' 4.8526 "	E(m)	696,678.399
		H(m)	188.510

LOCATION IN 1: 50,000 MAP:

MAP SHEET NO: 6340 II

NAME: B. HANONG



DESCRIPTION OF GPS STATION

STATION NO:	GPS 013	DISTRICT:	M.KALUM
TYPE:		PROVIENCE:	XEKONG

METHOD OF APPROACH:

The station was established near ban Houayemun. Approached to the site for monumentation , signalisation and observation by helicopter.

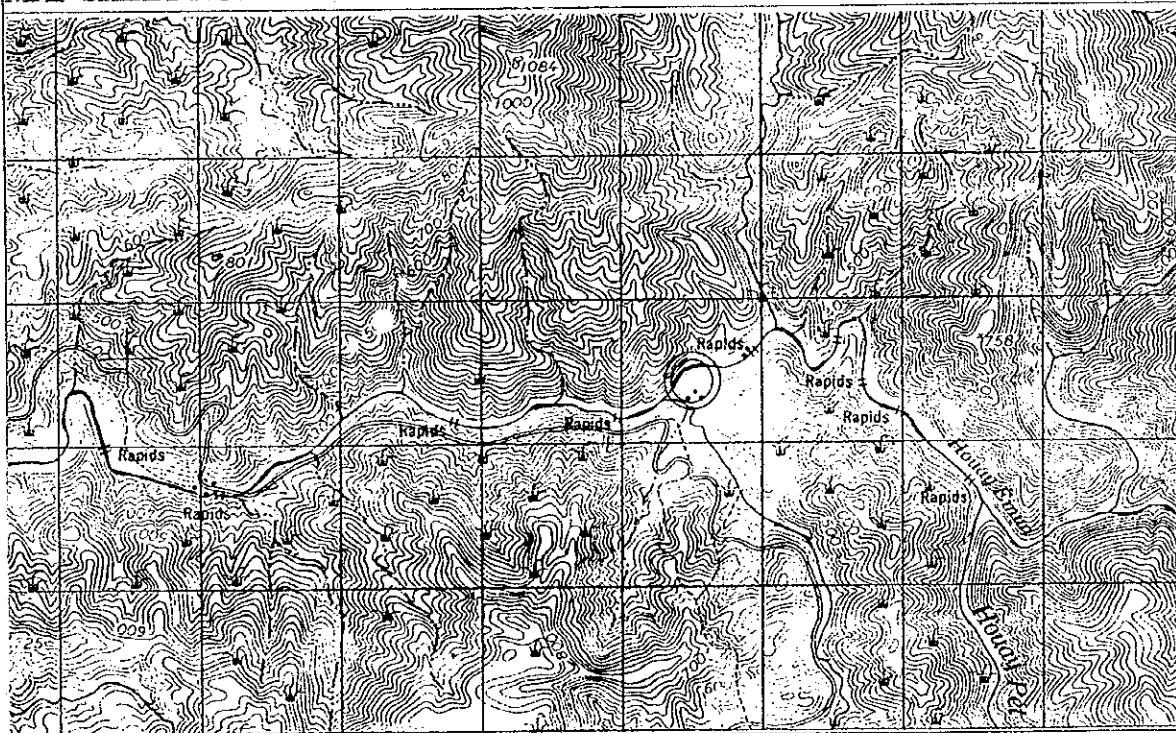
GPS 13

LATITUDE	15 ° 34 ' 44.0179 "	N(m)	1,723,177.385
LONGITUDE	106 ° 57 ' 13.6048 "	E(m)	709,476.377
		H(m)	316.797

LOCATION IN 1: 50,000 MAP:

MAP SHEET NO: 6340 II

NAME: B. HANONG



DESCRIPTION OF GPS STATION

STATION NO:	GPS 014	DISTRICT:	M. LAMAM
TYPE:		PROVIENCE:	XEKONG

METHOD OF APPROACH:

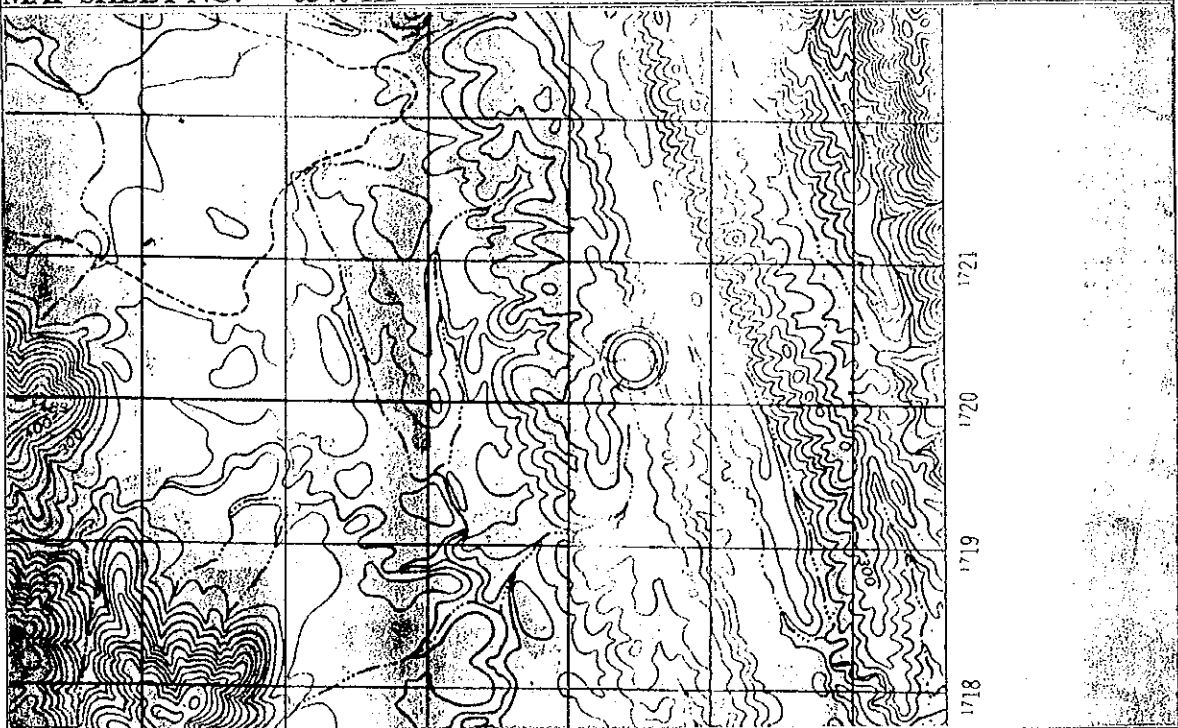
The station was established along the Hochiminh trail . Approached to the site for monumentation , signalisation and observation by 4WD vehicle from Ban Phon, which is 8Km from Xekong on the way to Salavan. It takes 2 hrs drive (about 22 Km) from Ban Phon. GPS 015 is also on the way.

GPS 14			
LATITUDE	15 °	32 ' 10.3354 "	N(m) 1,718,255.851
LONGITUDE	106 °	44 ' 25.5981 "	E(m) 686,635.490
			H(m) 227.890

LOCATION IN 1: 50,000 MAP:

MAP SHEET NO: 6340 III

NAME: B. NONG BOUA



DESCRIPTION OF GPS STATION

STATION NO:	GPS 015	DISTRICT:	M. LAMAM
TYPE:		PROVINCENCE:	XEKONG

METHOD OF APPROACH:

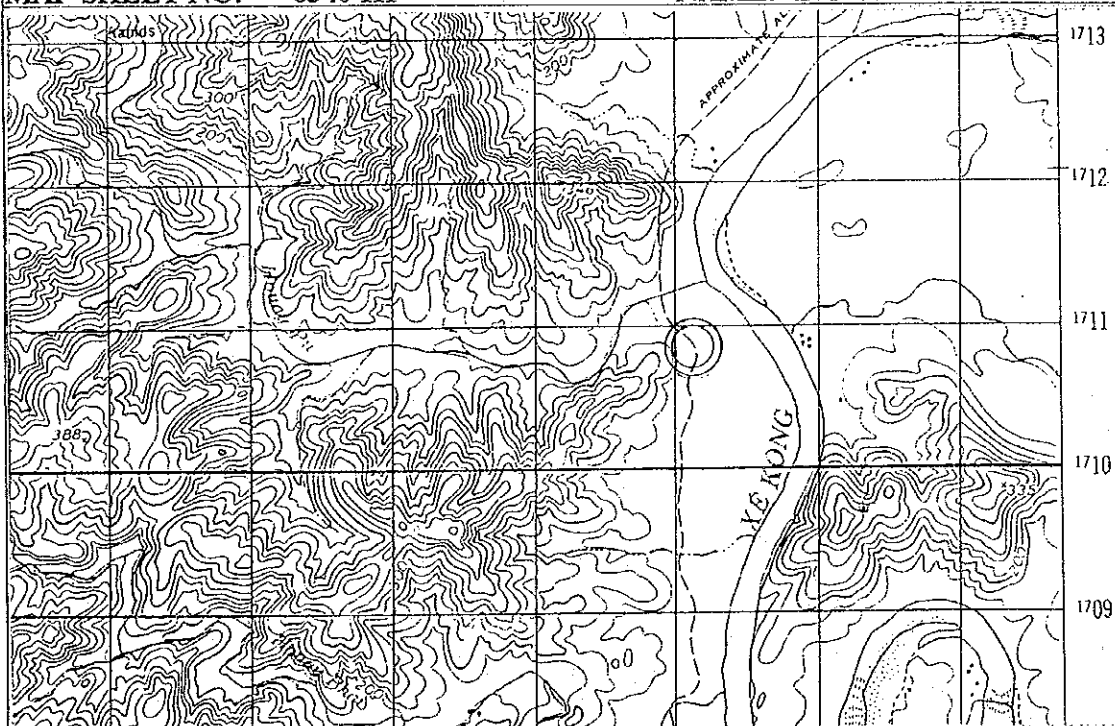
The station was established along the Hochiminh trail . Approached to the site for monumentation , signalisation and observation by 4WD vehicle from Ban Phon, which is 8Km from Xekong on the way to Salavan. It takes 50 mins drive (about 9.5Km) from Ban Phon.

GPS 15					
LATITUDE	15 °	28 ' 11.1652 "	N(m)	1,710,892.280	
LONGITUDE	106 °	43 ' 32.3891 "	E(m)	685,109.315	
			H(m)	151.304	

LOCATION IN 1: 50,000 MAP:

MAP SHEET NO: 6340 III NAME: B. NONG BOUA

NAME: B. NONG BOUA



DESCRIPTION OF GPS STATION

STATION NO:	GPS 016	DISTRICT:	M. LAMAM
TYPE:		PROVINCENCE:	XEKONG

METHOD OF APPROACH:

The station was established on the rice field of a abenden village near Ban Nava Nua along the Xe Kong river . Approached to the site for monumentation and signalisation by 4WD vehicle from Ban Phon, which is 8Km from Xekong on the way to Salavan. It is about 10 Km from Ban Phon up to river and one has to cross the river and the point is on the top bank of river.

GPS 16

LATITUDE	15 ° 25 ' 23.9794 "	N(m)	1,705,779.853
LONGITUDE	106 ° 45 ' 19.8170 "	E(m)	688,353.127
		H(m)	136.679

LOCATION IN 1: 50,000 MAP:

MAP SHEET NO: 6339 I

NAME: B. NAM HIANG



DESCRIPTION OF GPS STATION

STATION NO:	GPS 018	DISTRICT:	M. DAKCHUNG
TYPE:		PROVINCENCE:	XEKONG

TITLE:	DATE:
METHOD OF APPROACH:	

The station was established in the open field near Ban Dakyout Gnai .
Approached to the site for monumentation , signalisation and observation by
helicopter.

GPS 18			
LATITUDE	15 °	13 ' 49.0916 "	N(m) 1,684,906.120
LONGITUDE	107 °	14 ' 44.0441 "	E(m) 741,175.554
			H(m)

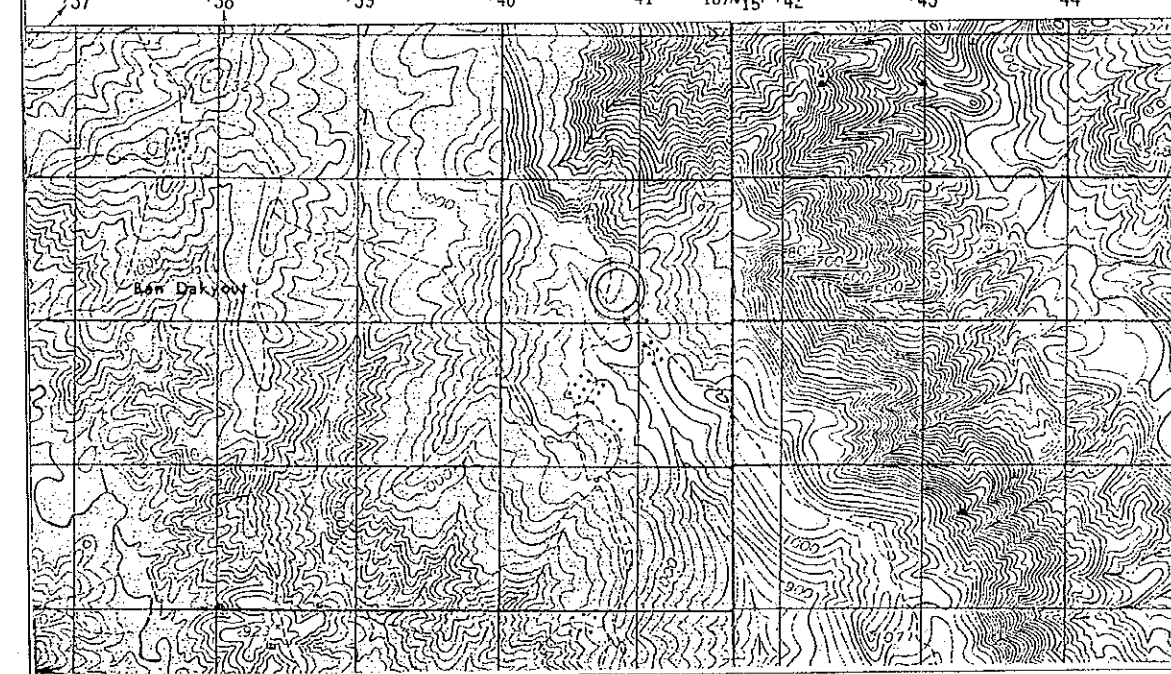
LOCATION IN 1: 50,000 MAP: _____

MAP SHEET NO: 6439 III & II NAME: B. VANG IAI

MAP SHEET NO: 6439 III & II NAME: B. VANG IAI

ASS (1) 10 KM. PIASS (213 KM. 727 729 740 741 107... 742 743 744 119°20'

119620' E



DESCRIPTION OF GPS STATION

STATION NO:	GPS 019	DISTRICT:	M. DAKCHUNG
TYPE:		PROVIENCE:	XEKONG

METHOD OF APPROACH:

The station was established on the confluence of Nam Xe Kaman and Nam Klabai . Approached to the site for monummentation , signalisation and observation by helicopter.

This station was washed away by flood after the GPS observation but before the aerial photography. Thus a supplimentary point was established and pricked by Mr. Takamatsu in January 94.

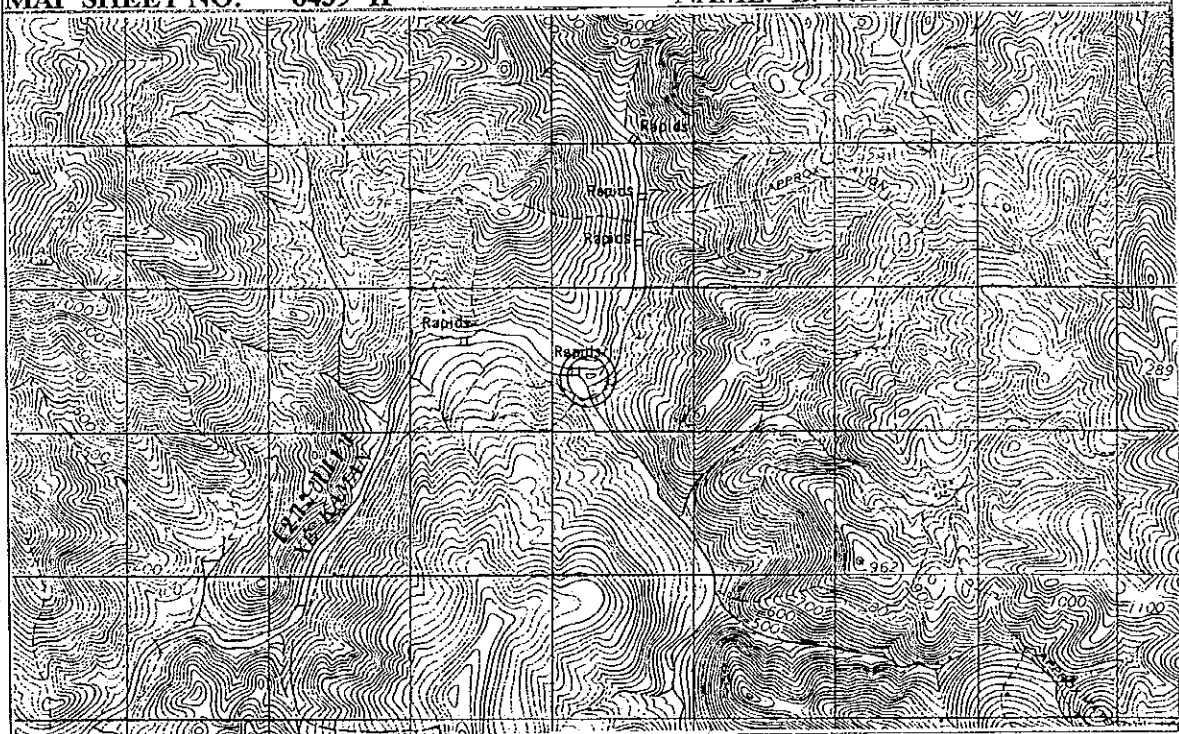
GPS 19

LATITUDE	15 ° 13 ' 24.2555 "	N(m)	1,684,391.058
LONGITUDE	107 ° 27 ' 35.5354 "	E(m)	764,212.217
		H(m)	307.423

LOCATION IN 1: 50,000 MAP:

MAP SHEET NO: 6439 II

NAME: B. VANG TAT



DESCRIPTION OF GPS STATION

STATION NO:	GPS 020	DISTRICT:	M. SANXAY
TYPE:		PROVINCENCE:	ATTAPU

METHOD OF APPROACH:

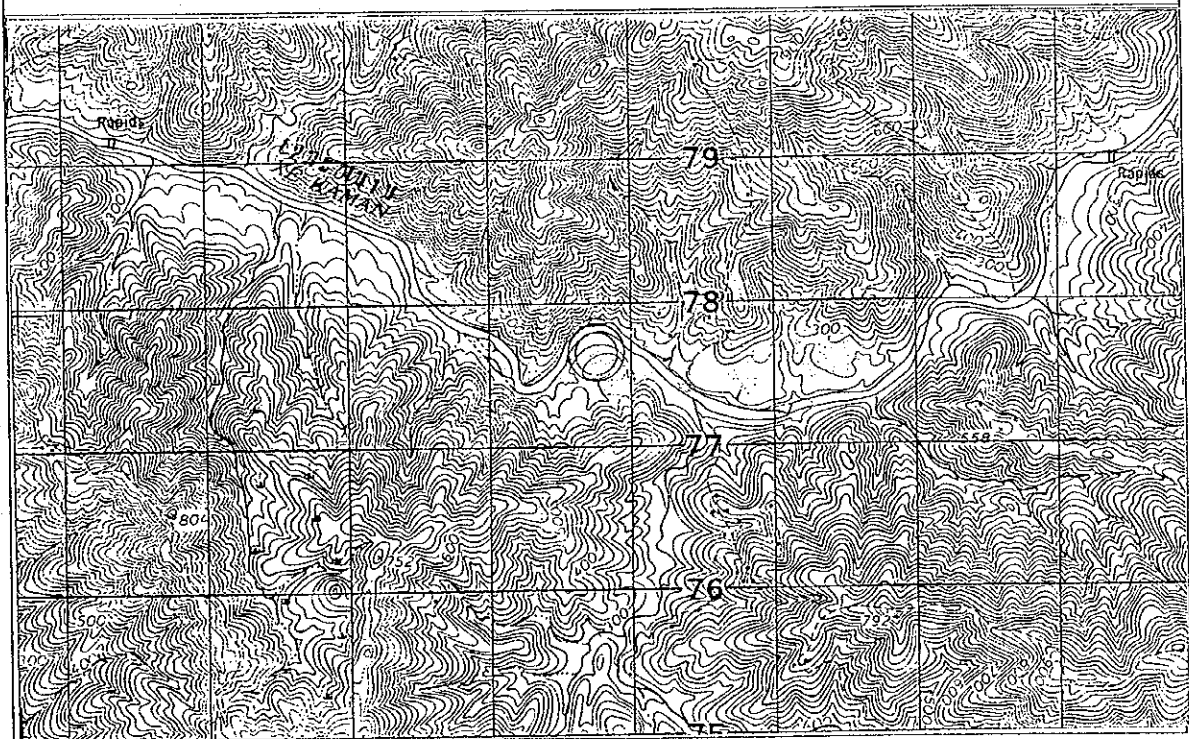
The station was established in Ban Phiang Xe near the bank of Xe Kaman river. Approached to the site for monumentation , signalisation and observation by helicopter.

GPS 20					
LATITUDE	15 °	9 ' 43.2411 "	N(m)	1,677,491.598	
LONGITUDE	107 °	22 ' 19.4556 "	E(m)	754,850.717	
			H(m)		

LOCATION IN 1: 50,000 MAP:

MAP SHEET NO: 6439 II NAME: B. VANG TAT

NAME: B. VANG TAT



DESCRIPTION OF GPS STATION

STATION NO:	GPS 021	DISTRICT:	M. SANXAY
TYPE:		PROVIENCE:	ATTAPU

METHOD OF APPROACH:

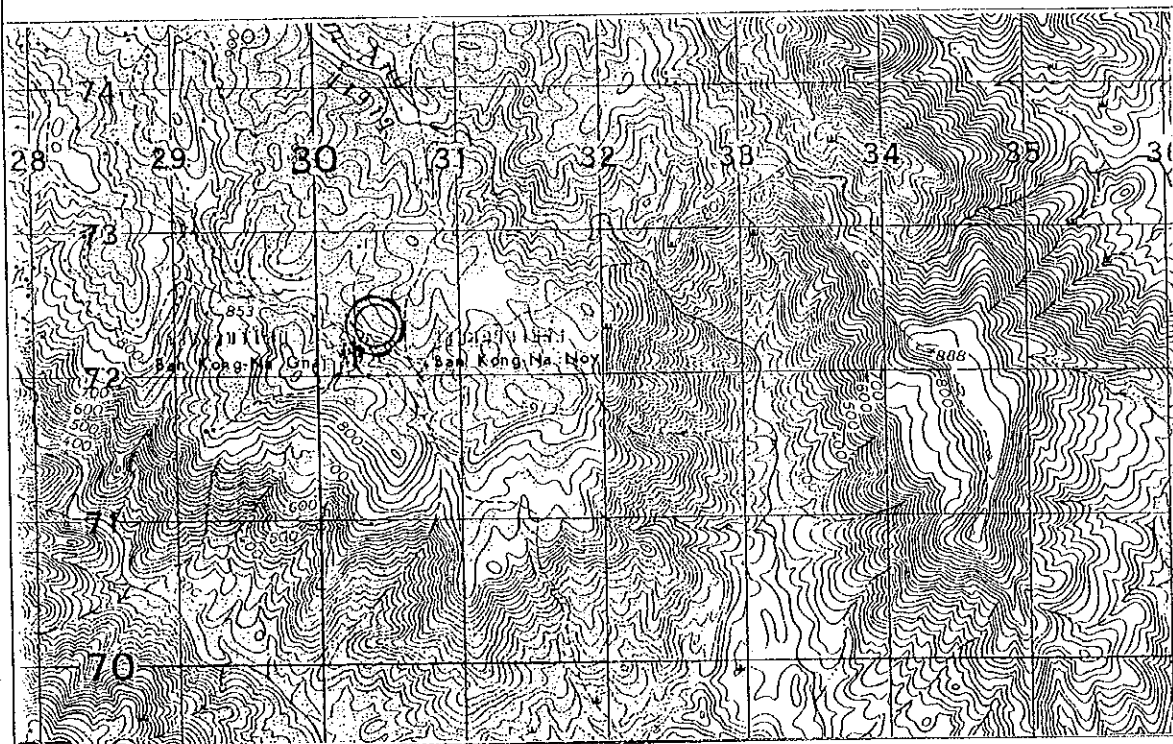
The station was established near Ban Kong Na. Approached to the site for monumentation, signalisation and observation by helicopter.

GPS 21
 LATITUDE 15 ° 7 ' 19.4186 " N(m) 1,672,816.637
 LONGITUDE 107 ° 8 ' 34.8211 " E(m) 730,273.106
 H(m)

LOCATION IN 1: 50,000 MAP:

MAP SHEET NO: 6439 III

NAME: B. YET



DESCRIPTION OF GPS STATION

STATION NO:	GPS 022	DISTRICT:	M. SANXAY
TYPE:		PROVIENCE:	ATTAPU

METHOD OF APPROACH:

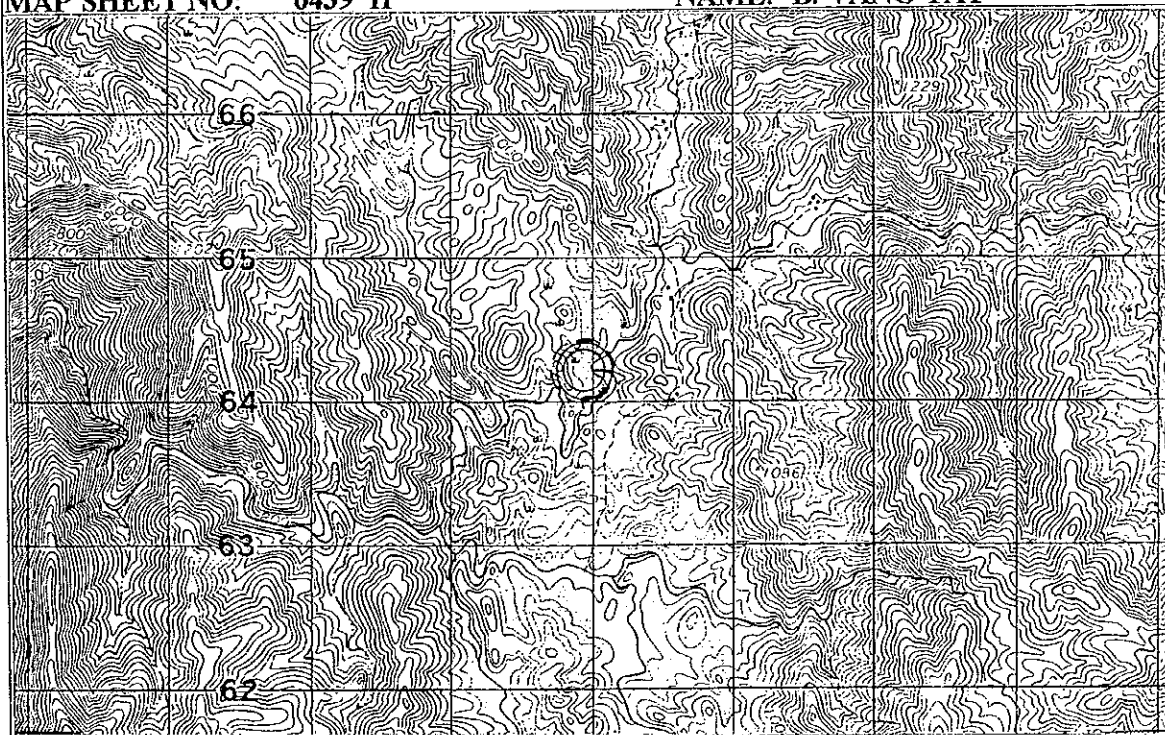
The station was established near Ban Vangtat. Approached to the site for monumentation, signalisation and observation by helicopter.

GPS 22
 LATITUDE 15 ° 1 ' 36.4547 " N(m) 1,662,561.214
 LONGITUDE 107 ° 24 ' 9.0901 " E(m) 758,287.815
 H(m)

LOCATION IN 1: 50,000 MAP:

MAP SHEET NO: 6439 II

NAME: B. VANG TAT



DESCRIPTION OF GPS STATION

STATION NO:	GPS 023	DISTRICT:	M. SANXAY
TYPE:		PROVIENCE:	ATTAPU

METHOD OF APPROACH:

The station was established along the bank of Xe Kong river in the visinity of Ban Dakklong. Approached to the site for monumentation , signalisation and observation by helicopter.

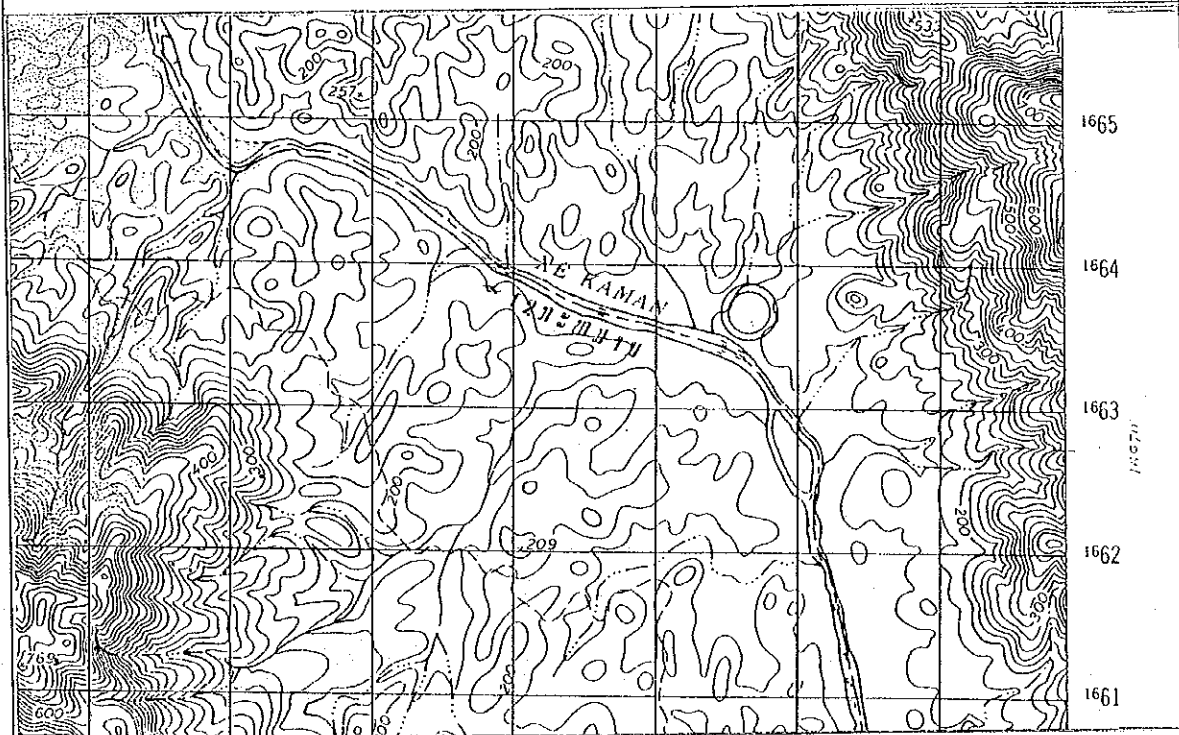
GPS 23

LATITUDE	15 °	2 ' 20.3468 "	N(m)	1,663,708.040
LONGITUDE	107 °	13 ' 21.8767 "	E(m)	738,937.702
			H(m)	167.441

LOCATION IN 1: 50,000 MAP:

MAP SHEET NO: 6439 III

NAME: B. YET



DESCRIPTION OF GPS STATION

STATION NO:	GPS 024	DISTRICT:	M. SANXAY
TYPE:		PROVINCENCE:	ATTAPU

METHOD OF APPROACH:

The station was established along the disused Hochiminh trail about 3 Km from Ban Paam. Approached to the site for monumentation, signalisation and observation by helicopter.

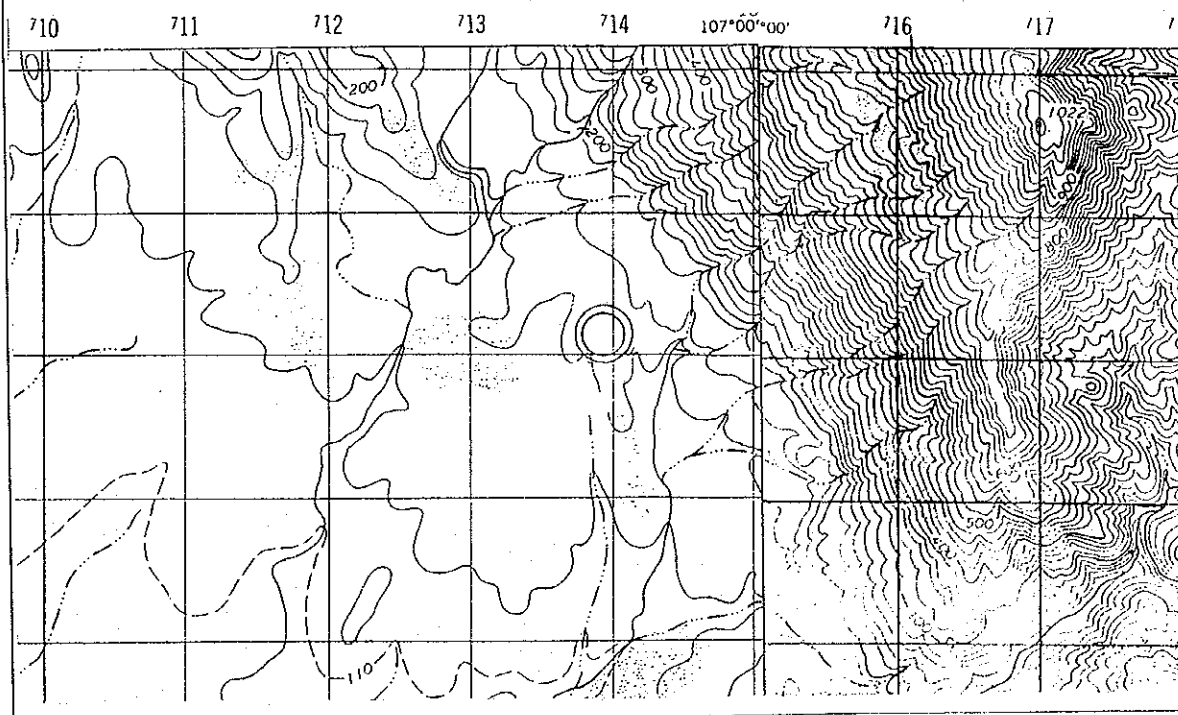
GPS 24

LATITUDE	14 ° 56 ' 57.3936 "	N(m)	1,653,549.021
LONGITUDE	106 ° 59 ' 48.0924 "	E(m)	714,718.412
		H(m)	124.531

LOCATION IN 1: 50,000 MAP:

MAP SHEET NO: 6438 I

NAME: ATTAPU



DESCRIPTION OF GPS STATION

STATION NO:	GPS 025	DISTRICT:	M. SANXAY
TYPE:		PROVINCENCE:	ATTAPU

METHOD OF APPROACH:

The station was established in Ban Paam, which is about 27 Km north east from Attapu. Approached to the site for monumentation and signalisation by vehicle from Attapu.

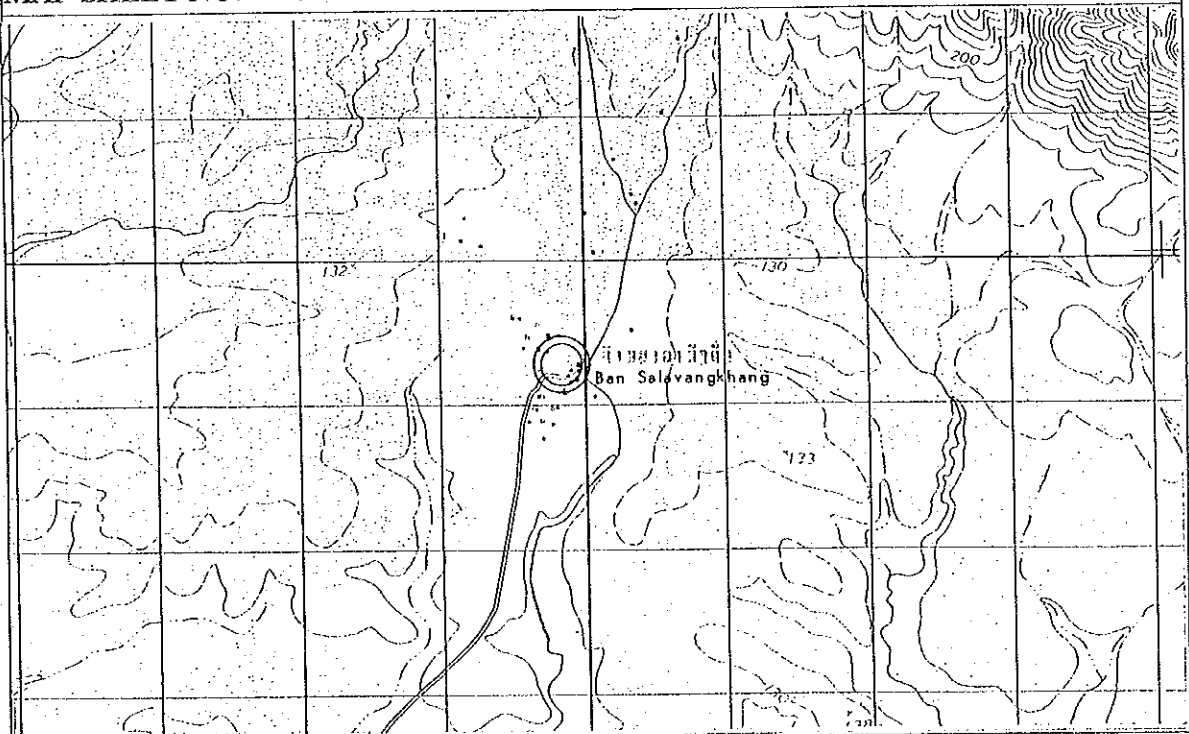
GPS 25

LATITUDE	14 °	55 ' 23.6671 "	N(m)	1,650,720.517
LONGITUDE	107 °	3 ' 0.6841 "	E(m)	720,500.095
			H(m)	132.070

LOCATION IN 1: 50,000 MAP:

MAP SHEET NO: 6438 IV

NAME: B. SALAVANGKHANG



DESCRIPTION OF GPS STATION

STATION NO:	GPS 026	DISTRICT:	M. SANXAI
TYPE:		PROVINCENCE:	ATTAPU

METHOD OF APPROACH:

The station was established in the Hochiminh trail, about 6 Km from Ban Paam, which is about 27 Km north east from Attapu. Approached to the site for monumentation and signalisation by 4WD vehicle .

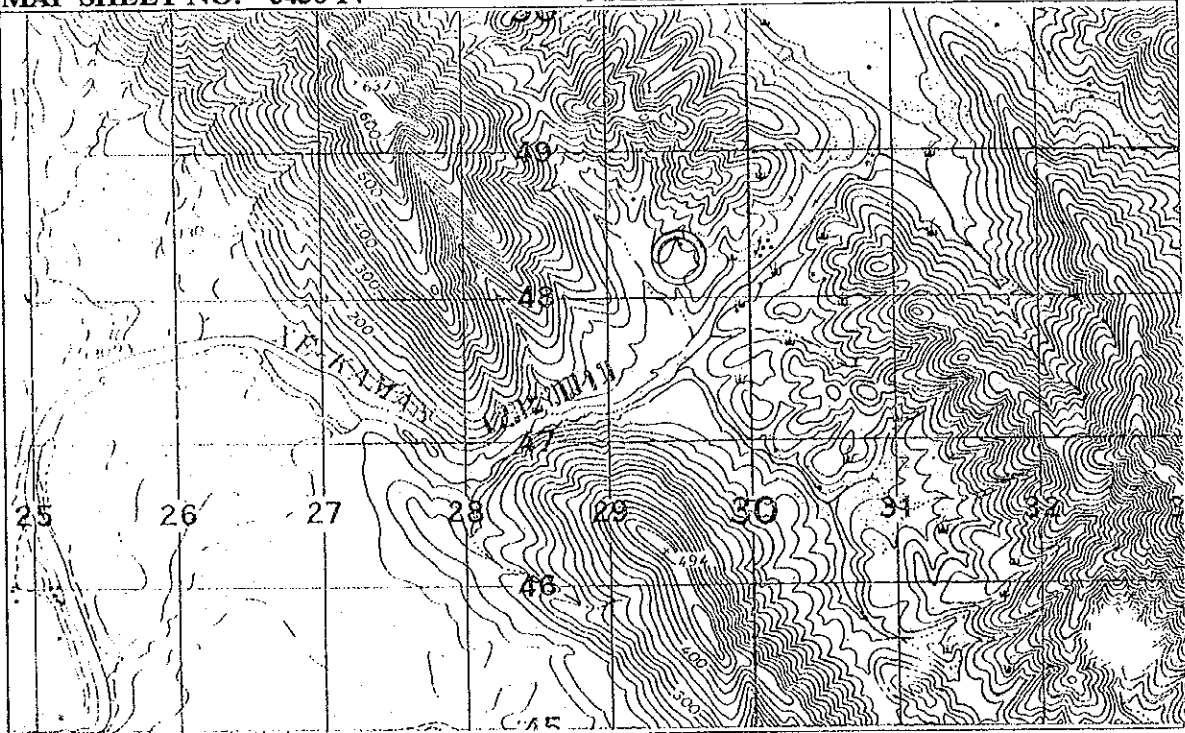
GPS 26

LATITUDE	14 ° 53 ' 42.2886 "	N(m)	1,647,686.004
LONGITUDE	107 ° 7 ' 51.9763 "	E(m)	729,235.810
		H(m)	128.505

LOCATION IN 1: 50,000 MAP:

MAP SHEET NO: 6438 IV

NAME: B. SALAVANGKHANG



DESCRIPTION OF GPS STATION

STATION NO:	GPS 027	DISTRICT:	SANXAI
TYPE:		PROVIENCE:	ATTAPU

METHOD OF APPROACH:

The station was established along the disused Hochiminh trail across the Xekaman river. Approached to the site for monumentation, signalisation and observation by helicopter .

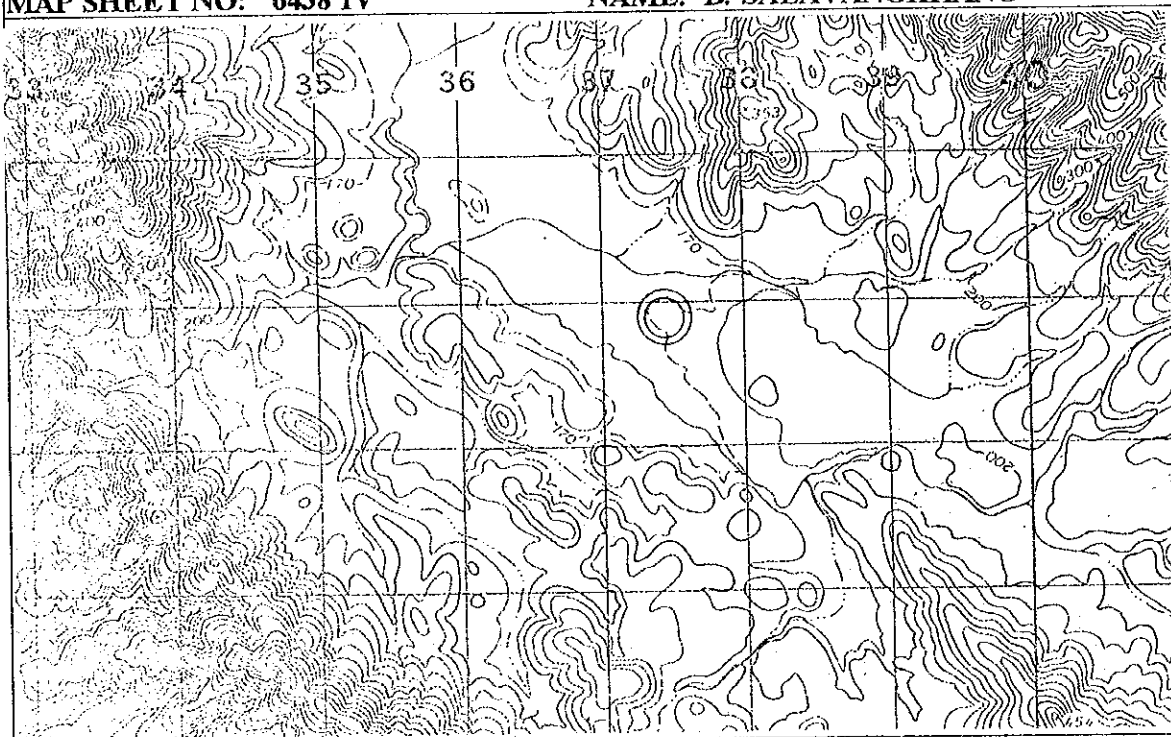
GPS 27

LATITUDE	14 ° 52 ' 18.1422 "	N(m)	1,645,170.697
LONGITUDE	107 ° 11 ' 57.4837 "	E(m)	736,600.095
		H(m)	178.910

LOCATION IN 1: 50,000 MAP:

MAP SHEET NO: 6438 IV

NAME: B. SALAVANGKHIANG



DESCRIPTION OF GPS STATION

STATION NO:	GPS 028	DISTRICT:	SAMAKHIXAI
TYPE:		PROVIENCE:	ATTAPU

METHOD OF APPROACH:

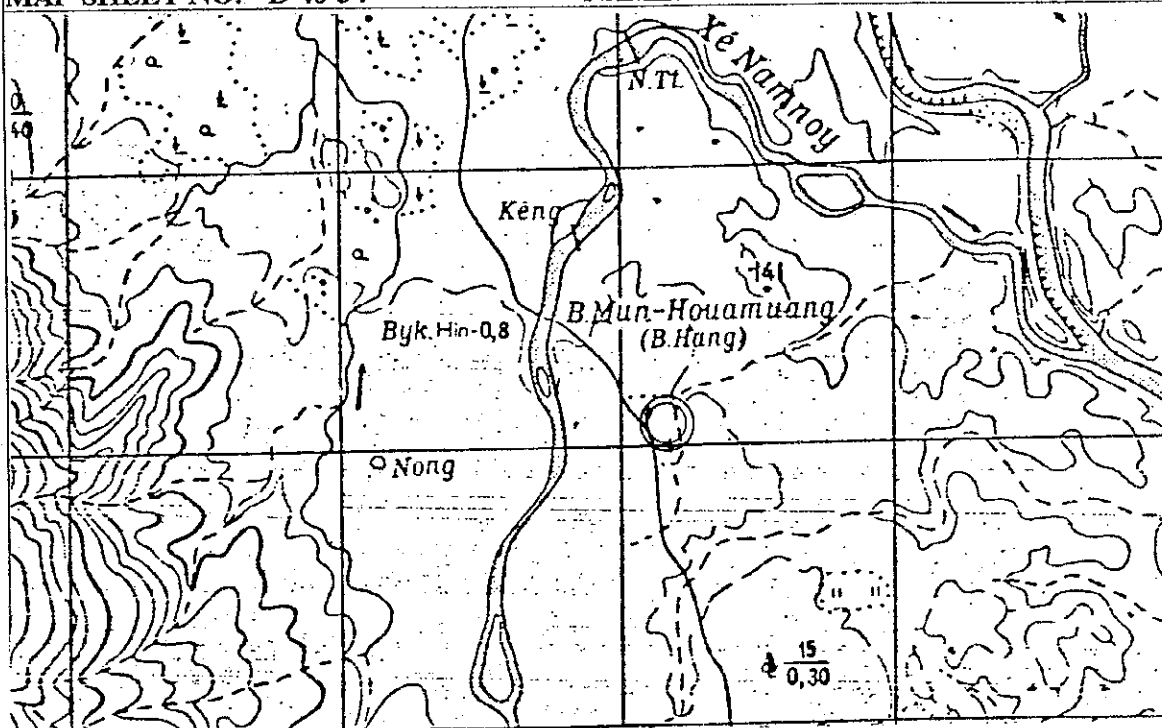
The station was established in the rice field along Xekong - Attapu road, about 0.5 km from Xenamnoy ferry. Approached to the site for monumentation, signalisation and observation by vehicle .

GPS 28					
LATITUDE	15 °	13 '	1.2989 "	N(m)	1,682,954.832
LONGITUDE	106 °	45 '	22.7314 "	E(m)	688,624.933
				H(m)	137.248

LOCATION IN 1: 100,000 MAP:

MAP SHEET NO: D 48-34

NAME: B. HOUAYKONG



DESCRIPTION OF GPS STATION

STATION NO:	GPS 029	DISTRICT:	SAMAKHIXAI
TYPE:		PROVIENCE:	ATTAPU

METHOD OF APPROACH:

The station was established in the open forest area along Xekong - Attapu road, about 4.5 Km from Xenamnoy ferry. Approached to the site for monumentation, signalisation and observation by vehicle .

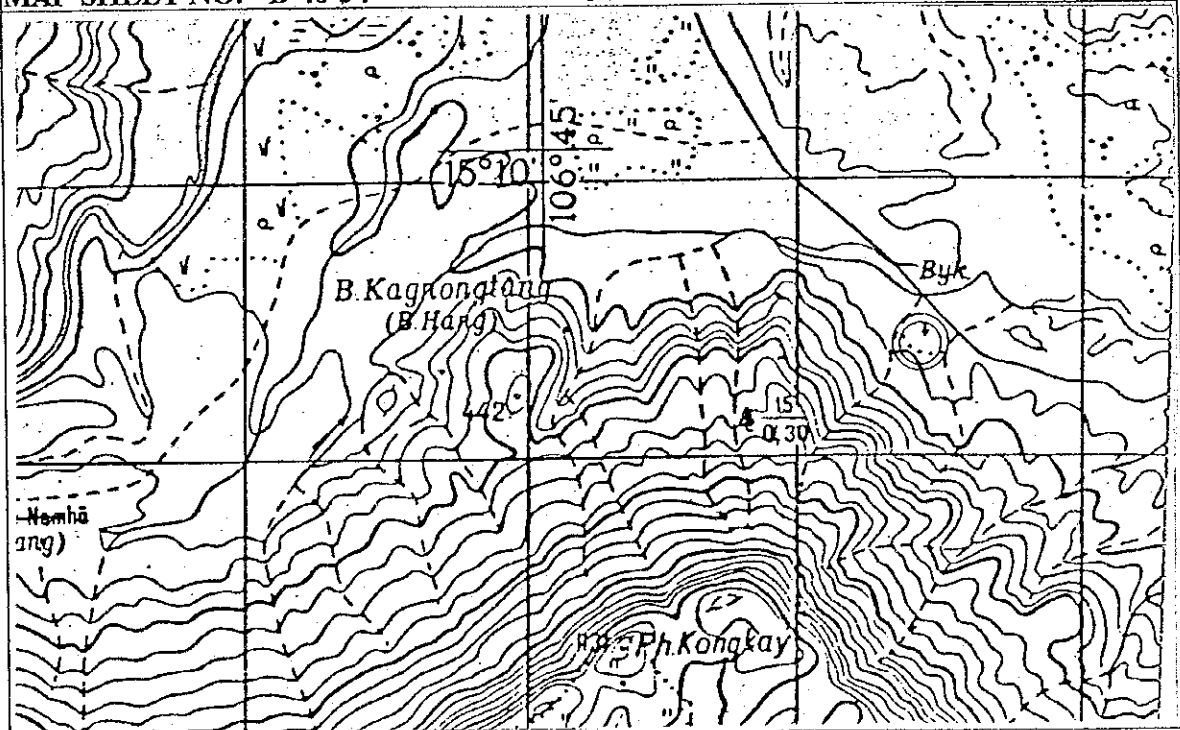
GPS 29

LATITUDE	15 °	9 '	9.1069 "	N(m)	1,675,840.031
LONGITUDE	106 °	46 '	51.4265 "	E(m)	691,329.816
				H(m)	150.381

LOCATION IN 1: 100,000 MAP:

MAP SHEET NO: D 48-34

NAME: B. HOUAYKONG



DESCRIPTION OF GPS STATION

STATION NO:	GPS 030	DISTRICT:	M. PAKXONG
TYPE:		PROVIENCE:	PAKSE

METHOD OF APPROACH:

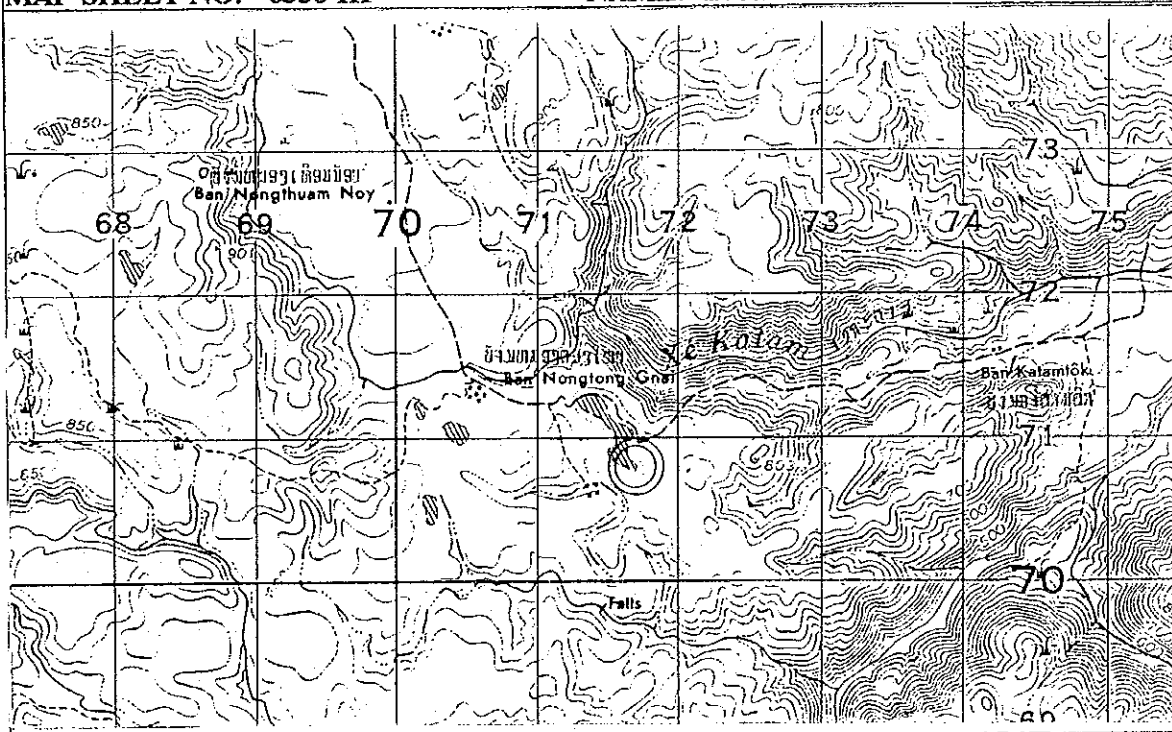
The station was established at the edge of lake at Nongthuam, which is about 45 minutes drive from Ban Houaykong. Approached to the site for monumentation, signalisation and observation by 4WD vehicle from B. Houaykong.

GPS 30					
LATITUDE	15 °	6 '	31.9323 "	N(m)	1,670,857.795
LONGITUDE	106 °	35 '	50.8026 "	E(m)	671,645.940
				H(m)	747.719

LOCATION IN 1: 50,000 MAP:

MAP SHEET NO: 6338 III NAME: B. HOUAYKONG

NAME: B. HOUAYKONG



DESCRIPTION OF GPS STATION

STATION NO:	GPS 031	DISTRICT:	M. PAKXONG
TYPE:		PROVINCENCE:	PAKSE

METHOD OF APPROACH:

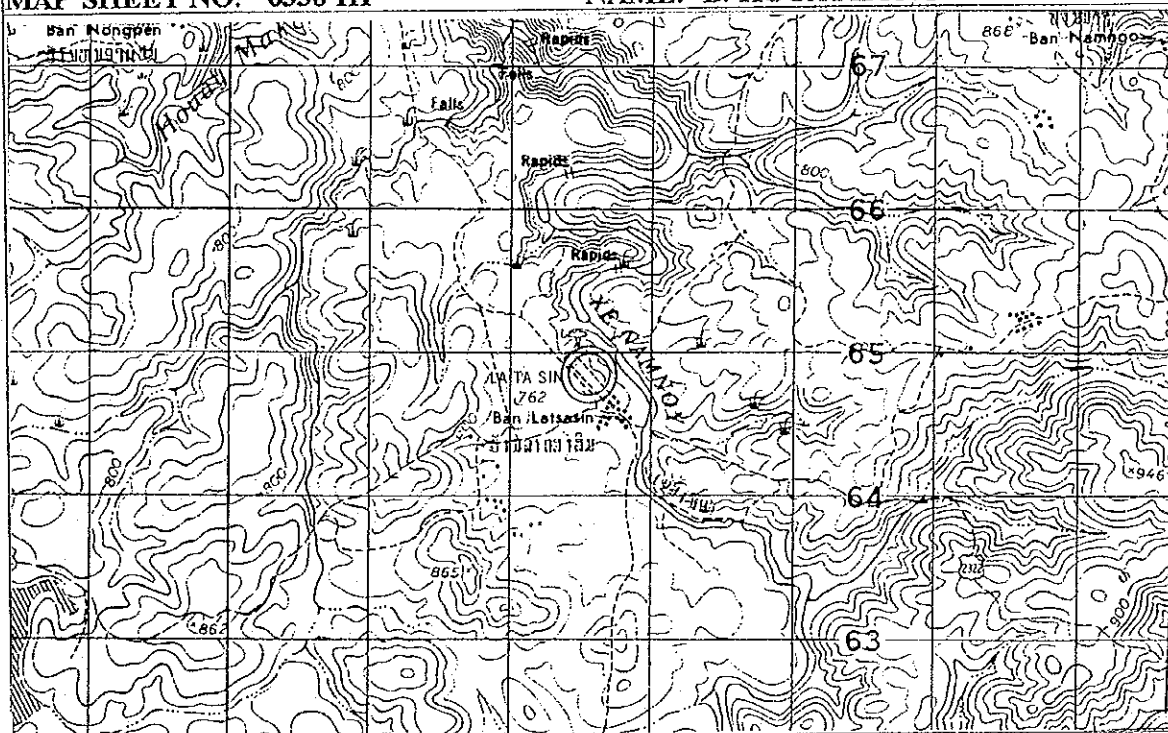
The station was established at the disused airfield in Ban Latsasin, which is about 30 minutes drive from Ban Houaykong. Approached to the site for monumentation, signalisation and observation by vehicle from B. Houaykong.

GPS 31
 LATITUDE 15 ° 3 ' 15.7813 " N(m) 1,664,836.463
 LONGITUDE 106 ° 36 ' 21.6130 " E(m) 672,609.732
 H(m) 751.183

LOCATION IN 1: 50,000 MAP:

MAP SHEET NO: 6338 III

NAME: B. HOUAYKONG



DESCRIPTION OF GPS STATION

STATION NO:	GPS 032	DISTRICT:	M. PAKXONG
TYPE:		PROVIENCE:	PAKSE

METHOD OF APPROACH:

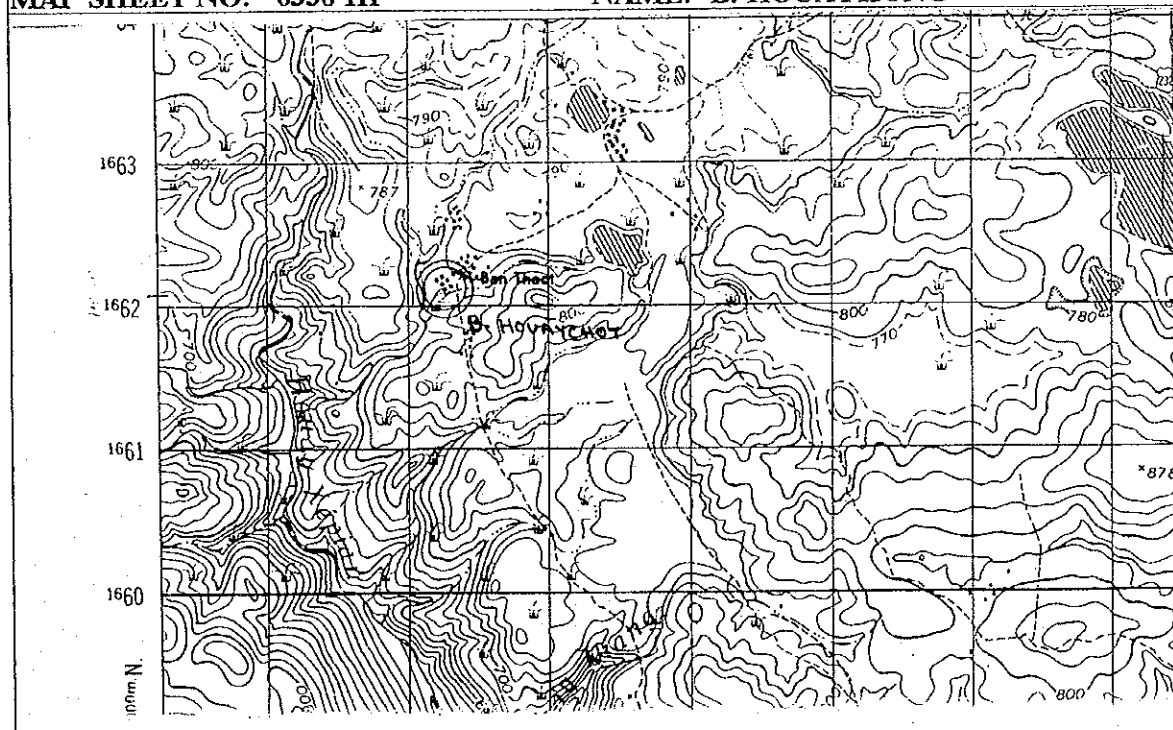
The station was established at Ban Houaychot, which is about 30 minutes drive from Ban Houaykong. Approached to the site for monumentation, signalisation and observation by vehicle from B. Houaykong.

GPS 32					
LATITUDE	15 °	1 '	59.1816 "	N(m)	1,662,417.512
LONGITUDE	106 °	31 '	14.4972 "	E(m)	663,455.098
				H(m)	758.406

LOCATION IN 1: 50,000 MAP:

MAP SHEET NO: 6338 III NAME: B. HOUAYKONG

NAME: B. HOUAYKONG



DESCRIPTION OF GPS STATION

STATION NO:	GPS 033	DISTRICT:	M. PAKXONG
TYPE:		PROVIENCE:	PAKXONG

METHOD OF APPROACH:

The station was established near Ban Houayxoy. Approached to the site for monumentation, signalisation and observation by helicopter.

GPS 33
 LATITUDE 14 ° 58 ' 8.0870 " N(m) 1,655,322.134
 LONGITUDE 106 ° 31 ' 44.8387 " E(m) 664,410.277
 H(m)

LOCATION IN 1: 50,000 MAP:

MAP SHEET NO: 6338 IV

NAME: B. KONGHANG



DESCRIPTION OF GPS STATION

STATION NO:	GPS 034	DISTRICT:	M. PAKXONG
TYPE:		PROVIENCE:	PAKSE

METHOD OF APPROACH:

The station was established south east of Ban Namhan across the Xenamnoy river. Approached to the site for monumentation, signalisation and observation by helicopter.

GPS 34					
LATITUDE	14 °	56 ' 22.9620 "	N(m)	1,652,212.023	
LONGITUDE	106 °	41 ' 2.2242 "	E(m)	681,085.932	
			H(m)		

LOCATION IN 1: 50,000 MAP:

MAP SHEET NO: 6338 I NAME: ATTAPU

NAME: ATTAPU



DESCRIPTION OF GPS STATION

STATION NO:	GPS 035	DISTRICT:	SAMAKHIXAI
TYPE:		PROVINECE:	ATTAPU

METHOD OF APPROACH:

The station was established at the rice field in Ban Nasakhan along the road from Attapu to Xekong, north west of Ban Hatsati. It is about 8 Km from Attapu. Approached to the site for monumentation, signalisation and observation by Vehicle from Attapu.

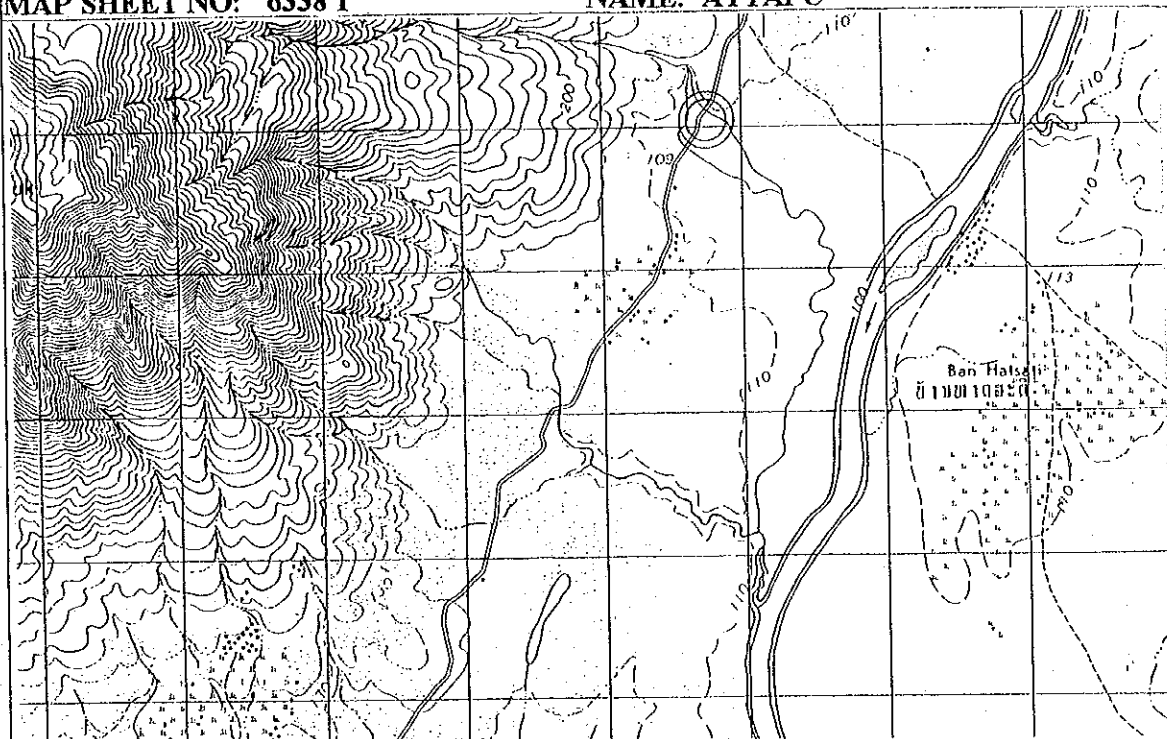
GPS 35

LATITUDE	14 ° 54 ' 23.6888 "	N(m)	1,648,668.203
LONGITUDE	106 ° 49 ' 38.7612 "	E(m)	696,550.022
		H(m)	98.997

LOCATION IN 1: 50,000 MAP:

MAP SHEET NO: 6338 I

NAME: ATTAPU



DESCRIPTION OF GPS STATION

STATION NO:	GPS 036	DISTRICT:	SAMAKHIXAI
TYPE:		PROVIENCE:	ATTAPU

METHOD OF APPROACH:

The station was established at the road side on the way from Attapu to Xekong which is about 4 Km from Attapu. Approached to the site for monumentation signalisation and observation by Vehicle from Attapu.

```

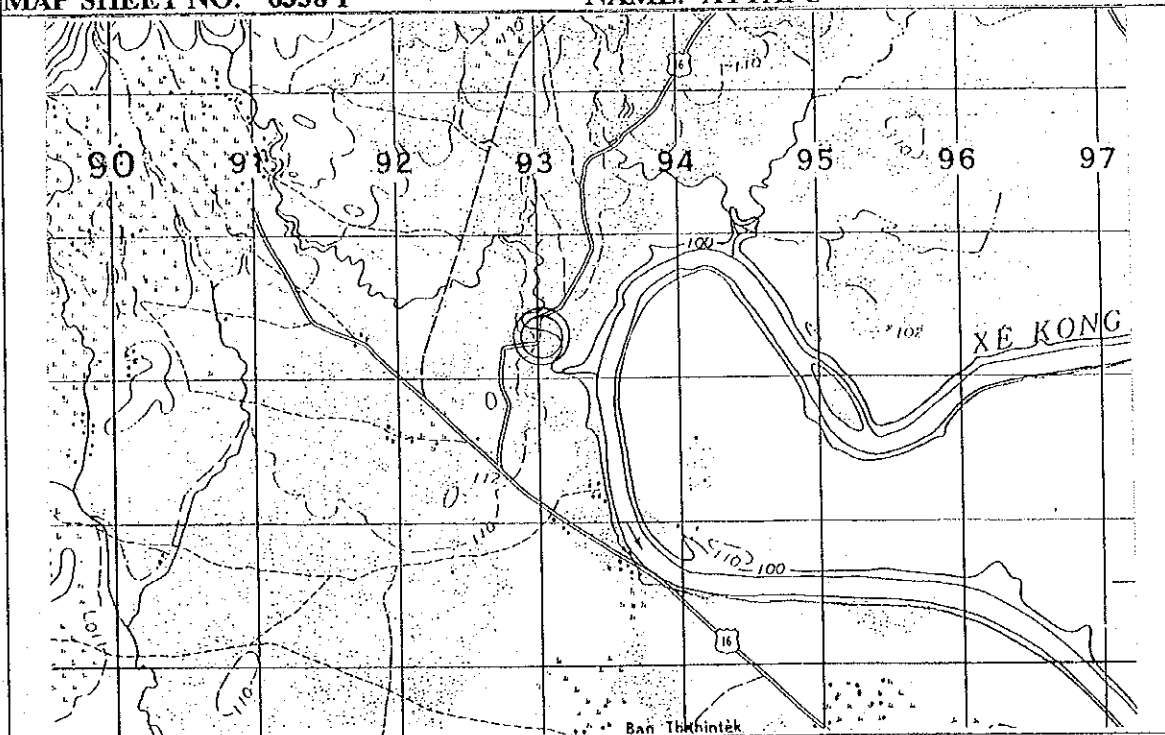
GPS 36
LATITUDE    14 ° 50 ' 54.9058 " N(m) 1,642,222.056
LONGITUDE   106 ° 47 ' 37.4967 " E(m) 692,977.622
                                     H(m) 95.374

```

LOCATION IN 1: 50,000 MAP:

MAP SHEET NO: 6338 I NAME: ATTAPU

NAME: ATTAPU



DESCRIPTION OF GPS STATION

STATION NO:	GPS 037	DISTRICT:	SAMAKHIXAI
TYPE:		PROVIENCE:	ATTAPU

METHOD OF APPROACH:

The station was established at the road side on the way from Attapu to Ban Khong Lom, South west of Attapu, which is about 8 Km from Attapu. Approached to the site for monumentation, signalisation and observation by Vehicle from Attapu.

GPS 37

LATITUDE	14 ° 45 ' 45.8658 "	N(m)	1,632,661.370
LONGITUDE	106 ° 43 ' 8.7745 "	E(m)	685,017.741
		U(m)	91.588

LOCATION IN 1: 50,000 MAP:

MAP SHEET NO: 6338 IV

NAME: KONGHANG

