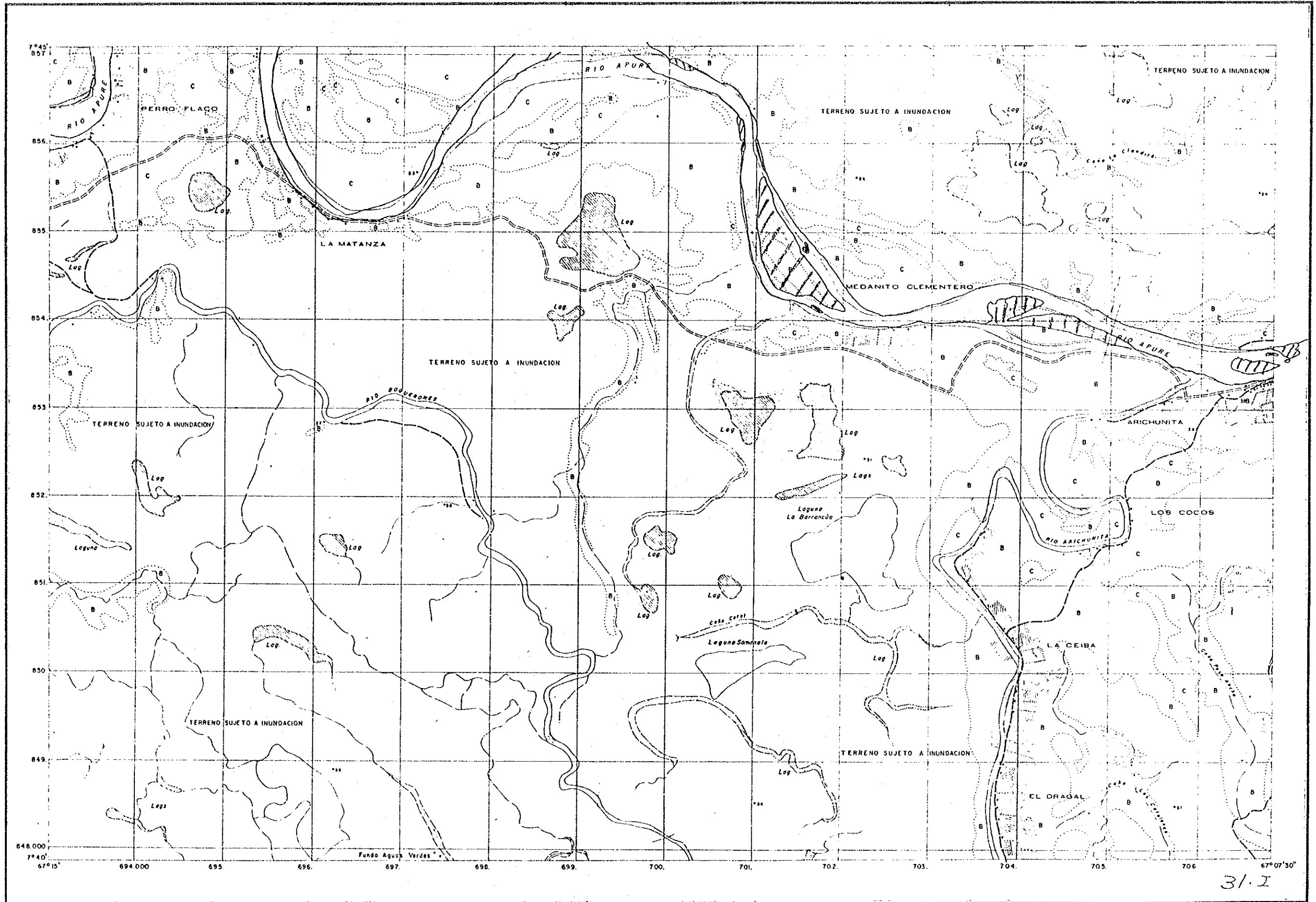
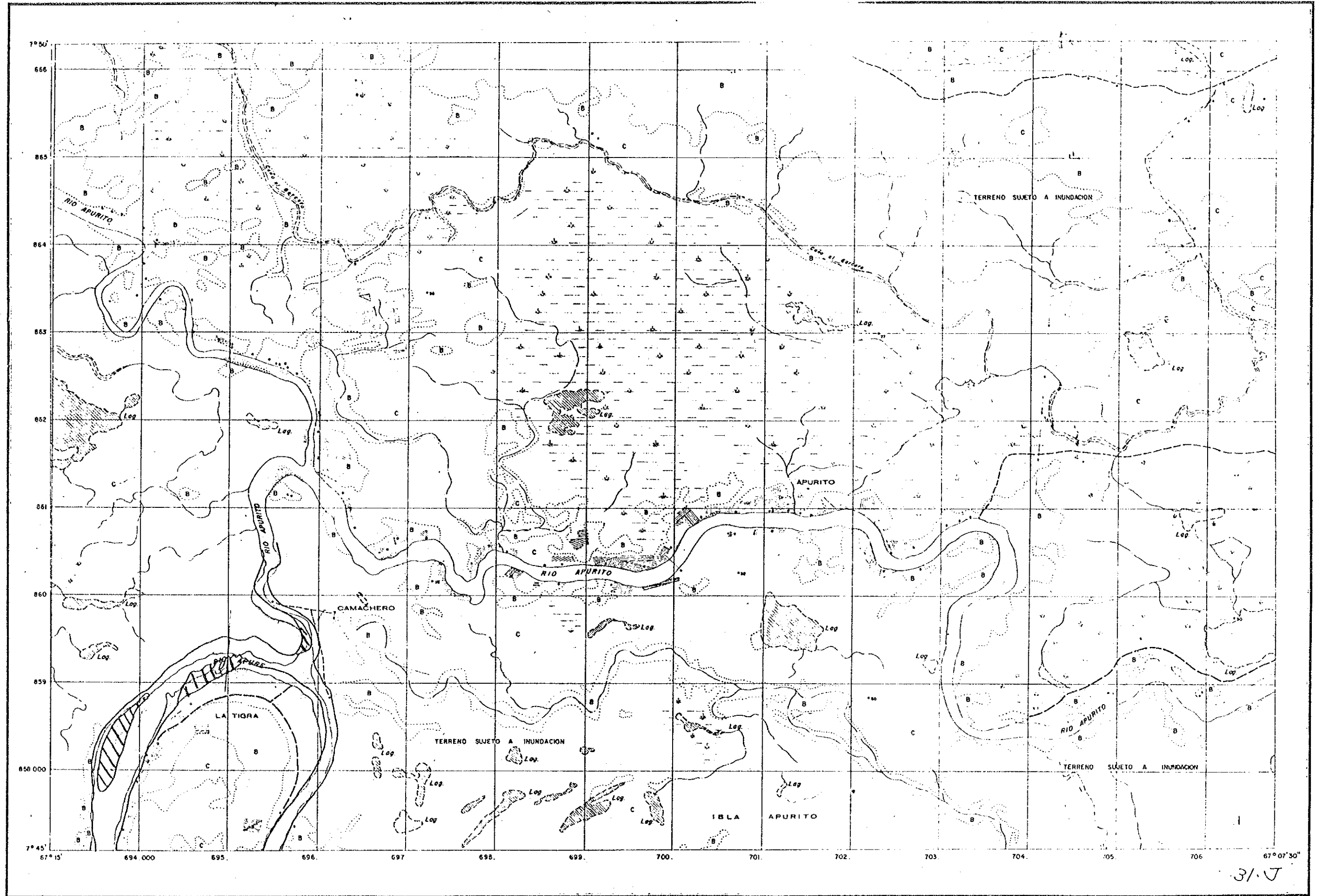




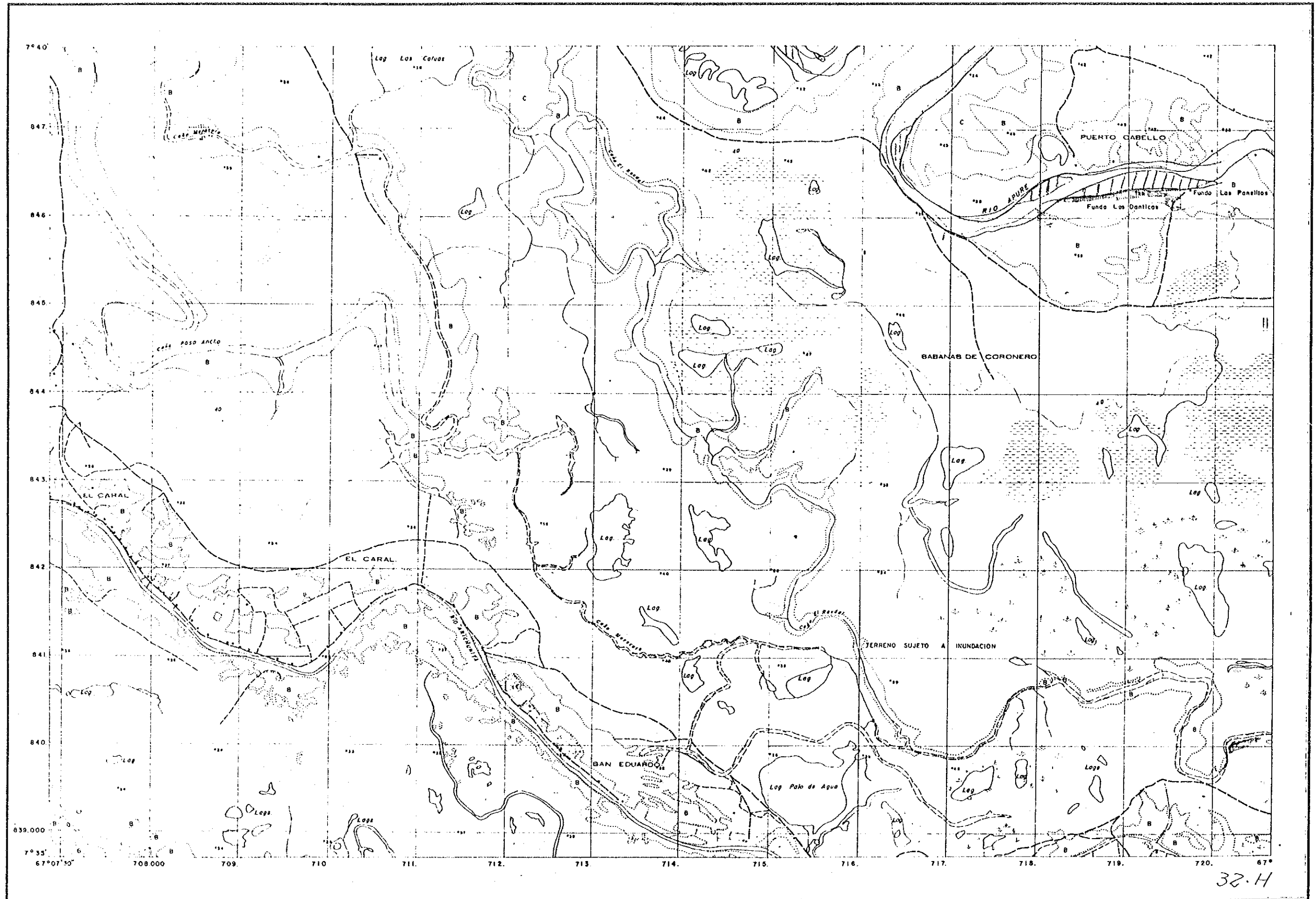
LA MATANZA



APURITO



PUERTO CABELLO



32.H

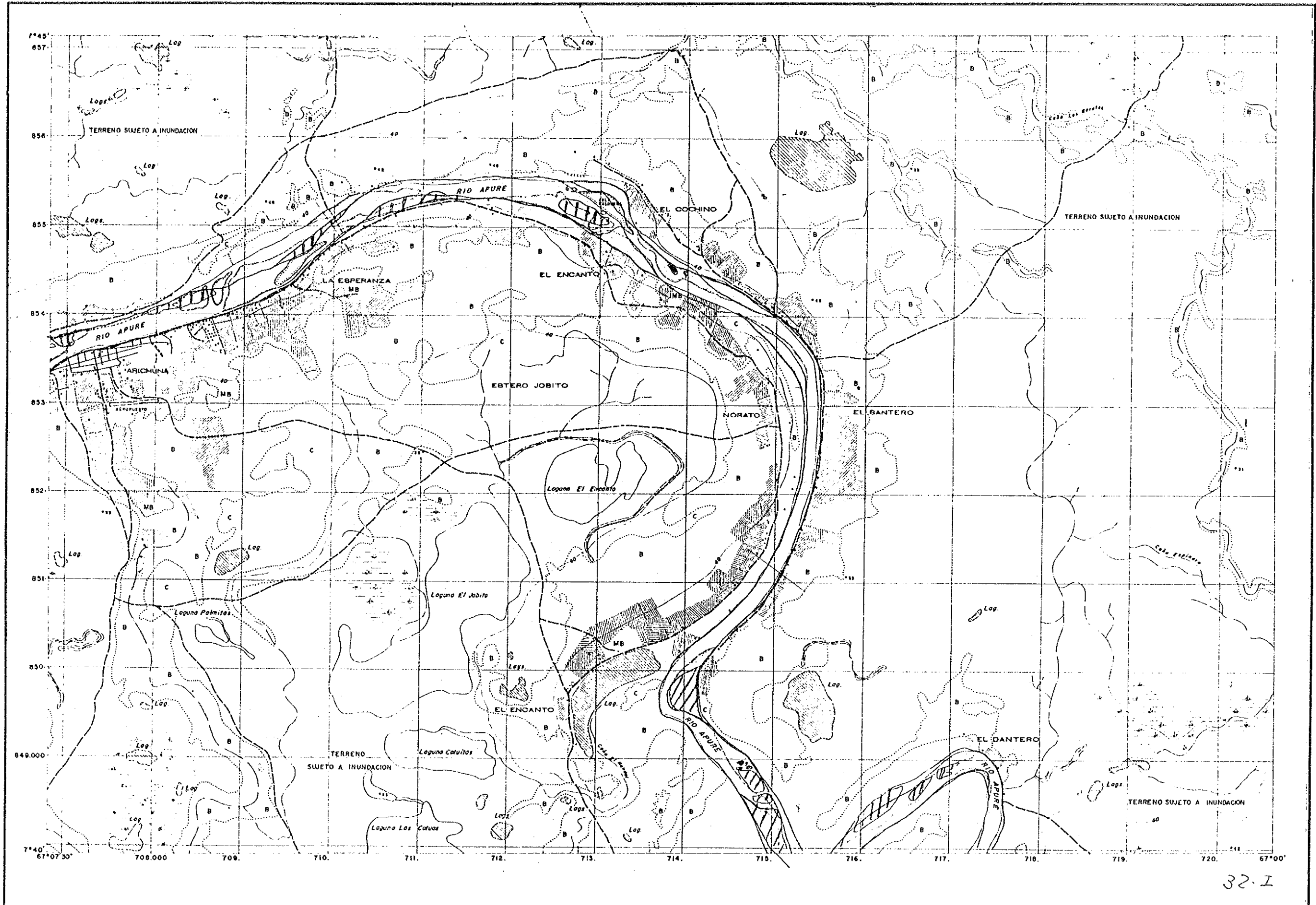


ARICHUNA

EDICIÓN DCN
1971

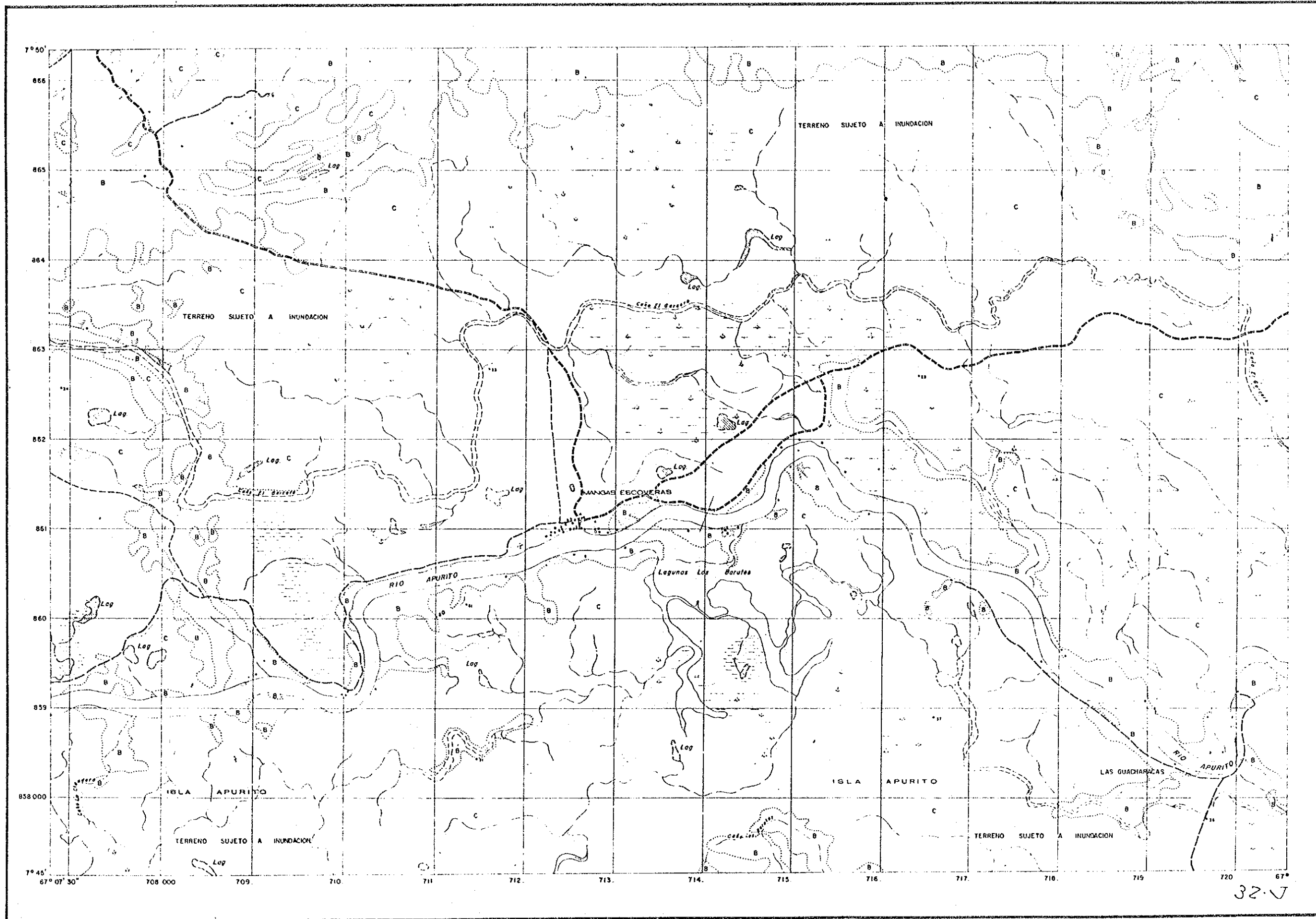
LA REFERENCIA DE ESTE MAPA ES

6739-II-SE



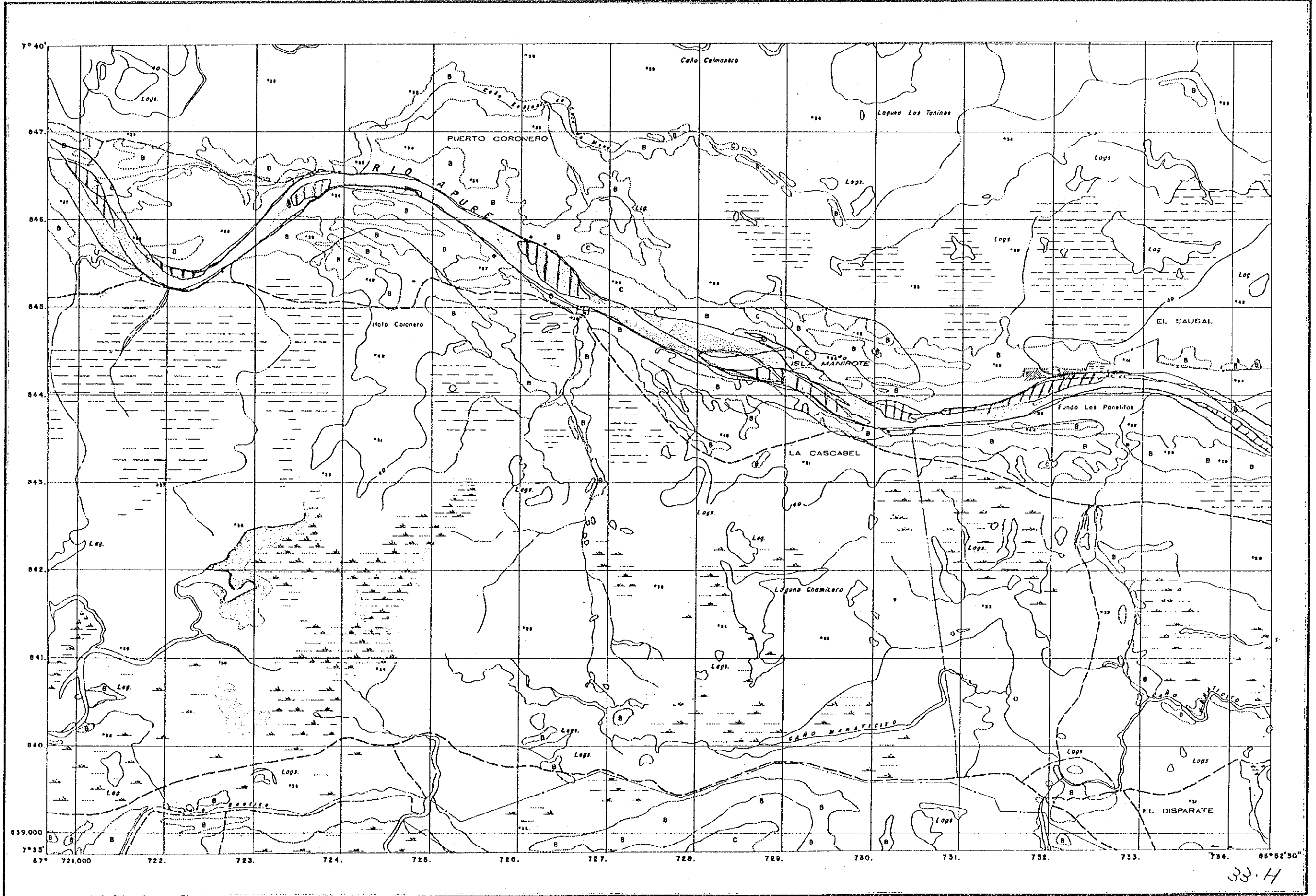
32.1

MANGAS ESCOVERAS





EL SAUSAL



33.4

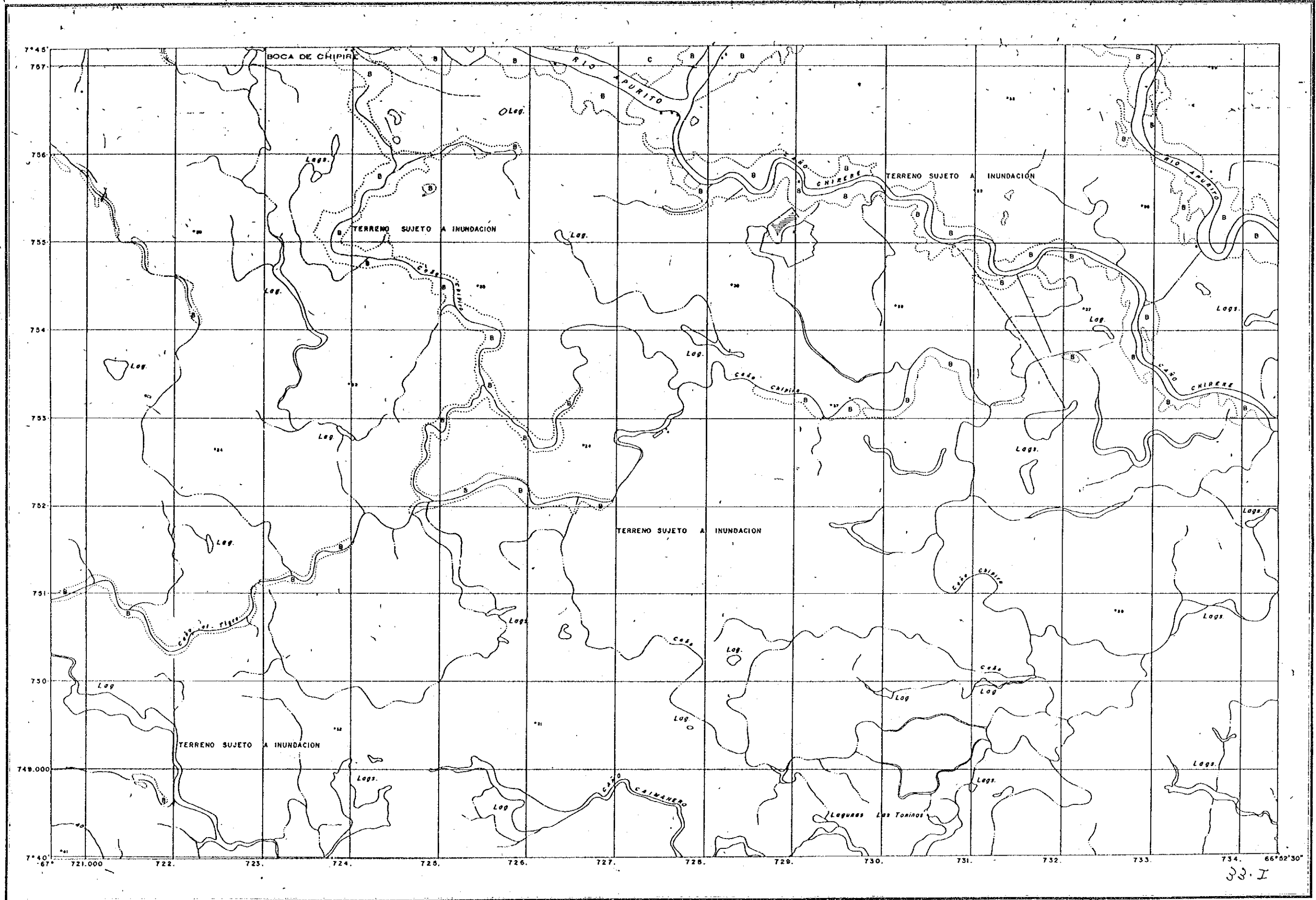


BOCA DE CHIPIRE

EDICIÓN DCN
1974

LA REFERENCIA DE ESTE MAPA ES:

6839-III-SO



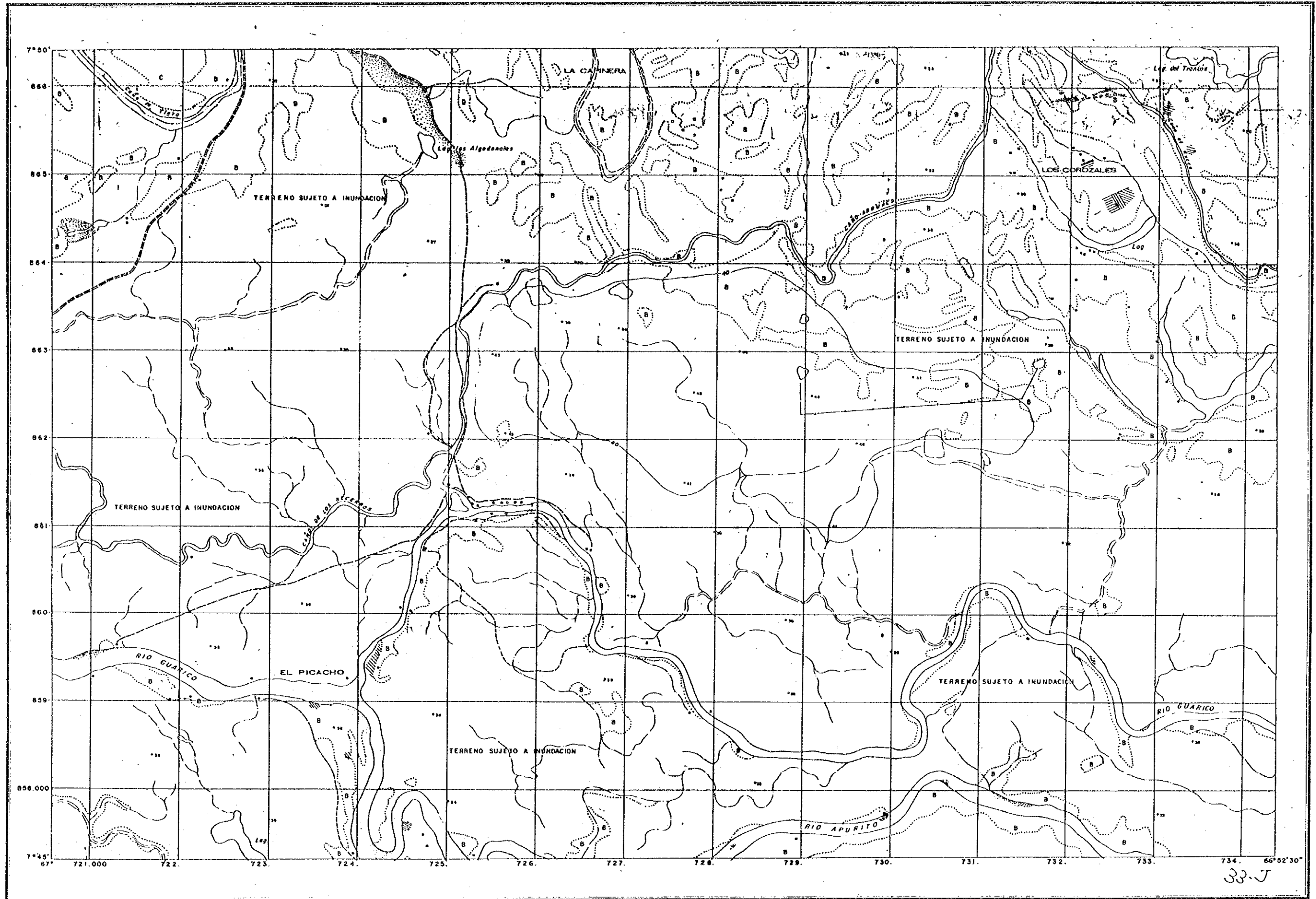
33. I



LOS COROZALES

EDICION I DCM
1974

LA REFERENCIA DE ESTE MAPA ES:
6839-II-NO



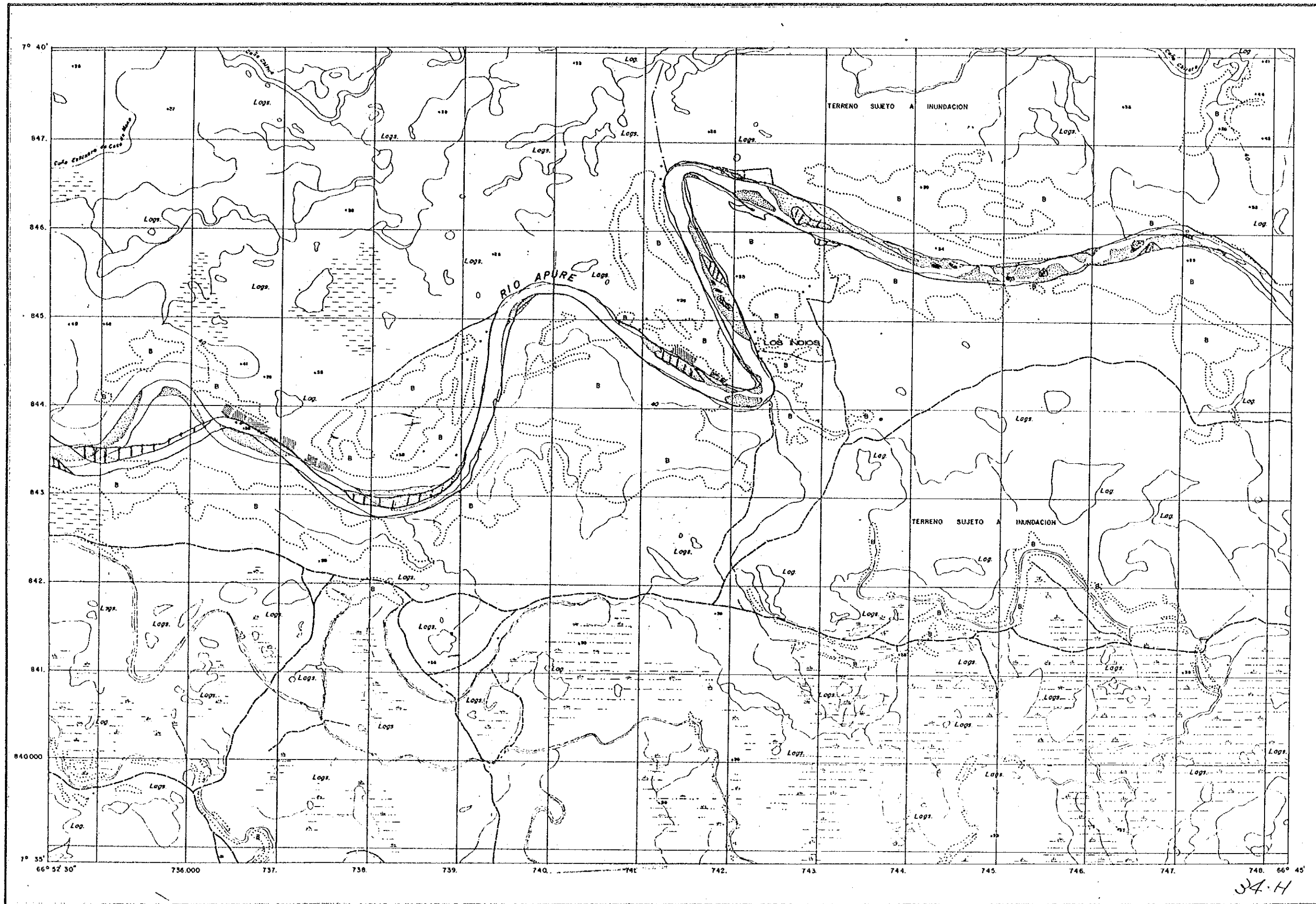
33-J



LOS INDIOS

EDICION I DCN
1973

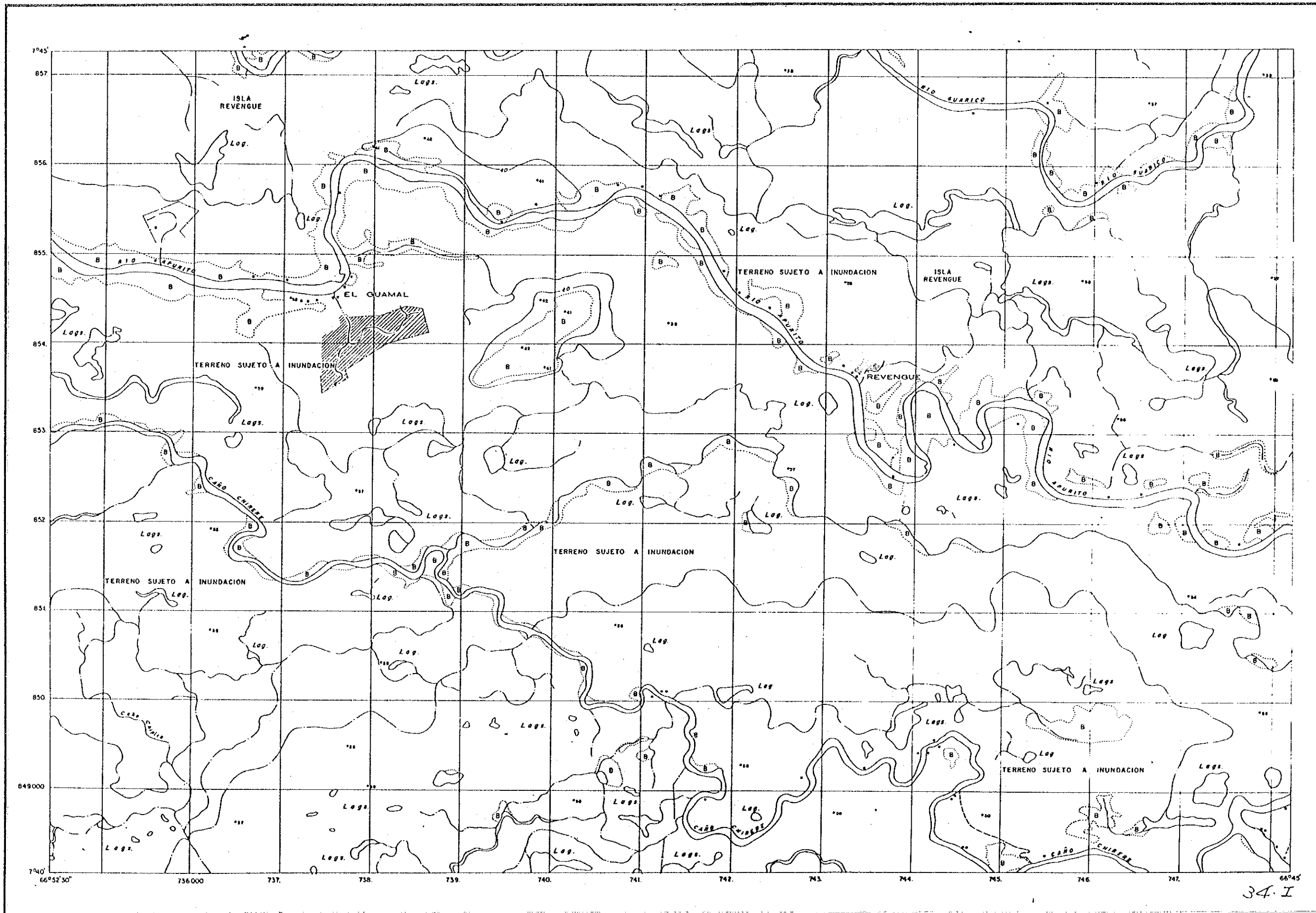
6838-IV-NE



J.A.H

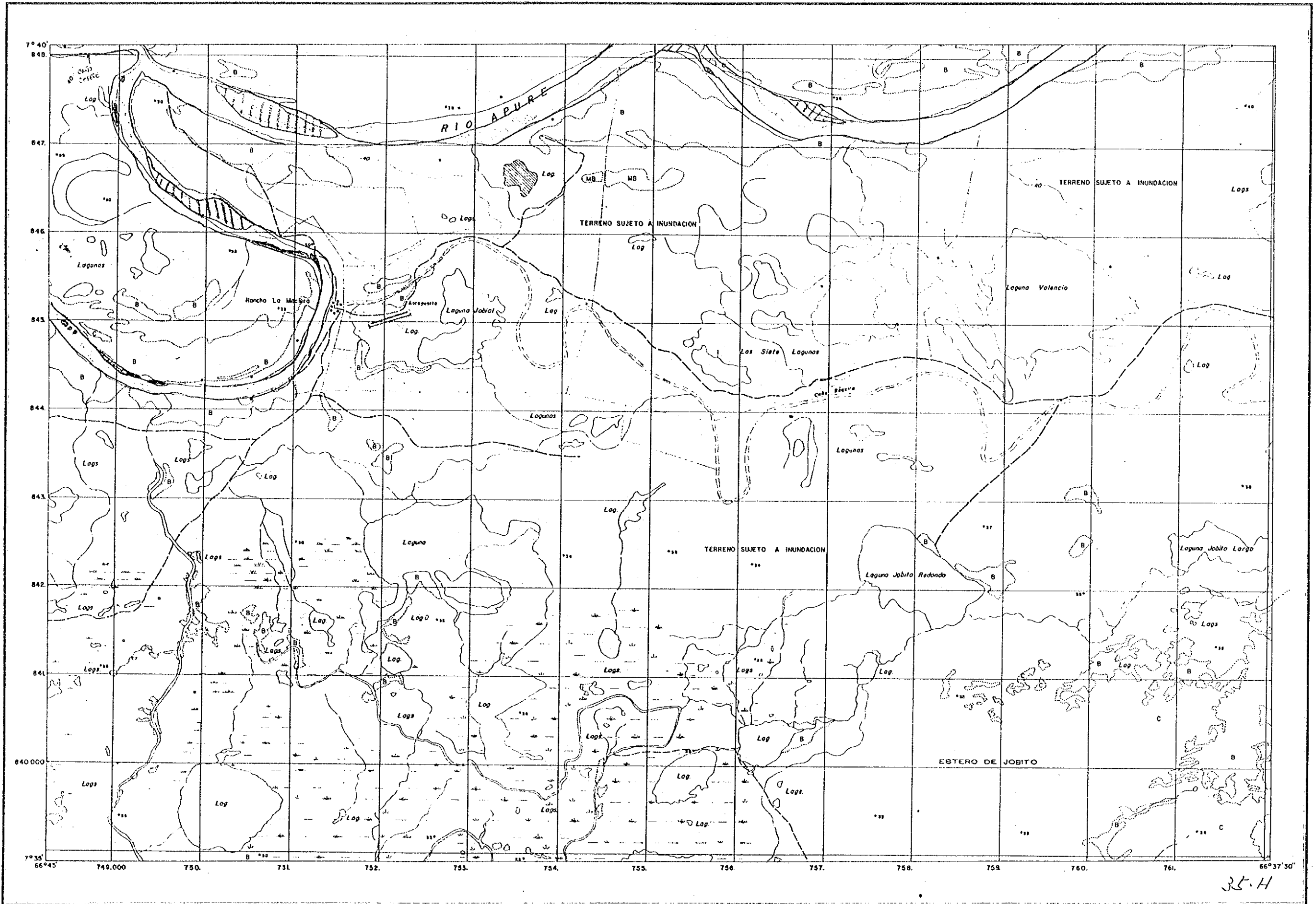


EL GUAMAL





RANCHO LA MACIERA



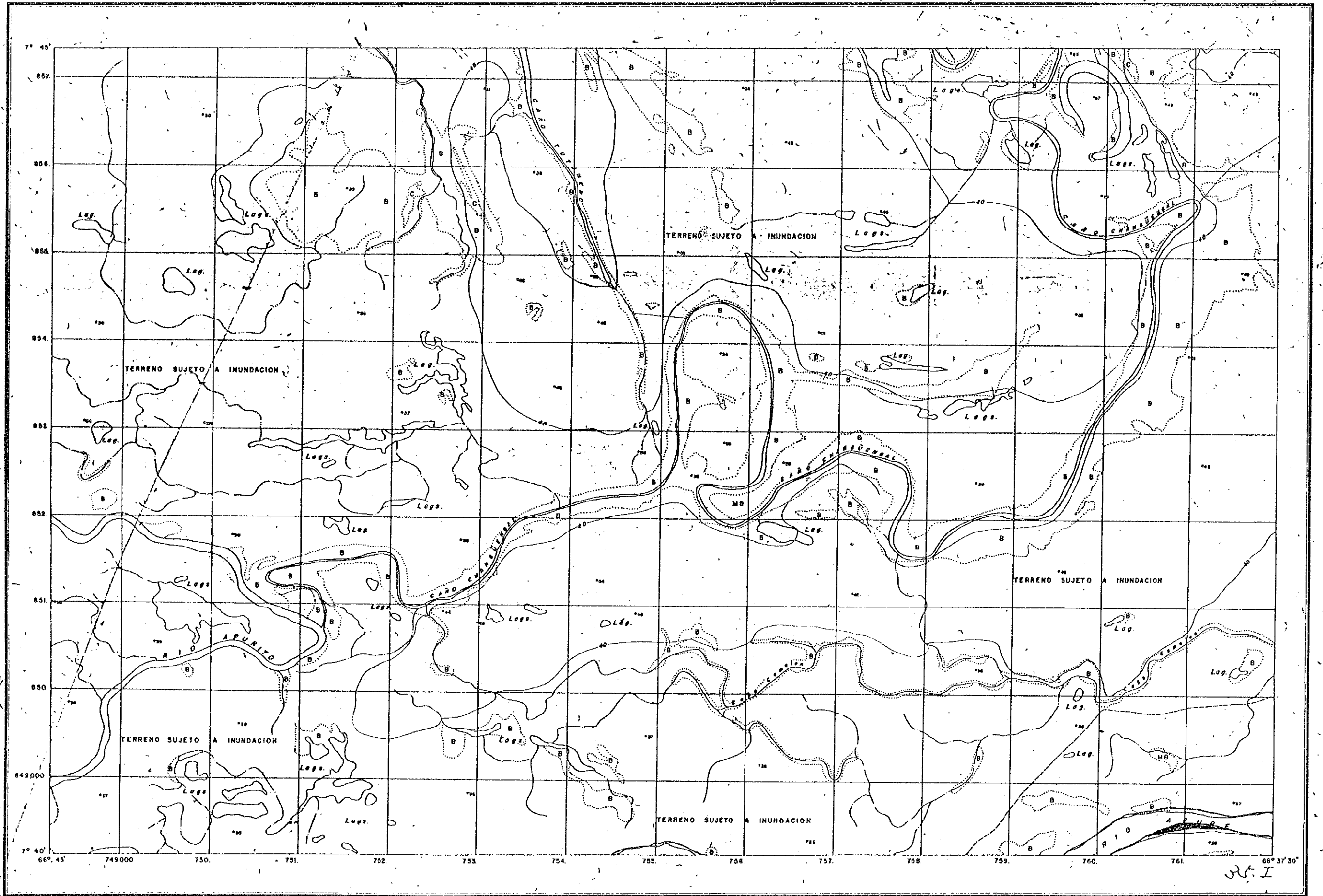
35.4



CAÑO CHANGÜENGAL

EDICION DCN
1974

LA REFERENCIA DE ESTE MAPA ES:
6839-II-SO

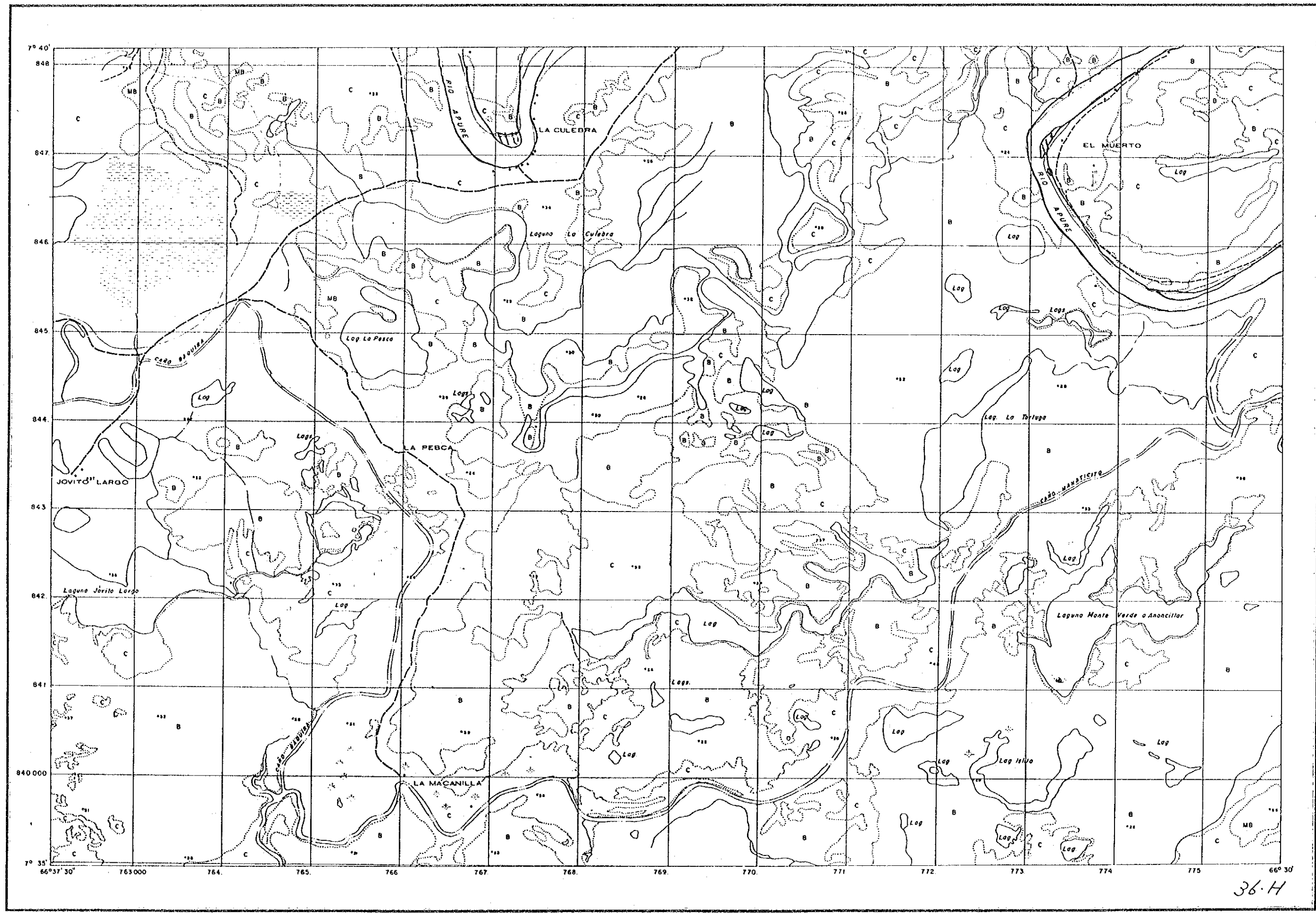




LA CULEBRA

EDICION I DCM
1973

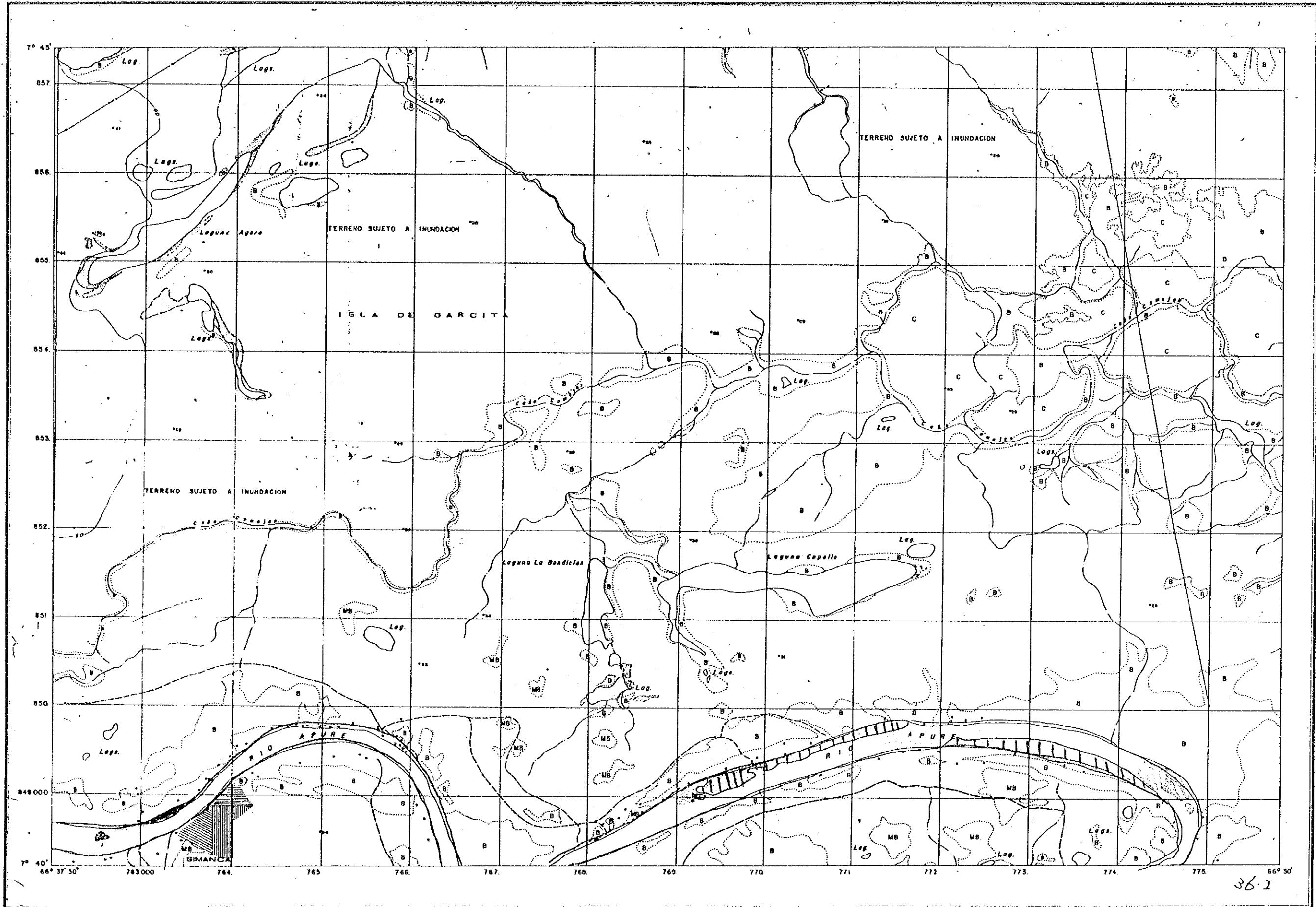
LA REFERENCIA DE ESTE MAPA ES
6838- I -NE



36-H



RIO APURE



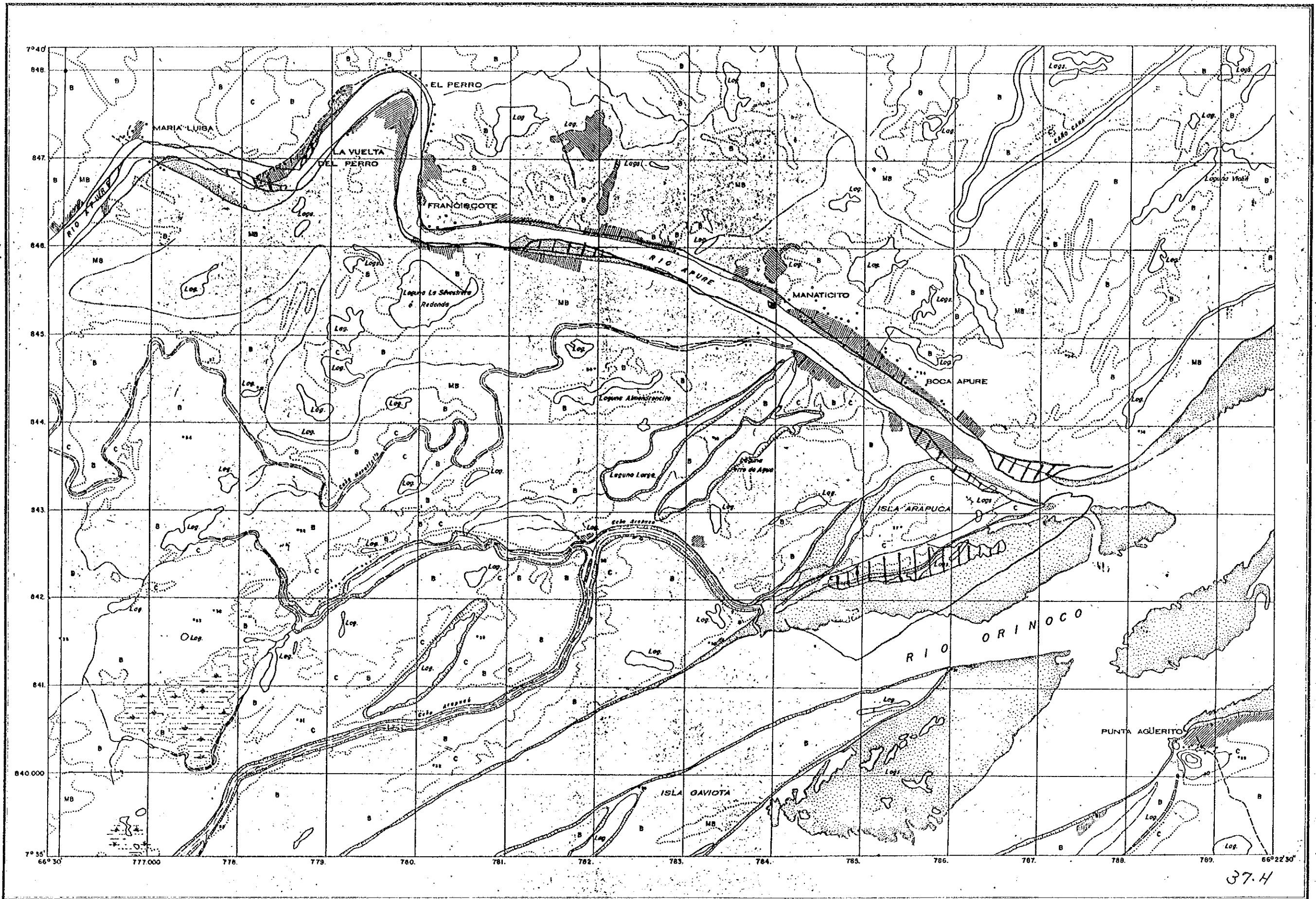
36-I



MANATICITO

EDICION I DCN
1973

LA REFERENCIA DE ESTE MAPA ES:
6938-IV-NO



37.4

1111