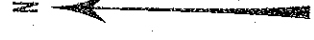
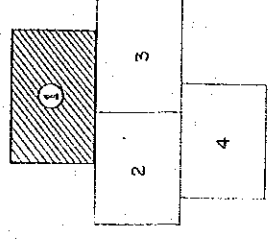


INDEX SHEET



NOTE

REFERENCE

HORIZONTAL  
BM 1 C. 900000.000 N° 50000.000 K + 403.789

VERTICAL  
E. N. 30. 407427 INSTITUT NATIONAL GEOMETRIQUE

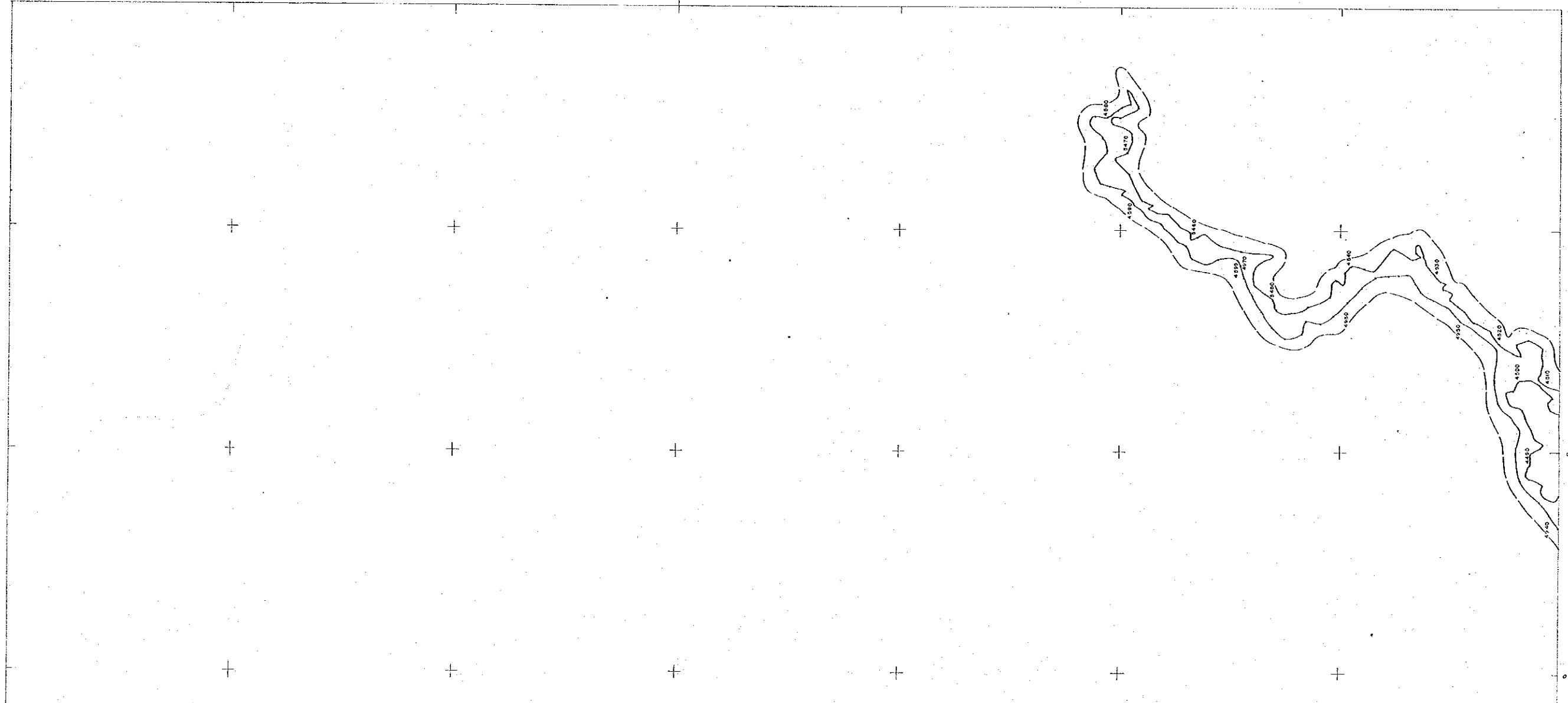
### LEGENDE

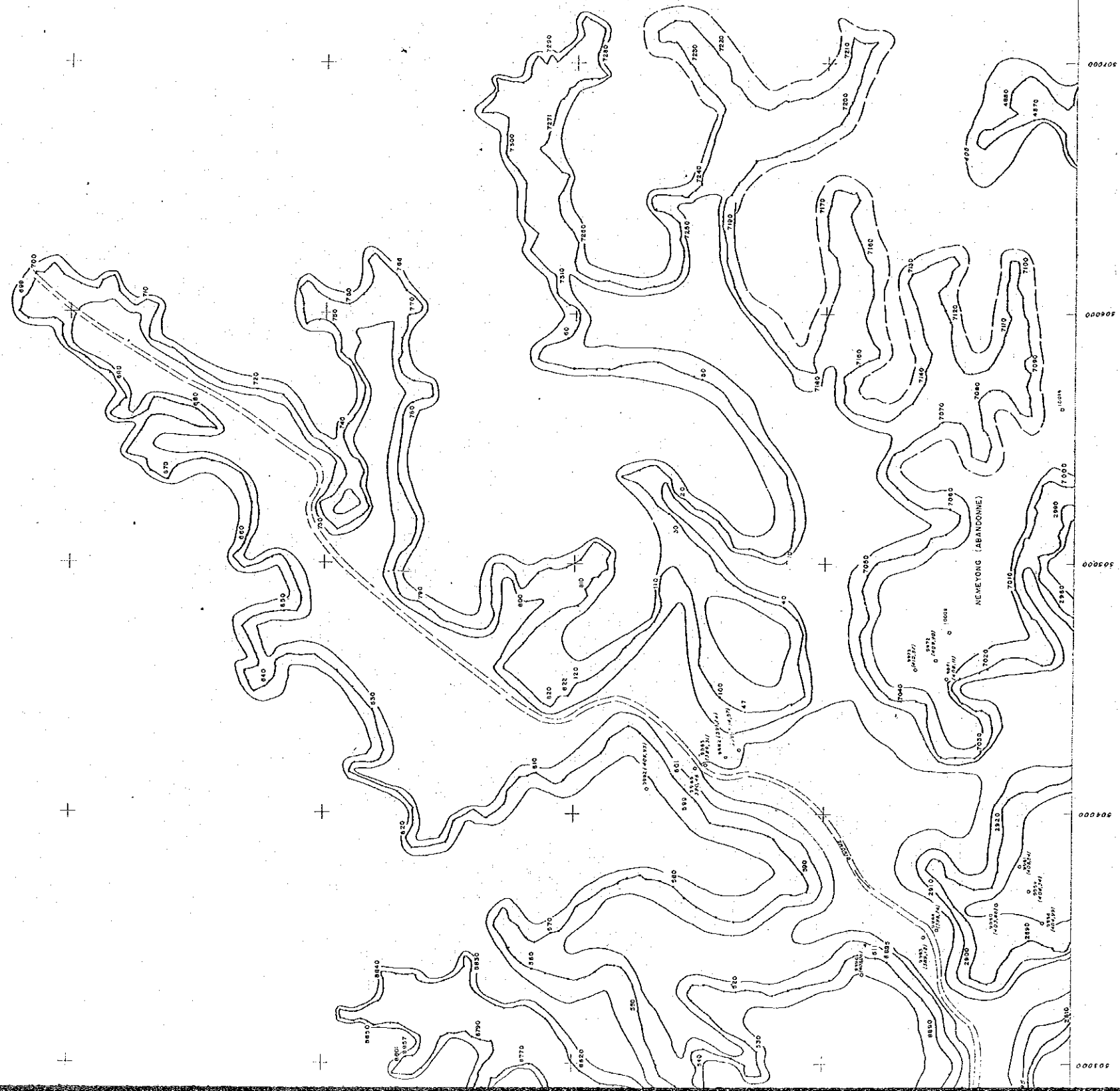
POINTE DE REPERE CONCRETE PILE	◊	ARMES TRIZI	◊ ◊ ◊
STATION	△	CITE	◊ ◊ ◊
ALIMENTATION POINT	◊	OFFICE	◊ ◊ ◊
ALIMENTATION POINT	•	COMMUNTE	◊ ◊ ◊
POINT DE CONTRÔLE CONVOI POINT	◊	GRANDS CLOUE	◊ ◊ ◊
MARQUE	◊	LIMITES DES PLANTATIONS	◊ ◊ ◊
MARQUE	◊	PARCOURS DE PLANTATION	◊ ◊ ◊
MARQUE	◊	ARRES ALAINE GRAIS	◊ ◊ ◊
BUREAU ADMINISTRATIF ADJONCTE OFFICE	◊	TAILLES UNDEK BUSH	◊ ◊ ◊
PARCOURS DE POLICE OFFICE	◊	PARCOURS DE PLANTATION	◊ ◊ ◊
ESCALE	◊	PARCOURS PARK	◊ ◊ ◊
ESPACE	◊	PARCOURS RIVER	◊ ◊ ◊
CHURCH	◊	PARCOURS SMALL RIVER	◊ ◊ ◊
CLIQUE	◊	PARCOURS SAC	◊ ◊ ◊
ROUTES EN ADAG 2M	◊	PARCOURS STATION HYDRAULIQUE	◊ ◊ ◊
ADAG 1.5M	◊	PARCOURS HYDROMETRIC STATION	◊ ◊ ◊
PASSAGE PIETON	◊	PARCOURS BARRAGE	◊ ◊ ◊
POST PATH	◊	PARCOURS STATION	◊ ◊ ◊
ROUTE	◊	PARCOURS DAMS	◊ ◊ ◊
ROUTE EN BOIS	◊	PARCOURS DAM	◊ ◊ ◊
ROUTE EN BOIS	◊	PARCOURS DAM	◊ ◊ ◊
DALOT EN BOIS	◊	PARCOURS DAM	◊ ◊ ◊
DAMBOU ARRIERE	◊	PARCOURS DAM	◊ ◊ ◊
CONVOI DE NIVEAU	◊	PARCOURS DAM	◊ ◊ ◊
VOISINE	◊	PARCOURS DAM	◊ ◊ ◊
AGROUPE	◊	PARCOURS DAM	◊ ◊ ◊
CHAPELLE	◊	PARCOURS DAM	◊ ◊ ◊
CAMP	◊	PARCOURS DAM	◊ ◊ ◊
CHEVA	◊	PARCOURS DAM	◊ ◊ ◊
CULTURE VIVIERE	◊	PARCOURS DAM	◊ ◊ ◊
POUD CAS	◊	PARCOURS DAM	◊ ◊ ◊
PARCOURS	◊	PARCOURS DAM	◊ ◊ ◊
PARCOURS	◊	PARCOURS DAM	◊ ◊ ◊

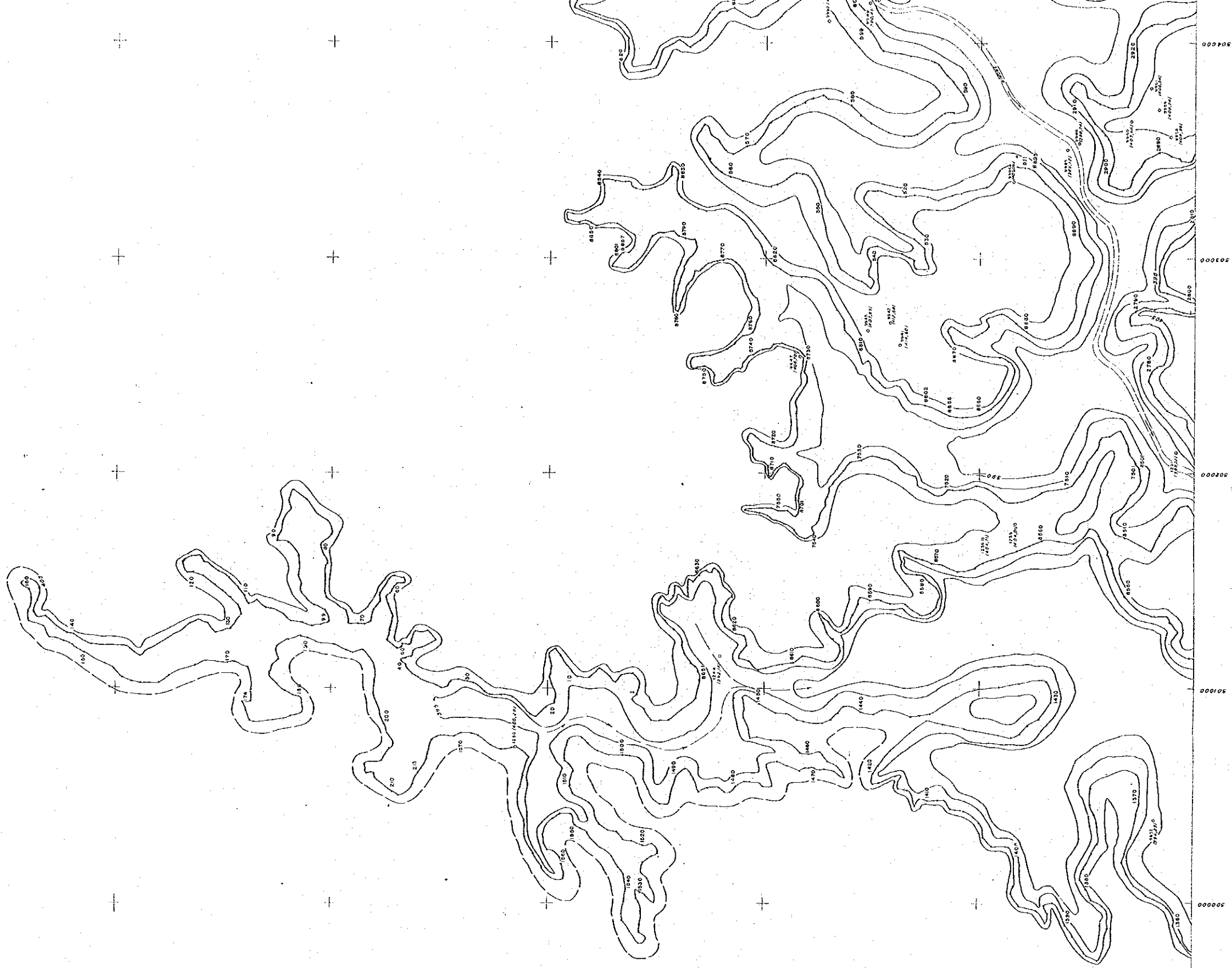
0 500 1000 Mètres

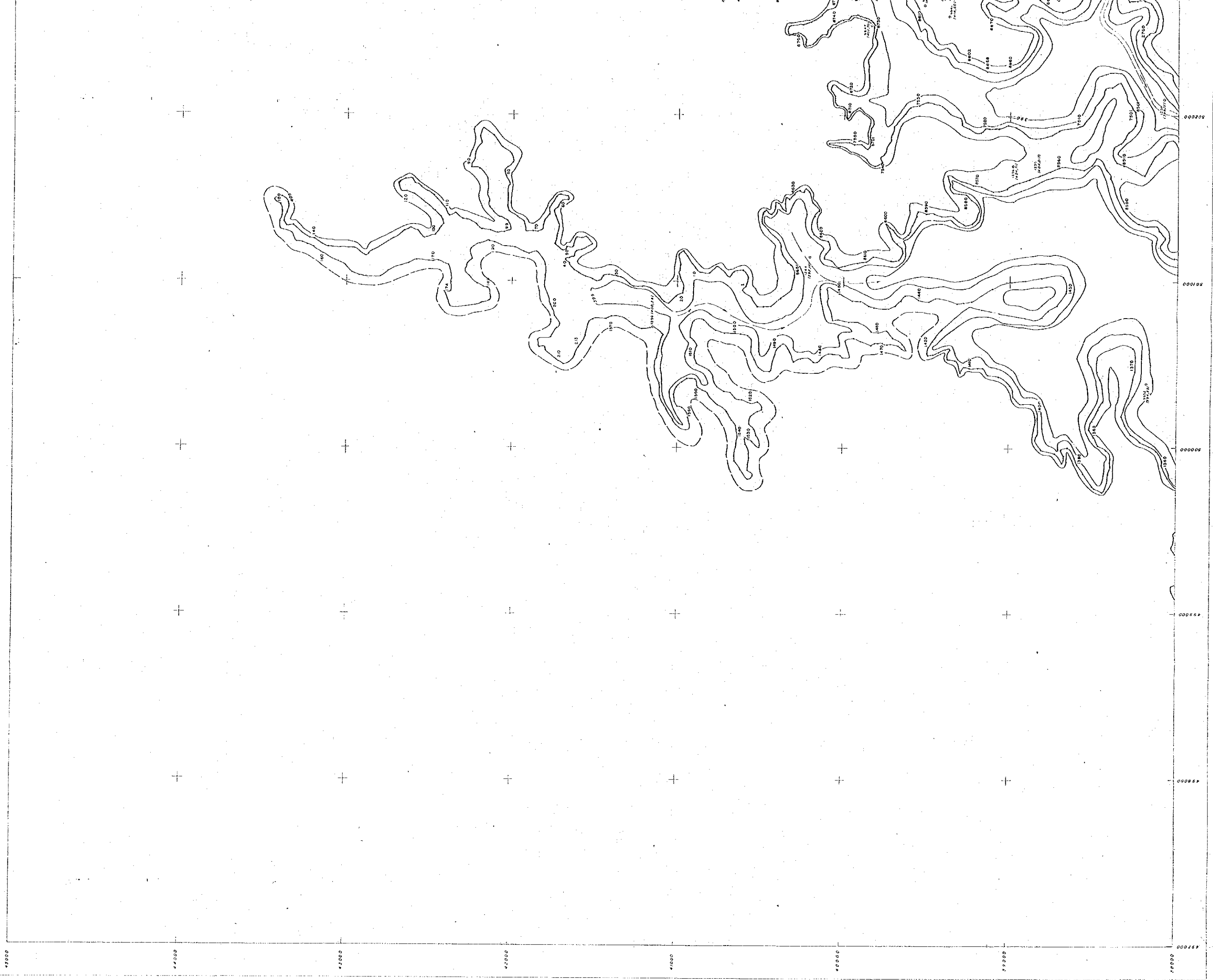
ECHELLE 1/10000

REPUBLIC OF CAMEROON	
SOCIETE NATIONALE D'ELECTRICITE DU CAMEROON	
MEMVE ELE HYDROELECTRIC POWER DEVELOPMENT PROJECT	
JAPAN INTERNATIONAL COOPERATION AGENCY	
TITLE OF DRAWING	SCHEME : MEMVE ELE
LOCATION : NYABESSAN	REGION : NYEM
RESERVOIR	
CHECKED BY	SCALE 1/10000
APPROVED BY	SHEET NUMBER 1
	DATE
	TOTAL SHEET 4

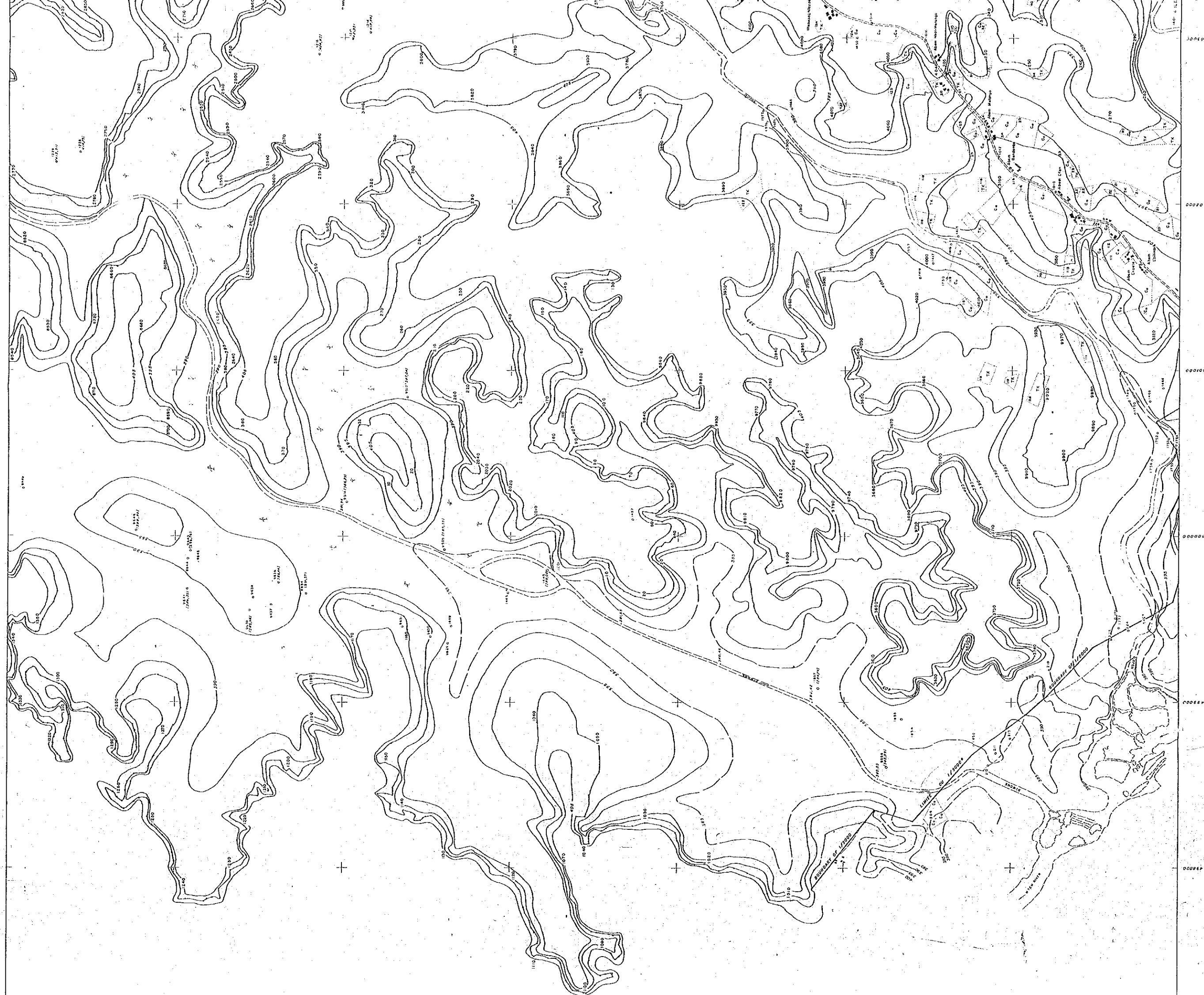


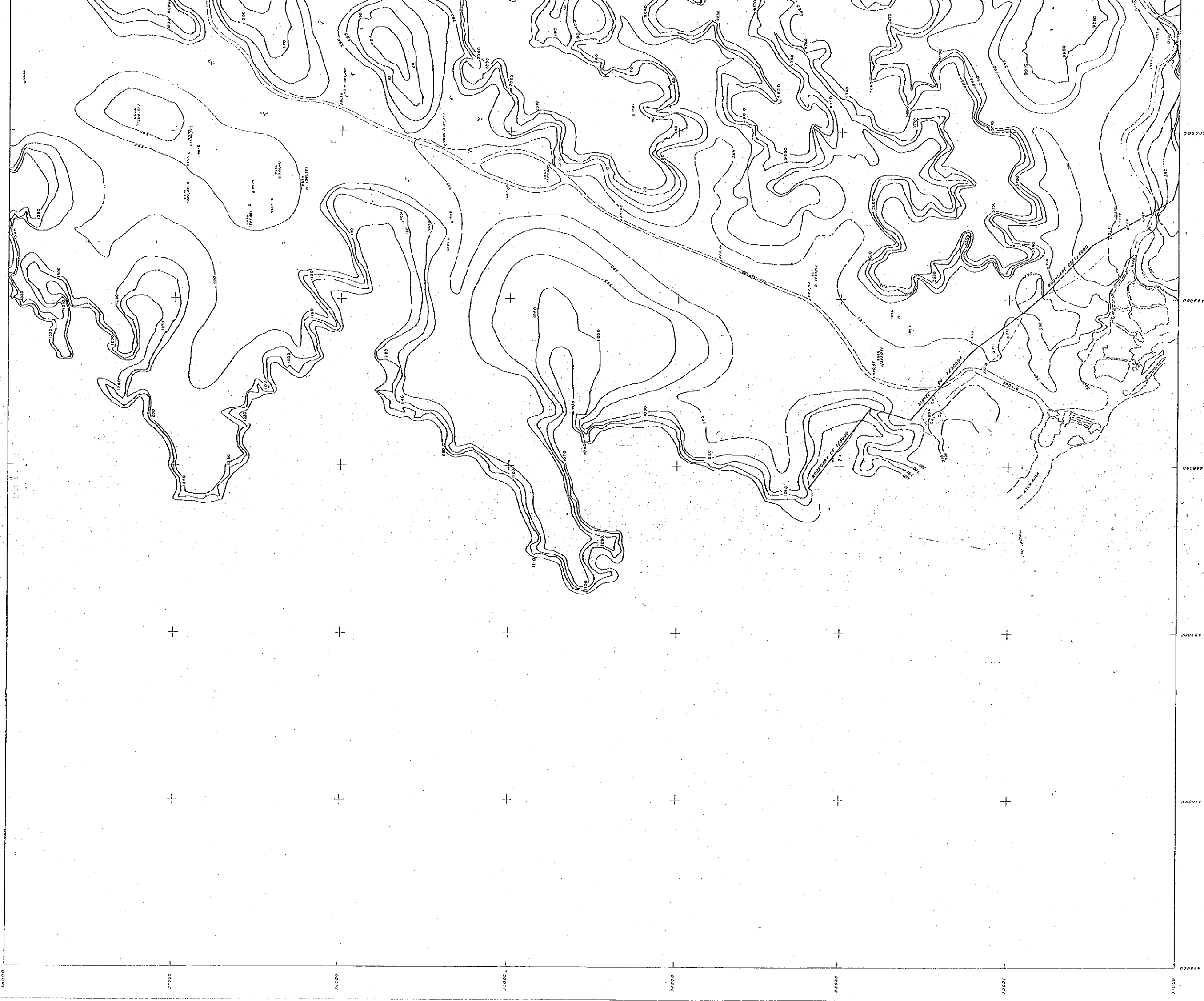






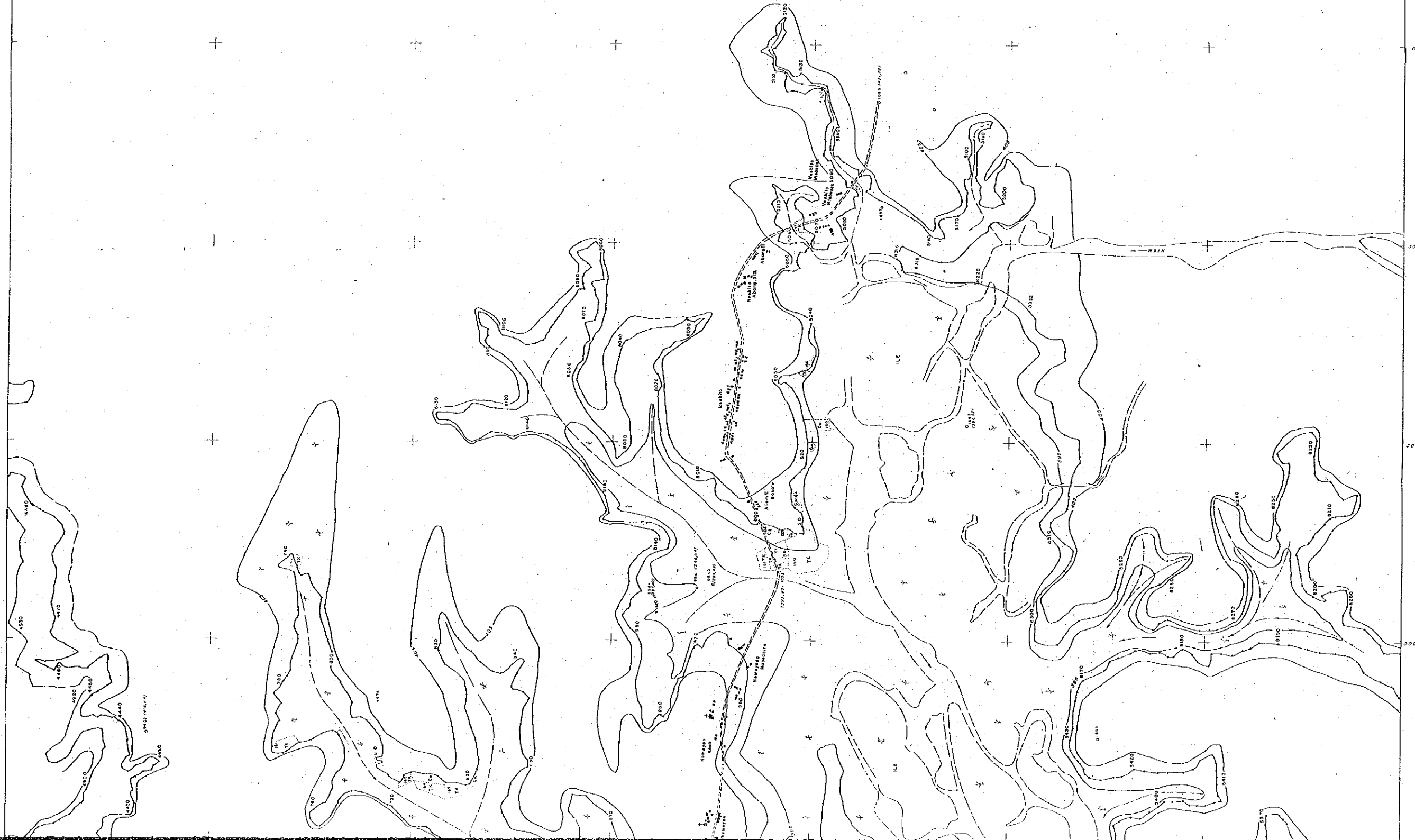


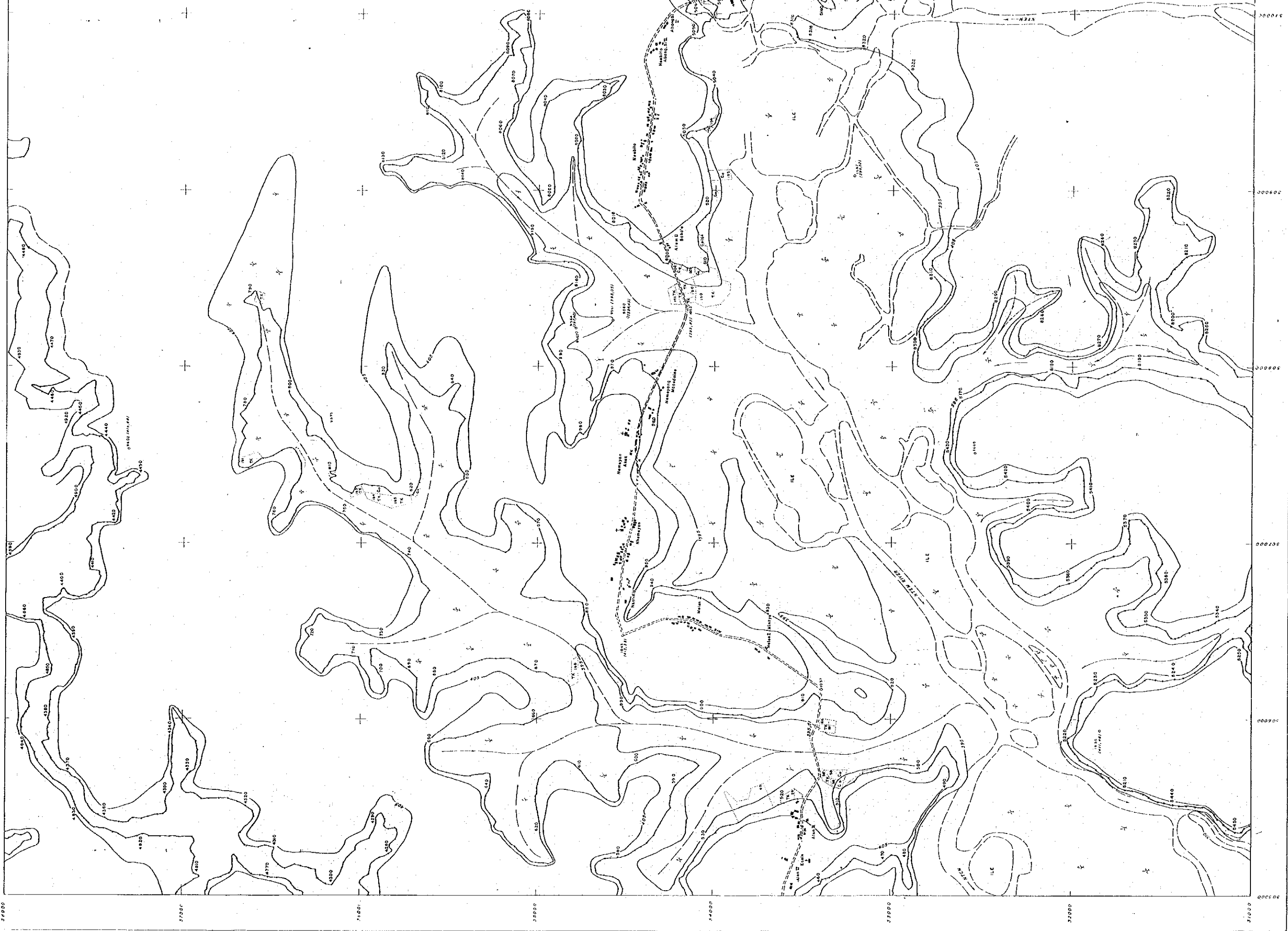


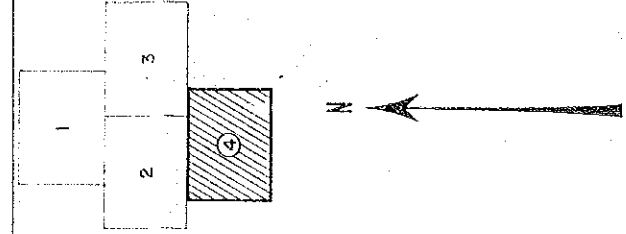
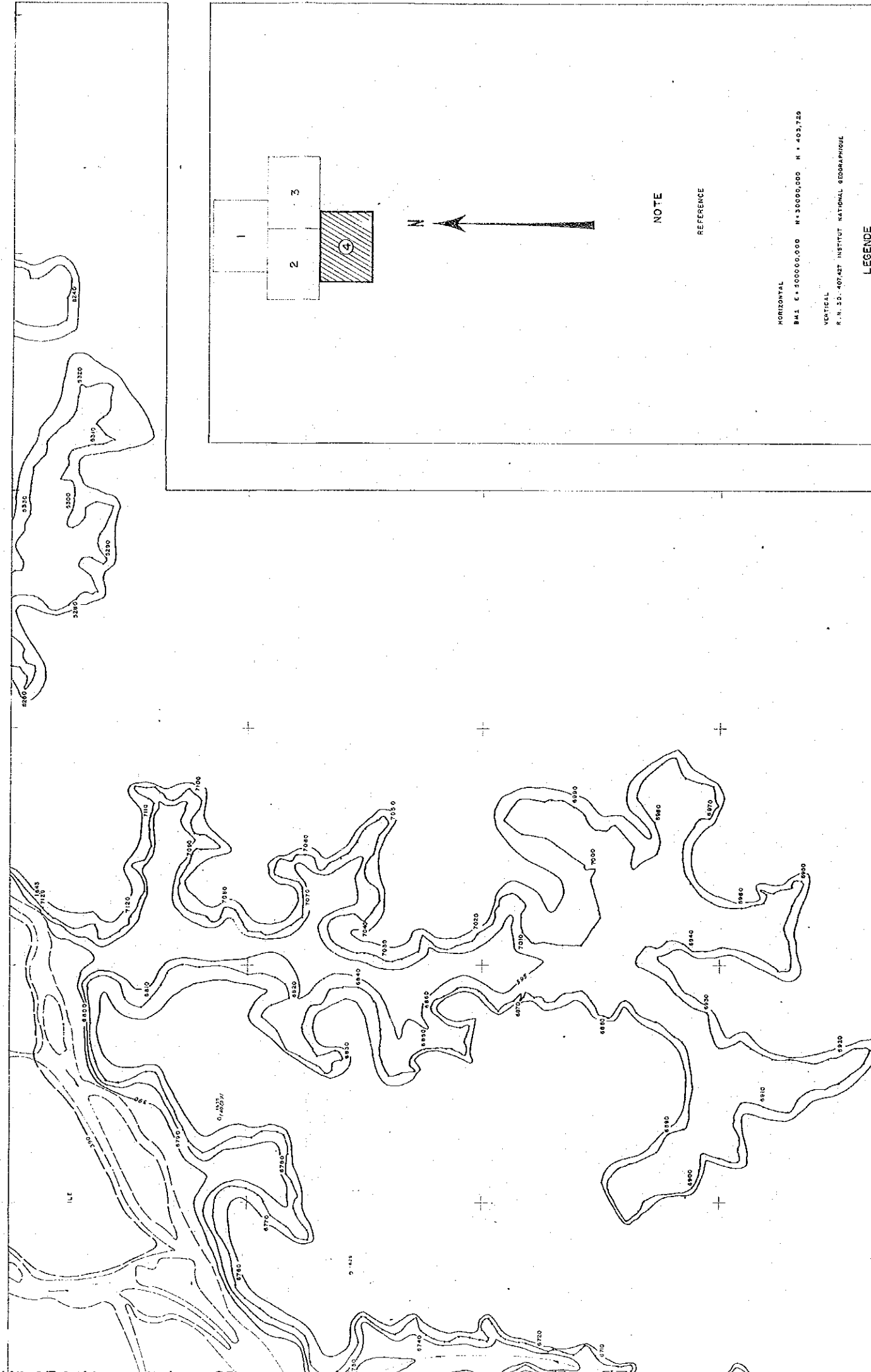












NOTE  
REFERENCE

HORIZONTAL  
BM 1 5+500000.000 N+300000.000 H+493.729

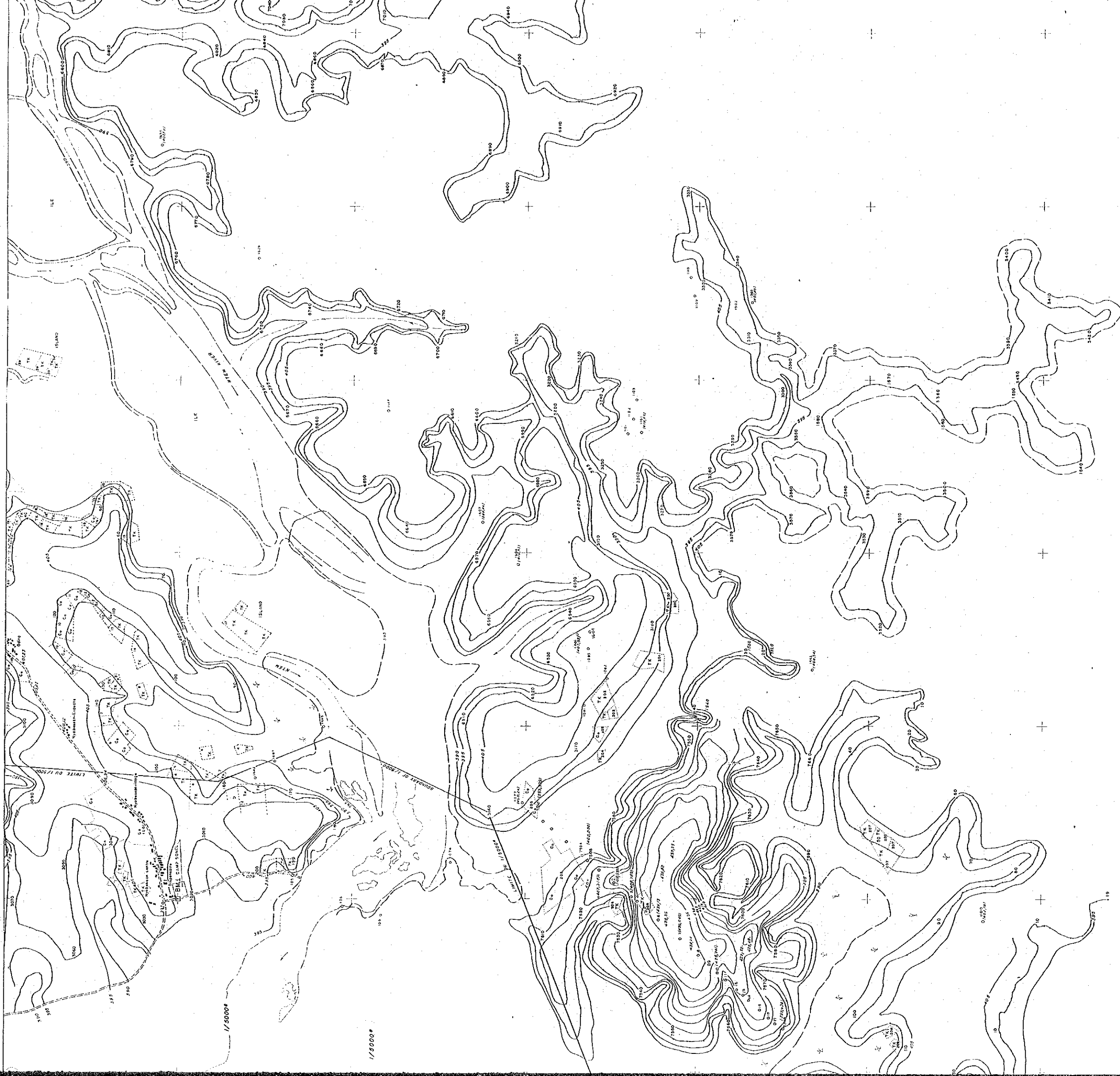
VERTICAL  
R.N. 33.407427 INSTITUT NATIONAL GEODIAPHIQUE

LEGEND  
LEGENDE

- |   |   |  |   |
|---|---|--|---|
| POINT DE SECTEUR<br>CONCRETE PIER         | △ | ARRES<br>TRAPP                                   | △ |
| STATION<br>TRAVAIL                        | □ | GATE   | □ |
| PLANTATION POINT                          | ○ | COFFEE   | ○ |
| CELESTIAL POINT                           | ● | COCONUT TREE                                     | ● |
| POINT DE CONTROLE<br>CONTROL POINT        | ○ | GRAINES  | ○ |
| MARQUE<br>MARK                            | ○ | CLIQUE   | ○ |
| MARQUE<br>MARK                            | ○ | LIMITE DES PLANTATIONS<br>BOUNDARY OF PLANTATION | ○ |
| BUREAU ADMINISTRATIF<br>GOVERNMENT OFFICE | □ | PLANT<br>PLANT                                   | □ |
| POSTE DE POLICE<br>POLICE OFFICE          | □ | ALIVE ALANG GRASS                                | □ |
| POSTE DE POLICE<br>POLICE OFFICE          | □ | TALLIS<br>DANGER ROAD                            | □ |
| ECOLE<br>SCHOOL                           | □ | CHAMP DE RIZ<br>RICE FIELD                       | □ |
| HOSPITAL                                  | □ | PARC<br>PARK                                     | □ |
| CHURCH<br>CHURCH                          | □ | PLANTATION<br>PLANTATION                         | □ |
| ROUTE 1-2M                                | — | CLIQUE<br>CLIQUE                                 | — |
| ROUTE 2M                                  | — | RIVER  | — |
| ROUTE 3M                                  | — | MUSSEAU<br>SHOULDER                              | — |
| ROUTE 4M                                  | — | SMALL RIVER                                      | — |
| ROUTE 5M                                  | — | SABLE<br>SAND                                    | — |
| ROUTE 6M                                  | — | PLANTATION<br>PLANTATION                         | — |
| ROUTE 7M                                  | — | STATION HYDRAULIQUE<br>HYDRAULIC STATION         | — |
| ROUTE 8M                                  | — | BARRAGE<br>DAM                                   | — |
| ROUTE 9M                                  | — | NAME<br>NAME                                     | — |
| ROUTE 10M                                 | — | STATION<br>STATION                               | — |
| ROUTE 11M                                 | — | STATION<br>STATION                               | — |
| ROUTE 12M                                 | — | STATION<br>STATION                               | — |
| ROUTE 13M                                 | — | STATION<br>STATION                               | — |
| ROUTE 14M                                 | — | STATION<br>STATION                               | — |
| ROUTE 15M                                 | — | STATION<br>STATION                               | — |
| ROUTE 16M                                 | — | STATION<br>STATION                               | — |
| ROUTE 17M                                 | — | STATION<br>STATION                               | — |
| ROUTE 18M                                 | — | STATION<br>STATION                               | — |
| ROUTE 19M                                 | — | STATION<br>STATION                               | — |
| ROUTE 20M                                 | — | STATION<br>STATION                               | — |
| ROUTE 21M                                 | — | STATION<br>STATION                               | — |
| ROUTE 22M                                 | — | STATION<br>STATION                               | — |
| ROUTE 23M                                 | — | STATION<br>STATION                               | — |
| ROUTE 24M                                 | — | STATION<br>STATION                               | — |
| ROUTE 25M                                 | — | STATION<br>STATION                               | — |
| ROUTE 26M                                 | — | STATION<br>STATION                               | — |
| ROUTE 27M                                 | — | STATION<br>STATION                               | — |
| ROUTE 28M                                 | — | STATION<br>STATION                               | — |
| ROUTE 29M                                 | — | STATION<br>STATION                               | — |
| ROUTE 30M                                 | — | STATION<br>STATION                               | — |
| ROUTE 31M                                 | — | STATION<br>STATION                               | — |
| ROUTE 32M                                 | — | STATION<br>STATION                               | — |
| ROUTE 33M                                 | — | STATION<br>STATION                               | — |
| ROUTE 34M                                 | — | STATION<br>STATION                               | — |
| ROUTE 35M                                 | — | STATION<br>STATION                               | — |
| ROUTE 36M                                 | — | STATION<br>STATION                               | — |
| ROUTE 37M                                 | — | STATION<br>STATION                               | — |
| ROUTE 38M                                 | — | STATION<br>STATION                               | — |
| ROUTE 39M                                 | — | STATION<br>STATION                               | — |
| ROUTE 40M                                 | — | STATION<br>STATION                               | — |
| ROUTE 41M                                 | — | STATION<br>STATION                               | — |
| ROUTE 42M                                 | — | STATION<br>STATION                               | — |
| ROUTE 43M                                 | — | STATION<br>STATION                               | — |
| ROUTE 44M                                 | — | STATION<br>STATION                               | — |
| ROUTE 45M                                 | — | STATION<br>STATION                               | — |
| ROUTE 46M                                 | — | STATION<br>STATION                               | — |
| ROUTE 47M                                 | — | STATION<br>STATION                               | — |
| ROUTE 48M                                 | — | STATION<br>STATION                               | — |
| ROUTE 49M                                 | — | STATION<br>STATION                               | — |
| ROUTE 50M                                 | — | STATION<br>STATION                               | — |
| ROUTE 51M                                 | — | STATION<br>STATION                               | — |
| ROUTE 52M                                 | — | STATION<br>STATION                               | — |
| ROUTE 53M                                 | — | STATION<br>STATION                               | — |
| ROUTE 54M                                 | — | STATION<br>STATION                               | — |
| ROUTE 55M                                 | — | STATION<br>STATION                               | — |
| ROUTE 56M                                 | — | STATION<br>STATION                               | — |
| ROUTE 57M                                 | — | STATION<br>STATION                               | — |
| ROUTE 58M                                 | — | STATION<br>STATION                               | — |
| ROUTE 59M                                 | — | STATION<br>STATION                               | — |
| ROUTE 60M                                 | — | STATION<br>STATION                               | — |
| ROUTE 61M                                 | — | STATION<br>STATION                               | — |
| ROUTE 62M                                 | — | STATION<br>STATION                               | — |
| ROUTE 63M                                 | — | STATION<br>STATION                               | — |
| ROUTE 64M                                 | — | STATION<br>STATION                               | — |
| ROUTE 65M                                 | — | STATION<br>STATION                               | — |
| ROUTE 66M                                 | — | STATION<br>STATION                               | — |
| ROUTE 67M                                 | — | STATION<br>STATION                               | — |
| ROUTE 68M                                 | — | STATION<br>STATION                               | — |
| ROUTE 69M                                 | — | STATION<br>STATION                               | — |
| ROUTE 70M                                 | — | STATION<br>STATION                               | — |
| ROUTE 71M                                 | — | STATION<br>STATION                               | — |
| ROUTE 72M                                 | — | STATION<br>STATION                               | — |
| ROUTE 73M                                 | — | STATION<br>STATION                               | — |
| ROUTE 74M                                 | — | STATION<br>STATION                               | — |
| ROUTE 75M                                 | — | STATION<br>STATION                               | — |
| ROUTE 76M                                 | — | STATION<br>STATION                               | — |
| ROUTE 77M                                 | — | STATION<br>STATION                               | — |
| ROUTE 78M                                 | — | STATION<br>STATION                               | — |
| ROUTE 79M                                 | — | STATION<br>STATION                               | — |
| ROUTE 80M                                 | — | STATION<br>STATION                               | — |
| ROUTE 81M                                 | — | STATION<br>STATION                               | — |
| ROUTE 82M                                 | — | STATION<br>STATION                               | — |
| ROUTE 83M                                 | — | STATION<br>STATION                               | — |
| ROUTE 84M                                 | — | STATION<br>STATION                               | — |
| ROUTE 85M                                 | — | STATION<br>STATION                               | — |
| ROUTE 86M                                 | — | STATION<br>STATION                               | — |
| ROUTE 87M                                 | — | STATION<br>STATION                               | — |
| ROUTE 88M                                 | — | STATION<br>STATION                               | — |
| ROUTE 89M                                 | — | STATION<br>STATION                               | — |
| ROUTE 90M                                 | — | STATION<br>STATION                               | — |
| ROUTE 91M                                 | — | STATION<br>STATION                               | — |
| ROUTE 92M                                 | — | STATION<br>STATION                               | — |
| ROUTE 93M                                 | — | STATION<br>STATION                               | — |
| ROUTE 94M                                 | — | STATION<br>STATION                               | — |
| ROUTE 95M                                 | — | STATION<br>STATION                               | — |
| ROUTE 96M                                 | — | STATION<br>STATION                               | — |
| ROUTE 97M                                 | — | STATION<br>STATION                               | — |
| ROUTE 98M                                 | — | STATION<br>STATION                               | — |
| ROUTE 99M                                 | — | STATION<br>STATION                               | — |
| ROUTE 100M                                | — | STATION<br>STATION                               | — |

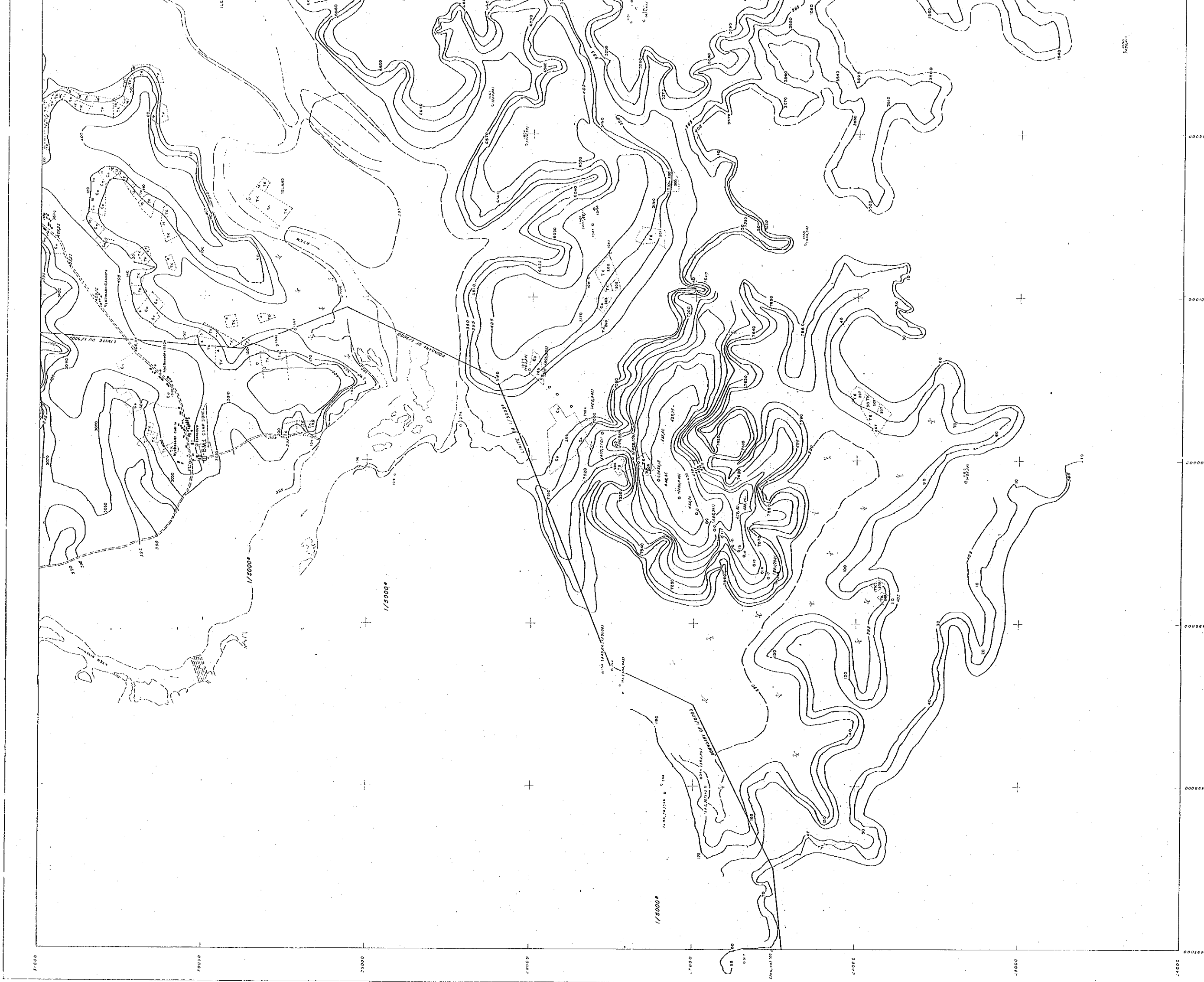
SCALE 1/10000

REPUBLIC OF CAMEROON	
SOCIETE NATIONALE D'ELECTRICITE DU CAMEROON	
MEMVE ELE HYDROELECTRIC POWER DEVELOPMENT PROJECT	
JAPAN INTERNATIONAL COOPERATION AGENCY	
TITLE OF DRAWING	
RESERVOIR	
SCHEME: MEMVE ELE	
LOCATION: NYABESSAN	
REGION: N TEM	
PROVINCE: SUD	
CHECKED BY	SHEET NUMBER 4
APPROVED BY	TOTAL SHEET 4



2,000

50000  
51000  
52000  
53000  
54000  
55000  
56000  
57000  
58000  
59000  
60000

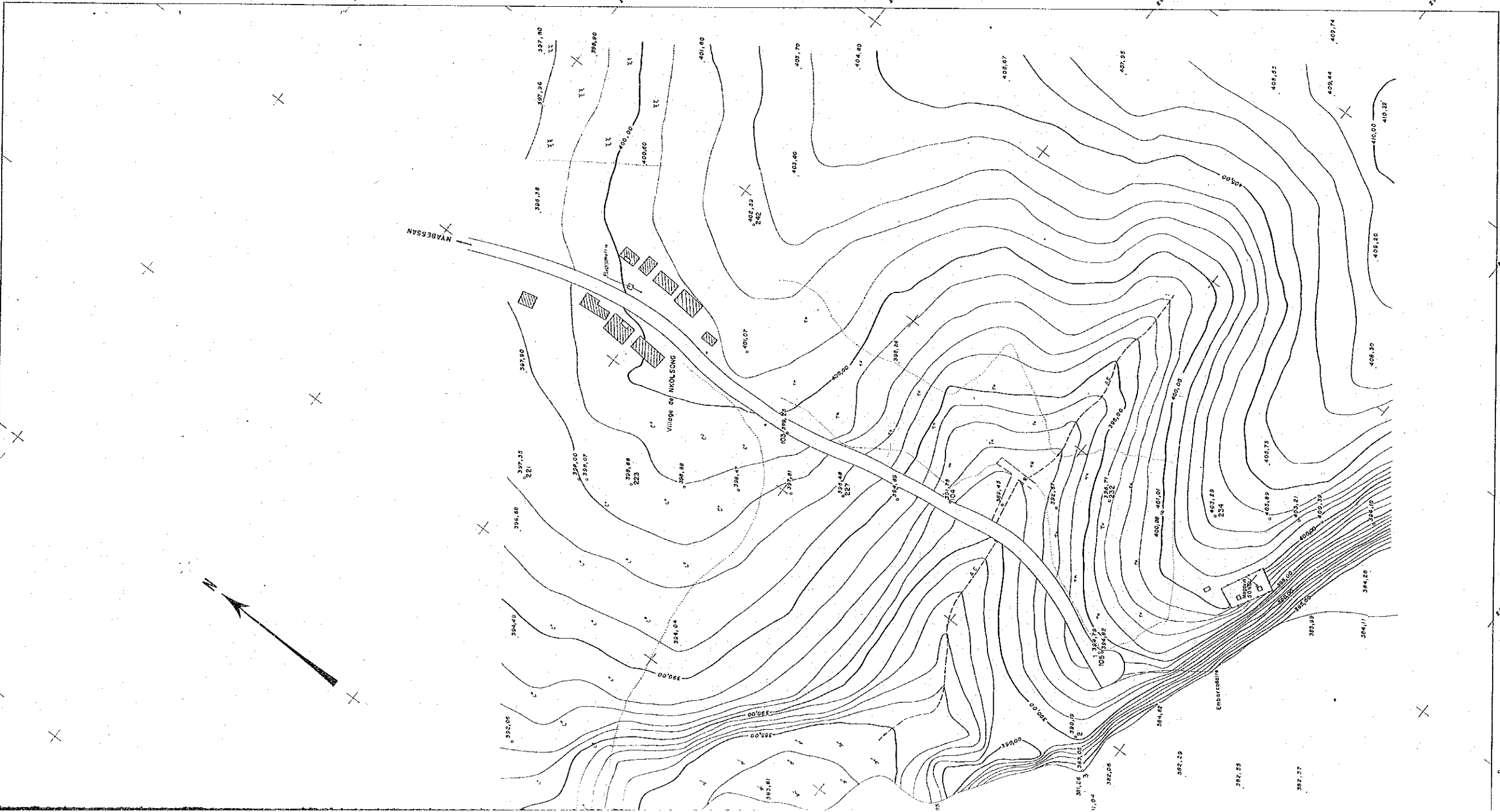


ANNEX 1 - 4 : ADDITIONAL TOPOGRAPHIC SURVEYS

Contents

1. Topographic Map near the Boat Station, Scale 1/1,000, 1 sheet
2. Topographic Map along the Existing Road, Scale 1/1,000, Abem Village
3. -do- , Alen II Village
4. -do- , Nemeyong-Alen I Village
5. -do- , Nsebito-Bethel Village

INDEX SHEET



VERTICAL  
A. N. 30. 402487 INSTITUT NATIONAL GEOGRAPHIQUE

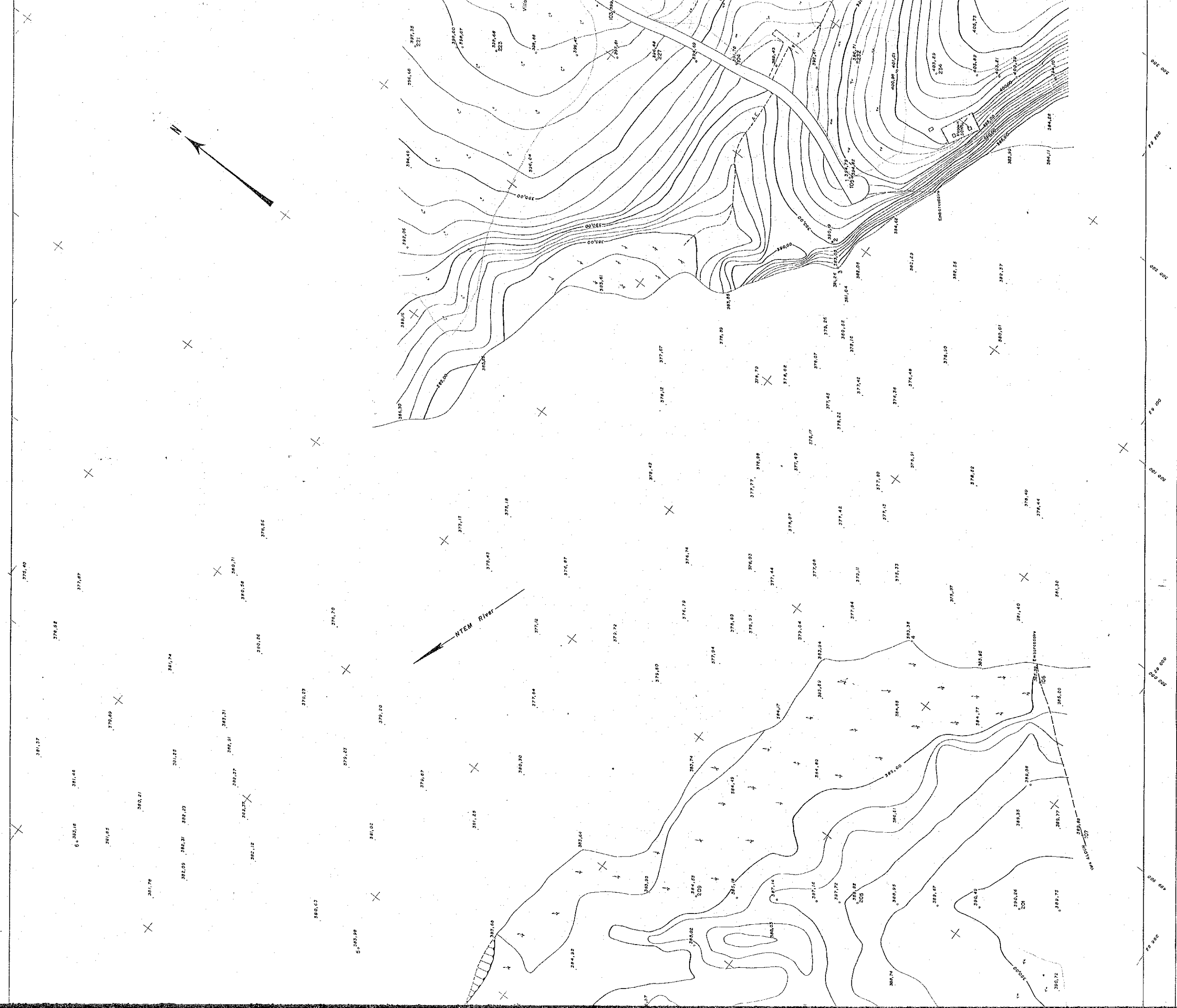
LEGENDE  
LEGEND

▲	PONCTIFERE	1	3	▲	ANNES
○	STATION	○	○	○	PRETS
●	TRANSMISSION POINT	⊗	⊗	⊗	COCHER
⊙	ALIMENTAIRE	⊙	⊙	⊙	COCHER
⊛	ELEVATION POINT	⊙	⊙	⊙	COCHER
⊠	PONCTIFERE	⊙	⊙	⊙	COCHER
⊡	MARKET	⊙	⊙	⊙	COCHER
⊢	MARON	⊙	⊙	⊙	COCHER
⊣	MARON	⊙	⊙	⊙	COCHER
⊤	MARON	⊙	⊙	⊙	COCHER
⊥	MARON	⊙	⊙	⊙	COCHER
⊦	MARON	⊙	⊙	⊙	COCHER
⊧	MARON	⊙	⊙	⊙	COCHER
⊨	MARON	⊙	⊙	⊙	COCHER
⊩	MARON	⊙	⊙	⊙	COCHER
⊪	MARON	⊙	⊙	⊙	COCHER
⊫	MARON	⊙	⊙	⊙	COCHER
⊬	MARON	⊙	⊙	⊙	COCHER
⊭	MARON	⊙	⊙	⊙	COCHER
⊮	MARON	⊙	⊙	⊙	COCHER
⊯	MARON	⊙	⊙	⊙	COCHER
⊰	MARON	⊙	⊙	⊙	COCHER
⊱	MARON	⊙	⊙	⊙	COCHER
⊲	MARON	⊙	⊙	⊙	COCHER
⊳	MARON	⊙	⊙	⊙	COCHER
⊴	MARON	⊙	⊙	⊙	COCHER
⊵	MARON	⊙	⊙	⊙	COCHER
⊶	MARON	⊙	⊙	⊙	COCHER
⊷	MARON	⊙	⊙	⊙	COCHER
⊸	MARON	⊙	⊙	⊙	COCHER
⊹	MARON	⊙	⊙	⊙	COCHER
⊺	MARON	⊙	⊙	⊙	COCHER
⊻	MARON	⊙	⊙	⊙	COCHER
⊼	MARON	⊙	⊙	⊙	COCHER
⊽	MARON	⊙	⊙	⊙	COCHER
⊾	MARON	⊙	⊙	⊙	COCHER
⊿	MARON	⊙	⊙	⊙	COCHER
⊿	MARON	⊙	⊙	⊙	COCHER
⊿	MARON	⊙	⊙	⊙	COCHER
⊿	MARON	⊙	⊙	⊙	COCHER
⊿	MARON	⊙	⊙	⊙	COCHER
⊿	MARON	⊙	⊙	⊙	COCHER

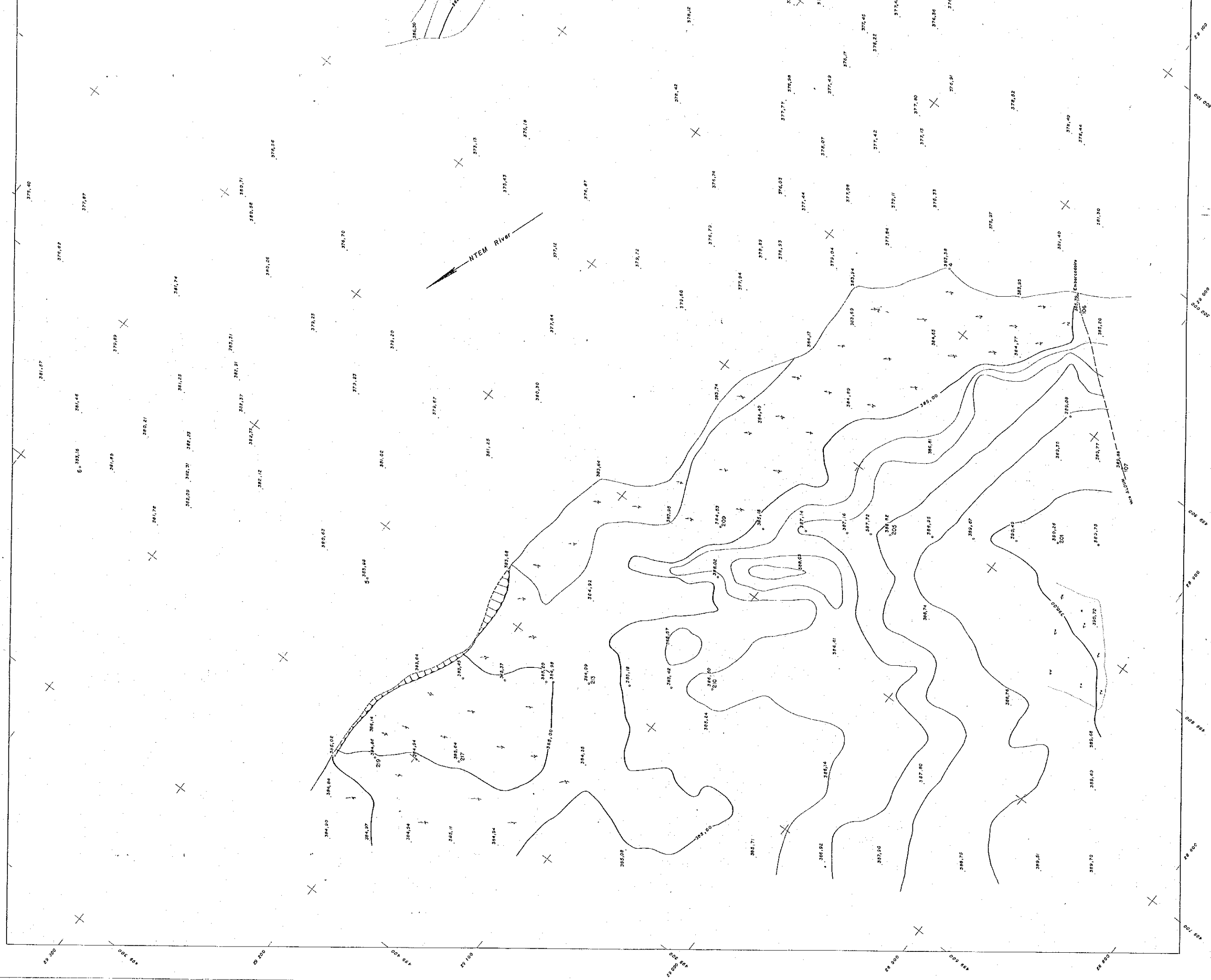
ECHELLE 1/10000

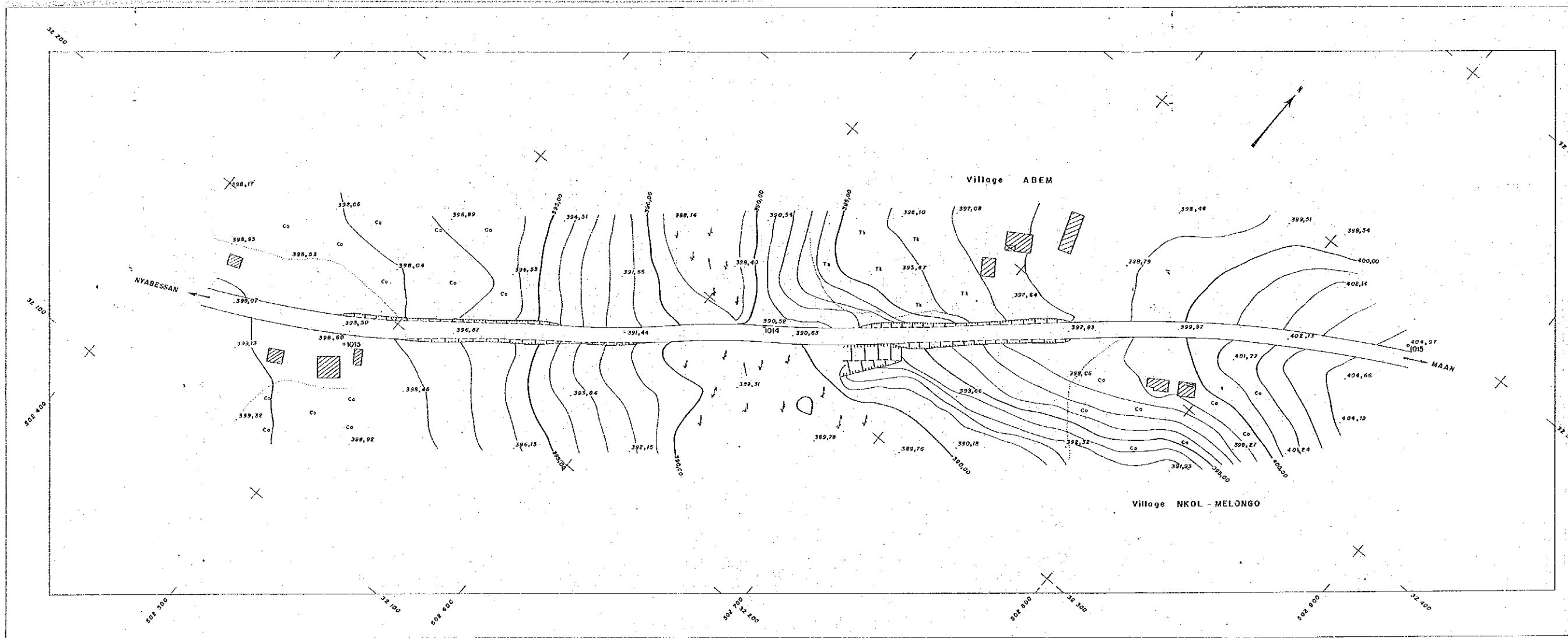
REPUBLIC OF CAMEROON  
SOCIETE NATIONALE D'ELECTRICITE DU CAMEROON  
MEMVE ELE HYDROELECTRIC POWER DEVELOPMENT PROJECT

JAPAN INTERNATIONAL COOPERATION AGENCY		TITLE OF DRAWING	SCHEME	MEMVE ELE
SOCIETE DE TOPOGRAPHIE ET DE SERVICES SARL		LOCATION	INYESSEN	
TOPOGRAPHIC MAP		REGENCY	N'TEN	
		PROVINCE	SUD	
CHECKED BY	SCALE	SHEET NUMBER	DATE	
	1/1000	1	1 JUL. 1992	
APPROVED BY		TOTAL SHEET		
		1		





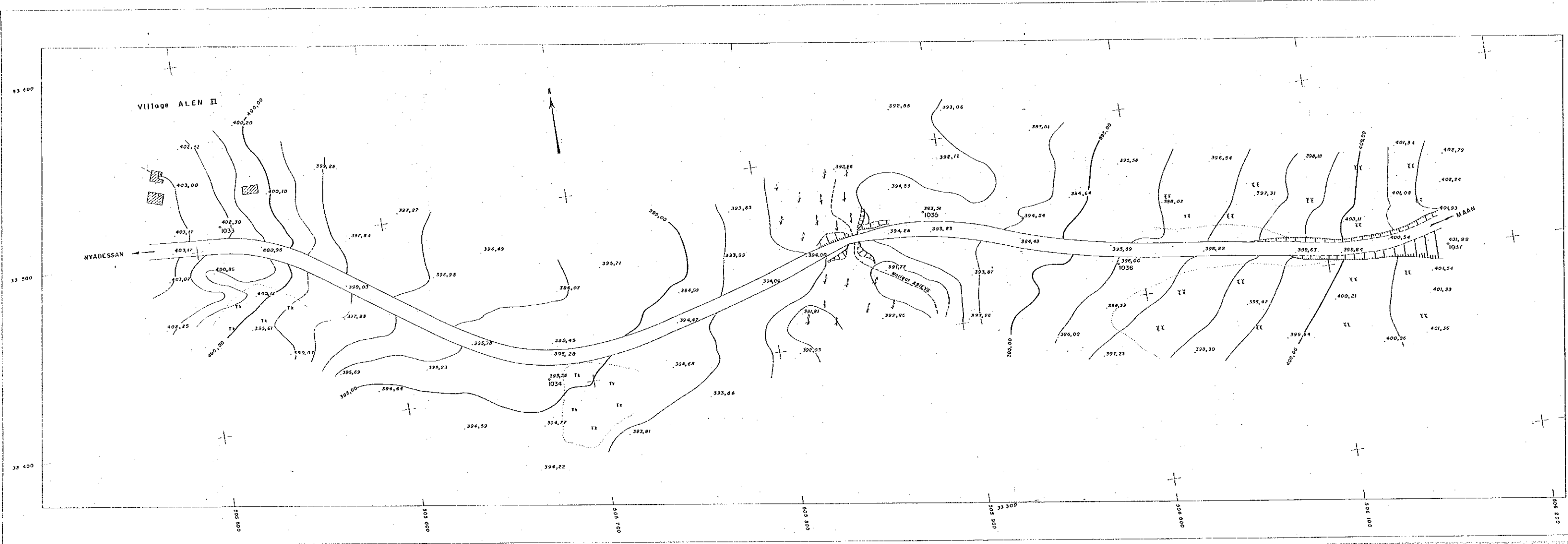




REPUBLIC OF CAMEROON		
SOCIÉTÉ NATIONALE D'ÉLECTRICITÉ DU CAMEROON		
MEMBRE C.C.E. HYDROÉLECTRIC POWER DEVELOPMENT		
JAPAN INTERNATIONAL COOPERATION AGENCY		
SOCIÉTÉ DE TOPOGRAPHIE ET DE SERVICES S.A.R.L.	TITLE OF DRAWING <b>NYABESSAN-MAAN</b> <b>ABEM VILLAGE</b>	SHEET NO. LOCAL REGION PROVINCE SHEET TOTAL
CHECKED BY PROJECT	SCALE 1/1000	SHEET TOTAL



REPUBLIC OF CAMEROON			
SOCIETE NATIONALE D'ELECTRICITE DU CAMEROUN			
MEMVE ELE HYDROELECTRIC POWER DEVELOPMENT PROJECT			
JAPAN INTERNATIONAL COOPERATION AGENCY			
SOCIETE DE TOPOGRAPHIE ET DE SERVICES SARL.	TITLE OF DRAWING	SCHEME: MEMVE ELE	
	<b>NYABESSAN - MAAN ABEM VILLAGE</b>	LOCATION: NYABESSAN	
CHECKED BY  APPROVED BY	SCALE	REGENCY: NTEM	
		PROVINCE: SUD	
	1/1000	SHEET NUMBER	1
		TOTAL SHEET	4
		DATE Juil 92	

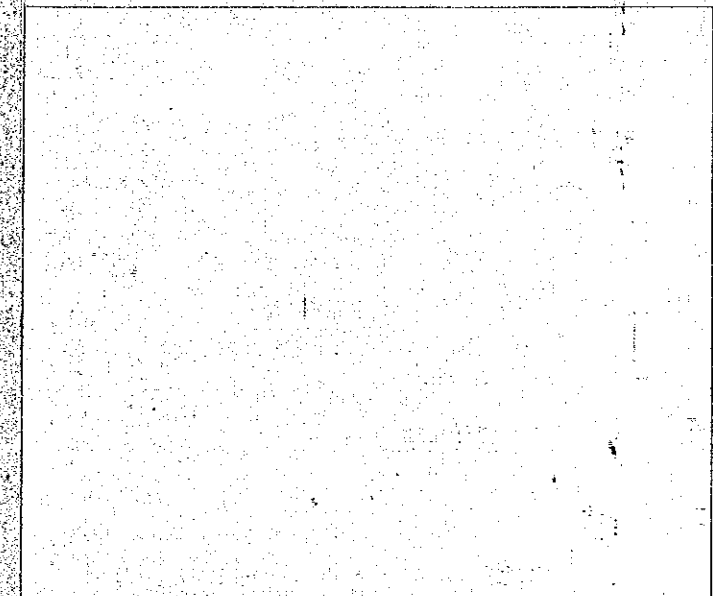
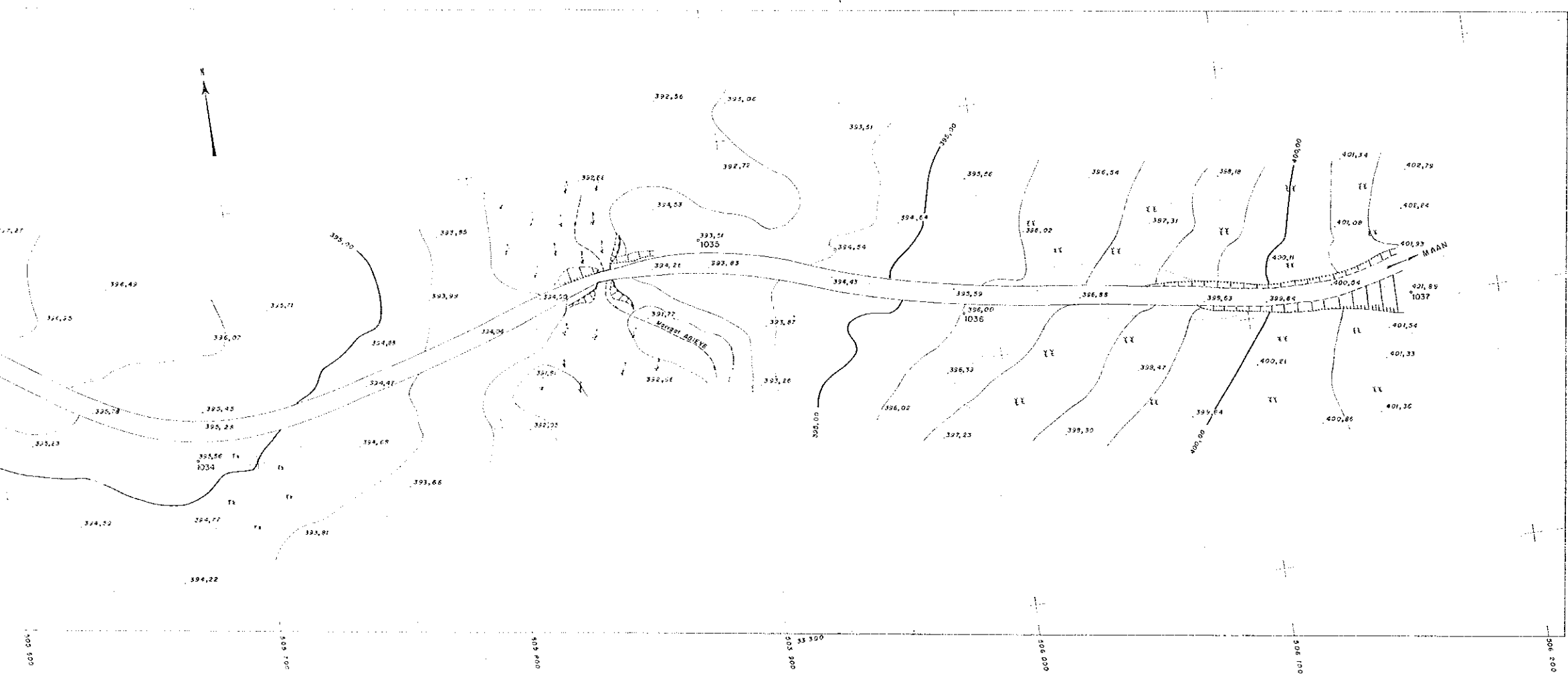


**SOCIÉTÉ**  
MEMBRE

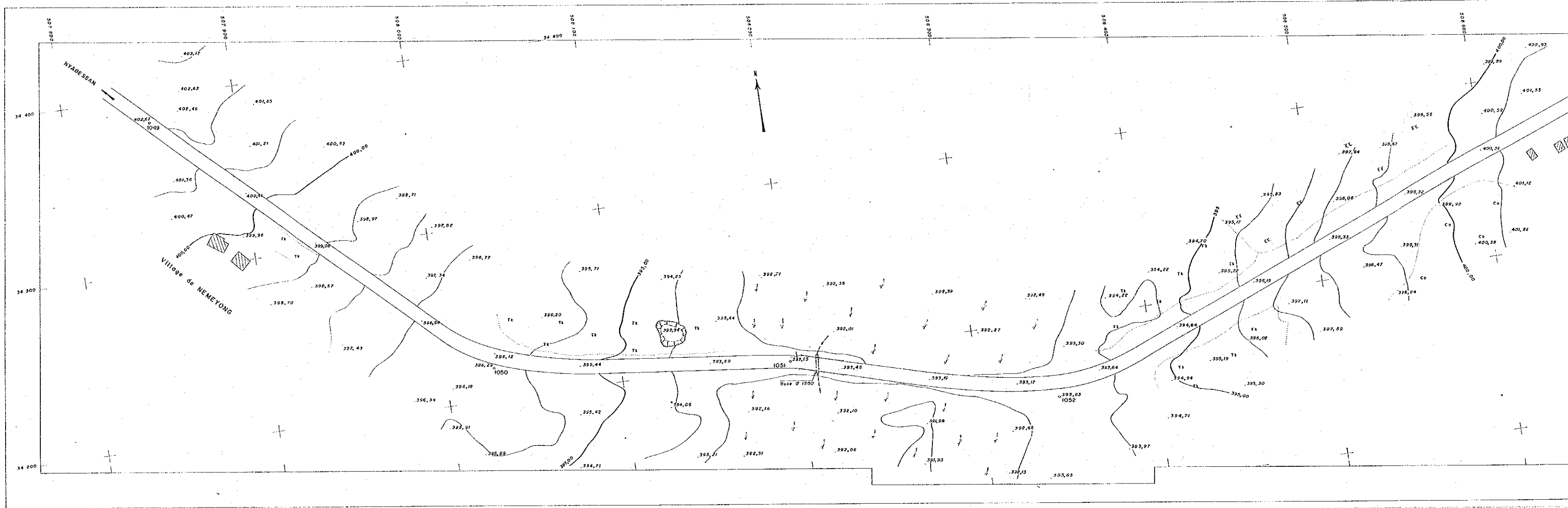
---

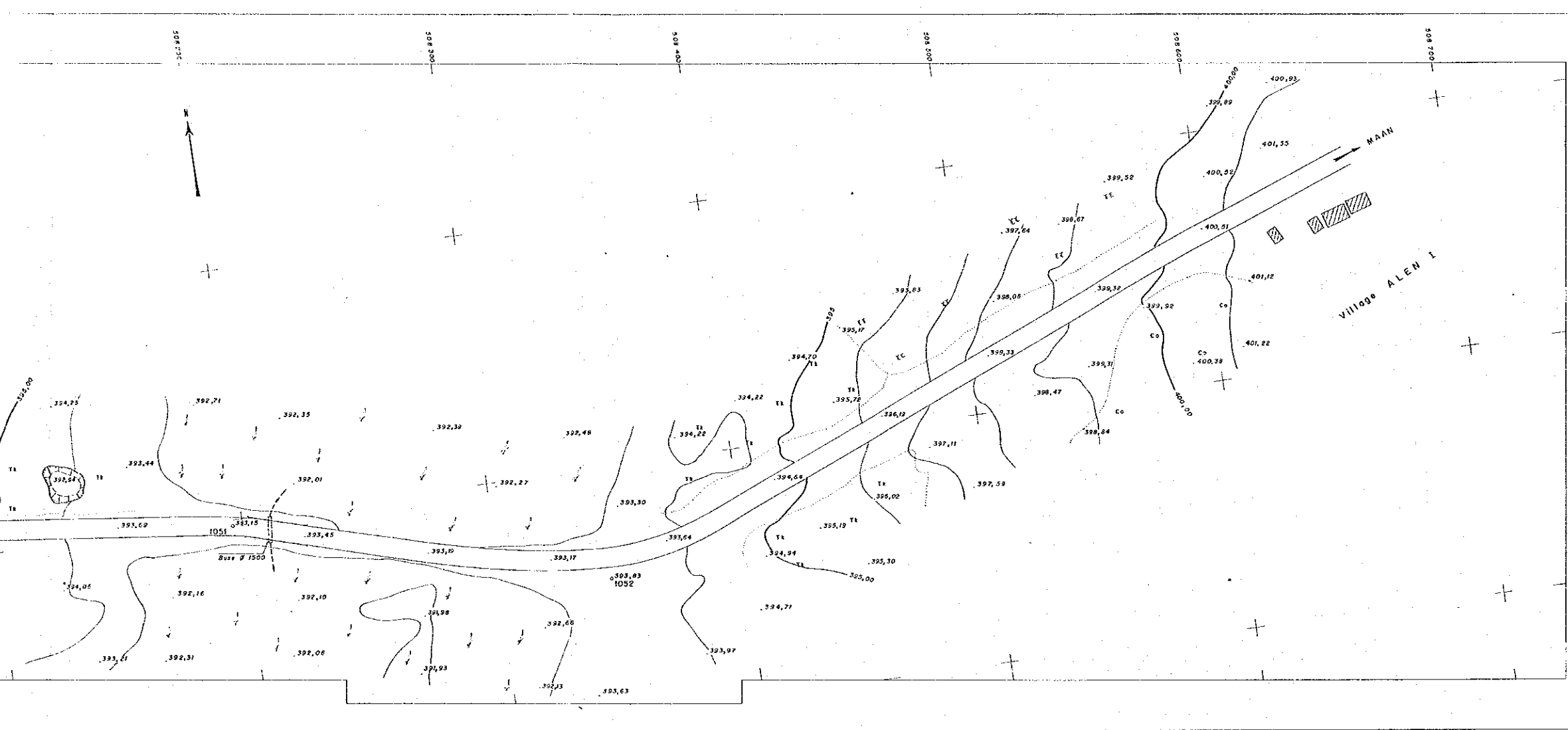
SOCIÉTÉ DE TOPO  
ET DE  
SERVICES S

CHECKED BY	
APPROVED BY	

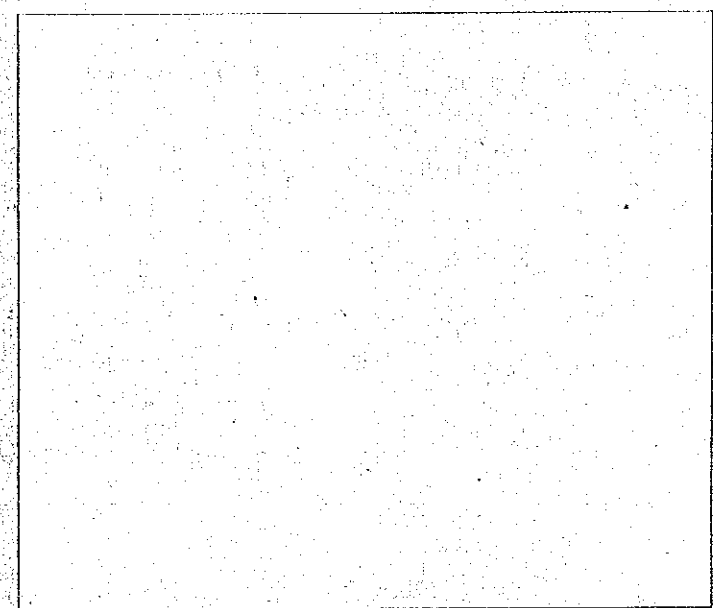
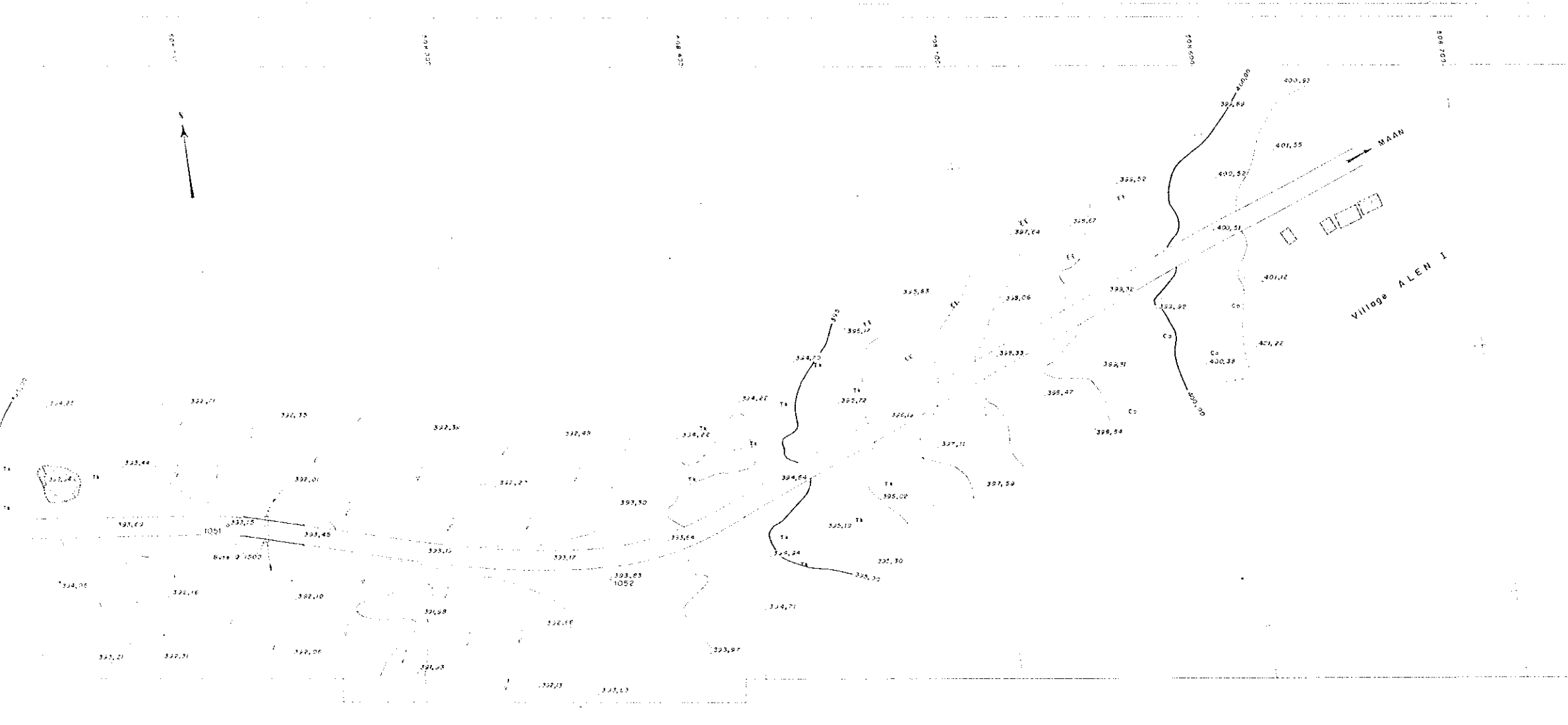


REPUBLIC OF CAMEROON			
SOCIETE NATIONALE D'ELECTRICITE DU CAMEROON			
MEMVE ELE HYDROELECTRIC POWER DEVELOPMENT PROJECT			
JAPAN INTERNATIONAL COOPERATION AGENCY			
SOCIETE DE TOPOGRAPHIE ET DE SERVICES SARL	TITLE OF DRAWING	SCHEME : MEMVE ELE	
	<b>NYABESSAN - MAAN</b> ALEN II VILLAGE	LOCATION: NYABESSAN	
CHECKED BY	APPROVED BY	SCALE	SHEET NUMBER <b>2</b> DATE
		<b>1/1000</b>	TOTAL SHEET <b>4</b> Jul 92



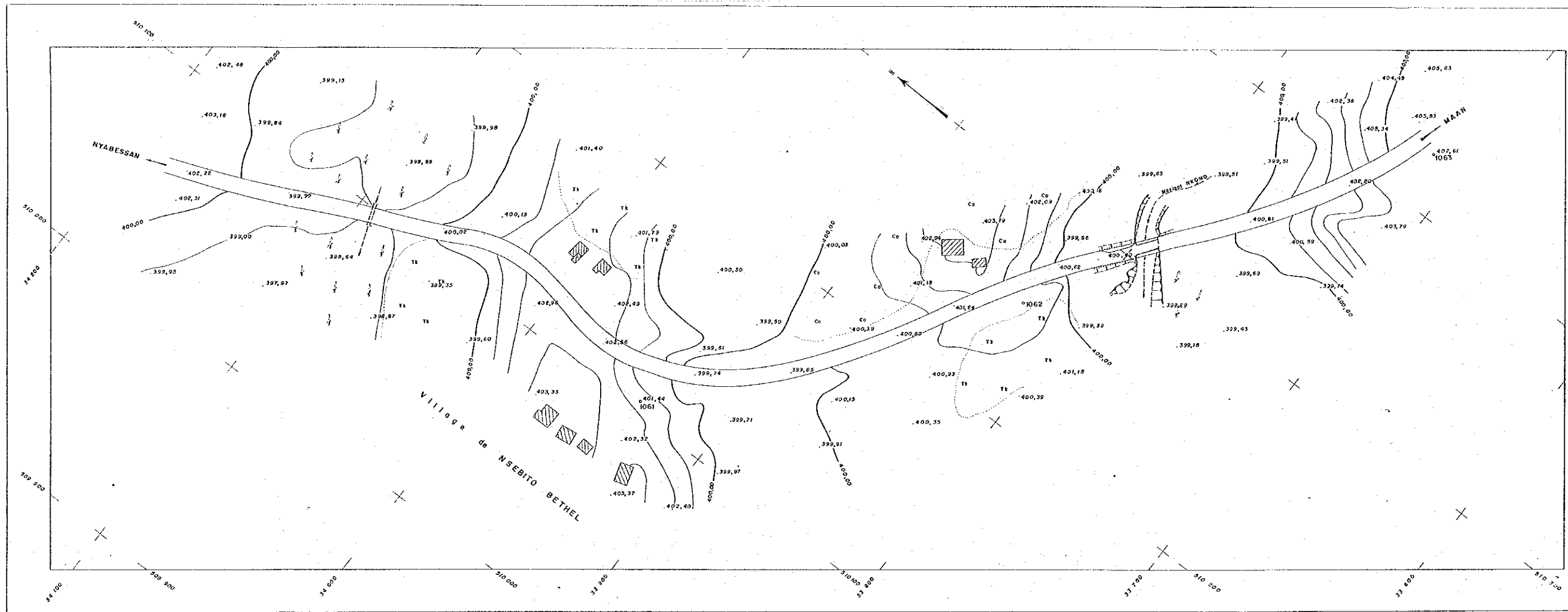


REPUBLIC OF CAMEROON			
SOCIETE NATIONALE D'ELECTRICITE DU CAMEROUN			
MEMVE ELE HYDROELECTRIC POWER DEVELOPMENT PROJECT			
JAPAN INTERNATIONAL COOPERATION AGENCY			
SOCIETE DE TOPOGRAPHIE ET DE SERVICES SARL	TITLE OF DRAWING	SCHEME : MEMVE ELE	
	<b>NYABESSAN - MAAN</b>	LOCATION : NYABESSAN	
CHECKED BY	APPROVED BY	REGENCY : NYEM	PROVINCE : SUD
		SCALE : 1/1000	SHEET NUMBER : 3
		TOTAL SHEET : 4	DATE : JUN 92

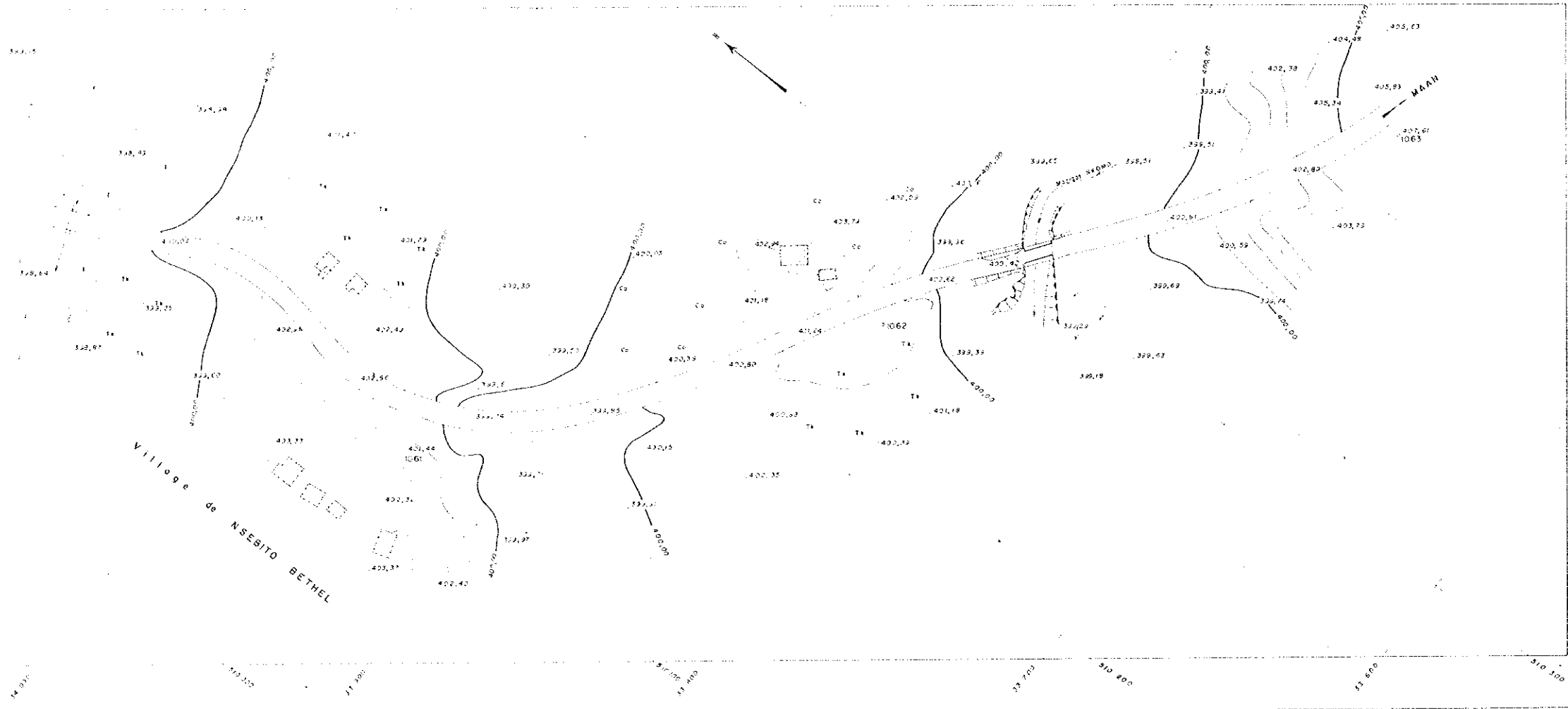


REPUBLIC OF CAMEROON			
SOCIETE NATIONALE D'ELECTRICITE DU CAMEROUN			
MEMVE ELE HYDROELECTRIC POWER DEVELOPMENT PROJECT			
JAPAN INTERNATIONAL COOPERATION AGENCY			
SOCIETE DE TOPOGRAPHIE ET DE SERVICES SARL.	TITLE OF DRAWING	SCHEME : MEMVE ELE	
	<b>NYABESSAN - MAAN NEMEYONG - ALENI VILLAGE</b>	LOCATION : NYABESSAN	REGENCY : NIEM
		PROVINCE : SUD	
CHECKED BY	SCALE	SHEET NUMBER	DATE
APPROVED BY	1/1000	3	4 Jul 92
		TOTAL SHEET	4





REPUBLIC OF CAMEROON		
SOCIÉTÉ NATIONALE D'ÉLECTRICITÉ DU		
MEMVE ELE HYDROELECTRIC POWER DEVELOPMENT		
JAPAN INTERNATIONAL COOPERATION AGENCY		
SOCIÉTÉ DE TOPOGRAPHIE ET DE SERVICES S.A.R.L.		SCALE
TITLE OF DRAWING		SCALE
NYABESSAN - MAAN		1/1000
NSEBITO-BETHEL VILLAGE		1/1000
CHECKED BY	APPROVED BY	SCALE
		1/1000



REPUBLIC OF CAMEROON			
SOCIÉTÉ NATIONALE D'ÉLECTRICITÉ DU CAMEROUN			
MEMVE ELE HYDROÉLECTRIC POWER DEVELOPMENT PROJECT			
JAPAN INTERNATIONAL COOPERATION AGENCY			
SOCIÉTÉ DE TOPOGRAPHIE ET DE SERVICES SARL.		TITLE OF DRAWING <b>NYABESSAN - MAAN NSEBITO-BETHEL VILLAGE</b>	SCHEME : MEMVE ELE LOCATION : NYABESSAN REGENCY : NTEM PROVINCE : SUD
CHECKED BY		SCALE 1/1000	SHEET NUMBER 4
APPROVED BY			DATE Juil.92

