

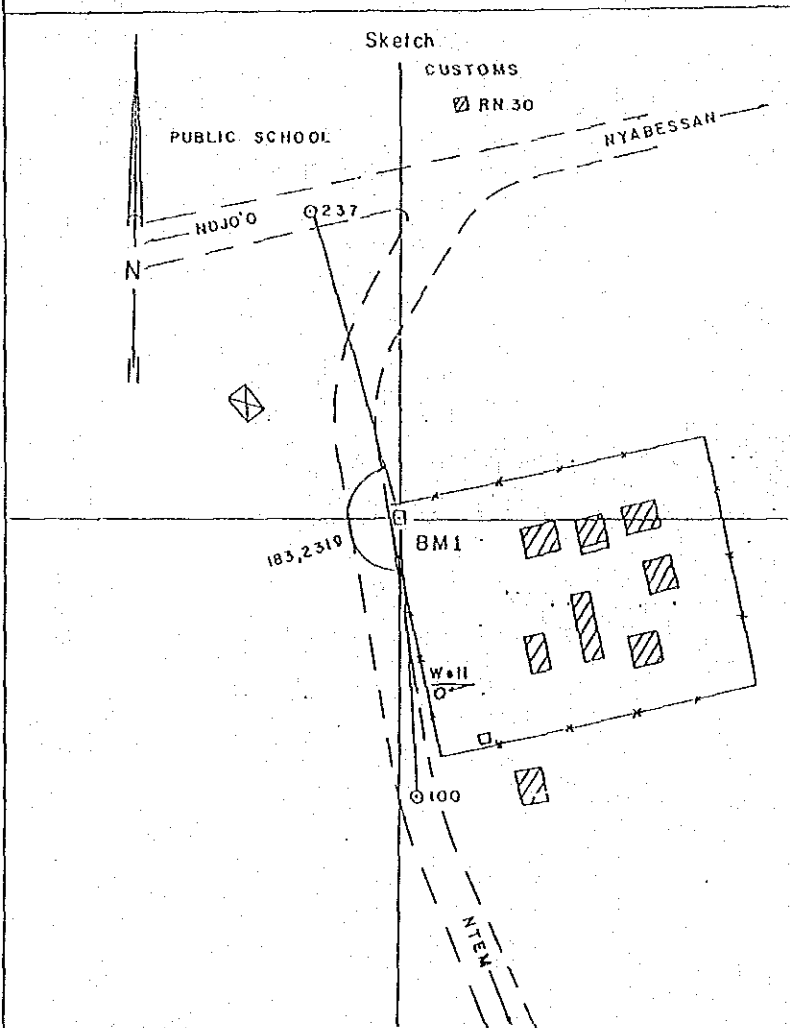
CONTROL STATION-IDENTIFICATION (N° BM 1)

FINAL RESULT SHEET

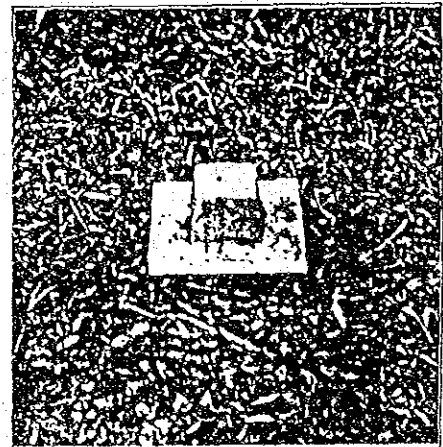
	B	L	X · E	Y · N	H
Station BM 1			500000,000	30 000,000	403,729
Eccentric point 237			499972,169	30 082,168	406,306
Eccentric point 100			500004,868	29 923,050	400,759

Place	IN CAMP SONEL NYABESSAN VILLAGE
Route	

	DATA	Full name	Note
Selecting of point			
Setting of signal			
Observed by			



Photograph of station



Profile

Aerial photo

Strip N°

Phot N°

- △ Triangulation point
- Bench mark
- Traverse station

Date

Written by

Checked by

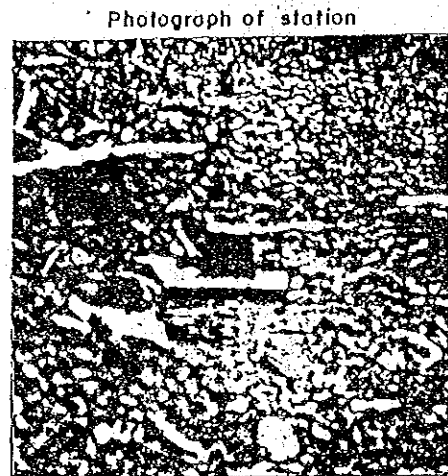
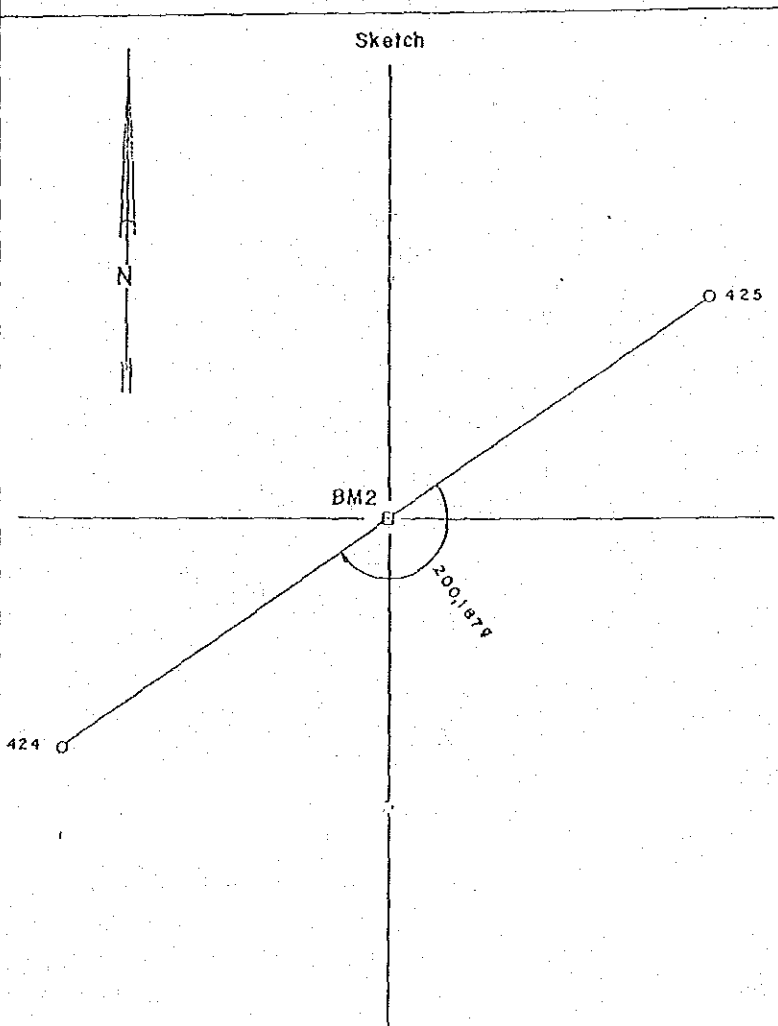
CONTROL STATION-IDENTIFICATION (N^o BM 2)

FINAL RESULT SHEET

	B	L	X - E	Y - N	H
Station BM 2			499 229,456	30 387,664	394,669
Eccentric point 424			499 088,258	30 289,529	384,553
Eccentric point 425			499 396,016	30 502,705	399,588

Place	SIESMIC LAYON SD4
Route	

	DATA	Full name	Note
Selecting of point			
Setting of signal			
Observed by			



Profile

Aerial photo

Strip N^o

Phot N^o

- △ Triangulation point
- Bench mark
- Traverse station

Date

Written by

Checked by

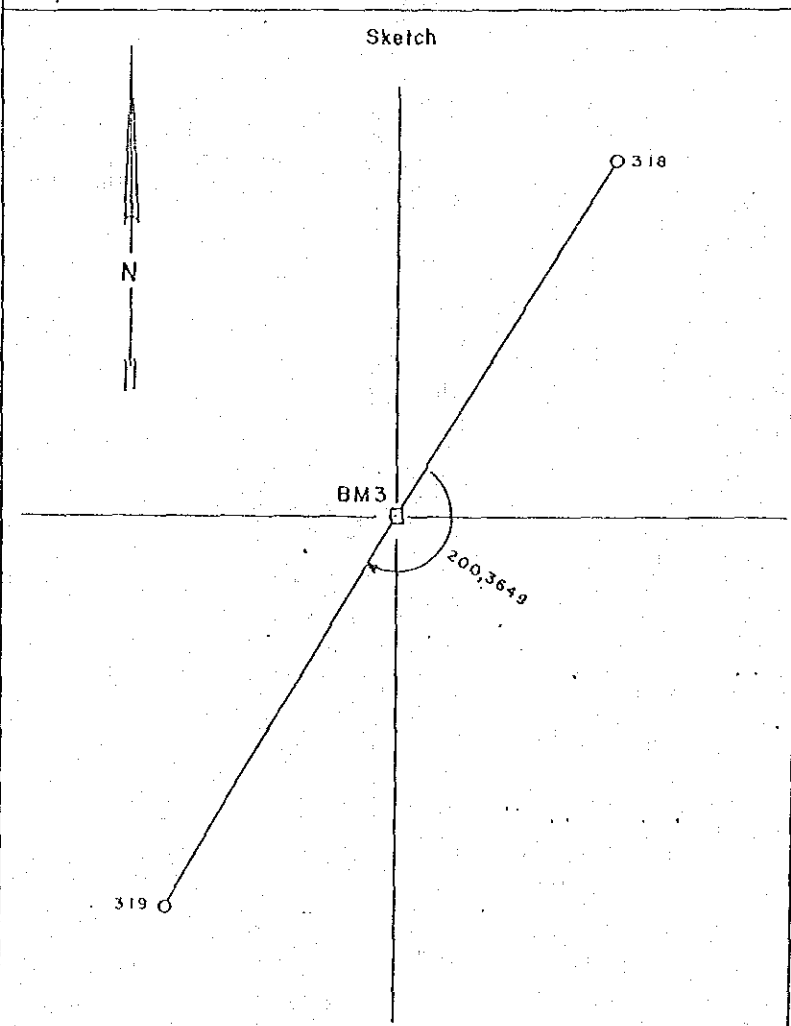
CONTROL STATION-IDENTIFICATION (Nº BM 3)

FINAL RESULT SHEET

	B	L	X · E	Y · N	H
Station BM 3			498 198,043	32 098,886	383,773
Eccentric point 318			498 243,471	32 174,990	387,747
Eccentric point 319			498 122,724	31 974,332	381,977

Place	SIESMIC LAYON SD5.5
Route	

	Data	Full name	Note
Selecting of point			
Setting of signal			
Observed by			



Photograph of station



Profile

Aerial photo

Strip Nº	Phot Nº

- △ Triangulation point
- Bench mark
- Traverse station

Date

Written by

Checked by

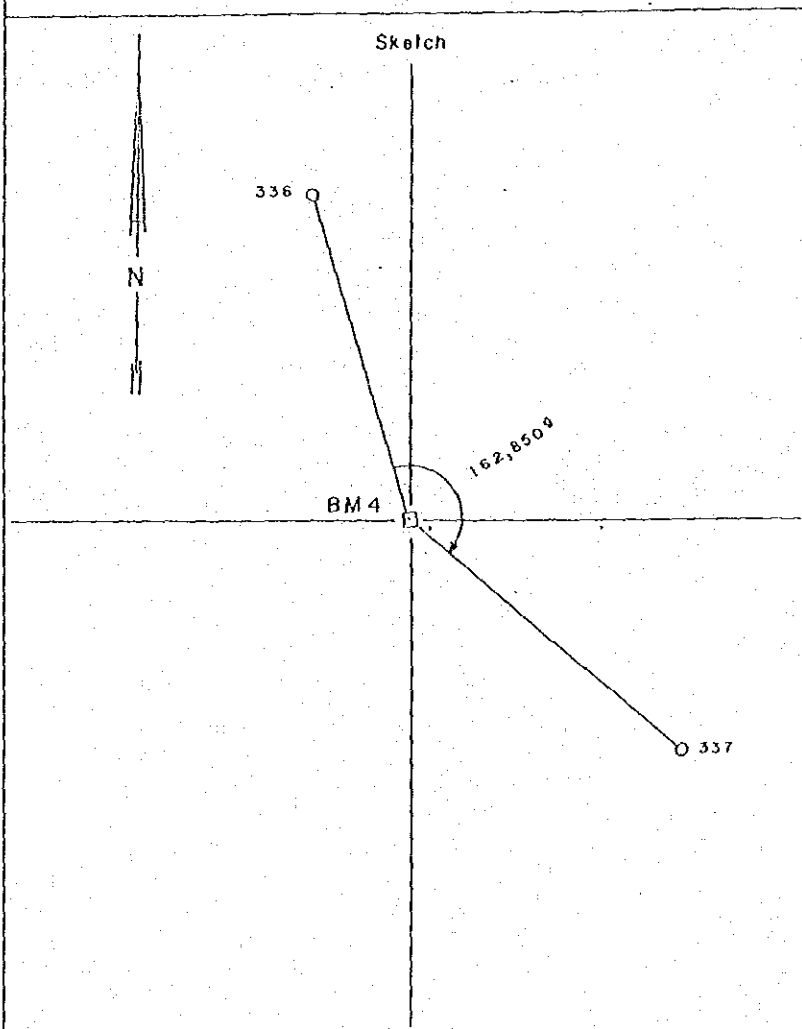
CONTROL STATION IDENTIFICATION (Nº BM 4)

FINAL RESULT SHEET

	B	L	X · E	Y · N	H
Station BM 4			497 994,047	30 410,086	384,085
Eccentric point 336			497 981,729	30 453,470	383,905
Eccentric point 337			498 074,672	30 317,942	385,470

Place	SIESMIC LAYON SD5 (4) SD5 (3)
Route	

	DATA	Full name	Note
Selecting of point			
Setting of signal			
Observed by			



Profile	
Aerial photo	
Strip Nº	Phot Nº

- △ Triangulation point
- Bench mark
- Traverse station

Date

Written by

Checked by

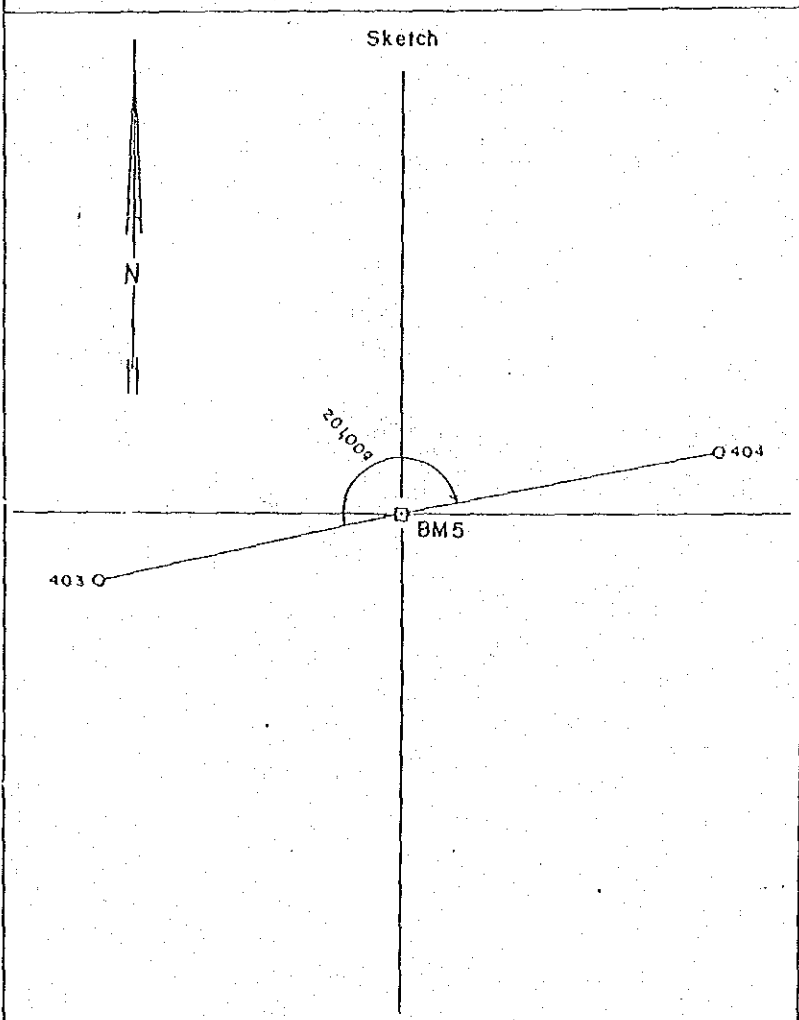
CONTROL STATION-IDENTIFICATION (N^o BM 5)

FINAL RESULT SHEET

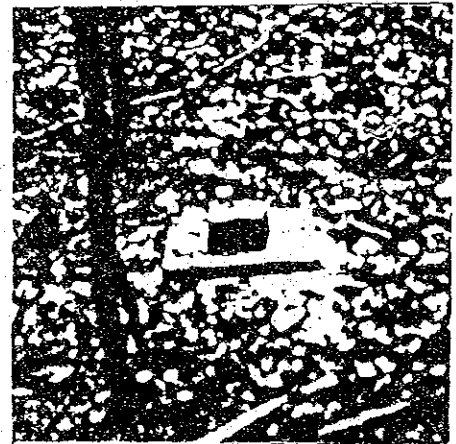
	B	L	X · E	Y · N	H
Station BM 5			498 827,140	28 284,823	385,741
Eccentric point 403			498 671,006	28 252,943	386,594
Eccentric point 404			498 984,637	28 314,410	385,862

Place	SIESMIC LAYON SW2
Route	

	DATA	Full name	Note
Selecting of point			
Setting of signal			
Observed by			



Photograph of station



Profile

Aerial photo.

Strip N^o

Phot N^o

- △ Triangulation point
- Bench mark
- Traverse station

Date

Written by

Checked by

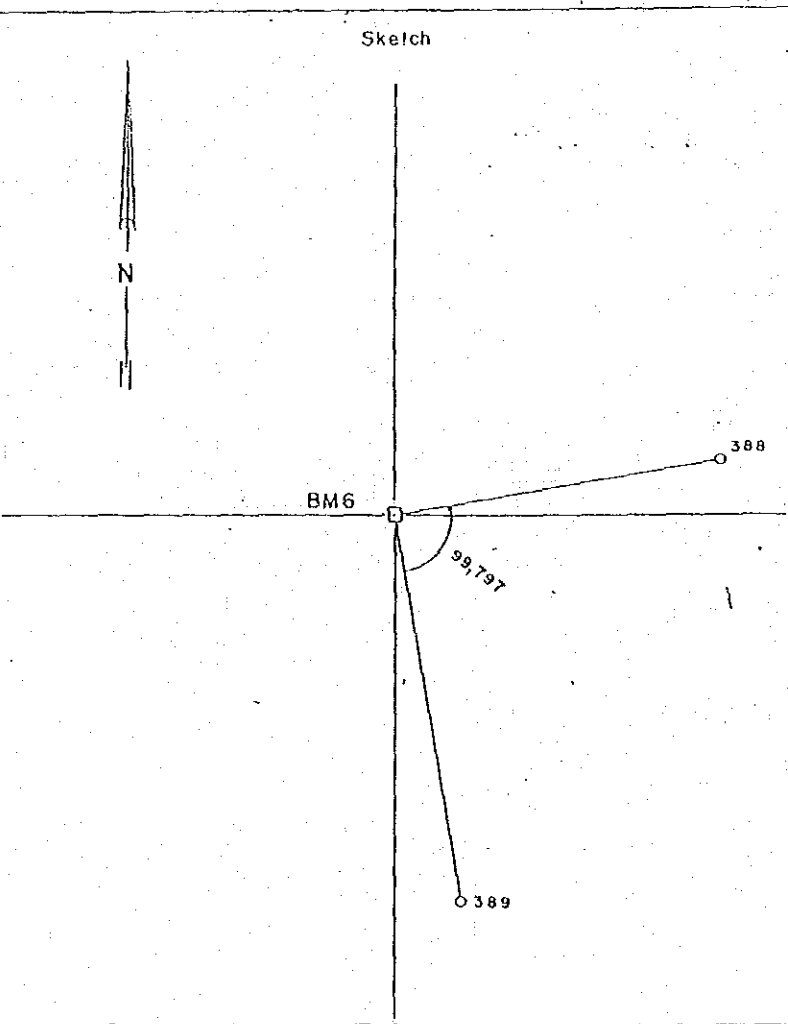
CONTROL STATION-IDENTIFICATION (N° BM 6)

FINAL RESULT SHEET

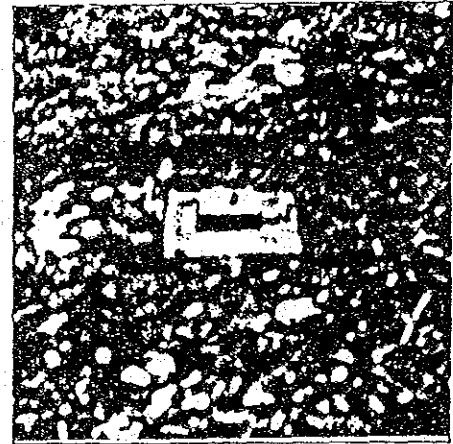
	B	L	X · E	Y · N	H
Station BM.6			496 389,651	27 808,478	393,817
Eccentric point 388			496 436,712	27 816,487	392,000
Eccentric point 389			496 402,428	27 734,815	386,664

Place	SIESMIC LAYON SW6(2)
Route	

	DATA	Full name	Note
Selecting of point			
Setting of signal			
Observed by			



Photograph of station



Profile

Aerial photo.	
Strip N°	Phot N°

- △ Triangulation point
- Bench mark
- Traverse station

Date Written by Checked by

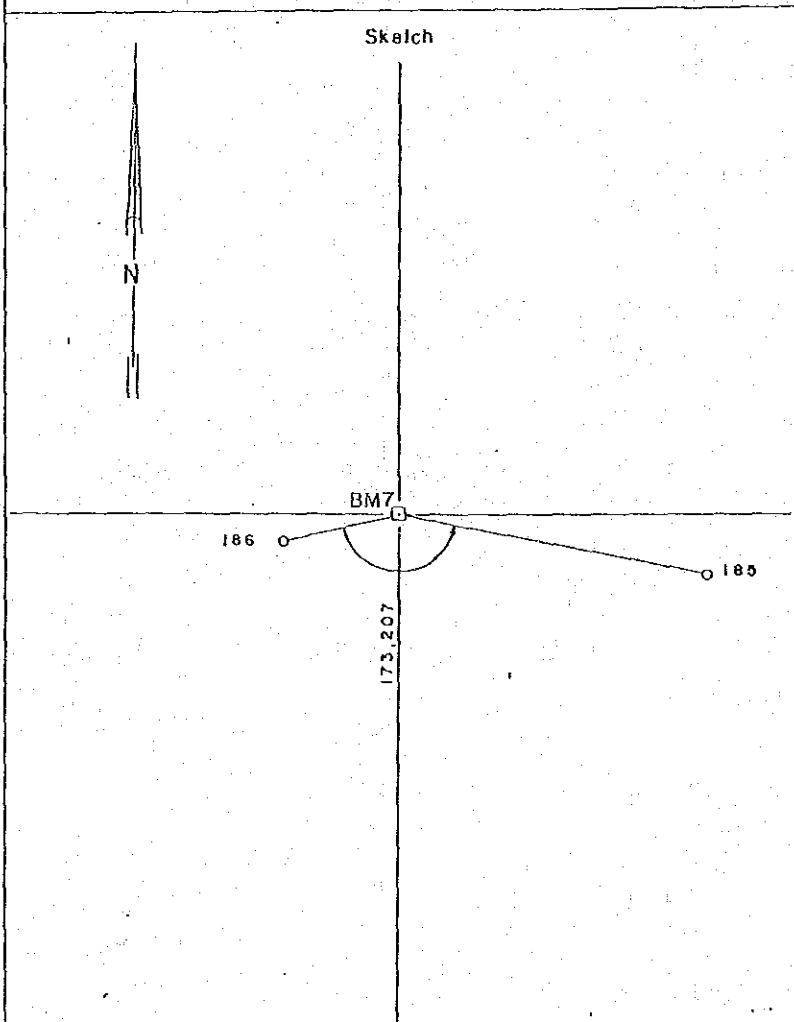
CONTROL STATION-IDENTIFICATION (N° BM 7)

FINAL RESULT SHEET

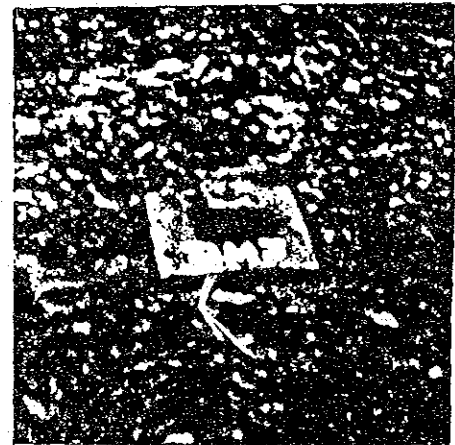
	B	L	X · E	Y · N	H
Station BM 7			495034,403	26788,331	377,340
Eccentric point 185			495100,475	26775,522	376,501
Eccentric point 186			495030,394	26787,395	377,327

Place	SIEMIC SW1 (3)
Route	

	DATA	Full name	Note
Selecting of point			
Setting of signal			
Observed by			



Photograph of station



Profile

Aerial photo

Strip N°	Phot N°

- △ Triangulation point
- Bench mark
- Traverse station

Date

Written by

Checked by

497000

497500

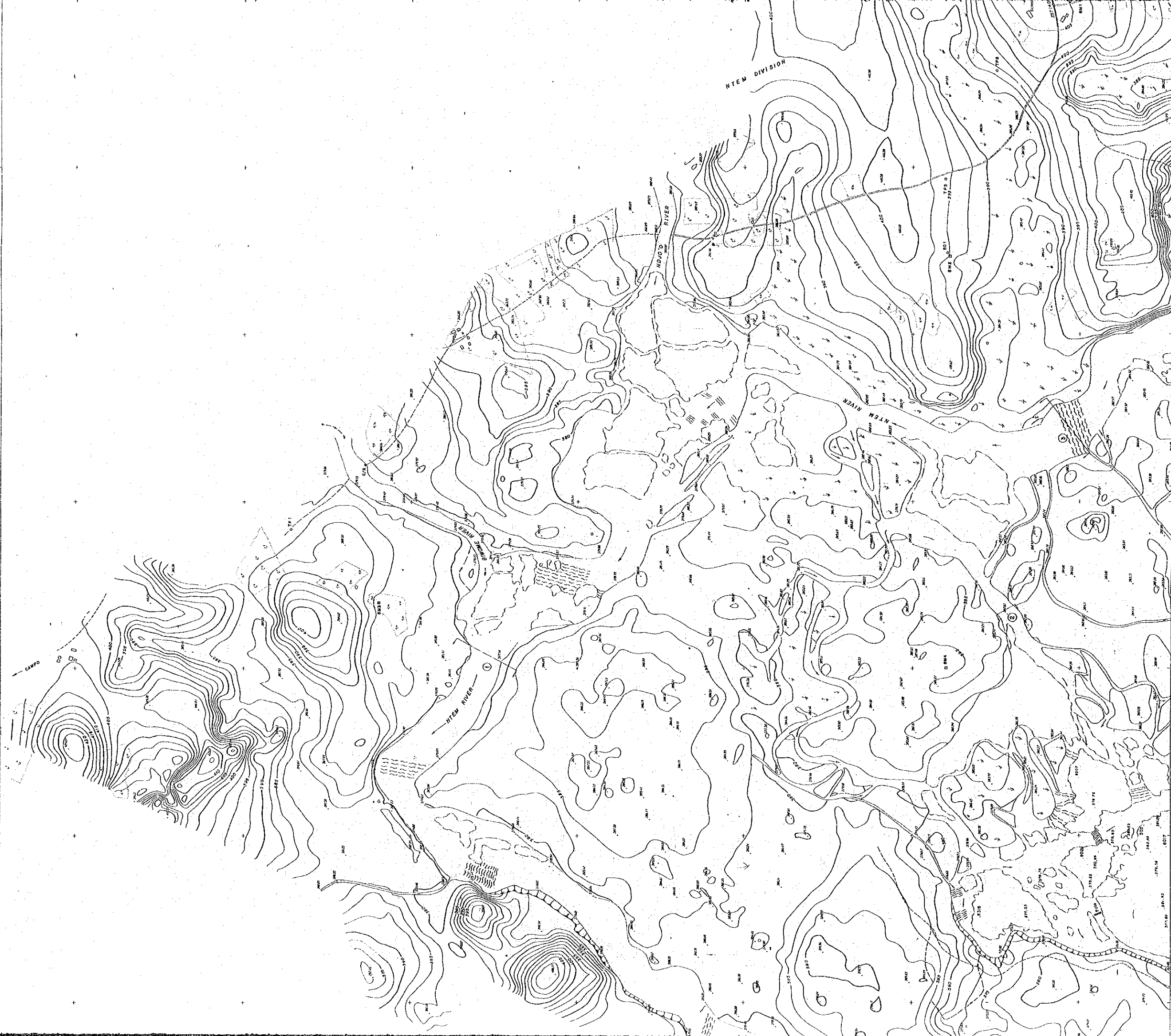
498000

498500

499000

499500

500000



000767

009650

009600

009567

33000

32500

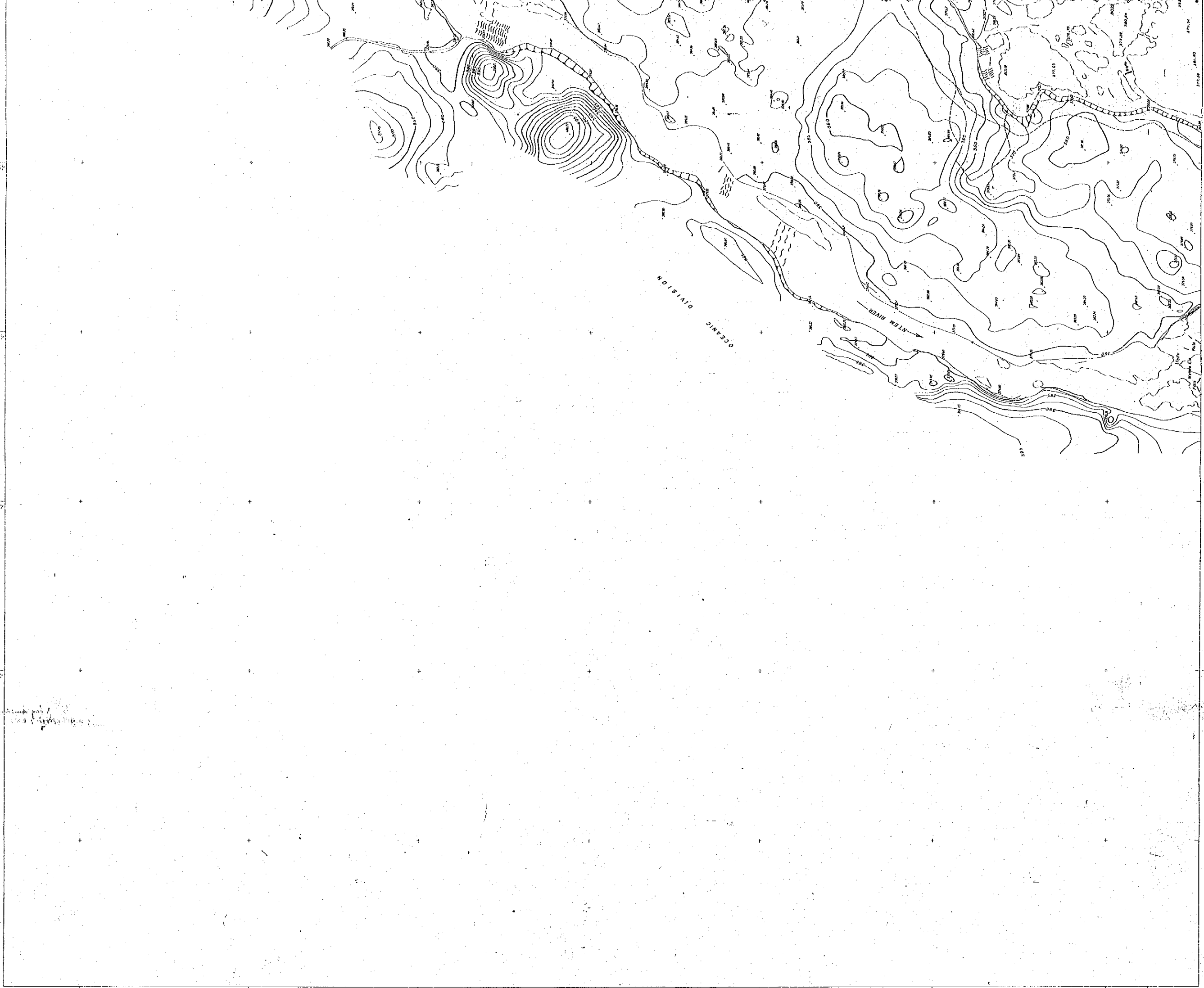
32000

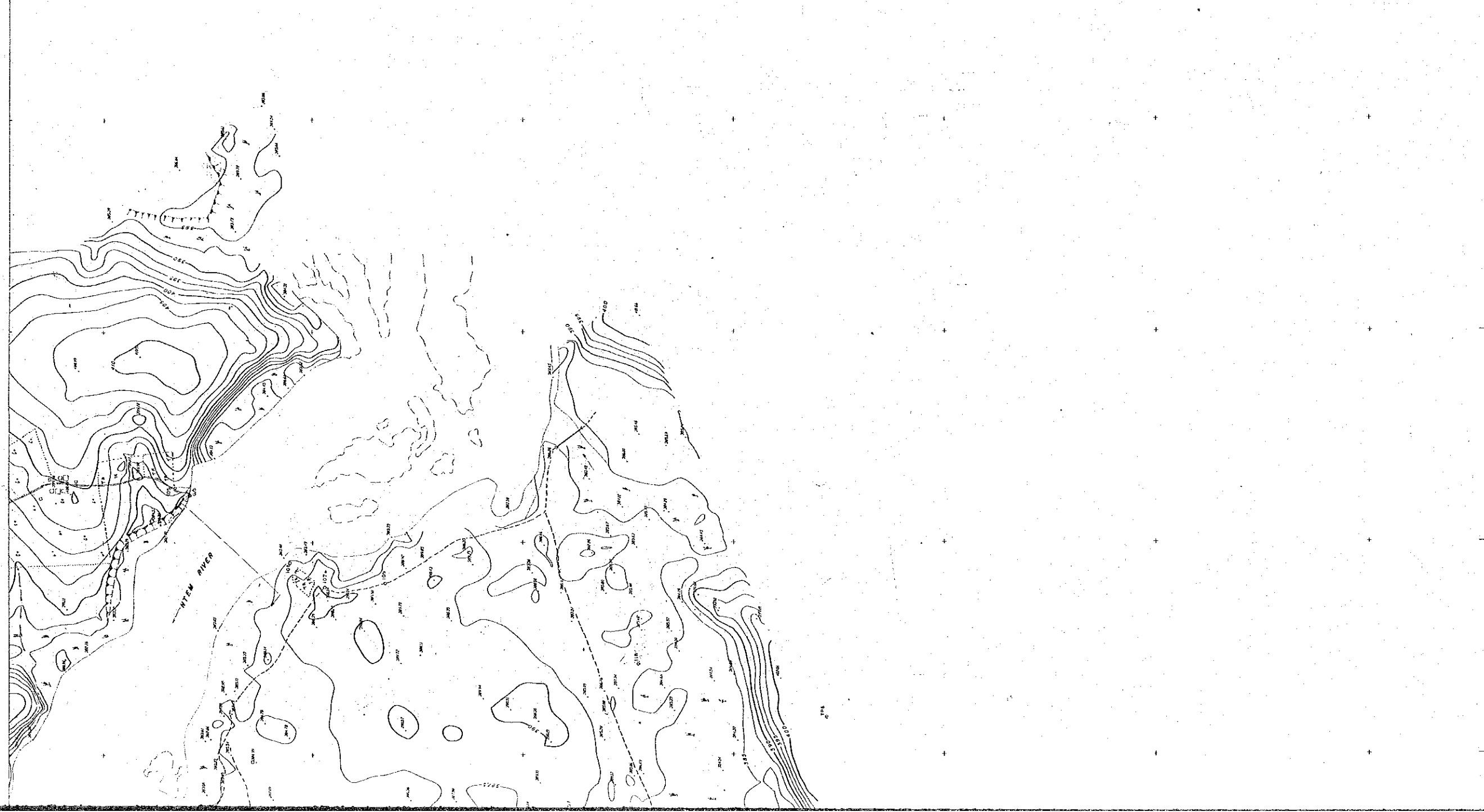
31500

31000

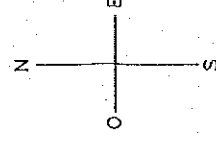
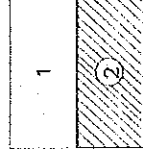
30500

30000





INDEX SHEET



NOTE

REFERENCE

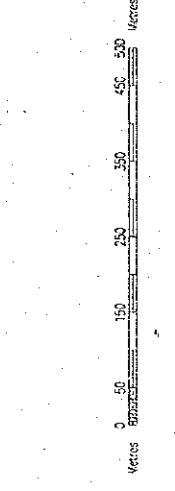
HORIZONTAL LOCAL COORDINATE

BM 1 E = 500000.000 N = 200000.000
 BM 2 E = 499229.436 N = 200377.664
 BM 3 E = 499198.043 N = 320868.896
 BM 4 E = 497994.647 N = 304150.086
 BM 5 E = 498927.140 N = 282844.823
 BM 6 E = 496386.651 N = 278066.478
 BM 7 E = 495034.403 N = 297866.331

VERTICAL
 S.N. 30 407.427 INSTITUT NATIONAL GEOGRAPHIQUE

LEGENDE
 LEGEND

○	PONS DE REPÈRE CONTROL POINT	○ ○ ○	ARBRES TREES
●	STATION BENCHMARK POINT	○ ○ ○	ENTE CUTTING
○	ELEVATION POINT	○ ○ ○ ○	COCHONNIER PISTACH
○	POINT DE CONTRÔLE CONTROL POINT	○ ○ ○ ○	CRANES CRANE
○	MARQUE MARK	○ ○ ○ ○	LIMIT DES PLANTATIONS BOUNDARY OF PLANTATION
○	MAISON HOUSE	○ ○ ○ ○	MAIS GRASS
○	BUREAU ADMINISTRATIF ADMINISTRATIVE OFFICE	○ ○ ○ ○	TALLS UNDER BRUSH
○	POSTE DE POLICE POLICE OFFICE	○ ○ ○ ○	CHAMP DE RIZ RIZY FIELD
○	ÉCOLE SCHOOL	○ ○ ○ ○	FAUCON FAUCON
○	HÔPITAL HOSPITAL	○ ○ ○ ○	CADIS CHOCOLATE
○	CHEMISE MACHINE	○ ○ ○ ○	RIVER RIVER
○	ROUTE 1-2M ROAD 1-2M	○ ○ ○ ○	SAULE SMALL ROSE
○	ROUTE 1-2M ROAD 1-2M	○ ○ ○ ○	SAULE SMALL ROSE
○	PASSAGE PÉTON FOOTWAY	○ ○ ○ ○	STATION AÉROLOGIQUE AERONAUTICAL STATION
○	DANCE	○ ○ ○ ○	BARREL BARREL
○	PONT EN ACIER STEEL BRIDGE	○ ○ ○ ○	MANSE SLUICE
○	PONT EN BOIS WOODEN BRIDGE	○ ○ ○ ○	CHUTE D'EAU WATER FALL
○	SAULE EN BOIS WOODEN BRIDGE	○ ○ ○ ○	SAULE SMALL ROSE
○	COUSINES DE NIGAU CONIVAN	○ ○ ○ ○	DIRECTION DU S'VEILLEMENT STATION D'AVERTISSEMENT
○	MOSQUE MOSQUE	○ ○ ○ ○	ETANG POND
○	BOULEVARD BOULEVARD	○ ○ ○ ○	BOULEVARD BOULEVARD
○	AVENUE AVENUE	○ ○ ○ ○	LIMIT DE DÉPARTEMENT DISTRICT BOUNDARY
○	CULTURE MARÉCHÈ RICE CULTURE	○ ○ ○ ○	BOULEVARD DE DISTRICT
○	MONTAINOUS RELIEF MOUNTAINOUS RELIEF	○ ○ ○ ○	
○	AÉRIAL PHOTOGRAPH	○ ○ ○ ○	



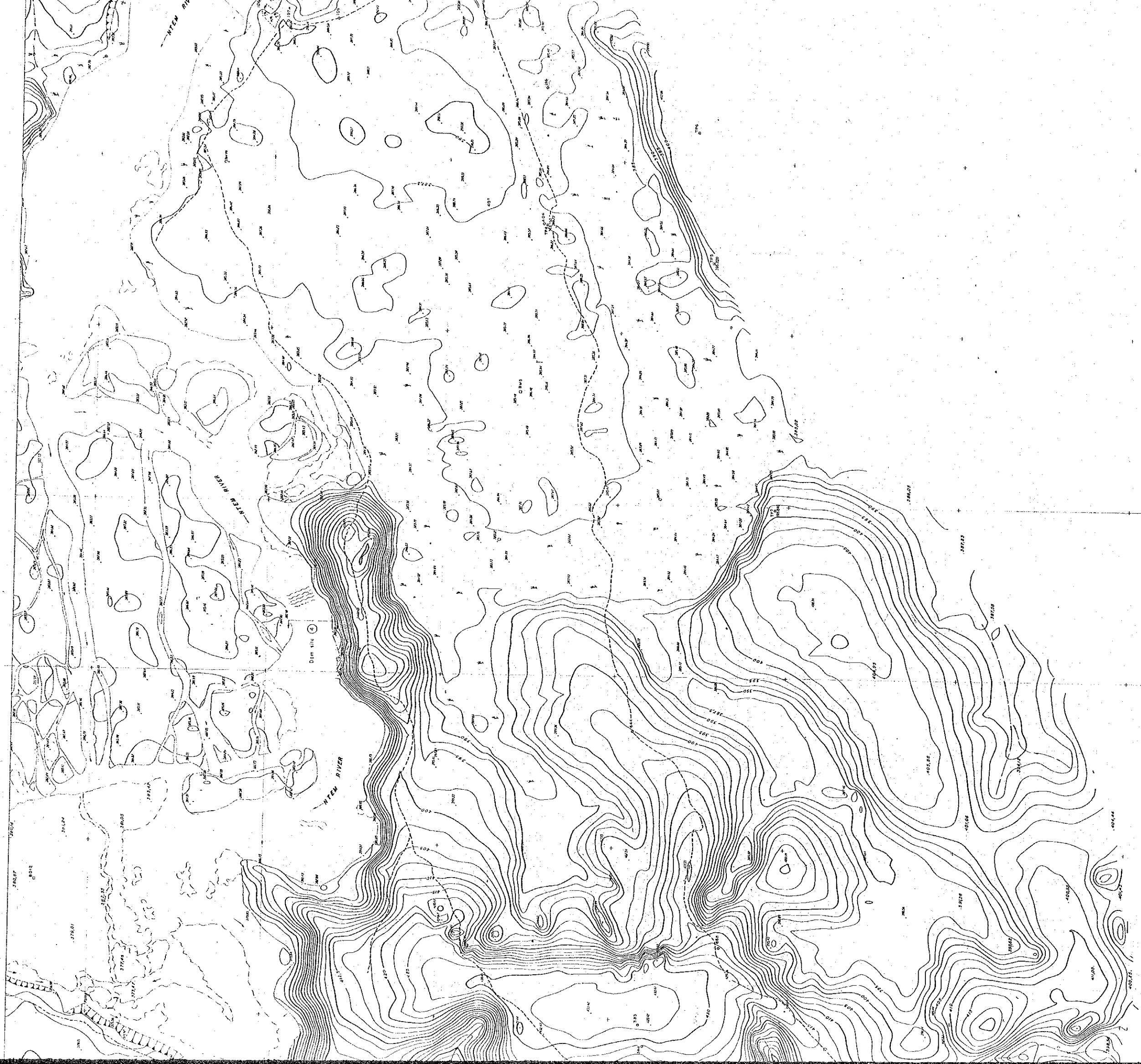
ECHELLE 1/5000

REPUBLIC OF CAMEROON	
SOCIETE NATIONALE D'ELECTRICITE DU CAMEROON	
MEWE ELE HYDROELECTRIC POWER DEVELOPMENT PROJECT	
JAPAN INTERNATIONAL COOPERATION AGENCY	
TITLE OF DRAWING : MEWE ELE	
LOCATION : NGAESSARA	
AGENCY : S.T.E.M.	
PROVINCE : SOU	
CHECKED BY :	SCALE : 1 / 5000
APPROVED BY :	SHEET NUMBER : 2
	DATE : MAR 1982
	TOTAL SHEET : 2

500500

500000

499500



497000

497500

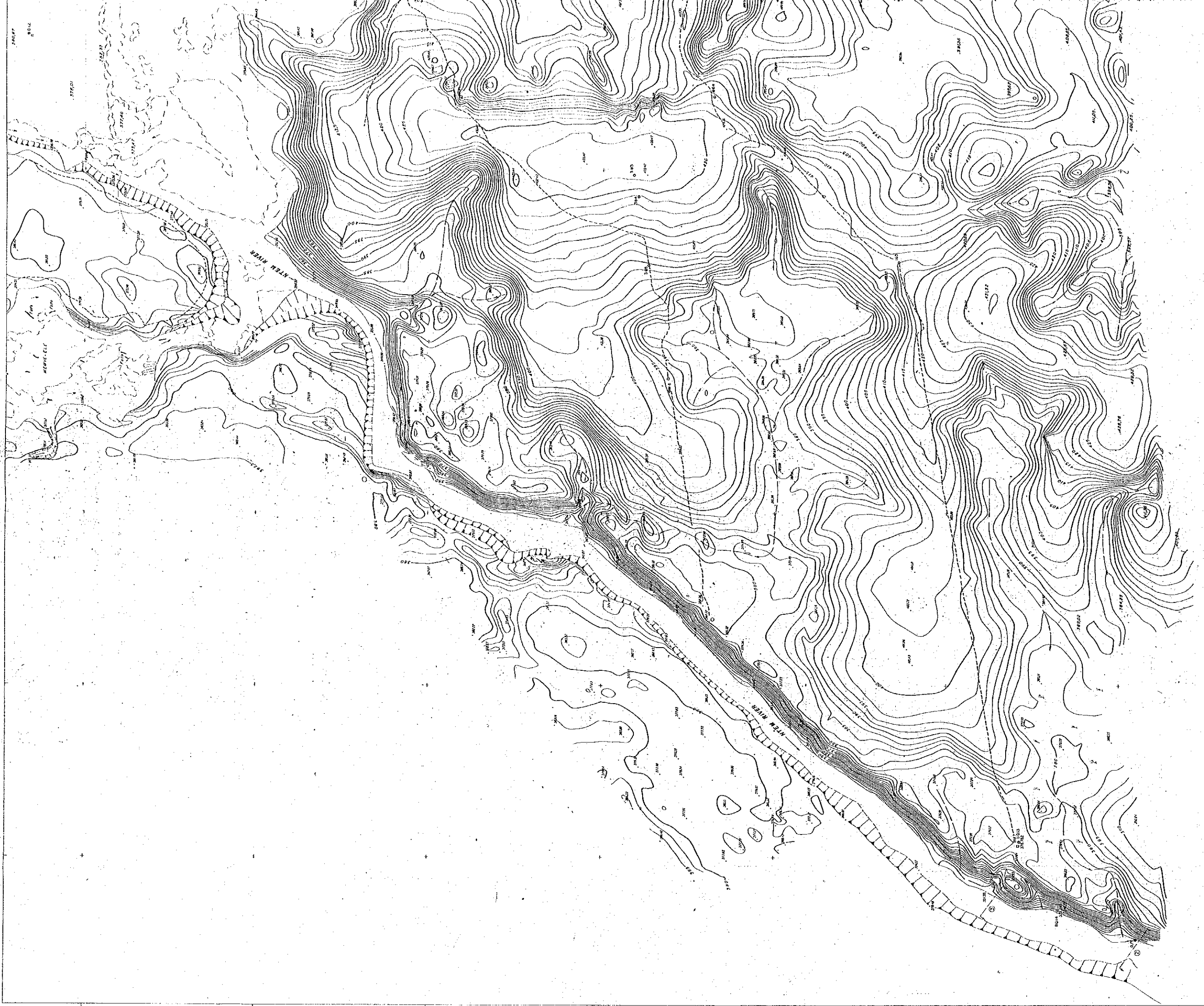
498000

498500

499000

499500

500000



29500

23000

25500

23000

27500

27000

49500

49500

49600

496500

497000

497500