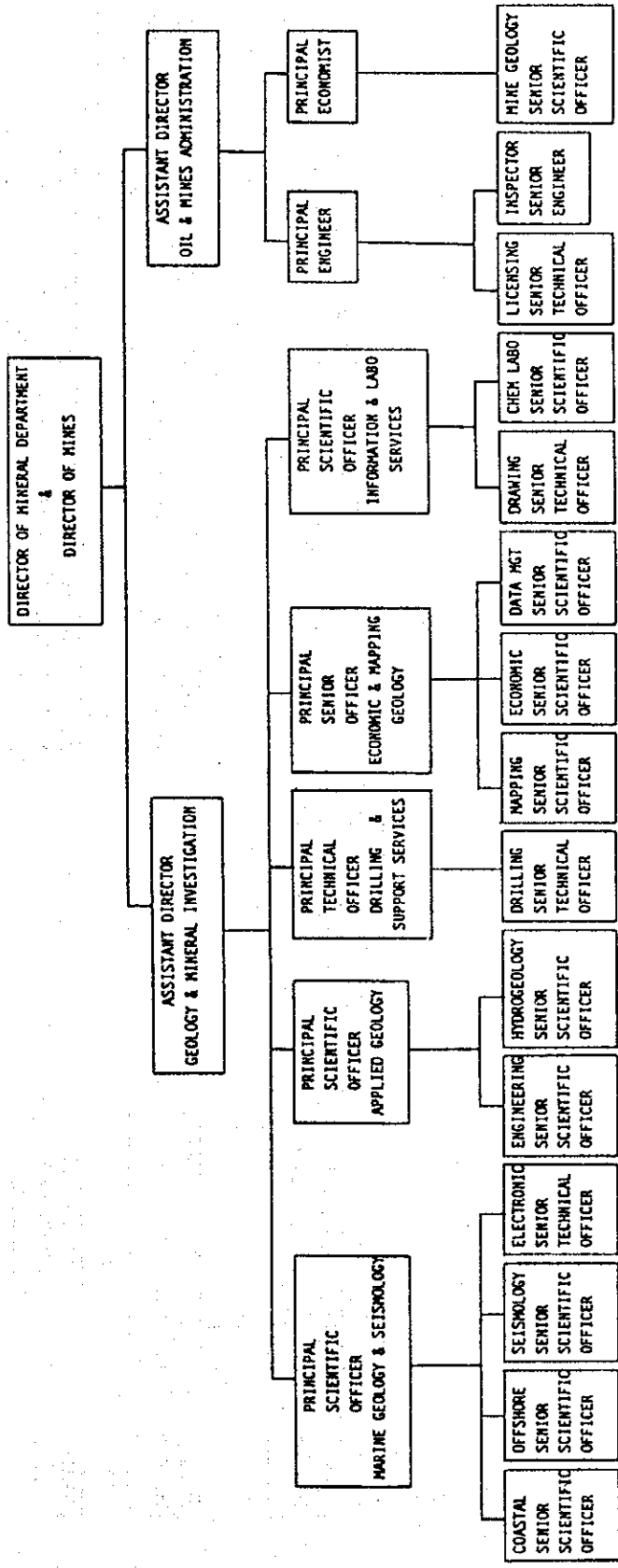


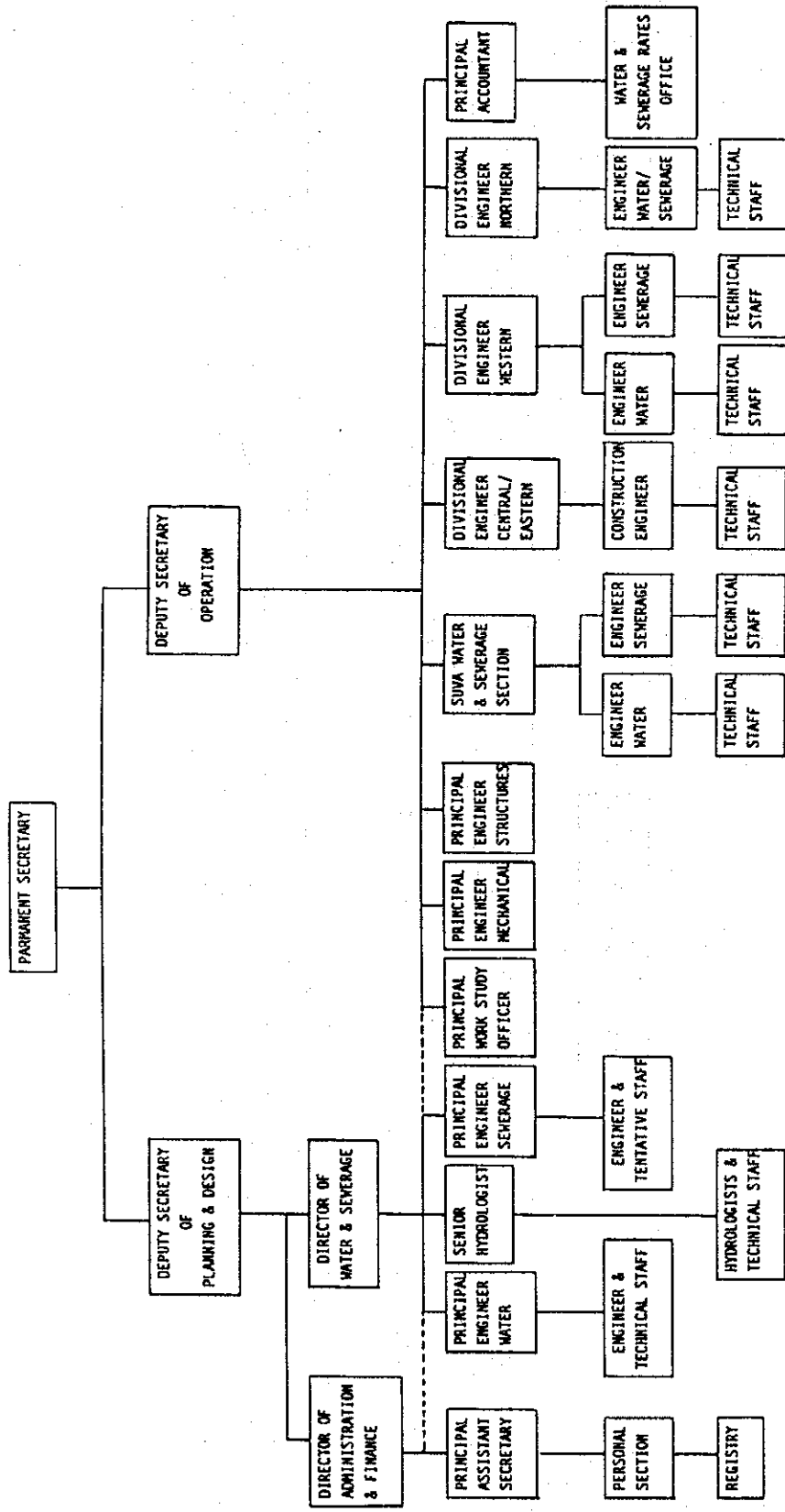
FIGURES



JAPAN INTERNATIONAL COOPERATION AGENCY (JICA)
 THE STUDY ON GROUNDWATER DEVELOPMENT IN NORTH VITI LEVU
 IN THE REPUBLIC OF FIJI

Fig.
 E-1.1 ORGANIZATION CHART OF MRD

NIPPON KOEI CO., LTD
 NIKKO EXPLORATION & DEVELOPMENT CO., LTD



JAPAN INTERNATIONAL COOPERATION AGENCY (JICA)
 THE STUDY ON GROUNDWATER DEVELOPMENT IN NORTH VITI LEVU
 IN THE REPUBLIC OF FIJI

Fig. E-1.2 ORGANIZATION CHART OF MIPW & PWD

NIPPON KOEI CO., LTD
 NIKKO EXPLORATION & DEVELOPMENT CO., LTD

APPENDIX - F
POPULATION PROJECTION

APPENDIX - F
POPULATION PROJECTIONS
TABLE OF CONTENTS

	<u>Page</u>
1. GENERAL	F-1
2. METHODOLOGY	F-3
2.1 Conditions and Assumptions	F-3
2.2 Calculation Process	F-4
3. RESULT	F-7

LIST OF TABLES

		<u>Page</u>
Table F-1.1	POPULATION ACCORDING TO ETHNIC ORIGIN AND SEX IN SUCCESSIVE CENSUSES, 1946-1986.....	F- 9
Table F-1.2	POPULATION OF PROVINCES ACCORDING TO URBAN AND RURAL AREAS AND ETHNIC ORIGIN IN THE 1976 AND 1986 CENSUSES.....	F-10
Table F-1.3	POPULATION AND POPULATION GROWTH RATE ACCORDING TO ETHNIC ORIGIN IN THE STUDY AREA (1) - (4).....	F-11
Table F-2.1	ESTIMATES OF AVERAGE ANNUAL GROWTH RATES FOR POPULATION PROJECTIONS.....	F-15
Table F-3.1	POPULATION PROJECTIONS IN THE STUDY AREA (1) - (2).....	F-16
Table F-3.2	ESTIMATED ANNUAL GROWTH RATE OF THE POPULATION IN THE STUDY AREA (1) - (2).....	F-18
Table F-3.3	POPULATION PROJECTIONS IN THE STUDY AREA WITH REGIONAL WATER SUPPLY SYSTEM (HIGH VARIANT) (1) - (2).....	F-20
Table F-3.4	POPULATION PROJECTIONS IN THE STUDY AREA WITHOUT REGIONAL WATER SUPPLY SYSTEM (HIGH VARIANT) (1) - (3).....	F-22
Table F-3.5	POPULATION PROJECTIONS IN THE STUDY AREA WITH REGIONAL WATER SUPPLY SYSTEM (MIDDLE VARIANT) (1) - (2).....	F-25
Table F-3.6	POPULATION PROJECTIONS IN THE STUDY AREA WITHOUT REGIONAL WATER SUPPLY SYSTEM (MIDDLE VARIANT) (1) - (3).....	F-27
Table F-3.7	POPULATION PROJECTIONS IN THE STUDY AREA WITH REGIONAL WATER SUPPLY SYSTEM (LOW VARIANT) (1) - (2).....	F-30
Table F-3.8	POPULATION PROJECTIONS IN THE STUDY AREA WITHOUT REGIONAL WATER SUPPLY SYSTEM (LOW VARIANT) (1) - (3).....	F-32
Table F-3.9	SUMMARY OF POPULATION PROJECTIONS IN THE STUDY AREA (HIGH SCENARIO).....	F-35
Table F-3.10	SUMMARY OF POPULATION PROJECTIONS IN THE STUDY AREA (MIDDLE SCENARIO).....	F-36
Table F-3.11	SUMMARY OF POPULATION PROJECTIONS IN THE STUDY AREA (LOW SCENARIO).....	F-37

1. GENERAL

The study of the population projections aims to provide the basic data required to estimate domestic water demand in the Study Area. The Study Area spreads over seven (7) Tikinas; Ba, Magodro, Tavua and Vuda Tikinas in the Ba Province, Navosa Tikina in the Nadroga/Navosa Province and Rakiraki and Saivou Tikinas in the Ra Province. It contains about 160 communities in total in an area of 1,567 km² and a population of 97,018 in 1986.

A growth trend in past censuses would enable the future population to be forecast. Fiji's censuses have been conducted 11 times at the rate of one per 10 years since 1881, except the period from 1922 to 1935. Table F-1.1 provides the census populations for the period 1946-1986 together with the intercensal annual growth rates.

According to the censuses, Fiji's average annual population growth rate decreased from 2.91 % for the period 1946-1956 to 1.98 % for the period 1976-1986, and this decrease was more evident in Indian and non-Fijian people.

In 1989 the Government of Fiji projected the national population for the period 1991 to 2011 at intervals of 5 years, using a demographic analysis method based on the 1986 census and past population growth trends. This analysis was conducted in detail by ethnic origin and age and sex groups, and estimated that the national population in 2011 will amount to 941,841 under conditions of a medium variant. This corresponds to an increase of 1.31 times as against the 1986 census population (715,375).

Excepting 1976 and 1986, the census population by region (Province, Tikina or community) is not available at present, and as a result the population projection by region to 2011 has not been officially announced. Table E-1.2 lists the census of 1976 and 1986 and the intercensal annual growth rate by province of the whole country. During this period, Ba and Ra Provinces which take in a major part of the Study Area had relatively low growth rates compared to other provinces. This was due mainly to an increase in emigrants from these provinces.

Table F-1.3 shows the 1976 and 1986 censuses and the intercensal annual growth rate of the population of the communities in the Study Area. As is obvious from the table, the growth rates of population indicate a remarkable scattering among the communities, due to migration between several areas in the said period. It is not expected to continue for the long term, and it seems natural to expect the scattering to gradually abate in the future.

Taking this matter into account, the population projections in the Study Area are first based on urban and rural areas in the respective Tikinas, not by individual communities. Next, the growth rates, which are derived from the initial population projections, are used to project the population of communities included in the urban and rural areas.

2. METHODOLOGY

2.1 Conditions and Assumptions

The population projections are made at intervals of five years for the period 1991 to 2011, using the 1986 census population and the proper population growth rate for the same period. In this population projection, the JICA Study Team adopted a semi-component model, a combination of component and mathematical models. Both models are employed for estimating the natural and migrational growth rates, respectively.

The population growth rate (r) in the Study Area is approximately given as the sum of two rates: natural growth rate (r_1) and migrational growth rate (r_2). The future population of Fiji mentioned in Section 1, was projected by making a demographic analysis on three components, fertility, mortality and two way migration. Among these components, the migration rate was very small in comparison to the natural growth rate which is based on fertility and mortality. Therefore, the growth rate of the whole population of Fiji is assumed to be a natural growth rate (r_1) when projecting population in the Study Area.

On the other hand, the migration growth rate (r_2) in this region (urban and rural areas in respective Tikinas) of the Study Area is given at the ratio of increase in migrants (difference between immigrants and emigrants) to the increased total population of the region. The migration growth rate is given in a calculation process of the population projections described in Section 2.2

The population projections in the Study Area are carried out by region and by ethnic origin, assuming the initial conditions as shown in Table F-2.1. Of the initial conditions, objective areas divided for the projections and their 1986 population are summarized below:

Urban/Rural Areas	Objective Area No in Tikina	Number of Communities	1986 Population			
			Fijians	Indians	Others	Total
<u>Urban Area</u>	1 Ba Town	All	1,888	7,934	438	10,260
	2 Tavua Town	All	1,042	1,094	91	2,227
	3 Vatukoula Town	All	3,248	749	792	4,789
	4 Rakiraki Town	All	963	2,290	108	3,361
<u>Rural Area</u>	5 Ba Rural	All	4,899	29,166	91	34,156
	6 Magodro Rural	All	3,080	3,008	19	6,107
	7 Tavua Rural	All	5,095	13,339	59	18,93
	8 Vuda Rural	3	91	3,480	18	3,589
	9 Navosa Rural	1	470	0	1	471
	10 Rakiraki Rural	All	3,682	8,205	77	11,964
	11 Saivou Rural	7	505	1,095	1	1,601
Total			24,963	70,360	1,695	97,018

Table F-2.1 lists the assumed annual natural growth rates (r_1) of population, divided into three scenarios of high, middle and low variants, at intervals of five years for the period 1976 to 2011, together with the annual growth rate ($r = r_1 + r_2$) of population in the Study Area for the period 1976-1986.

The middle variant of the migration rate (r_2) required for the population projection in 1991 is derived from the migration rate for the period 1976-1986, not 1986-1991. The initial approximate value is in accordance with the following calculation process. The high and low variants of migration rates are assumed to be 20 % up and 20 % down of the rate applied to the middle variant.

2.2 Calculation Process

- (1) The 1991 ethnic group populations of 11 regions in the Study Area (48 cases in total) are projected using the 1986 census (summarized in table above) and an annual growth rate for the period 1986-1991. Of the annual growth rate (r) for the period 1986-1991, the natural growth rate (r_1) adopts the rate shown on the left side in Table F-2.1, and the migration rate (r_2) is based on the difference between the annual growth rate (r) in the Study Area and the national growth rate (r_1) for the period 1976-1986 shown in Table F-2.1.

(2) The 1991 population estimated in Item (1) has been adjusted in accordance with the following process. This is in order to revise any distortion of the estimates which may arise due to uncertainties of the annual growth rate.

(A) The total ethnic group population by region should be in equal proportion to the same ethnic group population of the whole Study Area. If these figures are not proportionate, half of the difference between both figures is distributed to the ethnic group population in each region in proportion to the respective population, and the remaining half is adjusted to the ethnic group population in the Study Area.

For example, the sum total of the Fijian population estimated by region, and the population of Fijians estimated for the whole Study Area, are adjusted to become equal. The same adjustment is carried out for Indians and other ethnic groups.

(B) On the other hand, the sum total of Fijians, Indians and other groups in a region should be equal to the whole population estimated for the region. If both figures of population are not equal, half the difference between both figures is distributed to the populations of Fijians, Indians and others in proportion to their respective populations, and the remaining half is adjusted for the whole population of the region concerned. The same adjustment is made for each region.

For example, the total population of Fijians, Indians and others in Ba Town are adjusted to become equal to the whole population of Ba Town. The same adjustment is made for the remaining 10 regions.

(C) The two kinds of adjustments given in (A) and (B) above are alternately carried out till the results attain necessary accuracy. The final results would be the projected population in 1991 by region and ethnic group in the Study Area.

(D) The annual population growth rate for the period 1986-1991 in the Study Area is calculated by region and ethnic group, using the 1986 census population and the 1991 population finalized in (C) above.

- (3) A first approximate of the 1996 population is projected for the same regions and ethnic groups as indicated in Item (1), using the 1991 population finalized in Item (2) and an annual growth rate assumed for the period 1991-1996.

The annual growth rate (r) is assumed as an initial value, while the natural growth rate (r_1) is based on the rate of the period 1991-1996 indicated on the left side in Table F-2.1, the first approximate of the migration rate (r_2) for the same period is estimated by an extrapolation of the annual migration rates for the periods 1976-1986 and 1986-1991. Where, the migration rate for the period 1976-1986 is already provided in Item (1), and the rate for the period 1988-1991 is given as the difference between the rate (r) estimated in (D) of Item (2) and the national growth rate (r_1) shown in Table F-2.1.

- (4) An approximate of the 1996 population estimated in Item (3) is adjusted using the same method as (A), (B), (C) and (D) in Item (2). As a result, the 1996 population and the annual growth rate for the period 1991-1996 are finalized as the population projections of the Study Area.
- (5) The populations in 2001, 2006 and 2011, and the annual rates of population growth for the periods 1996-2001, 2001-2006 and 2006-2011 are successively projected in accordance with the method indicated in Items (1) to (4).

3. RESULTS

Results of the population projections according to three scenarios of high, middle and low variants are listed in Table F-3.1. The total population of the Study Area in 2011 would be projected to be 138,852 for the high variant, 104,248 for the medium variant and 85,707 for the low variant.

As mentioned at the beginning of this Section, the three scenarios of high, middle and low variants were classified in accordance with the initial condition of the population growth rate. The initial rate of the medium variant is based on the population growth rate (r_1) of the whole country and the intercensal migration rate (r_2) in the Study Area for the period 1976-1986.

The migration rate (r_2) in the Study Area for the intercensal period 1976-1986 indicated negative values for Fijians in the Vuda rural area, Indians in Tavua, Vatukoula and Rakiraki Towns, and other ethnic groups in all the Study Area except Tavua Town and the rural areas of Magodro and Vuda (Table F-2.1).

It can be considered this negative migration rate will have a decreasing effect on the future population projected, even when its rate is used as an initial condition. In the scenario of the medium variant, the 2011 population of the whole Study Area is projected to 104,248 increasing by 7.5 % (annual growth rate of 0.29 %) from the 1986 population (97,018). It appears that this growth rate is rather low, due to the influence of the negative growth rate of migration in the initial condition.

On the other hand, the 2011 population in the Study Area in the scenario of high variant is estimated at 138,852, increasing by 43.1 % (annual growth rate of 1.44 %) from the 1986 population. This growth rate is high compared to the population growth rate of the whole country in the Medium Scenario shown in Table F-2.1.

The population projected from the low variant scenario would come to 85,707 in 2011. This population, which is projected to be lower than the 1986 population, would not be subject to the water demand forecast in the Study Area. Therefore future water demand in the Study Area should be planned within the range of populations projected from scenarios of high and middle variants.

Using the projected population provided in Table F-3.1, the average annual population growth rates by ethnic groups in the respective regions of the Study Area are

estimated at intervals of five years for the period from 1991 to 2011, as shown in Table F-3.2.

Further, for the same period the populations of communities within regions are projected by using the population growth rates of the respective regions, according to the three scenarios, and divided into two kinds of areas, with or without a regional water supply system. These results are given in Tables F-3.3 to F-3.8.

Tables F-3.9 to F-3.11 provide a summary of population classified into urban and rural areas and areas with or without the regional water supply system in the Study Area. According to the high scenario (Table F-3.9), it is expected that the projected population in the Study Area will increase to 60,189 in 2011 from 49,846 in 1986 in areas with the regional water supply system, and to 78,664 in 2011 from 47,172 in 1986 in areas without the regional water supply system.

TABLES

Table F-1.1 POPULATION ACCORDING TO ETHNIC ORIGIN AND SEX
IN SUCCESSIVE CENSUSES, 1946-1986

Ethnic Origin	Sex	Population							Average Annual Growth Rate (%)						
		1946		1956		1966		1976	1986	1946-1956		1956-1966		1966-1976	
		2 Oct.	26 Sep.	12 Sep.	13 Sep.	13 Sep.	31 Aug.	1986	1956	1966	1976	1986			
Fijian	Male	59,862	74,989	102,479	131,413	167,256			2.28	3.17	2.52	2.44			
	Female	58,208	73,145	99,697	128,519	162,049			2.31	3.15	2.57	2.35			
	Total	118,070	148,134	202,176	259,932	329,305			2.29	3.16	2.54	2.39			
Indian	Male	64,988	88,359	122,632	147,194	175,829			3.12	3.33	1.84	1.79			
	Female	55,426	81,044	118,328	145,702	172,875			3.87	3.86	2.10	1.72			
	Total	120,414	169,403	240,960	292,896	348,704			3.47	3.59	1.97	1.76			
All others	Male	11,881	15,127	17,636	18,343	19,483			2.44	1.55	0.39	0.60			
	Female	9,273	13,073	15,955	16,897	17,883			3.49	2.01	0.58	0.57			
	Total	21,154	28,200	33,591	35,240	37,366			2.92	1.76	0.48	0.59			
Total	Male	136,731	178,475	242,747	296,950	362,568			2.70	3.12	2.04	2.02			
	Female	122,907	167,262	233,980	291,118	352,807			3.13	3.41	2.21	1.94			
	Total	259,638	345,737	476,727	588,068	715,375			2.91	3.26	2.12	1.98			

Source : Population Census 1986, Vol.1, Bureau of Statistics

Note : Figures in parentheses () mean negative.

Table F-1.2 POPULATION OF PROVINCES BY URBAN AND RURAL AREAS AND ETHNIC ORIGIN IN 1976 AND 1986 CENSUSES

1. Urban Area

Province	Fijian			Indian			Others			Total		
	1976	Annual Growth		1976	Annual Growth		1976	Annual Growth		1976	Annual Growth	
		1986	Rate(%)		1986	Rate(%)		1986	Rate(%)		1986	Rate(%)
Ba	20,104	23,612	1.62	34,761	43,347	2.23	4,719	4,594	-0.27	59,584	71,553	1.85
Bua	0	0	0	0	0	0	0	0	0	0	0	0
Cakaudrove	953	1,265	2.87	1,049	1,402	2.94	293	205	-3.51	2,295	2,872	2.27
Kadavu	0	0	0	0	0	0	0	0	0	0	0	0
Lau	0	0	0	0	0	0	0	0	0	0	0	0
Lomaiviti	1,567	1,888	1.88	494	450	-0.93	703	557	-2.30	2,764	2,895	0.46
Macuata	1,915	2,883	4.18	10,384	13,083	2.34	657	571	-1.39	12,956	16,537	2.47
Nadroga/Navosa	2,014	2,776	3.26	1,485	1,786	1.86	136	168	2.14	3,635	4,730	2.67
Naitasiri	16,650	31,094	6.45	24,790	38,854	4.60	2,661	5,150	6.83	44,101	75,098	5.47
Namosi	0	0	0	0	0	0	0	0	0	0	0	0
Ra	846	963	1.30	2,768	2,290	-1.88	141	108	-2.63	3,755	3,361	-1.10
Rewa	33,156	40,500	2.02	31,374	34,366	0.92	13,865	13,074	-0.59	78,395	87,940	1.16
Serua	597	548	-0.85	1,944	2,182	1.16	27	45	5.24	2,568	2,775	0.78
Tailevu	1,512	2,251	4.06	6,583	6,773	0.28	347	240	-3.62	8,442	9,264	0.93
Rotuma	0	0	0	0	0	0	0	0	0	0	0	0
Total	79,314	107,780	3.11	115,632	144,533	2.26	23,549	24,712	0.48	218,495	277,025	2.40

2. Rural Area

Province	Fijian			Indian			Others			Total		
	1976	Annual Growth		1976	Annual Growth		1976	Annual Growth		1976	Annual Growth	
		1986	Rate(%)		1986	Rate(%)		1986	Rate(%)		1986	Rate(%)
Ba	25,224	31,684	2.31	81,703	93,704	1.38	584	692	1.71	107,511	126,080	1.61
Bua	7,507	9,752	2.65	3,601	3,619	0.05	349	615	5.83	11,457	13,986	2.01
Cakaudrove	22,770	27,724	1.99	4,540	4,790	0.54	4,646	5,047	0.83	31,956	37,561	1.63
Kadavu	8,537	9,630	1.21	7	46	20.72	155	129	-1.82	8,699	9,805	1.20
Lau	14,159	13,894	-0.19	180	218	1.93	113	91	-2.14	14,452	14,203	-0.17
Lomaiviti	10,526	12,704	1.90	140	196	3.42	138	271	6.98	10,804	13,171	2.00
Macuata	11,469	15,922	3.33	32,507	41,615	2.50	482	661	3.21	44,458	58,198	2.73
Nadroga/Navosa	17,989	22,530	2.28	23,782	26,639	1.14	523	532	0.17	42,294	49,701	1.63
Naitasiri	14,458	18,619	2.56	6,096	6,035	-0.10	456	475	0.41	21,010	25,129	1.81
Namosi	3,072	4,440	3.75	174	316	6.15	46	80	5.69	3,292	4,836	3.92
Ra	11,369	15,308	3.02	10,232	12,440	1.97	167	176	0.53	21,768	27,924	2.52
Rewa	6,697	7,379	0.97	1,911	1,940	0.15	254	183	-3.23	8,862	9,502	0.70
Serua	4,961	6,267	2.36	3,226	3,593	1.08	508	721	3.56	8,695	10,581	1.98
Tailevu	21,826	25,593	1.60	9,159	8,999	-0.18	525	393	-2.85	31,510	34,985	1.05
Rotuma	54	79	3.88	6	21	13.35	2,745	2,588	-0.59	2,805	2,688	-0.43
Total	180,618	221,525	2.06	177,264	204,171	1.42	11,691	12,654	0.79	369,573	438,350	1.72

3. Urban and Rural Areas

Province	Fijian			Indian			Others			Total		
	1976	Annual Growth		1976	Annual Growth		1976	Annual Growth		1976	Annual Growth	
		1986	Rate(%)		1986	Rate(%)		1986	Rate(%)		1986	Rate(%)
Ba	45,328	55,296	2.01	116,464	137,051	1.64	5,303	5,286	-0.03	167,095	197,633	1.69
Bua	7,507	9,752	2.65	3,601	3,619	0.05	349	615	5.83	11,457	13,986	2.01
Cakaudrove	23,723	28,989	2.02	5,589	6,192	1.03	4,939	5,252	0.62	34,251	40,433	1.67
Kadavu	8,537	9,630	1.21	7	46	20.72	155	129	-1.82	8,699	9,805	1.20
Lau	14,159	13,894	-0.19	180	218	1.93	113	91	-2.14	14,452	14,203	-0.17
Lomaiviti	12,093	14,592	1.90	634	646	0.19	841	828	-0.16	13,568	16,066	1.70
Macuata	13,384	18,805	3.46	42,891	54,698	2.46	1,139	1,232	0.79	57,414	74,735	2.67
Nadroga/Navosa	20,003	25,306	2.38	25,267	28,425	1.18	659	700	0.61	45,929	54,431	1.71
Naitasiri	31,108	49,713	4.80	30,886	44,889	3.81	3,117	5,625	6.08	65,111	100,227	4.41
Namosi	3,072	4,440	3.75	174	316	6.15	46	80	5.69	3,292	4,836	3.92
Ra	12,215	16,271	2.91	13,000	14,730	1.26	308	284	-0.81	25,523	31,285	2.06
Rewa	39,853	47,879	1.85	33,285	36,306	0.87	14,119	13,257	-0.63	87,257	97,442	1.11
Serua	5,558	6,815	2.06	5,170	5,775	1.11	535	766	3.65	11,263	13,356	1.72
Tailevu	23,338	27,844	1.78	15,742	15,772	0.02	872	633	-3.15	39,952	44,249	1.03
Rotuma	54	79	3.88	6	21	13.35	2,745	2,588	-0.59	2,805	2,688	-0.43
Total	259,932	329,305	2.39	292,896	348,704	1.76	35,240	37,366	0.59	588,068	715,375	1.98

Source : Population Censuses 1976 and 1986, Bureau of Statistics

Table F-1.3 POPULATION AND POPULATION GROWTH RATE ACCORDING TO ETHNIC IN THE STUDY AREA (1)

Name of Province/ Tikina/Community	Fijian			Indian			Others			Total		
	1976	Annual Growth		1976	Annual Growth		1976	Annual Growth		1976	Annual Growth	
		1986	Rate(%)		1986	Rate(%)		1986	Rate(%)		1986	Rate(%)
Ba Province												
Ba Tikina												
B - 1 Bangladesh	0	6	-	109	385	13.45	0	0	-	109	391	13.63
B - 2 Benai	64	37	-5.33	908	544	-4.99	0	0	-	972	581	-5.02
B - 3 Bilolo	28	13	-7.39	766	702	-0.87	1	1	0.00	795	716	-1.04
B - 4 Bulabula	7	6	-1.53	536	636	1.73	0	0	-	543	642	1.69
B - 5 Busabusa	3	68	36.63	600	184	-11.15	0	5	-	603	257	-8.17
B - 6 Chinakoti	2	0	-	360	403	1.13	0	0	-	362	403	1.08
B - 7 Eleveluka Rural	25	12	-7.08	193	138	-3.30	3	0	-	221	150	-3.80
B - 8 Itatoko	4	0	-	371	320	-1.47	4	0	-	379	320	-1.68
B - 9 Karavi	25	31	2.17	611	662	0.80	9	1	-19.73	645	694	0.73
B - 10 Koronubu	148	181	2.03	737	810	0.95	3	6	7.18	888	997	1.16
B - 11 Korovaqa Village	83	119	3.67	0	2	-	0	0	-	83	121	3.84
B - 12 Korovuto	47	44	-0.66	1043	1394	2.94	0	0	-	1,090	1,438	2.81
B - 13 Kumkum	21	24	1.34	344	281	-2.00	0	0	-	365	305	-1.78
B - 14 Lavuci	25	17	-3.78	357	412	1.44	0	1	-	382	430	1.19
B - 15 Maranitawa	4	77	34.41	231	391	5.40	0	0	-	235	468	7.13
B - 15' Matawaru Village	26	-	-	0	-	-	0	-	-	26	-	-
B - 16 Matiniqara	33	2	-24.45	246	161	-4.15	0	0	-	279	163	-5.23
B - 17 Maururu	0	0	-	231	163	-3.43	1	5	17.46	232	168	-3.18
B - 18 Moto	18	10	-5.71	810	539	-3.99	1	0	-	829	549	-4.04
B - 19 Nabatolu	0	31	-	193	315	5.02	0	0	-	193	346	6.01
B - 20 Nacaci	12	27	8.45	555	370	-3.97	0	0	-	567	397	-3.50
B - 21 Nadari	1	2	7.18	546	755	3.29	0	0	-	547	757	3.30
B - 22 Nadrau	0	9	-	179	220	2.08	0	0	-	179	229	2.49
B - 23 Nailaga Village	516	594	1.42	12	0	-	6	0	-	534	594	1.07
B - 23' Nailaga	8	-	-	492	-	-	3	-	-	503	-	-
B - 24 Nakavika	56	1	-33.14	277	117	-8.26	0	3	-	333	121	-9.63
B - 25 Namada	18	36	7.18	388	738	6.64	0	1	-	406	775	6.68
B - 26 Namudri	0	0	-	156	189	1.94	0	0	-	156	189	1.94
B - 27 Naruku	0	9	-	273	272	-0.04	0	0	-	273	281	0.29
B - 28 Nasolo	-	8	-	-	131	-	-	0	-	-	139	-
B - 29 Nasolo Village	140	121	-1.45	0	0	-	0	3	-	140	124	-1.21
B - 30 Natalecake	20	83	15.29	215	328	4.31	2	1	-6.70	237	412	5.69
B - 31 Natalecake Village	156	131	-1.73	0	2	-	3	1	-10.40	159	134	-1.70
B - 32 Nanmuku Village	130	150	1.44	0	0	-	0	1	-	130	151	1.51
B - 33 Natutu Village	118	156	2.83	0	0	-	0	0	-	118	156	2.83
B - 34 Navatu	1	0	-	892	656	-3.03	0	0	-	893	656	-3.04
B - 35 Navau	12	8	-3.97	443	500	1.22	0	0	-	455	508	1.11
B - 36 Navia	0	1	-	159	173	0.85	0	0	-	159	174	0.91
B - 37 Navoli	7	0	-	1391	1067	-2.62	0	0	-	1,398	1,067	-2.67
B - 38 Nawaqarua Village	122	145	1.74	0	0	-	0	2	-	122	147	1.88
B - 39 Nukuloa	34	55	4.93	534	769	3.71	0	0	-	568	824	3.79
B - 40 Qara	145	183	2.35	6	0	-	0	0	-	151	183	1.94
B - 41 Qerelevu	1	0	-	391	453	1.48	1	0	-	393	453	1.43
B - 42 Rarawai Dam	-	0	-	-	135	-	-	0	-	-	135	-
B - 43 Rarawai Rural	0	24	-	490	1257	9.88	1	1	0.00	491	1,282	10.07
B - 44 Sarava	30	46	4.37	590	726	2.10	0	1	-	620	773	2.23
B - 45 Sasa Village	194	238	2.07	14	0	-	1	0	-	209	238	1.31
B - 46 Savusavu	-	19	-	-	239	-	-	0	-	-	258	-
B - 47 Solosolo	65	134	7.50	122	156	2.49	0	0	-	187	290	4.49
B - 48 Sorokoba Village	231	280	1.94	14	0	-	10	6	-4.98	255	286	1.15
B - 49 Talaiya	64	3	-26.36	495	381	-2.58	25	9	-9.71	584	393	-3.88
B - 50 Tauvegavega	-	24	-	-	589	-	-	5	-	-	618	-
B - 50' Thomson Jamecn	0	-	-	176	-	-	0	-	-	176	-	-
B - 50' Toge	0	-	-	233	-	-	0	-	-	233	-	-
B - 51 Vadravdra Village	236	262	1.05	6	0	-	18	1	-25.10	260	263	0.11
B - 52 Valele	16	3	-15.41	215	286	2.89	1	0	-	232	289	2.22
B - 53 Vaqia	6	11	6.25	355	686	6.81	0	0	-	361	697	6.80
B - 54 Varadoli	0	1	-	272	291	0.68	0	0	-	272	292	0.71
B - 55 Varavu	36	31	-1.48	594	765	2.56	9	3	-10.40	639	799	2.26
B - 56 Varoko	72	100	3.34	335	531	4.71	20	12	-4.98	427	643	4.18
B - 57 Vanuyaka	16	35	8.14	904	870	-0.38	1	0	-	921	905	-0.18
B - 57' Vanulaulau	2	-	-	232	-	-	0	-	-	234	-	-
B - 58 Vatusi	0	1	-	419	570	3.13	0	0	-	419	571	3.14
B - 59 Veisaru	196	275	3.44	1227	1631	2.89	2	1	-6.70	1,425	1,907	2.96
B - 60 Votua	29	15	-6.38	328	383	1.56	1	0	-	358	398	1.06

Table F-1.3 POPULATION AND POPULATION GROWTH RATE ACCORDING TO ETHNIC IN THE STUDY AREA (2)

Name of Province/ Tikina/Community	Fijian			Indian			Others			Total		
	1976	1986	Annual	1976	1986	Annual	1976	1986	Annual	1976	1986	Annual
			Growth			Growth			Growth			Growth
Rate(%)	Rate(%)	Rate(%)	Rate(%)	Rate(%)	Rate(%)	Rate(%)	Rate(%)	Rate(%)	Rate(%)	Rate(%)	Rate(%)	
B - 61 Votua Village	420	544	2.62	0	0	-	9	1	-19.73	429	545	2.42
B - 62 Vunisamaloa	31	1	-29.06	1050	439	-8.35	0	0	-	1,081	440	-8.60
B - 63 Vununi Creek	13	2	-17.07	548	545	-0.05	1	0	-	562	547	-0.27
B - 64 Waibuka	0	0	-	345	261	-2.75	0	0	-	345	261	-2.75
B - 65 Wailagi		0	-		143	-		0	-		143	-
B - 66 Wailailai	13	30	8.72	914	892	-0.24	1	7	21.48	928	929	0.01
B - 67 Waiwai	0	49	-	387	465	1.85	1	1	0.00	388	515	2.87
B - 68 Yalalevu	44	44	0.00	570	895	4.62	1	8	23.11	615	947	4.41
Other Communities	223	330	4.00	485	848	5.75	17	4	-13.47	725	1,182	5.01
Ba Town	1636	1888	1.44	6986	7,934	1.28	551	438	-2.27	9,173	10,260	1.13
Total of Ba Rural	3,997	4,899	2.06	26,875	29,166	0.82	156	91	-5.25	31,028	34,156	0.97
Total of Ba Tikina	5,633	6,787	1.88	33,861	37,100	0.92	707	529	-2.86	40,201	44,416	1.00
Magodro Tikina												
M - 1 Balevuto	72	77	0.67	749	930	2.19	0	0	-	821	1,007	2.06
M - 2 Balevuto Village	169	164	-0.30	0	1	-	0	0	-	169	165	-0.24
M - 3 Bukuya Village	363	485	2.94	2	0	-	0	0	-	365	485	2.88
M - 3' Nadevo Village	76	97	2.47	0	0	-	0	0	-	76	97	2.47
M - 4 Nadruvu Village	77	131	5.46	0	7	-	0	0	-	77	138	6.01
M - 5 Naloawa Village	68	62	-0.92	0	0	-	0	0	-	68	62	-0.92
M - 6 Namau	0	17	-	425	598	3.47	0	0	-	425	615	3.76
M - 7 Nanuku Village	74	110	4.04	0	0	-	0	8	-	74	118	4.78
M - 8 Nukuloa		12	-		371	-		1	-		384	-
M - 8' Nasivikoso Village	259	379	3.88	0	0	-	1	0	-	260	379	3.84
M - 8" Navaga Village	58	64	0.99	0	0	-	0	0	-	58	64	0.99
M - 8''' Navilawa Village	76	81	0.64	0	0	-	0	0	-	76	81	0.64
M - 9 Tabalei Village	67	161	9.16	0	0	-	0	0	-	67	161	9.16
M - 10 Tabataba	81	61	-2.80	477	555	1.53	2	1	-6.70	560	617	0.97
M - 11 Tabuquto Village	29	66	8.57	0	0	-	0	0	-	29	66	8.57
M - 12 Toge		20	-		224	-		0	-		244	-
M - 13 Toge Village	311	228	-3.06	0	0	-	0	1	-	311	229	-3.01
M - 14 Vatawai		111	-		79	-		0	-		190	-
M - 15 Virara		118	-		9	-		1	-		128	-
M - 15' Tukuraki Village	35	42	1.84	0	0	-	0	0	-	35	42	1.84
M - 16 Yaloku Village	63	98	4.52	0	0	-	0	0	-	63	98	4.52
Other Communities	367	496	3.06	507	234	-7.44	7	7	0.00	881	737	-1.77
Total of Magodro Tikina	2,245	3,080	3.21	2,160	3,008	3.37	10	19	6.63	4,415	6,107	3.30
Tavua Tikina												
T - 1 Asiasi	45	64	3.58	698	929	2.90	0	1	-	743	994	2.95
T - 2 Balata	12	12	0.00	416	465	1.12	2	1	-6.70	430	478	1.06
T - 3 Buyabuya Village	112	108	-0.36	0	0	-	0	0	-	112	108	-0.36
T - 4 Dakavono		4	-		209	-		0	-		213	-
T - 5 Davota	11	12	0.87	737	439	-5.05	0	2	-	748	453	-4.89
T - 6 Drumasi	2	1	-6.70	374	477	2.46	1	0	-	377	478	2.40
T - 7 Koro No.1	14	57	15.07	143	203	3.57	0	0	-	157	260	5.17
T - 8 Koro No.2	42	62	3.97	134	194	3.77	0	0	-	176	256	3.82
T - 9 Koro Village	60	98	5.03	0	0	-	0	0	-	60	98	5.03
T - 10 Koroboya Village	142	206	3.79	0	0	-	0	0	-	142	206	3.79
T - 11 Korovou	34	93	10.59	323	323	0.00	13	0	-	370	416	1.18
T - 12 Korovou Village	279	236	-1.66	8	0	-	1	1	0.00	288	237	-1.93
T - 13 Kukunirewa		0	-		168	-		1	-		169	-
T - 14 Lousa	17	7	-8.49	444	536	1.90	0	0	-	461	543	1.65
T - 14' Lewa Village	28	77	10.65	0	0	-	0	1	-	28	78	10.79
T - 15 Lubulubu	19	3	-16.85	392	411	0.47	1	1	0.00	412	415	0.07
T - 16 Malele	44	10	-13.77	1071	1098	0.25	3	0	-	1,118	1,108	-0.09
T - 17 Maqere	0	4	-	431	498	1.46	1	1	0.00	432	503	1.53
T - 17' Masimasi	9		-	130		-		0	-	139		-
T - 17'' Matacawa	8		-	161		-		1	-	170		-
T - 18 Matalevu	0	0	-	609	396	-4.21	2	2	0.00	611	398	-4.20
T - 19 Matamigata	8	14	5.76	434	448	0.32	0	0	-	442	462	0.44
T - 20 Mataniwai	29	0	-	313	247	-2.34	1	1	0.00	343	248	-3.19
T - 21 Nabuna Village	136	88	-4.26	0	0	-	0	0	-	136	88	-4.26
T - 21' Nadala Village	223	359	4.88	0	1	-	1	5	17.46	224	365	5.00
T - 22 Nadarivatu	51	116	8.56	4	11	10.65	1	0	-	56	127	8.53
T - 23 Nadelei Village	232	305	2.77	1	0	-	0	0	-	233	305	2.73
T - 24 Nagatagata Village	37	52	3.46	0	0	-	0	4	-	37	56	4.23
T - 24' Namau	21		-	151		-		0	-	172		-
T - 25 Natawa	48	81	5.37	464	399	-1.50	2	1	-6.70	514	481	-0.66
T - 26 Natolevu		87	-		36	-		0	-		123	-
T - 27 Natutavui Village	141	156	1.02	0	1	-	0	0	-	141	157	1.08

Table F-1.3 POPULATION AND POPULATION GROWTH RATE ACCORDING TO ETHNIC IN THE STUDY AREA (3)

Name of Province/ Tikina/Community	Fijian			Indian			Others			Total		
	Annual Growth			Annual Growth			Annual Growth			Annual Growth		
	1976	1986	Rate(%)	1976	1986	Rate(%)	1976	1986	Rate(%)	1976	1986	Rate(%)
T - 27 Navai Village	136	215	4.69	0	0	-	0	1	-	136	216	4.73
T - 28 Navala Village	396	484	2.03	29	0	-	0	0	-	425	484	1.31
T - 29 Qalela	29	2	-23.46	471	554	1.64	0	2	-	500	558	1.10
T - 30 Rakavidi	-	8	-	-	267	-	-	0	-	-	275	-
T - 31 Rukuruku	186	179	-0.38	4	2	-6.70	0	0	-	190	181	-0.48
T - 32 Tagiagi	8	89	27.24	803	928	1.46	1	2	7.18	812	1,019	2.30
T - 33 Toko	193	289	4.12	1157	979	-1.66	4	8	7.18	1,354	1,276	-0.59
T - 34 Vatia	74	94	2.42	215	278	2.60	25	1	-27.52	314	373	1.7368
T - 35 Vanbo	-	95	-	-	95	-	-	-	-	-	190	-
T - 36 Vuqele	-	41	-	-	460	-	-	2	-	-	503	-
T - 37 Waikakakata	31	95	11.85	238	377	4.71	0	1	-	269	473	5.81
T - 38 Waikona	20	7	-9.97	306	330	0.76	0	7	-	326	344	0.54
T - 39 Waikubukubu Village	165	158	-0.43	0	0	-	1	2	7.18	166	160	-0.37
T - 40 Wainivoca	103	7	-23.58	324	346	0.66	0	1	-	427	354	-1.86
T - 41 Yaladro	238	194	-2.02	503	544	0.79	0	2	-	741	740	-0.01
T - 42 Nasomo village	-	-	-	-	-	-	-	-	-	-	-	-
T - 43 Tokoloa	-	-	-	-	-	-	-	-	-	-	-	-
T - 44 Malou	-	-	-	-	-	-	-	-	-	-	-	-
T - 45 Garampani	-	-	-	-	-	-	-	-	-	-	-	-
T - 46 Lololevu	-	-	-	-	-	-	-	-	-	-	-	-
Other Communities	468	826	5.85	59	690	27.88	0	8	-	527	1,524	11.20
Tavua Town	921	1042	1.24	1164	1094	-0.62	59	91	4.43	2,144	2,227	0.38
Vatukoula Town	4337	3248	-2.85	947	749	-2.32	1141	792	-3.59	6,425	4,789	-2.90
Total of Urban	5258	4290	-2.01	2111	1843	-1.35	1200	883	-3.02	8569	7016	-1.98
Total of Tavua Rural	3,851	5,095	2.84	11,547	13,339	1.45	61	59	-0.33	15,459	18,493	1.81
Total of Tavua Tikina	9,109	9,385	0.30	13,658	15,182	1.06	1,261	942	-2.87	24,028	25,509	0.60
Vuda Tikina												
V - 1 Raviravi	11	63	19.07	1500	1811	1.90	1	4	14.87	1,512	1,878	2.19
V - 2 Tavarau	102	11	-19.97	804	961	1.80	0	0	-	906	972	0.71
V - 3 Tuvu	7	17	9.28	597	708	1.72	0	14	-	604	739	2.04
Total of Vuda Tikina	120	91	-2.73	2,901	3,480	1.84	1	18	33.51	3,022	3,589	1.73
Nadroga/Navosa Province												
Navosa Tikina												
N - 1 Nanoko Village	325	470	3.76	0	0	0.00	0	1	-	325	471	3.78
Ra Province												
Rakiraki Tikina												
R - 0 Balata	5	3	-4.98	227	321	3.53	0	1	-	232	325	3.43
R - 1 Caulasi/Colosi	-	0	-	-	375	-	-	0	-	-	375	-
R - 2 Draunivi	-	37	-	-	132	-	-	2	-	-	171	-
R - 3 Draunivi Village	232	324	3.40	0	0	-	6	5	-1.81	238	329	3.29
R - 4 Ellington	3	27	24.57	663	949	3.65	6	0	-	672	976	3.80
R - 5 Gallau	0	0	-	445	650	3.86	0	2	-	445	652	3.89
R - 6 Kavuli	1	10	25.89	418	438	0.47	2	1	-6.70	421	449	0.65
R - 7 Korotale	-	0	-	-	141	-	-	0	-	-	141	-
R - 8 Lobau	0	3	-	194	140	-3.21	1	0	-	195	143	-3.05
R - 8 Malake Village	263	351	2.93	1	1	0.00	0	1	-	264	353	2.95
R - 9 Mulau	0	13	-	289	455	4.64	0	2	-	289	470	4.98
R - 10 Naivunivuni Village	75	170	8.53	0	1	-	0	0	-	75	171	8.59
R - 11 Nakorokula Village	47	82	5.72	5	0	-	0	0	-	52	82	4.66
R - 11' Namena	0	-	-	120	-	-	0	-	-	120	-	-
R - 11" Namuaimada Village	202	218	0.77	4	0	-	0	1	-	206	219	0.61
R - 12 Nanau Village	91	204	8.41	0	0	-	0	0	-	91	204	8.41
R - 13 Nanuku	9	9	0.00	433	508	1.61	0	0	-	442	517	1.58
R - 14 Narawa	0	2	-	164	195	1.75	0	0	-	164	197	1.85
R - 15 Narawa Village	58	102	5.81	0	0	-	7	0	-	65	102	4.61
R - 16 Naria	14	20	3.63	449	663	3.97	0	0	-	463	683	3.96
R - 17 Nasayani Village	130	201	4.45	29	0	-	2	3	4.14	161	204	2.40
R - 17' Navolau No.1 Village	208	240	1.44	0	0	-	0	0	-	208	240	1.44
R - 17" Navolau No.2 Village	119	152	2.48	36	0	-	0	0	-	155	152	-0.20
R - 18 Rabulu Village	95	115	1.93	0	0	-	0	0	-	95	115	1.93
R - 19 Rabulu	1	71	53.15	322	319	-0.09	1	1	0.00	324	391	1.90
R - 20 Raravatu	0	0	-	344	147	-8.15	0	0	-	344	147	-8.15
R - 21 Togovere Village	169	187	1.02	0	0	-	5	1	-14.87	174	188	0.78
R - 22 Vausekiyasawa Village	187	215	1.41	0	0	-	1	1	0.00	188	216	1.40
R - 22' Vausekiyasawa	151	-	-	0	-	-	4	-	-	155	-	-
R - 23 Vitawa	0	140	-	274	132	-7.04	1	0	-	275	272	-0.11
R - 24 Vitawa Village	171	207	1.93	0	0	-	9	0	-	180	207	1.41
R - 25 Vitivanua	0	1	-	177	223	2.34	0	1	-	177	225	2.43
R - 26 Volivoli	21	6	-11.77	214	502	8.90	0	1	-	235	509	8.04

Table F-1.3 POPULATION AND POPULATION GROWTH RATE ACCORDING TO ETHNIC IN THE STUDY AREA (4)

Name of Province/ Tikina/Community	Fijian			Indian			Others			Total		
	Annual Growth			Annual Growth			Annual Growth			Annual Growth		
	1976	1986	Rate(%)	1976	1986	Rate(%)	1976	1986	Rate(%)	1976	1986	Rate(%)
R - 27 Vunitogoloa Village	125	236	6.56	0	0	-	1	3	11.61	126	239	6.61
R - 28 Wailevu	0	0	-	327	315	-0.37	0	0	-	327	315	-0.37
R - 28' Waigumu	0	-	-	143	-	-	0	-	-	143	-	-
R - 29 Wairuku	1	9	24.57	179	481	10.39	0	0	-	180	490	10.53
R - 30 Waimari	17	39	8.66	318	416	2.72	0	0	-	335	455	3.109
R - 30' Yaqara	78	-	-	28	-	-	7	-	-	113	-	-
R - 31 Dociu	-	-	-	-	-	-	-	-	-	-	-	-
R - 32 Nuculaca	-	-	-	-	-	-	-	-	-	-	-	-
R - 33 Nanmu	-	-	-	-	-	-	-	-	-	-	-	-
Other Communities	449	288	-4.34	696	701	0.07	48	51	0.61	1,193	1,040	-1.36
Rakiraki Town	846	963	1.30	2768	2290	-1.88	141	108	-2.63	3,755	3,361	-1.10
Total of Rakiraki Rural	2,922	3,682	2.34	6,499	8,205	2.36	101	77	-2.68	9,522	11,964	2.31
Total of Rakiraki Tikina	3,768	4,645	2.11	9,267	10,495	1.25	242	185	-2.65	13,277	15,325	1.44
Salvou Tikina												
S - 1 Korotale	45	42	-0.69	303	302	-0.03	1	0	-	349	344	-0.14
S - 2 Narara Village	48	30	-4.59	0	0	-	0	0	-	48	30	-4.59
S - 3 Rewasa	0	14	-	333	336	0.09	0	1	-	333	351	0.53
S - 4 Rewasa Village	167	219	2.75	1	0	-	0	0	-	168	219	2.69
S - 5 Tuvavatu	0	2	-	249	457	6.26	1	0	-	250	459	6.26
S - 6 Vanikacevaceva Village	168	198	1.66	0	0	-	1	0	-	169	198	1.60
S - 7 Waivuca	-	-	-	-	-	-	-	-	-	-	-	-
Total of Salvou Tikina	428	505	1.67	886	1,095	2.14	3	1	-10.40	1,317	1,601	1.97
Total of Urban Pop.	7,740	7,141	-0.80	11,865	12,067	0.17	1,892	1,429	-2.77	21,497	20,637	-0.41
Total of Rural Pop.	13,888	17,822	2.53	50,868	58,293	1.37	332	266	-2.19	65,088	76,381	1.61
Grand Total	21,628	24,963	1.44	62,733	70,360	1.15	2,224	1,695	-2.68	86,585	97,018	1.14

Table F-2.1 ESTIMATES OF AVERAGE ANNUAL GROWTH RATES
FOR POPULATION PROJECTIONS

(1) Estimate of Average Annual Population Growth Rate of Fiji (r1)
(1976-2011)

Year	Average Annual Growth Rate (%)			
	Fijian	Indian	others	Total
1976	2.39	1.76	0.59	1.98
1986	2.30	-0.07	0.38	1.07
1991	2.53	1.71	2.03	2.13
1996	2.50	1.71	1.98	2.12
2001	2.50	1.74	1.96	2.14
2006	2.50	1.64	1.95	2.10
2011				

2.Middle (r1)

Year	Average Annual Growth Rate (%)			
	Fijian	Indian	others	Total
1986	2.15	-0.19	0.24	0.94
1991	2.05	0.52	1.17	1.31
1996	1.82	0.43	1.05	1.18
2001	1.64	0.45	0.94	1.10
2006	1.45	0.43	0.86	1.01
2011				

3.Low (r1)

Year	Average Annual Growth Rate (%)			
	Fijian	Indian	others	Total
1986	1.96	-0.19	0.14	0.84
1991	1.53	0.14	0.69	0.86
1996	1.13	-0.11	0.42	0.55
2001	1.00	-0.20	0.31	0.45
2006	1.03	-0.32	0.29	0.44
2011				

(2) Average Annual Population Growth Rate in the Study Area (r1+r2)
(1976-1986)

Name of Tikina		Average Annual Growth Rate (%)			
		Fijian	Indian	others	Total
I. Urban Area					
1 Ba Town	H	1.73	1.54	-1.82	1.40
	M	1.44	1.28	-2.27	1.13
	L	1.15	1.02	-2.72	0.85
2 Tavua Town	H	1.49	-0.50	5.32	0.59
	M	1.24	-0.62	4.43	0.38
	L	0.99	-0.74	3.54	0.17
3 Vatukoula Town	H	-2.28	-1.86	-2.87	-2.32
	M	-2.85	-2.32	-3.59	-2.90
	L	-3.42	-2.78	-4.31	-3.47
4 Rakiraki Town	H	1.56	-1.50	-2.10	-0.76
	M	1.30	-1.88	-2.63	-1.10
	L	1.04	-2.26	-3.16	-1.45
II. Rural Area					
1 Ba Rural	H	2.47	0.98	-4.20	1.17
	M	2.06	0.82	-5.25	0.97
	L	1.65	0.66	-6.30	0.76
2 Magadro Rural	H	3.85	4.04	7.96	3.96
	M	3.21	3.37	6.63	3.30
	L	2.57	2.70	5.30	2.64
3 Tavua Rural	H	3.41	1.74	-0.26	2.17
	M	2.84	1.45	-0.33	1.81
	L	2.27	1.16	-0.40	1.44
4 Vuda Rural	H	-2.18	2.21	3.13	2.06
	M	-2.73	1.84	2.61	1.73
	L	-3.28	1.47	2.09	1.32
5 Navoso Rural	H	4.51	0.00	0.00	4.51
	M	3.76	0.00	0.00	3.78
	L	3.01	0.00	0.00	3.01
6 Rakiraki Rural	H	2.81	2.83	-2.14	2.78
	M	2.34	2.36	-2.68	2.31
	L	1.87	1.89	-3.22	1.84
7 Saivon Rural	H	2.00	2.57	-3.90	2.38
	M	1.67	2.14	-4.88	1.97
	L	1.34	1.71	-5.86	1.58
III.					
All Study Area	H	1.73	1.38	-2.14	1.39
	M	1.44	1.15	-2.68	1.14
	L	1.15	0.92	-3.22	0.89

Source : Report on Fiji Population Census 1986 - Analytical Report on the Demographic, Social and Economic Characteristics of the Population, March 1989, Bureau of Statistics

Note 1 : H = High Scenario, M = Medium Scenario and L = Low Scenario

Note 2 : Population Growth rates of Fiji and Medium Scenario in the Study Area for the period 1976-1986 indicate average annual rates for the said intercensal period.

Table F-3.1 POPULATION PROJECTIONS IN THE STUDY AREA (1)

Study Area	(1) High Scenario 1986 (Census)				(2) Medium Scenario 1986 (Census)				(3) Low Scenario 1986 (Census)			
	Fijian	Indian	others	Total	Fijian	Indian	others	Total	Fijian	Indian	others	Total
Urban												
1 Ba Town	1,888	7,934	438	10,260	1,888	7,934	438	10,260	1,888	7,934	438	10,260
2 Tavua Town	1,042	1,094	91	2,227	1,042	1,094	91	2,227	1,042	1,094	91	2,227
3 Vatukoula Town	3,248	749	792	4,789	3,248	749	792	4,789	3,248	749	792	4,789
4 Rakiraki Town	963	2,290	108	3,361	963	2,290	108	3,361	963	2,290	108	3,361
Total (U)	7,141	12,067	1,429	20,637	7,141	12,067	1,429	20,637	7,141	12,067	1,429	20,637
Rural												
1 Ba Rural	4,899	29,166	91	34,156	4,899	29,166	91	34,156	4,899	29,166	91	34,156
2 Magodro Rural	3,080	3,008	19	6,107	3,080	3,008	19	6,107	3,080	3,008	19	6,107
3 Tavua Rural	5,095	13,339	59	18,493	5,095	13,339	59	18,493	5,095	13,339	59	18,493
4 Vuda Rural	91	3,480	18	3,589	91	3,480	18	3,589	91	3,480	18	3,589
5 Navoso Rural	470	0	1	471	470	0	1	471	470	0	1	471
6 Rakiraki Rural	3,682	8,205	77	11,964	3,682	8,205	77	11,964	3,682	8,205	77	11,964
7 Saivou Rural	505	1,095	1	1,601	505	1,095	1	1,601	505	1,095	1	1,601
Total (R)	17,822	58,293	266	76,381	17,822	58,293	266	76,381	17,822	58,293	266	76,381
All Study Area	24,963	70,360	1,695	97,018	24,963	70,360	1,695	97,018	24,963	70,360	1,695	97,018

Study Area	(1) High Scenario 1991				(2) Medium Scenario 1991				(3) Low Scenario 1991			
	Fijian	Indian	others	Total	Fijian	Indian	others	Total	Fijian	Indian	others	Total
Urban												
1 Ba Town	2,052	7,882	398	10,333	2,018	7,742	388	10,148	1,977	7,643	377	9,997
2 Tavua Town	1,103	966	116	2,186	1,087	955	111	2,153	1,068	950	106	2,124
3 Vatukoula Town	2,818	611	666	4,094	2,726	593	638	3,957	2,634	579	613	3,827
4 Rakiraki Town	1,030	1,934	96	3,060	1,014	1,886	93	2,994	995	1,850	90	2,935
Total (U)	7,004	11,393	1,276	19,673	6,846	11,176	1,230	19,252	6,675	11,023	1,186	18,884
Rural												
1 Ba Rural	5,543	28,277	73	33,893	5,419	27,908	69	33,396	5,277	27,675	65	33,017
2 Magodro Rural	3,674	3,348	28	7,049	3,551	3,222	26	6,799	3,424	3,119	24	6,567
3 Tavua Rural	5,996	13,351	58	19,405	5,819	13,095	57	18,971	5,627	12,911	57	18,595
4 Vuda Rural	82	3,604	21	3,707	80	3,526	21	3,626	77	3,456	20	3,552
5 Navoso Rural	568	0	1	569	546	0	1	547	524	0	1	525
6 Rakiraki Rural	4,207	8,667	69	12,943	4,101	8,424	66	12,591	3,984	8,231	64	12,280
7 Saivou Rural	555	1,142	1	1,697	544	1,112	1	1,657	532	1,089	1	1,622
Total (R)	20,624	58,389	250	79,263	20,060	57,286	241	77,586	19,446	56,480	232	76,159
All Study Area	27,628	69,782	1,527	98,936	26,906	68,462	1,471	96,838	26,121	67,503	1,418	95,042

Study Area	(1) High Scenario 1996				(2) Medium Scenario 1996				(3) Low Scenario 1996			
	Fijian	Indian	others	Total	Fijian	Indian	others	Total	Fijian	Indian	others	Total
Urban												
1 Ba Town	2,220	8,456	385	11,062	2,126	7,784	354	10,264	2,008	7,446	329	9,783
2 Tavua Town	1,172	932	157	2,261	1,120	863	139	2,122	1,065	838	125	2,028
3 Vatukoula Town	2,487	552	609	3,647	2,280	489	538	3,307	2,092	459	487	3,037
4 Rakiraki Town	1,099	1,771	91	2,961	1,050	1,599	83	2,733	995	1,509	76	2,580
Total (U)	6,978	11,710	1,243	19,931	6,577	10,736	1,113	18,426	6,160	10,252	1,016	17,428
Rural												
1 Ba Rural	6,226	29,556	63	35,844	5,898	27,483	54	33,435	5,506	26,532	47	32,085
2 Magodro Rural	4,415	4,067	43	8,525	4,064	3,579	36	7,678	3,718	3,293	31	7,042
3 Tavua Rural	7,040	14,472	60	21,573	6,555	13,259	58	19,873	6,036	12,656	56	18,749
4 Vuda Rural	73	4,000	26	4,099	68	3,667	24	3,759	62	3,458	22	3,543
5 Navoso Rural	706	0	1	707	637	0	1	638	577	0	1	578
6 Rakiraki Rural	4,806	9,926	65	14,797	4,512	8,933	59	13,505	4,193	8,373	55	12,621
7 Saivou Rural	610	1,292	1	1,902	580	1,167	1	1,747	546	1,099	1	1,645
Total (R)	23,875	63,313	259	87,447	22,314	58,088	233	80,635	20,638	55,412	213	76,263
All Study Area	30,853	75,023	1,502	107,378	28,891	68,823	1,347	99,061	26,798	65,664	1,229	93,691

Table F-3.1 POPULATION PROJECTIONS IN THE STUDY AREA (2)

Study Area	(1) High Scenario 2001				(2) Medium Scenario 2001				(3) Low Scenario 2001			
	Fijian	Indian	others	Total	Fijian	Indian	others	Total	Fijian	Indian	others	Total
Urban												
1 Ba Town	2,391	9,063	367	11,821	2,205	7,779	318	10,301	1,990	7,152	280	9,421
2 Tavua Town	1,236	895	210	2,341	1,135	773	171	2,079	1,036	728	143	1,907
3 Vatukoula Town	2,188	499	551	3,237	1,883	403	447	2,733	1,625	359	378	2,362
4 Rakiraki Town	1,163	1,617	85	2,865	1,068	1,343	72	2,483	967	1,209	63	2,239
Total (U)	6,979	12,073	1,213	20,265	6,290	10,298	1,008	17,596	5,618	9,447	863	15,928
Rural												
1 Ba Rural	6,959	30,849	53	37,861	6,318	26,883	42	33,243	5,604	25,063	33	30,700
2 Magadro Rural	5,283	4,938	65	10,286	4,586	3,957	50	8,593	3,947	3,434	39	7,420
3 Tavua Rural	8,224	15,662	62	23,949	7,270	13,339	57	20,667	6,320	12,231	54	18,604
4 Vuda Rural	65	4,434	32	4,530	58	3,787	28	3,873	49	3,409	24	3,482
5 Navoso Rural	874	0	1	875	735	0	1	736	623	0	1	624
6 Rakiraki Rural	5,465	11,357	62	16,884	4,893	9,421	52	14,367	4,309	8,403	45	12,757
7 Saivou Rural	667	1,459	1	2,127	609	1,218	0	1,827	546	1,093	0	1,640
Total (R)	27,536	68,699	275	96,511	24,468	58,606	230	83,305	21,399	53,633	197	75,229
All Study Area	34,514	80,773	1,489	116,776	30,758	68,904	1,238	100,901	27,016	63,080	1,060	91,156

Study Area	(1) High Scenario 2006				(2) Medium Scenario 2006				(3) Low Scenario 2006			
	Fijian	Indian	others	Total	Fijian	Indian	others	Total	Fijian	Indian	others	Total
Urban												
1 Ba Town	2,567	9,712	346	12,624	2,256	7,762	280	10,298	1,953	6,831	234	9,018
2 Tavua Town	1,296	856	276	2,429	1,133	690	207	2,030	996	627	162	1,785
3 Vatukoula Town	1,923	451	492	2,866	1,541	333	365	2,240	1,253	280	289	1,822
4 Rakiraki Town	1,225	1,473	78	2,776	1,068	1,124	61	2,253	928	959	50	1,938
Total (U)	7,012	12,492	1,192	20,695	5,998	9,909	913	16,821	5,131	8,697	734	14,562
Rural												
1 Ba Rural	7,753	32,184	44	39,981	6,675	26,239	32	32,945	5,650	23,538	23	29,212
2 Magadro Rural	6,304	5,994	98	12,395	5,118	4,376	68	9,562	4,154	3,563	49	7,766
3 Tavua Rural	9,574	16,939	63	26,576	7,957	13,397	55	21,409	6,554	11,751	50	18,356
4 Vuda Rural	57	4,912	38	5,007	48	3,901	31	3,980	39	3,340	26	3,405
5 Navoso Rural	1,080	0	1	1,082	840	0	1	841	668	0	1	669
6 Rakiraki Rural	6,197	12,991	57	19,245	5,240	9,927	45	15,212	4,389	8,389	37	12,815
7 Saivou Rural	727	1,648	1	2,376	631	1,270	0	1,901	542	1,083	0	1,625
Total (R)	31,693	74,667	302	106,663	26,509	59,111	232	85,852	21,996	51,665	186	73,848
All Study Area	38,705	87,160	1,494	127,358	32,507	69,020	1,145	102,673	27,127	60,362	921	88,410

Study Area	(1) High Scenario 2011				(2) Medium Scenario 2011				(3) Low Scenario 2011			
	Fijian	Indian	others	Total	Fijian	Indian	others	Total	Fijian	Indian	others	Total
Urban												
1 Ba Town	2,754	10,354	320	13,428	2,280	7,724	241	10,245	1,920	6,491	193	8,603
2 Tavua Town	1,351	812	356	2,519	1,116	615	244	1,974	955	536	180	1,670
3 Vatukoula Town	1,688	407	433	2,528	1,249	275	294	1,819	967	217	218	1,402
4 Rakiraki Town	1,286	1,331	70	2,687	1,052	935	51	2,038	887	753	40	1,680
Total (U)	7,078	12,904	1,179	21,161	5,697	9,549	830	16,077	4,729	7,997	630	13,355
Rural												
1 Ba Rural	8,629	33,400	36	42,066	6,960	25,528	23	32,511	5,703	21,988	16	27,707
2 Magadro Rural	7,507	7,234	145	14,886	5,647	4,834	90	10,572	4,373	3,675	60	8,107
3 Tavua Rural	11,124	18,210	63	29,397	8,598	13,419	53	22,070	6,799	11,221	47	18,066
4 Vuda Rural	50	5,417	45	5,512	39	4,003	34	4,076	31	3,259	27	3,316
5 Navoso Rural	1,333	0	1	1,334	953	0	1	954	715	0	1	716
6 Rakiraki Rural	7,017	14,782	52	21,851	5,543	10,439	38	16,020	4,474	8,330	30	12,833
7 Saivou Rural	792	1,852	0	2,645	646	1,322	0	1,968	538	1,066	0	1,605
Total (R)	36,453	80,895	343	117,691	28,386	59,545	240	88,172	22,633	49,539	180	72,352
All Study Area	43,531	93,799	1,522	138,852	34,083	69,095	1,070	104,248	27,362	57,535	810	85,707

Table F-3.2 ESTIMATED ANNUAL GROWTH RATE OF THE POPULATION IN THE STUDY AREA (1)

Study Area	(1) High Scenario Period: 1986-1991				(2) Medium Scenario Period: 1986-1991				(3) Low Scenario Period: 1986-1991			
	Fijian	Indian	others	Total	Fijian	Indian	others	Total	Fijian	Indian	others	Total
Urban												
1 Ba Town	1.68	-0.13	-1.88	0.14	1.34	-0.49	-2.42	-0.22	0.93	-0.74	-2.96	-0.52
2 Tavua Town	1.15	-2.45	4.96	-0.37	0.85	-2.68	3.99	-0.67	0.50	-2.78	3.05	-0.94
3 Vatukoula Town	-2.80	-4.00	-3.41	-3.09	-3.44	-4.58	-4.22	-3.74	-4.10	-5.01	-4.99	-4.39
4 Rakiraki Town	1.36	-3.32	-2.32	-1.86	1.04	-3.81	-2.93	-2.29	0.66	-4.18	-3.54	-2.67
All Urban Area	-0.39	-1.14	-2.24	-0.95	-0.84	-1.52	-2.96	-1.38	-1.34	-1.79	-3.66	-1.76
Rural												
1 Ba Rural	2.50	-0.62	-4.20	-0.15	2.04	-0.88	-5.34	-0.45	1.50	-1.04	-6.48	-0.68
2 Magodo Rural	3.59	2.16	7.68	2.91	2.89	1.38	6.27	2.17	2.14	0.73	4.88	1.46
3 Tavua Rural	3.31	0.02	-0.38	0.97	2.69	-0.37	-0.52	0.51	2.01	-0.65	-0.67	0.11
4 Vuda Rural	-2.07	0.70	3.24	0.65	-2.65	0.26	2.67	0.20	-3.36	-0.14	2.02	-0.21
5 Navoso Rural	3.86	0.00	-0.64	3.85	3.05	0.00	-0.74	3.04	2.21	0.00	-0.79	2.21
6 Rakiraki Rural	2.70	1.10	-2.27	1.59	2.18	0.53	-2.89	1.03	1.59	0.06	-3.51	0.52
7 Saivou Rural	1.90	0.84	-4.03	1.18	1.51	0.31	-5.09	0.69	1.06	-0.11	-6.15	0.26
All Rural Area	2.96	0.03	-1.20	0.74	2.39	-0.35	-1.94	0.31	1.76	-0.63	-2.68	-0.06
All Study Area	2.05	-0.16	-2.07	0.39	1.51	-0.55	-2.80	-0.04	0.91	-0.83	-3.50	-0.41

Study Area	(1) High Scenario Period: 1991-1996				(2) Medium Scenario Period: 1991-1996				(3) Low Scenario Period: 1991-1996			
	Fijian	Indian	others	Total	Fijian	Indian	others	Total	Fijian	Indian	others	Total
Urban												
1 Ba Town	1.58	1.42	-0.67	1.37	1.04	0.11	-1.79	0.23	0.31	-0.52	-2.70	-0.43
2 Tavua Town	1.22	-0.73	6.31	0.68	0.61	-2.02	4.66	-0.29	-0.06	-2.48	3.36	-0.92
3 Vatukoula Town	-2.47	-2.02	-1.77	-2.29	-3.51	-3.75	-3.37	-3.52	-4.51	-4.57	-4.52	-4.52
4 Rakiraki Town	1.29	-1.74	-1.08	-0.66	0.70	-3.24	-2.34	-1.81	0.00	-3.99	-3.32	-2.55
All Urban Area	-0.07	0.55	-0.53	0.26	-0.80	-0.80	-1.97	-0.87	-1.59	-1.44	-3.04	-1.59
Rural												
1 Ba Rural	2.35	0.89	-3.03	1.13	1.71	-0.31	-4.73	0.02	0.85	-0.84	-6.23	-0.57
2 Magodo Rural	3.75	3.97	9.12	3.88	2.73	2.12	7.02	2.46	1.66	1.09	5.26	1.41
3 Tavua Rural	3.26	1.63	0.88	2.14	2.41	0.25	0.12	0.93	1.41	-0.40	-0.39	0.16
4 Vuda Rural	-2.29	2.11	4.28	2.03	-3.01	0.79	3.20	0.73	-4.03	0.02	2.20	-0.05
5 Navoso Rural	4.43	0.00	1.22	4.42	3.12	0.00	0.25	3.12	1.95	0.90	-0.19	1.94
6 Rakiraki Rural	2.70	2.75	-0.96	2.71	1.93	1.18	-2.21	1.41	1.02	0.34	-3.20	0.55
7 Saivou Rural	1.90	2.49	-2.71	2.30	1.27	0.97	-4.40	1.07	0.50	0.18	-5.82	0.28
All Rural Area	2.97	1.63	0.70	1.98	2.15	0.28	-0.66	0.77	1.20	-0.38	-1.74	0.03
All Study Area	2.23	1.46	-0.33	1.65	1.43	0.11	-1.75	0.45	0.51	-0.55	-2.83	-0.29

Study Area	(1) High Scenario Period: 1996-2001				(2) Medium Scenario Period: 1996-2001				(3) Low Scenario Period: 1996-2001			
	Fijian	Indian	others	Total	Fijian	Indian	others	Total	Fijian	Indian	others	Total
Urban												
1 Ba Town	1.49	1.40	-0.94	1.34	0.73	-0.01	-2.13	0.07	-0.18	-0.80	-3.19	-0.75
2 Tavua Town	1.07	-0.81	5.97	0.70	0.26	-2.18	4.26	-0.41	-0.56	-2.79	2.84	-1.23
3 Vatukoula Town	-2.53	-2.00	-1.99	-2.36	-3.75	-3.81	-3.64	-3.74	-4.92	-4.78	-4.93	-4.90
4 Rakiraki Town	1.15	-1.80	-1.39	-0.65	0.32	-3.43	-2.75	-1.90	-0.56	-4.34	-3.87	-2.80
All Urban Area	0.00	0.61	-0.47	0.33	-0.89	-0.83	-1.97	-0.92	-1.83	-1.62	-3.21	-1.78
Rural												
1 Ba Rural	2.25	0.86	-3.29	1.10	1.39	-0.44	-5.07	-0.12	0.35	-1.13	-6.72	-0.88
2 Magodo Rural	3.65	3.95	8.84	3.83	2.45	2.03	6.69	2.28	1.20	0.84	4.79	1.05
3 Tavua Rural	3.16	1.59	0.60	2.11	2.09	0.12	-0.24	0.79	0.92	-0.68	-0.88	-0.15
4 Vuda Rural	-2.39	2.08	4.00	2.02	-3.33	0.65	2.83	0.60	-4.54	-0.29	1.68	-0.34
5 Navoso Rural	4.37	0.00	0.99	4.37	2.89	0.00	-0.01	2.89	1.54	0.00	-0.59	1.54
6 Rakiraki Rural	2.60	2.73	-1.23	2.67	1.63	1.07	-2.54	1.24	0.55	0.07	-3.67	0.22
7 Saivou Rural	1.81	2.47	-2.97	2.26	0.97	0.86	-4.72	0.90	0.02	-0.09	-6.29	-0.06
All Rural Area	2.89	1.63	-1.22	1.99	1.86	0.18	-0.26	0.65	0.73	-0.65	-1.52	-0.27
All Study Area	2.27	1.49	-0.17	1.69	1.26	0.02	-1.67	0.37	0.16	-0.80	-2.90	-0.55

Table F-3.2 ESTIMATED ANNUAL GROWTH RATE OF THE POPULATION IN THE STUDY AREA (2)

Study Area	(1) High Scenario Period: 2001-2006				(2) Medium Scenario Period: 2001-2006				(3) Low Scenario Period: 2001-2006			
	Fijian	Indian	others	Total	Fijian	Indian	others	Total	Fijian	Indian	others	Total
Urban												
1 Ba Town	1.43	1.39	-1.22	1.32	0.47	-0.04	-2.52	-0.01	-0.37	-0.91	-3.53	-0.87
2 Tavua Town	0.95	-0.87	5.61	0.74	-0.03	-2.23	3.84	-0.47	-0.78	-2.93	2.44	-1.31
3 Vatukoula Town	-2.55	-1.97	-2.24	-2.41	-3.93	-3.75	-3.94	-3.91	-5.07	-4.85	-5.23	-5.06
4 Rakiraki Town	1.05	-1.85	-1.71	-0.63	0.01	-3.51	-3.19	-1.93	-0.82	-4.52	-4.29	-2.85
All Urban Area	0.09	0.68	-0.36	0.42	-0.95	-0.77	-1.95	-0.90	-1.80	-1.64	-3.18	-1.78
Rural												
1 Ba Rural	2.19	0.85	-3.58	1.10	1.11	-0.48	-5.47	-0.18	0.16	-1.25	-7.06	-0.99
2 Magodro Rural	3.60	3.95	8.54	3.80	2.22	2.03	6.31	2.16	1.03	0.74	4.44	0.92
3 Tavua Rural	3.09	1.58	0.30	2.10	1.82	0.09	-0.63	0.71	0.73	-0.80	-1.24	-0.27
4 Vuda Rural	-2.45	2.07	3.69	2.02	-3.62	0.59	2.40	0.55	-4.73	-0.41	1.31	-0.45
5 Navoso Rural	4.34	0.00	0.74	4.33	2.72	0.00	-0.30	2.72	1.40	0.00	-0.90	1.39
6 Rakiraki Rural	2.55	2.73	-1.51	2.65	1.38	1.05	-2.91	1.15	0.37	-0.03	-4.01	0.09
7 Saivou Rural	1.75	2.47	-3.25	2.24	0.72	0.84	-5.09	0.80	-0.15	-0.20	-6.62	-0.18
All Rural Area	2.85	1.68	1.87	2.02	1.61	0.17	0.18	0.60	0.55	-0.74	-1.12	-0.37
All Study Area	2.32	1.53	0.07	1.75	1.11	0.03	-1.54	0.35	0.08	-0.88	-2.79	-0.61

Study Area	(1) High Scenario Period: 2006-2011				(2) Medium Scenario Period: 2006-2011				(3) Low Scenario Period: 2006-2011			
	Fijian	Indian	others	Total	Fijian	Indian	others	Total	Fijian	Indian	others	Total
Urban												
1 Ba Town	1.41	1.29	-1.52	1.24	0.21	-0.10	-2.92	-0.10	-0.34	-1.02	-3.78	-0.94
2 Tavua Town	0.84	-1.06	5.20	0.74	-0.31	-2.30	3.40	-0.55	-0.83	-3.10	2.11	-1.31
3 Vatukoula Town	-2.57	-2.07	-2.53	-2.48	-4.11	-3.73	-4.25	-4.08	-5.06	-4.97	-5.48	-5.11
4 Rakiraki Town	0.97	-2.01	-2.07	-0.65	-0.30	-3.60	-3.63	-1.98	-0.90	-4.72	-4.63	-2.81
All Urban Area	0.19	0.65	-0.21	0.45	-1.03	-0.74	-1.88	-0.90	-1.62	-1.67	-3.03	-1.72
Rural												
1 Ba Rural	2.16	0.74	-3.87	1.02	0.84	-0.55	-5.86	-0.26	0.19	-1.35	-7.30	-1.05
2 Magodro Rural	3.56	3.83	8.19	3.73	1.99	2.01	5.92	2.03	1.03	0.62	4.15	0.87
3 Tavua Rural	3.05	1.46	-0.02	2.04	1.56	0.03	-1.04	0.61	0.74	-0.92	-1.51	-0.32
4 Vuda Rural	-2.46	1.98	3.39	1.94	-3.89	0.52	1.97	0.48	-4.69	-0.49	1.07	-0.53
5 Navoso Rural	4.29	0.00	0.42	4.29	2.55	0.00	-0.62	2.55	1.38	0.00	-1.19	1.37
6 Rakiraki Rural	2.52	2.62	-1.81	2.57	1.13	1.01	-3.30	1.04	0.38	-0.14	-4.26	0.03
7 Saivou Rural	1.72	2.36	-3.55	2.16	0.47	0.80	-5.47	0.69	-0.13	-0.30	-6.86	-0.25
All Rural Area	2.84	1.62	2.58	1.99	1.38	0.15	0.65	0.53	0.57	-0.84	-0.64	-0.41
All Study Area	2.38	1.48	0.38	1.74	0.95	0.02	-1.35	0.31	0.17	-0.95	-2.53	-0.62

Table F-3.3 POPULATION PROJECTIONS IN THE STUDY AREA WITH REGIONAL WATER SUPPLY SYSTEM (HIGH VARIANT) (1)

Name of Province/ Tikina/Community	1986				1991				1996				2001				2006				2011					
	Fijian		Others		Fijian		Others		Fijian		Others		Fijian		Others		Fijian		Others		Fijian		Others		Sum	
	Fijian	Others	Total	Sum	Fijian	Others	Total	Sum	Fijian	Others	Total	Sum	Fijian	Others	Total	Sum	Fijian	Others	Total	Sum	Fijian	Others	Total	Sum		
Ba Tikina	6	385	0	391	7	373	0	380	8	390	0	398	9	407	0	416	9	425	0	434	11	441	0	451		
B - 1 Bangidesh	12	138	0	150	14	134	0	147	15	140	0	155	17	146	0	163	19	152	0	171	21	158	0	179		
B - 7 Elevuka Rural	181	810	6	997	205	785	5	995	230	821	4	1,055	257	857	4	1,117	286	894	3	1,183	319	928	2	1,249		
B - 10 Koronubu	119	0	0	121	135	2	0	137	151	2	0	153	169	2	0	171	188	2	0	191	210	2	0	212		
B - 11 Koropeqa Village	44	1,394	0	1,438	50	1,352	0	1,401	56	1,413	0	1,469	62	1,474	0	1,537	70	1,538	0	1,608	77	1,596	0	1,674		
B - 12 Korovito	24	281	0	305	27	272	0	300	30	285	0	315	34	297	0	331	38	310	0	348	42	322	0	364		
B - 13 Kumkum	17	412	1	430	19	399	1	419	22	418	1	440	24	436	1	461	27	455	0	482	30	472	0	502		
B - 14 Lavuci	2	161	0	163	2	156	0	158	3	163	0	166	3	170	0	173	3	178	0	181	4	184	0	188		
B - 16 Matiniqara	0	163	5	168	0	158	4	162	3	165	3	169	0	172	3	175	0	180	2	182	0	187	2	189		
B - 17 Maururu	10	539	0	549	11	523	0	534	13	546	0	559	14	570	0	584	16	595	0	611	18	617	0	635		
B - 18 Mono	594	0	0	594	672	0	0	672	755	0	0	755	844	0	0	844	940	0	0	940	1,046	0	0	1,046		
B - 23 Nailaga Village	36	738	1	775	41	716	1	757	46	748	1	794	51	781	1	832	57	814	0	872	63	845	0	909		
B - 25 Namada	9	272	0	281	10	264	0	274	11	276	0	287	13	288	0	300	14	300	0	314	16	311	0	327		
B - 27 Naruku	8	131	0	139	9	127	0	136	10	133	0	143	11	139	0	150	13	145	0	157	14	150	0	164		
B - 28 Nasolo	121	0	3	124	137	0	2	139	154	0	2	156	172	0	2	174	191	0	1	193	213	0	1	214		
B - 29 Nasolo Village	83	328	1	412	94	318	1	413	105	332	1	439	118	347	1	465	131	362	0	494	146	376	0	522		
B - 30 Natolecake	131	2	1	134	148	2	1	151	166	2	1	169	186	2	1	189	207	2	0	210	231	2	0	233		
B - 31 Natolecake Village	156	0	0	156	176	0	0	176	198	0	0	198	222	0	0	222	247	0	0	247	275	0	0	275		
B - 33 Nannu Village	0	656	0	656	0	636	0	636	0	665	0	665	0	694	0	694	0	724	0	724	0	751	0	751		
B - 34 Navau	8	500	0	508	9	485	0	494	10	507	0	517	11	529	0	540	13	552	0	564	14	573	0	587		
B - 35 Navau	0	1,067	0	1,067	0	1,034	0	1,034	0	1,081	0	1,081	0	1,129	0	1,129	0	1,177	0	1,177	0	1,222	0	1,222		
B - 37 Navoli	145	0	2	147	164	0	2	166	184	0	2	186	206	0	1	207	229	0	1	230	255	0	1	256		
B - 38 Nawagana Village	46	726	0	773	52	704	1	757	58	736	1	795	65	768	1	834	73	801	0	874	81	831	0	913		
B - 44 Sarava	238	0	0	238	269	0	0	269	302	0	0	302	338	0	0	338	377	0	0	377	419	0	0	419		
B - 45 Sasa Village	19	239	0	258	21	232	0	253	24	242	0	266	27	253	0	280	30	264	0	294	33	274	0	307		
B - 46 Savusavu	280	0	6	286	317	0	5	322	356	0	4	360	398	0	4	401	443	0	3	446	493	0	2	496		
B - 48 Sorokoba Village	3	381	9	393	3	369	7	380	4	386	4	396	4	403	5	413	5	420	4	430	5	436	0	445		
B - 49 Talaja	24	589	0	613	27	571	4	602	30	597	3	631	34	623	3	660	38	650	2	690	42	675	2	719		
B - 51 Vadravadra Village	262	0	1	263	296	0	1	297	333	0	1	334	372	0	1	373	415	0	0	415	461	0	0	462		
B - 53 Vaja	11	686	0	697	12	665	0	678	14	695	0	709	16	726	0	741	17	757	0	774	19	786	0	805		
B - 54 Vasadoli	1	291	0	292	1	282	0	283	1	295	0	296	1	308	0	309	2	321	0	323	2	333	0	335		
B - 55 Vanavu	31	765	3	799	35	742	2	779	39	775	2	817	44	809	2	855	49	844	1	895	55	876	1	932		
B - 56 Varoko	100	531	12	643	113	515	10	638	127	538	8	673	142	562	7	711	158	596	6	750	176	608	5	789		
B - 57 Vanuyasa	35	870	0	905	40	843	0	883	44	882	0	926	50	920	0	970	55	960	0	1,015	62	996	0	1,058		
B - 59 Vcisaru	275	1,631	1	1,907	311	1,581	1	1,893	349	1,653	1	2,003	391	1,725	1	2,116	435	1,800	0	2,235	484	1,868	0	2,353		
B - 60 Vonu	15	383	0	398	17	371	0	388	19	388	0	407	21	405	0	426	24	423	0	446	26	439	0	465		
B - 61 Vonua Village	544	0	1	545	615	0	1	616	691	0	1	692	773	0	1	773	861	0	0	861	958	0	0	959		
B - 62 Vunissamaloa	1	439	0	440	1	426	0	427	1	445	0	446	0	464	0	466	2	484	0	486	2	503	0	504		
B - 65 Wailagi	0	143	0	143	0	139	0	139	0	145	0	145	0	151	0	151	0	158	0	158	0	164	0	164		
B - 66 Wailalai	30	892	7	929	34	865	6	904	38	904	5	947	43	943	4	990	47	984	3	1,035	53	1,022	3	1,077		
B - 68 Yalalevu	44	895	8	947	50	868	6	904	56	907	6	968	62	947	5	1,014	70	988	4	1,061	77	1,025	3	1,106		
Ba Town	1,888	7,934	438	10,260	2,052	7,882	398	10,333	2,220	8,456	385	11,062	2,391	9,063	367	11,821	2,567	9,712	346	12,624	2,754	10,354	320	13,428		
Total of Ba Rural	3,665	17,440	74	21,179	4,146	16,909	60	21,115	4,657	17,673	51	22,382	5,206	18,446	43	23,696	5,800	19,244	36	25,081	6,455	19,972	30	26,457		
Total of Ba Tikina	5,553	25,374	512	31,439	6,199	24,790	458	31,447	6,878	26,129	436	33,443	7,597	27,510	411	35,517	8,368	28,956	382	37,705	9,209	30,326	350	39,885		

Table F-3.3 POPULATION PROJECTIONS IN THE STUDY AREA WITH REGIONAL WATER SUPPLY SYSTEM (HIGH VARIANT) (2)

Name of Province/ Tikina/Community	1986			1991			1996			2001			2011												
	Fijian	Indian	Others	Total	Fijian	Indian	Others	Total	Fijian	Indian	Others	Total	Fijian	Indian	Others	Total									
Tavua Tikina	64	929	1	994	75	930	1	1,006	88	1,008	1	1,097	103	1,091	1	1,195	120	1,180	1	1,301	140	1,268	1	1,409	
T - 1 Asiasi	4	209	0	213	5	209	0	214	6	227	0	232	6	245	0	252	8	265	0	273	9	285	0	294	
T - 4 Dakavono	3	411	1	415	4	411	1	416	5	483	1	451	5	483	1	488	6	522	1	529	7	561	1	569	
T - 15 Lubulu	0	247	1	248	0	247	1	248	0	268	0	269	0	290	1	291	0	314	1	315	0	337	1	338	
T - 20 Maanawai	88	0	0	88	104	0	0	104	122	0	0	122	142	0	0	142	165	0	0	165	192	0	0	192	
T - 21 Nabuna Village	81	399	1	481	95	399	1	495	112	433	1	546	131	468	1	600	152	507	1	660	177	545	1	723	
T - 25 Naawa	179	2	0	181	211	2	0	213	247	2	0	250	289	2	0	291	336	3	0	339	391	3	0	394	
T - 31 Rukuruku	89	928	2	1,019	105	929	2	1,036	123	1,007	2	1,132	144	1,090	2	1,235	167	1,178	2	1,348	194	1,267	2	1,463	
T - 32 Tagiagi	289	979	8	1,276	340	980	8	1,328	399	1,062	8	1,470	466	1,150	8	1,624	543	1,243	9	1,795	631	1,336	9	1,976	
T - 33 Toko	7	330	7	344	8	330	7	345	10	358	7	375	11	387	7	406	13	419	8	440	15	450	8	473	
T - 38 Waikona	194	544	2	740	228	545	2	775	268	590	2	860	313	639	2	954	365	691	2	1,058	424	743	2	1,168	
T - 41 Yaladro	1,042	1,094	91	2,227	1,103	966	116	2,186	1,172	932	157	2,261	1,236	895	210	2,341	1,296	856	276	2,429	1,351	812	356	2,519	
Tavua Town	3,248	749	792	4,789	2,818	611	666	4,094	2,487	552	609	3,647	2,188	499	551	3,237	1,923	451	492	2,866	1,688	407	433	2,528	
Vanukoula Town	4,290	1,843	883	7,016	3,921	1,577	782	6,280	3,659	1,483	766	5,900	3,424	1,393	761	5,579	3,219	1,308	768	5,295	3,039	1,219	789	5,047	
Total of Urban	998	4,978	23	5,999	1,174	4,983	23	6,180	1,379	5,401	24	6,803	1,611	5,845	24	7,480	1,875	6,321	25	8,221	2,179	6,796	25	8,999	
Total of Tavua Rural	5,288	6,821	906	13,015	5,096	6,560	804	12,460	5,038	6,884	790	12,712	5,035	7,238	785	13,059	5,094	7,629	793	13,516	5,218	8,014	814	14,046	
Re Province																									
Rakiraki Tikina																									
R - 1 Caunisi/Cobosi	0	375	0	375	0	396	0	396	0	454	0	454	0	519	0	519	0	594	0	594	0	676	0	676	
R - 7 Koronae	0	141	0	141	0	149	0	149	0	171	0	171	0	195	0	195	0	223	0	223	0	254	0	254	
R - 29 Waraku	9	481	0	490	10	508	0	518	12	582	0	594	13	666	0	679	15	762	0	777	17	867	0	884	
R - 30 Wainari	39	416	0	455	45	439	0	484	51	503	0	554	58	576	0	634	66	659	0	724	74	749	0	824	
Rakiraki Town	963	2,290	108	3,361	1,030	1,934	96	3,060	1,099	1,771	91	2,961	1,163	1,617	85	2,865	1,225	1,473	78	2,776	1,286	1,331	70	2,687	
Total of Rakiraki Rural	48	1,413	0	1,461	55	1,493	0	1,547	63	1,709	0	1,772	71	1,956	0	2,027	81	2,237	0	2,318	91	2,546	0	2,637	
Total of Rakiraki Tikina	1,011	3,703	108	4,822	1,085	3,426	96	4,608	1,161	3,481	91	4,733	1,235	3,573	85	4,892	1,306	3,710	78	5,094	1,377	3,876	70	5,324	
Saivou Tikina																									
S - 3 Rewasa	14	336	1	351	15	350	1	367	17	396	1	414	18	448	1	467	20	506	1	527	22	568	0	591	
S - 4 Rewasa Village	219	0	0	219	241	0	0	241	264	0	0	264	289	0	0	289	315	0	0	315	344	0	0	344	
S - 7 Waivuca	-	-	-	-	-	-	-	-	-	-	-	-	-	-	-	-	-	-	-	-	-	-	-	-	
Total of Saivou Tikina	233	336	1	570	256	350	1	607	281	396	1	678	308	448	1	756	336	506	1	842	365	568	0	934	
Total of Urban Pop.	7,141	12,067	1,429	20,637	7,004	11,393	1,276	19,673	6,978	11,710	1,243	19,931	6,979	12,073	1,213	20,265	7,012	12,492	1,192	20,695	7,078	12,904	1,179	21,161	
Total of Rural Pop.	4,944	24,167	98	29,209	5,632	23,734	83	29,449	6,380	25,179	75	31,635	7,196	26,695	68	33,959	8,092	28,309	61	36,462	9,091	29,882	55	39,028	
Grand Total	12,085	36,234	1,527	49,846	12,636	35,127	1,359	49,122	13,358	36,890	1,318	51,567	14,174	38,768	1,282	54,224	15,104	40,801	1,253	57,158	16,170	42,785	1,234	60,189	

Table F-3.4 POPULATION PROJECTIONS IN THE STUDY AREA WITHOUT REGIONAL WATER SUPPLY SYSTEM (HIGH VARIANT) (2)

Years of Projection Village/Community	1986				1991				1996				2001				2011					
	Fijian		Others		Fijian		Others		Fijian		Others		Fijian		Others		Fijian		Others			
	Sum	Total	Sum	Total	Sum	Total	Sum	Total	Sum	Total	Sum	Total	Sum	Total	Sum	Total	Sum	Total				
Tavauni TBlina	12	445	1	478	14	465	1	481	17	504	1	522	19	546	1	566	23	590	1	614	26	633
T - 2 Burea	0	0	0	0	0	0	0	0	0	0	0	0	0	0	0	0	0	0	0	0	0	0
T - 3 Bureya Village	108	108	0	108	127	127	0	127	149	149	0	149	174	174	0	174	203	203	0	203	236	236
T - 5 Davoa	12	439	2	441	14	439	0	439	17	476	0	476	19	515	0	515	23	537	0	537	26	599
T - 6 Dronas	1	478	1	479	1	478	0	478	1	518	0	519	2	540	0	542	2	606	0	608	2	631
T - 7 Koro No.1	57	285	0	285	67	285	0	285	79	220	0	299	92	238	0	330	107	238	0	345	124	277
T - 8 Koro No.2	62	194	0	256	73	194	0	267	86	210	0	296	100	228	0	328	117	246	0	363	135	265
T - 9 Koro Village	98	0	0	98	115	0	0	115	135	0	0	285	333	0	0	158	184	0	342	184	214	0
T - 10 Korobya Village	206	0	0	206	242	0	0	242	285	0	0	479	350	0	0	333	387	0	720	450	0	0
T - 11 Korovu	93	323	0	416	109	323	0	432	129	350	0	479	379	0	0	529	175	410	0	585	203	441
T - 12 Korovu Village	236	0	0	236	278	0	0	278	326	0	0	327	381	0	0	382	443	0	825	513	0	0
T - 13 Kuluwira	0	168	1	169	0	168	0	168	182	0	182	1	183	0	197	0	213	0	214	0	229	1
T - 14 Lona	7	536	0	543	8	536	0	544	10	582	0	591	11	629	0	641	13	681	0	694	15	732
T - 15 Lova Village	77	0	0	77	91	0	0	92	106	0	0	107	124	0	0	125	145	0	146	168	0	169
T - 16 Mache	10	1098	0	1108	12	1099	0	1111	14	1191	0	1205	16	1289	0	1305	19	1394	0	1413	22	1490
T - 17 Macece	4	498	1	503	5	498	1	504	6	540	1	547	6	583	1	592	8	632	1	641	9	680
T - 17 Maunasi	0	396	2	398	0	396	2	398	0	430	2	432	0	463	2	467	0	503	2	505	0	541
T - 18 Mavevu	14	448	0	462	16	448	1	465	19	486	0	505	23	526	0	549	26	569	0	595	31	612
T - 19 Matangata	359	1	5	365	422	1	5	428	496	1	5	502	579	1	5	586	675	1	681	784	1	791
T - 20 Nadi Village	116	11	0	127	137	11	0	148	160	12	0	172	187	13	0	200	218	14	0	232	253	15
T - 21 Nadi Village	305	0	0	305	359	0	0	359	421	0	0	421	492	0	0	492	573	0	573	666	0	666
T - 22 Naganaga Village	52	0	4	56	61	0	4	65	72	0	4	76	84	0	4	88	98	0	102	114	0	118
T - 23 Naganaga Village	87	36	0	123	102	36	0	138	120	39	0	159	140	42	0	183	163	46	0	209	190	49
T - 24 Nalobu	156	1	0	157	184	1	0	185	216	1	0	217	232	1	0	253	283	1	0	294	341	1
T - 25 Nasono Village	215	0	1	216	253	0	1	254	297	0	1	298	347	0	1	348	404	0	1	465	469	0
T - 26 Nivala Village	484	0	0	484	570	0	0	570	669	0	0	669	781	0	0	781	910	0	0	910	1,007	0
T - 27 Nivala Village	2	554	2	558	2	555	2	559	3	601	2	606	3	650	2	656	4	704	2	709	4	736
T - 28 Qeta	8	267	0	275	9	267	0	277	11	290	0	301	31	314	0	326	35	359	0	354	17	364
T - 29 Rikavidi	94	278	1	279	111	278	1	280	130	302	1	433	326	326	1	479	171	353	1	531	205	380
T - 30 Vata	95	95	0	190	112	95	0	207	131	103	0	234	153	112	0	265	179	121	0	299	207	130
T - 31 Vunibani	41	460	2	462	48	460	2	462	57	499	2	558	46	540	2	608	77	584	2	663	90	628
T - 32 Vunibani	95	377	1	473	377	1	1	480	371	409	1	541	353	443	1	597	179	479	1	658	207	515
T - 33 Waiyabani Village	138	0	2	140	186	0	2	188	218	0	2	220	255	0	2	257	297	0	2	299	345	0
T - 34 Wainocea	7	346	1	354	8	346	1	356	10	375	1	386	11	406	1	419	13	439	1	454	15	472
T - 35 Nasono village	-	-	-	-	-	-	-	-	-	-	-	-	-	-	-	-	-	-	-	-	-	-
T - 36 Tokolou	-	-	-	-	-	-	-	-	-	-	-	-	-	-	-	-	-	-	-	-	-	-
T - 37 Malou	-	-	-	-	-	-	-	-	-	-	-	-	-	-	-	-	-	-	-	-	-	-
T - 38 Garampani	-	-	-	-	-	-	-	-	-	-	-	-	-	-	-	-	-	-	-	-	-	-
T - 39 Lololevu	-	-	-	-	-	-	-	-	-	-	-	-	-	-	-	-	-	-	-	-	-	-
T - 40 Lololevu	-	-	-	-	-	-	-	-	-	-	-	-	-	-	-	-	-	-	-	-	-	-
T - 41 Lololevu	-	-	-	-	-	-	-	-	-	-	-	-	-	-	-	-	-	-	-	-	-	-
T - 42 Lololevu	-	-	-	-	-	-	-	-	-	-	-	-	-	-	-	-	-	-	-	-	-	-
T - 43 Lololevu	-	-	-	-	-	-	-	-	-	-	-	-	-	-	-	-	-	-	-	-	-	-
T - 44 Lololevu	-	-	-	-	-	-	-	-	-	-	-	-	-	-	-	-	-	-	-	-	-	-
T - 45 Lololevu	-	-	-	-	-	-	-	-	-	-	-	-	-	-	-	-	-	-	-	-	-	-
T - 46 Lololevu	-	-	-	-	-	-	-	-	-	-	-	-	-	-	-	-	-	-	-	-	-	-
Other Communities	826	690	8	1,524	972	691	8	1,671	1,941	749	8	1,898	1,333	810	8	2,152	1,532	876	9	2,437	1,803	942
Total of Tavauni TBlina	4,097	8,361	36	12,504	4,821	8,369	35	13,226	5,661	9,071	37	14,769	6,613	9,817	38	16,488	7,699	10,617	39	18,355	8,945	11,414
Yaba TBlina	63	1,811	4	1,878	57	1,875	5	1,937	51	2,082	6	2,138	45	2,307	7	2,339	40	2,556	8	2,604	35	2,819
V - 1 Buvani	11	961	0	972	10	965	0	1,005	9	1,105	0	1,114	8	1,204	0	1,232	7	1,356	0	1,383	6	1,496
V - 2 Tavau	17	708	14	739	15	733	16	765	14	814	20	848	12	902	25	939	11	999	30	1,039	9	1,102
V - 3 Tavu	91	3,480	18	3,599	82	3,604	21	3,707	73	4,000	26	4,099	65	4,434	32	4,530	57	4,912	38	5,007	50	5,417
Total of Yaba TBlina	171	5,999	36	6,111	154	5,974	42	6,177	138	6,916	52	6,985	122	7,640	65	7,708	108	8,271	76	8,427	71	8,917

Table F-3.4 POPULATION PROJECTIONS IN THE STUDY AREA WITHOUT REGIONAL WATER SUPPLY SYSTEM (HIGH VARIANT) (3)

Name of Province/ Thana/Community	1986				1991				1996				2001				2001					
	Fijian	Indian	Others	Total	Fijian	Indian	Others	Sum	Fijian	Indian	Others	Sum	Fijian	Indian	Others	Sum	Fijian	Indian	Others	Sum		
Madaya/Veeco Province																						
Naravu Thana	470	0	0	471	568	0	0	568	707	874	0	1,581	875	1,080	0	1,955	1,082	1,333	0	2,415		
Naravu Village																						
Subtotal Thana	321	1	2	324	399	4	4	407	444	4	4	452	450	5	5	455	514	6	6	520		
Subtotal Village	321	1	2	324	399	4	4	407	444	4	4	452	450	5	5	455	514	6	6	520		
R - 0 Bauri	37	152	0	189	139	2	2	143	55	183	0	238	210	62	62	272	239	71	71	310		
R - 1 Drauniv	324	0	5	329	370	0	0	370	427	481	0	908	448	545	0	993	549	617	0	1,166		
R - 2 Drauniv Village	27	949	0	1,026	1,002	0	0	1,002	1,184	1,314	0	2,498	1,284	1,503	0	2,787	1,403	1,710	0	3,113		
R - 4 Edington	6	630	2	638	687	0	0	687	784	15	0	799	801	1,029	0	1,830	1,031	1,271	0	2,302		
R - 5 Galau	10	438	1	449	463	1	1	465	544	15	0	559	606	17	17	623	711	19	19	729		
R - 6 Kavoli	3	140	0	143	146	0	0	146	175	154	0	329	398	591	0	989	427	609	0	1,036		
R - 8 Labau	351	1	1	353	401	1	1	403	446	521	1	968	1,032	1,222	2	2,256	1,144	1,382	2	2,526		
R - 9 Malla	13	455	2	470	481	2	2	485	519	630	2	1,151	1,244	1,488	2	2,734	1,338	1,582	2	2,922		
R - 10 Navunivoni Village	170	1	0	171	194	1	0	195	222	1	0	223	254	236	2	492	288	324	2	614		
R - 11 Nakorobu Village	82	0	0	82	94	0	0	94	107	122	0	229	122	138	0	260	138	156	0	294		
R - 11' Namua	218	0	1	219	249	0	0	249	285	324	0	609	624	667	0	1,291	668	713	0	1,381		
R - 11' Namua Village	204	0	0	204	233	0	0	233	266	300	0	566	585	630	0	1,215	630	675	0	1,305		
R - 12 Naranu Village	9	508	0	517	537	0	0	537	626	703	0	1,329	1,329	1,504	0	2,833	1,504	1,679	0	3,183		
R - 13 Naranu	2	195	0	197	206	0	0	206	239	270	0	509	509	539	0	1,048	539	569	0	1,108		
R - 14 Nareva	102	0	0	102	117	0	0	117	133	151	0	284	284	309	0	593	309	334	0	643		
R - 15 Nareva Village	20	663	0	683	700	0	0	700	802	918	0	1,720	1,720	1,947	0	3,667	1,947	2,172	0	4,119		
R - 16 Nareva	201	0	3	204	230	0	0	230	262	298	0	560	560	606	0	1,166	606	652	0	1,258		
R - 17 Nareva No.1 Village	240	0	0	240	274	0	0	274	313	356	0	669	669	726	0	1,395	726	783	0	1,509		
R - 17' Nareva No.2 Village	152	0	0	152	174	0	0	174	198	226	0	424	424	456	0	880	456	488	0	944		
R - 18 Rabulu Village	115	0	0	115	131	0	0	131	150	171	0	321	321	342	0	663	342	363	0	705		
R - 19 Rabulu	71	319	1	391	419	0	0	419	479	505	0	984	984	1,023	0	2,007	1,023	1,062	0	2,085		
R - 20 Rarvau	0	147	0	147	155	0	0	155	178	203	0	381	381	406	0	787	406	431	0	837		
R - 21 Togoveva Village	187	0	1	188	214	0	0	214	244	278	0	522	522	547	0	1,069	547	572	0	1,119		
R - 22 Vanakiviseva Village	215	0	1	216	246	0	0	246	281	319	0	600	600	625	0	1,225	625	650	0	1,275		
R - 22' Vanakiviseva	140	132	0	272	160	139	0	299	183	160	0	343	343	209	0	552	552	238	0	790		
R - 23 Vitava	207	0	0	207	237	0	0	237	270	307	0	577	577	602	0	1,179	602	627	0	1,229		
R - 24 Vitava Village	1	223	1	225	1	236	1	238	1	270	1	272	272	311	2	585	311	350	2	663		
R - 25 Vitava	6	502	1	509	530	1	0	531	616	695	0	1,311	1,311	1,402	0	2,713	1,402	1,493	0	2,895		
R - 26 Vavoli	236	0	3	239	270	0	0	270	311	350	0	661	661	705	0	1,366	705	749	0	1,454		
R - 27 Vanigobon Village	0	315	0	315	333	0	0	333	381	436	0	817	817	861	0	1,678	861	905	0	1,766		
R - 28 Wilevu																						
R - 29' Wilevu																						
R - 30' Wilevu																						
R - 31' Wilevu																						
R - 32' Nareva																						
R - 33' Nareva																						
Other Communities	288	701	51	1,040	320	740	45	1,105	376	848	43	1,267	1,267	1,438	41	2,746	1,632	1,803	549	3,984		
Total of Rarvau Thana	3,634	6,792	77	10,503	4,152	2,125	69	6,346	4,743	8,217	65	13,025	13,025	14,856	62	28,943	16,927	18,729	57	36,213		
Subtotal Thana	42	302	0	344	46	315	0	361	51	402	0	453	453	60	453	60	1,106	1,106	1,145	0	2,251	
S - 1 Koroala	30	0	0	30	35	0	0	35	40	46	0	86	86	43	86	43	129	129	47	0	176	
S - 2 Nareva Village	2	457	0	459	2	477	0	479	2	509	0	511	511	612	3	1,126	691	775	3	1,469		
S - 5 Tuvana	198	0	0	198	218	0	0	218	259	261	0	520	520	285	0	805	285	311	0	596		
S - 6' Vanikavaseva Village	272	759	0	1,031	299	791	0	1,090	328	895	0	1,223	1,223	1,143	0	2,366	1,534	1,427	0	2,961		
Total of Suva Thana	12,878	34,126	168	47,172	14,992	34,655	167	49,814	17,495	38,133	184	55,812	55,812	23,601	46,559	241	70,200	27,362	51,013	289	78,664	

Table F-3.5 POPULATION PROJECTIONS IN THE STUDY AREA WITH REGIONAL WATER SUPPLY SYSTEM (MIDDLE VARIANT) (1)

Name of Province/ Tikina/Community	1996				1991				1996				2001				2006				2011									
	Fijian		Indian		Fijian		Indian		Fijian		Indian		Fijian		Indian		Fijian		Indian		Fijian		Indian		Others		Sum			
	Fijian	Indian	Others	Total	Fijian	Indian	Others	Total	Fijian	Indian	Others	Total	Fijian	Indian	Others	Total	Fijian	Indian	Others	Total	Fijian	Indian	Others	Total	Fijian	Indian	Others	Total		
Ba Province	6	385	0	391	7	368	0	375	7	363	0	370	8	355	0	363	0	346	8	363	0	355	9	337	0	346	9	337	0	346
B - 1. Bangladesh	12	138	0	150	13	132	0	145	14	130	0	144	15	127	0	143	0	124	16	143	0	140	17	121	0	138	17	121	0	138
B - 7. Eievuta Rural	181	810	6	997	200	775	5	980	218	763	4	985	233	747	3	983	247	729	2	977	257	709	2	968	2	968	2	968	2	968
B - 10. Koronubu	119	2	0	121	132	2	0	134	143	2	0	145	153	2	0	155	162	2	0	164	169	2	0	171	0	171	0	171	0	171
B - 11. Koroqqa Village	44	1,394	0	1,438	49	1,334	0	1,383	53	1,314	0	1,367	57	1,285	0	1,342	60	1,254	0	1,314	63	1,220	0	1,283	0	1,283	0	1,283	0	1,283
B - 12. Korovuto	24	281	0	305	27	269	0	295	29	265	0	294	31	259	0	290	33	253	0	285	34	246	0	280	0	280	0	280	0	280
B - 13. Kumukum	17	412	1	430	19	394	1	414	20	388	1	409	22	380	0	402	23	371	0	394	24	361	0	385	0	385	0	385	0	385
B - 14. Lavuci	2	161	0	163	2	154	0	156	2	152	0	154	3	148	0	151	3	145	0	148	3	141	0	144	0	144	0	144	0	144
B - 16. Mainsigera	0	163	5	168	0	156	4	160	0	154	3	157	0	150	2	153	0	147	2	148	0	148	0	144	0	144	0	144	0	144
B - 17. Maururu	10	539	0	549	11	516	0	527	12	508	0	520	13	497	0	510	14	485	0	499	14	472	0	486	0	486	0	486	0	486
B - 18. Moio	594	0	0	594	657	0	0	657	715	0	0	715	766	0	0	766	809	0	0	809	844	0	0	844	0	844	0	844	0	844
B - 23. Nailaga Village	36	738	1	775	40	706	1	747	43	695	1	739	46	680	0	727	49	664	0	713	51	646	0	697	0	697	0	697	0	697
B - 25. Namasa	9	272	0	281	10	260	0	270	11	256	0	267	12	251	0	262	12	245	0	251	13	238	0	251	0	251	0	251	0	251
B - 27. Neruku	8	131	0	139	9	125	0	134	10	123	0	133	11	118	0	131	11	118	0	129	11	115	0	126	0	126	0	126	0	126
B - 28. Nasolo	121	0	3	124	134	0	2	136	146	0	2	147	156	0	1	157	165	0	1	166	172	0	1	173	0	173	0	173	0	173
B - 29. Nasoho Village	83	328	1	412	92	314	1	406	100	309	1	410	107	302	0	410	113	295	0	409	118	287	0	405	0	405	0	405	0	405
B - 30. Natateake	131	2	1	134	145	2	1	148	158	2	1	160	169	2	0	171	178	2	0	181	186	2	0	188	0	188	0	188	0	188
B - 31. Natateake Village	156	0	0	156	173	0	0	173	188	0	0	188	201	0	0	201	213	0	0	213	222	0	0	222	0	222	0	222	0	222
B - 33. Natuu Village	0	656	0	656	0	628	0	628	0	618	0	618	0	605	0	605	0	590	0	590	0	574	0	574	0	574	0	574	0	574
B - 34. Navau	8	500	0	508	9	478	0	487	10	471	0	481	10	461	0	471	11	450	0	461	11	438	0	449	0	449	0	449	0	449
B - 35. Navau	0	1,067	0	1,067	0	1,021	0	1,021	0	1,005	0	1,005	0	983	0	983	0	960	0	960	0	934	0	934	0	934	0	934	0	934
B - 37. Navoli	145	0	2	147	160	0	2	162	175	0	1	176	187	0	1	188	198	0	1	198	206	0	1	207	0	207	0	207	0	207
B - 38. Newaqarua Village	46	726	1	773	51	695	1	746	55	684	1	740	59	669	0	729	63	653	0	716	65	635	0	701	0	701	0	701	0	701
B - 44. Sarava	238	0	0	238	263	0	0	263	287	0	0	287	307	0	0	307	324	0	0	324	338	0	0	338	0	338	0	338	0	338
B - 45. Sasa Village	19	239	0	258	21	229	0	250	23	225	0	248	25	220	0	245	26	215	0	241	27	209	0	236	0	236	0	236	0	236
B - 46. Savusavu	280	0	6	286	310	0	5	314	337	0	4	341	361	0	3	364	382	0	2	384	398	0	2	399	0	399	0	399	0	399
B - 48. Sorokoba Village	3	381	9	393	3	365	3	375	4	359	3	368	4	351	4	359	4	343	3	350	4	333	2	340	2	340	2	340	2	340
B - 49. Talaya	24	589	5	618	27	564	4	594	29	555	3	587	31	543	3	576	33	530	2	564	34	551	2	564	2	564	2	564	2	564
B - 50. Tavavevega	262	0	1	263	290	0	1	291	315	0	1	316	338	0	0	338	357	0	0	357	372	0	0	372	0	372	0	372	0	372
B - 51. Vadravadra Village	11	686	0	697	12	656	0	669	13	646	0	660	14	632	0	646	15	617	0	632	16	600	0	616	0	616	0	616	0	616
B - 53. Vacia	1	291	0	292	1	278	0	280	1	274	0	275	1	268	0	270	1	262	0	263	1	255	0	256	0	256	0	256	0	256
B - 54. Varadoli	31	765	3	799	34	732	2	769	37	721	2	760	40	705	1	746	42	688	1	731	44	670	1	714	1	714	1	714	1	714
B - 55. Varavu	160	531	12	643	111	643	9	628	120	500	7	628	129	489	6	624	136	478	4	618	142	465	3	610	3	610	3	610	3	610
B - 56. Varoko	35	870	0	905	39	832	0	871	42	820	0	862	45	802	0	847	48	783	0	830	50	761	0	811	0	811	0	811	0	811
B - 57. Vanayaka	275	1,651	1	1,907	304	1,561	1	1,866	331	1,537	1	1,869	355	1,503	0	1,858	375	1,467	0	1,842	391	1,428	0	1,819	0	1,819	0	1,819	0	1,819
B - 59. Veisara	15	383	0	398	17	366	0	383	18	361	0	379	19	353	0	372	20	345	0	365	21	335	0	357	0	357	0	357	0	357
B - 60. Voua	544	0	1	545	602	0	1	602	655	0	1	656	702	0	0	702	741	0	0	742	773	0	0	773	0	773	0	773	0	773
B - 61. Voua Village	1	439	0	440	1	420	0	421	1	414	0	415	1	405	0	406	1	395	0	396	1	384	0	386	0	386	0	386	0	386
B - 62. Vunisamaloa	0	143	0	143	0	137	0	137	0	135	0	135	0	132	0	132	0	129	0	129	0	125	0	125	0	125	0	125	0	125
B - 65. Wallagi	30	892	7	929	33	854	4	881	39	822	3	864	41	802	2	846	43	781	2	846	43	781	2	825	2	825	2	825	2	825
B - 66. Waihalu	44	895	8	947	49	856	6	911	53	843	5	901	57	825	4	885	60	805	3	868	63	783	2	848	2	848	2	848	2	848
B - 68. Yalalevu	1,888	7,934	438	10,260	2,018	7,742	388	10,148	2,126	7,784	354	10,264	2,205	7,779	318	10,301	2,256	7,762	280	10,298	2,280	7,724	241	10,245	241	10,245	241	10,245	241	10,245
Ba Town	3,665	17,440	74	21,179	4,054	16,688	56	20,798	4,412	16,434	44	20,890	4,727	16,075	34	20,855	4,994	15,690	26	20,709	5,207	15,265	19	20,490	19	20,490	19	20,490	19	20,490
Total of Ba Rural	5,553	25,374	512	31,439	6,072	24,430	444	30,946	6,538	24,218	398	31,154	6,931	23,854	352	31,137	7,250	23,4												

Table F-3.5 POPULATION PROJECTIONS IN THE STUDY AREA WITH REGIONAL WATER SUPPLY SYSTEM (MIDDLE VARIANT) (2)

Name of Province/ Tikina/Community	1986			1991			1996			2001			2006			2011									
	Fijian	Indian	Others	Total	Fijian	Indian	Others	Total	Fijian	Indian	Others	Total	Fijian	Indian	Others	Total	Fijian	Indian	Others	Total					
Tavua Tikina	64	929	1	994	73	912	1	986	82	923	1	1,007	91	929	1	1,021	100	933	1	1,034	108	935	1	1,043	
T - 1 Asiasi	4	209	0	213	5	205	0	210	5	208	0	213	6	209	0	215	6	210	0	216	7	210	0	217	
T - 4 Dakevono	3	411	1	415	3	403	1	408	4	409	1	413	4	411	1	416	5	413	1	418	5	413	1	419	
T - 15 Lubulubu	0	247	0	247	0	242	1	243	0	246	1	247	0	247	1	248	0	248	1	249	0	248	1	249	
T - 20 Maaerawai	88	0	0	88	101	0	0	101	113	0	0	113	126	0	0	126	137	0	0	137	149	0	0	149	
T - 21 Nabuna Village	81	399	1	481	93	392	1	485	104	397	1	502	116	399	1	516	126	401	1	528	137	401	1	539	
T - 25 Nuaava	179	2	0	181	204	2	0	206	230	2	0	232	255	2	0	257	280	2	0	282	302	2	0	304	
T - 31 Rukuru	89	928	2	1,019	102	911	2	1,015	115	922	2	1,039	127	928	2	1,057	139	932	2	1,073	150	934	2	1,086	
T - 32 Tagiagi	289	979	8	1,276	330	961	8	1,299	372	973	8	1,353	412	979	8	1,399	451	983	8	1,442	488	985	7	1,490	
T - 33 Toko	7	330	7	344	8	324	7	339	9	328	7	344	10	330	7	347	11	331	7	349	12	332	6	350	
T - 38 Waikona	194	544	2	740	222	534	2	758	250	541	2	792	277	544	2	823	303	546	2	851	327	547	2	876	
T - 41 Yaladro	1,042	1,094	91	2,227	1,087	955	111	2,153	1,120	863	139	2,122	1,135	773	171	2,079	1,133	690	207	2,030	1,116	615	244	1,974	
Tavua Town	3,248	749	792	4,789	2,726	593	638	3,957	2,280	489	538	3,307	1,883	403	447	2,833	1,541	333	365	2,240	1,249	275	294	1,819	
Vanakoua Town	4,290	1,843	883	7,016	3,813	1,548	749	6,110	3,401	1,352	677	5,429	3,018	1,176	618	4,812	2,674	1,023	572	4,270	2,365	890	538	3,793	
Total of Urban	998	4,978	23	5,999	1,140	4,887	22	6,049	1,284	4,948	23	6,255	1,424	4,978	22	6,424	1,559	5,000	22	6,580	1,684	5,008	20	6,713	
Total of Tavua Rural	5,288	6,821	906	13,015	4,953	6,435	771	12,159	4,685	6,300	699	11,684	4,442	6,154	640	11,236	4,233	6,023	594	10,850	4,049	5,898	559	10,506	
Ra Province																									
Rakiraki Tikina																									
R - 1 Cailiasi/Colosi	0	375	0	375	0	385	0	385	0	408	0	408	0	431	0	431	0	454	0	454	0	477	0	477	
R - 7 Korosale	0	141	0	141	0	145	0	145	0	154	0	154	0	162	0	162	0	171	0	171	0	179	0	179	
R - 29 Wanuku	9	481	0	490	10	494	0	504	11	524	0	535	12	552	0	564	13	582	0	595	14	612	0	625	
R - 30 Wainari	39	416	0	455	43	427	0	471	48	453	0	501	52	478	0	529	56	503	0	559	59	529	0	588	
Rakiraki Town	963	2,290	108	3,361	1,014	1,886	93	2,994	1,050	1,599	83	2,733	1,068	1,343	72	2,483	1,068	1,124	61	2,253	1,052	935	51	2,038	
Total of Rakiraki Rural	48	1,413	0	1,461	53	1,451	0	1,504	59	1,538	0	1,597	64	1,622	0	1,686	68	1,710	0	1,778	72	1,798	0	1,870	
Total of Rakiraki Tikina	1,011	3,703	108	4,822	1,068	3,337	93	4,498	1,109	3,138	83	4,330	1,131	2,966	72	4,169	1,136	2,833	61	4,031	1,124	2,733	51	3,908	
Salvou Tikina																									
S - 3 Rewasa	14	336	1	351	15	341	1	357	16	358	1	375	17	374	0	391	17	390	0	408	18	406	0	424	
S - 4 Rewasa Village	219	0	0	219	236	0	0	236	251	0	0	251	264	0	0	264	274	0	0	274	280	0	0	280	
S - 7 Waivuca																									
Total of Salvou Tikina	233	336	1	570	251	341	1	593	267	358	1	626	281	374	0	655	291	390	0	681	298	406	0	704	
Total of Urban Pop.	7,141	12,067	1,429	20,637	6,846	11,176	1,230	19,252	6,577	10,736	1,113	18,426	6,290	10,298	1,008	17,596	5,998	9,909	913	16,821	5,697	9,549	830	16,077	
Total of Rural Pop.	4,944	24,167	98	29,209	5,498	23,366	79	28,944	6,023	23,278	67	29,368	6,495	23,049	57	29,601	6,912	22,789	48	29,748	7,261	22,476	40	29,777	
Grand Total	12,085	36,234	1,527	49,846	12,344	34,543	1,309	48,196	12,599	34,014	1,181	47,794	12,785	33,347	1,065	47,197	12,910	32,698	961	46,569	12,958	32,025	870	45,854	

Table F-3.6 POPULATION PROJECTIONS IN THE STUDY AREA WITHOUT REGIONAL WATER SUPPLY SYSTEM (MIDDLE VARIANT) (2)

Name of Province/ Tithun/Community	1986				1991				1996				2001				2006				2011							
	Fijian		Others (Total)		Fijian		Others		Fijian		Others		Fijian		Others		Fijian		Others		Fijian		Others		Fijian		Others	
	Sum	Indian	Sum	Indian	Sum	Indian	Sum	Indian	Sum	Indian	Sum	Indian	Sum	Indian	Sum	Indian	Sum	Indian	Sum	Indian	Sum	Indian	Sum	Indian	Sum	Indian		
T - 2 Bina	12	465	1	478	14	456	1	471	15	462	1	479	17	445	1	483	19	447	1	487	20	448	1	489	20	448		
T - 3 Bynobya Village	108	0	0	108	123	0	0	123	139	0	0	139	154	0	0	154	169	0	0	169	182	0	0	182	0	182		
T - 5 Dava	12	439	2	443	14	431	2	447	15	436	2	452	17	439	2	458	19	441	2	462	20	442	2	464	20	442		
T - 6 Druwai	1	477	0	478	1	468	0	469	1	475	0	475	1	477	0	478	2	479	0	481	2	480	0	482	2	480		
T - 7 Koo No.1	57	203	0	260	65	199	0	264	73	202	0	275	81	203	0	284	89	204	0	293	96	204	0	300	96	204		
T - 8 Koo No.2	62	194	0	256	71	190	0	261	80	193	0	273	88	194	0	282	97	195	0	292	105	195	0	300	105	195		
T - 9 Koo Village	98	6	0	104	112	0	0	112	126	0	0	126	140	0	0	140	153	0	0	153	165	0	0	165	0	165		
T - 10 Koro Village	206	0	0	206	235	0	0	235	265	0	0	265	294	0	0	294	322	0	0	322	348	0	0	348	0	348		
T - 11 Koro Village	50	323	0	373	106	317	0	423	120	321	0	441	133	323	0	456	145	324	0	470	157	325	0	482	0	482		
T - 12 Koro Village	236	0	1	237	270	0	1	271	304	0	1	305	337	0	1	338	369	0	1	369	398	0	1	399	0	399		
T - 13 Koro Village	6	168	0	174	8	165	0	166	0	167	0	168	0	168	0	169	0	169	0	170	0	170	0	170	0	170		
T - 14 Lova	7	526	0	533	8	526	0	534	9	523	0	530	10	526	0	534	11	528	0	538	12	529	0	539	0	539		
T - 15 Lova Village	77	0	1	78	88	0	1	89	99	0	1	100	110	0	1	111	120	0	1	121	130	0	1	131	0	131		
T - 16 Mide	10	1098	0	1108	11	1078	0	1089	13	1091	0	1104	14	1098	0	1112	16	1103	0	1118	17	1105	0	1121	0	1121		
T - 17 Mide	4	498	1	503	5	489	1	494	5	495	1	501	6	498	1	505	6	500	1	507	7	501	1	509	0	509		
T - 17 Mide	4	498	1	503	5	489	1	494	5	495	1	501	6	498	1	505	6	500	1	507	7	501	1	509	0	509		
T - 17 Mide	4	498	1	503	5	489	1	494	5	495	1	501	6	498	1	505	6	500	1	507	7	501	1	509	0	509		
T - 17 Mide	4	498	1	503	5	489	1	494	5	495	1	501	6	498	1	505	6	500	1	507	7	501	1	509	0	509		
T - 17 Mide	4	498	1	503	5	489	1	494	5	495	1	501	6	498	1	505	6	500	1	507	7	501	1	509	0	509		
T - 17 Mide	4	498	1	503	5	489	1	494	5	495	1	501	6	498	1	505	6	500	1	507	7	501	1	509	0	509		
T - 17 Mide	4	498	1	503	5	489	1	494	5	495	1	501	6	498	1	505	6	500	1	507	7	501	1	509	0	509		
T - 17 Mide	4	498	1	503	5	489	1	494	5	495	1	501	6	498	1	505	6	500	1	507	7	501	1	509	0	509		
T - 17 Mide	4	498	1	503	5	489	1	494	5	495	1	501	6	498	1	505	6	500	1	507	7	501	1	509	0	509		
T - 17 Mide	4	498	1	503	5	489	1	494	5	495	1	501	6	498	1	505	6	500	1	507	7	501	1	509	0	509		
T - 17 Mide	4	498	1	503	5	489	1	494	5	495	1	501	6	498	1	505	6	500	1	507	7	501	1	509	0	509		
T - 17 Mide	4	498	1	503	5	489	1	494	5	495	1	501	6	498	1	505	6	500	1	507	7	501	1	509	0	509		
T - 17 Mide	4	498	1	503	5	489	1	494	5	495	1	501	6	498	1	505	6	500	1	507	7	501	1	509	0	509		
T - 17 Mide	4	498	1	503	5	489	1	494	5	495	1	501	6	498	1	505	6	500	1	507	7	501	1	509	0	509		
T - 17 Mide	4	498	1	503	5	489	1	494	5	495	1	501	6	498	1	505	6	500	1	507	7	501	1	509	0	509		
T - 17 Mide	4	498	1	503	5	489	1	494	5	495	1	501	6	498	1	505	6	500	1	507	7	501	1	509	0	509		
T - 17 Mide	4	498	1	503	5	489	1	494	5	495	1	501	6	498	1	505	6	500	1	507	7	501	1	509	0	509		
T - 17 Mide	4	498	1	503	5	489	1	494	5	495	1	501	6	498	1	505	6	500	1	507	7	501	1	509	0	509		
T - 17 Mide	4	498	1	503	5	489	1	494	5	495	1	501	6	498	1	505	6	500	1	507	7	501	1	509	0	509		
T - 17 Mide	4	498	1	503	5	489	1	494	5	495	1	501	6	498	1	505	6	500	1	507	7	501	1	509	0	509		
T - 17 Mide	4	498	1	503	5	489	1	494	5	495	1	501	6	498	1	505	6	500	1	507	7	501	1	509	0	509		
T - 17 Mide	4	498	1	503	5	489	1	494	5	495	1	501	6	498	1	505	6	500	1	507	7	501	1	509	0	509		
T - 17 Mide	4	498	1	503	5	489	1	494	5	495	1	501	6	498	1	505	6	500	1	507	7	501	1	509	0	509		
T - 17 Mide	4	498	1	503	5	489	1	494	5	495	1	501	6	498	1	505	6	500	1	507	7	501	1	509	0	509		
T - 17 Mide	4	498	1	503	5	489	1	494	5	495	1	501	6	498	1	505	6	500	1	507	7	501	1	509	0	509		
T - 17 Mide	4	498	1	503	5	489	1	494	5	495	1	501	6	498	1	505	6	500	1	507	7	501	1	509	0	509		
T - 17 Mide	4	498	1	503	5	489	1	494	5	495	1	501	6	498	1	505	6	500	1	507	7	501	1	509	0	509		
T - 17 Mide	4	498	1	503	5	489	1	494	5	495	1	501	6	498	1	505	6	500	1	507	7	501	1	509	0	509		
T - 17 Mide	4	498	1	503	5	489	1	494	5	495	1	501	6	498	1	505	6	500	1	507	7	501	1	509	0	509		
T - 17 Mide	4	498	1	503	5	489	1	494	5	495	1	501	6	498	1	505	6	500	1	507	7	501	1	509	0	509		
T - 17 Mide	4	498	1	503	5	489	1	494	5	495	1	501	6	498	1	505	6	500	1	507	7	501	1	509	0	509		
T - 17 Mide	4	498	1	503	5	489	1	494	5	495	1	501	6	498	1	505	6	500	1	507	7	501	1	509	0	509		
T - 17 Mide	4	498	1	503	5	489	1	494	5	495	1	501	6	498	1	505	6	500	1	507	7	501	1	509	0	509		
T - 17 Mide	4	498	1	503	5	489	1	494	5	495	1	501	6	498	1	505	6	500	1	507	7	501	1	509	0	509		
T - 17 Mide	4	498	1	503	5	489	1	494	5	495	1	501	6	498	1	505	6	500	1	507	7	501	1	509	0	509		
T - 17 Mide	4	498	1	503	5	489	1	494	5	495	1	501	6	498	1	505	6	500	1	507	7	501	1	509	0	509		
T - 17 Mide	4	498	1	503	5	489	1	494	5	495	1	501	6	498	1	505	6	500	1	507	7	501	1	509	0	509		
T - 17 Mide	4	498	1	503	5	489	1	494	5	495	1	501	6	498	1	505	6	500	1	50								

Table F-3.6 POPULATION PROJECTIONS IN THE STUDY AREA WITHOUT REGIONAL WATER SUPPLY SYSTEM (MIDDLE VARIANT) (3)

Name of Province/ Tahiti/Community	1986				1991				1996				2001				2006				2011			
	Filip.	Indian	Others	Total	Filip.	Indian	Others	Sum	Filip.	Indian	Others	Sum	Filip.	Indian	Others	Sum	Filip.	Indian	Others	Sum	Filip.	Indian	Others	Sum
Nevosa Tahiti	470	0	0	471	546	0	0	547	637	0	0	638	735	0	0	736	840	0	0	841	953	0	0	954
Naevosa Province																								
Bakiraki Tahiti																								
R - 0 Raba	3	321	1	325	3	330	1	334	4	349	1	354	4	369	1	373	4	388	1	393	5	408	0	413
R - 2 Drunaki	37	132	2	171	41	136	2	178	45	184	1	191	49	152	1	202	53	160	0	214	56	168	0	225
R - 3 Drunaki Village	324	0	5	329	361	6	4	365	397	0	4	401	431	0	3	434	461	0	3	464	488	0	2	490
R - 4 Ellingon	27	949	0	976	30	974	0	1,004	33	1,033	0	1,066	36	1,090	0	1,126	38	1,148	0	1,187	41	1,207	0	1,248
R - 5 Oritia	10	438	2	440	11	430	2	443	12	427	2	429	13	416	1	417	14	403	1	404	15	388	0	393
R - 6 Koroti	3	140	1	144	3	144	1	147	4	132	1	136	4	161	1	165	4	169	0	174	5	178	0	183
R - 8 Nalake Village	351	1	1	353	391	1	1	393	420	1	1	422	466	1	1	468	500	1	1	501	528	1	0	530
R - 9 Nalake	13	455	2	470	14	467	2	483	16	495	2	513	17	522	1	541	19	551	1	0	243	256	1	6
R - 10 Nalakevua Village	170	1	0	171	186	1	0	190	208	1	0	209	226	1	0	227	242	1	0	243	256	1	0	
R - 11 Nalakevua Village	82	0	0	82	91	0	0	91	100	0	0	100	109	0	0	109	117	0	0	117	123	0	0	
R - 11' Nalake	218	0	1	219	243	0	0	244	267	0	0	268	290	0	0	290	310	0	0	311	328	0	0	
R - 11' Nalakevua Village	204	0	0	204	227	0	0	227	250	0	0	250	271	0	0	271	290	0	0	290	307	0	0	
R - 12 Nalake	9	598	0	607	10	522	0	532	11	533	0	544	12	583	0	595	13	615	0	627	14	646	0	660
R - 13 Nalake	2	195	0	197	2	200	0	202	2	212	0	215	3	224	0	227	3	236	0	239	3	248	0	251
R - 14 Nalake	102	0	0	102	114	0	0	114	125	0	0	125	136	0	0	136	145	0	0	145	154	0	0	
R - 15 Nalake	20	663	0	683	22	681	0	703	25	722	0	746	27	763	0	788	28	802	0	831	30	843	0	874
R - 16 Nalake	201	0	3	204	224	0	3	226	246	0	2	249	267	0	2	269	286	0	2	288	303	0	1	
R - 17 Nalake	240	0	0	240	267	0	0	267	294	0	0	294	319	0	0	319	342	0	0	342	361	0	0	
R - 17' Nalake No.1 Village	152	0	0	152	169	0	0	169	186	0	0	186	202	0	0	202	216	0	0	216	229	0	0	
R - 17' Nalake No.2 Village	115	0	0	115	128	0	0	128	141	0	0	141	153	0	0	153	164	0	0	164	173	0	0	
R - 18 Nalake	71	319	0	391	79	328	0	407	87	347	1	435	94	366	1	461	101	386	1	488	107	406	0	513
R - 19 Nalake	0	147	0	147	0	151	0	151	0	160	0	160	0	169	0	169	0	178	0	178	0	187	0	187
R - 20 Nalake	187	0	1	188	208	0	1	209	229	0	1	230	249	0	1	249	266	0	1	267	282	0	0	
R - 21 Nalake	215	0	1	216	239	0	1	240	263	0	1	264	286	0	1	286	306	0	1	307	324	0	0	
R - 22 Nalakevua	140	132	0	272	156	136	0	291	172	144	0	315	186	152	0	338	199	160	0	359	211	168	0	379
R - 23 Nalake	207	0	0	207	231	0	0	231	254	0	0	254	275	0	0	275	295	0	0	295	312	0	0	
R - 24 Nalake	1	223	1	225	1	229	1	231	243	1	243	1	245	1	256	1	258	1	270	1	272	2	284	0
R - 25 Nalake	6	502	0	508	7	515	1	523	7	547	1	555	8	576	1	585	9	607	1	617	9	639	0	648
R - 26 Nalake	226	0	3	229	263	0	3	265	288	0	2	292	314	0	2	316	336	0	2	338	355	0	1	
R - 27 Nalake	0	315	0	315	0	323	0	323	0	343	0	343	0	362	0	362	0	381	0	381	0	401	0	401
R - 28 Nalake																								
R - 29 Nalake																								
R - 30 Nalake																								
R - 31 Nalake																								
R - 32 Nalake																								
R - 33 Nalake																								
Other Communities	288	701	51	1,040	321	720	44	1,084	353	763	39	1,136	383	805	35	1,222	410	848	30	1,248	434	892	25	1,351
Total of Bakiraki Tahiti	3,654	6,792	77	10,523	4,047	6,973	66	11,087	4,454	7,395	59	11,908	4,828	7,799	52	12,680	5,172	8,218	45	13,434	5,471	8,641	38	14,150
Savosa Tahiti																								
S - 1 Korale	42	302	0	344	43	397	0	392	48	322	0	370	51	336	0	387	52	350	0	403	54	365	0	418
S - 2 Nalake	30	0	0	30	32	0	0	32	34	0	0	34	36	0	0	36	37	0	0	37	38	0	0	38
S - 3 Nalake	2	457	0	459	2	464	0	466	2	487	0	489	2	508	0	511	2	530	0	533	3	532	0	554
S - 4 Nalake	198	0	0	198	213	0	0	213	227	0	0	227	239	0	0	239	247	0	0	247	253	0	0	
S - 5 Nalake																								
S - 6 Nalake																								
Total of Savosa Tahiti	272	759	0	1,031	295	771	0	1,064	312	809	0	1,121	328	844	0	1,172	340	880	0	1,220	348	916	0	1,264
Grand Total	12,878	34,126	168	47,172	14,561	33,919	162	48,642	16,292	34,809	166	51,267	17,673	35,557	174	53,704	19,597	36,322	183	56,104	21,125	37,049	200	58,395

Table F-3.7 POPULATION PROJECTIONS IN THE STUDY AREA WITH REGIONAL WATER SUPPLY SYSTEM (LOW VARIANT) (1)

Ba Province	(3) Low Variant																							
	1986			1991			1996			2001			2006			2011								
	Fijian	Indian	Others	Total	Fijian	Indian	Others	Total	Fijian	Indian	Others	Total	Fijian	Indian	Others	Total	Fijian	Indian	Others	Total				
B - 1 Bangladesh	6	385	0	391	6	365	0	372	7	350	0	357	7	331	0	338	0	311	0	318	7	290	0	297
B - 7 Elevuka Rural	12	138	0	150	13	131	0	144	13	126	0	139	14	119	0	132	0	111	0	125	14	104	0	118
B - 10 Koronubu	181	810	6	997	195	769	4	968	203	737	3	943	207	696	2	905	2	654	2	864	211	611	1	822
B - 11 Korogaga Village	119	2	0	121	128	2	0	130	134	2	0	136	137	2	0	138	0	136	2	139	139	2	0	140
B - 12 Korovuto	44	1,394	0	1,438	47	1,323	0	1,370	49	1,268	0	1,318	50	1,198	0	1,248	0	1,125	0	1,176	51	1,051	0	1,102
B - 13 Kunkum	24	281	0	305	26	267	0	292	27	256	0	283	27	241	0	269	0	254	0	254	28	212	0	240
B - 14 Lavuci	17	412	1	430	18	391	1	410	19	375	1	394	19	354	0	374	0	333	0	352	20	311	0	331
B - 16 Maunigara	2	161	0	163	2	153	0	155	2	146	0	149	2	138	0	141	0	130	0	132	2	121	0	124
B - 17 Maurru	0	163	5	168	0	155	4	158	0	148	3	151	0	140	2	142	0	132	1	133	0	123	1	124
B - 18 Motu	10	539	0	549	11	511	0	522	11	490	0	502	11	463	0	475	0	435	0	447	12	406	0	418
B - 23 Naitaga Village	594	0	0	594	640	0	0	640	668	0	0	668	679	0	0	679	0	685	0	685	691	0	0	691
B - 25 Namada	36	738	1	775	39	700	1	740	40	671	1	712	41	634	0	676	0	626	0	637	42	556	0	598
B - 27 Naraku	9	272	0	281	10	258	0	268	10	247	0	258	10	234	0	244	0	230	0	230	10	205	0	216
B - 28 Nasolo	8	131	0	139	9	124	0	133	9	119	0	128	9	113	0	122	0	106	0	115	9	99	0	108
B - 29 Nasolo Village	121	0	3	124	130	0	2	132	136	0	2	138	138	0	1	140	0	140	0	140	141	0	1	141
B - 30 Natoleke	83	328	1	412	89	311	1	401	93	298	1	392	95	282	0	377	0	351	2	352	152	2	0	154
B - 31 Natoleke Village	131	2	1	134	141	2	1	144	147	2	1	150	150	2	0	152	0	151	2	152	152	2	0	182
B - 33 Natun Village	156	0	0	156	168	0	0	168	175	0	0	175	178	0	0	178	0	180	0	180	182	0	0	182
B - 34 Navatu	0	656	0	656	0	622	0	622	0	597	0	597	0	564	0	564	0	529	0	529	0	495	0	495
B - 35 Navau	8	500	0	508	9	474	0	483	9	455	0	464	9	430	0	439	0	404	0	413	9	377	0	386
B - 37 Navoti	0	1,067	0	1,067	0	1,012	0	1,012	0	971	0	971	0	917	0	917	0	861	0	861	0	804	0	804
B - 38 Nawasaru Village	145	0	2	147	156	0	1	158	163	0	1	164	166	0	1	167	0	167	0	167	169	0	0	169
B - 44 Sarava	46	726	1	773	50	689	1	739	52	660	1	713	53	624	0	677	0	624	0	639	54	547	0	601
B - 45 Sasa Village	238	0	0	238	256	0	0	256	267	0	0	267	272	0	0	272	0	274	0	274	277	0	0	277
B - 46 Savusavu	19	239	0	258	20	227	0	247	21	217	0	239	22	205	0	227	0	193	0	215	22	180	0	202
B - 48 Sorokoba Village	280	0	6	286	302	0	4	306	315	0	3	318	320	0	2	322	0	323	0	324	326	0	1	327
B - 49 Takaya	3	381	9	393	3	362	6	371	3	347	3	355	27	506	2	535	0	307	3	313	3	287	2	292
B - 50 Tavogavega	24	589	5	618	26	559	4	588	27	536	3	565	27	506	2	535	0	475	1	504	28	444	1	473
B - 51 Vadravadra Village	262	0	1	263	282	0	1	283	294	0	1	295	300	0	0	300	0	302	0	302	305	0	0	305
B - 53 Vajia	11	686	0	697	12	651	0	663	12	624	0	636	13	589	0	602	0	554	0	566	13	517	0	530
B - 54 Varadoli	1	291	0	292	1	276	0	277	1	265	0	266	1	250	0	251	0	235	0	236	1	219	0	221
B - 55 Varavu	31	765	3	799	33	726	2	761	35	696	2	732	35	657	1	694	0	617	1	654	36	577	1	613
B - 56 Varoko	100	531	12	643	108	504	9	620	112	483	6	602	114	456	4	575	0	429	3	547	116	400	2	519
B - 57 Vavutsa	35	870	0	905	38	826	0	863	39	791	0	831	40	748	0	788	0	702	0	743	41	656	0	697
B - 59 Veisani	275	1,631	1	1,907	296	1,548	1	1,845	309	1,484	1	1,793	315	1,402	0	1,717	0	1,316	0	1,634	320	1,230	0	1,550
B - 60 Vouva	15	383	0	398	16	363	0	380	17	348	0	365	17	329	0	346	0	309	0	326	17	289	0	306
B - 61 Vouva Village	544	0	1	545	586	0	1	587	611	0	1	612	622	0	0	623	0	627	0	628	633	0	0	633
B - 62 Vuicimaboa	1	439	0	440	1	417	0	418	1	399	0	400	1	377	0	378	0	354	0	355	1	331	0	332
B - 65 Waibagi	0	143	0	143	0	136	0	136	0	130	0	130	0	123	0	123	0	115	0	115	0	108	0	108
B - 66 Waitilani	30	892	7	929	32	846	5	884	34	811	4	849	34	767	3	803	0	720	2	756	35	672	1	709
B - 68 Yalaveu	44	895	8	947	47	849	6	902	49	814	4	868	50	769	3	822	0	722	2	775	51	675	1	727
Ba Town	1,888	7,934	438	10,260	1,977	7,643	377	9,997	2,008	7,446	329	9,783	1,990	7,152	280	9,421	1,953	6,831	234	9,018	1,920	6,491	193	8,603
Total of Ba Rural	3,665	17,440	74	21,179	3,947	16,548	53	20,549	4,119	15,865	38	20,022	4,192	14,987	27	19,206	4,227	14,075	19	18,321	4,266	13,148	13	17,427
Total of Ba Tikina	5,553	25,374	512	31,439	5,925	24,191	430	30,546	6,127	23,312	367	29,805	6,182	22,138	307	28,627	6,180	20,906	252	27,339	6,187	19,639	205	26,031

Table F-3.7 POPULATION PROJECTIONS IN THE STUDY AREA WITH REGIONAL WATER SUPPLY SYSTEM (LOW VARIANT) (2)

Name of Province/ Tikina/Community	1986				1991				1996				2001				2006				2011									
	Fijian		Indian		Fijian		Indian		Fijian		Indian		Fijian		Indian		Fijian		Indian		Fijian		Indian		Others		Sum			
	Fijian	Indian	Others	Total	Fijian	Indian	Others	Total	Fijian	Indian	Others	Total	Fijian	Indian	Others	Total	Fijian	Indian	Others	Total	Fijian	Indian	Others	Total	Fijian	Indian	Others	Total		
Tavua Tikina	64	929	1	994	71	899	1	971	76	881	1	958	79	852	1	932	82	818	1	902	85	781	1	868						
T - 1 Asiassi	4	209	0	213	4	202	0	207	5	198	0	203	5	192	0	197	5	184	0	189	5	176	0	181						
T - 4 Dakavono	3	411	1	415	3	398	1	402	4	390	1	394	4	377	1	381	4	362	1	367	4	346	1	351						
T - 15 Lububu	0	247	1	248	0	239	1	240	0	234	1	235	0	226	1	227	0	218	1	218	1	208	0	209						
T - 20 Mataniwai	88	0	0	88	97	0	0	97	104	0	0	104	109	0	0	109	113	0	0	113	117	0	0	117						
T - 21 Nabuna Village	81	399	1	481	89	386	1	477	96	379	1	475	100	366	1	467	104	351	1	457	108	336	1	445						
T - 25 Natava	179	2	0	181	198	2	0	200	212	2	0	214	222	2	0	224	230	2	0	232	239	2	0	241						
T - 31 Rukuruku	89	928	2	1,019	98	898	2	998	1,050	881	2	988	1,110	851	2	963	1,140	818	2	934	1,119	781	2	901						
T - 32 Tagingi	289	979	8	1,276	319	948	8	1,275	342	929	8	1,279	358	898	7	1,263	372	862	7	1,241	386	824	6	1,215						
T - 33 Toko	7	330	7	344	8	319	7	334	8	313	7	328	9	303	6	318	9	291	6	306	9	278	6	292						
T - 38 Waikona	194	544	2	740	214	527	2	743	230	516	2	748	241	499	2	741	250	479	2	731	259	458	2	718						
T - 41 Yaladro	1,042	1,094	91	2,227	1,068	950	106	2,124	1,065	838	125	2,028	1,036	728	143	1,907	996	627	162	1,785	955	536	180	1,670						
Tavua Town	3,248	749	792	4,789	2,634	579	613	3,827	2,092	459	487	3,037	1,625	359	378	2,362	1,253	280	289	1,822	967	217	218	1,402						
Vatukoua Town	4,290	1,843	883	7,016	3,702	1,530	719	5,951	3,157	1,297	611	5,065	2,661	1,087	521	4,269	2,249	907	451	3,607	1,922	753	398	3,072						
Total of Urban	998	4,978	23	5,999	1,102	4,818	22	5,943	1,182	4,723	22	5,927	1,238	4,564	21	5,823	1,284	4,385	20	5,689	1,332	4,187	18	5,537						
Total of Tavua Rural	5,288	6,821	906	13,015	4,805	6,348	741	11,894	4,339	6,020	633	10,993	3,899	5,651	542	10,092	3,533	5,293	470	9,296	3,254	4,940	416	8,610						
Rakiraki Tikina																														
R - 1 Caulesi/Colosi	0	375	0	375	0	376	0	376	0	383	0	383	0	384	0	384	0	383	0	383	0	381	0	381						
R - 7 Korole	0	141	0	141	0	141	0	141	0	144	0	144	0	144	0	144	0	144	0	144	0	143	0	143						
R - 29 Wainuku	9	481	0	490	10	483	0	492	10	491	0	501	11	493	0	503	11	492	0	503	11	488	0	499						
R - 30 Waimani	39	416	0	455	42	417	0	460	44	425	0	469	46	426	0	472	46	425	0	472	47	422	0	470						
Rakiraki Town	963	2,290	108	3,361	995	1,850	90	2,935	995	1,509	76	2,580	967	1,209	63	2,239	928	959	50	1,938	887	753	40	1,680						
Total of Rakiraki Rural	48	1,413	0	1,461	52	1,417	0	1,469	55	1,442	0	1,497	56	1,447	0	1,503	57	1,445	0	1,502	58	1,434	0	1,493						
Total of Rakiraki Tikina	1,011	3,703	108	4,822	1,047	3,267	90	4,405	1,050	2,951	76	4,077	1,024	2,656	63	3,742	986	2,404	50	3,440	946	2,187	40	3,173						
Saivou Tikina																														
S - 3 Rewasa	14	336	1	351	15	334	1	350	15	337	1	353	15	336	0	351	15	332	0	348	15	327	0	342						
S - 4 Rewasa Village	219	0	0	219	231	0	0	231	237	0	0	237	237	0	0	237	235	0	0	235	234	0	0	234						
S - 7 Waivuca																														
Total of Saivou Tikina	233	336	1	570	246	334	1	580	252	337	1	589	252	336	0	588	250	332	0	583	248	327	0	576						
Total of Urban Pop.	7,141	12,067	1,429	20,637	6,675	11,023	1,186	18,884	6,160	10,252	1,016	17,428	5,618	9,447	863	15,928	5,131	8,697	734	14,562	4,729	7,997	630	13,355						
Total of Rural Pop.	4,944	24,167	98	29,209	5,347	23,118	76	28,541	5,608	22,368	61	28,036	5,739	21,334	48	27,121	5,818	20,237	39	26,094	5,905	19,097	31	25,033						
Grand Total	12,085	36,234	1,527	49,846	12,022	34,141	1,262	47,425	11,768	32,620	1,077	45,464	11,356	30,780	912	43,049	10,949	28,935	773	40,656	10,634	27,094	661	38,389						

49,846

CHECK

Table F-3.8 POPULATION PROJECTIONS IN THE STUDY AREA WITHOUT REGIONAL WATER SUPPLY SYSTEM (LOW VARIANT) (1)

Name of Province/ Tribes/Community	1986				1991				1996				2001				2006				2011			
	Filian		Others		Filian		Others		Filian		Others		Filian		Others		Filian		Others		Filian		Others	
	Indian	Sum	Indian	Sum	Indian	Sum	Indian	Sum	Indian	Sum	Indian	Sum	Indian	Sum	Indian	Sum	Indian	Sum	Indian	Sum	Indian	Sum		
De Tihua	57	544	0	581	40	516	0	556	42	495	0	536	43	439	0	482	43	439	0	482	43	439	0	482
B - 2 Beni	13	702	1	716	14	666	0	681	15	639	0	654	15	603	0	618	15	587	0	582	15	529	0	545
B - 3 Biolo	6	636	0	642	6	603	0	610	7	579	0	585	7	547	0	553	7	513	0	520	7	479	0	486
B - 4 Bahula	68	184	5	207	73	175	4	231	76	167	3	246	78	148	1	228	79	139	1	228	79	139	1	219
B - 5 Busaba	0	403	0	403	0	382	0	382	0	367	0	367	0	346	0	346	0	325	0	325	0	304	0	304
B - 6 Chinkoti	0	320	0	320	0	304	0	304	0	291	0	291	0	275	0	275	0	258	0	258	0	241	0	241
B - 8 Iutoko	0	662	1	663	33	628	1	662	33	602	1	638	35	569	0	605	36	516	0	570	36	499	0	535
B - 9 Karvi	77	391	0	468	85	371	0	454	87	356	0	442	88	336	0	424	89	316	0	404	90	295	0	384
B - 15 Maruwawa	31	315	0	346	33	299	0	332	33	287	0	321	35	271	0	306	36	254	0	290	36	237	0	274
B - 19 Nibola	27	370	0	397	29	351	0	380	30	337	0	367	31	318	0	349	31	299	0	330	31	279	0	310
B - 20 Nacai	2	755	0	757	2	716	0	719	2	687	0	689	2	649	0	651	2	609	0	612	2	569	0	572
B - 21 Nuhri	9	220	0	229	10	209	0	218	10	200	0	210	10	189	0	199	10	178	0	188	10	166	0	176
B - 22 Nuhru	1	117	3	121	1	111	2	114	1	106	2	109	1	101	1	103	1	94	1	96	1	88	1	90
B - 23 Nuhags	0	189	0	189	0	179	0	179	0	172	0	172	0	162	0	162	0	153	0	153	0	142	0	142
B - 26 Nuhadi	150	0	1	151	162	0	1	162	169	0	1	169	172	0	1	172	173	0	1	173	175	0	1	175
B - 32 Naunaku Village	1	173	0	174	1	164	0	165	1	157	0	159	1	149	0	150	1	140	0	141	1	130	0	132
B - 36 Nava	55	769	0	824	59	730	0	789	62	700	0	761	63	621	0	724	63	621	0	684	64	580	0	644
B - 39 Nukola	183	0	0	183	197	0	0	197	206	0	0	206	209	0	0	209	211	0	0	211	213	0	0	213
B - 40 Qura	0	453	0	453	0	430	0	430	0	412	0	412	0	389	0	389	0	366	0	366	0	342	0	342
B - 41 Qerevu	0	125	0	125	0	123	0	123	0	116	0	116	0	116	0	116	0	109	0	109	0	102	0	102
B - 42 Ravasi Dam	24	1257	1	1282	26	1193	1	1219	27	1143	1	1171	27	1080	0	1108	28	1014	0	1042	28	948	0	976
B - 43 Ravasi Run	134	156	0	290	144	148	0	292	151	142	0	293	153	134	0	287	155	126	0	280	156	118	0	274
B - 50' Thonaxo Junction	3	286	0	289	3	271	0	275	3	260	0	264	3	246	0	249	3	231	0	234	3	216	0	219
B - 52 Vole	1	570	0	571	1	541	0	542	1	519	0	520	1	498	0	491	1	460	0	461	1	430	0	431
B - 57' Yuharaha	2	585	0	587	2	517	0	519	2	496	0	498	2	468	0	471	2	440	0	442	2	411	0	413
B - 63 Yonani Creek	49	465	1	485	53	441	1	465	55	423	1	479	56	400	0	456	57	375	0	432	57	351	0	408
B - 64 Wabula	330	846	4	1182	355	805	3	1163	371	771	2	1144	377	729	1	1108	381	684	1	1065	384	639	1	1074
Other Communities	1,234	11,726	17	12,577	1,329	11,126	12	12,468	1,387	10,667	9	12,063	1,412	10,076	6	11,494	1,423	9,463	4	10,891	1,436	8,840	3	10,280
Magedro Tribes	77	930	0	1,007	86	964	0	1,050	93	1,018	0	1,111	99	1,062	0	1,160	104	1,102	0	1,203	109	1,136	0	1,246
M - 1 Bilevu	164	1	0	165	182	1	0	183	198	1	0	199	210	1	0	211	223	1	0	223	235	1	0	234
M - 2 Bilevu Village	485	0	0	485	559	0	0	559	585	0	0	585	621	0	0	621	654	0	0	654	689	0	0	689
M - 3 Bilevu Village	97	0	0	97	108	0	0	108	117	0	0	117	124	0	0	124	131	0	0	131	138	0	0	138
M - 4 Nudoo Village	131	7	0	138	146	7	0	153	158	8	0	166	168	8	0	176	177	8	0	185	186	9	0	195
M - 5 Nalooa Village	62	0	0	62	69	0	0	69	75	0	0	75	79	0	0	79	84	0	0	84	88	0	0	88
M - 6 Nuru	17	598	0	615	19	620	0	639	21	635	0	655	22	683	0	704	23	708	0	731	24	731	0	755
M - 7 Nuru Village	110	0	8	118	122	0	10	132	133	0	13	146	141	0	17	158	148	0	21	169	156	0	25	181
M - 8 Nukola	12	371	1	384	13	385	1	399	14	406	2	422	15	423	2	441	16	439	3	458	17	453	3	473
M - 8 Nuyukoo Village	379	0	0	379	421	0	0	421	457	0	0	457	488	0	0	488	511	0	0	511	538	0	0	538
M - 8' Nuvaga Village	64	0	0	64	71	0	0	71	77	0	0	77	82	0	0	82	86	0	0	86	91	0	0	91
M - 8' Nuvaga Village	81	0	0	81	90	0	0	90	98	0	0	98	104	0	0	104	109	0	0	109	115	0	0	115
M - 9' Taba'i Village	161	0	1	161	179	0	0	179	194	0	0	194	206	0	0	206	217	0	0	217	229	0	0	229
M - 10' Taba'i	61	535	1	617	68	575	1	645	74	608	2	683	78	634	2	714	82	657	3	742	87	678	3	768
M - 11' Taba'i	66	66	0	132	73	73	0	146	80	83	0	163	85	89	0	174	89	94	0	183	94	0	0	94
M - 11' Taba'i Village	20	294	0	314	22	232	0	334	24	245	0	369	26	256	0	381	27	265	0	390	28	274	0	302
M - 12' Taba'i	228	0	1	229	253	0	1	254	275	0	2	277	292	0	2	294	307	0	3	310	324	0	3	327
M - 13' Taba'i	111	79	0	190	123	82	0	205	134	86	0	220	142	90	0	232	150	94	0	243	158	97	0	254
M - 14' Vavasi	42	0	1	43	47	0	1	48	51	0	1	52	56	0	1	57	60	0	1	61	65	0	1	66
M - 15' Vavasi	98	0	0	98	109	0	0	109	118	0	0	118	126	0	0	126	132	0	0	132	139	0	0	139
M - 16' Yuhani Village	496	294	7	797	551	243	9	803	599	256	11	816	636	267	14	917	669	277	18	964	704	284	22	1,012
Other Communities	3,080	3,008	19	6,107	3,424	3,119	24	6,567	3,718	3,293	31	7,042	3,947	3,434	39	7,430	4,154	3,563	49	7,766	4,373	3,675	60	8,107

Table F-3.8 POPULATION PROJECTIONS IN THE STUDY AREA WITHOUT REGIONAL WATER SUPPLY SYSTEM (LOW VARIANT) (2)

Name of Province/ Tilina/Community	1988					1991					1996					2001					2006					2011				
	Indian		Others		Total	Fijian		Indian		Others	Sum	Fijian		Indian		Others	Sum	Fijian		Indian		Others	Sum	Fijian		Indian		Others	Sum	
	12	465	1	478	13	456	1	464	14	441	1	456	15	426	1	442	15	410	1	426	15	410	1	426	16	391	1	408		
T - 2 Buan	108	0	0	108	119	0	119	128	0	128	134	0	134	139	0	139	144	0	144	149	0	149	154	0	154	0	154	0	154	
T - 3 Buiyabuya Village	12	439	2	453	13	425	2	440	14	417	2	433	15	403	2	419	15	387	2	404	16	369	2	387	16	369	2	387		
T - 5 Davoa	12	477	0	477	1	462	0	463	1	453	0	453	1	437	0	439	1	420	0	421	1	401	0	403	1	401	0	403		
T - 6 Drunasi	57	203	0	260	63	196	0	259	68	184	0	260	71	186	0	257	73	179	0	252	76	171	0	267	76	171	0	267		
T - 7 Koro No.1	62	194	0	256	68	188	0	256	73	184	0	258	77	178	0	255	86	171	0	252	85	163	0	246	85	163	0	246		
T - 8 Koro No.2	98	0	0	98	108	0	108	116	0	116	122	0	122	126	0	122	126	0	126	131	0	131	131	0	131	0	131	0	131	
T - 9 Koro Village	206	0	0	206	228	0	228	244	0	244	256	0	256	265	0	265	285	0	285	292	0	292	304	0	304	272	0	272	0	272
T - 10 Koroona Village	93	323	0	416	103	313	0	415	110	306	0	417	115	286	0	412	120	285	0	404	124	272	0	396	124	272	0	396		
T - 11 Koroona Village	236	0	1	237	261	0	262	280	0	281	293	0	294	304	0	304	315	0	315	324	0	324	334	0	334	315	0	315	0	315
T - 12 Koroona Village	0	168	1	169	0	163	1	164	0	159	0	160	0	154	1	155	0	148	1	149	0	141	1	142	1	142	1	142		
T - 13 Kukunawa	7	536	0	543	8	519	0	527	8	509	0	517	9	491	0	500	9	472	0	481	9	451	0	460	9	451	0	460		
T - 14 Lousa	77	0	1	78	85	0	86	91	0	92	96	0	96	99	0	99	99	0	100	103	0	103	103	0	104	103	0	104		
T - 16 Malele	10	1098	0	1108	11	1063	0	1074	12	1042	0	1054	12	1007	0	1019	13	967	0	980	13	924	0	937	13	924	0	937		
T - 17 Meerse	4	498	1	503	4	482	1	487	5	473	1	478	5	457	1	462	5	439	1	445	5	419	1	425	5	419	1	425		
T - 17' Maunasi																														
T - 17' Maunawa	0	306	2	308	0	303	2	305	0	303	0	303	2	303	2	305	0	349	2	351	0	353	2	355	2	355	2	355		
T - 18 Maunawa	14	448	1	450	15	434	0	449	17	425	0	442	17	411	0	428	18	395	0	413	19	377	0	396	19	377	0	396		
T - 19 Maunawa	359	1	5	365	397	1	402	425	1	431	445	1	451	462	1	467	479	1	486	496	1	503	510	1	517	510	1	517		
T - 21' Nadi Village	116	11	0	127	128	11	0	139	137	10	0	148	144	10	0	154	149	10	0	159	155	9	0	164	155	9	0	164		
T - 22 Nadi Village	385	0	0	385	337	0	0	337	361	0	0	361	378	0	0	378	392	0	0	392	407	0	0	407	407	0	0	407		
T - 23 Nadi Village	52	0	4	56	57	0	61	62	0	62	65	0	65	65	0	68	67	0	70	70	69	0	73	73	69	0	73	0	73	
T - 24 Nagapaga Village																														
T - 24' Numa	87	36	0	123	96	35	0	131	102	34	0	137	105	33	0	141	112	32	0	144	116	30	0	146	116	30	0	146		
T - 26 Nazolevu	156	1	0	157	172	1	0	173	185	1	0	186	194	1	0	194	201	1	0	202	208	1	0	209	208	1	0	209		
T - 27 Nazolevu Village	215	0	1	216	237	0	238	255	0	256	267	0	268	287	0	288	297	0	298	307	0	308	317	0	318	317	0	318		
T - 28 Navata Village	484	0	0	484	555	0	555	573	0	573	600	0	600	623	0	623	646	0	646	666	0	666	686	0	686	686	0	686		
T - 29 Qolea	2	554	2	558	2	536	2	540	2	526	2	530	2	508	2	512	3	488	2	492	3	466	2	470	3	466	2	470		
T - 30 Rakaviti	8	267	0	275	9	258	0	267	9	253	0	263	10	243	0	255	10	232	0	246	11	224	0	235	11	224	0	235		
T - 34 Vata	94	278	1	373	104	269	1	374	111	264	1	376	117	253	1	372	121	243	1	367	125	234	1	360	125	234	1	360		
T - 35 Vavalo	95	95	0	190	105	92	0	197	113	90	0	203	118	87	0	205	122	84	0	206	127	80	0	207	127	80	0	207		
T - 36 Vavale	41	460	2	503	45	445	2	492	49	406	2	497	51	423	2	474	35	403	2	460	35	387	2	443	35	387	2	443		
T - 37 Waiwakaitani	95	377	1	473	105	365	1	471	113	358	1	471	118	346	1	464	122	332	1	455	127	317	1	443	127	317	1	443		
T - 38 Waiwakaitani Village	158	0	2	160	175	0	176	187	0	189	196	0	198	203	0	203	211	0	211	219	0	219	227	0	227	219	0	227		
T - 40 Wainiboca	7	346	1	354	8	335	1	344	8	328	1	338	9	317	1	327	9	305	1	315	9	291	1	301	9	291	1	301		
T - 42 Nasono Village																														
T - 43 Takolona																														
T - 44 Malou																														
T - 45 Garampani																														
T - 46 Lalolevu																														
Other Communities	826	690	8	1,524	912	648	8	1,588	979	655	8	1,641	1,023	633	7	1,665	1,063	608	7	1,677	1,102	580	6	1,689	1,102	580	6	1,689		
Total of Tavua Tilina	4,097	8,361	36	12,494	4,525	8,093	35	12,653	4,854	7,933	34	12,821	5,082	7,666	33	12,781	5,271	7,368	31	12,667	5,467	7,033	28	12,529	5,467	7,033	28	12,529		
Vava Tili	63	1,811	4	1,878	53	1,798	4	1,856	43	1,800	5	1,848	34	1,774	5	1,814	27	1,738	6	1,771	21	1,696	6	1,723	21	1,696	6	1,723		
V - 1 Ravina	11	961	0	972	9	954	0	964	8	955	0	963	6	941	0	947	5	922	0	927	5	900	0	904	5	900	0	904		
V - 2 Tavau	17	708	14	739	14	703	15	733	12	704	17	733	9	694	19	722	7	680	20	707	6	663	21	690	6	663	21	690		
V - 3 Tovu																														
Total of Vava Tili	91	3,480	18	3,599	77	3,456	20	3,552	62	3,458	22	3,549	49	3,409	24	3,482	39	3,340	26	3,405	31	3,259	27	3,316	31	3,259	27	3,316		

Table F-3.9 SUMMARY OF POPULATION PROJECTIONS IN THE STUDY AREA (HIGH SCENARIO)

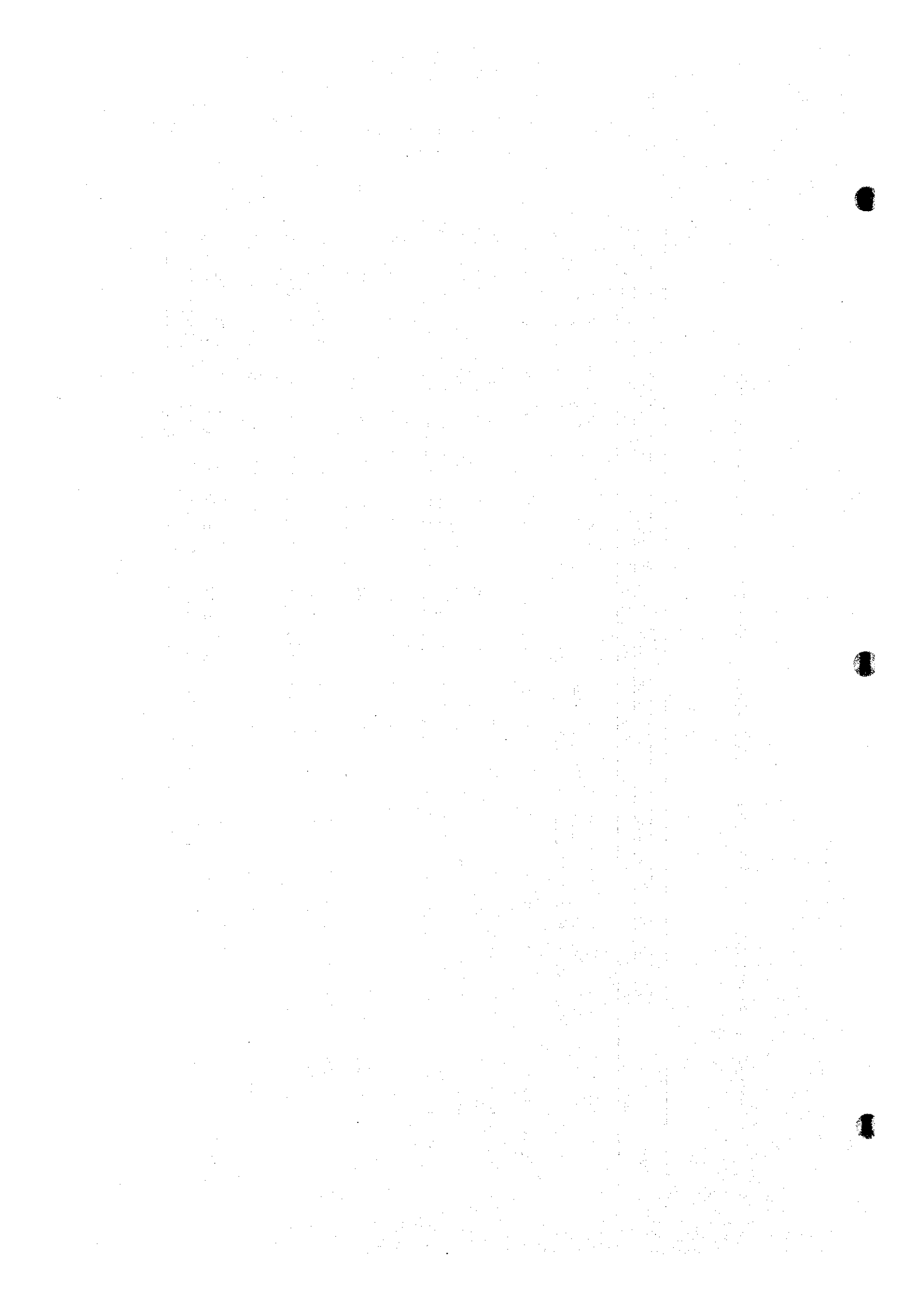
Tikina Area	Urban/Rural Area	Population																			
		With Regional Water Supply System							Without Regional Water Supply System							Total					
		1986	1991	1996	2001	2006	2011	2011	1986	1991	1996	2001	2006	2011	2011	1991	1996	2001	2006	2011	
Ba	Ba Town	10,260	10,333	11,062	11,821	12,624	13,428	13,428	0	0	0	0	0	0	0	10,260	10,333	11,062	11,821	12,624	13,428
	Rural Area	21,179	21,115	22,382	23,696	25,081	26,457	26,457	12,977	12,779	13,463	14,165	14,900	15,609	15,609	34,156	33,893	35,844	37,861	39,981	42,066
	Total	31,439	31,447	33,443	35,517	37,705	39,885	39,885	12,977	12,779	13,463	14,165	14,900	15,609	15,609	44,416	44,226	46,906	49,682	52,606	55,493
Magodro	Rural Area	0	0	0	0	0	0	0	6,107	7,049	8,525	10,286	12,395	14,886	14,886	6,107	7,049	8,525	10,286	12,395	14,886
Tavua	Tavua Town	2,227	2,186	2,261	2,341	2,429	2,519	2,519	0	0	0	0	0	0	0	2,227	2,186	2,261	2,341	2,429	2,519
	Vaukoulia Town	4,789	4,094	3,647	3,237	2,866	2,528	2,528	0	0	0	0	0	0	0	4,789	4,094	3,647	3,237	2,866	2,528
	Urban Area	7,016	6,280	5,909	5,579	5,295	5,047	5,047	0	0	0	0	0	0	0	7,016	6,280	5,909	5,579	5,295	5,047
	Rural Area	5,999	6,180	6,803	7,480	8,221	8,999	8,999	12,494	13,226	14,769	16,468	18,355	20,398	20,398	18,493	19,405	21,573	23,949	26,576	29,397
	Total	13,015	12,460	12,712	13,059	13,516	14,046	14,046	12,494	13,226	14,769	16,468	18,355	20,398	20,398	25,509	25,685	27,481	29,527	31,871	34,444
Vuda	Rural Area	0	0	0	0	0	0	0	3,589	3,707	4,099	4,530	5,007	5,512	5,512	3,589	3,707	4,099	4,530	5,007	5,512
Navoso	Rural Area	0	0	0	0	0	0	0	471	569	707	875	1,082	1,334	1,334	471	569	707	875	1,082	1,334
Rakiraki	Rakiraki Town	3,361	3,060	2,961	2,865	2,776	2,687	2,687	0	0	0	0	0	0	0	3,361	3,060	2,961	2,865	2,776	2,687
	Rural Area	1,461	1,547	1,772	2,027	2,318	2,637	2,637	10,503	11,395	13,025	14,856	16,927	19,214	19,214	11,964	12,943	14,797	16,884	19,245	21,851
	Total	4,822	4,608	4,733	4,892	5,094	5,324	5,324	10,503	11,395	13,025	14,856	16,927	19,214	19,214	15,325	16,003	17,758	19,749	22,021	24,538
Saivou	Rural Area	570	607	678	756	842	934	934	1,091	1,090	1,224	1,371	1,534	1,711	1,711	1,601	1,697	1,902	2,127	2,376	2,645
Total	Urban Area	20,637	19,673	19,931	20,265	20,695	21,161	21,161	0	0	0	0	0	0	0	20,637	19,673	19,931	20,265	20,695	21,161
	Rural Area	29,209	29,449	31,635	33,959	36,462	39,028	39,028	47,172	49,814	55,812	62,552	70,200	78,664	78,664	76,381	79,263	87,447	96,511	106,663	117,691
	Grand Total	49,846	49,122	51,567	54,224	57,158	60,189	60,189	47,172	49,814	55,812	62,552	70,200	78,664	78,664	97,018	98,936	107,378	116,776	127,358	138,852

Table F-3.10 SUMMARY OF POPULATION PROJECTIONS IN THE STUDY AREA (MIDDLE SCENARIO)

Tikina	Urban/Rural Area	Population																			
		With Regional Water Supply System							Without Regional Water Supply System							Total					
		1986	1991	1996	2001	2006	2011	2016	1986	1991	1996	2001	2006	2011	1986	1991	1996	2001	2006	2011	
Ba	Ba Town	10,260	10,148	10,264	10,301	10,298	10,245	0	0	0	0	0	0	0	0	10,260	10,148	10,264	10,301	10,298	10,245
	Rural Area	21,179	20,798	20,890	20,835	20,709	20,490	12,977	12,598	12,545	12,407	12,236	12,021	34,156	33,396	33,435	33,243	32,945	32,511		
	Total	31,439	30,946	31,154	31,137	31,007	30,736	12,977	12,598	12,545	12,407	12,236	12,021	44,416	43,544	43,699	43,544	43,244	42,757		
Magodro	Rural Area	0	0	0	0	0	0	6,107	6,799	7,678	8,593	9,562	10,572	6,107	6,799	7,678	8,593	9,562	10,572		
Tavua	Tavua Town	2,227	2,153	2,122	2,079	2,030	1,974	0	0	0	0	0	0	2,227	2,153	2,122	2,079	2,030	1,974		
	Vaukoulia Town	4,789	3,957	3,307	2,733	2,240	1,819	0	0	0	0	0	0	4,789	3,957	3,307	2,733	2,240	1,819		
	Urban Area	7,016	6,110	5,429	4,812	4,270	3,793	0	0	0	0	0	0	7,016	6,110	5,429	4,812	4,270	3,793		
	Rural Area	5,999	6,049	6,255	6,424	6,580	6,713	12,494	12,922	13,618	14,242	14,830	15,358	18,493	18,971	19,873	20,667	21,409	22,070		
	Total	13,015	12,159	11,684	11,236	10,850	10,506	12,494	12,922	13,618	14,242	14,830	15,358	25,509	25,081	25,302	25,478	25,679	25,864		
Vuda	Rural Area	0	0	0	0	0	0	3,589	3,626	3,759	3,873	3,980	4,076	3,589	3,626	3,759	3,873	3,980	4,076		
Navoso	Rural Area	0	0	0	0	0	0	471	547	638	736	841	954	471	547	638	736	841	954		
Rakiraki	Rakiraki Town	3,361	2,994	2,733	2,483	2,253	2,038	0	0	0	0	0	0	3,361	2,994	2,733	2,483	2,253	2,038		
	Rural Area	1,461	1,504	1,597	1,686	1,778	1,870	10,503	11,087	11,908	12,680	13,434	14,150	11,964	12,591	13,505	14,367	15,212	16,020		
	Total	4,822	4,498	4,330	4,169	4,031	3,908	10,503	11,087	11,908	12,680	13,434	14,150	15,325	15,594	16,237	16,850	17,465	18,058		
Saivou	Rural Area	570	593	626	655	681	704	1,031	1,064	1,121	1,172	1,220	1,264	1,601	1,657	1,747	1,827	1,901	1,968		
Total	Urban Area	20,637	19,252	18,426	17,596	16,821	16,077	0	0	0	0	0	0	20,637	19,252	18,426	17,596	16,821	16,077		
	Rural Area	29,209	28,944	29,368	29,601	29,748	29,777	47,172	48,642	51,267	53,704	56,104	58,395	76,381	77,586	80,635	83,305	85,852	88,172		
	Grand Total	49,846	48,196	47,794	47,197	46,569	45,854	47,172	48,642	51,267	53,704	56,104	58,395	97,018	96,838	99,061	100,901	102,673	104,248		

Table F-3.11 SUMMARY OF POPULATION PROJECTIONS IN THE STUDY AREA (LOW SCENARIO)

Tikina	Urban/Rural Area	Population																	
		With Regional Water Supply System							Without Regional Water Supply System							Total			
		1986	1991	1996	2001	2006	2011	1986	1991	1996	2001	2006	2011	1986	1991	1996	2001	2006	2011
Ba	Ba Town	10,260	9,997	9,783	9,421	9,018	8,603	0	0	0	0	0	0	10,260	9,997	9,783	9,421	9,018	8,603
	Rural Area	21,179	20,549	20,022	19,206	18,321	17,427	12,977	12,468	12,063	11,494	10,891	10,280	34,156	33,017	32,085	30,700	29,212	27,707
	Total	31,439	30,546	29,805	28,627	27,339	26,031	12,977	12,468	12,063	11,494	10,891	10,280	44,416	43,014	41,868	40,121	38,230	36,310
Magodro	Rural Area	0	0	0	0	0	0	6,107	6,567	7,042	7,420	7,766	8,107	6,107	6,567	7,042	7,420	7,766	8,107
Tavua	Tavua Town	2,227	2,124	2,028	1,907	1,785	1,670	0	0	0	0	0	0	2,227	2,124	2,028	1,907	1,785	1,670
	Vanukoula Town	4,789	3,827	3,037	2,362	1,822	1,402	0	0	0	0	0	0	4,789	3,827	3,037	2,362	1,822	1,402
	Urban Area	7,016	5,951	5,065	4,269	3,607	3,072	0	0	0	0	0	0	7,016	5,951	5,065	4,269	3,607	3,072
	Rural Area	5,999	5,943	5,927	5,823	5,689	5,537	12,494	12,653	12,821	12,781	12,667	12,529	18,493	18,595	18,749	18,604	18,356	18,066
	Total	13,015	11,894	10,993	10,092	9,296	8,610	12,494	12,653	12,821	12,781	12,667	12,529	25,509	24,546	23,814	22,873	21,962	21,138
Vuda	Rural Area	0	0	0	0	0	0	3,589	3,552	3,543	3,482	3,405	3,316	3,589	3,552	3,543	3,482	3,405	3,316
Navoso	Rural Area	0	0	0	0	0	0	471	525	578	624	669	716	471	525	578	624	669	716
Rakiraki	Rakiraki Town	3,361	2,935	2,580	2,239	1,938	1,680	0	0	0	0	0	0	3,361	2,935	2,580	2,239	1,938	1,680
	Rural Area	1,461	1,469	1,497	1,503	1,502	1,493	10,503	10,810	11,124	11,254	11,313	11,341	11,964	12,280	12,621	12,757	12,815	12,833
	Total	4,822	4,405	4,077	3,742	3,440	3,173	10,503	10,810	11,124	11,254	11,313	11,341	15,325	15,215	15,201	14,996	14,753	14,513
Savou	Rural Area	570	580	589	588	583	576	1,031	1,041	1,055	1,052	1,043	1,029	1,601	1,622	1,645	1,640	1,625	1,605
Total	Urban Area	20,637	18,884	17,428	15,928	14,562	13,355	0	0	0	0	0	0	20,637	18,884	17,428	15,928	14,562	13,355
	Rural Area	29,209	28,541	28,036	27,121	26,094	25,033	47,172	47,617	48,227	48,108	47,754	47,318	76,381	76,159	76,263	75,229	73,848	72,352
	Grand Total	49,846	47,425	45,464	43,049	40,656	38,389	47,172	47,617	48,227	48,108	47,754	47,318	97,018	95,042	93,691	91,156	88,410	85,707



1998