

## II. OBSERVATION SYSTEM



## II.1 MODEL OBSERVATION DATA



## LIST OF OBSERVATION DATA

1. Rain Card at Sallyan on July,1992
2. Rain Card at Sallyan on August,1992
3. Rain Card at Kuhun on July,1992
4. Rain Card at Chyuntaha on August,1992
5. Chart of Weighing-type raingauge at Kolbhi on Aug.24-31,1992
6. Chart of Weighing-type raingauge at Chyuntaha on Aug.24-31,1992
7. Chart of Weighing-type raingauge at Sirkang on Aug.24-31,1992
8. Chart of Weighing-type raingauge at Sallyan on Sep.7-14,1992
9. Chart of Weighing-type raingauge at Kuhun on July 27-Aug.3,1992
10. Chart of Weighing-type raingauge at Samargau on Aug.17-24,1992
11. List from MDS-II Data logger of Tipping bucket-type raingauge at Pamdur on July 30-31,1992
12. List from MDS-II Data logger of Tipping bucket-type raingauge at Pamdur on August 5-6,1992
13. List from MDS-II Data logger of Tipping bucket-type raingauge at Pamdur on September 11-12,1992
14. Cumulative rainfall depth from MDS-II Data loggerof Tipping bucket-type rain-gauge at Pamdur on June 15-October 15,1992
15. Cumulative rainfall depth from MDS-II Data loggerof Tipping bucket-type rain-gauge at Pamdur on July 1-31,1992
16. Cumulative rainfall depth from MDS-II Data loggerof Tipping bucket-type rain-gauge at Pamdur on August 1-31,1992
17. Cumulative rainfall depth from MDS-II Data loggerof Tipping bucket-type rain-gauge at Pamdur on September 1-30,1992
18. 5 minute rainfall intensity from MDS-II Data logger of Tipping bucket-type raingauge at Pamdur on July 30-31,1992
19. 5 minute rainfall intensity from MDS-II Data logger of Tipping bucket-type raingauge at Pamdur on August 5-6,1992
20. 5 minute rainfall intensity from MDS-II Data logger of Tipping bucket-type raingauge at Pamdur on September 11-12,1992
21. Record of Staff gauge reading at Tatopani on July-August,1992
22. Record of Staff gauge reading at Tatopani on August-September,1992
23. Record of Staff gauge reading at Kalleri on July-August,1992

24. Record of Staff gauge reading at Kalleri on August-September, 1992
25. Record of Staff gauge reading at Setibeni on July-August, 1992
26. Record of Staff gauge reading at Setibeni on August-September, 1992
27. Record of Staff gauge reading at Chyuntaha on July-August, 1992
28. Record of Staff gauge reading at Chyuntaha on August-September, 1992
29. Chart of Pressure-type Water level recorder at Tatopani on July 13-20, 1992
30. Chart of Pressure-type Water level recorder at Tatopani on July 20-27, 1992
31. Chart of Pressure-type Water level recorder at Tatopani on July 27-August 3, 1992
32. Chart of Pressure-type Water level recorder at Setibeni on August 3-10, 1992
33. Chart of Pressure-type Water level recorder at Setibeni on August 17-24, 1992
34. Chart of Pressure-type Water level recorder at Setibeni on August 24-31, 1992
35. Chart of Float-type Water level recorder at Chyuntaha on July 13-20, 1992
36. Chart of Float-type Water level recorder at Chyuntaha on July 20-27, 1992
37. List from MDS-II Data logger of Pressure sensor at Kalleri on August 24-25, 1992
38. List (analyzed) from MDS-II Data logger of Pressure sensor at Kalleri on August 22-30, 1992
39. Water level from MDS-II Data logger of Pressure sensor at Kalleri on March 16-October 21, 1992
40. Water level from MDS-II Data logger of Pressure sensor at Kalleri on July 1-31, 1992
41. Water level from MDS-II Data logger of Pressure sensor at Kalleri on August 1-31, 1992
42. Water level from MDS-II Data logger of Pressure sensor at Kalleri on September 1-30, 1992
43. Water level from MDS-II Data logger of Pressure sensor at Kalleri on July 23-25, 1992
44. Water level from MDS-II Data logger of Pressure sensor at Kalleri on July 31-August 2, 1992
45. Water level from MDS-II Data logger of Pressure sensor at Kalleri on August 14-15, 1992
46. Water level from MDS-II Data logger of Pressure sensor at Kalleri on August 24-25, 1992

श्री ५ को नरकार  
जलवायु विज्ञान विभाग  
क्षेत्रीय कार्यालय, पोखरा

Met Form No Cloll  
महिना (Month) July  
वर्ष (Year) 1992

केन्द्र (Station) ... Salyan  
जिल्ला (District) ... Raikot  
केन्द्र नं. (Station No.) ... 1829

मिति गते	वर्षा मि. मि.	समय र मिति	मिति गते	वर्षा मि. मि.	समय र किसिम	मिति गते	वर्षा मि. मि.	समय र किसिम
1	13.1	13.1 / 31.1	11.11	3.5	3.5 / 35.9	22.22	13.9	43.9 / 111.2
2	6.0	6.0 / 37.1	12	22.6	32.6 / 68.5	23	6.9	6.9 / 118.5
3	15.4	15.4 / 55.5	13MON	14.8	14.8 / 83.3	24	26.0	66.0 / 189.5
4	63.4	63.4 / 118.9	14	24.6	24.6	25	22.3	22.3 / 206.8
5	20.0	20.0 / 138.9	15	8.9	8.9 / 33.5	26	0.3	0.3 / 207.1
6MON	13.6	13.6 / 152.5	16	9.7	9.7 / 43.2	27MON	53.0	57.0 / 264.1
7	4.7	4.7	17	25.2	25.2 / 98.5	28	1.3	1.7
8	6.8	6.8 / 11.5	18	29.7	29.7 / 128.2	29	1.5	1.5 / 3.2
9	10.2	10.2 / 21.9	19	116.4	116.4 / 244.4	30	—	0.1 / 3.2
10	10.6	10.6 / 32.4	20MON	11.0	11.0 / 255.6	31	71.0	71.0 / 74.2
जम्मा वर्षा	166.9		21	67.7	67.7	12	X	
जम्मा वर्षा			जम्मा वर्षा	374.2		जम्मा वर्षा	270.6	

महिना र गते अर्घे जो तारीखमा लेखनुपर्छ।  
कैफियत:-

8/11/7  
अध्यक्ष/भरती नाम र सहो:-

Rain Card at Salyan on July, 1992

श्री ५ को नरकार  
जलवायु विज्ञान विभाग  
क्षेत्रीय कार्यालय, पोखरा

Met Form No Cloll  
महिना (Month) August  
वर्ष (Year) 1992

केन्द्र (Station) ... Salyan  
जिल्ला (District) ... Raikot  
केन्द्र नं. (Station No.) ... 1829

मिति गते	वर्षा मि. मि.	समय र मिति	मिति गते	वर्षा मि. मि.	समय र किसिम	मिति गते	वर्षा मि. मि.	समय र किसिम
1	11.7	11.7 / 189.9	11.11	12.4	12.4	22.22	107.2	107.2 / 175.3
2	10.7	10.7 / 200.6	12	2.6	2.6 / 15.0	23	45.3	43.8 / 219.1
3MON	24.4	24.4 / 225.0	13	11.5	11.5 / 26.5	24MON	71.2	71.3 / 290.4
4	13.4	13.4	14	2.1	2.1 / 28.6	25	54.1	54.1
5	2.7	2.7 / 16.1	15	25.3	25.3 / 73.9	26	22.0	22.0 / 76.1
6	110.0	110.0 / 126.1	16	3.5	3.5 / 77.4	27	14.7	14.7 / 90.8
7	59.3	59.3 / 185.4	17MON	29.1	29.1 / 106.5	28	17.2	17.2 / 108.0
8	3.0	3.0 / 193.4	18	14.6	14.6	29	31.6	31.6 / 139.6
9	13.5	13.5 / 206.9	19	7.2	7.2 / 21.8	30	1.6	1.6 / 141.2
10	33.2	33.2 / 240.1	20MON	8.7	8.7 / 30.5	31	211.2	34.3 / 175.5
जम्मा वर्षा	390.9		21	37.5	37.5 / 68.0	12	X	
जम्मा वर्षा			जम्मा वर्षा	174.5		जम्मा वर्षा	397.9	

महिना र गते अर्घे जो तारीखमा लेखनुपर्छ।  
कैफियत:-

9/6/3  
अध्यक्ष/भरती नाम र सहो:-

Rain Card at Salyan on August, 1992

श्री ५ को सरकार  
जलवायु विज्ञान विभाग  
क्षेत्रीय कार्यालय, पोखरा महिना (Month) July  
रेनफॉल कार्ड (RAINFALL CARD) वर्ष (Year) 1992

केन्द्र (Station) KUHUN  
जिल्ला (District) M.A.C.D.  
केन्द्र नं. (Station No.) 1617

मिति गते	वर्षा मि. मि.	समय र किसिम	मिति गते	वर्षा मि. मि.	समय र किसिम	मिति गते	वर्षा मि. मि.	समय र किसिम
1	—	0 /	11	9.0	9 / 28	22	7.0	7 / 23
2	—	0 /	12	6.0	6 / 34	23	16.0	15 / 38
3	—	0 /	13	4.6	4 / 38	24	1.0	1 / 39
4	2.5	2.5 / 2.5	14	6.0	6 /	25	14.0	14 / 53
5	1.5	1.5 / 4.0	15	3.0	3 / 9	26	14.0	14 / 67
6	—	0 / 4.0	16	—	0 / 9	27	5.0	5 / 72
7	2.0	2 /	17	9.0	9 / 18	28	—	—
8	8.0	8 / 10	18	15.0	15 / 33	29	—	—
9	7.0	7 / 17	19	8.0	8 / 41	30	—	—
10	2.0	2 / 19	20	7.0	7 / 48	31	35.0	35 / 41
जम्मा वर्षा	23.0		जम्मा वर्षा	82.0	16	जम्मा वर्षा	102.0	

महिना र गते अंग्रेजी तारीखमा लेख्नुपर्छ।  
कंसिप्ट:- 1992 प्रकृति र भरको नाम र वही:-

Rain Card at Kuhun on July, 1992

श्री ५ को सरकार  
जलवायु विज्ञान विभाग  
मध्यमाञ्चल क्षेत्रीय कार्यालय  
रेनफॉल कार्ड (RAINFALL CARD)

केन्द्र (Station) CHYUNTAHA महिना (Month) August  
जिल्ला (District) BARA वर्ष (Year) 1992  
केन्द्र नं. (Station No) \_\_\_\_\_

मिति गते	वर्षा मि. मि.	समय र किसिम	मिति गते	वर्षा मि. मि.	समय र किसिम	मिति गते	वर्षा मि. मि.	समय र किसिम
1	71.9	clear	11	4.8	clear	22	1.7	clear
2	2.1	clear	12	0.2	clear	23	0.5	clear
3	0.0	clear	13	0.0	clear	24	0.0	clear
4	0.0	clear	14	0.0	clear	25	17.0	clear
5	10.0	clear	15	6.0	clear	26	17.0	clear
6	4.6	clear	16	0.0	clear	27	11.2	clear
7	7.2	clear	17	0.0	clear	28	3.2	clear
8	1.0	clear	18	7.0	clear	29	0.9	clear
9	2.0	clear	19	0.0	clear	30	0.0	clear
10	6.0	clear	20	0.0	clear	31	0.0	clear
जम्मा वर्षा			जम्मा वर्षा	98.7	clear	जम्मा वर्षा		

महिना र गते अंग्रेजी तारीखमा लेख्नुपर्छ।  
कंसिप्ट: 1992 प्रकृति र भरको नाम र वही:-

Rain Card at Chyuntaha on August, 1992



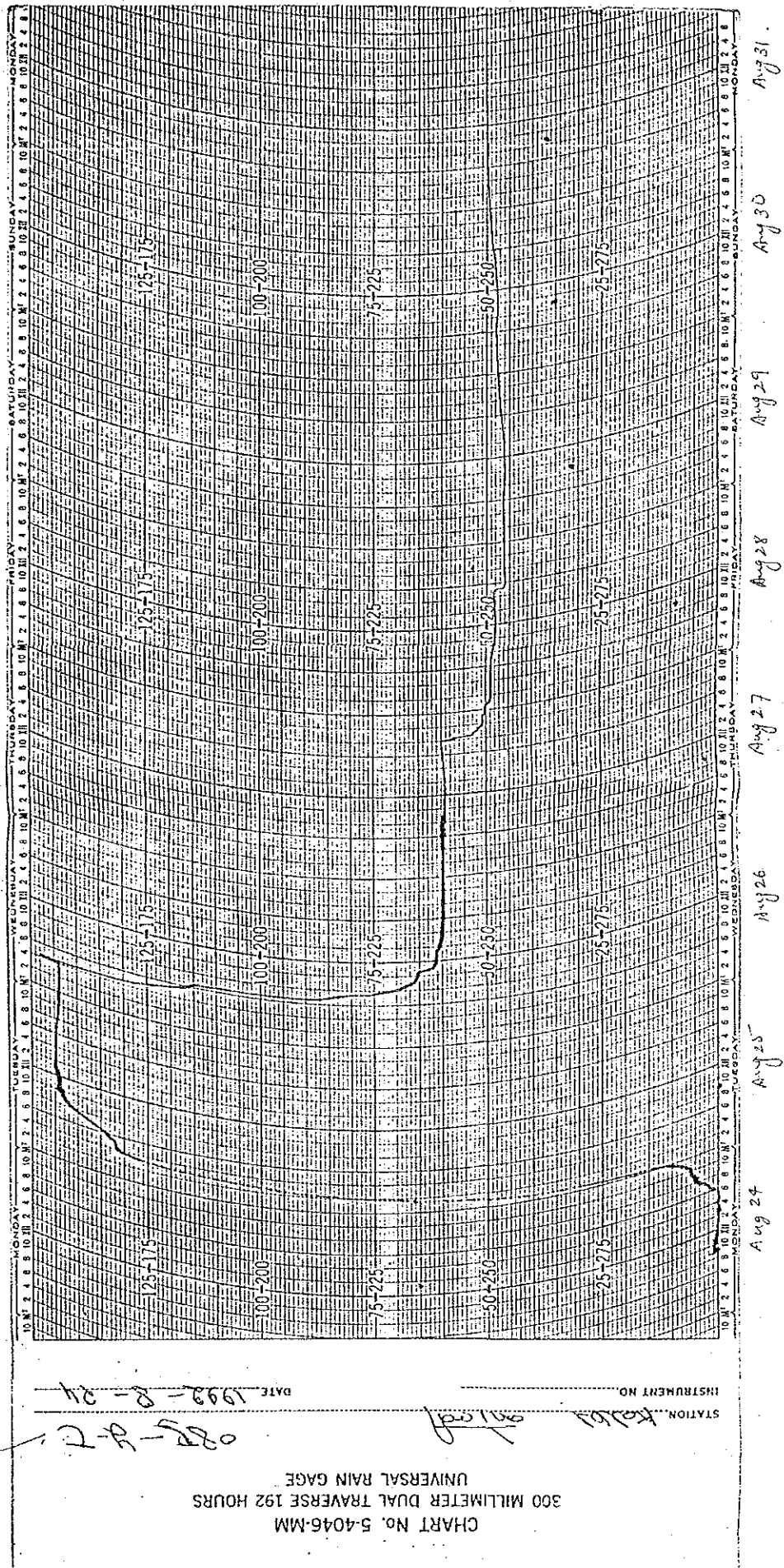
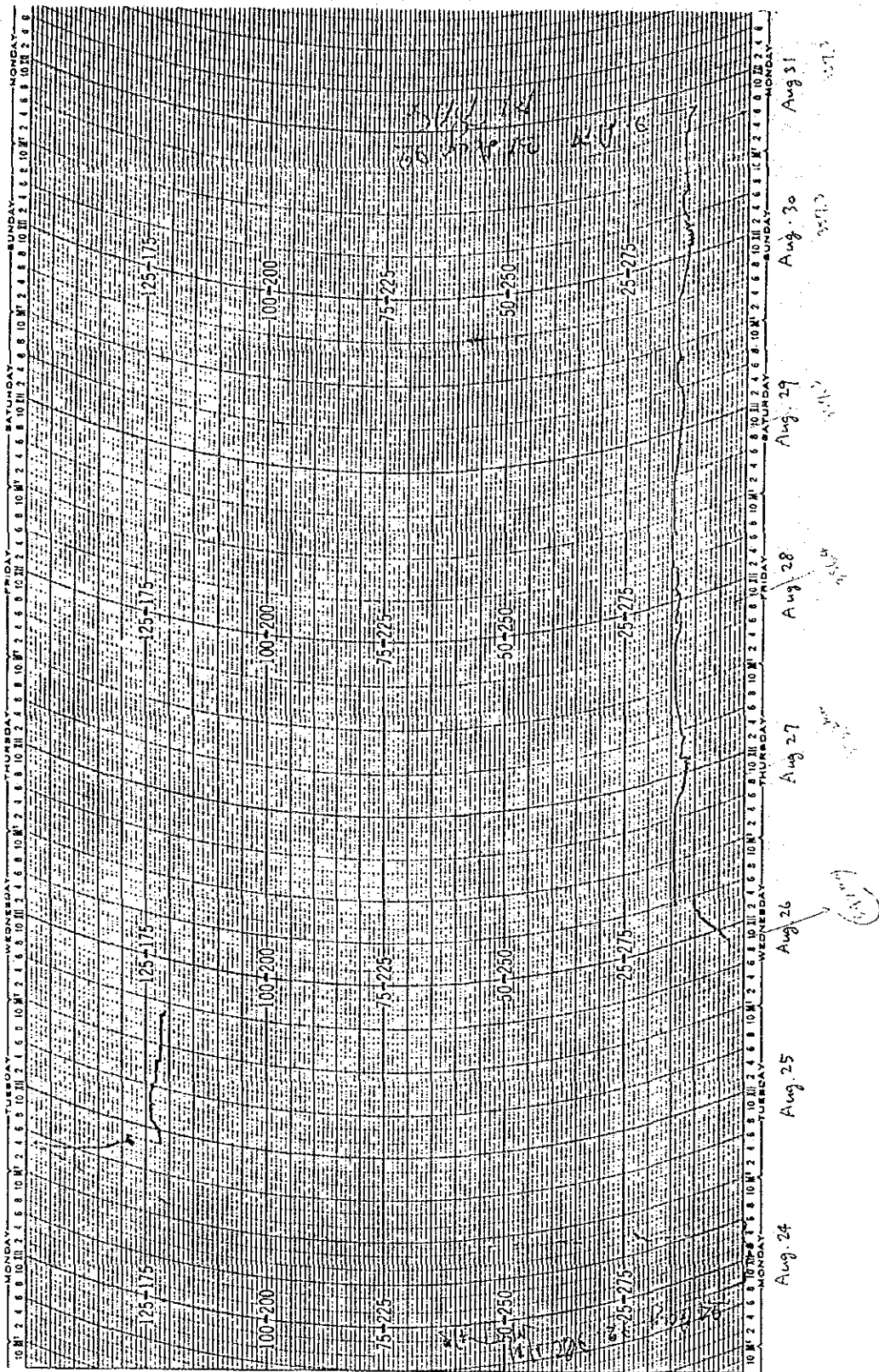


CHART No. 5-4046-MM  
 300 MILLIMETER DUAL TRAVERSE 192 HOURS  
 UNIVERSAL RAIN GAGE  
 STATION *Kolbi*  
 INSTRUMENT NO. *10107*  
 DATE *1992-8-24*

Chart of Weighing-type rain gauge at Kolbi on Aug. 24-31, 1992

Overflow 7.300 mm



STATION *Chiyuntaha* INSTRUMENT NO. \_\_\_\_\_ DATE *8 Aug 92*

CHART No. 5.4046-MM  
 300 MILLIMETER DUAL TRAVERSE 192 HOURS  
 UNIVERSAL RAIN GAGE

PRINTED IN

Chart of Weighing-type rain gauge at Chiyuntaha on Aug. 24-31, 1992

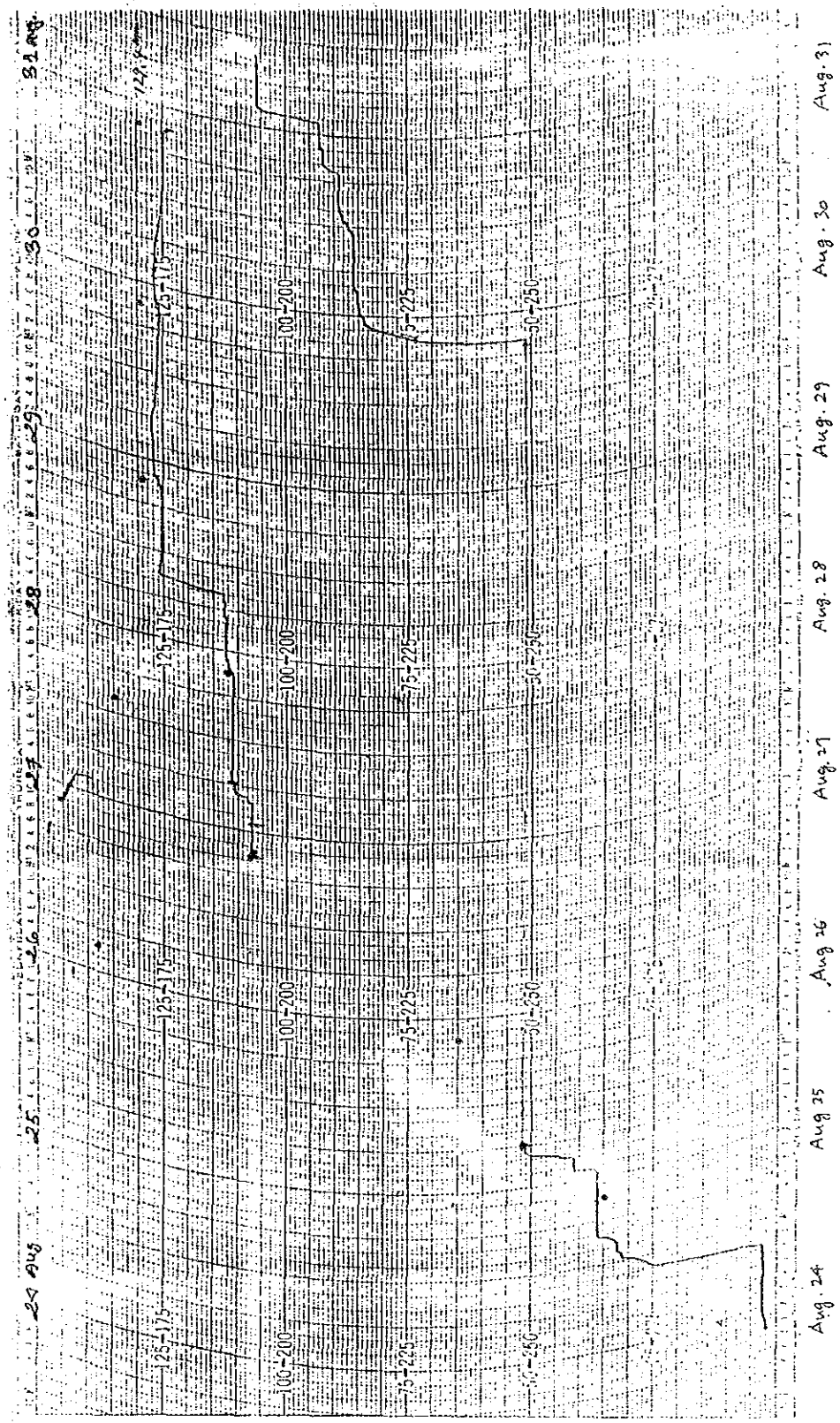


CHART No. 5-4046-MM  
 300 MILLIMETER DUAL TRAVERSE 1921 RS  
 UNIVERSAL RAIN GAGE  
 Sirkang  
 Station  
 29 August 1992  
 DATE 31 August

Chart of Weighing-type raingauge at Sirkang on Aug. 24-31, 1992

CHART NO. 6-4046-MM  
300 MILLIMETER DUAL TRAVERSE 192 HOURS  
UNIVERSAL RAIN GAGE

STATION Sallyan INSTRUMENT NO. \_\_\_\_\_  
DATE 9 Sept 1992

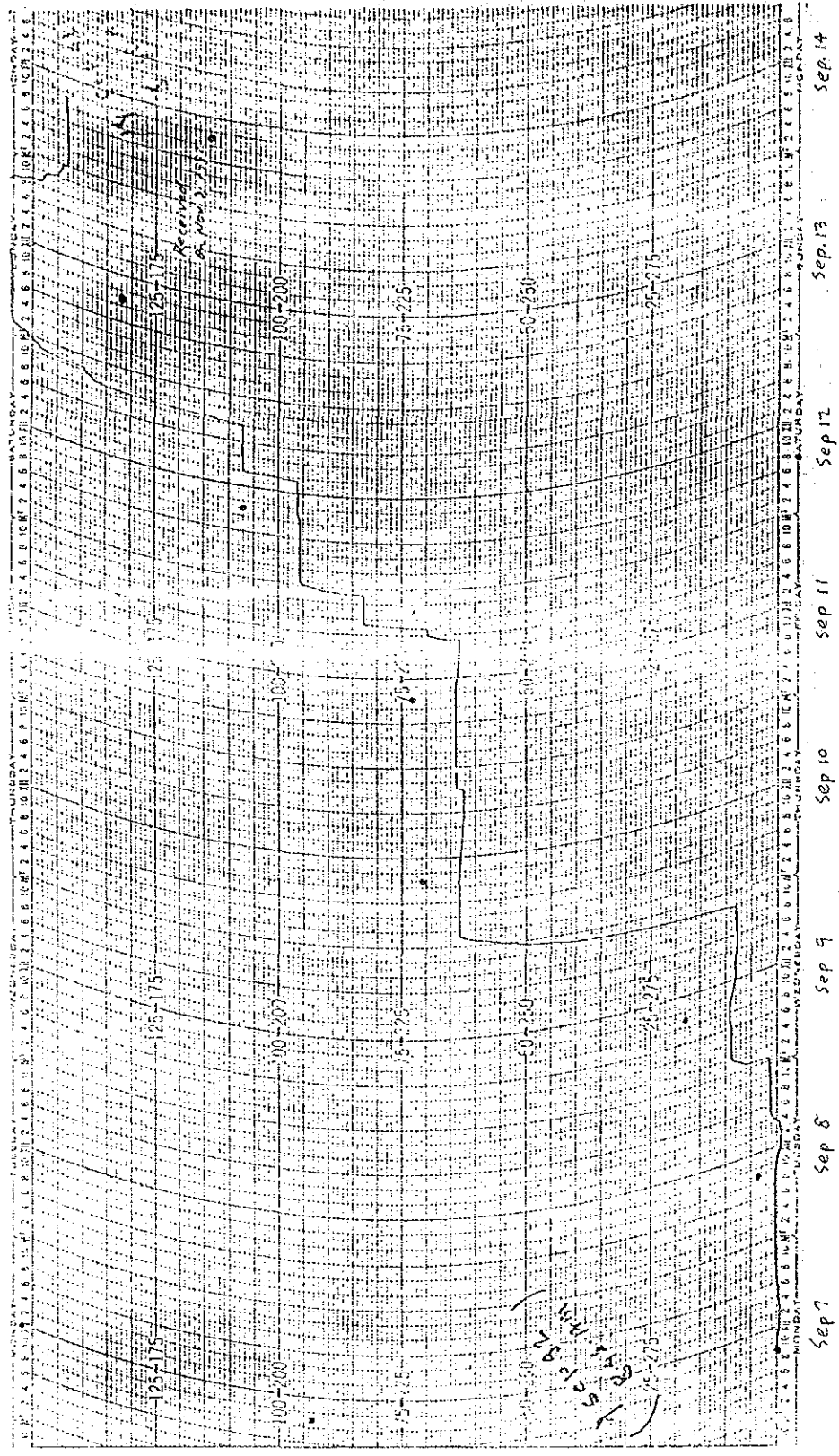


Chart of Weighing-type raingauge at Sallyan on Sep. 7-14, 1992

CHART No. 5-4046-MM  
 300 MILLIMETER DUAL TRAVERSE 192 P. IRS  
 UNIVERSAL RAIN GAGE

STATION *Kuhun*  
 INSTRUMENT NO. *magph*  
 DATE *28 July 1992*  
 DATE *2 Aug 1992*

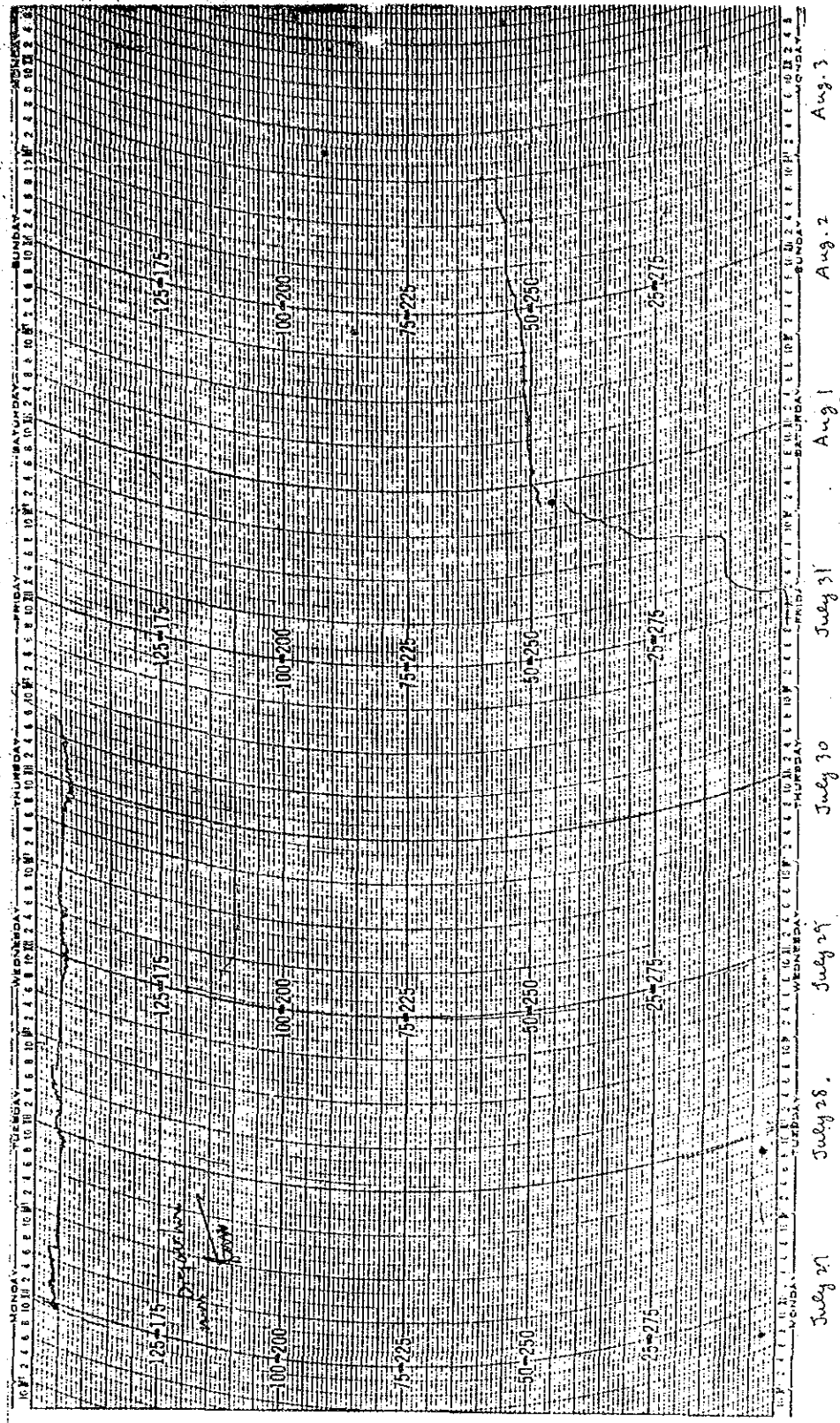


Chart of Weighing-type rain gauge at Kuhun on July 27-Aug. 3, 1992

CHART NO. 5-4046-MM  
 300 MILLIMETER DUAL TRAVERSE 192 HOURS  
 UNIVERSAL RAIN GAGE

STATION *Samargan*  
*Cell Samargan*

INSTRUMENT NO. \_\_\_\_\_  
 DATE *1/5/049*  
*17, Aug. '92 - 24, Aug. '92*

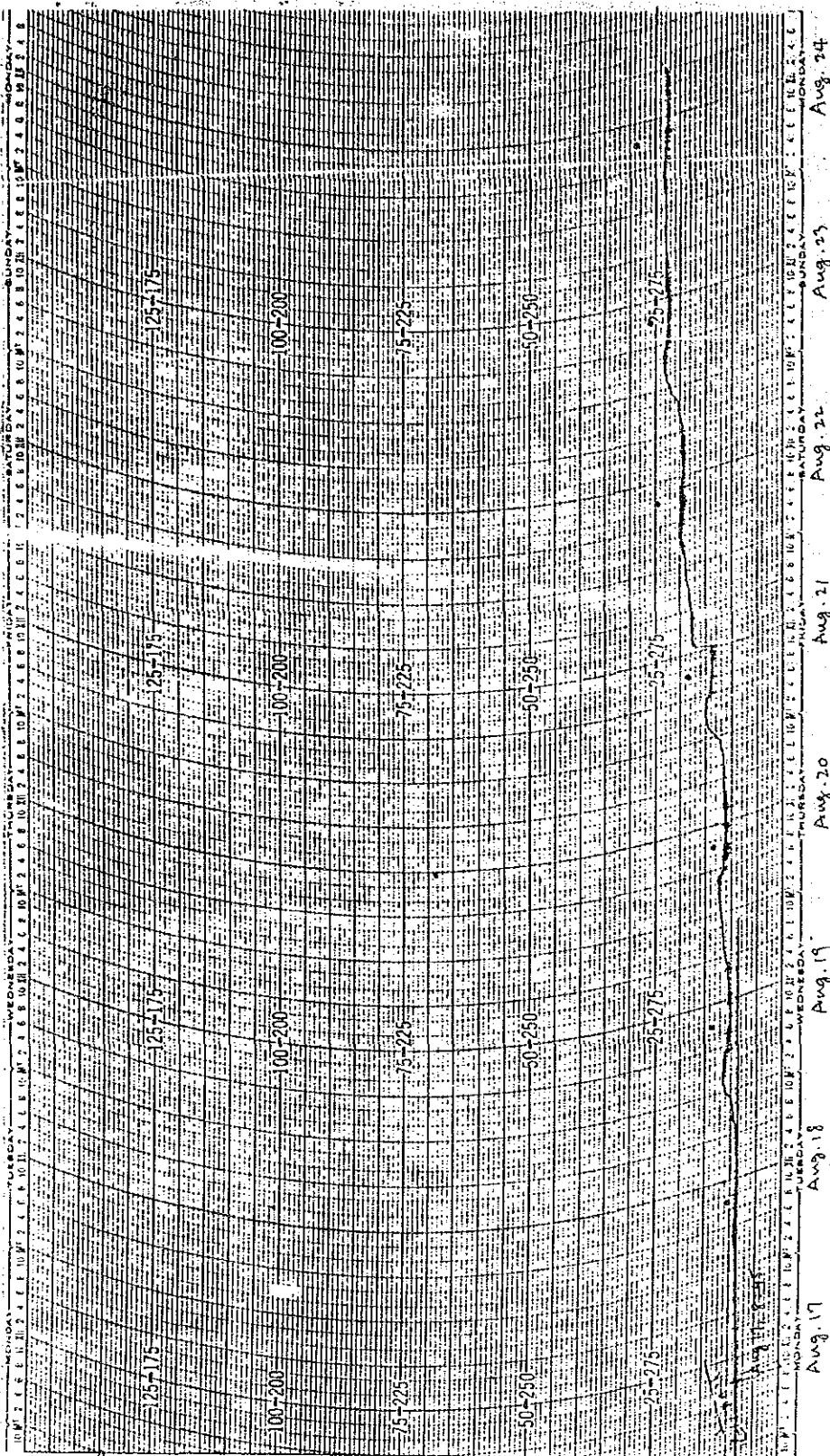


Chart of Weighing-type rain gauge at Samargan on Aug. 17-24, 1992

Analysis of values from MDS-II system version GB 2.14

=====  
 Logger no. : E00330  
 MDS filename : D:\NEPAL\04099210.330

Date of analysis : 09.03.1993 20:41:52

Channel no. : 1

Comment :

Control measurements : none

Beginning of measurement ..... : 01.07.1992 15:05:00.0  
 End of measurement ..... : 04.09.1992 14:41:32.0  
 No. of stored measuring values ... : 27503  
 Rainfall (Quantity) per Interrupt : 1/10 mm  
 Interruption of precipitation (s) : 600.0  
 Issue from ..... : 30.07.1992 12:00:00.0  
 Issue to ..... : 31.07.1992 12:00:00.0

Beginning	End	Precipitation in mm	Rainfall in l/(s*ha)
30.07.1992 14:14:06.5	30.07.1992 15:30:11.0	29.1	63.75
30.07.1992 16:11:05.0	30.07.1992 21:01:50.5	89.0	51.02
30.07.1992 21:12:19.0		0.1	
30.07.1992 21:29:51.5	30.07.1992 21:51:33.0	0.5	3.84
30.07.1992 22:02:11.5		0.1	
31.07.1992 00:43:28.0		0.1	
31.07.1992 00:58:36.5		0.1	
31.07.1992 01:55:01.0	31.07.1992 02:22:10.5	1.1	6.75
31.07.1992 02:32:30.0		0.1	
31.07.1992 02:53:42.0	31.07.1992 04:35:42.0	6.9	11.27
31.07.1992 04:48:38.0		0.1	
31.07.1992 05:18:01.5	31.07.1992 06:02:42.5	1.1	4.10
31.07.1992 06:14:13.0		0.1	
31.07.1992 06:56:36.0		0.1	
31.07.1992 07:07:50.0		0.1	
31.07.1992 07:26:02.5	31.07.1992 10:34:49.0	28.7	25.34
31.07.1992 11:14:02.5		0.1	
31.07.1992 11:51:02.5	31.07.1992 12:02:24.5	0.4	5.87

Total amount of rainfall : 157.8 mm  
 Number of rainfall events : 18

List from MDS-II Data logger of Tipping bucket-type rain gauge  
 at Pamdur on July 30-31, 1992

Analysis of values from MDS-II system version GB 2.14

=====  
 Logger no. : E00330  
 MDS filename : D:\NEPAL\04099210.330

Date of analysis : 09.03.1993 20:46:56

Channel no. : 1

Comment :

Control measurements : none

Beginning of measurement ..... : 01.07.1992 15:05:00.0  
 End of measurement ..... : 04.09.1992 14:41:32.0  
 No. of stored measuring values ... : 27503  
 Rainfall (Quantity) per Interrupt : 1/10 mm  
 Interruption of precipitation (s) : 600.0

Issue from ..... : 05.08.1992 12:00:00.0  
 Issue to ..... : 06.08.1992 12:00:00.0

Beginning	End	Precipitation in mm	Rainfall in l/(s*ha)
05.08.1992 18:17:35.0	05.08.1992 18:58:56.5	7.8	31.43
05.08.1992 19:15:59.0	06.08.1992 03:05:20.5	100.1	35.54
06.08.1992 03:16:29.5	06.08.1992 03:27:04.5	0.5	7.87
06.08.1992 03:37:11.0		0.1	
06.08.1992 03:54:48.5		0.1	
06.08.1992 04:09:14.0	06.08.1992 04:24:27.0	0.4	4.38
06.08.1992 06:08:56.0		0.1	
06.08.1992 06:33:44.0		0.1	
06.08.1992 06:43:45.5	06.08.1992 06:51:16.5	0.2	4.43
06.08.1992 07:05:35.0	06.08.1992 07:35:40.5	0.7	3.88
06.08.1992 07:57:12.5		0.1	

Total amount of rainfall : 110.2 mm  
 Number of rainfall events : 11

List from MDS- II Data logger of Tipping bucket-type raingauge  
 at Pamdur on August 5-6,1992



Analysis of values from MDS-II system version GB 2.14  
 =====

Logger no. : E00330  
 MDS filename : D:\NEPAL\21109210.330

Date of analysis : 09.03.1993 20:52:09

Channel no. : 1

Comment :

Control measurements : none

Beginning of measurement ..... : 01.07.1992 15:05:00.0  
 End of measurement ..... : 15.10.1992 03:55:04.5  
 No. of stored measuring values ... : 39935  
 Rainfall (Quantity) per Interrupt : 1/10 mm  
 Interruption of precipitation (s) : 600.0

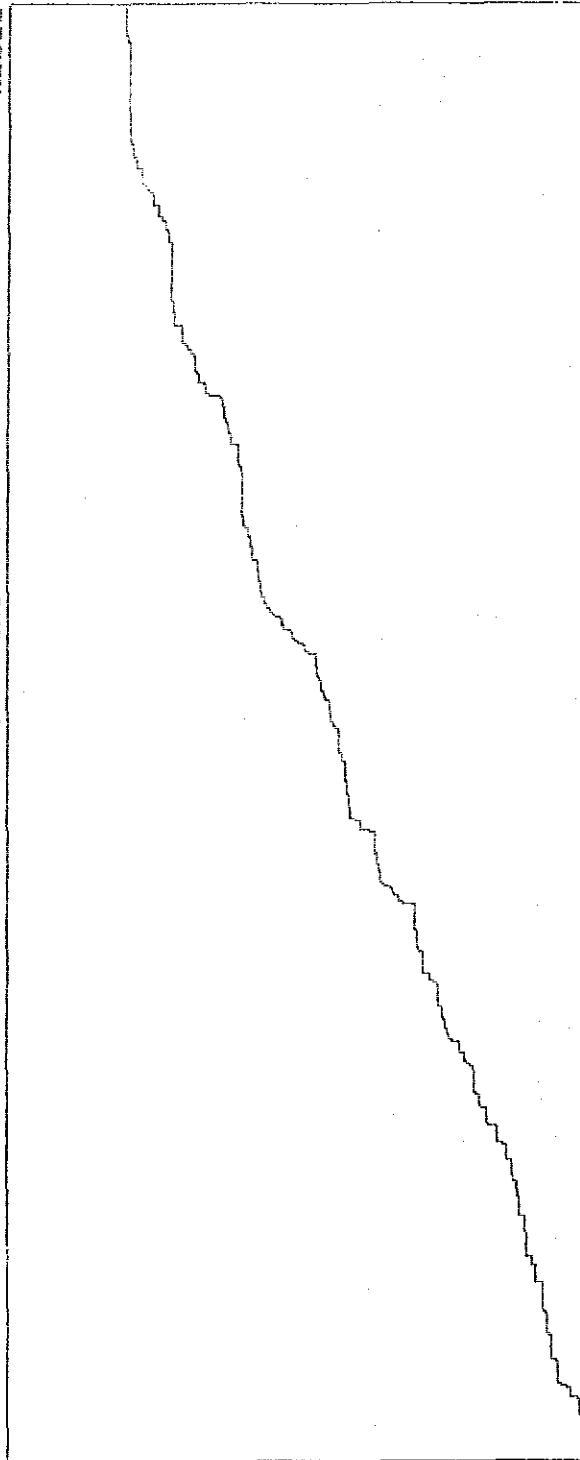
Issue from ..... : 11.09.1992 12:00:00.0  
 Issue to ..... : 12.09.1992 12:00:00.0

Beginning	End	Precipitation in mm	Rainfall in l/(s*ha)
11.09.1992 17:07:22.0	11.09.1992 20:13:21.0	34.8	31.19
11.09.1992 21:18:07.0	12.09.1992 00:42:46.5	77.5	63.11
12.09.1992 05:24:28.5		0.1	
12.09.1992 10:06:49.5	12.09.1992 10:14:04.5	0.2	4.60
12.09.1992 10:36:25.0	12.09.1992 12:00:26.5	6.1	12.10

Total amount of rainfall : 118.7 mm  
 Number of rainfall events : 5

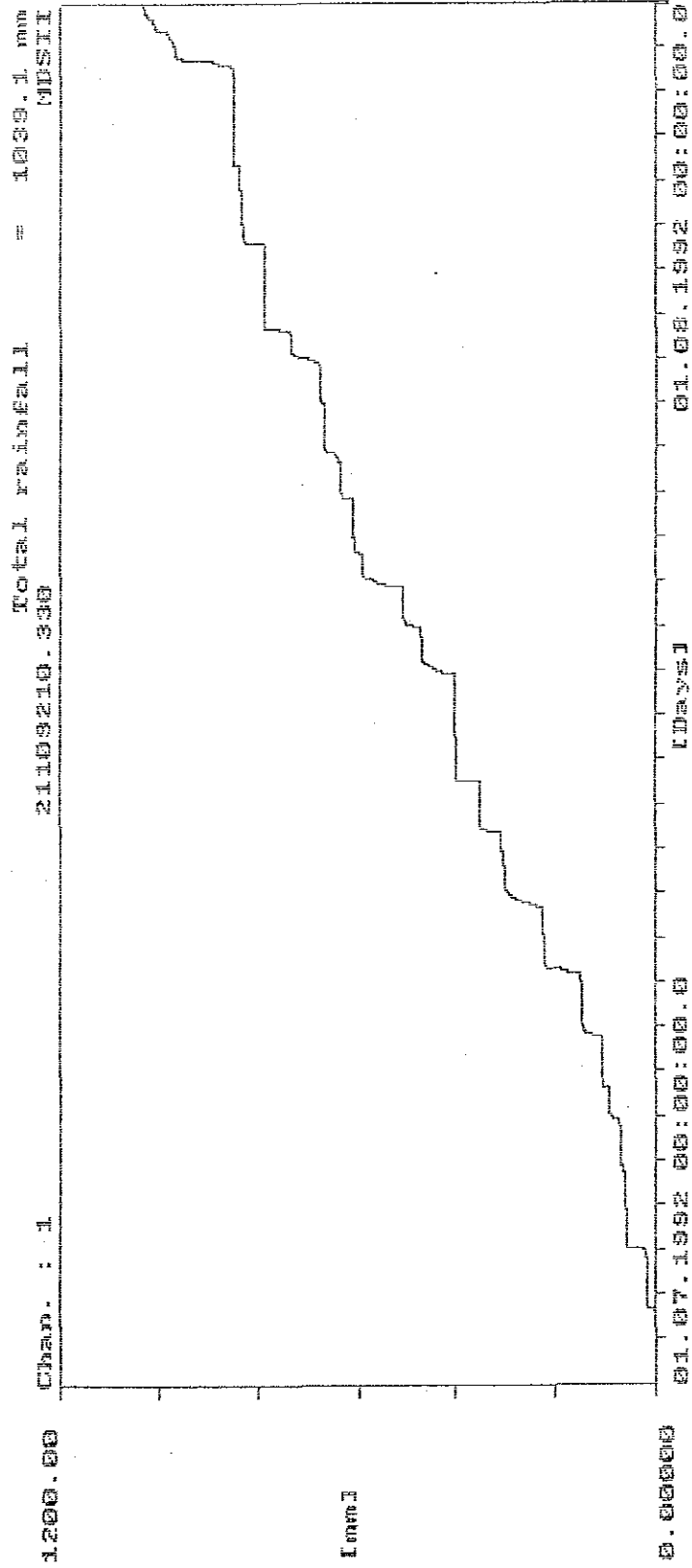
List from MDS-II Data logger of Tipping bucket-type raingauge  
 at Pamdur on September 11-12,1992

21109210.330 Total Rainfall = 3530.7 mm  
MDSII

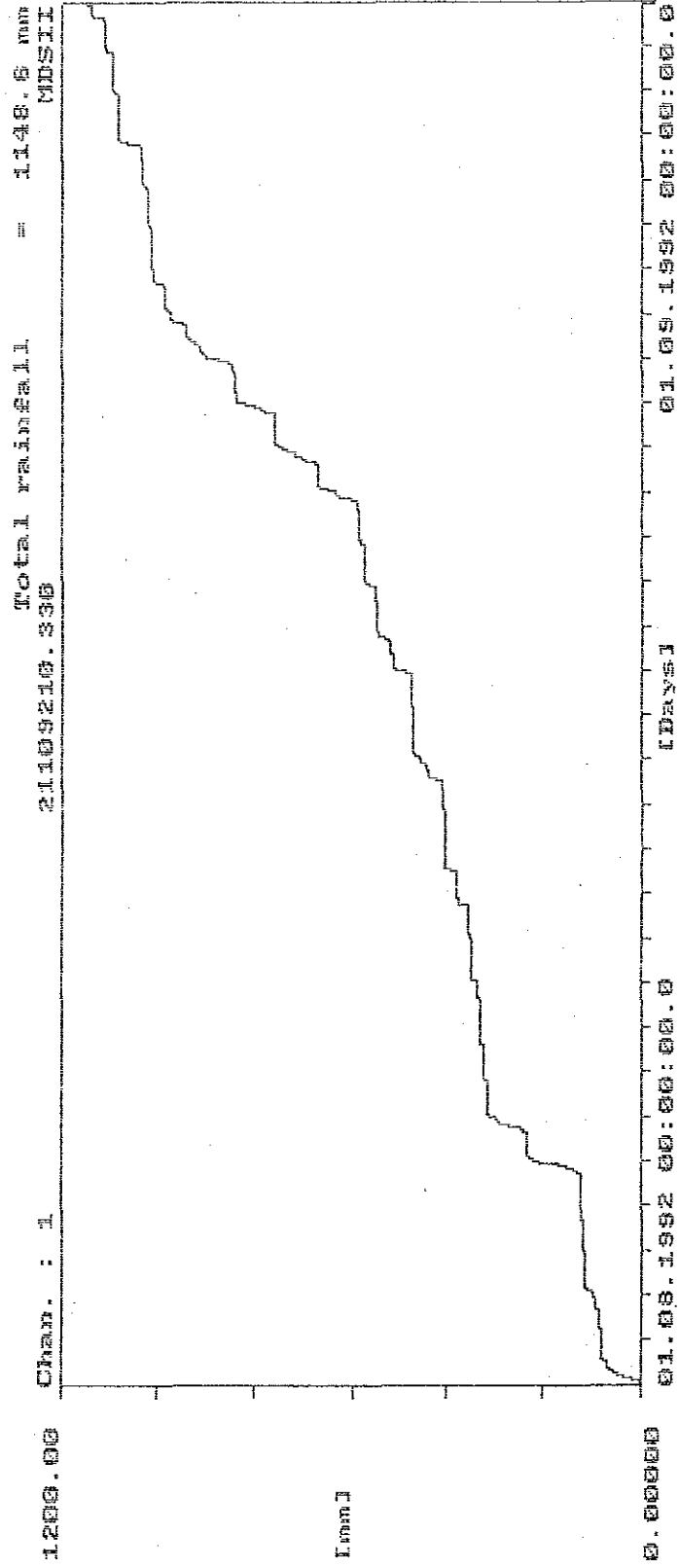


0.00000 [mm] 15.06.1992 12:54:20.0 [Month] 15.10.1992 03:55:04.5

Cumulative rainfall depth from MDS- II Data logger  
of Tipping bucket-type raingauge  
at Pamdur on June 15-October 15,1992

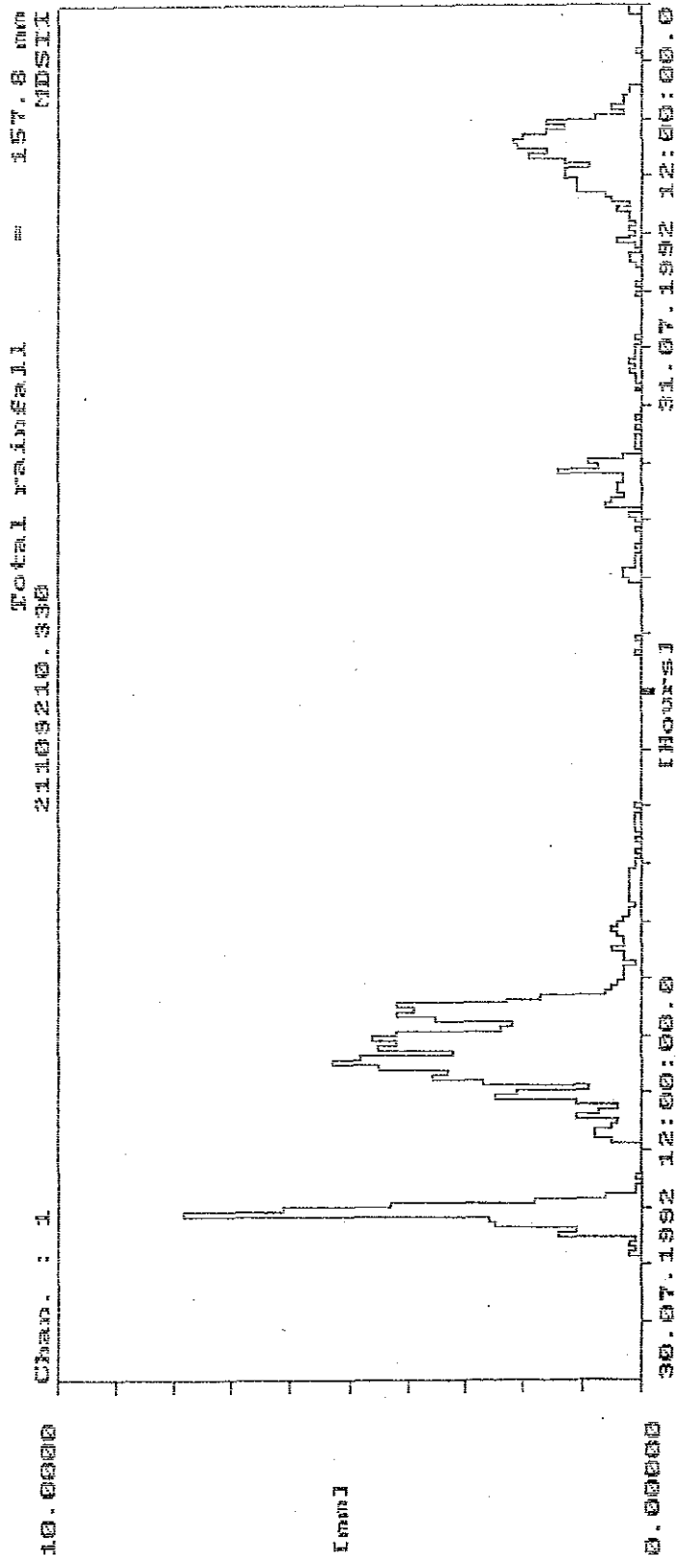


Cumulative rainfall depth from MDS-II Data logger  
 of Tipping bucket-type raingauge  
 at Pandur on July 1-31, 1992



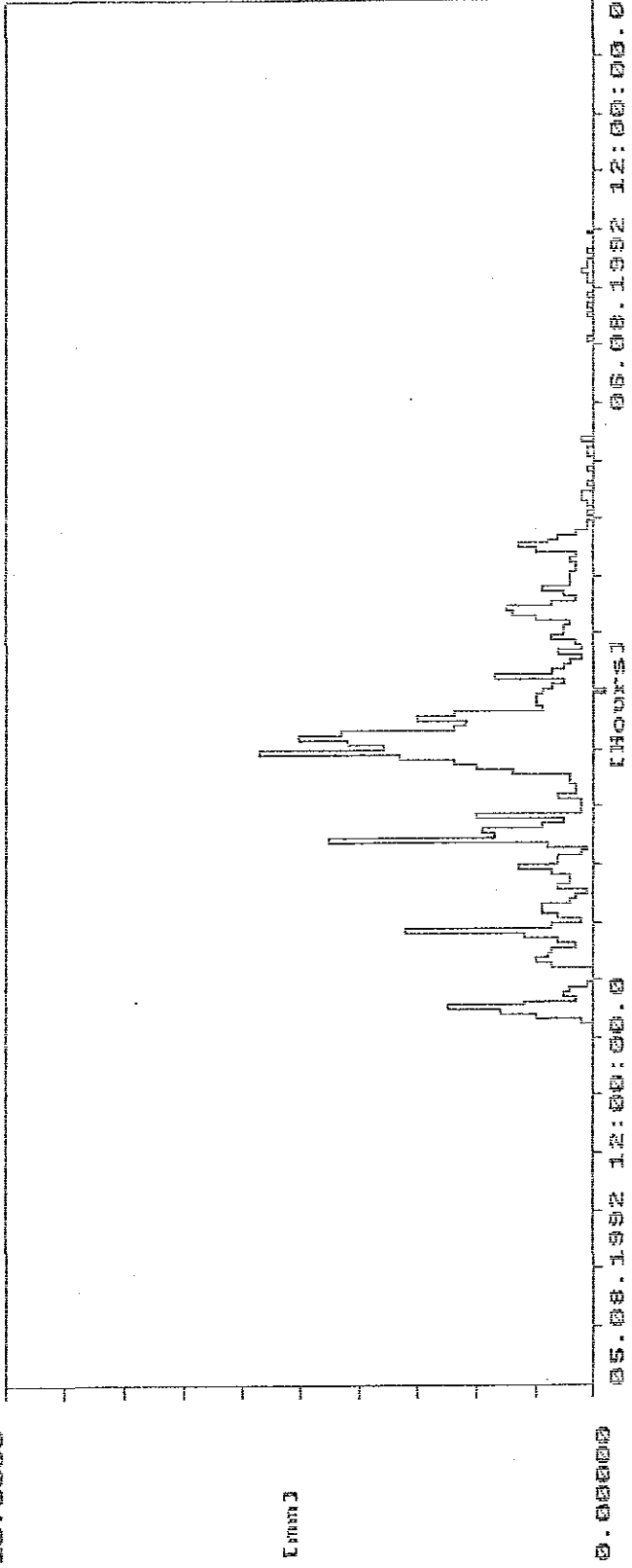
Cumulative rainfall depth from MDS-II Data logger  
 of Tipping bucket-type rain gauge  
 at Pamdur on August 1-31, 1992



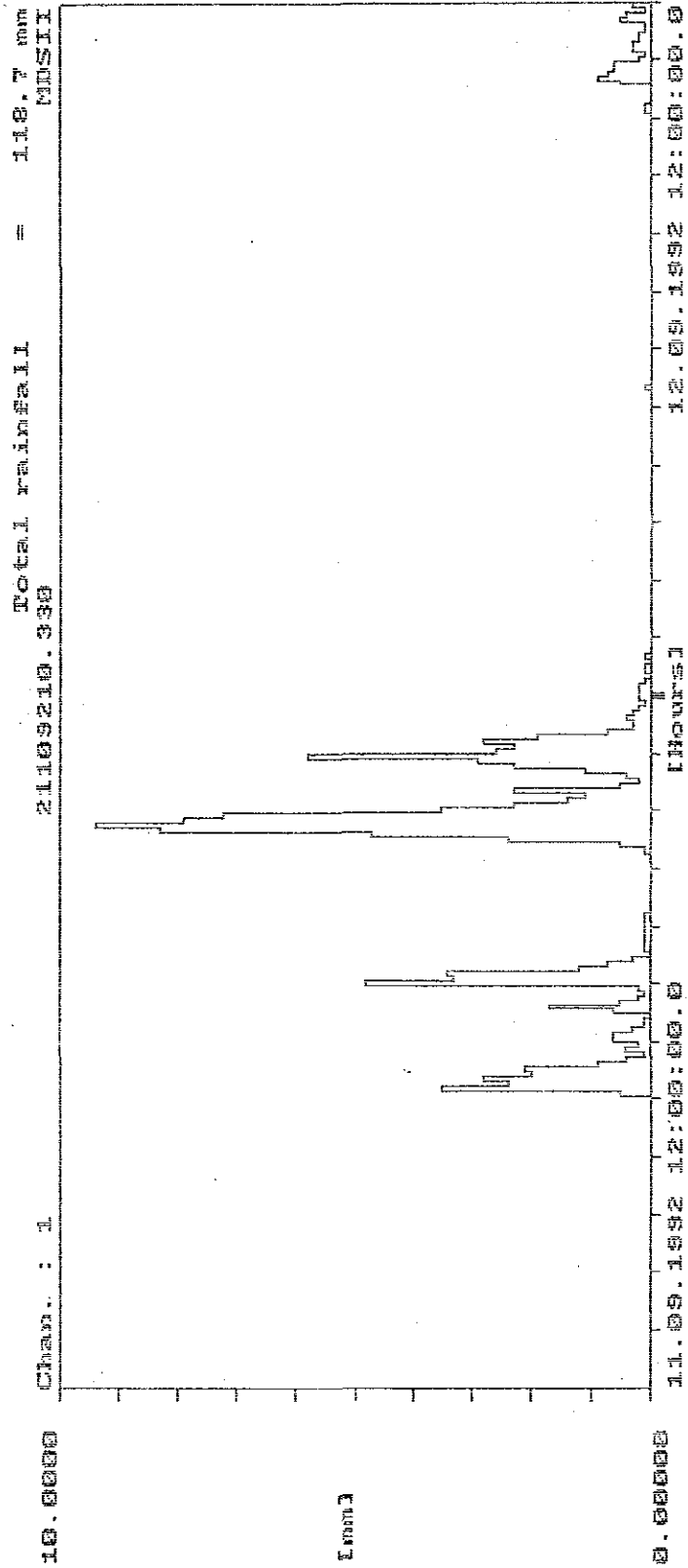


5 minute rainfall intensity from MDS- II Data logger  
of Tipping bucket-type raingauge  
at Pamdur on July 30-31,1992

10.0000 Chan. : 1 Total rainfall = 110.2 mm  
 2109210.330 MDSII



5 minute rainfall intensity from MDS- II Data logger  
 of Tipping bucket-type raingauge  
 at Pamdur on August 5-6,1992





Tatopani  
 HMG/NEPAL  
 MINISTRY OF WATER RESOURCES  
 Department of Hydrology and Meteorology  
 Western Regional Office  
 POKHARA

Observation of Water Resources DATA

Station No. ....  
 River Name : Kali Gandaki  
 Location : Tatopani  
 Date: 1992/July - August

DATE	TIME	READING			TIME	READING			TEMP °C	REMARK		
		M.   Cm.	Min.	M.   Cm.		Hr.	Min.	M.   Cm.				
17	8:30	2	89	12	15	2	70	16	80	2	7.2	
18	8:30	2	37	12	00	2	73	16	70	2	7.5	
19	8:30	2	44	12	00	2	73	14	80	2	7.7	
20	8:30	2	94	12	00	2	38	16	80	2	8.7	
21	8:30	2	61	12	00	2	82	16	70	2	8.9	
22	8:30	2	54	12	00	2	93	16	80	2	8.5	
23	8:30	2	52	12	00	2	53	17	80	2	6.1	
24	8:30	2	72	12	00	2	53	16	80	2	6.6	
25	8:30	2	67	12	00	2	94	16	80	2	7.3	
26	8:30	2	66	12	00	2	94	16	80	2	5.7	
27	8:30	2	68	12	00	2	53	16	80	2	8.7	
28	8:30	2	75	12	00	2	94	16	80	2	5.3	
29	8:30	2	78	12	00	2	36	16	80	2	7.5	
30	8:30	2	49	12	00	2	47	18	80	2	5.8	
1	8:30	2	34	12	00	2	36	17	80	2	8.9	
2	8:30	2	58	12	00	2	28	17	80	2	3.7	
3	8:30	2	15	12	00	2	17	16	80	2	2.0	
4	8:30	2	18	12	00	2	14	16	80	2	1.6	
5	8:30	2	10	12	00	2	10	16	80	2	1.9	
6	8:30	2	51	12	00	2	25	17	80	2	1.9	
7	8:30	2	34	12	00	2	21	16	80	2	2.1	
8	8:30	2	34	12	00	2	31	16	80	2	2.6	
9	8:30	2	24	12	00	2	14	16	80	2	2.0	
10	8:30	2	27	12	00	2	21	16	80	2	1.9	
11	8:30	2	27	12	00	2	22	16	80	2	2.2	
12	8:30	2	13	12	00	2	12	16	80	2	1.7	
13	8:30	2	27	12	00	2	12	16	80	2	1.6	
14	8:30	2	42	12	00	2	25	16	80	2	1.6	
15	8:30	2	13	12	00	2	12	16	80	2	1.6	
16	8:30	2	13	12	00	2	27	16	80	2	2.7	

Signature of Gauge Reader : S. K. Shrestha  
 Mean Computed by :  
 Date :  
 Checked by :  
 Date :

Record of Staff gauge reading at Tatopani  
 on August-September, 1992

Tatopani  
 HMG/NEPAL  
 MINISTRY OF WATER RESOURCES  
 Department of Hydrology and Meteorology  
 Western Regional Office  
 POKHARA

Observation of Water Resources DATA

Station No. ....  
 River Name : Kali Gandaki  
 Location : Tatopani  
 Date: 1992/July - August

DATE	TIME	READING			TIME	READING			TEMP °C	REMARKS		
		M.   Cm.	Min.	M.   Cm.		Hr.	Min.	M.   Cm.				
1	8:30	1	95	12	00	2	12	16	30	2	3.7	
2	8:30	2	19	12	30	2	30	17	00	2	3.8	
3	8:30	2	11	12	00	2	38	16	00	2	9.0	
4	8:30	2	20	12	00	2	22	16	80	2	2.9	
5	8:30	2	35	12	00	2	42	17	00	2	7.5	
6	8:30	2	44	12	00	2	52	16	00	2	7.0	
7	8:30	2	54	12	00	2	39	16	00	2	6.0	
8	8:30	2	46	12	00	2	20	17	00	2	2.9	
9	8:30	2	55	12	00	2	91	16	00	2	7.4	
10	8:30	2	94	12	00	2	58	15	00	3	6.8	
11	8:30	2	83	12	30	2	75	17	15	2	8.0	
12	8:30	2	47	12	00	2	30	17	00	2	3.7	
13	8:30	2	29	12	30	2	31	17	30	2	3.6	
14	8:30	2	34	12	00	2	30	16	30	2	3.1	
15	8:30	2	22	12	00	2	20	16	15	2	2.1	
16	8:30	2	22	12	00	2	45	16	00	2	3.7	
17	8:30	2	50	12	00	2	16	16	30	2	6.2	
18	8:30	2	58	12	00	2	13	16	00	2	6.8	
19	8:30	2	99	12	00	2	36	16	30	2	9.3	
20	8:30	2	62	12	00	2	82	16	00	3	8.3	
21	8:30	2	62	12	00	2	51	17	00	2	6.0	
22	8:30	2	94	12	00	2	97	16	30	2	5.7	
23	8:30	2	70	12	00	2	92	16	00	3	0.5	
24	8:30	2	61	12	00	2	85	16	00	3	1.2	
25	8:30	2	87	12	00	2	81	16	00	2	8.7	
26	8:30	2	53	12	30	2	58	16	00	2	5.2	
27	8:30	2	38	12	30	2	28	16	30	2	6.9	
28	8:30	2	26	12	00	2	28	16	30	2	2.8	
29	8:30	2	22	12	00	2	22	16	00	2	2.4	
30	8:30	2	61	12	00	2	22	16	00	2	2.4	
31	8:30	2	22	12	00	2	12	16	15	2	1.9	
32	8:30	2	61	12	00	2	58	16	00	2	6.1	
33	8:30	2	74	12	00	2	72	17	00	2	6.2	

Signature of Gauge Reader : S. K. Shrestha  
 Mean Computed by :  
 Date :  
 Checked by :  
 Date :

Record of Staff gauge reading at Tatopani  
 on July-August, 1992

HMG/NEPAL  
MINISTRY OF WATER RESOURCES  
Department of Hydrology and Meteorology  
**Western Regional Office**  
POKHARA

Observation of Water Resources DATA

Station No. ...  
River Name ...  
Location ...  
Date: 1992/Aug - Sept.

STAFF GAUGE READING

DATE	TIME	READING			TIME			READING			RE	
		Hr.	Min.	Sec.	Hr.	Min.	Sec.	M.	Min.	Sec.		
17	8	00	4	00	12	00	3	00	16	00	3	00
18	8	00	4	00	12	00	4	10	16	00	3	00
19	8	00	4	00	12	00	4	25	16	00	3	00
20	8	00	4	00	12	00	4	00	16	00	4	00
21	8	00	4	00	12	00	4	07	16	00	3	00
22	8	00	4	00	12	00	4	53	16	00	4	00
23	8	00	4	00	12	00	4	53	16	00	4	00
24	8	00	4	00	12	00	4	00	16	00	4	00
25	8	00	4	00	12	00	5	00	16	00	5	00
26	8	00	4	00	12	00	5	00	16	00	5	00
27	8	00	4	00	12	00	4	00	16	00	4	00
28	8	00	4	00	12	00	4	00	16	00	4	00
29	8	00	4	00	12	00	4	00	16	00	4	00
30	8	00	4	00	12	00	3	00	16	00	3	00
31	8	00	4	00	12	00	3	00	16	00	3	00
1	8	00	4	00	12	00	3	00	16	00	3	00
2	8	00	4	00	12	00	3	00	16	00	3	00
3	8	00	4	00	12	00	3	00	16	00	3	00
4	8	00	4	00	12	00	3	00	16	00	3	00
5	8	00	4	00	12	00	3	00	16	00	3	00
6	8	00	4	00	12	00	3	00	16	00	3	00
7	8	00	4	00	12	00	3	00	16	00	3	00
8	8	00	4	00	12	00	3	00	16	00	3	00
9	8	00	4	00	12	00	3	00	16	00	3	00
10	8	00	4	00	12	00	3	00	16	00	3	00
11	8	00	4	00	12	00	3	00	16	00	3	00
12	8	00	4	00	12	00	3	00	16	00	3	00
13	8	00	4	00	12	00	3	00	16	00	3	00
14	8	00	4	00	12	00	3	00	16	00	3	00
15	8	00	4	00	12	00	3	00	16	00	3	00
16	8	00	4	00	12	00	3	00	16	00	3	00
17	8	00	4	00	12	00	3	00	16	00	3	00
18	8	00	4	00	12	00	3	00	16	00	3	00
19	8	00	4	00	12	00	3	00	16	00	3	00
20	8	00	4	00	12	00	3	00	16	00	3	00
21	8	00	4	00	12	00	3	00	16	00	3	00
22	8	00	4	00	12	00	3	00	16	00	3	00
23	8	00	4	00	12	00	3	00	16	00	3	00
24	8	00	4	00	12	00	3	00	16	00	3	00
25	8	00	4	00	12	00	3	00	16	00	3	00
26	8	00	4	00	12	00	3	00	16	00	3	00
27	8	00	4	00	12	00	3	00	16	00	3	00
28	8	00	4	00	12	00	3	00	16	00	3	00
29	8	00	4	00	12	00	3	00	16	00	3	00
30	8	00	4	00	12	00	3	00	16	00	3	00
31	8	00	4	00	12	00	3	00	16	00	3	00
1	8	00	4	00	12	00	3	00	16	00	3	00
2	8	00	4	00	12	00	3	00	16	00	3	00
3	8	00	4	00	12	00	3	00	16	00	3	00
4	8	00	4	00	12	00	3	00	16	00	3	00
5	8	00	4	00	12	00	3	00	16	00	3	00
6	8	00	4	00	12	00	3	00	16	00	3	00
7	8	00	4	00	12	00	3	00	16	00	3	00
8	8	00	4	00	12	00	3	00	16	00	3	00
9	8	00	4	00	12	00	3	00	16	00	3	00
10	8	00	4	00	12	00	3	00	16	00	3	00
11	8	00	4	00	12	00	3	00	16	00	3	00
12	8	00	4	00	12	00	3	00	16	00	3	00
13	8	00	4	00	12	00	3	00	16	00	3	00
14	8	00	4	00	12	00	3	00	16	00	3	00
15	8	00	4	00	12	00	3	00	16	00	3	00
16	8	00	4	00	12	00	3	00	16	00	3	00
17	8	00	4	00	12	00	3	00	16	00	3	00
18	8	00	4	00	12	00	3	00	16	00	3	00
19	8	00	4	00	12	00	3	00	16	00	3	00
20	8	00	4	00	12	00	3	00	16	00	3	00
21	8	00	4	00	12	00	3	00	16	00	3	00
22	8	00	4	00	12	00	3	00	16	00	3	00
23	8	00	4	00	12	00	3	00	16	00	3	00
24	8	00	4	00	12	00	3	00	16	00	3	00
25	8	00	4	00	12	00	3	00	16	00	3	00
26	8	00	4	00	12	00	3	00	16	00	3	00
27	8	00	4	00	12	00	3	00	16	00	3	00
28	8	00	4	00	12	00	3	00	16	00	3	00
29	8	00	4	00	12	00	3	00	16	00	3	00
30	8	00	4	00	12	00	3	00	16	00	3	00
31	8	00	4	00	12	00	3	00	16	00	3	00
1	8	00	4	00	12	00	3	00	16	00	3	00
2	8	00	4	00	12	00	3	00	16	00	3	00
3	8	00	4	00	12	00	3	00	16	00	3	00
4	8	00	4	00	12	00	3	00	16	00	3	00
5	8	00	4	00	12	00	3	00	16	00	3	00
6	8	00	4	00	12	00	3	00	16	00	3	00
7	8	00	4	00	12	00	3	00	16	00	3	00
8	8	00	4	00	12	00	3	00	16	00	3	00
9	8	00	4	00	12	00	3	00	16	00	3	00
10	8	00	4	00	12	00	3	00	16	00	3	00
11	8	00	4	00	12	00	3	00	16	00	3	00
12	8	00	4	00	12	00	3	00	16	00	3	00
13	8	00	4	00	12	00	3	00	16	00	3	00
14	8	00	4	00	12	00	3	00	16	00	3	00
15	8	00	4	00	12	00	3	00	16	00	3	00
16	8	00	4	00	12	00	3	00	16	00	3	00
17	8	00	4	00	12	00	3	00	16	00	3	00
18	8	00	4	00	12	00	3	00	16	00	3	00
19	8	00	4	00	12	00	3	00	16	00	3	00
20	8	00	4	00	12	00	3	00	16	00	3	00
21	8	00	4	00	12	00	3	00	16	00	3	00
22	8	00	4	00	12	00	3	00	16	00	3	00
23	8	00	4	00	12	00	3	00	16	00	3	00
24	8	00	4	00	12	00	3	00	16	00	3	00
25	8	00	4	00	12	00	3	00	16	00	3	00
26	8	00	4	00	12	00	3	00	16	00	3	00
27	8	00	4	00	12	00	3	00	16	00	3	00
28	8	00	4	00	12	00	3	00	16	00	3	00
29	8	00	4	00	12	00	3	00	16	00	3	00
30	8	00	4	00	12	00	3	00	16	00	3	00
31	8	00	4	00	12	00	3	00	16	00	3	00

Signature of Gauge Reader: \_\_\_\_\_  
Mean Computed by: \_\_\_\_\_  
Date: \_\_\_\_\_

Record of Staff gauge reading at Kalleri  
on August-September, 1992

HMG/NEPAL  
MINISTRY OF WATER RESOURCES  
Department of Hydrology and Meteorology  
**Western Regional Office**  
POKHARA

Observation of Water Resources DATA

Station No. ...  
River Name ...  
Location ...  
Date: 1992/July - August.

STAFF GAUGE READING

DATE	TIME	READING			TIME			READING			REMARKS	
		Hr.	Min.	Sec.	Hr.	Min.	Sec.	M.	Min.	Sec.		
16	8	00	2	00	16	00	2	00	16	00	2	00
17	8	00	2	00	16	00	2	00	16	00	2	00
18	8	00	2	00	16	00	2	00	16	00	2	00
19	8	00	2	00	16	00	2	00	16	00	2	00
20	8	00	2	00	16	00	2	00	16	00	2	00
21	8	00	2	00	16	00	2	00	16	00	2	00
22	8	00	2	00	16	00	2	00	16	00	2	00
23	8	00	2	00	16	00	2	00	16	00	2	00
24	8	00	2	00	16	00	2	00	16	00	2	00
25	8	00	2	00	16	00	2	00	16	00	2	00
26	8	00	2	00	16	00	2	00	16	00	2	00
27	8	00	2	00	16	00	2	00	16	00	2	00
28	8	00	2	00	16	00	2	00	16	00	2	00
29	8	00	2	00	16	00	2	00	16	00	2	00
30	8	00	2	00	16	00	2	00	16	00	2	00
31	8	00	2	00	16	00	2	00	16	00	2	00
1	8	00	2	00	16	00	2	00	16	00	2	00
2	8	00	2									

27.27.1992

HMG/NEPAL  
 MINISTRY OF WATER RESOURCES  
 Department of Hydrology and Meteorology  
 Western Regional Office  
 POKHARA

Observation of Water Resources DATA

Station No. : 142  
 River Name : Kali Sarda River  
 Location : Sarda River, Pokhara  
 Date: 1992/July - August  
 STAFF GAUGE READING

DATE	TIME		READING		TIME		READING		TIME		READING		REMARKS
	Hr.	Min.	M.	Cm.	Hr.	Min.	M.	Cm.	Hr.	Min.	M.	Cm.	
1	8	00	2	58	12	00	2	58	16	00	2	50	
2	8	00	3	57	12	00	3	55	16	00	3	13	
3	8	00	4	08	12	00	3	68	16	00	3	38	
4	8	00	3	52	12	00	3	63	16	00	3	36	
5	8	00	4	37	12	00	4	07	16	00	3	70	
6	8	00	4	23	12	00	4	07	16	00	3	67	
7	8	00	4	48	12	00	3	55	16	00	3	67	
8	8	00	3	63	12	00	3	44	16	00	3	27	
9	8	00	5	70	12	00	5	22	16	00	4	45	
10	8	00	4	52	12	00	4	87	16	00	4	46	
11	8	00	4	68	12	00	4	76	16	00	4	05	
12	8	00	3	85	12	00	3	70	16	00	3	55	
13	8	00	3	56	12	00	3	44	16	00	3	35	
14	8	00	4	13	12	00	3	76	16	00	3	50	
15	8	00	3	45	12	00	3	33	16	00	3	24	
16	8	00	4	10	12	00	4	00	16	00	3	70	
17	8	00	5	76	12	00	6	25	16	00	6	00	
18	8	00	5	27	12	00	4	94	16	00	4	78	
19	8	00	5	15	12	00	4	98	16	00	4	70	
20	8	00	5	52	12	00	4	88	16	00	4	63	
21	8	00	4	47	12	00	4	34	16	00	4	16	
22	8	00	5	05	12	00	4	57	16	00	4	38	
23	8	00	6	50	12	00	5	75	16	00	5	32	
24	8	00	5	63	12	00	5	14	16	00	4	54	
25	8	00	4	70	12	00	4	65	16	00	4	50	
26	8	00	4	06	12	00	4	58	16	00	4	20	
27	8	00	4	20	12	00	4	10	16	00	3	96	
28	8	00	3	23	12	00	3	80	16	00	3	68	
29	8	00	3	19	12	00	3	75	16	00	3	60	
30	8	00	5	08	12	00	5	70	16	00	5	64	
31	8	00	5	09	12	00	5	13	16	00	5	67	
32	8	00	5	09	12	00	4	16	16	00	4	46	
33	8	00	5	09	12	00	4	16	16	00	4	46	

Signature of Gauge Reader :  
 Mean Computed by :  
 Date :  
 Checked by :  
 Date :

Record of Staff gauge reading at Setibeni  
 on August-September, 1992

27.27.1992

HMG/NEPAL  
 MINISTRY OF WATER RESOURCES  
 Department of Hydrology and Meteorology  
 Western Regional Office  
 POKHARA

Observation of Water Resources DATA

Station No. : 142  
 River Name : Kali Sarda River  
 Location : Sarda River, Pokhara  
 Date: 1992/Aug - Sept.  
 STAFF GAUGE READING

DATE	TIME		READING		TIME		READING		TIME		READING		REMARKS
	Hr.	Min.	M.	Cm.	Hr.	Min.	M.	Cm.	Hr.	Min.	M.	Cm.	
1	8	00	4	13	16	00	4	13	16	00	4	20	
2	8	00	4	53	16	00	4	20	16	00	4	20	
3	8	00	4	20	16	00	4	08	16	00	4	18	
4	8	00	4	24	16	00	4	18	16	00	4	18	
5	8	00	5	19	16	00	4	02	16	00	4	02	
6	8	00	5	50	16	00	5	59	16	00	6	59	
7	8	00	6	50	16	00	6	35	16	00	6	35	
8	8	00	6	54	16	00	6	15	16	00	6	15	
9	8	00	6	03	16	00	5	72	16	00	5	52	
10	8	00	5	16	16	00	5	19	16	00	5	19	
11	8	00	5	16	16	00	4	76	16	00	4	76	
12	8	00	4	20	16	00	4	55	16	00	4	55	
13	8	00	4	35	16	00	4	20	16	00	4	20	
14	8	00	4	16	16	00	4	10	16	00	4	10	
15	8	00	3	89	16	00	3	75	16	00	3	75	
16	8	00	3	80	16	00	3	75	16	00	3	75	
17	8	00	3	93	16	00	3	74	16	00	3	74	
18	8	00	4	08	16	00	4	08	16	00	4	08	
19	8	00	4	01	16	00	3	78	16	00	3	78	
20	8	00	4	17	16	00	3	82	16	00	3	82	
21	8	00	3	89	16	00	3	72	16	00	3	72	
22	8	00	3	58	16	00	3	42	16	00	3	42	
23	8	00	4	30	16	00	4	20	16	00	4	20	
24	8	00	4	38	16	00	4	14	16	00	4	14	
25	8	00	4	42	16	00	4	30	16	00	4	30	
26	8	00	4	25	16	00	4	20	16	00	4	20	

Signature of Gauge Reader :  
 Mean Computed by :  
 Date :  
 Checked by :  
 Date :

Record of Staff gauge reading at Setibeni  
 on July-August, 1992

CENTRAL REGIONAL OFFICE  
STAFF GAUGE READING

River Name: RAMUL RIVER Station No: 1992  
Location: CHYUNTABA  
Date: 1992

DATE	LINE	READING		TIME	READING		TIME	READING		TEMP °C	REMARKS
		m	cm		m	cm		m	cm		
17/07	3	3.60	3.60	11	3.60	3.60	11	3.60	3.60		
18/07	4	3.60	3.60	11	3.60	3.60	11	3.60	3.60		
19/07	5	3.60	3.60	11	3.60	3.60	11	3.60	3.60		
20/07	6	3.60	3.60	11	3.60	3.60	11	3.60	3.60		
21/07	7	3.60	3.60	11	3.60	3.60	11	3.60	3.60		
22/07	8	3.60	3.60	11	3.60	3.60	11	3.60	3.60		
23/07	9	3.60	3.60	11	3.60	3.60	11	3.60	3.60		
24/07	10	3.60	3.60	11	3.60	3.60	11	3.60	3.60		
25/07	11	3.60	3.60	11	3.60	3.60	11	3.60	3.60		
26/07	12	3.60	3.60	11	3.60	3.60	11	3.60	3.60		
27/07	13	3.60	3.60	11	3.60	3.60	11	3.60	3.60		
28/07	14	3.60	3.60	11	3.60	3.60	11	3.60	3.60		
29/07	15	3.60	3.60	11	3.60	3.60	11	3.60	3.60		
30/07	16	3.60	3.60	11	3.60	3.60	11	3.60	3.60		
31/07	17	3.60	3.60	11	3.60	3.60	11	3.60	3.60		
01/08	18	3.60	3.60	11	3.60	3.60	11	3.60	3.60		
02/08	19	3.60	3.60	11	3.60	3.60	11	3.60	3.60		
03/08	20	3.60	3.60	11	3.60	3.60	11	3.60	3.60		
04/08	21	3.60	3.60	11	3.60	3.60	11	3.60	3.60		
05/08	22	3.60	3.60	11	3.60	3.60	11	3.60	3.60		
06/08	23	3.60	3.60	11	3.60	3.60	11	3.60	3.60		
07/08	24	3.60	3.60	11	3.60	3.60	11	3.60	3.60		
08/08	25	3.60	3.60	11	3.60	3.60	11	3.60	3.60		
09/08	26	3.60	3.60	11	3.60	3.60	11	3.60	3.60		
10/08	27	3.60	3.60	11	3.60	3.60	11	3.60	3.60		
11/08	28	3.60	3.60	11	3.60	3.60	11	3.60	3.60		
12/08	29	3.60	3.60	11	3.60	3.60	11	3.60	3.60		
13/08	30	3.60	3.60	11	3.60	3.60	11	3.60	3.60		
14/08	31	3.60	3.60	11	3.60	3.60	11	3.60	3.60		
15/08	32	3.60	3.60	11	3.60	3.60	11	3.60	3.60		
16/08	33	3.60	3.60	11	3.60	3.60	11	3.60	3.60		
17/08	34	3.60	3.60	11	3.60	3.60	11	3.60	3.60		
18/08	35	3.60	3.60	11	3.60	3.60	11	3.60	3.60		
19/08	36	3.60	3.60	11	3.60	3.60	11	3.60	3.60		
20/08	37	3.60	3.60	11	3.60	3.60	11	3.60	3.60		
21/08	38	3.60	3.60	11	3.60	3.60	11	3.60	3.60		
22/08	39	3.60	3.60	11	3.60	3.60	11	3.60	3.60		
23/08	40	3.60	3.60	11	3.60	3.60	11	3.60	3.60		
24/08	41	3.60	3.60	11	3.60	3.60	11	3.60	3.60		
25/08	42	3.60	3.60	11	3.60	3.60	11	3.60	3.60		
26/08	43	3.60	3.60	11	3.60	3.60	11	3.60	3.60		
27/08	44	3.60	3.60	11	3.60	3.60	11	3.60	3.60		
28/08	45	3.60	3.60	11	3.60	3.60	11	3.60	3.60		
29/08	46	3.60	3.60	11	3.60	3.60	11	3.60	3.60		
30/08	47	3.60	3.60	11	3.60	3.60	11	3.60	3.60		
31/08	48	3.60	3.60	11	3.60	3.60	11	3.60	3.60		
01/09	49	3.60	3.60	11	3.60	3.60	11	3.60	3.60		

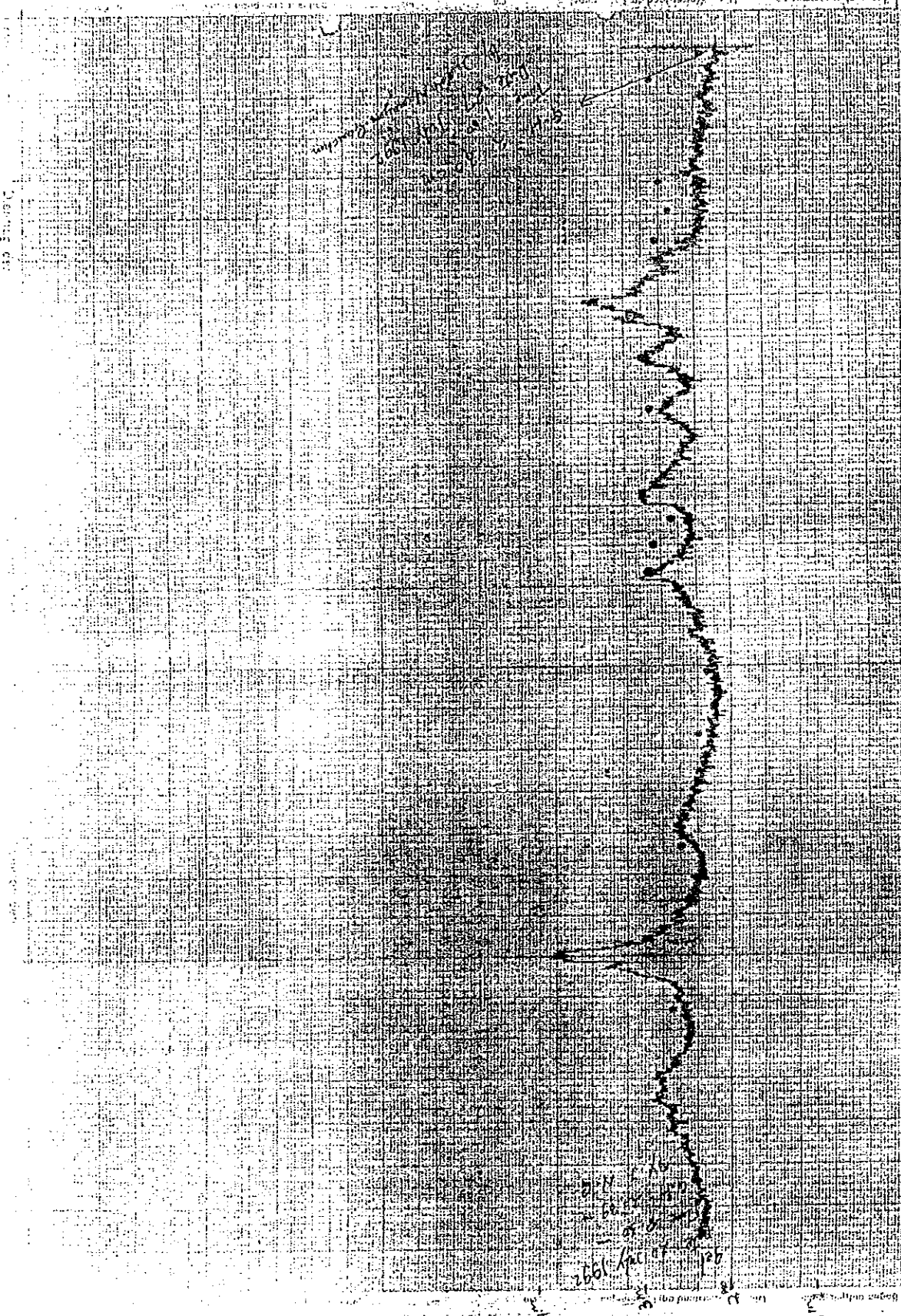
Record of Staff gauge reading at Chyuntaha on July-August, 1992

CENTRAL REGIONAL OFFICE  
STAFF GAUGE READING

River Name: RAMUL RIVER Station No: 1992  
Location: CHYUNTABA  
Date: 1992

DATE	LINE	READING		TIME	READING		TIME	READING		TEMP °C	REMARKS
		m	cm		m	cm		m	cm		
17/08	3	3.60	3.60	11	3.60	3.60	11	3.60	3.60		
18/08	4	3.60	3.60	11	3.60	3.60	11	3.60	3.60		
19/08	5	3.60	3.60	11	3.60	3.60	11	3.60	3.60		
20/08	6	3.60	3.60	11	3.60	3.60	11	3.60	3.60		
21/08	7	3.60	3.60	11	3.60	3.60	11	3.60	3.60		
22/08	8	3.60	3.60	11	3.60	3.60	11	3.60	3.60		
23/08	9	3.60	3.60	11	3.60	3.60	11	3.60	3.60		
24/08	10	3.60	3.60	11	3.60	3.60	11	3.60	3.60		
25/08	11	3.60	3.60	11	3.60	3.60	11	3.60	3.60		
26/08	12	3.60	3.60	11	3.60	3.60	11	3.60	3.60		
27/08	13	3.60	3.60	11	3.60	3.60	11	3.60	3.60		
28/08	14	3.60	3.60	11	3.60	3.60	11	3.60	3.60		
29/08	15	3.60	3.60	11	3.60	3.60	11	3.60	3.60		
30/08	16	3.60	3.60	11	3.60	3.60	11	3.60	3.60		
31/08	17	3.60	3.60	11	3.60	3.60	11	3.60	3.60		
01/09	18	3.60	3.60	11	3.60	3.60	11	3.60	3.60		
02/09	19	3.60	3.60	11	3.60	3.60	11	3.60	3.60		
03/09	20	3.60	3.60	11	3.60	3.60	11	3.60	3.60		
04/09	21	3.60	3.60	11	3.60	3.60	11	3.60	3.60		
05/09	22	3.60	3.60	11	3.60	3.60	11	3.60	3.60		
06/09	23	3.60	3.60	11	3.60	3.60	11	3.60	3.60		
07/09	24	3.60	3.60	11	3.60	3.60	11	3.60	3.60		
08/09	25	3.60	3.60	11	3.60	3.60	11	3.60	3.60		
09/09	26	3.60	3.60	11	3.60	3.60	11	3.60	3.60		
10/09	27	3.60	3.60	11	3.60	3.60	11	3.60	3.60		
11/09	28	3.60	3.60	11	3.60	3.60	11	3.60	3.60		
12/09	29	3.60	3.60	11	3.60	3.60	11	3.60	3.60		
13/09	30	3.60	3.60	11	3.60	3.60	11	3.60	3.60		
14/09	31	3.60	3.60	11	3.60	3.60	11	3.60	3.60		
15/09	32	3.60	3.60	11	3.60	3.60	11	3.60	3.60		
16/09	33	3.60	3.60	11	3.60	3.60	11	3.60	3.60		
17/09	34	3.60	3.60	11	3.60	3.60	11	3.60	3.60		
18/09	35	3.60	3.60	11	3.60	3.60	11	3.60	3.60		
19/09	36	3.60	3.60	11	3.60	3.60	11	3.60	3.60		
20/09	37	3.60	3.60	11	3.60	3.60	11	3.60	3.60		
21/09	38	3.60	3.60	11	3.60	3.60	11	3.60	3.60		
22/09	39	3.60	3.60	11	3.60	3.60	11	3.60	3.60		
23/09	40	3.60	3.60	11	3.60	3.60	11	3.60	3.60		
24/09	41	3.60	3.60	11	3.60	3.60	11	3.60	3.60		
25/09	42	3.60	3.60	11	3.60	3.60	11	3.60	3.60		
26/09	43	3.60	3.60	11	3.60	3.60	11	3.60	3.60		
27/09	44	3.60	3.60	11	3.60	3.60	11	3.60	3.60		
28/09	45	3.60	3.60	11	3.60	3.60	11	3.60	3.60		
29/09	46	3.60	3.60	11	3.60	3.60	11	3.60	3.60		
30/09	47	3.60	3.60	11	3.60	3.60	11	3.60	3.60		
01/10	48	3.60	3.60	11	3.60	3.60	11	3.60	3.60		

Record of Staff gauge reading at Chyuntaha on August-September, 1992



Montag, den 20. July 1992 : Dienstag, den 21. July 1992 : Mittwoch, den 22. July 1992 : Donnerstag, den 23. July 1992 : Freitag, den 24. July 1992 : Samstag, den 25. July 1992 : Sonntag, den 26. July 1992 : Montag, den 27. July 1992

Chart of Pressure-type Water level recorder at Tatopani  
 on July 20-27, 1992

Tatopani

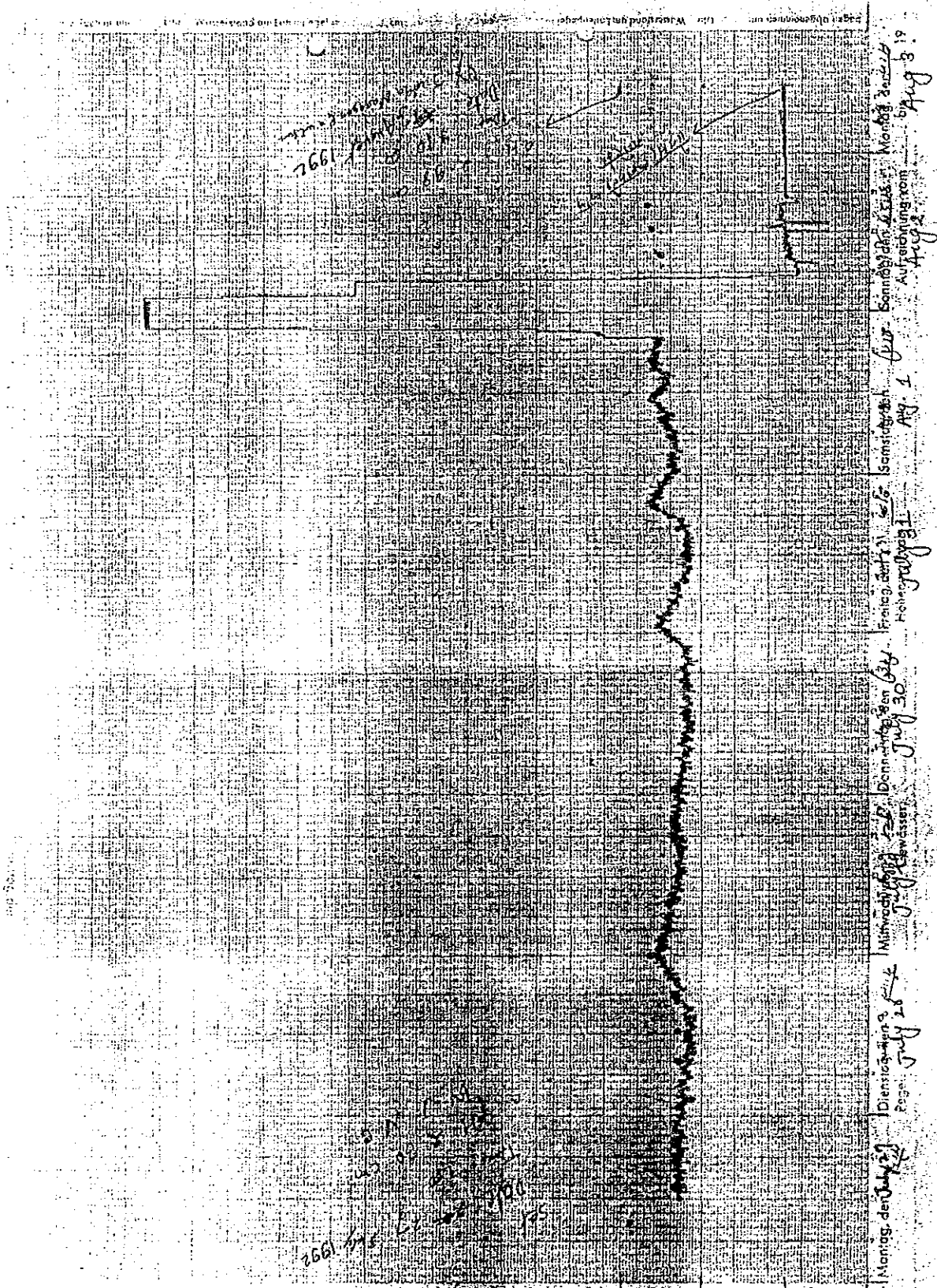


Chart of Pressure-type Water level recorder at Tatopani  
 on July 27-August 3, 1992

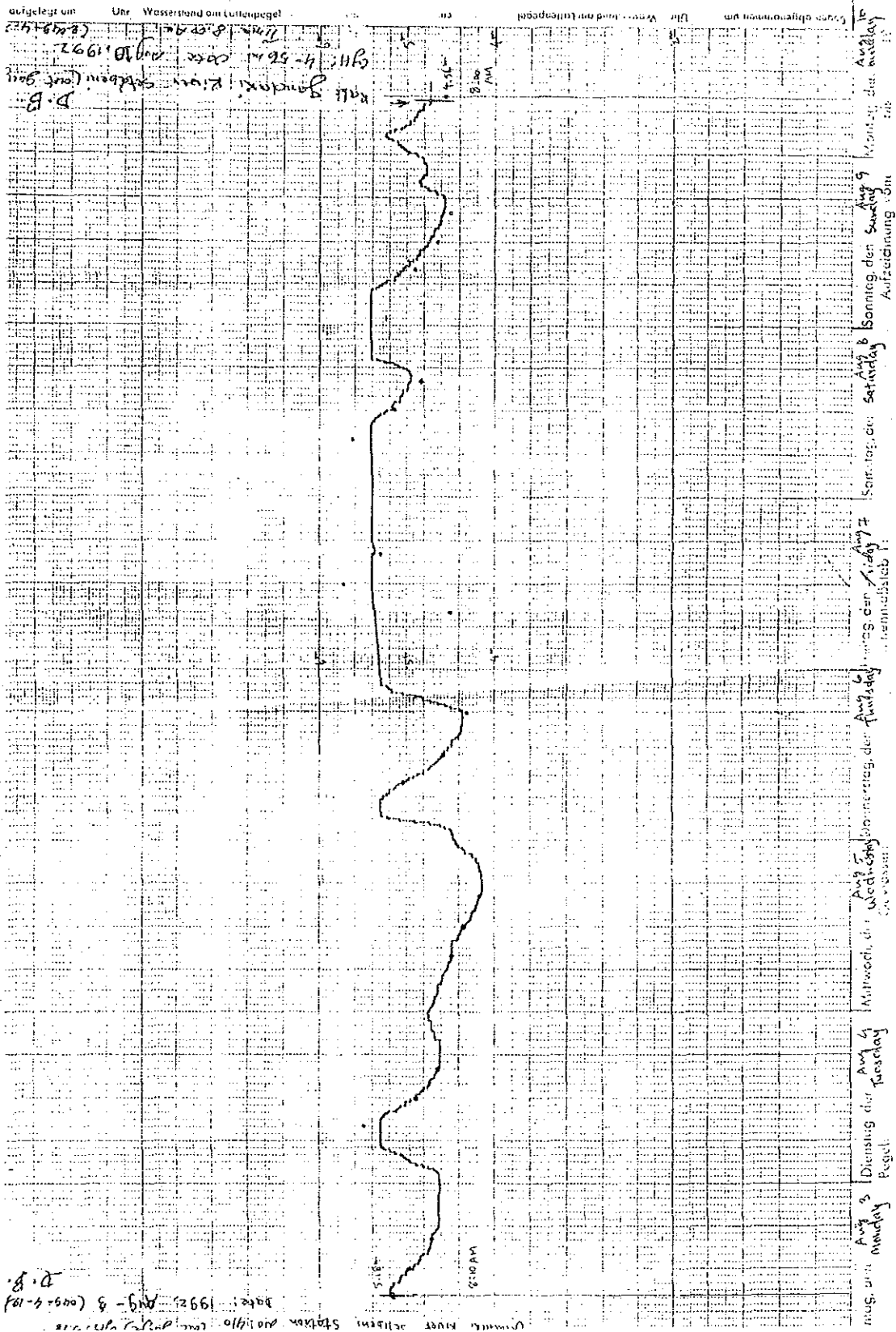
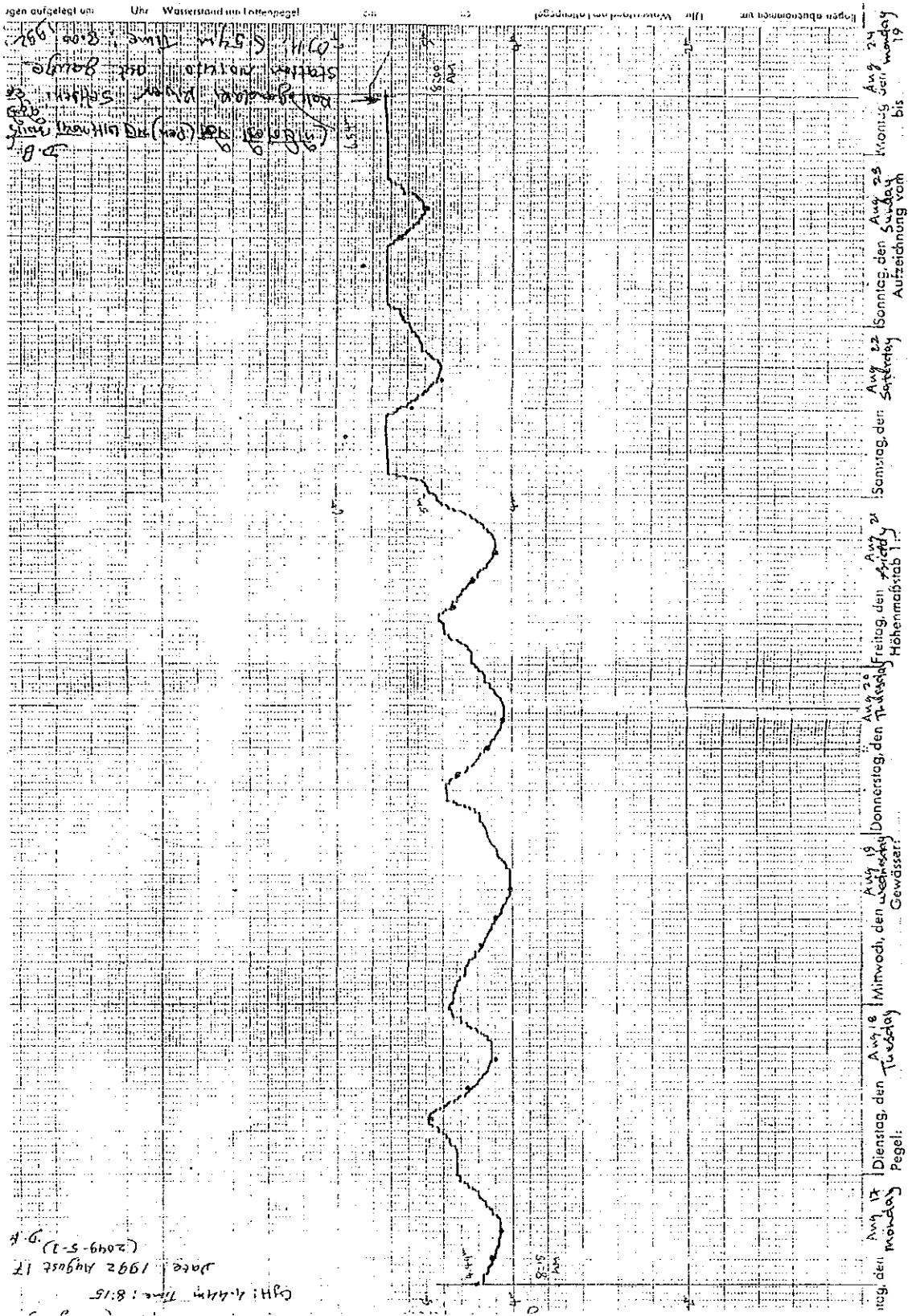


Chart of Pressure-type Water level recorder at Setibeni  
on August 3-10, 1992





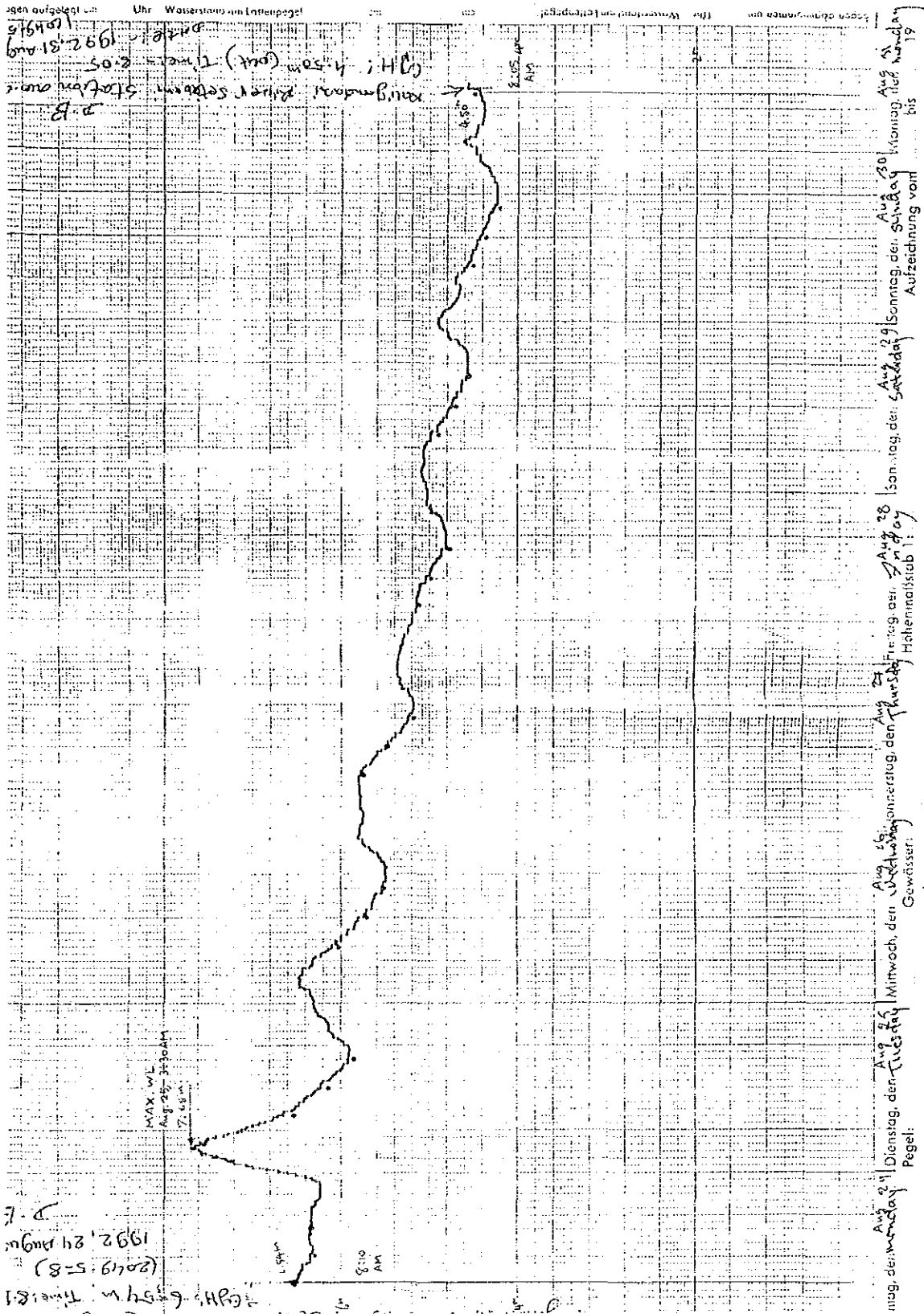


Chart of Pressure-type Water level recorder at Setibeni on August 24-31, 1992

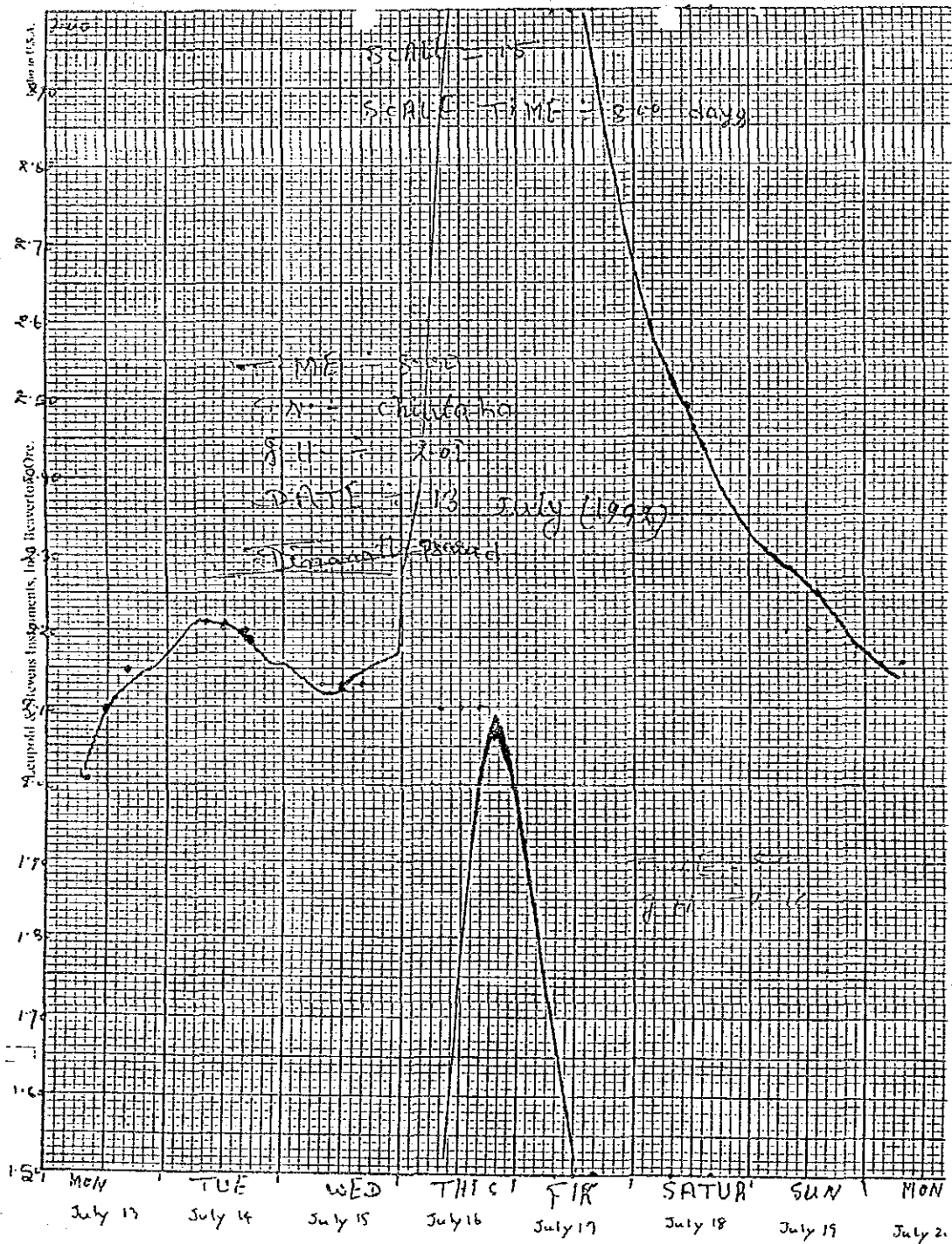


Chart of Float-type Water level recorder at Chyuntaha on July 13-20, 1992



Analyse of values from MDS-II system ver GB 3.43  
 =====

logger no. : E01185

file name : D:\NEPAL\21109211.185

date : 09.03.1993 21:05:45

comment :

control-measur. : none

channel no. : 1

start of measurement ..... : 16.03.1992 10:04:00  
 stop of measurement ..... : 21.10.1992 07:44:00  
 cycle [sec] ..... : 600.0  
 number of values ..... : 36  
 range of values ..... : 0.097 bis 12.394 m  
 correction factor ..... : 0  
 issue-start ..... : 24.08.1992 21:00:00  
 issue-stop ..... : 25.08.1992 03:00:00

each xth value ..... : 1

time/date ..... value  
 =====

24.08.1992 21:04:00	6.289	m
24.08.1992 21:14:00	6.316	m
24.08.1992 21:24:00	6.415	m
24.08.1992 21:34:00	6.472	m
24.08.1992 21:44:00	6.538	m
24.08.1992 21:54:00	6.674	m
24.08.1992 22:04:00	6.821	m
24.08.1992 22:14:00	6.830	m
24.08.1992 22:24:00	6.866	m
24.08.1992 22:34:00	7.001	m
24.08.1992 22:44:00	7.133	m
24.08.1992 22:54:00	7.325	m
24.08.1992 23:04:00	7.343	m
24.08.1992 23:14:00	7.364	m
24.08.1992 23:24:00	7.586	m
24.08.1992 23:34:00	7.665	m
24.08.1992 23:44:00	7.764	m
24.08.1992 23:54:00	7.962	m
25.08.1992 00:04:00	7.914	m
25.08.1992 00:14:00	7.890	m
25.08.1992 00:24:00	7.836	m
25.08.1992 00:34:00	7.842	m
25.08.1992 00:44:00	7.905	m
25.08.1992 00:54:00	7.914	m
25.08.1992 01:04:00	7.794	m
25.08.1992 01:14:00	7.752	m
25.08.1992 01:24:00	7.755	m
25.08.1992 01:34:00	7.601	m
25.08.1992 01:44:00	7.595	m
25.08.1992 01:54:00	7.508	m
25.08.1992 02:04:00	7.436	m
25.08.1992 02:14:00	7.454	m
25.08.1992 02:24:00	7.226	m
25.08.1992 02:34:00	7.256	m
25.08.1992 02:44:00	7.199	m
25.08.1992 02:54:00	7.112	m

minimum on 24.08.1992 21:04:00 : 6.29 m  
 maximum on 24.08.1992 23:54:00 : 7.96 m  
 main value : 7.32 m

List from MDS- II Data logger of Pressure sensor  
 at Kalleri on August 24-25,1992.

Analyse of values from MDS-II system ver GB 3.43  
 =====

logger no. : E01185

file name : D:\NEPAL\21109211.185

date : 09.03.1993 21:16:58

comment :

control-measur. : none

channel no. : 1

start of measurement ..... : 16.03.1992 10:04:00  
 stop of measurement ..... : 21.10.1992 07:44:00  
 cycle [sec] ..... : 600.0  
 number of values ..... : 1152  
 range of values ..... : 0.097 bis 12.394 m  
 correction factor ..... : 0  
 issue-start ..... : 22.08.1992 00:00:00  
 issue-stop ..... : 30.08.1992 00:00:00

each xth value ..... : 1

time/date ..... value  
 =====

min: 22.08.1992 13:14:00 4.373 m  
 max: 22.08.1992 03:34:00 6.178 m  
 daily mean 5.053 m

min: 23.08.1992 13:34:00 4.553 m  
 max: 23.08.1992 22:04:00 5.680 m  
 daily mean 5.190 m

min: 24.08.1992 00:24:00 5.586 m  
 max: 24.08.1992 23:54:00 7.962 m  
 daily mean 6.153 m

min: 25.08.1992 14:54:00 5.409 m  
 max: 25.08.1992 00:04:00 7.914 m  
 daily mean 6.097 m

min: 26.08.1992 13:54:00 4.893 m  
 max: 26.08.1992 00:14:00 6.163 m  
 daily mean 5.325 m

min: 27.08.1992 14:24:00 4.589 m  
 max: 27.08.1992 00:54:00 5.304 m  
 daily mean 4.954 m

min: 28.08.1992 14:34:00 4.331 m  
 max: 28.08.1992 00:04:00 4.905 m  
 daily mean 4.634 m

min: 29.08.1992 12:54:00 4.136 m  
 max: 29.08.1992 03:14:00 4.758 m  
 daily mean 4.435 m

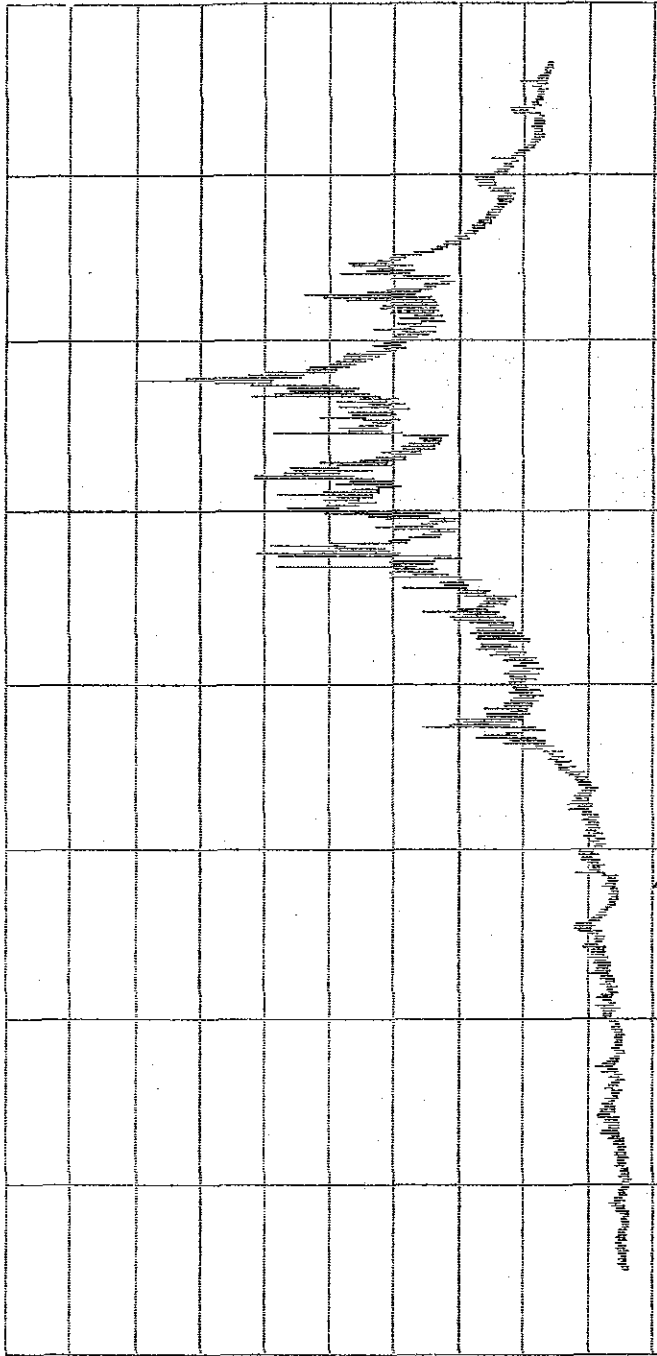
minimum on 29.08.1992 12:54:00 : 4.14 m  
 maximum on 24.08.1992 23:54:00 : 7.96 m  
 main value : 5.23 m

List (analyzed) from MDS- II Data logger of Pressure sensor  
 at Kalleri on August 22-30,1992

10.0000

NO. : 1

21109211.185

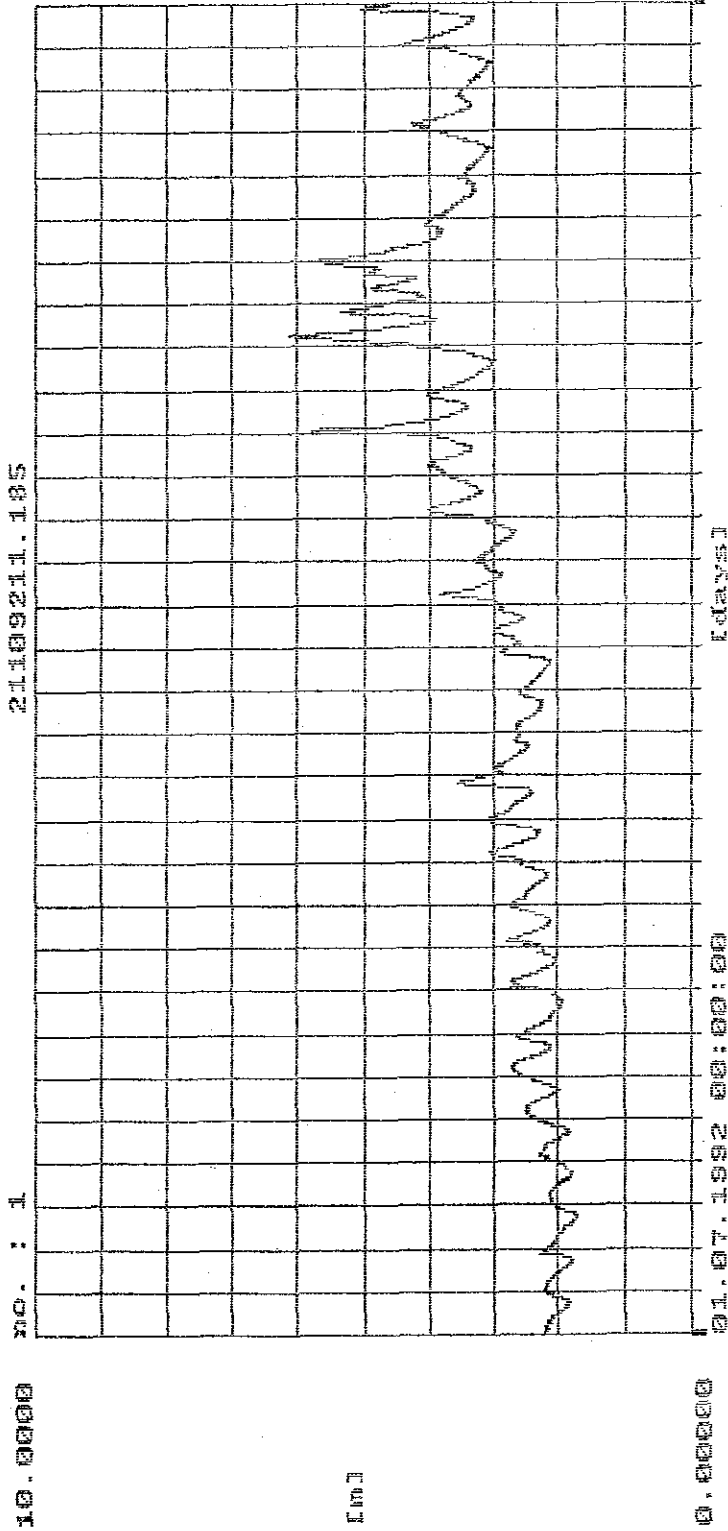


01.03.1992 00:00:00

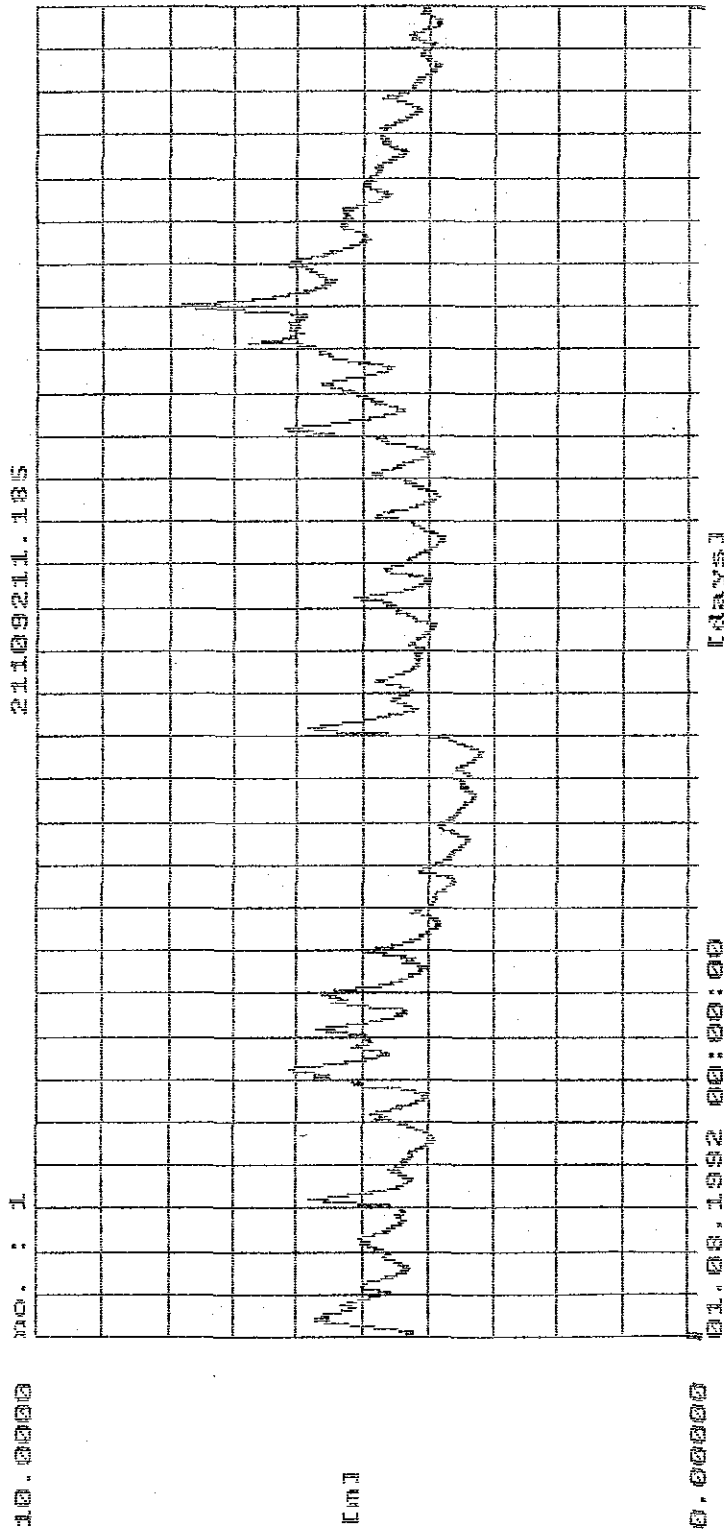
[units]

0.0000

Water level from MDS-II Data logger of Pressure sensor at Kalleri on March 16-October 21,1992

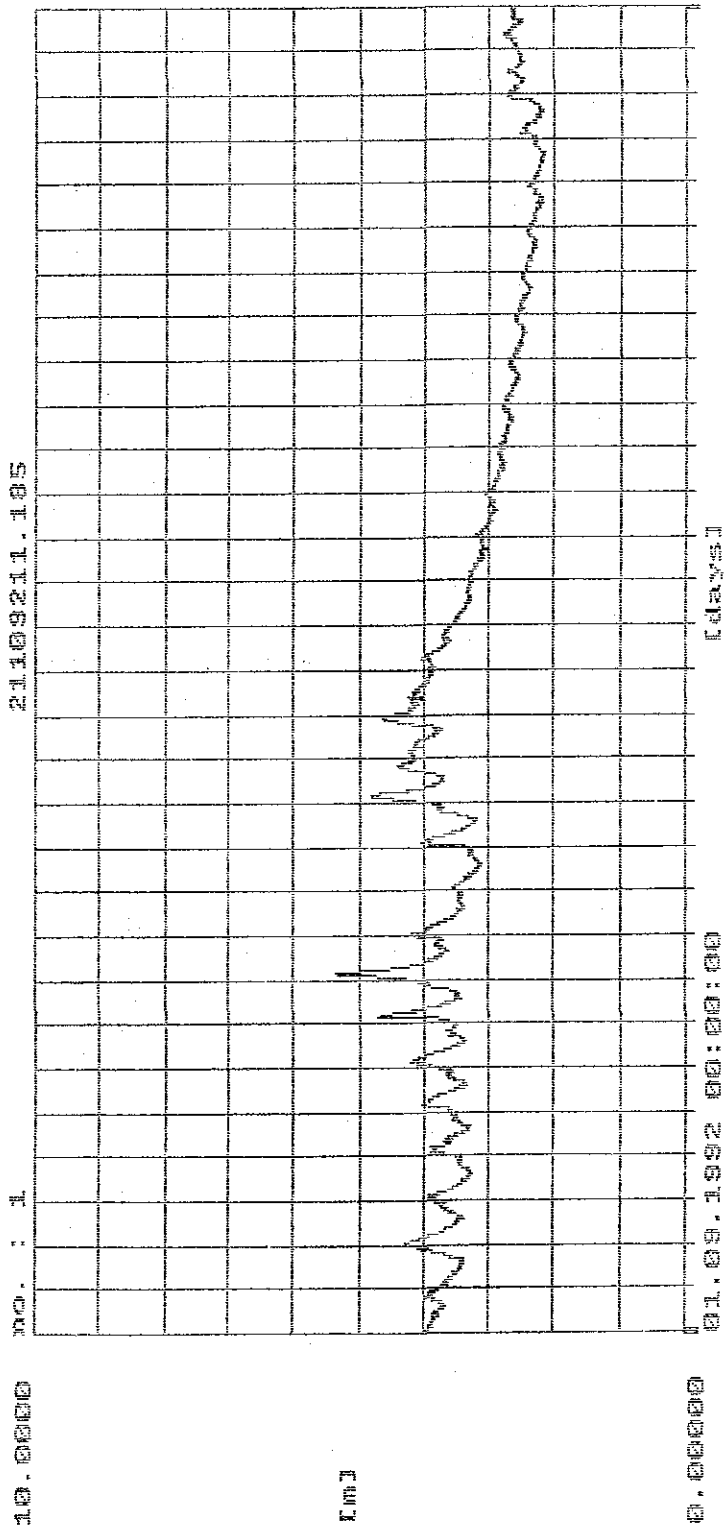


Water level from MDS- II Data logger of Pressure sensor  
at Kalleri on July 1-31,1992

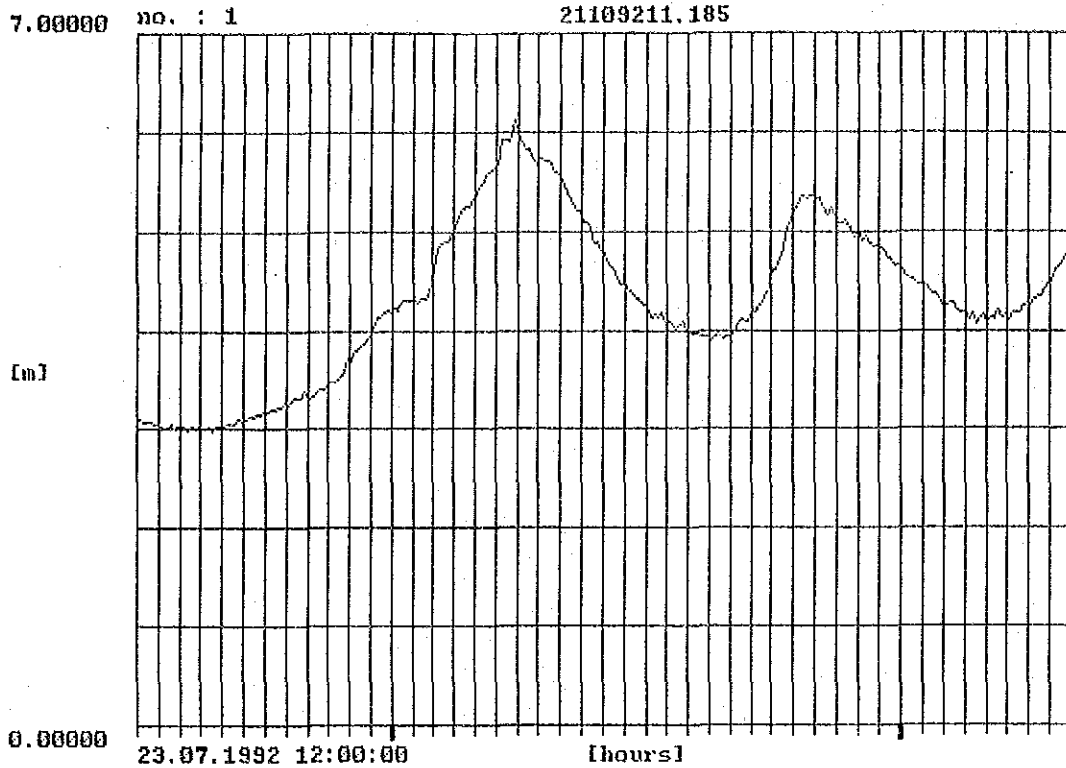


Water level from MDS- II Data logger of Pressure sensor  
at Kalleri on August 1-31, 1992

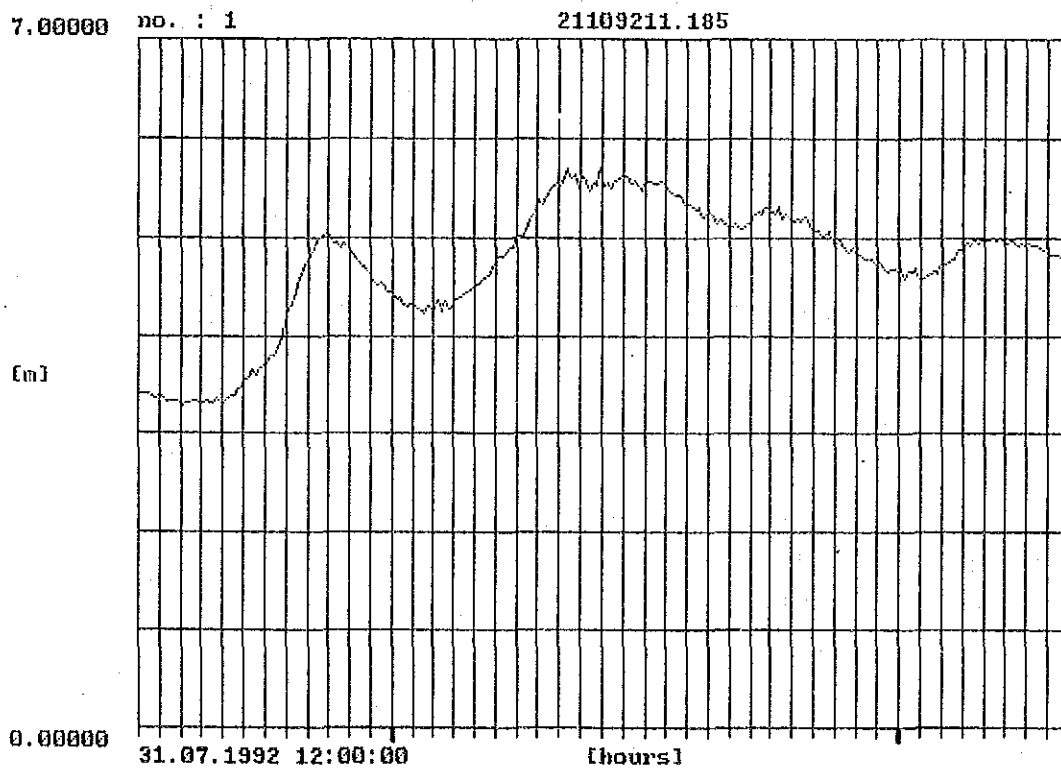




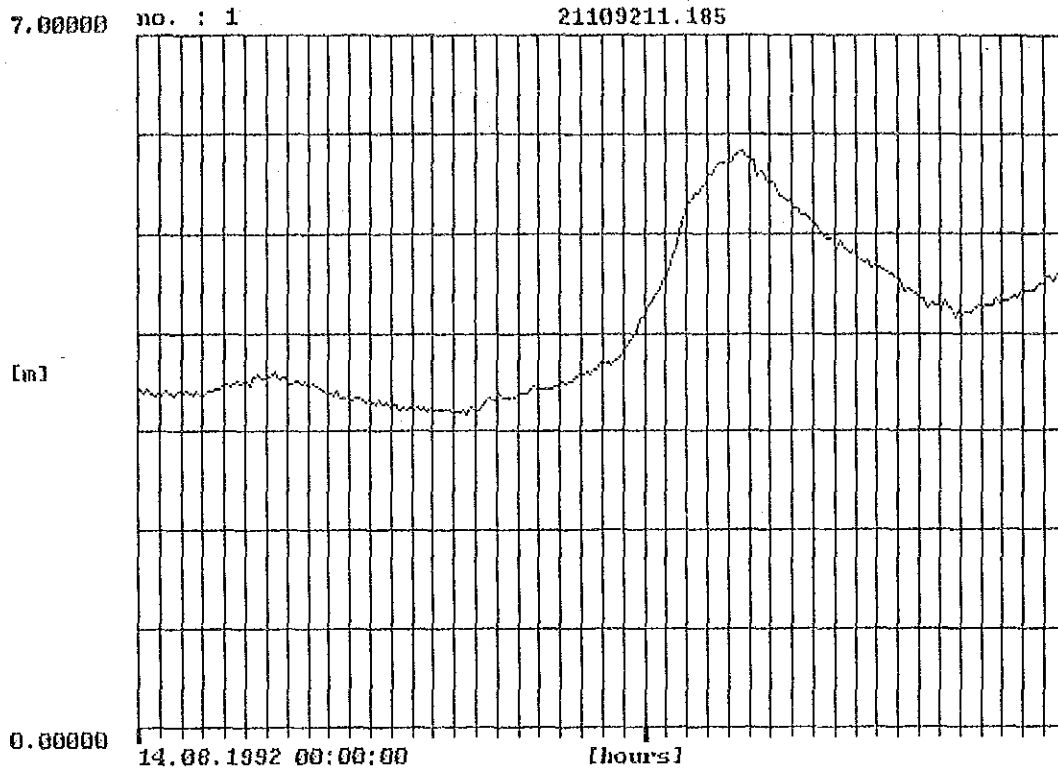
Water level from MDS- II Data logger of Pressure sensor  
at Kalleri on September 1-30, 1992



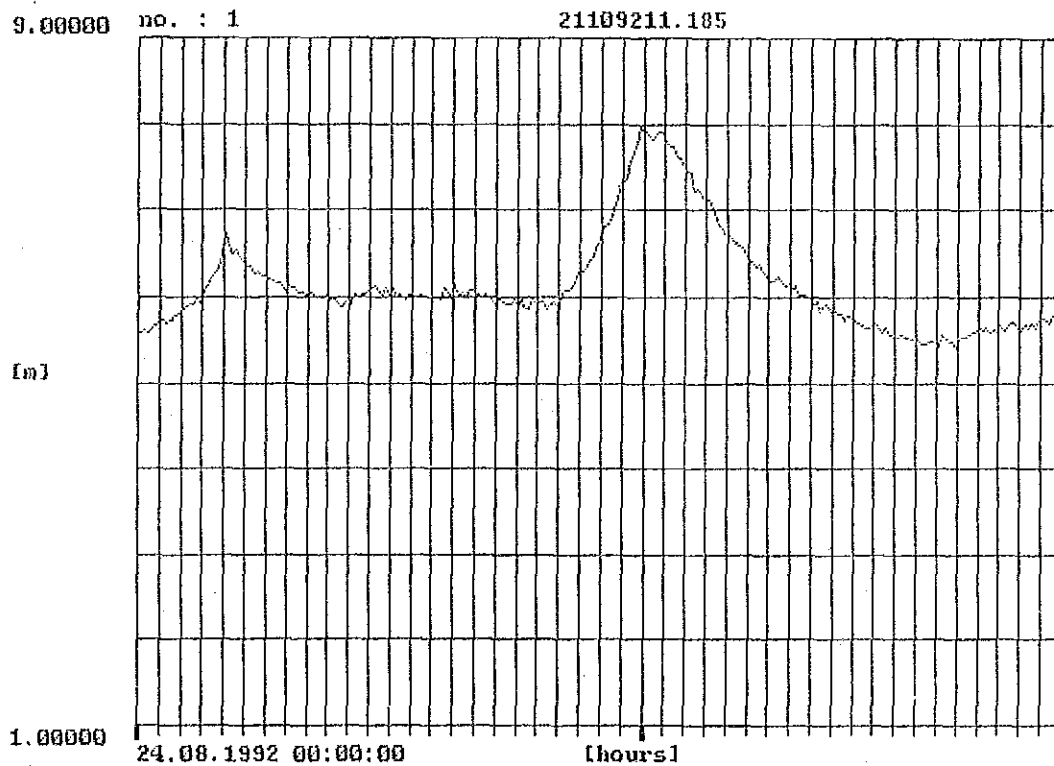
Water level from MDS-II Data logger of Pressure sensor at Kalleri on July 23-25, 1992



Water level from MDS-II Data logger of Pressure sensor at Kalleri on July 31-August 2, 1992



Water level from MDS- II Data logger of Pressure sensor at Kalleri on August 14-15,1992



Water level from MDS- II Data logger of Pressure sensor at Kalleri on August 24-25,1992

