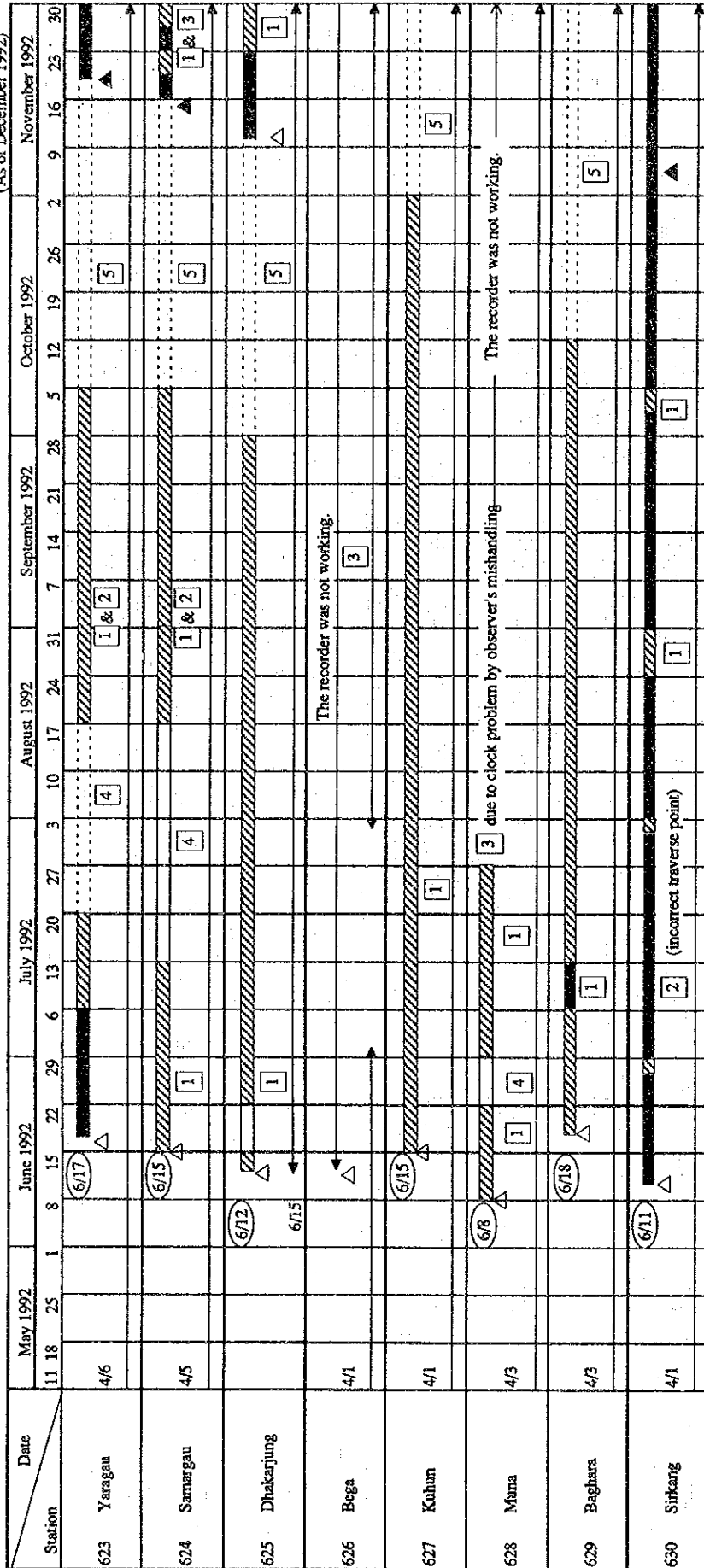


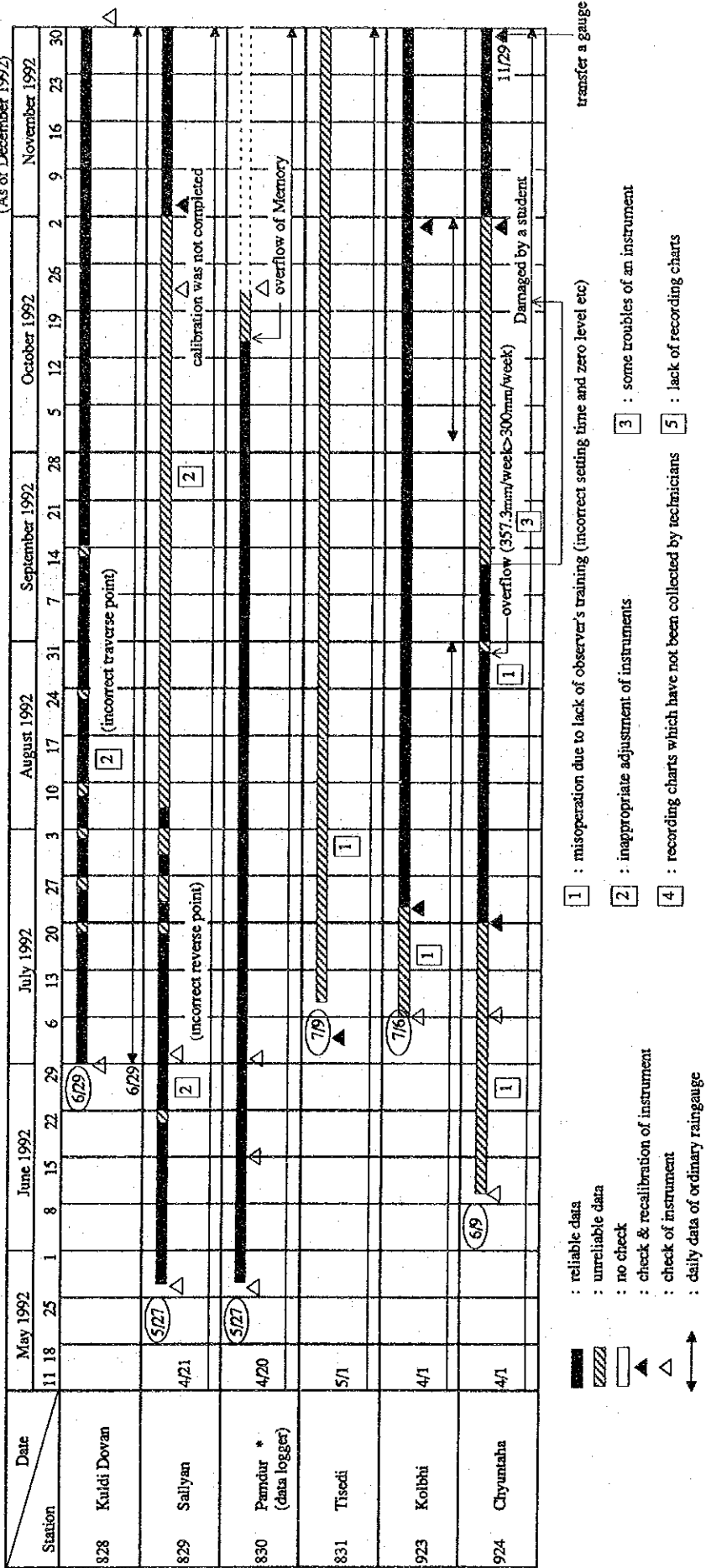
(Revised in June 1993)
(As of December 1992)



- █ : reliable data
 - ▨ : unreliable data
 - : no check
 - ▲ : check & recalibration of instrument
 - △ : check of instrument
 - ↔ : daily data of ordinary raingauge
- All recording gauges are weighing type ones.
- 1 : misoperation due to lack of observer's training (incorrect setting time and zero level etc)
 - 2 : inappropriate adjustment of instruments
 - 3 : some troubles of an instrument
 - 4 : recording charts which have not been collected by technicians
 - 5 : lack of recording charts

Fig. 10 STATUS OF RAINGAUGE RECORD (1/4)

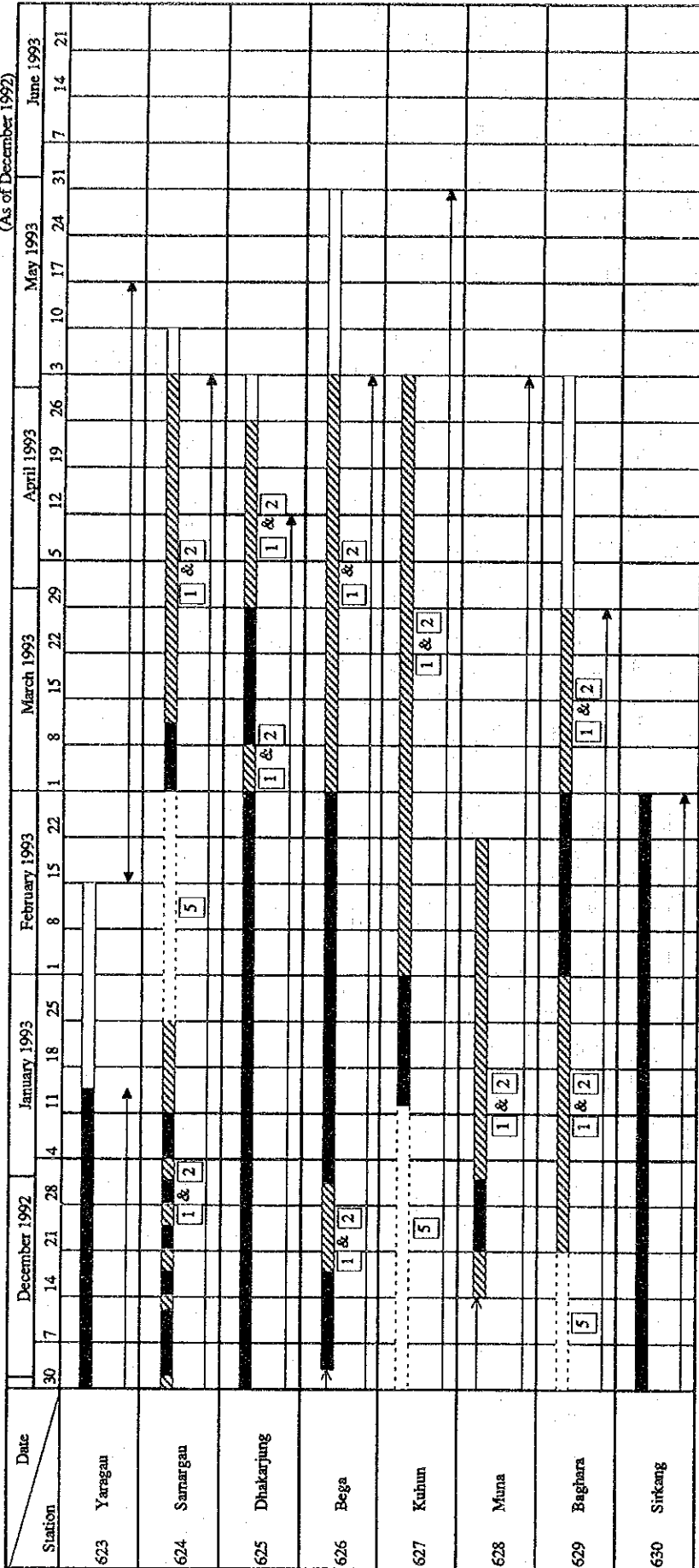
(Revised in June 1993)
(As of December 1992)



* All recording gauges are weighing type ones except No. 0830 at Pamdur, which is tipping bucket-type with data logger system.

FIG. 10 STATUS OF RAINGAUGE RECORD (2/4)

(Revised in June 1993)
(As of December 1992)



- : reliable data
 - ▨ : unreliable data
 - : no check
 - ▲ : check & recalibration of instrument
 - △ : check of instrument
 - ↔ : daily data of ordinary rain gauge
- All recording gauges are weighing type
- 1 : misoperation due to lack of observer's training (incorrect setting time and zero level etc)
 - 2 : inappropriate adjustment of instruments
 - 3 : some troubles of an instrument
 - 4 : recording charts which have not been collected by technicians
 - 5 : lack of recording charts

Fig. 10 STATUS OF RAINGAUGE RECORD (3/4)

(Revised in June 1993)
(As of December 1992)

| Station | March 1992 | | | April 1992 | | | May 1992 | | | June 1992 | | | July 1992 | | | August 1992 | | |
|-------------------------------|---|----|----|----------------|----|----|----------|----|------|-----------|----|----|-----------|----|----|-------------|--|--|
| | 1 | 10 | 20 | 31 | 10 | 20 | 31 | 10 | 20 | 31 | 10 | 20 | 31 | 10 | 20 | 31 | | |
| 403.5 Tatopani / Kali Gandaki | | | | 4/20 | | | (6/3) | | | | | | | | | | | |
| 406 Kalleri / Kali Gandaki | | | | (3/16) 3/15 | | | | | | | | | | | | | | |
| 410 Setubeni / Kali Gandaki | | | | | | | (3/18) | | | | | | | | | | | |
| 595 Chyuntaha / Jamuni River | | | | | | | 4/1 | | 4/20 | | | | | | | | | |
| | <div style="display: flex; justify-content: space-between;"> September 1992 October 1992 November 1992 December 1992 </div> | | | | | | | | | | | | | | | | | |
| 403.5 Tatopani / Kali Gandaki | | | | | | | | | | | | | | | | | | |
| 406 Kalleri / Kali Gandaki | | | | | | | | | | | | | | | | | | |
| 410 Setubeni / Kali Gandaki | | | | | | | | | | | | | | | | | | |
| 595 Chyuntaha / Jamuni River | | | | | | | | | | | | | | | | | | |

Remarks:
Gauge well was out of working due to sand

pressure type gauge with recorder

pressure type gauge with data logger

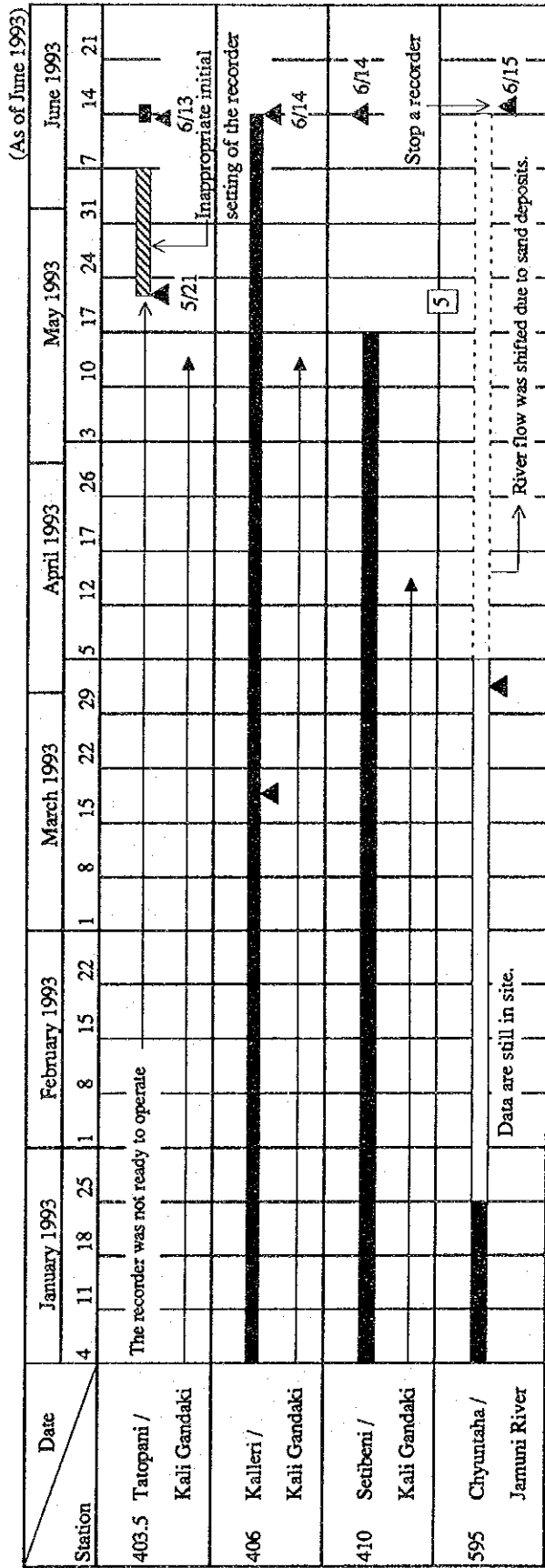
pressure type gauge with recorder

float type gauge with recorder

Note: ■ : reliable data
 ▨ : unreliable data
 □ : not yet checked
 ▲ : inspection of station (DHM & JICA)
 ↔ : staff gauge reading

1 : misoperation due to lack of observer's training (incorrect setting time and water level, misadjustment etc)
 2 : stop clock (for spring watch)
 3 : Low battery (for pressure sensor)
 4 : High water level was cut due to some machine trouble
 5 : Lack of recording chart

Fig. 11 STATUS OF WATER LEVEL GAUGE RECORD (1/2)



- Note:
- : reliable data
 - ▨ : unreliable data
 - : not yet checked
 - ▲ : inspection of station (DHM & JCA)
 - ↔ : staff gauge reading
- 1 : misoperation due to lack of observer's training (incorrect setting time and water level, misadjustment etc)
 - 2 : stop clock (for spring watch)
 - 3 : Low battery (for pressure sensor)
 - 4 : High water level was cut due to some machine trouble
 - 5 : Lack of recording chart

Fig.11 STATUS OF WATER LEVEL GAUGE RECORD (2/2)

Fig. 12 PRECIPITATION NETWORK IN THE LONG TERM PROGRAMME

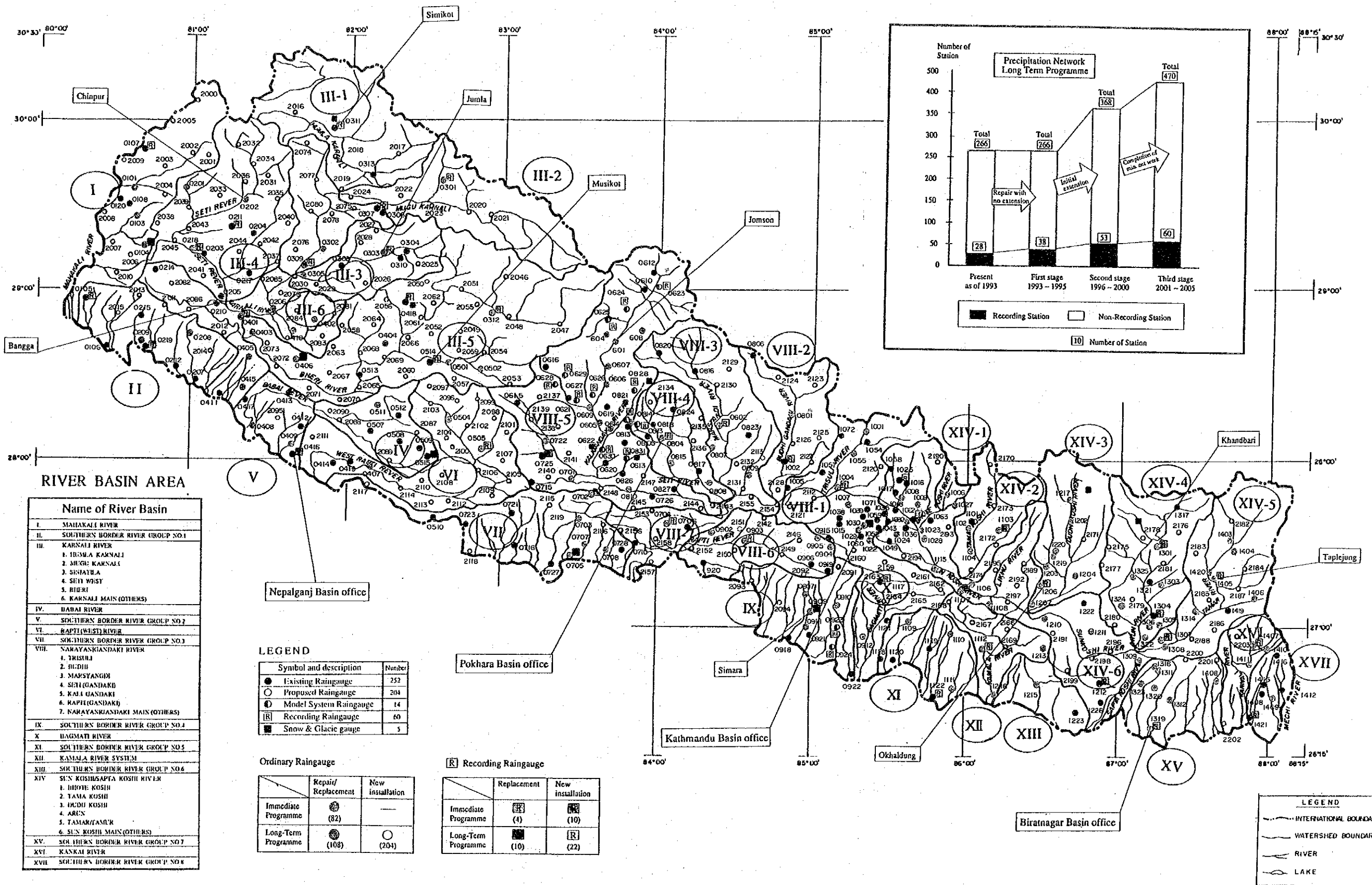
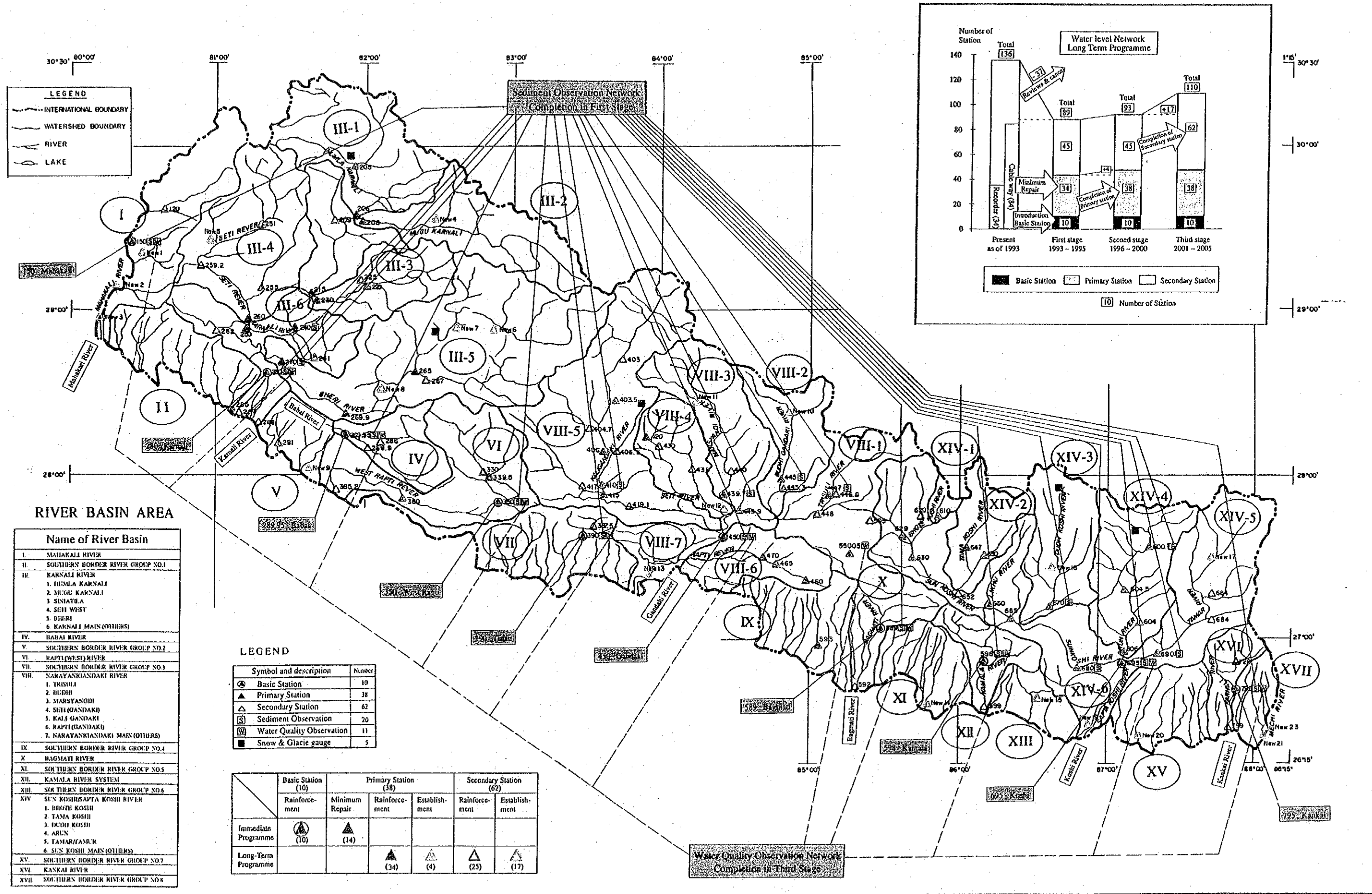


Fig. 13 HYDROMETRIC NETWORK IN THE LONG TERM PROGRAMME



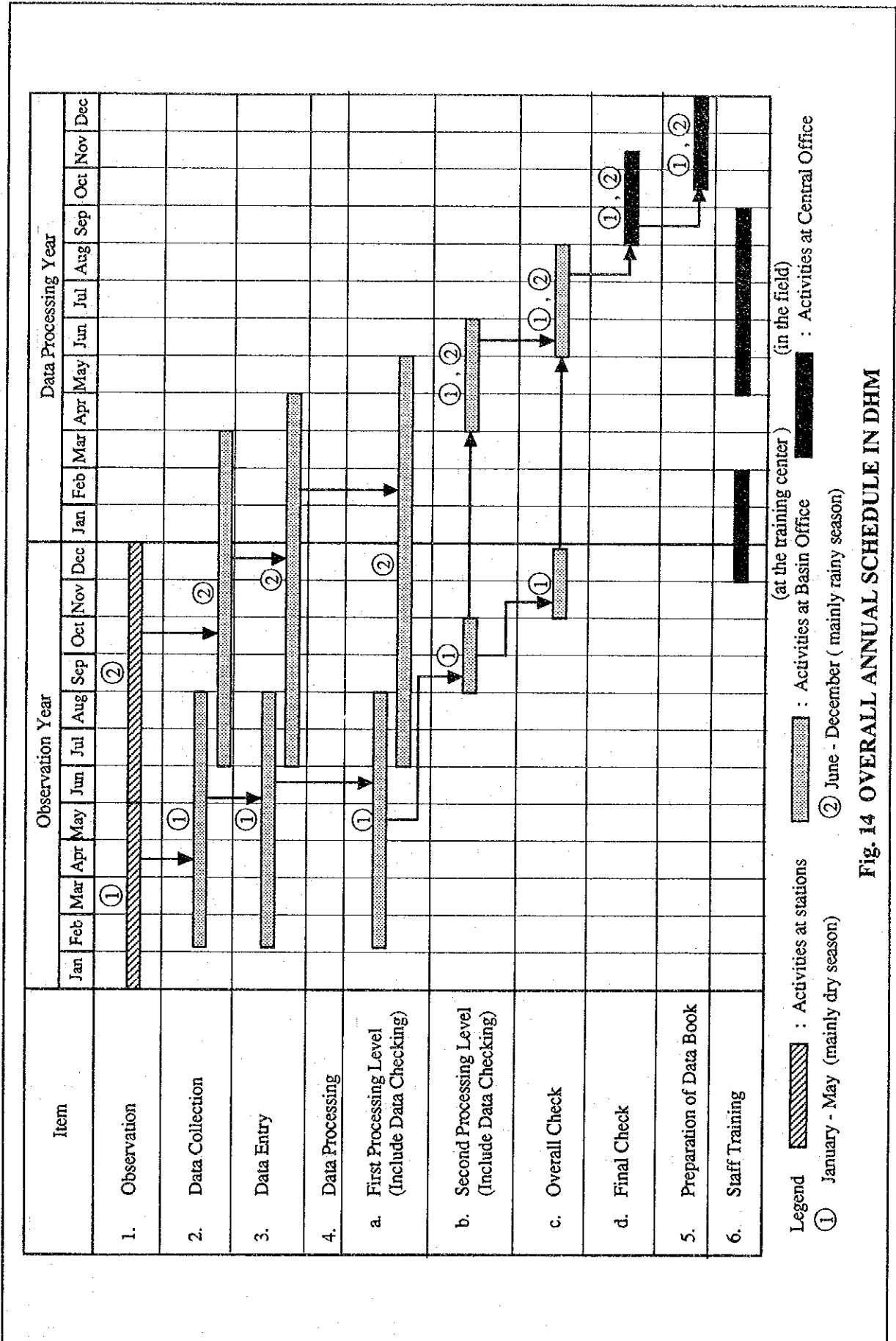


Fig. 14 OVERALL ANNUAL SCHEDULE IN DHM

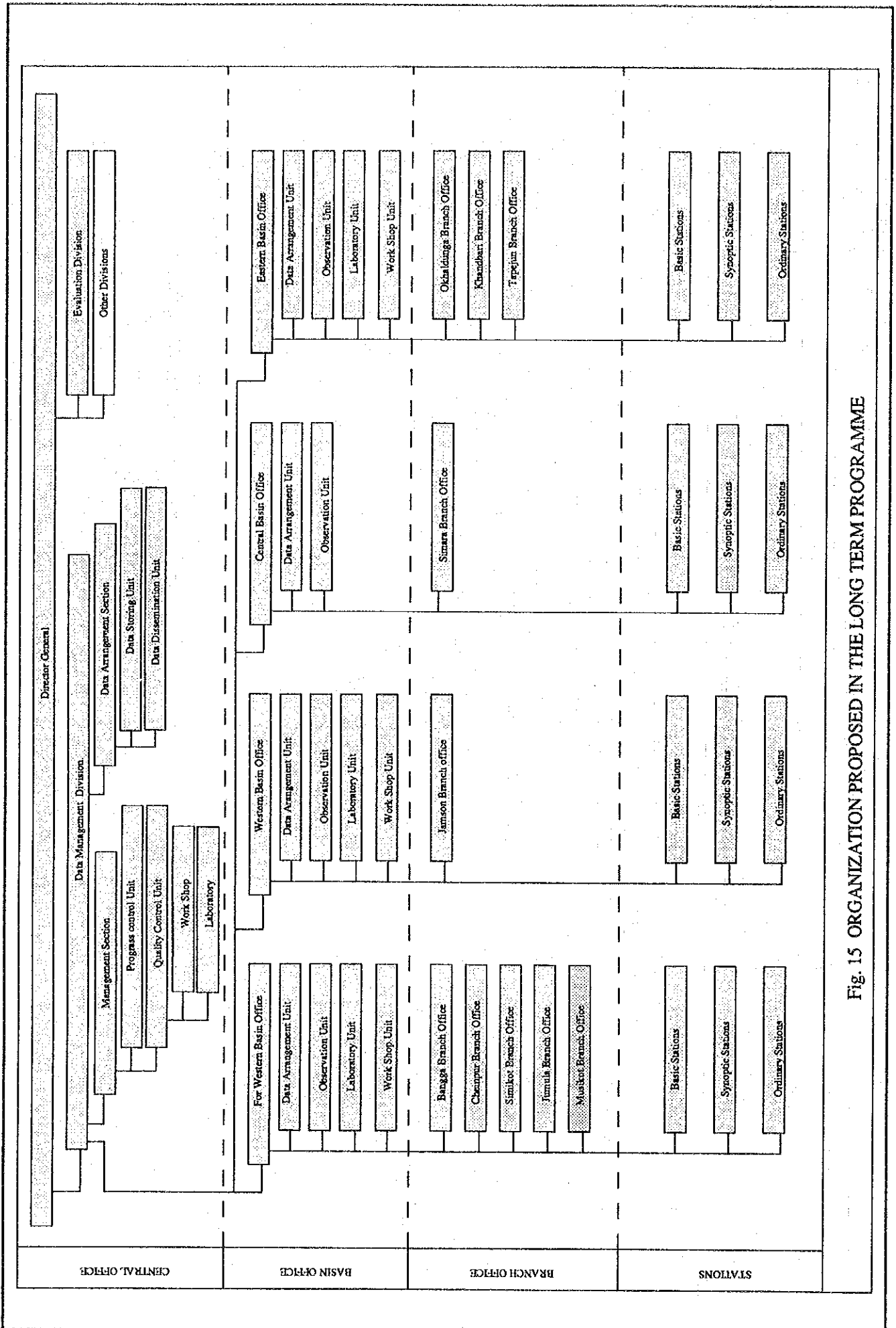


Fig. 15 ORGANIZATION PROPOSED IN THE LONG TERM PROGRAMME

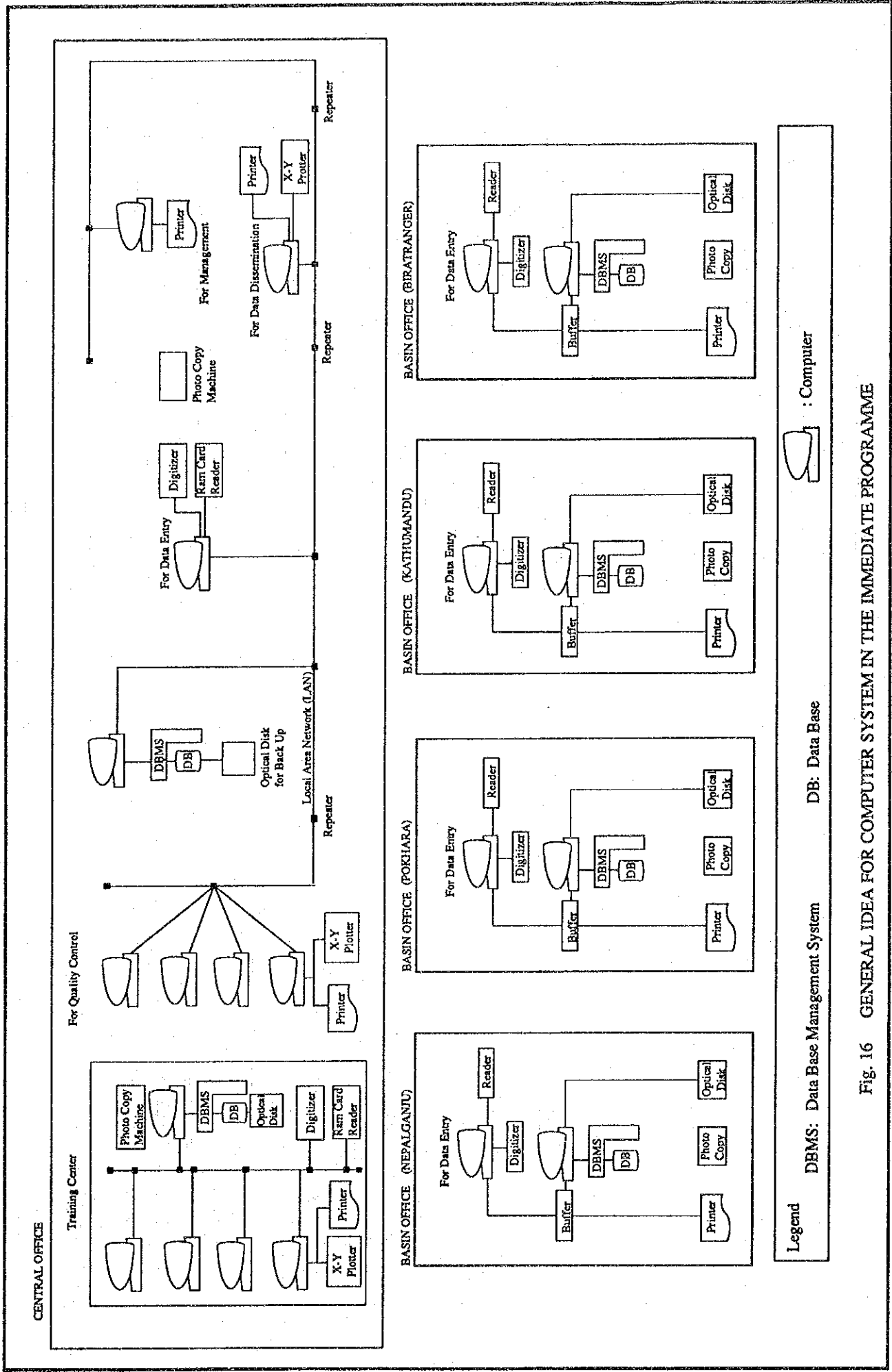


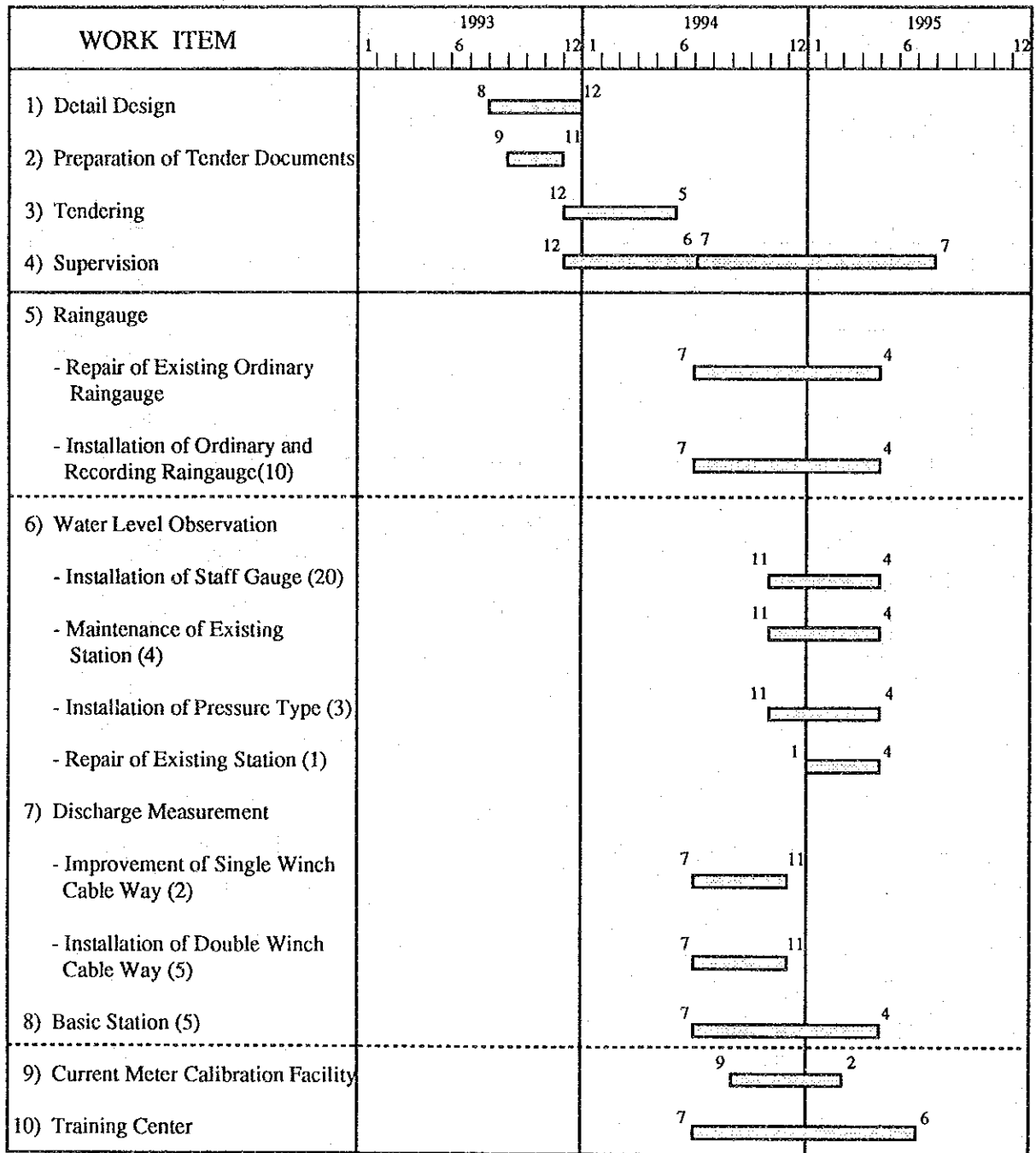
Fig. 16 GENERAL IDEA FOR COMPUTER SYSTEM IN THE IMMEDIATE PROGRAMME

Fig. 17 IMPLEMENTATION SCHEDULE OF OBSERVATION FOR THE IMMEDIATE PROGRAMME

| Item | Month | | | | | | | | | | | | | | | | | | | | | | | | | | | |
|---|-------|---|---|---|---------|---|---|---|------|----|----|----|---|---|---|---|---|---|---|---|---|----|----|----|--|--|--|--|
| | 1993 | | | | 1994 | | | | 1995 | | | | | | | | | | | | | | | | | | | |
| | 1 | 2 | 3 | 4 | 5 | 6 | 7 | 8 | 9 | 10 | 11 | 12 | 1 | 2 | 3 | 4 | 5 | 6 | 7 | 8 | 9 | 10 | 11 | 12 | | | | |
| 1.1 Detail Design Civil work Instrument/workshop/Labo Tender | | | | | (8) | | | | (12) | | | | | | | | | | | | | | | | | | | |
| 1.2 Supervision Civil work Instrument/workshop/Labo | | | | | (1 M/M) | | | | (5) | | | | | | | | | | | | | | | | | | | |
| | | | | | | | | | | | | | | | | | | | | | | | | | | | | |
| 2.1 Installation of Raingauge | | | | | | | | | | | | | | | | | | | | | | | | | | | | |
| 2.2 Installation of Staff gauge/recording gauge Maintenance/Repair of gauge well | | | | | | | | | | | | | | | | | | | | | | | | | | | | |
| 2.3 Installation of Double winch cable way | | | | | | | | | | | | | | | | | | | | | | | | | | | | |
| 2.4 Repair of Single winch cable way | | | | | | | | | | | | | | | | | | | | | | | | | | | | |
| 2.5 Office building | | | | | | | | | | | | | | | | | | | | | | | | | | | | |
| 2-6 Calibration facility for current meter | | | | | | | | | | | | | | | | | | | | | | | | | | | | |
| 2-7 Training Center | | | | | | | | | | | | | | | | | | | | | | | | | | | | |
| 3-1 Training by foreign expert | | | | | | | | | | | | | | | | | | | | | | | | | | | | |
| - Overall Observation System | | | | | | | | | | | | | | | | | | | | | | | | | | | | |
| - Calibration for current meter | | | | | | | | | | | | | | | | | | | | | | | | | | | | |
| - Sediment Observation | | | | | | | | | | | | | | | | | | | | | | | | | | | | |
| 3-2 Training in Instrument manufacture | | | | | | | | | | | | | | | | | | | | | | | | | | | | |

Note :  : Schedule on civil construction  : Schedule on training () : month

Fig. 19 CIVIL CONSTRUCTION SCHEDULE FOR IMMEDIATE PROGRAMME



Note; () shows the number of gauges.

JICA