

E4740

E4740.5

N1449

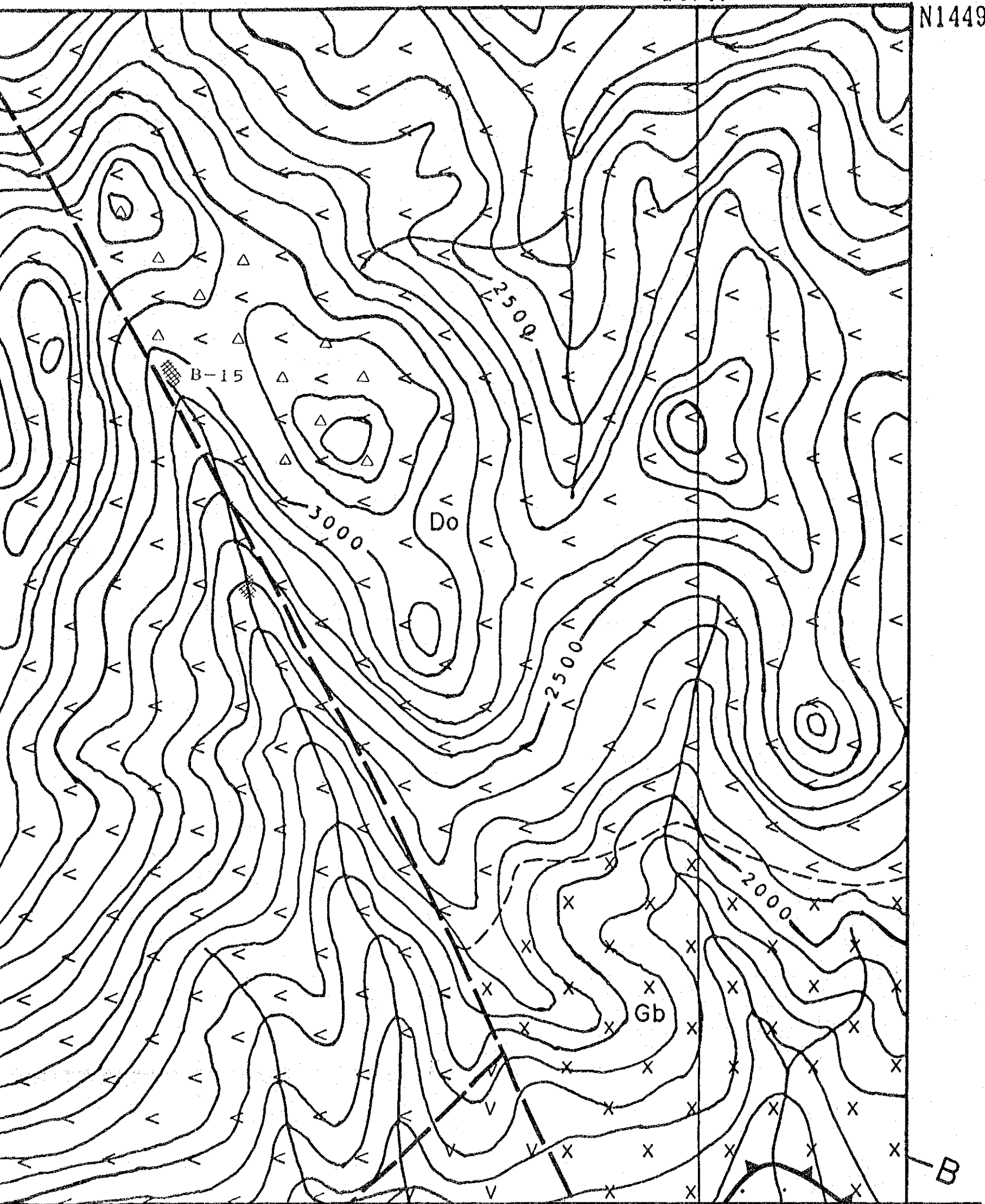
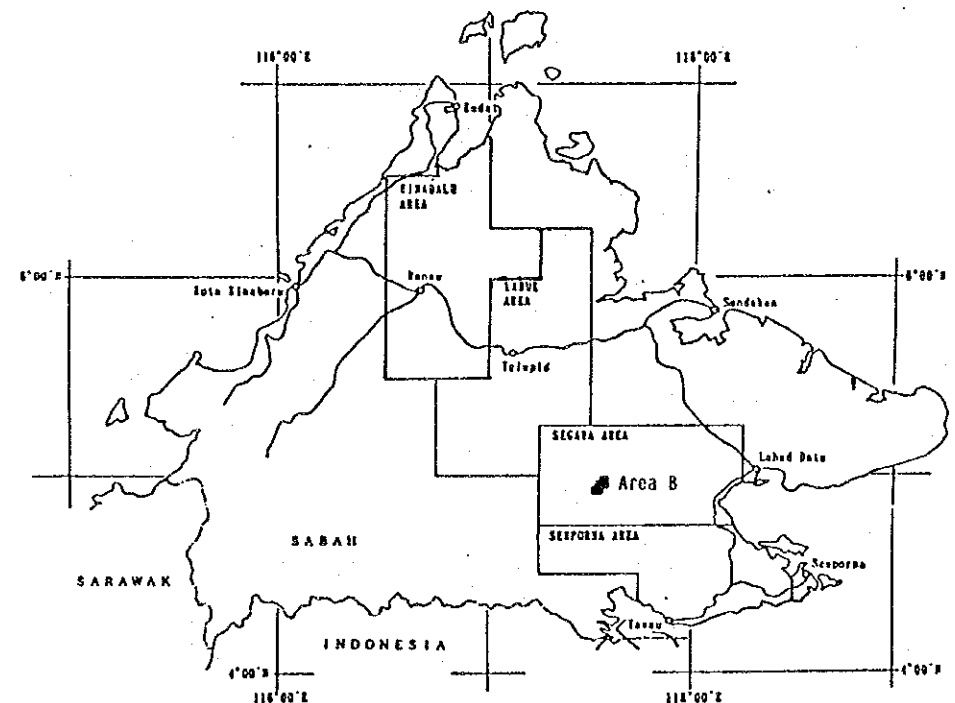


Plate II 21

MINERAL EXPLORATION:
 SUPRA-REGIONAL SURVEY IN
 CENTRAL SABAH, MALAYSIA
 PHASE IV

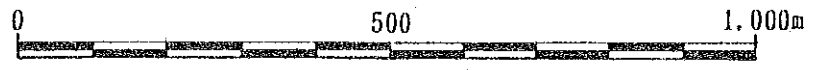
GEOLOGIC MAP AND
 CROSS SECTION OF
 AREA B

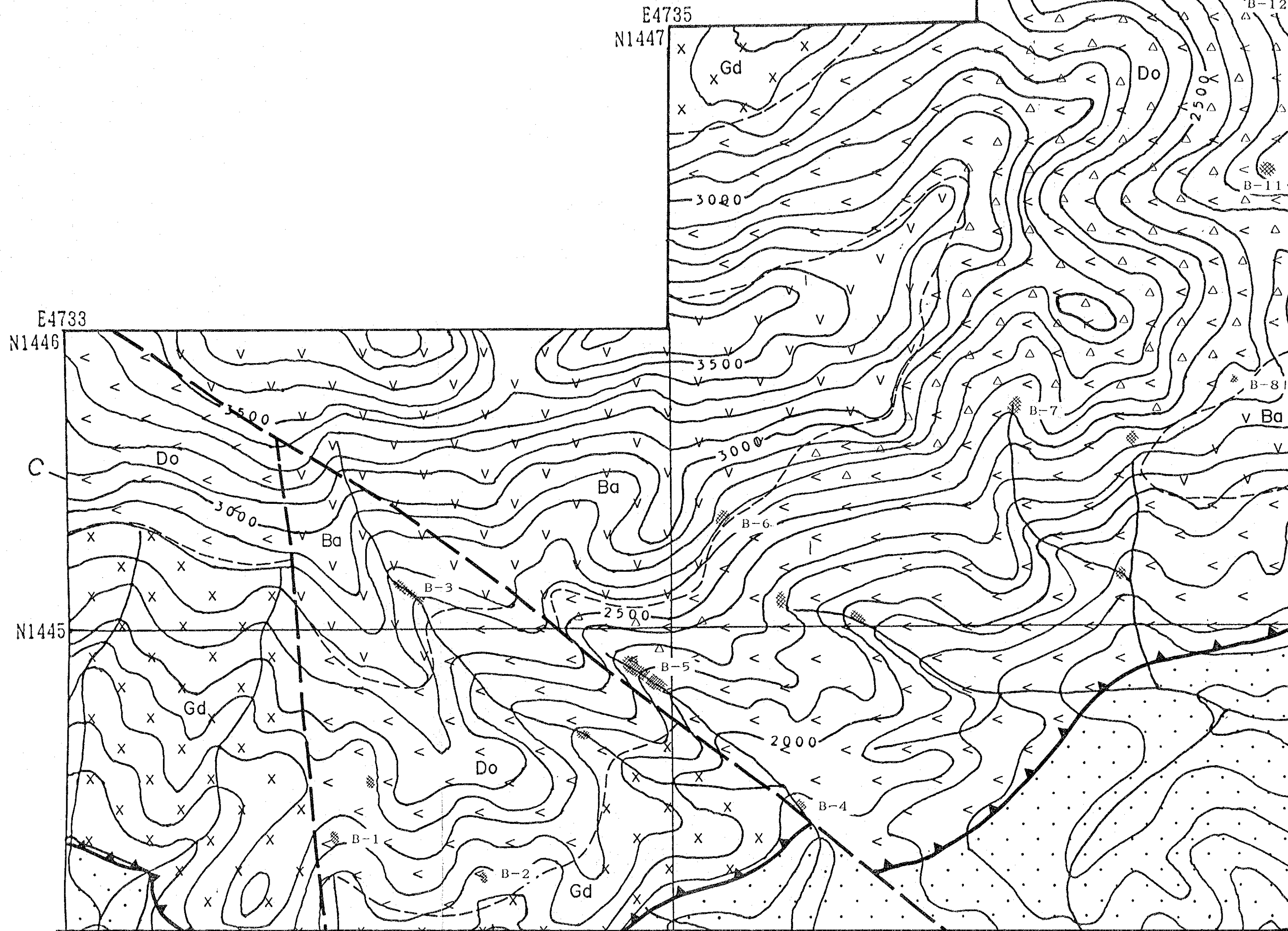
Scale 1:10,000

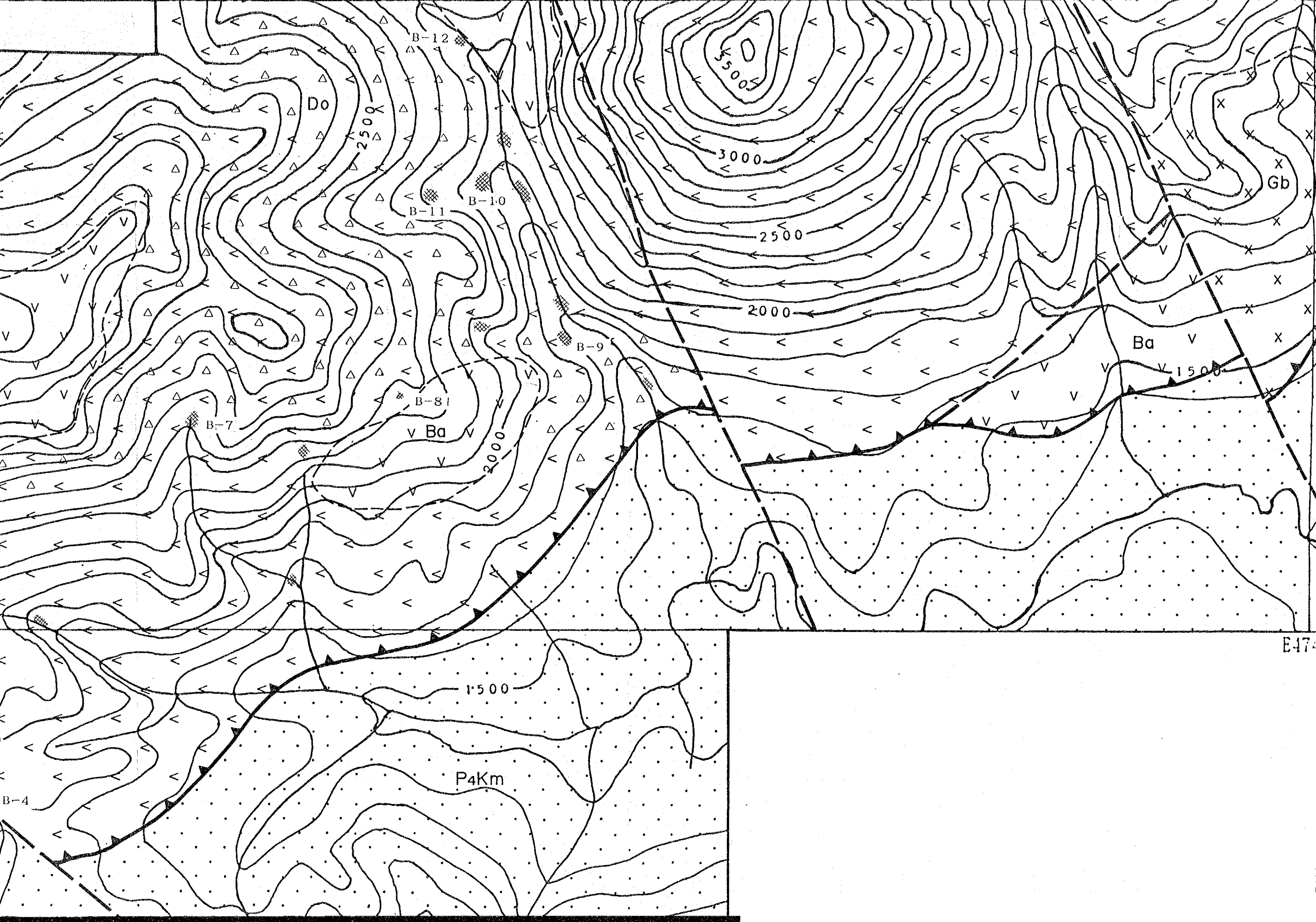


JAPAN INTERNATIONAL COOPERATION AGENCY
 METAL MINING AGENCY OF JAPAN

FEBRUARY, 1994







B-12

Do

2500

B-11

B-10

3500

3000

2500

2000

Ba

1500

Gb

B-8

Ba

2000

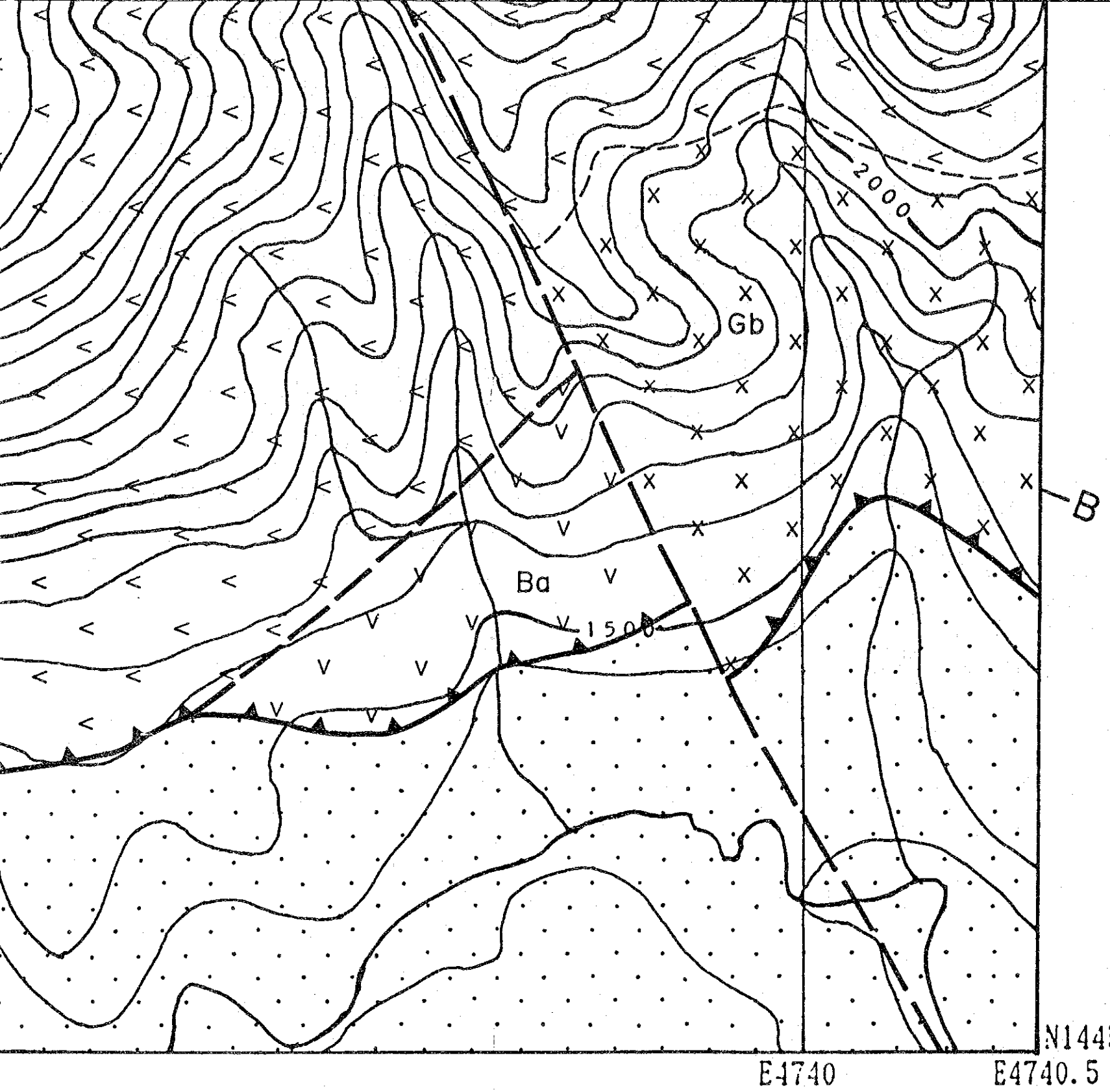
B-9

1500

P4Km

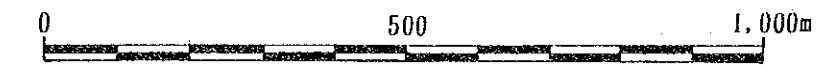
B-4

E-17

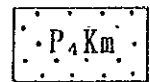
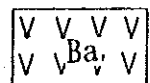
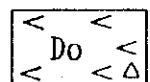
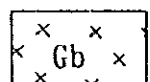






JAPAN INTERNATIONAL COOPERATION AGENCY
METAL MINING AGENCY OF JAPAN

FEBRUARY, 1994

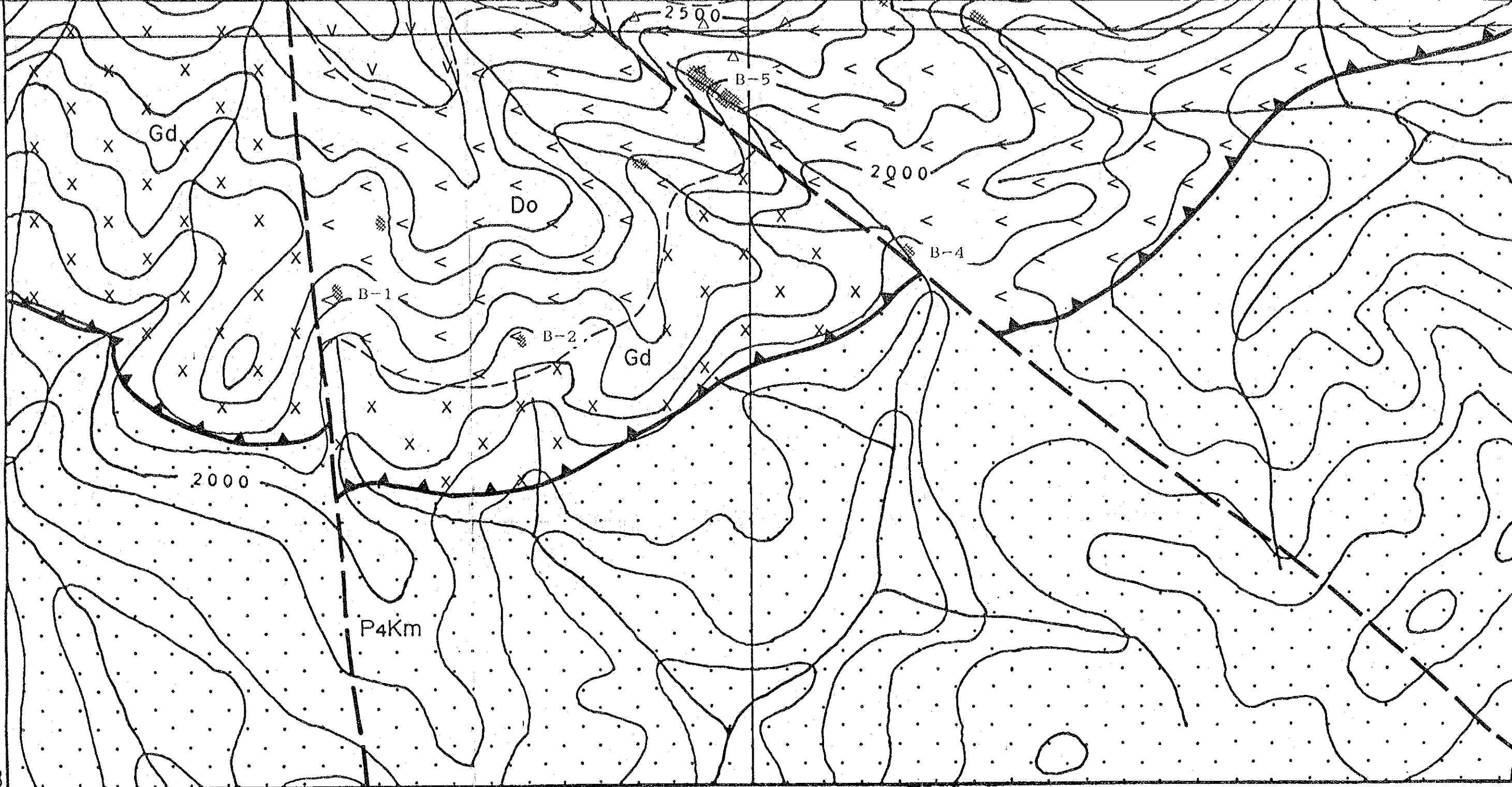


L E G E N D

- | | | |
|-------------------------------|---|--|
| Oligocene-
Middle Miocene |  | Kuamut Formation;
sandstone and mudstone. |
| Cretaceous-
Eocene |  | basalt. |
| |  | dolerite. |
| |  | brecciated dolerite (Δ). |
| Cretaceous-
Early Tertiary |  | gabbro. |
| |  | Thrust fault. |
| |  | Fault. |
| |  | Mineral showing. |

N1445
E4740 E4740.5

N1445

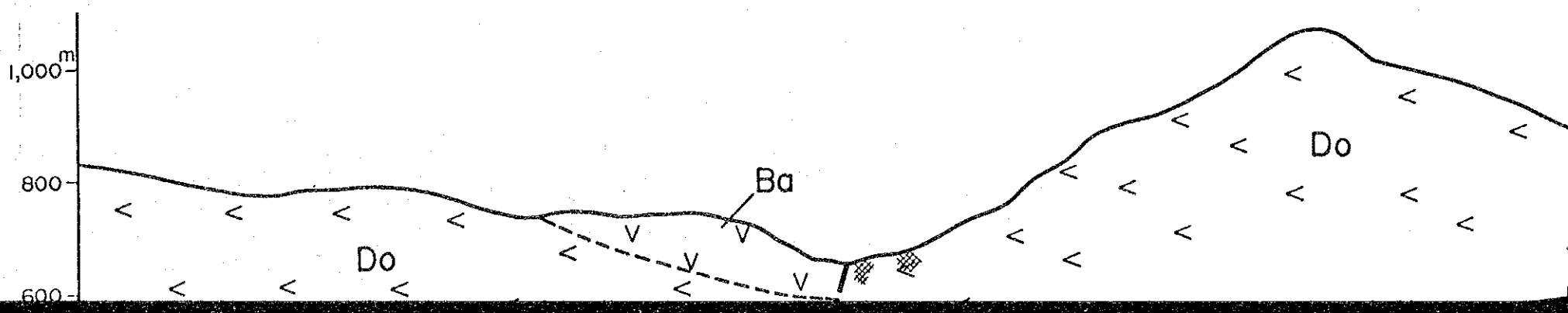


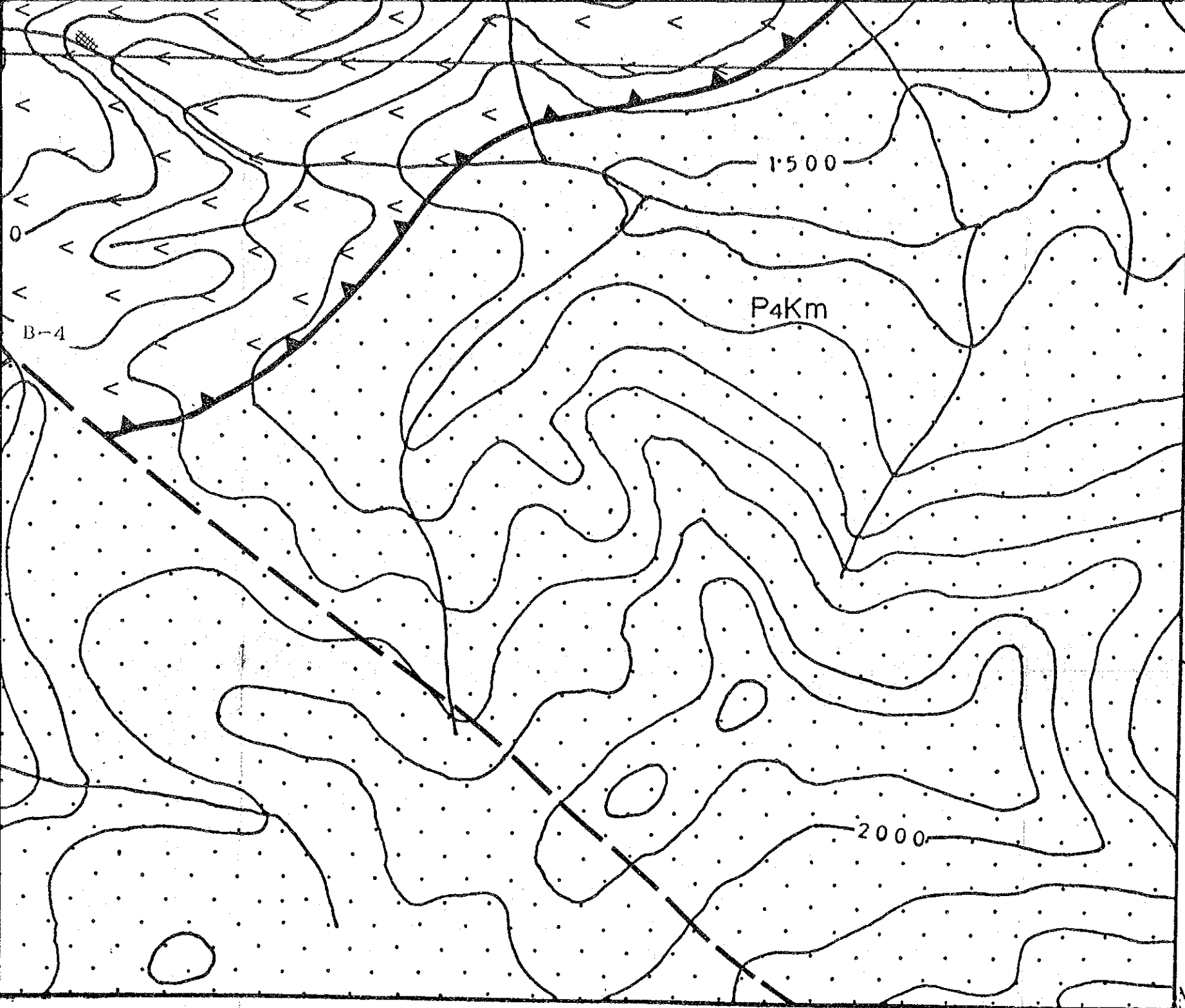
N1443

E4733

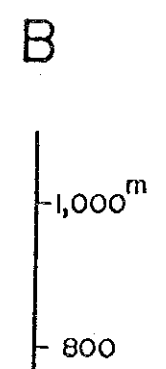
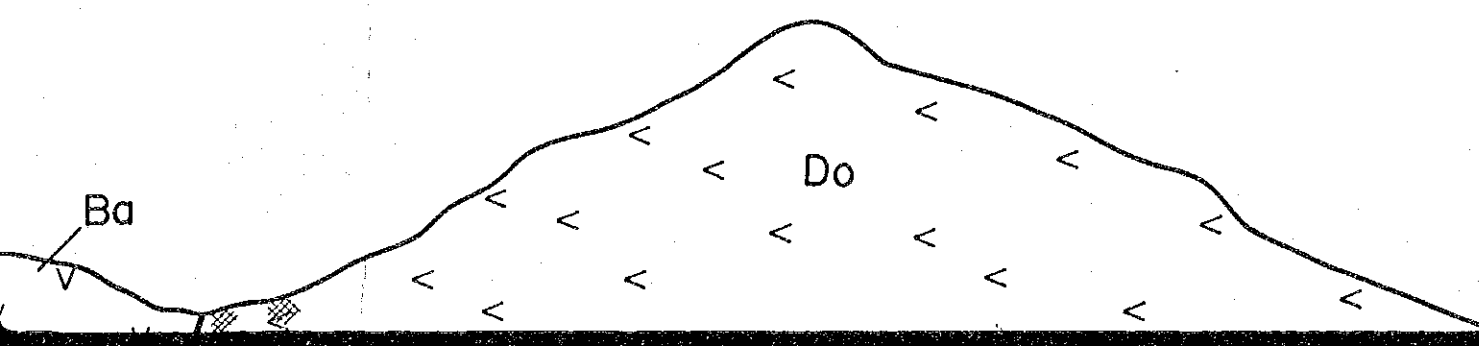
E4735

A





N1443
E4738



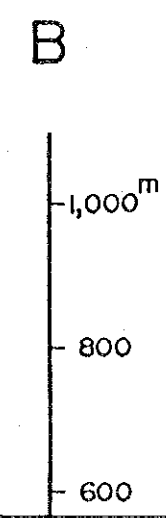
E4

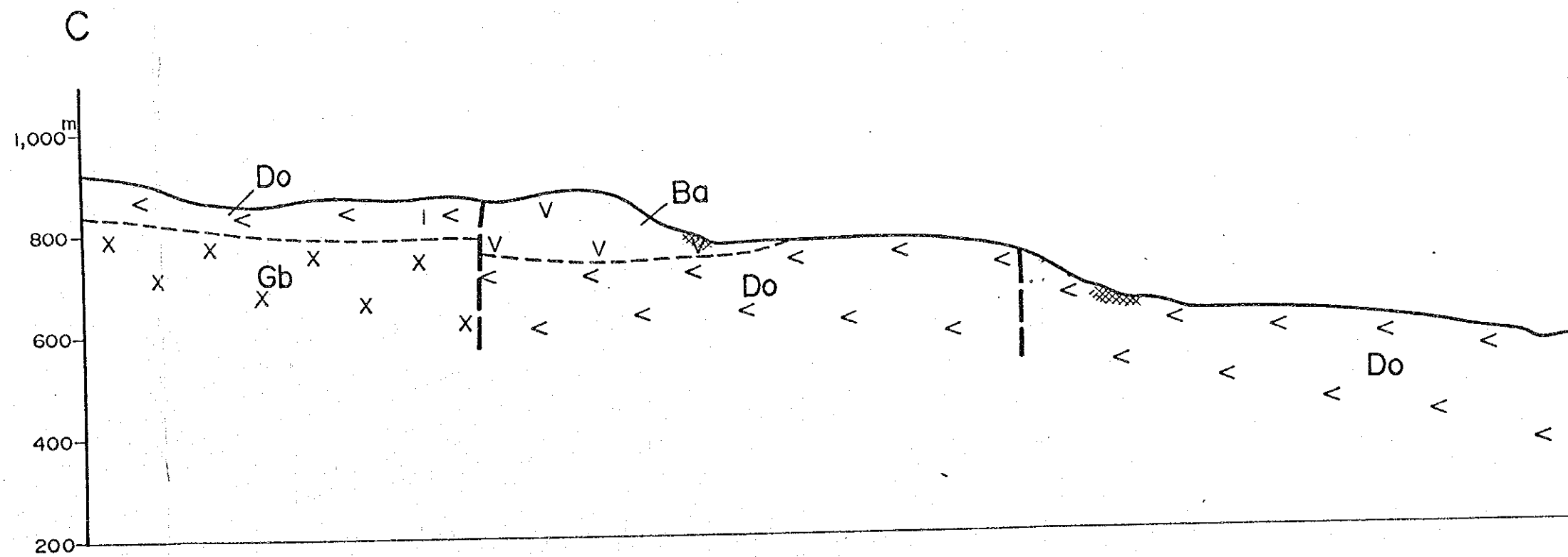
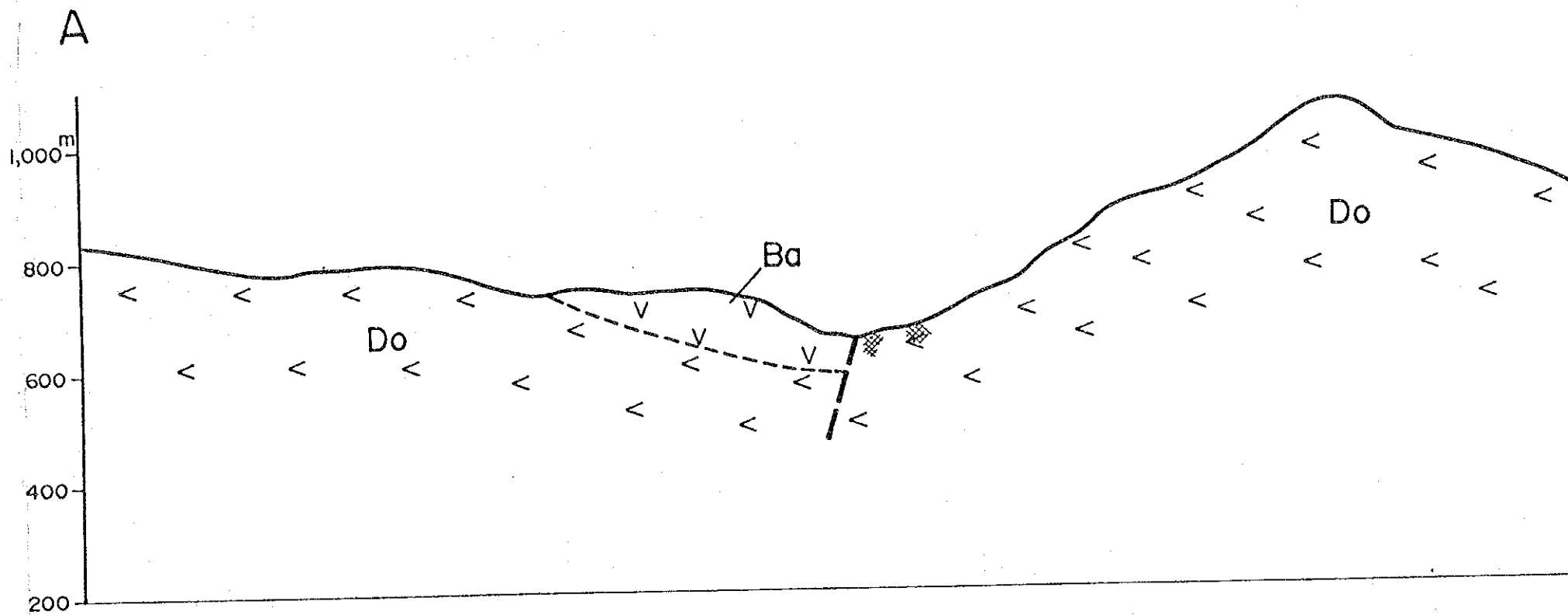
E4740

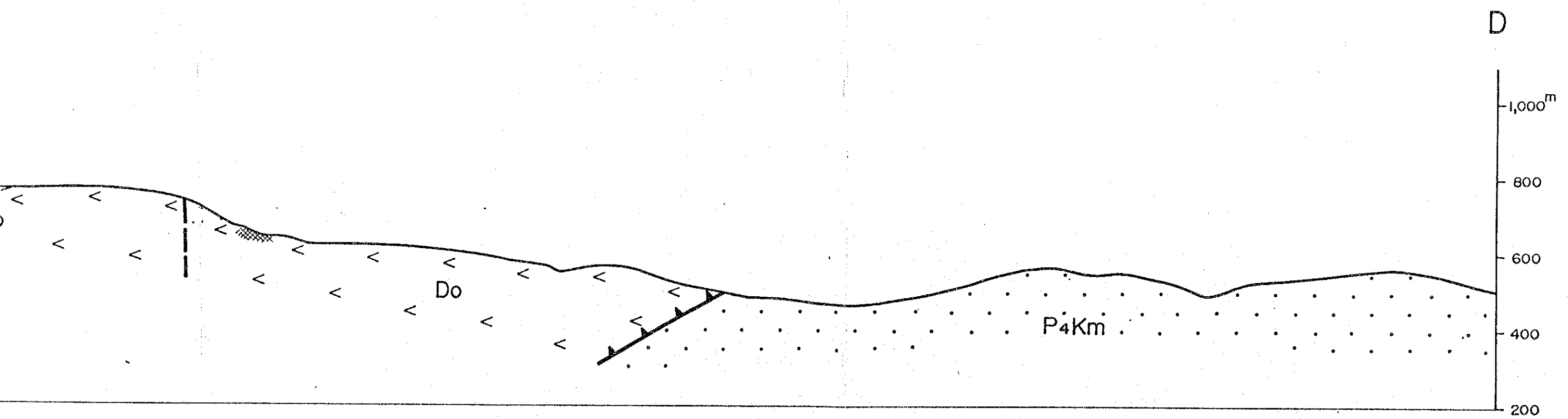
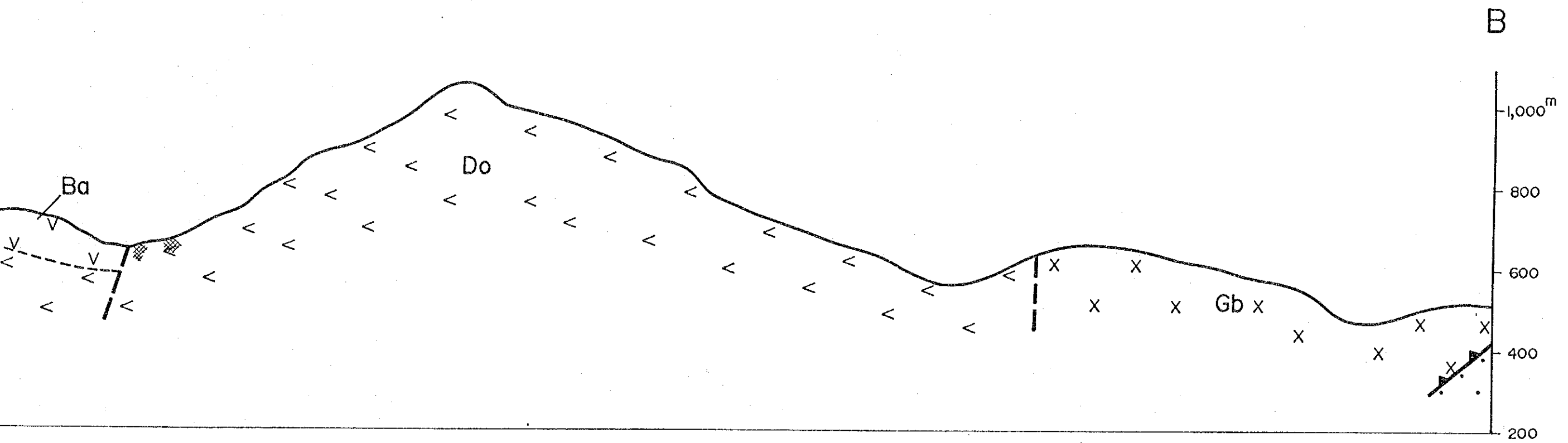
E4740.5

N1445

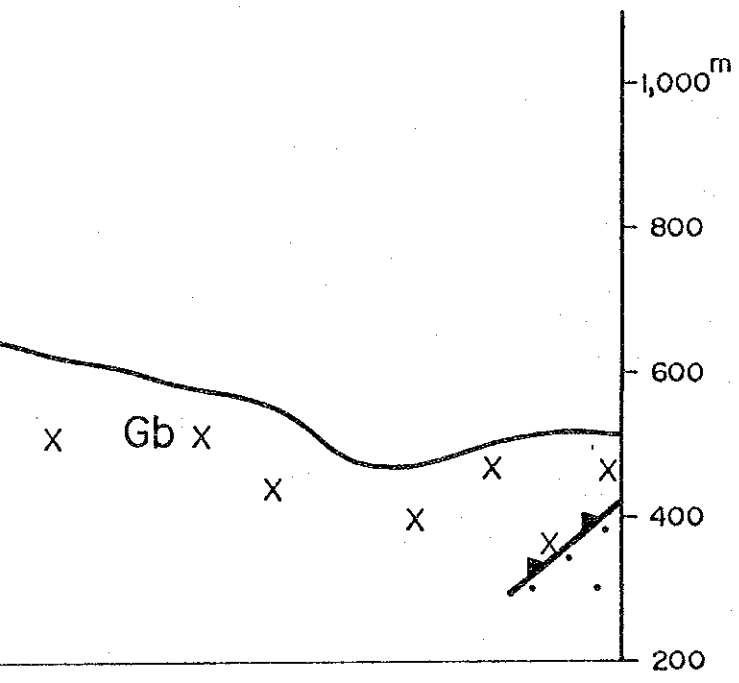
Normal fault.
Fault.
Mineral showing.



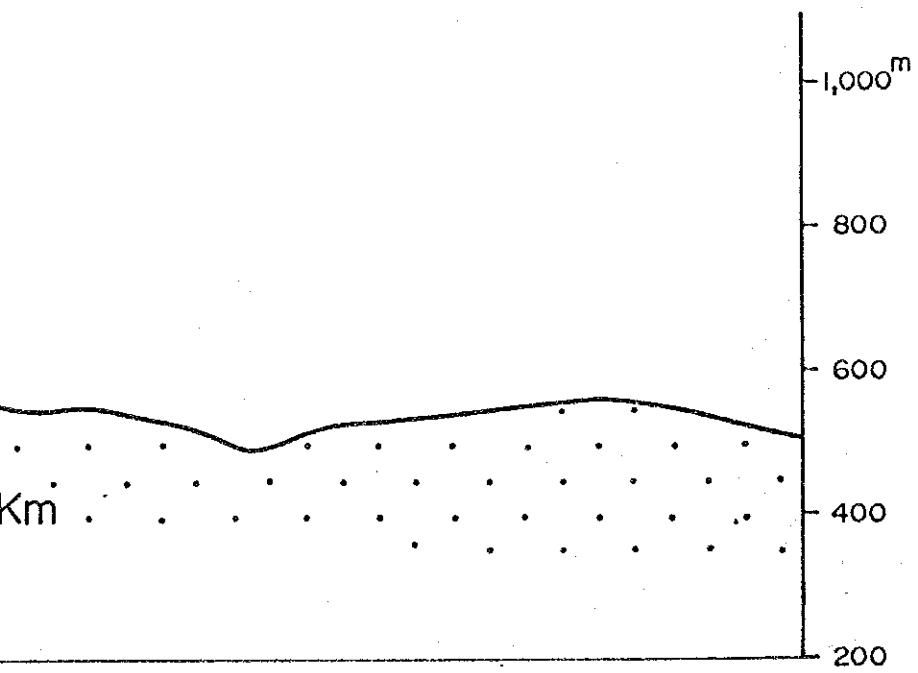




B



D



JICA