

Kpg Bangkud

Bt Tumpang

Bt Kotud

BT-20

BT-38

BT-43

BT-41

BT-42

BT-44

BT-46

BT-45

BT-47

BT-48

BT-49

BT-2

BT-11

BT-10

BT-7

BT-6

BT-5

BT-4

BT-3

BT-14

BT-16

BT-15

BT-13

BT-17

BT-58

BT-28

BT-2

BT-1

BT-9

Bangkut

Bangkut

Kpg Bangkud

8 km Quarters

7 km

6 km

5 km

4 km

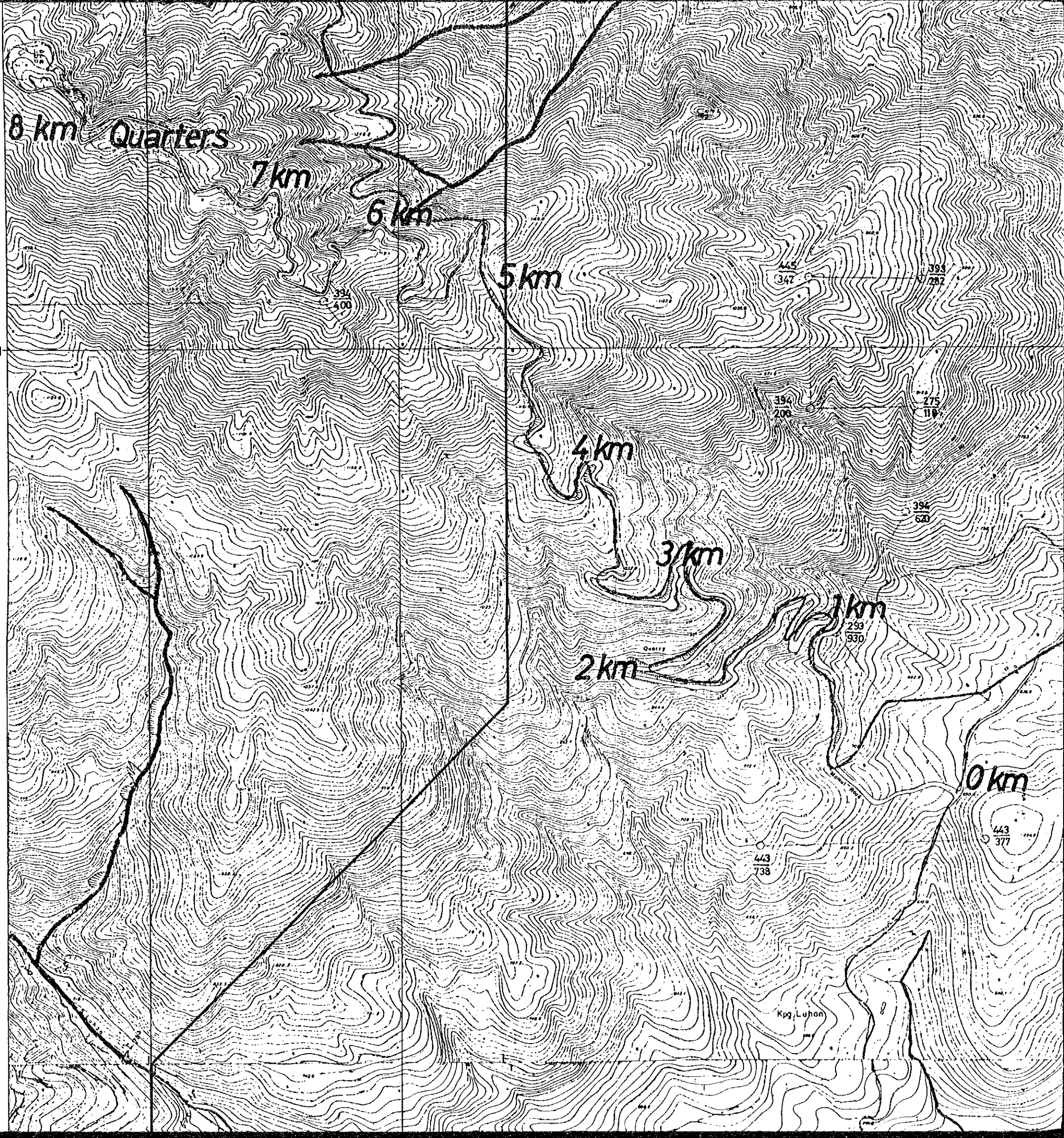
3 km

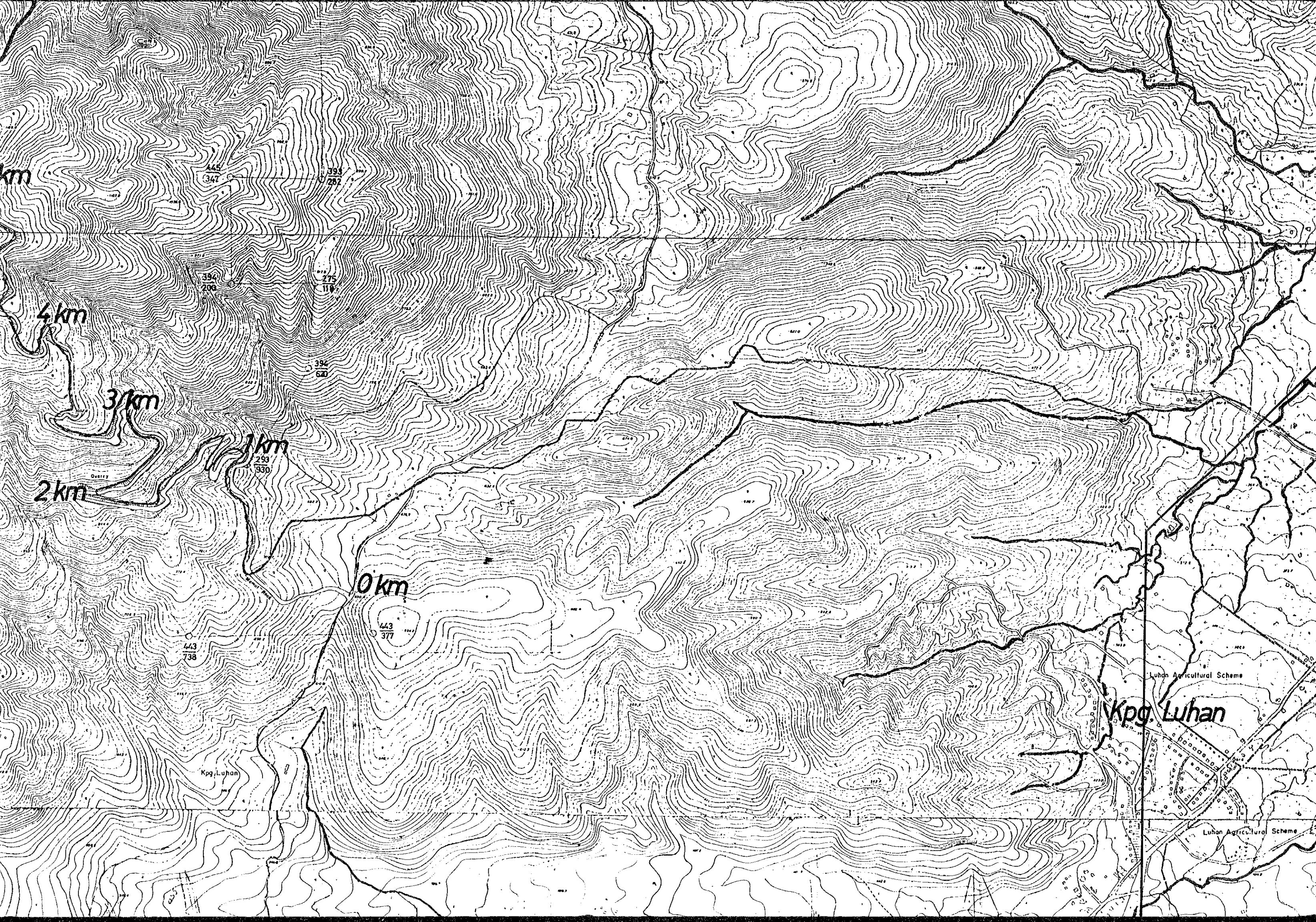
2 km

1 km

0 km

1,565,000N





km

4 km

3 km

1 km

2 km

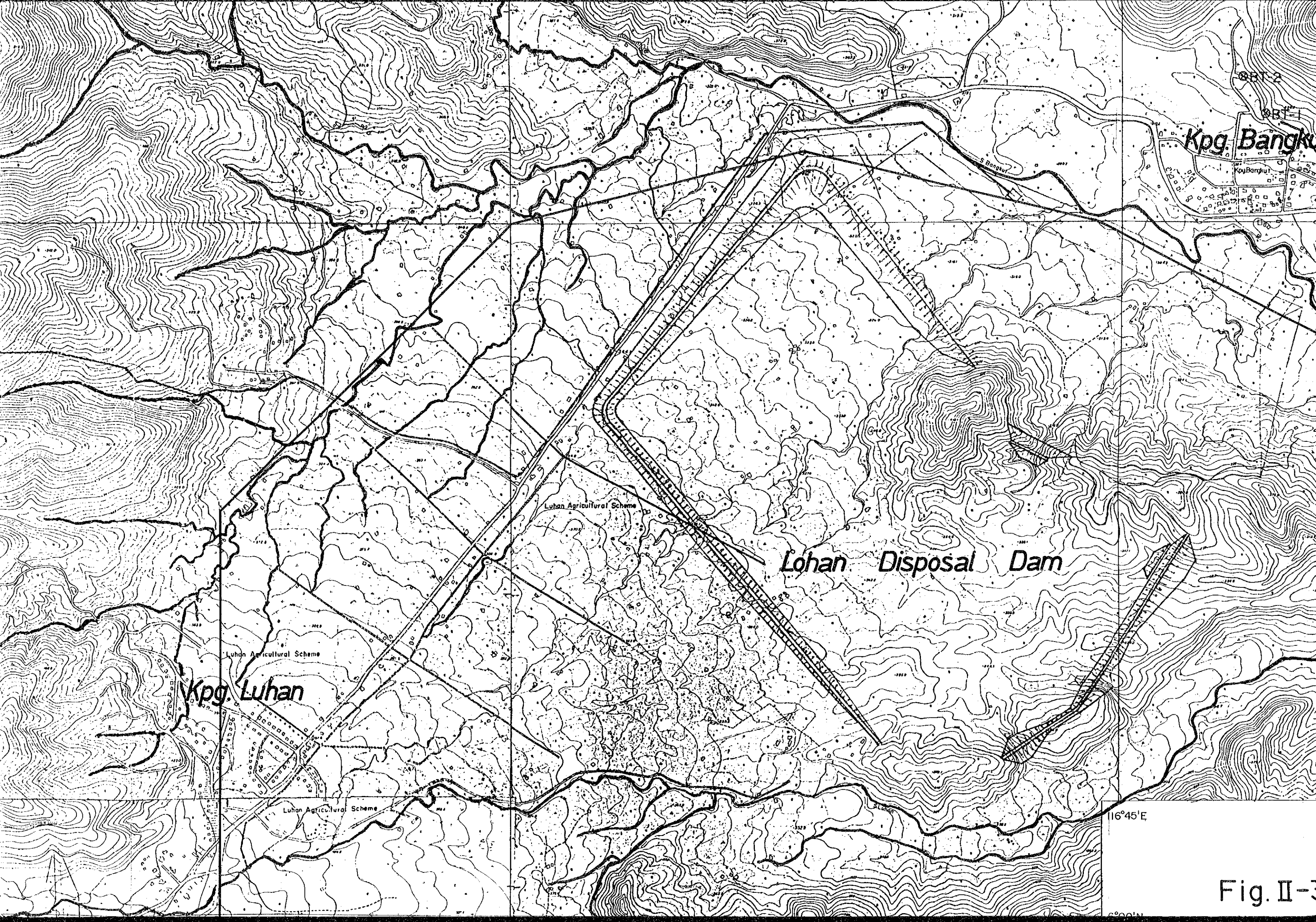
0 km

Kpg. Luhan

Luhon Agricultural Scheme

Luhon Agricultural Scheme

Kpg. Luhan



Kpg. Bangku

Lohan Agricultural Scheme

Lohan Agricultural Scheme

Kpg. Luhan

Lohan Agricultural Scheme

Lohan Disposal Dam

16°45'E

Fig. II-3

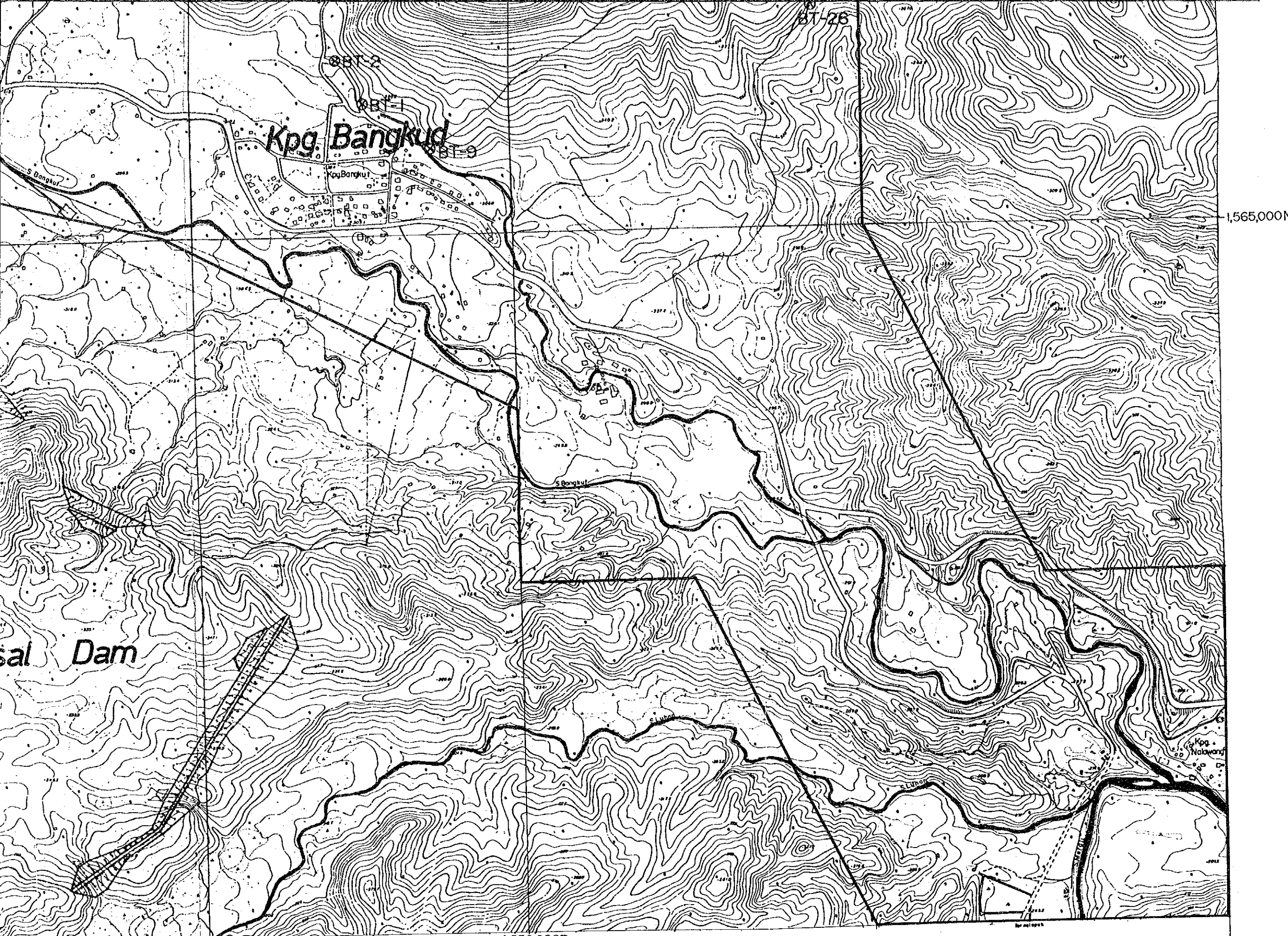
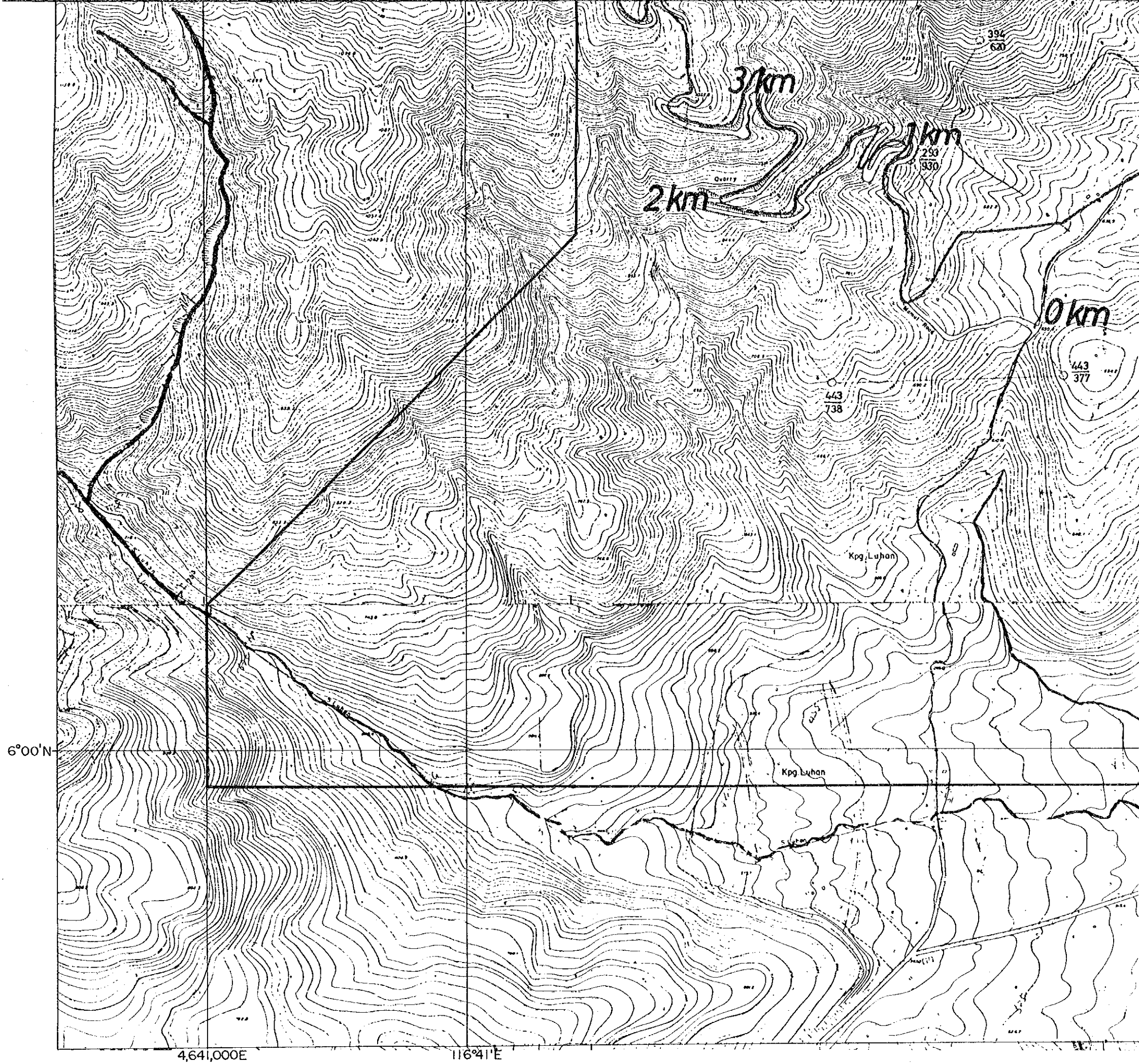
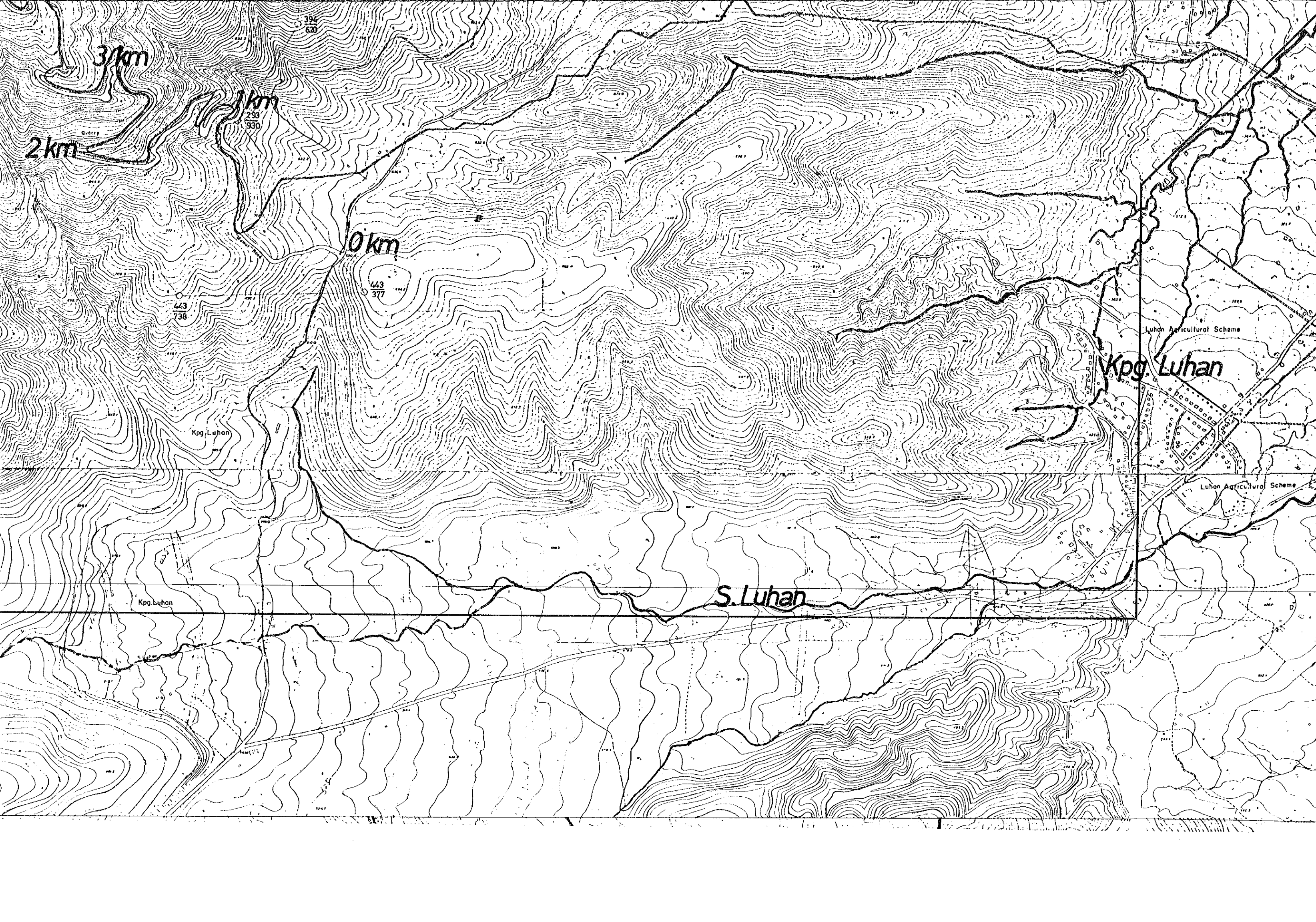


Fig. II-3 Locality Map of Mineral Occurrence
in Bt. Tampang-Ka. Poring Area





3/km

2 km

1 km

0 km

Kpg. Luhan

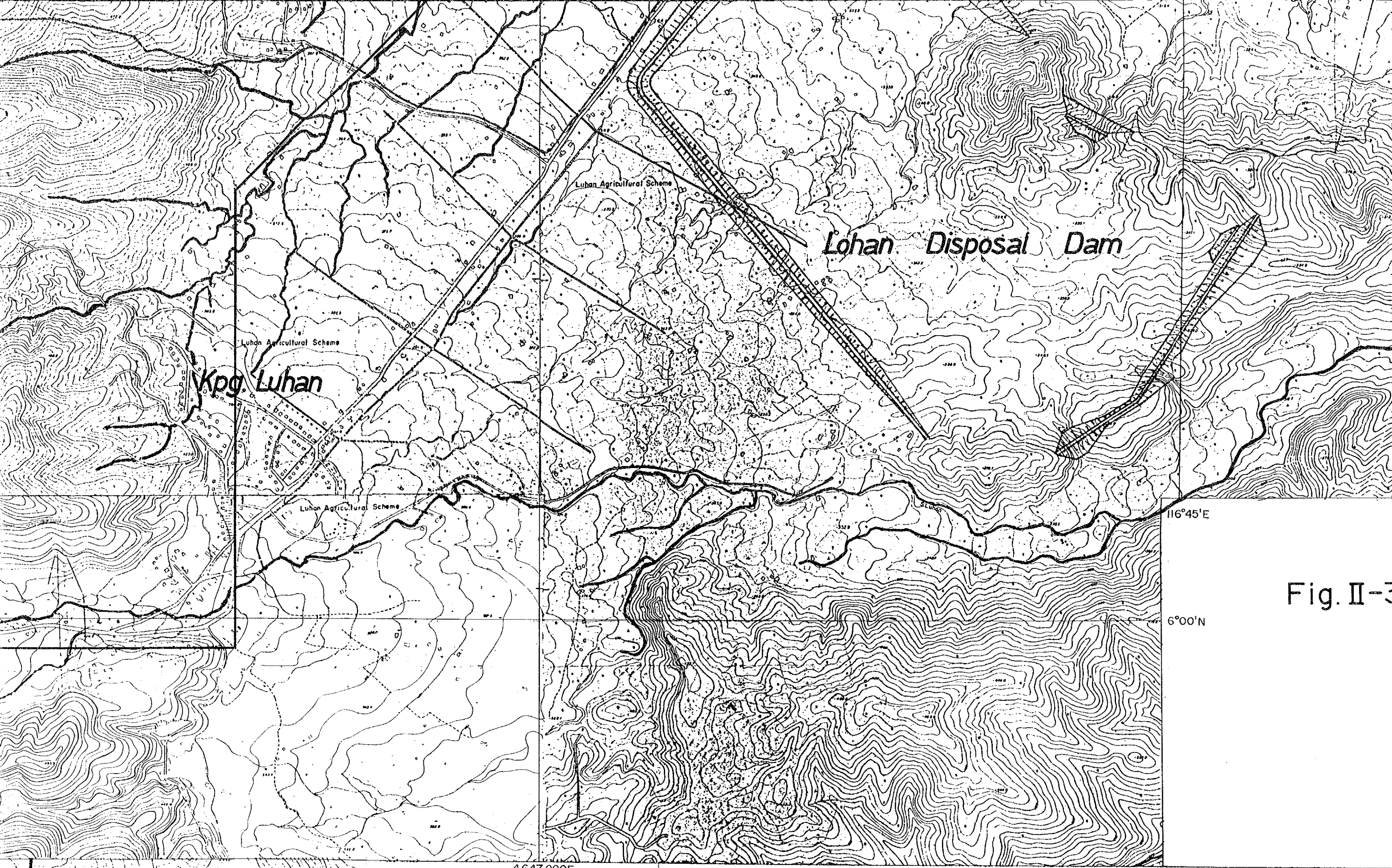
S. Luhan

Kpg. Luhan

Kpg. Luhan

Luhan Agricultural Scheme

Luhan Agricultural Scheme



Lohan Disposal Dam

Kpg. Luhan

Lohan Agricultural Scheme

Lohan Agricultural Scheme

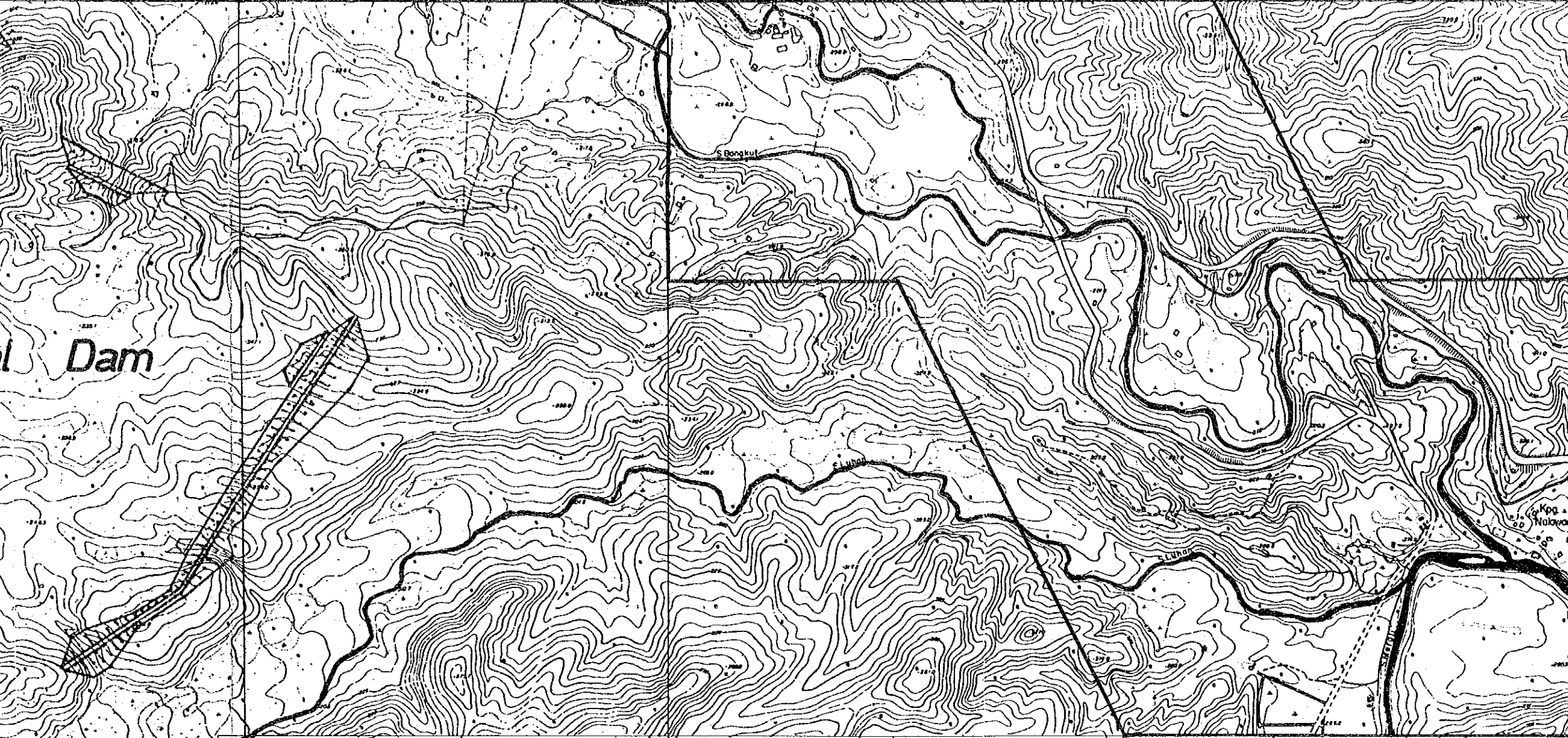
Lohan Agricultural Scheme

116°45'E

6°00'N

4,647,000E

Fig. II-3



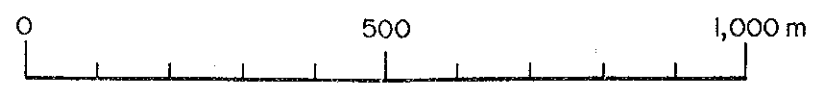
116°45'E

4,650,000E

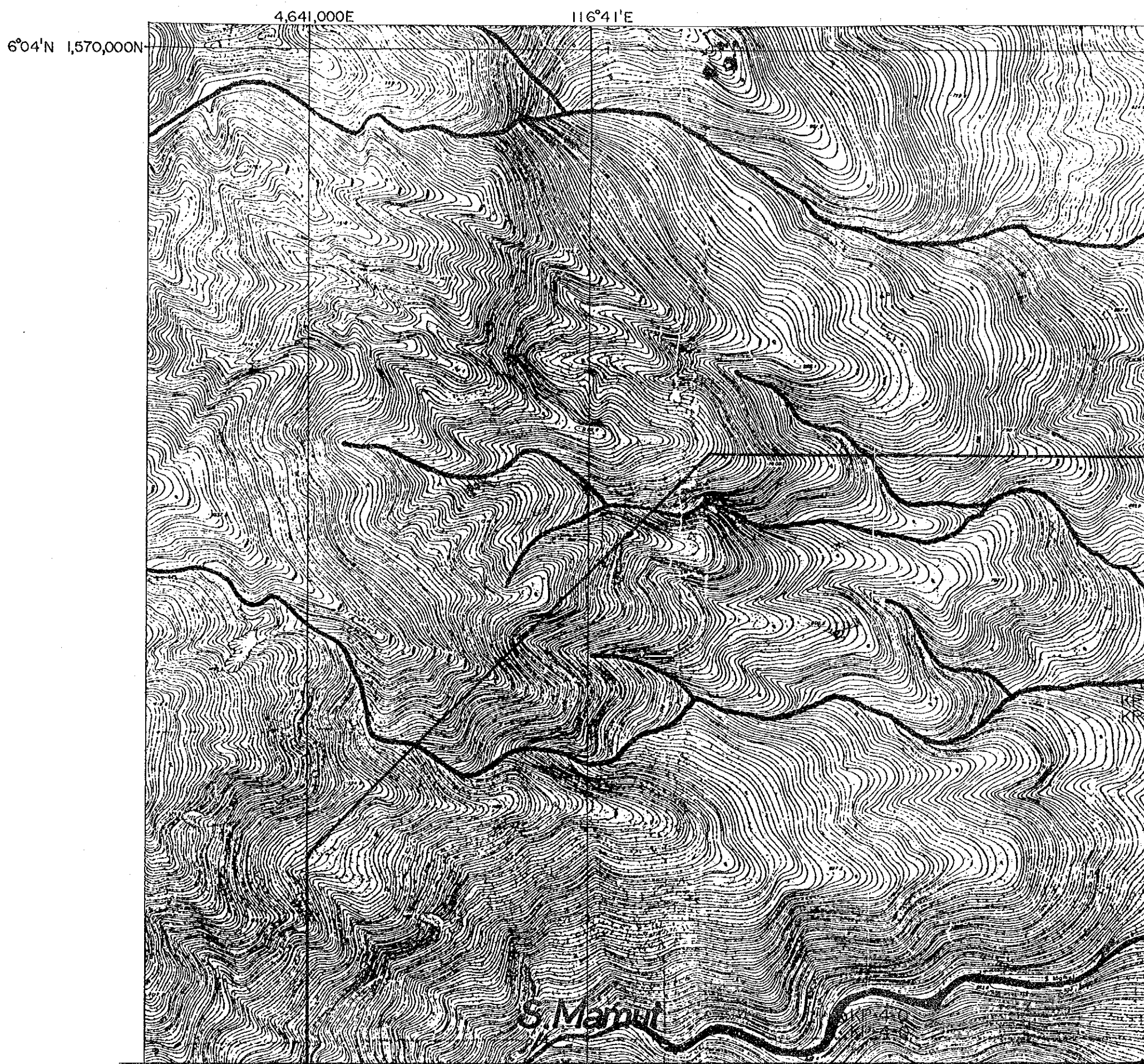
6°00'N

Fig. II-3 Locality Map of Mineral Occurrence
in Bt. Tampang-Kg. Poring Area

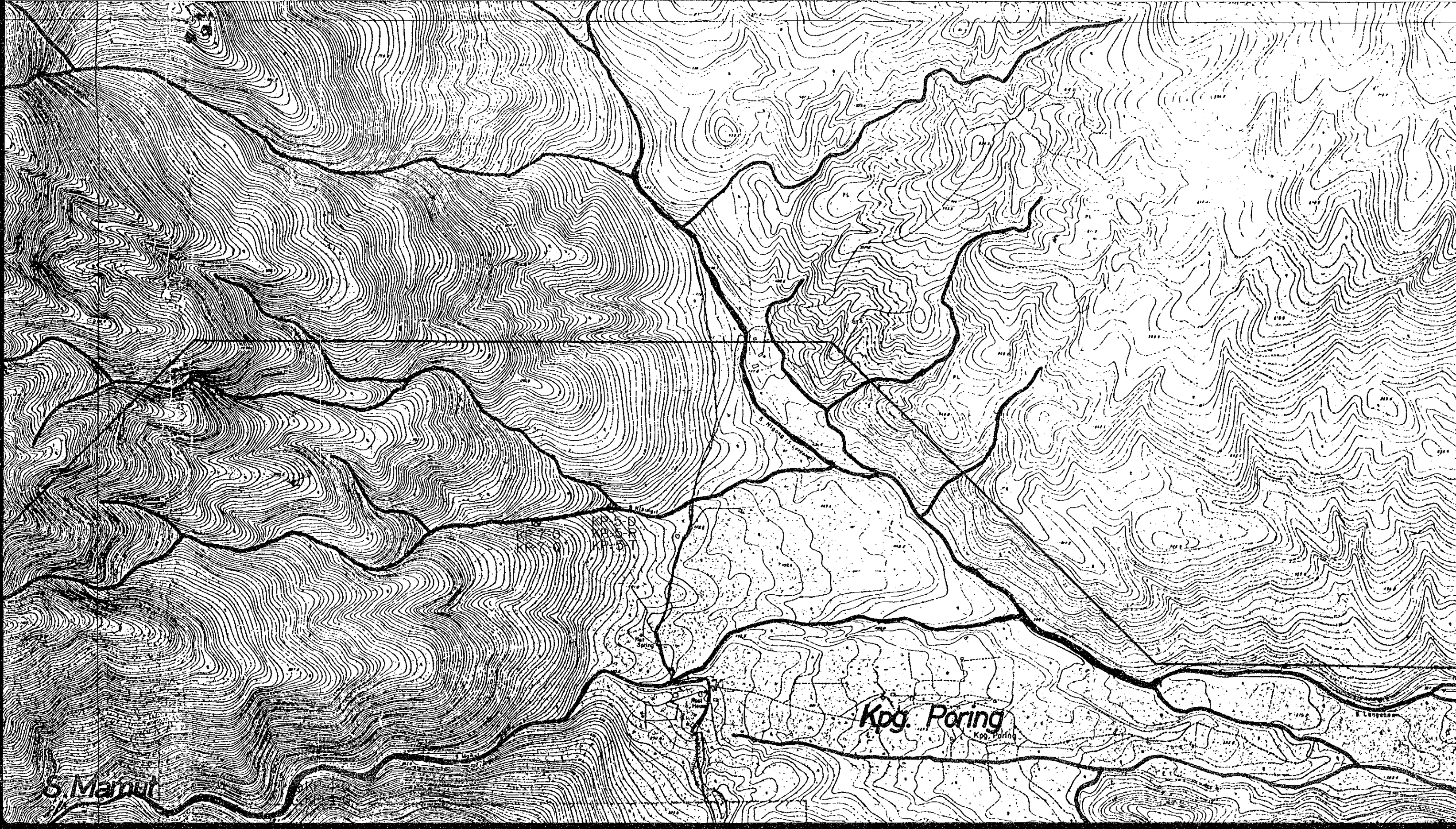
Scale 1:10,000



□ : Survey Area ⊗ BT-1: Locality of Mineral Occurrence with Number



116°41'E



S. Manul

Kpg. Poring