

Do

B-12

B-11

B-10

B-9

B-8

B-7

Ba

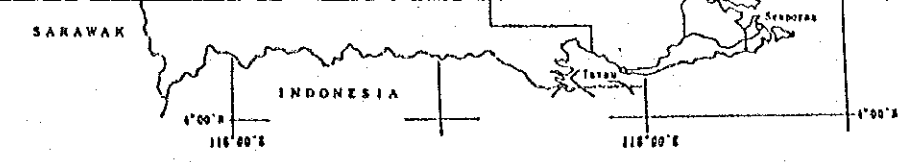
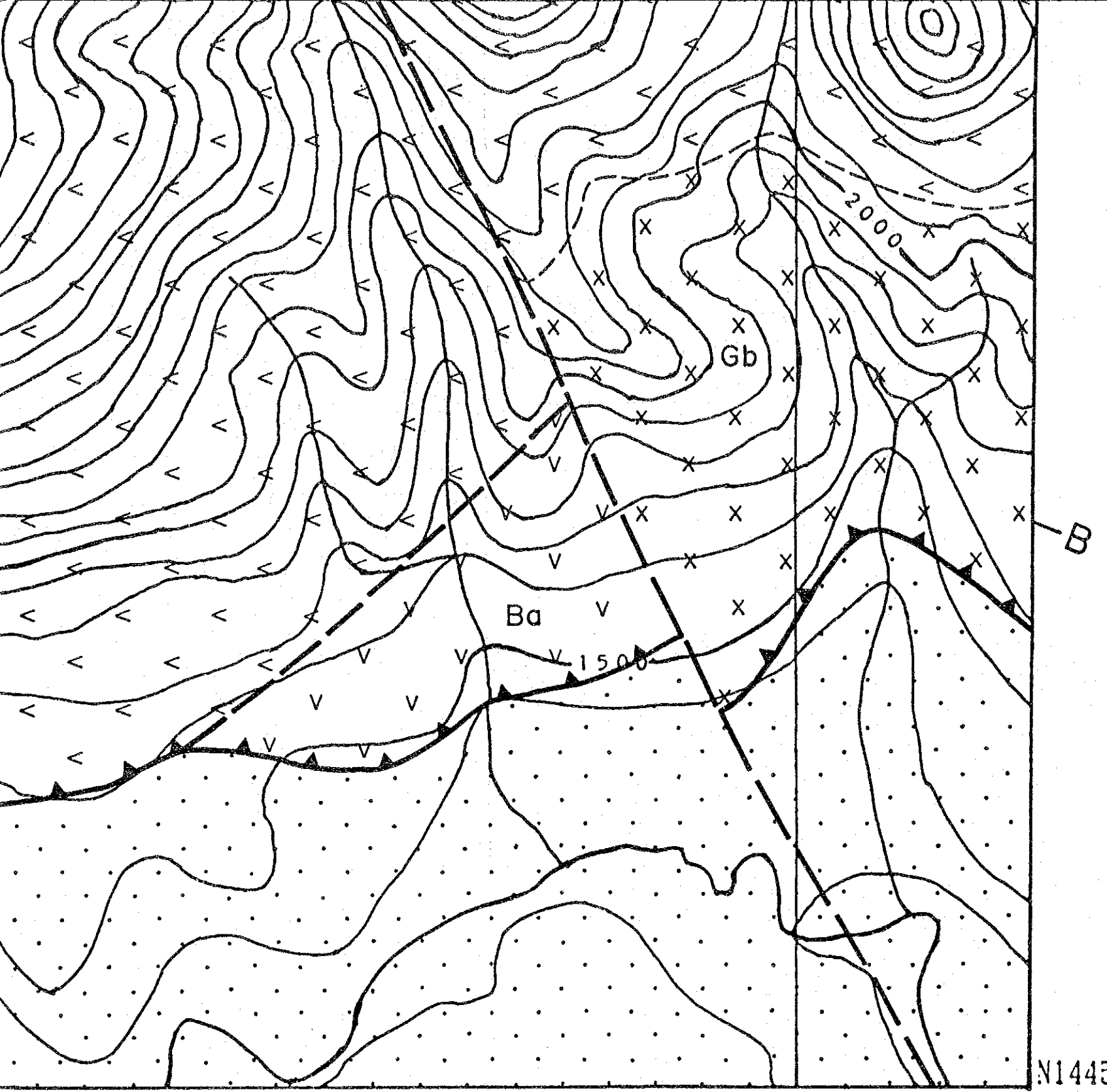
Ba

Gb

P4Km

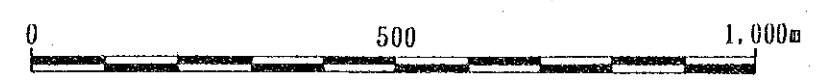
B-4

E47



JAPAN INTERNATIONAL COOPERATION AGENCY
METAL MINING AGENCY OF JAPAN

FEBRUARY, 1994



L E G E N D

- | | | |
|-------------------------------|--|--|
| Oligocene-
Middle Miocene | | Kuamut Formation;
sandstone and mudstone. |
| | | basalt. |
| Cretaceous-
Eocene | | dolerite. |
| | | brecciated dolerite (Δ). |
| Cretaceous-
Early Tertiary | | gabbro. |
| | | Thrust fault. |
| | | Fault. |
| | | Mineral showing. |

N1445

E-1740

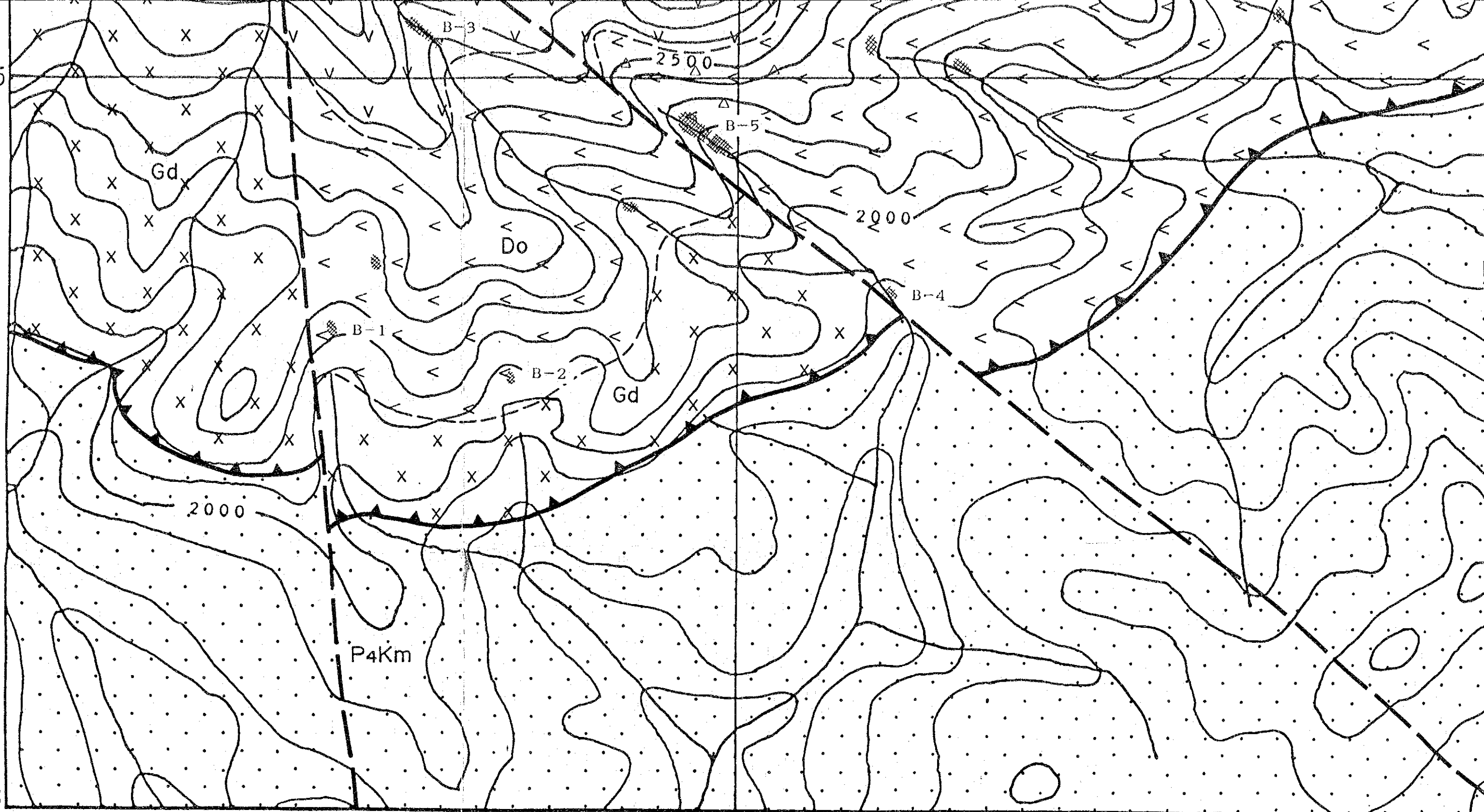
E4740.5

N1445

N1443

E4733

E4735



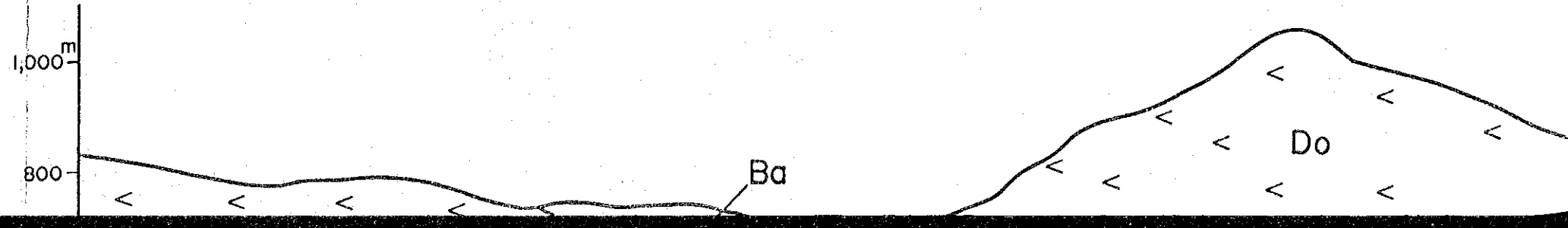
A

1,000^m

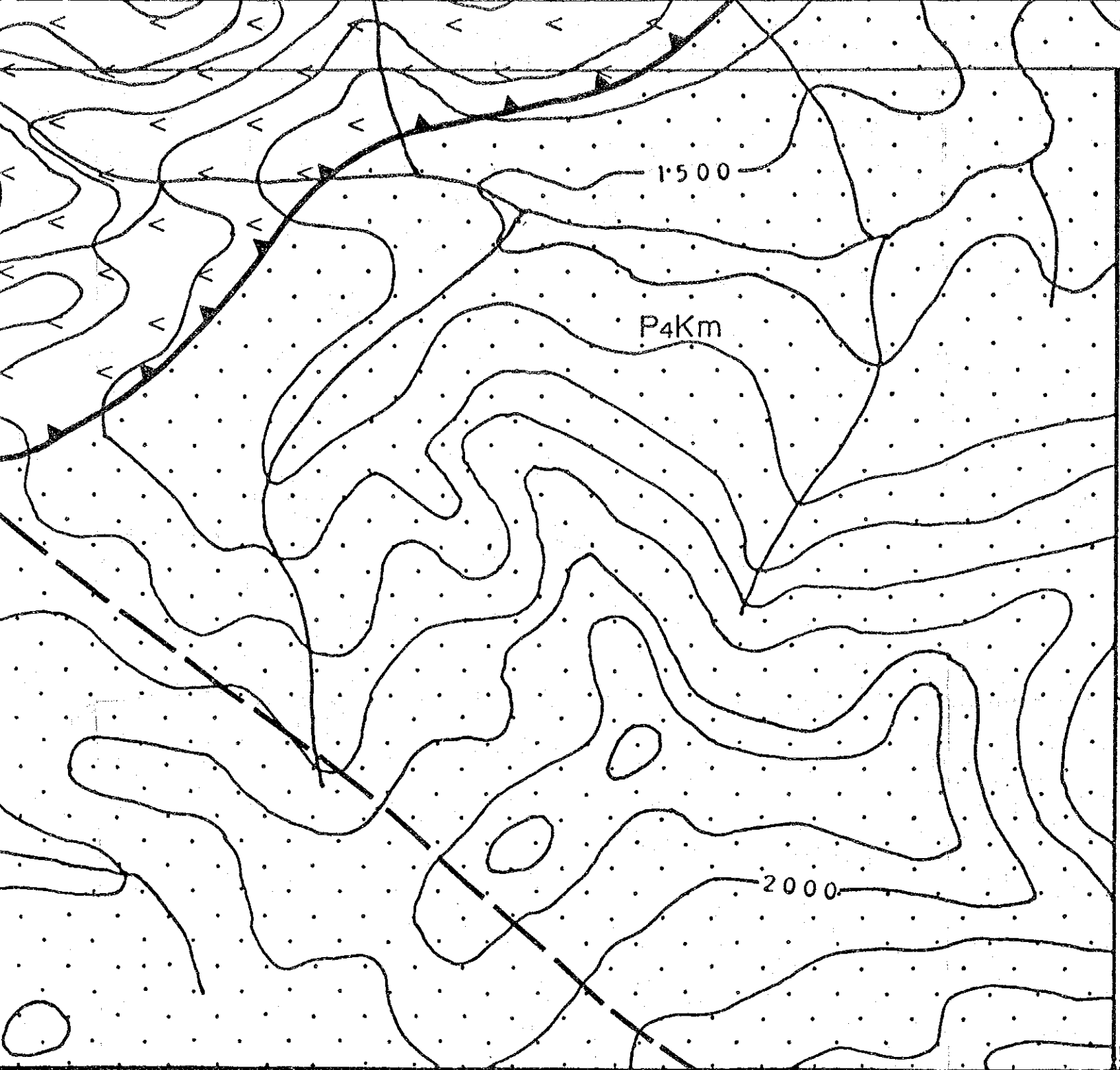
800

Ba

Do



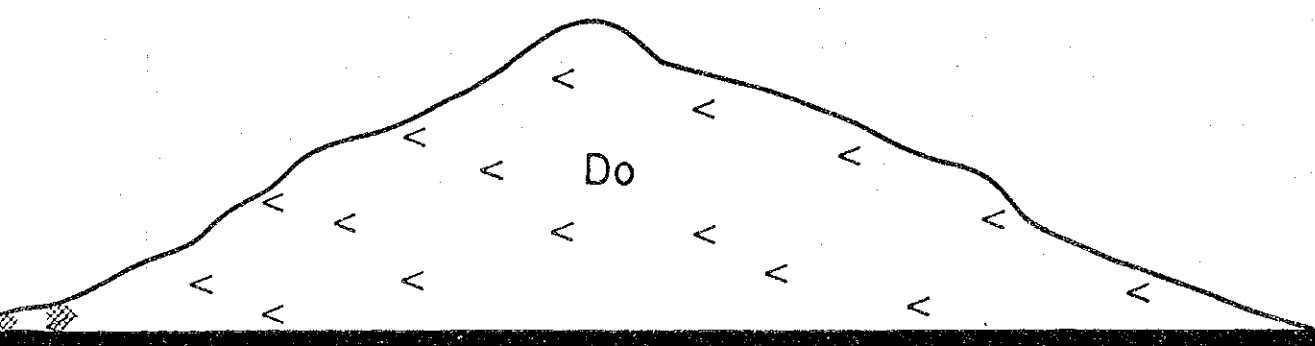
E4740



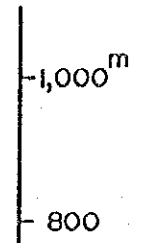
D

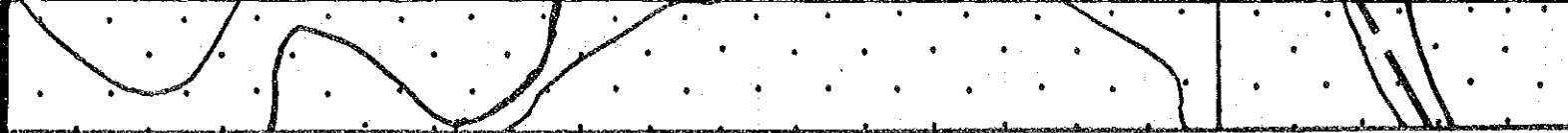
N1443

E4738



B






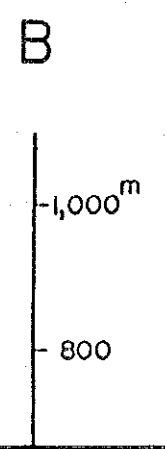


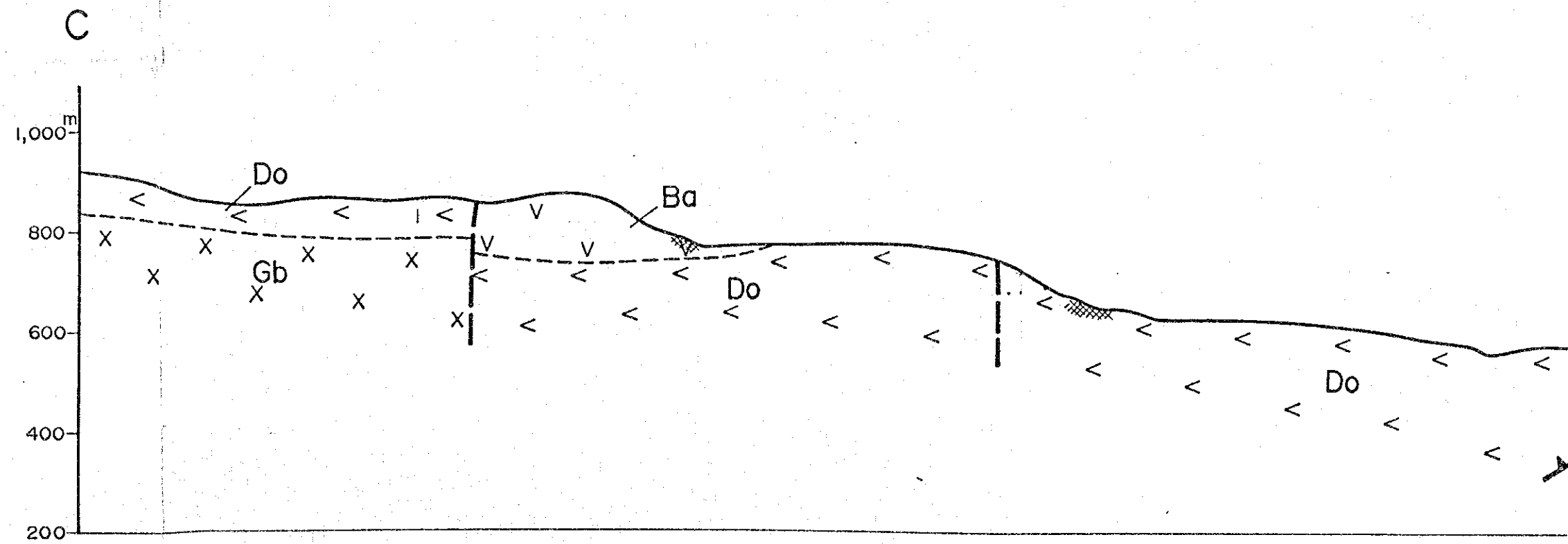
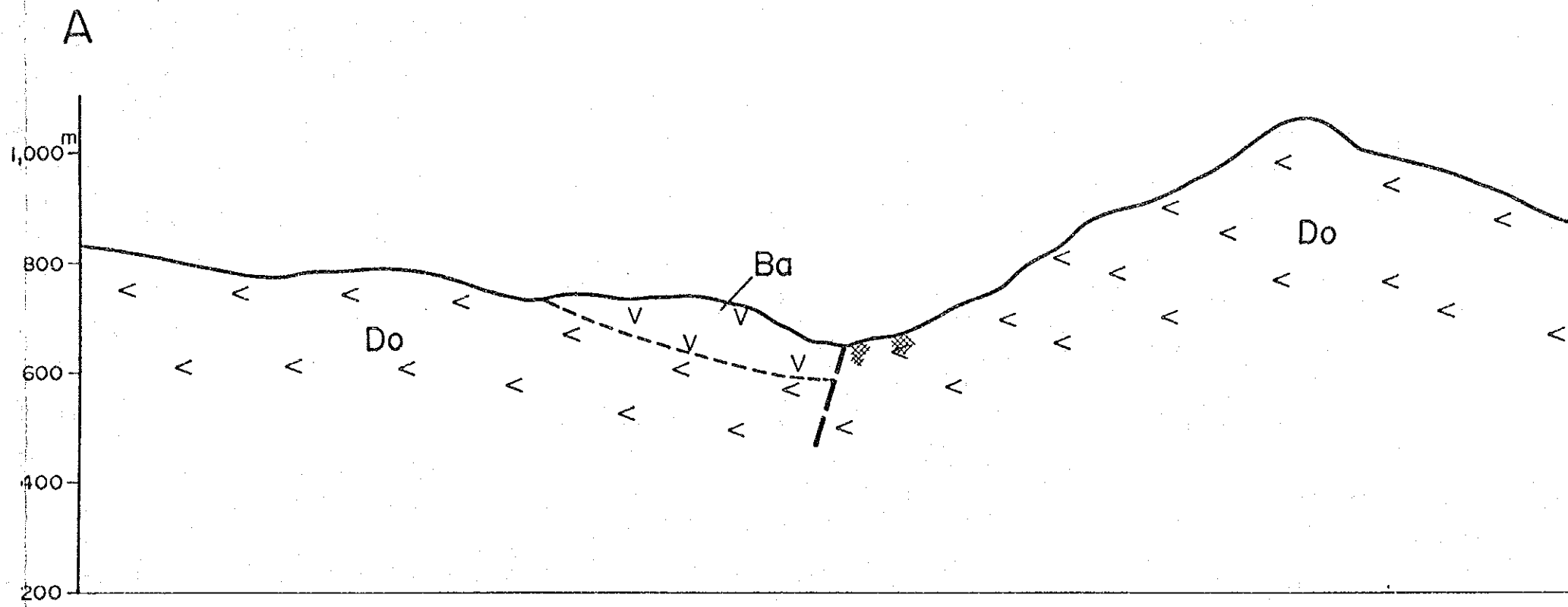
N1445

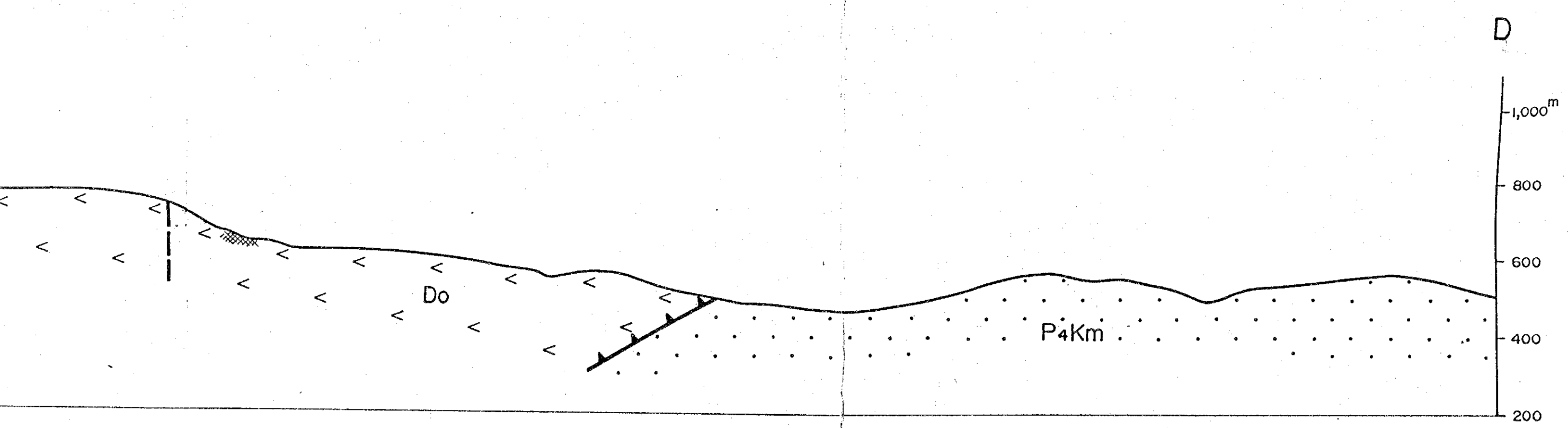
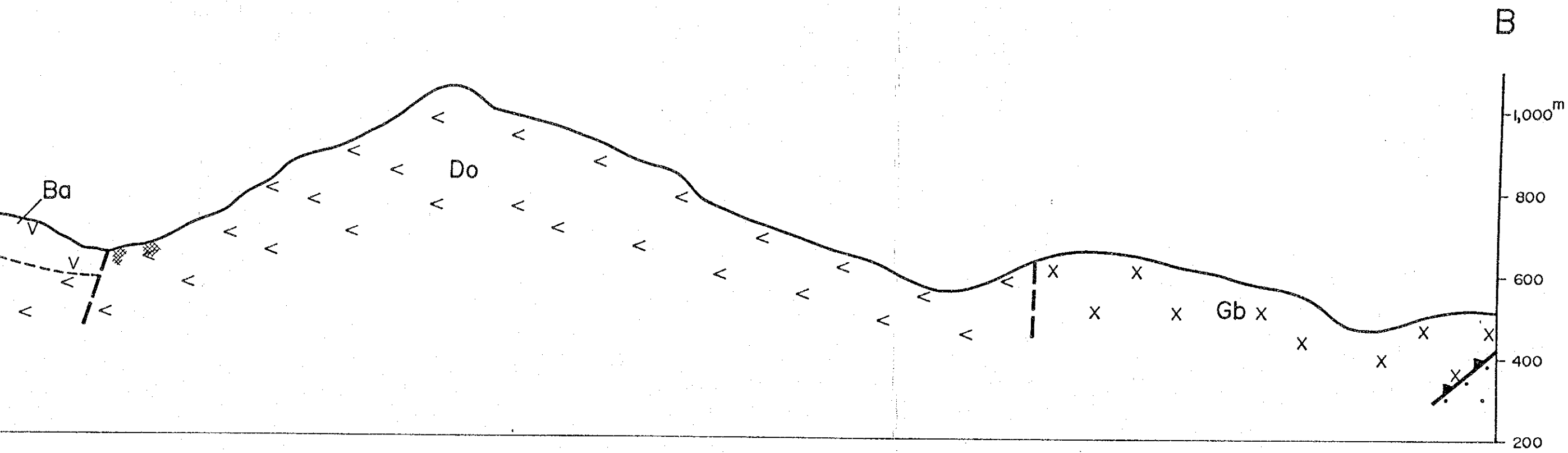
E4740

E4740.5

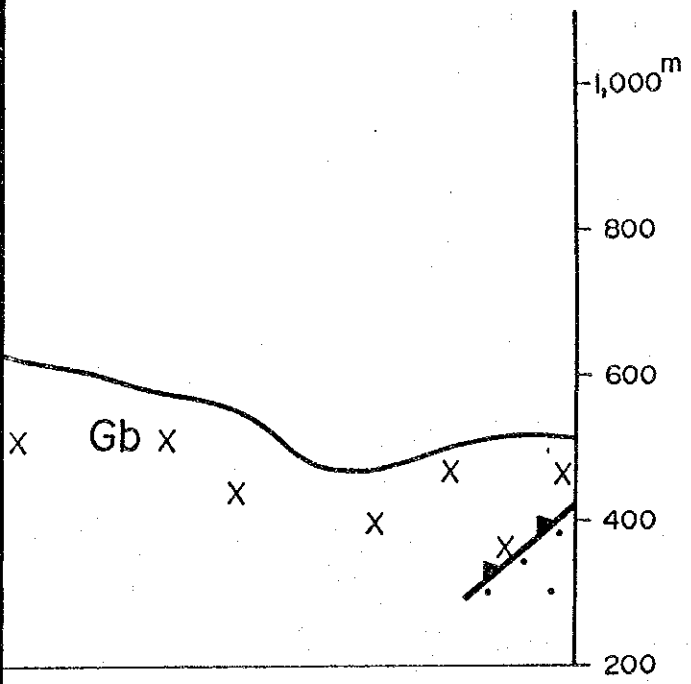
-  Thrust fault.
-  Fault.
-  Mineral showing.



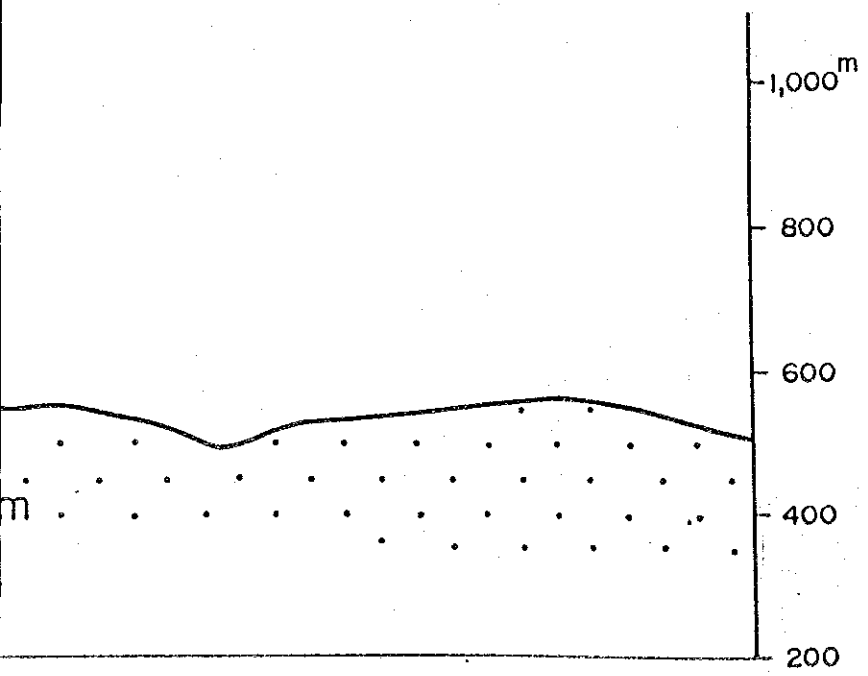




B



D



JICA