

Kpg. Bangkut

8 km Quarters

7 km

6 km

5 km

4 km

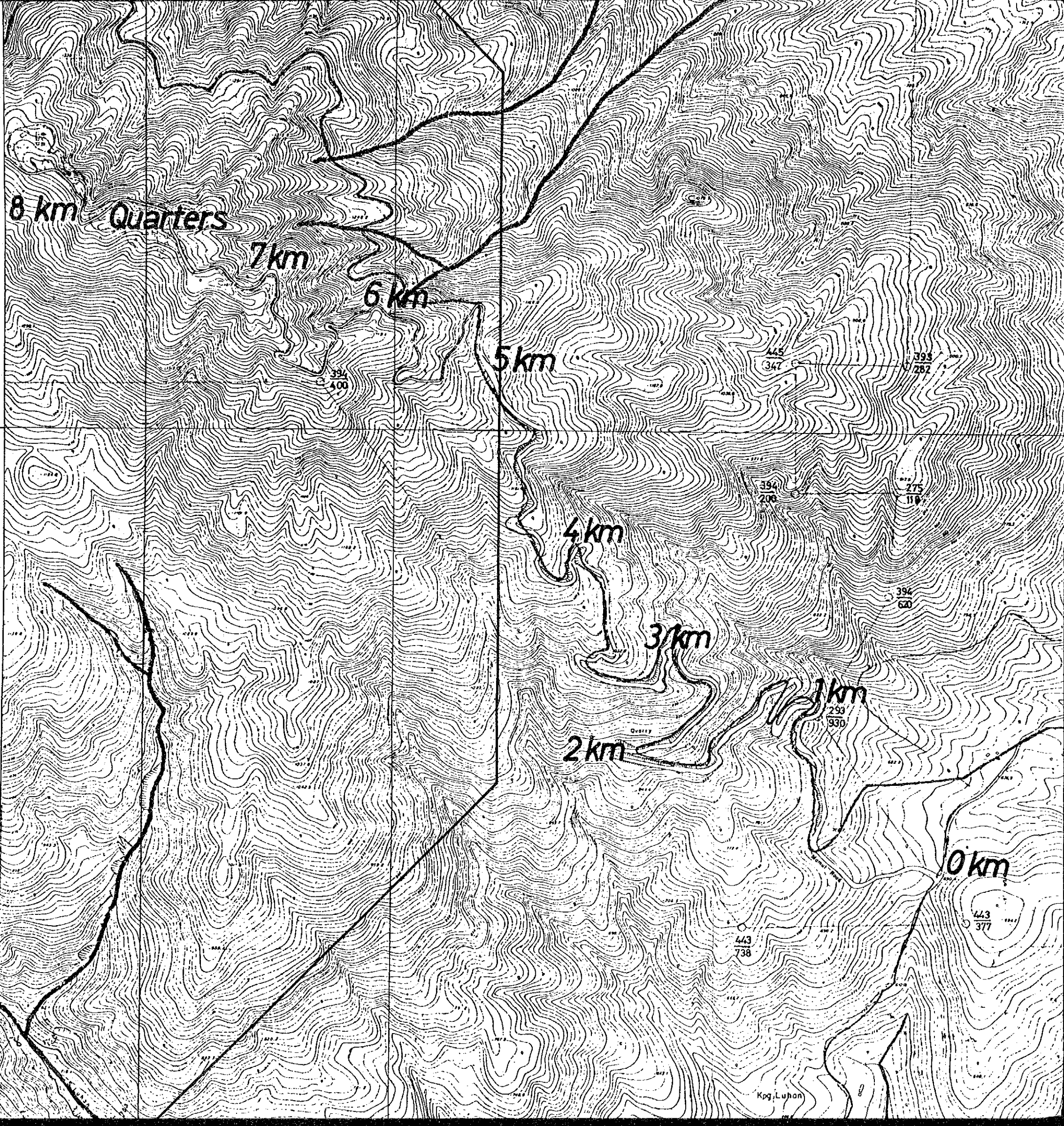
3 km

2 km

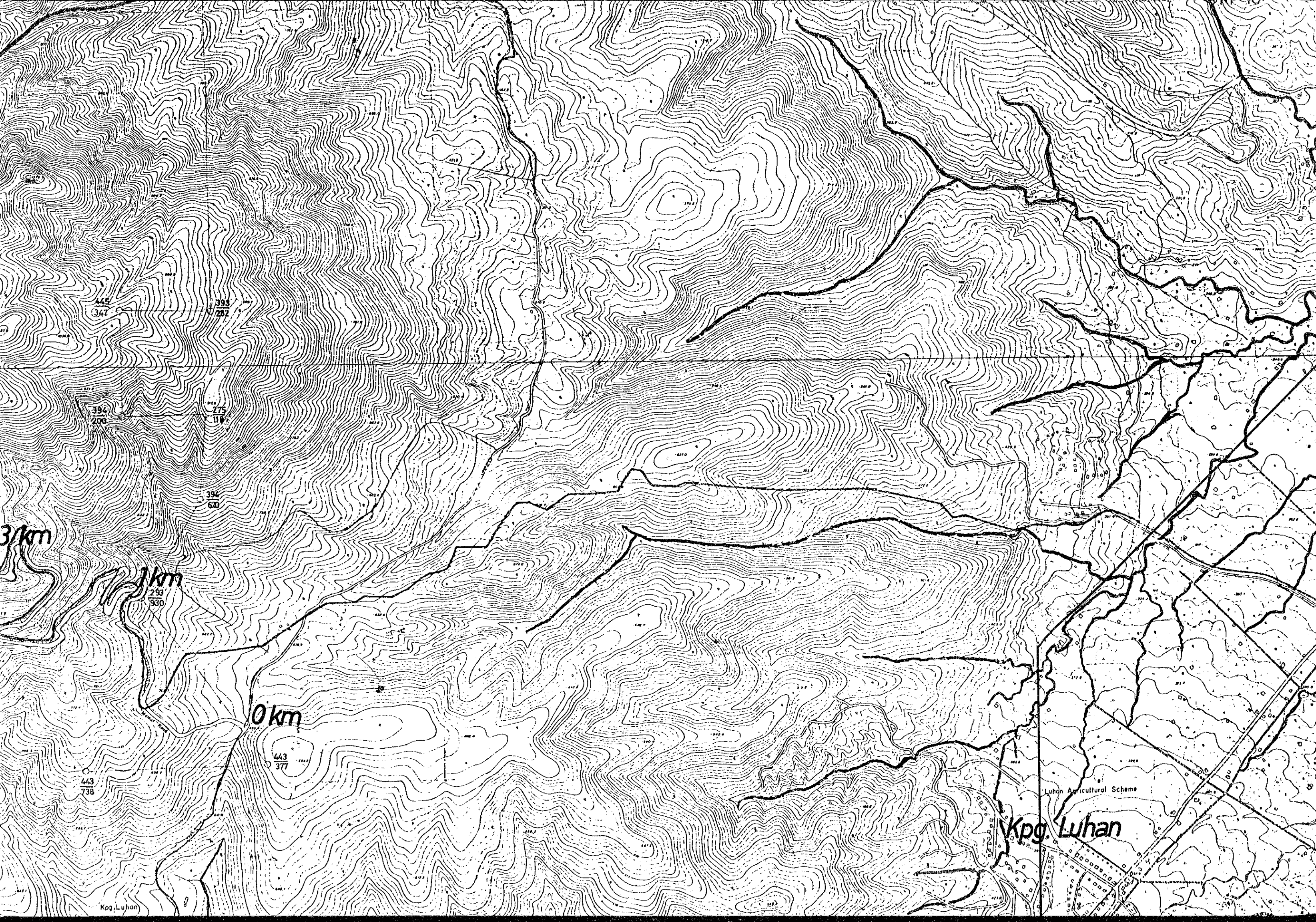
1 km

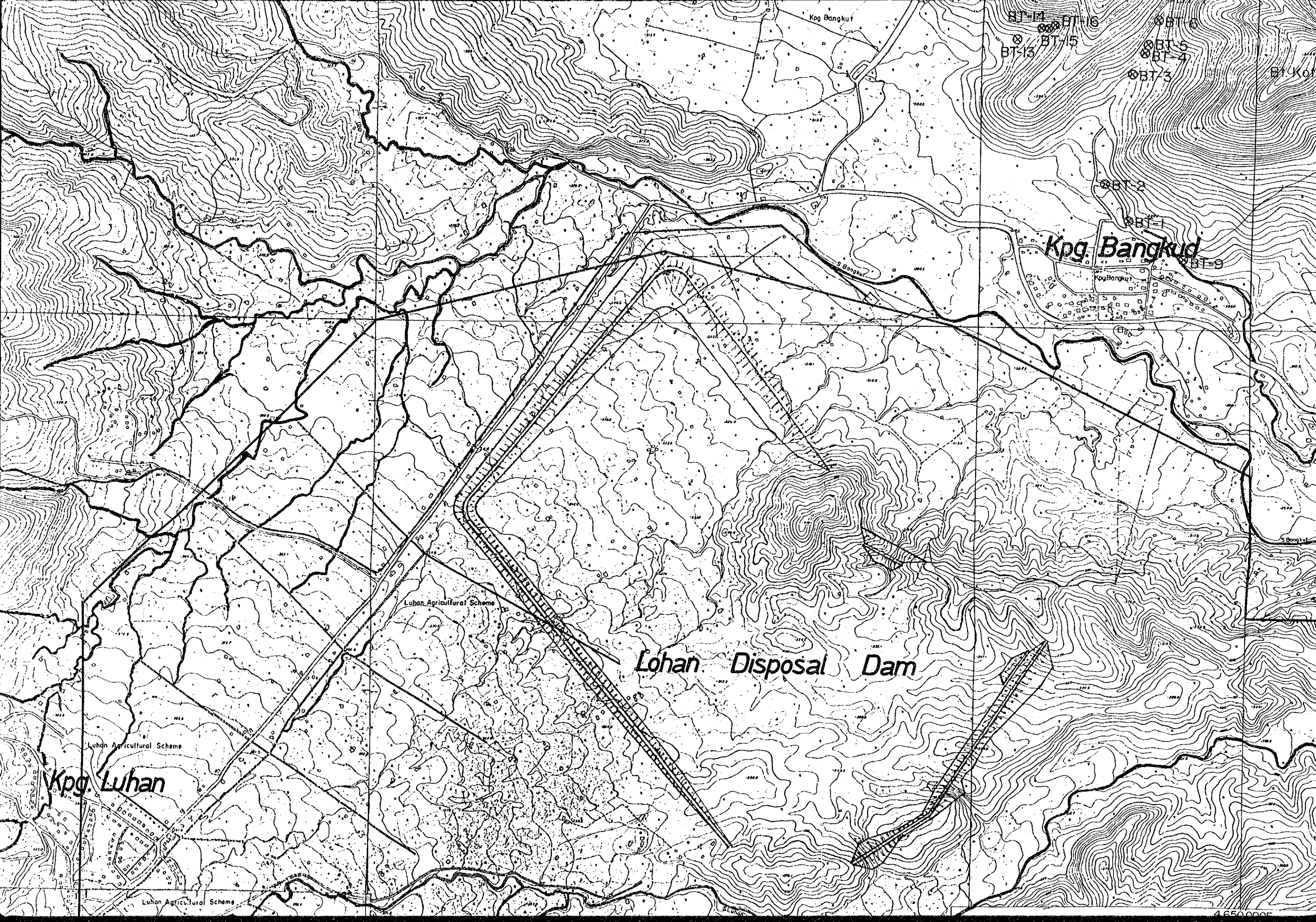
0 km

1,565,000N



Kpg, Lohan



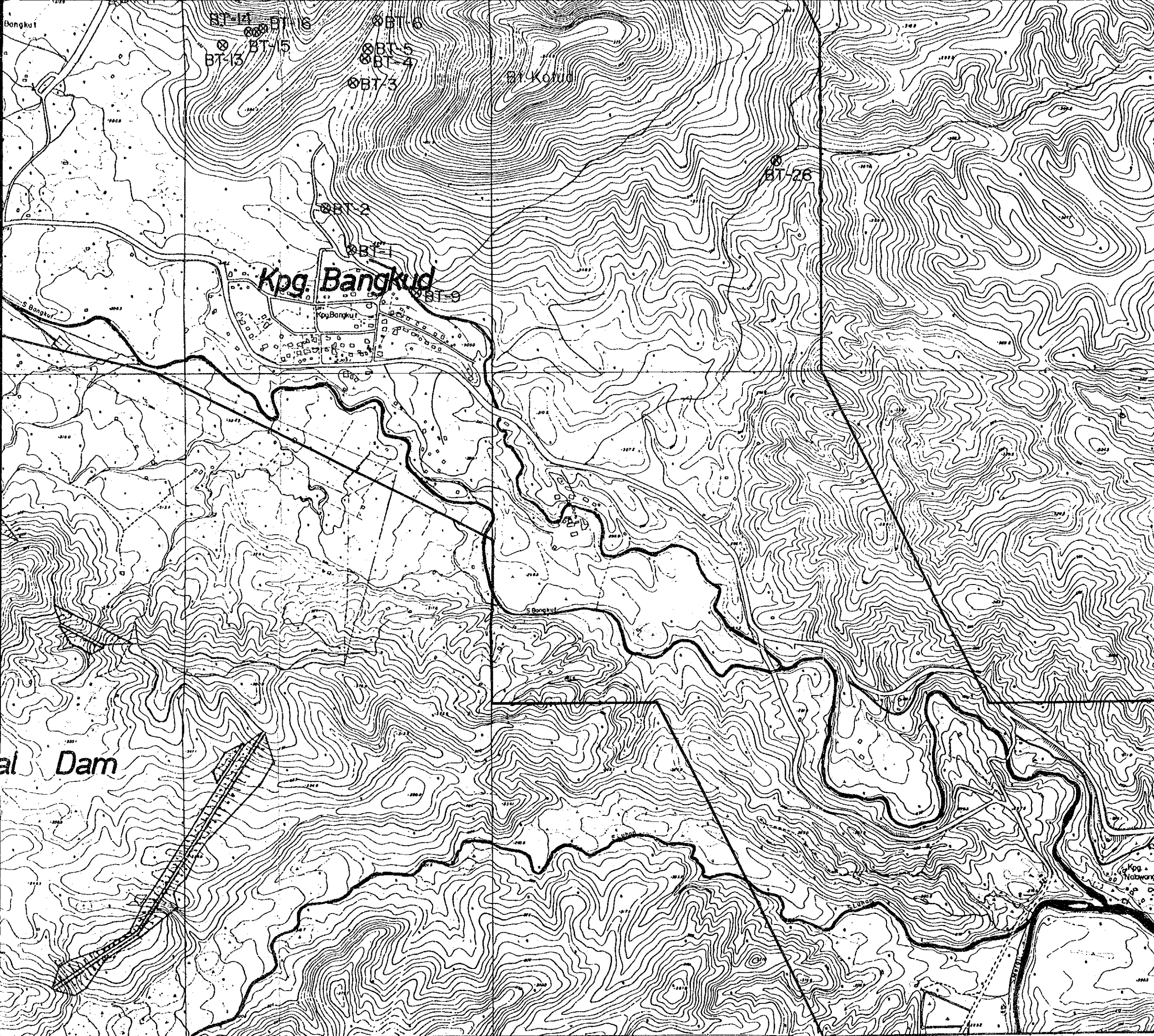


BT-14 BT-16
BT-13 BT-15
BT-6
BT-5
BT-4
BT-3

Kpg. Bangkud

Lohan Disposal Dam

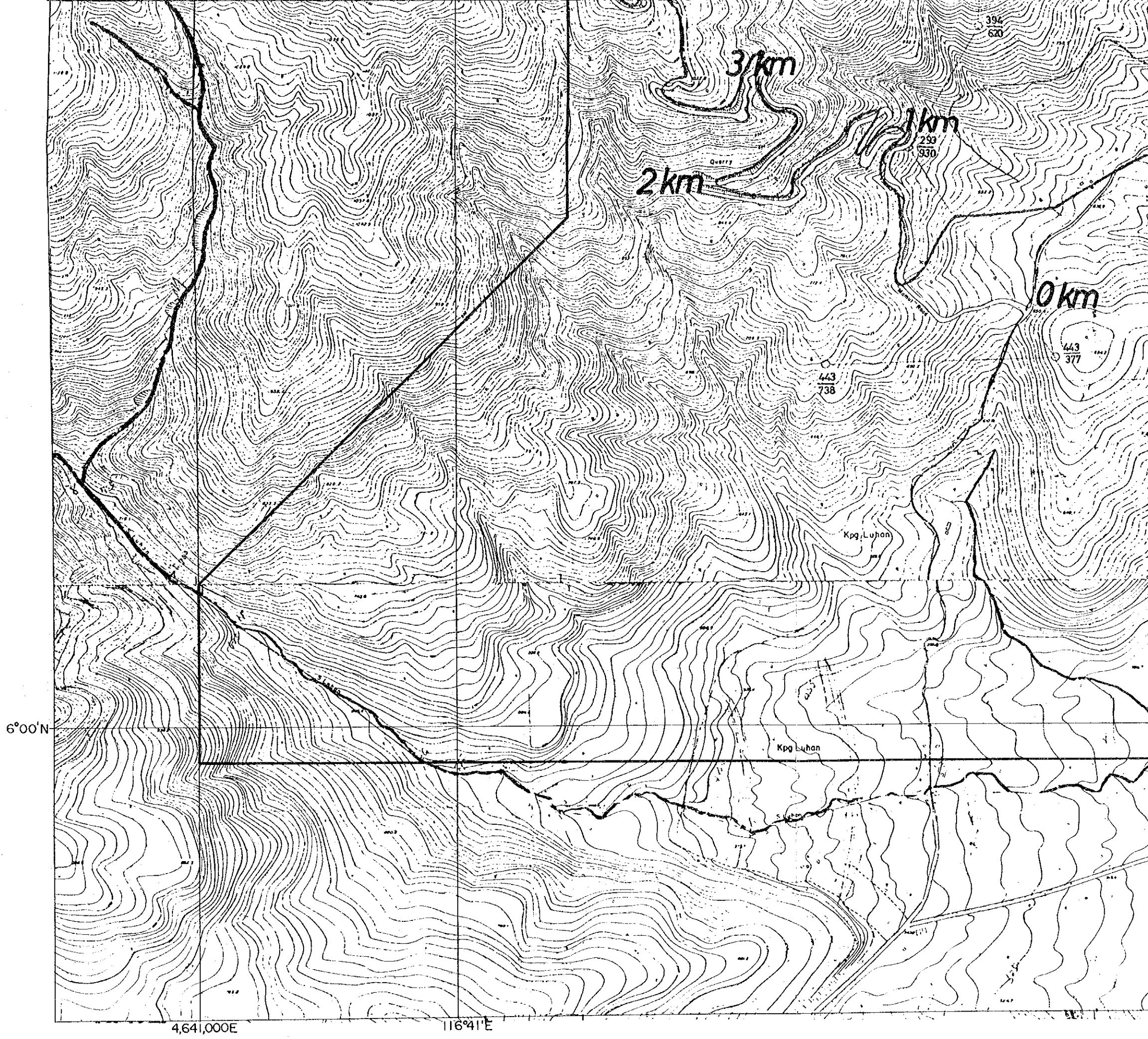
Kpg. Luhan



1,565,000N

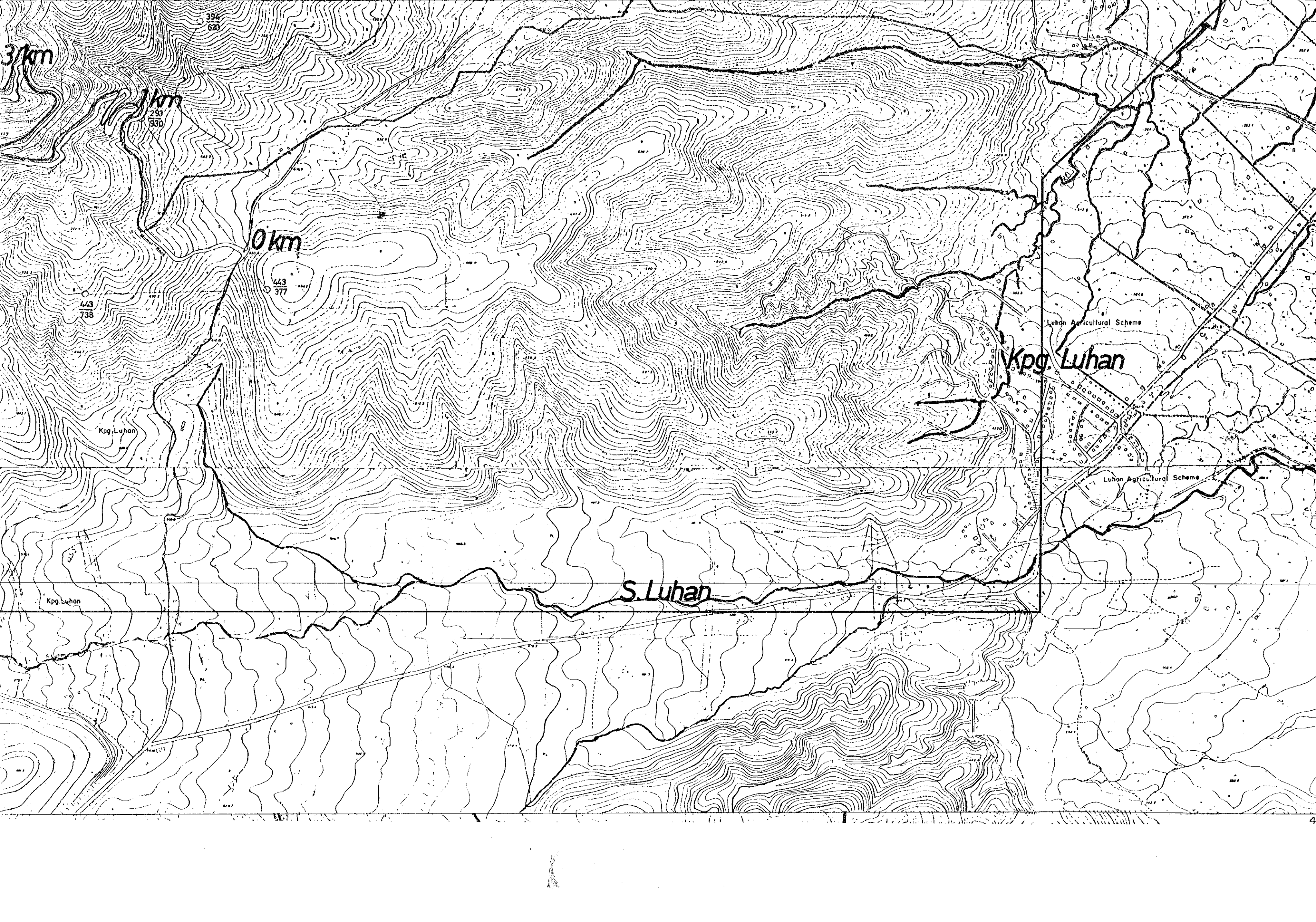
4,650,000E

1:50,000



4,641,000E

116°41'E



3/km

1km

0 km

Kpg. Luhan

S. Luhan

Luhon Agricultural Scheme

Luhon Agricultural Scheme

394
620

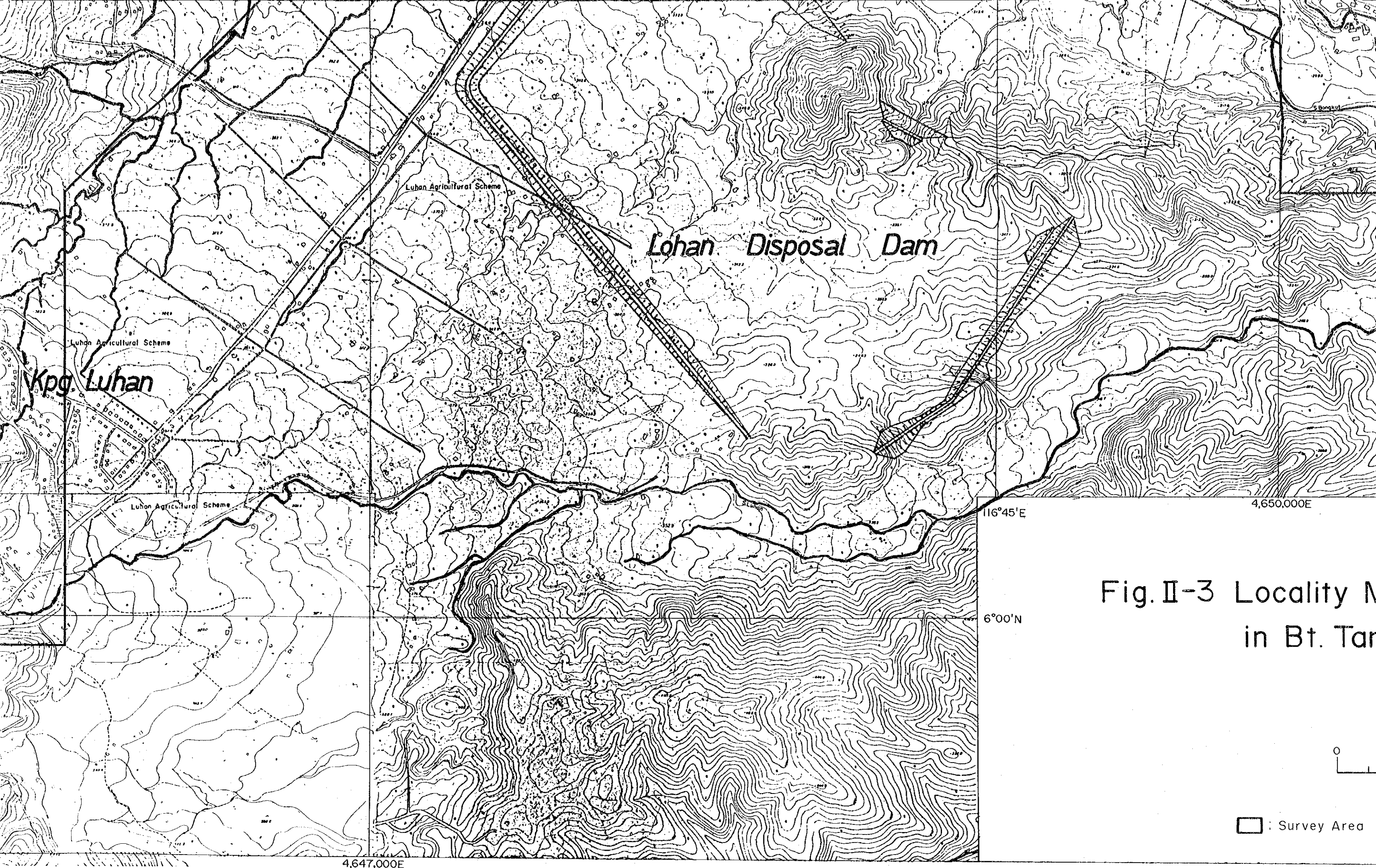
293
930

443
738

443
377

Kpg. Luhan

Kpg. Luhan



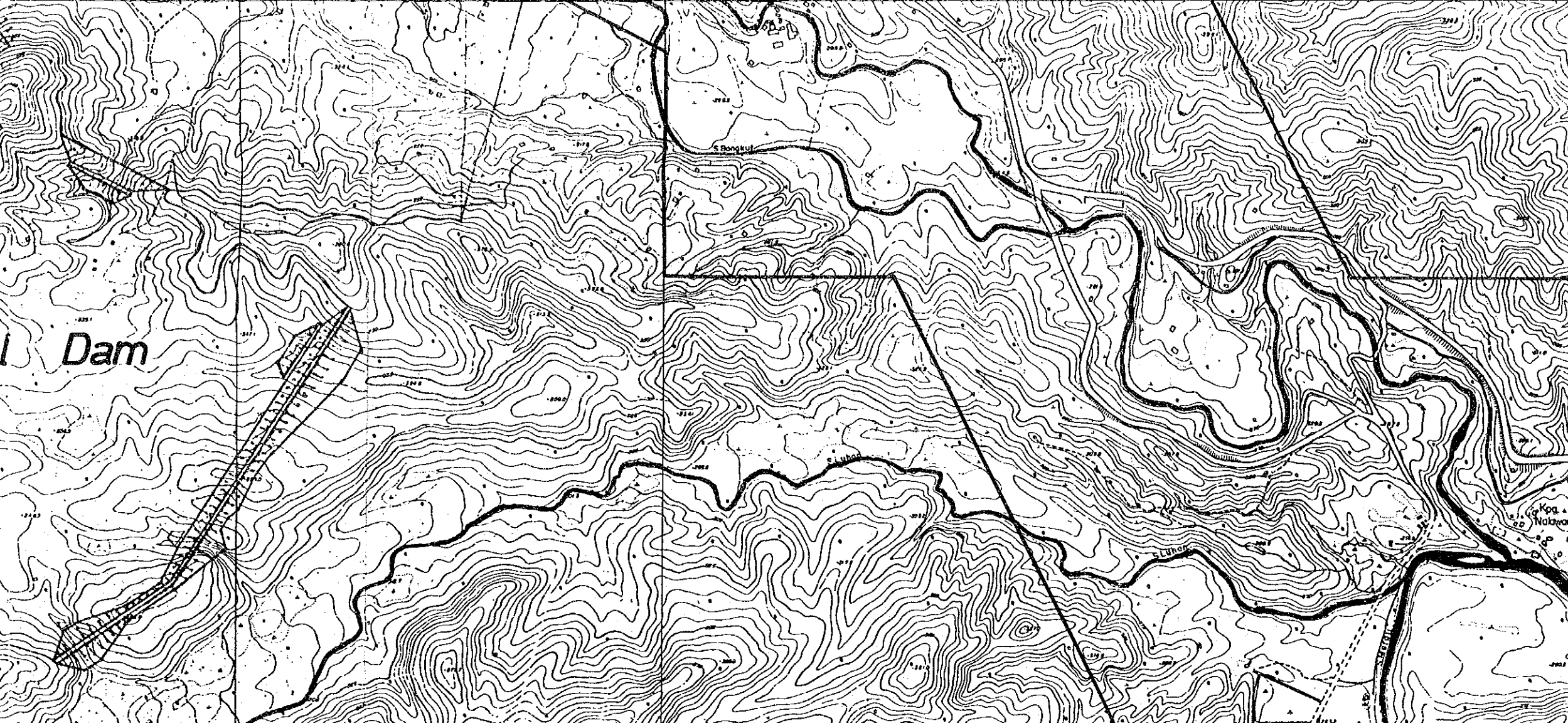
Lohan Disposal Dam

Kpg. Luhan

Lohan Agricultural Scheme

Fig. II-3 Locality Map
in Bt. Tan

□ : Survey Area



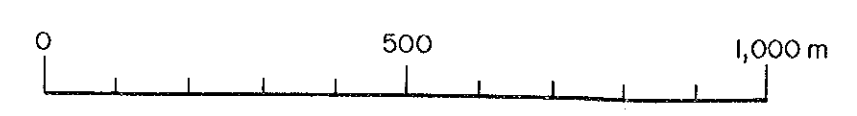
116°45' E

4,650,000E

6°00' N

Fig. II-3 Locality Map of Mineral Occurrence
in Bt. Tampang-Kg. Poring Area

Scale 1:10,000

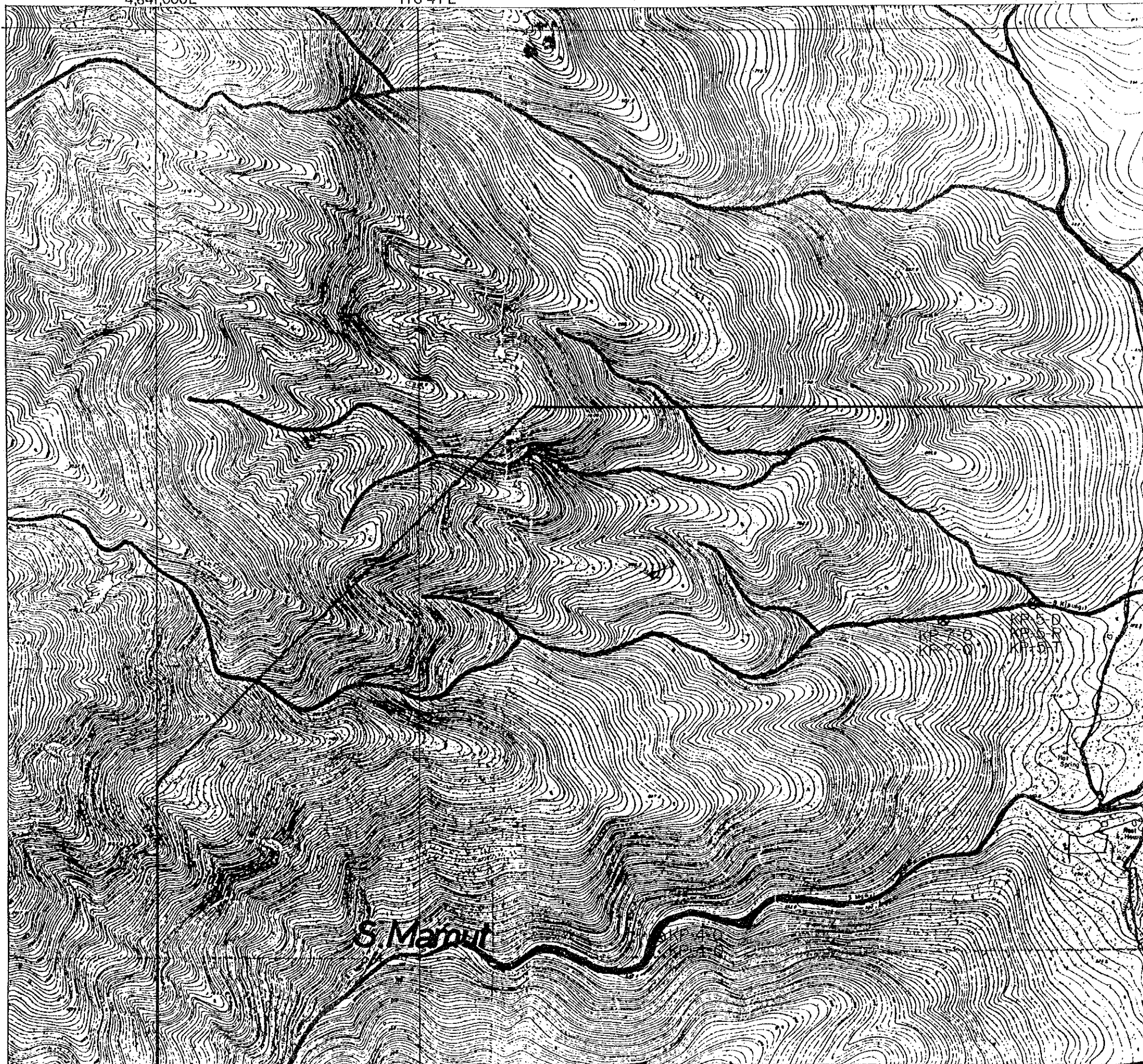


□ : Survey Area ⊗ BT-1: Locality of Mineral Occurrence with Number

6°04'N 1,570,000N

4,641,000E

116°41'E



S. Marbut