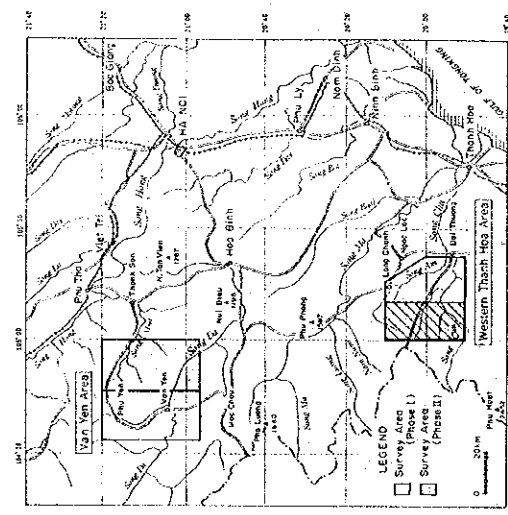


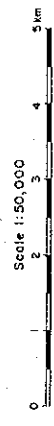
REPORT ON THE COOPERATIVE MINERAL EXPLORATION
IN THE VAN YEN AND WESTERN THANH HOA AREAS,
THE SOCIALIST REPUBLIC OF VIETNAM

PHASE II

LOCALITY MAP OF STREAM SEDIMENT AND PANNED CONCENTRATE
SAMPLES IN THE WESTERN THANH HOA AREA



FEBRUARY 1985
JAPAN INTERNATIONAL COOPERATION AGENCY
METAL MINING AGENCY OF JAPAN

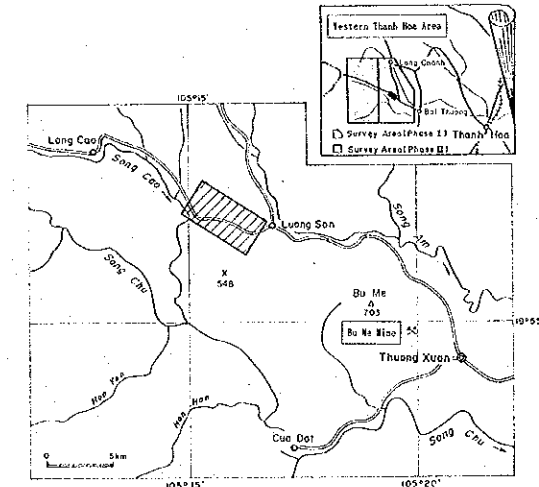
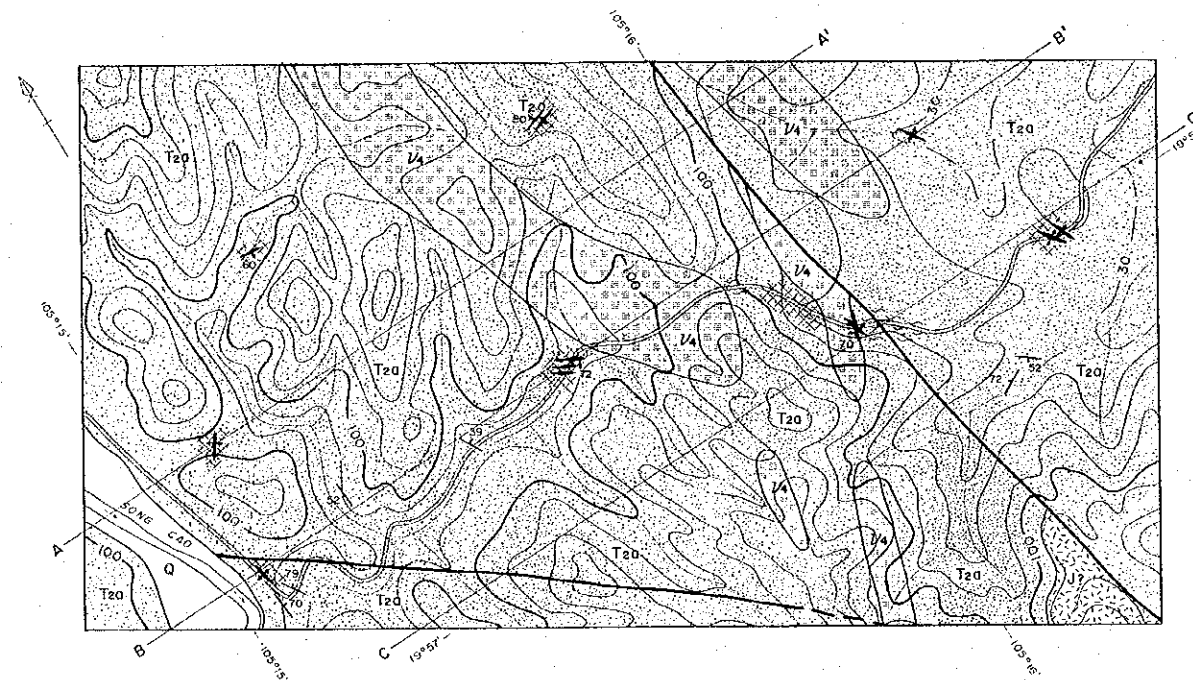


LEGEND

- TMS301 Location and number of both stream sediment and panned concentrate samples
- TMS302 Location and number of stream sediment samples
- TMS303 Location and number of panned concentrate samples

REPORT ON THE COOPERATIVE MINERAL EXPLORATION
 IN THE VAN YEN AND WESTERN THANH HOA AREAS,
 THE SOCIALIST REPUBLIC OF VIETNAM
 PHASE II

GEOLOGIC MAP AND SECTIONS OF THE LUONG SON
 MINERALIZATION ZONE



FEBRUARY 1955

JAPAN INTERNATIONAL COOPERATION AGENCY
 METAL MINING AGENCY OF JAPAN

Scale 1:10,000



LEGEND

STRATIGRAPHY

- Quaternary Gravel, sand, silt, clay
- Undifferentiated Jurassic Dacitic tuff
- Middle Triassic Sandstone, shale

INTRUSIVE ROCK

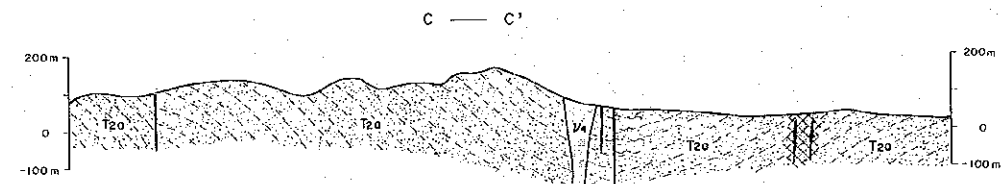
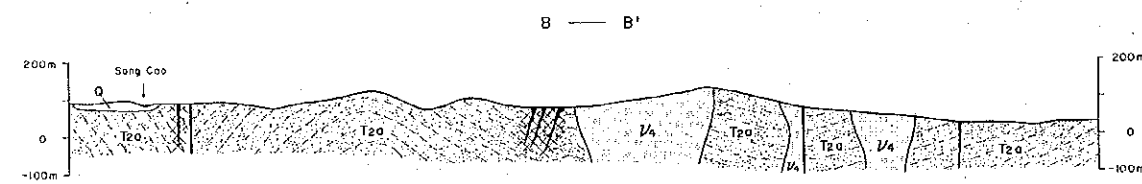
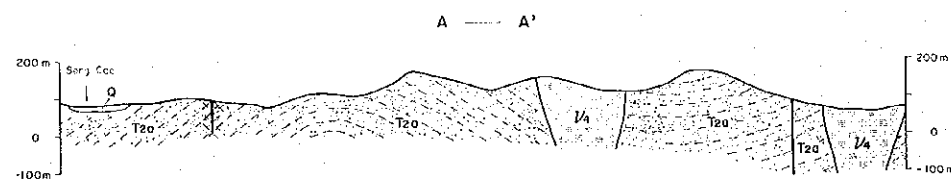
- Late Triassic Gabbro

ALTERATION AND MINERALIZATION

- Argillization (kaolinization)
- Silicification
- Quartz veins

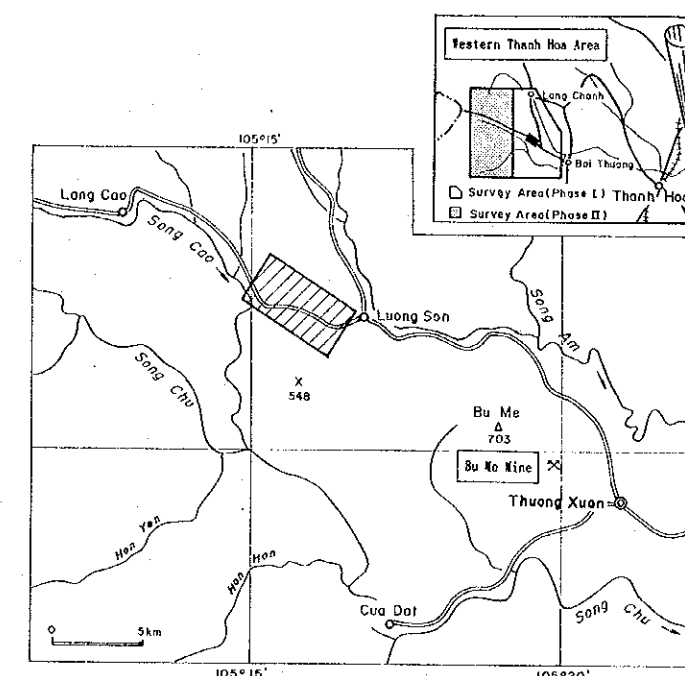
OTHERS

- Dip and strike of bed
- Fault
- Geologic section line



REPORT ON THE COOPERATIVE MINERAL EXPLORATION
IN THE VAN YEN AND WESTERN THANH HOA AREAS,
THE SOCIALIST REPUBLIC OF VIETNAM
PHASE II

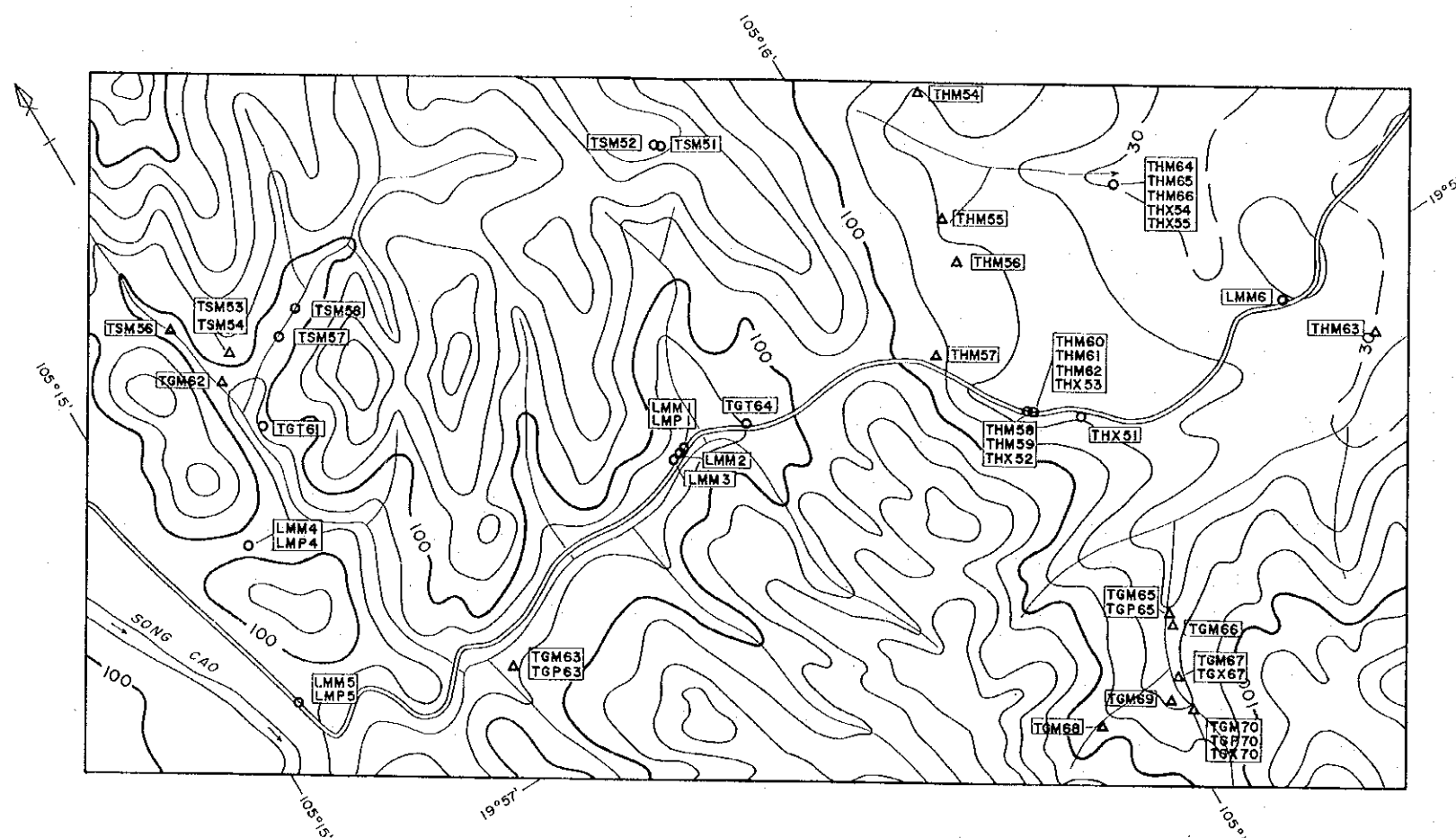
LOCALITY MAP OF SAMPLES FOR LABORATORY STUDIES IN THE
LUONG SON MINERALIZATION ZONE



FEBRUARY 1995

JAPAN INTERNATIONAL COOPERATION AGENCY
METAL MINING AGENCY OF JAPAN

Scale 1:10,000



LEGEND

- THM54 Location and number of ore samples for chemical analysis
- △ THP54 Location and number of ore samples for polished section
- △ THT54 Location and number of rock samples for thin section
- △ THX54 Location and number of rock samples for X-ray diffraction analysis

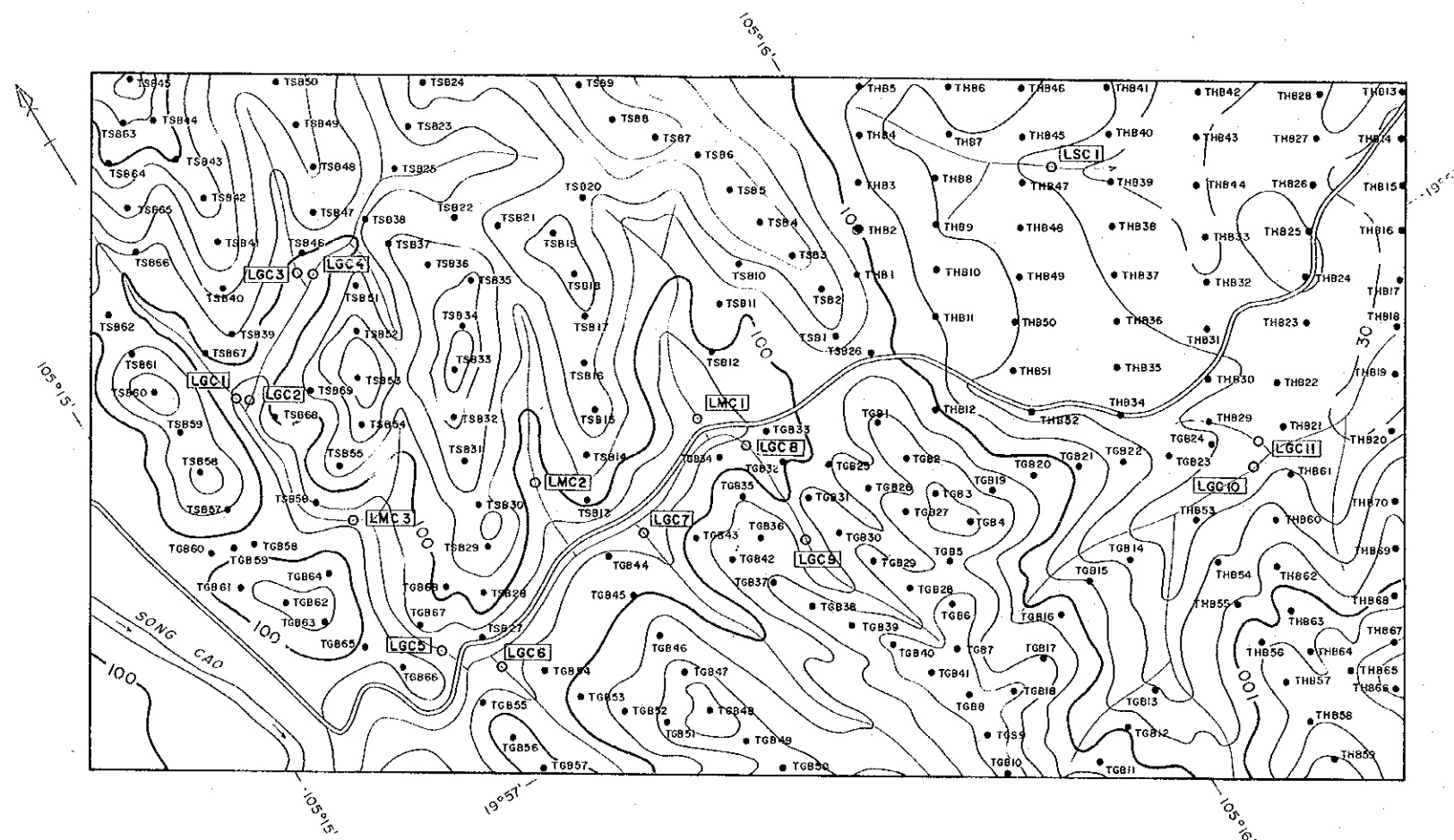
Occurrence	Host rock	Strike and dip	Minerals	sample NO.	width (m)	Ore grade				
						Au	Ag	Cu	Pb	Zn
Vein	Ss	N51° E/12° S	Qt, Py	LW1	2.0	<1	<2	0.004	0.031	0.245
Vein	Ss		Qt, Py	LW2	2.5	<1	<2	0.002	0.008	0.025
Vein	Ss		Qt, Py	LW3	2.0	<1	<2	0.002	0.013	0.020
Vein	Ss	N33° E/30°	Qt, Py, Cp	LW4	0.6	19	<2	0.002	0.009	0.007
Vein	Ss	N15° E/30°	Qt, Py	LW5	1.0	<1	<2	<0.001	0.004	0.019
Vein	Ss	N25° E/30°	Qt	LW6	2.0	<1	<2	<0.001	<0.001	<0.001
Float	Sa7		Qt	TG62		<1	<2	0.001	0.009	0.022
Float	Sa7		Qt	TG63	8	5		0.012	0.080	0.007
Float	Sa7		Qt, Py	TG65	<1	7		0.028	0.025	0.004
Float	Sa7		Qt	TG65	<1	<2		<0.001	0.001	<0.001
Float	Sa7		Qt, Lia	TG61	<1	<2		0.002	0.050	0.006
Float	Sa7		Qt, Lia	TG68	6	<2		0.001	0.008	0.004
Float	Sa7		Qt	TG69	<1	<2		0.003	0.009	0.014
Float	Sa7		Qt, Py	TG70	22	2		<0.001	0.002	0.021
Float	Sa7		Qt	TH54	<1	<2		0.004	<0.001	<0.001
Float	Sa7		Qt	TH55	<1	<2		<0.001	<0.001	<0.001
Float	Sa7		Qt	TH56	<1	<2		<0.001	<0.001	<0.001
Float	Sa7		Qt	TH57	<1	<2		<0.001	<0.001	<0.001
Vein	Gb	N22° E/30°	Qt	TH58	0.3	<1	<2	<0.001	<0.001	0.001
Vein	Gb		Qt	TH59	0.3	<1	<2	0.006	0.002	0.056
Vein	Gb	N20° E/10°	Qt	TH60	0.05	11	<2	0.005	0.016	0.005

Occurrence	Host rock	Strike and dip	Minerals	sample NO.	width (m)	Ore grade				
						Au	Ag	Cu	Pb	Zn
Vein	Gb			TH61	0.3	<1	<2	0.001	0.002	0.002
Vein	Gb		Qt	TH62	0.3	1	<2	0.001	0.004	0.005
Float	Sa		Qt	TH63	<1	<2		0.017	0.002	<0.001
Vein	Ss	N32° E/30°	Qt	TH64	0.27	<1	<2	0.002	0.012	0.004
Vein	Ss	N32° E/30°	Qt	TH65	0.13	<1	<2	0.007	0.141	0.034
Vein	Ss	N32° E/30°	Qt	TH66	0.13	<1	<2	0.003	0.055	0.022
Vein	Ss	N10° E/80° N	Qt	TH67	0.03	53	<2	<0.001	0.002	<0.001
Vein	Ss	N10° E/85° N	Qt	TH68	0.05	4	<2	<0.001	0.002	0.009
Float	Sa7		Qt	TH69	14	<2		<0.001	0.012	0.001
Float	Sa7		Qt, Lia	TH70	1	15		0.014	0.145	0.003
Float	Sa7		Qt	TH71	0.5	<1	<2	<0.001	0.006	0.005
Vein	Ss		Qt, Py	TH72	0.3	<1	<2	0.039	0.007	0.054
Vein	Ss	E-1/60° S	Qt	TH73	0.02	1	<2	0.004	0.018	0.024

[Abbreviation] Au is in ppb, Ag in ppm, and other elements in percent.
Ss: sandstone, As: andstone
Gb: gabbro, Qt: Quartz
Py: pyrite, Cp: chalcopyrite, Lia: ilmenite

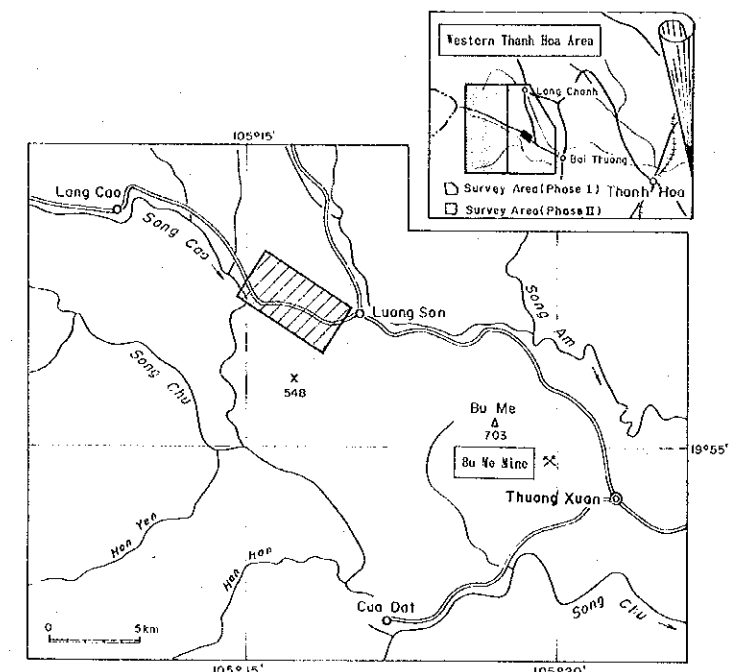
REPORT ON THE COOPERATIVE MINERAL EXPLORATION
IN THE VAN YEN AND WESTERN THANH HOA AREAS,
THE SOCIALIST REPUBLIC OF VIETNAM
PHASE II

LOCALITY MAP OF SOIL AND PANNED CONCENTRATE SAMPLES IN THE
LUONG SON MINERALIZATION ZONE



LEGEND

- TSB2 Location and number of soil samples
- LMC2 Location and number of panned concentrate samples



FEBRUARY 1995

JAPAN INTERNATIONAL COOPERATION AGENCY
METAL MINING AGENCY OF JAPAN

Scale 1:10,000

