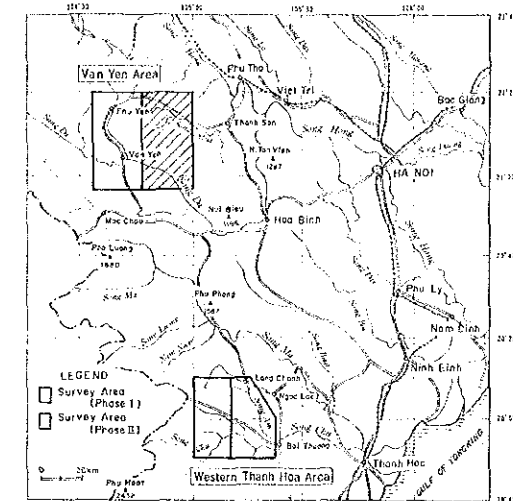


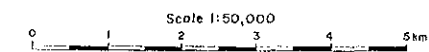
REPORT ON THE COOPERATIVE MINERAL EXPLORATION  
IN THE VAN YEN AND WESTERN THANH HOA AREAS,  
THE SOCIALIST REPUBLIC OF VIETNAM  
PHASE II

GEOLOGIC MAP OF THE VAN YEN AREA



FEBRUARY 1985

JAPAN INTERNATIONAL COOPERATION AGENCY  
METAL MINING AGENCY OF JAPAN



LEGEND

STRATIGRAPHY

- Q Quaternary
- T3 Upper Triassic
- T2 Lower Triassic
- T1 Lower Permian
- P1 Lower Permian
- CP Carboniferous to Permian
- D2 Middle Devonian
- D1 Lower Devonian
- O3S Upper Ordovician to Silurian
- O3D Upper Cambrian to Lower Ordovician
- PR Proterozoic

INTRUSIVE ROCKS

- Cretaceous**
  - Y6 Granite
  - C6 Syenite
- Early Triassic**
  - Y4 Gabbro
- Permian**
  - O4 Ultramafic rocks
- Proterozoic**
  - Y2 Granite

OTHERS

- Fault (certain / inferred or covered by the Quaternary)
- Dip and strike of bed
- Dip and strike of schistosity and gneissosity



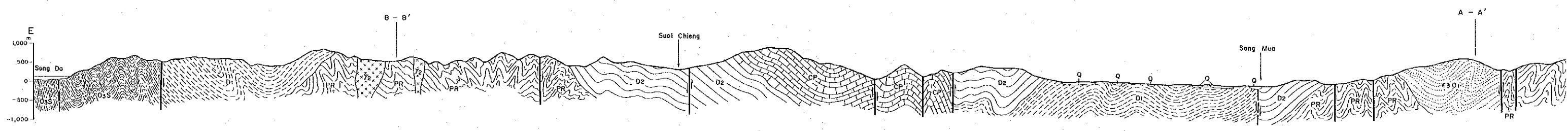
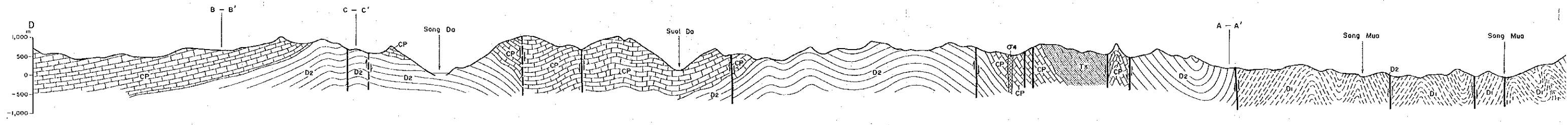
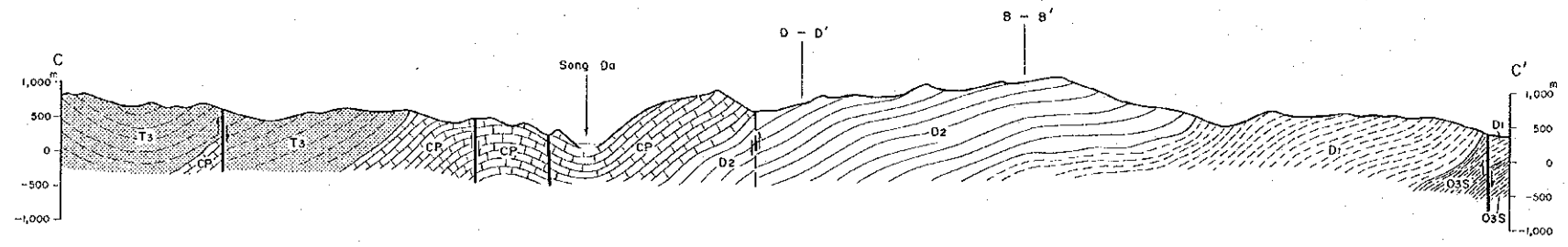
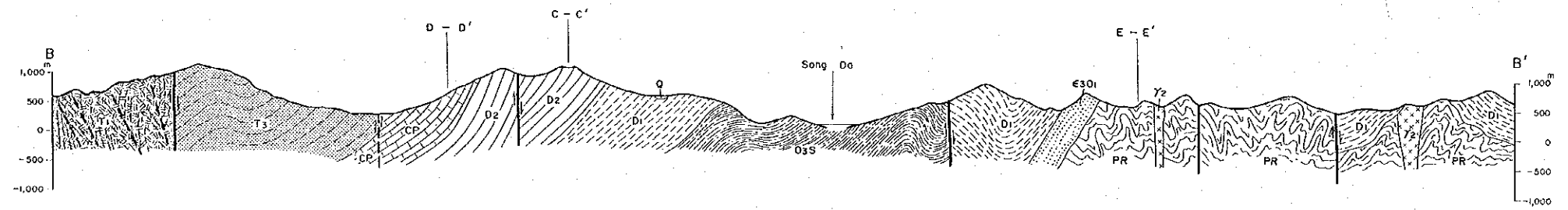
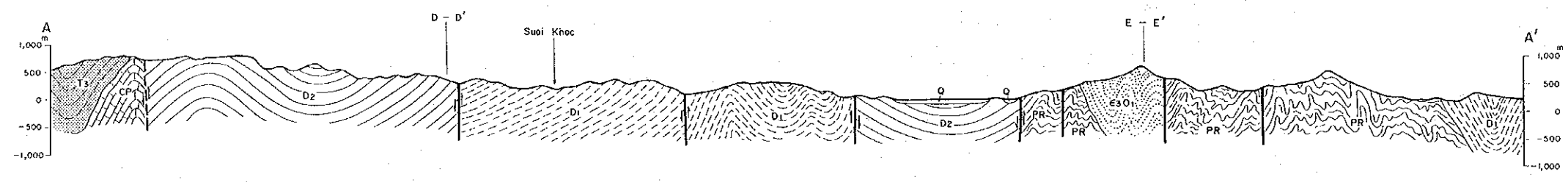
- Upper Triassic
- Lower Triassic
- Lower Permian
- Carboniferous to Permian
- Middle Devonian
- Lower Devonian
- Upper Ordovician to Silurian
- Upper Cambrian to Lower Ordovician
- Proterozoic

**INTRUSIVE ROCKS**

- Cretaceous**
  - Granite
  - Syenite
- Early Triassic**
  - Gabbro
- Permian**
  - Ultramafic rocks
- Proterozoic**
  - Granite

**OTHERS**

- Fault (certain / inferred or covered by the Quaternary)
- Dip and strike of bed
- Dip and strike of schistosity and gneissosity
- Quartz (- sulfide) vein
- Mineralization
- Lead and zinc mineralization
- A—A' Geologic section line



**LEGEND**

**STRATIGRAPHY**

- Q Quaternary
- T<sub>3</sub> Upper Triassic
- T<sub>1</sub> Lower Triassic
- P<sub>1</sub> Lower Permian
- CP Carboniferous to Permian
- D<sub>2</sub> Middle Devonian
- D<sub>1</sub> Lower Devonian
- O<sub>3S</sub> Upper Ordovician to Silurian
- E<sub>3O1</sub> Upper Cambrian to Lower Ordovician
- PR Proterozoic

**INTRUSIVE ROCKS**

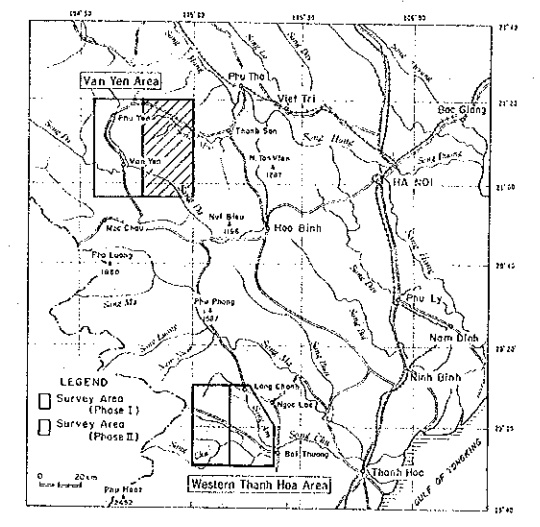
- Cretaceous**
- γ<sub>6</sub> Granite
- εγ Syenite
- Early Triassic**
- γ<sub>4</sub> Gabbro
- Permian**
- γ<sub>2</sub> Ultramafic rocks
- Proterozoic**
- γ<sub>2</sub> Granite

**OTHERS**

- Fault (certain / inferred or covered by the Quaternary)

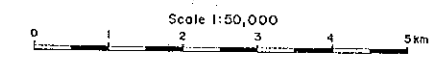
REPORT ON THE COOPERATIVE MINERAL EXPLORATION  
IN THE VAN YEN AND WESTERN THANH HOA AREAS,  
THE SOCIALIST REPUBLIC OF VIETNAM  
PHASE II

GEOLOGIC SECTIONS OF THE VAN YEN AREA



FEBRUARY 1995

JAPAN INTERNATIONAL COOPERATION AGENCY  
METAL MINING AGENCY OF JAPAN



LEGEND

STRATIGRAPHY

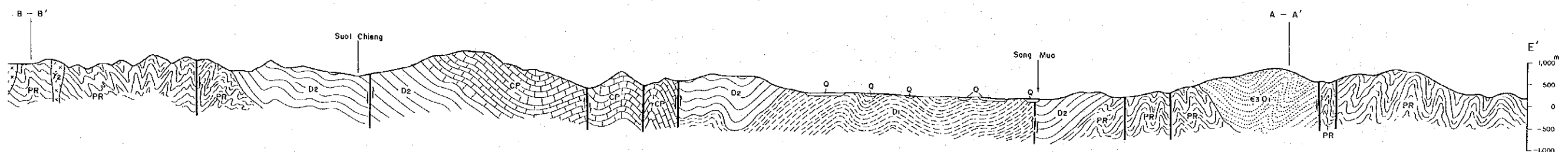
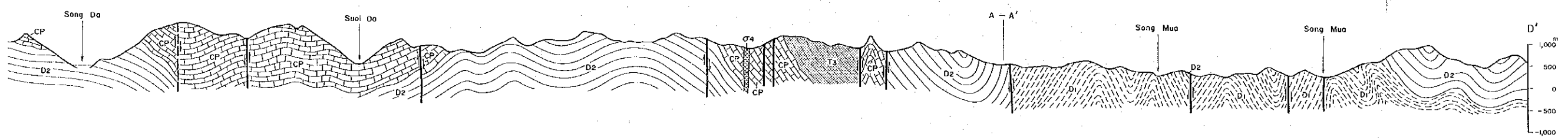
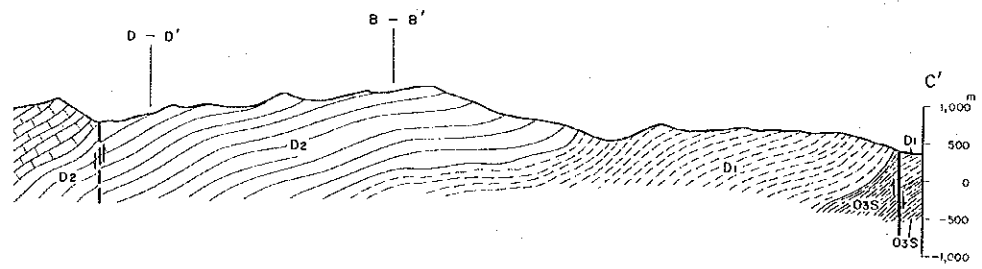
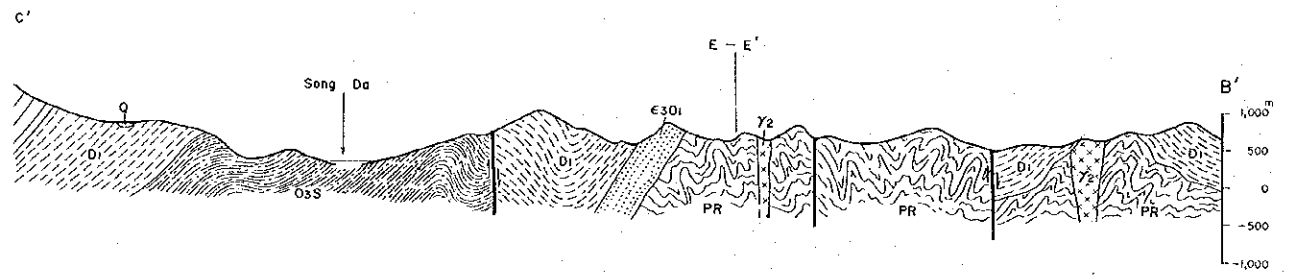
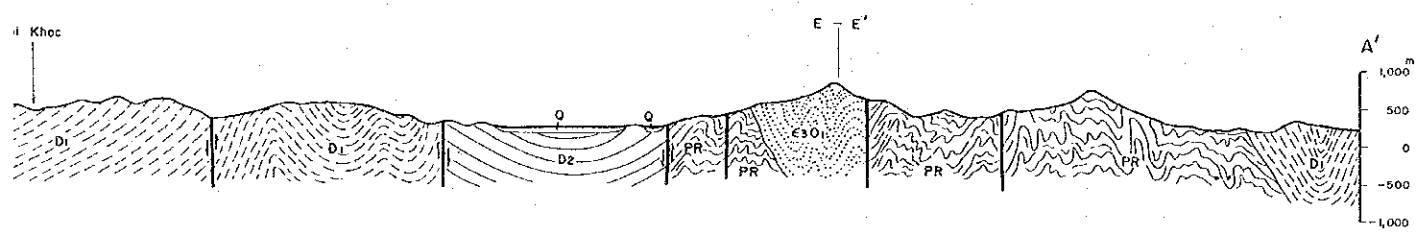
- Q Quaternary
- T<sub>3</sub> Upper Triassic
- T<sub>1</sub> Lower Triassic
- P<sub>1</sub> Lower Permian
- CP Carboniferous to Permian
- D<sub>2</sub> Middle Devonian
- D<sub>1</sub> Lower Devonian
- O<sub>3S</sub> Upper Ordovician to Silurian
- O<sub>3L</sub> Upper Cambrian to Lower Ordovician
- PR Proterozoic

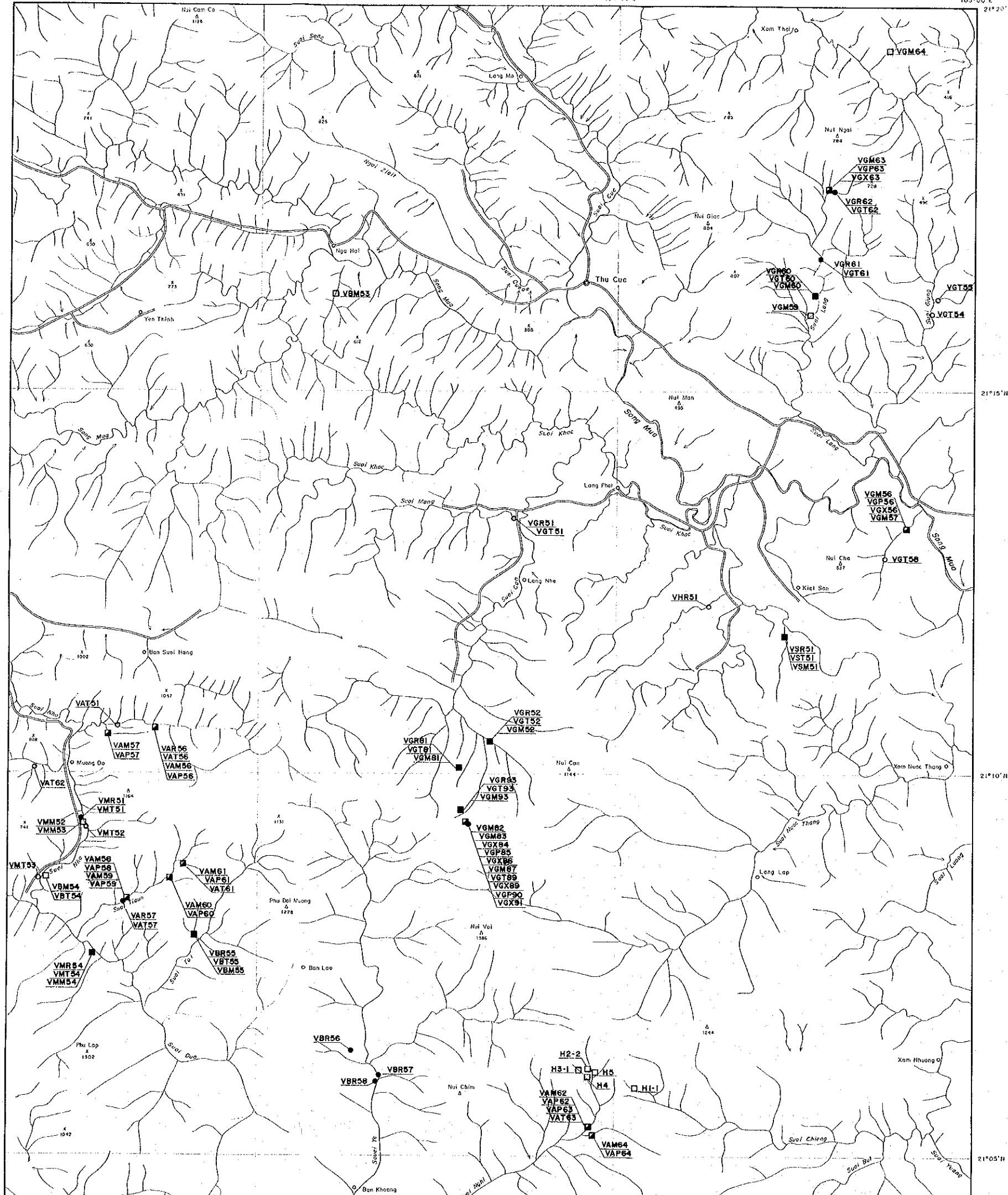
INTRUSIVE ROCKS

- Cretaceous
  - Y<sub>0</sub> Granite
  - Y<sub>1</sub> Granite
  - Y<sub>2</sub> Granite
  - Y<sub>3</sub> Granite
  - Y<sub>4</sub> Granite
  - Y<sub>5</sub> Granite
  - Y<sub>6</sub> Granite
  - Y<sub>7</sub> Granite
  - Y<sub>8</sub> Granite
  - Y<sub>9</sub> Granite
  - Y<sub>10</sub> Granite
  - Y<sub>11</sub> Granite
  - Y<sub>12</sub> Granite
  - Y<sub>13</sub> Granite
  - Y<sub>14</sub> Granite
  - Y<sub>15</sub> Granite
  - Y<sub>16</sub> Granite
  - Y<sub>17</sub> Granite
  - Y<sub>18</sub> Granite
  - Y<sub>19</sub> Granite
  - Y<sub>20</sub> Granite
  - Y<sub>21</sub> Granite
  - Y<sub>22</sub> Granite
  - Y<sub>23</sub> Granite
  - Y<sub>24</sub> Granite
  - Y<sub>25</sub> Granite
  - Y<sub>26</sub> Granite
  - Y<sub>27</sub> Granite
  - Y<sub>28</sub> Granite
  - Y<sub>29</sub> Granite
  - Y<sub>30</sub> Granite
  - Y<sub>31</sub> Granite
  - Y<sub>32</sub> Granite
  - Y<sub>33</sub> Granite
  - Y<sub>34</sub> Granite
  - Y<sub>35</sub> Granite
  - Y<sub>36</sub> Granite
  - Y<sub>37</sub> Granite
  - Y<sub>38</sub> Granite
  - Y<sub>39</sub> Granite
  - Y<sub>40</sub> Granite
  - Y<sub>41</sub> Granite
  - Y<sub>42</sub> Granite
  - Y<sub>43</sub> Granite
  - Y<sub>44</sub> Granite
  - Y<sub>45</sub> Granite
  - Y<sub>46</sub> Granite
  - Y<sub>47</sub> Granite
  - Y<sub>48</sub> Granite
  - Y<sub>49</sub> Granite
  - Y<sub>50</sub> Granite
  - Y<sub>51</sub> Granite
  - Y<sub>52</sub> Granite
  - Y<sub>53</sub> Granite
  - Y<sub>54</sub> Granite
  - Y<sub>55</sub> Granite
  - Y<sub>56</sub> Granite
  - Y<sub>57</sub> Granite
  - Y<sub>58</sub> Granite
  - Y<sub>59</sub> Granite
  - Y<sub>60</sub> Granite
  - Y<sub>61</sub> Granite
  - Y<sub>62</sub> Granite
  - Y<sub>63</sub> Granite
  - Y<sub>64</sub> Granite
  - Y<sub>65</sub> Granite
  - Y<sub>66</sub> Granite
  - Y<sub>67</sub> Granite
  - Y<sub>68</sub> Granite
  - Y<sub>69</sub> Granite
  - Y<sub>70</sub> Granite
  - Y<sub>71</sub> Granite
  - Y<sub>72</sub> Granite
  - Y<sub>73</sub> Granite
  - Y<sub>74</sub> Granite
  - Y<sub>75</sub> Granite
  - Y<sub>76</sub> Granite
  - Y<sub>77</sub> Granite
  - Y<sub>78</sub> Granite
  - Y<sub>79</sub> Granite
  - Y<sub>80</sub> Granite
  - Y<sub>81</sub> Granite
  - Y<sub>82</sub> Granite
  - Y<sub>83</sub> Granite
  - Y<sub>84</sub> Granite
  - Y<sub>85</sub> Granite
  - Y<sub>86</sub> Granite
  - Y<sub>87</sub> Granite
  - Y<sub>88</sub> Granite
  - Y<sub>89</sub> Granite
  - Y<sub>90</sub> Granite
  - Y<sub>91</sub> Granite
  - Y<sub>92</sub> Granite
  - Y<sub>93</sub> Granite
  - Y<sub>94</sub> Granite
  - Y<sub>95</sub> Granite
  - Y<sub>96</sub> Granite
  - Y<sub>97</sub> Granite
  - Y<sub>98</sub> Granite
  - Y<sub>99</sub> Granite
  - Y<sub>100</sub> Granite
- Early Triassic
  - G<sub>1</sub> Gabbro
- Permian
  - U<sub>1</sub> Ultramafic rocks
- Proterozoic
  - Y<sub>1</sub> Granite

OTHERS

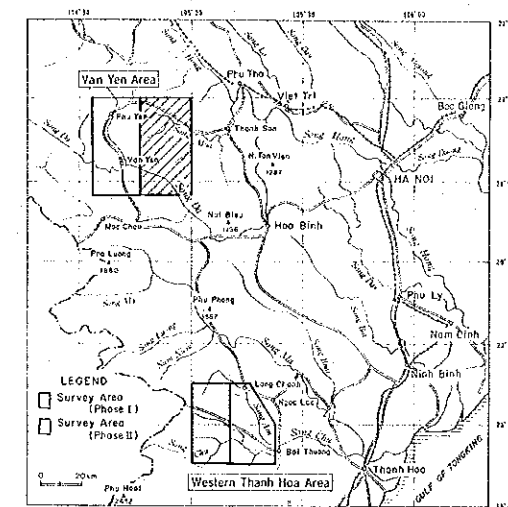
- Fault (certain / inferred or covered by the Quaternary)





REPORT ON THE COOPERATIVE MINERAL EXPLORATION  
 IN THE VAN YEN AND WESTERN THANH HOA AREAS,  
 THE SOCIALIST REPUBLIC OF VIETNAM  
 PHASE II

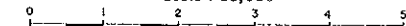
LOCALITY MAP OF SAMPLES FOR LABORATORY STUDIES IN THE  
 VAN YEN AREA



FEBRUARY 1985

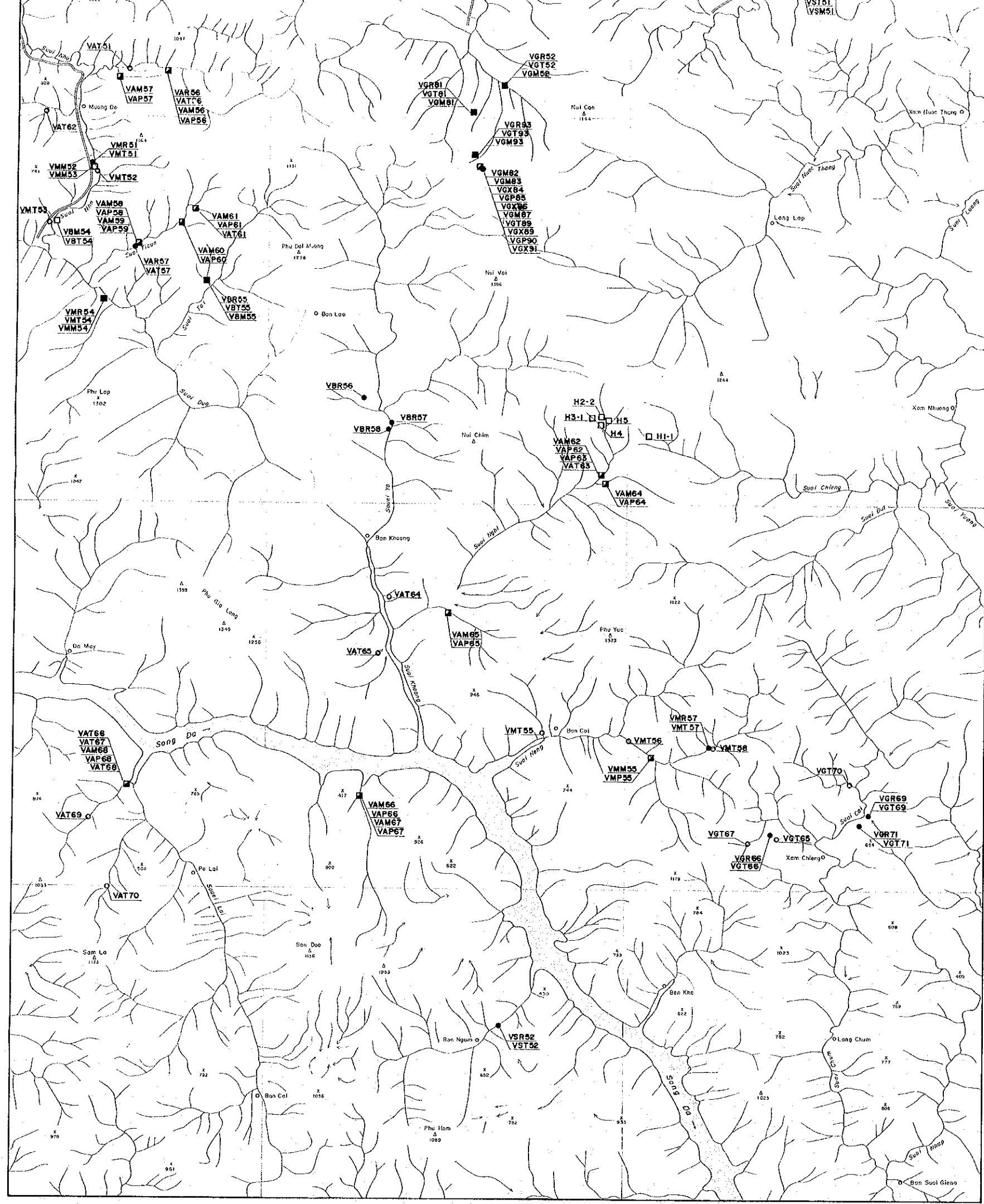
JAPAN INTERNATIONAL COOPERATION AGENCY  
METAL MINING AGENCY OF JAPAN

Scale 1:50,000



LEGEND

- VGT51: Location and number of rock samples for thin section
- VGR51: Location and number of rock samples for whole rock analysis and thin section  
 upper : whole rock analysis sample  
 lower : thin section sample
- VGM51: Location and number of ore samples for chemical analysis
- ▣ VGM51: Location and number of ore samples for chemical analysis and polished section  
 upper : chemical analysis sample  
 lower : polished section sample
- VGR51: Location and number of rock samples for whole rock analysis and thin section, and ore samples for chemical analysis  
 upper : whole rock analysis sample  
 middle : thin section sample  
 lower : chemical analysis sample
- ⊙ VGX51: Location and number of rock samples for X-ray diffraction analysis

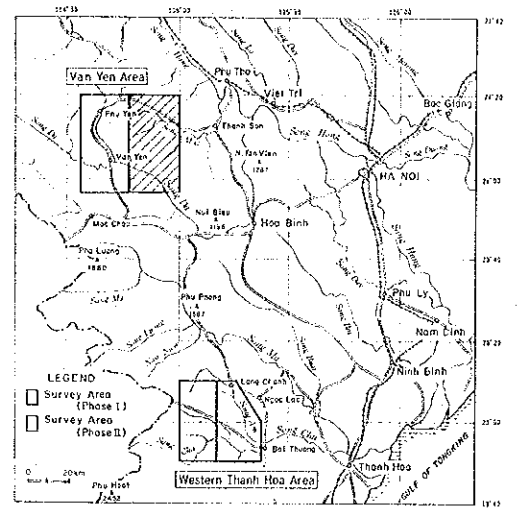


- VGM51 Location and number of ore samples for chemical analysis and polished section  
 VGP51 upper : chemical analysis sample  
                   lower : polished section sample
  
- VGR51 Location and number of rock samples for whole rock analysis and thin section, and one samples for chemical analysis  
 VGT51 upper : whole rock analysis sample  
                   middle : thin section sample  
                   lower : chemical analysis sample
  
- VGX51 Location and number of rock samples for X-ray diffraction analysis

21°10'N  
 21°05'N  
 21°00'N  
 20°56'N

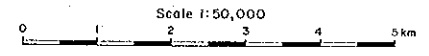
REPORT ON THE COOPERATIVE MINERAL EXPLORATION  
 IN THE VAN YEN AND WESTERN THANH HOA AREAS,  
 THE SOCIALIST REPUBLIC OF VIETNAM  
 PHASE II

LOCALITY MAP OF STREAM SEDIMENT AND PANNED CONCENTRATE  
 SAMPLES IN THE VAN YEN AREA



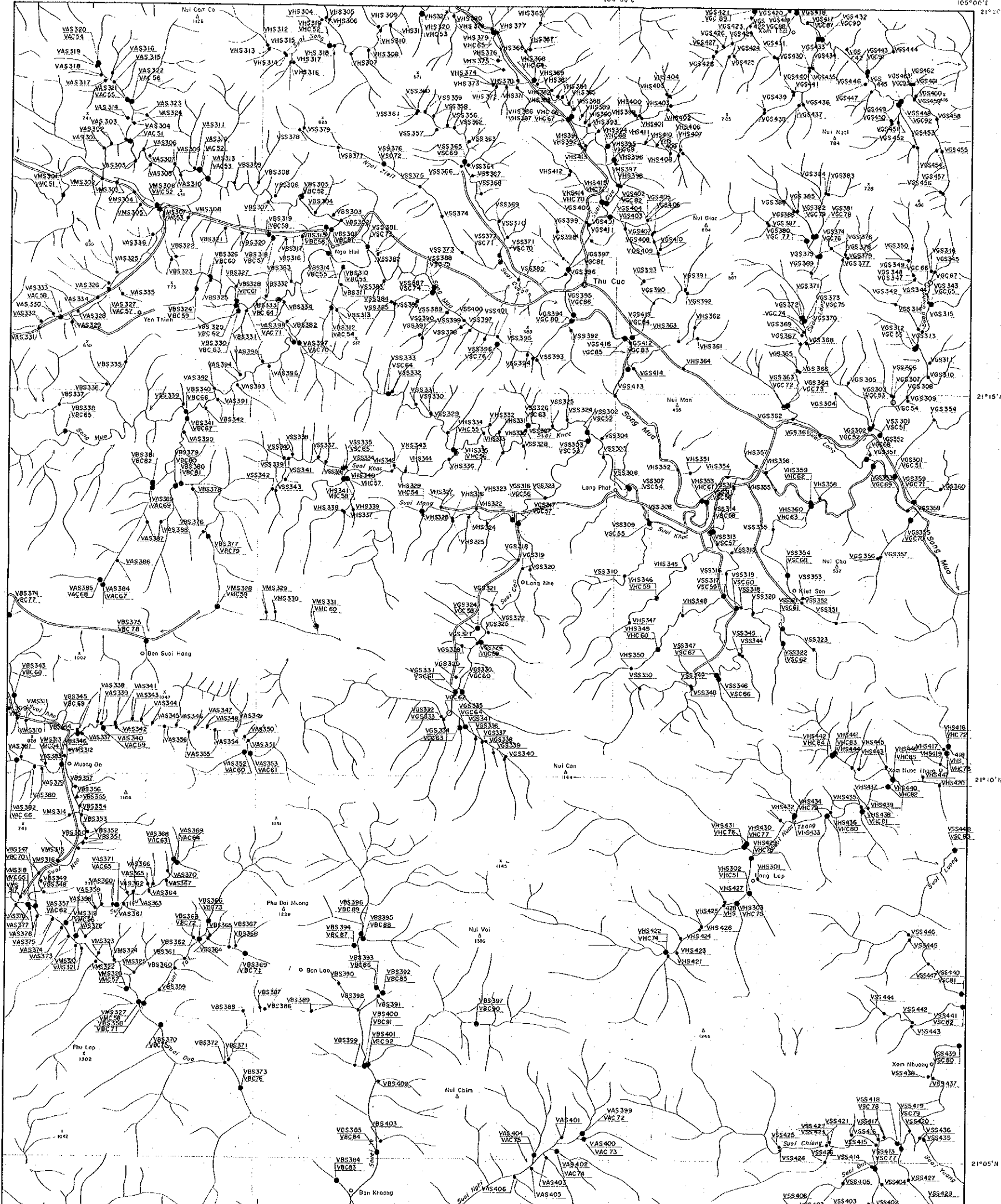
FEBRUARY 1995

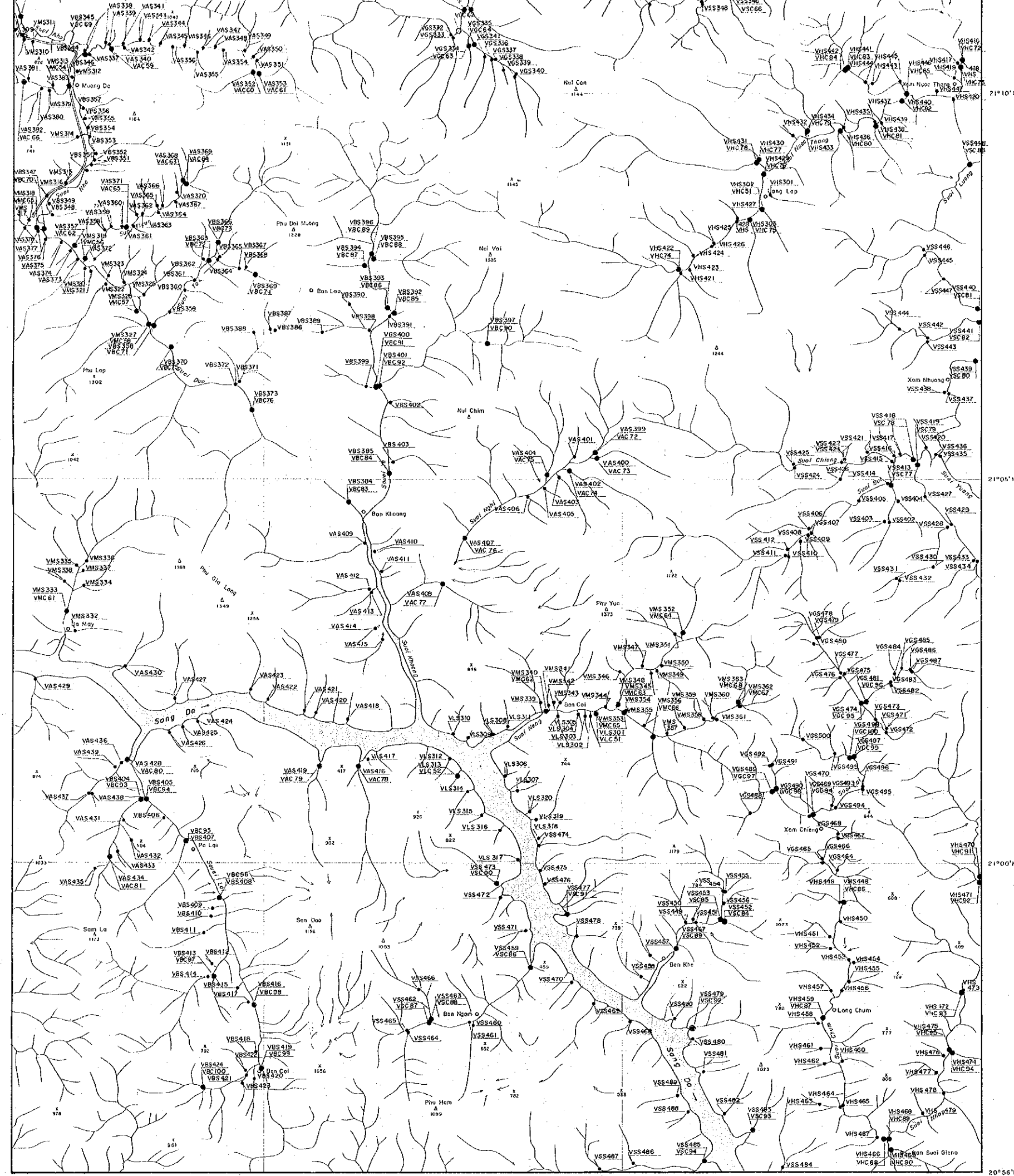
JAPAN INTERNATIONAL COOPERATION AGENCY  
 METAL MINING AGENCY OF JAPAN



LEGEND

- VMS301 Location and number of both stream sediment and panned concentrate samples  
 upper : stream sediment sample  
 lower : panned concentrate sample
- VMS302 Location and number of stream sediment samples
- VMC 52 Location and number of panned concentrate samples





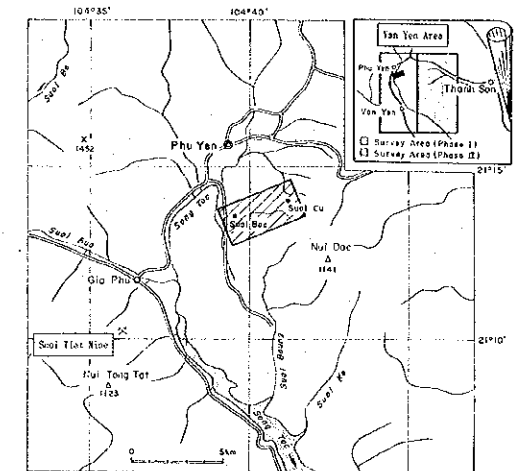
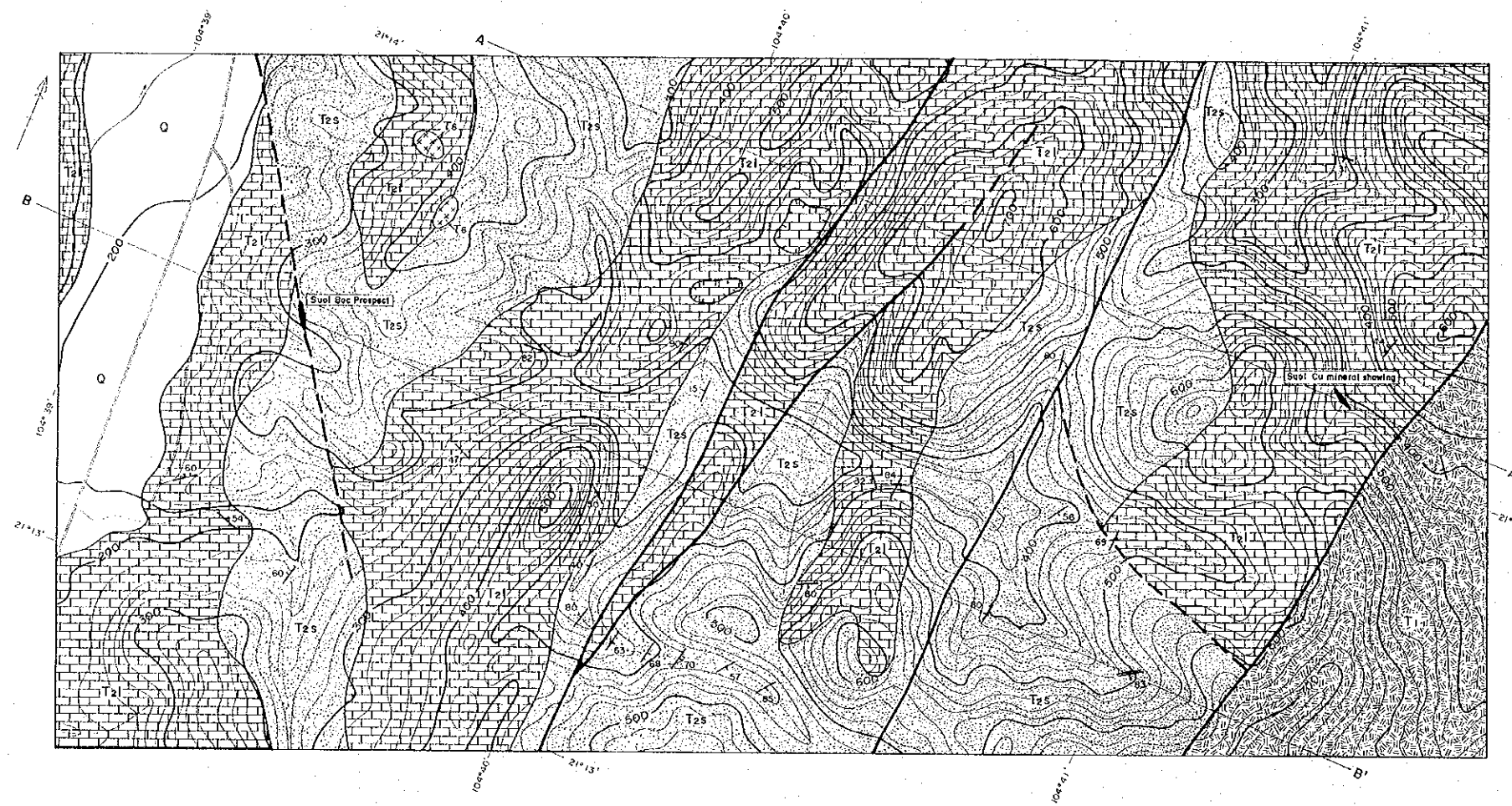
● VMS 302 Location and number of stream sediment samples  
 ○ VMS 52 Location and number of paired concentrate samples

20°56'N



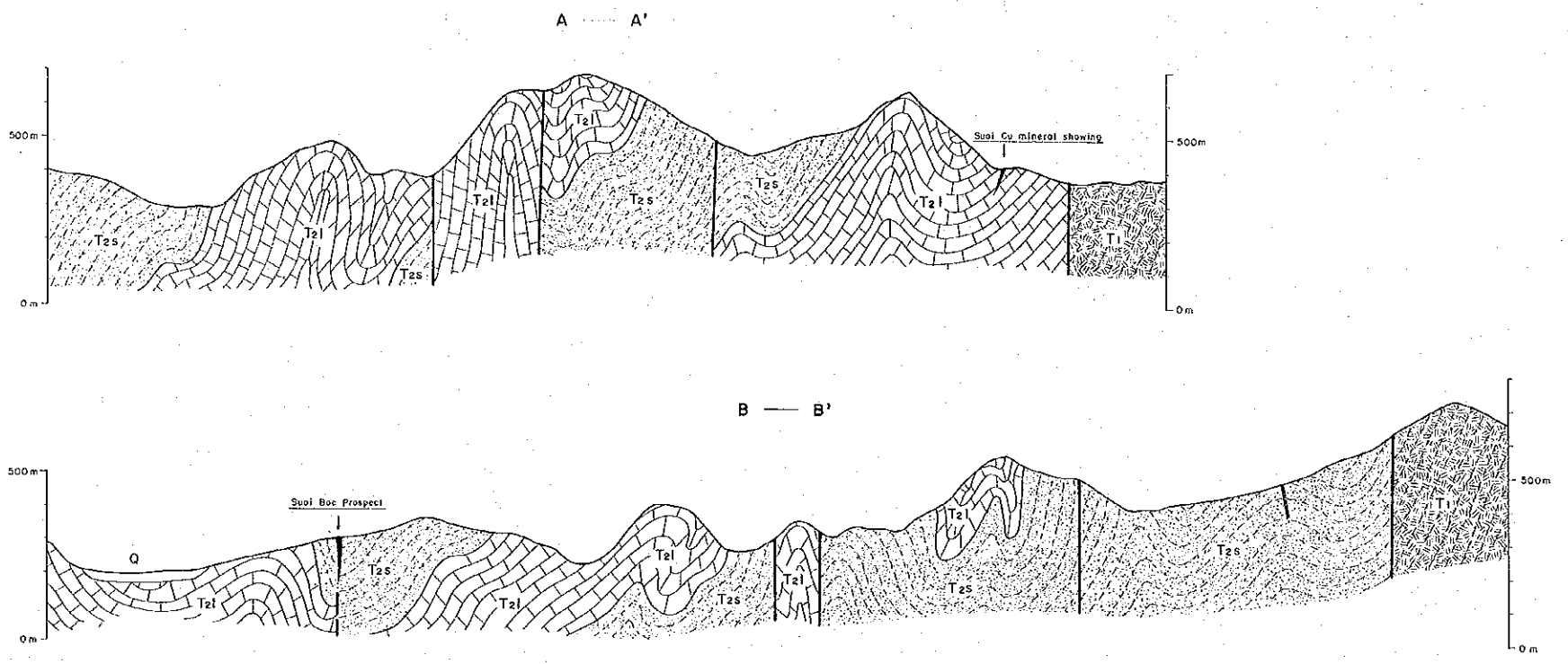
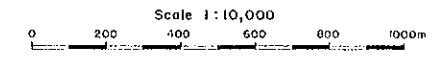
REPORT ON THE COOPERATIVE MINERAL EXPLORATION  
IN THE VAN YEN AND WESTERN THANH HOA AREAS,  
THE SOCIALIST REPUBLIC OF VIETNAM  
PHASE II

GEOLOGIC MAP AND SECTIONS OF THE SUOI BOC - SUOI CU  
MINERALIZATION ZONE



FEBRUARY 1955

JAPAN INTERNATIONAL COOPERATION AGENCY  
METAL MINING AGENCY OF JAPAN



LEGEND

STRATIGRAPHY

- Quaternary: Gravel, sand, clay (Q)
- Middle Triassic: Limestones (T2l)
- Middle Triassic: Mudstone, sandstone, siltstone, conglomerate (T2s)
- Early Triassic: Trachybasalt, trachybasaltic tuff, limestone (T1)

INTRUSIVE ROCK

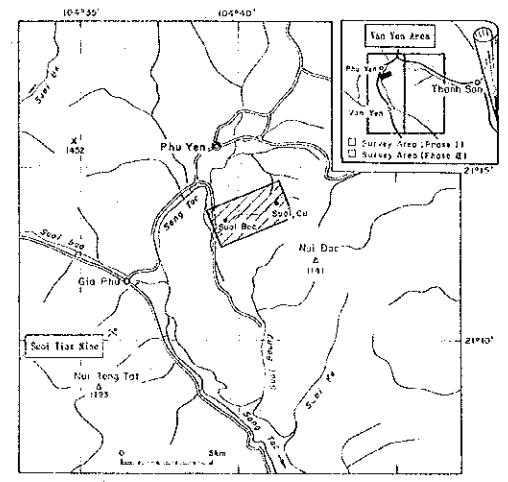
- Cretaceous?: Diacite porphyry (T6)

OTHERS

- Dip and strike of bed
- Fault (certain/inferred or covered by the Quaternary)
- Lead and Zinc mineralization
- Quartz vein
- Geologic section line (A-A')

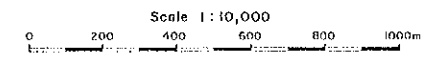
REPORT ON THE COOPERATIVE MINERAL EXPLORATION  
IN THE VAN YEN AND WESTERN THANH HOA AREAS,  
THE SOCIALIST REPUBLIC OF VIETNAM  
PHASE II

LOCALITY MAP OF SOIL SAMPLES AND SAMPLES FOR LABORATORY  
STUDIES IN THE SUOI BOC - SUOI CU MINERALIZATION ZONE



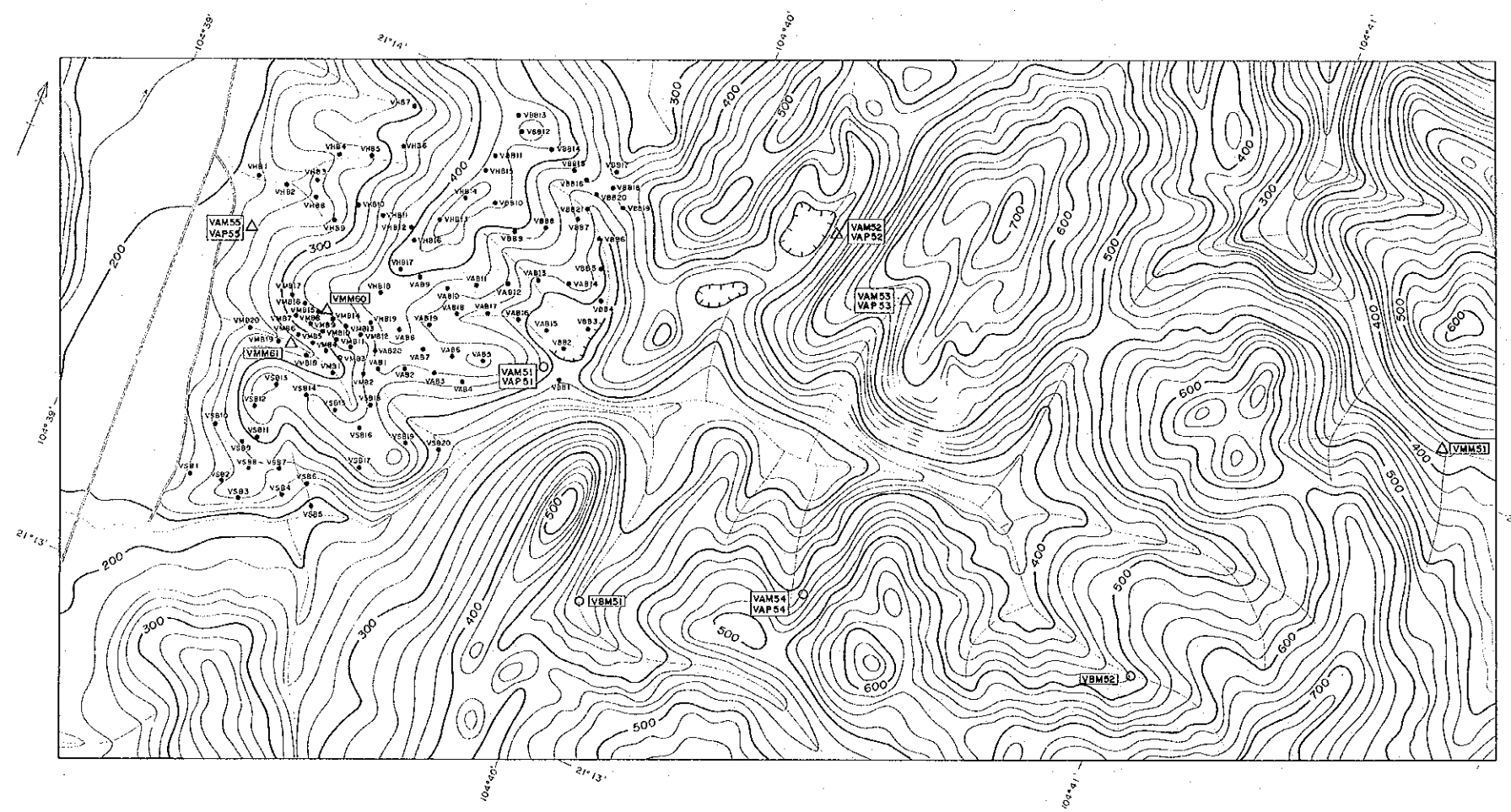
FEBRUARY 1965

JAPAN INTERNATIONAL COOPERATION AGENCY  
METAL MINING AGENCY OF JAPAN



LEGEND

- VAB2 Location and number of soil samples
- VAM51 Location and number of ore samples for chemical analysis and polished section
- △ VAP51 Location and number of ore samples for upper: chemical analysis sample lower: polished section sample



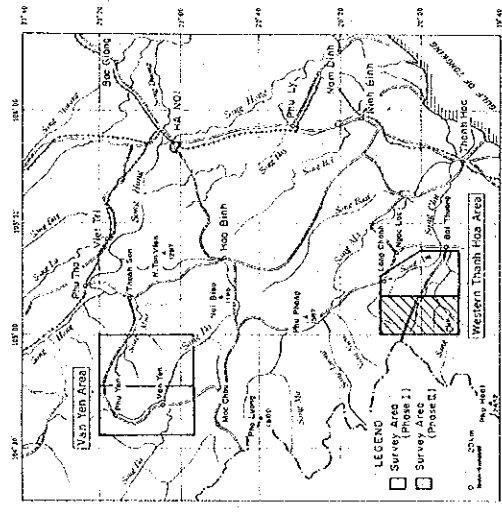
sample no.	wt (g)	Occurrence	Host rock	Strike and dip	Minerals	Ore grade									
						Au	Ag	Cu	Pb	Zn	Al	Fe	Mo	Pt	
VAB21	0.1	Float (Fein)	Ls*	-	Qtz, Lta, Cp	<0.001	<0.001	<0.001	<0.001	<0.001	<0.001	<0.001	<0.001	<0.001	<0.001
VAB22	-	Float (Fein)	Sn*	-	Qtz, Lta, Cp	<0.001	<0.001	<0.001	<0.001	<0.001	<0.001	<0.001	<0.001	<0.001	<0.001
VAB23	0.2	Float (Fein)	Sst*	-	Qtz, Lta, Cp	<0.001	<0.001	<0.001	<0.001	<0.001	<0.001	<0.001	<0.001	<0.001	<0.001
VAB24	-	Disc	Ls	-	Cal	<0.001	<0.001	<0.001	<0.001	<0.001	<0.001	<0.001	<0.001	<0.001	<0.001
VAB25	-	Float (Disc)	Ls	-	Cal	<0.001	<0.001	<0.001	<0.001	<0.001	<0.001	<0.001	<0.001	<0.001	<0.001
VAB26	-	Disc	Ls	-	Cal	<0.001	<0.001	<0.001	<0.001	<0.001	<0.001	<0.001	<0.001	<0.001	<0.001
VAB27	-	Float (Disc)	Ls	-	Cal	<0.001	<0.001	<0.001	<0.001	<0.001	<0.001	<0.001	<0.001	<0.001	<0.001
VAB28	-	Disc	Sl	-	Py	<0.001	<0.001	<0.001	<0.001	<0.001	<0.001	<0.001	<0.001	<0.001	<0.001
VAB29	0.1	Fein	Cg	N20° E/63° SE	Qtz	<0.001	<0.001	<0.001	<0.001	<0.001	<0.001	<0.001	<0.001	<0.001	<0.001

(Abbreviation)  
Disc: dissemination, Ls: limestone  
Sn: sandstone, Ss: siltstone  
Cg: conglomerate, Qtz: quartz  
Lta: limonite, Cp: chalcocoprite  
Cal: calcite, Py: pyrite

Au and Pt are in ppt. Ag in ppb, and other elements in percent.

REPORT ON THE COOPERATIVE MINERAL EXPLORATION  
IN THE VAN YEN AND WESTERN THANH HOA AREAS,  
THE SOCIALIST REPUBLIC OF VIETNAM  
PHASE II

GEOLOGIC MAP OF THE WESTERN THANH HOA AREA



FEBRUARY 1985

JAPAN INTERNATIONAL COOPERATION AGENCY  
METAL MINING AGENCY OF JAPAN

Scale 1:50,000



LEGEND

STRATIGRAPHY

- Quaternary
- Unconsolidated Jurassic (mainly acidic welded tuff)
- Middle Triassic
- o: sedimentary rocks excluding limestone
- s: limestone
- Silurian to Lower Devonian
- Upper Ordovician to Silurian
- Cambrian

INTRUSIVE ROCKS

Late Cretaceous to Paleogene

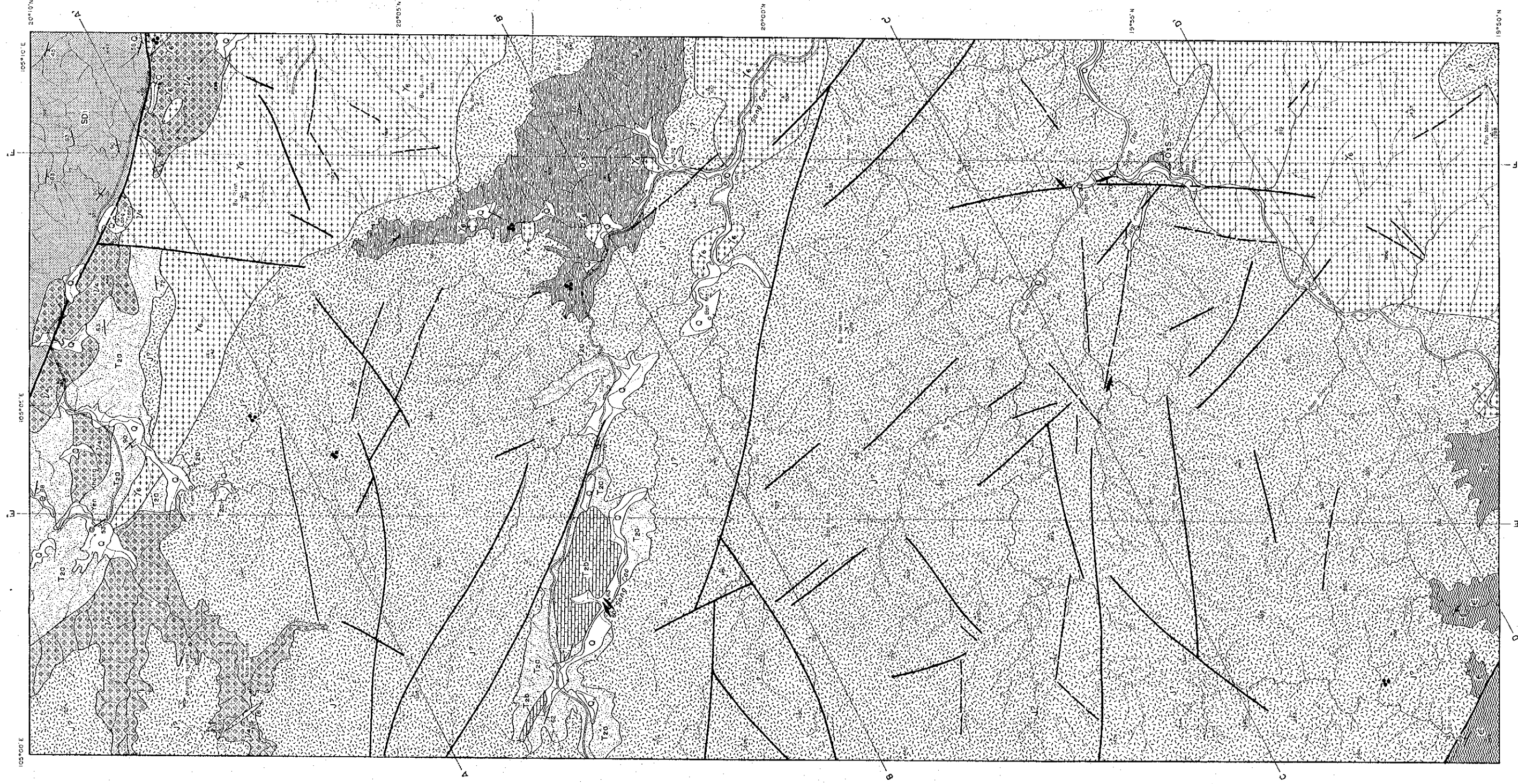
- Granite
- Feisic rock

Late Triassic

- Gabbro

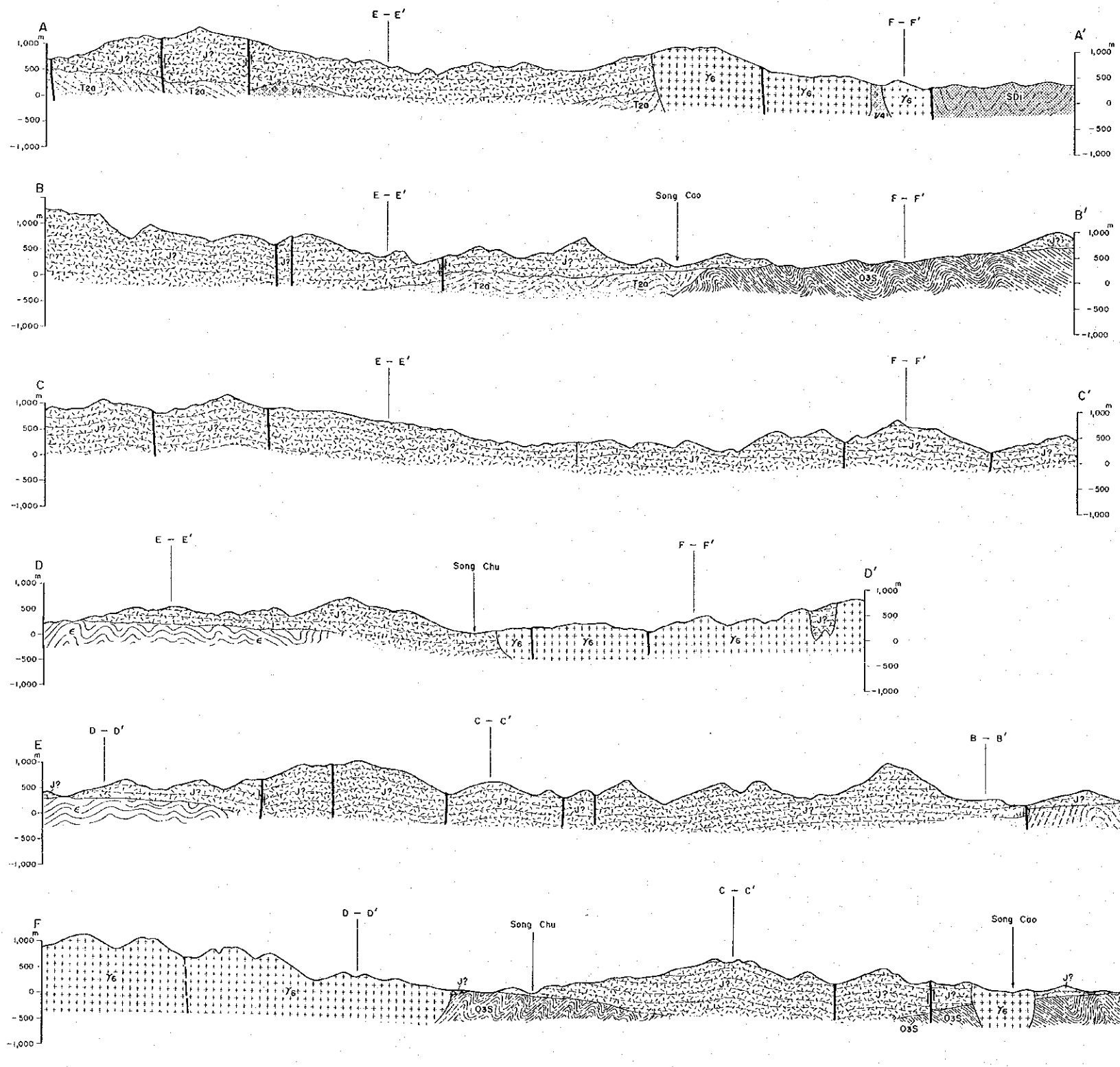
OTHERS

- Fault (center / inverted or covered by the Quaternary)
- Dip and strike of bed
- Dip and strike of secondary and tertiary
- Quartz (= sulfide) vein
- Mineralization
- Geologic section line



REPORT ON THE COOPERATIVE MINERAL EXPLORATION  
IN THE VAN YEN AND WESTERN THANH HOA AREAS,  
THE SOCIALIST REPUBLIC OF VIETNAM  
PHASE II

GEOLOGIC SECTIONS OF THE WESTERN THANH HOA AREA



**LEGEND**

**STRATIGRAPHY**

- Quaternary
- Undiscriminated Jurassic (mainly dacitic welded tuff)
- Middle Triassic
  - a: sedimentary rocks excluding limestone
  - b: limestone
- Silurian to Lower Devonian
- Upper Ordovician to Silurian
- Cambrian

**INTRUSIVE ROCKS**

Late Cretaceous to Paleogene

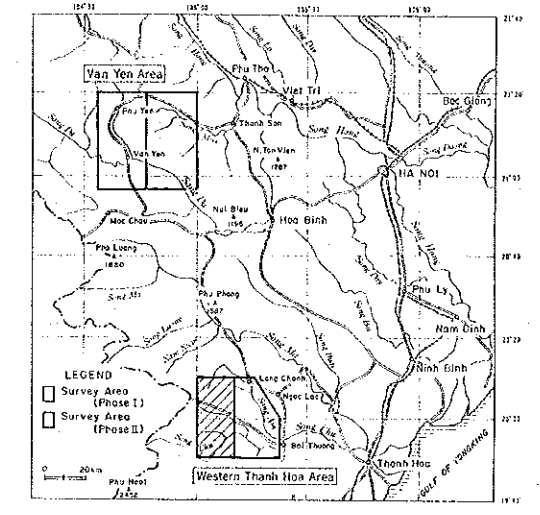
- Granite
- Felsic rock

Late Triassic

- Gabbro

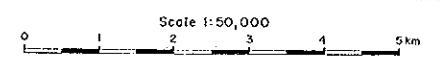
**OTHERS**

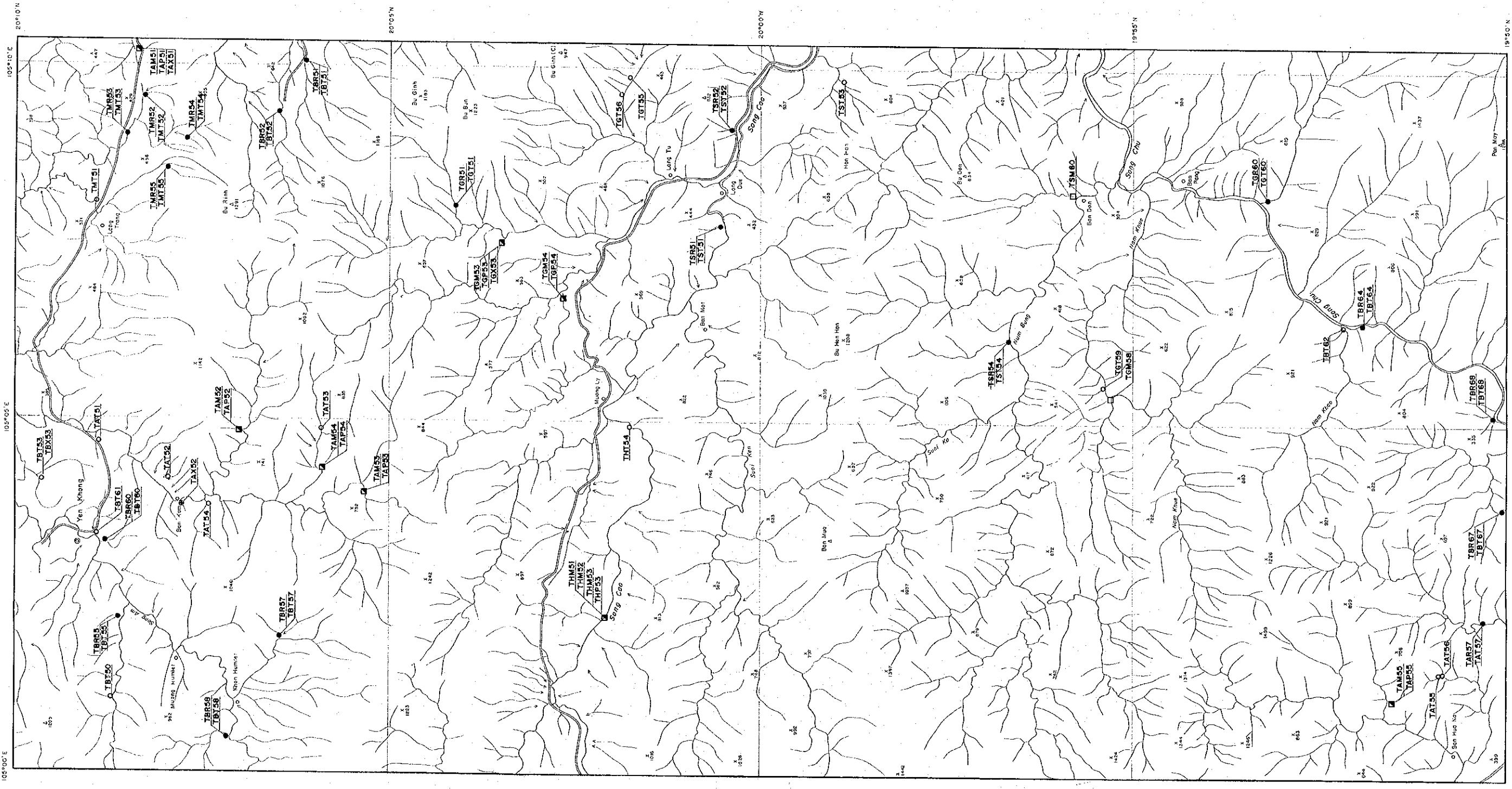
- Fault (certain / inferred or covered by the Quaternary)



FEBRUARY 1995

JAPAN INTERNATIONAL COOPERATION AGENCY  
METAL MINING AGENCY OF JAPAN





PL. 13

REPORT ON THE COOPERATIVE MINERAL EXPLORATION  
IN THE VAN YEN AND WESTERN THANH HOA AREAS,  
THE SOCIALIST REPUBLIC OF VIETNAM  
PHASE II

LOCALITY MAP OF SAMPLES FOR LABORATORY STUDIES IN THE  
WESTERN THANH HOA AREA

LEGEND

- Survey Area (Phase I)
- Survey Area (Phase II)

FEBRUARY 1965

JAPAN INTERNATIONAL COOPERATION AGENCY  
METAL MINING AGENCY OF JAPAN

Scale 1:50,000

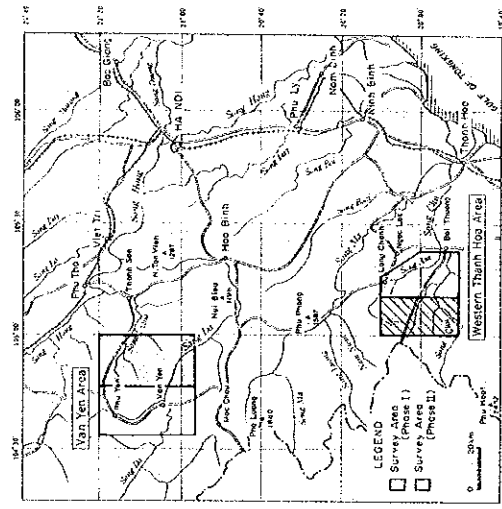
0 1 2 3 4 5 Km

- LEGEND
- TATS1 Location and number of rock samples for thin section
  - TARS1 Location and number of rock samples for whole rock analysis and thin section  
upper : whole rock analysis sample  
lower : thin section sample
  - TAMS1 Location and number of ore samples for chemical analysis
  - ▣ TAMS1 Location and number of ore samples for chemical analysis  
upper : prepared and polished section  
lower : polished section sample
  - ⊙ TARS1 Location and number of rock samples for X-ray diffraction analysis

REPORT ON THE COOPERATIVE MINERAL EXPLORATION  
IN THE VAN YEN AND WESTERN THANH HOA AREAS,  
THE SOCIALIST REPUBLIC OF VIETNAM

PHASE II

LOCALITY MAP OF STREAM SEDIMENT AND PANNEED CONCENTRATE  
SAMPLES IN THE WESTERN THANH HOA AREA

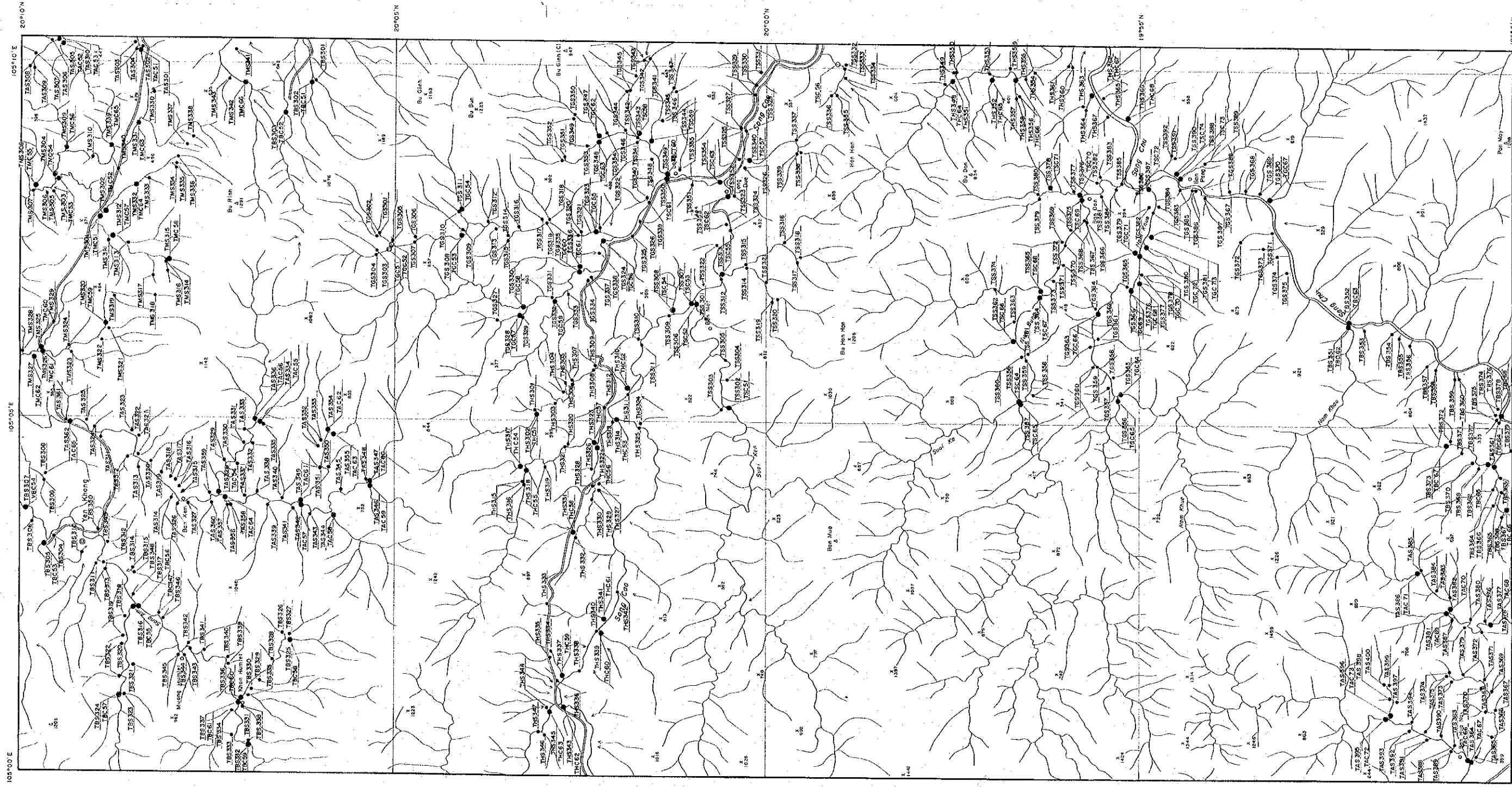


FEBRUARY 1985  
JAPAN INTERNATIONAL COOPERATION AGENCY  
METAL MINING AGENCY OF JAPAN

Scale 1:50,000

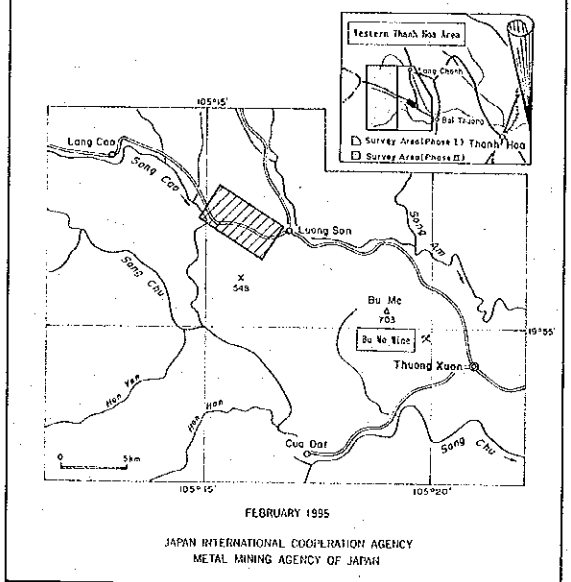
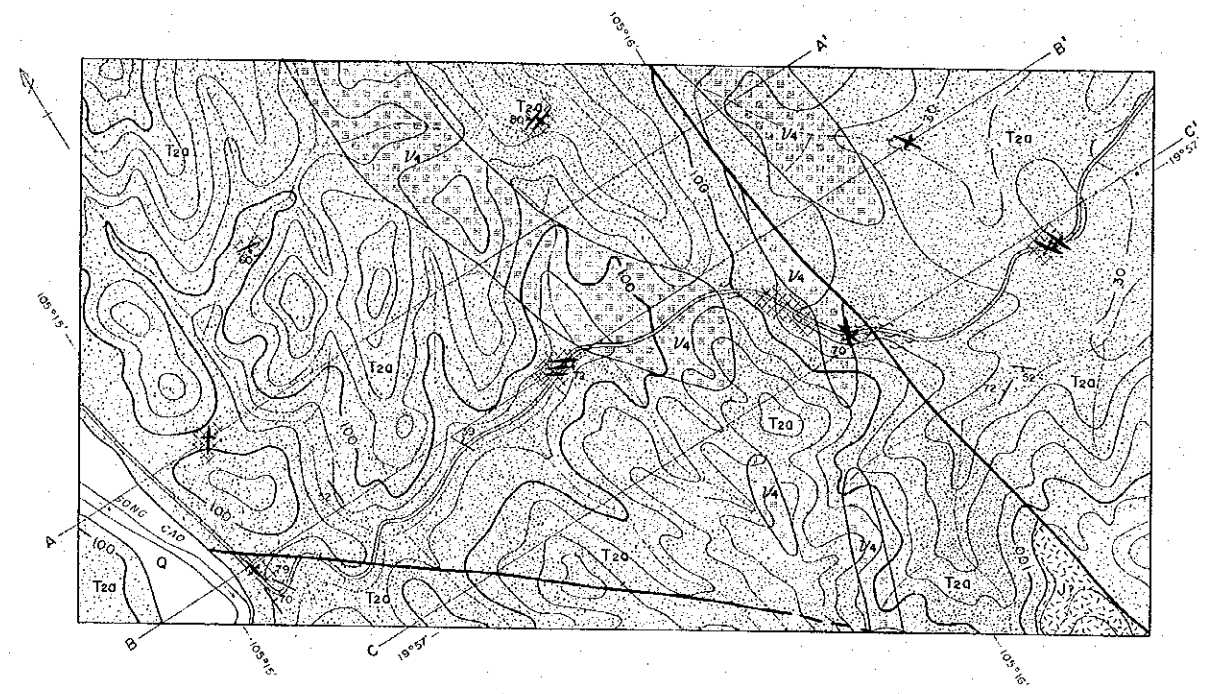
LEGEND

- TMS201 Location and number of both stream sediment and pan concentrate samples
- TMS202 Location and number of stream sediment samples
- TMS203 Location and number of pan concentrate samples



REPORT ON THE COOPERATIVE MINERAL EXPLORATION  
IN THE VAN YEN AND WESTERN THANH HOA AREAS,  
THE SOCIALIST REPUBLIC OF VIETNAM  
PHASE II

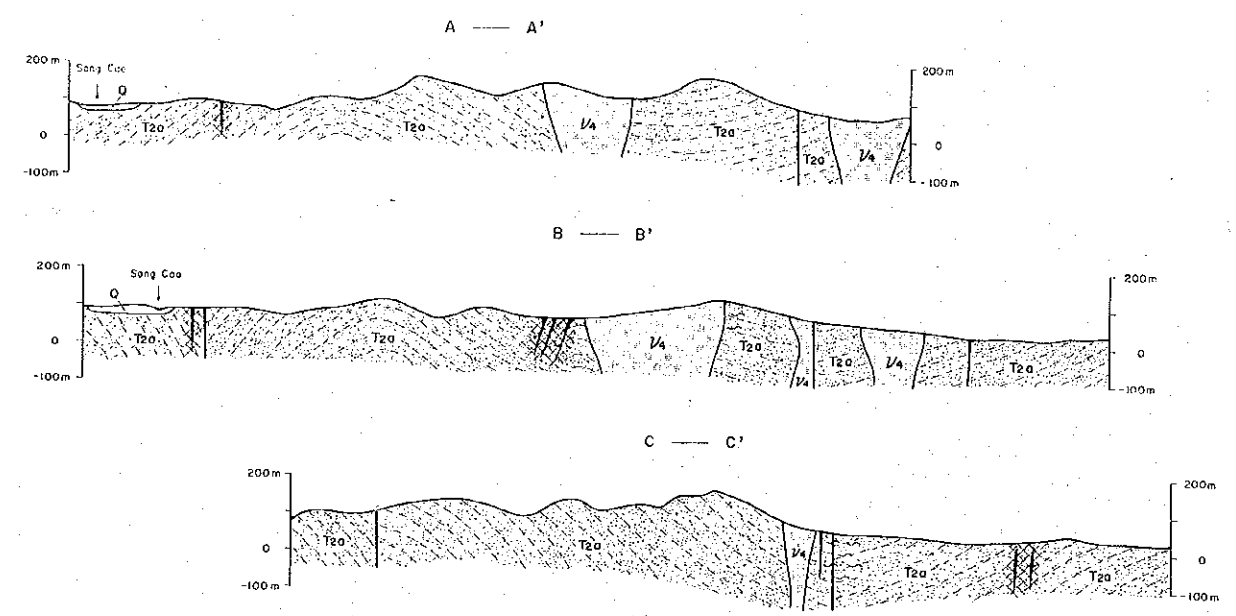
GEOLOGIC MAP AND SECTIONS OF THE LUONG SON  
MINERALIZATION ZONE



Scale 1:10,000  
0 200 400 600 800 1000m

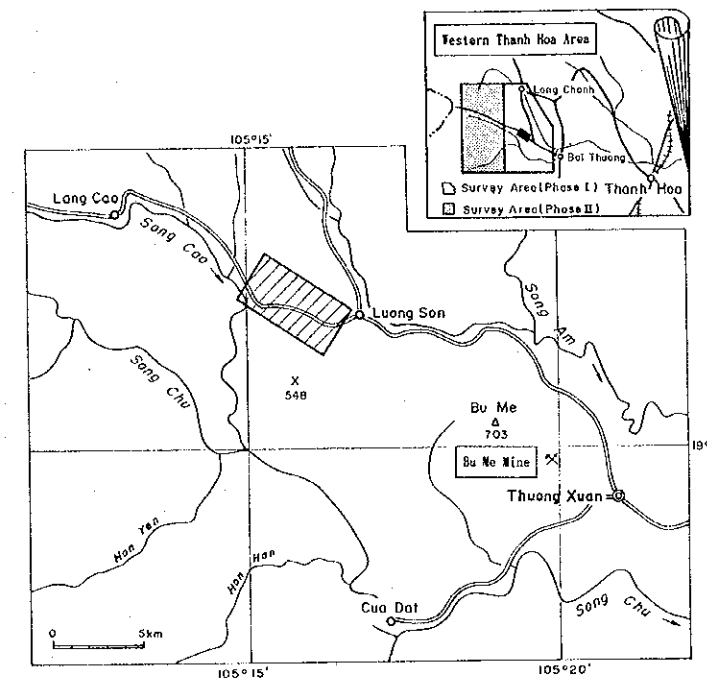
LEGEND

- STRATIGRAPHY**
- Quaternary Gravel, sand, silt, clay
  - Unfossiliferated Jurassic Dacitic tuff
  - Middle Triassic Sandstone, shale
- INTRUSIVE ROCK**
- Late Triassic Gabbro
- ALTERATION AND MINERALIZATION**
- Argillization (kaolinization)
  - Sulfidation
  - Quartz veins
- OTHERS**
- Dip and strike of bed
  - Fault
  - A — A' Geologic section line



REPORT ON THE COOPERATIVE MINERAL EXPLORATION  
IN THE VAN YEN AND WESTERN THANH HOA AREAS,  
THE SOCIALIST REPUBLIC OF VIETNAM  
PHASE II

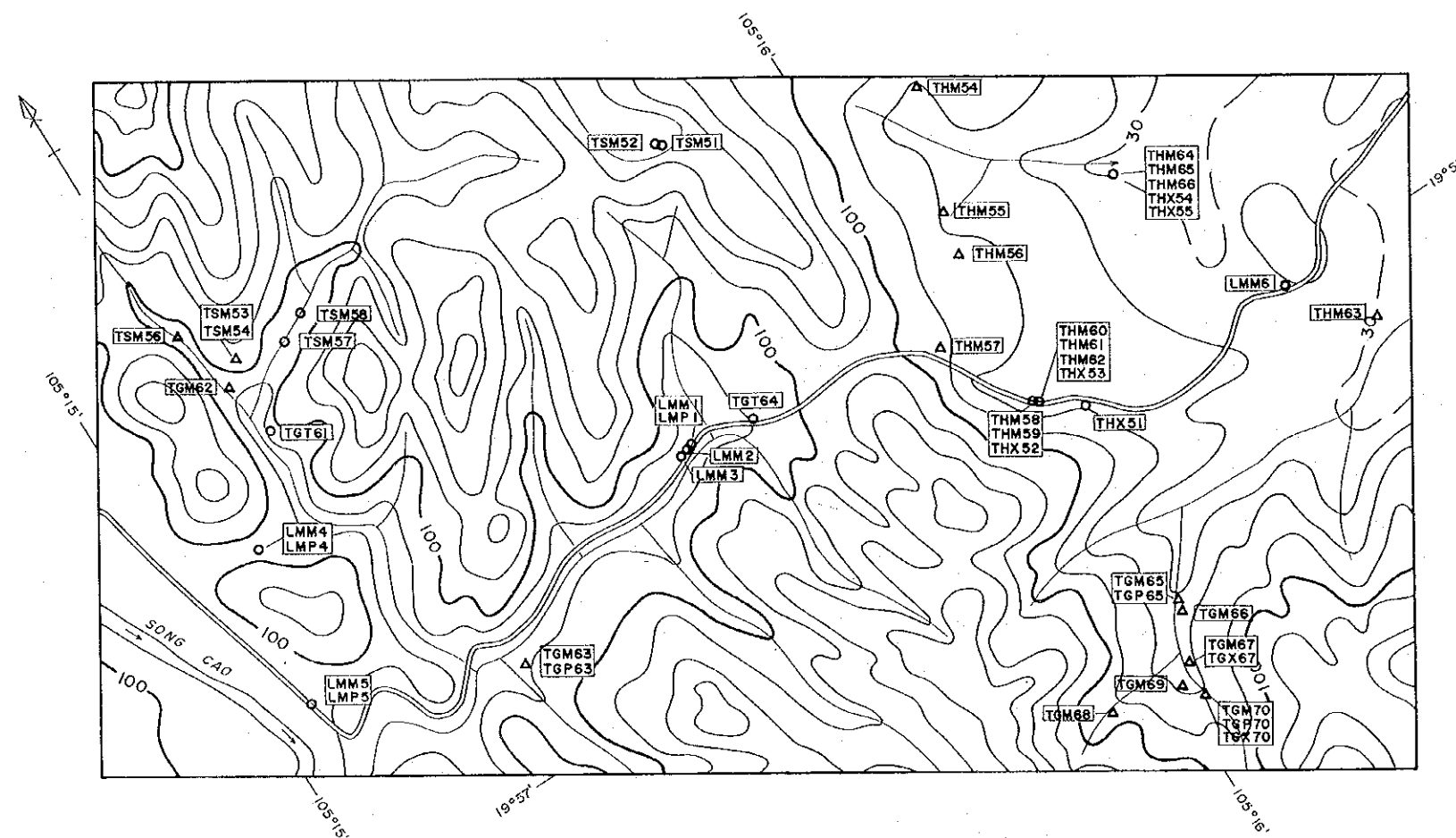
LOCALITY MAP OF SAMPLES FOR LABORATORY STUDIES IN THE  
LUONG SON MINERALIZATION ZONE



FEBRUARY 1995

JAPAN INTERNATIONAL COOPERATION AGENCY  
METAL MINING AGENCY OF JAPAN

Scale 1:10,000



LEGEND

- Outcrop ○ THM54 Location and number of ore samples for chemical analysis  
 Float ▲ THP54 Location and number of ore samples for polished section  
 ▲ THT54 Location and number of rock samples for thin section  
 ▲ THX54 Location and number of rock samples for X-ray diffraction analysis

Occurrence	Host rock	Strike and dip	Minerals	sample NO.	width (m)	Ore grade				
						Au	Ag	Cu	Pb	Zn
Yeln	Ss	N54°E/12°S	Qz, Py	LMM1	2.0	<1	<2	0.004	0.001	0.045
Yeln	Ss		Qz, Py	LMM2	2.5	<1	<2	0.002	0.008	0.025
Yeln	Ss		Qz, Py	LMM3	2.0	<1	<2	0.002	0.013	0.020
Yeln	Ss	N33°E/90°	Qz, Py, Cp	LMM4	0.6	49	<2	0.002	0.009	0.007
Yeln	Ss	N15°W/90°	Qz, Py	LMM5	1.9	<1	<2	<0.001	0.004	0.019
Yeln	Ss	N25°W/90°	Qz	LMM5	2.0	<1	<2	<0.001	<0.001	<0.001
Float	Ss?		Qz	TGM62	<1	<2	<0.001	0.009	0.022	
Float	Ss?		Qz	TGM63	8	5	0.073	0.080	0.007	
Float	Ss?		Qz, Py	TGM65	<1	7	0.003	0.025	0.004	
Float	Ss?		Qz	TGM65	<1	<2	<0.001	0.001	<0.001	
Float	Ss?		Qz, Lin	TGM67	<1	<2	0.002	0.050	0.006	
Float	Ss?		Qz, Lin	TGM68	6	<2	0.001	0.008	0.004	
Float	Ss?		Qz	TGM69	<1	<2	0.003	0.009	0.014	
Float	Ss?		Qz, Py	TGM70	22	2	<0.001	0.052	0.021	
Float	Ss?		Qz	TSM51	<1	<2	0.004	<0.001	<0.001	
Float	Ss?		Qz	TSM55	<1	<2	0.001	<0.001	<0.001	
Float	Ss?		Qz	TSM56	<1	<2	0.001	<0.001	<0.001	
Float	Ss?		Qz	TSM57	<1	<2	<0.001	<0.001	<0.001	
Yeln	Gb	N22°W/90°	Qz	TSM58	0.3	<1	<2	0.001	<0.001	0.001
Yeln	Gb		Qz, Py	TSM59	0.3	<1	<2	0.009	0.007	0.054
Yeln	Gb	N20°W/10°E	Qz	TSM60	0.05	11	<2	0.005	0.016	0.005

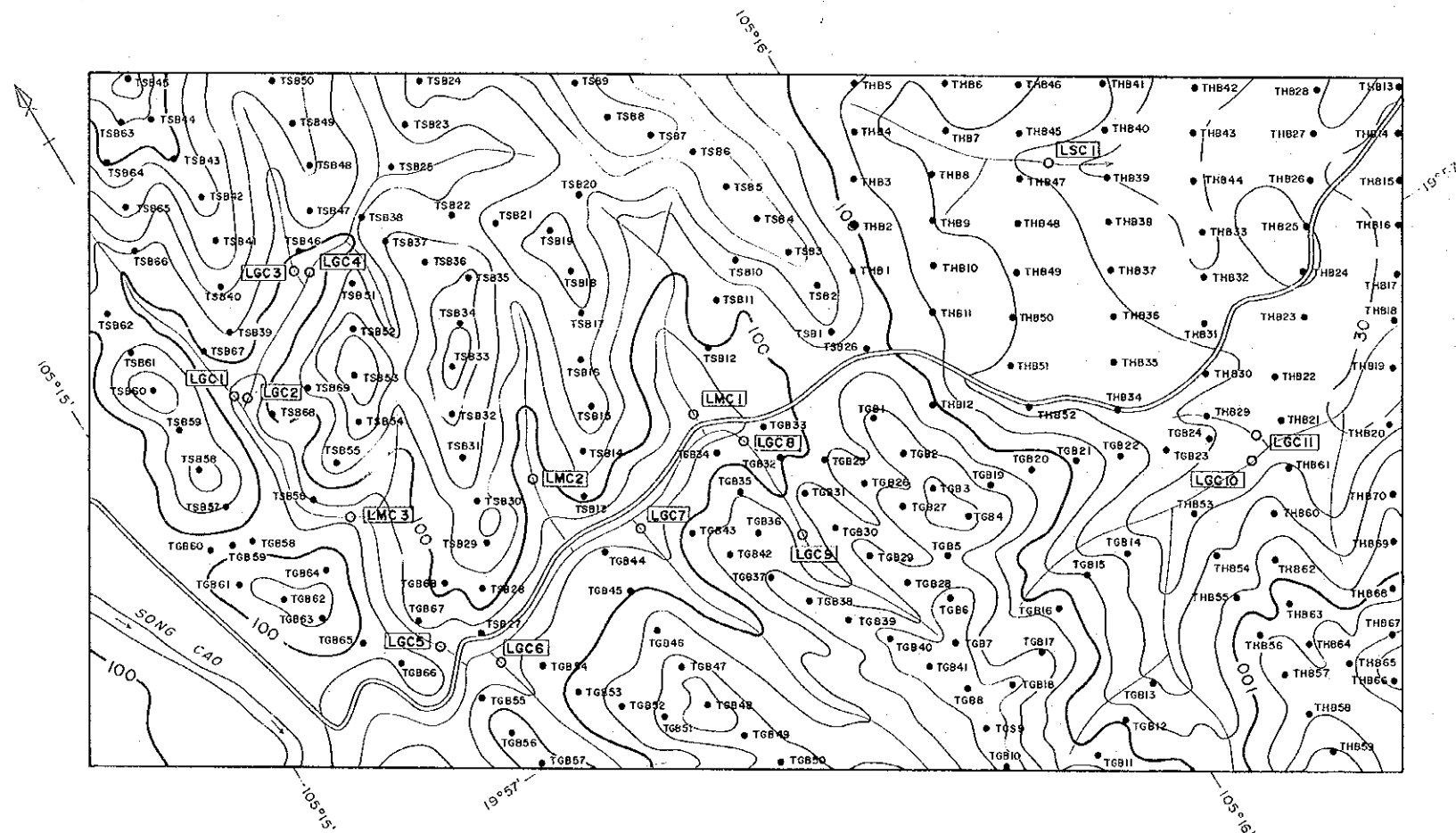
Occurrence	Host rock	Strike and dip	Minerals	sample NO.	width (m)	Ore grade				
						Au	Ag	Cu	Pb	Zn
Yeln	Gb			TSM51	0.3	<1	<2	0.001	0.002	0.062
Yeln	Gb		Qz	TSM52	0.3	1	<2	0.001	0.004	0.085
Float	Ss		Qz	TSM53	<1	<2	<0.001	0.017	0.002	<0.001
Yeln	Ss	N32°W/90°	Qz	TSM54	0.27	<1	<2	0.002	0.012	0.004
Yeln	Ss	N32°W/90°	Qz	TSM55	0.13	<1	<2	0.007	0.141	0.034
Yeln	Ss	N32°W/90°	Qz	TSM56	0.13	<1	<2	0.003	0.055	0.022
Yeln	Ss	N10°E/90°N	Qz	TSM57	0.02	53	<2	<0.001	0.002	<0.001
Yeln	Ss	N10°E/85°N	Qz	TSM58	0.05	4	<2	<0.001	0.002	0.009
Float	Ss?		Qz	TSM53	14	<2	<0.001	0.012	0.001	
Float	Ss?		Qz, Lin	TSM54	1	15	0.014	0.145	0.042	
Float	Ss?		Qz	TSM56	0.5	<1	<2	<0.001	0.005	0.005
Yeln	Ss		Qz, Py	TSM57	0.3	<1	3	0.039	0.007	0.054
Yeln	Ss	E-72°W/5	Qz	TSM58	0.02	1	<2	0.004	0.018	0.024

(Abbreviation) Au is in ppb, Ag in ppm, and other elements in percent.  
 Ss: sandstone, Ss: sandstone  
 Gb: gabbro, Qz: Quartz  
 Py: pyrite, Cp: chalcopyrite, Lin: limonite



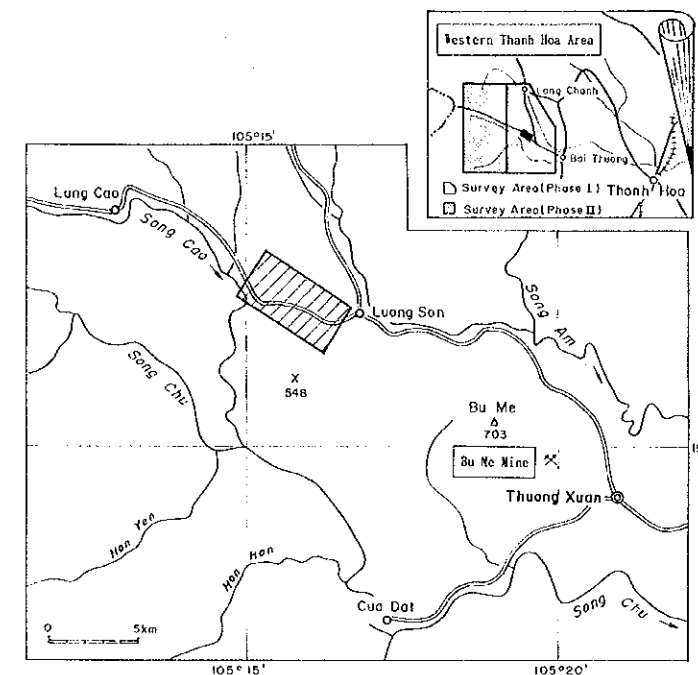
REPORT ON THE COOPERATIVE MINERAL EXPLORATION  
IN THE VAN YEN AND WESTERN THANH HOA AREAS,  
THE SOCIALIST REPUBLIC OF VIETNAM  
PHASE II

LOCALITY MAP OF SOIL AND PANNED CONCENTRATE SAMPLES IN THE  
LUONG SON MINERALIZATION ZONE



LEGEND

- TSB2 Location and number of soil samples
- LMC2 Location and number of panned concentrate samples



FEBRUARY 1995

JAPAN INTERNATIONAL COOPERATION AGENCY  
METAL MINING AGENCY OF JAPAN

Scale 1:10,000



