

JAPAN INTERNATIONAL COOPERATION AGENCY (JICA)

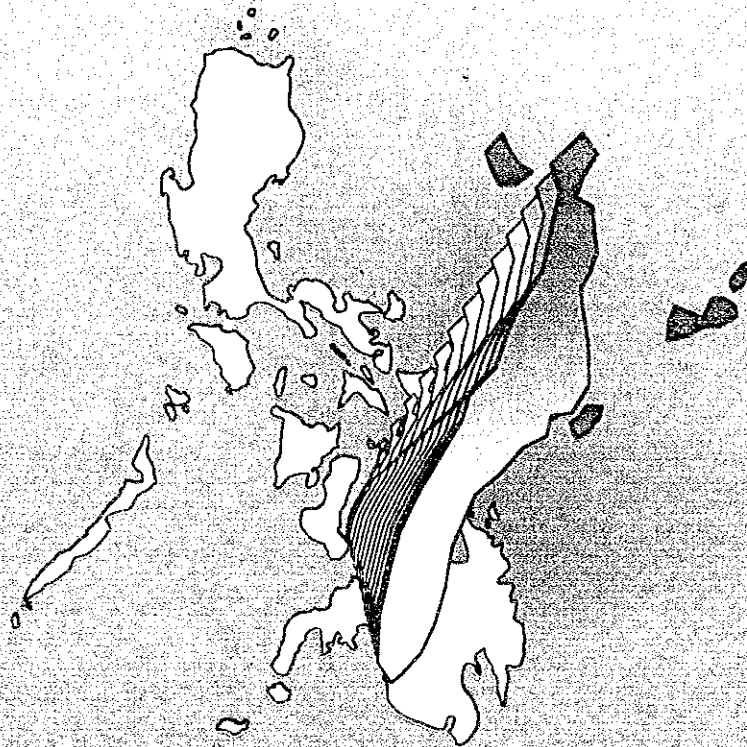
**REGIONAL DEVELOPMENT COUNCIL REGION VII (RDC VII)
REPUBLIC OF THE PHILIPPINES**

**THE STUDY ON THE
CEBU INTEGRATED AREA
DEVELOPMENT MASTER PLAN**

FINAL REPORT

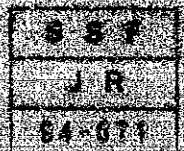
VOL. 3:

**A PROFILE OF
PROPOSED PROJECTS AND PROGRAMS**



JULY 1994

**PACIFIC CONSULTANTS INTERNATIONAL
NIPPON KOEI CO., LTD.**



The exchange rates used in the Study are:

$\$1.00 = \text{PHP}29.36 = \text{JY}106.1$

$\text{PHP}1.00 = \text{JY}3.61$

(as of the end of September 1993)

JICA LIBRARY



1119572[4]

JAPAN INTERNATIONAL COOPERATION AGENCY (JICA)
REGIONAL DEVELOPMENT COUNCIL REGION VII (RDC VII)
REPUBLIC OF THE PHILIPPINES

**THE STUDY ON THE
CEBU INTEGRATED AREA
DEVELOPMENT MASTER PLAN**

FINAL REPORT

VOL. 3:

**A PROFILE OF
PROPOSED PROJECTS AND PROGRAMS**

JULY 1994

**PACIFIC CONSULTANTS INTERNATIONAL
NIPPON KOEI CO., LTD.**

国際協力事業団

27620

PREFACE

In response to a request from the Government of Republic of the Philippines, the Government of Japan decided to conduct a study on the Cebu Integrated Area Development Master Plan and entrusted the study to the Japan International Cooperation Agency (JICA)

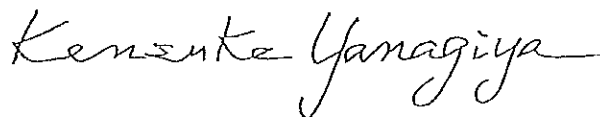
JICA sent to the Philippines a study team headed by Dr. Katsuhide NAGAYAMA of Pacific Consultants International, between July 1993 and March 1994.

The team held discussions with the officials concerned of the Government of the Philippines, and conducted field surveys at the study area. After the team returned to Japan, further studies were made and the present report was prepared.

I hope that this report will contribute to the promotion of the projects and programs and to the enhancement of friendly relations between our two countries.

I wish to express my sincere appreciation to the officials concerned of the Government of Republic of the Philippines for their close cooperation extended to the team.

July 1994

A handwritten signature in black ink, reading "Kensuke Yanagiya". The signature is fluid and cursive, with a long horizontal stroke at the end.

Kensuke Yanagiya
President
Japan International Cooperation
Agency

July 1994

Mr. Kensuke Yanagiya
President
Japan International Cooperation Agency
Tokyo, Japan

Letter of Transmittal

Dear Sir:

We are pleased to formally submit herewith the final report of "Cebu Integrated Area Development Master Plan Study".

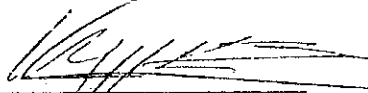
This report compiles the results of the Study which was undertaken in Cebu, Republic of the Philippines, from July 1993 to March 1994 by the Study Team, organized jointly by Pacific Consultants International and Nippon Koei, Co.Ltd.

We owed a lot to many people for the accomplishment of this report. First, we would like to express our deep appreciation and sincere gratitude to all those who extended their kind assistance and cooperation to the Study Team, in particular, the Steering Committee of the Central Visayas Regional Development Council, National Economic Development Agency Region VII, and Technical Working Groups.

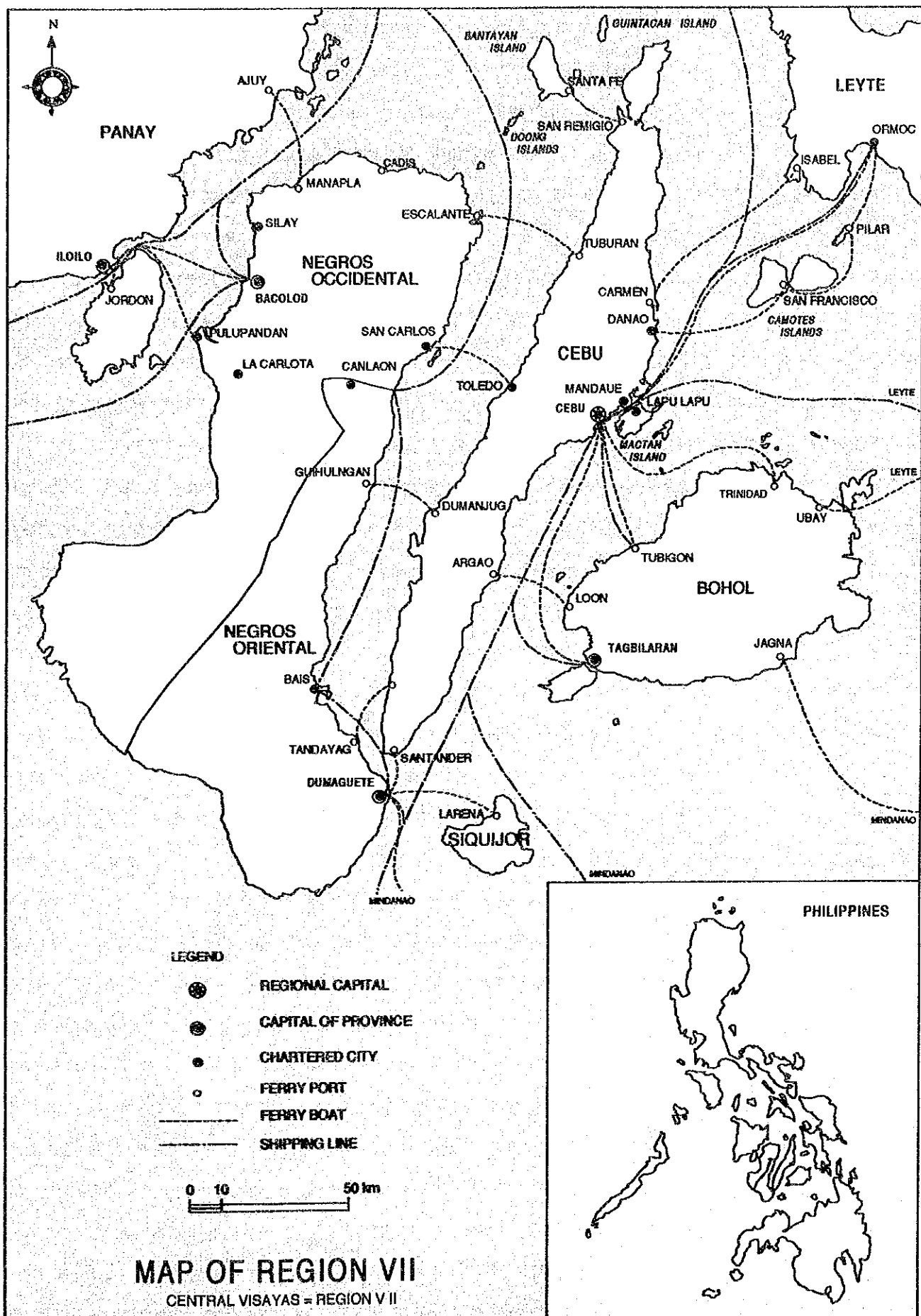
We also acknowledge the officials of your agency, the JICA Advisory Committee and the Embassy of Japan in the Philippines.

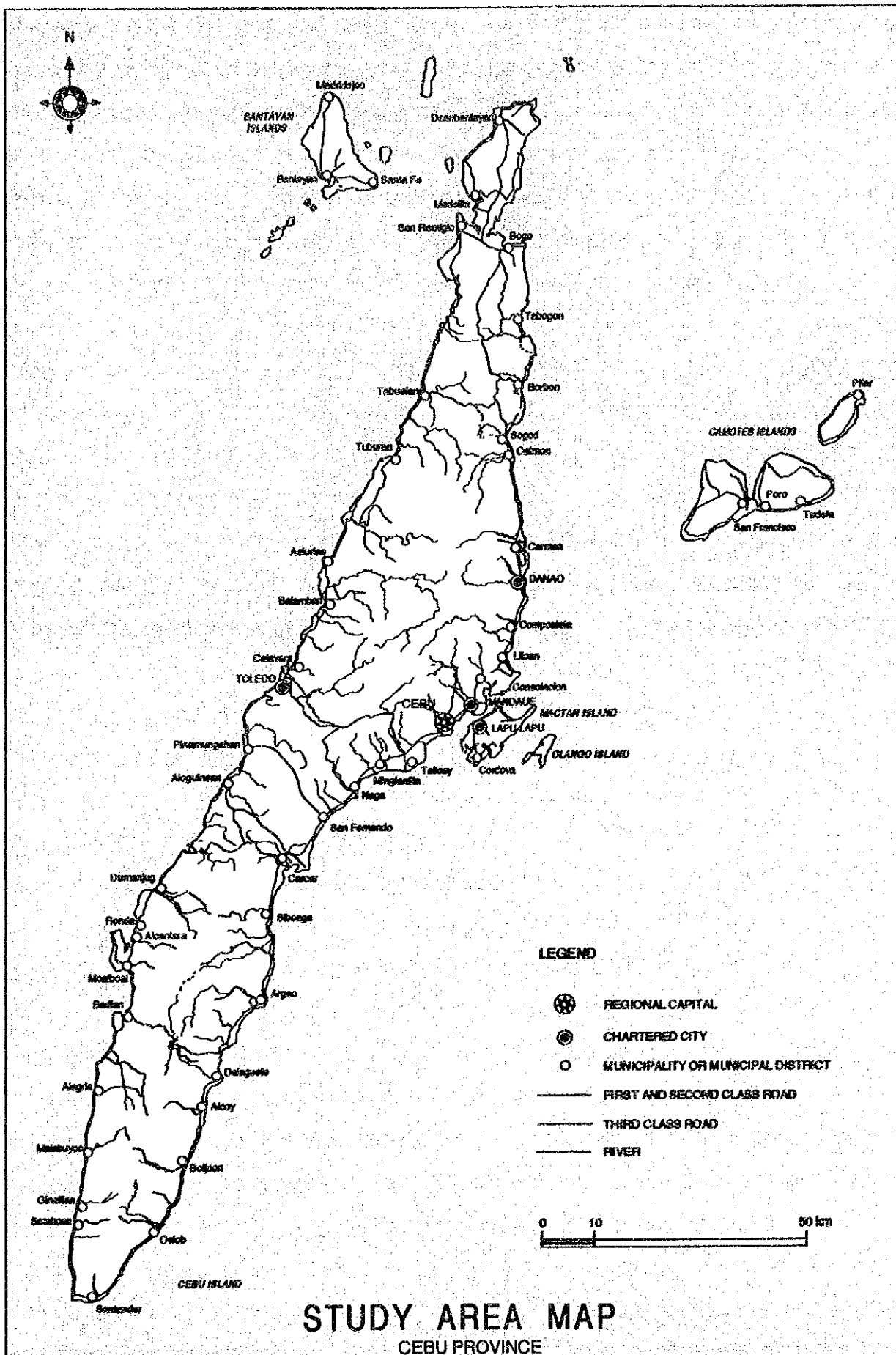
We wish the report would be able to contribute really to Cebu people and Cebu's socioeconomic development in the future.

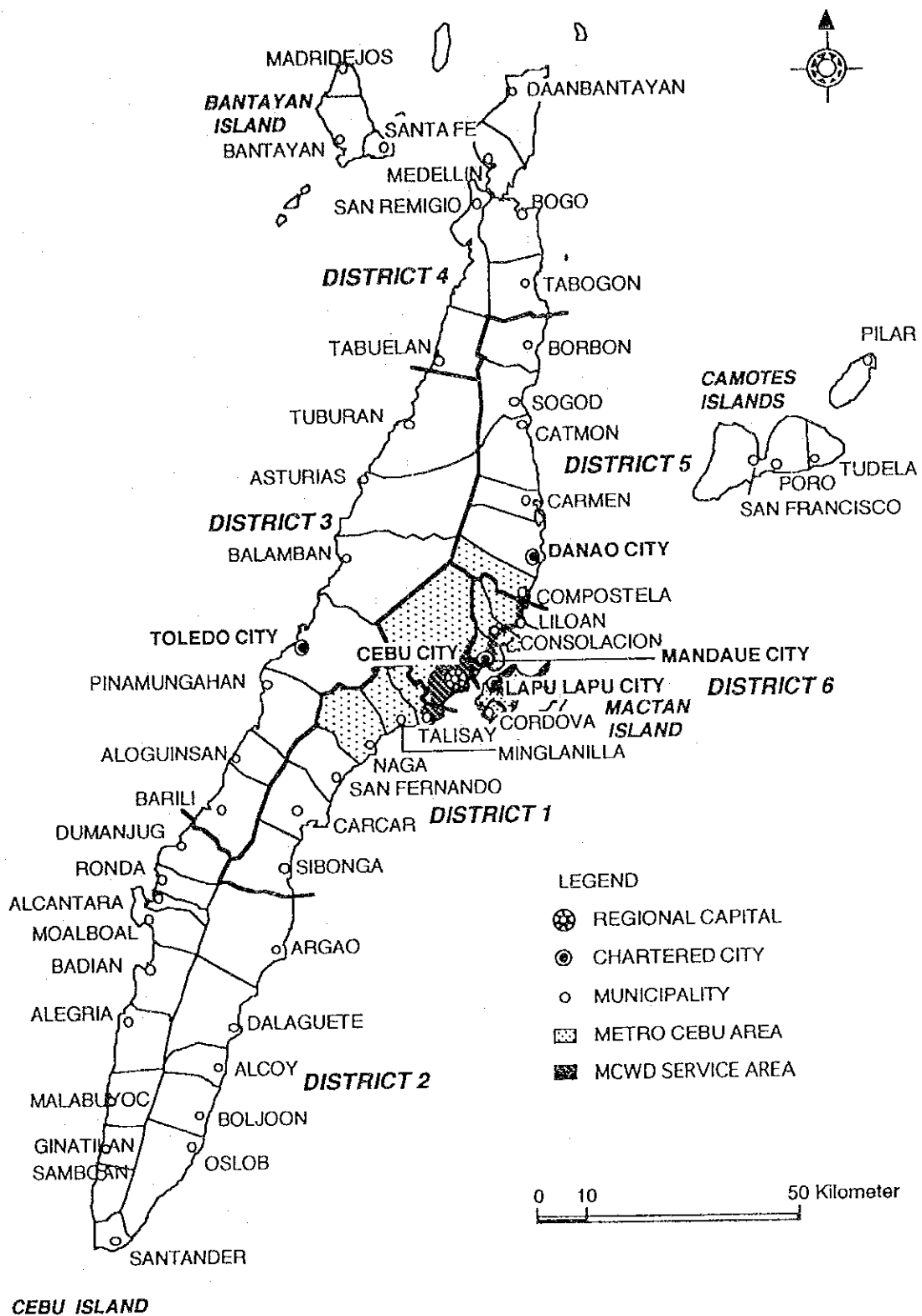
Very truly yours,


Katsuhide Nagayama, Ph. D.

Team Leader
The Study Team for
Cebu Integrated Area Development
Master Plan Study

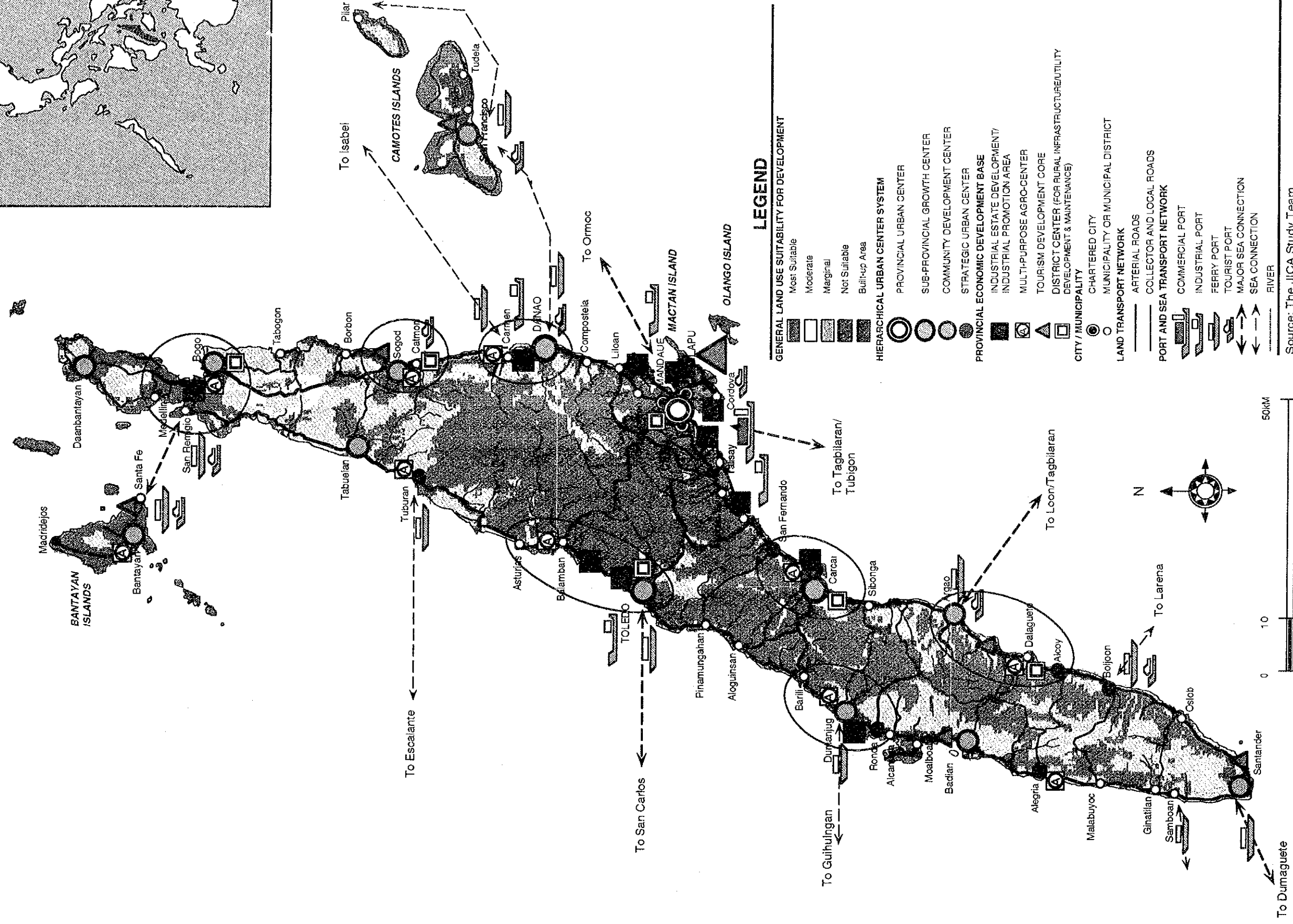
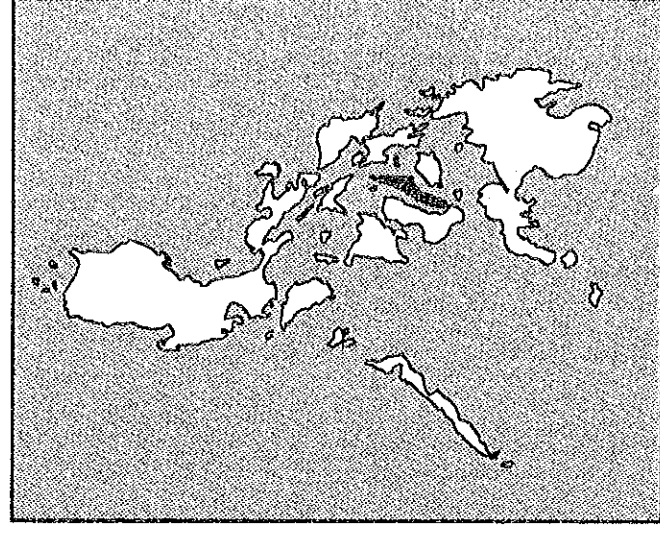






THE STUDY AREA MAP:

ADMINISTRATIVE AND CONGRESSIONAL DISTINCT BOUNDARIES



Cebu MASTER PLAN 2010

LIST OF PROPOSED PROJECTS AND PROGRAMS

Agriculture:

Short- and Medium-Term Projects and Programs (Up to 2005)

- *AG01: Program for Facilitation of CARP Implementation
- *AG02: New Approach Program for Farmers/Fishermen Cooperative Development (linked with AG01, AG03 and AG04)
- AG03: Program for Extension of New Farming System (linked with AG01, AG02)
- *AG04: Multipurpose District Center Project (linked with AG01, AG02 AG03 and HS03, associated with LT15 and WR08)
- *AG05: Cebu Community - Based Resource Management Project (A Revision of CVRP-Phase II, linked with AG03, NE01)
- *AG06: "Cebu Integrated Rural Livelihood Promotion Center" Project (Enhancement of the Existing "Farmers Training Center, Barili", linked with AG01 and HS03)
- *AG07: Municipal Fishery Port Improvement Project, Phase I
- AG08: Cebu Regional Fishery Port Development Project (Revision of the Kaut Fishery Port Project, linked with UD02)
- AG09: Irrigation Infrastructure Development and Rehabilitation Project

Long-Term Projects and Programs (2005-2010)

- AG10: Extension of Support Program for Facilitation of CARP Implementation (Reviewing AG01)
- AG11: Extension of Cebu Community-Based Resource Management Project (Reviewing AG05)
- AG12: Municipal Fishery Ports Improvement Project, Phase II (linked with AG07)
- AG13: Fishery-Based Industrial Complex Development (in relation to the Kaut Fishery Port Project, AG08)

Note: * indicates short-term projects and programs.

Trade and Industry:

Short- and Medium-Term Projects and Programs (Up to 2005)

- *IN01: Institutional Building of Long-term Industrial Development
- *IN02: Expansion Project of the Mactan Export Processing Zone (additional 70 ha)
- *IN03: Industrial Estates Development Projects (linked with IN01)
- *IN04: Cebu Local Economy Acceleration Program (LEAP-Cebu), (linked with IN01, IN03, TM03, TM06, UD02)
- IN05: Human Resource and Technology Network Program (HRTNP), (linked with IN08 and HS05)
- *IN06: Establishment of Cebu Economic Development Corporation (CEDC)
- IN07: Infrastructure Development Project Supporting Industrial Location in Toledo-Balamban Area (linked with IN03, UD08, PH03 and WR09)
- IN08: "Cebu World Trade and Training Center" Project, Phase I (linked with IN05)

Long-Term Projects and Programs (2005-2010)

- IN09: Industrial Estates Development Projects in Potential Rural Areas
- IN10: Western Sea-Board Development (Toledo-Asturias) Projects
- IN11: Extension of Human Resource and Technology Network Program (HRTNP), (Reviewing IN05)
- IN12: Expansion of "Cebu World Trade and Training Center" Project, Phase II (linked with IN08)

Tourism

Short- and Medium-Term Projects and Programs (Up to 2005)

- *TM01: Cebu Tourism Promotion Program (linked with IN06 and AT01)
- *TM02: Cebu Tourism Corridors Beautification Projects (linked with LT04 and LT08)
- *TM03: One-Stop Tourist Information and Service Complex Project (linked with IN04)
- *TM04: Formulation of Mactan Island Comprehensive Tourism Master Plan (linked with UD12)

- TM05: Tourist Piers and Sea Excursion Routes Development Project, Phase I (linked with IN06 and PH05)
- *TM06: Hotel and Tourist Service Training Enhancement Program (linked with IN04 and IN06)
- TM07: Olango Island Eco Tourism (Bird Sanctuary Park) Project (linked with TM04)
- TM08: Mountain/Barangay Tourist Area Development Project (Phase I of TM11)

Long-Term Projects and Programs (2005-2010)

- TM09: Extension of Cebu Tourism Promotion Program, (Reviewing TM01)
- TM10: Tourist Pier Development Project, Phase II
- TM11: Mountain/Barangay Tourist Area Development Project (Extension of TM08)
- TM11: Hotel Complex Development in Mactan Aqua Ville Project (linked with UD12 and PH06)

Urban and Human Settlement Center Development

Short- and Medium-Term Projects and Programs (Up to 2005)

- UD01: Metro Cebu Roads Improvement and Land Development Project (Extension of MCDP, Linked with UD11, LT02, LT04, LT05 and LT11)
- *UD02: Cebu South Reclamation Project (linked with IN03, IN04, UD04, UD05 and LT05)
- UD03: Metro Cebu Drainage System Improvement Project, Phase I (linked with UD11)
- *UD04: Metro Cebu Solid Waste Treatment Project - Extension of MCDP (linked with UD02)
- UD05: Metro Cebu Sewerage System Development Project, Phase I (linked with UD02)
- *UD06: Metro Cebu Public Housing Development Program, Phase I (linked with UD11)
- UD07: Urban Renewal Project in Old Central Business District in Cebu City (linked with UD11)
- *UD08: Toledo-Balamban Metro Area Urban Structure Development Project, Phase I (linked with IN07, PH02 and WR09)
- UD09: Danao-Carmen Metro Area Urban Structure Development Project, Phase I, (Linked with PH02 and WR10)

- *UD10: Local Economies Vitalization Project (Phase I) in Danao, Toledo, Carcar, Bantayan, Bogó, Santander and Dumanjug
- *UD11: Metro Cebu Urban Development Study
- UD12: Mactan South Reclamation Project (tentatively named "Mactan Aqua Ville") (linked with TM04, UD11, LT03 and PH04)

Long-Term Projects and Programs (2005-2010)

- UD13: Extension of Metro Cebu Roads Improvement and Land Development Project (linked with UD01)
- UD14: Metro Cebu Drainage System Improvement Project, Phase II (linked with UD03, UD11)
- UD15: New Urban Center Development in the Cebu South Reclamation Area (linked UD07 and UD13)
- UD16: Extension of Metro Cebu Solid Waste Treatment Project (linked with UD04)
- UD17: Metro Cebu Public Housing Development Program, Phase II (linked with UD06)
- UD18: Toledo-Balamban Metro Area Urban Development Project, Phase II (linked with UD08)
- UD19: Danao-Carmen Metro Area Urban Development Project, Phase II (linked with UD09)
- UD20: Local Economies Vitalization Project, Phase II (linked with UD10), in Tabuelan, Sogod, Danbantayan and Other Centers
- UD21: Extension of Mactan South Reclamation Project (tentatively named "Mactan Aqua Ville") in Mactan South Reclamation Area (linked with UD12, UD17, TM11, PH05)

Land Transportation

Short- and Medium-Term Projects and Programs (Up to 2005)

- *LT01: Cebu Island Circumferential Road: A Total Length of 512 Km (linked with UD08, UD09 and LT08)
- LT02: East - West Main Link Toledo-Naga/Talisay: A Total of 58 Km (linked with UD01 and UD08)
- *LT03: Metro Cebu Public Transit Corridor
- *LT04: Second Mactan Bridge and Its Approaches

- *LT06: F/S on Metro Cebu Mass Transit System (linked with UD01, LT01 and LT03)
- *LT07: Metro Cebu Coastal Industrial Corridor Project, Phase I (Extension of MCDP; linked with LT03, LT04 and LT05)
- LT08: Roads Improvement Projects of Cebu Island Circumferential Road Supplemental Links (linked with LT01)
- *LT09: Mactan Scenic Tourist Road Project (Partial Amendment of MCDP-II, linked with LT03 and TM02)
- *LT10: Cebu Island Trans Central Highway (Balamban - Cebu Corridor), Phase I (linked with TM10 and HS05)
- LT11: Metro Cebu Circumferential Roads (linked with UD01)
- *LT12: East-West Sub-Links Projects
- LT13: Remote Island Main Roads (Provincial Roads) Improvement Project
- *LT14: Barangay and Municipal Roads Improvement Program, Phase I (linked with AG01, LT15)
- *LT15: Multipurpose District Centers (Construction and Maintenance Depot) Development Project (linked with AG04, LT14 and WR08)

Long-Term Projects and Programs (2005-2010)

- LT16: Metro Cebu Urban Roads Development and Improvement Project (Extension of MCDP, linked with LT03)
- LT17: Metro Cebu Coastal Industrial Corridor Project, Phase II (linked with LT07)
- LT18: Metro Cebu Outer Circumferential Road Project (linked with UD11 and UD13)
- LT19: Cebu Trans Central Highway Improvement Project, Phase II (linked with LT10, IN10 and HS05)
- LT20: Metro Cebu Mass Transit System Development Project, Phase I: Liloan - Talisay Corridor, 20 km (linked with LT06)
- LT21: Barangay Roads Improvement Program, Phase II (linked with LT14 and LT15)

Port and Harbor

Short- and Medium-Term Projects and Programs (Up to 2005)

- *PH01: Rehabilitation and Improvement of Cebu Port and Cebu International Port (CIP)
- PH02: Industrial Port Improvement Project - Phase I (linked with IN03, IN07, UD08 and UD09) in Toledo, Carmen and Mandaue
- *PH03: Regional Ferry Port Facilities Rehabilitation and Improvement Project Phase I (linked with TM05)
- *PH04: Feasibility Study of the Expansion of Cebu Port (Second Cebu International Port)
- PH05: Tourist Piers/Ports Development Project (linked with PH03 and TM05)

Long-Term Projects and Programs (2005-2010)

- PH06: Second Cebu International Port Construction Project, based on PH04 (linked with UD12 and TM11)
- PH07: Industrial Port Construction Projects - Phase II (linked with IN10 and UD18)
- PH08: Regional Ferry Port Facilities Rehabilitation and Improvement Projects Phase II

Water Resource and Supply

Short- and Medium-Term Projects and Programs (Up to 2005)

- *WR01: Implementation of Mananga I and II Water Resource Development Projects
- *WR02: Buhisan Dam Rehabilitation Project
- *WR03: Comprehensive Study for Alternative Water Resources Development for Metro Cebu
- *WR04: MCWD Water Distribution System Rehabilitation and Up-grading Project, Phase I
- *WR05: MCWD Water Charge Collection System Improvement Program (linked with WR04)
- *WR06: Establishment of "Provincial Technical Center for Rural Water Development" (linked with WR08)
- *WR07: Study of Ground Water Resource and Potentials in the Entire Cebu Province (linked with WR06, WR08)

- *WR08: Rural Water Supply Facility Development Project, Phase-I (linked with AG04, WR06 and WR07)
- WR09: Water Supply Extension Project for Toledo-Balamban Metro Area (linked with IN07 and UD08)
- WR10: Water Supply Extension Project in Danao-Carmen Area (linked with UD09)
- WR11: Metro Cebu Retarding Mini-Dams Development Project

Long-Term Projects and Programs (2005-2010)

- WR11: Alternative Water Resources Development for Metro Cebu (based on WR03)
- WR12: MCWD Water Distribution System Rehabilitation and Up-grading Project, Phase II (linked with WR04)
- WR13: Rural Water Supply Facility Development Project, Phase II (linked with WR08)

Power and Energy Supply

Short- and Medium-Term Projects and Programs (Up to 2005)

- *PE01: Inter-connection Between Luzon, Mindanao, Cebu and Negros
- *PE02: Development of the Control Center for Power Transfer
- *PE03: Review/Clarification of the Peak Demand Forecasts in the Plan
- *PE04: Development of New Power Generation Plants in Cebu Grid with a total of 400MW capacity:
- *PE05: Rehabilitation of Existing major Plants
- *PE06: Facilitation of Rural Electrification Program

Long-Term Projects and Programs (2005-2010)

- PE07: Development of Non-Conventional Energy for Rural Local Area
- PE08: Development of Power Plant in Long-Term

Human Resource and Social Services Development

Short- and Medium-Term Projects and Programs (Up to 2005)

- *HS01: School Facility Minimum Improvement Program, Phase-I
- *HS02: Program for People's Awareness Promotion on Sanitation and Health
- *HS03: Non-formal Education Promotion Program (linked with AG06)
- HS04: Central Visayas Adolescent Development Program
- HS05: Cebu Educational and Training Center (tentatively named "Cebu Research Park City") Development Project (linked with IN05, UD11 and LT10)

Natural Resources and Environmental Management

Short- and Medium-Term Projects and Programs (Up to 2005)

- *NE01: Cebu Community-Based Resource Management Project (same as AG05)
- *NE02: Program for Supporting "Integrated Social Forest (ISF) Program"
- NE03: "Environmental Monitoring and Pollution Control Center (EMPCC)" Project
- NE04: Industrial Toxic Waste Treatment Center Project (linked with UD04)
- *NE05: A Data Base and Mapping Project
- *NE06: Land Resource Evaluation Project (linked with NE05), for Planning Support of All the Proposed Projects/Programs

Local Government Finance and Administration

Short- and Medium-Term Projects and Programs (Up to 2005)

- *LG01: Cebu Assessment and Treasury Information Mega-link Project, (linked with NE05 and NE06)
- LG02: "Local Government Academy" Development Project

ABBREVIATION

ACMDC:	Atlas Consolidated Mining & Development Corporation
ADB:	Asian Development Bank
BOMEDCO:	Bogo Medellin Company
BPI:	Bureau of Plant Industry
CARP:	Comprehensive Agrarian Reform Project
CCCI:	Cebu Chamber of Commerce and Industry
CCHDP:	Cebu City Hillyland Development Project
CDOP:	Community Development Outreach Project
CIP:	Cebu International Port
CUP:	Cebu Upland Project
CVRMS:	Central Visayas Resource Management Center
CVWSP:	Central Visayas Water & Sanitation Project
DA:	Department of Agriculture
DECS:	Department of Education, Culture and Sports
DENR:	Department of Environment and Natural Resources
DOF:	Department of finance
DOH:	Department of Health
DOLE:	Department of Labor and Employment
DOST:	Department of Science and Technology
DOT:	Department of Tourism
DOTC:	Department of Transportation and Communications
DPWH:	Department of Public Works and Highways
DSWD:	Department of Social Welfare and Development
DTI:	Department of Trade and Industry
ECC:	Environmental Management Bureau
EMPAS:	Environmental Management and Protective & Services
ERDS:	Ecosystem Research and Development Sector
FG-PVP:	Federal Republic-German Photo-Voltaic Pumping Project
GRDP:	Gross Regional Domestic Products
GTZ:	Deutsche Gessellschaft fur Technische Zusammenarbeit
HUDCC:	Housing and Urban Development Coordinating Council
JICA	Japan International Cooperation Agency
LGC:	Local Government Code
LGU:	Local Government Unit
LWUA:	Local Water Utilities Administration

MCDP:	Metro Cebu Development Project
MCWD:	Metro Cebu Water District
MEPZ:	Mactan Export Processing Zone
MRP:	Mandaue Reclamation Project
NAMRIA:	National Mapping & Resource Information Authority
NEDA:	National Economic and Development Authority
NGO:	Non-Government Organization
NIA:	National Irrigation Administrations
NIEs:	Newly Industrialized Economies
NMYC:	National Manpower and Youth Council
NPC:	National Power Corporation
NRNDP:	Natural Resources Management Development Project
OECE:	Overseas Economic Cooperation Fund
PAGASA:	Philippine Atmospheric Geophysical & Astron Services Administration
PDO:	Port District Office
PIDS:	Philippine Institute for Development Study
PITO-P	Private Investment Trade Opportunity Projects
PMO:	Port Management Office
POPCOM:	Population Commission
PPA:	Philippine Ports authority
PPDO:	Provincial Planning and Development Office
PTA:	Philippine Tourism Authority
PWDTF:	Provincial Water Works Development Task Force
RDC:	Regional Development Council
RLUC:	Regional Land Use Committee
TWG:	Technical Working Group
UNCHS:	United Nations Center for Human Settlement
WD:	Water District
WRC:	Water Resource Center

AGRICULTURE

Agriculture:

Short- and Medium-Term Projects and Programs (Up to 2005)

- *AG01: Program for Facilitation of CARP Implementation
- *AG02: New Approach Program for Farmers/Fishermen Cooperative Development (linked with AG01, AG03 and AG04)
- AG03: Program for Extension of New Farming System (linked with AG01, AG02)
- *AG04: Multipurpose District Center Project (linked with AG01, AG02 AG03 and HS03, associated with LT15 and WR08)
- *AG05: Cebu Community - Based Resource Management Project (A Revision of CVRP-Phase II, linked with AG03, NE01)
- *AG06: "Cebu Integrated Rural Livelihood Promotion Center" Project (Enhancement of the Existing "Farmers Training Center, Barili", linked with AG01 and HS03)
- *AG07: Municipal Fishery Port Improvement Project, Phase I
- AG08: Cebu Regional Fishery Port Development Project (Revision of the Kaut Fishery Port Project, linked with UD02)
- AG09: Irrigation Infrastructure Development and Rehabilitation Project

Long-Term Projects and Programs (2005-2010)

- AG10: Extension of Support Program for Facilitation of CARP Implementation (Reviewing AG01)
- AG11: Extension of Cebu Community-Based Resource Management Project (Reviewing AG05)
- AG12: Municipal Fishery Ports Improvement Project, Phase II (linked with AG07)
- AG13: Fishery-Based Industrial Complex Development (in relation to the Kaut Fishery Port Project, AG08)

PROPOSED PROJECT PROFILE
for Cebu Integrated Area Development
Prepared by the JICA Study Team, 1993-1994

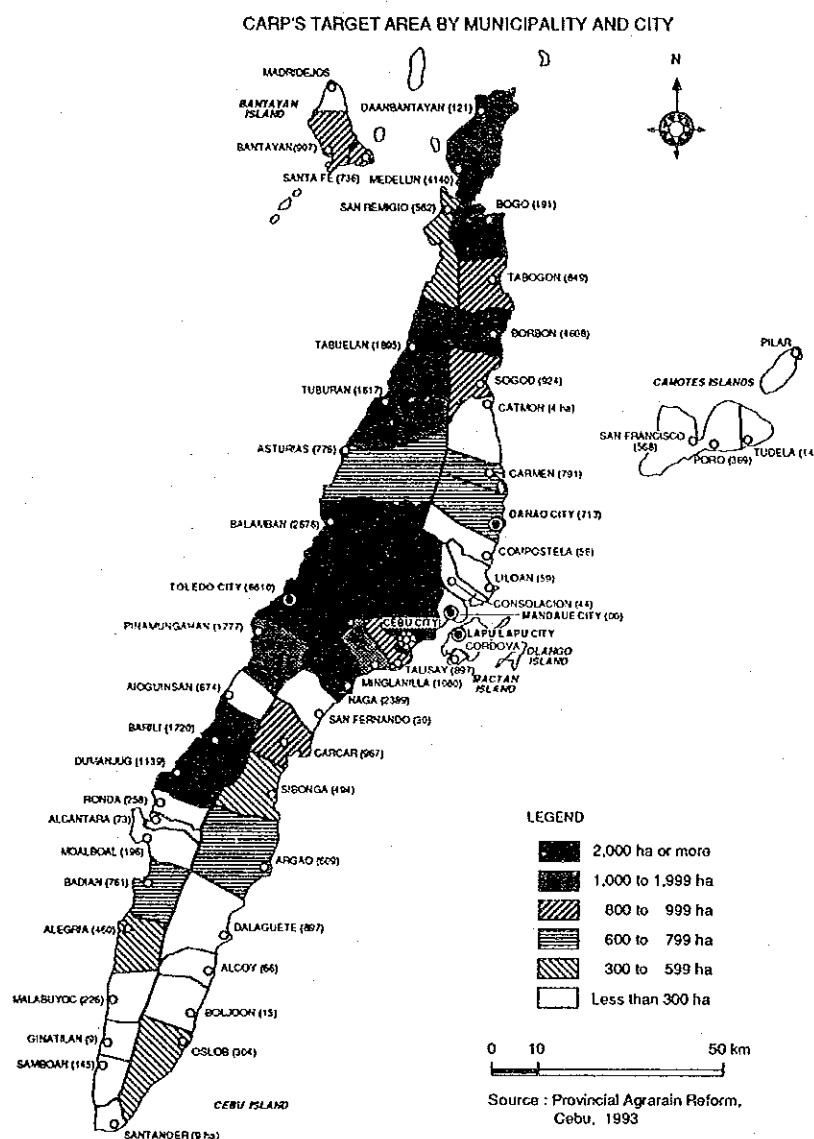
(1/2)

Project No. AG 01	Project Title PROGRAM FOR FACILITATION OF CARP IMPLEMENTATION		Economic Sector Agriculture
Project Location Province wide, with emphasis on those Municipalities with large land area to be distributed under CARP.		Project Priority <input checked="" type="checkbox"/> Urgent <input type="checkbox"/> Medium-term <input type="checkbox"/> Long-term	Project Duration
		Type of Project <input type="checkbox"/> F/S Study or Survey <input type="checkbox"/> Development Project <input checked="" type="checkbox"/> Packaged Program <input type="checkbox"/> Institutional Building <input type="checkbox"/> Others	
1. Summary of Objectives To speed up the implementation process of the Comprehensive Agrarian Reform Program. To promote equitable distribution of resources To increase income of farm households To reduce poverty incidence To improve management of natural resources as result of awarding land ownership to the ones that actually till the land.		2. Target Beneficiaries More than Twenty thousand rural families (more than 100,000 people) that supposedly will receive their own piece of land, are the direct beneficiaries.	
3. Project Description To Strengthen the implementing capability of DAR and other related agencies by providing the necessary technical support, and equipment such as vehicles, land surveying equipment. To secure the funds necessary for paying to the land owners. To provide the infrastructure support for production and marketing, specially in those Municipalities with larger land areas to be affected by CARP. To strengthen the agricultural extension service in CARP areas. To facilitate formation of the cooperatives of CARP beneficiaries.		4. Expected Benefits / Outputs Finish implementation of CARP according to its initial schedule. Increase production and income of farmhouseholds in CARP areas. Mitigate inequity	
5. Important Assumptions / Conditions for the Project There is a genuine political will of local authorities in order to implement CARP. The agencies responsible for implementation of CARP are lacking of the means for carrying out their task of mapping the land to be affected. A large amount of money is required for compensating the land owners but those funds are not been secured yet.		6. Project Linkages / Other Sector Linkages Linked with socioeconomic and Human resources development, and with natural resources management sectors.	
7. Estimated Investment Requirement (in 1993 prices) For Project Implementation in Total : <u>1,518.0</u> Mill. Pesos 1) Land acquisition <u>1,500.0</u> Mill. Pesos 2) Equipments <u>3.0</u> Mill. Pesos 3) Infrastructure development <u>15.0</u> Mill. Pesos For Annual Recurrent Expenditure for O & M: _____ Mill. Pesos		8. Implementing Agency/Body Department of Agrarian Reform	
		9. Relevant Agencies to Be Coordinated Provincial Government, The Land Bank, DENR, DA	
10. A Provisional Scheme for Fund Procurement <input type="checkbox"/> Central Government <input type="checkbox"/> Local Government <input checked="" type="checkbox"/> International Assistance Funds (Foreign Portion: <u>50</u> %) <input type="checkbox"/> Private Sector Involvement (as specified in Box 11) <input checked="" type="checkbox"/> Specially Organized Fund (as specified in Box 16) <input type="checkbox"/> Others		11. Private Sector Participation Collaboration of land owners to facilitate the process of land valuation and transfer.	
12. Environmental Measures <div style="display: flex; justify-content: space-between;"> <div> Technical Measures: <input type="checkbox"/> Conduct In-Depth Environmental and Social Impact Studies <input type="checkbox"/> Install Pollution Protection Facilities/Equipment <input type="checkbox"/> Implement Jointly Environmental Engineering Work <input type="checkbox"/> Examine the Project Location Site and/or Scale <input type="checkbox"/> Examine Availability of Alternative Resource Use () <input type="checkbox"/> Undertake Protection Measures for Flora and Fauna <input checked="" type="checkbox"/> Implement Jointly Social and Community Development <input type="checkbox"/> Others (as specified in Box 16) </div> <div> Administrative Measures <input type="checkbox"/> Adjust with Land Use Zoning <input type="checkbox"/> Coordinate with Environmental Sector Guidelines <input type="checkbox"/> Undertake Periodical Environmental Monitoring <input type="checkbox"/> Apply policy of PPP (Pollutor-Pay-Principle) <input type="checkbox"/> Train Management Skill/Personnel for the Project <input type="checkbox"/> Make a Consensus with Inhabitants <input type="checkbox"/> Promote Public Relation for Envir'l Awareness <input type="checkbox"/> Others (as specified in Box 16) </div> </div>			

PROPOSED PROJECT PROFILE
for Cebu Integrated Area Development
Prepared by the JICA Study Team, 1993-1994

(2/2)

Project No. AG 01	Project Title PROGRAM FOR FACILITATION OF CARP IMPLEMENTATION
------------------------------------	--

13. Verifiable Indicators / Information / Drawings

14. Project Classification	15. Necessary Inputs/Arrangement	16. Special Considerations
Functional Level <input type="checkbox"/> Island Minimum Project <input checked="" type="checkbox"/> Island Basic Project <input type="checkbox"/> Island Strategic Project Project Orientation <input type="checkbox"/> Regional Economic Drive <input checked="" type="checkbox"/> Social Development Drive <input type="checkbox"/> Environmental Drive	<input type="checkbox"/> National Government Involvement <input type="checkbox"/> Initiatives of Local Government Units <input type="checkbox"/> Institutional Arrangement at Local Level <input type="checkbox"/> Special Financial Building at Local Level <input checked="" type="checkbox"/> Special Fund Allocation by Central Government <input checked="" type="checkbox"/> International Financial Assistance (Grant) <input type="checkbox"/> International Financial Assistance (Loan) <input type="checkbox"/> Private Sector Participation in Funding <input type="checkbox"/> Maximum Utilization of Local Technologies <input type="checkbox"/> International Technical Assistance <input type="checkbox"/> Others (as specified in Box)	<p>The funds required for CARP implementation shall be sourced from the "Agrarian Reform Fund" created under sections 20 and 21 of E.O. 229; But, because of lack of fund, international financial assistance, both grant and loan types, are necessary for speeding up and making effective the implementation of the program.</p>

PROPOSED PROJECT PROFILE
for Cebu Integrated Area Development
Prepared by the JICA Study Team, 1993-1994

(1/2)

Project No. AQ 02	Project Title NEW APPROACH PROGRAM FOR FARMERS/FISHERMEN COOPERATIVE DEVELOPMENT		Economic Sector Agriculture
Project Location PROVINCE WIDE		Project Priority <input checked="" type="checkbox"/> Urgent <input type="checkbox"/> Medium-term <input type="checkbox"/> Long-term	Project Duration 5 years
		Type of Project <input type="checkbox"/> F/S Study or Survey <input type="checkbox"/> Development Project <input checked="" type="checkbox"/> Packaged Program <input type="checkbox"/> Institutional Building <input type="checkbox"/> Others	
1. Summary of Objectives To facilitate the process of organizing the farmers/fishermen multipurpose cooperative by coordinating work among LGU's, line agencies related to agriculture and social sector, and NGO's. To form a Strong Multi-purpose Cooperative of Farmers and Fishermen with continuous linkage from Barangay up to Provincial level. To facilitate: extension service, training, provision of farming credit, and marketing of production.		2. Target Beneficiaries At least 75 % of land workers and fishermen province wide.	
3. Project Description To form a Task Force at provincial and municipal level, composed of technicians from LGU's, CDA, DA, DENR, DAR, dSWD, NEDA, PAO, existing agricultural cooperatives, and NGO's; The objective of the Task Force will be to organize ONE Multi-purpose Cooperative using a bottom up approach, that is, from Barangay up to Province level. Cooperative organization and strengthening will be the primary duty for members of the Task Force during the first year of the project. The Task Force will be provided with the means necessary to effectively carry out their duty, including means of transportation, common office space, computers, etc.		4. Expected Benefits / Outputs A strong Multipurpose Rural Coop will be organized. The existence of the cooperative will facilitate: 1) agricultural extension services, 2) provision of agricultural credit, 3) diversification and increase of agricultural production, 4) marketing of produce, 5) implementation of measures for conservation of natural resources, 6) increase income of rural families, 7) reduce incidence of poverty in rural areas, 8) Facilitate the provision of others rural services such as Water distribution, Road maintenance.	
5. Important Assumptions / Conditions for the Project There is a genuine political will, at all levels of decision making, for improving living condition of rural families. The local authorities, at all levels, recognize the importance of this program as a first step for increasing agricultural production, uplifting living standard of rural families; therefore the LGU's will provide all support necessary for the success of the program.		6. Project Linkages / Other Sector Linkages Close linked with socioeconomic and Human resources development, and with natural resources management sectors.	
7. Estimated Investment Requirement (In 1993 prices) For Project Implementation in Total : _____ Mill. Pesos 1) Vehicles and Equipment _____ Mill. Pesos 2) _____ Mill. Pesos 3) _____ Mill. Pesos For Annual Recurrent Expenditure for O & M: _____ Mill. Pesos		8. Implementing Agency/Body Cooperative Development Authority	
		9. Relevant Agencies to Be Coordinated LGU's, DA, PAO, MAO, DAR, DENR, dSWD, NFA, NEDA, Land Bank, Coconut Authority, and others.	
10. A Provisional Scheme for Fund Procurement <input type="checkbox"/> Central Government <input checked="" type="checkbox"/> Local Government <input checked="" type="checkbox"/> International Assistance Funds (Foreign Portion: <u>70</u> %) <input type="checkbox"/> Private Sector Involvement (as specified in Box 11) <input type="checkbox"/> Specially Organized Fund (as specified in Box 16) <input type="checkbox"/> Others		11. Private Sector Participation The participation and support of the private sector, such as experienced private professionals and institution is of high importance for the implementation of the whole program for Agricultural and rural development and poverty alleviation; the private sector should be encouraged to participate actively.	
12. Environmental Measures			
Technical Measures: <input type="checkbox"/> Conduct In-Depth Environmental and Social Impact Studies <input type="checkbox"/> Install Pollution Protection Facilities/Equipment <input type="checkbox"/> Implement Jointly Environmental Engineering Work <input type="checkbox"/> Examine the Project Location Site and/or Scale <input type="checkbox"/> Examine Availability of Alternative Resource Use () <input type="checkbox"/> Undertake Protection Measures for Flora and Fauna <input type="checkbox"/> Implement Jointly Social and Community Development <input type="checkbox"/> Others (as specified in Box 16)		Administrative Measures <input type="checkbox"/> Adjust with Land Use Zoning <input type="checkbox"/> Coordinate with Environmental Sector Guidelines <input type="checkbox"/> Undertake Periodical Environmental Monitoring <input type="checkbox"/> Apply policy of PPP (Pollutor-Pay-Principle) <input type="checkbox"/> Train Management Skill/Personnel for the Project <input type="checkbox"/> Make a Consensus with Inhabitants <input type="checkbox"/> Promote Public Relation for Envir Awareness <input type="checkbox"/> Others (as specified in Box 16)	

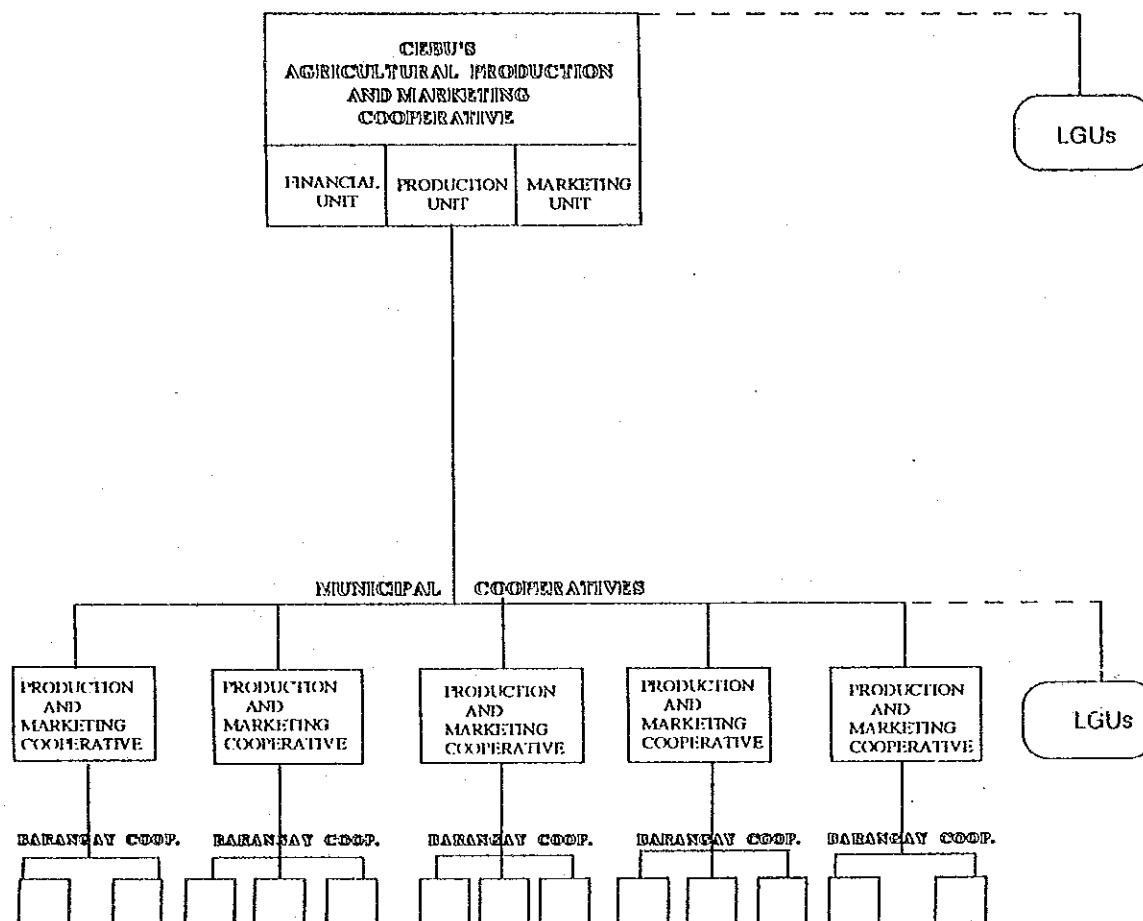
PROPOSED PROJECT PROFILE
for Cebu Integrated Area Development
Prepared by the JICA Study Team, 1993-1994

(2/2)

Project No. AG 02	Project Title NEW APPROACH PROGRAM FOR FARMERS/FISHERMEN COOPERATIVE DEVELOPMENT
-----------------------------	--

13. Verifiable Indicators / Information / Drawings

PROPOSED ORGANISATION CHART FOR MULTIPURPOSE COOPERATIVE



14. Project Classification	15. Necessary Inputs/Arrangement	16. Special Considerations
Functional Level <input type="checkbox"/> Island Minimum Project <input type="checkbox"/> Island Basic Project <input checked="" type="checkbox"/> Island Strategic Project Project Orientation <input type="checkbox"/> Regional Economic Drive <input checked="" type="checkbox"/> Social Development Drive <input type="checkbox"/> Environmental Drive	<input type="checkbox"/> National Government Involvement <input checked="" type="checkbox"/> Initiatives of Local Government Units <input checked="" type="checkbox"/> Institutional Arrangement at Local Level <input type="checkbox"/> Special Financial Building at Local Level <input type="checkbox"/> Special Fund Allocation by Central Govern't <input checked="" type="checkbox"/> International Financial Assistance (Grant) <input checked="" type="checkbox"/> International Financial Assistance (Loan) <input type="checkbox"/> Private Sector Participation in Funding <input type="checkbox"/> Maximum Utilization of Local Technologies <input type="checkbox"/> International Technical Assistance <input type="checkbox"/> Others (as specified in Box)	

PROPOSED PROJECT PROFILE
for Cebu Integrated Area Development
Prepared by the JICA Study Team, 1993-1994

(1/2)

Project No. A-03	Project Title PROGRAM FOR EXTENSION OF NEW FARMING SYSTEM		Economic Sector Agriculture
Project Location PROVINCE WIDE		Project Priority <input checked="" type="checkbox"/> Urgent <input type="checkbox"/> Medium-term <input type="checkbox"/> Long-term	Project Duration 3 years
Type of Project <input type="checkbox"/> F/S Study or Survey <input type="checkbox"/> Development Project <input checked="" type="checkbox"/> Packaged Program <input checked="" type="checkbox"/> Institutional Building <input type="checkbox"/> Others			
1. Summary of Objectives To develop an efficient agricultural extension service. To facilitate demonstration and dissemination of appropriate farming technologies. To accelerate the process for diversification and increase of agricultural production.		2. Target Beneficiaries At least 75 per cent of farmers and fishermen province wide.	
3. Project Description Strengthen Agricultural Extension Services by augmenting the number of personnel directly responsible of providing the services, and upgrading the technical capability of that personnel. Creation of a COORDINATION SYSTEM between workers of extension service and other technician of LGU's and line agencies. To provide the means and materials required to effectively carry out the agricultural extension services, including mean of transportation such as motorcycles that could be provided from a Financing scheme. To prepare an appropriate Technology Package of appropriate for dissemination to the farmer s by the extension service.		4. Expected Benefits / Outputs An effective and efficient Agricultural Extension service will be in place. Farmers and Fishermen will receive appropriate and updated technology to improve productivity; Increase in Agriculture and Fishery production; Increase income of rural households; Improve management of natural resources. Strengthened of the Farmers and Fishermen Cooperative.	
5. Important Assumptions / Conditions for the Project There is a genuine political will, at all levels of decision making, to improve the living condition of rural families. The local authorities, at all levels, recognize the importance of this program as a first step for increasing agricultural production, uplifting living standard of rural families; therefore the LGU's will provide all support necessary for the success of the program.		6. Project Linkages / Other Sector Linkages Linked with projects AG 01, AG 02, AG 04, AG 05, AG 06, AG 09 and NE 01. Close linkage with socioeconomic and resources management sectors.	
7. Estimated Investment Requirement (in 1993 prices) For Project Implementation in Total : <u>17.0</u> Mill. Pesos 1) Pick-up and Motorcycles <u>9.0</u> Mill. Pesos 2) Supporting Materials <u>2.0</u> Mill. Pesos 3) Others <u>6.0</u> Mill. Pesos For Annual Recurrent Expenditure for O & M: <u> </u> Mill. Pesos		8. Implementing Agency/Body LGUs at each Municipality	
10. A Provisional Scheme for Fund Procurement <input checked="" type="checkbox"/> Central Government <input checked="" type="checkbox"/> Local Government <input checked="" type="checkbox"/> International Assistance Funds (Foreign Portion: <u>50</u> %) <input type="checkbox"/> Private Sector Involvement (as specified in Box 11) <input checked="" type="checkbox"/> Specially Organized Fund (as specified in Box 16) <input type="checkbox"/> Others		9. Relevant Agencies to Be Coordinated All line agencies related to agriculture, social services and natural resources management: DA, CDA, DAR, DENR, DSWD, NFA, NEDA, Land Bank.	
11. Private Sector Participation Cooperatives and NGO's participation will facilitate implementation of the program.		12. Environmental Measures <div style="display: flex;"> <div style="flex: 1;"> Technical Measures: <input type="checkbox"/> Conduct In-Depth Environmental and Social Impact Studies <input type="checkbox"/> Install Pollution Protection Facilities/Equipment <input type="checkbox"/> Implement Jointly Environmental Engineering Work <input type="checkbox"/> Examine the Project Location Site and/or Scale <input type="checkbox"/> Examine Availability of Alternative Resource Use () <input type="checkbox"/> Undertake Protection Measures for Flora and Fauna <input type="checkbox"/> Implement Jointly Social and Community Development <input type="checkbox"/> Others (as specified in Box 16) </div> <div style="flex: 1;"> Administrative Measures <input type="checkbox"/> Adjust with Land Use Zoning <input type="checkbox"/> Coordinate with Environmental Sector Guidelines <input type="checkbox"/> Undertake Periodical Environmental Monitoring <input type="checkbox"/> Apply policy of PPP (Pollutor-Pay-Principle) <input type="checkbox"/> Train Management Skill/Personnel for the Project <input type="checkbox"/> Make a Consensus with Inhabitants <input type="checkbox"/> Promote Public Relation for Envir'l Awareness <input type="checkbox"/> Others (as specified in Box 16) </div> </div>	

PROPOSED PROJECT PROFILE
for Cebu Integrated Area Development
Prepared by the JICA Study Team, 1993-1994

(2/2)

Project No. A-03	Project Title PROGRAM FOR EXTENSION OF NEW FARMING SYSTEM	
----------------------------	---	--

13. Verifiable Indicators / Information / Drawings

A special **COORDINATING SCHEME** should be arranged between LGU's technical staff assigned with duties related to agriculture, natural resources management and social welfare. It is proposed here that all municipal officers related to Agricultural and Rural Development should work as a **TEAM** composed by the Planning and Development Coordinator (head of the **TEAM**), the municipal Engineer, the Health Officer, the Agriculturist, the Social Welfare and Development Officer, the Environment and Natural Resources officer, the Information officer, the Cooperatives officer, the Population officer, and the Veterinarian.

The **TEAM** members will **COORDINATE** their plans and provide support for implementing each sector's work. That means that some times the Health Officer will be helping the Agriculturist in carrying out his work, and vice-versa. The municipal **TEAM** will also **COORDINATE** plans and implementation of work with provincial and national line agencies.

A Package of Appropriate Technologies on Agriculture, Livestock, and Fishery production will be prepared taking into consideration the suitability of the land and potential economic benefits. The recommended Technologies should fit the local variation of natural resources. The technology package should be available in the form most understandable by the end-users. The technology package should answer the questions of What, Where, When and How to produce.

Transportation support is a must to reach out the end-user of the extension service. A special fund will be allocated through a soft loan for the acquisition of motorcycles to be used by extension workers; The recipient of a motorcycle will pay back 50 % of the cost in monthly installments for a period of three years. The extension worker will own the motorcycle, but it must be available for rendering the necessary extension services for at least 5 years.

14. Project Classification	15. Necessary Inputs/Arrangement	16. Special Considerations
<p>Functional Level</p> <p><input type="checkbox"/> Island Minimum Project</p> <p><input type="checkbox"/> Island Basic Project</p> <p><input type="checkbox"/> Island Strategic Project</p> <p>Project Orientation</p> <p><input type="checkbox"/> Regional Economic Drive</p> <p><input checked="" type="checkbox"/> Social Development Drive</p> <p><input type="checkbox"/> Environmental Drive</p>	<p><input type="checkbox"/> National Government Involvement</p> <p><input checked="" type="checkbox"/> Initiatives of Local Government Units</p> <p><input checked="" type="checkbox"/> Institutional Arrangement at Local Level</p> <p><input type="checkbox"/> Special Financial Building at Local Level</p> <p><input type="checkbox"/> Special Fund Allocation by Central Govern't</p> <p><input checked="" type="checkbox"/> International Financial Assistance (Grant)</p> <p><input type="checkbox"/> International Financial Assistance (Loan)</p> <p><input type="checkbox"/> Private Sector Participation in Funding</p> <p><input checked="" type="checkbox"/> Maximum Utilization of Local Technologies</p> <p><input checked="" type="checkbox"/> International Technical Assistance</p> <p><input checked="" type="checkbox"/> Others (as specified in Box)</p>	<p>Special funds will be allocated through a soft loan for acquisition of motorcycles to be used by extension workers.</p>

PROPOSED PROJECT PROFILE
for Cebu Integrated Area Development
Prepared by the JICA Study Team, 1993-1994

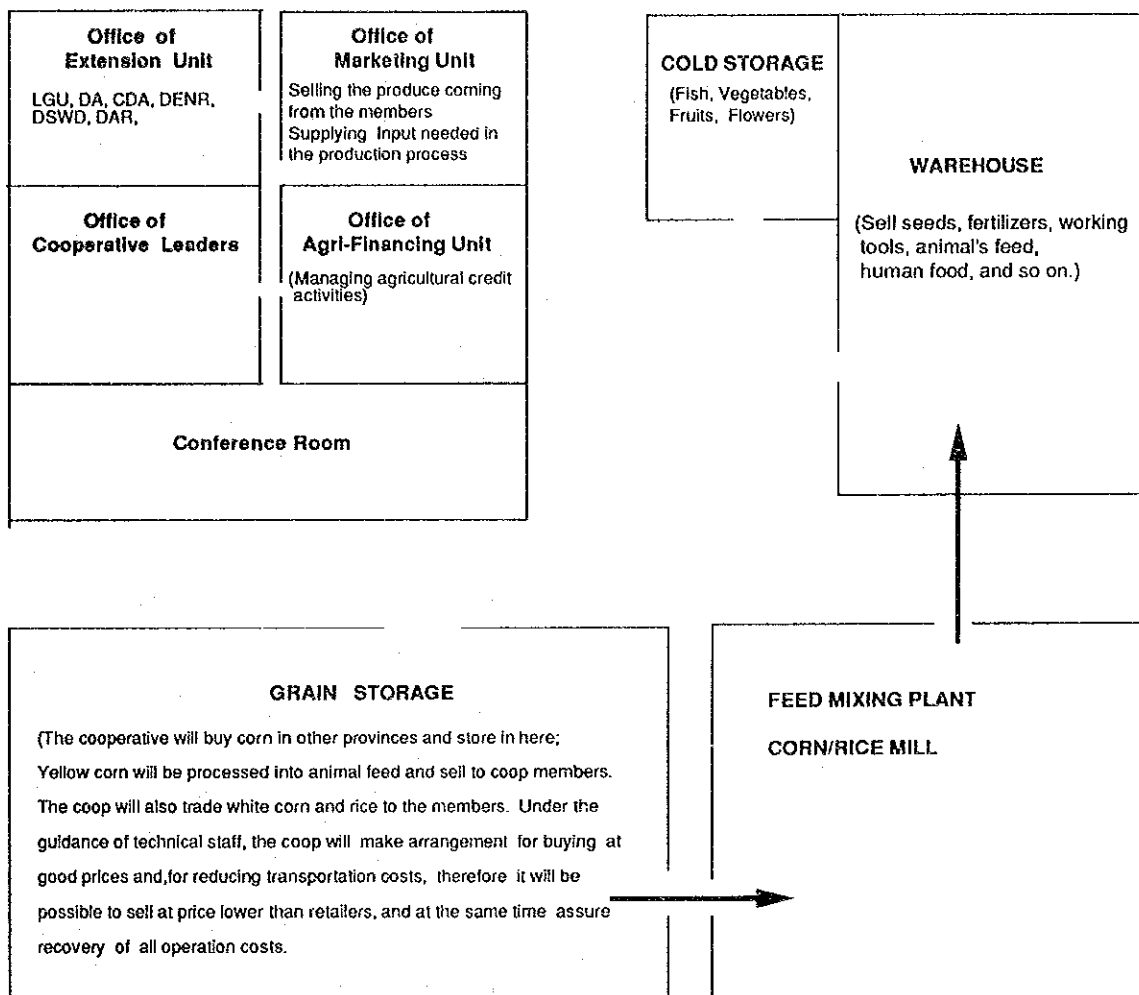
(1/2)

Project No. AG 04	Project Title MULTIPURPOSE DISTRICT CENTER PROJECT		Economic Sector Agriculture
Project Location Municipalities of: Bantayan, Bogo, Sogod, Carmen, Carcar, Dalaguete, Alegria, Dumanjug, Balamban and Tuburan.		Project Priority <input type="checkbox"/> Urgent <input checked="" type="checkbox"/> Medium-term <input type="checkbox"/> Long-term	Project Duration
		Type of Project <input type="checkbox"/> F/S Study or Survey <input type="checkbox"/> Development Project <input checked="" type="checkbox"/> Packaged Program <input checked="" type="checkbox"/> Institutional Building <input type="checkbox"/> Others	
1. Summary of Objectives To function as center of operation at district level of all activities for supporting development of the multipurpose cooperative, such as community organizing, extension service, financing, marketing, data collection & analysis, supplying input for production (seeds, fertilizers, working tools). To function as food terminal, facilitating marketing of farm and fishery produce. To facilitate a stable and economic supply of feed for livestock and poultry industry. To facilitate the delivery of community services such as water supply, road maintenance, and others by coordinating with LGU's and Cooperative.		2. Target Beneficiaries The direct beneficiaries will be the land workers, fishermen, rural women and youth members of the multipurpose cooperative. The activities expected to be carried out within the compound of the multipurpose center will produce a large impact in the organization and economic process of a large percentage of the population of each community.	
3. Project Description Construction of the infrastructure needed for the effective function of the multipurpose cooperative at district level. The infrastructure will include : offices for the cooperative and for all LGU's personnel concerned in agriculture and rural development, conference room, warehouse, cold storage, grain storage, feed mixing plant. In those districts with large production of fruits and vegetables a Vapor Heat Treatment Plant should be included. It is proposed that all the infrastructure be located within one compound.		4. Expected Benefits / Outputs It is expected that the center will produce a large impact on: Community organizing, institutional strengthening and human resources development. Facilitate all activities of the rural cooperative such as: extension and training services, marketing of local production, assure adequate supply of input at reasonable prices.	
5. Important Assumptions / Conditions for the Project There is a genuine interest of local authorities for the development of the rural sector, therefore they will provide all support necessary for implementing an ample development package. The LGU will provide the land where the compound will be located. The LGU will provide for 50 % of total costs, including the land cost. The line agencies will coordinate work for implementing the whole package for developing the multipurpose cooperative. The rural community is willing to participate in organizing the cooperative		6. Project Linkages / Other Sector Linkages Linked with socioeconomic and Human resources development, and with natural resources management sectors.	
7. Estimated Investment Requirement (In 1993 prices) For Project Implementation in Total : <u>25.0</u> Mill. Pesos * Estimated cost per each center 1) Buildings <u>15.0</u> Mill. Pesos 2) Transportation equipments <u>8.0</u> Mill. Pesos 3) Computers and Communication Equipments <u>2.0</u> Mill. Pesos For Annual Recurrent Expenditure for O & M: _____ Mill. Pesos		8. Implementing Agency/Body Cooperative Development Authority (CDA)	
		9. Relevant Agencies to Be Coordinated All LGU's within a district and all agencies concerned in agriculture and social development DA, DAR, DENR, DPWH, DSWD, NFA, NEDA) and NGOs	
10. A Provisional Scheme for Fund Procurement <input type="checkbox"/> Central Government <input checked="" type="checkbox"/> Local Government <input checked="" type="checkbox"/> International Assistance Funds (Foreign Portion: <u>70</u> %) <input type="checkbox"/> Private Sector Involvement (as specified in Box 11) <input type="checkbox"/> Specially Organized Fund (as specified in Box 16) <input type="checkbox"/> Others		11. Private Sector Participation The participation and support of the private sector is necessary in the implementation of the whole package for developing a strong multipurpose cooperative. Private institution and some existing cooperatives and NGOs are requested to provide their support for project implementation.	
12. Environmental Measures <div style="display: flex; justify-content: space-between;"> <div style="width: 48%;"> Technical Measures: <input type="checkbox"/> Conduct In-Depth Environmental and Social Impact Studies <input type="checkbox"/> Install Pollution Protection Facilities/Equipment <input type="checkbox"/> Implement Jointly Environmental Engineering Work <input type="checkbox"/> Examine the Project Location Site and/or Scale <input type="checkbox"/> Examine Availability of Alternative Resource Use () <input type="checkbox"/> Undertake Protection Measures for Flora and Fauna <input type="checkbox"/> Implement Jointly Social and Community Development <input type="checkbox"/> Others (as specified in Box 16) </div> <div style="width: 48%;"> Administrative Measures <input type="checkbox"/> Adjust with Land Use Zoning <input type="checkbox"/> Coordinate with Environmental Sector Guidelines <input type="checkbox"/> Undertake Periodical Environmental Monitoring <input type="checkbox"/> Apply policy of PPP (Pollutor-Pay-Principle) <input type="checkbox"/> Train Management Skill/Personnel for the Project <input type="checkbox"/> Make a Consensus with Inhabitants <input type="checkbox"/> Promote Public Relation for Envir'l Awareness <input type="checkbox"/> Others (as specified in Box 16) </div> </div>			

PROPOSED PROJECT PROFILE
for Cebu Integrated Area Development
Prepared by the JICA Study Team, 1993-1994

(2/2)

Project No. AG- 04	Project Title MULTIPURPOSE DISTRICT CENTER PROJECT
-------------------------------------	---

13. Verifiable Indicators / Information / Drawings**Multi-purpose Center for Supporting Agricultural Production and Marketing****Proposed locations:**

Short-Term: Four Centers as Pilot Project in Bantayan, Sogod, Balamban, and Carcar.

Midium-Term: Centers in Dalaguete, Alegria,

Long-Term: Centers in Dumanjug, Tuburan, Bogo and Carmen.

14. Project Classification	15. Necessary Inputs/Arrangement	16. Special Considerations
Functional Level <input type="checkbox"/> Island Minimum Project <input type="checkbox"/> Island Basic Project <input type="checkbox"/> Island Strategic Project Project Orientation <input type="checkbox"/> Regional Economic Drive <input checked="" type="checkbox"/> Social Development Drive <input type="checkbox"/> Environmental Drive	<input type="checkbox"/> National Government Involvement <input checked="" type="checkbox"/> Initiatives of Local Government Units <input checked="" type="checkbox"/> Institutional Arrangement at Local Level <input type="checkbox"/> Special Financial Building at Local Level <input type="checkbox"/> Special Fund Allocation by Central Govern't <input checked="" type="checkbox"/> International Financial Assistance (Grant) <input checked="" type="checkbox"/> International Financial Assistance (Loan) <input type="checkbox"/> Private Sector Participation in Funding <input type="checkbox"/> Maximum Utilization of Local Technologies <input type="checkbox"/> International Technical Assistance <input type="checkbox"/> Others (as specified in Box)	The buildings infrastructure should be provided as grant aid; Transportation vehicles, computers and other equipments will be acquired through loan funds.

PROPOSED PROJECT PROFILE
for Cebu Integrated Area Development
Prepared by the JICA Study Team, 1993-1994

(1/2)

Project No. AG-05	Project Title CEBU COMMUNITY BASED-RESOURCES MANAGEMENT PROJECT (A REVISION OF CVRP-PHASE II)		Economic Sector Agriculture
Project Location Watersheds of: Mananga, Balamban, KotKot, Mandaue, and Sapangdaku rivers		Project Priority <input type="checkbox"/> Urgent <input checked="" type="checkbox"/> Medium-term <input type="checkbox"/> Long-term	Project Duration 5 years
Type of Project <input type="checkbox"/> F/S Study or Survey <input type="checkbox"/> Development Project <input checked="" type="checkbox"/> Packaged Program <input checked="" type="checkbox"/> Institutional Building <input type="checkbox"/> Others			
1. Summary of Objectives To organize the community and Strengthen the working capability of LGUs To improve management of Land and water resources To support afforestation of important watersheds To improve agriculture, livestock and fishery production To uplift living condition of rural families		2. Target Beneficiaries The direct beneficiaries are those land workers and fishermen depending on the resources within the project area. The whole community will indirectly benefit from the improvement of management of natural resources.	
3. Project Description Community organization; Zonification of land use; Diversification of production, and introduction of High Value Crops; Extension of appropriate farming technologies for hilly lands; Support for improving livestock production; Support for improving fishery production; Support for seedling- nursery development; Support for afforestation of watersheds; Facilitate assurance of land holding by awarding stewardship. Development of minimum required infrastructures, such as farm to market roads, small irrigation systems.		4. Expected Benefits / Outputs Communities been effectively organized; Land and water resources are used appropriately accordingly with suitability criteria; A significant area of the watersheds are reforested; Agricultural production and income of beneficiary families are significantly better-off.	
5. Important Assumptions / Conditions for the Project There is an important local experience for implementing this type of project. This project is of high priority for national and local authorities, but because of economic constraints its implementation can not go through without some type of International Financial Assistance.		6. Project Linkages / Other Sector Linkages Linked with AG02, AG03, AG04, AG09, ; Linked with Environment and Natural Resources sector especially with project NE01.	
7. Estimated Investment Requirement (in 1993 prices) For Project Implementation in Total : <u>300.0</u> Mill. Pesos 1) Infrastructure development <u>105.0</u> Mill. Pesos 2) Upland and Coastal development <u>150.0</u> Mill. Pesos 3) Research and Extension <u>45.0</u> Mill. Pesos For Annual Recurrent Expenditure for O & M: <u>0.9</u> Mill. Pesos		8. Implementing Agency/Body The Resources Management Center	
9. Relevant Agencies to Be Coordinated LGU's, DA, PAO, MAO, DAR, DENR, NEDA.			
10. A Provisional Scheme for Fund Procurement <input type="checkbox"/> Central Government <input checked="" type="checkbox"/> Local Government <input checked="" type="checkbox"/> International Assistance Funds (Foreign Portion: <u>70</u> %) <input type="checkbox"/> Private Sector Involvement (as specified in Box 11) <input type="checkbox"/> Specially Organized Fund (as specified in Box 16) <input type="checkbox"/> Others		11. Private Sector Participation The participation and support of the private sector, such as experienced private professionals and institution like Foundation for Resource Linkage, is of high importance for the implementation of the whole program for Agricultural and rural development and poverty alleviation; the private sector should be encouraged to participate and support actively.	
12. Environmental Measures			
Technical Measures: <input type="checkbox"/> Conduct In-Depth Environmental and Social Impact Studies <input type="checkbox"/> Install Pollution Protection Facilities/Equipment <input type="checkbox"/> Implement Jointly Environmental Engineering Work <input type="checkbox"/> Examine the Project Location Site and/or Scale <input type="checkbox"/> Examine Availability of Alternative Resource Use () <input type="checkbox"/> Undertake Protection Measures for Flora and Fauna <input checked="" type="checkbox"/> Implement Jointly Social and Community Development <input type="checkbox"/> Others (as specified in Box 16)		Administrative Measures <input type="checkbox"/> Adjust with Land Use Zoning <input type="checkbox"/> Coordinate with Environmental Sector Guidelines <input type="checkbox"/> Undertake Periodical Environmental Monitoring <input type="checkbox"/> Apply policy of PPP (Pollutor-Pay-Principle) <input type="checkbox"/> Train Management Skill/Personnel for the Project <input type="checkbox"/> Make a Consensus with Inhabitants <input type="checkbox"/> Promote Public Relation for Envir'l Awareness <input type="checkbox"/> Others (as specified in Box 16)	

PROPOSED PROJECT PROFILE
for Cebu Integrated Area Development
Prepared by the JICA Study Team, 1993-1994

(2/2)

Project No. AG- 05	Project Title CEBU COMMUNITY BASED-RESOURCES MANAGEMENT PROJECT (A REVISION OF CVRP-PHASE II)
-----------------------	---

13. Verifiable Indicators / Information / Drawings

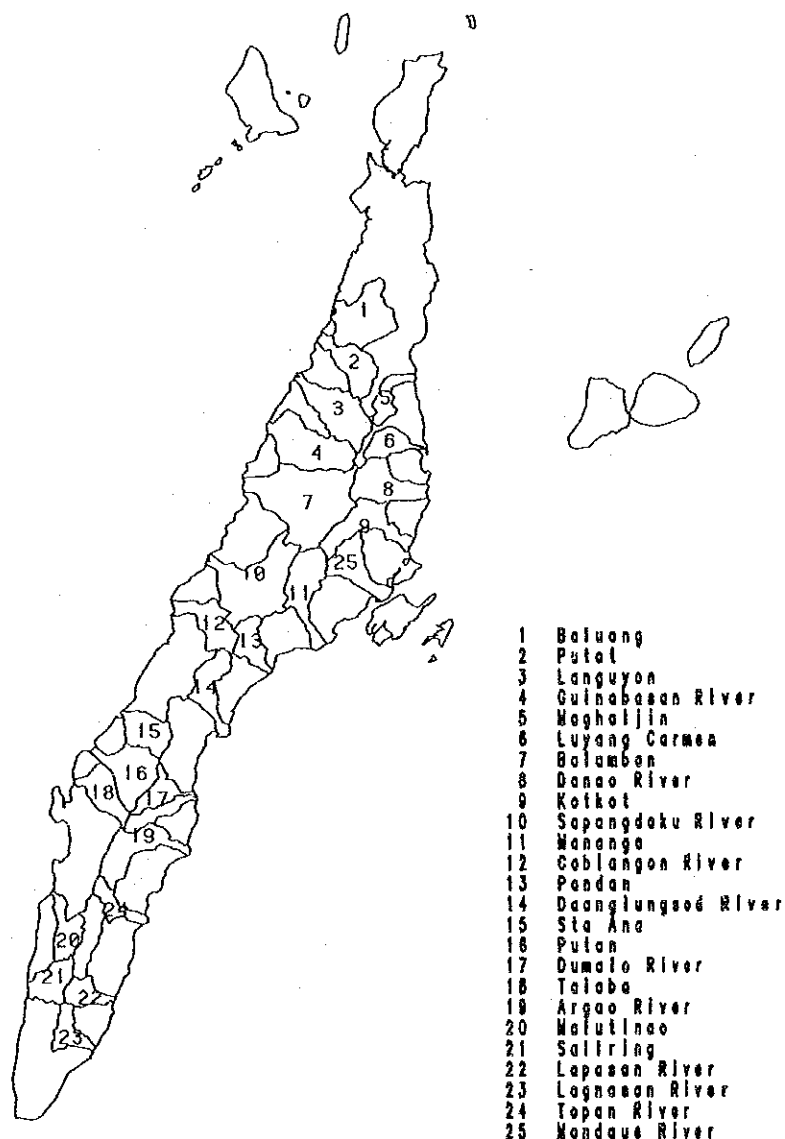


Figure Main Watershed

14. Project Classification	15. Necessary Inputs/Arrangement	16. Special Considerations
<p>Functional Level</p> <p><input type="checkbox"/> Island Minimum Project</p> <p><input type="checkbox"/> Island Basic Project</p> <p><input checked="" type="checkbox"/> Island Strategic Project</p> <p>Project Orientation</p> <p><input type="checkbox"/> Regional Economic Drive</p> <p><input checked="" type="checkbox"/> Social Development Drive</p> <p><input type="checkbox"/> Environmental Drive</p>	<p><input type="checkbox"/> National Government Involvement</p> <p><input checked="" type="checkbox"/> Initiatives of Local Government Units</p> <p><input checked="" type="checkbox"/> Institutional Arrangement at Local Level</p> <p><input type="checkbox"/> Special Financial Building at Local Level</p> <p><input type="checkbox"/> Special Fund Allocation by Central Govern't</p> <p><input checked="" type="checkbox"/> International Financial Assistance (Grant)</p> <p><input checked="" type="checkbox"/> International Financial Assistance (Loan)</p> <p><input type="checkbox"/> Private Sector Participation in Funding</p> <p><input type="checkbox"/> Maximum Utilization of Local Technologies</p> <p><input type="checkbox"/> International Technical Assistance</p> <p><input type="checkbox"/> Others (as specified in Box)</p>	

PROPOSED PROJECT PROFILE
for Cebu Integrated Area Development
Prepared by the JICA Study Team, 1993-1994

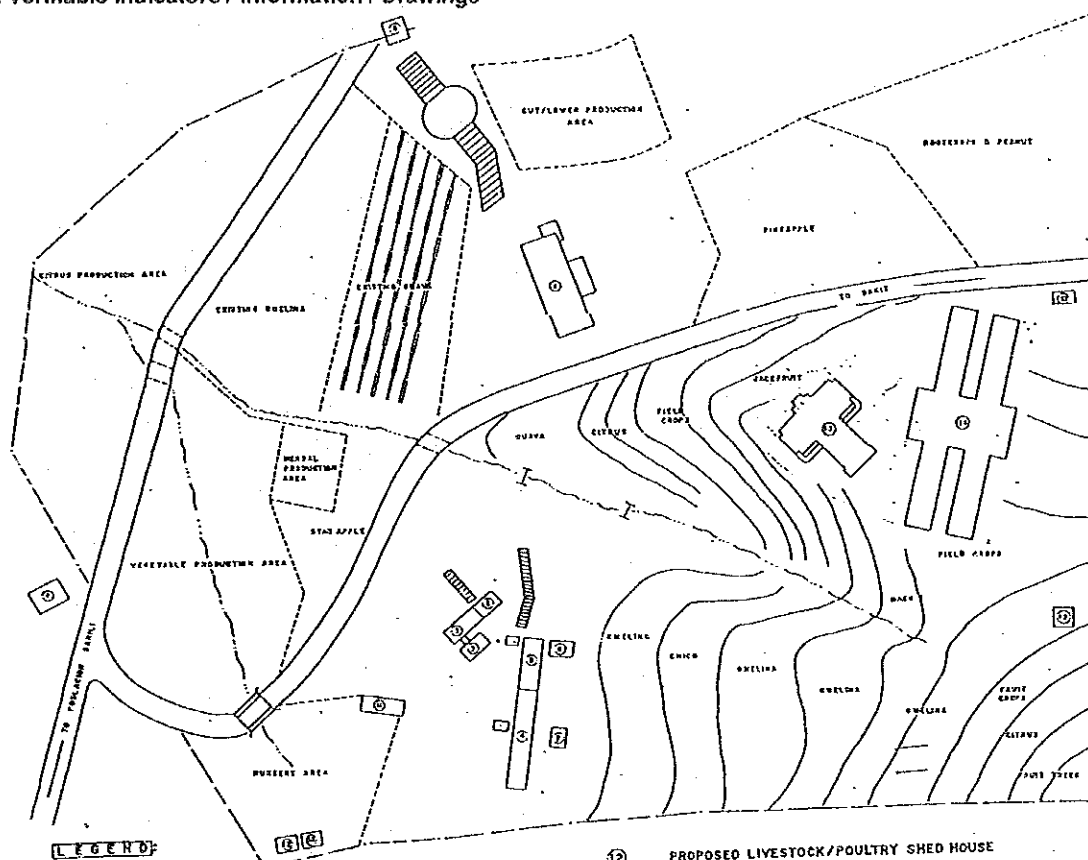
(1/2)

Project No. AG-06	Project Title CEBU INTEGRATED RURAL LIVELIHOOD PROMOTION CENTER		Economic Sector Agriculture
Project Location Boloc Boloc barangay, municipality of Barili District 2, Cebu province		Project Priority <input checked="" type="checkbox"/> Urgent <input type="checkbox"/> Medium-term <input type="checkbox"/> Long-term	Project Duration
1. Summary of Objectives To provide an adequate venue for conducting agricultural training. To showcase appropriate technologies for improving agricultural production and other livelihood activities. To develop the entrepreneurial capability of community leaders (land workers, fishermen, rural women and youth leaders). To update the knowledge of technicians engaged in extension work. To provide expatriate experts for the training of local staff.		2. Target Beneficiaries Province wide community leaders organized in the multipurpose cooperative, rural women and youth organized in the cooperative, technicians responsible for agricultural extension services.	
3. Project Description Construction of the new infrastructure for the training center; provide all necessary equipments for implementing training programs; Provide equipments necessary to facilitate research and training. Provide expatriate expert personnel on the subjects of: 1. Development of rural cooperatives; 2. Agricultural marketing; 3. Rural micro-enterprise development; 4. Horticulture production; 5. Integrated pest management; 6. Organic farming; 7. Fishery.		4. Expected Benefits / Outputs Strengthening of rural leadership on cooperative activities; Develop entrepreneurial capability of rural folks, including women and youth; Strengthening agricultural extension services; Improve production and increase income of rural families; Poverty alleviation.	
5. Important Assumptions / Conditions for the Project This type of project is of high priority for the provincial government, but because of economic constraints, the government can not implement the project without the support of foreign aid.		6. Project Linkages / Other Sector Linkages Linked with socioeconomic and Human resources development, and with natural resources management sectors.	
7. Estimated Investment Requirement (in 1993 prices) For Project Implementation in Total : _____ Mill. Pesos 1) Building infrastructure _____ Mill. Pesos 2) Equipment _____ Mill. Pesos 3) _____ Mill. Pesos For Annual Recurrent Expenditure for O & M: _____ Mill. Pesos		8. Implementing Agency/Body Provincial government	
		9. Relevant Agencies to Be Coordinated DA, DAR, CDA, DENR, DSWD, NFA, NEDA, DTI	
10. A Provisional Scheme for Fund Procurement <input type="checkbox"/> Central Government <input checked="" type="checkbox"/> Local Government <input checked="" type="checkbox"/> International Assistance Funds (Foreign Portion: <u>80</u> %) <input type="checkbox"/> Private Sector Involvement (as specified in Box 11) <input type="checkbox"/> Specially Organized Fund (as specified in Box 16) <input type="checkbox"/> Others		11. Private Sector Participation The participation and support of the private sector in the whole program for rural development and poverty alleviation will be encouraged.	
12. Environmental Measures			
Technical Measures: <input type="checkbox"/> Conduct In-Depth Environmental and Social Impact Studies <input type="checkbox"/> Install Pollution Protection Facilities/Equipment <input type="checkbox"/> Implement Jointly Environmental Engineering Work <input type="checkbox"/> Examine the Project Location Site and/or Scale <input type="checkbox"/> Examine Availability of Alternative Resource Use () <input type="checkbox"/> Undertake Protection Measures for Flora and Fauna <input type="checkbox"/> Implement Jointly Social and Community Development <input type="checkbox"/> Others (as specified in Box 16)		Administrative Measures <input type="checkbox"/> Adjust with Land Use Zoning <input type="checkbox"/> Coordinate with Environmental Sector Guidelines <input type="checkbox"/> Undertake Periodical Environmental Monitoring <input type="checkbox"/> Apply policy of PPP (Pollutor-Pay-Principle) <input type="checkbox"/> Train Management Skill/Personnel for the Project <input type="checkbox"/> Make a Consensus with Inhabitants <input type="checkbox"/> Promote Public Relation for Envir'l Awareness <input type="checkbox"/> Others (as specified in Box 16)	

PROPOSED PROJECT PROFILE
for Cebu Integrated Area Development
Prepared by the JICA Study Team, 1993-1994

(2/2)

Project No. AG-06	Project Title CEBU INTEGRATED RURAL LIVELIHOOD PROMOTION CENTER
-----------------------------	--

13. Verifiable Indicators / Information / Drawings**LEGEND:**

- | | |
|---|--|
| <ul style="list-style-type: none"> ① PROPOSED RENOVATION OF EXISTING ADMINISTRATION BUILDING ② PROPOSED CONVERSION OF EXISTING STAFF HOUSE TO GREEN HOUSE ③ PROPOSED CONVERSION OF EXISTING MEN'S DORMITORY TO GREEN HOUSE ④ PROPOSED CONVERSION OF EXISTING LADIES' DORMITORY TO SOIL LABORATORY ⑤ PROPOSED CONVERSION OF EXISTING MESS HALL TO SOIL LABORATORY ⑥ UTILITY HOUSE ⑦ WATER TANK ⑧ COOPERATIVE STORE ⑨ PUMP HOUSE ⑩ HOUSE ⑪ GERMINATION CHAMBER | <ul style="list-style-type: none"> ⑫ PROPOSED LIVESTOCK/POULTRY SHED HOUSE ⑬ PROPOSED FARMER'S TRAINING CENTER ⑭ PROPOSED DORMITORY ⑮ PROPOSED WATER RESERVOIR — INTERMITTENT CREEK --- CROP BOUNDARY --- CONTOUR BUND --- FARM BOUNDARY --- CULVERT --- ROAD — BRIDGE — CONCRETE STEPS — BRUSH DAM |
|---|--|

14. Project Classification	15. Necessary Inputs/Arrangement	16. Special Considerations
Functional Level <input type="checkbox"/> Island Minimum Project <input type="checkbox"/> Island Basic Project <input checked="" type="checkbox"/> Island Strategic Project	<input type="checkbox"/> National Government Involvement <input type="checkbox"/> Initiatives of Local Government Units <input checked="" type="checkbox"/> Institutional Arrangement at Local Level <input type="checkbox"/> Special Financial Building at Local Level <input type="checkbox"/> Special Fund Allocation by Central Govern't <input checked="" type="checkbox"/> International Financial Assistance (Grant) <input type="checkbox"/> International Financial Assistance (Loan) <input type="checkbox"/> Private Sector Participation in Funding <input type="checkbox"/> Maximum Utilization of Local Technologies <input checked="" type="checkbox"/> International Technical Assistance <input type="checkbox"/> Others (as specified in Box)	
Project Orientation <input type="checkbox"/> Regional Economic Drive <input checked="" type="checkbox"/> Social Development Drive <input type="checkbox"/> Environmental Drive		

PROPOSED PROJECT PROFILE
for Cebu Integrated Area Development
Prepared by the JICA Study Team, 1993-1994

(1/2)

Project No. AG-07	Project Title MUNICIPAL FISHERY PORT IMPROVEMENT PROJECT, PHASE I		Economic Sector Agriculture
Project Location Municipalities of: Bantayan, Daan Bantayan, Bogo, Borbon, Moalboal, Tuburan, and San Francisco.		Project Priority <input type="checkbox"/> Urgent <input checked="" type="checkbox"/> Medium-term <input type="checkbox"/> Long-term	Project Duration 2 years
Type of Project <input type="checkbox"/> F/S Study or Survey <input checked="" type="checkbox"/> Development Project <input type="checkbox"/> Packaged Program <input type="checkbox"/> Institutional Building <input type="checkbox"/> Others			
1. Summary of Objectives To develop the infrastructure and provide the facilities necessary to facilitate landing of fishing boats, handling and marketing of fish.		2. Target Beneficiaries Approximately 50 % of the Province's Fishermen and those engaged in fish handling and marketing.	
3. Project Description Construction or Rehabilitation of Municipal Fishlanding Wharves. Installation of Facilities and Equipment necessary for handling fish.		4. Expected Benefits / Outputs The selected Municipalities will have new or improved fish landing wharves. The conditions for proper handling of fish are facilitated and improved.	
5. Important Assumptions / Conditions for the Project This project have been identified by local authorities as high priority. The LGUs are in need of Financial Assistance for project implementation		6. Project Linkages / Other Sector Linkages Linked with projects AG 02, AG 04 and AG 08. Linkage with socio-economic sector.	
7. Estimated Investment Requirement (In 1993 prices) For Project Implementation in Total : <u>10.0</u> * Mill. Pesos Cost per unit. 1) Warf construction <u>7.0</u> Mill. Pesos 2) Facilities and Equipments <u>2.5</u> Mill. Pesos 3) Others <u>0.5</u> Mill. Pesos For Annual Recurrent Expenditure for O & M: _____ Mill. Pesos		8. Implementing Agency/Body Local Government Unit	
		9. Relevant Agencies to Be Coordinated DA, CDA, DAR, DENR, DSWD, NFA, NEDA, DPWH.	
10. A Provisional Scheme for Fund Procurement <input type="checkbox"/> Central Government <input checked="" type="checkbox"/> Local Government <input checked="" type="checkbox"/> International Assistance Funds (Foreign Portion: <u>80</u> %) <input type="checkbox"/> Private Sector Involvement (as specified in Box 11) <input type="checkbox"/> Specially Organized Fund (as specified in Box 16) <input type="checkbox"/> Others		11. Private Sector Participation Fishermen's Cooperatives and NGO's participation will facilitate implementation of the project.	
12. Environmental Measures <div style="display: flex; justify-content: space-between;"> <div> Technical Measures: <input type="checkbox"/> Conduct In-Depth Environmental and Social Impact Studies <input type="checkbox"/> Install Pollution Protection Facilities/Equipment <input type="checkbox"/> Implement Jointly Environmental Engineering Work <input type="checkbox"/> Examine the Project Location Site and/or Scale <input type="checkbox"/> Examine Availability of Alternative Resource Use () <input type="checkbox"/> Undertake Protection Measures for Flora and Fauna <input checked="" type="checkbox"/> Implement Jointly Social and Community Development <input type="checkbox"/> Others (as specified in Box 16) </div> <div> Administrative Measures <input type="checkbox"/> Adjust with Land Use Zoning <input type="checkbox"/> Coordinate with Environmental Sector Guidelines <input type="checkbox"/> Undertake Periodical Environmental Monitoring <input type="checkbox"/> Apply policy of PPP (Pollutor-Pay-Principle) <input type="checkbox"/> Train Management Skill/Personnel for the Project <input type="checkbox"/> Make a Consensus with Inhabitants <input type="checkbox"/> Promote Public Relation for Envir'l Awareness <input type="checkbox"/> Others (as specified in Box 16) </div> </div>			

PROPOSED PROJECT PROFILE
for Cebu Integrated Area Development
Prepared by the JICA Study Team, 1993-1994

(2/2)

Project No. AG 07	Project Title MUNICIPAL FISHERY PORT IMPROVEMENT PROJECT, PHASE I	
-----------------------------	---	--

13. Verifiable Indicators / Information / Drawings

LEGEND

○ MUNICIPALITY OR MUNICIPAL DISTRICT

▨ PROPOSED SITES FOR FISH-LANDING PIERS

0 10 50 Kilometer

14. Project Classification	15. Necessary Inputs/Arrangement	16. Special Considerations
<p>Functional Level</p> <p><input checked="" type="checkbox"/> Island Minimum Project</p> <p><input type="checkbox"/> Island Basic Project</p> <p><input type="checkbox"/> Island Strategic Project</p> <p>Project Orientation</p> <p><input type="checkbox"/> Regional Economic Drive</p> <p><input checked="" type="checkbox"/> Social Development Drive</p> <p><input type="checkbox"/> Environmental Drive</p>	<p><input type="checkbox"/> National Government Involvement</p> <p><input checked="" type="checkbox"/> Initiatives of Local Government Units</p> <p><input checked="" type="checkbox"/> Institutional Arrangement at Local Level</p> <p><input type="checkbox"/> Special Financial Building at Local Level</p> <p><input type="checkbox"/> Special Fund Allocation by Central Govern't</p> <p><input type="checkbox"/> International Financial Assistance (Grant)</p> <p><input type="checkbox"/> International Financial Assistance (Loan)</p> <p><input type="checkbox"/> Private Sector Participation in Funding</p> <p><input type="checkbox"/> Maximum Utilization of Local Technologies</p> <p><input type="checkbox"/> International Technical Assistance</p> <p><input type="checkbox"/> Others (as specified in Box)</p>	

PROPOSED PROJECT PROFILE
for Cebu Integrated Area Development
Prepared by the JICA Study Team, 1993-1994

(1/3)

Project No. AG-08	Project Title CEBU REGIONAL FISHERY PORT DEVELOPMENT PROJECT (Revision of Kault Fishery Port Project)		Economic Sector Agriculture
Project Location Kault Islet, Cebu city	Project Priority <input checked="" type="checkbox"/> Urgent <input type="checkbox"/> Medium-term <input type="checkbox"/> Long-term	Project Duration 2 years	Type of Project <input type="checkbox"/> F/S Study or Survey <input checked="" type="checkbox"/> Development Project <input type="checkbox"/> Packaged Program <input type="checkbox"/> Institutional Building <input type="checkbox"/> Others
1. Summary of Objectives To provide a modern infrastructure for facilitate landing and handling of large amount of fish brought daily to Cebu city by commercial fishing vessels from others provinces. To contribute for hygienic handling of fish To reduce contamination of the market area To contribute in the decongestion process of Cebu city To contribute to the beatification of Cebu city		2. Target Beneficiaries All of the fishermen and those engaged in fish handling and marketing of fish in Cebu city. Cebu community as a result of controlling pollution, improving hygiene, decongestion and beatification.	
3. Project Description Construction of a modern type fish landing port with related facilities and equipment necessary for handling fish., conservation and distribution. Construction of a 850 m causeway for easy access to the island.		4. Expected Benefits / Outputs A modern fish landing port is in place. The condition for handling fish are facilitated and improved. Large reduction on pollution of the fish market and surrounding waters. Noticeable improvement of hygiene of the fish market Increase in collection of revenue by city administrator	
5. Important Assumptions / Conditions for the Project This project was identified by national authorities as of high priority. The feasibility Study and Design have been completed The funds necessary for Project implementation have been secured The Local Authorities recognize the importance of the project for Cebu city, the province and the region.		6. Project Linkages / Other Sector Linkages Linked with projects AG 02, AG 04 and AG 07. Linkage Urban Planning sector.	
7. Estimated Investment Requirement (in 1993 prices) For Project Implementation in Total : _____ Mill. Pesos 1) Port construction _____ Mill. Pesos 2) Causeway _____ Mill. Pesos 3) Facilities and Equipments _____ Mill. Pesos For Annual Recurrent Expenditure for O & M: _____ Mill. Pesos		8. Implementing Agency/Body Municipal government of Cebu city	
10. A Provisional Scheme for Fund Procurement <input type="checkbox"/> Central Government <input checked="" type="checkbox"/> Local Government <input checked="" type="checkbox"/> International Assistance Funds (Foreign Portion: <u>80</u> %) <input type="checkbox"/> Private Sector Involvement (as specified in Box 11) <input type="checkbox"/> Specially Organized Fund (as specified in Box 16) <input type="checkbox"/> Others		9. Relevant Agencies to Be Coordinated NEDA, Port Authority	
11. Private Sector Participation Fishermen's Cooperatives and NGO's participation will facilitate implementation of the project.		12. Environmental Measures Technical Measures: <input checked="" type="checkbox"/> Conduct In-Depth Environmental and Social Impact Studies <input checked="" type="checkbox"/> Install Pollution Protection Facilities/Equipment <input type="checkbox"/> Implement Jointly Environmental Engineering Work <input checked="" type="checkbox"/> Examine the Project Location Site and/or Scale <input type="checkbox"/> Examine Availability of Alternative Resource Use () <input checked="" type="checkbox"/> Undertake Protection Measures for Flora and Fauna <input checked="" type="checkbox"/> Implement Jointly Social and Community Development <input type="checkbox"/> Others (as specified in Box 16)	
Administrative Measures <input type="checkbox"/> Adjust with Land Use Zoning <input type="checkbox"/> Coordinate with Environmental Sector Guidelines <input type="checkbox"/> Undertake Periodical Environmental Monitoring <input type="checkbox"/> Apply policy of PPP (Pollutor-Pay-Principle) <input type="checkbox"/> Train Management Skill/Personnel for the Project <input type="checkbox"/> Make a Consensus with Inhabitants <input checked="" type="checkbox"/> Promote Public Relation for Envir Awareness <input type="checkbox"/> Others (as specified in Box 16)			

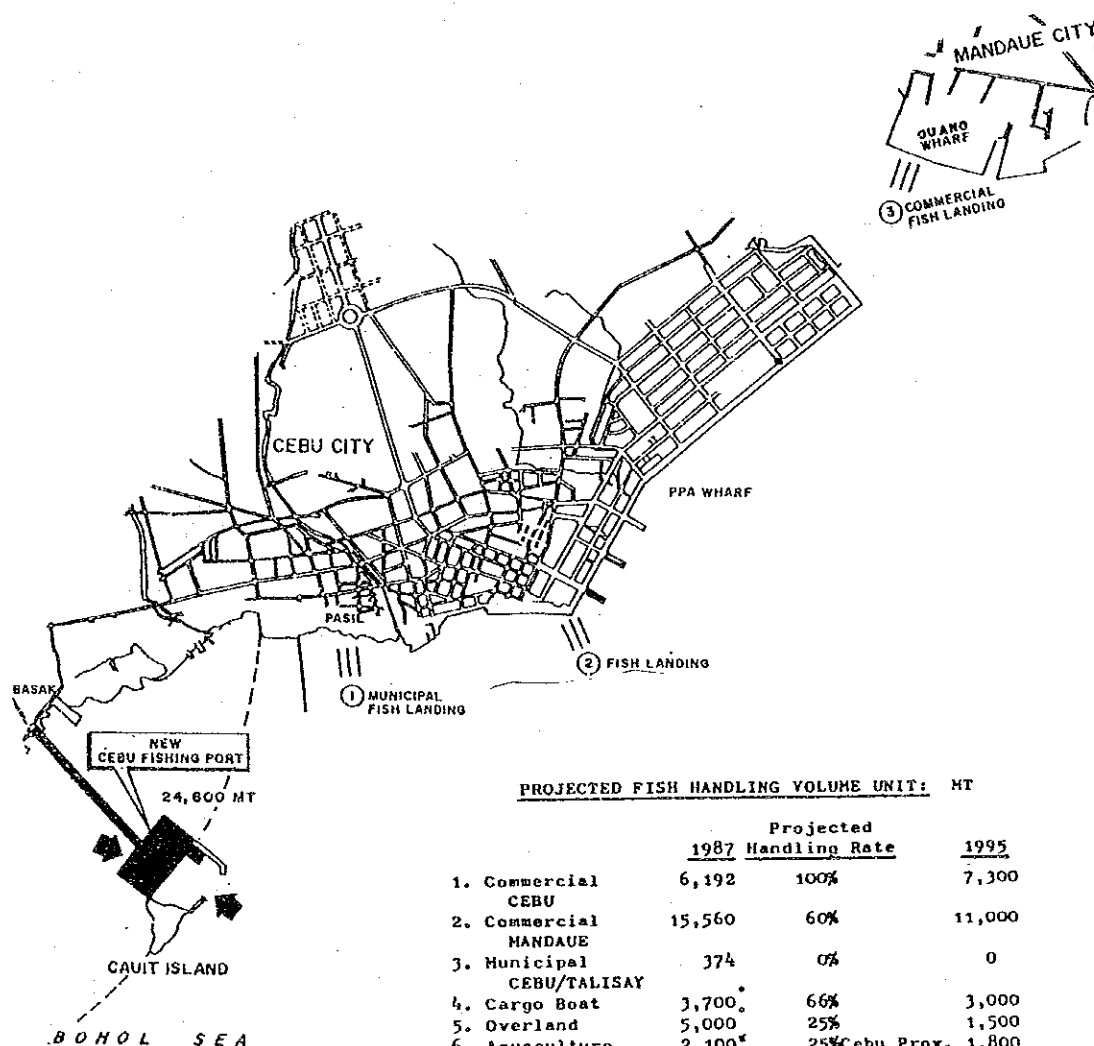
PROPOSED PROJECT PROFILE
for Cebu Integrated Area Development
Prepared by the JICA Study Team, 1993-1994

(2/3)

Project No. AG-08	Project Title CEBU REGIONAL FISHERY PORT DEVELOPMENT PROJECT (Revision of Kault Fishery Port Project)
-----------------------------	--

13. Verifiable Indicators / Information / Drawings

Present Fish Landing Activities & Projected Fish Handling Volume
(Cebu City)



14. Project Classification	15. Necessary Inputs/Arrangement	16. Special Considerations
<p>Functional Level</p> <p><input type="checkbox"/> Island Minimum Project</p> <p><input checked="" type="checkbox"/> Island Basic Project</p> <p><input type="checkbox"/> Island Strategic Project</p> <p>Project Orientation</p> <p><input checked="" type="checkbox"/> Regional Economic Drive</p> <p><input type="checkbox"/> Social Development Drive</p> <p><input checked="" type="checkbox"/> Environmental Drive</p>	<p><input checked="" type="checkbox"/> National Government Involvement</p> <p><input checked="" type="checkbox"/> Initiatives of Local Government Units</p> <p><input type="checkbox"/> Institutional Arrangement at Local Level</p> <p><input type="checkbox"/> Special Financial Building at Local Level</p> <p><input type="checkbox"/> Special Fund Allocation by Central Govern't</p> <p><input type="checkbox"/> International Financial Assistance (Grant)</p> <p><input checked="" type="checkbox"/> International Financial Assistance (Loan)</p> <p><input type="checkbox"/> Private Sector Participation in Funding</p> <p><input type="checkbox"/> Maximum Utilization of Local Technologies</p> <p><input type="checkbox"/> International Technical Assistance</p> <p><input type="checkbox"/> Others (as specified in Box)</p>	

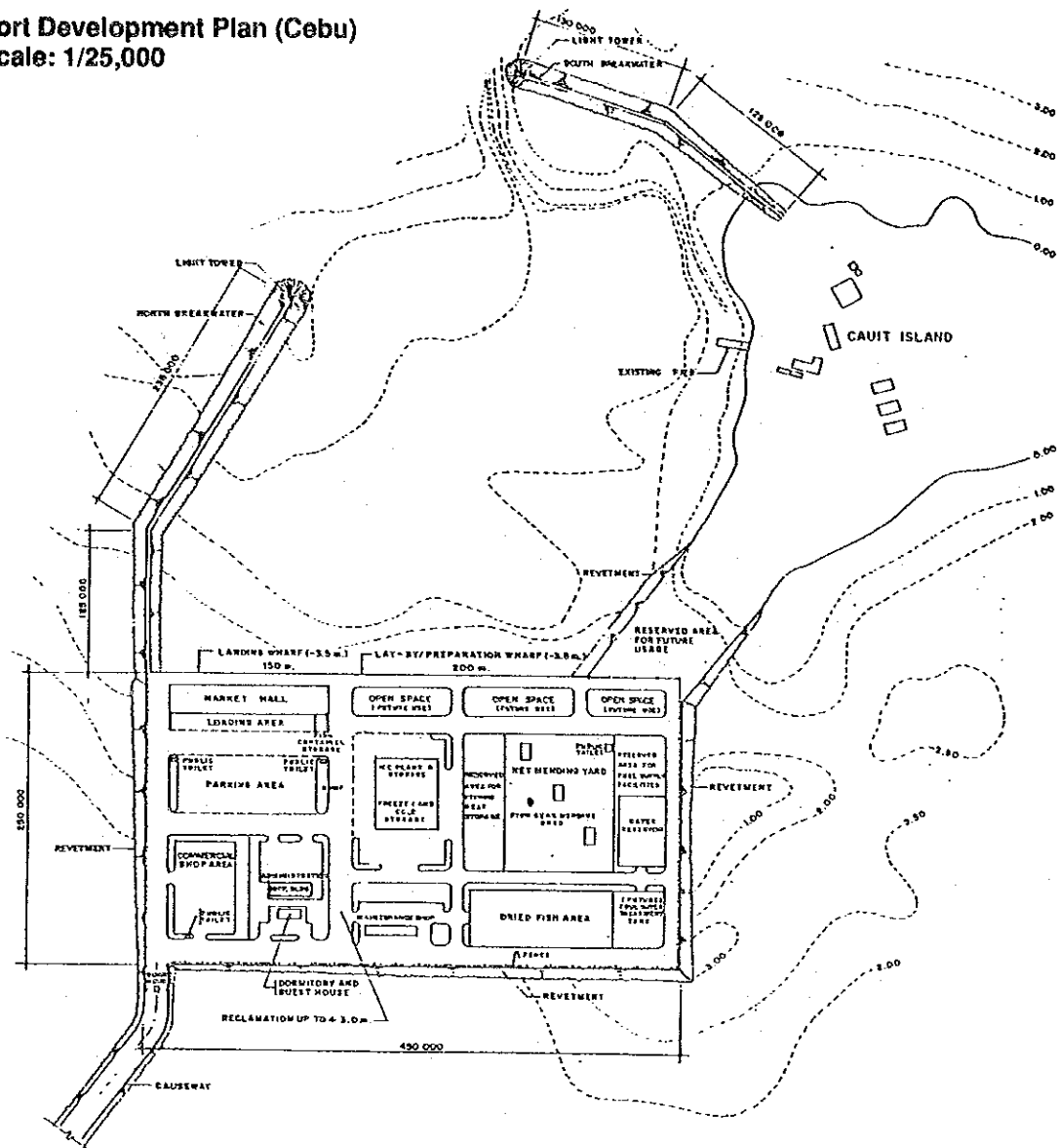
PROPOSED PROJECT PROFILE
for Cebu Integrated Area Development
Prepared by the JICA Study Team, 1993-1994

(3/3)

Project No. AG-08	Project Title CEBU REGIONAL FISHERY PORT DEVELOPMENT PROJECT (Revision of Kault Fishery Port Project)
------------------------------------	---

13. Verifiable Indicators / Information / Drawings

Port Development Plan (Cebu)
Scale: 1/25,000



14. Project Classification	15. Necessary Inputs/Arrangement	16. Special Considerations
Functional Level <input type="checkbox"/> Island Minimum Project <input type="checkbox"/> Island Basic Project <input type="checkbox"/> Island Strategic Project Project Orientation <input type="checkbox"/> Regional Economic Drive <input type="checkbox"/> Social Development Drive <input type="checkbox"/> Environmental Drive	<input type="checkbox"/> National Government Involvement <input type="checkbox"/> Initiatives of Local Government Units <input type="checkbox"/> Institutional Arrangement at Local Level <input type="checkbox"/> Special Financial Building at Local Level <input type="checkbox"/> Special Fund Allocation by Central Govern't <input type="checkbox"/> International Financial Assistance (Grant) <input type="checkbox"/> International Financial Assistance (Loan) <input type="checkbox"/> Private Sector Participation in Funding <input type="checkbox"/> Maximum Utilization of Local Technologies <input type="checkbox"/> International Technical Assistance <input type="checkbox"/> Others (as specified in Box)	

PROPOSED PROJECT PROFILE
for Cebu Integrated Area Development
Prepared by the JICA Study Team, 1993-1994

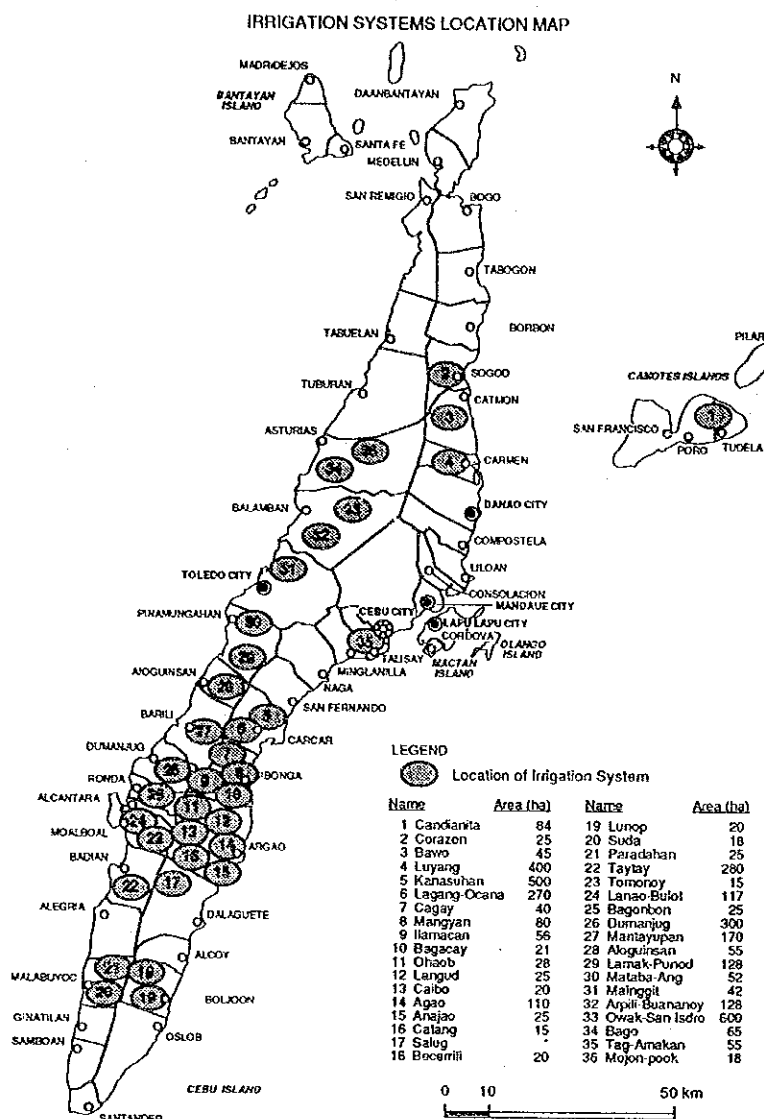
(1/2)

Project No. AG 09	Project Title IRRIGATION INFRASTRUCTURE DEVELOPMENT AND REHABILITATION PROJECT		Economic Sector Agriculture		
Project Location Municipalities of: Carcar, Argao, Balamban, Asturias, Barili, Dumanjug Pinamungahan, Cebu city, and Carmen		Project Priority <input checked="" type="checkbox"/> Urgent <input checked="" type="checkbox"/> Medium-term <input type="checkbox"/> Long-term	Project Duration 2 years		
		Type of Project <input checked="" type="checkbox"/> F/S Study or Survey <input checked="" type="checkbox"/> Development Project <input type="checkbox"/> Packaged Program <input type="checkbox"/> Institutional Building <input type="checkbox"/> Others			
1. Summary of Objectives To increase the land area under irrigation; To improve water use efficiency; To facilitate and assure the production of high value crops; To increase provincial self-sufficiency of food; To increase income of farm household beneficiaries; To alleviate poverty in rural areas.		2. Target Beneficiaries Approximately 2000 farm household users (10,0000 people) of the irrigation system.			
3. Project Description Feasibility Study for CAN-ASUJAN Community Irrigation System. Rehabilitation and Enlargement of OWAK-SAN ISIDRO Irrigation system Implementation of Irrigation Projects identified by the Small Scale Irrigation Development Project (SSIDP). Implementation of Small Water Impounding Projects (SWIMP).		4. Expected Benefits / Outputs A large percentage of the land potentially irrigable will be under irrigation. Water use efficiency increases significantly, therefore more water will be available for other uses. Significant Increase in Agricultural Production. Uplifting the economic condition of beneficiary families.			
5. Important Assumptions / Conditions for the Project The construction of new small irrigation systems and the rehabilitation of the existing ones are of high priority for the agricultural development of the province. Farmers beneficiaries are willing to shoulder the cost of their respective project; the costs of each project will be paid back by the beneficiaries in a period of 30 years.		6. Project Linkages / Other Sector Linkages Linked with projects AG 02, AG 04 and AG 08. Linkage with socio-economic sector.			
7. Estimated Investment Requirement (in 1993 prices) For Project Implementation in Total : <u>80.0</u> Mill. Pesos 1) New Irrigation Systems <u>40.0</u> Mill. Pesos 2) Rehabilitation of existing systems <u>40.0</u> Mill. Pesos 3) Others _____ Mill. Pesos For Annual Recurrent Expenditure for O & M: _____ Mill. Pesos		8. Implementing Agency/Body National Irrigation Administration			
		9. Relevant Agencies to Be Coordinated LGU, DA, CDA, DAR, DENR			
10. A Provisional Scheme for Fund Procurement <input type="checkbox"/> Central Government <input checked="" type="checkbox"/> Local Government <input checked="" type="checkbox"/> International Assistance Funds (Foreign Portion: <u>80</u> %) <input type="checkbox"/> Private Sector Involvement (as specified in Box 11) <input type="checkbox"/> Specially Organized Fund (as specified in Box 16) <input type="checkbox"/> Others		11. Private Sector Participation Irrigators associations and NGO's participation will facilitate implementation of the project.			
12. Environmental Measures <table border="0"> <tr> <td> Technical Measures: <input type="checkbox"/> Conduct In-Depth Environmental and Social Impact Studies <input type="checkbox"/> Install Pollution Protection Facilities/Equipment <input type="checkbox"/> Implement Jointly Environmental Engineering Work <input type="checkbox"/> Examine the Project Location Site and/or Scale <input type="checkbox"/> Examine Availability of Alternative Resource Use () <input type="checkbox"/> Undertake Protection Measures for Flora and Fauna <input checked="" type="checkbox"/> Implement Jointly Social and Community Development <input type="checkbox"/> Others (as specified in Box 16) </td> <td> Administrative Measures <input type="checkbox"/> Adjust with Land Use Zoning <input type="checkbox"/> Coordinate with Environmental Sector Guidelines <input type="checkbox"/> Undertake Periodical Environmental Monitoring <input type="checkbox"/> Apply policy of PPP (Pollutor-Pay-Principle) <input type="checkbox"/> Train Management Skill/Personnel for the Project <input type="checkbox"/> Make a Consensus with Inhabitants <input type="checkbox"/> Promote Public Relation for Envir'l Awareness <input type="checkbox"/> Others (as specified in Box 16) </td> </tr> </table>				Technical Measures: <input type="checkbox"/> Conduct In-Depth Environmental and Social Impact Studies <input type="checkbox"/> Install Pollution Protection Facilities/Equipment <input type="checkbox"/> Implement Jointly Environmental Engineering Work <input type="checkbox"/> Examine the Project Location Site and/or Scale <input type="checkbox"/> Examine Availability of Alternative Resource Use () <input type="checkbox"/> Undertake Protection Measures for Flora and Fauna <input checked="" type="checkbox"/> Implement Jointly Social and Community Development <input type="checkbox"/> Others (as specified in Box 16)	Administrative Measures <input type="checkbox"/> Adjust with Land Use Zoning <input type="checkbox"/> Coordinate with Environmental Sector Guidelines <input type="checkbox"/> Undertake Periodical Environmental Monitoring <input type="checkbox"/> Apply policy of PPP (Pollutor-Pay-Principle) <input type="checkbox"/> Train Management Skill/Personnel for the Project <input type="checkbox"/> Make a Consensus with Inhabitants <input type="checkbox"/> Promote Public Relation for Envir'l Awareness <input type="checkbox"/> Others (as specified in Box 16)
Technical Measures: <input type="checkbox"/> Conduct In-Depth Environmental and Social Impact Studies <input type="checkbox"/> Install Pollution Protection Facilities/Equipment <input type="checkbox"/> Implement Jointly Environmental Engineering Work <input type="checkbox"/> Examine the Project Location Site and/or Scale <input type="checkbox"/> Examine Availability of Alternative Resource Use () <input type="checkbox"/> Undertake Protection Measures for Flora and Fauna <input checked="" type="checkbox"/> Implement Jointly Social and Community Development <input type="checkbox"/> Others (as specified in Box 16)	Administrative Measures <input type="checkbox"/> Adjust with Land Use Zoning <input type="checkbox"/> Coordinate with Environmental Sector Guidelines <input type="checkbox"/> Undertake Periodical Environmental Monitoring <input type="checkbox"/> Apply policy of PPP (Pollutor-Pay-Principle) <input type="checkbox"/> Train Management Skill/Personnel for the Project <input type="checkbox"/> Make a Consensus with Inhabitants <input type="checkbox"/> Promote Public Relation for Envir'l Awareness <input type="checkbox"/> Others (as specified in Box 16)				

PROPOSED PROJECT PROFILE
for Cebu Integrated Area Development
Prepared by the JICA Study Team, 1993-1994

(2/2)

Project No. AG 09	Project Title IRRIGATION INFRASTRUCTURE DEVELOPMENT AND REHABILITATION PROJECT
------------------------------------	---

13. Verifiable Indicators / Information / Drawings

14. Project Classification	15. Necessary Inputs/Arrangement	16. Special Considerations
Functional Level <input checked="" type="checkbox"/> Island Minimum Project <input type="checkbox"/> Island Basic Project <input type="checkbox"/> Island Strategic Project Project Orientation <input type="checkbox"/> Regional Economic Drive <input checked="" type="checkbox"/> Social Development Drive <input type="checkbox"/> Environmental Drive	<input type="checkbox"/> National Government Involvement <input checked="" type="checkbox"/> Initiatives of Local Government Units <input type="checkbox"/> Institutional Arrangement at Local Level <input type="checkbox"/> Special Financial Building at Local Level <input type="checkbox"/> Special Fund Allocation by Central Government <input checked="" type="checkbox"/> International Financial Assistance (Grant) <input type="checkbox"/> International Financial Assistance (Loan) <input type="checkbox"/> Private Sector Participation in Funding <input type="checkbox"/> Maximum Utilization of Local Technologies <input type="checkbox"/> International Technical Assistance <input type="checkbox"/> Others (as specified in Box)	

TRADE AND INDUSTRY

Trade and Industry:

Short- and Medium-Term Projects and Programs (Up to 2005)

- *IN01: Institutional Building of Long-term Industrial Development
- *IN02: Expansion Project of the Mactan Export Processing Zone (additional 70 ha)
- *IN03: Industrial Estates Development Projects (linked with IN01)
- *IN04: Cebu Local Economy Acceleration Program (LEAP-Cebu), (linked with IN01, IN03, TM03, TM06, UD02)
- IN05: Human Resource and Technology Network Program (HRTNP), (linked with IN08 and HS05)
- *IN06: Establishment of Cebu Economic Development Corporation (CEDC)
- IN07: Infrastructure Development Project Supporting Industrial Location in Toledo-Balamban Area (linked with IN03, UD08, PH03 and WR09)
- IN08: "Cebu World Trade and Training Center" Project, Phase I (linked with IN05)

Long-Term Projects and Programs (2005-2010)

- IN09: Industrial Estates Development Projects in Potential Rural Areas
- IN10: Western Sea-Board Development (Toledo-Asturias) Projects
- IN11: Extension of Human Resource and Technology Network Program (HRTNP), (Reviewing IN05)
- IN12: Expansion of "Cebu World Trade and Training Center" Project, Phase II (linked with IN08)

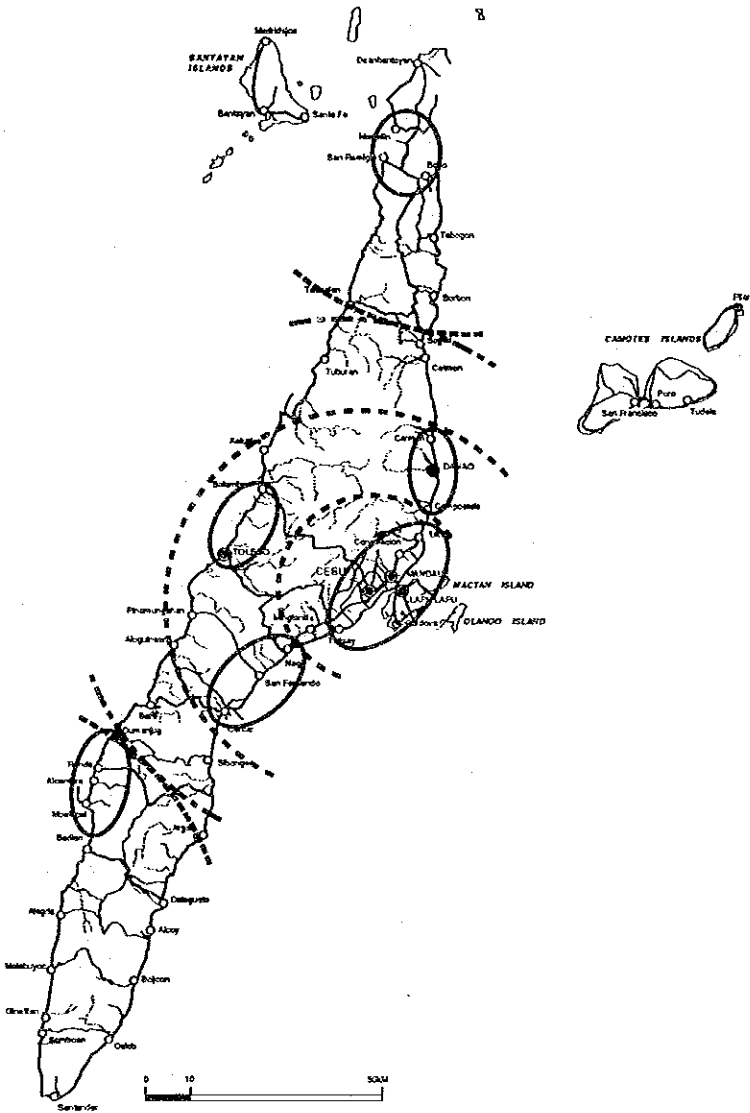
PROPOSED PROJECT PROFILE
for Cebu Integrated Area Development
Prepared by the JICA Study Team, 1993-1994

(1/2)

Project No. IN01	Project Title Institutional Building of Long-term Industrial development		Economic Sector Industrial Development
Project Location Metro Cebu		Project Priority <input checked="" type="checkbox"/> Urgent <input type="checkbox"/> Medium-term <input type="checkbox"/> Long-term	Project Duration
Type of Project <input type="checkbox"/> F/S Study or Survey <input type="checkbox"/> Development Project <input type="checkbox"/> Packaged Program <input checked="" type="checkbox"/> Institutional Building <input type="checkbox"/> Others			
1. Summary of Objectives 1. Designation of Industrial Location Promotion Areas 2. Guidance for Industrial Park development (design criteria, environmental control, and institutional incentives) 3. Formulation of national and local policies and laws for decentralization of industry. 4. Generation of industrial location and information.		2. Target Beneficiaries 1. Local areas where industrial parks and infrastructure will be developed (the chart on the right page) 2. New industries and enterprises in these local areas 3. Local governments supporting industrial relocation	
3. Project Description 1. Establishment of an industrial estate development organization in the near future. This organization promotes industrial location and conducts an industrial estate development study to set up and start this project 2. Formulation of regional and local development laws and incentives defining local government's industrial location/relocation policy. 3. Policy support for industrial infrastructure.		4. Expected Benefits / Outputs 1. Location of industries or companies in local area 2. New job creation in local areas 3. Set up of industrial location information service system	
5. Important Assumptions / Conditions for the Project 1. Local regional development policy		6. Project Linkages / Other Sector Linkages IN03: Industrial Estate Development Projects	
7. Estimated Investment Requirement (in 1993 prices) For Project Implementation in Total : _____ Mill. Pesos 1) _____ Mill. Pesos 2) _____ Mill. Pesos 3) _____ Mill. Pesos For Annual Recurrent Expenditure for O & M: _____ Mill. Pesos		8. Implementing Agency/Body DTI and LGUs	
10. A Provisional Scheme for Fund Procurement <input type="checkbox"/> Central Government <input type="checkbox"/> Local Government <input type="checkbox"/> International Assistance Funds (Foreign Portion: _____ %) <input type="checkbox"/> Private Sector Involvement (as specified in Box 11) <input type="checkbox"/> Specially Organized Fund (as specified in Box 16) <input type="checkbox"/> Others		9. Relevant Agencies to Be Coordinated Chamber of Commerce and Industry, organization for IE development, and NEDA	
11. Private Sector Participation Chamber of Commerce and Industry		12. Environmental Measures <div style="display: flex; justify-content: space-between;"> <div> Technical Measures: <input type="checkbox"/> Conduct In-Depth Environmental and Social Impact Studies <input type="checkbox"/> Install Pollution Protection Facilities/Equipment <input type="checkbox"/> Implement Jointly Environmental Engineering Work <input type="checkbox"/> Examine the Project Location Site and/or Scale <input type="checkbox"/> Examine Availability of Alternative Resource Use () <input type="checkbox"/> Undertake Protection Measures for Flora and Fauna <input type="checkbox"/> Implement Jointly Social and Community Development <input type="checkbox"/> Others (as specified in Box 16) </div> <div> Administrative Measures <input type="checkbox"/> Adjust with Land Use Zoning <input type="checkbox"/> Coordinate with Environmental Sector Guidelines <input type="checkbox"/> Undertake Periodical Environmental Monitoring <input type="checkbox"/> Apply policy of PPP (Polluter-Pay-Principle) <input type="checkbox"/> Train Management Skill/Personnel for the Project <input type="checkbox"/> Make a Consensus with Inhabitants <input type="checkbox"/> Promote Public Relation for Env'l Awareness <input type="checkbox"/> Others (as specified in Box 16) </div> </div>	

PROPOSED PROJECT PROFILE
for Cebu Integrated Area Development
Prepared by the JICA Study Team, 1993-1994

(2/2)

Project No. IN01	Project Title Institutional Building of Long-term Industrial development	
<p>13. Verifiable Indicators / Information / Drawings</p> <p align="center">Industrial Location Zoning Plan</p> 		
14. Project Classification	15. Necessary Inputs/Arrangement	16. Special Considerations
<p>Functional Level</p> <p><input type="checkbox"/> Island Minimum Project</p> <p><input checked="" type="checkbox"/> Island Basic Project</p> <p><input type="checkbox"/> Island Strategic Project</p> <p>Project Orientation</p> <p><input checked="" type="checkbox"/> Regional Economic Drive</p> <p><input type="checkbox"/> Social Development Drive</p> <p><input type="checkbox"/> Environmental Drive</p>	<p><input type="checkbox"/> National Government Involvement</p> <p><input type="checkbox"/> Initiatives of Local Government Units</p> <p><input type="checkbox"/> Institutional Arrangement at Local Level</p> <p><input type="checkbox"/> Special Financial Building at Local Level</p> <p><input type="checkbox"/> Special Fund Allocation by Central Govern't</p> <p><input type="checkbox"/> International Financial Assistance (Grant)</p> <p><input type="checkbox"/> International Financial Assistance (Loan)</p> <p><input type="checkbox"/> Private Sector Participation in Funding</p> <p><input type="checkbox"/> Maximum Utilization of Local Technologies</p> <p><input type="checkbox"/> International Technical Assistance</p> <p><input type="checkbox"/> Others (as specified in Box)</p>	

PROPOSED PROJECT PROFILE
for Cebu Integrated Area Development
Prepared by the JICA Study Team, 1993-1994

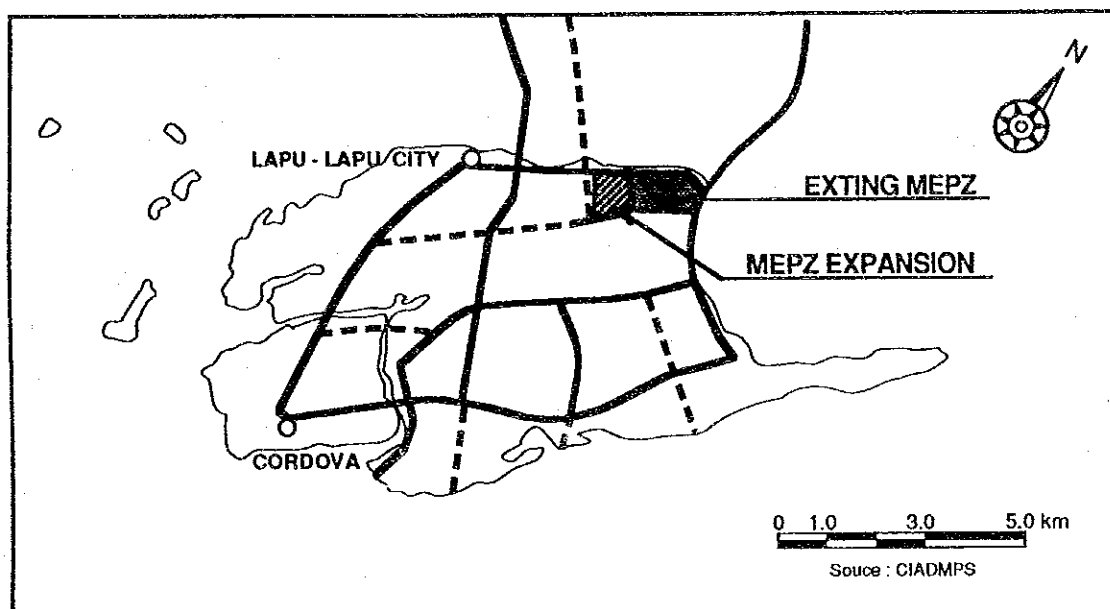
(1/2)

Project No. IN-02	Project Title Expansion Project of Mactan Export Processing Zone		Economic Sector Industrial Development
Project Location Lapulapu City		Project Priority <input checked="" type="checkbox"/> Urgent <input type="checkbox"/> Medium-term <input type="checkbox"/> Long-term	Project Duration 2 years
Type of Project <input checked="" type="checkbox"/> F/S Study or Survey <input type="checkbox"/> Development Project <input type="checkbox"/> Packaged Program <input type="checkbox"/> Institutional Building <input type="checkbox"/> Others			
1. Summary of Objectives 1. To expand enterprises in MEPZ 2. To introduce export enterprises in MEPZ 3. To transfer technology to local enterprises		2. Target Beneficiaries 1. New industries introduced to Cebu Province 2. Local enterprises	
3. Project Description 1. 70ha expansion of EPZ development 2. Introduction of about 50 or more export oriented enterprise 3. Creation of some 10,000 or more jobs		4. Expected Benefits / Outputs 1. Job creation (10,000 or more) 2. Over US\$250 million in exports	
5. Important Assumptions / Conditions for the Project 1. Availability of IE common service facilities 2. Pre-survey on space demand by export enterprises 3. Labor force availability 4. Available industrial infrastructure		6. Project Linkages / Other Sector Linkages 1. Industrial estate development 2. Development of local or small- and medium scale enterprises industrial estate 3. high-tech industrial development	
7. Estimated Investment Requirement (in 1993 prices) For Project Implementation in Total : _____ Mill. Pesos 1) _____ Mill. Pesos 2) _____ Mill. Pesos 3) _____ Mill. Pesos For Annual Recurrent Expenditure for O & M: _____ Mill. Pesos		8. Implementing Agency/Body EPZ Authority and DTI	
		9. Relevant Agencies to Be Coordinated LGUs, RDC, and NEDA	
10. A Provisional Scheme for Fund Procurement <input type="checkbox"/> Central Government <input type="checkbox"/> Local Government <input type="checkbox"/> International Assistance Funds (Foreign Portion: _____ %) <input type="checkbox"/> Private Sector Involvement (as specified in Box 11) <input type="checkbox"/> Specially Organized Fund (as specified in Box 16) <input type="checkbox"/> Others		11. Private Sector Participation None	
12. Environmental Measures <div style="display: flex; justify-content: space-between;"> <div> Technical Measures: <input type="checkbox"/> Conduct In-Depth Environmental and Social Impact Studies <input type="checkbox"/> Install Pollution Protection Facilities/Equipment <input type="checkbox"/> Implement Jointly Environmental Engineering Work <input type="checkbox"/> Examine the Project Location Site and/or Scale <input type="checkbox"/> Examine Availability of Alternative Resource Use (_____) <input type="checkbox"/> Undertake Protection Measures for Flora and Fauna <input type="checkbox"/> Implement Jointly Social and Community Development <input type="checkbox"/> Others (as specified in Box 16) </div> <div> Administrative Measures <input type="checkbox"/> Adjust with Land Use Zoning <input type="checkbox"/> Coordinate with Environmental Sector Guidelines <input type="checkbox"/> Undertake Periodical Environmental Monitoring <input type="checkbox"/> Apply policy of PPP (Polluter-Pay-Principle) <input type="checkbox"/> Train Management Skill/Personnel for the Project <input type="checkbox"/> Make a Consensus with Inhabitants <input type="checkbox"/> Promote Public Relation for Envir'l Awareness <input type="checkbox"/> Others (as specified in Box 16) </div> </div>			

PROPOSED PROJECT PROFILE
for Cebu Integrated Area Development
Prepared by the JICA Study Team, 1993-1994

(2/2)

Project No. IN-02	Project Title Expansion project of Mactan Export Processing Zone
-----------------------------	--

13. Verifiable Indicators / Information / Drawings**Site Location of MEPZ Expansion Area**

14. Project Classification	15. Necessary Inputs/Arrangement	16. Special Considerations
Functional Level <input type="checkbox"/> Island Minimum Project <input type="checkbox"/> Island Basic Project <input checked="" type="checkbox"/> Island Strategic Project Project Orientation <input checked="" type="checkbox"/> Regional Economic Drive <input type="checkbox"/> Social Development Drive <input type="checkbox"/> Environmental Drive	<input type="checkbox"/> National Government Involvement <input type="checkbox"/> Initiatives of Local Government Units <input type="checkbox"/> Institutional Arrangement at Local Level <input type="checkbox"/> Special Financial Building at Local Level <input type="checkbox"/> Special Fund Allocation by Central Govern't <input type="checkbox"/> International Financial Assistance (Grant) <input type="checkbox"/> International Financial Assistance (Loan) <input type="checkbox"/> Private Sector Participation in Funding <input type="checkbox"/> Maximum Utilization of Local Technologies <input type="checkbox"/> International Technical Assistance <input type="checkbox"/> Others (as specified in Box)	

PROPOSED PROJECT PROFILE
for Cebu Integrated Area Development
Prepared by the JICA Study Team, 1993-1994

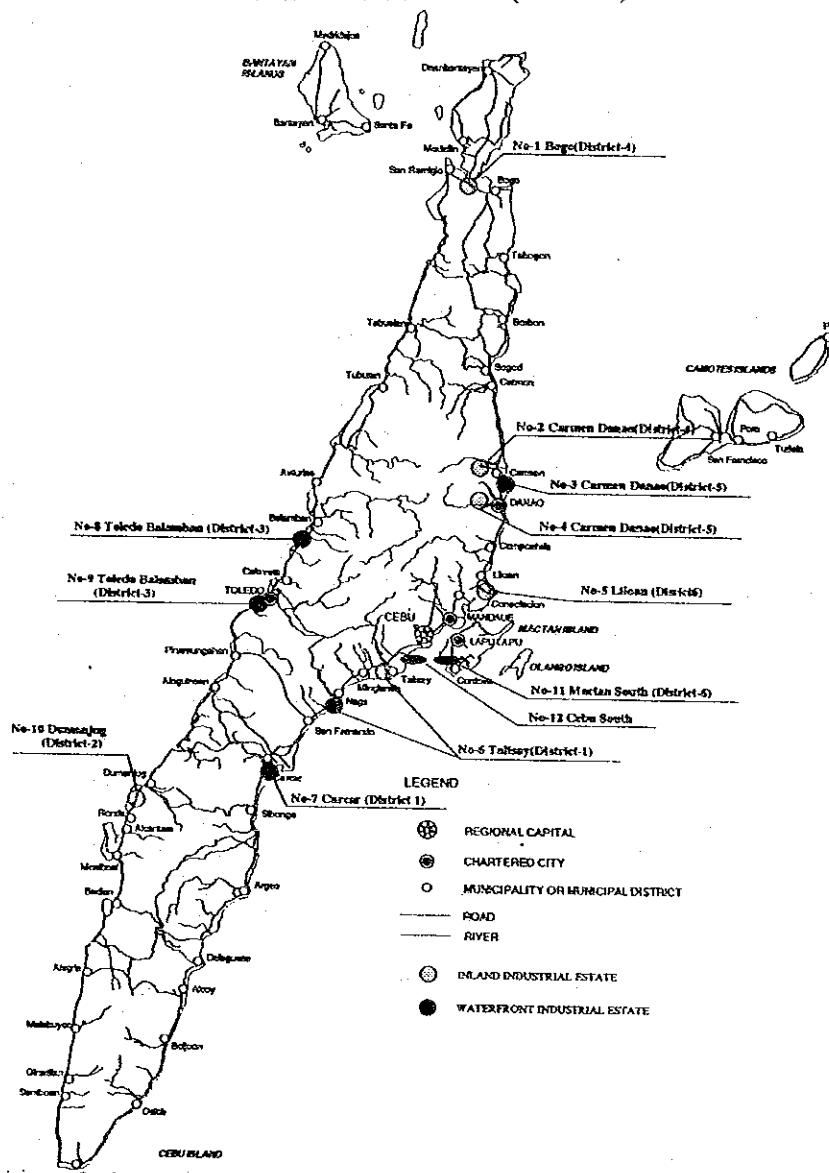
(1/2)

Project No. IN-03	Project Title Industrial Estate Development Project		Economic Sector Industrial Development
Project Location Several places in Cebu Island		Project Priority <input checked="" type="checkbox"/> Urgent <input type="checkbox"/> Medium-term <input type="checkbox"/> Long-term	Project Duration 5 years
1. Summary of Objectives 1. General industrial estate development project 2. Preparation of suitable site for industrial location 3. Local and regional growth 4. Job creation 5. Increase in people's income level		2. Target Beneficiaries 1.. People of Cebu western corridor and other rural areas 2. New industries in the designated areas	
3. Project Description 1. Minimum one IE per District 2. One IE 100 to 200ha, including roads, green areas, local enterprise IE, or science park 3. 100-200ha IEs for a total of seven to eight sites 4. Standard factory buildings and other support to local enterprises		4. Expected Benefits / Outputs 1. Minimum 10,000 workers in an IE 2. 200-300 workers/ha 3. 100million pesos output/ha 4. Ten billion pesos of Total output	
5. Important Assumptions / Conditions for the Project 1. Land acquisition, good access to public utility 2. Space demand survey of industrial location 3. Availability of labor supply 4. Availability of industrial infrastructure 5. Highway, port, airport, and technical college		6. Project Linkages / Other Sector Linkages IN01: Institutional Building of Long-term Industrial Development	
7. Estimated Investment Requirement (In 1993 prices) For Project Implementation in Total : _____ Mill. Pesos 1) 2 million pesos/has _____ Mill. Pesos 2) _____ Mill. Pesos 3) _____ Mill. Pesos For Annual Recurrent Expenditure for O & M: _____ Mill. Pesos		8. Implementing Agency/Body LGUs and DTI	
		9. Relevant Agencies to Be Coordinated MEPZ, NEDA, and RDC	
10. A Provisional Scheme for Fund Procurement <input type="checkbox"/> Central Government <input type="checkbox"/> Local Government <input type="checkbox"/> International Assistance Funds (Foreign Portion: _____ %) <input type="checkbox"/> Private Sector Involvement (as specified in Box 11) <input type="checkbox"/> Specially Organized Fund (as specified in Box 16) <input type="checkbox"/> Others		11. Private Sector Participation Private financial sector, private realtors, private developers	
12. Environmental Measures			
Technical Measures: <input type="checkbox"/> Conduct In-Depth Environmental and Social Impact Studies <input type="checkbox"/> Install Pollution Protection Facilities/Equipment <input type="checkbox"/> Implement Jointly Environmental Engineering Work <input type="checkbox"/> Examine the Project Location Site and/or Scale <input type="checkbox"/> Examine Availability of Alternative Resource Use (_____) <input type="checkbox"/> Undertake Protection Measures for Flora and Fauna <input type="checkbox"/> Implement Jointly Social and Community Development <input type="checkbox"/> Others (as specified in Box 16)		Administrative Measures <input type="checkbox"/> Adjust with Land Use Zoning <input type="checkbox"/> Coordinate with Environmental Sector Guidelines <input type="checkbox"/> Undertake Periodical Environmental Monitoring <input type="checkbox"/> Apply policy of PPP (Polluter-Pay-Principle) <input type="checkbox"/> Train Management Skill/Personnel for the Project <input type="checkbox"/> Make a Consensus with Inhabitants <input type="checkbox"/> Promote Public Relation for Envir'l Awareness <input type="checkbox"/> Others (as specified in Box 16)	

PROPOSED PROJECT PROFILE
for Cebu Integrated Area Development
 Prepared by the JICA Study Team, 1993-1994

(2/2)

Project No. IN-03	Project Title Industrial Estate Development Project
----------------------	--

13. Verifiable Indicators / Information / Drawings**Industrial Estate Site Selection (Phase I)**

14. Project Classification	15. Necessary Inputs/Arrangement	16. Special Considerations
Functional Level <input type="checkbox"/> Island Minimum Project <input type="checkbox"/> Island Basic Project <input type="checkbox"/> Island Strategic Project Project Orientation <input type="checkbox"/> Regional Economic Drive <input type="checkbox"/> Social Development Drive <input type="checkbox"/> Environmental Drive	<input type="checkbox"/> National Government Involvement <input type="checkbox"/> Initiatives of Local Government Units <input type="checkbox"/> Institutional Arrangement at Local Level <input type="checkbox"/> Special Financial Building at Local Level <input type="checkbox"/> Special Fund Allocation by Central Govern't <input type="checkbox"/> International Financial Assistance (Grant) <input type="checkbox"/> International Financial Assistance (Loan) <input type="checkbox"/> Private Sector Participation in Funding <input type="checkbox"/> Maximum Utilization of Local Technologies <input type="checkbox"/> International Technical Assistance <input type="checkbox"/> Others (as specified in Box)	

PROPOSED PROJECT PROFILE
for Cebu Integrated Area Development
Prepared by the JICA Study Team, 1993-1994

(1/2)

Project No. IN-04	Project Title Cebu Local Economy Acceleration Program (LEAP-CEBU)		Economic Sector Industrial Development
Project Location Several Areas in Cebu Province		Project Priority <input checked="" type="checkbox"/> Urgent <input type="checkbox"/> Medium-term <input type="checkbox"/> Long-term	Project Duration 5 years
Type of Project <input type="checkbox"/> F/S Study or Survey <input checked="" type="checkbox"/> Development Project <input type="checkbox"/> Packaged Program <input type="checkbox"/> Institutional Building <input type="checkbox"/> Others			
1. Summary of Objectives 1. Local enterprise industrial estate project, i.e., General Industrial Estate Development for small and medium-scale enterprises with common facilities: 1) furniture, 2) wood processing, 3) metal working 4) machinery, 5) plastics and packaging, 6) garment and textile, 7) food processing and 8) other types of light industries 2. Prepare suitable sites for location of industrial estates		2. Target Beneficiaries 1. Selected local industrial sector 2. Local areas where LIE will be set up 3. Local enterprises benefited by upgraded operational technologies and grant funding subsidies	
3. Project Description 1. Minimum one LIE project per subsector of local enterprises 2. One LIE of 3 to 30 ha includes roads, green area. 3. Local enterprises LIEs are independent type or joint project with another LIE. 4. Standard factory buildings and other supports to local enterprises 5. Export business support programs such as 1) Production and dissemination of local export product brochures, and 2) Market exploitation activities		4. Expected Benefits / Outputs 1. Local enterprises will be able to get the trust of the financial sector 2. Local enterprises will be able to have new technology and new manufacturing system. 3. In LIEs, enterprises can share their technology and management 4. Cooperative projects will be able to succeed 5. Job creation about 200 to 300 workers per ha 6. Output in the order of 100 million peso per ha	
5. Important Assumptions / Conditions for the Project 1. land and acquisition, good access to public utility 2. Space demand survey of industrial locations 3. Technology, financial and other support programs for modernization and for cooperative organization of small- and medium-scale local enterprises 4. Strong demand and interest of sectoral enterprises or members		6. Project Linkages / Other Sector Linkages IN01: Institutional Building of Long-term Industrial Development IN03: Industrial Estates Development Projects TM03: One-stop Tourist Information and Service Complex Project TM06: Hotel and Tourist Service Training Enhancement Program UD02: Cebu South Reclamation Project	
7. Estimated Investment Requirement (in 1993 prices) For Project Implementation in Total : _____ Mill. Pesos 1) _____ Mill. Pesos 2) _____ Mill. Pesos 3) _____ Mill. Pesos For Annual Recurrent Expenditure for O & M: _____ Mill. Pesos		8. Implementing Agency/Body LGUs, DTI, and Cebu Investment Promotion Center	
10. A Provisional Scheme for Fund Procurement <input checked="" type="checkbox"/> Central Government <input checked="" type="checkbox"/> Local Government <input checked="" type="checkbox"/> International Assistance Funds (Foreign Portion: _____%) <input checked="" type="checkbox"/> Private Sector Involvement (as specified in Box 11) <input checked="" type="checkbox"/> Specially Organized Fund (as specified in Box 16) <input type="checkbox"/> Others		9. Relevant Agencies to Be Coordinated Chamber of Commerce and Industry	
11. Private Sector Participation Private financial sector Private real estate developer		12. Environmental Measures Technical Measures: <input type="checkbox"/> Conduct In-Depth Environmental and Social Impact Studies <input type="checkbox"/> Install Pollution Protection Facilities/Equipment <input type="checkbox"/> Implement Jointly Environmental Engineering Work <input type="checkbox"/> Examine the Project Location Site and/or Scale <input type="checkbox"/> Examine Availability of Alternative Resource Use () <input type="checkbox"/> Undertake Protection Measures for Flora and Fauna <input type="checkbox"/> Implement Jointly Social and Community Development <input type="checkbox"/> Others (as specified in Box 16)	
Administrative Measures <input type="checkbox"/> Adjust with Land Use Zoning <input type="checkbox"/> Coordinate with Environmental Sector Guidelines <input type="checkbox"/> Undertake Periodical Environmental Monitoring <input type="checkbox"/> Apply policy of PPP (Polluter-Pay-Principle) <input type="checkbox"/> Train Management Skill/Personnel for the Project <input type="checkbox"/> Make a Consensus with Inhabitants <input type="checkbox"/> Promote Public Relation for Env'l Awareness <input type="checkbox"/> Others (as specified in Box 16)			

PROPOSED PROJECT PROFILE
for Cebu Integrated Area Development
Prepared by the JICA Study Team, 1993-1994

(2/2)

Project No. IN-04	Project Title Cebu Local Economy Acceleration Program (LEAP-CEBU)
-----------------------------	---

13. Verifiable Indicators / Information / Drawings**Components for the Phase I Program****A. Program for Modernization and Cooperative Organization**

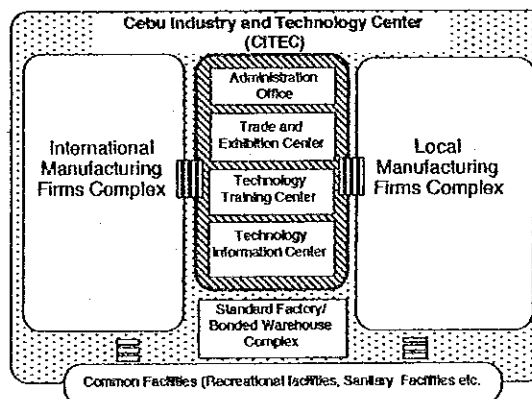
- 1) Provision of a **"technical support system"**, involving academic and international resources, for improvement of overall operation efficiency such as:
 - production planning, inventory control and plant layout;
 - design development
 - financial & management control techniques;
 - up-grading of accountabilities etc.,
- 2) Provision of a **"financial support system"** involving commercial and public financial institutions, for qualified firms' and/or cooperatives' attempts such as:
 - modernization and/or renewal of production equipment and buildings;
 - relocation in industrial estates or designated areas;
 - installation of common facilities or cooperatives;
 - new market exploitation activities;
 - R & D activities.
- 3) Provision of **tax incentives** for the activities mentioned above;
- 4) Promotion of **"Quality Up-grading Campaign"**

B. Cebu Investment Promotion Center (CIPC)

- 1) One-stop Information Desk
- 2) Investor Facilitation Services
- 3) Investment Promotion Activities
- 4) Data Link and Research Activities

C. Cebu Industry and Technology Center (CITEC) Project

- 1) Industrial Estates
- 2) Common Facilities such as:
 - Technology Training Center
 - Trade and Exhibition Center
 - Technology Information Center



14. Project Classification	15. Necessary Inputs/Arrangement	16. Special Considerations
Functional Level <input type="checkbox"/> Island Minimum Project <input type="checkbox"/> Island Basic Project <input type="checkbox"/> Island Strategic Project Project Orientation <input type="checkbox"/> Regional Economic Drive <input type="checkbox"/> Social Development Drive <input type="checkbox"/> Environmental Drive	<input type="checkbox"/> National Government Involvement <input type="checkbox"/> Initiatives of Local Government Units <input type="checkbox"/> Institutional Arrangement at Local Level <input type="checkbox"/> Special Financial Building at Local Level <input type="checkbox"/> Special Fund Allocation by Central Govern't <input type="checkbox"/> International Financial Assistance (Grant) <input type="checkbox"/> International Financial Assistance (Loan) <input type="checkbox"/> Private Sector Participation in Funding <input type="checkbox"/> Maximum Utilization of Local Technologies <input type="checkbox"/> International Technical Assistance <input type="checkbox"/> Others (as specified in Box)	

PROPOSED PROJECT PROFILE
for Cebu Integrated Area Development
Prepared by the JICA Study Team, 1993-1994

(1/2)

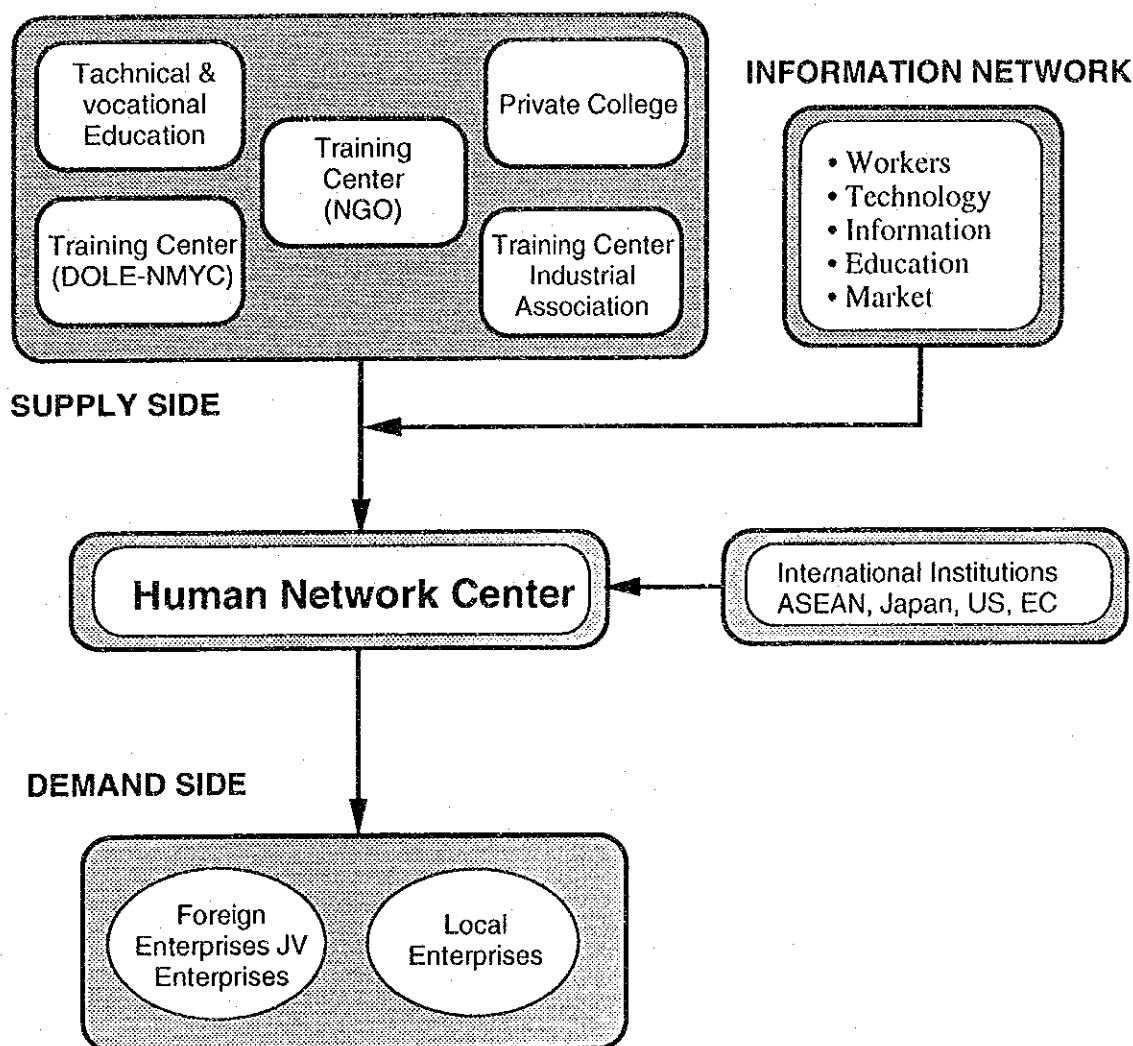
Project No. IN05/11	Project Title Human Resource and Technology Network Program (HRTNP)		Economic Sector Industrial Development
Project Location Metro Cebu		Project Priority <input checked="" type="checkbox"/> Urgent <input type="checkbox"/> Medium-term <input type="checkbox"/> Long-term	Project Duration
Type of Project <input type="checkbox"/> F/S Study or Survey <input type="checkbox"/> Development Project <input type="checkbox"/> Packaged Program <input type="checkbox"/> Institutional Building <input checked="" type="checkbox"/> Others			
1. Summary of Objectives 1. Promotion of OJT program 2. Formation of a "Technology and Design Patent Market" linked with ASEAN market through a computerized information network system 3. Establishment of a Human Resource Bank 4. Support of the LEAP-CEBU		2. Target Beneficiaries 1. Local industries 2. Skilled labor force 3. Foreign firms in Cebu 4. Skills/educational training institutions	
3. Project Description 1. Support program for technical colleges and vocational schools 2. Networking of international institutions and local centers 3. Supplying skilled workers to foreign investors or JV enterprises 4. Support to vocational schools, private colleges, training centers (DOLENTMYC, NGO AND industrial association's) 5. On-line network from center to local Data Bank 6. Communication and buy-and-sell business of technology information 7. Business incubator support		4. Expected Benefits / Outputs 1. Creation of new market for technology information 2. Skilled workers recruitment and information network 3. Supporting system for business incubators	
5. Important Assumptions / Conditions for the Project 1. Demand Forecast 2. Development of data bank for technology information and skilled labor force inventory		6. Project Linkages / Other Sector Linkages IN08:/12 "Cebu World Trade and Training Center" Project, Phase I and II HS05: Cebu Educational and Training Center Development Project	
7. Estimated Investment Requirement (in 1993 prices) For Project Implementation in Total : _____ Mill. Pesos 1) _____ Mill. Pesos 2) _____ Mill. Pesos 3) _____ Mill. Pesos For Annual Recurrent Expenditure for O & M: _____ Mill. Pesos		8. Implementing Agency/Body NMYC, DTI	
10. A Provisional Scheme for Fund Procurement <input type="checkbox"/> Central Government <input type="checkbox"/> Local Government <input type="checkbox"/> International Assistance Funds (Foreign Portion: _____ %) <input type="checkbox"/> Private Sector Involvement (as specified in Box 11) <input type="checkbox"/> Specially Organized Fund (as specified in Box 16) <input type="checkbox"/> Others		9. Relevant Agencies to Be Coordinated LGUs, NEDA, Organization for IE Development, RDC	
11. Private Sector Participation Chamber of Commerce and Industry Job Placement Center Patent Information Center		12. Environmental Measures Technical Measures: <input type="checkbox"/> Conduct In-Depth Environmental and Social Impact Studies <input type="checkbox"/> Install Pollution Protection Facilities/Equipment <input type="checkbox"/> Implement Jointly Environmental Engineering Work <input type="checkbox"/> Examine the Project Location Site and/or Scale <input type="checkbox"/> Examine Availability of Alternative Resource Use (_____) <input type="checkbox"/> Undertake Protection Measures for Flora and Fauna <input type="checkbox"/> Implement Jointly Social and Community Development <input type="checkbox"/> Others (as specified in Box 16)	
Administrative Measures <input type="checkbox"/> Adjust with Land Use Zoning <input type="checkbox"/> Coordinate with Environmental Sector Guidelines <input type="checkbox"/> Undertake Periodical Environmental Monitoring <input type="checkbox"/> Apply policy of PPP (Polluter-Pay-Principle) <input type="checkbox"/> Train Management Skill/Personnel for the Project <input type="checkbox"/> Make a Consensus with Inhabitants <input type="checkbox"/> Promote Public Relation for Envir'l Awareness <input type="checkbox"/> Others (as specified in Box 16)			

PROPOSED PROJECT PROFILE
for Cebu Integrated Area Development
Prepared by the JICA Study Team, 1993-1994

(2/2)

Project No. IN-05/11	Project Title Human resource and Technology Network Program (HRTNP)
-------------------------	--

13. Verifiable Indicators / Information / Drawings

Human Resource and Technology Network Program (HRTNP)

14. Project Classification	15. Necessary Inputs/Arrangement	16. Special Considerations
Functional Level <input type="checkbox"/> Island Minimum Project <input type="checkbox"/> Island Basic Project <input checked="" type="checkbox"/> Island Strategic Project Project Orientation <input checked="" type="checkbox"/> Regional Economic Drive <input type="checkbox"/> Social Development Drive <input type="checkbox"/> Environmental Drive	<input type="checkbox"/> National Government Involvement <input type="checkbox"/> Initiatives of Local Government Units <input type="checkbox"/> Institutional Arrangement at Local Level <input type="checkbox"/> Special Financial Building at Local Level <input type="checkbox"/> Special Fund Allocation by Central Govern't <input type="checkbox"/> International Financial Assistance (Grant) <input type="checkbox"/> International Financial Assistance (Loan) <input type="checkbox"/> Private Sector Participation in Funding <input type="checkbox"/> Maximum Utilization of Local Technologies <input type="checkbox"/> International Technical Assistance <input type="checkbox"/> Others (as specified in Box)	

PROPOSED PROJECT PROFILE
for Cebu Integrated Area Development
Prepared by the JICA Study Team, 1993-1994

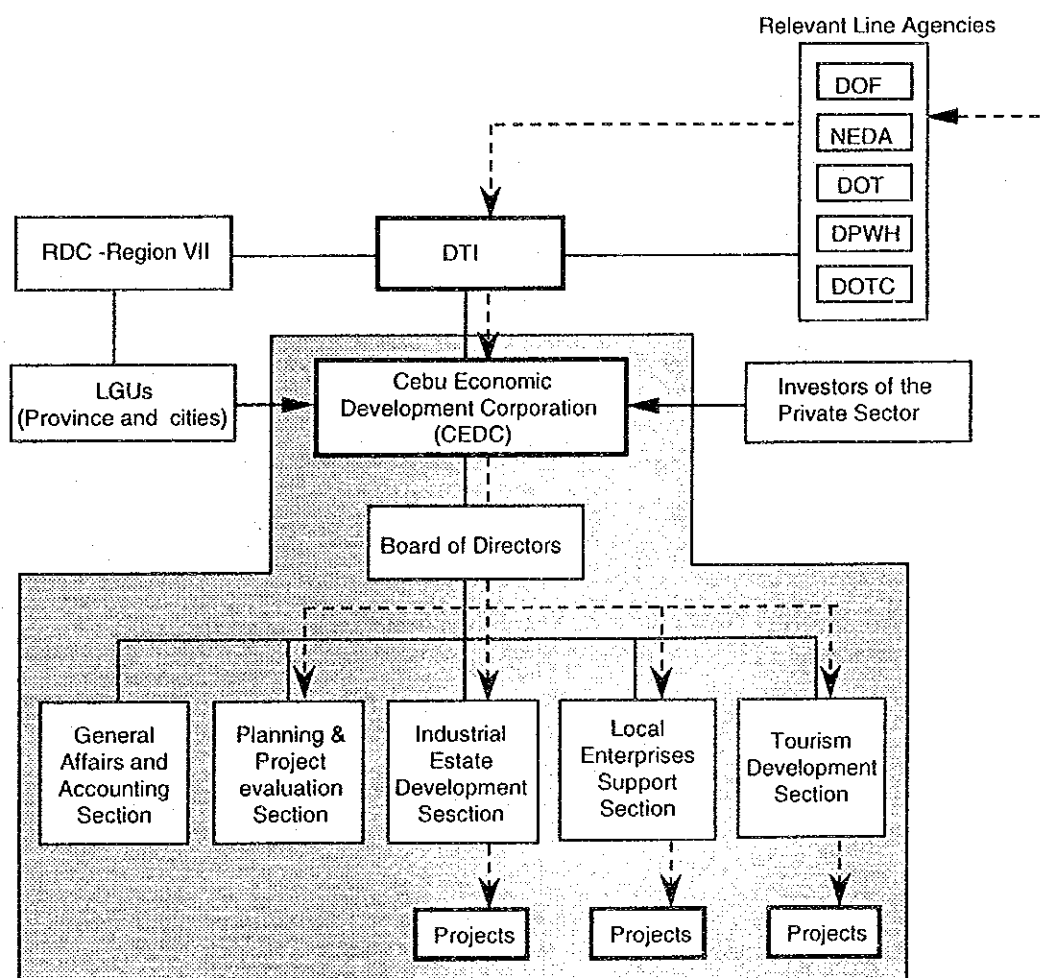
(1/2)

Project No. IN-06	Project Title Establishment of "Cebu Economic Development Corporation (CEDC)"		Economic Sector Industrial development
Project Location Cebu Province	Project Priority <input checked="" type="checkbox"/> Urgent <input type="checkbox"/> Medium-term <input type="checkbox"/> Long-term	Project Duration	Type of Project <input type="checkbox"/> F/S Study or Survey <input type="checkbox"/> Development Project <input type="checkbox"/> Packaged Program <input checked="" type="checkbox"/> Institutional Building <input type="checkbox"/> Others
1. Summary of Objectives 1. To organic industrial estate development 2. To provide financial and technical support for small and medium-scale enterprises for R&D and export promotio activities 3. To support regional development, industry, tourism and other local development projects 4. To implement tourism supporting project and/or manage tourism		2. Target Beneficiaries 1. Local areas with IE location potenial 2. Private sector investors	
3. Project Description 1. To target volume of IE development three to four projects until the year 2000 2. To support tourism development plan in potential sites 3. To collect CEDC fund from government and private sector		4. Expected Benefits / Outputs Institutionalized private-public sector collaboration in planning and implementation (including financial expenditure) industrial estate and other business support programs.	
5. Important Assumptions / Conditions for the Project DTI's initiative and private sector's collaboration is necessary.		6. Project Linkages / Other Sector Linkages 1. Industrial Estate Development Program 2. Local Enterprise Industrial Estate 3. Local Governemnt	
7. Estimated Investment Requirement (in 1993 prices) For Project Implementation in Total : _____ Mill. Pesos 1) _____ Mill. Pesos 2) _____ Mill. Pesos 3) _____ Mill. Pesos For Annual Recurrent Expenditure for O & M: _____ Mill. Pesos		8. Implementing Agency/Body DTI, LGUs 9. Relevant Agencies to Be Coordinated NEDA, Organisation of IE Development, RDC	
10. A Provisional Scheme for Fund Procurement <input type="checkbox"/> Central Government <input type="checkbox"/> Local Government <input type="checkbox"/> International Assistance Funds (Foreign Potion: _____ %) <input type="checkbox"/> Private Sector Involvement (as specified in Box 11) <input type="checkbox"/> Specially Organized Fund (as specified in Box 16) <input type="checkbox"/> Others		11. Private Sector Participation Chamber of Commerce and Industry, Patent Information Center Job Placement Center	
12. Environmental Measures <div style="display: flex; justify-content: space-between;"> <div> Technical Measures: <input type="checkbox"/> Conduct In-Depth Environmental and Social Impact Studies <input type="checkbox"/> Install Pollution Protection Facilities/Equipment <input type="checkbox"/> Implement Jointly Environmental Engineering Work <input type="checkbox"/> Examine the Project Location Site and/or Scale <input type="checkbox"/> Examine Availability of Alternative Resource Use () <input type="checkbox"/> Undertake Protection Measures for Flora and Fauna <input type="checkbox"/> Implement Jointly Social and Community Development <input type="checkbox"/> Others (as specified in Box 16) </div> <div> Administrative Measures <input type="checkbox"/> Adjust with Land Use Zoning <input type="checkbox"/> Coordinate with Environmental Sector Guidelines <input type="checkbox"/> Undertake Periodical Environmental Monitoring <input type="checkbox"/> Apply policy of PPP (Polluter-Pay-Principle) <input type="checkbox"/> Train Management Skill/Personnel for the Project <input type="checkbox"/> Make a Consensus with Inhabitants <input type="checkbox"/> Promote Public Relation for Envr'l Awareness <input type="checkbox"/> Others (as specified in Box 16) </div> </div>			

PROPOSED PROJECT PROFILE
for Cebu Integrated Area Development
Prepared by the JICA Study Team, 1993-1994

(2/2)

Project No. IN-06	Project Title Establishment of "Cebu Economic Development Corporation (CEDC)"
-----------------------------	---

13. Verifiable Indicators / Information / Drawings**A Conceptual Organization of the Proposed CEDC**

Note: ---➔ stands for the inflow of external concessional funds

14. Project Classification	15. Necessary Inputs/Arrangement	16. Special Considerations
Functional Level <input type="checkbox"/> Island Minimum Project <input type="checkbox"/> Island Basic Project <input checked="" type="checkbox"/> Island Strategic Project Project Orientation <input checked="" type="checkbox"/> Regional Economic Drive <input type="checkbox"/> Social Development Drive <input type="checkbox"/> Environmental Drive	<input type="checkbox"/> National Government Involvement <input type="checkbox"/> Initiatives of Local Government Units <input type="checkbox"/> Institutional Arrangement at Local Level <input type="checkbox"/> Special Financial Building at Local Level <input type="checkbox"/> Special Fund Allocation by Central Govern't <input type="checkbox"/> International Financial Assistance (Grant) <input type="checkbox"/> International Financial Assistance (Loan) <input type="checkbox"/> Private Sector Participation in Funding <input type="checkbox"/> Maximum Utilization of Local Technologies <input type="checkbox"/> International Technical Assistance <input type="checkbox"/> Others (as specified in Box)	

PROPOSED PROJECT PROFILE
for Cebu Integrated Area Development
Prepared by the JICA Study Team, 1993-1994

(1/2)

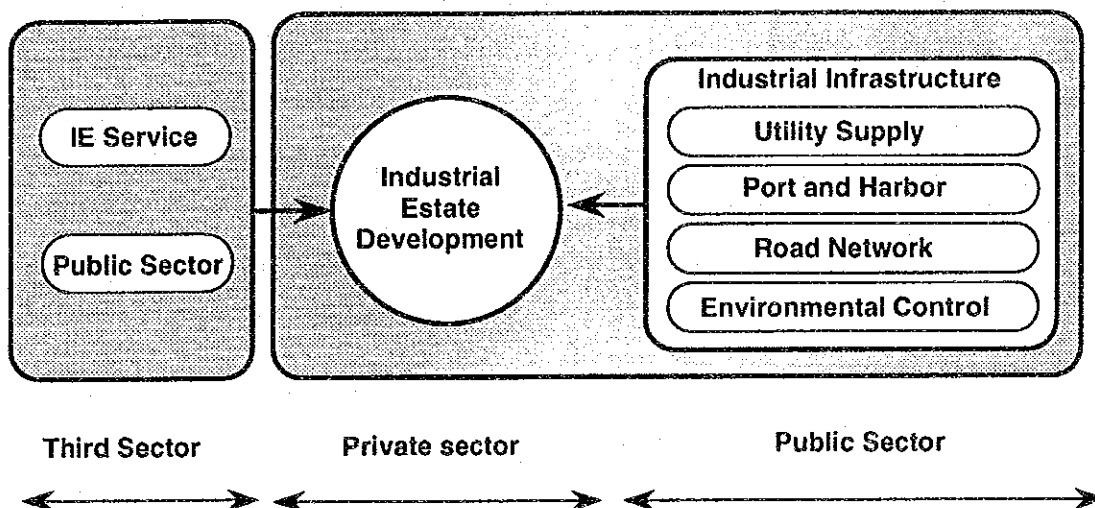
Project No. IN-07	Project Title Infrastructure Development Project Supporting Industrial Location in Toledo-Balamban Area		Economic Sector Industrial Development		
Project Location Toledo-Balamban		Project Priority <input checked="" type="checkbox"/> Urgent <input type="checkbox"/> Medium-term <input type="checkbox"/> Long-term	Type of Project <input type="checkbox"/> F/S Study or Survey <input checked="" type="checkbox"/> Development Project <input type="checkbox"/> Packaged Program <input type="checkbox"/> Institutional Building <input type="checkbox"/> Others		
1. Summary of Objectives 1. To establish industrial estates in the Western Corridor 2. To locate heavy industry, natural resources related industry in the Western Corridor 3. Industrial infrastructure support for the IE projects		2. Target Beneficiaries 1. People of the Western Corridor 2. Industrial estates/enterprises in Western Corridor 3. Cement, Steel, Shipbuilding and food Processing industries			
3. Project Description 1. Waterfront industrial estate development 2. industrial port, industrial water supply, industrial environmental control and other industrial utility joint project		4. Expected Benefits / Outputs 1. Industrial estate development program 2. Port and road network construction 3. Town and housing development plan and projects			
5. Important Assumptions / Conditions for the Project 1. Demand forecast 2. Technical and economic feasibilities for land development and related infrastructure 3. Consensus on development plans		6. Project Linkages / Other Sector Linkages IN03: Industrial Estates Development Projects UD07: Urban Renewal Project in Old Central Business District in Cebu City PH03: Regional Ferry Port Facilities Rehabilitation and Improvement Project Phase I WR09: Water Supply Extension Project for Toledo-Balamban Metro Area			
7. Estimated Investment Requirement (in 1993 prices) For Project Implementation in Total : _____ Mill. Pesos 1) _____ Mill. Pesos 2) _____ Mill. Pesos 3) _____ Mill. Pesos For Annual Recurrent Expenditure for O & M: _____ Mill. Pesos		8. Implementing Agency/Body PPA, LGUs, DPWH, DTI, NPC			
		9. Relevant Agencies to Be Coordinated Local Government Organization of IE Development, NEDA, RDC			
10. A Provisional Scheme for Fund Procurement <input type="checkbox"/> Central Government <input type="checkbox"/> Local Government <input type="checkbox"/> International Assistance Funds (Foreign Portion: _____ %) <input type="checkbox"/> Private Sector Involvement (as specified in Box 11) <input type="checkbox"/> Specially Organized Fund (as specified in Box 16) <input type="checkbox"/> Others		11. Private Sector Participation Chamber of Commerce and Industry			
12. Environmental Measures <table border="0"> <tr> <td> Technical Measures: <input type="checkbox"/> Conduct In-Depth Environmental and Social Impact Studies <input type="checkbox"/> Install Pollution Protection Facilities/Equipment <input type="checkbox"/> Implement Jointly Environmental Engineering Work <input type="checkbox"/> Examine the Project Location Site and/or Scale <input type="checkbox"/> Examine Availability of Alternative Resource Use () <input type="checkbox"/> Undertake Protection Measures for Flora and Fauna <input type="checkbox"/> Implement Jointly Social and Community Development <input type="checkbox"/> Others (as specified in Box 16) </td> <td> Administrative Measures <input type="checkbox"/> Adjust with Land Use Zoning <input type="checkbox"/> Coordinate with Environmental Sector Guidelines <input type="checkbox"/> Undertake Periodical Environmental Monitoring <input type="checkbox"/> Apply policy of PPP (Polluter-Pay-Principle) <input type="checkbox"/> Train Management Skill/Personnel for the Project <input type="checkbox"/> Make a Consensus with Inhabitants <input type="checkbox"/> Promote Public Relation for Env'r'l Awareness <input type="checkbox"/> Others (as specified in Box 16) </td> </tr> </table>				Technical Measures: <input type="checkbox"/> Conduct In-Depth Environmental and Social Impact Studies <input type="checkbox"/> Install Pollution Protection Facilities/Equipment <input type="checkbox"/> Implement Jointly Environmental Engineering Work <input type="checkbox"/> Examine the Project Location Site and/or Scale <input type="checkbox"/> Examine Availability of Alternative Resource Use () <input type="checkbox"/> Undertake Protection Measures for Flora and Fauna <input type="checkbox"/> Implement Jointly Social and Community Development <input type="checkbox"/> Others (as specified in Box 16)	Administrative Measures <input type="checkbox"/> Adjust with Land Use Zoning <input type="checkbox"/> Coordinate with Environmental Sector Guidelines <input type="checkbox"/> Undertake Periodical Environmental Monitoring <input type="checkbox"/> Apply policy of PPP (Polluter-Pay-Principle) <input type="checkbox"/> Train Management Skill/Personnel for the Project <input type="checkbox"/> Make a Consensus with Inhabitants <input type="checkbox"/> Promote Public Relation for Env'r'l Awareness <input type="checkbox"/> Others (as specified in Box 16)
Technical Measures: <input type="checkbox"/> Conduct In-Depth Environmental and Social Impact Studies <input type="checkbox"/> Install Pollution Protection Facilities/Equipment <input type="checkbox"/> Implement Jointly Environmental Engineering Work <input type="checkbox"/> Examine the Project Location Site and/or Scale <input type="checkbox"/> Examine Availability of Alternative Resource Use () <input type="checkbox"/> Undertake Protection Measures for Flora and Fauna <input type="checkbox"/> Implement Jointly Social and Community Development <input type="checkbox"/> Others (as specified in Box 16)	Administrative Measures <input type="checkbox"/> Adjust with Land Use Zoning <input type="checkbox"/> Coordinate with Environmental Sector Guidelines <input type="checkbox"/> Undertake Periodical Environmental Monitoring <input type="checkbox"/> Apply policy of PPP (Polluter-Pay-Principle) <input type="checkbox"/> Train Management Skill/Personnel for the Project <input type="checkbox"/> Make a Consensus with Inhabitants <input type="checkbox"/> Promote Public Relation for Env'r'l Awareness <input type="checkbox"/> Others (as specified in Box 16)				

PROPOSED PROJECT PROFILE
for Cebu Integrated Area Development
Prepared by the JICA Study Team, 1993-1994

(2/2)

Project No. IN-07	Project Title Infrastructure Development Project Supporting Industrial Location in Toledo-Balamban Area
----------------------	---

13. Verifiable Indicators / Information / Drawings

Operation System and Infrastructure for Industrial Estate Development

14. Project Classification	15. Necessary Inputs/Arrangement	16. Special Considerations
Functional Level <input type="checkbox"/> Island Minimum Project <input type="checkbox"/> Island Basic Project <input type="checkbox"/> Island Strategic Project Project Orientation <input type="checkbox"/> Regional Economic Drive <input type="checkbox"/> Social Development Drive <input type="checkbox"/> Environmental Drive	<input type="checkbox"/> National Government Involvement <input type="checkbox"/> Initiatives of Local Government Units <input type="checkbox"/> Institutional Arrangement at Local Level <input type="checkbox"/> Special Financial Building at Local Level <input type="checkbox"/> Special Fund Allocation by Central Govern't <input type="checkbox"/> International Financial Assistance (Grant) <input type="checkbox"/> International Financial Assistance (Loan) <input type="checkbox"/> Private Sector Participation in Funding <input type="checkbox"/> Maximum Utilization of Local Technologies <input type="checkbox"/> International Technical Assistance <input type="checkbox"/> Others (as specified in Box)	

PROPOSED PROJECT PROFILE
for Cebu Integrated Area Development
Prepared by the JICA Study Team, 1993-1994

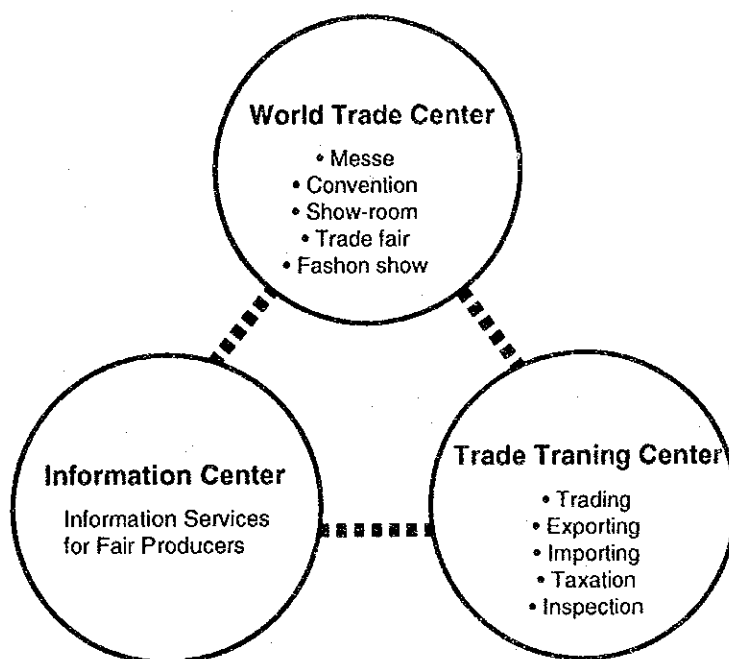
(1/2)

Project No. IN-08	Project Title "Cebu World Trade and Training Center" Project -Phase I		Economic Sector Industrial Development
Project Location Metro Cebu Area		Project Priority <input checked="" type="checkbox"/> Urgent <input type="checkbox"/> Medium-term <input type="checkbox"/> Long-term	Project Duration
Type of Project <input type="checkbox"/> F/S Study or Survey <input checked="" type="checkbox"/> Development Project <input type="checkbox"/> Packaged Program <input type="checkbox"/> Institutional Building <input type="checkbox"/> Others			
1. Summary of Objectives 1. Sales promotion for local manufacturing goods 2. Provision of open space for fair and messe 3. Provision of space for a world-wide trade fair		2. Target Beneficiaries 1. Traders and exporters 2. Local enterprises and producers 3. Local labor force	
3. Project Description 1. Construction of exhibition and convention hall 2. Construction of show-room 3. Establishment of trade center and trading information center 4. Incubation for trading service enterprises 5. Training for trading business center		4. Expected Benefits / Outputs 1. Export sales expansion 2. Import material, goods information network 3. Training center for trade and export business 4. Increase investment, trade and job opportunities in the local area	
5. Important Assumptions / Conditions for the Project 1. Demand forecast 2. Development of data bank for trade and export 3. Land availability for world trade center 4. Operating organization 5. Fund availability		6. Project Linkages / Other Sector Linkages IN05: Human Resource and Technology Network Program (HRTNP)	
7. Estimated Investment Requirement (in 1993 prices) For Project Implementation in Total : _____ Mill. Pesos 1) _____ Mill. Pesos 2) _____ Mill. Pesos 3) _____ Mill. Pesos For Annual Recurrent Expenditure for O & M: _____ Mill. Pesos		8. Implementing Agency/Body World Trade Center Organization DTI	
		9. Relevant Agencies to Be Coordinated LGUs, NEDA, Chamber of Commerce and Industry	
10. A Provisional Scheme for Fund Procurement <input type="checkbox"/> Central Government <input type="checkbox"/> Local Government <input type="checkbox"/> International Assistance Funds (Foreign Portion: _____ %) <input type="checkbox"/> Private Sector Involvement (as specified in Box 11) <input type="checkbox"/> Specially Organized Fund (as specified in Box 16) <input type="checkbox"/> Others		11. Private Sector Participation	
12. Environmental Measures <div style="display: flex; justify-content: space-between;"> <div> Technical Measures: <input type="checkbox"/> Conduct In-Depth Environmental and Social Impact Studies <input type="checkbox"/> Install Pollution Protection Facilities/Equipment <input type="checkbox"/> Implement Jointly Environmental Engineering Work <input type="checkbox"/> Examine the Project Location Site and/or Scale <input type="checkbox"/> Examine Availability of Alternative Resource Use () <input type="checkbox"/> Undertake Protection Measures for Flora and Fauna <input type="checkbox"/> Implement Jointly Social and Community Development <input type="checkbox"/> Others (as specified in Box 16) </div> <div> Administrative Measures <input type="checkbox"/> Adjust with Land Use Zoning <input type="checkbox"/> Coordinate with Environmental Sector Guidelines <input type="checkbox"/> Undertake Periodical Environmental Monitoring <input type="checkbox"/> Apply policy of PPP (Polluter-Pay-Principle) <input type="checkbox"/> Train Management Skill/Personnel for the Project <input type="checkbox"/> Make a Consensus with Inhabitants <input type="checkbox"/> Promote Public Relation for Envir'l Awareness <input type="checkbox"/> Others (as specified in Box 16) </div> </div>			

PROPOSED PROJECT PROFILE
for Cebu Integrated Area Development
Prepared by the JICA Study Team, 1993-1994

(2/2)

Project No. IN-08	Project Title "Cebu World Trade and Training Center" Project -Phase I
-----------------------------	---

13. Verifiable Indicators / Information / Drawings**Cebu World Trade Center**

14. Project Classification	15. Necessary Inputs/Arrangement	16. Special Considerations
Functional Level <input type="checkbox"/> Island Minimum Project <input type="checkbox"/> Island Basic Project <input type="checkbox"/> Island Strategic Project Project Orientation <input type="checkbox"/> Regional Economic Drive <input type="checkbox"/> Social Development Drive <input type="checkbox"/> Environmental Drive	<input type="checkbox"/> National Government Involvement <input type="checkbox"/> Initiatives of Local Government Units <input type="checkbox"/> Institutional Arrangement at Local Level <input type="checkbox"/> Special Financial Building at Local Level <input type="checkbox"/> Special Fund Allocation by Central Govern't <input type="checkbox"/> International Financial Assistance (Grant) <input type="checkbox"/> International Financial Assistance (Loan) <input type="checkbox"/> Private Sector Participation in Funding <input type="checkbox"/> Maximum Utilization of Local Technologies <input type="checkbox"/> International Technical Assistance <input type="checkbox"/> Others (as specified in Box)	

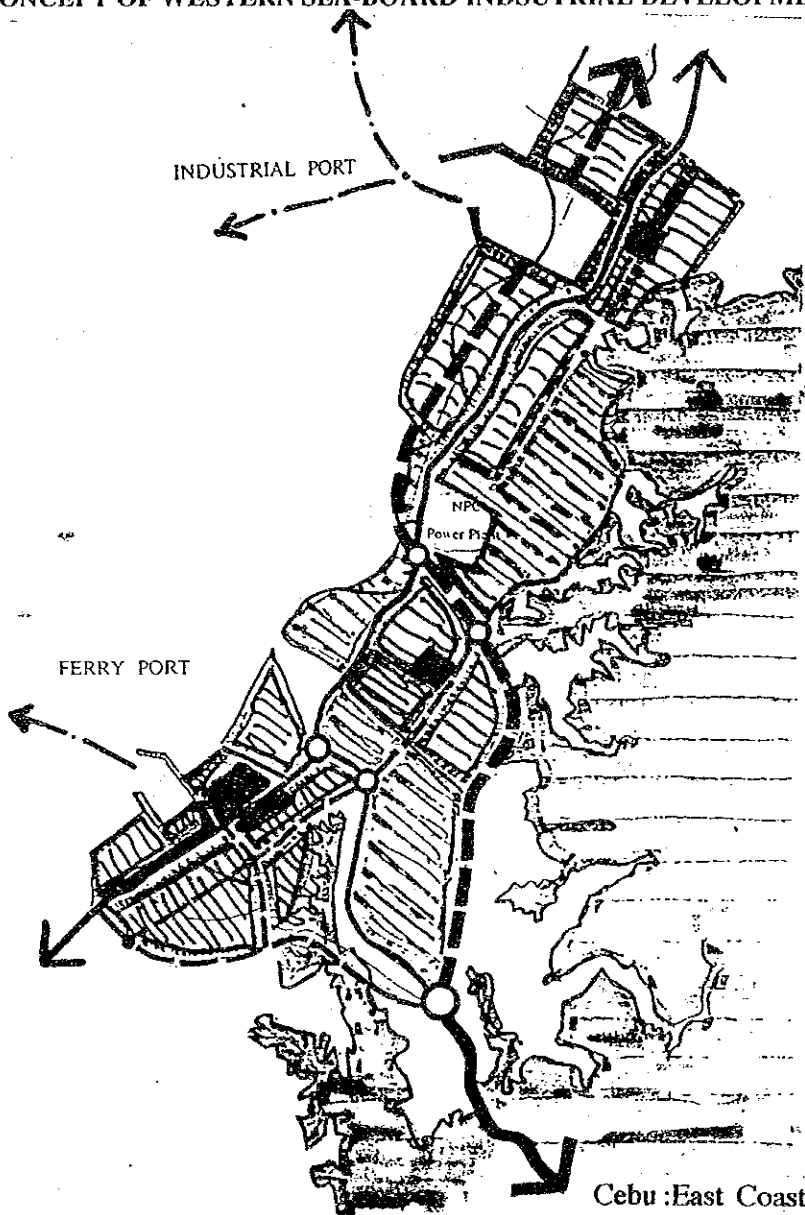
PROPOSED PROJECT PROFILE
for Cebu Integrated Area Development
Prepared by the JICA Study Team, 1993-1994

(1/2)

Project No. IN10	Project Title Western Sea-board Development (Toledo-Asturias) Projects		Economic Sector Industrial Development
Project Location Toledo-Balamban Area		Project Priority <input type="checkbox"/> Urgent <input type="checkbox"/> Medium-term <input checked="" type="checkbox"/> Long-term	Project Duration 2005-
Type of Project <input type="checkbox"/> F/S Study or Survey <input checked="" type="checkbox"/> Development Project <input type="checkbox"/> Packaged Program <input type="checkbox"/> Institutional Building <input type="checkbox"/> Others			
1. Summary of Objectives 1 Designation of Industrial Location Promotion /Area 2 Provision of Guidance of Industrial Park Development (Design Criteria, Environmental Control and Institutional Incentives) 3 Encouragement of Industrial Decentralization Policies 4. Promotion of local industries		2. Target Beneficiaries • Local industries • LGUs (toledo, Balamban, Asturias) • Negros	
3. Project Description 1. To make industrial development plan, including feasibility study 2. To adjust the land for the industrial use and some other industrial related use (port and harbor) 3. To provide necessary infrastructure for industrial activities 4. To build up industrial estates or factories, including information and training centers. 5. To develop a Technology Data/Information Bank 6. To set up a supporting system for small enterprises such as incubator.		4. Expected Benefits / Outputs 1 Creation of New Market for Technology Information 2. Job creation 3. Economic development in the area 4. Stronger economic linkage with Negros and other areas 5. disperse of industrial activities in Cebu island 6. Planned land use in Toledo area	
5. Important Assumptions / Conditions for the Project • Development of Data Bank for Technology Information and Skilled Workers List • Well designed development program required, including future demand for industrial activities in terms of employees, output, utilities requirements, etc. • Demand Forecast		6. Project Linkages / Other Sector Linkages IN07: infrastructure Development Project supporting Industrial Location in Industrial Toledo-Balamban Area UD08: Toledo-Balamban Metro Area Urban Structure Development Project WR09: Water Supply Extension Project for Toledo-Balamban Metro Area PH07: Industrial Port Construction Projects	
7. Estimated Investment Requirement (in 1993 prices) For Project Implementation in Total : _____ Mill. Pesos 1) _____ Mill. Pesos 2) _____ Mill. Pesos 3) _____ Mill. Pesos For Annual Recurrent Expenditure for O & M: _____ Mill. Pesos		8. Implementing Agency/Body DTI, NMYC, DOST	
10. A Provisional Scheme for Fund Procurement <input type="checkbox"/> Central Government <input type="checkbox"/> Local Government <input type="checkbox"/> International Assistance Funds (Foreign Portion: _____ %) <input type="checkbox"/> Private Sector Involvement (as specified in Box 11) <input type="checkbox"/> Specially Organized Fund (as specified in Box 16) <input type="checkbox"/> Others		9. Relevant Agencies to Be Coordinated LGUs, NEDA, Organization for Industrial Estate Development	
11. Private Sector Participation CCCI Workers recruitment Center, Patent Information Center		12. Environmental Measures Technical Measures: <input type="checkbox"/> Conduct In-Depth Environmental and Social Impact Studies <input type="checkbox"/> Install Pollution Protection Facilities/Equipment <input type="checkbox"/> Implement Jointly Environmental Engineering Work <input type="checkbox"/> Examine the Project Location Site and/or Scale <input type="checkbox"/> Examine Availability of Alternative Resource Use () <input type="checkbox"/> Undertake Protection Measures for Flora and Fauna <input type="checkbox"/> Implement Jointly Social and Community Development <input type="checkbox"/> Others (as specified in Box 16)	
Administrative Measures <input type="checkbox"/> Adjust with Land Use Zoning <input type="checkbox"/> Coordinate with Environmental Sector Guidelines <input type="checkbox"/> Undertake Periodical Environmental Monitoring <input type="checkbox"/> Apply policy of PPP (Polluter-Pay-Principle) <input type="checkbox"/> Train Management Skill/Personnel for the Project <input type="checkbox"/> Make a Consensus with Inhabitants <input type="checkbox"/> Promote Public Relation for Envir'l Awareness <input type="checkbox"/> Others (as specified in Box 16)			

PROPOSED PROJECT PROFILE
for Cebu Integrated Area Development
Prepared by the JICA Study Team, 1993-1994

(2/2)

Project No. IN10	Project Title Western Sea-board Development (Toledo-Asturias) Projects	
<p>13. Verifiable Indicators / Information / Drawings</p> <p align="center">A CONCEPT OF WESTERN SEA-BOARD INDUSTRIAL DEVELOPMENT</p> 		
14. Project Classification	15. Necessary Inputs/Arrangement	16. Special Considerations
<p>Functional Level</p> <p><input type="checkbox"/> Island Minimum Project</p> <p><input type="checkbox"/> Island Basic Project</p> <p><input checked="" type="checkbox"/> Island Strategic Project</p> <p>Project Orientation</p> <p><input checked="" type="checkbox"/> Regional Economic Drive</p> <p><input type="checkbox"/> Social Development Drive</p> <p><input type="checkbox"/> Environmental Drive</p>	<p><input type="checkbox"/> National Government Involvement</p> <p><input type="checkbox"/> Initiatives of Local Government Units</p> <p><input type="checkbox"/> Institutional Arrangement at Local Level</p> <p><input type="checkbox"/> Special Financial Building at Local Level</p> <p><input type="checkbox"/> Special Fund Allocation by Central Govern't</p> <p><input type="checkbox"/> International Financial Assistance (Grant)</p> <p><input type="checkbox"/> International Financial Assistance (Loan)</p> <p><input type="checkbox"/> Private Sector Participation in Funding</p> <p><input type="checkbox"/> Maximum Utilization of Local Technologies</p> <p><input type="checkbox"/> International Technical Assistance</p> <p><input type="checkbox"/> Others (as specified in Box)</p>	

