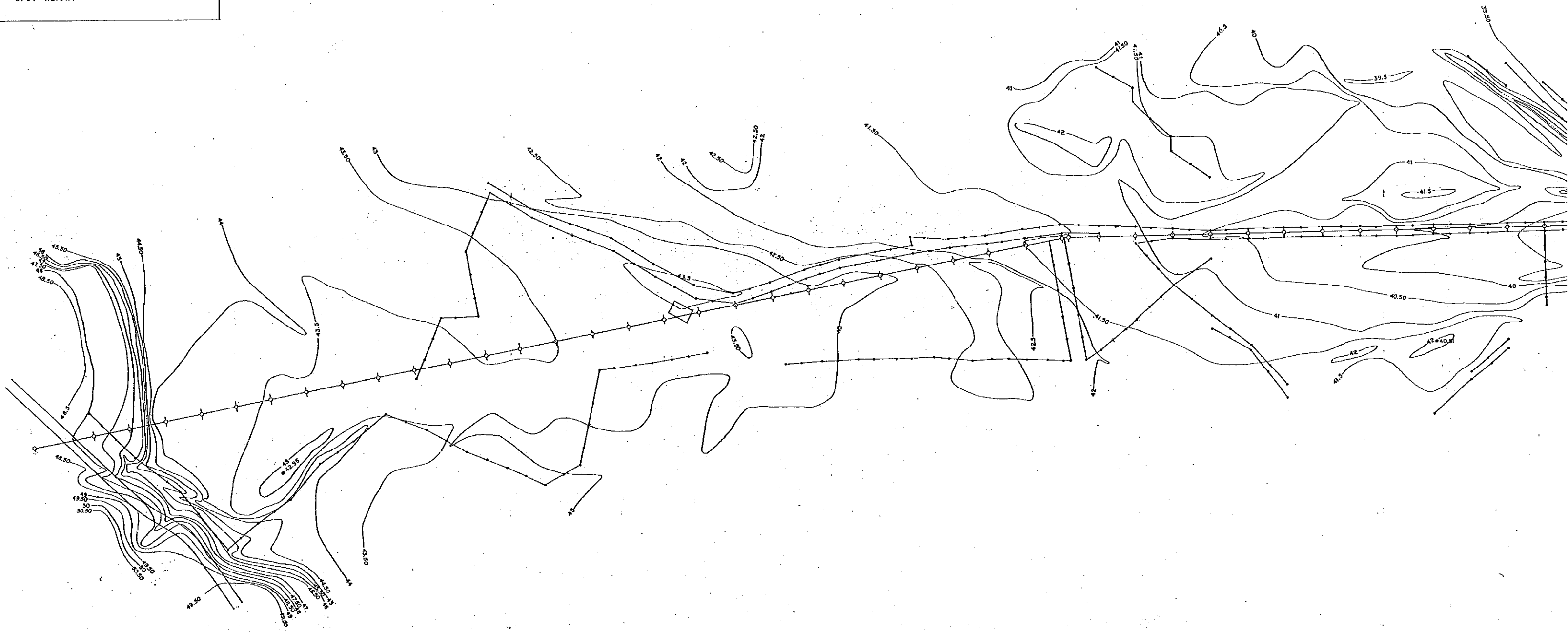
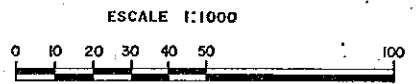
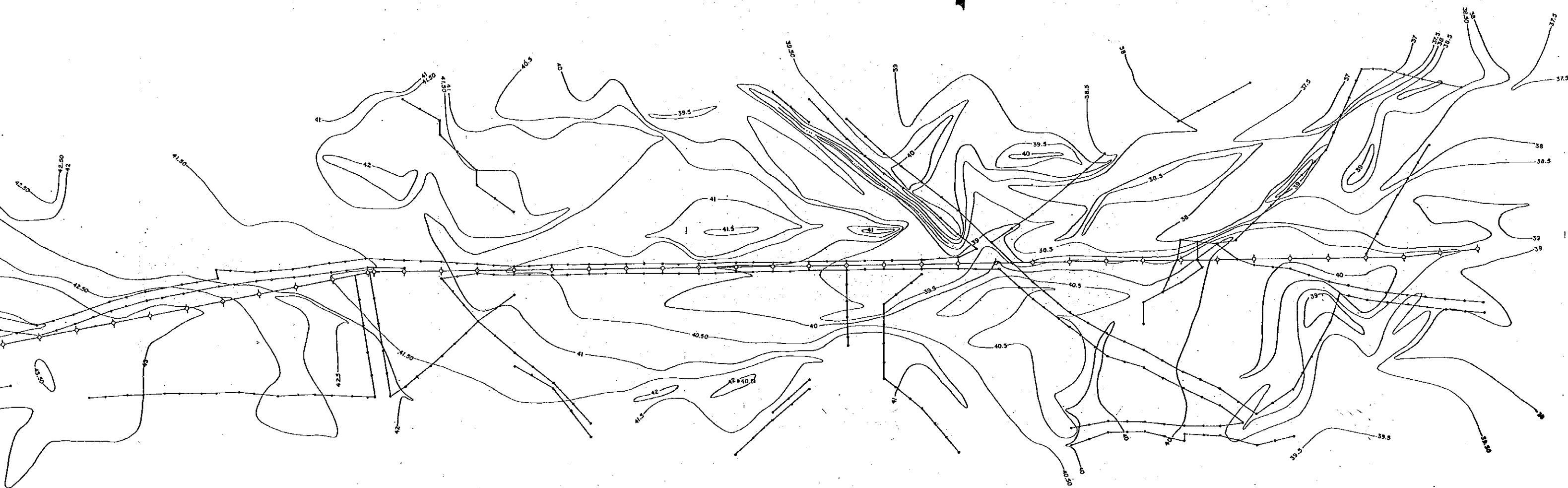


LEGEND	
FENCE	—+—+—+—+—+—
HOUSE	□
SEASONAL RIVER	~~~~~
TRAVERSING STATION	○
TEMPORARY BENCH MARK	□ 35.253
SPOT HEIGHT	• 30.2





RIO CHOLOMA (MIDSTREAM)

SITE OF CONSOLIDATION DAM / DEBRIS LEVEE

SHEET No.	1 / 2	CONTOUR INTERVAL	0.5 mts.
-----------	-------	------------------	----------

DATE	JUNE 1993
------	-----------

JAPAN INTERNATIONAL COOPERATION AGENCY

RIO CHOLOMA (MIDSTREAM)

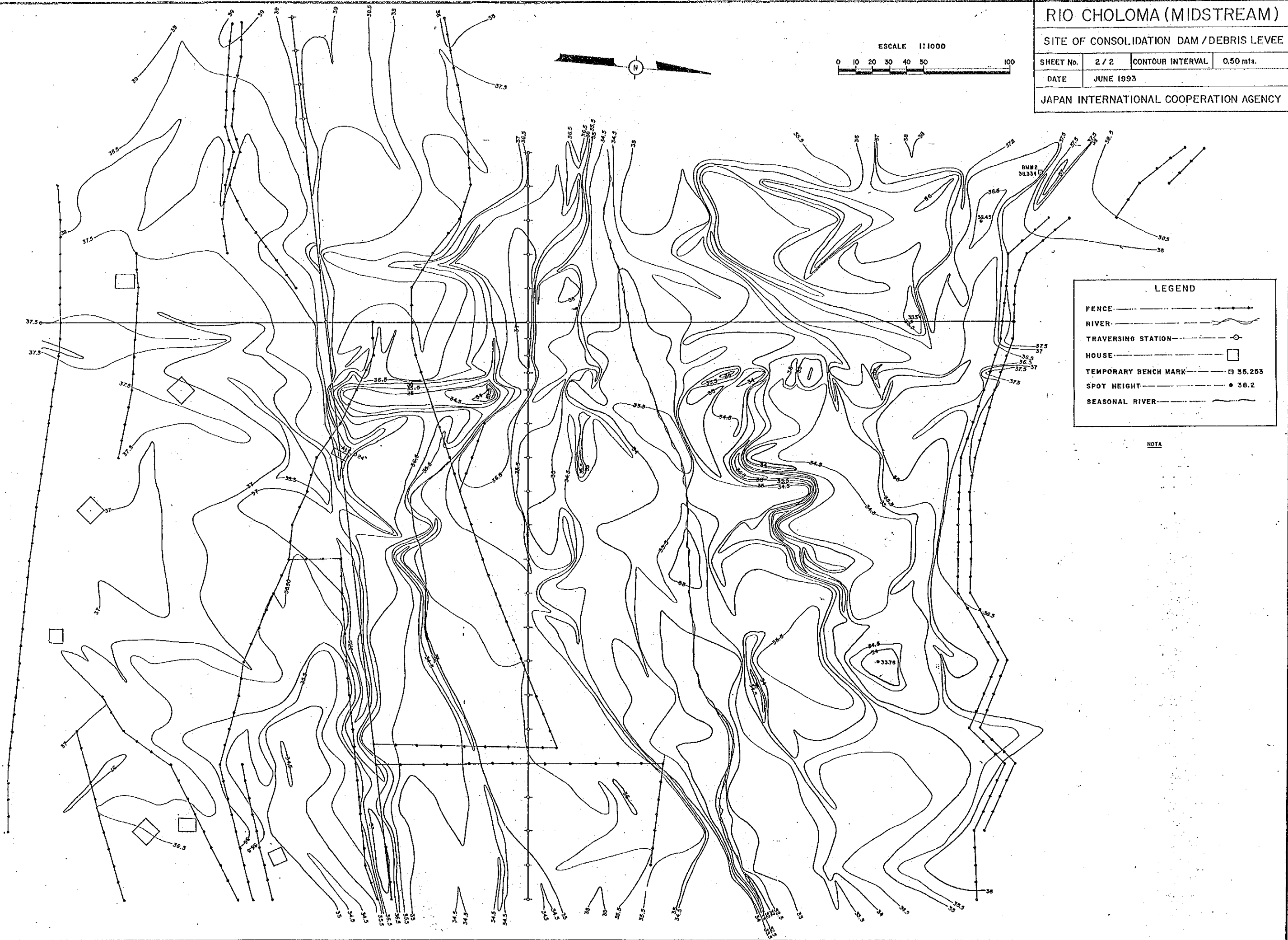
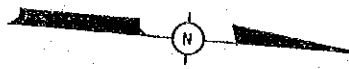
SITE OF CONSOLIDATION DAM / DEBRIS LEVEE

SHEET No. 2 / 2 CONTOUR INTERVAL 0.50 mls.

DATE JUNE 1993

JAPAN INTERNATIONAL COOPERATION AGENCY

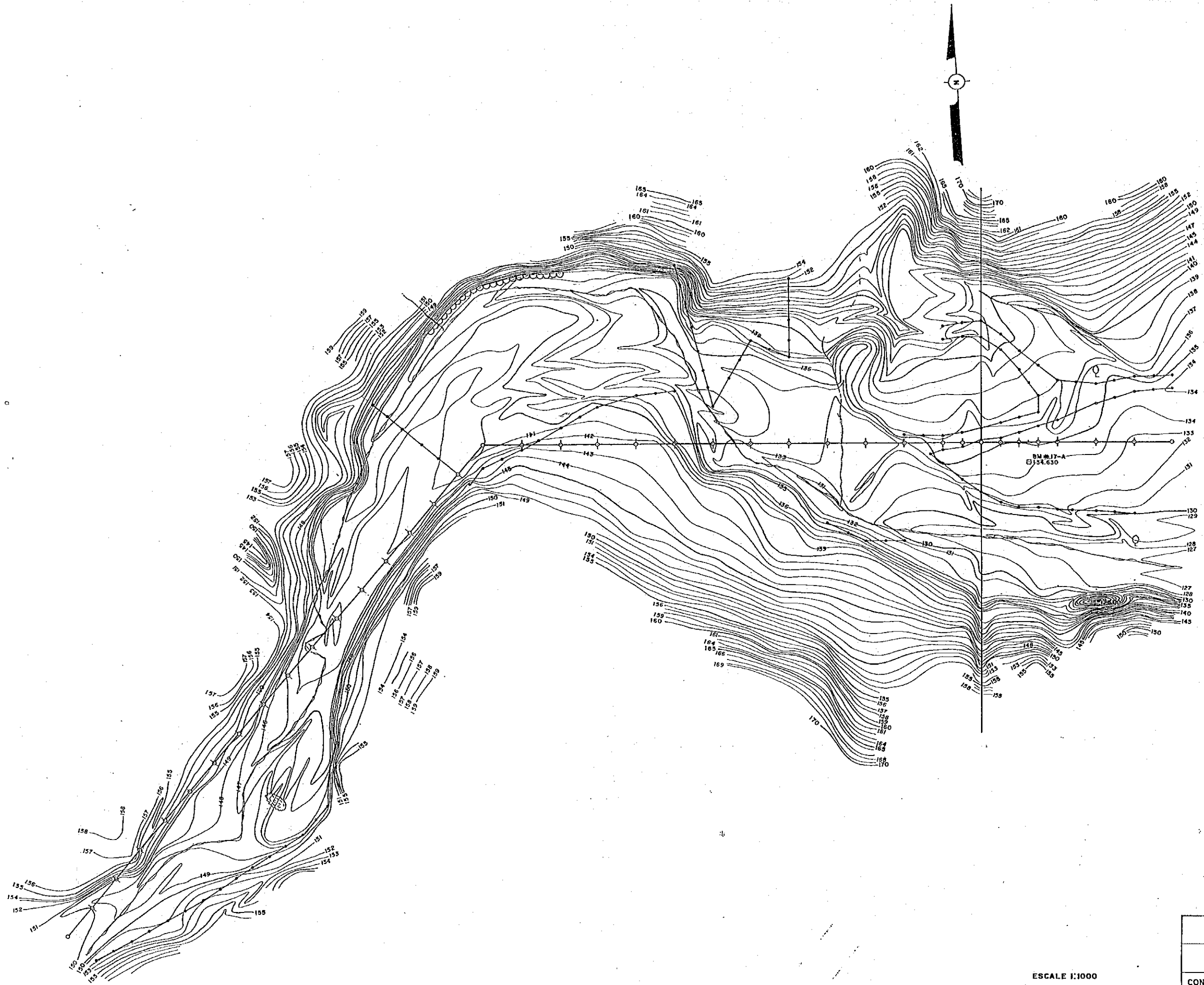
ESCALE 1:1000



LEGEND

- FENCE ————
- RIVER ————
- TRAVERSING STATION ————
- HOUSE ————
- TEMPORARY BENCH MARK ————
- SPOT HEIGHT ————
- SEASONAL RIVER ————

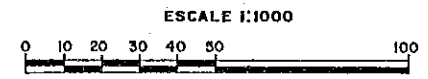
NOTA

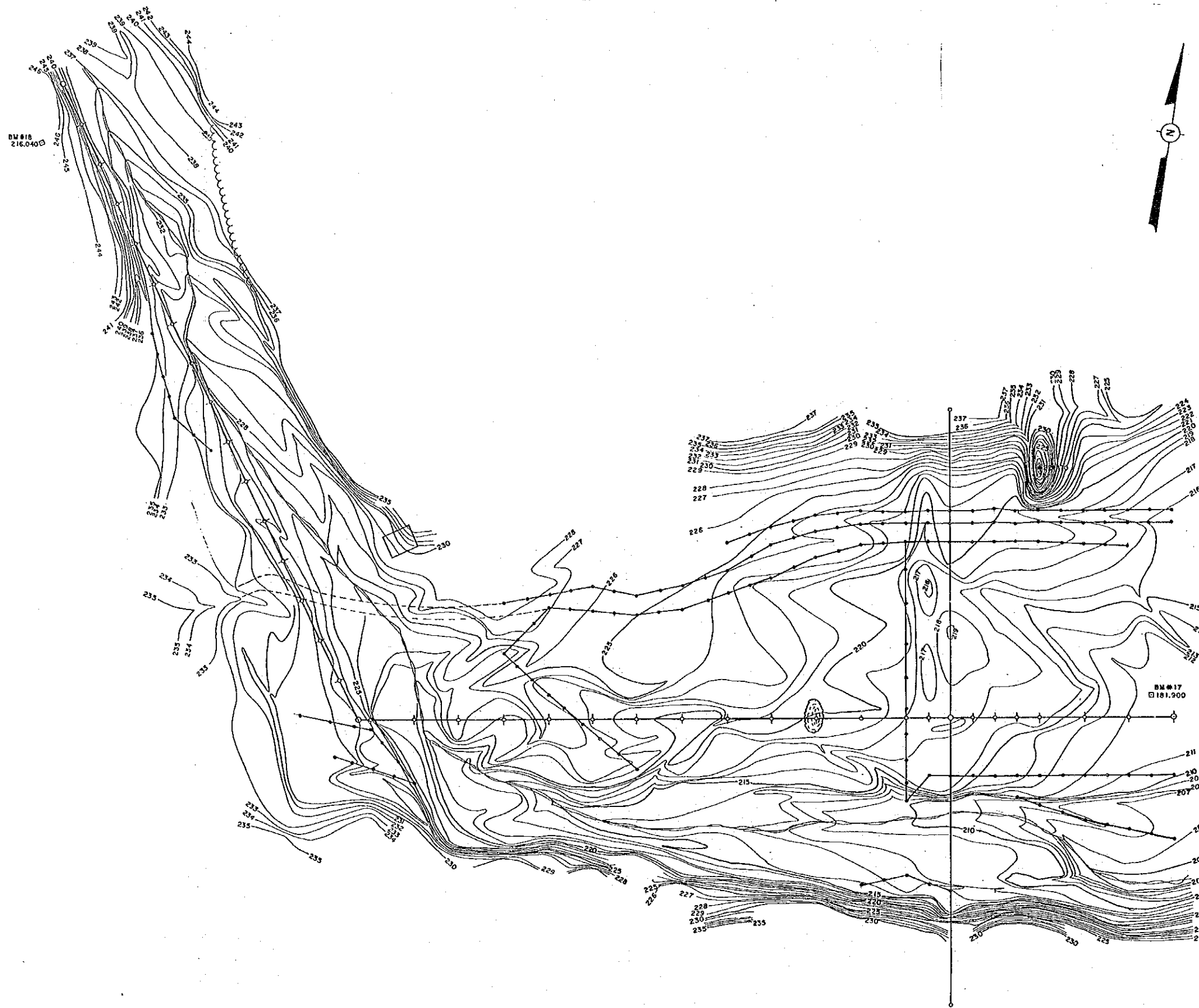


LEGEND

FENCE	— — — — —
RIVER	~~~~~
SEASONAL RIVER	~~~~~
TRAVERSING STATION	— ○ —
STEEP SLOPE	~~~~~
TREE	— ○ —
TEMPORARY BENCH MARK	— □ —
SPOT HEIGHT	— ● —
STONE	— [stone symbol] —

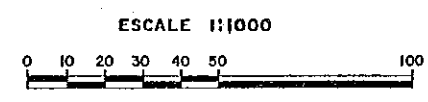
RIO MAJAINÉ	
SITE OF CHECK DAM	
CONTOUR INTERVAL	1.00 Mts.
DATE	JUNE 1993
JAPAN INTERNATIONAL COOPERATION AGENCY	



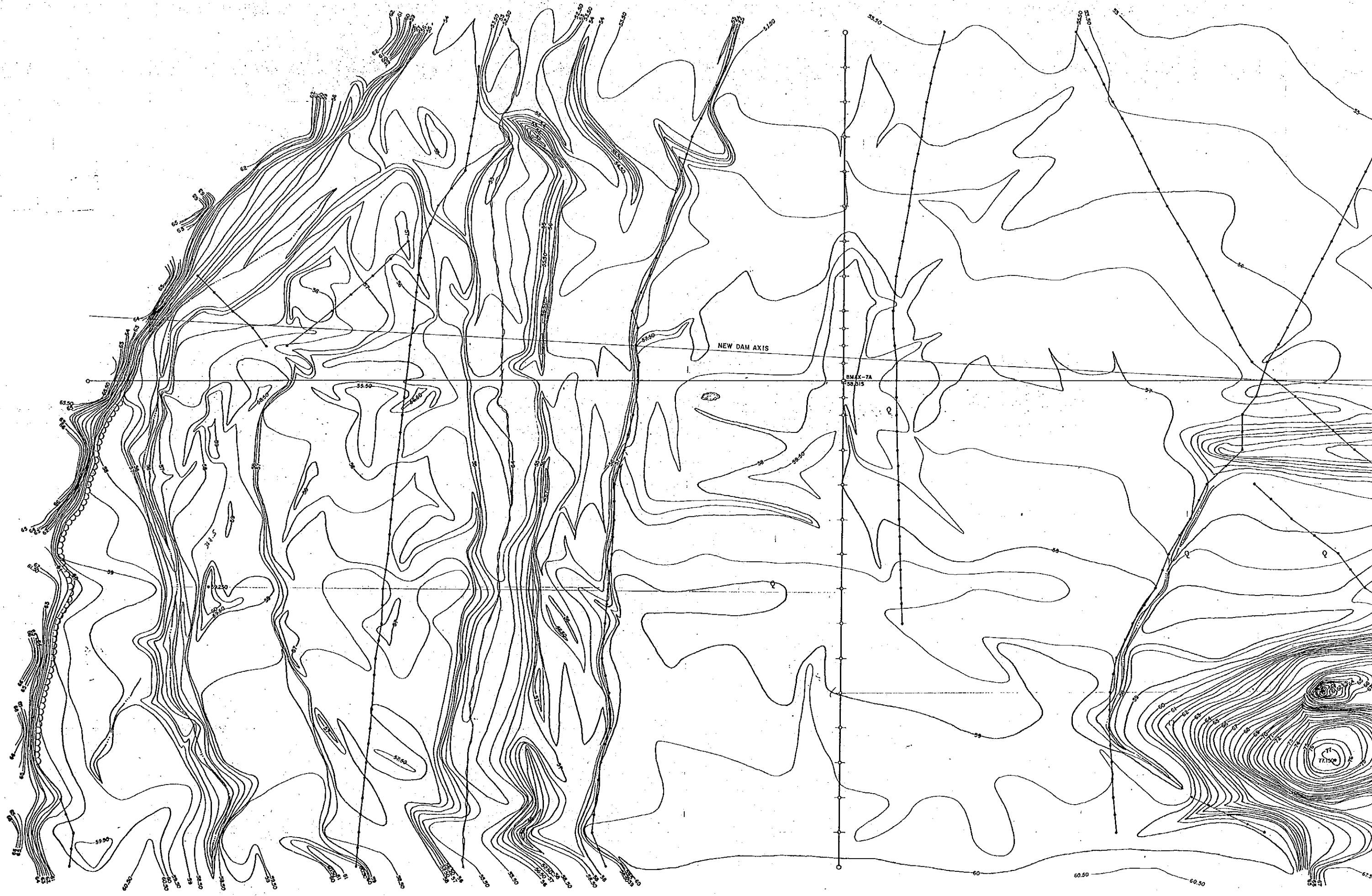


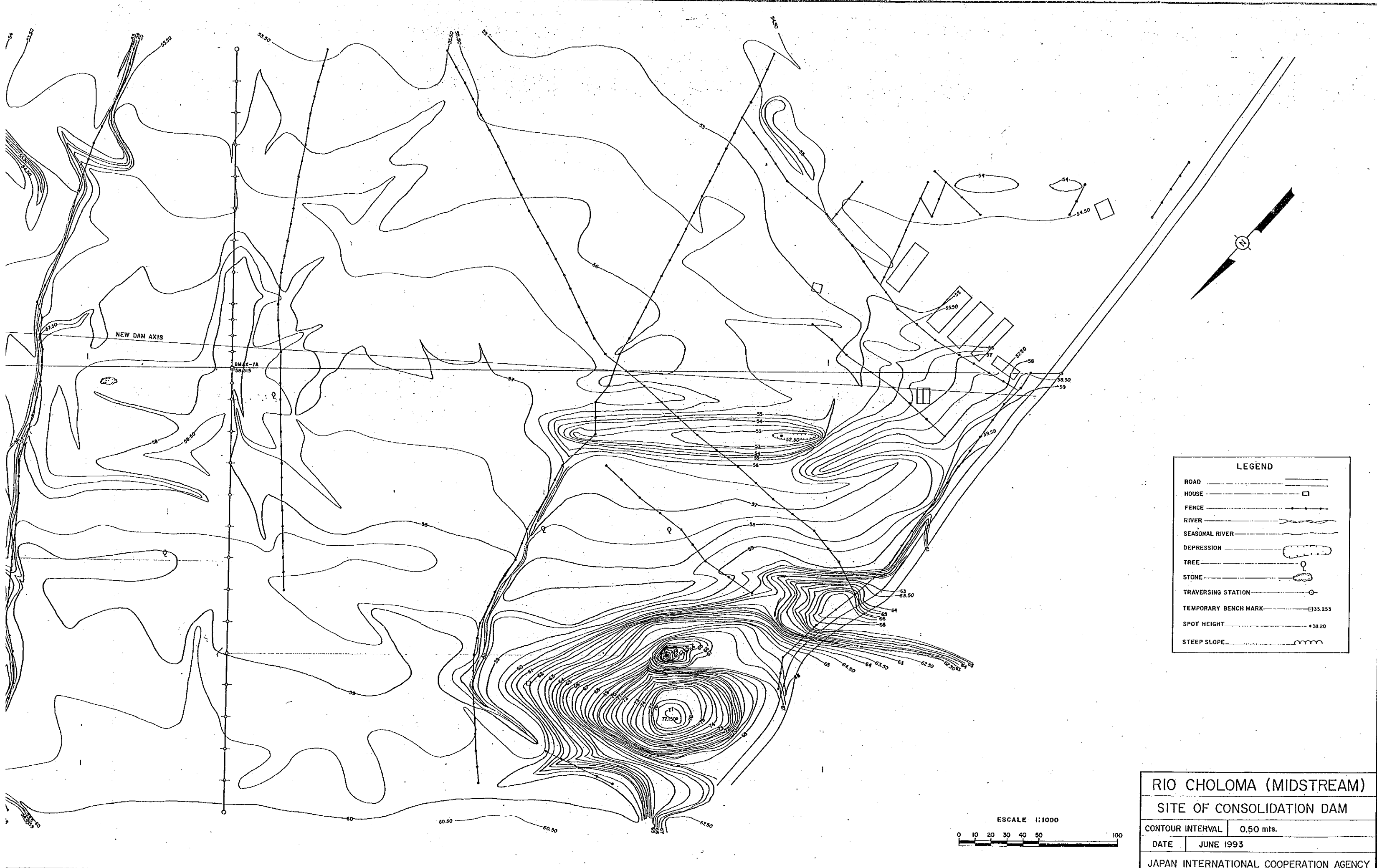
1:1,500

LEGEND	
FENCE	
RIVER	
TRAVERSING STATION	
STEEP SLOPE	
TEMPORARY BENCH MARK	
DEPRESSION	
SPOT HEIGHT	
FOOT PATH	
STONE	
HOUSE	



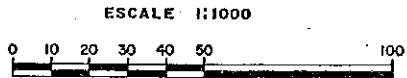
RIO LA JUTOSA	
SITE OF CHECK DAM	
CONTOUR INTERVAL	1.00 Mts.
DATE	JUNE 1993
JAPAN INTERNATIONAL COOPERATION AGENCY	



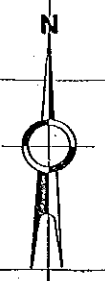
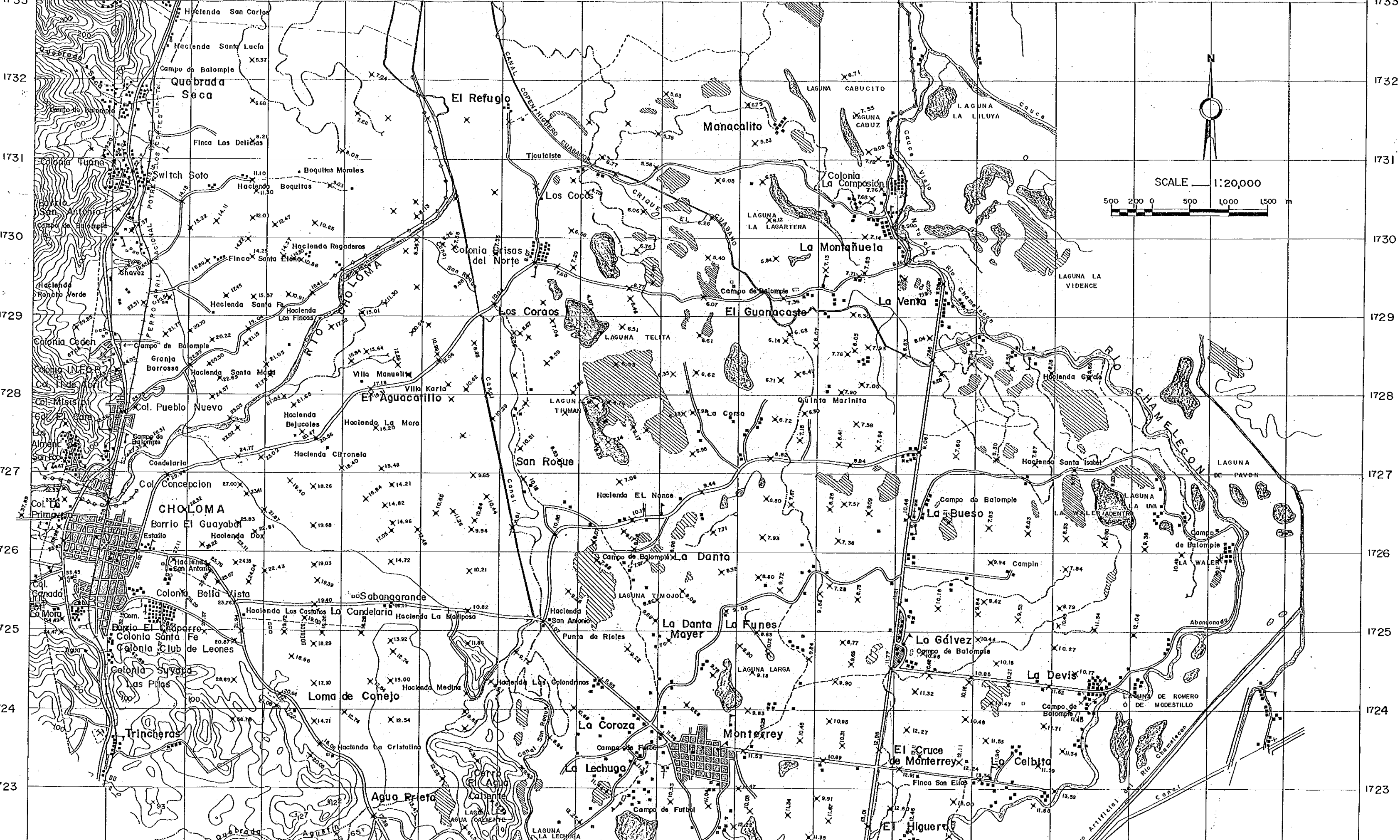


LEGEND

ROAD	
HOUSE	
FENCE	
RIVER	
SEASONAL RIVER	
DEPRESSION	
TREE	
STONE	
TRAVERSING STATION	
TEMPORARY BENCH MARK	
SPOT HEIGHT	
STEEP SLOPE	



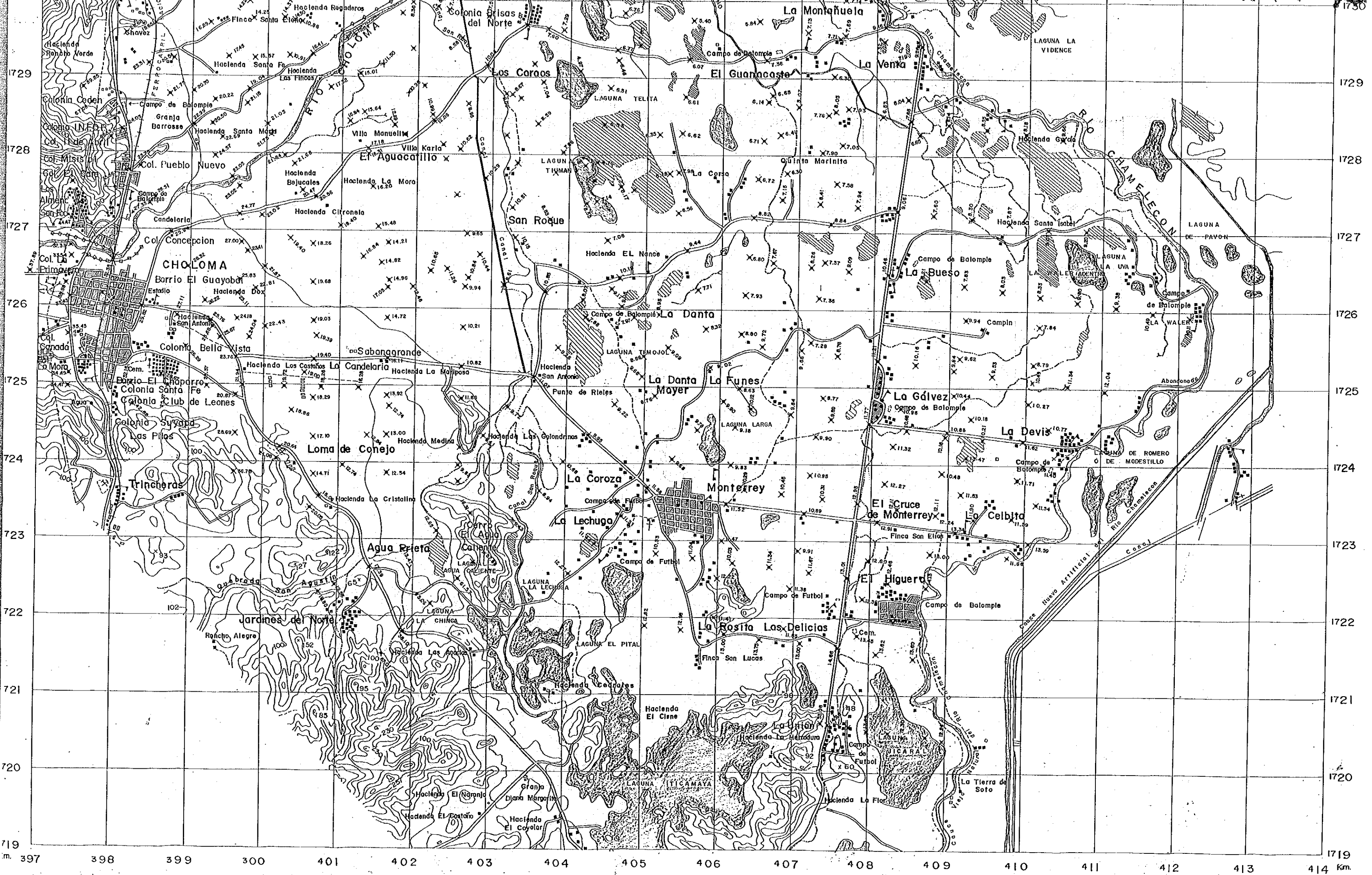
RIO CHOLOMA (MIDSTREAM)	
SITE OF CONSOLIDATION DAM	
CONTOUR INTERVAL	0,50 mts.
DATE	JUNE 1993
JAPAN INTERNATIONAL COOPERATION AGENCY	



SCALE 1:20,000
500 200 0 500 1000 1500 m

1733
1732
1731
1730
1729
1728
1727
1726
1725
1724
1723

1733
1732
1731
1730
1729
1728
1727
1726
1725
1724
1723



m. 397 398 399 300 401 402 403 404 405 406 407 408 409 410 411 412 413 414 Km.

729
728
727
726
725
724
723
722
721
720
719

1730
1729
1728
1727
1726
1725
1724
1723
1722
1721
1720

613
61.7
SSS