

250

200

150

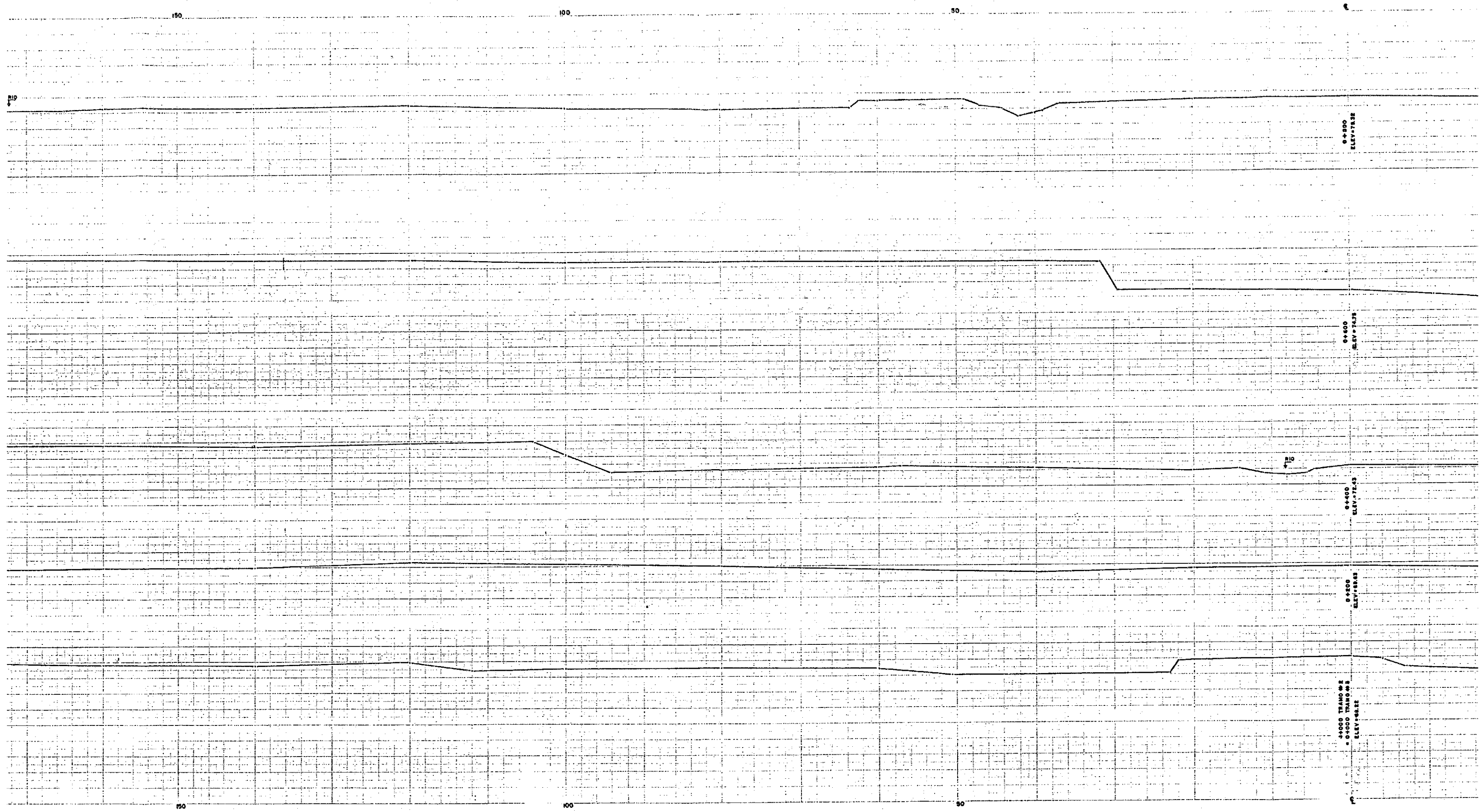
RIO MAJANE TRAMO #3
SECC. TRANS. EST. 0+000 a 0+800

RIP

250

200

150



150

100

50

0+500
ELEV. 72.32

0+600
ELEV. 74.71

0+600
ELEV. 72.43

0+500
ELEV. 72.22

150

100

50

0+500
ELEV. 72.22

0+600
ELEV. 72.43

0+600
ELEV. 74.71

0+500
ELEV. 72.32

50

100

150

0+800
ELEV. 74.32

0+600
ELEV. 74.75

0+400
ELEV. 72.33

0+200
ELEV. 69.83

4+000 TRAM 0+2
0+000 TRAM 0+8
ELEV. 68.12

RIO

RIO

RIO

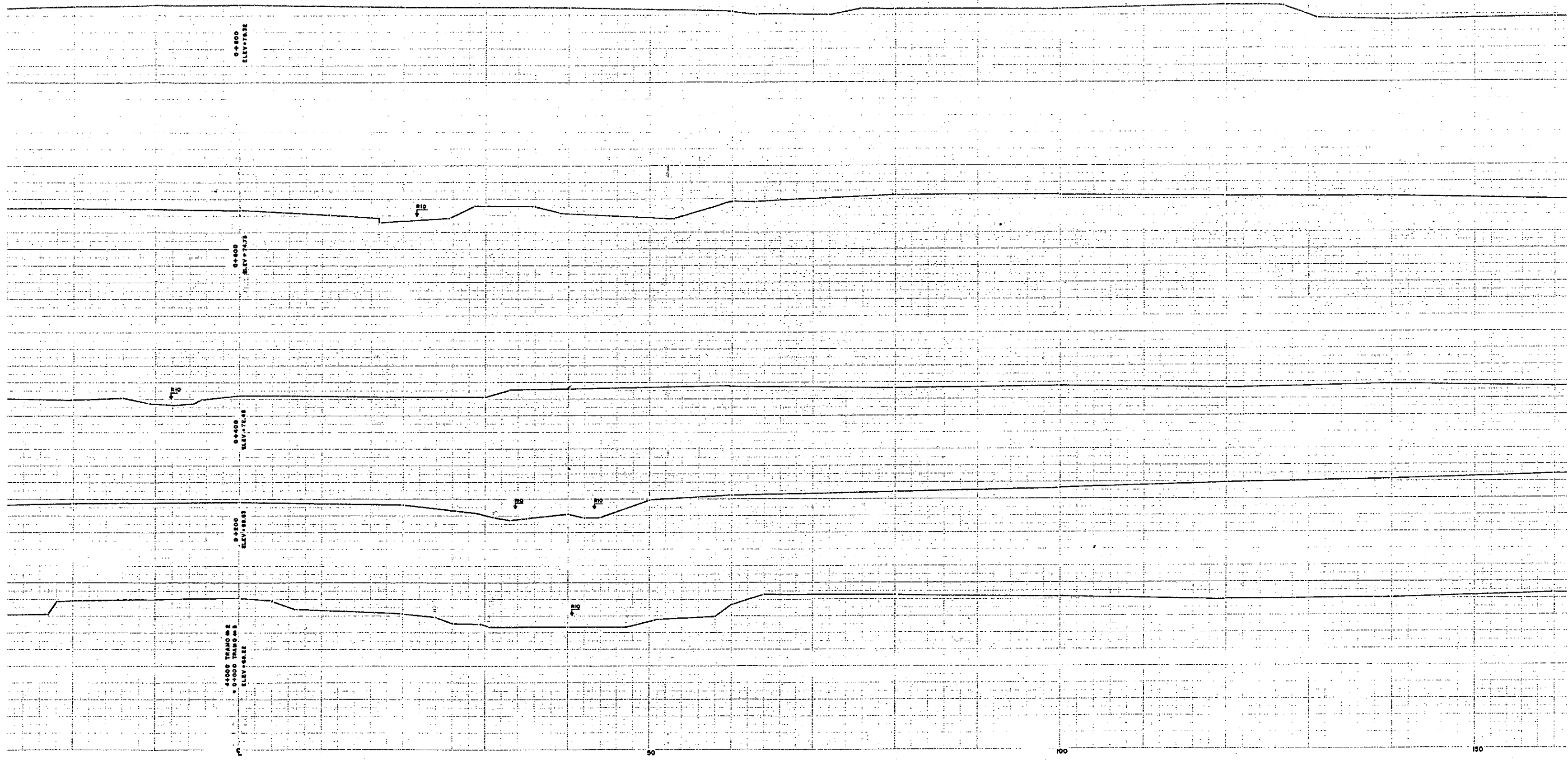
RIO

RIO

50

100

150

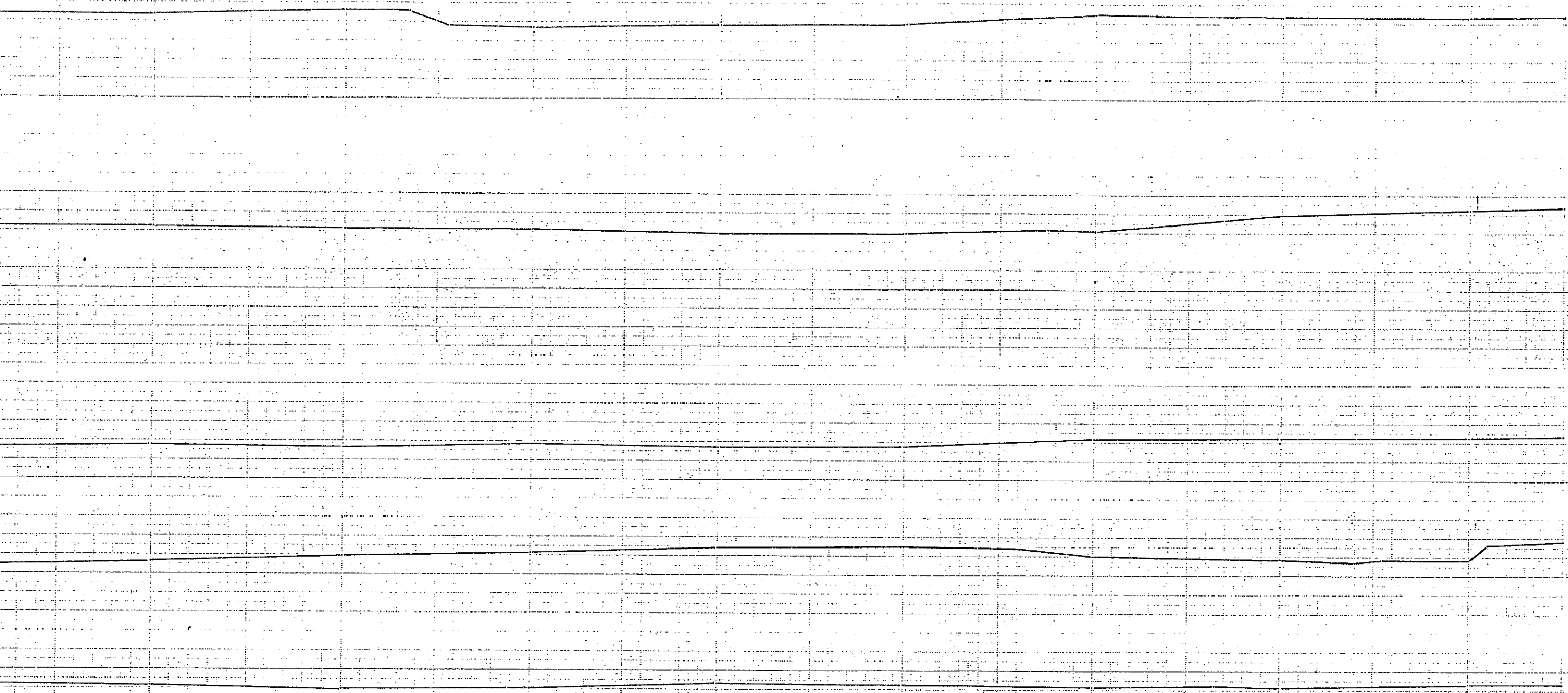


100

150

200

250



100

150

200

250

250

200

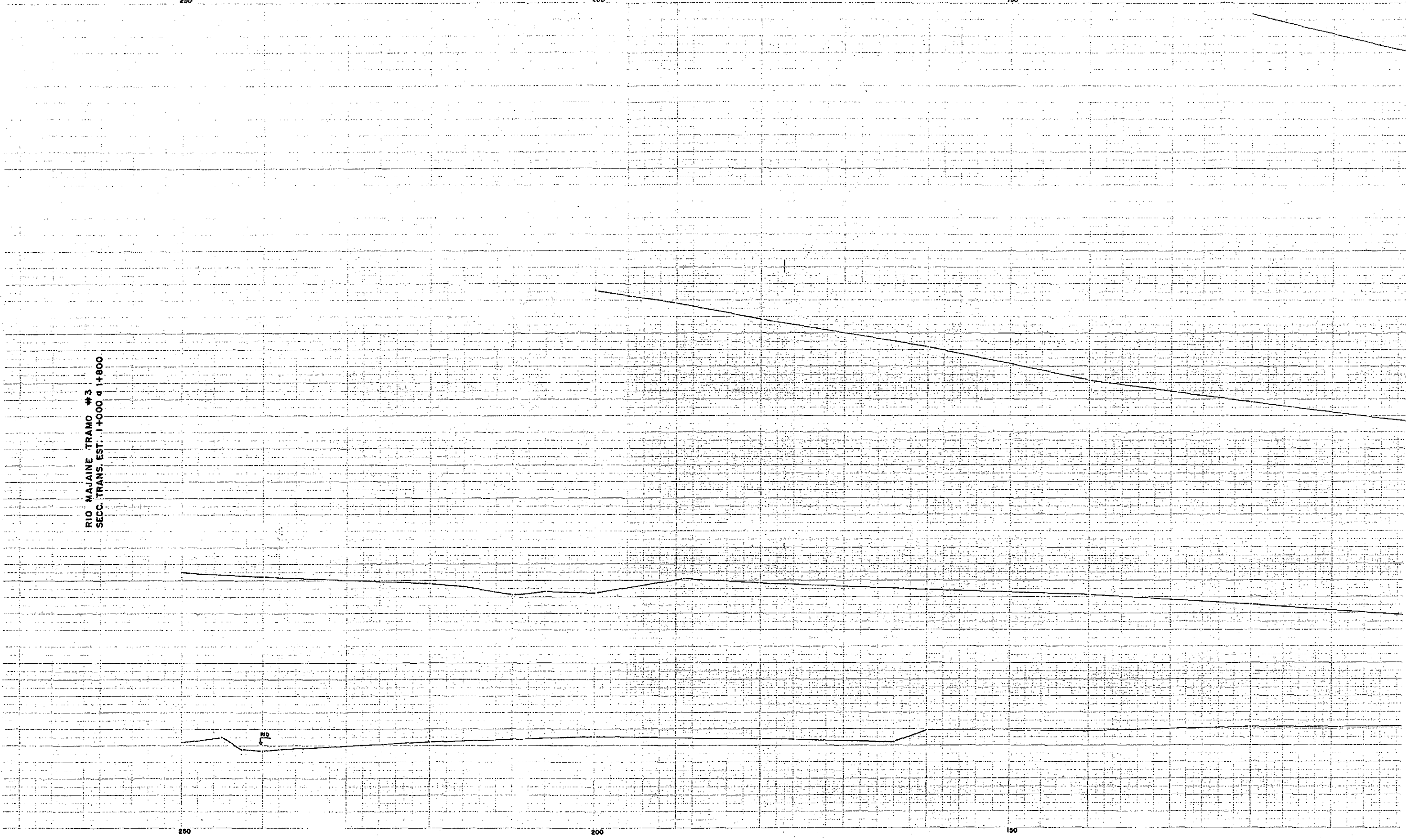
150

RIO MAJAINÉ TRAMO #3
SECC. TRANS. EST. 14000 à 14800

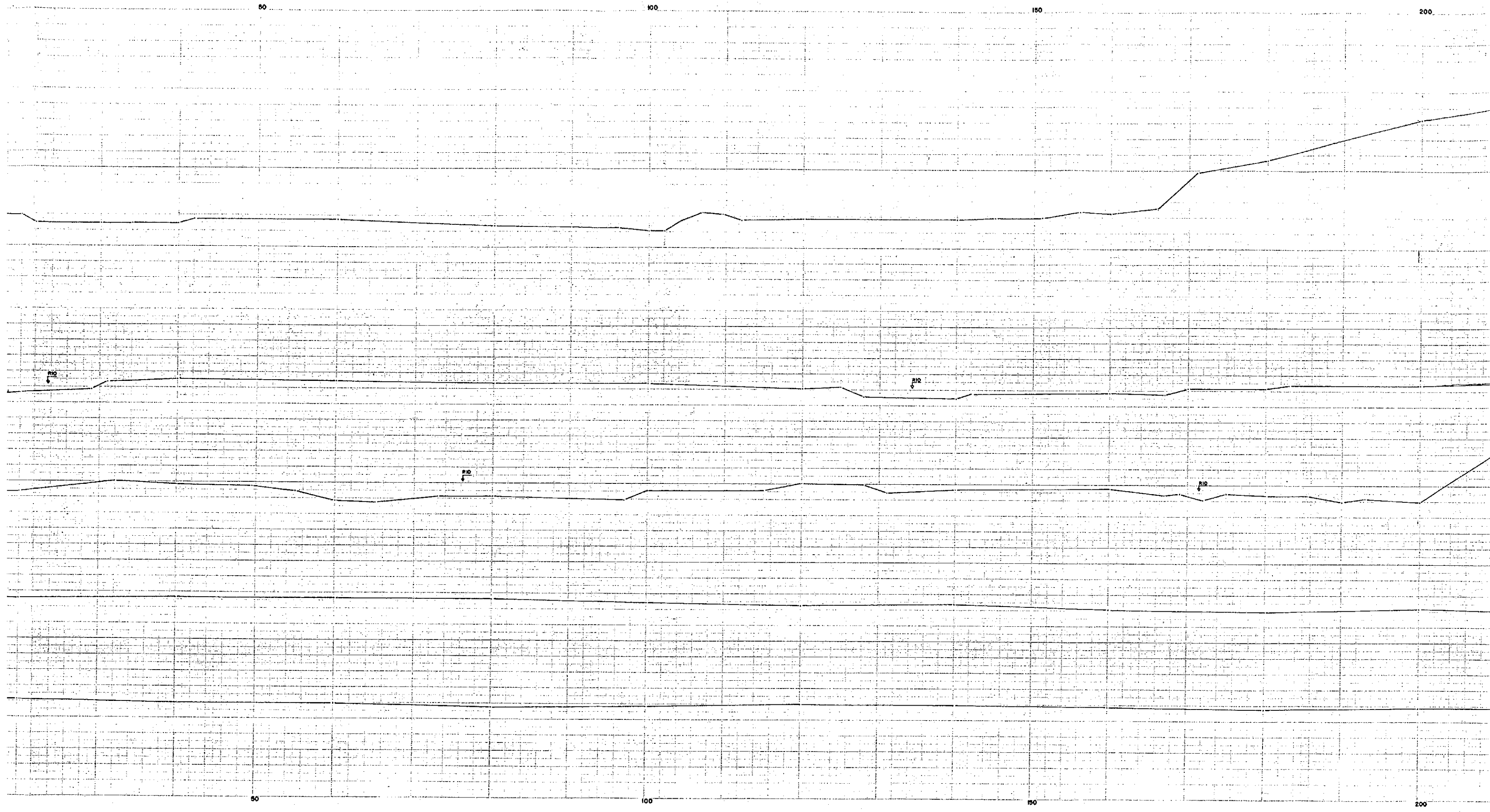
250

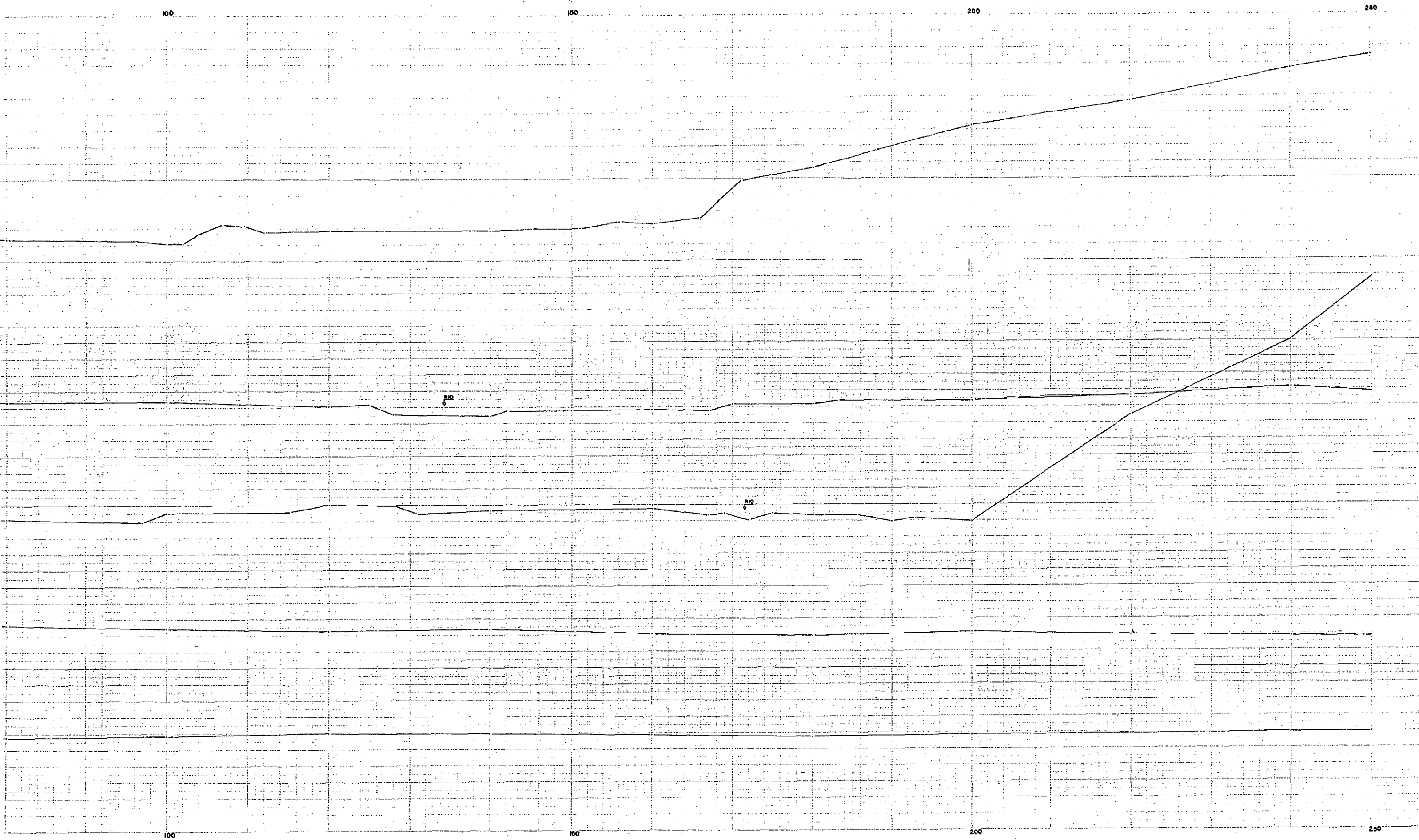
200

150

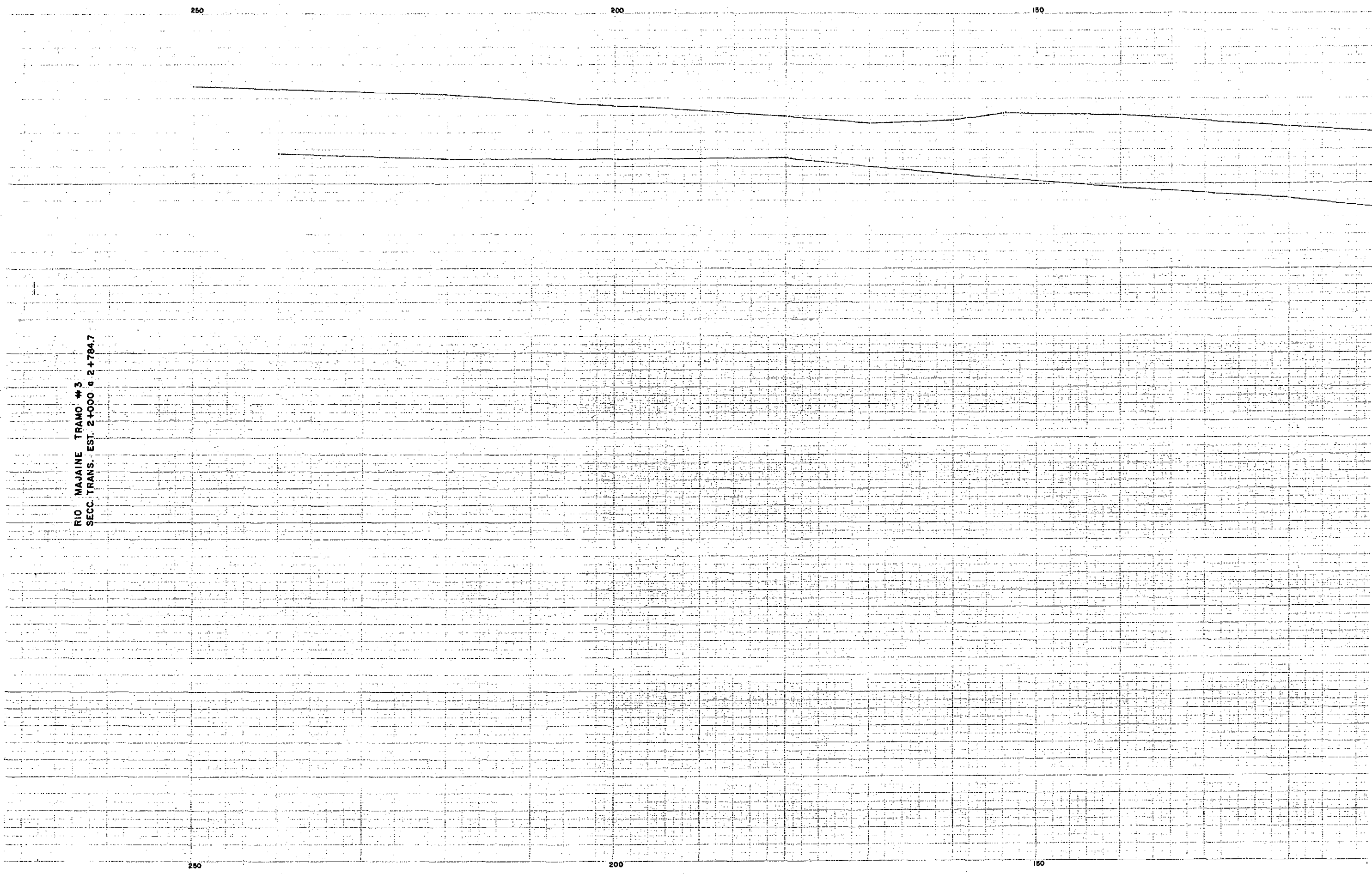




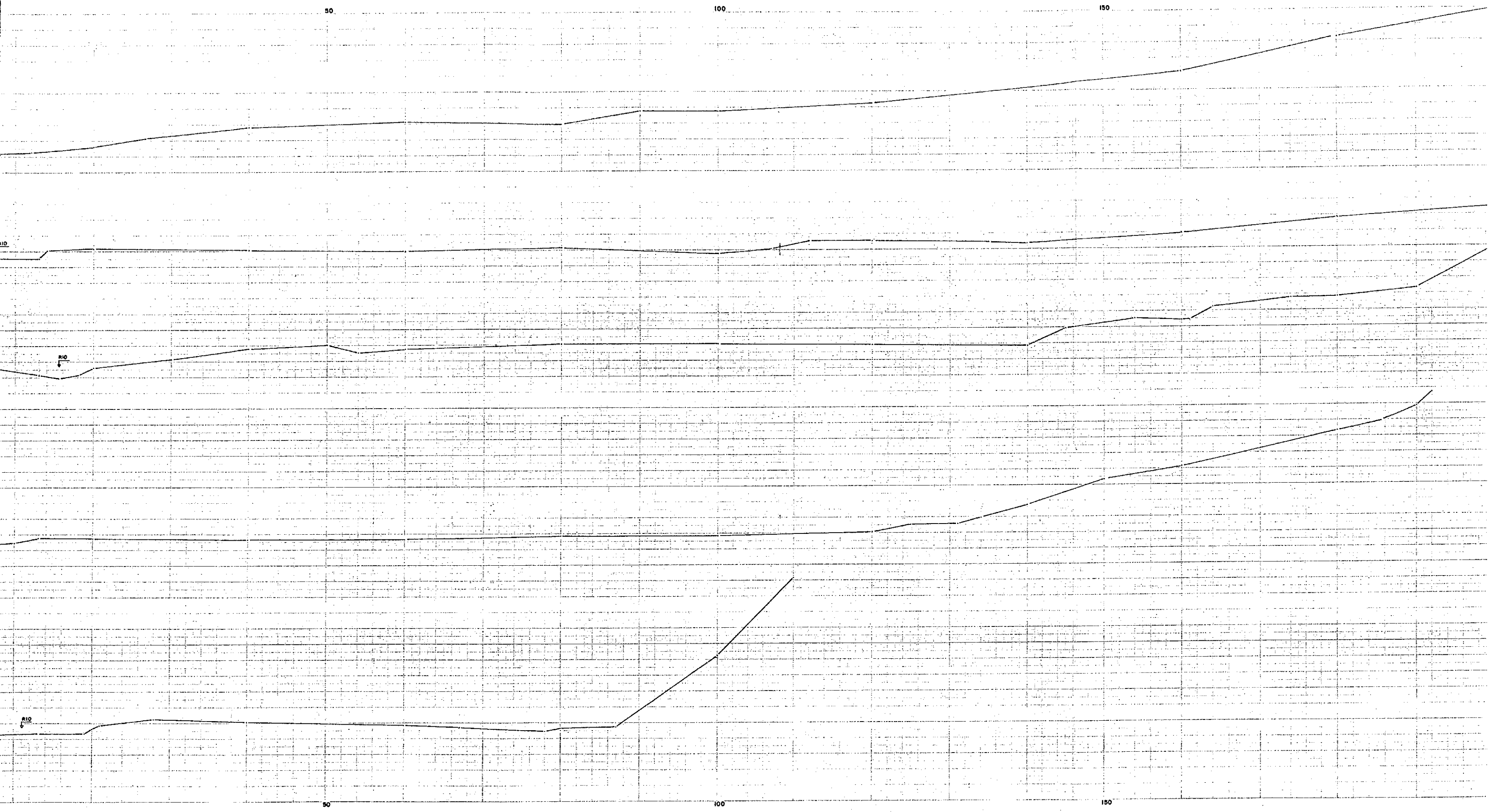


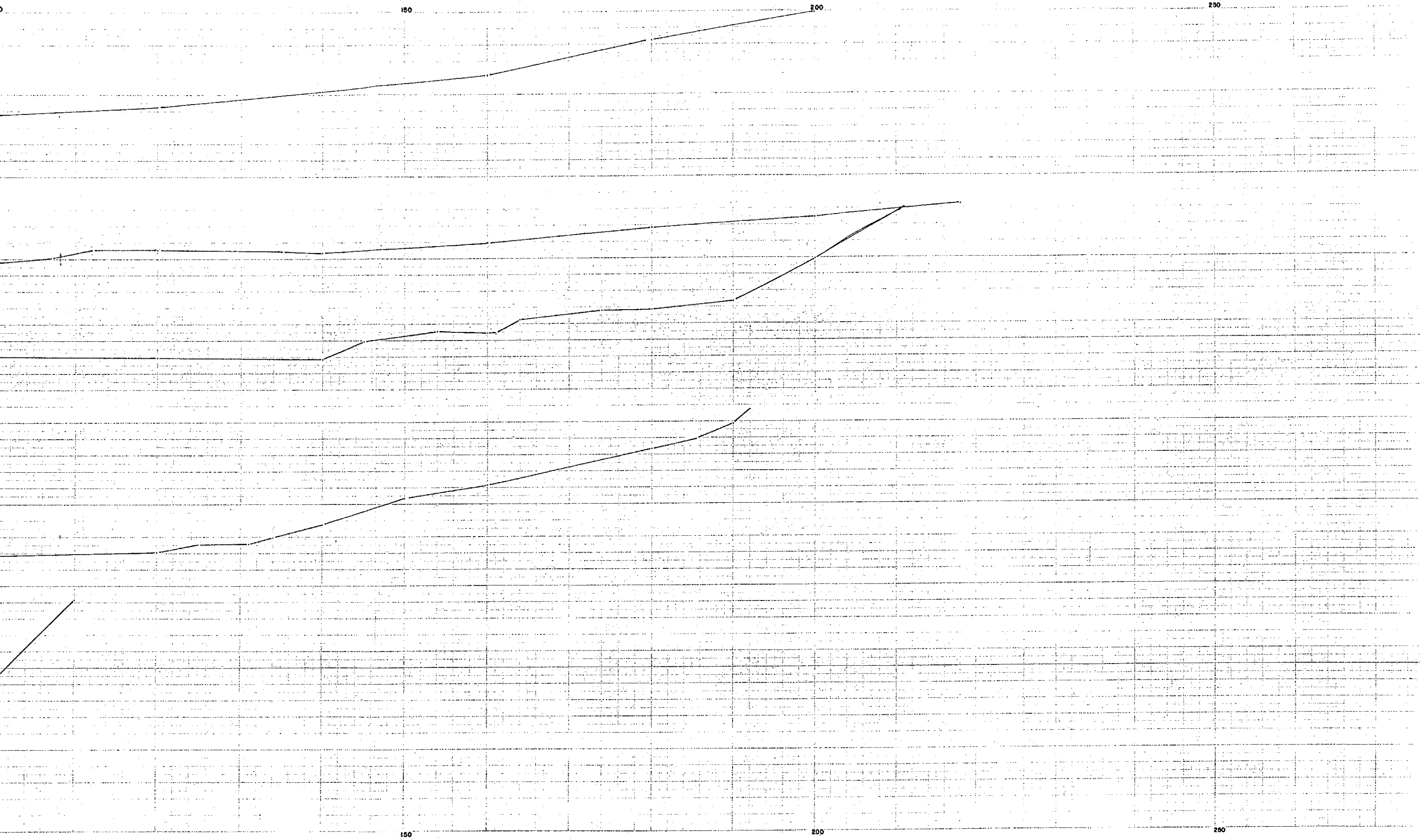


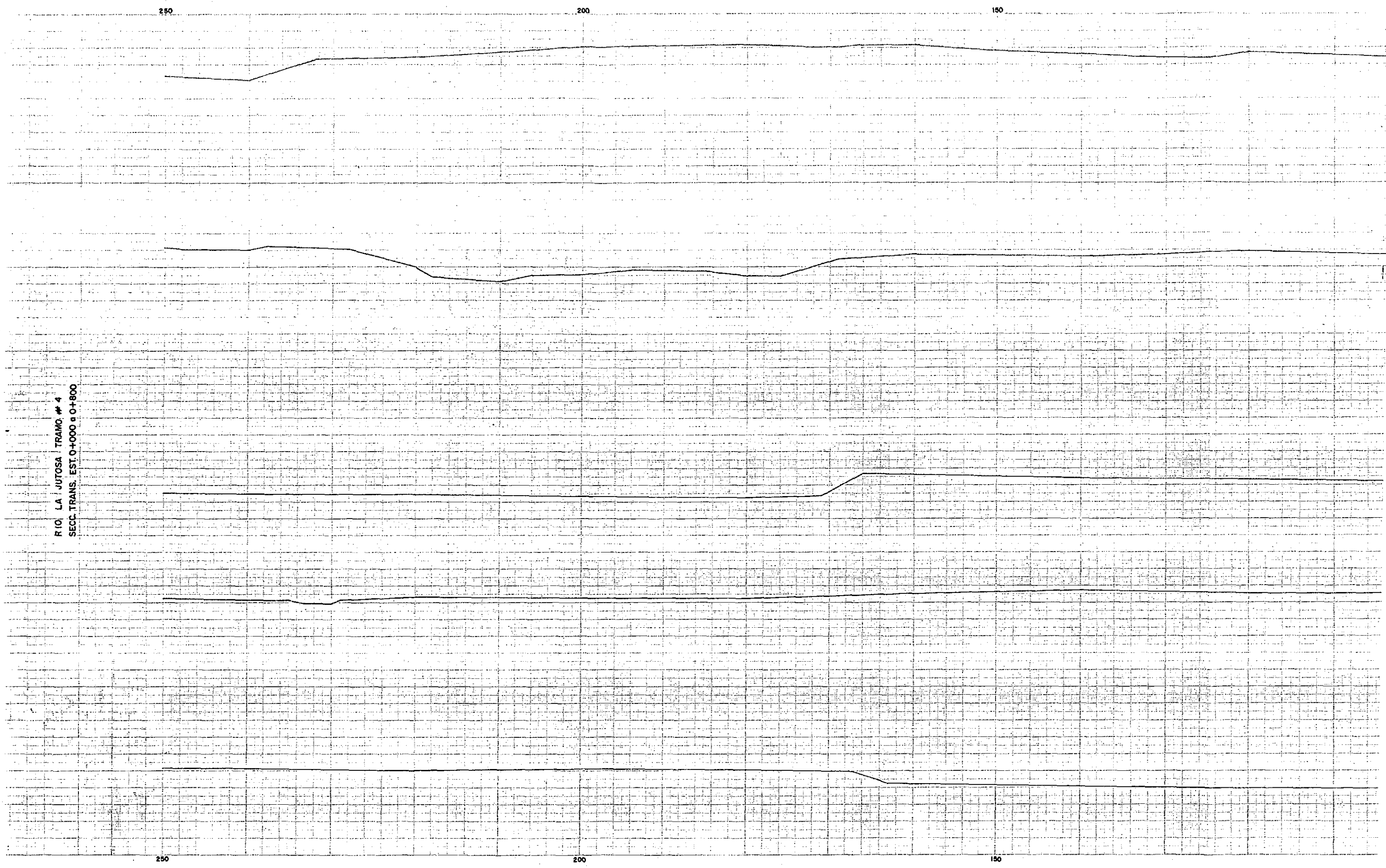
RIO MAJANE TRAMO #3
SECC. TRANS. EST. 2+000 a 2+784.7











250

200

150

RIO LA JUTOSA TRAMO # 4
SECC TRANS. EST. 0+000 a 0+800

250

200

150



100

50

0+100

50

0+100

0+100
ELEV=81.06

0+600

0+600
ELEV=76.81

0+400

0+400
ELEV=72.72

0+200

0+200

0+200

0+200
ELEV=69.08

0+000
ELEV=66.23

100

50

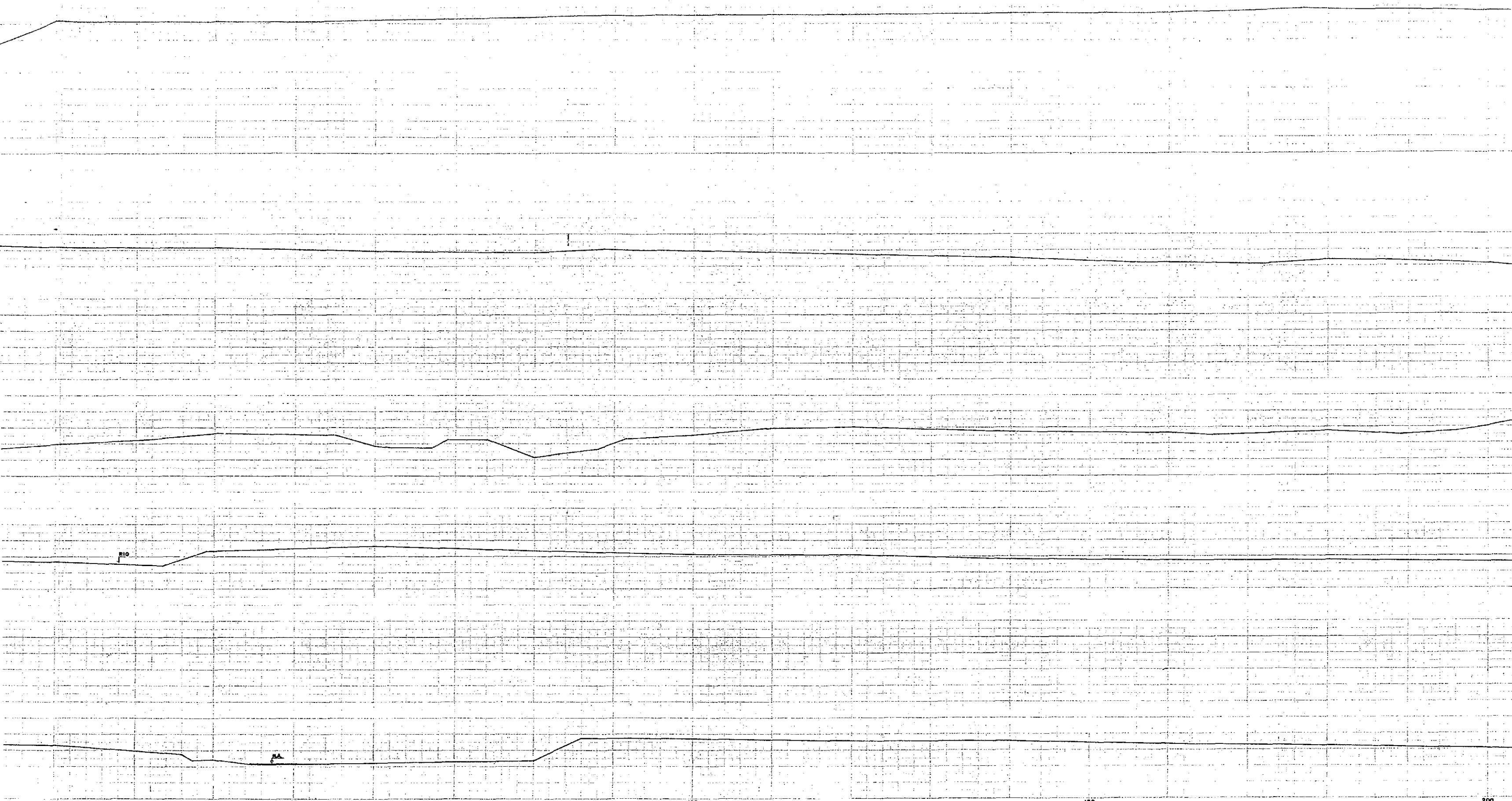
50

50

100

150

200



R10

50

100

150

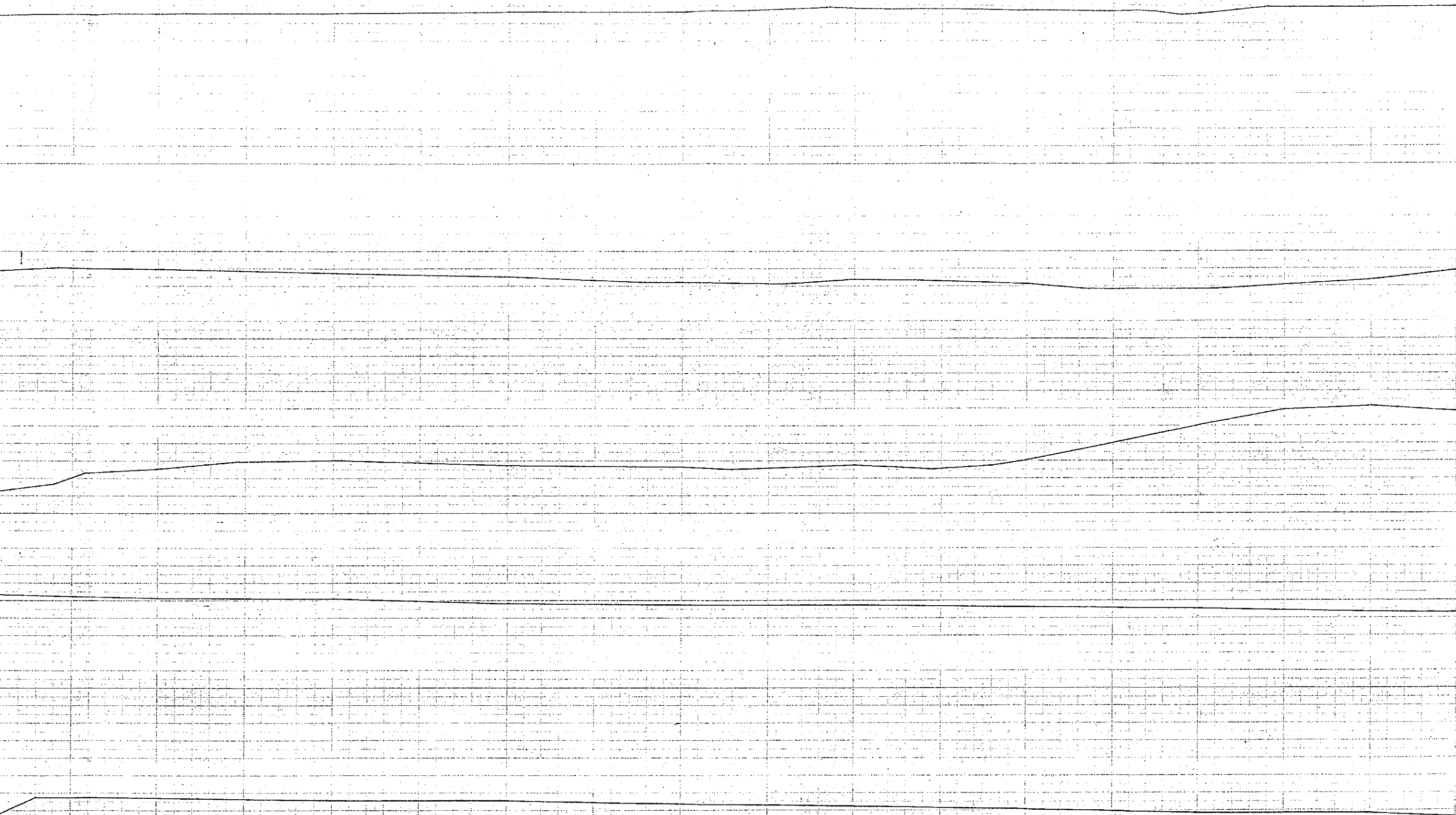
200

100

150

200

250

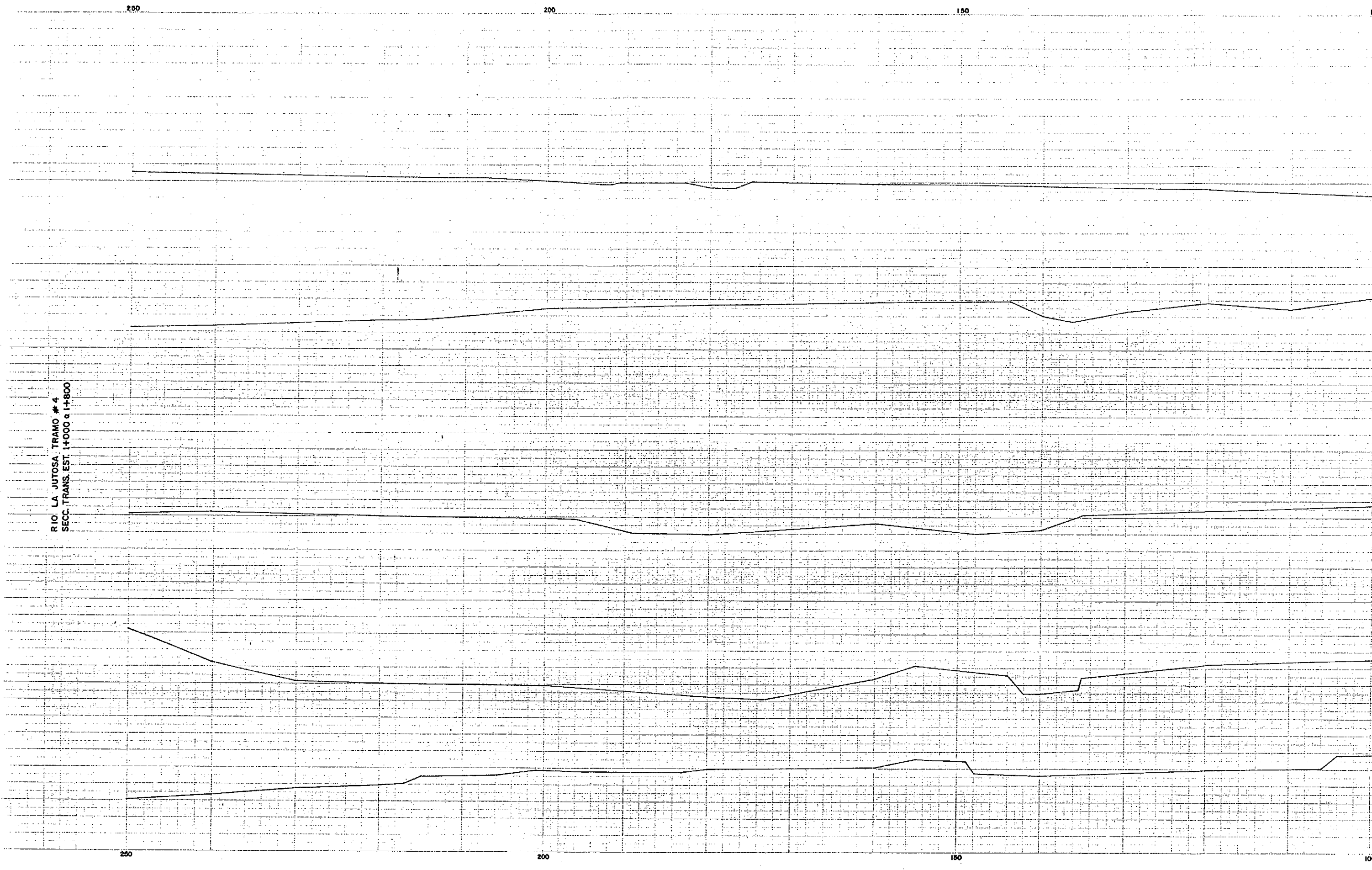


100

150

200

250

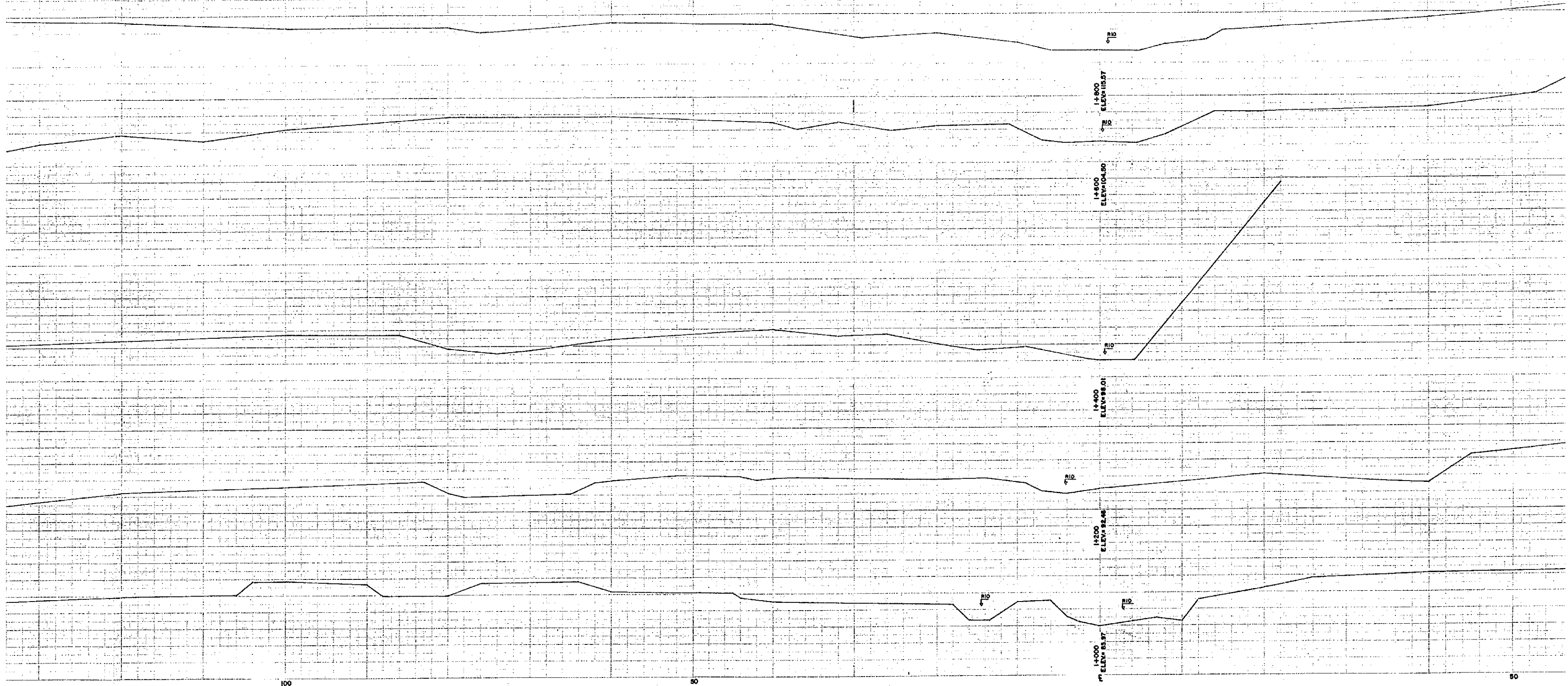


RIO LA JUTOSA TRAMO # 4
SECC. TRANS. EST. 1+000 a 1+800

100

50

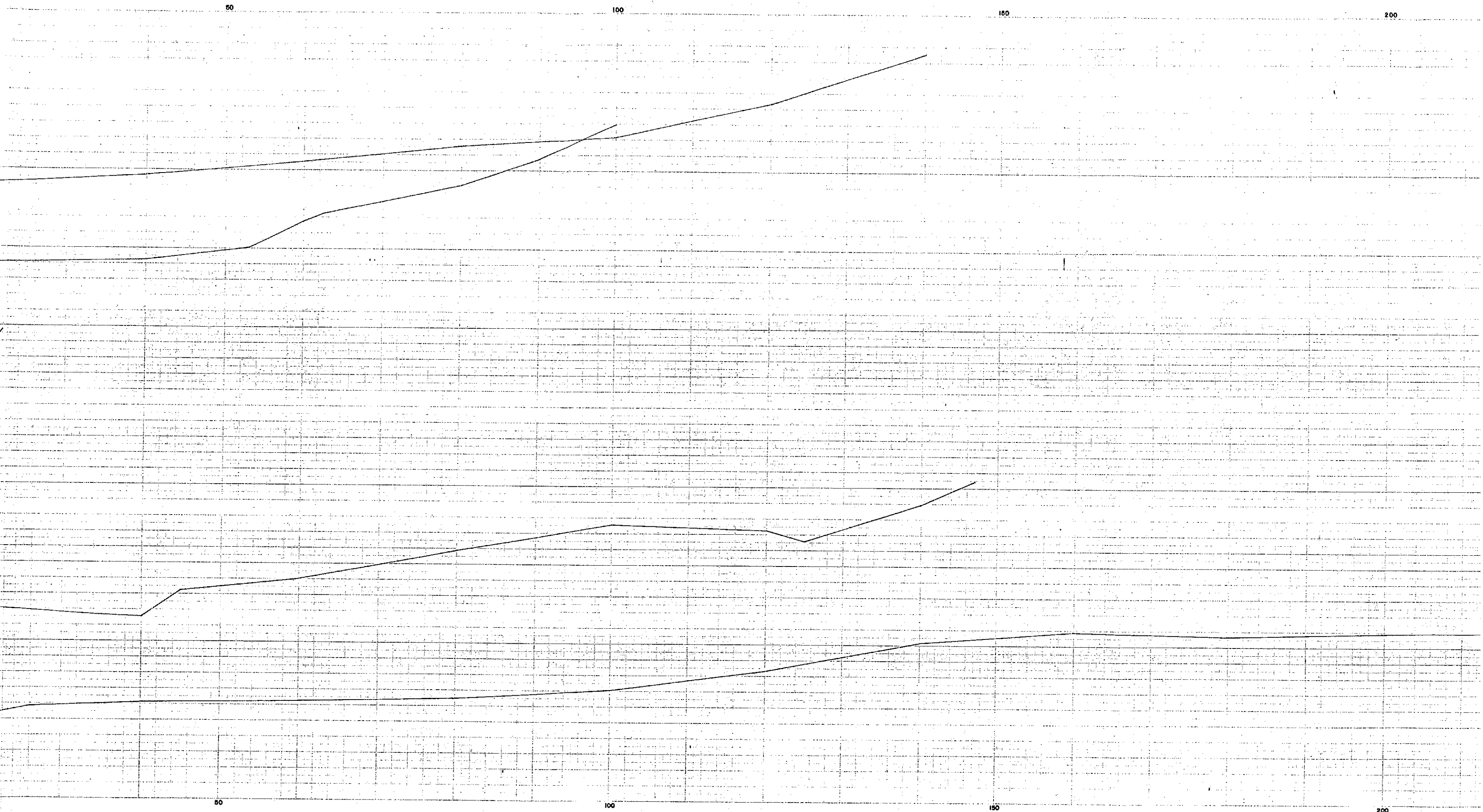
50



100

50

50



50

100

150

200

50

100

150

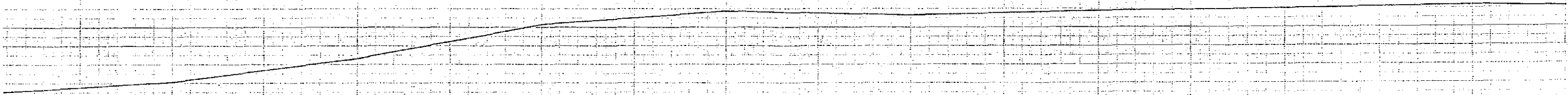
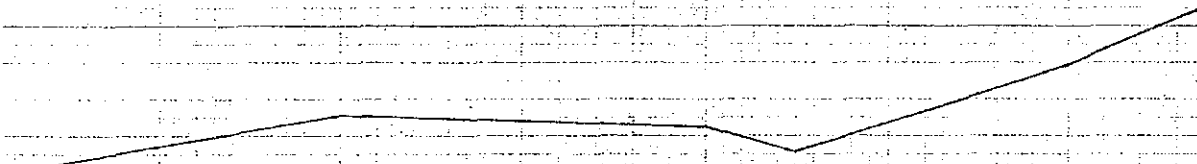
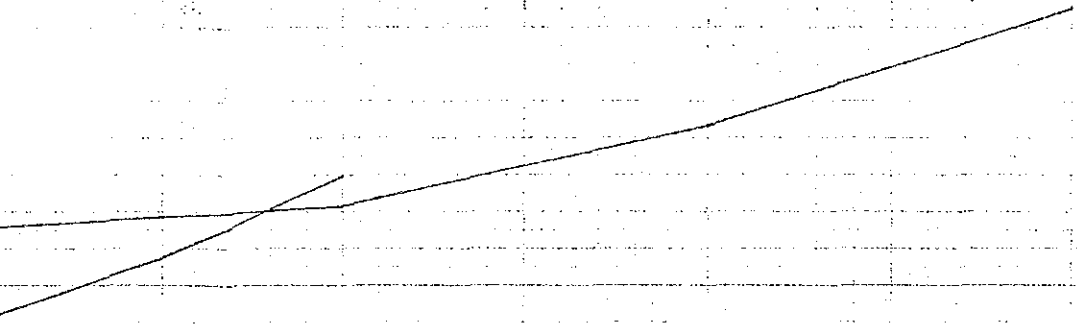
200

100

150

200

250

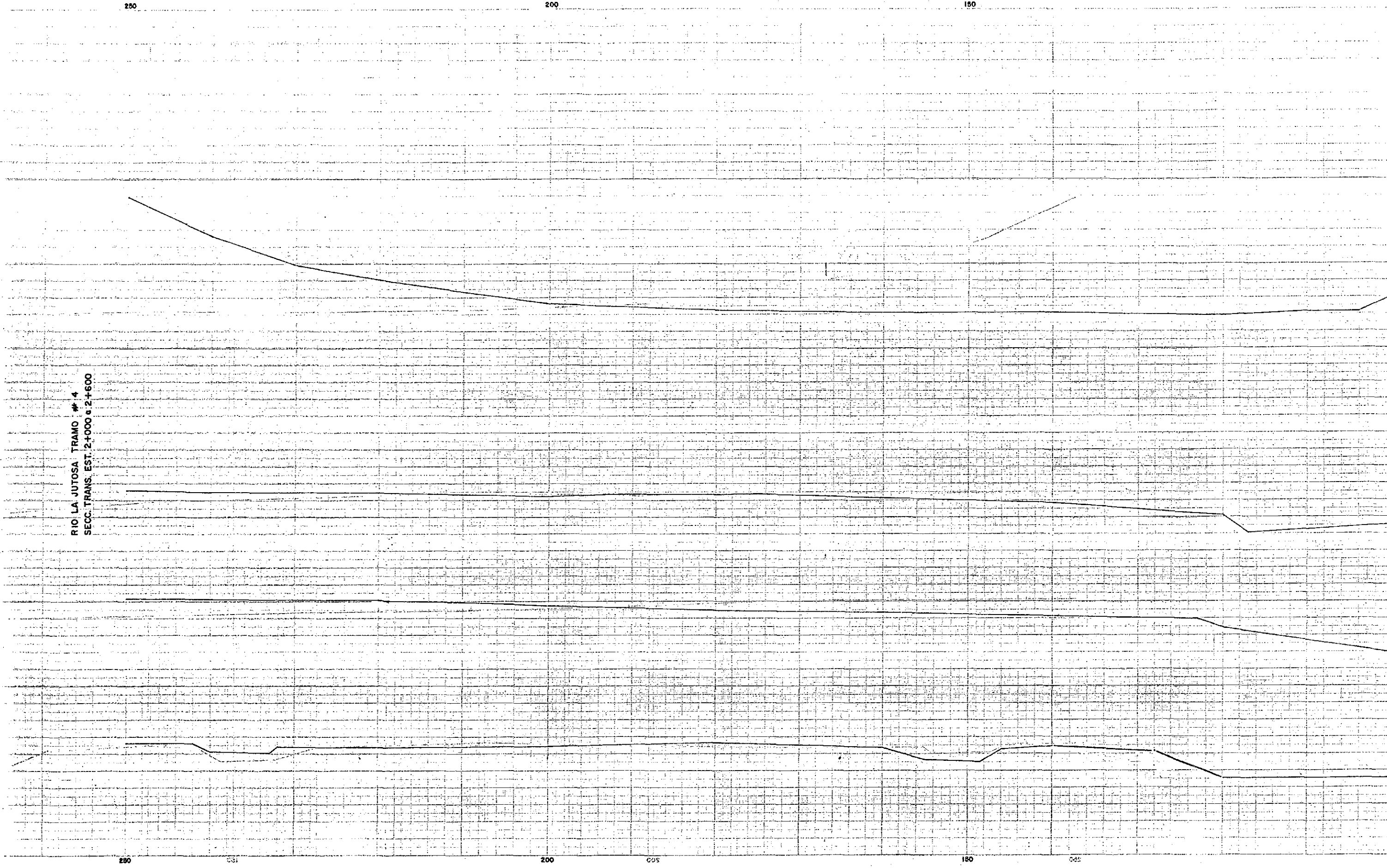


100

150

200

250



RIO LA JUTOSA TRAMO # 4
SECC. TRANS. EST. 2+000 a 2+600

250

200

150

200

150

200

150

150

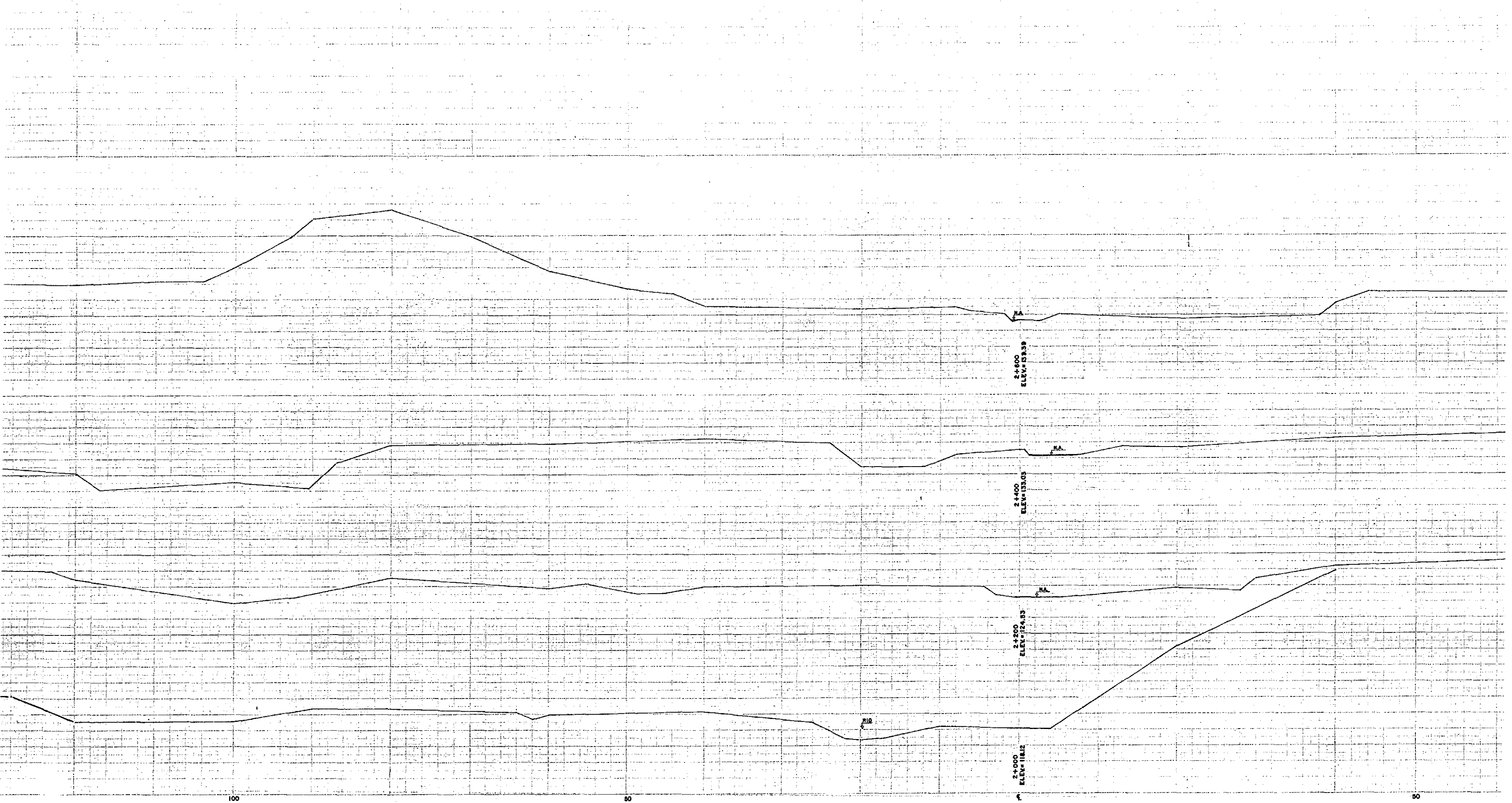
100

100

50

0

50



100

50

0

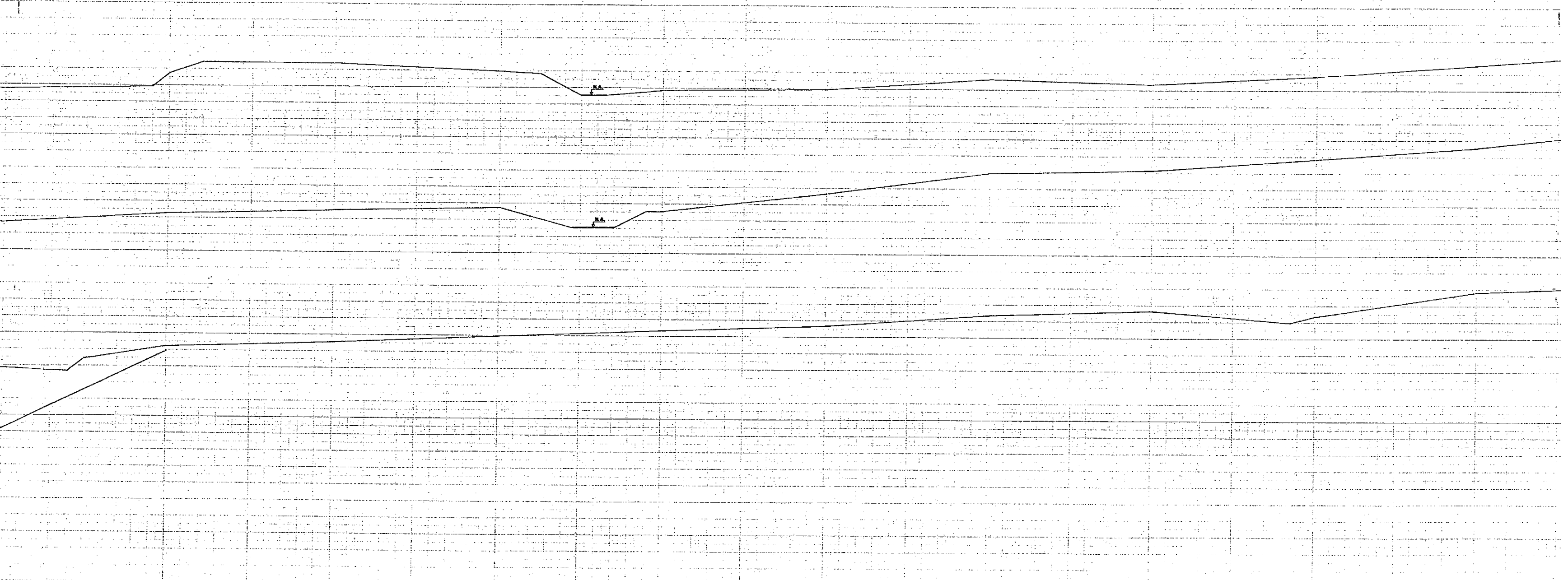
50

50

100

150

200



50

100

150

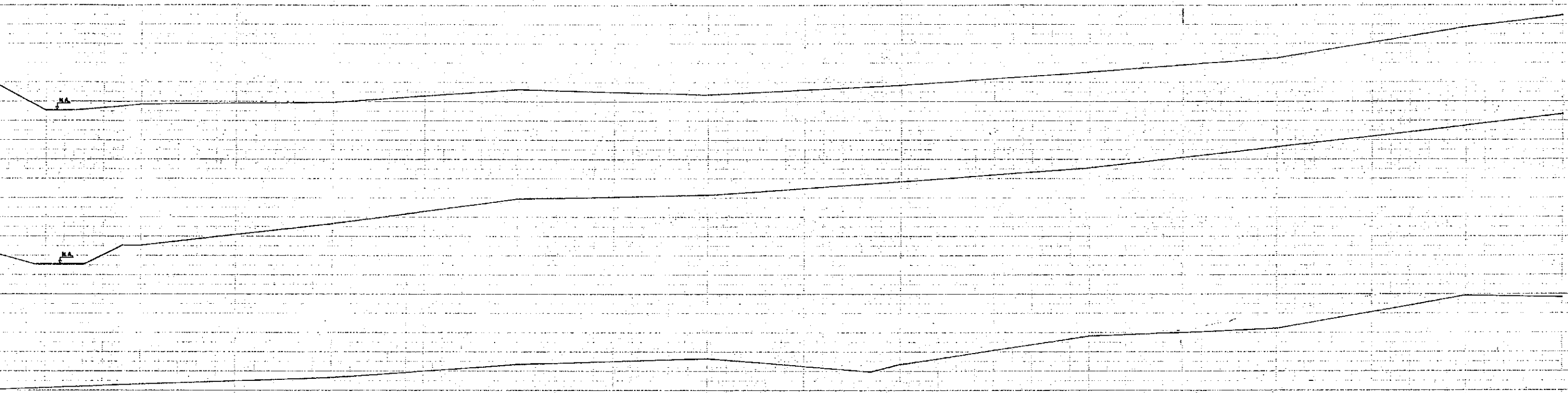
200

100

150

200

250



100

150

200

250