

RIO CHOLOMA TRAMO # 1
SECC. TRANS. EST. 1+000 a 1+800

250

200

150

10

250

200

150

10

100

50

0

50



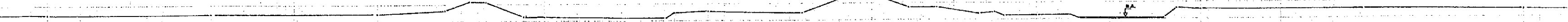
14800
ELEV. 14800

100

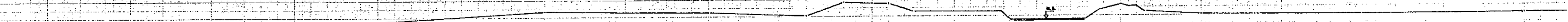
50

0

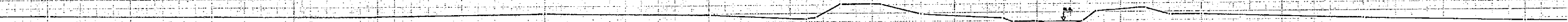
50



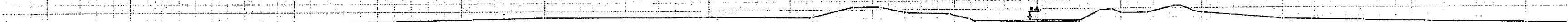
14600
ELEV. 14600



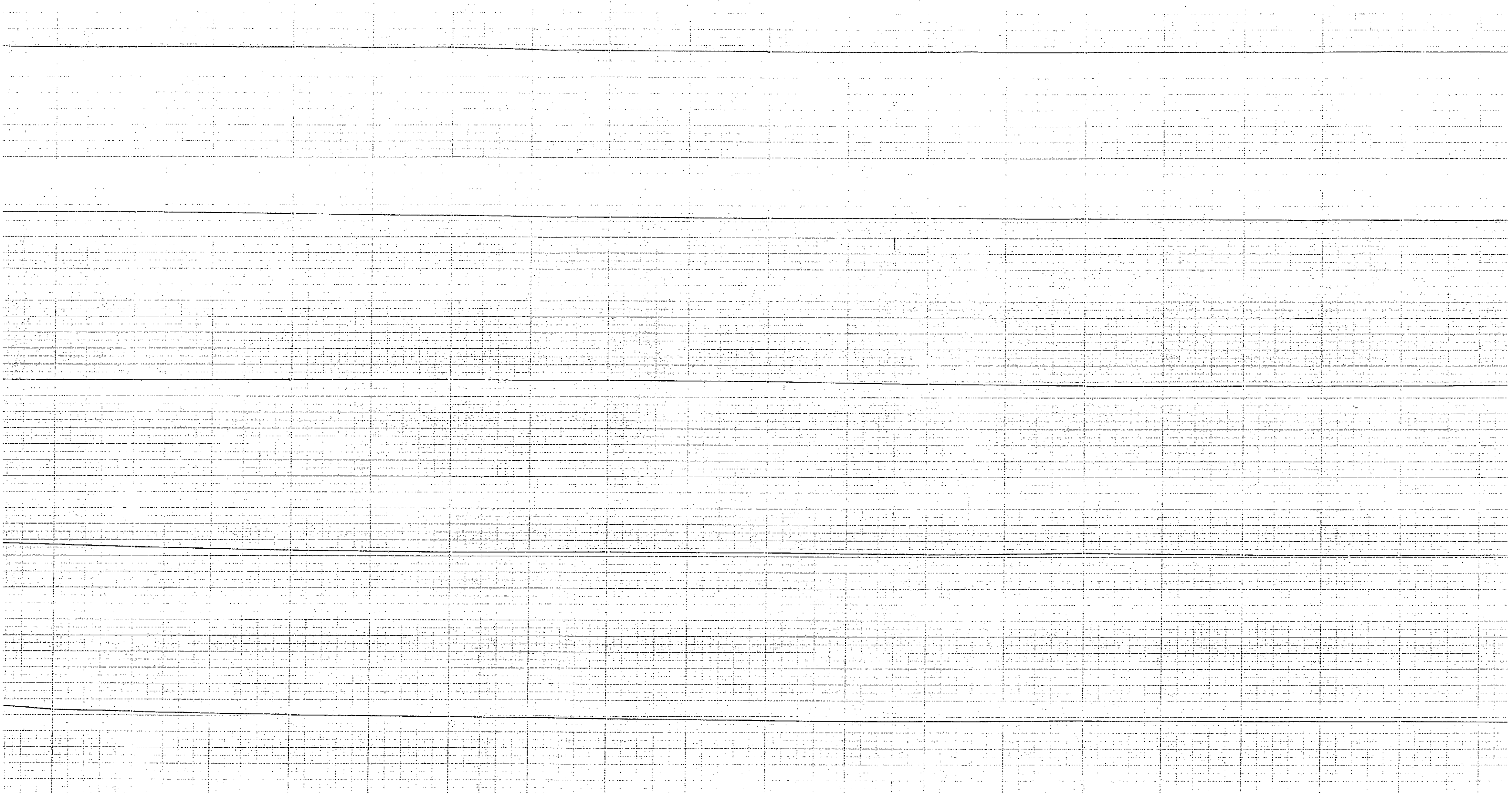
14400
ELEV. 14400



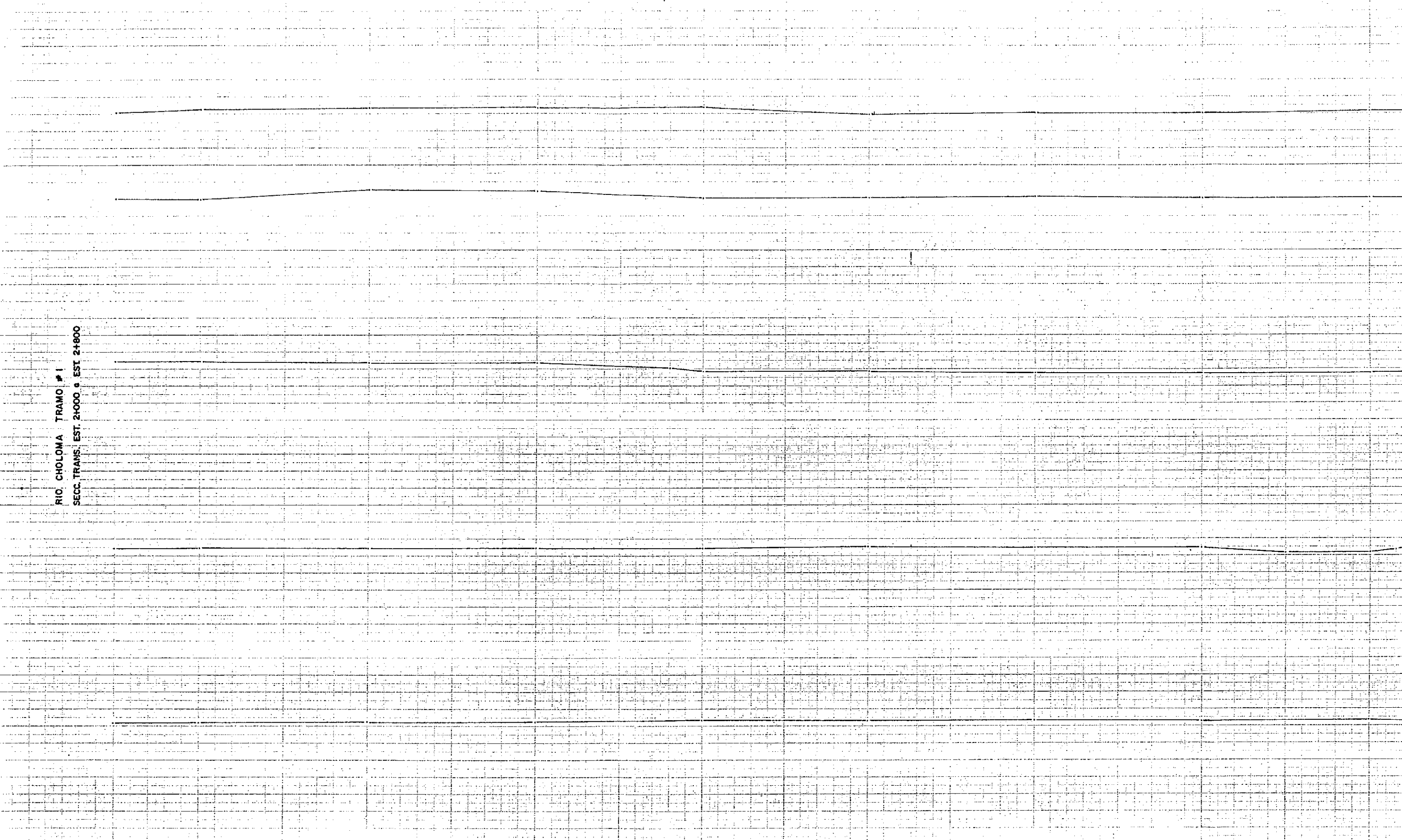
14200
ELEV. 14200



14000
ELEV. 14000



250 200 150 100



RIO. CHOLOMA TRAMO # 1
SECC. TRANS. EST. 2+000. a EST. 2+800

250 200 150 100

100

50

50

M.O.
6

2+800
ELEV=10.34

M.O.
6

2+800
ELEV=10.34

M.O.
6

2+800
ELEV=10.34

M.O.
6

2+800
ELEV=10.34

M.O.
6

2+800
ELEV=10.34

100

50

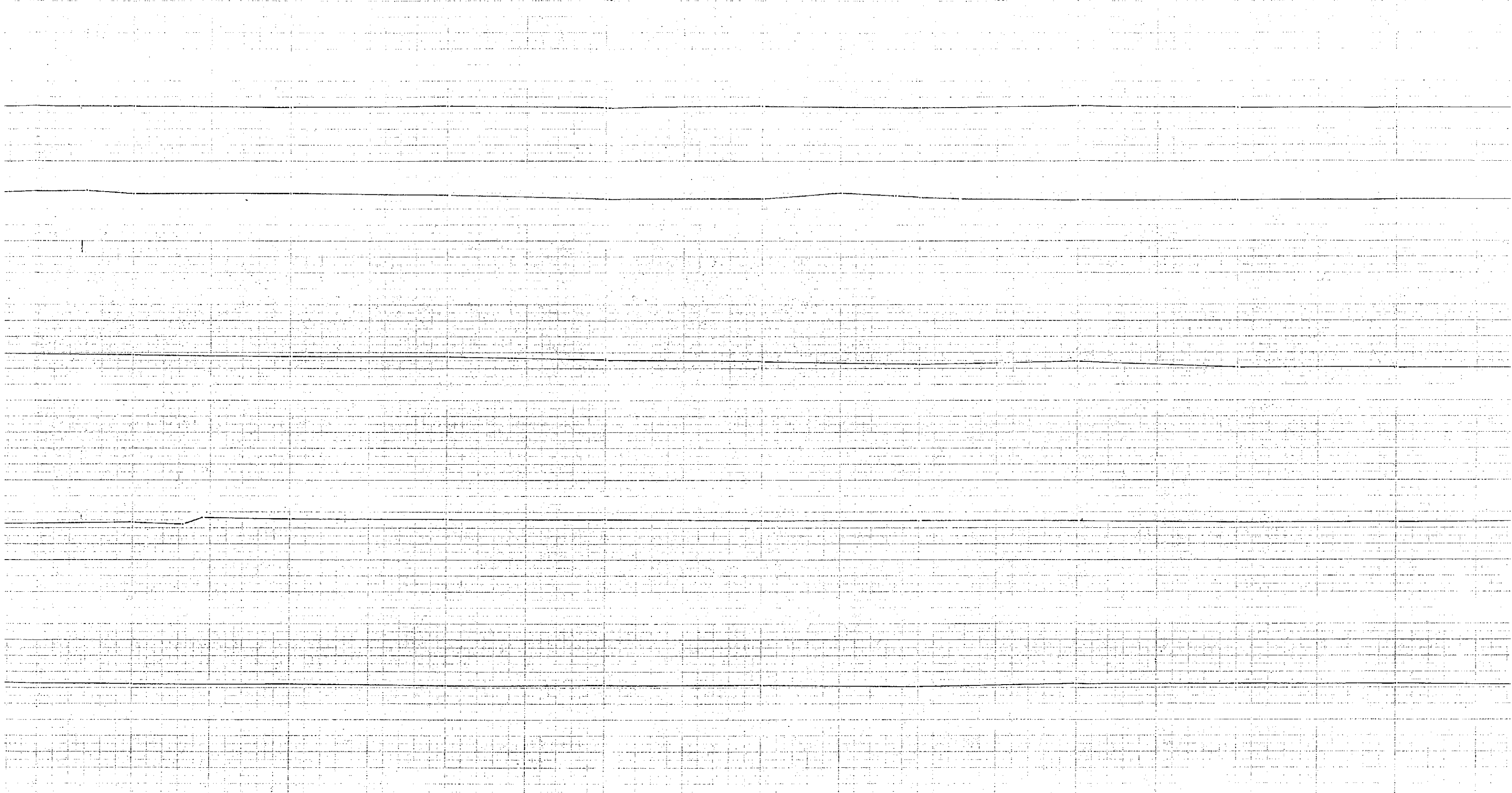
50

50

100

150

200



50

100

150

200

100

150

200

250

100

150

200

250

250

200

150

100

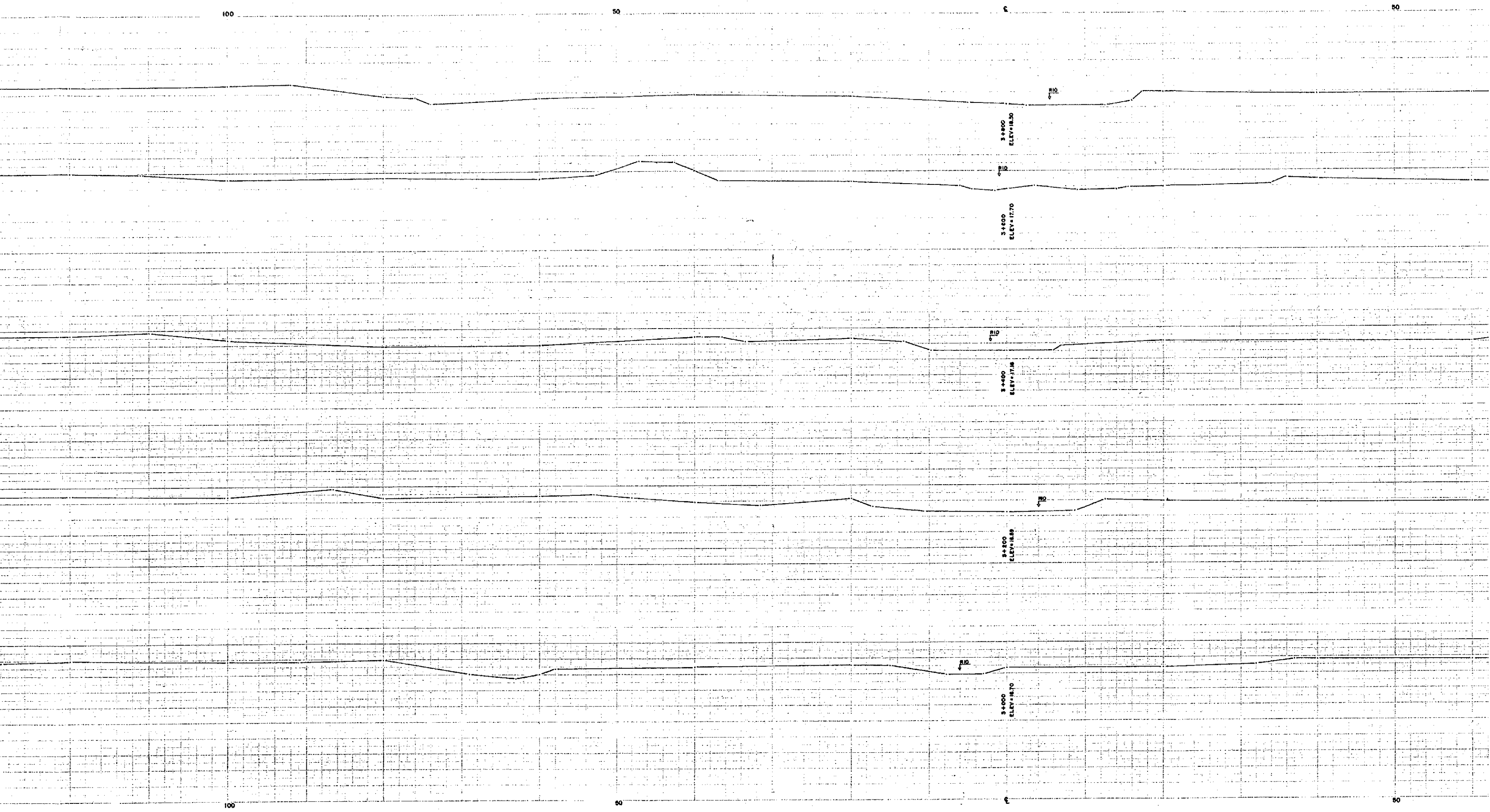
RIO CHOLOMA TRAMO #1
SECC. TRANS. EST. 3+000 a EST. 3+800

250

200

150

100

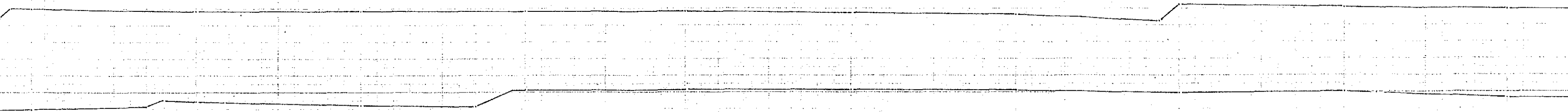


50

100

150

200

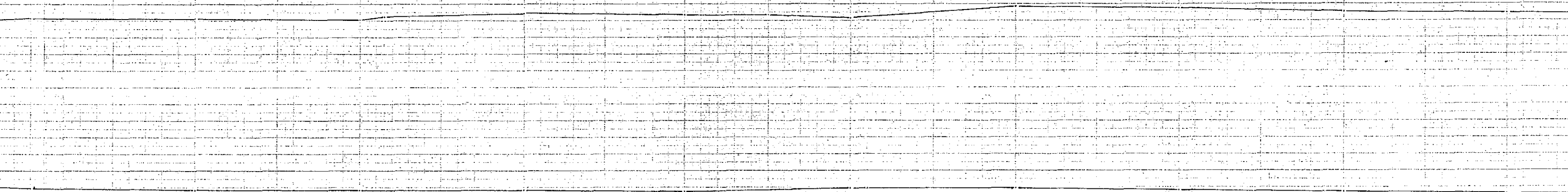


50

100

150

200

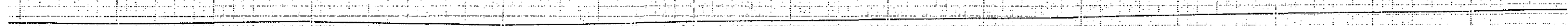
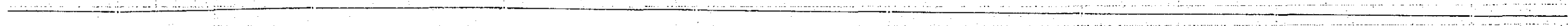
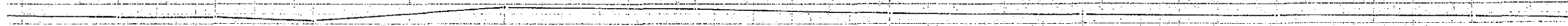
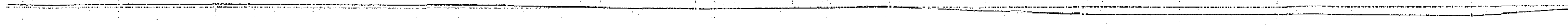


100

150

200

250



100

150

200

250

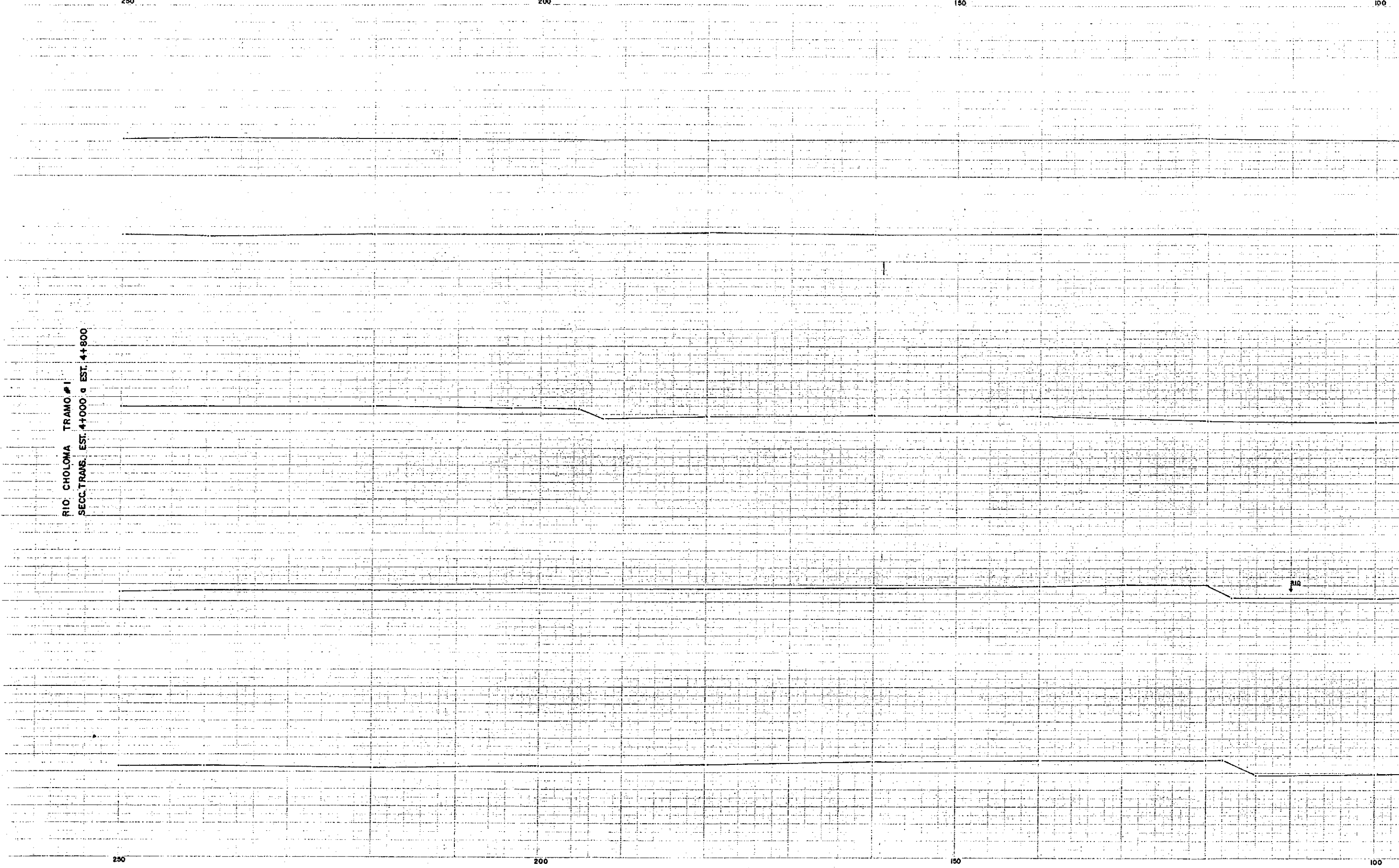
250

200

150

100

RIO CHOLOMA TRAMO #1
SECC. TRANS. EST. 4+000 a EST. 4+800



250

200

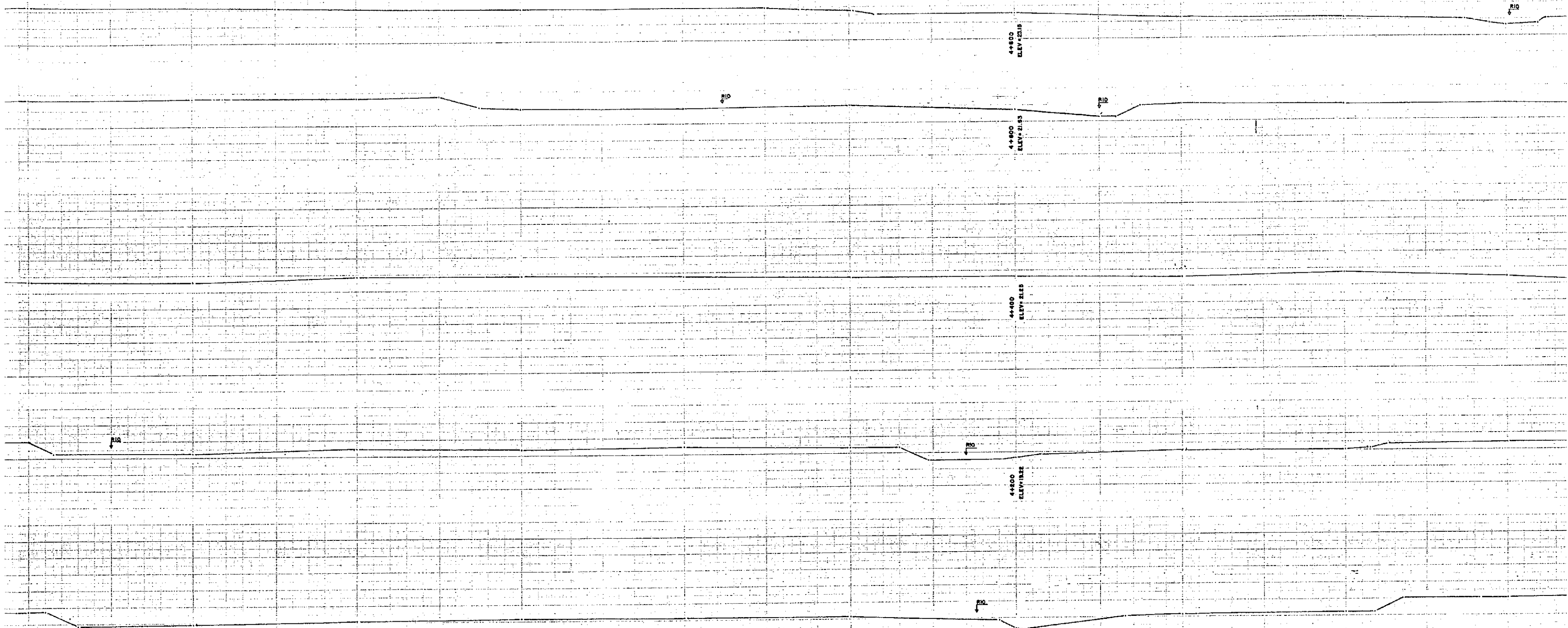
150

100

100

50

50



100

50

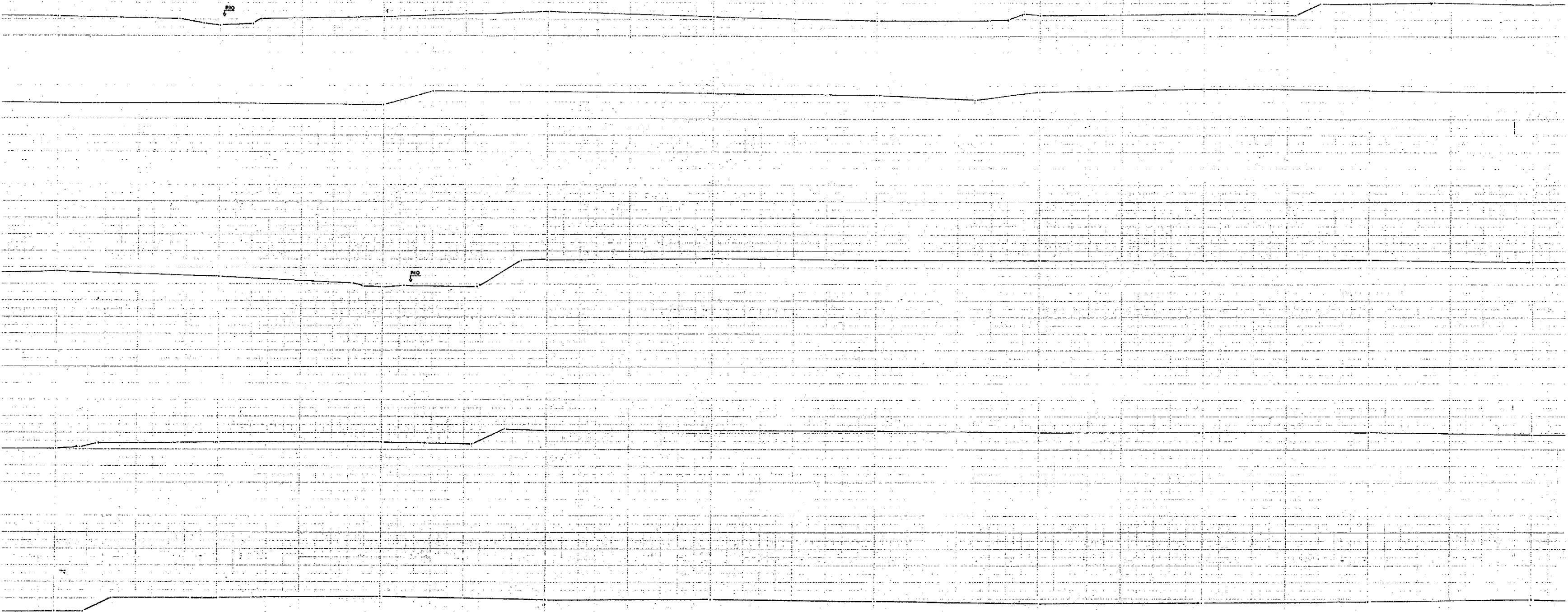
50

50

100

150

200



50

100

150

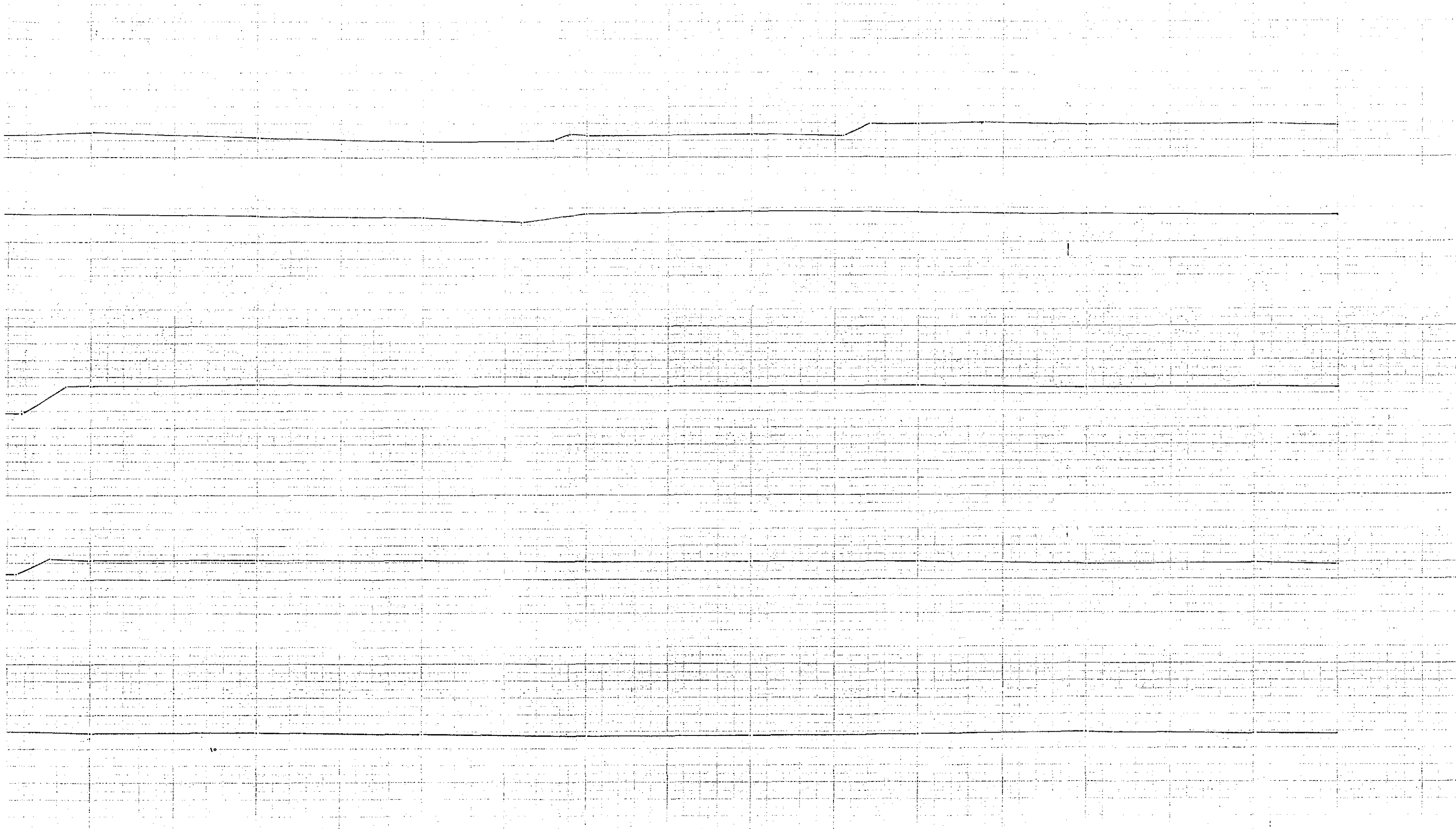
200

100

150

200

250



100

150

200

250

250

200

150

100

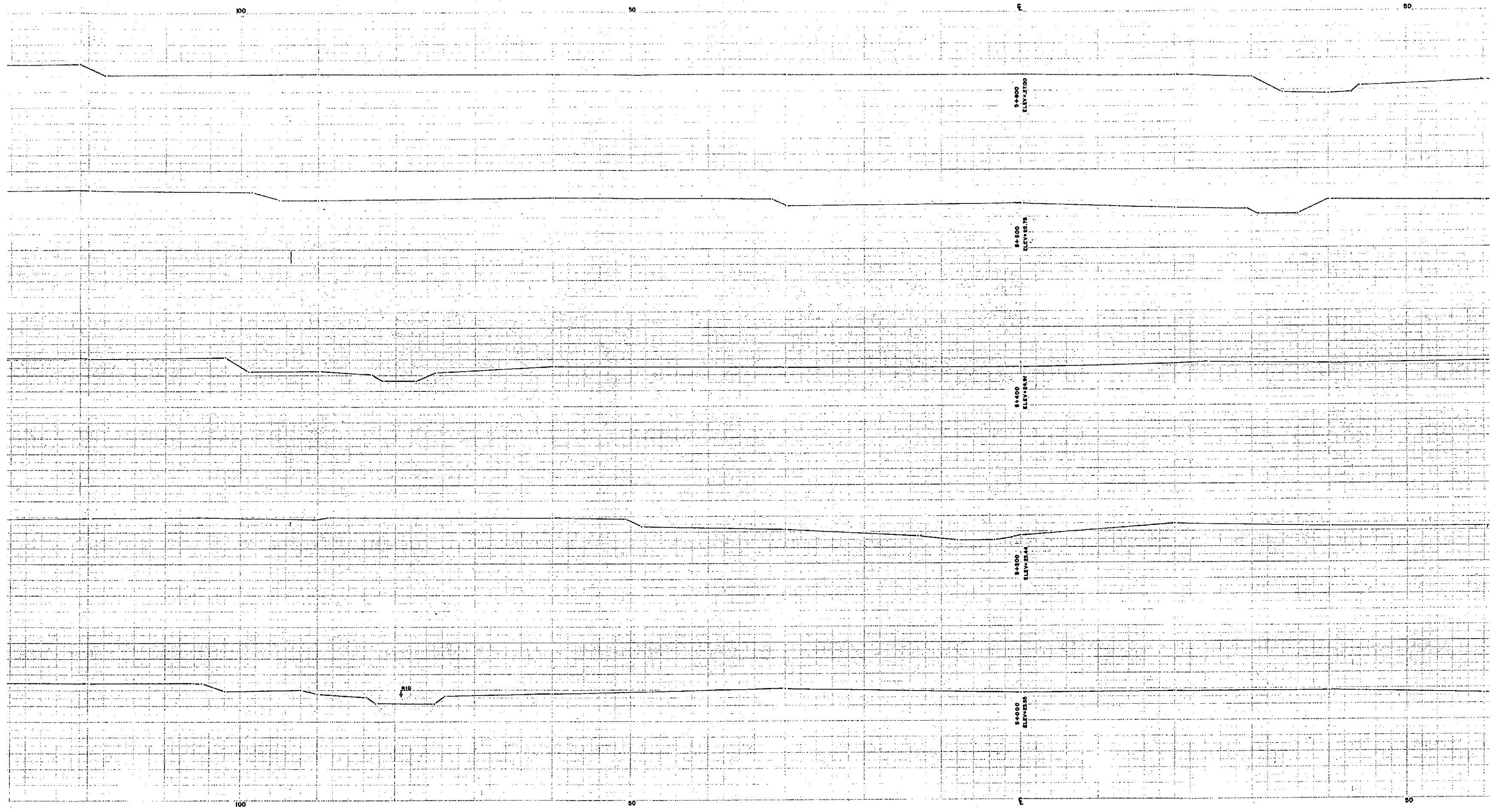
RIO CHOLOMA TRAMO #1
SECC TRANS. EST. 5+000 a 5+800

250

200

150

100



50

100

150

200



50

100

150

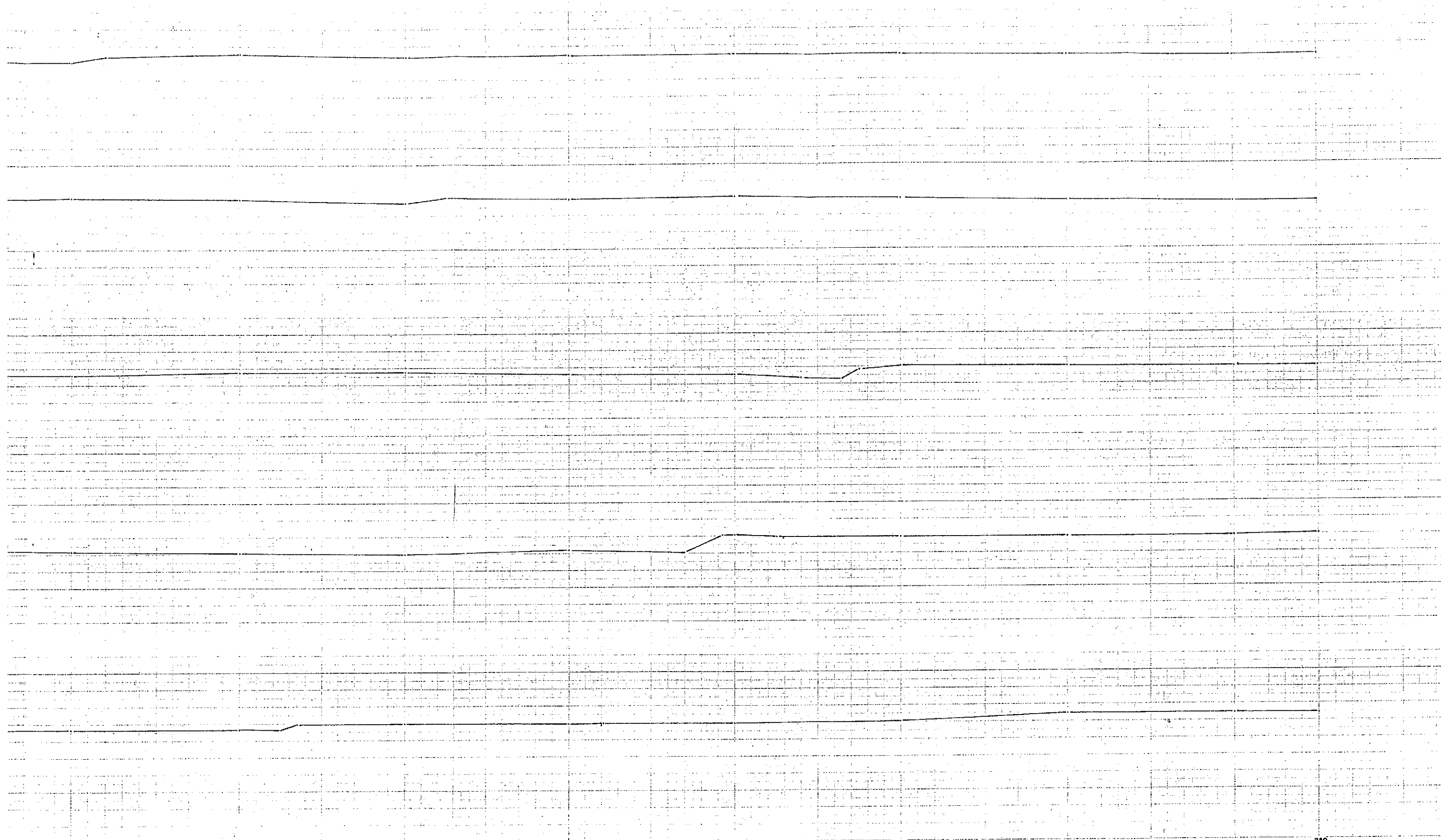
200

100

150

200

250



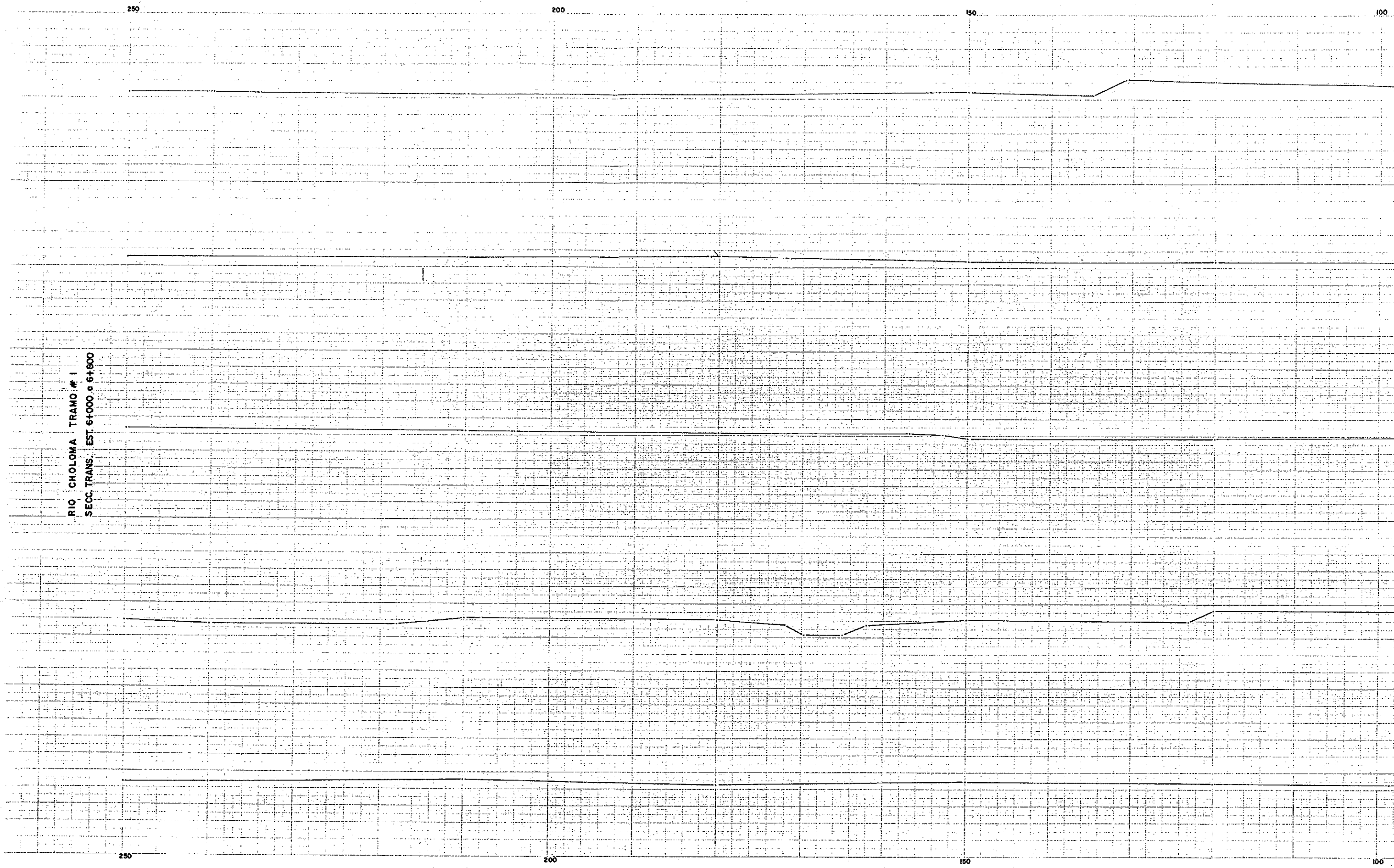
100

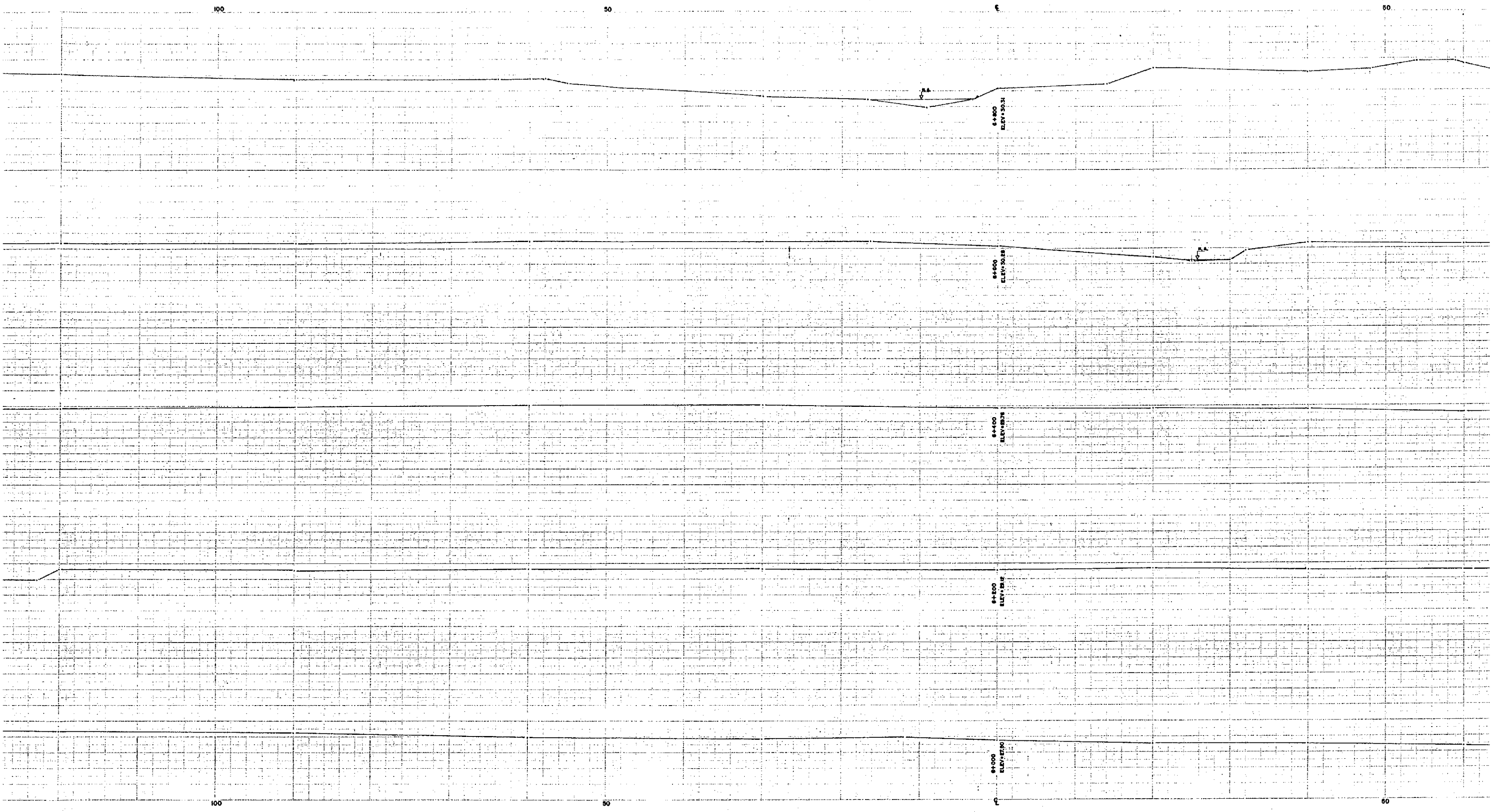
150

200

250

RIO CHOLOMA TRAMO # 1
SECC. TRANS. EST. 6+000 a 6+800





100

50

6

60

6+800
ELEV: 50.31

6+800
ELEV: 50.28

6+800
ELEV: 50.25

6+800
ELEV: 50.22

6+800
ELEV: 50.20

100

50

6

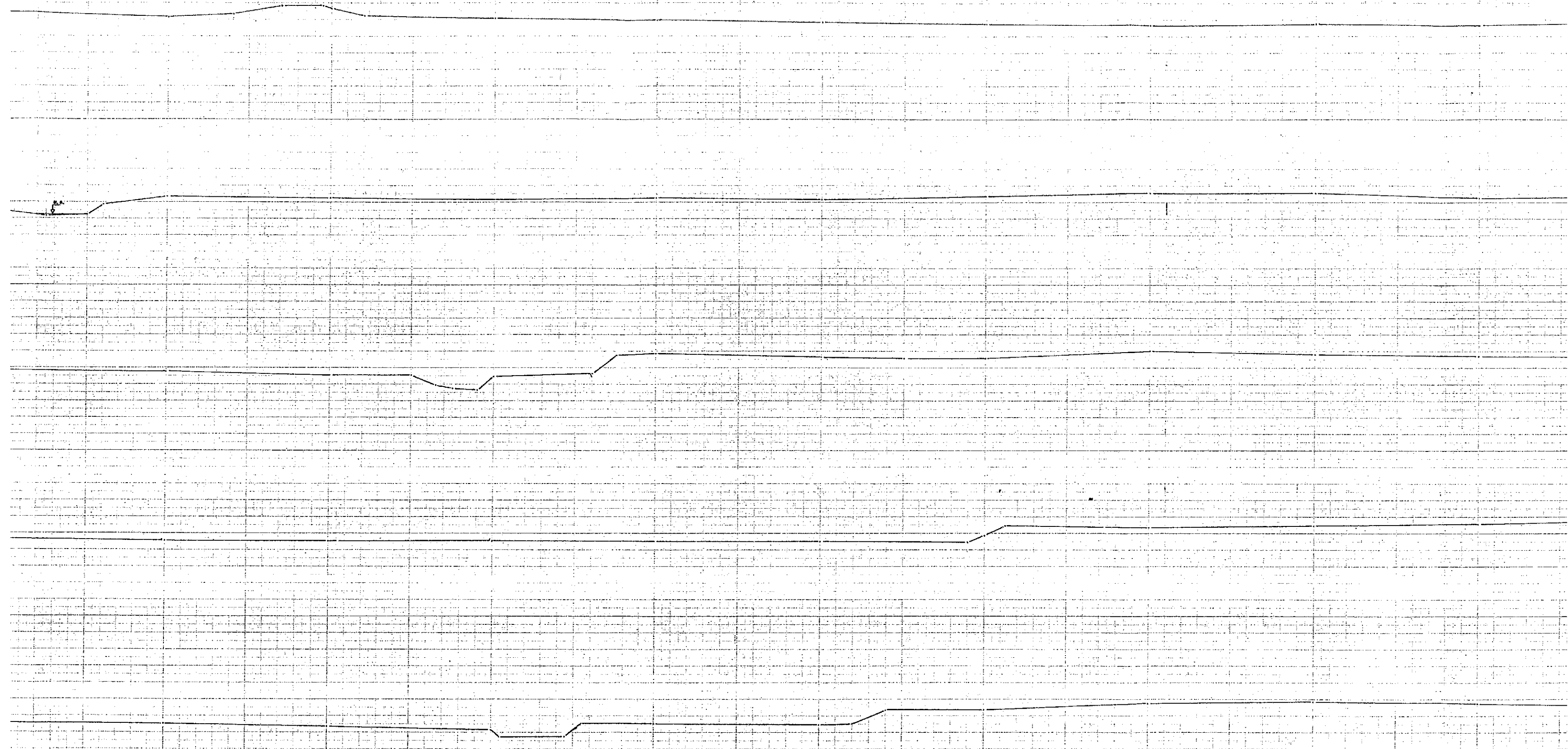
60

80

100

150

200



80

100

150

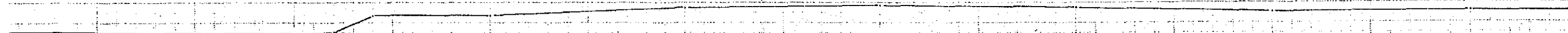
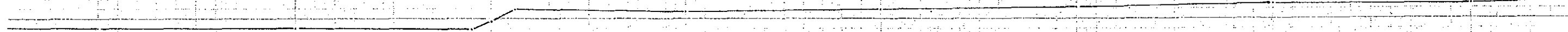
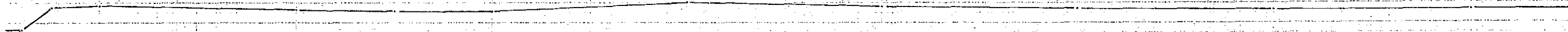
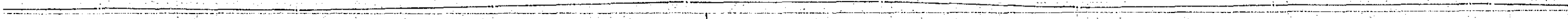
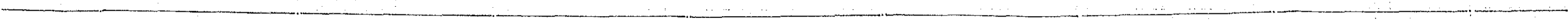
200

100

150

200

250



100

150

200

250

250

200

150

RIO CHOLOMA TRAMO # 1
SECC. TRANS. DE EST. 7+000 a 7+274.38

250

200

150

