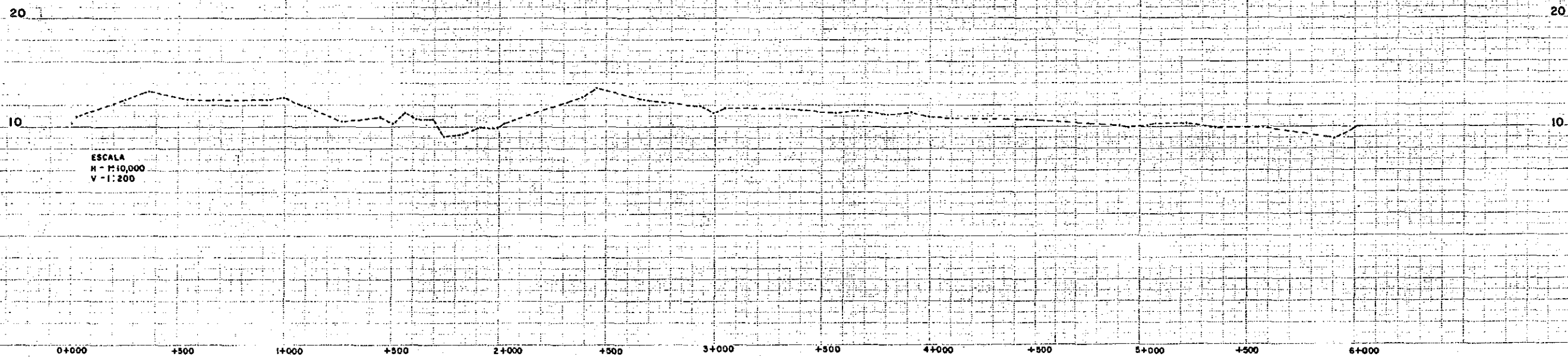
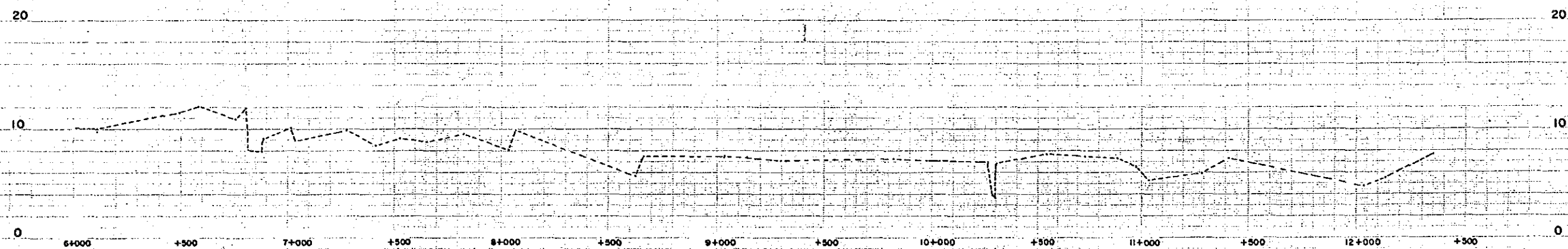
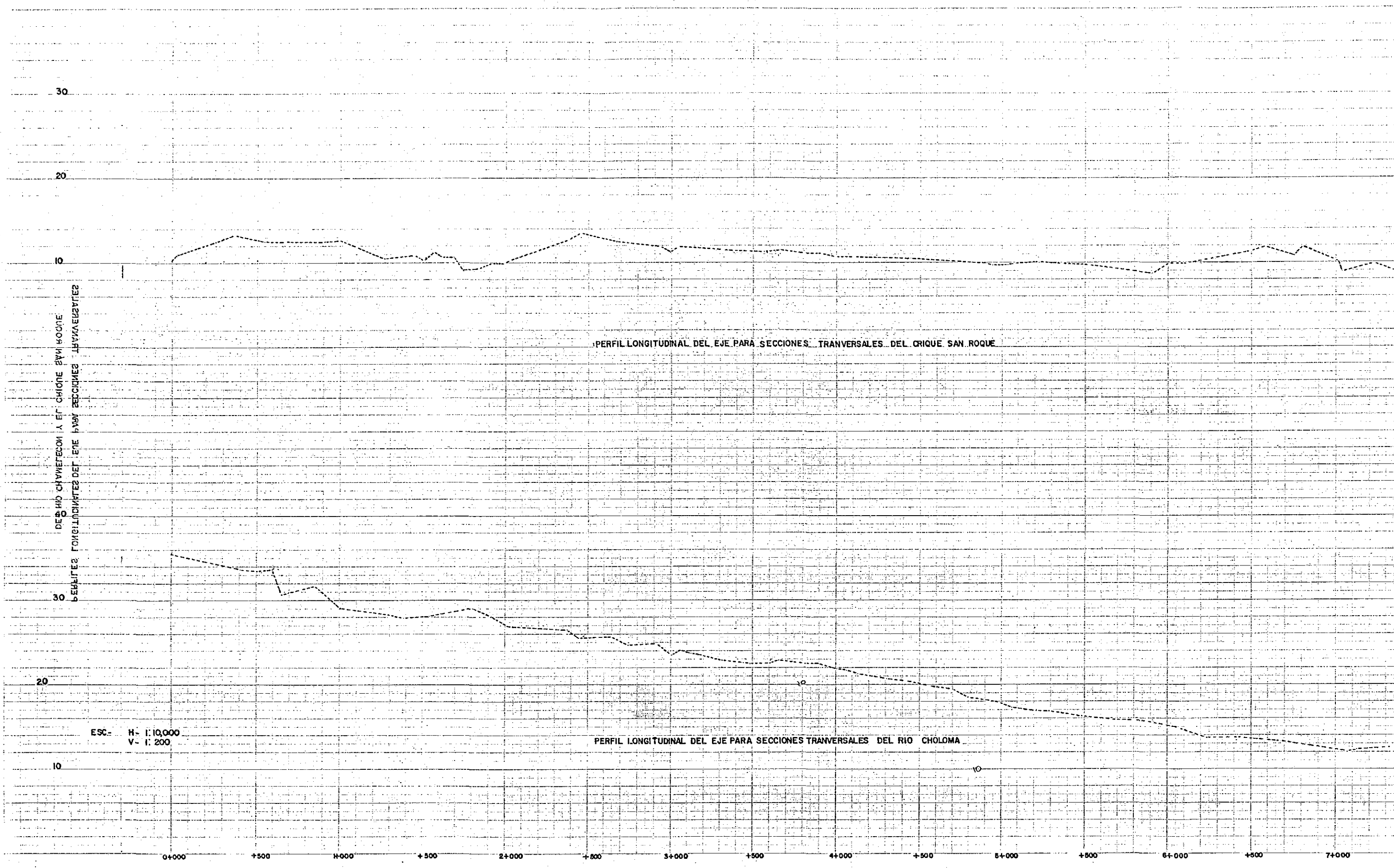
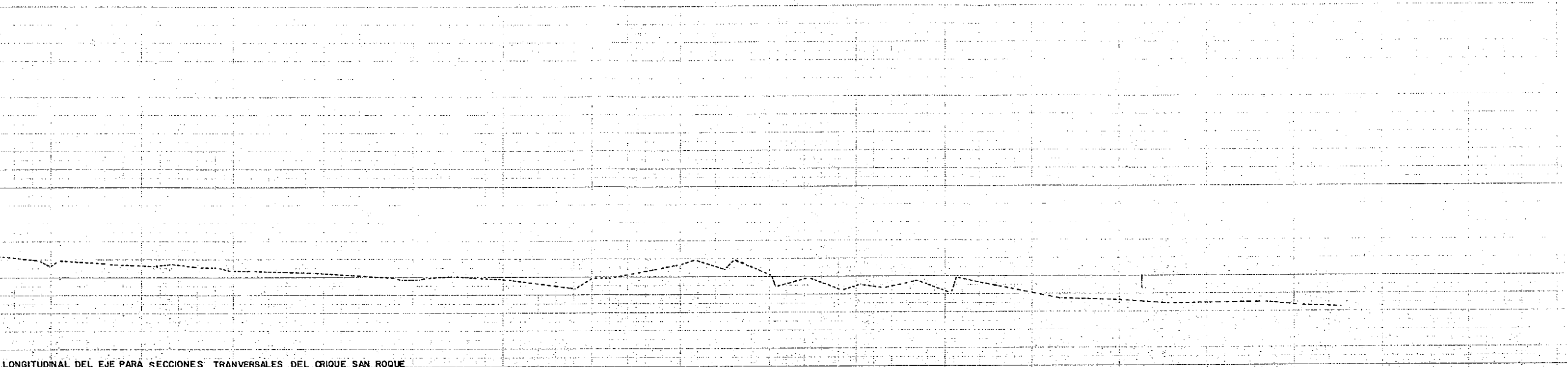


PERFIL LONGITUDINAL DEL EJE PARA SECCIONES
TRANSVERSALES ESTUDIO CANAL SAN ROQUE

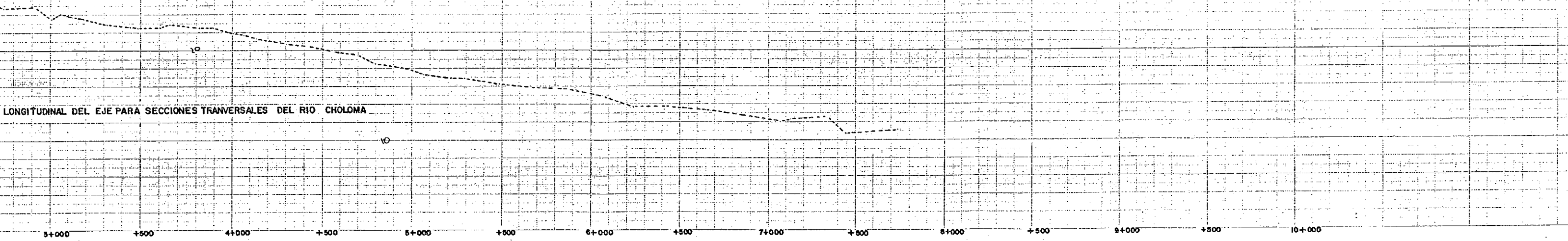


ESCALA
H - 1:10,000
V - 1:200





LONGITUDINAL DEL EJE PARA SECCIONES TRANSVERSALES DEL CRIQUE SAN ROQUE



LONGITUDINAL DEL EJE PARA SECCIONES TRANSVERSALES DEL RIO CHOLOMA

3+000 +500 4+000 +500 5+000 +500 6+000 +500 7+000 +500 8+000 +500 9+000 +500 10+000

150 140 130 120 110 100 90 80 70 60 50 40 30 20 10 0

COMPLEMENTO SECCIONES TRANSVERSALES
ESTUDIO CANAL SAN ROQUE - FINAL EN CANAL
LOS CUABANOS

150 140 130 120 110 100 90 80 70 60 50 40 30 20 10 0

EST 6000 m. DER. SECCION 22+384.60
CANAL SAN ROQUE + EST. 0+000
ELEV. 2.70
CANAL LOS CUABANOS ELEV. 2.70

EST 25+384.60
ELEV. 2.70
CANAL SAN ROQUE FIN

EST 0+000
ELEV. 2.70
CANAL SAN ROQUE

10

10

10

20 10 0 10 20 30 40 50 60 70 80 90 100 110 120 130 140 150 160

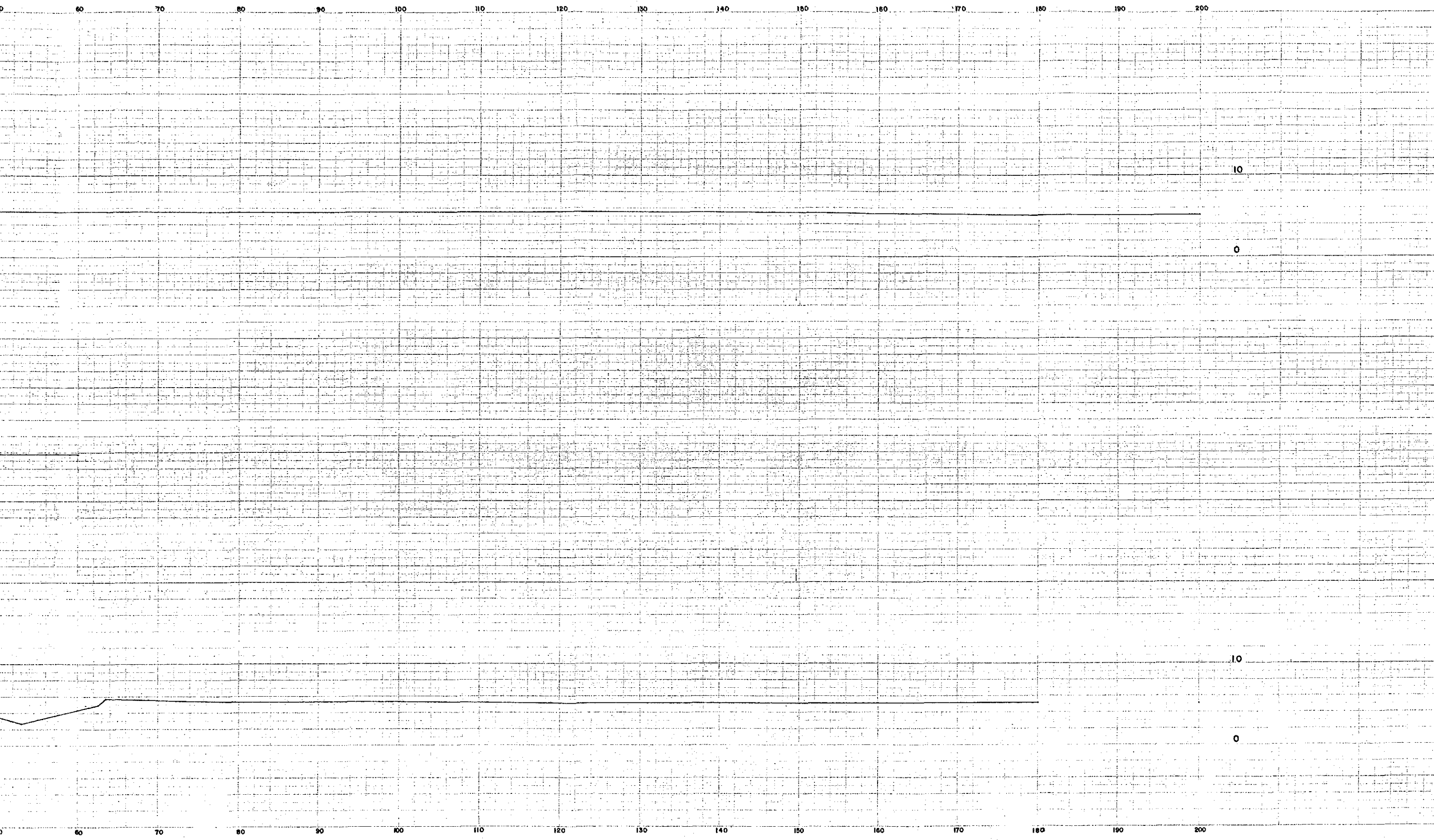
10
0
DST. 60+00-75. SEE RECORD BY 384.60
CANAL SAN ROQUE - EST. 61+000
SECCION BARRIO CANAL SAN ROQUE
CUBANOS ELEV. 8.70

10
0
EST. 12+254.60
ELEV. 7.93
CANAL SAN ROQUE FIN

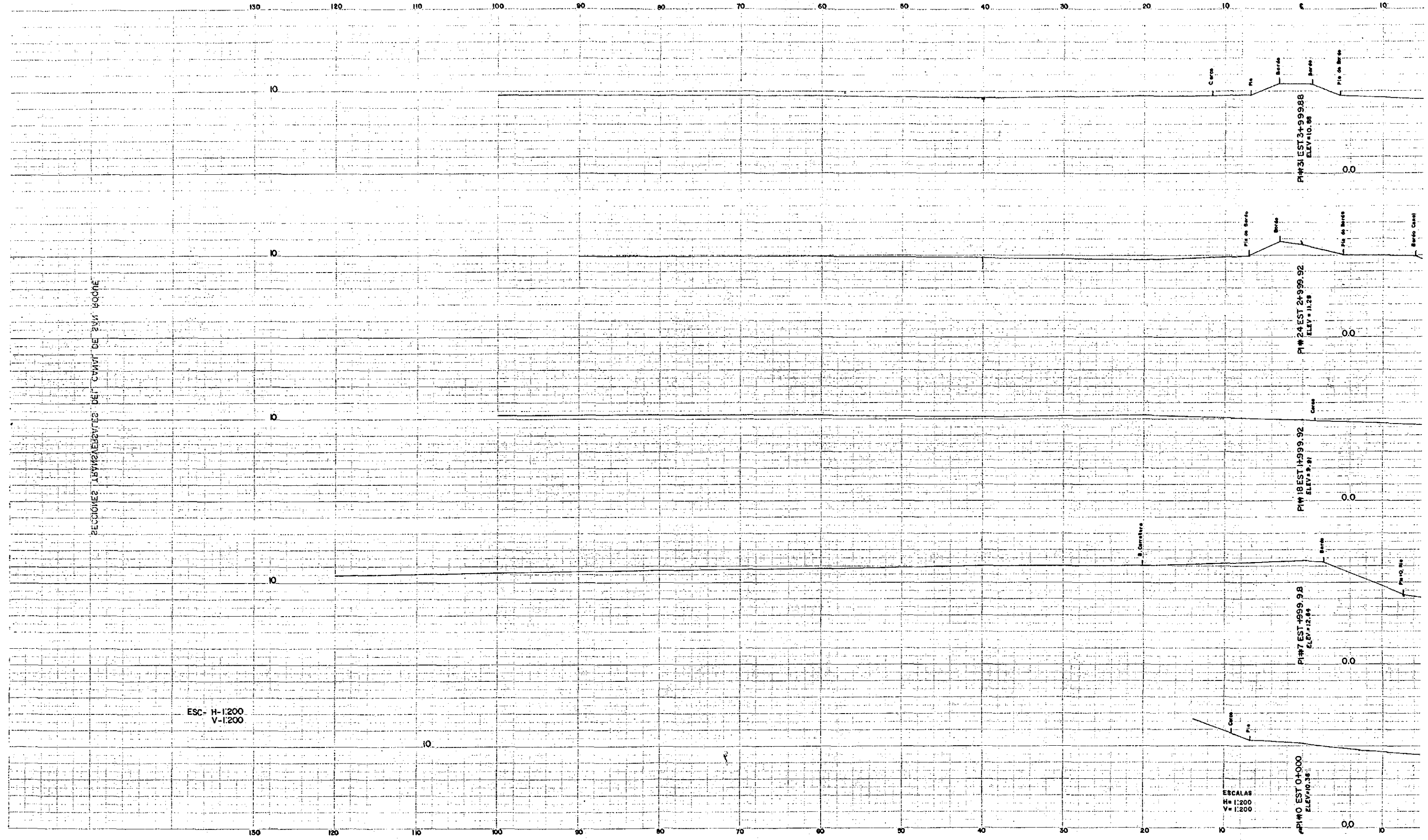
10
0
EST. 0+000
ELEV. 6.51
CANAL SAN ROQUE

ESCALA
H = 1:200
V = 1:200

20 10 0 10 20 30 40 50 60 70 80 90 100 110 120 130 140 150 160



RECORDED DRAWING COPY OF THE ORIGINAL DRAWING



ESC- H-1:200
V-1:200

ESCALAS
H=1:200
V=1:200

PI#0 EST 0+000
ELEV=10.38

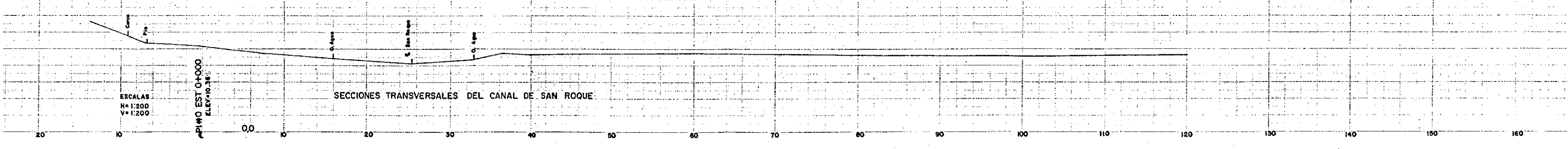
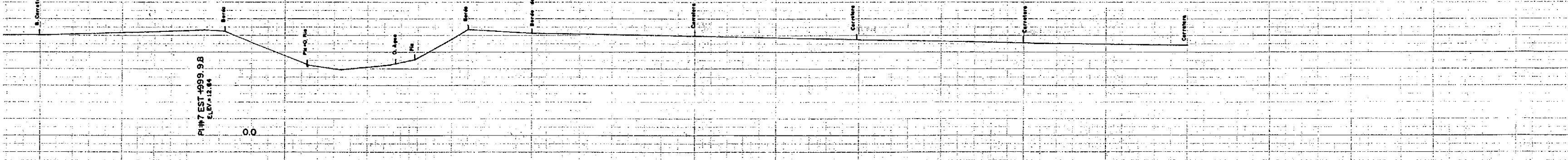
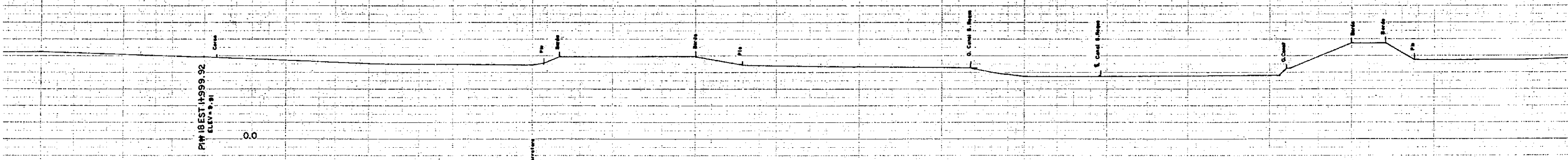
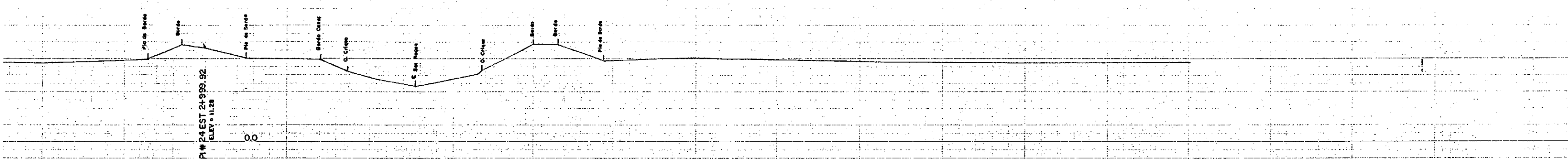
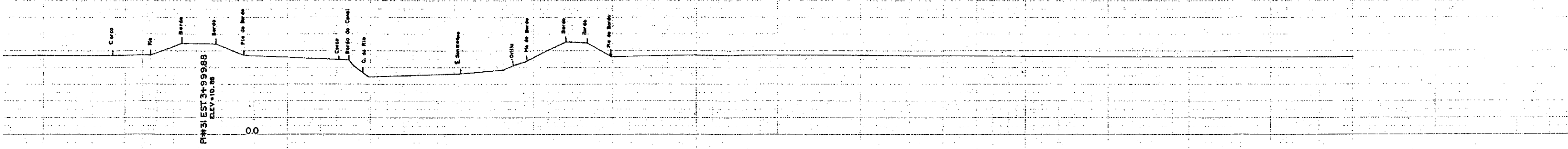
PI#7 EST 1999.98
ELEV=12.84

PI#18 EST 14999.92
ELEV=9.81

PI#24 EST 24999.92
ELEV=11.28

PI#31 EST 34999.88
ELEV=10.88

20 10 0 10 20 30 40 50 60 70 80 90 100 110 120 130 140 150 160

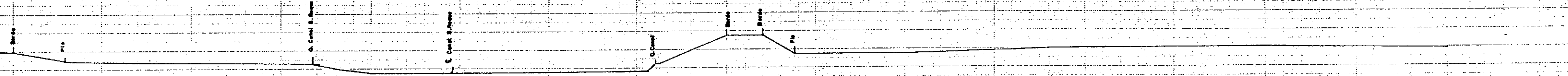


ESCALAS
H = 1:200
V = 1:200

SECCIONES TRANSVERSALES DEL CANAL DE SAN ROQUE

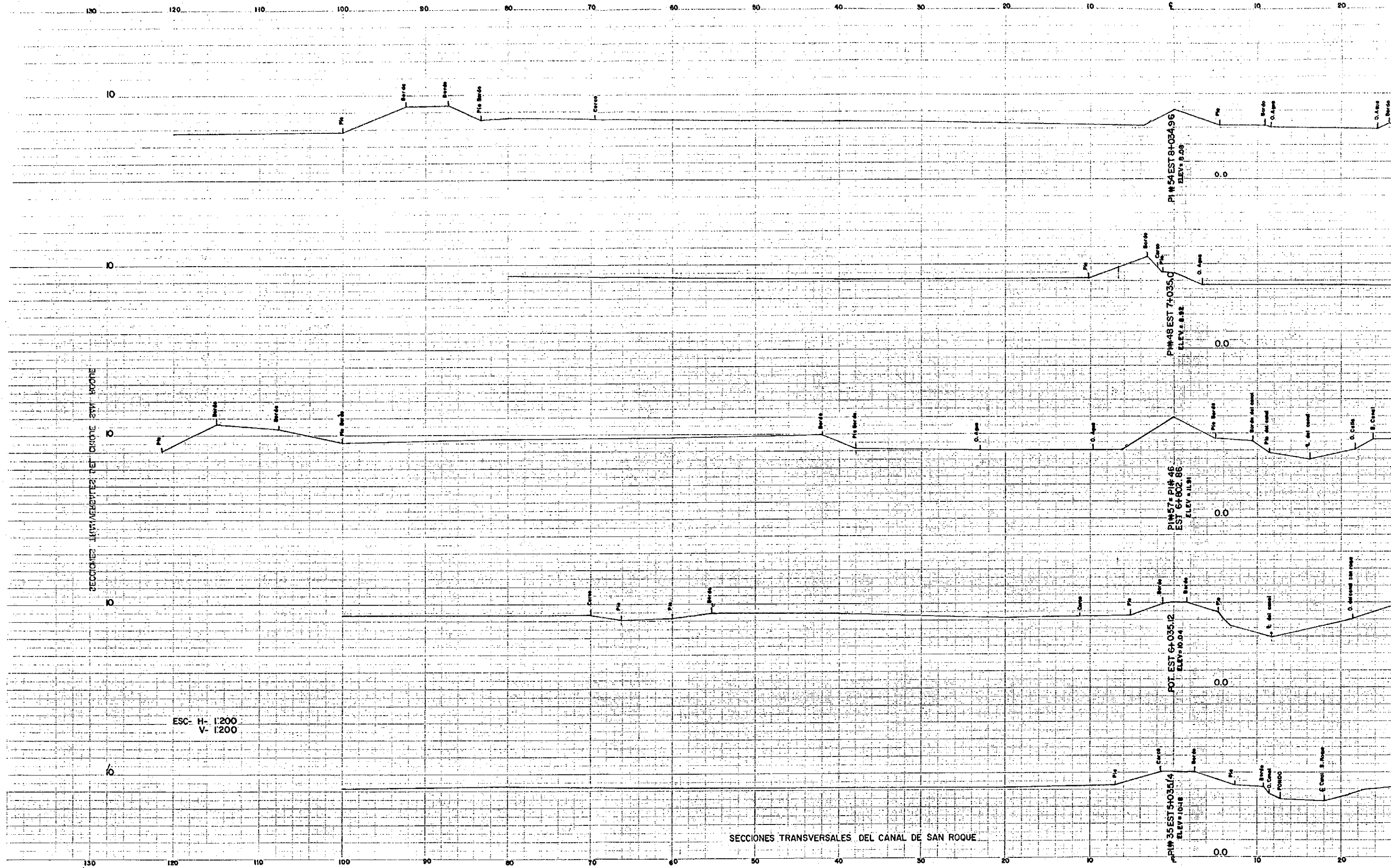
20 10 0 10 20 30 40 50 60 70 80 90 100 110 120 130 140 150 160

60 70 80 90 100 110 120 130 140 150 160 170 180 190 200 210 220 230

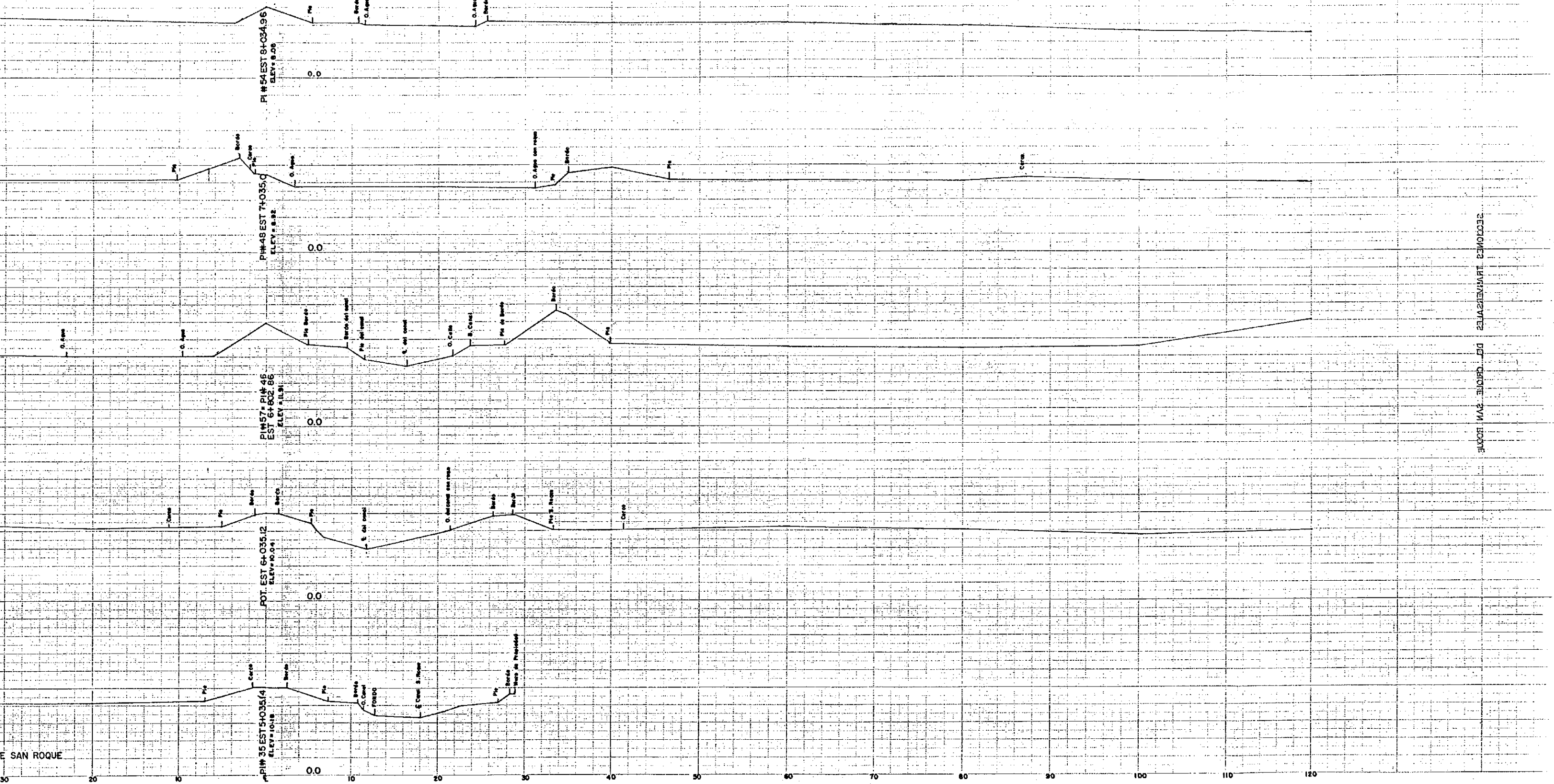


Concrete
Concrete
Concrete
Concrete

60 70 80 90 100 110 120 130 140 150 160 170 180 190 200 210 220 230



30 20 10 0 10 20 30 40 50 60 70 80 90 100 110 120



E SAN ROQUE

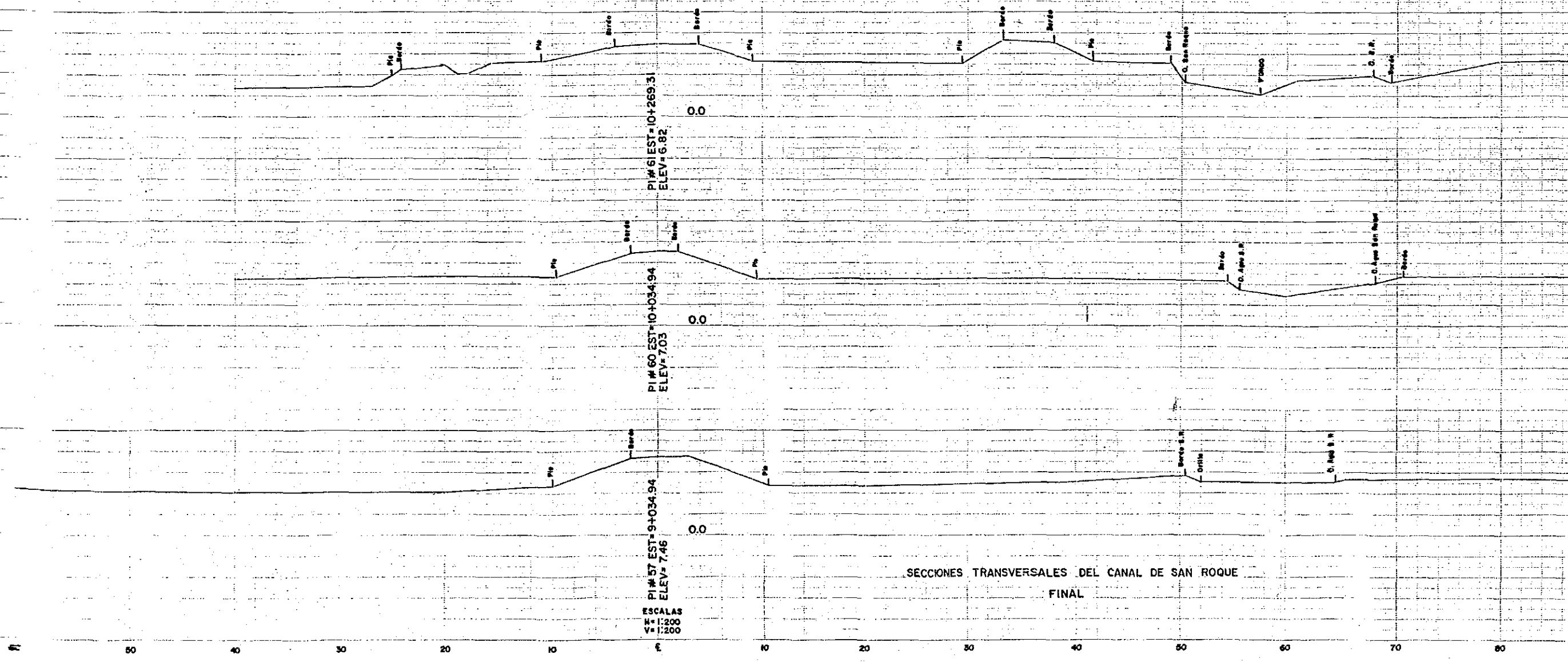
SECCIONES TRANSVERSAL DE CALLE SAN ROQUE

LIVEL
SECCIONES TRANSVERSALES DEL CANAL DE SAN ROQUE

10

10

10



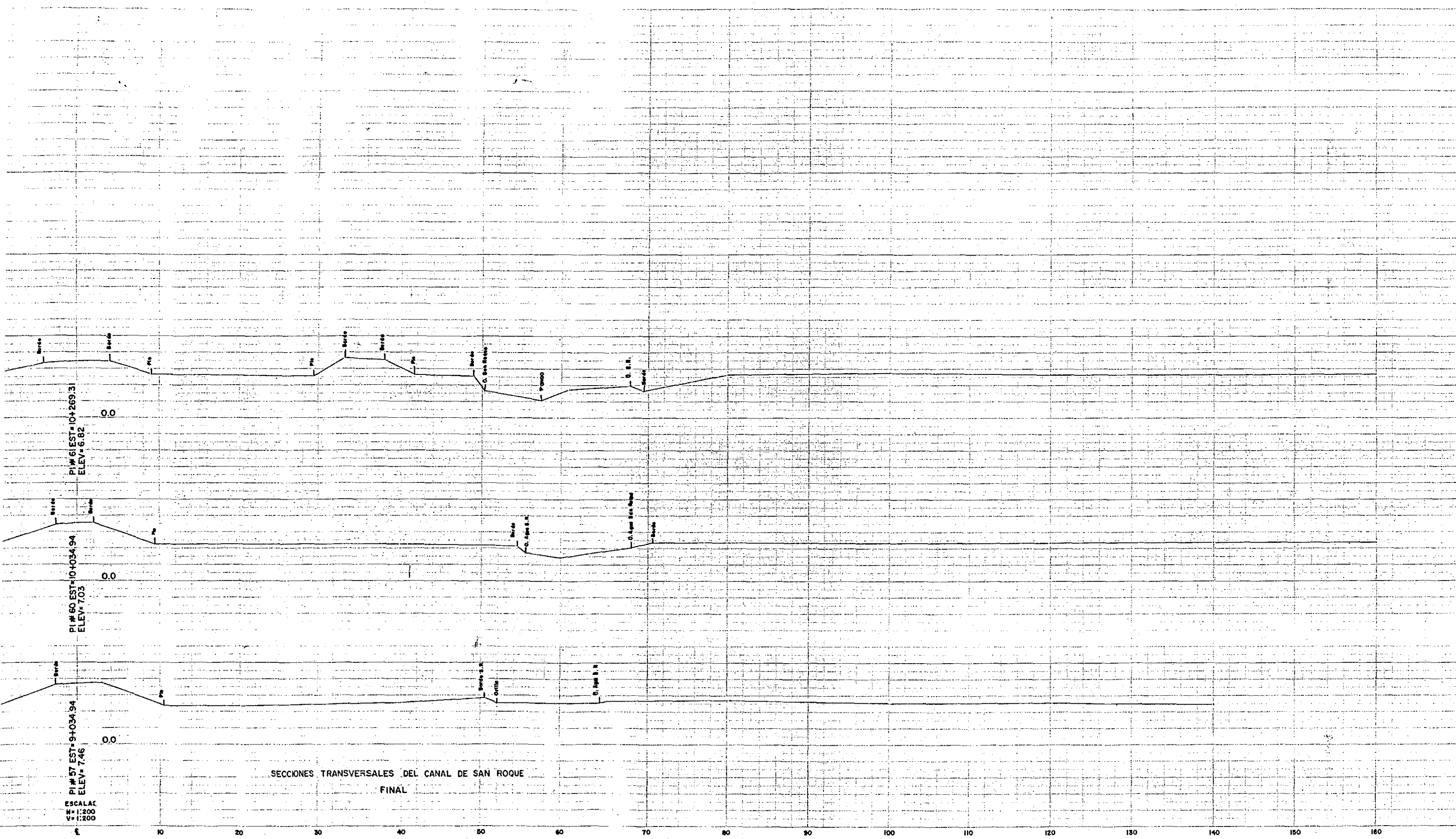
PI# 61 EST=10+269.3
ELEV=6.82

PI# 60 EST=10+034.94
ELEV=7.03

PI# 57 EST=9+034.94
ELEV=7.46

ESCALAS
H=1:200
V=1:200

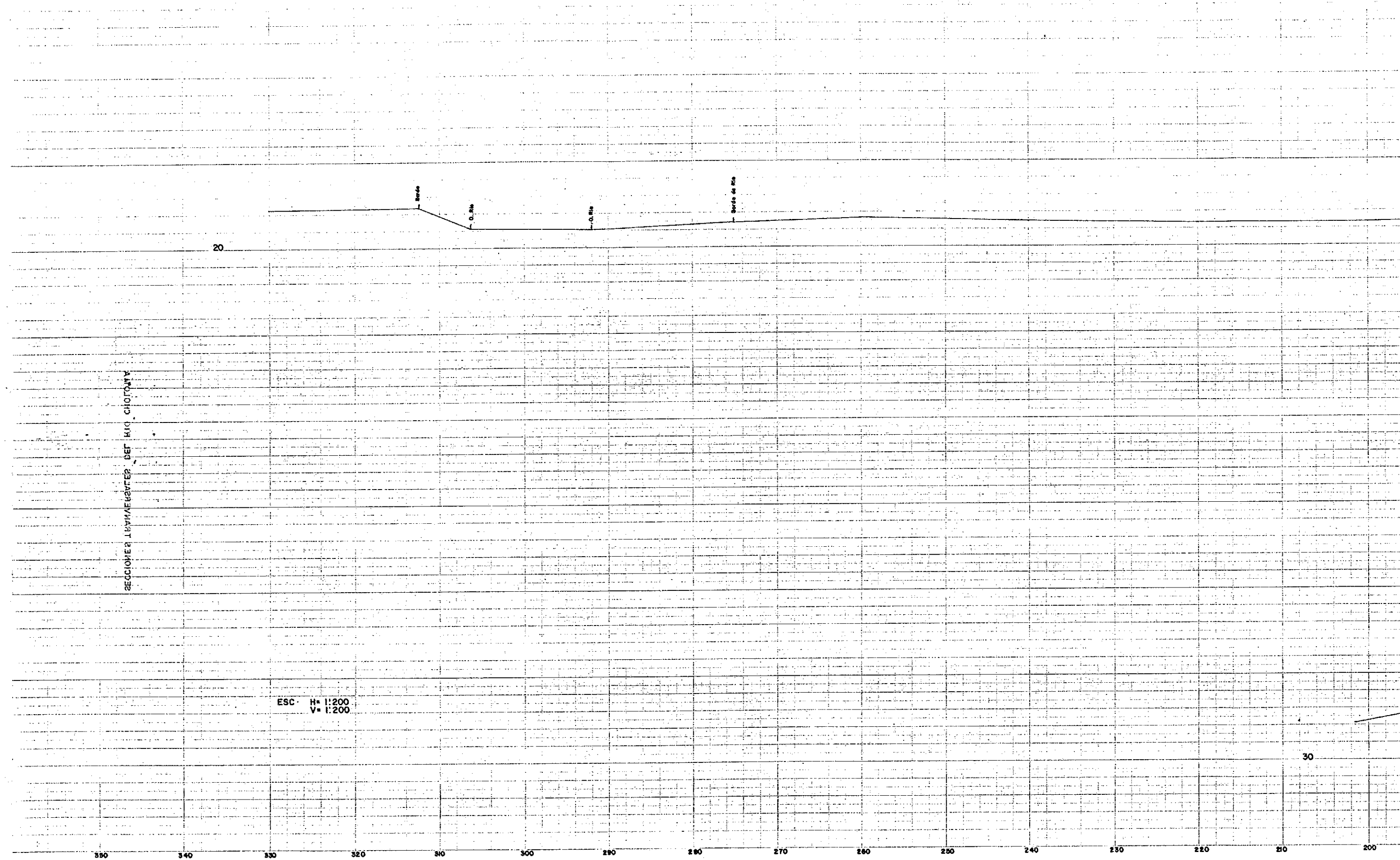
SECCIONES TRANSVERSALES DEL CANAL DE SAN ROQUE
FINAL



SECCIONES TRANSVERSALES DEL CANAL DE SAN ROQUE
FINAL

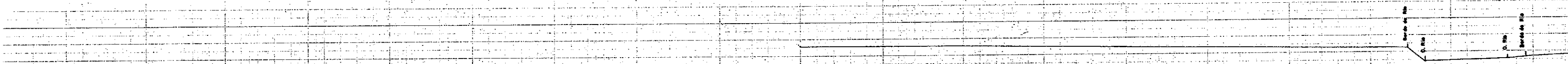
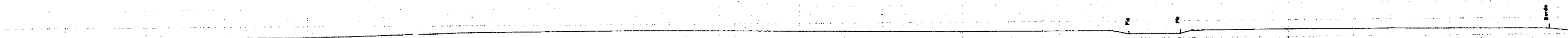
ESCALAC
 H = 1:200
 V = 1:200

350 340 330 320 310 300 290 280 270 260 240 230 220 210 200

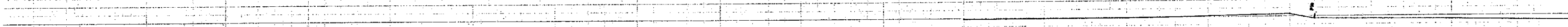


350 340 330 320 310 300 290 280 270 260 240 230 220 210 200

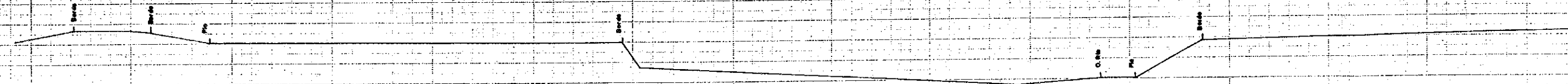
230 220 210 200 190 180 170 160 150 140 130 120 110 100 90 80 70 60 50



20

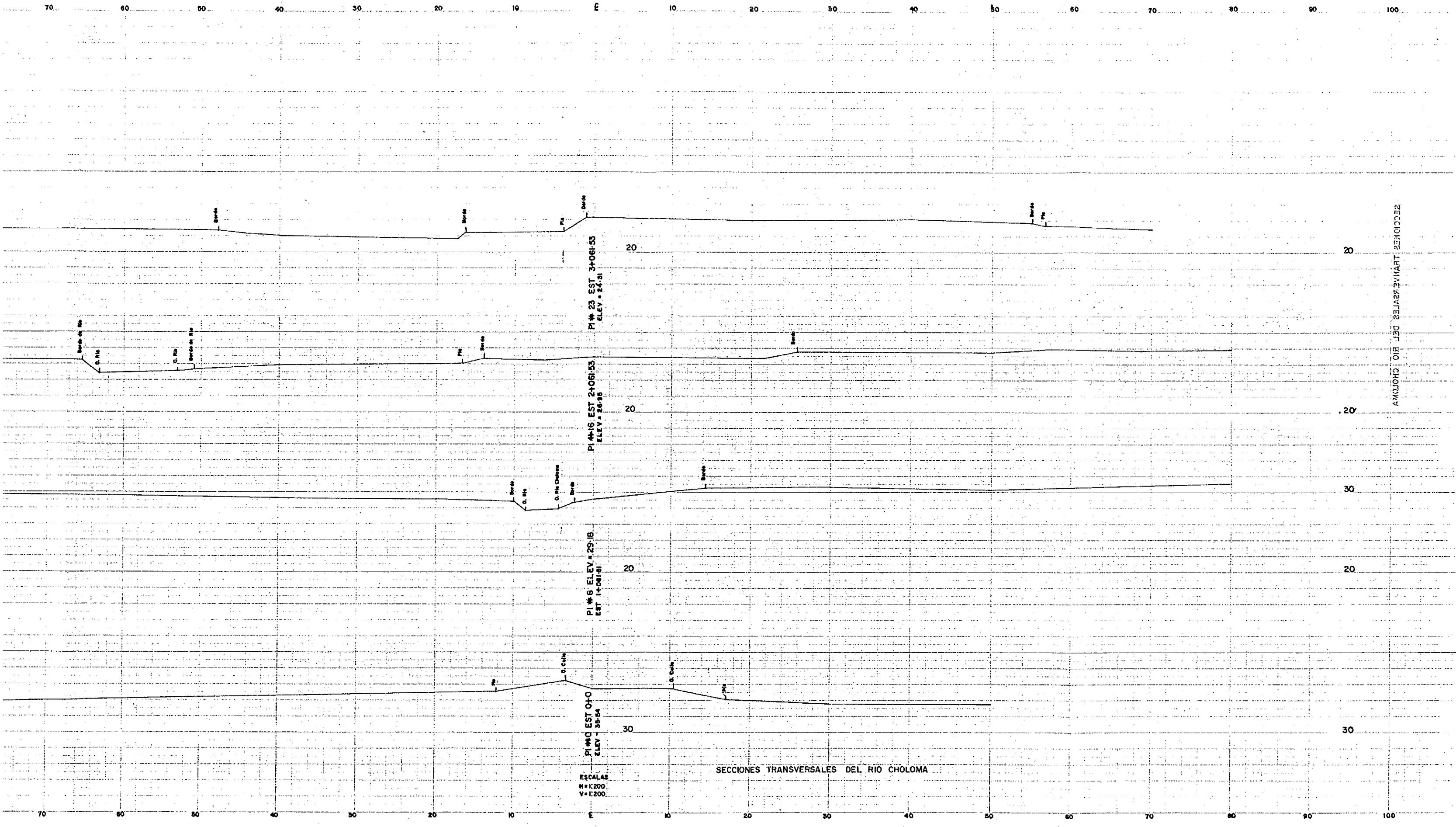


20



30

230 220 210 200 190 180 170 160 150 140 130 120 110 100 90 80 70 60 50

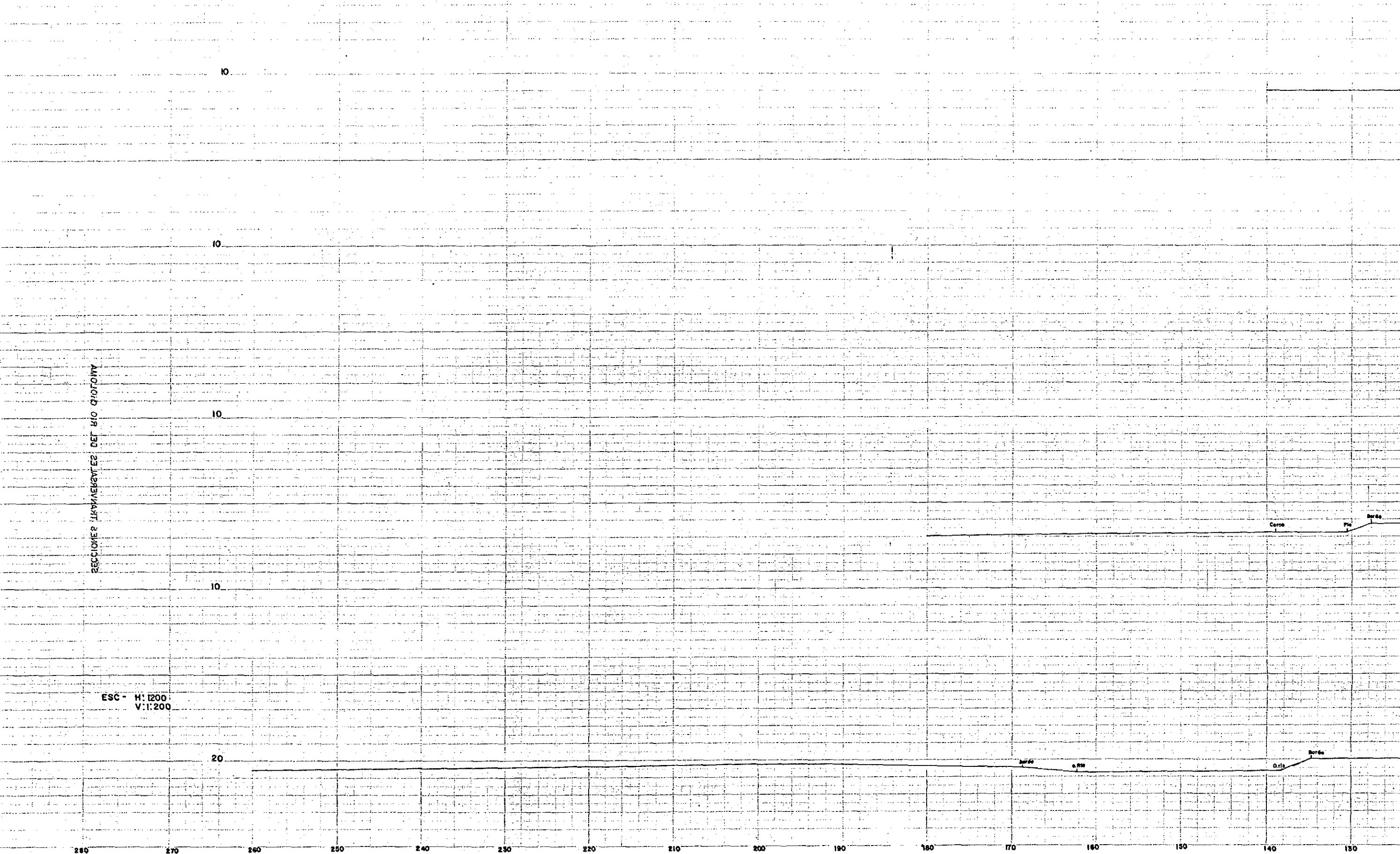


SECCIONES TRANSVERSALES DEL RIO CHOLOMA

SECCIONES TRANSVERSALES DEL RIO CHOLOMA

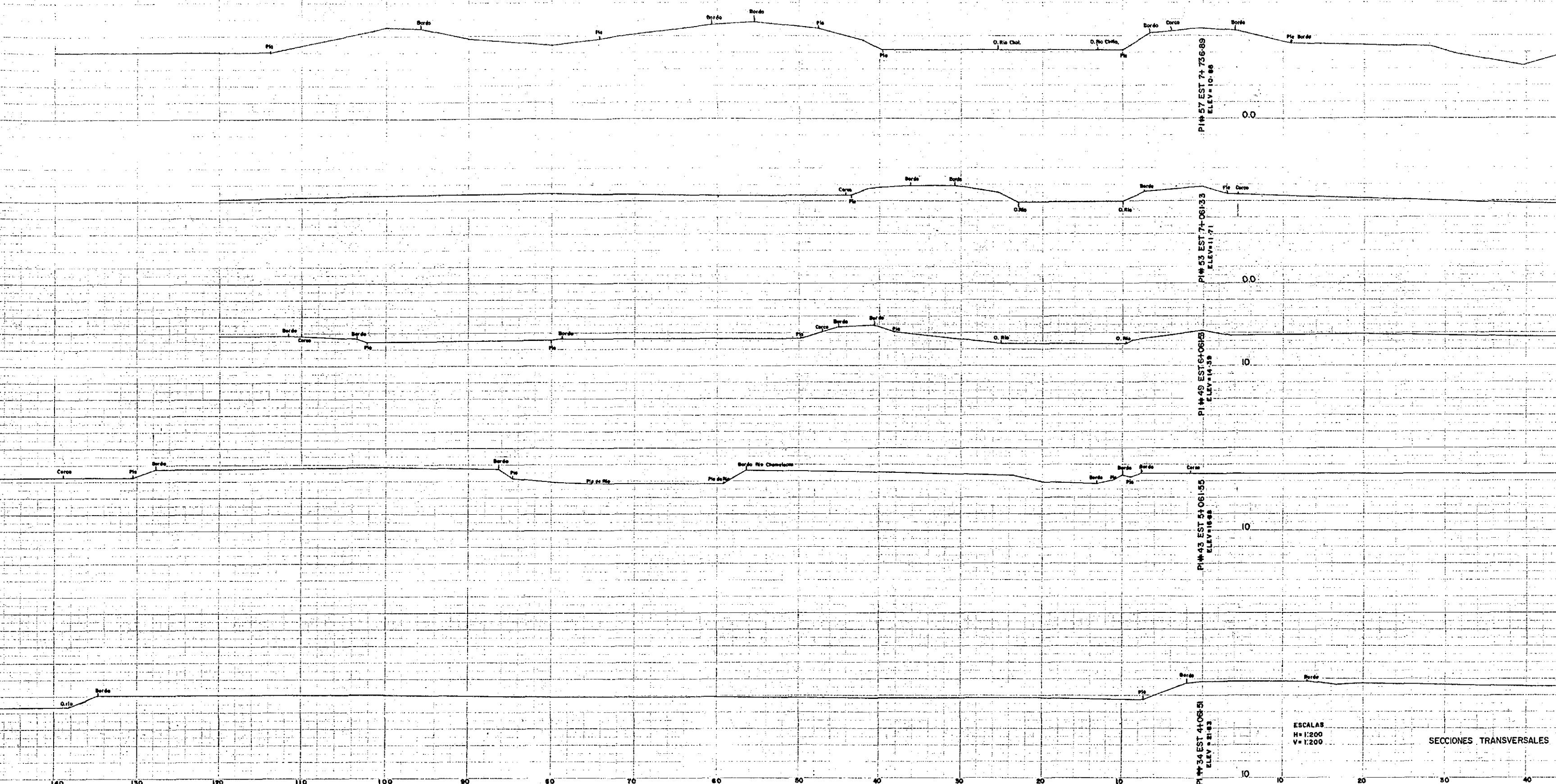
ESCALAS
H=1:200
V=1:200

280 270 260 250 240 230 220 210 200 190 180 170 160 150 140 130



SECCION TRANSVERSAL DEL RIO QUILÓN

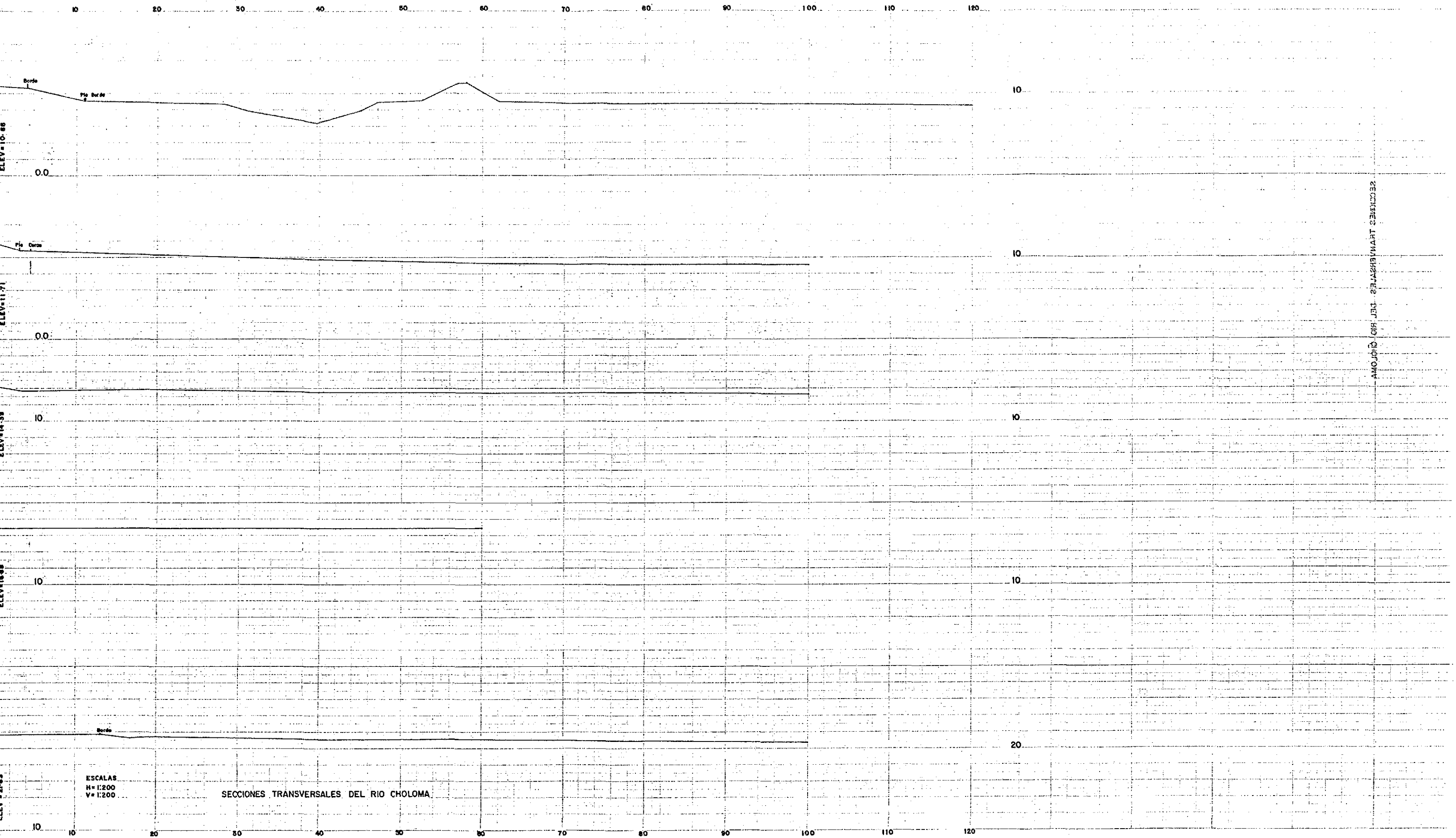
140 130 120 110 100 90 80 70 60 50 40 30 20 10 0 10 20 30 40



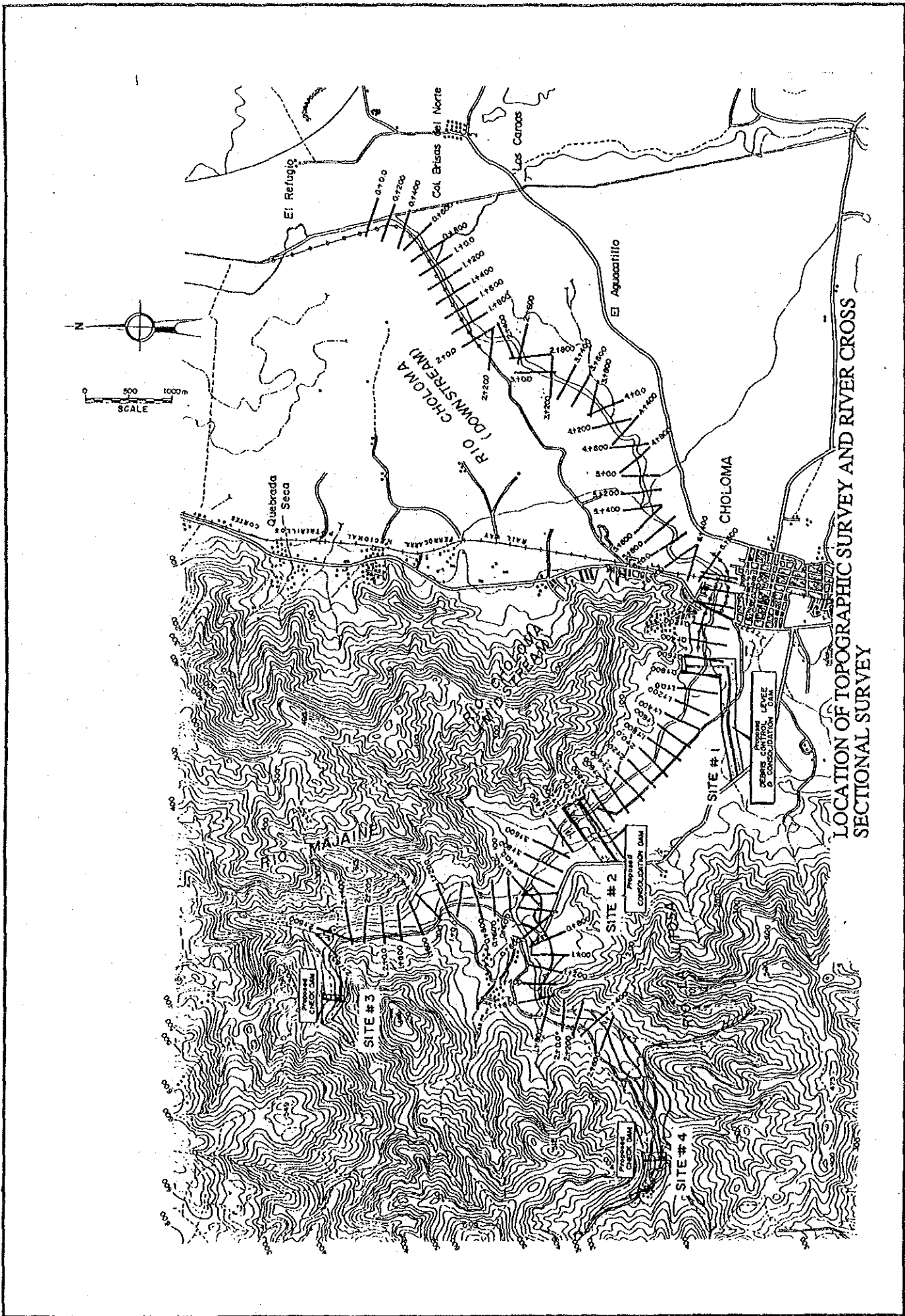
ESCALAS
H = 1:200
V = 1:200

SECCIONES TRANSVERSALES C

140 130 120 110 100 90 80 70 60 50 40 30 20 10 0 10 20 30 40



**SURVEY OF RIVER CROSS SECTIONS IN THE FEASIBILITY
STUDY STAGE**



LOCATION OF TOPOGRAPHIC SURVEY AND RIVER CROSS
 SECTIONAL SURVEY

250

200

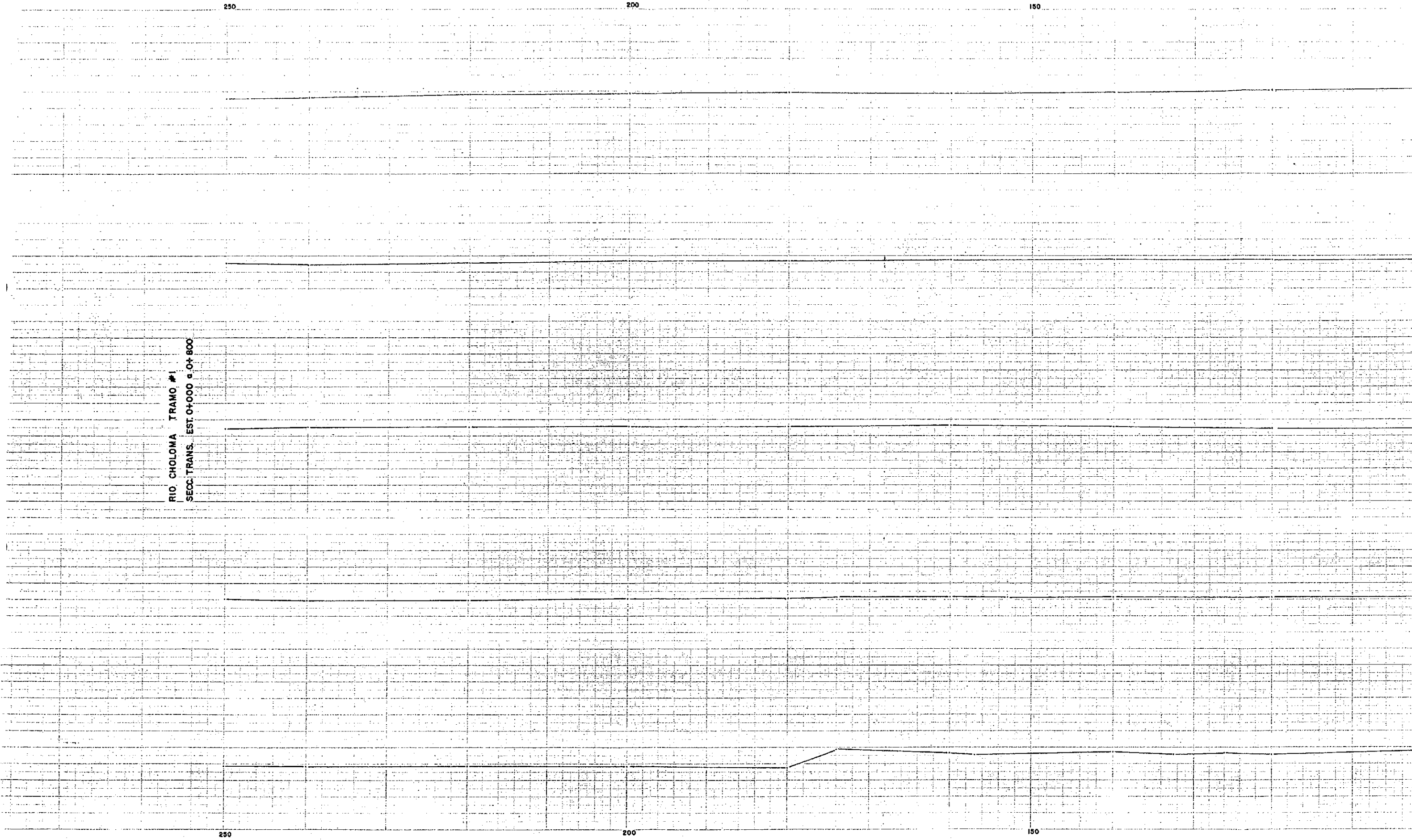
150

RIO CHOLOMA TRAMO #1
SECC TRANS. EST. 0+000 a 0+800

250

200

150

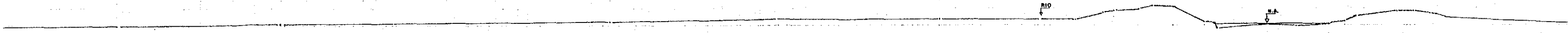


150

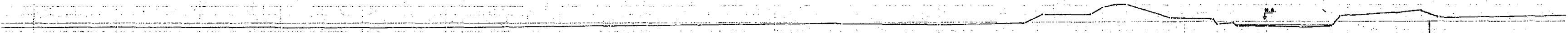
100

50

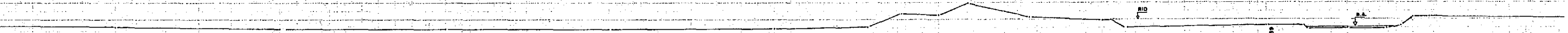
0



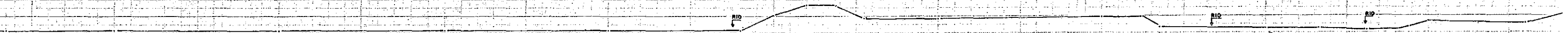
0+800
ELEV 10.02



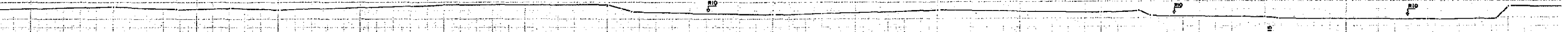
0+800
ELEV 9.92



0+800
ELEV 9.82



0+800
ELEV 9.72



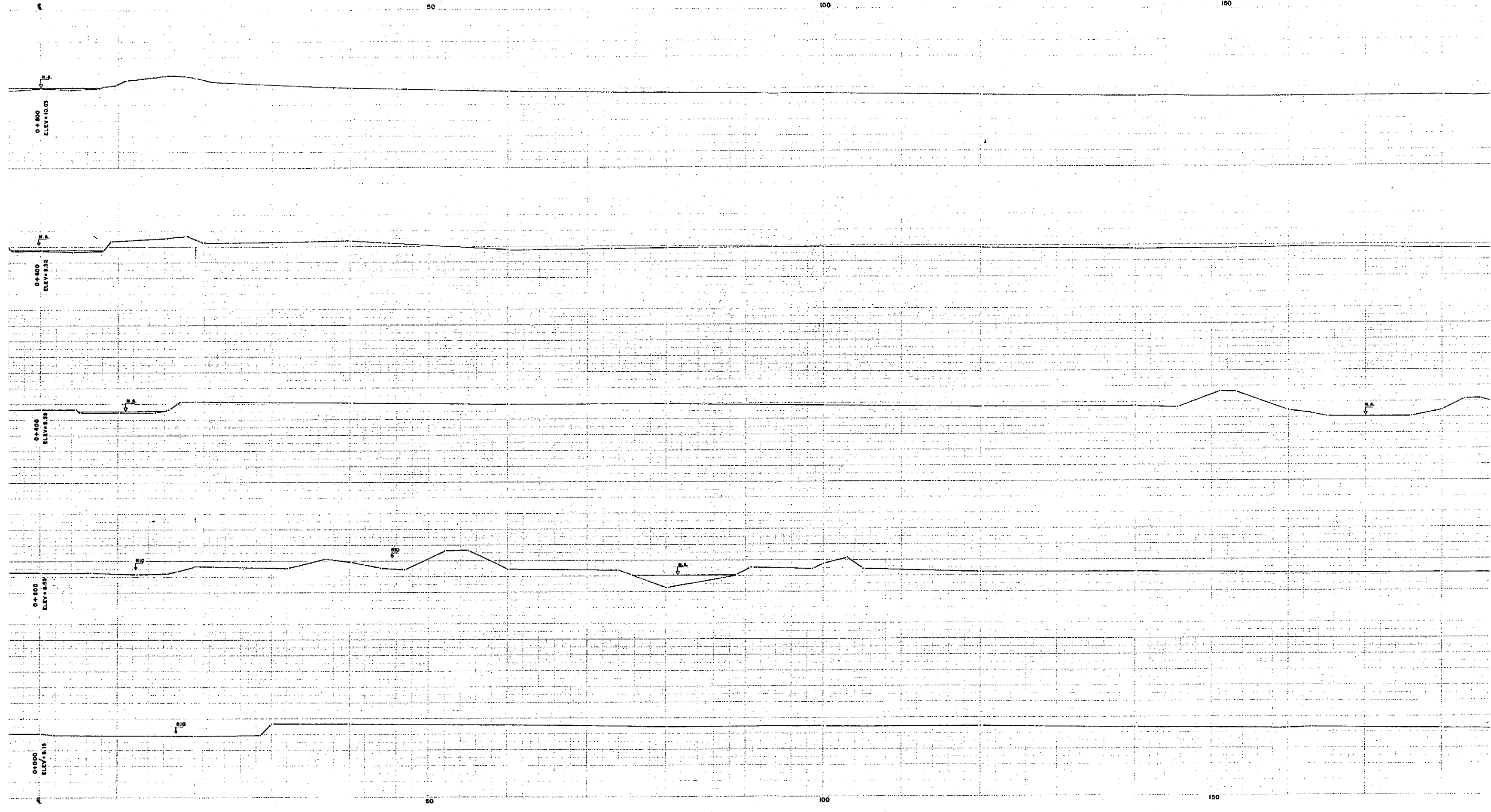
0+800
ELEV 9.62

150

100

50

0



50

100

150

0+800
ELEV. 10.05

0+800
ELEV. 9.92

0+800
ELEV. 9.83

0+800
ELEV. 9.52

0+800
ELEV. 9.16

50

100

150

P.A.

P.A.

R10

P.A.

P.A.

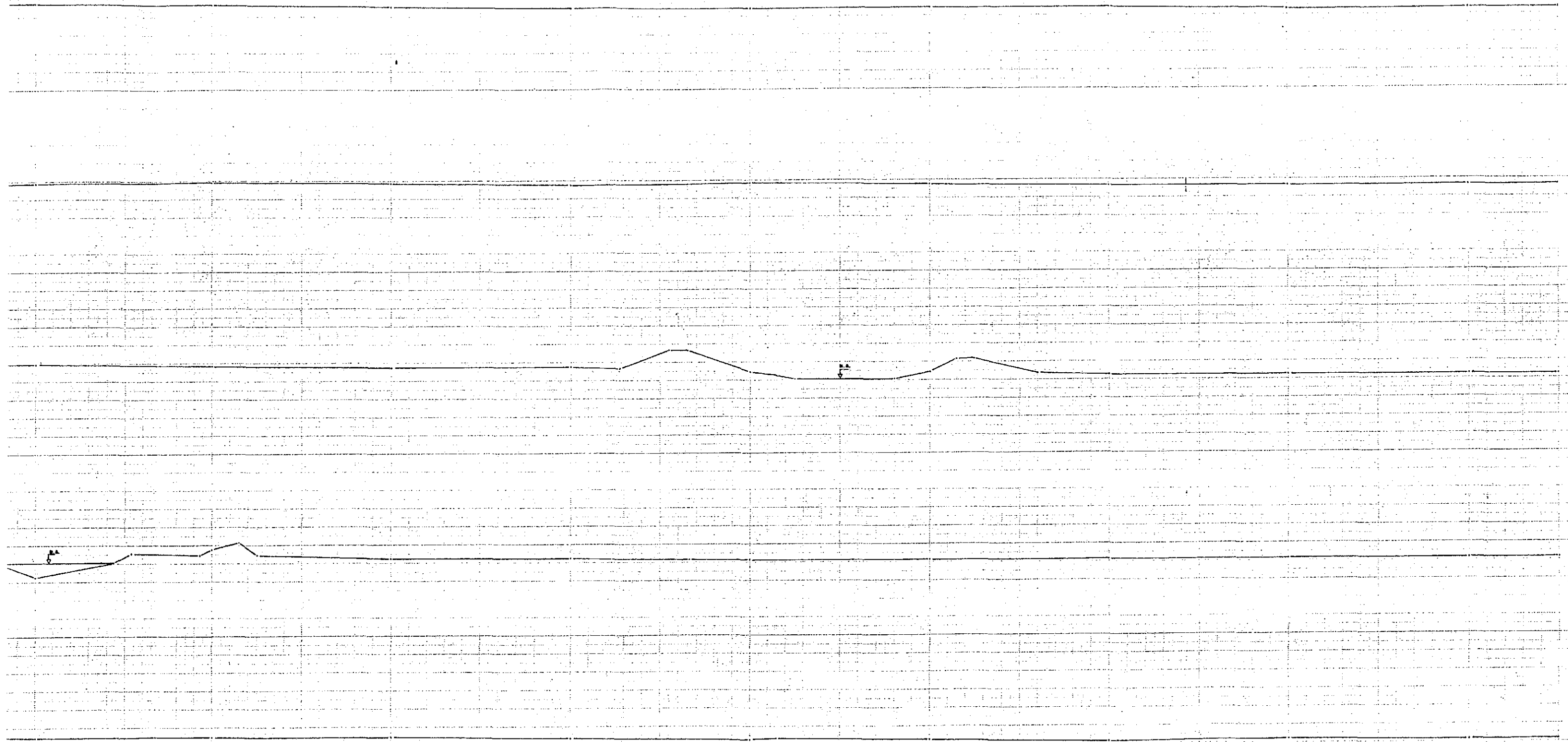
R10

100

150

200

250



100

150

200

250